

**The
Key**

大宅[®]

Select deluxe homes

Volume 81 SEPTEMBER 2011

臨海之尊
**WATERFRONT
LUXURY**



何為家...



中國西安，秦嶺北麓，漢上林苑故址之上，一座足以傳世的家宅。
 倚秦嶺之勢，北瞰秦川，東望紫閣峰，西臨太平河，
 歷時五年，六十多位祖傳手工藝匠人，
 于三百畝林溪坡地之上，精心打磨三十五席純手工院落，
 引天然溫泉，山水園林布局，東方古韵盎然。
 以家園情懷，縱橫天下，今回歸此間，心駐為家……

... 吾心安處！



西廂院子

XIXIANG GARDEN

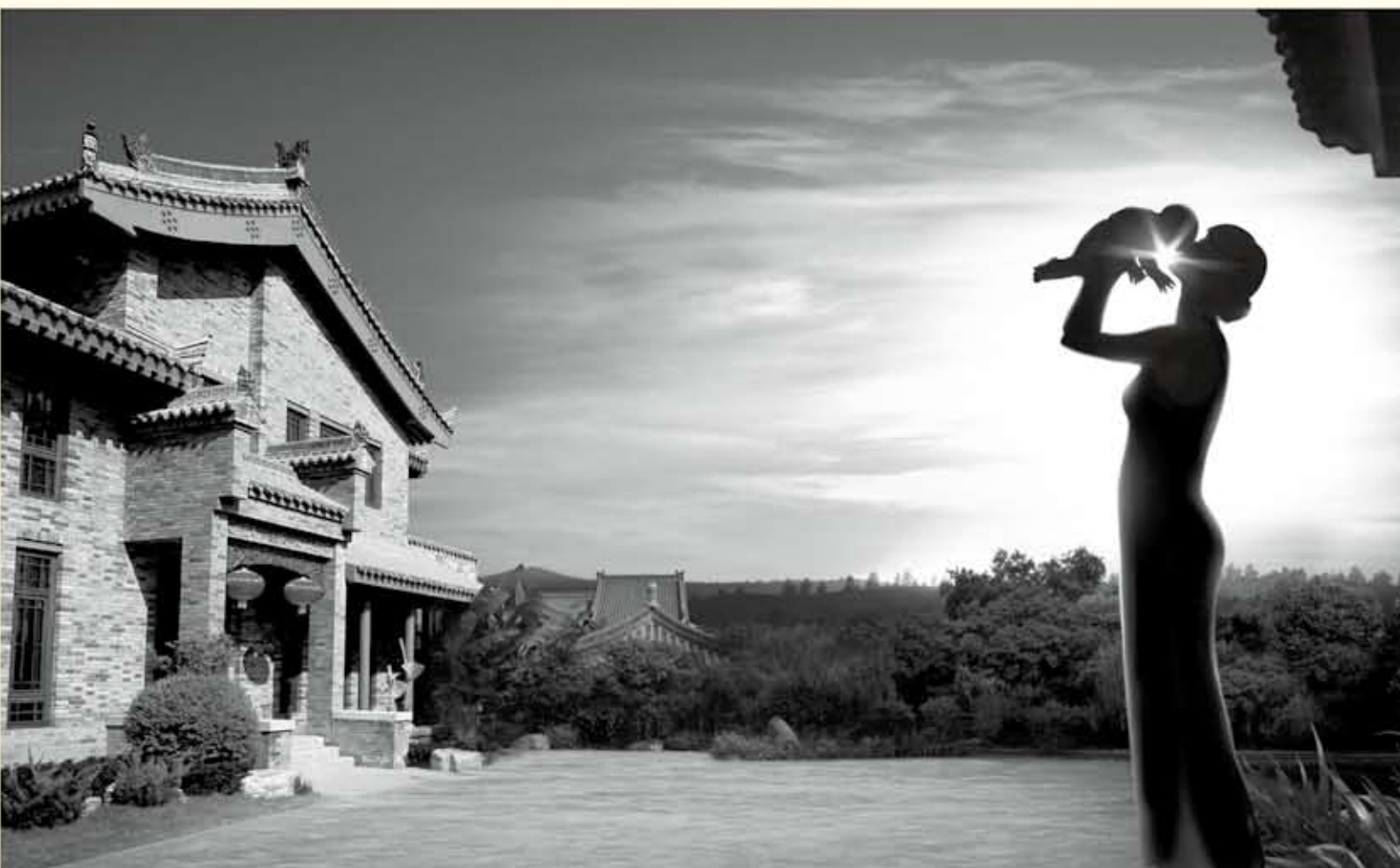
品鑒專線：400-029-8885

港澳地區：+852 3102 4888

Contact: Mr. Koh +852 31024888

www.xianyuanzi.com

開發商：陝西嘉友軒置業有限公司 | 物業/營銷顧問：美倫物業管理(上海)有限公司 | 品牌策劃諮詢：迪卡品牌策劃諮詢(上海)有限公司





周邊環境及專案特點：

西安院子坐落於西安市西南郊秦嶺北麓，東鄰大漢上林苑遺址，西接太平河，依山傍水，樹木蔥郁。其主要建築由35座純手工中式大宅和自然山水園林景觀構成。

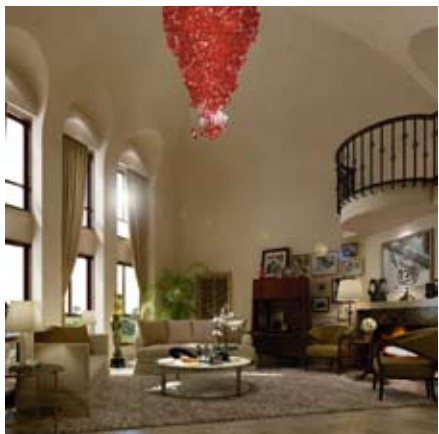
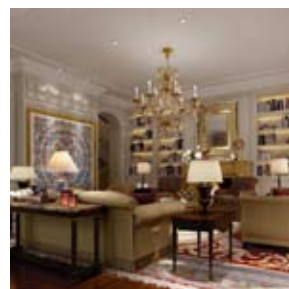
西安院子設計項目以中國傳統庭院為基調，兼顧北方民居，採用了門樓、院牆、坡頂、青磚及窗櫺的形式。在設計理念上，將現代建築功能、結構、形式及設備配套與豐富的文化內涵有機結合，形成了青瓦延綿，灰牆連貫，古樹參天，樸實自然的建築群體。園林景觀集南方園林之精粹，戶戶溪流環繞，三季有花，四季常綠。

精裝修戶型由梁錦華先生與蔡文亮先生兩位大師親自設計，將藝術、建築與科技完美融合。物業管理獨創「中國式管家服務特色」，為業主提供舒適貼心服務，另西安院子成為業主的理想身心家園。

項目位置：陝西省西安市草堂寺景區內
別墅面積：每棟建築面積 600平米-800平米
庭院面積：400平米-800平米

均價及價格區間：
 30000元/平米 (均價)

Contact person 聯絡人：
 許先生 +852 3102 4888



KeyWords

"They always say time changes things, but you actually have to change them yourself"
「人們常道時間能改變一切，但其實一切都得由人去做改變。」

Andy Warhol (1928-1987), US artist; leader of Pop Art movement
美國藝術家兼流行藝術運動領袖安迪·華荷 (1928-1987)

KeyNotes

More on unauthorised structures 再論僭建

The Buildings Department has always been slow in taking action against unauthorised structures, possibly due to a lack of manpower – but the private sector could easily assist via thousands of qualified building professionals, including architects and building surveyors, known as Authorised Persons under the Buildings Ordinance.

Under current law, all property sales must be registered with the Land Registry for legal protection of property rights. It could be legislated that each transaction also requires a certificate of compliance endorsed by an Authorised Person. This would certify that the property under consideration complies with Building Regulations and, in the Authorised Person's opinion, no unauthorised structures exist. Laws could be enacted stating that the Land Registrar will not permit registration of the sale without this certificate.

Under current legislation, a sale can still proceed if both buyer and seller opt to go ahead even if a building order has been registered against a property. But if it were enacted that the order must be complied with before a new transaction can be registered, the burden of ridding the property of unauthorised structures would be put squarely on the seller.

屋宇署對僭建物一直都執法遲緩，或許是人力資源不足所致。反觀私營界別，他們只要動用旗下數以千計合資格的建築專家，包括於建築物條例列明的註冊認可人士，如建築師及測量師，便能輕易伸出援手解決風波。

就現時的法例，所有物業銷售必須於土地註冊處註冊，物業才獲法律保護，保障物業權益。政府大可推行法例，規定每宗交易的「合約完成證明書」（俗稱「滿意紙」）都要由註冊認可人士簽署。如此一來，便能確保申請物業都符合建築條例的要求，並保證物業在註冊認可人士的驗證下並無僭建物。同時，亦可頒布法例指明若沒有註冊認可人士認可的證明書，土地註冊處處長不會受理有關銷售註冊的申請。

即使物業已獲發建築修葺令，只要買賣雙方同意，現時的法例便會允許物業買賣繼續進行。但是，倘若政府頒布法例，規定新的物業買賣必須在執行建築修葺令後才能登記於業權紀錄上，清拆僭建物的責任便自然落到賣家的身上，使業主無法再推卸責任。

K.S. Koh
ks-koh@landscape.com

(The above is an excerpt from Market Watch on www.landscape.com. Read the full article at Market Watch, www.landscape.com/marketwatch)
(以上內容節錄於領域網站內的市場觀察，如欲觀看全文，請登上網址: www.landscape.com/marketwatch)

Monthly HIGHLIGHTS 每月精選



- 06 Tai Tam House
大潭洋房
- 08 Tregunter Tower
中半山 地利根德閣
- 17 Medallion Heights
西半山 金徽閣

HOW MAY YOU LIST YOUR PROPERTY WITH THE KEY?

怎樣在《大宅》刊登您的出售／出租物業？

If you would like to see your property listed in The Key in the next issue, you may call Loretta Lui at 3102 4818 or visit us at www.landscape.com/sell_let. Or you may simply fill out the space below and fax to us at 2866 0015.

如果您想將出售／出租物業刊登於大宅，可致電3102 4818與呂小姐聯絡，或登上 www.landscape.com/sell_let。或者您可以填寫下面的表格傳真至2866 0015。

Property to be listed 物業

Asking Rental / Sale Price 租金 / 售價

Floor Area 面積

Contact Person 聯絡人

Telephone 電話

Email 電郵地址

Our KeyPersons will contact you for follow-up works.
我們的大宅專員會馬上與您聯絡

Published and distributed by

LANDSCOPE 領域
The Specialists in Luxury Properties

Landscape Realty Limited C-018733

a member of Landscape Surveyors Ltd

Find us on:
facebook.

Designed by

PERSPECTIVE 透視

Tel: +852 2866 0022
Fax: +852 2866 0015
Email: info@landscape.com
Website: www.landscape.com
Address: Unit 3106, 31/F, Hopewell Centre,
183 Queen's Road East, Wanchai, Hong Kong

Member of:



Tel: +852 2525 0287
Fax: +852 2526 3860
Email: info@perspectiveglobal.com
Website: www.perspectiveglobal.com
Address: Rm 2408, Dominion Centre,
59 Queen's Road East, Wanchai, Hong Kong

The information, text, photos, analyses and projections contained herein are provided solely for the convenience of prospective clients and no warranty or representation as to their accuracy, correctness or completeness is made by Landscape Surveyors Limited, Landscape Realty Limited or the owners, none of whom shall have any liability or obligation with respect thereto. Interested parties should rely on their own investigations, interpretations and analyses in connection with the purchase or letting thereof.

Information has been provided to us by sources deemed reliable, but no warranty or representation is made as to its accuracy, correctness or completeness. These offerings are made subject to contract, correction of errors, omissions, prior sale or lease, change of price or terms or withdrawal from the market without notice. The contents of The Key are for reference only and do not constitute all or any part of a contract. Copyright 2011



臨海之尊 WATERFRONT LUXURY

Photography: Daniel Tam



Perfectly positioned on the corner of the peninsula, this over 3,000 sq-ft town house in Tai Tam has a resort feel but is close to the city. Best experienced from the 2,617 sq-ft garden, the waterfront house enjoys panoramic sea views over Tai Tam Bay towards Shek O Country Park. The large teak-decked terrace and garden come with a teak pergola, extensive mature planting, garden lighting and an irrigation system.

Ideal for families, the three-storey residence has three bedrooms (all ensuite), together with a large family room or fourth bedroom, also en suite. There is a combined living and dining room, and two maid's rooms with a utility room and separate staff entrance.

The light and airy home has been completely renovated to an exceptional standard in classic contemporary style. New plumbing, electrical systems and air-conditioning units are in place. Additionally, the renovations included all new double-glazed, floor to ceiling windows and sliding doors, light oak floors and high quality architect-designed woodwork throughout, with extensive built-in cupboards and bookcases.

Halogen ceiling lights are set throughout the home, with a Lutron lighting system in the main rooms. For those who enjoy music and cinema, surround sound is installed in the family room and a Sonos music system with ceiling speakers in the main rooms. The family room also features a pantry equipped with a fridge, dishwasher, sink and storage for entertaining on the adjacent terrace.

At entrance level, the kitchen presents granite worktops, complementing the high-specification Siemens appliances. Ensuring safety throughout the house, door entry phones are installed on all levels, with an American Burglar Alarm security system.

Just 25 minutes from Central, this waterfront house is perfect for families looking for a relaxed lifestyle surrounded by nature but which is not far from the city.

位於大潭半島一角，這間超過3,000平方呎的聯排洋房儼如毗鄰市區的假日別墅。整間臨海房子都享有一望無際的環迴海景，飽覽朝石澳郊野公園方向的大潭灣美景，而其2,617平方呎的花園的海景更出其右。偌大的柚木平台花園設有柚木棚，種有繁茂的翠綠植物，襯以花園燈飾，並配設灌溉系統。

這間三層高的住宅最適合家庭居住，除了四間睡房均是套房外，客廳與飯廳相連，兩間工人房還設有雜物間，更有獨立入口供家傭使用。

住宅光猛又通風，曾大規模裝修，室內改成高檔的經典當代風格，亦更換了新喉管、電力系統與冷氣機。再者，住宅亦加上全新的雙層玻璃趟窗門，新設防水天台，鋪上淺色橡木地板，而全屋的多個固定壁櫃與書櫃都是由建築師設計的高質木櫃。

全屋都裝設了鹵素天花燈，而主要的房間都配設路創燈光系統。家庭娛樂室裝設環迴立體聲系統，而主要房間則裝設Sonos音樂系統並在天花裝設揚聲器，照顧愛好音樂與電影的家庭的需要。家庭娛樂室還附設小廚房，內有雪櫃、洗碗碟機、洗滌槽，以及貯物空間，放有隔旁陽台的娛樂物品。

設於地下的廚房配有花崗岩 面，配以高規格的西門子電器。為了確保全屋的安全，房子每層門口都設有電話對講機，更裝設American Burglar Alarm防盜警鐘安全系統。

這間臨海住宅距離中環只有25分鐘的車程，是想要寧靜家居、又不想離市區太遠的家庭的二選一。

Tai Tam House

大潭洋房

3,026 s.f.

(plus garden of 2,617 s.f., rooftop of 127 s.f. and carport of 451 s.f.)

HK\$102M



9871 6828 Louis Wong 黃先生

www.landscape.com/107218.htm



燈光所能改變的豈只是光線

燈光所能改變的，遠超乎想像。Philips實地走訪不同家庭，利用最先進的LED燈具改造室內照明，塑造完美氣氛。立即用手機或平板電腦輸入QR碼觀看改造過程或瀏覽www.philips.com/seewhatlightcando，感受飛利浦LED演繹照明全新定義。

Philips LED Lighting. See what light can do.



PHILIPS
sense and simplicity



Gallant Place

15 Tung Shan Terrace,
Midlevels East

Stylish low-rise apartment with private
terrace garden
時尚低密度住宅，連私家平台

1,284 s.f. (plus 1,400 s.f. terrace)

\$18.5M

☎ 9551 1077 Walker Lam 林先生

🌐 www.landscape.com/96966.htm

東
半
山
嘉
逸
居

可普通話



Royal Court

9M Kennedy Road,
Midlevels Central

3-bedroom apartment with roof top at
convenient location
中半山三房住宅，連天台，位置優越，可租可售

919 s.f. (plus 637 s.f. roof)

\$25M also for lease \$55K incl.

☎ 9093 3381 Stephen Chan 陳先生

🌐 www.landscape.com/18552.htm

中
半
山
皇
朝
閣

高空情緣 Vertigo at home

Once Asia's tallest residential building in the early 1990s, this two-bedroom (one ensuite) apartment is part of the prestigious Tregunter Towers in Midlevels.

The 4,146 sq-ft enjoys mountain views best experienced from the 1,073 sq-ft rooftop terrace. From the combined living and dining room to the bedrooms to the family room, space is ample and well-decorated. The building is equipped with recreational facilities such as a gym, swimming pool, tennis court, squash court, children's playground, sauna and golf driving range.

There are also designated barbecue areas and function rooms. Located in the Lower Peak area, the estate has its own shuttle bus service providing easy access to business districts like Central and Wanchai. A walking trail behind Tregunter Towers leads up to the Peak.

尊貴的半山地利根德閣在90年代初曾是亞洲第一住宅高樓，這間住宅單位便正身在其中。

這個單位面積達4,146平方呎，設有一間套房和一間睡房。全個單位均享有翠綠山景，而當中1,073平方呎的天台平台的景緻最美麗醉人。從相連的客飯廳、到睡房以至家庭娛樂室，空間都既寬敞又裝修精緻。地利根德閣設有多個消遣娛樂設施，包括健身室、游泳池、網球場、壁球場、兒童遊樂場、桑拿浴室及高爾夫球練習場。

地利根德閣更設有特定燒烤場及用途室，在下山頂段更設有專屬穿梭巴士服務，為居民提供快捷交通直達中環與灣仔等商業區。屋苑後方更有行山徑通往山頂。

Tregunter Tower 3, 14 Tregunter Path, Midlevels Central

地利根德閣3座

中半山地利根德里14號

4,146 s.f. (plus 1,073 s.f. roof)

HK\$118M

☎ 6838 2929 Mark Mak 麥先生

🌐 www.landscape.com/109256.htm





Botanic Terrace

3-5 Conduit Road, Midlevels West
Unique penthouse apartment with private roof and open mountain view
西半山雅致頂層住宅，連私家天台，享開揚山景，可租可售

2,200 s.f. (plus 912 s.f. roof)
\$26.68M also for lease \$63k incl.

📞 9080 6686 Teresa Lau 劉小姐
🌐 www.landscape.com/49309.htm 可普通話

西半山芝蘭台



5G-5H Bowen Road, Midlevels Central

Low-rise with huge private roof for sale on Bowen Road
寶雲道低密度住宅，連特大天台，可租可售

1,400 s.f. (plus 3,000 s.f. roof)
\$28M also for lease \$72K incl.

📞 9833 9509 Michelle Chung 鍾小姐
🌐 www.landscape.com/130577.htm 可普通話

中半山寶雲道5G-5H號



Wing On Lodge

72-82 Blue Pool Road, Happy Valley
Stylish mid-rise 2-bedroom flat with private roof and high ceilings
時尚中密度兩房單位，連私家天台，樓底極高

1,308 s.f. (plus 992 s.f. roof)
\$33M

📞 9809 8570 Stella Lo 羅小姐
🌐 www.landscape.com/133361.htm

跑馬地永安新村



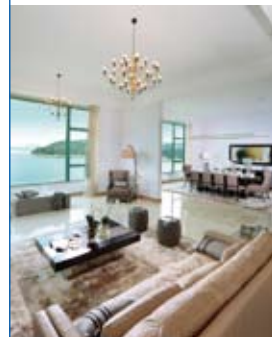
Regalia Bay

88 Wong Ma Kok Road, Stanley
Waterfront high garden townhouse with clubhouse facilities enjoy peaceful sea view
特大海濱花園大屋，連住客會所設施，享寧靜海景

9,916 s.f. (plus 2,947 s.f. roof and 1,645 s.f. garden)
\$50M

📞 5182 8699 Maria Cheung 張小姐
🌐 www.landscape.com/126208.htm

赤柱富豪海灣



Residence Bel-Air

Bel-Air Avenue, Pokfulam
Newly decorated duplex penthouse with sky garden and private roof
全新裝修複式單位，連空中花園及私家天台

2,425 s.f. (plus 556 s.f. terrace and 304 s.f. roof)
\$55M

📞 9028 0147 Jenson Au 區先生
🌐 www.landscape.com/99245.htm 可普通話

薄扶林貝沙灣



Le Palais

8 Pak Pat Shan Road, Tai Tam
Garden townhouse with sweeping sea view in serene location
大潭花園洋房，觀賞遼闊海景，地段寧靜怡人

3,348 s.f. (plus 741 s.f. garden)
\$88M

📞 6330 7888 Cora Ko 高小姐
🌐 www.landscape.com/32677.htm

大潭皇府灣





Regent Palisades
43 Bisney Road, Pokfulam
Newly renovated low-rise flat with huge private roof terrace in quiet neighbourhood
全新裝修低密度住宅，連大天台，環境清幽怡人

薄扶林 帝柏園

1,513 s.f. (plus 905 s.f. roof)
\$19.5M

9648 6082 Christine Chong 莊小姐
www.landscape.com/109888.htm



South Bay Towers
59 South Bay Road, Repulse Bay
Sea view high-floor boutique 2-bedroom apartment with facilities
高層精緻兩房單位，尊享海景，連住客會所設施

淺水灣 南灣大廈

1,433 s.f.
\$20M

6330 7888 Cora Ko 高小姐
www.landscape.com/16275.htm



Royalton
116 Pok Fu Lam Road, Pokfulam
Bright and airy 2-bedroom apartment with full sea view
光猛舒適兩房住宅，欣賞全海景

薄扶林 豪峰

1,750 s.f.
\$20M

9229 2396 Elaine Chow 周小姐 可普通話
www.landscape.com/121728.htm



18-24 Bisney Road, Pokfulam
Low-rise penthouse with internal private roof for sale in Pokfulam
薄扶林低密度頂層住宅，連內置私家天台出售

薄扶林 碧林道 18-24號

1,500 s.f. (plus 1,500 s.f. roof)
\$20.5M

9648 6082 Christine Chong 莊小姐
www.landscape.com/83518.htm



Aqua 33
33 Consort Rise, Pokfulam
Contemporary style penthouse in excellent condition with roof terrace
豪華頂層住宅，靚裝修，連天台平台，可租可售

薄扶林 甘栗街33號

1,896 s.f. (plus 1,135 s.f. roof)
\$28.8M also for lease \$85K.

9809 8570 Stella Lo 羅小姐
www.landscape.com/124658.htm



La Mer
67-71 Bisney Road, Pokfulam
Full sea view 3-bedroom plus study room low-rise apartment with twin carports
全海景三房連書房低密度住宅，連雙車位

薄扶林 浪頤居

2,063 s.f.
\$29.8M
Sole Agent 獨家代理

9088 4666 Yvonne Chang 鄭小姐
www.landscape.com/108873.htm



Splendour Villa
10 South Bay Road, Repulse Bay
Rare find beachfront low-rise with private roof top at Repulse Bay
淺水灣海邊低密度住宅，連私家天台，市場罕有

淺水灣 雅景閣

1,325 s.f. (plus 1,044 s.f. roof)
\$32M

6838 2929 Mark Mak 麥先生
www.landscape.com/34427.htm



Ruby Court
55 South Bay Road, Repulse Bay
Nicely decorated flat with full sea view in prestigious development
雅致靚裝修單位，尊享全海景，地段尊貴，可租可售

淺水灣 嘉麟閣

1,780 s.f.
\$37M also for lease \$72k incl.

9138 1621 Teresa Fung 馮小姐
www.landscape.com/123302.htm



Bauhinia Gardens
42 Chung Hom Kok Road, Chung Hom Kok
Low-rise 3-bedroom apartment with private roof enjoying green and sea view
低密度三房住宅，連私家天台，尊享翠綠景色及海景，可租可售

春坎角 紫荊園

1,600 s.f. (plus 1,190 s.f. roof)
\$39M also for lease \$78K incl.

9080 6686 Teresa Lau 劉小姐 可普通話
www.landscape.com/34206.htm



South Bay Towers
59 South Bay Road, Repulse Bay
Sea view apartment with high efficiency layout in South Bay
淺水灣海景住宅，實用率高，間隔寬敞

淺水灣 南灣大廈

2,738 s.f.
\$45M

9833 9509 Michelle Chung 鍾小姐 可普通話
www.landscape.com/3328.htm



Hong Kong Parkview - Tower 15

88 Tai Tam Reservoir Road, Repulse Bay

Newly decorated apartment with clubhouse facilities enjoying fantastic views
全新裝修住宅，連完善住客會所設施，尊享遼闊開揚景色

2,611 s.f.
\$55M

☎ 5182 8699 Maria Cheung 張小姐
🌐 www.landscape.com/94329.htm

淺水灣
陽明三柱15座



Celestial Garden

5 Repulse Bay Road, Repulse Bay

Popular 4-bedroom sea view flat on upper Repulse Bay Road
淺水灣道頭段受歡迎四房海景住宅

2,375 s.f.
\$61M

☎ 6330 7888 Cora Ko 高小姐
🌐 www.landscape.com/4127.htm

淺水灣
詩禮花園



Barker Villa

41 Barker Road, The Peak

Nicely renovated apartment with full harbour view
雅致裝修住宅，尊享全維港景色，可租可售

1,650 s.f.
\$68M also for lease \$70K incl.

☎ 9199 0672 David Leung 梁先生
🌐 www.landscape.com/15818.htm

山頂
柏架別墅



Guildford Court

5 Guildford Road, The Peak

Well decorated apartment in lower Peak
山頂雅致裝修住宅出售

2,500 s.f.
\$70M

☎ 9809 8570 Stella Lo 羅小姐
🌐 www.landscape.com/30026.htm

山頂
喬福道9號



Twin Brook

43 Repulse Bay Road, Repulse Bay

4-bedroom apartment with sea view in prime location
四房海景住宅，欣賞美麗海景，地段顯赫，可租可售

2,700 s.f.
\$76M also for lease \$128K

☎ 9348 4118 Rowena Siu 蕭小姐
🌐 www.landscape.com/7861.htm

淺水灣
雙溪



Royal Garden

27 Repulse Bay Road, Repulse Bay

Exclusive apartment at vantage point to take in spectacular views
淺水灣獨特住宅，尊享如畫美景

2,680 s.f.
\$90M

☎ 9809 8570 Stella Lo 羅小姐
🌐 www.landscape.com/103481.htm

淺水灣
聚豪居



Peak Gardens

16-20 Mount Austin Road, The Peak

Contemporarily designed apartment overlooking picturesque Victoria Harbour view
雅致靚裝修住宅，俯瞰維港如畫美景

2,655 s.f.
\$90M

☎ 9093 3381 Stephen Chan 陳先生
🌐 www.landscape.com/30077.htm

山頂
山頂花園



Le Palais

8 Pak Pat Shan Road, Tai Tam

Renowned townhouse with sweeping sea view and facilities
新裝修排屋，享寧靜海景及住客會所設施

3,348 s.f.
\$98M

☎ 9238 2012 David Chan 陳先生
🌐 www.landscape.com/44588.htm

大潭
皇府灣



L'Harmonie

3 Stanley Mound Road, Stanley

Rare find 4-bedroom townhouse on Stanley Main Beach
罕有四房排屋，鄰近赤柱大灘，可租可售

3,557 s.f. (plus 1,125 s.f. garden and 663 s.f. roof)
\$106M also for lease \$250K incl.

☎ 6330 7888 Cora Ko 高小姐
🌐 www.landscape.com/122327.htm

赤柱
葆琳居



Sunshine Villa

48 Mount Kellett Road, The Peak

Deluxe Peak townhouse with private garage
豪華山頂洋房，連私家車庫，可租可售

2,300 s.f. (plus 929 s.f. garden)
\$110M also for lease \$150K incl.

☎ 9238 2012 David Chan 陳先生
🌐 www.landscape.com/1708.htm

山頂
陽光花園



South Bay Palace

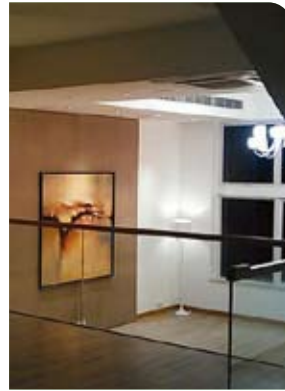
25-31 South Bay Close,
Repulse Bay

Designer decorated penthouse duplex
with huge private roof terrace
設計師精心設計頂層複式住宅，連特大私家
天台平台

3,960 s.f. (plus 4,133 s.f. roof)
\$140M

9871 6828 Louis Wong 黃先生
www.landscape.com/109182.htm

淺水灣
南灣御苑



Manderly Garden

48 Deep Water Bay Road,
Deep Water Bay

Designer decorated 4-bedroom
townhouse with roof in Deep Water Bay
深水灣靚裝修大屋，豪華四房連天台排屋連天台

3,610 s.f. (plus 587 s.f. roof)
\$143M

6183 8339 Carman Szeto 司徒小姐 可普通話
www.landscape.com/6527.htm

深水灣
文禮苑



Stanley Crest

5 Stanley Beach Road, Stanley

Sea view garden townhouse close
to beach
赤柱花園洋房，鄰近海灘，尊享海景，可租可售

3,894 s.f. (plus 920 s.f. garden,
666 s.f. roof and 436 s.f. terrace)
\$150M also for lease \$260K incl.

9093 3381 Stephen Chan 陳先生
www.landscape.com/123699.htm

赤柱
赤柱灘道5號



45 Island Road, Deep Water Bay

Rare find sea view garden house at
Deep Water Bay
深水灣罕有海景花園洋房

4,800 s.f. (plus 710 s.f. garden
and 540 s.f. roof)
\$168M

9199 0672 David Leung 梁先生
www.landscape.com/99477.htm

深水灣
香島道45號



Strawberry Hill

8 Plunkett's Road, The Peak

Tasteful designer decorated colonial
townhouse
設計師品味裝修英式洋房

3,200 s.f.
\$170M

9199 0672 David Leung 梁先生
www.landscape.com/108282.htm

山頂
紅莓閣



Carmelia

60 Stanley Village Road, Stanley

Huge colonial house with terrace and
private garden
巨型英式大屋，連平台及私家花園，可租可售

5,200 s.f. (plus 753 s.f. garden
and 343 s.f. terrace)
\$200M also for lease \$250K incl.

9871 6828 Louis Wong 黃先生
www.landscape.com/84478.htm

赤柱
赤柱村道60號



7-11 Cape Road, Chung Hom Kok

Brand new decorated modern house with
stunning sea view
全新裝修時尚大屋，欣賞遼闊海景

4,963 s.f. (plus 1,083 s.f. garden,
609 s.f. roof and 196 s.f. terrace)
\$220M

9871 6828 Louis Wong 黃先生
www.landscape.com/126122.htm

春坎角
環角道7-11號



Abergeldie

52 Plantation Road, The Peak

Peak house with garden and terrace
enjoy bird's eye view of Victoria Harbour
山頂大屋，連花園平台，鳥瞰維港景色

3,655 s.f. (plus 282 s.f. roof, 505
s.f. terrace and 464 s.f. garden)
\$220M

9199 0672 David Leung 梁先生
www.landscape.com/13340.htm

山頂
種植道52號



Kellett View Town House

65-69 Mount Kellett Road,
The Peak

Tastefully decorated 4-bedroom
townhouse in quiet area of the
prestigious Peak
靚裝修四房排屋，位於山頂顯赫地段，
環境寧靜怡人

3,986 s.f. (plus 973 s.f. terrace)
\$240M

5182 8699 Maria Cheung 張小姐
www.landscape.com/96599.htm

山頂
嘉麗園



Aegean Terrace

60 Sassoon Road, Pokfulam

Sea view low-rise with brand new
decorations and spacious layout
低密度海景住宅，連全新裝修，間隔寬敞實用

1,860 s.f.
\$Open Offer
Sole Agent 獨家代理

5182 8699 Maria Cheung 張小姐
www.landscape.com/40058.htm

薄扶林
愛琴苑

No.6 Stanley Beach Road 赤柱灘道六號



天成山海 彌足珍藏

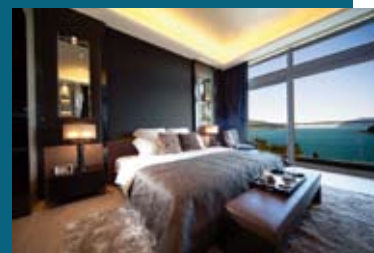
Evergreen Southern Splendour

Formerly known as “Lai On Court”, No.6 Stanley Beach Road overlooks Stanley beach and has a scenic view of the South China Sea. It used to be the villa belonging to the Liaison Office of the Central People’s Government in Hong Kong, formerly known as the Xinhua News Agency. It was used to receive dignitaries and VIPs, and has hosted key officials, including Lu Ping and Zhou Nan, during the 1980s and 90s when the Chinese and British governments were engaged in negotiations on the future of Hong Kong. It was also the scene of numerous parties and banquets for luminaries such as former Hong Kong governor Chris Patten, Baroness Lydia Selina Dunn and Sir Sze-yuen Chung.

“Lai On Court” has been witness to the long and winding negotiations on Hong Kong’s handover and one can say that it has contributed to their success. The location accomplished its mission with the end of colonial rule in Hong Kong, but its glory and splendour remains.

No. 6 Stanley Beach Road has now been converted into an eminent property with 10 brand new detached houses. Facing southeast, the houses all overlook the beautiful scenery of Stanley

Main Beach. Each has spacious front and back gardens, a rare find in Island South. The floor heights of the living room and the master bedroom are nearly 15 feet and over 12 feet respectively, creating an excellent, lofty living space. In addition, the large site area of No. 6 Stanley Beach Road provides ample space for a carpark level and an indoor temperature-conditioned swimming pool - all unique in Island South.



「赤柱灘道六號」，前身是「麗安閣」，面向赤柱正灘，盡覽壯觀的南中國海景致，是前新華社（即今天的中聯辦）專門用作接待政要及上賓的別墅。上世紀八、九十年代，中、英兩國就香港前途展開談判，當時，新華社曾於此處接待過魯平、周南等政要，亦曾於此舉行過各式宴會，接見不少本地政界及知名人士，包括前香港督彭定康、鄧蓮如男爵、鍾士元爵士等。

「麗安閣」見證了香港前途談判之始末，為香港的成功過渡作出貢獻，亦隨著段殖民地時代落幕而功成身退。縱然如此，「赤柱灘道六號」的尊貴氣質卻絲毫不減，歷久不衰。

今天的「赤柱灘道六號」，宏立著10幢簇新的獨立洋房，全部座向東南，盡覽赤柱正灘海天一色。獨立洋房採透台式設計，戶外空間特多，前後花園面積特別寬廣，同區罕有。客飯廳樓層高度接近15呎；主人房樓層亦逾12呎，令起居空間更顯優裕。此外，項目充份利用大型地皮的優勢，設有大型透光通風停車層及室內恆溫泳池，同區絕無僅有。

Area 面積:

4,242 s.f. 平方呎 – 5,221 s.f. 平方呎 (Gross Floor Area 建築面積)

1,634 s.f. 平方呎 – 4,166 s.f. 平方呎 (Garden Area 花園面積)

Contact person 聯絡人:

Teresa Lau 劉小姐 9680 6686 可普通話

David Chan 陳先生 9238 2012

Christine Chong 莊小姐 9648 6082

Disclaimer

Vendor / Developer: Wealth Join Development Limited (Developer's Parent Company: China Overseas Land & Investment Limited) ; Authorized Person / Architect: Mr. Kyran Sze of Aedas Limited ; Main Superstructure Contractor: Man Kit Construction Co., Ltd. ; Vendor's Solicitor: F. Zimmern & Company ; Finance Undertaking Bank: The Hong Kong and Shanghai Banking Corporation Limited ; Financier: Chung Hoi Finance Limited. The photographs, images, drawings or sketches shown in this advertisement/promotional material represent the artist's imaginative impression of the development concerned only. They are not drawn to scale and/or may have been edited and processed with computerized imaging techniques. Prospective purchasers should make reference to the sales brochure for details of the development. The Developer also advises purchasers to conduct on-site visit for a better understanding of the development site, its surrounding environment and the public facilities nearby.



Botanic Terrace
3-5 Conduit Road, Midlevels West
A designer gem on convenient Conduit Road
雅致靚裝修單位，位於干德道優越地段

西半山
芝蘭台

1,400 s.f.
\$22M

9348 4118 Rowena Siu 蕭小姐
www.landscape.com/136455.htm



Convention Plaza Apartments
1 Harbour Road, Wan Chai
Deluxe furnished 2-bedroom apartment with harbour view
豪華兩房單位，欣賞維港美景，可租可售

灣仔
會景閣

1,315 s.f.
\$22M also for lease \$49K incl.

9229 2396 Elaine Chow 周小姐
www.landscape.com/117543.htm

可普通話



Realty Garden
41 Conduit Road, Midlevels West
Renovated 3-bedroom with mountain view on Conduit Road
新裝修三房住宅，享翠綠山景，位於干德道優越地段

西半山
聯邦花園

1,350 s.f.
\$23.8M

9028 0147 Jenson Au 區先生
www.landscape.com/94712.htm

可普通話



Starcrest
9 Star Street, Wan Chai
Stylish designed apartment on fringe of Admiralty
時尚設計單位，鄰近金鐘，交通方便

灣仔
星域軒

1,164 s.f.
\$24.5M

9486 1566 Mira To 杜小姐
www.landscape.com/25462.htm



Hatton Place
1A Po Shan Road, Midlevels West
Newly renovated 3-bedroom mid-rise apartment on serene Po Shan Road
寶珊道新裝修三房中密度住宅，環境寧靜怡人

西半山
杏彤苑

1,579 s.f.
\$28.5M

9348 4118 Rowena Siu 蕭小姐
www.landscape.com/127506.htm



Glory Mansion
106-108 MacDonnell Road, Midlevels Central
Tastefully designed colonial apartment on convenient MacDonnell Road
麥當勞道品味裝修英式住宅，位置優越，交通方便

中半山
輝煌大廈

2,300 s.f.
\$30.5M

9028 0147 Jenson Au 區先生
www.landscape.com/107872.htm

可普通話



Visalia Garden
48 MacDonnell Road, Midlevels Central
Bright and airy apartment with Manhattan-style view
光猛通爽住宅，享城市景觀，可租可售

中半山
蔚山花園

2,195 s.f.
\$32M also for lease \$70K incl.

6330 7888 Cora Ko 高小姐
www.landscape.com/50238.htm



Chenyu Court
22-24 Kennedy Road, Midlevels Central
Practical mid-rise flat in convenient location
間隔實用中密度住宅，地段優越方便

中半山
燦如閣

1,800 s.f.
\$40M

5182 8699 Maria Cheung 張小姐
www.landscape.com/50258.htm



Dynasty Court
23 Old Peak Road, Midlevels Central
Prestigious apartment with excellent facilities in sought after development
中半山尊貴住宅，連完善住客會所設施，市面難尋，可租可售

中半山
帝景園

1,970 s.f.
\$40M also for lease \$90K incl.

9238 2012 David Chan 陳先生
www.landscape.com/6485.htm



Po Garden
9 Brewin Path, Midlevels Central
Spacious 3-bedroom apartment on fringe of CBD
寬敞三房住宅，鄰近中環，交通方便

中半山
寶園

2,594 s.f. (plus 165 s.f. terrace)
\$40M

9648 6082 Christine Chong 莊小姐
www.landscape.com/17111.htm



Haddon Court
41C Conduit Road, Midlevels West
Spacious 4-bedroom apartment in convenient yet quiet location
寬敞四房單位，位置優越寧靜

西半山 海天閣

2,850 s.f.
\$43M

9493 8275 Sami Woo 胡小姐
www.landscape.com/9831.htm



Olympian Mansion
9 Conduit Road, Midlevels West
4-bedroom high efficiency apartment close to Midlevels pedestrian escalator
西半山四房住宅，實用率高，鄰近半山扶手電梯

西半山 李園

2,750 s.f.
\$45M

9028 0147 Jenson Au 區先生
www.landscape.com/19092.htm



Midlevels Central Duplex Apartment
1 Robinson Road, Midlevels Central
Rare found 4-bedroom duplex apartment with 2 carparks at Midlevels Central
中半山四房複式住宅，連兩個停車場，市場罕有

中半山 複式住宅

3,400 s.f.
\$48M

9080 6686 Teresa Lau 劉小姐
www.landscape.com/98548.htm



Villa Veneto
3 Kotewall Road, Midlevels West
Nicely decorated 4-bedroom flat with harbour view
雅致靚裝修四房住宅，尊享維港景

西半山 威都閣

2,568 s.f.
\$55M

9551 1077 Walker Lam 林先生
www.landscape.com/127446.htm



Hatton House
15 Kotewall Road, Midlevels West
Spacious 4-bedroom apartment with greenery and city view
間隔寬敞四房住宅，兼享城市景及翠綠景色，可租可售

西半山 赫德大廈

2,800 s.f.
\$55M also for lease \$110K

9486 1566 Mira To 杜小姐
www.landscape.com/123153.htm



Tregunter Tower 3
14 Tregunter Path, Midlevels Central
Spacious apartment with magnificent views
間隔寬敞住宅，享遠闊景觀

中半山 地利根德閣 3座

3,001 s.f.
\$56M

6183 8339 Carman Szeto 司徒小姐
www.landscape.com/29799.htm



Hillsborough Court
18 Old Peak Road, Midlevels Central
Duplex penthouse with roof and terrace in Midlevels Central
中半山豪華頂層住宅，連天台及平台

中半山 曉峰閣

2,355 s.f. (plus 646 s.f. roof and 295 s.f. terrace)
\$68M

9199 0672 David Leung 梁先生
www.landscape.com/23008.htm



Tregunter Tower 3
14 Tregunter Path, Midlevels Central
Luxurious duplex apartment with full clubhouse facilities overlooking the harbour
豪華複式住宅，連完善住客會所設施，俯瞰維港美景，可租可售

中半山 地利根德閣 3座

3,639 s.f.
\$82M also for lease \$150K incl. Sole Agent 獨家代理

6838 2929 Mark Mak 麥先生
www.landscape.com/3950.htm



Century Tower 2
1A Tregunter Path, Midlevels Central
Prestigious large 4-bedroom flat with high privacy
豪華特大四房住宅，私隱度高，可租可售

中半山 世紀大廈 2座

3,638 s.f.
\$100M also for lease \$150K incl.

9238 2012 David Chan 陳先生
www.landscape.com/31547.htm



The Albany
1 Albany Road, Midlevels Central
Exquisite duplex apartment on fringe of CBD commanding nice views
獨特複式住宅，鄰近中環，尊享美麗景色

中半山 雅賓利大廈

3,563 s.f.
\$118M

9833 9509 Michelle Chung 鍾小姐
www.landscape.com/39658.htm



Riverain Valley
79 Sing Woo Road, Happy Valley
Cozy mid-rise 2-bedroom apartment in the heart of Happy Valley
迷人中密度兩房住宅，位於跑馬地中心，交通方便

跑馬地 御駿居

1,025 s.f.
\$12M

9229 2396 Elaine Chow 周小姐 可普通話
www.landscape.com/50649.htm



Vivian's Court
75 Blue Pool Road, Happy Valley
Spacious 3-bedroom apartment with balcony in the heart of Happy Valley
間隔寬敞三房住宅，連陽臺，位於跑馬地中心地段

跑馬地 榮慧苑

1,100 s.f.
\$12.5M

6838 2929 Mark Mak 麥先生
www.landscape.com/79122.htm



18-19A Fung Fai Terrace, Happy Valley
Boutique low-rise with greenery view in quiet area
別致低密度住宅，欣賞翠綠景色，環境舒適寧靜

跑馬地 鳳輝台 18-19A號

1,200 s.f.
\$13.88M

Sole Agent 獨家代理
9551 1077 Walker Lam 林先生 可普通話
www.landscape.com/110137.htm



Winfield Gardens
34-40 Shan Kwong Road, Happy Valley
High efficiency flat at quiet and convenient location of Happy Valley
跑馬地高實用住宅，環境寧靜，地段優越

跑馬地 永富苑

1,500 s.f.
\$19.8M

6183 8388 Chris Law 羅先生
www.landscape.com/110100.htm



Dragon View Garden
16 Tin Hau Temple Road, North Point Midlevels
3-bedroom apartment with private roof terrace in North Point Midlevels
北角半山三房住宅，連私家天台及平台

北角半山 龍景花園

1,198 s.f. (plus 512 s.f. roof and 124 s.f. terrace)
\$21M

9229 2396 Elaine Chow 周小姐 可普通話
www.landscape.com/89504.htm



Elm Tree Towers
8-10 Chun Fai Road, Jardine's Lookout
Large and practical flat with nice decor in sought after neighbourhood
特大靚裝修單位，間隔實用，市場罕有，可租可售

渣甸山 愉富大廈

2,028 s.f.
\$29M also for lease \$78K incl.

9093 3381 Stephen Chan 陳先生
www.landscape.com/50008.htm



Serene Villa
41-45 Perkins Road, Jardine's Lookout
Practical 3-bedroom flat with greenery view in Perkins Road
白建時道三房單位，間隔實用，享翠綠景色

渣甸山 寧苑

1,650 s.f.
\$33.8M

9093 3381 Stephen Chan 陳先生
www.landscape.com/124497.htm



Cavendish Heights
27-37 Perkins Road, Jardine's Lookout
Well decorated flat in family-oriented estate with swimming pool and tennis courts
雅致裝修家庭式住宅，連泳池及網球場

渣甸山 嘉雲臺

1,907 s.f.
\$35M

6330 7888 Cora Ko 高小姐
www.landscape.com/31208.htm



9 Broom Road, Happy Valley
Renovated in modern contemporary style low-rise apartment with 1 car park
新裝修時尚設計低密度住宅，連一個車位

跑馬地 蟠龍道9號

2,000 s.f.
\$35.8M

9833 9509 Michelle Chung 鍾小姐 可普通話
www.landscape.com/136247.htm



11-15 Briar Avenue, Happy Valley
Stylish colonial low-rise in quiet environment
時尚英式低密度住宅，環境清幽寧靜

跑馬地 比雅道11-15號

2,200 s.f.
\$36.5M

9028 0147 Jenson Au 區先生 可普通話
www.landscape.com/9313.htm



Celeste Court
12 Fung Fai Terrace, Happy Valley
3-bedroom apartment with private roof
and terrace overlooking racecourse
跑馬地三房住宅，連私定天台平台，俯瞰馬場景色

跑馬地蔚雲閣

1,638 s.f. (plus 474 s.f. roof
and 260 s.f. terrace)

\$40M

9648 6082 Christine Chong 莊小姐
www.landscape.com/108271.htm



The Elegance
60 Tai Hang Road, Midlevels East
Top floor duplex with private roof on
Tai Hang Road
大坑道頂層複式住宅，連私家天台

東半山優雅閣

2,438 s.f. (plus 1,000 s.f. roof)

\$43M

9093 3381 Stephen Chan 陳先生
www.landscape.com/44596.htm



Villa Monte Rosa
41A Stubbs Road, Midlevels East
Spacious 3-bedroom apartment enjoy
mountain and city view
寬敞三房住宅，兼享山景及城市景

東半山玫瑰新村

2,300 s.f.

\$46M

9809 8570 Stella Lo 羅小姐
www.landscape.com/83279.htm



White Jade
51 Stubbs Road, Midlevels East
Rare 2-bedroom apartment with fantastic
Victoria Harbour view
罕有兩房單位，尊享遠闊維港美景

東半山白璧

1,700 s.f.

\$53M

6183 8388 Chris Law 羅先生
www.landscape.com/38175.htm



Situated near the end of Conduit Road in Midlevels, this two-bedroom (one ensuite) penthouse was recently renovated by architectural and interior design firm Urban Anchor Studio. Providing a raw and modern look, shades of gray, black and beige are used in the furnishings, walls and hardwood floors. The combined living and dining room features floor-to-ceiling windows that allow natural light to flow through.

Next to the dining area, the open kitchen is equipped with the latest appliances, including an oven and wine cellar. The maid's room (ensuite) is skillfully tucked away at the end of the kitchen. From the living room, a spiral staircase leads to a 1,600 sq-ft rooftop terrace and indoor living area with views of the city – ideal for parties, this space is also equipped with a pantry and barbecue.

The 2,050 sq-ft apartment features plenty of concealed shelving units that are additional space-saving, thanks to sliding doors.

Only a 15-minute drive away from major downtown areas, this is a comfortable and spacious home located in a tranquil part of Mid Levels.

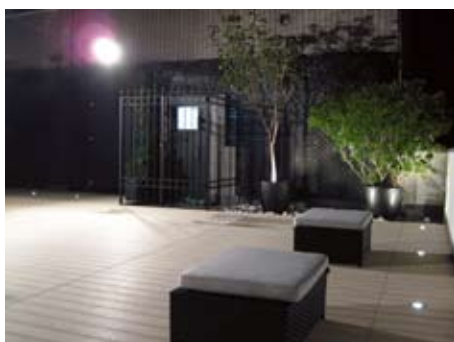
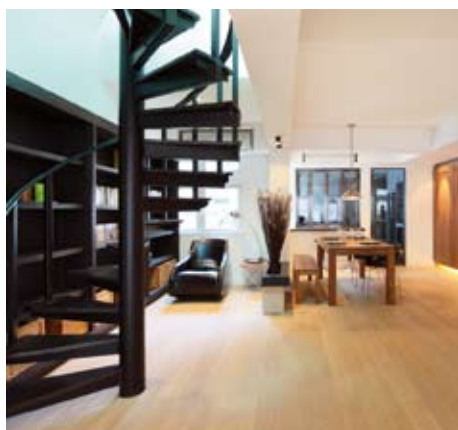
這間豪華公寓坐落半山干德道尾段，設有兩間睡房（其一為套房）。公寓最近剛完成裝修，由建築與室內設計事務所Urban Anchor Studio操刀，一室盡顯原始又時尚的味道，傢具陳設、牆壁與實木地板均呈現灰、黑與米黃色調。相連的客飯廳配有落地玻璃窗，使天然日光滲進室內每個角落。

開放式廚房就在飯廳旁，配設先進廚房電器，包括焗爐與酒櫃，而家庸套房則巧妙藏於廚房盡頭。客廳有一螺旋樓梯通向戶外1,600平方呎天台平台與家庭廳區，飽覽都市美景之餘更設有小廚房及燒烤爐，在這裡開派對最合適不過。

這間公寓面積達2,050平方呎，在趟門的後方隱藏了充足的貯物櫃，為住宅添上額外貯物空間。

住宅離鬧區只有15分鐘車程，位於半山諧和寧靜的地段，是個舒適寬敞的理想家居。

動人都市 City spectacle



Medallion Heights 西半山 金徽閣
45 Conduit Road, Midlevels West
半山西干德道45號

2,050 s.f. (plus 1,600 s.f. roof)
HK\$38M

9138 1621 Teresa Fung 馮小姐
www.landscape.com/135947.htm



South Bay Towers
59 South Bay Road, Repulse Bay
Newly renovated cozy apartment with comprehensive facilities
全新裝修單位，連完善住客會所設施，可租可售

淺水灣 南灣大廈

1,433 s.f.
\$48K incl. also for sale \$22.8M

☎ 6838 2929 Mark Mak 麥先生
🌐 www.landscape.com/109586.htm



Country Villa
4 Shouson Hill Road, Shouson Hill
Nicely renovated 2-bedroom low-rise with garden view
雅致裝修低密度兩房單位，尊享翠綠景色

壽臣山 翠谷別墅

1,500 s.f.
\$58K incl.

☎ 6183 8388 Chris Law 羅先生
🌐 www.landscape.com/31918.htm



Country Villa
4 Shouson Hill Road, Shouson Hill
Cozy and nicely decorated low-rise in lush green environment
迷人雅致裝修低密度住宅，尊享翠綠景色

壽臣山 翠谷別墅

1,500 s.f.
\$63K incl.

☎ 5182 8699 Maria Cheung 張小姐
🌐 www.landscape.com/19725.htm



Kellett Heights
61A-61B Mount Kellett Road, The Peak
Colonial style mid-rise with panoramic view
中密度英式住宅，享遠闊景觀

山頂 嘉利別墅

1,600 s.f.
\$68K incl.

☎ 9138 1621 Teresa Fung 馮小姐
🌐 www.landscape.com/41290.htm



Tam Towers
25 Sha Wan Drive, Pokfulam
Practical 3-bedroom apartment with balcony and fantastic sea view
實用三房單位，連陽臺，俯瞰遼闊海景

薄扶林 譚益芳樓

3,000 s.f.
\$70K incl.

☎ 9871 6828 Louis Wong 黃先生
🌐 www.landscape.com/151291.htm



Coombe Apartments
15-17 Coombe Road, The Peak
Rare and sought after 3-bedroom apartment in tranquil neighbourhood
罕有三房住宅，地段寧靜

山頂甘道15-17號

2,150 s.f.
\$88K incl.

☎ 6183 8388 Chris Law 羅先生
🌐 www.landscape.com/28363.htm



12-14 Shouson Hill Road West, Shouson Hill
Newly renovated 3-bedroom low-rise apartment overlooking greenery view
全新裝修三房低密度住宅，俯瞰翠綠景色

壽臣山 壽臣山道西12-14號

2,200 s.f.
\$100K incl.

☎ 9348 4118 Rowena Siu 蕭小姐
🌐 www.landscape.com/148357.htm



Ruby Court
55 South Bay Road, Repulse Bay
Fantastic 3-bedroom sea view apartment with 2 carparks and clubhouse facilities at South Bay waterfront
美麗三房海景住宅，連雙車位及住客會所設施，位於南灣海濱地段

淺水灣 嘉麟閣

2,200 s.f.
\$100K incl.

☎ 6330 7888 Cora Ko 高小姐
🌐 www.landscape.com/148356.htm



Carmel Hill
12 Carmel Road, Stanley
Sea view townhouse in quiet location with 4 bedrooms and facilities
赤柱海景四房排屋，環境寧靜，連會所設施

赤柱 海明山

2,395 s.f. (plus 381 s.f. garden and 262 s.f. terrace)
\$110K incl.

☎ 9138 1621 Teresa Fung 馮小姐
🌐 www.landscape.com/8468.htm



Carolina Garden
20-34 Coombe Road, The Peak
Architect designed and fully furnished/unfurnished apartment on sought after Coombe Road
設計師雅致裝修，亦可連全屋傢俬，位於甘道，市場罕有

山頂 嘉樂園

2,350 s.f.
\$118K incl.

☎ 9493 8275 Sami Woo 胡小姐
🌐 www.landscape.com/95786.htm



Mountain Lodge
44 Mount Kellett Road, The Peak
Spacious 4-bedroom apartment with sea view
間隔寬敞四房單位，欣賞美麗海景

山頂崑崙

2,600 s.f.
\$130K

☎ 9028 0147 Jenson Au 區先生 可普通話
🌐 www.landscape.com/11692.htm



Stewart Terrace
81-95 Peak Road, The Peak
Designer decorated colonial low-rise at exclusive location
設計師精心設計低密度英式住宅，地段尊貴，可租可售

山頂史釗域臺

3,077 s.f.
\$120K also for sale Open Offer

☎ 9080 6686 Teresa Lau 劉小姐 可普通話
🌐 www.landscape.com/113372.htm



The Mount Austin
8 Mount Austin Road, The Peak
Deluxe duplex apartment with luxurious clubhouse facilities
尊貴複式住宅，尊享豪華完善住客會所設施

山頂柯士甸山道8號

2,661 s.f.
\$135K

☎ 9138 1621 Teresa Fung 馮小姐
🌐 www.landscape.com/27906.htm



1-9 Watford Road, The Peak
4-bedroom Peak townhouse with garden and terrace
山頂四房洋房，連花園及平台

山頂和福道1-9號

4,678 s.f. (plus 1,065 s.f. garden and 228 s.f. terrace)
\$135K

☎ 9809 8570 Stella Lo 羅小姐
🌐 www.landscape.com/4851.htm



Regalia Bay
88 Wong Ma Kok Road, Stanley
5-bedroom townhouse with clubhouse facilities enjoying sea view
赤柱五房大屋，連住客會所設施，尊享海景，可租可售

赤柱富豪海灣

4,212 s.f.
(plus 817 s.f. roof and 681 s.f. garden)
\$160K incl. also for sale \$76M

☎ 9238 2012 David Chan 陳先生
🌐 www.landscape.com/34140.htm



The Zenith
11A Shouson Hill Road West, Shouson Hill
Modern townhouse with roof and garden terrace at tranquil Shouson Hill area
時尚設計洋房，連天台及花園平台，位於壽臣山，優美寧靜

壽臣山采簷

3,692 s.f. (plus 372 s.f. terrace, 307 s.f. garden and 286 s.f. roof)
\$168K

☎ 9348 4118 Rowena Siu 蕭小姐
🌐 www.landscape.com/50355.htm



13-25 Ching Sau Lane, Chung Hom Kok
Practical 5-bedroom townhouse with garden looking out to sea view
實用五房排屋，連花園，俯瞰海景

春坎角靜修里13-25號

4,800 s.f. (plus 800 s.f. garden and 150 s.f. terrace)
\$180K

☎ 9648 6082 Christine Chong 莊小姐
🌐 www.landscape.com/1615.htm



Plantation Heights
29 Plantation Road, The Peak
Newly renovated house with private garden
山頂全新裝修大屋，連私家花園，可租可售

山頂迎福苑

3,500 s.f. (plus garden)
\$188K also for sale \$130M

☎ 9088 4666 Yvonne Chang 鄭小姐
🌐 www.landscape.com/109399.htm



Felix Villas
61 Mount Davis Road, Pokfulam
Rare sea view townhouse with private garage
薄扶林罕有海景排屋，連私家車庫

薄扶林福和別墅

5,000 s.f. (plus 800 s.f. terrace)
\$200K incl.

☎ 9088 4666 Yvonne Chang 鄭小姐
🌐 www.landscape.com/130602.htm



L'Harmonie
3 Stanley Mound Road, Stanley
4-bedroom townhouse with roof and garden on Stanley Main Beach
赤柱四房排屋，連天台花園，鄰近赤柱海灘

赤柱葆琳居

3,557 s.f. (plus 663 s.f. roof and 918 s.f. garden)
\$200K incl.

☎ 9088 4666 Yvonne Chang 鄭小姐
🌐 www.landscape.com/99469.htm



**11 Coombe Road,
The Peak**
Huge 4-bedroom apartment nestled in
sought after neighbourhood
山頂特大四房單位，市面難尋

山頂甘道11號

3,830 s.f.
\$200K

9238 2012 David Chan 陳先生
www.landscape.com/102084.htm



**12 Shouson Hill Road,
Shouson Hill**
Large 5-bedroom garden house in
quiet enclave
特大五房花園大屋，環境優美寧靜

壽山山麓山頂道12號

3,746 s.f. (plus 374 s.f. garden)
\$220K

9833 9509 Michelle Chung 鍾小姐 可普通話
www.landscape.com/11896.htm



**74 Mount Kellett Road,
The Peak**
Newly renovated townhouse with hill and
sea views on the Peak
山頂全新裝修洋房，享翠綠山景及海景

山頂加列山道74號

4,200 s.f. (plus 300 s.f. garden)
\$250K incl.

9809 8570 Stella Lo 羅小姐
www.landscape.com/11703.htm



Kellett View Town House
65-69 Mount Kellett Road,
The Peak
Fantastic garden townhouse with partial
sea view on the Peak
山頂花園洋房，享部份海景

山頂嘉龍園

4,010 s.f. (plus 973 s.f. terrace)
\$250K

9833 9509 Michelle Chung 鍾小姐 可普通話
www.landscape.com/3327.htm



Magnolia
29-31 Ching Sau Lane,
Chung Hom Kok
Newly decorated townhouse with
private pool
新裝修排屋，連私家泳池出租

春坎角靜修里29-31號

4,200 s.f.
\$300K

9871 6828 Louis Wong 黃先生
www.landscape.com/124010.htm



Orient Crest
76 Peak Road, The Peak
Peak townhouse with 4 bedrooms in
tranquil neighbourhood
山頂四房排屋，地段尊貴

山頂山頂道76號

3,300 s.f.
\$215K incl.

6183 8388 Chris Law 羅先生
www.landscape.com/7735.htm



Magnolia Villas
46 Sassoon Road, Pokfulam
Spanish style townhouse with private pool
at tranquil Pokfulam
英式設計洋房，連私家泳池，地段清幽怡人

薄扶林百合苑

4,000 s.f.
\$250K incl.

9088 4666 Yvonne Chang 鄭小姐
www.landscape.com/14763.htm



**56 Repulse Bay Road,
Repulse Bay**
4-bedroom waterfront duplex with
facilities overlooking Repulse Bay Beach
四房海濱複式住宅，連住客會所設施，俯瞰淺水灣
海灘景色

淺水灣淺水灣道56號

3,964 s.f. (plus 277 s.f. terrace)
\$250K incl.

9493 8275 Sami Woo 胡小姐
www.landscape.com/46233.htm



King's Court
5 Mount Kellett Road, The Peak
Townhouse with huge garden and terrace
overlooking Southside sea view
山頂洋房，連特大花園平台，俯瞰南區海景

山頂龍庭

3,165 s.f.
(plus 2,600 s.f. garden and 1,900 s.f.
terrace and 500 s.f. roof)
\$260K

9238 2012 David Chan 陳先生
www.landscape.com/12286.htm



The Nautilus
16A South Bay Road, Repulse Bay
Waterfront townhouse with roof and
garden enjoy sweeping sea view across
Repulse Bay
淺水灣海濱排屋，欣賞寧靜海景，連天台花園

淺水灣南灣道16號

4,859 s.f. (plus 661 s.f. roof and
264 s.f. garden)
\$350K incl.

9238 2012 David Chan 陳先生
www.landscape.com/27207.htm

Herman Miller, HKDI join forces for Reach 2011

A unique exhibition with interactive, visual and educational zones for design enthusiasts, Reach 2011 will be held at Hong Kong Design Institute, kicking off in September and continuing over three months.

Reach 2011 — which Perspective is supporting as local media partner — will feature the latest products from Herman Miller, officially open a new travelling exhibition — Essential Eames — and host the finals of the inaugural Asia-Pacific Aeron Hockey Championship, which will see each member of one team walk away with an Eames lounge and ottoman.

The event, co-hosted by Herman Miller and the HKDI, will feature several zones for invited guests, students and the general public to explore.

Reach 2011 will commence on 15 September with an interactive learning forum for internal Herman Miller staff and invited guests; doors will open to the general public the following day.

HIGHLIGHTS

Essential Eames Exhibition

Curated by MMoser in association with HKDI

Special guest Eames Demetrios will officially open the brand new Essential Eames exhibit in the Hong Kong Design Institute (HKDI) Gallery. Designed and curated by MMoser, the exhibition will trace the seamless integration of Charles and Ray's creative life and passions. Essential Eames will feature never-before-seen images, and launch 30 new films about the life and works of this iconic couple in design. The exhibit will be open to the public until 3 December.

Aeron Hockey Championships

This is an all-day event with teams from 10 different countries around the Asia-Pacific region. An evolution of 'office hockey' played with a paper puck and makeshift stick, Aeron Hockey is played on a purpose-built court, with players seated on iconic Herman Miller Aeron chairs. Hong Kong design students will be eligible to play in the Student Aeron Hockey Championships on 17 September.

Retreat Zone

Retreat Zone, designed by Phunk Studio, will display offerings for home and office, and will remain open for one month. Select items will be available for purchase from 15-17 September.

Herman Miller and HKDI Presents:

A series of lectures by design leaders

Design leaders such as Eames Demetrios and Don Chadwick lead the line-up of speakers.



REACH
HONG KONG 2011



為期三月的Reach 2011為一把互動、視覺及教學等多種元素融合其中的大型會展活動，將於下月在香港知專設計學院（HKDI）正式揭幕。

《透視》雜誌為是次Reach 2011的本地媒體伙伴。Herman Miller最新產品將在本次會展中首次亮相，重點活動包括Essential Eames的巡迴展覽及Aeron曲棍球亞太區冠軍杯賽，總冠軍將獲得由Herman Miller Inc提供的設計珍藏Eames Lounge & Ottoman。

Herman Miller聯同HKDI主辦本次活動，針對不同的參展對象，如嘉賓、學生及公眾，設立了各具特色的主題展區，滿足各種喜好與需求。

Reach將於9月15日（周四）以互動的論壇形式拉開序幕，更邀得Herman Miller成員及一眾嘉賓分享設計心得。活動於翌日起正式向公眾開放。

活動焦點

Essential Eames展覽

展出協辦：MMoser / 香港知專設計學院（HKDI）

特別嘉賓設計名師Eames Demetrios將蒞臨香港知專設計學院為Essential Eames的展出擔任揭幕嘉賓。由MMoser策展的本次活動，目的為追尋Charles & Ray Eames將創新、激情融入生活、融入設計的足跡。部分未曾公開的設計手稿及30齣關於Eames設計點滴的短片將首次公開。活動展期至2011年12月3日。

Aeron曲棍球亞太區冠軍杯

10組分別來自亞太各國的曲棍球隊將於9月16日全天展開激戰。在特定的比賽場中，選將坐在Herman Miller經典座椅Aeron上，揮動手中的曲棍球棒全新演繹Office Hockey。來自香港知專設計學院的學生代表也將參與9月17日Aeron曲棍球冠軍杯賽學生專場。

Retreat展區

Retreat展區由來自新加坡的Phunk Studio設計，展出Herman Miller最新辦公室及家居產品，為期一個月。公眾可在9月15日至9月17日期間選購部分展品。

Herman Miller與HKDI呈獻：多場設計名師演講

由Eames Demetrios及Don Chadwick領銜的設計名師將列席並參與演講，分享設計心得。

For more features on design and architecture, don't miss the September issue of Perspective magazine, and check out our website at www.perspectiveglobal.com

請密切留意《透視》九月號更多有關建築與設計的專題報導，或登入 www.perspectiveglobal.com 參閱精彩內容。

more info... <http://reach.hermanmillerasia.com/Home/About>



Realty Garden

41 Conduit Road, Midlevels West
Nicely renovated 3-bedroom apartment
with open view
靚裝修三房單位，享開揚景觀，可租可售

西
半
山
聯
邦
花
園

1,350 s.f.
\$50K incl. also for sale \$17.5M

☎ 9080 6686 Teresa Lau 劉小姐 可普通話
🌐 www.landscape.com/71846.htm



Beauty Court

82 Robinson Road, Midlevels West
3-bedroom harbour view apartment in
desirable location
維港景三房單位，位於西半山高尚地段

西
半
山
雅
苑

1,771 s.f.
\$63K incl.

☎ 9138 1621 Teresa Fung 馮小姐
🌐 www.landscape.com/13264.htm



Alpine Court

12 Kotewall Road, Midlevels West
High efficiency 3-bedroom apartment
with private roof in quiet location
高實用三房住宅，連私家天台，環境清幽怡人

西
半
山
嘉
賢
大
廈

2,200 s.f. (plus 1,350 s.f. roof)
\$65K

☎ 9493 8275 Sami Woo 胡小姐
🌐 www.landscape.com/43887.htm



The Albany

1 Albany Road, Midlevels Central
Exclusive apartment overlooking lush
greenery and Botanical Garden
中半山獨特單位，俯瞰翠綠的動植物公園景觀

中
半
山
雅
賓
利
大
廈

1,751 s.f.
\$75k

☎ 9551 1077 Walker Lam 林先生 可普通話
🌐 www.landscape.com/107995.htm



Tavistock

10A Tregunter Path,
Midlevels Central
Grand modern apartment for rent in
Midlevels Central
中半山豪華時尚住宅出租

中
半
山
騰
皇
居

2,030 s.f.
\$90K incl.

☎ 9551 1077 Walker Lam 林先生 可普通話
🌐 www.landscape.com/45563.htm



Grand House

110-112 MacDonnell Road,
Midlevels Central
Colonial style mid-rise apartment in
good condition
英式中密度住宅，連雅緻裝修

中
半
山
柏
齡
大
廈

2,400 s.f.
\$90K incl.

☎ 9486 1566 Mira To 杜小姐
🌐 www.landscape.com/25389.htm



Po Garden

9 Brewin Path, Midlevels Central
Popular 3-bedroom flat in exclusive
location close to CBD
受歡迎三房單位，鄰近中環，交通方便

中
半
山
寶
園

2,590 s.f.
\$95K incl.

☎ 9093 3381 Stephen Chan 陳先生
🌐 www.landscape.com/30143.htm



Palatial Crest

3 Seymour Road, Midlevels West
Modern penthouse 4-bedroom apartment
with sweeping view of the city skyline
時尚頂層四房住宅，享遠闊開揚城市景觀

西
半
山
輝
煌
豪
園

2,174 s.f.
\$100K incl.

☎ 6183 8339 Carman Szeto 司徒小姐 可普通話
🌐 www.landscape.com/151301.htm



Kenne Mansion

20 Kennedy Road,
Midlevels Central
Sought after colonial mid-rise overlooking
metropolitan and harbour view
中密度英式住宅，俯瞰城市景色及維港美景，
市場罕有

中
半
山
堅
尼
地
台

2,500 s.f.
\$108K incl.

☎ 9486 1566 Mira To 杜小姐
🌐 www.landscape.com/150605.htm



Estoril Court

55 Garden Road,
Midlevels Central
Spacious 5-bedroom apartment with club
facilities on fringe of CBD
寬敞五房住宅，連住客會所設施，鄰近中環，
交通方便

中
半
山
愛
都
大
廈

3,347 s.f.
\$120K

☎ 9486 1566 Mira To 杜小姐
🌐 www.landscape.com/4973.htm



Fixwell Display System Co., Ltd.

With over 30 years' experience in Cooling System for hotels and restaurants, we generate a new image by designing exclusive, custom-made Wine Cellar not only in commercials but also for households in recent years. Apart from providing professional setup on the whole system for storing Red Wine, White Wine, Champagne and Sake, we also focus on featuring-wine display purpose and creating an elegant decoration in our new concepts.

Unit 1401, 14/F Westlands Centre,
20 Westlands Road, Quarry Bay, Hong Kong
Tel: (852) 2811 9381
Fax: (852) 2565 7094
Email: sales@fixwell.com.hk
Website: www.fixwell.com.hk



輝和陳列設備有限公司
Fixwell Display System Co., Ltd.

Karndean

Karndean LVT replicates the beauty of natural materials without any of the practical drawbacks associated with the likes of stone and wood. Its benefits are far reaching and suitable for a raft of applications including healthcare, retail and leisure. For more information, visit Karndean International (Asia) Ltd. showroom, 10/F, 313 Lockhart Road, Wanchai Ring: 2572 2238/ 2572 2886 Email: salesasia@karndean.com or see: www.karndean.com.au Karndean LVT 設計出眾、環保、安全、容易安裝且用途廣泛，適用於家居、商業、零售及酒店等地方。歡迎光臨灣仔駱克道 313 號 10 樓 Karndean International (Asia) Ltd. 電話: 2572 2238/ 2572 2886 電郵: salesasia@karndean.com 或瀏覽: www.karndean.com.au

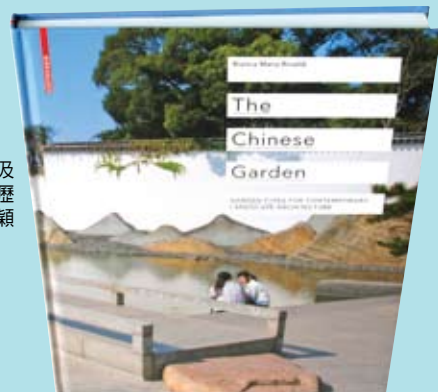


The Chinese Garden

Published by Birkhäuser

Chinese gardens have long been a source of inspiration for contemporary landscape design, but often in a haphazard fashion. Looking at the essential compositional principles, main elements and contemporary projects, this volume shows readers how these historic gardens can ignite new designs and creations.

當代園林設計一直深受中式花園影響，但形式卻相當隨意。本書透過探討中式花園的基本格局原理、主要元素及當代設計項目，展示出這些歷史悠久的花園如何激發出新穎的園林設計。



Garnering the Essence

Following appearances in Beijing, Singapore, Shanghai and Taipei, this exhibition tour makes its last stop in Hong Kong, featuring a collection of bronze and stainless steel sculptures by young Chinese artist Ren Zhe. Presented by Gallery by the Harbour and Yan Gallery. 「海港城·美術館」將與香港一畫廊於聯合舉辦《精神的凝固》任哲雕塑作品2011年亞洲巡迴展，展出任哲銅及不銹鋼雕塑，是該次巡迴展繼北京、上海、新加坡及台北後之終點站。

To Sept 11
Gallery by the Harbour, Shop 207,
Level 2, Ocean Centre, Harbour City,
Tsimshatsui
Tel : 2118 8666
Email : yanart@netvigator.com
www.yangallery.com



Canon

Canon has created the EOS 600D camera designed especially for beginner photographers new to digital SLR photography. The camera is also available with a special lens and flash package that includes a lightweight EF 50mm lens and a compact Speedlite 270EX II flash. Available at Canon Hong Kong Company Limited, 19/F Metropolis Tower, 10 Metropolis Drive, Hunghom, Kowloon. Ring 2170 2828 or see www.canon.com.hk

佳能全新EOS 600D相機，為不熟悉數碼單鏡反光攝影的初學者而設，附設特別鏡頭及閃光燈套裝，包括輕巧的EF 50mm鏡頭及纖巧的Speedlite 270EX II閃光燈。詳情可親臨九龍紅磡都會道10號都會大廈19樓佳能香港總辦公室，致電2170 2828或瀏覽www.canon.com.hk



PERSPECTIVE透視

For more than a decade, Hong Kong-based Perspective Ltd has covered the architecture, interiors and design markets in Asia and beyond. Our monthly flagship title **Perspective** is a vital source of information for architects and design professionals. It is complemented by our annual books **Interiors+**, a style guide to fashionable interiors, furniture and homeware, and **Perspective+**, targeting the architecture and construction industry with extensive supplier listings, profiles of leading architectural firms and a lavishly-illustrated selection of the most emblematic works in Asia-Pacific and beyond. We also proudly own the regional **Perspective Awards** and **40 Under 40** programmes.



www.perspectiveglobal.com



Kennedy Heights
10-18 Kennedy Road,
Midlevels Central
Large 5-bedroom apartment with huge
living room and facilities
特大五房單位，連大客廳，享完善住客會所設施

中
半
山
堅
麗
閣

3,400 s.f.
\$145K incl.

☎ 9493 8275 Sami Woo 胡小姐
🌐 www.landscape.com/33324.htm



Chung Tak Mansion
2 Magazine Gap Road,
Midlevels Central
New decor spacious 4-bedroom
apartment with fabulous city view and
harbour view
全新裝修間隔寬敞四房單位，兼享城市景
及維港景，可租可售

中
半
山
重
德
大
廈

2,864 s.f.
\$150K incl. also for sale
Open Offer

☎ 6183 8339 Carman Szeto 司徒小姐 可普通話
🌐 www.landscape.com/35231.htm



May Tower
5 May Road, Midlevels Central
Rare on market spacious unit with
Victoria Harbour view in prime location
間隔寬敞維港景住宅，地段尊貴，市場罕有

中
半
山
梅
苑

3,393 s.f.
\$168K incl.

☎ 6183 8339 Carman Szeto 司徒小姐 可普通話
🌐 www.landscape.com/1613.htm



Century Tower
1 Tregunter Path,
Midlevels Central
Exclusive 4-bedroom duplex with
sweeping city view
獨特複式四房住宅，尊享遼闊城市景觀

中
半
山
世
紀
大
廈

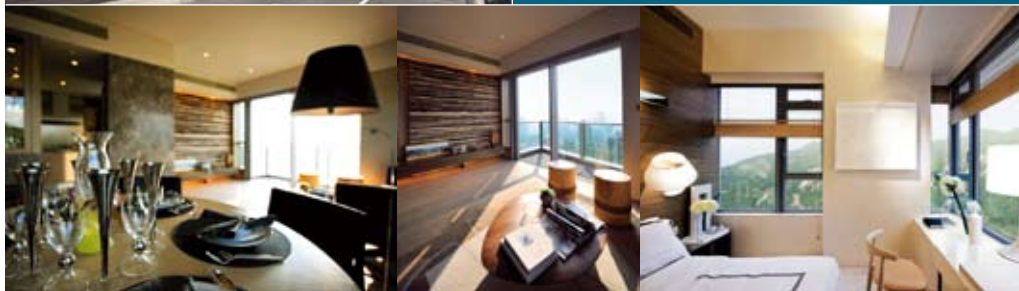
5,130 s.f.
\$250K

☎ 9648 6082 Christine Chong 莊小姐
🌐 www.landscape.com/21370.htm



Situated on Tai Hang Road, Island East, the new Serenade embraces a metropolitan pulse with its advantageous geographical locations and convenient transport. The premise possesses panoramic view of the spectacular Victoria Harbour in its front, and greeneries from Mount Butler at its back. The area of each apartment varies from 1,000 square feet to 4,000 square feet. Among the available apartments are duplexes with four bedrooms including two ensuites and prestigious penthouse.

上林位於香港島東半山之罕貴地段，掌握大都會脈搏，地理位置優越，交通四通八達。前臨270度遼闊維多利亞港美麗海景，背靠青蔥翠綠畢拉山山巒。單位面積由約1,000平方呎至4,000平方呎，其中包括四房兩套複式單位及頂層特色單位。



11 Tai Hang Road, Midlevels East

☎ Stella Lo 羅小姐 9809 8570
Yvonne Chang 鄭小姐 9088 4666
Sami Woo 胡小姐 9493 8275

上林
SERENADE



FARRINGTON INTERIORS

THE MOMENT MADE BEAUTIFUL

Shop 店舖

G/F., 87 Wong Nai Chung Road
Happy Valley, H.K.
香港跑馬地黃泥涌道87號地下
Tel: (852) 2808 0303
Fax: (852) 2801 6732

Flagship Store 旗艦店

31/F, World Trade Centre
280 Gloucester Road, Causeway Bay, H.K.
香港銅鑼灣告士打道280號世貿中心31樓
Tel : (852) 2808 1000
Fax : (852) 2808 2800

WWW.FARRINGTONINTERIORS.COM

Bridal Registry Service is now available at Farrington Interiors



Le Sommet

28 Fortress Hill Road, North Point
3-bedroom boutique apartment with private roof at convenient location
精緻三房單位，連私家天台，位置優越

北角
豪廷峰

1,050 s.f. (plus 612 s.f. roof)
\$43K incl.

9229 2396 Elaine Chow 周小姐 可普通話
www.landscape.com/130085.htm



Beverly Hill

6 Broadwood Road, Happy Valley
Decorated 4 bedrooms apartment in family estate with open city view
新裝修四房家庭式住宅，享開揚城市景觀，可租可售

跑馬地
比華利山

1,748 s.f.
\$55K incl. also for sale \$22.5M

6183 8339 Carman Szeto 司徒小姐 可普通話
www.landscape.com/83187.htm



77-79 Wong Nai Chung Road, Happy Valley

Racecourse view apartment with tasteful decorations
馬場景住宅，尊享雅緻靚裝修

跑馬地
黃泥涌道 77-79 號

1,400 s.f.
\$65K incl.

9833 9509 Michelle Chung 鍾小姐 可普通話
www.landscape.com/119790.htm



Evergreen Villa

43 Stubbs Road, Midlevels East
Practical 2-ensuite bedroom apartment with huge balcony in Midlevels East
東半山實用兩套房單位，連大陽臺，可租可售

東半山
松柏新村

1,750 s.f.
\$70K incl. also for sale \$30.8M

9486 1566 Mira To 杜小姐 可普通話
www.landscape.com/37714.htm



12 Tung Shan Terrace, Midlevels East

Low-rise apartment with modern equipped kitchen and bathrooms and pool
東半山低密度住宅，設計時尚，廚房及浴室配備齊全，連泳池

東半山
東山臺 12 號

2,200 s.f.
\$80K incl.

9551 1077 Walker Lam 林先生 可普通話
www.landscape.com/110252.htm



Leon Court

12-14 Wong Nai Chung Gap Road, Midlevels East
Rarely available 3-bedroom mid-rise with magnificent harbour view
罕有三房中密度住宅，尊享壯麗維港美景

東半山
利安閣

2,800 s.f.
\$90K incl.

9551 1077 Walker Lam 林先生 可普通話
www.landscape.com/24966.htm



8 Shiu Fai Terrace, Midlevels East

Modern 4-ensuite apartment in Midlevels East
東半山時尚四套房住宅

東半山
肇輝台 8 號

2,428 s.f.
\$90K incl.

9229 2396 Elaine Chow 周小姐 可普通話
www.landscape.com/31248.htm



Broadwood Park

38 Broadwood Road, Happy Valley
Large three-ensuite apartment with fantastic views on Broadwood Road
跑馬地特大三套房單位，尊享遠闊景觀

跑馬地
柏樂苑

2,938 s.f.
\$150K incl.

9348 4118 Rowena Siu 蕭小姐 可普通話
www.landscape.com/109432.htm



Trafalgar Court

70 Tai Hang Road, Midlevels East
High efficiency 5-bedroom apartment with harbour view and facilities
東半山五房維港景住宅出租，實用率高，連會所設施，可租可售

東半山
大寶閣

3,008 s.f.
\$150K incl. also for sale \$91M

9080 6686 Teresa Lau 劉小姐 可普通話
www.landscape.com/5912.htm



Chantilly

6 Shiu Fai Terrace, Midlevels East
Brand new ample apartment with city view on Shiu Fai Terrace
東半山全新寬敞住宅，欣賞壯麗城市景色

東半山
嘉峪峯

3,650 s.f.
\$219K

9088 4666 Yvonne Chang 鄭小姐 可普通話
www.landscape.com/136281.htm



Super Prime Retail- Commercial Investment.

Knightbridge

Retail unit in world famous location. Let to single tenant with 14.5 years lease term remaining, no breaks, and upward only rent reviews.

位於世界著名的銷售地段，還有十四年半的租約，租金可觀。

Virtual Freehold

(994 year peppercorn lease)

2,781 s.f. (net internal)



Prime Financial District- Commercial Investment

City of London EC2

Prime mixed use Office and Retail, fully renovated to Category A with vacant possession. Located near to Bank of England and Lloyds of London.

豪華辦公室及零售大廈，位置優越，全面翻新。鄰近Lloyds of London及英倫銀行。

Freehold

27,320 s.f. (net internal)



Off-Prime - Commercial Investment

Camden Lock NW1

Unique canal side central London location. Single let, long lease to well known media tenant. High yield 7%.

位於倫敦市中心河邊，獨特位置。現租予知名媒體公司，租約期長，租金回報高達7%。

Long leasehold

(155 year peppercorn lease)

16,500 s.f. (net internal)



Prime Boutique Hotel- Commercial Investment

Marylebone W1

Luxury Boutique Hotel with 45 rooms in prime west end location. Features Grand Suite, Junior Suites, and Deluxe rooms some with private terraces, a Restaurant and Cigar terrace.

位於西區的豪華精緻酒店，設有45間客房，包括特色豪華套房，普通套房及豪華客房。更設有私人露台，餐廳和雪茄露台。

Leasehold (75 years)



Prime Residential Whole Block. Residential Investment

Holland Park W11

Whole block in prestigious location containing 27 flats. Fully let except for one flat. All flats include car parking and shared gardens.

Future redevelopment potential.

整座物業位置優越包含27個單位。除了一個單位之外已全數租出。所有單位包括停車場和共享的花園，極具發展潛力。

Freehold



Super Prime Residential

Belgravia W1

Large residence in super prime address. Fully modernised and well maintained, features include sweeping central stairs leading from reception rooms to bedrooms and staff quarters.

一個地段尊貴的大型住宅，設計時尚管理完善，不容錯過。

Freehold available.

4,650 s.f. (net internal)

Prices on luxury UK properties are rarely quoted in listings. Interested parties are encouraged to make enquiries on price indications with Landscape.

PRICE UPON ENQUIRY 歡迎查詢

Contact person: 6183 8388 Chris Law 羅先生



The Elm Wood Collection

Effortlessly simple pieces in solid elm. Made from salvaged wood or sourced from eco-friendly plantations.



GOODS OF DESIRE

Causeway Bay 2890 5555

Tsim Sha Tsui 2784 5555

Central 2805 1876

Peak Galleria 2778 3331