

select deluxe homes

# The Key

大宅®

www.landscape.com

SEPTEMBER | 2010

Volume 71



## DUO SENSATION

Double up your enjoyment over the Jardine's Lookout

## PURELY REFRESHING

Peacefully designed for revitalisation

## KEY NOTES\*

“Change does not roll in on the wheels of inevitability, but comes through continuous struggle. And so we must straighten our backs and work for our freedom. A man can't ride you unless your back is bent.”

「改變是不會隨著車輪自然的轉到你面前，它必需經過堅持不懈的鬥爭才出現。我們必需挺起腰背為自由而奮鬥。只要你不振腰，便沒有人能騎在你的背上。」

- Martin Luther King  
馬丁路德·金

The leasing market however remains buoyant. Expatriates hired by multinational corporations continue to pour in, as Hong Kong and China maintain their economic momentum. Townhouses and large apartments are still in hot demand, but supplies are drying up as many properties have been taken up during the last two months' rush of activities. The financial industry remains to be the most generous tenants. Huge rental budgets enable them to have a broader choice of properties but most still prefer Central/Midlevels as the gated neighborhood borders the city's CBD, thus driving up rentals here at a faster rate than other districts. The Peak is another niche market where most properties are houses and large apartments popular with corporate heads, diplomats, senior government officials and taipans. The prestigious enclave has also experienced a shortage of supply and hence upward pressure on rentals.

然而，租賃市場卻仍然活躍。由於香港及內地維持強勁的經濟環境，跨國企業持續聘請外國專才，故此，租務市場對豪宅和大型公寓需求甚旺；但市場供應連續兩月的龜勢交易後開始減少。金融機構仍舊是市場上最慷慨的租戶，龐大的資金使他們有更多物業可選擇，但大部分仍選擇毗連商業中心區的中半山，使這區的租金升值較其他地區快。山頂則是另一個獨特的中半山市場，這裏的獨立屋及大型公寓深受企業高層、外交高官、高級政府官員和銀行大款歡迎。這個尊貴地點同樣承受供應短缺的壓力以致租金上揚。

By K.S. Koh  
ks-koh@landscape.com

Read the full article at Market Watch, [www.landscape.com/keynotes](http://www.landscape.com/keynotes)  
如欲觀看全文，請登入Market Watch網站，網址：[www.landscape.com/keynotes](http://www.landscape.com/keynotes)

published and distributed by

**LANDSCOPE** 領域  
The Specialists in Luxury Properties  
**Landscape Realty Limited** C-018733  
a member of Landscape Surveys Ltd

Tel: 852-2866 0022 Fax: 852-2866 0015  
Email: info@landscape.com Website: [www.landscape.com](http://www.landscape.com)  
Unit 3106, 31/F, Hopewell Centre, 183 Queen's Road East, Wanchai, Hong Kong

The information, text, photos, analysis and projections contained herein are provided solely for the convenience of prospective clients and no warranty or representation as to its accuracy, completeness or timeliness is made by Landscape Realty Limited, Landscape Realty Limited or the owners, none of whom shall have any liability or obligation with respect thereto. Interested parties should rely on their own investigations, interpretations and analyses in connection with the purchase or selling thereof.  
Information has been provided to us by sources deemed reliable, but no warranty or representation is made as to its accuracy, completeness or timeliness. These offerings are made subject to contract, correction of errors, omissions, prior sale of lease, change of price or terms or withdrawal from the market without notice. The contents of The Key are for reference only and do not constitute all or any part of a contract.

Reproduction of any material in whole or part without written permission from In-Corporation Ltd is strictly prohibited. All information is correct at the time of going to press. The opinions expressed in The Key are those of the authors and are not necessarily endorsed by In-Corporation Ltd. Copyright 2016

## THE KEY | CONTENTS

- 03 Broadwood Twelve 跑馬地 樂天峯
- 03 Serenade 東半山 上林
- 04 Duo Sensation 雙重享受
- 10 The Oakhill 灣仔 翠峯
- 14 Purely Refreshing 恬靜怡人

### The Key (The No.1 Publication for Luxury Properties)

The Key is a monthly, bilingual lifestyle publication focusing on luxury residential properties in Hong Kong Island. It is sent to over 60,000 urban elites comprising of Hong Kong's most affluent inhabitants.

These consist of Landscape's VIP clients, who mainly reside in The Peak, Mid-Levels, Southside, Kowloon Tong, Homantin and other select up-market residential areas such as Tai Po, Sai Kung and Clear Water Bay, etc.

### How may you list your property with The Key?

If you would like to list your property in an upcoming issue of The Key, you may contact Loretta Lui on +852 3102 4818 or visit us at [www.landscape.com/sell-to-let](http://www.landscape.com/sell-to-let). Alternatively, simply fill out the below and fax back to us on +852 2866 0015.

#### Property Details

#### Asking Rental / Sale Price

#### Floor Area

#### Contact Person

#### Telephone

#### Email

Our KeyPerson will contact you for follow-up work.

designed and produced by

**in** MAGAZINE  
**In-Corporation Limited**  
Your No. 1 Integrated Marketing Communications Partner in Hong Kong and China

Tel: 852-3699 0888 Fax: 852-3699 0889  
Email: [marketing@inccp.com.hk](mailto:marketing@inccp.com.hk) Website: [www.inmagazine.com.hk](http://www.inmagazine.com.hk)  
12/F, Cyberport 2, 100 Cyberport Road, Hong Kong



Situated on the Broadwood Road, the privileged mid-levels of Happy Valley, Broadwood Twelve overlooks the breath-taking view of 180° panoramic Victoria Harbour and the unparalleled Race Course. Its superb location is conveniently connected with all of Hong Kong. The prestigious vicinity includes a renowned school network, as well as notable private clubs. The premise offers various units with area from 1,650 sq ft to 3,236 sq ft for selection including two penthouse duplexes with private roofs. A 20,000 sq ft luxurious and functional clubhouse together with a podium garden is unique in the neighbourhood.

樂天峯盤踞跑馬地半山樂活道的傳統尊貴地段，飽覽180度蔚人的維港景致及尊尚獨有的馬場勝景，位置優越，區內名校林立，而且毗鄰多個香港尊尚私人會所。單位面積由1,650平方呎至3,236平方呎不等，其中包括兩套頂層複式單位連私人天台可供選擇，並設有同區罕有的20,000平方呎豪華會所連平台花園，設施應有盡有。

## Broadwood Twelve 跑馬地 樂天峯

No. 12 Broadwood Road, Happy Valley

Jenson Au 區先生 9028 0147

Sandra Choi 蘇小姐 9234 1109

Yvonne Chang 鄭小姐 9088 4666

Situated on Tai Hang Road, Island East, the new Serenade embraces a metropolitan pulse with its advantageous geographical locations and convenient transport. The premise possesses panoramic view of the spectacular Victoria Harbour in its front, and greeneries from Mount Butler at its back. The area of each apartment varies from 1,000 square feet to 4,000 square feet. Among the available apartments are duplexes with four bedrooms including two ensuites and prestigious penthouses.

上林位處香港島東半山之罕貴地段，掌握大都會脈搏，地理位置優越，交通四通八達。前臨270度遠眺維多利亞港美觀海景，背靠青蔥翠綠畢拉山山嶺。單位面積由約1,000平方呎至4,000平方呎，其中包括四房兩套複式單位及頂層特色單位。



**Serenade 東半山 上林**  
11 Tai Hang Road, Midlevels East

Mark Mak 麥先生 6838 2929

Mavis Wu 吳小姐 9107 3891

Stephen Chan 陳先生 9093 3381



## Duo Sensation

雙重享受



Located at the upscale Jardine's Lookout, this sophisticated complex of the Butler Towers spans over 3,300 square feet consisting of two dwellings. Each abode adopts its distinctive modern interior design – one upholds contemporary minimalism with contrasting colours throughout and stylish furniture, making a bold statement of the residents; the opposite unit appoints a neoteric juxtaposition of western and Indian style, elegantly decorated in warm tones, creating a cosy living environment. The complex contains 7 bedrooms and 2 ensuites with 2 fully equipped kitchens. Spacious and practical, these two apartments share a mini hallway at the doorstep, you may opt to combine the two apartments into one generous unit or to preserve the duo characters.

Proximity to the shopping and dining hubs in Causeway Bay, this complex enjoys the quiet neighbourhood as well as the metropolitan vibe with its prime location. ■

位於達甸山柏麗閣，這兩間公寓總面積達3,300平方呎，每個單位都有個性獨特的室內設計及裝潢。其中一個單位奉行當時時代的簡約主義風格，配以時尚傢俱，充分表現戶主大膽前衛的品味；而對面單位的設計則糅合了西方風格及印度色彩，全屋裝潢採用溫和色調，營造出舒適愜意的居住環境。兩個單位共有七個睡房，其中兩個為套房。另有兩個設備齊全的廚房，空間寬敞且實用，這兩間公寓門前有個小小的門廊，可隨你喜好，選擇把兩間公寓合併成一個大單位或是把兩個風格獨特的單位保留。■

柏麗閣地理位置優越，毗鄰銅鑼灣這個購物及美食的心臟地帶，讓戶主享受寧靜的居住環境，同時亦掌握大都會的時代脈搏。■

### Butter Tower

達甸山柏麗閣  
1-5 Bayce Road, Jardine's Lookout

3,300 s.f.  
\$69,000,000

www.landscape.com/22550.htm Louis Wong 黃先生 9871 6828

For more listings, please go to [www.landscape.com/sale](http://www.landscape.com/sale)

**LEICHT**  
Germany High Quality Kitchen

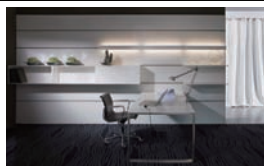
# WE HAVE MOVED showroom panorama harbour view



LEICHT CHIEF DESIGNER: Hartmut Reiser - award winner ifi Award 2008 on Concept 40



## Concept 40 series



HONG KONG MAIN OFFICE CHEST APPLY (ASIA) LTD.  
Shop No. 201, 2/F Harbour Centre, 25 Harbour Road, Wanchai, HK  
香港灣仔港灣道25號海港中心2樓201號舖  
enquiry@leicht.com.hk

HONG KONG SHOWROOM  
BEIJING SHOWROOM  
SHANGHAI SHOWROOM  
SHENZHEN SHOWROOM  
+852 2575 8286  
+8610 8527 1858  
+8621 3878 0212  
+86755 8279 3211

Opening Hours  
Mon - Sat: 0900 - 1930  
Sun & Pub: 1300 - 1930





**Stewart Terrace**  
山頂 史劍城臺  
81-95 Peak Road, The Peak  
Spacious colonial low-rise duplex apartment on the Peak  
山頂低密度英式複式住宅，間隔寬敞

**3,077 s.f.**  
**\$58,000,000**

[www.landscape.com/28368.htm](http://www.landscape.com/28368.htm) Sandra Choi 蔡小姐 9234 1109



**Mountain Lodge**  
山頂 嘉廬  
44 Mount Kellett Road, The Peak  
Exclusive Peak apartment with sweeping Southside view  
獨特山頂住宅，尊享寧靜南區海景

**2,600 s.f.**  
**\$65,000,000**

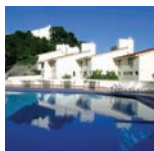
[www.landscape.com/17490.htm](http://www.landscape.com/17490.htm) Mira To 杜小姐 9486 1566



**Cameron House**  
山頂 嘉樂苑  
40 Magazine Gap Road, The Peak  
Extravagant penthouse with private roof situated on lower Peak  
豪華頂層住宅連私家天台，位於山頂尊貴地段

**2,847 s.f. (plus 2,081 s.f. roof)**  
**\$100,000,000**

[www.landscape.com](http://www.landscape.com) Louis Wong 黃先生 9871 6828



**Strawberry Hill**  
山頂 紅莓閣  
8 Plunkett's Road, The Peak  
Stylish colonial garden house overlooking Aberdeen Country Park and ocean view  
山頂時尚花園大屋，俯瞰香港仔郊野公園景觀及海景

**3,190 s.f.**  
**\$120,000,000**

[www.landscape.com/5288.htm](http://www.landscape.com/5288.htm) David Leung 梁先生 9199 0672



**La Hacienda**  
山頂 加利山道29-33號  
29-33 Mount Kellett Road, The Peak  
Rare garden townhouse on The Peak overlooking verdant Aberdeen Country Park  
山頂罕有花園大屋，俯瞰香港仔郊野公園景觀

**3,200 s.f.**  
**\$200,000,000**

[www.landscape.com/30422.htm](http://www.landscape.com/30422.htm) Stella Lo 羅小姐 9809 8570



**1-9 Rosmead Road, The Peak**  
山頂 樂善美道1-9號  
Rare single number garden house on the Peak  
山頂罕有獨立單號屋，連花園，市面難尋

**5,600 s.f. (plus 1,469 s.f. garden)**  
**\$250,000,000**

[www.landscape.com/20798.htm](http://www.landscape.com/20798.htm) David Leung 梁先生 9199 0672



**26 Magazine Gap Road, The Peak**  
山頂 馬己仙峽道26號  
Colonial apartment on Magazine Gap Road with excellent Victoria Harbour view  
馬己仙峽道英式住宅，尊享迷人維港景觀

**2,400 s.f.**  
**\$60,000,000**

[www.landscape.com/107696.htm](http://www.landscape.com/107696.htm) Louis Wong 黃先生 9871 6828



**Guildford Court**  
山頂 侯福道5號  
5 Guildford Road, The Peak  
Rare colonial low-rise in green surroundings on The Peak  
山頂罕有英式低密度住宅，尊享寧靜景緻

**2,500 s.f.**  
**\$70,000,000**

[www.landscape.com/30299.htm](http://www.landscape.com/30299.htm) Maria Cheung 張小姐 5182 8699



**22A-22B Mount Austin Road, The Peak**  
山頂 柯士甸山道22A-22B號  
A bird's eye view of the Victoria Harbour  
山頂優美維港景住宅，可租可售

**2,650 s.f.**  
**\$100,000,000 also for lease \$130,000**

[www.landscape.com/14296.htm](http://www.landscape.com/14296.htm) Maria Cheung 張小姐 5182 8699



**Mountain Lodge**  
山頂 嘉廬  
44 Mount Kellett Road, The Peak  
Rare duplex apartment with Southside sea view  
罕有複式住宅，尊享寧靜南區海景

**5,200 s.f.**  
**\$130,000,000**

[www.landscape.com/56955.htm](http://www.landscape.com/56955.htm) David Leung 梁先生 9199 0672



**Abergeldie**  
山頂 積根道52號  
52 Plantation Road, The Peak  
Peak house with bird's eye view of Victoria Harbour  
山頂洋房，尊享鳥語花香的維港景緻

**3,655 s.f. (plus 505 s.f. terrace, 464 s.f. garden and 282 s.f. roof)**  
**\$200,000,000**

[www.landscape.com/13340.htm](http://www.landscape.com/13340.htm) David Leung 梁先生 9199 0672



**Cheuk Nang Lookout**  
山頂 卓能山莊  
30 Severn Road, The Peak  
Detached house with private pool and garden terrace  
山頂獨立屋，連私家游泳池及花園平台，可租可售

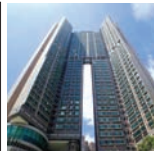
**5,300 s.f. (plus 2,904 s.f. garden, 537 s.f. roof and 1,400 s.f. terrace)**  
**\$250,000,000 also for lease \$300,000**

[www.landscape.com/19728.htm](http://www.landscape.com/19728.htm) Maria Cheung 張小姐 5182 8699

The essence of *Stylish living*

- Prominently located at 41C Stubbs Road, Mid-Levels
- In close proximity to C80, International schools and Bowen Road jogging trail
- With 70-storey, The Summit commands splendid views of Victoria Harbour and city skyline
- The duplex suites range from 3,254-6,496 sq.ft.
- Facilities include indoor swimming pool, Jacuzzi, gymnasium, golf simulator, outdoor entertainment BBQ area and children's playground
- 24-hour security service
- On-site maintenance team

**Leasing Enquiry: 2679 0222**  
(viewing by appointment only)  
**LeasingEnquiry@the-summit.com**  
[www.the-summit.com.hk](http://www.the-summit.com.hk)



**Le Sommet**  
北角 蒙廷峰  
28 Fortress Hill Road, North Point  
3-bedroom apartment sale with tenancy investment choice  
三房住宅單位，連約售，投資首選

**1,119 s.f.**  
**\$11,000,000**

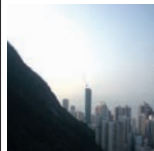
[www.landscape.com/127830.htm](http://www.landscape.com/127830.htm) Garman Szeto 司徒小姐 6183 8339



**80 Robinson Road, Midlevels West**  
西半山 羅便臣道80號  
Modern flat with 2 large bedrooms in well planned development  
時尚單位，連兩間特大睡房，大廈管理優良

**1,124 s.f.**  
**\$13,500,000**

[www.landscape.com/28468.htm](http://www.landscape.com/28468.htm) Rowena Siu 蕭小姐 9348 4118



**Hillsborough Court**  
中半山 曉峰閣  
18 Old Peak Road, Midlevels Central  
Rare high floor boutique apartment on Old Peak Road, enjoy mountain view and sea view  
中半山精緻特色單位，罕有極高層，尊享山景及海景

**938 s.f.**  
**\$15,000,000**

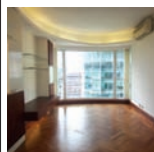
[www.landscape.com/53209.htm](http://www.landscape.com/53209.htm) Teresa Fung 馮小姐 9138 1621



**Green Lane Court**  
跑馬地 翠蘭閣  
130-140 Blue Pool Road, Happy Valley  
Colonial low-rise with greenery surroundings on upper Blue Pool Road  
藍池邊英式低密度住宅，尊享寧靜景緻

**1,400 s.f.**  
**\$15,500,000**

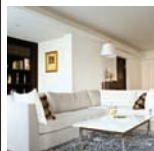
[www.landscape.com/122890.htm](http://www.landscape.com/122890.htm) Cora Ko 高小姐 6330 7888



**Starcrest**  
灣仔 星域軒  
9 Star Street, Wan Chai  
Cozy 2-bedroom flat with facilities on fringe of Admiralty  
迷人兩房單位，連完善住客會所設施，鄰近金鐘

**1,033 s.f.**  
**\$16,000,000**

[www.landscape.com/39761.htm](http://www.landscape.com/39761.htm) Rowena Siu 蕭小姐 9348 4118



**Dragon Garden**  
灣仔山 龍園  
1 Chun Fat Terrace, Jardine's Lookout  
Designer decorated 3-bedroom flat in quiet corner  
設計師精心設計三房住宅，環境清幽寧靜，可租可售

**1,750 s.f.**  
**\$20,000,000 also for lease \$62,000 incl.**

[www.landscape.com/104282.htm](http://www.landscape.com/104282.htm) Walker Lam 林先生 9551 1077

**Pearl Gardens**  
西半山 明珠臺  
7 Conduit Road, Midlevels West  
Practical 4-bedroom flat on upper Conduit Road close to Midlevels Escalator  
千禧園頂設四房住宅，高層寬闊，鄰近半山扶手電梯

**2,200 s.f.**  
**\$24,000,000**

[www.landscape.com/3353.htm](http://www.landscape.com/3353.htm) [Sami Woo 胡小姐 9493 8275](mailto:Sami Woo 胡小姐 9493 8275)

**Braemar Hill Mansions**  
北角半山 寶西湖大廈  
15-43 Braemar Hill Road, North Point Midlevels  
High efficiency 3-bedroom apartment with large pool and tennis courts  
高實用三房住宅，獨特大泳池及網球場

**1,490 s.f.**  
**\$23,800,000**

[www.landscape.com/77363.htm](http://www.landscape.com/77363.htm) [Jenson Au 區先生 9028 0147](mailto:Jenson Au 區先生 9028 0147)

**Jardine's Lookout Garden Mansion**  
東半山 渣甸山花園大廈  
148-150 Tai Hang Road, Midlevels East  
Nicely decorated apartment overlooking Hong Kong Stadium  
東半山雅緻裝修住宅，俯瞰香港大球場景觀

**1,500 s.f.**  
**\$25,000,000 also for lease \$60,000 incl.**

[www.landscape.com/110480.htm](http://www.landscape.com/110480.htm) [Sami Woo 胡小姐 9493 8275](mailto:Sami Woo 胡小姐 9493 8275)

**Cavendish Heights**  
渣甸山 嘉雲臺  
27-37 Perkins Road, Jardine's Lookout  
Popular family apartment with full clubhouse facilities  
受歡迎家庭式住宅，連住客會所設施，可租可售

**1,819 s.f.**  
**\$26,000,000 also for lease \$65,000 incl.**

[www.landscape.com/32495.htm](http://www.landscape.com/32495.htm) [Cora Ko 高小姐 6330 7888](mailto:Cora Ko 高小姐 6330 7888)

**Tavistock**  
中半山 麗皇閣  
10A Tregunter Path, Midlevels Central  
Luxury boutique apartment in tranquil location  
豪華精緻特色單位，環境寧靜怡人，可租可售

**1,730 s.f.**  
**\$29,000,000 also for lease \$60,000**

[www.landscape.com/38975.htm](http://www.landscape.com/38975.htm) [Teresa Lau 劉小姐 9080 6886](mailto:Teresa Lau 劉小姐 9080 6886)

**Birchwood Place**  
中半山 寶得臺  
96 MacDonnell Road, Midlevels Central  
Fully fitted apartment with open city view and clubhouse facilities  
配齊完善單位，尊享開揚城市景觀及住客會所設施

**2,018 s.f.**  
**\$31,000,000**

[www.landscape.com/107827.htm](http://www.landscape.com/107827.htm) [Stella Lo 羅小姐 9809 8570](mailto:Stella Lo 羅小姐 9809 8570)

**Suncrest Tower**  
中半山 桂灣苑  
1-11 Monmouth Terrace, Midlevels Central  
High efficiency, newly decorated 4-bedroom (2 en-suites) apartment on fringe of CBD  
全新裝修四房兩套兩衛單位，實用率高，鄰近中環，可租可售

**2,005 s.f.**  
**\$23,800,000 also for lease \$65,000 incl.**

[www.landscape.com/109565.htm](http://www.landscape.com/109565.htm) [Teresa Fung 馮小姐 9138 1621](mailto:Teresa Fung 馮小姐 9138 1621)

**Chenyu Court**  
中半山 燭如閣  
22-24 Kennedy Road, Midlevels Central  
Cozy 2-bedroom flat with private roof  
中半山迷人兩房單位，連私家天台，可租可售

**1,350 s.f. (plus 1,350 s.f. roof)**  
**\$24,000,000 also for lease \$70,000 incl.**

[www.landscape.com/100693.htm](http://www.landscape.com/100693.htm) [Stella Lo 羅小姐 9809 8570](mailto:Stella Lo 羅小姐 9809 8570)

**Wah Fung Mansion**  
東半山 華峰閣  
27 Tai Hang Road, Midlevels East  
Spacious whole-floor unit with balcony in high privacy  
東半山寬敞住宅連陽臺，私隱度高，可租可售

**2,087 s.f.**  
**\$27,000,000 also for lease \$70,000 incl.**

[www.landscape.com/36117.htm](http://www.landscape.com/36117.htm) [Stephen Chan 陳先生 9093 3381](mailto:Stephen Chan 陳先生 9093 3381)

**Medallion Heights**  
西半山 金雷閣  
45 Conduit Road, Midlevels West  
Exclusive mid-rise apartment with private roof terrace, nice internal design  
獨特中密度住宅，連私家天台平台，室內觀裝修

**2,000 s.f. (plus 1,500 s.f. roof)**  
**\$26,500,000**

[www.landscape.com/98468.htm](http://www.landscape.com/98468.htm) [Teresa Lau 劉小姐 9080 6886](mailto:Teresa Lau 劉小姐 9080 6886)

**Glory Mansion**  
中半山 輝煌大廈  
106-108 MacDonnell Road, Midlevels Central  
Well decorated and fully furnished colonial low-rise on MacDonnell Road  
麥當勞街低密度英式住宅，雅緻裝修，連全層傢俬

**2,300 s.f.**  
**\$29,000,000**

[www.landscape.com/37757.htm](http://www.landscape.com/37757.htm) [Jenson Au 區先生 9028 0147](mailto:Jenson Au 區先生 9028 0147)

**Dynasty Court**  
中半山 帝景園  
23 Old Peak Road, Midlevels Central  
Nice apartment on fringe of Central with superb facilities  
中半山靚景住宅，尊享華麗會所設施，鄰近中環

**1,970 s.f.**  
**\$33,500,000**

[www.landscape.com/84498.htm](http://www.landscape.com/84498.htm) [Mira To 杜小姐 9486 1566](mailto:Mira To 杜小姐 9486 1566)



"you never own ya premises,  
you merely live there unless  
ya character implanted"

- Joseph Chang -



Joseph Lee

Joseph is friendly, honest, reliable, organized, and very meticulous in his work. I can't say enough good things about all the work he did to make my place gorgeous & very functional.

Old Peak road - the boundless en-suite



Suzanne Toppin

Don't be fooled by Joseph's easy demeanor. He's an unswerving advocate for the client and the work. It's clear to his contractors that anything less than the best work is in. He thinks through everything, and does nothing up his.

Shouhou Hill - classical contemporary



Richard J. Brink

Throughout the project, Joseph was personally involved, ensuring the quality of the work and the project's adherence in the budget and schedule. The project was completed on time and within budget and we now have a beautiful new home, as well as a new friend, Joseph!

Capitol Garden - minimalist modernized flexibility



Mei Ling

Thank you so much for designing our new dream house. We absolutely love it! I just keep going upstairs and looking at it. It looks like a place out of a magazine. Fantastic! And! You matched the house to our personality perfectly. Thanks again!

Red Hill Peninsula - accentuated coziness



Sean Holden

We really appreciated the way Joseph worked with us in coming up with great ideas to make our rudimentary ideas and developing them into amazing designs.

Park Place - interior & exterior connection

Interior design  
constructions  
space planning  
project management  
tendering  
landscaping  
quantity survey





**Villa Monte Rosa**  
東半山 玫瑰新村  
41A Stubbs Road, Midlevels East  
Large practical flat with garden view  
特大花園景住宅，間隔實用

**2,300 s.f.**  
**\$35,000,000**

[www.landscape.com/108395.htm](http://www.landscape.com/108395.htm) [Cora Ko](mailto:Cora_Ko) 高小姐 6330 7888



**Nicholson Tower**  
東半山 蔚豪苑  
8 Wong Nai Chung Gap Road, Midlevels East  
Family apartment with cozy decor  
迷人雅緻裝修家庭式住宅

**1,993 s.f.**  
**\$36,000,000**

[www.landscape.com/102635.htm](http://www.landscape.com/102635.htm) [Mira To](mailto:Mira_To) 杜小姐 9486 1566



**Serene Court**  
西半山 秀麗閣  
8 Kowloon Road, Midlevels West  
Newly renovated 4-bedroom flat enjoying open harbour view  
雅緻裝修四房住宅，尊享開揚維港景觀

**2,334 s.f.**  
**\$38,000,000**

[www.landscape.com/115655.htm](http://www.landscape.com/115655.htm) [Garman Szeto](mailto:Garman_Szeto) 司徒小姐 6183 8339



**Century Tower I**  
中半山 世紀大廈1座  
1 Tregunter Path, Midlevels Central  
Huge 4-bedroom flat with large balcony and sea view, investment choice  
中半山特大四房住宅，連特大陽臺，尊享海景，投資首選

**2,565 s.f.**  
**\$36,000,000**

[www.landscape.com/15864.htm](http://www.landscape.com/15864.htm) [Christine Chang](mailto:Christine_Chang) 莊小姐 9648 6082



**Kingsford Gardens**  
北角半山 瓊峰園  
202-216 Tin Hau Temple Road, North Point Midlevels  
4-bedroom (2 ensuite) apartment in North Point with Victoria Harbour view  
北角四房連兩套房住宅，尊享維港景觀

**2,500 s.f.**  
**\$36,000,000**


[www.landscape.com/133543.htm](http://www.landscape.com/133543.htm) [Jenson Au](mailto:Jenson_Au) 區先生 9028 0147



**Elm Tree Towers**  
西半山 愉富大廈  
8-10 Chun Fat Road, Jardine's Lookout  
Renovated spacious 3-bedroom apartment with Victoria Harbour view  
豪華寬敞三房住宅，尊享維港景觀

**2,028 s.f.**  
**\$39,800,000**

[www.landscape.com/127001.htm](http://www.landscape.com/127001.htm) [Stephen Chan](mailto:Stephen_Chan) 陳先生 9093 3381



**Regent On The Park**  
中半山 御花園  
9A Kennedy Road, Midlevels Central  
Conveniently located large apartment with beautiful view of the city centre  
中半山特大住宅，尊享優美市中心景觀，位置優越

**2,720 s.f.**  
**\$46,800,000**

[www.landscape.com/18550.htm](http://www.landscape.com/18550.htm) [Walker Lam](mailto:Walker_Lam) 林先生 9551 1077



**Leon Court**  
東半山 利安閣  
12-14 Wong Nai Chung Gap Road, Midlevels East  
Rare large 3-bedroom mid-rise apartment with panoramic view  
罕有特大三房中密度住宅，尊享廣闊景觀

**2,800 s.f.**  
**\$50,000,000**

[www.landscape.com/1310323.htm](http://www.landscape.com/1310323.htm) [Walker Lam](mailto:Walker_Lam) 林先生 9551 1077



**Hatton House**  
西半山 赫德大廈  
15 Kowloon Road, Midlevels West  
Spacious 4-bedroom harbour view apartment on quiet Kowloon Road  
寬敞四房維港景住宅，環境寧靜怡人

**2,800 s.f.**  
**\$55,000,000**

[www.landscape.com/110323.htm](http://www.landscape.com/110323.htm) [Mira To](mailto:Mira_To) 杜小姐 9486 1566



**May Tower 1**  
中半山 梅苑一座  
7 May Road, Midlevels Central  
Harbour view duplex in prime location  
中半山維港景複式住宅，地段尊貴

**2,850 s.f.**  
**\$49,000,000**

[www.landscape.com/110279.htm](http://www.landscape.com/110279.htm) [Garman Szeto](mailto:Garman_Szeto) 司徒小姐 6183 8339



**Bellevue Court**  
東半山 碧園閣  
41 Stubbs Road, Midlevels East  
Spacious 5-bedroom apartment with private roof and 3 car parking spaces  
寬敞五房住宅，連私家天台及三個車位

**2,700 s.f. (plus 1,300 s.f. roof)**  
**\$52,000,000**

[www.landscape.com/131559.htm](http://www.landscape.com/131559.htm) [Stephen Chan](mailto:Stephen_Chan) 陳先生 9093 3381



**Piccadilly Mansion**  
西半山 碧苑  
4-6 Po Shan Road, Midlevels West  
Large practical harbour view apartment in tranquil environment  
西半山特大維港景住宅，間隔寬用，環境寧靜

**2,800 s.f.**  
**\$55,500,000**

[www.landscape.com/35978.htm](http://www.landscape.com/35978.htm) [Garman Szeto](mailto:Garman_Szeto) 司徒小姐 6183 8339



Situated on the peaceful Wood Road, the building embraces a metropolitan pulse with its advantageous location and convenient transport. The area of each apartment varies from 875 sq ft to 1,514 sq ft, among which the units on the 8th floor offer an exclusive terrace. The top floor duplex units extend to 3,062 sq ft with a spacious rooftop.

Wan Cha's convenient aside, this property boasts an elite school network, notable private clubs, recreational and cultural facilities, rendering a truly metropolitan lifestyle infused with tranquility.

位於灣仔活適的萃峯地理位置優越，單位面積由875平方呎至1,514平方呎，其中8樓每個單位皆設有平台。而頂樓的複式單位面積大約3,062平方呎，更設有樓梯到天台，盡顯獨特氣派。

區內名校林立，並毗鄰多個高尚會所及各類娛樂及文化設施，為你締造城市中的愜意生活。

**The Oakhill 灣仔 萃峯**  
28 Wood Road, Wan Chai

[Christine Chang](mailto:Christine_Chang) 莊小姐 9648 6082 [David Chan](mailto:David_Chan) 陳先生 9238 2012 [Teresa Lau](mailto:Teresa_Lau) 劉小姐 9080 6686



德國 **osmo**®  
...in form und farbe

*Wood finishes from a wood specialist*

**Natural...**  
...with natural oils and waxes, the very best for wood and the environment!

**Faster...**  
...Osmo finishes can be renovated without sanding, saving time and money!

**Coverage...**  
...high solid means amazing coverage and best price per m²!

Hop Sze Timber Co., Ltd.  
220 Gloucester Road, Wanchai, Hong Kong  
Phone (852) 28336069 - www.hopsze.com

**Tregunter Tower 3**  
 中半山 地利樓閣3座  
 14 Tregunter Path, Midlevels Central  
 Tastefully decorated duplex with excellent clubhouse facilities  
 品味裝修複式住宅，連完善住客會所設施

**2,980 s.f.** (plus 187 s.f. terrace)  
**\$56,000,000**

[www.landscope.com/105883.htm](http://www.landscope.com/105883.htm) David Chan 陳先生 9238 2012

**Borrett Mansion**  
 中半山 寶傳基  
 8A-9B Bowen Road, Midlevels Central  
 Spacious colonial apartment with harbour view  
 開闊寬敞英式住宅，享港維港景觀

**2,800 s.f.**  
**\$72,000,000 also for lease \$125,000**

[www.landscope.com/40463.htm](http://www.landscope.com/40463.htm) Sandra Choi 蔡小姐 9234 1109

**Broadview Villa**  
 跑馬地 樂景園  
 20 Broadwood Road, Happy Valley  
 High floor huge 4-bedroom apartment with harbour view  
 跑馬地高層特大四房維港景住宅

**3,134 s.f.**  
**\$78,000,000**

[www.landscope.com/123761.htm](http://www.landscope.com/123761.htm) Walker Lam 林先生 9551 1077

**Scenic Lodge**  
 東半山 怡晴軒  
 6 Wang Fung Terrace, Midlevels East  
 Rare duplex penthouse with nice decor in secluded location  
 罕有頂層複式單位，遠觀裝修，位處尊貴地段

**4,400 s.f.** (plus 747 s.f. roof and 93 s.f. terrace)  
**\$88,000,000**

[www.landscope.com/104354.htm](http://www.landscope.com/104354.htm) Sandra Choi 蔡小姐 9234 1109

**White Jade**  
 東半山 白蠟  
 51 Stubbs Road, Midlevels East  
 Rare find large harbour view flat on Stubbs Road  
 司徒拔道罕有特大維港景住宅，可租可售

**3,000 s.f.**  
**\$90,000,000 also for lease \$130,000 incl.**

[www.landscope.com/48296.htm](http://www.landscope.com/48296.htm) Louis Wong 黃先生 9871 6828

**80 Robinson Road, Midlevels West**  
 西半山 麗徑80號  
 5-bedroom penthouse with superb harbour view and clubhouse  
 特大五房頂層單位，尊設廣闊維港景，連完善住客會所設施

**2,957 s.f.** (plus 546 s.f. terrace and 247 s.f. roof)  
**\$97,581,000**

[www.landscope.com/50119.htm](http://www.landscope.com/50119.htm) Jensen Au 區先生 9028 0147

**Kennedy Heights**  
 中半山 堅麗閣  
 10-18 Kennedy Road, Midlevels Central  
 Huge 5-bedroom apartment on fringe of CBD  
 特大五房單位，鄰近中環，交通方便

**3,400 s.f.**  
**\$68,000,000**

[www.landscope.com/39691.htm](http://www.landscope.com/39691.htm) Stella Lo 羅小姐 9809 8570

**Catalina Mansions**  
 中半山 嘉年大廈  
 98-100 MacDonnell Road, Midlevels Central  
 Designer decorated huge duplex on MacDonnell Road  
 豪裝旁園巨屋複式住宅，配以設計師品味靚裝修

**4,600 s.f.**  
**\$78,000,000**

[www.landscope.com/130902.htm](http://www.landscope.com/130902.htm) Stephen Chan 陳先生 9093 3381

**Craigmont**  
 東半山 紀園  
 34 Stubbs Road, Midlevels East  
 Newly renovated penthouse with private terrace overlooking Happy Valley  
 全新裝修頂層住宅，連私家平台，俯瞰跑馬地景觀

**3,200 s.f.** (plus 799 s.f. roof)  
**\$85,000,000**

[www.landscope.com/32864.htm](http://www.landscope.com/32864.htm) Mark Mak 麥先生 6838 2929

**保快家**  
 PURIFICARE<sup>®</sup>

**逆滲透濾水系統**  
 Reverse Osmosis (R.O.) Water Filter System

歡迎聯絡我們安排免費水質測試！  
 Call us for a FREE water test NOW!

憑此廣告購買逆滲透濾水系統，即享\$800即減折扣！  
 \$800 off on purchase of R.O. system with this ad!

Hotline 熱線 **9013 2338**  
[www.mtel.com.hk](http://www.mtel.com.hk)

## VIRTUE ARCHITECTS LIMITED

No.11 Burd Street, Sheung Wan, Hong Kong  
 Tel. (852) 3113 4699 Fax. (852) 2574 6269  
 Email. virtuearch@gmail.com

Commercial Interior Design  
 商業室內設計  
 Residence Interior Design  
 住宅室內設計  
 Building Renovation Design  
 樓宇更新設計  
 Garden Design  
 園藝設計



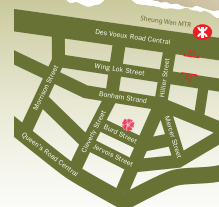
中秋



Wellcome to reserve flowers, plants, fruit baskets, funeral, orchid, opening & congratulations, decoration and etc.  
 歡迎預訂花束、植物、果籃、悼念花園、蘭花、開張花籃和場地佈置等等。

**Yim's Flower**

No.11 Burd Street, Central, H.K.  
 Tel. 2544 6886 Fax. 2574 6269  
 Email. yimflower@yahoo.com.hk




**CNT Bisney**  
**澤扶林 奧琳閣**  
 28 Bisney Road, Pokfulam

2-bedroom boutique apartment in quiet neighbourhood  
 精緻兩房兩廁裝修住宅，位處薄扶林清幽地段

767 s.f.  
**\$5,800,000**

[www.landscape.com/54815.htm](http://www.landscape.com/54815.htm)

Christine Chong 莊小姐 9648 6082


**Yee On**  
**澤扶林 羅富閣徑13-15號**  
 13-15 Northcote Close, Pokfulam

Tastefully decorated 2-bedroom apartment with big balcony and greenery view  
 品味裝修兩房單位，獨特大露台，尊享翠綠山景

1,600 s.f.  
**\$15,000,000**

[www.landscape.com/111417.htm](http://www.landscape.com/111417.htm)

Chris Law 羅先生 6183 8388


**Albany Court**  
**澤扶林 雅閣閣**  
 51 Bisney Road, Pokfulam

Lofy-ceilinged low-rise flat with terrace in tranquil Pokfulam  
 薄扶林低密度住宅，連平台，樓底特高

1,800 s.f. (plus 474 s.f. terrace)  
**\$22,000,000**

[www.landscape.com/113639.htm](http://www.landscape.com/113639.htm)

Walker Lam 林先生 9551 1077


**Hong Kong Parkview**  
**澤扶林 陽明山莊**  
 88 Tai Tam Reservoir Road, Repulse Bay

Well decorated mountain view apartment with full facilities  
 靚裝修住宅，匯完善住客會所設施，尊享翠綠山景

2,105 s.f.  
**\$28,000,000**

[www.landscape.com/106388.htm](http://www.landscape.com/106388.htm)

Mary Li 李小姐 9011 6595


**Cape Mansions**  
**澤扶林 翠海別墅**  
 56-62 Mount Davis Road, Pokfulam

Sea view apartment in Mount Davis Road  
 薄扶林海景住宅，位處尊貴地段

2,100 s.f.  
**\$29,500,000**

[www.landscape.com/18679.htm](http://www.landscape.com/18679.htm)

Mira To 杜小姐 9486 1566


**Splendour Villa**  
**澤扶林 雅閣閣**  
 10 South Bay Road, Repulse Bay

Rare find beachfront low-rise with private roof top  
 罕有海濱渡假式低密度住宅，連私家天台

1,325 s.f. (plus 1,044 s.f. roof)  
**\$32,000,000**

[www.landscape.com/34427.htm](http://www.landscape.com/34427.htm)

Mavis Wu 吳小姐 9107 3891

## Purely Refreshing

### 恬靜怡人



Tucked away in the serene Jardine's Lookout, this simple and commodious apartment spreads over 1,800 square feet with 3 bedrooms, 2 bathrooms and a combined living and dining room. The apartment is naturally lit through large picture windows, combining the teakwood flooring, pinewood furniture and decoration and the green plants embellishment, offering a peaceful and comfortable ambience. Yet, a stainless steel cabinet in the open kitchen adds a touch of sleek and chic to its calm environment.

Located in a tranquil low-rise area of the Jardine's Lookout surrounded by greeneries. Only minutes away from the bustling Wan Chai district, this refreshing apartment ensures privacy, space and relaxing atmosphere to unwind. ■

這座靜雅而寬敞的公寓座落於幽靜的渣甸山，面積1,800平方呎，共有三睡房浴及相連客廳。充沛的自然光線從落地玻璃窗照進全屋，配合柚木地板、松木傢俱和裝潢，並以翠綠的植物作點綴，為住戶提供舒適平和的居住環境。而開放式廚房則裝上不鏽鋼廚櫃，為全屋的一片寧靜添上一絲時尚風格。

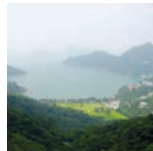
位處渣甸山一處低密度住宅群，四周碧綠環繞，環境清幽恬靜，與煩囂的灣仔區只是一簣之隔，這座公寓保證你有一個舒適的私人空間，讓你可完全放鬆，忘卻煩惱。■

**Wilson Road Low-rise Apartment**  
**灣甸山 衛信道低密度住宅**

1,800 s.f.  
**\$28,800,000**

[www.landscape.com](http://www.landscape.com)

Garman Szeto 司徒小姐 6183 8339


**Sea Cliff Mansions**  
**澤扶林 海峰閣**  
 19A-19D Repulse Bay Road, Repulse Bay

Sea view apartment in convenient location  
 澤扶林海景單位，位處優越地段

2,400 s.f.  
**\$40,000,000**

[www.landscape.com/6364.htm](http://www.landscape.com/6364.htm)

Stella Lo 盧小姐 9809 8570


**Celestial Garden**  
**澤扶林 詩韻花園**  
 5 Repulse Bay Road, Repulse Bay

Good investment on upper Repulse Bay Road with Deep Water Bay sea view  
 澤扶林高層住宅，位處優越地段，投資佳品，可租可售

2,363 s.f.  
**\$44,000,000 also for lease \$100,000 incl.**

[www.landscape.com/1520.htm](http://www.landscape.com/1520.htm)

Sandra Choi 蔡小姐 9234 1109

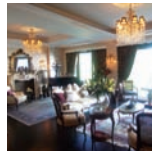

**Pacific View**  
**澤扶林 松閣閣**  
 38 Tai Tam Road, Tai Tam

High floor flat with splendid sea view  
 大澤高層住宅，尊享遼闊海景

3,106 s.f.  
**\$47,000,000**

[www.landscape.com/13954.htm](http://www.landscape.com/13954.htm)

Maria Cheung 張小姐 5182 8699

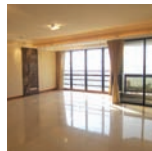

**Ridge Court**  
**澤扶林 冠閣**  
 21A-21D Repulse Bay Road, Repulse Bay

Full sea view flat with nice decorations in Repulse Bay  
 澤扶林全海景住宅，尊享靚裝修

2,300 s.f.  
**\$42,800,000**

[www.landscape.com/99498.htm](http://www.landscape.com/99498.htm)

Rowna Siu 蕭小姐 9348 4118

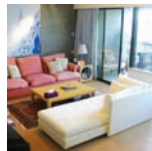

**South Bay Towers**  
**澤扶林 南灣大廈**  
 59 South Bay Road, Repulse Bay

Renowned practical sea view apartment with swimming pool  
 有名望海景住宅連游泳池，間隔實用，可租可售

2,738 s.f.  
**\$45,000,000 also for lease \$85,000 incl.**

[www.landscape.com/112724.htm](http://www.landscape.com/112724.htm)

Coria Ko 高小姐 6330 7888


**Pine Crest**  
**澤扶林 松閣閣**  
 65 Repulse Bay Road, Repulse Bay

Nicely decorated 4-bedroom flat overlooking Deep Water Bay  
 雅緻裝修四房住宅，俯瞰深水灣景觀

2,550 s.f.  
**\$50,000,000**

[www.landscape.com/109944.htm](http://www.landscape.com/109944.htm)

Chris Law 羅先生 6183 8388

**astral™**  
 advanced lighting system



Astral system controls more than just lights, discover how it can change your lifestyle.

astral™, the advanced lighting system from MK Electric, brings out the best in your environment and is the ideal lighting control solution if you are looking to enhance the ambience and atmosphere in any room or residence.

Providing sophisticated and inspirational lighting control, astral is an extremely versatile and intelligent system, which incorporates the award-winning Zensys RF communications technology (Z-Wave®) ensuring the ultimate in both reliability and flexibility.



MK Electric (China) Ltd  
 25/F, Honeywell Tower, Olympia Plaza, 255 King's Road, North Point, Hong Kong  
 Telephone (4652) 2331 8183, (4652) 2553 8379 • Fax (4652) 2151 9465  
[www.mk-electric.com.hk](http://www.mk-electric.com.hk)





**Redhill Peninsula**  
大潭 紅山半島  
18 Pak Pat Shan Road, Tai Tam  
Spacious townhouse with sea view  
間隔寬敞洋房，尊享海景

**3,119 s.f.** (plus 1,854 s.f. garden and 241 s.f. terrace)  
**\$54,000,000**

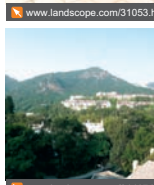
www.landscope.com/33716.htm Maria Cheung 張小姐 5182 8699



**Regalia Bay**  
赤柱 富豪海湾  
88 Wong Ma Kok Road, Stanley  
Luxurious 5-bedroom waterfront townhouse  
豪華五房渡假式海濱洋房

**4,101 s.f.** (plus 1,317 s.f. roof and 131 s.f. garden)  
**\$58,800,000**

www.landscope.com/31053.htm Mark Mak 麥先生 6838 2329



**Las Pinadas**  
壽臣山 蔚藍閣  
33 Shouson Hill Road, Shouson Hill  
Luxurious garden house with roof and terrace in tranquil enclave  
豪華花園大屋，連天台平台，位處清幽靜地段

**3,382 s.f.** (plus 617 s.f. roof, 565 s.f. garden and 166 s.f. terrace)  
**\$75,000,000**

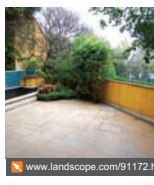
www.landscope.com/21407.htm Teresa Fung 馮小姐 9138 1621



**45 Island Road, Deep Water Bay**  
深水灣 香島道45號  
Townhouse with private garden in prestigious location  
深水灣花園排屋，位處尊貴地段

**2,751 s.f.** (plus 503 s.f. roof and 474 s.f. garden)  
**\$87,000,000**

www.landscope.com/34142.htm Mavis Wu 吳小姐 9107 3891



**Carmelia**  
赤柱 赤柱村道60號  
60 Stanley Village Road, Stanley  
Huge colonial house with front yard and private garden  
巨型英式大屋，連前院及花園，可租可售

**4,600 s.f.** (plus 753 s.f. garden and 215 s.f. terrace)  
**\$150,000,000 also for lease \$250,000 incl.**

www.landscope.com/91172.htm Sandra Choi 蔡小姐 9234 1109



**Rare Single House at SouthSide**  
南區罕有獨立屋  
Rare huge 6-bedroom sea view house with garden and pool in prime location  
特大六房海景住宅，連花園及泳池，地段尊貴，市場罕有，可租可售

**6,700 s.f.** (plus 1,213 s.f. garden and 341 s.f. terrace)  
**\$330,000,000 also for lease \$420,000**

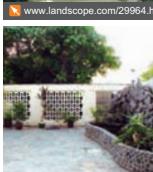
www.landscope.com Louis Wong 黃先生 9871 6828



**Faber Villa**  
大潭 舞百苑  
17 Tai Tam Road, Tai Tam  
Exclusive mid-rise with expansive sea view  
獨特中密度住宅，尊享觀海景

**3,200 s.f.**  
**\$58,000,000**

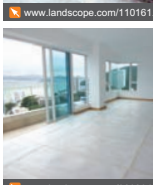
www.landscope.com/29964.htm Mavis Wu 吳小姐 9107 3891



**Hillgrove**  
香欖角 璧如花園  
18 Cape Drive, Chung Hom Kok  
4-bedroom townhouse with private roof  
四房排屋，連私家天台

**2,751 s.f.** (plus 895 s.f. roof and terrace)  
**\$60,000,000**

www.landscope.com/110161.htm Christine Chong 莊小姐 9648 6082



**Radcliffe**  
薄扶林 曉林  
120 Pokfulam Road, Pokfulam  
Brand new sea view duplex apartment with designer decorations  
全新海景複式住宅，配以品味裝修

**3,620 s.f.**  
**\$82,020,000**

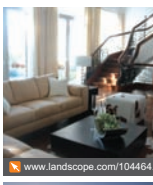
www.landscope.com/96930.htm Mary Li 李小姐 9011 6595



**7-11 Cape Road, Chung Hom Kok**  
香欖角 環角道7-11號  
Brand new high privacy sea view townhouse with roof and terrace in Chung Hom Kok  
香欖角全新海景排屋，私隱度高，連天台平台

**4,900 s.f.** (plus 659 s.f. roof and 166 s.f. terrace)  
**\$150,000,000**

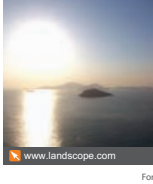
www.landscope.com/126121.htm Sandra Choi 蔡小姐 9234 1109



**110 Repulse Bay Road, Repulse Bay**  
淺水灣 淺水灣道110號  
Exclusive sea view mansion in prestigious location of Repulse Bay  
淺水灣獨特海景住宅，地段尊貴，可租可售

**6,150 s.f.** (plus 1,173 s.f. garden and 934 s.f. roof)  
**\$305,000,000 also for lease \$350,000 incl.**

www.landscope.com/104484.htm Mavis Wu 吳小姐 9107 3891



**Brand New Detached House at SouthSide**  
全新南區獨立大屋  
Brand new detached house with private pool and garden  
全新獨立大屋，連私家游泳池及花園

**12,000 s.f.**  
**\$350,000,000**

www.landscope.com Louis Wong 黃先生 9871 6828



**ERIC FUNG Interior Design Limited**  
**THE INTERIOR DESIGN REFLECTS YOUR NEED**

**ERIC FUNG**  
Creative Director



OUR SERVICES : RESIDENTIAL DESIGN | OFFICE DESIGN | COMMERCIAL DESIGN | KITCHEN DESIGN | DESIGN CONCEPT | CONSULTANT | SPACE PLANNING

28/F & 29/F, Catic Plaza, 8 Causeway Road, Causeway Bay, Hong Kong T: (852) 3104 3104 F: (852) 2362 7788 www.tint-international.com

**LOOKING FOR FURNITURE?!**

Designer Furniture Gallery : G/F, 3 Blue Pool RD, Happy Valley, HK T: (852) 3104 3105 www.tintliving.com  
Furniture Outlet : 11/F, Ming Sang Ind. Building, 19 Hing Yip Street, Kwun Tong, Kowloon T: (852) 3104 3107

**tint**  
Tint Living Limited

**Villa Verde**  
山頂 綠翠園  
4-18 Guildford Road, The Peak  
Rarely on Peak 4-bedroom apartment with Southside sea view and good condition  
罕有山頂四房住宅，專享南面海景及靚裝修

2,520 s.f.  
\$115,000 incl.

www.landscope.com/4434.htm Teresa Lau 劉小姐 9080 6686

**Cameron House**  
山頂 嘉樂苑  
40 Magazine Gap Road, The Peak  
Unique mid-rise apartment with sea view  
精緻中密度住宅，專享海景

2,847 s.f.  
\$140,000 incl.

www.landscope.com/14268.htm Rowena Siu 蕭小姐 9348 4118

**The Mount Austin**  
山頂 柯士甸道8號  
8 Mount Austin Road, The Peak  
Luxury 4-bedroom duplex with private garden and terrace on The Peak  
山頂豪華四房複式住宅，連私家花園及平台

2,657 s.f. (plus 749 s.f. garden and 257 s.f. terrace)  
\$148,000 incl.

www.landscope.com/27916.htm Chris Law 羅先生 6183 8388

**Strawberry Hill**  
山頂 紅莓閣  
8 Plunkett's Road, The Peak  
Prestigious colonial 4-bedroom house on The Peak  
山頂尊貴英式四房大屋

3,250 s.f.  
\$185,000

www.landscope.com/4238.htm Mary Li 李小姐 9011 6595

**74 Mount Kellett Road, The Peak**  
山頂 加列山道74號  
Rarely available sea view townhouse on The Peak  
山頂罕有海景洋房

4,200 s.f. (plus 1,041 s.f. roof, 620 s.f. garden and 191 s.f. terrace)  
\$210,000 incl.

www.landscope.com/100054.htm Mark Mak 麥先生 6838 2929

**Severn 8**  
山頂 荷德  
8 Severn Road, The Peak  
Luxurious townhouse with a bird's eye view of the Victoria Harbour  
山頂豪華洋房，專享鳥瞰花香的維港景致

3,330 s.f. (plus 772 s.f. roof and 460 s.f. garden)  
\$260,000 incl.

www.landscope.com/116961.htm Louis Wong 黃先生 9871 6828

**1-3 Homestead Road, The Peak**  
東半山 山頂 瑞仕達道1-3號  
Modern luxurious apartment with fantastic sea view  
時尚豪華住宅，專享優美海景

2,828 s.f.  
\$130,000 incl.

www.landscope.com/29255.htm Sami Woo 胡小姐 9493 8275

**La Hacienda**  
山頂 加列山道29-33號  
29-33 Mount Kellett Road, The Peak  
Large high-ceilinged colonial apartment in lush greenery  
特大英式住宅，樓底特高，專享翠綠景致，可租可售

3,506 s.f.  
\$140,000 incl. also for sale \$82,000,000

www.landscope.com/123395.htm Yvonne Chang 鄭小姐 9088 4666

**Charles Mansion**  
山頂 種植道25號  
25 Plantation Road, The Peak  
Huge penthouse duplex with private roof overlooking Victoria Harbour panorama  
特大頂層複式住宅，連私家天台，俯瞰優美維港景致

3,800 s.f. (plus 844 s.f. terrace and roof)  
\$152,000

www.landscope.com/23584.htm Chris Law 羅先生 6183 8388

**Abergeldie**  
山頂 種植道52號  
52 Plantation Road, The Peak  
Peak townhouse with bird's eye view of Victoria Harbour  
山頂洋房，專享鳥瞰花香的維港景致

3,655 s.f. (plus 759 s.f. garden and 313 s.f. terrace)  
\$190,000 incl.

www.landscope.com/606.htm Carman Szeto 司徒小姐 6183 8339

**Altadena**  
山頂 白加道27號  
27 Barker Road, The Peak  
Highly sought after huge apartment with panoramic harbour view on Barker Road  
白加道巨型住宅，專享優美維港，市面難尋

4,500 s.f.  
\$250,000 incl.

www.landscope.com/12838.htm David Leung 梁先生 9199 0672

**The Mount Austin**  
山頂 柯士甸山道8號  
8 Mount Austin Road, The Peak  
Detached townhouse with private garden and internal lift at the zenith of The Peak  
山頂獨立大屋，連私家花園及內置樓梯

4,956 s.f. (plus 991 s.f. garden and 612 s.f. roof)  
\$290,000

www.landscope.com/27924.htm David Chan 陳先生 9238 2012

**Park Garden**  
中半山 柏園  
6 Tai Hang Drive, Midlevels East  
Practical boutique flat in convenient yet quiet location  
精緻實用三房單位，位置優越，環境怡人

1,450 s.f.  
\$52,000 incl.

www.landscope.com/54534.htm Mary Li 李小姐 9011 6595

**Cooper Villa**  
港灣山 衛信道23-29號  
23-29 Wilson Road, Jardine's Lookout  
Nicely renovated 3-bedroom low-rise with huge balcony and fantastic view  
雅緻裝修三房低密度住宅，盡特大陽臺及優美景致

1,700 s.f.  
\$65,000 incl.

www.landscope.com/129581.htm Teresa Lau 劉小姐 9080 6686

**Haddon Court**  
中半山 海天閣  
41C Conduit Road, Midlevels West  
Modern 3-bedroom apartment in quiet enclave  
時尚三房住宅，環境寧靜怡人

1,860 s.f.  
\$68,000 incl.

www.landscope.com/37395.htm Sami Woo 胡小姐 9493 8275

**Kennedy Terrace**  
中半山 堅尼地台  
20 Kennedy Road, Midlevels Central  
Colonial green view and good decor mid-rise apartment at the heart of Central  
英式中密住宅，位於中環中心地帶，交通方便，專享開揚樹景及靚裝修

1,200 s.f.  
\$52,000 incl.

www.landscope.com/131621.htm Teresa Fung 馮小姐 9138 1621

**Birchwood Place**  
中半山 寶樹臺  
96 MacDonnell Road, Midlevels Central  
2-bedroom apartment on MacDonnell Road with tennis court and pool  
專享旁邊兩房單位，連網球場及游泳池，可租可售

2,018 s.f.  
\$66,000 also for sale \$37,000,000

www.landscope.com/8691.htm Cora Ko 高小姐 6330 7888

**Visalia Garden**  
中半山 蔚山花園  
48 MacDonnell Road, Midlevels Central  
Bright and airy 3-bedroom apartment on fringe of Central  
光猛通爽三房單位，鄰近中環，可租可售

2,195 s.f.  
\$70,000 incl. also for sale Open Offer

www.landscope.com/81594.htm David Chan 陳先生 9238 2012

a passion for excellence

"A floor from Schotten & Hansen is as unique as the person who lives on it"

Torben Hansen, Managing Director of Schotten & Hansen



**Po Shan Mansions**  
西半山 寶城大廈  
10-16 Po Shan Road, Midlevels West  
Large practical 4-bedroom apartment with harbour view on Po Shan Road  
特大四房住宅，開闊寬敞，專享維港景緻

2,800 s.f.  
**\$174,000 incl.**

[www.landscape.com/26417.htm](http://www.landscape.com/26417.htm) Christine Chong 莊小姐 9648 6082

**Fontana Gardens**  
東半山 豪園  
41-45 Ka Ning Path, Midlevels East  
Large practical 4-bedroom apartment on fringe of Causeway Bay  
特大四房住宅，開闊寬敞實用，鄰近銅鑼灣，交通方便

3,300 s.f.  
**\$75,000 incl.**

[www.landscape.com/46159.htm](http://www.landscape.com/46159.htm) Mavis Wu 吳小姐 9107 3891

**Nicholson Tower**  
東半山 蔚豪苑  
8 Wong Nai Chung Gap Road, Midlevels East  
High floor 4-bedroom apartment with stunning views  
高層四房住宅，專享遼闊景觀

1,993 s.f.  
**\$82,000 incl.**

[www.landscape.com/18561.htm](http://www.landscape.com/18561.htm) Mira To 杜小姐 9486 1566

**Catalina Mansions**  
東半山 嘉年大廈  
98-100 MacDonnell Road, Midlevels Central  
Nicely decorated apartment on convenient MacDonnell Road  
豪富優雅精緻裝修單位，地段優越，可租可售

2,300 s.f.  
**\$86,000 incl. also for sale \$28,500,000**

[www.landscape.com/110374.htm](http://www.landscape.com/110374.htm) Stella Lo 羅小姐 9809 8570

**Evergreen Villa**  
東半山 松柏新村  
43 Stubbs Road, Midlevels East  
Spacious harbour view apartment with roof  
東半山維港豪宅，露天台，開闊寬敞

2,700 s.f. (plus roof)  
**\$90,000 incl.**

[www.landscape.com/20276.htm](http://www.landscape.com/20276.htm) Sami Woo 胡小姐 9493 8275

**Silvercrest**  
東半山 銀安樓  
24 Macdonnell Road, Midlevels Central  
Unique 4-bedroom apartment with huge terrace on MacDonnell Road  
豪富優雅精緻四房住宅，附設特大平台

2,643 s.f. (plus 2,129 s.f. terrace)  
**\$100,000 incl.**

[www.landscape.com/20681.htm](http://www.landscape.com/20681.htm) Teresa Lau 劉小姐 9080 6686

**Pearl Gardens**  
西半山 明珠臺  
7 Conduit Road, Midlevels West  
Spacious practical apartment in good condition  
匯致裝修住宅，開闊寬敞，實用率高

2,200 s.f.  
**\$170,000 incl.**

[www.landscape.com/112765.htm](http://www.landscape.com/112765.htm) Mark Mak 麥先生 6838 2929

**Serene Villa**  
灣甸山 寧苑  
41-45 Perkins Road, Jardine's Lookout  
Newly decorated spacious 3-bedroom low-rise apartment  
全新裝修，寬敞三房低密度住宅，開闊實用

2,000 s.f.  
**\$78,000 incl.**

[www.landscape.com/127697.htm](http://www.landscape.com/127697.htm) Stephen Chan 陳先生 9093 3381

**Palm Court**  
西半山 羅便臣道55號  
55 Robinson Road, Midlevels West  
Spacious apartment in convenient location  
開闊寬敞單位，位置優越

3,600 s.f.  
**\$85,000 incl.**

[www.landscape.com/21263.htm](http://www.landscape.com/21263.htm) Yvonne Chang 鄭小姐 9088 4666

**Stubbs Villa**  
東半山 詩瀟花園  
2 Shui Fai Terrace, Midlevels East  
Spacious 4-bedroom apartment with open view in quiet neighbourhood  
開闊寬敞四房住宅，專享開揚景觀，環境舒適，可租可售

2,325 s.f.  
**\$86,000 also for sale \$30,000,000**

[www.landscape.com/20828.htm](http://www.landscape.com/20828.htm) Walker Lam 林先生 9551 1077

**May Tower 1**  
東半山 梅苑一座  
7 May Road, Midlevels Central  
A well-presented 3-bedroom triplex apartment  
雅緻三房三複式住宅，可租可售

2,850 s.f.  
**\$96,000 incl. also for sale \$50,000,000**

[www.landscape.com/6191.htm](http://www.landscape.com/6191.htm) Cora Ko 高小姐 6330 7888

**Estoril Court**  
東半山 愛都大廈  
55 Garden Road, Midlevels Central  
Huge apartment with facilities on Garden Road  
花園園巨型住宅，連住客會所設施

3,347 s.f.  
**\$100,000 incl.**

[www.landscape.com/5514.htm](http://www.landscape.com/5514.htm) Sami Woo 胡小姐 9493 8275

**Garden Terrace**  
東半山 花園臺  
8A Old Peak Road, Midlevels Central  
Immaculately decorated 3-bedroom with 1 study room spacious apartment with balcony  
完美裝修三房住宅，連書房及陽臺，開闊寬敞，可租可售

3,009 s.f.  
**\$110,000 incl. also for sale Open Offer**

[www.landscape.com/30124.htm](http://www.landscape.com/30124.htm) Chris Law 羅先生 6183 8388

**Grenville House**  
東半山 嘉華園  
1-3A Magazine Gap Road, Midlevels Central  
Renowned huge 4-bedroom apartment with new decor  
豪華巨型四房住宅，專享全新裝修

3,700 s.f.  
**\$78,000 incl.**

[www.landscape.com/30085.htm](http://www.landscape.com/30085.htm) David Chan 陳先生 9238 2012

**Kennedy Heights**  
東半山 堅麗閣  
10-18 Kennedy Road, Midlevels Central  
Huge 5-bedroom apartment on fringe of Central  
中半山特大五房單位，鄰近中環，交通方便

2,929 s.f.  
**\$150,000 incl.**

[www.landscape.com/33316.htm](http://www.landscape.com/33316.htm) Jensen Au 羅先生 9028 0147

**Villa Elegance**  
東半山 雅麗閣  
1 Robinson Road, Midlevels Central  
Newly renovated huge 4-bedroom flat with high privacy on fringe of Central  
匯致裝修特大四房單位，私隱度高，鄰近中環，交通方便

3,500 s.f.  
**\$120,000 incl.**

[www.landscape.com/27635.htm](http://www.landscape.com/27635.htm) Mavis Wu 吳小姐 9107 3891

**Borrett Mansion**  
東半山 寶得臺  
8A-9B MacDonnell Road, Midlevels Central  
Spacious colonial 4-bedroom apartment with harbour view  
寬敞四房英式住宅，專享維港景緻

2,800 s.f.  
**\$140,000 incl.**

[www.landscape.com/12007.htm](http://www.landscape.com/12007.htm) Teresa Fung 高小姐 9138 1621

**The Legend**  
東半山 名門  
23 Tai Hang Drive, Midlevels East  
Brand new harbour view 4-bedroom duplex penthouse with private pool and roof  
全新維港景緻式複層四房單位，連私家泳池及天台，可租可售

3,205 s.f. (plus 385 s.f. roof)  
**\$180,000 also for sale \$140,000,000**

[www.landscape.com/108208.htm](http://www.landscape.com/108208.htm) Christine Chong 莊小姐 9648 6082



## Hong Kong Memorabilia

Shop 32-41, Level 2, The Peak Galleria

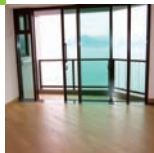
**\$300 CASH COUPON\***

GOODS OF DESIRE  
\*Valid at The Peak store only.  
L2-32, 118 Peak Road, Peak Galleria, Hong Kong  
Tel: 2778-3331

TERMS & CONDITIONS: \*Valid until 30th September 2010. \*This coupon can only be used when making a new-time purchase of over HK\$2,000 (no exchange period allowed). \*Photocopies of this coupon are not acceptable. \*This coupon cannot be used in conjunction with any other promotion or special offers in the shop. \*This coupon cannot be exchanged for cash. \*G.O.D. reserves the right to amend the above conditions from time to time and without prior notice.

GOODS OF DESIRE





**The Sail at Victoria**  
薄扶林 優雅海畔  
86 Victoria Road, Pokfulam  
Brand new modern 4-bedroom sea view flat with balcony  
全新時尚四房海景住宅，連陽臺，可租可售

**1,429 s.f.**  
**\$55,000 incl. also for sale \$19,000,000**

[www.landscape.com/122769.htm](http://www.landscape.com/122769.htm) [Rowena Siu 廖小姐 9348 4118](mailto:Rowena.Siu@landscape.com)



**La Clare Mansion**  
薄扶林 利嘉大廈  
92 Pokfulam Road, Pokfulam  
Spacious colonial mid-rise with big balcony enjoying open sea view  
寬敞中密度英式住宅，連特大陽臺，尊享開海海景

**2,500 s.f.**  
**\$65,000 incl.**

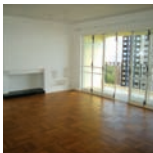
[www.landscape.com/130706.htm](http://www.landscape.com/130706.htm) [Rowena Siu 廖小姐 9348 4118](mailto:Rowena.Siu@landscape.com)



**Country Apartments**  
赤柱 南郊別墅  
17-23 Stanley Village Road, Stanley  
Spacious 3-bedroom apartment with huge balcony and green view  
開闊寬敞三房單位，連特大陽臺，尊享翠綠景觀

**1,840 s.f.**  
**\$65,000**

[www.landscape.com/4781.htm](http://www.landscape.com/4781.htm) [Chris Law 羅先生 6183 8388](mailto:Chris.Law@landscape.com)



**Middleton Towers**  
薄扶林 明睿村  
140 Pokfulam Road, Pokfulam  
Spacious 3-bedroom flat with sea view balcony and green view  
薄扶林寬敞三房單位，尊享海景

**2,569 s.f.**  
**\$64,000 incl.**

[www.landscape.com/134694.htm](http://www.landscape.com/134694.htm) [Christine Chong 莊小姐 9648 6082](mailto:Christine.Chong@landscape.com)



**La Mer**  
薄扶林 凌閣閣  
67-71 Bisney Road, Pokfulam  
Newly renovated 4-bedroom low-rise with full sea view  
全新裝修四房低密度住宅，尊享海景，可租可售

**2,063 s.f.**  
**\$69,000 incl. also for sale \$33,000,000**

[www.landscape.com/108873.htm](http://www.landscape.com/108873.htm) [Yvonne Chang 鄭小姐 9088 4666](mailto:Yvonne.Chang@landscape.com) [Sole Agent 獨家代理](mailto:SoleAgent@landscape.com)



**Royalton I**  
赤柱 豪華峰 I  
118 Pokfulam Road, Pokfulam  
4-bedroom duplex apartment with fantastic sea view  
四房複式住宅，尊享私人觀海景，可租可售

**3,250 s.f.**  
**\$80,000 incl. also for sale \$43,000,000**

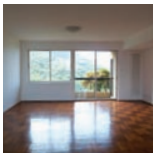
[www.landscape.com/11421.htm](http://www.landscape.com/11421.htm) [Stephen Chan 陳先生 9093 3381](mailto:Stephen.Chan@landscape.com)



**Ann Gardens**  
壽臣山 安苑  
29 Shouson Hill Road, Shouson Hill  
Low-rise duplex on top floor with exclusive roof terrace  
低密度頂層複式住宅，連獨特天台平台

**2,500 s.f. (plus 2,500 s.f. roof)**  
**\$95,000 incl.**

[www.landscape.com/11849.htm](http://www.landscape.com/11849.htm) [Teresa Lau 劉小姐 9080 6886](mailto:Teresa.Lau@landscape.com)



**Celestial Garden**  
深水灣 詩禮花園  
5 Repulse Bay Road, Repulse Bay  
Sea view apartment with facilities on upper Repulse Bay Road  
深水灣區頂級海景住宅，連住客會所設施

**2,363 s.f.**  
**\$100,000 incl.**

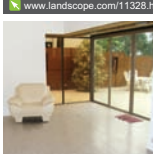
[www.landscape.com/11328.htm](http://www.landscape.com/11328.htm) [Jenson Au 區先生 9028 0147](mailto:Jenson.Au@landscape.com)



**Baguio Villa**  
薄扶林 碧瑤灣  
550 & 555 Victoria Road, Pokfulam  
Designer decorated sea view 4-bedroom duplex with private roof terrace  
設計師精心設計海景複式住宅，連私家天台

**3,160 s.f. (plus 1,292 s.f. roof)**  
**\$146,000 incl.**

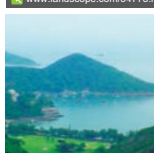
[www.landscape.com/54773.htm](http://www.landscape.com/54773.htm) [Mark Mak 麥先生 6838 2929](mailto:Mark.Mak@landscape.com)



**Evergreen Garden**  
壽臣山 松柏花園  
18 Shouson Hill Road, Shouson Hill  
Garden duplex in tranquil environment with well decoration  
花園複式住宅，環境寧靜，連雅緻裝修，可租可售

**2,106 s.f. (plus 1,591 s.f. garden)**  
**\$160,000 incl. also for sale Open Offer**

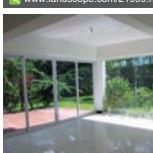
[www.landscape.com/21999.htm](http://www.landscape.com/21999.htm) [Teresa Fung 高小姐 9138 1621](mailto:Teresa.Fung@landscape.com)



**8 Deep Water Bay Road, Deep Water Bay**  
深水灣 深水灣道8號  
Exclusive sea view townhouse in upscale Deep Water Bay  
獨特海景排屋，位於深水灣尊貴地段

**3,200 s.f. (plus 1,000 s.f. roof and 304 s.f. terrace)**  
**\$160,000**

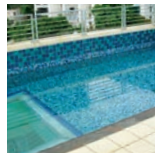
[www.landscape.com/13233.htm](http://www.landscape.com/13233.htm) [Maria Cheung 張小姐 5182 8699](mailto:Maria.Cheung@landscape.com)



**26C Shouson Hill Road, Shouson Hill**  
壽臣山 壽山道26C號  
4-bedroom townhouse with greenery view in prime location  
四房排屋，尊享翠綠景致，地段尊貴，可租可售

**3,000 s.f. (plus 1,500 s.f. garden)**  
**\$168,000 incl. also for sale \$80,000,000**

[www.landscape.com/49729.htm](http://www.landscape.com/49729.htm) [Mary Li 李小姐 9011 6995](mailto:Mary.Li@landscape.com)



**12A South Bay Road, Repulse Bay**  
深水灣 南灣道12號A  
Waterfront 4-bedroom townhouse with private pool on roof top  
海濱豪靚式四房洋房，連天台私家泳池

**4,672 s.f. (plus roof)**  
**\$170,000 incl.**

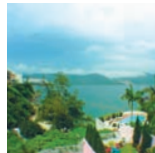
[www.landscape.com/16297.htm](http://www.landscape.com/16297.htm) [Yvonne Chang 鄭小姐 9088 4666](mailto:Yvonne.Chang@landscape.com)



**Las Pinadas**  
壽臣山 蔚松閣  
33 Shouson Hill Road, Shouson Hill  
Designer decorated 4-bedroom townhouse with roof and garden enjoy green mountain view  
設計師精心設計四房排屋，連天台及花園，尊享翠綠山景

**3,494 s.f. (plus 608 s.f. roof, 393 s.f. garden and 144 s.f. terrace)**  
**\$180,000 incl.**

[www.landscape.com/91170.htm](http://www.landscape.com/91170.htm) [Mary Li 李小姐 9011 6995](mailto:Mary.Li@landscape.com)



**Stanley Crest**  
赤柱 赤柱灣道5號  
5 Stanley Beach Road, Stanley  
Sea view garden townhouse close to beach  
海景花園洋房，鄰近海灘，可租可售

**3,894 s.f. (plus 920 s.f. garden, 666 s.f. roof and 436 s.f. terrace)**  
**\$250,000 also for sale \$135,000,000**

[www.landscape.com/123699.htm](http://www.landscape.com/123699.htm) [Yvonne Chang 鄭小姐 9088 4666](mailto:Yvonne.Chang@landscape.com)



**5 Headland Road, Repulse Bay**  
深水灣 赫蘭道5號  
Rare low-rise 4-bedroom garden flat with sea view in gated neighbourhood  
罕有低密度四房住宅，連花園，尊享美麗海景

**3,200 s.f. (plus 2,138 s.f. garden)**  
**\$170,000**

[www.landscape.com/36934.htm](http://www.landscape.com/36934.htm) [Mark Mak 麥先生 6838 2929](mailto:Mark.Mak@landscape.com)



**Circle Lodge**  
深水灣 環翠閣  
79 Repulse Bay Road, Repulse Bay  
Large townhouse with roof and garden enjoy Repulse Bay sea view  
巨型排屋，連天台及花園，尊享深水灣海景

**4,000 s.f. (plus 616 s.f. roof and 348 s.f. garden)**  
**\$220,000**

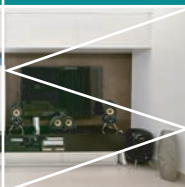
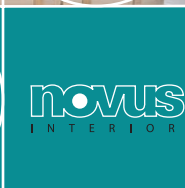
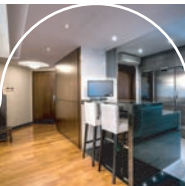
[www.landscape.com/106215.htm](http://www.landscape.com/106215.htm) [Yvonne Chang 鄭小姐 9088 4666](mailto:Yvonne.Chang@landscape.com)



**Tung Tau Wan Road, Stanley**  
赤柱 東頭灣道  
Waterfront detached house with private swimming pool in secluded location  
赤柱海邊獨立大屋，連私家游泳池，地段清幽怡人

**5,134 s.f. (plus 3,508 s.f. terrace and 1,513 s.f. roof)**  
**\$320,000**

[www.landscape.com/13717.htm](http://www.landscape.com/13717.htm) [David Chan 陳先生 9238 2012](mailto:David.Chan@landscape.com)



**novus**  
INTERIOR  
**PENETRALS LIMITED**  
ARCHITECTURE

UNIT 16A, HANG SENG CAUSEWAY BAY BUILDING  
28 YEE WO STREET, CAUSEWAY BAY, HONG KONG  
T: 3106 6069 / 2576 7202 F: 3106 6079  
E: info@novusp.com



FARRINGTON INTERIORS

THE MOMENT MADE BEAUTIFUL

富樂庭

10,000 sq.ft. new Flagship Store at 31/F World Trade Centre

一萬平方呎旗艦店於銅鑼灣世貿中心三十一樓



**Shop 店舖**

G/F, 87 Wong Nai Chung Road,  
Happy Valley, H.K.  
香港跑馬地黃泥涌道87號地下  
Tel: (852) 2808 0303  
Fax: (852) 2801 6732

**Flagship Store 旗艦店**

31/F, World Trade Centre, 280 Gloucester Road,  
Causeway Bay, H.K.  
香港銅鑼灣告士打道280號世貿中心31樓  
Tel: (852) 2808 1000  
Fax: (852) 2808 2800

**Opening Hours 營業時間**

11:00am - 7:00pm  
Mon - Fri (星期一至五)

1:00pm - 6:00pm  
Sat, Sun & Public Holiday  
(星期六、日及公眾假期)

WWW.FARRINGTONINTERIORS.COM