

select deluxe homes

# The Key

大宅®

www.landscape.com

SEPTEMBER | 2009

Volume 59

## DESIGNER LIVING

Designer living in a sought-after colonial low-rise in Happy Valley.

## URBAN SANCTUARY

The Peninsula Spa offers the perfect get-away for urban dwellers.



KEY NOTES\*

“Each of us has a natural right – from God to defend his person, his liberty, and his property. These are the three basic requirements of life, and the preservation of any one of them is completely dependent upon the preservation of the other two. For what are our faculties but the extension of our individuality? And what is property but an extension of our faculties?”

「我們每一個人都有天賦的權利，去捍衛自己的人身、自由及財產。這是生活的三大基本所需，而每一項均需依靠其餘兩項才能得以維持。試問除了自身的擴充外，我們的身體機能還剩下甚麼？而除了身體機能的擴充外，我們的財產還剩下甚麼？」

- Frédéric Bastiat  
19th Century French Political Economist  
十九世紀法國政治經濟學家

Should buyers and renters wait for the market to stabilise? While waiting for the market to even out may bring property speculators hopes of ‘certainty’, it is not advised that you prolong your search – if indeed you are looking to buy. “If you look at the economy, we are, as Obama said, around or near the bottom. So it’s most likely property prices will go up in the next three years – especially luxury properties,” says KS Koh, founder and Managing Director of Landscape. There’s a growing trend of people looking for larger residences in Hong Kong. With a dearth of new land on which to build new luxury residential housing, demand outstrips supply when it comes to deluxe property exceeding 2,000 square feet; unless that is, the government were to release more land for luxury residential development.

By nature, many investors fear buying an asset that has further to depreciate in value, but by waiting for the bottom of the market, they also risk missing out on the best opportunities. These will already have been snapped up by those prepared to take more risks. “Everybody knows that on the Peak and the South Side there is no more land the government will release for housing developments. So any new developments will have to come from the re-development of existing houses,” says Koh.

事實上，買家及租戶是否應等待市場穩定下來呢？無疑，持觀望態度的地產投資者在等待市場穩定期間，不免會對市場的確定性抱有期望，但若然你真決定置業，我們並不建議你將市場調查的階段拖延太久。「如奧巴馬所言，我們看到市場正於底部徘徊。因此，以豪宅為甚的樓價於未來三年，有很大的機會出現上揚。」地產顧問集團領域的創辦人兼董事總經理許廣勝表示。香港人現時追求較寬躺的居室，這種趨勢更有上升跡象。除非政府撥出更多的土地作興建豪宅之用，否則因缺乏用以建築新型豪華住宅的地段，2,000平方呎以上的高尚住宅仍然將出現供不應求的局面。

不少投資者總是出於自然，因害怕買入會進一步貶值的資產而卻步，但在等待樓價觸底的期間，卻可能錯失最佳的買入時機。屆時，願意冒較大風險的買家可能早已捕捉了這些買入機會。「眾所周知，政府已經不會於山頂及南區撥出更多土地作房地產計劃的發展。任何新型的房地產計劃都要向舊樓重建着手。」許廣勝指出。

Read the full article at Market Watch, [www.landscape.com/keynotes](http://www.landscape.com/keynotes)

published and distributed by



**Landscape Realty Limited** C-018733  
a member of Landscape Surveyors Ltd

Tel: 852-2866 0022 Fax: 852-2866 0015  
Email: [info@landscape.com](mailto:info@landscape.com) Website: [www.landscape.com](http://www.landscape.com)  
Unit 3106, 31/F, Hopewell Centre, 183 Queen's Road East, Wanchai, Hong Kong

The information, text, photos, analyses and projections contained herein are provided solely for the convenience of prospective clients and no warranty or representation as to their accuracy, correctness or completeness is made by Landscape Surveyors Limited, Landscape Realty Limited or the owners, none of whom shall have any liability or obligation with respect thereto. Interested parties should rely on their own investigations, interpretations and analyses in connection with the purchase or letting thereof.

Information has been provided to us by sources deemed reliable, but no warranty or representation is made as to its accuracy, correctness or completeness. These offerings are made subject to contract, correction of errors, omissions, prior sale of lease, change of price or terms or withdrawal from the market without notice. The contents of The Key are for reference only and do not constitute all or any part of a contract.

Reproduction of any material in whole or part without written permission from inCorporation Ltd is strictly prohibited. All information is correct at the time of going to press. The opinions expressed in *The Key* are those of the authors and are not necessarily endorsed by inCorporation Ltd.



THE KEY | CONTENT

- 04 Designer Living  
設計生活
- 07 Urban Sanctuary  
都市聖所
- 09 Peak Performance  
頂峰表現
- 11 The High Life  
高端生活
- 13 Resort Living  
度假生活
- 19 The Final Frontier  
最後的拓荒者

*The Key* is a monthly, bilingual lifestyle publication focusing on luxury residential properties in Hong Kong Island. It is sent to over 60,000 urban elites comprising of Hong Kong’s most affluent inhabitants.

These consist of Landscape’s VIP clients, who mainly reside in The Peak, Mid-Levels, Southside, Kowloon Tong, Homantin and other select up-market residential areas such as Tai Po, Sai Kung and Clear Water Bay, etc.

How may you list your property with *The Key*?

If you would like to list your property in an upcoming issue of *The Key*, you may contact Loretta Lui on +852 3102 4818 or visit us at [www.landscape.com/sell-to-let](http://www.landscape.com/sell-to-let). Alternatively, simply fill out the below and fax back to us on +852 2866 0015.

Property Details

Asking Rental / Sale Price

Floor Area

Contact Person

Telephone

Email

Our KeyPerson will contact you for follow-up work.

designed and produced by



**inCorporation Limited**  
Your No. 1 Integrated Marketing Communications Partner in Hong Kong and China

Tel: 852-3699 0888 Fax: 852-3699 0889  
Email: [marketing@incorp.com.hk](mailto:marketing@incorp.com.hk) Website: [www.inmagazine.com.hk](http://www.inmagazine.com.hk)  
12/F, Cyberport 2, 100 Cyberport Road, Hong Kong



BOWEN ROAD, THE PEAK, HONG KONG



2,388 s.f. with 4 bedrooms (2 ensembles)

NOW LEASING

VIEWING BY APPOINTMENT  
8207 7608 MARIA LAM

E-mail: [marialam@sino.com](mailto:marialam@sino.com)  
Website: [www.bowenslookout.com.hk](http://www.bowenslookout.com.hk)



[www.sino-leasing.com](http://www.sino-leasing.com)





設計生活

# Designer Living

This designer apartment is located in a sought-after colonial low-rise nestled in a quiet backstreet in Happy Valley. Away from the bustle of noisy buses, this apartment enjoys both sweeping city views and ample greenery, with Mount Nicholson to the right. The property sits comfortably on the first floor, looking out towards Blue Pool Road over verdant green trees. With not one but two balconies overlooking the front and back of the building, this apartment is perfectly appointed for those who like to enjoy a slice of outdoor living. Sliding doors from the living room open up to the fresh veranda, complete with colonial-style fans. The second balcony is accessible from the en-suite master bedroom, offering a peaceful outer sanctum, amid the hustle of Hong Kong city life.

A stylish and well-designed open plan kitchen leaves nothing to chance when it comes to cooking and entertaining. Featuring an island, built-in dishwasher, state-of-the-art fridge, cooker and various other appliances, eating at home becomes the new dining out. And with the layout of this inviting and optimally functional kitchen opening up to the adjacent dining and living areas, hosting dinner parties for family and friends is but a delight.



Situated in a prime position, just minutes away from the action, this property is both quiet and accessible, characterful and modern, offering luxury living with distinct style. White walls, high ceilings and large windows lend a bright and airy feel to the interior of the apartment, while dark, solid wood floors create a classic and homely atmosphere. A rare gem, this property offers designer living – with an old world charm. ■

這間設計師居所位於跑馬地最受歡迎的寧靜後街，能遠離煩囂。居所既能享有繁華的都市夜景，又能得到園景的襯托。住宅的右邊正是聳高信山，外望綠草如茵的藍塘道，前後各有一露台，是喜歡戶外活動空間人士的理想之選。客廳的趟門外是綠油油的園景，襯以富殖民地色彩的風扇。主人套房可以直達屋內的第二個露台，為住戶提供閒憩空間，遠離本港都市的煩囂生活。

設計時尚而簡約的開放式廚房，讓主人家可以享受煮食及玩樂的時光。獨立吧台、內置式的洗碗設備、高級雪櫃、烹調器具及各式電器一應俱全，令人更加嚮往在家吃飯的美好時刻。廚房間格開揚而實用，且鄰近餐桌及客廳，為親友間的家庭派對帶來無限方便。

住宅地理位置方便，距鬧市僅數分鐘路程之遙，可謂靜中帶旺，既時尚又獨特、華麗且具格調。白色牆身、高天花、偌大的窗戶令居所的內部空間光線充足，富有空間感，而黑色的實木地板則營造和諧的家庭氣氛。作為具有古典魅力的設計師居所，這類型的住宅在市場上實在是極為罕有。 ■

**Shuk Yuen Building**  
跑馬地 蔚園新臺  
2 Green Lane, Happy Valley  
**2,000 s.f.**  
**\$21,000,000**



www.landscape.com/19817.htm Rowena Siu 蕭小姐 9348 4118

傲翔灣畔  
The SAIL at VICTORIA  
維畔傲飛翔  
A Life of Waterfront Luxury



## A Life of Waterfront Luxury

86 Victoria Road

Just minutes away from the heart of Hong Kong's  
Central Business District, The Sail at Victoria  
provides the perfect calm to rest.

置地公司  
Hongkong Land

Enquiry Hotline: **2810 9293**  
**www.sail-victoria.com**

Developer/Vendor: Tong Yan Development Co., Limited Holding Company of Developer: The Hongkong Land Company, Limited  
Architect: WCWP International Limited Authorized Person of the Architect: Mr. Clement Chu Main Contractor: Hien Lee Engineering Co., Ltd.  
Vendor's Solicitor: JSM Bank that has given undertaking to provide finance to complete the Development: HSBC  
Financiers: The Hongkong Land Company, Limited, The Hongkong Land Property Company, Limited





**Barker Villa**  
山頂 柏架別墅  
41 Barker Road, The Peak  
Cosy apartment with panoramic harbour view on Barker Road  
白加道迷人維港景住宅，可租可售

**1,650 s.f.**  
**\$35,000,000** also for lease \$65,000 incl.

[www.landscape.com/4184.htm](http://www.landscape.com/4184.htm) David Leung 梁先生 9199 0672



**Guildford Garden**  
山頂 喬苑  
1-3 Mansfield Road, The Peak  
Lower Peak 4-bedroom flat with spacious practical layout  
山頂四房住宅，間隔寬敞實用

**2,400 s.f.**  
**\$38,000,000**

[www.landscape.com/14486.htm](http://www.landscape.com/14486.htm) Sissy Li 李小姐 9642 6969



**Stewart Terrace**  
山頂 史釗域臺  
81-95 Peak Road, The Peak  
Colonial low-rise apartment with nice decor on The Peak  
山頂低密度英式住宅連雅緻裝修，可租可售

**3,077 s.f.**  
**\$48,000,000** also for lease \$95,000 incl.

[www.landscape.com/18444.htm](http://www.landscape.com/18444.htm) Teresa Lau 劉小姐 9080 6686



**Villa Verde**  
山頂 環翠園  
4-18 Guildford Road, The Peak  
Sought after older-style Peak apartment with 4-bedroom layout  
罕有舊式山頂四房住宅，間隔實用，可租可售

**2,540 s.f.**  
**\$51,800,000** also for lease \$92,000 incl.

[www.landscape.com/15685.htm](http://www.landscape.com/15685.htm) Eric Wong 黃先生 9740 3396



**Carolina Garden**  
山頂 嘉樂園  
20-34 Coombe Road, The Peak  
Sought after colonial style apartment in prestigious location  
罕有英式單位，位於山頂優越地段，可租可售

**2,800 s.f.**  
**\$60,000,000** also for lease \$120,000 incl.

[www.landscape.com/19653.htm](http://www.landscape.com/19653.htm) Louis Wong 黃先生 9871 6828



**Strawberry Hill**  
山頂 紅莓閣  
8 Plunkett's Road, The Peak  
Colonial townhouse with fireplace at The Peak  
山頂英式排屋，享南區海景

**3,200 s.f. (plus terrace)**  
**\$110,000,000**

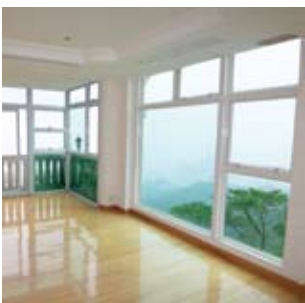
[www.landscape.com](http://www.landscape.com) Mark Mak 麥先生 6838 2929



**Mountain Lodge**  
山頂 崑廬  
44 Mount Kellett Road, The Peak  
Rare duplex apartment with Southside sea view  
山頂罕有複式住宅享南區海景，可租可售

**5,200s.f.**  
**\$120,000,000**

[www.landscape.com/14003.htm](http://www.landscape.com/14003.htm) David Leung 梁先生 9199 0672



**Cheuk Nang Lookout**  
山頂 卓能山莊  
30 Severn Road, The Peak  
Detached house with private pool and terrace  
山頂獨立大屋連私家游泳池及平台，可租可售

**5,300s.f. (plus 2,904 s.f. garden, 1,400 s.f. terrace and 534 s.f. roof)**  
**\$140,000,000** also for lease \$200,000

[www.landscape.com](http://www.landscape.com) Maria Cheung 張小姐 5182 8699



**1-9 Rosmead Road, The Peak**  
山頂 樂善美道1-9號  
Rare single number garden house on The Peak  
山頂罕有獨立花園大屋

**5,887 s.f. (plus 1,469 s.f. garden and 117 s.f. terrace)**  
**\$230,000,000**

[www.landscape.com/14409.htm](http://www.landscape.com/14409.htm) David Leung 梁先生 9199 0672



**The Belvedere**  
山頂 種植道51-61號  
Prestigious house with a bird's eye view of the Victoria Harbour  
豪華尊貴大屋，配以鳥語花香的維港景觀

**4,900 s.f. (plus 1,681 s.f. garden, 464 s.f. roof and 447 s.f. terrace)**  
**\$250,000,000**

[www.landscape.com/11280.htm](http://www.landscape.com/11280.htm) Maria Cheung 張小姐 5182 8699



**10-18 Pollock's Path, The Peak**  
山頂 普樂道10-18號  
Distinguished detached townhouse with a bird's eye view of the Victoria Harbour  
山頂獨立大屋享維港景，鳥語花香

**7,229 s.f. (plus 1,999 s.f. garden and 1,756 s.f. terrace)**  
**\$360,000,000**

[www.landscape.com/19798.htm](http://www.landscape.com/19798.htm) David Leung 梁先生 9199 0672



**Oasis**  
山頂 欣怡居  
8-12 Peak Road, The Peak  
Brand new apartment with sweeping harbour view  
山頂全新單位連廣闊維港景

**2,987 s.f.**  
**Open Offer** also for lease \$155,000

[www.landscape.com/10938.htm](http://www.landscape.com/10938.htm) Maria Cheung 張小姐 5182 8699

style has found a new destination  
**realise your dreams**  
in blossoming inspirations



colourliving

333 lockhart road wanchai 2510 2666 info@colourliving.com www.colourliving.com





**Silverwood**  
**銅鑼灣 力生軒**  
109 Caroline Hill Road, Causeway Bay  
An investment choice with fantastic city view  
驚人城市景觀，投資首選

**1,045 s.f.**  
**\$8,000,000**

[www.landscape.com/19908.htm](http://www.landscape.com/19908.htm) Yvonne Chang 鄭小姐 9088 4666



**Marlborough House**  
**東半山 保祿大廈**  
154 Tai Hang Road, Midlevels East  
Colonial apartment with big balcony and open city view  
東半山英式住宅連大陽臺，享開揚景觀，可租可售

**1,250 s.f.**  
**\$13,000,000** also for lease \$38,000 incl.

[www.landscape.com/19767.htm](http://www.landscape.com/19767.htm) Mira To 杜小姐 9486 1566



**Moulin Court**  
**跑馬地 玫林別墅**  
65 Blue Pool Road, Happy Valley  
Tastefully decorated apartment in convenient Happy Valley  
跑馬地品味設計裝修單位，交通方便

**1,750 s.f.**  
**\$19,500,000**

[www.landscape.com/19878.htm](http://www.landscape.com/19878.htm) Yvonne Chang 鄭小姐 9088 4666



**Valverde**  
**中半山 蔚皇居**  
11 May Road, Midlevels Central  
Luxury boutique flat in Midlevels Central  
中半山豪華精緻住宅

**1,373 s.f.**  
**\$21,000,000**

[www.landscape.com/19590.htm](http://www.landscape.com/19590.htm) Eric Wong 黃先生 9740 3396



**Paris Court**  
**西半山 聯邦花園**  
41 Conduit Road, Midlevels West  
Practical 3-bedroom apartment with harbour view  
實用三房單位享維港景

**1,350 s.f.**  
**\$13,500,000**

[www.landscape.com/19846.htm](http://www.landscape.com/19846.htm) Walker Lam 林先生 9551 1077



**Flora Garden**  
**渣甸山 慧景園**  
7 Chun Fai Road, Jardine's Lookout  
High floor 3-bedroom family apartment with lush green view  
高層三房家庭式住宅，尊享翠綠山景

**1,302 s.f.**  
**\$14,000,000**

[www.landscape.com/16504.htm](http://www.landscape.com/16504.htm) Walker Lam 林先生 9551 1077



**Amber Garden**  
**中半山 柏苑**  
70-72 Kennedy Road, Midlevels Central  
3-bedroom flat with balcony conveniently located on Kennedy Road  
堅尼地道三房住宅連陽臺，交通方便，可租可售

**1,732 s.f.**  
**\$21,500,000** also for lease \$45,000 incl.

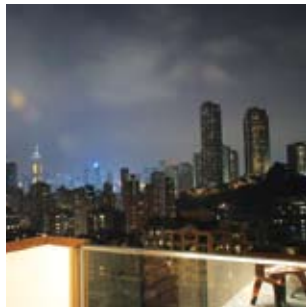
[www.landscape.com/19860.htm](http://www.landscape.com/19860.htm) David Chan 陳先生 9238 2012



**Richery Palace**  
**東半山 德信豪庭**  
16 Tung Shan Terrace, Midlevels East  
4-bedroom low-rise in lush green environment with racecourse view  
低密度四房馬場景住宅，尊享翠綠園景

**2,500 s.f.**  
**\$22,000,000**

[www.landscape.com/17693.htm](http://www.landscape.com/17693.htm) Christine Chong 莊小姐 9648 6082



**Green Lane Court**  
**跑馬地 箕璦閣**  
130-140 Blue Pool Road, Happy Valley  
Designer decorated mid-rise flat with balcony in Happy Valley  
設計師精心設計中密度住宅連陽臺，位於跑馬地尊貴地段

**1,400 s.f.**  
**\$14,600,000**

[www.landscape.com/14601.htm](http://www.landscape.com/14601.htm) Sami Woo 胡小姐 9493 8275



**Park Garden**  
**東半山 柏園**  
6 Tai Hang Drive, Midlevels East  
Harbour view apartment in prestigious Jardine's Lookout  
渣甸山維港景住宅，地段尊貴

**1,450 s.f.**  
**\$15,000,000**

[www.landscape.com/17071.htm](http://www.landscape.com/17071.htm) Mary Li 李小姐 9011 6595



**Butler Tower**  
**渣甸山 柏麗園**  
1-5 Boyce Road, Jardine's Lookout  
Penthouse apartment with roof at tranquil neighbourhood  
頂樓連天台單位，地段優越，開揚恬靜

**1,650 s.f.** (plus 1,306 s.f. roof)  
**\$25,000,000**

[www.landscape.com/13852.htm](http://www.landscape.com/13852.htm) Walker Lam 林先生 9551 1077



**Carnation Court**  
**東半山 康馨園**  
41-47 Tai Hang Road, Midlevels East  
Practical 4-bedroom flat with open city view and very nice decoration  
實用四房單位連開揚城市景觀及清雅裝修

**2,126 s.f.**  
**\$25,000,000**

[www.landscape.com/19933.htm](http://www.landscape.com/19933.htm) Teresa Lau 劉小姐 9080 6686



**Yicks Villa**  
**跑馬地 奕廬**  
83-85 Blue Pool Road, Happy Valley  
Well maintained 3-bedroom low-rise on upper Blue Pool Road  
跑馬地優質三房住宅，位於南塘道頭段

**1,750 s.f.**  
**\$16,800,000**

[www.landscape.com/11128.htm](http://www.landscape.com/11128.htm) Teresa Lau 劉小姐 9080 6686



**Swiss Towers**  
**東半山 瑞士花園**  
113 Tai Hang Road, Midlevels East  
Nicely decorated harbour view flat in Jardine's Lookout  
渣甸山全新裝修維港景住宅

**1,600 s.f.**  
**\$16,800,000**

[www.landscape.com/19897.htm](http://www.landscape.com/19897.htm) Walker Lam 林先生 9551 1077



**Monticello**  
**中半山 滿峰台**  
48 Kennedy Road, Midlevels Central  
Decorated apartment with practical layout  
中半山雅緻裝修間隔實用住宅

**1,447 s.f.**  
**\$17,000,000**

[www.landscape.com/19910.htm](http://www.landscape.com/19910.htm) Mira To 杜小姐 9486 1566



**Greenland Court**  
**中半山 恒翠園**  
56-58 Macdonnell Road, Midlevels Central  
Practical and high efficiency family flat on fringe of Central  
間隔實用家庭式住宅，鄰近中環，交通方便，可租可售

**1,350 s.f.**  
**\$18,000,000** also for lease \$46,000 incl.

[www.landscape.com/19737.htm](http://www.landscape.com/19737.htm) Eric Wong 黃先生 9740 3396



**Hatton Place**  
**西半山 杏彤苑**  
1A Po Shan Road, Midlevels West  
Newly decorated apartment in tranquil area  
西半山全新裝修單位，地段尊貴

**1,579 s.f.**  
**\$18,500,000**

[www.landscape.com/19848.htm](http://www.landscape.com/19848.htm) Sami Woo 胡小姐 9493 8275



**Hillsborough Court**  
**中半山 曉峰閣**  
18 Old Peak Road, Midlevels Central  
Nicely decorated apartment with excellent facilities in prime location  
全新裝修住宅連完善住客會所設施，位處中半山優越地段

**1,369 s.f.**  
**\$18,800,000**

[www.landscape.com/14225.htm](http://www.landscape.com/14225.htm) Maria Cheung 張小姐 5182 8699

## Urban Sanctuary 都市聖所

Life in the city can sometimes get the better of us. Late night meetings, credit crunch woes, soaring temperatures and Hong Kong's fast paced rhythm can all but overwhelm us. It's times like these that we need to step back from it all, if only for a day, and take some time for rest and relaxation. And finding a quiet inner sanctum amidst the 24/7 hustle and bustle isn't always easy.

That's where the Peninsula's spa steps in. With a staff to guest ratio of three to one – note, the highest in Hong Kong – you can start to let go and relax the minute you step through the door. With a range of spa treatments and therapies to suit everyone – from fresh ginger foot buffs to skin brightening facials to chakra balancing body massages with volcanic stones – you can be sure to leave The Peninsula Spa feeling soothed and pampered. Spa facilities also include a harbour-view sauna, a peppermint vapour crystal steam room, an experience shower and relaxation area. ■







**Dragon View**  
中半山 龍景樓  
39 Macdonnell Road, Midlevels Central

Mid-rise apartment with huge balcony on Macdonnell Road  
麥當勞道中密度住宅連巨型陽臺

**2,351 s.f.**  
**\$28,000,000**

[www.landscape.com/19858.htm](http://www.landscape.com/19858.htm) Eric Wong 黃先生 9740 3396



**Elm Tree Towers**  
渣甸山 愉富大廈  
8-10 Chun Fai Road, Jardine's Lookout

Large 3-bedroom apartment in Jardine's Lookout  
渣甸山巨型三房住宅

**2,329 s.f.**  
**\$29,000,000**

[www.landscape.com/4727.htm](http://www.landscape.com/4727.htm) Mary Li 李小姐 9011 6595



**The Albany**  
中半山 雅賓利大廈  
1 Albany Road, Midlevels Central

Luxury living on Old Peak Road with open city view  
舊山頂道豪華住宅，享開揚城市景觀，可租可售

**2,594 s.f.**  
**\$65,000,000** also for lease \$120,000 incl.

[www.landscape.com/15001.htm](http://www.landscape.com/15001.htm) Rebecca Cheung 張小姐 9021 7644



**Century Tower II**  
中半山 世紀大廈2座  
1A Tregunter Path, Midlevels Central

Huge 4-bedroom apartment with harbour view and mountain view  
巨型四房單位連維港景及山景

**3,663 s.f.**  
**\$70,000,000**

[www.landscape.com/10960.htm](http://www.landscape.com/10960.htm) Rebecca Cheung 張小姐 9021 7644



**Clement Court**  
渣甸山 松風臺  
56-64 Mount Butler Road, Jardine's Lookout

Designer decorated low-rise flat in serene Jardine's Lookout  
低密度設計師精心設計單位，位於渣甸山，環境寧靜

**2,200 s.f.** (plus 700 s.f. garden)  
**\$30,000,000**

[www.landscape.com/12351.htm](http://www.landscape.com/12351.htm) Stephen Chan 陳先生 9093 3381



**Hong Villa**  
中半山 峰景花園  
12 Bowen Road, Midlevels Central

Harbour view apartment with facilities in lush green neighbourhood  
中半山維港景住宅連住客會所設施，尊享翠綠山景

**1,916 s.f.**  
**\$30,000,000**

[www.landscape.com/18036.htm](http://www.landscape.com/18036.htm) Mark Mak 麥先生 6838 2929



**Hong Villa**  
中半山 峰景花園  
12 Bowen Road, Midlevels Central

Exclusive huge apartment with sweeping view of Victoria Harbour  
中半山獨特巨型住宅連廣闊維港景觀

**3,833 s.f.**  
**\$75,000,000**

[www.landscape.com/16238.htm](http://www.landscape.com/16238.htm) Louis Wong 黃先生 9871 6828



**HighCliff**  
東半山 曉廬  
41D Stubbs Road, Midlevels East

Prestigious 4-bedroom apartment with sleek modern decor  
豪華四房住宅連時尚雅緻裝修，可租可售

**3,816 s.f.**  
**\$80,000,000** also for lease \$150,000 incl.

[www.landscape.com/11060.htm](http://www.landscape.com/11060.htm) Mark Mak 麥先生 6838 2929



**Dynasty Court**  
中半山 帝景園  
23 Old Peak Road, Midlevels Central

3-bedroom apartment with excellent facilities  
中半山三房單位連會所設施

**1,962 s.f.**  
**\$30,500,000**

[www.landscape.com/10111.htm](http://www.landscape.com/10111.htm) Stella Lo 羅小姐 9809 8570



**Bellevue Court**  
東半山 碧蕙園  
41 Stubbs Road, Midlevels East

Sought after spacious apartment on Upper Stubbs Road  
位於司徒拔道頭段間隔寬敞住宅，市面難尋

**2,700 s.f.**  
**\$32,000,000**

[www.landscape.com/10772.htm](http://www.landscape.com/10772.htm) Carman Szeto 司徒小姐 6183 8339



**Century Tower I**  
中半山 世紀大廈1座  
1 Tregunter Path, Midlevels Central

Rare duplex with panoramic view of Victoria Harbour  
罕有複式單位連廣闊維港景觀

**5,130 s.f.**  
**\$118,000,000**

[www.landscape.com](http://www.landscape.com) Christine Chong 莊小姐 9648 6082



**Man Yuen Garden**  
中半山 文苑花園  
52A-52B Kennedy Road, Midlevels Central

Nicely decorated apartment on convenient Kennedy Road  
堅尼地道標緻裝修住宅，交通方便

**2,000 s.f.**  
**Open Offer**

[www.landscape.com/19907.htm](http://www.landscape.com/19907.htm) Mira To 杜小姐 9486 1566



**Evergreen Villa**  
東半山 松柏新村  
43 Stubbs Road, Midlevels East

Sought after 4-bedroom flat with brand new decorations  
全新裝修四房住宅，市面難尋

**2,600 s.f.**  
**\$32,000,000**

[www.landscape.com/14580.htm](http://www.landscape.com/14580.htm) Walker Lam 林先生 9551 1077



**Bowen Place**  
中半山 寶雲閣  
11A Bowen Road, Midlevels Central

Harbour view flat on tree-lined Bowen Road  
寶雲道維港景住宅，綠樹松蔭

**1,927 s.f.**  
**\$35,000,000**

[www.landscape.com/16313.htm](http://www.landscape.com/16313.htm) Stella Lo 羅小姐 9809 8570



**Estoril Court**  
中半山 愛都大廈  
55 Garden Road, Midlevels Central

Huge efficient apartment on fringe of Central  
巨型實用住宅，鄰近中環，交通方便，可租可售

**3,347 s.f.**  
**\$37,000,000** also for lease \$90,000 incl.

[www.landscape.com/19741.htm](http://www.landscape.com/19741.htm) Sami Woo 胡小姐 9493 8275



**Regent on the Park**  
中半山 御花園  
9A Kennedy Road, Midlevels Central

Spacious apartment with facilities on fringe of Admiralty  
寬敞住宅連住客會所設施，鄰近金鐘

**2,720 s.f.**  
**\$37,300,000**

[www.landscape.com/15643.htm](http://www.landscape.com/15643.htm) David Chan 陳先生 9238 2012

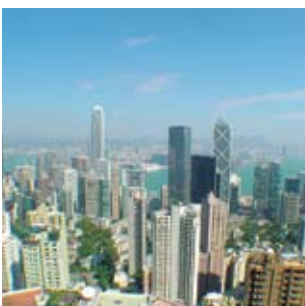


**Broadwood Park**  
跑馬地 柏樂苑  
38 Broadwood Road, Happy Valley

Spacious apartment with views of the Hong Kong Stadium and the harbor  
間隔寬敞單位，尊享香港大球場及維港景觀

**2,913 s.f.**  
**\$53,000,000**

[www.landscape.com/19761.htm](http://www.landscape.com/19761.htm) Stephen Chan 陳先生 9093 3381



**The Mayfair**  
中半山 梅道1號  
1 May Road, Midlevels Central

Luxurious apartment in renowned building with harbour view  
中半山豪華單位，大廈全新翻新，享維港景

**2,870 s.f.**  
**\$62,000,000**

[www.landscape.com/9963.htm](http://www.landscape.com/9963.htm) Teresa Lau 劉小姐 9080 6686

This luxurious duplex apartment is situated on Pokfulam Road, pivotally positioned to take in sweeping, uninterrupted south-facing views out past the Lamma Channel. Elegantly decorated, it feels more like a deluxe five-star hotel than your average home. A circular dining room with a round marble table and grand velvet-upholstered seats provides the perfect setting for any occasion. Similarly, the master bedroom, complete with walk in dressing room and bathroom, has floor to ceiling windows offering 150 degree views, providing ample sunlight and the most romantic of sunsets.

A graceful, carpeted interior staircase with a spectacular mountain facing two-storey height window leads one from the downstairs living room, study, dining room and kitchen to the peaceful upper sleeping quarters. Resplendent with state-of-the-art dimmer lighting, ceiling recesses, chandeliers, and Travertine stone flooring, this is a signature home of creature comforts. ■

這個位於薄扶林道的華麗複式單位，坐擁南丫海峽全景。單位佈置典雅高尚，與其說是普通住所，不如說它是五星級豪華酒店。圓形的飯廳，加上大理石圓桌及豪華天鵝絨軟椅，足以為任何聚會提供完美的場地。氣派不凡的主人房可直達更衣室及浴室；落地大玻璃為房屋主人送上150度的風景、充足的光線，和醉人日落景致。

房屋內部裝潢優雅，鋪上地毯的樓梯以及面向山景的兩層高窗戶，把地面的客廳、書房、飯廳及廚房連接到一樓憩靜的睡房。高科技的柔和燈光、層次分明的天花、吊燈及洞石地板 — 這個住宅單位無疑是悠閒生活家居的典範。 ■

**Royalton I**  
薄扶林 豪峰 I  
118 Pokfulam Road, Pokfulam

**3,250 s.f.**  
**\$42,000,000**

[www.landscape.com/19838.htm](http://www.landscape.com/19838.htm) Christine Chong 莊小姐 9648 6082







**Country Villa**  
**壽臣山 翠谷別墅**  
4 Shouson Hill Road, Shouson Hill

Unique low-rise in green and quiet environment  
精緻低密度住宅，享翠綠園景，環境寧靜

**1,500 s.f.**  
**\$19,500,000**

 www.landscape.com/19662.htm  Sissy Li 李小姐 9642 6969



**Chung Hom Kok Rare On Market**  
**春坎角罕有海景單位**

High efficiency 3-bedroom sea view apartment with big balcony and 1 car park  
高實用率三房海景單位，連太陽臺及停車場

**1,800 s.f.**  
**\$20,000,000**

 www.landscape.com  Mary Li 李小姐 9011 6595



**Ridge Court**  
**淺水灣 冠園**  
21A-21D Repulse Bay Road, Repulse Bay

Well kept colonial style lofty-ceiling 3-bedroom flat  
保存良好英式高樓底三房住宅

**2,300 s.f.**  
**\$36,000,000**

 www.landscape.com/17929.htm  Stephen Chan 陳先生 9093 3381



**Hong Kong Parkview**  
**淺水灣 陽明山莊**  
88 Tai Tam Reservoir Road, Repulse Bay

Spacious country park apartment with excellent clubhouse facilities  
寬敞郊野公園景單位連完善住客會所設施，可租可售

**2,787 s.f.**  
**\$36,000,000** also for lease \$90,000 incl.

 www.landscape.com/9225.htm  Walker Lam 林先生 9551 1077



**Goldson Place**  
**壽臣山 金信閣**  
11 Shouson Hill Road West, Shouson Hill

Low-rise garden flat with open view of Shouson Hill  
壽臣山低密度花園住宅，享開揚景觀

**1,650 s.f.** (plus 620 s.f. garden)  
**\$22,000,000**

 www.landscape.com/9914.htm  Eric Wong 黃先生 9740 3396



**Cape Mansions**  
**薄扶林 翠海別墅**  
56-62 Mount Davis Road, Pokfulam

Practical apartment with panoramic sea view in quiet enclave  
間隔實用住宅，享廣闊海景，環境寧靜

**2,200 s.f.**  
**\$23,000,000**

 www.landscape.com/19614.htm  Mark Mak 麥先生 6838 2929



**Ming Wai Garden**  
**淺水灣 明慧園**  
45 Repulse Bay Road, Repulse Bay

Exclusive building on upper Repulse Bay Road with picturesque views  
淺水灣道頭段罕有放盤單位連如畫美景

**1,900 s.f.**  
**\$37,000,000**

 www.landscape.com/17601.htm  Christine Chong 莊小姐 9648 6082



**Pine Crest**  
**淺水灣 松苑**  
65 Repulse Bay Road, Repulse Bay

Nicey decorated 4-bedroom flat overlooking Deep Water Bay  
全新裝修四房住宅，俯瞰深水灣全景

**2,250 s.f.**  
**\$40,000,000**

 www.landscape.com/14000.htm  Maria Cheung 張小姐 5182 8699



**Scenic Villas**  
**薄扶林 美景臺**  
2-28 Scenic Villa Drive, Pokfulam

High efficiency 4-bedroom apartment with nice decoration and unobstructed sea view  
高實用率四房住宅連雅緻裝修及一望無際海景

**2,194 s.f.**  
**\$24,000,000**

 www.landscape.com/19834.htm  Sami Woo 胡小姐 9493 8275



**Repulse Bay Garden**  
**淺水灣 麗景園**  
18-40 Belleview Drive, Repulse Bay

Practical apartment overlooking Repulse Bay Beach  
間隔實用單位，俯瞰淺水灣海灘

**1,780 s.f.**  
**\$28,000,000**

 www.landscape.com/19877.htm  Stella Lo 羅小姐 9809 8570



**Stanley Court**  
**赤柱 海灣園**  
9 Stanley Mound Road, Stanley

Boutique 3-bedroom townhouse with spacious garden close to Stanley Main Beach  
精緻三房排屋連寬敞花園，鄰近赤柱海灘

**2,889 s.f.**  
(plus 1,075 s.f. garden and 552 s.f. roof)  
**\$42,000,000**

 www.landscape.com/19733.htm  Maria Cheung 張小姐 5182 8699



**Park Place**  
**淺水灣 雅柏苑**  
7 Tai Tam Reservoir Road, Repulse Bay

Popular 3-bedroom apartment at prestigious location with partial harbour view  
受歡迎三房單位，地段尊貴，享部份維港景

**2,335 s.f.**  
**\$48,000,000**

 www.landscape.com/19340.htm  Stella Lo 羅小姐 9809 8570



**Woodgreen Estate**  
**壽臣山 壽山村道5號**  
5 Shouson Hill Road, Shouson Hill

Low-rise flat in serene Shouson Hill  
低密度住宅，位於壽臣山，環境寧靜

**2,200 s.f.**  
**\$28,000,000**

 www.landscape.com/9765.htm  Sissy Li 李小姐 9642 6969



**The Brentwood**  
**淺水灣 蔚峰園**  
11 Repulse Bay Road, Repulse Bay

Boutique flat on upper Repulse Bay Road with full sea view  
淺水灣道頭段精緻單位，尊享全海景

**1,556 s.f.**  
**\$28,000,000**

 www.landscape.com/19925.htm  Teresa Fung 馮小姐 9138 1621



**Hong Kong Parkview**  
**淺水灣 陽明山莊**  
88 Tai Tam Reservoir Road, Repulse Bay

Popular family flat in country park  
受歡迎家庭式住宅，鄰近郊野公園

**2,366 s.f.**  
**\$30,000,000** **Sole Agent 獨家代理**

 www.landscape.com/10796.htm  Rebecca Cheung 張小姐 9021 7644



**Scenic Villas**  
**薄扶林 美景臺**  
2-28 Scenic Villa Drive, Pokfulam

Practical 4-bedroom apartment with swimming pool and full sea view  
超實用四房住宅，尊享全海景及泳池設施

**2,517 s.f.**  
**\$30,500,000**

 www.landscape.com/10432.htm  Christine Chong 莊小姐 9648 6082



**Aegean Terrace**  
**薄扶林 愛琴苑**  
60 Sassoon Road, Pokfulam

Tastefully decorated low-rise with dramatic sea view and internal stair to roof  
品味設計裝修低密度住宅連內置樓梯往天台，享如畫美景

**2,543 s.f.** (plus 1,363 s.f. roof)  
**\$33,000,000**

 www.landscape.com/15559.htm  Teresa Lau 劉小姐 9080 6686



**Sea Cliff Mansions**  
**淺水灣 海峰園**  
19A-19D Repulse Bay Road, Repulse Bay

Well decorated sea view flat with balcony on upper Repulse Bay Road  
雅致裝修海景單位連陽臺，位於淺水灣道頭段

**2,400 s.f.**  
**\$35,000,000**

 www.landscape.com/18741.htm  Stephen Chan 陳先生 9093 3381

This majestic ocean-facing stand-alone house is located in Tai Tam. A three-storey house complete with outdoor patio and several balconies, this property can accommodate a great many people in comfort and style. With floor to ceiling windows throughout, this South-side house is bright and airy with high ceilings, and a light and crisp white interior. Light oak floor-boards and ceiling lights create a warm and inviting mood; and an open-plan living room and kitchen look out onto the patio and palm trees beyond, taking maximum advantage of the palm fringed sea view and the cool breeze of the night.



Each room has been carefully appointed and designed to ensure maximum ease, pleasure, privacy and convenience. And with most rooms benefiting from en-suite bathrooms, walk-in wardrobes, and adjacent lounge areas, this is truly a unique, one-of-a-kind home fit for kings. ■

這座向海的獨立洋房位於大潭，三層高的公寓加上戶外天井及數個露台，足以讓住客享受個人化的居住空間。遍佈公寓四處的落地大玻璃，加上高天花及開闊的間格，令雪白的室內裝潢看來更光線充足，讓人精神為之一振；淺色的橡木地板及天花燈則予人溫暖和諧的感覺。開放式客廳及廚房可外望天井及椰林樹影，是享受醉人海景、傍晚海風的最佳地點。

洋房內的每一個房間都經過精心陳設，確保住戶既能住得方便愜意、又可盡享私人空間。大部份房間均內設私人浴室、步入式衣櫃及相連休息間，將這裡打造成獨一無二的貴族居庭。■

**Rosecliff**  
**大潭 大潭道20號**  
12-14 Wong Nai Chung Gap Road, Midlevels East

**3,980** (plus 1,050 s.f. roof and 649 s.f. garden)  
**\$96,000,000** also for lease \$230,000 **Sole Agent 獨家代理**

 www.landscape.com/15747.htm  Rebecca Cheung 張小姐 9021 7644





**Park Place**  
**淺水灣 雅柏苑**  
 7 Tai Tam Reservoir Road, Repulse Bay

Luxurious apartment on upper Repulse Bay Road with harbour view  
 豪華單位，位於淺水灣頭段，享維港景，可租可售

**2,288 s.f.**  
**\$58,000,000** also for lease \$120,000 incl.

 [www.landscape.com/10963.htm](http://www.landscape.com/10963.htm)  Stephen Chan 陳先生 9093 3381

**Le Palais**  
**大潭 皇府灣**  
 8 Pak Pat Shan Road, Tai Tam

High quality waterfront townhouse with private garden in serene Tai Tam  
 間隔實用海濱排屋連私家花園，位於大潭，環境寧靜，可租可售

**3,348 s.f.** (plus 741 s.f. garden)  
**\$60,000,000**  
 also for lease \$140,000 incl.

 [www.landscape.com/18829.htm](http://www.landscape.com/18829.htm)  Stephen Chan 陳先生 9093 3381

**Grosvenor Place**  
**淺水灣 淺水灣道117號**  
 117 Repulse Bay Road, Repulse Bay

Brand new landmark building with breath-taking Repulse Bay view  
 全新地標大廈，享寧靜淺水灣景觀

**2,809 s.f.**  
**\$70,000,000**

 [www.landscape.com/13448.htm](http://www.landscape.com/13448.htm)  Rebecca Cheung 張小姐 9021 7644

**The Beachfront**  
**淺水灣 壁池**  
 7 Belleview Drive, Repulse Bay

Repulse Bay townhouse with picturesque views  
 淺水灣排屋連如畫美景

**3,047 s.f.** (plus 413 s.f. terrace)  
**\$83,000,000**

 [www.landscape.com/14459.htm](http://www.landscape.com/14459.htm)  David Leung 梁先生 9199 0672

**Carmelia**  
**赤柱 赤柱村道60號**  
 60 Stanley Village Road, Stanley

Huge colonial house with front yard and private garden  
 巨型英式大屋連前院及私家花園，可租可售

**5,200 s.f.**  
 (plus 753 s.f. garden and 343 s.f. terrace)  
**\$120,000,000**  
 also for lease \$210,000 incl.

 [www.landscape.com](http://www.landscape.com)  Louis Wong 黃先生 9871 6828

**Repulse Bay Road, Repulse Bay**  
**淺水灣 淺水灣道**

Extraordinary garden house on Repulse Bay Road  
 淺水灣道獨特花園大屋

**3,000 s.f.**  
 (plus 1,356 s.f. garden and 556 s.f. roof)  
**\$150,000,000**

 [www.landscape.com](http://www.landscape.com)  Louis Wong 黃先生 9871 6828

**Twin Brook**  
**淺水灣 雙溪**  
 43 Repulse Bay Road, Repulse Bay

Spacious 4-bedroom unit with fascinating view of Deep Water Bay  
 寬敞四房單位享廣闊深水灣景觀，可租可售



**2,700 s.f.**  
**\$60,000,000** also for lease \$110,000

 [www.landscape.com/15419.htm](http://www.landscape.com/15419.htm)  Rebecca Cheung 張小姐 9021 7644

**Belgravia Heights**  
**碧濤閣**  
 27 Tai Tam Road, Tai Tam

Full seaview of Tai Tam apartment  
 大潭全海景住宅，可租可售

**2,890 s.f.** (plus 2,401 s.f. roof)  
**\$65,000,000** also for lease \$120,000 incl.

 [www.landscape.com/19718.htm](http://www.landscape.com/19718.htm)  Christine Chong 莊小姐 9648 6082

**Ruby Court**  
**淺水灣 嘉麟閣**  
 55 South Bay Road, Repulse Bay

Unique penthouse with roof enjoying splendid view of South Bay and Repulse Bay  
 精緻頂樓連天台住宅，享南灣及淺水灣景觀

**2,790 s.f.**  
 (Plus 587 s.f. roof and 150 s.f. terrace)  
**\$80,000,000**

 [www.landscape.com/15657.htm](http://www.landscape.com/15657.htm)  Mark Mak 麥先生 6838 2929

**Le Palais**  
**大潭 皇府灣**  
 8 Pak Pat Shan Road, Tai Tam

Waterfront garden residence with comprehensive facilities  
 海濱花園住宅連完善住客會所設施

**4,372 s.f.** (plus 787 s.f. garden)  
**\$100,000,000**

 [www.landscape.com/19539.htm](http://www.landscape.com/19539.htm)  Rebecca Cheung 張小姐 9021 7644

**Twin Brook**  
**淺水灣 雙溪**  
 43 Repulse Bay Road, Repulse Bay

Rare spacious duplex apartment in Repulse Bay  
 淺水灣罕有寬敞複式住宅

**5,400 s.f.**  
**\$150,000,000**

 [www.landscape.com/19906.htm](http://www.landscape.com/19906.htm)  Eric Wong 黃先生 9740 3396

**Majestic Court**  
**大潭 君誠閣**  
 9 Tai Tam Road, Tai Tam

An investment choice, whole block sea view property for sale  
 海景大廈全幢放售，投資首選

**\$370,000,000**

 [www.landscape.com](http://www.landscape.com)  Louis Wong 黃先生 9871 6828



*Le* **MERIDIEN**  
 CYBERPORT

# Need to escape

A weekend escape is available right here in Hong Kong thanks to Club Horizon and Le Meridien Cyberport.

Club Horizon combines an exciting list of dining, accommodation and other VIP benefits for members and their guests, including up to 50% off dining, complimentary access to the gym, pool, sauna and steam room and up to 2 complimentary room nights in their chic guest rooms.

Call Club Horizon member services now to find out how you too can enjoy a relaxing getaway without the hassle of travelling with Club Horizon and Le Meridien Cyberport.

Please call the friendly Member service centre on 2155 0489 or 2155 0491  
 Email: [memser@clubhorizon.com.hk](mailto:memser@clubhorizon.com.hk)

Mention this advert when joining any of the 4 VIP memberships and receive an additional complimentary bottle of wine

  
**club horizon**  
 Chic Gold & Platinum

[www.clubhorizon.com.hk](http://www.clubhorizon.com.hk)





**Carolina Garden**  
山頂 嘉樂園  
20-34 Coombe Road, The Peak  
Rare colonial apartment on Coombe Road overlooking Aberdeen Country Park  
甘道罕有英式住宅，俯瞰香港仔郊野公園景

**2,350 s.f.**  
**\$78,000**

[www.landscape.com/19493.htm](http://www.landscape.com/19493.htm) Teresa Fung 馮小姐 9138 1621



**La Hacienda**  
山頂 加列山道29-33號  
29-33 Mount Kellett Road  
Newly renovated lofty-ceilinged colonial apartment with Southside sea view  
全新裝修高樓底英式住宅，享南區海景

**2,820 s.f.**  
**\$113,000**

[www.landscape.com/19796.htm](http://www.landscape.com/19796.htm) Teresa Fung 馮小姐 9138 1621



**Strawberry Hill**  
山頂 紅莓閣  
8 Plunkett's Road, The Peak  
Colonial style townhouse with picturesque views  
山頂英式排屋享如畫美景，可租可售

**3,200 s.f.**  
**\$160,000 incl.**  
also for sale \$100,000,000

[www.landscape.com/19786.htm](http://www.landscape.com/19786.htm) Maria Cheung 張小姐 5182 8699



**Orient Crest**  
山頂 山頂道76號  
76 Peak Road, The Peak  
Charming townhouse with huge private terrace and roof top  
迷人排屋連巨型私家平台呷天台

**3,300 s.f.** (plus 400 s.f. garden)  
**\$175,000 incl.**

[www.landscape.com/18836.htm](http://www.landscape.com/18836.htm) Carman Szeto 司徒小姐 6183 8339



**Strawberry Hill**  
山頂 紅莓閣  
8 Plunkett's Road, The Peak  
Rare director house with private pool and garden  
罕有豪華大屋連私家游泳池及花園

**5,211 s.f.** (plus 1,344 s.f. terrace)  
**\$260,000 incl**

[www.landscape.com/2529.htm](http://www.landscape.com/2529.htm) Louis Wong 黃先生 9871 6828



**Middle Gap Road, The Peak**  
山頂 中峽道  
Single detached house with private swimming pool, rare for lease  
山頂獨立大屋連私家游泳池及大花園，罕有出租

**10,000 s.f.** (plus 7,146 s.f. garden)  
**\$300,000 incl.**

[www.landscape.com](http://www.landscape.com) Teresa Lau 劉小姐 9080 6686



**1-3 Pollock's Path**  
山頂 普樂道1-3號  
Harbour view mid-rise with facilities on The Peak  
罕有山頂維港景英式住宅，連會所設施

**2,216 s.f.**  
**\$85,000**

[www.landscape.com/2844.htm](http://www.landscape.com/2844.htm) Sami Woo 胡小姐 9493 8275



**1-3 Homestead Road, The Peak**  
山頂 堪仕達道1-3號  
3-ensuite apartment with lovely views in convenient location  
山頂三套房住宅連迷人景觀，交通方便

**2,828 s.f.**  
**\$120,000 incl.**

[www.landscape.com/11528.htm](http://www.landscape.com/11528.htm) David Leung 梁先生 9199 0672



**King's Court**  
山頂 龍庭  
5 Mount Kellett Road, The Peak  
Prestigious townhouse with unobstructed sea view and country park view  
山頂尊貴豪華排屋，連廣闊海景及郊野公園景

**3,165 s.f.**  
(plus 1,733 s.f. garden and 539 s.f. terrace)  
**\$170,000**

[www.landscape.com/19756.htm](http://www.landscape.com/19756.htm) Teresa Fung 馮小姐 9138 1621



**The Mount Austin**  
山頂 柯士甸山道8號  
8 Mount Austin Road, The Peak  
Modern townhouse with panoramic harbour view  
時尚排屋連廣闊維港景觀

**5,083 s.f.** (plus 2,997 s.f. garden)  
**\$203,320**

[www.landscape.com/7796.htm](http://www.landscape.com/7796.htm) David Leung 梁先生 9199 0672



**The Kenlis**  
山頂 加列山道34號  
34 Mount Kellett Road, The Peak  
Colonial style detached townhouse with private pool and garden  
山頂英式獨立排屋連私家游泳池及花園

**3,521 s.f.** (plus 1,588 s.f. garden)  
**\$280,000**

[www.landscape.com/1978.htm](http://www.landscape.com/1978.htm) Teresa Fung 馮小姐 9138 1621



**56 Plantation Road, The Peak**  
山頂 種植道56號  
Peak townhouse with extravagant view of Victoria Harbour  
山頂排屋，尊享驚人維港景觀

**4,686 s.f.** (plus 834 s.f. roof, 442 s.f. garden and 394 s.f. terrace)  
**\$300,000**

[www.landscape.com/14847.htm](http://www.landscape.com/14847.htm) David Chan 陳先生 9238 2012

# Creative Vision

interior design and project management



Hong Kong Head Office: 12/F, Cyberport 2, 100 Cyberport Road, Hong Kong  
China Office: 15/F, Plaza 66, 1366 Nanjing West Road, Shanghai, China  
t +852 3699 0899 (Hong Kong) t+86 21 6137 6038 (China)  
info@visionnouvelle.com.hk www.visionnouvelle.com.hk







**Starcrest**  
**中半山 星域軒**  
 9 Star Street, Midlevels Central  
 Quality boutique apartment on fringe of Admiralty  
 中半山精緻單位，鄰近金鐘  
**850 s.f.**  
**\$33,000 incl.**

www.landscape.com/6665.htm Carman Szeto 司徒小姐 6183 8339



**Harmony Court**  
**東半山 融園**  
 20-22 Tai Hang Road, Midlevels East  
 3-bedroom apartment with neighbourhood view close to Causeway Bay  
 東半山三房住宅，環境寧靜，鄰近銅鑼灣，可租可售  
**1,650 s.f.**  
**\$42,000 incl.** also for sale \$16,500,000

www.landscape.com/18878.htm Maria Cheung 張小姐 5182 8699



**Dynasty Court**  
**中半山 帝景園**  
 23 Old Peak Road, Midlevels Central  
 Spacious 4-bedroom flat with stunning harbour view  
 寬敞四房單位，享遼闊維港景觀  
**2,266 s.f.**  
**\$72,000**

www.landscape.com/11157.htm Mira To 杜小姐 9486 1566



**Borrett Mansion**  
**中半山 寶德臺**  
 8A-9B Borrett Road, Midlevels Central  
 Large harbour view flat with big balcony in quiet location  
 巨型維港景住宅連大陽臺，環境清幽怡人  
**2,800 s.f.**  
**\$75,000 incl.**

www.landscape.com/19170.htm Stella Lo 羅小姐 9809 8570



**Beverly Hill**  
**跑馬地 比華利山**  
 6 Broadwood Road, Happy Valley  
 High floor 3-bedroom harbour view apartment with facilities  
 高層三房維港景單位連住客會所設施，可租可售  
**1,358 s.f.**  
**\$43,000 incl.** also for sale \$15,000,000

www.landscape.com/19818.htm Walker Lam 林先生 9551 1077



**Wing Way Court**  
**中半山 永威閣**  
 31 Kennedy Road, Midlevels Central  
 3-bedroom apartment with nice decoration overlooking Wan Chai cityscape  
 中半山三房住宅連雅緻裝修，俯瞰灣仔城市景觀  
**1,860 s.f.**  
**\$50,000 incl.**

www.landscape.com Sissy Li 李小姐 9642 6969



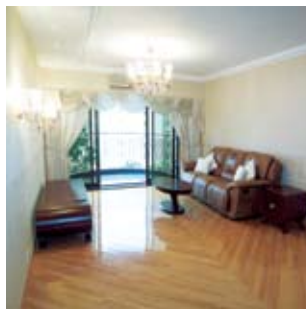
**5 Goldsmith Road, Jardine's Lookout**  
**渣甸山 高士美道5號**  
 Rare find colonial low-rise with huge balcony in quiet Jardine's Lookout  
 渣甸山罕有英式低密度住宅連大陽臺  
**2,500 s.f.** (plus 67 s.f. terrace)  
**\$75,000**

www.landscape.com/19447.htm Stella Lo 羅小姐 9809 8570



**Beauty Court**  
**西半山 雅苑**  
 82 Robinson Road, Midlevels West  
 Tastefully decorated apartment overlooking harbour view  
 品味設計單位，俯瞰維港景觀，可租可售  
**1,771 s.f.**  
**\$75,000 incl.** also for sale \$25,500,000

www.landscape.com/19937.htm Rowena Siu 蕭小姐 9348 4118



**Wah Fung Mansion**  
**東半山 華峰閣**  
 27 Tai Hang Road, Midlevels East  
 Unique spacious apartment with balcony occupying whole floor  
 精緻寬敞單位，連特大陽臺，可租可售  
**2,087 s.f.**  
**\$55,000 incl.** also for sale \$18,000,000

www.landscape.com/17866.htm Carman Szeto 司徒小姐 6183 8339



**Catalina Mansions**  
**中半山 嘉年大廈**  
 98-100 Macdonnell Road, Midlevels Central  
 Spacious colonial 3-bedroom apartment on Macdonnell Road  
 麥當勞道寬敞英式三房住宅  
**2,300 s.f.**  
**\$65,000 incl.**

www.landscape.com/19931.htm Rowena Siu 蕭小姐 9348 4118



**Clement Court**  
**渣甸山 松風臺**  
 56-64 Mount Butler Road, Jardine's Lookout  
 Colonial low-rise in Jardine's Lookout  
 渣甸山英式低密度住宅  
**2,500 s.f.** (plus 800 s.f. terrace)  
**\$80,000 incl.**

www.landscape.com/1182.htm Mary Li 李小姐 9011 6595



**Century Tower I**  
**中半山 世紀大廈1座**  
 1 Tregunter Path, Midlevels Central  
 Stylish apartment at prime location  
 時尚設計住宅，地段尊貴  
**2,565 s.f.**  
**\$80,000 incl.**

www.landscape.com/19870.htm Mira To 杜小姐 9486 1566



**Hamilton Court**  
**西半山 愛敦大廈**  
 8 Po Shan Road, Midlevels West  
 Spacious 4-bedroom harbour view apartment in serene location  
 寬敞四房維港景單位，地段優越  
**2,600 s.f.**  
**\$65,000**

www.landscape.com/10900.htm Sami Woo 胡小姐 9493 8275



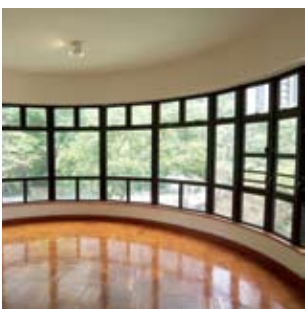
**11 MacDonnell Road, Midlevels Central**  
**中半山麥當勞道11號**  
 Nicely decorated high privacy modern apartment on MacDonnell Road  
 麥當勞道全新裝修私隱度高時尚住宅，可租可售  
**2,313 s.f.**  
**\$68,000 incl.** also for sale \$28,000,000

www.landscape.com/14367.htm Stella Lo 羅小姐 9809 8570



**Villa Monte Rosa**  
**東半山 玫瑰新村**  
 41A Stubbs Road, Midlevels East  
 Large family apartment on upper Stubbs Road  
 巨型家庭式住宅位於司徒拔道頭段  
**2,300 s.f.**  
**\$68,000 incl.**

www.landscape.com/19887.htm Chris Law 羅先生 6183 8388



**Po Garden**  
**中半山 寶園**  
 9 Brewin Path, Midlevels Central  
 Newly renovated 3-bedroom apartment on fringe of Central  
 全新裝修三房住宅，鄰近中環，可租可售  
**2,572 s.f.**  
**\$69,000 incl.** **Sole Agent 獨家代理**  
 also for sale \$34,000,000

www.landscape.com/10909.htm Yvonne Chang 鄭小姐 9088 4666



**Stubbs Villa**  
**東半山 詩瀟花園**  
 2 Shiu Fai Terrace, Midlevels East  
 Sought after older-style apartment with 4-bedroom layout  
 東半山懷舊設計四房住宅，千金難求  
**2,325 s.f.**  
**\$70,000 incl.**

www.landscape.com/19913.htm Mary Li 李小姐 9011 6595



**Tavistock 2**  
**中半山 騰皇居2座**  
 10A Tregunter Path, Midlevels Central  
 Deluxe flat with superb clubhouse taking in green hill view  
 高層複式單位，連完善住客會所設施，享翠綠山景，可租可售  
**1,730 s.f.**  
**\$72,000 incl.** also for sale \$28,000,000

www.landscape.com/19319.htm Rowena Siu 蕭小姐 9348 4118



## Peak Performance 頂峰表現

Indulge yourself with a refined and luxurious dining moment at the Peak. Located at the Peak Tower, this restaurant offers 270-degree sweeping views of Hong Kong Island through floor-to-ceiling windows, making it the perfect dining venue.

With a menu created by award-winning Australian chef Geoff Lindsay – winner of Australia's 2005 Chef of the Year award – only the best and freshest produce is flown in from around the world, ensuring an unsurpassed delicacy of flavours. And a constantly changing menu with items such as eggplant and bean curd sandwich with dashi warmed coffin bay oysters, enoki and shimji mushrooms, yarra valley salmon caviar and dancing bonito, ensure there's something to tempt every palate. Finish off with a satisfying mixed-berry pudding with rose petal cream for the perfect end to a perfect night.

If you've come to the Peak for some hiking, then this isn't the place for you, but if good food, fine wine and spectacular views is what you're after, then this has got to be one of Hong Kong's top picks. ■

在山頂享用一頓華麗晚宴，絕對是一件賞心樂事。這一間位於山頂廣場的餐廳能透過落地大玻璃飽覽270度港島區全景，實在是晚餐的最佳首選。

由曾於2005年獲澳洲年度總廚大獎的主廚Geoff Lindsay精心設計的餐單，選用從世界各地空運到港的最優質材料，以確保最頂級的味覺享受。餐單時常都會轉換菜色，包括茄子豆腐三文治配澳洲蠔、金針及姬菇、亞拉河谷三文魚子醬及新鮮鯉魚等，而甜品則有雜莓布甸配以玫瑰花瓣玉露，為你的晚上劃上完美句號。

若然你到山頂是為了行山，食物未必最切合你的要求；但若你渴望享受美酒佳餚及醉人夜景，這裡卻是不二之選。■





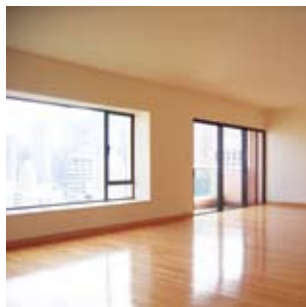
**Regent on the Park**  
 中半山 御花園  
 9A Kennedy Road, Midlevels Central  
 Prestigious newly renovated 3-bedroom apartment with greenery view  
 尊貴全新裝修三房住宅，享翠綠園景  
**2,720 s.f.**  
**\$85,000 incl.**

www.landscape.com/19730.htm Stephen Chan 陳先生 9093 3381



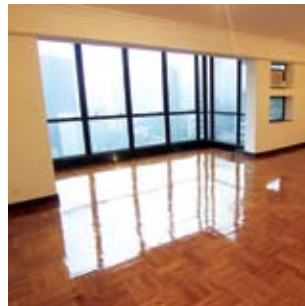
**Tregunter Tower**  
 中半山 地利根德閣  
 14 Tregunter Path, Midlevels Central  
 Popular spacious 3-bedroom Midlevels flat  
 中半山受歡迎寬敞三房住宅  
**3,052 s.f.**  
**\$90,000 incl.**

www.landscape.com/14591.htm Mira To 杜小姐 9486 1566



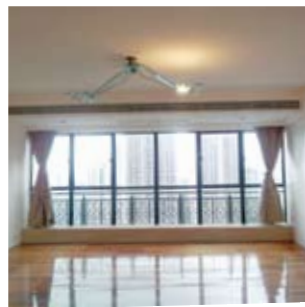
**The Albany**  
 中半山 雅賓利大廈  
 1 Albany Road, Midlevels Central  
 Prime apartment in prestigious location  
 中半山尊貴單位，地段優越  
**2,546 s.f.**  
**\$120,000 incl.**

www.landscape.com/2909.htm Teresa Fung 馮小姐 9138 1621



**Villa Elegance**  
 中半山 雅慧園  
 1 Robinson Road, Midlevels Central  
 Huge 4-bedroom flat in high privacy on fringe of Central  
 巨型四房單位私隱度高，鄰近中環  
**3,500 s.f.**  
**\$85,000 incl.**

www.landscape.com/10333.htm Sissy Li 李小姐 9642 6969



**Clovelly Court**  
 中半山 嘉富麗苑  
 12 May Road, Midlevels Central  
 Newly renovated large flat in prime location of Midlevels Central  
 中半山全新裝修大型單位，地段優越，可租可售  
**2,722 s.f.**  
**\$95,000 incl.** also for sale \$45,000,000

www.landscape.com/15514.htm Mira To 杜小姐 9486 1566



**Grenville House**  
 中半山 嘉慧園  
 1-3A Magazine Gap Road, Midlevels Central  
 Huge 6-bedroom duplex in renowned building on fringe of Central  
 巨型六房複式單位，大廈全新翻新，鄰近中環，可租可售  
**6,800 s.f.**  
**\$190,000** also for sale \$100,000,000

www.landscape.com/18055.htm Mark Mak 麥先生 6838 2929



**Jade Beach Villa**  
 春坎角 華翠海灘別墅  
 3-7 Horizon Drive, Chung Hom Kok  
 Boutique sea view flat on tranquil Chung Hom Kok  
 精緻海景住宅，位於春坎角，環境寧靜  
**1,980 s.f.**  
**\$50,000 incl.**

www.landscape.com/8397.htm David Chan 陳先生 9238 2012



**Unicorn Garden**  
 壽臣山 麒麟閣  
 11 Shouson Hill Road East, Shouson Hill  
 Low-rise flat in tranquil neighbourhood  
 壽臣山低密度住宅，環境清幽怡人  
**1,714 s.f.**  
**\$60,000 incl.**

www.landscape.com/19915.htm Sissy Li 李小姐 9642 6969



**Joy Garden**  
 壽臣山 曉穎花園  
 13 Shouson Hill Road West, Shouson Hill  
 Unique 4-bedroom duplex flat with new kitchen and bathrooms  
 精緻四房複式單位連全新裝修廚房及浴室  
**2,752 s.f.**  
**\$69,000 incl.**

www.landscape.com/14273.htm Christine Chong 莊小姐 9648 6082



**Repulse Bay Garden**  
 淺水灣 麗景園  
 18-40 Belleview Drive, Repulse Bay  
 Spacious 4-bedroom apartment with stunning sea view of Repulse Bay Beach  
 寬敞四房單位，尊享迷人淺水灣海灘景觀  
**2,810 s.f.**  
**\$82,000 incl.**

www.landscape.com/12841.htm Sami Woo 胡小姐 9493 8275



**Riviera Apartment**  
 淺水灣 海濱公寓  
 4 South Bay Road, Repulse Bay  
 4-bedroom colonial low-rise with superb beach view  
 英式四房低密度單位連華麗海灘景觀  
**2,600 s.f.**  
**\$86,000 incl.**

www.landscape.com/10010.htm Stella Lo 羅小姐 9809 8570



**Pine Crest**  
 淺水灣 松苑  
 65 Repulse Bay Road, Repulse Bay  
 Spacious apartment with beautiful Deep Water Bay view  
 間隔寬敞單位，享優美深水灣海景  
**2,250 s.f.**  
**\$90,000 incl.**

www.landscape.com/1197.htm Eric Wong 黃先生 9740 3396



**8-14 Cape Road, Chung Hom Kok**  
 春坎角 環角道8-14號  
 Low-rise garden flat in tree-lined neighbourhood  
 低密度花園住宅，綠樹松蔭，環境清幽怡人  
**1,800 s.f.** (plus 800 s.f. garden)  
**\$58,000**

www.landscape.com/15309.htm Chris Law 羅先生 6183 8388



**South Bay Palace**  
 淺水灣 南灣御苑  
 25 - 27 South Bay Close, Repulse Bay  
 Designer decorated 3-bedroom apartment with facilities  
 名師設計三房單位連住客會所設施，可租可售  
**1,780 s.f.**  
**\$60,000 incl.** also for sale \$22,800,000

www.landscape.com/19505.htm Carman Szeto 司徒小姐 6183 8339



**39 Shouson Hill Road, Shouson Hill**  
 壽臣山 壽臣山道39號  
 Newly decorated 3-bedroom apartment in colonial low-rise  
 全新裝修三房低密度英式住宅  
**2,450 s.f.**  
**\$78,000**

www.landscape.com/7410.htm Sissy Li 李小姐 9642 6969



**Park Place**  
 淺水灣 雅柏苑  
 7 Tai Tam Reservoir Road, Repulse Bay  
 Bright and airy apartment with harbour view  
 光猛通風單位，享維港景  
**2,338 s.f.**  
**\$85,000 incl.**

www.landscape.com/19944.htm Teresa Lau 劉小姐 9080 6686



**Celestial Garden**  
 淺水灣 詩禮花園  
 5 Repulse Bay Road, Repulse Bay  
 Practical 4-bedroom apartment overlooking lush green view  
 間隔實用四房單位，俯瞰翠綠山景，全新裝修  
**2,375 s.f.**  
**\$90,000 incl.**

www.landscape.com/19900.htm Rowena Siu 蕭小姐 9348 4118



**Carriana Sassoon**  
 薄扶林 沙宣道41號  
 41 Sassoon Road, Pokfulam  
 Unique and spacious house in Pokfulam  
 薄扶林精緻寬敞大屋  
**3,000 s.f.**  
 (plus 795 s.f. terrace and 236 s.f. garden)  
**\$95,000 incl.**

www.landscape.com Yvonne Chang 鄭小姐 9088 4666

## The Final Frontier 最後的拓荒者



The fastest iPhone, ever, the iPhone 3GS launches applications up to two times faster than the previous model. Updated 3D graphics deliver an incredible gaming experience, and with the added benefits of a new 3-megapixel camera, video recording, Voice Control, and up to 32GB of storage, there's pretty much nothing this baby can't do.

Check out the latest financial data on stock charts, watch videos on YouTube or even read your favourite magazine online. And even cooler, if you misplace your phone, Apple's MobileMe service can help you find it. Log on to me.com to view a map that shows the approximate location of your iPhone. If it's nearby, have it play an alert sound to help you find it, or display a message on the home screen to help someone return it to you. If displaying a message hasn't resulted in its safe return, you can initiate a remote wipe and restore your iPhone to factory settings. Now that's what I call technology. ■

iPhone 3GS的程式下載速度超出上一代iPhone兩倍之多。更新過後的三維圖像帶來驚人的遊戲體驗，還有300萬像素相機、錄影功能、聲量控制及32GB存放空間，真的可說是無所不能。

新iPhone讓你可以緊貼市場資訊、觀看影片及瀏覽網上雜誌。若不幸遺失手機，蘋果電腦的MobileMe服務可以追蹤它的所在地。只需登入me.com，地圖便會顯示手機的大概位置。若只是數步之遙，你可透過警示聲音確定其位置，或是於螢光幕上顯示信息，讓拾獲人士將之歸還。若顯示信息未能令手機物歸原主，你也可透過遠端功能將資料清除，讓手機回復至原廠設定。■





**Villa Cecil**  
**薄扶林 趙苑**  
192 Victoria Road, Pokfulam  
Unique apartment with private garden and stunning sea view in Pokfulam  
薄扶林精緻海景住宅連私家花園，可租可售  
**3,967 s.f.** (plus 1,100 s.f. terrace)  
**\$100,000** also for sale \$45,620,000

[www.landscape.com/7725.htm](http://www.landscape.com/7725.htm) Yvonne Chang 鄭小姐 9088 4666



**Provident Villas**  
**薄扶林 富麗苑**  
29-30 Sassoon Road, Pokfulam  
High privacy garden townhouse on secluded Pokfulam  
私隱度高花園排屋，位於薄扶林，環境寧靜  
**3,312 s.f.** (plus 398 s.f. garden)  
**\$110,000**

[www.landscape.com/19885.htm](http://www.landscape.com/19885.htm) Rowena Siu 蕭小姐 9348 4118



**Belgravia**  
**淺水灣 南海道57號**  
57 South Bay Road, Repulse Bay  
Newly renovated apartment with facilities enjoying nice sea view  
全新裝修住宅連住客會所設施，享優雅海景  
**2,390 s.f.**  
**\$120,000 incl.**

[www.landscape.com/18929.htm](http://www.landscape.com/18929.htm) Walker Lam 林先生 9551 1077



**Hillgrove**  
**春坎角 壁如花園**  
18 Cape Drive, Chung Hom Kok  
5-bedroom sea view townhouse with private garden  
五房海景排屋連私家花園  
**3,300 s.f.**  
(plus 1,152 s.f. garden, 1,080 s.f. roof and 200 s.f. terrace)  
**\$150,000 incl.**

[www.landscape.com/19853.htm](http://www.landscape.com/19853.htm) Mary Li 李小姐 9011 6595



**Rosecliff**  
**大潭 大潭道20號**  
20 Tai Tam Road, Tai Tam  
Prestigious waterfront townhouse in tranquil location  
尊貴海濱大屋，環境清幽怡人，可租可售  
**3,980 s.f.**  
(plus 1,075 s.f. garden and 1,050 s.f. roof)  
**\$190,000** also for sale \$120,000,000

[www.landscape.com/19648.htm](http://www.landscape.com/19648.htm) Yvonne Chang 鄭小姐 9088 4666



**110 Repulse Bay Road, Repulse Bay**  
**淺水灣 淺水灣道110號**  
Exclusive sea view mansion in prestigious location of Repulse Bay  
獨特海景大屋，位於淺水灣，地段尊貴，可租可售  
**6,150 s.f.** (plus 1,173 s.f. garden and 934 s.f. roof)  
**\$300,000 incl.**  
also for sale \$220,000,000

[www.landscape.com/13442.htm](http://www.landscape.com/13442.htm) David Chan 陳先生 9238 2012



**Bluewater**  
**大潭 大潭道25號**  
25 Tai Tam Road, Tai Tam  
Prestigious apartment with 4 bedrooms enjoying full sea view  
豪華四房單位，尊享全海景，可租可售  
**2,500 s.f.**  
**\$110,000 incl.**  
also for sale \$50,000,000

[www.landscape.com/13275.htm](http://www.landscape.com/13275.htm) Mary Li 李小姐 9011 6595



**22 South Bay Road, Repulse Bay**  
**淺水灣 南灣道22號**  
Unique and spacious 5-bedroom triplex at South Bay waterfront  
南灣海濱精緻寬敞三複式五房單位  
**3,200 s.f.** (plus 762 s.f. roof)  
**\$120,000 incl.**

[www.landscape.com/10520.htm](http://www.landscape.com/10520.htm) Yvonne Chang 鄭小姐 9088 4666



**Las Pinadas**  
**壽臣山 朗松居**  
33 Shouson Hill Road, Shouson Hill  
Popular townhouse with full clubhouse facilities in lush green surroundings  
受歡迎排屋連完善住客會所設施，享翠綠園景，可租可售  
**3,383 s.f.** (plus 617 s.f. roof, 214 s.f. garden and 152 s.f. terrace)  
**\$138,000 incl.** also for sale \$75,000,000

[www.landscape.com/19390.htm](http://www.landscape.com/19390.htm) David Chan 陳先生 9238 2012



**Manly Villa**  
**淺水灣 文麗雙築**  
38 Ocean Park Road, Repulse Bay  
Full sea view garden detached house in exclusive location  
全海景獨立花園大屋，獨特地段  
**3,500 s.f.** (plus 3,378 s.f. garden)  
**\$180,000**

[www.landscape.com/12786.htm](http://www.landscape.com/12786.htm) David Chan 陳先生 9238 2012



**Turtle Cove**  
**大潭 龜背灣**  
60 Tai Tam Road, Tai Tam  
Rare find Tai Tam waterfront townhouse with picturesque views  
罕有大潭海濱排屋，尊享如畫美景，可租可售  
**4,300 s.f.** (plus TBC s.f. roof)  
**\$250,000 incl.**  
also for sale \$120,000,000

[www.landscape.com/14417.htm](http://www.landscape.com/14417.htm) Louis Wong 黃先生 9871 6828



**The Beachfront**  
**淺水灣 壁池**  
7 Belleview Drive, Repulse Bay  
Exclusive townhouse with panoramic sea view of Repulse Bay  
獨立大屋連廣闊淺水灣海景，可租可售  
**3,691 s.f.** (plus 105 s.f. terrace)  
**\$320,000 incl.**  
also for sale \$130,000,000

[www.landscape.com/17928.htm](http://www.landscape.com/17928.htm) Teresa Fung 馮小姐 9138 1621

For more listings, please go to [www.landscape.com/lease](http://www.landscape.com/lease)



## The Key (The No.1 Luxury Property Publication)

inMAGAZINE has had the privilege of being appointed by Landscape to revamp its monthly publication, *The Key*, and act as their sole advertising representative. This September issue marks the launch of the newly revamped version.

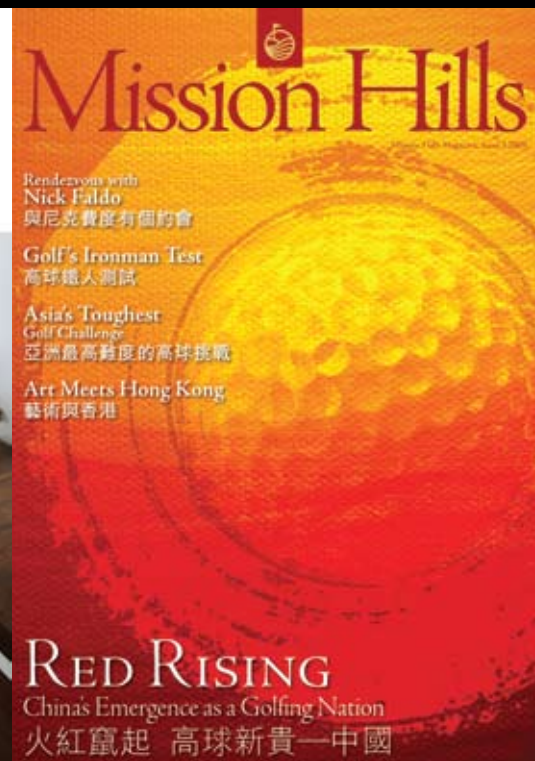
*The Key* is a bilingual, monthly lifestyle publication focusing on luxury residential properties on Hong Kong Island. It is sent to over 60,000 urban elites, comprising of Hong Kong's most affluent inhabitants.

These consist of Landscape's VIP clients, who mainly reside in The Peak, Mid-Levels, Southside, Kowloon Tong, Homantin, and other select up-market residential areas such as in Tai Po, Sai Kung and Clear Water Bay, etc.

inCORPORATION, your No.1 integrated marketing communications partner in Hong Kong & China

Marketing (852) 3699 0877 | Advertising (852) 3699 0898 | email: [marketing@incorp.com.hk](mailto:marketing@incorp.com.hk)





## Your No.1 Integrated Marketing Communications Partner in Hong Kong & China

*inMAGAZINE* : publisher and sole advertising representatives  
of the top luxury lifestyle publications, including *Mission Hills Magazine* and *The Key*.

[www.inmagazine.com.hk](http://www.inmagazine.com.hk)

Hong Kong Head Office: 12/F Cyberport 2, 100 Cyberport Road, Hong Kong

China Office: 15/F Plaza 66 Tower 2, 1366 Nanjing West Road, Shanghai

Marketing (852) 3699 0877 | Advertising (852) 3699 0898 | email: [marketing@incorp.com.hk](mailto:marketing@incorp.com.hk)