

select deluxe homes

The Key

大宅®

SEPTEMBER 2008
Volume 48

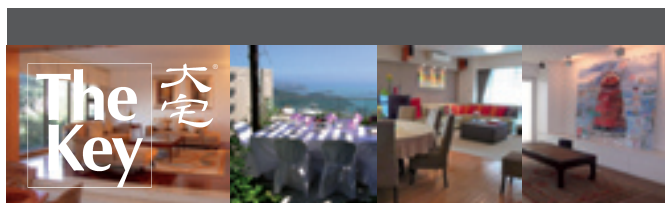
published and distributed by

LANDSCOPE 領域
The Specialists in Luxury Properties



SURREAL SURROUNDS

www.landscape.com



KeyNotes

"Do not quench your inspiration and your imagination; do not become the slave of your model."

Vincent van Gogh

.....The high end leasing market in Hong Kong however has been exceptionally buoyant, especially in the rental range of \$60,000 to \$100,000 per month, as it is still basking in the glory of the summer, and as many potential tenant-buyers have switched back to leasing in the wake of a bearish sales market. The leasing market may defy its traditional seasonal high-and-lows and become the only bright spot in the local property market.

Koh Keng-shing
ks-koh@landscape.com

(The above are an excerpt from Market Watch on www.landscape.com. For the full article, please log on to www.landscape.com/m0908.htm)

About The Key

The Key is a monthly publication of sales and letting listings of luxury residential properties on Hong Kong Island. It is sent to VIP clients of Landscape Realty and residents of The Peak, Southside, Mid-Levels, Kowloon Tong, Homantin and selected upmarket residential areas in Shatin, Tai Po, Clear Water Bay and Castle Peak Road. The recipients comprise the crème de la crème of Hong Kong's affluent community.

In addition to The Key, Landscape Realty sends weekly eNewsletters to clients on most update listings of luxury properties. If you wish to receive the eNewsletter, please call Loretta Lui at 3102 4818 or email to info@landscape.com.

How may you list your property with The Key?

If you would like to see your property listed in The Key in the next issue, you may call Loretta Lui at 3102 4818 or email to info@landscape.com. Or you may simply fill out the space below and fax to us at 2866 0015.

Property to be listed

Asking Rental / Sale Price

Floor Area

Contact Person

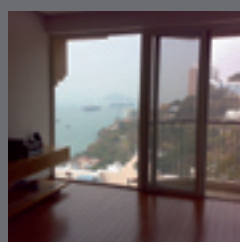
Telephone

Email

Our KeyPersons will contact you for follow-up works.

SOUTHSIDE SALES

南區
出售



Bisney Terrace

薄扶林 碧荔臺

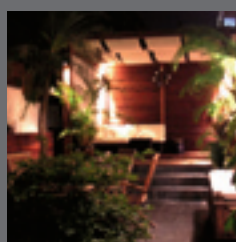
73-79 Bisney Road, Pokfulam

Nicely decorated 3-bedroom low-rise with full sea view

低密度海景三房住宅，配精緻裝潢

1,035 s.f.
\$9,300,000

www.landscape.com/14442.htm | Mark Mak 麥先生 6838 2929



CNT Bisney

薄扶林 美琳園

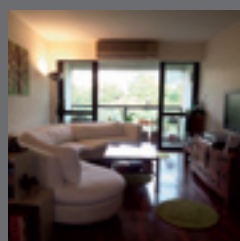
28 Bisney Road, Pokfulam

Tastefully decorated cosy garden flat in tranquil location

豪華花園住宅，優雅裝修，位處寧靜地段

949 s.f. (plus 880 s.f. garden)
\$9,800,000

www.landscape.com/15402.htm | Christine Chong 莊小姐 9648 6082



Baguio Villa

薄扶林 碧瑤灣

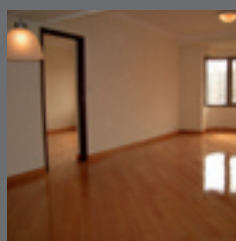
550 Victoria Road, Pokfulam

Well decorated top floor unit with private roof garden enjoying green view

優美裝潢頂層單位連私家天台，享青翠綠景

1,135 s.f. (plus 687 s.f. roof)
\$11,800,000 SOLE AGENT 獨家代理

www.landscape.com/13539.htm | Teresa Lau 劉小姐 9080 6686



Hong Kong Parkview

淺水灣 陽明山莊

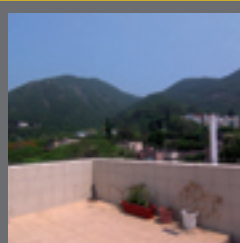
88 Tai Tam Reservoir Road, Repulse Bay

Rare find penthouse flat with private roof

頂層單位連私家天台，罕有放盤

1,312 s.f.
\$17,000,000

www.landscape.com/14347.htm | David Chan 陳先生 9238 2012



43 Stanley Village Road, Stanley

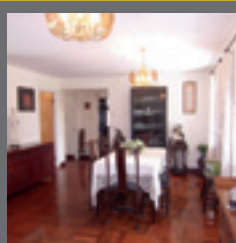
赤柱 赤柱村道43號

Well designed and renovated low-rise with roof top

全新裝修低密度住宅連天台

1,454 s.f. (plus 1,033 s.f. roof)
\$18,800,000 also for lease \$80,000 incl

www.landscape.com/16566.htm | David Chan 陳先生 9238 2012



Villa Piubello

春坎角 環角道1-7號

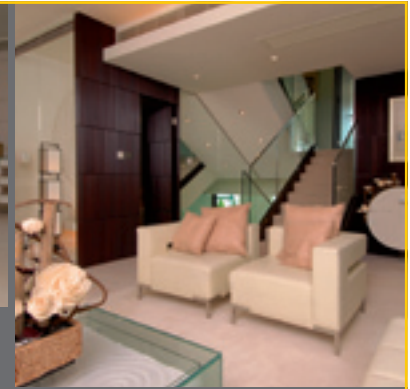
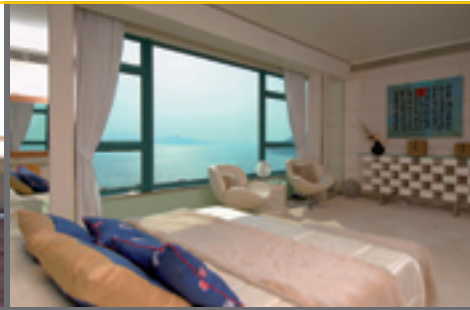
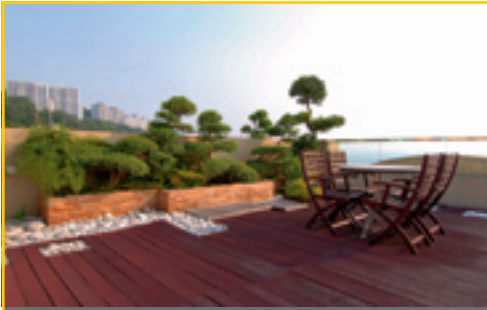
1-7 Cape Drive, Chung Hom Kok

Spacious sea view flat in quiet location

寬敞海景單位，位處寧靜地段

1,800 s.f.
\$23,800,000

www.landscape.com/16575.htm | Johnny Cheung 張先生 9278 9939



SURREAL SURROUNDS

Tucked away in a secluded spot on the meandering, barely populated coastline of Stanley is this huge townhouse. It looks out to the enchanting Stanley Bay in the distant back drop of Lamma Island. The lofty-ceilinged living room has a spacious walk-out terrace fronting the open sea, and the inside is meticulously decorated in light colour tone of white, cream and beige, with hinted blue and brown, evoking a very relaxed ambience. The light colour tone is carried throughout the family room and the bedrooms, as if one lived in a dream. Two huge en suite bedrooms on different levels ensure a big family is well catered for. The landscaped roof garden adds a further dimension to this surreal living in the cool breeze of the South China Sea. A real hideaway from it all.

Regalia Bay

赤柱 富豪海灣

88 Wong Ma Kok Road, Stanley

4,212 s.f.

Open Offer

www.landscape.com/16798.htm

Cecilia Fung 馮小姐 6271 2388



Hong Kong Parkview

淺水灣 陽明山莊

88 Tai Tam Reservoir Road, Repulse Bay

Large 3-bedroom flat with lush green

mountain view

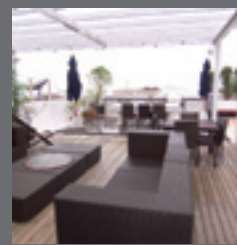
三房巨宅，享翠綠山景

2,366 s.f.

\$24,500,000

www.landscape.com/10533.htm

Johnny Cheung 張先生 9278 9939



18-22 Crown Terrace, Pokfulam

薄扶林 冠冕台18-22號

Well-maintained apartment with internal

staircase to private roof

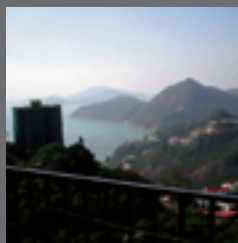
良好保養單位，室內樓梯直達私家天台

1,800 s.f. (plus 1,600 s.f. garden)

\$25,000,000

www.landscape.com/16696.htm

Philip Lai 黎先生 9430 3330



The Brentwood

淺水灣 蔚峰園

11 Repulse Bay Road, Repulse Bay

Spacious flat with charming sea view

in prime location

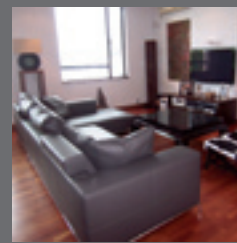
寬敞海景單位，位處尊貴地段

1,556 s.f.

\$27,500,000 **SOLE AGENT 獨家代理**

www.landscape.com/13139.htm

Rita Lee 李小姐 9437 0087



Consort Garden

薄扶林 金碧花園

22-24 Consort Rise, Pokfulam

Charming low-rise flat with private roof

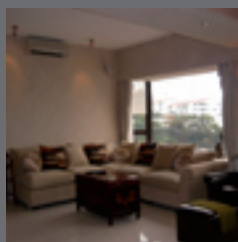
迷人低密度住宅，連私家天台

2,200 s.f. (plus 2,000 s.f. roof)

\$28,000,000

www.landscape.com/15975.htm

Carman Szeto 司徒小姐 8100 3893



Ruby Court

花園淺水灣 嘉麟閣

55 South Bay Road, Repulse Bay

Nicely decorated flat with full sea view in

prestigious development

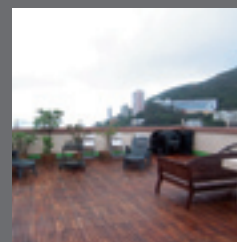
精緻裝修單位連雙車位，享迷人海景

1,780 s.f.

\$28,200,000 also for lease \$88,000 incl.

www.landscape.com/16680.htm

Teresa Fung 馮小姐 9138 1621



Scenic Villas

薄扶林 美景臺

2-28 Scenic Villa Drive, Pokfulam

Nicely decorated sea view apartment with

a big roof top

精緻裝修海景單位，連巨型天台

2,194 s.f. (plus 1,369 s.f. roof)

\$30,000,000

www.landscape.com/16603.htm

Stephen Chan 陳先生 9093 3381



Repulse Bay Garden

淺水灣 麗景園

18-40 Belleview Drive, Repulse Bay

Nicely decorated 3-bedroom flat with view

of Repulse Bay Beach

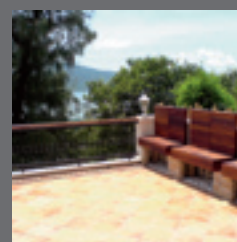
優雅裝潢三房住宅，遠眺淺水灣景色

2,288 s.f.

\$36,000,000

www.landscape.com/16336.htm

Philip Lai 黎先生 9430 3330



Carmel Hill 赤柱 海明山

12 Carmel Road, Stanley

Decorated townhouse with tennis

court and pool

精美裝修排屋，配網球場及泳池

2,378 s.f.

(plus 405 s.f. garden & 318 s.f. roof)

\$37,000,000

www.landscape.com/7068.htm

Rowena Siu 蕭小姐 9348 4118

SOUTHSIDE SALES



Pine Crest

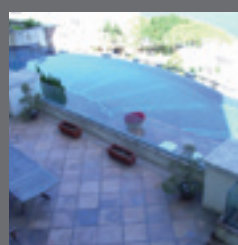
淺水灣 松苑

65 Repulse Bay Road, Repulse Bay
Spacious apartment with beautiful Deep Water Bay view
寬敞單位, 享優美深水灣海景

2,250 s.f.
\$40,000,000

www.landscape.com/1197.htm

Mark Mak 麥先生 6838 2929



Bluewater

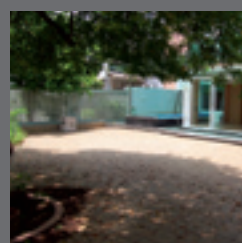
大潭 大潭路 25號

Bluewater 25 Tai Tam Road, Tai Tam
Luxurious waterfront apartment with quality fittings and finishes
豪華海濱住宅, 連優雅裝潢傢俱

2,500 s.f.
\$50,000,000 also for lease \$160,000 incl

www.landscape.com/15177.htm

Stephen Chan 陳先生 9093 3381



Woodgreen Estate

壽臣山 壽山村道5號

5 Shouson Hill Road, Shouson Hill
Duplex with huge private garden with charming green view
複式單位連巨型私家花園, 享迷人綠景

2,400 s.f. (plus 3,100 s.f. garden)
\$56,000,000

www.landscape.com/16760.htm

Simon Yung 翁先生 9418 5743



Stanley Court

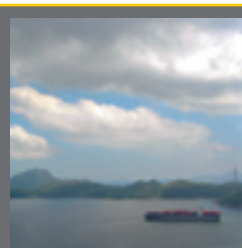
赤柱 海灣園

9 Stanley Mound Road, Stanley
Newly renovated garden house close to Beach
全新裝修花園屋, 鄰近沙灘

2,669 s.f. (plus 617 s.f. roof)
\$60,000,000 also for lease \$168,000 incl.

www.landscape.com/13230.htm

Stephen Chan 陳先生 9093 3381



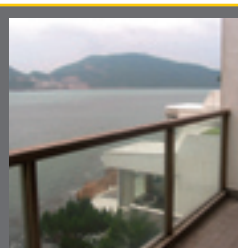
Bel-Air on the Peak (Phase 4) 薄扶林 貝沙灣南灣

68 Bel-Air Peak Avenue, Pokfulam
Exclusive 5-bedroom penthouse duplex with full sea view
獨特五房頂層複式單位, 享海景

3,981 s.f. (plus 1,274 s.f. roof)
\$73,600,000 also for lease \$200,000 incl.

www.landscape.com/16507.htm

Walker Lam 林先生 9551 1077



37 Tung Tau Wan Road, Stanley

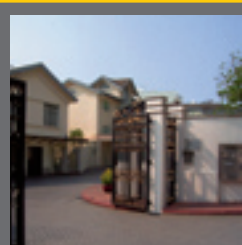
赤柱 東頭灣道37號

Unique garden house at Stanley waterfront
獨特赤柱海濱花園屋

3,300 s.f. (plus 1,000 s.f. garden)
\$75,000,000

www.landscape.com/10620.htm

Cecilia Fung 馮小姐 6271 2388



36A-36D, Repulse Bay Road, Repulse Bay

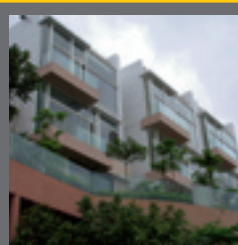
淺水灣道36A-36D號

Rare find detached house at Deep Water Bay waterfront
罕有深水灣海濱獨立屋

4,900 s.f. (plus 1,946 s.f. garden)
\$180,000,000

www.landscape.com/13719.htm

Eric Wong 黃先生 9740 3396



Island Grove

深水灣 香島道 40號

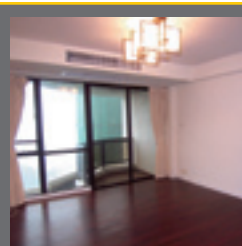
40 Island Road, Deep Water Bay
Prestigious residence at Deep Water Bay waterfront
深水灣海濱著名住宅

5,080 s.f. (plus 423 s.f. garden)
\$250,000,000

www.landscape.com/13229.htm

Louis Wong 黃先生 9871 6828

SOUTHSIDE LEASE



South Bay Towers

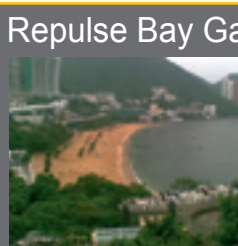
淺水灣 南灣大廈

59 South Bay Road, Repulse Bay
High floor 2-bedroom flat with sea view in tranquil South Bay
海景高層兩房單位, 位處寧靜南灣

1,433 s.f.
\$50,000 incl.

www.landscape.com/16240.htm

Simon Yung 翁先生 9418 5743



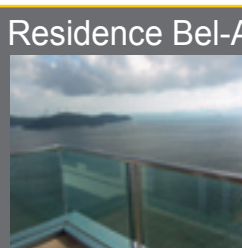
Repulse Bay Garden 淺水灣 麗景園

18-40 Belleview Drive, Repulse Bay
Newly renovated high efficiency flat overlooking Repulse Bay Beach
全新裝修高實用率單位, 遠眺淺水灣景色

1,780 s.f.
\$65,000 incl. also for sale \$25,000,000
SOLE AGENT 獨家代理

www.landscape.com/12489.htm

Mary Li 李小姐 9011 6595



Residence Bel-Air South Towers (Phase 2)

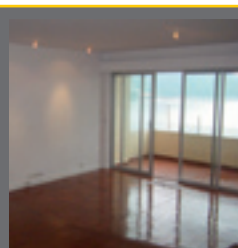
薄扶林貝沙灣南岸 (第二期)

38 Bel-Air Avenue, Pokfulam
Well-maintained high-floor 3-bedroom sea view flat
良好保養高層三房海景住宅

1,693 s.f.
\$68,000 incl. also for sale \$22,900,000

www.landscape.com/16306.htm

David Chan 陳先生 9238 2012



Faber Court

大潭 輝百閣

29-31 Tai Tam Road, Tai Tam
Tai Tam mid-rise with sweeping sea view
大潭中密度單位, 享優美海景

1,900 s.f.
\$78,000 incl. also for sale \$28,000,000

www.landscape.com/15863.htm

Simon Lee 李先生 6014 3712



74-80 Repulse Bay Road, Repulse Bay
 淺水灣 淺水灣道74-80號
 Colonial apartment close to Repulse Bay Beach
 英式住宅，鄰近淺水灣
 2,200 s.f.
\$80,000

www.landscape.com/16861.htm | David Chan 陳先生 9238 2012



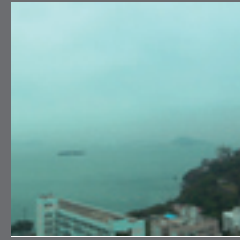
Springfield Gardens
 壽臣山 春暉園
 5-9 Shouson Hill Road West, Shouson Hill
 Charming low-rise flat in serene Shouson Hill
 壽臣山迷人低密度住宅
 1,775 s.f. (plus 600 s.f. terrace)
\$80,000 also for sale \$24,000,000

www.landscape.com/15078.htm | Eric Wong 黃先生 9740 3396



8-14 Cape Road, Chung Hom Kok
 春坎角 環角道8-14號
 3-bedroom low-rise flat with private terrace
 低密度三房住宅，連私家平台
 1,800 s.f.
\$80,000

www.landscape.com/15308.htm | Philip Lai 黎先生 9430 3330



La Mer
 薄扶林 浪頤居
 71 Bisney Road, Pokfulam
 Newly renovated 4-bedroom and 2-car park low-rise with full sea view
 全新裝修低密度四房雙車位單位，享開揚海景
 2,063 s.f.
\$82,000 incl. also for sale \$33,000,000

www.landscape.com/14489.htm | Yvonne Chang 鄭小姐 9088 4666



Villa Cecil
 薄扶林 趙苑
 192 Victoria Road, Pokfulam
 Nicely decorated 4-bedroom low-rise apartment with fantastic sea view
 新裝修低密度四房單位，享優美海景
 3,731 s.f.
\$100,000

www.landscape.com/16351.htm | Yvonne Chang 鄭小姐 9088 4666



Ruby Court
 淺水灣 嘉麟閣
 55 South Bay Road, Repulse Bay
 Newly renovated 3-bedroom flat with full sea view and facilities
 全新裝修三房單位，享全海景及設施
 2,200 s.f.
\$110,000

www.landscape.com/15660.htm | Carman Szeto 司徒小姐 8100 3893



Banyan Villas
 赤柱 榕蔭園
 9 Stanley Village Road, Stanley
 3-ensuite townhouse with garden and roof terrace
 三套房排屋，連花園及平台天台
 2,500 s.f.
\$128,000

www.landscape.com/16870.htm | Maria Cheung 張小姐 6256 1848



Provident Villas
 薄扶林 富麗苑
 29-31 Sassoon Road, Pokfulam
 High privacy garden townhouse on quiet location
 高私隱度花園排屋，位處寧靜地段
 3,030 s.f. (plus 800 s.f. terrace)
\$130,000

www.landscape.com/16746.htm | Christine Chong 莊小姐 9648 6082



Grosse Pointe Villa
 赤柱 赤柱村道4號
 4 Stanley Village Road, Stanley
 Garden duplex in lush green environment
 複式住宅連花園，位處翠綠環境
 2,800 s.f. (plus 297 s.f. garden)
\$140,000 incl.

www.landscape.com/16867.htm | Christine Chong 莊小姐 9648 6082



Faber Villa
 大潭 輝百苑
 17 Tai Tam Road, Tai Tam
 Rare find high privacy sea view flat
 罕有高私隱度海景單位
 3,200 s.f.
\$140,000 incl. also for sale \$65,000,000

www.landscape.com/15869.htm | Mary Li 李小姐 9011 6595



Pacific View
 大潭 浪琴園
 38 Tai Tam Road, Tai Tam
 Duplex penthouse in prestigious estate with panoramic sea view
 著名住宅頂層複式單位，享環迴海景
 3,913 s.f. (plus 647 s.f. terrace)
\$160,000 incl. also for sale \$78,260,000

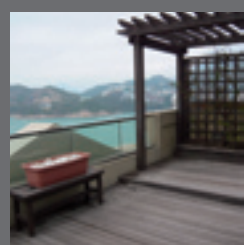
www.landscape.com/10571.htm | Simon Lee 李先生 6014 3712



Fairview Court
 淺水灣 富慧閣
 94 Repulse Bay Road, Repulse Bay
 Huge 5-bedroom flat in tranquil area of Repulse Bay
 巨型五房住宅，位處寧靜淺水灣
 4,155 s.f.
\$165,000

www.landscape.com/15269.htm | Cecilia Fung 馮小姐 6271 2388

SOUTHSIDE LEASE



Regalia Bay

赤柱 富豪海灣

88 Wong Ma Kok Road, Stanley

Nicely decorated 5-bedroom waterfront garden house

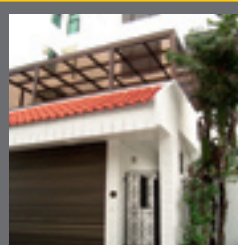
優美裝潢五房海濱花園屋

4,053 s.f.

\$170,000 incl. also for sale \$60,000,000

www.landscape.com/15498.htm

Teresa Fung 馮小姐 9138 1621



Carriana Sassoon

薄扶林 沙宣道41號

41 Sassoon Road, Pokfulam

5-bedroom townhouse with private garage

五房排屋連私家車房

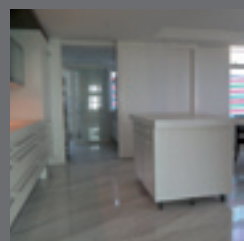
3,500 s.f.

(plus 836 s.f. terrace & 514 s.f. garden)

\$180,000 incl.

www.landscape.com/15486.htm

Teresa Lau 劉小姐 9080 6686



37 Repuse Bay Road, Repuse Bay

淺水灣 淺水灣道 37號

Rare find huge penthouse with roof garden enjoying stunning sea view

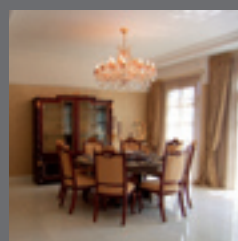
巨型頂層單位連天台花園，罕有放盤

5,804 s.f. (plus 1,194 s.f. garden)

\$250,000 incl.

www.landscape.com/14281.htm

Sissy Li 李小姐 9642 6969



Bay Villas

壽臣山 南源

57-71 Shouson Hill Road, Shouson Hill

Rare detached house with private lift overlooking Deep Water Bay

罕有獨立屋內置私家電梯，遠眺深水灣景色

5,443 s.f. (plus 541 s.f. garden)

\$380,000 incl. Also for sale Open Offer

www.landscape.com/15248.htm

Sissy Li 李小姐 9642 6969

MID-LEVELS SALES



Cherry Crest

西半山 翠麗軒

3 Kui In Fong, Midlevels West

Modern flat in Central location with lush green view

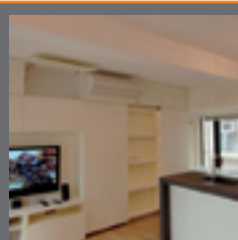
中環摩登住宅，享青翠綠景

995 s.f.

\$7,300,000 also for lease \$32,000 incl.

www.landscape.com/13648.htm

Mary Li 李小姐 9011 6595



Woodlands Terrace

西半山 嘉倫軒

4 Woodlands Terrace, Midlevels West

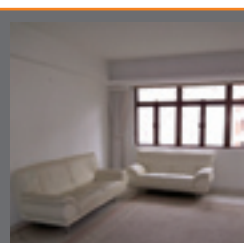
High rental potential property for investment purpose

投資放租，優質之選

950 s.f.

\$8,000,000

Mary Li 李小姐 9011 6595



Morengo Court

大坑道 昭達閣

23-25 Tai Hang Road, Midlevels East

Spacious apartment in prime location with easy access to Causeway Bay

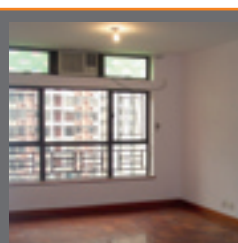
寬敞單位，位處尊貴地段，往返銅鑼灣極方便

1,066 s.f.

\$10,500,000

www.landscape.com/14648.htm

Carman Szeto 司徒小姐 8100 3893



Blessings Garden I

西半山 殷樺花園1期

95 Robinson Road, Midlevels West

Newly renovated flat with green view and partial harbour view

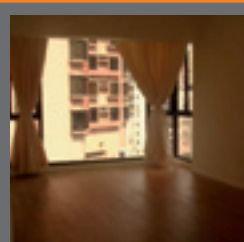
全新裝修單位，享開揚綠景及部份維港景

1,082 s.f.

\$10,800,000

www.landscape.com/2500.htm

Teresa Fung 馮小姐 9138 1621



27-29 Village Terrace, Happy Valley

跑馬地 山村臺27-29號

Unique low-rise with nice decoration in tranquil location

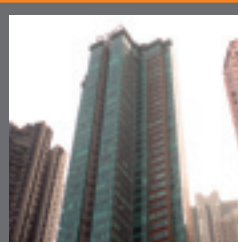
獨特低密度單位，配優美裝潢，位處寧靜地段

1,521 s.f.

\$11,200,000

www.landscape.com/16520.htm

Mary Li 李小姐 9011 6595



Casa Bella

西半山 寶華軒

117 Caine Road, Midlevels West

Modern cozy flat on convenient location

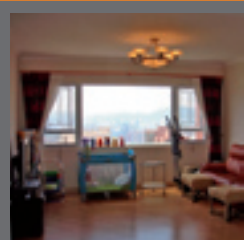
時尚優美住宅，交通便利

1,136 s.f.

\$12,000,000

www.landscape.com/16195.htm

Mark Mak 麥先生 6838 2929



Evelyn Towers

北半山 雲景台

38 Cloud View Road, North Point Midlevels

Practical flat with harbour view in convenient location

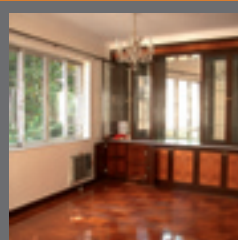
維港景住宅，間隔實用，交通方便

1,198 s.f.

\$140,000,000

www.landscape.com/16524.htm

Carman Szeto 司徒小姐 8100 3893



Hong Lok Mansions

中半山 康樂大廈

4-44F MacDonnell Road, Midlevels Central

Spacious 4-bedroom mid-rise in

中密度四房單位，間隔寬敞

1,600 s.f.

\$14,800,000 also for lease \$50,000 incl.

www.landscape.com/13659.htm

Eric Wong 黃先生 9740 3396

MID-LEVELS SALES

半山
出售



Carrie Garden
東半山 嘉園
345 Tai Hang Road, Midlevels East
Rare find low-rise flat on upper Happy Valley
上跑馬地低密度住宅，市場罕有
1,390 s.f.
\$15,500,000 also for lease \$55,000
www.landscape.com/16698.htm | Mark Mak 麥先生 6838 2929



Amber Garden
東半山 柏苑
70-72 Kennedy Road, Midlevels East
Conveniently located 3-bedroom flat with practical layout
實用三房單位，交通便利
1,732 s.f.
\$16,500,000
www.landscape.com/12490.htm | Simon Lee 李先生 6014 3712



Hillsborough Court
中半山 曉峰閣
18 Old Peak Road, Midlevels Central
Boutique apartment on Old Peak Road
舊山頂道精緻住宅
938 s.f.
\$16,500,000 **SOLE AGENT 獨家代理**
www.landscape.com/9770.htm | Teresa Fung 馮小姐 9138 1621



Flora Garden
渣甸山 慧景園
7 Chun Fai Road, Jardine's Lookout
Practical layout flat with nice decoration and swimming pool
優美裝潢單位，間隔實用，配會所泳池
1,533 s.f.
\$17,000,000 also for lease \$52,000 incl.
www.landscape.com/16681.htm | Teresa Lau 劉小姐 9080 6686



Beau Cloud Mansion
中半山 碧雲樓
64 MacDonnell Road, Midlevels Central
3-bedroom flat with terrace on MacDonnell Road
麥當奴道三房單位連平台
1,700 s.f.
\$17,700,000
www.landscape.com/14550.htm | Philip Lai 黎先生 9430 3330



Pak Fai Mansion
中半山 百輝大廈
72 MacDonnell Road, Midlevels Central
Well renovated 2-ensuite flat in colonial building
全新裝修英式雙套房單位
1,800 s.f.
\$18,500,000
www.landscape.com/16684.htm | Ada Cheung 張小姐 9681 8166



The Royal Court
中半山 帝景閣
3 Kennedy Road, Midlevels Central
Garden view apartment on Kennedy Road
堅尼地道花園景住宅
1,428 s.f.
\$18,800,000
www.landscape.com/6997.htm | Eric Wong 黃先生 9740 3396



Beverly Hill
跑馬地 比華利山
6 Broadwood Road, Happy Valley
High floor harbour view apartment in convenient location
高層維港景住宅，交通便利
1,742 s.f.
\$20,500,000
www.landscape.com/13618.htm | Simon Yung 翁先生 9418 5743



Rosedale
東半山 玫瑰花園
6 Fuk Kwan Avenue, Midlevels East
Rare find large flat in tranquil neighbourhood close to Causeway Bay
市場罕有大宅，位處寧靜地段，鄰近銅鑼灣
2,382 s.f.
\$22,000,000
www.landscape.com/16385.htm | Cecilia Fung 馮小姐 6271 2388



Beverly Hill
跑馬地 比華利山
6 Broadwood Road, Happy Valley
Tastefully decorated 4-bedroom apartment in prime location
品味佈置四房單位，位處尊貴地段
1,979 s.f.
\$22,000,000
www.landscape.com/16657.htm | Rowena Siu 蕭小姐 9348 4118

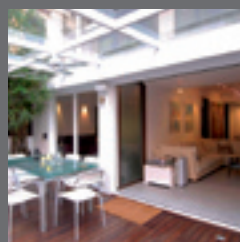


Sanitarian Apartments
跑馬地 潔園
20-30 Green Lane, Happy Valley
Nicely decorated colonial apartment with private garden in tranquil surroundings
優美英式單位，連私家花園，位處寧靜地段
2,000 s.f. (plus 150 s.f. terrace)
\$24,500,000
www.landscape.com/16269.htm | Rowena Siu 蕭小姐 9348 4118



Yuenita Villa
跑馬地 苑廬
3A-B Blue Pool Road, Happy Valley
Colonial apartment with high efficiency in convenient location
高實用率英式單位，交通便利
2,380 s.f.
\$25,500,000
www.landscape.com/16562.htm | Mira To 杜小姐 9486 1566

MID-LEVELS SALES



Grand Court

跑馬地 嘉蘭閣

16 Shan Kwong Road, Happy Valley
Nicely decorated 3-bedroom flat with large terrace
精緻三房單位連平台

1,569 s.f. (plus 1,404 s.f. terrace)
\$26,000,000

www.landscape.com/15741.htm

Christine Chong 莊小姐 9648 6082



Elm Tree Towers

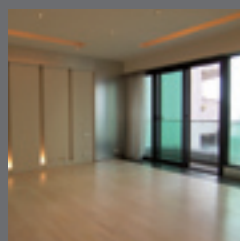
渣甸山 愉富大廈

8-10 Chun Fai Road, Jardine's Lookout
Practical and spacious flat in Jardine's Lookout
渣甸山住宅，間隔寬敞實用

2,028 s.f.
\$26,000,000

www.landscape.com/16350.htm

Mira To 杜小姐 9486 1566



11 MacDonnell Road, Midlevels Central

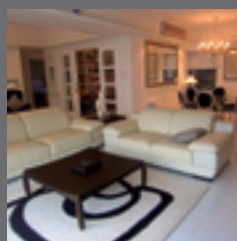
中半山 麥當勞道 11 號

Tasteful decorated high privacy modern apartment
品味裝潢時尚單位，享高私隱度

2,313 s.f.
\$29,800,000 also for lease \$88,000 incl.

www.landscape.com/14367.htm

David Chan 陳先生 9238 2012



Nicholson Tower

東半山 蔚豪苑

8 Wong Nai Chung Gap Road, Midlevels East
Nicely decorated flat with open green view and partial harbour

1,993 s.f.
\$31,000,000

www.landscape.com/16010.htm

Cecilia Fung 馮小姐 6271 2388



Horizon Mansion

中半山 崇華大廈

102-104 MacDonnell Road, Midlevels Central
Nicely fitted and equipped colonial flat with large balcony
英式單位連大露台，配優美裝修佈置

2,300 s.f.
\$32,000,000 also for lease \$180,000

www.landscape.com/16761.htm

Stella Lo 羅小姐 9809 8570



Wealthy Heights

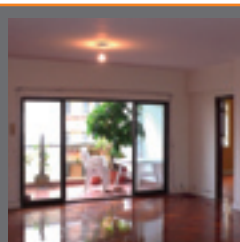
中半山 威豪閣

35-37 MacDonnell Road, Midlevels Central
Spacious 2-bedroom flat with huge private terrace garden
寬敞兩房單位，連巨型私家平台花園

1,561 s.f. (plus 3,880 s.f. terrace)
\$33,000,000 also for lease \$80,000 incl.

www.landscape.com/15046.htm

Stella Lo 羅小姐 9809 8570



Fairview Mansion

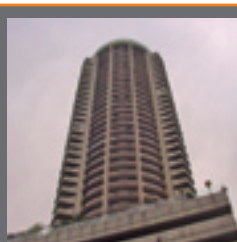
西半山 昭景大廈

84 Robinson Road, Midlevels West
Spacious and practical 4-bedroom apartment
四房單位，間隔寬敞實用

2,700 s.f.
\$33,000,000 also for lease \$80,000 incl.

www.landscape.com/16375.htm

Mira To 杜小姐 9486 1566



Century Tower I

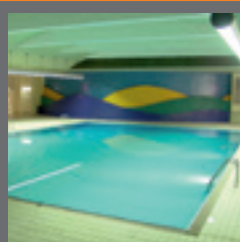
中半山 世紀大廈 1座

1 Tregunter Path, Midlevels Central
Harbour view flat with balcony in prime location
維港景單位連露台，位處尊貴地段

2,565 s.f.
\$37,800,000

www.landscape.com/15806.htm

Rita Lee 李小姐 9437 0087



Regent on the Peak

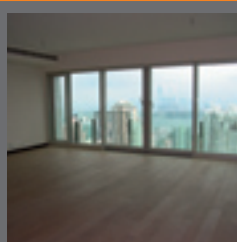
中半山 御花園

9A Kennedy Road, Midlevels Central
Spacious apartment with facilities on fringe of Admiralty
寬敞單位連設施，鄰近金鐘

2,720 s.f.
\$38,000,000

www.landscape.com/15643.htm

Sissy Li 李小姐 9642 6969



The Legend

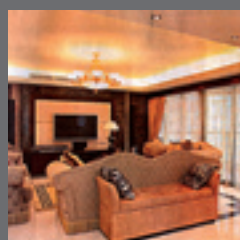
渣甸山 名門

23 Tai Hang Drive, Jardine's Lookout
5-bedroom harbour view flat with comprehensive facilities
五房維港景單位，配完善會所設施

2,372 s.f.
\$38,000,000

www.landscape.com/16160.htm

Cecilia Fung 馮小姐 6271 2388



Estoril Court

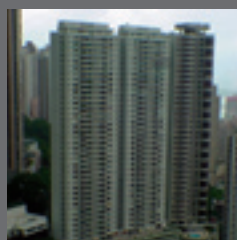
中半山 愛都大廈

55 Garden Road, Midlevels Central
Nicely decorated apartment with very high efficiency on fringe of Central
優美裝潢高實用率住宅，鄰近中環

3,347 s.f.
\$39,800,000

www.landscape.com/12919.htm

Eric Wong 黃先生 9740 3396



Garden Terrace

中半山 花園臺

8 Old Peak Road, Midlevels Central
4-ensuite bedroom flat in Midlevels with easy access to Central
半山四套房單位，往返中環交通便利

3,319 s.f.
\$43,000,000

www.landscape.com/14416.htm

Maria Cheung 張小姐 6256 1848

MID-LEVELS SALES

半山
出售



Leon Court 東半山 利安閣
12-14 Wong Nai Chung Gap Road, Midlevels East
Practical 4-bedroom flat in a quiet location with open city view
實用四房單位，位處寧靜地段，享開揚城市景
2,800 s.f.
\$45,000,000

www.landscape.com/10476.htm | Christine Chong 莊小姐 9648 6082



May Tower 1
中半山 梅苑一座
7 May Road, Midlevels Central
Deluxe harbour view duplex with enlarged master bedroom
豪華複式維港景單位，連巨型主人套房
2,850 s.f.
\$48,000,000

www.landscape.com/14381.htm | Rowena Siu 蕭小姐 9348 4118



Catalina Mansions
中半山 嘉年大廈
98-100 MacDonnell Road, Midlevels Central
Rare find huge duplex apartment in prime location
罕有複式巨宅，位處優越地段
4,600 s.f.
\$53,800,000

www.landscape.com/16920.htm | Louis Wong 黃先生 9871 6828



Kennedy Heights
中半山 堅麗閣
10-18 Kennedy Road, Midlevels Central
Large 5-bedroom flat with facilities on fringe of Central
巨型五房單位連設施，鄰近中環
3,400 s.f.
\$55,000,000

www.landscape.com/16461.htm | Stella Lo 羅小姐 9809 8570



Garden Terrace
中半山 花園臺
8 Old Peak Road, Midlevels Central
Tastefully decorated harbour view penthouse flat with terrace
品味裝潢維港景頂層單位，連平台
1,766 s.f. (plus 1,090 s.f. terrace)
\$58,000,000

www.landscape.com/16663.htm | Ada Cheung 張小姐 9681 8166



Clovelly Court
中半山 嘉富麗苑
12 May Road, Midlevels Central
Large and spacious 4-bedroom flat in prime location
寬敞實用四房單位，地段尊貴
2,809 s.f.
\$58,000,000 also for lease \$120,000

www.landscape.com/13459.htm | Sissy Li 李小姐 9642 6969



Bowen Place
中半山 寶雲閣
11A Bowen Road, Midlevels Central
Rare find harbour view duplex with 4-bedroom
四房維港景複式單位，市場罕有
3,621 s.f. (plus 184 s.f. terrace)
\$62,000,000

www.landscape.com/15241.htm | Sami Woo 胡小姐 9493 8275



The Albany
中半山 雅賓利大廈
1 Albany Road, Midlevels Central
Prestigious apartment in prime location
豪華住宅，位處尊貴地段
2,549 s.f.
\$65,000,000 also for lease \$150,000 incl.

www.landscape.com/15001.htm | Simon Lee 李先生 6014 3712



Grenville House
中半山 嘉慧園
1-3 Magazine Gap Road, Midlevels Central
Prestigious 4-bedroom flat with large balcony in prime location
豪華四房住宅連大露台，顯赫地段
3,700 s.f.
\$66,000,000

www.landscape.com/16676.htm | Ada Cheung 張小姐 9681 8166



Tregunter Tower 3
中半山 地利根德閣3座
14 Tregunter Path, Midlevels Central
Luxurious duplex apartment with stunning harbour view
尊貴複式單位，享環迴維港景
3,798 s.f.
\$83,800,000

www.landscape.com/16623.htm | Walker Lam 林先生 9551 1077



Shuk Yuen Building
跑馬地 菽園新臺
2 Green Lane, Happy Valley
Unique mid-rise with large balcony
獨特中密度單位連大露台
1,900 s.f.
\$50,000 also for sale \$20,000,000

www.landscape.com/14824.htm | Walker Lam 林先生 9551 1077



Vivian's Court
跑馬地 榮慧苑
75 Blue Pool Road, Happy Valley
Low-rise penthouse with roof in quiet location
低密度頂層單位連天台，位處寧靜地段
1,100 s.f.
\$50,000 also for sale \$11,000,000

www.landscape.com/14448.htm | Johnny Cheung 張先生 9278 9939

半山
出租

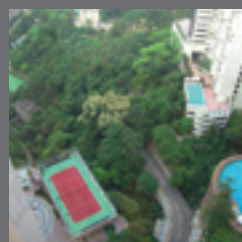
MID-LEVELS LEASE

For more listings, please go to www.landscape.com/sale

For more listings, please go to www.landscape.com/lease

The Key **volume 48** 08

MID-LEVELS LEASE



Valverde

中半山 蔚皇居

11 May Road, Midlevels Central
Cozy 2-bedroom flat in prime location
舒適兩房單位，位處尊貴地段

1,063 s.f.
\$52,000 incl. also for sale \$20,000,000

www.landscape.com/9845.htm

Walker Lam 林先生 9551 1077



Winfield Building

跑馬地 雲暉大廈

1 Ventris Road, Happy Valley
Well maintained racecourse view flat
新裝單位連廚廁，享馬場景

1,597 s.f.
\$65,000 incl.

www.landscape.com/16674.htm

Walker Lam 林先生 9551 1077



Kennedy Terrace

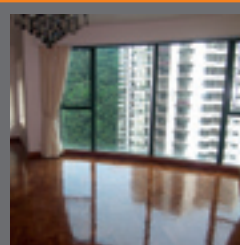
中半山 堅尼地台

20 Kennedy Road, Midlevels Central
Mid-rise apartment with internal staircase
and roof
巨型五房住宅，位處寧靜淺水灣

1,200 s.f. (plus 1,020 s.f. terrace)
\$65,000 incl. also for sale \$18,000,000

www.landscape.com/16918.htm

Teresa Lau 劉小姐 9080 6686



Hillsborough Court

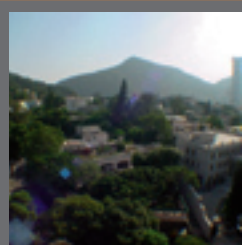
中半山 曉峰閣

18 Old Peak Road, Midlevels Central
3-bedroom luxurious living in
Midlevels Central
中半山豪華三房住宅

1,385 s.f.
\$70,000 incl.

www.landscape.com/16360.htm

Philip Lai 黎先生 9430 3330



Monterey Court

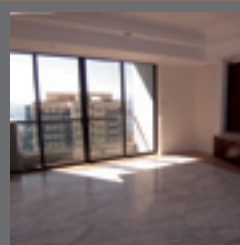
渣甸山 白建時道47- 49號

47-49 Perkins Road, Jardine's Lookout
Open view 3-bedroom apartment in
Jardine's Lookout
渣甸山三房住宅，享開揚景觀

1,788 s.f.
\$73,000

www.landscape.com/14848.htm

Simon Yung 翁先生 9418 5743



Cavendish Heights

渣甸山 嘉雲臺

27-37 Perkins Road, Jardine's Lookout
Well maintained flat with harbour view and
full clubhouse facilities
維港景單位配會所設施，保養良好

1,907 s.f.
\$75,000 incl.

www.landscape.com/16748.htm

Carman Szeto 司徒小姐 8100 3893



Old Peak Mansion

中半山 舊山頂道5號

5 Old Peak Road, Midlevels Central
Spacious 3-bedroom mid-rise flat on
convenient location
寬敞中密度三房單位，地點便利

2,088 s.f.
\$75,000

www.landscape.com/16442.htm

Sami Woo 胡小姐 9493 8275



Bowen Place

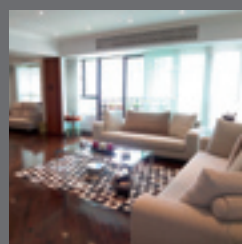
中半山 寶雲閣

11A Bowen Road, Midlevels Central
Charming 3-bedroom apartment on quiet
Bowen Road
精緻三房單位，位處寧靜寶雲路

1,927 s.f.
\$80,000 incl.

www.landscape.com/12732.htm

Rita Lee 李小姐 9437 0087



Carnation Court

東半山 康馨園

41-47 Tai Hang Road, Midlevels East
Practical 4-bedroom flat with open city
view on fringe of Causeway Bay
實用四房單位，享開揚景觀，鄰近銅鑼灣

2,126 s.f.
\$82,000 incl.

www.landscape.com/15207.htm

Sami Woo 胡小姐 9493 8275



Wealthy Heights

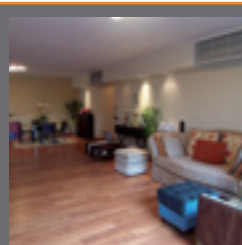
中半山 威豪閣

35-37 MacDonnell Road, Midlevels Central
4-bedroom apartment with expansive
harbour and CBD views
四睡房單位，盡覽維港及中區景觀

2,128 s.f.
\$95,000 incl.

www.landscape.com/7577.htm

Mira To 杜小姐 9486 1566



Clovelly Court

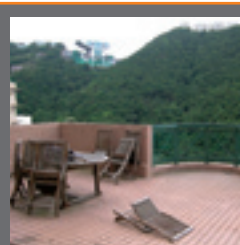
中半山 嘉富麗苑

12 May Road, Midlevels Central
Spacious and practical flat with
nice decoration
寬敞實用住宅配優美裝潢

2,276 s.f.
\$98,000 incl.

www.landscape.com/16370.htm

Rita Lee 李小姐 9437 0087



Hillsborough Court

中半山 曉峰閣

18 Old Peak Road, Midlevels Central
Rare find duplex penthouse with terrace
頂層複式單位連平台，罕有放盤

2,095 s.f. (plus 1,225 s.f. terrace)
\$110,000

www.landscape.com/6597.htm

Mira To 杜小姐 9486 1566

MID-LEVELS LEASE

半山
出租



Estoril Court
中半山 愛都大廈
55 Garden Road, Midlevels Central
Huge flat with spacious and practical layout on fringe of Central
寬敞實用巨宅，鄰近中環
3,347 s.f.
\$115,000 incl.

www.landscape.com/15566.htm | Ada Cheung 張小姐 9681 8166



Ville De Perkins
渣甸山 禮苑
15 Perkins Road, Jardine's Lookout
Modern penthouse duplex with roof with open city view
時尚頂層複式單位連天台，享開揚城市景
3,200 s.f. (plus 2,000 s.f. roof)
\$120,000

www.landscape.com/15808.htm | Sami Woo 胡小姐 9493 8275



Garden Terrace
中半山 花園臺
8 Old Peak Road, Midlevels Central
High floor 4-ensuite apartment with comprehensive facilities
高層四套房單位，配完善設施
3,307 s.f.
\$120,000

www.landscape.com/16733.htm | Stella Lo 羅小姐 9809 8570



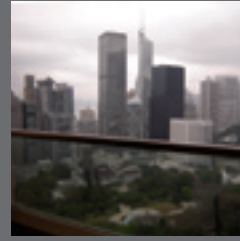
Victoria Height
東半山 威利閣
43A Stubbs Road, Midlevels East
Penthouse with 4-bedroom and roof in prime location
頂層四房單位連天台，位處尊貴地段
2,650 s.f. (plus 1,936 s.f. roof)
\$120,000

www.landscape.com/16805.htm | Teresa Lau 劉小姐 9080 6686



Kam Yuen Mansion
中半山 錦園大廈
3 Old Peak Road, Midlevels Central
Brand new decorated 4-bedroom low-rise with greenery view and club facilities
全新裝修四房低密度單位，享綠景及會所設施
2,700 s.f.
\$128,000

www.landscape.com/5393.htm | Yvonne Chang 鄭小姐 9088 4666



The Albany
中半山 雅賓利大廈
1 Albany Road, Midlevels Central
Exclusive apartment with splendid city view and harbour view
獨特單位，享壯麗城市及維港景
2,546 s.f.
\$150,000 incl. also for sale \$65,000,000

www.landscape.com/14229.htm | Stephen Chan 陳先生 9093 3381



May Tower 2
中半山 梅苑二座
5 May Road, Midlevels Central
Spacious 4-ensuite apartment with high privacy
寬敞高私隱度四套房單位
3,393 s.f.
\$165,000 also for sale \$78,000,000

www.landscape.com/16762.htm | Simon Yung 翁先生 9418 5743



Century Tower II
中半山 世紀大廈2座
1A Tregunter Path, Midlevels Central
Spacious 4-bedroom flat with high privacy
寬敞四房單位，享極高私隱
3,663 s.f.
\$170,000 incl.

www.landscape.com/16600.htm | Stella Lo 羅小姐 9809 8570



Kenville Building
中半山 甘苑
32 Kennedy Road, Midlevels Central
Large 5-bedroom garden flat with huge terrace
五房花園大宅，連巨型平台
4,000 s.f. (plus 2,607 s.f. terrace)
\$210,000 incl. also for sale \$100,000,000

www.landscape.com/15074.htm | Rowena Siu 蕭小姐 9348 4118



Bowen's Lookout 中半山 寶雲道13號
13 Bowen Road, Midlevels Central
Rare find duplex penthouse with harbour view and full club facilities
頂層複式單位，享維港景及會所設施
4,050 s.f.
(plus 619 s.f. roof & 619 s.f. sky garden)
\$400,000

www.landscape.com/2980.htm | Yvonne Chang 鄭小姐 9088 4666

THE PEAK SALES

山頂
出售



Peak Garden
山頂 山頂花園
16-20 Mount Austin Road, The Peak
Harbour view penthouse apartment with roof
維港景頂層單位連天台
1,640 s.f. (plus 1,200 s.f. roof)
\$48,800,000

www.landscape.com/16580.htm | Johnny Cheung 張先生 9278 9939



Eredine
山頂 加列山道38號
38 Mount Kellett Road, The Peak
Huge colonial apartment with spectacular sea view
英式巨宅，享壯觀海景
3,300 s.f.
\$71,000,000

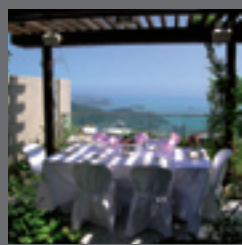
www.landscape.com/9926.htm | David Leung 梁先生 9199 0672

For more listings, please go to www.landscape.com/lease

For more listings, please go to www.landscape.com/sale

THE PEAK SALES

山頂出售



Sunshine Villa

山頂 陽光花園

48 Mount Kellett Road, The Peak

Lovely Peak garden house with 17-foot ceiling

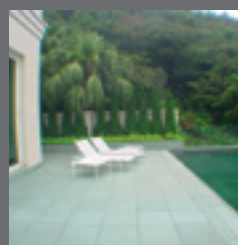
迷人山頂花園屋，享十七呎天花

3,500 s.f. (plus 1,920 s.f. garden)

\$120,000,000

www.landscape.com/4082.htm

David Leung 梁先生 9199 0672



Peak Road, The Peak

山頂 山頂道

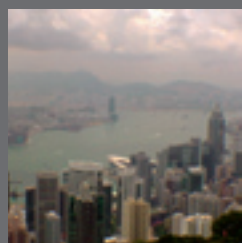
Rare detached house with private swimming pool
罕有獨立屋連私家泳池

4,250 s.f.

\$160,000,000 **SOLE AGENT 獨家代理**

www.landscape.com/14315.htm

David Leung 梁先生 9199 0672



Abergeldie 山頂 種植道52號

52 Plantation Road, The Peak

Peak house with bird's eye view of Victoria Harbour

山頂大宅，俯瞰維港景色

3,655 s.f.

(plus 313 s.f. terrace & 464 s.f. garden)

\$188,000,000 also for lease \$250,000

www.landscape.com/12967.htm

Maria Cheung 張小姐 6256 1848



Gough Hill Residences

山頂 歌賦山里

3-5 Gough Hill Path, The Peak

Exclusive Peak house with huge garden

獨特山頂屋連巨型花園

5,657 s.f. (plus 5,320 s.f. garden)

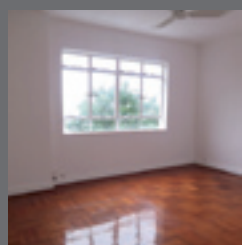
\$330,000,000 also for lease \$580,000 incl.

www.landscape.com/15140.htm

Teresa Fung 馮小姐 9138 1621

THE PEAK LEASE

山頂出租



26 Magazine Gap Road

山頂 馬己仙峽道26號

Rare find harbour view colonial mid-rise apartment

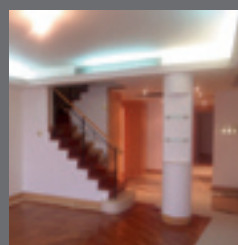
維港景英式中密度住宅，罕有放盤

2,400 s.f.

\$108,000 incl. also for sale \$55,000,000

www.landscape.com/15645.htm

Rita Lee 李小姐 9437 0087



27 Plantation Road

山頂 種植道27號

Unique low-rise flat with private roof terrace overlooking the harbour

獨特低密度住宅連私家天台平台，遠眺維港景色

2,600 s.f. (plus 791 s.f. garden)

\$138,000 incl. also for sale \$60,000,000

www.landscape.com/11498.htm

Maria Cheung 張小姐 6256 1848



Ondina Heights

山頂 安寧臺

62-66 Peak Road, The Peak

Luxurious European style house with sweeping sea view

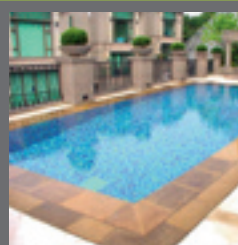
豪華歐陸式住宅，享壯觀海景

3,396 s.f.

\$160,000

www.landscape.com/16559.htm

Louis Wong 黃先生 9871 6828



74 Mount Kellett Road, The Peak

山頂 加列山道74號

Rare find garden house with sea view on The Peak

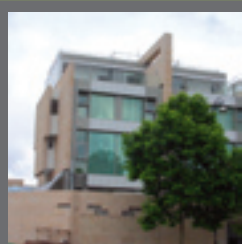
山頂海景花園屋，罕有放盤

4,200 s.f. (plus 400 s.f. roof)

\$250,000 incl.

www.landscape.com/16178.htm

Yvonne Chang 鄭小姐 9088 4666



2 Barker Road, The Peak

山頂 白加道2號

Exquisite townhouse with stunning views over Victoria Harbour and the Southside

精緻排屋，享環迴維港及南區景

4,082 s.f.

\$290,000

www.landscape.com/11572.htm

Louis Wong 黃先生 9871 6828



9 Coombe Road, The Peak

山頂 甘道9號

Newly decorated house on serene location

全新裝修大屋，位處寧靜地段

7,500 s.f. (plus 400 s.f. garden)

\$450,000

www.landscape.com/16661.htm

David Leung 梁先生 9199 0672



Landscape Realty Limited C-018733

a member of Landscape Surveyors Ltd

Tel: 852-2866 0022 Fax: 852-2866 0015

Email: info@landscape.com Website: www.landscape.com

Unit 3106, 31/F, Hopewell Centre,

183 Queen's Road East, Wanchai, Hong Kong

The information, text, photos, analyses and projections contained herein are provided solely for the convenience of prospective clients and no warranty or representation as to their accuracy, correctness or completeness is made by Landscape Surveyors Limited, Landscape Realty Limited or the owners, none of whom shall have any liability or obligation with respect thereto. Interested parties should rely on their own investigations, interpretations and analyses in connection with the purchase or letting thereof.

Information has been provided to us by sources deemed reliable, but no warranty or representation is made as to its accuracy, correctness or completeness. These offerings are made subject to contract, correction of errors, omissions, prior sale or lease, change of price or terms or withdrawal from the market without notice. The contents of The Key are for reference only and do not constitute all or any part of a contract.

Copyright 2008