

The
Key

大宅[®]

Select deluxe homes

LANDSCOPE

CHRISTIE'S
INTERNATIONAL REAL ESTATE

Volume 94 OCTOBER 2012

奢居藍塘道

ULTRA-LUXE AT THE
HAMPTON



KeyWords

“Socialism failed because it couldn't tell the economic truth;
capitalism may fail because it couldn't tell the ecological truth”

「社會主義的失敗，是因為無法顯示經濟的實際情況；資本主義或會失敗，是因為無法顯示生態現實」

– Lester Russel Brown (1934-), environmental analyst, founder of the Worldwatch Institute

– 環境分析師兼世界觀察研究所創辦人萊斯特布朗 (1934-)

KeyNotes

Despite the government's latest attempts to increase the housing supply – which includes the exemption of premiums on resale of Home Ownership Scheme (HOS) flats – the shortfall in the land bank is clear, prompting speculators to jump on the bandwagon, even though there is no indication that the punitive Special Stamp Duty will be removed any time soon. As a result, the small flats market has experienced a sudden surge in sales and a price hike. More recently, the government announced measures to speed up the conversion of factory buildings into residential units for letting, illustrating the dire lack of developable land territory-wide.

縱然政府推出新一輪措施試圖增加房屋供應，包括「居者有其屋(居屋)」二手市場轉售豁免補地價，但土地儲備短缺還是明顯不過的事實，即使無跡象顯示嚴苛的額外印花稅會在不久的將來撤消，已足夠驅使炒家紛紛趕潮流加入戰團。結果，小型住宅市場的交投量突然急增，價格亦創新高。而最近，政府宣布措施加快把工廠大廈改裝成住宅單位出租，全港可發展土地嚴重短缺的情況更是表露無遺。

K.S. Koh

ks.koh@landscape-christies.com

(The above is an excerpt from Market Watch on www.landscape-christies.com. Read the full article at Market Watch, www.landscape-christies.com/marketwatch)

(以上內容節錄於領域網站內的市場觀察，如欲觀看全文，請登上網址: www.landscape-christies.com/marketwatch)

Monthly HIGHLIGHTS 每月精選



04 The Hampton
跑馬地 藍塘道45號

15 Bay Villas
壽臣山 南源

22 Shek O Village
大潭 石澳村

HOW MAY YOU LIST YOUR PROPERTY WITH THE KEY?

怎樣在《大宅》刊登您的出售／出租物業？

If you would like to see your property listed in The Key in the next issue, you may call Loretta Lui at 3102 4818 or visit us at www.landscape-christies.com/sell_let. Or you may simply fill out the space below and fax to us at 2866 0015.

如果您想將出售／出租物業刊登於大宅，可致電3102 4818與呂小姐聯絡，或登上 www.landscape-christies.com/sell_let。或者您可以填寫下面的表格傳真至2866 0015。

Property to be listed 物業

Asking Rental / Sale Price 租金 / 售價

Floor Area 面積

Contact Person 聯絡人

Telephone 電話

Email 電郵地址

Our KeyPersons will contact you for follow-up works.

我們的大宅專員會上與您聯絡

Published and distributed by

LANDSCOPE

CHRISTIE'S
INTERNATIONAL REAL ESTATE

Find us on:
facebook

Designed by

PERSPECTIVE 透視

Landscape Christie's International Real Estate C-018733

Tel: +852 2866 0022

Fax: +852 2866 0015

Email: info@www.landscape-christies.com

Website: www.landscape-christies.com

Address: Unit 3106, 31/F, Hopewell Centre,
183 Queen's Road East, Wanchai, Hong Kong

Tel: +852 2525 0287

Fax: +852 2526 3860

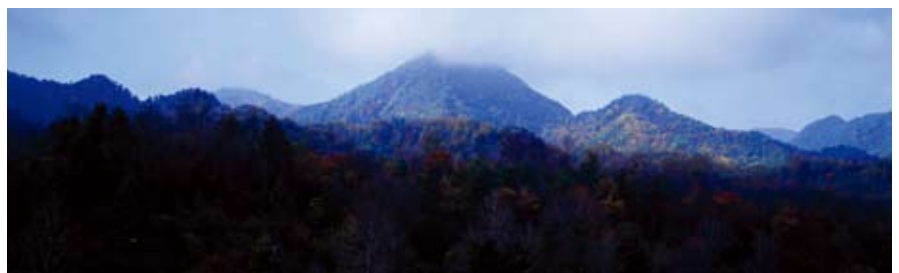
Email: info@perspectiveglobal.com

Website: www.perspectiveglobal.com

Address: Rm 2408, Dominion Centre,
59 Queen's Road East, Wanchai, Hong Kong

The information, text, photos, analyses and projections contained herein are provided solely for the convenience of prospective clients and no warranty or representation as to their accuracy, correctness or completeness is made by Landscape Christie's International Real Estate, Landscape Surveyors Limited, Landscape Realty Limited or the owners, none of whom shall have any liability or obligation with respect thereto. Interested parties should rely on their own investigations, interpretations and analyses in connection with the purchase or letting thereof.

Information has been provided to us by sources deemed reliable, but no warranty or representation is made as to its accuracy, correctness or completeness. These offerings are made subject to contract, correction of errors, omissions, prior sale or lease, change of price or terms or withdrawal from the market without notice. The contents of The Key are for reference only and do not constitute all or any part of a contract. Copyright 2012



周邊環境及專案特點：

西安院子坐落於西安市西南郊秦嶺北麓，位於大漢上林苑遺址，西接太平河，依山傍水，樹木蔥郁。其主要建築由35座純手工中式大宅和自然山水園林景觀構成。

西安院子設計項目以中國傳統庭院為基調，兼顧北方民居，採用了門樓、院牆、坡頂、青磚及窗櫺的形式。在設計理念上，將現代建築功能、結構、形式及設備配套與豐富的文化內涵有機結合，形成了青瓦延綿，灰牆連貫，古樹參天，樸實自然的建築群體。園林景觀集南北方園林之精粹，戶戶溪流環繞，三季有花，四季常綠。

精裝修戶型由梁錦華先生與蔡文亮先生兩位大師親自設計，將藝術、建築與科技完美融合。物業管理獨創「中國式管家服務特色」，為業主提供舒適貼心服務，令西安院子成為業主的理想身心家園。

項目位置：陝西省西安市草堂寺景區內

建築面積：每棟600平米-800平米

花園面積：420平米-760平米（贈送）

均價及價格區間：

32,000元（人民幣）/平米

聯絡人：許先生 +852 3102 4888

張小姐 +852 5303 4349


西安院子
XIAN GARDEN



ULTRA-LUXE AT THE HAMPTON 奢居藍塘道



Villa Oak the 3,235 s.f. residence is tastefully designed and furnished to meet the needs of any modern family. Featuring a palette of white, gray and Naples yellow, the three-bedroom apartment (one ensuite) is brightly lit with light hardwood floors and large windows in the combined living and dining room, family room and master bedroom. Next to the living room, homeowners and guests can enjoy a drink at the stylishly designed bar. From the master bedroom, homeowners get a beautiful view of the lush greenery outside. In addition, Villa Oak comes with a maid's room, a utility room, a study, a covered car park and brand new and fully fitted kitchen and bathroom.

Part of a 7-storey low density residence, Villa Oak is located in one of Hong Kong's most sought after sites in Happy Valley. With only a total of 11 exclusive Villas, The Hampton offers luxury living and comfort in the most enchanting and gracious neighbourhood of Happy Valley. The area is peaceful and full of open space yet only a few minutes' ride to downtown Causeway Bay with buses and minibuses nearby. There are also supermarkets, laundries and convenience stores within close proximity.

Villa Oak這個3,235平方呎的歐式巨宅的設計與陳設都盡顯品味，迎合現代家庭的各種需要。兩睡房連一套房的設計以白、灰和暗黃為主，鋪上淺色實木地板，客飯廳、家庭室與主人套房都裝設大型窗戶，一室光亮。客廳旁是設計時尚的吧枱，屋主與客人可把酒言歡一番。主人套房的景色尤其優美，窗外一片蒼翠繁茂。而且，單位附設家傭房、雜物房、書房與有蓋車位，廚房與浴室新裝後設備齊全。

這個單位位於跑馬地七層高低密度物業The Hampton內，坐落於香港最受歡迎的住宅區之一。The Hampton僅有11個主題巨宅。每一戶獨步天下，在跑馬地最迷人雅緻的社區中帶來奢華生活與極致舒適。區內寧靜空曠，交通卻相當便利，乘搭附近的巴士與小巴到銅鑼灣鬧市只需數分鐘車程。附近亦有多間超級市場、洗衣店及便利店。車站亦不過相距數分鐘車程。

Villa Oak@The Hampton
45 Blue Pool Road, Happy Valley
跑馬地 藍塘道45號

3,235 s.f.
\$90M

9871 6828 Louis Wong 黃先生
www.landscape-christies.com/78395.htm



Shuk Yuen Building

2 Green Lane

Spacious 3-bedroom mid-rise apartment with big balcony in upper Happy Valley
中密度三房住宅，間隔寬敞，連大露台

2,000 s.f.
\$30.8M

☎ 9028 0147 Jenson Au 區先生
🌐 www.landscape-christies.com/52784.htm

跑馬地
叔園新臺



9-10 Briar Avenue

Upper Happy Valley low-rise apartment with open city views for sale
跑馬地低密度住宅，享開揚城市景致，罕有放售

2,000 s.f.
\$33M

☎ 9093 3381 Stephen Chan 陳先生
🌐 www.landscape-christies.com/67477.htm

跑馬地
比雅道9-10號



Goodview Garden

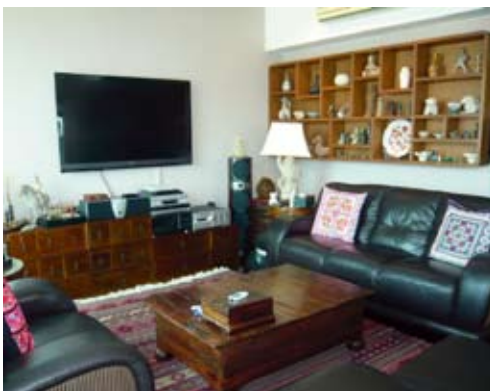
24 Stubbs Road

Rare low-rise duplex conveniently located in Stubbs Road
司徒拔道低密度複式住宅，市場罕有

2,200 s.f. (plus 215 s.f. garden)
\$38.9M

☎ 9229 2396 Elaine Chow 周小姐
🌐 www.landscape-christies.com/41695.htm

東半山
豐景台



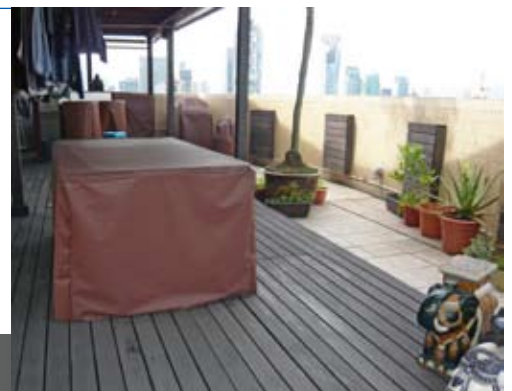
8 Shiu Fai Terrace

Unique duplex with private roof and balcony in Midlevels East for sale
東半山獨特複式單位，連私家天台及露台

3,076 s.f. (plus 746 s.f. roof)
\$55M

☎ 9833 9509 Michelle Chung 鍾小姐
🌐 www.landscape-christies.com/101559.htm

東半山
肇輝台8號



Leon Court

12-14 Wong Nai Chung Gap Road

Large 3-bedroom simplex in Midlevels East with panoramic city views
巨大三房單位，享遠闊城市景觀

2,800 s.f.
\$59M

☎ 9551 1077 Walker Lam 林先生
🌐 www.landscape-christies.com/37355.htm

東半山
利安閣





Royalton II

116 Pok Fu Lam Road

Bright and airy 3-bedroom apartment with full sea view

光猛通風三房單位，享美麗全海景

1,750 s.f.

\$21M

9250 0300 Randy Chan 陳先生
www.landscape-christies.com/121728.htm

薄扶林 豪峰二



The Redhill Peninsula

18 Pak Pat Shan Road

Practical 2-bedroom sea view flat with facilities in Tai Tam

實用兩房海景住宅，連設施，位於大潭，可租可售

1,391 s.f.

\$22M also for lease \$54K incl.

9551 1077 Walker Lam 林先生
www.landscape-christies.com/4556.htm

大潭 紅山半島



South Bay Towers

59 South Bay Road

Popular 2-bedroom apartment with facilities and sea view

受歡迎兩房海景住宅，連優質設施

1,433 s.f.

\$23M

6838 2929 Mark Mak 麥先生
www.landscape-christies.com/109586.htm

淺水灣 南灣大廈



South Bay Palace

25-31 South Bay Close

Designer decorated 3-bedroom apartment with facilities

設計師精心設計三房住宅，設施完善

1,780 s.f.

\$28M

9229 2396 Elaine Chow 周小姐
www.landscape-christies.com/100188.htm

淺水灣 南灣御苑



The Brentwood

11 Repulse Bay Road

Renowned boutique apartment on Repulse Bay Road enjoying stunning sea view

淺水灣迷人住宅，享無敵靚海景，可租可售

1,556 s.f.

\$33M also for lease \$Open Offer

9080 6686 Teresa Lau 劉小姐
www.landscape-christies.com/150412.htm

淺水灣 蔚峰園



21-21C Shek O Headland

Stylish colonial sea view townhouse in tranquil neighbourhood

品味英式海景排屋，環境清幽恬靜

2,000 s.f. (plus 240 s.f. garden and 500 s.f. roof)

\$35M

9250 0300 Randy Chan 陳先生
www.landscape-christies.com/44339.htm

大潭 石澳山仔21-21C號



Shouson Garden

6A Shouson Hill Road

Charming 3-bedroom low-rise apartment in a lush green and serene area in Shouson Hill with 2 car park spaces

迷人三房低密度住宅，位於翠綠和諧的壽臣山，連兩車位

1,598 s.f.

\$35M

9833 9509 Michelle Chung 鍾小姐
www.landscape-christies.com/13813.htm

壽臣山 壽山花園



Ridge Court

21A-21D Repulse Bay Road

High-ceilinged 3-bedroom flat with stunning view of Deep Water Bay

樓底特高三房住宅，欣賞深水灣優美景致

2,300 s.f.

\$42M

9648 6082 Christine Chong 莊小姐
www.landscape-christies.com/123703.htm

淺水灣 冠園



Hong Kong Parkview

88 Tai Tam Reservoir Road

Popular family development in prime location with full facilities

受歡迎家庭式屋苑，位置方便，連完善設施

2,570 s.f.

\$45M

6330 7888 Cora Ko 高小姐
www.landscape-christies.com/3266.htm

淺水灣 陽明山莊



Hong Kong Parkview

88 Tai Tam Reservoir Road

Spacious 3-ensuite unit with balcony enjoying mountain view and excellent facilities

寬敞三套房住宅，連露台，享山巒美景及優質設施

2,764 s.f.

\$47M

9093 3381 Stephen Chan 陳先生
www.landscape-christies.com/112895.htm

淺水灣 陽明山莊



FAIRLINE

Welcome to the beautiful new world of Fairline

捷成遊艇誠邀您蒞臨品鑑

廣州南沙灣國際遊艇展: 10月12日 - 10月14日

深圳國際遊艇展: 10月18日 - 10月22日

香港國際遊艇展: 11月30日 - 12月2日

菲爾蘭中國:

上海市延安東路618號東海商業中心16樓 郵政編碼 200001

電話: (+86) 21 2306 4749/2306 4752 電郵: china@fairline.com

菲爾蘭香港:

香港香港仔深灣道8號深灣遊艇俱樂部地下5室

電話: (+852) 3180 3189 電郵: hongkong@fairline.com

特約代理:

中國 香港 印度 印度尼西亞 日本

韓國 馬來西亞 新西蘭 菲律賓

居士蘭 維多利亞洲 澳洲西部

越南 新加坡 泰國





Celestial Garden

5 Repulse Bay Road

Nice 4-bedroom with fantastic sea view and green view on upper Repulse Bay Road

雅致四房海景單位，享翠綠景色，位於淺水灣道頭段

2,375 s.f.

\$55.1M

9809 8570 Stella Lo 羅小姐

www.landscape-christies.com/4130.htm

淺水灣
詩禮花園



Regalia Bay

88 Wong Ma Kok Road

Popular 5-bedroom townhouse with ample open space and splendid view of South China Sea

受歡迎五房排屋，空間特大，享壯麗南中國海景致

4,053 s.f. (plus 113 s.f. garden and 1,190 s.f. roof)

\$66M

6838 2929 Mark Mak 麥先生

www.landscape-christies.com/31214.htm

赤柱
富豪海灣



Belgravia

57 South Bay Road

Newly renovated sea view flat with facilities in serene South Bay

全新裝修海景住宅，連完善設施，環境和諧恬靜

2,390 s.f.

\$69M

6258 8847 Anthea Ngai 魏小姐

www.landscape-christies.com/118350.htm

淺水灣
南灣道57號



Hillgrove

18 Cape Drive

Large and spacious 6-bedroom townhouse in quiet Chung Hom Kok

寬敞六房排屋，位於寧靜春坎角，可租可售

3,000 s.f. (plus 600 s.f. garden and 900 s.f. roof)

\$75M also for lease \$190K incl.

9648 6082 Christine Chong 莊小姐

www.landscape-christies.com/104403.htm

春坎角
壁如花園



Oasis

8-12 Peak Road

Lower Peak apartment with high ceiling overlooking the Victoria Harbour panorama

樓底特高住宅，俯瞰全維港美景

2,719 s.f.

\$78M

9250 0300 Randy Chan 陳先生

www.landscape-christies.com/122963.htm

山頂
欣怡居



Seascape

42 Sassoon Road

Well kept spacious townhouse in tranquil neighbourhood

優質寬敞排屋，環境清靜

3,200 s.f.

\$93M

6838 2929 Mark Mak 麥先生

www.landscape-christies.com/39858.htm

薄扶林
海日樓



Grosvenor Place

117 Repulse Bay Road

Nicely fitted 4-bedroom unit with twin balconies enjoying panoramic vista of Repulse Bay

雅致裝修四房單位，雙露台設計，享淺水灣迷人全景

2,809 s.f.

\$120M

6258 8847 Anthea Ngai 魏小姐

www.landscape-christies.com/120291.htm

淺水灣
淺水灣道117號



56 Repulse Bay Road

Waterfront apartment with sweeping view of Repulse Bay Beach

淺水灣海濱住宅，享無敵淺水灣泳灘景致

2,671 s.f.

\$120M

9093 3381 Stephen Chan 陳先生

www.landscape-christies.com/34400.htm

淺水灣
淺水灣道56號



Abergeldie

52 Plantation Road

Luxurious and modern townhouse located on The Peak with magnificent view of Victoria Harbour

山頂豪華時尚排屋，享壯麗維港景致

3,688 s.f. (plus private terraces)

\$220M

9871 6828 Louis Wong 黃先生

www.landscape-christies.com/108991.htm

山頂
種植道52號



Severn Eight

8 Severn Road

Extravagant harbour view house at prestigious location

豪華海景大屋，地段尊貴顯赫

4,300 s.f. (plus 1,138 s.f. garden and 553 s.f. roof)

\$268M

6838 2929 Mark Mak 麥先生

www.landscape-christies.com/124472.htm

山頂
倚巒

LEICHT®

Germany High Quality Kitchen | Since 1928



THE SENSATION
OF MODERN
LIVING

Chest Apply Group | www.leicht.com.hk

Shop No. 201, 2/F, Harbour Centre, 25 Harbour Road, Wanchai, HK

Tel + 852 2575 8286 fax + 852 2151 6977

Beijing • Shanghai • Guangzhou • Shenzhen • Hangzhou • Hainan • Macau • Hong Kong

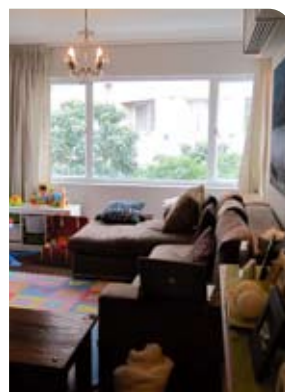


Merry Garden
90 Kennedy Road
 3-bedroom flat with balcony overlooking the peaceful neighbourhood of Midlevels Central
 中半山三房住宅，連露台，俯瞰城市景致

中半山
豐樂新村

1,250 s.f.
\$16.8M

9648 6082 Christine Chong 莊小姐
www.landscape-christies.com/82475.htm



Kam Fai Mansion
68A MacDonnell Road
 Spacious mid-rise apartment with open view on fringe of Central
 寬敞中密度住宅，享開揚景觀，鄰近中環

中半山
錦輝大廈

1,400 s.f.
\$17.5M

6330 7888 Cora Ko 高小姐
www.landscape-christies.com/111956.htm



Woodland Gardens
62A-62F Conduit Road
 Newly decorated flat in Conduit road
 西半山全新裝修住宅，位於干德道

西半山
華翠園

1,500 s.f.
\$21M

9028 0147 Jenson Au 區先生
www.landscape-christies.com/86245.htm



Wing Way Court
31 Kennedy Road
 Rare 3-bedroom apartment in a quiet and yet convenient location of Midlevels Central
 罕有三房單位，環境清靜，交通方便

中半山
永威閣

1,860 s.f.
\$22.8M

9551 1077 Walker Lam 林先生
www.landscape-christies.com/96206.htm



Monticello
48 Kennedy Road
 Practical apartment with private roof top
 間隔實用住宅，連私家天台

中半山
滿峰台

1,293 s.f. (plus 1,000 s.f. roof)
\$23M

6330 7888 Cora Ko 高小姐
www.landscape-christies.com/110138.htm

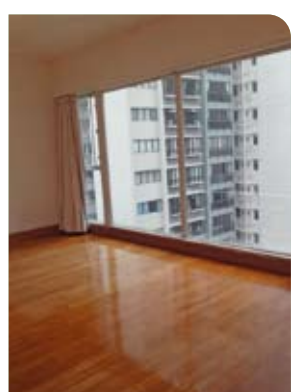


Beauty Court
82 Robinson Road
 Popular 3-bedroom family flat on convenient Robinson Road
 受歡迎三房家庭式住宅，位於方便的羅便臣道，可租可售

西半山
雅苑

1,778 s.f.
\$25M also for lease \$63K incl.

6183 8339 Carman Szeto 司徒小姐
www.landscape-christies.com/108739.htm



Valverde
11 May Road
 Sought after Midlevels apartment with practical layout
 半山優質住宅，間隔實用

中半山
蔚皇居

1,373 s.f.
\$29M

9028 0147 Jenson Au 區先生
www.landscape-christies.com/40104.htm



Mirror Marina
47 Conduit Road
 Cosy apartment in quiet location with four bedrooms
 四房舒適單位，環境清靜

西半山
鑑波樓

1,900 s.f.
\$29.8M

9809 8570 Stella Lo 羅小姐
www.landscape-christies.com/47949.htm



Amber Garden
70-72 Kennedy Road
 Conveniently located high-rise flat on fringe of Wanchai
 中半山高密度住宅，交通方便，鄰近灣仔

中半山
柏苑

1,732 s.f.
\$30M

9229 2396 Elaine Chow 周小姐
www.landscape-christies.com/102796.htm



Park Mansions
27-29 MacDonnell Road
 Well-appointed 4-bedroom apartment on Macdonnell Road, well served by public transportation
 優質四房單位，公共交通方便，位於麥當勞道

中半山
百年順大廈

2,013 s.f.
\$33.8M

6183 8388 Chris Law 羅先生
www.landscape-christies.com/46726.htm



GOODS OF DESIRE®

Causeway Bay 2890 5555 Tsim Sha Tsui 2784 5555 Central 2805 1876 Peak Galleria 2778 3331
Stanley 2673 0071 Sai Kung 2791 7122 Cyberport 2577 6899 Ap Lei Chau 2580 2290



Catalina Mansions
98-100 MacDonnell Road
Designer decorated colonial low-rise with huge balcony
英式低密度單位，配以設計師精心設計靚裝修，連大露台

中半山
嘉年大廈

2,300 s.f.
\$35.5M

9229 2396 Elaine Chow 周小姐
www.landscape-christies.com/110374.htm



The Rednaxela
1 Rednaxela Terrace
Brand new designer flat with private roof terrace
全新裝修住宅，連私家平台及天台，可租可售

西半山
帝華臺

1,872 s.f. (plus 15 s.f. terrace and 441 s.f. roof)
\$40M also for lease \$95K incl.

9215 3999 Boris Wong 王先生
www.landscape-christies.com/127291.htm



Dynasty Court
23 Old Peak Road
Prestigious apartment with excellent facilities in sought after development
中半山著名住宅，連優質設施

中半山
帝景園

1,970 s.f.
\$42M

9551 1077 Walker Lam 林先生
www.landscape-christies.com/6485.htm

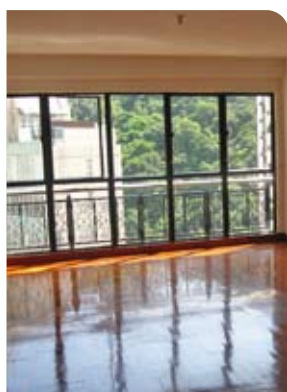


Po Garden
9 Brewin Path
Luxury apartment surrounded by lush greenery on fringe of Central
豪華裝修單位，享翠綠景致，鄰近中環

中半山
寶園

2,572 s.f.
\$43M

6258 8847 Anthea Ngai 魏小姐
www.landscape-christies.com/35055.htm



Clovelly Court
12 May Road
Spacious 3-bedroom apartment with comprehensive clubhouse facilities on Lower Peak
寬敞三房單位，連完善會所設施，實用率高

中半山
嘉富麗苑

1,881 s.f.
\$43.8M

9080 6686 Teresa Lau 劉小姐
www.landscape-christies.com/40580.htm



Tregunter Tower 2
14 Tregunter Path
Spacious apartment with full clubhouse facilities in serene neighbourhood
中半山寬敞單位，享完善會所設施，環境和諧寧靜

中半山
地利根德閣座

3,052 s.f.
\$46M

6330 7888 Cora Ko 高小姐
www.landscape-christies.com/109257.htm



Olympian Mansion
9 Conduit Road
4-bedroom high efficiency flat with good layout on Conduit Road
千德道四房住宅，實用率高，間隔四正

西半山
李園

2,750 s.f.
\$47M

6183 8339 Carman Szeto 司徒小姐
www.landscape-christies.com/28730.htm



Century Tower 1
1 Tregunter Path
Unique-style decorated harbour view apartment on fringe of Central
裝修時尚獨特單位，享美麗海景，鄰近中環

中半山
世紀大廈座

2,565 s.f.
\$50.8M

9229 2396 Elaine Chow 周小姐
www.landscape-christies.com/30894.htm



Dragon View
39 MacDonnell Road
Nicely renovated 2-bedroom apartment with balcony at a convenient spot of Midlevels Central
兩房雅緻住宅，連露台，交通方便

中半山
龍景樓

2,500 s.f.
\$55M

9809 8570 Stella Lo 羅小姐
www.landscape-christies.com/123917.htm



Hong Villa
12 Bowen Road
Spacious 1-unit per each floor apartment enjoying Victoria Harbour view with 2 carpark spaces
寬敞維港靚景單位，一梯一伙，連兩車位，可租可售

中半山
峰景花園

3,833 s.f.
\$100M also for lease \$160K incl.

9080 6686 Teresa Lau 劉小姐
www.landscape-christies.com/7396.htm

Interior design
 constructions
 space planning
 project management
 tendering
 landscaping
 quantity survey

Peter M. Cannon

Thank you for all your works over the past 4 months. Our home is beautiful and the time we have spent with our family in the house has been just what we dreamed of...

Perkins road —colonial charm



Sherrie Hurps

Joseph is a problem-solver, talented designer, sophisticated and..... now my very good friend, I could not praise him and his firm enough.

Repulse Bay —classical contemporary



Susan Taylor

Thank you for giving me such a beautiful home. I can't say enough good things about you. Joseph -I know first hand why your company has such an excellent reputation. It was worth every penny I spent.

Castle Peak road —clean lines



Ethan King

We were very happy with Joseph as our designer. He made everything easy for us and read our tastes very well. We would recommend JCAW Consultants to anyone. We couldn't be happier with the outcome.

Plantation road —sophisticate mode



Jennifer Park

We are super pleased with our remodel that your team did at our home. Everyone we came in contact with is first class!

Sapphire Chalet —light filled spread



**a kiss is for a second
 admiring domicile is for ever** -jc



tel: +852 2524 9988 fax: +852 2524 4388 email: jcaawtd@biznetvigator.com workshop: 11/f, leelooing bldg., 4 queen victoria st., central



Greencliff

23 Tung Shan Terrace

Unique 2-bedroom low-rise apartment with full racecourse views on Stubbs Road
獨特兩房低密度住宅，享馬場全景，位於司徒拔道

1,005 s.f.
\$14M

9551 1077 Walker Lam 林先生
www.landscape-christies.com/108700.htm

東半山翠壁



Greenville Gardens

16-17 Shiu Fai Terrace

Nicely decorated apartment for sale at Shiu Fai Terrace
雅致裝修住宅，位於肇輝台，罕有放賣

1,340 s.f.
\$18.5M

9551 1077 Walker Lam 林先生
www.landscape-christies.com/111342.htm

東半山嘉苑



27-29 Village Terrace

Well decorated colonial low-rise with private roof top
英式低密度住宅，配以優質裝修，連私家天台

1,625 s.f. (plus 1,625 s.f. roof)
\$20M

9215 3999 Boris Wong 王先生
www.landscape-christies.com/143978.htm

跑馬地山村臺27至29號



Marlborough House

154 Tai Hang Road

Colonial apartment with big balcony and open city view
東半山英式住宅，連大露台，享開揚城市景致

1,250 s.f.
\$21M

6838 2929 Mark Mak 麥先生
www.landscape-christies.com/36614.htm

東半山保祿大廈



The Legend

23 Tai Hang Drive

Harbour view apartment with excellent fits and finishes
海景單位，連優質裝修

1,542 s.f.
\$29M

9028 0147 Jenson Au 區先生
www.landscape-christies.com/42459.htm

東半山名門



Evergreen Villa

43 Stubbs Road

High efficiency apartment green view on Stubbs Road
高實用率住宅，享翠綠景致，位於司徒拔道

1,750 s.f.
\$30.5M

9486 1566 Mira To 杜小姐
www.landscape-christies.com/40312.htm

東半山松柏新村



Stubbs Villa

2 Shiu Fai Terrace

Modern designed and decorated 4-bedroom flat with open city view
時尚裝修四房單位，享開揚城市景觀

2,325 s.f.
\$32M

9648 6082 Christine Chong 莊小姐
www.landscape-christies.com/45131.htm

東半山詩濤花園



Moulin Court

65 Blue Pool Road

Rare find mid-rise apartment with huge roof terrace on Upper Happy Valley
跑馬地中密度住宅，連大平台，市場罕有

1,750 s.f. (plus 2,896 s.f. garden)
\$42M

9809 8570 Stella Lo 羅小姐
www.landscape-christies.com/54881.htm

跑馬地玫瑰別墅



The Colonnade

152 Tai Hang Road

Nicely decorated 3-bedroom apartment with stunning views
雅致裝修三房住宅，享壯觀美景

2,141 s.f.
\$45M

9648 6082 Christine Chong 莊小姐
www.landscape-christies.com/49607.htm

東半山嘉薈臺



Bellevue Court

41 Stubbs Road

Older style mid-rise apartment on prime Stubbs Road enjoying open city views
傳統中密度住宅，位於交通方便的司徒拔道，享開揚城市景致，可租可售

2,700 s.f.
\$52M also for lease \$94K incl.

9551 1077 Walker Lam 林先生
www.landscape-christies.com/48161.htm

東半山碧蕙園



Fontana Gardens

1-25 Ka Ning Path

Huge 4-bedroom apartment with high efficiency on fringe of Causeway Bay
巨大四房單位，實用率高，鄰近銅鑼灣

3,300 s.f.
\$52.8M also for lease \$100K incl.

☎ Mira To 9486 1566 杜小姐
🌐 www.landscape-christies.com/4968.htm

東
半
山
豪
園



Broadwood Park

38 Broadwood Road

Spacious 3-bedroom apartment in Upper Happy Valley overlooking Hong Kong Stadium
寬敞三房住宅，位於跑馬地頭段，俯瞰香港大球場美景

2,938 s.f.
\$85M

☎ 6838 2929 Mark Mak 麥先生
🌐 www.landscape-christies.com/34706.htm

跑
馬
地
柏
樂
苑



5 Henderson Road

Single detached garden house for sale in Jardine's Lookout's gated community
渣甸山獨立花園大屋，罕有放售

8,579 s.f. (plus 3,976 s.f. garden)
\$Open Offer

☎ 9833 9509 Michelle Chung 鍾小姐
🌐 www.landscape-christies.com/37174.htm

渣
甸
山
軒
德
孫
道
5
號



15 Moorsom Road

Rare find single house with private garden situated at a prestigious location
渣甸山罕有獨立屋，連私家花園，地段尊貴顯赫

3,154 s.f. (site area approx. 4,045 s.f.)
\$Upon Application

☎ 9871 6828 Louis Wong 黃先生
🌐 www.landscape-christies.com/14618.htm

渣
甸
山
睦
誠
道
15
號



Situated on Shouson Hill in the scenic Deepwater Bay, this massive combined townhouse spans 10,061 s.f. with a 2,125 s.f. roof and 671 s.f. garden. Like a museum, the living room and dining room feature stunning antique pieces and paintings that the homeowners have collected over years. From the common areas to the nine bedrooms (seven ensuite), all rooms boast unobstructed mountain and sea views. The dining room and living room are connected to the terrace, allowing homeowners to sit outside and enjoy the scenery as well.

Occupying the entire second floor that can be accessed via elevator, the master floor provides ultimate luxury with a large walk-in closet, a home cinema, two bathrooms and a balcony all in over 3,000 s.f. of space. Additionally, the house includes 6.5 bathrooms, two family rooms, a fully equipped kitchen, two maid's rooms, a utility room and a covered carpark that can fit up to eight cars.

One of Bay Villas' eight houses, this townhouse enjoys fascinating views of Deep Water Bay. A ten to fifteen minute will take you to Central and Causeway Bay via Aberdeen Tunnel.

這間大型相連排屋位於深水灣景色優美的壽臣山，面積達10,061平方呎，附設2,125平方呎的天台及671平方呎的花園。客廳廳儼如博物館般，擺放一系列屋主多年來珍藏的古董與畫作。從公共廳區到九間睡房（七間為套房），全屋均飽覽一望無際的山景與海景。客廳廳連接陽台，屋主可於戶外盡情欣賞美景。

二樓整層都是主人區，可乘升降機到達，3,000平方呎的空間設大型衣帽間、家庭影院、陽台與兩間浴室，極盡奢華。而且，全屋共有6.5間浴室、兩間家庭室、一個設備齊全的廚房、兩間家傭房、一間雜物房，以及可容納八輛車的有蓋停車場。

這間排屋為南源的八間屋之一，坐擁深水灣醉人景致，經香港仔隧道駕車到中環或銅鑼灣只需10-15分鐘。

極致奢華

Grand luxury

Bay Villas

南源

57-71 Shouson Hill Road, Shouson Hill

壽臣山 壽山村道57-71號

10,061 s.f.
\$638M

☎ 9080 6686 Teresa Lau 劉小姐
🌐 www.landscape-christies.com/30925.htm



Regent Palisades

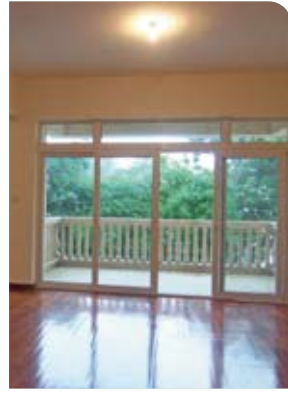
43 Bisney Road

Nicely decorated low-rise apartment with 3 bedrooms on tranquil Bisney Road
低密度三房住宅，配以雅致裝修，位於寧靜碧荔道，可租可售

1,509 s.f.
\$60K incl. also for sale \$16.8M

☎ 9551 1077 Walker Lam 林先生
🌐 www.landscape-christies.com/25662.htm

薄扶林 帝柏園



98 Repulse Bay Road

Cosy colonial low-rise apartment with good-sized balcony in a tranquil neighbourhood
英式低密度住宅，環境舒適寧靜，連實用露台

1,600 s.f.
\$62K incl.

☎ 9215 3999 Boris Wong 王先生
🌐 www.landscape-christies.com/31993.htm

淺水灣 淺水灣道98號



19-25 Horizon Drive

Tastefully decorated low-rise apartment with decked roof terrace enjoying stunning sea views
品味裝修低密度單位，連天台，享無敵海港景致

2,500 s.f.
\$92K incl.

☎ 9215 3999 Boris Wong 王先生
🌐 www.landscape-christies.com/13846.htm

春坎角 海天徑19-25號



Woodland Villa

53 Shouson Hill Road

Bright and cosy apartment with terrace in a serene and verdant neighbourhood
光猛舒適住宅，連平台，環境翠綠寧靜

2,060 s.f. (plus 300 s.f. terrace)
\$98K excl.

☎ 9486 1566 Mira To 杜小姐
🌐 www.landscape-christies.com/16759.htm

壽臣山 傲林軒



Monte Verde

41 Repulse Bay Road

Sought after 4-bedroom flat on upper Repulse Bay Road with stunning sea view
淺水灣四房住宅，享遼闊海港美景

2,400 s.f.
\$105K excl.

☎ 9493 8275 Sami Woo 胡小姐
🌐 www.landscape-christies.com/10238.htm

淺水灣 南山別墅



Residence Bel-Air

Bel-Air Avenue

Full sea view 4-bedroom apartment of a renowned development with comprehensive facilities
全海景四房單位，位於著名屋苑，連完善設施

2,378 s.f.
\$115K incl.

☎ 9028 0147 Jenson Au 區先生
🌐 www.landscape-christies.com/98543.htm

薄扶林 貝沙灣



The Deepdene

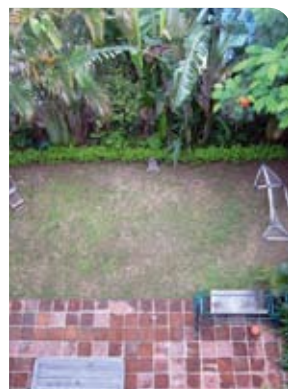
55 Island Road

Newly renovated high efficiency apartment with spacious garden
全新裝修住宅，實用率高，連800呎花園

2,077 s.f.
\$115K incl.

☎ 6183 8388 Chris Law 羅先生
🌐 www.landscape-christies.com/10628.htm

深水灣 蒲苑



Villa Martini

8 Stanley Beach Road

Charming low-rise 4-bedroom apartment with private garden in a verdant neighbourhood of Stanley
迷人低密度四房住宅，連私家花園，環境和諧清靜

2,500 s.f. (plus 800 s.f. garden)
\$120K incl.

☎ 9648 6082 Christine Chong 莊小姐
🌐 www.landscape-christies.com/20113.htm

赤柱 醇廬



Pine Crest

65 Repulse Bay Road

Bright and airy sea view flat on upper Repulse Bay Road
光猛通風海景住宅，位於淺水灣道頭段，可租可售

2,250 s.f.
\$120K incl. also for sale \$71M

☎ 6330 7888 Cora Ko 高小姐
🌐 www.landscape-christies.com/33873.htm

淺水灣 松苑



The Deepdene

55 Island Road

High efficiency and good condition 4-bedroom apartment with huge living room and balcony in quiet location
高實用率雅致四房單位，連巨大客廳及露台，環境寧靜怡人

2,319 s.f.
\$125K incl.

☎ 9833 9509 Michelle Chung 鍾小姐
🌐 www.landscape-christies.com/27333.htm

深水灣 蒲苑

HONG KONG GOLD COAST RESIDENCES



HOME FOR LEASE



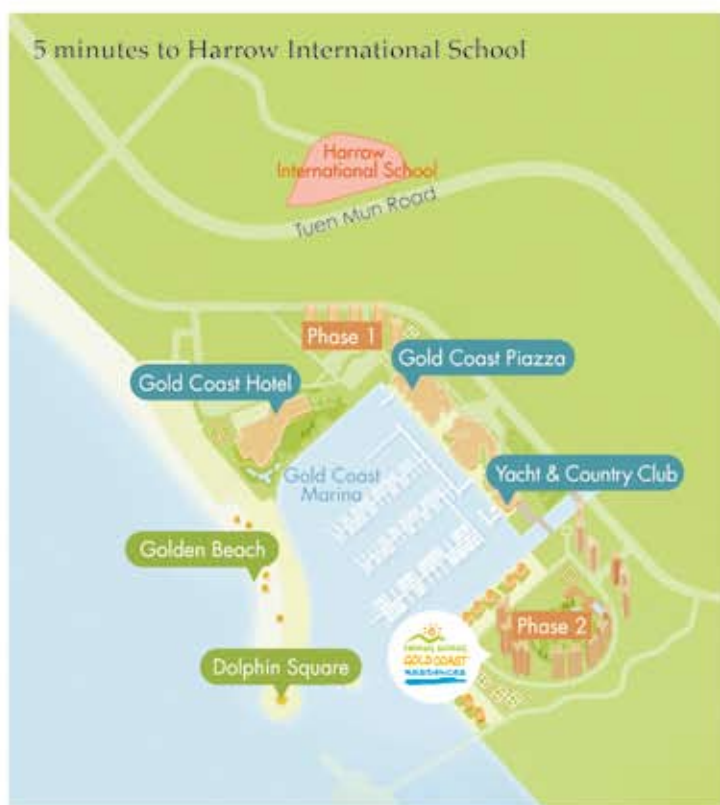
Swimming Pool



Marina Villas



Grassland



5 minutes to Harrow International School


Short and Long Term Lease Available

- Marina Villas (1,950 – 3,540sq.ft.)
- Sea View Apartments (700 – 1,718 sq.ft.)
- Serviced Apartments (700 – 1,138 sq.ft.)

☎ 2457 0789 galycowen@sino.com

1/F Gold Coast Piazza, 1 Castle Peak Road,
Castle Peak Bay, N.T., Hong Kong
www.goldcoast.com.hk

f www.facebook.com/GoldCoastResidences

 Sino Group YOUR LEASING PARTNER

All information and photo are for reference only





Hong Kong Parkview

88 Tai Tam Reservoir Road

Newly decorated apartment with clubhouse facilities enjoying fantastic views
全新裝修單位，連會所設施，享醉人景致，可租可售

淺水灣
陽明山莊

2,611 s.f.

\$125K excl. also for sale \$54M

☎ 9215 3999 Boris Wong 王先生

🌐 www.landscape-christies.com/94329.htm



1-3 Homestead Road

3-ensuite apartment with stunning sea view on the Peak

山頂三套房住宅，享遼闊海景

山頂堪仕達道1至3號

2,828 s.f.

\$140K incl.

☎ 6330 7888 Cora Ko 高小姐

🌐 www.landscape-christies.com/29259.htm



The Somerset

67 Repulse Bay Road

Rare duplex enjoying stunning views of Deep Water Bay

淺水灣複式住宅，享深水灣景致，市場罕有，可租可售

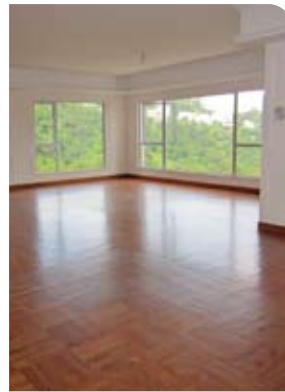
淺水灣
怡峰

3,099 s.f.

\$150K incl. also for sale \$95M

☎ 9871 6828 Louis Wong 黃先生

🌐 www.landscape-christies.com/123306.htm



Guildford Court

5 Guildford Road

Spacious 4-bedroom low-rise apartment at a convenient location on The Peak

低密度四房寬敞住宅，交通方便，可租可售

山頂僑福道5號

2,750 s.f.

\$150K incl. also for sale \$100M

☎ 9250 0300 Randy Chan 陳先生

🌐 www.landscape-christies.com/107173.htm



Louisette

20 Stanley Beach Road

Full sea view townhouse with garden, roof and 3 covered parking spaces in Stanley

赤柱全海景花園排屋，連天台及三個有蓋車位，可租可售

赤柱
赤柱灘道20號

2,856 s.f. (plus 489 s.f. garden and 432 s.f. roof)

\$158K incl.

also for sale \$Open Offer

☎ 9093 3381 Stephen Chan 陳先生

🌐 www.landscape-christies.com/4652.htm



Orient Crest

76 Peak Road

Spacious and nicely renovated 4-bedroom townhouse on the Peak

雅致裝修四房排屋，間隔寬敞，位於山頂

山頂山頂道76號

3,313 s.f. (plus 1,000 s.f. garden and 1,000 s.f. roof)

\$160K incl.

☎ 6330 7888 Cora Ko 高小姐

🌐 www.landscape-christies.com/20263.htm



Repulse Bay Towers

119A Repulse Bay Road

Unique duplex with tasteful decor taking in a bird's eye view of Repulse Bay Beach

品味裝修複式單位，鳥瞰淺水灣泳灘景致

淺水灣
保華大廈

3,300 s.f.

\$160K incl.

☎ 9871 6828 Louis Wong 黃先生

🌐 www.landscape-christies.com/32043.htm



Hong Kong Parkview

88 Tai Tam Reservoir Road

Showflat quality with internal staircases to roof

示範單位式優質住宅，連內置樓梯往天台，可租可售

淺水灣
陽明山莊

2,540 s.f. (plus 1,857 s.f. roof)

\$160K incl. also for sale \$75M

☎ 9250 0300 Randy Chan 陳先生

🌐 www.landscape-christies.com/28295.htm



3, 3A-3E Shouson Hill Road

5-bedroom garden house in tranquil location

壽臣山五房花園大屋，環境寧靜

壽臣山壽山村道3號、3A-E號

3,220 s.f. (plus 2,800 s.f. garden)

\$168K incl.

☎ 9809 8570 Stella Lo 羅小姐

🌐 www.landscape-christies.com/14222.htm



Eredine

38 Mount Kellest Road

High efficiency 3-ensuite apartment located on The Peak with private garden and Southside sea view

高實用率三套房單位，連私家花園，享南區海港景致

山頂加列山道38號

3,500 s.f. (plus 500 s.f. garden)

\$180K incl.

☎ 9493 8275 Sami Woo 胡小姐

🌐 www.landscape-christies.com/12359.htm



Cool, calm & collected 珍藏呵護

You've tracked down the rare vintage, you've ordered a case, now it needs to be looked after properly until you're ready to enjoy it... and you can't go wrong with a Sub-Zero wine storage unit. It's like rolling out the red carpet for wine, as if each bottle is given the VIP treatment.

We're also pretty certain that if it had a gender, the Sub-Zero mini wine bar would be a woman, because of its rather amazing multitasking abilities: it combines wine storage, six independently-zoned wine glass racks and a cherrywood cheese-cutting board. Plus it does all this and manages to look sleek and spectacular.

A limited edition production number, it's available in Hong Kong at Lane Crawford Pacific Place... and if that's whetted your palate, head over to Tsimshatsui to the Lane Crawford Canton Road store, where the free-standing (albeit hardly snappily named) ICB424FSG version is a sculptural art piece.

幾經辛苦找到罕有的陳年美酒買下一整箱，在準備好品嘗一番前得要謹慎存放... 選用Sub-Zero酒櫃便錯不了。Sub-Zero像是為紅酒準備好紅地毯現身，對每瓶酒都如「貴賓」般呵護備之。

若果酒櫃有性別之分，我們敢肯定Sub-Zero迷人酒櫃會是女性，因為它有著頗為驚人的「多功能」：酒櫃結合貯酒功能、六個獨立分隔的酒杯架與櫻桃木芝士切板。更甚的，Sub-Zero除了身兼數職外，外型還時髦又迷人。

少量限量版Sub-Zero現於香港太古廣場連卡佛有售... 如果這讓你心動，那就出發到尖沙咀的連卡佛廣東道店吧，那裡的獨立式ICB424FSG型號儼如件藝術雕塑。

Bling your walls 閃耀牆上

You love anything that sparkles and everything you own is covered in crystals... including your walls, if you've kept abreast of the latest offerings from Goodrich Global, the designated distributor of the Swarovski Elements wallpaper collection in Hong Kong and China.

Created by British wallpaper designer Karen Beauchamp in collaboration with the Swarovski Elements in-house design team, the collection pushes boundaries and turns design concepts into wallpaper reality. The finest crystal elements manufactured by Swarovski, Swarovski Elements, are shown on backgrounds of flock, mirror-like foil and layered ink giving the effect of metallic leather.

It's a dream of shimmering sparkles as light plays across the wall refracted by the multi-faceted coloured crystals, Cabochon pearls and Crystal Strata integrated into the designs — and as you can see, this is all achieved with a truly admirable restraint and demonstration of good taste.

倘若你鍾情於閃閃發亮的東西，喜歡一切都鋪上水晶，包括你家中的那堵牆，那你便要緊貼「施華洛世奇元素」牆紙系列的香港與中國官方分銷商Goodrich Global最新的產品情報。

這個牆紙系列由英國牆紙設計師Karen Beauchamp與施華洛世奇元素的设计團隊攜手創作，挑戰界線極限，把設計概念化作實實在在的牆紙。施華洛世奇製作的優質水晶元素「施華洛世奇元素」融於如鏡般的浮水印箔紙之上，有層次質感的墨水帶出金屬皮革的效果。

牆紙設計鋪上多割面有色水晶、Cabochon珍珠與Crystal Strata，光線散落牆上折射出閃爍光芒，如夢般唯美。而且正如大家所見，系列毫不矯揉造作，展現出恰到好處的講究品味。

For more features on design and architecture, don't miss the October issue of Perspective magazine, and check out our website at www.perspectiveglobal.com 請密切留意《透視》十月號更多有關建築與設計的專題報導，或登入www.perspectiveglobal.com參閱精彩內容。



Sitting on art 藝術之椅

Design crossovers are increasingly common these days, and the latest — 'Unframed Art' — comes from Herman Miller, in collaboration with artists and fabric companies to produce a series of special Sayl chair editions.

Launched in 2010, Sayl is distinguished by its unique unframed suspension back, which gives the user an unprecedented sense of freedom. So it makes sense that the first Unframed Art collaboration is based on the work of the late Australian artist Minnie Pwerle, whose paintings were spontaneous and executed with great freedom.

Created by Woven Image in collaboration with Dacou Aboriginal Gallery in Australia, 'Ritual' is a high-performance fabric derived from Pwerle's art, typified by bold and vibrant colour. The Ritual fabric is available in three colour options, and can be applied to the Sayl chair both as full upholstery or on the seat only, with a suspension back.

For more details, see hermanmillerasia.com

今時今日跨界合作的設計作品已屢見不鮮，最新的跨界作品「Unframed Art」便來自Herman Miller，與藝術家及布藝公司合作設計出一系列的特別版Sayl椅。

Sayl於2010年推出，以獨特的無框懸架式椅背見稱，為用家帶來前所未有的自由感覺。所以，Unframed Art系列中的首件以已故澳洲藝術家Minnie Pwerle的作品為基礎合理得很，她的畫作自然而生，創作自由空間極大。

「Ritual」由Woven Image與澳洲Dacou Aboriginal Gallery合作開發，是一種以Minnie的藝術作品為題的高性能布料，顏色大膽又繽紛。Ritual布料共有三種顏色可供選擇，用在Sayl椅上既可選擇充當所有軟墊布料，亦可只用於坐墊配合懸架式椅背。

詳情可瀏覽hermanmillerasia.com





Seascape

42 Sassoon Road

Rare seafront townhouse in Pokfulam with 4 ensuite and ample outdoor space
薄扶林罕有海濱排屋，連四套房及特大戶外空間

3,200 s.f. (plus 500 s.f. garden, 600 s.f. terrace and 871 s.f. roof)
\$190K excl.

9215 3999 Boris Wong 王先生
www.landscape-christies.com/38628.htm

薄扶林
海日樓



Felix Villas

61 Mount Davis Road

Historical colonial townhouse in Pokfulam with high ceiling, big balconies and fireplaces
傳統英式排屋，樓底特高，連巨大露台及壁爐

5,000 s.f. (plus 800 s.f. terrace)
\$200K incl.

9648 6082 Christine Chong 莊小姐
www.landscape-christies.com/130602.htm

薄扶林
福利別墅



Strawberry Hill

8 Plunkett's Road

Colonial townhouse with very high efficiency of space
山頂英式排屋，實用率高

3,190 s.f.
\$220K incl.

9080 6686 Teresa Lau 劉小姐
www.landscape-christies.com/158479.htm

山頂
紅莓閣



Wilhelmina

81 Repulse Bay Road

Rare on market unique garden house with full sea view and new decoration
獨特花園大屋，配以全新裝修，享全海景，市場罕有

3,000 s.f. (plus 864 s.f. roof)
\$225K excl.

6183 8388 Chris Law 羅先生
www.landscape-christies.com/28102.htm

淺水灣
楊宅



Ocean Bay

15-17 Horizon Drive

Exquisite townhouse in Island South with unobstructed sea view and private swimming pool
春坎角精緻排屋，享廣闊全海景，連私家游泳池

3,690 s.f. (plus 2,354 s.f. garden and 624 s.f. roof)
\$240K incl.

6258 8847 Anthea Ngai 魏小姐
www.landscape-christies.com/32738.htm

春坎角
海大徑15-17號



Altadena

27 Barker Road

Spacious duplex with spectacular harbour view prestigiously located on The Peak
山頂寬敞複式大宅，享極美海景，地段顯赫尊貴

4,500 s.f.
\$250K incl.

9493 8275 Sami Woo 胡小姐
www.landscape-christies.com/12839.htm

山頂
白道27號



56 Repulse Bay Road

Luxury 4-bedroom apartment with private roof terrace at Repulse Bay waterfront
豪華海濱四房大宅，連私家平台，可租可售

3,201 s.f. (plus 188 s.f. terrace)
\$250K incl. also for sale \$155M

6258 8847 Anthea Ngai 魏小姐
www.landscape-christies.com/45883.htm

淺水灣
淺水灣道56號



The Belvedere

51-61 Plantation Road

Exclusive harbour view Peak house for rent with indoor private pool
山頂全維港景大屋，連私家室內游泳池

4,800 s.f. (plus 879 s.f. garden, 662 s.f. terrace and 461 s.f. roof)
\$350K incl.

9833 9509 Michelle Chung 鍾小姐
www.landscape-christies.com/20413.htm

山頂
種植道51-61號



99-103 Peak Road

Prestigious Peak house with private pool, garden and tasteful decor for rent
著名山頂大屋，連私家游泳池及花園，品味裝修

6,115 s.f. (plus 2,273 s.f. garden, 492 s.f. terrace and 617 s.f. roof)
\$500K incl.

9833 9509 Michelle Chung 鍾小姐
www.landscape-christies.com/31761.htm

山頂
山頂道99-103號



8 Tai Tam Road

Magnificent waterfront townhouse with private swimming pool taking in Tai Tam sea view
壯麗海濱排屋，連私家游泳池，享大潭海景，可租可售

5,474 s.f. (plus 945 s.f. garden and 712 s.f. roof)
\$530K incl. also for sale \$220M

9833 9509 Michelle Chung 鍾小姐
www.landscape-christies.com/34709.htm

大潭
大潭道8號



Striking 上林 Serenade

A modern development comprising two 54-storey residential buildings, Serenade is nestled in the green hills of Mid-Levels East and offers a truly luxurious lifestyle. Boasting breathtaking views from every apartment, the development also provides easy access to the heart of cosmopolitan Hong Kong – it is just a few minutes' drive to Central and the Causeway Bay shopping and business areas, and close to several top schools. The property impresses from the outset, with striking entrances featuring a unique sculpture by American artist Riis Burwell and sparkling Moooi chandeliers designed by mathematician Raimond Puts. Offering substance as well as style, Serenade affords residents with indulgent amenities such as banquet and catering services provided by The Landmark Mandarin Oriental, an oxygen suite for the ultimate escape, a clubhouse, and a spectacular outdoor pool. Simplex (1,563 s.f.), duplex (2,617 s.f.) and penthouse (3,919 s.f.) suites are available.

現代住宅發展項目上林由兩幢高54層的大廈組成，位處半山東的翠綠山巒之中，帶來奢華時尚之居，每戶均坐擁懾人景觀。上林離開鬧市只有一尺之隔，交通相當便利，距離中環及銅鑼灣購物商業中心地帶只數分鐘車程，亦毗鄰數間頂尖學府。甫抵達上林的入口已能感受其懾人氣派，大堂擺放了美國藝術家Riis Burwell的獨特雕塑，並以出自數學教授Raimond Puts手筆、璀璨閃耀的迷人Moooi吊燈點綴。上林除了裝潢陳設出色，亦提供一流服務，營造奢華生活風尚，包括為住客提供置地文華東方酒店負責的宴會及到會服務、非凡享受的蒸氣浴室、會所及大型室外游泳池。上林提供單層單位(1,563 s.f.)、複式單位(2,617 s.f.)及頂層豪華單位(3,919 s.f.)。

Contact: Agnes Cheung 張小姐 5303 4349
Randy Chan 陳先生 9250 0300
Mark Mak 麥先生 6838 2929
www.landscape-christies.com/103699.htm



Living in style®

www.living-instyle.com



At *Living in Style*, we mainly use valuable and rare hardwood. We provide HANDMADE furniture, lighting and wood sculptures which are inspired by nature. You will also find home décor accessories as well as customised programmes for visual arts. We offer an exceptional choice of the latest national and international brands exclusive to *Living in Style*. *Living in Style* creates your own oasis of rejuvenation and tranquility, where a sense of understated luxury is attainable.

非凡氣派 超級傢俬

Living in Style 主要選用珍貴罕有的原木，打造天然簡約，獨特又時尚的手工傢具、燈飾與木工藝品，並代理世界各地頂級傢俬品牌，設計訂做為你個人而設的傢具，創造悠然恬靜的生活綠洲，體驗低調的奢華享受

Living in Style - Flagship Store (Tuen Mun)

Showroom: Room 712, 7/F, Block 3, Nan Fung Industrial City,
No. 18 Tin Hau Road, Tuen Mun, Hong Kong
Tel: 2463 8498 Fax: 2463 8182
Email: living_style@live.hk

Living in Style - Specialist Dealer (Central)

Showroom: G/F, No. 174 Wellington Street, Central, Hong Kong
Tel: 2815 5515 / 2815 5516 Fax: 2815 5517
Email: cvtstyle@biznetvigator.com



MOLD architecture & interior

www.moldarch.com tel: 2137 0122 fax: 3170 6506 email: info@moldarch.com

出於自然 Natural getaway

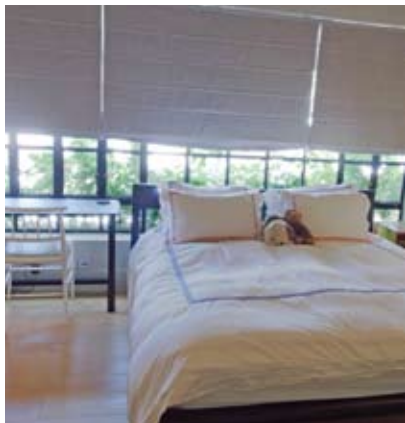
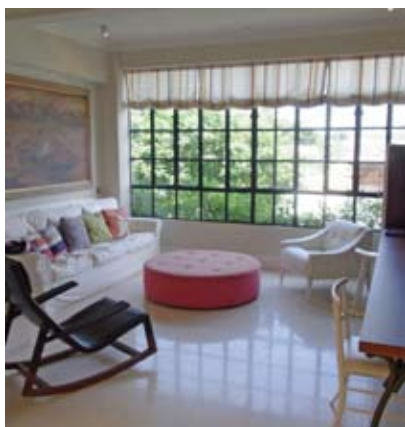
Shek O Village

石澳村

Shek O Village Road, Tai Tam

大潭 石澳村路

1,800 s.f.
\$28M



Like a country-style home, this three-storey detached townhouse in Shek O is ideal for those who enjoy a tranquil and relaxed lifestyle. The two-bedroom (one ensuite) townhouse spans 1,800 s.f. with a terrace and roof where homeowners can sunbathe and barbecue with unobstructed greenery and sea views. The master bedroom has a large ensuite bathroom including a shower and bathtub. Featuring a palette of white and cream colours, the house provides a feeling of lightness and nature.

The townhouse is situated in the heart of Shek O. Shek O Country Club & Golf Course and Shek O beach are within walking distance. There are local restaurants, shops, convenience stores and barbecue areas closeby as well. Commute to the city centre takes about 30 minutes by car or 40 minutes by bus.

石澳這間三層高獨立排屋呈現鄉郊風格，最適合嚮往平靜生活的人士。屋內設一套房一睡房，面積1,800平方呎，設陽台及屋頂平台，可在無邊際的山景與海景中浸日光浴或燒烤。主人套房內設偌大浴室，既有浴缸亦有淋浴間。全屋一室純白與米白，感覺既光亮又自然。

這間排屋位於石澳的中心地帶，石澳鄉村俱樂部、高爾夫球場及石澳海灘皆步行可達。附近設食肆、商店、便利店及燒烤場，駕車往市中心需時約30分鐘，巴士車程則約40分鐘。



9250 0300 Randy Chan 陳先生



www.landscape-christies.com/94583.htm

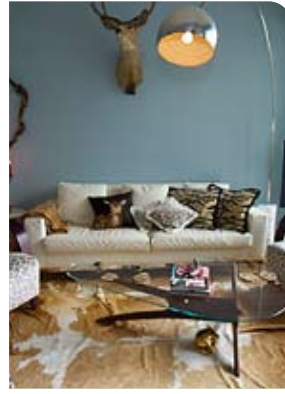


Man Yuen Garden
52A-52B Kennedy Road
Mid-rise apartment with open city view at a convenient location of Midlevels Central
中密度住宅，享開揚城市景觀，交通方便

中半山 文苑花園

2,000 s.f.
\$60K incl.

6258 8847 Anthea Ngai 魏小姐
www.landscape-christies.com/107398.htm



Happy Mansion
42 MacDonnell Road
Tastefully designed and decorated apartment on fringe of CBD
品味靚裝修住宅，鄰近商業中心區，可租可售

中半山 快樂大廈

1,200 s.f.
\$68K incl. also for sale \$19.8M

6183 8388 Chris Law 羅先生
www.landscape-christies.com/124920.htm

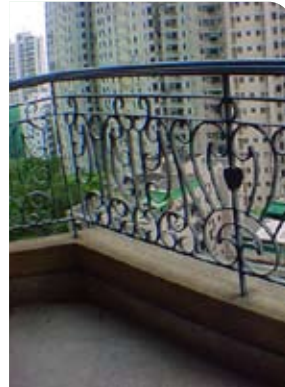


Beauty Court
82 Robinson Road
Practical 3-bedroom apartment with city view on Robinson Road
實用三房單位，欣賞羅便臣道城市景觀，可租可售

西半山 雅苑

1,778 s.f.
\$69K incl. also for sale \$28.4M

9229 2396 Elaine Chow 周小姐
www.landscape-christies.com/4044.htm



Haddon Court
41C Conduit Road
Well appointed mid-rise apartment on Conduit Road configured with 3 bedrooms and a balcony
設備完善中密度住宅，連三房及露台，位於干德道

西半山 海天閣

1,860 s.f.
\$75K incl.

9493 8275 Sami Woo 胡小姐
www.landscape-christies.com/8630.htm



Visalia Garden
48 MacDonnell Road
4-bedroom apartment with balcony on fringe of CBD with open city view
中半山四房單位，連露台，鄰近商業中心區，享開揚景觀

中半山 蔚山花園

2,195 s.f.
\$80K incl.

9486 1566 Mira To 杜小姐
www.landscape-christies.com/30791.htm



Park View Court
1 Lyttelton Road
Practical 4-bedroom flat at quiet yet convenient location
實用四房單位，環境寧靜，交通方便

西半山 恒柏園

2,857 s.f.
\$82K incl.

9809 8570 Stella Lo 羅小姐
www.landscape-christies.com/40835.htm



Tavistock 2
10A Tregunter Path
Deluxe 3-bedroom apartment with mountain view prestigiously located on Lower Peak
豪華三房單位，享山巒景致，地段尊貴

中半山 騰龍居2座

1,730 s.f.
\$83K incl.

9229 2396 Elaine Chow 周小姐
www.landscape-christies.com/14264.htm



Po Shan Mansion
10-16 Po Shan Road
Newly decorated 4-bedroom flat with big balcony on tranquil Po Shan Road
全新裝修四房單位，連大露台，位於寧靜的寶珊道

西半山 寶城大廈

2,800 s.f.
\$88K incl.

9809 8570 Stella Lo 羅小姐
www.landscape-christies.com/11196.htm



Piccadilly Mansion
4-6 Po Shan Road
Large practical harbour view 4-bedroom apartment with newly decorated in tranquil environment
全新裝修四房大宅，寬敞實用，享海港美景，環境舒適寧靜

西半山 碧苑

2,800 s.f.
\$98K incl.

6183 8339 Carman Szeto 司徒小姐
www.landscape-christies.com/35976.htm



Regent On The Park
9A Kennedy Road
Large 3-bedroom flat with comprehensive clubhouse facilities on fringe of Admiralty
巨大三房住宅，連完善會所設施，鄰近金鐘

中半山 御花園

2,720 s.f.
\$98K incl.

9493 8275 Sami Woo 胡小姐
www.landscape-christies.com/36855.htm



Kennedy Apartment
34A Kennedy Road
Rare 3-bedroom apartment with garden view in a quiet location
罕有三房單位，欣賞花園美景，環境恬靜

中半山 堅尼地大廈

2,500 s.f.
\$100K incl.

6838 2929 Mark Mak 麥先生
www.landscape-christies.com/99978.htm



Estoril Court
55 Garden Road
Huge 5-bedroom apartment with upgraded kitchen and bathrooms in the heart of Midlevels Central with 2 car park spaces
寬敞五房單位，配以優質廚房及浴室設備，位於中半山心臟地帶，連兩車位

中半山 愛都大廈

3,347 s.f.
\$110K incl.

9080 6686 Teresa Lau 劉小姐
www.landscape-christies.com/143965.htm



May Tower 1
7 May Road
Rarely available newly renovated simplex prestigiously located on Lower Peak
罕有全新裝修住宅，地段尊貴

中半山 梅苑一座

2,850 s.f.
\$110K incl.

9028 0147 Jenson Au 區先生
www.landscape-christies.com/33366.htm



Brewin Court
5-7 Brewin Path
Colonial mid-rise apartment on Lower Peak with huge balcony and open green views
英式中密度住宅，連大露台，享開揚翠綠景致

中半山 明雅園

2,600 s.f.
\$110K incl.

6258 8847 Anthea Ngai 魏小姐
www.landscape-christies.com/11659.htm



Garden Terrace 1
8 Old Peak Road
Newly renovated 4-bedroom (2 ensembles) apartment on fringe of Central
全新裝修四房單位，連兩套房，鄰近中環

中半山 花園臺一座

2,798 s.f.
\$120K excl.

9250 0300 Randy Chan 陳先生
www.landscape-christies.com/14389.htm

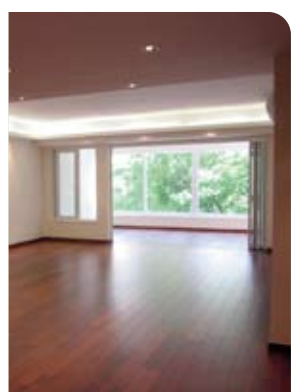


Kenne Mansion
20 Kennedy Road
Nicely decorated colonial low-rise apartment with balcony located in Midlevels Central
英式低密度住宅，配以雅致裝修連露台

中半山 堅尼地台

2,500 s.f.
\$125K incl.

9493 8275 Sami Woo 胡小姐
www.landscape-christies.com/130769.htm



Kam Yuen Mansion
3 Old Peak Road
Spacious low-rise apartment with modern fittings and fixtures in a prime location
寬敞低密度單位，設備時尚，交通方便

中半山 錦園大廈

2,700 s.f.
\$130K incl.

9028 0147 Jenson Au 區先生
www.landscape-christies.com/40137.htm



Branksome Crest
3A Tregunter Path
Deluxe harbour view apartment with chic outlook at a prime location on fringe of CBD
豪華海景單位，裝修別緻，鄰近商業中心區

中半山 地利根德里2號

2,355 s.f.
\$132K excl.

9093 3381 Stephen Chan 陳先生
www.landscape-christies.com/33613.htm



1 Robinson Road
Newly renovated spacious duplex with open green view nearby CBD
全新裝修寬敞複式住宅，享翠綠景致，鄰近商業中心區，可租可售

西半山 羅便臣道2號

3,400 s.f.
\$138K incl.
also for sale \$Open Offer

9486 1566 Mira To 杜小姐
www.landscape-christies.com/157117.htm



Kennedy Heights
10-18 Kennedy Road
Newly decorated 5-bedroom apartment with open green views on fringe of CBD
全新裝修五房住宅，享開揚翠綠景致，鄰近商業中心區

中半山 堅麗閣

3,400 s.f.
\$145K incl.

6183 8339 Carman Szeto 司徒小姐
www.landscape-christies.com/20516.htm



Royal Villa

25-29 Happy View Terrace

Well kept low-rise apartment with 3 bedrooms, exceptionally high ceiling and good-sized balcony at a quiet location
優質低密度三房單位，樓底特高，連實用露台，環境寧靜

1,650 s.f.
\$50K incl.

6183 8388 Chris Law 羅先生
www.landscape-christies.com/47404.htm

東
半
山
六
也
別
墅



Beverly Hill

6 Broadwood Road

Popular 4-bedroom city view apartment well served by shuttle bus service and clubhouse facilities
受歡迎四房住宅，享城市景致，連穿梭巴士服務及會所設施，可租可售

1,748 s.f.
\$59K incl. also for sale \$25.8M

6183 8339 Carman Szeto 司徒小姐
www.landscape-christies.com/83187.htm

跑
馬
地
比
華
利
山



The Altitude

20 Shan Kwong Road

Brand new deluxe apartment in a tranquil neighbourhood of Happy Valley
全新裝修豪華住宅，環境恬靜，位於跑馬地

1,923 s.f.
\$85K incl.

9093 3381 Stephen Chan 陳先生
www.landscape-christies.com/154914.htm

跑
馬
地
紀
雲
峰



Evergreen Villa

43 Stubbs Road

Spacious 4-bedroom apartment with balcony enjoying panoramic vista of the city and Victoria Harbour
寬敞四房住宅，連露台，享醉人城市及海港全景

2,700 s.f.
\$88K incl.

6183 8339 Carman Szeto 司徒小姐
www.landscape-christies.com/12532.htm

東
半
山
松
柏
新
村



Elm Tree Towers

8-10 Chun Fai Road

Beautifully decorated apartment in Midlevels East with spectacular harbour view
東半山雅緻裝修住宅，享壯麗海景

2,028 s.f.
\$90K incl.

9028 0147 Jenson Au 區先生
www.landscape-christies.com/140495.htm

渣
甸
山
愉
富
大
廈



Rose Court

115-121 Wong Nai Chung Road

Newly designed 4-bedroom apartment with balcony at a convenient location of Happy Valley
全新設計四房住宅，連露台，位於跑馬地，交通便利

2,300 s.f.
\$110K incl.

9486 1566 Mira To 杜小姐
www.landscape-christies.com/41515.htm

跑
馬
地
逸
廬



Ventris Place

19-23 Ventris Road

Spacious 4-bedroom apartment with balcony overlooking racecourse view
寬敞四房住宅，連露台，俯瞰馬場景色，可租可售

2,121 s.f.
\$110K incl. also for sale \$46M

6183 8388 Chris Law 羅先生
www.landscape-christies.com/104235.htm

跑
馬
地
雲
地
利
台



Broadwood Park

38 Broadwood Road

Spacious apartment with balcony enjoying harbour view in Upper Happy Valley
跑馬地寬敞住宅，連露台，欣賞海港景致

2,913 s.f.
\$120K excl.

9486 1566 Mira To 杜小姐
www.landscape-christies.com/130630.htm

跑
馬
地
柏
樂
苑



Victoria Heights

43A Stubbs Road

Rarely available apartment with huge living room enjoying panorama of the city and Victoria Harbour
罕有寬敞大客廳住宅，享壯麗城市及維港景致，可租可售

2,650 s.f.
\$130K incl. also for sale \$70M

9093 3381 Stephen Chan 陳先生
www.landscape-christies.com/37141.htm

東
半
山
威
利
閣



Broadview Villa

20 Broadwood Road

Rare huge penthouse duplex with private terrace enjoying fantastic views
巨大頂層複式住宅，連私家平台，欣賞迷人景致，市場罕有

5,019 s.f. (plus 703 s.f. terrace)
\$298K incl.

9871 6828 Louis Wong 黃先生
www.landscape-christies.com/12249.htm

東
半
山
樂
景
園

Chinese Carpet Centre Ltd.

offers the ***Best Quality***
of handknotted silk and woolen carpets

available in all range of sizes, colours and design

Special Promotion



pure wool 90 Lines
5' x 8'



pure silk 120 Lines
5' x 8'



pure silk 360 Lines
5' x 8'



pure silk 120 Lines
5' x 8'



pure silk 120 Lines
5' x 8'

CHINESE CARPET CENTRE LTD
珍藝行地毯有限公司

Shop 5, G/F, Houston Centre, 63 Mody Road, TST East, Kowloon
Tel: 2730 7230, 2736 1773 rugs@biznetvigator.com www.cccrugs.com.hk

**Prime Residential
Whole Block****Kensington W8**

Whole house in prime Kensington location configured as 12 apartments. All flats fully let. Renovation of each apartment as they become vacant would greatly enhance the capital value. Owner seeking quick sale.

鄰近 Kensington 的住宅大宅，已改建為12個單位，並已經租出，可內部透過內部翻新增加回報，業主急售。

Gross Yield 3.45%
Freehold
6,045sf
£8-9m

**Prime Residential****South Kensington**

Whole House in prime South Kensington location, converted into 14 studio and 4 one bedroom apartments with a small commercial element. Fully let at good yield. Value of the asset could be significantly increased in future by renovating or reconfiguring flats, also possibility to add additional floors, subject to planning.

位於South Kensington的住宅大宅，現改建為14個開放式單位、4個1睡房單位及1個商舖，已全部租出。未來單位可透過更新及改建工程增加額外樓層，增加房屋價值。

Gross Yield 3.4%
Freehold
£11-13m

**Prime Commercial****Mid-Town WC1**

Three interconnecting Grade 1 listed houses with Mews in prestigious Mid-Town Square. Comprehensively refurbished in 2011 and now fully let as office space to single tenant, on a long lease. Secure yield in near term with excellent long term potential capital appreciation.

由三間1級文物大宅改建成的寫字樓，座落於mid-town的優越地段，於2011年進行全面的優化更新，現租予單一租戶作為辦公室，回報穩定且具長遠發展潛力。

Gross Yield 5.2%
Freehold
23,400sf
£11-13m

Prime Commercial**The City of London EC4**

Prime City of London freehold building located a short walk from the Bank of England. Commercial space fully let to a single tenant, a large Financial institution. Ground floor retail space let to a retail bank and an F&B operator. Long tenancies.



在英倫銀行鄰近的商業大樓，現已租予一間大型金融機構，地下兩個舖位則租予一間知名的零售銀行及連所餐飲集團，擁長期租約。

Gross Yield 5.8%
Freehold
68,000sf
£60-70m

Small Prime Commercial**Clerkenwell EC1**

Two attractive period buildings, overlooking Clerkenwell Green. Currently multi-let for commercial tenants. Fully let at good yields. Future conversion back to residential use may enhance value subject to planning.

兩個具吸引力的小型商業大廈，俯瞰Clerkenwell Green美景，現已全數租予幾個租戶作商業用途，租金回報可觀，透過完善規劃，大廈可改變用途為住宅單位，以增加回報價值。



5.3% Gross Yield
Freehold
7,150sf
£3-4m

**Prime Commercial
High Yield****Camden NW1**

Prime, freehold, modern commercial building, with residential apartments on upper floors. Located in the vibrant commercial and residential area of Camden. Commercial space is 19,720sf let to single, reputable tenant on long lease with 15 years unexpired. 6 Apartments on upper floors, fully let, 5,260sf in total. Quality high-yield long-term investment.

位於Camden的混合式用途大廈，設計時尚，地下層至二樓是19,720呎的寫字樓，現租予單一租戶至2027年，三、四樓則是5,260呎的住宅空間，現已規劃成6個單位，並已全數租出，具優質長遠投資潛力。

Gross Yield 6.1%
Freehold
24,980sf
£14-15m



Prices on luxury UK properties are rarely quoted in listings. Interested parties are encouraged to make enquiries on price indications with Landscape

PRICE UPON ENQUIRY 歡迎查詢**6183 8388 Chris Law 羅先生**



FARRINGTON INTERIORS

THE MOMENT MADE BEAUTIFUL



Shop 店舖:

G/F., 87 Wong Nai Chung Road,
Happy Valley, H.K.
香港跑馬地黃泥涌道87號地下
Tel: (852) 2808 0303
Fax: (852) 2801 6732

10,000 sq.ft Flagship store 旗艦店:

31/F., World Trade Centre, 280 Gloucester Road,
Causeway Bay, H.K.
香港銅鑼灣告士打道280號世界貿易中心31樓
Tel: (852) 2808 1000
Fax: (852) 2808 2800

Opening Hours 營業時間:

11:00 am - 7:00 pm
Mon - Fri (星期一至五)
12:00 pm - 6:00 pm
Sat, Sun & Public Holiday
(星期六、日及公眾假期)

WWW.FARRINGTONINTERIORS.COM