

select deluxe homes

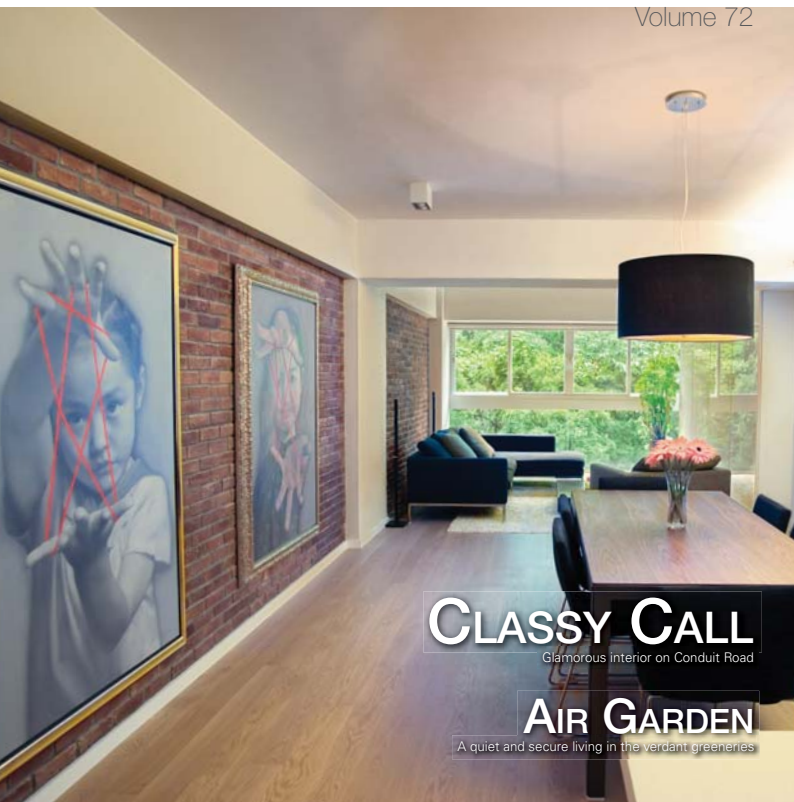
The Key

大宅®

www.landscape.com

OCTOBER | 2010

Volume 72



CLASSY CALL

Glamorous interior on Conduit Road

AIR GARDEN

A quiet and secure living in the verdant greeneries

KEY NOTES*

“Most successful men have not achieved their distinction by having opportunity presented to them. They have developed the opportunity that was at hand.”

「大多數成功的人並不等待別人予以機會；而是掌握自己手中的機遇。」

- Bruce Barton, Famous America author
巴頓 美國著名作家

When we look at the reasons why Chinese buyers are particularly favouring Hong Kong luxury property, the following answers usually emerge. These include long term investment value and asset value appreciation, protection of private property rights, transparent market, comprehensive legislation and law enforcement, high liquidity of real estate asset, stable rental return, superb maintenance and excellent estate management. To most Hong Kongers, these are matters taken for granted but for people from across the border, they are rare and unique, and they are non-existent on the Mainland. Many of these factors also exist in other leading cities around the world but Hong Kong enjoys yet another unbeatable advantage, that is, it is at the door step of China.

談到何以中國內地的買家特別青睞香港的豪宅物業，可從以下幾個原因分析：包括長遠投資的價值和資產增值、私人業權的保障、市場的透明度、健全的立法和嚴格的執法、物業的高度流動性、穩健的租金回報以及優質的物業維修保養和物業管理服務等。對於本港市民來說，這些是理所當然的條件，而對於內地人士，這是稀有的優厚條件，是在中國內地所缺乏。雖然，在全球很多發達城市都具備這些條件，但香港還擁有一個得天獨厚的優點，那就是香港是通往中國的南大門。

By K.S. Koh
ks-koh@landscope.com

Read the full article at Market Watch, www.landscope.com/keynotes
如欲觀看全文，請登入Market Watch網站，網址：www.landscope.com/keynotes

published and distributed by

LANDSCOPE 領域
The Specialists in Luxury Properties

Landscape Realty Limited C-187133
a member of Landscape Surveys Ltd

Tel: 852-2866 0022 Fax: 852-2866 0015
Email: info@landscope.com Website: www.landscope.com
Unit 3106, 31/F, Hopewell Centre, 183 Queen's Road East, Wanchai, Hong Kong

The information, text, photos, analyses and projections contained herein are provided solely for the convenience of prospective clients and no warranty or representation as to its accuracy, correctness or completeness is made by Landscape Surveys Limited, Landscope Realty Limited or the owners, none of whom shall have any liability or obligation with respect thereto. Interested parties should rely on their own investigations, interpretations and analyses in connection with the purchase or selling thereof.
Information has been provided to us by sources deemed reliable, but no warranty or representation is made as to its accuracy, correctness or completeness. These offerings are made subject to contract, correction of errors, omissions, prior sale of assets, change of price or terms or withdrawal from the market without notice. The contents of The Key are for reference only and do not constitute all or any part of a contract.

Reproduction of any material in whole or part without written permission from inCorporation Ltd is strictly prohibited. All information is correct at the time of going to press. The opinions expressed in The Key are those of the authors and are not necessarily endorsed by inCorporation Ltd. Copyright 2013



THE KEY | CONTENTS

- 03 Broadwood Twelve
跑馬地 樂天峯
- 03 Serenade
東半山 上林
- 04 Classy Call
品味之選
- 12 Air Garden
空中之家

The Key (The No. 1 Publication for Luxury Properties)

The Key is a monthly, bilingual lifestyle publication focusing on luxury residential properties in Hong Kong Island. It is sent to over 60,000 urban elites comprising of Hong Kong's most affluent inhabitants.

These consist of Landscope's VIP clients, who mainly reside in The Peak, Mid-Levels, Southside, Kowloon Tong, Homantin and other select up-market residential areas such as Tai Po, Sai Kung and Clear Water Bay, etc.

How may you list your property with The Key?

If you would like to list your property in an upcoming issue of The Key, you may contact Loretta Lui on +852 3102 4818 or visit us at www.landscope.com/sell-to-let. Alternatively, simply fill out the below and fax back to us on +852 2866 0015.

Property Details

Asking Rental / Sale Price

Floor Area

Contact Person

Telephone

Email

Our KeyPerson will contact you for follow-up work.

designed and produced by

in MAGAZINE

inCorporation Limited
Your No. 1 Integrated Marketing Communications Partner in Hong Kong and China

Tel: 852-3699 0888 Fax: 852-3699 0889
Email: marketing@incorp.com.hk Website: www.inmagazine.com.hk
12/F, Cyberport 2, 100 Cyberport Road, Hong Kong



Situated on the Broadwood Road, the privileged mid-levels of Happy Valley, Broadwood Twelve overlooks the breath-taking view of 180° panoramic Victoria Harbour and the unparalleled Race Course. Its superb location is conveniently connected with all of Hong Kong. The prestigious vicinity includes a renowned school network, as well as notable private clubs. The premise offers various units with area from 1,650 sq ft to 3,236 sq ft for selection including two penthouse duplexes with private roofs. A 20,000 sq ft luxurious and functional clubhouse together with a podium garden is unique in the neighbourhood.

樂天峯盤踞跑馬地半山樂活道的傳統尊貴地段，飽覽180度醉人的維港景致及尊尚獨有的馬場勝景，位置優越，區內名校林立，而且毗鄰多間香港尊尚私人會所。單位面積由1,650平方呎至3,236平方呎不等，其中包括兩套頂層複式單位連私人天台可供選擇，並設有同區罕有的20,000平方呎豪華會所連平天花園，設施應有盡有。

Broadwood Twelve 跑馬地 樂天峯

No. 12 Broadwood Road, Happy Valley

Corra Ko 高小姐 6330 7888

Teresa Fung 高小姐 9138 1621

Yvonne Chang 鄭小姐 9088 4666

Appointed Agent 指定代理

Situated on Tai Hang Road, Island East, the new Serenade embraces a metropolitan pulse with its advantageous geographical locations and convenient transport. The premise possesses panoramic view of the spectacular Victoria Harbour in its front, and greeneries from Mount Butler at its back. The area of each apartment varies from 1,000 square feet to 4,000 square feet. Among the available apartments are duplexes with four bedrooms including two ensuites and prestigious penthouses.

上林位處香港島東半山之罕貴地段，掌握大都會脈搏，地理位置優越，交通四通八達。前臨270度遠闊維多利亞港美觀海景，背靠青蔥翠綠華拉山山巒。單位面積由約1,000平方呎至4,000平方呎，其中包括四房兩套複式單位及頂層特色單位。



Mark Mak 麥先生 6838 2929

Mavis Wu 吳小姐 8107 3891

Stephen Chan 陳先生 9093 3381



Classy Call

品味之選

This 1,445 square feet apartment contains three bedrooms, a fully-equipped modern open kitchen and a spacious combined living and dining room which highlights a brick wall with two gigantic stylish portraits on it. The playful red brick wall marks a sharp contrast with the beige-hued contemporary décor throughout. One of the rooms has transformed into a translucent glass-walled study room with a sliding door, allowing you to work in a spacious yet private area. Another 'wow' is the stage-like limpid bathroom in the middle of the master ensuite boasting intimacy of the owners. Imagine you are indulging in a hot tub where the glasses and mirror are fogged - what a sensuous and glamorous scene on your private stage!

Situated on Conduit Road, Midlevels West, Skyline Mansion is in the vicinity of Hong Kong's financial hub Central, offering an ideal residence for middle class urban elite. Classy and edgy, this apartment reflects the attitude of stylish living. ■

這座公屋總面積達1,445平方呎，共有三間睡房，設備齊全的開放式廚房及寬敞的相連客廳。飯廳的牆壁上掛着兩幅新潮雅緻的畫像，那道紅磚牆更為屋內增添一絲原始玩味的感覺，這恰好與全屋米白色的現代裝潢形成強烈的對比。其中一個房間被改裝成半透明的書房，只要拉開趟門便能進入寬闊的私人工作間。全屋最令人讚嘆的當然是主人套房中央的全透明玻璃浴室，仿如戶主的私人舞台。試想像浸泡在熱水浴當中，四周的玻璃及鏡子被蒸氣覆蓋，為你營造浪漫醉人的休閒一刻。

年豐園座落西半山干德道，毗鄰中環金融中心，加上室內的裝潢設計時尚優雅，流露着一派高格調的生活品味，絕對是中產知識分子的理想居所。 ■

Skyline Mansion

西半山 年豐園

51 Conduit Road, Midlevels West

1,445 s.f.
\$17,800,000

www.landscope.com/123151.htm Maria Cheung 葉小姐 51828699



Cytech

Cytech offers a wide range of digital services including digital media, mobile marketing, database management, CRM, eDM, website design, sales platform, e-book and 3-D interactive system. A recognised leader in digital media and innovative technologies, Cytech also establish as an iPhone and iPad developer to satisfy clients' needs in marketing brand building, information delivery and product and service sales.

A DYNAMIC TOTAL DIGITAL SOLUTION



CYTECH LIMITED A SUBSIDIARY OF INCORPORATION LIMITED

(Hong Kong Head Office) 12/F Cyberport 2, 100 Cyberport Road, Hong Kong T+852 3699 0888
(China Office) 12/F Chong Hing Financial Centre, 288 Nanjing West Road, Shanghai T+86 138 1784 0148
(China Office) Building B - 805 Zhuhang 2000 Ba Li Zhuang Xi Li 100 Chao Yang District, Beijing T+86 138 1784 0148

Email: marketing@incorp.com.hk



Kellett Heights
山頂 嘉利閣
61A-61B Mount Kellett Road, The Peak
Nicely renovated 3-bedroom apartment in tranquil environment
雅緻裝修三房單位，環境清幽怡人，罕有放盤

1,600 s.f.
\$42,000,000

www.landscape.com/30673.htm Christine Chong 莊小姐 9648 6082



Ereidine
山頂 加列山道38號
38 Mount Kellett Road, The Peak
Huge colonial apartment with spectacular sea view
巨型英式住宅，尊享壯麗的海景

3,300 s.f.
\$80,000,000

www.landscape.com/23687.htm David Leung 梁先生 9199 0572



Mountain Lodge
山頂 嘉麗
44 Mount Kellett Road, The Peak
Rare duplex apartment with Southside sea view
罕有複式住宅，尊享寧靜南區海景

5,200 s.f.
\$130,000,000

www.landscape.com/96955.htm David Leung 梁先生 9199 0572



La Hacienda
山頂 加列山道29-33號
29-33 Mount Kellett Road, The Peak
Newly decorated townhouse with facilities overlooking nice views
山頂全新裝修排屋，適住客會所設施，俯瞰優美景觀

3,200 s.f.
\$140,000,000

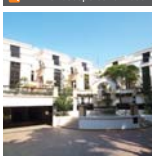
www.landscape.com/3323.htm David Leung 梁先生 9199 0572



Cragside Mansion
山頂 白加道23號
23 Barker Road, The Peak
Rare huge apartment with panoramic view of Victoria Harbour
罕有巨型住宅，尊享遼闊維港景致

4,000 s.f.
\$180,000,000

www.landscape.com/126951.htm Louis Wong 黃先生 9871 6828



Abergeildie
山頂 寶德道52號
52 Plantation Road, The Peak
Peak house with bird's eye view of Victoria Harbour
山頂洋房，尊享鳥瞰港香之維港景致

3,655 s.f. (plus 505 s.f. terrace, 464 s.f. garden and 282 s.f. roof)
\$200,000,000

www.landscape.com/13340.htm David Leung 梁先生 9199 0572

The essence of
Stylish living

Leasing Enquiry: 2879 0222
(viewing by appointment only)
LeasingEnquiry@hansung.com
www.theSummit.com.hk

● Prominently located at 41C Stubbs Road, Mid-Levels
● In close proximity to CBD, international schools and Bowen Road jogging trail
● With 70-storey, The Summit commands splendid views of Victoria Harbour and city skyline
● The duplex suites range from 3,254-6,496 sq.ft.
● Facilities include indoor swimming pool, Jacuzzi, gymnasium, golf simulator, outdoor entertainment/BBQ area and children's playground
● 24-hour security service
● On-site maintenance team



Y.I.
東半山 大坑道10號
10 Tai Hang Road, Midlevels East
2-bedroom sea view apartment in prime location
兩房海景住宅，位處尊貴地段

706 s.f.
\$7,800,000

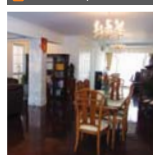
www.landscape.com/130728.htm Mary Li 李小姐 9011 6595



CentreStage
上環 寶賢居
108 Hollywood Road, Sheung Wan
3-bedroom apartment with city view in prime location
三房城市景單位，地段尊貴

1,102 s.f.
\$16,500,000

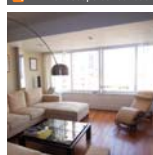
www.landscape.com/110533.htm Jackson Lee 李先生 9177 7191



9 Room Road, Happy Valley
跑馬地 龍龍道9號
Charming low-rise with new decorations in quiet neighbourhood
迷人低密度住宅，全新裝修，環境優美怡人

1,800 s.f.
\$23,800,000

www.landscape.com/67695.htm Stephen Chan 陳先生 9093 3381



Wing Hong Mansion
中半山 永康大廈
60-62 MacDonnell Road, Midlevels Central
Cozy flat with practical layout in convenient location
中半山迷人住宅，開闊實用，位置優越

1,700 s.f.
\$24,000,000

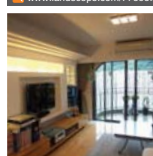
www.landscape.com/99058.htm Stella Lo 鄺小姐 9809 8570



Braemar Hill Mansions
北角半山 寶善湖大廈
15-43 Braemar Hill Road, North Point Midlevels
High efficiency 3-bedroom apartment with large pool and tennis courts
高實用三房住宅，設特大泳池及網球場

1,490 s.f.
\$25,000,000

www.landscape.com/77363.htm Jensen Au 區先生 9028 0147



Wah Fung Mansion
東半山 華峰樓
27 Tai Hang Road, Midlevels East
Spacious whole-floor unit with balcony in high privacy
東半山寬敞住宅連閣樓，私隱度高，可租可售

2,087 s.f.
\$25,000,000 also for lease \$65,000 incl.

www.landscape.com/36117.htm Mira To 杜小姐 9486 1566



Winsome Park
西半山 匯豪閣
42 Conduit Road, Midlevels West
2-bedroom open view apartment with easy access to Central
兩房開揚景住宅，鄰近中環，交通方便

895 s.f.
\$11,000,000

www.landscape.com/104118.htm Jackson Lee 李先生 9177 7191



Blue Pool Road, Happy Valley
跑馬地 藍塘道
Nicely decorated low-rise 3-bedroom apartment on upper Blue Pool Road
裝飾優雅段低密度三房單位，適宜致裝修

1,900 s.f.
\$21,000,000

www.landscape.com/99604.htm Mira To 杜小姐 9486 1566



Pearl Gardens
西半山 明珠閣
7 Conduit Road, Midlevels West
High efficiency 4-bedroom flat
西半山四房住宅，實用率高

2,200 s.f.
\$24,000,000

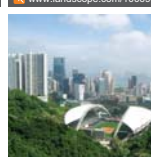
www.landscape.com/33356.htm Sami Woo 胡小姐 9493 8275



Kennedy Road with Roof
堅尼地連道天台住宅
22-24 Kennedy Road, Midlevels Central
Cozy 2-bedroom flat with private roof
中半山迷人兩房單位，連私家天台，可租可售

1,350 s.f. (plus 1,350 s.f. roof)
\$24,000,000 also for lease \$70,000 incl.

www.landscape.com/100693.htm Teresa Lau 劉小姐 9080 0686



Jardine's Lookout Garden Mansion
東半山 蓮荷山花園大廈
148-150 Tai Hang Road, Midlevels East
Nicely decorated apartment overlooking Hong Kong Stadium
東半山雅緻裝修單位，俯瞰香港大球場景觀，可租可售

1,500 s.f.
\$25,000,000 also for lease \$60,000 incl.

www.landscape.com/110480.htm Sami Woo 胡小姐 9493 8275



Flora Garden
灣仔山 綠豪閣
7 Chun Fat Road, Jardine's Lookout
High floor harbour view flat in quiet location with private roof
高層維港景住宅連私家天台，環境寧靜怡人，可租可售

1,519 s.f. (plus 978 s.f. roof)
\$26,000,000 also for lease \$60,000 incl.

www.landscape.com/9295.htm Jackson Lee 李先生 9177 7191

Green Lane Court
跑馬地 寶璽閣
130-140 Blue Pool Road, Happy Valley
Blue Pool Road low-rise apartment with huge balcony and nice decorated terrace and view, 遠特大陽臺及雅緻裝修, 可租可售
2,000 s.f.
\$26,800,000 also for lease \$72,000 incl.
www.landscape.com/109985.htm [Jenson Au 羅先生 9028 0147](#)

New Haven Court
遠荷山 衛街道1-11號
1-11 Wilson Road, Jardine's Lookout
Well decorated colonial style apartment with open city view in Jardine's Lookout
遠荷山靚裝修英式住宅, 尊享開揚城市景觀
1,800 s.f. (plus roof)
\$28,800,000
www.landscape.com/39344.htm [Garman Szeto 司徒小姐 6183 8339](#)

Serene Villa
遠荷山 寧苑
41-45 Perkins Road, Jardine's Lookout
Bright and airy low-rise with nice decorations
光猛開揚低密度住宅, 尊享雅緻裝修, 可租可售
1,650 s.f.
\$29,000,000 also for lease \$88,000 incl.
www.landscape.com/49318.htm [Mary Li 李小姐 9011 6595](#)

The Legend
東半山 名門
23 Tai Hang Drive, Midlevels East
Harbour view 4-bedroom flat on fringe of Causeway Bay
東半山維港景四房住宅, 鄰近銅鑼灣, 吃喝玩樂十分方便
1,908 s.f.
\$31,000,000
www.landscape.com/42265.htm [Cora Ko 高小姐 6330 7888](#)

Villa Monte Rosa
東半山 玫瑰新村
41A Stubbs Road, Midlevels East
Large practical flat with garden view and huge balcony
特大花園三房住宅, 遠特大陽臺, 開闊實景
2,300 s.f.
\$35,000,000
www.landscape.com/108395.htm [Mary Li 李小姐 9011 6595](#)

Nicholson Tower
東半山 蔚豪苑
8 Wong Nai Chung Gap Road, Midlevels East
Spacious 4-bedroom apartment with nice decorations and fantastic city view
寬敞四房住宅, 遠雅緻裝修, 尊享優美城市景觀
1,993 s.f.
\$36,000,000
www.landscape.com/102635.htm [Garman Szeto 司徒小姐 6183 8339](#)

Cavendish Heights
遠荷山 嘉雲臺
27-37 Perkins Road, Jardine's Lookout
3-bedroom apartment with facilities easy access to Causeway Bay
三房單位遠完善住宅會所設施, 鄰近銅鑼灣, 吃喝玩樂十分方便
1,819 s.f.
\$28,500,000
www.landscape.com/129438.htm [Garman Szeto 司徒小姐 6183 8339](#)

Glory Mansion
中半山 輝煌大廈
106-108 MacDonnell Road, Midlevels Central
Well decorated and fully furnished colonial low-rise on MacDonnell Road
豪貴英式低密度住宅, 尊享雅緻裝修, 連全屋傢俬, 可租可售
2,300 s.f.
\$29,000,000 also for lease \$75,000 incl.
www.landscape.com/37757.htm [Jenson Au 區先生 9028 0147](#)

Birchwood Place
中半山 寶樹森
96 MacDonnell Road, Midlevels Central
Fully fitted apartment with open city view
靚裝修單位, 尊享開揚城市景觀
2,018 s.f.
\$31,000,000
www.landscape.com/107827.htm [Mavis Wu 吳小姐 9107 3891](#)

Catalina Mansions
中半山 嘉年大廈
98-100 MacDonnell Road, Midlevels Central
Spacious apartment on MacDonnell Road
豪貴開揚寬敞單位, 可租可售
2,300 s.f.
\$31,000,000 also for lease \$92,000 incl.
www.landscape.com/37793.htm [Jenson Au 區先生 9028 0147](#)

Century Tower I
中半山 世紀大廈1座
1 Tregunter Path, Midlevels Central
Unique 3-bedroom flat with large balcony and sea view
中半山精緻三房住宅, 遠特大陽臺, 尊享海景, 全城最平
2,565 s.f.
\$36,000,000
www.landscape.com/15864.htm [Christine Chong 莊小姐 9648 6082](#)

Kingsford Gardens
北角半山 瓊峰園
232-216 Tin Hau Temple Road, North Point Midlevels
4-bedroom (2 ensuite) apartment in North Point with Victoria Harbour view
北角半山四房兩套套房單位, 尊享維港景
2,500 s.f.
\$38,000,000
www.landscape.com/133543.htm [Garman Szeto 司徒小姐 6183 8339](#)



SIMPLICITY INDIVIDUALITY PERSONALITY

Opening Hours:

Mon - Sat: 0900 - 1930
Sun & Pub: 1300 - 1930

HONG KONG MAIN OFFICE CHEST APPLY (ASIA) LTD.

Shop No. 201, 2/F Harbour Centre, 25 Harbour Road, Wanchai, HK
enquiry@leicht.com.hk www.leicht.com.hk

LEICHT UP YOUR LIFE

HONG KONG SHOWROOM - Phone (852) 2575 8286
BEIJING SHOWROOM - Phone (8610) 8527 1858
SHANGHAI SHOWROOM - Phone (8621) 3878 0212
SHENZHEN SHOWROOM - Phone (86755) 8279 3211

MID-LEVELS Sales | 中區出售



Villa Veneto
西半山 威都閣
3 Kotewall Road, Midlevels West
Large 4-bedroom apartment with harbour view
西半山特大四房住宅，尊享優美港景致

2,562 s.f.
\$39,600,000

www.landscape.com/129458.htm Mira To 杜小姐 9486 1566



16 Broom Road, Happy Valley
跑馬地 蟻龍道16-20號
Colonial low-rise with private garden in prime area
跑馬地英式低密度住宅，連私家花園，地段尊貴

2,000 s.f. (plus 1,355 s.f. garden)
\$40,000,000 Sole Agent 獨家代理

www.landscape.com/83486.htm Stella Lo 羅小姐 9809 8570



Valley View
東半山 欣景台
4A-4D Wong Nai Chung Gap Road, Midlevels East
Spacious practical flat overlooking Happy Valley
寬闊住宅，間隔實用，俯瞰跑馬地景致

2,400 s.f.
\$43,000,000

www.landscape.com/96788.htm Walker Lam 林先生 9551 1077



May Tower 1
中半山 梅苑一座
7 May Road, Midlevels Central
A well-presented 3-bedroom triplex apartment
雅緻三房三複式住宅，可租可售

2,850 s.f.
\$50,000,000 also for lease \$98,000 incl.

www.landscape.com/6191.htm Mavis Wu 吳小姐 9107 3891



Tregunter Tower 3
中半山 地利根德閣3座
14 Tregunter Path, Midlevels Central
Tastefully decorated duplex with excellent clubhouse facilities
品味裝修複式住宅，連完善住客會所設施

2,980 s.f. (plus 187 s.f. terrace)
\$56,000,000

www.landscape.com/105883.htm David Chan 陳先生 9238 2012



Borrett Mansion
中半山 寶得豪
8A-9B Bowen Road, Midlevels Central
Sought after older style spacious apartment overlooking harbour view
中半山罕有古典式住宅，間隔寬敞，俯瞰港景致

2,800 s.f.
\$60,000,000

www.landscape.com/18427.htm Rowena Siu 蕭小姐 9348 4118



Elm Tree Towers
渣甸山 愉富大廈
8-10 Chun Fai Road, Jardine's Lookout
Renovated spacious 3-bedroom apartment with Victoria Harbour view
豪華三房住宅，間隔寬敞，尊享港景觀

2,028 s.f.
\$39,800,000

www.landscape.com/127001.htm Chris Law 羅先生 6183 8388



The Colonnade
東半山 嘉善閣
152 Tai Hang Road, Midlevels East
Modern 3-bedroom flat with breath-taking harbour view in Midlevels East
東半山時尚三房單位，尊享優美港景致，可租可售

1,857 s.f.
\$40,800,000 also for lease \$82,000 incl.

www.landscape.com/127169.htm Rowena Siu 蕭小姐 9348 4118



The Leighton Hill
跑馬地 禮頓山
28 Broadwood Road, Happy Valley
Deluxe 4-bedroom apartment with racecourse view
豪華四房住宅，尊享馬場景

1,911 s.f.
\$43,000,000

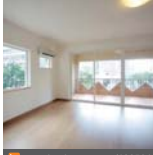
www.landscape.com/94599.htm Mark Mak 麥先生 6838 2929



Rose Gardens
中半山 玫瑰別墅
9 Magazine Gap Road, Midlevels Central
Midlevels Central 3-bedroom apartment in prime location
中半山三房單位，地段尊貴，可租可售

2,600 s.f.
\$50,000,000 also for lease \$150,000 incl.

www.landscape.com/21557.htm Teresa Lau 劉小姐 9080 6686



Yale Lodge
中半山 怡盛
30 Kennedy Road, Midlevels Central
Rare found 4-apartment with 2 ensuite with new renovation
中半山罕有四房連兩套房住宅，連雅緻裝修

3,300 s.f.
\$57,000,000

www.landscape.com/128564.htm Mira To 杜小姐 9486 1566



Dynasty Court
中半山 帝景閣
23 Old Peak Road, Midlevels Central
4-bedroom apartment with full harbour view
中半山四房住宅，尊享全港景，可租可售

2,691 s.f.
\$62,000,000 also for lease \$140,000

www.landscape.com/11125.htm Mark Mak 麥先生 6838 2929



FARRINGTON INTERIORS
THE MOMENT MADE BEAUTIFUL

富樂庭

10,000 sq.ft. new Flagship Store at 31/F World Trade Centre
一萬平方呎旗艦店於銅鑼灣世貿中心三十一樓



Shop 店舖
G/F, 87 Wong Nai Chung Road,
Happy Valley, H.K.
香港跑馬地黃泥涌道87號地下
Tel: (852) 2808 0303
Fax: (852) 2801 6732

Flagship Store 旗艦店
31/F, World Trade Centre, 280 Gloucester Road,
Causeway Bay, H.K.
香港銅鑼灣士打道280號世貿中心31樓
Tel: (852) 2808 1000
Fax: (852) 2808 2800

Opening Hours 營業時間
11:00am - 7:00pm
Mon - Fri (星期一至五)
1:00pm - 6:00pm
Sat, Sun & Public Holiday
(星期六、日及公眾假期)

WWW.FARRINGTONINTERIORS.COM



Cherry Court
薄扶林 昌閣閣
10-12 Consort Rise, Pokfulam
High ceiling low-rise 3-bedroom apartment with car park at Pokfulam
薄扶林低座三房住宅，樓底特高，連車位

1,018 s.f.
\$8,500,000

www.landscape.com/57460.htm [Christine Chong 莊小姐 9648 0082](#)



Ruby Court
清水灣 嘉蘭閣
55 South Bay Road, Repulse Bay
Full sea view 3-bedroom flat with full facilities overlooking South Bay
全海景三房住宅，連完善住客會所設施，俯瞰優美南區景色

1,780 s.f.
\$30,000,000

www.landscape.com/3954.htm [Stella Lo 盧小姐 9809 8570](#)



Hillgrove
香軟角 璧如花園
18 Cape Drive, Chung Hom Kok
Well decorated low-rise 4-bedroom apartment
雅緻裝修低座四房住宅

2,200 s.f.
\$32,000,000

www.landscape.com/44697.htm [Mark Mak 麥先生 6838 2929](#)

Air Garden 空中之家



Scenic Villas
薄扶林 美景閣
2-28 Scenic Villa Drive, Pokfulam
Spacious 4-bedroom sea view apartment with facilities
寬敞四房海景住宅，連泳池網球場設施

2,517 s.f.
\$30,000,000

www.landscape.com/49920.htm [Jenson Au 區先生 9028 0147](#)



Hong Kong Parkview - Tower 8
清水灣 陽明山莊8座
88 Tai Tam Reservoir Road, Repulse Bay
Popular 3-bedroom apartment with lush green view in country park
受歡迎三房單位，尊享翠綠郊野公園景致

2,366 s.f.
\$32,000,000

www.landscape.com/99642.htm [Cora Ko 喬小姐 6330 7888](#)



Shouson Garden
壽臣山 壽山花園
6A Shouson Hill Road, Shouson Hill
Quiet low-rise flat in lush green Shouson Hill
靜謐山清靜低座住宅，尊享翠綠景觀，可租可售

1,598 s.f.
\$35,000,000 also for lease \$55,000 incl.

www.landscape.com/13813.htm [Chris Law 羅先生 6183 8388](#)

Two 0812-floor apartments are transformed into this 4,210 square feet duplex with brand new lavish decoration throughout. When you first step into the apartment, you will see an atrium boasting a high ceiling which makes a closer connection between both floors other than the staircase. Consisting of three ensuites, one living room on each floor, and a dining room facing the modern kitchen on the lower floor, this plush duplex has a spectacular 180° view that stretches across the verdant greenery of Tai Tam Country Park and overlooks the Tai Tam reservoir and the Victoria Harbour.

Hong Kong Parkview possesses a comprehensive luxurious clubhouse that offers full range of recreational facilities, where kindergarten and supermarket are included in the self-contained neighbourhood. This commodious duplex is ideal for large families with three generations who seeks for a quiet and secure living environment. ■

這間4,210平方呎的複式公寓由兩層公寓改裝而成，全屋經由室內設計師重新設計裝修。當你踏進屋內，便會看到半圓形的中庭。除了屋內的樓梯外，中庭特高的天花亦有助拉近上下兩層的距離。全屋共設三個套房，每層各有一個客廳，飯廳則設於下層的開放式廚房外，間隔分明。另外，這座豪華舒適的複式公寓環抱180度翠綠的大潭郊野公園景緻，俯瞰大潭水塘及維多利亞港的開揚勝景，空氣清新怡人。

陽明山莊的豪華會所提供全面的康樂設施，幼稚園及超級市場也一應俱全，是名副其實的獨立社區。屋苑環境安逸恬靜，這寬敞豪華的複式公寓無疑是三代同堂的家庭的理想居所。 ■

Hong Kong Parkview
清水灣 陽明山莊
88 Tai Tam Reservoir Road, Repulse Bay

4,210 s.f.
\$95,000,000

www.landscape.com/111871.htm [David Leung 梁先生 9199 0672](#)

For more listings, please go to www.landscape.com/sale

MAXALTO



MAXALTO IS A B&B ITALIA BRAND, COLLECTION CO-ORDINATED BY ANTONIO CITTERIO.

MAXALTO STORE HONG KONG C/O - DENTRO UPPER G/F WILSON HOUSE, 19-27 WYNDHAM STREET HONG KONG
TEL. 00852 28668829 INFO@DENTRO.COM.HK TO REACH THE DEALER NEAREST TO YOU. PLEASE CONTACT B&B ITALIA:
TEL. +39 031 795 213 INFO@BEBITALIA.COM WWW.MAXALTO.IT



Joy Garden
壽臣山 曉翠花園
13 Shouson Hill Road West, Shouson Hill
4-bedroom (3 ensuite) duplex in tranquil Shouson Hill
壽臣山四房連三套房複式住宅，環境寧靜怡人
2,753 s.f.
\$39,800,000

www.landscape.com/107698.htm Christine Chong 莊小姐 9648 6082



Faber Court
大潭 輝百閣
29-31 Tai Tam Road, Tai Tam
Well decorated sea view apartment at prestige area
大潭雅緻裝修三房海景單位，地段尊貴
2,250 s.f.
\$42,000,000

www.landscape.com/16125.htm Mary Li 李小姐 9011 6595



Celestial Garden
淺水灣 詩禮花園
5 Repulse Bay Road, Repulse Bay
3-bedroom apartment on upper Repulse Bay Road
淺水灣道頂三房住宅
2,363 s.f.
\$44,000,000

www.landscape.com/1520.htm Mark Mak 麥先生 6838 2929



South Bay Towers
淺水灣 南海大廈
59 South Bay Road, Repulse Bay
Spacious 3-bedroom apartment in South Bay
淺水灣寬敞三房住宅出售
2,738 s.f.
\$45,000,000

www.landscape.com/34251.htm Sami Woo 胡小姐 9493 8275



Ventura Villa
香坎角 華庭苑
27 Ching Sau Lane, Chung Hom Kok
Tastefully decorated townhouse with private terrace in quiet enclave
品味裝修洋房，連私家平台，環境優美怡人
2,400 s.f. (plus 400 s.f. terrace)
\$50,000,000

www.landscape.com/33374.htm Sandra Choi 蔡小姐 9234 1109



Repulse Bay Road House
淺水灣道洋房
Brand new decorated townhouse in Repulse Bay with swimming pool
全新裝修淺水灣洋房，連泳池設施
3,426 s.f. (plus 117 s.f. terrace)
\$57,000,000

www.landscape.com/123284.htm Teresa Lau 劉小姐 9080 6686



Ridge Court
淺水灣 翠園
21A-21D Repulse Bay Road, Repulse Bay
Well maintained high-ceilinged flat with sea view on upper Repulse Bay Road
淺水灣頂段高樓住宅，管理良好，尊享海景，租可自售
2,300 s.f.
\$41,500,000 also for lease \$90,000 incl.

www.landscape.com/21018.htm Rowena Siu 蕭小姐 9348 4118



Royalton I
薄扶林 豪峰 I
118 Pokfulam Road, Pokfulam
Spacious duplex with sweeping Pokfulam sea view
寬敞複式住宅享廣闊薄扶林海景
3,250 s.f.
\$43,000,000

www.landscape.com/109727.htm Jackson Lee 李先生 9177 7191



Woodbury Court
薄扶林 嘉林閣
137 Pokfulam Road, Pokfulam
Practical duplex with balconies and peaceful sea view
實用複式單位，連陽臺，尊享寧靜優美的海景
2,895 s.f.
\$45,000,000

www.landscape.com/38820.htm Garman Szeto 司徒小姐 6183 8339



Pacific View
大潭 淺灣閣
38 Tai Tam Road, Tai Tam
High floor flat with splendid sea view
大潭高層住宅，尊享遼闊海景
3,106 s.f.
\$47,000,000

www.landscape.com/13954.htm Maria Cheung 蔡小姐 5182 8699



Park Place
淺水灣 雅柏苑
7 Tai Tam Reservoir Road, Repulse Bay
Prestigious apartment with facilities close to city enjoying unique views
豪華尊貴住宅，連完善住客設施，鄰近市區，尊享雅緻景觀
2,288 s.f.
\$54,000,000

www.landscape.com/35497.htm Teresa Fung 馮小姐 9138 1621



Regalia Bay
赤柱 寶藏灣
88 Wong Miu Kok Road, Stanley
Spacious 5-bedroom waterfront townhouse with sunset sea view
寬敞五房渡假式海濱排屋，尊享海景
4,083 s.f. (plus 1,167 s.f. roof and 570 s.f. garden)
\$60,000,000

www.landscape.com/107814.htm Cora Ko 黃小姐 6330 7888

For more listings, please go to www.landscape.com/sale



Alvin Lee

Joseph is friendly, honest, reliable, organized, and very meticulous in his work. I can't say enough good things about all the work he did to make my place gorgeous & very functional.

Old Peak road - the boundless en-suite



Suzanne Toppin

Don't be fooled by Joseph's easy demeanor. He's an unwavering advocate for the client and the work. It's clear to his contractors that anything less than the best won't do. He thinks through everything, and has nothing left to go.

Shouson Hill - classical contemporary



Richard J. Brink

Throughout the project, Joseph was personally involved, ensuring the quality of the work and the project's adherence to the budget and schedule. The project was completed on time and within budget, and we now have a beautiful new home, as well as a new friend, Joseph!

Capitol Garden - minimal maximized flexibility



Mei Ling

Thank you so much for designing our new dream home. We absolutely love it! I just keep going upstairs and looking at it. It looks like a piece out of a magazine. Fantastic job! You matched the house to our personalities perfectly. Thanks again!

Red Hill Peninsula - accentuated coziness



Sean Holden

We really appreciated the way Joseph worked with us in coming up with great ideas by taking our rudimentary ideas and developing them into amazing designs.

Park Place - interior & exterior connection

"you never own ya premises,
you merely live there unless
ya character implanted"

- Joseph Chang

Interior design
constructions
space planning
project management
tendering
landscaping
quantity survey

tel: +852 2524 4338 fax: +852 2524 4338 email: [joreinvestor.com](mailto:jawah@joreinvestor.com) whatsapp: 1771 1616 long b6b, 4 queen victoria st, central



Headland Road, Repulse Bay
淺水灣 赫蘭道

Brand new single garden house with luxurious decoration and private swimming pool.
淺水灣全新獨立花園洋房，尊享豪華裝修，連私家泳池

10,119 s.f. (plus 6,179 s.f. garden, 1,625 s.f. roof and 643 s.f. terrace)
\$550,000,000

www.landscape.com/133492.htm Louis Wong 黃先生 9871 6828



Pine Crest

淺水灣 松苑

65 Repulse Bay Road, Repulse Bay

Sea view 4-bedroom apartment at Repulse Bay
淺水灣海景四房住宅出售

2,250 s.f.
\$85,000,000

www.landscape.com/15774.htm Teresa Fung 高小姐 9138 1621



Hillgrove

香坊角 望如花園

18 Cape Drive, Chung Hom Kok

Sea view 6-bedroom townhouse with private garden and roof
香坊角海景六房排屋，連私家花園及天台，環境清靜

3,000 s.f. (plus 900 s.f. roof and 660 s.f. garden)
\$68,000,000

www.landscape.com/104403.htm Christine Chong 莊小姐 9648 6082



Manhattan Tower

淺水灣 曼頓大廈

63 Repulse Bay Road, Repulse Bay

4-bedroom sea view apartment enjoy a large swimming pool with sundeck
四房海景住宅，尊享大型露天光浴場的游泳池

2,400 s.f.
\$68,000,000

www.landscape.com/135210.htm Teresa Fung 高小姐 9138 1621



The Somersets

淺水灣 怡峰

67 Repulse Bay Road, Repulse Bay

Well decoration sea view famous duplex apartment with big balcony on upper Repulse Bay Road
淺水灣道頭段有名雅緻裝修複式單位，尊享海景及特大陽臺

2,464 s.f.
\$73,920,000

www.landscape.com/111753.htm Stephen Chan 陳先生 9093 3381



Redhill Park

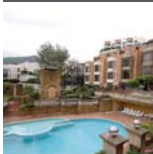
大潭 紅山花園

12 Pak Tai Shan Road, Tai Tam

Spacious townhouse with fascinating sea view
大潭開闊寬敞大廈，尊享優美海景

3,608 s.f. (plus 1,160 s.f. garden)
\$85,000,000

www.landscape.com/21076.htm Sandra Choi 蔡小姐 9234 1109



45 Island Road, Deep Water Bay

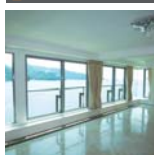
深水灣 香島道45號

Townhouse with private garden in prestigious location

深水灣花園排屋，位處尊貴地段

2,751 s.f. (plus 503 s.f. roof and 474 s.f. garden)
\$87,000,000

www.landscape.com/34142.htm Mavis Wu 吳小姐 9107 3891



56 Repulse Bay, Road Repulse Bay

淺水灣 淺水灣道56號

4-bedroom waterfront duplex with facilities overlooking Repulse Bay Beach
四房連複式複式住宅，連住客會所設施，俯瞰淺水灣海灘景觀

4,086 s.f.
\$120,000,000

www.landscape.com/45928.htm Cora Ko 高小姐 6330 7888



37-39 Bisney Road, Pokfulam

薄扶林 雅盧

37-39 Bisney Road, Pokfulam

Whole block for sale on 37-39 Bisney Road
新嘉坡37-39號整座物業出售

16,635 s.f.
\$160,000,000

www.landscape.com/135166.htm Sandra Choi 蔡小姐 9234 1109



26B Shouson Hill Road, Shouson Hill

壽臣山 壽山村道26B號

Huge 5-bedroom house with large garden enjoy greenery view in prime location
巨型五房大屋連特大花園，尊享翠綠景致，地段尊貴

6,200 s.f. (plus 3,000 s.f. garden)
\$250,000,000

www.landscape.com/4493.htm Sandra Choi 蔡小姐 9234 1109



Repulse Bay Road Garden House

淺水灣連花園大屋

Rare contemporary house with garden on Repulse Bay Road
淺水灣道罕有時尚大屋，連花園

4,400 s.f. (plus 1,816 s.f. garden)
\$280,000,000

www.landscape.com/32663.htm Louis Wong 黃先生 9871 6828



MICKEY
\$1,190



GOODS OF DESIRE

Causeway Bay 2890 5555

Tsim Sha Tsui 2784 5555

Central 2805 1876

Peak Galleria 2778 3331

THE PEAK Lease | 山頂出租



Magazine Gap Towers
山頂 馬己仙峽道15號
15 Magazine Gap Road, The Peak
Colonial style harbour view apartment in prime location
山頂英式港灣住宅，位處尊貴地段

2,300 s.f.
\$73,000 incl.

www.landscape.com/6991.htm

Walker Lam 林先生 9551 1077



77 Peak Road, The Peak
山頂 山頂道77號
Colonial apartment with huge balcony in quiet enclave on the Peak
山頂英式住宅，獨特大陽臺，環境寧靜怡人

2,392 s.f.
\$82,000

www.landscape.com/7517.htm

Mavis Wu 吳小姐 9107 3891



Carolina Garden
山頂 嘉樂園
20-34 Coombe Road, The Peak
Sought after colonial style apartment in prestigious location
山頂英式住宅，地段尊貴，市面難尋

2,800 s.f.
\$120,000 incl.

www.landscape.com/32017.htm

Jackson Lee 李先生 9177 7191



Sunshine Villa
山頂 陽光花園
48 Mount Kellett Road, The Peak
Deluxe Peak townhouse with private garage
豪華山頂排屋，連私家車庫，可租可售

2,300 s.f. (plus 920 s.f. garden)
\$120,000 also for sale \$95,000,000

www.landscape.com/1708.htm

David Leung 梁先生 9199 0672



1-3 Homestead Road, The Peak
山頂 峯仕道1-3號
Modern luxurious apartment enjoy fantastic sea view with facilities and 2 car park spaces
時尚豪華住宅，尊享優美海景及雙車位

2,828 s.f.
\$130,000 incl.

www.landscape.com/29255.htm

Teresa Lau 蕭小姐 9080 6686



Oasis
山頂 欣怡閣
8-12 Peak Road, The Peak
Brand new harbour view apartment with high ceiling
山頂全新能港景住宅，樓底特高

2,719 s.f.
\$130,000

www.landscape.com/35082.htm

Corra Ko 喬小姐 6330 7888



La Hacienda
山頂 加列山道29-33號
29-33 Mount Kellett Road, The Peak
Large high-ceilinged colonial apartment in lush greenery
特大英式住宅，樓底特高，尊享翠綠景致，可租可售

3,506 s.f.
\$140,000 incl. also for sale \$82,000,000

www.landscape.com/123395.htm

Chris Law 羅先生 6183 8388



Abergeldie
山頂 楓樹道52號
52 Plantation Road, The Peak
Peak townhouse with bird's eye view of Victoria Harbour
山頂洋房，尊享鳥語花香的維港景色

3,655 s.f. (plus 759 s.f. garden and 313 s.f. terrace)
\$190,000 incl.

www.landscape.com/606.htm

Jackson Lee 李先生 9177 7191



Altadena
山頂 白加道27號
27 Barker Road, The Peak
Highly sought after huge apartment with panoramic harbour view on Barker Road
白加道巨型住宅，尊享優美維港，市面難尋

4,500 s.f.
\$250,000 incl.

www.landscape.com/12838.htm

Louis Wong 黃先生 9871 6828



Watford Villa
山頂 和輦別墅
18-28 Watford Road, The Peak
Lofty-ceilinged townhouse with sea view
山頂海景洋房，樓底特高

3,300 s.f.
\$260,000 incl.

www.landscape.com/104174.htm

Louis Wong 黃先生 9871 6828

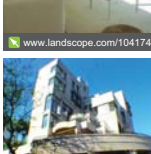


46 Plantation Road, The Peak
山頂 楓樹道46號
Extravagant house with private pool and lift overlooking Victoria Harbour panorama
山頂獨特豪華大屋，連私家游泳池，設有私人電梯，俯瞰維港景色

5,930 s.f. (plus 934 s.f. garden and 670 s.f. terrace)
\$450,000 incl.

www.landscape.com/42030.htm

Sandra Choi 蔡小姐 9234 1109



The Belvedere
山頂 楓樹道51-61號
51-61 Plantation Road, The Peak
Exclusive luxury detached house with private pool overlooking Victoria Harbour view
山頂獨特豪華大屋，連私家游泳池，俯瞰維港景色

4,800 s.f. (plus 1,500 s.f. roof and 1,500 s.f. terrace)
\$500,000 incl.

www.landscape.com/20413.htm

Yvonne Chang 鄭小姐 9088 4666

VIRTUE ARCHITECTS LIMITED

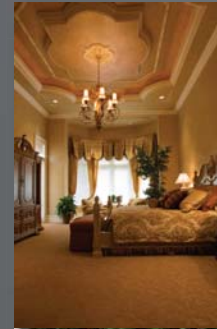
No.11 Burd Street, Sheung Wan, Hong Kong
Tel. (852) 3113 4699 Fax. (852) 2574 6269
Email. virtuearch@gmail.com

Commercial Interior Design
商業室內設計

Residence Interior Design
住宅室內設計

Building Renovation Design
樓宇更新設計

Garden Design
園藝設計



Welcome to reserve flowers, plants, fruit baskets, funeral, orchid, opening & congratulations, decoration and etc.

歡迎預訂花束、植物、果籃、悼念花圈、蘭花、開張花籃和場地佈置等等。

No.11 Burd Street, Central, Hong Kong
Tel. 2544 6886 Fax. 2574 6269
Website. www.yimflower.com
Email. yimflower@yahoo.com.hk

Yim's
Flower



Flora Garden
東半山 靜景園
7 Chun Fai Road, Jardine's Lookout
Newly redecorated flat with spacious living room enjoying partial harbour view
遠望山全新裝修住宅，客廳開闊寬敞，享部份維港景致

1,533 s.f.
\$53,000 incl.

www.landscape.com/54556.htm | Stephen Chan 陳先生 9093 3381



CentreStage
東半山 靜景園
108 Hollywood Road, Sheung Wan
Fully furnished harbour view duplex with 5-star hotel facilities
維港豪宅，匯全層低價，享完善住客會所設施

857 s.f.
\$55,000

www.landscape.com/84747.htm | Sami Woo 胡小姐 9493 8275



The Elegance
東半山 靜景園
60 Tai Hang Road, Midlevels East
Tastefully renovated harbour view duplex on Tai Hang Road
大坑道品裝裝修雙式住宅，享維港景色，可租可售

2,404 s.f.
\$95,000 incl. also for sale \$30,880,000

www.landscape.com/130711.htm | Rowena Siu 盧小姐 9348 4118



Taipan Court
東半山 大坑園
47B Stubbs Road, Midlevels East
Renovated 4-ensuite duplex overlooking stunning harbour view
豪華四套房雙式單位，俯瞰廣闊維港景色

3,670 s.f.
\$95,000

www.landscape.com/29477.htm | Yvonne Chang 鄭小姐 9088 4666



Cooper Villa
渣甸山 衛街道23-29號
23-29 Wilson Road, Jardine's Lookout
Nicely renovated 3-bedroom low-rise with huge balcony and fantastic view
雅緻裝修低密度三房單位，遠特大匯景，享翠綠景色

1,700 s.f.
\$65,000 incl.

www.landscape.com/129581.htm | Stephen Chan 陳先生 9093 3381



Beauty Court
中半山 雅苑
82 Robinson Road, Midlevels West
Harbour view flat with new decor in convenient location
中半山維港豪宅，遠雅緻裝修，位處絕佳地段

1,771 s.f.
\$68,000 incl.

www.landscape.com/40539.htm | Sami Woo 胡小姐 9493 8275



Rose Gardens
中半山 玫瑰園
9 Magazine Gap Road, Midlevels Central
Rare find colonial apartment at prime location close to Central with brand new decor
罕有全新裝修英式住宅，鄰近中環，位處尊貴地段

2,600 s.f.
\$100,000 incl.

www.landscape.com/125468.htm | Teresa Fung 高小姐 9138 1621



The Albany
中半山 雅賓利大廈
1 Albany Road, Midlevels Central
Renowned apartment on fringe of Central
中半山豪華單位，鄰近中環，交通方便

2,546 s.f.
\$108,000

www.landscape.com/31634.htm | Teresa Fung 高小姐 9138 1621



Haddon Court
西半山 海天閣
41C Conduit Road, Midlevels West
Modern 3-bedroom apartment in quiet enclave
西半山時尚三房住宅，環境清幽寧靜

1,860 s.f.
\$68,000 incl.

www.landscape.com/37395.htm | David Chan 陳先生 9238 2012



Visalia Garden
中半山 蔚山花園
48 MacDonnell Road, Midlevels Central
Bright and airy 3-bedroom apartment on fringe of Central
光猛通爽三房單位，鄰近中環，可租可售

2,195 s.f.
\$70,000 incl. also for sale Open Offer

www.landscape.com/81594.htm | David Chan 陳先生 9238 2012



The Leighton Hill
跑馬地 禮頓山
2B Broadwood Road, Happy Valley
Popular luxurious 4-bedroom apartment with excellent club facilities
受歡迎豪華四房單位，享完善住客會所設施

1,911 s.f.
\$100,000 incl.

www.landscape.com/131615.htm | Walker Lam 林先生 9551 1077



Dynasty Court
中半山 帝景園
23 Old Peak Road, Midlevels Central
4-bedroom apartment overlooking Victoria Harbour
中半山四房住宅，俯瞰維港景致

2,266 s.f.
\$110,000 incl.

www.landscape.com/104347.htm | Mary Li 李小姐 9011 6595



Tavistock 2
中半山 匯景閣2座
10A Tregunter Path, Midlevels Central
3-bedroom apartment with nice view
中半山三房單位，享翠綠美景

1,655 s.f.
\$75,000 incl.

www.landscape.com/45354.htm | Stella Lo 羅小姐 9809 8570



Man Yuen Garden
中半山 文苑花園
52A-52B Kennedy Road, Midlevels Central
Nicely decorated apartment with big balcony
凱尼地園雅緻裝修單位，遠匯景

2,000 s.f.
\$76,000 incl.

www.landscape.com/96871.htm | Sami Woo 胡小姐 9493 8275



Park View Court
西半山 恒柏園
1 Lyteton Road, Midlevels West
Rare and newly renovated 3-bedroom duplex in convenient Midlevels West
西半山罕有三房雙式單位，全新裝修，交通方便

3,000 s.f.
\$80,000 incl.

www.landscape.com/15734.htm | Stella Lo 羅小姐 9809 8570



Po Garden
中半山 寶園
9 Brewin Path, Midlevels Central
Newly renovated 4-bedroom apartment on fringe of Central
全新裝修四房住宅，鄰近中環，可租可售

2,572 s.f.
\$80,000 incl. also for sale \$40,000,000

www.landscape.com/18937.htm | Mira To 杜小姐 9486 1566



Horizon Mansions
中半山 廣華大廈
102-104 MacDonnell Road, Midlevels Central
Newly renovated colonial apartment with big balcony
全新裝修英式住宅，遠特大匯景

2,300 s.f.
\$82,000 incl.

www.landscape.com/115892.htm | David Chan 陳先生 9238 2012



Silvercrest
中半山 寶安樓
24 MacDonnell Road, Midlevels Central
Unique 4-bedroom apartment with 2,000 s.f. huge terrace on MacDonnell Road
麥當勞道雅緻四房住宅，匯二千呎特大平台

2,643 s.f. (plus 2,129 s.f. terrace)
\$80,000 incl.

www.landscape.com/20681.htm | Christine Chong 莊小姐 9648 6082

astral™
advanced lighting system



Astral system controls more than just lights, discover how it can change your lifestyle.

astral™, the advanced lighting system from MK Electric, brings out the best in your environment and is the ideal lighting control solution if you are looking to enhance the ambience and atmosphere in any room or residence.

Providing sophisticated and inspirational lighting control, astral is an extremely versatile and intelligent system, which incorporates the award-winning ZenSys RF communications technology (Z-Wave®) ensuring the ultimate in both reliability and flexibility.



MK Electric (China) Ltd
25/F Honeywell Tower, Olympia Plaza, 255 King's Road, North Point, Hong Kong
Telephone (+852) 2331 9133, (+852) 2953 8379 | Fax (+852) 2511 9465
www.mk-electric.com.hk

Tregunter Tower 1

中半山 地利根樓閣 1座
14 Tregunter Path, Midlevels Central
Practical 4-bedroom apartment with full clubhouse facilities
中半山四房住宅，間隔寬用，連完善住客會所設施

3,336 s.f.
\$120,000 incl.

www.landscape.com/103033.htm Mira To 杜小姐 9486 1566

Borrett Mansions

中半山 寶德基
8A-9B Bowen Road, Midlevels Central
Spacious 4-bedroom apartment with splendid city view and harbour view
中半山四房住宅，間隔寬敞，享城市景觀及維港景色

2,800 s.f.
\$125,000

www.landscape.com/40435.htm Stella Lo 廖小姐 9809 8570

Panorama

西半山 全景大廈
15 Conduit Road, Midlevels West
Huge duplex apartment with huge balcony on Conduit Road
千禧獨特大複式住宅，連巨型陽臺

3,858 s.f. (plus 504 s.f. terrace)
\$135,000 incl.

www.landscape.com/71212.htm Walker Lam 林先生 9551 1077

Villa Elegance

中半山 雅華閣
1 Robinson Road, Midlevels Central
Newly renovated huge 4-bedroom flat with high privacy on fringe of Central
全新裝修巨型四房單位，私隱度高，鄰近中環，交通方便

3,500 s.f.
\$120,000 incl.

www.landscape.com/96721.htm Mavis Wu 吳小姐 9107 3891

Kennedy Terrace

中半山 堅尼地台
20 Kennedy Road, Midlevels Central
Penthouse facing park view with good condition
中半山頂層住宅，靚裝修，享翠綠動植物公園景

2,500 s.f. (plus 1,500 s.f. roof and 350 s.f. terrace)
\$125,000 incl.

www.landscape.com/133482.htm Sandra Choi 蔡小姐 9234 1109

Kennedy Heights

中半山 堅尼閣
10-18 Kennedy Road, Midlevels Central
Huge 5-bedroom apartment in heart of Midlevels Central
特大五房單位，位於半山中心地帶

3,400 s.f.
\$140,000 incl.

www.landscape.com/27644.htm Cora Ko 高小姐 6330 7888

INVENTIVE NOVATIVE IMAGINATIVE

our services
RESIDENTIAL DESIGN
OFFICE DESIGN
COMMERCIAL DESIGN
F&B DESIGN
DESIGN CONSULTANT
CONSTRUCTIONS



www.novusp.com

NOVUS PENETRALIS LIMITED

UNIT 16A, HANG SENG CAUSEWAY BAY BUILDING
28 YEE WO STREET, CAUSEWAY BAY, HONG KONG
T. 3106 6069 F. 3106 6079 E. info@novusp.com

Century Tower 2

中半山 世紀大廈2座
1A Tregunter Path, Midlevels Central
Large 4-bedroom apartment in gated neighbourhood
中半山特大四房單位，環境寧靜怡人

3,663 s.f.
\$150,000 incl.

www.landscape.com/135372.htm Teresa Lau 劉小姐 9080 6686

Grenville House

中半山 嘉德閣
1-3A Magazine Gap Road, Midlevels Central
Renowned huge 4-bedroom apartment with new decor
豪華巨型四房住宅，尊享全新裝修，可租可售

3,700 s.f.
\$150,000 incl. also for sale \$80,000

www.landscape.com/30085.htm Teresa Lau 劉小姐 9080 6686

The Mayfair

中半山 梅道1號
1 May Road, Midlevels Central
Deluxe 4-bedroom apartment with harbour view
中半山豪華四房港景豪宅，租可可售

2,905 s.f.
\$140,000 incl. also for sale \$78,000

www.landscape.com/12736.htm David Chan 陳先生 9238 2012

The Summit

東半山 御峰
41C Stubbs Road, Midlevels East
Huge prestigious high-rise flat with stunning harbour view
東半山高層住宅，尊享遼闊港景觀

3,272 s.f.
\$185,000 incl.

www.landscape.com/29091.htm Mary Li 李小姐 9011 6595

Branksome Grande

中半山 地利根樓閣3號
3 Tregunter Path, Midlevels Central
Unique full harbour view penthouse with huge sky terrace
獨特全港景頂層住宅，連特大平台

4,950 s.f. (plus 1,154 s.f. terrace)
\$320,000

www.landscape.com/11675.htm Yvonne Chan 鄭小姐 9088 4666

HighCliff

東半山 曉嵐
41D Stubbs Road, Midlevels East
Extravagant apartment with bird's eye view of Victoria Harbour
東半山豪華住宅，尊享鳥語花香的港景景致

7,486 s.f.
\$500,000

www.landscape.com/123974.htm Louis Wong 黃先生 9871 6828

德國 osmo[®]
...in form und farbe

Wood finishes from a wood specialist



Natural...

...with natural oils and waxes,
the very best for wood and
the environment!



Faster...

...Osmo finishes can be renovated
without sanding, saving time
and money!



Coverage...

...high solid means amazing
coverage and best price per m²!

Hop Sze Timber Co., Ltd.
220 Gloucester Road, Wanchai, Hong Kong
Phone (852) 28330609 www.hopsze.com





La Mer
灣畔林 連順居
67-71 Bisney Road, Pokfulam

Newly renovated 4-bedroom low-rise with full sea view
全新裝修四房低密度住宅，尊享全海景，可租可售

2,063 s.f.
\$69,000 incl. also for sale \$33,000,000

Sole Agent 獨家代理

www.landscape.com/108873.htm **Yvonne Chang 鄭小姐 9088 4666**



Stanley Knoll
赤柱 赤柱村道42號
42 Stanley Village Road, Stanley

Spacious 3-bedroom apartment at quiet neighbourhood
寬敞三房單位，地段清幽寧靜

2,461 s.f.
\$95,000

www.landscape.com/36681.htm **Mavis Wu 吳小姐 9107 3891**



Villa Cecil Phase III
灣畔林 越苑3期
219 Victoria Road, Pokfulam

Spacious 3-bedroom apartment with huge balcony
寬敞三房單位，連特大陽臺，可租可售

3,779 s.f. (plus 26 s.f. terrace)
\$98,000 also for sale \$50,464,000

www.landscape.com/92185.htm **Maria Cheung 蔡小姐 5182 8699**



Celestial Garden
淡水灣 蔚園花園
5 Repulse Bay Road, Repulse Bay

Newly renovated sea view apartment on upper Repulse Bay Road
全新裝修海景住宅，位於淡水灣道頭段，可租可售

2,363 s.f.
\$100,000 incl. also for sale \$54,000,000

www.landscape.com/131231.htm **Jenson Au 區先生 9028 0147**




Monte Verde
淡水灣 南山別墅
41 Repulse Bay Road, Repulse Bay

Spacious 4-bedroom apartment enjoying spectacular views with nice decoration
淡水灣寬敞四房單位，尊享壯麗景色，連新裝修，可租可售

2,400 s.f.
\$110,000 incl. also for sale \$83,000,000

www.landscape.com/127523.htm **Walker Lam 林先生 9551 1077**



L'Harmonie
赤柱 福順居
3 Stanley Mound Road, Stanley

Sea view townhouse with 4 bedrooms in Stanley
赤柱海景四房渡假式洋房

2,700 s.f. (plus 1,162 s.f. garden and 600 s.f. roof)
\$140,000 incl.

www.landscape.com/69628.htm **Mark Mak 麥先生 6838 2929**




Cypresswater Villas
曹汝角 柏濤小廬
32 Cape Road, Chung Hom Kok

Nicely decorated 3-bedroom duplex with garden close to Stanley Market
雅緻裝修三房複式住宅連花園，鄰近赤柱大灘

2,200 s.f. (plus 580 s.f. garden)
\$85,000 incl.

www.landscape.com/31833.htm **Mary Li 李小姐 9011 6595**



Consort Garden
灣畔林 金碧花園
22-24 Consort Rise, Pokfulam

Exclusive low-rise with roof top in quiet neighbourhood
獨特低密度住宅，連天台，環境寧靜

2,200 s.f. (plus 2,000 s.f. roof)
\$96,000 incl.

www.landscape.com/47712.htm **Rowna Siu 蕭小姐 9348 4118**



Park Place
淡水灣 雅柏苑
7 Tai Tam Reservoir Road, Repulse Bay

Renovated penthouse flat with private roof and splendid views
全新裝修頂層住宅連私家天台，尊享壯麗景色

2,338 s.f. (plus 2,000 s.f. roof)
\$100,000 incl.

www.landscape.com/10594.htm **Walker Lam 林先生 9551 1077**



Pine Crest
淡水灣 松苑
65 Repulse Bay Road, Repulse Bay

High floor sea view apartment with nice decor
高層海景住宅，連雅緻裝修

2,250 s.f.
\$100,000

www.landscape.com/100355.htm **Chris Law 羅先生 6183 8388**



The Somerset
淡水灣 怡峰
67 Repulse Bay Road, Repulse Bay

Famous building with fantastic Southside sea view in Repulse Bay
受歡迎住宅大廈，尊享廣闊淡水灣南區海景，可租可售

2,464 s.f.
\$135,000 incl. also for sale \$66,000,000

www.landscape.com/110820.htm **Maria Cheung 蔡小姐 5182 8699**



The Zenith
壽臣山 榮閣
11A Shouson Hill Road West, Shouson Hill

Townhouse incorporating intelligent home management system
壽臣山獨特排屋，屋苑管理系統完善

3,625 s.f. (plus 420 s.f. garden, 381 s.f. terrace and 305 s.f. roof)
\$140,000

www.landscape.com/32049.htm **Stella Lo 廖小姐 9809 8570**



68 Mount Davis Road, Pokfulam
灣畔林 摩星嶺道68號
3-bedroom penthouse with private roof in Pokfulam
灣畔林頂層三房住宅，連私家天台

2,925 s.f. (plus 718 s.f. roof)
\$146,250

www.landscape.com/127378.htm **Christine Chang 莊小姐 9648 6082**



Pine Lodge
壽臣山 松苑
10 Shouson Hill Road West,
3-bedroom duplex with large terrace in tranquil Shouson Hill
壽臣山三房複式住宅連特大平台，環境寧靜怡人

3,000 s.f. (plus 800 s.f. terrace and garden)
\$150,000 incl.

www.landscape.com/3218.htm **David Chan 陳先生 9238 2012**



The Lily
淡水灣 淡水灣道129號
129 Repulse Bay Road, Repulse Bay

Brand new 4-bedroom duplex with fantastic Repulse Bay view
全新四房複式住宅，尊享美麗淡水灣景色

3,612 s.f.
\$156,000

www.landscape.com/75996.htm **Gora Ko 高小姐 6330 7888**



8 Shouson Hill Road East, Shouson Hill
壽臣山 壽臣山道東8號
Large detached townhouse in serene Shouson Hill
壽臣山巨型獨立大廈，環境寧靜怡人

3,500 s.f. (plus 1,800 s.f. terrace and 1,000 s.f. roof)
\$150,000 incl.

www.landscape.com/39459.htm **Rowna Siu 蕭小姐 9348 4118**



1 Shouson Hill Road East, Shouson Hill
壽臣山 壽臣山道東1號
Top quality garden house in quiet Shouson Hill
壽臣山頂級花園大廈，環境寧靜怡人

4,069 s.f. (plus 629 s.f. roof and 407 s.f. garden)
\$154,000 incl.

www.landscape.com/94516.htm **David Chan 陳先生 9238 2012**



Blewater
大潭 大潭道25號
25 Tai Tam Road, Tai Tam

4-bedroom garden apartment with panoramic sea view
四房住宅連特大花園，尊享遼闊海景

2,500 s.f. (plus 2,997 s.f. garden and 746 s.f. terrace)
\$160,000 incl.

www.landscape.com/31650.htm **Carman Szeto 司徒小姐 6183 8339**

SCHOTTEN & HANSEN

a passion for excellence

"A floor from Schotten & Hansen is as unique as the person who lives on it"

Torben Hansen, Managing Director of Schotten & Hansen

8 Deep Water Bay Road, Deep Water Bay
深水灣 深水灣道 8 號
Exclusive sea view townhouse in upscale Deep Water Bay
獨特海景屋，位於深水灣尊貴地段

3,200 s.f. (plus 1,000 s.f. roof and 304 s.f. terrace)
\$160,000

www.landscape.com/1323.htm Maria Cheung 張小姐 5182 8699



26C Shouson Hill Road, Shouson Hill
壽臣山 壽山村道26C號
4-bedroom townhouse with greenery view in prime location
四房排屋，尊享翠綠景致，地段尊貴，可租可售

3,000 s.f. (plus 1,500 s.f. garden)
\$168,000 incl. also for sale \$80,000,000

www.landscape.com/49729.htm Chris Law 羅先生 6183 8388



Felix Villas
薄扶林 福和別墅
61 Mount Davis Road, Pokfulam
Rare sea view townhouse with private garage
薄扶林罕有海景排屋，連私家車庫

5,000 s.f.
\$180,000 incl.

www.landscape.com/130602.htm Yvonne Chang 鄭小姐 9088 4666



Carmella
赤柱 赤柱村道60號
60 Stanley Village Road, Stanley
Huge colonial house with front yard and private garden
巨型英式大屋，連前院及私家花園，可租可售

4,600 s.f. (plus 753 s.f. garden and 215 s.f. terrace)
\$230,000 incl. also for sale \$150,000,000

www.landscape.com/91172.htm Maria Cheung 張小姐 5182 8699



Villa Rosa
大潭 玫瑰園
68 Red Hill Road, Tai Tam
Garden house with brilliant sea view in tranquil location
大潭花園大屋，享絕色海景，地段清幽怡人，可租可售

3,960 s.f. (plus 480 s.f. roof and 414 s.f. garden)
\$250,000 also for sale \$120,000,000

www.landscape.com/1914.htm Mark Mak 麥先生 6838 2929



Ming Villas
壽臣山 明園
318C-F Shouson Hill Road, Shouson Hill
Rare huge 5-bedroom townhouse with terrace and beautiful sea view
罕有特大六房單位，連平台，尊享美麗海景

4,258 s.f. (plus 745 s.f. terrace)
\$300,000 incl.

www.landscape.com/132289.htm Teresa Fung 馮小姐 9138 1621



Las Pinadas
壽臣山 蔚松居
33 Shouson Hill Road, Shouson Hill
Luxurious garden house with roof and terrace in tranquil enclave
豪華花園大屋，連天台及平台，環境清幽怡人，可租可售

3,382 s.f. (plus 617 s.f. roof, 565 s.f. garden and 166 s.f. terrace)
\$165,000 incl. also for sale \$85,000,000

www.landscape.com/21407.htm David Chan 陳先生 9238 2012



5 Headland Road, Repulse Bay
深水灣 赫爾道5號
Rare low-rise 4-bedroom garden flat with sea view in gated neighbourhood
罕有低密度四房住宅，連花園，尊享海景，環境寧靜怡人

3,200 s.f. (plus 2,138 s.f. garden)
\$170,000

www.landscape.com/36934.htm Mira To 杜小姐 9486 1566



Henredon Court
壽臣山 恒安閣
8 Shouson Hill Road, Shouson Hill
Huge garden duplex with open green view
特大花園複式住宅，尊享開揚翠綠景觀

4,750 s.f. (plus garden)
\$195,000

www.landscape.com/99417.htm Yvonne Chang 鄭小姐 9088 4666



Residence Bel-Air
薄扶林 貝沙灣
Cyberport Road, Pokfulam
Brand new 5-bedroom townhouse with fantastic sea view
全新薄扶林五房大屋，尊享優美海景

6,296 s.f. (plus 582 s.f. terrace)
\$250,000 incl.

www.landscape.com/128047.htm Carman Szeto 司徒小姐 6183 8339



Stanley Crest
赤柱 赤柱道5號
5 Stanley Beach Road, Stanley
Sea view garden townhouse close to beach
海景花園洋房，鄰近海灘，可租可售

3,894 s.f. (plus 920 s.f. garden, 666 s.f. roof and 436 s.f. terrace)
\$250,000 also for sale \$135,000,000

www.landscape.com/123699.htm Stephen Chan 陳先生 9093 3381



Double Bay
深水灣 雙島道46號
46 Island Road, Deep Water Bay
Deluxe waterfront house at Deep Water Bay
深水灣豪華海濱大屋，可租可售

5,113 s.f. (plus 1,382 s.f. roof and 1,046 s.f. garden)
\$350,000 also for sale \$298,000,000

www.landscape.com/108206.htm Stephen Chan 陳先生 9093 3381



ERIC FUNG
DESIGN LIMITED
THE INTERIOR DESIGN REFLECTS YOUR NEED



OUR SERVICES: RESIDENTIAL DESIGN OFFICE DESIGN COMMERCIAL DESIGN KITCHEN DESIGN DESIGN CONCEPT CONSULTANT SPACE PLANNING
28/F & 29/F, Catic Plaza, Causeway Road, Causeway Bay, Hong Kong T: (862) 3104 3104 F: (862) 2362 7788 www.tint-international.com

TINT LIVING LTD FURNITURE

Designer Furniture Gallery: G/F, 3 Blue Pool RD, Happy Valley, HK. T: (852) 3104 3105 www.tintliving.com

Furniture Outlet: 11/F, Ming Sang Ind. Building, 19 Hong Yip Street, Kwan Tong, Kowloon. T: (852) 3104 3107



SPECIAL OFFER, CALL US



SPORTRIVA 56'

A member of the Jensen Group • CONSUMER • INDUSTRIAL • BEVERAGE • LUXURY • China • Hong Kong • Macau • Taiwan • Korea



Unit 5, G/F, Aberdeen Marina Tower, 8 Shum Wan Road, Aberdeen, Hong Kong 香港香港仔深灣道8號深灣遊艇俱樂部地下5室
Tel 電話: (852) 3180 3189 Fax 傳真: (852) 2805 6867 Email 電郵: info@jensenmarine.com Website 網址: www.jensenmarine.com
China information 中國電話: (86) 21 23064748 China Email 中國電郵: chinainfo@jensenmarine.com

Riva
AUTHORIZED DEALER