

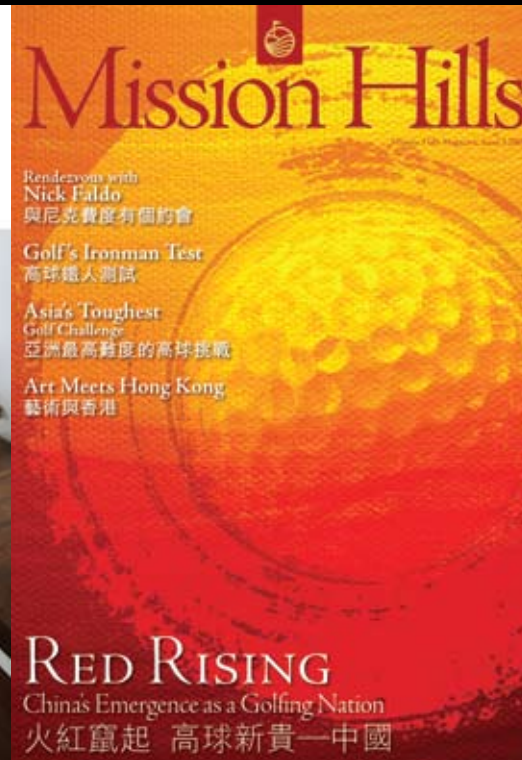
The Key

大宅®

www.landscape.com

OCTOBER | 2009

Volume 60



Your No.1 Integrated Marketing Communications Partner in Hong Kong & China

*inMAGAZINE* : publisher and sole advertising representatives  
of the top luxury lifestyle publications, including *Mission Hills Magazine* and *The Key*.

www.inmagazine.com.hk

Hong Kong Head Office: 12/F Cyberport 2, 100 Cyberport Road, Hong Kong  
China Office: 15/F Plaza 66 Tower 2, 1366 Nanjing West Road, Shanghai

Marketing (852) 3699 0877 | Advertising (852) 3699 0898 | email: marketing@incorp.com.hk



NATURALLY REFRESHING

Soak up Wan Chai's enlivening and convenient habitat.

ARCHITECTURE IS ART

Architecture is an expression of more than just buildings.



KEY NOTES\*

“We are what we repeatedly do. Excellence then, is not an act, but a habit.”

「我們就是自己重複所做的事情。那麼優越就不只是一個行為，而是變成一個習慣。」

- Aristotle  
Greek philosopher (384 BC -322 BC)  
希臘哲學家亞里士多德 (公元前384-322年)

A ‘key’ plays an important role as a pivotal tool that opens up doors. To luxury apartment owners, a key connects them to their safe haven – to their home. To Landscape, a key, or more aptly, The Key – Landscape’s luxury property publication – connects the company to their valued clients. Since its inception in 2003, The Key magazine has continued to grow and prosper. Today, we are privileged to be speaking with Landscape’s Managing Director, KS Koh, on the key to their success.

Both Landscape and The Key share the same business philosophies: to be one step ahead and remain at the forefront of the industry. As of its 59th issue, Landscape appointed inMAGAZINE to be solely responsible for The Key – ensuring that the magazine reaches new heights. Landscape’s efforts to improve The Key – a magazine which connects them to their clients – stands as testament to how much they value and respect their distinguished clients.

As The Key continues to bring itself to the next level, its website – www.landscape.com – will carry on serving as an additional platform for Landscape to serve its clients. And the website calls for an exciting new piece of news – it recently won the Standard of Excellence Award by The Web Marketing Association.

英文「Key」——是鎖匙，也解作重要。對於每一位尋見豪宅物業的人士，鎖匙是把他們與安樂窩連上關係的重要媒體；對於領域房地產顧問有限公司而言，其旗下刊物《The Key大宅》是香港市場唯一和豪宅客戶保持緊密連繫的重要橋樑。由2003年創刊至今，《The Key大宅》一直向前走，我們訪問了領域董事總經理許廣勝（K. S. Koh），由他細說《The Key大宅》的演變與成功之處。

雖說早已是豪宅代理界的代表刊物，然而與領域的理念一樣，《The Key大宅》絕不會甘於現狀，務求比人走得更快、更前。從第59期開始，領域委託《inMAGAZINE》負責《The Key大宅》的設計及製作，進一步確立其在豪宅刊物市場的第一位置，並把它推向更高峰。由此可見，領域是如何重視與客人的溝通，亦彰顯了其尊重客戶與物業的信念。

在《The Key大宅》演變革新的同時，領域亦同步更新其網頁www.landscape.com，這個全新改版的網頁剛榮膺由The Web Marketing Association頒發房地產界別的「優越表現獎」(Standard of Excellence Award)。

Read the full article at Market Watch, www.landscape.com/keynotes

published and distributed by



**Landscape Realty Limited** C-018733  
a member of Landscape Surveyors Ltd

Tel: 852-2866 0022 Fax: 852-2866 0015  
Email: info@landscape.com Website: www.landscape.com  
Unit 3106, 31/F, Hopewell Centre, 183 Queen's Road East, Wanchai, Hong Kong

The information, text, photos, analyses and projections contained herein are provided solely for the convenience of prospective clients and no warranty or representation as to their accuracy, correctness or completeness is made by Landscape Surveyors Limited, Landscape Realty Limited or the owners, none of whom shall have any liability or obligation with respect thereto. Interested parties should rely on their own investigations, interpretations and analyses in connection with the purchase or letting thereof.

Information has been provided to us by sources deemed reliable, but no warranty or representation is made as to its accuracy, correctness or completeness. These offerings are made subject to contract, correction of errors, omissions, prior sale of lease, change of price or terms or withdrawal from the market without notice. The contents of The Key are for reference only and do not constitute all or any part of a contract.

Reproduction of any material in whole or part without written permission from inCorporation Ltd is strictly prohibited. All information is correct at the time of going to press. The opinions expressed in The Key are those of the authors and are not necessarily endorsed by inCorporation Ltd. Copyright 2009



THE KEY | CONTENT

04 Naturally refreshing  
都市中的清新一角

09 Architecture is Art  
建築是藝術

11 Spacious Design  
偌大而實用

13 The Heartfelt Pioneer  
貼心的先行者

19 Treasures in Mid-Levels  
半山的文化瑰寶

20 Russian Repertoire  
暢遊俄羅斯樂曲之中

The Key (The No.1 Publication for Luxury Properties)

The Key is a monthly, bilingual lifestyle publication focusing on luxury residential properties in Hong Kong Island. It is sent to over 60,000 urban elites comprising of Hong Kong’s most affluent inhabitants.

These consist of Landscape’s VIP clients, who mainly reside in The Peak, Mid-Levels, Southside, Kowloon Tong, Homantin and other select up-market residential areas such as Tai Po, Sai Kung and Clear Water Bay, etc.

How may you list your property with The Key?

If you would like to list your property in an upcoming issue of The Key, you may contact Loretta Lui on +852 3102 4818 or visit us at www.landscape.com/sell-to-let. Alternatively, simply fill out the below and fax back to us on +852 2866 0015.

Property Details

Asking Rental / Sale Price

Floor Area

Contact Person

Telephone

Email

Our KeyPerson will contact you for follow-up work.

designed and produced by



**inCorporation Limited**  
Your No. 1 Integrated Marketing Communications Partner in Hong Kong and China

Tel: 852-3699 0888 Fax: 852-3699 0889  
Email: marketing@incorp.com.hk Website: www.inmagazine.com.hk  
12/F, Cyberport 2, 100 Cyberport Road, Hong Kong

# THE PALAZZO

## 御龍山



THE DERBY董事屋及BORGHESE GARDEN貝佳斯花園

## A CLASSIC. ABOVE IT ALL.

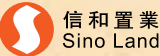
### 世紀經典馬場大宅

Rising up next to the world-class Sha Tin Racecourse,  
With panoramic views of the racecourse, Kau To Shan and Tolo Harbour,  
THE PALAZZO DERBY CLUBHOUSE is inspired by classical European architecture,  
With elegant imported marble and stone,  
Classical art pieces and lush landscaped gardens.

Luxuriously appointed 4-bedroom apartments with two ensuite bathrooms  
available from 1,568 to 2,379 sq ft. Also on offer are 2-bedroom apartments from 717 sq ft,  
3-bedroom apartments from 888 to 996 sq ft,  
3-bedroom apartments with master ensuite from 1,146 to 1,298 sq ft,  
and 4-bedroom apartments from 1,402 sq ft.

THE PALAZZO Show Suites are now available for private viewings.

Please call Isabella at 2721 8388 for an appointment. Website: www.thepalazzo.hk  
Development address: No.28 Lok King Street, Sha Tin (MTR Fo Tan Station – Exit C)





# Naturally refreshing

## 都市中的清新一角

Wan Chai has always been one of the most appealing places in the city to own a property. Located on Star Street with a lush green backdrop, this apartment is iconic with an elegant interior design. The walls are made of glass and high-quality oak materials that project comfort and natural elements. The floor-to-ceiling windows allow plenty of fresh air and sunlight to flood the room thus making it environmentally-friendly yet economical.

Another attention-worthy point is the cabinets which have been fitted into the walls to further maximize space while the open kitchen eliminates the need for barriers. There are two rooms, one bedroom suite and one maid's room, which allow added privacy. ■

灣仔一向是不少人士最希望置業的首選地區，交通方便之餘，亦不失高雅氣息。這個位於灣仔的單位，正正是一個典範。身處於星街，既享有灣仔方便的地利因素，同時間卻能遠離區內最稠密的地方。室內間隔方面，設計風格一致，牆身以玻璃鏡與高級木材作為主要用料，感覺舒適之餘，亦帶着自然氣息。寬敞的落地玻璃使單位光猛通爽，亦合乎環保與經濟原則。

值得注意的是，單位內大部份的櫃子都採用了入牆設計，加上開放式廚房，使單位的每一個角落均非常實用。單位有兩個睡房、一個套房，另更設有工人房，讓各人均能盡享私人空間。 ■

**Starcrest**  
星域軒

9 Star Street, Wan Chai

**1,033 s.f.**  
**\$17,000,000**

[www.landscape.com/102771.htm](http://www.landscape.com/102771.htm) Stella Lo 羅小姐 9809 8570



傲翔灣畔  
*The SAIL at VICTORIA*  
維畔傲飛翔  
*A Life of Waterfront Luxury*



*A Life of Waterfront Luxury*

*86 Victoria Road*

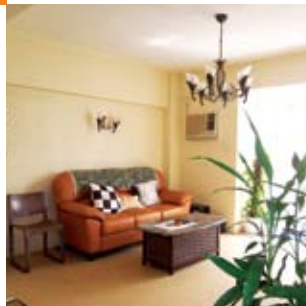
*Just minutes away from the heart of Hong Kong's  
Central Business District, The SAIL at Victoria  
provides the perfect calm to rest.*

**置地公司**  
**Hongkong Land**

Enquiry Hotline: **2810 9293**  
**www.sail-victoria.com**

Developer/Vendor: Tong Yan Development Co., Limited Holding Company of Developer: The Hongkong Land Company, Limited  
Architect: WCWP International Limited Authorized Person of the Architect: Mr. Clement Chu Main Contractor: Hien Lee Engineering Co., Ltd.  
Vendor's Solicitor: JSM Bank that has given undertaking to provide finance to complete the Development: HSBC  
Financiers: The Hongkong Land Company, Limited, The Hongkong Land Property Company, Limited





**Villa Verde**  
山頂 環翠園  
4-18 Guildford Road, The Peak  
Rare find cozy colonial apartment at Lower Peak  
山頂迷人英式住宅，市場罕有，可租可售

**1,200 s.f.**  
**\$18,900,000** also for lease \$46,000 incl.

www.landscape.com/119897.htm Sissy Li 李小姐 9642 6969



**Guildford Garden**  
山頂 香苑  
1-3 Mansfield Road, The Peak  
Lower Peak 4-bedroom flat with spacious practical layout  
山頂四房住宅間隔寬敞實用

**2,400 s.f.**  
**\$38,000,000**

www.landscape.com/108886.htm Stella Lo 羅小姐 9809 8570



**Barker Villa**  
山頂 柏架別墅  
41 Barker Road, The Peak  
Cosy apartment with panoramic views on Barker Road  
白加道迷人住宅，尊享廣闊景觀

**1,650 s.f.**  
**\$45,000,000**

www.landscape.com/40734.htm Rebecca Cheung 張小姐 9021 7644



**Stewart Terrace**  
山頂 史釗域臺  
81-95 Peak Road, The Peak  
Colonial low-rise apartment with nice decor on The Peak  
山頂英式低密度住宅連雅致裝修，可租可售

**3,077 s.f.**  
**\$48,000,000** also for lease \$95,000 incl.

www.landscape.com/113372.htm Stephen Chan 陳先生 9093 3381



**La Hacienda**  
山頂 加列山道29-33號  
29-33 Mount Kellett Road, The Peak  
Colonial style lofty-ceilinged apartment with Southside sea view and green view  
英式高樓底住宅，享南區海景及翠綠園景

**3,100 s.f.**  
**\$61,000,000**

www.landscape.com/123395.htm Teresa Fung 馮小姐 9138 1621



**Strawberry Hill**  
山頂 紅莓閣  
8 Plunkett's Road, The Peak  
Colonial townhouse with fireplace and garden at The Peak  
山頂英式排屋連花園

**3,200 s.f.**  
**\$110,000,000**

www.landscape.com David Leung 梁先生 9199 0672



**Mountain Lodge**  
山頂 崑廬  
44 Mount Kellett Road, The Peak  
Rare duplex apartment with Southside sea view  
罕有複式住宅享南區海景

**5,200 s.f.**  
**\$120,000,000**

www.landscape.com/96955.htm David Leung 梁先生 9199 0672



**Cheuk Nang Lookout**  
山頂 卓能山莊  
30 Severn Road, The Peak  
Detached house with private pool and terrace  
獨立大屋連私家游泳池及平台，可租可售

**5,300 s.f.** (plus 2,904 s.f. garden, 1,400 s.f. terrace and 534 s.f. roof)  
**\$140,000,000** also for lease \$200,000

www.landscape.com Maria Cheung 張小姐 5182 8699



**1-9 Rosmead Road, The Peak**  
山頂 樂善美道1-9號  
Rare single number garden house on The Peak  
山頂罕有獨立花園大屋

**5,600 s.f.** (plus 1,469 s.f. garden and 117 s.f. terrace)  
**\$230,000,000**

www.landscape.com/20798.htm David Leung 梁先生 9199 0672



**9-19 Black's Link, The Peak**  
山頂 布力徑9-19號  
Exclusive house with private pool and terrace overlooking Deep Water Bay  
獨特大屋連私家游泳池及平台，俯瞰深水灣景觀

**6,480 s.f.** (plus 1,066 s.f. terrace)  
**\$250,000,000**

www.landscape.com/13296.htm Chris Law 羅先生 6183 8388



**16 Pollock's Path, The Peak**  
山頂 普樂道16號  
Distinguished detached townhouse with a bird's eye view of the Victoira Harbour  
著名獨立大屋享鳥語花香的維港景觀

**7,229 s.f.** (plus 1,999 s.f. garden and 1,756 s.f. terrace)  
**\$360,000,000**

www.landscape.com/108630.htm Louis Wong 黃先生 9871 6828



**The Belvedere**  
山頂 種植道  
51-61 Plantation Road, The Peak  
Prestigious house with a bird's eye view of the Victoira Harbour  
尊貴大屋享維港景，鳥語花香

**4,900 s.f.** (plus 1,681 s.f. garden, 464 s.f. roof and 447 s.f. terrace)  
**Open Offer**

www.landscape.com Maria Cheung 張小姐 5182 8699



Only an elite group of individuals understand the true meaning of modern-luxury living. Accustomed to the very best that life has to offer, their place of residence exudes a quality and standard that is exceptionally high—it not only represents their discerning taste, but also stands as the ultimate symbol of their distinguished status and celebrated success.

In its prime address at Kowloon Tong overlooking the majestic surroundings, FORFAR is a truly unique, architectural icon. Designed to surpass the most discriminating demands, this distinctive, state-of-the-art property is simply without peer.

## WingTai Asia proudly presents FORFAR at Kowloon Tong

Hong Kong's first residences with 360° views and full curtain wall

### Intelligent Modular Design creates homes of extraordinary character

Featuring Intelligent Modular Design, an innovative design technology which shifts many of the building's internal core walls to the exterior structure, FORFAR's original layout of 4 bedrooms with 2 en-suites can be effortlessly adapted to meet individual personalities and needs. From creating a private art gallery to a music performance hall, FORFAR is designed to fit any unique modern luxury lifestyle.

An ergonomic curtain wall width setting based on a multiple of two feet allows for perfect placement of furniture.



Featuring a 10 meters, full floor-to-ceiling glass window with a balcony

### Twin balconies set new heights in luxurious living

At FORFAR, WingTai Asia leads the market by introducing the latest architectural design incorporating one-of-a-kind full curtain walls, accompanied with rare twin balconies offering breathtaking 360° views.

WingTai Asia has selected the best in high-tech insulated glass for FORFAR which reduces ultra-violent rays, heat, and noise, ensuring peace and tranquility at all times. FORFAR's curtain wall system allows windows to be opened up to 90° wide. A generous ceiling height of 3.45 meters creates a sense of unparalleled spaciousness and will rarely be seen in the future, making each residence even more desirable.

As only 43 of Hong Kong's circle of elite will experience this truly rare residence of extraordinary character, it is no surprise that FORFAR is igniting passion like no other.

Enquiry Hotline: 8109 3000



Developer: Pangold Development Limited. Holding company of the Developer: USI Holdings Limited. Main Superstructure Contractor: Hien Lee Engineering Co., Ltd.. Authorized Person: Mr. Clement Chu of WCWP International Limited. Design Architect: Arquitectonica International Corporation. Vendor's Solicitors: Woo, Kwan, Lee & Lo (A partner of the solicitors firm, Messrs. Woo, Kwan, Lee & Lo, is personally related to a Director of the Developer and the parent or holding company of the Developer). Mortgagee of building mortgage: The Hongkong and Shanghai Banking Corporation Limited. Financiers: Allied Effort Limited and USI Holdings (BVI) Limited. The Financiers have already provided loans to finance the construction of the development and will join in the formal agreement for sale and purchase. Bank Undertaking: The Hongkong and Shanghai Banking Corporation Limited has given an undertaking to provide finance to complete the development. Photos/graphics/layout plans are for reference only and shall not constitute or be construed as giving any offer, representation or warranty whether expressly or implied by the Developer. All plans are subject to the final approval by relevant Government authorities. Forfar comprises 43 residential units and not more than 43 residential units will be offered for private sale. Saleable areas of typical units are 1,882 and 1,758 sq.ft. (Where the curtain wall system forms the external walls of a unit, the saleable area of the relevant unit is measured from the exterior of the curtain wall).





**Grand Deco Tower**  
東半山 帝后臺  
26 Tai Hang Road, Midlevels East

Modern 4-bedroom apartment on fringe of Causeway Bay  
時尚四房單位，鄰近銅鑼灣，吃喝玩樂十分方便

**1,418 s.f.**  
**\$11,000,000**

[www.landscape.com/39618.htm](http://www.landscape.com/39618.htm) Sissy Li 李小姐 9642 6969

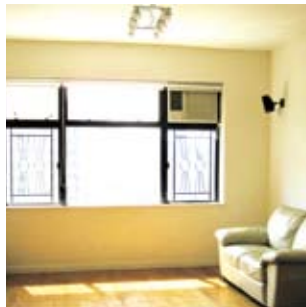


**Marlborough House**  
東半山 保祿大廈  
154 Tai Hang Road, Midlevels East

Colonial apartment with big balcony and open city view  
東半山英式住宅連太陽臺，享開揚城市景觀，可租可售

**1,250 s.f.**  
**\$13,000,000** also for lease \$38,000 incl.

[www.landscape.com/121922.htm](http://www.landscape.com/121922.htm) Sami Woo 胡小姐 9493 8275



**Villa Rocha**  
跑馬地 樂翠台  
10 Broadwood Road, Happy Valley

Well maintained 3-bedroom flat with nice decorations  
精美三房單位，配以雅致裝修

**1,313 s.f.**  
**\$14,800,000**

[www.landscape.com/38075.htm](http://www.landscape.com/38075.htm) Mira To 杜小姐 9486 1566



**Yicks Villa**  
跑馬地 奕廬  
83-85 Blue Pool Road, Happy Valley

Well maintained 3-bedroom apartment on upper Blue Pool Road  
藍塘道頭段雅致三房住宅

**1,750 s.f.**  
**\$16,800,000**

[www.landscape.com/40119.htm](http://www.landscape.com/40119.htm) Teresa Lau 劉小姐 9080 6686



**Greenland Court**  
中半山 恒翠園  
56-58 Macdonnell Road, Midlevels Central

Practical and high efficiency family flat on fringe of Central  
間隔實用家庭式住宅，實用率高，鄰近中環，可租可售

**1,350 s.f.**  
**\$18,000,000** also for lease \$46,000 incl.

[www.landscape.com/103948.htm](http://www.landscape.com/103948.htm) David Chan 陳先生 9238 2012



**Beauty Court**  
西半山 雅苑  
82 Robinson Road, Midlevels West

Popular building on Robinson Road with easy access to Central  
羅便臣道受歡迎住宅，鄰近中環，交通方便

**1,762 s.f.**  
**\$22,000,000**

[www.landscape.com/99570.htm](http://www.landscape.com/99570.htm) Carman Szeto 司徒小姐 6183 8339



**Starcrest**  
灣仔 星域軒  
9 Star Street, Wan Chai

Quality boutique apartment on fringe of Admiralty  
精致裝修單位，鄰近金鐘，交通方便，可租可售

**850 s.f.**  
**\$13,000,000** also for lease \$33,000 incl.

[www.landscape.com/39907.htm](http://www.landscape.com/39907.htm) Carman Szeto 司徒小姐 6183 8339



**Camelot Height**  
中半山 金鑾閣  
66 Kennedy Road, Midlevels Central

Well laid out flat with open city view close to Hopewell Centre  
雅致裝修單位享開揚城市景觀，鄰近合和中心

**1,520 s.f.**  
**\$14,200,000**

[www.landscape.com/82353.htm](http://www.landscape.com/82353.htm) Sissy Li 李小姐 9642 6969



**Moulin Court**  
跑馬地 玫瑰別墅  
65 Blue Pool Road, Happy Valley

Tastefully decorated apartment in convenient Happy Valley  
跑馬地品味設計裝修住宅，交通方便

**1,750 s.f.**  
**\$19,500,000**

[www.landscape.com/88271.htm](http://www.landscape.com/88271.htm) Yvonne Chang 鄭小姐 9088 4666



**Pak Fai Mansion**  
中半山 百輝大廈  
72 Macdonnell Road, Midlevels Central

Well renovated 2-ensuite flat in colonial building  
中半山華麗英式裝修兩套房單位

**1,800 s.f.**  
**\$18,000,000**

[www.landscape.com/89102.htm](http://www.landscape.com/89102.htm) David Chan 陳先生 9238 2012



**Hillsborough Court**  
中半山 曉峰閣  
18 Old Peak Road, Midlevels Central

Nicely decorated apartment with excellent facilities in prime location  
全新裝修單位連完善住客會所設施，地段尊貴

**1,369 s.f.**  
**\$18,800,000**

[www.landscape.com/12853.htm](http://www.landscape.com/12853.htm) Maria Cheung 張小姐 5182 8699

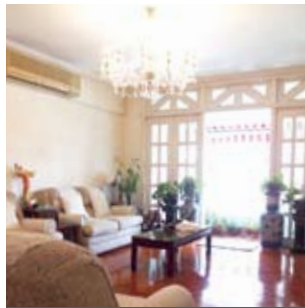


**Cooper Villa**  
渣甸山 衛信道23-29號  
23-29 Wilson Road, Jardine's Lookout

Nicely renovated 3 bedroom low-rise with huge balcony and 2 car parks enjoy fantastic view  
低密度全新裝修三房單位連巨型陽臺及兩個車位，尊享美麗景觀

**1,600 s.f.**  
**\$24,000,000**

[www.landscape.com/100348.htm](http://www.landscape.com/100348.htm) Chris Law 羅先生 6183 8388



**Medallion Heights**  
西半山 金微閣  
45 Conduit Road, Midlevels West

Practical 3-bedroom apartment in popular location  
受歡迎實用三房單位

**2,000 s.f.**  
**\$24,000,000**

[www.landscape.com/34243.htm](http://www.landscape.com/34243.htm) Rowena Siu 蕭小姐 9348 4118

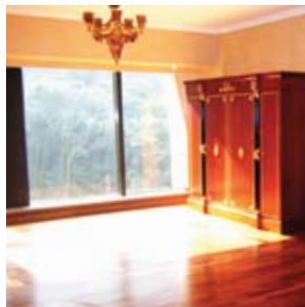


**Cavendish Heights**  
渣甸山 嘉雲臺  
27-37 Perkins Road, Jardine's Lookout

Spacious 3-bedroom family apartment in Jardine's Lookout  
渣甸山寬敞三房家庭式住宅，可租可售

**1,819 s.f.**  
**\$25,500,000** also for lease \$60,000 incl.

[www.landscape.com/32427.htm](http://www.landscape.com/32427.htm) Eric Wong 黃先生 9740 3396



**Tavistock 2**  
中半山 騰皇居2座  
10A Tregunter Path, Midlevels Central

Nicely decorated 3-bedroom apartment in Midlevels  
中半山雅致裝修三房單位，可租可售

**1,730 s.f.**  
**\$26,000,000** also for lease \$65,000 incl.

[www.landscape.com/115028.htm](http://www.landscape.com/115028.htm) Rowena Siu 蕭小姐 9348 4118



**Ho King View**  
北角半山 豪景  
2 Braemar Hill Road, North Point Midlevels

High efficiency practical apartment with Victoria Harbour view  
間隔寬敞維港景單位，實用率高

**2,000 s.f.**  
**\$25,000,000**

[www.landscape.com/21492.htm](http://www.landscape.com/21492.htm) Carman Szeto 司徒小姐 6183 8339

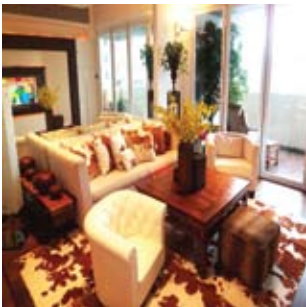


**Fairlane Tower**  
中半山 寶雲山莊  
2B Bowen Road, Midlevels Central

Modern flat with excellent facilities on tree-lined Bowen Road  
寶雲道時尚住宅連完善住客會所設施，綠樹松蔭，可租可售

**1,744 s.f.**  
**\$26,000,000** also for lease \$67,000 incl.

[www.landscape.com/37843.htm](http://www.landscape.com/37843.htm) Rowena Siu 蕭小姐 9348 4118



**Catalina Mansions**  
中半山 嘉年大廈  
98-100 Macdonnell Road, Midlevels Central

Nicely decorated apartment on convenient MacDonnell Road  
麥當勞道雅致裝修單位，交通方便

**2,300 s.f.**  
**\$26,500,000**

[www.landscape.com/110374.htm](http://www.landscape.com/110374.htm) Stella Lo 羅小姐 9809 8570

In your mind, what exactly does “architecture” mean to you? Is it a representation of the art of buildings? Or is it a reflection of designers’ painstaking ideas? Perhaps it means something else to you. Besides representing physical structures, architecture – as a concept – can be interpreted as stages or acts of a performance. Commemorating the Hong Kong Cultural Centre’s twentieth anniversary, Zuni Icosahedron presents the Architecture is Art Festival, Hong Kong’s first-ever art festival dedicated to architecture. The festival, which is running a series of programmes promoting art, design, architecture and urban development, is running at the Hong Kong Cultural Centre until 18 October.

Mathias Woo, Artistic Director for the Architecture is Art Festival believes that if we all had some fundamental understanding about architecture, and knew how to improve our quality of life through architecture, our standard of living would substantially improve. Through the festival, Woo hopes people will better understand the inherent bond between architecture and life. One such performance is Corbu and Kahn, which centres on the ideas of the two master architects, giving insight into the origins and interpretations of modern architecture. ■

於你來說，建築是什麼？純粹的樓宇？設計師的心血？還是其他的種種？原來建築除了以一幢幢樓宇的形式表達，也可以透過舞台的演出演譯出來。進念·二十面體主辦「建築是藝術節」，是香港首個以建築為主題的藝術節。節目由即日起至10月18日假香港文化中心盛大舉行，推廣一系列有關藝術設計、建築與及城市發展之活動。

「建築是藝術節」藝術總監胡恩威表示，如果每個人都瞭解基本的建築知識，理解如何以建築去改善人的生活，大家的生活素質就會有實質的改善。他希望可以借今次的藝術節，讓大家去認識建築和生活的關係。其中一個表演項目為《Corbu and Kahn》，讓觀眾透過兩位建築大師的理念，重新認識現代主義建築的源頭和意義。■





**Dragon View**  
中半山 龍景樓  
39 Macdonnell Road, Midlevels Central

Mid-rise apartment with huge balcony on Macdonnell Road  
麥當勞道中密度住宅連巨型陽臺

**2,500 s.f.**  
**\$28,000,000**

[www.landscape.com/37956.htm](http://www.landscape.com/37956.htm) David Chan 陳先生 9238 2012



**Clement Court**  
渣甸山 松風臺  
56-64 Mount Butler Road, Jardine's Lookout

Designer decorated low-rise flat in serene Jardine's Lookout  
渣甸山設計師精心設計低密度住宅，環境清幽怡人

**2,200 s.f.**  
**\$30,000,000**

[www.landscape.com/49223.htm](http://www.landscape.com/49223.htm) David Leung 梁先生 9199 0672



**Birchwood Place**  
中半山 寶樺臺  
96 Macdonnell Road, Midlevels Central

Fully fitted apartment with open city view  
完善配置單位享開揚城市景觀

**2,018 s.f.**  
**\$32,000,000**

[www.landscape.com/107827.htm](http://www.landscape.com/107827.htm) Mira To 杜小姐 9486 1566



**Po Garden**  
中半山 寶園  
9 Brewin Path, Midlevels Central

Newly renovated 3-bedroom apartment on fringe of Central  
全新裝修三房住宅，鄰近中環，可租可售

**2,572 s.f.** Sole Agent 獨家代理  
**\$34,000,000** also for lease \$69,000 incl.

[www.landscape.com/98123.htm](http://www.landscape.com/98123.htm) Yvonne Chang 鄭小姐 9088 4666



**Regent on the Park**  
中半山 御花園  
9A Kennedy Road, Midlevels Central

Prestigious apartment with metropolitan view  
中半山尊貴住宅，享城市景觀

**2,720 s.f.**  
**\$39,000,000**

[www.landscape.com/121760.htm](http://www.landscape.com/121760.htm) Stephen Chan 陳先生 9093 3381



**May Tower**  
中半山 梅苑  
7 May Road, Midlevels Central

Deluxe harbour view duplex with enlarged master bedroom at prime location  
豪華維港景複式住宅連特大主人睡房，地段尊貴

**2,850 s.f.**  
**\$49,800,000**

[www.landscape.com/33364.htm](http://www.landscape.com/33364.htm) David Chan 陳先生 9238 2012



**Villa Monte Rosa**  
東半山 玫瑰新村  
41A Stubbs Road, Midlevels East

Large practical apartment on upper Stubbs Road  
司徒拔道頭段巨型間隔實用單位

**2,300 s.f.**  
**\$28,000,000**

[www.landscape.com/38566.htm](http://www.landscape.com/38566.htm) Walker Lam 林先生 9551 1077



**Clovelly Court**  
中半山 嘉富麗苑  
2 May Road, Midlevels Central

3-bedroom apartment with nice decorations in prime location  
雅致裝修三房單位，地段尊貴，可租可售

**2,115 s.f.**  
**\$31,725,000** also for lease \$68,000 incl.

[www.landscape.com/10141.htm](http://www.landscape.com/10141.htm) Teresa Lau 劉小姐 9080 6686



**18-20 Happy View Terrace, Happy Valley**  
跑馬地 樂景臺18-20號

Colonial low-rise with huge balcony in Happy Valley  
跑馬地英式低密度住宅連巨型陽臺，可租可售

**2,400 s.f.**  
**\$32,000,000** also for lease \$80,000 incl.

[www.landscape.com/12605.htm](http://www.landscape.com/12605.htm) Stephen Chan 陳先生 9093 3381



**47A Stubbs Road, Midlevels East**  
東半山 司徒拔道 47A號

Rare find spacious apartment overlooking metropolitan view  
罕有間隔寬敞單位，俯瞰城市景觀

**2,400 s.f.**  
**\$37,000,000**

[www.landscape.com/37076.htm](http://www.landscape.com/37076.htm) Eric Wong 黃先生 9740 3396



**Garden Terrace 2 & 3**  
中半山 花園臺2 & 3座  
8A Old Peak Road, Midlevels Central

4-ensuite apartment at prime location  
中半山四套房單位，地段尊貴

**3,002 s.f.**  
**\$45,000,000**

[www.landscape.com/30123.htm](http://www.landscape.com/30123.htm) Stella Lo 羅小姐 9809 8570



**Yale Lodge**  
中半山 怡廬  
30 Kennedy Road, Midlevels Central

Large 4-bedroom apartment overlooking Hong Kong Park on fringe of Central  
巨型四房單位，俯瞰香港公園景觀，鄰近中環交通方便

**3,300 s.f.**  
**\$50,000,000**

[www.landscape.com/16308.htm](http://www.landscape.com/16308.htm) Teresa Lau 劉小姐 9080 6686



**Estoril Court**  
中半山 愛都大廈  
55 Garden Road, Midlevels Central

Renovated apartment with 4 large bedrooms  
全新裝修巨型四房住宅

**3,347 s.f.**  
**\$52,900,000**

[www.landscape.com/5716.htm](http://www.landscape.com/5716.htm) Eric Wong 黃先生 9740 3396



**The Mayfair**  
中半山 梅道1號  
1 May Road, Midlevels Central

Deluxe 4-bedroom apartment with harbour view  
豪華四房單位享維港景，可租可售

**2,905 s.f.**  
**\$68,000,000** also for lease \$140,000 incl.

[www.landscape.com/12736.htm](http://www.landscape.com/12736.htm) Stephen Chan 陳先生 9093 3381



**Tregunter Tower**  
中半山 地利根德閣  
14 Tregunter Path, Midlevels Central

Luxurious duplex apartment with stunning harbour view  
豪華複式住宅享維港景

**3,798 s.f.**  
**\$85,000,000**

[www.landscape.com/14936.htm](http://www.landscape.com/14936.htm) Mark Mak 麥先生 6838 2929

This apartment is located at Monticello on Kennedy Road, which is a high-rise residential estate comprising three blocks of 21-storeyed residential buildings. There are two apartments per floor which gives residents extra privacy. A sense of peace contrasts with the glamour that plays throughout the rest of the apartment.

Most people would love to live in a spatial apartment, but a highly practical one is equally important. Upon stepping into this 1,500 square feet apartment, the first thing to impress is the joint dining-living room, which makes the apartment look more spacious. This also enables residents to implement more designing ideas into the apartment. There are two covered car parks provided for each apartment. Situated on the western end of Kennedy Road, residents can enjoy the convenient location. Close by, you could visit Hong Kong Park for a short walk or go shopping at Pacific Place. ■

這個位於中環堅尼地道滿峰台的單位於1966年落成。滿峰台是一幢高層住宅大廈，由三棟樓高21層的大廈組成，每層只有兩個單位。在露台眺望出外，能夠飽覽都市遠景，同時亦能享受燦爛陽光。

大多數人嚮往充裕的居住空間，如果能夠找到實用率高的就更加難能可貴。走進這個千多呎的單位內，第一眼看到的是相連的客飯廳，儼如走進了一個接近二千呎的單位當中，能夠讓住戶在裝修設計上有更多發揮空間。單位更附設兩個有蓋車位，而其位於堅尼地道西末段的有利位置，住客既可步行至香港公園享受園林，或到太古廣場購物。 ■

**Monticello**  
滿峰台  
48 Kennedy Road, Midlevels Central

**1,447 s.f.**  
**\$17,000,000**

[www.landscape.com/89417.htm](http://www.landscape.com/89417.htm) Mira To 杜小姐 9486 1566



**Broadwood Park**  
跑馬地 柏樂苑  
38 Broadwood Road, Happy Valley

Large 4-bedroom apartment overlooking Hong Kong Stadium  
巨型四房單位，俯瞰香港大球場景觀

**2,938 s.f.**  
**\$53,800,000**

[www.landscape.com/36099.htm](http://www.landscape.com/36099.htm) Walker Lam 林先生 9551 1077



**Hong Villa**  
中半山 峰景花園  
12 Bowen Road, Midlevels Central

Exclusive huge apartment with sweeping view of Victoria Harbour  
中半山獨特巨型住宅，享寧靜維港景觀

**3,833 s.f.**  
**\$75,000,000**

[www.landscape.com/111817.htm](http://www.landscape.com/111817.htm) Mark Mak 麥先生 6838 2929



**Grenville House**  
中半山 嘉慧園  
1-3A Magazine Gap Road, Midlevels Central

Huge 6-bedroom duplex in renowned building on fringe of Central  
巨型六房複式單位，大廈全新翻新，鄰近中環，可租可售

**6,800 s.f.**  
**\$100,000,000** also for lease \$190,000

[www.landscape.com/37933.htm](http://www.landscape.com/37933.htm) Mira To 杜小姐 9486 1566







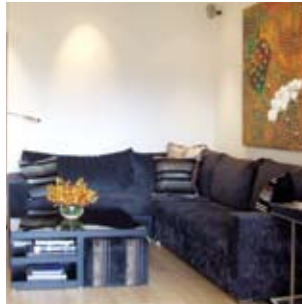
**Albany Court**  
**薄扶林 雅鑾閣**  
51 Bisney Road, Pokfulam  
Nicely decorated 3-bedroom low-rise in quiet neighborhood  
低密度雅致裝修三房單位，環境寧靜怡人  
**1,508 s.f.**  
**\$14,000,000**

[www.landscape.com/81585.htm](http://www.landscape.com/81585.htm) Rowena Siu 蕭小姐 9348 4118



**Hong Kong Parkview - Tower 5**  
**淺水灣 陽明山莊5座**  
88 Tai Tam Reservoir Road, Repulse Bay  
Ideal home for couple with excellent facilities and easy access to Central  
完美小家庭式住宅，配以完善住客會所設施，前往中環十分方便  
**1,312 s.f.**  
**\$14,200,000**

[www.landscape.com/108909.htm](http://www.landscape.com/108909.htm) Teresa Fung 馮小姐 9138 1621



**Hong Kong Parkview - Tower 8**  
**淺水灣 陽明山莊8座**  
88 Tai Tam Reservoir Road, Repulse Bay  
Spacious apartment overlooking greenery country park  
間隔寬敞單位，俯瞰翠綠郊野公園景  
**2,366 s.f.**  
**\$34,000,000**

[www.landscape.com/106649.htm](http://www.landscape.com/106649.htm) Christine Chong 莊小姐 9648 6082



**Royalton II**  
**薄扶林 豪峰 II**  
116 Pokfulam Road, Pokfulam  
Duplex penthouse with sweeping west sea view  
複式頂層單位寧靜海景  
**3,460 s.f.**  
**\$36,000,000**

[www.landscape.com/41345.htm](http://www.landscape.com/41345.htm) Mary Li 李小姐 9011 6595



**Residence Bel-Air Phase 2**  
**薄扶林 貝沙灣第二期**  
38 Bel-Air Avenue, Pokfulam  
Waterfront apartment with excellent facilities  
海濱住宅連完善住客會所設施，可租可售  
**1,697 s.f.**  
**\$19,500,000** also for lease \$53,000 incl.

[www.landscape.com/41602.htm](http://www.landscape.com/41602.htm) Walker Lam 林先生 9551 1077



**Regent Palisades**  
**薄扶林 帝柏園**  
43 Bisney Road, Pokfulam  
Modern designed low-rise flat with private roof  
時尚設計低密度住宅連私家天台  
**1,513 s.f.** (plus 1,015 s.f. roof)  
**\$20,800,000**

[www.landscape.com/108649.htm](http://www.landscape.com/108649.htm) Mary Li 李小姐 9011 6595



**Ming Wai Garden**  
**淺水灣 明慧園**  
45 Repulse Bay Road, Repulse Bay  
Nicely decorated apartment with beautiful view of Deep Water Bay  
全新裝修單位，享美麗深水灣景觀  
**1,900 s.f.**  
**\$38,000,000**

[www.landscape.com/89927.htm](http://www.landscape.com/89927.htm) Stephen Chan 陳先生 9093 3381



**Repulse Bay Garden**  
**淺水灣 麗景園**  
18-40 Belleview Drive, Repulse Bay  
3-bedroom flat overlooking Repulse Bay Beach  
淺水灣三房住宅，俯瞰淺水灣海灘景觀  
**2,288 s.f.**  
**\$38,000,000**

[www.landscape.com/5611.htm](http://www.landscape.com/5611.htm) Eric Wong 黃先生 9740 3396



**Cape Mansions**  
**薄扶林 翠海別墅**  
56-62 Mount Davis Road, Pokfulam  
Fully renovated sea view flat with balcony  
全新裝修海景住宅連陽臺，可租可售  
**2,200 s.f.**  
**\$23,000,000** also for lease \$62,000 incl.

[www.landscape.com/122039.htm](http://www.landscape.com/122039.htm) Eric Wong 黃先生 9740 3396



**Country Villa**  
**壽臣山 翠谷別墅**  
4 Shouson Hill Road, Shouson Hill  
Unique low-rise in green and quite environment  
雅致低密度住宅，享翠綠園景  
**1,500 s.f.**  
**\$23,300,000** also for lease \$62,000 incl.

[www.landscape.com/108623.htm](http://www.landscape.com/108623.htm) Stella Lo 羅小姐 9809 8570



**Stanley Court**  
**赤柱 海灣園**  
9 Stanley Mound Road, Stanley  
Boutique 3-bedroom townhouse with spacious garden close to Stanley Main Beach  
精致三房排屋連寬敞花園，鄰近赤柱海灘  
**2,889 s.f.**  
(plus 1,075 s.f. garden and 552 s.f. roof)  
**\$42,000,000**

[www.landscape.com/122969.htm](http://www.landscape.com/122969.htm) Maria Cheung 張小姐 5182 8699



**The Redhill Peninsula**  
**大潭 紅山半島**  
18 Pak Pat Shan Road, Tai Tam  
Popular townhouse with facilities at Tai Tam waterfront  
大潭海濱受歡迎排屋連住客設施  
**2,588 s.f.**  
(plus 859 s.f. garden and 493 s.f. terrace)  
**\$48,000,000**

[www.landscape.com/30286.htm](http://www.landscape.com/30286.htm) Maria Cheung 張小姐 5182 8699



**Scenic Villas**  
**薄扶林 美景臺**  
2-28 Scenic Villa Drive, Pokfulam  
High efficiency 4-bedroom apartment with unobstructed sea view  
實用率高四房單位尊享一望無際海景  
**2,194 s.f.**  
**\$24,800,000**

[www.landscape.com/49804.htm](http://www.landscape.com/49804.htm) Rowena Siu 蕭小姐 9348 4118



**Vista Mount Davis**  
**薄扶林 華亭閣**  
52-54 Mount Davis Road, Pokfulam  
Newly decorated apartment with full sea view  
全新裝修住宅享全海景  
**2,100 s.f.**  
**\$26,000,000**

[www.landscape.com/109037.htm](http://www.landscape.com/109037.htm) Walker Lam 林先生 9551 1077



**The Brentwood**  
**淺水灣 蔚峰園**  
11 Repulse Bay Road, Repulse Bay  
Boutique high floor flat on upper Repulse Bay Road with full sea view  
淺水灣道頭段精致高層單位享全海景  
**1,556 s.f.**  
**\$28,000,000**

[www.landscape.com/35641.htm](http://www.landscape.com/35641.htm) Teresa Fung 馮小姐 9138 1621



**Ruby Court**  
**淺水灣 嘉麟閣**  
55 South Bay Road, Repulse Bay  
Newly renovated sea view flat in tranquil South Bay with facilities  
淺水灣全新裝修海景單位，環境寧靜，連住客會所設施，可租可售  
**1,780 s.f.**  
**\$28,000,000** also for lease \$62,000 incl.

[www.landscape.com/107492.htm](http://www.landscape.com/107492.htm) Teresa Lau 劉小姐 9080 6686



**Hong Kong Parkview - Tower 8**  
**淺水灣 陽明山莊8座**  
88 Tai Tam Reservoir Road, Repulse Bay  
Popular family flat in country park  
受歡迎家庭式住宅，鄰近郊野公園  
**2,366 s.f.**  
**\$31,800,000** Sole Agent 獨家代理

[www.landscape.com/45079.htm](http://www.landscape.com/45079.htm) Rebecca Cheung 張小姐 9021 7644



**Scenic Villas**  
**薄扶林 美景臺**  
2-28 Scenic Villa Drive, Pokfulam  
Popular 4-bedroom apartment with full sea view  
受歡迎四房單位，享全海景  
**2,517 s.f.**  
**\$30,500,000**

[www.landscape.com/16016.htm](http://www.landscape.com/16016.htm) Christine Chong 莊小姐 9648 6082

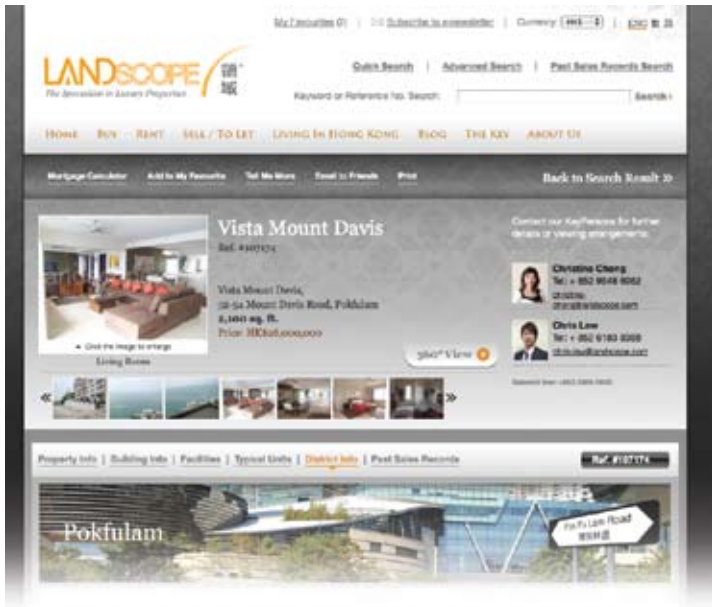
## The Heartfelt Pioneer 貼心的先行者

As the revamped The Key continues to raise the bar of publishing, its technologically savvy website – [www.landscape.com](http://www.landscape.com) – will keep serving as a platform for Landscape to serve its prestigious clients. Its wide-ranged instantaneous resources include the Google Map (which shows property locations) and Property Alert (you only need to type in your request in details once to receive related information automatically) functions, the online version of The Key, etc. For those who have their fingers firmly on the pulse of the property market, a user-friendly and informative website is important as it is of great use in your property hunt. Some of the properties are armed with panoramic videos that allow viewers to immerse themselves in the uniqueness of each of them.

The elegant website [www.landscape.com](http://www.landscape.com) has just been awarded the Standard of Excellence Award in the 13th Annual Web Award Competition from the Web Marketing Association. Its clear photos, wealth of information and sleek design make it the best website for buyers hunting for a one-of-a-kind apartment. ■



For more listings, please go to [www.landscape.com/sale](http://www.landscape.com/sale)



在全新版《The Key大宅》演變革新的同時，領域亦同步更新了其網頁 [www.landscape.com](http://www.landscape.com)。網頁資訊非常豐富，包括樓宇轉讓 / 出租的即時資訊、展示樓宇位置的Google Map和只要詳細輸入一次要求，就可自動接收有關資訊的Property Alert功能和《The Key大宅》的網上版等等。對於有興趣緊貼豪宅市場脈搏的你或專業投資者而言，一個清楚易用和擁有豐富資訊的網頁非常重要，是你尋找物業的主要途徑。部分樓盤更有360度的短片介紹，讓買家充份了解樓盤特別的氣質。

設計優美的[www.landscape.com](http://www.landscape.com)剛榮膺由The Web Marketing Association 頒發房地產界別的「優越表現獎」(Standard of Excellence Award)。這個以清楚圖片、豐富資訊和精美設計的網頁，是買家細心挑選心愛物業的上佳選擇。■





**Bluewater**  
大潭 大潭道25號  
25 Tai Tam Road, Tai Tam

Prestigious apartment with 4-bedroom enjoying full sea view  
大潭尊貴四房單位，享全海景，可租可售

**2,500 s.f.**  
**\$50,000,000** also for lease \$110,000 incl.

[www.landscape.com/106586.htm](http://www.landscape.com/106586.htm) Christine Chong 莊小姐 9648 6082



**33 Cape Road, Chung Hom Kok**  
春坎角 環角道33號

Brand new sea view garden house with tasteful decorations  
全新海景花園大屋配以品味裝修

**3,154 s.f.**  
(plus 756 s.f. garden and 420 s.f. roof)  
**\$57,900,000**

[www.landscape.com/34720.htm](http://www.landscape.com/34720.htm) Sissy Li 李小姐 9642 6969



**Belgravia Heights**  
大潭 碧濤閣  
27 Tai Tam Road, Tai Tam

Full sea view of Tai Tam Bay apartment  
大潭全海景住宅，可租可售

**2,890 s.f.** (plus 2,401 s.f. roof)  
**\$65,000,000** also for lease \$120,000 incl.

[www.landscape.com/36002.htm](http://www.landscape.com/36002.htm) Christine Chong 莊小姐 9648 6082



**Las Pinadas**  
壽臣山 朗松居  
33 Shouson Hill Road, Shouson Hill

Popular townhouse with full clubhouse facilities in lush green surroundings  
受歡迎排屋連完善住客會所設施，享翠綠園景，可租可售

**3,400 s.f.** (plus 776 s.f. roof, 332 s.f. garden and 198 s.f. terrace)  
**\$68,000,000** also for lease \$150,000

[www.landscape.com/118549.htm](http://www.landscape.com/118549.htm) David Chan 陳先生 9238 2012

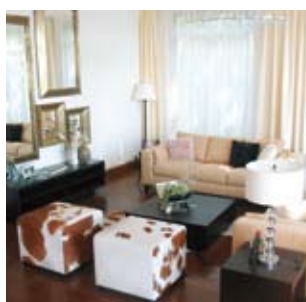


**Rosecliff**  
大潭 大潭道20號  
20 Tai Tam Road, Tai Tam

Waterfront townhouse with garden and twin balconies  
海濱排屋連花園及兩個陽臺

**3,980 s.f.** **Sole Agent 獨家代理**  
(plus 1,050 s.f. roof and 649 s.f. garden)  
**\$96,000,000**

[www.landscape.com/50071.htm](http://www.landscape.com/50071.htm) Rebecca Cheung 張小姐 9021 7644



**110 Repulse Bay Road, Repulse Bay**  
淺水灣 淺水灣道110號

Exclusive sea view mansion in prestigious location of Repulse Bay  
淺水灣獨特海景大宅，地段尊貴，可租可售

**6,150 s.f.** (plus 1,173 s.f. garden and 934 s.f. roof)  
**\$220,000,000** also for lease \$300,000 incl.

[www.landscape.com/104464.htm](http://www.landscape.com/104464.htm) David Chan 陳先生 9238 2012



**Hong Kong Parkview - Tower 15**  
淺水灣 陽明山莊15座  
88 Tai Tam Reservoir Road, Repulse Bay

4-bedroom apartment with views of Island South and the harbor  
四房住宅享南區景觀及維港景

**2,746 s.f.**  
**\$54,000,000**

[www.landscape.com/57448.htm](http://www.landscape.com/57448.htm) Stephen Chan 陳先生 9093 3381



**37 Repulse Bay Road, Repulse Bay**  
淺水灣 淺水灣道 37號

Designer decorated duplex with picturesque sea view  
設計師精心設計複式住宅，享如畫美景，可租可售

**3,480 s.f.**  
**\$62,000,000** also for lease \$150,000 incl.

[www.landscape.com/31508.htm](http://www.landscape.com/31508.htm) Walker Lam 林先生 9551 1077



**Grosvenor Place**  
淺水灣 淺水灣道117號  
117 Repulse Bay Road, Repulse Bay

4-bedroom apartment with fantastic Repulse Bay view  
淺水灣四房單位享無敵淺水灣景觀

**2,809 s.f.**  
**\$68,000,000**

[www.landscape.com/104487.htm](http://www.landscape.com/104487.htm) Rebecca Cheung 張小姐 9021 7644

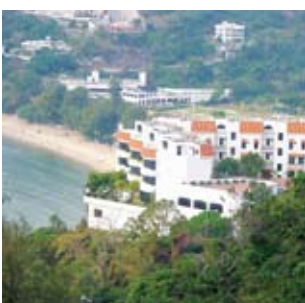


**Repulse Bay Towers**  
淺水灣 保華大廈  
119A Repulse Bay Road, Repulse Bay

Sough after large duplex with a bird's eye view of Repulse Bay beach  
巨型複式住宅，享鳥語花香的淺水灣海景

**3,300 s.f.**  
**\$70,000,000**

[www.landscape.com/110273.htm](http://www.landscape.com/110273.htm) Maria Cheung 張小姐 5182 8699



**Repulse Bay Road Garden House**  
淺水灣道 花園大屋

Extraordinary garden house on Repulse Bay Road  
淺水灣道獨特花園大屋

**3,000 s.f.** (plus 1,356 s.f. garden and 556 s.f. roof)  
**\$150,000,000**

[www.landscape.com](http://www.landscape.com) Louis Wong 黃先生 9871 6828



**Island Grove**  
深水灣 香島道  
Island Road, Deep Water Bay

Modern house with private lift on Deep Water Bay waterfront  
深水灣海濱時尚大屋連私家電梯

**5,300 s.f.** (plus 1,240 s.f. garden and 689 s.f. roof)  
**\$300,000,000**

[www.landscape.com](http://www.landscape.com) Chris Law 羅先生 6183 8388



iPhone Application Version  
will be launched on 29th September 2009

Enquiries: [marketing@incorp.com.hk](mailto:marketing@incorp.com.hk)  
Website: [www.inmagazine.com.hk](http://www.inmagazine.com.hk)



**Barker Villa**  
山頂 柏架別墅  
41 Barker Road, The Peak

Cozy apartment with panoramic harbour view on Barker Road  
白加道迷人維港景住宅，可租可售

**1,650 s.f.**  
**\$65,000 incl.** also for sale \$35,000,000

[www.landscape.com/45038.htm](http://www.landscape.com/45038.htm) David Leung 梁先生 9199 0672

**Guildford Garden**  
山頂 喬苑  
1-3 Mansfield Road, The Peak

Spacious practical 4-bedroom flat at Lower Peak  
山頂寬敞四房住宅，間隔實用，可租可售

**2,400 s.f.**  
**\$70,000 incl.** also for sale \$42,000,000

[www.landscape.com/31449.htm](http://www.landscape.com/31449.htm) Mary Li 李小姐 9011 6595

**Carolina Garden**  
山頂 嘉樂園  
20-34 Coombe Road, The Peak

Rare colonial apartment on Coombe Road overlooking Aberdeen Country Park  
甘道罕有英式住宅，俯瞰香港仔郊野公園景

**2,350 s.f.**  
**\$78,000**

[www.landscape.com/17381.htm](http://www.landscape.com/17381.htm) Mira To 杜小姐 9486 1566

**Magazine Gap Towers**  
山頂 馬己仙峽道15號  
15 Magazine Gap Road, The Peak

Lower Peak harbour view apartment with private roof  
山頂維港景住宅連私家天台

**2,300 s.f.** (plus 2,300 s.f. roof)  
**\$79,000 incl.**

[www.landscape.com/30865.htm](http://www.landscape.com/30865.htm) Sami Woo 胡小姐 9493 8275

**1-3 Pollock's Path, The Peak**  
山頂 普樂道1-3 號

Rare find colonial harbour view flat with facilities  
罕有維港景英式住宅連住客會所設施

**2,216 s.f.**  
**\$85,000**

[www.landscape.com/24146.htm](http://www.landscape.com/24146.htm) Sami Woo 胡小姐 9493 8275

**1-3 Homestead Road, The Peak**  
山頂 堪仕達道1-3號

Top notch apartment with facilities on The Peak  
山頂頂級豪華住宅連住客會所設施

**2,828 s.f.**  
**\$120,000 incl.**

[www.landscape.com/29257.htm](http://www.landscape.com/29257.htm) David Leung 梁先生 9199 0672

**La Hacienda**  
山頂 加列山道29-33號  
29-33 Mount Kellett Road, The Peak

Newly decorated townhouse with facilities overlooking nice views  
全新裝修排屋連完善住客會所設施，俯瞰優美景色

**3,200 s.f.**  
**\$150,000 incl.**

[www.landscape.com/3323.htm](http://www.landscape.com/3323.htm) Sissy Li 李小姐 9642 6969

**Strawberry Hill**  
山頂 紅莓閣  
8 Plunkett's Road, The Peak

Colonial townhouse with private garden  
英式排屋連私家花園

**2,945 s.f.** (plus 1,623 s.f. garden)  
**\$170,000 incl.**

[www.landscape.com/48206.htm](http://www.landscape.com/48206.htm) Louis Wong 黃先生 9871 6828

**Orient Crest**  
山頂 山頂道76號  
76 Peak Road, The Peak

Newly renovated house on The Peak with harbour view  
山頂全新裝修大屋，享維港景

**3,300 s.f.**  
**\$190,000 incl.**

[www.landscape.com/17202.htm](http://www.landscape.com/17202.htm) Teresa Lau 劉小姐 9080 6686

**2 Barker Road, The Peak**  
山頂 白加道2號

Exquisite townhouse on Barker Road with harbour view  
白加道雅致獨特排屋，享維港景

**4,745 s.f.** (plus 551 s.f. roof and 517 s.f. terrace)  
**\$230,000**

[www.landscape.com/46177.htm](http://www.landscape.com/46177.htm) Christine Chong 莊小姐 9648 6082

**Severn 8**  
山頂 倚巒  
8 Severn Road, The Peak

Luxurious townhouse with a bird's eye view of the Victoria Harbour  
豪華排屋享鳥語花香的維港景觀

**3,330 s.f.** (plus 772 s.f. roof and 460 s.f. garden)  
**\$280,000 incl.**

[www.landscape.com/116961.htm](http://www.landscape.com/116961.htm) Mary Li 李小姐 9011 6595

**Peak Road, The Peak**  
山頂 山頂道

Harbour view townhouse with terrace garden  
維港景排屋連花園平台

**6,671 s.f.** (plus 1,985 s.f. garden, 594 s.f. roof and 294 s.f. terrace)  
**\$320,000**

[www.landscape.com](http://www.landscape.com) Louis Wong 黃先生 9871 6828



**in feverclub**

- *inMAGAZINE's* official members' club
- Designated for sophisticated individuals who recognise the value of elegance and fine living
- Exclusive privileges: inboutique, indining, intravel, inculture

Enquiries: [marketing@incorp.com.hk](mailto:marketing@incorp.com.hk)  
Website: [www.inmagazine.com.hk](http://www.inmagazine.com.hk)





**2-4 Hawthorn Road, Happy Valley**  
**跑馬地 荷塘道2-4號**

Colonial 4-bedroom flat with practical layout in Happy Valley  
跑馬地英式四房單位，間隔實用

**2,500 s.f.**  
**\$55,000 incl.**

[www.landscape.com/114893.htm](http://www.landscape.com/114893.htm) Stella Lo 羅小姐 9809 8570

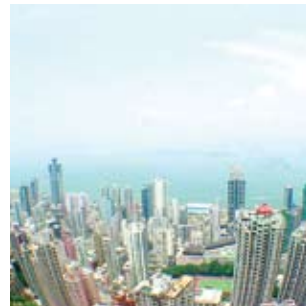


**Butler Tower**  
**渣甸山 柏麗園**  
1-5 Boyce Road, Jardine's Lookout

Practical 4-bedroom apartment in sought after Jardine's Lookout  
渣甸山實用四房單位，市面難尋

**1,650 s.f.**  
**\$60,000 incl.**

[www.landscape.com/38287.htm](http://www.landscape.com/38287.htm) Carman Szeto 司徒小姐 6183 8339

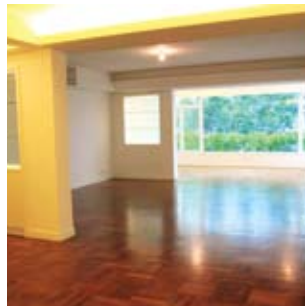


**Beauty Court**  
**西半山 雅苑**  
82 Robinson Road, Midlevels West

Tastefully decorated apartment overlooking harbour view  
品味設計裝修單位，俯瞰維港景觀，可租可售

**1,771 s.f.**  
**\$75,000 incl.** also for sale \$25,500,000

[www.landscape.com/89251.htm](http://www.landscape.com/89251.htm) Rowena Siu 蕭小姐 9348 4118



**Kam Yuen Mansion**  
**中半山 錦園大廈**  
3 Old Peak Road, Midlevels Central

Time-honored colonial low-rise with high ceiling  
懷舊英式低密度住宅，樓底極高

**2,700 s.f.**  
**\$83,000 incl.**

[www.landscape.com/18719.htm](http://www.landscape.com/18719.htm) Stella Lo 羅小姐 9809 8570



**23 Po Shan Road, Midlevels West**  
**西半山 寶珊道23號**

Exclusive apartment in peaceful environment  
罕有大宅恬靜環境

**3,000 s.f.**  
**\$60,000 incl.**

[www.landscape.com/26893.htm](http://www.landscape.com/26893.htm) Walker Lam 林先生 9551 1077



**Birchwood Place**  
**中半山 寶樟臺**  
96 Macdonnell Road, Midlevels Central

Popular flat on Macdonnell with tennis court and pool  
麥當勞道受歡迎單位連網球場及游泳池

**2,018 s.f.**  
**\$62,000 incl.**

[www.landscape.com/11390.htm](http://www.landscape.com/11390.htm) Eric Wong 黃先生 9740 3396



**Tregunter Tower**  
**中半山 地利根德閣**  
14 Tregunter Path, Midlevels Central

Newly renovated spacious apartment with comprehensive facilities  
全新裝修寬敞住宅，連完善住客會所設施

**3,052 s.f.**  
**\$90,000 incl.**

[www.landscape.com/122878.htm](http://www.landscape.com/122878.htm) Teresa Fung 馮小姐 9138 1621



**Branksome Grande**  
**中半山 地利根德里3號**  
3 Tregunter Path, Midlevels Central

Spacious apartment in popular building at lower Peak, overlooking Central city view, with huge balcony  
中半山受歡迎寬敞住宅俯瞰中環城市景觀，連巨型陽臺

**3,030 s.f.**  
**\$95,000**

[www.landscape.com/52894.htm](http://www.landscape.com/52894.htm) Teresa Lau 劉小姐 9080 6686

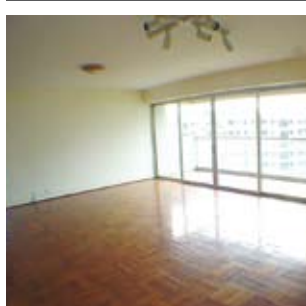


**1-4 Briar Avenue, Happy Valley**  
**跑馬地 比雅道1-4號**

Unique low-rise with balcony on Briar Avenue  
比雅道精緻低密度住宅連陽臺

**2,000 s.f.**  
**\$65,000 incl.**

[www.landscape.com/49057.htm](http://www.landscape.com/49057.htm) Sami Woo 胡小姐 9493 8275



**Hamilton Court**  
**西半山 愛敦大廈**  
8 Po Shan Road, Midlevels West

Spacious 4-bedroom harbour view apartment in serene location  
寬敞四房維港景單位，環境清幽怡人

**2,600 s.f.**  
**\$65,000**

[www.landscape.com/8193.htm](http://www.landscape.com/8193.htm) Mary Li 李小姐 9011 6595

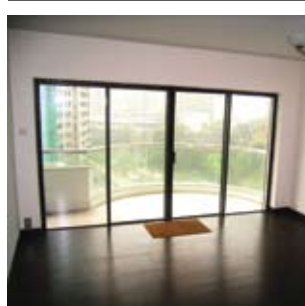


**Estoril Court**  
**中半山 愛都大廈**  
55 Garden Road, Midlevels Central

Large high efficiency 4-bedroom apartment on fringe of Central  
巨型實用四房單位，鄰近中環，交通方便

**3,347 s.f.**  
**\$100,000**

[www.landscape.com/5479.htm](http://www.landscape.com/5479.htm) Mira To 杜小姐 9486 1566

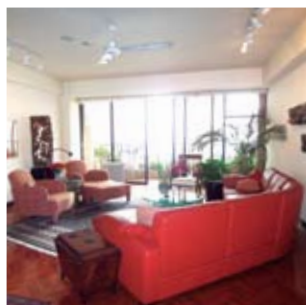


**Garden Terrace 2 & 3**  
**中半山 花園臺2 & 3座**  
8A Old Peak Road, Midlevels Central

Large 4-ensuite flat with nice decorations in prime location  
巨型四套房住宅連雅致裝修，位於中半山尊貴地段，可租可售

**3,002 s.f.**  
**\$100,000 incl.** also for sale \$45,000,000

[www.landscape.com/101674.htm](http://www.landscape.com/101674.htm) Stephen Chan 陳先生 9093 3381



**Savoy Court**  
**西半山 夏蕙苑**  
101 Robinson Road, Midlevels West

Spacious 4-bedroom mid-rise on convenient Robinson Road  
羅便臣道中密度四房住宅，交通方便

**2,540 s.f.**  
**\$66,000 incl.**

[www.landscape.com/109722.htm](http://www.landscape.com/109722.htm) Chris Law 羅先生 6183 8388

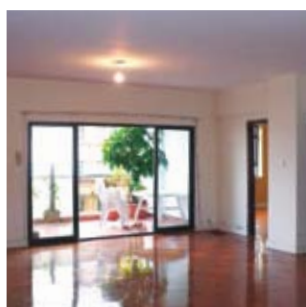


**Villa Monte Rosa**  
**東半山 玫瑰新村**  
41A Stubbs Road, Midlevels East

Large family apartment on upper Stubbs Road with huge balcony  
位於司徒拔道頭段巨型家庭式住宅連巨型陽臺

**2,300 s.f.**  
**\$68,000 incl.**

[www.landscape.com/38464.htm](http://www.landscape.com/38464.htm) Chris Law 羅先生 6183 8388



**Fairview Mansion**  
**西半山 昭景大廈**  
84 Robinson Road, Midlevels West

Large practical 4-bedroom apartment  
巨型實用四房單位，可租可售

**2,700 s.f.**  
**\$70,000 incl.** also for sale \$33,000,000

[www.landscape.com/40168.htm](http://www.landscape.com/40168.htm) Sami Woo 胡小姐 9493 8275



**Dynasty Court**  
**中半山 帝景園**  
23 Old Peak Road, Midlevels Central

Spacious 4-bedroom flat with stunning Harbour View  
寬敞四房住宅，享遼闊維港景

**2,266 s.f.**  
**\$73,000**

[www.landscape.com/22018.htm](http://www.landscape.com/22018.htm) Sami Woo 胡小姐 9493 8275



**The Colonnade**  
**東半山 嘉薈臺**  
152 Tai Hang Road, Midlevels East

Stylish modern high-rise on convenient Tai Hang Road  
大坑道時尚高密度單位，交通方便

**1,857 s.f.**  
**\$75,000 incl.**

[www.landscape.com/117614.htm](http://www.landscape.com/117614.htm) Mark Mak 麥先生 6838 2929



**5 Goldsmith Road, Jardine's Lookout**  
**渣甸山 高士美道5號**

Rare find colonial low-rise with huge balcony in quiet Jardine's Lookout  
渣甸山罕有英式低密度住宅，連特大陽臺，環境清幽怡人

**2,500 s.f.** (plus 67 s.f. terrace)  
**\$75,000**

[www.landscape.com/19468.htm](http://www.landscape.com/19468.htm) Sissy Li 李小姐 9642 6969



## Treasures in Mid-Levels 半山的文化瑰寶

The month of October is a time of festivities, with not only the Mid-Autumn festival to celebrate, but also China National Day. While you may not have planned any family gatherings akin to those for the Mid-Autumn festival for our country's National Day, besides watching the firework performance, a visit to the Dr Sun Yat-sen museum located in Mid-levels may prove an informative and educational experience for all the family. The museum offers a comprehensive look at the life of Dr Sun Yat-sen, China's National Father and raises the national awareness of society.

To mark the 80th anniversary of the death of Dr Sun Yat-sen, an exhibition titled "Icon of an Era – the Dr Sun Yat-sen Mausoleum 1929.6.1" is being held at the museum until 17 March 2010. The exhibition sheds light on the life and death of the world-renowned revolutionary. It also explores the construction of Dr Sun Yat-sen's mausoleum and the symbolic significance of his grand funeral. ■

在十月裡的節慶，除了中秋，還有國慶。在中秋節賞月，是全家共聚天倫的好節目，至於國慶，除了欣賞煙花之外，也不妨在這個充滿民族氣息的月分，到位於香港中環半山的孫中山紀念館，看看關於我們國父的大小事，提升一下大家的民族意識。

適逢今年為孫中山先生安葬中山陵八十周年，孫中山紀念館由由即日起至明年三月十七日舉行「時代符號 — 中山陵1929.6.1」，展覽除重溫一九二九年從北京移靈南京的盛況，亦介紹中山陵的興建，並探究葬禮背後的深層意義，以及這些隱藏的訊息如何將中山陵及安葬大典建構時代符號。■

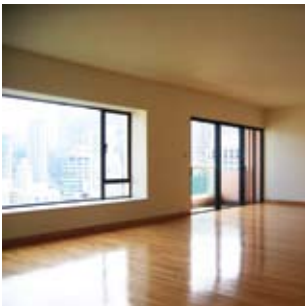




**Kennedy Heights**  
中半山 堅麗閣  
10-18 Kennedy Road, Midlevels Central  
Huge 5-bedroom apartment with partial harbour view close to Central  
巨型五房單位享部份維港景，鄰近中環

**3,400 s.f.**  
**\$118,000**

[www.landscape.com/20515.htm](http://www.landscape.com/20515.htm) Eric Wong 黃先生 9740 3396



**The Albany**  
中半山 雅賓利大廈  
1 Albany Road, Midlevels Central  
Prime apartment in prestigious location  
中半山豪華住宅，地段尊貴

**2,546 s.f.**  
**\$120,000 incl.**

[www.landscape.com/40879.htm](http://www.landscape.com/40879.htm) Rebecca Cheung 張小姐 9021 7644



**HighCliff**  
東半山 曉廬  
41D Stubbs Road, Midlevels East  
Ultra luxury modern apartment with sweeping view of the harbour and city  
特大豪華時尚住宅，享維港及城市景觀

**3,676 s.f.**  
**\$124,000**

[www.landscape.com/81578.htm](http://www.landscape.com/81578.htm) Louis Wong 黃先生 9871 6828



**Unique Villa**  
跑馬地 友園  
10 Holly Road, Happy Valley  
Designer decorated penthouse flat with internal staircase to roof  
設計師精心設計頂層住宅連內置樓梯往天台

**2,500 s.f.** (plus 1,940 s.f. roof)  
**\$125,000 incl.**

[www.landscape.com/52593.htm](http://www.landscape.com/52593.htm) Mark Mak 麥先生 6838 2929



**Century Tower II**  
中半山 世紀大廈2座  
1A Tregunter Path, Midlevels Central  
Renovated large 4-bedroom flat with high privacy  
全新裝修巨型四房單位，私隱度高

**3,638 s.f.**  
**\$140,000 incl.**

[www.landscape.com/20526.htm](http://www.landscape.com/20526.htm) Teresa Fung 馮小姐 9138 1621



**Eva Court**  
中半山 惠園  
36 Macdonnell Road, Midlevels Central  
Huge whole floor 4-bedroom apartment on Macdonnell Road  
麥當勞道巨型全層四房單位

**4,500 s.f.**  
**\$165,000**

[www.landscape.com/26702.htm](http://www.landscape.com/26702.htm) Yvonne Chang 鄭小姐 9088 4666

When times get tough and we're faced with overwhelming amounts of work, our minds fly away in a daydream to distant shores in search of relief. You may be fantasizing about vacationing in Europe and mentally planning your route, however your overloading tasks and responsibilities don't allow you to leave the chambers of your mind. If this rings true for you, then let your ears take you on a journey... to Russia. As part of its ten day tour of Asia, the full-strength Sydney Symphony of 95 musicians will perform in Hong Kong on 23 October. Catch them at the Hong Kong City Hall for an all-Russian repertoire including Rachmaninoff and Prokofiev.

Under the conducting baton of maestro Vladimir Ashkenazy, the Sydney Symphony will be joined by the young Hong Kong pianist, Rachel Cheung. Cheung will perform Rachmaninoff's Piano Concerto No.2 in C Minor, while the orchestra will play Rachmaninov's Vocalise. Indulge yourself and let your ears carry you away to Russia! ■

工作繁忙時，心神難免會忽爾飄到外國，想偷閒一番。渴望到歐洲走一趟？繁忙的工作或許令你較難騰出閒暇，不如由耳朵帶你到俄羅斯走走吧 — 欣賞一場全俄羅斯樂曲的音樂會。享譽全球的悉尼交響樂團將於十月二十三日晚上在香港大會堂音樂廳舉行音樂會。

悉尼交響樂團在殿堂級音樂家阿殊堅納西的帶領下，將聯同近年在國際樂壇初露鋒芒的香港鋼琴家張緯晴，演出這場全俄羅斯樂曲的音樂會。張緯晴將演繹難度極高拉赫曼尼諾夫的將會演繹難度極高的拉赫曼尼諾夫的《C小調第二鋼琴協奏曲，作品十八》，而樂團亦會演奏拉氏的《聲樂練習曲》。就讓我們一同在鋼琴之聲中到俄羅斯遊歷一趟。■



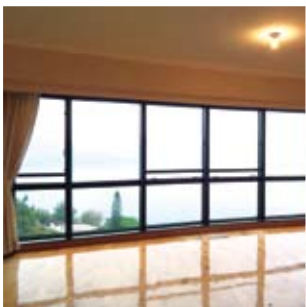
## Russian Repertoire 暢遊俄羅斯樂曲之中



**88 A-B Pokfulam Road, Pokfulam**  
薄扶林 薄扶林道88號A-B  
Newly refurbished colonial low-rise with sea view with huge balcony and open kitchen  
全新裝修英式低密度住宅享海景連巨型陽臺及開放式廚房

**2,100 s.f.**  
**\$50,000 incl.**

[www.landscape.com/119797.htm](http://www.landscape.com/119797.htm) Chris Law 羅先生 6183 8388



**Pacific View**  
大潭 浪琴園  
38 Tai Tam Road, Tai Tam  
Newly renovated flat with panoramic sea view and clubhouse facilities  
全新裝修住宅享廣闊海景及完善住客會所設施，可租可售

**1,906 s.f.**  
**\$62,000 incl.** also for sale \$26,000,000

[www.landscape.com/110449.htm](http://www.landscape.com/110449.htm) Carman Szeto 司徒小姐 6183 8339



**Repulse Bay Garden**  
淺水灣 麗景園  
18-40 Bellevue Drive, Repulse Bay  
Spacious 4-bedroom apartment with view of Repulse Bay Beach  
寬敞四房單位，享淺水灣海景

**2,810 s.f.**  
**\$82,000 incl.**

[www.landscape.com/5595.htm](http://www.landscape.com/5595.htm) Stella Lo 羅小姐 9809 8570



**Stanley Green**  
赤柱 維壁別墅  
66 Stanley Village Road, Stanley  
Duplex with roof in quiet enclave yet close to Stanley market  
複式連天台單位，環境寧靜，鄰近赤柱市集

**2,200 s.f.** (plus 800 s.f. roof)  
**\$88,000**

[www.landscape.com/15650.htm](http://www.landscape.com/15650.htm) Mary Li 李小姐 9011 6595



**46 Tai Tam Road, Tai Tam**  
大潭 大潭道 46號  
4-bedroom duplex nestled high on Turtle Cove with private terrace  
龜背灣四房複式住宅連私家平台

**2,327 s.f.**  
(plus 968 s.f. roof and 400 s.f. garden)  
**\$110,000 incl.**

[www.landscape.com/6329.htm](http://www.landscape.com/6329.htm) Chris Law 羅先生 6183 8388



**The Somerset**  
淺水灣 怡峰  
67 Repulse Bay Road, Repulse Bay  
Rare find Repulse Bay duplex apartment with good condition and 2 carpark space  
淺水灣罕有複式住宅，雅致裝修連雙車位

**3,099 s.f.**  
**\$115,000 incl.**

[www.landscape.com/4674.htm](http://www.landscape.com/4674.htm) Teresa Lau 劉小姐 9080 6686

For more listings, please go to [www.landscape.com/lease](http://www.landscape.com/lease)



**Unicorn Garden**  
壽臣山 麒麟閣  
11 Shouson Hill Road East, Shouson Hill  
Decent spacious low-rise flat in Shouson Hill  
壽臣山舒適寬敞低密度住宅

**1,714 s.f.**  
**\$58,000 incl.**

[www.landscape.com/34404.htm](http://www.landscape.com/34404.htm) Mark Mak 麥先生 6838 2929



**Joy Garden**  
壽臣山 曉穎花園  
13 Shouson Hill Road West, Shouson Hill  
Unique 4-bedroom duplex flat with new kitchen and bathrooms  
雅致四房複式住宅，全新廚房及浴室

**2,752 s.f.**  
**\$69,000 incl.**

[www.landscape.com/107698.htm](http://www.landscape.com/107698.htm) Mary Li 李小姐 9011 6595



**Twin Brook**  
淺水灣 雙溪  
43 Repulse Bay Road, Repulse Bay  
4-bedroom apartment with 2-ensuit overlooking full sea view  
四房連兩套房單位，俯瞰全海景

**2,700 s.f.**  
**\$85,000 incl.**

[www.landscape.com/9419.htm](http://www.landscape.com/9419.htm) Rebecca Cheung 張小姐 9021 7644



**Carmina Place**  
深水灣 嘉名苑  
7-9 Deep Water Bay Drive, Deep Water Bay  
Brand new Deep Water Bay 4-bedroom flat with practical layout  
全新深水灣四房單位，間隔實用

**2,628 s.f.**  
**\$106,000 incl.**

[www.landscape.com/12934.htm](http://www.landscape.com/12934.htm) Yvonne Chang 鄭小姐 9088 4666



**Stanley Court**  
赤柱 海灣園  
9 Stanley Mound Road, Stanley  
Resort-style townhouse with private garden close to beach  
渡假式排屋連私家花園，鄰近海灘

**2,713 s.f.**  
(plus 732 s.f. garden and 517 s.f. roof)  
**\$120,000 incl.**

[www.landscape.com/30960.htm](http://www.landscape.com/30960.htm) Mark Mak 麥先生 6838 2929



**Hong Kong Parkview - Tower 17**  
淺水灣 陽明山莊17座  
88 Tai Tam Reservoir Road, Repulse Bay  
Large 5-bedroom flat with harbour view in verdant country park  
巨型五房單位連維港景，鄰近郊野公園

**3,273 s.f.**  
**\$128,000**

[www.landscape.com/25588.htm](http://www.landscape.com/25588.htm) Sissy Li 李小姐 9642 6969

The Key 21





**4 Headland Road, Repulse Bay**  
淺水灣 赫蘭道4號

Colonial apartment with peaceful sea view with huge balcony  
英式住宅享寧靜海景連巨型陽臺

**3,586 s.f.**  
**\$130,000**

[www.landscape.com/12033.htm](http://www.landscape.com/12033.htm) Chris Law 羅先生 6183 8388



**Circle Villa**  
香坎角 環角道16號  
16 Cape Road, Chung Hom Kok

Huge 4-bedroom sea view apartment  
春坎角巨型四房海景住宅

**3,600 s.f.** (plus 1,000 s.f. terrace)  
**\$133,000 incl.**

[www.landscape.com/8498.htm](http://www.landscape.com/8498.htm) Yvonne Chang 鄭小姐 9088 4666



**14 Headland Road, Repulse Bay**  
淺水灣 赫蘭道14號

Brand new low-rise garden flat in tranquil location  
全新低密度花園住宅，環境清幽怡人

**2,570 s.f.**  
(plus 1,138 s.f. garden)  
**\$138,000 incl.**

[www.landscape.com/11839.htm](http://www.landscape.com/11839.htm) Yvonne Chang 鄭小姐 9088 4666



**1 Shouson Hill Road East, Shouson Hill**  
壽臣山 壽臣山道東1號

Townhouse with huge garden in peaceful environment  
巨型花園排屋，環境寧靜

**4,063 s.f.**  
(plus 994 s.f. garden and 629 s.f. roof)  
**\$148,000**

[www.landscape.com/94617.htm](http://www.landscape.com/94617.htm) Carman Szeto 司徒小姐 6183 8339



**Manly Villa**  
淺水灣 文麗雙築  
38 Ocean Park Road, Repulse Bay

Full sea view garden detached house with private pool in exclusive location  
全海景獨特花園大屋連私家泳池，地段尊貴

**3,500 s.f.** (plus 3,378 s.f. garden)  
**\$180,000**

[www.landscape.com/4472.htm](http://www.landscape.com/4472.htm) David Chan 陳先生 9238 2012



**Island Road, Deep Water Bay**  
深水灣 香島道

Exclusive house with private pool on Deep Water Bay waterfront  
深水灣海濱獨特大屋連私家泳池

**3,319 s.f.** (plus 274 s.f. garden, 262 s.f. terrace and 108 s.f. roof)  
**\$195,000**

[www.landscape.com/](http://www.landscape.com/) Teresa Fung 馮小姐 9138 1621



**The Hazelton**  
壽臣山 榛園  
6 Shouson Hill Road, Shouson Hill

A detached townhouse with huge garage and highly privacy  
獨立大屋連特大車房，私隱度高

**3,195 s.f.**  
(plus 596 s.f. garden and 548 s.f. roof)  
**\$130,000 incl.**

[www.landscape.com/4158.htm](http://www.landscape.com/4158.htm) Yvonne Chang 鄭小姐 9088 4666



**Las Pinadas**  
壽臣山 朗松居  
33 Shouson Hill Road, Shouson Hill

Large townhouse with full clubhouse facilities in lush green surroundings  
巨型排屋連完善住客會所設施，享翠綠園景，可租可售

**3,383 s.f.** (plus 617 s.f. roof, 214 s.f. garden and 152 s.f. terrace)  
**\$138,000 incl.** also for sale \$75,000,000

[www.landscape.com/121421.htm](http://www.landscape.com/121421.htm) Christine Chong 莊小姐 9648 6082



**Le Palais**  
大潭 皇府灣  
8 Pak Pat Shan Road, Tai Tam

High quality waterfront townhouse with private garden in serene Tai Tam  
大潭海濱優質排屋連私家花園，可租可售

**3,348 s.f.** (plus 741 s.f. garden)  
**\$140,000 incl.** also for sale \$60,000,000

[www.landscape.com/109996.htm](http://www.landscape.com/109996.htm) Mark Mak 麥先生 6838 2929



**27-31 South Bay Road, Repulse Bay**  
淺水灣 南灣道27-31號

Rare and unique low-rise with private garden and huge balcony  
低密度私家花園及巨型陽臺住宅，市場罕有

**3,056 s.f.** (plus 1,190 s.f. garden)  
**\$160,000 incl.**

[www.landscape.com/22479.htm](http://www.landscape.com/22479.htm) Sami Woo 胡小姐 9493 8275



**Manderly Garden**  
深水灣 文禮苑  
48 Deep Water Bay Road, Deep Water Bay

Newly renovated house in tranquil enclave  
全新裝修大屋，地段尊貴

**3,504 s.f.** (plus 586 s.f. roof)  
**\$180,000 incl.** also for sale Open Offer

[www.landscape.com/6539.htm](http://www.landscape.com/6539.htm) Teresa Fung 馮小姐 9138 1621



**Carmelia**  
赤柱 赤柱村道60號  
60 Stanley Village Road, Stanley

Huge colonial house with front yard and private garden  
巨型英式大屋連前院及私家花園，可租可售

**5,200 s.f.** (plus 753 s.f. garden and 343 s.f. terrace)  
**\$210,000 incl.** also for sale \$120,000,000

[www.landscape.com/84478.htm](http://www.landscape.com/84478.htm) Louis Wong 黃先生 9871 6828

# Creative Vision

interior design and project management



Hong Kong Head Office: 12/F, Cyberport 2, 100 Cyberport Road, Hong Kong  
China Office: 15/F, Plaza 66, 1366 Nanjing West Road, Shanghai, China  
t +852 3699 0899 (Hong Kong) t +86 21 6137 6038 (China)  
info@visionnouvelle.com.hk www.visionnouvelle.com.hk

