

select deluxe homes

OCTOBER 2008
Volume 49

The Key

大宅®

published and distributed by

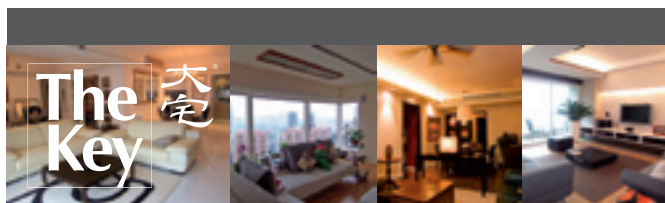
LANDSCOPE
The Specialists in Luxury Properties

領域



COLONIAL
CHARM

www.landscape.com



KeyNotes

"If you do not hope, you will not find what is beyond your hopes."

St. Clement of Alexandria

Luxury property price is softening quietly amid weak demand. Sales in traditional upmarket locations shrank further from July, and more owners have joined the seller side. Some desperate vendors are now slashing price at faster rate, hoping to offload before the winter. However, such effort is not met with buying enthusiasm, as potential buyers are still waiting on the sideline for further fall. It now requires between 4 to 6 months before a 2,000 square feet flat can be matched with a suitable buyer, compared to less than one month last year. Market commentators said the luxury sector would not be much affected in the same way as the mass market, but the fact is that desperate sellers in this sector are pushing down the price, and the resultant price drop in luxury end may be even greater than the mass market, which has over the years not gained as much compared to its counterpart in the high end. Luxury property represents 7% of the total market stock, and the much narrower base means it is susceptible to greater fluctuations (by the same token, luxury property has higher long term investment value due to limited supply).

Koh Keng-shing
ks-koh@landscape.com

(The above are an excerpt from Market Watch on www.landscape.com. For the full article, please log on to www.landscape.com/1008.htm)

About The Key

The Key is a monthly publication of sales and letting listings of luxury residential properties on Hong Kong Island. It is sent to VIP clients of Landscape Realty and residents of The Peak, Southside, Mid-Levels, Kowloon Tong, Homantin and selected upmarket residential areas in Shatin, Tai Po, Clear Water Bay and Castle Peak Road. The recipients comprise the crème de la crème of Hong Kong's affluent community.

In addition to The Key, Landscape Realty sends weekly eNewsletters to clients on most update listings of luxury properties. If you wish to receive the eNewsletter, please call Loretta Lui at 3102 4818 or email to info@landscape.com.

How may you list your property with The Key?

If you would like to see your property listed in The Key in the next issue, you may call Loretta Lui at 3102 4818 or email to info@landscape.com. Or you may simply fill out the space below and fax to us at 2866 0015.

Property to be listed

Asking Rental / Sale Price

Floor Area

Contact Person

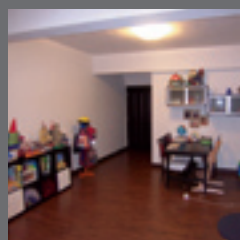
Telephone

Email

Our KeyPersons will contact you for follow-up works.

MID-LEVELS SALES

半山出售



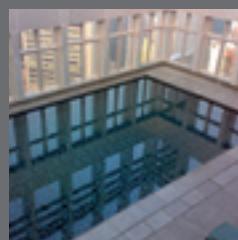
Well View Villa

東半山 瑩景閣

17 Tung Shan Terrace, Midlevels East
3-bedroom low-rise with 2 car park in prime location
低密度三房單位連雙車位，地點方便

1,037 s.f.
\$8,250,000 **SOLE AGENT 獨家代理**

www.landscape.com/15915.htm | David Chan 陳先生 9238 2012



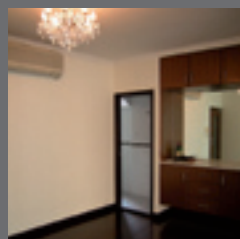
J Residence

灣仔 嘉薈軒

60 Johnston Road, Wan Chai
Modern cosy flat with excellent facilities in the heart of Wan Chai
豪華摩登住宅配完善設施，位處灣仔鬧市

877 s.f.
\$10,500,000

www.landscape.com/14641.htm | Ada Cheung 張小姐 9681 8166



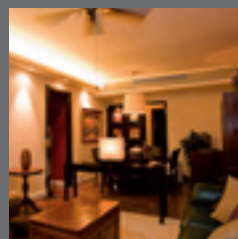
Mandarin Villa

東半山 文華新村

10 Shiu Fai Terrace, Midlevels East
Spacious apartment in convenient location
寬敞住宅，位處黃金地段

1,450 s.f.
\$11,000,000

www.landscape.com/17031.htm | Eric Wong 黃先生 9740 3396



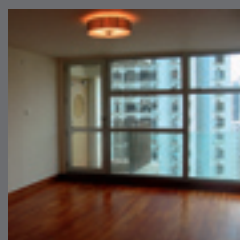
Imperial Court

西半山 帝豪園

62G Conduit Road, Midlevels West
Nicely renovated flat with clubhouse facilities
全新裝修單位，配完善會所設施

1,319 s.f.
\$11,500,000

www.landscape.com/16068.htm | Christine Chong 莊小姐 9648 6082



Grand Deco Tower

東半山 帝后臺

26 Tai Hang Road, Midlevels East
Rare find 4-bedroom flat with convenient transportation
罕有四房單位，交通便利

1,415 s.f.
\$11,800,000 also for lease \$43,000 incl.

www.landscape.com/16063.htm | Mary Li 李小姐 9011 6595



Kensington Court

東半山 景麗苑

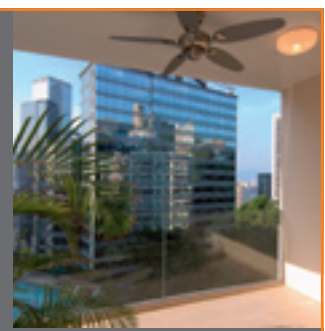
4B - 4C Shiu Fai Terrace, Midlevels East
Well maintained 3-bedroom flat in excellent location
黃金地段三房單位，保養良好

1,450 s.f.
\$12,300,000

www.landscape.com/16883.htm | Rowena Siu 蕭小姐 9348 4118

COLONIAL CHARM

This colonial style mid-rise building is set in a secluded platform off Macdonnell Road, within 5 minutes drive of Central Business District. The owner had spared no effort in transforming two older style apartments into one huge, state of the art duplex (building authority approved) while retaining the colonial style. The spacious balconies are classical, with a modern touch of glass parapets. The generous lounge resembles modern art gallery, both in size and in its collection of paintings. The duplex has been thoroughly renovated with new wooden floor, wiring, plumbing, drainage, and the bathrooms and kitchen are of top grade. This is not just a large apartment, it's the discerning eye's answer to rejuvenating the old world charm.



Catalina Mansions
98-100 MacDonnell Road,
Midlevels Central
中半山 嘉年大廈
4,600 s.f.
\$53,800,000

www.landscape.com/16798.htm

Louis Wong 黃先生 9871 6828



Botanic Terrace

西半山 芝蘭台

3-5 Conduit Road, Midlevels West
Practical 2-bedroom flat with balcony
in prime location
實用兩房單位連露台，地點優越

1,313 s.f.
\$13,000,000 SOLE AGENT 獨家代理

www.landscape.com/17022.htm

Sami Woo 胡小姐 9493 8275



Evelyn Towers

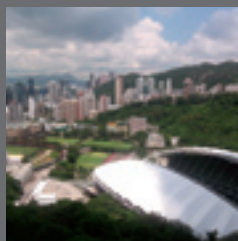
北半山 雲景台

38 Cloud View Road, North Point Midlevels
Practical flat with splendid harbour view
in convenient location
維港景單位，間隔實用，交通方便

1,198 s.f.
\$13,800,000 SOLE AGENT 獨家代理

www.landscape.com/16524.htm

Carman Szeto 司徒小姐 8100 3893



Villa Lotto

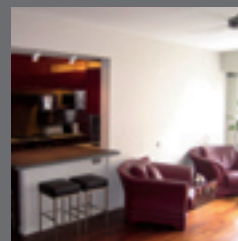
跑馬地 樂陶苑

18 Broadwood Road, Happy Valley
Well kept flat with bird's eye view of
Hong Kong Stadium
良好保養單位，鳥瞰香港大球場景

1,211 s.f.
\$14,500,000 also for lease \$45,000 incl.

www.landscape.com/17001.htm

David Chan 陳先生 9238 2012



Kennedy Terrace

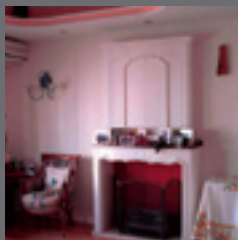
中半山 堅尼地台

20 Kennedy Road, Midlevels Central
Nicely decorated flat with high efficiency in
tranquil location
高實用率優美裝修單位，地點清幽

1,200 s.f.
\$15,000,000

www.landscape.com/16426.htm

Ada Cheung 張小姐 9681 8166



Flora Garden

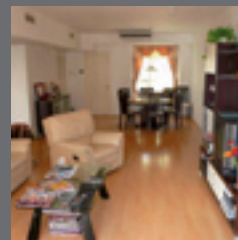
渣甸山 慧景園

7 Chun Fai Road, Jardine's Lookout
Practical layout flat with nice decorations
優雅裝修單位，間隔實用

1,533 s.f.
\$15,800,000

www.landscape.com/16681.htm

Teresa Lau 劉小姐 9080 6686



Amber Garden

東半山 柏苑

70-72 Kennedy Road, Midlevels East
Conveniently located 3-bedroom flat with
practical layout
實用間隔三房單位，交通方便

1,732 s.f.
\$16,280,000

www.landscape.com/12490.htm

Sissy Li 李小姐 9642 6969



Beau Cloud Mansion

中半山 碧雲樓

64 MacDonnell Road, Midlevels Central
3-bedroom flat with terrace on
MacDonnell Road
麥當奴道三房單位連平台

1,700 s.f.
\$17,700,000

www.landscape.com/14550.htm

Philip Lai 黎先生 9430 3330



The Royal Court

中半山 帝景閣

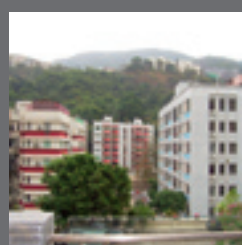
3 Kennedy Road, Midlevels Central
Garden view apartment in prime location
花園景住宅，位處優越地段

1,428 s.f.
\$18,800,000

www.landscape.com/6997.htm

Philip Lai 黎先生 9430 3330

MID-LEVELS SALES



Shuk Yuen Building

跑馬地 菽園新臺

2 Green Lane, Happy Valley

Low-rise apartment with greenery
view in quiet location

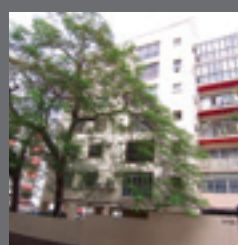
低密度住宅，享翠綠景觀，地點清幽

1,900 s.f.

\$19,000,000

www.landscape.com/15992.htm

Walker Lam 林先生 9551 1077



79-81 Blue Pool Road, Happy Valley

跑馬地 藍塘道 79-81號

Spacious low-rise apartment in
convenient location

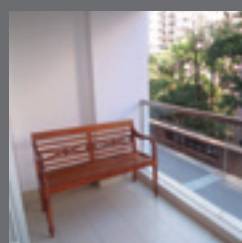
寬敞低密度單位，交通便利

1,900 s.f.

\$19,200,000

www.landscape.com/17121.htm

Stephen Chan 陳先生 9093 3381



Medallion Heights

西半山 金徽閣

45 Conduit Road, Midlevels West

Spacious 3-bedroom apartment
with balcony

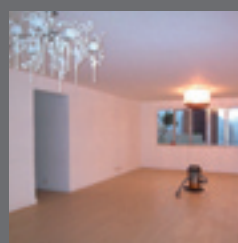
寬敞三房住宅連露台

2,000 s.f.

\$20,500,000

www.landscape.com/17000.htm

Mira To 杜小姐 9486 1566



Butler Tower

渣甸山 柏麗閣

1-5 Boyce Road, Jardine's Lookout

Practical 4-bedroom flat in
renovated building

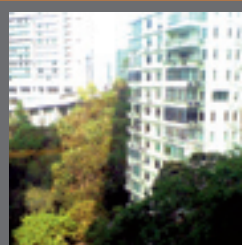
翻新大廈實用四房單位

1,650 s.f.

\$22,000,000 also for lease \$70,000 incl.

www.landscape.com/14942.htm

Eric Wong 黃先生 9740 3396



Birchwood Place

中半山 寶樺臺

96 MacDonnell Road, Midlevels Central

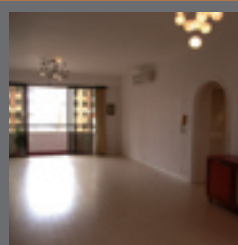
Renowned 4-bedroom flat in prime location
著名大廈四房單位，位處尊貴地段

2,018 s.f.

\$22,000,000

www.landscape.com/15701.htm

Stella Lo 羅小姐 9809 8570



Elm Tree Towers

渣甸山 愉富大廈

8-10 Chun Fai Road, Jardine's Lookout

Practical and high efficiency family flat in
Jardine's Lookout

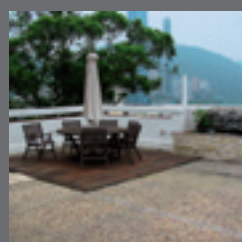
渣甸山高實用率住宅

2,028 s.f.

\$23,000,000

www.landscape.com/16350.htm

Johnny Cheung 張先生 9278 9939



2-6A Wilson Road, Jardine's Lookout

渣甸山 衛信道 2-6A號

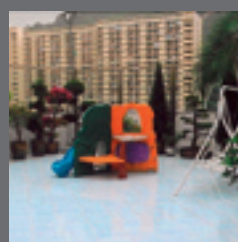
Low-rise apartment with private roof top
低密度住宅連私家天台

1,800 s.f. (plus 1,600 s.f. roof)

\$23,800,000 also for lease \$75,000 incl.

www.landscape.com/15040.htm

Christine Chong 莊小姐 9648 6082



Rosedale

東半山 玫瑰花園

6 Fuk Kwan Avenue, Midlevels East

Rarely available large flat in tranquil
location close to Causeway Bay

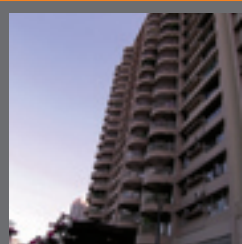
罕有大單位，地段清幽，鄰近銅鑼灣

2,382 s.f. (plus 1,500 s.f. roof)

\$24,000,000

www.landscape.com/17157.htm

Sissy Li 李小姐 9642 6969



Pearl Gardens

西半山 明珠臺

7 Conduit Road, Midlevels West

Spacious practical apartment in
prime location

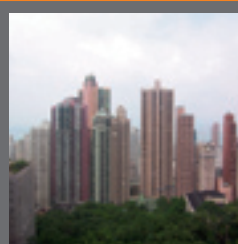
寬敞實用住宅，位處黃金地段

2,200 s.f.

\$24,500,000

www.landscape.com/11214.htm

Ada Cheung 張小姐 9681 8166



Serene Court

西半山 秀麗閣

8 Kotewall Road, Midlevels West

4-bedroom spacious apartment in
quiet location

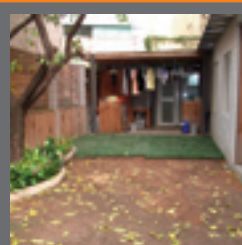
寬敞四房單位，位處寧靜地段

2,334 s.f.

\$26,000,000 also for lease \$68,000 incl.

www.landscape.com/12603.htm

Sissy Li 李小姐 9642 6969



2-4 Hawthorn Road, Happy Valley

跑馬地 荷塘道2-4號

4-bedroom flat including 2-ensuites with
private garden

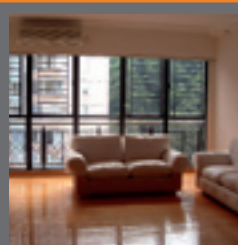
四房雙套住宅連私家花園，配品味豪裝

2,600 s.f. (plus 600 s.f. garden)

\$26,000,000

www.landscape.com/17014.htm

Walker Lam 林先生 9551 1077



Clovelly Court

中半山 嘉富麗苑

12 May Road, Midlevels Central

Nicely fitted and equipped 3-bedroom
flat in serene location

三房單位配優美裝修傢俱，位處寧靜地段

1,881 s.f.

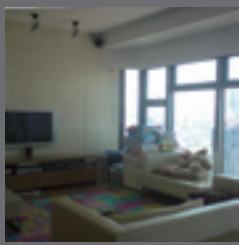
\$28,000,000 also for lease \$88,000 incl.

www.landscape.com/17047.htm

Rita Lee 李小姐 9437 0087

MID-LEVELS SALES

半山
出售



Palatial Crest

西半山 輝煌豪園

3 Seymour Road, Midlevels West
High floor flat with sweeping harbour view
高層單位，享遼闊維港景

2,177 s.f.
\$29,000,000

www.landscape.com/15950.htm | Ada Cheung 張小姐 9681 8166



Villa Lotto

跑馬地 樂陶苑

18 Broadwood Road, Happy Valley
Practical 4-bedroom flat overlooking
Hong Kong Stadium
實用四房單位，坐擁香港大球場景

2,406 s.f.
\$29,800,000

www.landscape.com/17056.htm | Stephen Chan 陳先生 9093 3381

Jardine's Lookout Garden Mansion

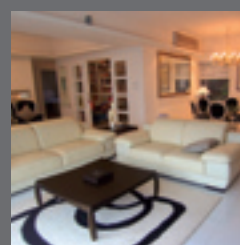


渣甸山 渣甸山花園大廈

148-150 Tai Hang Road, Midlevels East
Large older-style flat with full view of
Hong Kong Stadium
舊式寬敞大宅，俯瞰大球場景觀

2,500 s.f.
\$30,000,000

www.landscape.com/16305.htm | Johnny Cheung 張先生 9278 9939



Nicholson Tower 東半山 蔚豪苑

8 Wong Nai Chung Gap Road,
Midlevels East

Nicely decorated 3-bedroom flat with
balcony, enjoying open city view
三房單位連露台，享開揚景，配精緻裝潢

1,993 s.f.
\$31,000,000

www.landscape.com/16010.htm | Carman Szeto 司徒小姐 8100 3893



Villa Veneto

西半山 威都閣

3 Kotewall Road, Midlevels West
Large 4-bedroom harbour view flat with
balcony in tranquil location
四房維港景住宅連露台，地點寧靜

2,562 s.f.
\$33,000,000

www.landscape.com/17002.htm | Ada Cheung 張小姐 9681 8166



The Colonnade

東半山 嘉崙臺

152 Tai Hang Road, Midlevels East
Modern-styled apartment with open
city view
摩登住宅，享開揚城市景

2,137 s.f.
\$33,800,000 also for lease \$90,000

www.landscape.com/16721.htm | Mira To 杜小姐 9486 1566



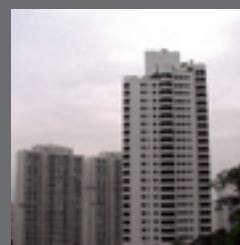
Dynasty Court

中半山 帝景園

23 Old Peak Road, Midlevels Central
Popular apartment with harbour view
in prime location
維港景住宅，位處黃金地段，極受歡迎

1,972 s.f.
\$35,500,000

www.landscape.com/13086.htm | Philip Lai 黎先生 9430 3330



Po Garden

中半山 寶園

9 Brewin Path, Midlevels Central
Spacious 3-bedroom flat in exclusive
location of Midlevels Central
寬敞三房單位，位處獨特地段

2,590 s.f.
\$38,000,000

www.landscape.com/16963.htm | Rowena Siu 蕭小姐 9348 4118



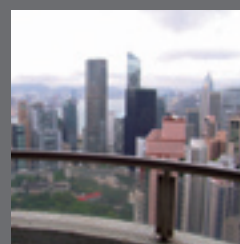
Brewin Court

中半山 明雅園

5-7 Brewin Path, Midlevels Central
Unique colonial flat with huge
garden terrace
獨特英式住宅連巨型花園平台

2,600 s.f. (plus 1,500 s.f. terrace)
\$43,000,000 also for lease \$100,000

www.landscape.com/16999.htm | David Chan 陳先生 9238 2012



Garden Terrace

中半山 花園臺

8 Old Peak Road, Midlevels Central
Large 4-ensuite apartment with balcony
寬敞四套房住宅連露台

3,307 s.f.
\$47,500,000 also for lease \$110,000 incl.

www.landscape.com/16733.htm | Eric Wong 黃先生 9740 3396



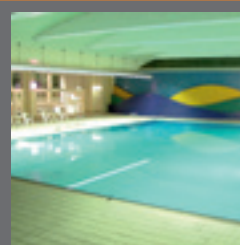
Tregunter Tower

中半山 地利根德閣

14 Tregunter Path, Midlevels Central
Large apartment on fringe of Central
with magnificent views
寬敞大宅，鄰近中環，享優美景觀

3,001 s.f.
\$48,000,000 also for lease \$120,000 incl.

www.landscape.com/11101.htm | Teresa Fung 馮小姐 9138 1621



Regent on the Park

中半山 御花園

9A Kennedy Road, Midlevels Central
Duplex apartment on Kennedy Road with
city open view
堅尼地道複式單位，享開揚城市景

2,700 s.f.
\$50,000,000

www.landscape.com/14559.htm | Simon Lee 李先生 6014 3712

MID-LEVELS SALES



Century Tower

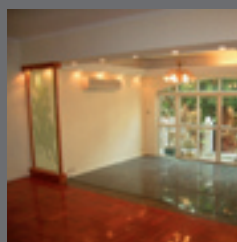
中半山 世紀大廈

1A Tregunter Path, Midlevels Central
Large 4-bedroom flat with high privacy
四房大宅，私隱度極高

3,663 s.f.
\$57,000,000 also for lease \$170,000 incl.

www.landscape.com/15600.htm

Rita Lee 李小姐 9437 0087



Falcon Lodge

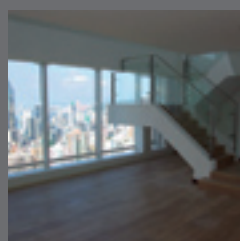
渣甸山 嘉麟園

67 Perkins Road, Jardine's Lookout
Spacious 5-bedroom townhouse in
quiet location
寬敞五房排屋，地點清幽

3,546 s.f.
\$58,000,000

www.landscape.com/16819.htm

Maria Cheung 張小姐 6256 1848



Bowen Place

中半山 寶雲閣

11A Bowen Road, Midlevels Central
Rare harbour view duplex with 5-bedroom
維港景五房複式單位，市場罕有

3,621 s.f. (plus 184 s.f. terrace)
\$62,000,000

www.landscape.com/15241.htm

Stella Lo 羅小姐 9809 8570



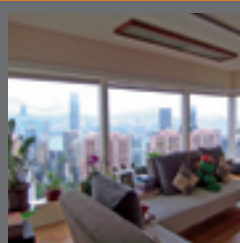
15-21 Wilson Road, Jardine's Lookout

渣甸山 衛信道15-21號
European-style townhouse with tasteful
decorations

歐陸式排屋，配品味裝潢
4,400 s.f. (plus 900 s.f. garden)
\$75,000,000 also for lease \$180,000

www.landscape.com/11702.htm

Mark Mak 麥先生 6838 2929



May Tower

中半山 梅苑

5 May Road, Midlevels Central
Spacious 4-ensuite apartment with
high privacy
寬敞四套房住宅，極高私隱度

3,393 s.f.
\$78,000,000 also for lease \$165,000

www.landscape.com/16762.htm

Simon Yung 翁先生 9418 5743



21 Perkins Road, Jardine's Lookout

渣甸山 白建時道21號
Highly sought after single detached house
in Jardine's Lookout
市場罕有，渣甸山獨立屋

3,800 s.f. (plus 800 s.f. garden)
\$128,000,000

www.landscape.com/15593.htm

Mark Mak 麥先生 6838 2929

MID-LEVELS LEASE



Kennedy Terrace

中半山 堅尼地台

20 Kennedy Road, Midlevels Central
Mid-rise penthouse with internal
access to roof
中密度頂層單位，連室內樓梯直達天台

1,200 s.f. (plus 1,020 s.f. roof)
\$65,000 incl. also for sale \$17,300,000

www.landscape.com/16918.htm

Teresa Lau 劉小姐 9080 6686



Monterey Court

渣甸山 白建時道47-49號

47-49 Perkins Road, Jardine's Lookout
Newly renovated 3-bedroom flat in
tranquil surroundings
全新裝修三房單位，環境清幽

1,788 s.f.
\$75,000

www.landscape.com/17004.htm

Teresa Fung 馮小姐 9138 1621



Park Mansions

中半山 百年順大廈

27-29 MacDonnell Road, Midlevels Central
Well maintained 4-bedroom flat with open
city view
四房住宅，享開揚城市景，保養良好

2,013 s.f.
\$80,000

www.landscape.com/16588.htm

Mira To 杜小姐 9486 1566



Villa Veneto

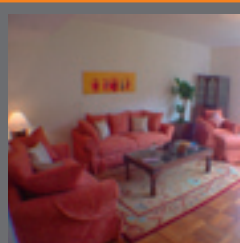
西半山 威都閣

3 Kotewall Road, Midlevels West
Spacious 4-bedroom flat with big balcony
寬敞四房單位連大露台

2,562 s.f.
\$80,000 also for sale \$36,800,000

www.landscape.com/17015.htm

Teresa Lau 劉小姐 9080 6686



Bamboo Grove

中半山 竹林苑

74-86 Kennedy Road, Midlevels Central
Spacious apartments in convenient location
with comprehensive clubhouse facilities
寬敞單位，設施齊備，交通便利

986 - 2,600 s.f.
\$35,000 up

www.landscape.com/16588.htm

Mira To 杜小姐 9486 1566



Evergreen Villa

東半山 松柏新村

43 Stubbs Road, Midlevels East
Spacious 4-bedroom flat with high
efficiency layout
寬敞四房單位，實用率極高

2,700 s.f.
\$85,000

www.landscape.com/17103.htm

Cecilia Fung 馮小姐 6271 2388

MID-LEVELS LEASE

半山
出租



Fontana Garden

東半山 豪園

1-25 Ka Ning Path, Midlevels East
Spacious 4-bedroom flat in practical layout
close to Causeway Bay
四房單位，間隔寬敞實用，鄰近銅鑼灣

3,300 s.f.
\$95,000 incl.

www.landscape.com/16822.htm

Sissy Li 李小姐 9642 6969



Villa Lotto

跑馬地 樂陶苑

18 Broadwood Road, Happy Valley
Newly renovated 4-bedroom flat
overlooking Hong Kong Stadium
全新裝修四房單位，盡享大球場景色

2,406 s.f.
\$90,000 incl.

www.landscape.com/15790.htm

Teresa Lau 劉小姐 9080 6686



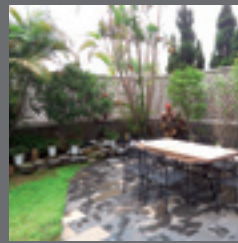
Ivory Court

西半山 華麗閣

26-28 Conduit Road, Midlevels West
Brand new decorated apartment with
huge terrace
全新裝修單位連巨型平台

2,600 s.f. (plus 1,600 s.f. terrace)
\$100,000 incl.

Yvonne Chang 鄭小姐 9088 4666



Amber Lodge

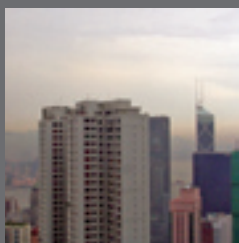
渣甸山 金碧閣

40-52 Mount Butler Drive, Jardine's Lookout
Dream home with huge garden in
serene location
華麗家居連巨型花園，環境恬靜

1,400 s.f. (approx 1,500 s.f. garden)
\$100,000 incl.

www.landscape.com/13646.htm

Sami Woo 胡小姐 9493 8275



Tregunter Tower

中半山 地利根德閣

14 Tregunter Path, Midlevels Central
Spacious flat with excellent open city view
寬敞單位，享一流開揚城市景

3,001 s.f.
\$110,000

www.landscape.com/14952.htm

Mary Li 李小姐 9011 6595



Leon Court

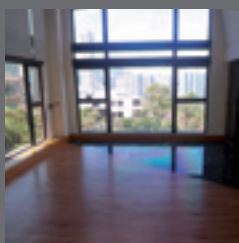
東半山 利安閣

12-14 Wong Nai Chung Gap Road,
Midlevels East
Exclusive flat with sweeping city view
特色單位，坐擁優美景色

2,800 s.f.
\$112,000 incl.

www.landscape.com/17032.htm

Teresa Lau 劉小姐 9080 6686



Villa De Perkins

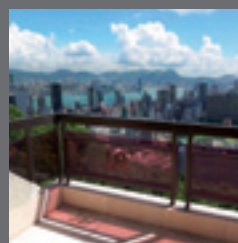
渣甸山 禮苑

15 Perkins Road, Jardine's Lookout
Modern mid-rise duplex with roof in
Jardine's Lookout
複式單位連天台，配時尚裝修

3,200 s.f. (plus 2,000 s.f. roof)
\$120,000

www.landscape.com/16973.htm

Simon Yung 翁先生 9418 5743



Taipan Court

東半山 大班閣

47B Stubbs Road, Midlevels East
Newly renovated 4-enuite duplex with the
views of racecourse and the Harbour
翻新四套房複式單位，俯瞰馬場及維港景

3,670 s.f.
\$130,000

www.landscape.com/17070.htm

Sissy Li 李小姐 9642 6969



The Royal Court

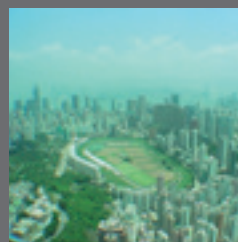
中半山 帝景閣

3 Kennedy Road, Midlevels Central
4-bedroom duplex on fringe of Central
四房複式單位，鄰近中環

2,846 s.f.
\$130,000 also for sale \$56,900,000

www.landscape.com/15810.htm

Simon Lee 李先生 6014 3712



The Summit

東半山 御峰

41C Stubbs Road, Midlevels East
Landmark building with splendid views
地標名廈，享醉人景色

3,272 s.f.
\$180,000 incl.

www.landscape.com/15923.htm

Rita Lee 李小姐 9437 0087



Regent on the Park

中半山 御花園

9A Kennedy Road, Midlevels Central
Huge 6-bedroom duplex in prime location,
ideal for large family
六房複式巨宅，地點優越，大家庭理想之選

5,440 s.f.
\$230,000 incl.

www.landscape.com/14282.htm

Mary Li 李小姐 9011 6595



1 Chatham Path, Midlevels Central

中半山 漆咸徑1號

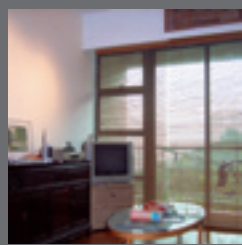
Exclusive single detached house in
secluded location
特色獨立屋，環境清幽恬靜

7,800 s.f. (plus 2,000 s.f. garden)
\$320,000

www.landscape.com/17025.htm

Simon Lee 李先生 6014 3712

SOUTHSIDE SALES



Bisney Terrace

薄扶林 碧瑤灣

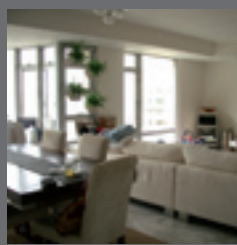
73-79 Bisney Road, Pokfulam

3-bedroom sea view flat in quiet location
海景三房單位，位處清幽地段

1,129 s.f.
\$9,700,000

www.landscape.com/16418.htm

Mary Li 李小姐 9011 6595



Baguio Villa

薄扶林 碧瑤灣

550 Victoria Road, Pokfulam

Nicely decorated 3-bedroom flat with open kitchen
優雅裝修三房住宅，連開放式廚房

1,520 s.f.
\$13,300,000

www.landscape.com/17119.htm

Mary Li 李小姐 9011 6595



Grand Garden

淺水灣 華景園

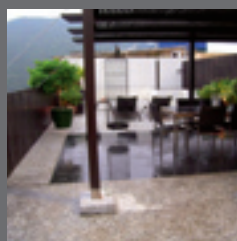
61 South Bay Road, Repulse Bay

Full sea view apartment with balcony and facilities
全海景住宅連露台及完善設施

1,463 s.f.
\$17,800,000 also for lease \$55,000 incl.

www.landscape.com/12245.htm

Philip Lai 黎先生 9430 3330



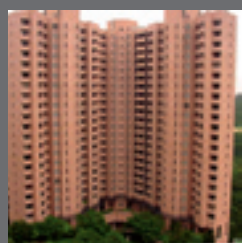
18-24 Bisney Road, Pokfulam

薄扶林 碧瑤道 18-24號

Low-rise flat with internal staircase to roof terrace
低密度住宅，連室內樓梯直達天台
1,640 s.f. (plus 1,200 s.f. roof)
\$20,000,000

www.landscape.com/15481.htm

Mary Li 李小姐 9011 6595



Hong Kong Parkview

淺水灣 陽明山莊

88 Tai Tam Reservoir Road, Repulse Bay

Large 3-bedroom flat with lush green mountain view
寬敞三房住宅，享翠綠山景

2,366 s.f.
\$24,500,000

www.landscape.com/10533.htm

Stephen Chan 陳先生 9093 3381



Cape Mansions

薄扶林 翠海別墅

56-62 Mount Davis Road, Pokfulam

Meticulously decorated sea view apartment
優美裝修海景住宅

2,200 s.f.
\$28,000,000

www.landscape.com/16964.htm

Carman Szeto 司徒小姐 8100 3893



Scenic Villas

薄扶林 美景臺

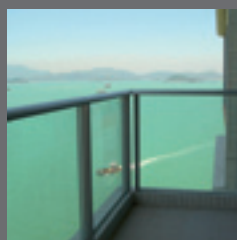
2-28 Scenic Villa Drive, Pokfulam

4-bedroom sea view flat with spacious practical layout
海景四房住宅，間隔寬敞實用

2,517 s.f.
\$32,000,000 also for lease \$120,000 incl.

www.landscape.com/16807.htm

Carman Szeto 司徒小姐 8100 3893



Bel-Air on the Peak

薄扶林 貝沙灣

68 Bel-Air Peak Avenue, Pokfulam

Full sea view 4-bedroom apartment with facilities
全海景四房單位，配會所設施

2,346 s.f.
\$33,300,000 also for lease \$113,000 incl.

www.landscape.com/14260.htm

Rita Lee 李小姐 9437 0087



Villas Sorrento

薄扶林 御海園

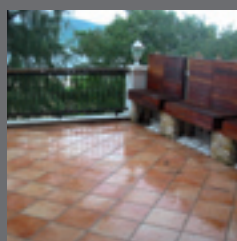
64-66 Mount Davis Road, Pokfulam

Modern sea view duplex in tranquil location
時尚海景複式單位，位處寧靜地段

2,253 s.f.
\$35,000,000 also for lease \$88,000 incl.

www.landscape.com/16927.htm

Sami Woo 胡小姐 9493 8275



Carmel Hill

赤柱 海明山

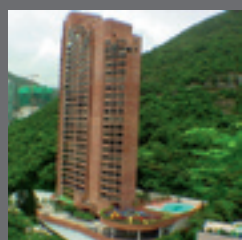
12 Carmel Road, Stanley

Decorated townhouse with tennis court and pool
精緻裝修排屋，連網球場及泳池

2,378 s.f.
\$37,000,000

www.landscape.com/7068.htm

Johnny Cheung 張先生 9278 9939



Ruby Court

淺水灣 嘉麟閣

55 South Bay Road, Repulse Bay

Popular sea view apartment with comprehensive facilities
受歡迎海景住宅，配完善會所設施

2,200 s.f.
\$39,000,000

www.landscape.com/9218.htm

Rita Lee 李小姐 9437 0087



Ridge Court

淺水灣 冠園

21A-21D Repulse Bay Road, Repulse Bay

Newly renovated apartment enjoying full sea view
全新裝修單位，享全海景

2,300 s.f.
\$39,000,000

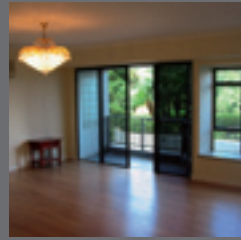
www.landscape.com/15591.htm

Teresa Fung 馮小姐 9138 1621



Sea Cliff Mansions
淺水灣 海峰園
19A-19D Repulse Bay Road, Repulse Bay
Exclusive large flat with stunning Deep Water Bay view
特色大單位，享優美深水灣景
2,400 s.f.
\$41,500,000

www.landscape.com/15613.htm | Teresa Fung 馮小姐 9138 1621



Grand Garden
淺水灣 華景園
61 South Bay Road, Repulse Bay
Renovated large 4-bedroom flat in prime location
全新裝修四房單位，位處尊貴地段
3,061 s.f.
\$45,000,000 also for sale \$115,000 incl.

www.landscape.com/16958.htm | Christine Chong 莊小姐 9648 6082



3 Repulse Bay Road, Repulse Bay
淺水灣 淺水灣道 3 號
Luxury apartment with sweeping views
豪華住宅享開揚景觀
2,161 s.f.
\$50,000,000

www.landscape.com/9802.htm | Eric Wong 黃先生 9740 3396



Repulse Bay Towers
淺水灣 保華大廈
119A Repulse Bay Road, Repulse Bay
Renowned 4-bedroom duplex with view of Repulse Bay Beach
著名大廈四房複式住宅，享淺水灣景
3,100 s.f.
\$58,000,000 also for lease \$100,000

www.landscape.com/16605.htm | Stephen Chan 陳先生 9093 3381



Joy Garden
壽臣山 曉穎花園
13 Shouson Hill Road West, Shouson Hill
Spacious duplex with private roof in tranquil Shouson Hill
壽臣山清靜複式單位，連私家天台
3,574 s.f. (plus 1,357 s.f. roof)
\$58,000,000

www.landscape.com/6302.htm | Simon Yung 翁先生 9418 5743



Celestial Garden
淺水灣 詩禮花園
5 Repulse Bay Road, Repulse Bay
Nicely decorated apartment in Repulse Bay with facilities
淺水灣優美裝修住宅連設施
2,363 s.f.
\$60,000,000 also for lease \$120,000 incl.

www.landscape.com/13479.htm | Philip Lai 黎先生 9430 3330



Le Palais
大潭 皇府灣
8 Pak Pat Shan Road, Tai Tam
Sea view garden house with clubhouse facilities
海景花園屋，連會所設施
3,271 s.f. (plus 857 s.f. garden)
\$60,000,000

www.landscape.com/14488.htm | Simon Lee 李先生 6014 3712



Regalia Bay 赤柱 富豪海灣
88 Wong Ma Kok Road, Stanley
Sea view townhouse with full clubhouse facilities
海景排屋，連完善會所設施
4,179 s.f.
(plus 1,341 s.f. roof & 1,282 garden)
\$60,000,000 also for lease \$180,000 incl.

www.landscape.com/16419.htm | Maria Cheung 張小姐 6256 1848



Faber Villa
大潭 輝百苑
17 Tai Tam Road, Tai Tam
Rare find high privacy sea view flat
高私隱海景單位，市場罕有
3,200 s.f.
\$60,000,000 also for lease \$165,000 incl.

www.landscape.com/15869.htm | Mary Li 李小姐 9011 6595



The Redhill Peninsula
大潭 紅山半島
18 Pak Pat Shan Road, Tai Tam
Waterfront 5-bedroom house with private pool
海濱五房大宅連私家泳池
3,055 s.f. (plus 1,018 s.f. garden)
\$75,000,000 also for lease \$180,000 incl.

www.landscape.com/7491.htm | Cecilia Fung 馮小姐 6271 2388



37 Tung Tau Wan Road, Stanley 赤柱 東頭灣道37號
37 Tung Tau Wan Road, Stanley
Unique garden house at Stanley waterfront
獨特花園屋，位處赤柱海濱
3,300 s.f. (plus 1,000 s.f. garden)
\$75,000,000

www.landscape.com/10620.htm | Cecilia Fung 馮小姐 6271 2388



Panarama Terrace
淺水灣 蕙園
12 South Bay Road, Repulse Bay
Charming garden house in serene area
迷人花園屋，位處寧靜地段
3,500 s.f. (plus 1,000 s.f. garden)
\$115,000,000 also for lease \$200,000

www.landscape.com/11401.htm | Stella Lo 羅小姐 9809 8570

SOUTHSIDE SALES



45 Chung Hom Kok Road, Chung Hom Kok

春坎角 春坎角道45號

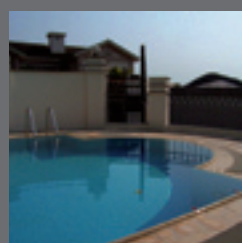
Designer decorated duplex with private pool and terrace
優雅裝修複式住宅，連私家泳池及平台

4,280 s.f. (plus 2,850 s.f. garden)
\$130,000,000



www.landscape.com/15471.htm

Louis Wong 黃先生 9871 6828



36A-36D Repulse Bay Road, Repulse Bay

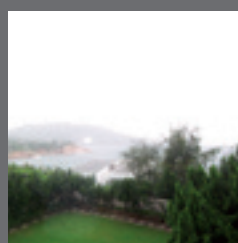
淺水灣 淺水灣道36A-36D

Rare detached house at Deep Water
Bay waterfront
罕有深水灣海濱獨立屋

4,900 s.f. (plus 1,946 s.f. garden)
\$180,000,000

www.landscape.com/13719.htm

David Chan 陳先生 9238 2012



25 Shek O Headland, Tai Tam

大潭 石澳山仔25號

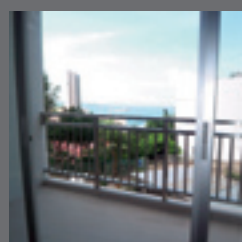
Colonial style single house with garden
and private pool
英式獨立屋連花園及私家泳池

Site Area 11,330 s.f.
\$200,000,000

www.landscape.com/16271.htm

Mark Mak 麥先生 6838 2929

SOUTHSIDE LEASE



Four Winds

薄扶林 恆琪園

4 Mount Davis Road, Pokfulam
Spacious older style apartment in
quiet location
寬敞舊式單位，位處寧靜地段

1,800 s.f.
\$55,000 incl. also for sale \$16,500,000

www.landscape.com/16810.htm

Rowena Siu 蕭小姐 9348 4118



Parisian

赤柱 海寧雅舍

8 Stanley Mound Road, Stanley
Low-rise apartment with private terrace
close to beach
低密度住宅，連私家平台，鄰近海灘

1,550 s.f. (plus 521 s.f. garden)
\$70,000 also for sale \$21,000,000

www.landscape.com/12376.htm

Christine Chong 莊小姐 9648 6082



Grand Garden

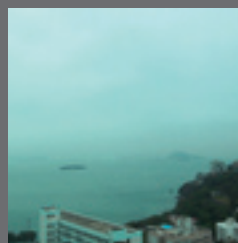
淺水灣 華景園

61 South Bay Road, Repulse Bay
Relaxing sea view apartment with roof
and full facilities
優美海景住宅，連天台及完善設施

1,657 s.f. (plus 775 s.f. roof)
\$73,000 also for lease \$26,800,000

www.landscape.com/16449.htm

Cecilia Fung 馮小姐 6271 2388



La Mer 薄扶林 浪頤居

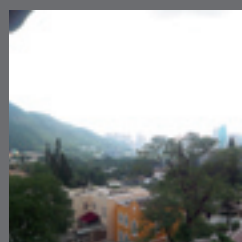
71 Bisney Road, Pokfulam

Newly renovated 4-bedroom low-rise
with full sea view
全新裝修低密度四房單位，享全海景

2,063 s.f.
\$82,000 also for sale \$33,000,000
SOLE AGENT 獨家代理

www.landscape.com/14489.htm

Yvonne Chang 鄭小姐 9088 4666



12-14 Shouson Hill Road West, Shouson Hill

壽臣山 壽臣山道西12-14號

Spacious low-rise apartment with brand
new decorations
全新裝修低密度單位，間隔寬敞

2,200 s.f.
\$90,000 also for lease \$28,000,000

www.landscape.com/16945.htm

Johnny Cheung 張先生 9278 9939



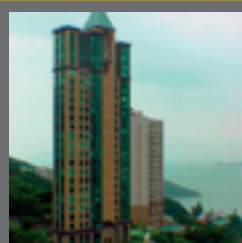
59-61 Bisney Road, Pokfulam 薄扶林 碧荔道 59-61號

Nicely decorated huge apartment
located in prime area
精緻裝修大宅，位處黃金地段

2,800 s.f.
\$92,000

www.landscape.com/17151.htm

Christine Chong 莊小姐 9648 6082



3 Repulse Bay Road, Repulse Bay

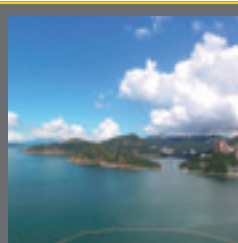
淺水灣 淺水灣道 3 號

Prestigious 4-bedroom apartment with
stunning views
豪華四房單位，享開揚景觀

2,161 s.f.
\$100,000 also for sale \$54,000,000

www.landscape.com/12705.htm

Maria Cheung 張小姐 6256 1848



Ruby Court

淺水灣 嘉麟閣

55 South Bay Road, Repulse Bay
Waterfront 4-bedroom apartment
with facilities
海濱四房住宅，配會所設施

2,200 s.f.
\$110,000

www.landscape.com/15660.htm

Carman Szeto 司徒小姐 8100 3893



Villa Cecil
薄扶林 趙苑
192 Victoria Road, Pokfulam
Popular 4-bedroom low-rise apartment with fantastic sea view
熱門低密度四房單位，享優美海景
3,731 s.f.
\$110,000

www.landscape.com/16951.htm | Simon Yung 翁先生 9418 5743



Joy Garden
壽臣山 曉穎花園
13 Shouson Hill Road West, Shouson Hill
Spacious 4-bedroom duplex with terrace in tranquil area
寬敞四房複式住宅連平台，位處清淨地段
3,334 s.f. (plus 560 s.f. garden)
\$120,000 incl.

www.landscape.com/16921.htm | Walker Lam 林先生 9551 1077



Banyan Villas
赤柱 榕蔭園
9 Stanley Village Road, Stanley
Garden house with swimming pool close to Stanley Beach
花園屋連泳池，鄰近赤柱沙灘
2,500 s.f.
\$128,000

www.landscape.com/16870.htm | Maria Cheung 張小姐 6256 1848



Grosse Pointe Villa
赤柱 赤柱村道4號
4 Stanley Village Road, Stanley
4-bedroom garden duplex in tranquil location
四房複式住宅連花園，地點恬靜
2,800 s.f. (plus 400 s.f. garden)
\$140,000 incl.

www.landscape.com/16867.htm | Stella Lo 羅小姐 9809 8570



The Somerset
淺水灣 怡峰
67 Repulse Bay Road, Repulse Bay
Brand new decorated prime duplex with relaxing sea view
全新裝修豪華複式住宅，享迷人海景
3,099 s.f.
\$160,000 incl.

www.landscape.com/16995.htm | Sami Woo 胡小姐 9493 8275



Fairview Court
淺水灣 富慧閣
94 Repulse Bay Road, Repulse Bay
Huge 5-bedroom flat in tranquil area of Repulse Bay
五房巨宅，位處寧靜淺水灣
4,155 s.f.
\$165,000

www.landscape.com/15269.htm | Maria Cheung 張小姐 6256 1848



Carriana Sassoon 薄扶林 沙宣道41號
41 Sassoon Road, Pokfulam
Huge townhouse with 5-bedroom with private garage
五房大屋，連私家車房
3,500 s.f.
(plus 836 s.f. terrace & 514 s.f. garden)
\$165,000 incl.

www.landscape.com/15486.htm | Mira To 杜小姐 9486 1566



Regalia Bay
赤柱 富豪海灣
88 Wong Ma Kok Road, Stanley
Nicely decorated 5-bedroom waterfront garden house
海濱五房花園屋，設計獨特
4,053 s.f.
\$170,000 incl. also for sale \$60,000,000

www.landscape.com/15498.htm | Walker Lam 林先生 9551 1077



Pinewaver Villas
春坎角 松濤小築
35 Ching Sau Lane, Chung Hom Kok
Well designed sea view house with roof and terrace in quiet location
精緻設計海景大屋連天台及平台，位處寧靜地段
3,353 s.f.
\$180,000 incl. also for sale \$70,000,000

www.landscape.com/14834.htm | Yvonne Chang 鄭小姐 9088 4666



Seascope
薄扶林 海日樓
42 Sassoon Road, Pokfulam
4-ensuites townhouse in quiet location
四套房排屋，環境恬靜
3,000 s.f. (plus 871 s.f. roof)
\$198,000

www.landscape.com/17094.htm | Rowena Siu 蕭小姐 9348 4118



37 Repulse Bay Road, Repulse Bay
淺水灣 淺水灣道37號
Rare find huge sea view penthouse with roof garden
巨型海景頂層單位連天台，市場罕有
5,804 s.f. (plus 1,194 s.f. roof)
\$220,000 incl.

www.landscape.com/14281.htm | Simon Lee 李先生 6014 3712



56 Repulse Bay Road, Repulse Bay
淺水灣 淺水灣道56號
Duplex with private terrace enjoying breath-taking sea view
複式住宅連私家平台，享完美海景
3,761 s.f. (plus 1,850 s.f. terrace)
\$330,000 incl.

www.landscape.com/16926.htm | Stephen Chan 陳先生 9093 3381

THE PEAK SALES



Eredine

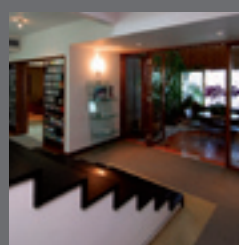
山頂 加列山道38號

38 Mount Kellett Road, The Peak
Huge colonial apartment with
spectacular sea view
英式巨宅，享無敵優美海景

3,300 s.f.
\$71,000,000

www.landscape.com/9926.htm

David Leung 梁先生 9199 0672



Mountain Lodge

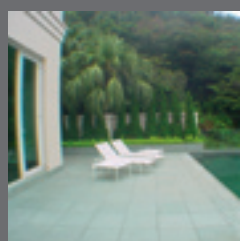
山頂 崑廬

44 Mount Kellett Road, The Peak
Rare duplex apartment with Southside
sea view
罕有複式單位，盡享南區海景

5,200 s.f.
\$120,000,000

www.landscape.com/14003.htm

David Leung 梁先生 9199 0672



Peak Road, The Peak

山頂 山頂道

Rare detached house with private
swimming pool
罕有獨立屋連私家泳池

4,250 s.f. (plus 2,087 s.f. garden)
\$160,000,000

www.landscape.com/14315.htm

David Leung 梁先生 9199 0672



Severn 8

山頂 倚巒

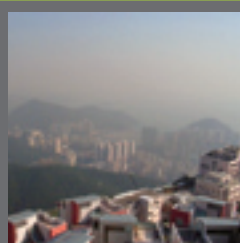
8 Severn Road, The Peak
Extravagant townhouse with panoramic
view of the Victoria Harbour
豪華排屋，擁有壯麗維港景觀

3,330 s.f.
\$160,000,000

www.landscape.com/15847.htm

Mark Mak 麥先生 6838 2929

THE PEAK LEASE



Eredine

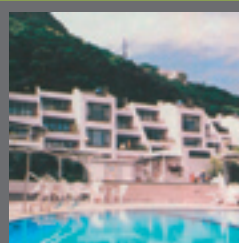
山頂 加列山道38號

38 Mount Kellett Road, The Peak
Mid-rise sea view colonial apartment
with spacious layout
中密度英式海景住宅，間隔寬敞實用

3,300 s.f.
\$159,000 incl.

www.landscape.com/13070.htm

Sami Woo 胡小姐 9493 8275



Ondina Heights

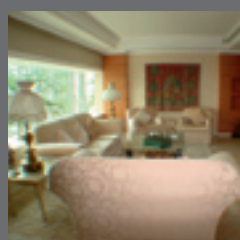
山頂 安寧臺

62-66 Peak Road, The Peak
Luxurious European style house with
sweeping sea view
罕有獨立屋連私家泳池

3,396 s.f.
\$160,000

www.landscape.com/16559.htm

Louis Wong 黃先生 9871 6828



43 Barker Road, The Peak

山頂 白加道43號

Modern harbour view apartment
in prime location
時尚維港景住宅，地點尊貴

3,820 s.f.
\$170,000

www.landscape.com/12669.htm

Louis Wong 黃先生 9871 6828



Abergeldie 山頂 種植道52號

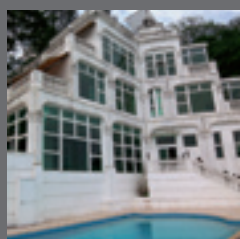
52 Plantation Road, The Peak

Peak house with bird's eye view of
Victoria Harbour
山頂大宅，俯瞰維港景色

3,655 s.f.
(plus 313 s.f. terrace & 464 s.f. garden)
\$250,000 also for sale \$188,000,000

www.landscape.com/12967.htm

David Leung 梁先生 9199 0672



Cheuk Nang Lookout

山頂 卓能山莊

30 Severn Road, The Peak
Newly renovated detached house
with private pool and terrace
全新裝修獨立屋連私家游泳池及平台

5,300 s.f. (plus 3,900 s.f. garden)
\$260,000 also for sale \$160,000,000

www.landscape.com/2109.htm

Yvonne Chang 鄭小姐 9088 4666



9 Coombe Road, The Peak

山頂 甘道9號

Newly decorated house in
serene location
全新裝修大屋，位處寧靜地段

7,500 s.f. (plus 400 s.f. garden)
\$450,000

www.landscape.com/16661.htm

Louis Wong 黃先生 9871 6828



Landscape Realty Limited C-018733

a member of Landscape Surveyors Ltd

Tel: 852-2866 0022 Fax: 852-2866 0015

Email: info@landscape.com Website: www.landscape.com

Unit 3106, 31/F, Hopewell Centre,
183 Queen's Road East, Wanchai, Hong Kong

The information, text, photos, analyses and projections contained herein are provided solely for the convenience of prospective clients and no warranty or representation as to their accuracy, correctness or completeness is made by Landscape Surveyors Limited, Landscape Realty Limited or the owners, none of whom shall have any liability or obligation with respect thereto. Interested parties should rely on their own investigations, interpretations and analyses in connection with the purchase or letting thereof.

Information has been provided to us by sources deemed reliable, but no warranty or representation is made as to its accuracy, correctness or completeness. These offerings are made subject to contract, correction of errors, omissions, prior sale or lease, change of price or terms or withdrawal from the market without notice. The contents of The Key are for reference only and do not constitute all or any part of a contract.

Copyright 2008