

Vol. 210

The 大宅 Key

Since 1995



Optic Verve
雲端氣魄

領域
LANDSCOPE



Beauty in the Balance 平衡之美

Spacious yet cosy, stylish yet practical, lofty yet convenient – such is the balance of qualities that make this Mid-levels West duplex so powerfully attractive. It is the best of all worlds, with few of the downsides.

Its appeal begins with the basic specification: a total 3,155 s.f. saleable area, three bedrooms and 3.5 bathrooms make it ideal for small families and couples alike. Features like its 308 s.f. terrace make the most of the stunning city views and complement its general atmosphere of refined easy living.

The spirit continues inside: available fully-furnished, the décor is contemporary with an accent on unpretentious comfort. Highlights include the marble-and-wood lined master bathroom, a casual-cool living-dining area, an internal staircase crowned with a modern sunburst chandelier, and the useful inclusion of a semi-enclosed study. Access to two covered car parking spaces and full clubhouse facilities also comes with the package – as does easy access to the Mid-levels Escalator and the city beyond.



寬敞而親密，時尚而實用，位置高聳卻便利 — 成功融會各式各樣的特色元素，並取得絕佳平衡，令這西半山複式單位擁有無與倫比的吸引力。

實用面積達3,155平方呎，這三房三個半浴室複式單位是小型家庭和伴侶的最佳選擇。面積達308平方呎的平台，方便欣賞絕美的中環景致，亦為精緻舒適的室內格調，添上心曠神怡的一筆。

配備優質裝潢出售的單位，洋溢著當代入時的氛圍，舒適而寫意。不論是以雲石和木材打造的主浴室、型格舒適的客飯廳、以奪目璀璨吊燈裝飾的室內樓梯，還是實用的半開放式書房，均叫人一見難忘。單位亦包括兩個有蓋車位和完善的會所設備，中環半山扶手電梯和市中心的便利繁華，亦在咫尺間唾手可得。



Superb designer duplex unit in Midlevels West
西半山匠心獨運複式住宅

3 bed, 1 study, 3.5 bath, 309 s.f. terrace, 2 car parks

Saleable 實用 3,155 s.f.

Sale 售 \$220,000,000 Open offer

Inquiries 查詢 9027 2100 Louis Wong 黃先生

6607 2082 Stephen Chan 陳先生

Property Search No. 物業搜尋編號 45827





Contents 目錄

- 04 **Monthly highlight**
Midlevels West
西半山

- 07 **Luxury Rental Specials**
豪宅租務專輯



- 33 **Midlevels Central & West sale**
中半山及西半山 出售

- 34 **Highlight**
Tai Hang
大坑



- 20 **Southside & The Peak sale**
南區及山頂 出售

- 27 **Highlight**
Repulse Bay
淺水灣



Follow Us 關注我們



landscapehk

4 Easy ways to list your property with The Key:
4個簡單方法在《大宅》刊登您的出售 / 出租物業：



6891 3639 WhatsApp



info@landscape.com



2152 4818



www.landscape.com/sell-to-let



Contents 目錄

44 **Midlevels East & Happy Valley sale**
東半山及跑馬地 出售

49 **Sai Kung & Clear Water Bay sale**
西貢及清水灣 出售

57 **U.K. Properties**
英國物業

62 **Japanese Properties**
日本物業

Published and distributed by



領域房地產顧問有限公司

C-018733

Tel: +852 2866 0022

Fax: +852 2866 0015

Email: info@landscape.com

Website: www.landscape.com

Address: Units 1201-3, 12/F, Siu On Centre,
No. 188 Lockhart Road, Wanchai, Hong Kong

**Scan for
online
version**



The information, text, photos, analyses and projections contained herein are provided solely for the convenience of prospective clients and no warranty or representation as to their accuracy, correctness or completeness is made by Landscape Surveyors Limited, Landscape Realty Limited, Landscape International Property Agency Limited or the owners, none of whom shall have any liability or obligation with respect thereto. Interested parties should rely on their own investigations, interpretations and analyses in connection with the purchase or letting thereof.

Purchasing uncompleted properties situated outside Hong Kong is complicated and contains risk. You should review all relevant information and documents carefully before making a purchase decision. If in doubt, please seek independent professional advice before making a purchase decision. Selling Agent: Landscape International Property Agency Limited (C-089033) and Landscape Surveyors Limited (C-000715) are licensed and regulated by EAA. Our sales representatives for overseas property work exclusively in relation to properties outside Hong Kong and unless expressly stated otherwise, are not licensed under the EAA to deal with Hong Kong properties.

Information has been provided to us by sources deemed reliable, but no warranty or representation is made as to its accuracy, correctness or completeness. These offerings are made subject to contract, correction of errors, omissions, prior sale or lease, change of price or terms or withdrawal from the market without notice. The contents of The Key are for reference only and do not constitute all or any part of a contract. Copyright 2023





Perfect Vista 永恆美景

Nestled in a quiet corner of Midlevels East, this exquisite designer's combined gem boasts a spacious layout completed with stylish and tasteful furnishings, plus wonderful views over Victoria Harbour and Hong Kong Stadium endlessly.

Featuring classic white walls and marble floors, residents can design the interior and arrange furniture easily. Thanks to the sizeable floor-to-ceiling windows, the residence enjoys ample natural light and pleasant views. There are five comfortable bedrooms (two ensuites), three fully-fitted bathrooms and a well-equipped kitchen, as well as two car parks.



這精緻設計師相連聚寶盆坐落於東半山寧靜隱逸的地段，間隔寬敞實用，配備時尚高雅的家具，更可享維多利亞港和香港大球場的永恆磅礴美景。

這相連住宅設有經典的淡白色牆身，搭配雲石地板，戶主可輕鬆靈活地設計室內環境並陳設家具。而偌大的落地窗戶讓住宅享有充足的自然光線和怡人的景色。住宅提供五間舒適的睡房（其中兩間是套房），三間設備齊全的浴室和完善的廚房，另有兩個車位。



Rare and spacious combined unit in Midlevels East

東半山罕有寬敞相連聚寶盆

5 bed, 3 bath, 2 car parks

Saleable 實用 1,897 s.f.

Sale 售 \$78,000,000

Inquiries 查詢 ☎ 6535 9918 Josephine Yuen 阮小姐

Property Search No. 物業搜尋編號 89812





Optic Verve

雲端氣魄

The city of dream living includes breathtaking skyline views, tastefully finished renovated spaces and an outstanding location. But that's just for starters.

Everywhere one looks, this three-bedroom, two-bathroom, 1,798 s.f. home exudes attention to detail and quality – the result of a recent major renovation. Showcasing it all is the combined living-dining area, a gallerylike space whose flawlessly stark walls and ceilings and subtly contrasting stone floors make it an ideal match for any personal choice of furnishings and artworks. Glazing wraps around, ensuring a generous measure of natural light while luring the eye to those endlessly fascinating views over the rooftops of Central and





Admiralty. Practical considerations abound, and are executed with flair. The master bedroom, for example, boasts a massive walk-in closet with generous built in storage. A further highlight is the kitchen, with work surfaces, appliances and built-in storage spaces ergonomically arrayed around a monolithic central island. Here, the neutral tones of the floors, walls and ceiling is enlivened with a red wall of integrated storage cupboards enveloping the refrigerator.

Views are not the only virtue of the flat's location: from its front door, Central is just a few steps away. The city centre, fine dining restaurants and shopping malls are just 5 mins' walking distance. From there, once again, what you see is what you get – the glittering, bustling heart of Hong Kong, ready to be experienced.





西半山豪宅專屬的無與倫比天際景觀、品味裝潢和優越地段，現在均唾手可及。這翻新不久的三房兩浴室單位面積達1,798 平方呎，每個角落均盡顯精雕細琢的非凡品味。在如畫廊般的客飯廳，光鮮俐落的牆身與雲石地板互相映襯，適合放置各類型的家具和藝術品。連綿不絕的玻璃窗，確保充足的自然光之餘，亦令人目光流連窗外居高臨下的中環和金鐘一帶景致。

室內處處均是品味和實用性兼備的設計，主人房設有巨型獨立衣帽間，內置一流儲物空間。廚房亦不例外，中央的巨型廚房中島台與四周的工作枱面、電器和儲物櫃距離位置計算精準，營造無縫流暢的煮食體驗。而包圍整個雪櫃的滿牆紅色廚櫃，亦為中性色調的地板、牆身和天花帶來醒目活力。

單位與中環只有幾步之遙——地利不但為單位帶來難忘景觀，亦方便隨時體驗香港心臟地帶紙醉金迷的魅力。此外，五分鐘便可直達市中心核心區、商級食府及商場等。

Stylish apartment in Midlevels West
西半山時尚單位

3 bed, 2 bath, 1 car park

Saleable 實用 1,798 s.f.

Sale 售 \$58,000,000 \$52,500,000

Inquiries 查詢 

6535 9918 Josephine Yuen 阮小姐

Property Search No. 物業搜尋編號 171025





Cozy apartment in Repulse Bay

淺水灣舒適住宅

4 bed, 3 bath, 1 car park

Spacious 4-bedroom home with a practical layout in a sought after estate
受歡迎豪宅屋苑，寬敞四房家居，間隔實用

Saleable 實用 2,576 s.f.

Lease 租 \$110,000 incl.

Inquiries 查詢 ☎ 6538 6922 Teresa Fung 馮小姐

Property Search No. 物業搜尋編號 4763



Sumptuous apartment at The Peak

山頂華貴住宅

3 bed, 2.5 bath, 492 s.f. garden, 1 car park

Exquisite low-rise apartment with ample open space in a prestigious location
豪華低密度住宅，享充足戶外空間，地段尊貴顯赫

Saleable 實用 2,309 s.f.

Lease 租 \$118,000 incl.

Inquiries 查詢 ☎ 9020 1583 Michelle Chung 鍾小姐

Property Search No. 物業搜尋編號 165609





Practical apartment in Midlevels Central

中半山實用住宅

5 bed, 3 bath, 1 car park

Large 5-bedroom city view apartment ideal for a family in prime location

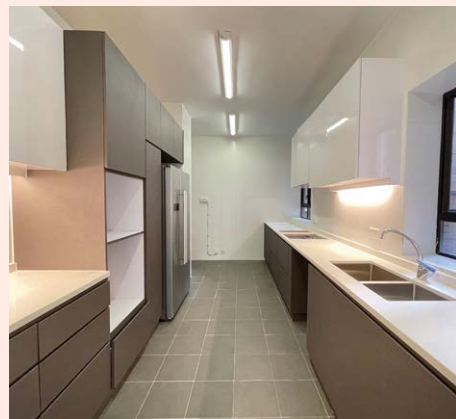
偌大五房城市景住宅，家庭首選，地段優越

Saleable 實用 2,929 s.f.

Lease 租 \$128,000 incl.

Inquiries 查詢 ☎ 6607 2082 Stephen Chan 陳先生

Property Search No. 物業搜尋編號 27644



Spacious apartment in Midlevels Central

中半山寬敞住宅

3 bed, 2.5 bath, 1 car park

Popular 3-bedroom city view apartment with full clubhouse facilities

備受追捧三房城市景住宅，連完善會所設施

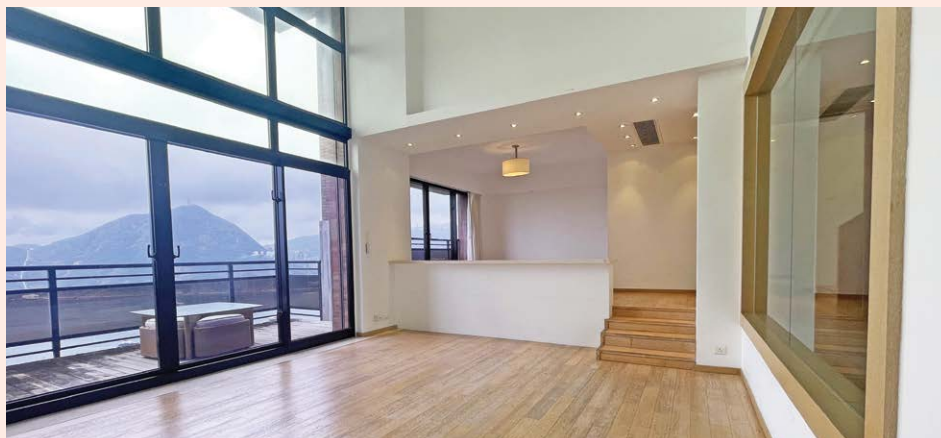
Saleable 實用 2,357 s.f.

Lease 租 \$135,000 excl.

Inquiries 查詢 ☎ 6538 6922 Teresa Fung 馮小姐

Property Search No. 物業搜尋編號 8913





Unique duplex apartment in Repulse Bay

淺水灣獨特複式單位

4 bed, 3 bath, 2 car parks

Modern duplex apartment with soaring ceilings overlooks a stunning view of Middle Island
時尚複式住宅，享高樓底，俯瞰熨波洲優美景色

Saleable 實用 2,453 s.f.

Lease 租 \$138,000 incl.

Inquiries 查詢 ☎ 6607 2082 Stephen Chan 陳先生

Property Search No. 物業搜尋編號 106510



Bright and airy apartment in Repulse Bay

淺水灣明亮通風住宅

4 bed, 2 bath, 1 car park

Family 4-bedroom apartment with full clubhouse facilities enjoys a fantastic sea view
家庭式四房單位，享完善會所設施，坐擁壯麗海景

Saleable 實用 1,970 s.f.

Lease 租 \$101,000 excl.

Inquiries 查詢 ☎ 9021 1270 Annie Lee 李小姐

Property Search No. 物業搜尋編號 14988





Luxurious garden townhouse in Shouson Hill

壽臣山奢華花園洋房

4 bed, 4.5 bath, 640 s.f. terrace, 502 s.f. garden, 1 garage

Well decorated garden house with lofty ceilings and 4-ensuite bedrooms ideal for a family
裝修精美花園洋房，樓底極高，連四間套房，家庭首選

Saleable 實用 2,972 s.f.

Lease 租 \$273,500 excl.

Inquiries 查詢 ☎ 9021 1270 Annie Lee 李小姐

Property Search No. 物業搜尋編號 204705



Highly sought after duplex in Repulse Bay

淺水灣受歡迎複式住宅

4 bed, 3 bath, 2 car parks

Stylish 4-bedroom sea view duplex with an ample alfresco space in a tranquil location
時尚品味海景複式，連充足戶外空間，地段寧靜怡人

Saleable 實用 3,138 s.f.

Lease 租 \$180,000 incl.

Inquiries 查詢 ☎ 6538 6922 Teresa Fung 馮小姐

Property Search No. 物業搜尋編號 36560





AIGBURTH • BRANKSOME GRANDE • TAVISTOCK

The Home of Prestige

Laced along the stunning Mid-Levels locations of May Road and Tregunter Path,
a signature collection of premier properties nestles within verdant greenery.
Aigburth, Branksome Grande and Tavistock – their names synonymous with luxury and distinction.
From your Dress Circle elevation, view a panorama of iconic Victoria Harbour and
the vibrant cityscape. A pre-eminent address in Hong Kong,
with exceptional management services – the pinnacle of prestige.

TREGUNTER PATH • MID-LEVELS • HONG KONG



嘉里物業代理有限公司
KERRY REAL ESTATE AGENCY LIMITED

residentialleasing@kerryprops.com

Leasing Hotline : (852) 2967 2200

WhatsApp : (852) 9151 3126



WeChat ID



Massive house in Deep Water Bay

深水灣偌大洋房

4 bed, 3.5 bath, 272 s.f. terrace & 317 s.f. garden, 1 garage (2 cars)

Exquisite 4-bedroom house with generous floor-to-ceiling windows and luxurious clubhouse facilities in a tranquil location

雅致四房洋房，連寬敞的落地大窗及豪華會所設施，地段清幽恬靜

Saleable 實用 2,838 s.f.

Lease 租 \$203,000 excl.

Inquiries 查詢 ☎ 6607 2082 Stephen Chan 陳先生

Property Search No. 物業搜尋編號 12396



Spacious waterfront townhouse in Pokfulam

薄扶林寬敞臨海洋房

4 bed, 1 study, 4.5 bath, private garden & swimming pool, 2 car parks

Luxurious waterfront townhouse with a private swimming pool overlooks fabulous views of the sea

豪華臨海洋房，設私家游泳池，俯瞰壯麗海景

Saleable 實用 4,506 s.f.

Lease 租 \$220,000 incl.

Inquiries 查詢 ☎ 6607 2082 Stephen Chan 陳先生

Property Search No. 物業搜尋編號 14763





Fresh Vantage

嶄新視野

Modern expectations are met in unique style in this trio of apartments for lease in Mid-Levels Central. Located in a new residential building, the units all feature similar basics: three bedrooms and two bathrooms, open-plan living-dining, and saleable areas ranging from 1,083 to 1,091 s.f. All offer access to full clubhouse facilities, as well as a prime location convenient to premier shopping and entertainment options.

What truly elevates the trio is their unusually thoughtful design touches. While many apartments can boast of high-level views from their living rooms, a long ribbon of glazing here continues the vista into the kitchen and master bedroom. Interior vistas are also anything but monotonous, with colour and material combinations shifting from the warm neutrality of the living and bedrooms to a lavish five-star look in the bathrooms and kitchen.

Modernity, location and style make for an ideal home to enjoy – whether inside or out.



這三間中半山放租單位，絕對能夠滿足任何現代生活需要。位處 嶄新住宅華廈，三個單位的基本配備近似，同樣擁有三間睡房、兩間浴室和開放式客飯廳，實用面積介乎1,083至1,091平方呎。戶主將可享受全方位的會所設施，以及優越位置所帶來的便利，隨時享受一站式頂級購物及娛樂選擇。

鉅細無遺的設計細節，令這三個單位的格調昇華，突顯與眾不同。單位客飯廳享有半山城市美景之餘，連綿不絕的玻璃窗，更加將景觀延續到廚房和主人房。不拘一格的室內設計，融合各式各樣的顏色和物料運用，從客廳和睡房的暖色中性風格，至浴室和廚房的奢華酒店風，皆轉換流暢自如。

周到入時的佈局、尊貴地利和靈活風格，由裡至外打造出適合任何人士的當代理想家居。

3 brand new apartments in Midlevels Central

中半山三間全新住宅

Saleable 實用 1,083 – 1,091 s.f.

Lease 租 \$88,000 excl. - \$94,000 incl.

Inquiries 查詢 ☎ 9020 1583 Michelle Chung 鍾小姐

Property Search No. 物業搜尋編號 212033, 212048, 212049





Rare garden house in Deep Water Bay

深水灣矜罕花園洋房

4 bed, 3.5 bath, 1 garage (2 cars)

Family garden house with a practical layout and lofty ceilings enjoys a peaceful mountain view

家庭式花園洋房，間隔實用，享高樓底，眺望怡人翠綠山巒景色

Saleable 實用 3,205 s.f.

Lease 租 \$240,000 incl.

Inquiries 查詢 ☎ 9020 1583 Michelle Chung 鍾小姐

Property Search No. 物業搜尋編號 2684



Waterfront house on Island Road

香島道臨海洋房

4 bed, 3 bath, 197 s.f. terrace, 675 s.f. garden, 621 s.f. roof, 1 garage

Highly exclusive 4-bedroom house with sufficient outdoor space overlooks a magnificent sea view

獨樹一幟四房洋房，享充足戶外空間，眺望壯麗海景

Saleable 實用 3,323 s.f.

Lease 租 \$320,000 excl.

Inquiries 查詢 ☎ 9021 1270 Annie Lee 李小姐

Property Search No. 物業搜尋編號 206529





Infinite Possibilities 無限可能

The saleable area of this high-level newly renovated flat is 4,715 s.f., and yet numbers simply don't do justice to its sheer size; a dinner party at one end of its hangar-like combined living-dining area might appear as a speck on the horizon from the other end. Massive, very useable space is but one advantage of this Mid-Levels Central flat's full-floorplate expanse. As well as the livingdining area – looking even more expansive than it actually is thanks to a near-continuous glazed wall overlooking Victoria Harbour – the five bedrooms and even the brand new 4.5 bathrooms sprawl out to offer usefully proportioned shapes with plenty of room to move.

A second benefit of the full floorplate – especially for a growing family – is the complete privacy and enhanced security it affords. The capacious floor area also finds more than enough space for a well-planned brand new kitchen, a maid's room, and around every corner, even more potential for living large.



這高層全新裝修單位的實用面積達4,715平方呎，但數字或許仍未能充分反映這半山豪宅的驚人面積——試想像在一邊客飯廳舉辦晚餐聚會，另一邊的盡頭，卻能夠完全不受干擾。

這佔據全層的中半山豪宅賣點眾多，偌大而實用的空間只是其中之一。客飯廳看起來比其實際面積更加宏大，這歸功於近乎無間斷的玻璃窗，將窗外的維多利亞港美景映入眼簾。五間睡房加上四間半全新浴室的佈局四正，為所有住客帶來充足的活動空間。

全層單位亦為住客帶來無可比擬的私隱和安全度，特別適合大家庭居住。寬敞宏大的樓面面積，不論是功能齊全的簇新廚房還是傭人房等居住需要，均能夠照顧周到，引發無限生活可能。



Extravagant apartment in Midlevels Central

中半山奢華住宅

5 bed, 4.5 bath, 2 car parks

Saleable 實用 4,715 s.f.

Lease 租 \$500,000 excl.

Inquiries 查詢 ☎ 9027 2100 Louis Wong 黃先生

Property No. 物業編號 20870



Grand penthouse in Midlevels Central

中半山豪華頂層單位

4 bed, 4.5 bath, 792 s.f. terrace, 129 s.f. roof, 2 car parks

Rare and massive 4-ensuite penthouse with walk-out terrace and roof top enjoying a sublime view of Victoria Harbour

矜罕偌大四套房頂層單位，連私家平台及天台，維港氣勢磅礴景色盡收眼底

Saleable 實用 3,708 s.f.

Lease 租 \$512,000 excl.

Inquiries 查詢 ☎ 9021 1270 Annie Lee 李小姐

Property Search No. 物業搜尋編號 33860



Rare single house at The Peak

山頂罕有獨立屋

4 bed, 4.5 bath

Exceptional single house overlooks a fantastic view of Victoria Harbour

別具一格獨立屋，俯瞰維多利亞港醉人景色

Saleable 實用 3,937 s.f.

Lease 租 \$600,000 excl.

Inquiries 查詢 ☎ 9027 2100 Louis Wong 黃先生

Property No. 物業編號 82564





Well decorated apartment in Wanchai

灣仔優質裝修單位

3 bed, 1 bath

Tastefully decorated 3-bedroom apartment enjoys a stunning city view close to Admiralty MTR station

品味裝修三房單位，眺望城市璀璨景色，信步可達金鐘港鐵站

Saleable 實用 924 s.f.

Lease 租 \$67,000 incl.

Inquiries 查詢 ☎ 9027 2100 Louis Wong 黃先生

Property Search No. 物業搜尋編號 39874



Prestigious house at The Peak

山頂尊貴洋房

4 bed, 4.5 bath, 1,228 s.f. terrace & 676 s.f. garden, 2 car parks

Designer decorated extravagant house (all ensuites) with private lift and swimming pool enjoys fantastic Victoria Harbour view

奢華極致設計全套房洋房，飽覽全維港景色，設有私家電梯及私家游泳池，可租可售

Saleable 實用 4,274 s.f.

Lease 租 \$650,000 excl. / **Sale** 售 \$868,000,000

Inquiries 查詢 ☎ 9027 2100 Louis Wong 黃先生

Property Search No. 物業搜尋編號 163684



至尚生活之境
南天第
壽臣山
ANSALDO



備註[1]

發展項目名稱：南天第 | 區域：壽臣山及淺水灣 | 發展項目的街道名稱及門牌號數：壽臣山道西11A號 | 賣方就發展項目指定的互聯網網站的網址：www.ansaldo.com.hk | 本廣告/宣傳資料內載列的相片、圖像、繪圖或素描顯示純屬畫家對有關發展項目之想像。有關相片、圖像、繪圖或素描並非按照比例繪畫及/或可能經過電腦修飾處理。準買家如欲了解發展項目的詳情，請參閱售樓說明書。賣方亦建議準買家到有關發展地盤作實地考察，以對該發展地盤、其周邊地區環境及附近的公共設施有較佳了解。



備註[2]



三幢全新獨立洋房，居高臨下，拱照壽臣山
自然山巒美景環抱下，與朝南風水配合得天衣無縫
洋房實用面積由 4,004 起至 5,132 平方呎
每幢配有私人花園、游泳池、天台、特大獨立車庫及電梯連接各層
可用公司轉讓形式獨立購買；亦可貫通三幢洋房，打造成為家族府邸

Developer 發展商

Joint Sole Agent 聯合獨家代理



東立地產
ORION LAND



領域房地產顧問有限公司 牌照號碼 C-018733

歡迎預約參觀現樓洋房

Louis Wong 黃先生
(E-047022)

☎ 9027 2100

Josephine Yuen 阮小姐
(E-424895)

☎ 6535 9918

Teresa Fung 馮小姐
(E-062803)

☎ 6538 6922

備註[3]

賣方：Knight Vale Limited、Heather Merit Limited、Sunshine Arch Limited | 賣方的控股公司：Novel Treasure Ventures Limited、東立地產有限公司、東立投資集團有限公司 | 發展項目的認可人士：黎紹堅先生 | 認可人士以其專業身分擔任經營人、董事或僱員的商號或法團：呂邵黎建築師有限公司 | 發展項目的承建商：富和建築有限公司 | 就發展項目中的住宅物業的出售而代表擁有人行事的律師事務所：丹士打律師行 | 已為發展項目的建造提供貸款或已承諾為該項建造提供融資的認可機構：中國銀行(香港)有限公司 | 已為發展項目的建造提供貸款的任何其他人：Novel Treasure Ventures Limited | 賣方建議準買方參閱有關樓說明書，以了解發展項目或期數的資料。 | 本廣告/宣傳資料內一切資料，須以政府相關部門最後批准之圖則及法律文件為準。賣方保留一切權利，按實際情況需要作出修改及改動，而無須另行通知。 | 本廣告由領域房地產顧問有限公司經賣方同意發報。本廣告/宣傳資料並不構成，亦不得詮釋成賣方就發展項目或其任何部分作出任何不論明示或暗示之要約、陳述、承諾或保證。 | 詳情請參閱售樓說明書。 | 物業編號：1991 | 印製日期：2023年11月1日

[1] 本相片於2022年7月28日發展項目3號洋房內拍攝；[2] 本相片於2022年8月22日發展項目1號洋房內拍攝；[3] 本相片於2022年7月20日發展項目3號洋房內拍攝*。相片經電腦修飾處理，僅供參考。相片內展示的裝置、裝修物料、設備、裝飾物、家具、燈飾及其他物件等不一定在實際落成的洋房內或其附近範圍出現，僅供參考，並以買賣合約或交易文件條款為準。相片及描述所顯示的景觀並不適用於所有發展項目的洋房。各洋房之景觀座向、樓層及周邊建築物所影響。賣方保留不時改動建築圖則的權利。本相片及其所有內容並不構成亦不得詮釋成賣方作出任何不論明示或隱含之合約條款、要約、承諾、陳述或保證（不論是否有關景觀）。

SALE 出售

Southside & The Peak 南區及山頂

Can be sold via company shares transfer
可以公司轉讓股份形式買賣



Family 4-bedroom apartment in Repulse Bay

淺水灣家庭式四房住宅

4 bed, 3 bath, 1 car park

Popular 4-bedroom apartment with fabulous mountain and sea views

受歡迎四房住宅，坐擁壯麗山巒景及海景

Saleable 實用 1,973 s.f.

Sale 售 \$59,800,000

Inquiries 查詢 ☎ 6538 6922 Teresa Fung 馮小姐

Property Search No. 物業搜尋編號 35637



Rare duplex in Shouson Hill

壽臣山矜罕複式單位

3 bed, 2 bath, 1 car park

Highly sought after 3-bedroom duplex with peaceful views of greenery and swimming pool

受歡迎三房複式單位，坐享翠綠及游泳池怡人景色

Saleable 實用 1,493 s.f.

Sale 售 \$55,000,000

Inquiries 查詢 ☎ 9021 1270 Annie Lee 李小姐

Property Search No. 物業搜尋編號 13671





Bay Watcher 港灣生活

Relaxed living comes naturally among Tai Tam's verdant hills and sandy shorelines; and thanks to its perch atop the former with outstanding views of the latter, this high-rise flat offers more than its full measure.

Highlights of this 1,534 s.f. haven start with the curved expanse of full-height glass that defines the Tai Tam Bay-facing side of the living area. From here, space flows seamlessly into a long, versatile dining area that can serve equally well as an open study or lounge extension. Throughout, the atmosphere is airy and bright but warm, thanks to a tastefully contrasting palette of white walls and wood flooring. Located nearby is a modern linear kitchen equipped with all the essentials.

Rounding out this surprisingly keenly priced residence are three bedrooms, two baths, two carpark spaces, and access to comprehensive clubhouse facilities. Needless to say, relaxation also comes standard.

大潭以翠綠山巒和海邊細砂聞名，寫意生活令人嚮往。這高層豪宅既座落山峰，亦擁有超越想像的無邊海景，突顯大潭優勢。

在這1,534平方呎的世外桃源，延綿不絕的拱型落地玻璃，令大潭灣海景相伴整個客廳。客廳連接長型飯廳，空間靈活實用，用作開放式書房或休閒空間均可，旁邊則是設備齊全的現代長型廚房。白牆與木地板相間的裝潢手法，令整個單位洋溢明亮溫馨的氛圍。

如今以意外地相宜的價格，便可擁有三間睡房、兩間浴室、兩個車位、一站式完善會所設施，以及令人著迷的寫意優閒生活。



Unique sea view apartment with bargain price in Tai Tam

大潭海景超筍價住宅

3 bed, 2 bath, 2 car parks

Saleable 實用 1,534 s.f.

Sale 售 \$32,000,000

Inquiries 查詢 ☎ 6538 6922 Teresa Fung 馮小姐

Property Search No. 物業搜尋編號 208313



General Valuations

We carry out property valuations for diversified purposes including IPO, annual audit, mergers and acquisitions, insurance, immigration, disposal, rating / stamp duty appeal and tax computations.

一般估值

我們會受託提供估值報告作公司上市、審計賬目、收購合併、保險、海外移民、資產出售、差餉或印花稅上訴及其他稅務用途。



Expert Witness and Dispute Resolution

We provide independent professional valuation advice and full narrative reports to solicitors and other clients in relation to property disputes, and can also act as an expert witness upon request.

專家證人和爭端調解

當物業價值遇上爭議時，我們向律師和客戶提供獨立專業估值建議和完整詳盡的報告，並在需要時在法庭充當專家證人。

Resumption Compensation

The government and URA acquire private land for public purposes. We are well-versed with resumption-related ordinances, subsequent procedure and assessment of claim. We can assist you in quantifying losses and carrying out negotiations with the Government and URA.

收地損失評估

政府及市區重建局不時根據相關條例收回私人土地作公共用途。我們熟悉該等條例，收地程序及補償評估工作，能協助客戶計算損失並代表客戶進行談判。

Railway Works Disturbance Claim

Retail shop operators suffer from disturbance and business loss due to railways works. The complexity of relevant compensation ordinances is often beyond the understanding of a layman. We can help unravel the perplexity of such issues.

滋擾補償評估

零售及飲食業往往因鐵路工程受到滋擾並引致生意損失。相關補償條例複雜繁瑣，一般人不易理解。我們熟悉法定評估工作，深刻瞭解受影響行業，協助客戶拆解難題。

Compulsory Sale for Redevelopment

Under ordinance Cap.545, developers can apply to the Lands Tribunal for an order for sale of a lot when they have successfully acquired sufficient undivided shares of the lot. We can represent you to handle negotiations with developers more effectively and act as your expert witness if the case is eventually referred to the Lands Tribunal for determination.

強制售賣

根據香港法例第545章，若發展商成功收購土地上足夠的業權，便可向土地審裁處申請強制拍賣該土地。我們能代表小業主更有效跟發展商商討收購價。若案件最終需提交土地審裁處裁決，我們亦可充當專家証人。

Development Consultancy

We have diverse and extensive experience in providing professional planning advice ranging from S.16 Planning Application, Lease Modification, Temporary Waiver etc

土地發展顧問

我們有多元化的經驗幫助客戶進行城市規劃第16條申請，更改土地契約，申請土地短期豁免書等。

Inquiries : **Cliff Lau 劉先生** (MRICS)
查詢: **2152 4868**
cliff.lau@landscape.com

Can be sold via company shares transfer
可以公司轉讓股份形式買賣



Waterfront house in Stanley

赤柱臨海洋房

5 bed, 5.5 bath, 255 s.f. garden & 817 s.f. roof, 1 garage (2 cars)

Family townhouse with full clubhouse facilities overlooks breathtaking sea views

家庭式洋房，連完善會所設施，俯瞰壯麗海景，可租可售

Saleable 實用 3,034 s.f.

Sale 售 ~~\$84,000,000~~ \$79,000,000 / Lease 租 \$110,000 incl.

Inquiries 查詢 ☎ 9020 1583 Michelle Chung 鍾小姐

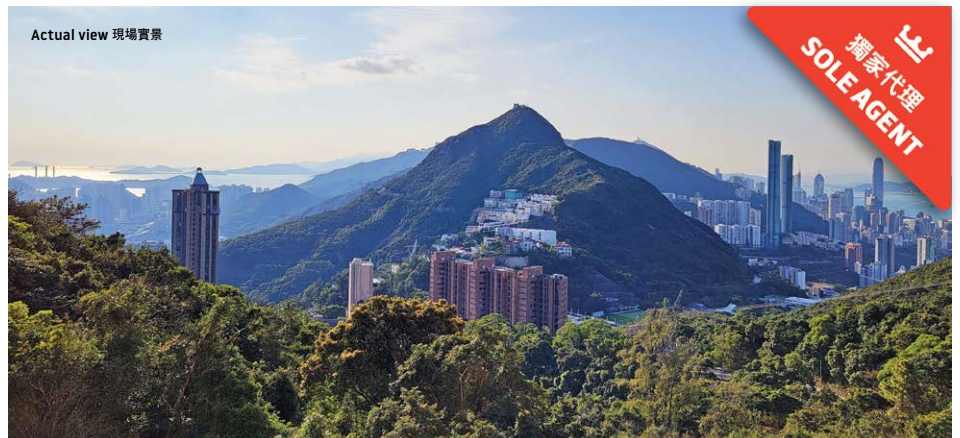
Property Search No. 物業搜尋編號 146970



Can be sold via company shares transfer
可以公司轉讓股份形式買賣



Actual view 現場實景



Rare 3-ensuite apartment in Repulse Bay

淺水灣罕有三套房單位

3 ensuite, 3.5 bath, 1 car park

Generous 3-bedroom apartment with full clubhouse facilities in a serene location

淺水灣罕有寬敞三套房單位，連完善會所設施，地段寧靜

Saleable 實用 2,067 s.f.

Sale 售 ~~\$88,000,000~~ \$80,000,000 (Negotiable)

Inquiries 查詢 ☎ 9027 2100 Louis Wong 黃先生

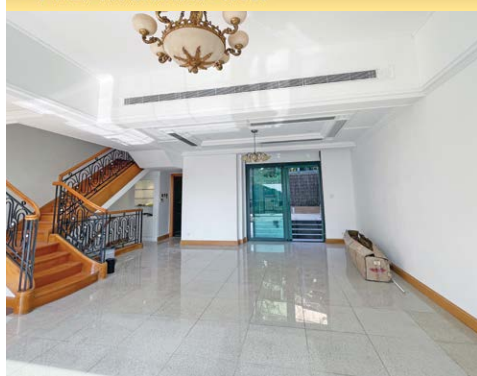
Property Search No. 物業搜尋編號 84538



SALE 出售

Southside & The Peak 南區及山頂

Can be sold via company shares transfer
可以公司轉讓股份形式買賣



Prestigious house in Tai Tam

大潭尊貴顯赫洋房

4 bed, 3.5 bath, 741 s.f. garden, 2 car parks

Full sea view house with a private garden and luxurious clubhouse facilities in a quiet location

全海景洋房大宅，連私家花園及豪華會所設施，地段寧謐，可租可售

Saleable 實用 2,546 s.f.

Sale 售 \$110,000,000 / Lease 租 \$150,000 incl.

Inquiries 查詢 ☎ 6607 2082 Stephen Chan 陳先生

Property Search No. 物業搜尋編號 112386



Unique sea view duplex in Repulse Bay

淺水灣獨特海景複式

4 bed, 3.5 bath, 2 car parks

Rare duplex unit with extensive glazing, light wood flooring and elegant architecture offering sweeping views of Repulse Bay beach

罕有複式豪宅，配以大量玻璃門窗、淺木地板以及優雅的建築空間，飽覽淺水灣沙灘無盡景觀，可租可售

Saleable 實用 2,893 s.f.

Sale 售 \$118,000,000 / Lease 租 \$143,000 incl.

Inquiries 查詢 ☎ 6538 6922 Teresa Fung 馮小姐

Property Search No. 物業搜尋編號 4961





Garden house in Stanley

赤柱花園洋房

4 bed, 4 bath, 2,950 s.f. garden, 663 s.f. roof, 1 garage

Large 4-bedroom townhouse with a private garden and rooftop in a tranquil location

偌大四房洋房，連私家花園及天台，地段清幽怡人，可租可售

Saleable 實用 2,392 s.f.

Sale 售 \$120,000,000 / **Lease** 租 \$168,000 incl.

Inquiries 查詢 ☎ 6607 2082 Stephen Chan 陳先生

Property Search No. 物業搜尋編號 107182



Nicely designed townhouse in Deep Water Bay

深水灣優雅裝修洋房

4 bed, 3.5 bath, private roof, 1 garage (for 3-4 cars)

Spacious 4-bedroom house with meticulous design and an unrivalled green view

深水灣寬敞四房大宅，享精美裝修及優美翠綠景色

Saleable 實用 3,200 s.f.

Sale 售 \$198,000,000

Inquiries 查詢 ☎ 9020 1583 Michelle Chung 鍾小姐

Property Search No. 物業搜尋編號 41879



SALE 出售

Southside & The Peak 南區及山頂



Brand new renovated duplex unit in Repulse Bay

淺水灣全新裝修複式

4 bed, 3.5 bath, 356 s.f. garden, 1 car park

Unique waterfront 4-bedroom duplex with well decorations enjoys a peaceful view of Repulse Bay Beach

別具一格臨海四房複式，配以精美裝修，坐擁淺水灣泳灘怡人景色，罕有放賣

Saleable 實用 2,554 s.f.

Sale 售 \$210,000,000

Inquiries 查詢 ☎ 6538 6922 Teresa Fung 馮小姐

Property Search No. 物業搜尋編號 208444



Exceptional detached house in Shouson Hill

壽臣山恢宏洋房

Rare and unique detached house with a private garden in a serene location

罕有獨特洋房，連私家花園，地段寧靜怡人

Saleable 實用 3,207 s.f.

Sale 售 \$250,000,000

Inquiries 查詢 ☎ 9027 2100 Louis Wong 黃先生

Property No. 物業編號 8784



Soar Spot 優越之地

A jewel amongst Repulse Bay's string of gems, this single detached house offers what few townhouses and apartments can: an array of big and small features tailored precisely for a truly personal luxurious lifestyle.

Starting inside, this unique spirit is showcased by the living room's soaring ceiling, as well as the glazing that wraps up and overhead for uninterrupted views of the private swimming pool/terrace and the sky above. Floors in light marble and white walls reflect the sunlight that washes in, while broad vertical stripes of dark wood flank the space with niches for art and artefacts.

Completing the 3,855 s.f. saleable area are a separate dining room, three ensuite bedrooms, 3.5 bathrooms, study and fully-equipped kitchen. Finishes and materials throughout are impeccable, while the décor is eclectic and engaging. Even car parking facilities are luxuriously proportioned, with spaces for five. It is, in other words, a private and personal world where fine living is the only constant.



這矜罕出眾的淺水灣珍貴大宅，將別墅與分層單位的優點完美結合，大小細節均設計周到，締造出個人化的奢華生活品味空間。

大宅格調在客廳的高聳樓底表露無遺，玻璃天窗以及相連幕牆，將私人泳池、平台和天際景致無間斷地引進室內。淺色雲石地板和白色牆身，與源源不絕的自然光互相輝映；客廳側面的深色木板間隔，則成為藝術品的最佳展示場所。

實用面積達3,855平方呎的大宅，另外亦擁有獨立飯廳、三間套房、三間半浴室、書房和設備完善的廚房。大宅處處均使用最頂級上乘的材質和物料，營造不拘一格而舒適親切的裝潢風格。貫徹這空間氣派，連車位也有五個之多，完美打造私密個人的尊尚生活之地。

Can be sold via company shares transfer
可以公司轉讓股份形式買賣

Exquisite house in Repulse Bay

淺水灣優雅洋房別墅

3 bed, 1 study, 3.5 bath, 5 car parks

Saleable 實用 3,855 s.f.

Sale 售 \$298,000,000

Inquiries 查詢 ☎ 6607 2082 Stephen Chan 陳先生

Property No. 物業編號 14935



SALE 出售

Southside & The Peak 南區及山頂

Can be sold via company shares transfer
可以公司轉讓股份形式買賣



Newly renovated duplex in Repulse Bay

淺水灣全新裝修複式單位

3 bed, 3.5 bath, 2 car parks

Exquisite 3-bedroom duplex with tasteful furnishings and full clubhouse facilities boasts lush verdant mountain views

豪華三房複式單位，家具雅致，設完善會所設施，坐擁美景如畫的翠綠山景，可租可售

Saleable 實用 3,244 s.f.

Sale 售 \$120,000,000 / **Lease 租** \$150,000 incl.

Inquiries 查詢 ☎ 9021 1270 Annie Lee 李小姐

Property Search No. 物業搜尋編號 174904



Grand Victoria Harbour house at The Peak

山頂奢華維港景洋房

3 bed, 3.5 bath, 313 s.f. terrace, 759 s.f. garden, 2 car parks

Well decorated house with ample alfresco space overlooks a sublime view of Victoria Harbour

優質裝修洋房，享充足戶外空間，坐擁維港壯麗海景

Saleable 實用 3,221 s.f.

Sale 售 \$338,000,000 / **Lease 租** \$220,000 incl.

Inquiries 查詢 ☎ 6535 9918 Josephine Yuen 阮小姐

Property Search No. 物業搜尋編號 606



Can be sold via company shares transfer
可以公司轉讓股份形式買賣



Exceptional full sea view house in Shouson Hill

壽臣山罕有全海景洋房

4 bed, 2 bath, 355 s.f. terrace, 96 s.f. garden, 561 s.f. roof, 2 car parks

Highly sought after 4-bedroom house with an ample alfresco space enjoys a stunning sea view

受歡迎四房洋房，享充足戶外空間，坐擁壯麗海景

Saleable 實用 3,474 s.f.

Sale 售 \$330,000,000

Inquiries 查詢 ☎ 6535 9918 Josephine Yuen 阮小姐

Property Search No. 物業搜尋編號 30463



Modern luxurious townhouse in Shouson Hill (Mortgagee Sale)

壽臣山時尚豪華洋房（銀主盤出售）

5 bed, 5 bath, 919 s.f. terrace, 2,733 s.f. garden & 889 s.f. roof, 4 car parks

Nicely designed house with a private lift and a private huge garden in move in condition

雅致裝修洋房，裝修簇新，連私家升降機及罕有大花園

Saleable 實用 4,240 s.f.

Sale 售 ~~\$498,000,000~~ \$390,000,000

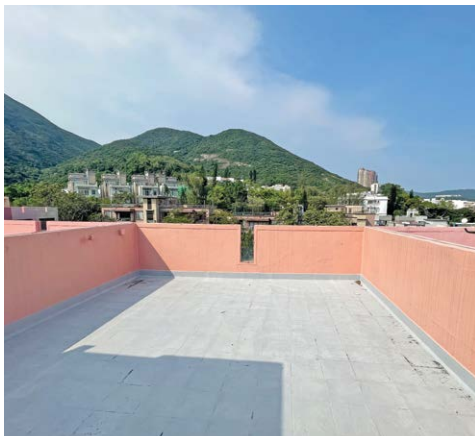
Inquiries 查詢 ☎ 6535 9918 Josephine Yuen 阮小姐

Property Search No. 物業搜尋編號 179392



SALE 出售

Southside & The Peak 南區及山頂



Rare garden house in Stanley

赤柱矜罕花園洋房

4 bed, 4 bath, 604 s.f. garden, 602 s.f. roof, 1 garage (2 cars)

Cozy family garden house with sufficient outdoor space close to Stanley main beach

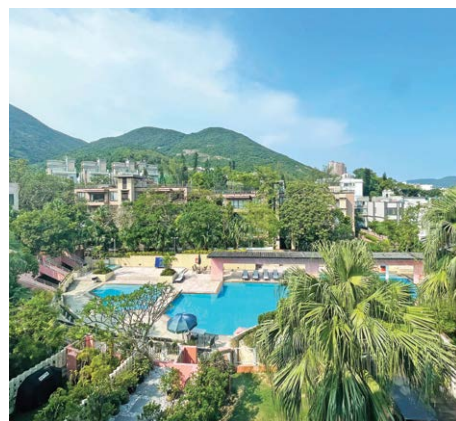
舒適家庭式花園洋房，享充足戶外空間，毗鄰赤柱正灘，可租可售

Saleable 實用 2,058 s.f.

Sale 售 \$72,000,000 / Lease 租 \$130,000 incl.

Inquiries 查詢 ☎ 9020 1583 Michelle Chung 鍾小姐

Property Search No. 物業搜尋編號 165872



Can be sold via company shares transfer
可以公司轉讓股份形式買賣



Exceptional house in Deep Water Bay

深水灣顯赫非凡洋房

5 bed, 4.5 bath, 1,867 s.f. garden, 1,382 s.f. roof, 1 garage

Luxurious 5-bedroom house with a private garden and rooftop ideal for a large family

奢華五房洋房，連私家花園及天台，大家庭首選

Saleable 實用 3,562 s.f.

Sale 售 \$330,000,000

Inquiries 查詢 ☎ 9027 2100 Louis Wong 黃先生

Property Search No. 物業搜尋編號 4540





Over 4000 s.f. Victoria Harbour view combined unit 皇者氣派 逾四千呎維港景相連大宅

Down to the smallest detail, every aspect of this Victoria Peak flat is designed to awe or pamper – or often both. And with a saleable area of 4,265 s.f., five bedrooms and 4.5 bathrooms, there is a lot of opulence here to sink into.

Like the bridge of an ocean liner, the high-ceilinged living-dining area's external walls are almost entirely glazed, giving a commanding view across the tops of city towers to the distant Victoria Harbour. Inside, there is simply nowhere for the eye to rest as endless patterns, finishes and textures vie for attention, each crafted with materials of obvious superior quality.

While overwhelmingly lavish in detail, the interior architecture is modern and pared-down in form. This gives these spaces an unexpected versatility, lending themselves equally well to décor and furnishings ranging from traditional to contemporary, Far Eastern to Western; or, given the flat's size and spirit, everything all at once.



這山頂豪宅的每個細節均精雕細琢，叫人驚嘆連連之餘，亦令戶主舒適貼心。實用面積廣達4,265平方呎，擁有五間睡房和四間半浴室的宅第，叫人在奢華生活中沉醉忘返。

在樓底極高的客飯廳，幾乎全透明玻璃幕牆的設計，讓人如天之驕子般俯瞰市中心高樓，同時眺望遠處氣勢磅礴的維多利亞港。單位內，各式各樣的圖案、紋理和質感爭相吸引注意力，並以頂尖的物料帶來最優越的效果。

縱使單位內充滿奢華細節，其室內建築和空間卻現代簡約，帶來靈活的空間運用潛力，不論是傳統或當代、東方或西式風格均揮灑自如——一如單位的格局和靈魂，所有風格元素，均可濃縮其中。



Victoria Harbour view combined unit at The Peak
山頂維港景相連大宅

5 bed, 4.5 bath, 2 car parks

Saleable 實用 4,265 s.f.

Sale 售 \$480,000,000

Inquiries 查詢 ☎ 6535 9918 Josephine Yuen 阮小姐

Property No. 物業編號 128539

SALE 出售

Southside & The Peak 南區及山頂

Can be sold via company shares transfer
可以公司轉讓股份形式買賣



Generous single house at The Peak

山頂偌大獨立屋

5 bed, 6.5 bath, 321 s.f. terrace & 1,589 s.f. garden, 6 car parks

Luxurious 5-ensuite single house with a private garden ideal for a large family

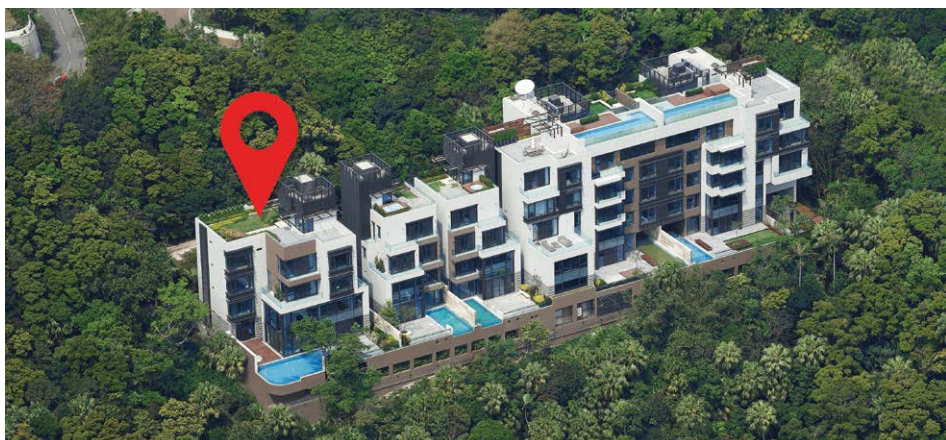
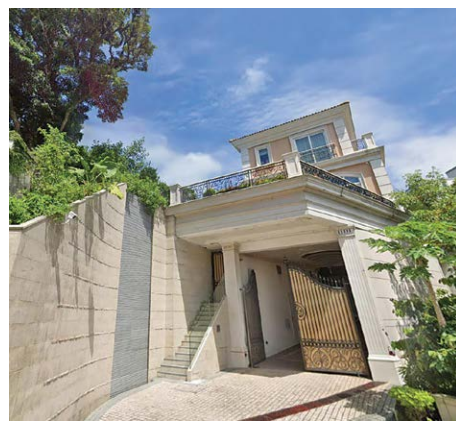
奢華五套房獨立洋房，連私家花園，適合大家庭

Saleable 實用 4,559 s.f.

Sale 售 \$980,000,000

Inquiries 查詢 ☎ 6535 9918 Josephine Yuen 阮小姐

Property Search No. 物業搜尋編號 125922



Enormous house at The Peak

山頂巨型洋房

12 bed, 12 bath, 2,737 s.f. garden & 2,680 s.f. roof, 1 garage (4-6 cars)

Rare enormous house with a plenty of outdoor living space (including a private swimming pool) and lift enjoys spectacular views

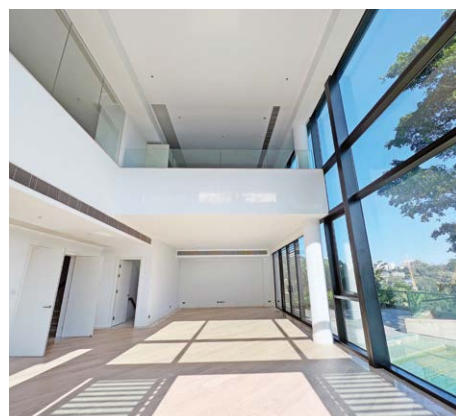
艷麗絕倫巨型洋房，享充裕的戶外生活空間，連私家游泳池及升降機，眺望無敵海景

Saleable 實用 12,098 s.f.

Sale 售 Price on application 面議 /Lease 租 Subject to offer

Inquiries 查詢 ☎ 9027 2100 Louis Wong 黃先生

Property No. 物業編號 160077





3-bedroom apartment in Midlevels West 西半山三房單位

3 bed, 2 bath

Practical 3-bedroom apartment with full clubhouse facilities close to Central-Mid-Levels Escalators

實用三房單位，連完善會所設施，鄰近中環半山行人扶手電梯，交通便利

Saleable 實用 691 s.f.

Sale 售 \$14,300,000

Inquiries 查詢 ☎ 9020 1583 Michelle Chung 鍾小姐

Property Search No. 物業搜尋編號 121565



City view apartment in Midlevels Central 中半山城市景單位

3 bed, 2 bath, 1 car park

Practical 3-bedroom apartment with an amazing city view on fringe of CBD on Kennedy Road

堅尼地道實用三房單位，飽覽城市醉人美景，鄰近市中心

Saleable 實用 1,669 s.f.

Sale 售 \$42,000,000

Inquiries 查詢 ☎ 9021 1270 Annie Lee 李小姐

Property Search No. 物業搜尋編號 198911





Above and Beyond

城市綠洲

Space to grow in is a rare commodity amid the teeming density of urban Hong Kong; but with four bedrooms and 1,658 s.f. of saleable area, this Mid-levels East flat carves out a family-friendly niche complemented with a sense of tasteful style.

Step inside and the immediate impression is one of serene contrast with the location's busy surroundings. Living and dining areas physically flow together, creating a large single volume. Floor-to-ceiling glazing provides

excellent views and access to a usefully sized balcony whilst inviting natural light in. Complementing the clean, simple architecture is a calm palette of white and grey, warmed by the light tan of the wood floors.

Located off the dining area – and visually flowing directly from it, via a full-height glass doorway – is a massive, superbly equipped kitchen. Matching the living-dining area's colour palette and architecture, it offers more than enough capacity to feed a thriving family, as well as family friends.

Venturing elsewhere within the floorplan reveals two bathrooms (one ensuite), a master bedroom with very generous walk-in storage, and a trio of smaller bedrooms for children or guests. The latter rooms are extremely well designed to maximise function and comfort, as well as the city views from their bay windows.

Access to clubhouse facilities and covered car parking top off a list of amenities that truly make this 'niche' an island of space and ease at the heart of the city.



在香港擠擁的城市環境中，成長空間絕對是奢侈品。但這東半山單位成功以品味裝潢、1,658平方呎實用面積加上四房間隔，在家庭客群中突圍而出。

縱使位處熱鬧便利的地段，甫步進單位，卻頓時感到平靜祥和。客飯廳間隔連接流暢，形成偌大舒適的空間感。落地玻璃不但帶來一流景觀，亦無縫連接尺寸實用的露台，令單位自然光充足。簡約乾淨的建築空間，配上白色與灰色的平和色調，與明淨的木地板共同營造出迷人的溫暖氛圍。

飯廳與廚房之間，以落地玻璃門的獨特設計連接，叫人視線聚焦在偌大而設備齊全的廚房。呼應客飯廳的空間感和色調，設備豪華的廚房絕對能夠滿足家庭及待客需要。

在單位往內走，會到達兩間浴室（其中一間是套房浴室）、擁有巨型獨立衣帽間的主人房，以及三間可用作兒童房或客房的較小型房間。這些房間同樣功能與舒適度兼備，各自的窗台均折射出醉人的城市景致。

配合會所設施和有蓋車位，這獨特單位絕對是市中心的綠洲。



Stylish apartment on Tai Hang Road
大坑道時尚住宅

4 bed, 2 bath, 1 car park

Saleable 實用 1,658 s.f.

Sale 售 \$48,000,000

Inquiries 查詢

9021 1270 Annie Lee 李小姐

Property Search No. 物業搜尋編號 175712



SALE 出售

Midlevels Central & West sale 中半山及西半山



Well decorated apartment in Midlevels Central

中半山優質裝修住宅

3 bed, 2 bath, 1 car park

Modern 3-bedroom apartment with stunning views of the city and Victoria Harbour Views on fringe of CBD

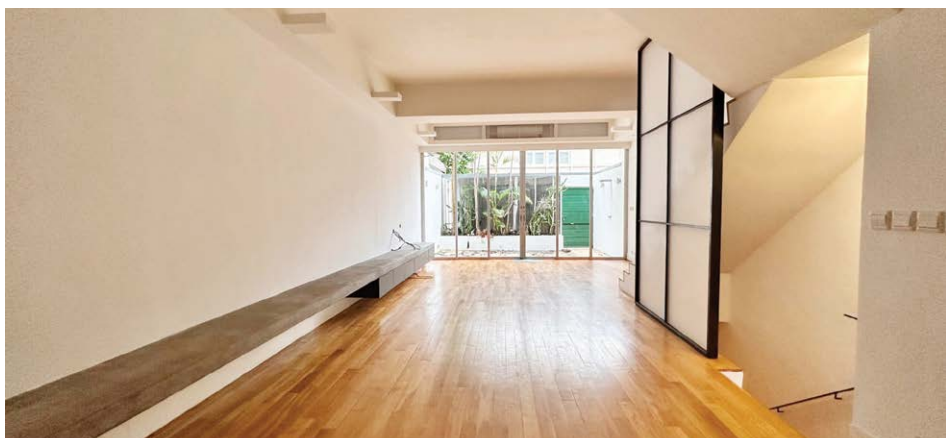
時尚三房單位，眺望維港及城市優美景色，鄰近市中心

Saleable 實用 1,485 s.f.

Sale 售 \$58,000,000 / **Lease 租** \$80,000 incl.

Inquiries 查詢 ☎ 9021 1270 Annie Lee 李小姐

Property Search No. 物業搜尋編號 159721



Tranquil townhouse in Pokfulam

薄夫林寧靜怡人洋房

3 bed, 1 study, 3 bath, 262 s.f. garden, 647 s.f. roof, 3 car parks

Nicely renovated townhouse with sufficient outdoor space in a treelined neighbourhood

位於綠樹成蔭的地段，雅致裝修洋房，享充足戶外空間，可租可售

Saleable 實用 2,096 s.f.

Sale 售 \$65,000,000 / **Lease 租** \$110,000 incl.

Inquiries 查詢 ☎ 9021 1270 Annie Lee 李小姐

Property Search No. 物業搜尋編號 193909





Living expanses 理想之家

Boasting 2,888 sf of glorious space, this Mid-Levels Central flat shows that family living needn't compromise style or luxury. At its heart is a tastefully appointed living-dining area whose proportions and size allow it to comfortably accommodate family and entertaining activities simultaneously. A long expanse of floor-to-ceiling windows floods the area with natural light and provides high-level views to Victoria Harbour and beyond.

Balancing the openness of the living-dining area is the privacy of four bedrooms, two ensuite. All feature generous integrated storage, and are easily adaptable to alternate uses, such as a quiet study, home office or private gym space. Just as impressive in its proportions is the contemporary kitchen – fully fitted and equipped, and large enough to feed an army (or a family and friends). Key 'extras' like two covered carpark spaces, twin maid's rooms and a useable balcony complete this picture of family living without compromise.

這面積達2,888平方呎中半山豪宅證明，家庭生活也可奢華與格調兼備。面積偌大而開揚的客飯廳，能夠成為任何家庭及娛樂活動的中心。落地玻璃延綿整個客飯廳，為整體空間帶來充足的自然光，亦可居高臨下俯瞰維多利亞港海景。

客飯廳開揚氣派，四間睡房和兩間套房則隱密舒適，全部房間均配備大量儲物空間，靈活實用，可隨住戶需要成為書房、辦公室或私人健身室。單位比例優越，廚房亦同樣設備齊全，面積之大，即使是舉辦大型派對及備膳也可輕鬆辦妥。加上兩個有蓋車位、雙傭人房、實用露台，絕對是你實現理想家庭生活的完美選擇。



Can be sold via company shares transfer
可以公司轉讓股份形式買賣

Prestigious apartment in Midlevels Central
中半山尊貴住宅

4 bed, 3 bath, 2 car parks

Saleable 實用 2,888 s.f.

Sale 售 \$168,000,000 \$150,000,000

Inquiries 查詢 9021 1270 Annie Lee 李小姐

Property Search No. 物業搜尋編號 106463



SALE 出售

Midlevels Central & West sale 中半山及西半山



Huge joint unit with large garden in Pokfulam

薄扶林相連大宅連大花園

6 bed, 4 bath, 3,486 s.f. terrace, 4 car parks

Tastefully decorated 6-bedroom apartment with a massive garden terrace in a tranquil location

品味裝修六房住宅，連私家大平台花園，地段怡人寧靜

Saleable 實用 4,157 s.f.

Sale 售 \$112,000,000

Inquiries 查詢 ☎ 6535 9918 Josephine Yuen 阮小姐

Property Search No. 物業搜尋編號 55313



Unique triplex unit in Midlevels Central

中半山獨特三層複式

4 bed, 2 bath, 1 car park

Modern 4-bedroom triplex unit with stunning views of Victoria Harbour and city skyline ideal for a family

時尚四房三層複式，飽覽維港壯麗景色及城市璀璨美景，家庭首選

Saleable 實用 2,218 s.f.

Sale 售 \$89,000,000

Inquiries 查詢 ☎ 9020 1583 Michelle Chung 鍾小姐

Property Search No. 物業搜尋編號 30675





Modern Heart

時尚焦點

Timeless high-quality materials meet contemporary style in this 1,452 s.f. Mid-levels Central flat – all within walking distance to Central and Admiralty.

Inside, a full-height wood-panelled wall defines the open living-dining area, luring the eye along the entire length of the space and adding a touch of natural texture to the otherwise gleaming white surfaces. Extensive glazing offers sweeping skyline views, while in the dining area, panels fold away to reveal a convenient service station.

Décor takes a more lavish turn in the fully-equipped kitchen, shimmering in stainless steel and granite. The dining area also leads directly to one of three marble-slathered bathrooms and one of three spacious bedrooms. Echoing the theme from the living-dining area, each bedroom features a wood-panelled wall with integrated drawers and cupboards. This flat is an example of style, space and location coming together to create a modern classic for modern living.



這1,452平方呎中半山單位擁有頂級物料融會當代風格的裝潢，而且位處優越，步行即達中環和金鐘。

單位一面鋪滿木板飾面的牆身，成為開放式客飯廳空間的主角，叫人目光隨木牆追逐整個空間；這設計亦為潔淨明亮的白色牆身，添上一份自然質感。大量的玻璃窗帶來滿室的城市景致，飯廳的木牆後，更暗藏設備完善的工作枱面，方便隨時款待客人。

裝潢風格在設備齊全的廚房搖身一變，變得奢華而氣派，利用不銹鋼和花崗岩帶來現代眩目的效果。飯廳過後便是三間鋪滿雲石的浴室，以及三間寬敞的睡房。延續客飯廳的風格，每間睡房均擁有木板牆身，以及度身訂造的入牆櫃和儲物空間。這單位以無與倫比的裝潢、空間和位置，締造現代生活的不朽示範。



Can be sold via company shares transfer
可以公司轉讓股份形式買賣

Meticulous designed apartment in Midlevels Central
中半山精美裝修單位

3 bed, 3 bath, 1 car park

Saleable 實用 1,452 s.f.

Sale 售 ~~\$70,000,000~~ ~~\$68,000,000~~ \$63,900,000

Inquiries 查詢 ☎ 9021 1270 Annie Lee 李小姐

Property Search No. 物業搜尋編號 157949

Welcome for any reasonable offer

歡迎合理還價



SALE 出售

Midlevels Central & West sale 中半山及西半山



Bright and airy apartment in Midlevels Central

中半山明亮通風住宅

4 bed, 3 bath, 1 car park

Elegant 4-bedroom apartment with a spacious layout in a prestigious location
位於顯赫尊貴地段，優雅四房住宅，間隔寬敞

Saleable 實用 2,792 s.f.

Sale 售 \$100,000,000

Inquiries 查詢 ☎ 9021 1270 Annie Lee 李小姐

Property Search No. 物業搜尋編號 112237



Can be sold via company shares transfer
可以公司轉讓股份形式買賣



Generous apartment in Midlevels Central

中半山偌大住宅

4 bed, 3 bath, 1 car park

Prestigious 4-bedroom apartment with roomy balcony in a landmark building at the beginning of Magazine Gap Road

坐落馬己仙峽道地標建築大廈，尊貴四房單位，連寬敞露台，可租可售

Saleable 實用 3,335 s.f.

Sale 售 \$137,000,000 / **Lease** 租 \$180,000 incl.

Inquiries 查詢 ☎ 9021 1270 Annie Lee 李小姐

Property Search No. 物業搜尋編號 158135





A full expression of charm and grace

100%全新魅力佈局

Mid-Levels West is one of the most sought-after residential areas in Hong Kong. Located on Robinson Road, this apartment has been renovated completely and boasts an unforgettable yet meticulously designed interior with furnished.

The apartment spans 1,705 s.f. (saleable area) and boasts three bedrooms (including two ensembles), three bathrooms, a combined living and dining room, a maid's room, a utility room, and a covered car park. This residence includes a wide range of meticulously chosen brand new furniture and residents can enjoy a comfortable living experience while enjoying beautiful city views. Suitable for moving in immediately, this apartment is an ideal choice for homebuyers looking for a tastefully renovated residence.

Residents can easily head to the Central-Mid-Levels Escalator to reach Central and other major business areas. Schools, hospitals and grocery shopping are all in close proximity with ample public transport available to most areas in the city.



港島半山是本港其中一個最受歡迎的高尚住宅區。此單位位於羅便臣道，全屋最近全新裝修，呈現令人忘懷的新穎雅致裝修。

單位實用面積達1,705平方呎，提供三間睡房，其中兩間為套房。另有三間浴室、相連的客飯廳、家傭房、多用途房及有蓋車位。此單位已完成全屋的簇新裝修，並配備了精心挑選配置全屋全新家具，既可以享受室內的舒適怡人，同時可欣賞繁華的都市美景，單位可即時入住，適合有意購入華麗而高尚單位的人士。

住戶可使用中環至半山自動扶梯系統，步行前往中環及港島核心的商業中心區都十分方便。如要前往學校、醫院及購買生活所需，單位附近亦應有盡有，同時附近有多項公共交通前往各區。



Midlevels West — Fully renovated & brand new interior 西半山全新裝修住宅

3 bed, 3 bath, 1 car park

Saleable 實用 1,705 s.f.

Sale 售 \$53,000,000 \$45,000,000 (Negotiable 議價)

Inquiries 查詢 ☎ 9027 2100 Louis Wong 黃先生

☎ 6535 2866 Mr. Lai 黎先生

Property Search No. 物業搜尋編號 185043



SALE 出售

Midlevels Central & West sale 中半山及西半山



One of a kind huge duplex

中半山獨樹一幟巨型複式

6 bed, 1 study, 4.5 bath, 4 car parks

Sumptuous 6-bedroom duplex apartment and 4 car parks enjoys a sweeping harbour view

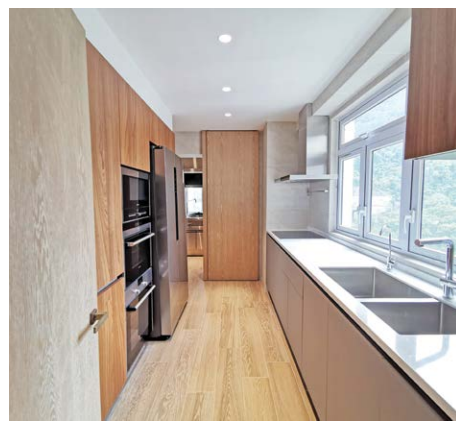
奢華複式六房單位，連四車位，維港美景一覽無遺

Saleable 實用 6,368 s.f.

Sale 售 Open Offer

Inquiries 查詢 ☎ 9027 2100 Louis Wong 黃先生

Property Search No. 物業搜尋編號 179317



Victoria Harbour view combined unit in Midlevels Central (Mortgagee Sale)

中半山維港景相連單位（銀主盤出售）

4 bed, 3 bath

Extravagant modern apartment with marvellous harbour and metropolitan views

奢華時尚住宅，維港城市景色盡收眼底

Saleable 實用 3,738 s.f.

Sale 售 Open Offer

Inquiries 查詢 ☎ 9027 2100 Louis Wong 黃先生

Property Search No. 物業搜尋編號 115395





City Grandeur 宏偉非凡

The luxurious and rare residential site, situated at one of the most prestigious locations, Mid-levels Central, occupies over 10,378 s.f. total area with 5,138 s.f. (Saleable area) single house, the expansive private garden (7,000 s.f.) and roof top (2,500 s.f.), to demonstrate the extraordinary identity of the owners.

This exquisite single house features a spacious layout and lofty ceilings (approx. 4 metres) completed with stylish furnishing and tasteful artifacts that give the space a warm, delightful atmosphere. Mixing lively colours, the interiors of this house show a vibrant vibe. There are total four bedrooms (all ensembles) with a sizable living and dining room ideal for a large family. Nestled in the tree-lined neighbourhood, this rare single house is also conveniently linking toward the central business district.



這奢華物業坐落於全港最貴重地段之一的中半山，地盤面積佔地10,378平方呎，獨立屋實用面積高達5,138平方呎，提供廣闊的私家花園（7,000平方呎）及天台（2,500平方呎），彰顯住戶非凡貴重的身份。

獨立屋除了間隔寬敞實用，更享近四米極高樓底，當代時尚的家具及品味的藝術品營造出溫暖、愉悅的氣氛。室內裝潢更採用了活潑的色調，展現出生氣勃勃的氛圍。獨立屋提供四間睡房（全部均為套房）及偌大的客飯廳，非常適合大家庭。這罕有獨立屋位處綠樹成蔭的地段，亦可輕鬆通往市中心商業區，十分便利。



Rare single lot in Midlevels Central 中半山罕有獨立屋地

Total Area 地盤面積 10,378 s.f.

Saleable 實用 5,138 s.f.

Garden 花園 7,000 s.f.

Roof 天台 2,500 s.f.

Sale 售 \$600,000,000 \$480,000,000

Inquiries 查詢 ☎ 6535 9918 Josephine Yuen 阮小姐

Property Search No. 物業搜尋編號 45695



SALE 出售

Midlevels East & Happy Valley 東半山及跑馬地



Rare high floor unit in Jardine's Lookout

渣甸山罕有高層單位

3 bed, 2 bath, 1 car park

Beautifully renovated modern 3-bedroom apartment with abundant natural light and greenery views

精緻時尚三房住宅，自然光充足，享翠綠景色

Saleable 實用 871 s.f.

Sale 售 ~~\$24,800,000~~ \$23,500,000

Inquiries 查詢 ☎ 6538 6922 Teresa Fung 馮小姐

Property Search No. 物業搜尋編號 42756



Modern apartment in Midlevels East

東半山別緻單位

2 bed, 2 bath, 1 car park

Cozy apartment enjoys magnificent views of Victoria Harbour and Hong Kong Stadium

時尚舒適住宅，維港及香港大球場美景一覽無遺，可租可售

Saleable 實用 1,411 s.f.

Sale 售 \$60,000,000 / **Lease 租** \$80,000 incl.

Inquiries 查詢 ☎ 9020 1583 Michelle Chung 鍾小姐

Property Search No. 物業搜尋編號 117614



Can be sold via company shares transfer
可以公司轉讓股份形式買賣



Practical apartment in Midlevels East
東半山實用單位

4 bed, 3 bath, 1 car park

Spacious 4-bedroom apartment with practical layout ideal for a large family
寬敞四房住宅，間隔實用，大家庭首選，可租可售

Saleable 實用 2,750 s.f.

Sale 售 \$79,000,000 / **Lease** 租 \$100,000 excl.

Inquiries 查詢 ☎ 6607 2082 Stephen Chan 陳先生

Property Search No. 物業搜尋編號 131283



Can be sold via company shares transfer
可以公司轉讓股份形式買賣



Rare 3-ensuite apartment in Midlevels East
東半山罕有三套房住宅

3 bed, 1 study, 3.5 bath, 2 car parks

Cozy 3-ensuite apartment with a practical layout enjoys a fantastic city view
舒適三套房住宅，間隔實用，坐擁城市迷人景色

Saleable 實用 2,471 s.f.

Sale 售 \$79,000,000

Inquiries 查詢 ☎ 9020 1583 Michelle Chung 鍾小姐

Property Search No. 物業搜尋編號 120377



SALE 出售

Midlevels East & Happy Valley 東半山及跑馬地



Rare combined unit in Midlevels East

東半山矜罕相連大單位

6 bed, 6 bath, 4 car parks

Massive combined unit with a practical layout overlooks an open view in a renowned location

寬敞相連大單位，間隔實用，享開揚景色，地段顯赫

Saleable 實用 4,930 s.f.

Sale 售 \$238,000,000

Inquiries 查詢 ☎ 6535 9918 Josephine Yuen 阮小姐

Property Search No. 物業搜尋編號 17254



Rare Site in Jardine's Lookout (Mortgagee Sale)

罕有渣甸山地皮（銀主盤出售）

One of a kind single lot in prestigious and prominent location

位處尊貴優越地段，獨樹一幟罕有獨立地皮

Total Area 地盤面積 9,814 s.f.

Saleable 實用 6,493 s.f.

Sale 售 Open Offer

Inquiries 查詢 ☎ 6535 9918 Josephine Yuen 阮小姐

Property No. 物業編號 37821



Looking forward to seeing you 我哋等緊你呀!

We are looking for suitable candidates to join us 如果你對以下工作有興趣, 請聯絡我哋

- Experienced luxury property sales/leasing consultants 豪宅部物業顧問
- Sales/Leasing Assistants 豪宅部助理
- Associate Director, Valuation 估價部聯席董事
- Photographers (Part time / Freelance) 攝影師 (兼職 / 自由工作)
- Graphic Designer (Part time / Freelance) 平面設計師 (兼職 / 自由工作)
- Editor / Copywriter (Part time / Freelance) 編輯 / 撰稿員 (兼職 / 自由工作)

Please send your enquiries / resume to the following 詢問、履歷可發送至

✉ recruit@landscape.com | ☎ +852 2152-4810

Disclaimer 免責聲明

The personal data collected in the job application will only be used by Landscape Realty Limited, its subsidiaries and/or affiliates (Landscape) internally to assess your suitability to assume the job duties of the position for which you have applied. All personal data will be handled in strict confidence and filed with Human Resources Department. It is the Company policy to retain the personal data of unsuccessful applicants for future recruitment opportunities for a period of maximum six (6) months, otherwise it will be destroyed. Any information or data which you submit through the e-mail or WhatsApp may be exposed to the risk of unauthorised access by third parties. Landscape has instituted security precautions to protect the privacy of data you submit, but cannot guarantee security or confidentiality against all hackers, other attacks or other security failures. Landscape accepts no responsibility and shall not be liable for any loss or damage arising from or related to such unauthorised access. You acknowledge that you have read the above conditions of use and that you accept and agree to be bound thereby upon making your application by e-mail or WhatsApp. If you do not agree to the above terms discussed above, you must not make your application by e-mail or WhatsApp. 對職位申請者所提供的個人資料, 領域房地產顧問有限公司, 其附屬公司及/或聯屬公司(領域) 只用作處理其求職申請之用途。所有的個人資料將保密處理, 並提交人力資源部。我們將保留六(6)個月不成功申請人之個人資料, 期限後將被銷毀。通過電子郵件或WhatsApp提交的任何資料或數據可能會暴露於未經授權的第三方的風險。領域已設立安全措施以保護 台端所呈交之資料。惟本公司不能保證因為黑客、其他侵襲或安全系統出現故障而衍生的保安或機密問題; 本公司也不負責任何直接、間接、特別情況而導致之任何損失。請閣下確認已閱讀了以上使用條款, 通過電子郵件發或WhatsApp發送職位申請者將視為已接納此等條款及條件。不同意此等條款及條件者不用通過電子郵件或WhatsApp發送職位申請。@@@本聲明的英文本與中文本有任何差異的地方, 則以英文本為準。



Nonpareil Universe 尊屬時空

Some getaways offer more than a change of place; as this Lantau Island townhouse demonstrates, they can take one to a whole new state of mind.

Located just a few minutes' walk from Cheung Sha Beach – and within easy reach of Hong Kong and the Greater Bay Area – the house's colonial architecture and lush surroundings exude the feel of simpler, slower-paced times. Its variety of alfresco spaces are ideal for entertaining or enjoying a sunset cocktail.

Inside, the 3,575 s.f. saleable area includes four ensuite bedrooms and five bathrooms. High-ceilinged and spacious, the living-dining area features full glazing overlooking the garden, and easily accommodates a conversational triple-sofa arrangement as well as a dining table for eight.

Bedrooms and even bathrooms are on a similarly expansive scale, with the former repeating the living-dining area's palette of wood floors and white walls and ceilings. Bathrooms, meanwhile, combine marble, wood and chrome for a sense of natural grandeur.



有些世外桃源不僅是場景的轉換，一如這大嶼山別墅，更可以帶人進入一個全新的心境。

大宅與長沙泳灘只有數分鐘距離，同時可輕易到達香港島和大灣區。這大宅的殖民地建築和翠綠景致，彷彿叫人進入一個更簡單、步伐緩慢的時空。各式各樣的戶外空間，則適合設宴娛賓，或放鬆心境享受日落小酌。

大宅室內實用面積達3,575平方呎，擁有四間套房和五間浴室。客飯廳樓底極高，全玻璃幕牆與花園相連，整體空間亦無比寬敞，可輕易放置三張沙發以及八人餐桌，享受親密無間的聚會對話。

睡房和浴室亦同樣寬敞，睡房延續客飯廳的木地板和白天花主調，浴室則以雲石、木材和鉻合金，營造出一份天然的奢華感。

Sumptuous townhouse in Lantau Island

大嶼山奢華洋房別墅

4 bed, 5 bath, 216 s.f. terrace, 1,369 s.f. garden & 1,524 s.f. roof, 1 garage

Saleable 實用 3,575 s.f.

Sale 售 ~~\$75,000,000~~ \$68,000,000 (Negotiable 議價)

Inquiries 查詢 ☎ 6535 2866 Mr. Lai 黎先生

☎ 9027 2100 Louis Wong 黃先生

Property No. 物業編號 171457





Beachfront Dream House in Silverstrand

完美唯一 銀線灣海灘最前排全海屋

Occupying a serene location in core Silverstrand, this magnificent waterfront dream house overlooks breathtaking and expansive panoramic sea views from every floor. With a unique Italian colonial style, this two-story corner house includes a private access to an enormous wrap-around garden, providing a great expanding potential.

Silverstrand Beach waterfront can be reached just within a few minutes' walk directly from the house. Residents can enjoy swimming and sunbathing with a few steps closer to nature.

這夢寐以求的恢宏別墅位於銀線灣海灘灣畔，寧靜的最前排臨海位置，層層可享寧謐廣闊的海天相連如詩的蔚藍海景致。這罕罕的全海景崖邊別墅，具有西西里島風格獨特的臨海居停，稀有的巨型環繞式花園，提供了巨大的擴展潛力。

從這全海景別墅，可通過私人通道可直達優美銀線灣海濱，住戶信步即可享受到海灘暢泳及日光浴之樂，親親大自然。

Can be sold via company shares transfer
可以公司轉讓股份形式買賣

Silverstrand — Panoramic Full Sea View. Dream House
銀線灣 - 珍罕非凡，家族收藏之選，一見難忘層層全海屋

4 beds (2 En-suites), 3 bath, private terrace & garden

Saleable 實用 2,800 s.f. (平方呎) +

Enormous private garden 專屬大花園

Sale 售 \$86,800,000 (Negotiable 議價)

Inquiries 查詢 ☎ 6535 2866 Mr. Lai 黎先生

Property No. 物業編號 CWB-LW-S-2211



SALE 出售

Sai Kung & Clear Water Bay 西貢及清水灣



Brand New Detached Lot House 西貢半山已批則全新屋地

Sai Kung is renowned for its tranquility and secluded nature, with its sense of privacy being particularly appealing to home buyers.

Situated in Pak Sha Wan, Sai Kung, this rare brand new detached lot spans 8,776.88 s.f. (site area) of lush natural land. It is approved to build to a 2-storey dream house with a private lift as well as a private garage offering thoroughly modern and graceful living experiences. A south east facing waterfront detached lot house boasts tremendous, uninterrupted views of Hebe Haven.

Well served by public transport, it is close to Pak Sha Wan Pier and within walking distance of Hebe Haven Pier.

西貢以清幽寧靜而聞名，區內高私隱度更吸引有意置業的人士。

這珍罕的全新獨立屋地位於西貢白沙灣，地段土地面積廣達8,776.88 平方呎。地段已獲批准建成兩層高全獨立洋房別墅，並罕有附設有私家升降電梯及獨立車庫，享時尚優雅的奢華生活。這臨海獨立屋地面向東南，飽覽白沙灣遼闊優美的海景。

這獨立屋地公共交通便利，信步可達白沙灣遊艇會及碼頭。

Can be sold via company shares transfer

可以公司轉讓股份形式買賣

Extremely rare brand new detached lot house in Pak Sha Wan
白沙灣罕有全新獨立屋地

Site Area 地段土地面積 8,776.88 s.f.

Gross Floor Area 建築面積 3,510.75 s.f.

Sale 售 Upon Application 歡迎來電查詢

Inquiries 查詢 ☎ 6535 2866 Mr. Lai 黎先生

Property Search No. 物業搜尋編號 SK-WLPSW-2307

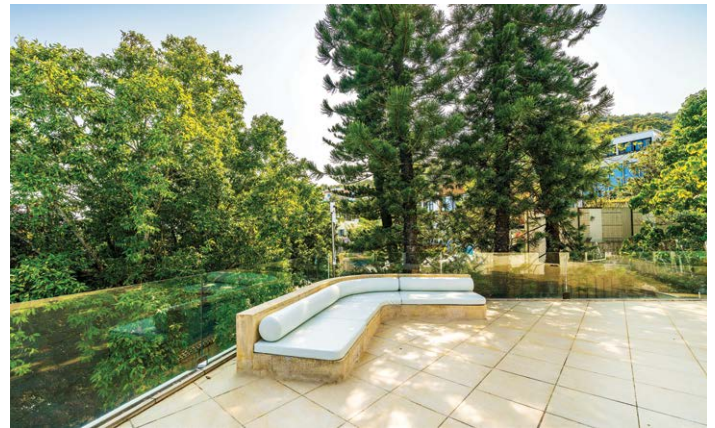




Poolside party, Colonial house 池畔派對，經典大屋

Surrounded by natural beauty, this impressive corner garden house is situated in a tranquil area of Clear Water Bay and perfectly embodies the best in luxury living.

This 2-storey detached corner house spans 2,405 s.f. (saleable area) with an ample alfresco space. The interior features stylish furnishings, tasteful decorations, a practical layout and great expanding potential, with direct access to a superb resort-style pool and self-owned garden, where it is a perfect place to enjoy the tranquility or host parties and gatherings. The modern kitchen benefits from a large island with highend appliances. Further highlight of this house includes 5 bedrooms with 1 study, panoramic sea views of Silverstrand, a private garage (6 cars) and a maid's quarter.



這位於清水灣銀線灣極具私密一隅的單邊花園洋房被大自然美景所環抱，完美體現了奢華生活的最佳典範。

罕有樓高僅兩層的獨立單邊洋房實用面積2,405平方呎，提供寬敞戶外空間。室內設計品味時尚，裝潢高雅氣派不凡，間隔與別不同，巨型擴展空間實用碩大無朋，多處戶外空間可直通豪華度假式游泳池和私家入契花園，是享受寧靜或舉辦派對聚會的理想場所。此外，全屋時尚設計，廚房設有廚房中島，客廳、偏廳及客房均可連接全海景草地花園及私人泳池，盡顯奢華。洋房其他亮點包括五間睡房加一間書房，銀線灣優美全海景，停泊六車的一個巨型車庫及傭人的獨立起居套房。



Sumptuous townhouse in Clear Water Bay

清水灣奢華洋房別墅

5 rooms (2 en-suites), 3.5 bath, private huge garden and terrace

Saleable 實用 2,405 s.f.

Sale 售 \$168,000,000 (Negotiable 議價)

Inquiries 查詢 ☎ 6535 2866 Mr. Lai 黎先生

Property No. 物業編號 CWB-WLSC-2304

SALE 出售

Sai Kung & Clear Water Bay 西貢及清水灣



Serene enclave

優閒樂土

Situated in a serene location, just adjacent to Clearwater Bay Country club, this 3-storey semi-detached colonial house overlooks lovely green and sea views.

The cozy marble flooring offers a welcoming atmosphere, and a touch of elegance is added with a number of tailor-made pieces of furniture. The massive outdoor terrace is the perfect spot for mingling and gardening.

With an excellent gated security management, this idyllic residential estate also offers exclusive recreational facilities for residents including outdoor swimming pool, tennis court and huge lawn waterfront garden.



這樓高三層的半獨立式殖民地別墅位於寧靜的地泉，毗鄰清水灣鄉村俱樂部，俯瞰怡人的翠綠色和海景。

舒適的大理石地板營造出溫馨的氛圍，而獨樹一幟的家具則為別墅增添一絲優雅。巨大的戶外平台是親友歡聚和園藝的理想地點。

這世外桃源式的屋苑擁有嚴密的保安管理，而住戶更可享專屬的娛樂休閒設施，包括戶外游泳池、網球場和巨大草坪的海濱花園。

In a Serene Enclave — Just off CWB Country Club

優閒樂土 — 清水灣鄉村俱樂部

4 bed (2 Ensuites), 3.5 bath, 2 fixed cars, private terrace & garden

Saleable 實用 2,100 s.f.

Sale 售 ~~\$46,000,000~~ ~~\$40,000,000~~ \$38,000,000

Inquiries 查詢 ☎ 6535 2866 Mr. Lai 黎先生

Property No. 物業編號 CWB-WLFV-2309





Sea View Mediterranean – Corner House with Private Pool

尊貴高雅建築群，單邊海景私泳屋

4 rooms (3 En-suites), 4 bath, Twin maid's rooms with bath, Garage (6 cars)

Prestigious address, exclusive development. Mediterranean-style corner house with a spacious self-owned garden, private swimming pool and sea view. Deluxe clubhouse facilities & excellent security

歐陸菲諾港海灣情懷建築風格，自成一角外型統一宏偉，氣派顯赫大宅巨屋，臨海生活標誌，連綿山海疊疊美景，嚴密保安大單邊花園，私人泳池，最佳位置董事屋

Saleable 實用 3,350 s.f. (Approx. 約)

Sale 售 ~~\$98,000,000~~ \$88,000,000

Inquiries 查詢 ☎ 6535 2866 Mr. Lai 黎先生

Property No. 物業編號 CWBTP-SS-2109



Can be sold via company shares transfer
可以公司轉讓股份形式買賣



Private Huge Garden Corner House

地中海式別墅 罕有私屬巨園

3 bed, 2 bath, drive-in garden, park over 10 cars

Unique 2-story English-style house. Drive-in of the private gate toward over 4000 s.f. private garden – a rare find! Peace, tranquility, and fresh air, surrounded by lush greenery, mountains, and trees – perfect for retirement, pets and kids

二層英式獨特洋房，私屬大園連接逾4000呎巨型私草地花園及私屬泊車場。亭深處處連綿山巒翠綠環繞，城市綠洲8分鐘連接港鐵，自成一角回抱自然，退休、寵物、小孩樂園

Saleable 實用 1,885 s.f.

Sale 售 ~~\$68,000,000~~ \$59,000,000

Inquiries 查詢 ☎ 6535 2866 Mr. Lai 黎先生

Property No. 物業編號 CWB-WLPSW-2307



SALE 出售

Sai Kung & Clear Water Bay 西貢及清水灣



Silverstrand — Panoramic Sea View, Dream House

銀線灣 — 珍藏之選，一見難忘層層全海屋

4 beds (2 En-suites), 3 bath, private terrace & garden

Serene location, in “Core Silverstrand”. Small development with breathtaking full sea views for each floor. Private garden, garage, great potential

銀灣核心寧謐地段，永無阻擋天連海，海連天環迴全景盡覽無遺，優閒簡約別墅屋苑，擁獨立花園車庫天台，優質潛力巨大，超值收藏之選

Saleable 實用 1,583 s.f.

Sale 售 \$66,000,000

Inquiries 查詢 ☎ 6535 2866 Mr. Lai 黎先生

Property Search No. 物業搜尋編號 CWB-PSS-V-2202



Silverstrand Sea View — Amazing Spacious Area

銀線灣全海景 — 驚喜魅力無限

4 bed, 3 bath, covered 2 cars

Enjoying full sea view of each floor. The lofty ceiling throughout with separated living and dining area. The extra family area provides ample inspiration for arranging multi-usage

銀線灣寧謐小屋苑，位置優越獨享層層廣闊全海景，罕有劇院式特高樓底，擴展空間多用途巨型空間，提供家庭可塑性靈感，花園車庫設備應有盡有

Saleable 實用 2,252 s.f.

Sale 售 ~~\$85,000,000~~ \$79,000,000

Inquiries 查詢 ☎ 6535 2866 Mr. Lai 黎先生

Property No. 物業編號 CWB-WLVTH-2207





Silverstrand — Charming Family Townhouse

銀線灣 管理屋苑小品屋

2 bed, 3.5 bath, covered 2 cars

2-story comfortable townhouse with a lovely sea view and lots of character. A private terrace, rooftop, and 2 en-suites are ideal for a family

二層高聯排別墅，愜意空間可欣賞山海相連美麗海景。舒適的平台、露台及天台提供了多樣化特色戶外空間，加上雙套間的佈局是簡約家庭的理想選擇

Saleable 實用 1,449 s.f.

Sale 售 \$31,900,000

Inquiries 查詢 ☎ 6535 2866 Mr. Lai 黎先生

Property No. 物業編號 CWB-WLFWG-2307



Expansive Full Sea View — Atop the hill above Silverstrand

銀線灣頂峰山嶺 — 層層全海獨立屋

4 bed (2 En-suites), 3 bath, private terrace & garden

An Expression of Elegance. Extremely high privacy, stylish detached house. Lofty high ceiling with floor-to-ceiling windows. Breathtaking full view of Silverstrand seaside

銀線灣頂峰，天高地利，顯赫家庭愛完美，嚴密保安名人私隱之選，獨立式超高樓底，時尚落地玻璃設計別墅，俯瞰壯麗寧謐絕美銀線灣層層全海景

Saleable 實用 1,789 s.f.

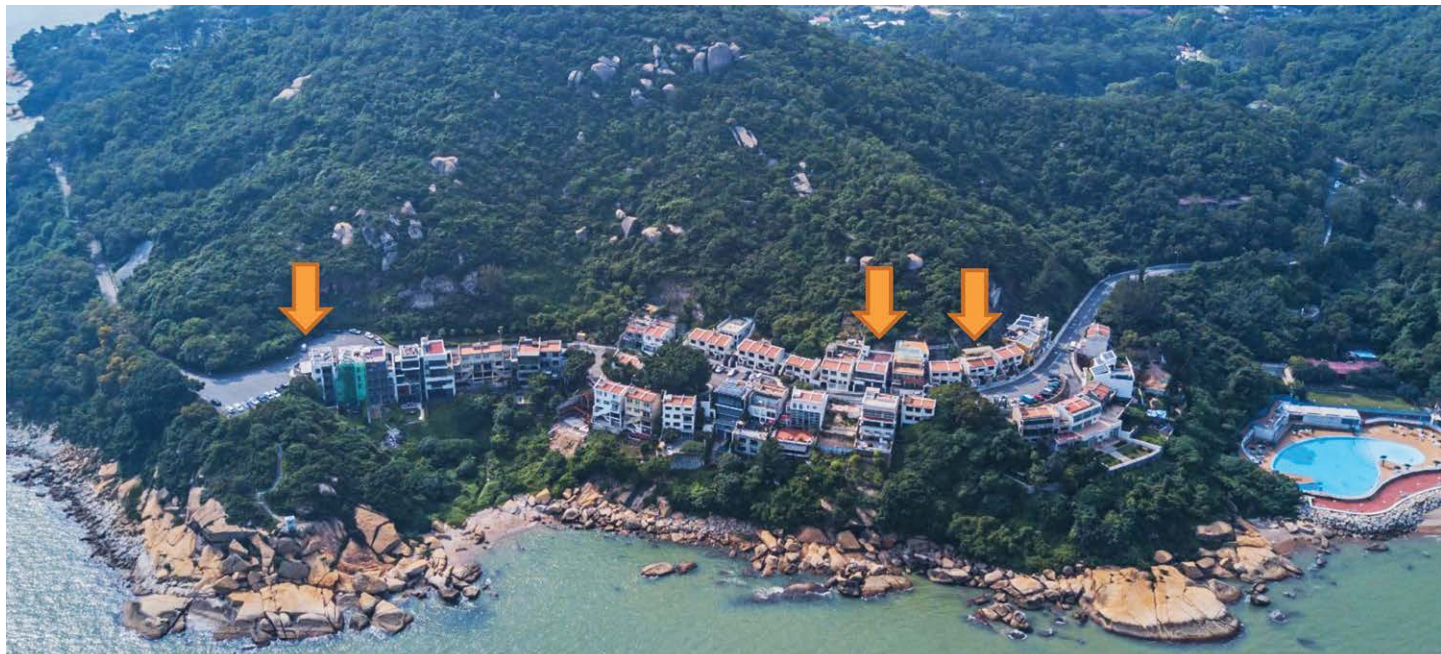
Self-owned Garden 入契花園 2,003 s.f.

Sale 售 \$98,000,000

Inquiries 查詢 ☎ 6535 2866 Mr. Lai 黎先生

Property No. 物業編號 CWBSS-RBV-2104





Contemporary Masterpiece

當代奢華

Surrounded by the natural beauty of green country parks and natural beaches, these 3 family single lot houses are situated in the most prestigious, private and picturesque location of Macau. Total 3 single lot houses (1 five-storey & 2 two-storey) boast beautiful architectural details, high ceilings, exceptional layouts and luxurious amenities overlooking panoramic sea and mountain views. Particularly, the five-storey house is equipped with a private elevator and an indoor swimming pool, offering an indulgent option for relaxation or exercise.

The houses are also within close proximity to the Macau Golf and Country Club, Coloane Village, the entertainment strip in Taipa including luxury hotels such as Ritz Carlton, Four Seasons, MGM, Banyan Tree, and with easy access to the Lotus Bridge to Hengqin, Zhuhai.



這三間家庭式獨立洋房別墅位於澳門最尊貴、私隱度高及美景如畫的地段，四周被郊野公園及自然海灘所環抱。合共三間獨立洋房別墅（其中一間樓高五層，另外兩間樓高兩層）坐擁華麗細膩的室內設計、享高樓底、間隔實用，連奢華設施，優美海景及山景一覽無遺。其中樓高五層的洋房別墅更設私家升降機及室內游泳池，可放鬆身心，盡享奢閒之樂。

洋房別墅鄰近澳門高爾夫球鄉村俱樂部、路環村、氹仔娛樂區，包括五星級奢華酒店，如麗思卡爾頓酒店、四季酒店、美高梅、悅榕莊，經蓮花橋便可輕鬆抵達珠海橫琴，十分便利。



3 luxurious modern single lot houses in Macau

澳門 3 間豪華時尚獨立洋房別墅

3 bed, 2 bath, 1 car park

Area 面積 3,344 s.f. to 5,478 s.f.

Sale 售 \$36,000,000 to \$88,000,000

Inquiries 查詢 ☎ 9027 2100 Louis Wong 黃先生

Property No. 物業編號 mac01, mac02, mac03



如何購買英國商業物業

英國商業物業較住宅能提供更長，更穩定和更高的租金回報；卻可以比住宅更容易管理。但如何入手？有哪些事項要注意？英國與香港市場的分別在哪裡？由豐富實戰經驗的皇家特許測量師提供免費一對一諮詢。

Commercial properties in the UK provide opportunities for overseas investors with long, stable rental income and higher yields than residential properties; still they can be easier to manage than residential. But how to invest? What do you need to know before purchase? What are the differences between UK and HK markets? We are pleased to provide free, one-to-one consultation.

Prime Covent Garden retail-led investment opportunity

柯芬園整幢永久業權投資機會

- Located on the highly desirable and sought after retail pitch with highest footfall and excellent connectivity
- Unbroken parade of 6 contiguous buildings comprising 21,001 sq ft of prime retail, office and residential accommodation
- Total passing rent of £3,929,161 p.a.
- Freehold

- 物業位於極優越和受歡迎的零售黃金地段，人流暢旺，交通網絡完善
- 6棟相連的建築組成，共21,001平方呎的優質零售、辦公和住宅面積
- 總年租金收入為3,929,161英鎊
- 永久業權



Guide Price £90,000,000 @£4,285 per sq ft
指標價

Net Yield c. 4.3%
淨收益率

Property No. 6205ME

ENQUIRIES 查詢

WhatsApp  2152 4888 KS Koh 許先生 ks.koh@landscape.com



Rarely available prime Mayfair serviced apartments

倫敦梅菲爾罕有優質服務式住宅

- Situated in a prominent and prestigious location of Mayfair, close to Hyde Park and Green Park
- Comprising c.26,000 sq ft accommodation with 25 luxury apartments from 1-bed to penthouse
- Freehold

- 物業坐落於梅菲爾尊貴顯赫的地段，鄰近近海德公園和格林公園
- 面積約26,000平方呎，提供一房到頂層單位，共25間豪華住宅
- 永久業權

Guide Price
指標價

£65,000,000 @£2500 per sq ft

Property No. 4600B



High yield mixed-use investment

高回報混合用途投資機會

- Situated in a prominent location of North London within close proximity to the London Metropolitan University and the Emirates Stadium (home of Arsenal FC)
- Comprising 4,373 sq ft retail (ground floor) and residential (four 1-bed & one 3-bed apartments) accommodations
- Fully let at a total passing rent of £163,740 p.a.
- Freehold

- 位於倫敦北部的優越位置，緊鄰倫敦城市大學和酋長大球場（阿仙奴足球會主場）
- 面積4,373平方呎的零售（地面層）和住宅（四間一房和一間三房住宅）空間
- 零售和五個住宅單位已全數租出，年租金總收入為163,740英鎊
- 永久業權

Guide Price
指標價

£1,750,000 @£400 per sq ft

Net Yield
淨收益率

c. 8.8%

Property No. 4058HM

ENQUIRIES 查詢

WhatsApp 2152 4888 KS Koh 許先生 ks.koh@landscape.com



Well secured, dominant, convenience store close to Luton Airport 鄰近倫敦盧頓機場穩健可靠便利店

- Dominant and well established convenience store, strategically located in close proximity to London Luton Airport
- Comprising a standalone convenience store of 3,216 sq ft and dedicated car park, on a site of 0.7 acres (30,492 sq ft)
- Single let to Tesco Stores Limited at a passing rent of £64,351.86 p.a.
- Freehold

- 佔主導地位，穩健便利店，地理位置優越，鄰近倫敦盧頓機場
- 佔地0.7英畝（30,492平方呎），包括一間3,216平方呎的便利店和專用停車場
- 由Tesco Stores Limited單一承租，年租金收入為 64,351.86英鎊
- 永久業權

Guide Price £1,050,000 @£326 per sq ft
指標價

Net Yield c. 5.7%
淨收益率

Property No. 1288C



Highly sought after retail in London commuter town 倫敦通勤城市極受歡迎零售投資

- Situated in the growing affluent commuter location of Streatham with excellent transport links into central London
- Totalling 10,644 sq ft arranged over ground and first floors
- Single let to Iceland Foods Ltd with a passing rent of £172,000 p.a.
- Freehold

- 物業位於斯特里薩姆，是日益富裕的倫敦通勤城市，提供通往倫敦市中心的優良交通網絡
- 面積10,644平方呎，提供地面層及一樓
- 由Iceland Foods Ltd單一承租，年租金收入為172,000英鎊
- 永久業權

Guide Price £2,150,000 @£202 per sq ft
指標價

Net Yield c. 7.5%
淨收益率

Property No. 2112C

ENQUIRIES 查詢

WhatsApp 2152 4888 KS Koh 許先生 ks.koh@landscape.com



Prominent corner public house investment in London suburb

倫敦市郊優越大單邊大型酒吧穩定收入

- Situated in a prominent leisure & retailing pitch of Romford, a popular and busy London suburb, benefitting from consistent and strong footfall
- 9,330 sq ft property arranged over ground, basement and first floors – benefits from two beer gardens
- Single let to Hops Pub Company Ltd till 2044 at a passing rent of £186,871 p.a. with annual RPI-linked rent increase
- Freehold

- 物業位於羅姆福德市中心的主要休閒和零售地段，客流量持續強勁，是倫敦一個受歡迎、繁忙的近郊通勤市鎮
- 9,330平方呎的物業分佈在地面層、地庫和一樓 — 並有兩個啤酒花園
- 由Hops Pub Company Ltd單一承租至2044年，年租金收入為186,871英鎊，每年與零售物價指數掛鉤租金增長
- 永久業權

Guide Price £2,250,000 @£241 per sq ft
指標價

Net Yield c. 7.8%
淨收益率

Property No. 3062B



High yielding retail investment

高收益零售投資機會

- Located in an affluent South East, coastal resort town, Eastbourne benefitting from a number of tourist attractions
- Totaling 36,508 sq ft attractive retail parade arranged over basement, ground, first and second floors
- Multi-let to national retailers at a total passing rent of £306,519 p.a.
- Freehold

- 物業坐落於伊斯特本，是英國東南部一個富裕的海濱度假小鎮，擁有眾多旅遊景點
- 零售面積總計36,508平方呎，包括七個相連零售舖位，提供地庫、地面層、一樓和二樓
- 由多個全國性零售商承租，年租金收入為306,519英鎊
- 永久業權

Guide Price £3,200,000 @£88 per sq ft
指標價

Net Yield c. 9.0%
淨收益率

Property No. 3388C

ENQUIRIES 查詢
WhatsApp 2152 4888 KS Koh 許先生 ks.koh@landscape.com



Rare opportunity to acquire a prime retail investment in Richmond

獲得優質零售投資的難得機會

- Situated in Richmond-upon-Thames, a highly prosperous and affluent commuter town in south west London
- Providing 2,492 sq ft retail accommodation arranged on ground floor
- Single let to Oliver Bonas Ltd at a passing rent of £110,000 p.a.
- Virtual freehold

- 位於倫敦西南部高度繁榮富裕的通勤小鎮里奇蒙
- 面積2,492平方呎的零售地面層
- 由Oliver Bonas Ltd單一承租，年租金收入為110,000英鎊
- 近乎永久業權

Guide Price £1,600,000 @£642 per sq ft
指標價

Net Yield c. 6.5%
淨收益率

Property No. 2172C



Prime leisure & retail building in the heart of Birmingham

伯明翰市心臟地帶休閒及零售大樓

- Located in a prominently positioned corner pitch in the heart of Birmingham
- Attractive building (10,044 sq ft) arranged over basement, ground and three upper floors
- Multi-let at a total passing rent of £430,645 p.a.
- Freehold

- 物業位處伯明翰心臟地帶，位處優越的大單邊轉角位
- 具吸引力的建築（10,044平方呎），提供地庫、地面層和三層上層
- 由四個穩健租戶承租，年租金總收入為430,645英鎊
- 永久業權

Guide Price £4,750,000 @£473 per sq ft
指標價

Net Yield c. 8.5%
淨收益率

Property No. 5397C

ENQUIRIES 查詢

WhatsApp  2152 4888 KS Koh 許先生 ks.koh@landscape.com



**Prime en bloc residential building
(45-min ride to Ikebukuro station)**
優質獨棟住宅 (距離池袋站45分鐘車程)

- Steel 3-storey structure located in Tsurugashima City, Saitama, a city blessed with abundant nature and popular as a bedroom community
- Land area 341.11 sq m and gross building area 562.53 sq m
- 9-min walking distance to Sakado station on Tobu Tojo Line, 45-min ride to Ikebukuro station and 55-min ride to Shinjuku station
- Built in August 2023
- Corporate lease for 30 years
- Freehold

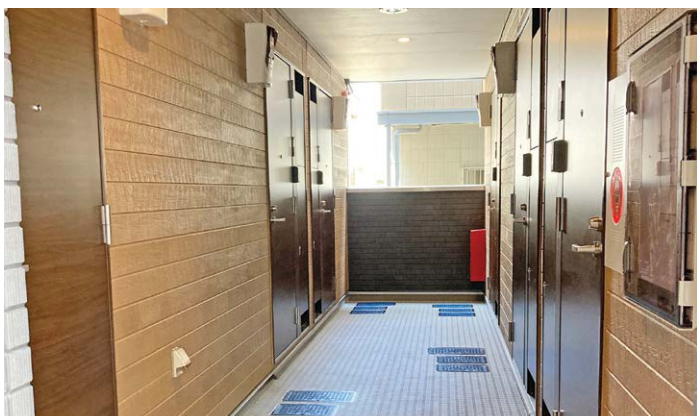
- 位於埼玉縣鶴島市的鋼骨製三層住宅大廈，是自然資源豐富、備受歡迎的住宅都市
- 土地面積341.11平方米，總建築面積562.53平方米
- 物業距離東武東上線坂戸站僅9分鐘步程，45分鐘車程可抵達池袋站，55分鐘車程可抵達新宿站
- 建於2023年8月
- 單一公司租客，租期30年
- 永久業權

Guide Price JPY 249,100,000 (tax incl 連稅)
指標價 (Approx. HK\$13,100,000)

Gross Yield 5.3%
收益率

Property No. JP1625WP

ENQUIRIES 查詢
WhatsApp 2152 4888 KS Koh 許先生 ks.koh@landscape.com



**Brand new en bloc residential building
(40-min ride to Tokyo station)**
全新獨棟住宅（距離東京站40分鐘車程）

- Steel 3-storey structure located in Chiba-city, Chiba, a convenient yet tranquil city close to Tokyo city centre
- Land area 318.29 sq m and gross building area 527.41 sq m
- 7-min walking distance to Shin-Chiba Station on Keisei Electric Railway, 13-min to Chiba Station on Sobu Line and 40-min ride to Tokyo Station
- Built in July 2023
- Corporate lease for 30 years
- Freehold

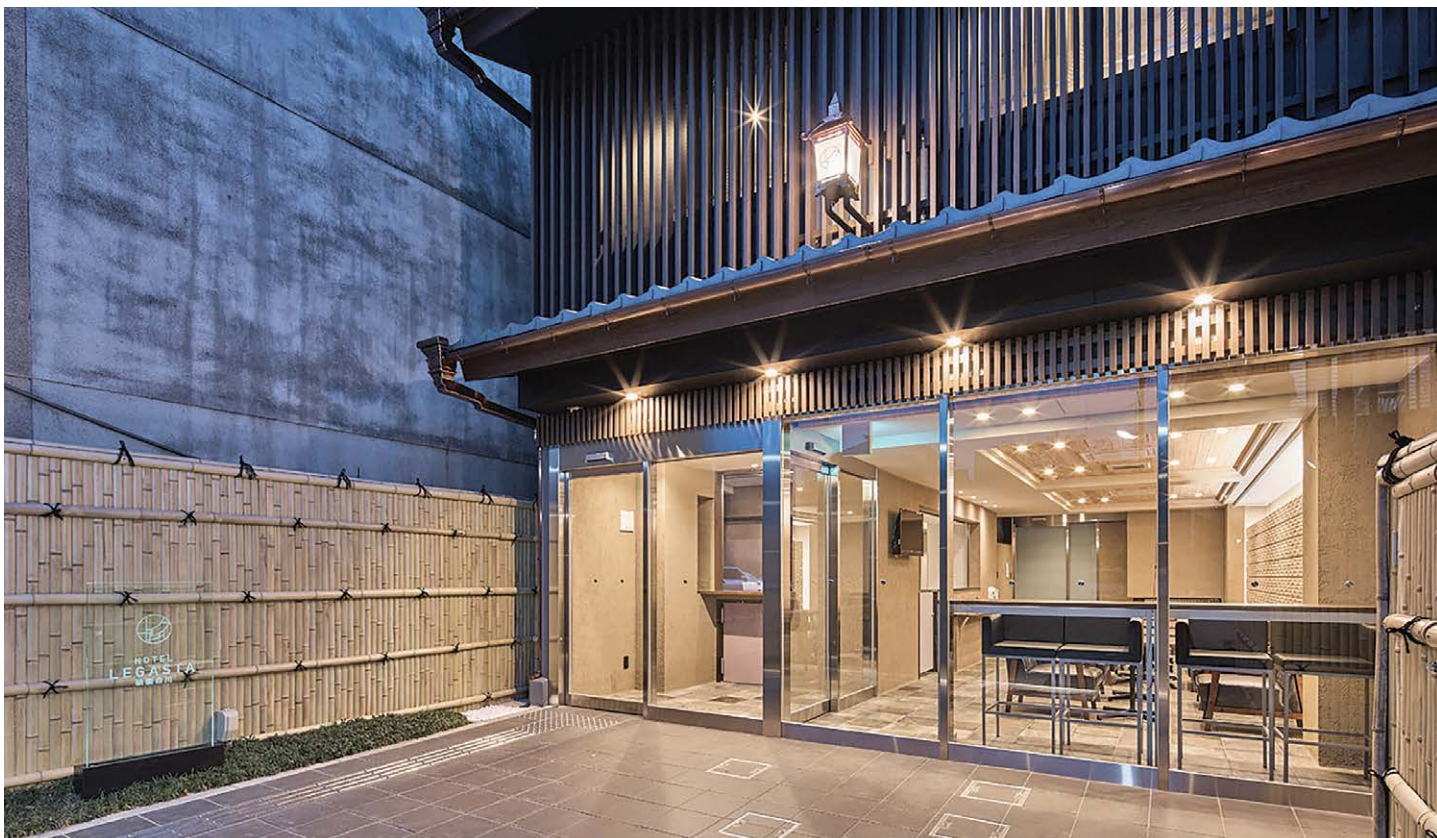
- 位於千葉市的鋼骨製三層住宅大廈，是鄰近東京市中心，既便利且寧靜的城市
- 土地面積318.29平方米，總建築面積527.41平方米
- 物業距離京成電鐵新千葉車站僅7分鐘步程，距離總武線千葉車站僅13分鐘步程，40分鐘車程可抵達東京站
- 建於2023年7月
- 單一公司租客，租期30年
- 永久業權

Guide Price JPY 283,800,000 (tax incl 連稅)
指標價 (Approx. HK\$14,800,000)

Gross Yield 5.1%
收益率

Property No. JP1626WP

ENQUIRIES 查詢
WhatsApp 2152 4888 KS Koh 許先生 ks.koh@landscape.com



Boutique riverside hotel in Kyoto 京都精品河畔酒店

- Steel frame structure with 5-storey located in a historic townscape district
- Land area 219.97 sq m and total floor area 552.30 sq m with total 18 rooms
- 2-min walking distance to Higashiyama Station on Kyoto Metro and 9-minute walking distance to Sanjo Station on Keihan Electric Railway
- Built in January 2019
- Freehold

- 酒店位於歷史悠久的城鎮景觀區，鋼框架結構建築，樓高五層
- 土地面積219.97平方米，總樓面面積552.30平方米，共有18間客房
- 酒店距離京都地鐵東山站僅2分鐘步程，京阪電車三條站僅9分鐘步程
- 建於2019年1月
- 永久業權

Guide Price
指標價

JPY 527,887,800 (tax incl 連稅)
(approx. HK\$28,000,000)

Property No. JP1580K

ENQUIRIES 查詢

WhatsApp 2152 4888 KS Koh 許先生 ks.koh@landscape.com



Modern Japanese style hotel in Kyoto 京都時尚日式酒店

- RC structure with 5-storey and 1 basement located in a scenic landscape conservation area
- Land area 236.19 sq m and total floor area 824.52 sq m with total 20 rooms
- 3-min walking distance to Higashiyama Station on Kyoto Metro and 10-minute walking distance to Sanjo Station on Keihan Electric Railway
- Built in May 2021
- Freehold

- 酒店位於風景秀麗的保護區內，鋼筋混凝土結構建築，樓高五層連一層地庫
- 土地面積236.19平方米，總樓面面積824.52平方米，共有20間客房
- 酒店距離京都地鐵東山站僅3分鐘路程，京阪電車三條站僅10分鐘路程
- 建於2021年5月
- 永久業權

Guide Price
指標價

JPY 1,080,894,000 (tax incl 連稅)
(approx. HK\$57,000,000)

Property No. JP1582K

ENQUIRIES 查詢

WhatsApp 2152 4888 KS Koh 許先生 ks.koh@landscape.com

LEASE 出租

Midlevels East 東半山



Chantilly, 6 Shiu Fai Terrace, Midlevels East

東半山 肇輝台6號

- ▶ 傳統豪宅區罕罕寬闊大戶，3.4米特高樓底
- ▶ 莊園設計重演法式建築藝術
- ▶ 配置國際著名廚具潔具品牌，包括Sub-Zero雪櫃及Gaggenau廚具
- ▶ 酒店式玫瑰典雅大堂設計
- ▶ 專屬電梯直達私人電梯大堂
- ▶ 會所設有游泳池、健身室及宴會廳

尚餘兩個單位放租:

Unit 6A (5-bed)

Saleable 實用 2,816 s.f.

Lease 租 \$130,000 incl.

Unit 11B (4-bed)

Lease 租 ~~\$132,000~~ incl. (Leased)

Unit 12A (5-bed)

Saleable 實用 2,816 s.f.

Lease 租 \$135,000 incl.

Unit 15A (5-bed)

Lease 租 ~~\$140,000~~ incl. (Leased)

Unit 15B (4-bed)

Lease 租 ~~\$140,000~~ incl. (Leased)

Inquiries 查詢 ☎ 6535 9918 Josephine Yuen 阮小姐

Property No. 物業編號 136282, 136288

