

The Key

SELECT DELUXE HOMES

太宅®

VOLUME 95 | November 2012

環視維港

VICTORIA HARBOUR PANORAMA

LANDSCOPE

CHRISTIE'S
INTERNATIONAL REAL ESTATE

W WINFIELD

VENTRIS ROAD - HAPPY VALLEY



1940 - 2468 SQFT
3 - 4 BEDROOMS

LEASING

8102 8366

WWW.WINFIELD-VENTRIS.HK



| | | | |
|----|--|----|--|
| 02 | MONTHLY HIGHLIGHT Hong Villa 中半山 峰景花園 | 20 | Southside and the Peak lease 南區及山頂 出租 |
| 04 | SPECIAL FEATURE Enchanting Harbour 迷人維港 | 25 | FEATURE From fashion to furnishing 時裝到家具設計 |
| 05 | Southside and the Peak sale 南區及山頂 出售 | 27 | Midlevels Central & West lease 中半山及西半山 出租 |
| 11 | HIGHLIGHT Full View Court 跑馬地 富威閣 | 32 | HIGHLIGHT Mirror Marina 西半山 鑑波樓 |
| 12 | Midlevels Central & West sale 中半山及西半山 出售 | 33 | Midlevels East & Happy Valley lease 東半山及跑馬地 出租 |
| 14 | Midlevels East & Happy Valley sale 東半山及跑馬地 出售 | 35 | SPECIAL FEATURE London Properties 倫敦物業 |

HOW MAY YOU LIST YOUR PROPERTY WITH THE KEY?

怎樣在《大宅》刊登您的出售／出租物業？

If you would like to see your property listed in The Key in the next issue, you may call Loretta Lui at 3102 4818 or visit us at www.landscape-christies.com/sell_let. Or you may simply fill out the space below and fax to us at 2866 0015.

如果您想將出售/出租物業刊登於大宅，可致電3102 4818與呂小姐聯絡，或登上 www.landscape-christies.com/sell_let。或者您可以填寫下面的表格傳真至2866 0015。

Property to be listed 物業

Asking Rental / Sale Price 租金 / 售價

Floor Area 面積

Contact Person 聯絡人

Telephone 電話

Email 電郵地址

Our KeyPersons will contact you for follow-up works.

我們的大宅專員會馬上與您聯絡



As the welcome cool weather starts to arrive in Hong Kong after another long, hot summer, our thoughts turn once again to spending more time outdoors. Whether hiking in the country parks, camping on a beach or simply throwing open your windows at home, there's nothing as enjoyable and relaxing as a breath of fresh air.

Our three highlighted properties this month all boast highly desirable outdoor spaces – two with their own balconies, and one with its own private roof accessed by an internal staircase... undoubtedly one of the greatest luxuries to be found in Hong Kong, and great for entertaining your guests.

悠長的炎炎夏日終於褪去，香港近日秋意漸濃，讓人不禁又想多花點時間留在室外。無論你打算去郊野公園遠足、到沙灘露營，還是簡簡單單在家中開扇窗，始終沒有甚麼比呼吸一口清新空氣來得放鬆消遙。我們今月介紹的三間住宅都有讓人稱羨的戶外空間，當中兩間附設露台，另一間更有室內樓梯連接的私人天台…毫無疑問這些都是香港最奢華的戶外空間，最適合用來宴客。

Published and distributed by

LANDSCOPE

CHRISTIE'S
INTERNATIONAL REAL ESTATE

Find us on:
facebook.

Designed by

PERSPECTIVE透視

Landscape Christie's International Real Estate C-018733

Tel: +852 2866 0022

Fax: +852 2866 0015

Email: info@www.landscape-christies.com

Website: www.landscape-christies.com

Address: Unit 3106, 31/F, Hopewell Centre,
183 Queen's Road East, Wanchai, Hong Kong

Tel: +852 2525 0287

Fax: +852 2526 3860

Email: info@perspectiveglobal.com

Website: www.perspectiveglobal.com

Address: Rm 2408, Dominion Centre,
59 Queen's Road East, Wanchai, Hong Kong

The information, text, photos, analyses and projections contained herein are provided solely for the convenience of prospective clients and no warranty or representation as to their accuracy, correctness or completeness is made by Landscape Christie's International Real Estate, Landscape Surveyors Limited, Landscape Realty Limited or the owners, none of whom shall have any liability or obligation with respect thereto. Interested parties should rely on their own investigations, interpretations and analyses in connection with the purchase or letting thereof.

Information has been provided to us by sources deemed reliable, but no warranty or representation is made as to its accuracy, correctness or completeness. These offerings are made subject to contract, correction of errors, omissions, prior sale or lease, change of price or terms or withdrawal from the market without notice. The contents of The Key are for reference only and do not constitute all or any part of a contract. Copyright 2012

Each Office is Independently Owned and Operated



VICTORIA 環視維港 HARBOUR PANORAMA

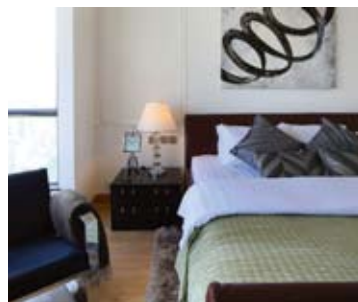
Photography: Daniel Tam

Views are everything at this four-bedroom (three ensuite) apartment in Midlevels Central. Spanning 3,833 s.f., it boasts panoramic vistas of Victoria Harbour best appreciated from the living room and balcony. The apartment was recently renovated, offering a classic yet modern aesthetic to the interiors.

A light, neutral colour palette is combined with natural light flowing through the large windows, creating a cosy home environment. Ideal for large families, it comes with four bathrooms, a large living room and dining room, a fully-equipped kitchen, a family room, two maid's rooms, a utility room and two covered car parks. It is the only unit on its floor, offering privacy for homeowners – and is extremely good value, priced at \$115 million for sale, or \$160,000 to lease.

Situated in a popular neighbourhood of Midlevels, Hong Villa is secluded in the tree-lined path of Bowen Road. It is conveniently located, within easy driving and walking distance to business and entertainment districts. Taxis are easily hailed, and there are minibuses direct to Central pier.

The 29-storey apartment block has only two units per floor from the first to 17th floors, and one unit on each floor from the 18th to 29th floors. Residents can take advantage of recreational facilities such as a gym, an outdoor swimming pool and children's playground.



Hong Villa 峰景花園
12 Bowen Road,
Midlevels Central
中半山 寶雲道12號

3,833 s.f.
INQUIRIES
9080 6686 Teresa Lau 劉小姐
SEARCH REFERENCE NO. 7396

位於中半山的四房單位（三間為套房），景觀勝於一切。住宅面積達3,833平方呎，坐擁維港迷人環迴景緻，客廳及陽台的景色更是一絕。單位最近才完成翻新，一室典雅卻當代感十足。

淡淡的中性色調配合從大窗戶照進來的天然日光，的使家居散發舒適恬靜的氣息。單位除了設有四個浴室、偌大客廳、設備齊全的廚房、家庭室及雜物房外，亦有兩間家傭房及兩個有蓋車位。這個一梯一伙單位為屋主提供不少的私穩度，只售1億1千5百萬港元，月租亦只是16萬港元，絕對是物有所值。

峰景花園位於綠樹林蔭的半山寶雲道，屬該帶其中一個受歡迎的住宅區，自成一隅。地理位置相當便利，步行或駕車往商業及娛樂區均十分方便，而且有小巴往返中環碼頭，並有充足的士服務。

峰景花園樓高29層，1樓至17樓每層兩個單位，而18至29樓則每層一個單位。住戶可享用各種消閒設施，包括健身室、室外游泳池及兒童遊樂場。



FARRINGTON INTERIORS

THE MOMENT MADE BEAUTIFUL



Fratelli BOFFI

F THE CLASSICS

GRANDMA
BUCCELLATI

CHRISTOPHER GUY

OO
III.
ART JOURNAL
2004

HUGUES CHEVALIER

CASA
2015
belavita

ARMY
MILITARY AWARD

G
CARPANELLI

Flagship store: 31/F., World Trade Centre, Causeway Bay +852 2808-1000 | Shop: G/F., 8 7 Wong Nai Chung Road, +852 2808-0303

WWW.FARRINGTONINTERIORS.COM



The Legend

東半山 名門

23 Tai Hang Drive

Deluxe apartment with full clubhouse facilities and Victoria Harbour view

東半山豪華住宅，連完善會所設施，享維港景致，可租可售

1,542 s.f.

OFFERED AT \$30,800,000 also for lease
\$73,000 incl.

INQUIRIES 6258 8847 Anthea Ngai 魏小姐

SEARCH REFERENCE NO. 108741



Palatial Crest

西半山 輝煌豪園

3 Seymour Road

Rare 4-bedroom harbour view apartment with great facilities close to Central-Mid-levels Escalators

罕有四房海景單位，享完善設施，鄰近半山扶手電梯

2,177 s.f.

OFFERED AT \$46,000,000

INQUIRIES 6838 2929 Mark Mak 麥先生

SEARCH REFERENCE NO. 96164



Serenade

東半山上林

11 Tai Hang Road

Luxurious brand new apartment close to Causeway Bay

全新豪華住宅大廈，鄰近銅鑼灣

2,617 s.f.

OFFERED AT \$70,659,000

INQUIRIES 9250 0300 Randy Chan 陳先生

SEARCH REFERENCE NO. 72369



Dynasty Court

中半山 帝景園

23 Old Peak Road

Prestigious 4-bedroom apartment with grand clubhouse

著名四房住宅，連豪華會所設施

2,680 s.f.

OFFERED AT \$85,000,000

INQUIRIES 9551 1077 Walker Lam 林先生

SEARCH REFERENCE NO. 18549





Bisney Terrace

薄扶林 碧荔臺

73-79 Bisney Road

Western suburb style low-rise apartment in a tranquil neighbourhood with full sea view

英式低密度鄉郊住宅，環境恬靜，享壯麗全海景

1,129 s.f.

OFFERED AT \$13,800,000

INQUIRIES 9250 0300 Randy Chan 陳先生

SEARCH REFERENCE NO. 124937



Stanford Villa

赤柱 旭逸居

7 Stanley Village Road

Modern low-rise apartment close to Stanley Main Beach

時尚低密度單位，鄰近赤柱正灘

1,052 s.f.

OFFERED AT \$16,600,000

INQUIRIES 6838 2929 Mark Mak 麥先生

SEARCH REFERENCE NO. 36028



Royalton II

薄扶林 豪峰II

116 Pok Fu Lam Road

Bright and airy 3-bedroom apartment with full sea view

光猛通風三房單位，享美麗全海景

1,750 s.f.

OFFERED AT \$21,000,000

INQUIRIES 9250 0300 Randy Chan 陳先生

SEARCH REFERENCE NO. 121728



South Bay Towers

淺水灣 南灣大廈

59 South Bay Road

Popular 2-bedroom apartment with facilities and sea view

受歡迎兩房海景住宅，連優質設施

1,433 s.f.

OFFERED AT \$23,000,000

INQUIRIES 6838 2929 Mark Mak 麥先生

SEARCH REFERENCE NO. 109586



Shek O Village

大潭 石澳村

Shek O Village Road

Rare stylish townhouse in Shek O with ample open space for sale

石澳罕有特色排屋，環境寬敞開揚

1,800 s.f. (plus 600 s.f. roof)

OFFERED AT \$28,000,000

INQUIRIES 9250 0300 Randy Chan 陳先生

SEARCH REFERENCE NO. 94583



Ruby Court

淺水灣 嘉麟閣

55 South Bay Road

Renowned 3-bedroom apartment with comprehensive clubhouse facilities in tranquil South Bay

著名三房單位，享完善會所設施，環境寧靜

1,780 s.f.

OFFERED AT \$32,500,000

INQUIRIES 9093 3381 Stephen Chan 陳先生

SEARCH REFERENCE NO. 110325



Shouson Garden

壽臣山 壽山花園

6A Shouson Hill Road

Charming 3-bedroom low-rise apartment in a lush green and serene area in Shouson Hill

迷人三房低密度住宅，位於翠綠和諧的壽臣山，可租可售
1,598 s.f.

OFFERED AT \$35,000,000 also for lease \$65,000 incl.

INQUIRIES 9080 6686 Teresa Lau 劉小姐

SEARCH REFERENCE NO. 13813



The Redhill Peninsula

大潭 紅山半島

18 Pak Pat Shan Road

Tastefully decorated sea view apartment with facilities at Tai Tam waterfront

大潭海濱單位，配以品味裝修，享美麗海景及完善設施
2,153 s.f.

OFFERED AT \$36,500,000

INQUIRIES 6330 7888 Cora Ko 高小姐

SEARCH REFERENCE NO. 117704



The Brentwood

淺水灣 蔚峰園

11 Repulse Bay Road

Cozy 3-bedroom apartment on Repulse Bay Road with stunning sea view
淺水灣道舒適三房單位，享壯麗海景

1,556 s.f.

OFFERED AT \$36,500,000

INQUIRIES 9229 2396 Elaine Chow 周小姐

SEARCH REFERENCE NO. 42872



Hong Kong Parkview

淺水灣 陽明山莊

88 Tai Tam Reservoir Road

Well decorated apartment at prestigious location with deluxe clubhouse facilities and mountain view

雅致裝修住宅，地段尊貴，享豪華會所設施及山巒景致
1,925 s.f.

OFFERED AT \$37,000,000

INQUIRIES 6330 7888 Cora Ko 高小姐

SEARCH REFERENCE NO. 113370



Cape Mansions

薄扶林 翠海別墅

56-62 Mount Davis Road

Modern designer flat with full sea view
時尚裝修住宅，享迷人全海景

2,100 s.f.

OFFERED AT \$38,000,000

INQUIRIES 9215 3999 Boris Wong 王先生

SEARCH REFERENCE NO. 109746



Ridge Court

淺水灣 冠園

21A-21D Repulse Bay Road

Contemporary style decorated flat in tranquil location with stunning views

當代時尚裝修住宅，地點寧靜，欣賞壯麗景致

2,300 s.f.

OFFERED AT \$44,000,000

INQUIRIES 9809 8570 Stella Lo 羅小姐

SEARCH REFERENCE NO. 123703



Villa Cecil Phase II

薄扶林 趙苑二期

192 Victoria Road

Huge 4-bedroom apartment with breathtaking sea view
巨大四房單位，享壯麗海景，可租可售

3,467 s.f. (plus 920 s.f. garden)

OFFERED AT \$49,440,000 also for lease \$95,000 incl.

INQUIRIES 9648 6082 Christine Chong 莊小姐

SEARCH REFERENCE NO. 36628



Celestial Garden

淺水灣 詩禮花園

5 Repulse Bay Road

Nice 4-bedroom with fantastic sea view and green view on upper Repulse Bay Road

雅致四房海景單位，享翠綠景色，位於淺水灣道頭段

2,375 s.f.

OFFERED AT \$55,100,000

INQUIRIES 9093 3381 Stephen Chan 陳先生

SEARCH REFERENCE NO. 4130



Pine Crest

淺水灣 松苑

65 Repulse Bay Road

4-bedroom apartment at a prime location overlooking panoramic view of Deep Water Bay

四房單位，交通方便，俯瞰深水灣無敵靚景

2,250 s.f.

OFFERED AT \$58,000,000

INQUIRIES 9215 3999 Boris Wong 王先生

SEARCH REFERENCE NO. 21278



Stanley Court

赤柱 海灣園

9 Stanley Mound Road

Well kept garden townhouse close to Stanley Main Beach and market

優質花園排屋，鄰近赤柱正灘及市場

2,889 s.f. (plus 1,075 s.f. garden and 552 s.f. roof)

OFFERED AT \$61,000,000

INQUIRIES 9648 6082 Christine Chong 莊小姐

SEARCH REFERENCE NO. 136248



3 Repulse Bay Road

淺水灣 淺水灣道3號

Nicely decorated mountain view apartment at a prime location with comprehensive facilities

雅致裝修住宅，享山巒景色，連完善設施，交通方便

2,161 s.f.

OFFERED AT \$67,000,000

INQUIRIES 9809 8570 Stella Lo 羅小姐

SEARCH REFERENCE NO. 37806



Regalia Bay

赤柱 富豪海灣

88 Wong Ma Kok Road

Efficient sea view townhouse with clubhouse facilities

高實用率海景排屋，會所設施完善，可租可售

4,053 s.f. (plus 735 s.f. garden and 1,167 s.f. roof)

OFFERED AT \$70,000,000 also for lease \$170,000 incl.

INQUIRIES 6838 2929 Mark Mak 麥先生

SEARCH REFERENCE NO. 79122

Southside & The Peak SALE

南區及山頂 出售



33 Cape Road

春坎角 環角道33號

Well decorated garden house in quiet Chung Hom Kok with sea and greenery views

春坎角花園大屋，連優質靚裝修，欣賞海港及翠綠景致

3,217 s.f. (plus 492 s.f. garden, 99 s.f. terrace and 446 s.f. roof)

OFFERED AT \$70,000,000

INQUIRIES 6330 7888 Cora Ko 高小姐

SEARCH REFERENCE NO. 122617



Hong Kong Parkview

淺水灣 陽明山莊

88 Tai Tam Reservoir Road

Showflat quality with internal staircases to roof

示範單位式優質住宅，連內置樓梯往天台，可租可售

2,540 s.f. (plus 1,857 s.f. roof)

OFFERED AT \$75,000,000 also for lease \$160,000 incl.

INQUIRIES 9250 0300 Randy Chan 陳先生

SEARCH REFERENCE NO. 28295



Oasis

山頂 欣怡居

8-12 Peak Road

Lower Peak apartment with high ceiling overlooking the Victoria Harbour panorama

樓底特高住宅，俯瞰全維港美景

2,719 s.f.

OFFERED AT \$80,000,000

INQUIRIES 6183 8388 Chris Law 羅先生

SEARCH REFERENCE NO. 122963



Le Palais

大潭 皇府灣

8 Pak Pat Shan Road

Quality waterfront townhouse in serene Tai Tam

高質素海濱排屋，環境和諧寧靜，可租可售

3,393 s.f. (plus 741 s.f. garden)

OFFERED AT \$89,000,000 also for lease \$180,000 incl.

INQUIRIES 6258 8847 Anthea Ngai 魏小姐

SEARCH REFERENCE NO. 112386



Hong Kong Parkview

淺水灣 陽明山莊

88 Tai Tam Reservoir Road

Unique 5-bedroom apartment of a renowned development with deluxe clubhouse facilities

獨特五房單位，位於著名住宅大廈，享豪華會所設施

3,273 s.f.

OFFERED AT \$95,000,000

INQUIRIES 9215 3999 Boris Wong 王先生

SEARCH REFERENCE NO. 29392



37 Repulse Bay Road

淺水灣 淺水灣道37號

Unique penthouse duplex with stunning view and private roof

特色頂層複式單位，享遼闊海景，連私家天台

3,177 s.f. (plus 845 s.f. roof)

OFFERED AT \$100,000,000

INQUIRIES 9093 3381 Stephen Chan 陳先生

SEARCH REFERENCE NO. 33139

LEICHT®
Germany High Quality Kitchen | Since 1928

THE SENSATION
OF MODERN
LIVING

Chest Apply Group | www.leicht.com.hk
Shop No. 201, 2/F, Harbour Centre, 25 Harbour Road, Wanchai, HK
tel + 852 2575 8286 fax + 852 2151 6977

Beijing • Shanghai • Guangzhou • Shenzhen • Hangzhou • Hainan • Macau • Hong Kong



Horizon Ridge

春坎角 海天小築

38-48 Horizon Drive

Boutique townhouse with pool in tranquil neighbourhood

春坎角雅致裝修排屋，地點和諧清靜

3,500 s.f. (plus 201 s.f. garden and 443 s.f. terrace)

OFFERED AT \$128,000,000

INQUIRIES 9871 6828 Louis Wong 黃先生

SEARCH REFERENCE NO. 35220



La Hacienda

山頂 加列山道29-33號

29-33 Mount Kellett Road

Prestigious Peak townhouse with private garden

著名山頂排屋，連私家花園

3,200 s.f.

OFFERED AT \$150,000,000

INQUIRIES 9833 9509 Michelle Chung 鍾小姐

SEARCH REFERENCE NO. 33958



Abergeldie

山頂 種植道52號

52 Plantation Road

Luxurious and modern townhouse located on The Peak with magnificent view of Victoria Harbour

山頂豪華時尚排屋，享壯麗維港景致

3,688 s.f. (plus private terraces)

OFFERED AT \$220,000,000

INQUIRIES 9871 6828 Louis Wong 黃先生

SEARCH REFERENCE NO. 108991



8 Tai Tam Road

大潭 大潭道8號

Magnificent waterfront townhouse with private swimming pool taking in Tai Tam sea view

壯麗海濱排屋，連私家游泳池，享大潭海景，可租可售

5,474 s.f. (plus 945 s.f. garden and 712 s.f. roof)

OFFERED AT \$230,000,000 also for lease \$530,000 incl.

INQUIRIES 9551 1077 Walker Lam 林先生

SEARCH REFERENCE NO. 34709



Severn Eight

山頂 倚巒

8 Severn Road

Luxury 4-bedroom townhouse with postcard view of the harbour

豪華四房排屋，欣賞醉人海港美景

4,306 s.f. (plus 978 s.f. garden and 553 s.f. roof)

OFFERED AT \$270,000,000

INQUIRIES 9833 9509 Michelle Chung 鍾小姐

SEARCH REFERENCE NO. 96956



Bay Villas

壽臣山 南源

57-71 Shouson Hill Road

Rare find sea view townhouse at prestigious Deep Water Bay

罕有海景排屋，地段尊貴

4,869 s.f. (plus 603 s.f. terrace)

OFFERED AT \$300,000,000

INQUIRIES 9250 0300 Randy Chan 陳先生

SEARCH REFERENCE NO. 135517



The Nautilus

淺水灣 南灣道16A號
16A South Bay Road
Tastefully decorated sea view
townhouse in South Bay
淺水灣海景排屋，配以品味靚裝修

4,675 s.f.

OFFERED AT \$320,000,000

INQUIRIES

9871 6828 Louis Wong 黃先生

SEARCH REFERENCE NO. 102786



Bay Villas

壽臣山 南源
57-71 Shouson Hill Road
Huge combined townhouse with
nice decorations in Deep Water Bay
with sweeping sea view
巨大相連大屋，配以華麗裝修，享壯麗海景

10,061 s.f. (plus 671 s.f. garden and
2,125 s.f. roof)

OFFERED AT \$638,000,000

INQUIRIES 9080 6686 Teresa Lau 劉小姐

SEARCH REFERENCE NO. 30925



清幽一角 Cityscape serenity

Full View Court

富威閣
7-9 Happy View Terrace, Happy Valley
跑馬地 樂景台7-9號

1,200 s.f. (plus 845 s.f. roof)

OFFERED AT \$23,300,000

INQUIRIES 6183 8388 Chris Law 羅先生

SEARCH REFERENCE NO. 154386

This 1,200 s.f. apartment in Happy Valley has been stylishly renovated, presenting clean lines, light hardwood floors and a colour palette of white and light grey. The key feature of this two-bedroom (one ensuite) flat is its expansive roof, which can be accessed via a private staircase from the combined living and dining room. The apartment includes one car park space.

Measuring 845 s.f., the roof is equipped for entertaining guests with shaded seating, a barbecue and storage space. Guests and homeowners can get a view of the neighbourhood and greenery.

Full View Court is a colonial style low-rise building in a serene location tucked away from

Broadway Road, yet close to daily amenities in Happy Valley and Causeway Bay, accessible either via public transport or on foot. The three-storey building is a walk-up, with three units per floor.

跑馬地這間1,200平方呎單位翻新成型格住宅，簡約線條配上淺色實木地板，一室白嫩淺灰。兩睡房其中一間為套房，最矚目的特點無疑是其偌大的天台，由私人樓梯連接到單位內的相連客飯廳，另單位附設一車位。

845平方呎的天台最適合款待客人，除了有蓋沙發區外，還有燒烤爐及貯物空間，客人與屋主可共賞四周社區一片翠綠的景色。

富威閣為舊式低層住宅大廈，坐落樂活道環境清幽，但步行或乘搭公共交通工具到跑馬地或銅鑼灣購買日常用品亦十分方便。大廈共三層，每層三個單位，不設升降機。

Midlevels Central & West SALE

中半山及西半山 出售



Valverde

中半山 蔚皇居

11 May Road

2-bedroom flat in prestigious development with comprehensive facilities

中半山兩房單位，地段尊貴，設施完善，可租可售

1,053 s.f.

OFFERED AT \$25,000,000 also for lease \$52,000 incl.

INQUIRIES 6258 8847 Anthea Ngai 魏小姐

SEARCH REFERENCE NO. 2454



Suncrest Tower

中半山 桂瀾苑

1-11 Monmouth Terrace

4-bedroom (3-ensuite) apartment on fringe of CBD

四房連三套房住宅，鄰近商業中心區，可租可售

2,005 s.f.

OFFERED AT \$36,000,000 also for lease \$70,000 incl.

INQUIRIES 9229 2396 Elaine Chow 周小姐

SEARCH REFERENCE NO. 10757



Catalina Mansions

中半山 嘉年大廈

98-100 MacDonnell Road

Colonial mid-rise apartment with tasteful decoration in Midlevels Central

英式中密度住宅，配以品味裝修

2,300 s.f.

OFFERED AT \$38,000,000

INQUIRIES 9551 1077 Walker Lam 林先生

SEARCH REFERENCE NO. 136843



Olympian Mansion

西半山 李園

9 Conduit Road

Large 4-bedroom apartment near Midlevels escalator

巨大四房單位，鄰近半山扶手電梯

2,750 s.f.

OFFERED AT \$42,000,000

INQUIRIES 6258 8847 Anthea Ngai 魏小姐

SEARCH REFERENCE NO. 28734



Clovelly Court

中半山 嘉富麗苑

12 May Road

Spacious 3-bedroom apartment with comprehensive clubhouse facilities on Lower Peak

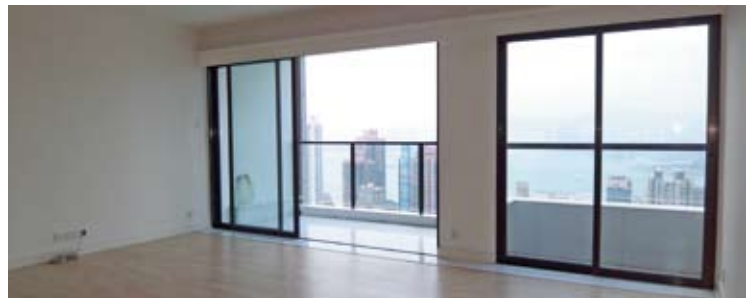
寬敞三房單位，連完善會所設施

1,881 s.f.

OFFERED AT \$43,800,000

INQUIRIES 6258 8847 Anthea Ngai 魏小姐

SEARCH REFERENCE NO. 40580



Hong Kong Garden

西半山 香港花園

8 Seymour Road

Spacious 4 bedrooms apartment with harbour view

寬敞四房單位，享醉人海景

1,744 s.f.

OFFERED AT \$44,000,000

INQUIRIES 9028 0147 Jenson Au 區先生

SEARCH REFERENCE NO. 36536



Tregunter Tower 2

中半山 地利根德閣2座

14 Tregunter Path

Spacious apartment with balcony
and superb clubhouse facilities

中半山寬敞單位，連露台，享豪華會所設施

3,052 s.f.

OFFERED AT \$45,000,000

INQUIRIES 6330 7888 Cora Ko 高小姐

SEARCH REFERENCE NO. 45074



May Tower 1

中半山 梅苑一座

7 May Road

Prime 3-ensuite duplex in Midlevels
Central

三套房複式單位，交通便利

2,850 s.f.

OFFERED AT \$68,000,000

INQUIRIES

9648 6082 Christine Chong 莊小姐

SEARCH REFERENCE NO. 5823



Bowen Mansion

中半山 寶雲大廈

7C Bowen Road

Unique mid-rise apartment with
huge balcony on tranquil Bowen
Road enjoying open green views
獨特中密度住宅，連大露台，位於寧靜寶雲
道，享開揚翠綠景致

4,100 s.f.

OFFERED AT \$80,000,000

INQUIRIES

9551 1077 Walker Lam 林先生

SEARCH REFERENCE NO. 38884



Century Tower 2

中半山 世紀大廈 2座

1A Tregunter Path

Full floor 4-bedroom apartment
with huge living room and facilities
in prestigious address

半山四房住宅，一梯一伙，連巨大客廳及優
質設施，地段尊貴

3,663 s.f.

OFFERED AT \$90,000,000

INQUIRIES

9833 9509 Michelle Chung 鍾小姐

SEARCH REFERENCE NO. 137412



Midlevels East & Happy Valley SALE

東半山及跑馬地 出售



Marlborough House

東半山 保祿大廈

154 Tai Hang Road

Colonial apartment with big balcony and open city view

東半山英式住宅，連大露台，享開揚城市景致

1,250 s.f.

OFFERED AT \$21,000,000

INQUIRIES 6838 2929 Mark Mak 麥先生

SEARCH REFERENCE NO. 36614



Pinewood Garden

渣甸山 松峰園

39 Perkins Road

Colonial low-rise with nice decor in Jardine's Lookout

英式低密度單位，連清雅裝修

1,450 s.f.

OFFERED AT \$22,500,000

INQUIRIES 6838 2929 Mark Mak 麥先生

SEARCH REFERENCE NO. 125385



Flora Garden

渣甸山 慧景園

7 Chun Fai Road

3-bedroom family apartment in Jardine's Lookout

渣甸山三房家庭式住宅

1,518 s.f.

OFFERED AT \$24,000,000

INQUIRIES 6330 7888 Cora Ko 高小姐

SEARCH REFERENCE NO. 99170



Wing On Lodge

跑馬地 永安新村

72-82 Blue Pool Road

Two bedrooms decorated apartment at Happy Valley

跑馬地兩房單位，配以優質裝修

1,308 s.f.

OFFERED AT \$26,900,000

INQUIRIES 9809 8570 Stella Lo 羅小姐

SEARCH REFERENCE NO. 111751



United Mansion

東半山 騰黃閣

7 Shiu Fai Terrace

Spacious 3-bedroom mid-rise in Shiu Fai Terrace

三房中密度住宅，間隔寬敞

2,200 s.f.

OFFERED AT \$30,000,000

INQUIRIES 9551 1077 Walker Lam 林先生

SEARCH REFERENCE NO. 44403



Evergreen Villa

東半山 松柏新村

43 Stubbs Road

High efficiency apartment green view on Stubbs Road

司徒拔道高實用率住宅，享翠綠景致

1,750 s.f.

OFFERED AT \$30,500,000

INQUIRIES 9028 0147 Jenson Au 區先生

SEARCH REFERENCE NO. 40312



The Legend

東半山 名門

23 Tai Hang Drive

Contemporary apartment with full clubhouse facility in Jardine's Lookout
當代時尚住宅，會所設施完善

1,908 s.f.

OFFERED AT \$31,000,000

INQUIRIES 9229 2396 Elaine Chow 周小姐

SEARCH REFERENCE NO. 42555



Villa Monte Rosa

東半山 玫瑰新村

41A Stubbs Road

High efficiency 3-bedroom apartment at prestigious address with
mountain and city views

高實用率三房住宅，地段尊貴，享山巒及城市景色

2,300 s.f.

OFFERED AT \$43,000,000

INQUIRIES 9093 3381 Stephen Chan 陳先生

SEARCH REFERENCE NO. 115646



The Colonnade

東半山 嘉崙臺

152 Tai Hang Road

Nicely decorated 3-bedroom apartment with stunning views
雅致裝修三房單位，享壯麗景致

2,141 s.f.

OFFERED AT \$43,500,000

INQUIRIES 6183 8388 Chris Law 羅先生

SEARCH REFERENCE NO. 49607



Fontana Gardens

東半山 豪園

1-25 Ka Ning Path

Superbly maintained 4-bedroom apartment with spacious balcony close
to Causeway Bay

優質四房單位，連大露台，鄰近銅鑼灣

3,000 s.f.

OFFERED AT \$45,000,000

INQUIRIES 9551 1077 Walker Lam 林先生

SEARCH REFERENCE NO. 109309



Cavendish Heights

渣甸山 嘉雲臺

27-37 Perkins Road

Good upkeep and high efficiency apartment with city view in
Jardine's Lookout

高實用率優質住宅，享城市醉人景致

2,242 s.f.

OFFERED AT \$50,000,000

INQUIRIES 6183 8339 Carman Szeto 司徒小姐

SEARCH REFERENCE NO. 32317



Bellevue Court

東半山 碧蕙園

41 Stubbs Road

Older style mid-rise apartment on prime Stubbs Road enjoying
open city views

傳統中密度住宅，位於交通方便的司徒拔道，享開揚城市景致，可租可售

2,700 s.f.

OFFERED AT \$52,000,000 also for lease \$94,000 incl.

INQUIRIES 9080 6686 Teresa Lau 劉小姐

SEARCH REFERENCE NO. 48161

Midlevels East & Happy Valley SALE

東半山及跑馬地 出售



Fontana Gardens

東半山 豪園

1-25 Ka Ning Path

Huge 4-bedroom apartment with high efficiency on fringe of Causeway Bay

巨大四房單位，實用率高，鄰近銅鑼灣，可租可售

3,300 s.f.

OFFERED AT \$52,800,000 also for lease 110,000 incl.

INQUIRIES 6183 8339 Carman Szeto 司徒小姐

SEARCH REFERENCE NO. 4968



8 Shiu Fai Terrace

東半山 肇輝台8號

Unique duplex with private roof and balcony in Midlevels East for sale

獨特複式單位，連私家天台及露台，罕有放售

3,076 s.f. (plus 746 s.f. roof)

OFFERED AT \$55,000,000

INQUIRIES 9648 6082 Christine Chong 莊小姐

SEARCH REFERENCE NO. 101559



Winfield Building

跑馬地 雲暉大廈

5 Ventris Road

Fully renovated spacious apartment in quiet yet convenient location

全新裝修寬敞住宅，環境清靜，交通方便，可租可售

2,468 s.f.

OFFERED AT \$68,000,000 also for lease \$133,000 incl.

INQUIRIES 6330 7888 Cora Ko 高小姐

SEARCH REFERENCE NO. 151868



Victoria Heights

東半山 威利閣

43A Stubbs Road

Rarely available apartment with huge living room enjoying panorama of the city and Victoria Harbour

罕有住宅單位放盤，連巨大客廳，享遼闊都市及維港景致，可租可售

2,650 s.f.

OFFERED AT \$74,000,000 also for lease \$130,000 incl.

INQUIRIES 9648 6082 Christine Chong 莊小姐

SEARCH REFERENCE NO. 37141



The Hampton

跑馬地 藍塘道45號

45 Blue Pool Road

Tastefully designed and furnished apartment of a brand new development on Blue Pool Road

藍塘道全新住宅大廈，設計品味時尚

3,350 s.f.

OFFERED AT \$93,000,000

INQUIRIES 9871 6828 Louis Wong 黃先生

SEARCH REFERENCE NO. 78395



Moorsom Road

渣甸山 睦誠道

Rare find single house with private garden situated at a prestigious location

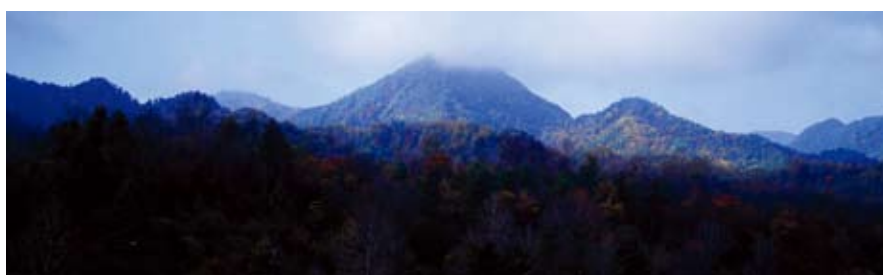
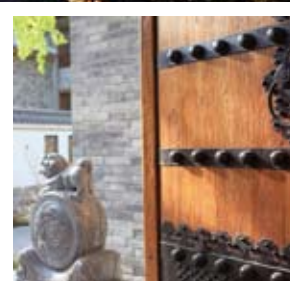
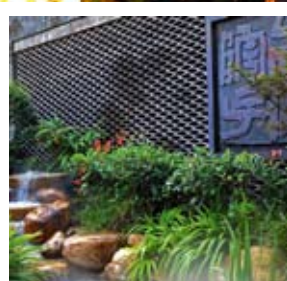
渣甸山罕有獨立屋，連私家花園，地段尊貴顯赫

3,154 s.f. (plus 1,000 s.f. garden)

OFFERED AT \$Upon Application

INQUIRIES 6183 8339 Carman Szeto 司徒小姐

SEARCH REFERENCE NO. 14618



周邊環境及專案特點：

西安院子坐落於西安市西南郊秦嶺北麓，位於大漢上林苑遺址，西接太平河，依山傍水，樹木蔥郁。其主要建築由35座純手工中式大宅和自然山水園林景觀構成。

西安院子設計項目以中國傳統庭院為基調，兼顧北方民居，採用了門樓、院牆、坡頂、青磚及窗櫺的形式。在設計理念上，將現代建築功能、結構、形式及設備配套與豐富的文化內涵有機結合，形成了青瓦延綿，灰牆連貫，古樹參天，樸實自然的建築群體。園林景觀集南北方園林之精粹，戶戶溪流環繞，三季有花，四季常綠。

精裝修戶型由梁錦華先生與蔡文亮先生兩位大師親自設計，將藝術、建築與科技完美融合。物業管理獨創「中國式管家服務特色」，為業主提供舒適貼心服務，令西安院子成為業主的理想身心家園。

項目位置：陝西省西安市草堂寺景區內

建築面積：每棟600平米-800平米

花園面積：420平米-760平米（贈送）

均價及價格區間：

32,000元（人民幣）/平米

聯絡人：許先生 +852 3102 4888

張小姐 +852 5303 4349



璀璨藝文 Extraordinary art & expertise



**A RARE AND FINELY CARVED
POLYCHROME LACQUER
CIRCULAR 'DRAGON' DISH
SONG DYNASTY (960-1279)**
宋 剔彩螭龍紋折沿盤
17.9 cm./ 公分 (7 in./ 吋) diam./ 口徑
Estimate 估價:
HK\$ 港幣 1,500,000-2,000,000
US\$ 美元 200,000-250,000

**An 36.58ct fancy brown-yellow VS1
type Ila cushion-shaped diamond ring**
36.58克拉枕形彩棕黃色VS1 type Ila鑽石戒指
Estimate 估價:
HK\$ 港幣 8,000,000-12,000,000
US\$ 美元 1,000,000-1,500,000



**PROPERTY FROM AN IMPORTANT
FRENCH COLLECTION
ZAO WOU-KI
(ZHAO WUJI, French/Chinese, B. 1920)**
15.5.60
oil on canvas
Painted in 1960
重要法國私人收藏
趙無極
《15.5.60》
油彩 畫布
1960年作
160 x 200 cm./ 公分 (63 x 78 3/4 in./ 吋)
Estimate 估價:
HK\$ 港幣 22,000,000 - 28,000,000
US\$ 美元 2,820,500 - 3,589,700



ZHANG DAQIAN (1899-1983)
The Early Spring
Scroll, mounted and framed,
ink and colour on paper
Date 1967
張大千
《曉春》
設色紙本 鏡框
1967年作
94 x 43 cm./ 公分 (37 x 17 in./ 吋)
Estimate 估價:
HK\$ 港幣 2,800,000 - 3,000,000
US\$ 美元 370,000 - 400,000



**Pétus – Vintage 2000
Pomerol**
6 bottles per lot
Estimate 估價:
HK\$ 港幣 120,000 - 200,000
US\$ 美元 15,000 - 25,000

Taking place at the Hong Kong Convention & Exhibition Centre from 23-28 November, Christie's Hong Kong 2012 Autumn Auction presents an eclectic collection, including Asian 20th Century and Contemporary Art, Chinese Classical and Modern Paintings, Chinese Ceramics and Works of Art, Wines, Important Watches, Jewellery and Jadeite, in conjunction with an exhibition of contemporary Chinese ink painting

香港佳士得2012年秋季拍賣將於11月23日至28日假香港會議展覽中心舉行，隆重呈獻來自亞洲二十世紀及當代藝術、中國古代及近現代書畫、中國瓷器及工藝精品、名酒、精緻名錶、瑰麗珠寶及翡翠首飾之珍罕拍品，亦將同時舉行當代中國水墨作品展覽

Enquiries

Tel: +852 2760 1766 Email: enquiryhk@christies.com
www.christies.com/hk

**Patek Philippe. A possibly unique platinum
minute repeating tourbillon wristwatch with
mother-of-pearl dial, Ref. 3939, circa 2011**
百達翡麗，鉑金三問陀飛輪腕錶，
配貝母錶盤，型號3939，約2011年製。
Estimate 估價:
HK\$ 港幣 2,800,000-4,400,000
US\$ 美元 350,000-550,000



Following the success of its first Christie's Art Forum — Christie's Hong Kong is currently showcasing highlights from this month's autumn 2012 auction around the region.

Highlights of the auction, which will take place in conjunction with an exhibition of contemporary Chinese ink painting, include works of art by Asian contemporary and modern masters Zao Wou-Ki, Zhang Xiaogang, Aya Takano and Hendra Gunawan, as well as fine Chinese paintings by classical and modern masters Wang Liben and Zhang Daqian. Also of note is a selection of important Chinese lacquer from a private collection, highlighted by a rare Song Dynasty lacquer bowl stand. Other highlights include an exceptional blue and white 'dragon' vase and cover, and a collection of rare Chinese furniture.

Rare collectibles extend to important watches from leading watchmakers Audemars Piguet and Patek Philippe, while a pair of pear-shaped Colombia emerald and pearl diamond earrings at more than 23 carats, as well as a rare lavender jadeite bead necklace, lead the sale of jewellery. Meanwhile, vinous highlights include an exceptional case of Hermitage La Chapelle Vintage 1961 from the Maison Paul Jaboulet in the Rhone valley, and from Burgundy, Pétus of the best claret from the 2000 vintages.

香港佳士得最近呈獻的首個藝術論壇取得空前成功，香港佳士得將於今個月在亞洲區內作巡迴預展，展示最新2012年秋季拍賣品。

這次拍賣會將同時舉行當代中國水墨作品展覽，拍賣品的亮點是多位亞洲現代及當代大師的作品，包括趙無極、張曉剛、高野綾及古那鸞，而中國古代及近現代書畫方面則有張大千和王立本的作品。一系列來自私人收藏家的中國漆器珍品也叫人眼前一亮，矚目之作包括一個罕有的宋代剔犀如意雲紋葵瓣式盞托。其他精品包括清雍正青花雲龍紋蓋罐及一些珍貴古典中式傢具。

其他珍罕拍賣品還有不少瑰麗珠寶及珍貴名錶，包括愛彼、百達翡麗名錶、一對重逾23克拉的梨形哥倫比亞祖母綠耳環，以及緬甸天然紫羅蘭翡翠項鍊。另外，拍賣會亦帶來不少名酒，包括羅納河谷Maison Paul Jaboulet的1961年出品Hermitage La Chapelle，以及布根地柏翠莊2000年份的佳釀。

資料由客戶提供

THE GRAND MUZO

A pair of 23.34ct and 23.18ct Colombia no oil pear-shaped emerald, pearl and diamond earrings

23.34 及 23.18 克拉梨形天然哥倫比亞祖母綠、珍珠及鑽石耳環

HK\$28,000,000–38,000,000 · US\$3,500,000–4,800,000



HONG KONG AUTUMN AUCTIONS 2012

香港佳士得 2012 年秋季拍賣

Asian 20th Century and Contemporary Art · Chinese Ceramics and Works of Art
Chinese Classical and Modern Paintings · Jewellery and Jadeite · Watches · Wines
亞洲二十世紀及當代藝術 · 中國瓷器及工藝精品 · 中國古代及近現代書畫
瑰麗珠寶及翡翠首飾 · 精緻名錶 · 佳士得名釀

23–28 November 2012

Hong Kong Convention and Exhibition Centre

2012 年 11 月 23–28 日 · 香港會議展覽中心

CHRISTIE'S 佳士得

Viewing 預展

Hong Kong · 香港

22–27 November · 11 月 22 至 27 日

Contact 查詢

enquiryhk@christies.com

+852 2760 1766

christies.com/hk





Bauhinia Gardens

春坎角 紫荊園

42 Chung Hom Kok Road

Spacious low-rise apartment in quiet neighbourhood

寬敞低密度單位，環境恬靜，可租可售

1,600 s.f.

OFFERED AT \$55,000 excl. also for sale \$30,000,000

INQUIRIES 9809 8570 Stella Lo 羅小姐

SEARCH REFERENCE NO. 128086



Gordon Terrace

赤柱 歌敦臺

4-8A Carmel Road

Newly renovated low-rise apartment in the serene location of Stanley

全新裝修低密度住宅，環境和諧恬靜

1,800 s.f.

OFFERED AT \$85,000 incl.

INQUIRIES 6258 8847 Anthea Ngai 魏小姐

SEARCH REFERENCE NO. 35314



Montebello

山頂 濠景閣

15-17 Plantation Road

Spacious low-rise 4-bedroom apartment on the Peak

寬敞四房單位，密度低，可租可售

3,070 s.f.

OFFERED AT \$100,000 incl. also for sale \$98,240,000

INQUIRIES 9648 6082 Christine Chong 莊小姐

SEARCH REFERENCE NO. 148291



Tam Gardens

薄扶林 譚亦衡樓

25 Sha Wan Drive

Sea view townhouse in quiet location with 4 bedrooms

四房海景排屋，地點清靜

3,500 s.f. (plus 164 s.f. roof)

OFFERED AT \$108,000 incl.

INQUIRIES 9493 8275 Sami Woo 胡小姐

SEARCH REFERENCE NO. 153136



Carolina Garden

山頂 嘉樂園

20-34 Coombe Road

Nicely decorated two-bedroom apartment on Coombe Road

甘道兩房單位，裝修雅致，可租可售

2,350 s.f.

OFFERED AT \$110,000 incl. also for sale \$78,000,000

INQUIRIES 9493 8275 Sami Woo 胡小姐

SEARCH REFERENCE NO. 6005



Seabranche

春坎角 海天閣

31 Horizon Drive

Rare low-rise apartment in Chung Hom Kok with full sea view and private terrace

罕有低密度住宅，享全海景，連私家平台

2,380 s.f. (plus 389 s.f. roof)

OFFERED AT \$110,000 excl.

INQUIRIES 9028 0147 Jenson Au 區先生

SEARCH REFERENCE NO. 10525



Repulse Bay Towers

淺水灣 保華大廈

119A Repulse Bay Road

Unique duplex with tasteful decor taking in a bird's eye view of Repulse Bay Beach

獨特複式住宅，配以品味裝修，鳥瞰淺水灣泳灘

3,300 s.f.

OFFERED AT \$130,000 incl.

INQUIRIES 9028 0147 Jenson Au 區先生

SEARCH REFERENCE NO. 32043



The Somerset

淺水灣 怡峰

67 Repulse Bay Road

Rare duplex enjoying stunning views of Deep Water Bay

淺水灣複式住宅，享深水灣景致，市場罕有，可租可售

3,099 s.f.

OFFERED AT \$130,000 incl. also for sale \$95,000,000

INQUIRIES 9871 6828 Louis Wong 黃先生

SEARCH REFERENCE NO. 123306



Eredine

山頂 加列山道38號

38 Mount Kellett Road

Beautifully decorated colonial style apartment on the Peak with nice views

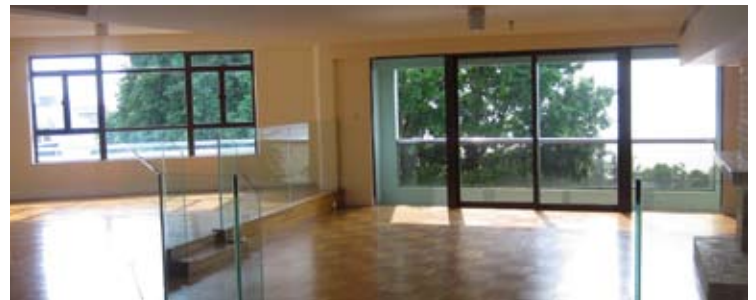
英式雅致裝修單位，享迷人景致

3,300 s.f.

OFFERED AT \$150,000 incl.

INQUIRIES 9833 9509 Michelle Chung 鍾小姐

SEARCH REFERENCE NO. 50482



Fairview Court

淺水灣 富慧閣

94 Repulse Bay Road

Huge 5-bedroom apartment with exceptionally high ceiling just steps from Repulse Bay Beach

巨大五房單位，樓底特高，鄰近淺水灣泳灘

4,155 s.f.

OFFERED AT \$155,000 incl.

INQUIRIES 9080 6686 Teresa Lau 劉小姐

SEARCH REFERENCE NO. 3037



Regalia Bay

赤柱 富豪海灣

88 Wong Ma Kok Road

Nicely decorated 5-bedroom townhouse with sea view

雅致裝修五房排屋，欣賞醉人海景，可租可售

4,212 s.f. (plus 96 s.f. garden and 817 s.f. roof)

OFFERED AT \$160,000 incl. also for sale \$80,000,000

INQUIRIES 6838 2929 Mark Mak 麥先生

SEARCH REFERENCE NO. 157995



Orient Crest

山頂 山頂道76號

76 Peak Road

High efficiency townhouse with swimming pool in convenient location

高實用率排屋，連游泳池，交通便利

2,950 s.f. (plus 1,000 s.f. garden and 1,000 s.f. roof)

OFFERED AT \$160,000 incl.

INQUIRIES 9093 3381 Stephen Chan 陳先生

SEARCH REFERENCE NO. 6806



Carolina Garden

山頂 嘉樂園

20-34 Coombe Road

Spacious mid-rise apartment on the Peak adjoining Aberdeen Country Park

寬敞中密度單位，鄰近香港仔郊野公園

2,800 s.f.

OFFERED AT \$160,000 excl.

INQUIRIES 9493 8275 Sami Woo 胡小姐

SEARCH REFERENCE NO. 28111



Monte Verde

淺水灣 南山別墅

41 Repulse Bay Road

2-bedroom apartment with huge living room and balcony enjoying sea view

兩房住宅，連巨大客廳及露台，欣賞美麗海景

2,400 s.f.

OFFERED AT \$168,000 incl.

INQUIRIES 9871 6828 Louis Wong 黃先生

SEARCH REFERENCE NO. 111212



102 Repulse Bay Road

淺水灣 淺水灣道102號

Unique townhouse overlooking Repulse Bay Beach

特色排屋，俯瞰淺水灣泳灘

3,500 s.f.

OFFERED AT \$170,000 incl.

INQUIRIES 9028 0147 Jenson Au 區先生

SEARCH REFERENCE NO. 23948



Hillgrove

春坎角 壁如花園

18 Cape Drive

Large and spacious 6-bedroom townhouse in quiet Chung Hom Kok

寬敞六房排屋，位於寧靜春坎角，可租可售

3,000 s.f. (plus 600 s.f. garden and 900 s.f. roof)

OFFERED AT \$190,000 incl. also for sale \$90,000,000

INQUIRIES 9648 6082 Christine Chong 莊小姐

SEARCH REFERENCE NO. 104403



Seascape

薄扶林 海日樓

42 Sassoon Road

Rare seafront townhouse in Pokfulam with 4 ensuite and ample outdoor space

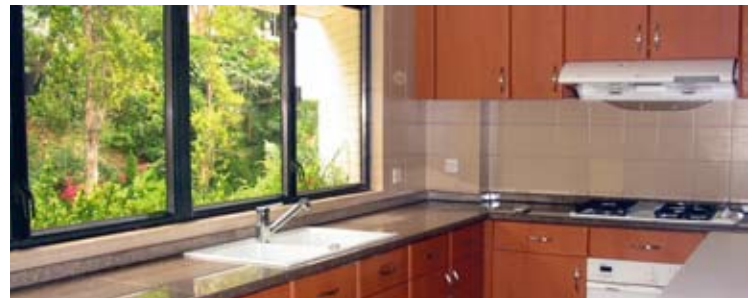
薄扶林罕有海濱排屋，連四套房及特大戶外空間

3,200 s.f. (plus 500 s.f. garden, 600 s.f. terrace and 871 s.f. roof)

OFFERED AT \$190,000 excl.

INQUIRIES 9215 3999 Boris Wong 王先生

SEARCH REFERENCE NO. 38628



Manderly Garden

深水灣 文禮苑

48 Deep Water Bay Road

Sought after townhouse enjoying lush green views at a prestigious location

深水灣受歡迎排屋，享翠綠美景，地段尊貴

3,594 s.f. (plus 161 s.f. garden and 691 s.f. roof)

OFFERED AT \$210,000 incl.

INQUIRIES 9093 3381 Stephen Chan 陳先生

SEARCH REFERENCE NO. 2276


FAIRLINE

Welcome to the beautiful new world of Fairline

捷成遊艇誠邀您蒞臨品鑑

We cordially invite you to visit us at:

香港國際遊艇展 2012: 2012年 11月30日 - 12月2日

Hong Kong International Boat Show 2012: 30 Nov - 2 Dec 2012

菲爾蘭中國 Fairline China

上海市延安東路618號東海商業中心16樓 郵政編碼 200001

16/F, East Ocean Centre, No.618 Yan An Road East, Shanghai, 200001, P.R.China

電話 Tel: +86 21 2306 4749/2306 4752 電郵 E-mail: china@fairline.com

菲爾蘭香港 Fairline Hong Kong

香港香港仔深灣道8號深灣遊艇俱樂部地下5室

Unit 5, G/F, Aberdeen Marina Tower, 8 Shum Wan Road, Aberdeen, Hong Kong

電話 Tel: +852 3180 3189 電郵 E-mail: hongkong@fairline.com

特約代理 Appointed Dealers in:

中國 China 香港 Hong Kong 印度 India 印尼 Indonesia 日本 Japan 韓國 Korea

馬來西亞 Malaysia 新南威爾斯 New South Wales 新西蘭 New Zealand

菲律賓 Philippines 昆士蘭 Queensland 新加坡 Singapore 泰國 Thailand

維多利亞州 Victoria 越南 Vietnam 澳洲西部 Western Australia





Altadena

山頂 白加道27號

27 Barker Road

Spacious duplex with spectacular harbour view prestigiously located on The Peak

山頂寬敞複式大宅，享極美海景，地段顯赫尊貴

4,500 s.f.

OFFERED AT \$250,000 incl.

INQUIRIES 9493 8275 Sami Woo 胡小姐

SEARCH REFERENCE NO. 12839



Severn Eight

山頂 倚巒

8 Severn Road

Prestigious 2-bedroom townhouse with private garden overlooking Victoria Harbour panorama

著名兩房排屋，連私家花園，俯瞰無敵維港景致，可租可售

3,363 s.f. (plus 461 s.f. garden, 80 s.f. terrace and 794 s.f. roof)

OFFERED AT \$250,000 incl. also for sale \$230,000,000

INQUIRIES 6330 7888 Cora Ko 高小姐

SEARCH REFERENCE NO. 106601



56 Repulse Bay Road

淺水灣 淺水灣道56號

Modern waterfront apartment with sweeping views of Repulse Bay

時尚海濱住宅，享無敵淺水灣景色

4,089 s.f. (plus 321 s.f. terrace)

OFFERED AT \$300,000 incl.

INQUIRIES 6258 8847 Anthea Ngai 魏小姐

SEARCH REFERENCE NO. 48822



The Belvedere

山頂 種植道51-61號

51-61 Plantation Road

Exclusive harbour view Peak house for rent with indoor private pool

山頂全維港景大屋，連私家室內游泳池

4,800 s.f. (plus 879 s.f. garden, 662 s.f. terrace and 461 s.f. roof)

OFFERED AT \$350,000 incl.

INQUIRIES 9833 9509 Michelle Chung 鍾小姐

SEARCH REFERENCE NO. 20413



115 Repulse Bay Road

淺水灣 淺水灣道115號

Rare find 5-bedroom sea view duplex with big balcony in Repulse Bay

五房海景複式住宅，連大露台，市場罕有

7,700 s.f. (plus 500 s.f. terrace)

OFFERED AT \$350,000 excl.

INQUIRIES 9215 3999 Boris Wong 王先生

SEARCH REFERENCE NO. 43975



99-103 Peak Road

山頂 山頂道99-103號

Prestigious Peak house with private pool, garden and tasteful decor for rent

著名山頂大屋，連私家游泳池及花園，品味裝修

6,115 s.f. (plus 2,273 s.f. garden, 492 s.f. terrace and 617 s.f. roof)

OFFERED AT \$500,000 incl.

INQUIRIES 9833 9509 Michelle Chung 鍾小姐

SEARCH REFERENCE NO. 31761



From fashion to furnishings

Text: Jasmine Miao
Photography: Dicky Liu

With the unveiling of her suite in Hotel Icon, fashion designer and Hong Kong Polytechnic University alumnus Vivienne Tam talks about the move towards interiors and maintaining an identity

Thanks to the highly interchangeable and applicable nature of all areas of design, a trend has been developing over the last decades or so, in which fashion designers are expanding their fields to encompass interiors. Whether residential projects or commercial premises, or under their own brand name — Maison Moschino, for example, or Bulgari Resorts — or by commission (such as Diane von Furstenberg's suites for Claridge's in London) increasing numbers of fashion designers are applying their skills to interior design.

In Hong Kong, it is fashion designer Vivienne Tam who has brought the trend home to her roots, at the designer-led Hotel

Icon in Tsimshatsui. An alumnus of the Hong Kong Polytechnic University just across the road, Tam says she took on the project as her way of contributing to the school that nurtured her interest in fashion design. Unveiled in June this year, the Vivienne Tam collaboration suite uses the panoramic views of the "concrete forest" that is Hong Kong as the starting point for inspiration.

Tam creates a juxtaposition with the interior of the room, which maintains her signature 'China chic' style and blends it with warm woods, tactile fabrics, a neutral palette enhanced by spot colours and personal touches like plants and a small collection of books in the 'reading nook'. In creating the room, the New York-based fashion designer opted for organic materials and shapes, avoiding sharp angles and hard edges. "A lot of hotel rooms are very corporate. I wanted something more home-like and comfortable," she explains. "It's not very conventional."

For Tam, especially in Hong Kong, it is key to maintain a balance and connection with nature. The room also has a minimalist vibe which Tam explains is due to a deliberate lack of furniture "that you will not use, like lots of closets and chairs. So why not get rid of them and give yourself more space?"

And space there is a-plenty, given the careful selection of furniture pieces, from a desk which looks like it was made from a single slice of a fallen tree, to a Chinese-style wardrobe in the bedroom. "I wanted people to feel free to move things around and use the space in different ways... Which pieces are my favourites? All of



them. That's why I put them here."

Tam jokes that a unique perspective offered by a fashion designer when it comes to interior design is personality and individuality. Perhaps this view encapsulates the reason many couturiers are turning to interiors; as big brands in the fashion world already maintain strong identities unique to the designers, it is readily and easily translated and applied to furniture and interiors. For Tam, the transition between fashion and interiors came naturally. "As a designer, you can do anything, because you have a sensibility of materials and forms and textures," she explains.

Whether it's Matthew Williamson's wallpaper and furniture collections which reflect his brightly-patterned, young aesthetic, or the DVF suites at Claridge's which capture her bold yet sophisticated use of patterns, each designer's move into interiors exemplifies the aesthetic, the DNA, of both designer and the brand.



For places such as Schlosshotel im Grunewald (rooms by Karl Lagerfeld), Salvatore Ferragamo's properties in Italy, the Armani Casa hotels or the Palazzo Versace, visitors are paying not for the clothing, but what the interiors provide — the lifestyle-essence of the brand. At Louis Vuitton's Cheval Blanc in Courchevel, France, for example, the LV haute couture aesthetic is evident (and complemented by Lagerfeld photographs on the walls). Oscar de la Renta draws on his own heritage as a Dominican at Tortuga Bay at Punta Cana Resort in the Dominican Republic.

Each fashion designer or label moving into interiors clearly wants to make its own, distinctive mark to set it apart — a feel Tam is familiar with. "As a designer, you always have to fight for what you want to do, and believe in what you want," she muses. "At the Icon, I want people to feel at home, to feel that this is also the kind of space they would want to have at home."



從時裝到傢具陳設

時裝設計師兼香港理工大學畢業生譚燕玉(Vivienne Tam)為唯港薈設計套房，她在揭幕禮當日大談涉足室內設計及如何保持個人風格

設計本質上一脈相通，因而過去數十年設計界有不少時裝設計師都跨界涉足室內設計，且日漸成風。無論是住宅或商業項目，或是如Maison Moschino和Bulgari Resorts等的自家品牌酒店，甚至乎個別委託的項目，例如Diane von Furstenberg為倫敦Claridge's設計的系列套房，都可見越來越多的時裝設計師把其才華發揮在室內設計中。

本地出身的時裝設計師譚燕玉(Vivienne)把這個潮流帶回香港，為尖沙咀的藝術與設計酒店唯港薈設計套房。Vivienne是與酒店只有一街之隔的香港理工大學的校友，她說接下這個項目是要回饋母校，報答學校栽培出她對時裝設計的興趣。Vivienne設計的套房今年六月才登場，創作靈感來自一望無際的香港「石屎森林」景觀。

Vivienne把香港景緻與房間的室內設計融和並置，維持她一貫的招牌「摩登中國風」，並糅合帶有暖意的木材與質感豐富的布料，中性色調以色彩及植物等人性化設計點綴，而「閱讀角」則特意收藏了一些書籍。創作這間套房時，這位於紐約工作的時裝設計師

選擇了天然的物料與形狀，避免尖銳的角落和鋒利的邊緣。她解釋：「很多酒店房間都很公式化。我想要更像『家裡』、更適舒一點，不是很傳統的酒店套房。」

對Vivienne來說，尤其是在香港，維持與大自然的平衡和連繫是關鍵所在。她設計的套房亦帶有簡約的味道，她解說是因為她故意不用一些傢具。她說：「那些傢具永遠都用不著，像是大量的櫃與椅。那何不乾脆放棄它們，留給自己多點空間？」

的而且確，套房相當寬敞，傢具陳設都一一精心挑選，書桌像是只由一塊木雕刻而成，而睡房則有個中式衣櫃。她說：「我希望人們在這裡會感到可以隨意搬動傢具陳設，以不同方法去使用空間…哪件才是我最喜歡的？我全都喜歡。正因如此我才把它們放在房裡嘛。」

Vivienne笑說，時裝設計師為室內設計帶來的獨有觀點是個性。或許，她的說法一語道破了時裝設計師涉足室內設計的原因。時裝界裡的大品牌都已建立了品牌設計師獨有的強烈形象，很容易便可轉化應用於傢具與室內設計。對Vivienne來說，從時裝走到室內設計是自然不過的事。她解釋：「作為設計師，你要

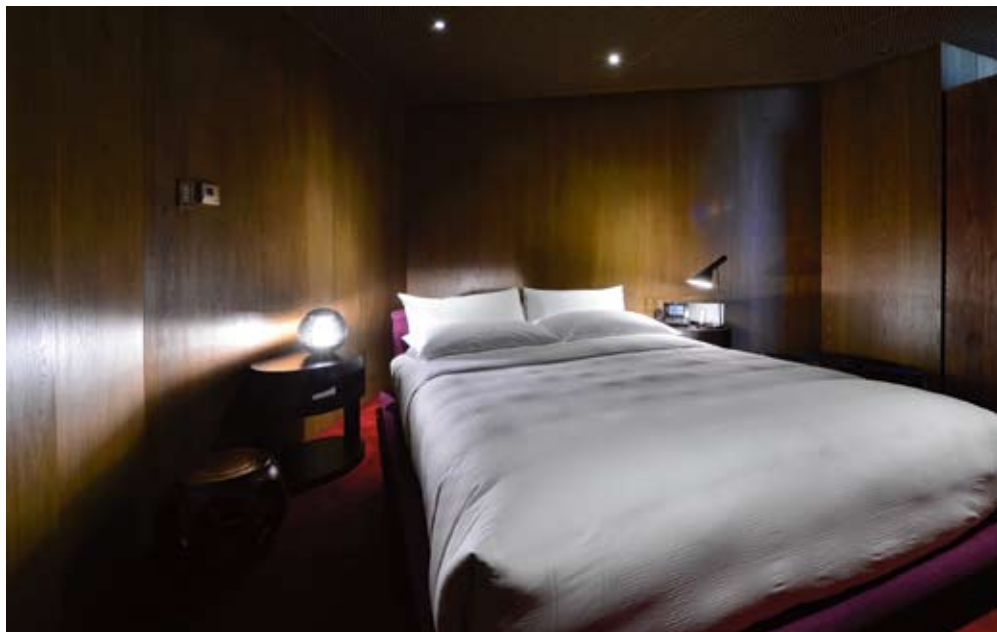


做甚麼都可以，因為你對物料、形態與質感都已經有一定的概念。」

無論是Matthew Williamson的牆紙與傢具系列反映出其圖案繽紛又年輕活潑的美學，還是Claridge's的Diane von Furstenberg套房盡顯了她大膽又細膩的花樣設計，每位轉戰室內的設計師都呈現自己本身以至品牌的美學精髓。

在Schlosshotel im Grunewald (Karl Lagerfeld設計的客房)、Salvatore Ferragamo在意大利的酒店、Armani Casa酒店或是Palazzo Versace，客人花錢不是為了時裝，而是室內裝潢為他們帶來的品牌精髓的生活態度。以法國Courchevel滑雪勝地裡的路易威登Cheval Blanc酒店為例，可以明顯感受到品牌的高級時裝美學風格，而牆上掛著的Karl Lagerfeld相片亦突顯出其風尚。至於在多米尼加共和國Tortuga Bay的Punta Cana Resort，Oscar de la Renta則以自己身為多米尼加人的背景作為設計的依據。

每位轉戰室內設計的時裝設計師或時裝品牌，顯然都想要在室內設計領域裡佔一席位別創一格，塑造出與別不同的自我一套。Vivienne也不例外，她若有所思地說：「身為設計師，總要為自己想要的爭取，並且相信自己想要的。在唯港薈，我希望人們能感到像是置身家中，同時覺得他們希望自己的家也是如此的一個地方。」



For more features on design and architecture, don't miss the October issue of Perspective magazine, and check out our website at www.perspectiveglobal.com 請密切留意《透視》十月號更多有關建築與設計的特題報導，或登入 www.perspectiveglobal.com 參閱精彩內容。



Fair Wind Manor

西半山 輝永大廈

6A-6B Seymour Road

Rare on market mid-rise apartment with open view
罕有中密度住宅，欣賞開揚景色

1,100 s.f.

OFFERED AT \$42,000 incl.

INQUIRIES 9250 0300 Randy Chan 陳先生

SEARCH REFERENCE NO. 112068



Botanic Terrace

西半山 芝蘭台

3-5 Conduit Road

Practical 2-bedroom flat with balcony close to
Central-Midlevels escalators

實用兩房住宅，連露台，鄰近半山扶手電梯

1,300 s.f.

OFFERED AT \$46,000 incl.

INQUIRIES 9250 0300 Randy Chan 陳先生

SEARCH REFERENCE NO. 56445



Tregunter Tower 3

中半山 地利根德閣3座

14 Tregunter Path

Prestigious residential development located on Lower Peak with
excellent investment potential

著名住宅大廈，具優質投資潛力，可租可售

2,020 s.f.

OFFERED AT \$60,000 incl. also for sale \$35,000,000

INQUIRIES 6258 8847 Anthea Ngai 魏小姐

SEARCH REFERENCE NO. 22421



Fairlane Tower

中半山 寶雲山莊

2B Bowen Road

Modern flat with excellent facilities on treelined Bowen Road

寶雲道時尚住宅，連優質設施，環境翠綠，可租可售

1,744 s.f.

OFFERED AT \$70,000 incl. also for sale \$34,000,000

INQUIRIES 9028 0147 Jenson Au 區先生

SEARCH REFERENCE NO. 37843



Pearl Gardens

西半山 明珠臺

7 Conduit Road

High efficiency 4-bedroom apartment with huge living room and balcony
enjoying city view

高實用率四房單位，連巨大客廳及露台，享城市景觀

2,200 s.f.

OFFERED AT \$85,000 incl.

INQUIRIES 9486 1566 Mira To 杜小姐

SEARCH REFERENCE NO. 28918



Dynasty Court

中半山 帝景園

23 Old Peak Road

Spacious 3-bedroom apartment with new kitchen and full
clubhouse facilities

寬敞三房單位，連全新廚房，享完善會所設施

1,970 s.f.

OFFERED AT \$86,000 incl.

INQUIRIES 6183 8339 Carman Szeto 司徒小姐

SEARCH REFERENCE NO. 102112

Midlevels Central & West LEASE

中半山及西半山 出租



Belmont Court

西半山 清暉大廈

10 Kotewall Road

Spacious 3-bedroom apartment with stylish decoration

寬敞三房單位，配以別緻裝修

1,900 s.f.

OFFERED AT \$88,000 incl.

INQUIRIES 9486 1566 Mira To 杜小姐

SEARCH REFERENCE NO. 123398



1A Robinson Road

西半山 羅便臣道1號A

Unique 3-bedroom penthouse with private roof enjoying open city views in Midlevels Central

獨特三房頂層單位，連私家天台，享開揚城市景

2,200 s.f. (plus 2,200 s.f. roof)

OFFERED AT \$89,000 incl.

INQUIRIES 9493 8275 Sami Woo 胡小姐

SEARCH REFERENCE NO. 118844



May Tower 1

中半山 梅苑一座

7 May Road

Unique triplex with balcony overlooking the city at a prime location on fringe on CBD

獨特三層複式單位，連露台，俯瞰城市景致，鄰近商業中心區

2,850 s.f.

OFFERED AT \$90,000 incl.

INQUIRIES 9486 1566 Mira To 杜小姐

SEARCH REFERENCE NO. 8184



The Rednaxela

西半山 帝華臺

1 Rednaxela Terrace

Brand new designer flat with private roof terrace

全新裝修住宅，連私家平台及天台，可租可售

1,872 s.f. (plus 15 s.f. terrace and 441 s.f. roof)

OFFERED AT \$95,000 incl. also for sale \$40,000,000

INQUIRIES 9215 3999 Boris Wong 王先生

SEARCH REFERENCE NO. 127291



Piccadilly Mansion

西半山 碧苑

4-6 Po Shan Road

Large practical harbour view 4-bedroom apartment with newly decorated in tranquil environment

全新裝修四房大宅，寬敞實用，享海港美景，環境舒適寧靜

2,800 s.f.

OFFERED AT \$98,000 incl.

INQUIRIES 6183 8339 Carman Szeto 司徒小姐

SEARCH REFERENCE NO. 35976



Estoril Court

中半山 愛都大廈

55 Garden Road

Huge 5-bedroom apartment with upgraded kitchen, bathrooms and 2 carpark spaces in the heart of Midlevels Central

寬敞五房單位，連優質廚房及浴室設備，位於中半山心臟地帶，連兩車位

3,347 s.f.

OFFERED AT \$110,000 incl.

INQUIRIES 9080 6686 Teresa Lau 劉小姐

SEARCH REFERENCE NO. 143965

Interior design
 constructions
 space planning
 project management
 tendering
 landscaping
 quantity survey

Peter M. Cannon



Thank you for all your works over the past 4 months. Our home is beautiful and the time we have spent with our family in the house has been just what we dreamed of....

Perkins road —colonial charm

Sherrie Harps



Joseph is a problem-solver, talented designer, sophisticated and..... now my very good friend, I could not praise him and his firm enough.

Repulse Bay —classical contemporary

Susan Taylor



Thank you for giving me such a beautiful home. I can't say enough good things about you. Joseph -I know first hand why your company has such an excellent reputation. It was worth every penny I spent.

Castle Peak road —clean lines

Ethan King



We were very happy with Joseph as our designer. He made everything easy for us and read our tastes very well. We would recommend JCAW Consultants to anyone. We couldn't be happier with the outcome.

Plantation road —sophisticate mode

Jennifer Park



We are super pleased with our remodel that your team did at our home. Everyone we came in contact with is first class!

Sapphire Chalet —light filled spread

**a kiss is for a second
 admiring domicile is for ever** -jc

© 2014 JCAW CONSULTANTS LTD. ALL RIGHTS RESERVED. JCAW CONSULTANTS LTD. IS A REGISTERED COMPANY IN THE REPUBLIC OF SOUTH AFRICA. JCAW CONSULTANTS LTD. IS A REGISTERED COMPANY IN THE REPUBLIC OF SOUTH AFRICA. JCAW CONSULTANTS LTD. IS A REGISTERED COMPANY IN THE REPUBLIC OF SOUTH AFRICA.



JCAW CONSULTANTS
 11/11 Leeloong bldg., 4 queen victoria st., central
 email: jcawid@biznetvigator.com workshop: 11/11 Leeloong bldg., 4 queen victoria st., central
 tel: +852 2524 9988 fax: +852 2524 4388



Regent On The Park

中半山 御花園

9A Kennedy Road

Newly renovated modern apartment on fringe of CBD

全新裝修時尚住宅，鄰近商業中心區

2,720 s.f.

OFFERED AT \$115,000 excl.

INQUIRIES 9229 2396 Elaine Chow 周小姐

SEARCH REFERENCE NO. 150668



Tregunter Tower 3

中半山 地利根德閣3座

14 Tregunter Path

Nicely decorated high floor 4-bedroom duplex with lush green view and great facilities

雅致裝修四房複式住宅，欣賞翠綠景致，可租可售

2,980 s.f. (plus 187 s.f. terrace)

OFFERED AT \$120,000 incl. also for sale \$75,000,000

INQUIRIES 9833 9509 Michelle Chung 鍾小姐

SEARCH REFERENCE NO. 140530



Kennedy Heights

中半山 堅麗閣

10-18 Kennedy Road

Huge 5-bedroom apartment with open city view on fringe of CBD

巨大五房單位，享開揚城市景致，鄰近商業中心區

3,400 s.f.

OFFERED AT \$125,000 incl.

INQUIRIES 9486 1566 Mira To 杜小姐

SEARCH REFERENCE NO. 28106



Clovelly Court

中半山 嘉富麗苑

12 May Road

Spacious 4-bedroom apartment with comprehensive facilities located on Lower Peak

半山寬敞四房單位，連完善設施

2,809 s.f.

OFFERED AT \$130,000 incl.

INQUIRIES 9809 8570 Stella Lo 羅小姐

SEARCH REFERENCE NO. 930



Catalina Mansions

中半山 嘉年大廈

98-100 MacDonnell Road

Colonial style mid-rise apartment with balcony at a quiet location of Midlevels Central

英式中密度住宅，連露台，環境清靜，可租可售

2,300 s.f.

OFFERED AT \$155,000 incl. also for sale \$38,000,000

INQUIRIES 9648 6082 Christine Chong 莊小姐

SEARCH REFERENCE NO. 136378



Grenville House

中半山 嘉慧園

1, 3 & 3A Magazine Gap Road

Huge 4-bedroom flat with prominent neighbours on Magazine Gap Road

寬敞四房住宅，位於馬己仙峽道尊貴地段

3,700 s.f.

OFFERED AT \$170,000 incl.

INQUIRIES 9229 2396 Elaine Chow 周小姐

SEARCH REFERENCE NO. 33803



CHINESE CARPET CENTRE LTD.

offers the best quality of handknotted
silk and woolen carpets

available in all range of sizes,
colours and design



CHINESE CARPET CENTRE LTD

珍藝行地毯有限公司

Shop 5, G/F, Houston Centre, 63 Mody Road, TST East, Kowloon
Tel: 2730 7230, 2736 1773 rugs@biznetvigator.com www.cccrugs.com.hk

Midlevels Central & West LEASE

中半山及西半山 出租



39 Conduit Road

西半山 天匯

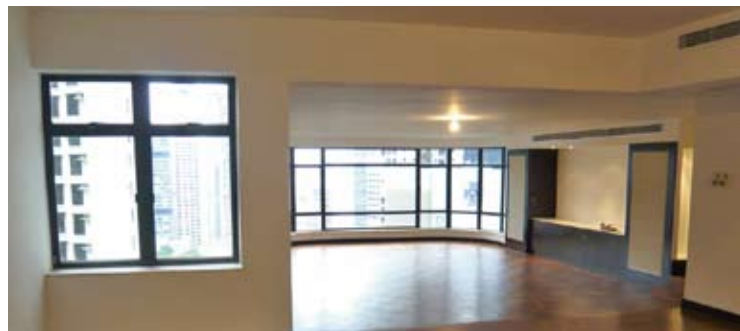
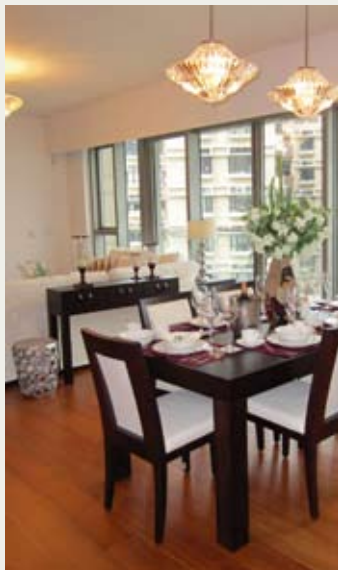
Brand new luxury home with open city view in Midlevels West
西半山全新豪華大宅，享開揚城市美景

2,808 s.f.

OFFERED AT \$173,000 incl.

INQUIRIES 9486 1566 Mira To 杜小姐

SEARCH REFERENCE NO. 125945



Eva Court

中半山 惠園

36 MacDonnell Road
Newly decorated 5-bedroom apartment with split-level living/dining room on fringe of CBD
全新裝修五房大宅，連分層客飯廳，鄰近商業中心區

4,500 s.f.

OFFERED AT \$268,000 excl.

INQUIRIES 9486 1566 Mira To 杜小姐

SEARCH REFERENCE NO. 45348



舒適殿堂 A cosy space

Mirror Marina

鑑波樓

47 Conduit Road, Midlevels West

西半山 干德道47號

1,900 s.f.

OFFERED AT \$29,800,000

INQUIRIES 9809 8570 Stella Lo 羅小姐

SEARCH REFERENCE NO. 47949



This four-bedroom (one ensuite) apartment is situated in a quiet location on Conduit Road in Midlevels West. Extending 1,900 s.f., it comes with a separate living and dining room, a maid's room, a utility room and a covered car park. Homeowners can enjoy a greenery and neighbourhood view from the living room and balcony, as well as the bedrooms.

Mirror Marina is a mid-rise building housing spacious three-bedroom and one study room units with large balconies. There are three units per floor. The building is situated at the end of Conduit Road near the intersection with Kotewall Road. Public light bus and bus services are available nearby.

西半山干德道環境寧靜，這裡的一個四房單位（其一為套房）面積達1900平方呎，有客廳、飯廳、家傭房、雜物房及有蓋車位。客廳、陽台及睡房的景色優美，可眺望翠綠山景與市區景色。

鑑波樓為低層住宅大廈，每層三伙單位，普通單位偌大寬敞，有三間睡房，一間書房及一個大陽台。大廈位於干德道末段，鄰近與旭龔道的交界，附近設公共小巴及巴士服務。



Jade Terrace

跑馬地 華翠臺

3 Link Road

Cozy 3-bedroom penthouse with roof on fringe of Causeway Bay
舒適三房頂層住宅，連天台，鄰近銅鑼灣

827 s.f. (plus 547 s.f. roof)

OFFERED AT \$45,000 incl.

INQUIRIES 6183 8339 Carman Szeto 司徒小姐

SEARCH REFERENCE NO. 115381



Royal Villa

東半山 六也別墅

25-29 Happy View Terrace

Well kept low-rise apartment with 3 bedrooms and good-sized balcony
at a quiet location

優質低密度三房單位，連實用露台，環境寧靜

1,650 s.f.

OFFERED AT \$50,000 incl.

INQUIRIES 9093 3381 Stephen Chan 陳先生

SEARCH REFERENCE NO. 47404



Goodview Garden

東半山 豐景台

24 Stubbs Road

Unique 3-bedroom low-rise with private roof terrace
獨特三房低密度住宅，連私家天台

2,200 s.f. (plus 583 s.f. roof)

OFFERED AT \$69,000 incl.

INQUIRIES 9551 1077 Walker Lam 林先生

SEARCH REFERENCE NO. 48277



6-6A Sing Woo Crescent

跑馬地 成和坊6-6A號

Unique duplex in quiet yet convenient location

獨特複式住宅，環境寧靜，交通方便

2,000 s.f.

OFFERED AT \$70,000 incl.

INQUIRIES 9486 1566 Mira To 杜小姐

SEARCH REFERENCE NO. 159004



The Altitude

跑馬地 紀雲峰

20 Shan Kwong Road

Brand new apartment with city view in Happy Valley
全新設計四房住宅，連露台，位於跑馬地，交通便利

1,923 s.f.

OFFERED AT \$85,000 incl.

INQUIRIES 9229 2396 Elaine Chow 周小姐

SEARCH REFERENCE NO. 158499



Evergreen Villa

東半山 松柏新村

43 Stubbs Road

Spacious 4-bedroom apartment with balcony enjoying panoramic vista
of the city and Victoria Harbour

寬敞四房單位，連露台，享醉人城市及海港全景

2,700 s.f.

OFFERED AT \$88,000 incl.

INQUIRIES 6183 8339 Carman Szeto 司徒小姐

SEARCH REFERENCE NO. 12532

Midlevels East & Happy Valley LEASE

東半山及跑馬地 出租



Villa Monte Rosa

東半山 玫瑰新村
41A Stubbs Road
Renowned 3-bedroom apartment
in Midlevels East
東半山著名三房住宅

2,300 s.f.

OFFERED AT \$88,000 incl.

INQUIRIES

9229 2396 Elaine Chow 周小姐

SEARCH REFERENCE NO. 38524



Winfield Building

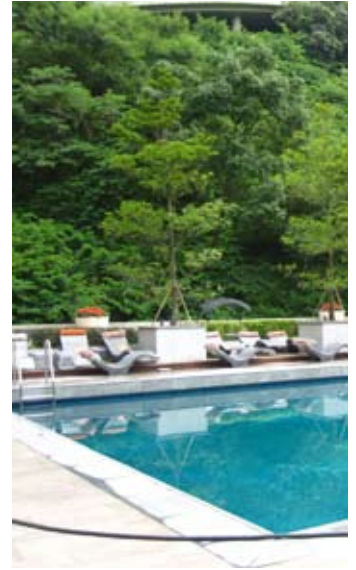
跑馬地 雲暉大廈
5 Ventris Road
Brand new luxurious 3-bedroom
apartment in Happy Valley
跑馬地全新豪華三房住宅

1,940 s.f.

OFFERED AT \$98,000 incl.

INQUIRIES 9493 8275 Sami Woo 胡小姐

SEARCH REFERENCE NO. 151898



Rose Court

跑馬地 逸廬
115-121 Wong Nai Chung Road
Newly designed 4-bedroom
apartment with balcony at a
convenient location of Happy Valley
全新設計四房住宅，連露台，位於跑馬地，
交通便利

2,300 s.f.

OFFERED AT \$110,000 incl.

INQUIRIES 6183 8388 Chris Law 羅先生

SEARCH REFERENCE NO. 41515



Mount Butler Lodge

渣甸山 畢拉山徑2-22號
Unique townhouse with ample
outdoor spaces in tranquil
Jardine's Lookout
渣甸山獨特排屋，空間寬敞，環境恬靜

3,000 s.f.

OFFERED AT \$150,000 incl.

INQUIRIES 9486 1566 Mira To 杜小姐

SEARCH REFERENCE NO. 15033





Prime Residential

Bayswater W2

Prime residential house, in unbroken terrace, attractive period facade with access to private garden square. Currently configured as 4 one bedroom flats and 1 two bedroom flat.

Excellent long-term investment or redevelopment opportunity.

位於Bayswater的住宅大廈，連私家平台及花園。現改建為4個一房單位及1個兩房單位。具優質長遠投資及重建機會。

Freehold
3,267 s.f. (net)
£2-3M



Prime Retail

Covent Garden WC2

Prime retail site in very busy Covent Garden location. Let to a single tenant, a restaurant operator, with 8 years lease unexpired.

位於繁華Covent Garden的零售熱點，面向Leicester Square站，現已租予一間餐廳，擁8年租約。

Freehold
2,757 s.f.
Gross Yield 5.3%
£2-3M



Prime Retail

King's Road SW3

Prime Retail site on the fashionable Kings Road in the Borough of Kensington & Chelsea. Let to a single tenant, with 15 years unexpired lease. 位於高級時尚Kings Road的零售熱點，現已租予單一租戶，擁15年長約。

Freehold
Gross Yield 4.3%
£4-5M



Prime Riverside

Commercial

Mid Town WC2

Trophy Commercial Building in prime Mid-Town location overlooking the River Thames. Let to 6 tenants on leases expiring between 2014 and 2019, at good yield.

座落於Mid-Town的商業大廈，俯瞰美麗的River Thames，現租予6個租戶至2014年及2019年，回報優越。

Freehold
28,058 s.f.
Gross Yield 5.9%
£25-30M

Prime Small Commercial

Soho W1

Prime commercial property in the heart of Soho. Let to a single tenant on a lease expiring in December 2013 at good yield for a prime West End location. There is an opportunity to convert to residential and add an additional floor subject to planning permission.

位於Soho餐飲及零售核心地段的商業大廈，現已租予單一租戶，租約期至2013年12月，回報優越，可重新改建為住宅區或增加額外樓層。

Freehold
6,246 s.f.
Gross Yield 4.5%
£3-4M



Super Prime Commercial

Pall Mall SW1

Prime commercial property between Pall Mall and Piccadilly. Let to a single tenant on a lease expiring in 2019. Good yield for such a prime location.

鄰近Pall Mall及Piccadilly的商業大廈，現已租予單一租戶至2019年，具長遠優質回報。

Freehold
13,565 s.f.
Gross Yield 4.2%
£19-21M



Prices on luxury UK properties are rarely quoted in listings. Interested parties are encouraged to make enquiries on price indications with Landscape

Deepdene

ELIZABETH BAY, SYDNEY



A rare opportunity to purchase a spectacular apartment building in stunning Elizabeth Bay. Situated just minutes from the picturesque Beare Park and the Cruising Yacht Club, and a stone's throw from cosmopolitan restaurants and exclusive boutiques, the landmark Deepdene building is truly a prime piece of real estate. The structure has recently been given a new lease of life by the two current owners along with renowned architect Richard Goodwin, including the addition of a breathtaking two-storey penthouse, complete overhaul of the exteriors, completely new lift system and complete refurbishment of the vast secure parking area. Comprising four luxury apartments, the building offers a genuinely unrepeatable opportunity. Clean, contemporary lines characterize the open-plan interiors, which boast generous proportions, spectacular views, and superb alfresco spaces, making every apartment in this building an exclusive, highly sought-after proposition.

澳洲悉尼伊莉莎伯灣珍貴物業罕有放盤。 Deepdene位處矜貴的臨海地段，屬區內地標，距離風光如畫的Beare Park和澳洲遊艇俱樂部只有數分鐘之隔，附近時尚餐廳和時裝店林立。由知名建築師Richard Goodwin精心策劃，整棟大廈最近完成了翻新工程，並打造了令人嚮往的頂層複式單位，設計別具匠心，用料講究，配有全新的升降機系統，翻新後的停車場保安更嚴密。Deepdene僅有四個豪華複式單位，置入物業機會彌足珍貴。開放式的室內格局設計，簡約時尚，空間感十足，前臨無遮擋海景，還附有偌大的戶外空間，讓每戶成為品味買家爭相競投的物業。

- Award-winning building, designed and completed in 1973 by Stuart Murray
此獲獎建築由著名建築師Stuart Murray設計，並於1973年落成
- A Manhattan-style building offering the potential for a rare "one family opportunity" with ample room and privacy for every family member and live-in staff if necessary
富曼克頓風格的建築，時尚簡約，單位面積寬敞，最適合一家大小的家庭，讓每位家庭成員或傭人均可盡享私人空間
- 4 duplexes comprising 10 bedrooms, 7 living rooms, 1 study, 10 bathrooms, 4 guest powder rooms, 10 car park spaces, 1 swimming pool and ample alfresco spaces.
大廈由四個複式單位組成，共有十個房間、七個客廳、一個書房、十個浴室、四個客用洗手間、十個車位、一個游泳池和充裕的戶外空間
- High-end modern luxuries and designer touches throughout
所有設備時尚高級，全屬設計師之作

Price upon request. For enquiries, please contact:

Landscape Christie's International Real Estate
www.landscape-christies.com
Yeoman Ho +852 6205 0415
yeoman.ho@landscape-christies.com

Ken Jacobs
www.kenjacobs.com.au
Darren Curtis +61 406 761 840
darren@kenjacobs.com.au



UNLOCK YOUR PROPERTY ASPIRATIONS WITH TAILORED PROPERTY FINANCE*

Want to purchase or refinance your local or overseas properties[#] with peace of mind? **National Australia Bank** offers flexible one-stop solutions at competitive terms and favourable exchange rates.

Whether you own one or more properties locally or overseas, we can tailor financing that saves you money and time and, best of all, is managed through a single dedicated Banking Partner in Hong Kong.

Additionally, we offer competitive financing at fixed or variable interest rates to suit your needs. You can also choose to borrow in the currency of either the country in which the property is situated, or the currency of your income.

Benefits and features:

- Consolidate your portfolio of properties in different countries with a single financing package managed in Hong Kong
- Apply to borrow against your existing local and overseas properties
- Competitive financing at fixed or variable interest rates
- Flexible monthly or quarterly repayment schedules
- Tailor-made package to suit your financial needs

To find out more, contact us at:

+852 2826 8163 nabasia.com



GOODS OF DESIRE

The Original Hong Kong Lifestyle Store

Whether its something for your home or a gift for a loved one,
GOD is the place to find something special that captures
the essential Hong Kong spirit

Causeway Bay 2890 5555 Tsim Sha Tsui 2784 5555 Central 2805 1876 Peak Galleria 2778 3331
Stanley 2673 0071 Sai Kung 2791 7122 Cyberport 2577 6899 Ap Lei Chau 2580 2290