

The Key

大宅[®]

Select deluxe homes

Volume 83 NOVEMBER 2011



隱逸南埼

Escape to SCape

KeyWords

“Thou say in thine heart, my power and the might of mine hand hath gotten me this wealth. But thou shalt remember the Lord thy God: for it is He that giveth thee power to get wealth”

「恐怕你心裡說、這貨財是我力量我能力得來的。你要記念耶和華你的神、因為得貨財的力量是祂給你的。」

– Deuteronomy 8:17-18, The Bible

– 聖經申命記第8章第17至18節

KeyNotes

The economic gloom has deepened with large-scale lay-offs in the financial industry, and investment banking is one of the most severely affected areas. High-flying bankers who made fortunes some years ago have had to sell off trophy properties which they bought in the good old days.

Many tenants of high-end properties are finding themselves on the receiving end of dismissals and have to return to their home countries, leaving behind vacated houses and large apartments. Breakleases are appearing in droves, as tenants are forced to quit Hong Kong before their tenancies expire. As a result, rentals have felt the downward pressure: landlords are having to slash rents as high budget tenants dwindle, creating further pressure on the sale prices of luxury property.

金融界開始爆發大規模裁員潮，其中投資銀行界是受到最嚴重影響的領域之一，令暗淡的經濟前景再蒙陰霾。一些在幾年前累積相當財富的銀行家，現在都不得不拋售昔日好景時購入的高價物業。

高端物業的許多租戶都是解雇的對象，只好返回原居國，不少洋房和大型公寓都因而騰空。租戶被迫在租期結束前離開香港，導致中止租約的個案層出不窮，租金因而面臨下調壓力。高端租戶明顯縮減，令業主必須割價出租，為豪華物業的售價構成更大壓力。

K.S. Koh

ks-koh@landscape.com

(The above is an excerpt from Market Watch on www.landscape.com. Read the full article at Market Watch, www.landscape.com/marketwatch)
(以上內容節錄於領域網站內的市場觀察，如欲觀看全文，請登上網址: www.landscape.com/marketwatch)



Monthly HIGHLIGHTS 每月精選

- 04 SCape - Cedrus
春坎角 南埼一森居
- 09 Sheffield Garden
東半山 肇豐園
- 13 Carnation Court
東半山 康馨園

HOW MAY YOU LIST YOUR PROPERTY WITH THE KEY?

怎樣在《大宅》刊登您的出售／出租物業？

If you would like to see your property listed in The Key in the next issue, you may call Loretta Lui at 3102 4818 or visit us at www.landscape.com/sell_let. Or you may simply fill out the space below and fax to us at 2866 0015.

如果您想將出售／出租物業刊登於大宅，可致電3102 4818與呂小姐聯絡，或登上 www.landscape.com/sell_let。或者您可以填寫下面的表格傳真至2866 0015。

Property to be listed 物業

Asking Rental / Sale Price 租金 / 售價

Floor Area 面積

Contact Person 聯絡人

Telephone 電話

Email 電郵地址

Our KeyPersons will contact you for follow-up works.

我們的大宅專員會馬上與您聯絡

Published and distributed by

LANDSCOPE 領域
The Specialists in Luxury Properties

Landscape Realty Limited C-018733

a member of Landscape Surveyors Ltd

Find us on:
facebook.

Designed by

PERSPECTIVE 透視

Tel: +852 2866 0022

Fax: +852 2866 0015

Email: info@landscape.com

Website: www.landscape.com

Address: Unit 3106, 31/F, Hopewell Centre,
183 Queen's Road East, Wanchai, Hong Kong

Member of:



Tel: +852 2525 0287

Fax: +852 2526 3860

Email: info@perspectiveglobal.com

Website: www.perspectiveglobal.com

Address: Rm 2408, Dominion Centre,
59 Queen's Road East, Wanchai, Hong Kong

The information, text, photos, analyses and projections contained herein are provided solely for the convenience of prospective clients and no warranty or representation as to their accuracy, correctness or completeness is made by Landscape Surveyors Limited, Landscape Realty Limited or the owners, none of whom shall have any liability or obligation with respect thereto. Interested parties should rely on their own investigations, interpretations and analyses in connection with the purchase or letting thereof.

Information has been provided to us by sources deemed reliable, but no warranty or representation is made as to its accuracy, correctness or completeness. These offerings are made subject to contract, correction of errors, omissions, prior sale or lease, change of price or terms or withdrawal from the market without notice. The contents of The Key are for reference only and do not constitute all or any part of a contract. Copyright 2011



Sole Dealer of Minotti for Hong Kong

andante

Minotti

Model: Allen Sofa
Designer : Rodolfo Dordoni

TK/1111/M/ALN05

Shop D, G/F, The Design Showcase,
Ruttonjee Centre, 11 Duddell Street,
Central, Hong Kong
Tel. +852/ 2537 9688
Fax. +852/ 2537 4488
E-mail: info@andante.com.hk
www.andante.com.hk



隱逸南埼 Escape to SCape

Photography: Daniel Tam

Located in the tranquil neighbourhood of Chung Hom Kok, SCape comprises eight three-storey townhouses near the waterfront. The houses were built in a single row with the use of floor-to-ceiling windows to provide homeowners with striking views of Chung Hom Wan Bay and Stanley Bay.

Space is certainly not an issue here, as the houses range from approximately 4,500 to 8,000 s.f., with about 2,000 to 4,000 s.f. of outdoor area, inclusive of private rooftop, garden and heated infinity pool.

Additionally, one of the 4,578 s.f. house in this luxury development, on offer for HK\$280 million, has a private elevator, allowing easy access to all rooms: three bedrooms (all ensuite), four bathrooms, a separated living and dining room, one family room and one study room. The master bedroom also features a large walk-in closet. With their timeless elegance and classic design, these are homes for those with discerning tastes and a demand for nothing less than excellence.

Just a few minutes' drive away, daily amenities, shops and restaurants can be found at Stanley Market. Also near the complex are a supermarket, dry cleaners and a doctor's clinic, as well as both campuses of Hong Kong International School. Chung Hom Kok is well served by public transportation with routes to Central and elsewhere. SCape's location between Repulse Bay and Stanley make the luxury development the perfect 'getaway' residence.

南埼坐落於恬靜宜人的春坎角，共8座3層高洋房，臨海而立。各幢洋房面海並排成列，均採用全落地大玻璃窗，春坎灣與赤柱灣醉人美景一覽無遺。

這裡環境絕對寬敞舒適，每幢獨立洋房的室內面積從4,500至8,000平方呎不等，更有約2,000至4,000呎戶外空間，包括私家天台、花園和無邊際暖水泳池。

這座豪華發展項目的其中一幢豪華大宅面積達4,578平方呎，叫價2億8千萬港幣，特設私家電梯，輕鬆連接所有房間，包括3間睡房（全是套房）、4間浴室、客廳、飯廳、家庭房和書房。主人套房更設有寬敞的衣帽間。南埼設計典雅，氣派雍容華貴，對於品味獨到，追求優越完美的用家，實屬不二之選。

這裡交通便捷，只需數分鐘車程，便可到達赤柱市中心。各種生活設施、店舖和餐廳一應俱全，應有盡有。屋苑附近也有超市、洗衣店和診所，更有香港國際學校的兩個分部。春坎角四通八達，有公共交通網絡連接中環及其他地方，非常方便。位處淺水灣與赤柱之間的優越地段，環境幽美，是遠離塵囂的豪華罕貴。



SCape - Cedrus 南埼一森居
26 Cape Road, Chung Hom Kok
春坎角 環角道26號

9138 1621 Teresa Fung 馮小姐 9871 6828 Louis Wong 黃先生
www.landscape.com/150397.htm



CHRISTOPHER GUY



10,000 Sq.Ft.
FLAGSHIP
STORE AT
31/F WORLD TRADE CENTRE



FARRINGTON INTERIORS
THE MOMENT MADE BEAUTIFUL



Shop 店舖:

G/F., 87 Wong Nai Chung Road,
Happy Valley, H.K.
香港跑馬地黃泥涌道87號地下
Tel: (852) 2808 0303
Fax: (852) 2801 6732

Flagship Store 旗艦店:

31/F, World Trade Centre,
280 Gloucester Road, Causeway Bay, H.K.
香港銅鑼灣告士打道280號世貿中心31樓
Tel: (852) 2808 1000
Fax: (852) 2808 2800

Opening hours 營業時間:

11:00am – 7:00pm
Mon – Fri(星期一至五)

1:00 pm – 6:00pm
Sat, Sun & Public Holiday (星期六、日及公眾假期)

WWW.FARRINGTONINTERIORS.COM

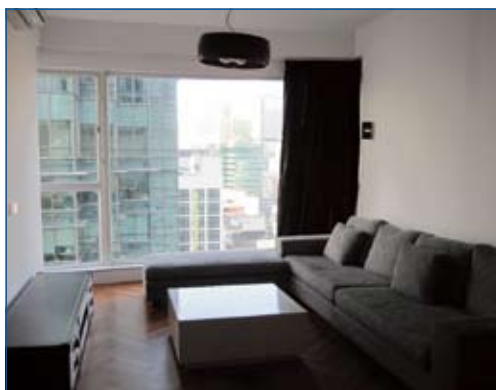


**80 Robinson Road,
Midlevels West**
Popular 3-bedroom flat with club facilities
受歡迎三房單位，連住客設施，可租可售

西半山羅便臣道80號

1,387 s.f.
\$24M also for lease \$56K incl.

☎ 6655 4488 William Tam 譚先生
🌐 www.landscape.com/138145.htm

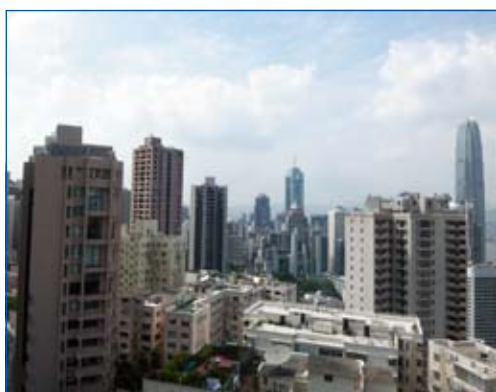


Starcrest
9 Star Street, Wan Chai
Stylish 3-bedroom apartment on fringe
of Admiralty
灣仔時尚三房單位，鄰近金鐘，交通方便

灣仔星域軒

1,164 s.f.
\$24.5M

☎ 9486 1566 Mira To 杜小姐
🌐 www.landscape.com/25462.htm

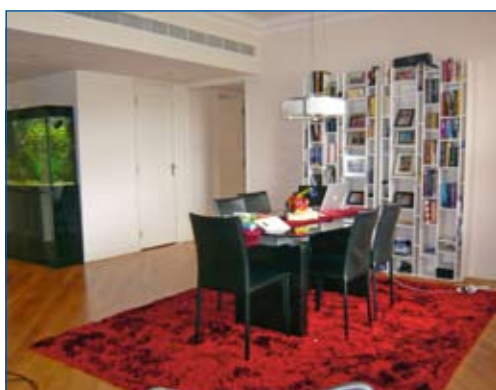


Fairlane Tower
2B Bowen Road, Midlevels Central
Modern flat with excellent facilities on
treelined Bowen Road
寶雲道時尚住宅，連完善住客設施，環境清幽怡人

中半山寶雲山莊

1,744 s.f.
\$34M

☎ 9080 6686 Teresa Lau 劉小姐 可普通話
🌐 www.landscape.com/37843.htm

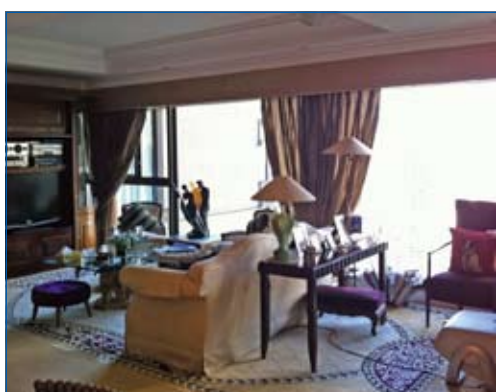
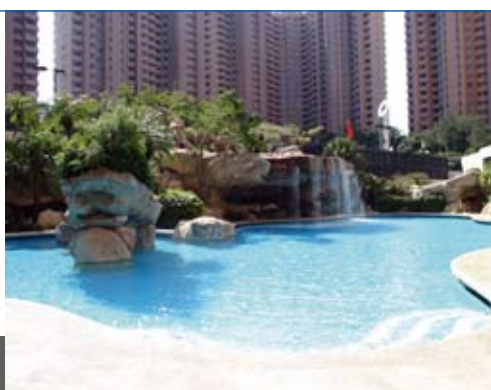


**Hong Kong Parkview-
Tower 18**
88 Tai Tam Reservoir Road,
Repulse Bay
Deluxe apartment with mountain view for
sale with lease
淺水灣豪華住宅，享翠綠山景，連約售，投資首選

淺水灣陽明山莊二座

2,570 s.f.
\$45M

☎ 9238 2012 David Chan 陳先生
🌐 www.landscape.com/30950.htm



Tavistock
10A Tregunter Path,
Midlevels Central
3-bedroom designer decorated luxury flat
in Midlevels Central
設計師精心設計三房單位，位於中半山高尚地段

中半山騰皇居

2,030 s.f.
\$46M

☎ 9093 3381 Stephen Chan 陳先生
🌐 www.landscape.com/27625.htm





**56 Repulse Bay Road,
Repulse Bay**
Luxuriously decorated duplex with lovely
Repulse Bay sea view
豪華裝修複式住宅，享迷人淺水灣海景

淺水灣
淺水灣道98號

3,279 s.f. (plus 854 s.f. roof)
\$180M

📞 9809 8570 Stella Lo 羅小姐
🌐 www.landscape.com/96165.htm



Stanley Crest
5 Stanley Beach Road, Stanley
Rare and unique waterfront townhouse
with panoramic sea view
赤柱罕有獨特海濱洋房，享遼闊海景，可租可售

赤柱
赤柱灘道9號

3,894 s.f. (plus 920 s.f. garden,
666 s.f. roof and 436 s.f. terrace)
\$180M also for lease \$250K incl.

📞 9088 4666 Yvonne Chang 鄭小姐
🌐 www.landscape.com/123699.htm

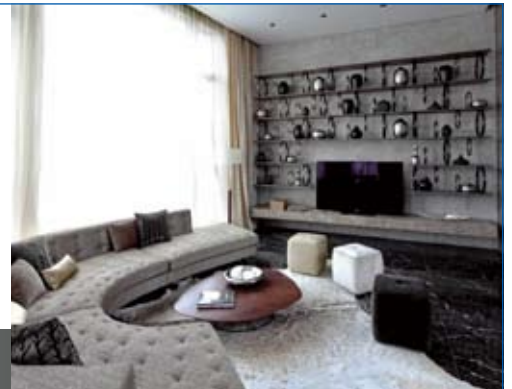


**7-11 Cape Road,
Chung Hom Kok**
Brand new decorated modern house with
stunning sea view
全新裝修時尚大屋，享遼闊海景

春坎角
環角道11號

4,963 s.f. (plus 1,083 s.f. garden,
609 s.f. roof and 196 s.f. terrace)
\$220M

📞 9551 1077 Walker Lam 林先生 可普通話
🌐 www.landscape.com/126122.htm



8 Tai Tam Road, Tai Tam
Magnificent waterfront dream house with
private pool taking in Tai Tam sea view
豪華海濱大屋，連私家泳池，俯瞰大潭海景

大潭
大潭道8號

5,474 s.f. (plus 945 s.f. garden
and 712 s.f. roof)
\$250M

📞 9871 6828 Louis Wong 黃先生
🌐 www.landscape.com/34709.htm



Peak Road, The Peak
Rare detached townhouse with private
swimming pool and huge garden
山頂罕有獨立大屋，連私家泳池及大花園

山頂
山頂道

4,250 s.f. (plus 2,087 s.f. garden,
673 s.f. terrace and 376 s.f. roof)
\$280M

📞 5182 8699 Maria Cheung 張小姐
🌐 www.landscape.com/79080.htm





Pokfulam Court

94 Pok Fu Lam Road, Pokfulam

Practical 3-bedroom apartment with 2 carparks and big balcony overlooking harbour view

薄扶林三房單位，間隔實用，連雙車位及大陽臺，俯瞰維港美景

1,750 s.f.

\$22M

9809 8570 Stella Lo 羅小姐
www.landscape.com/83034.htm

薄扶林
碧林閣



La Mer

67-71 Bisney Road, Pokfulam

Full sea view 3-bedroom plus study room low-rise apartment with twin carparks

全海景三房連書房低密度住宅，連雙車位

2,063 s.f.

\$26M

Sole Agent 獨家代理

9088 4666 Yvonne Chang 鄭小姐
www.landscape.com/108873.htm

薄扶林
浪韻居



Goldson Place

11 Shouson Hill Road West, Shouson Hill

Well kept 3-bedroom low-rise with private terrace at serene Shouson Hill area

壽臣山優質三房低密度住宅，連私家平台，可租可售

1,650 s.f. (plus 543 s.f. terrace)

\$27M also for lease \$66K incl.

9648 6082 Christine Chong 莊小姐
www.landscape.com/128186.htm

壽臣山
金信閣



Ruby Court

55 South Bay Road, Repulse Bay

Nicely decorated flat with full sea view in prestigious development

全新裝修住宅，享全海景，地段尊貴，可租可售

1,780 s.f.

\$37M also for lease \$72K incl.

9348 4118 Rowena Siu 蕭小姐
www.landscape.com/123302.htm

淺水灣
嘉麟閣



Bauhinia Gardens

42 Chung Hom Kok Road, Chung Hom Kok

Spacious low-rise apartment with private roof top in quiet neighbourhood

低密度住宅，間隔寬敞，連私家天台，環境寧靜，可租可售

1,600 s.f. (plus 1,600 s.f. roof)

\$39M also for lease \$68K incl.

9229 2396 Elaine Chow 周小姐 可普通話
www.landscape.com/34206.htm

春坎角
紫荊園



Gorden Terrace

4-8A Carmel Road, Stanley

Sea view low-rise with private roof and balcony in spacious layout

低密度海景住宅，連私家天台及陽臺，間隔寬敞，可租可售

1,800 s.f. (plus 1,500 s.f. roof)

\$42M also for lease \$115K incl.

9648 6082 Christine Chong 莊小姐
www.landscape.com/13051.htm

赤柱
歌敦臺



South Bay Towers

59 South Bay Road, Repulse Bay

Sea view apartment with high efficiency layout in South Bay

淺水灣海景住宅，實用率高，間隔寬敞

2,738 s.f.

\$45M

9833 9509 Michelle Chung 鍾小姐 可普通話
www.landscape.com/3328.htm

淺水灣
南灣大廈



Hong Kong Parkview-Tower 18

88 Tai Tam Reservoir Road, Repulse Bay

Newly decorated 4-bedroom flat with estate shuttle bus to Central

全新裝修四房單位，設有接駁巴士往中環

2,708 s.f.

\$45M

9833 9509 Michelle Chung 鍾小姐 可普通話
www.landscape.com/28248.htm

淺水灣
陽明山莊18座



South Bay Palace

25-31 South Bay Close, Repulse Bay

Nicely fitted and equipped large apartment in quiet enclave

淺水灣特大住宅，享靚裝修，環境寧靜，可租可售

2,540 s.f.

\$45M also for lease \$125k incl.

6838 2929 Mark Mak 麥先生
www.landscape.com/102800.htm

淺水灣
南灣御苑



Hong Kong Parkview-Tower 10

88 Tai Tam Reservoir Road, Repulse Bay

Popular family apartment with full facilities overlooking mountain view

受歡迎家庭式住宅，連完善住客會所設施，俯瞰綠油油的山景，可租可售

2,772 s.f.

\$50M also for lease \$118K incl.

9238 2012 David Chan 陳先生
www.landscape.com/92141.htm

淺水灣
陽明山莊10座

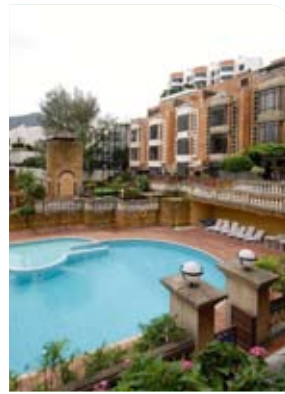


63-65 Bisney Road, Pokfulam
Practical 4-bedroom low-rise apartment in quiet location with sea view
實用四房低密度住宅，環境優美寧靜，欣賞海景，可租可售

2,400 s.f.
\$50M also for lease \$85k incl.

☎ 6838 2929 Mark Mak 麥先生
🌐 www.landscape.com/11631.htm

薄扶林 碧荔道 63-65號



45 Island Road, Deep Water Bay
Deep Water Bay low-rise for sale with lease
深水灣低密度住宅，連約售，投資首選

1,634 s.f. (plus 1,207 s.f. roof)
\$50M

☎ 9229 2396 Elaine Chow 周小姐
🌐 www.landscape.com/127406.htm

深水灣 香島道 45號



Villa Cecil Phase II
192 Victoria Road, Pokfulam
Large practical 4-bedroom apartment overlooking Pokfulam sea view
特大四房單位，間隔實用，俯瞰薄扶林海景，可租可售

3,605 s.f.
\$50.768M also for lease \$110K

☎ 9809 8570 Stella Lo 羅小姐
🌐 www.landscape.com/36630.htm

薄扶林 趙苑二期



Redhill House
18 Pak Pat Shan Road, Tai Tam
Redhill townhouse with efficient layout facing the ocean
紅山半島洋房，間隔實用，面向海洋，景色優美

2,936 s.f. (plus 584 s.f. garden, 379 s.f. terrace and 309 s.f. roof)
\$58.72M

☎ 6330 7888 Cora Ko 高小姐
🌐 www.landscape.com/19701.htm

大潭 紅山半島

雅緻之選 Sleek style

Sheffield Garden 峯豐園
5 Shiu Fai Terrace, Midlevels East
東半山峯輝臺5號

1,450 s.f. (plus 1,024 s.f. roof)
HK\$29M

Located at the upper section of Shiu Fai Terrace in Midlevels East, this colonial style apartment is a peaceful abode within the city. The 1,450 s.f. apartment enjoys an open view of Happy Valley and the verdant green view of hillsides.

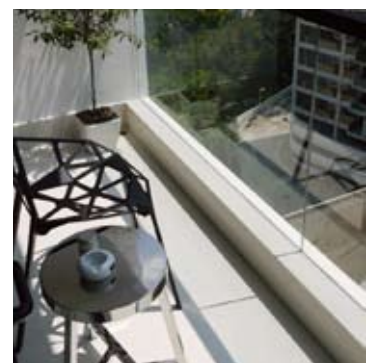
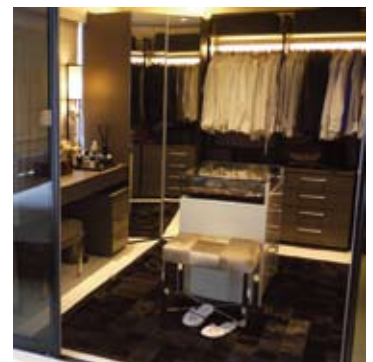
Fully furnished and decorated with a sleek, modern design, its spacious and practical layout comprises three bedrooms (one ensuite), two bathrooms, a combined living and dining room and one balcony. An internal staircase leads to a private roof terrace ideal for entertaining guests, equipped with a barbecue, dining area and ample space for seating.

The apartment is two minutes' walk to the nearest bus stop on Stubbs Road, from where buses go to major areas such as the Peak, Southside, Wanchai, Admiralty and Central.

單位坐落於東半山峯輝臺的較高地段，極具殖民地風味，面積達1,450平方呎，不單在吵鬧的城市中獨享寧靜，更享有開揚景觀，俯覽跑馬地以及青蔥翠綠山景，讓人心曠神怡。

全屋傢俬齊備，設計裝飾雅緻時尚，間隔寬敞而實用，包括3間睡房（1間套房），2間浴室，1個客飯廳以及露台。屋內有樓梯通往私家天台，設有燒烤爐和用餐區，舒適寬闊的空間能容納許多座位，招朋宴客最理想不過。

徒步到司徒拔道的巴士站只需2分鐘，巴士途經山頂、南區、灣仔、金鐘及中環等地，十分便捷。



☎ 6183 8388 Chris Law 羅先生
🌐 www.landscape.com/134906.htm



Celestial Garden

5 Repulse Bay Road, Repulse Bay
4-bedroom sea view apartment on upper Repulse Bay Road with swimming pool
淺水灣道頭段四房海景住宅，連泳池

淺水灣
詩禮花園

2,363 s.f.
\$63M

☎ 9093 3381 Stephen Chan 陳先生
🌐 www.landscape.com/3881.htm



Belgravia

57 South Bay Road, Repulse Bay
Newly renovated sea view flat with facilities in serene South Bay
全新裝修海景住宅，連住客設施，環境清幽怡人，可租可售

淺水灣
南灣道57號

2,390 s.f.
\$66M also for lease \$160K incl.

☎ 9833 9509 Michelle Chung 鍾小姐 **可普通話**
🌐 www.landscape.com/118350.htm



Repulse Bay Towers

119A Repulse Bay Road, Repulse Bay
Renowned 4-bedroom duplex with view of Repulse Bay Beach
新裝修四房複式單位，尊享淺水灣海灘景色，可租可售

淺水灣
保華大廈

3,100 s.f.
\$68M also for lease \$100K incl.

☎ 9809 8570 Stella Lo 羅小姐
🌐 www.landscape.com/4270.htm



Guildford Court

5 Guildford Road, The Peak
Rare well decorated 3-bedroom apartment with practical layout in lower Peak
山頂三房住宅，享靚裝修，寬敞實用，少有放盤

山頂
喬福道5號

2,500 s.f.
\$70M

☎ 9648 6082 Christine Chong 莊小姐
🌐 www.landscape.com/30026.htm



Stanley Beach Road, Stanley

Tastefully decorated 4-bedroom low-rise apartment close to Stanley Beach
品味靚裝修四房低密度住宅，鄰近赤柱海灘

赤柱
赤柱灘道

3,300 s.f.
\$73M

☎ 9088 4666 Yvonne Chang 鄭小姐
🌐 www.landscape.com/13862.htm



Twin Brook

43 Repulse Bay Road, Repulse Bay
4-bedroom apartment with sea view in prime location
四房海景住宅，欣賞美麗海景，地段顯赫，可租可售

淺水灣
雙溪

2,700 s.f.
\$78M also for lease \$110K

☎ 6183 8388 Chris Law 羅先生
🌐 www.landscape.com/7861.htm



Pine Crest

65 Repulse Bay Road, Repulse Bay
Rarely garden apartment for sale in Repulse Bay
淺水灣罕有分層單位連花園出售

淺水灣
松苑

2,250 s.f. (plus 2,020 s.f. garden)
\$85M

☎ 9028 0147 Jenson Au 區先生 **可普通話**
🌐 www.landscape.com/31521.htm



La Hacienda - Apartment

29-33 Mount Kelleff Road, The Peak
Colonial style apartment with facilities in The Peak with Southside sea view
山頂英式住宅，連完善住客會所設施，欣賞南區海景，可租可售

山頂
加列山道29-33號

3,506 s.f.
\$90M also for lease \$145K incl.

☎ 9138 1621 Teresa Fung 馮小姐
🌐 www.landscape.com/30905.htm



Tai Tam Waterfront Townhouse

Contemporary waterfront townhouse with designer's decor and garden terrace
豪華海濱洋房，連設計師品味裝修及花園平台

大潭
海濱洋房

3,026 s.f. (plus 2,617 s.f. garden, 127 s.f. roof and 451 s.f. carport)
\$102M

☎ 9871 6828 Louis Wong 黃先生
🌐 www.landscape.com/107218.htm



Chung Hom Kok Sea View House

Cape Drive, Chung Hom Kok
Sea view townhouse in quiet Chung Hom Kok
春坎角海景排屋，環境寧靜

春坎角
海景大屋

3,300 s.f. (plus 1,144 s.f. garden and 1,083 s.f. roof)
\$118M

☎ 9138 1621 Teresa Fung 馮小姐
🌐 www.landscape.com/27548.htm



Belleview Place
93 Repulse Bay Road, Repulse Bay
High-ceilinged 4-bedroom townhouse at Repulse Bay
淺水灣四房排屋，樓底極高

淺水灣寶晶苑

3,619 s.f.
(plus 735 s.f. roof, 310 s.f. terrace)
\$130M

9871 6828 Louis Wong 黃先生
www.landscape.com/136438.htm



Manderly Garden
48 Deep Water Bay Road, Deep Water Bay
Designer decorated townhouse in Deep Water Bay
深水灣靚裝修排屋，設計師精心設計

深水灣文禮苑

3,610 s.f. (plus 587 s.f. roof)
\$150M

5182 8699 Maria Cheung 張小姐
www.landscape.com/6527.htm



45 Island Road, Deep Water Bay
Rare find sea view garden house at Deep Water Bay
深水灣罕有海景花園洋房

深水灣香島道45號

4,800 s.f. (plus 710 s.f. garden and 540 s.f. roof)
\$168M

9199 0672 David Leung 梁先生
www.landscape.com/99477.htm



Turtle Cove
60 Tai Tam Road, Tai Tam
Nicely decorated waterfront house in Tai Tam
罕有大潭獨立屋，全新裝修，可租可售

大潭龜背灣

4,300 s.f. (plus 453 s.f. terrace and 259 s.f. roof)
\$168M also for lease \$250K incl.

9138 1621 Teresa Fung 馮小姐
www.landscape.com/12763.htm



Strawberry Hill
8 Plunkett's Road, The Peak
Tasteful designer decorated colonial townhouse
設計師品味裝修英式洋房

山頂紅莓閣

3,200 s.f.
\$170M

9199 0672 David Leung 梁先生
www.landscape.com/108282.htm



Sherwood's Bluff
10 Bluff Path, The Peak
Detached townhouse with splendid Southside sea view
山頂獨立大屋，享廣闊南區海景，可租可售

山頂百綠徑10號

4,055 s.f. (plus 531 s.f. garden and 431 s.f. terrace)
\$185M also for lease \$200K incl.

6183 8388 Chris Law 羅先生
www.landscape.com/28825.htm



Abergeldie
52 Plantation Road, The Peak
Peak house with garden and terrace enjoy bird's eye view of Victoria Harbour
山頂大屋，連花園平台，鳥瞰維港景色

山頂種植道52號

3,655 s.f. (plus 282 s.f. roof, 505 s.f. terrace and 464 s.f. garden)
\$220M

9199 0672 David Leung 梁先生
www.landscape.com/13340.htm



12-16 Tai Tam Road, Tai Tam
Exclusive waterfront house with private swimming pool
獨特海濱大屋，連私家泳池，可租可售

大潭大潭道12-16號

5,234 s.f. (plus 2,652 s.f. garden, 939 s.f. roof and 767 s.f. terrace)
\$220M also for lease \$300K incl.

9871 6828 Louis Wong 黃先生
www.landscape.com/120240.htm



Kellett View Town House
65-69 Mount Kellett Road, The Peak
Tastefully decorated 4-bedroom townhouse in quiet area of the prestigious Peak
靚裝修四房排屋，位於山頂顯赫地段，環境寧靜怡人

山頂嘉麗園

3,986 s.f. (plus 973 s.f. terrace)
\$224M

9648 6082 Christine Chong 莊小姐
www.landscape.com/96599.htm



Island Grove
40 Island Road, Deep Water Bay
Designer decorated waterfront townhouse at prestigious address
設計師精心設計海濱洋房，地段尊貴，可租可售

深水灣香島道40號

5,080 s.f. (plus 423 s.f. garden)
\$330M also for lease \$390K incl.

9871 6828 Louis Wong 黃先生
www.landscape.com/121888.htm



Winsome Park

42 Conduit Road, Midlevels West
Cozy 2-bedroom apartment with facilities on Conduit Road
西半山迷人兩房單位，連住客設施，可租可售

西
半
山
匯
豪
閣

895 s.f.
\$11.8M also for lease \$33K incl.

☎ 6655 4488 William Tam 譚先生
🌐 www.landscape.com/74424.htm



Best View Court

66-68 MacDonnell Road,
Midlevels Central
Colonial low-rise on MacDonnell Road
麥當勞道英式低密度住宅，可租可售

中
半
山
好
景
大
廈

1,600 s.f.
\$19M also for lease \$65K incl.

☎ 9028 0147 Jenson Au 區先生
🌐 www.landscape.com/54181.htm

可普通話



Botanic Terrace

3-5 Conduit Road, Midlevels West
A designer gem with fully furniture on convenient Conduit Road
雅緻靚裝修單位連全屋傢俬，位於干德道優越地段，可租可售

西
半
山
芝
蘭
台

1,400 s.f.
\$21.5M also for lease \$95K incl.

☎ 9080 6686 Teresa Lau 劉小姐
🌐 www.landscape.com/136455.htm

可普通話



5G-5H Bowen Road, Midlevels Central

Rare find stylish 3-bedroom colonial apartment on tranquil Bowen Road
寶雲道時尚英式三房單位，環境寧靜，市場罕有

中
半
山
寶
雲
道
5G-5H
號

1,600 s.f.
\$24M

☎ 9348 4118 Rowena Siu 蕭小姐
🌐 www.landscape.com/123608.htm



Pearl Gardens

7 Conduit Road, Midlevels West
Practical 3-bedroom apartment on convenient Conduit Road
西半山實用三房住宅，位置優越，可租可售

西
半
山
明
珠
臺

2,200 s.f.
\$34M also for lease \$83K incl.

☎ 9486 1566 Mira To 杜小姐
🌐 www.landscape.com/109264.htm



Medallion Heights

45 Conduit Road, Midlevels West
Tastefully decorated 2-bedroom penthouse with internal staircase to private roof enjoy open green view in tranquil location
雅緻靚裝修兩房頂層住宅，連內置樓梯往私家天台，享開揚翠綠景色，環境優美怡人

西
半
山
金
徽
閣

2,050 s.f. (plus 1,500 s.f. roof)
\$38M

☎ 9028 0147 Jenson Au 區先生
🌐 www.landscape.com/135947.htm

可普通話



Tregunter Tower 1

14 Tregunter Path,
Midlevels Central
Large and practical modern 4-bedroom flat with easy access to Central
特大時尚四房單位，間隔實用，鄰近中環，交通方便

中
半
山
地
利
根
德
閣
座

3,052 s.f.
\$39M

☎ 6330 7888 Cora Ko 高小姐
🌐 www.landscape.com/89920.htm



Po Garden

9 Brewin Path, Midlevels Central
Spacious 3-bedroom apartment on fringe of CBD
寬敞三房住宅，鄰近中環，交通方便

中
半
山
寶
園

2,594 s.f. (plus 165 s.f. terrace)
\$40M

☎ 9551 1077 Walker Lam 林先生
🌐 www.landscape.com/17111.htm

可普通話



Chenyu Court

22-24 Kennedy Road,
Midlevels Central
Practical mid-rise flat in convenient location
間隔實用中密度住宅，地段優越方便

中
半
山
燦
如
閣

1,800 s.f.
\$40M

☎ 5182 8699 Maria Cheung 張小姐
🌐 www.landscape.com/50258.htm



11 MacDonnell Road, Midlevels Central

Well decorated fully furnished apartment close to CBD
雅緻裝修單位，連全屋傢俬，鄰近中環，可租可售

中
半
山
麥
當
勞
道
11
號

2,313 s.f.
\$40M also for lease \$100K incl.

☎ 9229 2396 Elaine Chow 周小姐
🌐 www.landscape.com/124575.htm

可普通話



Clovelly Court
12 May Road, Midlevels Central
Spacious 3-bedroom apartment will full facilities
中半山三房住宅，連完善住客設施

中半山
嘉富麗苑

2,115 s.f.
\$48M

☎ 6183 8339 Carman Szeto 司徒小姐 可普通話
🌐 www.landscape.com/135022.htm



Century Tower 1
1 Tregunter Path, Midlevels Central
Spacious 3-bedroom flat in prime location of Midlevels Central
中半山三房單位，間隔寬敞，地段尊貴

中半山
世紀大廈二座

2,565 s.f.
\$49.2M

☎ 9028 0147 Jenson Au 區先生 可普通話
🌐 www.landscape.com/135573.htm



Hillsborough Court
18 Old Peak Road, Midlevels Central
Duplex penthouse with roof and terrace in Midlevels Central
中半山豪華頂層住宅，連天台及平台

中半山
曉峰閣

2,355 s.f. (plus 646 s.f. roof and 295 s.f. terrace)
\$68M

☎ 9199 0672 David Leung 梁先生
🌐 www.landscape.com/23008.htm



1 Po Shan Road, Midlevels West
Nicely decorated 4-bedroom apartment with harbour view
西半山靚裝修四房住宅，享維港景

西半山
寶珊道一號

2,939 s.f.
\$85M

☎ 9551 1077 Walker Lam 林先生 可普通話
🌐 www.landscape.com/36642.htm



時尚安樂窩 Modern family home

Carnation Court 康馨園
41-47 Tai Hang Road, Midlevels East,
東半山太坑道41-47號

2,126 s.f.
HK\$32M also for lease \$78K incl.

Ideal for families, this 2,126 s.f. apartment in Midlevels East is part of Carnation Court, known for its efficient layouts. Upon entrance, there is a spacious combined living and dining room with a view of the city from the balcony. Next to the dining area, the kitchen is equipped with Siemens appliances, ample storage space, a maid's room (ensuite) and a storage room. With a total of four bedrooms, the master bedroom (ensuite) comes with a walk-in closet and office space facing the city view. The children's bedrooms evoke their young spirits through vibrant coloured wallpaper and furnishings.

Situated on Tai Hang Road, the apartment has easy access to Wanchai and Central.

東半山的康馨園素以間格實用見稱，這個單位面積2,126平方呎，是一家人理想的安樂窩。一進屋就是空間感十足的客飯廳，寬敞舒適，露台更可眺望城市景緻。飯廳旁邊是廚房，備有全套西門子電器廚具，存儲空間非常充足，還有工人套房和儲物房。全屋共4間睡房，當中主人套房設有衣帽間和工作間，亮麗城市景觀盡收眼簾。至於孩子的房間，不論牆紙和傢俱都採用鮮明活潑色調，展現無限年青活力。

康馨園位處大坑道，出入灣仔和中環都非常方便。



☎ 6330 7888 Cora Ko 高小姐
🌐 www.landscape.com/112640.htm



Gold King Mansion
7 Tai Hang Drive, Midlevels East
2-bedroom harbour view apartment
東半山兩房維港景住宅

東半山
高景大廈

700 s.f.
\$9.9M

☎ 5182 8699 Maria Cheung 張小姐
🌐 www.landscape.com/119397.htm



Swiss Towers
113 Tai Hang Road, Midlevels East
Practical flat with internal stairs enjoying nice harbour view and Hong Kong Stadium view
東半山實用住宅，連內置樓梯，享美麗維港景色及大球場景觀

東半山
瑞士花園

1,600 s.f.
\$26.8M

☎ 6655 4488 William Tam 談先生
🌐 www.landscape.com/49663.htm



Richery Palace
16 Tung Shan Terrace, Midlevels East
Resort style apartment with open racecourse view
東半山渡假式住宅，享開揚馬場景觀

東半山
德信豪庭

2,500 s.f.
\$28.8M

☎ 6655 4488 William Tam 談先生
🌐 www.landscape.com/113902.htm



Elm Tree Towers
8-10 Chun Fai Road, Jardine's Lookout
Large and practical flat with nice decor and 2 carparks in sought after neighbourhood
特大靚裝修單位，間隔實用連雙車位，市場罕有，可租可售

渣甸山
愉富大廈

2,028 s.f.
\$29M also for lease \$65K incl.

☎ 9093 3381 Stephen Chan 陳先生
🌐 www.landscape.com/50008.htm



9 Broom Road, Happy Valley
Renovated in modern contemporary style low-rise apartment with 1 car park
新裝修時尚設計低密度住宅，連一個車位

跑馬地
蟠龍道9號

2,000 s.f.
\$33.8M

☎ 9833 9509 Michelle Chung 鍾小姐 可普通話
🌐 www.landscape.com/136247.htm



Cavendish Heights
27-37 Perkins Road, Jardine's Lookout
Well decorated flat in family-oriented estate with swimming pool and tennis courts
雅致裝修家庭式住宅，連泳池及網球場

渣甸山
嘉雲臺

1,907 s.f.
\$35M

☎ 6330 7888 Cora Ko 高小姐
🌐 www.landscape.com/31208.htm



Antonia House
4-12 Broom Road, Happy Valley
Rarely available spacious colonial apartment at upper Happy Valley
跑馬地頭段罕有英式住宅，間隔寬敞，可租可售

跑馬地
蟠龍道4-12號

2,400 s.f.
\$40M also for lease \$90K incl.

☎ 9028 0147 Jenson Au 區先生 可普通話
🌐 www.landscape.com/66985.htm



The Colonnade
152 Tai Hang Road, Midlevels East
Modern 3-bedroom apartment with stunning view
時尚三房住宅，享遠闊維港景觀，可租可售

東半山
嘉雲臺

1,857 s.f.
\$48M also for lease \$90K incl.

☎ 9093 3381 Stephen Chan 陳先生
🌐 www.landscape.com/124048.htm



Trafalgar Court
70 Tai Hang Road, Midlevels East
High efficiency 5-bedroom apartment with harbour view
東半山五房維港景住宅出租，實用率高，可租可售

東半山
大寶閣

2,465 s.f.
\$91M also for lease \$150K incl.

☎ 9493 8275 Sami Woo 胡小姐
🌐 www.landscape.com/5912.htm



White Jade
51 Stubbs Road, Midlevels East
Rare 2-bedroom apartment with fantastic Victoria Harbour view
罕有兩房單位，尊享遠闊維港景色，可租可售

東半山
白璧

1,700 s.f.
\$53M also for lease \$110K incl.

☎ 6183 8388 Chris Law 羅先生
🌐 www.landscape.com/38175.htm



GOODS OF DESIRE®



Woodland Villa
53 Shouson Hill Road, Shouson Hill
2-bedroom sea view apartment
壽臣山兩房海景單位

壽臣山
傲林軒

1,200 s.f.
\$70K

☎ 9238 2012 David Chan 陳先生
🌐 www.landscape.com/12016.htm



The Brentwood
11 Repulse Bay Road, Repulse Bay
Newly renovated 3-bedroom apartment
commanding stunning sea view
全新裝修三房單位，享遼闊海景

淺水灣
蔚峰園

1,556 s.f.
\$73K incl.

☎ 9348 4118 Rowena Siu 蕭小姐
🌐 www.landscape.com/135370.htm



34-36 Bisney Road, Pokfulam
Nicely decorated 4-bedroom colonial low-rise in Pokfulam
薄扶林低密度英式四房單位，享雅致裝修

薄扶林
碧荔道 34-36號

2,200 s.f.
\$80K incl.

☎ 9551 1077 Walker Lam 林先生 可普通話
🌐 www.landscape.com/104002.htm



Scenic Villas
2-28 Scenic Villa Drive, Pokfulam
Practical 4-bedroom sea view apartment
at quiet Pokfulam waterfront
薄扶林海濱四房單位，間隔實用，欣賞寧靜海景

薄扶林
美景臺

2,517 s.f.
\$81K

☎ 9348 4118 Rowena Siu 蕭小姐
🌐 www.landscape.com/10592.htm



Faber Court
29-31 Tai Tam Road, Tai Tam
Popular 3-bedroom apartment with
splendid sea view
受歡迎三房住宅，享遼闊海景

大潭
輝百閣

1,900 s.f.
\$85K incl.

☎ 6838 2929 Mark Mak 麥先生
🌐 www.landscape.com/35467.htm



Ruby Court
55 South Bay Road, Repulse Bay
Sea view apartment with clubhouse
facilities at South Bay
淺水灣海景住宅，連住客設施

淺水灣
嘉麟閣

2,200 s.f.
\$90K

☎ 6838 2929 Mark Mak 麥先生
🌐 www.landscape.com/148356.htm



Pine Crest
65 Repulse Bay Road, Repulse Bay
Full sea view apartment at Repulse Bay
淺水灣全海景住宅

淺水灣
松苑

2,250 s.f.
\$90K incl.

☎ 5182 8699 Maria Cheung 張小姐
🌐 www.landscape.com/21278.htm



Stewart Terrace
81-95 Peak Road, The Peak
Designer decorated colonial low-rise at
exclusive location
設計師精心設計英式低密度住宅，地段尊貴，
可租可售

山頂
史釗域臺

3,077 s.f.
\$90K also for sale Open Offer

☎ 9080 6686 Teresa Lau 劉小姐 可普通話
🌐 www.landscape.com/113372.htm



3 Repulse Bay Road, Repulse Bay
Renowned apartment with sea view on
upper Repulse Bay Road
淺水灣道頭段海景住宅，尊享靚裝修，可租可售

淺水灣
淺水灣道 3號

2,161 s.f.
\$98K also for sale Open Offer

☎ 9238 2012 David Chan 陳先生
🌐 www.landscape.com/6402.htm



Repulse Bay Garden
18-40 Belleview Drive, Repulse Bay
Practical 4-bedroom sea view apartment
at Repulse Bay
淺水灣四房單位，間隔實用，尊享海景

淺水灣
麗景園

2,810 s.f.
\$100K incl.

☎ 9648 6082 Christine Chong 莊小姐
🌐 www.landscape.com/5595.htm



Villa Verde

4-18 Guildford Road, The Peak

Newly renovated high efficiency 3-bedroom apartment with sea view in Lower Peak

山頂全新裝修三房住宅，實用率高，享海景

2,520 s.f.
\$108K incl.

6183 8339 Carman Szeto 司徒小姐 可普通話
www.landscape.com/4433.htm

山頂環翠園



77 Peak Road, The Peak

3-ensuite Peak mid-rise flat with lush green view

山頂中密度三房單位，尊享綠油油翠綠景色

2,734 s.f.
\$110K

9551 1077 Walker Lam 林先生 可普通話
www.landscape.com/10870.htm

山頂山頂道11號



Pine Grove

23 Sha Wan Drive, Pokfulam

Large 4-bedroom duplex apartment with newly kitchen and internal staircase to roof

特大四房複式住宅，連新廚房，及內置樓梯上天台

3,750 s.f. (plus 1,012 s.f. roof)
\$110K incl.

9080 6686 Teresa Lau 劉小姐 可普通話
www.landscape.com/151104.htm

薄扶林蘊真閣



The Carmina

7-9 Deep Water Bay Drive, Deep Water Bay

Newly renovated apartment in tranquil area

深水灣全新裝修單位，環境清幽怡人

2,628 s.f.
\$115K incl.

9080 6686 Teresa Lau 劉小姐 可普通話
www.landscape.com/17162.htm

深水灣嘉名苑



Fortuna Court

25 Repulse Bay Road, Repulse Bay

4-bedroom high efficiency and split level apartment with a balcony overlooking Deep Water Bay beach and golf course

淺水灣實用四房單位連陽臺，尊享深水灣海灘及高爾夫球場景觀

3,012 s.f.
\$119K

6183 8339 Carman Szeto 司徒小姐 可普通話
www.landscape.com/163.htm

淺水灣福慧大廈



Mountain Lodge

44 Mount Kelleff Road, The Peak

Spacious 4-bedroom apartment with sea view

間隔寬敞四房單位，欣賞美麗海景

2,600 s.f.
\$120K incl.

9486 1566 Mira To 杜小姐 可普通話
www.landscape.com/11692.htm

山頂崑崙



Redhill House

18 Pak Pat Shan Road, Tai Tam

Spacious sea view townhouse with clubhouse facilities

大潭寬敞海景洋房，連住客會所設施

3,140 s.f. (plus 787 s.f. garden, 392 s.f. terrace and 323 s.f. roof)
\$130K

9486 1566 Mira To 杜小姐 可普通話
www.landscape.com/30741.htm

大潭紅山半島



1-9 Watford Road, The Peak

4-bedroom Peak townhouse with garden and terrace

山頂四房排屋，連花園平台

4,678 s.f. (plus 1,065 s.f. garden and 228 s.f. terrace)
\$135K

9088 4666 Yvonne Chang 鄭小姐 可普通話
www.landscape.com/4851.htm

山頂和福道19號



Carriana Sassoon

41 Sassoon Road, Pokfulam

Large 4-bedroom townhouse with expansive sea view located at quiet Sassoon Road

沙宣道特大四房排屋，尊享美麗海景，環境寧靜

3,000 s.f. (plus 795 s.f. terrace and 236 s.f. garden)
\$150K incl.

9348 4118 Rowena Siu 蕭小姐 可普通話
www.landscape.com/37426.htm

薄扶林沙宣道11號



The Zenith

11A Shouson Hill Road West, Shouson Hill

Modern townhouse with roof and garden terrace at tranquil Shouson Hill area

時尚設計洋房，連天台及花園平台，位於壽臣山，優美寧靜

3,692 s.f. (plus 372 s.f. terrace, 307 s.f. garden and 286 s.f. roof)
\$168K

6330 7888 Cora Ko 高小姐 可普通話
www.landscape.com/50355.htm

壽臣山采庵



Regalia Bay
88 Wong Ma Kok Road, Stanley
Newly renovated 4-bedroom townhouse with sea view
全新裝修四房排屋，欣賞寧靜海景

赤柱
富豪海灣

4,104 s.f. (plus 1,167 s.f. roof and 467 s.f. garden)
\$175K incl.

9138 1621 Teresa Fung 馮小姐
www.landscape.com/150529.htm



11 Coombe Road, The Peak
Huge 4-bedroom apartment nestled in sought after neighbourhood
山頂特大四房單位，市面難尋

山頂
甘道11號

3,830 s.f.
\$178K

9493 8275 Sami Woo 胡小姐
www.landscape.com/102084.htm



Ondina Heights
62-66 Peak Road, The Peak
Luxurious European townhouse with peaceful sea view
豪華英式洋房，尊享優美海景

山頂
安寧臺

3,396 s.f. (plus 413 s.f. terrace, 291 s.f. roof and 94 s.f. garden)
\$180K

9809 8570 Stella Lo 羅小姐
www.landscape.com/20982.htm



Plantation Heights
29 Plantation Road, The Peak
Newly renovated house with private garden
全新裝修大屋，連私家花園

山頂
迎福苑

3,080 s.f. (plus 1,265 s.f. garden)
\$188K

9833 9509 Michelle Chung 鍾小姐 可普通話
www.landscape.com/109399.htm



Kellett View Town House
65-69 Mount Kellett Road, The Peak
Fantastic garden townhouse with partial sea view on the Peak
山頂花園洋房，享部份海景

山頂
嘉麗園

4,010 s.f. (plus 973 s.f. terrace)
\$220K

9833 9509 Michelle Chung 鍾小姐 可普通話
www.landscape.com/3327.htm



Magnolia
29-31 Ching Sau Lane, Chung Hom Kok
Newly decorated townhouse with private pool
新裝修排屋，連私家泳池出租

春坎角
靜修里29-31號

4,200 s.f.
\$250K incl.

9088 4666 Yvonne Chang 鄭小姐
www.landscape.com/124010.htm



Rocky Bank
6 Deep Water Bay Road, Deep Water Bay
Townhouse with practical layout and sea view in serene location
深水灣海景洋房，間隔實用，環境清幽怡人

深水灣
深水灣道6號

2,648 s.f.
\$260K

9238 2012 David Chan 陳先生
www.landscape.com/15782.htm



2 Barker Road, The Peak
Luxury 4-bedroom townhouse on the Peak with full Victoria Harbour view
山頂豪華四房洋房，尊享全維港景觀

山頂
白加道2號

4,325 s.f. (plus 553 s.f. roof and 382 s.f. terrace)
\$270K

9493 8275 Sami Woo 胡小姐
www.landscape.com/46173.htm



Belgravia
57 South Bay Road, Repulse Bay
Rare and unique duplex penthouse with private terrace overlooking stunning sea view
淺水灣罕有獨特頂層住宅，連私家天台平台，俯瞰遼闊海景

淺水灣
南灣道57號

3,675 s.f. (plus 1,154 s.f. roof and 462 s.f. terrace)
\$280K incl.

9551 1077 Walker Lam 林先生 可普通話
www.landscape.com/136359.htm



The Nautilus
16A South Bay Road, Repulse Bay
Waterfront townhouse with roof and garden enjoy sweeping sea view across Repulse Bay
淺水灣海濱排屋，欣賞寧靜海景，連天台花園

淺水灣
南灣道16號

4,859 s.f. (plus 661 s.f. roof and 264 s.f. garden)
\$350K incl.

9871 6828 Louis Wong 黃先生
www.landscape.com/27207.htm

MOVING WITH THE TIMES

With exquisite craftsmanship at the very core of its brand, Halo continues to evolve

text: mavis wong

photography: dicky liu / courtesy of halo



When it comes to purchasing a product, it's only natural to check where it is made. If it's somewhere like Japan, the UK or Italy, most people immediately assume it's a good buy. But what if 'Made in China' is inscribed on the product body or label? Quick as a flash, concerns over quality and labour practices come to the fore, as this is the place which has long been regarded as the world's factory.

Eager to correct this impression is lifestyle brand Halo, which produces luxury handcrafted furniture. "In five years' time, 'Made in China' will be promoted because what it means is better quality. People today think it's poor quality, but it's not true," says Timothy Oulton, owner and creative director of Halo, who believes Chinese artisans are fast learning skills and are capable of doing the best job. "If you're just doing a modern sofa range, I'm sure Italy is good. But if you want a complex product, I don't know anywhere better than China."

Without doubt, Halo is proud of being 'made in China'. Evident to this is its newly-opened showroom — a four-storey building of steel and salvaged timber with a natural industrial ceiling, reminiscent of the brand's contemporary yet vintage sensibility — in Gaoming, Foshan. Just 90 minutes by car from Guangzhou Baiyun International Airport, this 4,000 sq-m showroom not only is located in the vicinity of its China workshop, but also incorporates Chinese elements — a huge Mao Zedong sculpture placed right at the entrance and the 'Five Star Red Flag' pattern carved into the lift's ceiling — forming a visually-interesting contrast with its setting, where collections featuring the Union Jack pattern could be found.



Dating back to 1976, Halo started off as an antique business in England but then repositioned to focus on the recreation of antique pieces with a modern viewpoint. When asked about this move, Oulton emphasised that bringing a modern perspective to the brand is essential: "I think if you do not put a modern flavour, it's not relevant today. I love heritage, but I want to reinvent it."

Offering a diverse range of products from furniture to trunks, bags and travel accessories, Halo is known for a unique aesthetic with exquisite craftsmanship at its very core. "You want to make something you are proud of. You want to make something that's going to last," says Oulton. "That's what we do; that's what we're good at. We could never get anywhere if we hadn't captured craftsmanship. Never."

'Big pieces' are another signature of Halo. "It tells you who we are," notes Oulton. "We have small chairs as well, but of course, the accent is big. I'd like to show oversized items."

Today, Halo has gone a step further by collaborating with a number of international designers such as Kelly Hoppen and Michael Yeung. The Kelly Hoppen for Halo furniture collection is glamorous with clean lines, while Yeung creates futuristic designs with an unusual blend of avant-garde modernism. Among them, one interesting crossover is a range created with the Oxford University, the second oldest surviving university in the world.

According to Oulton, collaborations are not restricted to designers, as long as they interest him while having a completely different style with Halo. "When we do sub-brands, we always learn something. You don't feel it, but it happens by osmosis. I know the quality of our fabrics has improved since we did Kelly's line, because I got a better idea of how to do it."



隨「時」設計

Halo深深植根於精湛工藝，時時刻刻進步演化

撰文：mavis wong

攝影：dicky liu / courtesy of halo



購物前，查看產地最自然不過。倘若產自日本、英國或意大利等地，人們大多會立刻認為是物有所值、質量有保證。但倘若產品或標籤上印有「中國製造」呢？剎那間，對品質與勞工的懷疑頓時浮現腦海，無他的，中國多年來都被當作世界工廠。

專製奢華手工傢俱的時尚生活品牌Halo卻有不同的見解，一心要糾正這個錯誤。老闆兼創意總監Timothy Oulton道：「未來五年，『中國製造』會受到推廣普及，因為它所代表的是更高的質素。現在人們以為中國貨劣質，但其實卻不然。」Timothy認為中國工匠學習手藝的速度快，有能力造出最精緻的作品。他說：「如果只是想製造當代沙發系列，我肯定意大利已經夠好了。但若是精細複雜的產品，就沒有一個地方及得上中國了。」

無容置疑，Halo對「中國製造」感到驕傲。其實看看它在佛山高明新開的陳列室，便昭然若見。四層高的陳列室面積4000平方米，距廣州白雲機場只需90分鐘車程，鄰近Halo在中國的工場。陳列室的設計裝潢貫徹品牌當代卻又復古的風格，一室鋼鐵舊木配上工業調兒的平實天花，不乏以英國米字國旗為題的傢俱系列。不過，室內亦融匯了不少中國元素，入口擺有巨型的毛澤東雕像，而升降機的天花又雕上五星紅旗的圖案，為室內設計帶來對比，相映成趣。

Halo成立於1976年，在英國以售賣古董傢俱起家。後來，品牌重新定位，製造復古味道的現代傢俱。談到新的設計方向，Timothy強調為品牌帶來現代感是必需的，說道：「我認為如果不引入現代的味道，便會與今天的世界脫節。我喜歡歷史文化，但卻想將之重新演繹。」

Halo的產品種類繁多，除了傢俱，還有旅行箱、袋子和旅行用品，以獨特的美學風格見稱，而神髓都在於精湛的工藝。Timothy說：「你希望造出能引以為傲、能留芳百世的东西。這就是我們，是我們擅長的事。如果沒有掌握到工藝的精髓，我們便沒可能走下去，一點可能都沒有。」

「大碼」傢俱是Halo的另一招牌特質。Timothy說：「這是我們的標誌，讓人們一看就知道是我們。我們亦有製作細小一點的椅子，不過當然，同樣帶有大碼傢俱的感覺。我想要帶給客戶大尺寸的傢俱。」

今天，Halo更上一層樓，與不少蜚聲國際

的設計師合作，包括Kelly Hoppen和Michael Yeung。Kelly Hoppen的Halo傢俱系列線條簡約，風格瑰麗，而Michael Yeung的設計則富未來感，揉合獨特的前衛現代主義風格。眾多的副線之中，有一個相當耐人尋味：貴為全球現存第二最古老的大學學府牛津大學，與Halo攜手設計了具歷史感與書卷味濃的系列。

據Timothy所言，合作不限於設計師。只要能引起他的興趣，而且風格與Halo截然不同，就有合作的可能。他說：「每次開發副線，我們都能從中學學習。雖然感受不到，但副線帶來的影響的確慢慢滲進品牌之中。我知道做了Kelly Hoppen的系列後，Halo布藝的質素提升了不少，因為我更清晰的知道該怎樣做。」

For more features on design and architecture, don't miss the September issue of Perspective magazine, and check out our website at www.perspectiveglobal.com
請密切留意《透視》九月號更多有關建築與設計的專題報導，或登入 www.perspectiveglobal.com 參閱精彩內容。



**1 Po Shan Road,
Midlevels West**
Luxurious 3-bedroom apartment with
clubhouse facilities on quiet Po Shan Road
寶珊道豪華三房單位，連完善住客會所設施，
環境清幽寧靜，可租可售

西
半
山
寶
珊
道
二
號

1,324 s.f.
\$55K incl. also for sale \$26M

☎ 9028 0147 Jenson Au 區先生 可普通話
🌐 www.landscape.com/36657.htm



Suncrest Tower
1-11 Monmouth Terrace,
Midlevels Central
4-bedroom flat with efficient layout for
rent in prime location
中半山四房住宅出租，間隔實用，地段尊貴

中
半
山
桂
濤
苑

2,005 s.f.
\$68K incl.

☎ 5182 8699 Maria Cheung 張小姐
🌐 www.landscape.com/144003.htm



Park Mansions
27-29 MacDonnell Road,
Midlevels Central
Nice 4-bedroom apartment on fringe
of CBD
雅致四房單位，鄰近中環，交通方便

中
半
山
百
年
順
大
廈

2,013 s.f.
\$75K incl.

☎ 9238 2012 David Chan 陳先生
🌐 www.landscape.com/38207.htm



Hamilton Court
8 Po Shan Road, Midlevels West
Spacious and high efficiency 4-bedroom
flat with huge balcony on quiet Po Shan Road
西半山四房單位，實用率高，連特大陽臺，環境清
幽怡人

西
半
山
愛
敦
大
廈

2,600 s.f.
\$78K

☎ 9809 8570 Stella Lo 羅小姐
🌐 www.landscape.com/8193.htm



Tregunter Tower 3
14 Tregunter Path,
Midlevels Central
Luxurious duplex apartment with full
clubhouse facilities overlooking
the harbour
豪華複式住宅，連完善住客會所設施，
俯瞰維港美景

中
半
山
地
利
根
德
閣
座

3,639 s.f.
\$80K incl.
Sole Agent 獨家代理

☎ 6838 2929 Mark Mak 麥先生
🌐 www.landscape.com/3950.htm



William Mansion
16-18 MacDonnell Road,
Midlevels Central
Large and practical 4-bedroom
apartment with balcony
特大四房單位，間隔實用，連陽臺

中
半
山
惠
利
大
廈

2,500 s.f.
\$83K incl.

☎ 9088 4666 Yvonne Chang 鄭小姐
🌐 www.landscape.com/99484.htm



Po Shan Mansion
10-16 Po Shan Road,
Midlevels West
Large practical 4-bedroom apartment
with harbour view in quiet neighbourhood
特大四房單位，間隔實用，欣賞維港美景，
環境寧靜

西
半
山
寶
城
大
廈

2,800 s.f.
\$85K

☎ 9648 6082 Christine Chong 莊小姐
🌐 www.landscape.com/29508.htm



Po Garden
9 Brewin Path, Midlevels Central
Practical flat with upgraded bathrooms in
convenient location
中半山住宅，間隔實用，浴室已經翻新，位置優
越，交通方便

中
半
山
寶
園

2,590 s.f.
\$95K incl.

☎ 9486 1566 Mira To 杜小姐
🌐 www.landscape.com/30143.htm



Kenne Mansion
20 Kennedy Road,
Midlevels Central
Sought after colonial mid-rise overlooking
metropolitan and harbour view
罕有英式中密度住宅，俯瞰城市及維港美景

中
半
山
堅
尼
地
台

2,560 s.f.
\$100K incl.

☎ 9348 4118 Rowena Siu 蕭小姐
🌐 www.landscape.com/150605.htm



Palatial Crest
3 Seymour Road, Midlevels West
High floor modern flat with sweeping
harbour view next to Midlevels escalator
高層時尚單位，享廣闊維港景致，鄰近半山
扶手電梯

西
半
山
輝
煌
豪
園

2,174 s.f.
\$115K incl.

☎ 6655 4488 William Tam 談先生
🌐 www.landscape.com/151301.htm



Kam Yuen Mansion

3 Old Peak Road,
Midlevels Central
Colonial style large 4-bedroom apartment
with nice decorations
中半山英式四房住宅，連雅緻裝修

中
半
山
錦
園
大
廈

2,500 s.f.
\$110K

9648 6082 Christine Chong 莊小姐
www.landscape.com/14193.htm



Regent On The Park

9A Kennedy Road,
Midlevels Central
Conveniently located apartment with
indoor pool and tennis courts
中半山住宅，位置優越，交通方便，連室內泳池及
網球場，可租可售

中
半
山
御
花
園

2,720 s.f.
\$110K incl. also for sale \$56M

9093 3381 Stephen Chan 陳先生
www.landscape.com/108993.htm



Estoril Court

55 Garden Road,
Midlevels Central
Spacious 5-bedroom apartment with club
facilities on fringe of CBD
寬敞五房住宅，連住客會所設施，鄰近中環，
交通方便

中
半
山
愛
都
大
廈

3,347 s.f.
\$120K

9493 8275 Sami Woo 胡小姐
www.landscape.com/4973.htm



Chung Tak Mansion

2 Magazine Gap Road,
Midlevels Central
Brand new 4-bedroom apartment with
harbour view in
Midlevels Central
中半山全新四房單位，享維港景，可租可售

中
半
山
重
德
大
廈

2,864 s.f.
\$130K incl.
also for sale Open Offer

6183 8339 Carman Szeto 司徒小姐 可普通話
www.landscape.com/35231.htm



Grenville House

1-3A Magazine Gap Road,
Midlevels Central
Huge 3-bedroom apartment in deluxe
decor on fringe of CBD
中半山巨型三房住宅，享豪華靚裝修，鄰近中環，
可租可售

中
半
山
嘉
慧
園

3,400 s.f.
\$160K incl. also for sale \$92M

6655 4488 William Tam 譚先生
www.landscape.com/89134.htm



Piccadilly Mansion

4-6 Po Shan Road, Midlevels West
High efficiency large 4-bedroom with 2
ensuites flat enjoy harbour view in tree-
lined neighbourhood
西半山特大單位，四房雙套房間隔實用，綠葉松
蔭，享維港景，可租可售

西
半
山
碧
苑

2,790 s.f.
\$110K incl. also for sale \$60M

9080 6686 Teresa Lau 劉小姐 可普通話
www.landscape.com/16116.htm



Pine Court

5 Old Peak Road,
Midlevels Central
Colonial style large 3-bedroom apartment
with big balcony
中半山英式三房住宅，間隔寬敞，連大陽臺

中
半
山
翠
峰
園

2,700 s.f.
\$110K

9138 1621 Teresa Fung 馮小姐
www.landscape.com/15274.htm



Clovelly Court

12 May Road, Midlevels Central
Harbour view apartment with efficient
layout at prime location
中半山維港景住宅，間隔實用，地段尊貴

中
半
山
嘉
富
麗
苑

2,809 s.f.
\$128K incl.

9486 1566 Mira To 杜小姐
www.landscape.com/15840.htm



Borrett Mansions

8A-9B Borrett Road,
Midlevels Central
Newly renovated 3-bedroom apartment
with big balcony in leafy neighbourhood
overlooking the harbour
全新裝修三房單位，連大陽臺，綠葉成蔭，俯瞰維
港景觀

中
半
山
寶
德
臺

2,800 s.f.
\$145K

9809 8570 Stella Lo 羅小姐
www.landscape.com/12366.htm



May Tower

5 May Road, Midlevels Central
Rare on market spacious unit with
Victoria Harbour view in prime location
間隔寬敞維港景住宅，地段尊貴，市場罕有

中
半
山
梅
苑

3,393 s.f.
\$168K incl.

6183 8339 Carman Szeto 司徒小姐 可普通話
www.landscape.com/1613.htm



Custom-made Wine Cellar

With over 30 years' experience in Cooling System for supermarkets, hotels and restaurants, we generate a new image by designing exclusive, custom-made Wine Cellar not only in commercials but also for households in recent years. Apart from providing professional setup on the whole system for storing Red Wine, White Wine, Champagne and Sake, we also focus on featuring-wine display purpose and creating an elegant decoration in our new concepts.

Unit 1401, 14/F Westlands Centre,
20 Westlands Road, Quarry Bay, Hong Kong
Tel: (852) 2811 9381
Fax: (852) 2565 7094
Email: sales@fixwell.com.hk
Website: www.fixwell.com.hk



輝和陳列設備有限公司
Fixwell Display System Co., Ltd.

Karndean

Karndean LVT replicates the beauty of natural materials without any of the practical drawbacks associated with the likes of stone and wood. Its benefits are far reaching and suitable for a raft of applications including healthcare, retail and leisure. For more information, visit Karndean International (Asia) Ltd. showroom, 10/F, 313 Lockhart Road, Wanchai Ring: 2572 2238/ 2572 2886 Email: salesasia@karndean.com or see: www.karndean.com.au Karndean LVT 設計出眾、環保、安全、容易安裝且用途廣泛，適用於家居、商業、零售及酒店等地方。歡迎光臨灣仔駱克道 313 號 10 樓 Karndean International (Asia) Ltd. 電話: 2572 2238/ 2572 2886 電郵: salesasia@karndean.com 或瀏覽: www.karndean.com.au



MOLD architecture & interior

www.moldarch.com tel: 2137 0122 fax: 3170 6506 email: info@moldarch.com

Fabulous Furniture

Published by Artpower International Publishing

Ranging from sofas, chairs and tables to lighting and bathroom fixtures, this collection showcases some fab picks in today's contemporary furniture design world, providing brilliant ideas for your home décor.

本書精選當代傢俱設計，收錄的設計作品包括沙發、椅桌、燈飾與浴室設備等，為讀者帶來裝飾家居的好主意。



Sofa & Drape Couture

All our sofas and curtains are custom made to meet your expectations. Whether you are looking for a contemporary sofa, or a classic armchair, we will make it your way with over ten thousand choices of exquisite fabrics.

Visit us at:
G/F, 182 Jaffe Road
Wan Chai, HK

Tel: 2790 6490

www.fabricsmith.com.hk

We open
from 10:30am to 7:00pm
(except Sundays and
Public Holidays)



PERSPECTIVE透視

For more than a decade, Hong Kong-based Perspective Ltd has covered the architecture, interiors and design markets in Asia and beyond. Our monthly flagship title **Perspective** is a vital source of information for architects and design professionals. It is complemented by our annual books **Interiors+**, a style guide to fashionable interiors, furniture and homeware, and **Perspective+**, targeting the architecture and construction industry with extensive supplier listings, profiles of leading architectural firms and a lavishly-illustrated selection of the most emblematic works in Asia-Pacific and beyond. We also proudly own the regional **Perspective Awards** and **40 Under 40** programmes.



www.perspectiveglobal.com



118 Tung Lo Wan Road, Causeway Bay

Conveniently located 3-bedroom apartment with full harbour view in Causeway Bay
銅鑼灣三房住宅，享全海景，位置優越

銅鑼灣
銅鑼灣道118號

1,283 s.f.
\$50K incl.

9229 2396 Elaine Chow 周小姐 可普通話
www.landscape.com/115042.htm



Carrie Garden

345 Tai Hang Road, Midlevels East
Nicely decorated 3-bedroom flat in convenient yet tranquil location
雅致裝修三房單位，位於東半山環境寧靜，交通方便

東半山
嘉園

1,390 s.f.
\$58K incl.

9238 2012 David Chan 陳先生
www.landscape.com/112357.htm



Dragon Garden

1 Chun Fai Terrace, Midlevels East

High efficiency 3-bedroom apartment close to Causeway Bay
東半山實用三房住宅，鄰近銅鑼灣，吃喝玩樂，方便至極

東半山
龍園

1,750 s.f.
\$60K incl.

9229 2396 Elaine Chow 周小姐 可普通話
www.landscape.com/40226.htm



Pine Hill Villa

8-12A Wilson Road,

Jardine's Lookout
Colonial low-rise with balcony in quiet yet convenient location
渣甸山英式低密度住宅，連陽臺，環境寧靜，位置優越

渣甸山
松園

1,800 s.f.
\$60K incl.

5182 8699 Maria Cheung 張小姐
www.landscape.com/29540.htm



Serene Villa

41-45 Perkins Road, Jardine's Lookout

Well decorated spacious 3-bedroom low-rise apartment
雅致裝修三房低密度住宅，間隔寬敞，可租可售

渣甸山
寧苑

1,650 s.f.
\$60K incl. also for sale \$38M

9093 3381 Stephen Chan 陳先生
www.landscape.com/49322.htm



Evergreen Villa

43 Stubbs Road, Midlevels East

Newly renovated 3 good size bedrooms apartment
新裝修三房單位，間隔寬敞實用

東半山
松柏新村

1,750 s.f.
\$63K incl.

9486 1566 Mira To 杜小姐
www.landscape.com/10958.htm



Butler Tower

1-5 Boyce Road, Jardine's Lookout

High efficiency 4-bedroom flat with practical layout
高實用四房住宅，間隔寬敞

渣甸山
柏麗園

1,650 s.f.
\$63K incl.

6183 8339 Carman Szeto 司徒小姐 可普通話
www.landscape.com/38287.htm



Elegant Court

333 Tai Hang Road, Midlevels East

4-bedroom mid-rise on Tai Hang Road with brand new decorations
大坑道中密度五房單位，連全新裝修

東半山
雅麗閣

2,000 s.f.
\$75K

9093 3381 Stephen Chan 陳先生
www.landscape.com/44259.htm



Fontana Gardens

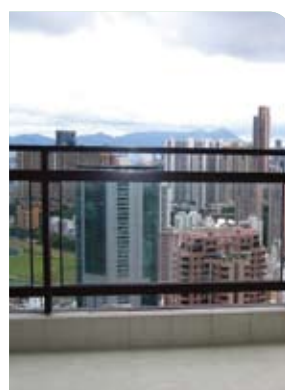
1-25 Ka Ning Path, Midlevels East

Practical huge apartment with 5 bedrooms close to Causeway Bay
東半山特大五房單位，間隔實用，鄰近銅鑼灣，交通方便

東半山
豪園

3,300 s.f.
\$80K incl.

9229 2396 Elaine Chow 周小姐 可普通話
www.landscape.com/39429.htm



Evergreen Villa

43 Stubbs Road, Midlevels East

Well decorated large apartment enjoying racecourse view
東半山特大住宅，雅致靚裝修，享馬場美景

東半山
松柏新村

2,700 s.f.
\$95K incl.

9238 2012 David Chan 陳先生
www.landscape.com/37660.htm

bulthaup



bulthaup b3 – a solid investment. This universal design system offers everything you could wish for from the total kitchen. If you are looking for superlative quality, lasting value, solid materials and attention to precision craftsmanship and you want to experience the particular advantages of unique interior fittings, then we invite you to visit the specialists in the new bulthaup kitchen architecture. You will find them wherever you see the name bulthaup. www.bulthaup.com

MADISON hong kong | macau | beijing | shanghai | singapore

ground floor, 5 hoi ping road, causeway bay, hong kong
t +2868 0895. info.bulthaup.hk@madison-asia.com



Cooper Villa

23-29 Wilson Road,
Jardine's Lookout

3-bedroom colonial low-rise with huge balcony and private roof enjoy lush green view

渣甸山三房英式住宅，連天台及大陽臺，享翠綠景色

2,000 s.f. (plus 1,800 s.f. roof)
\$95K incl.

☎ 6183 8388 Chris Law 羅先生
🌐 www.landscape.com/36355.htm

渣甸山衛信道23-29號



Elm Tree Towers

8-10 Chun Fai Road,
Jardine's Lookout

Practical 3-bedroom apartment in convenient location with harbour view
實用三房單位，地段優越，交通方便，享維港景，可租可售

2,028 s.f.
\$98K incl. also for sale \$43.8M

☎ 6838 2929 Mark Mak 麥先生
🌐 www.landscape.com/79122.htm

渣甸山愉富大廈



Victoria Height

43A Stubbs Road, Midlevels East

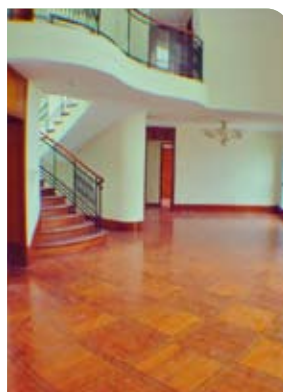
Popular 4-bedroom apartment with excellent harbour view, pool and tennis court

受歡迎四房住宅，欣賞美麗維港景色，連泳池及網球場

2,553 s.f.
\$128K incl.

☎ 9493 8275 Sami Woo 胡小姐
🌐 www.landscape.com/103009.htm

東半山威利閣



The Summit

41C Stubbs Road, Midlevels East

Luxurious 4-bedroom skyscraper with panoramic harbour view

豪華四房住宅，尊享壯麗維港美景

3,254 s.f.
\$170K incl.

☎ 9229 2396 Elaine Chow 周小姐
🌐 www.landscape.com/117732.htm

可普通話

東半山御峰

The Altitude 紀雲峰

Unit Size: 1,855 – 1,955 s.f.
標準單位面積: 1,855 – 1,955平方呎

20 Shang Kwong Road, Happy Valley
跑馬地山光道廿號



Contact person 聯絡人:

Teresa Lau 劉小姐
9080 6686 可普通話
Maria Cheung 張小姐
5182 8699
Yvonne Chang 鄭小姐
9088 4666

The photographs, images, drawings or sketches shown in this advertisement/promotional material represent the artist's imaginative impression of the development concerned only. They are not drawn to scale and/or may have been edited and processed with computerized imaging techniques. Prospective purchasers should make reference to the sales brochure for details of the development. The Developer also advises purchasers to conduct on-site visit for a better understanding of the development site, its surrounding environment and the public facilities nearby.
本廣告/宣傳資料內載列的相片、圖像、繪圖或素描顯示的純屬畫家對該發展地盤之想像感覺。有關圖片並非按照比例繪畫或/及可能經過電腦圖像修飾處理。準買家如欲了解本發展項目的詳情，請參閱售樓說明書。發展商亦建議買方到該發展地盤作實地考察，以獲取該發展地盤以及其周圍地區的公共設施及環境較佳的了解。



Luxury Designer Apartment

Covent Garden WC2

Luxury apartment in exclusive new development finished to very high standard. World famous Italian Designer. 3 large bedrooms, with lots of natural light, featuring balcony/winter garden and great views of London. With parking.

全新優質豪華住宅發展項目，由世界著名的意大利設計師設計，三睡房間格，自然光線充足，設有陽臺並尊享倫敦美景，更附設停車場。

1,600 s.f.



Prime Residential Investment Whole block sold as single lot.

Kensington SW5

Luxury redevelopment, Restored Victorian facade, converted into 10 modern apartments. Includes 3 bedroom, 2 bedroom, 1 bedroom and studio units. Target Gross yield of 4.4%.

維多利亞式外牆的豪華大宅，現已重建為十個現代化住宅。提供三房、兩房、一房及開放式單位。目標租金回報約4.4%。

**Freehold
12,205 s.f. (gross internal)**



Super Prime Retail - Commercial Investment

Mayfair W1

Super Prime site on 7 floors in one of London's most high end retail addresses. Single-let to multinational US clothing retailer with 15 years remaining. 3 Floors used for retail, Upper floors for the US groups European Headquarters. Grade II listed and historically significant as the former Headquarters of the Beatles.

樓高七層的大廈坐落於倫敦的高消費黃金地段。現租予世界知名的美國服裝品牌，租約期為十五年，其中三層用作零售業。這座二級歷史文物建築物更曾經是披頭四樂隊的前總部。

**Freehold
20,000 s.f. (approx.)**



Prime Restaurant- Commercial Investment

City EC1

Prime location single-let to a renowned popular City Restaurant on an FRI lease with 38 years remaining. Stylish modern industrial design throughout. Gross Yield of 5%

地段尊貴，現租予著名餐廳達38年的租約。內部裝修仿做工業大廈的時尚設計。回報高達5%

**Freehold
16,500s.f.**



Prime - Commercial Investment

Victoria SW1

Prominent Mixed use Commercial building with retail and office space. Let until 2013 with 8% gross yield. Vacant possession in 2013 with potential for redevelopment, or change of use to residential, or serviced apartments.

多用途商住大廈，提供零售及辦公室空間。回報率高達8%。2013年後租約期滿後可改裝成住宅或服務式住宅，投資首選。

**Freehold
17,264s.f. (net internal plus basement car park)**



Prime Hotel- Commercial Investment

Covent Garden WC2

160 room hotel with 8 meeting and conference rooms. Prime west end location, vacant possession, owner looking for quick sale. Gross Yield in excess of 5% achievable based on previous trading figures.

備有160間客房及8個會議室的豪華酒店，可交吉售，總回報率可超過5%。

Freehold

Prices on luxury UK properties are rarely quoted in listings. Interested parties are encouraged to make enquiries on price indications with Landscape.

PRICE UPON ENQUIRY 歡迎查詢

Contact person: 6183 8388 Chris Law 羅先生



Coming soon, call us now.

Our meticulously crafted Sports Cruisers and Motor Yachts range from 38 to 80 feet.
To discover the full Fairline story - and to view our new and pre-owned models - visit our website.

專注於打造38英尺至80英尺運動型快艇及豪華動力艇
欲探索更多菲爾蘭發展的故事、瞭解更多菲爾蘭全新的船型，請登錄官網



Fairline China: 16/F, East Ocean Centre, 618 Yan An Road East, Shanghai 200001
菲爾蘭中國：上海延安東路618號東海商業中心16樓 郵編：200001
Tel 電話: +86 21 2306 4981 **Email 電郵:** china@fairline.com

Fairline Hong Kong: Unit 5, G/F, Aberdeen Marina Tower, 8 Shum Wan Road, Aberdeen, Hong Kong
菲爾蘭香港：香港香港仔深灣道8號深灣遊艇俱樂部地下5室
Tel 電話: +852 3180 3189 **Email 電郵:** hongkong@fairline.com

Appointed Dealers in 特約代理:

China中國 Hong Kong香港 India印度 Indonesia印尼 Japan日本 Malaysia馬來西亞 New Zealand新西蘭 Philippines菲律賓
Singapore新加坡 South Korea南韓 Thailand泰國 Vietnam越南 Victoria維多利亞州 Western Australia澳洲西部



FAIRLINE

www.fairline.com