

select deluxe homes

# The Key

大宅®

www.landscape.com

NOVEMBER | 2010

Volume 73



## SECLUSION RELISH

Enjoy a peaceful life at the secluded domicile in Lantau Island

## HIGH ABOVE

Lavish living at the top of Robinson Road

## KEY NOTES\*

“But those who hope in the LORD will renew their strength. They will soar on wings like eagles; they will run and not grow weary, they will walk and not be faint.”

「但那等候耶和華的必從新得力。他們必如鷹展翅上騰；他們奔跑卻不困倦，行走卻不疲乏。」

- Isaiah 40:31, Bible  
- 聖經·以賽亞書40章31節

Back in our home turf, the Chief Executive announced in his policy address weeks ago to exclude property from the Capital Investment Entrant Scheme. This will certainly deal a further blow to local property market. Although it has been spelt out that it is a temporary measure, the associated uncertainty has already stirred up the market sentiments.

These notwithstanding, we still foresee that the market will recover in the not too distant future. The chronic under supply situation in the luxury sector will not be eased any time soon, as geographical and political constraints mean that there will be no new land supply for this sector in the foreseeable future. Any new supply of luxury units will have to trickle down from redevelopments of existing old buildings, which is far from enough to quench the ever-increasing demand. It will take a major economic correction to put the heavily skewed supply-demand into balance. But history has told us that after the correction the luxury property market will resume its hike on the back of this supply-demand imbalance.

而香港特首剛發表的施政報告宣布剔除投資移民計劃中的物業買賣項目，顯然會對本港樓市造成打擊。儘管政府已說明這只是暫時性的措施，但這已足夠影響市場投資氣氛。

儘管如此，我們預期樓市於不久將來再次復甦。豪宅市場長期的供應短缺問題不可能輕易解決，因為地理及政治上的限制意味著新的土地供應不會在可見的將來出現。任何新的豪宅單位供應必需從重建舊樓着手，而其供應量卻是遠遠不能滿足需求。以往供不應求的問題往往是在經濟調整時得到暫時舒緩，可是歷史告訴我們，每當調整過後，需求失衡的問題將會再次出現，豪宅市場亦會重拾升軌。

By K.S. Koh  
ks-koh@landscape.com

Read the full article at Market Watch, [www.landscape.com/keynotes](http://www.landscape.com/keynotes)  
如欲觀看全文，請登入Market Watch網站，網址為[www.landscape.com/keynotes](http://www.landscape.com/keynotes)

published and distributed by

**LANDSCAPE** 領域  
The Specialists in Luxury Properties

**Landscape Realty Limited** C-018733  
a member of Landscape Surveys Ltd

Tel: 852-2866 0022 Fax: 852-2866 0015  
Email: [info@landscape.com](mailto:info@landscape.com) Website: [www.landscape.com](http://www.landscape.com)  
Unit 3106, 31/F, Hopewell Centre, 183 Queen's Road East, Wanchai, Hong Kong

The information, text, photos, analyses and projections contained herein are provided solely for the convenience of prospective clients and no warranty or representation as to their accuracy, correctness or completeness is made by Landscape Surveys Limited, Landscape Realty Limited or the owners, none of whom shall have any liability or obligation with respect thereto. Interested parties should rely on their own investigations, interpretations and analyses in connection with the purchase or selling thereof.

Information has been provided to us by sources deemed reliable, but no warranty or representation is made as to its accuracy, correctness or completeness. These offerings are made subject to contract, correction of errors, omissions, prior sale of lease, change of price or terms or withdrawal from the market without notice. The contents of The Key are for reference only and do not constitute all or any part of a contract.

Reproduction of any material in whole or part without written permission from inCorporation Ltd is strictly prohibited. All information is correct at the time of going to press. The opinions expressed in The Key are those of the authors and are not necessarily endorsed by inCorporation Ltd.

## THE KEY | CONTENTS

- 03 Broadwood Twelve  
跑馬地 樂天峯
- 03 Serenade  
東半山 上林
- 04 Seclusion Relish  
歸隱之樂
- 07 High Above  
凌霄氣派
- 11 Oriental Garden  
日式風情

### The Key (The No.1 Publication for Luxury Properties)

The Key is a monthly, bilingual lifestyle publication focusing on luxury residential properties in Hong Kong Island. It is sent to over 60,000 urban elites comprising of Hong Kong's most affluent inhabitants.

These consist of Landscape's VIP clients, who mainly reside in The Peak, Mid-Levels, Southside, Kowloon Tong, Homantin and other select up-market residential areas such as Tai Po, Sai Kung and Clear Water Bay, etc.

## How may you list your property with The Key?

If you would like to list your property in an upcoming issue of The Key, you may contact Loretta Lui on +852 3102 4818 or visit us at [www.landscape.com/sell-to-let](http://www.landscape.com/sell-to-let). Alternatively, simply fill out the below and fax back to us on +852 2866 0015.

### Property Details

Asking Rental / Sale Price

Floor Area

Contact Person

Telephone

Email

Our KeyPerson will contact you for follow-up work.

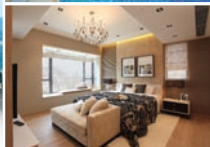
designed and produced by

**in** MAGAZINE

**inCorporation Limited**

Your No. 1 Integrated Marketing Communications Partner in Hong Kong and China

Tel: 852-3699 0888 Fax: 852-3699 0889  
Email: [marketing@inincorp.com.hk](mailto:marketing@inincorp.com.hk) Website: [www.inmagazine.com.hk](http://www.inmagazine.com.hk)  
12/F, Cyberport 2, 100 Cyberport Road, Hong Kong



Situated on the Broadwood Road, the privileged mid-levels of Happy Valley, Broadwood Twelve overlooks the breath-taking view of 180° panoramic Victoria Harbour and the unparalleled Race Course. Its superb location is conveniently connected with all of Hong Kong. The prestigious vicinity includes a renowned school network, as well as notable private clubs. The premise offers various units with area from 1,650 sq ft to 3,236 sq ft for selection including two penthouse duplexes with private roofs. A 20,000 sq ft luxurious and functional clubhouse together with a podium garden is unique in the neighbourhood.

樂天峯盤踞跑馬地半山樂活道的傳統尊貴地段，飽覽180度醉人的維港景致及尊尚獨有的馬場勝景，位置優越。區內名校林立，而且毗鄰多個香港尊尚私人會所。單位面積由1,650平方呎至3,236平方呎不等，其中包括兩套頂層複式單位連私人天台可供選擇，並設有同區罕有的20,000平方呎豪華會所連平台花園，設施應有盡有。

## Broadwood Twelve 跑馬地 樂天峯

No. 12 Broadwood Road, Happy Valley

Appointed Agent 指定代理

Christine Chong 莊小姐 9648 6082

Jackson Lee 李先生 9177 7191

Mira To 杜小姐 9486 1566

Situated on Tai Hang Road, Island East, the new Serenade embraces a metropolitan pulse with its advantageous geographical locations and convenient transport. The premise possesses panoramic view of the spectacular Victoria Harbour in its front, and greeneries from Mount Butler at its back. The area of each apartment varies from 1,000 square feet to 4,000 square feet. Among the available apartments are duplexes with four bedrooms including two ensembles and prestigious penthouses.

上林位處香港島東半山之罕貴地段，掌握大都會脈搏，地理位置優越、交通四通八達。前臨270度遼闊維多利亞港美麗海景，背靠青蔥翠綠畢拉山山巒。單位面積由約1,000平方呎至4,000平方呎，其中包括四房兩套複式單位及頂層特色單位。



上林  
SERENADE

Serenade 東半山 上林

11 Tai Hang Road, Midlevels East

Mark Mak 麥先生 6838 2929

Mavis Wu 吳小姐 9107 3891

Stephen Chan 陳先生 9093 3381

# Seclusion Relish

## 歸隱之樂

This 2,144-square foot mansion is tucked away in the serene San Shek Wan village on the south side of Lantau Island amid lush greenery. The detached house with 100 percent saleable area is neatly furnished with a commodious family room, two bedrooms and one en-suite bathroom. On the first floor, there is a sitting room with a 420-square-foot open terrace. The house enjoys opulent natural light from both the floor-to-ceiling glass panels and the dormer window. Outside, this secluded mansion boasts a 20,000-square foot landscaped private garden fitted with outdoor wooden tiles and an L-shaped swimming pool, creating a functional garden for all seasons. Here, you can host poolside barbecues with your family and friends in the winter or splash in the pool during the summer.

If you are looking for a quiet domicile with spacious surroundings, this rare, secluded mansion is the perfect hideaway from hectic urban life. ■

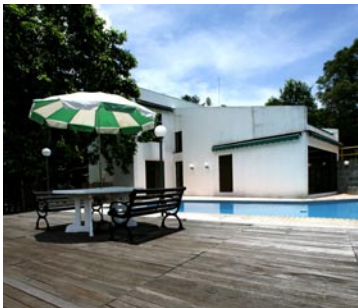
這座2,144平方呎的大宅坐落於恬靜的大嶼山散石灣，被一片繁盛翠綠的樹林包圍著，景觀開揚，清新怡人。樓高兩層的獨立屋，其實用面積高達百分之百，室內裝潢整潔，設有2房、1套房，及寬敞的大客廳。一樓另設有偏廳及420平方呎的平台花園。客廳的落地玻璃門及玻璃天窗，讓充足的室外天然光線照遍全屋。這座隱世大宅獨享20,000平方呎的私人花園及L型的泳池，花園更鋪上戶外木製地板，堪稱全天候的多功能花園。冬天時，你可與摯愛親朋在池畔舉行溫馨貼心的燒烤聚會；或於炎炎夏日從客廳躍進泳池中，享受無拘無束的隱居生活。

假如你鍾情寧靜且具有寬敞空間的居住環境，這座罕有的大宅絕對是最佳的避世之選。 ■

荳蘆

2,144 s.f. (plus 20,882 s.f. garden size)

Teressa Fung 馮小姐 9138 1621





**LEICHT®**  
Germany High Quality Kitchen



**SIMPLICITY**  
**INDIVIDUALITY**  
**PERSONALITY**

**Opening Hours:** Mon - Sat: 0900 - 1930  
Sun & Pub: 1300 - 1930

HONG KONG MAIN OFFICE CHEST APPLY (ASIA) LTD.

Shop No. 201, 2/F Harbour Centre, 25 Harbour Road, Wanchai, HK  
enquiry@leicht.com.hk      www.leicht.com.hk

**LEICHT UP YOUR LIFE**

HONG KONG SHOWROOM - Phone (852) 2575 8286  
BEIJING SHOWROOM - Phone (8610) 8527 1858  
SHANGHAI SHOWROOM - Phone (8621) 3878 0212  
SHENZHEN SHOWROOM - Phone (86755) 8279 3211



### Stewart Terrace

山頂 史釗域臺

81-95 Peak Road, The Peak

Spacious colonial low-rise apartment on The Peak

山頂低密度英式住宅，間隔寬敞

3,077 s.f.

\$58,000,000

[www.landscape.com/28368.htm](http://www.landscape.com/28368.htm)

Stephen Chan 陳先生 9093 3381



### Mountain Lodge

山頂 嘉蓮

44 Mount Kellett Road, The Peak

Exclusive Peak 4-bedroom apartment with sweeping Southside sea view

獨特山頂四房豪宅，享寧靜南區海景

2,600 s.f.

\$65,000,000

[www.landscape.com/17490.htm](http://www.landscape.com/17490.htm)

Mary Li 李小姐 9011 6595



### Guildford Court

山頂 佛羅道5號

5 Guildford Road, The Peak

Spacious colonial mid-rise apartment with open view on secluded location

寬敞英式中密度住宅，尊享開揚景觀，地段尊貴寧靜

2,500 s.f.

\$70,000,000

[www.landscape.com/30299.htm](http://www.landscape.com/30299.htm)

Mavis Wu 吳小姐 9107 3891



### La Hacienda

山頂 加列山道29-33號

29-33 Mount Kellett Road, The Peak

Newly decorated townhouse with facilities overlooking nice views

山頂全新裝修排屋，連住客會所設施，俯瞰優美景觀

3,200 s.f.

\$140,000,000

[www.landscape.com/3323.htm](http://www.landscape.com/3323.htm)

David Leung 梁先生 9199 0672



### Strawberry Hill

山頂 紅莓閣

8 Plunkett's Road, The Peak

Prestigious colonial townhouse overlooking sea view and green view

山頂豪華英式洋房，俯瞰南區海景及翠綠景致

2,880 s.f. (plus garden)

\$150,000,000

[www.landscape.com/123096.htm](http://www.landscape.com/123096.htm)

David Leung 梁先生 9199 0672



### Abergeldie

山頂 種植道52號

52 Plantation Road, The Peak

Peak house with bird's eye view of Victoria Harbour

山頂洋房，尊享鳥語花香的維港景致

3,655 s.f. (plus 505 s.f. terrace, 464 s.f. garden and 282 s.f. roof)

\$200,000,000

[www.landscape.com/13340.htm](http://www.landscape.com/13340.htm)

David Leung 梁先生 9199 0672

# 御 華

the **summit**  
a measure of success

The essence of  
*Stylish living*

EXCLUSIVE UNITS FOR SHORT-TERM LEASE

- Prominently located at 41C Stubbs Road, Mid-Levels
- In close proximity to CBD, international schools and Bowen Road jogging trail
- With 70-story, The Summit commands splendid views of Victoria Harbour and city skyline
- The duplex suites range from 3,254-6,496 sq.ft.
- Facilities include indoor swimming pool, Jacuzzi, gymnasium, golf simulator, outdoor entertainment/BBQ area and children's playground
- 24-hour security service
- On-site maintenance team

**Leasing Enquiry: 2879 0222**  
(viewing by appointment only)  
[LeasingEnquiry@hanglung.com](mailto:LeasingEnquiry@hanglung.com)  
[www.thesummit.com.hk](http://www.thesummit.com.hk)

恒隆地產  
HANG LUNG PROPERTIES

**Roc Ye Court**

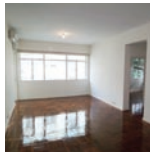
西半山 樂怡閣

11 Robinson Road, Midlevels West

Boutique 3-bedroom apartment close to Midlevels escalator  
西半山精緻三房單位，鄰近半山扶手電梯，可租可售

1,026 s.f.

\$9,500,000 also for sale \$37,000 incl

[www.landscape.com/127678.htm](http://www.landscape.com/127678.htm) Walker Lam 林先生 9551 1077
**Best View Court**

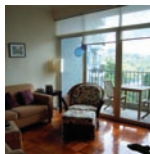
中半山 好景大廈

66-68 MacDonnell Road, Midlevels Central

High efficiency 3-bedroom apartment on MacDonnell Road  
麥當勞道三房住宅，實用率高

1,500 s.f.

\$16,000,000

[www.landscape.com/10691.htm](http://www.landscape.com/10691.htm) Rowena Siu 蕭小姐 9348 4118
**Monticello**

中半山 滿峰台

48 Kennedy Road, Midlevels Central

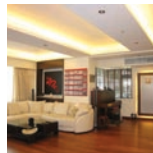
Practical 3-bedroom apartment with nice decorations  
中半山間隔實用三房住宅，尊享雅致裝修

1,329 s.f.

\$17,000,000

[www.landscape.com/71051.htm](http://www.landscape.com/71051.htm) Mary Li 李小姐 9011 6595

## High Above 凌霄氣派

**Winway Court**

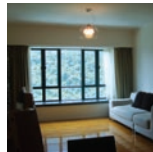
東半山 永威閣

3 Tai Hang Road, Midlevels East

Tastefully decorated 3-bedroom flat  
東半山雅緻裝修三房單位

1,600 s.f.

\$13,900,000

[www.landscape.com/98354.htm](http://www.landscape.com/98354.htm) Stella Lo 羅小姐 9809 8570
**Imperial Court**

西半山 帝皇閣

62G Conduit Road, Midlevels West

Greenery view high floor 3-bedroom apartment on Conduit Road  
千禧道名廈，三房高層住宅，享靜山景

1,289 s.f.

\$16,200,000

[www.landscape.com/123566.htm](http://www.landscape.com/123566.htm) Christine Chong 莊小姐 9648 6082
**31 Robinson Road, Midlevels West**

西半山 羅便臣道31號

New modern high-rise with clubhouse facilities in convenient location  
全新時尚高層住宅，連完善住客會所設施，位處優越地段

1,341 s.f.

\$19,300,000

[www.landscape.com/101754.htm](http://www.landscape.com/101754.htm) Jackson Lee 李先生 9177 7191

Prominently situated on Robinson Road, this 2,957-square foot penthouse with a 180 degree panoramic view of Victoria Harbour is spread over three floors, complete with a 618-square foot rooftop terrace and one balcony on each floor. An array of large picture windows are panelled on one side of the first floor which span across the spacious dining room and the living room, allowing copious light to stream into the interior. Four bedrooms easily allow for guests to stay, the master ensuite is situated on the second floor. Up on the third floor, the glass-partitioned study room opens to the rooftop terrace giving a greater sense of space with the outdoor, alfresco access.

As the Mid-Levels escalator is only steps away, you may conveniently connect the city and Central's financial district, or you could choose to stay within the comforts of home and comprehensive clubhouse. ■

這間2,957平方呎的頂層三複式公寓位於巔峰地段羅便臣道，全屋共分三層，包括頂層618平方呎的天台，而且每層均設有一個寬闊的露台，可俯瞰180度維港景緻。底層的客廳飯廳旁裝上一列特大玻璃窗，好讓充足的天然光照遍屋內。全屋共有四間睡房，其中的主人套房位於中層。來到頂層便是裝上透明玻璃幕牆的書房，穿過房中的落地玻璃門則可通往外面的平台，讓你盡享戶外生活的情趣。

羅便臣道80號做鄰港島西半山的優越地段，毗鄰中環半山扶手電梯，可直達香港的金融中心樞紐。餘暇時，你也可以選擇到屋苑的豪華會所，享用其多元化的娛樂休閒設施。 ■

**80 Robinson Road, Midlevels West**

西半山 羅便臣道80號

2,957 s.f. (plus 618 s.f. roof and 104 s.f. terrace)

\$97,581,000

[www.landscape.com/50119.htm](http://www.landscape.com/50119.htm) Jenson Au 區先生 9028 0147



### Wing On Tower

渣甸山 永安閣

7-9 Boyce Road, Jardine's Lookout

Mid-rise practical apartment with open view and 2 car parking spaces  
中密度住宅，間隔實用，尊享開揚景觀，連雙車位

**1,650 s.f.**  
**\$23,000,000**

[www.landscape.com/123114.htm](http://www.landscape.com/123114.htm) Chris Law 羅先生 6183 8388



### Robinson Garden Apartment

西半山 羅便臣道花園大廈

3-3G Robinson Road, Midlevels West

Colonial style apartment with open city view on fringe of CBD  
西半山英式住宅，尊享開揚城市景觀，鄰近中環商業區

**1,800 s.f.**  
**\$24,000,000**

[www.landscape.com/26682.htm](http://www.landscape.com/26682.htm) Mira To 杜小姐 9486 1566



### Wing Hong Mansion

中半山 永康大廈

60-62 MacDonnell Road, Midlevels Central

Cozy flat with practical layout in convenient location overlooking city view  
中半山迷人住宅，間隔實用，位置優越，俯瞰城市景觀

**1,700 s.f.**  
**\$24,000,000**

[www.landscape.com/99558.htm](http://www.landscape.com/99558.htm) Teresa Lau 劉小姐 9080 6686



### The Legend

東半山 名門

23 Tai Hang Drive, Midlevels East

Brand new property in nice decor with clubhouse facilities  
全新雅緻裝修單位，連完善住客會所設施

**1,542 s.f.**  
**\$25,000,000**

[www.landscape.com/42479.htm](http://www.landscape.com/42479.htm) Arthur Wong 黃先生 9304 4257



### Catalina Mansions

中半山 嘉年大廈

98-100 MacDonnell Road, Midlevels Central

Nicely decorated apartment on convenient MacDonnell Road  
麥當勞道雅緻裝修單位，地段優越

**2,300 s.f.**  
**\$28,500,000**

[www.landscape.com/110374.htm](http://www.landscape.com/110374.htm) Mira To 杜小姐 9486 1566



### Fontana Gardens

東半山 豪園

1-25 Ka Ning Path, Midlevels East

Large practical 4-bedroom apartment close to Causeway Bay  
特大四房單位，間隔實用，鄰近銅鑼灣，吃喝玩樂十分方便

**3,000 s.f.**  
**\$32,000,000**

[www.landscape.com/46135.htm](http://www.landscape.com/46135.htm) Mavis Wu 吳小姐 9107 3891



### Hanking Court

北角半山 恒景園

43-49 Cloud View Road, North Point Midlevels

Rare find spacious 4-bedroom flat in North Point Midlevels  
北角半山罕有四房單位，間隔寬敞，可租可售

**1,950 s.f.**  
**\$23,800,000** also for lease \$63,000 incl.

[www.landscape.com/78499.htm](http://www.landscape.com/78499.htm) Mira To 杜小姐 9486 1566



### Ventris Place

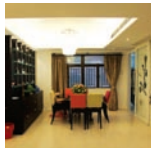
跑馬地 雲地利台

19-23 Ventris Road, Happy Valley

Spacious 3-bedroom unit in quiet enclave and yet close to Causeway Bay  
間隔寬敞三房單位，環境寧靜，鄰近銅鑼灣

**1,560 s.f.**  
**\$24,000,000**

[www.landscape.com/8934.htm](http://www.landscape.com/8934.htm) Mark Mak 麥先生 6838 2929



### Suncrest Tower

中半山 桂滿苑

1-11 Monmouth Terrace, Midlevels Central

High efficiency, newly decorated 4-bedroom (2 ensuite) apartment on fringe of CBD  
全新裝修四房連兩套房單位，實用率高，鄰近中環

**2,005 s.f.**  
**\$24,200,000**

[www.landscape.com/109565.htm](http://www.landscape.com/109565.htm) Teresa Fung 馮小姐 9138 1621



### New Haven Court

渣甸山 衛信道1-11號

1-11 Wilson Road, Jardine's Lookout

Well decorated colonial style apartment with open city view in Jardine's Lookout  
渣甸山靚裝修英式住宅，尊享開揚城市景觀

**1,800 s.f. (plus roof)**  
**\$28,800,000**

[www.landscape.com/39344.htm](http://www.landscape.com/39344.htm) Carman Szeto 司徒小姐 6183 8339



### South Garden Mansion

中半山 南園大廈

40-40A Kennedy Road, Midlevels Central

Cozy apartment in quiet location  
中半山迷人住宅，環境清幽寧靜

**1,600 s.f.**  
**\$30,000,000**

[www.landscape.com/113805.htm](http://www.landscape.com/113805.htm) Erica Fan 范小姐 6972 3063



### Visalia Garden

中半山 蔚山花園

48 MacDonnell Road, Midlevels Central

Bright and airy apartment with open city view  
光猛通爽單位，尊享開揚城市景觀

**2,195 s.f.**  
**\$32,000,000**

[www.landscape.com/50238.htm](http://www.landscape.com/50238.htm) Stella Lo 羅小姐 9809 8570



FARRINGTON INTERIORS

THE MOMENT MADE BEAUTIFUL

富樂庭

10,000 sq.ft. new Flagship Store at 31/F World Trade Centre  
一萬平方呎旗艦店於銅鑼灣世貿中心三十一樓



**Shop 店舖**

G/F, 87 Wong Nai Chung Road,  
Happy Valley, H.K.  
香港跑馬地黃泥涌道87號地下  
Tel: (852) 2808 0303  
Fax: (852) 2801 6732

**Flagship Store 旗艦店**

31/F, World Trade Centre, 280 Gloucester Road,  
Causeway Bay, H.K.  
香港銅鑼灣告士打道280號世貿中心31樓  
Tel: (852) 2808 1000  
Fax: (852) 2808 2800

**Opening Hours 營業時間**

11:00am - 7:00pm  
Mon - Fri (星期一至五)

1:00pm - 6:00pm  
Sat, Sun & Public Holiday  
(星期六、日及公眾假期)

WWW.FARRINGTONINTERIORS.COM





**Villa Monte Rosa**  
東半山 玫瑰新村  
41A Stubbs Road, Midlevels East  
Large practical flat with garden view  
特大花園景住宅，開隔實用

**2,300 s.f.**  
**\$35,000,000**

[www.landscape.com/108395.htm](http://www.landscape.com/108395.htm) Jensen Au 區先生 9028 0147



**Century Tower 1**  
中半山 世紀大廈1座  
1 Tregunter Path, Midlevels Central  
Unique property in prime location with splendid view  
中半山精緻單位，地段尊貴，享壯麗景色

**2,565 s.f.**  
**\$40,000,000**

[www.landscape.com/35168.htm](http://www.landscape.com/35168.htm) Jensen Au 區先生 9028 0147



**Po Garden**  
中半山 寶園  
9 Brewin Path, Midlevels Central  
Newly renovated 3-bedroom apartment on fringe of Central  
中半山全新裝修三房單位，鄰近中環，交通方便

**2,572 s.f.**  
**\$40,000,000** Sole Agent 獨家代理

[www.landscape.com/98123.htm](http://www.landscape.com/98123.htm) Yvonne Chang 鄭小姐 9088 4666



**Clovelly Court**  
中半山 嘉富麗苑  
12 May Road, Midlevels Central  
Sought after family flat with comprehensive facilities in quiet enclave  
中半山熱門家庭式住宅，離完善住客會所設施，環境寧靜，可租可售

**2,809 s.f.**  
**\$45,000,000** also for lease \$138,000 incl.

[www.landscape.com/33893.htm](http://www.landscape.com/33893.htm) Erica Fan 范小姐 6972 3063



**Estoril Court**  
中半山 愛都大廈  
55 Garden Road, Midlevels Central  
Huge 4-bedroom apartment on fringe of Central  
特大四房單位，鄰近中環，交通方便

**3,347 s.f.**  
**\$53,000,000**

[www.landscape.com/45400.htm](http://www.landscape.com/45400.htm) Sami Woo 胡小姐 9493 8275



**Tregunter Tower 3**  
中半山 地利根德閣3座  
14 Tregunter Path, Midlevels Central  
Tastefully decorated duplex with excellent clubhouse facilities  
品味裝修複式住宅，連完善住客會所設施

**2,980 s.f. (plus 187 s.f. terrace)**  
**\$56,000,000**

[www.landscape.com/105883.htm](http://www.landscape.com/105883.htm) David Chan 陳先生 9238 2012



**Kingsford Gardens**  
北角半山 瑞峰園  
202-216 Tin Hau Temple Road, North Point Midlevels  
4-bedroom (2 ensuites) apartment in North Point with Victoria Harbour view  
北角半山四房連兩套房單位，尊享維港景致

**2,500 s.f.**  
**\$38,000,000**

[www.landscape.com/133543.htm](http://www.landscape.com/133543.htm) Jensen Au 區先生 9028 0147



**The Elegance**  
東半山 優雅閣  
60 Tai Hang Road, Midlevels East  
Nicely decorated duplex with internal staircase to roof  
雅緻裝修複式住宅，連內置樓梯上天台

**2,438 s.f. (plus 1,000 s.f. roof)**  
**\$40,000,000**

[www.landscape.com/44596.htm](http://www.landscape.com/44596.htm) Arthur Wong 黃先生 9304 4257



**Bowen Place**  
中半山 寶雲閣  
11A Bowen Road, Midlevels Central  
Harbour view flat with European style decorations  
中半山維港景住宅，享英式裝修

**1,927 s.f.**  
**\$42,000,000**

[www.landscape.com/34851.htm](http://www.landscape.com/34851.htm) Erica Fan 范小姐 6972 3063



**May Tower 1**  
中半山 梅苑一座  
7 May Road, Midlevels Central  
Deluxe 3-bedroom triplex in the prestigious Lower Peak area  
豪華三複式住宅，三房設計，位於中半山尊貴地段

**2,850 s.f.**  
**\$50,000,000**

[www.landscape.com/6191.htm](http://www.landscape.com/6191.htm) Mavis Wu 吳小姐 9107 3891



**Dynasty Court**  
中半山 帝景園  
23 Old Peak Road, Midlevels Central  
Prestigious Midlevels apartment with excellent facilities  
中半山尊貴住宅，連完善住客會所設施

**2,691 s.f.**  
**\$55,000,000**

[www.landscape.com/30383.htm](http://www.landscape.com/30383.htm) Jensen Au 區先生 9028 0147



**Woodland Heights**  
東半山 怡園  
2A-2F Wong Nai Chung Gap Road, Midlevels East  
Spacious colonial style apartment with huge balcony  
東半山英式住宅，連陽臺，開隔寬敞

**2,800 s.f.**  
**\$58,000,000**

[www.landscape.com/38339.htm](http://www.landscape.com/38339.htm) Walker Lam 林先生 9551 1077

**Trafalgar Court**

東半山 大寶閣

70 Tai Hang Road, Midlevels East

Huge 5-bedroom flat overlooking Causeway Bay and Victoria Harbour  
特大五房住宅，俯瞰銅鑼灣景觀及維港景，罕有放盤

3,008 s.f.  
\$65,000,000

[www.landscape.com/5913.htm](http://www.landscape.com/5913.htm) Christine Chong 莊小姐 9648 6082

**Victoria Height**

東半山 威利閣

43A Stubbs Road, Midlevels East

Harbour view 4-bedroom flat on Stubbs Road  
司徒拔道四房單位，尊享維港景觀

2,650 s.f.  
\$70,000,000

[www.landscape.com/124265.htm](http://www.landscape.com/124265.htm) Mark Mak 麥先生 6838 2929

**White Jade**

東半山 白璧

51 Stubbs Road, Midlevels East

Rare find large harbour view flat on Stubbs Road  
司徒拔道罕有特大維港景住宅，可租可售

3,000 s.f.  
\$90,000,000 also for lease \$110,000 incl.

[www.landscape.com/48296.htm](http://www.landscape.com/48296.htm) Louis Wong 黃先生 9871 6828

## Oriental Garden

### 日式風情

**Hillsborough Court**

中半山 曉峰閣

18 Old Peak Road, Midlevels Central

Duplex penthouse in Midlevels Central  
中半山頂層複式單位

2,355 s.f. (plus 646 s.f. roof and 295 s.f. terrace)  
\$68,000,000

[www.landscape.com/23008.htm](http://www.landscape.com/23008.htm) David Leung 梁先生 9199 0672

**The Mayfair**

中半山 梅道1號

1 May Road, Midlevels Central

Rare 4-bedroom apartment on Midlevels Central enjoy sea view  
中半山罕有四房單位，尊享海景

2,838 s.f.  
\$85,000,000 also for lease \$150,000 incl.

[www.landscape.com/31145.htm](http://www.landscape.com/31145.htm) Erica Fan 范小姐 6972 3063

**Moorsom Drive, Jardine's Lookout**

渣甸山 駿誠徑

Newly decorated modern single house in gated Jardine's Lookout  
渣甸山全新裝修，時尚獨立大屋，環境寧靜怡人

4,755 s.f.  
\$165,000,000

[www.landscape.com](http://www.landscape.com) Louis Wong 黃先生 9871 6828

Antique furniture, wooden decorations and Persian carpets exemplify a signature Oriental style. Nested at the end of Broom Road in Happy Valley, this 2,000-square foot low-rise apartment features a 875-square foot Japanese garden. Instead of sleek outdoor flooring, the garden has kept a traditional pebbled ground, which marks a striking contrast with the renovated living and dining room area. Behind the walls and doors, the kitchen and bathrooms have been redesigned in a contemporary western style.

With its close proximity to Causeway Bay, you can shuttle between a busy life in the city, while living in a serene residence only 10 minutes away. Who says you can't have it all under one roof? ■

古董傢俱、木製裝飾擺設和波斯地毯披露了這間公寓別具東方氣息的裝潢特色。該低密度公寓坐落於跑馬地蠟能道盡處，佔地2,000平方呎，獨享875平方呎罕有的日式花園平台。花園沒有鋪設時尚的戶外木地板，反而選擇鋪上傳統的卵石。當視線從充滿亞洲風情的客廳廳移至另一邊的廚房及浴室，映入眼簾的卻是另一視覺效果，其摩登時尚的西式設計，與客廳的亞洲風格形成強烈的對比。誰說兩種截然不同的風格不能並存？

跑馬地鄰近銅鑼灣，交通便利，只需十分鐘便能穿梭於熱鬧煩囂的銅鑼灣及清幽恬靜的安樂窩。 ■

**16-20 Broom Road, Happy Valley**

跑馬地 蠟能道16-20號

2,000 s.f. (plus 875 s.f. garden and 57 s.f. terrace)  
\$40,000,000

Sole Agent 獨家代理

[www.landscape.com/83486.htm](http://www.landscape.com/83486.htm) Stella Lo 羅小姐 9809 8570



### Stanford Villa

赤柱 旭逸居

7 Stanley Village Road, Stanley

Modern low-rise apartment close to Stanley Main Beach  
赤柱時尚低密度住宅，鄰近赤柱正灘

1,052 s.f.  
**\$14,900,000**

[www.landscape.com/36028.htm](http://www.landscape.com/36028.htm) Walker Lam 林先生 9551 1077



### The Beachside

淺水灣 淺水灣道82及86號

82 & 86 Repulse Bay Road, Repulse Bay

Newly renovated 2-ensuite apartment close to Repulse Bay Beach with 3 parking spaces  
全新裝修兩套房住宅，鄰近淺水灣海灘，連罕有三車位

1,161 s.f.  
**\$20,000,000**

[www.landscape.com/124215.htm](http://www.landscape.com/124215.htm) Teresa Fung 馮小姐 9138 1621



### The Brentwood

淺水灣 蔚峰園

11 Repulse Bay Road, Repulse Bay

Cozy apartment with stunning sea view on upper Repulse Bay Road  
淺水灣道頭段迷人住宅，享遼闊海景，可租可售

1,556 s.f.  
**\$26,000,000** also for lease \$65,000 incl.

[www.landscape.com/109549.htm](http://www.landscape.com/109549.htm) Chris Law 羅先生 6183 8388



### La Mer

薄扶林 浪晴居

67-71 Bisney Road, Pokfulam

Newly renovated 4-bedroom low-rise with full sea view  
全新裝修四房低密度住宅，尊享海景，可租可售

2,063 s.f. **\$33,000,000** also for lease \$69,000 incl. **Sole Agent 獨家代理**

[www.landscape.com/108873.htm](http://www.landscape.com/108873.htm) Yvonne Chang 鄭小姐 9088 4666



### Faber Court

大潭 輝閣閣

29-31 Tai Tam Road, Tai Tam

Well decorated sea view apartment at prestige area  
大潭雅緻裝修海景住宅

2,250 s.f.  
**\$39,500,000**

[www.landscape.com/16125.htm](http://www.landscape.com/16125.htm) Rowena Siu 蕭小姐 9348 4118



### Residence Bel-Air

薄扶林 貝沙灣

68 Bel-Air Peak Avenue, Pokfulam

Brand new 4-bedroom waterfront flat with beautiful sunset view  
全新四房住宅，享美麗的日落景色，可租可售

2,322 s.f.  
**\$43,000,000** also for lease \$120,000 incl.

[www.landscape.com/44644.htm](http://www.landscape.com/44644.htm) Arthur Wong 黃先生 9304 4257



### Royalton II

薄扶林 豪峰II

116 Pokfulam Road, Pokfulam

Full sea view 4-bedroom apartment in Pokfulam  
薄扶林四房住宅，尊享全海景

1,750 s.f.  
**\$17,500,000**

[www.landscape.com/120300.htm](http://www.landscape.com/120300.htm) Jackson Lee 李先生 9177 7191



### Beach Pointe

赤柱 海灣閣

16 Stanley Beach Road, Stanley

Newly renovated low-rise close to Stanley Main Beach have swimming pool and children playground  
全新裝修低密度住宅，鄰近赤柱正灘，附設泳池及兒童遊樂場

1,666 s.f.  
**\$25,000,000**

[www.landscape.com/108226.htm](http://www.landscape.com/108226.htm) Teresa Lau 劉小姐 9080 6686



### Hillgrove

香坊角 璧如花園

18 Cape Drive, Chung Hom Kok

Well decorated low-rise 4-bedroom apartment  
雅緻裝修低密度四房住宅

2,200 s.f.  
**\$32,000,000**

[www.landscape.com/44697.htm](http://www.landscape.com/44697.htm) Jackson Lee 李先生 9177 7191



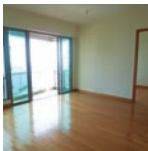
### 45 Island Road, Deep Water Bay

深水灣 香島道45號

Low-rise 3-bedroom apartment with private roof in Deep Water Bay  
深水灣低密度三房住宅，連私家天台

1,634 s.f. (plus 1,207 s.f. roof)  
**\$38,000,000**

[www.landscape.com/34433.htm](http://www.landscape.com/34433.htm) Christine Chong 莊小姐 9648 6082



### Villas Sorrento

薄扶林 御海園

64-66 Mount Davis Road, Pokfulam

Brand new 4-bedroom apartment with breath-taking sea view  
全新四房住宅，享寧靜怡人海景，可租可售

2,523 s.f. (plus 78 s.f. terrace)  
**\$40,000,000** also for lease \$100,000 incl.

[www.landscape.com/107474.htm](http://www.landscape.com/107474.htm) Carman Szeto 司徒小姐 6183 8339



### Woodbury Court

薄扶林 嘉林閣

137 Pokfulam Road, Pokfulam

Practical duplex with balconies and peaceful sea view  
薄扶林複式住宅，間隔實用，連陽臺，享優美海景

2,895 s.f.  
**\$45,000,000**

[www.landscape.com/38820.htm](http://www.landscape.com/38820.htm) Chris Law 羅先生 6183 8388



"you never own ya premises,  
you merely live there unless  
ya character implanted"

-joseph chang-



*Alexei Lee*

*Joseph is friendly, honest, reliable, organized, and very meticulous in his work. I can't say enough good things about all the work he did to make my place gorgeous & very functional.*

**Old Peak road** -the boundless en-suite



*Susanna Toppin*

*Don't be fooled by Joseph's easy demeanor. he's an unwavering advocate for the client and the work. It's clear to his contractors that anything less than the best won't do. He thinks through everything, and lets nothing slip by.*

**Shouson Hill** -classical contemporary



*Richard J. Brink*

*Throughout the project, Joseph was personally involved, ensuring the quality of the work and the project's adherence to the budget and schedule. The project was completed on time and within budget, and we now have a beautiful new home, as well as a new friend, Joseph!*

**Capital Garden** -minimal maximized flexibility



*Mei Ling*

*Thank you so much for designing our new dream house. We absolutely love it! I just keep going upstairs and looking at it. It looks like a place out of a magazine. Fantastic Job! You matched the house to our personalities perfectly. Thanks again!*

**Red Hill Peninsula** -accentuated coziness



*Sean Holden*

*We really appreciated the way Joseph worked with us in coming up with great ideas by taking our rudimentary ideas and developing them into amazing designs.*

**Park Place** -interior & exterior connection

Interior design  
constructions  
space planning  
project management  
tendering  
landscaping  
quantity survey



**Joy Garden**

壽臣山 曉翠花園

13 Shouson Hill Road West, Shouson Hill

Low-rise duplex apartment in serene Shouson Hill  
壽臣山低密度複式住宅，環境清幽怡人

**2,662 s.f.** (plus 1,306 s.f. roof)  
**\$45,000,000**

[www.landscape.com/30121.htm](http://www.landscape.com/30121.htm) Maria Cheung 張小姐 5182 8699



**Bluewater**

大潭 大潭道25號

25 Tai Tam Road, Tai Tam

Luxurious modern mid-rise at Tai Tam waterfront  
大潭豪華式高密度住宅，尊享豪華時尚裝修

**2,450 s.f.**  
**\$49,800,000**

[www.landscape.com/123996.htm](http://www.landscape.com/123996.htm) Sandra Choi 蔡小姐 9234 1109



**27-29 Consort Rise, Pokfulam**  
薄扶林 金葉街27-29號

Modern stylish 6-bedroom house with spacious layout in Pokfulam  
薄扶林時尚六房排屋，間隔寬敞實用

**3,500 s.f.** (plus 692 s.f. roof and 531 s.f. garden)  
**\$56,000,000**

[www.landscape.com/48235.htm](http://www.landscape.com/48235.htm) Christine Chong 莊小姐 9648 6082



**Regalia Bay**

赤柱 富豪灣

88 Wong Ma Kok Road, Stanley

Full sea view townhouse with luxurious clubhouse facilities  
赤柱全海景洋房，連豪華住客會所設施

**4,053 s.f.** (plus 1,190 s.f. roof and 672 s.f. garden)  
**\$63,800,000** **Sole Agent 獨家代理**

[www.landscape.com/34777.htm](http://www.landscape.com/34777.htm) David Chan 陳先生 9238 2012



**Le Palais**

大潭 皇府灣

8 Pak Pat Shan Road, Tai Tam

High quality waterfront townhouse with private garden in serene Tai Tam  
大潭高級海濱洋房，鐘私家花園，環境優美

**3,348 s.f.** (plus 741 s.f. garden)  
**\$72,000,000**

[www.landscape.com/109996.htm](http://www.landscape.com/109996.htm) Mark Mak 麥先生 6838 2929



**Belleview Place**

淺水灣 寶昌苑

93 Repulse Bay Road, Repulse Bay

Stylish luxury townhouse in serene location  
時尚品味豪華洋房，環境清幽怡人，可租可售

**3,619 s.f.** (plus 735 s.f. roof, 310 s.f. terrace and 25 s.f. garden)  
**\$88,000,000** also for lease \$155,000 incl.

[www.landscape.com/109039.htm](http://www.landscape.com/109039.htm) Chris Law 羅先生 6183 8388



**Pacific View**

大潭 浪琴園

38 Tai Tam Road, Tai Tam

High floor flat with splendid sea view  
大潭高層住宅，尊享遼闊海景

**3,106 s.f.**  
**\$47,000,000**

[www.landscape.com/13954.htm](http://www.landscape.com/13954.htm) Maria Cheung 張小姐 5182 8699



**Faber Villa**

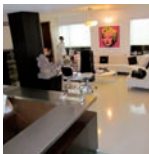
大潭 輝百苑

17 Tai Tam Road, Tai Tam

Rare high privacy sea view 4-bedroom flat in Tai Tam  
大潭罕有海景四房住宅，私隱度高

**3,200 s.f.**  
**\$53,000,000**

[www.landscape.com/107946.htm](http://www.landscape.com/107946.htm) Mary Li 李小姐 9011 6595



**Woodgreen Estate**

壽臣山 壽山村道5號

5 Shouson Hill Road, Shouson Hill

Character 4-bedroom duplex in quiet neighbourhood  
特色複式四房單位，環境優美寧靜

**3,200 s.f.** (plus 1,600 s.f. roof)  
**\$60,000,000**

[www.landscape.com/36487.htm](http://www.landscape.com/36487.htm) Sandra Choi 蔡小姐 9234 1109



**The Somerset**

淺水灣 怡峰

67 Repulse Bay Road, Repulse Bay

Well decoration sea view famous duplex apartment with big balcony on upper Repulse Bay Road  
淺水灣頭段有名雅緻裝修複式單位，尊享海景及特大陽臺，可租可售

**2,464 s.f.**  
**\$70,000,000** also for lease \$140,000 incl.

[www.landscape.com/111753.htm](http://www.landscape.com/111753.htm) Maria Cheung 張小姐 5182 8699



**Repulse Bay Towers**

淺水灣 保華大廈

119A Repulse Bay Road, Repulse Bay

5-ensuite large duplex with Repulse Bay view  
五套房特大複式住宅，享淺水灣迷人景觀

**5,000 s.f.**  
**\$82,000,000**

[www.landscape.com/33119.htm](http://www.landscape.com/33119.htm) Jensen Au 區先生 9028 0147



**Hong Kong Parkview Tower 4**

淺水灣 陽明山莊4座

88 Tai Tam Reservoir Road, Repulse Bay

Rare 3-bedroom duplex in Hong Kong Parkview  
陽明山莊罕有三房複式住宅

**4,210 s.f.**  
**\$95,000,000**

[www.landscape.com/111871.htm](http://www.landscape.com/111871.htm) David Leung 梁先生 9199 0672





**Villa Rosa**

大潭 玫瑰園  
88 Red Hill Road, Tai Tam

Prestigious garden house with fantastic sea view  
大潭豪華花園洋房，尊享遼闊海景

**3,960 s.f.** (plus 904 s.f. garden and 453 s.f. roof)  
**\$98,000,000**

[www.landscape.com/1851.htm](http://www.landscape.com/1851.htm) Cora Ko 喬小姐 6330 7888



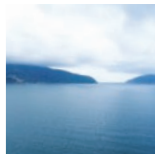
**Turtle Cove**

大潭 龜背灣  
60 Tai Tam Road, Tai Tam

Rare find Tai Tam waterfront house with picturesque views  
大潭罕有海濱洋房，尊享如畫美景

**4,300 s.f.** (plus 453 s.f. terrace and 259 s.f. roof)  
**\$150,000,000**

[www.landscape.com/12763.htm](http://www.landscape.com/12763.htm) Sandra Choi 蔡小姐 9234 1109



**Rosecliff**

大潭 大潭道20號  
20 Tai Tam Road, Tai Tam

Prestigious waterfront house in tranquil location  
豪華海濱洋房，位置優越寧靜

**3,980 s.f.** (plus 1,075 s.f. garden and 1,050 s.f. roof)  
**\$160,000,000**

[www.landscape.com/108557.htm](http://www.landscape.com/108557.htm) Sandra Choi 蔡小姐 9234 1109



**Double Bay**

深水灣 寶島道46號  
46 Island Road, Deep Water Bay

Prestigious townhouse with garden and roof in Deep Water Bay  
深水灣豪華洋房，蓮花園及天台

**3,880 s.f.** (plus 2,120 s.f. garden and 1,274 s.f. roof)  
**\$160,000,000**

[www.landscape.com/20501.htm](http://www.landscape.com/20501.htm) Mavis Wu 吳小姐 9107 3891



**New Decorated Sea View Apartment Block**

全新裝修海景住宅  
Newly decorated apartment block with unobstructed sea view  
全新裝修住宅，享無阻擋海景

**12,236 s.f.**  
**\$340,000,000**

[www.landscape.com/111310.htm](http://www.landscape.com/111310.htm) Louis Wong 黃先生 9871 6828



**Headland Road, Repulse Bay**

淺水灣 赫蘭道  
Brand new single house with luxurious decoration  
淺水灣全新獨立洋房，貴麗豪華裝修

**10,119 s.f.** (plus 6179 s.f. garden, 643 s.f. terrace and 1,625 s.f. roof)  
**\$550,000,000**

[www.landscape.com/133492.htm](http://www.landscape.com/133492.htm) Louis Wong 黃先生 9871 6828



歐詩木  
德國 **osmo**<sup>®</sup>  
...in form und farbe

*Wood finishes from a wood specialist*



**Natural...**

...with natural oils and waxes, the very best for wood and the environment!



**Faster...**

...Osmo finishes can be renovated without sanding, saving time and money!



**Coverage...**

...high solid means amazing coverage and best price per m<sup>2</sup>!

**Hop Sze Timber Co., Ltd.**  
220 Gloucester Road, Wanchai, Hong Kong  
Phone (852) 28336069 - [www.hopsze.com](http://www.hopsze.com)



### The Mount Austin

山頂 柯士甸山道8號  
8 Mount Austin Road, The Peak

Exquisite 4-bedroom flat with lofty ceiling  
獨特精緻四房住宅，樓底極高

2,035 s.f.  
\$89,000

[www.landscape.com/27870.htm](http://www.landscape.com/27870.htm)

David Chan 陳先生 9238 2012



### 26 Magazine Gap Road, The Peak

山頂 馬己仙峽道26號

Rare find mid-rise flat in Lower Peak area  
with Victoria Harbour view  
山頂罕有中密度住宅，尊享維港景致

2,400 s.f.  
\$110,000 incl.

[www.landscape.com/122921.htm](http://www.landscape.com/122921.htm)

Louis Wong 黃先生 9871 6828



### Oasis

山頂 欣怡居

8-12 Peak Road, The Peak

Modern harbour view apartment with high  
ceiling  
山頂新穎維港景住宅，樓底極高，可租可售

2,719 s.f.  
\$138,000 also for sale \$73,400,000

[www.landscape.com/40250.htm](http://www.landscape.com/40250.htm)

Cora Ko 高小姐 6330 7888



### Cameron House

山頂 嘉樂苑

40 Magazine Gap Road, The Peak

Unique mid-rise apartment with sea view  
精緻中密度住宅，坐擁南區海景

2,847 s.f.  
\$140,000 incl.

[www.landscape.com/14268.htm](http://www.landscape.com/14268.htm)

Rowena Siu 蕭小姐 9348 4118



### Abergeldie

山頂 橡樹道52號

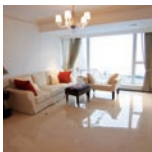
52 Plantation Road, The Peak

Peak townhouse with bird's eye view of  
Victoria Harbour  
山頂洋房，享鳥語花香的維港景色

3,655 s.f. (plus 759 s.f. garden and 313  
s.f. terrace)  
\$190,000 incl.

[www.landscape.com/606.htm](http://www.landscape.com/606.htm)

David Chan 陳先生 9238 2012



### Montebello

山頂 濠景閣

15-17 Plantation Road, The Peak

Rarely available 4-ensuite duplex with  
sweeping harbour view  
罕有四套房複式住宅，享怡人維港景色，可  
租可售

4,455 s.f.  
\$300,000 incl. also for sale \$178,000,000

[www.landscape.com/103366.htm](http://www.landscape.com/103366.htm)

Cora Ko 高小姐 6330 7888

# INVENTIVE INNOVATIVE IMAGINATIVE

our services

RESIDENTIAL DESIGN

OFFICE DESIGN

COMMERCIAL DESIGN

F&B DESIGN

DESIGN CONSULTANT

CONSTRUCTIONS



www.novusp.com

**NOVUS PENETRALIS LIMITED**  
INTERIOR ARCHITECTURE

UNIT 16A, HANG SENG CAUSEWAY BAY BUILDING  
28 YEE WO STREET, CAUSEWAY BAY, HONG KONG  
T. 3106 6069 F. 3106 6079 E. info@novusp.com



**Serenade**  
東半山 上林

11 Tai Hang Road, Midlevels East

Brand new apartment with excellent facilities close to Causeway Bay  
東半山全新住宅，連完善住客會所設施，鄰近銅鑼灣，可租可售

1,032 s.f.  
**\$45,000 incl.** also for sale \$17,000,000

[www.landscape.com/128500.htm](http://www.landscape.com/128500.htm) Arthur Wong 黃先生 9304 4257



**80 Robinson Road, Midlevels West**  
西半山 羅便臣道80號

18 Park Road, Midlevels West

Nice apartment with club facilities  
西半山雅緻裝修住宅，連住客會所設施

1,398 s.f.  
**\$50,000 incl.**

[www.landscape.com/103483.htm](http://www.landscape.com/103483.htm) Erica Fan 范小姐 6972 3063



**Jardine's Lookout Garden Mansion**  
東半山 蓮荷山花園大廈

148-150 Tai Hang Road, Midlevels East

Older style practical apartment with balcony overlooking Hong Kong Stadium  
古典式住宅，間隔實用，連陽臺，俯瞰香港大球場景觀

1,500 s.f.  
**\$53,000 incl.**

[www.landscape.com/29676.htm](http://www.landscape.com/29676.htm) Arthur Wong 黃先生 9304 4257



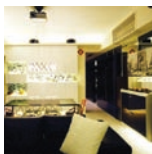
**Wilton Place**  
西半山 蔚庭軒

18 Park Road, Midlevels West

Modern penthouse flat with private roof overlooking sweeping harbour view  
時尚頂層住宅，連私家天台，俯瞰優美維港景致

1,243 s.f. (plus roof and 350 s.f. terrace)  
**\$55,000 incl.**

[www.landscape.com/38664.htm](http://www.landscape.com/38664.htm) Carman Szeto 司徒小姐 6183 8339



**Sky Horizon Tower**  
北角半山 海天峰

35 Cloud View Road, North Point Midlevels

Modern harbour view high-rise in North Point Midlevels  
北角半山高層住宅，尊享維港景，可租可售

1,365 s.f.  
**\$55,000 incl.** also for sale \$23,800,000

[www.landscape.com/108267.htm](http://www.landscape.com/108267.htm) Stephen Chan 陳先生 9093 3381



**CentreStage**  
上環 聚賢居

108 Hollywood Road, Sheung Wan

Fully furnished harbour view apartment with 5-star hotel facilities  
配套齊全維港景住宅，連完善住客會所設施

857 s.f.  
**\$55,000**

[www.landscape.com/84747.htm](http://www.landscape.com/84747.htm) Sami Woo 胡小姐 9493 8275



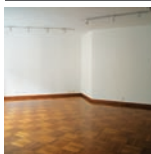
**Venice Garden**  
跑馬地 蓮花花園

91-93 Blue Pool Road, Happy Valley

Nicely renovated 3-bedroom apartment with balcony and private roof  
全新裝修三房住宅，連陽臺及天台，可租可售

1,369 s.f. (plus 1,369 s.f. roof)  
**\$65,000 incl.** also for sale \$24,000,000

[www.landscape.com/126234.htm](http://www.landscape.com/126234.htm) Chris Law 羅先生 6183 8388



**Tregunter Tower 3**  
中半山 地利根德閣3座

14 Tregunter Path, Midlevels Central

Popular development in prime location of Midlevels  
中半山受歡迎住宅大廈，地段尊貴

2,020 s.f.  
**\$68,000 incl.**

[www.landscape.com/40961.htm](http://www.landscape.com/40961.htm) Mira To 杜小姐 9486 1566



**Man Yuen Garden**  
中半山 文苑花園

52A-52B Kennedy Road, Midlevels Central

Nicely decorated apartment with big balcony on Kennedy Road  
堅尼地道雅緻裝修單位，連陽臺

2,000 s.f.  
**\$78,000 incl.**

[www.landscape.com/96871.htm](http://www.landscape.com/96871.htm) Sami Woo 胡小姐 9493 8275



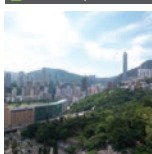
**Catalina Mansions**  
中半山 嘉年大廈

98-100 MacDonnell Road, Midlevels Central

Spacious apartment in MacDonnell Road  
麥當勞道寬敞單位，可租可售

2,300 s.f.  
**\$78,000 incl.** also for sale \$30,500,000

[www.landscape.com/37793.htm](http://www.landscape.com/37793.htm) Stella Lo 羅小姐 9809 8570



**Stubbs Villa**  
東半山 詩濤花園

2 Shiu Fai Terrace, Midlevels East

Spacious 4-bedroom apartment with open view in quiet neighbourhood  
寬敞四房住宅，尊享開揚景觀，環境清靜，可租可售

2,325 s.f.  
**\$78,000** also for sale \$33,000,000

[www.landscape.com/20828.htm](http://www.landscape.com/20828.htm) Mavis Wu 吳小姐 9107 3891



**Broadwood Twelve**  
跑馬地 樂天峰

12 Broadwood Road, Happy Valley

Brand new 3-bedroom apartment with stunning views  
跑馬地全新三房單位，尊享遼闊景致

1,653 s.f.  
**\$86,000 incl.**

[www.landscape.com/133363.htm](http://www.landscape.com/133363.htm) Sami Woo 胡小姐 9493 8275



**Pine Court**

中半山 翠峰園

5 Old Peak Road, Midlevels Central

Mid-rise apartment with high efficiency and practical layout on Old Peak Road  
舊山頂道中密度住宅，間隔實用

**3,200 s.f.**  
**\$88,000 incl.**

[www.landscape.com/11522.htm](http://www.landscape.com/11522.htm)

Teresa Fung 馮小姐 9138 1621



**Hillsborough Court**

中半山 曉峰閣

18 Old Peak Road, Midlevels Central

4-bedroom apartment with terrace enjoy greenery view  
中半山四房住宅，連平台，享翠綠景致，可租可售

**1,993 s.f. (plus 348 s.f. terrace)**  
**\$100,000 incl. also for sale \$48,800,000**

[www.landscape.com/10898.htm](http://www.landscape.com/10898.htm)

David Chan 陳先生 9238 2012



**The Albany**

中半山 雅賓利大廈

1 Albany Road, Midlevels Central

Prime apartment overlooking lush greenery and the city views with elegant decoration  
中半山尊貴住宅，俯瞰翠綠景致及城市景色，享秀雅裝修，可租可售

**2,546 s.f.**  
**\$108,000 incl. also for sale \$80,000,000**

[www.landscape.com/44049.htm](http://www.landscape.com/44049.htm)

Teresa Lau 劉小姐 9080 6686



**Villa Elegance**

中半山 雅慧園

1 Robinson Road, Midlevels Central

Huge 4-bedroom flat with high privacy on fringe of Central  
特大四房單位，實用率高，鄰近中環，交通方便

**3,500 s.f.**  
**\$120,000 incl.**

[www.landscape.com/96721.htm](http://www.landscape.com/96721.htm)

Mavis Wu 吳小姐 9107 3891



**Grenville House**

中半山 嘉慧園

1-3A Magazine Gap Road, Midlevels Central

Huge apartment ideal for large family on fringe of Central  
中半山巨型住宅，適合大家庭，鄰近中環，交通方便

**3,400 s.f.**  
**\$130,000 incl.**

[www.landscape.com/17350.htm](http://www.landscape.com/17350.htm)

Samir Woo 胡小姐 9493 8275



**Clovelly Court**

中半山 嘉富麗苑

12 May Road, Midlevels Central

Huge 4-bedroom family apartment with fantastic city view  
巨型四房家庭式住宅，鳥瞰城市景觀

**2,809 s.f.**  
**\$135,000**

[www.landscape.com/29099.htm](http://www.landscape.com/29099.htm)

Jackson Lee 李先生 9177 7191



**Nicholson Tower**

東半山 蔚豪苑

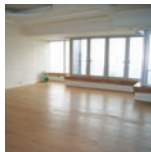
8 Wong Nai Chung Gap Road, Midlevels East

4-bedroom apartment in exclusive location  
東半山四房住宅，地段尊貴，可租可售

**1,993 s.f.**  
**\$90,000 incl. also for sale \$36,000,000**

[www.landscape.com/33867.htm](http://www.landscape.com/33867.htm)

Carman Szeto 司徒小姐 6183 8339



**Tregunter Tower 3**

中半山 地利樓德閣3座

14 Tregunter Path, Midlevels Central

Spacious apartment with splendid view of the city skyline  
中半山開闊寬敞單位，尊享壯麗的城市景觀

**3,001 s.f.**  
**\$108,000 incl.**

[www.landscape.com/13965.htm](http://www.landscape.com/13965.htm)

Mira To 杜小姐 9486 1566



**Valley View**

東半山 欣景台

4A-4D Wong Nai Chung Gap Road, Midlevels East

Good sized 4-bedroom apartment in mid-rise building  
東半山四房住宅，間隔實用

**2,400 s.f.**  
**\$110,000**

[www.landscape.com/130793.htm](http://www.landscape.com/130793.htm)

Sandra Choi 蔡小姐 9234 1109



**The Harbourview**

中半山 港景別墅

11 Magazine Gap Road, Midlevels Central

Highly sought after 4-bedroom apartment with stunning harbour view on Midlevels Central  
中半山罕有四房住宅，尊享遼闊維港景色

**2,350 s.f.**  
**\$125,000**

[www.landscape.com/3067.htm](http://www.landscape.com/3067.htm)

Stephen Chan 陳先生 9093 3381



**Lower Peak Low-rise With Roof**

中半山低密度住宅連天台

5-7 Brewin Path, Midlevels Central

Rare find colonial style 4-bedroom apartment with huge balcony and private roof top  
罕有英式四房住宅，連巨型陽臺及天台

**2,600 s.f. (plus 2,600 s.f. roof)**  
**\$130,000 incl.**

[www.landscape.com/18725.htm](http://www.landscape.com/18725.htm)

Teresa Lau 劉小姐 9080 6686



**Estoril Court**

中半山 愛都大廈

55 Garden Road, Midlevels Central

Large luxuriously designed 4-bedroom apartment commanding harbour view  
中半山特大四房單位，蓮豪華裝修及維港景色

**3,347 s.f.**  
**\$170,000 incl.**

[www.landscape.com/6796.htm](http://www.landscape.com/6796.htm)

Rowena Siu 蕭小姐 9348 4118



# Merry Christmas

我們以專業及貼心的態度為每位客人安排節日花束、禮盒果籃、開張花籃、悼念花籃、場地佈置、花卉擺設、宴會襟花和婚禮花球等，並可根據客人要求而提供特定的設計，務求為每位客人提供最優質及可信賴的服務。詳情可致電**2544 6886**或親臨本店查詢。

聖誕禮物籃Christmas Present Basket、聖誕花Christmas Flowers、聖誕樹Christmas Tree、聖誕場地佈置Christmas Decoration現已接受訂購available for order。

**Yim's  
Flower**

No.11 Burd Street, Central, Hong Kong  
Tel. 2544 6886 Fax. 2574 6269  
Email. yimflower@yahoo.com.hk







### Hong Kong Parkview – Tower 3

淺水灣 陽明山莊3座  
88 Tai Tam Reservoir Road, Repulse Bay  
Cozy 2-ensuite apartment in well equipped family estate  
迷人兩套房住宅，屋苑配套完善，可租可售

**1,235 s.f.**  
**\$43,000 incl.** also for sale \$16,000,000

[www.landscape.com/108246.htm](http://www.landscape.com/108246.htm) Cora Ko 高小姐 6330 7888

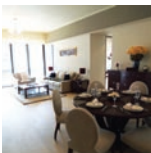


### Sea Branch

香坎角 海天閣  
31 Horizon Drive, Chung Hom Kok  
Nicely decorated low-rise apartment on quiet Horizon Drive  
香坎角雅緻裝修低密度住宅，環境寧靜，可租可售

**1,825 s.f.**  
**\$75,000 incl.** also for sale \$32,000,000

[www.landscape.com/81551.htm](http://www.landscape.com/81551.htm) Mark Mak 麥先生 6838 2929



### 7 South Bay Close, Repulse Bay

淺水灣 南灣坊7號  
Brand new modern decorated 3-bedroom apartment in South Bay  
淺水灣全新三房住宅，時尚靚裝修

**2,218 s.f.**  
**\$83,000**

[www.landscape.com/133353.htm](http://www.landscape.com/133353.htm) Jackson Lee 李先生 9177 7191



### Ridge Court

淺水灣 翠園  
21A-21D Repulse Bay Road, Repulse Bay  
Well maintained high-ceilinged flat with sea view on upper Repulse Bay Road  
淺水灣頭段高樓底住宅，管理良好，尊享海景，可租可售

**2,300 s.f.**  
**\$90,000 incl.** also for sale \$40,000,000

[www.landscape.com/21018.htm](http://www.landscape.com/21018.htm) Stella Lo 羅小姐 9809 8570

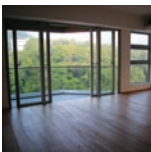


### Celestial Garden

淺水灣 詩禮花園  
5 Repulse Bay Road, Repulse Bay  
Newly renovated sea view apartment on upper Repulse Bay Road  
全新裝修海景住宅，位於淺水灣頭段，可租可售

**2,363 s.f.**  
**\$100,000 incl.** also for sale \$54,000,000

[www.landscape.com/131231.htm](http://www.landscape.com/131231.htm) Stephen Chan 陳先生 9093 3381



### The Carmina

深水灣 嘉名苑  
7-9 Deep Water Bay Drive, Deep Water Bay  
Large and practical 4-bedroom apartment in tranquil area  
特大四房住宅，間隔實用，環境優美怡人

**2,628 s.f.**  
**\$122,000 incl.**

[www.landscape.com/100150.htm](http://www.landscape.com/100150.htm) Stella Lo 羅小姐 9809 8570



### Regent Palisades

薄扶林 帝柏園  
43 Bisney Road, Pokfulam

Charming low-rise with private roof top  
迷人低密度住宅，連私家天台，可租可售

**1,735 s.f.** (plus 1,034 s.f. roof)  
**\$68,000 incl.** also for sale \$22,000,000

[www.landscape.com/111476.htm](http://www.landscape.com/111476.htm) Mark Mak 麥先生 6838 2929



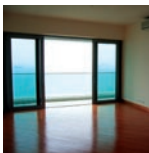
### Scenic Villas

薄扶林 美景臺  
2-28 Scenic Villa Drive, Pokfulam

Spacious 4-bedroom sea view apartment with facilities at quiet Pokfulam  
薄扶林四房住宅，間隔寬敞，連住客會所設施，環境寧靜，可租可售

**2,517 s.f.**  
**\$80,000 incl.** also for sale \$31,000,000

[www.landscape.com/49912.htm](http://www.landscape.com/49912.htm) Rowena Siu 蕭小姐 9348 4118



### Residence Bel-Air

薄扶林 貝沙灣  
68 Bel-Air Peak Avenue, Pokfulam

Modern sea view flat with 4 bedrooms and facilities  
時尚四房海景住宅，附設完善住客會所設施

**1,875 s.f.**  
**\$85,000 incl.**

[www.landscape.com/89834.htm](http://www.landscape.com/89834.htm) Mary Li 李小姐 9011 6595



### Banyan Villas

赤柱 榕蔭園  
9 Stanley Village Road, Stanley

Popular garden townhouse with facilities close to Stanley Main Beach  
受歡迎花園洋房，連住客會所設施，鄰近赤柱大灘

**2,500 s.f.**  
**\$100,000 incl.**

[www.landscape.com/21201.htm](http://www.landscape.com/21201.htm) Stephen Chan 陳先生 9093 3381



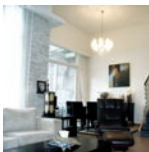
### Pine Crest

淺水灣 松苑  
65 Repulse Bay Road, Repulse Bay

Newly renovated 4-bedroom apartment enjoy sweeping view of Deep Water Bay  
全新裝修四房住宅，坐擁深水灣遼闊景觀

**2,250 s.f.**  
**\$100,000**

[www.landscape.com/1527.htm](http://www.landscape.com/1527.htm) Teresa Fung 馮小姐 9138 1621



### 33 Cape Road, Chung Hom Kok

香坎角 蓮角道33號

Garden townhouse in quiet location with charming sea view  
花園洋房，環境優美怡人，享靜人海景，可租可售

**3,140 s.f.** (plus 645 s.f. garden and 420 s.f. roof)  
**\$128,000 incl.** also for sale \$55,000,000

[www.landscape.com/123155.htm](http://www.landscape.com/123155.htm) Maria Cheung 張小姐 5182 8699



# ERIC FUNG

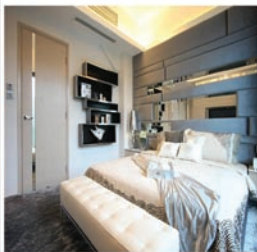
DESIGN LIMITED

## THE INTERIOR DESIGN REFLECTS YOUR NEED

ERIC FUNG Design Limited



ERIC FUNG  
Creative Director



OUR SERVICES : RESIDENTIAL DESIGN | OFFICE DESIGN | COMMERCIAL DESIGN | KITCHEN DESIGN | DESIGN CONCEPT | CONSULTANT | SPACE PLANNING  
28/F & 29/F, Catic Plaza, 8 Causeway Road, Causeway Bay, Hong Kong T: (852) 3104 3104 F: (852) 2362 7788 [www.tint-international.com](http://www.tint-international.com)

**TINT LIVING LTD  
FURNITURE**

Designer Furniture Gallery : G/F, 3 Blue Pool RD, Happy Valley, HK. T: (852) 3104 3105 [www.tintliving.com](http://www.tintliving.com)  
Furniture Outlet : 11/F, Ming Sang Ind. Building, 19 Hing Yip Street, Kwun Tong, Kowloon. T: (852) 3104 3107





**68 Mount Davis Road, Pokfulam**  
薄扶林 摩星嶺道68號

Full sea view 3-bedroom penthouse with private roof in Pokfulam  
薄扶林頂層三房全海景住宅，連私家天台

**2,925 s.f.** (plus 718 s.f. roof)  
**\$146,250**

[www.landscape.com/127378.htm](http://www.landscape.com/127378.htm) Mary Li 李小姐 9011 6595



**84 Repulse Bay Road, Repulse Bay**  
淺水灣 淺水灣道84號

Fully renovated 4-ensuite duplex apartment with spacious private garden  
全新裝修四套房複式單位，連特大寬敞私家花園

**2,800 s.f.** (plus 1,431 s.f. garden and 60 s.f. terrace)  
**\$155,000 incl.**

[www.landscape.com/27993.htm](http://www.landscape.com/27993.htm) Walker Lam 林先生 9551 1077



**Bluewater With Private Garden**  
大潭 大潭道25號

25 Tai Tam Road, Tai Tam

4-bedroom garden apartment with panoramic sea view  
四房海景住宅連特大花園

**2,500 s.f.** (plus 3,563 s.f. garden and 746 s.f. terrace)  
**\$160,000 incl.**

[www.landscape.com/31650.htm](http://www.landscape.com/31650.htm) Teresa Lau 劉小姐 9080 6686



**Pine Lodge**

壽臣山 松苑

10 Shouson Hill Road West, Shouson Hill

3-bedroom duplex with large terrace in tranquil Shouson Hill  
壽臣山三房複式住宅連平台，環境寧靜怡人

**3,000 s.f.** (plus 800 s.f. terrace and garden)  
**\$150,000 incl.**

[www.landscape.com/3218.htm](http://www.landscape.com/3218.htm) Maria Cheung 張小姐 5182 8699



**The Lily**

淺水灣 淺水灣道129號

129 Repulse Bay Road, Repulse Bay

Brand new modern duplex apartment with fantastic sea view in Repulse bay  
全新時尚複式住宅，尊享淺水灣美麗海景

**3,612 s.f.**  
**\$158,000**

[www.landscape.com/76003.htm](http://www.landscape.com/76003.htm) Walker Lam 林先生 9551 1077



**8 Deep Water Bay Road, Deep Water Bay Road**  
深水灣 深水灣道8號

Exclusive sea view 4-bedroom townhouse with huge private roof in upscale Deep Water Bay  
獨特海景四房排屋連特大私家天台，位於深水灣尊貴地段

**3,200 s.f.** (plus 1,000 s.f. roof and 304 s.f. terrace)  
**\$160,000**

[www.landscape.com/13233.htm](http://www.landscape.com/13233.htm) Christine Chong 莊小姐 9648 6082

**SCHOTTEN  
& HANSEN**

a passion for excellence

**"A floor from Schotten & Hansen is as unique as the person who lives on it"**

Torben Hansen, Managing Director of Schotten & Hansen

**Las Pinadas**

壽臣山 朗松居

33 Shousun Hill Road, Shousun Hill

Luxurious garden house with roof and terrace in tranquil enclave  
豪華花園大屋，連天台及平台，環境清幽怡人，可租可售

**3,382 s.f.** (plus 617 s.f. roof, 565 s.f. garden and 166 s.f. terrace)  
**\$165,000 incl. also for lease \$85,000,000**

[www.landscape.com/21407.htm](http://www.landscape.com/21407.htm)

Cora Ko 高小姐 6330 7888

**5 Headland Road, Repulse Bay**  
淺水灣 赫蘭道5號

Rare low-rise 4-bedroom garden flat with sea view in gated neighbourhood  
罕有低密度四房住宅，連花園，鳥瞰美麗海景

**3,200 s.f.** (plus 2,138 s.f. garden)  
**\$165,000**

[www.landscape.com/36934.htm](http://www.landscape.com/36934.htm)

Yvonne Chang 鄭小姐 9088 4666

**The Somerset**

淺水灣 怡峰

67 Repulse Bay Road, Repulse Bay

Rare find 4-bedroom apartment in Somerset for rent, duplex with relaxing sea view in exclusive location  
怡峰罕有四房複式海景住宅出租，位處尊貴地段，可租可售

**3,099 s.f.**  
**\$170,000 incl. also for sale \$96,000,000**

[www.landscape.com/31500.htm](http://www.landscape.com/31500.htm)

Teresa Fung 馮小姐 9138 1621

**Circle Lodge**

淺水灣 環翠園

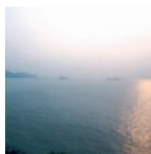
79 Repulse Bay Road, Repulse Bay

Rare find Repulse Bay garden townhouse with full sea view  
淺水灣罕有花園洋房，尊享全海景

**3,600 s.f.** (plus 605 s.f. roof, 540 s.f. garden and terrace)  
**\$240,000**

[www.landscape.com/14342.htm](http://www.landscape.com/14342.htm)

Yvonne Chang 鄭小姐 9088 4666

**Residence Bel-Air**

薄扶林 貝沙灣

Cyberport Road, Pokfulam

Brand new 5-bedroom townhouse with fantastic sea view  
全新薄扶林五房大屋，尊享優美海景

**6,296 s.f.** (plus 602 s.f. terrace)  
**\$250,000 incl.**

[www.landscape.com/128047.htm](http://www.landscape.com/128047.htm)

Carman Szeto 司徒小姐 6183 8339

**Tung Tau Wan Road, Stanley**  
赤柱 東頭灣道

Waterfront detached house with private swimming pool in secluded location  
赤柱海邊獨立大屋，連私家游泳池，地段清幽怡人

**5,134 s.f.** (plus 3,508 s.f. terrace and 1,513 s.f. roof)  
**\$320,000**

[www.landscape.com/13717.htm](http://www.landscape.com/13717.htm)

Yvonne Chang 鄭小姐 9088 4666

**astral™**  
advanced lighting system



**Astral system controls more than just lights,  
discover how it can change your lifestyle.**

astral™, the advanced lighting system from MK Electric, brings out the best in your environment and is the ideal lighting control solution if you are looking to enhance the ambience and atmosphere in any room or residence.

Providing sophisticated and inspirational lighting control, astral is an extremely versatile and intelligent system, which incorporates the award-winning Zensys RF communications technology (Z-Wave™) ensuring the ultimate in both reliability and flexibility.



MK Electric (China) Ltd

25/F, Honeywell Tower, Olympia Plaza, 255 King's Road, North Point, Hong Kong  
Telephone (+852) 2331 9133, (+852) 2953 6379 • Fax (+852) 2151 9465

[www.mkelectric.com.hk](http://www.mkelectric.com.hk)

# SPECIAL OFFER, CALL US



SPORTRIVA 56'

A member of the Jepsen Group • CONSUMER • INDUSTRIAL • BEVERAGE • LUXURY • China • Hong Kong • Macau • Taiwan • Korea



Unit: 5, G/F, Aberdeen Marina Tower, 8 Shum Wan Road, Aberdeen, Hong Kong 香港香港仔深灣道8號深灣遊艇俱樂部地下5室  
Tel 電話: (852) 3180 3189 Fax 傳真: (852) 2805 6867 Email 電郵: info@jepsenmarine.com Website 網址: www.jepsenmarine.com  
China Information 中國電話: (86) 21 23064748 China Email 中國電郵: chinainfo@jepsenmarine.com

*Riva*  
AUTHORIZED DEALER