

select deluxe homes

The Key

大宅®

www.landscape.com

NOVEMBER | 2009

Volume 61



SEAFRONT LUXURY

Sip a glass of wine on your very own breathtaking patio.

HIGH-TECH LIVING

For those who appreciate the finer things in life.

KEY NOTES*

“Architecture is a small piece of this human equation, but for those of us who practice it, we believe in its potential to make a difference, to enlighten and to enrich the human experience, to penetrate the barriers of misunderstanding and provide a beautiful context for life’s drama.”

「建築是人類活動的一小部份，但對於參與其中的我們，應該相信，它能夠帶給我們不同的生活：能夠點亮和豐富我們的經歷：能夠消除誤解和為生活這場「戲劇」帶來美妙意境。」

- Frank Gehry
a world renowned architect
弗蘭克·蓋裡，享譽全球的建築師

From the beginning of this year up to now, rentals have generally been declining. The rate of decline was the sharpest for the first four to five months, an effect following the aftermath of the financial collapse. However now they are stabilizing and edging up slightly to support the current sale prices.

What will happen next depends on market factors such as inflation and borrowing costs. If the rental yields after these costs have been factored in still look positive, then that will support further property investments. From the data we have today, rental income will probably outstrip cost of money and gives us a positive sign that property investments will probably keep going on. But will the sale prices go up further like what we have witnessed in the first nine months of this year? Probably not! We’re already at a level where the rental yield – a factor between the rental and the price, has dropped to a low level which has not been seen for decades.

Whether you’re taking today’s perspective or using a historical yardstick, we are working for a very low yield level today. In Mr Koh’s opinion it will hardly drop any further. So, that would mean that the price increase would not be very substantial unless the rentals increase and by a multiplying effect cause the sale price to rise. Most likely for the remainder of this year (last quarter), we would see rentals edging further and sale prices maintain their current level, more or less. Let’s just wait and see……

從年初到現在，豪宅租金一直下跌，受金融危機的影響，租金在開始的四五個月內下跌得最厲害。而現在已經趨向穩定，基本支持當前的樓價。

按下去的樓市將會取決於市場因素，比如通貨膨脹的程度，貸款成本等。如果租金收入在扣除成本之後仍有盈餘，這必將刺激投資。從目前數據顯示，租金收入是超出資金成本，這是良好的預示，樓市將繼續向前發展。但樓價能以今年九個月中大家所見的那種程度繼續上升嗎？可能不會！現今的情況是作為衡量租金和樓價關係的回報率已跌至近幾十年未見的低水平。

不論從當前的觀點或是從過去的角度來看，租金回報率是非常低的。許廣勝認為已到達不能再低的水準。因此，這就意味着除非租金上升加上多方面的因素導致樓價上升，否則樓價上升空間很有限。在今年按下去的時間內，很有可能租金慢慢上升，而樓價將維持當前的水平。且讓我們拭目以待吧！

Read the full article at Market Watch, www.landscape.com/Keynotes
如欲觀看全文，請登入Market Watch網站，網址：www.landscape.com/Keynotes

published and distributed by

LANDSCOPE 領域
The Specialist in Luxury Properties

Landscape Realty Limited C-018733
a member of Landscape Surveyors Ltd

Tel: 852-2866 0022 Fax: 852-2866 0015
Email: info@landscape.com Website: www.landscape.com.hk
Unit 3106, 31/F, Hopewell Centre, 183 Queens Road East, Wanchai, Hong Kong



THE KEY | CONTENT

- 04 Seafront Luxury
海邊的華麗
- 07 Moving On
生命的旅程
- 09 Hi-tech Living
生活，向高科技看齊
- 11 A Quiet Oasis
心靈綠洲
- 14 Understated Elegance
含蓄的優雅
- 20 Tour de Force
Detour 2009 全城參與

The Key (The No.1 Publication for Luxury Properties)

The Key is a monthly, bilingual lifestyle publication focusing on luxury residential properties in Hong Kong Island. It is sent to over 60,000 urban elites comprising of Hong Kong’s most affluent inhabitants.

These consist of Landscape’s VIP clients, who mainly reside in The Peak, Mid-Levels, Southside, Kowloon Tong, Homantin and other select up-market residential areas such as Tai Po, Sai Kung and Clear Water Bay, etc.

How may you list your property with The Key?

If you would like to list your property in an upcoming issue of The Key, you may contact Loretta Lui on +852 3102 4818 or visit us at www.landscape.com/sell-to-let. Alternatively, simply fill out the below and fax back to us on +852 2866 0015.

Property Details

Asking Rental / Sale Price

Floor Area

Contact Person

Telephone

Email

Our KeyPerson will contact you for follow-up work.

designed and produced by

in MAGAZINE
LUXURY REAL ESTATE

inCorporation Limited
Your No. 1 Integrated Marketing Communications Partner in Hong Kong and China

Tel: 852-3699 0888 Fax: 852-3699 0889
Website: www.incorp.com.hk Website: www.inmagazine.com.hk
12/F Cyberport 2, 100 Cyberport Road, Hong Kong

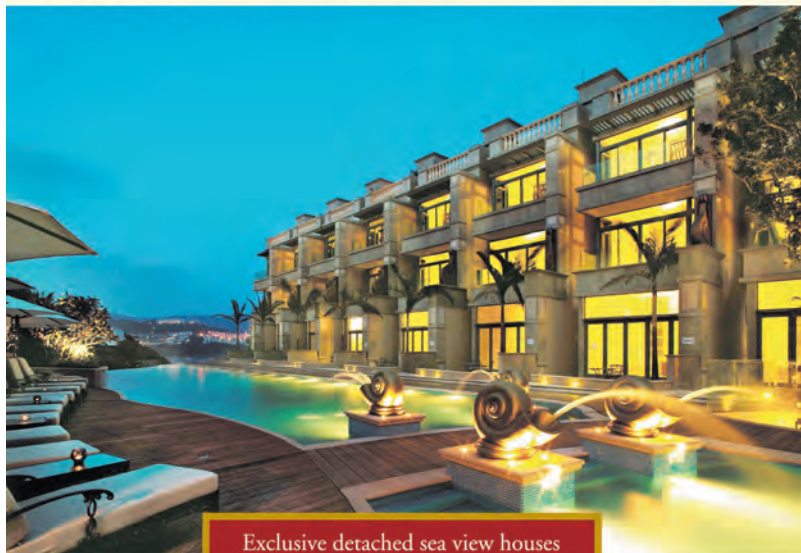
The information, text, photos, analyses and projections contained herein are provided solely for the convenience of prospective clients and no warranty or representation as to their accuracy, correctness or completeness is made by Landscape Surveyors Limited, Landscape Realty Limited or the owners, none of whom shall have any liability or obligation with respect thereto. Interested parties should rely on their own investigations, interpretations and analyses in connection with the purchase or selling thereof.

Information has been provided to us by sources deemed reliable, but no warranty or representation is made as to its accuracy, correctness or completeness. These offerings are made subject to contract, correction of errors, omissions, prior sale of assets, change of price or terms or withdrawal from the market without notice. The contents of The Key are for reference only and do not constitute all or any part of a contract.

Reproduction of any material in whole or part without written permission from inCorporation Ltd is strictly prohibited. All information is correct at the time of going to press. The opinions expressed in The Key are those of the authors and are not necessarily endorsed by inCorporation Ltd. Copyright 2009

THREE BAYS

7 STANLEY BEACH ROAD, TAI TAM BAY



Exclusive detached sea view houses
NOW LEASING

Expansive and stunning views of
Stanley, Turtle Cove and Tai Tam Bay

Viewing by appointment
8207 7608 Maria Lam

Email: marialam@sino.com
Website: threebays.com.hk



Sino Group

WE LEASE HONG KONG

www.sino-leasing.com



Seafront Luxury

海邊的華麗

Set against the stunning backdrop of Hong Kong Island's 18th century Tin Hau Temple, dedicated to the Goddess of the Sea, this 1,290 sq ft Splendor Villa apartment's living, dining and kitchen areas are all open plan. This results in a striking mix of spotlights, flood lights, pendant lights and table lamps around the abode which enhance the different areas in just the perfect ambience. A top quality audio-visual system has been installed in strategic spots throughout the apartment, culminating in the best of sound and music enjoyment. There's also a barbecue pit, sheltered cabana and lush green views from the balcony of the living room. The hallway opens onto a master bedroom that's decidedly different from the rest of the apartment. A unique rain shower makes it a divinely decadent spot for a soak so you can pamper yourself at any time.

Residents get to enjoy plenty of greenery, sunlight, fresh air and the gentle sea breeze. Designed to suit whatever you're in the mood for, anytime of the day, this pad gently helps you to drift off to sleep, provides a capsule to lose yourself in a book, to a stage set for romance and even fulfills your love for entertaining. Splendor Villa truly pampers the senses with its careful attention to detail. ■

這座1,290平方公尺的單位，背靠十八世紀為媽祖而建的天后廟。雅景間的起居室、廚房和飯廳都是開放式的設計。圍繞住宅的聚光燈、泛光燈、吊燈及怡燈照亮各個角落，讓人一覽無遺。單位各處更巧妙地安裝了視聽系統，讓人沉浸在無限美妙的樂韻之中。室外設有燒烤爐及海濱小屋，而陽臺則盡收綠蔭景色。走廊直接通向主人套房，風格各異其趣。獨特的花園淋浴更讓你隨時隨地疲勞盡消。

住戶可欣賞遍地綠蔭，享受陽光，呼吸清新的空氣，還有那一絲絲清涼的海風。無論何時，心情如何，這裡都能讓你放鬆心情，精神倍增。你可以在這裡寧靜地看書，又或與至愛共度浪漫時光，也可盡情休閒玩樂。華苑設計周到，能為你洗滌身心。■

Splendor Villa
 清水灣 雅景閣
 10 South Bay Road, Repulse Bay
 1,290 s.f. (plus 777 s.f. garden)
\$32,000,000



Designer: Rodolfo Dordoni

Sole Dealer of Minotti in Hong Kong

Minotti

Minotti S.p.A.
 20036 MEDA (MI) ITALIA
 e-mail: info@minotti.it
 www.minotti.com

IM/0911/M/WLM08

andante

Shop D.GiF. The Design Showcase,
 Ruttonjee Centre, 11 Duddell Street,
 Central, Hong Kong
 Tel. +852/ 2537 9688
 Fax. +852/ 2537 4488
 E-mail: info@andante.com.hk
 www.andante.com.hk



Villa Verde
山頂 連翠園
4-18 Guildford Road, The Peak
Rare find cozy colonial apartment at Lower Peak
山頂罕有迷人英式住宅，可租可售

1,200 s.f.
\$18,900,000 also for lease \$46,000 incl.

www.landscape.com/119897.htm David Chan 陳先生 9238 2012



Barker Villa
山頂 柏架別墅
41 Barker Road, The Peak
Cosy apartment with panoramic views on Barker Road
山頂獨家住宅，享如畫美景

1,650 s.f.
\$45,000,000

www.landscape.com/40734.htm David Leung 梁先生 9199 0672



La Hacienda
山頂 加利山道29-33號
29-33 Mount Kellett Road, The Peak
Colonial apartment at The Peak
山頂英式住宅出售

2,820 s.f.
\$65,000,000

www.landscape.com/34861.htm Christine 莊小姐 9648 6082



Montebello
山頂 澤景閣
15-17 Plantation Road, The Peak
Large 4-bedroom flat with private roof overlooking the harbour
巨座四房單位連私家天台，俯瞰維港景觀

3,085 s.f. (plus 2,234 s.f. roof)
\$98,000,000

www.landscape.com/121422.htm David Leung 梁先生 9199 0672



Strawberry Hill
山頂 紅香閣
8 Plunkett's Road, The Peak
Colonial townhouse with fireplace at The Peak
山頂獨特英式排屋

3,200 s.f. (plus terrace)
\$110,000,000

www.landscape.com David Leung 梁先生 9199 0672



11 Pollock's Path, The Peak
山頂 普樂道11號
Exclusive garden house with a bird's eye view of Victoria Harbour
獨特花園大屋，俯瞰維港，可租可售

4,600 s.f. (plus terrace and garden)
\$180,000,000 also for lease \$300,000 incl.

www.landscape.com/4394.htm Teresa Fung 馮小姐 9138 1621



Guildford Garden
山頂 菁苑
1-3 Mansfield Road, The Peak
Lower Peak 4-bedroom flat with spacious practical layout
山頂四房單位，間隔寬敞實用

2,400 s.f.
\$36,000,000

www.landscape.com/108886.htm David Leung 梁先生 9199 0672



Stewart Terrace
山頂 史刺域基
81-95 Peak Road, The Peak
Colonial low-rise apartment with nice decor on The Peak
山頂低密度雅緻裝修英式住宅，適合投資自住

3,077 s.f.
\$50,000,000

www.landscape.com/113372.htm Walker Lam 林先生 9551 1077



Eredine
山頂 加利山道38號
38 Mount Kellett Road, The Peak
Huge colonial apartment with spectacular sea view
巨座英式住宅，享壯麗奪目海景

3,300 s.f.
\$70,800,000

www.landscape.com/23687.htm Teresa Fung 馮小姐 9138 1621



43 Barker Road, The Peak
山頂 白加道43號
Modern harbour view apartment on Barker Road
白加道時尚維港景住宅，可租可售

3,820 s.f.
\$100,000,000 also for lease \$170,000

www.landscape.com/103936.htm Maria Cheung 張小姐 5182 8699



Mountain Lodge
山頂 嘉匯
44 Mount Kellett Road, The Peak
Rare duplex apartment with Southside sea view
山頂罕有複式住宅，欣賞南區美麗海景

5,200 s.f.
\$120,000,000

www.landscape.com/96955.htm David Leung 梁先生 9199 0672



1-9 Rosmead Road, The Peak
山頂 樂善美道1-9號
Rare single number garden house on The Peak
山頂罕有獨立花園大屋出售

5,600 s.f. (plus 1,469 s.f. garden)
\$250,000,000

www.landscape.com/20798.htm Maria Cheung 張小姐 5182 8699

The Hacienda

90 Repulse Bay Road

- Full seaview, with Garden / Roof
- Swimming pool, Gym & Carpark
- 1,822-3,000 sq.ft.
- 3-4 Bedrooms
- Incentive commission scheme to agents and welcome coupons to tenants

Leasing Hotlines: **2122 2025**
2122 2362

www.landscape.com/119897.htm

Luxury Apartments

5 Warwick Road, Kowloon Tong

- Open View, Carpark & BBQ area
- Approx. 5 minutes walk to Festival Walk / Kowloon Tong MTR
- 1,277-1,350 sq.ft., 2/3 bedrooms / balcony
- Kowloon Tong school network no.41
- Incentive commission scheme to agents and welcome coupons to tenants

Leasing Hotlines: **2122-2025**
2122-2362

www.landscape.com/119897.htm



Moving On 生命的旅程

The only certainty in life is uncertainty. You never know what awaits you, so they say. The Hong Kong Ballet's Symphony of Movements is a triple bill embracing the elusiveness of life, the fear that hovered over the Second World War, and mythical India. Merging modern revelations and classical elements, the ballet delves into the psychology of loss, loneliness, and doubt.

Symphony of Movements features Act II of the hauntingly beautiful La Bayadère by Marius Petipa, Stephen Baynes' pensive The Way Alone, which was a special commission for The Hong Kong Ballet, and Nils Christie's poetic Symphony in Three Movements. It takes us on a journey deep into the human psyche – expect to emerge with revelations of your own. The ballet will be staged at the Grand Theatre, Hong Kong Cultural Centre from 20 to 22 November 2009. ■

人們如是說，人類唯一能確定的就是人類生活充滿不確定性，你永遠無法預料前方的路會如何。由香港芭蕾舞團傾心演繹的運動交響曲蘊含三種人生哲理，包括正視生命的無常，解讀二戰給人類帶來的恐懼後遺症，以及探索印度的神秘，融合了現代和古典的元素，談話芭蕾舞團探究了人類心靈的失落，孤單與疑惑。

運動交響曲的第二幕-由Stephen Baynes所作的深刻作品孤獨之旅，經Marius Petipa演繹出一個驚艷的舞姬，動人心弦。孤獨之旅是特別獻給香港芭蕾舞團的一個作品。而Nils Christie充滿詩意的作品「交響三部曲」亦相當精彩。作品把我們帶進自身內心深處的反省，談話芭蕾舞將會於2009年11月20日至22日假香港文化中心大劇院上演。■

Botanic Terrace
西半山 芝蘭台
3-5 Conduit Road, Midlevels West
Practical 3-bedroom apartment at beginning of Conduit Road
實用三房單位，位於干德道頭段

1,492 s.f.
\$14,200,000

www.landscape.com/50436.htm [Rowena Siu 蕭小姐 9348 4118](#)

Camelot Height
中半山 金寶閣
66 Kennedy Road, Midlevels Central
Newly decorated 3-bedroom apartment with partial harbour view
全新裝修三房單位連港景

1,520 s.f.
\$16,000,000

www.landscape.com/59558.htm [Yvonne Chang 鄭小姐 9088 4666](#)

Villa Rocha
跑馬地 樂翠台
10 Broadwood Road, Happy Valley
Cozy penthouse with stadium view on fringe of Causeway Bay
迷人頂層單位享大球場景，鄰近網球場

1,313 s.f. (plus 400 s.f. terrace)
\$17,500,000 also for lease \$50,000 incl.

www.landscape.com/34032.htm [Mary Lu 李小姐 9011 6595](#)

Pak Fai Mansion
中半山 百輝大廈
72 Macdonnell Road, Midlevels Central
Well renovated 2-ensuite flat in colonial building
中半山英式雅緻裝修兩套房單位

1,750 s.f.
\$18,000,000

www.landscape.com/89102.htm [Walker Lam 林先生 9551 1077](#)

Medallion Heights
西半山 金寶閣
45 Conduit Road, Midlevels West
Spacious 3-bedroom apartment with balcony
寬敞三房單位連陽臺

2,000 s.f.
\$20,000,000

www.landscape.com/41623.htm [Rowena Siu 蕭小姐 9348 4118](#)

Beauty Court
西半山 雅苑
82 Robinson Road, Midlevels West
Popular building on Robinson Road with easy access to Central
受歡迎住宅大廈，位於羅便臣道，鄰近中環十分方便

1,762 s.f.
\$22,000,000

www.landscape.com/39570.htm [Carman Szeto 司徒小姐 6183 8339](#) [Sole Agent 獨家代理](#)

Dragon Garden
渣甸山 龍園
1 Chun Fat Terrace, Jardine's Lookout
Spacious apartment with nice decor and 3 carpark space
靚裝修兩房及三車位，開闊寬敞

1,750 s.f.
\$16,000,000

www.landscape.com/39171.htm [Walker Lam 林先生 9551 1077](#)

Greenview Garden
西半山 景翠園
125 Robinson Road, Midlevels West
Modern design family apartment on Robinson Road
靚裝修兩房兩廳家庭式住宅

1,600 s.f.
\$16,800,000

www.landscape.com/111680.htm [Rowena Siu 蕭小姐 9348 4118](#)

Hillsborough Court
中半山 曉峰閣
18 Old Peak Road, Midlevels Central
Renowned development with clubhouse facilities and lush green view
半山名廠屋苑完善住客會所設施，享翠綠景觀

1,385 s.f.
\$18,000,000

www.landscape.com/117757.htm [Maria Cheung 張小姐 5182 8699](#)

Grandview Tower
中半山 慧景峯
128-130 Kennedy Road, Midlevels Central
Rare combined unit with balcony and twin carpark enjoying greenery view
罕有綠港景雙連單位，連陽臺及雙車位，享翠綠山景

1,680 s.f. (plus 265 s.f. terrace)
\$19,000,000

www.landscape.com/86929.htm [Carman Szeto 司徒小姐 6183 8339](#) [Sole Agent 獨家代理](#)

Man Yuen Garden
中半山 文苑花園
52A-52B Kennedy Road, Midlevels Central
Nicely decorated apartment on convenient Kennedy Road
雅緻裝修住宅，位於堅尼地道，交通方便

2,000 s.f.
\$21,500,000

www.landscape.com/102082.htm [Stephen Chan 陳先生 9093 3381](#)

Evergreen Villa
東半山 松柏新村
43 Stubbs Road, Midlevels East
Popular flat on Stubbs Road with practical layout
司徒拔道受歡迎住宅，開闊實用

1,720 s.f.
\$22,800,000

www.landscape.com/31616.htm [Maria Cheung 張小姐 5182 8699](#)

Cooper Villa
渣甸山 衛信庭23-29號
23-29 Wilson Road, Jardine's Lookout
Nicely renovated 3-bedroom low-rise with huge balcony and fantastic view. Can park 2 cars.
今年低修低密度三房單位連大陽臺及華麗景觀，設有雙車位

1,600 s.f.
\$24,000,000

www.landscape.com/100348.htm [Chris Law 羅先生 6183 8388](#)

9-10 Briar Avenue, Happy Valley
跑馬地 比華道 9-10號
Stylish low-rise flat with private roof on upper Happy Valley
雅緻低密度住宅連私家天台，位於跑馬地頭段

2,000 s.f. (plus 1,600 s.f. roof)
\$26,800,000

www.landscape.com/121863.htm [Christine Chong 莊小姐 9648 6082](#)

Fontana Garden
東半山 園園
1-25 Ka Ning Path, Midlevels East
Huge 4-bedroom apartment with big balcony close to Causeway Bay
東半山巨型四房住宅連特大陽臺，鄰近網球場，交通方便

3,300 s.f.
\$31,500,000

www.landscape.com/ [Christine Chong 莊小姐 9648 6082](#)

Hi-tech Living
生活，向高科技看齊



Carnation Court
東半山 康寧園
41-47 Tai Hang Road, Midlevels East
Practical 4-bedroom flat with open city view in convenient location
實用四房單位享開揚城市景觀，交通方便

2,126 s.f.
\$25,000,000

www.landscape.com/106770.htm [Mark Mak 麥先生 6838 2929](#)

Visalia Garden
中半山 蔚山花園
48 Macdonnell Road, Midlevels Central
Spacious 3-bedroom apartment with harbour view on fringe of Central
開闊寬敞三房單位，享維港景，鄰近中環

2,195 s.f.
\$29,000,000

www.landscape.com/99666.htm [Eric Wong 黃先生 9740 3396](#)

Blue Pool Road Low-rise
跑馬地 平房
83-85 Blue Pool Road, Happy Valley
Rare combined unit for sale, high efficiency
罕有連單位位段，實用率高

3,500 s.f.
\$33,300,000

www.landscape.com/40119.htm [Teresa Lau 劉小姐 9080 6686](#)

Undoubtedly the most famous and vibrant district for locals and tourists, The Colonnade on Tai Hang Road in Mid-Levels East is one of Hong Kong's choicest locations. This 2,256 sq ft quality apartment is ideal for buyers who want to move into a luxurious and modern home with just a suitcase. Its ultra high ceilings and full-height windows are designed to create a sense of space and offer the breathtaking panorama of Victoria Harbour.

Replete with branded furnishings, the apartment exudes contemporary elegance and high-tech functionality, just like the facilities provided for residents of The Colonnade. Residents can enjoy a host of recreational and leisure facilities like the ultra-modern gymnasium, outdoor swimming pool, Jacuzzi and a squash court. This hot favourite in the property market is nearby the adrenaline charged atmosphere of the Happy Valley Racecourse, an inexhaustible energy that is part of Hong Kong's charm. ■

無疑，對於本地居民和旅客最具活力及最具吸引力的地區，莫過於位於東半山犬坑道的嘉寧臺。這個2,256平方呎的單位是那些渴望時尚生活又充滿現代氣息的住房買家的理想選擇。超高的樓底，開闊的窗戶，給人無限的空間延伸感，更能將攝人的維港全景盡收眼底，海天一色，美不勝收。

擺上高貴家私，單位更是當代典雅與高科技的結合。嘉寧臺為住戶提供娛樂休閒的設施，包括先進的健身設備、戶外游泳池、按摩浴缸、壁球場等等。更令人欣喜的是，這個於樓市中絕無僅有，更位處代表香港無限魅力的跑馬地旁邊！■

The Colonnade
東半山 嘉寧臺
132 Tai Hang Road, Midlevels East

2,256 s.f.
\$45,000,000

www.landscape.com/113654.htm [Louis Wong 黃先生 9871 6828](#)



Tregunter Tower 2
中半山 地利根德閣 2座
 14 Tregunter Path, Midlevels Central

Spacious apartment with comprehensive facilities in renowned development
 寬敞住宅連完善住客會所設施，大廈經已翻新

3,052 s.f.
\$34,000,000

www.landscape.com/40439.htm | Mira To 杜小姐 9486 1566



Po Garden
中半山 寶園
 9 Brewin Path, Midlevels Central

Practical 3-bedroom apartment on fringe of Central
 實用三房單位，鄰近中環，可租可售

2,572 s.f.
\$34,000,000 also for lease \$69,000 incl.

www.landscape.com/98123.htm | Yvonne Chang 鄭小姐 9088 4666



Silvercrest
中半山 翠豪樓
 24 Macdonnell Road, Midlevels Central

Spacious 4-bedroom apartment with high privacy and open views
 寬敞四房單位，私隱度高，享開揚景觀

2,643 s.f.
\$38,000,000

www.landscape.com/35199.htm | Eric Wong 黃先生 9740 3396



Elegant Terrace
西半山 慧明苑
 36 Conduit Road, Midlevels West

Nicely decorated duplex penthouse with private porch close to pedestrian escalator
 雅緻裝修兩層複式單位連私家天台，鄰近半山扶手電梯

2,476 s.f. (plus 633 s.f. roof and 149 s.f. terrace)
\$39,000,000

www.landscape.com/47426.htm | Sissy Li 李小姐 9642 6969



Estoril Court
中半山 愛都大廈
 55 Garden Road, Midlevels Central

Large high floor harbour view apartment on fringe of Central
 中半山巨座高層全維港景住宅，鄰近中環

2,945 s.f.
\$67,000,000

www.landscape.com/33039.htm | Mark Mak 麥先生 6838 2929



Century Tower 1
中半山 世紀大廈1座
 1 Tregunter Path, Midlevels Central

Rare duplex with panoramic view of Victoria Harbour
 中半山罕有複式住宅，享廣闊維港景，市面難尋

5,130 s.f.
\$118,000,000

www.landscape.com/94786.htm | Mira To 杜小姐 9486 1566



Evergreen Villa
中半山 松栢新村
 43 Stubbs Road, Midlevels East

Sought after 4-bedroom flat with brand new decorations
 全新裝修四房住宅，市面難尋

2,600 s.f.
\$34,000,000

www.landscape.com/104882.htm | Eric Wong 黃先生 9740 3396



11-15 Briar Avenue, Happy Valley
跑馬地 比雅道 11-15號

Designer decorated low-rise flat with private garden
 設計師精心設計低密度住宅連私人花園，可租可售

2,100 s.f. (plus 400 s.f. terrace)
\$36,000,000 also for lease \$98,000 incl.

www.landscape.com/112241.htm | Stephen Chan 陳先生 9093 3381



Valley View
東半山 欣景台
 4A-4D Wong Nai Chung Gap Road, Midlevels East

Popular 4-bedroom apartment at prestigious location with nice view
 受歡迎四房單位 享優美景觀，位處地段罕貴

2,400 s.f.
\$39,000,000

www.landscape.com/115102.htm | Stella Lo 羅小姐 9809 8570



May Tower 1
中半山 梅苑一座
 7 May Road, Midlevels Central

Deluxe harbour view duplex with enlarged master bedroom at prime location
 豪華維港景複式住宅連特大主人房，地段罕貴

2,850 s.f.
\$49,800,000

www.landscape.com/33364.htm | Rebecca Cheung 張小姐 9021 7644



Hong Villa
中半山 峰景花園
 12 Bowen Road, Midlevels Central

Exclusive huge apartment with sweeping view of Victoria Harbour
 獨佔巨座豪宅，尊享寧靜的維港景觀

3,833 s.f.
\$75,000,000

www.landscape.com/111817.htm | Mark Mak 麥先生 6838 2929



Po Shan Road, Midlevels West
西半山 寶山道

A free-standing 3-storey house nestled in thick greenery with huge redevelopment potential
 獨立三層大宅，綠樹松蔭，可重建發展

10,000 s.f.
\$400,000,000

www.landscape.com/76207.htm | Louis Wong 黃先生 9871 6828



39 Conduit Road, Midlevels West
西半山 天匯

Aptly named after the street it is on, 39 Conduit Road comprises 66 flats ranging from 2,800 to 7,600 square feet. Featuring luxury apartments, split-level apartments, and top-floor duplex residences, 39 Conduit Road boasts a luxurious clubhouse, sculptures and other artworks. Enjoy a 270-degree view of the glamorous Victoria Harbour.

「天匯」位於港島半山干德道39號，提供共66個單位，面積由約2,800平方呎至約7,600平方呎，包括標準單位、半複式單位及頂層複式連天台及泳池。物業一梯兩伙設計，令大部分單位享270度廣闊維港海景。

Square Measure: • Luxury Apartments 2,800 to 4,000 sq. ft.
 • Split-Level Apartments 5,100 to 5,600 sq. ft.
 • Top-Floor Duplex Residences 6,100 to 7,600 sq. ft.

面積:

- 標準單位2,800至4,000平方呎
- 半複式約5,100至5,600平方呎
- 頂層複式6,100至7,600平方呎

39 Conduit Road, Midlevels West
西半山 天匯
 2,800 s.f. - 7,600 s.f.

Louis Wong 黃先生 9871 6828, David Leung 梁先生 9199 0672



A Quiet Oasis
心靈綠洲

Tregunter on Tregunter Path in Mid-Levels Central gives its residents a piece of quiet tranquility smack in the middle of the bustling city centre. This 2,980 sq ft apartment is tastefully designed in chic Manhattan style hence making it intimate and luxurious. The spacious living room in walnut timber flooring creates a warm and cosy ambience, complete with a selection of top quality furniture. Divided into two levels, there's an internal staircase leading to the master bedroom and ensuite bathroom and another 4 bedrooms located on the upper and lower floor.

Only minutes away from the city's financial hub, this highly-sought after luxury residential area combines stunning harbour and mountain views. The property fuses exceptional comfort and design with an extensive range of business and lifestyle amenities, including a gymnasium, outdoor swimming pools, multipurpose function room, and even a golf driving range. Needless to mention, Tregunter is known for its quality management. ■

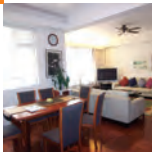
在喧嚷的都市中，座落在中半山地利根德里的地利根德閣，為住戶提供一份獨特的寧靜。這個2,980平方呎的單位，以曼哈頓的風格設計，品味高雅，極具豪華、浪漫之特色。寬闊的臥室，配上胡桃木鋪成的地板及高檔的家私，可謂溫馨滿溢。單位分成兩層，有一條內部樓梯通向主人房和浴室套房，另外四個睡房則位於單位的上層及下層。

離香港國際金融中心僅幾分鐘路程，這片豪宅區盡收動人山水之色。區內更為居民提供齊全舒適的工作和休閒設備，包括健身房、戶外游泳池、多用途房間，甚至高爾夫練習場所。毫無疑問，地利根德閣以提供高質量生活為標準，為眾人所愛。■

Tregunter Tower 3
中半山 地利根德閣3座
 14 Tregunter Path, Midlevels Central

2,980 s.f. (plus 187 s.f. terrace)
\$56,000,000

Sole Agent 獨家代理
 www.landscape.com/105883.htm | Sissy Li 李小姐 9642 6969



Glamour Court
薄扶林 華耀閣
39 Consort Rise, Pokfulam
Quiet 3-bedroom apartment in serene Pokfulam
薄扶林寧靜三房單位

1,500 s.f.
\$13,000,000

www.landscape.com/54549.htm Teresa Lau 劉小姐 9080 6686



The Beachside
清水灣 清水灣道82及86號
82 & 86 Repulse Bay Road, Repulse Bay
Boutique flat near Repulse Bay beach with private terrace
淺水灣精品單位，鄰近淺水灣海灘，連私家平台，可租可售

969 s.f. (plus 300 s.f. terrace)
\$14,000,000 also for lease \$32,000 incl.

www.landscape.com Christine Chong 莊小姐 9648 6082



Aegean Terrace
薄扶林 愛琴苑
60 Sassoon Road, Pokfulam
Modern sea view low-rise at Pokfulam waterfront
薄扶林海濱時尚海景低密度住宅

2,417 s.f. (plus 196 s.f. terrace)
\$22,000,000

www.landscape.com/39495.htm Stella Lo 蕭小姐 9809 8570



La Mer
薄扶林 波蘭閣
67-71 Bisney Road, Pokfulam
Sea view low-rise at Pokfulam
薄扶林低密度海景住宅

2,185 s.f.
\$26,000,000

www.landscape.com/477238.htm Mary Li 李小姐 9011 6595



The Brentwood
清水灣 蔚橋園
11 Repulse Bay Road, Repulse Bay
Boutique flat on upper Repulse Bay Road with full sea view
淺水灣高級段精品住宅，享全海景

1,556 s.f.
\$27,600,000 **Sole Agent 獨家代理**

www.landscape.com/35641.htm Teresa Fung 高小姐 9138 1621



Scenic Villas
薄扶林 美景峯
2-28 Scenic Villa Drive, Pokfulam
Popular 4-bedroom apartment with full sea view
受歡迎四房住宅享全海景

2,517 s.f.
\$31,500,000

www.landscape.com/49859.htm Christine Chong 莊小姐 9648 6082



Y Y Mansion
薄扶林 裕仁大廈
96 Pokfulam Road, Pokfulam
Nicerly decorated sea view apartment with private roof
雅緻裝修海景住宅連私家天台

1,450 s.f. (plus 877 s.f. roof)
\$13,500,000

www.landscape.com/95525.htm Sami Woo 胡小姐 9493 8275



Hong Kong Parkview - Tower 3
清水灣 陽明山莊3座
88 Tai Tam Reservoir Road, Repulse Bay
Cozy 2-ensuite flat with nicely decorated in well planned development
迷人兩房兩廁單位精美裝修，屋苑管理完善

1,308 s.f.
\$14,900,000

www.landscape.com/104523.htm Stephen Chan 陳先生 9093 3381



Cape Mansions
薄扶林 翠海閣
56-62 Mount Davis Road, Pokfulam
Fully renovated flat with balcony and superb sea view
全新裝修住宅連陽臺，享華麗海景

2,200 s.f.
\$24,700,000

www.landscape.com/ Rowena Siu 蕭小姐 9348 4118



Vista Mount Davis
薄扶林 華亭閣
52-54 Mount Davis Road, Pokfulam
Newly decorated apartment with full sea view
全新裝修住宅享全海景

2,100 s.f.
\$26,000,000

www.landscape.com/109037.htm Mira To 杜小姐 9486 1586



45 Island Road, Deep Water Bay
深水灣 香島道45號
52-54 Mount Davis Road, Pokfulam
Resort-style townhouse in a sought after address
度假式排屋，市面難尋

1,634 s.f.
\$29,000,000

www.landscape.com/89255.htm Sissy Li 李小姐 9642 6969



Hong Kong Parkview - Tower 8
清水灣 陽明山莊8座
88 Tai Tam Reservoir Road, Repulse Bay
Popular family flat in country park
受歡迎家庭式住宅，鄰近郊野公園，綠樹松蔭

2,366 s.f.
\$31,800,000 **Sole Agent 獨家代理**

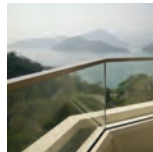
www.landscape.com/45079.htm Rebecca Cheung 張小姐 9021 7644



Carmel Hill
赤柱 海明山
12 Carmel Road, Stanley
3-ensuite sea view townhouse with garden, roof and 4 car parking spaces
三套房海景排屋連花園，天台及四個車位，可租可售

2,434 s.f. (plus 271 s.f. garden and 262 s.f. terrace)
\$36,000,000 also for lease \$90,000 incl.

www.landscape.com/18021.htm Chris Law 羅先生 6183 8388



Belgravia
清水灣 南灣57號
57 South Bay Road, Repulse Bay
Newly renovated sea view flat with facilities in serene South Bay
全新裝修海景住宅連完善住客會所設施，環境清幽怡人

2,390 s.f.
\$47,600,000

www.landscape.com/117879.htm Sissy Li 李小姐 9642 6969



Le Palais
大潭 皇府灣
8 Pak Pat Shan Road, Tai Tam
High quality waterfront townhouse with private garden in serene Tai Tam
大潭優美海景排屋連私家花園，環境寧靜

3,348 s.f. (plus 741 s.f. garden)
\$67,000,000

www.landscape.com/109996.htm Stephen Chan 陳先生 9093 3381



Ming Wai Garden
清水灣 明華園
45 Repulse Bay Road, Repulse Bay
Designer renovated apartment with panoramic sea view
設計師精心設計住宅，享如畫美景

1,900 s.f.
\$39,500,000

www.landscape.com/89927.htm Stephen Chan 陳先生 9093 3381



37 Repulse Bay Road, Repulse Bay
清水灣 清水灣道37號
Designer decorated duplex with picturesque sea view
設計師精心設計複式住宅享如畫海景，可租可售

3,480 s.f.
\$62,000,000 also for lease \$150,000 incl.

www.landscape.com/31508.htm Sissy Li 李小姐 9642 6969



Majestic Court
大潭 君誠閣
9 Tai Tam Road, Tai Tam
Brand new decorated apartment for sale
大潭全新裝修住宅出售

12,236 s.f.
Open Offer

www.landscape.com/111310.htm Louis Wong 黃先生 9871 6628

The Westminster Terrace 汀九悠麗路2A

British property giant Grosvenor is famed for its high end apartments. Hot on the heels of Grosvenor Place at Repulse Bay, The Westminster Terrace will be testament to Grosvenor's impeccable architectural taste. The Westminster Terrace is a rare gem in Hong Kong – it comprises 59 duplex residences that stretch from 3,200 to 6,500 square feet. Located at the heart of the city, it is only 15 minutes away from Central and comes with spectacular views. The Hong Kong-Shenzhen Western Corridor nearby allows you the luxury of traveling to the Mainland in just 20 minutes.

英國殿堂級發展商高富諾（Grosvenor）一向以高級豪宅享譽國際，繼「淺水灣 Grosvenor Place」後，The Westminster Terrace 再度展現高富諾一貫對建築品味的極致追求，成為全城市罕有僅提供59個複式大宅，面積由3,200呎至6,500呎，物業近都會中心，前往中環商業區僅15分鐘，同時置身於翠綠天地，放眼就是海天一色美景，毗鄰港珠澳大橋，經深港西部通道20分鐘即抵中國內地，輕鬆便捷。

Storey: 32-storey
Size: 3,200 s.f. - 6,500 s.f.
Selling Points:

- A 11.5-metre floor height
- Private lift lobby
- Each household has at least 2 car parking spaces

層樓: 32層
單位面積: 3,200呎 - 6,500呎
特點:

- 樓層高度約11呎半
- 住戶專用電梯，私人電梯大堂
- 每戶可享車位最少兩個

The Westminster Terrace

汀九悠麗路2A

2A Yau Lai Road, Ting Kau

3,200 s.f. - 6,500 s.f.

Maria Cheung 張小姐 5182 8699, Eric Wong 黃先生 9740 3396



Manderly Garden
深水灣 文禮苑
48 Deep Water Bay Road, Deep Water Bay
House investment opportunity in Deep Water Bay
深水灣大屋連地的出售，投資首選
3,160 s.f.
\$85,000,000
Eric Wong 黃先生 9740 3396



Rosecliff
大潭 大潭道20號
20 Tai Tam Road, Tai Tam
Waterfront townhouse with garden and twin balconies
海濱排屋花園及雙陽臺
3,980 s.f. (plus 1,050 s.f. roof and 649 s.f. garden)
\$96,000,000 Sole Agent 獨家代理
Rebecca Cheung 張小姐 9021 7644



Repulse Bay Road Garden House
深水灣道花園大屋
Extraordinary garden house on Repulse Bay Road
深水灣海濱優美花園大屋
3,000 s.f. (plus 1,356 s.f. garden and 556 s.f. roof)
\$150,000,000
Louis Wong 黃先生 9871 6828

Understated Elegance 含蓄的優雅



56 Repulse Bay Road, Repulse Bay
深水灣 深水灣道56號
Waterfront duplex with breath-taking view of Repulse Bay Beach
海濱複式住宅，享靜謐深水灣海灘景觀
3,580 s.f.
\$93,800,000
Rebecca Cheung 張小姐 9021 7644



Villa Rosa
大潭 玫瑰園
88 Red Hill Road, Tai Tam
Rare garden house at Tai Tam
大潭罕見花園大屋
3,960 s.f.
\$100,000,000
Mark Mak 麥先生 6838 2929



Deep Water Bay Modern House
深水灣 時尚大屋
Modern house with private lift on Deep Water Bay waterfront
深水灣海濱時尚大屋內置私家電梯
6,000 s.f.
\$300,000,000
Louis Wong 黃先生 9871 6828

Cradled against the mountains in the heart of the 3,000 acres Tai Tam Country Park, this 2,366 sq ft Hong Kong Parkview apartment, allows you to live in the lap of luxury amid a lush green sanctuary. Next to the kitchen are the living room and 3 bedrooms which instantly welcome guests with its cosy yet stylish ambience. The impact is amazing – you can literally feel the stories that emanate from each find around the apartment, which were sourced from designer stores all over the world.

Saunter from the lush gardens into one of the most luxurious clubhouse with world-class facilities: an indoor heated Roman bath, a three-themed floor gymnasium and rock climbing plus a variety of classes for all ages. With pristine surroundings, Hong Kong Parkview offers a haven of freshness and a high level of privacy – a true breathing space within the city, yet is only a 15 minutes drive from Central and most shopping and entertainment districts. ■

環山而立，這座位於3,000畝大潭郊野公園中心地段，佔地2,366平方尺的陽明山莊有十五座，設備豪華，而且舉目盡是園林美景。廚房直接通向客廳和三間臥室，室內溫馨而時尚。這裡的風格為住客帶來非凡體驗——圍繞這個單位，你能感受到來自全世界頂尖設計師的創作故事。

穿越美麗的公園，就會到達高級會所。會所設備達至世界頂級水平，擁有室內羅馬浴，三層不同項目的健身房，最上層為女士專用。場內還設有場地供人攀岩，亦為不同年齡層的人開設多項課程。優越的地理位置，使得山莊環境清新自然，私人空間充足。讓人難以想像的是，它離中環這個購物天堂和娛樂中心僅數步之遙。■

Hong Kong Parkview - Tower 3
深水灣 陽明山莊8座
88 Tai Tam Reservoir Road, Repulse Bay
2,366 s.f.
\$34,000,000
Christine Chong 莊小姐 9648 6082

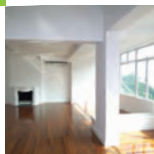
For more listings, please go to www.landscape.com/sale



iPhone Application Version
Immerse yourself in this stylish experience anytime, anywhere!

Enquiries: marketing@incorp.com.hk
Website: www.inmagazine.com.hk

THE PEAK Lease | 山頂出租



23 Plantation Road, The Peak 山頂 種植道23號

Harbour view low-rise flat on prestigious Plantation Road
種植道低密度康樂豪宅，地段尊貴

2,626 s.f.
\$70,000 incl.

www.landscape.com/15833.htm **Teresa Fung** 高小姐 9138 1621



Magazine Gap Towers 山頂 馬己仙峽道15號

15 Magazine Gap Road, The Peak
Lower Peak harbour view apartment with private roof
山頂離港景住宅樓私家天台

2,300 s.f. (plus 2,300 s.f. roof)
\$81,000 incl.

www.landscape.com/30865.htm **Sami Woo** 胡小姐 9493 8275



43 Barker Road, The Peak 山頂 白加道43號

Modern mid-rise harbour view apartment on Barker Road
時尚白加道中密度離港景住宅

1,573 s.f.
\$90,000 incl.

www.landscape.com/20046.htm **Sami Woo** 胡小姐 9493 8275



Falconridge 山頂 白加道35號

35 Barker Road, The Peak
Exquisite colonial apartment with full harbour view on Barker Road
白加道全港景精美英式住宅

3,300 s.f.
\$105,000 incl.

www.landscape.com/5792.htm **Sami Woo** 胡小姐 9493 8275

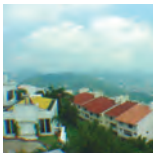


La Hacienda 山頂 加利山道29-33號

29-33 Mount Kellett Road, The Peak
Newly decorated townhouse with facilities overlooking nice views
山頂排屋全新裝修連住客會所設施，俯瞰優美景觀

3,200 s.f.
\$140,000 incl.

www.landscape.com/3323.htm **Maria Cheung** 張小姐 5182 8699

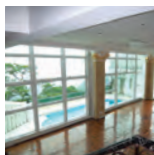


Strawberry Hill 山頂 紅梅閣

8 Plunkett's Road, The Peak
Rare find colonial garden house overlooking Aberdeen Country Park and ocean view
罕有山頂英式花園大廈，俯瞰香港仔郊野公園景及海景

3,900 s.f.
\$180,000

www.landscape.com/4610.htm **Rebecca Cheung** 張小姐 9021 7644



Cheuk Nang Lookout 山頂 卓能山莊

30 Severn Road, The Peak
Detached house with private pool and terrace
山頂獨立大屋連私家游泳池及平台，可租可售

5,300 s.f. (plus 2,904 s.f. garden, 1,400 s.f. terrace and 534 s.f. roof)
\$200,000 also for sale \$210,000,000

www.landscape.com/ **David Leung** 梁先生 9199 0672

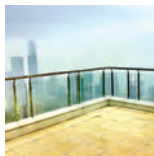


2 Barker Road, The Peak 山頂 白加道2號

High ceiling luxury house with Victoria Harbour view and Southside sea view
山頂高樓底豪華大廈，專享離港及南面海景

4,325 s.f.
\$260,000

www.landscape.com/46174.htm **Louis Wong** 黃先生 9871 6828

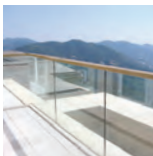


40 Peak Road, The Peak 山頂 山頂道40號

Townhouse on The Peak with full Victoria Harbour view
山頂豪華排屋出租

7,122 s.f. (plus 3,256 s.f. garden, 1,313 s.f. roof and 298 s.f. terrace)
\$350,000

www.landscape.com/31370.htm **Mira To** 杜小姐 9486 1566

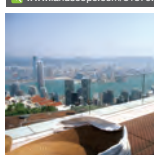


Gough Hill Road, The Peak 山頂 歌賦山道

Exclusive Peak house with private pool, garden and lift
山頂獨特大屋連私家游泳池花園及電梯

6,080 s.f. (plus 1,530 s.f. garden, 196 s.f. roof and 104 s.f. terrace)
\$430,000 incl.

www.landscape.com **Yvonne Chan** 鄭小姐 9088 4666

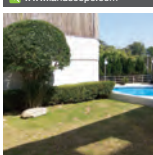


46 Plantation Road, The Peak 山頂 種植道46號

Brand new extravagant detached house with private pool and lift overlooking harbour view
全新豪華獨立大屋連私家游泳池及電梯，俯瞰港景

5,730 s.f. (plus 1,569 s.f. garden and 670 s.f. roof)
\$430,000 incl.

www.landscape.com/110224.htm **Mark Mak** 麥先生 6838 2929



9 Coombe Road, The Peak 山頂 甘道9號

Newly renovated garden house on serene Coombe Road
甘道全新裝修花園大廈，環境寧靜

3,300 s.f.
Open Offer

www.landscape.com/10283.htm **Teresa Lau** 劉小姐 9080 6686

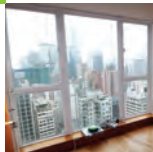
For more listings, please go to www.landscape.com/lease



in feverclub

- *inMAGAZINE's* official members' club
- Designated for sophisticated individuals who recognise the value of elegance and fine living
- Exclusive privileges: inboutique, indining, intravel, inculture

Enquiries: marketing@incorp.com.hk
Website: www.inmagazine.com.hk

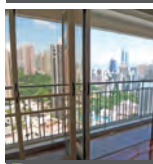


Starcrest
灣仔 星域軒
9 Star Street, Wan Chai
Quality boutique apartment on fringe of Admiralty
精緻裝修單位，鄰近金融、交通方便，可租可售

850 s.f.
\$32,000 also for sale \$13,000,000

Sole Agent 獨家代理
www.landscope.com/39907.htm **Carman Szeto** 司徒小姐 6183 8339

www.landscope.com/39907.htm **Carman Szeto** 司徒小姐 6183 8339

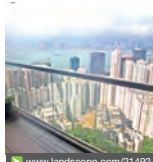


St. Joan Court
中半山 勝家大廈
76 Macdonnell Road, Midlevels Central
3-bedroom apartment with open city view on convenient Macdonnell Road
步富步遠三房住宅，享開揚城市景觀

2,040 s.f.
\$60,000 incl.

www.landscope.com/21944.htm **Chris Law** 羅先生 6183 8388

www.landscope.com/21944.htm **Chris Law** 羅先生 6183 8388



Ho King View
北半山 豪景
2 Braemar Hill Road, North Point Midlevels
High efficiency practical apartment with Victoria Harbour view
開闊寬敞單位，實用率高，享臨港景

2,000 s.f.
\$65,000 incl.

www.landscope.com/21492.htm **Carman Szeto** 司徒小姐 6183 8339

www.landscope.com/21492.htm **Carman Szeto** 司徒小姐 6183 8339



Visalia Garden
中半山 蔚山花園
48 Macdonnell Road, Midlevels Central
Spacious 4-bedroom apartment in convenient location
寬敞四房單位，位置優越，可租可售

2,195 s.f.
\$68,000 incl. also for sale \$29,000,000

www.landscope.com/14922.htm **Sami Woo** 胡小姐 9493 8275

www.landscope.com/14922.htm **Sami Woo** 胡小姐 9493 8275



Hoover Court
中半山 豪園
7-9 Macdonnell Road, Midlevels Central
Spacious 4-bedroom apartment on Macdonnell Road
步富步遠寬敞四房住宅，可租可售

2,654 s.f.
\$75,000 incl. also for sale \$38,000,000

www.landscope.com/37367.htm **Teresa Lau** 劉小姐 9080 6686

www.landscope.com/37367.htm **Teresa Lau** 劉小姐 9080 6686



Po Shan Mansions
西半山 寶城大廈
10-16 Po Shan Road, Midlevels West
Large 4-bedroom harbour view flat with big balcony in quiet location
特大四房港景住宅連大陽臺，環境寧靜

2,800 s.f.
\$78,000 incl.

www.landscope.com/27321.htm **Stella Lo** 羅小姐 9809 8570

www.landscope.com/27321.htm **Stella Lo** 羅小姐 9809 8570



Greenland Court
中半山 恒翠園
56-58 Macdonnell Road, Midlevels Central
Practical and high efficiency family flat on fringe of Central
開闊實用家庭式住宅，實用率高，鄰近中環，可租可售

1,350 s.f.
\$46,000 incl. also for sale \$18,000,000

www.landscope.com/103948.htm **Stella Lo** 羅小姐 9809 8570

www.landscope.com/103948.htm **Stella Lo** 羅小姐 9809 8570

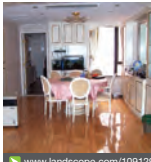


Butler Tower
中半山 柏翠閣
1-5 Boyce Road, Jardine's Lookout
Practical 4-bedroom apartment in sought after Jardine's Lookout
滿地山寶利四房單位，市面難尋

1,650 s.f.
\$65,000 incl.

www.landscope.com/38287.htm **Carman Szeto** 司徒小姐 6183 8339

www.landscope.com/38287.htm **Carman Szeto** 司徒小姐 6183 8339

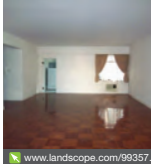


Regal Crest
中半山 寶翠苑
9 Robinson Road, Midlevels West
Spacious family apartment on upper Robinson Road with excellent facilities
豪華住宅區投資買家家庭式住宅，擴充自住客會所設施，可租可售

2,314 s.f.
\$65,000 incl. also for sale \$25,000,000

www.landscope.com/109129.htm **Mira To** 杜小姐 9486 1566

www.landscope.com/109129.htm **Mira To** 杜小姐 9486 1566



William Mansion
中半山 惠利大廈
16-18 Macdonnell Road, Midlevels Central
Practical 4-bedroom apartment at top of Macdonnell Road
步富步遠頂段四房單位，開闊實用

2,500 s.f.
\$70,000

www.landscope.com/99357.htm **David Chan** 陳先生 9238 2012

www.landscope.com/99357.htm **David Chan** 陳先生 9238 2012



Villa Monte Rosa
東半山 玫瑰新村
41A Stubbs Road, Midlevels East
Large 4-bedroom family apartment on upper Stubbs Road
司徒拔頂段特大四房家庭式住宅，可租可售

2,800 s.f.
\$75,000 incl. also for sale \$40,000,000

www.landscope.com/17426.htm **Walker Lam** 林先生 9551 1077

www.landscope.com/17426.htm **Walker Lam** 林先生 9551 1077



Taipan Court
東半山 大班閣
47B Stubbs Road, Midlevels East
Hugh duplex apartment with open city view
東半山巨型複式住宅，享開揚城市景觀

3,670 s.f.
\$65,000

www.landscope.com/20557.htm **Sami Woo** 胡小姐 9493 8275

www.landscope.com/20557.htm **Sami Woo** 胡小姐 9493 8275

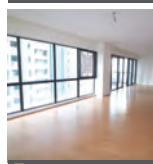


Clement Court
灣甸山 松風閣
56-64 Mount Butler Road, Jardine's Lookout
Designer decorated low-rise flat in serene Jardine's Lookout
設計師精心設計低密度住宅，位於灣甸山，環境清幽怡人，可租可售

2,200 s.f. (plus 700 s.f. garden)
\$95,000 incl. also for sale \$30,000,000

www.landscope.com/49223.htm **Stephen Chan** 陳先生 9093 3381

www.landscope.com/49223.htm **Stephen Chan** 陳先生 9093 3381

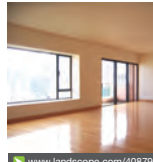


Estoril Court
中半山 愛都大廈
55 Garden Road, Midlevels Central
Huge 4-bedroom flat with practical layout and high efficiency on fringe of Central
巨型四房單位開闊寬敞，實用率高，鄰近中環，交通方便

3,347 s.f.
\$98,000 incl.

www.landscope.com/109742.htm **Mira To** 杜小姐 9486 1566

www.landscope.com/109742.htm **Mira To** 杜小姐 9486 1566



The Albany
中半山 雅賓利大廈
1 Albany Road, Midlevels Central
Prime apartment in prestigious location
中半山豪華住宅，地段尊貴

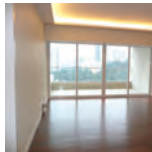
2,546 s.f.
\$110,000 incl.

www.landscope.com/40879.htm **Eric Wong** 黃先生 9740 3396

www.landscope.com/40879.htm **Eric Wong** 黃先生 9740 3396



12 Broadwood Road 樂活道12號



Valley View
東半山 欣景台
4A-10 Wong Nai Chung Gap Road, Midlevels East
Sought after huge mid-rise apartment with meticulous decoration
巨型中密居住宅連華麗裝修，市面難尋

2,400 s.f.
\$96,000 incl.

www.landscope.com/104172.htm **Rowena Siu** 蕭小姐 9348 4118

www.landscope.com/104172.htm **Rowena Siu** 蕭小姐 9348 4118

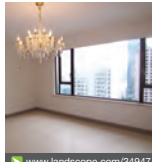


May Tower 1
中半山 梅苑一座
7 May Road, Midlevels Central
Well presented 3-bedroom triplex apartment with harbour view in Mid-levels
中半山雅緻三複式綠港景住宅

2,850 s.f.
\$96,000 incl.

www.landscope.com/19442.htm **Carman Szeto** 司徒小姐 6183 8339

www.landscope.com/19442.htm **Carman Szeto** 司徒小姐 6183 8339



Chung Tak Mansion
中半山 重禧大廈
2 Magazine Gap Road, Midlevels Central
Newly decorated 3-ensuite harbour view apartment
全新裝修三房兩廳港景住宅

2,864 s.f.
\$115,000 incl.

www.landscope.com/34947.htm **Sami Woo** 胡小姐 9493 8275

www.landscope.com/34947.htm **Sami Woo** 胡小姐 9493 8275

- Brand new apartment with stunning views of Happy Valley Racecourse and a bird's eye view of the Hong Kong Stadium
- Units ranging from about 1,600 sq. ft. (simplex), 3,200 sq. ft. (duplex) and 4,800 sq. ft. (triplex).
- 3 to 6 bedrooms
- Balcony
- Double-glazed windows
- Popenophl and Gagenau equipped kitchen
- Completion by mid 2010

- 全新單位能飽覽快活谷馬場美景，更可以鳥瞰香港大球場
- 由約1,600呎複式單位以至4,800呎的頂層複式單位也一應俱全
- 三至六睡房
- 環保露台
- 雙層玻璃窗
- 廚房採用Popenophl與Gagenau設備
- 將於2010年落成



12 Broadwood Road 樂活道12號

www.landscope.com/20557.htm **Walker Lam** 林先生 9551 1077, **Rowena Siu** 蕭小姐 9348 4118

Bowen Mansion
 中半山 寶雲大廈
 7C Bowen Road, Midlevels Central
 Colonial low-rise flat with L-shaped huge balcony
 英式低密度住宅園林型特大陽臺

4,000 s.f.
\$125,000 incl.

www.landscape.com/38884.htm Teresa Lau 劉小姐 9080 6686

Bowen Place
 中半山 寶雲閣
 11A Bowen Road, Midlevels Central
 Full harbour view duplex apartment in quiet yet convenient location
 全港景景複式住宅，環境寧靜，交通方便

3,528 s.f. (plus 184 s.f. terrace)
\$140,000 incl.

www.landscape.com/34845.htm Eric Wong 黃先生 9740 3396

Century Tower II
 中半山 世紀大廈2座
 1A Tregunter Path, Midlevels Central
 Renovated large 4-bedroom flat with high privacy
 全新裝修特大四房單位，私隱度高

3,638 s.f.
\$140,000 incl.

www.landscape.com/20526.htm Rebecca Cheung 張小姐 9021 7644



Unique Villa
 跑馬地 友園
 10 Holly Road, Happy Valley
 Designer decorated penthouse flat with internal staircase to roof
 設計師精心設計頂層單位連內置樓梯往天台，可租可售

2,500 s.f. (plus 1,940 s.f. roof)
\$125,000 incl. also for sale \$48,800,000

www.landscape.com/52593.htm Mark Mak 麥先生 6838 2929

The Mayfair
 中半山 梅道1號
 1 May Road, Midlevels Central
 Deluxe harbour view apartment with 4 bedrooms
 豪華四房住宅享港景

2,836 s.f.
\$140,000 incl.

www.landscape.com/13146.htm Mary Li 李小姐 9011 6595

The Harbourview
 中半山 港景別墅
 11 Magazine Gap Road, Midlevels Central
 Extravagant duplex with stunning harbour view
 豪華複式住宅，享一望無際港景

4,257 s.f. (plus 1,493 s.f. roof and 80 s.f. terrace)
\$190,000

www.landscape.com/18275.htm Stella Lo 羅小姐 9809 8570

Tour de Force

Detour2009 全城參與

Detour 2009 is back for its fourth year to keep the public's collective dialogue about art, design, culture, city and architecture flowing! Organized by Hong Kong Ambassadors of Design, Detour 2009 is packed with more than 40 events including exhibitions, designer talks, performances, and workshops that heighten our design consciousness. The youth-led lineup boasts the installation "Polytechnic on the Beach" by design students from The Hong Kong Polytechnic University who breathe new life into the central courtyard of Detour 2009's core venue Former Police Married Quarters – with a sassy beach.

Local designers such as Douglas Young, transports us to the glory of the 1950s and 1960s in the exhibition "High Modern: Living in the 1951-1969" showcasing modern design and the décor from those representative eras. ■

Detour 2009今年已踏入第四屆，透過舉辦一系列活動讓市民參與對藝術、設計、文化、都市和建築的概念。由香港設計大使主辦，Detour 2009 舉辦超過40多項活動，包括展覽、對話設計師、表演等等，集中表現設計理念。來自理工大學設計學院的學生更是把荷裡活道舊舍轉變成一片海灘，其創意令人注目。

城中設計師楊志聰也親自參與，在以「高度現代化——生活在1951-1969」為主題的展覽會上，講述二十世紀五六十年代展覽的光榮歷史，這個時期堪稱現代設計的代表時期。■

For more listings, please go to www.landscape.com/lease

The Repulse Bay
 清水灣 影灣閣
 109 Repulse Bay Road, Repulse Bay
 Duplex 2-bedroom apartment with swimming pool in Repulse Bay
 清水灣兩房複式單位連游泳池

1,585 s.f.
\$41,000

www.landscape.com/7805.htm Sissy Li 李小姐 9642 6969

Cape Mansions
 薄扶林 翠海別墅
 56-62 Mount Davis Road, Pokfulam
 Fully renovated sea view flat with balcony
 薄扶林全新裝修海景住宅連陽臺，可租可售

2,200 s.f.
\$62,000 incl. also for sale \$23,000,000

www.landscape.com/122039.htm Stella Lo 羅小姐 9809 8570

Hong Kong Parkview - Tower 18
 清水灣 隔明山莊18座
 88 Tai Tam Reservoir Road, Repulse Bay
 Large 4-bedroom apartment with partial harbour view and lush green view
 巨型四房連開放停車位享部份港景及翠綠園景，可租可售

2,708 s.f.
\$80,000 also for sale \$37,500,000

www.landscape.com/3231.htm Stella Lo 羅小姐 9809 8570

Twin Brook
 清水灣 雙溪
 43 Repulse Bay Road, Repulse Bay
 4-bedroom apartment with 2 ensuites overlooking full sea view
 清水灣四房連兩套房單位，俯瞰全海景

2,700 s.f.
\$85,000 incl.

www.landscape.com/94119.htm Walker Lam 林先生 9551 1077

Yue Hing Court
 壽臣山 餘慶閣
 10 Shouson Hill Road, Shouson Hill
 Newly renovated spacious low-rise flat with huge balcony
 全新裝修寬敞低密度住宅連特大陽臺

3,200 s.f.
\$100,000 incl.

www.landscape.com/45603.htm Teresa Fung 馮小姐 9138 1621

Carmina Place
 深水灣 嘉名苑
 7-9 Deep Water Bay Drive, Deep Water Bay
 Newly renovated 4-bedroom practical apartment with green view and balcony
 全新裝修四房住宅連陽臺，欣賞翠綠景緻，間隔實用

2,628 s.f.
\$118,000 incl.

www.landscape.com/91777.htm Chris Law 羅先生 6183 8388

For more listings, please go to www.landscape.com/lease

Shouson Garden
 壽臣山 壽山花園
 6A Shouson Hill Road, Shouson Hill
 Peaceful low-rise duplex in lush greenery
 寧靜於人低密度住宅，享翠綠園景

1,876 s.f.
\$60,000

www.landscape.com/13671.htm Teresa Fung 馮小姐 9138 1621

Ridge Court
 清水灣 靚閣
 21A-21D Repulse Bay Road, Repulse Bay
 Well maintained sea view flat on upper Repulse Bay Road
 清水灣靚景海景住宅，地段尊貴

2,300 s.f.
\$75,000 incl.

www.landscape.com/94500.htm Mark Mak 麥先生 6838 2929

Jade Beach Villa
 香軟角 翡翠海邊別墅
 3-7 Horizon Drive, Chung Hom Kok
 High privacy garden townhouse on sought after Horizon Drive
 海天邊花園排屋，私隱度高，市場罕有

2,680 s.f.
\$85,000 incl.

www.landscape.com/16704.htm David Chan 陳先生 9238 2012

Banoo Villa
 赤柱 步雲軒
 2 Tung Tau Wan Road, Stanley
 Spacious and practical low-rise flat with open kitchen in tranquil area
 寬敞實用低密度住宅連開放式廚房，環境寧靜怡人

2,133 s.f.
\$88,000

www.landscape.com/7008.htm Maria Cheung 張小姐 5182 8699

Bluewater
 大潭 大潭道25號
 25 Tai Tam Road, Tai Tam
 Luxurious modern mid-rise at Tai Tam waterfront
 大潭海濱豪華新穎中密度住宅

2,250 s.f.
\$100,000 incl.

www.landscape.com/99213.htm Mary Li 李小姐 9011 6595

Stanley Court
 赤柱 海灣閣
 9 Stanley Mound Road, Stanley
 Resort-style townhouse with private garden close to beach
 度假式別墅臨私家花園，鄰近海灘

2,713 s.f. (plus 732 s.f. garden and 517 s.f. roof)
\$120,000 incl.

www.landscape.com/30960.htm Mary Li 李小姐 9011 6595

The Key 21

SOUTHSIDE Lease | 南區出租



4 Headland Road, Repulse Bay 清水灣 靚靚道4號

Colonial apartment with huge balcony and peaceful sea view
清水灣英式海景住宅連大陽臺，享寧靜海景

3,586 s.f.
\$130,000

www.landscape.com/12033.htm Yvonne Chang 鄭小姐 9088 4666



5 Headland Road, Repulse Bay 清水灣 靚靚道5號

Newly renovated duplex with peaceful sea view
全新裝修複式住宅，享迷人海景，環境寧靜

3,200 s.f. (plus 786 s.f. roof)
\$150,000

www.landscape.com/36930.htm Mary Li 李小姐 9011 6595



63 Deep Water Bay Road, Deep Water Bay 深水灣 深水灣道63號

Luxurious townhouse in serene Deep Water Bay
深水灣豪華排屋，環境清幽怡人

3,362 s.f. (plus 802 s.f. garden)
\$165,000

www.landscape.com David Chan 陳先生 9238 2012



56 Repulse Bay Road, Repulse Bay 清水灣 靚靚道56號

Modern style duplex apartment on Repulse Bay waterfront
時尚清水灣海濱複式住宅

3,964 s.f. (plus 289 s.f. terrace)
\$180,000 incl.

www.landscape.com/46233.htm Teresa Lau 劉小姐 9080 6686



Carmelia 赤柱 赤柱村道60號

60 Stanley Village Road, Stanley
Huge colonial house with front yard and private garden
巨屋英式大屋連前院及私家花園

5,200 s.f. (plus 753 s.f. garden and 343 s.f. terrace)
\$210,000 incl.

www.landscape.com Louis Wong 黃先生 9871 6828



Three Bays 赤柱 赤柱灘道7號

7 Stanley Beach Road, Stanley
Townhouse with quality finishes overlooking stunning sea view
赤柱排屋連優雅裝修，俯瞰廣闊海景

3,870 s.f. (plus 671 s.f. terrace, 977 s.f. garden and 611 s.f. roof)
\$260,000

www.landscape.com/33107.htm Christine Chong 莊小姐 9648 6082



Radcliffe 薄扶林 靚林

120 Pokfulam Road, Pokfulam
Sought after 4-ensuites duplex with sweeping sea view
四套房海景複式住宅，市面難尋，可租可售

3,620 s.f.
\$140,000 incl. also for sale \$65,000,000

www.landscape.com/107385.htm Rowena Siu 蕭小姐 9348 4118



Las Pinadas 壽臣山 靚松居

33 Shouson Hill Road, Shouson Hill
Popular townhouse with full clubhouse facilities in lush green surroundings
受歡迎排屋連完善住客會所設施，享綠樹松蔭景觀，可租可售

3,400 s.f. (plus 1,592 s.f. garden, 508 s.f. roof and 367 s.f. terrace)
\$150,000 also for sale \$65,000,000

www.landscape.com/118549.htm David Chan 陳先生 9238 2012



115 Repulse Bay Road, Repulse Bay 清水灣 靚靚道115號

Colonial apartment with huge balcony taking in Repulse Bay Beach view
清水灣英式單位連特大陽臺，俯瞰淺水灣海灣景觀

4,000 s.f.
\$180,000 incl.

www.landscape.com/43971.htm Chris Law 羅先生 6183 8388



Villa Rosa 大潭 玫瑰園

88 Red Hill Road, Tai Tam
Renowned townhouse with spacious private garden
全新裝修排屋連寬敞私家花園，可租可售

3,960 s.f. (plus 2,234 s.f. garden and 480 s.f. roof)
\$200,000 incl. also for sale \$128,000,000

www.landscape.com/1782.htm Yvonne Chang 鄭小姐 9088 4666

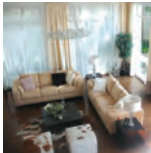


66 Deep Water Bay Road, Deep Water Bay 深水灣 靚靚道66號

Luxurious townhouse in prestigious neighbourhood
深水灣豪華大屋，地段尊貴

4,200 s.f. (plus 569 s.f. roof)
\$260,000 incl.

www.landscape.com/100126.htm Yvonne Chang 鄭小姐 9088 4666



110 Repulse Bay Road, Repulse Bay 清水灣 靚靚道110號

Exclusive sea view mansion in prestigious location of Repulse Bay
清水灣優待海濱大廈，地段尊貴，可租可售

6,150 s.f. (plus 1,173 s.f. garden and 934 s.f. roof)
\$350,000 incl. also for sale \$220,000,000

www.landscape.com/104464.htm Chris Law 羅先生 6183 8388

For more listings, please go to www.landscape.com/lease

Creative Vision interior design and project management



Hong Kong Head Office: 12/F, Cyberport 2, 100 Cyberport Road, Hong Kong
China Office: 15/F, Plaza 66, 1366 Nanjing West Road, Shanghai, China
t +852 3699 0899 (Hong Kong) t +86 21 6137 6038 (China)
info@visionnouvelle.com.hk www.visionnouvelle.com.hk





Your No.1 Integrated Marketing Communications Partner in Hong Kong & China

inMAGAZINE : publisher and sole advertising representatives
of the top luxury lifestyle publications, including *Mission Hills Magazine* and *The Key*.

www.inmagazine.com.hk

Hong Kong Head Office: 12/F Cyberport 2, 100 Cyberport Road, Hong Kong

China Office: 15/F Plaza 66 Tower 2, 1366 Nanjing West Road, Shanghai

Marketing (852) 3699 0877 | Advertising (852) 3699 0898 | email: marketing@incorp.com.hk