

select deluxe homes

The Key

大宅®

NOVEMBER 2008
Volume 50

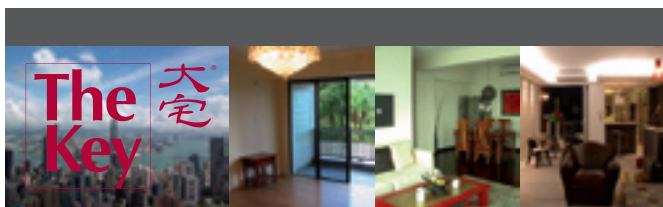
published and distributed by

LANDSCOPE
The Specialists in Luxury Properties

領域®



www.landscape.com



KeyNotes

"As for man, his days are like grass; he flourishes like a flower of the field. For the wind passes over it, and it is gone, and its place knows it no more."

Psalms 103

In Hong Kong, the property market is hard hit by this financial tsunami, with the luxury sector bearing the brunt. Layoffs in the financial sector have greatly diminished the demand from this affluent community. Many investment bankers who bought heavily into real estate last year are now faced with declining property price and a market that is almost at a stand still. Offloading seems to be the only option. But amid the bearish sentiment, serious buyers are nowhere to be seen. The trimming down of financial headcount means less demand for high end rental properties. Many tenants are breaking leases as their employment contracts come to an end. Property vacancy rises in the wake of all cost cutting movements, not only in the financial industry but also in other sectors which are invariably affected in the slowing down of global economy and perhaps recession.

Koh Keng-shing
ks-koh@landscape.com

(The above are an excerpt from Market Watch on www.landscape.com. For the full article, please log on to www.landscape.com/m1108.htm)

About The Key

The Key is a monthly publication of sales and letting listings of luxury residential properties on Hong Kong Island. It is sent to VIP clients of Landscape Realty and residents of The Peak, Southside, Mid-Levels, Kowloon Tong, Homantin and selected upmarket residential areas in Shatin, Tai Po, Clear Water Bay and Castle Peak Road. The recipients comprise the crème de la crème of Hong Kong's affluent community.

In addition to The Key, Landscape Realty sends weekly eNewsletters to clients on most update listings of luxury properties. If you wish to receive the eNewsletter, please call Loretta Lui at 3102 4818 or email to info@landscape.com.

How may you list your property with The Key?

If you would like to see your property listed in The Key in the next issue, you may call Loretta Lui at 3102 4818 or email to info@landscape.com. Or you may simply fill out the space below and fax to us at 2866 0015.

Property to be listed

Asking Rental / Sale Price

Floor Area

Contact Person

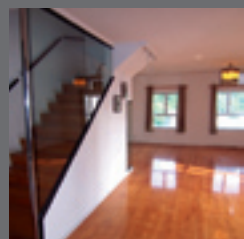
Telephone

Email

Our KeyPersons will contact you for follow-up works.

SOUTHSIDE SALES

南區
出售



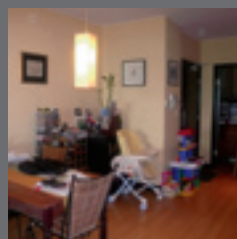
Academic Terrace

薄扶林 學士臺

101 Pok Fu Lam Road, Pokfulam
2-bedroom duplex with roof top enjoying lush green view
兩房複式單位連天台，飽覽青翠景觀

1,200 s.f.
\$8,600,000

www.landscape.com/17104.htm | Simon Lee 李先生 6014 3712



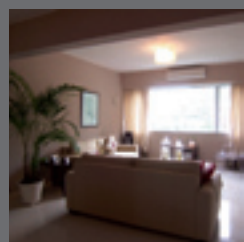
Bisney Terrace

薄扶林 碧荔臺

73-79 Bisney Road, Pokfulam
Garden low-rise with peaceful sea view
低密度住宅連花園平台，享寧靜海景

1,049 s.f. (plus 1,000 s.f. terrace)
\$11,500,000 also for lease \$42,000

www.landscape.com/17101.htm | Christine Chong 莊小姐 9648 6082



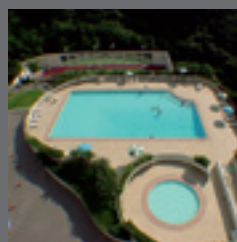
Y Y Mansion

薄扶林 裕仁大廈

96 Pok Fu Lam Road, Pokfulam
Nicely fitted and equipped 3-bedroom apartment in quiet Pokfulam
品味裝修三房單位，位於寧靜薄扶林

1,750 s.f.
\$14,000,000 also for lease \$48,000

www.landscape.com/14777.htm | Sami Woo 胡小姐 9493 8275



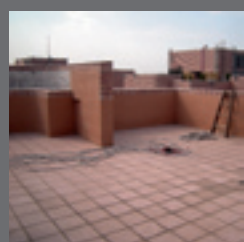
Grand Garden

淺水灣 華景園

61 South Bay Road, Repulse Bay
Practical apartment with full range of facilities
實用住宅，享完善會所設施

1,463 s.f.
\$14,500,000

www.landscape.com/16779.htm | Maria Cheung 張小姐 6256 1848



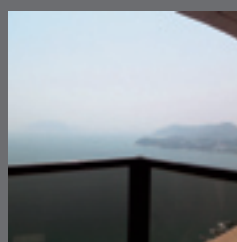
Hong Kong Parkview

淺水灣 陽明山莊

88 Tai Tam Reservoir Road, Repulse Bay
Rare penthouse flat with private roof in prime location
罕有頂層單位連私家天台，位處黃金地段

1,312 s.f.
\$16,600,000

www.landscape.com/14347.htm | Stephen Chan 陳先生 9093 3381



Pacific View

大潭 浪琴園

38 Tai Tam Road, Tai Tam
Waterfront apartment with excellent facilities
臨海住宅，配完善設施

1,334 s.f.
\$17,000,000 also for lease \$43,000 incl.

www.landscape.com/14299.htm | Cecilia Fung 馮小姐 6271 2388



LEISURELY LIFE

This top floor flat with internally accessed private roof is nestled in the quiet Crown Terrace, which is a low density neighbourhood with low-rise buildings. The interior is meticulously decorated and evokes a very leisurely ambience. The lounge is comfortably furnished with many large sofas that are enough for a big party, and the dining room has a candle tray that hangs over the dining table setting the perfect scene for a candle-lit dinner. Your beloved dog can rest in the snug dog kennel just below the staircase to roof. On the roof, one can play a pool game with friends or chill out under the trellis while watching the sun set over the golden sea. Leisurely life at its pinnacle.

18-22 Crown Terrace, Pokfulam

薄扶林 冠冕台

1,800 s.f. (plus 1,600 s.f. roof)

\$25,000,000

www.landscape.com/16696.htm

Philip Lai 黎先生 9430 3330



South Bay Towers
淺水灣 南灣大廈
59 South Bay Road, Repulse Bay
Newly renovated cozy apartment with comprehensive facilities
全新裝修豪華住宅，配完善設施
1,433 s.f.
\$17,500,000 also for lease \$48,000 incl.

www.landscape.com/16452.htm | Mark Mak 麥先生 6838 2929

Repulse Bay Garden 淺水灣 麗景園
18-40 Belleview Drive, Repulse Bay
Newly renovated high efficiency flat overlooking Repulse Bay Beach
全新裝修高實用率單位，俯瞰淺水灣海景
1,780 s.f.
\$25,000,000 also for lease \$59,000
SOLE AGENT 獨家代理

www.landscape.com/12489.htm | Mary Li 李小姐 9011 6595



The Brentwood
淺水灣 蔚峰園
11 Repulse Bay Road, Repulse Bay
Popular flat sea view flat in convenient location
著名海景住宅，交通便利
1,556 s.f.
\$25,000,000

www.landscape.com/10437.htm | Maria Cheung 張小姐 6256 1848



37 Repulse Bay Road, Repulse Bay
淺水灣 淺水灣道37號
Newly renovated 3-bedroom flat with full view of Deep Water Bay
全新裝修三房單位，俯瞰深水灣全景
1,680 s.f.
\$26,300,000

www.landscape.com/15370.htm | Teresa Fung 馮小姐 9138 1621



Cape Mansions
薄扶林 翠海別墅
56-62 Mount Davis Road, Pokfulam
Meticulously decorated sea view apartment
優美裝修海景住宅
2,200 s.f.
\$27,000,000

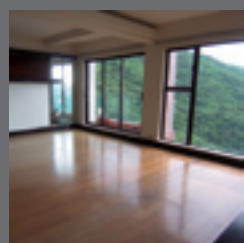
www.landscape.com/16964.htm | Rowena Siu 蕭小姐 9348 4118



Elite Villas
壽臣山 怡禮苑
22 Shouson Hill Road, Shouson Hill
Neat and tidy low-rise flat in serene Shouson Hill
裝修別緻住宅，位處寧靜壽臣山
1,871 s.f.
\$28,000,000

www.landscape.com/17565.htm | Philip Lai 黎先生 9430 3330

SOUTHSIDE SALES



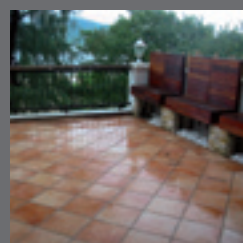
Ridge Court

淺水灣 冠園

21A-21D Repulse Bay Road, Repulse Bay
3-bedroom apartment enjoying bird's eye view of Deep Water Bay
中密度三房單位，盡覽深水灣迷人海景

2,300 s.f.
\$34,000,000

www.landscape.com/17405.htm | Carman Szeto 司徒小姐 8100 3893



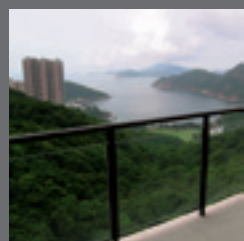
Carmel Hill

赤柱 海明山

12 Carmel Road, Stanley
Decorated townhouse with 600 s.f. garden, tennis court and pool
精緻裝修排屋，連600呎花園，網球場及泳池

2,378 s.f.
\$37,000,000

www.landscape.com/7068.htm | Christine Chong 莊小姐 9648 6082



Sea Cliff Mansions

淺水灣 海峰園

19A-19D Repulse Bay Road, Repulse Bay
Deluxe sea view apartment with nice decorations
豪華海景單位，配優美裝修

2,400 s.f.
\$40,000,000

www.landscape.com/13860.htm | Teresa Fung 馮小姐 9138 1621



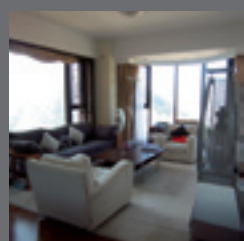
The Redhill Peninsula

大潭 紅山半島

18 Pak Pat Shan Road, Tai Tam
Waterfront townhouse with private garden
臨海排屋連私家花園

3,119 s.f. (plus 1,874 s.f. garden)
\$45,000,000

www.landscape.com/17082.htm | Cecilia Fung 馮小姐 6271 2388



3 Repulse Bay Road, Repulse Bay

淺水灣 淺水灣道3號

Decorated deluxe apartment, enjoying very open view
優美裝修豪華單位，享遼闊開揚景

2,161 s.f.
\$50,000,000

www.landscape.com/9802.htm | Sissy Li 李小姐 9642 6969



Woodgarden Estate

壽臣山 壽臣山道5號

5 Shouson Hill Road, Shouson Hill
Duplex with huge private garden in lush green surroundings
複式單位連特大花園，環境清幽

2,400 s.f. (plus 3,100 s.f. garden)
\$56,000,000 also for lease \$105,000

www.landscape.com/16760.htm | Eric Wong 黃先生 9740 3396



Le Palais

大潭 皇府灣

8 Pak Pat Shan Road, Tai Tam
Sea view garden house with clubhouse facilities
優美海景花園屋，連會所設施

3,271 s.f. (plus 657 s.f. garden)
\$60,000,000

www.landscape.com/14488.htm | Simon Lee 李先生 6014 3712



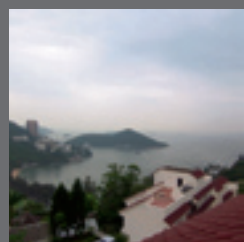
The Somerset

淺水灣 怡峰

67 Repulse Bay Road, Repulse Bay
Duplex with deluxe decoration overlooking Deep Water Bay
豪華裝修複式單位，盡享深水灣海景

3,099 s.f.
\$65,000,000

www.landscape.com/9268.htm | Stella Lo 羅小姐 9809 8570



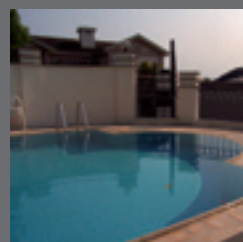
39 Deep Water Bay Road, Deep Water Bay

深水灣 深水灣道39號

Rare townhouse with new decorations overlooking stunning sea view
罕有新裝修排屋，享怡人海景

4,047 s.f. (plus 1,354 s.f. garden)
\$138,000,000 also for lease \$320,000 incl.

www.landscape.com/15313.htm | Christine Chong 莊小姐 9648 6082



36A-36D Repulse Bay Road, Repulse Bay

淺水灣 淺水灣道36A-36D號

Rare detached house at Deep Water Bay waterfront
罕有深水灣海濱獨立屋

4,900 s.f. (plus 1,946 s.f. garden)
\$180,000,000

www.landscape.com/13719.htm | Eric Wong 黃先生 9740 3396



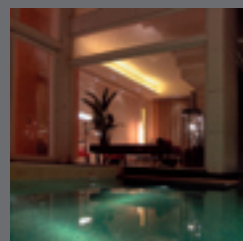
25 Shek O Headland, Tai Tam

大潭 石澳山仔25號

Colonial style single house with garden and private pool
英式獨立屋連花園及私家泳池

Site Area 11,330 s.f.
\$200,000,000

www.landscape.com/16271.htm | Mark Mak 麥先生 6838 2929



Island Grove

深水灣 香島道40號

40 Island Road, Deep Water Bay
Prestigious residence at Deep Water Bay
深水灣著名住宅，地段尊貴

5,080 s.f. (with private pool and garden)
\$200,000,000

www.landscape.com/13229.htm | Louis Wong 黃先生 9871 6828



45 Chung Hom Kok Road, Chung Hom Kok

春坎角 春坎角道45號

Designer decorated duplex with private pool and terrace
優雅裝修複式住宅，連私家泳池及平台

4,280 - 5,025 s.f.

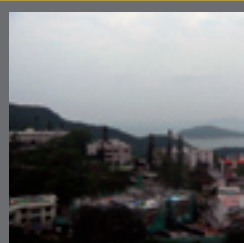
\$80,000,000 up



www.landscape.com/15471.htm

Louis Wong 黃先生 9871 6828

SOUTHSIDE LEASE



Grand Garden

淺水灣 華景園

61 South Bay Road, Repulse Bay

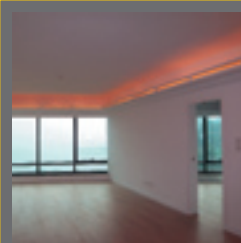
3-bedroom apartment with comprehensive facilities in quiet location
三房單位，環境寧靜，配完善設施

1,463 s.f.

\$55,000 incl. also for sale \$17,800,000

www.landscape.com/17559.htm

Philip Lai 黎先生 9430 3330



La Mer

薄扶林 浪頤居

69 Bisney Road, Pokfulam

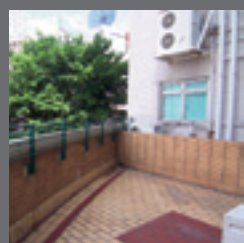
Newly renovated 4-bedroom low-rise with full sea view (plus 2 covered-carpark)
全新裝修低密度海景四房單位連雙車位

2,063 s.f.

\$68,000 incl. also for sale \$33,000,000

www.landscape.com/14489.htm

Yvonne Chang 鄭小姐 9088 4666



The Regalis

薄扶林 帝鑾閣

21 Crown Terrace, Pokfulam

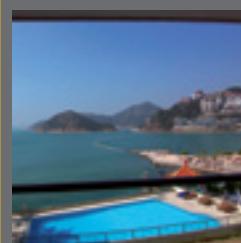
Charming low-rise 5-bedroom with huge terrace at quiet Pokfulam
迷人低密度五房單位連巨型平台，位處寧靜薄扶林

2,558 s.f.

\$72,000

www.landscape.com/17431.htm

Mary Li 李小姐 9011 6595



Splendour Villa

淺水灣 雅景閣

10 South Bay Road, Repulse Bay

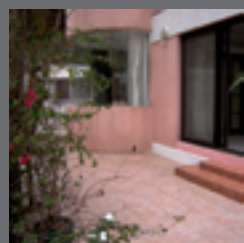
Rarely find beachfront 3-bedroom low-rise in good condition
低密度三房臨海住宅，保養良好，罕有放盤

1,527 s.f.

\$75,000 incl

www.landscape.com/14188.htm

Teresa Fung 馮小姐 9138 1621



Springfield Gardens

壽臣山 春暉園

5-9 Shouson Hill Road West, Shouson Hill

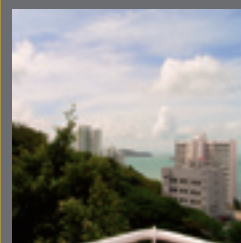
Charming low-rise flat in serene Shouson Hill
迷人低密度住宅，位處清靜壽臣山

1,775 s.f. (plus 600 s.f. terrace)

\$80,000 also for sale \$21,000,000

www.landscape.com/15078.htm

Eric Wong 黃先生 9740 3396



Bisney Cove

薄扶林 碧荔道 33-35 號

33-35 Bisney Road, Pokfulam

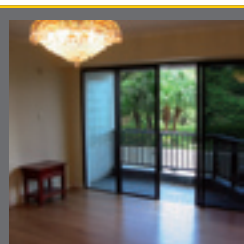
Rarely available charming low-rise with big balcony
迷人低密度住宅連大露台，市場罕有

2,500 s.f.

\$88,000

www.landscape.com/17412.htm

Carman Szeto 司徒小姐 8100 3893



Grand Garden

淺水灣 華景園

61 South Bay Road, Repulse Bay

Renovated large 4-bedroom flat in prime location
全新裝修四房單位，位處尊貴地段

3,061 s.f.

\$98,000 incl. also for sale \$40,000,000

www.landscape.com/16958.htm

Christine Chong 莊小姐 9648 6082



Belvedere 春坎角 浩瀚臺

41 Chung Hom Kok Road,
Chung Hom Kok

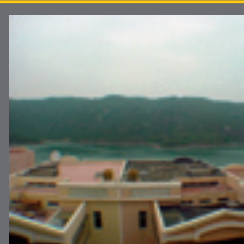
Unique townhouse with green view and pool
獨特翠綠山景排屋，配泳池設施

3,240 s.f.

\$125,000 incl.

www.landscape.com/17242.htm

Yvonne Chang 鄭小姐 9088 4666



The Redhill Peninsula

大潭 紅山半島

18 Pak Pat Shan Road, Tai Tam

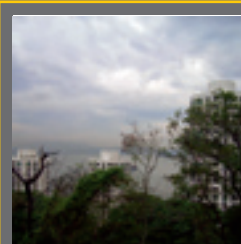
Mediterranean style garden house with sea view
地中海式花園洋房，配優美海景

3,054 s.f. (plus 652 s.f. garden)

\$125,000 incl. also for sale \$51,000,000

www.landscape.com/1972.htm

Maria Cheung 張小姐 6256 1848



Carriana Sassoon

薄扶林 沙宣道41號

41 Sassoon Road, Pokfulam

Unique and Spacious House in Pokfulam
薄扶林特色寬敞洋房

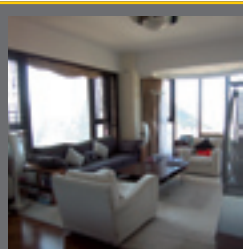
3,000 s.f. (plus 500 s.f. terrace)

\$130,000 incl.

www.landscape.com/2162.htm

Christine Chong 莊小姐 9648 6082

SOUTHSIDE LEASE



Fortuna Court

淺水灣 福慧大廈

25 Repulse Bay Road, Repulse Bay
Mid-rise apartment with spacious layout in prime location

中密度單位，間隔寬敞，地段尊貴

2,857 s.f.

\$133,000

www.landscape.com/17516.htm

Sissy Li 李小姐 9642 6969



Stanley Court

赤柱 海灣園

9 Stanley Mound Road, Stanley
Resort-style garden townhouse close to Stanley Beach

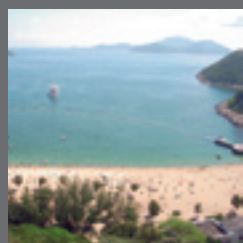
渡假式花園屋，鄰近赤柱海灘

2,713 s.f.

\$155,000 incl. also for lease \$58,000,000

www.landscape.com/17493.htm

Mary Li 李小姐 9011 6595



Grosvenor Place

淺水灣 淺水灣道117號

117 Repulse Bay Road, Repulse Bay
4-bedroom apartment with fantastic Repulse Bay view

四房單位，享無敵淺水灣海景

2,809 s.f.

\$160,000 also for sale \$61,000,000 incl.

www.landscape.com/12672.htm

Simon Lee 李先生 6014 3712



1 Shouson Hill Road East, Shouson Hill

壽臣山 壽臣山道東1號

4-bedroom townhouse in lush green neighbourhood with facilities

四房排屋，環境翠綠，配會所設施

4,062 s.f.

\$170,000

www.landscape.com/17338.htm

Simon Lee 李先生 6014 3712



The Redhill Peninsula

大潭 紅山半島

18 Pak Pat Shan Road, Tai Tam
Serene garden townhouse with roof and excellent sea view

寧靜花園排屋連天台，享迷人海景

3,339 s.f.

\$180,000 also for sale \$70,000,000

www.landscape.com/17133.htm

Sissy Li 李小姐 9642 6969



Seascope

薄扶林 海日樓

42 Sassoon Road, Pokfulam
Rare garden townhouse in quiet Pokfulam

罕有花園排屋，位處寧靜薄扶林

3,200 s.f. (plus 500 s.f. garden)

\$180,000 incl.

www.landscape.com/17094.htm

Rowena Siu 蕭小姐 9348 4118



56 Repulse Bay Road, Repulse Bay

淺水灣 淺水灣道56號

Luxuriously decorated duplex with Repulse Bay sea view
豪華裝修複式住宅，俯瞰淺水灣全海景

3,279 s.f. (plus 881 s.f. roof)

\$250,000 also for sale \$90,000,000



www.landscape.com/17128.htm

Maria Cheung 張小姐 6256 1848

MID-LEVELS SALES



Well View Villa

東半山 瑩景閣

17 Tung Shan Terrace, Midlevels East
Low-rise 3-bedroom (including 1 maid room) with 2-carport in convenient location

低密度兩房單位(另加工人房)連雙車位，地點方便

1,037 s.f.

\$7,800,000 SOLE AGENT 獨家代理

www.landscape.com/15915.htm

David Chan 陳先生 9238 2012



Caroline Height

跑馬地 嘉蘭閣

1 Link Road, Happy Valley
Spacious 3-bedroom flat (plus 1 carpark) on fringe of Causeway Bay

寬敞三房單位連車位，鄰近銅鑼灣

1,052 s.f.

\$9,200,000 also for lease \$40,000 incl.

www.landscape.com/15974.htm

Carman Szeto 司徒小姐 8100 3893



Unique Villa

跑馬地 友園

10-12 Holly Road, Happy Valley
High floor nice decorated apartment with lush green view

高層雅裝單位，享青翠綠景

1,250 s.f.

\$10,900,000

www.landscape.com/17388.htm

Walker Lam 林先生 9551 1077



Botanic Terrace

西半山 芝蘭台

3-5 Conduit Road, Midlevels West
Practical 2-bedroom flat with balcony in prime location

實用兩房單位連露台，位處黃金地段

1,313 s.f.

\$13,000,000 SOLE AGENT 獨家代理

www.landscape.com/17022.htm

Sami Woo 胡小姐 9493 8275



Flora Garden
渣甸山 慧景園
7 Chun Fai Road, Jardine's Lookout
Nice decorated flat with practical and facilities
優美裝修單位，間隔實用，配會所設施
1,533 s.f.
\$14,800,000 (Nego)

www.landscape.com/16681.htm | Teresa Lau 劉小姐 9080 6686



Green Lane Court
跑馬地 筭璉閣
130-140 Blue Pool Road, Happy Valley
Designer decorated mid-rise flat with balcony
品味裝修中密度單位連露台
1,400 s.f.
\$15,600,000 also for sale \$60,000 incl.

www.landscape.com/14601.htm | Mira To 杜小姐 9486 1566



Wing On Tower
渣甸山 永安閣
7-9 Boyce Road, Jardine's Lookout
Mid-rise practical apartment with open view
中密度住宅，間隔實用，享開揚景
1,650 s.f.
\$17,000,000

www.landscape.com/17383.htm | Stephen Chan 陳先生 9093 3381



Shuk Yuen Building
跑馬地 菽園新臺
2 Green Lane, Happy Valley
Low-rise apartment with greenery view in quiet location
低密度單位，環境清幽，享優美綠景
1,900 s.f.
\$17,800,000

www.landscape.com/15992.htm | Walker Lam 林先生 9551 1077




Swiss Towers
東半山 瑞士花園
113 Tai Hang Road, Midlevels East
Nicely decorated 3-bedroom flat with amazing Harbour View
精緻裝潢三房單位，環抱維港美景
1,600 s.f.
\$18,800,000 also for lease \$58,000

www.landscape.com/17313.htm | Stephen Chan 陳先生 9093 3381



The Royal Court
中半山 帝景閣
3 Kennedy Road, Midlevels Central
Garden view apartment in convenient location
優美花園景單位，交通便利
1,428 s.f.
\$18,800,000

www.landscape.com/6997.htm | Philip Lai 黎先生 9430 3330



21-25 Green Lane, Happy Valley
跑馬地 筭璉坊 21-25 號
Low-rise 3-bedroom apartment with decorations
低密度三房住宅，配品味裝潢
1,600 s.f.
\$19,000,000 also for lease \$70,000 incl.

www.landscape.com/17191.htm | Mary Li 李小姐 9011 6595



Centre Place
西半山 匯賢居
1 High Street, Midlevels West
High-floor harbour view flat with excellent decorations
高層維港景單位，配優美裝潢
1,609 s.f.
\$20,000,000

www.landscape.com/14568.htm | Mark Mak 麥先生 6838 2929



Chester Court
東半山 東山臺5號
5 Tung Shan Terrace, Midlevels East
Newly renovated apartment with private roof
全新裝修單位連私家天台
1,737 s.f. (plus 1,480 s.f. roof)
\$21,600,000

www.landscape.com/17334.htm | Stephen Chan 陳先生 9093 3381



Sanitarian Apartments
跑馬地 潔園
20-30 Green Lane, Happy Valley
Nicely decorated colonial apartment with private garden in quiet area
優美裝修英式單位連私家花園，環境清幽
2,000 s.f. (plus 150 s.f. terrace)
\$24,500,000

www.landscape.com/16269.htm | Mira To 杜小姐 9486 1566



14-20 Wilson Road, Jardine's Lookout
渣甸山 衛信道14-20號
Rare colonial low-rise apartment in tranquil location
市場罕有英式低密度住宅，位處寧靜地段
2,200 s.f.
\$28,000,000

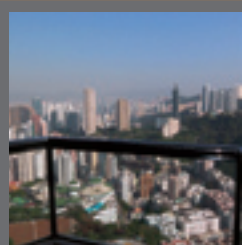
www.landscape.com/16771.htm | Carman Szeto 司徒小姐 8100 3893



Jardine's Lookout Garden Mansion 東半山 渣甸山花園大廈
148-150 Tai Hang Road, Midlevels East
Large older-style flat with full view of Hong Kong Stadium
寬敞懷舊式住宅，眺望香港大球場景
2,500 s.f.
\$30,000,000

www.landscape.com/16305.htm | Sissy Li 李小姐 9642 6969

MID-LEVELS SALES

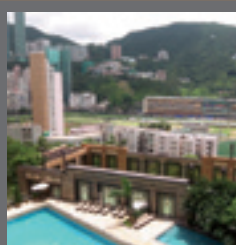


Nicholson Tower 東半山 蔚豪苑

8 Wong Nai Chung Gap Road,
Midlevels East
4-bedroom flat with balcony, enjoying
harbour view
四房單位連露台，享優美維港景

1,993 s.f.
\$31,000,000

www.landscape.com/17575.htm | Cecilia Fung 馮小姐 6271 2388

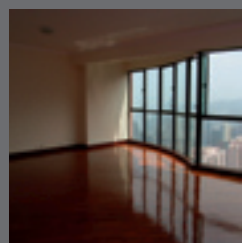


The Leighton Hill

跑馬地 禮頓山
2B Broadwood Road, Happy Valley
Spacious 4-bedroom luxurious flat with full
racecourse view
豪華寬敞四房單位，飽覽全馬場景

1,911 s.f.
\$32,000,000

www.landscape.com/16406.htm | Sissy Li 李小姐 9642 6969



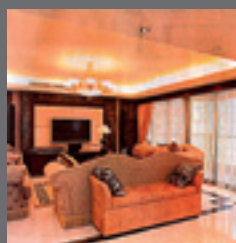
Dynasty Court

中半山 帝景園

23 Old Peak Road, Midlevels Central
Popular family apartment with harbour
view in prime location
受歡迎維港景家庭式住宅，位處優越地段

1,972 s.f.
\$34,000,000 also for lease \$70,000 incl.

www.landscape.com/13086.htm | Eric Wong 黃先生 9740 3396



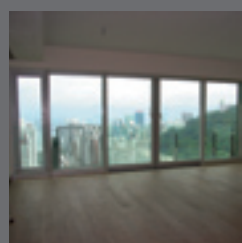
Estoril Court

中半山 愛都大廈

55 Garden Road, Midlevels Central
Nicely decorated apartment with very high
efficiency on fringe of Central
優美裝修實用單位，鄰近中環

3,347 s.f.
\$38,000,000

www.landscape.com/12919.htm | Stella Lo 羅小姐 9809 8570



The Legend 渣甸山 名門

23 Tai Hang Drive, Jardine's Lookout
High floor 5-bedroom (plus 2 carparks)
harbour view flat with comprehensive
facilities
高層五房連車位單位，享維港景及配會所設施

2,372 s.f.
\$38,000,000

www.landscape.com/16160.htm | Cecilia Fung 馮小姐 6271 2388



Tregunter Tower

中半山 地利根德閣

14 Tregunter Path, Midlevels Central
Spacious apartment with
magnificent views
寬敞單位有一流景觀

3,001 s.f.
\$41,000,000 also for lease \$98,000 incl.

www.landscape.com/4043.htm | Simon Lee 李先生 6014 3712

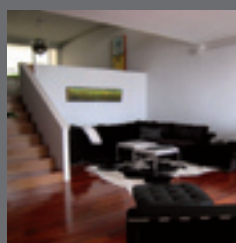


Leon Court 東半山 利安閣

12-14 Wong Nai Chung Gap Road,
Midlevels East
Good value apartment in a quiet location
with open city view
高回報住宅，環境清幽，享開揚景

2,800 s.f.
\$42,000,000 also for lease \$105,000

www.landscape.com/10476.htm | Mark Mak 麥先生 6838 2929



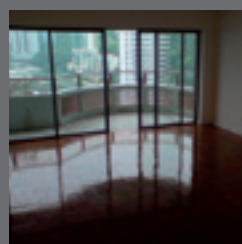
May Tower

中半山 梅苑

7 May Road, Midlevels Central
Harbour view duplex in prime location
維港景複式單位，地點一流

2,850 s.f.
\$42,200,000

www.landscape.com/15356.htm | Stella Lo 羅小姐 9809 8570



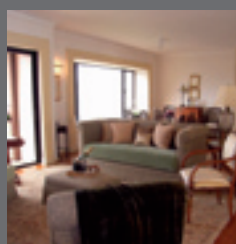
Garden Terrace

中半山 花園臺

8A Old Peak Road, Midlevels Central
Large 4-ensuite apartment with balcony
and 2 carparks
特大四房單位，連露台及雙車位

3,319 s.f.
\$48,000,000 also for lease \$135,000 incl.

www.landscape.com/15105.htm | David Chan 陳先生 9238 2012



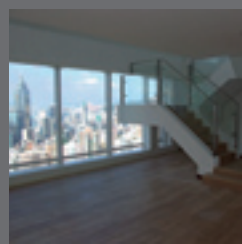
The Albany

中半山 雅賓利大廈

1 Albany Road, Midlevels Central
Prestigious apartment overlooking
Botanical Garden
華麗住宅，俯瞰香港動植物公園景

2,546 s.f.
\$60,000,000

www.landscape.com/13612.htm | Stephen Chan 陳先生 9093 3381



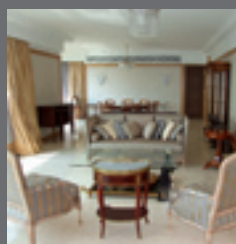
Bowen Place

中半山 寶雲閣

11A Bowen Road, Midlevels Central
Rare harbour view duplex with 5-bedroom
in quiet location
五房複式單位，市場罕有，環境寧靜

3,621 s.f. (plus 184 s.f. terrace)
\$62,000,000

www.landscape.com/15241.htm | Stella Lo 羅小姐 9809 8570



Century Tower

中半山 世紀大廈

1A Tregunter Path, Midlevels Central
Nicely decorated 4-bedroom property with
high privacy
優美裝修四房單位，極高私隱

3,638 s.f.
\$78,000,000 also for lease \$150,000

www.landscape.com/15252.htm | Mary Li 李小姐 9011 6595



18-20 Tsun Yuen Street, Happy Valley
跑馬地 晉源街18-20號
Low-rise apartment with practical layout in convenient location
實用低密度住宅，交通方便
1,100 s.f.
\$36,000

www.landscape.com/17528.htm | Walker Lam 林先生 9551 1077



The Royal Court
中半山 帝景閣
3 Kennedy Road, Midlevels Central
Nice apartment in convenient location overlooking Hong Kong Park
優美住宅交通便利，俯瞰香港公園景色
1,428 s.f.
\$48,000 incl.

www.landscape.com/12413.htm | Teresa Lau 劉小姐 9080 6686



Riverain Valley
跑馬地 御駿居
79 Sing Woo Road, Happy Valley
Unique new low-rise in Happy Valley
跑馬地新建別具一格低層住宅
2,050 s.f.
\$50,000 incl. also for sale \$17,500,000

www.landscape.com/4071.htm | Cecilia Fung 馮小姐 6271 2388



Beau Cloud Mansion
中半山 碧雲樓
64 MacDonnell Road, Midlevels Central
Colonial apartment in convenient Macdonnell Road
麥當奴道英式單位，交通方便
1,700 s.f.
\$60,000 also for sale \$18,000,000

www.landscape.com/17389.htm | Mira To 杜小姐 9486 1566



Loong Fung Terrace
東半山 龍鳳臺
89-93 Tai Hang Road, Midlevels East
Low-rise flat with lush green view in quiet area
低密度住宅，環境翠綠清幽
1,800 s.f.
\$64,000 incl.

www.landscape.com/15832.htm | Walker Lam 林先生 9551 1077



Cavendish Heights
渣甸山 嘉雲臺
27-37 Perkins Road, Jardine's Lookout
Popular family apartment with full facilities
受歡迎家庭式住宅，配完善設施
1,1819 s.f.
\$65,000 incl.

www.landscape.com/17326.htm | Cecilia Fung 馮小姐 6271 2388



Kennedy Terrace
中半山 堅尼地台
20 Kennedy Road, Midlevels Central
Mid-rise penthouse with internal access to roof
中密度頂層單位，室內樓梯直達天台
1,200 s.f. (plus 1,020 s.f. roof)
\$65,000 also for sale \$18,000,000

www.landscape.com/16918.htm | Teresa Lau 劉小姐 9080 6686



Beauty Court
西半山 雅苑
82 Robinson Road, Midlevels West
Popular 3-bedroom apartment with excellent city view
受歡迎三房住宅，盡覽一流城市景
1,771 s.f.
\$67,000

www.landscape.com/17307.htm | Rowena Siu 蕭小姐 9348 4118



Tregunter Tower
中半山 地利根德閣
14 Tregunter Path, Midlevels Central
Popular development in prime location of Midlevels
中半山著名大廈，格調豪華
2,020 s.f.
\$70,000 incl.

www.landscape.com/16591.htm | Mira To 杜小姐 9486 1566



Birchwood Place
中半山 寶樺臺
96 MacDonnell Road, Midlevels Central
3-bedroom apartment with tennis court and pool
三房住宅，配網球場及泳池設施
2,018 s.f.
\$75,000 also for sale \$29,000,000

www.landscape.com/6794.htm | Teresa Fung 馮小姐 9138 1621



Carnation Court
東半山 康馨園
41-47 Tai Hang Road, Midlevels East
Practical 4-bedroom flat with open city view on fringe of Causeway Bay
實用四房單位，享開揚城市景，鄰近銅鑼灣
2,126 s.f.
\$75,000 incl.

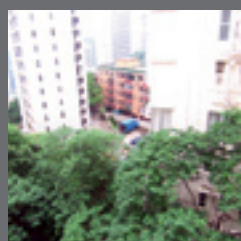
www.landscape.com/15207.htm | Sami Woo 胡小姐 9493 8275



Evergreen Villa
東半山 松柏新村
43 Stubbs Road, Midlevels East
Spacious apartment with roof, enjoying open view
寬敞單位連天台，享開揚景
2,700 s.f.
\$85,000 incl.

www.landscape.com/17103.htm | Carman Szeto 司徒小姐 8100 3893

MID-LEVELS LEASE



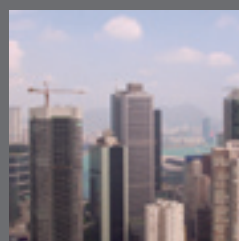
Catalina Mansions

中半山 嘉年大廈

98-100 MacDonnell Road, Midlevels Central
3-bedroom colonial flat on quiet location
英式三房單位，環境寧靜

2,040 s.f.
\$85,000 incl.

www.landscape.com/17122.htm | Stella Lo 羅小姐 9809 8570



Bowen Place

中半山 寶雲閣

11A Bowen Road, Midlevels Central
Spacious 3-bedroom apartment with panoramic harbour view
寬敞三房單位，擁環迴海景

1,927 s.f.
\$86,000 also for sale \$26,800,000

www.landscape.com/17539.htm | Teresa Lau 劉小姐 9080 6686



11 MacDonnell Road, Midlevels Central

中半山 麥當勞道 11 號

Nicely decorated high privacy modern apartment on MacDonnell Road
麥當奴道高私隱優美裝修單位

2,313 s.f.
\$88,000

www.landscape.com/14367.htm | David Chan 陳先生 9238 2012



The Colonnade

東半山 嘉崙臺

152 Tai Hang Road, Midlevels East
Nicely decorated apartment with open city view
雅緻裝修單位享開揚城市景

2,137 s.f.
\$85,000 also for sale \$33,800,000

www.landscape.com/16721.htm | Sami Woo 胡小姐 9493 8275



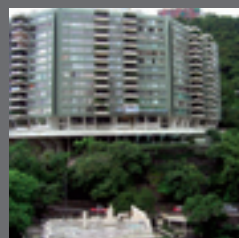
Pine Court

中半山 翠峰園

5 Old Peak Road, Midlevels Central
Colonial style apartment with huge balcony and high ceiling
英式住宅連大露台，樓底極高

2,650 s.f.
\$90,000

www.landscape.com/17365.htm | Teresa Lau 劉小姐 9080 6686



Silvercrest

中半山 聚安樓

24 MacDonnell Road, Midlevels Central
Prestigious 4-bedroom apartment with high privacy
豪華四房單位，極高私隱

2,643 s.f.
\$90,000 incl. also for sale \$35,000,000

www.landscape.com/17183.htm | Mira To 杜小姐 9486 1566



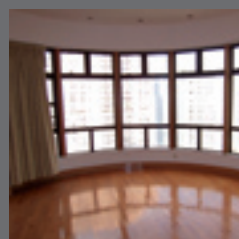
Grenville House

中半山 嘉慧園

1-3 Magazine Gap Road, Midlevels Central
Colonial apartment with huge balcony close to Central
英式單位連特大露台，鄰近中環

3,400 s.f.
\$90,000 incl.

www.landscape.com/14628.htm | Stella Lo 羅小姐 9809 8570



Po Garden

中半山 寶園

9 Brewin Path, Midlevels Central
Nicely decorated flat with full facilities in Lower Peak
上山頂段優美裝修單位，配完善設施

2,594 s.f.
\$100,000 also for sale \$34,000,000

www.landscape.com/16811.htm | Rowena Siu 蕭小姐 9348 4118



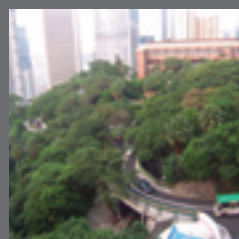
Leon Court 東半山 利安閣

12-14 Wong Nai Chung Gap Road, Midlevels East

Good value apartment in a quiet area with open city view
高回報住宅，地點清幽，享開揚城市景

2,800 s.f.
\$105,000 incl. also for sale \$42,000,000

www.landscape.com/10476.htm | Cecilia Fung 馮小姐 6271 2388



Borrett Mansion

中半山 寶德臺

8A-9B Borrett Road, Midlevels Central
Large 4-bedroom apartment in lush greenery
特大四房單位，擁翠綠旺景觀

2,800 s.f.
\$110,000 incl.

www.landscape.com/17271.htm | Sami Woo 胡小姐 9493 8275

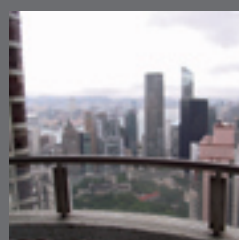


Taipan Court 東半山 大班閣

47B Stubbs Road, Midlevels East
Bright and airy 4-ensuite triplex with brand new kitchen and bathrooms
開揚光猛四套房住宅，配全新廚廁

3,670 s.f.
\$128,000

www.landscape.com/17415.htm | Yvonne Chang 鄭小姐 9088 4666



Garden Terrace

中半山 花園臺

8 Old Peak Road, Midlevels Central
High floor 4-ensuite apartment with comprehensive facilities
高層四房單位，連完善會所設施

3,307 s.f.
\$120,000

www.landscape.com/16733.htm | Eric Wong 黃先生 9740 3396

MID-LEVELS LEASE

半山
出租



Chung Tak Mansion
中半山 重慶大廈

2 Magazine Gap Road, Midlevels Central
Spacious apartment with fabulous city view and harbour view
寬敞單位，享維港及市區美景

2,864 s.f.
\$108,000 incl. also for sale \$55,000,000

www.landscape.com/6428.htm | David Chan 陳先生 9238 2012



Bowen Mansion
中半山 寶雲大廈

7C Bowen Road, Midlevels Central
Huge colonial apartment with open greenery view
特大英式住宅，享開揚綠景

4,000 s.f.
\$138,000 incl.

www.landscape.com/15601.htm | Yvonne Chang 鄭小姐 9088 4666



Regence Royale
中半山 富匯豪庭

2 Bowen Road, Midlevels Central
Modern deluxe 4-bedroom apartment on prime area
時尚豪華四房單位，位處黃金地段

2,522 s.f.
\$110,000 incl. also for sale \$41,000,000

www.landscape.com/13775.htm | Louis Wong 黃先生 9871 6828



Dynasty Court
中半山 帝景園

23 Old Peak Road, Midlevels Central
Prestigious apartment in prime location
精緻單位，位處黃金地段

2,691 s.f.
\$130,000 incl. also for sale \$47,000,000

www.landscape.com/13253.htm | Eric Wong 黃先生 9740 3396



The Legend 渣甸山名門

23 Tai Hang Drive, Jardine's Lookout
Brand new prestigious penthouse duplex with private swimming pool, enjoying Victoria Harbour view
全新華麗裝修頂層複式單位連私家泳池，眺望維港景色

2,278 s.f. (plus 367 s.f. roof)
\$158,000 incl.

www.landscape.com/14498.htm | Teresa Fung 馮小姐 9138 1621



Rare Colonial Apartment In Midlevels
中半山 低密度大宅

Magazine Gap Road, Midlevels Central
New decoration colonial apartment with big balcony in excellent location
部裝修英式住宅連大露台，地點一流

3,300 s.f.
\$168,000

www.landscape.com/17397.htm | Carman Szeto 司徒小姐 8100 3893



Regent on the Park
中半山 御花園

9A Kennedy Road, Midlevels Central
Huge 6-bedroom duplex in prime location
六房複式巨宅，位處黃金地段

5,440 s.f.
\$180,000 incl.

www.landscape.com/14282.htm | Christine Chong 莊小姐 9648 6082



Dynasty Court
中半山 帝景園

23 Old Peak Road, Midlevels Central
5-bedroom duplex penthouse with roof top and terrace
五房複式單位連頂層天台及平台

4,500 s.f.
\$250,000

www.landscape.com/17485.htm | Louis Wong 黃先生 9871 6828

THE PEAK SALES

山頂
出售



Montebello
山頂 濠景閣

15-17 Plantation Road, The Peak
Duplex apartment with fantastic sea view
複式單位享無敵海景

3,050 s.f.
\$58,800,000

www.landscape.com/5854.htm | David Leung 梁先生 9199 0672



Sunshine Villa
山頂 陽光花園

48 Mount Kellett Road, The Peak
Lovely Peak garden house with high ceiling
舒適山頂花園洋房配極高樓底

3,500 s.f. (plus 1,920 s.f. garden)
\$92,000,000

www.landscape.com/4082.htm | Mark Mak 麥先生 6838 2929



La Hacienda
山頂 加列山道29-33號

29-33 Mount Kellett Road, The Peak
Garden House with Fantastic Seaview
花園洋房，享無敵海景

3,200 s.f.
\$108,000,000 also for lease \$180,000

www.landscape.com/2462.htm | David Leung 梁先生 9199 0672



1-9 Rosmead Road, The Peak
山頂 樂善美道1-9號

Rarely garden house on the Peak
罕有山頂花園大宅，地段尊貴

5,887 s.f.
\$280,000,000

www.landscape.com/14409.htm | David Leung 梁先生 9199 0672

For more listings, please go to www.landscape.com/lease

For more listings, please go to www.landscape.com/sale

THE PEAK LEASE



Kellett Heights

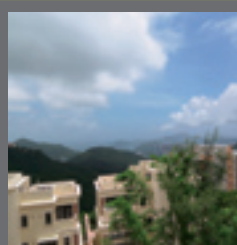
山頂 嘉利別墅

61A & 61B Mount Kellett Road, The Peak
3-bedroom mid-rise flat with amazing sea view
三房住宅，擁壯觀海景

1,600 s.f.
\$68,000

www.landscape.com/17190.htm

Teresa Lau 劉小姐 9080 6686



Coombe Apartments

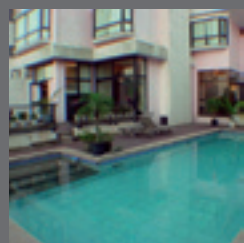
山頂 甘道15-17號

15-17 Coombe Road, The Peak
Stylish colonial apartment in secluded green surroundings
品味英式住宅，環境清幽翠綠

2,150 s.f.
\$86,000

www.landscape.com/17302.htm

Maria Cheung 張小姐 6256 1848



Chateau Vivienne

山頂 顯峰居

72 Mount Kellett Road, The Peak
Unique duplex with private pool on Peak
罕有山頂複式單位連私家泳池

2,600 s.f. (plus 2,400 s.f. garden)
\$135,000

www.landscape.com/17343.htm

Sami Woo 胡小姐 9493 8275



Eredine

山頂 加列山道38號

38 Mount Kellett Road, The Peak
Mid-rise sea-view colonial apartment with spacious layout
中密度英式海景住宅，間隔寬敞實用

3,300 s.f.
\$159,000 incl.

www.landscape.com/13070.htm

Maria Cheung 張小姐 6256 1848



74 Mount Kellett Road

山頂 加列山道74號

Rare find garden house with communal pool on The Peak
山頂花園屋連泳池設施，市場罕有

4,200 s.f. (plus 400 s.f. garden)
\$180,000 incl.

www.landscape.com/16178.htm

Yvonne Chang 鄭小姐 9088 4666



Severn 8

山頂 倚巒

8 Severn Road, The Peak
Prestigious 4-bedroom townhouse with private garden overlooking harbour view
優美四房排屋連私家花園，俯瞰環迴維港景

4,306 s.f.
\$250,000

www.landscape.com/17265.htm

Louis Wong 黃先生 9871 6828



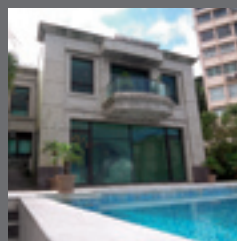
Abergeldie 山頂 種植道52號

52 Plantation Road, The Peak
Peak house with bird's eye view of Victoria Harbour
山頂大宅，俯瞰維港景色

3,655 s.f.
(plus 313 s.f. terrace & 464 s.f. garden)
\$250,000 also for sale Open Offer

www.landscape.com/12967.htm

David Leung 梁先生 9199 0672



Kletteria

山頂 加列山道71號

71 Mount Kellett Road, The Peak
Peak luxurious house with private pool and garage
山頂豪華大屋連私家泳池及車房

3,198 s.f. (plus 1,370 s.f. garden)
\$260,000 also for sale \$150,000,000

www.landscape.com/13460.htm

David Leung 梁先生 9199 0672



62-70 Black's Link, The Peak

山頂 布力徑62至70號

Rare detached house with huge garden overlooking Deep Water Bay
罕有獨立屋連巨型花園，俯瞰深水灣海景

3,681 s.f.
\$380,000

www.landscape.com/17586.htm

Sissy Li 李小姐 9642 6969



Gough Hill Residences 山頂 歌賦山里3-5號

3-5 Gough Hill Path, The Peak
Exclusive Peak house with huge garden and private pool
獨特山頂大宅連特大花園及私家泳池

5,657 s.f.
(plus 1,717 s.f. roof & 5,320 garden)
\$480,000 also for sale Open Offer

www.landscape.com/17585.htm

Sissy Li 李小姐 9642 6969



Landscape Realty Limited C-018733

a member of Landscape Surveyors Ltd

Tel: 852-2866 0022 Fax: 852-2866 0015

Email: info@landscape.com Website: www.landscape.com

Unit 3106, 31/F, Hopewell Centre,
183 Queen's Road East, Wanchai, Hong Kong

The information, text, photos, analyses and projections contained herein are provided solely for the convenience of prospective clients and no warranty or representation as to their accuracy, correctness or completeness is made by Landscape Surveyors Limited, Landscape Realty Limited or the owners, none of whom shall have any liability or obligation with respect thereto. Interested parties should rely on their own investigations, interpretations and analyses in connection with the purchase or letting thereof.

Information has been provided to us by sources deemed reliable, but no warranty or representation is made as to its accuracy, correctness or completeness. These offerings are made subject to contract, correction of errors, omissions, prior sale or lease, change of price or terms or withdrawal from the market without notice. The contents of The Key are for reference only and do not constitute all or any part of a contract.

Copyright 2008