

The
Key

大宅[®]

Select deluxe homes

Volume 77 MAY 2011

DESIGNER DELIGHT



KeyWords

"To develop in taste, quality, and personality one is obliged to respect the past, accept the present, and look with enthusiasm toward the future."

要做出有品味、高素質、又有個性的設計，就必須尊重過去、接受現在、並擁抱未來。

Eleanor McMillen Brown, American interior designer

艾莉諾·麥米倫·布朗·美國著名室內設計師

KeyNotes

Certainly, chronic shortage of supply is one of the main driving forces behind rampant price escalations in recent years. Increasing supply would serve to satisfy the high demand rather than contain it. This is a move in the right direction. However, new supply of land will take three to four years to produce housing to the market. Before that materialises, the market will still suffer from a severe shortage and prices will continue to grow. For the great majority of the middle class population in Hong Kong, current prices are already well beyond their reach.

Increasing supply should have effectively reduced anticipated demand. But other factors at play have served to drive prices up, including accelerating inflation, the low cost of borrowing, an influx of mainland money chasing Hong Kong assets and a robust

local economy. These factors have overwhelmed the effect of increased land supply, and will continue to do so in the foreseeable future.

土地供應長期短缺，顯然是近年樓價失控劇升的主因之一。土地供應增加能滿足市場的大量需求，而非壓制需求。這個政策是走對了方向。不過，現在增加新的土地供應，要待三至四年後才有新樓宇落成。在這批新樓宇投入市場之前，市場仍然要面對供應嚴重短缺，而樓價亦只會持續上揚。對於香港絕大多數中產階層來說，現時的樓價已是高不可攀。

增加土地供應無疑能有效減低需求預期。但是，卻有其他因素促使樓價持續上升，包括通脹急升、借貸成本低、中國資金湧入香港樓市，以及本土經濟發展蓬勃。這些因素抵銷土地供應增加的效用，使樓價在可見的將來依然繼續攀升。

Koh Keng-shing

ks-koh@landscape.com

(The above is an excerpt from Market Watch on www.landscape.com. For the full article, please log on to www.landscape.com/marketwatch)

Monthly HIGHLIGHTS 每月精選



03 Summit Court
雲峰大廈

11 Monticello
中半山 滿峰台

13 Wilshire Towers
北角半山 慧雅閣

16 Serenade
東半山 上林

HOW MAY YOU LIST YOUR PROPERTY WITH THE KEY?

怎樣在《大宅》刊登您的出售／出租物業？

If you would like to see your property listed in The Key in the next issue, you may call Loretta Lui at 3102 4818 or visit us at www.landscape.com/sell_let. Or you may simply fill out the space below and fax to us at 2866 0015.

如果您想將出售／出租物業刊登於大宅，可致電31024818與呂小姐聯絡，或登上 www.landscape.com/sell_let。或者您可以填寫下面的表格傳真至28660022。

我們的大宅專員會馬上與您聯絡

Property to be listed

Asking Rental / Sale Price

Floor Area

Contact Person

Telephone

Email

Our KeyPersons will contact you for follow-up works.

Published and distributed by

LANDSCOPE 領域
The Specialists in Luxury Properties

Landscape Realty Limited C-018733
a member of Landscape Surveyors Ltd

Tel: +852 2866 0022
Fax: +852 2866 0015
Email: info@landscape.com
Website: www.landscape.com
Address: Unit 3106, 31/F, Hopewell Centre,
183 Queen's Road East, Wanchai, Hong Kong



Tel: +852 2525 0287
Fax: +852 2526 3860
Email: info@perspectiveglobal.com
Website: www.perspectiveglobal.com
Address: Rm 2408, Dominion Centre,
59 Queen's Road East, Wanchai, Hong Kong

The information, text, photos, analyses and projections contained herein are provided solely for the convenience of prospective clients and no warranty or representation as to their accuracy, correctness or completeness is made by Landscape Surveyors Limited, Landscape Realty Limited or the owners, none of whom shall have any liability or obligation with respect thereto. Interested parties should rely on their own investigations, interpretations and analyses in connection with the purchase or letting thereof.

Information has been provided to us by sources deemed reliable, but no warranty or representation is made as to its accuracy, correctness or completeness. These offerings are made subject to contract, correction of errors, omissions, prior sale or lease, change of price or terms or withdrawal from the market without notice. The contents of The Key are for reference only and do not constitute all or any part of a contract. Copyright 2011

Designed by

PERSPECTIVE 透視



DESIGNER DELIGHT 心水之選

If you dream of a professionally-designed, open-plan apartment with luxurious fittings, beautiful floors and expansive views over Victoria Harbour, then look no further than this 1,650 sq-ft apartment in Summit Court on Tin Hau Temple Road.

Featuring two bedrooms (one ensuite), two bathrooms, a combined living and dining room, a glass-walled balcony and a high-spec kitchen with stainless steel appliances and ample storage, the residence is a designer's dream.

In the living area, for example, recessed and spot lighting help create a warm, stylish ambience, with glass folding doors which run the full length of the balcony ensuring that ample natural light floods the space during the day. In cooler weather, the balcony doors can be fully opened, expanding the living area and making it perfect for entertaining.

The master bathroom is a symphony of creamy marble, with a glass-walled shower and sleek taps; the second bathroom is no less opulent, featuring dark grey marble and a unique, coffeebean-shaped glass sink.

At this Summit Court residence, you can be assured that you will have attained the peak of designer perfection.

你若夢寐以求入住由設計師專業打造的開放式居所，內設豪華傢俱陳設，精挑細致地板，更能覽維港美景；那麼，這間位於天后廟道雲峰大廈的一千六百五十平方呎公寓便是你的不二之選。

這寓所設有兩間睡房(其一為套房)、兩間浴室與一雙連客廳，設有玻璃露台，而廚房設備齊全，設不鏽鋼器具與充足的貯物空間。家居如斯佈置，委實是設計師的夢之居所。

以客廳為例，嵌壁式射燈營造窩心而時尚的格調。至於分隔露台與客廳的玻璃摺疊門，則使日間有充足的天然日光透進室內。當天氣涼快時，打開摺疊門，把客廳空間擴展到露台，最適宜用來招呼朋友聯誼一番。

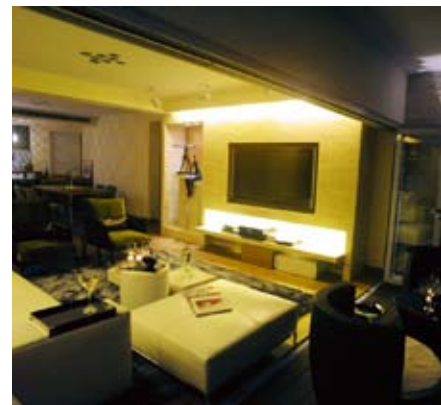
主浴室格調諧和，鋪有淡黃大理石，設有配襯雅緻龍頭的玻璃淋浴間。相較之下，另一間浴室亦毫不遜色，除了鋪有深灰大理石外，更設有形態宛如咖啡豆的獨特玻璃洗臉槽。

這間位於雲峰大廈的住宅，可謂已達登峰造極的設計境界。

Summit Court 雲峰大廈
144-158 Tin Hau Temple Road,
North Point MidLevels
北角半山天后廟道144-158號

1,650 s.f.
HK\$22.8M

6838 2929 Mark Mak 麥先生
www.landscape.com/124501.htm





Baguio Villa

550 - 555 Victoria Road, Pokfulam
Spacious practical apartment with private roof in Pokfulam
薄扶林寬敞住宅，連天台，間隔實用

薄扶林 碧瑤灣

1,135 s.f. (plus roof)

\$12M

☎ 6838 2929 Mark Mak 麥先生
🌐 www.landscape.com/56210.htm



Cherry Court

10-12 Consort Rise, Pokfulam
3-bedroom low-rise apartment at Pokfulam
薄扶林三房低密度住宅出售

薄扶林 昌麗閣

1,475 s.f. (plus terrace)

\$14M

☎ 9551 1077 Walker Lam 林先生
🌐 www.landscape.com/54552.htm

可普通話



Y Y Mansion

96 Pok Fu Lam Road, Pokfulam
Nicely decorated apartment with private roof top
雅致裝修住宅，連天台出售

薄扶林 裕仁大廈

1,750 s.f. (plus roof)

\$22M

☎ 9093 3381 Stephen Chan 陳先生
🌐 www.landscape.com/121872.htm



Pokfulam Court

94 Pok Fu Lam Road, Pokfulam
Practical 3-bedroom apartment with big balcony overlooking harbour view
間隔實用三房單位，連大陽臺，俯瞰維港美景

薄扶林 碧林閣

1,800 s.f.

\$23M

☎ 9348 4118 Rowena Siu 蕭小姐
🌐 www.landscape.com/83034.htm



Residence Bel-Air

Bel-Air Avenue, Pokfulam
Nicely decorated waterfront apartment with excellent clubhouse facilities
靚裝修海濱住宅，連豪華會所設施，可租可售

薄扶林 貝沙灣

1,588 s.f.

\$24.8M also for lease \$65K incl.

☎ 9028 0147 Jenson Au 區先生
🌐 www.landscape.com/98641.htm

可普通話



Villa Piubello

1-7 Cape Drive, Chung Hom Kok
3-bedroom flat with tranquil sea view
春坎角三房住宅，環境寧靜，享海景

春坎角 環角徑1-7號

1,800 s.f.

\$25.5M

☎ 9011 6595 Mary Li 李小姐
🌐 www.landscape.com/113946.htm



Baguio Villa

550 - 555 Victoria Road, Pokfulam
Practical and high efficiency 4-bedroom apartment near Cyberport
間隔實用四房住宅，鄰近數碼港，實用率極高

薄扶林 碧瑤灣

2,332 s.f.

\$26.5M

☎ 5182 8699 Maria Cheung 張小姐
🌐 www.landscape.com/55052.htm



Aegean Terrace

60 Sassoon Road, Pokfulam
Sea view low-rise with brand new decorations and spacious layout
全新裝修低密度海景住宅，間隔寬敞

薄扶林 愛琴苑

1,860 s.f.

\$26.5M

Sole Agent 獨家代理

☎ 5182 8699 Maria Cheung 張小姐
🌐 www.landscape.com/40058.htm



Hong Kong Parkview

88 Tai Tam Reservoir Road, Repulse Bay
Mountain view apartment with full facilities
翠綠山景住宅，連完善住客會所設施

淺水灣 陽明山莊

1,903 s.f.

\$27.8M

☎ 9177 7191 Jackson Lee 李先生
🌐 www.landscape.com/4245.htm



La Mer

67-71 Bisney Road, Pokfulam
Full sea view low-rise 3-bedroom apartment with study room and twin carparks
全海景低密度三房單位，連書房及雙車位

薄扶林 浪韻居

2,063 s.f.

\$29.8M

Sole Agent 獨家代理

☎ 9088 4666 Yvonne Chang 鄭小姐
🌐 www.landscape.com/108873.htm



Pokfulam Court
94 Pok Fu Lam Road, Pokfulam
Newly decorated sea view 3-bedroom apartment
靚裝修三房海景住宅

薄扶林
碧林閣

1,780 s.f.
\$30M

9648 6082 Christine Chong 莊小姐
www.landscape.com/124534.htm



Splendour Villa
10 South Bay Road, Repulse Bay
Rare find beachfront low-rise with private roof top at Repulse Bay
淺水灣海濱低密度住宅，連私家天台，市場罕有

淺水灣
雅景閣

1,325 s.f. (plus roof)
\$32M

9107 3891 Mavis Wu 吳小姐
www.landscape.com/34427.htm

可普通話



The Brentwood
11 Repulse Bay Road, Repulse Bay
Cozy 3-bedroom apartment with beautiful views on upper Repulse Bay Road
淺水灣道頭段迷人三房單位，享美麗景色，可租可售

淺水灣
蔚峰園

1,556 s.f.
\$35M also for lease \$70K incl.

6330 7888 Cora Ko 高小姐
www.landscape.com/109080.htm



37 Repulse Bay Road, Repulse bay
Family flat with comprehensive facilities and full view of Deep Water Bay
家庭式住宅，連完善住客會所設施，兼享深水灣全景

淺水灣
淺水灣道37號

1,745 s.f.
\$35.5M

9809 8570 Stella Lo 羅小姐
www.landscape.com/19689.htm



Faber Court
29-31 Tai Tam Road, Tai Tam
Spacious sea view apartment in Tai Tam
大潭海景住宅，間隔寬敞

大潭
輝百閣

1,900 s.f.
\$38M

9028 0147 Jenson Au 區先生
www.landscape.com/17333.htm

可普通話



12-14 Shouson Hill Road West, Shouson Hill
Unique low-rise flat with nice decor in tranquil Shouson Hill
壽臣山精緻低密度住宅，靚裝修，環境寧靜怡人

壽臣山
壽臣山道西12-14號

2,200 s.f.
\$40M

9348 4118 Rowena Siu 蕭小姐
www.landscape.com/108788.htm



Faber Court
29-31 Tai Tam Road, Tai Tam
3-bedroom sea view apartment in Tai Tam
大潭三房海景住宅

大潭
輝百閣

2,250 s.f.
\$42M

9011 6595 Mary Li 李小姐
www.landscape.com/108156.htm



South Bay Towers
59 South Bay Road, Repulse Bay
Well decorated 3-bedroom apartment with 3 car parks, swimming pool and tennis court
靚裝修三房單位，連三車位，游泳池及網球場

淺水灣
南灣大廈

2,738 s.f.
\$43M

9011 6595 Mary Li 李小姐
www.landscape.com/49997.htm



Hong Kong Parkview
88 Tai Tam Reservoir Road, Repulse Bay
Spacious 4-bedroom apartment with extensive clubhouse facilities
寬敞四房單位，連完善住客會所設施

淺水灣
陽明山莊

2,787 s.f.
\$43M

9648 6082 Christine Chong 莊小姐
www.landscape.com/23087.htm



Ruby Court
55 South Bay Road, Repulse Bay
Popular sea view 3-bedroom flat in tranquil South Bay
受歡迎三房住宅，環境優美怡人，欣賞南區海景

淺水灣
嘉麟閣

2,200 s.f.
\$45M

9011 6595 Mary Li 李小姐
www.landscape.com/51578.htm



Faber Villa

17 Tai Tam Road, Tai Tam
Rare high privacy sea view flat in Tai Tam
大潭罕有海景住宅，私隱度高

大潭
輝百苑

3,200 s.f.
\$53M

☎ 9028 0147 Jenson Au 區先生 可普通話
🌐 www.landscape.com/107946.htm



Residence Bel-Air

1-18 Cyberport Road, Pokfulam
Brand new duplex penthouse with sky garden and private roof
全新複式頂層住宅，連私家天台及空中花園，可租可售

薄扶林
貝沙灣

2,425 s.f. (plus terrace and roof)
\$54M also for lease \$135K incl.

☎ 9809 8570 Stella Lo 羅小姐
🌐 www.landscape.com/99245.htm



Pine Crest

65 Repulse Bay Road, Repulse Bay
Nicey decorated 4-bedroom flat overlooking Deep Water Bay
靚裝修四房單位，俯瞰深水灣迷人景色

淺水灣
松苑

2,250 s.f.
\$55M

☎ 9809 8570 Stella Lo 羅小姐
🌐 www.landscape.com/109944.htm



Park Place

7 Tai Tam Reservoir Road, Repulse Bay
Prestigious apartment with facilities close to city enjoying unique views
淺水灣豪華住宅，連會所設施，鄰近市區，享優美景觀

淺水灣
雅柏苑

2,288 s.f.
\$58M

☎ 9093 3381 Stephen Chan 陳先生
🌐 www.landscape.com/35497.htm



Park Place

7 Tai Tam Reservoir Road, Repulse Bay
Prestigious 3-bedroom apartment location in a very convenient part of Island South
南區頭段三房瑰麗住宅

淺水灣
雅柏苑

2,335 s.f.
\$65M

☎ 6183 8388 Chris Law 羅先生
🌐 www.landscape.com/108291.htm



Hillgrove

18 Cape Drive, Chung Hok Kok
Large and spacious 4-bedroom townhouse with big garden in quiet Chung Hom Kok
春坎角特大四房排屋，連大花園，環境清幽怡人，間隔寬敞

春坎角
壁如花園

3,000 s.f. (plus roof and garden)
\$65M

☎ 9648 6082 Christine Chong 莊小姐
🌐 www.landscape.com/13747.htm



Mountain Lodge

44 Mount Kellett Road, The Peak
Exclusive Peak apartment with sweeping Southside sea view
山頂獨特住宅，尊享寧靜南區海景

山頂
崑崙

2,600 s.f.
\$65M

☎ 9107 3891 Mavis Wu 吳小姐 可普通話
🌐 www.landscape.com/17490.htm



Regalia Bay

88 Wong Ma Kok Road, Stanley
Spacious 5-bedroom waterfront townhouse with sunset sea view
寬敞五房海濱排屋，享日落海景

赤柱
富豪海灣

4,083 s.f. (plus roof and garden)
\$66M

☎ 6838 2929 Mark Mak 麥先生
🌐 www.landscape.com/107814.htm



Montebello

15-17 Plantation Road, The Peak
Colonial duplex apartment with tasteful decorations
山頂英式複式住宅，配以品味靚裝修，可租可售

山頂
濠景閣

3,070 s.f.
\$75M also for lease \$180K incl.

☎ 9199 0672 David Leung 梁先生
🌐 www.landscape.com/130620.htm



Fortuna Court

25 Repulse Bay Road, Repulse Bay
Large 4-bedroom apartment with full view of Deep Water Bay
特大四房單位，尊享全深水灣景觀

淺水灣
福慧大廈

2,857 s.f.
\$87M

☎ 9871 6828 Louis Wong 黃先生
🌐 www.landscape.com/168.htm



La Hacienda

29-33 Mount Kellett Road,
The Peak

Colonial style apartment with facilities in
The Peak

山頂英式住宅，設施齊全，地段尊貴，可租可售

3,506 s.f.

\$90M also for lease \$160K

☎ 9080 6686 Teresa Lau 劉小姐

🌐 www.landscape.com/30905.htm

可普通話

山頂
加列山道29-33號



Repulse Bay Towers

119A Repulse Bay Road,
Repulse Bay

5-ensuite large duplex with
Repulse Bay view

特大五房複式住宅，欣賞淺水灣景觀

5,000 s.f.

\$92M

☎ 9028 0147 Jenson Au 區先生

🌐 www.landscape.com

可普通話

淺水灣
保華大廈



Belleview Place

93 Repulse Bay Road, Repulse Bay

High quality sea view townhouse with
private garage

高質素海景排屋，連私家車庫

3,619 s.f. (plus terrace and roof)

\$98M

☎ 9138 1621 Teresa Fung 馮小姐

🌐 www.landscape.com/84590.htm

淺水灣
寶晶苑



22A-B Mount Austin Road, The Peak

A Bird's eye view of the Vitoria Harbour

山頂鳥瞰優美維港景住宅，可租可售

2,650 s.f.

\$100M also for lease \$130K

☎ 9199 0672 David Leung 梁先生

🌐 www.landscape.com/14296.htm

山頂
柯士甸山道22A-B號



Le Palais

8 Pak Pat Shan Road, Tai Tam

4-bedroom house with private garden
on Tai Tam waterfront

大潭海濱四房大屋，連私家花園

4,372 s.f. (plus garden)

\$105M

☎ 9833 9509 Michelle Chung 鍾小姐

🌐 www.landscape.com/36564.htm

可普通話

大潭
皇府灣



Royal Bay

82 Chung Hom Kok Road,
Chung Hom Kok

Sea view townhouse in Chung Hom Kok
春坎角海景排屋

3,850 s.f. (plus roof and terrace)

\$120M

☎ 9871 6828 Louis Wong 黃先生

🌐 www.landscape.com

春坎角
御灣



56 Repulse Bay Road, Repulse Bay

Tastefully decorated duplex apartment
with terrace overlooking Repulse Bay

品味裝修複式住宅，連平台，俯瞰淺水灣迷人景色

3,173 s.f. (plus terrace)

\$120M

☎ 6330 7888 Cora Ko 高小姐

🌐 www.landscape.com/98347.htm

淺水灣
淺水灣道56號



Mountain Lodge

44 Mount Kellett Road, The Peak

Rare duplex apartment with Southside
sea view

山頂罕有複式住宅，享南區海景

5,200 s.f.

\$130M

☎ 9199 0672 David Leung 梁先生

🌐 www.landscape.com/96955.htm

山頂
崑崙



Residence Bel-Air

1-18 Cyberport Road, Pokfulam

Brand new spacious waterfront garden
house at Cyberport

全新海濱洋房，間隔寬敞，可租可售

4,654 s.f. (plus roof and garden)

\$142M also for lease \$250K incl.

☎ 5182 8699 Maria Cheung 張小姐

🌐 www.landscape.com/126958.htm

薄扶林
貝沙灣



Strawberry Hill

8 Plunkett's Road, The Peak

Colonial style townhouse with
picturesque views

山頂英式洋房，尊享如畫美景

3,200 s.f.

\$160M

☎ 9833 9509 Michelle Chung 鍾小姐

🌐 www.landscape.com/49439.htm

可普通話

山頂
紅莓閣



Kelleteria

71 Mount Kellett Road, The Peak
Peak luxurious mansion with private pool and garage
山頂豪華住宅，連私家泳池及車庫

山頂
加列山道71號

3,198 s.f.

(plus garden, roof and terrace)

\$160M

☎ 6330 7888 Cora Ko 高小姐

🌐 www.landscape.com/99225.htm



45 Island Road, Deep Water Bay

Rare find sea view garden house at Deep Water Bay
深水灣罕有海景花園洋房

深水灣
香島道45號

4,800 s.f. (plus garden and roof)

\$168M

☎ 9199 0672 David Leung 梁先生

🌐 www.landscape.com/99477.htm



Abergeldie

52 Plantation Road, The Peak
Designer decorated townhouse overlooking Victoria Harbour panorama
設計師精心設計排屋，俯瞰維港美景

山頂
種植道52號

3,688 s.f.

(plus roof, terrace and garden)

\$200M

☎ 9833 9509 Michelle Chung 鍾小姐

🌐 www.landscape.com/122157.htm



Kellett View Town House

65-69 Mount Kellett Road, The Peak
Colonial style townhouse situated at prime location
山頂英式洋房，地段尊貴

山頂
嘉麗園

3,986 s.f. (plus terrace)

\$220M

☎ 9833 9509 Michelle Chung 鍾小姐

🌐 www.landscape.com/96599.htm



Severn Eight

8 Severn Road, The Peak
Extravagant harbour view house at prestigious location
豪華維港景大屋，地段尊貴

山頂
倚巒

4,300 s.f. (plus roof and garden)

\$260M

☎ 9871 6828 Louis Wong 黃先生

🌐 www.landscape.com/124472.htm



Turtle Cove

60 Tai Tam Road, Tai Tam
Rare and unique sea view townhouse in Tai Tam
大潭罕有海景大屋，市面難尋

大潭
龜背灣

4,500 s.f. (plus terrace)

\$165M

☎ 9833 9509 Michelle Chung 鍾小姐

🌐 www.landscape.com/30574.htm



Bayview

21-35 Black's Link, The Peak
5-bedroom townhouse with Deep Water Bay view from The Peak
山頂五房排屋，享深水灣迷人景色

山頂
布力徑21-35號

3,350 s.f. (plus terrace and roof)

\$200M

☎ 9238 2012 David Chan 陳先生

🌐 www.landscape.com/84364.htm



Severn Eight

8 Severn Road, The Peak
Superb townhouse overlooking Victoria Harbour panorama
山頂豪華洋房，俯瞰遠闊維港景色

山頂
倚巒

3,330 s.f. (plus roof and garden)

\$215M

☎ 6838 2929 Mark Mak 麥先生

🌐 www.landscape.com/94672.htm



32 Stanley Village Road, Stanley

Contemporary designed townhouse with private pool in Stanley
赤柱靚裝修洋房，連私家泳池，天台及花園

赤柱
赤柱村道32號

6,700 s.f. (plus terrace and roof)

\$250M

☎ 9107 3891 Mavis Wu 吳小姐

🌐 www.landscape.com/131629.htm



11 Pollock's Path, The Peak

Exclusive garden house with a bird's eye view of Victoria Harbour
獨特尊貴花園大屋，鳥瞰維港美景，可租可售

山頂
普樂道11號

4,600 s.f.

\$268M also for lease \$330K

☎ 9199 0672 David Leung 梁先生

🌐 www.landscape.com/4394.htm



Albron Court

99 Caine Road, Midlevels West
Spacious 3-bedroom flat in Midlevels
close to escalator
寬敞三房單位，鄰近半山扶手電梯

西
半
山
豐
樂
閣

1,600 s.f.
\$18M

☎ 9177 7191 Jackson Lee 李先生
🌐 www.landscape.com/136682.htm



Realty Garden

41 Conduit Road, Midlevels West
3-bedroom apartment in convenient
location
西半山三房住宅，位置優越，交通方便

西
半
山
聯
邦
花
園

1,350 s.f.
\$23.8M

☎ 9028 0147 Jenson Au 區先生 **可普通話**
🌐 www.landscape.com/94712.htm



Wing Way Court

31 Kennedy Road, Midlevels Central
3-bedroom apartment with high privacy
close to Wanchai and Causeway Bay
高私隱度三房住宅，鄰近灣仔及銅鑼灣，吃喝玩樂十分方便

中
半
山
桂
濤
苑

1,860 s.f.
\$24.98M

☎ 9177 7191 Jackson Lee 李先生
🌐 www.landscape.com/94524.htm



Glory Mansion

106-108 MacDonnell Road,
Midlevels Central
Tastefully designed colonial apartment on
convenient MacDonnell Road
麥當勞道品味裝修英式住宅，位置優越，交通方便

中
半
山
輝
煌
大
廈

2,300 s.f.
\$30.5M

☎ 9348 4118 Rowena Siu 蕭小姐
🌐 www.landscape.com/107872.htm



Suncrest Tower

1-11 Monmouth Terrace,
Midlevels Central
Rare find 4-bedroom unit with lush
mountain view in convenience location
罕有四房單位，享翠綠景致，地段優越

中
半
山
桂
濤
苑

2,005 s.f.
\$31M

☎ 9138 1621 Teresa Fung 馮小姐
🌐 www.landscape.com/45087.htm



Savoy Court

101 Robinson Road,
Midlevels West
Practical 4-bedroom flat with new decor
新裝修四房住宅，間隔實用

西
半
山
夏
蕙
苑

2,546 s.f.
\$34.5M

☎ 9809 8570 Stella Lo 羅小姐 **可普通話**
🌐 www.landscape.com/107715.htm



Bowen Place

11A Bowen Road,
Midlevels Central
3-bedroom harbour view apartment in
quiet location
中半山三房維港景住宅，環境寧靜優美

中
半
山
寶
雲
閣

1,983 s.f.
\$35M

☎ 9080 6686 Teresa Lau 劉小姐 **可普通話**
🌐 www.landscape.com/34841.htm



Fairlane Tower

2B Bowen Road, Midlevels Central
Luxury apartment with facilities on
tranquil Bowen Road
寶雲道豪宅，連住客會所設施，地段尊貴，可租可售

中
半
山
寶
雲
山
莊

1,700 s.f.
\$33M also for lease \$83K incl.

☎ 9551 1077 Walker Lam 林先生
🌐 www.landscape.com/100695.htm



Century Tower 1

1 Tregunter Path, Midlevels Central
Unique 3-bedroom flat with large balcony
and view
獨特三房住宅，連特大陽臺，享優美景色

中
半
山
世
紀
大
廈
二
座

2,565 s.f.
\$37.8M

☎ 9648 6082 Christine Chong 莊小姐
🌐 www.landscape.com/15864.htm



Wealthy Heights

35 MacDonnell Road,
Midlevels Central
Family apartment with green hill view
中半山家庭式住宅，欣賞綠色山景

中
半
山
威
豪
閣

1,987 s.f.
\$39.8M

☎ 9486 1566 Mira To 杜小姐
🌐 www.landscape.com/120190.htm



Bowen Place

11A Bowen Road,
Midlevels Central
3-bedroom apartment with balcony in
prime location
三房單位連陽臺，地段尊貴

1,983 s.f.
\$40M

📞 9011 6595 Mary Li 李小姐
🌐 www.landscape.com/118850.htm

中半山
寶雲閣



Dynasty Court

23 Old Peak Road,
Midlevels Central
Renowned luxury apartment with deluxe
clubhouse in fringe of CBD
新裝修豪華住宅，連完善尊貴住客會所設施，
鄰近中環，可租可售

1,970 s.f.
\$40M also for lease \$88K incl.

📞 6838 2929 Mark Mak 麥先生
🌐 www.landscape.com/136874.htm

中半山
帝景閣



Silvercrest

24 MacDonnell Road,
Midlevels Central
Unique apartment with tasteful
decorations in prime location
精緻獨特住宅，連雅緻裝修，地段尊貴

2,643 s.f.
\$42M

📞 9493 8275 Sami Woo 胡小姐
🌐 www.landscape.com/102054.htm

中半山
聚安樓



Haddon Court

41C Conduit Road, Midlevels West
Spacious 4-bedroom apartment in
convenient yet quiet location
寬敞四房住宅，環境寧靜，位置優越

2,850 s.f.
\$43M

📞 9493 8275 Sami Woo 胡小姐
🌐 www.landscape.com/9831.htm

西半山
海天閣



Century Tower 1

1 Tregunter Path,
Midlevels Central
Unique harbour view flat in Central
Midlevels with nice decorations
中半山維港景住宅，尊享靚裝修

2,565 s.f.
\$42M

📞 9138 1621 Teresa Fung 馮小姐
🌐 www.landscape.com/21356.htm

中半山
世紀大廈一座



Realty Garden

41 Conduit Road, Midlevels West
Spacious harbour view apartment with
good layout and nice decor
寬敞維港景住宅，間隔實用，靚裝修

2,700 s.f.
\$44.8M

📞 9493 8275 Sami Woo 胡小姐
🌐 www.landscape.com/125567.htm

西半山
聯邦花園



1 Robinson Road,
Midlevels West
Unique duplex with good layout on fringe
of CBD
獨特複式住宅，間隔實用，鄰近中環，交通方便

3,400 s.f.
\$55M

📞 9486 1566 Mira To 杜小姐
🌐 www.landscape.com/98553.htm

西半山
羅便臣道一號



May Tower

7 May Road, Midlevels Central
Large 2-ensuite duplex in popular
colonial style mansion
受歡迎英式特大兩套房複式住宅，可租可售

2,850 s.f.
\$58M also for lease \$110K incl.

📞 9093 3381 Stephen Chan 陳先生
🌐 www.landscape.com/135192.htm

中半山
梅苑



Estoril Court

55 Garden Road,
Midlevels Central
Huge 4-bedroom apartment with
spacious and highly efficient layout
特大四房住宅，間隔寬敞，實用率高

3,347 s.f.
\$63M

📞 9107 3891 Mavis Wu 吳小姐
🌐 www.landscape.com/107585.htm

中半山
愛都大廈



Grenville House

1-3A Magazine Gap Road,
Midlevels Central
Huge 4-bedroom apartment with
huge balcony enjoy open city view
in Midlevels Central
中半山特大四房住宅連大露台，享開揚城市景觀

3,700 s.f.
\$95M

📞 9080 6686 Teresa Lau 劉小姐
🌐 www.landscape.com/17367.htm

中半山
嘉慧園



The Albany
1 Albany Road,
Midlevels Central
Exquisite duplex apartment on fringe of
CBD commanding nice views
豪華複式住宅，鄰近中環，享優美景色

中
半
山
雅
賓
利
大
廈

3,563 s.f.
\$108M

9138 1621 Teresa Fung 馮小姐
www.landscape.com/39658.htm



Century Tower 2
1A Tregunter Path,
Midlevels Central
Stylish designer decorated penthouse
with private roof terrace
設計師時尚靚裝修頂層住宅，連私家天台平台

中
半
山
世
紀
大
廈
2座

3,663 s.f. (plus roof)
\$130M

9871 6828 Louis Wong 黃先生
www.landscape.com/100168.htm



**Huge duplex apartment
in Midlevels Central**
Rare find huge duplex apartment
at prime location
罕有特大複式單位，地段尊貴

中
半
山
特
大
複
式
單
位

6,786 s.f.
\$200M

9871 6828 Louis Wong 黃先生
www.landscape.com



The Mayfair
1 May Road, Midlevels Central
Unique penthouse duplex with Victoria
Harbour view in prime location
獨特頂層複式住宅，享維港景，地段尊貴

中
半
山
梅
道
2號

5,836 s.f.
\$220M

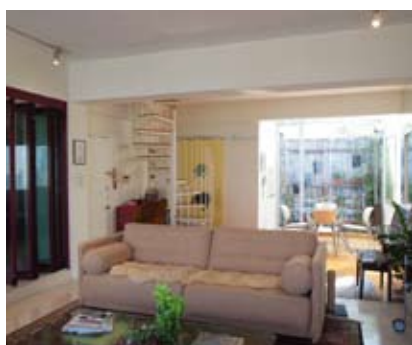
9833 9509 Michelle Chung 鍾小姐 可普通話
www.landscape.com/40006.htm



This sought-after penthouse, with its own private roof in Central Mid-Levels is an oasis of calm and relaxation. The three-bedroomed space, features a split-level combined living and dining room, and a balcony which provides uninterrupted views over Central Hong Kong. With its cream-coloured walls, neutral wood and stone floors and large windows, the space is filled with natural light.

A spiral staircase leads to the roof, where a Thai-style pagoda-roof patio and terracotta floor tiles create a true haven, complete with an established garden of trees, flowering shrubs and greenery.

The apartment also comes with two car-parking spaces and one maid's room.



這間相當受歡迎的豪華公寓位於中環半山區，設有私人天台，是繁囂都市中的一片幽靜綠洲。公寓設三間睡房、結合客房廳的中層，以及中環全景一覽無遺的露台。公寓的牆身是奶油白，鋪設天然木地板與石地板，偌大的玻璃窗讓天然日光滲透室內每個角落。

走上螺旋樓梯可通往天台。天台一片綠色的花園種滿花草灌木，並設有泰式涼亭、鋪上赤陶地板。

公寓亦附設一間工人房及兩個車位。

空中庭園
A garden
in the sky

Monticello 滿峰台
48 Kennedy Road, Midlevels Central
中環半山堅尼地道48號

1,447 s.f.
HK\$26M

9348 4118 Rowena Siu 蕭小姐
www.landscape.com/71103.htm



Silver Fair Mansion

2E-2F Shiu Fai Terrace,
Midlevels East

Brand new decoration flat with green view and open view
全新裝修住宅，享翠綠景色及開揚景致

1,450 s.f.
\$15M

6183 8339 Carman Szeto 司徒小姐 可普通話
www.landscape.com/72414.htm

東半山銀輝大廈



Beverly Hill

6 Broadwood Road, Happy Valley

Decorated 4-bedroom apartment in family estate with open city view and clubhouse facilities
靚裝修四房住宅，連完善會所設施，享開揚城市景觀

1,748 s.f.
\$23.8M

6183 8339 Carman Szeto 司徒小姐 可普通話
www.landscape.com/83187.htm

跑馬地比華利山



8 Shiu Fai Terrace, Midlevels East

3-ensuite family flat in tranquil location
三套房家庭式住宅，地段尊貴

2,142 s.f.
\$28M

6838 2929 Mark Mak 麥先生
www.landscape.com/31231.htm

東半山肇輝台8號



Winfield Building

5 Ventris Road, Happy Valley

Racecourse view 3-bedroom apartment on fringed of Causeway Bay
馬場景三房單位，鄰近銅鑼灣，吃喝玩樂，十分方便

1,597 s.f.
\$29.5M

9551 1077 Walker Lam 林先生 可普通話
www.landscape.com/112809.htm

跑馬地雲輝大廈



The Leighton Hill

2B Broadwood Road,
Happy Valley

2-bedroom racecourse view apartment with excellent facilities
兩房馬場景住宅，連完善住客會所設施

1,206 s.f.
\$30.15M

9551 1077 Walker Lam 林先生 可普通話
www.landscape.com/34133.htm

跑馬地禮頓山



Cavendish Heights

27-37 Perkins Road,
Jardine's Lookout

Popular family development in prime location with full facilities
受歡迎家庭式住宅，地段尊貴，連完善住客會所設施

1,907 s.f.
\$32M

9028 0147 Jenson Au 區先生 可普通話
www.landscape.com/103934.htm

渣甸山嘉雲臺



Celeste Court

12 Fung Fai Terrace, Happy Valley

3-bedroom apartment with internal private roof and terrace overlooking racecourse
跑馬地三房單位，連內置私家天台平台，俯瞰馬場景觀

1,638 s.f. (plus roof and terrace)
\$40M

9648 6082 Christine Chong 莊小姐
www.landscape.com/108271.htm

跑馬地蔚雲閣



Fontana Gardens

1-25 Ka Ning Path, Midlevels East

Spacious 3-bedroom apartment with city view within walking distance of Causeway Bay
寬敞三房單位，享城市景，鄰近銅鑼灣，吃喝玩樂，十分方便

3,000 s.f.
\$42.8M

6183 8339 Carman Szeto 司徒小姐 可普通話
www.landscape.com/46148.htm

東半山豪園



Luxury apartment in Midlevels East

Tai Hang Road, Midlevels East

Top floor duplex in prime location
大坑道複式住宅，地段尊貴

2,438 s.f.
\$43M

9486 1566 Mira To 杜小姐
www.landscape.com/44596.htm

東半山高尚住宅



Grand Deco Tower

26 Tai Hang Road, Midlevels East

Rare unique triplex penthouse with private roof
獨特三複式頂層住宅，連私家天台，市場罕有

3,308 s.f. (plus roof and terrace)
\$53M

9304 4257 Arthur Wong 黃先生
www.landscape.com/103305.htm

東半山帝后臺



White Jade
51 Stubbs Road, Midlevels East
Boutique 2-bedroom apartment with fantastic harbour view
精緻兩房單位，享壯麗維港美景

東
半
山
白
璧

1,700 s.f.
\$53M

9304 4257 Arthur Wong 黃先生
www.landscape.com/38175.htm



47A Stubbs Road,
Midlevels East
Exclusive mid-rise apartment with harbour view
獨特中密度住宅，享維港景色，可租可售

渣
甸
山
司
徒
拔
道
47A號

2,400 s.f.
\$55M also for lease \$88K incl.

9348 4118 Rowena Siu 蕭小姐
www.landscape.com/107400.htm



Victoria Height
43A Stubbs Road, Midlevels East
Nicely decorated 4-bedroom apartment with magnificent harbour view

東
半
山
威
利
閣

2,650 s.f.
\$72.8M also for lease \$160K incl.

9093 3381 Stephen Chan 陳先生
www.landscape.com



Moorsom Drive,
Jardine's Lookout
Newly decorated modern single house in gated Jardine's Lookout
全新裝修時尚獨立屋，位於渣甸山高尚地段

渣
甸
山
睦
誠
徑

3,566 s.f. (plus garden)
\$180M

9177 7191 Jackson Lee 李先生
www.landscape.com/47366.htm



Sea view 4-bedroom apartment with balcony in North Point Midlevels.

A minimalist design ethos features strongly in this four-bedroomed apartment, with beautifully clean lines and a simple layout that optimises functionality and ergonomics. High-end design aesthetics see creamy walls, pale wood floors and recessed ceiling lights contribute toward the sense of unity and spaciousness, set off by dark-framed windows for contrast.

Marble and granite are used extensively in the luxurious master bathroom, which also features a double-sink unit. In the kitchen, stainless steel appliances contrast with the pale wood cabinetry, while the breakfast bar island provides additional worktop space complements the clean white palette of the space.



北角半山四房海景住宅連陽臺

這個四房單位的設計奉行簡約主義，線條簡潔，間格亦相當簡明，講求實用與人體工學。單位的室內設計充滿華麗氣息，乳白色的牆身、淡色木地板與嵌入式天花吊燈連貫整個空間，加強整體的統一性與空間感，配上深色的窗框，營造強烈對比。

主人房的豪華浴室用上大理石與花崗岩，設有雙水槽設計。廚房內的不鏽鋼煮食爐具在淺色木廚櫃襯托下加倍亮麗。早餐吧檯同時可當作額外的煮食工作檯面，映襯出廚房空間的純白色調。



簡潔亮麗

Clean & bright

Wilshire Towers 慧雅閣

200 Tin Hau Temple Road, North Point Midlevels
北角半山天后廟道200號

2,317 s.f.
HK\$32M

6183 8339 Carman Szeto 司徒小姐
www.landscape.com/125464.htm



Bayview Court

49 Mount Davis Road, Pokfulam
Low-rise apartment with full sea view in good condition
低密度海景住宅，靚裝修

1,650 s.f.
\$69K incl.

☎ 6183 8388 Chris Law 羅先生
🌐 www.landscape.com/39650.htm

薄扶林
碧海閣



Repulse Bay Villas

74-80 Repulse Bay Road, Repulse Bay
Practical sea view apartment close to Repulse Bay Beach
間隔實用海景住宅，鄰近淺水灣海灘

2,200 s.f. (plus roof)
\$80K incl.

☎ 9107 3891 Mavis Wu 吳小姐
🌐 www.landscape.com/34575.htm

淺水灣
淺水灣道74-80號



98 Repulse Bay Road, Repulse Bay

Well decorated 4-bedroom apartment close to Repulse Bay Beach
雅致裝修四房單位，鄰近淺水灣海灘，可租可售

1,800 s.f.
\$80K incl. also for sale \$31M

☎ 6183 8388 Chris Law 羅先生
🌐 www.landscape.com/124331.htm

淺水灣
淺水灣道98號



Guildford Garden

1-3 Mansfield Road, The Peak
Spacious 3-bedroom apartment with practical layout
寬敞三房住宅，間隔實用

2,400 s.f.
\$90K incl.

☎ 9486 1566 Mira To 杜小姐
🌐 www.landscape.com/32781.htm

山頂
喬苑



South Bay Towers

59 South Bay Road, Repulse Bay
High floor practical family flat with sea view and good facilities
實用家庭式住宅，極高層，連海景及會所設施，可租可售

2,738 s.f.
\$100K incl.

☎ 5182 8699 Maria Cheung 張小姐
🌐 www.landscape.com/12331.htm

淺水灣
南灣大廈



Stanley Green

66 Stanley Village Road, Stanley
Rare find 3-bedroom duplex with private garden close to Stanley Main Beach
罕有三房複式住宅，連私家花園，鄰近赤柱海灘

2,200 s.f. (plus garden)
\$102K

☎ 9138 1621 Teresa Fung 馮小姐
🌐 www.landscape.com/20266.htm

赤柱
維多利亞別墅



Celestial Garden

5 Repulse Bay Road, Repulse Bay
Spacious 3-bedroom flat enjoying fantastic sea view and hill view
寬敞三房住宅，享遠闊海景及山景

2,363 s.f.
\$115K incl.

☎ 9348 4118 Rowena Siu 蕭小姐
🌐 www.landscape.com/4173.htm

淺水灣
詩禮花園



Carolina Garden

20-34 Coombe Road, The Peak
Sought after colonial style apartment in prestigious location
山頂罕有英式住宅，地段尊貴

2,800 s.f.
\$120K incl.

☎ 9238 2012 David Chan 陳先生
🌐 www.landscape.com/32017.htm

山頂
嘉樂園



Provident Villas

29-30 Sassoon Road, Pokfulam
Spacious townhouse with swimming pool and terrace in tranquil neighbourhood
薄扶林洋房，連泳池及平台，間隔寬敞，環境怡人

3,030 s.f. (plus terrace)
\$120K

☎ 9088 4666 Yvonne Chang 鄭小姐
🌐 www.landscape.com/18525.htm

薄扶林
富麗苑



Manhattan Tower

63 Repulse Bay Road, Repulse Bay
Renovated popular 4-bedroom apartment with stunning sea view
受歡迎新裝修四房單位，享遠闊海景

2,400 s.f.
\$128K incl.

☎ 9177 7191 Jackson Lee 李先生
🌐 www.landscape.com/35916.htm

淺水灣
曼赫頓大廈



Stanley Court
9 Stanley Mound Road, Stanley
Popular 3-bedroom townhouse with garden in Stanley enjoy greenery view and pool view
赤柱受歡迎三房屋，連私家花園，享翠綠景色及泳池景

2,669 s.f.
(plus roof, terrace and garden)
\$138K incl.

☎ 9648 6082 Christine Chong 莊小姐 可普通話
🌐 www.landscape.com

赤柱海灣園



127 Repulse Bay Road, Repulse Bay
4-bedroom apartment with clubhouse facilities in exclusive location
四房住宅，連住客會所設施，地段尊貴

2,990 s.f.
\$145K

☎ 9107 3891 Mavis Wu 吳小姐
🌐 www.landscape.com/14590.htm

淺水灣 淺水灣道127號



Sunshine Villa
48 Mount Kellett Road, The Peak
Deluxe Peak townhouse with private garage
豪華山頂洋房，連私家車庫，可租可售

2,300 s.f. (plus garden)
\$150K incl. also for sale \$100M

☎ 5182 8699 Maria Cheung 張小姐
🌐 www.landscape.com/1708.htm

山頂陽光花園



Pine Lodge
10 Shouson Hill Road West, Shouson Hill
Duplex apartment with private garden in lush greenery
豪華住宅，連私家花園，綠樹松蔭，環境舒適

3,000 s.f. (plus garden)
\$160K

☎ 5182 8699 Maria Cheung 張小姐
🌐 www.landscape.com/40980.htm

壽臣山松苑



Eredine
38 Mount Kellett Road, The Peak
Spacious colonial apartment with spectacular sea view
間隔寬敞英式住宅，欣賞壯麗的維港景色

3,300 s.f.
\$160K

☎ 6330 7888 Cora Ko 高小姐
🌐 www.landscape.com/134819.htm

山頂加列山道38號



The Somerset
67 Repulse Bay Road, Repulse Bay
Duplex with relaxing sea view in exclusive location
淺水灣複式住宅，享寧靜海景，地段尊貴，可租可售

3,099 s.f.
\$170K incl. also for sale \$120M

☎ 9871 6828 Louis Wong 黃先生
🌐 www.landscape.com/31500.htm

淺水灣 怡峰



61-63 Deep Water Bay Road, Deep Water Bay
Quality townhouse in gated neighbourhood of Deep Water Bay
高質素洋房，位於深水灣寧靜地段

3,479 s.f. (plus garden)
\$200K

☎ 6330 7888 Cora Ko 高小姐
🌐 www.landscape.com/12396.htm

深水灣 深水灣道63號



25 Shek O Headland Road, Tai Tam
Colonial style single house with wrap-around garden and private pool in exclusive location
大潭英式獨立大屋，連花園及泳池，地段尊貴

4,000 s.f. (plus garden)
\$200K also for sale \$250M

☎ 6838 2929 Mark Mak 麥先生
🌐 www.landscape.com/21156.htm

大潭 石澳山仔25號



74 Mount Kellett Road, The Peak
Rare find garden 4-bedroom house on The Peak
山頂罕有四房花園洋房

4,200 s.f.
(plus roof, garden and terrace)
\$220K incl.

☎ 9011 6595 Mary Li 李小姐
🌐 www.landscape.com/129288.htm

山頂加列山道74號



Kellett View Town House
65-69 Mount Kellett Road, The Peak
Fantastic garden townhouse with sea view on the Peak
山頂花園洋房，尊享壯麗海景

4,010 s.f. (plus terrace)
\$220K

☎ 9238 2012 David Chan 陳先生
🌐 www.landscape.com/3327.htm

山頂嘉麗園



Le Palais

8 Pak Pat Shan Road, Tai Tam

Renowned townhouse with full clubhouse facilities and picturesque views of Tai Tam

大潭全新裝修洋房，連完善會所設施，尊享美麗的大潭景色

4,372 s.f. (plus garden)

\$290K

9088 4666 Yvonne Chang 鄭小姐

www.landscape.com/17451.htm

大潭
皇府灣



110 Repulse Bay Road, Repulse Bay

Exclusive sea view mansion in prestigious location of Repulse Bay
獨特海景住宅大廈，位於淺水灣高尚地段，可租可售

6,150 s.f. (plus roof and garden)

\$350k incl. also for sale Open Offer

9493 8275 Sami Woo 胡小姐

www.landscape.com/104464.htm

淺水灣
淺水灣道110號



9 Coombe Road, The Peak

Prestigious Peak house with 5 ensuite overlooking fantastic vista
尊貴山頂五套房大屋，盡享奢華美景

7,500 s.f. (plus terrace and garden)

\$400K

9493 8275 Sami Woo 胡小姐

www.landscape.com/5569.htm

山頂
甘道9號



24 Middle Gap Road, The Peak

Extravagant mansion house in prestigious address with fantastic views
奢華大屋，地段尊貴，享遼闊海景

10,000 s.f. (plus garden)

\$700K incl.

9199 0672 David Leung 梁先生

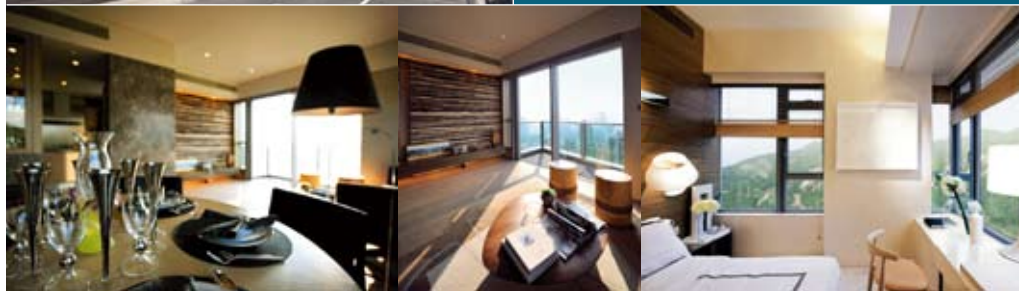
www.landscape.com/31646.htm

山頂
中峽道24號



Situated on Tai Hang Road, Island East, the new Serenade embraces a metropolitan pulse with its advantageous geographical locations and convenient transport. The premise possesses panoramic view of the spectacular Victoria Harbour in its front, and greeneries from Mount Butler at its back. The area of each apartment varies from 1,000 square feet to 4,000 square feet. Among the available apartments are duplexes with four bedrooms including two ensuite and prestigious penthouse.

上林位於香港島東半山之罕貴地段，掌握大都會脈搏，地理位置優越，交通四通八達。前臨270度遼闊維多利亞港美麗海景，背靠青蔥翠綠畢拉山山巒。單位面積由約1,000平方呎至4,000平方呎，其中包括四房兩套複式單位及頂層特色單位。



11 Tai Hang Road, Midlevels East

9833 9509 Michelle Chung 鍾小姐

9648 6082 Christine Chong 莊小姐

9028 0147 Jenson Au 區先生

上林
SERENADE

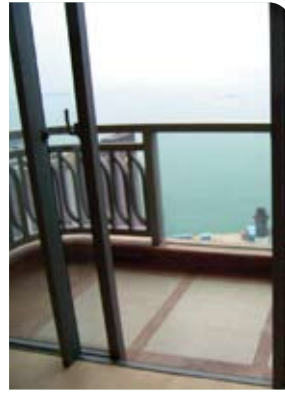


The Royal Court
3 Kennedy Road,
Midlevels Central
Conveniently located apartment
overlooking Hong Kong Park
中半山位置優越單位，俯瞰香港公園景色

中
半
山
帝
景
閣

1,428 s.f.
\$50K incl.

9809 8570 Stella Lo 羅小姐
www.landscape.com/112784.htm



Mount Davis 33
33 Ka Wai Man Road,
Midlevels West
Newly apartment with full sea view
全新住宅，尊享全海景

西
半
山
怡
峰

1,108 s.f.
\$35K incl.

6183 8339 Carman Szeto 司徒小姐 可普通話
www.landscape.com/63910.htm



Man Yuen Garden
52A-52B Kennedy Road,
Midlevels Central
Spacious 3-bedroom apartment
close to CBD
寬敞三房單位，鄰近中環商業區

中
半
山
文
苑
花
園

2,000 s.f.
\$75K incl.

9093 3381 Stephen Chan 陳先生
www.landscape.com/64981.htm



Bamboo Grove
74-86 Kennedy Road,
Midlevels Central
Cozy apartment with full facilities on
Kennedy Road
堅尼地道迷人住宅，連完善住客會所設施

中
半
山
竹
林
苑

1,772 s.f.
\$75K

9304 4257 Arthur Wong 黃先生
www.landscape.com/12402.htm



Cliffview Mansions
21-25 Conduit Road,
Midlevels West
Large colonial style apartment with new
refurbishment close to Midlevels
pedestrian escalator
特大英式住宅，新裝修，鄰近半山扶手電梯

西
半
山
康
苑

3,300 s.f.
\$83K incl.

9177 7191 Jackson Lee 李先生
www.landscape.com/135020.htm



Birchwood Place
96 MacDonnell Road,
Midlevels Central
Nicely fitted and equipped spacious flat
on MacDonnell Road
麥當勞道靚裝修住宅，配套齊全，間隔寬敞

中
半
山
寶
樺
臺

2,018 s.f.
\$90K incl.

9238 2012 David Chan 陳先生 可普通話
www.landscape.com/6516.htm



Kenville Building
32 Kennedy Road,
Midlevels Central
Nicely decorated apartment on
convenient Kennedy Road,
facing Hong Kong Park view
堅尼地道靚裝修單位，地段優越，交通方便，
全香港公園景

中
半
山
甘
苑

2,200 s.f.
\$98K incl.

9080 6686 Teresa Lau 劉小姐
www.landscape.com/136166.htm



Branksome Grande
3 Tregunter Path,
Midlevels Central
Spacious family apartment with big
balcony and clubhouse facilities
寬敞家庭式住宅，連大陽臺及會所設施

中
半
山
地
利
根
德
里
6
號

3,030 s.f.
\$105K

9088 4666 Yvonne Chang 鄭小姐
www.landscape.com/9225.htm

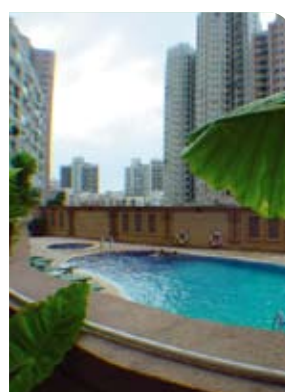


Brewin Court
5-7 Brewin Path, Midlevels Central
Newly renovated colonial style low-rise
flat with huge balcony
全新裝修英式低密度住宅，連大陽臺，可租可售

中
半
山
明
雅
園

2,600 s.f.
\$105K incl. also for sale Open Offer

6330 7888 Cora Ko 高小姐
www.landscape.com/52851.htm



Haddon Court
41C Conduit Road, Midlevels West
Modern 4-bedroom apartment with
spacious layout and open city view
時尚四房住宅，享開揚城市景觀，間隔寬敞

西
半
山
海
天
閣

2,850 s.f.
\$108K incl.

9088 4666 Yvonne Chang 鄭小姐
www.landscape.com/11155.htm



Borrett Mansions

8A-9B Borrett Road,
Midlevels Central

Spacious 4-bedroom apartment with big balcony in leafy neighbourhood
寬敞四房住宅，連大陽臺，欣賞翠綠景色

2,800 s.f.
\$100K incl.

9238 2012 David Chan 陳先生
www.landscape.com/25802.htm

中半山寶德臺



Old Peak Mansion

5 Old Peak Road,
Midlevels Central

Spacious 4-bedroom low-rise apartment on fringe of CBD
寬敞四房低密度住宅，鄰近中環商業區

3,130 s.f.
\$115K

9486 1566 Mira To 杜小姐
www.landscape.com/10324.htm

中半山舊山頂道5號



Piccadilly Mansion

4-6 Po Shan Road, Midlevels West

Po Shan Road 4-bedroom apartment enjoy peaceful Victoria Harbour view with big balcony
西半山寶珊道四房住宅，欣賞美麗維港景致連大露台

3,200 s.f.
\$118K incl.

6183 8339 Carman Szeto 司徒小姐 可普通話
www.landscape.com/35974.htm

西半山碧苑



Tregunter Tower 1

14 Tregunter Path,
Midlevels Central

4-bedroom apartment with comprehensive clubhouse
中半山四房住宅，連完善住客會所設施

3,336 s.f.
\$120K incl.

9138 1621 Teresa Fung 馮小姐
www.landscape.com/1129728.htm

中半山地利根德閣1座



Fairlane Tower

2B Bowen Road, Midlevels Central

Duplex with harbour view for rent in Midlevels Central
中半山複式維港景住宅出租

2,682 s.f.
\$138K incl.

9809 8570 Stella Lo 羅小姐
www.landscape.com/70664.htm

中半山寶雲山莊



Regence Royale

2 Bowen Road, Midlevels Central

Prestigious harbour view apartment in convenient location
豪華維港景住宅，位置優越，四通八達

2,552 s.f.
\$140K

9304 4257 Arthur Wong 黃先生
www.landscape.com/112311.htm

中半山富匯豪庭



Bowen Mansion

7C Bowen Road, Midlevels Central

Colonial 4-bedroom apartment with huge balcony enjoying green and partial harbour view
英式四房住宅，連大陽臺，享翠綠景觀及部份維港景

3,500 s.f.
\$140K

6183 8388 Chris Law 羅先生
www.landscape.com/15436.htm

中半山寶雲大廈



Hong Villa

12 Bowen Road, Midlevels Central

Well maintained harbour view apartment with 2 carparks space in quite location
中半山維港景住宅，環境寧靜，管理完善，連兩車位

3,833 s.f.
\$150K

9080 6686 Teresa Lau 劉小姐 可普通話
www.landscape.com/7396.htm

中半山峰景花園



Eva Court

36 MacDonnell Road,
Midlevels Central

Huge 4-bedroom apartment with high privacy on fringe of Central
特大四房住宅，私隱度高，鄰近中環，交通方便

4,500 s.f.
\$180K

9088 4666 Yvonne Chang 鄭小姐
www.landscape.com/14839.htm

中半山惠園



Tavistock 1

10-10A Tregunter Path,
Midlevels Central

Privileged residence in an exclusive neighbourhood
中半山豪華高尚住宅，環境優美怡人

4,860 s.f.
\$320K

9871 6828 Louis Wong 黃先生
www.landscape.com/31756.htm

中半山地利根德里10-10A號



Formwell Garden

46-48 Blue Pool Road,
Happy Valley
Unique duplex apartment in a quiet
location of Happy Valley
跑馬地精緻複式住宅，環境寧靜怡人

1,600 s.f.
\$43.8K incl. also for sale \$18M

☎ 6183 8388 Chris Law 羅先生
🌐 www.landscape.com/53711.htm

跑馬地
豐和苑



Jolly Villa

8 Tai Hang Road, Midlevels East
3-bedroom harbour view apartment on
fringe of Causeway Bay
東半山三房維港景住宅，鄰近銅鑼灣，交通方便

1,579 s.f.
\$45K incl.

☎ 9304 4257 Arthur Wong 黃先生
🌐 www.landscape.com/52744.htm

東半山
竹籬苑



Swiss Towers

113 Tai Hang Road, Midlevels East
3-bedroom apartment with practical
layout enjoying harbour and green views
東半山三房住宅，間隔實用，兼享維港景及
翠綠景致

1,600 s.f.
\$63K incl.

☎ 9304 4257 Arthur Wong 黃先生
🌐 www.landscape.com/109946.htm

東半山
瑞士花園



Yuenita Villa

43A-B Blue Pool Road,
Happy Valley
Colonial apartment with new decorations
on Blue Pool Road
藍塘道英式住宅，全新裝修，可租可售

2,380 s.f.
\$65K incl. also for sale \$30M

☎ 9551 1077 Walker Lam 林先生
🌐 www.landscape.com/52778.htm

跑馬地
苑廬



Cavendish Heights

27-37 Perkins Road,
Jardine's Lookout
Newly renovated family flat with facilities
in popular development
全新裝修家庭式住宅，連住客會所設施，極受歡迎

1,819 s.f.
\$71K incl.

☎ 9093 3381 Stephen Chan 陳先生
🌐 www.landscape.com/32493.htm

渣甸山
嘉雲臺



Serene Villa

41-45 Perkins Road,
Jardine's Lookout
Bright and airy low-rise with
nice decorations
光猛通爽低密度住宅，靚裝修，可租可售

1,650 s.f. (plus garden)
\$29M also for lease \$72K incl.

☎ 6183 8388 Chris Law 羅先生
🌐 www.landscape.com/49318.htm

渣甸山
寧苑



The Leighton Hill

2B Broadwood Road,
Happy Valley
3-bedroom flat with spacious terrace
and full clubhouse facilities
跑馬地三房住宅，連寬敞特大平台及完善住客
會所設施

1,432 s.f. (plus terrace)
\$85K incl.

☎ 9493 8275 Sami Woo 胡小姐
🌐 www.landscape.com/125883.htm

跑馬地
禮頓山



Broadview Villa

20 Broadwood Road,
Happy Valley
Huge family apartment with
comprehensive facilities
特大家庭式住宅，連完善住客會所設施，
可租可售

3,134 s.f.
\$128K also for sale \$63.8M

☎ 9551 1077 Walker Lam 林先生
🌐 www.landscape.com/34747.htm

跑馬地
樂景園



Taipan Court

47B Stubbs Road, Midlevels East
Renovated 4-ensuite duplex commanding
stunning harbour view
新裝修四房複式住宅，享遠闊維港景色

3,670 s.f.
\$148K

☎ 9238 2012 David Chan 陳先生
🌐 www.landscape.com/10450.htm

東半山
大班閣



Midlevels East Brand New Apartment for Lease

6 Shiu Fai Terrace, Midlevels East
Brand new 5-bedroom apartment at
convenient location with swimming pool
and private garden
全新五房單位出租，位置優越，
交通方便連私泳池及花園

3,650 s.f.
\$328K

☎ 6183 8339 Carman Szeto 司徒小姐
🌐 www.landscape.com/136278.htm

東半山
全新住宅出租

Published and distributed by



The Specialists in Luxury Properties

Landscape Realty Limited C-018733
a member of Landscape Surveyors Ltd

Tel: +852 2866 0022

Fax: +852 2866 0015

Email: info@landscape.com

Website: www.landscape.com

Address: Unit 3106, 31/F, Hopewell Centre,
183 Queen's Road East, Wanchai, Hong Kong