



**CUSTOM-MADE LUXURY SOFAS OF ITALIAN HERITAGE**

Over 200 colors of Italian leather  
European mechanisms  
Size, comfort & design alterations  
Fast delivery program

**cierre**  
ITALIA

Shop F, G/F., 12-22 Blue Pool Road, Happy Valley Tel: 2573 8083  
Shop 1, G/F., 51 Wong Nai Chung Road, Happy Valley Tel: 2576 9168  
Shop G03, G/F., Man Yee Arcade, 60-68 Des Voeux Road Central Tel: 2259 5368  
G/F., Capital Commercial Building, 26 Leighton Road, Causeway Bay Tel: 2808 0297  
[www.cierre.com.hk](http://www.cierre.com.hk)

Italy Factory

**cierre imbottiti s.r.l.**

via Ansaldo, 2-47100 FORLÌ-ITALY Tel: (+39) 0543 782611  
[www.cierreimbottiti.com](http://www.cierreimbottiti.com)

select deluxe homes

**The  
Key**

[www.landscape.com](http://www.landscape.com)

大宅®

MAY | 2010

Volume 67



**TREASURE BOX**

Eccentric combination of art, nostalgia, design and feng shui

**LIVING IN COLOUR**

A perfect retreat from the grind and routine of day-to-day life

KEY NOTES\*

“Today, the best traditional architects are renewing time-tested traditions in new old houses meant for the present. These traditions are constantly evolving. Rather than being dead, historical leftovers, they are living customs, each with a fascinating tale of birth, evolution and renewal over time. Today, we are simply adding new pages to the story.”

「今天，傑出的傳統建築師正在為懷舊新屋裡的舊有傳統灌注新生命。這些傳統不斷地演變。歷史遺留下來的產物並沒有死去，反而是活生生的習俗傳統，其背後隱藏着隨時間洗禮所得的經歷，記載了由誕生、演變以至更新的故事。今天，我們為這個故事作出貢獻，創出新的一頁。」

- Russell Versaci  
A renowned architect and author of the best-selling book, “Creating a New Old House”  
Russell Versaci，著名建築師及暢銷書《懷舊的新屋》的作者

As the Mainland and Hong Kong’s economy are tightly intertwined, there are bound to be repercussions in Hong Kong when any substantial policy changes are made on the Mainland. When China’s property market loses its steam, the impact will be felt across other economic sectors such as domestic consumption, construction and local governments’ tax revenue. Coupled with a tightened credit cap, hot money, which has been accountable for the rampant price surge on both sides of the border, will dry up. This will effectively take the heat out of Hong Kong’s luxury property market, the staggering price growth of which has been largely attributable to capital flow from the Mainland.

The substantial participation of Mainland capital in the local market has pushed luxury property prices to a historical level. Similarly, the withdrawal of this capital will spell a chilly period for the luxury sales market. There may be other factors at work, but we have already seen a slowdown in sales activities in recent weeks.

In the rental market, the picture is taking a different turn. Multinationals especially the financial companies are beefing up their Asian operations. Hong Kong as a major financial hub has witnessed an increased influx of expatriates who have pushed luxury rentals higher in the last few months.

中國內地與香港的兩地經濟關係密切，每當內地有任何重大政策改變時，香港都會受到影響。當中國房地產市場有所降溫，其影響會波及其他經濟部分，如國內消費、建築及政府稅收。隨着信貸上限收緊，令導致中港兩地物業價格飆升的熱錢漸漸干枯。這將有效地為香港豪宅市場降溫，遏止主要因內地熱錢流內而引致的驚人樓價增長。

大量國內資金流入本港，令本地豪宅售價推至歷史高水平。而資金撤出市場則意味着豪宅市場將不會如昔日暢旺。或許還有其他因素的影響，最近幾個星期的交投量均有所回落。

至於豪宅租賃市場的情況則剛好相反。跨國企業，尤其是金融公司正在加強其亞洲業務，令湧入香港這個主要金融中心的外籍人士大大增加，使豪宅租金於過去的幾個月有上升的趨勢。

Read the full article at Market Watch, [www.landscape.com/keynotes](http://www.landscape.com/keynotes)  
如欲觀看全文，請登入Market Watch網站，網址為[www.landscape.com/keynotes](http://www.landscape.com/keynotes)

published and distributed by



**Landscape Realty Limited** C-018733  
a member of Landscape Surveyors Ltd

Tel: 852-2866 0022 Fax: 852-2866 0015  
Email: [info@landscape.com](mailto:info@landscape.com) Website: [www.landscape.com](http://www.landscape.com)  
Unit 3106, 31/F, Hopewell Centre, 183 Queen’s Road East, Wanchai, Hong Kong

The information, text, photos, analyses and projections contained herein are provided solely for the convenience of prospective clients and no warranty or representation as to their accuracy, correctness or completeness is made by Landscape Surveyors Limited, Landscape Realty Limited or the owners, none of whom shall have any liability or obligation with respect thereto. Interested parties should rely on their own investigations, interpretations and analyses in connection with the purchase or letting thereof.

Information has been provided to us by sources deemed reliable, but no warranty or representation is made as to its accuracy, correctness or completeness. These offerings are made subject to contract, correction of errors, omissions, prior sale of lease, change of price or terms or withdrawal from the market without notice. The contents of The Key are for reference only and do not constitute all or any part of a contract.

Reproduction of any material in whole or part without written permission from inCorporation Ltd is strictly prohibited. All information is correct at the time of going to press. The opinions expressed in *The Key* are those of the authors and are not necessarily endorsed by inCorporation Ltd.



THE KEY | CONTENTS

- 04 **Treasure Box**  
珍藏瑰寶
- 08 **City View**  
第五屆亞洲國際藝術古董展
- 10 **Living in Colour**  
色彩生活
- 14 **Talking with the Walls**  
對話牆壁

**The Key (The No.1 Publication for Luxury Properties)**

*The Key* is a monthly, bilingual lifestyle publication focusing on luxury residential properties in Hong Kong Island. It is sent to over 60,000 urban elites comprising of Hong Kong’s most affluent inhabitants.

These consist of Landscape’s VIP clients, who mainly reside in The Peak, Mid-Levels, Southside, Kowloon Tong, Homantin and other select up-market residential areas such as Tai Po, Sai Kung and Clear Water Bay, etc.

How may you list your property with *The Key*?

If you would like to list your property in an upcoming issue of *The Key*, you may contact Loretta Lui on +852 3102 4818 or visit us at [www.landscape.com/sell-to-let](http://www.landscape.com/sell-to-let). Alternatively, simply fill out the below and fax back to us on +852 2866 0015.

Property Details

Asking Rental / Sale Price

Floor Area

Contact Person

Telephone

Email

Our KeyPerson will contact you for follow-up work.

designed and produced by



**inCorporation Limited**  
Your No. 1 Integrated Marketing Communications Partner in Hong Kong and China

Tel: 852-3699 0888 Fax: 852-3699 0889  
Email: [marketing@incorp.com.hk](mailto:marketing@incorp.com.hk) Website: [www.inmagazine.com.hk](http://www.inmagazine.com.hk)  
12/F, Cyberport 2, 100 Cyberport Road, Hong Kong



The Original 'Sporting Luxury' Sedan.  
We know. We coined the term.



For 75 years, Jaguar has strived to produce beautiful fast cars. At the same time, Jaguars have always been synonymous with luxury. The XF was developed precisely based upon these twin platforms of achievement and that is why we are proud to create a whole new category for sedans – the Sporting Luxury sedan.

Jaguar Hong Kong A Member of Inchcape Group  
Shop 2, G/F, Bank of East Asia Harbour View Centre,  
56 Gloucester Road, Wanchai, Hong Kong  
Tel : 2520 0989  
[WWW.JAGUAR.COM.HK](http://WWW.JAGUAR.COM.HK)

THIS IS THE NEW JAGUAR 75 YEARS



# Treasure Box

珍藏瑰寶

When it comes to incorporating a mix of the East and the West, 2,300 sq ft Catalina Mansions apartment in the highly sought-after residential hub of Mid-Levels Central is the perfect representation.

This house has been brought to life by its house owner, who has an affinity for the glamour of the past, is evident throughout the interior design that utilises rich ornate detailing of bygone eras. But the aim was not to design the place to merely exhibit their collections, but rather to create a space of outstanding elegance, one in which Oriental elements combine with subtle references to modern aesthetics.

Certain items and furniture have also been positioned in order to adhere to the principles of feng shui. Thus, the space certainly flows as it should and so does the chi from the moment you enter. Adding just the right amount of opulence to the home are the Balinese crafted doors, innovative paintings and sculptures, and a dining set from Malacca; these finishing touches embrace the past, while, at the same time, are rightfully proud of the present.

On the other hand, the panoramic views of Hong Kong's iconic cityscape from this apartment are nothing short of spectacular. Set as a tranquil sanctuary in the bustling city, this stunning home offers vibrant living with a new perspective. ■

提到中西融匯之最，當然非這裡莫屬。這座公寓位於中環半山嘉年大廈，佔地面積有2,300平方呎。

公寓的業主特別鍾情懷舊，從屋內華麗奪目、精雕細琢的設計裝潢便可見一斑，猶如時光倒流般帶領你回到昔日的時代。然而，這座公寓不僅是用來展示業主的收藏，更重要的是創造出一個非凡優雅的空間，將東方元素與現代美學合二為一。

公寓有部分陳設與傢俱是根據風水學而擺放的，使空氣中瀰漫着一片和諧自然，令人一踏進屋內便瞬間感到平靜舒適。屋內精緻的巴里式大門、創意畫作及雕塑，以及麻六甲餐具，均融合了新與舊的魅力，並且豐富了公寓的空間。

在這裡，城市醉人美景盡入眼簾，環境恬靜宜人，遠離一切繁囂，同時亦帶給你充滿動感的生活。■

## Catalina Mansions

中半山 嘉年大廈

98-100 MacDonnell Road, Midlevels Central

2,300 s.f.

\$30,000,000

www.landscape.com/37796.htm

Mira To 杜小姐 94861566



Designer: Rodolfo Dordoni

Sole Dealer of Minotti for Hong Kong

# Minotti

Minotti S.p.A  
20036 MEDA [MI] ITALIA  
e-mail: info@minotti.it  
www.minotti.com

# andante

Shop D, G/F, The Design Showcase,  
Ruttonjee Centre, 11 Duddell Street,  
Central, Hong Kong  
Tel. +852/ 2537 9688  
Fax. +852/ 2537 4488  
E-mail: info@andante.com.hk  
www.andante.com.hk

TK/1005/M/WLMD



**Stewart Terrace**  
**山頂 史釗域臺**  
 81-95 Peak Road, The Peak  
 Colonial low-rise apartment in The Peak with huge private roof  
 山頂英式低密度住宅連特大私家天台，可租可售  
**2,327 s.f.** (plus 1,607 s.f. roof)  
**\$45,000,000** also for lease \$75,000 incl.

[www.landscape.com/46374.htm](http://www.landscape.com/46374.htm) Christine Chong 莊小姐 9648 6082



**Mountain Lodge**  
**山頂 崑廬**  
 44 Mount Kellett Road, The Peak  
 Exclusive Peak apartment with sweeping Southside sea view  
 獨特山頂住宅，尊享遼闊寧靜南區海景，可租可售  
**2,600 s.f.**  
**\$65,000,000** also for lease \$120,000 incl.

[www.landscape.com/17490.htm](http://www.landscape.com/17490.htm) Mark Mak 麥先生 6838 2929



**La Hacienda - Townhouse**  
**山頂 加列山道29-33號**  
 29-33 Mount Kellett Road, The Peak  
 Newly decorated townhouse with facilities overlooking nice views  
 全新裝修排屋連住客會所設施，尊享華麗景觀，可租可售  
**3,200 s.f.**  
**\$140,000,000** also for lease \$120,000 incl.

[www.landscape.com/3323.htm](http://www.landscape.com/3323.htm) David Chan 陳先生 9238 2012



**Montebello**  
**山頂 濠景閣**  
 15-17 Plantation Road, The Peak  
 Rarely available 4-bedroom duplex on The Peak with nice open view  
 山頂罕有四房複式住宅，享遼闊景觀，可租可售  
**3,070 s.f.**  
**\$55,000,000** also for lease \$100,000

[www.landscape.com/124532.htm](http://www.landscape.com/124532.htm) Chris Law 羅先生 6183 8388



**Peak Garden**  
**山頂 山頂花園**  
 16-20 Mount Austin Road, The Peak  
 Contemporarily designed apartment overlooking picturesque Victoria Harbour view  
 時尚設計單位，俯瞰美麗維港景觀  
**2,655 s.f.**  
**\$82,000,000**

[www.landscape.com/30077.htm](http://www.landscape.com/30077.htm) Mavis Wu 胡小姐 9107 3891



**Severn 8**  
**山頂 倚巒**  
 8 Severn Road, The Peak  
 Brand new harbour view garden townhouse on The Peak  
 山頂全新維港景花園排屋  
**3,330 s.f.** (plus 794 s.f. roof and 460 s.f. garden)  
**\$165,000,000**

[www.landscape.com/101967.htm](http://www.landscape.com/101967.htm) Chris Law 羅先生 6183 8388



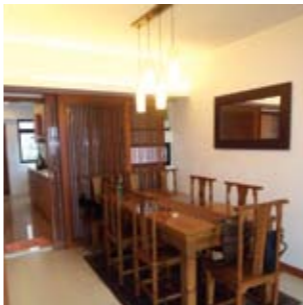
**Monticello**  
**中半山 滿峰台**  
 48 Kennedy Road, Midlevels Central  
 Spacious 3-bedroom apartment with greenery view  
 寬敞三房住宅享翠綠景致  
**1,329 s.f.**  
**\$13,800,000**

[www.landscape.com/102983.htm](http://www.landscape.com/102983.htm) Maria Cheung 張小姐 5182 8699



**Flora Garden**  
**渣甸山 慧景園**  
 7 Chun Fai Road, Jardine's Lookout  
 Popular 3-bedroom apartment on prime Jardine's Lookout area  
 受歡迎三房單位，位於渣甸山尊貴地段  
**1,533 s.f.**  
**\$18,500,000**

[www.landscape.com/108737.htm](http://www.landscape.com/108737.htm) Rowena Siu 蕭小姐 9348 4118



**Beauty Court**  
**西半山 雅苑**  
 82 Robinson Road, Midlevels West  
 Nice 3-bedroom family flat on convenient Robinson Road  
 羅便臣道雅致三房家庭式住宅  
**1,778 s.f.**  
**\$21,600,000**

[www.landscape.com/108739.htm](http://www.landscape.com/108739.htm) Carman Szeto 司徒小姐 6183 8339



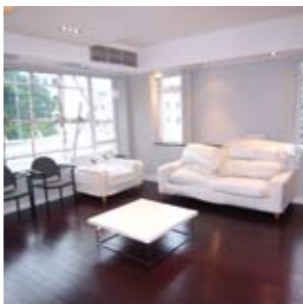
**Estella Court**  
**中半山 香港大廈**  
 70 MacDonnell Road, Midlevels Central  
 Well decorated colonial style apartment with big balcony and partial harbour view on MacDonnell Road  
 麥當勞道雅致裝修英式住宅連開揚城市景觀及部份維港景，並附設陽臺  
**2,000 s.f.**  
**\$25,000,000**

[www.landscape.com/96274.htm](http://www.landscape.com/96274.htm) Chris Law 羅先生 6183 8388



**1-4 Briar Avenue, Happy Valley**  
**跑馬地 比雅道1-4號**  
 Charming colonial low-rise in Happy Valley  
 跑馬地迷人英式低密度住宅連天台  
**1,800 s.f.** (plus roof)  
**\$27,000,000**

[www.landscape.com/41099.htm](http://www.landscape.com/41099.htm) Christine Chong 莊小姐 9648 6082



**The Elegance**  
**東半山 優雅閣**  
 60 Tai Hang Road, Midlevels East  
 Nicely fitted and equipped 2-ensuite duplex on Tai Hang Road  
 大坑道兩套房複式住宅，內裝齊全完善，可租可售  
**2,438 s.f.**  
**\$30,000,000** also for lease \$70,000 incl.

[www.landscape.com/123399.htm](http://www.landscape.com/123399.htm) Mira To 杜小姐 9486 1566



**21-25 Green Lane, Happy Valley**  
**跑馬地 箕璉坊 21-25 號**  
 Low-rise 3-bedroom apartment with decorations  
 低密度三房住宅配雅致裝修  
**1,600 s.f.**  
**\$18,500,000**

[www.landscape.com/109699.htm](http://www.landscape.com/109699.htm) Mark Mak 麥先生 6838 2929



**Grandview Tower**  
**中半山 慧景臺**  
 128-130 Kennedy Road, Midlevels Central  
 Rare combined unit with terrace and twin car parks enjoying greenery view  
 罕有相連單位及雙車位，附設平台兼享翠綠山巒  
**1,681 s.f.** (include 265 s.f. terrace)  
**\$18,500,000**

[www.landscape.com/88929.htm](http://www.landscape.com/88929.htm) Carman Szeto 司徒小姐 6183 8339



**Amber Garden**  
**中半山 柏苑**  
 70-72 Kennedy Road, Midlevels Central  
 Well-known apartment with swimming pool on Kennedy Road  
 堅尼地道有名住宅大廈連游泳池  
**1,732 s.f.**  
**\$22,000,000**

[www.landscape.com/37913.htm](http://www.landscape.com/37913.htm) Maria Cheung 張小姐 5182 8699



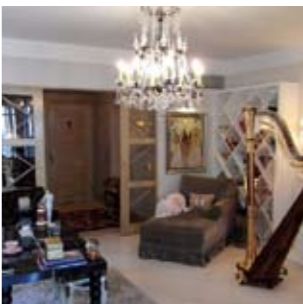
**Babington House**  
**西半山 巴威大廈**  
 5 Babington Path, Midlevels West  
 Nicely decorated 5-bedroom apartment with huge balcony, sale with tenancy  
 優美裝修五房單位連特大陽臺，連約售，投資首選  
**2,750 s.f.**  
**\$25,800,000**

[www.landscape.com/95921.htm](http://www.landscape.com/95921.htm) Sami Woo 胡小姐 9493 8275



**Medallion Heights**  
**西半山 金徽閣**  
 45 Conduit Road, Midlevels West  
 Exclusive mid-rise apartment with private roof terrace  
 獨特中密度住宅，連私家天台平台  
**2,000 s.f.** (plus 1,500 s.f. roof)  
**\$28,500,000**

[www.landscape.com/98468.htm](http://www.landscape.com/98468.htm) Rowena Siu 蕭小姐 9348 4118



**Glory Mansion**  
**中半山 輝煌大廈**  
 106-108 MacDonnell Road, Midlevels Central  
 Well decorated and fully furnished colonial low-rise on MacDonnell Road  
 麥當勞道低密度英式住宅，雅致裝修，連全屋傢俬，可租可售  
**2,300 s.f.**  
**\$30,000,000** also for lease \$75,000

[www.landscape.com/37757.htm](http://www.landscape.com/37757.htm) Teresa Lau 劉小姐 9080 6686

# The Hacienda

## 90 Repulse Bay Road

- Full seaview, with Garden / Roof
- Swimming pool, Gym & Carpark
- 1,600-3,000 sq.ft.
- 3-4 Bedrooms

Leasing Hotline **2122 2025**  
**2122 2362**

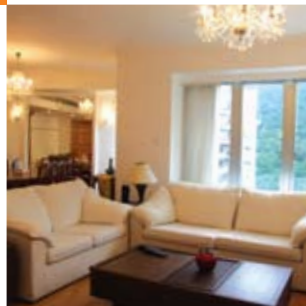




**Luxe Apartments**  
 5 Warwick Road, Kowloon Tong

- Open View, Carpark & BBQ area
- Approx. 5 minutes walk to Festival Walk / Kowloon Tong MTR
- 1,277-1,350 sq.ft., 2/3 bedrooms / balcony
- Kowloon Tong school network no.41

Leasing Hotlines : **2122-2025**  
**2122-2362**



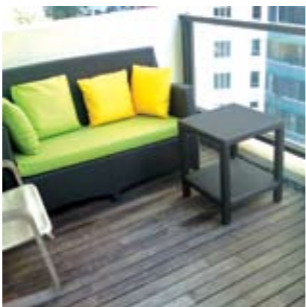
**Tregunter Tower 3**  
 中半山 地利根德閣3座  
 14 Tregunter Path, Midlevels Central  
 Nice decorated apartment with club house facilities  
 中半山悅目裝修住宅連住客會所設施  
**2,042 s.f.**  
**\$31,000,000**  
[www.landscape.com/40523.htm](http://www.landscape.com/40523.htm) Mira To 杜小姐 9486 1566



**Hong Villa**  
 中半山 峰景花園  
 12 Bowen Road, Midlevels Central  
 Well-maintained luxury apartment full harbour view  
 優良保養豪華住宅，尊享全維港景，可租可售  
**1,916 s.f.**  
**\$33,500,000** also for lease \$75,000 incl.  
[www.landscape.com/34528.htm](http://www.landscape.com/34528.htm) Mary Li 李小姐 9011 6595



**Villa Veneto**  
 西半山 威都閣  
 3 Kotewall Road, Midlevels West  
 High efficiency 4-bedroom flat with harbour view  
 高實用四房單位，尊享維港景  
**2,562 s.f.**  
**\$35,000,000**  
[www.landscape.com/118545.htm](http://www.landscape.com/118545.htm) Rowena Siu 蕭小姐 9348 4118



**Tregunter Tower 2**  
 中半山 地利根德閣 2座  
 14 Tregunter Path, Midlevels Central  
 Spacious colonial apartment with 4 bedrooms and balcony  
 中半山英式住宅連四房及陽臺，間隔寬敞  
**3,052 s.f.**  
**\$35,000,000**  
[www.landscape.com/99951.htm](http://www.landscape.com/99951.htm) Eric Wong 黃先生 9740 3396



**Serene Court**  
 西半山 秀麗閣  
 8 Kotewall Road, Midlevels West  
 Newly renovated 4-bedroom flat enjoying open harbour view  
 全新裝修四房住宅，享開揚維港景觀  
**2,334 s.f.**  
**\$38,000,000**  
[www.landscape.com/115655.htm](http://www.landscape.com/115655.htm) Carman Szeto 司徒小姐 6183 8339



**Leon Court**  
 東半山 利安閣  
 12-14 Wong Nai Chung Gap Road, Midlevels East  
 Large 3-bedroom apartment with picturesque view  
 東半山特大三房單位，尊享如畫美景  
**2,800 s.f.**  
**\$38,000,000**  
[www.landscape.com/96481.htm](http://www.landscape.com/96481.htm) Rowena Siu 蕭小姐 9348 4118

## City View 第五屆亞洲國際藝術古董展

Presenting a significant new group of over sixty drawings from LaBelle's project, Buildings Entered, the exhibition will be held on May 28- June 27, 2010 in the dispensary building of The Hong Kong Museum of Medical Sciences, formerly the Old Pathological Institute. Selected by the artist and MobArt Gallery specifically for this exhibition, the building and its history form an important context for the drawings and for the artist's ongoing project which examines the interrelationship of the body and architecture. At the heart of this relationship, as LaBelle's work reveals, is a mechanism of power- economic, political, judicial and scientific power – which collectively organizes both the built-space of the world and the perceptions, ideas and subjectivities of the human beings that inhabit the world. ■

藝術家 LaBelle 的作品展《Buildings Entered》將於2010年5月28日於前身為舊病理學院的香港醫學博物館的前舉行，並展出其超過60件畫作。這次由這位藝術家及遊藝畫廊挑選的展覽作品展現了不同建築的特色及其歷史，並探討建築與建構本身之間的關係，並經濟、政治、司法及科學的角度創作，從而展示其構想、意念及人文與習性的主觀概念。■



New Catalogue Out Now



GOODS OF DESIRE

Causeway Bay 2890 5555

Tsim Sha Tsui 2784 5555

Central 2805 1876

Peak Galleria 2778 3331



**Bellevue Court**  
東半山 碧蕙園  
41 Stubbs Road, Midlevels East

Spacious 5 bedroom apartment located on Stubbs Road with nice open greenery view and 3 car parking spaces  
司徒拔道寬敞五房住宅連優美翠綠景觀及三個車位

**2,700 s.f.** (plus roof)  
**\$43,000,000**

[www.landscape.com/48073.htm](http://www.landscape.com/48073.htm) Chris Law 羅先生 6183 8388



**Macdonnell House**  
中半山 麥當奴大廈  
6-8 MacDonnell Road, Midlevels Central

Tastefully decorated 4-bedroom apartment on MacDonnell Road  
麥當勞道雅致裝修四房單位

**2,519 s.f.**  
**\$48,000,000**

[www.landscape.com/112781.htm](http://www.landscape.com/112781.htm) Mavis Wu 吳小姐 9107 3891



**Piccadilly Mansion**  
西半山 碧苑  
4-6 Po Shan Road, Midlevels West

Large practical harbour view apartment in tranquil environment  
西半山特大維港景住宅，間隔實用，環境寧靜

**2,800 s.f.**  
**\$56,000,000**

[www.landscape.com/35976.htm](http://www.landscape.com/35976.htm) Carman Szeto 司徒小姐 6183 8339

## Living in Colour 色彩生活





**Villa Benesther**  
跑馬地 輝華小苑  
4 Sing Woo Crescent, Happy Valley

Spacious 4-bedroom duplex in quiet neighbourhood  
寬敞四房複式住宅，環境清幽寧靜

**2,450 s.f.** (plus 303 s.f. roof)  
**\$46,800,000**

[www.landscape.com/103139.htm](http://www.landscape.com/103139.htm) Stephen Chan 陳先生 9093 3381



**May Tower 1**  
中半山 梅苑一座  
7 May Road, Midlevels Central

Deluxe harbour view duplex with enlarged master bedroom at prime location  
豪華維港景複式住宅連特大主人睡房，地段尊貴

**2,850 s.f.**  
**\$49,800,000**

[www.landscape.com/33364.htm](http://www.landscape.com/33364.htm) Rylie Ip 葉先生 6600 2238



**Kennedy Heights**  
中半山 堅麗閣  
10-18 Kennedy Road, Midlevels Central

Huge 5-bedroom apartment on fringe of Central  
特大五房住宅，鄰近中環，交通方便

**3,400 s.f.**  
**\$65,000,000**

[www.landscape.com/101979.htm](http://www.landscape.com/101979.htm) Mira To 杜小姐 9486 1566

Gracing the hills along Monmouth Terrace in Mid-Levels Central, this 2,005 sq ft striking home has been cleverly conceptualised to look like a colourful reflection. Colour is, in fact, the key element in this warm, sun-filled environment in order to give it a more positive and comfortable feel.

Though pure white has been used as a base for the backdrop, it is bathed in bold colour tones to create an energetic look that pulses with life. Adding the perfect and utterly personal finishing touch to the dining room wall is a gorgeous array of crystal ornaments – a reflection of the family's memories stored in an exquisite large glass cupboard. Not to mention, the intricately etched patterns and motifs on the mirrors is equally captivating.

This magnificent lifestyle at Suncrest Tower is also superbly accessible with an extensive transportation network offering convenience to its residents. ■

這座毗鄰萬茂臺的公寓坐擁中環中半山，面積達2,005平方呎。屋內的設計裝潢均經過精心設計，巧妙地運用了不同的色彩。在這座充滿溫暖陽光氣息的公寓裡，顏色的運用扮演着一個重要的角色，營造出舒適悠揚之感。

雖然公寓以白色為主調，但設計上用以大膽的色彩，帶出生活節奏與活力。客廳的牆壁以一排又一排的水晶擺設點綴，流露出屋主的個人品味 — 將一家人樂聚天倫的回憶保存於巨型玻璃壁櫃上。此外，鏡子上的複雜刻紋與圖案同樣引人入勝。

這座位於桂濤苑的公寓擁有方便快捷的交通網絡，成就你的美好生活。■

**Suncrest Tower**  
中半山 桂濤苑  
1-11 Monmouth Terrace, Midlevels Central

**2,005 s.f.**  
**\$23,800,000**

[www.landscape.com/109565.htm](http://www.landscape.com/109565.htm) Teresa Fung 馮小姐 91381621



**Trafalgar Court**  
東半山 大寶閣  
70 Tai Hang Road, Midlevels East

Huge 5-bedroom flat overlooking Causeway Bay and Victoria Harbour  
巨型五房住宅俯瞰銅鑼灣及維港景

**3,008 s.f.**  
**\$69,000,000**

[www.landscape.com/5913.htm](http://www.landscape.com/5913.htm) Stephen Chan 陳先生 9093 3381



**The Mayfair**  
中半山 梅道1號  
1 May Road, Midlevels Central

Prestigious 4-bedroom apartment overlooking Victoria Harbour panorama  
中半山豪華尊貴四房住宅，俯瞰維港景觀

**2,918 s.f.**  
**\$82,000,000**

[www.landscape.com/11707.htm](http://www.landscape.com/11707.htm) Rylie Ip 葉先生 6600 2238



**Century Tower 1**  
中半山 世紀大廈1座  
1 Tregunter Path, Midlevels Central

Rare duplex with panoramic view of Victoria Harbour  
罕有複式住宅，尊享遼闊維港景觀

**5,130 s.f.**  
**\$118,000,000**

[www.landscape.com/94786.htm](http://www.landscape.com/94786.htm) Mary Li 李小姐 9011 6595

Situated on Tai Hang Road, Island East, the new Serenade embraces a metropolitan pulse with its advantageous geographical locations and convenient transport. The premise possesses panoramic view of the spectacular Victoria Harbour in its front, and greeneries from Mount Butler at its back. The area of each apartment varies from 1,000 square feet to 4,000 square feet. Among the available apartments are duplexes with four bedrooms including two ensembles and prestigious penthouses.

「上林」位處香港島東半山之罕貴地段，掌握大都會脈搏，地理位置優越、交通四通八達。前臨270度遼闊維多利亞港美麗海景，背靠青蔥翠綠畢拉山山巒。單位面積由約1,000平方呎至4,000平方呎，其中包括四房兩套複式單位及頂層特色單位。

**Address:** No. 11 Tai Hang Road, Hong Kong  
**No. of Towers:** 2  
**No. of Flats:** 270 including 30 duplex units and 4 penthouse units  
**No. of Storeys:** 55 storeys  
**Flat Size:** approx. 1,349 – 3,958 sq.ft.

**地址：**香港大坑道11號  
**物業座數：**2座  
**單位數目：**270個，包括30個複式單位及4個頂層特色單位  
**住宅層數：**55層  
**單位面積：**約1,349 — 3,958平方呎

**Serenade**  
上林  
11 Tai Hang Road, Hong Kong

**Walker Lam** 林先生 9551 1077, **Rowena Siu** 蕭小姐 9348 4118



**Clovelly Court**  
中半山 嘉富麗苑  
12 May Road, Midlevels Central

Large and spacious flat with balcony and harbour view  
特大寬敞住宅連盼臺，尊享維港景

**2,809 s.f.**  
**\$80,000,000**

[www.landscape.com/26300.htm](http://www.landscape.com/26300.htm) Mark Mak 麥先生 6838 2929



**Craigmount**  
東半山 紀園  
34 Stubbs Road, Midlevels East

Newly renovated penthouse with private terrace overlooking Happy Valley  
全新裝修頂層單位連私家平台，俯瞰跑馬地景觀

**3,200 s.f.** (plus 799 s.f. roof)  
**\$85,000,000**

[www.landscape.com/32864.htm](http://www.landscape.com/32864.htm) Mark Mak 麥先生 6838 2929



**21 Perkins Road, Jardine's Lookout**  
渣甸山 白建時道21號

Highly sought after single detached house in Jardine's Lookout  
渣甸山罕有獨立大屋出售

**3,800 s.f.** (plus 800 s.f. garden, 352 s.f. roof and 352 s.f. terrace)  
**\$160,000,000**

[www.landscape.com](http://www.landscape.com) Stephen Chan 陳先生 9093 3381



**Mount Davis 33**  
**薄扶林 怡峰**  
33 Ka Wai Man Road, Pokfulam  
Brand new apartment with full sea view  
薄扶林全新全海景住宅  
**1,108 s.f.**  
**\$11,300,000**

[www.landscape.com/63910.htm](http://www.landscape.com/63910.htm) Carman Szeto 司徒小姐 6183 8339



**La Clare Mansion**  
**薄扶林 利嘉大廈**  
92 Pokfulam Road, Pokfulam  
All brand new decoration with 4 bedrooms  
in quiet location  
全新裝修四房單位，環境寧靜怡人  
**1,750 s.f.**  
**\$16,500,000**

[www.landscape.com/123572.htm](http://www.landscape.com/123572.htm) Teresa Lau 劉小姐 9080 6686



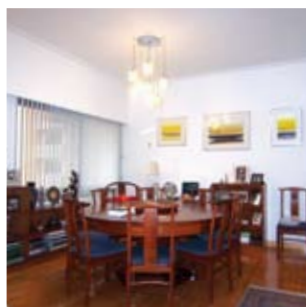
**18-24 Bisney Road, Pokfulam**  
**薄扶林 碧荔道18-24號**  
Top floor unit with private roof terrace in  
low-rise block  
薄扶林低密度高層住宅連私家天台  
**1,640 s.f.** (plus 1,200 s.f. roof)  
**\$19,500,000**

[www.landscape.com/122199.htm](http://www.landscape.com/122199.htm) Chris Law 羅先生 6183 8388



**Parisian**  
**赤柱 海寧雅舍**  
8 Stanley Mound Road, Stanley  
Low-rise apartment with garden in Stanley  
赤柱低密度住宅連花園，可租可售  
**1,710 s.f.**  
**\$21,000,000** also for lease \$55,000 incl.

[www.landscape.com/36012.htm](http://www.landscape.com/36012.htm) Christine Chong 莊小姐 9648 6082



**Hong Kong Parkview - Tower 8**  
**淺水灣 陽明山莊8座**  
88 Tai Tam Reservoir Road, Repulse Bay  
Nicely decorated popular apartment with  
excellent clubhouse facilities  
雅致裝修受歡迎住宅連完善住客會所設施  
**2,366 s.f.**  
**\$30,000,000**

[www.landscape.com/33239.htm](http://www.landscape.com/33239.htm) Rowena Siu 蕭小姐 9348 4118



**Hong Kong Parkview - Tower 14**  
**淺水灣 陽明山莊14座**  
88 Tai Tam Reservoir Road, Repulse Bay  
Unique flat with both harbour view and  
Southside sea view  
淺水灣別致住宅尊享維港景及南區海景  
**1,837 s.f.**  
**\$32,000,000**

[www.landscape.com/107107.htm](http://www.landscape.com/107107.htm) Yvonne Chang 鄭小姐 9088 4666



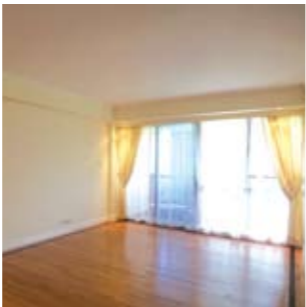
**Bisney Terrace**  
**薄扶林 碧荔臺**  
73-79 Bisney Road, Pokfulam  
Practical boutique flat with sea view in  
quiet neighbourhood  
薄扶林精緻實用住宅享海景，環境優美怡人，可租可售  
**1,304 s.f.**  
**\$15,000,000** also for lease \$40,000 incl.

[www.landscape.com/127314.htm](http://www.landscape.com/127314.htm) Walker Lam 林先生 9551 1077



**Cypresswaver Villas**  
**春坎角 柏濤小築**  
32 Cape Road, Chung Hom Kok  
Waterfront 2-bedroom low-rise with nice  
decorations  
海邊兩房低密度住宅連雅致裝修，可租可售  
**1,375 s.f.**  
**\$19,000,000** also for lease \$45,000 incl.

[www.landscape.com/110168.htm](http://www.landscape.com/110168.htm) Mary Li 李小姐 9011 6595



**South Bay Towers**  
**淺水灣 南灣大廈**  
59 South Bay Road, Repulse Bay  
Newly renovated cozy apartment with  
comprehensive facilities  
全新裝修迷人住宅連完善住客會所設施  
**1,433 s.f.**  
**\$20,000,000**

[www.landscape.com/109586.htm](http://www.landscape.com/109586.htm) Mark Mak 麥先生 6838 2929



**Bauhinia Gardens**  
**春坎角 紫荊園**  
42 Chung Hom Kok Road, Chung Hom Kok  
Spacious 3-bedroom low-rise in tranquil  
Chung Hom Kok  
春坎角寬敞三房低密度住宅，環境清幽怡人，可租可售  
**1,600 s.f.**  
**\$22,500,000** also for lease \$55,000 incl.

[www.landscape.com/128086.htm](http://www.landscape.com/128086.htm) Chris Law 羅先生 6183 8388



**Scenic Villas**  
**薄扶林 美景臺**  
2-28 Scenic Villa Drive, Pokfulam  
High efficiency 4-bedroom apartment at  
waterfront with sea view  
薄扶林海濱四房住宅，實用率高，尊享海景  
**2,517 s.f.**  
**\$31,500,000**

[www.landscape.com/49859.htm](http://www.landscape.com/49859.htm) Christine Chong 莊小姐 9648 6082



**South Bay Palace**  
**淺水灣 南灣御苑**  
25-31 South Bay Close, Repulse Bay  
Nicely fitted and equipped 4-bedroom  
family flat in serene neighbourhood  
雅致裝修四房家庭式住宅，配套齊全，環境寧靜，可租可售  
**2,540 s.f.**  
**\$35,000,000** also for lease \$100,000 incl.

[www.landscape.com/127602.htm](http://www.landscape.com/127602.htm) Rylie Ip 葉先生 6600 2238



**South Bay Towers**  
**淺水灣 南灣大廈**  
59 South Bay Road, Repulse Bay  
Practical 3-bedroom flat on quiet South  
Bay Road  
南灣道實用三房住宅，環境寧靜優美  
**2,738 s.f.**  
**\$38,000,000**

[www.landscape.com/7026.htm](http://www.landscape.com/7026.htm) Mavis Wu 吳小姐 9107 3891



**Hong Kong Parkview - Tower 18**  
**淺水灣 陽明山莊18座**  
88 Tai Tam Reservoir Road, Repulse Bay  
Harbour view flat in country park  
淺水灣維港景住宅，鄰近郊野公園  
**2,570 s.f.**  
**\$40,000,000**

[www.landscape.com/3266.htm](http://www.landscape.com/3266.htm) Teresa Fung 馮小姐 9138 1621



**South Bay Towers**  
**淺水灣 南灣大廈**  
59 South Bay Road, Repulse Bay  
Rare find apartment with huge private  
terrace in South Bay  
南灣罕有住宅連特大私家平台  
**2,738 s.f.** (plus 1,893 s.f. terrace)  
**\$47,000,000**

[www.landscape.com/114138.htm](http://www.landscape.com/114138.htm) Christine Chong 莊小姐 9648 6082



**Stanley Beach Road Apartment**  
**赤柱灘道平房**  
Spacious 3-bedroom low-rise apartment  
with high efficiency  
寬敞三房低密度住宅，實用率高  
**2,850 s.f.**  
**\$58,000,000**

[www.landscape.com](http://www.landscape.com) Mary Li 李小姐 9011 6595



**The Somerset**  
**淺水灣 怡峰**  
67 Repulse Bay Road, Repulse Bay  
Well decoration sea view famous duplex  
apartment with big balcony on upper  
repulse bay road  
淺水灣道頭段有名雅致裝修複式單位，尊享海景及特大陽臺  
**2,464 s.f.**  
**\$70,000,000**

[www.landscape.com/111753.htm](http://www.landscape.com/111753.htm) Maria Cheung 張小姐 5182 8699



**Grosvenor Place**  
**淺水灣 淺水灣道117號**  
117 Repulse Bay Road, Repulse Bay  
High privacy luxurious unit with large  
terrace on Repulse Bay Beach  
淺水灣豪華住宅連特大平台，私隱度高，鄰近淺水灣海灘，可租可售  
**2,719 s.f.** (plus 2,500 s.f. terrace)  
**\$78,000,000** also for lease \$160,000 incl.

[www.landscape.com/34995.htm](http://www.landscape.com/34995.htm) Louis Wong 黃先生 9871 6828



**Ruby Court**  
**淺水灣 嘉麟閣**  
55 South Bay Road, Repulse Bay  
Popular sea view flat in tranquil South Bay  
南灣受歡迎海景住宅，鄰近南灣，環境寧靜，可租可售  
**2,200 s.f.**  
**\$40,000,000** also for lease \$120,000 incl.

[www.landscape.com/51578.htm](http://www.landscape.com/51578.htm) Mary Li 李小姐 9011 6595



**Joy Garden**  
**壽臣山 曉穎花園**  
13 Shouson Hill Road West, Shouson Hill  
Low-rise duplex apartment in serene  
Shouson Hill  
壽臣山低密度複式住宅，環境清靜怡人  
**2,662 s.f.** (plus 1,306 s.f. roof)  
**\$45,000,000**

[www.landscape.com/30121.htm](http://www.landscape.com/30121.htm) Maria Cheung 張小姐 5182 8699



**Stanley Court**  
**赤柱 海灣園**  
9 Stanley Mound Road, Stanley  
Boutique 3-bedroom townhouse with nice  
decoration and spacious garden close to  
Stanley Main Beach  
精緻三房排屋連靚裝修及寬敞花園，鄰近赤柱正灘  
**2,889 s.f.** (plus 1,075 s.f. garden and 552 s.f. roof)  
**\$52,000,000**

[www.landscape.com/122969.htm](http://www.landscape.com/122969.htm) Teresa Fung 馮小姐 9138 1621



**Park Place**  
**淺水灣 雅柏苑**  
7 Tai Tam Reservoir Road, Repulse Bay  
Prestigious apartment with facilities  
enjoying unique views  
豪華住宅連住客設施享獨一無二的景觀，可租可售  
**2,335 s.f.**  
**\$58,800,000** also for lease \$100,000 incl.

[www.landscape.com/33870.htm](http://www.landscape.com/33870.htm) Walker Lam 林先生 9551 1077



**Horizon Ridge**  
**春坎角 海天小築**  
38-48 Horizon Drive, Chung Hom Kok  
Rare townhouse with stunning sea view in  
quiet enclave  
春坎角罕有絕色海景大屋，寧靜怡人  
**3,800 s.f.** (plus 783 s.f. terrace)  
**\$73,800,000**

[www.landscape.com/22813.htm](http://www.landscape.com/22813.htm) Teresa Fung 馮小姐 9138 1621



**The Somerset**  
**淺水灣 怡峰**  
67 Repulse Bay Road, Repulse Bay  
Famous building with fantastic south side  
sea view in Repulse Bay  
淺水灣著名住宅大廈連驚人南區海景  
**3,099 s.f.**  
**\$85,000,000**

[www.landscape.com/1361.htm](http://www.landscape.com/1361.htm) Louis Wong 黃先生 9871 6828



**Bellevue Place**  
淺水灣 寶晶苑  
93 Repulse Bay Road, Repulse Bay  
Newly renovated sea view house in Repulse Bay  
淺水灣全新裝修海景大屋  
**3,619 s.f.** (plus 747 s.f. roof and 171 s.f. terrace)  
**\$98,000,000**

www.landscape.com/29358.htm Teresa Lau 劉小姐 9080 6686



**Rosecliff**  
大潭 大潭道20號  
20 Tai Tam Road, Tai Tam  
Waterfront townhouse with garden and twin balconies  
海濱排屋連花園及雙陽臺  
**3,980 s.f.** (plus 1,050 s.f. roof and 649 s.f. garden)  
**\$120,000,000**

www.landscape.com/50071.htm Rylie Ip 葉先生 6600 2238



**Double Bay**  
深水灣 香島道46號  
46 Island Road, Deep Water Bay  
Deluxe waterfront house at Deep Water Bay  
深水灣豪華海濱大屋  
**5,113 s.f.** (plus 1,382 s.f. roof and 1,046 s.f. garden)  
**\$298,000,000**

www.landscape.com/108206.htm Louis Wong 黃先生 9871 6828



**Villa Rosa**  
大潭 玫瑰園  
88 Red Hill Road, Tai Tam  
Prestigious garden house with brilliant sea view  
大潭豪華花園大屋，享迷人海景，可租可售  
**4,018 s.f.** (plus 786 s.f. garden, 480 s.f. roof and terrace)  
**\$100,000,000** also for lease \$228,000 incl.

www.landscape.com/7228.htm Teresa Lau 劉小姐 9080 6686



**The Beachfront**  
淺水灣 璧池  
7 Bellevue Drive, Repulse Bay  
Exclusive townhouse with panoramic sea view of Repulse Bay  
獨特排屋連廣闊淺水灣全海景，可租可售  
**3,691 s.f.** (plus 105 s.f. terrace)  
**\$130,000,000** also for lease \$320,000 incl.

www.landscape.com/4262.htm Mark Mak 麥先生 6838 2929



**Belgravia**  
淺水灣 南灣道57號  
57 South Bay Road, Repulse Bay  
Brand new duplex penthouse with private terrace and roof overlooking stunning views  
全新複式頂層住宅連私家平台及天台，俯瞰驚人遼闊景觀  
**3,675 s.f.** (plus 1,154 s.f. roof and 462 s.f. terrace)  
**Open Offer**

www.landscape.com/19073.htm Stephen Chan 陳先生 9093 3381

## Talking with the Walls 對話牆壁

Famed New Yorker Nathan Slate Joseph’s exhibition opens in Sundaram Tagore Gallery from May 5 – June 10. The Israeli-born artist unveils a new series of stunningly vibrant works. Scouring the streets of the city, he gathers scrap metal which he assembles into paintings and vessels. Joseph showers his work with pigments and acid in his outdoor studio. He leaves the rest to nature allowing rain, wind and sunlight to transform the work. An integral member of the New York art scene, his peers include luminaries Larry Rivers, John Chamberlain and Frank Stella. Intensely coloured, Joseph’s art blurs the boundaries between painting and sculpture, East and West, nature and the manmade. ■

於2010年5月5日至6月10日期間，紐約著名的藝術家Nathan Slate Joseph將於Sundaram Tagore Gallery舉辦個人作品展。這位以色列出生的藝術家將向公眾展示他的一系列極富內涵及啟發性的作品。他搜遍全城大街小巷，收集大量廢金屬，然後把它們演變成畫作或容器。他於自己的戶外工作室，往作品上潑撒顏料及硫磺酸，然後讓作品經受風吹雨淋日曬，最後作品大功告成。作為New York Art Scene的成員之一，他的同事包括聲名顯赫的拉裡•裡弗斯、John Chamberlain及Frank Stella等。他的作品彰顯濃密的色調設計，風格融合了畫作及雕塑的特色、中西藝術風格，同時融匯了天然與人工的造詣。 ■

For more listings, please go to [www.landscape.com/sale](http://www.landscape.com/sale)

“you never own ya premises,  
you merely live there unless  
ya character implanted”

-joseph chang-



Alexiz Lee  
Joseph is friendly, honest, reliable, organized, and very meticulous in his work. I can't say enough good things about all the work he did to make my place gorgeous & very functional.

Old Peak road -the boundless en-suite



Susanna Topjon  
Don't be fooled by Joseph's easy demeanor. he's an unwavering advocate for the client and the work. It's clear to his contractors that anything less than the best won't do. He thinks through everything, and lets nothing slip by.

Shouson Hill -classical contemporary



Richard J. Brink  
Throughout the project, Joseph was personally involved, assuring the quality of the work and the project's adherence to the budget and schedule. The project was completed on time and within budget, and we now have a beautiful new home, as well as a new friend, Joseph!

Capital Garden -minimal maximized flexibility



Mei Ling  
Thank you so much for designing our new dreamy house. We absolutely love it! I just keep going upstairs and looking at it. It looks like a place out of a magazine. Fantastic Job! You matched the house to our personalities perfectly. Thanks again!

Red Hill Peninsula -accentuated coziness



Sean Holdren  
We really appreciated the way Joseph worked with us in coming up with great ideas by taking our rudimentary ideas and developing them into amazing designs.

Park Place -interior & exterior connection

- Interior design
- constructions
- space planning
- project management
- tendering
- landscaping
- quantity survey



**Chelsea Court**  
山頂 賽詩閣  
63 Mount Kellett Road, The Peak  
Deluxe 2-ensuite flat with Southside sea view  
山頂豪華兩套房住宅，尊享南區優美海景  
**1,509 s.f.**  
**\$65,000**

[www.landscape.com/20225.htm](http://www.landscape.com/20225.htm) David Chan 陳先生 9238 2012



**1-3 Homestead Road, The Peak**  
山頂 堪仕連道1-3號  
Luxurious modern sea view apartment on The Peak  
山頂豪華時尚海景住宅  
**2,828 s.f.**  
**\$120,000 incl.**

[www.landscape.com/29260.htm](http://www.landscape.com/29260.htm) Sami Woo 胡小姐 9493 8275



**Oasis**  
山頂 欣怡居  
8-12 Peak Road, The Peak  
Brand new 4-bedroom apartment with harbour view  
山頂全新四房住宅，尊享維港景，可租可售  
**2,947 s.f.** (plus garden)  
**\$140,000** also for sale Open Offer

[www.landscape.com/35413.htm](http://www.landscape.com/35413.htm) Mavis Wu 吳小姐 9107 3891



**Ondina Heights**  
山頂 安寧臺  
62-66 Peak Road, The Peak  
Luxurious european style house with sweeping sea view  
豪華英式大屋，尊享優美海景  
**3,396 s.f.** (plus 2,881 s.f. terrace and 138 s.f. roof)  
**\$150,000 incl.**

[www.landscape.com/31708.htm](http://www.landscape.com/31708.htm) Maria Cheung 張小姐 5182 8699



**9 Coombe Road, The Peak**  
山頂 甘道9號  
Newly renovated garden house on serene Coombe Road  
甘道全新裝修花園大屋，環境清幽寧靜  
**3,500 s.f.** (plus 656 s.f. terrace, 307 s.f. roof and garden)  
**\$175,000**

[www.landscape.com/10283.htm](http://www.landscape.com/10283.htm) Teresa Fung 馮小姐 9138 1621



**Strawberry Hill**  
山頂 紅莓閣  
32 Plantation Road, The Peak  
Rare find colonial garden house overlooking Aberdeen Country Park and ocean view  
罕有英式花園大屋，俯瞰香港仔郊野公園景及海景  
**3,900 s.f.**  
**\$200,000**

[www.landscape.com/5662.htm](http://www.landscape.com/5662.htm) Louis Wong 黃先生 9871 6828



**Mountain Court**  
山頂 山景大廈  
11 Plantation Road, The Peak  
Luxurious Peak apartment with expansive harbour view  
豪華山頂住宅連遼闊的維港景觀  
**2,129 s.f.** (plus 87 s.f. terrace and 84 s.f. roof)  
**\$116,000**

[www.landscape.com/18986.htm](http://www.landscape.com/18986.htm) Mavis Wu 吳小姐 9107 3891



**29 Severn Road, The Peak**  
山頂 施勳道29號  
Brand new 4-bedroom apartment with spacious balcony and sea view  
山頂全新四房住宅連寬敞陽臺，尊享海景  
**2,300 s.f.**  
**\$130,000**

[www.landscape.com/46657.htm](http://www.landscape.com/46657.htm) Maria Cheung 張小姐 5182 8699



**La Hacienda - Apartment**  
山頂 加列山道29-33號  
29-33 Mount Kellett Road, The Peak  
Colonial style lofty-ceiling apartment with Southside sea view and green view  
山頂英式住宅樓底特高，尊享南區海景及翠綠園景，可租可售  
**3,506 s.f.**  
**\$140,000 incl.** also for sale \$56,000,000

[www.landscape.com](http://www.landscape.com) Christine Chong 莊小姐 9648 6082



**Orient Crest**  
山頂 山頂道76號  
76 Peak Road, The Peak  
Charming townhouse with huge private terrace and roof top  
迷人排屋連特大私家平台及天台  
**3,300 s.f.** (plus 400 s.f. garden)  
**\$155,000 incl.**

[www.landscape.com/2427.htm](http://www.landscape.com/2427.htm) Yvonne Chang 鄭小姐 9088 4666



**Abergeldie**  
山頂 種植道52號  
52 Plantation Road, The Peak  
Peak house with bird's eye view of Victoria Harbour  
山頂大屋尊享鳥語花香的維港景觀，可租可售  
**3,655 s.f.** (plus 505 s.f. terrace, 464 s.f. garden and 282 s.f. roof)  
**\$200,000** also for sale \$200,000,000

[www.landscape.com/13340.htm](http://www.landscape.com/13340.htm) David Chan 陳先生 9238 2012



**The Mount Austin**  
山頂 柯士甸山道8號  
8 Mount Austin Road, The Peak  
Rare large modern townhouse with panoramic harbour view  
山頂特大時尚排屋，尊享廣闊維港景，市場罕有  
**6,415 s.f.** (plus 7,271 s.f. garden, 902 s.f. roof and 833 s.f. terrace)  
**\$390,000**

[www.landscape.com/27917.htm](http://www.landscape.com/27917.htm) David Chan 陳先生 9238 2012



**Silver Fair Mansion**  
東半山 銀輝大廈  
2E-2F Shiu Fai Terrace, Midlevels East  
Conveniently located flat with green view and open view  
東半山翠綠園景住宅，景觀開揚，交通方便，可租可售  
**1,450 s.f.**  
**\$38,000 incl.** also for sale \$13,300,000

[www.landscape.com/72414.htm](http://www.landscape.com/72414.htm) Carman Szeto 司徒小姐 6183 8339



**Marlborough House**  
東半山 保祿大廈  
154 Tai Hang Road, Midlevels East  
Minimalist colonial cul-de-sac city-hideaway apartment  
英式藝術設計特色單位，坐落於城市的角落  
**1,450 s.f.**  
**\$55,000 incl.**

[www.landscape.com/38130.htm](http://www.landscape.com/38130.htm) Eric Wong 黃先生 9740 3396



**Fairlane Tower**  
中半山 寶雲山莊  
2B Bowen Road, Midlevels Central  
Modern flat with excellent facilities on treelined Bowen Road  
寶雲道時尚住宅，綠樹松蔭，設有完善住客會所設施，可租可售  
**1,744 s.f.**  
**\$66,000 incl.** also for sale \$29,800,000

[www.landscape.com/37843.htm](http://www.landscape.com/37843.htm) Mira To 杜小姐 9486 1566



**Wing Hong Mansion**  
中半山 永康大廈  
60-62 MacDonnell Road, Midlevels Central  
Practical 3-bedroom mid-rise apartment in good condition  
中密度三房住宅，保養良好，間隔實用  
**1,700 s.f.**  
**\$53,000 incl.**

[www.landscape.com/107824.htm](http://www.landscape.com/107824.htm) Eric Wong 黃先生 9740 3396



**Loong Fung Terrace**  
東半山 龍鳳臺  
89-93 Tai Hang Road, Midlevels East  
Mint condition low-rise flat with lush green view in quiet Neighbourhood  
完美裝修低密度住宅，尊享翠綠園景，環境寧靜，可租可售  
**1,800 s.f.**  
**\$65,000 incl.** also for sale \$24,000,000

[www.landscape.com/43556.htm](http://www.landscape.com/43556.htm) Walker Lam 林先生 9551 1077



**Wah Fung Mansion**  
東半山 華峰樓  
27 Tai Hang Road, Midlevels East  
Spacious whole-floor unit with balcony in high privacy  
東半山寬敞住宅連陽臺，私隱度高，可租可售  
**2,087 s.f.**  
**\$70,000 incl.** also for sale \$27,000,000

[www.landscape.com/36117.htm](http://www.landscape.com/36117.htm) Carman Szeto 司徒小姐 6183 8339

SCHOTTEN & HANSEN

a passion for excellence

“A floor from Schotten & Hansen is as unique as the person who lives on it”

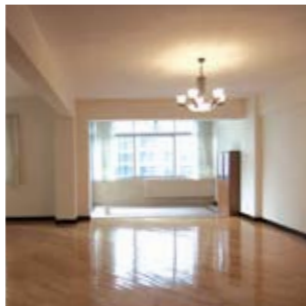
Torben Hansen, Managing Director of Schotten & Hansen



**United Mansion**  
東半山 騰黃閣  
7 Shiu Fai Terrace, Midlevels East  
Nicely decorated spacious flat with practical layout in tranquil area  
雅致悅目裝修住宅，間隔寬敞實用，環境寧靜優美

**2,200 s.f.**  
**\$72,000 incl.**

[www.landscape.com/27158.htm](http://www.landscape.com/27158.htm) Walker Lam 林先生 9551 1077



**Catalina Mansions**  
中半山 嘉年大廈  
98-100 MacDonnell Road, Midlevels Central  
Spacious 3-bedroom apartment in colonial mid-rise building  
中半山高密度寬敞英式三房住宅

**2,300 s.f.**  
**\$75,000 incl.**

[www.landscape.com/37788.htm](http://www.landscape.com/37788.htm) Rowena Siu 蕭小姐 9348 4118



**Bowen's Lookout**  
中半山 寶雲道13號  
13 Bowen Road, Midlevels Central  
Luxury 4-bedroom flat in lush greenery closet of CBD  
豪華四房住宅，綠樹松蔭，鄰近中環商業區

**2,388 s.f.**  
**\$118,000 incl.**

[www.landscape.com/33913.htm](http://www.landscape.com/33913.htm) Sami Woo 胡小姐 9493 8275



**Grenville House**  
中半山 嘉慧園  
1-3A Magazine Gap Road, Midlevels Central  
Huge 4-bedroom apartment in renowned building on Magazine Gap Road  
馬己仙峽道有名望巨型四房住宅

**3,700 s.f.**  
**\$130,000 incl.**

[www.landscape.com/17363.htm](http://www.landscape.com/17363.htm) Teresa Lau 劉小姐 9080 6686



**Nicholson Tower**  
東半山 蔚豪苑  
8 Wong Nai Chung Gap Road, Midlevels East  
Newly renovated popular 4-bedroom flat with racecourse view  
全新裝修受歡迎四房住宅，尊享馬場景

**1,993 s.f.**  
**\$78,000 incl.**

[www.landscape.com/33431.htm](http://www.landscape.com/33431.htm) Eric Wong 黃先生 9740 3396



**Evergreen Villa**  
東半山 松柏新村  
43 Stubbs Road, Midlevels East  
Large practical 4-bedroom flat with big balcony on Stubbs Road  
司徒拔道特大四房住宅連太陽臺，間隔實用

**2,700 s.f.**  
**\$80,000 incl.**

[www.landscape.com/2786.htm](http://www.landscape.com/2786.htm) Stephen Chan 陳先生 9093 3381



**Victoria Height**  
東半山 威利閣  
43A Stubbs Road, Midlevels East  
Exclusive apartment with private roof in excellent condition overlooking stunning harbour view  
東半山獨特住宅連私家天台，保養良好，俯瞰驚人維港景觀

**2,650 s.f.** (plus 1,936 s.f. roof)  
**\$135,000**

[www.landscape.com/37158.htm](http://www.landscape.com/37158.htm) Eric Wong 黃先生 9740 3396



**Tregunter Tower 3**  
中半山 地利根德閣3座  
14 Tregunter Path, Midlevels Central  
Luxurious duplex apartment with full clubhouse facilities overlooking the harbour  
豪華複式住宅連完善住客會所設施，俯瞰維港景，可租可售

**3,639 s.f.**  
**\$140,000** also for sale \$72,000,000

[www.landscape.com/3950.htm](http://www.landscape.com/3950.htm) Mira To 杜小姐 9486 1566



**Bellevue Court**  
東半山 碧蕙園  
41 Stubbs Road, Midlevels East  
High efficiency colonial style apartment with good layout and nice decor  
高實用英式住宅，間隔實用，靚裝修，可租可售

**2,700 s.f.**  
**\$80,000 incl.** also for sale \$40,000,000

[www.landscape.com/50056.htm](http://www.landscape.com/50056.htm) Teresa Lau 劉小姐 9080 6686



**May Tower 1**  
中半山 梅苑一座  
7 May Road, Midlevels Central  
Sought after spacious duplex apartment in Midlevels Central  
中半山複式住宅，間隔寬敞，市面難尋

**2,850 s.f.**  
**\$82,000 incl.**

[www.landscape.com/8184.htm](http://www.landscape.com/8184.htm) Sami Woo 胡小姐 9493 8275



**HighCliff**  
東半山 曉廬  
41D Stubbs Road, Midlevels East  
Brand new luxurious 4-bedroom apartment on Stubbs Road  
司徒拔道全新豪華四房單位，可租可售

**3,676 s.f.**  
**\$150,000** also for sale \$88,100,000

[www.landscape.com/34338.htm](http://www.landscape.com/34338.htm) Stephen Chan 陳先生 9093 3381



**Regence Royale**  
中半山 富匯豪庭  
2 Bowen Road, Midlevels Central  
Huge luxurious 6-bedroom apartment with deluxe clubhouse  
中半山巨型華麗六房單位連豪華住客會所設施，可租可售

**5,219 s.f.**  
**\$300,000 incl.** also for sale \$145,000,000

[www.landscape.com/105968.htm](http://www.landscape.com/105968.htm) Louis Wong 黃先生 9871 6828



**Chung Tak Mansion**  
中半山 重德大廈  
2 Magazine Gap Road, Midlevels Central  
Huge 3-ensuite apartment with high efficiency on fringe of Central  
特大中半山三套房住宅，間隔實用，鄰近中環，交通方便

**2,864 s.f.**  
**\$97,000 incl.**

[www.landscape.com/16989.htm](http://www.landscape.com/16989.htm) Mary Li 李小姐 9011 6595



**Branksome Grande**  
中半山 地利根德里3號  
3 Tregunter Path, Midlevels Central  
Colonial style spacious flat with balcony in Midlevels Central  
中半山英式住宅連陽臺，間隔寬敞

**3,030s.f.**  
**\$97,000**

[www.landscape.com/13323.htm](http://www.landscape.com/13323.htm) Ryllie Ip 葉先生 6600 2238



**Aigburth**  
中半山 譽皇居  
12 Tregunter Path, Midlevels Central  
Luxurious 3-bedroom apartment on Midlevels Central  
中半山豪華三房住宅

**2,650 s.f.**  
**\$106,000**

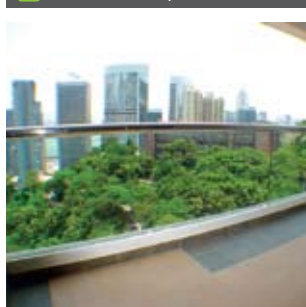
[www.landscape.com/21637.htm](http://www.landscape.com/21637.htm) Teresa Lau 劉小姐 9080 6686



**The Albany**  
中半山 雅賓利大廈  
1 Albany Road, Midlevels Central  
Renowned 3-bedroom apartment on fringe of Central with nice views  
中半山有名望三房住宅，鄰近中環，享優美景觀

**2,546 s.f.**  
**\$110,000**

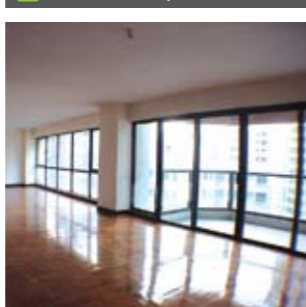
[www.landscape.com/31634.htm](http://www.landscape.com/31634.htm) Mira To 杜小姐 9486 1566



**Borrett Mansion**  
中半山 寶德臺  
8A-9B Bowen Road, Midlevels Central  
Spacious 4-bedroom apartment with open city view  
中半山寬敞四房單位享開揚城市景觀

**2,800 s.f.**  
**\$113,000 incl.**

[www.landscape.com/30828.htm](http://www.landscape.com/30828.htm) Ryllie Ip 葉先生 6600 2238



**Estoril Court**  
中半山 愛都大廈  
55 Garden Road, Midlevels Central  
Huge 4-bedroom flat in highly convenient location  
巨型四房住宅，交通方便

**3,347s.f.**  
**\$118,000 incl.**

[www.landscape.com/32122.htm](http://www.landscape.com/32122.htm) Yvonne Chang 鄭小姐 9088 4666



CONCEPT & SOLUTION FOR INTERIOR DESIGN



Unit 3-5, 10FJupiter Tower, 9 Jupiter Street, Hong Kong. Telephone: 2882 4007 Fax: 3428 8379 email: fk@fkconcept.com



**96 Repulse Bay Road, Repulse Bay**  
 淺水灣 淺水灣道 96號  
 Newly renovated colonial low-rise in Repulse Bay  
 淺水灣全新裝修英式低密度住宅  
**1,500 s.f.**  
**\$55,000 incl.**

[www.landscape.com/127465.htm](http://www.landscape.com/127465.htm) Teresa Fung 馮小姐 9138 1621



**Greenery Garden**  
 薄扶林 怡林閣  
 2A Mount Davis Road, Pokfulam  
 Brand new decoration with full sea view apartment in quiet neighbourhood of Pokfulam  
 薄扶林全新裝修全海景住宅，環境優美寧靜  
**1,547 s.f.**  
**\$55,000 incl.**

[www.landscape.com/112672.htm](http://www.landscape.com/112672.htm) Mary Li 李小姐 9011 6595



**Celestial Garden**  
 淺水灣 詩禮花園  
 5 Repulse Bay Road, Repulse Bay  
 Well kept 3-bedroom apartment with facilities on upper Repulse Bay Road  
 淺水灣道頭段雅致三房住宅連完善住客會所設施  
**2,375 s.f.**  
**\$90,000 incl.**

[www.landscape.com/22426.htm](http://www.landscape.com/22426.htm) Eric Wong 黃先生 9740 3396



**3 Consort Rise, Pokfulam**  
 薄扶林 金粟街3號  
 Practical 4-bedroom townhouse with garden and roof  
 薄扶林實用四房排屋連花園天台  
**2,800 s.f.** (plus 539 s.f. garden and 442 s.f. roof)  
**\$90,000 incl.**

[www.landscape.com/38618.htm](http://www.landscape.com/38618.htm) Yvonne Chang 鄭小姐 9088 4666



**Repulse Bay Garden**  
 淺水灣 麗景園  
 18-40 Belleview Drive, Repulse Bay  
 Spacious practical older-style apartment with full view of Repulse Bay Beach  
 淺水灣寬敞實用傳統豪宅，尊享淺水灣海灘全景  
**2,288 s.f.**  
**\$70,000 incl.**

[www.landscape.com/30473.htm](http://www.landscape.com/30473.htm) Sami Woo 胡小姐 9493 8275



**34-36 Bisney Road, Pokfulam**  
 薄扶林 碧荔道34-36號  
 Newly renovated low-rise flat with private terrace and balcony in lush greenery  
 全新裝修低密度住宅連私家平台及陽臺，環境翠綠怡人  
**2,200 s.f.** (plus 500 s.f. terrace)  
**\$72,000 incl.**

[www.landscape.com/50596.htm](http://www.landscape.com/50596.htm) Walker Lam 林先生 9551 1077



**Belgravia Heights**  
 大潭 碧濤閣  
 27 Tai Tam Road, Tai Tam  
 Well maintained full sea view penthouse with private roof at Tai Tam water front  
 大潭海濱全海景頂層單位，連特大私家天台  
**2,890 s.f.** (plus 2,401 s.f. roof)  
**\$105,000 incl.**

[www.landscape.com/36003.htm](http://www.landscape.com/36003.htm) Teresa Fung 馮小姐 9138 1621



**Belvedere**  
 春坎角 浩瀚臺  
 41 Chung Hom Kok Road, Chung Hom Kok  
 Rare 4-bedroom townhouse with communal pool  
 罕有四房排屋連泳池設施  
**3,343 s.f.** (plus 1,195 s.f. roof and 468 s.f. terrace)  
**\$105,000 incl.**

[www.landscape.com/34465.htm](http://www.landscape.com/34465.htm) Yvonne Chang 鄭小姐 9088 4666



**Monte Verde**  
 淺水灣 南山別墅  
 41 Repulse Bay Road, Repulse Bay  
 Rare 4-bedroom apartment with Deep Water Bay view on upper Repulse Bay Road  
 淺水灣道頭段罕有四房住宅，尊享深水灣景觀  
**2,200 s.f.**  
**\$85,000**

[www.landscape.com/10238.htm](http://www.landscape.com/10238.htm) Sami Woo 胡小姐 9493 8275



**14 Stanley Beach Road, Stanley**  
 赤柱 赤柱灘道14號  
 Renovated 3-bedroom low-rise with balcony close to beach  
 全新裝修三房低密度住宅連陽臺，鄰近海灘  
**2,320 s.f.**  
**\$85,000**

[www.landscape.com/20695.htm](http://www.landscape.com/20695.htm) Maria Cheung 張小姐 5182 8699



**14 Headland Road, Repulse Bay**  
 淺水灣 赫蘭道14號  
 Brand new garden low-rise apartment on Headland Road  
 赫蘭道全新低密度花園住宅  
**2,650 s.f.** (plus 912 s.f. terrace)  
**\$109,000**

[www.landscape.com/124150.htm](http://www.landscape.com/124150.htm) Yvonne Chang 鄭小姐 9088 4666



**Manhattan Tower**  
 淺水灣 曼赫頓大廈  
 63 Repulse Bay Road, Repulse Bay  
 Popular 4-bedroom apartment with sea view on upper Repulse Bay Road  
 受歡迎淺水灣道頭段四房住宅，享海景  
**2,400 s.f.**  
**\$110,000 incl.**

[www.landscape.com/35916.htm](http://www.landscape.com/35916.htm) Rylie Ip 葉先生 6600 2238



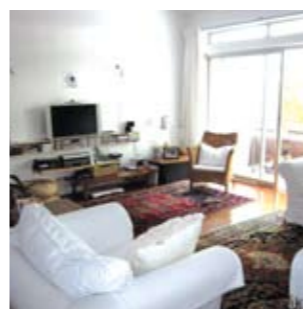
**Carmina Place**  
 深水灣 嘉名苑  
 7-9 Deep Water Bay Drive, Deep Water Bay  
 Newly decorated apartment in tranquil neighbourhood  
 全新裝修單位，環境寧靜怡人  
**2,628 s.f.**  
**\$114,000 incl.**

[www.landscape.com/19356.htm](http://www.landscape.com/19356.htm) Stephen Chan 陳先生 9093 3381



**Stanley Court**  
 赤柱 海灣園  
 9 Stanley Mound Road, Stanley  
 Resort-style townhouse with private garden close to beach  
 赤柱渡假式排屋連私家花園，鄰近海灘  
**2,713 s.f.** (plus 732 s.f. garden and 517 s.f. roof)  
**\$120,000 incl.**

[www.landscape.com/30960.htm](http://www.landscape.com/30960.htm) Yvonne Chang 鄭小姐 9088 4666



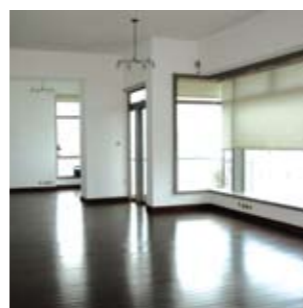
**Ann Garden**  
 壽臣山 安苑  
 2 Bowen Road, Midlevels Central  
 4-bedroom duplex unit in serene neighbourhood  
 壽臣山四房複式住宅，環境清幽怡人  
**2,500 s.f.** (plus 800 s.f. garden and 96 s.f. terrace)  
**\$125,000 incl.**

[www.landscape.com/34582.htm](http://www.landscape.com/34582.htm) Eric Wong 黃先生 9740 3396



**Redhill House**  
 大潭 紅山半島  
 18 Pak Pat Shan Road, Tai Tam  
 Spacious family garden house in good condition  
 寬敞家庭式花園大屋，保養良好，可租可售  
**2,880 s.f.** (plus 723 s.f. garden, 378 s.f. terrace and 308 s.f. roof)  
**\$125,000 incl.** also for sale \$53,000,000

[www.landscape.com/151.htm](http://www.landscape.com/151.htm) Maria Cheung 張小姐 5182 8699



**Grosvenor Place**  
 淺水灣 淺水灣道117號  
 117 Repulse Bay Road, Repulse Bay  
 Modern apartment with Repulse Bay view  
 時尚設計單位，尊享淺水灣景觀，可租可售  
**2,809 s.f.**  
**\$140,000 incl.** also for sale \$68,000,000

[www.landscape.com/37517.htm](http://www.landscape.com/37517.htm) Walker Lam 林先生 9551 1077



**Pine Lodge**  
 壽臣山 松苑  
 10 Shouson Hill Road West, Shouson Hill  
 3-bedroom duplex with large terrace in tranquil Shouson Hill  
 壽臣山三房複式住宅連特大平台，環境寧靜怡人  
**3,000 s.f.** (plus 800 s.f. terrace and garden)  
**\$150,000 incl.**

[www.landscape.com/3218.htm](http://www.landscape.com/3218.htm) David Chan 陳先生 9238 2012

For more listings, please go to [www.landscape.com/lease](http://www.landscape.com/lease)

德國 **osmo**®  
 ...in form und farbe

*Wood finishes from a wood specialist*



**Natural...**  
 ...with natural oils and waxes, the very best for wood and the environment!



**Faster...**  
 ...Osmo finishes can be renovated without sanding, saving time and money!



**Coverage...**  
 ...high solid means amazing coverage and best price per m²!

**Hop Sze Timber Co., Ltd.**  
 220 Gloucester Road, Wanchai, Hong Kong  
 Phone (852) 28336069 · [www.hopsze.com](http://www.hopsze.com)  
 For more listings, please go to [www.landscape.com/lease](http://www.landscape.com/lease)



**4 Headland Road, Repulse Bay**  
淺水灣 赫蘭道4號

Unique sizeable low-rise flat with huge balcony overlooking fantastic sea view  
精致寬敞低密度住宅連特大陽臺，俯瞰絕色海景

**3,586 s.f.**  
**\$150,000**

[www.landscape.com/18443.htm](http://www.landscape.com/18443.htm) Chris Law 羅先生 6183 8388



**1 Shouson Hill Road East, Shouson Hill**  
壽臣山 壽臣山道東1號

4-bedroom garden townhouse in Shouson Hill  
壽臣山四房花園排屋

**4,069 s.f.** (plus 629 s.f. roof and 207 s.f. garden)  
**\$165,000**

[www.landscape.com/94620.htm](http://www.landscape.com/94620.htm) Rowena Siu 蕭小姐 9348 4118

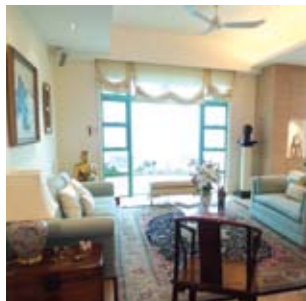


**13 Headland Road, Repulse Bay**  
淺水灣 赫蘭道13號

Exclusive townhouse in gated neighbourhood with nice views  
淺水灣獨特排屋，環境寧靜，享優美景觀

**3,576 s.f.** (plus 533 s.f. terrace)  
**\$168,000**

[www.landscape.com/35697.htm](http://www.landscape.com/35697.htm) Mavis Wu 吳小姐 9107 3891

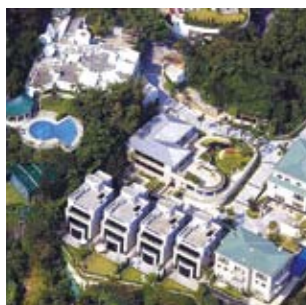


**Ocean Bay**  
春坎角 海天徑15-17號  
15-17 Horizon Drive, Chung Hom Kok

Sea view townhouse with private garden  
春坎角海景排屋連私家花園

**3,180 s.f.** (plus 437 s.f. roof and 436 s.f. terrace)  
**\$180,000 incl.**

[www.landscape.com/34993.htm](http://www.landscape.com/34993.htm) Mark Mak 麥先生 6838 2929



**70 Deep Water Bay Road, Deep Water Bay**  
深水灣 深水灣道70號

Rarely available Deep Water Bay townhouse  
深水灣罕有排屋出租

**4,140 s.f.** (plus 2,959 s.f. garden)  
**\$220,000**

[www.landscape.com/21927.htm](http://www.landscape.com/21927.htm) David Chan 陳先生 9238 2012



**Circle Lodge**  
淺水灣 環翠園  
79 Repulse Bay Road, Repulse Bay

Rare garden townhouse at ocean front with full Repulse Bay sea view  
罕有海濱花園大屋，尊享全淺水灣海景

**4,000 s.f.** (plus 1,000 s.f. garden)  
**\$270,000**

[www.landscape.com/11814.htm](http://www.landscape.com/11814.htm) Louis Wong 黃先生 9871 6828



**Regalia Bay**  
赤柱 富豪海灣  
88 Wong Ma Kok Road, Stanley

Full sea view townhouse at Stanley seafront  
赤柱海邊排屋尊享全海景，可租可售

**4,110 s.f.** (plus 1,167 s.f. roof and 651 s.f. garden)  
**\$160,000** also for sale \$80,000,000

[www.landscape.com](http://www.landscape.com) Christine Chong 莊小姐 9648 6082



**Helene Court**  
壽臣山 喜蓮閣  
14 Shouson Hill Road, Shouson Hill

5-bedroom house with private garden in serene environ  
五房大屋連私家花園，環境清幽怡人

**3,160 s.f.** (plus 1,000 s.f. garden)  
**\$165,000**

[www.landscape.com/7294.htm](http://www.landscape.com/7294.htm) Rylie Ip 葉先生 6600 2238



**Fairwinds**  
赤柱 東頭灣道29-31號  
29-31 Tung Tau Wan Road, Stanley

Rare find garden townhouse at Stanley waterfront  
罕有赤柱海濱花園排屋

**2,300 s.f.** (plus 343 s.f. terrace)  
**\$180,000 incl.**

[www.landscape.com/100229.htm](http://www.landscape.com/100229.htm) David Chan 陳先生 9238 2012



**The Somerset**  
淺水灣 怡峰  
67 Repulse Bay Road, Repulse Bay

Rare duplex with huge garden overlooking Deep Water Bay  
淺水灣罕有複式住宅連特大花園，俯瞰深水灣景觀

**3,141 s.f.** (plus 2,035 s.f. garden and 911 s.f. terrace)  
**\$200,000 incl.**

[www.landscape.com/3511.htm](http://www.landscape.com/3511.htm) Walker Lam 林先生 9551 1077



**66 Deep Water Bay Road, Deep Water Bay**  
深水灣 深水灣道66號

Luxurious townhouse in prestigious neighbourhood  
深水灣豪華排屋，地段尊貴寧靜

**4,200 s.f.** (plus 569 s.f. roof)  
**\$260,000**

[www.landscape.com/100126.htm](http://www.landscape.com/100126.htm) Sami Woo 胡小姐 9493 8275



**Rosecliff**  
大潭 大潭道20號  
20 Tai Tam Road, Tai Tam

Prestigious waterfront townhouse with stunning sea view in tranquil location  
豪華海濱排屋連廣闊海景，環境寧靜

**3,980 s.f.** (plus 1,192 s.f. garden and 1,050 s.f. roof)  
**\$280,000**

[www.landscape.com/127173.htm](http://www.landscape.com/127173.htm) Louis Wong 黃先生 9871 6828

For more listings, please go to [www.landscape.com/lease](http://www.landscape.com/lease)

# 隨時隨地緊貼第一手豪宅資訊

[Home](#)
[Buy](#)
[Rent](#)
[Search](#)
[Favourites](#)

**The Leighton Hill**  
跑馬地 禮頓山  
2B Broadwood Road, Happy Valley

**2,238 s.f.**  
**\$50,000,000**

[More Details](#)



## First-hand luxury property news on-the-go

With over a decade of experience in the property consultancy business, Landscape is a renowned real estate consulting group based in Hong Kong. Keeping up with the pace of life, Landscape is to launch its innovative luxury property mobile website in May, the first-of-its-kind in the entire market.

Go to Home Page to look for your targeted properties. With the real-time updates of property listings from our database, the mobile website, integrated with Google map, features over 2000 buy/ rent luxury properties in Hong Kong with internal photos and full details of the properties. The user-friendly search options allow you to search properties by district, street name, property title and price range etc., and save your favourite properties under My Favourite section. With just one click, you can contact Landscape by phone, email, sms or mms, or directly link to The Key Magazine, Landscape's monthly publication of sales and letting listings of luxury residential properties. Always keep updated with the first-hand luxury property news on-the-go...No delay!

領域是香港的獨立地產顧問集團，憑借專業的地產代理服務，一直享譽業界。為了與時俱進，領域將於五月推出香港首個的手機版網頁，為你帶來香港各區豪宅的最新資訊。

在首頁，你可選擇想尋找的單位，網頁的即時更新功能為你帶來超過2000個香港豪宅買賣租賃的資料及單位圖片，並附設Google地圖，顯示更一目了然。簡單易用的搜索功能讓你可按照地區、街道名稱、樓盤名稱及售價或租金搜尋樓盤資料，然後將資料儲存到「我的最愛」。只要輕輕一按，便可以電話、電郵、短訊或多媒體訊息與領域的專業顧問聯絡，或連結到領域豪宅資訊月刊《大宅》。隨時隨地緊貼第一手豪宅資訊，時刻盡在掌握！

Mobile website (手機版網址) : [m.landscape.com](http://m.landscape.com)  
Full version website (網上版網址) : [www.landscape.com](http://www.landscape.com)