

select deluxe homes

The Key

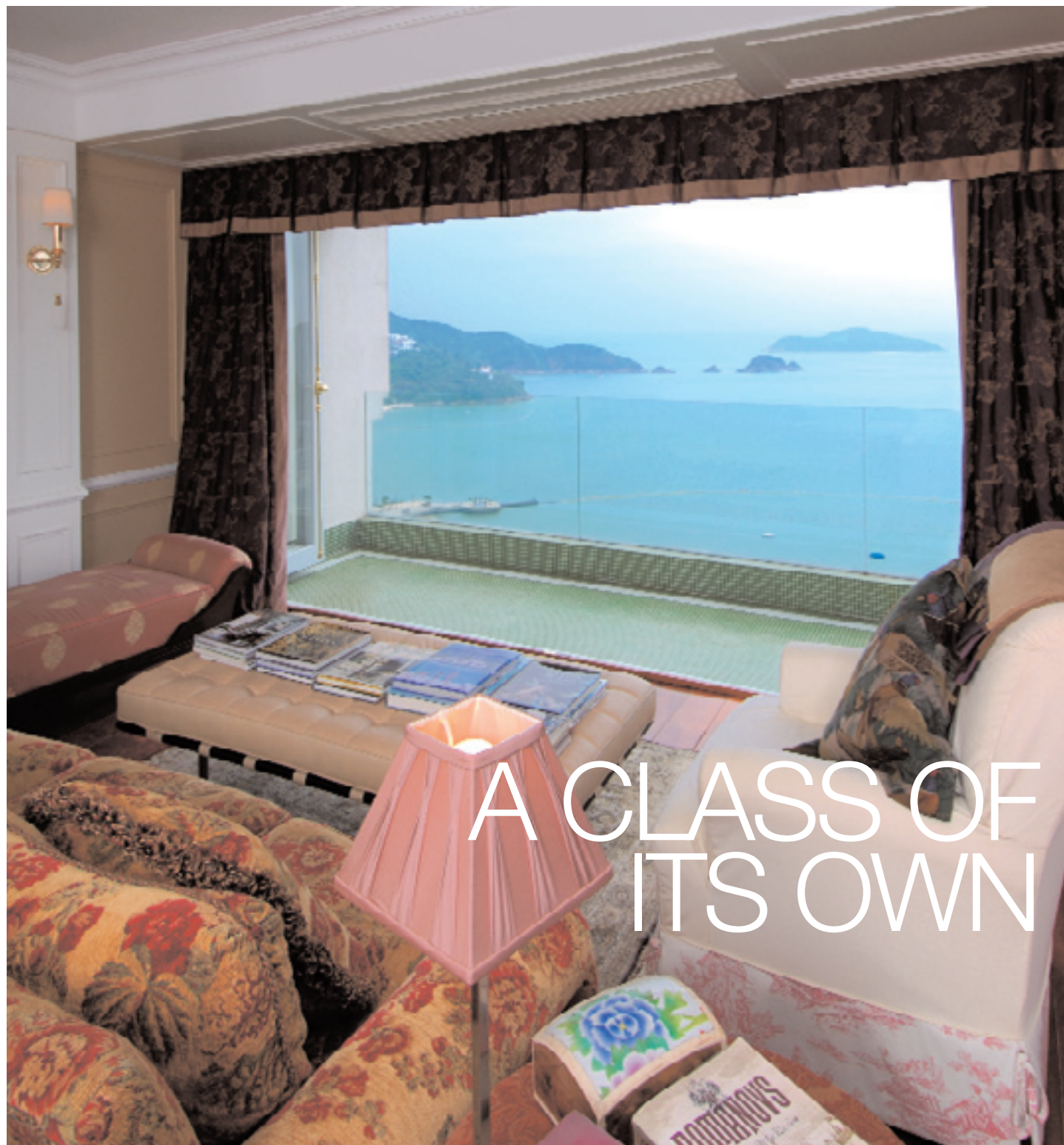
大宅®

MAY 2008
Volume 44

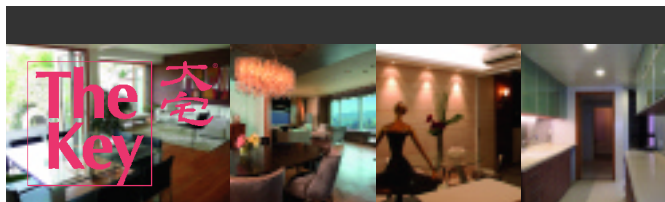
published and distributed by

LANDSCOPE
The Specialists in Luxury Properties

領域



www.landscape.com



KeyNotes

"He had swallowed down riches, and he shall vomit them up again."
Job 20:15

Amid mixed good and bad news that emerge every day, the market seems to have lost its sense of direction. This uncertainty has prolonged the market lull. The finance industry is feeling the pinch as lay-offs are setting in. Property sellers from this sector are on the increase. When financial corporations are steering towards austerity, the high end property market is bracing for a cool off, as both sales and leasing markets have been underpinned by strong demand from the sector in the past. Counter-balancing this is the fact that low supply of new flats since last year will likely continue for a couple of years and the remaining stock available for sale has been decreasing. Low interest rate and climbing inflation will also help shore up market confidence. What will evolve from all this in the next few months will decide the direction of the market. But before that, the market will remain in the doldrums.

Koh Keng-Shing
ks-koh@landscape.com

(The above is an excerpt from Market Watch on www.landscape.com.
For the full article, please log on to www.landscape.com/m0508.htm)

About The Key

The Key is a monthly publication of sales and letting listings of luxury residential properties on Hong Kong Island. It is sent to VIP clients of Landscape Realty and residents of The Peak, Southside, Mid-Levels, Kowloon Tong, Homantin and selected upmarket residential areas in Shatin, Tai Po, Clear Water Bay and Castle Peak Road. The recipients comprise the crème de la crème of Hong Kong's affluent community.

In addition to The Key, Landscape Realty sends weekly eNewsletters to clients on most update listings of luxury properties. If you wish to receive the eNewsletter, please call Loretta Lui at 3102 4818 or email to info@landscape.com.

How may you list your property with The Key?

If you would like to see your property listed in The Key in the next issue, you may call Loretta Lui at 3102 4818 or email to info@landscape.com. Or you may simply fill out the space below and fax to us at 2866 0015.

Property to be listed

Asking Rental / Sale Price

Floor Area

Contact Person

Telephone

Email

Our KeyPersons will contact you for follow-up works.

SOUTHSIDE SALES

南區
出售



Baguio Villa 薄扶林碧瑤灣

550 & 555 Victoria Road, Pokfulam

Well decorated top floor unit with private roof garden
enjoying green view

良好裝修頂層連天台花園，享怡人綠景

1,135 s.f. (plus 687 s.f. roof)

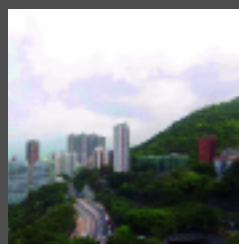
\$11,800,000

SOLE AGENT 獨家代理



www.landscape.com/13539.htm

Teresa Lau 劉小姐 9080 6686



Y Y Mansion

薄扶林裕仁大廈

96 Pokfulam Road, Pokfulam

Nicely fitted and equipped 3-bedroom
apartment

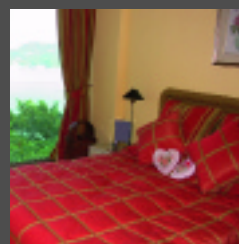
裝修用料配置優良三房物業

1,750 s.f.

\$15,000,000 also for lease \$60,000 incl.

www.landscape.com/14777.htm

Rowena Siu 蕭小姐 9348 4118



Cypresswaver Villas

春坎角柏濤小築

32 Cape Road, Chung Hom Kok

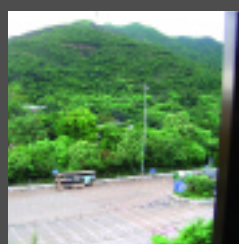
Waterfront low-rise with nice decorations
臨海低密度住宅，裝修雅緻

1,375 s.f.

\$20,000,000 also for lease \$55,000 incl.

www.landscape.com/14148.htm

Christine Chong 莊小姐 9648 6082



Goldson Place

壽臣山金信閣

11 Shouson Hill Road West, Shouson Hill

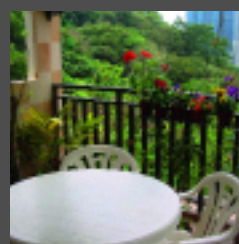
Low-rise garden flat with open view
低密度花園住宅享開揚景觀

1,650 s.f. (plus 620 s.f. garden)

\$21,000,000

www.landscape.com/9914.htm

David Chan 陳先生 9238 2012



Baguio Villa

薄扶林碧瑤灣

550 & 555 Victoria Road, Pokfulam

Spacious and practical 4-bedroom flat in
lush green surroundings
寬敞實用四房，綠樹圍蔭

2,330 s.f.

\$23,100,000

www.landscape.com/14541.htm

Christine Chong 莊小姐 9648 6082

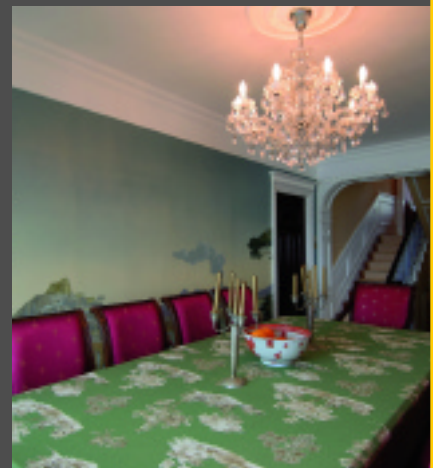


A CLASS OF ITS OWN

This colonial style duplex sits comfortably on Repulse Bay beach, taking in one of Hong Kong's most fantastic vistas. The living room is decorated with plush antique furniture. The broad teakwood floorboards set the tone, with scenery paintings lining the walls and chandeliers dangling from the ceiling that heighten the elegant ambience. Up stairs one finds a family room dressed in red that echoes the green reading room next to the master en suite. The huge, carpeted master bedroom contains a generously decorated bathroom and a walk-in closet, while the wide windows present the panorama of Repulse Bay. In a world that is predominated by minimalists, this classic masterpiece is a rare find.

Repulse Bay Towers
119A Repulse Bay Road, Southside
淺水灣 保華大廈

3,100 s.f.
\$72,000,000



www.landscape.com/14566.htm

Maria Cheung 張小姐 6256 1848

Residence Bel-Air South Towers (Phase 2)



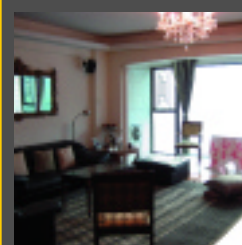
薄扶林貝沙灣南岸 (第二期)

38 Bel-Air Avenue, Pokfulam
Modern sea view apartment with comprehensive facilities
時尚海景單位, 多樣化消閒設施

1,690 s.f.
\$23,800,000 also for lease \$70,000 incl.

www.landscape.com/14727.htm

Maria Cheung 張小姐 6256 1848



Scenic Villas

薄扶林美景臺

2-28 Scenic Villa Drive, Pokfulam
High efficiency sea view apartment
高實用率海景單位

2,194 s.f.
\$25,000,000

www.landscape.com/14372.htm

Mary Li 李小姐 9011 6595



Aegean Terrace

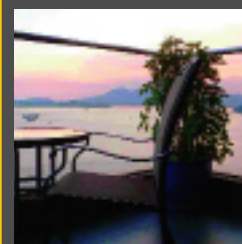
薄扶林 愛琴苑

60 Sassoon Road, Pokfulam
Sea view low-rise with brand new decorations and spacious layout
海景低密度, 全新裝修, 間格寬敞

1,860 s.f.
\$28,000,000

www.landscape.com/14733.htm

Maria Cheung 張小姐 6256 1848



Cape Mansions

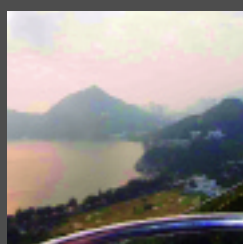
薄扶林翠海別墅

56-62 Mount Davis Road, Pokfulam
Nicely decorated apartment with peaceful sea view
雅裝單位享平靜海景

2,200 s.f.
\$28,000,000

www.landscape.com/14730.htm

Yvonne Chang 鄭小姐 9088 4666



37 Repulse Bay Road

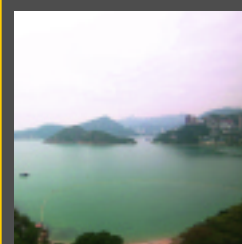
淺水灣 淺水灣道37號

37 Repulse Bay Road, Repulse Bay
Sea view apartment with facilities on sought after upper Repulse Bay Road
淺灣頭段海景住宅連設施

1,635 s.f.
\$28,000,000

www.landscape.com/14353.htm

Teresa Fung 馮小姐 9138 1621



Ruby Court

淺水灣嘉麟閣

55 South Bay Road, Repulse Bay
Renowned sea view apartment in tranquil South Bay
南灣海景名宅, 環境寧靜

1,780 s.f.
\$30,000,000

www.landscape.com/13334.htm

Sami Woo 胡小姐 9493 8275

SOUTHSIDE SALES



Villa Helvetia

淺水灣雲濤別墅

69 Repulse Bay Road, Repulse Bay
Rare colonial apartment with fascinating sea view
罕有英式住宅享迷人海景

2,200 s.f.
\$37,000,000

www.landscape.com/9515.htm | Simon Yung 翁先生 9418 5743

Bel-Air on the Peak (Phase 4)



薄扶林貝沙灣-南灣 (第四期)

68 Bel-Air Peak Avenue, Pokfulam
Brand new 4-bedroom flat with panoramic sea view
全新四房單位享環迴海景

2,346 s.f.
\$38,000,000

www.landscape.com/14760.htm | Philip Lai 黎先生 9430 3330



Bisney View

薄扶林碧荔道47 - 49號

47-49 Bisney Road, Pokfulam
Designer decorated townhouse with roof and terrace
匠心設計排屋連天台及平台

3,500 s.f. (plus 641 s.f. garden & 485 s.f. roof)
\$38,800,000

www.landscape.com/14760.htm

Mary Li 李小姐 9011 6595



Woodgreen Estate

壽臣山壽山村道5號

5 Shouson Hill Road, Shouson Hill
Low-rise penthouse with roof in lush green area
低密度頂層連天台，環境翠綠

2,200 s.f. (plus 2,200 s.f. roof)
\$38,000,000 also for lease \$100,000 incl.

www.landscape.com/14841.htm | Christine Chong 莊小姐 9648 6082



Sea Cliff Mansions

淺水灣海峰園

19A-19D Repulse Bay Road, Repulse Bay
Nicely decorated sea view flat on upper Repulse Bay Road
淺灣頭段雅緻海景單位

2,400 s.f.
\$44,800,000

www.landscape.com/14195.htm | Christine Chong 莊小姐 9648 6082



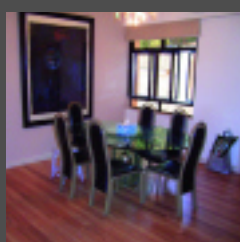
Repulse Bay Garden 淺水灣麗景園

18-40 Belleview Drive, Repulse Bay
Tastefully decorated practical flat with large balcony and full view of Repulse Bay beach
品味裝修實用單位連大露台及淺灣泳灘全景

2,288 s.f.
\$41,000,000

www.landscape.com/14443.htm

Teresa Fung 馮小姐 9138 1621



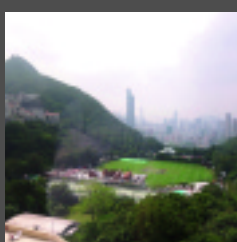
Pine Crest

淺水灣松苑

65 Repulse Bay Road, Repulse Bay
Spacious apartment with beautiful Deep Water Bay view
寬敞住宅享深水灣美景

2,250 s.f.
\$45,000,000

www.landscape.com/1197.htm | Teresa Fung 馮小姐 9138 1621



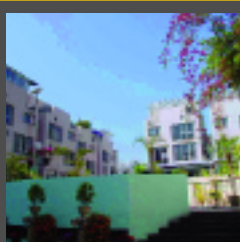
Park Place

淺水灣雅柏苑

7 Tai Tam Reservoir Road, Repulse Bay
Spacious and practical apartment on upper Repulse Bay Road
淺灣頭段寬敞實用住宅

2,288 s.f.
\$50,000,000

www.landscape.com/13499.htm | Eric Wong 黃先生 9740 3396



The Hazelton

壽臣山榛園

6 Shouson Hill Road, Shouson Hill
Garden townhouse with private garage
花園排屋連私家車房

3,195 s.f. (plus 671 s.f. roof)
\$60,000,000

www.landscape.com/14510.htm | Simon Yung 翁先生 9418 5743



Repulse Bay Heights

淺水灣淺水灣花園

3 Belleview Drive, Repulse Bay
Spacious garden townhouse
特大花園排屋

3,200 s.f. (plus 2,900 s.f. garden)
\$60,000,000

www.landscape.com/14268.htm | Sylvia Tsang 曾小姐 9801 1742



26E Shouson Hill Road
壽臣山壽山村道26E號
Rare find duplex with large garden and tasteful decor
搶手複式單位連大花園，品味裝修

3,000 s.f. (plus 1,000 s.f. garden)
\$60,000,000

www.landscape.com/14794.htm | Teresa Fung 馮小姐 9138 1621



Ventura Villa
春坎角華慧苑
27 Ching Sau Lane, Chung Hom Kok
Tastefully decorated townhouse with private terrace
品味裝修排屋連私家平台

2,800 s.f. (plus 600 s.f. terrace)
\$60,000,000

www.landscape.com/14430.htm | Christine Chong 莊小姐 9648 6082



Twin Brook
淺水灣 雙溪
43 Repulse Bay Road, Repulse Bay
Spacious 4-bedroom unit with fascinating view of Deep Water Bay
寬敞四房單位享迷人深水灣景

2,700 s.f.
\$60,000,000

www.landscape.com/14721.htm | Rita Lee 李小姐 9437 0087



Royal Garden
淺水灣聚豪居
27 Repulse Bay Road, Repulse Bay
Sea view penthouse with roof in excellent condition
海景頂層連天台，狀況優良

2,680 s.f. (plus 2,000 s.f. roof)
\$65,000,000

www.landscape.com/14428.htm | Christine Chong 莊小姐 9648 6082



Las Pinadas
壽臣山 朗松居
33 Shouson Hill Road, Shouson Hill
Quality townhouse in tranquil environment
優質排屋，環境寧靜

3,382 s.f. (plus 777 s.f. roof)
\$68,000,000 also for lease \$160,000

www.landscape.com/13369.htm | Johnny Cheung 張先生 9278 9939



The Somerset
淺水灣怡峰
67 Repulse Bay Road, Repulse Bay
Duplex apartment overlooking Repulse Bay and Deep Water Bay
複式眺望淺水灣及深水灣景色

3,099 s.f.
\$68,000,000

www.landscape.com/12660.htm | Simon Yung 翁先生 9418 5743



Grosvenor Place
淺水灣 淺水灣道117號
117 Repulse Bay Road, Repulse Bay
Modern high-rise in the heart of Repulse Bay with extensive views
時尚住宅位處淺水灣中心，享遼闊景觀

2,809 s.f.
\$70,000,000

www.landscape.com/13358.htm | David Chan 陳先生 9238 2012



The Beachfront
淺水灣壁池
7 Bellevue Drive, Repulse Bay
Rare townhouse with full sea view
罕有排屋享全海景

3,047 s.f. (plus 285 s.f. garden)
\$90,000,000

www.landscape.com/13183.htm | Sissy Li 李小姐 9642 6969



Villa Corniche
淺水灣 康芷苑
21 South Bay Road, Repulse Bay
Spacious garden house in serene area
寬敞花園屋，位置寧靜

4,200 s.f.
(plus 930 s.f. roof & 888 s.f. garden)
\$93,000,000

www.landscape.com/11774.htm | David Chan 陳先生 9238 2012



39 Deep Water Bay Road
深水灣深水灣道 39號
Superb sea view house in exclusive location
華麗海景洋房，位置優越

4,047 s.f. (plus 1,354 s.f. garden)
\$148,000,000

www.landscape.com/186.htm | Louis Wong 黃先生 9871 6828



2-8 Shouson Hill Road West
壽臣山道西2至8號
Unique 6-bedroom townhouse with large private garden in tranquil neighbourhood
獨特六房排屋連特大私家花園，環境寧靜

4,000 s.f. (plus 3,000 s.f. garden)
\$150,000,000

www.landscape.com/14420.htm | Louis Wong 黃先生 9871 6828



Hong Kong Parkview - Tower 15
淺水灣陽明山莊第15座
88 Tai Tam Reservoir Road, Repulse Bay
Rare duplex apartment with both views of Victoria Harbour and Deep Water Bay
罕有複式單位享維港及深水灣景色

5,492 s.f.
\$150,000,000

www.landscape.com/12313.htm | Eric Wong 黃先生 9740 3396

SOUTHSIDE SALES



24 Shek O Headland

石澳山仔24號

Unique sea view detached house with huge garden
罕有海景獨立屋連巨型花園

6,000 s.f.
\$160,000,000

Johnny Cheung 張先生 9278 9939



Island Grove

深水灣香島道40號

40 Island Road, Deep Water Bay
Prestigious residence at Deep Water Bay waterfront
尊貴住宅，位於深水灣海濱

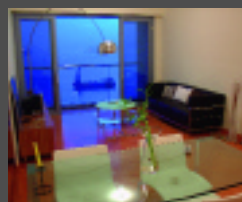
5,080 s.f. (plus 423 s.f. garden)
\$250,000,000

www.landscape.com/13229.htm

Louis Wong 黃先生 9871 6828

SOUTHSIDE LEASE

Residence Bel-Air South Towers (Phase 2)



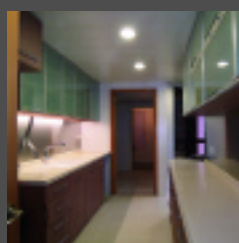
薄扶林貝沙灣南岸 (第二期)

38 Bel-Air Avenue, Pokfulam
Brand new fully furnished apartment with clubhouse facilities
全新物業享會所設施連傢俬

1,125 s.f.
\$43,000 incl.

www.landscape.com/9548.htm

Sylvia Tsang 曾小姐 9801 1742



Pacific View

大潭浪琴園

38 Tai Tam Road, Tai Tam
Newly renovated flat with panoramic sea view and clubhouse facilities
翻新物業享環迴海景及會所設施

1,906 s.f.
\$70,000 incl.

www.landscape.com/14594.htm

Carman Szeto 司徒小姐 8100 3893



Repulse Bay Garden

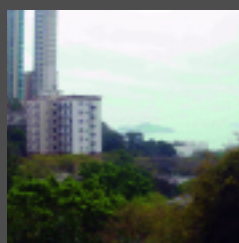
淺水灣麗景園

18-40 Belleview Drive, Repulse Bay
Refurbished flat with practical layout close to Repulse Bay beach
翻新實用間格單位，鄰近淺水灣泳灘

2,288 s.f.
\$85,000 incl. also for sale \$33,000,000

www.landscape.com/6262.htm

Mary Li 李小姐 9011 6595



3 South Bay Close, Repulse Bay 淺水灣 南灣坊3號

Modern mid-rise apartment in tranquil location
時尚中密度單位，環境寧靜

2,200 s.f.
\$86,000

www.landscape.com/14675.htm

Sylvia Tsang 曾小姐 9801 1742



Woodland Villa

壽臣山傲林軒

53 Shouson Hill Road, Shouson Hill
Lovely low-rise apartment with practical layout in tranquil location
迷人低密度實用單位，環境清靜

2,060 s.f.
\$93,000

www.landscape.com/13749.htm

David Chan 陳先生 9238 2012



Bluewater

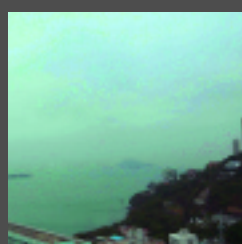
大潭道25號

25 Tai Tam Road, Tai Tam
Deluxe mid-rise apartment with sweeping sea view
豪華中密度住宅享遼闊海景

2,500 s.f.
\$95,000 also for sale \$52,000,000

www.landscape.com/13489.htm

Christine Chong 莊小姐 9648 6082



La Mer 薄扶林 浪頤居

67-71 Bisney Road, Pokfulam

Newly renovated 4-bedroom low-rise with full sea view
翻新四房低密度享全海景

2,063 s.f.
\$95,000 incl.
SOLE AGENT 獨家代理

www.landscape.com/14489.htm

Yvonne Chang 鄭小姐 9088 4666

Bel-Air on the Peak (Phase 4)



薄扶林貝沙灣-南灣 (第四期)

68 Bel-Air Peak Avenue, Pokfulam
Brand new 4-bedroom waterfront flat with beautiful sunset view
全新四房臨海單位享醉人日落景色

2,322 s.f.
\$100,000

www.landscape.com/14751.htm

Philip Lai 黎先生 9430 3330



Burnside Estate

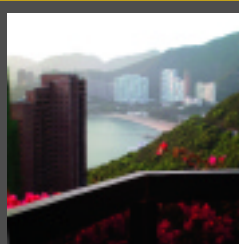
淺水灣濱景園

9 South Bay Road, Repulse Bay
3-bedroom townhouse with private roof terrace close to beach
三房排屋連私家天台平台，鄰近海灘

2,100 s.f.
\$100,000 incl.

www.landscape.com/12916.htm

Maria Cheung 張小姐 6256 1848



South Bay Towers

淺水灣南灣大廈

59 South Bay Road, Repulse Bay
Large sea view flat with good facilities in tranquil enclave
海景大單位享完善設施，環境寧靜

2,738 s.f.
\$100,000 incl. also for sale Open Offer

www.landscape.com/14897.htm

David Chan 陳先生 9238 2012



Joy Garden
壽臣山曉穎花園
13 Shouson Hill Road West, Shouson Hill
Unique 4-bedroom duplex flat with new kitchen and bathrooms
獨特四房複式，全新廚房浴室
2,752 s.f.
\$108,000 incl. also for sale \$39,800,000

www.landscape.com/14273.htm | Simon Lee 李先生 6014 3712



Ann Garden
壽臣山安苑
29 Shouson Hill Road, Shouson Hill
Duplex apartment with roof.
Feels like in a house!
複式單位連天台，猶如置身於洋房
2,500 s.f. (plus around 1,300 s.f. roof)
\$110,000

www.landscape.com/11558.htm | Teresa Lau 劉小姐 9080 6686



Carmel Hill
赤柱 海明山
12 Carmel Road, Stanley
Mediterranean style house with private garden
地中海風格洋房連私家花園
2,378 s.f. (plus 405 s.f. garden)
\$110,000 incl.

www.landscape.com/1150.htm | Rowena Siu 蕭小姐 9348 4118



South Bay Palace
淺水灣南灣御苑
25-31 South Bay Close, Repulse Bay
Spacious 4-bedroom apartment with facilities
寬敞四房單位連屋苑設施
2,636 s.f.
\$118,000 incl. also for sale \$40,000,000

www.landscape.com/14203.htm | David Leung 梁先生 9199 0672



46 Tai Tam Road
大潭 大潭道46號
Exclusive waterfront duplex with private roof
獨特臨海複式連天台
2,600 s.f. (plus 1,800 s.f. roof)
\$120,000

www.landscape.com/14463.htm | Carman Szeto 司徒小姐 8100 3893



Celestial Garden
淺水灣詩禮花園
5 Repulse Bay Road, Repulse Bay
Practical 4-bedroom apartment with new decorations
新裝實用四房單位
2,375 s.f.
\$120,000 incl.

www.landscape.com/14700.htm | Philip Lai 黎先生 9430 3330



Monte Verde
淺水灣南山別墅
41 Repulse Bay Road, Repulse Bay
Rarely available apartment with panoramic view of Deep Water Bay
罕有放盤單位享環迴深水灣景色
2,400 s.f.
\$120,000 also for sale \$53,800,000

www.landscape.com/14808.htm | Philip Lai 黎先生 9430 3330



Provident Villas
薄扶林 富麗苑
29-31 Sassoon Road, Pokfulam
High privacy garden townhouse on secluded Sassoon Road
高私隱度花園排屋，位處沙宣道寧靜地段
3,030 s.f. (plus 800 s.f. terrace)
\$120,000

www.landscape.com/14990.htm | Rowena Siu 蕭小姐 9348 4118



Repulse Bay Heights 淺水灣淺水灣花園
3 Bellevue Drive, Repulse Bay
Garden townhouse with nice decor in the heart of Repulse Bay
花園排屋雅緻裝修，位處淺水灣中心
3,200 s.f.
(plus 1,745 s.f. garden & 997 s.f. roof)
130,000 incl. also for sale \$59,000,000

www.landscape.com/13236.htm | Teresa Lau 劉小姐 9080 6686



Jade Crest
壽臣山翠峰園
35A-H Shouson Hill Road, Shouson Hill
Garden house with new decor
新裝花園洋房
3,300 s.f. (plus 1,000 s.f. garden)
\$142,000 incl.

www.landscape.com/14036.htm | Stephen Chan 陳先生 9093 3381



Horizon Crest
赤柱 赤柱村道22號
22 Stanley Village Road, Stanley
Stylish townhouse with open space
風格排屋享戶外空間
2,800 s.f. (plus 851 s.f. garden)
\$145,000 incl.

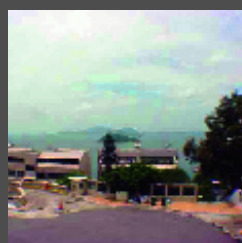
www.landscape.com/14863.htm | Rowena Siu 蕭小姐 9348 4118



Repulse Bay Towers
淺水灣保華大廈
119A Repulse Bay Road, Repulse Bay
Charming duplex on Repulse Bay beach
淺水灣海灘迷人複式物業
3,100 s.f.
\$150,000 incl.

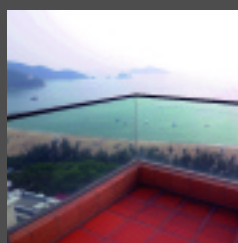
www.landscape.com/4834.htm | Yvonne Chang 鄭小姐 9088 4666

SOUTHSIDE LEASE



30-36 Horizon Drive, Chung Hom Kok
春坎角海天徑30-36號
Rarely available sea view house with 3 balconies
罕有海景洋房連三露台
3,000 s.f.
\$158,000

www.landscape.com/14800.htm | Louis Wong 黃先生 9871 6828



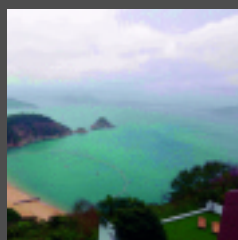
Grosvenor Place
淺水灣淺水灣道117號
117 Repulse Bay Road, Repulse Bay
4-bedroom apartment with fantastic Repulse Bay view
四房單位享迷人淺灣景
2,809 s.f.
\$159,000 also for sale \$67,000,000

www.landscape.com/12672.htm | Philip Lai 黎先生 9430 3330



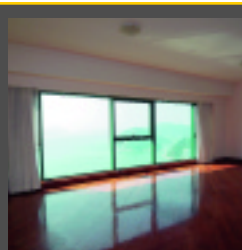
8 Deep Water Bay Road
深水灣深水灣道8號
Exclusive sea view house in upscale Deep Water Bay
獨特海景洋房，位處尊貴深水灣
3,000 s.f.
\$160,000

www.landscape.com/12884.htm | Simon Yung 翁先生 9418 5743



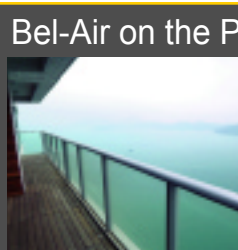
5 Headland Road
淺水灣赫蘭道5號
Newly renovated duplex with peaceful sea view
翻新複式單位享寧靜海景
3,200 s.f. (plus 1,800 s.f. roof)
\$162,000

www.landscape.com/14646.htm | Teresa Fung 馮小姐 9138 1621



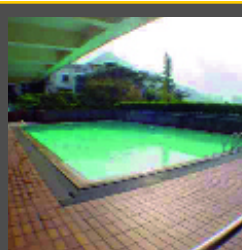
127 Repulse Bay Road
淺水灣淺水灣道127號
Luxurious apartment with deluxe decorations overlooking Repulse Bay beach
豪裝物業眺望淺水灣泳灘
3,008 s.f.
\$168,000

www.landscape.com/12915.htm | David Chan 陳先生 9238 2012



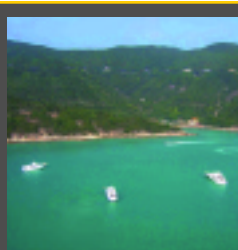
Bel-Air on the Peak (Phase 4)
薄扶林貝沙灣-南灣 (第四期)
68 Bel-Air Peak Avenue, Pokfulam
Large sea view flat with huge master bedroom and nice decorations
大海景單位，擁巨型主人房，雅緻裝修
3,980 s.f.
\$180,000 incl. also for sale \$66,000,000

www.landscape.com/14546.htm | Simon Yung 翁先生 9418 5743



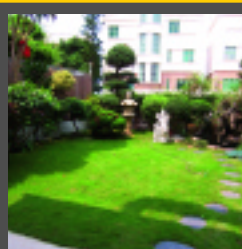
Henredon Court
壽臣山恆安閣
8 Shouson Hill Road, Shouson Hill
Huge penthouse duplex with tasteful decorations
巨型頂層複式，品味裝修
4,937 s.f.
\$180,000

www.landscape.com/14611.htm | Simon Lee 李先生 6014 3712



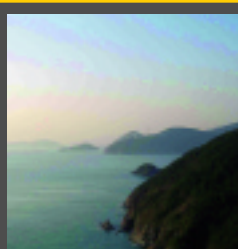
Redhill Peninsula - The Apartments 大潭紅山半島
18 Pak Pat Shan Road, Tai Tam
Newly renovated penthouse duplex with roof and terrace
翻新頂層複式連天台及平台
3,433 s.f. (plus 1,061 s.f. roof)
\$180,000

www.landscape.com/14722.htm | Simon Lee 李先生 6014 3712



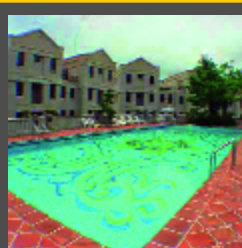
Bauhinia Gardens
春坎角紫荊園
42 Chung Hom Kok Road, Chung Hom Kok
Garden townhouse ideal for big family in lush greenery neighbourhood
花園排屋，環境翠綠，大家庭理想居庭
3,500 s.f. (plus 1,000 s.f. garden)
\$185,000 incl.

www.landscape.com/14779.htm | Maria Cheung 張小姐 6256 1848



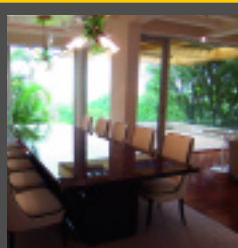
Coral Villas
春坎角珊瑚小築
27 Horizon Drive, Chung Hom Kok
Rarely available seaside townhouse
罕有放盤海濱排屋
3,345 s.f.
\$200,000

www.landscape.com/14376.htm | Yvonne Chang 鄭小姐 9088 4666



63 Deep Water Bay Road
深水灣深水灣道63號
61-63 Deep Water Bay Road, Deep Water Bay
Luxurious townhouse in prestigious neighbourhood
豪華排屋，位置優越
3,479 s.f. (plus 894 s.f. garden)
\$230,000

www.landscape.com/14664.htm | Simon Yung 翁先生 9418 5743

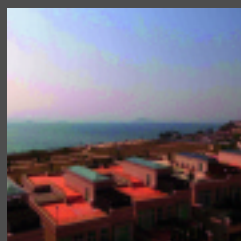


Carmelia
赤柱村道60號
60 Stanley Village Road, Stanley
Huge colonial house with front yard and private garden
巨型英式洋房連前園及私家花園
4,600 s.f. (plus 1,155 s.f. garden)
\$250,000 incl. also for sale Open Offer

www.landscape.com/9534.htm | Christine Chong 莊小姐 9648 6082

SOUTHSIDE LEASE

南區
出租



Residence Bel-Air (Phase 3) Houses 薄扶林貝沙灣洋房
Cyberport Road, Pokfulam
Brand new spacious waterfront garden house
全新寬敞臨海花園洋房
4,645 s.f.
(plus 1,977 s.f. garden & 1,503 s.f. roof)
\$268,000 also for sale \$120,000,000

www.landscape.com/14348.htm | Mira To 杜小姐 9486 1566

Hong Kong Parkview - Tower 16



淺水灣陽明山莊第16座
88 Tai Tam Reservoir Road, Repulse Bay
Huge 5-bedroom duplex apartment with
harbour view
巨型五房複式享維港景
5,166 s.f.
\$270,000

www.landscape.com/13721.htm | Yvonne Chang 鄭小姐 9088 4666



56 Repulse Bay Road
淺水灣淺水灣道56號
Waterfront duplex with breath-taking view
of Repulse Bay beach
臨海複式享壯觀淺水灣泳灘景
3,580 s.f.
\$290,000 incl. also for sale \$100,000,000

www.landscape.com/13708.htm | Louis Wong 黃先生 9871 6828



115 Repulse Bay Road
淺水灣淺水灣道115號
Full sea view duplex penthouse with
large terraces
全海景頂層複式連大平台
7,700 s.f. (plus 825 s.f. terrace)
\$330,000

www.landscape.com/14400.htm | Johnny Cheung 張先生 9278 9939



Bel-Air on the Peak (Phase 4)
薄扶林貝沙灣-南灣 (第四期)
68 Bel-Air Peak Avenue, Pokfulam
Huge duplex unit with sweeping sunset view and
excellent facilities
巨型複式單位享遼闊日落景色及優良設施
6,603 s.f.
\$350,000



www.landscape.com/13116.htm

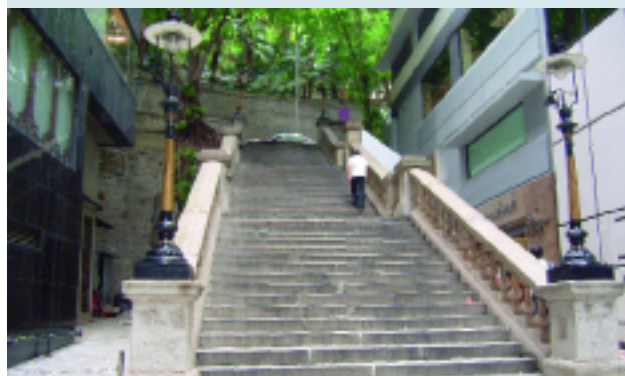
Sami Woo 胡小姐 9493 8275

DO YOU
KNOW

Duddell Street Steps and Gas Lamps, Central 中環都爹利街石階及煤氣路燈

The stone steps at Duddell Street, Central were built between 1875 and 1889. Four gas lamps surmounting the balustrades at the top and foot of the steps are the only surviving working gas street lamps in Hong Kong. The Hong Kong and China Gas Company which was originally founded to provide street lighting in Hong Kong continues to operate the lamps as objects of historical interest.

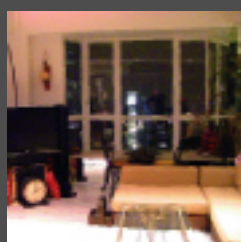
中環都爹利街的石階約建於一八七五至一八八九年間。四座煤氣路燈置於石階兩端的欄杆上，是本港僅存的煤氣路燈，現仍由原為本港提供街道照明而開辦的香港中華煤氣公司繼續操作。



Information provided by Antiquities and Monuments
Office, Leisure and Cultural Services Department

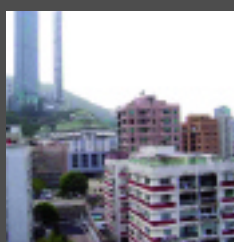
MID-LEVELS SALES

半山
出售



St. Louis Mansion
中半山 雨時大廈
20 MacDonnell Road, Midlevels Central
Unique flat with stunning city and Victoria
Harbour view
獨特單位享醉人都會及維港景
822 s.f.
\$10,900,000 SOLE AGENT 獨家代理

www.landscape.com/14006.htm | Philip Lai 黎先生 9430 3330



Vivian's Court
跑馬地榮蕙苑
75 Blue Pool Road, Happy Valley
Low-rise penthouse with roof in
quiet location
低密度頂層連天台，環境寧靜
1,100 s.f.
\$11,500,000

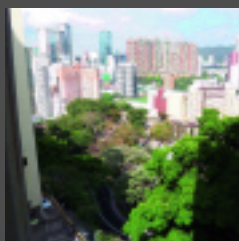
www.landscape.com/14448.htm | Johnny Cheung 張先生 9278 9939

For more listings, please go to www.landscape.com/lease

For more listings, please go to www.landscape.com/sale

The Key volume 44 08

MID-LEVELS SALES



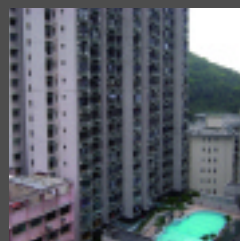
Silver Fair Mansion

東半山銀輝大廈

2E-2F Shiu Fai Terrace, Midlevels East
Bright and airy apartment
通爽光猛住宅

1,450 s.f.
\$11,500,000

www.landscape.com/14732.htm David Leung 梁先生 9199 0672



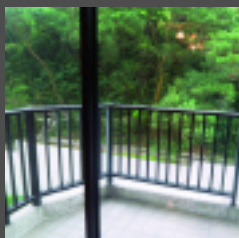
Winsome Park

西半山匯豪閣

42 Conduit Road, Midlevels West
3-bedroom apartment with facilities
三房單位連設施

1,069 s.f.
\$11,900,000 also for lease \$40,000

www.landscape.com/14908.htm Mary Li 李小姐 9011 6595



Flora Garden

渣甸山慧景園

7 Chun Fai Road, Jardine's Lookout
Practical 3-bedroom apartment with
greenery view
實用三房享綠景

1,302 s.f.
\$13,800,000

www.landscape.com/14603.htm Rowena Siu 蕭小姐 9348 4118



Sunrise Court

東半山兆暉閣

54 Tai Hang Road, Midlevels East
Cosy 3-bed room flat with private terrace
舒適三房連私家平台

1,350 s.f.
\$14,300,000

www.landscape.com/14605.htm Teresa Lau 劉小姐 9080 6686



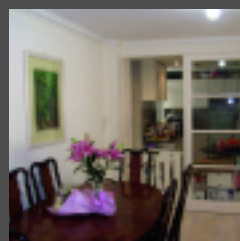
Hillsborough Court

中半山曉峰閣

18 Old Peak Road, Midlevels Central
Luxurious boutique apartment on fringe
of Central
豪裝雅緻住宅, 鄰近中環

976 s.f.
\$15,000,000

www.landscape.com/14226.htm Johnny Cheung 張先生 9278 9939



Best View Court

中半山好景大廈

66-68 MacDonnell Road, Midlevels Central
Quiet neighbourhood
環境寧靜

1,500 s.f.
\$15,500,000

www.landscape.com/14875.htm Eric Wong 黃先生 9740 3396



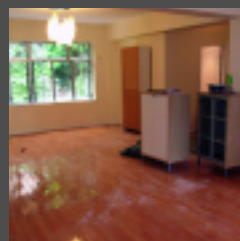
Beverly Hill

跑馬地比華利山

6 Broadwood Road, Happy Valley
Designer decorated 3-bedroom unit
匠心設計三房

1,354 s.f.
\$15,800,000

www.landscape.com/14735.htm Mary Li 李小姐 9011 6595



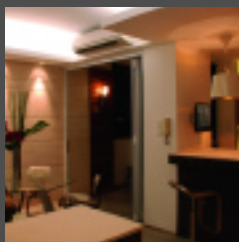
Beau Cloud Mansion

中半山碧雲樓

64 MacDonnell Road, Midlevels Central
Style apartment
風格物業

1,800 s.f.
\$16,000,000 also for lease \$50,000 incl.

www.landscape.com/14851.htm Eric Wong 黃先生 9740 3396



Green Lane Court

跑馬地箕璫閣

130-140 Blue Pool Road, Happy Valley
Designer decorated mid-rise flat
with balcony
品味裝修中密度單位連露台

1,400 s.f.
\$16,000,000

www.landscape.com/14601.htm Stephen Chan 陳先生 9093 3381



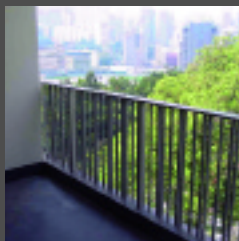
Monticello

中半山滿峰台

48 Kennedy Road, Midlevels Central
Bright and airy high floor flat with open
city view
光猛通爽高層單位享開揚城市景

1,453 s.f.
\$16,500,000

www.landscape.com/14693.htm Mary Li 李小姐 9011 6595



3-5 Happy View Terrace, Happy Valley

跑馬地樂景臺3-5號

Low-rise flat with balcony
低密度住宅連露台

1,500 s.f.
\$16,880,000

www.landscape.com/14606.htm Christine Chong 莊小姐 9648 6082



Amber Garden

中半山柏苑

70-72 Kennedy Road, Midlevels Central
Sought after on convenient Kennedy Road
罕有物業位處堅尼地道, 位置方便

1,732 s.f.
\$18,000,000

www.landscape.com/13069.htm Rita Lee 李小姐 9437 0087



9 Broom Road, Happy Valley

跑馬地蟠龍道9號

Spacious colonial apartment with balcony in quiet neighbourhood

寬敞英式物業連露台，環境寧靜

2,000 s.f.

\$20,500,000

www.landscape.com/13998.htm

Mark Mak 麥先生 6838 2929



Centre Place

西半山匯賢居

1 High Street, Midlevels West

High-floor harbour view flat with designer's decorations

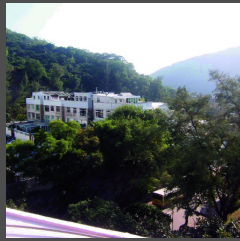
高層維港景物業，品味設計裝修

1,609 s.f.

\$20,500,000

www.landscape.com/14568.htm

Mary Li 李小姐 9011 6595



New Haven Court

渣甸山衛信道1-11號

1-11 Wilson Road, Jardine's Lookout

Charming colonial low-rise

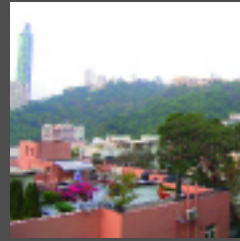
迷人英式低密度物業

1,800 s.f.

\$21,500,000

www.landscape.com/13171.htm

Mark Mak 麥先生 6838 2929



Sanitarian Apartment

跑馬地潔園

20-30 Green Lane, Happy Valley

Unique colonial low-rise flat in tranquil location

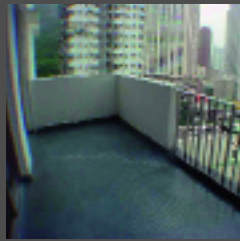
獨特英式低密度物業，環境清靜

2,000 s.f.

\$22,500,000

www.landscape.com/4748.htm

Stephen Chan 陳先生 9093 3381



United Mansion

東半山騰黃閣

7 Shiu Fai Terrace, Midlevels East

Spacious flat with practical layout in tranquil area

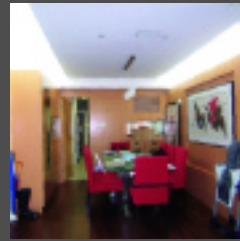
寬敞住宅間格實用，位置寧靜

2,350 s.f.

\$24,800,000

www.landscape.com/14752.htm

Mark Mak 麥先生 6838 2929



Beauty Court

西半山雅苑

82 Robinson Road, Midlevels West

Tastefully decorated apartment with harbour view

品味裝修物業享維港景

1,762 s.f.

\$25,000,000 also for lease \$70,000 incl.

www.landscape.com/14676.htm

Rowena Siu 蕭小姐 9348 4118



South Garden Mansion

中半山南園大廈

40-40A Kennedy Road, Midlevels Central

Mid-rise unit in lush greenery

中密度物業，綠樹圍蔭

1,600 s.f.

\$25,000,000 also for lease \$75,000 incl.

www.landscape.com/13998.htm

Mark Mak 麥先生 6838 2929



The Leighton Hill

跑馬地禮頓山

2B Broadwood Road, Happy Valley

Modern luxurious flat with racecourse view

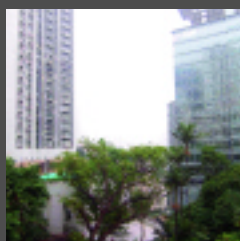
時尚豪宅享馬場景

1,438 s.f.

\$25,000,000

www.landscape.com/12902.htm

Mira To 杜小姐 9486 1566



Glory Mansion 中半山 輝煌大廈

106-108 MacDonnell Road,

Midlevels Central

Older style flat with large balcony and practical layout

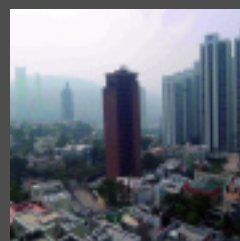
老香港式住宅連大露台，間格實用

2,300 s.f.

\$26,500,000

www.landscape.com/13919.htm

Simon Lee 李先生 6014 3712



Butler Tower

渣甸山柏麗園

1-5 Boyce Road, Jardine's Lookout

Penthouse apartment with roof at tranquil neighbourhood

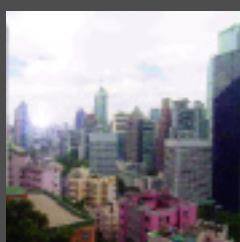
頂層物業連天台，位置寧靜

1,800 s.f. (plus 1,306 s.f. roof)

\$27,000,000

www.landscape.com/13852.htm

Maria Cheung 張小姐 6256 1848



Birchwood Place

中半山寶樺臺

96 MacDonnell Road, Midlevels Central

Apartment with clubhouse

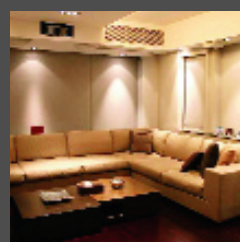
物業享會所設施

2,018 s.f.

\$27,000,000

www.landscape.com/7901.htm

Rita Lee 李小姐 9437 0087



The Elegance

東半山優雅閣

60 Tai Hang Road, Midlevels East

Designer decorated harbour view duplex

匠心設計維港景複式

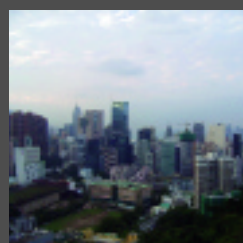
2,438 s.f.

\$28,000,000 also for lease \$98,000 incl.

www.landscape.com/14197.htm

Sylvia Tsang 曾小姐 9801 1742

MID-LEVELS SALES



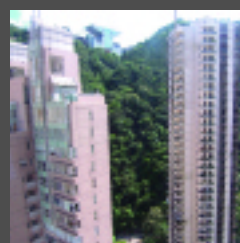
Scenic Lodge

東半山怡晴軒

6 Wang Fung Terrace, Midlevels East
Modern large flat at quiet location with
stunning view of the city skyline
時尚大單位，環境寧靜，享醉人大都會景致

2,480 s.f.
\$28,500,000

www.landscape.com/14074.htm | Sissy Li 李小姐 9642 6969



Clovelly Court

中半山嘉富麗苑

12 May Road, Midlevels Central
Family apartment with facilities in
convenient location
家庭住宅連設施，位置方便

1,881 s.f.
\$28,800,000

www.landscape.com/11310.htm | Eric Wong 黃先生 9740 3396



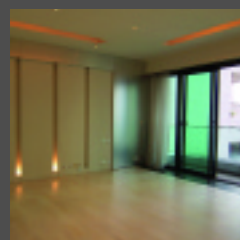
Park Mansions

中半山百年順大廈

27-29 MacDonnell Road, Midlevels Central
Nicely decorated 3-bedroom apartment on
fringe of Central
雅裝三房，鄰近中環

2,013 s.f.
\$30,000,000

www.landscape.com/14283.htm | David Chan 陳先生 9238 2012



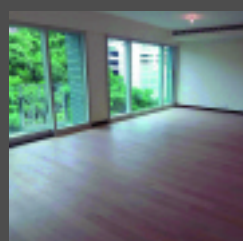
11 MacDonnell Road, Midlevels Central

中半山麥當勞道 11 號

Nicely decorated high privacy modern
apartment
雅裝高私隱度物業

2,313 s.f.
\$31,000,000

www.landscape.com/14367.htm | Rowena Siu 蕭小姐 9348 4118



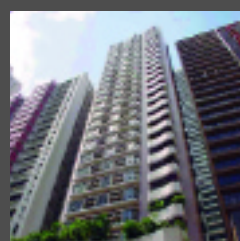
The Legend

東半山名門

23 Tai Hang Drive, Midlevels East
Brand new 4-bedroom apartment with lush
green mountain view
全新四房物業享翠綠山景

2,058 s.f.
\$31,800,000

www.landscape.com/12020.htm | Simon Yung 翁先生 9418 5743



Wilshire Park, Midlevels East 中半山 豪輝閣

12-14 MacDonnell Road, Midlevels Central
Rare on market high privacy 4-bedroom flat
罕有放盤高私隱度四房物業

2,265 s.f.
\$32,800,000

www.landscape.com/13899.htm | Rita Lee 李小姐 9437 0087



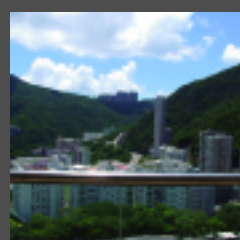
Kam Yuen Mansion

中半山錦園大廈

3 Old Peak Road, Midlevels Central
Huge balcony and high ceiling
享巨型露台，樓底特高

2,600 s.f.
\$33,000,000

www.landscape.com/5452.htm | Sissy Li 李小姐 9642 6969



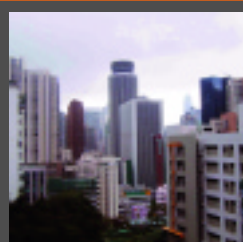
Villa Monte Rosa

東半山玫瑰新村

41A Stubbs Road, Midlevels East
Spacious practical apartment with big
balcony
寬敞實用住宅連大露台

2,300 s.f.
\$33,000,000

www.landscape.com/11648.htm | Johnny Cheung 張先生 9278 9939



8 Shiu Fai Terrace, Midlevels East

東半山肇輝台8號

Modern 4-ensuite duplex in quiet
neighbourhood
時尚四套房複式，環境寧靜

3,074 s.f.
\$34,000,000

www.landscape.com/14734.htm | Simon Lee 李先生 6014 3712



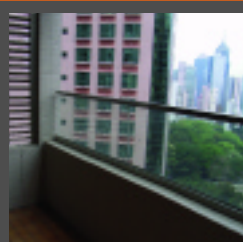
Bowen Place

中半山寶雲閣

11A Bowen Road, Midlevels Central
Harbour view apartment in peaceful
environment
維港景物業，環境清靜

1,983 s.f.
\$34,000,000

www.landscape.com/12994.htm | Eric Wong 黃先生 9740 3396



MacDonnell House

中半山麥當奴大廈

6-8 MacDonnell Road, Midlevels Central
Huge and practical flat
巨型實用單位

2,519 s.f.
\$35,000,000

www.landscape.com/14854.htm | Eric Wong 黃先生 9740 3396



Dynasty Court

中半山帝景園

23 Old Peak Road, Midlevels Central
Renowned Midlevels apartment with
deluxe clubhouse facilities
著名半山物業享豪華會所

1,962 s.f.
\$35,000,000

www.landscape.com/13332.htm | David Chan 陳先生 9238 2012



Estoril Court
中半山 愛都大廈

55 Garden Road, Midlevels Central
Huge 3-bedroom apartment with family room on fringe of Central
巨型三房備家庭室，鄰近中環

3,347 s.f.
\$36,000,000 also for lease \$88,000

www.landscape.com/11848.htm | Sissy Li 李小姐 9642 6969



Po Shan Mansions
西半山寶城大廈

10-16 Po Shan Road, Midlevels West
High floor 4-bedroom apartment with huge balcony enjoying harbour view
四房高層單位連大露台享維港景

2,800 s.f.
\$36,000,000 also for lease \$85,000

www.landscape.com/14512.htm | Teresa Lau 劉小姐 9080 6686



Hollywood Height
中半山 好利閣

6 Old Peak Road, Midlevels Central
High efficiency 4-bedroom apartment with easy access to Central
高實用率四房單位，中環近在咫尺

2,466 s.f.
\$38,000,000

www.landscape.com/14809.htm | David Chan 陳先生 9238 2012

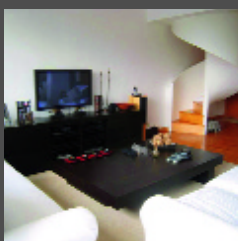


Regent on the Park
中半山御花園

9A Kennedy Road, Midlevels Central
Prestigious apartment with metropolitan view
尊貴單位享大都會景

2,720 s.f.
\$39,000,000

www.landscape.com/10946.htm | Simon Lee 李先生 6014 3712



Clement Court 渣甸山松風臺

56-64 Mount Butler Road, Jardine's Lookout
Tastefully decorated penthouse with internal access to roof terrace
品味裝修頂層，內置樓梯直達天台

2,200 s.f. (plus 1,400 s.f. roof)
\$45,000,000

www.landscape.com/14277.htm | Sylvia Tsang 曾小姐 9801 1742



Rose Gardens
中半山玫瑰別墅

9 Magazine Gap Road, Midlevels Central
Rare find colonial apartment at prime location
罕有英式住宅，黃金地段

2,600 s.f.
\$46,000,000

www.landscape.com/14200.htm | Carman Szeto 司徒小姐 8100 3893



Broadview Villa
跑馬地 樂景園

20 Broadwood Road, Happy Valley
Large 4-bedroom apartment with bird's eye view of Hong Kong Stadium
四房大單位，鳥瞰香港大球場

3,134 s.f.
\$47,000,000

www.landscape.com/13771.htm | Rowena Siu 蕭小姐 9348 4118



Brewin Court
中半山明雅園

5-7 Brewin Path, Midlevels Central
Rare garden apartment
罕有花園住宅

2,600 s.f. (plus 1,000 s.f. garden)
\$48,000,000

www.landscape.com/3314.htm | Sylvia Tsang 曾小姐 9801 1742



The Albany
中半山 雅賓利大廈

1 Albany Road, Midlevels Central
Fully furnished high floor harbour view apartment
高層維港景單位連傢俬

1,755 s.f.
\$49,000,000 also for lease \$95,000

www.landscape.com/13614.htm | Sylvia Tsang 曾小姐 9801 1742



May Tower 1
中半山梅苑一座

7 May Road, Midlevels Central
Deluxe harbour view duplex with enlarged master bedroom at prime location
豪華維港景複式，特大主人房，位置優越

2,850 s.f.
\$50,000,000

www.landscape.com/14381.htm | Stephen Chan 陳先生 9093 3381



Trafalgar Court
東半山 大寶閣

70 Tai Hang Road, Midlevels East
Huge 5-bedroom harbour view flat in exclusive building
五房維港景巨宅，位於顯赫名廈

3,008 s.f.
\$56,000,000

www.landscape.com/14895.htm | Stephen Chan 陳先生 9093 3381



The Mayfair
中半山梅道1號

1 May Road, Midlevels Central
Prestigious harbour view apartment
尊貴維港景物業

2,905 s.f.
\$70,000,000

www.landscape.com/12331.htm | Mark Mak 麥先生 6838 2929

MID-LEVELS SALES



Hillsborough Court

中半山曉峰閣

18 Old Peak Road, Midlevels Central
Duplex penthouse in Midlevels Central
中半山頂層複式

2,355 s.f. (plus 841 s.f. roof)

\$55,000,000

SOLE AGENT 獨家代理



www.landscape.com/8.htm

Sylvia Tsang 曾小姐 9801 1742



Broadview Villa

跑馬地 樂景園

20 Broadwood Road, Happy Valley

Very rare high-floor apartment with a bird's eye view of Hong Kong Stadium and Victoria Harbour
超罕高層鳥瞰香港大球場及維多利亞港

3,134 s.f.

\$60,000,000



www.landscape.com/14481.htm

Teresa Fung 馮小姐 9138 1621



Sky Horizon Tower

北角半山 海天峰

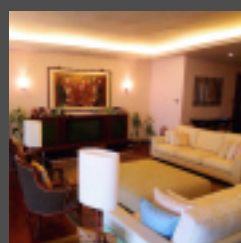
35 Cloud View Road, North Point Midlevels
Luxurious apartment with expansive views of Victoria Harbour
豪華住宅享遼闊維港景

2,804 s.f.

\$64,500,000

www.landscape.com/14825.htm

Stephen Chan 陳先生 9093 3381



Grenville House

中半山嘉慧園

1, 3 & 3A Magazine Gap Road, Midlevels Central
Rare huge apartment at Midlevels Central
中半山罕有巨宅

3,700 s.f.

\$65,000,000

www.landscape.com/13048.htm

David Leung 梁先生 9199 0672



15-21 Wilson Road, Jardine's Lookout

渣甸山衛信道15-21號

European-style townhouse with tasteful decorations in tranquil area
歐陸式排屋，品味裝修，環境寧靜

4,400 s.f. (plus 260 s.f. roof)

\$75,000,000

www.landscape.com/11702.htm

Simon Yung 翁先生 9418 5743



Garden Terrace 2 & 3

中半山花園臺2, 3座

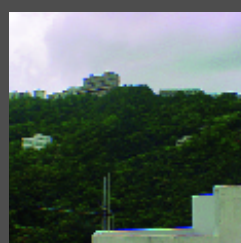
8A Old Peak Road, Midlevels Central
Huge combined unit with eight ensuites
超巨型相連單位，擁八套房

6,018 s.f.

\$100,000,000

www.landscape.com/14414.htm

Simon Lee 李先生 6014 3712



Tregunter Tower 1

中半山地利根德閣 1座

14 Tregunter Path, Midlevels Central
Huge penthouse duplex with roof in prime location
巨型頂層複式連天台，黃金地段

6,143 s.f. (plus 1,100 s.f. roof)

\$100,000,000

www.landscape.com/13868.htm

Johnny Cheung 張先生 9278 9939



1 Purves Road, Jardine's Lookout

渣甸山包華士道 1號

Rare free-standing house in Jardine's Lookout
渣甸山罕有獨立洋房

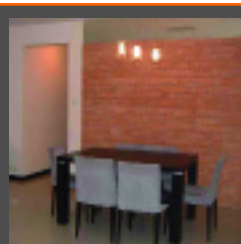
13,095 s.f. (plus 6,000 s.f. garden)

\$420,000,000

www.landscape.com/6001.htm

Maria Cheung 張小姐 6256 1848

MID-LEVELS LEASE



The Broadville

跑馬地樂活臺

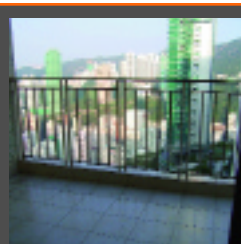
4 Broadwood Road, Happy Valley
Nicely decorated 3-bedroom flat overlooking the racecourse
雅裝三房物業眺望馬場

1,487 s.f.

\$59,000

www.landscape.com/14449.htm

Mary Li 李小姐 9011 6595



Evergreen Villa

東半山 松柏新村

43 Stubbs Road, Midlevels East
Penthouse apartment on upper Stubbs Road
上司徒拔道頂樓單位

1,750 s.f.

\$68,000 incl.

www.landscape.com/4786.htm

Teresa Lau 劉小姐 9080 6686



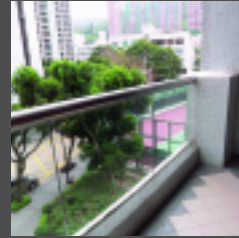
The Leighton Hill

跑馬地 禮頓山

2B Broadwood Road, Happy Valley
Luxurious 3-bedroom apartment
overlooking the racecourse
豪華三房物業眺望馬場

1,438 s.f.
\$70,000

www.landscape.com/14232.htm | Carman Szeto 司徒小姐 8100 3893



Cavendish Heights

渣甸山嘉雲臺

27-37 Perkins Road, Jardine's Lookout
Newly renovated flat in popular family
development
翻新單位，位於受歡迎家庭屋苑

1,819 s.f.
\$75,000

www.landscape.com/14766.htm | Mira To 杜小姐 9486 1566



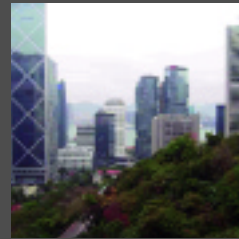
Pearl Gardens

西半山 明珠臺

7 Conduit Road, Midlevels West
Practical 4-bedroom flat with balcony in
move-in condition
實用四房連露台，優良入伙狀況

2,200 s.f.
\$85,00 incl.

www.landscape.com/14857.htm | Carman Szeto 司徒小姐 8100 3893



Grosvenor House

中半山高雲大廈

114-120 MacDonnell Road,
Midlevels Central
Huge balcony low-rise
低密度物業連巨型露台

2,400 s.f.
\$88,000 incl.

www.landscape.com/5852.htm | Mira To 杜小姐 9486 1566



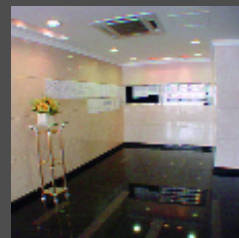
Dynasty Court

中半山 帝景園

23 Old Peak Road, Midlevels Central
Well maintained high floor flat with
Victoria Harbour view
保養良好高層物業享維港景

1,973 s.f.
\$90,000

www.landscape.com/13611.htm | Eric Wong 黃先生 9740 3396



Fontana Garden

東半山豪園

1-25 Ka Ning Path, Midlevels East
Deluxe apartment on fringe of
Causeway Bay
豪華住宅，鄰近銅鑼灣

3,300 s.f.
\$90,000

www.landscape.com/6136.htm | Sissy Li 李小姐 9642 6969



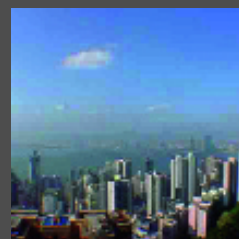
47A Stubbs Road, Midlevels East

東半山 司徒拔道47A

Exclusive mid-rise apartment enjoys
harbour view
獨特中密度單位享維港景

2,400 s.f.
\$90,000 incl. also for sale \$38,500,000

www.landscape.com/14822.htm | Sami Woo 胡小姐 9493 8275



Hamilton Court

西半山愛敦大廈

8 Po Shan Road, Midlevels West
Large practical 4-bedroom apartment with
expansive harbour view
實用四房大單位享遼闊維港景

2,515 s.f.
\$93,000

www.landscape.com/14375.htm | Mira To 杜小姐 9486 1566



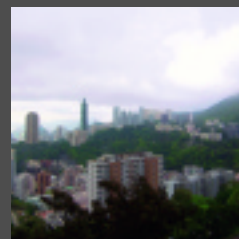
Elm Tree Towers

渣甸山 愉富大廈

8-10 Chun Fai Road, Jardine's Lookout
High efficiency family apartment
高實用率家庭住宅

2,329 s.f.
\$95,000 incl.

www.landscape.com/14050.htm | Sylvia Tsang 曾小姐 9801 1742



Leon Court 東半山利安閣

12-14 Wong Nai Chung Gap Road,
Midlevels East

Exclusive mid-rise apartment with
expansive view
獨特中密度單位享特闊景觀

2,800 s.f.
\$98,000 incl.

www.landscape.com/14749.htm | Simon Yung 翁先生 9418 5743



Grand House 中半山柏齡大廈

110-112 MacDonnell Road,
Midlevels Central
Unique low-rise flat with balcony and
private terrace
獨特低密度住宅連露台及私家平台

2,400 s.f. (plus 700 s.f. terrace)
\$100,000 incl.

www.landscape.com/14009.htm | Sami Woo 胡小姐 9493 8275



Pine Court

中半山翠峰園

5 Old Peak Road, Midlevels Central
Newly renovated colonial low-rise with
huge balcony
翻新英式低密度住宅連大露台

2,650 s.f.
\$100,000 incl.

www.landscape.com/14551.htm | Teresa Lau 劉小姐 9080 6686

MID-LEVELS LEASE



The Colonnade

東半山 嘉崙臺

152 Tai Hang Road, Midlevels East
Exquisite modern high-rise apartment with open view of Midlevels East
精緻時尚住宅享東半山開揚景觀

2,137 s.f.

\$110,000

www.landscape.com/14558.htm Rita Lee 李小姐 9437 0087



Villa Monte Rosa

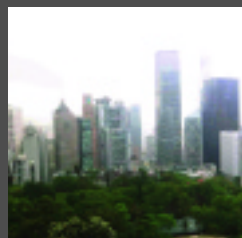
東半山玫瑰新村

41A Stubbs Road, Midlevels East
Spacious 4-bedroom apartment in good condition
寬敞四房單位，狀況良好

3,300 s.f.

\$110,000

www.landscape.com/14451.htm Mark Mak 麥先生 6838 2929



Villa Elegance

中半山雅慧園

1 Robinson Road, Midlevels Central
Large 4-bedroom apartment with new decorations on fringe of CBD
新裝四房大單位，鄰近商業樞紐

3,500 s.f.

\$115,000

www.landscape.com/13008.htm Johnny Cheung 張先生 9278 9939



Clovelly Court

中半山 嘉富麗苑

12 May Road, Midlevels Central
Large and spacious 4-bedroom flat at lower Peak
寬敞四房大單位，位處下山頂段

2,809 s.f.

\$120,000 incl. also for sale \$65,000,000

www.landscape.com/13459.htm Teresa Lau 劉小姐 9080 6686



Kam Yuen Mansion

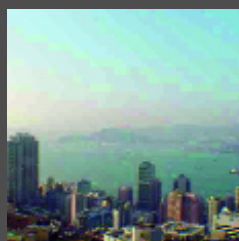
中半山錦園大廈

3 Old Peak Road, Midlevels Central
Spacious colonial low-rise with easy access to Central
寬敞英式低密度住宅，中環近在咫尺

2,500 s.f.

\$120,000

www.landscape.com/14311.htm Mira To 杜小姐 9486 1566



Piccadilly Mansion

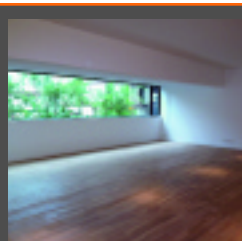
西半山碧苑

4-6 Po Shan Road, Midlevels West
Large practical apartment with harbour view
實用大單位享維港景

2,800 s.f.

\$120,000 incl.

www.landscape.com/14761.htm Sami Woo 胡小姐 9493 8275



Fontana Garden - Block C

東半山 豪園 C座

1-25 Ka Ning Path, Midlevels East
Huge apartment with brand new decorations in convenient location
巨型物業全新裝修，位置方便

3,300 s.f.

\$120,000 incl. also for sale \$31,000,000

www.landscape.com/14464.htm David Leung 梁先生 9199 0672



Visalia Garden

中半山蔚山花園

48 MacDonnell Road, Midlevels Central
Newly renovated high floor 4-bedroom flat at convenient location
翻新高層四房單位，位置方便

2,195 s.f.

\$120,000 also for sale \$40,000,000

www.landscape.com/14513.htm Sylvia Tsang 曾小姐 9801 1742



The Albany

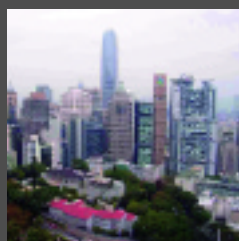
中半山雅賓利大廈

1 Albany Road, Midlevels Central
Prestigious apartment with views of harbour and Botanical Garden
尊貴住宅享維港及動植物公園景觀

2,546 s.f.

\$125,000

www.landscape.com/14835.htm Rowena Siu 蕭小姐 9348 4118



Kennedy Heights

中半山堅麗閣

10-18 Kennedy Road, Midlevels Central
Large and practical 4-bedroom flat with nice city view on fringe of Central
實用四房大單位享都會景，鄰近中環

3,400 s.f.

\$140,000

www.landscape.com/13736.htm Philip Lai 黎先生 9430 3330



Taipan Court

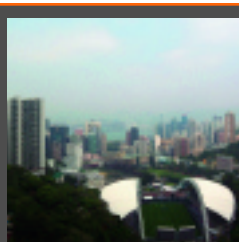
東半山大班閣

47B Stubbs Road, Midlevels East
Renovated 4-ensuite duplex commanding stunning harbour view
翻新四套房複式享壯觀維港景

3,670 s.f.

\$140,000

www.landscape.com/13983.htm Sissy Li 李小姐 9642 6969



Broadwood Park

跑馬地柏樂苑

38 Broadwood Road, Happy Valley
3-ensuite bedrooms apartment with bird's eye view of Hong Kong Stadium
三套房物業鳥瞰香港大球場

2,938 s.f.

\$140,000 incl.

www.landscape.com/14602.htm Sami Woo 胡小姐 9493 8275




1 Robinson Road, Midlevels West
西半山 羅便臣道1號
Large duplex with open city view on fringe of Central
特大複式享開揚都會景，鄰近中環
3,400 s.f.
\$148,000 incl.

www.landscape.com/14682.htm | Mira To 杜小姐 9486 1566



White Jade
東半山白璧
51 Stubbs Road, Midlevels East
Rare find large harbour view flat
罕有維港景大單位
3,000 s.f.
\$150,000 incl. also for sale \$75,000,000

www.landscape.com/14219.htm | Mira To 杜小姐 9486 1566



Bowen's Lookout
中半山 寶雲道13號
13 Bowen Road, Midlevels Central
New 4-bedroom apartment on Bowen Road
新四房物業，位處寶雲道
2,388 s.f.
\$155,000

www.landscape.com/5479.htm | Sami Woo 胡小姐 9493 8275



The Mayfair
中半山梅道1號
1 May Road, Midlevels Central
Deluxe 4-bedroom apartment with harbour view
豪華四房物業享維港景
2,905 s.f.
\$160,000 incl. also for sale \$63,000,000

www.landscape.com/11693.htm | Mira To 杜小姐 9486 1566




Aigburth
中半山 譽皇居
12 Tregunter Path, Midlevels Central
Prestigious harbour view flat with quality fittings and finishes
尊貴維港景物業，優質配置
2,980 s.f.
\$167,000

www.landscape.com/14728.htm | Philip Lai 黎先生 9430 3330



HighCliff
東半山曉廬
41D Stubbs Road, Midlevels East
Top notch residence with fantastic view of city skyline and the harbour
城中一級豪宅享醉人維港及大都會景致
3,816 s.f.
\$173,000

www.landscape.com/112504.htm | Simon Lee 李先生 6014 3712



2-2A Henderson Road, Jardine's Lookout
渣甸山 軒德蔭道2-2A 號
Rare garden house in unique colonial style
罕有花園屋，獨特英式風格
3,115 s.f. (plus 1,000 s.f. garden)
\$175,000

www.landscape.com/11269.htm | Carman Szeto 司徒小姐 8100 3893



Estoril Court
中半山愛都大廈
55 Garden Road, Midlevels Central
Spacious apartment on fringe of CBD
寬敞物業，鄰近商業樞紐
3,347 s.f.
\$180,000 incl.

www.landscape.com/1031.htm | Philip Lai 黎先生 9430 3330



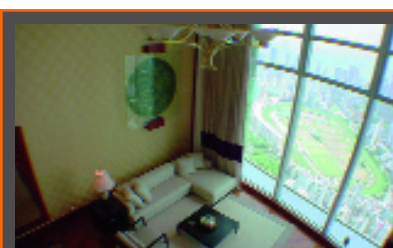
Tregunter Tower 3
中半山 地利根德閣3座
14 Tregunter Path, Midlevels Central
Tastefully decorated duplex with sky terrace
品味裝修複式連空中平台
4,146 s.f. (plus 1,073 s.f. roof)
\$180,000 incl. also for sale \$90,000,000

www.landscape.com/14710.htm | Louis Wong 黃先生 9871 6828




The Albany
中半山雅賓利大廈
1 Albany Road, Midlevels Central
Newly renovated duplex apartment on fringe of Central
翻新複式，鄰近中環
3,563 s.f.
\$180,000

www.landscape.com/14475.htm | Mark Mak 麥先生 6838 2929



The Summit
東半山御峰
41C Stubbs Road, Midlevels East
Breathtaking panoramic views & impeccable finishes
醉人環迴景致，極優質用料
3,272 s.f.
\$195,000 incl.

www.landscape.com/1307.htm | Sissy Li 李小姐 9642 6969



MID-LEVELS LEASE



Borrett Mansion

中半山寶德臺

8A-9B Borrett Road, Midlevels Central

Brand new decorated 5-bedroom unit with 3 ensuite

Rare on market

全新裝修五房三套單位，市場上罕有

6,000 s.f.

\$300,000 incl.



Regence Royale

中半山富匯豪庭

2 Bowen Road, Midlevels Central

Prestigious modern harbour view flat in

tree-lined neighbourhood

尊貴時尚維港景物業，環境翠綠

5,219 s.f.

\$400,000 incl. also for sale \$150,000,000



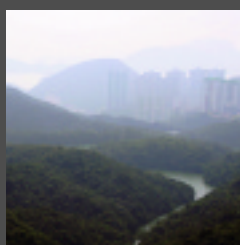
www.landscape.com/14274.htm

Teresa Lau 劉小姐 9080 6686

www.landscape.com/12813.htm

Yvonne Chang 鄭小姐 9088 4666

THE PEAK SALES



Carolina Garden

山頂 嘉樂園

20-34 Coombe Road, The Peak

Rare colonial apartment in

prestigious location

罕有英式住宅，黃金地段

2,350 s.f.

\$48,000,000



Villa Verde

山頂 環翠園

4-18 Guildford Road, The Peak

Spacious colonial apartment

寬敞英式住宅

2,540 s.f.

\$53,000,000

www.landscape.com/12308.htm

Teresa Fung 馮小姐 9138 1621

www.landscape.com/2319.htm

Carman Szeto 司徒小姐 8100 3893



Eredine

山頂 加列山道38號

38 Mount Kellett Road, The Peak

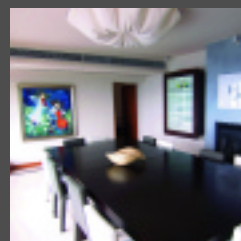
Huge colonial apartment with

spectacular sea view

英式巨宅享壯觀海景

3,300 s.f.

\$69,000,000



Mountain Lodge

山頂 崑廬

44 Mount Kellett Road, The Peak

Rare duplex apartment with Southside

sea view

罕有複式享南區海景

5,200 s.f.

\$120,000,000

www.landscape.com/9926.htm

David Leung 梁先生 9199 0672

www.landscape.com/14003.htm

David Leung 梁先生 9199 0672



Peak Garden

山頂 山頂花園

16-20 Mount Austin Road, The Peak

Exclusive Peak apartment with a bird's eye view of

Victoria Harbour

獨特山頂住宅，鳥瞰維港

2,655 s.f. (plus 2,338 s.f. garden & 1,058 s.f. roof)

\$78,000,000



www.landscape.com/13923.htm

Johnny Cheung 張先生 9278 9939



Abergeldie

山頂 種植道52號

52 Plantation Road, The Peak

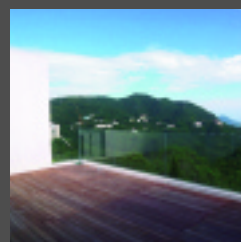
Exclusive peak townhouse with a bird's

eye view of Victoria Harbour

獨特山頂排屋，鳥瞰維港

3,583 s.f. (plus 488 s.f. terrace)

\$180,000,000



1-9 Rosmead Road

山頂樂善美道1-9號

1-9 Rosmead Road, The Peak

Rare garden house on the Peak

罕有山頂花園洋房

5,136 s.f.

(plus 2,228 s.f. terrace & 1,955 s.f. garden)

\$250,000,000

www.landscape.com/13805.htm

David Leung 梁先生 9199 0672

www.landscape.com/14409.htm

Simon Lee 李先生 6014 3712



The Mount Austin

山頂 柯士甸山道8號

8 Mount Austin Road, The Peak
Luxury boutique apartment
豪華品味物業

2,035 s.f.
\$106,000

www.landscape.com/880.htm

Rita Lee 李小姐 9437 0087



26 Magazine Gap Road

山頂 馬己仙峽道26號

26 Magazine Gap Road, The Peak
Colonial apartment on lower Peak with
harbour view
英式單位享維港景，位處下山頂段

2,400 s.f.
\$108,000 incl. also for sale \$60,000,000

www.landscape.com/13997.htm

Yvonne Chang 鄭小姐 9088 4666



1-3 Homestead Road, The Peak

山頂 堪仕達道1至3號

Modern luxurious apartment with
fantastic sea view
時尚豪華住宅享醉人海景

2,828 s.f.
\$110,000 incl.

www.landscape.com/14850.htm

Louis Wong 黃先生 9871 6828



Mountain Court

山頂 山景大廈

11 Plantation Road, The Peak
Modern 3-ensuite apartment with
panoramic harbour view
時尚三套房物業享環迴維港景

2,129 s.f.
\$125,000

www.landscape.com/10473.htm

Maria Cheung 張小姐 6256 1848



Peak Garden

山頂 山頂花園

16-20 Mount Austin Road, The Peak
Peak penthouse apartment with breath-
taking view of Victoria Harbour
山頂複式單位享壯觀維港景色

2,655 s.f. (plus 2,000 s.f. roof)
\$138,000

www.landscape.com/14379.htm

Mark Mak 麥先生 6838 2929



74 Mount Kellett Road, The Peak

山頂 加列山道74號

Rarely available sea view townhouse
罕有放盤海景排屋

4,200 s.f. (plus 1,041 s.f. roof)
\$170,000 incl.

www.landscape.com/11843.htm

Yvonne Chang 鄭小姐 9088 4666



Guildford Court

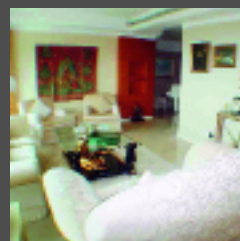
山頂 僑福道5號

5 Guildford Road, The Peak
Newly renovated 4-bedroom mid-rise flat
at convenient location
翻新四房中密度單位，位置方便

2,750 s.f.
\$170,000 incl.

www.landscape.com/14018.htm

Mark Mak 麥先生 6838 2929



43 Barker Road, The Peak

山頂 白加道43號

Modern harbour view apartment
時尚維港景單位

3,820 s.f.
\$200,000

www.landscape.com/12669.htm

Johnny Cheung 張先生 9278 9939



King's Court

山頂 龍庭

5 Mount Kellett Road, The Peak
Popular sea view townhouse with huge
terraces and roof
受歡迎海景排屋連巨型平台及天台

3,165 s.f. (plus 1,916 s.f. garden)
\$250,000

www.landscape.com/13149.htm

Louis Wong 黃先生 9871 6828



Strawberry Hill

山頂 紅莓閣

8 Plunkett's Road, The Peak
Colonial garden townhouse with facilities
decorated in modern style
英式花園排屋連設施，時尚裝修

2,880 s.f.
\$270,000

www.landscape.com/14334.htm

Sami Woo 胡小姐 9493 8275



Peak Garden

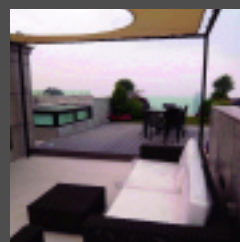
山頂 山頂花園

16-20 Mount Austin Road, The Peak
Newly renovated peak duplex with a
bird's eye view of Victoria Harbour
翻新山頂複式鳥瞰維港

4,000 s.f.
\$280,000

www.landscape.com/14539.htm

Carman Szeto 司徒小姐 8100 3893



Severn 8

山頂 倚巒

8 Severn Road, The Peak
Brand new harbour view garden
townhouse
全新維港景花園排屋

3,330 s.f.
\$290,000

www.landscape.com/14171.htm

Mark Mak 麥先生 6838 2929

THE PEAK LEASE



2 Barker Road, The Peak

山頂 白加道2號

Exquisite townhouse with stunning views of the harbour and Southside
精緻排屋享醉人南區及維港景

4,745 s.f.
\$300,000



www.landscape.com/14796.htm

Sami Woo 胡小姐 9493 8275



12-22 Black's Link, The Peak

山頂 布力徑12-22號

Townhouse in quiet location with four bedrooms and huge private garden
四房排屋連巨型私家花園，環境寧靜

5,000 s.f.
\$300,000 incl. also for sale \$250,000,000



www.landscape.com/10425.htm

Yvonne Chang 鄭小姐 9088 4666

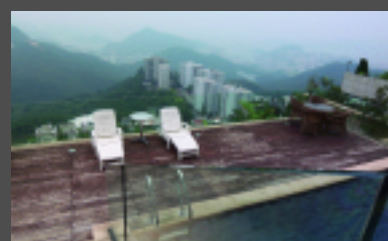


21 Severn Road, The Peak

山頂 施動道21號

Brand new detached house with private pool
全新獨立屋連私家泳池

6,000 s.f. (plus 6,000 s.f. garden)
\$380,000



www.landscape.com/1836.htm

Sissy Li 李小姐 9642 6969



56 Plantation Road, The Peak

山頂 種植道56號

Prestigious townhouse with panoramic harbour view
尊貴排屋享環迴維港景

4,733 s.f. (plus 859 s.f. roof)
\$400,000



www.landscape.com/14807.htm

Louis Wong 黃先生 9871 6828



The Belvedere

山頂 種植道51至61號

51-61 Plantation Road, The Peak

Detached house on the Peak with private pool overlooking harbour
山頂獨立屋享私家泳池眺望維港

4,800 s.f. (plus 1,500 s.f. roof & 1,500 s.f. terrace)
\$450,000



www.landscape.com/9241.htm

Sissy Li 李小姐 9642 6969



Landscape Realty Limited C-018733

a member of Landscape Surveyors Ltd

Tel: 852-2866 0022 Fax: 852-2866 0015

Email: info@landscape.com Website: www.landscape.com

Unit 3106, 31/F, Hopewell Centre,
183 Queen's Road East, Wanchai, Hong Kong

The information, text, photos, analyses and projections contained herein are provided solely for the convenience of prospective clients and no warranty or representation as to their accuracy, correctness or completeness is made by Landscape Surveyors Limited, Landscape Realty Limited or the owners, none of whom shall have any liability or obligation with respect thereto. Interested parties should rely on their own investigations, interpretations and analyses in connection with the purchase or letting thereof.

Information has been provided to us by sources deemed reliable, but no warranty or representation is made as to its accuracy, correctness or completeness. These offerings are made subject to contract, correction of errors, omissions, prior sale or lease, change of price or terms or withdrawal from the market without notice. The contents of The Key are for reference only and do not constitute all or any part of a contract.

Copyright 2008