

Vol. 212

# The 大宅 Key

Since 1995

**End-of-terrace seaview house with private pool**  
**大單邊海景洋房連私家泳池**

**Super prime retail SOHO London @5.75% p.a.**  
**倫敦蘇豪區旺鋪5.75%租金回報**

**En bloc residential in Osaka @8.3% p.a.**  
**大阪全幢住宅8.3%租金回報**

領域  
LANDSCOPE



## Away from the hustle and bustle 天與海之間

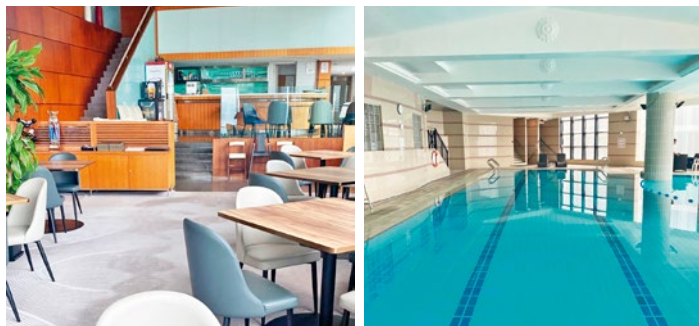
Located in the southern district of Hong Kong Island, Tai Tam enjoys a unique geographical advantage with its prime location.

This seafront unit has a saleable area of 1,534 s.f. and features three bedrooms (including one en-suite), two bathrooms, and two adjoining parking spaces. The interior of the unit is well-ventilated and bright, with a practical layout and excellent natural lighting. It offers breathtaking views of the beautiful sunrise over Tai Tam Bay, where the sea and sky blend into a picturesque panorama that leaves viewers in awe. The estate is in close proximity to the American Club and Hong Kong International School. It also provides shuttle bus services, prestigious 30,000 s.f. clubhouse facilities (including indoor and outdoor swimming pools, a gymnasium, tennis and squash courts, and a children's playroom), as well as a restaurant offering home delivery services.



位於港島南區的大潭，地利優勢得天獨厚，附近有水塘及郊野公園，遠離煩囂。這臨海單位實用面積為1,534平方呎，擁有三間睡房(其中一間為套房)、兩個浴室及兩個相連車位，更以震撼價發售。

單位室內環境既通風又明亮，布局實用，更有很好的採光，飽覽優美的大潭灣日出景致，海天一色，令人讚嘆不絕。屋苑臨近美國會所及香港國際學校，並設有穿梭巴士服務、3萬呎尊貴會所(室內和戶外游泳池、健身房、網球場、壁球場和兒童遊樂室等)及餐廳(提供送餐服務到家中)，從日常生活到社交活動，均貼心照顧每位住客需要。



Unique sea view apartment in Tai Tam  
大潭海景住宅

**3 bed, 2 bath, 2 adjoining car parks**

**Saleable 實用 1,534 s.f.**

**Sale 售 \$30,800,000**

**Inquiries 查詢** ☎ 6538 6922 Teresa Fung 馮小姐

**Property Search No. 物業搜尋編號 208313**





## Contents 目錄

03 **Highlight**  
Repulse Bay  
淺水灣

04 **Monthly Highlight**  
Clear Water Bay  
清水灣



28 **Highlight**  
Chung Hom Kok  
春坎角

29 **Southside & The Peak sale**  
南區及山頂 出售



07 **Luxury Rental Specials**  
豪宅租務專輯

24 **Build the future**  
構建現在與未來 · 馬岩松



Follow Us 關注我們    [landscapehk](https://www.landscapehk.com)  THE KEY 大宅

4 Easy ways to list your property with The Key:  
4個簡單方法在《大宅》刊登您的出售 / 出租物業：



2152 4818 WhatsApp



2152 4818



[info@landscape.com](mailto:info@landscape.com)



[www.landscape.com/sell-to-let](https://www.landscape.com/sell-to-let)

## Contents 目錄

- 40 Highlight**  
Siu Lam, Tuen Mun  
屯門小欖
- 42 Midlevels Central & West sale**  
中半山及西半山 出售
- 48 Midlevels East & Happy Valley sale**  
東半山及跑馬地 出售
- 52 Sai Kung & Clear Water Bay sale**  
西貢及清水灣 出售
- 53 Highlight**  
Midlevels Central  
中半山
- 57 Highlight**  
Yuen Long  
元朗
- 59 U.K. Properties**  
英國物業
- 63 Japanese Properties**  
日本物業



Published and distributed by



**領域房地產顧問有限公司**

C-018733

Tel: +852 2866 0022

Fax: +852 2866 0015

Email: [info@landscape.com](mailto:info@landscape.com)

Website: [www.landscape.com](http://www.landscape.com)

Address: Units 1201-3, 12/F, Siu On Centre,  
No. 188 Lockhart Road, Wanchai, Hong Kong

**Scan for  
online  
version**



The information, text, photos, analyses and projections contained herein are provided solely for the convenience of prospective clients and no warranty or representation as to their accuracy, correctness or completeness is made by Landscape Surveyors Limited, Landscape Realty Limited, Landscape International Property Agency Limited or the owners, none of whom shall have any liability or obligation with respect thereto. Interested parties should rely on their own investigations, interpretations and analyses in connection with the purchase or letting thereof.

Purchasing uncompleted properties situated outside Hong Kong is complicated and contains risk. You should review all relevant information and documents carefully before making a purchase decision. If in doubt, please seek independent professional advice before making a purchase decision. Selling Agent: Landscape International Property Agency Limited (C-089033) and Landscape Surveyors Limited (C-000715) are licensed and regulated by EAA. Our sales representatives for overseas property work exclusively in relation to properties outside Hong Kong and unless expressly stated otherwise, are not licensed under the EAA to deal with Hong Kong properties.

Information has been provided to us by sources deemed reliable, but no warranty or representation is made as to its accuracy, correctness or completeness. These offerings are made subject to contract, correction of errors, omissions, prior sale or lease, change of price or terms or withdrawal from the market without notice. The contents of The Key are for reference only and do not constitute all or any part of a contract. Copyright 2024

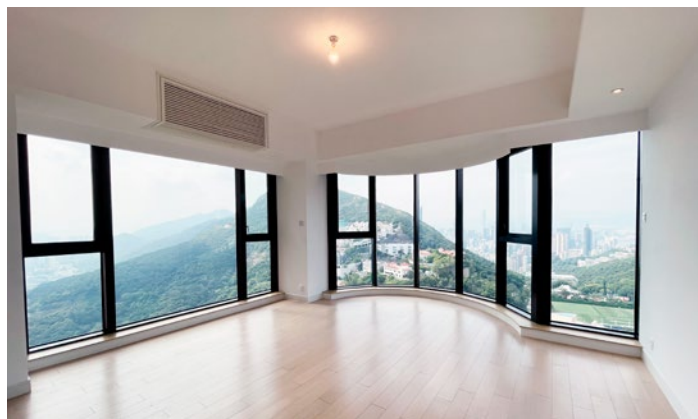




## Enchanting Day and Night 迷人日與夜

Repulse Bay, a traditional upscale residential area on Hong Kong Island, has always been highly coveted. Its prestigious location, surrounded by mountains and the ocean, allows residents to enjoy the proximity of sunlight and beaches, creating an intoxicating ambience day and night.

This unit is a distinctive high-rise residence with a saleable area of 1,796 s.f.. The interior decor is impeccable, featuring four bedrooms (including one en-suite), two bathrooms, and a parking space. The estate also boasts luxurious clubhouse facilities to cater to the residents' daily needs. Due to its elevated position, the unit is bathed in abundant natural light, and the large floor-to-ceiling windows reflect panoramic views from nearby reservoirs to the Victoria Harbour. Gazing further, the bustling cityscape of Hong Kong Island unfolds, capturing the majority of the southern district in sight.



港島傳統豪宅區域淺水灣，向來令人趨之若鶩；尊貴的地理位置，四周環抱的山巒與海洋，於咫尺間可享有陽光與海灘，日與夜都令人醉迷。

單位為高層特色戶，實用面積1,796平方呎，室內裝潢完善，設有四間睡房(其一為套房)、兩間浴室及一個車位；屋苑亦擁有豪華的會所設施，以滿足住戶的日常所需。由於位置高聳，光線充足，在大面積的落地玻璃窗映照下，從鄰近水塘到維港全景，再遙望港島繁華的城市景觀，將大半個南區盡收眼底，一個城市的繁華與寧靜，已在掌握中。



Bright and airy apartment in Repulse Bay  
淺水灣明亮通風住宅

**4 bed, 2 bath, 1 car park**

**Saleable 實用 1,796 s.f.**

**Lease 租 \$98,000 excl.**

**Inquiries 查詢** ☎ 9021 1270 Annie Lee 李小姐

**Property Search No. 物業搜尋編號 6400**





## Extraordinary House

### 寧謐不凡的安樂居

The extraordinary corner house, located in Clearwater Bay, offers breathtaking views of the mountains and sea. It's rare in the market, with a saleable area of 3,126 s.f. and an exceptionally high efficiency. The house boasts a private swimming pool, a self-owned garden, four bedrooms (three of which are en-suite), four bathrooms, and two maid's rooms. It also features a spacious garage that can accommodate up to six cars. Clearwater Bay has always been a preferred residential area for wealthy families, celebrities and business elites, providing a beautiful environment and privacy to create a comfortable and desirable living environment.





Upon entering the house, one can't help but be captivated by the surroundings, filled with curiosity and eager to explore. The interior decor exudes an elegant and nostalgic style infused with a touch of modernity, showcasing exceptional taste. The entire house is adorned with classical furniture and exquisite decorations, creating a beautiful ambience reminiscent of a bygone era. Tropical plants are scattered both indoors and outdoors, harmonizing with the natural scenery and adding a leisurely atmosphere to the space. The nearby Clearwater Bay Beach provides convenient access to recreational activities, while the private rooftop terrace offers an idyllic setting with a panoramic view of lush green forests. A desirable residence must have excellent property management and this estate excels in that regard, providing meticulous security and ensuring a peaceful dwelling for the homeowners. The well-equipped clubhouse facilities further enhance the ideal living environment.





這位於清水灣的單邊花園董事大屋，享連綿山海美景，市場罕有，實用面積3,126平方呎，實用極高，由此創造更多空間，並擁有私人泳池、花園、四間睡房(三間為套房)、四間浴室、兩間傭人房，與及可容納6輛車的車房。清水灣向來是城中富豪家族、名人及商界翹楚的安居之所，環境優美，私隱度高，藉此營造舒適完美的生活環境。

走進大屋，令人不禁環顧四周，好奇心大增，由此開始尋幽探勝。整個室內裝潢風格，在優雅懷舊中注入時尚氣息，品味不凡，並以分布全屋的古典傢具及精緻裝飾品，塑造美好時光。屋內外均栽種了不少熱帶植物，呼應四周大自然景致，亦為空間帶來更多生活閒情。這洋房屋苑附近就是清水灣泳灘，方便前往玩樂，又或安坐在私人天台的沙發上，面對一大片翠綠原始森林及遠處寧靜的海景，是偷得浮生半日閒的最佳寫照。但凡理想的居所，都不能沒有優秀的物業管理，屋苑以出色的物業管理，嚴密保安，為業主帶來安心居所，更以完善的會所設施，打造出最理想的居住環境。另外，提供屋苑專車接駁往返將軍澳區內的港鐵站，是區內極罕有的配置。

Sea View Mediterranean – Corner House with Private Pool  
尊貴高雅建築群，單邊海景私泳屋

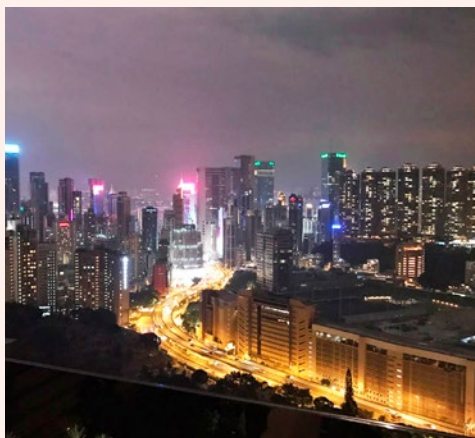
**4 rooms (3 En-suites), 4 bath,**  
**Twin maid's rooms with bath, Garage (6 cars)**

**Saleable** 實用 3,350 s.f. (Approx. 約)

**Sale** 售 \$98,000,000 \$88,000,000

**Inquiries** 查詢 ☎ 6535 2866 Mr. Lai 黎先生

**Property No.** 物業編號 CWBTP-SS-2109



### Designer decorated apartment in Midlevels East

東半山雅致設計師裝修住宅

**2 bed, 1.5 bath, 1 car park**

Practical 2-bedroom apartment with balcony overlooks a stunning racecourse view

實用兩房住宅，連露台，飽覽壯麗馬場景色

**Saleable** 實用 1,315 s.f.

**Lease** 租 \$50,000 incl.

**Inquiries** 查詢 ☎ 6189 3992 Carman Szeto 司徒小姐

**Property Search No.** 物業搜尋編號 131125



### City view apartment in Midlevels Central

中半山城市景單位

**3 bed, 2.5 bath, 1 car park**

Stylish low-rise apartment with spacious layout and a large balcony in a prime location

位處優越地段，時尚低密度單位，間隔寬敞實用，連大露台

**Saleable** 實用 1,798 s.f.

**Lease** 租 \$85,000 excl.

**Inquiries** 查詢 ☎ 6607 2082 Stephen Chan 陳先生

**Property Search No.** 物業搜尋編號 10321





### Charming sea view apartment in Pokfulam

薄扶林迷人海景單位

**4 bed, 3 bath, 2,000 s.f. roof, 1 car park**

Practical 4-bedroom sea view apartment with a private roof in easy access location

實用四房海景單位，連私家天台，交通便利

**Saleable** 實用 2,311 s.f.

**Lease** 租 \$92,000 excl.

**Inquiries** 查詢 ☎ 6590 2686 Akina Yeung 楊小姐

**Property Search No.** 物業搜尋編號 49902



### Practical apartment in Midlevels Central

中半山實用住宅

**3 bed, 3 bath, 1 car park**

Colonial style 3-bedroom apartment in a tranquil yet convenient location

位於寧靜而便利地段，英式三房住宅

**Saleable** 實用 2,350 s.f.

**Lease** 租 \$95,000 incl.

**Inquiries** 查詢 ☎ 6607 2082 Stephen Chan 陳先生

**Property Search No.** 物業搜尋編號 211526





Modern duplex unit in Midlevels Central  
中半山時尚複式單位

**4 bed, 3 bath, 357 s.f. terrace, 1 car park**

4-bedroom duplex apartment with a spacious layout enjoys lush green views  
四房複式住宅，間隔寬敞，眺望翠綠景色

**Saleable** 實用 2,626 s.f.

**Lease** 租 \$110,000 excl.

**Inquiries** 查詢 ☎ 6590 2686 Akina Yeung 楊小姐

**Property Search No.** 物業搜尋編號 10317



Garden house in Shouson Hill

壽臣山花園洋房

**5 bed, 3 bath, 964 s.f. garden, 644 s.f. roof, 1 garage (2 cars)**

Rare 5-bedroom garden house with spacious layout in a tranquil location  
位處清幽怡人地段，罕有五房花園洋房，間隔寬敞

**Saleable** 實用 2,782 s.f.

**Lease** 租 \$150,000 incl.

**Inquiries** 查詢 ☎ 6590 2686 Akina Yeung 楊小姐

**Property Search No.** 物業搜尋編號 15619





### High floor sea view apartment in Repulse Bay

淺水灣高層海景單位

**4 bed, 2 bath, 1 car park**

Rare high floor unit with a spacious layout enjoys a fantastic view of Deep Water Bay

矜罕高層單位，間隔寬敞，坐擁迷人深水灣景色

**Saleable** 實用 1,999 s.f.

**Lease** 租 \$120,000 incl.

**Inquiries** 查詢 ☎ 6607 2082 Stephen Chan 陳先生

**Property Search No.** 物業搜尋編號 6431



### Modern home in Midlevels Central

中半山時尚家居

**4 bed, 4 bath, 1 car park**

Family 4-ensuite apartment with a balcony enjoys peaceful green and city views

家庭式四套房住宅，連露台，眺望怡人翠綠景及城市景

**Saleable** 實用 2,828 s.f.

**Lease** 租 \$120,000 incl.

**Inquiries** 查詢 ☎ 6590 2686 Akina Yeung 楊小姐

**Property Search No.** 物業搜尋編號 164800





Unique garden low-rise in Repulse Bay

淺水灣獨特花園低密度住宅

**3 bed, 3 bath, 1,500 s.f. garden, 1 car park**

Boutique low-rise with a private garden and swimming pool facilities in a quiet location

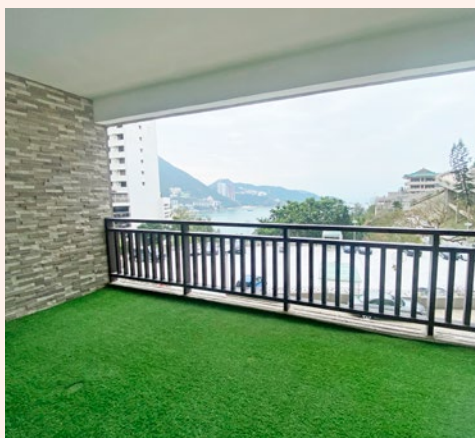
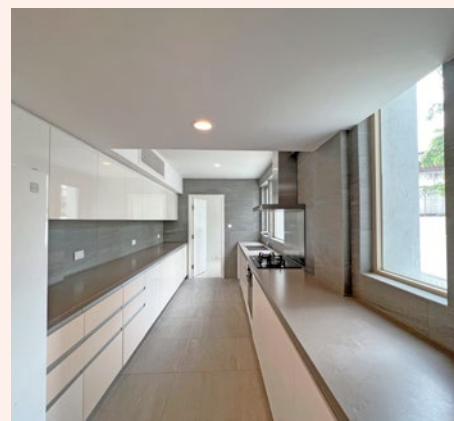
精品低密度單位，連私家花園及游泳池設施，地段怡人寧靜

**Saleable** 實用 2,767 s.f.

**Lease** 租 \$128,000 incl.

**Inquiries** 查詢 ☎ 6607 2082 Stephen Chan 陳先生

**Property Search No.** 物業搜尋編號 7093



Newly renovated apartment in Repulse Bay

淺水灣全新裝修單位

**4 bed, 3 bath, 1 car park**

Rare 4-bedroom home with a large balcony in a sought after estate

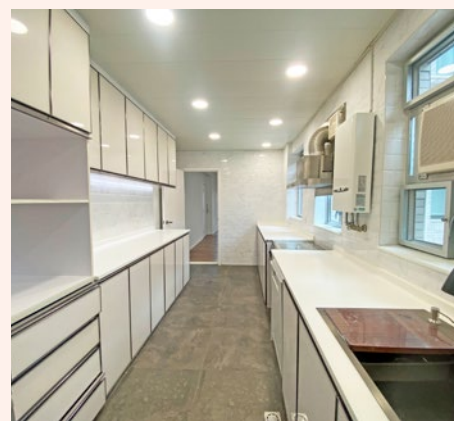
位於受歡迎豪宅屋苑，罕有四房家居，連寬闊露台

**Saleable** 實用 2,576 s.f.

**Lease** 租 \$110,000 incl.

**Inquiries** 查詢 ☎ 6189 3992 Carman Szeto 司徒小姐

**Property Search No.** 物業搜尋編號 4763





### Sea view duplex in Repulse Bay

淺水灣海景複式

**3 bed, 1 study, 2.5 bath, 1 car park**

3-bedroom sea view duplex overlooks a fantastic view of Repulse Bay Beach

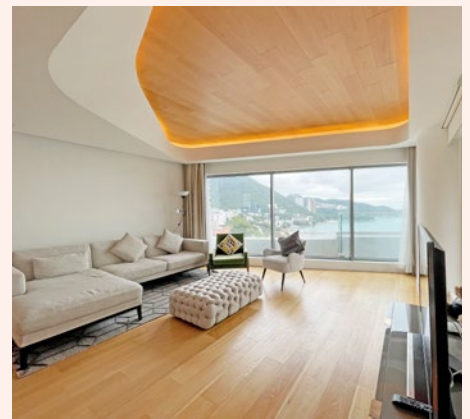
三房海景複式單位，俯瞰淺水灣泳灘迷人景色

**Saleable** 實用 2,518 s.f.

**Lease** 租 \$132,000 excl.

**Inquiries** 查詢 ☎ 6607 2082 Stephen Chan 陳先生

**Property Search No.** 物業搜尋編號 26616



### Contemporary residence in Repulse Bay

淺水灣時尚住宅

**4 bed, 3.5 bath, 1 car park**

Rare and stunning 4-bedroom apartment enjoys an unobstructed view of Repulse Bay

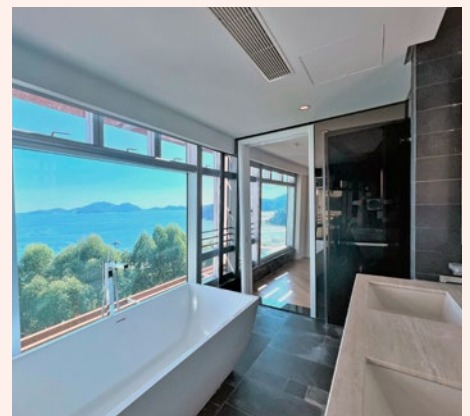
罕罕瑰麗四房家居，飽覽遼闊淺水灣美景

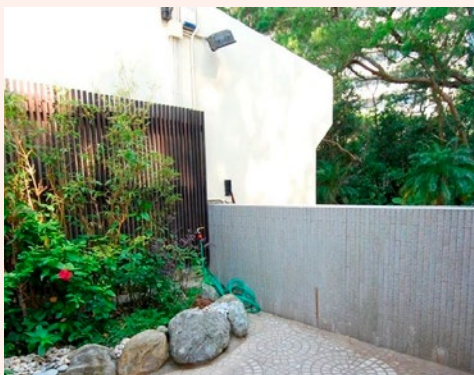
**Saleable** 實用 2,533 s.f.

**Lease** 租 \$133,000 incl.

**Inquiries** 查詢 ☎ 6590 2686 Akina Yeung 楊小姐

**Property Search No.** 物業搜尋編號 75627





Can be sold via company shares transfer  
可以公司轉讓股份形式買賣



### Garden house on The Peak

山頂花園洋房

**4 bed, 1 study, 3.5 bath, 228 s.f. terrace, 390 s.f. garden, 1 garage (5 cars)**

Highly sought after 4-bedroom house with a study and ample outdoor space in a verdant location

位於翠綠怡人地段，備受追捧四房洋房，連書房，享充足戶外空間，可租可售

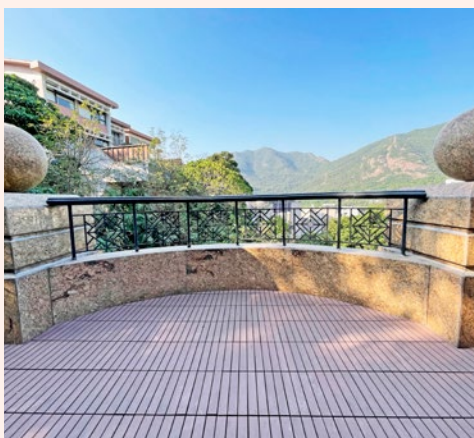
**Saleable** 實用 2,706 s.f.

**Lease** 租 \$130,000 excl. / **Sale** 售 \$210,000,000

**Inquiries** 查詢 ☎ 6538 6922 Teresa Fung 馮小姐

☎ 9027 2100 Louis Wong 黃先生

**Property No.** 物業編號 158148



### Cozy house in Shouson Hill

壽臣山舒適洋房

**4 bed, 3.5 bath, 166 s.f. terrace, 197 s.f. garden, 617 s.f. roof, 2 car parks**

Rare 4-bedroom house enjoys a greenery view in a serene location

罕有四房洋房，享翠綠景色，地段寧靜清幽

**Saleable** 實用 2,933 s.f.

**Lease** 租 \$150,000 incl.

**Inquiries** 查詢 ☎ 6590 2686 Akina Yeung 楊小姐

**Property Search No.** 物業搜尋編號 21407





Family 4-ensuite apartment at The Peak  
山頂家庭式四套房住宅

**4 bed, 4 bath, 1 car park**

Highly sought after 4-ensuite apartment with fantastic views of Southside sea and lush greenery

受歡迎四套房住宅，坐擁南區優美海景和翠綠景色

**Saleable** 實用 2,299 s.f.

**Lease** 租 \$160,000 incl.

**Inquiries** 查詢 ☎ 9021 1270 Annie Lee 李小姐

**Property Search No.** 物業搜尋編號 160084



Massive house at The Peak

山頂偌大洋房

**4 bed, 3.5 bath, 1,701 s.f. garden, 1 garage**

Sumptuous 4-bedroom house with ample outdoor space and resort-style bathroom enjoys an expansive Southside sea view

豪華四房洋房，享充足戶外空間及華麗度假風浴室，飽覽廣闊南區海景

**Saleable** 實用 2,545 s.f.

**Lease** 租 \$180,000 incl.

**Inquiries** 查詢 ☎ 6607 2082 Stephen Chan 陳先生

**Property Search No.** 物業搜尋編號 6461





### Newly decorated apartment in Repulse Bay

淺水灣簇新裝修單位

**4 bed, 3 bath, 1 car park**

Bright and airy 4-bedroom apartment with a spacious layout enjoys marvellous views of Deep Water Bay & the golf course

明亮通風四房住宅，間隔寬敞，遠眺深水灣及高爾夫球場壯麗景色

**Saleable** 實用 2,499 s.f.

**Lease** 租 \$188,000 incl.

**Inquiries** 查詢 ☎ 6607 2082 Stephen Chan 陳先生

**Property Search No.** 物業搜尋編號 175



### Family 4-ensuite apartment in Midlevels East

東半山家庭式四套房住宅

**4 bed, 4.5 bath, 1 car park**

Commodious 4-ensuite apartment with splendid metropolitan and greenery views

舒適四套房住宅，坐擁壯麗城市景及翠綠景觀

**Saleable** 實用 2,264 s.f.

**Lease** 租 218,000 incl.

**Inquiries** 查詢 ☎ 9027 2100 Louis Wong 黃先生

**Property Search No.** 物業搜尋編號 182007





Highly sought after duplex in Repulse Bay  
淺水灣受歡迎複式住宅

**4 bed, 3 bath, 2 car parks**

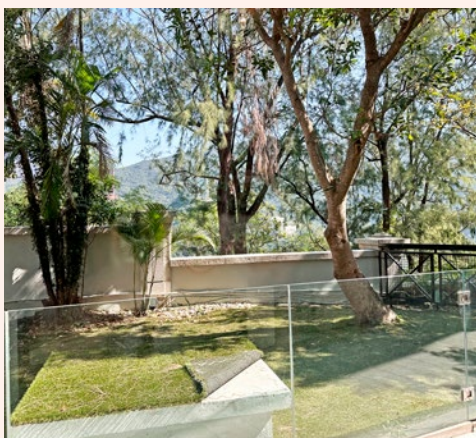
Stylish 4-bedroom sea view duplex with an ample alfresco space in a tranquil location  
時尚品味海景複式，連充足戶外空間，地段寧靜怡人

**Saleable** 實用 3,138 s.f.

**Lease** 租 \$160,000 incl.

**Inquiries** 查詢 ☎ 6590 2686 Akina Yeung 楊小姐

**Property Search No.** 物業搜尋編號 36560



Family townhouse in Deep Water Bay  
深水灣家庭式住宅

**4 bed, 3.5 bath, 272 s.f. terrace, 317 s.f. garden, 1 garage (2 cars)**

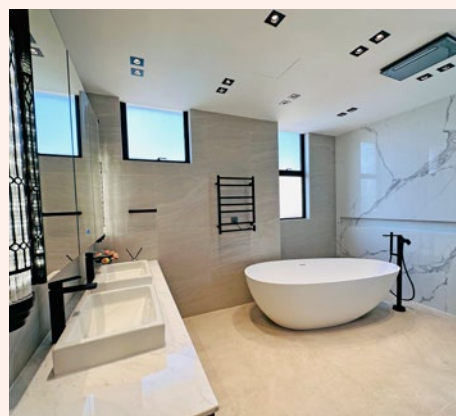
Newly renovated 4-bedroom townhouse with ample outdoor space in a peaceful location  
位處清幽怡人地段，全新裝修四房洋房，享充裕戶外空間

**Saleable** 實用 2,838 s.f.

**Lease** 租 \$203,000 excl.

**Inquiries** 查詢 ☎ 9021 1270 Annie Lee 李小姐

**Property Search No.** 物業搜尋編號 12396





### Outstanding garden townhouse in Repulse Bay

淺水灣非凡花園洋房

**4 bed, 4 bath, 1,486 s.f. garden, 556 s.f. roof, 3 car parks**

Grand 4-bedroom garden townhouse with sufficient outdoor space enjoys a breath-taking sea view

瑰麗四房花園洋房，享充足戶外空間，飽覽優美海景

**Saleable** 實用 2,490 s.f.

**Lease** 租 \$220,000 incl.

**Inquiries** 查詢 ☎ 6538 6922 Teresa Fung 馮小姐

**Property Search No.** 物業搜尋編號 6318



### Rare single house at The Peak

山頂罕有獨立屋

**4 bed, 4.5 bath, 1 garage**

Exceptional single house overlooks a fantastic view of Victoria Harbour

別具一格獨立屋，俯瞰維多利亞港醉人景色

**Saleable** 實用 3,937 s.f.

**Lease** 租 ~~\$600,000~~ excl. \$480,000 excl.

**Inquiries** 查詢 ☎ 9027 2100 Louis Wong 黃先生

**Property Search No.** 物業搜尋編號 82564





### Majestic house in Deep Water Bay

深水灣宏偉非凡洋房

**5 bed, 2 study, 5.5 bath, 1,000 s.f. garden, 2 car parks**

Generous 5-bedroom house with a private garden in a quiet location

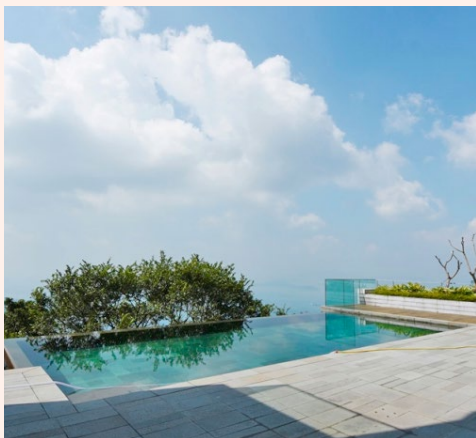
位於寧靜地段，偌大寬敞五房洋房，連私家花園

**Saleable** 實用 5,283 s.f.

**Lease** 租 \$400,000 incl.

**Inquiries** 查詢 ☎ 6538 6922 Teresa Fung 馮小姐

**Property Search No.** 物業搜尋編號 29771



### Private pool house at The Peak

山頂私家游泳池洋房

**4 bed, 5 bath, 280 s.f. terrace, 2,844 s.f. garden, 1,780 s.f. roof, 1 garage**

Rare find huge 4-ensuite house with private swimming pool enjoys a picturesque

Southside sea view

罕有巨型四套房洋房，坐擁如畫南區海景

**Saleable** 實用 5,043 s.f.

**Lease** 租 \$520,000 incl.

**Inquiries** 查詢 ☎ 6538 6922 Teresa Fung 馮小姐

**Property No.** 物業編號 155985





### Waterfront house in Deep Water Bay

深水灣臨海洋房

**5 bed, 3 bath, 1,154 s.f. garden, 420 s.f. roof, 2 car parks**

One of a kind garden house with ample open space overlooks a spectacular sea view  
別具一格花園洋房，享充足戶外空間，俯瞰壯麗海景

**Saleable** 實用 3,461 s.f.

**Lease** 租 \$400,000 incl.

**Inquiries** 查詢 ☎ 9021 1270 Annie Lee 李小姐

**Property Search No.** 物業搜尋編號 35171



### Majestic house at The Peak

山頂非凡洋房

**6 bed, 5.5 bath, private swimming pool, 6 car parks**

Unique 6-bedroom detached house with a private swimming pool and garden  
in a tranquil location

位處寧靜地段，特色六房洋房，連私家游泳池及花園

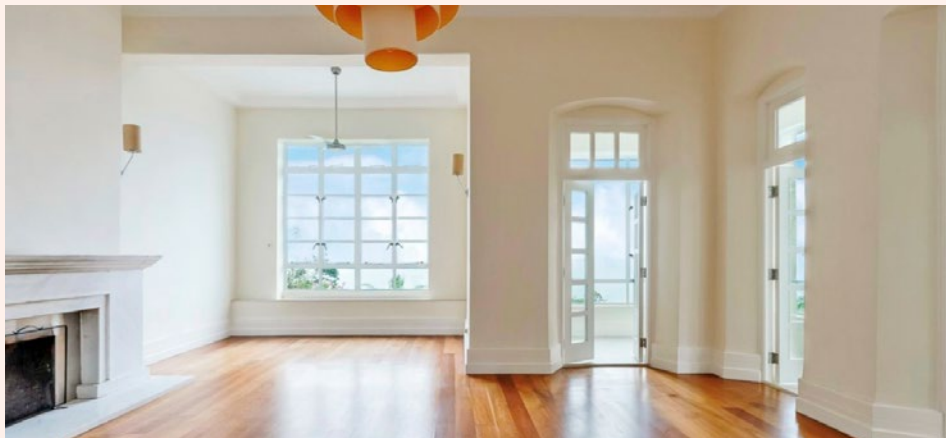
**Saleable** 實用 4,012 s.f.

**Lease** 租 \$450,000 incl.

**Inquiries** 查詢 ☎ 9027 2100 Louis Wong 黃先生

**Property Search No.** 物業搜尋編號 11636





Unique single house on The Peak

山頂別具一格獨立屋

**4 bed, 4.5 bath, 3 car parks**

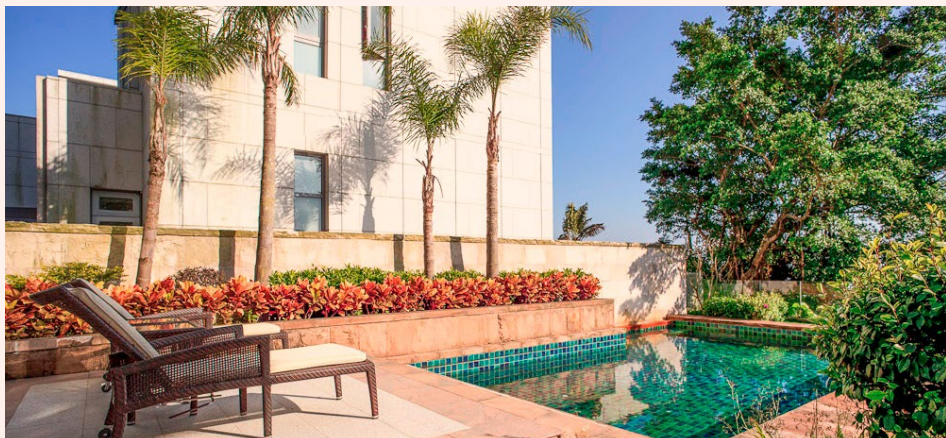
Enormous 4-bedroom single house with a private swimming pool in a prestigious location  
位處尊貴地段，巨型四房獨立屋，連私家游泳池

**Saleable** 實用 5,481 s.f.

**Lease** 租 \$330,000 incl.

**Inquiries** 查詢 ☎ 6535 9918 Josephine Yuen 阮小姐

**Property Search No.** 物業搜尋編號 197160



Private pool house under the fog line at The Peak

霧線以下山頂私泳獨立屋

**4 bed, 1 study, 4.5 bath, 492 s.f. terrace, 1,947 s.f. garden & 617 s.f. roof, 2 car parks**

Prestigious house with 4 ensuite bedrooms featuring luxurious designer's décor,  
private pool, garden and terrace (including all furnitures)

尊貴兩層高設計四房洋房，搭配設計師名貴裝修，連私家游泳池、花園及平台，  
包全屋家具，可遇難求

**Saleable** 實用 4,195 s.f.

**Lease** 租 \$400,000 incl.

**Inquiries** 查詢 ☎ 6535 9918 Josephine Yuen 阮小姐

**Property Search No.** 物業搜尋編號 31760





Brand new luxurious modern houses on The Peak

山頂全新時尚洋房

**4 bed, 1 study, 4.5 bath, 1 garage**

Outstanding brand new houses with ample alfresco space overlooks spectacular mountain and sea views

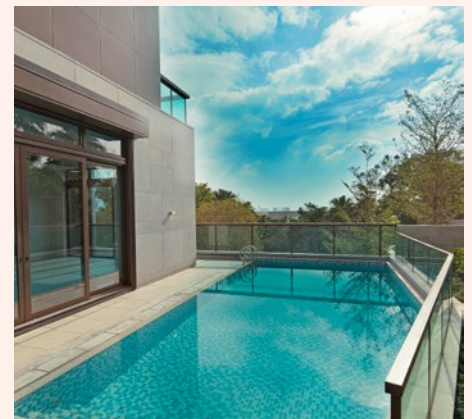
恢宏大度全新洋房，享寬敞戶外空間，俯瞰遼闊深邃山景及海景

**Saleable** 實用 4,897 s.f. to 5,149 s.f.

**Lease** 租 starting from \$688,000 incl.

**Inquiries** 查詢 ☎ 9027 2100 Louis Wong 黃先生

**Property Search No.** 物業搜尋編號 212534



Extraordinary single house on The Peak

山頂尊貴顯赫獨立屋

**5 bed, 3 bath, private swimming pool and garden, 1 garage**

Lavish single house with a private swimming pool and a massive garden enjoys a picturesque Southside sea view

奢華氣派獨立屋，連私家游泳池及偌大花園，享南區如畫海景

**Saleable** 實用 4,001 s.f.

**Lease** 租 Open Offer

**Inquiries** 查詢 ☎ 9027 2100 Louis Wong 黃先生

**Property Search No.** 物業搜尋編號 8603





## Chantilly, 6 Shiu Fai Terrace, Midlevels East 東半山 肇輝台6號

- ▶ 傳統豪宅區罕見寬闊大戶，3.4米特高樓底
- ▶ 莊園設計重演法式建築藝術
- ▶ 配置國際著名廚具潔具品牌，包括Sub-Zero雪櫃及Gaggenau廚具
- ▶ 酒店式玫瑰典雅大堂設計
- ▶ 專屬電梯直達私人電梯大堂
- ▶ 會所設有游泳池、健身室及宴會廳

尚餘兩個單位放租：

**Unit 6A (5-bed)**

**Saleable** 實用 2,816 s.f.

**Lease** 租 \$130,000 incl.

**Unit 11B (4-bed)**

**Lease** 租 ~~\$132,000~~ incl. (Leased)

**Unit 12A (5-bed)**

**Saleable** 實用 2,816 s.f.

**Lease** 租 \$135,000 incl.

**Unit 15A (5-bed)**

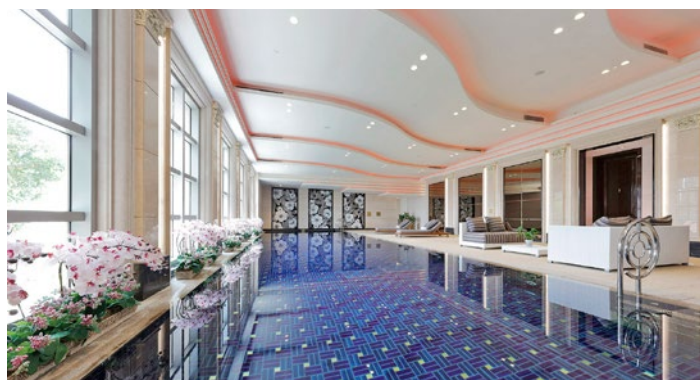
**Lease** 租 ~~\$140,000~~ incl. (Leased)

**Unit 15B (4-bed)**

**Lease** 租 ~~\$140,000~~ incl. (Leased)

**Inquiries** 查詢 ☎ 6535 9918 Josephine Yuen 阮小姐

**Property No.** 物業編號 136282, 136288





## Tasteful Abode

### 品味家居

Nestled in the heart of bustling Kowloon, hidden beneath a canopy of trees, lies The Kadoorie Estate - an exclusive residential community situated on Kadoorie Hill.

This peaceful enclave benefits from all the conveniences of modern city living and is readily accessible to the business and commercial hubs of West Kowloon and Central District.

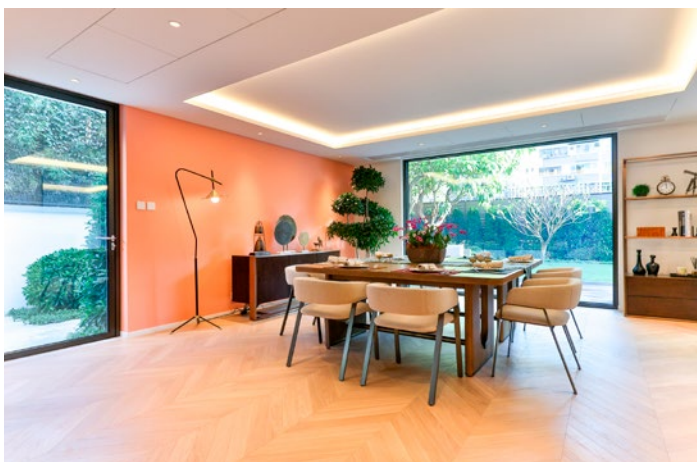
The Estate's detached and semi-detached houses vary in size from 3,000 square feet to 6,000 square feet. Each house has its own garden and some have private pools.



座落於九龍繁華核心地段、藏於綠樹掩影下，嘉道理置業旗下住宅是座落於加多利山上的隱世居庭，形成了一片尊尚住宅區。

這靜謐怡然的尊尚住宅區，既展現現代城市生活之便利，又可快速便捷往返西九龍及中環商業區。

嘉道理置業旗下的獨立式和半獨立式洋房面積由3,000至6,000平方呎不等。每棟洋房皆有獨立花園，部分更擁有私人泳池。



Gorgeous three-storey house on Kadoorie Avenue  
嘉道理道三層華麗洋房

**4 ensuite bed, 4.5 bath, 1 garage (2 carpark spaces)**

**Saleable 實用 4,571 s.f.**

**Lease 租 \$350,000 excl.**

**Inquiries 查詢** ☎ 9027 2100 Louis Wong 黃先生

☎ 6538 6922 Teresa Fung 馮小姐

**Property No. 物業編號 77500**

中國當代著名建築師馬岩松。



## Build the future 構建現在與未來 · 馬岩松

隨著建築技術的不斷革新及改良，令建築設計可以突破各種限制，充分發揮建築師的想像力，為世界帶來多個著名建築物。在建築語言已日漸全球化的今日，馬岩松堪稱中國建築界第一人，其建築設計風格天馬行空，想像力非凡，但他真正關心的，卻是建築物內人與自然的關係。在HKDI Gallery 舉行的年度旗艦級展覽——《馬岩松：流動的大地》中，便詮釋了其建築設計在現在與未來之間的微妙平衡關係。

在很多年前，中國建築界流傳著一句話，說建築師要在30歲之前成名是不可能的，除非你是馬岩松。今年48歲的馬岩松，已是近代最具國際影響力的中國建築師之一，其出生於北京，出道不久已被譽為中國新一代建築師中最重要的聲音和代表，更是首位在海外贏得重要代表性建築比賽項目的中國建築師。

世上很多著名建築師的成名之路上，都或多或少受過其他建築大師的影響，馬岩松的建築設計一向善用曲線，在形式上崇尚自由，而且未來主義風格強烈，因此常被人與已故建築大師Zaha Hadid的作品相提並論。馬岩松先就讀於北京建築工程學院（現北京建築大學），完成建築學學士學位後，再往美國耶魯大學攻讀建築學碩士，畢業後曾於倫敦的Zaha Hadid建築事務所和紐約埃森曼事務所工作。他表示，在耶魯大學時期，他曾擔任其論文導師，因此在設計風格上曾受其影響，難怪我們可以从其設計的作品中找到一些Zaha Hadid獨特設計手法的蛛絲馬跡。



深圳灣文化廣場建築項目。



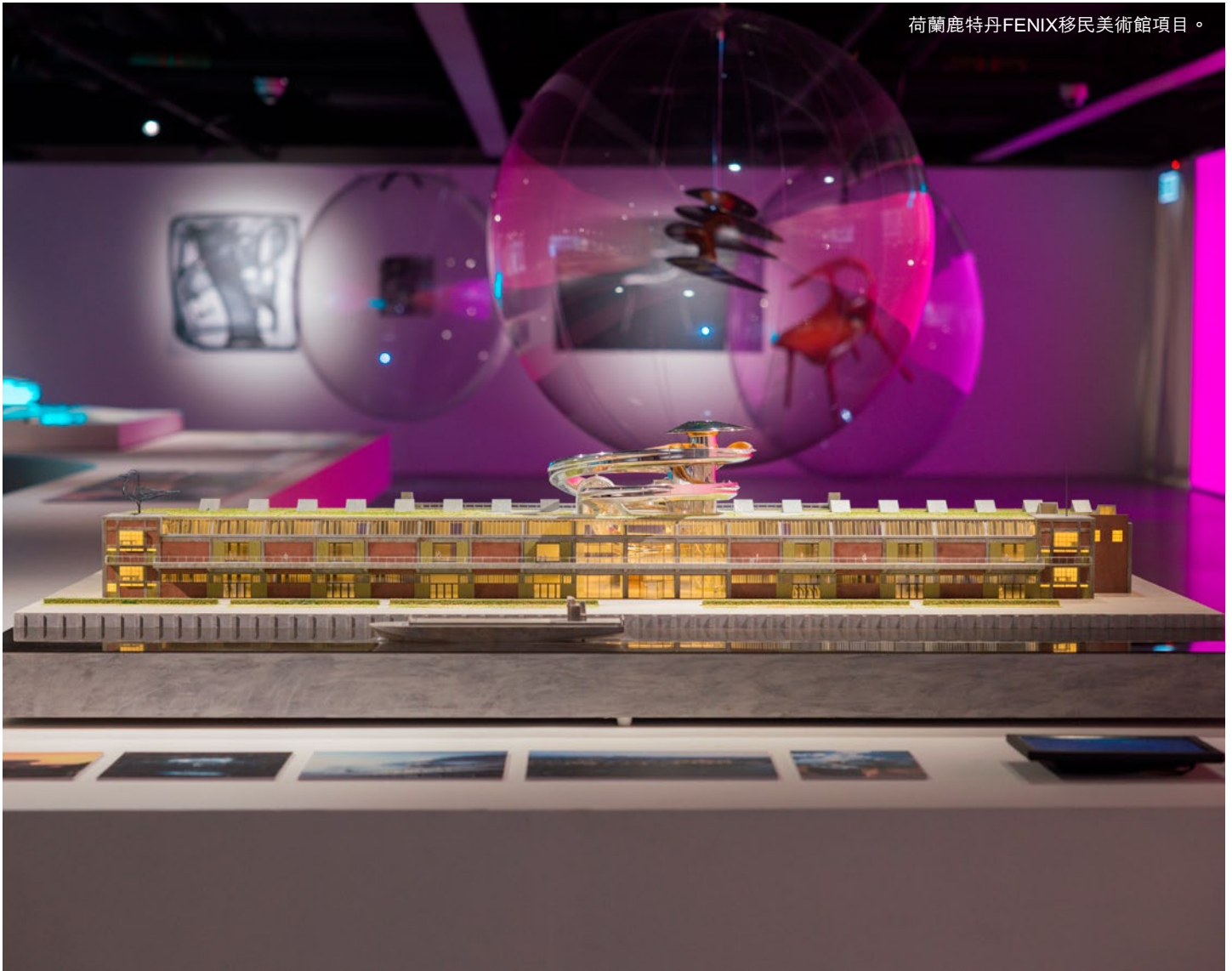
## 走向國際的中國建築師

馬岩松的建築理念著重對光影、自然及與宇宙之間的交流，把非物質性的東西凝固，轉化成生活空間，而在其過去二十多年的建築師生涯中，一直都在致力探索建築的未來之路，並倡導把城市的密度、機能和自然環境結合起來，重新建立人與自然的聯繫，期望最終走向一個全新，以人文精神為核心的城市文明時代。

從2002年設計浮游之島開始，馬岩松於2005年參加了加拿大安大略湖北岸城市的一個建築比賽項目(亦即後來的「夢露大廈」)，並帶領其創立只有一年多的MAD 建築事務所，憑藉螺旋型的全曲線方案一舉取得設計權，一夜成名，而這亦是中國建築師第一次在公開國際競賽中贏得

設計方案。其後他又主持設計一系列標誌性建築及藝術作品，包括北京老城區的泡泡32號、鄂爾多斯博物館、哈爾濱文化島、朝陽公園廣場等優秀建築項目，逐漸在業界建立穩固的地位。

馬岩松身型高大，當臉上目無表情時，會錯誤地給人一種高傲的感覺，事實上，他雖然性格木納、不擅辭令，又不愛社交，連面書、微博帳號都沒有，但初步接觸後會發現他亦有溫情一面，正如其建築設計，外表看來冷酷，但建築內部流露出豐富的人文原素，外冷內熱，讓建築回歸生活基本。他卻笑稱，自己不是一個未來派，而是一個傳統派，只是習慣了用傳統的眼光來放眼未來。

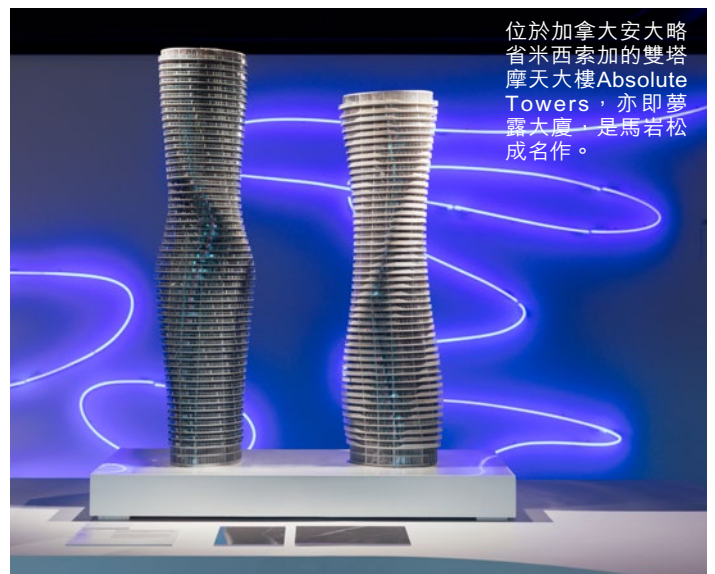


荷蘭鹿特丹FENIX移民美術館項目。

## 建構與探索未來

這個名為《馬岩松：流動的大地》的專題展覽，乃是源自深圳市當代藝術與城市規劃館2023年的大型個展，並由MAD建築事務所創始人及合夥人馬岩松親自進行二次策劃，更是其首個於香港舉辦的大型個人展覽。此次展覽不僅揭示了馬岩松引人深思的概念和富有想像力的視野，還提供了對未來城市文明的一瞥——從城市景觀、歷史和自然環境的和諧共存，以建構及探索未來。

展覽一樓重點呈現馬岩松及MAD團隊的主要項目，包括一系列大型模型，以及專為 HKDI 創作的全新互動裝置作品「流動的香港」；同層的霓虹燈藝術裝置，作品以「流動的大地」命名，橫跨展覽空間，刻劃不同展覽項目的原始設計概念，包括哈爾濱大劇院、深圳灣文化廣場、衢州體育公園和荷蘭鹿特丹FENIX移民美術館。馬岩松藉著將過去與未來連結，演繹一種現代思考建築的方式——建築不會被僅僅視為靜態結構，而是原始且生動的藝術形式，啟發人們思考建築、藝術和自然之間的關係。



位於加拿大安大略省米西索加的雙塔摩天大樓Absolute Towers，亦即夢露大廈，是馬岩松成名作。

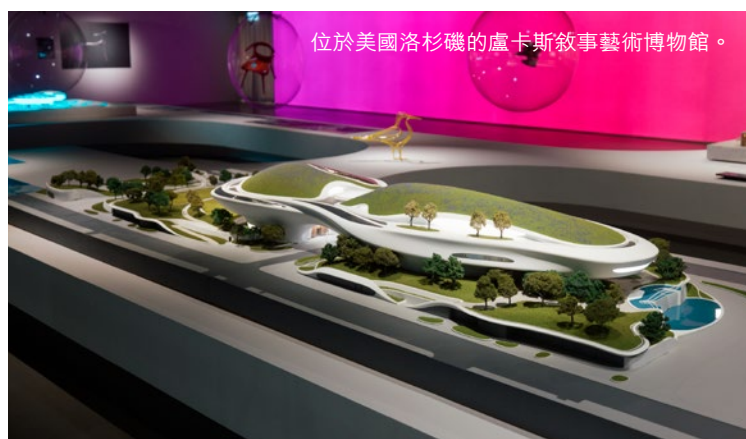
## 建築中的人性化一面

在欣賞這些劃時代的裝置前，入場觀眾亦可率先探索其參考作品，欣賞MAD建築事務所遍布全球的各個項目。當中包括即將落成的深圳灣文化廣場，該公園座落於深圳南山區，旨在為繁華的都市創造一個「緩衝區」。設計以「遠古未來」為核心概念，在現實的城市空間置入超現實的大地藝術場景，觀眾便可透過由彎曲的白色花崗岩組成的「巨石」，探索如何將有機元素注入建築之中。

MAD遍布全球的作品令人驚嘆，當中的活化保育項目，更成為焦點，如團隊為荷蘭鹿特丹FENIX移民美術館進行的翻新工程，便非常有代表性。該項目通過打開建築物的中央結構和屋頂，擴展了原有的倉庫，形成一個人性化的展覽空間，同時保留了當中具標誌性的綠色鋼窗和混凝土

土內部，將城市的歷史與當代面貌聯繫起來。團隊並增添兩道螺旋形的樓梯，以模仿自然界最常見的螺旋結構，從而將大自然引入室內空間，為室內增添自然氣息。

是次展覽更突顯了MAD的使命——以創造空間作為探索文化生活的渠道。馬岩松希望啟發觀眾在觀察當代社會動態、多元、流動的文化景觀的同時，一同探索內在的自我。他再表示：「此展覽展示了MAD建築事務所在過去 20 年，最具代表性的城市建築項目。我相信所有人造物，從工具到藝術，都是人內心的一種外化。這個展覽中展示的裝置皆充滿能量且動態流動，反映我們面對外在世界過去與未來的態度；並展示了先進科學建築技術人性化的一面。」





## Green Sanctuary 翠綠天地

Chung Hom Kok is an area known for its low-density luxury residences nestled against the hills. With complete living amenities, it is the ideal choice for those seeking a refined lifestyle.

This property is a unique duplex unit with a saleable area of 1,860 s.f. It features three en-suite bedrooms, three bathrooms and two covered parking spaces. The outdoor space is exceptionally spacious, with a private garden spanning 451 s.f., adorned with a variety of plants, creating a private green sanctuary. The interior design also reflects an elegant sense of space, embracing a minimalist aesthetic. Amidst the soft lighting and the harmonious blend of the verdant outdoor scenery, one can enjoy breathtaking sea views and indulge in the unique tranquillity offered by the city.



春坎角位於港島南區赤柱的西部，區內的低密度豪宅依山而建，生活配套齊全，是追求生活品味人士最佳之選。

物業是實用面積為1,860平方呎的獨特複式戶連花園，備有三間套房、三間浴室與及兩個有蓋車位，其中戶外空間非常寬敞，私家花園更達451平方呎，栽種了多種植物，一個私人的綠化天地，就此形成。室內裝潢部分亦延續這份優雅的空間感，走簡約主義，在柔和的燈光及窗外翠綠景致的融合中，眺望醉人海景，享受一份城市中獨有的靜謐。



Unique garden duplex in Chung Hom Kok  
春坎角別具一格花園複式

**3 bed, 3 bath, 451 s.f. garden, 2 car parks**

**Saleable 實用 1,860 s.f.**

**Sale 售 \$52,000,000 \$40,000,000 (Negotiable 可議)**

**Inquiries 查詢** ☎ 6590 2686 Akina Yeung 楊小姐

**Property Search No. 物業搜尋編號 106564**



Can be sold via company shares transfer  
可以公司轉讓股份形式買賣



Highly sought after apartment in Repulse Bay

淺水灣受歡迎住宅

**3 bed, 2.5 bath, 1 car park**

Practical 3-bedroom apartment with clubhouse facilities in a peaceful neighbourhood of Repulse Bay

位處淺水灣寧靜地段，實用三房單位，連會所設施，可租可售

**Saleable** 實用 1,962 s.f.

**Sale** 售 \$72,000,000 / **Lease** 租 \$90,000 incl.

**Inquiries** 查詢 ☎ 6189 3992 Carman Szeto 司徒小姐

**Property Search No.** 物業搜尋編號 186969



Rare 3-ensuite apartment in Repulse Bay

淺水灣罕有三套房單位

**3 ensuite, 3.5 bath, 1 car park**

Generous 3-bedroom apartment with full clubhouse facilities in a serene location

淺水灣罕有寬敞三套房單位，連完善會所設施，地段寧靜

**Saleable** 實用 2,067 s.f.

**Sale** 售 ~~\$88,000,000~~ ~~\$80,000,000~~ ~~\$72,800,000~~ (Negotiable 議價)

**Inquiries** 查詢 ☎ 9027 2100 Louis Wong 黃先生

**Property Search No.** 物業搜尋編號 84538



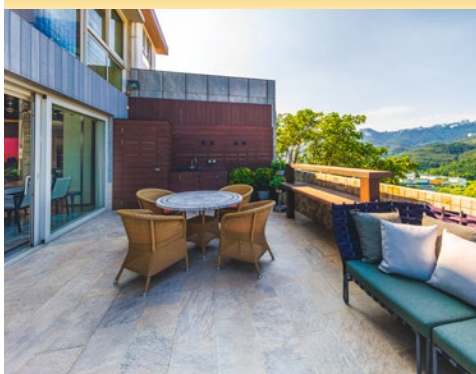
Can be sold via company shares transfer  
可以公司轉讓股份形式買賣



**SALE 出售**

Southside & The Peak 南區及山頂

Can be sold via company shares transfer  
可以公司轉讓股份形式買賣



One of a kind townhouse in Shouson Hill (Rare On Market)

壽臣山特色洋房 (市場罕有)

**4 bed, 4 bath, 1,050 s.f. garden, 2 car parks**

Meticulously and uniquely decorated 4-bedroom house with ample alfresco space boasts expansive mountain views in a peaceful location

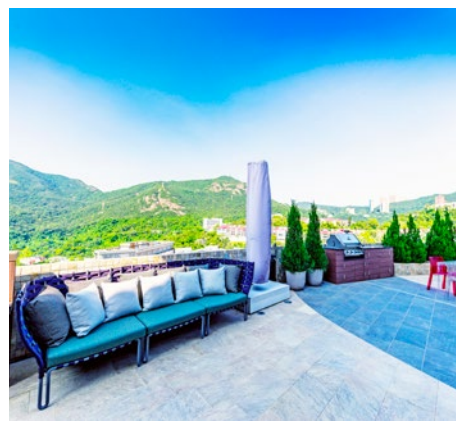
位處寧靜一隅地段，精心獨特裝修四房洋房，戶外空間寬闊，坐擁遼闊翠綠山景

**Saleable 實用** 2,528 s.f.

**Sale 售** \$149,000,000 (Negotiable 可議)

**Inquiries 查詢** ☎ 6538 6922 Teresa Fung 馮小姐

**Property Search No. 物業搜尋編號** 36465



Garden house in Stanley

赤柱花園洋房

**4 bed, 4 bath, 2,950 s.f. garden, 663 s.f. roof, 1 garage**

Large 4-bedroom townhouse with a private garden and rooftop in a tranquil location

偌大四房洋房，連私家花園及天台，地段清幽怡人，可租可售

**Saleable 實用** 2,392 s.f.

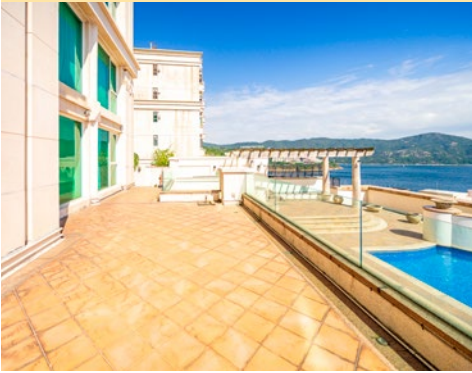
**Sale 售** \$98,000,000 / Lease 租 \$149,000 incl.

**Inquiries 查詢** ☎ 6607 2082 Stephen Chan 陳先生

**Property Search No. 物業搜尋編號** 107182



Can be sold via company shares transfer  
可以公司轉讓股份形式買賣



### Waterfront garden apartment in Tai Tam 大潭臨海花園單位

**4 bed, 2.5 bath, 746 s.f. terrace, 3,563 s.f. garden, 1 car park**

Well decorated 4-bedroom apartment with a massive garden overlooks a panoramic sea view

優質裝修四房住宅，連廣闊花園，俯瞰全海景，可租可售

**Saleable** 實用 1,824 s.f.

**Sale** 售 \$110,000,000 / \$95,000,000 / Lease 租 \$168,000 incl.

**Inquiries** 查詢 6590 2686 Akina Yeung 楊小姐

**Property Search No.** 物業搜尋編號 31650



Can be sold via company shares transfer  
可以公司轉讓股份形式買賣



### Rare duplex in Repulse Bay 淺水灣罕有複式單位

**3 bed, 3.5 bath, 2 car parks**

Exquisite 3-bedroom duplex with tasteful furnishings and full clubhouse facilities boasts lush verdant mountain views

豪華三房複式單位，家具雅致，設完善會所設施，坐擁美景如畫的翠綠山景

**Saleable** 實用 3,244 s.f.

**Sale** 售 \$130,000,000

**Inquiries** 查詢 9021 1270 Annie Lee 李小姐

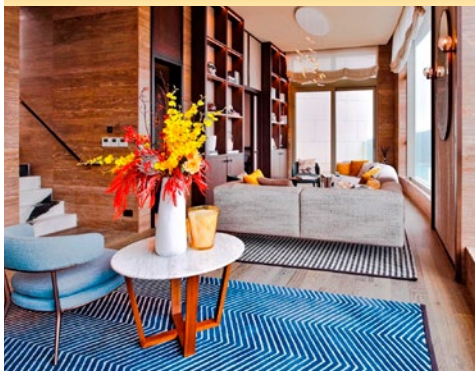
**Property Search No.** 物業搜尋編號 174904



**SALE 出售**

Southside & The Peak 南區及山頂

Can be sold via company shares transfer  
可以公司轉讓股份形式買賣



Stunning sea view single house in Chung Hom Kok

春坎角壯麗海景獨立屋

**3 bed, 3 bath, 196 s.f. terrace, 1,083 s.f. garden, 609 s.f. roof, 2 car parks**

Rare 3-ensuite sea view single house with a private lift and swimming pool facilities including 30 million luxury decorations in a verdant location

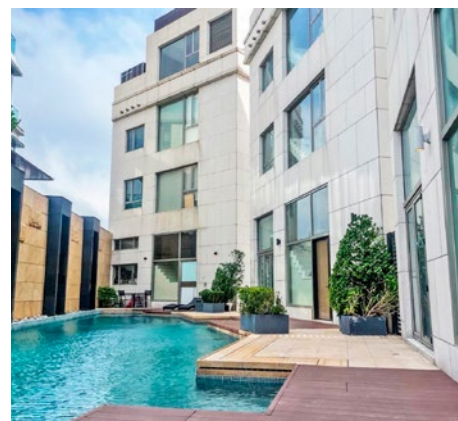
位於清幽寧靜地段，矜罕三套房海景獨立屋，連私家升降機，享游泳池設施，3000萬全新豪華Rosewood 設計裝修

**Saleable 實用** 2,513 s.f.

**Sale 售** \$168,000,000

**Inquiries 查詢** ☎ 6535 9918 Josephine Yuen 阮小姐

**Property Search No. 物業搜尋編號** 193307



Can be sold via company shares transfer  
可以公司轉讓股份形式買賣



Modern penthouse duplex in Repulse Bay

淺水灣時尚頂層複式單位

**3 bed, 3.5 bath, 462 s.f. terrace, 1,154 s.f. roof, 3 car parks**

Highly sought after sea view penthouse duplex with ample outdoor space in a serene location

位於寧靜怡人地段，備受追捧海景頂層複式，戶外空間充足

**Saleable 實用** 2,795 s.f.

**Sale 售** \$230,000,000

**Inquiries 查詢** ☎ 6535 9918 Josephine Yuen 阮小姐

**Property Search No. 物業搜尋編號** 136359





## Over 4000 s.f. Victoria Harbour view combined unit 皇者氣派 四千呎維港相連極高層大宅

Down to the smallest detail, every aspect of this Victoria Peak flat is designed to awe or pamper – or often both. And with a saleable area of 4,265 s.f., five bedrooms and 4.5 bathrooms, there is a lot of opulence here to sink into.

Like the bridge of an ocean liner, the high-ceilinged living-dining area's external walls are almost entirely glazed, giving a commanding view across the tops of city towers to the distant Victoria Harbour. Inside, there is simply nowhere for the eye to rest as endless patterns, finishes and textures vie for attention, each crafted with materials of obvious superior quality.

While overwhelmingly lavish in detail, the interior architecture is modern and pared-down in form. This gives these spaces an unexpected versatility, lending themselves equally well to décor and furnishings ranging from traditional to contemporary, Far Eastern to Western; or, given the flat's size and spirit, everything all at once.



這山頂豪宅的每個細節均精雕細琢，叫人驚嘆連連之餘，亦令戶主舒適貼心。實用面積廣達4,265平方呎，擁有五間睡房和四間半浴室的宅第，叫人在奢華生活中沉醉忘返。

在樓底極高的客飯廳，幾乎全透明玻璃幕牆的設計，讓人如天之驕子般俯瞰市中心高樓，同時眺望遠處氣勢磅礴的維多利亞港。單位內，各式各樣的圖案、紋理和質感爭相吸引注意力，並以頂尖的物料帶來最優越的效果。

縱使單位內充滿奢華細節，其室內建築和空間卻現代簡約，帶來靈活的空間運用潛力，不論是傳統或當代、東方或西式風格均揮灑自如——如單位的格局和靈魂，所有風格元素，均可濃縮其中。

Victoria Harbour view combined unit at The Peak  
山頂維港景相連大宅

**5 bed, 4.5 bath, 2 car parks**

**Saleable 實用 4,265 s.f.**

**Sale 售 \$480,000,000 ~~\$468,000,000~~ (還價即成)**

**Inquiries 查詢 ☎ 6535 9918 Josephine Yuen 阮小姐**

**Property No. 物業編號 128539**



**SALE 出售**

Southside & The Peak 南區及山頂



Newly renovated garden house in Stanley

赤柱全新裝修花園洋房

**3 bed, 3.5 bath, 117 s.f. terrace, 815 s.f. garden, 526 s.f. roof, 2 car parks**

Deluxe 3-ensuite house with sufficient outdoor space and a private swimming pool ideal for a large family

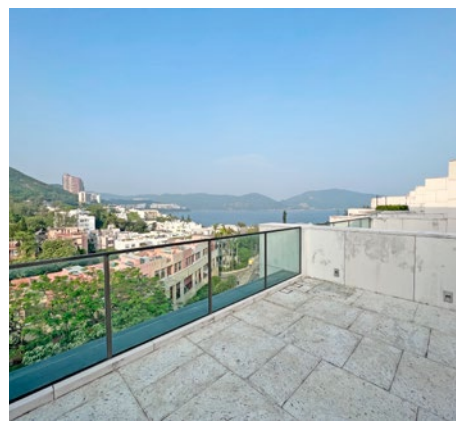
豪華三套房洋房，享充足戶外空間和私家游泳池，大家庭首選

**Saleable** 實用 2,705 s.f.

**Sale** 售 \$138,000,000

**Inquiries** 查詢 ☎ 6189 3992 Carman Szeto 司徒小姐

**Property Search No.** 物業搜尋編號 172849



Exquisite house at The Peak

山頂豪華洋房

**3 bed, 2.5 bath, 428 s.f. garden, 1 garage (2 cars)**

Rare garden colonial house with comprehensive clubhouse facilities in a serene location

矜罕花園洋房，連完善會所設施，地段寧靜怡人

**Saleable** 實用 2,945 s.f.

**Sale** 售 \$180,000,000

**Inquiries** 查詢 ☎ 9027 2100 Louis Wong 黃先生

**Property Search No.** 物業搜尋編號 4238





Magnificent house at The Peak

山頂典雅洋房

**5 bed, 4 bath, 1,265 s.f. garden, 2 car parks**

Gorgeous 5-bedroom house with ample alfresco space in a serene location

位於清幽地段，華麗五房洋房，享充足戶外空間，可租可售

**Saleable** 實用 2,947 s.f.

**Sale** 售 \$150,000,000 / **Lease** 租 \$148,000 incl.

**Inquiries** 查詢 ☎ 6535 9918 Josephine Yuen 阮小姐

**Property Search No.** 物業搜尋編號 109399



Grand Peak house with private lift

山頂豪華洋房連私家升降機

**4 bed, 3.5 bath, 378 s.f. terrace, 299 s.f. garden, 456 s.f. roof, 2 car parks**

Glamorous 4-bedroom house with a private life and sufficient outdoor space overlooks a

supreme sea view of Southside

優雅大度四房洋房，連私家升降機，享充裕戶外空間，俯瞰南區怡人海景

**Saleable** 實用 2,756 s.f.

**Sale** 售 \$170,000,000

**Inquiries** 查詢 ☎ 6535 9918 Josephine Yuen 阮小姐

**Property Search No.** 物業搜尋編號 182355



**SALE 出售**

Southside & The Peak 南區及山頂



### Waterfront house in Tai Tam

大潭臨海洋房

**4 bed, 4 bath, 379 s.f. terrace, 200 s.f. garden, 309 s.f. roof, 2 car parks**

Exquisite 4-bedroom garden house with sufficient outdoor space enjoys picturesque sea and mountain views

典雅四房花園洋房，戶外空間充足，享如畫海景及山景

**Saleable 實用 2,623 s.f.**

**Sale 售 \$90,000,000**

**Inquiries 查詢** ☎ 6189 3992 Carman Szeto 司徒小姐

**Property Search No. 物業搜尋編號 154734**



### Exceptional detached house in Shouson Hill

壽臣山恢宏洋房

Rare and unique detached house with a private garden in a serene location

罕有獨特洋房，連私家花園，地段寧靜怡人

**Saleable 實用 3,207 s.f.**

**Sale 售 \$250,000,000**

**Inquiries 查詢** ☎ 9027 2100 Louis Wong 黃先生

**Property Search No. 物業搜尋編號 8784**



## General Valuations

We carry out property valuations for diversified purposes including IPO, annual audit, mergers and acquisitions, insurance, immigration, disposal, rating / stamp duty appeal and tax computations.

### 一般估值

我們會受託提供估值報告作公司上市、審計賬目、收購合併、保險、海外移民、資產出售、差餉或印花稅上訴及其他稅務用途。



## Expert Witness and Dispute Resolution

We provide independent professional valuation advice and full narrative reports to solicitors and other clients in relation to property disputes, and can also act as an expert witness upon request.

### 專家證人和爭端調解

當物業價值遇上爭議時，我們向律師和客戶提供獨立專業估值建議和完整詳盡的報告，並在需要時在法庭充當專家證人。

## Railway Works Disturbance Claim

Retail shop operators suffer from disturbance and business loss due to railways works. The complexity of relevant compensation ordinances is often beyond the understanding of a layman. We can help unravel the perplexity of such issues.

### 滋擾補償評估

零售及飲食業往往因鐵路工程受到滋擾並引致生意損失。相關補償條例複雜繁瑣，一般人不易理解。我們熟悉法定評估工作，深刻瞭解受影響行業，協助客戶拆解難題。

## Development Consultancy

We have diverse and extensive experience in providing professional planning advice ranging from S.16 Planning Application, Lease Modification, Temporary Waiver etc

### 土地發展顧問

我們有多元化的經驗幫助客戶進行城市規劃第16條申請，更改土地契約，申請土地短期豁免書等。

## Resumption Compensation

The government and URA acquire private land for public purposes. We are well-versed with resumption-related ordinances, subsequent procedure and assessment of claim. We can assist you in quantifying losses and carrying out negotiations with the Government and URA.

### 收地損失評估

政府及市區重建局不時根據相關條例收回私人土地作公共用途。我們熟悉該等條例，收地程序及補償評估工作，能協助客戶計算損失並代表客戶進行談判。

## Compulsory Sale for Redevelopment

Under ordinance Cap.545, developers can apply to the Lands Tribunal for an order for sale of a lot when they have successfully acquired sufficient undivided shares of the lot. We can represent you to handle negotiations with developers more effectively and act as your expert witness if the case is eventually referred to the Lands Tribunal for determination.

### 強制售賣

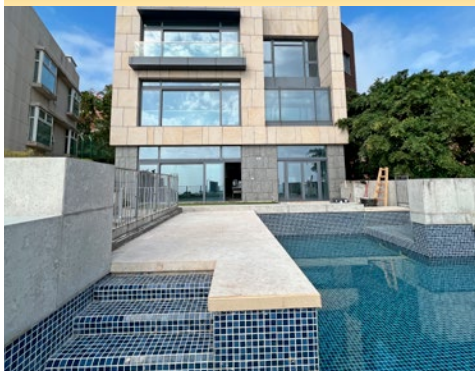
根據香港法例第545章，若發展商成功收購土地上足夠的業權，便可向土地審裁處申請強制拍賣該土地。我們能代表小業主更有效率地跟發展商商討收購價。若案件最終需提交土地審裁處裁決，我們亦可充當專家証人。

Inquiries : **Cliff Lau 劉先生** (MRICS)  
查詢: **2152 4868**  
[cliff.lau@landscape.com](mailto:cliff.lau@landscape.com)

**SALE 出售**

Southside & The Peak 南區及山頂

Can be sold via company shares transfer  
可以公司轉讓股份形式買賣



Luxurious single lot in Stanley

赤柱奢華獨立屋地

**6 bed, 6 bath, 381 s.f. terrace, 2,452 s.f. garden & 1,628 s.f. roof, 1 garage (6 cars)**

Enormous 6-ensuite single house with ample alfresco space, private lift and swimming pool enjoys spectacular sea view in tranquil location

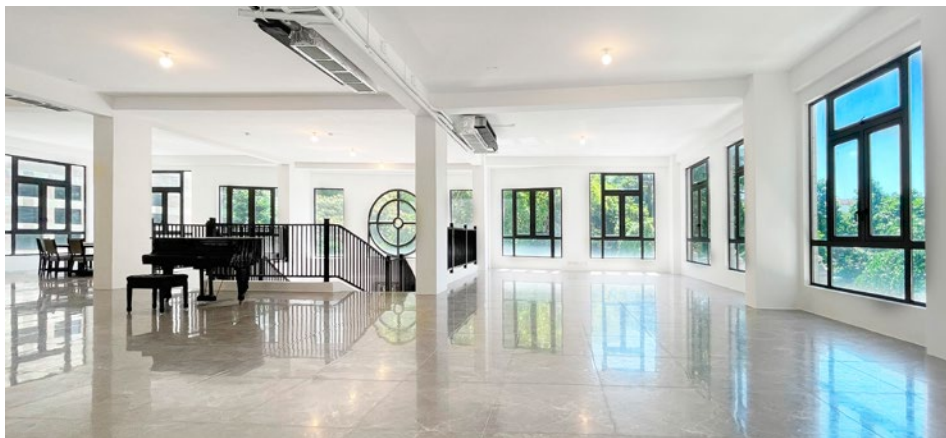
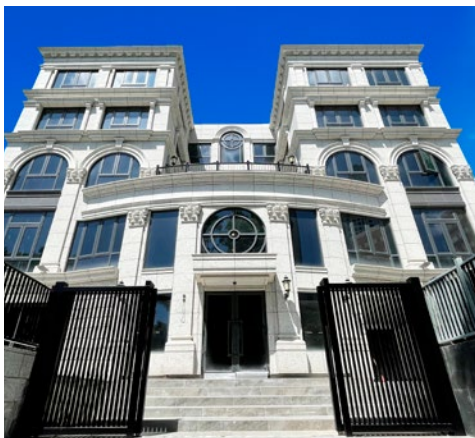
巨型六套房獨立屋，享充足戶外空間，連私家升降機及游泳池，遠眺遼闊海景，地段清靜

**Saleable** 實用 7,395 s.f.

**Sale** 售 \$630,000,000

**Inquiries** 查詢 ☎ 6535 9918 Josephine Yuen 阮小姐

**Property Search No.** 物業搜尋編號 31084



Generous single house in Repulse Bay

淺水灣巨型獨立屋

**9 bed, 9.5 bath, 2,621 s.f. terrace, 4,265 s.f. garden, 1,141 s.f. roof & 1,108 s.f. yard, 1 garage**

Enormous single house with an outstanding interior design and lofty ceilings overlooks magnificent views of Repulse Bay

巨型獨立大宅，室內擁有別出心裁的設計和極高樓底，盡顯氣派，眺望淺水灣壯麗景色

**Saleable** 實用 18,274 s.f. (Approx.)

**Sale** 售 Open Offer

**Inquiries** 查詢 ☎ 6535 9918 Josephine Yuen 阮小姐

**Property Search No.** 物業搜尋編號 186097





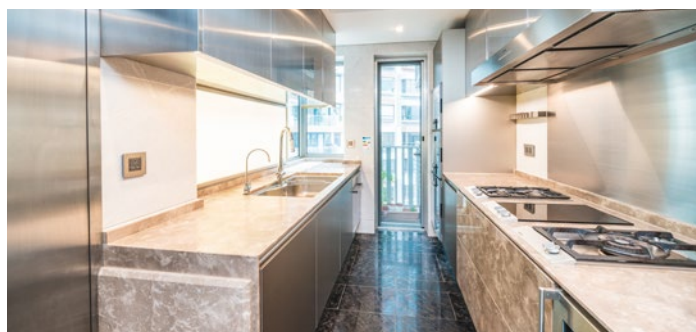
獨家代理  
SOLE AGENT

## Modern Heart 時尚焦點

Timeless high-quality materials meet contemporary style in this 1,452 s.f. Mid-levels Central flat – all within walking distance to Central and Admiralty.

Inside, a full-height wood-panelled wall defines the open living-dining area, luring the eye along the entire length of the space and adding a touch of natural texture to the otherwise gleaming white surfaces. Extensive glazing offers sweeping skyline views, while in the dining area, panels fold away to reveal a convenient service station.

Décor takes a more lavish turn in the fully-equipped kitchen, shimmering in stainless steel and granite. The dining area also leads directly to one of three marble-slathered bathrooms and one of three spacious bedrooms. Echoing the theme from the living-dining area, each bedroom features a wood-panelled wall with integrated drawers and cupboards. This flat is an example of style, space and location coming together to create a modern classic for modern living.



這1,452平方呎中半山單位擁有頂級物料融會當代風格的裝潢，而且位處優越，步行即達中環和金鐘。

單位一面鋪滿木板飾面的牆身，成為開放式客廳空間的主角，叫人目光隨木牆追逐整個空間；這設計亦為潔淨明亮的白色牆身，添上一份自然質感。大量的玻璃窗帶來滿室的城市景致，飯廳的木牆後，更暗藏設備完善的工作枱面，方便隨時款待客人。

裝潢風格在設備齊全的廚房搖身一變，變得奢華而氣派，利用不銹鋼和花崗岩帶來現代眩目的效果。飯廳過後便是三間鋪滿雲石的浴室，以及三間寬敞的睡房。延續客廳飯廳的風格，每間睡房均擁有木板牆身，以及度身訂造的入牆櫃和儲物空間。這單位以無與倫比的裝潢、空間和位置，締造現代生活的不朽示範。



Can be sold via company shares transfer  
可以公司轉讓股份形式買賣

Meticulous designed apartment in Midlevels Central  
中半山精美裝修單位

**3 bed, 3 bath, 1 car park**

**Saleable** 實用 1,452 s.f.

**Sale** 售 ~~\$70,000,000~~ ~~\$68,000,000~~ \$63,900,000

**Inquiries** 查詢 ☎ 9021 1270 Annie Lee 李小姐

**Property Search No.** 物業搜尋編號 157949

**Welcome for any reasonable offer**

歡迎合理還價





## Brand new waterfront houses 全新臨海洋房大宅

This brand new contemporary residence offers two sumptuous three-storey houses including one basement garage (6-10 cars). Boasting a stunning beach view, both houses are connecting to a private swimming pool and garden, where it is a perfect place to relax and hosting outdoor parties. Massive floor-to-ceiling windows, light wood flooring and elegant architecture provide the living space an airy and cozy feel.

Nestled in this serene location, this brand new residence is well-served by public transport, and the famous Harrow International School is only 8 minutes' driving distance from the residence.



Can be sold via company shares transfer  
可以公司轉讓股份形式買賣

這全新的臨海住宅項目提供兩幢豪華的三層洋房，連一個地庫停車場(可停泊約6-10輛車)。兩幢洋房均享有壯麗的海灘景觀，並連接私家游泳池和花園，是放鬆身心和舉辦戶外派對的理想場所。偌大的落地窗戶、淺色木地板和優雅的建築風格為居住空間帶來通風舒適的氣氛。

坐落在寧靜怡人的位置，公共交通便利，距離著名的哈羅國際學校僅 8 分鐘車程。



2 extraordinary houses in Siu Lam, Tuen Mun  
屯門小欖2間恢宏大度洋房別墅

**House 1: Saleable** 實用 7,682 s.f. (Garden 花園 4,348 s.f.)

**House 2: Saleable** 實用 7,695 s.f. (Garden 花園 3,617 s.f.)

**Sale** 售 \$40,000 per square foot (每平方呎\$40,000)

**Inquiries** 查詢 ☎ 6535 2866 Mr. Lai 黎先生

☎ 9027 2100 Louis Wong 黃先生

**Property No.** 物業編號 212618, 212619



# 22A

## KENNEDY ROAD



Brand New  
Residential Apartment  
for Lease

Leasing Agent 租務代理



HENDERSON LEASING AGENCY LIMITED  
恒基租務代理有限公司  
牌照號碼 License No. C055835

Leasing Hotline

852 2908 8338

852 9869 4813

22A  
KENNEDY ROAD

**SALE 出售**

Midlevels Central & West 中半山及西半山



### 3-bedroom apartment in Midlevels West

西半山三房單位

**3 bed, 2 bath**

Practical 3-bedroom apartment with full clubhouse facilities close to Central-Mid-Levels Escalators

實用三房單位，連完善會所設施，鄰近中環半山行人扶手電梯，交通便利

**Saleable** 實用 691 s.f.

**Sale** 售 ~~\$14,300,000~~ \$13,800,000

**Inquiries** 查詢 ☎ 6538 6922 Teresa Fung 馮小姐

**Property Search No.** 物業搜尋編號 121565



### City view apartment in Midlevels Central

中半山城市景單位

**3 bed, 2 bath, 1 car park**

Practical 3-bedroom apartment with an amazing city view on fringe of CBD on Kennedy Road

堅尼地道實用三房單位，飽覽城市醉人美景，鄰近市中心

**Saleable** 實用 1,669 s.f.

**Sale** 售 \$39,500,000

**Inquiries** 查詢 ☎ 9021 1270 Annie Lee 李小姐

**Property Search No.** 物業搜尋編號 198911



Can be sold via company shares transfer  
可以公司轉讓股份形式買賣



### Unique duplex in Midlevels West

西半山獨特複式單位

**3 bed, 1 study, 3.5 bath, 1 car park**

Highly sought after 3-ensuite duplex with a study enjoys an open city view in convenient location

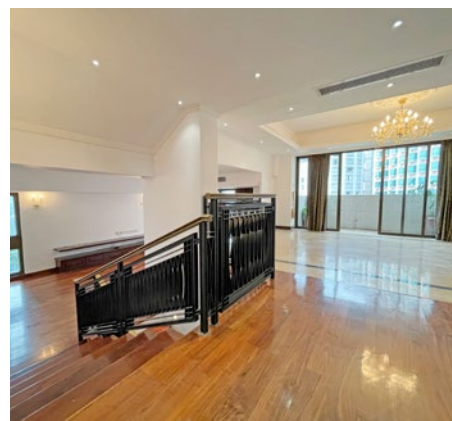
位處便利地段，受歡迎三套房複式單位，連書房，坐擁開揚城市景

**Saleable** 實用 2,626 s.f.

**Sale** 售 \$72,000,000 / **Lease** 租 \$120,000 incl.

**Inquiries** 查詢 ☎ 6535 9918 Josephine Yuen 阮小姐

**Property Search No.** 物業搜尋編號 98549



### Generous apartment in Midlevels Central

中半山偌大單位

**4 bed, 3 bath, 2 car parks**

Tastefully decorated 4-bedroom apartment enjoys a stunning view of Victoria Harbour view

高雅裝修四房住宅，眺望維多利亞港壯麗景色

**Saleable** 實用 2,888 s.f.

**Sale** 售 \$129,000,000

**Inquiries** 查詢 ☎ 6189 3992 Carman Szeto 司徒小姐

**Property Search No.** 物業搜尋編號 55956



**SALE 出售**

Midlevels Central & West 中半山及西半山



Large apartment in Midlevels Central

中半山寬敞住宅

**4 bed, 2 bath, 2 car parks**

Rare on market 4-bedroom city view apartment in a prime location

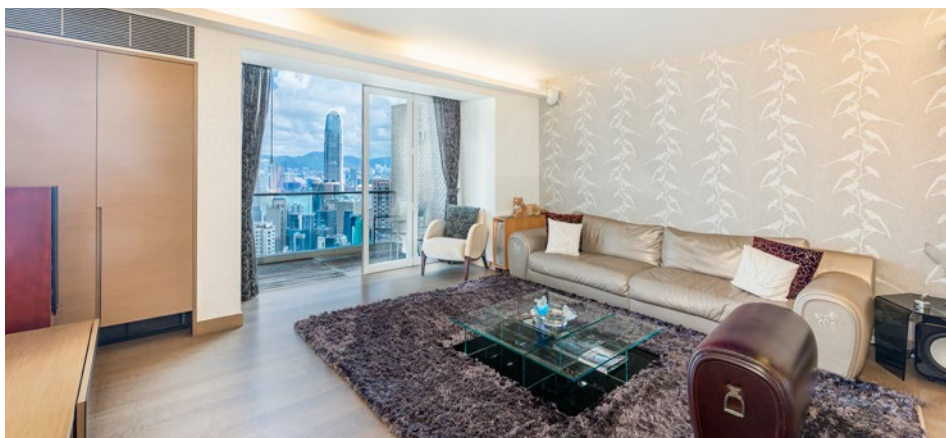
位處優越地段，矜罕四房城市景單位

**Saleable 實用 2,270 s.f.**

**Sale 售 \$83,000,000**

**Inquiries 查詢** ☎ 6538 6922 Teresa Fung 馮小姐

**Property Search No. 物業搜尋編號 3**



Unique triplex unit in Midlevels Central

中半山獨特三層複式

**4 bed, 2.5 bath, 1 car park**

Open and airy 4-bedroom triplex unit with stylish decorations offers magnificent views of

Victoria Harbour and the bustling cityscape

寬敞開揚三層複式，四房間隔，裝潢時尚優雅，遠眺壯觀維港及繁華城市景觀

**Saleable 實用 2,218 s.f.**

**Sale 售 ~~\$89,000,000~~ \$81,000,000**

**Inquiries 查詢** ☎ 6189 3992 Carman Szeto 司徒小姐

**Property Search No. 物業搜尋編號 30675**





## Beauty in the Balance 平衡之美

Spacious yet cosy, stylish yet practical, lofty yet convenient – such is the balance of qualities that make this Mid-levels West duplex so powerfully attractive. It is the best of all worlds, with few of the downsides.

Its appeal begins with the basic specification: a total 3,155 s.f. saleable area, three bedrooms and 3.5 bathrooms make it ideal for small families and couples alike. Features like its 308 s.f. terrace make the most of the stunning city views and complement its general atmosphere of refined easy living.

The spirit continues inside: available fully-furnished, the décor is contemporary with an accent on unpretentious comfort. Highlights include the marble-and-wood lined master bathroom, a casual-cool living-dining area, an internal staircase crowned with a modern sunburst chandelier, and the useful inclusion of a semi-enclosed study. Access to two covered car parking spaces and full clubhouse facilities also comes with the package – as does easy access to the Mid-levels Escalator and the city beyond.



寬敞而親密，時尚而實用，位置高聳卻便利 — 成功融會各式各樣的特色元素，並取得絕佳平衡，令這西半山複式單位擁有無與倫比的吸引力。

實用面積達3,155平方呎，這三房三個半浴室複式單位是小型家庭和伴侶的最佳選擇。面積達308平方呎的平台，方便欣賞絕美的中環景致，亦為精緻舒適的室內格調，添上心曠神怡的一筆。

配備優質裝潢出售的單位，洋溢著當代入時的氛圍，舒適而寫意。不論是以雲石和木材打造的主浴室、型格舒適的客飯廳、以奪目璀璨吊燈裝飾的室內樓梯，還是實用的半開放式書房，均叫人一見難忘。單位亦包括兩個有蓋車位和完善的會所設備，中環半山扶手電梯和市中心的便利繁華，亦在咫尺間唾手可得。



Superb designer duplex unit in Midlevels West  
西半山匠心獨運複式住宅

**3 bed, 1 study, 3.5 bath, 309 s.f. terrace, 2 car parks**

**Saleable 實用 3,155 s.f.**

**Sale 售 \$220,000,000 Open offer**

**Inquiries 查詢** ☎ 9027 2100 Louis Wong 黃先生

☎ 6607 2082 Stephen Chan 陳先生

**Property Search No. 物業搜尋編號 45827**



**SALE 出售**

Midlevels Central & West 中半山及西半山

Can be sold via company shares transfer  
可以公司轉讓股份形式買賣



### Prestigious apartment in Midlevels Central

中半山尊貴住宅

**4 bed, 3 bath, 2 car parks**

Tastefully appointed 4-bedroom high floor apartment with a sublime Victoria Harbour view  
ideal for a large family

奢華格調裝修四房高層單位，坐擁維多利亞港絕色海景，大家庭首選

**Saleable** 實用 2,888 s.f.

**Sale** 售 \$~~168,000,000~~ \$150,000,000

**Inquiries** 查詢 ☎ 9021 1270 Annie Lee 李小姐

**Property Search No.** 物業搜尋編號 106463



### Stylish apartment in Midlevels West

西半山時尚裝修住宅

**4 bed, 3 bath, 1 car park**

Elegant 4-bedroom apartment with a fantastic Victoria Harbour view in a tranquil yet  
convenient location

位於寧靜而便利的地段，優雅四房住宅，眺望維港迷人景色

**Saleable** 實用 2,355 s.f.

**Sale** 售 \$200,000,000 / **Lease** 租 \$200,000 incl.

**Inquiries** 查詢 ☎ 6535 9918 Josephine Yuen 阮小姐

**Property Search No.** 物業搜尋編號 165672



Can be sold via company shares transfer  
可以公司轉讓股份形式買賣



### Massive apartment in Midlevels Central 中半山偌大單位

**4 bed, 3 bath, 1 car park**

Family 4-bedroom apartment with a roomy balcony in sought after building  
受歡迎住宅大廈，家庭式四房住宅，連偌大露台

**Saleable** 實用 3,335 s.f.

**Sale** 售 \$137,000,000

**Inquiries** 查詢 ☎ 6607 2082 Stephen Chan 陳先生

**Property Search No.** 物業搜尋編號 158135



### One of a kind huge duplex 中半山獨樹一幟巨型複式

**6 bed, 1 study, 4.5 bath, 4 car parks**

Sumptuous 6-bedroom duplex apartment and 4 car parks enjoys a sweeping harbour view  
奢華複式六房單位，連四車位，維港美景一覽無遺

**Saleable** 實用 6,368 s.f.

**Sale** 售 Open Offer

**Inquiries** 查詢 ☎ 9027 2100 Louis Wong 黃先生

**Property Search No.** 物業搜尋編號 179317



**SALE 出售**

Midlevels East & Happy Valley 東半山及跑馬地



Rare high floor unit in Jardine's Lookout  
渣甸山罕有高層單位

**3 bed, 2 bath, 1 car park**

Beautifully renovated modern 3-bedroom apartment with abundant natural light and greenery views, comprehensive clubhouse facilities including a heated pool  
精緻時尚三房住宅，自然光充足，享翠綠景色，完善的會所設施，連恆溫游泳池

**Saleable 實用 871 s.f.**

**Sale 售** ~~24,800,000~~ ~~\$23,500,000~~ \$22,800,000

**Inquiries 查詢** ☎ 6538 6922 Teresa Fung 馮小姐

**Property Search No. 物業搜尋編號 42756**



Can be sold via company shares transfer  
可以公司轉讓股份形式買賣



Sumptuous apartment in Midlevels East  
東半山豪華單位

**4 bed, 2 bath, 1 car park**

Colonial-style large apartment in exclusive location with easy access to Causeway Bay  
東半山傳統偌大住宅，舉步可達銅鑼灣，相當便利

**Saleable 實用 2,560 s.f.**

**Sale 售** \$52,000,000

**Inquiries 查詢** ☎ 9021 1270 Annie Lee 李小姐

**Property Search No. 物業搜尋編號 46004**





### Modern apartment in Happy Valley

跑馬地時尚住宅

**3 bed, 2 bath**

Spacious 3-bedroom racecourse view apartment in a convenient location  
位處交通便利地段，寬敞三房馬場景單位，可租可售

**Saleable** 實用 1,513 s.f.

**Sale** 售 \$56,000,000 / **Lease** 租 \$98,000 incl. (Negotiable 議價)

**Inquiries** 查詢 ☎ 6538 6922 Teresa Fung 馮小姐

**Property Search No.** 物業搜尋編號 165624



Can be sold via company shares transfer  
可以公司轉讓股份形式買賣



### Tastefully decorated apartment in Midlevels East

東半山品味裝修單位

**2 bed, 2 bath, 1 car park**

Minimalist style apartment with practical layout enjoys breathtaking metropolitan  
and greenery views

簡約時尚風格家居，間隔實用，飽覽城市及翠綠美景

**Saleable** 實用 1,790 s.f.

**Sale** 售 \$60,000,000

**Inquiries** 查詢 ☎ 9027 2100 Louis Wong 黃先生

**Property Search No.** 物業搜尋編號 208349





## A full expression of charm and grace 港島半山100%全新魅力佈局

Mid-Levels West is one of the most sought-after residential areas in Hong Kong. Located on Robinson Road, this apartment has been renovated completely and boasts an unforgettable yet meticulously designed interior with furnished.

The brand new apartment spans 1,705 s.f. (saleable area) and boasts three bedrooms (including two ensembles), three bathrooms, a combined living and dining room, a maid's room, a utility room, and a covered car park. This residence includes a wide range of meticulously chosen brand new furniture and residents can enjoy a comfortable living experience while enjoying beautiful city views. Suitable for moving in immediately, this apartment is an ideal choice for homebuyers looking for a tastefully renovated residence.

Residents can easily head to the Central-Mid-Levels Escalator to reach Central and other major business areas. Schools, hospitals and grocery shopping are all in close proximity with ample public transport available to most areas in the city.





港島半山是本港其中一個最受歡迎的高尚住宅區。此單位位於羅便臣道，全屋內外全新裝修，呈現高貴典雅的新穎雅致裝修。

單位實用面積達1,705平方呎，提供三間睡房，其中兩間為套房。另有三間浴室、相連的客飯廳、多用途房、有蓋車位及家傭房。單位已完成全屋100%的簇新裝修，並精心挑選配備了全屋全新高級名貴家具，既可以享受室內的舒適宜人，同時可欣賞繁華的都市美景，單位可即時入住，適合有意購入華麗而高尚單位的人士。

住戶可使用中環至半山自動扶梯系統，步行前往中環及港島核心的商業中心區都十分方便。如要前往學校、醫院及購買生活所需，單位附近亦應有盡有，同時附近有多項公共交通前往各區。

Midlevels West — Fully renovated & brand new interior  
半山全新裝修住宅

**3 bed, 3 bath, 1 car park**

**Saleable** 實用 1,705 s.f.

**Sale** 售 \$53,000,000 ~~\$45,000,000~~ ~~\$41,000,000~~ (Negotiable 議價)

**Inquiries** 查詢 ☎ 9027 2100 Louis Wong 黃先生

☎ 6535 2866 Mr. Lai 黎先生

**Property Search No.** 物業搜尋編號 185043

**Welcome agent's inquiries**

歡迎同業查詢





## Mediterranean Style 地中海風情

Located in a secluded corner of Clearwater Bay, the house is situated in the most prestigious residential area within Silverstrand Bay, renowned for its luxurious homes and picturesque surroundings.

This two-story standalone garden house offers a stylish and elegant interior design with panoramic views of Silverstrand Bay. With a saleable area of 2,405 s.f., it features five bedrooms (including two en-suite), three and a half bathrooms, and a massive garage that can accommodate six cars. The spacious kitchen is equipped with a kitchen island and ample storage spaces. The highlights of the property are the self-owned garden and a private swimming pool. To maximize the enjoyment of the unobstructed views, living and dining areas are designed in a semi-open layout, adjacent to the pool. Under the sunlight, the shimmering pool water and gentle breeze create a Mediterranean resort vibe.



位於清水灣的私密一隅，是銀線灣內被公認為最優質的豪宅地段，四周景色怡人，絕對是身份象徵。

這是間樓高僅兩層的獨立單邊花園洋房，內部裝潢時尚雅致並富有風格，可眺望銀線灣全景。實用面積2,405平方呎，備有五間睡房(兩間為套房)、三間半浴室及一個可停泊六輛車的巨型車庫；廚房寬敞，有廚房中島及多個儲物空間，設備齊全。私人入契花園及泳池是整間屋的亮點，為了盡享開揚景致，部分客飯廳以半開放式設計，並設於泳池旁，陽光下池內水光粼粼，清風徐來，充溢著地中海的度假風情。



Sumptuous townhouse in Clear Water Bay

清水灣奢華洋房別墅

**5 rooms (2 en-suites), 3.5 bath, private huge garden and terrace**

**Saleable 實用 2,405 s.f.**

**Sale 售 \$168,000,000 (Negotiable 議價)**

**Inquiries 查詢** ☎ 6535 2866 Mr. Lai 黎先生

**Property No. 物業編號** CWB-WLSC-2304

特委代理  
APPOINTED AGENT



## City Grandeur 宏偉非凡

The luxurious and rare residential site, situated at one of the most prestigious locations, Mid-levels Central, occupies over 10,378 s.f. total area with 5,138 s.f. (Saleable area) single house, the expansive private garden (7,000 s.f.) and roof top (2,500 s.f.), to demonstrate the extraordinary identity of the owners.

This exquisite single house features a spacious layout and lofty ceilings (approx. 4 metres) completed with stylish furnishing and tasteful artifacts that give the space a warm, delightful atmosphere. Mixing lively colours, the interiors of this house show a vibrant vibe. There are total four bedrooms (all ensembles) with a sizable living and dining room ideal for a large family. Nestled in the tree-lined neighbourhood, this rare single house is also conveniently linking toward the central business district.



這奢華物業坐落於全港最貴重地段之一的中半山，地盤面積佔地10,378平方呎，獨立屋實用面積高達5,138平方呎，提供廣闊的私家花園 (7,000平方呎) 及天台 (2,500 平方呎)，彰顯住戶非凡貴重的身份。

獨立屋除了間隔寬敞實用，更享近四米極高樓底，當代時尚的家具及品味的藝術品營造出溫暖、愉悅的氣氛。室內裝潢更採用了活潑的色調，展現出生氣勃勃的氛圍。獨立屋提供四間套房及偌大的客飯廳，非常適合大家庭。這罕有獨立屋位處綠樹成蔭的地段，亦可輕鬆通往市中心商業區，十分便利。



Rare single lot in Midlevels Central  
中半山罕有獨立屋地

**Total Area** 地盤面積 10,378 s.f.

**Saleable** 實用 5,138 s.f.

**Garden** 花園 7,000 s.f.

**Roof** 天台 2,500 s.f.

**Sale** 售 \$600,000,000 ~~\$480,000,000~~ \$338,000,000

**Inquiries** 查詢 ☎ 6535 9918 Josephine Yuen 阮小姐

**Property Search No.** 物業搜尋編號 45695



**SALE 出售**

Sai Kung & Clear Water Bay 西貢及清水灣



## Rare Beachfront Dream House in Silverstrand

### 完美唯一 銀線灣海灘最前排 層層全海屋

Occupying a serene location in core Silverstrand, this magnificent waterfront dream house overlooks breathtaking and expansive panoramic sea views from every floor. With a unique Italian colonial style, this two-story corner house includes a private access to an enormous wrap-around garden, providing a great expanding potential.

Silverstrand Beach waterfront can be reached just within a few minutes' walk directly from the house. Residents can enjoy swimming and sunbathing with a few steps closer to nature.

這夢寐以求的矜罕別墅位於銀線灣海灘灣畔最前排，寧靜的臨海位置，層層可享寧謐廣闊的海天相連如詩的蔚藍海景致。這極罕有的全海景崖邊別墅，具有西西里島風格獨特的臨海居停，稀有的巨型環繞式花園，提供了巨大的擴展潛力。

從這全海景別墅，可通過私人通道可直達優美銀線灣海濱，住戶信步即可享受到海灘暢泳及日光浴之樂的巨型獨立花園，緊連海邊直接步出海濱親親大自然。



Can be sold via company shares transfer  
可以公司轉讓股份形式買賣

Silverstrand — Panoramic Full Sea View. Dream House

銀線灣 - 珍罕非凡，家族收藏之選，一見難忘層層全海屋

**4 beds (2 En-suites), 3 bath, private terrace & garden**

**Saleable** 實用 2,800 s.f. (平方呎) + Enormous private garden 專屬大花園

**Sale** 售 \$86,800,000 (Negotiable 議價)

**Inquiries** 查詢 ☎ 6535 2866 Mr. Lai 黎先生

**Property No.** 物業編號 CWB-LW-S-2211



## Seaside getaway

### 度假殿堂 - 海邊屋

Clean architectural lines and large living space define this unique Spanish style detached house.

Featuring stunning ocean and lush green views, the living and dining area is connected to a private garden terrace, from where you can enjoy great views, gentle outdoor breezes and glorious sunshine with your family and guests. The private roof top is fully-equipped with a Jacuzzi — imagine lying back and gazing up at the stars in the clear night sky as you're being massaged. The house has good internal upkeep and a high-end gourmet kitchen, along with well-appointed bathrooms.



這間獨特的西班牙式全獨立海濱洋房別墅擁有簡潔俐落的建築風格和寬敞的生活空間。

洋房享迷人的海景和翠綠景色，客飯廳與私家平台花園相連，更可直接通往大海，安坐這裡可以與家人和朋友一同欣賞壯麗的景色、享受戶外柔和的海風和明媚的陽光。私家天台配備了按摩浴缸 — 試想像一邊在天朗氣清的夜空仰望星星，一邊享受著按摩，極為寫意。洋房裝修保養簇新，設頂級廚房和精心設計的浴室。

Rarely Detached House — Direct Waterfront

全獨立海濱別墅 — 灣畔海邊屋

**4 bed (2 Ensuites), 4.5 bath, private terrace & garden direct access to the sea**

**Saleable** 實用 2,100 s.f. + Private terrace & garden 獨立花園 連接海濱

**Sale** 售 \$43,800,000 (Negotiable 議價)

**Inquiries** 查詢 ☎ 6535 2866 Mr. Lai 黎先生

**Property No.** 物業編號 CWBTWK-2210



**SALE 出售**

Sai Kung & Clear Water Bay 西貢及清水灣

Can be sold via company shares transfer  
可以公司轉讓股份形式買賣



In a Serene Enclave — Just off CWB Country Club

優閒樂土 — 清水灣鄉村俱樂部

**4 bed (2 Ensuites), 3.5 bath, 2 fixed cars, private terrace & garden Cozy Colonial Style Development: Total 12 blocks, 3-storey house with gated security. Communal swimming pool, Tennis court, Huge lawn waterfront garden, private beachside & facilities. Bright & airy in a serene enclave, with lovely green & sea views. Excellent interior**  
緊鄰清水灣鄉村俱樂部，罕有殖民地式低密度屋苑，總建12幢三層高別墅，封閉式私密保安屋苑專屬廣闊度假海旁園林，巨型草坪泳池，草地網球場，私人海濱及設施，優雅魅力全美感裝修

**Saleable 實用 2,100 s.f.**

**Sale 售** ~~\$46,000,000~~ ~~\$40,000,000~~ ~~\$38,000,000~~ \$36,000,000

**Inquiries 查詢** ☎ 6535 2866 Mr. Lai 黎先生

**Property No. 物業編號** CWB-WLFV-2403



Private Huge Garden Corner House

地中海式別墅 罕有私屬巨園

**3 bed, 2 bath, drive-in garden, park over 10 cars**

Unique 2-story English-style house. Drive-in of the private gate toward over 4000 s.f. private garden — a rare find! Peace, tranquility, and fresh air, surrounded by lush greenery, mountains, and trees — perfect for retirement, pets and kids

二層英式獨特洋房，私屬大園連接逾4000呎巨型私草地花園及私屬泊車場。亭深處處連綿山巒翠綠環繞，城市綠洲8分鐘連接港鐵，自成一角回抱自然，退休、寵物、小孩樂園

**Saleable 實用 1,885 s.f.**

**Sale 售** ~~\$68,000,000~~ \$59,000,000

**Inquiries 查詢** ☎ 6535 2866 Mr. Lai 黎先生

**Property No. 物業編號** CWB-WL.CDM-2401

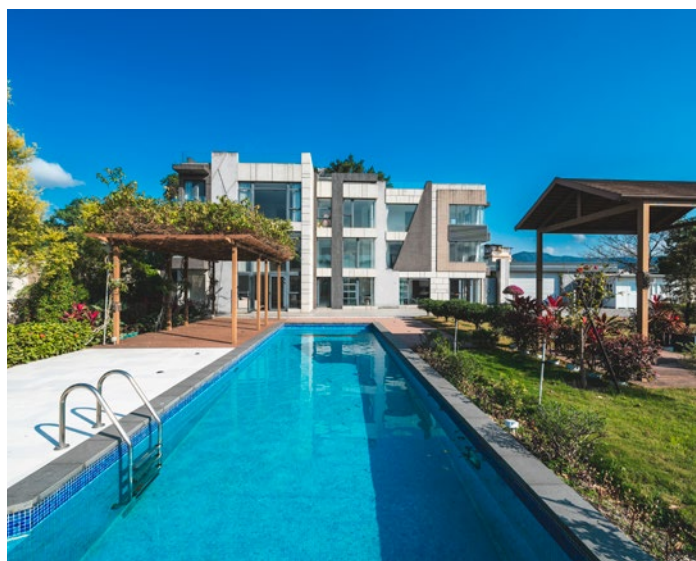




## Luxurious and Rare Gem 矜罕瑰寶

Nestled in an ideally positioned site of Yuen Long, this huge self-owned land spans 20,000 s.f. with a grand detached house, surrounded by lush natural greenery. It is an extremely rare opportunity to acquire an enormous outdoor living space.

Extensive fencing around the property ensures perfect privacy. This sumptuous property boasts a private swimming pool and a massive alfresco space, with a detached house featuring opulent designs and premium fittings. The area is benefitting from excellent road communications. Residents can easily head to the highways to reach major business and shopping districts. Ample public transports are all in close proximity.



這偌大私家屋地坐落於元朗地理位置優越的地段，土地面積佔地廣達 20,000 平方呎，連宏偉非凡的洋房大宅，四周是翠綠怡人的自然環境。這是一個難能可貴的機會購入一個巨大戶外生活空間。

物業四周設有圍欄確保高隱私度。這豪華物業連私家游泳池和巨大的戶外空間，連洋房大宅，建築設計華麗氣派，室內裝修簇新。坐落於交通便利地段，數分鐘車程可抵達高速公路，連接主要商業和購物區。公共交通亦近在咫尺。

Extremely rare self-owned land in Yuen Long  
元朗矜罕私家屋地

**Land area** 土地面積 20,000 s.f.

**Saleable** 實用 4,200 s.f.

**Sale** 售 \$65,000,000 (Negotiable 議價)

**Inquiries** 查詢 ☎ 6535 2866 Mr. Lai 黎先生

☎ 9027 2100 Louis Wong 黃先生

**Property No.** 物業編號 888



# 英國高街旺鋪投資研討會 UK HIGH STREET RETAIL PROPERTY SEMINAR

Looking for high yield yet safe property investment? UK high street retail is a top choice. There are opportunities with net yields 8-10% p.a. on long, secure leases to A-grade tenants.

To help you explore this vibrant market we have invited investment professionals from the UK who will present various opportunities and related considerations on legal, tax and financing.

**Date:** Friday 26th April, 2024  
**Time:** 9:30am – 12:30pm & 2:30pm – 5:00pm.  
**Venue:** Town Club – 24/F, New World Tower,  
16-18 Queen's Road Central, Central

## AGENDA

### Morning session 9:30am – 12:30pm (by registration)

- **Legal**  
Mr. **Chris Harvey**, Head of UK & European Real Estate, Mayer Brown
- **Tax**  
Ms. **Christina Chan**, Head of Family Office, Deloitte UK
- **Market Opportunities**  
Mr. **Jack Barratt**, Director, Bruce Gillingham & Pollard  
Mr. **Woody Bruce**, Director, Bruce Gillingham & Pollard
- **Financing**  
Mr. **Gavin Fitch**, Director and Senior Mortgage Consultant,  
Capricorn Financial

### Moderator

Mr. **K.S Koh**, Chief Executive & Founder, Landscape International  
Property Agency Ltd

### Afternoon session 2:30pm – 5:00pm (by prior appointment only)

1- to -1 consultations

**The seminar is for professional investors. Listed companies, investment funds, family offices and high-net-worth investors are most welcome.**

### Enquiry, registration & appointment

☎ Ms. Loretta Lui ☎ 2152 4818 ✉ [loretta.lui@landscape.com](mailto:loretta.lui@landscape.com)



Organized by:

**LANDSCAPE**  
INTERNATIONAL

Supported by: **MAYER BROWN**

**Deloitte.**

**BRUCE**  
**GILLINGHAM**  
**POLLARD**

**Capricorn**  
financial  
Consultancy

Landscape International Property Agency Limited (C-089033) is licensed and regulated by EAA. Like any investment, purchasing properties situated outside of Hong Kong is complicated and contains risk. You should review all relevant information and documents carefully before making a purchase decision. If in doubt, please seek independent professional advice before making a purchase decision.



## Super prime SOHO Freehold, Central London 倫敦蘇豪區優質永久業權

- Situated in prime Soho location with high footfall, close to Oxford Circus and Tottenham Court Road underground stations
- Attractive mixed-use building totalling 2,664 sq ft arranged over basement, ground (retail) and three upper floors (residential)
- Multi let at a total passing rent of £125,080 p.a.
- Freehold
- 物業坐落於蘇豪區的黃金地段，人流暢旺，緊鄰 Oxford Circus 和 Tottenham Court Road 兩個地鐵站
- 具吸引力的混合用途樓宇，總面積 2,664 平方呎，提供地庫、地面層 (零售) 和三層上層 (住宅)
- 由三個租戶承租，年租金總收入為 125,080 英鎊
- 永久業權



**Guide Price** £3,000,000 @£1126 per sq ft  
指標價

**Net Yield** c. 5.75%  
淨收益率

Property No. 1905C

### 如何購買英國商業物業

英國商業物業較住宅能提供更長，更穩定和更高的租金回報；卻可以比住宅更容易管理。但如何入手？有哪些事項要注意？英國與香港市場的分別在哪裡？由豐富實戰經驗的皇家特許測量師提供免費一對一諮詢。

Commercial properties in the UK provide opportunities for overseas investors with long, stable rental income and higher yields than residential properties; still they can be easier to manage than residential. But how to invest? What do you need to know before purchase? What are the differences between UK and HK markets? We are pleased to provide free, one-to-one consultation.

**ENQUIRIES 查詢**  
WhatsApp  2152 4888 KS Koh 許先生 [ks.koh@landscape.com](mailto:ks.koh@landscape.com)



## Long-let Greater London retail to excellent tenant 大倫敦區優質租客長約

- Located in Bromley, an affluent Greater London suburb with easy access to Central London
- Highly attractive double fronted building comprising 7,839 sq ft arranged over basement, ground and two upper floors
- The entire building is let to Clarks at a passing rent of £125,000 p.a.
- The tenant has been operating from this property for over 40 years and have recently renewed their lease
- Freehold

- 物業位於布羅姆利，是大倫敦地區的一個富裕市郊，輕鬆可達倫敦市中心
- 極具吸引力的雙鋪面大廈，總面積 7,839 平方呎，提供地庫、地面層和兩層上層
- 由 Clarks 單一承租，年租金收入為125,000 英鎊
- 租客在此經營已逾40年，並於最近續約
- 永久業權

**Guide Price** £1,475,000 @£188 per sq ft  
**指標價**

**Net Yield** c. 8.0%  
**淨收益率**

Property No. 1904C



## Extensive retail with 120 car parking let to Waitrose 大型超市連120車位Waitrose單租

大型超市連120車位Waitrose單租

- Located in Uckfield, a highly affluent East Sussex market town, benefitting from good road communications
- Comprising 26,127 sq ft retail space and 120 car parking spaces over 86,650 sq.ft. land
- Single let to Waitrose Limited at a passing rent of £400,000 p.a.
- Significant long term redevelopment potential
- Freehold

- 物業坐落於東南部非常富裕市鎮阿克菲爾德，擁良好的道路網絡
- 零售面積 26,127 平方呎加120個車位，占地共86,650平方呎
- 由Waitrose Limited單一承租，年租金收入為 400,000 英鎊
- 重大長線重建潛力
- 永久業權

**Guide Price** £5,000,000 @£191 per sq ft  
**指標價**

**Net Yield** c. 7.5%  
**淨收益率**

Property No. 1906C



ENQUIRIES 查詢

WhatsApp 2152 4888 KS Koh 許先生 ks.koh@landscape.com



## Prime retail and residential freehold investment in upmarket Notting Hill

### 諾丁山優質永久業權投資

- Located in the heart of Notting Hill, one of London's most iconic neighbourhoods
- Attractive mixed-use Victorian building comprising 2,224 sq ft accommodations arranged over basement, ground (retail) and three upper floors (residential)
- Multi-let at a total passing rent of £141,720 p.a.
- Freehold

- 物業位於諾丁山中心地段，是倫敦最富裕的社區之一
- 具吸引力的混合用途維多利亞式建築，總面積 2,224 平方呎，提供地庫、地面層（零售）和三層上層（住宅）
- 由數個租戶承租，年租金總收入為141,720 英鎊
- 永久業權

**Guide Price** £3,325,000 @£1495 per sq ft  
指標價

**Net Yield** c. 5.0%  
淨收益率

Property No. 1227C



## Highly sought after retail in Reading

### 雷丁備受追捧的零售投資

- Situated in Reading, an important and popular regional retail centre with an affluent primary catchment population in UK
- The west terminus of Elizabeth Line is located within 5 minutes walk
- An attractive period building totalling 13,601 sq ft accommodations arranged over basement, ground and three upper floors
- Let to Waterstones and Fone World at a total passing rent of £325,000 p.a.
- Freehold

- 物業坐落於英國重要並受歡迎的區域零售核心雷丁，該地區擁有富裕的流域人口
- 伊麗莎白線的西總站離本物業僅五分鐘步程
- 具吸引力的古風建築，總面積 13,601 平方呎，提供地庫、地面層及三層上層
- 由Waterstones 和 Fone World承租，總年租金收入為 325,000 英鎊
- 永久業權

**Guide Price** £3,800,000 @£279 per sq ft  
指標價

**Net Yield** c. 8.0%  
淨收益率

Property No. 110223C

ENQUIRIES 查詢

WhatsApp  2152 4888 KS Koh 許先生 ks.koh@landscape.com



## Rare retail & residential investment in the heart of Birmingham

伯明罕市中心商住有零售和住宅投資機會

- Located in a highly strategic position in Birmingham city centre with strong footfall
- Comprising 27,122 sq ft accommodations arranged over basement, ground floor and five upper floors
- Multi-let at a total passing rent of £458,930 p.a.
- Freehold

- 物業坐落於伯明罕市中心的高度戰略位置，人流暢旺
- 物業總面積27,122平方呎，提供地庫、地面層及五層上層
- 由數個商住租戶承租，年租金總收入為458,930 英鎊
- 永久業權

**Guide Price** £6,000,000 @£221 per sq ft  
**指標價**

**Net Yield** c. 9.0% (retail) and c. 7.1% (mixed)  
**淨收益率**

Property No. 3566B



## Highly prominent corner building in the heart of St James's, London

倫敦聖詹姆士中心極優質商住用途大單邊建築

- Unbroken retail parade situated on St James's most iconic retailing street
- Four well configured ground floor retail stores with a restaurant totalling 18,811 sq ft and 23 apartments on the upper floors
- Multi-let at a total passing rent of £780,750 p.a.
- Long leasehold

- 位於聖詹姆士著名零售街上的相連零售地鋪
- 四個配置完善的地鋪及一間餐廳，總面積 18,811 平方呎，上層是23個住宅單位
- 由數個租戶承租，年租金總收入為780,750 英鎊
- 長期租賃權

**Guide Price** £12,000,000 @£638 per sq ft  
**指標價**

**Net Yield** c. 5.5%  
**淨收益率**

Property No. 3372B

ENQUIRIES 查詢  
WhatsApp 2152 4888 KS Koh 許先生 ks.koh@landscape.com



## High yielding en bloc building in Minato Ward, Osaka 大阪港區高收益全幢物業

- Located in a prominent location close to Kyocera Dome Osaka and Aeon mall
- Land size 414.46 sq m (4,461.2 sq ft) and gross floor area 940.3 sq m (10,121.3 sq ft)
- 10-storey building with total 89 units
- 11-min walking distance to Bentencho Station on JR Osaka Loop Line and The Chuo Line
- Built in June 1989

- 物業位於著名的大阪巨蛋及Aeon購物中心附近的優越地段
- 土地面積414.46平方米 (4,461.2平方呎) · 建築面積940.3平方米 (10,121.3平方呎)
- 十層高大廈共有 89 個單位
- 物業距離JR大阪環狀線及大阪地下鐵中央線弁天町站僅 11分鐘步程
- 建於1989年 6 月

**Guide Price** JPY 756,000,000 (tax incl 連稅)  
指標價 (Approx. HK\$39,980,000)

**Rental Yield** c. 8.3%  
租金回報

Property No. 229F



## Rare en bloc residential building in Nipponbashi, Osaka 大阪日本橋矜罕全幢物業

- Situated in a shopping district of Nipponbashi close to Kuromon Market and Nakai-dori Shopping Street
- Land size 255.84 sq m (2,753.8 sq ft) and gross floor area 1,271.9 sq m (13,690.6 sq ft)
- 11-story building with total 40 units
- 5-min walking distance to Ebisucho station on Sakaisuji Line, 8-min walking distance to Namba station on Nankai & Midosuji Line
- Built in 2013

- 物業坐落於日本橋繁華購物區，鄰近黑門市場及南海通購物街
- 土地面積255.84平方米 (2,753.8平方呎) · 建築面積1,271.9平方米 (13,690.6平方呎)
- 十一層高大廈共有 40 個單位
- 物業距離大阪地下鐵堺筋線惠美須町站僅 5分鐘步程，南海本線及大阪地下鐵御堂筋線的難波站僅8分鐘步程
- 建於2013年

**Guide Price** JPY 830,000,000 (tax incl 連稅)  
指標價 (Approx. HK\$43,900,000)

**Rental Yield** c. 4.2%  
租金回報

Property No. 273F

ENQUIRIES 查詢  
WhatsApp 2152 4888 KS Koh 許先生 ks.koh@landscape.com



## Prime en bloc residential building (26-min ride to Tokyo station)

優質獨棟住宅 (距離東京站 26分鐘車程)

- Steel 3-storey structure located in Funabashi-city, Chiba, a well-equipped town with easy access to major shopping malls in the Tokyo metropolitan area like Lalaport Tokyo Bay and IKEA Tokyo Bay
- Land area 270.75 sq m (2,914.3 sq ft) and gross building area 402.45 sq m (4,331.9 sq ft)
- 13-min walking distance to Funabashi Station on JR Sobu Line and 26-min ride to Tokyo Station (Direct Access)
- Built in January 2022
- Corporate lease for 30 years
- Freehold

- 位於千葉縣船橋市的鋼骨製三層住宅大廈，船橋市是設施齊全的城市，可輕鬆前往東京都會區的主要購物中心，如三井 Lalaport 東京灣和宜家家居東京灣
- 土地面積 270.75 平方米 (2,914.3 平方呎)，總建築面積 402.45 平方米 (4,331.9 平方呎)
- 物業距離JR總武線船橋站僅 13 分鐘步程，26分鐘車程可抵達東京站 (直達免轉乘)
- 建於 2022 年 1 月
- 單一公司租客，租期 30 年
- 永久業權

**Guide Price** JPY 249,000,000 (tax incl 連稅)  
**指標價** (Approx. HK\$13,000,000)

**Gross Yield** c. 5.3%  
**收益率**

Property No. JP1625WP

ENQUIRIES 查詢  
WhatsApp 2152 4888 KS Koh 許先生 ks.koh@landscape.com



## Brand new en bloc residential building (44-min ride to Shinjuku station)

全新獨棟住宅 (距離新宿站44分鐘車程)

- Steel 3-storey structure located in Yamato City, Kanagawa Prefecture, a city with good access to both Tokyo and Yokohama. Its complex facility that houses a library is said to have the highest number of visitors in Japan
- Land area 399 sq m (4,294.8 sq ft) and gross building area 589.08 sq m (6,340.8 sq ft)
- 9-min walking distance to Yamato Station on Odakyu Enoshima Line, 20-min ride to Shin-Yokohama station and 44-min ride to Shinjuku station (Direct Access)
- Built in October 2023
- Corporate lease for 30 years
- Freehold

- 位於神奈川縣大和市的鋼骨製三層住宅大廈，前往東京和橫濱交通相當方便，該市配套設施完善，據稱圖書館所在的複合設施是在日本參觀人數最多的設施
- 土地面積 399 平方米 (4,294.8 平方呎)，總建築面積 589.08 平方米 (6,340.8 平方呎)
- 物業距離小田急電鐵江之島線大和站僅 9 分鐘步程，新橫濱站 20 分鐘車程、新宿站 44 分鐘車程 (直達免轉乘)
- 建於 2023 年 10 月
- 單一公司租客，租期 30 年
- 永久業權

Guide Price  
指標價

JPY 346,500,000 (tax incl 連稅)  
(Approx. HK\$18,500,000)

Gross Yield  
收益率

c. 5.1%

ENQUIRIES 查詢

WhatsApp  2152 4888 KS Koh 許先生 ks.koh@landscape.com

Property No. JP1629WP

## Private Gastronomy Experiences with Honda Jet in Toyama, Japan

From 2 nights 3 days, From 8,340HKD~

日本日本富山，高品位的私人美食之旅，  
HondaJet 帶你絲滑實現

2晚3日起訂，8,340港幣~

### Toyama Highlights



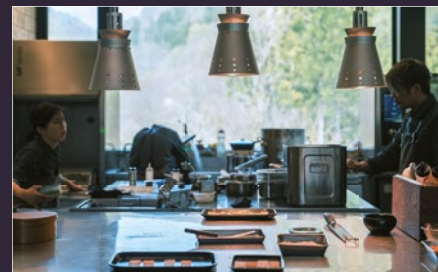
Enjoy a curated lunch featuring IWA Sake, curated by the Chief Winemaker of Dom Pérignon, paired with Michelin-listed GEJO sushi at a sake brewery designed by Kengo Kuma.

在建築師隈研吾設計的酒廠內享受一頓特選午餐，其特色包括由Dom Pérignon的首席釀酒師精心策劃的岩酒，搭配米其林星級GEJO壽司。



Ryuichiro Masuda, the president of Masuda Sake Brewery and a key figure in community development, will guide you through Iwase, featuring Michelin restaurants, sake shops, and more, centered around Masuda Sake Brewery.

地區發展的關鍵人物，榊田酒造社長榊田龍一郎將帶領您遊覽以榊田酒造為中心的岩瀨。這裡有米其林餐廳、清酒商店等。可以享用到精美的菜餚並搭配種類豐富的日本酒。



Experience exceptional dining at L'évo, celebrated by Asia's Best Restaurants and the Michelin Guide. Savor enchanting dishes using Toyama's finest produce and local game, all from the region's fertile lands.

在榮獲亞洲最佳餐廳和米其林指南讚賞的L'évo享受卓越的用餐體驗。品嚐使用富山最優質農產品和當地野味製作的迷人菜餚。所有食材都來自該地區肥沃的土地。

**Campaign** 4 pairs of 8 reservation slots will be awarded by lottery

### Sushi Saito -Tokyo-

Reserve an exclusive experience for 4 couples 8 people at Sushi Saito in Tokyo. Winners will be contacted separately.

- Date: November 7th, 12:00PM
- Cost: 190,000 yen per person
- Includes: Lunch cost and round-trip taxi fee from nearby hotel in Tokyo. Photo with Master Saito.
- Not include: Drinks.



### Inquiry About Our Tour

If you're interested in joining the tour we've introduced here or in tours of different areas with the same concept, please contact us. We will send you the related materials.



<https://japanticket.com/prestige/contact/en.html>