

INCORPORATION

select deluxe homes

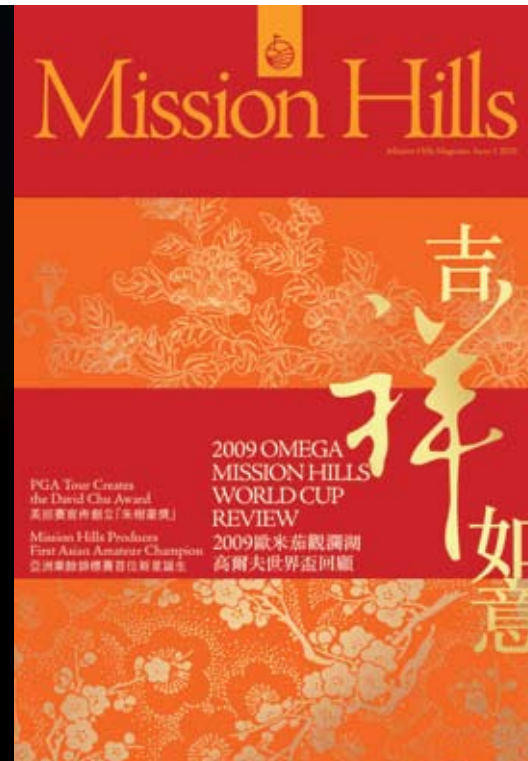
The
Key

大宅[®]

www.landscape.com

MARCH | 2010

Volume 65



Your No.1 Integrated Marketing Communications Partner in Hong Kong & China

inMAGAZINE : publisher and sole advertising representatives of the top luxury lifestyle publications, including Mission Hills Magazine, The Key and Jaguar Hong Kong Magazine.

www.inmagazine.com.hk

Hong Kong Head Office: 12/F Cyberport 2, 100 Cyberport Road, Hong Kong

China Office: 15/F Plaza 66 Tower 2, 1366 Nanjing West Road, Shanghai

Marketing (852) 3699 0877 | Advertising (852) 3699 0898 | email: marketing@incorp.com.hk



PARTY HAVEN

Where postcard perfect views combine with creative sensibilities

CREATIVE TWIST

Glamorous timeless abode on Conduit Road

KEY NOTES*

“Architects in the past have tended to concentrate their attention on the building as a static object. I believe dynamics are more important: the dynamics of people, their interaction with spaces and environmental condition.”

「從前的建築師傾向視建築為死物，但我認為互動性更為重要：這裡指的是人所帶來的互動，即人與空間及環境之間的溝通。」

- John Portman
American architect and real estate developer
約翰•帕文，美國建築師及地產發展商

On Hong Kong Island, upscale residential neighbourhoods, as well as gated communities in the New Territories, are invariably located along slopes. The slopes can be hazardous when not regularly checked or maintained. Hong Kong’s Buildings Department routinely inspects all natural and man-made slopes in developed areas, and issues orders for reinforcement, repairs or retaining works.

If the slope is within the site boundary of a privately owned building, orders by the Buildings Department will be sent to all the owners of the building with a specific scope of work to be carried out at the owners’ expense. Slope works is a huge cost and usually overwhelms the sinking fund of a building’s management fees. Therefore, the expense calls for extra capital from the owners of the building. The amount involved for each unit of the building can be from tens to hundreds of thousands of dollars. This could be a headache for some cash strapped owners.

All owners have legal responsibilities towards complying with the order and they are expected to convene and resolve, with the help of the building manager and relevant experts, on the cost to be shared by each unit. Buyers should therefore make full enquiries in this respect and ask the owner or property agent to provide them with the latest record of Land Registry and resolutions passed at the owners’ meetings.

港島區及新界區的許多豪宅是建築於山坡上，這些斜坡需要定期修葺保養以確保安全。在這些已發展地區中，不論是天然或是人造斜坡，香港屋宇署都會定期派人巡查勘察。如有需要，屋宇署會發出命令進行鞏固、修葺及保養工程。

如果斜坡是私人樓宇的所屬範圍，屋宇署便會向有關業主發出修葺令，要求修葺危險斜坡，具體列明負責維修的範圍，而業主則需要承擔工程的所有費用。然而，工程費用昂貴，一般樓宇的管理費儲備金不足以應付。所以，業主要籌集額外資金支付工程費用。往往每戶要科款由數萬元至數十萬元不等。對一些手頭現金緊絀的業主來說，這真是頭痛極了。

所有業主都要就修葺令履行法律責任，並在物業經理及有關專家的協助下，舉行會議商討每戶所需承擔的金額。因此，買家應就此方面作出全面查詢，並且要求業主或地產代理提供土地註冊處最新的紀錄，以及業主會所通過的決議。

Read the full article at Market Watch, www.landscape.com/keynotes
如欲觀看全文，請登入Market Watch網站，網址為www.landscape.com/keynotes

published and distributed by

LANDSCOPE
The Specialists in Luxury Properties

領域

Landscape Realty Limited C-018733
a member of Landscape Surveyors Ltd

Tel: 852-2866 0022 Fax: 852-2866 0015
Email: info@landscape.com Website: www.landscape.com
Unit 3106, 31/F, Hopewell Centre, 183 Queen’s Road East, Wanchai, Hong Kong

The information, text, photos, analyses and projections contained herein are provided solely for the convenience of prospective clients and no warranty or representation as to their accuracy, correctness or completeness is made by Landscape Surveyors Limited, Landscape Realty Limited or the owners, none of whom shall have any liability or obligation with respect thereto. Interested parties should rely on their own investigations, interpretations and analyses in connection with the purchase or letting thereof.

Information has been provided to us by sources deemed reliable, but no warranty or representation is made as to its accuracy, correctness or completeness. These offerings are made subject to contract, correction of errors, omissions, prior sale of lease, change of price or terms or withdrawal from the market without notice. The contents of The Key are for reference only and do not constitute all or any part of a contract.

Reproduction of any material in whole or part without written permission from inCorporation Ltd is strictly prohibited. All information is correct at the time of going to press. The opinions expressed in *The Key* are those of the authors and are not necessarily endorsed by inCorporation Ltd.



THE KEY | CONTENT

- 04 Party Haven
派對天堂
- 07 An artistic monograph
on Bronzino
Bronzino的藝術人生
- 09 Creative Twist
創意家居
- 12 Stylish Living
時尚生活
- 18 National Treasures
國寶級珍品
- 20 Ladies only
唯女獨尊

The Key (The No.1 Publication for Luxury Properties)

The Key is a monthly, bilingual lifestyle publication focusing on luxury residential properties in Hong Kong Island. It is sent to over 60,000 urban elites comprising of Hong Kong’s most affluent inhabitants.

These consist of Landscape’s VIP clients, who mainly reside in The Peak, Mid-Levels, Southside, Kowloon Tong, Homantin and other select up-market residential areas such as Tai Po, Sai Kung and Clear Water Bay, etc.

How may you list your property with The Key?

If you would like to list your property in an upcoming issue of The Key, you may contact Loretta Lui on +852 3102 4818 or visit us at www.landscape.com/sell-to-let. Alternatively, simply fill out the below and fax back to us on +852 2866 0015.

Property Details

Asking Rental / Sale Price

Floor Area

Contact Person

Telephone

Email

Our KeyPerson will contact you for follow-up work.

designed and produced by



inCorporation Limited
Your No. 1 Integrated Marketing Communications Partner in Hong Kong and China

Tel: 852-3699 0888 Fax: 852-3699 0889
Email: marketing@incorp.com.hk Website: www.inmagazine.com.hk
12/F, Cyberport 2, 100 Cyberport Road, Hong Kong



MAXALTO IS A B&B ITALIA BRAND. COLLECTION COORDINATED BY ANTONIO CITTERIO. WWW.BEBITALIA.COM

Déntro

EXCLUSIVE BY DENTRO | COLLECTIONS: MAXALTO UPPER G/F WILSON HOUSE, 19-27 WYNDHAM STREET, CENTRAL, H.K. | TEL: +852 2866 8829 | FAX: +852 2866 2656 | INFO@DENTRO.COM.HK



Set in a lovely resort-style building, the luxurious 1,650 sq ft Cypresswaver Villas residence on Cape Road blends modern finishes with state-of-the-art technology to create an exceptional urban retreat. Poised splendidly on a hilly setting, this residential treasure offers panoramic sea facing vistas with natural light freely cascading in through the expansive windows.

This magnificent Southside villa spread across three levels comprises of a spacious living room, fully-equipped kitchen, en-suite bedrooms, and bathrooms on the main floor with an additional 1,123 sq ft private roof top. Here, postcard perfect views combined with creative sensibilities make a superb spot to host your talk-of-the town soirees.

Inside, the property employs a sleek combination of concrete, steel, glass and wood to form long span cantilevers, wood surfaces and framed glass walls throughout. Meticulous attention has been paid to the concept of family by maintaining a perfect balance between privacy and open functional space.

Not only is it a worthwhile investment, in terms of lifestyle you will have the luxury of an alluring private retreat just minutes away from beautiful Stanley Beach. ■

這座豪華公寓位於環角道的柏濤小築，散發出濃厚的度假色彩。公寓佔地1,650平方呎，糅合了現代氣息與先進的科技設備，帶來非一般的都市享受。公寓居高林下，盡覽無敵海景，而自然光能穿透廣闊的玻璃進入屋內。

這座豪華式三層別墅擁有寬敞舒適的客廳、設備完善的廚房、套房，而主層則設有浴室，另有佔地1,123平方呎的私人天台。在這裡，懾人美景盡入眼簾，加上設計別具創意，絕對是舉行盛大社交宴會的最佳之選。

公寓設計雅緻時尚，糅合了由混凝土、鋼材、玻璃及木材交織而成的懸臂樑、木面及落地玻璃。此外，公寓的私人及公共空間並重，從設計中反映出對家庭生活的重視。

這公寓不單是一項有價值的投資，而且距離赤柱沙灘僅數分鐘路程，讓你沉醉於一片恬靜之中。■

Cypresswaver Villas

春坎角 柏濤小築

32 Cape Road, Chung Hom Kok

1,650 s.f. (plus 1,123 s.f. roof)

\$42,000,000

www.landscape.com/34099.htm Stella Lo 羅小姐 9809 8570



This bed is not for you...

but it is for Mr and Misses Chan of Chung Hom Kok. At Okooko we personalise every bed to each partners unique sleep needs and preferences. The secret is in the underlying european birch flexible slats and specialised mattress technologies, which are configured differently depending



upon each partners requirements. This unique design feature also has the additional benefit of totally eliminating partner disturbance. So don't accept a one size fits all approach when it comes to your bed, receive your free personalised sleep consultation instore today. New Ensemble bedding range instore now!

okooko

sleep . dream . live

Address: 27/F Horizon Plaza, 2 Lee Wing Street, Ap Lei Chau, Hong Kong
Tel: 2870-1132 WWW.OKOOKO.COM

Opening hours: 11am to 7pm



Villa Verde
山頂 環翠園
4-18 Guildford Road, The Peak
Spacious practical apartment at lower Peak
山頂寬敞實用住宅
1,505 s.f.
\$20,800,000

www.landscape.com/32827.htm David Leung 梁先生 9199 0672



Barker Villa
山頂 柏架別墅
41 Barker Road, The Peak
Cozy apartment with panoramic views on Barker Road
白加道迷人住宅，尊享如畫美景
1,650 s.f.
\$45,000,000

www.landscape.com/40734.htm David Leung 梁先生 9199 0672



Montebello
山頂 濠景閣
15-17 Plantation Road, The Peak
Spacious practical 4-bedroom flat at The Peak
山頂寬敞四房住宅，間隔實用，可租可售
3,070 s.f.
\$55,000,000 also for lease \$100,000

www.landscape.com/124532.htm David Chan 陳先生 9238 2012



La Hacienda - Apartment
山頂 加列山道29-33號
29-33 Mount Kellett Road, The Peak
Rare colonial apartment at The Peak
山頂英式住宅，罕有出售
2,820 s.f.
\$65,000,000

www.landscape.com/34861.htm David Leung 梁先生 9199 0672



Mountain Lodge
山頂 崑廬
44 Mount Kellett Road, The Peak
Rare duplex apartment with Southside sea view
山頂罕有複式住宅，享南區海景
5,200 s.f.
\$120,000,000

www.landscape.com/96955.htm David Leung 梁先生 9199 0672



Abergeldie
山頂 種植道52號
52 Plantation Road, The Peak
Peak house with bird's eye view of Victoria Harbour
山頂維港景大屋，尊享鳥語花香的景觀，可租可售
3,655 s.f. (plus 505 s.f. terrace, 464 s.f. garden and 282 s.f. roof)
\$200,000,000 also for lease \$200,000

www.landscape.com/13340.htm Louis Wong 黃先生 9871 6828



Guildford Garden
山頂 喬苑
1-3 Mansfield Road, The Peak
Spacious practical 4-bedroom flat at lower Peak
山頂寬敞實用四房住宅，可租可售
2,400 s.f.
\$42,000,000 also for lease \$70,000 incl.

www.landscape.com/31449.htm David Leung 梁先生 9199 0672



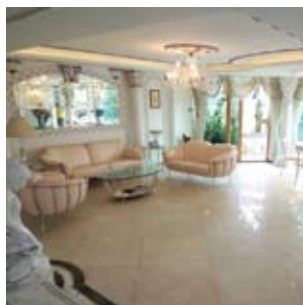
Stewart Terrace
山頂 史釗域臺
81-95 Peak Road, The Peak
Colonial low-rise apartment in The Peak with huge private roof
山頂英式低密度住宅連特大私家天台，可租可售
2,327 s.f. (plus 1,607 s.f. roof)
\$45,000,000 also for lease \$75,000 incl.

www.landscape.com/46374.htm Walker Lam 林先生 9551 1077



Oasis
山頂 欣怡居
8-12 Peak Road, The Peak
Brand new 4-bedroom apartment with full harbour view
山頂全新四房住宅享全海景
2,719 s.f.
\$65,000,000

www.landscape.com/36662.htm David Leung 梁先生 9199 0672



Overthorpe
山頂 豐林閣
24-28 Mount Austin Road, The Peak
Peak townhouse in exclusive location with a bird's eye view of Victoria Harbour
山頂獨特排屋，尊享鳥語花香的維港景致，地段尊貴
2,210 s.f. (plus 735 s.f. terrace and roof)
\$115,000,000

www.landscape.com/21593.htm Stella Lo 羅小姐 9809 8570



La Hacienda - Townhouse
山頂 加列山道29-33號
29-33 Mount Kellett Road, The Peak
Newly decorated townhouse with facilities overlooking nice views
全新裝修排屋連住客會所設施，尊享華麗景觀，可租可售
3,200 s.f.
\$130,000,000 also for lease \$120,000 incl.

www.landscape.com/3323.htm Maria Cheung 張小姐 5182 8699



Severn Eight
山頂 倚巒
8 Severn Road, The Peak
4-bedroom townhouse with garden and roof on The Peak
山頂四房排屋連花園及天台
4,300 s.f. (plus 1,138 s.f. garden and 553 s.f. roof)
\$230,000,000

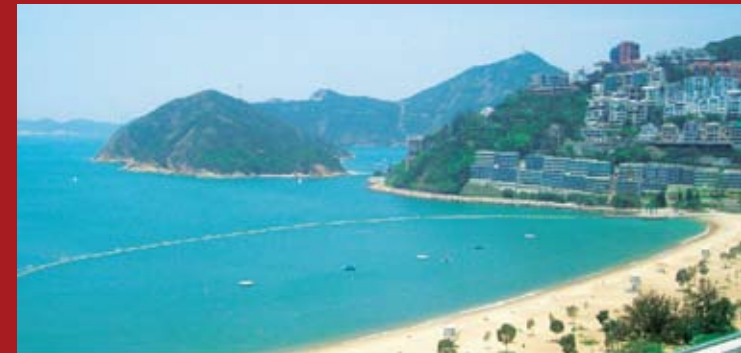
www.landscape.com/124472.htm Louis Wong 黃先生 9871 6828

The Hacienda

90 Repulse Bay Road

- Full seaview, with Garden / Roof
- Swimming pool, Gym & Carpark
- 1,822-3000 sq.ft.
- 3-4 Bedrooms
- Incentive commission scheme to agents and welcome coupons to tenants

Leasing Hotline **2122 2025**
2122 2362



 長江實業地產發展有限公司
CHEUNG KONG PROPERTY DEVELOPMENT LIMITED

An artistic monograph on Bronzino

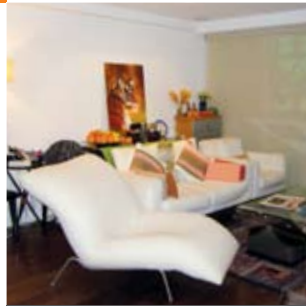
Bronzino的藝術人生

In a first-ever exhibition dedicated to Agnolo Bronzino (1503–1572), the New York Metropolitan Museum of Art (MET) has gathered nearly all known works of painting by, or attributed to, the leading Italian Mannerist artist, who was primarily active in Florence. A painter, draftsman, academician, and poet, Bronzino gained his fame by serving as the court artist

to the Duke Cosimo I de' Medici and his beautiful wife, the Duchess Eleonora di Toledo, and helped create decorations to their wedding. This exhibition will contain approximately 60 drawings from European and North-American collections, many of which have never before been on public view. The exhibition runs until 17 April 2010. ■



安哥那羅·布隆基諾(Agnolo Bronzino, 1503-1572)是意大利首屈一指的風格主義(Mannerist)藝術家。紐約大都會美術館(Metropolitan Museum of Art)就蒐集了布隆基諾近乎所有畫作，以專題展形式向這位文藝復興時代的藝術大師致敬。布隆基諾生前主要在佛羅倫斯從事藝術創作，他的工作涉獵甚廣，由繪畫、詩歌，到起草文件、學術研究，無所不包。布隆基諾成名在於為柯西莫(Cosimo I de' Medici)大公爵及其美麗的妻子埃利諾(Eleonora di Toledo)擔任宮廷藝術家，更曾為他們的婚禮設計佈置。展覽得自歐洲及北美收藏家借出60多幅畫作，大部分更從未被公開展出。展期至2010年4月17日。■



Phoenix Court
中半山 鳳凰閣
 39 Kennedy Road, Midlevels Central
 Practical flat in contemporary design with lush green view
 實用間隔配以時尚裝修，享翠綠景觀
983 s.f.
\$9,680,000

www.landscape.com/88509.htm Maria Cheung 張小姐 5182 8699



Shan Kwong Towers
跑馬地 山光苑
 22-24 Shan Kwong Road, Happy Valley
 Modern cozy 2-bedroom apartment with open view at convenient location
 新穎迷人兩房單位，享開揚美景，地段優越
1,100 s.f.
\$10,300,000

www.landscape.com/103977.htm Rowena Siu 蕭小姐 9348 4118



Beauty Court
西半山 雅苑
 82 Robinson Road, Midlevels West
 Popular 3-bedroom family flat on convenient Robinson Road
 羅便臣道受歡迎三房家庭式住宅，交通方便
1,778 s.f.
\$21,600,000

www.landscape.com/108739.htm Carman Szeto 司徒小姐 6183 8339



Wing Hong Mansion
中半山 永康大廈
 60-62 MacDonnell Road, Midlevels Central
 Cozy flat with practical layout in convenient location
 中半山迷人住宅，單位間隔實用，交通方便
1,700 s.f.
\$22,000,000

www.landscape.com/99558.htm Rowena Siu 蕭小姐 9348 4118



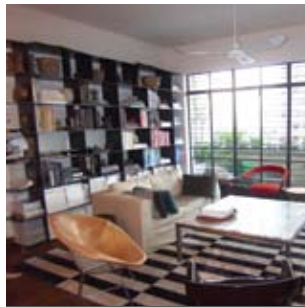
Silver Fair Mansion
東半山 銀輝大廈
 2E-2F Shiu Fai Terrace, Midlevels East
 Rare 3-bedroom apartment with open city view
 罕有東半山三房住宅，享開揚城市景觀
1,450 s.f.
\$13,300,000

www.landscape.com/72414.htm Carman Szeto 司徒小姐 6183 8339



Wingway Court
東半山 永威閣
 3 Tai Hang Road, Midlevels East
 Tastefully decorated 3-bedroom flat
 品味設計裝修三房住宅
1,600 s.f.
\$15,000,000

www.landscape.com/98354.htm Stella Lo 羅小姐 9809 8570



View Mansion
中半山 景雲大廈
 5L-5P Bowen Road, Midlevels Central
 Colonial low-rise with huge balcony and carpark, enjoy open Central city view
 中半山英式住宅連特大陽臺及車位，尊享開揚中環城市景觀
1,800 s.f.
\$23,000,000

www.landscape.com/38588.htm Teresa Lau 劉小姐 9080 6686



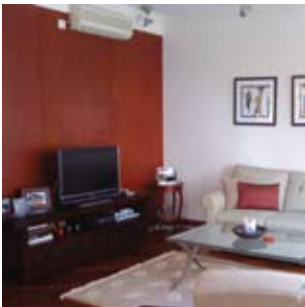
Suncrest Tower
中半山 桂濤苑
 1-11 Monmouth Terrace, Midlevels Central
 Spacious 4-bedroom apartment in convenient location
 寬敞四房住宅，位置優越，交通方便
2,005 s.f.
\$23,800,000

www.landscape.com/109565.htm Teresa Fung 馮小姐 9138 1621



Greenview Garden
西半山 景翠園
 125 Robinson Road, Midlevels West
 Modern design family apartment on Robinson Road
 羅便臣道時尚家庭式住宅
1,600 s.f.
\$16,500,000

www.landscape.com/111680.htm Sami Woo 胡小姐 9493 8275



Yicks Villa
跑馬地 奕廬
 83-85 Blue Pool Road, Happy Valley
 Well maintained 3-bedroom apartment with carpark on upper Blue Pool Road
 保養良好三房單位連車位，位於藍塘道頭段
1,750 s.f.
\$16,800,000

www.landscape.com/40119.htm Teresa Lau 劉小姐 9080 6686



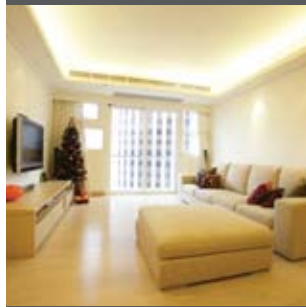
United Mansion
東半山 騰黃閣
 7 Shiu Fai Terrace, Midlevels East
 Spacious flat with practical layout in tranquil neighbourhood
 東半山寬敞實用單位，環境寧靜
2,200 s.f.
\$25,000,000

www.landscape.com/72773.htm Stephen Chan 陳先生 9093 3381



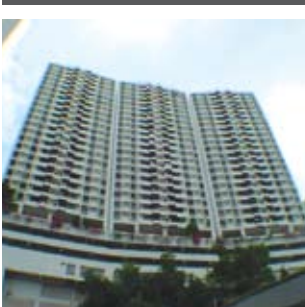
Wah Fung Mansion
東半山 華峰閣
 27 Tai Hang Road, Midlevels East
 Spacious whole-floor unit with balcony in high privacy
 東半山寬敞住宅連全層陽臺，私隱度高
2,087 s.f.
\$27,000,000

www.landscape.com/36117.htm Carman Szeto 司徒小姐 6183 8339



Camelot Height
中半山 金鑾閣
 66 Kennedy Road, Midlevels Central
 Rare find 3-bedroom apartment in convenient location
 中半山罕有三房單位，地段優越，交通方便
1,520 s.f.
\$18,000,000

www.landscape.com/95558.htm Yvonne Chang 鄭小姐 9088 4666



Flora Garden
渣甸山 慧景園
 7 Chun Fai Road, Jardine's Lookout
 Popular 3-bedroom apartment on prime Jardine's Lookout area
 受歡迎三房單位，位於渣甸山尊貴地段
1,533 s.f.
\$18,500,000

www.landscape.com/108737.htm Rowena Siu 蕭小姐 9348 4118



Grandview Tower
中半山 慧景臺
 128-130 Kennedy Road, Midlevels Central
 Rare combined unit with terrace and twin car parks enjoying greenery view
 罕有相連單位及雙車位，附設平台兼享翠綠山巒
1,681 s.f. (include 265 s.f. terrace)
\$18,500,000

www.landscape.com/88929.htm Carman Szeto 司徒小姐 6183 8339



Belmont Court
西半山 清輝大廈
 10 Kotewall Road, Midlevels West
 Practical apartment in quiet location
 西半山間隔實用單位，環境寧靜怡人
2,200 s.f.
\$19,500,000

www.landscape.com/101665.htm Sami Woo 胡小姐 9493 8275



Amber Garden
中半山 柏苑
 70-72 Kennedy Road, Midlevels Central
 Spacious flat on quiet and convenient Kennedy Road
 堅尼地道間隔寬敞住宅，環境寧靜，交通方便
1,732 s.f.
\$21,000,000

www.landscape.com/37853.htm Eric Wong 黃先生 9740 3396



Estella Court
中半山 香海大廈
 70 MacDonnell Road, Midlevels Central
 Mid-rise apartment with balcony close to Central business district
 中半山高密度住宅連陽臺，鄰近中環商業區，可租可售
1,750 s.f.
\$21,000,000 also for lease \$58,000 incl.

www.landscape.com/123244.htm Stella Lo 羅小姐 9809 8570



Perched above Central with sweeping views across the Island, this 2,000 sq ft Medallion Heights apartment in Mid-Levels West is a beautiful juxtaposition of antique and modern, with a dash of glamour thrown in.

The living room is embellished with a dramatic circular staircase which takes centre stage as soon as you step into this warm yet sophisticated home. Cleverly conceptualised, it leads the visitor into the public areas of the home such as the dining room and kitchen on the right, while turning left takes one into the private rooms of the residents. In addition, the massive 1,500 sq ft roof terrace makes for a timeless family abode on Conduit Road that's ideal for entertaining.

This superb contemporary apartment is also located in the heart of a prestigious residential neighbourhood which provides its residents with the convenient half-mile long Central to Mid-Levels escalator that helps to beat the rush-hour traffic. ■

公寓座落於中環的金徽閣，可飽覽彼岸的景致。這座西半山公寓佔地2,000平方呎，設計裝潢展現出古今之美，並抹上一片金碧輝煌。

踏進設計優美精緻的屋內，不禁被客廳裡的旋轉式樓梯深深的吸引着，並受到屋內的溫暖氣息所感染。樓梯巧妙地通往屋內的公共空間，如飯廳及右邊的廚房，而左邊則是臥室。此外，佔地高達1,500平方呎的天台花園，為住在這裡的家庭，提供一個理想的娛樂天地。

這富現代氣息的公寓位處高尚住宅區的心臟地帶。繁忙時間時，可使用達半英里、連接中環及半山的扶手電梯。■

Medallion Heights
西半山 金徽閣
 45 Conduit Road, Midlevels West
2,000 s.f. (plus 1,500 s.f. roof)
\$28,500,000
 www.landscape.com/98468.htm Rowena Siu 蕭小姐 9348 4118



Situated on Tai Hang Road, Island East, the new Serenade embraces a metropolitan pulse with its advantageous geographical locations and convenient transport. The premise possesses panoramic view of the spectacular Victoria Harbour in its front, and greeneries from Mount Butler at its back. The area of each apartment varies from 1,000 square feet to 4,000 square feet. Among the available apartments are duplexes with four bedrooms including two ensembles and prestigious penthouses.

The luxurious two-storey clubhouse is equipped with every recreational facility that one would expect. Exclusive services include banquet catering by Michelin star chefs from AMBER of the Landmark Mandarin Oriental Hotel, and spa and massage by professional therapists from the same hotel.

「上林」位處香港島東半山之罕貴地段，掌握大都會脈搏，地理位置優越、交通四通八達。前臨270度遼闊維多利亞港美麗海景，背靠青蔥翠綠畢拉山山巒。單位面積由約1,000平方呎至4,000平方呎，其中包括四房兩套複式單位及頂層特色單位。

雙層豪華會所，消閒設施應有盡有。特色設施包括由置地文華東方酒店AMBER提供的米芝星級連廚師宴會到會服務及置地文華東方酒店培訓之專業水療按摩師到會服務。

| | |
|------------------------|--|
| Address: | No. 11 Tai Hang Road, Hong Kong |
| No. of Towers: | 2 |
| No. of Flats: | 270 including 30 duplex units and 4 penthouse units |
| No. of Storeys: | 55 storeys |
| Flat Type: | Standard Flat 3-bedroom incl. 1 ensuite 4-bedroom incl. 2 ensembles Prestigious Flat Duplex Penthouse |
| | Gross Area approx. 1,349 sq.ft. approx. 1,563 sq.ft. Gross Area approx. 2,605 sq.ft. approx. 3,755 – 3,958 sq.ft. |

| | |
|--------------|--|
| 地址： | 香港大坑道11號 |
| 物業座數： | 2座 |
| 單位數目： | 270個，包括 30個複式單位及4個頂層特色單位 |
| 住宅層數： | 55層 |
| 單位類型： | 標準單位 3房連主人套房 4房雙套房 特色單位 複式單位 頂層特色單位 |

| |
|-------------------|
| 建築面積 |
| 約1,349平方呎 |
| 約1,563平方呎 |
| 建築面積 |
| 約2,605平方呎 |
| 約3,755 — 3,958平方呎 |

Serenade 上林

11, Tai Hang Road, Hong Kong

| | | | |
|-----------------|------------|---------------------|-----------|
| Mira To 杜小姐 | 9486 1566, | Rowena Siu 蕭小姐 | 9348 4118 |
| David Leung 梁先生 | 9199 0672, | Christine Chong 莊小姐 | 9648 6082 |



**11 MacDonnell Road,
Midlevels Central
中半山 麥當勞道11號**

Deluxe whole floor apartment
中半山豪華寬敞全層住宅

**2,313 s.f.
\$29,800,000**

 www.landscape.com/39696.htm Mavis Wu 吳小姐 9107 3891

**Catalina Mansions
中半山 嘉年大廈**
98-100 MacDonnell Road, Midlevels Central

Colonial apartment decorated in east
meets west style
中半山英式住宅，配以東西融治的設計

**2,300 s.f.
\$30,000,000**

 www.landscape.com/37796.htm Mira To 杜小姐 9486 1566

**Hong Villa
中半山 峰景花園**
12 Bowen Road, Midlevels Central

Well-maintained luxury apartment
overlooking harbour view
中半山豪華住宅，優質保養，俯瞰維港景，
可租可售

**1,916 s.f.
\$33,500,000 also for lease \$75,000 incl.**

 www.landscape.com Rowena Siu 蕭小姐 9348 4118

**Serene Court
西半山 秀麗閣**
8 Kotewall Road, Midlevels West

Newly renovated 4-bedroom flat enjoying
open harbour view
全新裝修四房住宅，享開揚維港景觀

**2,334 s.f.
\$38,000,000**

 www.landscape.com/115655.htm Carman Szeto 司徒小姐 6183 8339

**The Legend
東半山 名門**
23 Tai Hang Drive, Midlevels East

Brand new 6-bedroom apartment with
mountain view
東半山全新六房單位，享翠綠山景

**2,348 s.f.
\$48,500,000**

 www.landscape.com/42796.htm Eric Wong 黃先生 9740 3396

**Tregunter Tower 3
中半山 地利根德閣3座**
14 Tregunter Path, Midlevels Central

Tastefully decorated duplex with excellent
clubhouse facilities
品味設計複式住宅連完善住客會所設施

**2,980 s.f. (plus 187 s.f. terrace)
\$56,000,000**

 www.landscape.com/105883.htm Rebecca Cheung 張小姐 9021 7644

**Villa Monte Rosa
東半山 玫瑰新村**
41A Stubbs Road, Midlevels East

Large practical apartment on upper Stubbs
Road
司徒拔道特大住宅，間隔實用寬敞

**2,300 s.f.
\$30,000,000**

 www.landscape.com/38566.htm Walker Lam 林先生 9551 1077

**Grosvenor House
中半山 高雲大廈**
114-120 MacDonnell Road, Midlevels Central

Unique huge duplex apartment on
MacDonnell Road
麥當勞道特大精緻複式住宅

**2,400 s.f.
\$32,000,000**

 www.landscape.com/37568.htm Teresa Lau 劉小姐 9080 6686

**Po Shan Mansions
西半山 寶城大廈**
10-16 Po Shan Road, Midlevels West

Meticulously decorated 4-bedroom
apartment in quiet enclave
西半山四房單位，配以一絲不苟的裝修，環
境寧靜怡人

**2,800 s.f.
\$36,000,000**

 www.landscape.com/35334.htm Stephen Chan 陳先生 9093 3381

**The Colonnade
東半山 嘉崙臺**
152 Tai Hang Road, Midlevels East

Stylish modern apartment with tasteful
décor
時尚新穎住宅連品味裝修，可租可售

**2,256 s.f.
\$45,000,000 also for lease \$110,000 incl.**

 www.landscape.com/113654.htm Louis Wong 黃先生 9871 6828

**May Tower 1
中半山 梅苑一座**
7 May Road, Midlevels Central

Deluxe harbour view duplex with enlarged
master bedroom at prime location
豪華維港景複式住宅連特大主人睡房，地
段尊貴

**2,850 s.f.
\$49,800,000**

 www.landscape.com/33364.htm Mark Mak 麥先生 6838 2929

**Piccadilly Mansion
西半山 碧苑**
4-6 Po Shan Road, Midlevels West

Large practical harbour view apartment in
tranquil environment
西半山特大維港景住宅，間隔實用，環境
寧靜

**2,800 s.f.
\$58,000,000**

 www.landscape.com/35976.htm Carman Szeto 司徒小姐 6183 8339

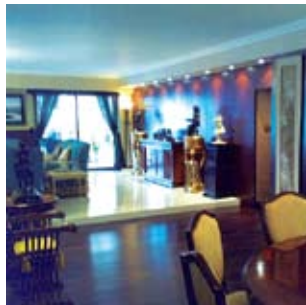


Trafalgar Court
東半山 大寶閣
70 Tai Hang Road, Midlevels East

Huge 5-bedroom flat overlooking Causeway Bay and Victoria Harbour
巨型五房住宅俯瞰銅鑼灣及維港景

3,008 s.f.
\$60,000,000

www.landscape.com/5913.htm Rebecca Cheung 張小姐 9021 7644



Grenville House
中半山 嘉慧園
1-3A Magazine Gap Road, Midlevels Central

Nicely decorated colonial apartment with large balcony
中半山雅致裝修英式住宅連特大陽臺

3,700 s.f.
\$70,000,000

www.landscape.com/41363.htm Mira To 杜小姐 9486 1566



Regence Royale
中半山 富匯豪庭
2 Bowen Road, Midlevels Central

Huge luxurious 6-bedroom apartment with deluxe clubhouse
中半山巨型華麗六房單位連豪華住客會所設施，可租可售

5,219 s.f.
\$130,000,000 also for lease \$250,000 incl.

www.landscape.com/106749.htm Christine Chong 莊小姐 9648 6082

Stylish Living 時尚生活



Garden Terrace
中半山 花園臺
8 Old Peak Road, Midlevels Central

Large family apartment with modern decorations on fringe of Central
中半山特大家庭式住宅，時尚獨特，鄰近中環，交通方便

3,002 s.f.
\$60,000,000

www.landscape.com/34957.htm Mavis Wu 吳小姐 9107 3891



15-21 Wilson Road, Jardine's Lookout
渣甸山 衛信道15-21號

5-ensuite townhouse in tranquil neighbourhood
五套房排屋，環境清幽寧靜

4,400 s.f. (plus 900 s.f. garden and 260 s.f. roof)
\$88,000,000

www.landscape.com/116017.htm Maria Cheung 張小姐 5182 8699



Perkins Road, Jardine's Lookout
渣甸山 白建時道

Highly sought after single detached house in Jardine's Lookout
渣甸山罕有獨立大屋出售

3,800 s.f. (plus 800 s.f. garden, 352 s.f. roof and 352 s.f. terrace)
\$160,000,000

www.landscape.com Walker Lam 林先生 9551 1077

Intended to establish iconic presence in the heart of Mid-Levels Central, the outstanding Century Tower 1 is a synthesis of architecture and engineering that integrates a meandering structural mesh frame to reveal an angular 2,565 sq ft apartment.

Upon entry, exquisite grand chandeliers exude elegance setting the perfect ambience for residents who appreciate timeless design. The interior shines with carefully selected quality furnishings, illuminated by glass windows that cast a soft tapestry of light and colour into its cool-toned rooms while offering sprawling views of Hong Kong Island and beyond. With its comprehensive club facilities, one will definitely experience a sensory thrill here that never ceases to delight.

Century Tower 1 is also within close proximity to the renowned shopping, entertainment, commercial district of Central and with ready access to all means of transport including the MTR, Airport Express and ferries to China and Macau. ■

位於中環半山心臟地帶的世紀大廈1座，結合了建築學與工程學的偉大，成為了一座具標誌性的弧形建築，而當中蘊藏着佔地2,565平方呎的公寓。

踏進屋內，精雕細琢的大吊燈，散發出陣陣優雅氣息，將住戶對永恆設計的鍾愛表露無遺。屋內以上乘講究的設計粉飾，而柔和的光線則穿透玻璃窗，投射於具時尚品味的臥室裡。透過玻璃窗，一望無際的香港島美景盡收眼底。住戶可享受多元化的會所設施，體驗非一般的身心之旅。

世紀大廈1座毗鄰集購買、娛樂及商業的中環，而且交通方便非常，設有各種公共交通工具，如港鐵、機場快線，以及往返中國和澳門的輪船服務。■

Century Tower I
中半山 世紀大廈 1座
1 Tregunter Path, Midlevels Central

2,565 s.f.
\$38,000,000 also for lease \$95,000 incl.

www.landscape.com/21356.htm Teresa Fung 馮小姐 9138 1621



Mount Davis 33
薄扶林 怡峰
33 Ka Wai Man Road, Pokfulam

Brand new apartment with full sea view
薄扶林全新全海景住宅

1,108 s.f.
\$11,800,000

Sole Agent 獨家代理

www.landscape.com/63910.htm Carman Szeto 司徒小姐 6183 8339



Redhill Apartment
大潭 紅山半島
18 Pak Pat Shan Road, Tai Tam

Waterfront apartment with clubhouse facilities
大潭海濱住宅連完善住客設施

1,311 s.f. (plus 830 s.f. roof)
\$16,500,000

www.landscape.com/48267.htm Eric Wong 黃先生 9740 3396



18-24 Bisney Road, Pokfulam
薄扶林 碧荔道18-24號

Stylishly decorated low-rise flat in quiet enclave
時尚低密度住宅，環境清幽怡人

1,640 s.f. (plus 1,200 s.f. roof)
\$19,000,000

www.landscape.com/122199.htm Christine Chong 莊小姐 9648 6082



45 Island Road, Deep Water Bay
深水灣 香島道 45 號

Resort-style low-rise with nice decoration in a sought after address
深水灣渡假式低密度住宅連雅致裝修，市面難尋

1,634 s.f.
\$29,000,000

www.landscape.com/89255.htm Teresa Fung 馮小姐 9138 1621



Scenic Villas
薄扶林 美景臺
2-28 Scenic Villa Drive, Pokfulam

High efficiency 4-bedroom apartment at waterfront with sea view
高實用四房單位，位於薄扶林海濱，尊享海景

2,517 s.f.
\$31,500,000

www.landscape.com/49859.htm Carman Szeto 司徒小姐 6183 8339



Hong Kong Parkview - Tower 8
淺水灣 陽明山莊8座
88 Tai Tam Reservoir Road, Repulse Bay

Spacious 3-bedroom apartment with facilities overlooking greenery country park
寬敞三房住宅，俯瞰翠綠郊野公園景致連豪華會所設施

2,366 s.f.
\$33,000,000

www.landscape.com/106649.htm Mary Li 李小姐 9011 6595



Glamour Court
薄扶林 華麗閣
39 Consort Rise, Pokfulam

Spacious 3-bedroom apartment with carpark in serene Pokfulam
寬敞三房單位連車位，實用率高，環境清幽怡人

1,500 s.f.
\$13,000,000

www.landscape.com/54549.htm Teresa Lau 劉小姐 9080 6686



Albany Court
薄扶林 雅鑾閣
51 Bisney Road, Pokfulam

3-bedroom low-rise in quiet neighbourhood
薄扶林低密度住宅，環境優美寧靜

1,787 s.f.
\$17,500,000

www.landscape.com/108548.htm Rowena Siu 蕭小姐 9348 4118



Villa Piubello
春坎角 環角徑1-7號
1-7 Cape Drive, Chung Hom Kok

Rare 3-bedroom low-rise in quiet neighbourhood
罕有全海景低密度三房單位，環境優美怡人

1,800 s.f.
\$21,000,000

www.landscape.com Christine Chong 莊小姐 9648 6082

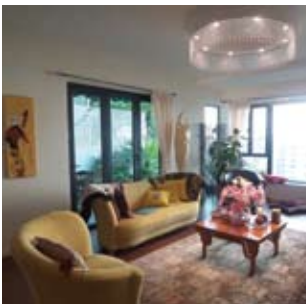


Repulse Bay Garden
淺水灣 麗景園
18-40 Belleview Drive, Repulse Bay

Practical flat with large balcony overlooking Repulse Bay Beach
淺水灣實用單位連特大陽臺，俯瞰淺水灣海灘景致

1,780 s.f.
\$30,000,000

www.landscape.com/99184.htm Mark Mak 麥先生 6838 2929



La Mer
薄扶林 浪頤居
67-71 Bisney Road, Pokfulam

Modern low-rise apartment with garden and super sea view
薄扶林新穎低密度住宅連花園，享無敵海景

2,174 s.f. (plus 774 s.f. terrace)
\$33,000,000

www.landscape.com/115528.htm Stella Lo 羅小姐 9809 8570



Repulse Bay Garden
淺水灣 麗景園
18-40 Belleview Drive, Repulse Bay

High efficiency apartment with Repulse Bay sea view
高實用住宅，尊享淺水灣海景

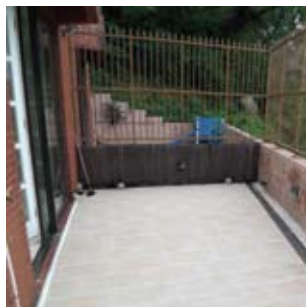
2,288 s.f.
\$34,500,000

www.landscape.com/4867.htm Louis Wong 黃先生 9871 6828



South Bay Palace
淺水灣 南灣御苑
 25-31 South Bay Close, Repulse Bay
 Nicely fitted and equipped 4-bedroom family flat in serene neighbourhood
 雅致裝修及配套四房家庭式住宅，環境寧靜，可租可售
2,540 s.f.
\$35,000,000 also for lease \$100,000 incl.

www.landscape.com/127602.htm Teresa Lau 劉小姐 9080 6686



Carmel Hill
赤柱 海明山
 12 Carmel Road, Stanley
 Stanley townhouse with swimming pool and tennis court
 赤柱排屋連游泳池及網球場，可租可售
2,375 s.f. (plus 271 s.f. garden and 262 s.f. terrace)
\$37,000,000 also for lease \$90,000 incl.

www.landscape.com/108021.htm Maria Cheung 張小姐 5182 8699



Hong Kong Parkview - Tower 18
淺水灣 陽明山莊18座
 88 Tai Tam Reservoir Road, Repulse Bay
 Harbour view flat in country park
 淺水灣維港景住宅，鄰近郊野公園
2,570 s.f.
\$38,500,000

www.landscape.com/3266.htm Teresa Fung 馮小姐 9138 1621



Ruby Court
淺水灣 嘉麟閣
 55 South Bay Road, Repulse Bay
 Popular sea view flat in tranquil South Bay
 淺水灣受歡迎海景住宅，鄰近南灣，環境寧靜
2,200 s.f.
\$40,000,000

www.landscape.com/51578.htm Mary Li 李小姐 9011 6595



Royalton I
薄扶林 豪峰 I
 118 Pokfulam Road, Pokfulam
 Spacious 5-bedroom duplex with sweeping Pokfulam sea view
 薄扶林寬敞五房複式住宅，尊享薄扶林海景
3,250 s.f.
\$41,000,000

www.landscape.com/109727.htm Mary Li 李小姐 9011 6595



3 Repulse Bay Road, Repulse Bay
淺水灣 淺水灣道3號
 Prestigious 4-bedroom apartment with lush green view and sea view
 豪華四房單位，尊享翠綠園景及海景，可租可售
2,078 s.f. (plus 1,033 s.f. roof)
\$55,000,000 also for lease \$115,000 incl.

www.landscape.com/100222.htm Teresa Fung 馮小姐 9138 1621



Sea Cliff Mansions
淺水灣 海峰園
 19A-19D Repulse Bay Road, Repulse Bay
 Sea view apartment in convenient location
 淺水灣海景住宅，位置優越，交通方便
2,400 s.f.
\$36,000,000

www.landscape.com/6364.htm Stella Lo 羅小姐 9809 8570



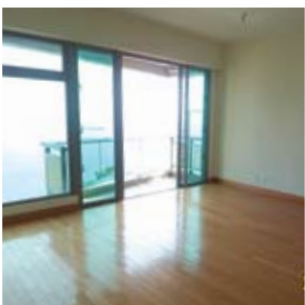
South Bay Towers
淺水灣 南灣大廈
 59 South Bay Road, Repulse Bay
 Practical 3-bedroom flat on quiet South Bay Road
 南灣道實用三房住宅，環境寧靜優美
2,738 s.f.
\$38,000,000

www.landscape.com/7026.htm Mavis Wu 吳小姐 9107 3891



Celestial Garden
淺水灣 詩禮花園
 5 Repulse Bay Road, Repulse Bay
 Spacious sea view flat on upper Repulse Bay Road with excellent facilities
 淺水灣道頭段寬敞海景住宅連完善住客會所設施
2,363 s.f.
\$40,000,000

www.landscape.com/11328.htm Maria Cheung 張小姐 5182 8699



Villas Sorrento
薄扶林 御海園
 64-66 Mount Davis Road, Pokfulam
 Modern 4-bedroom apartment with breath-taking sea view
 新穎四房單位享寧靜海景，可租可售
2,523 s.f. (plus 78 s.f. terrace)
\$40,000,000 also for lease \$100,000 incl.

www.landscape.com/107474.htm Mira To 杜小姐 9486 1566



Stanley Court
赤柱 海灣園
 9 Stanley Mound Road, Stanley
 Boutique 3-bedroom townhouse with spacious garden close to Stanley Main Beach
 精緻三房排屋連寬敞花園，鄰近赤柱大灘
2,889 s.f. (plus 1,075 s.f. garden and 552 s.f. roof)
\$50,000,000

www.landscape.com/122969.htm David Chan 陳先生 9238 2012



Belgravia Heights
大潭 碧濤閣
 27 Tai Tam Road, Tai Tam
 Full sea view colonial mid-rise of Tai Tam Bay apartment
 大潭全海景英式中密度住宅，可租可售
2,890 s.f. (plus 2,401 s.f. roof)
\$63,000,000 also for lease \$120,000 incl.

www.landscape.com/36002.htm Teresa Fung 馮小姐 9138 1621



Belgravia
淺水灣 南灣道57號
 57 South Bay Road, Repulse Bay
 Fully renovated 4-bedroom apartment with practical layout and sea view
 全新裝修四房住宅，間隔實用，享優美海景
2,790 s.f.
\$69,000,000

www.landscape.com/122947.htm Christine Chong 莊小姐 9648 6082



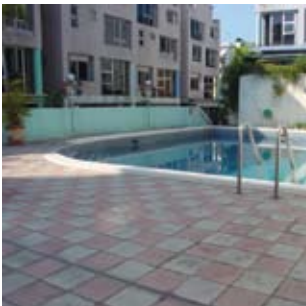
Grosvenor Place
淺水灣 淺水灣道117號
 117 Repulse Bay Road, Repulse Bay
 Award-winning sleek apartment overlooking Repulse Bay panorama
 淺水灣豪華住宅，俯瞰華麗淺水灣景觀，可租可售
2,809 s.f.
\$70,000,000 also for lease \$150,000 incl.

www.landscape.com/44586.htm Rebecca Cheung 張小姐 9021 7644



Horizon Ridge
春坎角 海天小築
 38-48 Horizon Drive, Chung Hom Kok
 Townhouse with stunning sea view in quiet enclave
 春坎角絕色海景排屋，寧靜怡人
3,800 s.f. (plus 783 s.f. terrace)
\$73,000,000

www.landscape.com/22813.htm Mark Mak 麥先生 6838 2929



The Hazelton
壽臣山 榛園
 6 Shouson Hill Road, Shouson Hill
 Rare garden townhouse with private garage in Shouson Hill
 壽臣山罕有花園排屋連私家車庫
3,195 s.f. (plus 671 s.f. roof and 567 s.f. garden)
\$70,000,000

www.landscape.com/4159.htm Maria Cheung 張小姐 5182 8699



Twin Brook
淺水灣 雙溪
 43 Repulse Bay Road, Repulse Bay
 Spacious 4-bedroom unit with fascinating view of Deep Water Bay
 淺水灣寬敞四房住宅尊享迷人深水灣景觀，可租可售
2,700 s.f.
\$72,000,000 also for lease \$110,000

www.landscape.com/32624.htm Stephen Chan 陳先生 90933381



Grosvenor Place
淺水灣 淺水灣道117號
 117 Repulse Bay Road, Repulse Bay
 High privacy luxurious unit with large terrace on Repulse Bay Beach
 淺水灣豪華住宅連特大平台，私隱度高，鄰近淺水灣海灘
2,719 s.f. (plus 2,500 s.f. terrace)
\$78,000,000

www.landscape.com/34995.htm Mark Mak 麥先生 6838 2929

SCHOTTEN
& HANSEN

“A floor from Schotten & Hansen is as unique as the person who lives on it”

Torben Hansen, Managing Director of Schotten & Hansen

Showroom:

HOP SZE TIMBER CO., LTD.

G/F, 220 Gloucester Road

Wanchai, Hong Kong

Phone: (852)28336069

www.hopsze.com

www.schotten-hansen.com



Royal Bay
春坎角 御濤灣
82 Chung Hom Kok Road, Chung Hom Kok

Rare on market sea view townhouse in Chung Hom Kok
春坎角海景排屋，罕有放盤

3,812 s.f. (plus 1,329 s.f. terrace, 816 s.f. garden and 522 s.f. roof)
\$80,000,000

www.landscape.com/45365.htm Chris Law 羅先生 6183 8388



Villa Rosa
大潭 玫瑰園
88 Red Hill Road, Tai Tam

Prestigious garden house with brilliant sea view
大潭豪華花園大屋，享迷人海景，可租可售

4,018 s.f. (plus 786 s.f. garden, 480 s.f. roof and terrace)
\$100,000,000 also for lease \$228,000 incl.

www.landscape.com/7228.htm Stephen Chan 陳先生 9093 3381



Villa Rosa
大潭 玫瑰園
88 Red Hill Road, Tai Tam

Rare garden house at Tai Tam
大潭罕有花園大屋

3,960 s.f. (plus 480 s.f. roof and 414 s.f. garden)
\$100,000,000

www.landscape.com/21103.htm Mark Mak 麥先生 6838 2929



Twin Brook
淺水灣 雙溪
43 Repulse Bay Road, Repulse Bay

Rare huge duplex apartment taking in stunning sea view on upper Repulse Bay Road
罕有淺水灣道頭段特大複式住宅，尊享絕色的海景

5,400 s.f.
\$140,000,000

www.landscape.com/109188.htm Chris Law 羅先生 6183 8388



Tai Tam Gorgeous Waterfront House
大潭豪華海濱大屋

Gorgeous waterfront house with private terrace and indoor pool looking out to ocean
華麗海濱大屋連私家平台及室內游泳池，坐擁無阻海景

5,474 s.f. to 6,479 s.f.
\$250,000,000 up

www.landscape.com Louis Wong 黃先生 9871 6828



Southside Brand New Detached House
南區全新獨立大屋

Brand new detached house with private pool and garden
南區全新獨立大屋連私家游泳池及花園

Total area over 12,000 s.f.
\$300,000,000

www.landscape.com Louis Wong 黃先生 9871 6828



Springfield Gardens
壽臣山 春暉園
5-9 Shouson Hill Road West, Shouson Hill

Rare 4-bedroom townhouse in Southside near Aberdeen Tunnel
南區罕有四房排屋，鄰近香港仔隧道，交通方便

3,000 s.f. (plus 1,750 s.f. garden)
\$85,000,000

www.landscape.com/36570.htm Mavis Wu 吳小姐 9107 3891



56 Repulse Bay Road, Repulse Bay
淺水灣 淺水灣道56號

4-bedroom waterfront duplex with facilities overlooking Repulse Bay Beach
淺水灣四房海濱複式住宅連住客會所設施，坐觀淺水灣海灘美景

4,086 s.f.
\$100,000,000

www.landscape.com/45928.htm Rebecca Cheung 張小姐 9021 7644



2-7 Shouson Hill Road West, Shouson Hill
壽臣山 壽臣山道西2-8號

Unique 6-bedroom townhouse with large private garden in tranquil neighbourhood
精緻六房排屋連特大私家花園，環境寧靜怡人

4,000 s.f. (plus 3,000 s.f. garden, roof and terrace)
\$128,000,000

www.landscape.com/33856.htm Christine Chong 莊小姐 9648 6082



39 Deep Water Bay Road, Deep Water Bay
深水灣 深水灣道 39號

Prestigious townhouse overlooking Deep Water Bay
深水灣豪華排屋，俯瞰深水灣景觀

3,674 s.f. (plus 1,762 s.f. garden and 336 s.f. roof)
\$150,000,000

www.landscape.com/30841.htm Maria Cheung 張小姐 5182 8699



Double Bay
深水灣 香島道46號
46 Island Road, Deep Water Bay

Deluxe waterfront house at Deep Water Bay
深水灣豪華海濱大屋

4,180 s.f. (plus 1,382 s.f. roof and 1,046 s.f. garden)
\$298,000,000

www.landscape.com/108206.htm Louis Wong 黃先生 9871 6828



Repulse Bay Brand New Duplex Penthouse
淺水灣全新複式住宅

Brand new duplex penthouse with private terrace overlooking peaceful sea view
全新複式頂層單位連私家平台，俯瞰寧靜海景

3,675 s.f. to 3,845 s.f.
Open Offer

www.landscape.com Louis Wong 黃先生 9871 6828



Villa Verde
山頂 環翠園
4-18 Guildford Road, The Peak

Boutique apartment with balcony and mountain view
山頂精致住宅連陽臺，尊享翠綠山景

1,200 s.f.
\$55,000

www.landscape.com/126731.htm David Chan 陳先生 9238 2012



23 Plantation Road, The Peak
山頂 種植道23號

Harbour view low-rise flat on prestigious Plantation Road
種植道維港景低密度住宅，位處尊貴地段

2,626 s.f.
\$68,000

www.landscape.com/15833.htm Walker Lam 林先生 9551 1077



Coombe Apartments
山頂 甘道15-17號
15-17 Coombe Road, The Peak

Stylish colonial apartment in secluded green surrounding
山頂時尚英式住宅，尊享廣闊翠綠園景

2,150 s.f.
\$86,000

www.landscape.com/12213.htm Chris Law 羅先生 6183 8388



Mount Austin Estate
山頂 山景花園別墅
5 Mount Austin Road, The Peak

Newly renovated Peak house with large private garden
山頂全新裝修大屋連特大私家花園

3,744 s.f. (plus 1,800 s.f. garden)
\$165,000

www.landscape.com/18161.htm Eric Wong 黃先生 9740 3396



Abergeldie
山頂 種植道52號
52 Plantation Road, The Peak

Peak townhouse with bird's eye view of Victoria Harbour
山頂精致排屋享鳥語花香的維港景觀

3,655 s.f. (plus 759 s.f. garden and 313 s.f. terrace)
\$220,000 incl.

www.landscape.com/606.htm Mavis Wu 吳小姐 9107 3891



2 Barker Road, The Peak
山頂 白加道2號

High ceiling luxury house with Victoria Harbour view and Southside sea view
山頂高樓底豪華大屋，尊享維港及南區海景

4,325 s.f.
\$280,000

www.landscape.com/46173.htm David Chan 陳先生 9238 2012



Chelsea Court
山頂 賽詩閣
63 Mount Kellett Road, The Peak

Luxurious boutique apartment on The Peak
山頂豪華精致住宅

1,509 s.f.
\$62,000

www.landscape.com/26381.htm David Chan 陳先生 9238 2012



Barker Villa
山頂 柏架別墅
41 Barker Road, The Peak

Nicely renovated apartment with full harbour view
山頂雅致裝修單位，尊享全海景

1,650 s.f.
\$70,000 incl.

www.landscape.com/15818.htm Chris Law 羅先生 6183 8388



Mountain Lodge
山頂 崑廬
44 Mount Kellett Road, The Peak

Exclusive Peak apartment with sweeping Southside sea view
獨特山頂住宅連寧靜南區海景

2,600 s.f.
\$120,000 incl.

www.landscape.com/17490.htm Christine Chong 莊小姐 9648 6082



King's Court
山頂 龍庭
5 Mount Kellett Road, The Peak

Newly renovated garden townhouse with sweeping Southside sea view
全新裝修花園排屋享寧靜南區海景

3,165 s.f. (plus 2,045 s.f. garden, roof and terrace)
\$200,000

www.landscape.com/12286.htm Eric Wong 黃先生 9740 3396

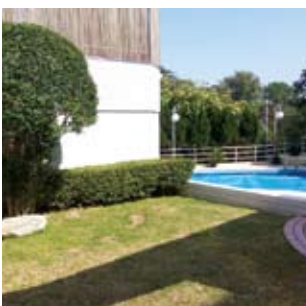


Montebello
山頂 濠景閣
15-17 Plantation Road, The Peak

Rarely available 4-ensuite duplex with sweeping harbour view
罕有四套房複式住宅，尊享優美維港景致，可租可售

4,455 s.f. (plus garden)
\$250,000 incl. also for sale \$158,000,000

www.landscape.com/103366.htm Louis Wong 黃先生 9871 6828



9 Coombe Road, The Peak
山頂 甘道9號

Newly renovated garden house on serene Coombe Road
甘道全新裝修花園大屋，環境寧靜怡人

3,300 s.f. (plus 656 s.f. terrace, 307 s.f. roof and garden)
Open Offer

www.landscape.com/10283.htm Teresa Lau 劉小姐 9080 6686

In an exhibition celebrating the 10th Anniversary of Macau's reunification with the Chinese Mainland, the Macau Art Museum is now hosting "The Season of Return: Treasures from the Palace Museum". A total 100 antiques, mostly antiquated relics from the Qing imperial court, including stone rubbings in calligraphy, paintings, bronze ware, jade ware, gold and silverware, porcelain, enamel ware, kesi silks, lacquer ware, bamboo, wood, ivory and horn objects, and statues have been specially transported from the Palace Museum. Its artistic, historical and cultural value, as well as the quality and rarity of the exhibits, is the highest among similar exhibitions held in the region in recent years. Open until 14th March 2010. Free admission. ■

為慶祝澳門十周年回歸祖國紀念，澳門美術館正舉辦「九九歸一——慶祝澳門回歸祖國十周年故宮珍寶展」。展品總計一百件套，主要為清宮舊藏，包括書法碑帖、繪畫、青銅器、玉器、金銀器、瓷器、琺瑯、緙絲、漆器、竹木牙角器和佛像等，全部由故宮博物院遠道運來。此展覽的藝術性、觀賞性及歷史性，以及展品的質量及珍貴程度，均為同類展覽之冠，當中更不乏國家一級文物。展期至3月14日。免費入場。■



The Westminster Terrace 皇璧



British property giant Grosvenor is famed for its high end apartments. Hot on the heel of Grosvenor Place at Repulse Bay, The Westminster Terrace will be testament to Grosvenor's impeccable architectural taste. The Westminster Terrace is a rare gem in Hong Kong - it comprises 59 duplex residences that stretch from 3,200 to 6,500 square feet.

Address: 2A Yau Lai Road, Ting Kau
Storey: 32-storey
Size: 3,200 s.f. - 6,500 s.f.

- A 11.5-metre floor height
- Private lift lobby
- Just 15 minutes to Central & Tsim Sha Tsui and just 20 minutes to China's border
- On Fringe of Tsing Ma Bridge & Ting Kau Bridge
- Over Looking South China Sea & the two bridges

英國殿堂級發展商高富諾（Grosvenor）一向以高級豪宅享譽國際，繼淺水灣 Grosvenor Place後，皇璧再度展現高富諾一貫對建築品味的極致追求，成為全城罕有僅提供59個複式大宅，面積由3,200呎至6,500呎。

地址： 汀九悠麗路2A
層樓： 32層
單位面積： 3,200呎 - 6,500呎

- 樓層高度約11呎半
- 住戶專用電梯，私人電梯大堂
- 前往中環及尖沙咀只需15分鐘，而前往中國邊境亦只需20分鐘
- 鄰近青馬大橋及汀九橋
- 所有單位均飽覽南中國海及雙橋景致

The Westminster Terrace 皇璧

2A Yau Lai Road, Ting Kau
Maria Cheung 張小姐 5182 8699, Eric Wong 黃先生 9740 3396

National Treasures 國寶級珍品



Kam Fai Mansion 中半山 錦輝大廈
68A MacDonnell Road, Midlevels Central
Rare find penthouse low-rise with internal stairs to roof
中半山罕有低密度頂層單位連內置樓梯上天台，可租可售

1,500 s.f. (plus 2,800 s.f. roof)
\$58,000 incl. also for sale \$23,000,000

www.landscape.com/124428.htm Yvonne Chang 鄭小姐 9238 2012



Clement Court 渣甸山 松風臺
56-64 Mount Butler Road, Jardine's Lookout
Character low-rise with private terrace in tranquil neighbourhood
特色低密度住宅連私家平台，環境寧靜怡人

2,200 s.f. (plus 800 s.f. terrace)
\$75,000 incl.

www.landscape.com/23410.htm Maria Cheung 張小姐 5182 8699



47A Stubbs Road, Midlevels East 東半山 司徒拔道 47A號
Exclusive mid-rise apartment with harbour view
獨特中密度維港景住宅，可租可售

2,400 s.f.
\$83,000 incl. also for sale \$38,000,000

www.landscape.com/50089.htm Stephen Chan 陳先生 9093 3381



Evergreen Villa 東半山 松柏新村
43 Stubbs Road, Midlevels East
Apartment for large family with harbour view
東半山維港景住宅，適合大家庭，可租可售

2,700 s.f.
\$89,000 incl. also for sale \$47,000,000

www.landscape.com/32050.htm Stephen Chan 陳先生 9093 3381



Haddon Court 西半山 海天閣
41C Conduit Road, Midlevels West
Rare find modern garden apartment on Conduit Road
干德道罕有時尚住宅連特大花園

2,805 s.f. (plus 1,884 s.f. terrace and 1,558 s.f. garden)
\$100,000 incl.

www.landscape.com/14338.htm Sami Woo 胡小姐 9493 8275



15-21 Wilson Road, Jardine's Lookout 渣甸山 衛信道15-21號
Rare Jardine's Lookout townhouse with garden and terrace
渣甸山罕有排屋，連花園及平台

3,000 s.f. (plus 730 s.f. garden and 262 s.f. terrace)
\$100,000

www.landscape.com/11938.htm Walker Lam 林先生 9551 1077

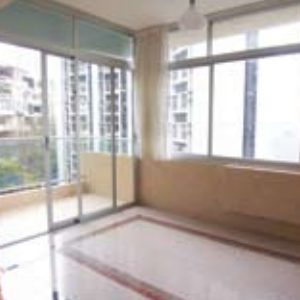
MID-LEVELS Lease | 半山出租



Ho King View 北角半山 豪景
2 Braemar Hill Road, North Point Midlevels
High efficiency practical apartment with Victoria Harbour view
北角半山間隔實用單位，尊享維港景觀，實用率高

2,200 s.f.
\$63,000 incl.

www.landscape.com/21492.htm Carman Szeto 司徒小姐 6183 8339



Catalina Mansions 中半山 嘉年大廈
98-100 MacDonnell Road, Midlevels Central
Spacious 3-bedroom apartment in colonial mid-rise building
中半山高密度寬敞英式三房住宅

2,300 s.f.
\$75,000 incl.

www.landscape.com/37788.htm Stella Lo 羅小姐 9809 8570



Pine Court 中半山 翠峰園
5 Old Peak Road, Midlevels Central
Colonial style apartment with huge balcony and high ceiling
中半山英式設計單位連特大陽臺，樓底極高

2,350 s.f.
\$88,000 incl.

www.landscape.com/10315.htm Sami Woo 胡小姐 9493 8275



Regent On The Park 中半山 御花園
9A Kennedy Road, Midlevels Central
Rarely find duplex apartment with clubhouse facilities in Midlevel Central
中半山罕有複式住宅連完善住客會所設施

2,700 s.f.
\$90,000 incl.

www.landscape.com/38702.htm Rowena Siu 蕭小姐 9348 4118



Unique Villa 跑馬地 友園
10 Holly Road, Happy Valley
Designer decorated penthouse flat with internal staircase to roof
設計師精心設計頂層住宅連內置樓梯上天台，可租可售

2,500 s.f. (plus 1,940 s.f. roof)
\$100,000 incl. also for sale \$45,000,000

www.landscape.com/52593.htm Mark Mak 麥先生 6838 2929



Estoril Court 中半山 愛都大廈
55 Garden Road, Midlevels Central
Large high efficiency 5-bedroom apartment on fringe of Central
特高大實用五房住宅，鄰近中環交通方便

3,347 s.f.
\$110,000

www.landscape.com/5536.htm Mira To 杜小姐 9486 1566



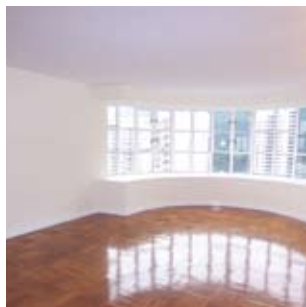
Highcliff
東半山 曉廬
41D Stubbs Road, Midlevels East
Luxurious 4-bedroom flat with clubhouse and mountain view in Midlevels East
東半山豪華四房住宅，連住客會所設施及翠綠山景
3,676 s.f.
\$111,000

www.landscape.com/81561.htm Teresa Lau 劉小姐 9080 6686



Bowen Mansion
中半山 寶雲大廈
7C Bowen Road, Midlevels Central
Colonial low-rise flat with huge balcony
中半山英式住宅連特大陽臺
4,000 s.f.
\$125,000 incl.

www.landscape.com/38884.htm Chris Law 羅先生 6183 8388



Garden Terrace 1
中半山 花園臺 1座
8 Old Peak Road, Midlevels Central
Large duplex apartment on fringe of Central Business District
中半山特大豪華複式住宅，鄰近中環商業區
3,726 s.f.
\$140,000

www.landscape.com/122405.htm Mavis Wu 吳小姐 9107 3891



Tregunter Tower 2
中半山 地利根德閣 2座
14 Tregunter Path, Midlevels Central
New decorated 4-bedroom apartment
新裝修四房單位，可租可售
3,050 s.f.
\$120,000 incl. also for sale \$35,000,000

www.landscape.com/120710.htm Mira To 杜小姐 9486 1566



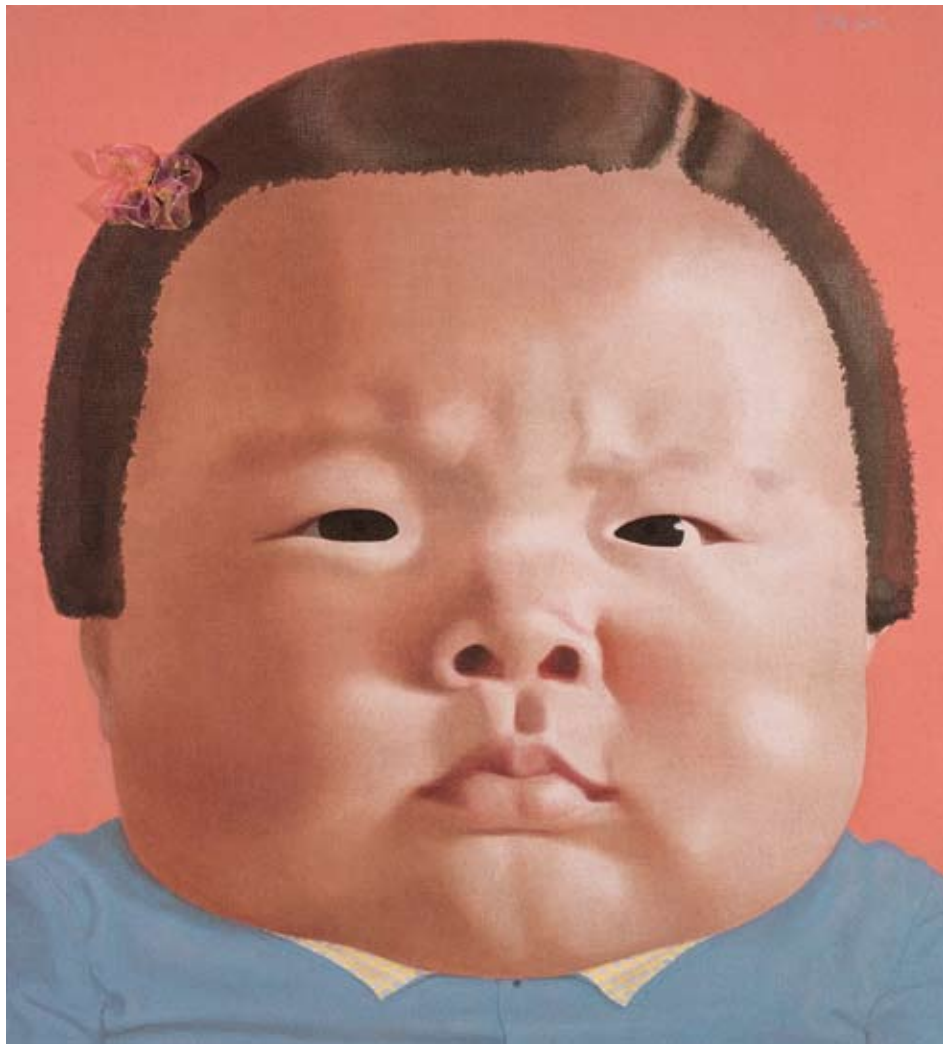
Grenville House
中半山 嘉慧園
1-3A Magazine Gap Road, Midlevels Central
Huge 4-bedroom apartment in renowned building on Magazine Gap Road
馬己仙峽道有名望巨型四房住宅
3,700 s.f.
\$130,000 incl.

www.landscape.com/17363.htm Mira To 杜小姐 94861566



Tregunter Tower 3
中半山 地利根德閣3座
14 Tregunter Path, Midlevels Central
Luxurious duplex apartment with full clubhouse facilities overlooking the harbour
豪華複式住宅連完善住客會所設施，俯瞰維港景，可租可售
3,639 s.f.
\$140,000 also for sale \$72,000,000

www.landscape.com/3950.htm David Chan 陳先生 9238 2012



Ladies only 唯女獨尊

Celebrating International Women's Day, Schoeni Art Gallery shall present WO MEN – We Are Our Own Women, group exhibition featuring 5 empowering Chinese contemporary artists: Liu Hong Yuan, Peng Wei, Shuai Mei, Qing Qing and Yu Chen. The exhibition provides an insight into the inner world of these female artists and offers an exceptional opportunity to learn about the true value and spirit of the female gender. In the Chinese contemporary art circle dominated by men, WO MEN is a testimony to female art – talented, empowering, strong and inspirational. Runs from 11th March till 17th April. Free admission. ■

為慶祝婦女節，香港Schoeni畫廊舉辦題為「我們」的展覽，由五位當代女性藝術家聯合展出作品，參展藝術家有劉宏苑、彭瑋、蚌眉、青青、玉塵（譯音）。展覽提供寶貴的機會，讓觀眾窺探幾位女性藝術家的內心世界，了解女性的心靈與身分價值。當代藝術界以男性為主導，「我們」正好讓外界見證當代女性藝術家的獨特氣質：天才橫溢，獨斷自強，靈采活現。■

For more listings, please go to www.landscape.com/lease



Ruby Court
淺水灣 嘉麟閣
55 South Bay Road, Repulse Bay
Full sea view 3-bedroom flat with full facilities overlooking South Bay
全海景三房住宅連完善住客會所設施，俯瞰南灣優美景觀，可租可售
1,780 s.f.
\$68,000 incl. also for sale \$28,900,000

www.landscape.com/3954.htm Teresa Fung 馮小姐 9138 1621



34-36 Bisney Road, Pokfulam
薄扶林 碧荔道34-36號
Newly renovated low-rise flat with private terrace and balcony in lush greenery
全新裝修低密度住宅連私家平台及陽臺，環境翠綠怡人
2,200 s.f. (plus 500 s.f. terrace)
\$80,000 incl.

www.landscape.com/50596.htm Walker Lam 林先生 9551 1077



Monte Verde
淺水灣 南山別墅
41 Repulse Bay Road, Repulse Bay
Rare 4-bedroom apartment with Deep Water Bay view on upper Repulse Bay Road
淺水灣道頭段罕有四房住宅，尊享深水灣景觀
2,200 s.f.
\$85,000

www.landscape.com/10238.htm Sami Woo 胡小姐 9493 8275



3 Consort Rise, Pokfulam
薄扶林 金粟街3號
Unique townhouse with peaceful sea view
薄扶林雅致排屋享寧靜怡人海景
2,800 s.f.(plus 539 s.f. garden and 442 s.f. roof)
\$90,000 incl.

www.landscape.com/38618.htm Yvonne Chang 鄭小姐 9088 4666



Ann Garden
壽臣山 安苑
29 Shouson Hill Road, Shouson Hill
Low-rise duplex on top floor with exclusive roof terrace
低密度複式高層單位，連獨特天台平台
2,500 s.f. (plus TBC s.f. roof)
\$95,000 incl.

www.landscape.com/11849.htm Teresa Fung 馮小姐 9138 1621



The Hacienda
淺水灣 海堤花園
90 Repulse Bay Road, Repulse Bay
Garden low-rise duplex with picturesque view of Repulse Bay
淺水灣低密度花園複式住宅，尊享如畫美景
2,860 s.f. (plus 682 s.f. garden)
\$108,000 incl.

www.landscape.com/94803.htm Mary Li 李小姐 9011 6595

For more listings, please go to www.landscape.com/lease



Repulse Bay Garden
淺水灣 麗景園
18-40 Belleview Drive, Repulse Bay
Spacious practical older-style apartment with full view of Repulse Bay Beach
淺水灣寬敞實用傳統住宅，尊享淺水灣海灘全景
2,288 s.f.
\$70,000 incl.

www.landscape.com/30473.htm Sami Woo 胡小姐 9493 8275



Villa Cecil Phase II
薄扶林 趙苑二期
192 Victoria Road, Pokfulam
Seaside low-rise apartment with balcony in Pokfulam
薄扶林海邊低密度住宅，連陽臺，可租可售
3,697 s.f.
\$83,000 also for sale \$48,100,000

www.landscape.com/36636.htm Chris Law 羅先生 6183 8388



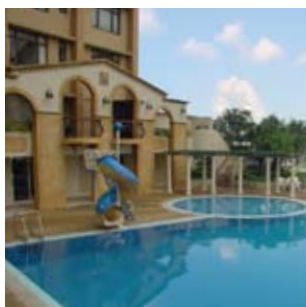
14 Stanley Beach Road, Stanley
赤柱 赤柱灘道14號
Renovated 3-bedroom low-rise with balcony and private roof close to beach
全新裝修三房低密度住宅連陽臺及私家天台，鄰近海灘
2,320 s.f. (plus 2,000 s.f. roof)
\$89,000

www.landscape.com/9473.htm Mark Mak 麥先生 6838 2929



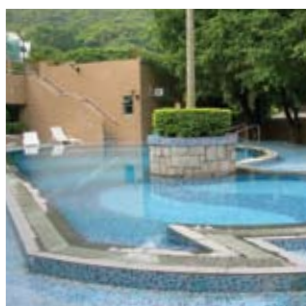
Park Place
淺水灣 雅柏苑
7 Tai Tam Reservoir Road, Repulse Bay
Bright and airy apartment enjoying nice view
光猛通風單位，享優雅景觀
2,338 s.f.
\$93,000 incl.

www.landscape.com/20007.htm Eric Wong 黃先生 9740 3396



Celestial Garden
淺水灣 詩禮花園
5 Repulse Bay Road, Repulse Bay
Spacious 4-bedroom apartment with facilities on upper Repulse Bay Road
淺水灣道頭段寬敞四房單位連住客會所設施
2,363 s.f.
\$100,000 incl.

www.landscape.com/125864.htm Mary Li 李小姐 9011 6595



Horizon Crest
赤柱 赤柱村道22號
22 Stanley Village Road, Stanley
4-bedroom townhouse with lush green surroundings
赤柱四房排屋連遼闊翠綠景致
2,800 s.f. (plus 752 s.f. garden, 284 s.f. roof and 182 s.f. terrace)
\$120,000 incl.

www.landscape.com/7720.htm Yvonne Chang 鄭小姐 9088 4666



Stanley Court
赤柱 海灣園
9 Stanley Mound Road, Stanley
Resort-style townhouse with private garden close to beach
赤柱渡假式排屋連私家花園，鄰近海灘
2,713 s.f. (plus 732 s.f. garden and 517 s.f. roof)
\$120,000 incl.

www.landscape.com/30960.htm Yvonne Chang 鄭小姐 9088 4666



Helene Garden
赤柱 喜蓮花園
22 Stanley Beach Road, Stanley
A fitting home for a big family close to beach
寬敞住宅適合大家庭居住，鄰近海灘
3,606 s.f. (plus 1,244 s.f. roof)
\$150,000

www.landscape.com/14377.htm Yvonne Chang 鄭小姐 9088 4666



Belleview Place
淺水灣 寶晶苑
93 Repulse Bay Road, Repulse Bay
Sea view townhouse in Repulse Bay
淺水灣海景排屋，可租可售
3,206 s.f. (plus 747 s.f. roof and 171 s.f. terrace)
\$150,000 incl. also for sale \$80,000,000

www.landscape.com/124184.htm Yvonne Chang 鄭小姐 9088 4666



Helene Court
壽臣山 喜蓮閣
14 Shouson Hill Road, Shouson Hill
Garden house with practical layout and very high efficiency
壽臣山花園大屋，間隔寬敞實用率高
3,555 s.f.
\$170,000

www.landscape.com/ Teresa Fung 馮小姐 9138 1621



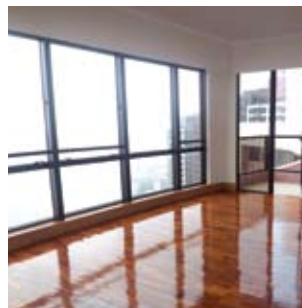
The Somerset
淺水灣 怡峰
67 Repulse Bay Road, Repulse Bay
Rare duplex with huge garden overlooking Deep Water Bay
淺水灣罕有複式住宅連特大花園，俯瞰深水灣景觀
3,141 s.f. (plus 2,035 s.f. garden and 911 s.f. terrace)
\$200,000 incl.

www.landscape.com/3511.htm Rebecca Cheung 張小姐 9021 7644



63 Deep Water Bay Road, Deep Water Bay
深水灣 深水灣道63號
Prestigious detached house in upscale Deep Water Bay
深水灣豪華獨立大屋，地段尊貴
3,479 s.f. (plus 603 s.f. garden and 272 s.f. terrace)
\$260,000

www.landscape.com/33643.htm Eric Wong 黃先生 9740 3396



Pacific View
大潭 浪琴園
38 Tai Tam Road, Tai Tam
Full sea view duplex in popular development of Tai Tam
受歡迎大潭全海景複式住宅
3,913 s.f. (plus 615 s.f. terrace)
\$130,000

www.landscape.com/33984.htm Yvonne Chang 鄭小姐 9088 4666



4 Headland Road, Repulse Bay
淺水灣 赫蘭道4號
22 Stanley Beach Road, Stanley
Unique sizeable low-rise flat with huge balcony overlooking fantastic sea view
別致低密度住宅連特大陽臺，俯瞰讚人海景
3,586 s.f.
\$150,000

www.landscape.com/18443.htm David Chan 陳先生 9238 2012



1 Shouson Hill Road East, Shouson Hill
壽臣山 壽臣山道東1號
4-bedroom garden townhouse in Shouson Hill
壽臣山四房花園排屋
4,069 s.f. (plus 629 s.f. roof and 207 s.f. garden)
\$165,000

www.landscape.com/94620.htm David Chan 陳先生 9238 2012



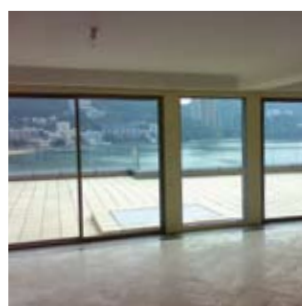
Ocean Bay
春坎角 海天徑15-17號
15-17 Horizon Drive, Chung Hom Kok
Sea view townhouse with private garden
春坎角海景排屋連私家花園
3,180 s.f. (plus 437 s.f. roof and 436 s.f. terrace)
\$200,000 incl.

www.landscape.com/34993.htm Stephen Chan 陳先生 9093 3381



Horizon Lodge
春坎角 海天小築
33 Horizon Drive, Chung Hom Kok
Newly refurbished Spanish style townhouse with tasteful decors and superb finishes
全新翻新西班牙式設計排屋連雅致華麗的裝修
3,080 s.f. (plus 700 s.f. terrace)
\$220,000

www.landscape.com/44726.htm Mary Li 李小姐 9011 6595



56 Repulse Bay Road, Repulse Bay
淺水灣 淺水灣道56號
Prestigious duplex with huge terrace overlooking Repulse Bay
淺水灣華麗複式住宅連巨型平台，俯瞰淺水灣迷人景致
4,134 s.f. (plus 2,140 s.f. terrace)
\$300,000 incl.

www.landscape.com/35309.htm Rebecca Cheung 張小姐 9021 7644

For more listings, please go to www.landscape.com/lease

We blossom with the **best** by providing you one-stop solution.

BRANDING

Print Media
inMAGAZINE (HK Version)
inMAGAZINE (China Version)

Custom Publishing
The Key
Mission Hills Magazine
Jaguar
OMEGA LIFETIME

Mobile Marketing
SMS
MMS
iPhone Application Development

Digital Media
inMAGAZINE Website
e-Marketing

TV & Movie
Brand Integration

Design & Styling
Logo Design
Visual Merchandising
Interior Design
Image Positioning
Shop inShop Design
Photography
Window Display

Public Relations
Press Release
Press Invitation

Events
Roadshow
Show Production
Guest Invitatin
Exhibition

Database Management
CRM
eDM
DM

Sales Platform
Event
Mobile Phone
Website

INCORPORATION

inCorporation Limited
Hong Kong Head Office
12/F Cyberport 2
100 Cyberport Road Hong Kong
T +852 3699 0888
F +852 3699 0889

China Office
15/F Plaza 66 Tower 2
1366 Nanjing West Road Shanghai
T +86 21 6137 6038

www.incorp.com.hk

Your No. 1 Integrated Marketing Communications Partner in Hong Kong and China

INC