

select deluxe homes

The Key

大宅®

MARCH 2009
Volume 53

published and distributed by


LANDSCOPE
The Specialists in Luxury Properties

領域®



EAST
MEETS
WEST

www.landscape.com



KeyNotes

"In these matters the only certainty is that nothing is certain."

Pliny the Elder

The market is entering a nostalgic mood. While people are reminiscing the good "old" days of 2007 and early 2008, property prices cannot defy the law of physics and retreat to their 2005 levels. Many buyers who fought so hard to grab a piece of the action in 2007 especially for those first hand sales are now seeing helplessly 30% of their asset value evaporate, if not regretting entering the market at all.

.....The questions these days are "How much more to slide?" and "How long to go before price stabilizes?" While there are many economic models as there are variations of statistics, I am afraid there are no clear and ready answers to the above questions. Experts may come up with various projections, but the true answer can only reveal itself with hind sight. However, one thing can be certain, that is, the uncertainties will continue to linger amid economic woes.

Koh Keng-shing
ks-koh@landscape.com

(The above are an excerpt from Market Watch on www.landscape.com. For the full article, please log on to www.landscape.com/m0309.htm)

About The Key

The Key is a monthly publication of sales and letting listings of luxury residential properties on Hong Kong Island. It is sent to VIP clients of Landscape Realty and residents of The Peak, Southside, Mid-Levels, Kowloon Tong, Homantin and selected upmarket residential areas in Shatin, Tai Po, Clear Water Bay and Castle Peak Road. The recipients comprise the crème de la crème of Hong Kong's affluent community.

In addition to The Key, Landscape Realty sends weekly eNewsletters to clients on most update listings of luxury properties. If you wish to receive the eNewsletter, please call Loretta Lui at 3102 4818 or email to info@landscape.com.

How may you list your property with The Key?

If you would like to see your property listed in The Key in the next issue, you may call Loretta Lui at 3102 4818 or email to info@landscape.com. Or you may simply fill out the space below and fax to us at 2866 0015.

Property to be listed

Asking Rental / Sale Price

Floor Area

Contact Person

Telephone

Email

Our KeyPersons will contact you for follow-up works.

SOUTHSIDE SALES

南區
出售



Regent Palisades 薄扶林 帝柏園

43 Bisney Road, Pokfulam
Newly renovated low-rise flat with huge private roof terrace in quiet neighbourhood 全新裝修低密度住宅配巨型私家天台，環境清幽怡人，可租可售

1,513 s.f. (plus 1,000 s.f. roof)
\$12,000,000 also for lease \$45,000 incl.

www.landscape.com/18442.htm | Rowena Siu 蕭小姐 9348 4118



Hong Kong Parkview - Tower 3 淺水灣 陽明山莊三座

88 Tai Tam Reservoir Road, Repulse Bay
Boutique 2-bedroom flat with comprehensive facilities 淺水灣精緻兩房單位，連完善會所設施，可租可售

1,295 s.f.
\$15,000,000 also for lease \$38,000 incl.

www.landscape.com/18557.htm | David Chan 陳先生 9238 2012



Springfield Gardens 壽臣山 春暉園

5-9 Shouson Hill Road West, Shouson Hill
Charming low-rise flat in serene Shouson Hill 壽臣山迷人精緻低密度住宅，環境寧靜，可租可售

1,775 s.f. (plus 600 s.f. terrace)
\$18,500,000 also for lease \$55,000 incl.

www.landscape.com/15078.htm | Maria Cheung 張小姐 6256 1848



37 Repulse Bay Road, Repulse Bay 淺水灣 淺水灣道37號

Sea view apartment with facilities on sought after upper Repulse Bay Road 淺水灣道海景住宅連住客設施，市場罕有，可租可售

1,635 s.f.
\$18,800,000 also for lease \$53,000 incl.

www.landscape.com/14353.htm | Teresa Fung 馮小姐 9138 1621



12-14 Shouson Hill Road West, Shouson Hill 壽臣山 壽臣山道西12-14號

Low-rise flat in quiet Shouson Hill 壽臣山低密度住宅，環境清幽怡人

2,200 s.f.
\$22,000,000

www.landscape.com/9688.htm | Rowena Siu 蕭小姐 9348 4118

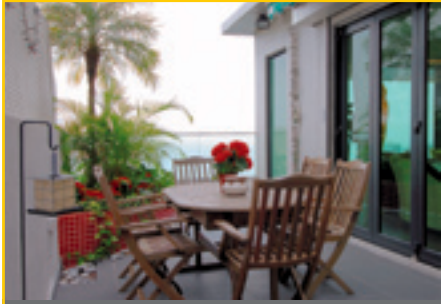


Shouson Garden 壽臣山 壽山花園

6A Shouson Hill Road, Shouson Hill
3-bedroom low-rise apartment with greenery view in quiet Shouson Hill 壽臣山三房低密度單位，環境清靜連翠綠園景

1,598 s.f. (plus 1,162 s.f. roof)
\$23,000,000

www.landscape.com/17371.htm | Maria Cheung 張小姐 6256 1848



EAST MEETS WEST

This cozy flat is tucked away in a quiet neighbourhood in Pokfulam, which is famed for its unique style of "East meets West". In perfect harmony with the area, the flat is decorated mixing the best of the Orient and the Occident. The focal point in the living room is a sleek bar that attends the lounge, with the opposite fire-place emanates family warmth. The lounge is flanked by a row of French doors opening to a spacious terrace, which provides a comfortable place for dining al fresco, or drinks over the sunset. The dining room is dressed in Oriental style, exuding peace and calm that are so essential in healthy eating. East meets West at its best.



La Mer

71 Bisney Road, Pokfulam

薄扶林 浪頤居

2,174 s.f.

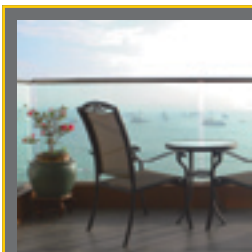
(plus 774 s.f. terrace)

\$29,000,000

also for lease \$120,000 incl.

www.landscape.com/17233.htm

Yvonne Chang 鄭小姐 9088 4666



Cape Mansions

薄扶林 翠海別墅

56-62 Mount Davis Road, Pokfulam

Nicely decorated apartment with peaceful sea view in Pokfulam

薄扶林精美裝修住宅，配寧靜海景

2,200 s.f.

\$23,000,000

www.landscape.com/14730.htm

Rowena Siu 蕭小姐 9348 4118



Hong Kong Parkview – Tower 10

淺水灣 陽明山莊10座

88 Tai Tam Reservoir Road, Repulse Bay

4-bedroom unit with two ensuites in well managed estate

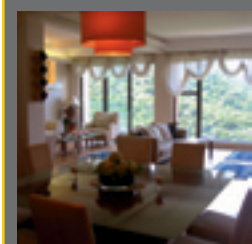
淺水灣四房連兩套房單位，屋苑管理完善

2,772 s.f.

\$25,500,000

www.landscape.com/18163.htm

Cecilia Fung 馮小姐 6271 2388



Ridge Court

淺水灣 冠園

21A-21D Repulse Bay Road, Repulse Bay

Nicely decorated apartment with full view of Deep Water Bay

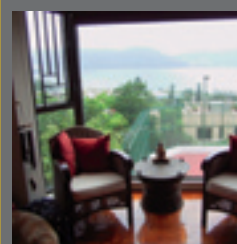
淺水灣精緻裝修住宅，配開揚深水灣海景，可租可售

2,300 s.f.

\$27,000,000 also for lease \$80,000 incl.

www.landscape.com/11663.htm

Stella Lo 羅小姐 9809 8570



Carmel Hill 赤柱 海明山

12 Carmel Road, Stanley

Sea view townhouse with private garden in tranquil environment

赤柱海景排屋連私家花園，位置清幽寧靜

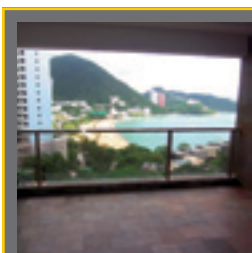
2,439 s.f.

(plus 324 s.f. roof and 411 s.f. garden)

\$29,800,000

www.landscape.com/17713.htm

Rowena Siu 蕭小姐 9348 4118



Repulse Bay Garden

淺水灣 麗景園

18-40 Belleview Drive, Repulse Bay

Charming practical 3-bedroom apartment with excellent sea view

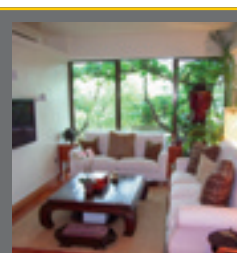
迷人淺水灣開揚海景三房單位，間格實用，可租可售

2,288 s.f.

\$30,000,000 also for lease \$85,000 incl.

www.landscape.com/17915.htm

Stephen Chan 陳先生 9093 3381



18 Cape Road, Stanley

赤柱 環角道18號

Rare find nicely decorated charming 4-bedroom low-rise duplex with high privacy

迷人裝修四房低密度複式住宅，私隱度高，市場罕有

2,000 s.f.

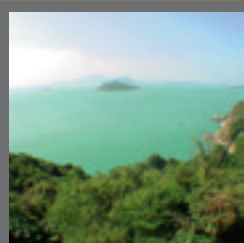
(plus 500 s.f. terrace and 400 s.f. garden)

\$30,000,000

www.landscape.com/18600.htm

Mark Mak 麥先生 6838 2929

SOUTHSIDE SALES



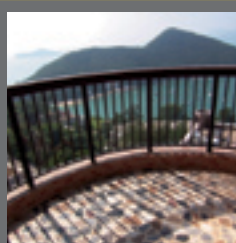
Sea Branch

春坎角 海天閣

31 Horizon Drive, Chung Hom Kok
3-bedroom waterfront low-rise with
stunning sea view
三房海濱低密度住宅，連廣闊海景

2,380 s.f.
\$30,000,000

www.landscape.com/12536.htm | Cecilia Fung 馮小姐 6271 2388



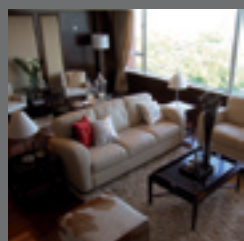
Pine Crest

淺水灣 松苑

65 Repulse Bay Road, Repulse Bay
Spacious 4-bedroom apartment with
beautiful Deep Water Bay view
淺水灣寬敞四房單位，連迷人深水灣景觀

2,250 s.f.
\$37,500,000

www.landscape.com/18445.htm | Teresa Fung 馮小姐 9138 1621

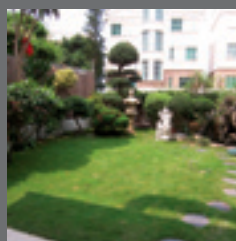


Pinewaver Villas 春坎角 松濤小築

35 Ching Sau Lane, Chung Hom Kok
Well designed house with breath-taking
sea view
春坎角良好裝修大屋連廣闊海景，可租可售

3,353 s.f.
(plus 188 s.f. roof and 133 s.f. terrace)
\$40,000,000 also for lease \$140,000 incl.

www.landscape.com/14834.htm | Cecilia Fung 馮小姐 6271 2388

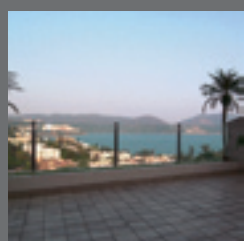


Bauhinia Gardens 春坎角 紫荊園

42 Chung Hom Kok Road,
Chung Hom Kok
Spacious garden house with new
decoration in Chung Hom Kok
春坎角寬敞花園大屋，連全新裝修

3,500 s.f. (plus 1,000 s.f. garden)
\$45,000,000

www.landscape.com/15740.htm | Teresa Lau 劉小姐 9080 6686

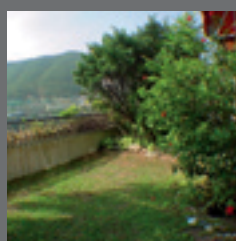


Stanley Knoll 赤柱 赤柱山莊

42 Stanley Village Road, Stanley
4-bedroom townhouse with garden and
facilities in quiet neighbourhood
赤柱四房排屋連花園及住客設施，環境寧靜

3,521 s.f.
(plus 500 s.f. terrace and 1,009 s.f. garden)
\$51,000,000

www.landscape.com/18093.htm | Christine Chong 莊小姐 9648 6082



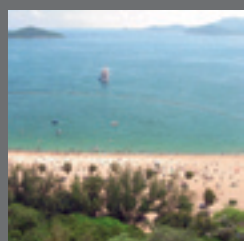
Redhill Park

大潭 紅山花園

12 Pak Pat Shan Road, Tai Tam
Sea view townhouse with spacious
private garden and terrace
大潭海景排屋連寬敞私家花園及平台

3,608 s.f. (plus 1,342 s.f. garden)
\$56,000,000

www.landscape.com/18421.htm | Mark Mak 麥先生 6838 2929



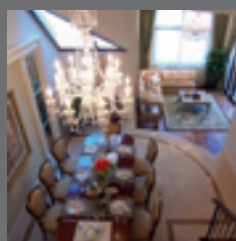
Grosvenor Place

淺水灣 淺水灣道117號

117 Repulse Bay Road, Repulse Bay
4-bedroom apartment with unobstructed
view of Repulse Bay
淺水灣四房住宅，尊享一望無際淺水灣景觀，可租可售

2,809 s.f.
\$56,180,000 also for lease \$138,000 incl.

www.landscape.com/16094.htm | Stephen Chan 陳先生 9093 3381

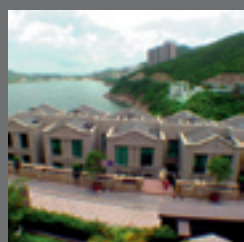


Bellevue Place 淺水灣 寶晶苑

93 Repulse Bay Road, Repulse Bay
Tastefully decorated townhouse with
excellent Repulse Bay sea view
品味設計裝修排屋連完美淺水灣海景

3,619 s.f.
(plus 455 s.f. terrace and 865 s.f. roof)
\$63,000,000

www.landscape.com/18547.htm | Mark Mak 麥先生 6838 2929



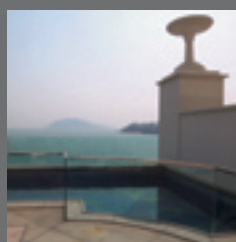
Le Palais

大潭 皇府灣

8 Pak Pat Shan Road, Tai Tam
Luxurious waterfront townhouse at
Tai Tam with excellent facilities
大潭海濱豪華排屋，連完善住客設施，可租可售

4,396 s.f. (plus 839 s.f. garden)
\$80,000,000 also for lease \$180,000 incl.

www.landscape.com/14253.htm | Sissy Li 李小姐 9642 6969

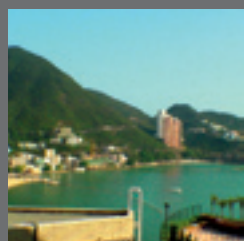


12-16 Tai Tam Road, Tai Tam 大潭 大潭道12-16號

Exclusive sea view townhouse with private
pool at Tai Tam waterfront
大潭海濱獨特海景排屋連私家泳池，可租可售

5,200 s.f. (plus 2,652 s.f. garden)
\$120,000,000 also for lease \$210,000 incl.

www.landscape.com/18498.htm | David Chan 陳先生 9238 2012



The Beachfront

淺水灣 壁池

7 Bellevue Drive, Repulse Bay
Exclusive townhouse with panoramic
sea view of Repulse Bay
淺水灣獨特排屋連無敵全海景，可租可售

3,691 s.f.
\$130,000,000 also for lease \$180,000

www.landscape.com/17928.htm | Maria Cheung 張小姐 6256 1848



Rosecliff 大潭 大潭道20號

20 Tai Tam Road, Tai Tam
Prestigious waterfront townhouse with
nice decoration
大潭著名的海濱排屋連優美裝修，可租可售

3,980 s.f.
(plus 649 s.f. garden and 1,050 s.f. roof)
\$92,000,000 also for lease \$260,000

www.landscape.com/15747.htm | Teresa Fung 馮小姐 9138 1621



Hong Kong Parkview – Tower 7 淺水灣 陽明山莊7座
88 Tai Tam Reservoir Road, Repulse Bay
 Penthouse flat with private roof and full facilities
 淺水灣頂層單位連私家天台及完善住客設施
 2,093 s.f. (plus 1,516 s.f. roof)
\$60,000 incl.

www.landscape.com/18350.htm | Cecilia Fung 馮小姐 6271 2388



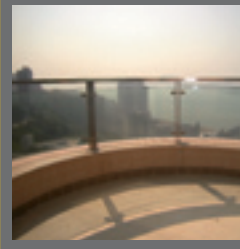
Scenic Villas
 薄扶林 美景臺
2-28 Scenic Villa Drive, Pokfulam
 Spacious 4-bedroom apartment with facilities at Pokfulam waterfront
 薄扶林海濱寬敞四房單位連住客設施，可租可售
 2,200 s.f.
\$65,000 incl. also for sale \$22,000,000

www.landscape.com/18338.htm | Yvonne Chang 鄭小姐 9088 4666



Celestial Garden
 淺水灣 詩禮花園
5 Repulse Bay Road, Repulse Bay
 Spacious 4-bedroom flat on upper Repulse Bay Road
 淺水灣道四房住宅，間隔寬敞
 2,363 s.f.
\$75,000 incl.

www.landscape.com/16101.htm | Stella Lo 羅小姐 9809 8570



Royalton II
 薄扶林 豪峰 II
116 Pokfulam Road, Pokfulam
 4-bedroom duplex penthouse with sweeping harbour view
 薄扶林四房頂層複式住宅獨享靜怡人海景，可租可售
 3,460 s.f. (plus 126 s.f. terrace)
\$75,000 also for sale \$35,000,000

www.landscape.com/18203.htm | Christine Chong 莊小姐 9648 6082



Hong Kong Parkview – Tower 18 淺水灣 陽明山莊18座
88 Tai Tam Reservoir Road, Repulse Bay
 Newly renovated 3-ensuite sea view flat with excellent facilities
 全新裝修三套房海景住宅連完善住客設施
 2,570 s.f.
\$88,000 incl.

www.landscape.com/18630.htm | Sissy Li 李小姐 9642 6969



Repulse Bay Towers
 淺水灣 保華大廈
119A Repulse Bay Road, Repulse Bay
 Effective duplex overlooking Repulse Bay Beach
 時尚設計四房複式住宅，尊享淺水灣海灘景觀
 3,100 s.f.
\$90,000 incl.

www.landscape.com/15536.htm | Mira To 杜小姐 9486 1566



Joy Garden
 壽星山 曉穎花園
13 Shouson Hill Road West, Shouson Hill
 An elegant 4-bedroom duplex apartment with private garden
 雅緻精美四房複式單位連私家花園
 3,334 s.f. (plus 560 s.f. garden)
\$93,000 incl.

www.landscape.com/17483.htm | Cecilia Fung 馮小姐 6271 2388



Mount Davis Village 薄扶林 摩星嶺道 6及10號
6 & 10 Mount Davis Road, Pokfulam
 Practical townhouse enjoying beautiful sea view and green view
 薄扶林海景及翠綠園景排屋，間隔實用，可租可售
 2,625 s.f.
 (plus 747 s.f. roof and 600 s.f. garden)
\$100,000 incl. also for sale \$65,000,000

www.landscape.com/18515.htm | Christine Chong 莊小姐 9648 6082




The Hacienda
 淺水灣 海堤花園
90 Repulse Bay Road, Repulse Bay
 4-bedroom sea view duplex apartment with private garden
 四房海景複式住宅連私家花園
 2,962 s.f. (plus 654 s.f. garden)
\$108,000 incl.

www.landscape.com/17907.htm | David Chan 陳先生 9238 2012



Monte Verde
 淺水灣 南山別墅
41 Repulse Bay Road, Repulse Bay
 An elegant apartment rarely for rent with unblocked sea view
 雅緻精美住宅獨享一望無際海景，罕有放租
 2,400 s.f.
\$110,000

www.landscape.com/18545.htm | Sami Woo 胡小姐 9493 8275



The Somerset
 淺水灣 怡峰
67 Repulse Bay Road, Repulse Bay
 Rare find Repulse Bay duplex apartment with sea view
 罕有淺水灣複式海景住宅
 3,099 s.f.
\$120,000 incl.

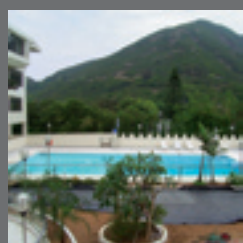
www.landscape.com/14674.htm | Walker Lam 林先生 9551 1077



Carriana Sassoon
 薄扶林 沙宣道41號
41 Sassoon Road, Pokfulam
 5-bedroom townhouse with private garage
 薄扶林五房排屋連私家車房
 3,500 s.f.
 (plus 836 s.f. terrace and 514 s.f. garden)
\$130,000 incl.

www.landscape.com/15486.htm | Yvonne Chang 鄭小姐 9088 4666

SOUTHSIDE LEASE



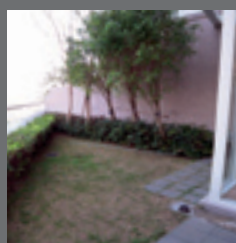
Stanley Knoll

赤柱 赤柱山莊

42 Stanley Village Road, Stanley
Rare find low-rise flat with tennis court and pool in quiet enclave
罕有低密度住宅，連網球場及泳池，環境清幽怡人
2,707 s.f. (plus 714 s.f. roof)
\$130,000

www.landscape.com/18287.htm

Maria Cheung 張小姐 6256 1848

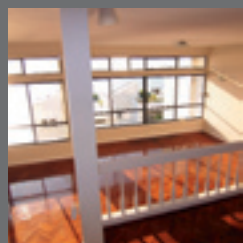


33 Cape Road, Chung Hom Kok

春坎角 環角道33號
Boutique 3-bedroom townhouse with sea view in prime and quiet location
雅致三房排屋連海景，位置優越環境寧靜，可租可售
3,230 s.f.
(plus 538 s.f. roof and 497 s.f. garden)
\$150,000 also for sale \$55,700,000

www.landscape.com/18311.htm

Yvonne Chang 鄭小姐 9088 4666



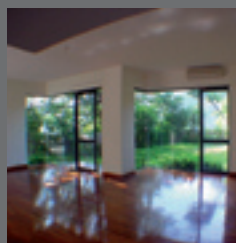
Coral Villas

春坎角 珊瑚小築

27 Horizon Drive, Chung Hom Kok
Exquisite townhouse with peaceful sea view
春坎角精緻排屋連寧靜海景
3,345 s.f.
\$160,000

www.landscape.com/9415.htm

Maria Cheung 張小姐 6256 1848



Helene Court

壽臣山 喜蓮閣

14 Shouson Hill Road, Shouson Hill
5-bedroom townhouse with private garden in serene location
五房排屋連私家花園，環境清幽怡人
3,555 s.f.
\$168,000

www.landscape.com/18218.htm

Carman Szeto 司徒小姐 6183 8339



63 Deep Water Bay Road, Deep Water Bay

深水灣 深水灣道63號

Newly re-decorated house with facilities in serene location
全新裝修大屋連住客設施，位於寧靜地段
3,362 s.f.
\$180,000

www.landscape.com/18549.htm

Teresa Fung 馮小姐 9138 1621



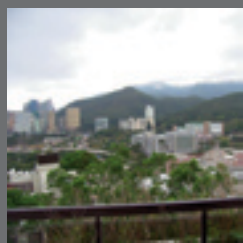
5 Headland Road, Repulse Bay

淺水灣 赫蘭道5號
Rare find low-rise 4-bedroom garden flat with sea view in gated neighbourhood
罕有低密度四房連花園住宅，享無敵海景，鄰近公路交通方便

3,200 s.f. (plus 2,138 s.f. garden)
\$180,000

www.landscape.com/18604.htm

Louis Wong 黃先生 9871 6828



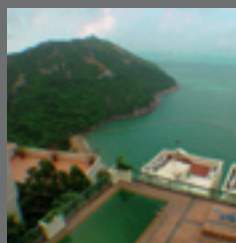
Evergreen Garden

壽臣山 松柏花園

18 Shouson Hill Road, Shouson Hill
Spacious 5-bedroom apartment with brand new decoration and lush green view
寬敞五房住宅全新裝修，獨享翠綠園景
3,800 s.f. (plus 998 s.f. terrace)
\$198,000 incl.

www.landscape.com/18601.htm

Carman Szeto 司徒小姐 6183 8339



Ocean Bay 春坎角 海天徑15-17號

15-17 Horizon Drive, Chung Hom Kok
4-ensuite waterfront house with private roof and pool
春坎角海濱四套房大屋連私家天台及泳池

3,690 s.f.
(plus 942 s.f. roof and 2,580 s.f. garden)
\$200,000

www.landscape.com/15565.htm

Louis Wong 黃先生 9871 6828



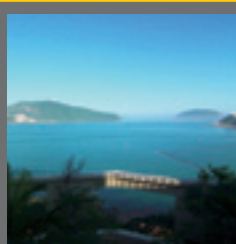
Carmelia

赤柱 赤柱村道60號

60 Stanley Village Road, Stanley
Rare find huge colonial house with front yard and private garden
罕有巨型英式大屋連前院及私家花園
5,200 s.f. (plus 1,891 s.f. garden)
\$230,000 incl.

www.landscape.com/8783.htm

Louis Wong 黃先生 9871 6828



Three Bays

赤柱 赤柱灘道7號

7 Stanley Beach Road, Stanley
Luxuriously decorated townhouse with stunning sea view
豪華裝修排屋連優美海景

3,960 s.f.
\$280,000 incl.

www.landscape.com/18413.htm

Louis Wong 黃先生 9871 6828

MID-LEVELS SALES



Well View Villa

東半山 瑩景閣

17 Tung Shan Terrace, Midlevels East
3-bedroom low-rise with 2 car parks in convenient location
東半山低密度三房單位連兩車位，交通方便
1,037 s.f.
\$7,200,000 SOLE AGENT 獨家代理

www.landscape.com/15915.htm

David Chan 陳先生 9238 2012



Caroline Height

跑馬地 嘉蘭閣

1 Link Road, Happy Valley
Spacious 3-bedroom flat with car park on fringe of Causeway Bay
寬敞三房住宅連車位，鄰近銅鑼灣交通方便
1,052 s.f.
\$7,600,000 SOLE AGENT 獨家代理

www.landscape.com/15974.htm

Carman Szeto 司徒小姐 6183 8339



Wah Chi Mansion
跑馬地 華芝大廈
18 Shan Kwong Road, Happy Valley
Spacious high-ceilinged 3-bedroom apartment in tranquil location
寬敞三房高樓底住宅，環境寧靜，可租可售
1,550 s.f.
\$9,500,000 also for lease \$36,000 incl.

www.landscape.com/17618.htm Walker Lam 林先生 9551 1077



The Grand Panorama II
西半山 嘉兆臺 II
10 Robinson Road, Midlevels West
Nicely decorated apartment enjoying Victoria Harbour view
西半山良好裝修住宅，尊享維港景觀
1,269 s.f.
\$12,000,000

www.landscape.com/18358.htm Eric Wong 黃先生 9740 3396



Greenville Gardens 東半山 嘉苑
16-17 Shiu Fai Terrace, Midlevels East
Spacious racecourse view apartment on fringe of Causeway Bay
東半山開揚廣闊馬場景住宅，鄰近銅鑼灣，購物玩樂十分方便
1,462 s.f.
\$12,000,000

www.landscape.com/18497.htm Rowena Siu 蕭小姐 9348 4118



Yun On Terrace
跑馬地 仁安台
135 Blue Pool Road, Happy Valley
Nicely decorated mid-rise flat in upper Happy Valley
跑馬地中密度住宅配以良好裝修
1,350 s.f.
\$13,500,000

www.landscape.com/17926.htm Walker Lam 林先生 9551 1077



Mirror Marina
西半山 鑑波樓
47 Conduit Road, Midlevels West
Practical apartment in quiet location with 4 bedrooms
西半山四房單位，間隔實用，環境清幽怡人
1,900 s.f.
\$13,800,000

www.landscape.com/18228.htm Teresa Lau 劉小姐 9080 6686



Billion Terrace
跑馬地 千葉居
137-139 Blue Pool Road, Happy Valley
Charming decorated duplex with private terrace
迷人裝修複式單位連私家平台
1,663 s.f. (plus 1,027 s.f. roof)
\$16,500,000

www.landscape.com/13679.htm Walker Lam 林先生 9551 1077



Beauty Court
西半山 雅苑
82 Robinson Road, Midlevels West
Harbour view flat with practical layout on Robinson Road
羅便臣道維港景中層單位雅裝，間隔寬敞實用，可租可售
1,771 s.f.
\$16,800,000 also for lease \$50,000 incl.

www.landscape.com/18014.htm Stella Lo 羅小姐 9809 8570



Shuk Yuen Building
跑馬地 菽園新臺
2 Green Lane, Happy Valley
Low-rise apartment with green view in quiet neighbourhood
低密度翠綠園景住宅，環境寧靜怡人，可租可售
1,900 s.f.
\$17,000,000 also for lease \$55,000 incl.

www.landscape.com/15992.htm Walker Lam 林先生 9551 1077



Cavendish Heights
渣甸山 嘉雲臺
27-37 Perkins Road, Jardine's Lookout
Well known development with good layout and clubhouse facilities
出名的發展區連住客會所設施，間隔實用
1,907 s.f.
\$19,500,000

www.landscape.com/18614.htm Sissy Li 李小姐 9642 6969



9 Broom Road, Happy Valley 跑馬地 蟠龍道9號
Stylish low-rise flat with large private roof terrace in quiet Broom Road
時尚設計低密度住宅連巨型私家天台，位於寧靜的蟠龍道
2,100 s.f. (plus 1,216 s.f. roof)
\$20,000,000

www.landscape.com/10184.htm Rowena Siu 蕭小姐 9348 4118



Savoy Court
西半山 夏蕙苑
101 Robinson Road, Midlevels West
Practical 4-bedroom flat with new decoration
全新裝修四房單位，間隔實用，可租可售
2,546 s.f.
\$20,000,000 also for lease \$75,000 incl.

www.landscape.com/17953.htm Mark Mak 麥先生 6838 2929



Birchwood Place
中半山 寶樺臺
96 Macdonnell Road, Midlevels Central
Popular family flat on Macdonnell Road with excellent facilities
麥當勞道受歡迎家庭式住宅連完善住客設施
2,018 s.f.
\$21,000,000

www.landscape.com/14941.htm Eric Wong 黃先生 9740 3396

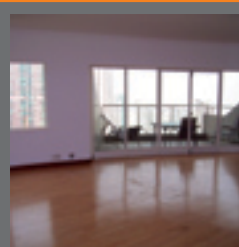
MID-LEVELS SALES



Jardine's Lookout Garden Mansion 東半山 渣甸山花園大廈

148-150 Tai Hang Road, Midlevels East
Large older-style flat with full view of Hong Kong Stadium
大型古典式設計住宅，獨享香港大球場景觀
2,500 s.f.
\$25,000,000

www.landscape.com/16305.htm | Cecilia Fung 馮小姐 6271 2388



Century Tower I 中半山 世紀大廈一座

1 Tregunter Path, Midlevels Central
Stylish apartment with large balcony on high floor
品味設計裝修高層單位連巨型陽臺
2,565 s.f.
\$26,000,000

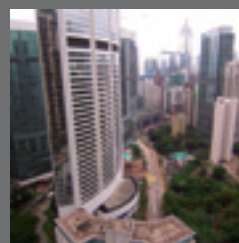
www.landscape.com/13344.htm | Stella Lo 羅小姐 9809 8570



14-20 Wilson Road, Jardine's Lookout

渣甸山 衛信道14-20號
Rare find colonial low-rise apartment in tranquil location
傳統渣甸山英式低密度住宅，地段尊貴，市場罕有
2,200 s.f.
\$26,000,000

www.landscape.com/16771.htm | Stephen Chan 陳先生 9093 3381



Regent on the Park 中半山 御花園

9A Kennedy Road, Midlevels Central
Prestigious apartment with metropolitan view on fringe of Central
中半山有名望尊貴住宅，鄰近中環，交通方便
2,720 s.f.
\$28,000,000

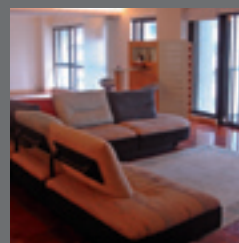
www.landscape.com/18133.htm | Stephen Chan 陳先生 9093 3381



Dynasty Court 中半山 帝景園

23 Old Peak Road, Midlevels Central
Luxurious 3-bedroom apartment in prime location
豪華三房住宅，位於中半山尊貴地段，可租可售
1,981 s.f.
\$30,000,000 also for lease \$57,000 incl.

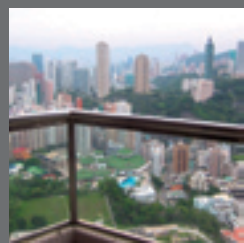
www.landscape.com/18102.htm | Sissy Li 李小姐 9642 6969



Estoril Court 中半山 愛都大廈

55 Garden Road, Midlevels Central
Huge apartment with high efficiency on fringe of Central
中半山巨型住宅，鄰近中環交通方便
3,347 s.f.
\$32,500,000

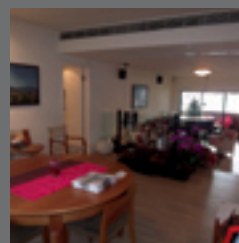
www.landscape.com/13041.htm | Christine Chong 莊小姐 9648 6082



Nicholson Tower 東半山 蔚豪苑

8 Wong Nai Chung Gap Road, Midlevels East
Popular family apartment with racecourse view
受歡迎家庭式住宅，享開揚馬場景，可租可售
1,993 s.f.
\$35,000,000 also for lease \$75,000 incl.

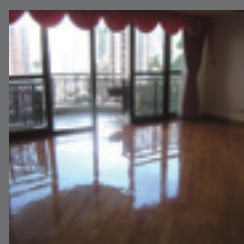
www.landscape.com/10830.htm | Stephen Chan 陳先生 9093 3381



Garden Terrace 2 & 3 中半山 花園臺2 & 3座

8A Old Peak Road, Midlevels Central
Rare find 4-ensuite apartment can park up to 5 cars
罕有四套房單位連五個車位
3,009 s.f.
\$37,800,000

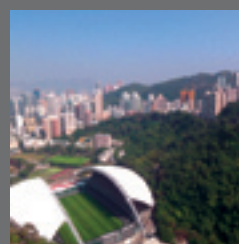
www.landscape.com/13651.htm | Stella Lo 羅小姐 9809 8570



Clovelly Court 中半山 嘉富麗苑

12 May Road, Midlevels Central
High efficiency practical 4-bedroom flat in prime location
間隔實用四房單位，位於中半山尊貴地段
2,809 s.f.
\$40,000,000

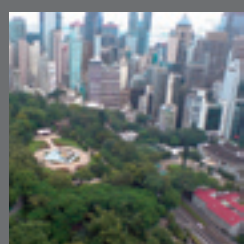
www.landscape.com/16886.htm | Sissy Li 李小姐 9642 6969



Broadview Villa 跑馬地 樂景園

20 Broadwood Road, Happy Valley
Huge apartment with nice decor overlooking the Hong Kong Stadium
良好裝修巨型住宅，尊享香港大球場景觀
3,134 s.f.
\$42,000,000

www.landscape.com/18439.htm | Stephen Chan 陳先生 9093 3381



Kennedy Heights 中半山 堅麗閣

10-18 Kennedy Road, Midlevels Central
Large 5-bedroom apartment with 2 car parks and magnificent view of Central
大型五房單位連雙車位，尊享高尚的中環景觀
3,400 s.f.
\$50,000,000

www.landscape.com/18039.htm | Stella Lo 羅小姐 9809 8570



Century Tower II 中半山 世紀大廈二座

1A Tregunter Path, Midlevels Central
Prestigious 4-bedroom whole floor apartment with high privacy
豪華四房單位，私隱度高
3,663 s.f.
\$50,000,000

www.landscape.com/17274.htm | Eric Wong 黃先生 9740 3396

MID-LEVELS SALES

半山
出售



Bowen Place
中半山 寶雲閣
11A Bowen Road, Midlevels Central
Victoria Harbour view duplex with roof garden in quiet location
全維港景複式住宅，連天台花園，環境寧靜
3,621 s.f. (plus 184 s.f. terrace)
\$55,000,000

www.landscope.com/15241.htm | Teresa Lau 劉小姐 9080 6686



Grenville House 中半山 嘉慧園
1, 3 & 3A Magazine Gap Road, Midlevels Central
Renowned huge apartment with 4 spacious bedrooms
華麗巨型四房住宅，間隔寬敞
3,700 s.f.
\$60,000,000

www.landscope.com/18141.htm | Mira To 杜小姐 9486 1566



Valverde
中半山 蔚皇居
11 May Road, Midlevels Central
Deluxe duplex penthouse with private roof
中半山豪華頂層複式單位連私家天台，可租可售
3,668 s.f. (plus 525 s.f. roof)
\$65,000,000 also for lease \$180,000 incl.

www.landscope.com/18692.htm | Mark Mak 麥先生 6838 2929



Perkins Road, Jardine's Lookout 渣甸山 白建時道
Highly sought after single detached house in Jardine's Lookout
渣甸山罕有獨立屋，市面難求
3,800 s.f.
(plus 352 s.f. roof and 800 s.f. garden)
\$100,000,000

www.landscope.com/15593.htm | Mark Mak 麥先生 6838 2929

MID-LEVELS LEASE

半山
出租



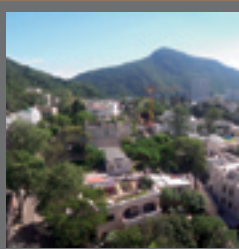
4A-4D Wang Fung Terrace, Midlevels East
東半山 宏豐臺4A-4D號
Quiet low-rise 3-bedroom flat in Wang Fung Terrace
宏豐臺低密度三房單位，環境清幽寧靜
1,750 s.f.
\$38,000

www.landscope.com/18569.htm | Sissy Li 李小姐 9642 6969



31 Robinson Road, Midlevels West
西半山 羅便臣道31號
Brand new flat on Robinson Road with facilities
羅便臣道全新住宅連住客設施，可租可售
1,342 s.f.
\$48,000 incl. also for sale \$16,800,000

www.landscope.com/16462.htm | Mira To 杜小姐 9486 1566



Monterey Court
渣甸山 松園
47-49 Perkins Road, Jardine's Lookout
Practical 3-bedroom apartment with facilities in Jardine's Lookout
渣甸山三房單位連住客設施，間隔實用
1,788 s.f.
\$55,000

www.landscope.com/6064.htm | Walker Lam 林先生 9551 1077



Butler Tower
渣甸山 柏麗園
1-5 Boyce Road, Jardine's Lookout
Older style apartment in prime location of Jardine's Lookout
古典設計住宅，位於尊貴渣甸山地段，可租可售
1,650 s.f.
\$65,000 incl. also for sale \$21,000,000

www.landscope.com/18507.htm | Eric Wong 黃先生 9740 3396



5G Bowen Road, Midlevels Central
中半山 寶雲道5G號
Low-rise apartment in tranquility area
傳統中半山低密度住宅，位處尊貴地段，可租可售
1,400 s.f. (plus 3,000 s.f. roof)
\$65,000 incl. also for sale \$22,000,000

www.landscope.com/18603.htm | Sami Woo 胡小姐 9493 8275



View Mansion
中半山 景雲大廈
5L-5P Bowen Road, Midlevels Central
3-bedroom colonial style apartment on fringe of Central
中半山三房英式住宅，鄰近中環購物玩樂皆十分方便
1,800 s.f.
\$67,000

www.landscope.com/17123.htm | Mira To 杜小姐 9486 1566



Fairlane Tower
中半山 寶雲山莊
2B Bowen Road, Midlevels Central
Luxurious apartment on serene Bowen Road
寶雲道豪華住宅，環境寧靜，清幽怡人
1,744 s.f.
\$72,500 incl.

www.landscope.com/14168.htm | Mira To 杜小姐 9486 1566



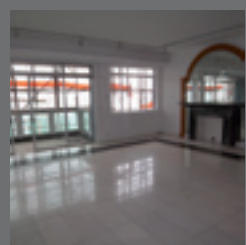
Bowen Place
中半山 寶雲閣
11A Bowen Road, Midlevels Central
Rare find harbour view apartment on Bowen Road
寶雲道海景住宅，市場罕有
1,927 s.f.
\$78,000 incl.

www.landscope.com/11164.htm | Mira To 杜小姐 9486 1566

For more listings, please go to www.landscope.com/sale

For more listings, please go to www.landscope.com/lease

MID-LEVELS LEASE



Rose Gardens

中半山 玫瑰別墅

9 Magazine Gap Road, Midlevels Central
Classic luxury 3-bedroom apartment on Magazine Gap Road

馬己仙峽道豪華古典設計三房單位，地段尊貴

2,600 s.f.

\$85,000 incl.

www.landscape.com/10487.htm

Mira To 杜小姐 9486 1566



Piccadilly Mansion

西半山 碧苑

4-6 Po Shan Road, Midlevels West
Newly renovated spacious 4-bedroom apartment with harbour view
全新裝修四房單位連維港景，間隔寬敞

2,800 s.f.

\$88,000 incl.

www.landscape.com/18177.htm

Yvonne Chang 鄭小姐 9088 4666



May Tower 1

中半山 梅苑一座

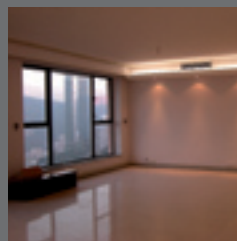
7 May Road, Midlevels Central
Colonial style harbour view duplex in prime location
英式維港景複式住宅，位於中半山尊貴地段

2,850 s.f.

\$85,000 incl.

www.landscape.com/18483.htm

Carman Szeto 司徒小姐 6183 8339



Jade House

東半山 寶璧大廈

47C Stubbs Road, Midlevels East
Huge 4-bedroom apartment on Stubbs Road with Victoria Harbour view and nice decor
司徒拔道巨型四房單位連維港景觀裝修

2,700 s.f.

\$95,000 incl.

www.landscape.com/18550.htm

Teresa Lau 劉小姐 9080 6686



Century Tower II

中半山 世紀大廈 2座

1A Tregunter Path, Midlevels Central
Prestigious large 4-bedroom flat with high privacy
中半山豪華四房單位，私隱度高，可租可售

3,638 s.f.

\$120,000 incl. also for sale \$55,000,000

www.landscape.com/16669.htm

Yvonne Chang 鄭小姐 9088 4666



The Albany

中半山 雅賓利大廈

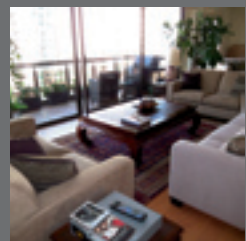
1 Albany Road, Midlevels Central
Newly renovated duplex apartment on fringe of Central
全新裝修複式住宅，鄰近中環交通方便

3,563 s.f.

\$130,000 incl.

www.landscape.com/14475.htm

Teresa Lau 劉小姐 9080 6686



Magazine Court 中半山 澄碧閣

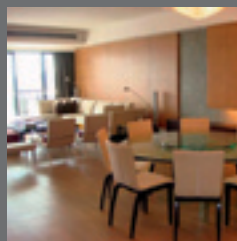
5-7 Magazine Gap Road, Midlevels Central
Sought after 4-bedroom apartment on Magazine Gap Road with stunning harbour view
馬己仙峽道環迴維港景四房住宅，市面難求

3,300 s.f.

\$138,000 incl.

www.landscape.com/18139.htm

Carman Szeto 司徒小姐 6183 8339



Clovelly Court

中半山 嘉富麗苑

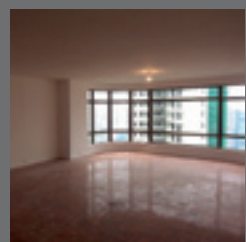
12 May Road, Midlevels Central
Nicely decorated 4-bedroom apartment in family development
中半山良好裝修家庭式四房單位，可租可售

2,809 s.f.

\$150,000 incl. also for sale \$47,500,000

www.landscape.com/17161.htm

Stephen Chan 陳先生 9093 3381



Eva Court

中半山 惠園

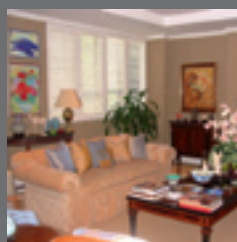
36 Macdonnell Road, Midlevels Central
Rare find huge apartment close to Central
中半山罕有巨型住宅，鄰近中環交通方便

4,500 s.f.

\$170,000

www.landscape.com/11270.htm

Sami Woo 胡小姐 9493 8275



Grenville House 中半山 嘉慧園

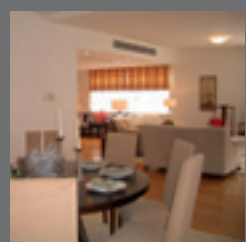
1, 3 & 3A Magazine Gap Road, Midlevels Central
Huge 6-bedroom duplex on fringe of Central
巨型六房複式單位，鄰近中環，購物玩樂十分方便

6,800 s.f.

\$170,000

www.landscape.com/18055.htm

Christine Chong 莊小姐 9648 6082



Tregunter Tower 2

中半山 地利根德閣2座

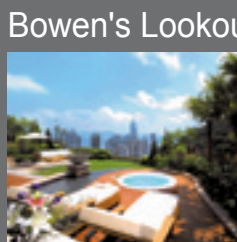
14 Tregunter Path, Midlevels Central
Spacious 4-ensuite penthouse with private roof in well planned development
間隔寬敞四套房頂層單位連私家天台，屋苑管理完善

6,100 s.f. (plus 1,100 s.f. roof)

\$190,000

www.landscape.com/18594.htm

Eric Wong 黃先生 9740 3396



Bowen's Lookout 中半山 寶雲道13號

13 Bowen Road, Midlevels Central
Brand new extravagant duplex penthouse with harbour view
全新豪華複式頂層住宅連維港景

4,050 s.f.

(plus 619 s.f. roof and 619 s.f. garden)

\$248,000 incl.

www.landscape.com/2980.htm

Eric Wong 黃先生 9740 3396



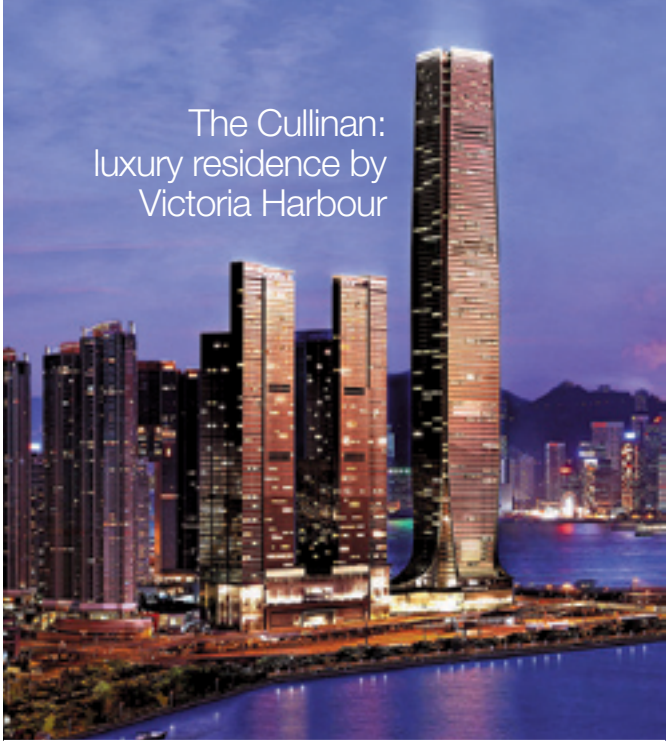
Villa Verde
山頂 環翠園
4-18 Guildford Road, The Peak
Spacious practical 2-bedroom apartment at lower Peak
山頂寬敞兩房住宅，間隔實用，可租可售
1,505 s.f.
\$24,000,000 also for lease \$65,000 incl.
www.landscope.com/14164.htm | Maria Cheung 張小姐 6256 1848



Guildford Garden
山頂 喬苑
1-3 Mansfield Road, The Peak
Lower Peak 4-bedroom flat with spacious practical layout
山頂寬敞四房住宅，間隔實用
2,400 s.f.
\$35,000,000
www.landscope.com/14486.htm | David Leung 梁先生 9199 0672



26 Magazine Gap Road, The Peak 山頂 馬己仙峽道26號
Rare find colonial apartment on Magazine Gap Road with harbour view
罕有馬己仙峽道英式住宅，連維港景
2,400 s.f.
\$40,000,000
www.landscope.com/1260.htm | Louis Wong 黃先生 9871 6828



The Cullinan:
luxury residence by
Victoria Harbour

**The Key provides the key access
to this ultimate Jewel of the Crown**

Speak to the
KeyPersons now.

Christine Chong	9648 6082
David Chan	9238 2012
David Leung	9199 0672
Mark Mak	6838 2929



La Hacienda – Apartment
山頂 加列山道29-33號
29-33 Mount Kellett Road, The Peak
Rare colonial style high-ceilinged apartment overlooking turf garden
英式高樓低住宅，尊享翠綠園景，可租可售
3,100 s.f.
\$52,000,000 also for lease \$130,000 incl.
www.landscope.com/18009.htm | David Leung 梁先生 9199 0672



Overthorpe
山頂 豐林閣
24-28 Mount Austin Road, The Peak
Peak townhouse in exclusive location with nice decorations
山頂獨特排屋，連良好裝修
2,502 s.f. (plus 1,624 s.f. garden)
\$80,000,000
www.landscope.com/16096.htm | Mark Mak 麥先生 6838 2929



Montebello
山頂 濠景閣
15-17 Plantation Road, The Peak
Newly furnished penthouse with private roof on The Peak
山頂頂層單位，配全新傢俬及私家天台，可租可售
3,140 s.f. (plus 2,129 s.f. roof)
\$53,000,000 also for lease \$150,000 incl.
www.landscope.com/5851.htm | David Leung 梁先生 9199 0672



62-70 Black's Link, The Peak 山頂 布力徑62-70號
Detached garden house with fantastic sea view on The Peak
山頂獨立花園大屋連無敵海景，地段尊貴
4,000 s.f. (plus 5,700 s.f. garden)
\$160,000,000
www.landscope.com/18215.htm | Teresa Fung 馮小姐 9138 1621



1-9 Rosmead Road, The Peak 山頂 樂善美道1-9號
Rare find garden house on The Peak
山頂罕有花園大屋
5,887 s.f.
(plus 2,228 s.f. terrace and 1,955 s.f. garden)
\$230,000,000
www.landscope.com/14409.htm | David Chan 陳先生 9238 2012



Abergeldie 山頂 種植道52號
52 Plantation Road, The Peak
Newly renovated townhouse with pool overlooking Victoria Harbour panorama
山頂全新裝修排屋連泳池，尊享廣闊維港景觀
3,688 s.f.
(plus 313 s.f. terrace and 759 s.f. garden)
Open Offer
www.landscope.com/18449.htm | David Leung 梁先生 9199 0672

THE PEAK LEASE



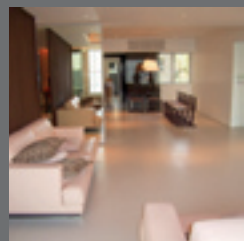
26 Magazine Gap Road, The Peak 山頂 馬己仙峽道26號
Colonial apartment on Magazine Gap Road with excellent Victoria Harbour view
馬己仙峽道英式住宅連優美維港景觀，可租可售
2,400 s.f.
\$70,000 incl. also for sale \$40,000,000

www.landscape.com/18509.htm | Carman Szeto 司徒小姐 6183 8339



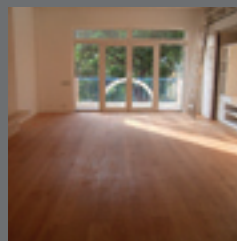
43 Barker Road, The Peak 山頂 白加道43號
Modern mid-rise apartment on Barker Road with Victoria Harbour view
白加道時尚中密度住宅連維港景觀
1,946 s.f.
\$75,000 incl.

www.landscape.com/18484.htm | Sami Woo 胡小姐 9493 8275



Carolina Garden 山頂 嘉樂園
20-34 Coombe Road, The Peak
Rare find colonial apartment with newly renovation and nice deco in prestigious location
罕有山頂英式住宅優美裝修，位處尊貴地段
2,350 s.f.
\$90,000

www.landscape.com/9599.htm | Teresa Lau 劉小姐 9080 6686



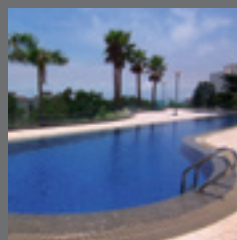
Stewart Terrace 山頂 史釗域臺
81-95 Peak Road, The Peak
Colonial low-rise apartment with nice decor on The Peak
山頂低密度英式住宅，連雅緻裝修，可租可售
3,077 s.f.
\$118,000 also for sale Open Offer

www.landscape.com/18444.htm | Teresa Fung 馮小姐 9138 1621



La Hacienda – Apartment 山頂 加列山道29-33號
29-33 Mount Kellett Road, The Peak
Spacious colonial apartment with new decor
山頂全新裝修寬敞英式住宅
3,506 s.f.
\$125,000 incl.

www.landscape.com/9922.htm | Teresa Fung 馮小姐 9138 1621



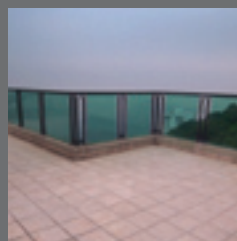
1-3 Homestead Road, The Peak 山頂 堪仕達道1-3號
Luxurious modern 3-ensuite apartment on The Peak with Southside sea view
山頂豪華時尚三套房單位，尊享南區海景
2,828 s.f.
\$130,000

www.landscape.com/18568.htm | Louis Wong 黃先生 9871 6828



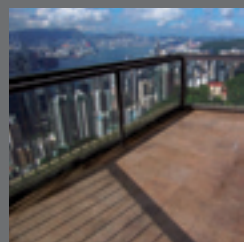
Cloud Nine 山頂 九雲居
9 Plunkett's Road, The Peak
Bright and airy colonial apartment with huge terrace and balcony
廣闊開揚英式住宅連巨型平台及陽臺
2,719 s.f. (plus 980 s.f. terrace)
\$130,000

www.landscape.com/18610.htm | Sami Woo 胡小姐 9493 8275



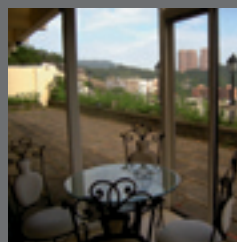
74 Mount Kellett Road, The Peak 山頂 加列山道74號
3-ensuite townhouse with sea and hill view on The Peak
山頂三套房排屋連海景及翠綠園景
4,200 s.f.
(plus 677 s.f. roof and 2,207 s.f. garden)
\$185,000 incl.

www.landscape.com/10636.htm | Sami Woo 胡小姐 9493 8275



Altadena 山頂 白加道27號
27 Barker Road, The Peak
Rare find duplex penthouse with unobstructed harbour view
罕有頂層複式單位獨享一望無際維港景
4,500 s.f. (plus 1,435 s.f. roof)
\$230,000

www.landscape.com/11910.htm | David Leung 梁先生 9199 0672



62-70 Black's Link, The Peak 山頂 布力徑62至70號
Rare find detached house with huge garden overlooking Deep Water Bay
山頂獨立大屋連巨型花園，配廣闊深水灣景觀，市面難尋
3,681 s.f.
(plus 1,044 s.f. roof and 5,844 s.f. garden)
\$280,000 incl.

www.landscape.com/17586.htm | Yvonne Chang 鄭小姐 9088 4666



Landscape Realty Limited C-018733
a member of Landscape Surveyors Ltd

Tel: 852-2866 0022 Fax: 852-2866 0015
Email: info@landscape.com Website: www.landscape.com
Unit 3106, 31/F, Hopewell Centre,
183 Queen's Road East, Wanchai, Hong Kong

The information, text, photos, analyses and projections contained herein are provided solely for the convenience of prospective clients and no warranty or representation as to their accuracy, correctness or completeness is made by Landscape Surveyors Limited, Landscape Realty Limited or the owners, none of whom shall have any liability or obligation with respect thereto. Interested parties should rely on their own investigations, interpretations and analyses in connection with the purchase or letting thereof.

Information has been provided to us by sources deemed reliable, but no warranty or representation is made as to its accuracy, correctness or completeness. These offerings are made subject to contract, correction of errors, omissions, prior sale or lease, change of price or terms or withdrawal from the market without notice. The contents of The Key are for reference only and do not constitute all or any part of a contract.

Copyright 2009