

select deluxe homes

The Key

大宅®

MARCH 2008
Volume 42

published and distributed by

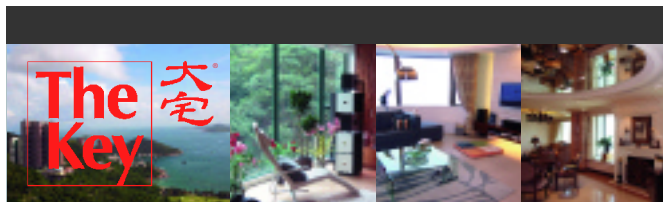
LANDSCOPE
The Specialists in Luxury Properties

領域



RAISING THE ROOF

www.landscape.com



KeyNotes

Lay not up for yourselves treasures upon earth, where moth and rust doth corrupt, and where thieves break through and steal; but lay up for yourselves treasures in heaven.

Matthew 6:19-20

The government will release its financial budget soon and will likely dish out generous goodies to the public including individuals and corporations. This will certainly add fuel to the consumer market and investment market. Real estate will definitely be a main target for investors looking for opportunities. Last year, the market had witnessed its lowest annual supply of residential units in the last 36 years; and the supply in 2008 and 2009 will not have substantial growth due to the fact that very limited land was released to the market in the last four years. So the scene is set for another property rally. The top end properties are now priced at 150% to 200% of their 1997 (the last peak) values, whereas the small flats are only 60% to 70% of their 1997 values. With a healthy and growing economy and a negative interest rate environment, small flats are set for a significant rise this year.

Koh Keng-shing
ks-koh@landscape.com

(The above is an excerpt from Market Watch on www.landscape.com. For the full article, please log on to www.landscape.com/m0308.htm)

About The Key

The Key is a monthly publication of sales and letting listings of luxury residential properties on Hong Kong Island. It is sent to VIP clients of Landscape Realty and residents of The Peak, Southside, Mid-Levels, Kowloon Tong, Homantin and selected upmarket residential areas in Shatin, Tai Po, Clear Water Bay and Castle Peak Road. The recipients comprise the crème de la crème of Hong Kong's affluent community.

In addition to The Key, Landscape Realty sends weekly eNewsletters to clients on most update listings of luxury properties. If you wish to receive the eNewsletter, please call Loretta Lui at 3102 4818 or email to info@landscape.com.

How may you list your property with The Key?

If you would like to see your property listed in The Key in the next issue, you may call Loretta Lui at 3102 4818 or email to info@landscape.com. Or you may simply fill out the space below and fax to us at 2866 0015.

Property to be listed

Asking Rental / Sale Price

Floor Area

Contact Person

Telephone

Email

Our KeyPersons will contact you for follow-up works.

THE PEAK SALES

山頂
出售



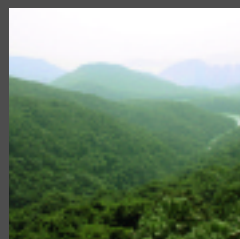
Guildford Garden

山頂 喬苑

1-3 Mansfield Road, The Peak
Lower Peak apartment in quiet neighbourhood with easy access to Central
下山頂段物業，環境清靜，中環近在咫尺

2,400 s.f.
\$39,000,000 also for lease \$110,000

www.landscape.com/13502.htm | Mark Mak 麥先生 6838 2929



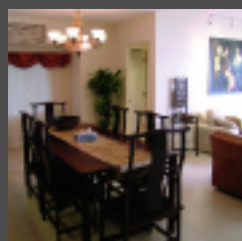
Carolina Garden

山頂嘉樂園

20-34 Coombe Road, The Peak
Rare colonial apartment in prestigious location
罕有英式單位，尊貴地段

2,350 s.f.
\$48,000,000

www.landscape.com/12308.htm | David Leung 梁先生 9199 0672



Montebello

山頂 濠景閣

15-17 Plantation Road, The Peak
Duplex apartment with fantastic sea view
複式單位享醉人海景

3,050 s.f.
\$60,000,000

www.landscape.com/5854.htm | David Leung 梁先生 9199 0672



La Hacienda - Apartment

山頂加列山道29-33號

29-33 Mount Kellett Road, The Peak
Rare colonial apartment at the Peak
罕有山頂英式住宅

3,100 s.f.
\$65,000,000

www.landscape.com/12453.htm | David Leung 梁先生 9199 0672



Peak Garden

山頂 山頂花園

16-20 Mount Austin Road, The Peak
Exclusive Peak apartment with a bird's eye view of Victoria Harbour
獨特山頂住宅，鳥瞰維港

2,655 s.f.
\$78,000,000

www.landscape.com/13923.htm | Simon Yung 翁先生 9418 5743



La Hacienda - Townhouse

山頂加列山道29-33號

29-33 Mount Kellett Road, The Peak
Garden house with fantastic sea view
花園洋房享無敵海景

3,200 s.f.
\$100,000,000

Simon Lee 李先生 6014 3712

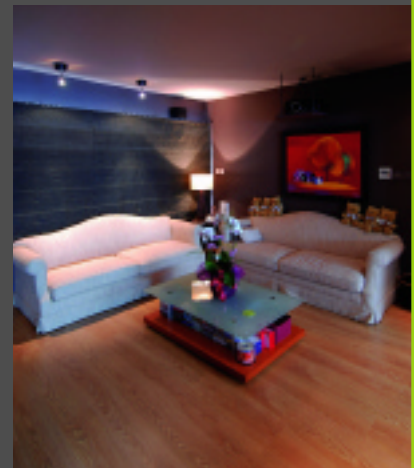


RAISING THE ROOF

This converted duplex apartment perched high on Mount Kellett takes in the stunning views of the magnificent Peak, the verdant Aberdeen Country Park and the deep blue South China Sea beyond. The two original apartments have been connected by an artistic stairway in the middle, and the ceiling of the lower unit is punched to make way for a large sky garden with double ceiling height, which evokes a leisurely tropical ambience with an adorable contrast to the clean-lined simple elegance of the living room. A fitness room, a band room and two large en suite bedrooms are also located on this lower level. Upstairs are a well appointed kitchen, a formal dining room that can accommodate a sizeable banquet, and a huge master's suite that includes a spacious bedroom, lounge, study, dressing room and walk-in closet. Welcome to the new height of luxury living!

Mountain Lodge
44 Mount Kellett Road,
The Peak
 山頂 崑廬

5,200 s.f.
\$120,000,000



www.landscape.com/14003.htm

David Leung 梁先生 9199 0672



Strawberry Hill

山頂 紅莓閣

8 Plunkett's Road, The Peak
 Colonial townhouse on the Peak with spacious and practical layout
 英式山頂排屋，間格寬敞實用

3,200 s.f.
\$128,000,000

David Leung 梁先生 9199 0672



Abergeldie

山頂 種植道52號

52 Plantation Road, The Peak
 Exclusive Peak townhouse with a bird's eye view of Victoria Harbour
 獨特山頂排屋，鳥瞰維港

3,583 s.f. (plus 488 s.f. terrace)
\$180,000,000

www.landscape.com/13805.htm

David Leung 梁先生 9199 0672



11 Pollock's Path, The Peak

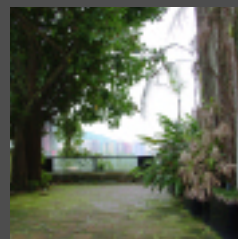
山頂 普樂道11號

Exclusive garden house with a bird's eye view of Victoria Harbour
 獨特花園洋房，鳥瞰維港

4,600 s.f.
\$190,000,000

www.landscape.com/12745.htm

Maria Cheung 張小姐 6256 1848



12-22 Black's Link, The Peak

山頂 布力徑12-22號

Townhouse in quiet location with four bedrooms and huge private garden
 四房排屋，位置寧靜，享巨型私家花園

5,000 s.f.
\$250,000,000 also for lease \$300,000

www.landscape.com/10425.htm

Sissy Li 李小姐 9642 6969



1-9 Rosmead Road, The Peak

Detached house in quiet enclave of the Peak
 獨立屋，位處山頂寧靜一隅

5,136 s.f.
 (plus 2,228 s.f. terrace & 1,955 s.f. garden)
\$280,000,000

www.landscape.com/1141.htm

Louis Wong 黃先生 9871 6828



Cameron House

山頂 嘉樂苑

40 Magazine Gap Road, The Peak
 Extravagant penthouse with private roof situated on lower Peak
 下山頂段豪華頂層物業，享私家天台

2,847 s.f. (plus 2,130 s.f. roof)
Open Offer

www.landscape.com/13904.htm

Teresa Fung 馮小姐 9138 1621

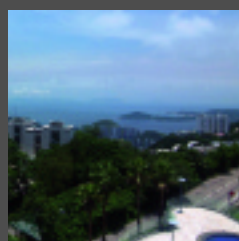
THE PEAK LEASE



26 Magazine Gap Road, The Peak

山頂 馬己仙峽道26號
Colonial apartment on lower Peak with harbour view
下山頂段英式住宅，享維港景
2,400 s.f.
\$110,000 incl. also for sale \$50,000,000

www.landscape.com/13997.htm Carman Szeto 司徒小姐 8100 3893



1-3 Homestead Road, The Peak 山頂 堪仕達道1-3號

1-3 Homestead Road, The Peak
Modern Peak apartment with fantastic sea view
時尚山頂住宅享無敵海景
2,828 s.f.
\$140,000 incl.

www.landscape.com/13709.htm Yvonne Chang 鄭小姐 9088 4666

DO YOU KNOW

Gate Lodge of the Former Mountain Lodge 舊總督山頂別墅守衛室

Information provided by Antiquities and Monuments Office, Leisure and Cultural Services Department

The Gate Lodge originally served as living quarters for the keeper of Mountain Lodge, the summer Peak residence of the Governor. It was built between 1900 and 1902. Mountain Lodge was constructed in the style of Scottish lodges and was described by the media as the most imposing and handsome architecture on the peak. Gate Lodge, however, is in Renaissance style which is a major deviation from Mountain Lodge. Mountain Lodge was demolished in 1946, leaving only Gate Lodge. Although Gate Lodge is a small building, it was planned in a very functional way. It was declared a monument in 1995.

這座建築物原本是總督山頂別墅守衛室，於一九零零至一九零二年間興建。山頂別墅採用蘇格蘭大宅建築特色，被當時傳媒形容為山頂區最宏偉及壯觀之建築。守衛室則採用文藝復興建築風格，與山頂別墅迥然不同。山頂別墅於一九四六年拆卸，只剩下這所守衛室。守衛室雖然面積不大，但建築規格嚴謹。守衛室於一九九五年被列為法定古蹟。



SOUTHSIDE SALES



Baguio Villa 薄扶林碧瑤灣

550 & 555 Victoria Road, Pokfulam
Well decorated top floor unit with private roof garden enjoying green view
雅裝頂層單位連私家天台花園，享綠景

1,135 s.f. (plus 687 s.f. roof)
\$11,800,000
SOLE AGENT 獨家代理



www.landscape.com/13539.htm

Teresa Lau 劉小姐 9080 6686



Greenery Garden

薄扶林怡林閣

2A Mount Davis Road, Pokfulam
Sea view apartment in tranquil location
海景單位，位置寧靜

1,587 s.f.
\$13,700,000

www.landscape.com/8637.htm

Christine Chong 莊小姐 9648 6082



Stanford Villa

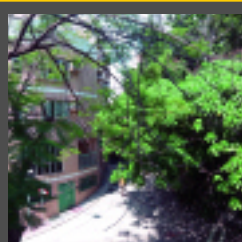
赤柱旭逸居

7 Stanley Village Road, Stanley
Resort-style low-rise penthouse with roof terrace
渡假式低密度頂層住宅，享私家天台

1,052 s.f. (plus 597 s.f. roof)
\$15,000,000

www.landscape.com/13488.htm

Maria Cheung 張小姐 6256 1848



Albany Court

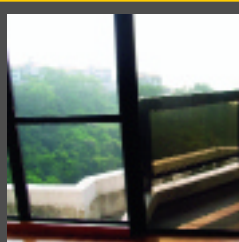
薄扶林雅鑾閣

51 Bisney Road, Pokfulam
Newly renovated 2-bedroom low-rise in tranquil location
新裝兩房低密度住宅，環境寧靜

1,795 s.f.
\$15,000,000 also for lease \$60,000

www.landscape.com/12451.htm

Christine Chong 莊小姐 9648 6082



South Bay Towers

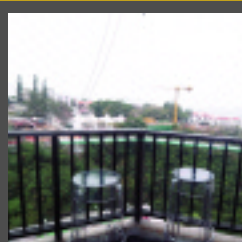
淺水灣南灣大廈

59 South Bay Road, Repulse Bay
Deluxe sea view boutique flat in tranquil area
豪華海景物業，位置寧靜

1,433 s.f.
\$18,500,000

www.landscape.com/13831.htm

Teresa Fung 馮小姐 9138 1621



Grand Garden

淺水灣華景園

61 South Bay Road, Repulse Bay
Cosy apartment with balcony in tranquil South Bay
舒適單位連露台，位處寧靜南灣

1,463 s.f.
\$19,019,000

www.landscape.com/13742.htm

Simon Lee 李先生 6014 3712



Bauhinia Gardens - Lowrise 春坎角紫荊園

42 Chung Hom Kok Road, Chung Hom Kok
Lovely low-rise flat in quiet area
迷人低密度單位，環境清靜

1,800 s.f.
\$20,000,000

www.landscape.com/13961.htm

Teresa Fung 馮小姐 9138 1621



La Clare Mansion

薄扶林 利嘉大廈

92 Pokfulam Road, Pokfulam
Spacious 4-bedroom mid-rise in
quiet location
寬敞四房中密度，環境寧靜

2,500 s.f.
\$21,000,000

www.landscape.com/13994.htm | Rowena Siu 蕭小姐 9348 4118

Residence Bel-Air (Phase 2) - South Towers



薄扶林貝沙灣南岸 (第二期)

38 Bel-Air Avenue, Pokfulam
Fully furnished apartment with fantastic
clubhouse facilities
新裝低密度大單位，享有海景

1,475 s.f.
\$21,500,000 also for lease \$56,000 incl.

www.landscape.com/8668.htm | Rita Lee 李小姐 9437 0087



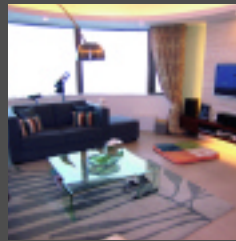
Repulse Bay Garden

淺水灣 麗景園

18-40 Belleview Drive, Repulse Bay
High efficiency apartment overlooking
Repulse Bay
高實用率單位，眺望淺水灣泳灘

1,780 s.f.
\$24,500,000 SOLE AGENT 獨家代理

www.landscape.com/12489.htm | Mary Li 李小姐 9011 6595

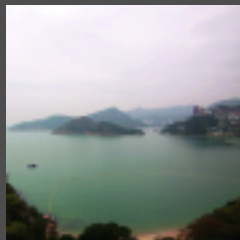


Hong Kong Parkview - Tower 4 淺水灣 陽明山莊-第4座

88 Tai Tam Reservoir Road, Repulse Bay
Nicely decorated 3-bedroom flat in well
planned development
雅裝三房單位，屋苑規劃優良

2,105 s.f.
\$28,800,000

www.landscape.com/13905.htm | Simon Lee 李先生 6014 3712



Ruby Court

淺水灣 嘉麟閣

55 South Bay Road, Repulse Bay
Popular South Bay sea view apartment
with comprehensive clubhouse facilities
受歡迎南灣海景物業，多元化會所設施

1,780 s.f.
\$29,500,000

www.landscape.com/13881.htm | Stephen Chan 陳先生 9093 3381

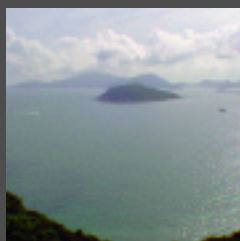


Hong Kong Parkview - Tower 7 淺水灣 陽明山莊第7座

88 Tai Tam Reservoir Road, Repulse Bay
Penthouse apartment with private roof in
tranquil environment
頂層單位連私家天台，環境清幽

1,925 s.f. (plus 1,393 s.f. roof)
\$30,000,000

www.landscape.com/13563.htm | Johnny Cheung 張先生 9278 9939



Sea Branch

春坎角 海天閣

31 Horizon Drive, Chung Hom Kok
Nicely decorated low-rise apartment in
quiet surroundings
雅裝低密度單位，四周寧靜怡人

1,825 s.f.
\$30,000,000

www.landscape.com/11510.htm | Teresa Fung 馮小姐 9138 1621



Bisney View

薄扶林碧荔道47-49號

47-49 Bisney Road, Pokfulam
3 ensuite bedrooms house in
secluded environment
三套房洋房，位處寧靜一隅

3,500 s.f.
\$33,000,000

www.landscape.com/7862.htm | Johnny Cheung 張先生 9278 9939



Hong Kong Parkview - Tower 8 淺水灣陽明山莊-第8座

88 Tai Tam Reservoir Road, Repulse Bay
Large 3-bedroom flat with lush green
mountain view
三房大單位享茂盛綠景及山景

2,366 s.f. (plus 1,763 s.f. roof)
\$37,000,000

www.landscape.com/1673.htm | Johnny Cheung 張先生 9278 9939



South Bay Towers

淺水灣南灣大廈

59 South Bay Road, Repulse Bay
Spacious 3-bedroom apartment in
South Bay
寬敞三房物業，位於南灣

2,738 s.f.
\$37,000,000

www.landscape.com/5397.htm | Stephen Chan 陳先生 9093 3381



Ridge Court

淺水灣 冠園

21A-21D Repulse Bay Road, Repulse Bay
Well located apartment with fantastic
views
位置優越單位享優美景色

2,300 s.f.
\$43,000,000

www.landscape.com/14060.htm | Louis Wong 黃先生 9871 6828



Carmel Hill 赤柱 海明山

12 Carmel Road, Stanley

Hilltop garden townhouse overlooking
Stanley Bay
花園排屋，居高臨下，眺望赤柱灣

2,378 s.f.
(plus 405 s.f. garden & 318 s.f. roof)
\$45,000,000 also for lease \$115,000

www.landscape.com/12292.htm | Simon Yung 翁先生 9418 5743

SOUTHSIDE SALES



Sea Cliff Mansions

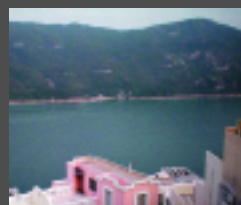
淺水灣海峰園

19A-19D Repulse Bay Road, Repulse Bay
Deluxe sea view apartment with nice
decorations on upper Repulse Bay Road
淺灣頭段豪華海景單位，裝修雅緻

2,400 s.f.
\$45,000,000

www.landscape.com/13860.htm | Teresa Fung 馮小姐 9138 1621

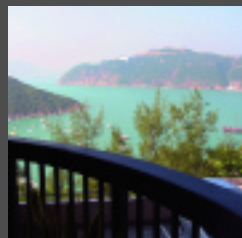
Redhill Peninsula - House 大潭紅山半島- 洋房



18 Pak Pat Shan Road, Tai Tam
Spacious family garden house in
good condition
寬敞家庭式花園洋房，狀況優良

2,880 s.f.
(plus 820 s.f. roof & 723 s.f. garden)
\$48,000,000 also for lease \$135,000 incl.

www.landscape.com/13918.htm | Christine Chong 莊小姐 9648 6082



Pine Crest

淺水灣松苑

65 Repulse Bay Road, Repulse Bay
Rare sea view apartment with
private garden
罕有海景住宅連私家花園

2,250 s.f. (plus 1,000 s.f. garden)
\$60,000,000

www.landscape.com/13870.htm | Teresa Fung 馮小姐 9138 1621

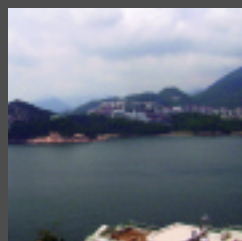


Stanley Court 赤柱海灣園

9 Stanley Mound Road, Stanley
Newly renovated garden house
close to beach
翻新花園洋房，鄰近海灘

2,669 s.f.
(plus 617 s.f. roof & 452 s.f. garden)
\$60,000,000

www.landscape.com/13230.htm | Christine Chong 莊小姐 9648 6082



Regalia Bay

赤柱 富豪海灣

88 Wong Ma Kok Road, Stanley
Luxurious townhouse with sweeping
sea view
豪華排屋享遼闊海景

4,089 s.f. (plus 1,317 s.f. roof)
\$63,000,000 also for lease \$150,000 incl.

www.landscape.com/12058.htm | Christine Chong 莊小姐 9648 6082



Twin Brook

淺水灣雙溪

43 Repulse Bay Road
4-bedroom unit with fascinating Deep
Water Bay view
寬敞四睡房單位眺望深水灣海景

2,700 s.f.
\$65,000,000

www.landscape.com/3019.htm | Philip Lai 黎先生 9430 3330



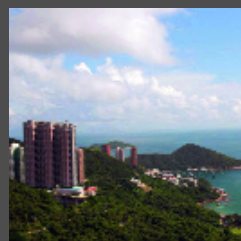
Grosvenor Place

淺水灣淺水灣道117號

117 Repulse Bay Road, Repulse Bay
4-bedroom apartment with fantastic
Repulse Bay view
四房單位享醉人淺水灣景致

2,809 s.f.
\$65,000,000

www.landscape.com/12672.htm | Maria Cheung 張小姐 6256 1848



Royal Garden

淺水灣聚豪居

27 Repulse Bay Road, Repulse Bay
Exclusive penthouse apartment with
private roof on upper Repulse Bay Road
獨特頂層住宅連私家天台，位處淺灣頭段

2,680 s.f. (plus 2,000 s.f. roof)
\$65,000,000

www.landscape.com/13413.htm | Christine Chong 莊小姐 9648 6082



33 Cape Road, Chung Hom Kok 春坎角環角道33號

Brand new sea view townhouse in
tranquil location
全新海景排屋，環境寧靜

3,182 s.f.
(plus 997 s.f. garden & 530 s.f. roof)
\$66,000,000

www.landscape.com/6898.htm | Simon Yung 翁先生 9418 5743



The Somerset

淺水灣怡峰

67 Repulse Bay Road, Repulse Bay
Popular high-ceilinged duplex with Deep
Water Bay sea view
受追捧高樓底複式物業，享深水灣海景

3,099 s.f.
\$68,000,000

www.landscape.com/13274.htm | Louis Wong 黃先生 9871 6828



Repulse Bay Towers

淺水灣保華大廈

119A Repulse Bay Road, Repulse Bay
Large 4-bedroom duplex with splendid
view of Repulse Bay Beach
寬敞四房複式享怡人淺水灣沙灘美景

3,100 s.f.
\$69,000,000

www.landscape.com/13890.htm | Simon Lee 翁先生 6014 3712



L'Harmonie 赤柱 葆琳居

3 Stanley Mound Road, Stanley
Newly renovated garden townhouse
close to Stanley Beach
翻新花園屋，鄰近赤柱海灘

3,557 s.f.
(plus 1,179 s.f. garden & 895 s.f. roof)
\$70,000,000

www.landscape.com/13145.htm | Simon Yung 翁先生 9418 5743

SOUTHSIDE SALES

南區
出售



37 Tung Tau Wan Road, Stanley
赤柱 東頭灣道37號
Unique garden house at Stanley waterfront
獨特花園洋房，位處赤柱海濱
3,300 s.f. (plus 1,000 s.f. garden)
\$75,000,000

www.landscape.com/10620.htm | Johnny Cheung 張先生 9278 9939



Ming Villas
壽臣山明園
39B-F Shouson Hill Road
Exclusive sea view garden house in tranquil area
特色海景花園屋，環境寧靜
4,258 s.f. (plus 745 s.f. terrace)
\$150,000,000 also for lease \$300,000 incl.

www.landscape.com/11984.htm | Rita Lee 李小姐 9437 0087



12 Tai Tam Road
大潭道 12 號
Newly renovated garden house on Tai Tam waterfront
大潭海濱新裝花園洋房
5,200 s.f.
(plus 933 s.f. roof & 636 s.f. terrace)
\$175,000,000

www.landscape.com/11195.htm | Sissy Li 李小姐 9642 6969



45 Chung Hom Kok Road
春坎角道45號
Fully renovated large low-rise flat with sea view
新裝低密度大單位，享有海景
4,400 s.f. (plus 4,000 s.f. roof)
Open Offer

www.landscape.com/13429.htm | Louis Wong 黃先生 9871 6828

SOUTHSIDE LEASE

南區
出租



Beaconsfield Court
壽臣山 碧麗閣
7 Shouson Hill Road
Stylish low-rise flat with private roof top
風格低密度單位連私家天台
1,650 s.f. (plus 1,650 s.f. roof)
\$85,000 incl.

www.landscape.com/10821.htm | Maria Cheung 張小姐 6256 1848



La Mer
薄扶林浪頭居
71 Bisney Road, Pokfulam
4-bedroom newly renovated modern sea view low-rise in tranquil surroundings
四房新裝時尚海景低密度物業，環境寧靜
2,063 s.f.
\$93,000 SOLE AGENT 獨家代理

www.landscape.com/13471.htm | Yvonne Chang 鄭小姐 9088 4666




Pine Crest
淺水灣 松苑
65 Repulse Bay Road, Repulse Bay
High-floor sea view 4-bedroom apartment in exclusive building
名廈高層海景四房單位
2,250 s.f.
\$110,000 incl.

www.landscape.com/13520.htm | Teresa Fung 馮小姐 9138 1621



Celestial Garden
淺水灣詩禮花園
5 Repulse Bay Road, Repulse Bay
Nicely decorated apartment in Repulse Bay with facilities
淺水灣雅裝單位，屋苑消閒設施
2,363 s.f.
\$120,000 incl.

www.landscape.com/13479.htm | Teresa Lau 劉小姐 9080 6686



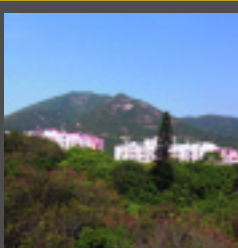
Louissette
赤柱 赤柱灘道20號
20 Stanley Beach Road, Stanley
Nicely renovated beachside townhouse in Stanley
雅裝排屋，位於赤柱海灘旁
2,856 s.f.
\$148,000 incl.

www.landscape.com/11826.htm | Stephen Chan 陳先生 9093 3381



Stanley Court 赤柱 海灣園
9 Stanley Mound Road, Stanley
Resort style townhouse with garden close to Stanley Beach
渡假式洋房連私家花園，鄰近赤柱海灘
2,669 s.f.
(plus 617 s.f. roof & 452 s.f. garden)
\$150,000

www.landscape.com/13835.htm | Simon Yung 翁先生 9418 5743



33 Cape Road, Chung Hom Kok 春坎角環角道33號
Brand new garden townhouse close to Stanley
全新花園洋房，鄰近赤柱
3,147 s.f.
(plus 764 s.f. garden & 423 s.f. roof)
\$180,000 incl.

www.landscape.com/13937.htm | Stephen Chan 陳先生 9093 3381



70 Deep Water Bay Road
深水灣道70號
Rarely available Deep Water Bay townhouse
罕有放盤深水灣排屋
4,140 s.f. (plus 2,959 s.f. garden)
\$210,000

www.landscape.com/13073.htm | Carman Szeto 司徒小姐 8100 3893

SOUTHSIDE LEASE



56 Repulse Bay Road
淺水灣道56號
Waterfront duplex with breath-taking view of Repulse Bay Beach
臨海複式，享怡人淺水灣沙灘景
3,580 s.f.
\$290,000 incl.

www.landscape.com/13708.htm | Louis Wong 黃先生 9871 6828



115 Repulse Bay Road
淺水灣道115號
Rare find sea view penthouse apartment with roof terrace
罕有海景頂層物業連天台平台
7,700 s.f. (plus 500 s.f. roof terrace)
\$330,000

www.landscape.com/13508.htm | Yvonne Chang 鄭小姐 9088 4666

MID-LEVELS SALES



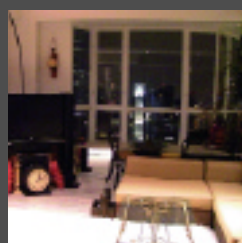
Cherry Crest
西半山翠麗軒
3 Kui In Fong, Midlevels West
Brand new modern apartment in Soho area
全新高雅單位，位於荷理活道以南
995 s.f.
\$7,500,000

Mary Li 李小姐 9011 6595



Morengo Court
東半山明達閣
25 Tai Hang Road, Midlevels East
Spacious apartment on Tai Hang Road with easy access to Causeway Bay
寬敞單位，位處大坑道，銅鑼灣近在咫尺
1,066 s.f.
\$10,500,000

www.landscape.com/13648.htm | Carman Szeto 司徒小姐 8100 3893



St. Louis Mansion
中半山雨時大廈
20 MacDonnell Road, Midlevels Central
Stunning city and Victoria Harbour view on MacDonnell Road
擁迷人都市及維港景觀，位處麥當勞道
822 s.f.
\$12,800,000 **SOLE AGENT** 獨家代理

www.landscape.com/14006.htm | Philip Lai 黎先生 9430 3330



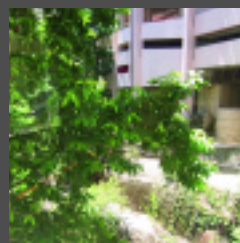
Shiu Fai Terrace Garden
東半山峯輝台花園
3-4 Shiu Fai Terrace, Midlevels East
Nicely decorated mid-rise with open city view in quiet neighbourhood
雅裝中密度單位，開揚城市景，環境寧靜
1,596 s.f.
\$14,200,000

www.landscape.com/13800.htm | Rowena Siu 蕭小姐 9348 4118



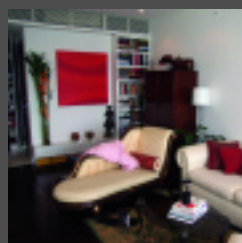
Yicks Villa
跑馬地奕廬
83-85 Blue Pool Road, Happy Valley
Well maintained 3-bedroom apartment on upper Blue Pool Road
保養良好三房，位於藍塘道上段
1,750 s.f.
\$14,500,000

www.landscape.com/11128.htm | Teresa Lau 劉小姐 9080 6686



Beau Cloud Mansion
中半山碧雲樓
64 MacDonnell Road, Midlevels Central
Stylish mid-rise apartment with 3 bedrooms
品味中密度三房單位
1,700 s.f.
\$16,500,000

www.landscape.com/11690.htm | Rita Lee 李小姐 9437 0087



Jardine's Lookout Garden Mansion 東半山渣甸山花園大廈
148-150 Tai Hang Road, Midlevels East
Nicely decorated apartment overlooking Hong Kong Stadium
高雅裝修物業，居高臨下，享香港大球場景觀
1,100 s.f.
\$16,500,000 **SOLE AGENT** 獨家代理

www.landscape.com/13930.htm | Sissy Li 李小姐 9642 6969



Hong Lok Mansions
中半山康樂大廈
44-44F MacDonnell Road, Midlevels Central
3-bedroom brand new Western decor mid-rise close to escalator at Midlevels
三房全新西式裝修，鄰近半山扶手電梯
1,600 s.f.
\$17,000,000

www.landscape.com/13659.htm | Mary Li 李小姐 9011 6595



Amber Garden
中半山柏苑
70-72 Kennedy Road, Midlevels Central
Conveniently located 3-bedroom flat with practical layout
實用三房，位置方便
1,732 s.f.
\$17,500,000 **SOLE AGENT** 獨家代理

www.landscape.com/12490.htm

Sissy Li 李小姐 9642 6969





Elegant Garden
西半山精緻園
18 Babington Path, Midlevels West
Nicely decorated top floor apartment with internal access to private roof
高雅裝修頂層物業，內置樓梯直達私家天台
1,750 s.f. (plus 1,500 s.f. roof)
\$18,500,000

www.landscape.com/13893.htm | Rowena Siu 蕭小姐 9348 4118



Estella Court
中半山香海大廈
70 MacDonnell Road, Midlevels Central
Mid-rise on MacDonnell Road with large balcony
麥當勞道中密度住宅連大露台
1,750 s.f.
\$19,500,000

www.landscape.com/13939.htm | Simon Lee 翁先生 6014 3712



Beauty Court
西半山雅苑
82 Robinson Road, Midlevels West
Newly renovated apartment in convenient location
全新裝修，地點方便
1,787 s.f.
\$20,800,000 also for lease \$63,000 incl.

www.landscape.com/13788.htm | Mira To 杜小姐 9486 1566



Hillsborough Court
中半山曉峰閣
18 Old Peak Road, Midlevels Central
Mountain view in apartment with nice decorations
翠綠山景物業，裝修雅緻
1,385 s.f.
\$22,000,000

www.landscape.com/13974.htm | Sylvia Tsang 曾小姐 9801 1742



Butler Tower
渣甸山柏麗園
1-5 Boyce Road, Jardine's Lookout
4-bedroom apartment in Jardine's Lookout with open city view
渣甸山四房單位享開揚城市景
1,650 s.f.
\$25,000,000

www.landscape.com/13177.htm | Carman Szeto 司徒小姐 8100 3893



Goodview Garden
東半山豐景台
24 Stubbs Road, Midlevels East
Penthouse low-rise flat with private roof
頂層低密度物業連私家天台
2,200 s.f. (plus 2,000 s.f. roof)
\$25,000,000

www.landscape.com/11405.htm | Sissy Li 李小姐 9642 6969



Glory Mansion 中半山輝煌大廈
106-108 MacDonnell Road, Midlevels Central
Older style flat with large balcony and practical layout
老香港式住宅連大露台，寬敞實用
2,300 s.f.
\$26,500,000

www.landscape.com/13919.htm | Philip Lai 黎先生 9430 3330



Visalia Garden
中半山蔚山花園
48 MacDonnell Road, Midlevels Central
Spacious 4-bedroom apartment in convenient location
寬敞四房住宅，位置方便
2,195 s.f.
\$27,000,000 also for lease \$75,000 incl.

www.landscape.com/13532.htm | Rita Lee 李小姐 9437 0087



Park Mansions
中半山百年順大廈
27-29 MacDonnell Road, Midlevels Central
Practical 4-bedroom flat on MacDonnell Road
麥當勞道實用四房物業
2,013 s.f.
\$30,000,000

www.landscape.com/12825.htm | Sylvia Tsang 曾小姐 9801 1742



Wilshire Park
中半山豪輝閣
12 MacDonnell Road, Midlevels Central
Rare on market high privacy 4-bedroom apartment
罕有放盤高私隱度四房住宅
2,265 s.f.
\$32,800,000

www.landscape.com/13899.htm | Rowena Siu 蕭小姐 9348 4118



Century Tower I
中半山世紀大廈1座
1 Tregunter Path, Midlevels Central
Unique-style harbour view apartment on fringe of Central
獨特維港景住宅，中環近在咫尺
2,565 s.f.
\$35,000,000 also for lease \$90,000 incl.

www.landscape.com/12852.htm | Teresa Lau 劉小姐 9080 6686



The Colonnade
東半山嘉崙臺
152 Tai Hang Road, Midlevels East
Stylish modern high-rise on convenient Tai Hang Road
品味時尚高度單位，位處大坑道，交通方便
2,256 s.f.
\$36,000,000

www.landscape.com/11463.htm | Louis Wong 黃先生 9871 6828

MID-LEVELS SALES



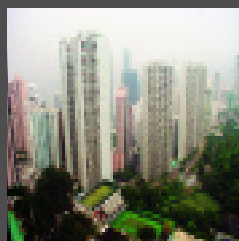
Kennedy Apartment

中半山堅尼地大廈

34A Kennedy Road, Midlevels Central
Unique mid-rise overlooking Hong Kong Park
獨特中密度物業，眺望香港公園

2,500 s.f.
\$42,000,000

www.landscape.com/13748.htm | Mira To 杜小姐 9486 1566



Tregunter Tower 3

中半山地利根德閣3座

14 Tregunter Path, Midlevels Central
Spacious apartment with tenancy overlooking magnificent views
寬敞單位連租約有一流景觀

3,001 s.f.
\$42,000,000

www.landscape.com/4043.htm | Mira To 杜小姐 9486 1566



Regence Royale

中半山富匯豪庭

2 Bowen Road, Midlevels Central
Modern deluxe 4-bedroom apartment on tree-lined environment
時尚豪華四房單位，綠樹連綿

2,522 s.f.
\$42,874,000

www.landscape.com/13775.htm | Philip Lai 黎先生 9430 3330



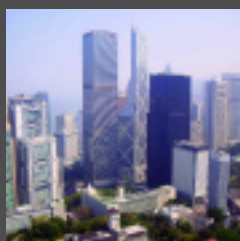
Leon Court 東半山利安閣

12-14 Wong Nai Chung Gap Road, Midlevels East

Good value apartment in a quiet enclave with open city view
優質物業，環境清靜，享開揚城市景

2,800 s.f.
\$45,000,000

www.landscape.com/10476.htm | Mark Mak 麥先生 6838 2929



The Albany

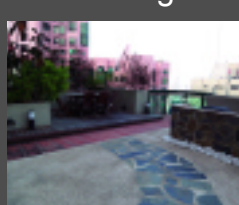
中半山雅賓利大廈

1 Albany Road, Midlevels Central
Fully furnished high floor harbour view apartment
高層雅賓利單位連裝修傢俬

1,755 s.f.
\$49,000,000

www.landscape.com/13614.htm | Sylvia Tsang 曾小姐 9801 1742

Hillsborough Court 中半山曉峰閣



18 Old Peak Road, Midlevels Central
Unique triplex penthouse with tasteful decorations
獨特頂層三複式，品味裝修

2,200 s.f.
(plus 1,016 s.f. terrace & 1,000 s.f. roof)
\$49,000,000

www.landscape.com/13019.htm | Teresa Lau 劉小姐 9080 6686



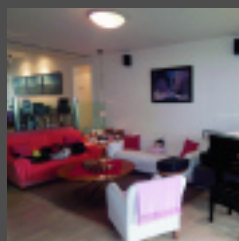
Clovelly Court

中半山嘉富麗苑

12 May Road, Midlevels Central
Large 4-bedroom apartment in lower Peak
四房大單位，位處下山頂段

2,722 s.f.
\$50,000,000 also for lease \$118,000 incl.

www.landscape.com/10453.htm | Mira To 杜小姐 9486 1566



Garden Terrace 2 & 3

中半山花園臺2 & 3座

8A Old Peak Road, Midlevels Central
Rare find 4-ensuite apartment with up to 5 car spaces
罕有四套房物業，車位可容納五部座駕

3,009 s.f.
\$50,000,000

www.landscape.com/13651.htm | Sylvia Tsang 曾小姐 9801 1742



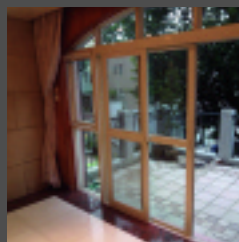
Kennedy Heights

中半山堅麗閣

10-18 Kennedy Road, Midlevels Central
Large and practical 4-bedroom flat with nice city view on fringe of Central
寬敞實用四房享迷人都市景，鄰近中環

3,400 s.f.
\$50,000,000 also for lease \$120,000

www.landscape.com/13736.htm | Rita Lee 李小姐 9437 0087



Falcon Lodge 渣甸山嘉鵬園

67 Perkins Road, Jardine's Lookout
Townhouse in tree-lined neighbourhood with spacious and practical layout
寬敞實用排屋，環境翠綠

3,728 s.f.
(plus 500 s.f. roof & 500 s.f. terrace)
\$52,000,000

www.landscape.com/14020.htm | Simon Yung 翁先生 9418 5743



18 Ventris Road, Happy Valley

跑馬地雲地利道18號
Unique lucky number single lot low-rise building
獨特幸運號碼獨立地段低座物業

4,500 s.f. (plus 424 s.f. garden)
\$55,000,000

www.landscape.com/14061.htm | Mark Mak 麥先生 6838 2929



Grenville House 中半山嘉慧園

1, 3 & 3A Magazine Gap Road, Midlevels Central

Huge apartment in prime location with large and practical layout
實用巨宅，尊貴地段

3,700 s.f.
\$57,000,000

www.landscape.com/13634.htm | Philip Lai 黎先生 9430 3330

MID-LEVELS SALES

半山
出售



Tregunter Tower 3

中半山 地利根德閣3座

14 Tregunter Path, Midlevels Central
High floor duplex with clubhouse facilities
高層複式，會所設施

3,639 s.f.
\$58,000,000

www.landscape.com/7677.htm | Mark Mak 麥先生 6838 2929



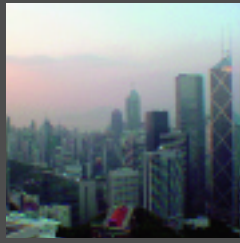
Butler Tower

渣甸山柏麗園

1-5 Boyce Road, Jardine's Lookout
Rare find penthouse duplex with roof in
serene neighbourhood
獨特頂層複式連天台，環境寧靜

3,500 s.f.
\$65,000,000

www.landscape.com/11813.htm | Johnny Cheung 張先生 9278 9939



Hong Villa

中半山 峰景花園

12 Bowen Road, Midlevels Central
Harbour view huge apartment with facilities
維港景巨宅，屋苑消閒設施

3,833 s.f.
\$71,000,000

www.landscape.com/14027.htm | Mark Mak 麥先生 6838 2929



31 Robinson Road

羅便臣道31號

Brand new luxury home living embracing
panoramic sea view and greenery of the Peak
全新尊貴豪宅，設計華麗，飽覽維港醉人景致，
亦享有半山的翠巒，氣派非凡

2,319 - 2,665 s.f.
Open Offer

Mark Mak 麥先生 6838 2929

MID-LEVELS LEASE

半山
出租



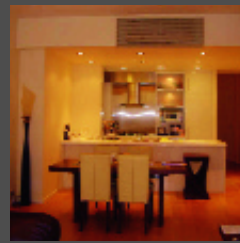
Garfield Garden

西半山 嘉輝大廈

23 Seymour Road, Midlevels West
Modern designer flat with balcony
時尚設計物業連露台

1,150 s.f.
\$49,000

www.landscape.com/13741.htm | Mary Li 李小姐 9011 6595



27-29 Village Terrace, Happy Valley

跑馬地山村臺27-29號

Nicely decorated 3-bedroom low-rise
flat at tranquil area of Happy Valley
雅裝三房低密度單位，位於寧靜跑馬地

1,521 s.f.
\$58,000

www.landscape.com/13862.htm | Mary Li 李小姐 9011 6595



Evergreen Villa

東半山 松柏新村

43 Stubbs Road, Midlevels East
Nicely decorated apartment with
large balcony
雅裝物業連大露台

1,750 s.f.
\$65,000 incl.

www.landscape.com/13806.htm | Sami Woo 胡小姐 9493 8275



Fontana Garden - Block E

東半山豪園E座

1-25 Ka Ning Path, Midlevels East
Large practical 4-bedroom apartment
close to Causeway Bay
敞大實用四房單位，鄰近銅鑼灣

3,000 s.f.
\$70,000 incl.

www.landscape.com/13907.htm | Sami Woo 胡小姐 9493 8275



Fairview Mansion

西半山 昭景大廈

84 Robinson Road, Midlevels West
Spacious 3-bedroom flat including
2 ensembles
寬敞三房連雙套物業

2,500 s.f.
\$88,000 incl.

www.landscape.com/13784.htm | Rowena Siu 蕭小姐 9348 4118



Bellevue Court

東半山碧蕙園

41 Stubbs Road, Midlevels East
Spacious 3-bedroom apartment with
greenery view
寬敞三房享綠景

2,700 s.f.
\$90,000 incl. also for sale \$31,000,000

www.landscape.com/11432.htm | Sami Woo 胡小姐 9493 8275



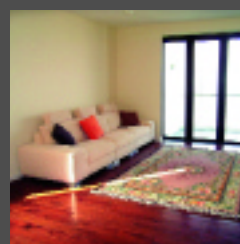
Estella Court

中半山 香海大廈

70 MacDonnell Road, Midlevels Central
Tastefully decorated mid-rise in tranquil
area
品味裝修中密度物業，環境清幽

2,000 s.f.
\$90,000 incl.

www.landscape.com/13935.htm | Simon Lee 李先生 6014 3712



May Tower 1

中半山梅苑一座

7 May Road, Midlevels Central
Well designed triplex apartment with
harbour view
雅裝三複式享維港景

2,850 s.f.
\$110,000 also for sale \$45,000,000

www.landscape.com/8923.htm | Carman Szeto 司徒小姐 8100 3893

For more listings, please go to www.landscape.com/sale

For more listings, please go to www.landscape.com/lease

MID-LEVELS LEASE



Tregunter Tower 1

中半山地利根德閣 1座

14 Tregunter Path, Midlevels Central
Large 4-bedroom apartment with clubhouse facilities in prime location
四房大單位，享會所設施，黃金地段

3,050 s.f.

\$100,000 also for sale \$33,000,000

www.landscape.com/11863.htm

Sylvia Tsang 曾小姐 9801 1742



Borrett Mansion

中半山寶德臺

8A-9B Bowen Road, Midlevels Central
Spacious colonial flat with large balcony in tranquil location
寬敞英式住宅連大露台，地點寧靜

2,800 s.f.

\$130,000

www.landscape.com/13696.htm

Mira To 杜小姐 9486 1566



Garden Terrace 1

中半山花園臺1座

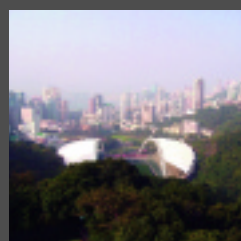
8 Old Peak Road, Midlevels Central
Duplex apartment with 4 bedrooms on fringe of CBD
四房複式，鄰近商業樞紐

3,726 s.f.

\$135,000

www.landscape.com/13781.htm

Yvonne Chang 鄭小姐 9088 4666



Broadwood Park

跑馬地柏樂苑

38 Broadwood Road, Happy Valley
Spacious apartment with a bird's eye view of Hong Kong Stadium
寬敞單位，鳥瞰香港大球場

2,938 s.f.

\$140,000 incl.

www.landscape.com/13844.htm

Sami Woo 胡小姐 9493 8275



Bowen's Lookout

中半山寶雲道13號

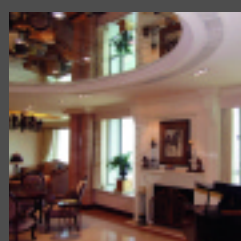
13 Bowen Road, Midlevels Central
Deluxe harbour view 4-bedroom flat with high privacy
豪華維港景四房單位，私隱度高

2,388 s.f.

\$150,000

www.landscape.com/13624.htm

Yvonne Chang 鄭小姐 9088 4666



Regence Royale

中半山富匯豪庭

2 Bowen Road, Midlevels Central
Luxuriously decorated huge apartment
豪華巨型單位

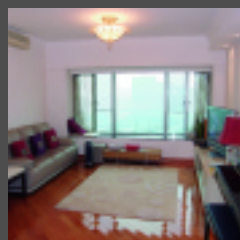
5,219 s.f.

\$380,000 incl.

www.landscape.com/13729.htm

Sami Woo 胡小姐 9493 8275

KOWLOON SALES



Sorrento

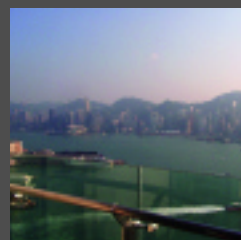
尖沙咀擎天半島

1 Austin Road West, Tsim Sha Tsui
Spacious 3 bedroom unit in renowned estate
名廈三房寬敞單位

1,274 s.f.

\$16,500,000 SOLE AGENT 獨家代理

Mary Li 李小姐 9011 6595



The Harbourside

尖沙咀君臨天下

1 Austin Road West, Tsim Sha Tsui
Exclusive combined unit with sweeping view of Victoria Harbour
罕有相連單位，享超闊維港美景，一見難忘

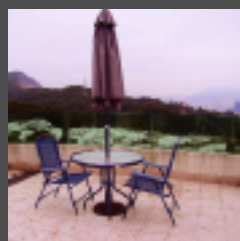
2,734 s.f.

\$76,000,000

www.landscape.com/14099.htm

Christine Chong 莊小姐 9648 6082

KOWLOON LEASE



Low-rise at Fei Ngo Shan

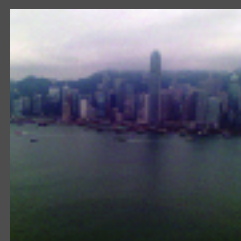
飛鵝山低密度住宅

Fei Ngo Shan Road, Sai Kung
Tastefully decorated residence with beautiful open view in tranquil surroundings
品味裝修住宅，享開揚美景，環境寧靜舒適

1,368 s.f. (plus 452 s.f. terrace)

\$38,000

Carman Szeto 司徒小姐 8100 3893



The Arch

尖沙咀凱旋門

1 Austin Road West, Tsim Sha Tsui
Landmark harbour-front apartment with breathing-taking view of Victoria Harbour
地標式臨海物業，享壯觀維港景

3,465 s.f.

\$480,000 incl.

www.landscape.com/13848.htm

Maria Cheung 張小姐 6256 1848



Landscape Realty Limited C-018733

a member of Landscape Surveyors Ltd

Tel: 852-2866 0022 Fax: 852-2866 0015

Email: info@landscape.com Website: www.landscape.com

Unit 3106, 31/F, Hopewell Centre,
183 Queen's Road East, Wanchai, Hong Kong

The information, text, photos, analyses and projections contained herein are provided solely for the convenience of prospective clients and no warranty or representation as to their accuracy, correctness or completeness is made by Landscape Surveyors Limited, Landscape Realty Limited or the owners, none of whom shall have any liability or obligation with respect thereto. Interested parties should rely on their own investigations, interpretations and analyses in connection with the purchase or letting thereof.

Information has been provided to us by sources deemed reliable, but no warranty or representation is made as to its accuracy, correctness or completeness. These offerings are made subject to contract, correction of errors, omissions, prior sale or lease, change of price or terms or withdrawal from the market without notice. The contents of The Key are for reference only and do not constitute all or any part of a contract.

Copyright 2008