

The  
Key

大宅<sup>®</sup>

Select deluxe homes

Volume 78 JUNE 2011

# TOP OF THE WORLD



## KeyWords

*"If you want to know what God thinks of money, just look at the people he gave it to."*

如果你想知道神對錢的看法，只要看看祂給了錢的那些人。

*Dorothy Parker, American poet, 1893-1967*

美國詩人陶樂詩·派克 (1893-1967)

## KeyNotes

The law of gravity states that anything which rises will eventually fall. The cycle theory applies to everything on Planet Earth. The big question is: when? To answer this, we need to examine what contributed to the present price hike, which began in 2004 when the local economy began to recover from the SARS fallout, and has gathered speed since 2009.

Various sectors of the economy have recovered and demand for loans has increased. In the last year or so, this has picked up pace, as reflected in the significantly enhanced performances of banks. With the property price hike entering its eighth year without major correction, more and more people are concerned about when the trend will reverse. Banks have become cautious and want to reduce exposure on property, now that their capital has found its way into business lending.

Recently, major banks have increased mortgage rates and the forecast is this will continue. Globally, the conclusion of QE2 means the end of the era of excess liquidity. So the days of excess liquidity and loose lending is numbered.

根據萬有引力定律，一切上升的最終都會下跌。這個周而復始的定理可套用於地球上的任何事物，但問題是「何時？」。要解答這個問題，我們便要去解構現時樓價高企的成因。二零零四年本地經濟開始走出非典型肺炎的陰影，樓價漸漸攀上高位，而於零九年更加快步伐登上巔峰。

各經濟範疇都復甦強勁，對貸款的需求日益增加，過去一年銀行的貸款業務顯著上升，反映增長步伐加快。樓價上升已持續八年，多年來都沒有明顯的調整，使越來越多人關注樓價究竟何時會掉頭回落。現在，銀行的資金在商業借貸業務上找到出路，便期望能減少地產方面的風險，對物業借貸變得謹慎。

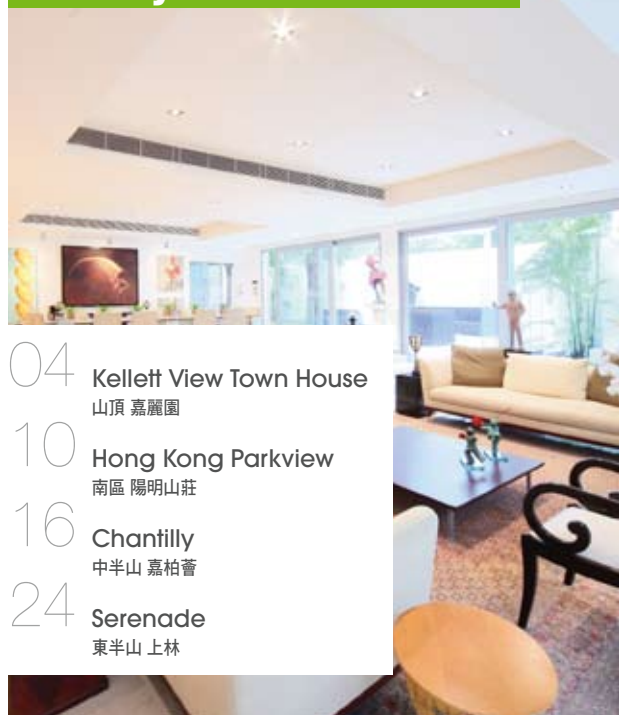
最近，各大銀行相繼調高按揭利率，市場亦預計利率會繼續上調。第二輪量化寬鬆措施的終結意味著流動性過剩時代的結束。所以說，資金過剩和寬鬆借貸的日子已不多矣。

K.S. Koh

ks-koh@landscape.com

(The above is an excerpt from Market Watch on [www.landscape.com](http://www.landscape.com). Read the full article at Market Watch, [www.landscape.com/marketwatch](http://www.landscape.com/marketwatch))  
(以上內容節錄於領域網站內的市場觀察，如欲觀看全文，請登上網址: [www.landscape.com/marketwatch](http://www.landscape.com/marketwatch))

## Monthly HIGHLIGHTS 每月精選



- 04 Kelleff View Town House  
山頂 嘉麗園
- 10 Hong Kong Parkview  
南區 陽明山莊
- 16 Chantilly  
中半山 嘉柏薈
- 24 Serenade  
東半山 上林

## HOW MAY YOU LIST YOUR PROPERTY WITH THE KEY?

怎樣在《大宅》刊登您的出售／出租物業？

If you would like to see your property listed in The Key in the next issue, you may call Loretta Lui at 3102 4818 or visit us at [www.landscape.com/sell\\_let](http://www.landscape.com/sell_let). Or you may simply fill out the space below and fax to us at 2866 0015.

如果您想將出售／出租物業刊登於大宅，可致電3102 4818與呂小姐聯絡，或登上 [www.landscape.com/sell\\_let](http://www.landscape.com/sell_let)。或者您可以填寫下面的表格傳真至2866 0015。

Property to be listed 物業

Asking Rental / Sale Price 租金 / 售價

Floor Area 面積

Contact Person 聯絡人

Telephone 電話

Email 電郵地址

Our KeyPersons will contact you for follow-up works.

我們的大宅專員會馬上與您聯絡

Published and distributed by

**LANDSCOPE** 領域  
The Specialists in Luxury Properties

**Landscape Realty Limited** C-018733  
a member of Landscape Surveyors Ltd

Tel: +852 2866 0022  
Fax: +852 2866 0015  
Email: [info@landscape.com](mailto:info@landscape.com)  
Website: [www.landscape.com](http://www.landscape.com)  
Address: Unit 3106, 31/F, Hopewell Centre,  
183 Queen's Road East, Wanchai, Hong Kong



Tel: +852 2525 0287  
Fax: +852 2526 3860  
Email: [info@perspectiveglobal.com](mailto:info@perspectiveglobal.com)  
Website: [www.perspectiveglobal.com](http://www.perspectiveglobal.com)  
Address: Rm 2408, Dominion Centre,  
59 Queen's Road East, Wanchai, Hong Kong

Designed by

**PERSPECTIVE** 透視

The information, text, photos, analyses and projections contained herein are provided solely for the convenience of prospective clients and no warranty or representation as to their accuracy, correctness or completeness is made by Landscape Surveyors Limited, Landscape Realty Limited or the owners, none of whom shall have any liability or obligation with respect thereto. Interested parties should rely on their own investigations, interpretations and analyses in connection with the purchase or letting thereof.

Information has been provided to us by sources deemed reliable, but no warranty or representation is made as to its accuracy, correctness or completeness. These offerings are made subject to contract, correction of errors, omissions, prior sale or lease, change of price or terms or withdrawal from the market without notice. The contents of The Key are for reference only and do not constitute all or any part of a contract. Copyright 2011





## EVERYTHING ON HAND EVERYTHING TIDY IN AN INSTANT

Valcucine has always focused on satisfying customers' requirements and has painstakingly researched into the use of traditional kitchens to the perfection of a few aspects that improve the interaction of Man with the whole kitchen "system". After having revolutionised ergonomics by presenting the Logica System with its 80 cm depth and equipped back section, removable jumbo drawers and wall units with Ala and Aeries lift-up doors, Valcucine is now presenting the new equipped back section with superb capability of containing and concealing all the kitchen equipment and appliances in a flexible yet smart way.

**VALCUCINE** 

GERMAN STANDARD ITALIAN DESIGN



www.mooi.hk

### FLAGSHIP STORE:

#### VALCUCINE

G/F & 1/F, 69 Blue Pool Rd.,  
Happy Valley, Hong Kong

Tel: 2893 8198

#### DEMODE by VALCUCINE

1/F, Fortune Bldg., 150-8 Lockhart Rd.,  
Wan Chai, Hong Kong

Tel: 2802 9998

#### RIMADESIO

53 Wong Nai Chung Rd.,  
Happy Valley, Hong Kong

Tel: 2890 8008



# TOP OF THE WORLD 高高在上



Perched in an exclusive location on The Peak, this 3,986 sq-ft spectacular stand-alone town house, which features four bedrooms (two ensuite), three-and-a-half bathrooms, separate open-plan living and dining areas for formal and family use, a sun-filled terrace and a high-spec kitchen, is a rare jewel.

Airy and spacious, the expansive home is filled with paintings and sculptures whose rich, vivid hues and fascinating combination of shape and texture are set perfectly against the neutral backdrop of creamy white walls and discreet spot-lighting.

Blending eastern and western contemporary styles throughout, the house is spread over three levels and connected by a stunning staircase in white with transparent walls creating an incredible sense of openness. On the top floor are the three bedrooms, each carefully designed to create different ambiances: one is young and energetic; another speaks to an adventurous heart; and the last evokes a peaceful state of mind. Attics have been built in two bedrooms, ingeniously making good use of the space created by the high ceilings.

In the living and dining rooms, a 12-seat dining table forms the heart of the space, surrounded by selected artwork. The outdoor terrace with its glass sliding door addresses modern tastes in which the boundaries between indoor and outdoor living are blurred. The family room is nestled in the basement, with a spacious, modern wine cellar tucked away at one end. The town house also offers two covered car parks.

這座3,986平方呎罕見大宅，位處山頂頂尖級豪宅區，設四睡房（其中兩間為套房）、三個半浴室、開放式客廳、供自用及宴客的飯廳、開揚露台及設備齊全的廚房。

豪華大宅寬敞開揚，一室掛畫與雕塑，貴氣逼人。而色彩斑斕的藝術品結合形形色色的形狀與質感，在射燈不經意的映照下，跟奶白牆身的背景成了自然完美的絕配。

大宅的東西合璧風格散佈三個樓層，由攝人的白色梯間併通透的牆壁連繫著，更見開揚。頂層的三間睡房，各自精彩：一間充滿青春氣息，另一間帶點冒險精神，而主人房則靈謐怡情。其中兩間睡房各設閣樓，善用高樓底的建築特色。

一張供十二人坐的餐桌成了客飯廳的焦點，四周擺放了藝術品。戶外露台由玻璃趟門分隔客飯廳，是現代生活融會室內外空間的最佳例子。起居室設於地庫，空間寬闊，更設有現代酒窖。大宅亦附設兩個有蓋停車場。



**Kellett View Town House 嘉麗園**  
65-69 Mount Kellett Road, The Peak  
山頂加列山道65-69號

3,986 s.f. (plus terrace)  
HK\$220M

9093 3381 Stephen Chan 陳先生  
www.landscape.com/96599.htm





*Distinct  
by  
Design*



For 90 years, Bauknecht has taken a uniquely German approach in crafting every piece of innovation, through meticulous attention to details and a passion for perfection.

Fire up an extraordinary culinary experience with our signature KULT Oven, featuring minimalist design and leading-edge technology to ensure your favourite foods are cooked to perfection without the need to pre-heat. It is little wonder the KULT Oven was awarded Best Product of the Year by Plus X Award.

**Bauknecht. The Craft in Kitchen.**

For inquiries please contact [info@bauknecht.com.hk](mailto:info@bauknecht.com.hk)



red dot design award



PLUS X AWARD

2010 red dot design award winner  
2010 Best Product of the Year by Plus X Award  
2010 Most Innovative Brand by Plus X Award



### Four Winds

4 Mount Davis Road, Pokfulam  
Fully furnished with nice decorations  
1-bedroom flat in quiet area of Pokfulam  
配套齊全靚裝修一房住宅，位於薄扶林環境寧靜怡人

1,400 s.f.  
**\$14.5M**

9648 6082 Christine Chong 莊小姐  
www.landscape.com/111229.htm

薄扶林 恒琪園



### Fulham Garden

84 Pok Fu Lam Road, Pokfulam  
Tastefully renovated 3-bedroom apartment in quiet Pokfulam  
品味雅致裝修三房單位，位於薄扶林清幽地段

1,750 s.f.  
**\$20M**

9551 1077 Walker Lam 林先生  
www.landscape.com/42934.htm

薄扶林 富林苑



### Y Y Mansion

96 Pok Fu Lam Road, Pokfulam  
Nicely decorated apartment with private roof top  
雅致裝修住宅，連天台出售

1,750 s.f. (plus roof)  
**\$22M**

9238 2012 David Chan 陳先生  
www.landscape.com/121872.htm

薄扶林 裕仁大廈



### Pokfulam Court

94 Pok Fu Lam Road, Pokfulam  
Practical 3-bedroom apartment with big balcony overlooking harbour view  
間隔實用三房單位，連大陽臺，俯瞰維港美景

1,800 s.f.  
**\$23M**

6838 2929 Mark Mak 麥先生  
www.landscape.com/83034.htm

薄扶林 碧林閣



### Parisian

8 Stanley Mound Road, Stanley  
Practical 3-bedroom apartment in Stanley  
赤柱三房住宅，間隔實用，可租可售

1,700 s.f.  
**\$23.8M** also for lease \$58K incl.

9107 3891 Mavis Wu 吳小姐  
www.landscape.com/25102.htm

赤柱 海寧雅舍



### Residence Bel-Air

Bel-Air Avenue, Pokfulam  
Nicely decorated waterfront apartment with excellent clubhouse facilities  
靚裝修海濱住宅，連豪華會所設施，可租可售

1,588 s.f.  
**\$25.5M** also for lease \$65K incl.

9028 0147 Jenson Au 區先生  
www.landscape.com/98641.htm

薄扶林 貝沙灣



### Aegean Terrace

60 Sassoon Road, Pokfulam  
Sea view low-rise with brand new decorations and spacious layout  
全新裝修低密度海景住宅，間隔寬敞

1,860 s.f.  
**\$26.5M**

Sole Agent 獨家代理

5182 8699 Maria Cheung 張小姐  
www.landscape.com/40058.htm

薄扶林 愛琴苑



### La Mer

67-71 Bisney Road, Pokfulam  
Full sea view 3-bedroom with study room low-rise apartment  
全海景三房連書房低密度住宅

2,063 s.f.  
**\$29.8M**

Sole Agent 獨家代理

9088 4666 Yvonne Chang 鄭小姐  
www.landscape.com/108873.htm

薄扶林 浪頤居



### South Bay Palace

25-31 South Bay Close, Repulse Bay  
Modern mid-rise in serene South Bay  
Close close to Hong Kong International School  
時尚中密度住宅，環境寧靜，位於南灣坊鄰近香港國際學校，可租可售

2,017 s.f.  
**\$33M** also for lease \$70K incl.

9238 2012 David Chan 陳先生  
www.landscape.com/40912.htm

淺水灣 南灣御苑



### Gordon Terrace

4-8A Carmel Road, Stanley  
Unique 3-bedroom low-rise apartment with private garden  
別致三房低密度住宅，連私家花園

1,800 s.f. (plus garden)  
**\$34M**

9093 3381 Stephen Chan 陳先生  
www.landscape.com/99085.htm

赤柱 歌敦臺





**37 Repulse Bay Road, Repulse Bay**  
Newly decorated apartment with clubhouse facilities enjoying Repulse Bay sea view  
全新裝修單位，連住客會所設施，欣賞淺水灣迷人海景

淺水灣  
淺水灣道37號

1,635 s.f.  
**\$37M**

☎ 9809 8570 Stella Lo 羅小姐  
🌐 [www.landscape.com/108932.htm](http://www.landscape.com/108932.htm)



**Hong Kong Parkview - Tower 8**  
88 Tai Tam Reservoir Road, Repulse Bay  
Nicely decorated 3-bedroom unit in family-oriented Hong Kong Parkview 著名家庭式三房住宅，享雅致裝修

淺水灣  
陽明山莊8座

2,366 s.f.  
**\$37M**

☎ 9648 6082 Christine Chong 莊小姐  
🌐 [www.landscape.com/106649.htm](http://www.landscape.com/106649.htm)



**Faber Court**  
29-31 Tai Tam Road, Tai Tam  
Spacious 3-bedroom apartment with extremely high efficiency and full sea view  
間隔寬敞三房住宅，私隱度極高，享全海景

大潭  
輝百閣

2,250 s.f.  
**\$42M**

☎ 6183 8388 Chris Law 羅先生  
🌐 [www.landscape.com/108156.htm](http://www.landscape.com/108156.htm)



**Ridge Court**  
21A-21D Repulse Bay Road, Repulse Bay  
Full sea view flat with nice decorations in Repulse Bay  
淺水灣全海景住宅，配以極靚裝修

淺水灣  
冠園

2,300 s.f.  
**\$44.8M**

☎ 9809 8570 Stella Lo 羅小姐  
🌐 [www.landscape.com/99498.htm](http://www.landscape.com/99498.htm)



**Faber Villa**  
17 Tai Tam Road, Tai Tam  
Rare high privacy sea view 4-bedroom flat in Tai Tam  
大潭罕有海景四房住宅，私隱度高

大潭  
輝百苑

3,200 s.f.  
**\$53M**

☎ 9138 1621 Teresa Fung 馮小姐  
🌐 [www.landscape.com/107946.htm](http://www.landscape.com/107946.htm)



**Redhill House**  
18 Pak Pat Shan Road, Tai Tam  
Popular 3-bedroom townhouse in quiet enclave  
受歡迎三房排屋，環境優美怡人，可租可售

大潭  
紅山半島

2,672 s.f. (plus roof and garden)  
**\$58M** also for lease \$110K incl.

☎ 9551 1077 Walker Lam 林先生  
🌐 [www.landscape.com/4450.htm](http://www.landscape.com/4450.htm) **可普通話**



**Park Place**  
7 Tai Tam Reservoir Road, Repulse Bay  
Prestigious apartment with facilities close to city enjoying unique views  
淺水灣豪華住宅，連會所設施，鄰近市區，享優美景觀

淺水灣  
雅柏苑

2,288 s.f.  
**\$58M**

☎ 9028 0147 Jenson Au 區先生 **可普通話**  
🌐 [www.landscape.com/35497.htm](http://www.landscape.com/35497.htm)



**Celestial Garden**  
5 Repulse Bay Road, Repulse Bay  
4-bedroom sea view apartment on upper Repulse Bay with swimming pool  
淺水灣道頭段四房海景住宅，連泳池

淺水灣  
詩禮花園

2,363 s.f.  
**\$64M**

☎ 9093 3381 Stephen Chan 陳先生  
🌐 [www.landscape.com/3881.htm](http://www.landscape.com/3881.htm)



**3 Repulse Bay Road, Repulse Bay**  
Renowned luxury apartment on upper Repulse Bay Road with fantastic views  
淺水灣道頭段新裝修豪華住宅，享遼闊景致

淺水灣  
淺水灣道3號

2,161 s.f.  
**\$65M**

☎ 6838 2929 Mark Mak 麥先生  
🌐 [www.landscape.com/126914.htm](http://www.landscape.com/126914.htm)



**Pine Crest**  
65 Repulse Bay Road, Repulse Bay  
Prestigious apartment with swimming pool enjoying stunning sea view of Deep Water Bay  
淺水灣尊貴住宅，連泳池，欣賞深水灣迷人海景

淺水灣  
松苑

2,250 s.f.  
**\$65M**

☎ 5182 8699 Maria Cheung 張小姐  
🌐 [www.landscape.com/5742.htm](http://www.landscape.com/5742.htm)



### Belgravia

57 South Bay Road, Repulse Bay  
Fully renovated apartment with stunning sea view  
全新裝修住宅，享遼闊海景，可租可售

淺水灣  
南灣道57號

2,390 s.f.  
**\$68M** also for lease \$131.45K

☎ 9093 3381 Stephen Chan 陳先生  
🌐 www.landscape.com/117879.htm



### Regalia Bay

88 Wong Ma Kok Road, Stanley  
Sea view townhouse with clubhouse facilities in quiet Stanley  
赤柱海景排屋，連完善住客會所設施，環境寧靜，可租可售

赤柱  
富豪灣

4,117 s.f. (plus roof and garden)  
**\$70M** also for lease \$180K incl.

☎ 6838 2929 Mark Mak 麥先生  
🌐 www.landscape.com/34171.htm



### Repulse Bay Towers

119A Repulse Bay Road, Repulse Bay  
Spacious 4-bedroom duplex with full view of Repulse Bay Beach  
寬敞四房複式單位，尊享全淺水灣海灘美景

淺水灣  
保華大廈

3,300 s.f.  
**\$75M**

☎ 6330 7888 Cora Ko 高小姐  
🌐 www.landscape.com/105931.htm



### Oasis

8-12 Peak Road, The Peak  
Deluxe harbour view apartment with high ceiling  
豪華維港景住宅，樓底極高

山頂  
欣怡居

2,719 s.f.  
**\$76M**

☎ 6330 7888 Cora Ko 高小姐  
🌐 www.landscape.com/122963.htm



### Pine Crest

65 Repulse Bay Road, Repulse Bay  
Rarely garden apartment with 2,000 s.f. private garden in Repulse Bay  
淺水灣罕有住宅連二千呎大花園出售

淺水灣  
松苑

2,250 s.f. (plus garden)  
**\$85M**

☎ 9138 1621 Teresa Fung 馮小姐  
🌐 www.landscape.com/31521.htm



### Residence Bel-Air

68 Bel-Air Peak Avenue, Pokfulam  
4-bedroom sea view apartment with roof terrace  
四房海景住宅，連私家天台

薄扶林  
貝沙灣

3,980 s.f. (plus roof)  
**\$88M**

☎ 9833 9509 Michelle Chung 鍾小姐 **可普通話**  
🌐 www.landscape.com/104038.htm



### La Hacienda

29-33 Mount Kellett Road, The Peak  
Colonial style apartment with facilities in The Peak  
山頂英式住宅，連住客會所設施

山頂  
加列山道29-33號

3,506 s.f.  
**\$90M**

☎ 9080 6686 Teresa Lau 劉小姐 **可普通話**  
🌐 www.landscape.com/30905.htm



### Le Palais

8 Pak Pat Shan Road, Tai Tam  
Quality waterfront townhouse in serene Tai Tam  
大潭優質海邊大屋，環境寧靜優美

大潭  
皇府灣

3,393 s.f. (plus garden)  
**\$95M**

☎ 9238 2012 David Chan 陳先生  
🌐 www.landscape.com/112386.htm



### L'Harmonie

3 Stanley Mound Road, Stanley  
Rare find 4-bedroom townhouse on Stanley Main Beach  
罕有四房排屋，鄰近赤柱正灘

赤柱  
葆琳居

3,557 s.f. (plus roof and garden)  
**\$106M**

☎ 9093 3381 Stephen Chan 陳先生  
🌐 www.landscape.com/122327.htm



### Sunshine Villa

48 Mount Kellett Road, The Peak  
Deluxe Peak townhouse with private garage  
山頂豪華洋房，連私家車庫，可租可售

山頂  
陽光花園

2,300 s.f. (plus garden)  
**\$110M** also for lease \$150K incl.

☎ 5182 8699 Maria Cheung 張小姐  
🌐 www.landscape.com/1708.htm





**Royal Bay**  
82 Chung Hom Kok Road,  
Chung Hom Kok  
Sea view 4-bedroom townhouse with roof  
and terrace in Chung Hom Kok  
春坎角四房洋房，連天台及平台，尊享海景

春坎角  
御灣

3,850 s.f. (plus roof and terrace)  
**\$120M**

9648 6082 Christine Chong 莊小姐  
www.landscape.com



**Villa Rosa**  
88 Red Hill Road, Tai Tam  
Deluxe hilltop 4-bedroom garden house  
with sweeping sea view  
豪華四房花園洋房，享遼闊海景

大潭  
玫瑰園

3,960 s.f. (plus roof and garden)  
**\$120M**

9648 6082 Christine Chong 莊小姐  
www.landscape.com/1823.htm



**Mountain Lodge**  
44 Mount Kellett Road, The Peak  
Rare duplex apartment with Southside  
sea view  
山頂罕有複式住宅，享南區海景

山頂  
崑廬

5,200 s.f.  
**\$130M**

9199 0672 David Leung 梁先生  
www.landscape.com/96955.htm



**Plantation Heights**  
29 Plantation Road, The Peak  
Newly renovated house with  
private garden  
山頂全新裝修大屋，連私家花園，可租可售

山頂  
迎福苑

3,500 s.f. (plus garden)  
**\$140M** also for lease \$200K

9809 8570 Stella Lo 羅小姐  
www.landscape.com/109399.htm



**Manderly Garden**  
48 Deep Water Bay Road, Deep  
Water Bay  
Designer decorated 4-bedroom  
townhouse with roof in Deep Water Bay  
深水灣靚裝修大屋，豪華四房連天台排屋連天台

深水灣  
文禮苑

3,610 s.f. (plus roof)  
**\$143M**

6183 8339 Carman Szeto 司徒小姐 可普通話  
www.landscape.com/6527.htm



**La Hacienda**  
29-33 Mount Kellett Road,  
The Peak  
Newly decorated townhouse with facilities  
overlooking nice views  
全新裝修洋房，連完善住客設施，俯瞰美麗景色

山頂  
加列山道29-33號

2,800 s.f.  
**\$150M**

9833 9509 Michelle Chung 鍾小姐 可普通話  
www.landscape.com/33958.htm



**45 Island Road, Deep  
Water Bay**  
Rare find sea view garden house at Deep  
Water Bay  
深水灣罕有海景花園洋房

深水灣  
香島道45號

4,800 s.f. (plus garden and roof)  
**\$168M**

9199 0672 David Leung 梁先生  
www.landscape.com/99477.htm



**Strawberry Hill**  
8 Plunkett's Road, The Peak  
Peak house enjoy greenery view and  
partial sea view  
英式山頂屋，享翠綠景致及部份維港景

山頂  
紅莓閣

3,200 s.f.  
**\$170M**

9833 9509 Michelle Chung 鍾小姐 可普通話  
www.landscape.com/104038.htm



**Sherwood's Bluff**  
10 Bluff Path, The Peak  
Detached townhouse with splendid  
Southside sea view  
山頂獨立洋房，尊享南區優美景色

山頂  
百祿徑10號

4,055 s.f. (plus garden)  
**\$180M**

6330 7888 Cora Ko 高小姐  
www.landscape.com/48826.htm



**La Hacienda**  
29-33 Mount Kellett Road,  
The Peak  
Rare garden townhouse on The Peak  
overlooking verdant Aberdeen Country  
Park  
山頂罕有花園洋房，俯瞰香港仔郊野公園景色

山頂  
加列山道29-33號

3,200 s.f.  
**\$180M**

9871 6828 Louis Wong 黃先生  
www.landscape.com/30422.htm



### Bayview

21-35 Black's Link, The Peak  
5-bedroom townhouse with Deep Water Bay view from The Peak  
五房排屋，享深水灣迷人景色

3,350 s.f. (plus terrace and roof)  
**\$200M**

☎ 5182 8699 Maria Cheung 張小姐  
🌐 [www.landscape.com/84364.htm](http://www.landscape.com/84364.htm)

山頂布力徑21-35號



### Abergeldie

52 Plantation Road, The Peak  
Designer decorated 3-bedroom townhouse overlooking Victoria Harbour panorama  
顯赫氣派山頂大屋，俯瞰維港美景

3,688 s.f.  
(plus roof, terrace and garden)  
**\$200M**

☎ 9833 9509 Michelle Chung 鍾小姐 **可普通話**  
🌐 [www.landscape.com/122157.htm](http://www.landscape.com/122157.htm)

山頂種植道52號



### 11 Pollock's Path, The Peak

Exclusive garden house with a bird's eye view of Victoria Harbour  
獨特尊貴花園大屋，鳥瞰維港美景，可租可售

4,600 s.f.  
**\$268M** also for lease \$330K

☎ 9199 0672 David Leung 梁先生  
🌐 [www.landscape.com/4394.htm](http://www.landscape.com/4394.htm)

山頂普樂道11號



### Manly Villa

38 Ocean Park Road, Repulse Bay  
Rare 5-bedroom townhouse with private garden and pool overlooking Deep Water Bay  
罕有五房排屋，連私家花園及泳池，俯瞰深水灣景色

3,500 s.f. (plus garden)  
**Open Offer**

☎ 5182 8699 Maria Cheung 張小姐  
🌐 [www.landscape.com/36472.htm](http://www.landscape.com/36472.htm)

淺水灣文麗雙築

## 還原基本步

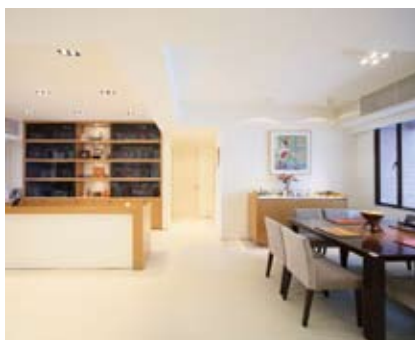
## Back to basics

Clean lines and a pared-down palette at this Hong Kong Parkview apartment are a classic example of contemporary style  
香港陽明山莊一公寓，主張簡潔的線條與色調，是當代設計風格的最佳演繹

### Hong Kong Parkview 陽明山莊8座

Tower 08, Hong Kong Parkview  
88 Tai Tam Reservoir Road, Repulse Bay  
陽明山莊8座  
淺水灣大潭水塘道88號

2,366 s.f.  
**HK\$38M** also for lease \$110K incl.



Located in up-market Repulse Bay, the standout feature of this 2,366 sq-ft apartment is its expansive open-plan 'Great Room' – as they are called in the US – which sees living area, dining room and an ample study occupying the main space in stylish harmony. With two bedrooms (one ensuite) and two bathrooms, the apartment also has a good-sized balcony providing sweeping views and acting as a channel for fresh breezes.

The simple organisation of this airy apartment celebrates functionality and flexibility. With durable white vinyl flooring and white walls throughout, the apartment is filled with light. A green feature wall in the living space, set behind the sofa with recessed lighting and simple, elegant shelving, creates a splash of colour and evokes the greenery of Parkview's location within Tai Tam Country Park.

這個位於淺水灣高尚住宅區香港陽明山莊的公寓，面積2,366平方呎，媲美美式的開揚寬敞大廳，集客飯廳及書房，時尚和諧。公寓設兩間睡房（其中一間為套房）、兩間浴室，及一個大小恰到好處的露台，座擁美景，更令一室空氣流通。

簡約的佈局尊崇功能與靈活性，耐用的白色膠地板及白色牆身，令家居光潔整齊，而客廳沙發背後的綠色特色牆設嵌牆燈飾，再配上簡約典雅的飾物架，為室內帶來自然色彩，與大潭水塘的背景互相輝映。

☎ 9871 6828 Louis Wong 黃先生  
🌐 [www.landscape.com/45552.htm](http://www.landscape.com/45552.htm)





### Royal Court

9M Kennedy Road,

Midlevels Central

Conveniently located 3-bedroom flat in well kept condition  
中半山三房住宅，保養良好，位置優越，交通方便，可租可售

919 s.f.

**\$11.3M** also for lease \$32K incl.

☎ 9493 8275 Sami Woo 胡小姐

🌐 [www.landscape.com/88666.htm](http://www.landscape.com/88666.htm)

中半山  
皇朝閣



### Park View Court

1 Lyttelton Road, Midlevels West

Cozy 4-bedroom apartment with terrace  
西半山迷人四房住宅，連平台

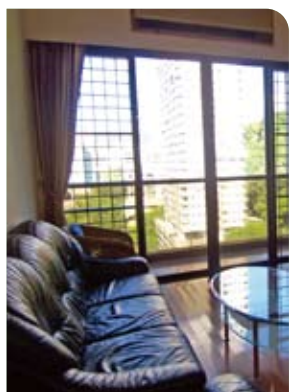
1,575 s.f. (plus terrace)

**\$16.5M**

☎ 9551 1077 Walker Lam 林先生

🌐 [www.landscape.com/108587.htm](http://www.landscape.com/108587.htm)

西半山  
恒柏園



### Merry Garden

90 Kennedy Road,

Midlevels Central

Rare find penthouse unit with private roof top  
罕有頂層單位，連私家天台

1,200 s.f. (plus roof)

**\$17M**

☎ 9486 1566 Mira To 杜小姐

🌐 [www.landscape.com/46699.htm](http://www.landscape.com/46699.htm)

中半山  
豐樂新村



### Monticello

48 Kennedy Road,

Midlevels Central

Nicely decorated 3-bedroom apartment on convenient Kennedy Road  
堅尼地道靚裝修三房單位，地段優越方便

1,293 s.f.

**\$17.8M**

☎ 9107 3891 Mavis Wu 吳小姐

🌐 [www.landscape.com/68754.htm](http://www.landscape.com/68754.htm)

中半山  
滿峰台



### Wing Way Court

31 Kennedy Road,

Midlevels Central

3-bedroom apartment with high privacy close to Wanchai and Causeway Bay  
中半山三房住宅，私隱度高，鄰近灣仔銅鑼灣，交通方便

1,860 s.f.

**\$24.98M**

☎ 9088 4666 Yvonne Chang 鄭小姐

🌐 [www.landscape.com/94524.htm](http://www.landscape.com/94524.htm)

中半山  
永威閣



### Amber Garden

70-72 Kennedy Road,

Midlevels Central

Popular apartment with swimming pool on Kennedy Road  
堅尼地道受歡迎住宅，連泳池

1,732 s.f.

**\$25M**

☎ 9238 2012 David Chan 陳先生

🌐 [www.landscape.com/37856.htm](http://www.landscape.com/37856.htm)

中半山  
柏苑



### Hatton Place

1A Po Shan Road, Midlevels West

Newly renovated 3-bedroom mid-rise apartment on serene Po Shan Road  
寶珊道全新裝修中密度三房單位，環境優美怡人

1,579 s.f.

**\$28.5M**

☎ 9493 8275 Sami Woo 胡小姐

🌐 [www.landscape.com/127506.htm](http://www.landscape.com/127506.htm)

西半山  
杏彤苑



### Belmont Court

10 Kotewall Road, Midlevels West

Newly renovated 3-bedroom apartment in quiet location  
全新裝修三房住宅，環境清幽怡人，可租可售

2,000 s.f.

**\$28.65M** also for lease \$60K incl.

☎ 9348 4118 Rowena Siu 蕭小姐

🌐 [www.landscape.com/33345.htm](http://www.landscape.com/33345.htm)

西半山  
清輝大廈



### Glory Mansion

106-108 MacDonnell Road,

Midlevels Central

Tastefully designed colonial apartment on convenient MacDonnell Road  
麥當勞道品味裝修英式住宅，位置優越，交通方便

2,300 s.f.

**\$30.5M**

☎ 9348 4118 Rowena Siu 蕭小姐

🌐 [www.landscape.com/107872.htm](http://www.landscape.com/107872.htm)

中半山  
輝煌大廈



### Pearl Gardens

7 Conduit Road, Midlevels West

3 bedrooms apartment in Pearl Garden  
明珠臺三房住宅出租

2,200 s.f.

**\$32.5M**

☎ 9028 0147 Jenson Au 區先生

🌐 [www.landscape.com/74586.htm](http://www.landscape.com/74586.htm)

西半山  
明珠臺



**Fairlane Tower**  
2B Bowen Road, Midlevels Central  
Luxurious apartment on Serene Bowen Road  
寶雲道豪華住宅，環境寧靜，優美怡人

中半山寶雲山莊

1,744 s.f.  
**\$33M**

9809 8570 Stella Lo 羅小姐  
www.landscape.com/110228.htm



**Sakura Court**  
58-60 Kennedy Road, Midlevels Central  
High efficiency apartment with balcony on Kennedy Road  
堅尼地道住宅，連陽臺，實用率高

中半山金樓閣

2,200 s.f.  
**\$33M**

9348 4118 Rowena Siu 蕭小姐  
www.landscape.com/51408.htm



**Bowen Place**  
11A Bowen Road, Midlevels Central  
3-bedroom harbour view apartment in quiet location  
三房維港景住宅，環境寧靜優美，可租可售

中半山寶雲閣

1,983 s.f.  
**\$35.5M** also for lease \$80K incl.

9809 8570 Stella Lo 羅小姐  
www.landscape.com/34841.htm



**Tregunter Tower 1**  
14 Tregunter Path, Midlevels Central  
Large and practical modern 3-bedroom flat with easy access to Central  
特大時尚三房單位，間隔實用，鄰近中環，交通方便

中半山地利根德閣一座

3,052 s.f.  
**\$39.5M**

9238 2012 David Chan 陳先生  
www.landscape.com/89920.htm



**Dynasty Court**  
23 Old Peak Road, Midlevels Central  
Prestigious apartment with excellent facilities in sought after development  
尊貴豪華住宅，連完善住客會所設施，市面難尋，可租可售

中半山帝景園

1,970 s.f.  
**\$40M** also for lease \$90K incl.

6838 2929 Mark Mak 麥先生  
www.landscape.com/6485.htm

可普通話



**Century Tower 1**  
1 Tregunter Path, Midlevels Central  
Unique harbour view flat in Central Midlevels with nice decorations  
中半山雅致維港景住宅，尊享靚裝修

中半山世紀大廈一座

2,565 s.f.  
**\$42M**

9107 3891 Mavis Wu 吳小姐  
www.landscape.com/21356.htm

可普通話



**Silvercrest**  
24 MacDonnell Road, Midlevels Central  
Unique apartment with tasteful decorations in prime location  
中半山獨特靚裝修住宅，位處尊貴地段

中半山聚安樓

2,643 s.f.  
**\$42M**

9107 3891 Mavis Wu 吳小姐  
www.landscape.com/102054.htm

可普通話



**Clovelly Court**  
12 May Road, Midlevels Central  
Popular 3-bedroom family flat in quiet corner of Midlevels Central  
受歡迎三房家庭式住宅，位於寧靜的中半山角落，環境舒適

中半山嘉富麗苑

1,925 s.f.  
**\$43M**

9348 4118 Rowena Siu 蕭小姐  
www.landscape.com/23309.htm



**Po Garden**  
9 Brewin Path, Midlevels Central  
Luxury apartment surrounded by lush greenery on fringe of Central  
中半山豪華單位，環境翠綠舒適，鄰近中環，交通方便

中半山寶園

2,572 s.f.  
**\$44M**

9551 1077 Walker Lam 林先生  
www.landscape.com/18937.htm

可普通話



**Dragon View**  
39 MacDonnell Road, Midlevels Central  
Spacious designer's decorated apartment situated on fringe of CBD  
間隔寬敞住宅，設計師品味裝修，鄰近中環，交通方便

中半山龍景樓

2,500 s.f.  
**\$45M**

9348 4118 Rowena Siu 蕭小姐  
www.landscape.com/37960.htm





### Wisdom Court

5 Hutton Road, Midlevels West

Nicely decorated 3-bedroom apartment with internal stairs to private roof top  
靚裝修三房住宅，連私家樓梯上天台

1,854 s.f. (plus roof)

**\$48M**

☎ 6838 2929 Mark Mak 麥先生  
🌐 [www.landscape.com/108898.htm](http://www.landscape.com/108898.htm)

西  
半  
山  
慧  
苑



### Regence Royale

2 Bowen Road, Midlevels Central

Luxuriously decorated apartment with excellent facilities in prime location  
豪華裝修大宅，連完善住客會所設施，地段尊貴

2,522 s.f.

**\$51M**

☎ 9648 6082 Christine Chong 莊小姐  
🌐 [www.landscape.com/110087.htm](http://www.landscape.com/110087.htm)

中  
半  
山  
富  
匯  
豪  
庭



### 1 Robinson Road, Midlevels West

Unique duplex with good layout on fringe of CBD

獨特複式住宅，間隔實用，鄰近中環，交通方便

3,400 s.f.

**\$54M**

☎ 9486 1566 Mira To 杜小姐  
🌐 [www.landscape.com/98553.htm](http://www.landscape.com/98553.htm)

西  
半  
山  
羅  
便  
臣  
道  
一  
號



### May Tower 1

7 May Road, Midlevels Central

Large 2-ensuite duplex in popular colonial style mansion

受歡迎英式設計複式住宅，連特大兩套房，可租可售

2,850 s.f.

**\$58M** also for lease \$100K incl.

☎ 9486 1566 Mira To 杜小姐  
🌐 [www.landscape.com/135192.htm](http://www.landscape.com/135192.htm)

中  
半  
山  
梅  
苑  
一  
座



### Tregunter Tower 3

14 Tregunter Path, Midlevels Central

Luxurious duplex apartment with full clubhouse facilities overlooking the harbour

豪華複式住宅，連完善住客會所設施，俯瞰維港美景，可租可售

3,639 s.f.

**\$80M** also for lease \$150K incl.

☎ 6183 8388 Chris Law 羅先生  
🌐 [www.landscape.com/3950.htm](http://www.landscape.com/3950.htm)

座 中  
半  
山  
地  
利  
根  
德  
閣  
3



### The Mayfair

1 May Road, Midlevels Central

Luxurious apartment in renowned building with stunning harbour view

豪華住宅大廈，尊享遠闊維港景致

2,872 s.f.

**\$93M**

☎ 9028 0147 Jenson Au 區先生  
🌐 [www.landscape.com/122709.htm](http://www.landscape.com/122709.htm)

可普通話

中  
半  
山  
梅  
道  
一  
號



### Grenville House

1-3A Magazine Gap Road, Midlevels Central

Huge apartment with swimming pool and big balcony in prestigious location

中半山特大住宅，連泳池及大露台，享開揚翠綠景致，地段尊貴，可租可售

3,700 s.f.

**\$95M** also for lease \$170K

☎ 9080 6686 Teresa Lau 劉小姐  
🌐 [www.landscape.com/17367.htm](http://www.landscape.com/17367.htm)

可普通話

中  
半  
山  
嘉  
慧  
園



### Kenville Building

32 Kennedy Road, Midlevels Central

Large combined 5-bedroom garden flat with huge terrace

特大連連五房花園大宅，連巨型平台

4,000 s.f. (plus terrace)

**\$100M**

☎ 5182 8699 Maria Cheung 張小姐  
🌐 [www.landscape.com/37237.htm](http://www.landscape.com/37237.htm)

中  
半  
山  
甘  
苑



### The Albany

1 Albany Road, Midlevels Central

Exquisite duplex 4-bedroom apartment on fringe of CBD commanding nice views

豪華四房複式住宅，鄰近中環，享優美景色

3,563 s.f.

**\$118M**

☎ 9348 4118 Rowena Siu 蕭小姐  
🌐 [www.landscape.com/39658.htm](http://www.landscape.com/39658.htm)

中  
半  
山  
雅  
賓  
利  
大  
廈



### Tregunter Tower 3

14 Tregunter Path, Midlevels Central

Tastefully decorated duplex with sky terrace

中半山品味靚裝修複式單位，連空中平台

4,146 s.f. (plus roof)

**\$125M**

☎ 9871 6828 Louis Wong 黃先生  
🌐 [www.landscape.com/109256.htm](http://www.landscape.com/109256.htm)

中  
半  
山  
地  
利  
根  
德  
閣  
三  
座



### Morengo Court

25 Tai Hang Road, Midlevels East  
Rare on market apartment with internal staircase to roof with well decoration  
東半山罕有住宅連內置樓梯上天台，連雅緻靚裝修

東  
半  
山  
明  
達  
閣

1,066 s.f. (plus roof)  
**\$20M**

9080 6686 Teresa Lau 劉小姐 可普通話  
www.landscape.com/100628.htm



### Greenville Gardens

16-17 Shiu Fai Terrace,  
Midlevels East  
Spacious 3-bedroom apartment in Midlevels East with gorgeous view  
東半山三房住宅，間隔寬敞，享遠闊壯麗景色

東  
半  
山  
嘉  
苑

1,462 s.f.  
**\$21M**

6183 8388 Chris Law 羅先生  
www.landscape.com/28825.htm



### Beverly Hill

6 Broadwood Road, Happy Valley  
Decorated 4 bedrooms apartment in family estate with open city view  
新裝修四房家庭式住宅，享開揚城市景觀

跑  
馬  
地  
比  
華  
利  
山

1,748 s.f.  
**\$22.8M**

6183 8339 Carman Szeto 司徒小姐 可普通話  
www.landscape.com/83187.htm



### Swiss Towers

113 Tai Hang Road, Midlevels East  
Conveniently located 3-bedroom apartment with nice decoration enjoy Victoria Harbour view  
維港景觀裝修三房住宅，位置優越，交通方便

東  
半  
山  
瑞  
士  
花  
園

1,600 s.f.  
**\$27M**

9138 1621 Teresa Fung 馮小姐  
www.landscape.com/34270.htm



### Felix Villa

10-12A Happy View Terrace,  
Happy Valley  
Well decorated low-rise flat with private roof overlooking Happy Valley racecourse  
雅緻裝修低密度住宅，連私家天台，俯瞰跑馬地馬場景色，可租可售

跑  
馬  
地  
豐  
樂  
園

1,620 s.f. (plus roof)  
**\$28M** also for lease \$76K incl.

9080 6686 Teresa Lau 劉小姐  
www.landscape.com/106615.htm



### Moulin Court

65 Blue Pool Road, Happy Valley  
Spacious apartment with high ceiling on Blue Pool Road  
藍塘道高樓住宅，間隔寬敞

跑  
馬  
地  
玫  
林  
別  
墅

1,750 s.f.  
**\$28M**

9107 3891 Mavis Wu 吳小姐 可普通話  
www.landscape.com/54877.htm



### Elm Tree Towers

8-10 Chun Fai Road,  
Jardine's Lookout  
Large and practical flat with nice decor in sought after neighbourhood  
特大靚裝修單位，間隔實用，市面難尋

渣  
甸  
山  
愉  
富  
大  
廈

2,028 s.f.  
**\$29M**

9238 2012 David Chan 陳先生  
www.landscape.com/50008.htm



### Cavendish Heights

27-37 Perkins Road,  
Jardine's Lookout  
3-bedroom with 1 ensuite apartment in prime location  
渣甸山三房連套房單位，地段尊貴

渣  
甸  
山  
嘉  
雲  
臺

1,819 s.f.  
**\$32.5M**

6330 7888 Cora Ko 高小姐  
www.landscape.com/107597.htm



### Wilshire Towers

200 Tin Hau Temple Road, North  
Point Midlevels  
Practical and high efficiency apartment with Victoria Harbour view  
間隔寬敞維港景住宅，實用率高

北  
角  
半  
山  
慧  
雅  
閣

2,145 s.f. (plus roof)  
**\$35M**

9486 1566 Mira To 杜小姐  
www.landscape.com/49562.htm



### Rose Court

115-121 Wong Nai Chung Road,  
Happy Valley  
High efficiency 3-bedroom apartment with easy access to Causeway Bay  
高實用三房單位，鄰近銅鑼灣

跑  
馬  
地  
逸  
廬

2,400 s.f.  
**\$35M**

9093 3381 Stephen Chan 陳先生  
www.landscape.com/50027.htm





**8 Shiu Fai Terrace,  
Midlevels East**  
spacious apartment with 4 ensuite  
bedrooms and nice open view  
跑馬地寬敞四套房住宅，享優美開揚景色

跑馬地  
肇輝台8號

2,428 s.f.  
**\$36M**

☎ 6183 8388 Chris Law 羅先生  
🌐 [www.landscape.com/34042.htm](http://www.landscape.com/34042.htm)



**Celeste Court**  
12 Fung Fai Terrace, Happy Valley  
3-bedroom apartment with private roof  
and terrace overlooking racecourse  
跑馬地三房住宅，連私家天台及平台，  
俯瞰馬場景觀

跑馬地  
蔚雲閣

1,638 s.f. (plus roof and terrace)  
**\$40M**

☎ 9648 6082 Christine Chong 莊小姐  
🌐 [www.landscape.com/108271.htm](http://www.landscape.com/108271.htm)



**9-10 Briar Avenue,  
Happy Valley**  
Newly decorated low-rise apartment with  
private roof  
雅致裝修低密度住宅，連私家天台

跑馬地  
比雅道9-10號

2,000 s.f. (plus roof)  
**\$40M**

☎ 9486 1566 Mira To 杜小姐  
🌐 [www.landscape.com/121863.htm](http://www.landscape.com/121863.htm)



**Fontana Gardens**  
1-25 Ka Ning Path, Midlevels East  
Spacious 3-bedroom apartment with city  
view within walking distance of  
Causeway Bay  
寬敞三房住宅，享城市景觀，鄰近銅鑼灣，吃喝玩  
樂十分方便

東半山  
豪園

3,000 s.f.  
**\$42.8M**

☎ 9093 3381 Stephen Chan 陳先生  
🌐 [www.landscape.com/46148.htm](http://www.landscape.com/46148.htm)



**The Elegance**  
60 Tai Hang Road, Midlevels East  
Top floor duplex with private roof on Tai  
Hang Road  
大坑道頂層複式住宅，連私家天台

東半山  
優雅閣

2,438 s.f. (plus roof)  
**\$43M**

☎ 9486 1566 Mira To 杜小姐  
🌐 [www.landscape.com/44596.htm](http://www.landscape.com/44596.htm)



**The Colonnade**  
152 Tai Hang Road, Midlevels East  
Nicely decorated 3-bedroom apartment  
with stunning views  
雅致裝修三房住宅，享遠闊景觀

東半山  
嘉禧臺

2,141 s.f.  
**\$48M**

☎ 9493 8275 Sami Woo 胡小姐  
🌐 [www.landscape.com/49607.htm](http://www.landscape.com/49607.htm)



**White Jade**  
51 Stubbs Road, Midlevels East  
Rare 2-bedroom apartment with fantastic  
Victoria Harbour view  
罕有兩房單位，尊享壯麗維港美景

東半山  
白璧

1,700 s.f.  
**\$53M**

☎ 6838 2929 Mark Mak 麥先生  
🌐 [www.landscape.com/38175.htm](http://www.landscape.com/38175.htm)



**Leon Court**  
12-14 Wong Nai Chung Gap  
Road, Midlevels East  
Rare 3-bedroom mid-rise apartment with  
panoramic view  
罕有三房中密度住宅，尊享廣闊景觀

東半山  
利安閣

2,800 s.f.  
**\$55M**

☎ 6330 7888 Cora Ko 高小姐  
🌐 [www.landscape.com/131038.htm](http://www.landscape.com/131038.htm)



**Villa Lotto**  
18 Broadwood Road,  
Happy Valley  
Newly renovated family flat in popular  
development  
全新裝修家庭式住宅，極受歡迎

跑馬地  
樂陶苑

2,406 s.f.  
**\$50M**

☎ 9551 1077 Walker Lam 林先生  
🌐 [www.landscape.com/135265.htm](http://www.landscape.com/135265.htm)



**Grand Deco Tower**  
26 Tai Hang Road, Midlevels East  
Unique triplex penthouse with private roof  
garden  
獨特三複式頂層住宅，連空中花園

東半山  
帝后臺

3,308 s.f. (plus roof and terrace)  
**\$56M**

☎ 9833 9509 Michelle Chung 鍾小姐  
🌐 [www.landscape.com/103305.htm](http://www.landscape.com/103305.htm)

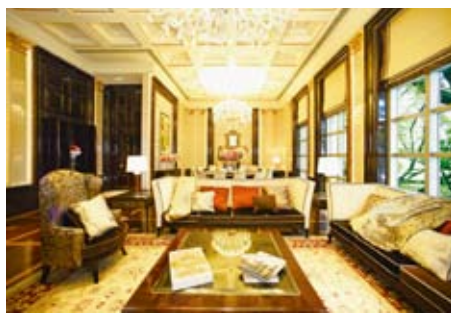
可普通話





Situated on the traditional luxury residential area, Stubbs Road, Chantilly is another signature luxury residential project of KWIH. With the significant location, Chantilly has the gorgeous racecourse view, and it is inspired from Chateau de Chantilly, the French Chateau in North of France. Limited to only 24 unique units, the project enjoys the privilege of being the only new development in the district. Chantilly also boasts its one-floor-one-unit design with individual private lift lobby for each unit. It offers luxurious clubhouse facilities of indoor swimming pool, banquet hall and gym room.

由嘉華國際精心策劃的豪宅項目嘉柏薈，座落港島司徒拔道傳統豪宅地段，擇居港島半山之最，俯瞰跑馬地馬場環迴駿景。嘉柏薈的建築靈感源自法國北部城堡—尚堤伊城堡，是區內罕有的低密度分層豪宅，採用一梯一伙設計，可享獨立私人電梯大堂。此外，嘉柏薈的會所設施齊備，室內泳池，宴會廳及健身室等一應俱全，全幢僅有24個罕貴單位，全區獨有。



Flat type 單位類型: 4-ensuite Suite 四套睡房單位 3,600 s.f. 平方呎  
5-ensuite Suite 五套睡房單位 3,650 s.f. 平方呎

Enquiry Hotline 查詢熱線  
Maria Cheung 張小姐 5182 8699  
Teresa Fung 馮小姐 9138 1621  
Yvonne Chang 鄭小姐 9088 4666

Chantilly  
嘉柏薈



**Butler Tower**  
1-5 Boyce Road, Jardine's Lookout  
Extra large combined apartment with tasteful décor  
特大相連單位，享品味靚裝修

3,300 s.f.  
\$69M

9871 6828 Louis Wong 黃先生  
www.landscape.com/22550.htm

渣甸山柏麗園



**Elm Tree Towers**  
8-10 Chun Fai Road,  
Jardine's Lookout  
Tastefully decorated harbour view duplex with terrace and roof  
品味雅緻裝修維港景複式單位，連平台及天台

2,950 s.f. (plus roof and terrace)  
\$110M

9551 1077 Walker Lam 林先生  
www.landscape.com/121961.htm

渣甸山愉富大廈



**5 Moorsom Drive, Jardine's Lookout**  
Newly decorated modern single house in gated Jardine's Lookout  
全新裝修時尚獨立大屋，位於渣甸山尊貴地段

4,755 s.f.  
\$190M

9093 3381 Stephen Chan 陳先生  
www.landscape.com/47366.htm

渣甸山睦誠徑5號



**Moorsom Road, Jardine's Lookout**  
Exclusive detached house with private garden and garage  
渣甸山特色獨立大屋，連私家花園及車庫

4,000 s.f. (plus garden)  
\$210M

9199 0672 David Leung 梁先生  
www.landscape.com/13399.htm

渣甸山睦誠道





# Tufting & weaving

Andre Fu's debut collection for Tai Ping Carpets is a testament to the company's profound artisanship

Text: Teresa Chow

Photography: Courtesy of Tai Ping Carpets

Today's resurgent craze for tweed surfaced a few years ago, and still exerts a powerful influence over the fashion world — and at first glance at the carpets designed by architect Andre Fu for Tai Ping, you would be excused for assuming that the tweed-inspired designs were led by a fascination with fashion. Indeed, the designer — who counts the award-winning Upper House Hotel in Hong Kong and Fullerton Bay Hotel in Singapore among his works — will tell you that fashion was only a part of his inspiration.

Another common assumption is that given Tai Ping Carpets' Asia roots — the company was founded in Hong Kong — Fu's



collection would be very Asian in style and essence. He will be the first to tell you, however, that his inspiration developed organically from a combination of the urban city lines of Hong Kong and an in-depth visit to the company's mill: "The visit to Tai Ping's mill in Paris was intriguing. I was captivated by the way they weave and dye their own yarn, and their intricate tufting technique," he explains.

The sheer scale of Tai Ping's manufacturing operations proved just as fascinating for Fu. "Taking yarn-weaving, for example — their studio is as big as a stadium. Also, I was impressed by the number of techniques that they have mastered so well."

Mulling his experiences around in his mind prompted the designer to consider pushing the boundaries to create a texture-driven collection which would celebrate Tai Ping's heritage, rather than simply follow current carpet-design trends,





### About the Andre Fu Collection Andre Fu「專屬地上的紡織品」

Working closely with Tai Ping's design atelier in Paris, Fu created seven designs for the collection, available in 28 colour variations executed in soft hues and subtle colour tones that evoke the sensitivities of modern China. To complement the collection's tweeds, dense silk pile rugs were conceived with original brush-stroke motifs inspired by Chinese calligraphy. This second line of the collection is composed of wool, cashmere and silk in graduated tones of dusty plum, green teas, mustard yellow, mauve grey and mineral blue.

Andre Fu為太平創作的系列共有七款設計，32種色彩配搭可供選擇，柔和的色調及細膩的質感反映現代中國的典雅風格。除了具有高級訂造服布料質感的演繹外，亦有以中國書法筆劃為靈感的設計，這種設計由羊毛、蠶絲以及羊絨織造，

令質感更加光滑柔軟，而顏色選擇則有淺梅紅、茶綠、芥末黃、銀紫灰及湖水藍等。



which are very much pattern-driven. "Then I thought about Hong Kong and the urban grid of all the curtain walls in the city. The grid that I came up with is something architectural. Then, I thought about finding a way to celebrate Tai Ping's heritage and artisanship," Fu notes.

In short, Fu made good use of all Tai Ping has in offer in terms of its expertise in carpet-making. Within just a three centimetre-square woven into the carpet is a wide range of different materials and techniques: hand-tufted silk, tiles with both high-cut and low loops, cotton ribbons — little wonder that people might think it a 'couture tweed' fabric. "It's really open as to how you feel about it; there is no definition for the pattern itself," explains Fu. "It's about how I see myself as an Asia-rooted designer, telling the story of Tai Ping."

Lauded as the 'face of Asian design', Fu describes his collaboration with Tai Ping as both an opportunity and a challenge. "People say only through challenges can one create opportunities. It's my first time designing a collection available to the general public — I've never done anything before that they can physically buy. It is an opportunity for me to expand beyond of my design world into creating a product. I think that was the main attraction for me," he says.



## 一針一織

Andre Fu首度與太平地氈攜手合作，印證太平積澱深厚的傳統工藝

撰文: Teresa Chow  
攝影: 由太平地氈提供

數年前，絨呢（tweed）熱潮重臨時裝界，席捲全球，流行至今。第一眼看到建築設計師Andre Fu為太平設計的地氈系列時，也難怪會想像他也是個時裝迷，情不自禁地受到tweed的影響。可是，這位因設計囊括多個獎項的香港奕居精品式酒店及新加坡濱海灣富麗敦酒店而聲名大噪的設計師，卻會告訴你時裝只是靈感來源的一部份。

太平地氈於亞洲掘起，創於香港，故人們亦普遍認為找來Andre設計新系列定必充滿亞洲風味。不過，Andre會第一個告訴你，地氈的設計靈感其實是順應香港的城市建築脈絡而生，並在觀摩太平地氈的織造廠房後成形。Andre說：「參觀太平在巴黎的織造廠房令我嘆為觀止。太平地氈的工匠手工精湛，把紗線純熟地一織一染，編織造詣精湛，越看越令人著迷。」

而太平的地氈製作規模也令Andre讚嘆萬分，他說：「以織紗為倒，工場面積宛如運動場般大，規模之大不言而喻。再者，工匠純熟的手工亦令我印象深刻。」

Andre在腦內重遊這次深刻的體驗，想出突破的構思，不走時下以圖案為主的流行地氈設計，反而以質感為首，藉以讚揚太平的傳統工藝。他續說：「然後我又想到了香港及城市內一幅幅的建築格子外牆，我構想的地氈格子就是來自建築的格子。最後，我想要借這個系列來讚頌太平的傳統及精湛的造氈技術。」

簡而言之，Andre善用太平製作地氈一切巧奪天工的技藝。單看他創作的地氈上小如三平方厘米的圖案，便結集了不同的紗料，蘊藏了各式的技術，包括手工紡絲、高低線圈及棉結等，真難怪人們一看便以為是高級女裝的tweed布料。Andre解釋：「圖案本身沒有特定的意思，人們可以隨心去詮釋它。但於我而言，這是代表以亞洲為本的我如何透過設計細說太平的故事。」

被譽為「Face of Asian Design」的Andre形容這次與太平的合作，既有挑戰、又有驚喜。他說：「人們說有危才有機。這是我首次在零售市場推出如此雅俗共賞的產品，這個好機會大大拓展我在產品設計上的領域。我想，這是最吸引的。」





**Unicorn Gardens**  
11 Shouson Hill Road East,  
Shouson Hill  
Newly decorated spacious 3-bedroom  
low-rise apartment  
全新裝修低密度三房單位，間隔寬敞

壽臣山  
麒麟閣

1,750 s.f.  
**\$68K incl.**

☎ 9551 1077 Walker Lam 林先生  
🌐 [www.landscape.com/24772.htm](http://www.landscape.com/24772.htm) 可普通話



**Cape Mansions**  
56-62 Mount Davis Road,  
Pokfulam  
Practical 3-bedroom sea view apartment  
at quiet Pokfulam  
間隔實用三房海景住宅，位於薄扶林高尚地段

薄扶林  
翠海別墅

2,200 s.f.  
**\$80K incl.**

☎ 9348 4118 Rowena Siu 蕭小姐  
🌐 [www.landscape.com/148284.htm](http://www.landscape.com/148284.htm)



**Tropicana Court**  
45 South Bay Close, Repulse Bay  
Spacious 3-bedroom apartment with  
balcony close to Repulse Bay beach  
間隔寬敞三房單位，一梯一伙，連陽臺，鄰近淺水  
灣海灘

淺水灣  
康南閣

2,200 s.f.  
**\$88K incl.**

☎ 9138 1621 Teresa Fung 馮小姐  
🌐 [www.landscape.com/13830.htm](http://www.landscape.com/13830.htm)



**South Bay Palace**  
25-31 South Bay Close,  
Repulse Bay  
3-bedroom apartment with luxurious  
fittings good for investment  
淺水灣三房住宅，豪華靚裝修，投資首選，  
可租可售

淺水灣  
南灣御苑

1,980 s.f.  
**\$95K** also for sale \$35.64M

☎ 9107 3891 Mavis Wu 吳小姐  
🌐 [www.landscape.com/94707.htm](http://www.landscape.com/94707.htm)



**Redhill House**  
18 Pak Pat Shan Road, Tai Tam  
Popular townhouse with extensive club  
facilities  
受歡迎排屋，連豪華完善住客設施

大潭  
紅山半島

3,054 s.f.  
(plus roof, terrace and garden)  
**\$100K**

☎ 9493 8275 Sami Woo 胡小姐  
🌐 [www.landscape.com/33831.htm](http://www.landscape.com/33831.htm)



**Stanley Green**  
66 Stanley Village Road, Stanley  
Rare find 3-bedroom duplex with private  
garden close to Stanley Main Beach  
罕有三房複式住宅，連私家花園，鄰近赤柱正灘

赤柱  
維多利亞別墅

2,200 s.f. (plus garden)  
**\$102K**

☎ 9138 1621 Teresa Fung 馮小姐  
🌐 [www.landscape.com/20266.htm](http://www.landscape.com/20266.htm)



**Carolina Garden**  
20-34 Coombe Road, The Peak  
Sought after colonial apartment in  
prestigious location  
山頂罕有英式住宅，地段尊貴，可租可售

山頂  
嘉樂園

2,350 s.f.  
**\$108K incl.** also for sale Open Offer

☎ 9493 8275 Sami Woo 胡小姐  
🌐 [www.landscape.com/6005.htm](http://www.landscape.com/6005.htm)



**Sea Cliff Mansions**  
19A-19D Repulse Bay Road,  
Repulse Bay  
Sea view flat with modern decor on upper  
Repulse Bay Road  
淺水灣道頭段海景住宅，尊享時尚靚裝修，  
可租可售

淺水灣  
海峰園

2,400 s.f.  
**\$120k incl.** also for sale \$53M

☎ 9809 8570 Stella Lo 羅小姐  
🌐 [www.landscape.com/121899.htm](http://www.landscape.com/121899.htm)



**Manhattan Tower**  
63 Repulse Bay Road, Repulse Bay  
Renovated popular 4-bedroom apartment  
with stunning sea view  
受歡迎四房單位，靚裝修，享廣闊海景

淺水灣  
陽明山莊二座

2,400 s.f.  
**\$128K incl.**

☎ 9138 1621 Teresa Fung 馮小姐  
🌐 [www.landscape.com/35916.htm](http://www.landscape.com/35916.htm)



**Belgravia Heights**  
27 Tai Tam Road, Tai Tam  
Unique 4-bedroom apartment with  
uninterrupted sea view in Tai Tam  
大潭獨特四房住宅，享遼闊無阻擋海景

大潭  
碧濤閣

2,890 s.f.  
**\$130K**

☎ 9809 8570 Stella Lo 羅小姐  
🌐 [www.landscape.com/13501.htm](http://www.landscape.com/13501.htm)



### Bisney View

47-49 Bisney Road, Pokfulam  
Pokfulam townhouse with nice decorations and great outdoor space  
薄扶林排屋，尊享雅致靚裝修

薄扶林 碧荔道47-49號

3,500 s.f. (plus roof and garden)  
**\$130K**

☎ 9080 6686 Teresa Lau 劉小姐 可普通話  
🌐 www.landscape.com/90690.htm



### Pine Lodge

10 Shouson Hill Road West, Shouson Hill  
Low-rise duplex flat with private garden surrounded by lush greenery  
低密度複式住宅，連私家花園，尊享優閒翠綠環境

壽臣山松苑

3,000 s.f. (plus terrace)  
**\$150K incl.**

☎ 5182 8699 Maria Cheung 張小姐  
🌐 www.landscape.com/3218.htm



### Orient Crest

76 Peak Road, The Peak  
Peak townhouse with 4 bedrooms in tranquil neighbourhood  
山頂四房排屋，位處山頂尊貴地段

山頂 山頂道76號

3,300 s.f.  
**\$180K**

☎ 9138 1621 Teresa Fung 馮小姐  
🌐 www.landscape.com/7735.htm



### L'Harmonie

3 Stanley Mound Road, Stanley  
Rare 4-bedroom townhouse near Main Stanley Beach  
罕有四房大屋，鄰近赤柱正灘，環境舒適

赤柱 葆琳居

3,557 s.f. (plus roof and garden)  
**\$200K incl.**

☎ 6330 7888 Cora Ko 高小姐  
🌐 www.landscape.com/108944.htm



### Watford Villa

18-28 Watford Road, The Peak  
Lofty-ceilinged townhouse with sea view  
山頂排屋，欣賞海景，樓底極高

山頂和福別墅

3,300 s.f.  
**\$218K incl.**

☎ 6183 8388 Chris Law 羅先生  
🌐 www.landscape.com/104174.htm



### Oasis

8-12 Peak Road, The Peak  
Brand new harbour view apartment with high ceiling  
全新維港景住宅，樓底極高

山頂 欣怡居

2,719 s.f.  
**\$138K**

☎ 9028 0147 Jenson Au 區先生  
🌐 www.landscape.com/40250.htm



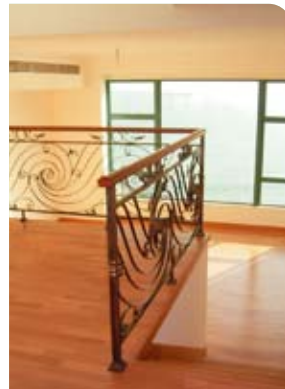
### La Hacienda

29-33 Mount Kellett Road, The Peak  
Colonial style apartment with Southside sea view  
英式住宅，享美麗南區海景，可租可售

山頂 加列山道29-33號

3,386 s.f.  
**\$160K incl. also for sale \$90M**

☎ 6183 8388 Chris Law 羅先生  
🌐 www.landscape.com/35150.htm



### Regalia Bay

88 Wong Ma Kok Road, Stanley  
5-bedroom sea view garden house with excellent facilities  
五房海景花園大屋，連完善住客會所設施，可租可售

赤柱 富豪海灣

4,132 s.f. (plus roof and garden)  
**\$180K incl. also for sale \$70M**

☎ 6330 7888 Cora Ko 高小姐  
🌐 www.landscape.com/50181.htm



### South Bay Towers

59 South Bay Road, Repulse Bay  
Nicely renovated 5-bedroom (4 ensembles) apartment close to South Bay Beach  
雅致裝修五房連四套房住宅，鄰近淺水灣海灘

淺水灣 南灣大廈

4,171 s.f.  
**\$210K incl.**

☎ 9871 6828 Louis Wong 黃先生  
🌐 www.landscape.com/50243.htm



### 74 Mount Kellett Road, The Peak

Rare find garden 4-bedroom house on The Peak  
山頂罕有四房花園洋房

山頂 加列山道74號

4,200 s.f.  
(plus roof, garden and terrace)  
**\$220K incl.**

☎ 6330 7888 Cora Ko 高小姐  
🌐 www.landscape.com/129288.htm

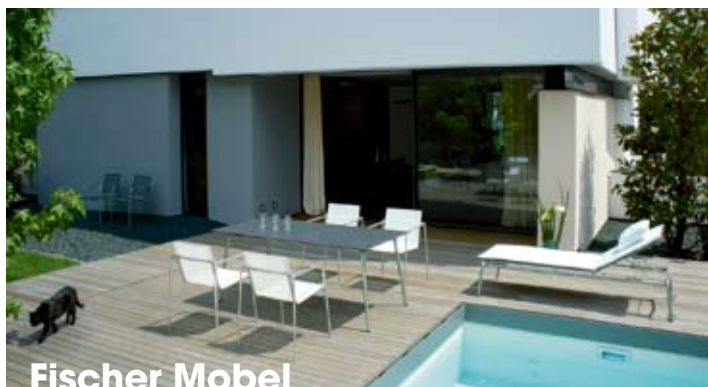




## Incotex

Specialising in double-width wall-covering fabrics, Incotex's eight different ranges cover basic, velvet, patterned, and glittery finishes. Available in up to 120 colours, the versatile fabric is ideal for residential, retail, commercial and hospitality projects. For more information, visit Mercer House, A1, 10/F Cheung Fat Building, 7-9 Hill Road, Hong Kong. Ring 2524 3866 or email [mercerc@mercercorhouse.com.hk](mailto:mercerc@mercercorhouse.com.hk)

Incotex專門生產特闊的牆身布藝，共設八個系列近一百二十種顏色，提供淨色、絨質、花紋及閃亮布料。Incotex布藝用途廣泛，適用於住宅、零售、商業以至酒店項目。詳情可親臨香港山道7-9號長發大廈10樓A1室Mercer House，致電2524 3866或電郵 [mercerc@mercercorhouse.com.hk](mailto:mercerc@mercercorhouse.com.hk)



## Fischer Mobil

Developed by Danish designer Mads Odgard, this Taku collection from Fischer Mobil is a revolutionary concept for indoor/outdoor use. With a stainless steel frame and minimalist design, the collection is easy to clean and maintain. For more information, visit Zzue Creation, 704 Horizon Plaza, 2 Lee Wing Street, Ap Lei Chau, Hong Kong. Ring 2580 0633, email [info@zzuecreation.com](mailto:info@zzuecreation.com) or see [www.zzuecreation.com](http://www.zzuecreation.com)

Fischer Mobil的Taku系列由丹麥設計師Mads Odgard操刀設計，帶來革命性的室內外兩用傢具。系列設計簡約時尚，配襯不銹鋼框，易於清潔打理。詳情可親臨香港鴨脷洲利榮街2號海怡工貿中心704室Zzue Creation，致電2580 0633、電郵[info@zzuecreation.com](mailto:info@zzuecreation.com)或瀏覽[www.zzuecreation.com](http://www.zzuecreation.com)

## Extremis

Perfect for small outdoor spaces, Extremis' Hopper Bench offers great versatility with clever design — the upper part of the 'bench' can act as a tabletop, a backrest for the lower bench or a tall seat. Available at Everything Under The Sun, 902 Horizon Plaza, 2 Lee Wing Street, Ap Lei Chau, Hong Kong. Ring 2554 9088, email [info@everythingunderthesun.com.hk](mailto:info@everythingunderthesun.com.hk) or see [www.everythingunderthesun.com.hk](http://www.everythingunderthesun.com.hk)

Extremis的Hopper Bench適用於細小的戶外空間，以巧妙設計帶來多種用途。設計的上半部分既可用作檯面，又可當作靠背，更可直接當作高身椅子。詳情可親臨香港鴨脷洲利榮街2號海怡工貿中心902室Everything Under The Sun，致電2554 9088、電郵 [info@everythingunderthesun.com.hk](mailto:info@everythingunderthesun.com.hk)或瀏覽 [www.everythingunderthesun.com.hk](http://www.everythingunderthesun.com.hk)



## Bose

Thanks to its cutting-edge Unify intelligent integration system, Bose's VideoWave system allows users to control all devices — Blu-ray player, video game system, etc — with a single remote, easily creating your home theatre. For more information, visit Bose Ltd, Shop 822 Times Square, Causeway Bay. Ring 2123 9000, email [support\\_hk@bose.com](mailto:support_hk@bose.com) or see [www.bose.com.hk](http://www.bose.com.hk)

Bose推出的VideoWave家庭娛樂系統採用先進的Unify智能一體化技術，用家只需單一遙控器，便能隨心掌控藍光影碟播放器、電子遊戲機等各類影音裝置，輕易創造出專屬的家居影院。詳情可親臨銅鑼灣時代廣場822號舖Bose Ltd，致電2123 9000、電郵 [support\\_hk@bose.com](mailto:support_hk@bose.com)或瀏覽 [www.bose.com.hk](http://www.bose.com.hk)



## Casal

Available in various colourways, Mise En Scene by Casal is a collection of coordinated fabrics for curtains and furnishings, including embroidered silky curtains, velvets for sofas and cushions. For more information, visit Master Resource Ltd, 16/F Kam Chung Building, 52-58 Jaffe Road, Wanchai. Ring 3105 3060, email [sales@masterresource.com.hk](mailto:sales@masterresource.com.hk) or see [www.masterresource.com.hk](http://www.masterresource.com.hk)

Casal的Mise En Scene布料系列設多種色調選擇，專為窗簾及傢俱陳設而設，如柔滑的刺繡窗簾，以及用於沙發與靠墊的絲絨。詳情可親臨灣仔謝斐道52-58號金鐘大廈16樓恆美裝飾材料有限公司，致電3105 3060、電郵 [sales@masterresource.com.hk](mailto:sales@masterresource.com.hk)或瀏覽 [www.masterresource.com.hk](http://www.masterresource.com.hk)



## Schneider Electric

With Wiser Home Control system from Schneider Electric, energy saving can now be easily realised at home by observing the pattern of power usage with a suitable power meter. Available at Schneider Electric (HK) Ltd, 13/F East Wing, Warwick House, Taikoo Place, 979 King's Road, Quarry Bay, Hong Kong. Ring 2579 9699, email [hk-ccc@hk.schneider-electric.com](mailto:hk-ccc@hk.schneider-electric.com) or see [www.schneider-electric.com.hk](http://www.schneider-electric.com.hk)

有了Schneider Electric的Wiser智慧家居控制系統，用家便能以合適的電力監察器了解用電模式，輕鬆實踐家居節能。詳情可親臨香港鰂魚涌英皇道979號太古坊和域大廈東翼13樓施耐德電氣(香港)有限公司，致電2579 9699、電郵 [hk-ccc@hk.schneider-electric.com](mailto:hk-ccc@hk.schneider-electric.com)或瀏覽 [www.schneider-electric.com.hk](http://www.schneider-electric.com.hk)







### Strawberry Hill

8 Plunkett's Road, The Peak  
Well decorated colonial 3-bedroom townhouse on The Peak with spacious practical layout  
山頂雅致裝修三房英式洋房，間隔寬敞實用

山頂紅莓閣

3,100 s.f. (plus garden)  
**\$230K incl.**

9648 6082 Christine Chong 莊小姐  
www.landscape.com/22136.htm



### Magnolia Villas

46 Sassoon Road, Pokfulam  
Spanish style 4-bedroom townhouse in tranquil Pokfulam  
薄扶林時尚四房排屋，環境清幽寧靜

薄扶林百合苑

4,608 s.f.  
**\$250K**

9088 4666 Yvonne Chang 鄭小姐  
www.landscape.com/13135.htm



### Kellett View Town House

65-69 Mount Kellett Road, The Peak  
Fantastic garden townhouse with partial sea view on the Peak  
山頂花園洋房，享部份海景

山頂嘉麗園

4,010 s.f. (plus terrace)  
**\$250K**

9833 9509 Michelle Chung 鍾小姐 可普通話  
www.landscape.com/3327.htm



### Peak Gardens

16-20 Mount Austin Road, The Peak  
4-bedroom duplex apartment with Victoria Harbour view  
山頂四房複式住宅，俯瞰維港美景

山頂山頂花園

4,000 s.f.  
**\$300K**

9088 4666 Yvonne Chang 鄭小姐  
www.landscape.com/110876.htm



### The Repulse Bay

109 Repulse Bay Road, Repulse Bay  
Huge 5-bedroom duplex with fantastic view of Repulse Bay Beach  
特大五房複式住宅，享遼闊淺水灣海景

淺水灣影灣園

5,868 s.f.  
**\$296K**

9107 3891 Mavis Wu 吳小姐 可普通話  
www.landscape.com/18647.htm



### Mountain Court

11 Plantation Road, The Peak  
Unique 4-ensuite duplex apartment with private roof on the Peak overlooking harbour view  
山頂獨特四房複式單位，連私家天台，俯瞰維港美景

山頂山景大廈

4,256 s.f. (plus roof and terrace)  
**\$298K**

9107 3891 Mavis Wu 吳小姐 可普通話  
www.landscape.com/18973.htm



### Residence Bel-Air

Bel-Air Avenue, Pokfulam  
Unique penthouse duplex with private pool in stunning sea view  
精緻複式頂層單位，連私家泳池，享迷人海景

薄扶林貝沙灣

4,790 s.f. (plus roof and terrace)  
**\$298K incl.**

9833 9509 Michelle Chung 鍾小姐 可普通話  
www.landscape.com/130886.htm



### Stanley Breeze

12-12A Stanley Beach Road, Stanley  
Sea view garden townhouse with private swimming pool  
赤柱海景花園洋房，連私家泳池

赤柱環海崇樓

3,128 s.f.  
(plus roof, terrace and garden)  
**\$300K incl.**

9088 4666 Yvonne Chang 鄭小姐  
www.landscape.com/134827.htm



### 2 Barker Road, The Peak

4-bedroom apartment with roof and garden enjoy peaceful harbour view  
四房住宅，連天台及花園，欣賞寧靜優美維港景致

山頂白加道2號

4,404 s.f. (plus roof and garden)  
**\$380K**

9871 6828 Louis Wong 黃先生  
www.landscape.com/46172.htm



### Extravagant House in The Peak

Extravagant mansion house in prestigious address with fantastic views  
奢華大屋，地段尊貴，享遼闊海景

山頂豪華大屋

10,000 s.f. (plus garden)  
**\$700K incl.**

9871 6828 Louis Wong 黃先生  
www.landscape.com/31646.htm





**Grosvenor House**  
114-120 MacDonnell Road,  
Midlevels Central  
Spacious mid-rise with huge balcony  
and nice kitchen  
間隔寬敞中密度住宅，連大陽臺，廚房靚裝修

中  
半  
山  
高  
雲  
大  
廈

2,400 s.f.  
**\$90K**

☎ 9080 6686 Teresa Lau 劉小姐 可普通話  
🌐 www.landscape.com/47187.htm



**Branksome Grande**  
3 Tregunter Path, Midlevels Central  
Effective apartment with huge balcony  
中半山實用單位，連特大陽臺

中  
半  
山  
地  
利  
根  
德  
里  
號

3,030 s.f.  
**\$105K**

☎ 9088 4666 Yvonne Chang 鄭小姐  
🌐 www.landscape.com/10887.htm



**Queen's Garden**  
9 Old Peak Road,  
Midlevels Central  
Harbour view duplex with high ceiling at  
prime location  
維港景複式住宅，樓底極高，地段尊貴

中  
半  
山  
裕  
景  
花  
園

2,050 s.f.  
**\$110.3K**

☎ 9088 4666 Yvonne Chang 鄭小姐  
🌐 www.landscape.com/18962.htm

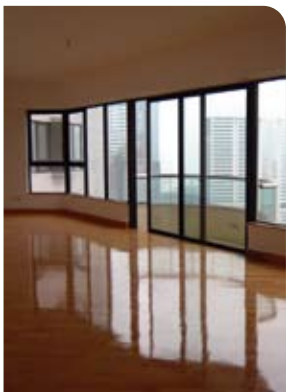


**Piccadilly Mansion**  
4-6 Po Shan Road, Midlevels West  
4-bedroom apartment with balcony enjoy  
peaceful Victoria Harbour view  
西半山四房住宅，連大陽臺，欣賞美麗維港景致，  
可租可售

西  
半  
山  
碧  
苑

3,200 s.f.  
**\$120K incl.** also for sale \$60M

☎ 6183 8339 Carman Szeto 司徒小姐 可普通話  
🌐 www.landscape.com/35974.htm



**Grand Bowen**  
11B Bowen Road,  
Midlevels Central  
4-bedroom apartment with panoramic  
harbour view in prime location  
中半山四房住宅，享遠闊維港景，地段尊貴

中  
半  
山  
寶  
雲  
殿

3,071 s.f.  
**\$120K incl.**

☎ 9493 8275 Sami Woo 胡小姐  
🌐 www.landscape.com/20376.htm



**Magazine Court**  
5-7 Magazine Gap Road,  
Midlevels Central  
Spacious 4-bedroom apartment with big  
balcony and Victoria Harbour view  
寬敞四房住宅連大陽臺，尊享維港美景

中  
半  
山  
澄  
碧  
閣

3,300 s.f.  
**\$140K**

☎ 6183 8339 Carman Szeto 司徒小姐  
🌐 www.landscape.com/21618.htm



**Bowen Mansion**  
7C Bowen Road, Midlevels Central  
Colonial apartment with huge balcony  
enjoying green and partial harbour view  
英式住宅連巨型陽臺，尊享翠綠景色及部份維港景

中  
半  
山  
寶  
雲  
大  
廈

3,500 s.f.  
**\$140K**

☎ 6183 8388 Chris Law 羅先生  
🌐 www.landscape.com/15436.htm



**1 Robinson Road,  
Midlevels West**  
Nicely decorated duplex on fringe of CBD  
overlooking dynamic metropolitan view  
雅致裝修複式住宅，鄰近中環，俯瞰遠闊城市景觀

西  
半  
山  
羅  
便  
臣  
道  
一  
號

3,400 s.f.  
**\$142K incl.**

☎ 9348 4118 Rowena Siu 蕭小姐  
🌐 www.landscape.com/114909.htm



**Estoril Court**  
55 Garden Road,  
Midlevels Central  
Well kept high floor unit with  
harbour view  
保養良好高層住宅，尊享維港景致

中  
半  
山  
愛  
都  
大  
廈

3,347 s.f.  
**\$148K incl.**

☎ 9486 1566 Mira To 杜小姐  
🌐 www.landscape.com/15397.htm



**Century Tower 2**  
1A Tregunter Path,  
Midlevels Central  
Prestigious 4-bedroom whole floor  
apartment with high privacy  
豪華四房住宅，私隱度高

中  
半  
山  
世  
紀  
大  
廈  
B  
座

3,638 s.f.  
**\$160K incl.**

☎ 9088 4666 Yvonne Chang 鄭小姐  
🌐 www.landscape.com/20526.htm



**Kennedy Heights**  
10-18 Kennedy Road,  
Midlevels Central  
Large 5-bedroom apartment with huge  
living room and facilities  
特大五房住宅，連大客廳及住客會所設施

中  
半  
山  
堅  
麗  
閣

3,400 s.f.  
**\$160K**

☎ 9809 8570 Stella Lo 羅小姐  
🌐 [www.landscape.com/33324.htm](http://www.landscape.com/33324.htm)



**39 Conduit Road,**  
**Midlevels West**  
Brand new 3-bedroom apartment in  
Midlevels West with nice decoration  
全新西半山三房住宅，連雅緻裝修，可租可售

西  
半  
山  
天  
匯

2,808 s.f.  
**\$173K incl.** also for sale \$70.58M

☎ 6183 8339 Carman Szeto 司徒小姐 可普通話  
🌐 [www.landscape.com/125945.htm](http://www.landscape.com/125945.htm)



**The Albany**  
1 Albany Road, Midlevels Central  
Well decorated prestigious duplex unit  
with Victoria Harbour view in prime  
location  
雅緻裝修豪華複式住宅，享維港海景，地段尊貴

中  
半  
山  
雅  
賓  
利  
大  
廈

3,563 s.f.  
**\$190K incl.**

☎ 9080 6686 Teresa Lau 劉小姐 可普通話  
🌐 [www.landscape.com/107997.htm](http://www.landscape.com/107997.htm)



**Tregunter Tower 3**  
14 Tregunter Path,  
Midlevels Central  
Vast skyline penthouse for rent in  
Midlevels Central  
中半山頂層住宅，享遼闊無邊際景觀，市面難尋

中  
半  
山  
地  
利  
根  
德  
閣  
3  
座

8,018 s.f.  
**\$330K**

☎ 9871 6828 Louis Wong 黃先生  
🌐 [www.landscape.com/899.htm](http://www.landscape.com/899.htm)



**S**ituated on Tai Hang Road, Island East, the new Serenade embraces a metropolitan pulse with its advantageous geographical locations and convenient transport. The premise possesses panoramic view of the spectacular Victoria Harbour in its front, and greeneries from Mount Butler at its back. The area of each apartment varies from 1,000 square feet to 4,000 square feet. Among the available apartments are duplexes with four bedrooms including two ensembles and prestigious penthouse.

上林位於香港島東半山之罕貴地段，掌握大都會脈搏，地理位置優越，交通四通八達。前臨270度遼闊維多利亞港美麗海景，背靠青蔥翠綠畢拉山山巒。單位面積由約1,000平方呎至4,000平方呎，其中包括四房兩套複式單位及頂層特色單位。



11 Tai Hang Road, Midlevels East

☎ Christine Chong 莊小姐 9648 6082  
David Chan 陳先生 9238 2012  
Sami Woo 胡小姐 9493 8275

上林  
**SERENADE**





## B&B Italia

PAB, the result of a very simple idea, a sheet folded in half and restrained by light ties, is designed to be used as a bookshelf and top. The vast choice of finishes and hues, along with the variety of furnishing elements, makes it possible to obtain personalised, made-to-measure solutions.

LG/F, 3-11 Wing Fung Street,  
Wanchai, Hong Kong  
Tel: 3102 3189  
Fax: 3102 2522  
Email: info@viahk.biz  
www.viahk.biz



## Life's A Breeze Ltd

Introduces an exclusive collection of the best in ceiling fan design and performance. Featuring elegant designs created from the finest materials to deliver exceptionally quiet air movement and performance.

Shop 1602, Horizon Plaza,  
2 Lee Wing Street, Apleichau, Hong Kong  
Tel: 2572 4000  
Email: info@lifesabreezehk.com  
www.lifesabreezehk.com



## TOTO

TOTO provides products and services that are designed to improve the cleanliness, comfort and convenience of residential and non-residential spaces. Its products can be utilised safely and comfortably, regardless of age or physical mobility, and ecologically-friendly products and technologies that contribute to environmental consciousness in everyday living.

### Leisure Plus

G/F & 2/F, Century Court, 239 Jaffe Road,  
Wanchai, Hong Kong  
Tel: 2186 8288  
Fax: 2169 2967  
Email: leisure.plus@vschk.com  
www.toto.com.hk



## MEGAMAN® Concept Store

Total Eco-lighting Solution for your Interiors

- Professional lighting consultation service
  - Over 400 types of energy saving lamps using CFL and LED technology
  - More than a hundred items of European luminaires for indoor and outdoor lighting
  - Smart home lighting control system
- Come and visit us!

### Wanchai Store

G/F, Siu On Centre, 188 Lockhart Road  
Mongkok Store

G/F, 703 Shanghai Street

### Shatin Store

Shop No. 101, Level 1, Grand Central Plaza  
Tel: (852) 3420 3299

Email: info@hk.megaman.cc  
www.hk.megaman.cc



## Santarossa

*Pure Italian Luxury.* Every Santarossa furnishing solution, including kitchen, dining, living and bedroom, is easily adapted to the tastes of modern life. The Santarossa brand was chosen for its range and flexibility of materials, including leather and fabric, and its flexibility of design. Minimal yet refined shapes offer a delicate combination of balances that turn your house into a home.

### Santarossa Flagship Store

1/F Century Court, 239 Jaffe Road,  
Wanchai, Hong Kong

Tel: 2186 8288

Fax: 2169 2967

Email: leisure.plus@vschk.com  
www.santarossa.it



## Poltrona Frau

Jean-Marie Massaud creates a version of the Archibald with a high backrest, even more comfortable and enveloping. A version that retains all the features of the armchair that won the prestigious Wallpaper Design Award 2010 as best armchair in the "Best domestic design" category and refined with Poltrona Frau's expert craftsmanship and high quality leather.

### LG/F, 1a Electric Street / Star Street,

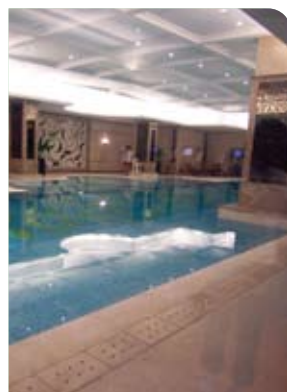
Wanchai, Hong Kong

Tel: 3102 0808

Fax: 3102 0818

Email: info@viahk.biz  
www.viahk.biz





### The Legend

23 Tai Hang Drive, Midlevels East  
Brand new 4-bedroom apartment with lush green mountain view  
全新四房單位，尊享翠綠山景

2,058 s.f.  
\$78K incl.

9648 6082 Christine Chong 莊小姐  
www.landscape.com/42700.htm

東  
半  
山  
名  
門



### Cavendish Heights

27-37 Perkins Road,  
Jardine's Lookout  
Harbour view penthouse apartment with private roof  
渣甸山維港景頂層單位，連私家天台

1,819 s.f. (plus roof)  
\$75K incl.

9493 8275 Sami Woo 胡小姐  
www.landscape.com/10584.htm

渣  
甸  
山  
嘉  
雲  
臺



### 47A Stubbs Road, Midlevels East

Exclusive mid-rise apartment with harbour view  
獨特中密度住宅，享維港美景

2,400 s.f.  
\$85K incl.

9028 0147 Jenson Au 區先生  
www.landscape.com/135236.htm

東  
半  
山  
司  
徒  
拔  
道  
47A  
號



### Leon Court

12-14 Wong Nai Chung Gap  
Road, Midlevels East  
Rarely available 3-bedroom mid-rise with magnificent harbour view  
罕有三房中密度住宅，尊享廣闊維港景觀

2,800 s.f.  
\$90K incl.

9138 1621 Teresa Fung 馮小姐  
www.landscape.com/24966.htm

東  
半  
山  
利  
安  
閣



### Evergreen Villa

43 Stubbs Road, Midlevels East  
Spacious apartment with huge balcony and beautiful racecourse view  
東半山間隔寬敞單位，連巨型陽臺，享美麗馬場景色，可租可售

2,560 s.f.  
\$90K incl. also for sale \$60M

6183 8388 Chris Law 羅先生  
www.landscape.com/37692.htm

東  
半  
山  
松  
柏  
新  
村



### Taipan Court

47B Stubbs Road, Midlevels East  
Spacious 4-bedroom triplex with unobstructed harbour view  
間隔寬敞四房三複式住宅，尊享一望無際的維港美景

3,670 s.f.  
\$138K

9238 2012 David Chan 陳先生  
www.landscape.com/26592.htm

東  
半  
山  
大  
班  
閣



### Villa Monte Rosa

41A Stubbs Road, Midlevels East  
Large practical apartment with spacious layout in prime location  
特大住宅，間隔寬敞實用，位於東半山尊貴地段

2,300 s.f.  
\$110K incl.

9486 1566 Mira To 杜小姐  
www.landscape.com/18652.htm

東  
半  
山  
玫  
瑰  
新  
村



### Serenade

11 Tai Hang Road, Midlevels East  
Brand new decoration flat with sea view and facilities  
全新裝修海景住宅，連完善住客會所設施

2,617 s.f.  
\$140K

6838 2929 Mark Mak 麥先生  
www.landscape.com/128228.htm

東  
半  
山  
上  
林



### Broadwood Park

38 Broadwood Road,  
Happy Valley  
Spacious 3-bedroom apartment in prime location  
跑馬地寬敞三房單位，地段尊貴

2,913 s.f.  
\$150k incl.

6183 8339 Carman Szeto 司徒小姐  
www.landscape.com/130630.htm

跑  
馬  
地  
柏  
樂  
苑



### Victoria Height

43A Stubbs Road, Midlevels East  
Nicely decorated 4-bedroom apartment with magnificent harbour view  
雅致裝修四房住宅，享壯麗的維港景色，可租可售

2,650 s.f.  
\$160K incl. also for sale \$75M

9028 0147 Jenson Au 區先生  
www.landscape.com/124265.htm

東  
半  
山  
威  
利  
閣



## Hong Kong International Art Fair

Venue : 3E01, Hall 3E

The Hong Kong Convention and Exhibition Centre

1 Expo Drive, Wanchai, Hong Kong

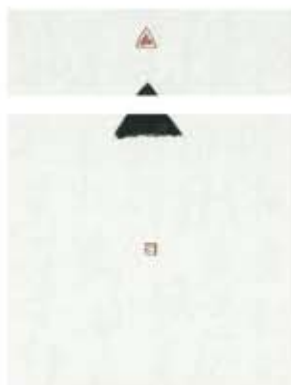
Date : 26 – 29 May 2011

## Sin Sin Fine Art

Venue : 53 - 54 Sai Street, Central, Hong Kong

Date : 26 May – 6 June 2011

馮明秋個展  
FUNG MING CHIP SOLO EXHIBITION



## 香港國際藝術展

地點：3E01，展覽廳3E

香港會議展覽中心

香港灣仔博覽道1號

日期：2011年5月26 – 29日

## Sin Sin Fine Art

地點：香港中環西街53 – 54號

日期：2011年5月26日 – 6月6日

物質變化連續長軸 Material Number 747, Sequence Mounting, 2001  
Chinese Ink on Paper, 224.5 x 34.5 cm



atelier • fine art • annex • villa

(852) 2521 0308

2858 5072

info@sinsinfineart.com

www.sinsin.com.hk

# COLOUR DOES MATTER ENJOYMENT IS THE KEY



## GROHE Rainshower® WaterColours Natural Collection & Spring Collection



From now on, you can enjoy GROHE 5-year guarantee\* upon your registering on [www.grohe.hk](http://www.grohe.hk) within 14 days after purchase of GROHE products.



**GROHE**, World's No.1  
German brand in sanitary fittings



GROHE Flagship Store Wanchai : Hop Lung 2802 2270

Mongkok : Luen Hing Hong 2390 9681

GROHE Boutique Wanchai : Luen Hing Hong 2836 5183

Tsuen Wan : Fu Kee 2412 7877

GROHE Counter Wanchai : Hop Lung 2802 2274 / 2802 2296  
Mongkok : Luen Hing Hong 2391 0353

Yuen Long : Luen Hing Hong 2470 9317  
Fu Kee 2395 8182 / 2394 8228 / 2393 2787

GROHE Shop-In-Shop Wanchai : Luen Hing Hong 2511 3630  
Tsuen Wan : Fu Kee 2412 3878

Hop Lung 2802 2273  
Mongkok : Fu Kee 2393 8322

\* For details please refer to GROHE Warranty Card Terms & Conditions

[www.grohe.hk](http://www.grohe.hk)

[GROHEcom](http://GROHEcom)

Hotline: 2969 7067

**GROHE**  
ENJOY WATER®