

VOL. 208

The Key 大宅

Since 1995

| 至尚生活之境 |

The Height of Refinement

ANSALDO

at Shouson Hill

領域
LANDSCOPE

✦
特委代理
APPOINTED AGENT



Breathtaking Vista 非凡勝景

This exceptional high floor duplex apartment is meticulously designed, featuring three bedrooms, each with its own en-suite bathroom, a dining room, a family room, a study, a maid's room, and a utility room. The kitchen is fully equipped and well-organized, and the apartment comes with two covered parking spaces. With a practical area of 3,155 s.f., the interior design is exquisite and delicate, providing ample space for entertainment and relaxation.

The most outstanding feature of this property is undoubtedly its private terrace, spanning 309 s.f., offering breathtaking views of Victoria Harbour and the city skyline. The property also boasts world-class club facilities and is conveniently located near the Mid-Levels Escalator, making it an unparalleled choice for a luxurious lifestyle.

這複式住宅位於高層，佈局精美，包括三間睡房，全部都是套房；客飯廳、家庭廳、書房、傭人房和多用途房，廚房及浴室配備亦一應俱全，條理分明，連兩個有蓋車位。單位實用面積為 3,155 平方呎，室內設計精巧細膩，同時為住客提供了充足的娛樂空間放鬆身心。

物業尤以其私人平台最為出眾，廣達 309 平方呎，坐擁令人驚艷的維多利亞港和城市天際線景色。物業亦配備頂級會所設施，鄰近中環半山自動扶手電梯，盡顯無與倫比的奢華便利生活。



Superb designer duplex unit in Midlevels West
西半山匠心獨運複式住宅

3 bed, 1 study, 3.5 bath, 309 s.f. terrace, 2 car parks

Saleable 實用 3,155 s.f.

Sale 售 \$220,000,000 Open offer

Inquiries 查詢 ☎ 9027 2100 Louis Wong 黃先生

☎ 6607 2082 Stephen Chan 陳先生

Property Search No. 物業搜尋編號 45827





Contents 目錄

04 **Monthly Highlight**
Shouson Hill 壽臣山

15 **Highlight**
Repulse Bay 淺水灣



26 **Midlevels Central & West sale**
中半山及西半山 出售

31 **Highlight**
Midlevels West 西半山

09 **Southside & The Peak sale**
南區及山頂 出售

18 **Highlight**
The Peak 山頂



Follow Us 關注我們



landscapehk

4 Easy ways to list your property with The Key:

4 個簡單方法在《大宅》刊登您的出售／出租物業



6891 3639 WhatsApp



info@landscape.com



2152 4818



www.landscape.com/sell-to-let



Contents 目錄

- 32 **Midlevels East & Happy Valley sale**
東半山及跑馬地 出售
- 33 **Highlight**
Midlevels East 東半山
- 38 **Art & Culture 文化藝術**
宇宙人生
- 40 **JArt & Culture**
The Devil's Violinist - Niccolò Paganini (Cont')
談魔鬼小提琴家帕格尼尼 (續)
- 42 **Sai Kung & Clear Water Bay sale**
西貢及清水灣 出售
- 48 **Other Districts**
其他地區
- 51 **Lease**
出租
- 61 **U.K. Properties**
英國物業

Published and distributed by



領域房地產顧問有限公司

C-018733

Tel: +852 2866 0022

Fax: +852 2866 0015

Email: info@landscape.com

Website: www.landscape.com

Address: Units 1201-3, 12/F, Siu On Centre,
No. 188 Lockhart Road, Wanchai, Hong Kong

Scan for
online
version



Produced by



Advertising Enquiries:

JP International (HK) Limited |

Contact: Garcia.li@jphongkong.com

Website: www.jphongkong.com

Mobile: +852 6485 8866 | Garcia Li

The information, text, photos, analyses and projections contained herein are provided solely for the convenience of prospective clients and no warranty or representation as to their accuracy, correctness or completeness is made by Landscape Surveyors Limited, Landscape Realty Limited, Landscape International Property Agency Limited or the owners, none of whom shall have any liability or obligation with respect thereto. Interested parties should rely on their own investigations, interpretations and analyses in connection with the purchase or letting thereof.

Purchasing uncompleted properties situated outside Hong Kong is complicated and contains risk. You should review all relevant information and documents carefully before making a purchase decision. If in doubt, please seek independent professional advice before making a purchase decision. Selling Agent: Landscape International Property Agency Limited and Landscape Surveyors Limited (C-000715) are licensed and regulated by EAA. Our sales representatives for overseas property work exclusively in relation to properties outside Hong Kong and unless expressly stated otherwise, are not licensed under the EAA to deal with Hong Kong properties. Information has been provided to us by sources deemed reliable, but no warranty or representation is made as to its accuracy, correctness or completeness. These offerings are made subject to contract, correction of errors, omissions, prior sale or lease, change of price or terms or withdrawal from the market without notice. The contents of The Key are for reference only and do not constitute all or any part of a contract. Copyright 2023



第 1 座標準 A 單位廚房 (28樓除外) 設計概念圖

The Quintessence of German Craftsmanship 德國櫥櫃美學

LEICHT® x THE KNIGHTSBRIDGE 天瀧

The *crème de la crème* of German cabinetry, LEICHT is renowned for avant-garde designs and superior craftsmanship that infuse homes with artistic opulence. LEICHT has recently adorned THE KNIGHTSBRIDGE's kitchens with the CONTINO BONDI collection, resulting in interiors of inimitable style.

CONTINO BONDI's door panels are swathed in silk-smooth lacquer of the deepest matte, applied in LEICHT's specialist lacquering atelier through layers of meticulous painting to achieve a surface impervious to fingerprints, remaining pristine after years of use. Concealed handles sculpt crisp silhouettes whilst exuding discreet luxury. Designers have selected hues of silken olive grey, complementing au courant wood tones in elegant harmony. Bronze VERO glass display cabinets are the *pièce de résistance*, encapsulating LEICHT's *raison d'être* of marrying architectural elements with furnishings. VERO's essence lies in transparency and illumination, emanating unique beauty through airy openness and ambient glows tailored for Hong Kong's kitchen spaces.

VERO's bronze aluminium framework and smoky glazed glass, graced with vertical LEDs bathing interiors and exteriors in radiance, pair concealed hinges affording unobstructed views of contents,



the paragon of display cabinets. Once extinguished, VERO's inner sanctum remains shrouded, cultivating an ambience of harmony. VERO's clarity and luminosity capture a kitchen's metamorphosis and architectural verve, equally suited to longitudinal or island layouts, resonating with THE KNIGHTSBRIDGE's refined palate.

Beyond the aesthetic, LEICHT holds practicality sacrosanct. For THE KNIGHTSBRIDGE, the MODO range of black aluminium wall racks and sundry accessories were appointed, including racks, napkin holders and hooks for stowing cooking essentials and implements with ease, elevating culinary pursuits to leisurely recreation. MODO's minimalist lines and natural materials comprise LEICHT's signature wall furnishment, every accessory freely repositioned according to personal predilection.

LEICHT has upheld a tradition of pioneering vision and incessant innovation, crafting products seamlessly coalescing beauty and function, testament to an unwavering commitment to excellence, composing odes of timeless splendour for your kitchen. Discover more at www.caal.com.hk/leicht or in person at Harbour Centre, Wanchai.

德國頂級櫥櫃品牌LEICHT，以創新設計和高技術聞名，為現代優雅家居注入奢華藝術美學。LEICHT最近為天瀧THE KNIGHTSBRIDGE項目的廚房採用CONTINO BONDI系列，打造時尚空間。

CONTINO BONDI系列採絲綢手感超啞光漆門板，並於LEICHT漆烤工場多層處理而成，有效防指紋，長期使用亦完美如初。隱藏手抽營造清晰線條，增添現代低調奢華氣息；而今次選用柔和的橄欖灰，則與流行的灰色木質色調相得益彰，格外低調優雅。古銅VERO玻璃吊櫃亦是廚房設計焦點，體現LEICHT將現代建築元素融入家具的設計理念。VERO著重透視度與光學，通過開放透視空間和時尚的環境照明散發出特殊的美感，尤其適合香港廚房。

VERO的古銅鋁框架和灰色透明玻璃，內置垂直LED照亮櫥櫃內外，隱藏門鉸讓櫥櫃內部一目了然，是理想的展示櫥櫃。開燈後即隱藏內部，營造整體和諧和溫馨氛圍。VERO透視度和光學設計展現廚房變化和建築感，適合長型或島台廚房，與天瀧THE KNIGHTSBRIDGE高雅品味相得益彰。

除追求設計感，LEICHT同樣注重實用性，為天瀧THE KNIGHTSBRIDGE廚房選用MODO系列黑鋁牆身掛架和可移動小配件，如層架、紙巾架和掛鉤，方便存放各種炊具和烹飪工具，使煮食更方便。

LEICHT一直秉持卓越和創新的精神，不斷推陳出新，並在產品中完美地融合美學與功能性，展現品牌對卓越品質的堅持，為您的廚房譜出經典永恆的動人樂章。如欲了解更多，請瀏覽www.caal.com.hk/leicht，或親臨灣仔海港中心2/F查詢。



第 1 座 28 樓 A 室無改動示範單位



第 7 座 28 樓 B 室無改動示範單位



Index 備註 [1]

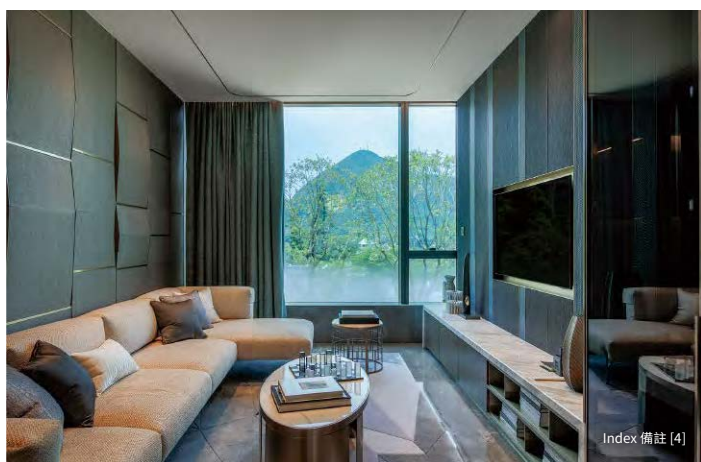
The Height of Refinement: **Ansaldo at Shouson Hill** 至尚生活之境 — 壽臣山 Ansaldo

In the prestigious residential enclave of Shouson Hill, an ultra-luxury residential oasis has emerged that redefines sophisticated living. Introducing Ansaldo, three contemporary mansions meticulously crafted by visionary designer Steve Leung, where refined living finds new artistic expression. Like dazzling gemstones, these private paradises offer three independent triplex houses saleable area spanning over 4,004 to 5,132 square feet, embodying the epitome of contemporary luxury. Each house consists a private garden and swimming pool, as well as a private lift connecting each floor. Residents have direct access to the houses through the private carport or garden.

香港大宅寶地壽臣山，一方至尚生活新境悄然出現。Ansaldo，由時尚大師梁志天親手打造的三幢全新當代華麗宅邸，在此嶄露風采，精緻生活藝術以創新姿態呈現。亮麗寶石般的私人天地，提供三間獨立三層別墅，連私人花園及游泳池，並享私人電梯連接各層，實用面積由 4,004 起至 5,132 平方呎，每幢配有特大獨立車庫及花園出入口，私隱度十足，完美體現當代奢華。



Index 備註 [3]



Index 備註 [4]

The three magnificent houses each possess unique characteristics. They can be purchased separately or connected to form an ancestral manor, or can also be sold via company shares transfer. House 1 offers the largest space in the middle and its palatial layout awaiting precision craftsmanship. The expansive garden reflects the verdant hills, soothing the mind. House 2 is well-established and highly adaptable, able to connect to House 1 or 3 and extend into a large estate.

三幢華麗宅邸皆各具特色，除可獨立購買，亦可貫通串連成為家族府邸，更可用公司轉讓形式購買。第一號宅邸擁當最大面積，寬敞格局正等待精雕細琢，遼闊花園映照翠綠山巒，時刻心曠神怡。第二號宅邸則穩紮其中，可塑性高，能與第一號或第三號宅邸相連，成為大宅延伸。



Index 備註 [3]



The most well-appointed House 3 is fully customized by Steve Leung Designs to craft an ambiance of unparalleled refinement. The private courtyard is an urban Arcadia, seamlessly blending two stainless steel sculptures by contemporary artist Helen Pun. Art and nature fuse perfectly. The extra-long swimming pool cleanses your soul while the floor-to-ceiling windows and triple-height living room enhance lavish parties at home. The state-of-the-art Italian Arclinea kitchen equipment turns every delicacy and sip of fine wine into a fashionable banquet. The house provides a luxurious master suite and two lavish guest bedrooms, all meticulously designed. The bright study complemented by rustling tree shadows also makes one feel extremely cozy. The extra-large garage allows your beloved vehicles to be ready to go at any time, reaching the city center or southern suburbs within a short time, fully embodying a refined lifestyle.



而其中配置最完善的第三號宅邸，全屋均由 Steve Leung Designs 度身訂造，營造絕無僅有的精緻氛圍。私人庭院尤如小桃花源，與兩件由當代藝術家 Helen Pun 打造的巧夥不鏽鋼雕塑渾然天成，藝術與自然完美相融，特長泳池讓你天天洗滌心靈，特大落地玻璃之隔，極高樓底客廳，亦讓家中豪華派對增色不少，頂級意大利國際品牌 Arclinea 廚房設備，讓每道佳餚，每杯美酒都成為時尚盛事。獨立屋提供一個豪華主人套房及兩間精緻套房，均悉心打造，窗明几淨的書房配搭樹影婆娑亦讓人倍感舒適，特大車庫讓你的愛驅隨時整裝待發，在短時間內到達市中心或南區郊外，完美演繹至尚生活。

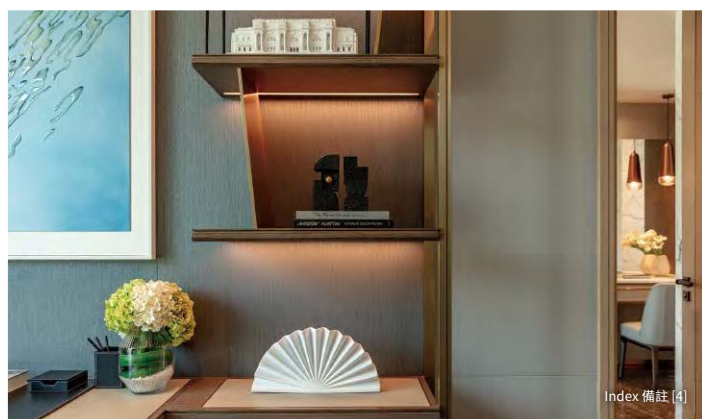




Index 備註 [2]



Index 備註 [3]



Index 備註 [4]

Nestled high above Shouson Hill, Ansaldo offers a secluded retreat that whisks one away from the mundane. Amid the natural beauty of the hills, each villa has a private, tranquil space seamlessly designed for optimal sunlight and an auspicious southern orientation. Connected yet separate, the design concept unveils the beauty of contemporary naturalistic aesthetics. Ansaldo redefines the pinnacle of discreet luxury at Shouson Hill with the perfect fusion of space, design and natural light. Luxury living and warm sunlight take flight, open to new vistas.

居高臨下，Ansaldo 拱照壽臣山，出塵脫俗。在自然山巒美景環抱下，各宅邸具備私密靜謐空間，日照與朝南風水配合得天衣無縫。空間相連而隔絕，設計理念呈現當代自然生態之美。Ansaldo 在空間、設計及採光上的完美融合，改寫了壽臣山高雅隱逸生活的標準，奢華生活與溫煦陽光在此恣意飛揚。

Developer 發展商



Joint Sole Agent 聯合獨家代理



領域房地產顧問有限公司 牌照號碼 C-018733

Enquiries 查詢

Louis Wong 黃先生 (E-047022)
☎ 9027 2100
louis.wong@landscape.com

Josephine Yuen 阮小姐 (E-424895)
☎ 6535 9918
josephine.yuen@landscape.com

Teresa Fung 馮小姐 (E-062803)
☎ 6538 6922
teresa.fung@landscape.com

Name of the Development: ANSALDO | District: Shouson Hill & Repulse Bay | Name of the street and street number of the Development: 11A Shouson Hill Road West | The website address designated by the Vendor for the Development: www.ansaldo.com.hk | The photographs, images, drawings or sketches shown in this advertisement/promotional material represent an artist's impression of the development concerned only. They are not drawn to scale and/or may have been edited and processed with computerized imaging techniques. Prospective purchasers should make reference to the sales brochure for details of the development. The Vendor also advises prospective purchasers to conduct an on-site visit for a better understanding of the development site, its surrounding environment and the public facilities nearby.

發展項目名稱：南天第 | 區域：壽臣山及淺水灣 | 發展項目的街道名稱及門牌號數：壽臣山道西 11A 號 | 賣方就發展項目指定的互聯網網站的網址：www.ansaldo.com.hk | 本廣告 / 宣傳資料內載列的相片、圖像、繪圖或素描顯示純屬畫家對有關發展項目之想像。有關相片、圖像、繪圖或素描並非按照比例繪畫及 / 或可能經過電腦修飾處理。準買家如欲了解發展項目的詳情，請參閱售樓說明書。賣方亦建議準買家到有關發展地盤作實地考察，以對該發展地盤、其周邊地區環境及附近的公共設施有較佳了解。

[1] The photograph(s) was/were taken at House 1 of ANSALDO on 28 July 2022*. [2] The photograph(s) was/were taken at House 1 of ANSALDO on 22 August 2022*. [3] The photograph(s) was/were taken at House 3 of ANSALDO on 20 July 2022*. [4] The photograph(s) was/were taken at House 3 of ANSALDO on 28 July 2022*.

* Had been edited and processed with computerized imaging techniques, and is for reference only. The fittings, finishes, appliances, decorations, furniture, lighting and other objects therein may not appear in the actual final as-built houses or their vicinity and are for reference only, and are subject to the provisions of the agreement for sale and purchase and transaction documents. The view and the description shown in the photograph(s) may not be applicable to all houses in the Development. The view enjoyed by any house is affected by the orientation, floor level and surrounding buildings. The Vendor reserves the right to make alteration to building plans of the Development. The photograph(s) and all the contents shall not constitute or be construed as any contractual term, offer, undertaking, representation or warranty, whether expressed or implied, on the part of the Vendor (whether related to the view or not).

[1] 本相片於 2022 年 7 月 28 日發展項目 1 號洋房內拍攝 *；[2] 本相片於 2022 年 8 月 22 日發展項目 1 號洋房內拍攝 *；[3] 本相片於 2022 年 7 月 20 日發展項目 3 號洋房內拍攝 *；[4] 本相片於 2022 年 7 月 28 日發展項目 3 號洋房內拍攝 *。

* 相片經電腦修飾處理，僅供參考。相片內展示的裝置、裝修物料、設備、裝飾物、家具、燈飾及其他物件等不一定在實際落成的洋房內或其附近範圍出現，僅供參考，並以買賣合約或交易文件條款為準。相片及描述所顯示的景觀並不適用於所有發展項目的洋房。各洋房之景觀座向、樓層及周邊建築物所影響。賣方保留不時改動建築圖則的權利。本相片及其所有內容並不構成亦不得詮釋成賣方作出任何不論明示或隱含之合約條款、要約、承諾、陳述或保證（不論是否有關景觀）。

Vendor: Knight Vale Limited, Heather Merit Limited, Sunshine Arch Limited | Holding companies of the Vendor: Novel Treasure Ventures Limited, Orion Land Limited, Orion Investment Group Limited | Authorized Person for the Development: Mr. Lai Siu Kin | The firm or corporation of which the Authorized Person for the Development is a proprietor, director or employee in his or her professional capacity: Lu Tang Lai Architects Limited | Building contractor for the Development: Forward Construction Company Limited | The firm of solicitors acting for the owner in relation to the sale of residential properties in the Development: Mayer Brown | Any authorized institution that has made a loan, or has undertaken to provide finance, for the construction of the Development: Bank of China (Hong Kong) Limited | Any other Person who has made a loan for the construction of the Development: Novel Treasure Ventures Limited | Prospective purchasers are advised to refer to the sales brochure for any information on the Development or the phase. | All information contained in this advertisement/promotional material shall be subject to the final plans approved by the relevant Government authorities and legal documentation. The vendor reserves the right to make modifications and changes according to the actual circumstances without prior notice. | This advertisement is published by Landscape Realty Limited with the consent of the Vendor. This advertisement/promotional material does not constitute and shall not be construed as giving any offer, representation, undertaking or warranty, whether express or implied, on the part of the Vendor regarding the Development or any part thereof. | Please refer to the sales brochure for details. | Property Number: 1991 | Date of Printing: 7 July 2023

賣方：Knight Vale Limited、Heather Merit Limited、Sunshine Arch Limited | 賣方的控股公司：Novel Treasure Ventures Limited、東立地產有限公司、東立投資集團有限公司 | 發展項目的認可人士：黎紹堅先生 | 認可人士以其專業身分擔任經營人、董事或僱員的商號或法團：呂鄧黎建築師有限公司 | 發展項目的承建商：富和建築有限公司 | 就發展項目中的住宅物業的出售而代表擁有人行事的律師事務所：孖士打律師行 | 已為發展項目的建造提供貸款或已承諾為該項建造提供融資的認可機構：中國銀行（香港）有限公司 | 已為發展項目的建造提供貸款的任何其他人：Novel Treasure Ventures Limited | 賣方建議準買方參閱有關售樓說明書，以了解發展項目或期數的資料。 | 本廣告 / 宣傳資料內一切資料，須以政府相關部門最後批准之圖則及法律文件為準。賣方保留一切權利，按實際情況需要作出修改及改動，而無須另行通知。 | 本廣告由領域房地產顧問有限公司經賣方同意發報。本廣告 / 宣傳資料並不構成，亦不得詮釋成賣方就發展項目或其任何部分作出任何不論明示或暗示之要約、陳述、承諾或保證。 | 詳情請參閱售樓說明書。 | 物業編號：1991 | 印製日期：2023 年 7 月 7 日

Sea view apartment in Tai Tam
大潭海景單位



4 bed, 2.5 bath, 2 car parks

Lovely 4-bedroom mid-rise apartment enjoys spectacular sea view, for sale with 2 car parks and for lease with 1 car park

別緻四房中密度單位，飽覽優美海景，出售連兩個車位，出租連一個車位，可租可售

Saleable 實用 1,824 s.f.

Sale 售 \$68,000,000 / Lease 租 \$100,000 incl.

Inquiries 查詢 ☎ 6607 2082 Stephen Chan 陳先生

Property Search No. 物業搜尋編號 13980



Waterfront house in Stanley
赤柱臨海洋房

✳ can be sold via company shares transfer 可以公司轉讓股份形式買賣



5 bed, 5.5 bath, 255 s.f. garden & 817 s.f. roof, 1 garage (2 cars)

Family townhouse with full clubhouse facilities overlooks breathtaking sea views

家庭式洋房，連完善會所設施，俯瞰壯麗海景，可租可售

Saleable 實用 3,034 s.f.

Sale 售 \$84,000,000 / Lease 租 \$125,000 incl.

Inquiries 查詢 ☎ 9020 1583 Michelle Chung 鍾小姐

Property Search No. 物業搜尋編號 146970



SALE 出售

Southside & Peak 南區及山頂

Garden townhouse in Stanley 赤柱花園洋房



4 bed, 2.5 bath, 1,077 s.f. garden & 628 s.f. roof, 2 car parks

Family 4-bedroom garden townhouse within short walk to Stanley Beach and market

家庭式四房花園洋房，舉步可達到赤柱海灘和市場，可租可售

Saleable 實用 2,364 s.f.

Sale 售 \$88,000,000 / Lease 租 \$128,000 incl.

Inquiries 查詢 ☎ 6607 2082 Stephen Chan 陳先生

Property Search No. 物業搜尋編號 69636



Nicely decorated sea view house in Tai Tam 大潭優雅裝修洋房

* can be sold via company shares transfer 可以公司轉讓股份形式買賣



5 bed, 4.5 bath, 907 s.f. garden, 2 car parks

Classic townhouse with a large garden and exquisite features breathtaking mountain and sea views

經典洋房大宅，連偌大花園和精緻裝修，享遼闊壯麗的山海景觀，可租可售

Saleable 實用 3,314 s.f.

Sale 售 \$165,000,000 \$148,000,000 / Lease 租 \$200,000 incl.

Inquiries 查詢 ☎ 6538 6922 Teresa Fung 馮小姐

Property Search No. 物業搜尋編號 21106



Luxurious townhouse in Shouson Hill
壽臣山豪華洋房

✳ can be sold via company shares transfer 可以公司轉讓股份形式買賣



5 bed, 4.5 bath, 603 s.f. terrace, 326 s.f. garden & 572 s.f. roof, 2 car parks

Tastefully decorated townhouse with sufficient outdoor space overlooks a magnificent Deep Water Bay view

品味優雅裝修洋房，享充足戶外空間，俯瞰壯麗深水灣美景

Saleable 實用 3,680 s.f.

Sale 售 \$298,000,000 \$278,000,000

Inquiries 查詢 ☎ 9027 2100 Louis Wong 黃先生

Property Search No. 物業搜尋編號 135517



Modern luxurious townhouse in Shouson Hill
壽臣山時尚豪華洋房



5 bed, 5 bath, 919 s.f. terrace, 2,733 s.f. garden & 889 s.f. roof, 4 car parks

Nicely designed house with a private lift and a private huge garden in move-in condition

雅致裝修洋房，裝修簇新，連私家升降機及罕有大花園

Saleable 實用 4,240 s.f.

Sale 售 \$498,000,000

Inquiries 查詢 ☎ 6535 9918 Josephine Yuen 阮小姐

Property Search No. 物業搜尋編號 179392



SALE 出售

Southside & Peak 南區及山頂

Victoria Harbour view apartment at The Peak 山頂維港景住宅



3 bed, 2 bath, 1 car park

Highly sought after 3-bedroom apartment overlooks an unparalleled Victoria Harbour view

三房備受追捧單位，維港美景一覽無遺

Saleable 實用 2,072 s.f.

Sale 售 \$85,000,000

Inquiries 查詢 ☎ 9027 2100 Louis Wong 黃先生

Property Search No. 物業搜尋編號 38984



Stylish apartment in Repulse Bay 淺水灣時尚住宅



3 bed, 2 bath, 1 car park

Popular 3-bedroom apartment with facilities enjoys sublime harbour and Southside sea views

受歡迎三房單位，連設施，飽覽壯麗維港景及南區海景，可租可售

Saleable 實用 1,671 s.f.

Sale 售 \$88,000,000 / Lease 租 \$100,000 incl.

Inquiries 查詢 ☎ 6538 6922 Teresa Fung 馮小姐

Property Search No. 物業搜尋編號 161434



Massive low-rise duplex in Pokfulam
薄扶林寬敞低密度複式單位



5 bed, 1 study, 5.5 bath, 1,870 s.f. roof, 2 car parks

Elegant and stylish designer decorated duplex with a huge private roof
優雅時尚設計師裝修複式住宅，連巨型私家天台
Saleable 實用 4,310 s.f.
Sale 售 \$108,000,000
Inquiries 查詢 ☎ 9027 2100 Louis Wong 黃先生
Property No. 物業編號 115445



Massive garden apartment in Tai Tam
大潭大花園雅居

✳ can be sold via company shares transfer 可以公司轉讓股份形式買賣



4 bed, 2.5 bath, 746 s.f. terrace & 3,563 s.f. garden, 1 car park

Elegantly furnished 4-bedroom garden apartment with a generous garden and terrace overlooks a panoramic sea view
優雅大度四房花園單位，連私家巨型花園及平台，俯瞰遼闊海景，可租可售
Saleable 實用 1,824 s.f.
Sale 售 \$110,000,000 / Lease 租 \$168,000 incl.
Inquiries 查詢 ☎ 9021 1270 Annie Lee 李小姐
Property Search No. 物業搜尋編號 31650



SALE 出售

Southside & Peak 南區及山頂

**Exclusive duplex penthouse in Pokfulam
薄扶林尊貴頂層單位**



4 bed, 3.5 bath, 885 s.f. roof, 2 car parks

Prestigious residence features fashionable and exquisite décor with a private roof top overlooking a magnificent sea view

尊貴雅居裝修時尚精美，連私家天台，俯瞰優美海景

Saleable 實用 2,549 s.f.

Sale 售 \$118,000,000

Inquiries 查詢 ☎ 9027 2100 Louis Wong 黃先生

Property No. 物業編號 44698



**Waterfront house in Tai Tam
大潭臨海洋房**

✳ can be sold via company shares transfer 可以公司轉讓股份形式買賣



5 bed, 1 study, 5 bath, 1,838 s.f. garden & 181 s.f. roof, 2 garage

Elegant 5-bedroom house with a private garden and a private swimming pool overlooks a marvelous sea view

優雅五房洋房，連私家花園及入則游泳池，俯瞰絕色海景

Saleable 實用 3,013 s.f.

Sale 售 \$180,000,000

Inquiries 查詢 ☎ 6535 9918 Josephine Yuen 阮小姐

Property Search No. 物業搜尋編號 122883





An Ode to the Hills 醉美山光

Nestled within a luxurious family-oriented residential building in Repulse Bay is a newly renovated three-bedroom duplex of unparalleled charm, with vistas reminiscent of an artistic masterpiece.

The interior boasts an exquisite décor and tasteful furnishings, fully equipped to move into. Comprehensive clubhouse facilities and security provide an enviable level of privacy, an escape from the mundane and a gateway to complete tranquillity. Lush verdant hills form a picturesque landscape, evoking a sense of being amid nature.

Ingeniously laid out, the three en-suite bedrooms and three and a half bathrooms promise the ultimate comfort. The separate living and dining room, along with a family area allow one to fully savour the stunning views of the undulating hills, an experience beyond imagination. Come nightfall, one can delight in the twinkling and shimmering hills under the starry sky, a sight too beautiful to behold.



位於淺水灣豪華家庭式屋苑，這全新裝修的三房複式單位姿彩獨存，美景如畫。

單位室內裝潢考究，家具雅緻，設備一應齊全，可即時入住。住宅設有完善的會所設施和保安管理，令人稱羨的超高私隱度，可遠離喧囂，完全暢享悠閒寧靜的氣氛。單位坐擁翠綠山景，景致怡人，仿如置身大自然。

單位設計布局實用，三間套房和三間半浴室，提供獨立的客廳和飯廳，家庭廳。所有房間均可飽覽山巒美景，舒適程度超乎想像，夜裡享受醉美山光，美不勝收。



* can be sold via company shares transfer
可以公司轉讓股份形式買賣

Newly renovated duplex in Repulse Bay

淺水灣全新裝修複式單位

3 bed, 3.5 bath, 2 car parks

Saleable 實用 3,244 s.f.

Sale 售 \$120,000,000

Inquiries 查詢 ☎ 9020 1583 Michelle Chung 鍾小姐

Property Search No. 物業搜尋編號 174904



SALE 出售

Southside & Peak 南區及山頂

Deluxe detached house in Shouson Hill 壽臣山奢華洋房



4 bed, 3.5 bath, 1,094 s.f. garden, 2 car parks

Three-storey deluxe detached townhouse with an opulent design and a spacious terrace

樓高三層洋房，裝修極具奢華氣派，連寬闊平台

Saleable 實用 2,840 s.f.

Sale 售 \$220,000,000 \$182,000,000

Inquiries 查詢 ☎ 6538 6922 Teresa Fung 馮小姐

Property Search No. 物業搜尋編號 179794



Nicely designed townhouse in Deep Water Bay 深水灣優雅裝修洋房



4 bed, 3.5 bath, private roof, 1 garage (for 3-4 cars)

Spacious 4-bedroom house with meticulous design and an unrivalled green view

深水灣寬敞四房大宅，享精美裝修及優美翠綠景色

Saleable 實用 3,200 s.f.

Sale 售 \$198,000,000

Inquiries 查詢 ☎ 9020 1583 Michelle Chung 鍾小姐

Property Search No. 物業搜尋編號 41879



Superb sea view house in Deep Water Bay 深水灣華麗海景洋房

* can be sold via company shares transfer 可以公司轉讓股份形式買賣



4 bed, 1 study, 5 bath, 710 s.f. garden & 540 s.f. roof, 2 car parks

Rare on market garden townhouse with a stunning sea view on prestigious Island Road

尊貴香島道罕有花園洋房，壯麗海景一覽無遺

Saleable 實用 2,338 s.f.

Sale 售 \$200,000,000

Inquiries 查詢 ☎ 6535 9918 Josephine Yuen 阮小姐

Property Search No. 物業搜尋編號 157113



Pool house in Repulse Bay 淺水灣泳池屋

* can be sold via company shares transfer 可以公司轉讓股份形式買賣



3 bed, 3 bath, 2,293 s.f. garden & 997 s.f. roof, 2 car parks

Highly sought after 3-bedroom house with sufficient outdoor space and a private swimming pool in a peaceful location

受歡迎三房洋房，享充足戶外空間及私家泳池，位處和諧怡人地段

Saleable 實用 2,161 s.f.

Sale 售 \$250,000,000

Inquiries 查詢 ☎ 6535 9918 Josephine Yuen 阮小姐

Property Search No. 物業搜尋編號 150934





Royal Grandeur - 180-degree Victoria Harbour view combined unit

皇者氣派 - 180 度維港景相連大宅 收藏首選

實用面積逾 4,200 呎

Nestled atop The Peak, this 4,265 s.f. (saleable) combined apartment along the prestigious Peak Road is renowned for its opulent décor, 3.15 m lofty ceilings and captivating views of Victoria Harbour.

Upon entering the flat, one is immediately greeted with stunning vistas of the harbour. Standing on the balcony, the bustling city below unfolds before your eyes, evoking a sense of regal grandeur as if in a royal palace. Ornate ceiling finishes, a voluminous floor plan and the open panorama collectively conjure an air of opulence. The spacious living and dining room makes for an ideal venue for hosting elegant soirees.

Masterfully laid out, the flat provides an abundance of space. Four lavish en-suite bedrooms and a total of four and a half bathrooms promise an indulgent family living experience. A maid's room,

utility room and two balconies along with two covered car parks are provided for convenience. Exquisitely decorated with premium fittings and fully equipped kitchen and bathrooms, the residence is move-in ready.

Residing here is not merely a lifestyle but an identity. A north-facing residence, an attribute that is deemed good Feng Shui for the next 20 years starting from 2024. This rare gem along Peak Road evokes a sense of grandeur and is worthy of collecting.



這坐落於尊貴顯赫山頂道上的一層過相連住宅，實用面積 4,265 平方呎，具備華麗的裝飾及 3.15 米特高樓底，坐擁整個香港的磅礴氣勢，左從山頂到維港及中環，緊接著九龍 ICC 至九肚山洋房，再右至跑馬地銅鑼灣一帶，整個維多利亞港美景一覽無遺，氣派非凡。

甫入屋內，映入眼簾的便是維港優美景色。站在露台上，香港繁華景致盡收眼底，宛如置身皇宮，富麗堂皇。細緻的天花裝飾，極高樓底，搭配維港開揚的優美全景，營造出皇室般的氛圍。客廳和餐廳寬敞明亮，是舉辦優雅晚會派對的理想地方。

單位布局四正，空間寬敞，是傳統大戶家庭的最愛。四間睡房均是套房，連四間半浴室，讓人享受奢華極致的家庭生活體驗。傭人房、多用途房、兩個露台及兩個車位則為住戶提供更便利的生活。室內裝潢用料考究，家具精美，廚房和浴室設施亦一應俱全。



居於此大宅，不僅是一種生活方式，更可體現尊貴的身份地位。大宅正北的設計，享 2024 年開始二十年北水大運的好風水。這是山頂道上難得一遇，極具魅力的豪華居所，值得珍藏。

Victoria Harbour view combined unit at The Peak
山頂維港景相連大宅

4 bed, 4.5 bath, 2 car parks

Saleable 實用 4,256 s.f.

Sale 售 \$480,000,000

Inquiries 查詢 ☎ 6535 9918 Josephine Yuen 阮小姐

Property No. 物業編號 128539



SALE 出售

Southside & Peak 南區及山頂

Family house at The Peak 山頂家庭式別墅

✦ can be sold via company shares transfer 可以公司轉讓股份形式買賣



4 bed, 3 bath, 400 s.f. garden, 1 garage

Unique garden house with soaring ceilings in a peaceful location

獨特花園洋房，享高樓底，地段怡人

Saleable 實用 3,195 s.f.

Sale 售 \$280,000,000

Inquiries 查詢 ☎ 6535 9918 Josephine Yuen 阮小姐

Property Search No. 物業搜尋編號 49439



Victoria Harbour view house at The Peak 山頂維港景洋房



4 bed, 4.5 bath, 1,021 s.f. garden & 861 s.f. roof, 2 car parks

Well decorated 4-ensuite house with a private garden and roof top overlooks a sublime view of Victoria Harbour

優質裝修四套房洋房，連私家花園及天台，俯瞰維港氣勢磅礴美景

Saleable 實用 1,817 s.f.

Sale 售 \$303,000,000

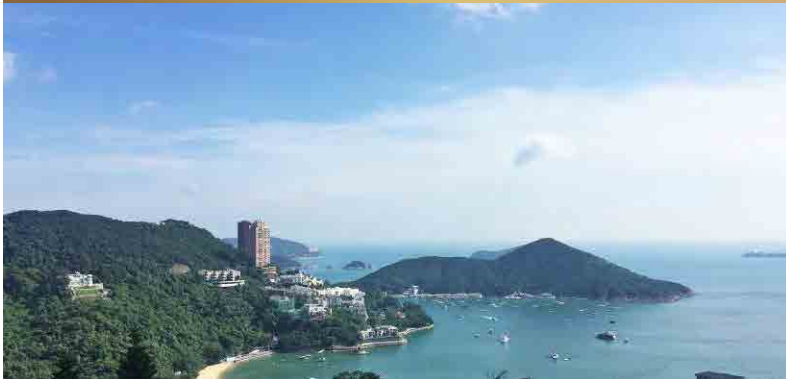
Inquiries 查詢 ☎ 6535 9918 Josephine Yuen 阮小姐

Property Search No. 物業搜尋編號 104467



Sumptuous colonial house in Deep Water Bay 深水灣奢華英式洋房

* can be sold via company shares transfer 可以公司轉讓股份形式買賣



4 bed, 4.5 bath, 2,140 s.f. terrace & 336 s.f. roof, 2 car parks

Brand new designer décor and fully furnished colonial house in a prestigious location

全新設計師裝修英式洋房，連家具，地段尊貴

Saleable 實用 2,939 s.f.

Sale 售 \$308,000,000

Inquiries 查詢 ☎ 6538 6922 Teresa Fung 馮小姐

Property Search No. 物業搜尋編號 202295



Enormous apartment at The Peak 山頂巨型住宅



5 bed, 1 study, 7 bath

Rare and generous 5-bedroom apartment at a modern luxury landmark residential development

現代豪華地標住宅項目，罕有巨型五房住宅

Saleable 實用 8,850 s.f.

Sale 售 \$890,000,000

Inquiries 查詢 ☎ 9027 2100 Louis Wong 黃先生

Property Search No. 物業搜尋編號 182307



SALE 出售

Southside & Peak 南區及山頂

Superb house in Deep Water Bay 深水灣恢宏洋房大宅

✧ can be sold via company shares transfer 可以公司轉讓股份形式買賣



4 bed, 5.5 bath, 2,306 s.f. garden, 2 car parks

Extraordinary detached house with a spectacular view over Deep Water Bay
尊貴顯赫洋房，坐享深水灣優美景色

Saleable 實用 5,277 s.f.

Sale 售 \$980,000,000

Inquiries 查詢 ☎ 9027 2100 Louis Wong 黃先生

Property Search No. 物業搜尋編號 122816



Luxurious single lot in Stanley 赤柱奢華獨立屋地

✧ can be sold via company shares transfer 可以公司轉讓股份形式買賣



6 bed, 6 bath, 69 s.f. terrace, 3,958 s.f. garden & 1,155 s.f. roof, 1 garage (6 cars)

Enormous 6-ensuite single house with ample alfresco space, private lift and swimming pool enjoys spectacular sea view in tranquil location

巨型六套房獨立屋，享充足戶外空間，連私家升降機及游泳池，遠眺遼闊海景，地段清靜

Saleable 實用 5,701 s.f.

Sale 售 \$630,000,000

Inquiries 查詢 ☎ 6535 9918 Josephine Yuen 阮小姐

Property Search No. 物業搜尋編號 31084



畢架山 帝景臺



半山 寶雲道



PROFILEGNO

pavimento perfetto

made in Italy

九龍塘 畢架山一號



實木複合地板

ENGINEERED PARQUET 定制/現貨

- 多種木種，不同程度的樹眼及紋理可供選擇
- 5種表面處理選擇
- 顏色多樣化
- 彈性尺寸



出貨時間快



環保



高耐光度



鋁線組合地板
有效穩固地板



符合多項國際標準

| Oak 橡木 | Walnut 胡桃木 | Chestnut 栗子木 | Elm 榆木 | Teak 柚木 |
| Cherry Tree 櫻桃樹木 | Olive Tree 橄欖樹木 | Cabreuva 檀木 | Wenge 雞翅木 |



達明地板

TAT MING FLOORING

灣仔

杜老誌道 6 號 群策大廈 20 樓

沙田

新城市中央廣場 2 期 801-805 室

尖沙咀

美麗華廣場 A 座 1602 室

☎ 2156 5333

☎ 5166 1823

HONG KONG • MACAU • BEIJING • SHANGHAI • CHENGDU • GUANGZHOU • SHENZHEN • SINGAPORE • MALAYSIA • VIETNAM



tatmingflooring.com



flooring@tatming.com



tatmingflooring



member of Tat Ming Group
SINCE 1981

SALE 出售

Southside & Peak 南區及山頂

Generous single house at The Peak 山頂偌大獨立屋

✳ can be sold via company shares transfer 可以公司轉讓股份形式買賣



5 bed, 6.5 bath, 321 s.f. terrace & 1,589 s.f. garden, 6 car parks

Luxurious 5-ensuite single house with a private garden ideal for a large family
奢華五套房獨立洋房，連私家花園，適合大家庭

Saleable 實用 4,559 s.f.

Sale 售 \$980,000,000

Inquiries 查詢 ☎ 6535 9918 Josephine Yuen 阮小姐

Property Search No. 物業搜尋編號 125922



Rare single lot house in Stanley 赤柱罕有獨立屋地



7 bed, 5 bath, 7,578 s.f. garden & 2,017 s.f. roof

Enormous 7-bedroom single lot house with a massive outdoor space in an idyllic location

巨型七房獨立屋地，享充足戶外空間，地段清幽怡人

Site Area 地盤面積 10,000 s.f.

Saleable 實用 7,434 s.f.

Sale 售 \$1,000,000,000

Inquiries 查詢 ☎ 6535 9918 Josephine Yuen 阮小姐

Property Search No. 物業搜尋編號 4935



Prestigious penthouse at The Peak 山頂尊貴頂層住宅



3 bed, 2 bath, private roof, 2 car parks

Nicely renovated penthouse with a private roof top enjoys a peaceful sea view of Southside

精美裝修頂層住宅，連私家天台，飽覽南區怡人寧靜海景

Saleable 實用 2,311 s.f.

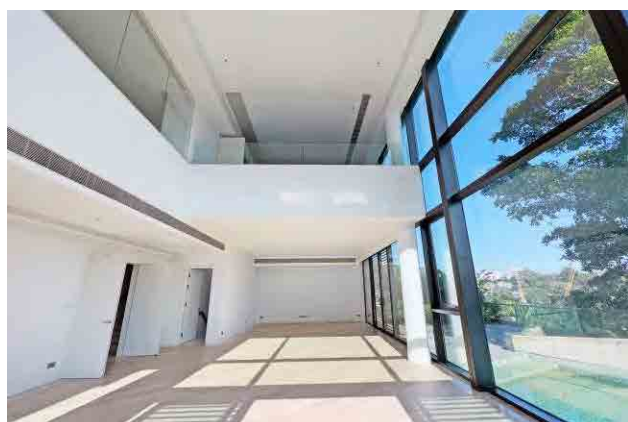
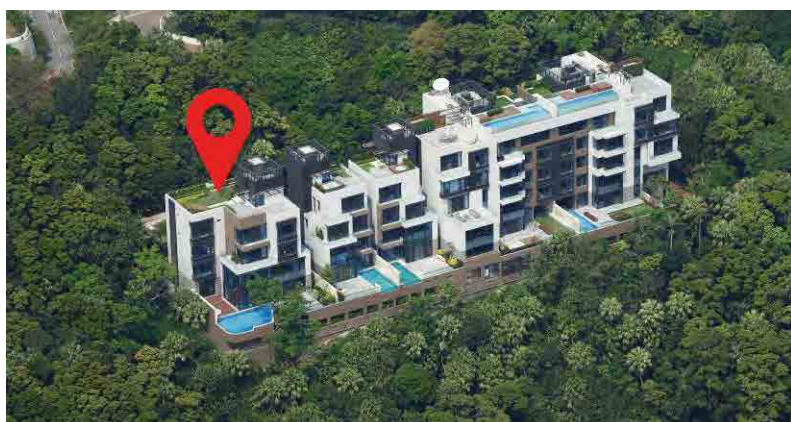
Sale 售 \$140,000,000

Inquiries 查詢 ☎ 9021 1270 Annie Lee 李小姐

Property Search No. 物業搜尋編號 32804



Enormous house at The Peak 山頂巨型洋房



12 bed, 12 bath, 2,737 s.f. garden & 2,680 s.f. roof, 1 garage (4-6 cars)

Rare enormous house with a plenty of outdoor living space (including a private swimming pool) and lift enjoys spectacular views

艷麗絕倫巨型洋房，享充裕的戶外生活空間，連私家游泳池及升降機，眺望無敵海景

Saleable 實用 12,098 s.f.

Sale 售 Price on application 面議 /Lease 租 Subject to offer

Inquiries 查詢 ☎ 9027 2100 Louis Wong 黃先生

☎ 6535 9918 Josephine Yuen 阮小姐

Property No. 物業編號 160077



SALE 出售

Midlevels Central & West 中半山及西半山

Well decorated apartment in Midlevels West 西半山優質裝修單位



4 bed, 3 bath, 2 car parks

Newly renovated 4-bedroom harbour view flat at a quiet yet easy access location
全新裝修海景四房單位，環境寧靜，交通便利，可租可售
Saleable 實用 2,320 s.f.
Sale 售 \$82,000,000 / Lease 租 \$100,000 incl.
Inquiries 查詢 ☎ 9020 1583 Michelle Chung 鍾小姐
Property Search No. 物業搜尋編號 189086



Highly sought after apartment in Midlevels Central 中半山受歡迎住宅



3 bed, 2.5 bath, 2 car parks

Cozy 3-bedroom apartment enjoys a breathtaking city view
舒適三房單位，眺望華麗城市景
Saleable 實用 2,072 s.f.
Sale 售 \$85,000,000
Inquiries 查詢 ☎ 6607 2082 Stephen Chan 陳先生
Property Search No. 物業搜尋編號 6484





Urban Prosperity 都會繁華

Tucked away in an elegant residential building in Mid-Levels West lies a three-bedroom apartment of irresistible charm. The spacious and practical layout features an adjoining living and dining area, three bedrooms, a maid's room and two bathrooms, catering perfectly to an intimate family. Though modestly adorned, immense potential abounds for customising this hidden gem into your ideal home.

Nestled in an unrivalled location near the Mid-Levels Escalator and SOHO district, nowhere remains out of easy reach whether for leisure or work. Majestic vistas from its lofty vantage encompass the kinetic cityscape and shimmering Victoria Harbour, a vibrant metro life abuzz with vitality.



這三房單位位於西半山的典雅住宅大廈，空間寬敞實用，提供相連的客飯廳及三間睡房，一間傭人房和兩間浴室，完全滿足小家庭需求。裝修簡約極具改造潛力，可以按個人品味打造心目中的住所。

單位地理位置優越，鄰近半山自動扶手電梯和 SOHO 區。無論外出娛樂消遣或工作，都可以輕鬆抵達各地。居高臨下，繁華都會一覽無遺，遠眺維港城市美景，盡享琳瑯滿目的城市生活。

Practical apartment in Midlevels West

西半山實用單位

3 bed, 2 bath

Saleable 實用 691 s.f.

Sale 售 \$14,800,000

Inquiries 查詢 ☎ 9020 1583 Michelle Chung 鍾小姐

Property Search No. 物業搜尋編號 121565



SALE 出售

Midlevels Central & West 中半山及西半山

One of a kind duplex on Kennedy Road 堅尼地道獨樹一幟複式單位

* can be sold via company shares transfer 可以公司轉讓股份形式買賣



4 bed, 2.5 bath, twins car parks

Highly sought after 4-bedroom (2-ensuite) duplex unit with lofty ceilings overlooks a fabulous city view

受歡迎四房兩套複式單位，享高樓底，俯瞰城市醉人景色

Saleable 實用 2,138 s.f.

Sale 售 \$95,000,000

Inquiries 查詢 ☎ 9021 1270 Annie Lee 李小姐

Property Search No. 物業搜尋編號 36856



Prestigious apartment in Midlevels Central 中半山尊貴住宅

* can be sold via company shares transfer 可以公司轉讓股份形式買賣



4 bed, 3 bath, 2 car parks

Family 4-bedroom apartment with sufficient alfresco space overlooks a spectacular Victoria Harbour view and city view

家庭式四房住宅，享充足戶外空間，俯瞰維港優美景色及城市景

Saleable 實用 2,888 s.f.

Sale 售 \$168,000,000

Inquiries 查詢 ☎ 9021 1270 Annie Lee 李小姐

Property Search No. 物業搜尋編號 106463



Stylish apartment in Midlevels West
西半山時尚單位



3 bed, 2 bath, 1 car park

Classic elegant apartment with a practical layout in a convenient location
經典優雅住宅，間隔實用，交通便利

Saleable 實用 1,798 s.f.

Sale 售 \$55,000,000

Inquiries 查詢 ☎ 9021 1270 Annie Lee 李小姐

Property Search No. 物業搜尋編號 171025



Midlevels Central Apartment with Victoria Harbour View
中半山維港景住宅



4 bed, 4 bath, 1 car park

Nicely renovated apartment with light-toned accents enjoys a fabulous view of Victoria Harbour
優雅裝修單位，室內採淺色系設計，飽覽維港壯麗景色

Saleable 實用 2,580 s.f.

Sale 售 \$110,000,000

Inquiries 查詢 ☎ 6607 2082 Stephen Chan 陳先生

Property Search No. 物業搜尋編號 32718



SALE 出售

Midlevels Central & West 中半山及西半山

Exquisitely decorated penthouse in Midlevels West 西半山華麗頂層家居



5 bed, 5 bath, 2,282 s.f. roof, 3 car parks

Rare 5-bedroom penthouse apartment with a private rooftop and swimming pool overlooks a magnificent Victoria Harbour view

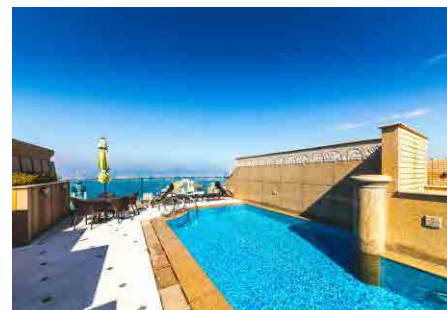
罕有五房頂層單位，連私家天台及游泳池，飽覽維港醉人景色

Saleable 實用 4,373 s.f.

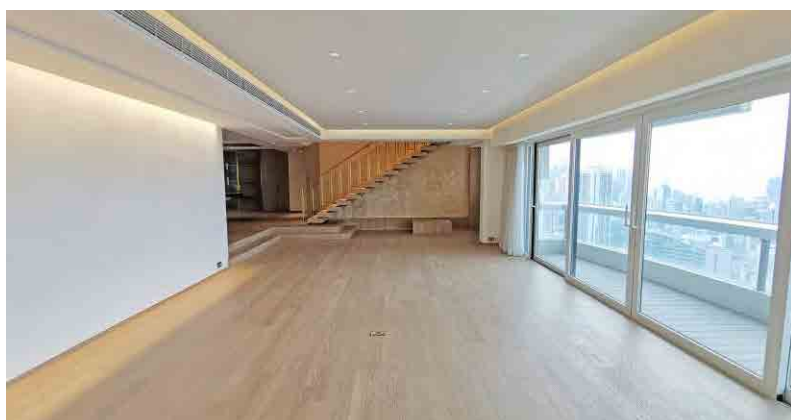
Sale 售 \$360,000,000

Inquiries 查詢 ☎ 6607 2082 Stephen Chan 陳先生

Property Search No. 物業搜尋編號 30288



One of a kind huge duplex in Midlevels Central 中半山獨樹一幟巨型複式



6 bed, 1 study, 4.5 bath, 4 car parks

Sumptuous duplex apartment enjoys a sweeping harbour view

奢華複式單位，維港美景盡收眼底

Saleable 實用 6,368 s.f.

Sale 售 Open Offer

Inquiries 查詢 ☎ 9027 2100 Louis Wong 黃先生

Property No. 物業編號 179317



* 獨家代理
SOLE AGENT



A Modern Gem 現代瑰寶

Indulge in the epitome of luxury living with this stylish and modern apartment, showcasing breathtaking city views and tasteful decor that exudes sophistication.

The apartment's layout is thoughtfully designed to emphasize both comfort and elegance, with the combined living and dining areas creating an expansive and airy living space that is ideal for entertaining guests or relaxing after a long day. Featuring three bedrooms, including two ensembles, and three bathrooms, this apartment is a testament to refined living and opulence.

The apartment also comes with a maid's room and one covered car park. As it is walking distance to Central and Admiralty, you will have easy access to the best shopping, dining, and entertainment options that Hong Kong has to offer.



讓這當代時尚住宅帶您體驗極致奢華生活的巔峰。這住宅遠眺美不勝收的城市美景，室內精緻的裝修散發高雅品味。

居室的佈局設計兼顧舒適和優雅，相連的客飯廳打造出寬敞通風的生活空間，既適合招待客人，又是漫長工作一天之後放鬆身心的理想位置。此外，單位提供三間睡房（包括兩間套房）和三間浴室，處處展現極致的品味和高雅風範。

單位附帶一間傭人房和一個有蓋車位。此外，由物業步行即可到達中環和金鐘，讓您輕鬆享受香港最佳的購物、美食和娛樂選擇。

* can be sold via company shares transfer
可以公司轉讓股份形式買賣

Meticulous designed apartment in Midlevels Central
中半山精美裝修單位

3 bed, 3 bath, 1 car park

Saleable 實用 1,452 s.f.

Sale 售 \$70,000,000 \$68,000,000

Inquiries 查詢 ☎ 9021 1270 Annie Lee 李小姐

Property Search No. 物業搜尋編號 157949

Welcome for any reasonable offer
歡迎合理還價



SALE 出售

Midlevels East & Happy Valley 東半山及跑馬地

Rare high floor unit in Jardine's Lookout 渣甸山罕有高層單位



3 bed, 2 bath, 1 car park

Beautifully renovated modern 3-bedroom apartment with abundant natural light and greenery views

精緻時尚三房住宅，自然光充足，享翠綠景色

Saleable 實用 871 s.f.

Sale 售 \$25,800,000 \$24,800,000

Inquiries 查詢 ☎ 6538 6922 Teresa Fung 馮小姐

Property Search No. 物業搜尋編號 42756



Cozy apartment in Jardine's Lookout 渣甸山舒適住宅



3 bed, 2 bath, 1 car park

Light and airy apartment with full clubhouse facilities in a prestigious location

明亮通風住宅，連完善會所設施，地段尊貴顯赫

Saleable 實用 1,439 s.f.

Sale 售 \$48,500,000

Inquiries 查詢 ☎ 9021 1270 Annie Lee 李小姐

Property Search No. 物業搜尋編號 19816





Great Auspice 風水寶地

Nestled in the prestigious enclave of Stubbs Road in Mid-Levels East lies an exclusive four-bedroom abode commanding sweeping 270-degree vistas of Victoria Harbour. Endowed with an efficient layout and copious space, the interior design and furnishings exude an air of refined elegance. The master suite features a large walk-in closet and adjoins an approx. 240 s.f. study which lends itself well for conversion into an extra ensuite bedroom. In addition, there are three and a half bathrooms, a maid's quarter and two covered car parks. A spacious living and dining area provides an ideal space for family entertaining.

Situated in a convenient location, residents can go either directions to avoid traffic jam (One direction to Central and the other to Wan Chai). Whilst a brisk three-minute drive whisks one to the picturesque Black's Link, a perfect tonic for recreation and vitality. Nestled beneath the mists, sunlight and fresh air flow freely with not a hint of damp. Verdant peaks embrace the left, harnessing the winds and enriching the chi in accord with the ancient precepts of feng shui, marking this out as a site of great auspice.



這豪宅位於東半山司徒拔道頂級豪宅區，飽覽 270 度無遮擋維多利亞港海景。單位屬四房設計，間隔實用，空間寬敞，設計裝飾細膩優雅。主人套房設偌大的衣帽間，而 240 呎的多用途書房更適合改裝成套房。另設三間半浴室、傭人房及兩個有蓋車位，相連的客飯廳亦是家庭歡聚的理想地方。

物業地理位置優越，環境清幽，交通亦四通八達，可利用兩條道路輕鬆到達中環或灣仔，免受交通擠塞的煩惱，三分鐘車程可直達行山徑布力徑，適合運動養生。物業坐落霧線以下，明亮通風，亦無潮濕發霉問題，左方青龍位皆有翠綠高山座落，實屬藏風聚氣的風水寶地。



Victoria Harbour view apartment on Stubbs Road
司徒拔道維港景住宅

4 bed, 3.5 bath, 2 car parks

Saleable 實用 2,377 s.f.

Sale 售 \$150,000,000

Inquiries 查詢 ☎ 9021 1270 Annie Lee 李小姐

Property Search No. 物業搜尋編號 38170



SALE 出售

Midlevels East & Happy Valley 東半山及跑馬地

Rare 3-ensuite apartment in Midlevels East 東半山罕有三套房住宅

✦ can be sold via company shares transfer 可以公司轉讓股份形式買賣



3 bed, 1 study, 3.5 bath, 2 car parks

Cozy 3-ensuite apartment with a practical layout enjoys a fantastic city view
舒適三套房住宅，間隔實用，坐擁城市迷人景色

Saleable 實用 2,471 s.f.

Sale 售 \$78,000,000

Inquiries 查詢 ☎ 9020 1583 Michelle Chung 鍾小姐

Property Search No. 物業搜尋編號 120377



Unique garden duplex in Happy Valley 跑馬地獨特花園複式



3 bed, 4 bath, 1,757 s.f. terrace, 2 car parks

One of a kind duplex with a stunning racecourse view and a private garden terrace
別具一格複式單位，連私家平台花園，飽覽壯麗馬場景，可租可售

Saleable 實用 2,495 s.f.

Sale 售 \$110,000,000 / Lease 租 \$138,000 incl.

Inquiries 查詢 ☎ 6607 2082 Stephen Chan 陳先生

Property Search No. 物業搜尋編號 186968



General Valuations

We carry out property valuations for diversified purposes including IPO, annual audit, mergers and acquisitions, insurance, immigration, disposal, rating / stamp duty appeal and tax computations.

一般估值

我們會受託提供估值報告作公司上市、審計賬目、收購合併、保險、海外移民、資產出售、差餉或印花稅上訴及其他稅務用途。



Expert Witness and Dispute Resolution

We provide independent professional valuation advice and full narrative reports to solicitors and other clients in relation to property disputes, and can also act as an expert witness upon request.

專家證人和爭端調解

當物業價值遇上爭議時，我們向律師和客戶提供獨立專業估值建議和完整詳盡的報告，並在需要時在法庭充當專家證人。

Resumption Compensation

The government and URA acquire private land for public purposes. We are well-versed with resumption-related ordinances, subsequent procedure and assessment of claim. We can assist you in quantifying losses and carrying out negotiations with the Government and URA.

收地損失評估

政府及市區重建局不時根據相關條例收回私人土地作公共用途。我們熟悉該等條例，收地程序及補償評估工作，能協助客戶計算損失並代表客戶進行談判。

Railway Works Disturbance Claim

Retail shop operators suffer from disturbance and business loss due to railways works. The complexity of relevant compensation ordinances is often beyond the understanding of a layman. We can help unravel the perplexity of such issues.

滋擾補償評估

零售及飲食業往往因鐵路工程受到滋擾並引致生意損失。相關補償條例複雜繁瑣，一般人不易理解。我們熟悉法定評估工作，深刻瞭解受影響行業，協助客戶拆解難題。

Compulsory Sale for Redevelopment

Under ordinance Cap.545, developers can apply to the Lands Tribunal for an order for sale of a lot when they have successfully acquired sufficient undivided shares of the lot. We can represent you to handle negotiations with developers more effectively and act as your expert witness if the case is eventually referred to the Lands Tribunal for determination.

強制售賣

根據香港法例第545章，若發展商成功收購土地上足夠的業權，便可向土地審裁處申請強制拍賣該土地。我們能代表小業主更有效地跟發展商商討收購價。若案件最終需提交土地審裁處裁決，我們亦可充當專家證人。

Development Consultancy

We have diverse and extensive experience in providing professional planning advice ranging from S.16 Planning Application, Lease Modification, Temporary Waiver etc

土地發展顧問

我們有多元化的經驗幫助客戶進行城市規劃第16條申請，更改土地契約，申請土地短期豁免書等。

Inquiries: **Cliff Lau 劉先生** (MRICS)

查詢: 2152 4868
cliff.lau@landscape.com

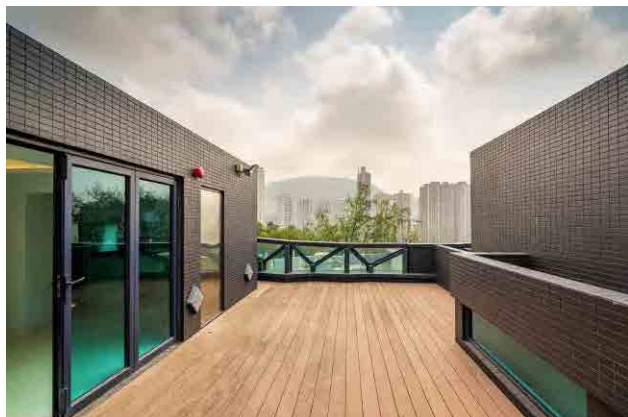
Jack Chan 陳先生 (MHKIS, MRICS, MCIREA)

2152 4812
jack.chan@landscape.com

SALE 出售

Midlevels East & Happy Valley 東半山及跑馬地

Rare single house in Midlevels East 東半山罕有獨立屋



5 bed, 4.5 bath, 240 s.f. terrace & 893 s.f. roof, 1 garage (4 cars)

Brand new 5-bedroom house with a private lift and garage in a tranquil neighbourhood

全新五房洋房，連私家升降機及車庫，地段寧靜，可租可售

Saleable 實用 4,398 s.f.

Sale 售 \$270,000,000 / Lease 租 \$300,000 incl.

Inquiries 查詢 ☎ 9020 1583 Michelle Chung 鍾小姐

Property Search No. 物業搜尋編號 208376



Enormous single house in Jardine's Lookout 渣甸山巨型獨立洋房

* can be sold via company shares transfer 可以公司轉讓股份形式買賣



One of a kind single house with a private garden in an exclusive location

別具一格獨立洋房，連私家花園，地段尊貴顯赫

Site Area over 地盤面積超過 13,000 s.f.

Re-development Area over 可重建面積超過 7,800 s.f.

Sale 售 Open Offer

Inquiries 查詢 ☎ 9027 2100 Louis Wong 黃先生

Property No. 物業編號 3532





A full expression of charm and grace 100% 全新魅力佈局

Mid-Levels West is one of the most sought-after residential areas in Hong Kong. Located on Robinson Road, this apartment has been renovated completely and boasts an unforgettable yet meticulously designed interior with furnished.

The apartment spans 1,705 s.f. (saleable area) and boasts three bedrooms (including two ensembles), three bathrooms, a combined living and dining room, a maid's room, a utility room, and a covered car park. This residence includes a wide range of meticulously chosen brand new furniture and residents can enjoy a comfortable living experience while enjoying beautiful city views. Suitable for moving in immediately, this apartment is an ideal choice for homebuyers looking for a tastefully renovated residence.

Residents can easily head to the Central-Mid-Levels Escalator to reach Central and other major business areas. Schools, hospitals and grocery shopping are all in close proximity with ample public transport available to most areas in the city.

Midlevels West — Fully renovated & brand new interior
西半山全新裝修住宅

3 bed, 3 bath, 1 car park

Saleable 實用 1,705 s.f.

Sale 售 : \$53,000,000 Upon Application 歡迎查詢

Inquiries 查詢 ☎ 9027 2100 Louis Wong 黃先生

☎ 6535 2866 Mr. Lai 黎先生

Property Search No. 物業搜尋編號 185043



港島半山是本港其中一個最受歡迎的高尚住宅區。此單位位於羅便臣道，全屋最近全新裝修，呈現令人忘懷的新穎雅致裝修。

單位實用面積達 1,705 平方呎，提供三間睡房，其中兩間為套房。另有三間浴室、相連的客飯廳、家傭房、多用途房及有蓋車位。此單位已完成全屋的簇新裝修，並配備了精心挑選配置的家具，住戶既可以享受室內的舒適怡人，同時可欣賞繁華的都市美景，單位可即時入住，適合有意購入華麗而高尚單位的人士。

住戶可使用中環至半山自動扶梯系統，步行前往中環及港島核心的商業中心區都十分方便。如要前往學校、醫院及購買生活所需，單位附近亦應有盡有，同時附近有多項公共交通前往各區。





宇宙人生

作者：江濤

世界之大，超乎想像。「世界」一詞，源自佛經，世指時間，界為空間。這兩個字，看似簡單，但卻生動地涵蓋了每一個隨着時間流動的空間所出現之成住壞空，及所有恆變事物的互動因緣，代表一切盡皆無常。

縱觀人類文明歷史，只有佛教的宇宙觀最為完整及宏大。每一位大覺者（佛）所負責的教區，均名為「三千大千世界」。在此必須說明，「三千大千世界」並不是說有「三千個」大千世界，而是一千個不同層次的世界之三次互乘：每一千個「小千世界」構成一個「中千世界」，再一千個「中千世界」組成一個「大千世界」。是以，一個大千世界即是 $1000 \times 1000 \times 1000 =$ 十億個世界。按一些近代佛學先賢的研究，佛經中的世界單位就等如我們身處的銀河系。換句話說，每一個大千世界，就有十億個銀河系。而我們這一個大千世界，名曰「娑婆」（*sahā*），由釋迦牟尼佛負責教化一切有情眾生，如何有意義地擺脫煩惱和困苦。

早在 2013 年，曾獲邵逸夫天文學獎及其他國際學術榮譽的天文學家 Geoffrey Marcy 與其團隊，於美國國家科學院院刊

（PNAS）發表過一篇名為 "Are Earths rare?" 的研究論文，以太陽作為一個參考標準，發現了最少八十八億個與地球大小相若的星球（簡稱「類地球」）於銀河系的宜溫區之中。他們指出，銀河系中約有二千億個星體，其中有四百億個類似我們太陽系中的太陽（簡稱「類太陽」）。那些宜溫區的溫度，都是按地球生物的標準來釐定。試想想，地球上就只是人類，如今已超過八十億。假如銀河系有其他生物不需依靠類太陽的光與熱而能存活及發展高度文明的話，那麼在每一個大千世界（十億個銀河系！）的有情眾生，真是無法估量。

莫說銀河系，就算是地球，已有隱生宙（Cryptozoic Eon）和顯生宙（Phanerozoic Eon）之分，各有無量無數的生命體。我們這群生物，超廣義來說都是顯生宙的物種之一。若再細分的話，顯生宙可分為三：約 5.7 億年前的古生代（Paleozoic），到約 2.5 億年前的中生代（Mesozoic），再到約六千五百萬年前至今的新生代（Cenozoic）。新生代亦分四個紀，人類的出現，就是在這個已經有二百六十萬年的第四紀（Quaternary）。地質學家從各地的冰核分析（Ice Core Analysis）中得知，第四紀曾出現過四次冰河時期，而我們現





萬二千年至今的第四個「間冰期」，即是冰期與冰期之間的宜溫期。在過去四十萬年，每個間冰期都跟現在一般溫暖，但卻為期甚短，只有一至三萬年，但過去的四個冰期卻很漫長，各約七至九萬年不等。反觀人類壽命，平均只有七八十歲，若與動輒以萬年計的地球週期相比，仿如曇花，不值一提。

人心不平，難調難伏。每當心雄氣壯之時，甚至會認為「一萬年太久，只爭朝夕！」然而，生老病死，人之進路；成住壞空，物之週期。地球若不繞着太陽適距公轉，過遠便會萬疆成冰，稍近則會草木皆焚。就算是曾經雄霸歐亞的成吉思汗，又或是一生未嘗敗績的亞歷山大，當年偉業如塵烟，如今萬骨化黃土。是以，佛在《無常經》（*Anityatā Sūtra*）中曾作出如此開示：

生者皆歸死，容顏盡變衰。

強力病所侵，無能免斯者。

假使妙高山，劫盡皆壞散。

大海深無底，亦復皆枯竭。

大地及日月，時至皆歸盡。

未曾有一事，不被無常吞。



無常見，乃正見。明乎此，則不會墮斷常二見。斷見者，執着世間和生命既然終會斷滅，便醉生夢死，以假為真；常見者，誤解萬物與人事必定常存不變，便蠅營狗苟，不思進取。斷見常見，都是邪見。既然每一個生命也面對無常所帶來的苦，我們便要以恰到好處的正確方法，慈悲及平等地幫助每一個生命，讓他們（我們）能夠在短暫的生命中得到平安喜樂，這才是活着的意義。

慈能予樂，悲能拔苦。

讀者如對本期內容有任何疑問或查詢，歡迎電郵至 the_key@jphongkong.com
For any questions or inquiries, please email us on the_key@jphongkong.com



作者簡介 About the author

江濤，分別於英國威爾斯大學及美國史丹福大學修畢工商管理碩士及高階項目管理專業資格，並於上海財經大學完成金融學博士課程。曾專職於能源及資源類國際項目融資工作多年，退休後重返校園，潛心學佛，於香港大學佛法輔導碩士以優異成績畢業。十多年來活躍於文化及宗教界，並獲邀於不同的媒體、網台及社團分享對中外古籍、三教經典、隱藏文明等非主流資訊之修學心得。

Michael Kong is a seasoned financier in a number of international energy and resources projects. He holds a Master of Business Administration degree from the University of Wales and is professionally certified in Advanced Project Management from the Stanford University. After completing his PhD in Finance at the Shanghai University of Finance and Economics, he pursued his interest in Buddhism and graduated from the University of Hong Kong in the Master of Buddhist Counselling programme with distinction. For nearly two decades, Kong remains to be a celebrated speaker in the Hong Kong cultural and religious spheres, for sharing his wealth of knowledge to the general public.



舒曼及其夫人克拉拉 Schumann and his wife Clara

談魔鬼小提琴家帕格尼尼(續) The Devil's Violinist - Niccolò Paganini (Cont')

作者：黎廣基博士

By Dr. Lai, Kwong-ki

據說，帕格尼尼在貴族內格羅(Marchese di Negro)的圖書館中，讀到了前輩大師洛卡泰利(Pietro Locatelli)的同名樂譜，因而觸發其創作《隨想曲》的靈感。而不少音樂學者亦指出，帕格尼尼創造性的弓法及指法，部分是受到法裔小提琴家杜拉諾夫斯基(Duranowski)的影響。但帕氏的過人之處，卻在於他能夠將理論與實踐巧妙地結合起來。當他的二十四首《隨想曲》初出版時，由於第1、2、3、5、10、12、16、22首均有“無窮動”(Moto perpetuo)的樂段，對手指的速度要求極高，當時就有兩位巴黎音樂學院的教授認為是“騙人的”，但帕氏卻能夠飛快地將其作品完美地演奏出來，這種驚人的高超技藝，令當時所有聽過的人震驚不已，並將之形容為“惡魔的幻影”、“魔鬼的音樂”！

與帕格尼尼同時代的鋼琴家舒曼(Robert Schumann)曾說：“帕格尼尼是音樂家技藝高度展現的代表者。”帕格尼尼的二十四首《隨想曲》，涵蓋了小提琴技巧的各個領域，當中包括顫音、琶音、震音、雙音、跳弓及左手撥弦(left-hand pizzicato)的大量運用，自公開出版以來，一直成為小提琴演奏技巧的試金石。有人說過這樣的話：“如果誰能拉好帕格尼尼的這二十四首曲子，那麼從技術上講，對於小提琴演奏將無所不能。”事實上，在《隨想曲》的樂譜

上，帕格尼尼大概估計到演奏的難度，已清楚地寫明：“獻給演奏家”(to the artists, 原文是Agli artisti)，而不是一般的業餘小提琴表演者。然而他有所不知的是，直到二十世紀的上半葉，不少著名的小提琴演奏家，都沒有公開地演奏過全部二十四首《隨想曲》。主要原因，還是由於這套作品的難度“難於上青天”！而這一點，也許是他所始料不及的。

現在向大家推薦一下此曲的版本。阿卡多(Salvatore Accardo)於1977年的慕尼黑錄音(DG 429 714-2)一如其人，處處流露著學者的氣度，演奏絕不遺漏每個細節，處理堪稱“溫文爾雅”，音色纖麗，具有“教材級”的示範作用。

而與阿卡多的風格有所不同，帕爾曼(Itzhak Perlman)的1972年錄音(EMI CDC 747171 2)則更形技巧化，少了些貴族品味，卻多了些鋒芒畢露。如《隨想曲》第五號，帕爾曼一洗阿卡多之纖麗，而代之以奇峭，不但先聲奪人，且線條感銳利，大大增強了演奏的刺激性。如果說，阿卡多的演奏偏向於古典主義，則帕爾曼無疑是現代的；而且後者所屬的唱片公司EMI，得力於名工程師Christopher Parker，有更發燒的錄音效果。

然而如果純粹考慮演繹，不介意早期錄音，則英年早逝的邁克爾·拉賓(Michael Rabin, 1936-1972)於1958年的Capitol錄音(EMI 76456027)絕對稱得上是空前絕後、難逢對手！拉賓的演奏有最完美的節奏、最精準的對比、最變化多端的音色、最富想像力的造句……將這些統統加起來，拉賓堪稱擁有最完美的技巧。通過他演繹的二十四首《隨想曲》，可以毫不誇張地說，他是在演奏氣質及技巧上最接近帕格尼尼的天才！



德國Deutsche Grammophon 唱片公司早期經數碼處理的“畫廊”系列CD，其中不乏精品。
One of Deutsche Grammophon's early digitally processed "Gallery" CD series, including many gems.



此為錄入英國 The Gramophone Good CD Guide 的名盤
Famous album recorded in The Gramophone Good CD Guide

It is said that whilst perusing the library of the Marchese di Negro, Paganini chanced upon a score of the same name by his illustrious forebear Locatelli. This felicitous encounter inspired his creation of the Caprices. Learned musicologists have also observed that Paganini's innovative bowing and fingering techniques were in part influenced by the inimitable French violinist Duranowski. Yet Paganini's brilliance lies in his unparalleled ability to ingeniously fuse theory and practice. Upon their initial publication, Caprices No. 1, 2, 3, 5, 10, 12, 16 and 22 demanded an extremity of digital velocity owing to passages of 'infinite movement' (Moto perpetuo). At the time, two distinguished professors at the Paris Conservatoire dismissed these works as 'duplicious'. Paganini, however, was able to execute his compositions with a rapidity and perfection that astonished all who heard them, and led commentators of the day to describe them as 'diabolical illusions' and 'the music of the Devil'!

The contemporary pianist Schumann once remarked: "Paganini represents the apotheosis of musical virtuosity." Paganini's 24 Caprices encompass the totality of violinistic technique, including tremolo, glissando, double stopping, and frequent use of left-hand pizzicato. Since their publication, they have constituted the touchstone of violinistic brilliance. As has been said, "If one can play well Paganini's 24 pieces, technically speaking, there will be nothing that one cannot do in violin



別具學者風範的阿卡多 Accardo with a distinct style of a scholar

performance." In truth, in the scores of the Caprices, Paganini calculated their prodigious difficulty, clearly inscribing: "To the artists", rather than ordinary amateur violinists. However, unknown to him, until the first half of the 20th century, many celebrated violinists refrained from performing in public the complete cycle of 24 Caprices, principally due to their difficulty which proved "as arduous as scaling the firmament"! This was perhaps beyond even Paganini's envisaging.

I recommend here a version of this magisterial work. Salvatore Accardo's 1977 Munich recording (DG 429 714-2) exudes a scholarly sensibility at every turn, never scanting any detail, and treated with a refinement that demonstrates these pieces at a 'textbook' level. His delicate and graceful tone complements an aristocratic temperament.

In contrast to Accardo's classicism, Itzhak Perlman's 1972 recording (EMI CDC 747171 2) evinces a more technical approach, with less gentility but greater acuity. In Caprice No. 5, for instance, Perlman dispenses with Accardo's delicacy, substituting a trenchancy that startles the listener and conveys an astringency heightening the interpretive stimulation. While Accardo's performance tends to classicism, Perlman's is indubitably modern; and EMI, Perlman's label, achieved a more febrile recorded sound thanks to the eminent engineer Christopher Parker.

However, if interpretive mastery alone is the criterion, and one discounts the impediment of early recorded sound, Michael Rabin's tragically brief 1958 Capitol recording (EMI 76456027) remains unsurpassed and unchallengeable. Rabin's playing evinces the most consummate rhythmic control, the most meticulous gradations of dynamics, the most varied tonal palette, and the most imaginative phrasing. Cumulatively, his technique can be said to represent the ne plus ultra. Through his rendition of the 24 Caprices, one can say without hyperbole that Rabin, in temperament and technique, was the genius most closely approaching Paganini.



帕爾曼的1972年錄音，最初以兩張一套的黑膠唱片套裝發售 (SLS 832)，當中包括《第一號小提琴協奏曲》及《卡門幻想曲》等
Perlman's 1972 recording was originally released as a two-record album set (SLS 832), including Violin Concerto No. 1 and Carmen Fantasy.



作者簡介 About the author

黎廣基，南海九江人。香港大學中文系哲學碩士及哲學博士、南京大學文學院博士後研究員。在南京求學期間，從章、黃學派大師徐復受業。回港後授學於香港城市大學中國文化中心，為香港大學亞洲研究中心訪問學者。曾獲全國古文獻學獎金一等獎及二等獎，於國內核心期刊、來源集刊發表學術論文十餘篇。2021年初出版了首部學術著作——《黎廣基古典文獻研究論集：戰國楚竹書（二）研究》。

Dr. Lai, Kwong-ki, Master & PhD of Philosophy from the University of Hong Kong, a postdoctoral researcher at the School of Liberal Arts of Nanjing University. During his study in Nanjing, he was taught by Prof. Xu Fu, a master of Zhang and Huang schools. After returning to Hong Kong, he taught at the Chinese Cultural Center of the City University of Hong Kong and was a visiting scholar at the Asian Studies Center of the University of Hong Kong.

讀者如對本期內容有任何疑問或查詢，歡迎電郵至 the_key@jphongkong.com
For any questions or inquiries, please email us on the_key@jphongkong.com

SALE 出售

Sai Kung & Clear Water Bay 西貢及清水灣



Brand New Detached Lot House 全新獨立屋地

Sai Kung is renowned for its tranquility and secluded nature, with its sense of privacy being particularly appealing to home buyers.

Situated in Pak Sha Wan, Sai Kung, this rare brand new detached lot spans 8,776.88 s.f. (site area) of lush natural land. It is approved to build to a 2-storey dream house with a private lift as well as a private garage offering thoroughly modern and graceful living experiences. A south east facing waterfront detached lot house boasts tremendous, uninterrupted views of Hebe Haven.

Well served by public transport, it is close to Pak Sha Wan Pier and within walking distance of Hebe Haven Pier.



西貢以清幽寧靜而聞名，區內高私隱度更吸引有意置業的人士。這矜罕的全新獨立屋地位於西貢白沙灣，地段土地面積廣達 8,776.88 平方呎。地段已獲批准建成兩層高全獨立洋房別墅，並罕有附設有私家升降電梯及獨立車庫，享時尚優雅的奢華生活。這臨海獨立屋地面向東南，飽覽白沙灣遼闊優美的海景。

這獨立屋地公共交通便利，信步可達白沙灣遊艇會及碼頭。

* can be sold via company shares transfer
可以公司轉讓股份形式買賣

Extremely rare brand new detached lot house in Pak Sha Wan
白沙灣罕有全新獨立屋地

Site Area 地段土地面積 8,776.88 s.f.

Gross Floor Area 建築面積 3,510.75 s.f.

Sale 售 Upon Application 歡迎來電查詢

Inquiries 查詢 ☎ 6535 2866 Mr. Lai 黎先生

Property Search No. 物業搜尋編號 SK-WLPSW-2307



Full Sea View Dream House in Silverstrand 完美唯一 銀線灣層層全海景

Occupying a serene location in core Silverstrand, this magnificent waterfront dream house overlooks breathtaking and expansive panoramic sea views from every floor. With a unique Italian colonial style, this two-story corner house includes a private access to an enormous wrap-around garden, providing a great expanding potential. Silverstrand Beach waterfront can be reached just within a few minutes' walk directly from the house. Residents can enjoy swimming and sunbathing with a few steps closer to nature.

這夢寐以求的恢宏別墅位於銀線灣海灘灣畔，寧靜的最前排臨海位置，層層可享寧謐廣闊的海天相連如詩的蔚藍海景致。這矜罕的全海景崖邊別墅，具有西西里島風格獨特的臨海居停，稀有的巨型環繞式花園，提供了巨大的擴展潛力。

從這全海景別墅，可通過私人通道可直達優美銀線灣海濱，住戶信步即可享受到海灘暢泳及日光浴之樂，親親大自然。



* can be sold via company shares transfer
可以公司轉讓股份形買賣

Silverstrand — Panoramic Full Sea View. Dream House
銀線灣 - 珍罕非凡，家族收藏之選，一見難忘層層全海屋

4 beds (2 En-suites), 3 bath, private terrace & garden

Saleable 實用 2,800 s.f. (平方呎) + Private enormous garden 專屬大花園

Sale 售 \$86,800,000 Upon Application 歡迎查詢

Inquiries 查詢 ☎ 6535 2866 Mr. Lai 黎先生

Property No. 物業編號 CWB-LW-S-2211





Poolside party, Colonial house 池畔派對，經典大屋

Surrounded by natural beauty, this impressive corner garden house is situated in a tranquil area of Clear Water Bay and perfectly embodies the best in luxury living.

This 2-storey detached corner house spans 2,405 s.f. (saleable area) with an ample alfresco space. The interior features stylish furnishings, tasteful decorations, a practical layout and great expanding potential, with direct access to a superb resort-style pool and self-owned garden, where it is a perfect place to enjoy the tranquility or host parties and gatherings. The modern kitchen benefits from a large island with high-end appliances. Further highlight of this house includes panoramic sea views of Silverstrand, a private garage (6 cars) and a maid's quarter.



這位於清水灣銀線灣極具私密一隅的單邊花園洋房被大自然美景所環抱，完美體現了奢華生活的最佳典範。

罕有樓高僅兩層的獨立單邊洋房實用面積 2,405 平方呎，提供寬敞戶外空間。室內設計品味時尚，裝潢高雅氣派不凡，間隔與別不同，巨型擴展空間實用碩大無朋，多處戶外空間可直通豪華度假式游泳池和私家入契花園，是享受寧靜或舉辦派對聚會的理想場所。此外，全屋時尚設計，廚房設有廚房中島，客廳、偏廳及客房均可連接全海景草地花園及私人泳池，盡顯奢華。洋房其他亮點包括銀線灣優美全海景，停泊六車的一個巨型車庫及傭人的獨立起居套間。

Sumptuous townhouse in Clear Water Bay

清水灣奢華洋房別墅

6 rooms (2 en-suites), 3.5 bath, private huge garden and terrace

Saleable 實用 2,405 s.f.

Sale 售 \$168,000,000

Inquiries 查詢 ☎ 6535 2866 Mr. Lai 黎先生

Property No. 物業編號 CWB-WLSC-2304





Elegant Tropical House 城市綠洲 異國高雅情懷

An oasis of peace and serenity, this rare corner house boasts fantastic views overlooking the sea and mountains with a perfect privacy.

Featuring a stylish interior design with plenty of elegant wood details, this dream house has five en-suite bedrooms ideal for a large family. The lofty ceilings and floor-to-ceiling windows let ample natural light into the living area and help to create a cozy ambience. Outside, the pleasant outdoor space includes a private swimming pool and outdoor furniture where it is a perfect place to entertain guests.

Situated in the highly sought-after Clear Water Bay area, this luxurious development offers 52 houses and 20 apartments with excellent clubhouse facilities and outstanding security management.



這珍罕珍貴的單邊海景屋位於怡人事靜的地段，自成一隅，私隱度高，優美海景和磅礴山色盡收眼底。

大屋室內設計品味時尚，家具採用大量木製元素，並提供五間套房，適合大家庭。室內樓底極高，大型落地玻璃窗戶充足的自然光進入客廳，營造舒適的氛圍。寬敞戶外空間設有私家游泳池和額外單邊大花園，是與客人歡聚的理想地點。

這豪華的住宅屋苑位於備受追捧的清水灣地區，提供 52 間洋房和 20 間住宅，屋苑提供頂級會所設施和嚴密保安管理。

Sea View Mediterranean - Corner House with Private Pool

尊貴高雅歐陸建築群，單邊海景私泳屋

5 bed, 5.5 bath, 1,000 s.f. self-owned garden, Garage (6+ car parks)

Saleable 實用 3,350s.f. (Approx. 約)

Sale 售 \$98,000,000 \$88,000,000

Inquiries 查詢 ☎ 6535 2866 Mr. Lai 黎先生

Property No. 物業編號 CWBTP-SS-2109



SALE 出售

Sai Kung & Clear Water Bay 西貢及清水灣

Private Huge Garden Corner House 地中海式別墅 罕有私屬巨園

* can be sold via company shares transfer 可以公司轉讓股份形式買賣

* 獨家代理
APPOINTED AGENT



3 bed, 2 bath, drive-in garden, park over 10 cars

Unique 2-story English-style house. Drive-in of the private gate toward over 4000 s.f. private garden – a rare find! Peace, tranquility, and fresh air, surrounded by lush greenery, mountains, and trees - perfect for retirement, pets and kids

二層英式獨特洋房，私屬大園連接逾 4000 呎巨型私草地花園。亭深處處連綿山巒翠綠環繞，城市綠洲 8 分鐘連接港鐵，自成一角回抱自然，退休、寵物、小孩樂園

Saleable 實用 1,885 s.f.

Sale 售 \$68,000,000

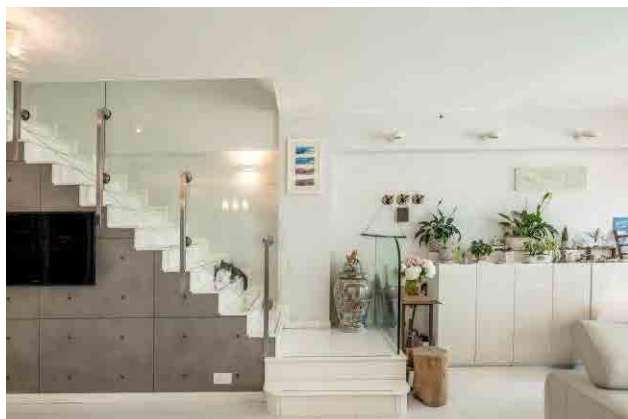
Inquiries 查詢 ☎ 6535 2866 Mr. Lai 黎先生

Property Search No. 物業編號 CWB-WLPSW-2307



Silverstrand - Charming Family Townhouse 銀線灣 管理屋苑小品屋

* 獨家代理
SOLE AGENT



2 bed, 3.5 bath, covered 2 cars

2-story comfortable townhouse with a lovely sea view and lots of character. A private terrace, rooftop, and 2 en-suites are ideal for a family

二層高聯排別墅，愜意空間可欣賞山海相連美麗海景。舒適的平台、露台及天台提供了多樣化特色戶外空間，加上雙套間的佈局是簡約家庭的理想選擇

Saleable 實用 1,449 s.f.

Sale 售 \$31,900,000

Inquiries 查詢 ☎ 6535 2866 Mr. Lai 黎先生

Property No. 物業編號 CWB-WLFWG-2307



Silverstrand — Panoramic Sea View, Dream House
銀線灣 — 珍藏之選，一見難忘層層全海屋



4 beds (2 En-suites), 3 bath, private terrace & garden

Serene location, in “Core Silverstrand”. Small development with breathtaking full sea views for each floor. Private garden, garage, great potential
銀灣核心寧謐地段，永無阻擋天連海，海連天環迴全景盡覽無遺，優閒簡約別墅屋苑，擁獨立花園車庫天台，優質潛力巨大，超值收藏之選
Saleable 實用 1,583 s.f.
Sale 售 \$66,000,000
Inquiries 查詢 ☎ 6535 2866 Mr. Lai 黎先生
Property Search No. 物業搜尋編號 CWB-PSS-V-2202



Expansive Full Sea View — Atop the hill above Silverstrand
銀線灣頂峰山嶺 — 層層全海獨立屋



4 beds (2 En-suites), 3 bath, private terrace & garden

An Expression of Elegance. Extremely high privacy, stylish detached house.
Lofty high ceiling with floor-to-ceiling windows. Breathtaking full view of Silverstrand seaside
銀線灣頂峰，天高地利，顯赫家庭愛完美，嚴密保安名人私隱之選，獨立式超高樓底，時尚落地玻璃設計別墅，俯瞰壯麗寧謐絕美銀線灣層層全海景
Saleable 實用 1,789 s.f.
Self-owned Garden 入契花園 2,003 s.f.
Sale 售 \$98,000,000
Inquiries 查詢 ☎ 6535 2866 Mr. Lai 黎先生
Property Search No. 物業搜尋編號 CWBSS-RBV-2104



*
獨家代理
SOLE AGENT



Gold Coast, Extremely Rare Detached Sea View Lot House

黃金海岸 - 矜罕全海景獨立屋

Perfectly positioned close to Golden Beach of the tranquil Gold Coast area, this rare detached residential lot has a resort-like environment with excellent transport links. With an extremely limited supply, it is a not-to-be-missed opportunity to acquire a precious single lot house.

Ideal for families and corporates to build the private territory, this rare single lot house is situated in a large site area with a private garden. Residents can enter to the house and private garden with a separated private direct access. The entire site area allows residents to re-build a brand new dream house. On the other hand, this residence enjoys sunset sea views over the East & South Sea.

This residential lot is conveniently located, with easy access to Hong Kong International Airport, Futian Port & Lok Ma Chau and Island The Central CBD. All the locations are about 20 minutes' drive away via NT circular road and several newly highways such as Hong Kong-Zhuhai-Macao Bridge and Ting Kau Bridge.



這矜罕的獨立住宅屋地，坐落於寧靜黃金海岸的黃金泳灘附近，環境如度假村般的世外桃源，但亦有完善的交通網絡連接。鑑於極稀有的供應，現正是一個難能可貴的機會打造一個珍貴的全獨立私屬領地。

這罕有的獨立住宅屋地包括一個大型住宅屋地和一個巨型私家花園。住戶可於整個住宅屋地內重新發展成夢寐以求的全新住宅，極適合大家庭。此外，東海和南海的壯麗景色更是盡收眼底。此住宅屋地地理位置優越，可輕鬆前往香港國際機場、福田口岸及落馬洲及中環市中心。經新界環形路和多條新高速公路，如港珠澳大橋及汀九橋，車程僅分別約 20 分鐘。

* can be sold via company shares transfer
可以公司轉讓股份形式買賣

Extremely Rare Detached Residential Lot in Gold Coast 黃金海岸極罕有獨立住宅屋地

Site Area 地段土地面積 8,216 s.f.

Max. GFA 核准上蓋面積 8,159 s.f.

Exist. Area 現有上蓋面積 3,735 s.f.

Add. Garden 附加花園面積 4,958 s.f.

Sale 售 \$130,000,000 \$100,000,000 Negotiable

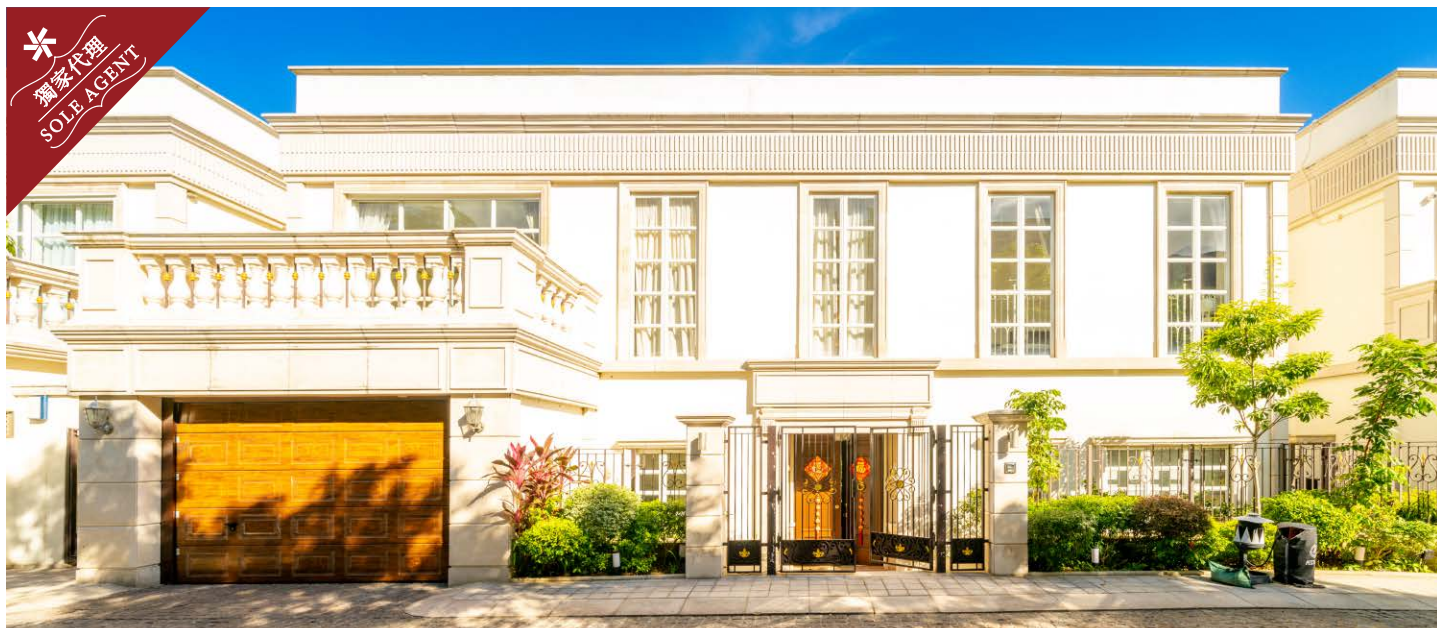
Inquiries 查詢

☎ 6535 2866 Mr. Lai 黎先生

☎ 9027 2100 Louis Wong 黃先生

Property No. 物業編號 TM-LW- S-2211

Welcome Agent Inquiries, fee to Successful Agent
提供佣金，歡迎同業查詢



Nestle in Nature 親親大自然

Escape to a world of luxury and tranquility at Botanica Bay, a stunning townhouse nestled in the heart of Lantau Island, Hong Kong. With easy access to the Greater Bay Area, this property offers a peaceful retreat from the hustle and bustle of city life. It only takes few minutes' walk to Cheung Sha Beach. Boasting a saleable area of 3,575 s.f., this home is the perfect choice for families or individuals who value spacious living.

Step inside and experience the height of elegance and comfort. The property features four ensuite bedrooms and five designed bathrooms, providing ample space for residents to relax and unwind. The living and dining area is a bright and inviting space, perfect for entertaining guests. Enjoy the serenity of the 1,369 s.f. garden and 216 s.f. terrace, or take in breathtaking views from the 1,524 s.f. roof.

Additional amenities include two balconies, and a garage that comfortably takes one car. With its breathtaking views, lofty ceilings, and prime location, this townhouse is a rare gem for those who demand only the best. The property comes fully furnished, with fully equipped bathrooms and a fully fitted and equipped kitchen.



大嶼山南岸是一個坐落於香港大嶼山南邊的迷人洋房屋苑，置身於此您可遠離塵囂，居住在奢華寧靜的環境中。這屋苑最適合用港澳前往大灣區，是遠離喧囂城市生活的寧靜之地，前往長沙泳灘僅數分鐘步程。這洋房提供 3,575 平方呎的實用面積，是重視寬敞生活的家庭或卓越人士的理想選擇。

甫入屋內，即可享受極致優雅和舒適的體驗。室內提供四間套房和五間浴室，為住戶提供可放鬆身心的充裕空間。明亮而溫馨的客飯廳，非常適合款待客人。您可在 1,369 平方呎的花園和 216 平方呎的平台區享受無與倫比的寧靜，或在 1,524 平方呎的天台飽覽醉人的景色。

其他設施包括兩露台和一個車庫。這洋房憑藉其開闊的景色、樓底高大氣派以及優越的地理位置，是追尋完美生活人士的難得瑰寶。洋房擁有優質裝修，浴室設施齊全，廚房設備亦完善實用。



Sumptuous townhouse in Lantau Island

大嶼山奢華洋房別墅

4 bed, 5 bath, 216 s.f. terrace, 1,369 s.f. garden & 1,524 s.f. roof, 1 garage

Saleable 實用 3,575 s.f.

Sale 售 \$75,000,000 Upon Application 歡迎查詢

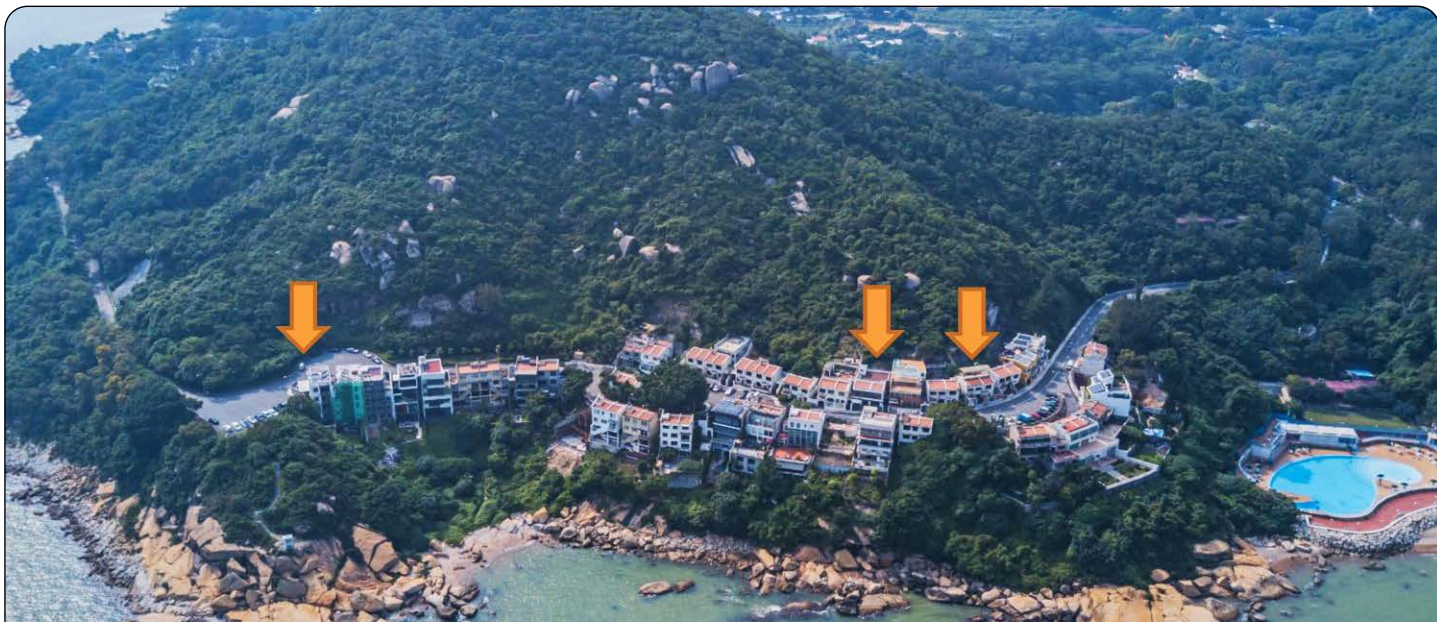
Inquiries 查詢

☎ 6535 2866 Mr. Lai 黎先生

☎ 9027 2100 Louis Wong 黃先生

Property No. 物業編號 171457





Contemporary Masterpiece 當代奢華

Surrounded by the natural beauty of green country parks and natural beaches, these 3 family single lot houses are situated in the most prestigious, private and picturesque location of Macau. Total 3 single lot houses (1 five-storey & 2 two-storey) boast beautiful architectural details, high ceilings, exceptional layouts and luxurious amenities overlooking panoramic sea and mountain views. Particularly, the five-storey house is equipped with a private elevator and an indoor swimming pool, offering an indulgent option for relaxation or exercise.

The houses are also within close proximity to the Macau Golf and Country Club, Coloane Village, the entertainment strip in Taipa including luxury hotels such as Ritz Carlton, Four Seasons, MGM, Banyan Tree, and with easy access to the Lotus Bridge to Hengqin, Zhuhai.



這三間家庭式獨立洋房別墅位於澳門最尊貴、私隱度高及美景如畫的地段，四周被郊野公園及自然海灘所環抱。合共三間獨立洋房別墅（其中一間樓高五層，另外兩間樓高兩層）坐擁華麗細膩的室內設計、享高樓底、間隔實用，連奢華設施，優美海景及山景一覽無遺。其中樓高五層的洋房別墅更設私家升降機及室內游泳池，可放鬆身心，盡享奢閒之樂。

洋房別墅鄰近澳門高爾夫球鄉村俱樂部、路環村、氹仔娛樂區，包括五星級奢華酒店，如麗思卡爾頓酒店、四季酒店、美高梅、悅榕莊，經蓮花橋便可輕鬆抵達珠海橫琴，十分便利。

3 luxurious modern single lot houses in Macau

澳門 3 間豪華時尚獨立洋房別墅

3 bed, 2 bath, 1 car park

Area 面積 3,344 s.f. to 5,478 s.f.

Sale 售 \$36,000,000 to \$88,000,000

Inquiries 查詢 ☎ 9027 2100 Louis Wong 黃先生

Property Search No. 物業搜尋編號 mac01, mac02, mac03

Luxurious apartment at The Peak 山頂豪華住宅



3 bed, 1 study, 3 bath, 1 car park

Practical 3-bedroom apartment with a study in a tranquil neighbourhood
實用三房單位，連書房，地段清幽怡人

Saleable 實用 2,145 s.f.

Lease 租 \$108,000 incl.

Inquiries 查詢 ☎ 6538 6922 Teresa Fung 馮小姐

Property Search No. 物業搜尋編號 20664



Rare designer townhouse in Southside 南區罕有設計師洋房



4 bed, 4.5 bath, 1,400 s.f. garden, 2 car parks

Designer renovated townhouse with wrap-around garden and stylish garage
設計師裝修洋房別墅，設環繞式大花園及時尚亮麗車庫，位處尊貴顯赫住宅項目

Saleable 實用 2,546 s.f.

Lease 租 \$150,000 incl.

Inquiries 查詢 ☎ 9021 1270 Annie Lee 李小姐

Property Search No. 物業搜尋編號 159284



LEASE 出租

Modern family house in Stanley 赤柱時尚家庭式洋房



3 bed, 3 bath, 732 s.f. garden & 517 s.f. roof, 1 garage (2 cars)

Spacious townhouse with a private garden enjoys great serenity and closeness to beautiful beaches

寬敞舒適洋房，連私家花園，享幽靜環境，毗鄰優美海灘

Saleable 實用 2,049 s.f.

Lease 租 \$135,000 incl.

Inquiries 查詢 ☎ 9020 1583 Michelle Chung 鍾小姐

Property Search No. 物業搜尋編號 108708



Practical apartment in Midlevels Central 中半山實用住宅



5 bed, 3 bath, 2 car parks

Large 5-bedroom flat with a spacious living area enjoys a fantastic city view

偌大五房住宅，連寬敞客廳，坐擁迷人城市景

Saleable 實用 2,929 s.f.

Lease 租 \$136,000 incl.

Inquiries 查詢 ☎ 9020 1583 Michelle Chung 鍾小姐

Property Search No. 物業搜尋編號 20516



Stylish apartment at The Peak 山頂時尚住宅



4 bed, 3 bath, 1 car park

Prestigious 4-ensuite townhouse with an ample alfresco space and lofty ceilings in a tranquil neighbourhood

尊貴四套房洋房，連充足戶外空間，享高樓底，環境清幽

Saleable 實用 2,334 s.f.

Lease 租 \$144,000 incl.

Inquiries 查詢 ☎ 9020 1583 Michelle Chung 鍾小姐

Property Search No. 物業搜尋編號 140205



Brand new decorated apartment in Repulse Bay 淺水灣全新裝修單位



4 bed, 3 bath, 1 car park

Brand new decorated 4-bedroom apartment with a gorgeous sea view of Southside

全新裝修四房單位，優美南區海景盡收眼底

Saleable 實用 2,499 s.f.

Lease 租 \$150,000 incl.

Inquiries 查詢 ☎ 6607 2082 Stephen Chan 陳先生

Property Search No. 物業搜尋編號 164



Waterfront duplex in Repulse Bay
淺水灣臨海複式單位



3 bed, 3.5 bath, 1 car park

Waterfront 3-bedroom duplex with massive floor-to-ceiling windows enjoys a fantastic view of Repulse Bay Beach

臨海三房複式住宅，連偌大落地玻璃窗，享淺水灣泳灘美景

Saleable 實用 3,463 s.f.

Lease 租 \$160,000 incl.

Inquiries 查詢 ☎ 6538 6922 Teresa Fung 馮小姐

Property Search No. 物業搜尋編號 44023



Rare duplex unit in Repulse Bay
淺水灣矜罕複式單位



4 bed, 3 bath, 1 car park

Exceptional duplex apartment with modern renovations overlooks a magnificent view of Repulse Bay Beach

尊貴非凡複式住宅，連優雅時尚裝修，俯瞰淺水灣泳灘怡人景色

Saleable 實用 2,578 s.f.

Lease 租 \$160,000 incl.

Inquiries 查詢 ☎ 6607 2082 Stephen Chan 陳先生

Property Search No. 物業搜尋編號 33124



Sumptuous house at The Peak 山頂豪華洋房



5 bed, 3 bath, private terrace, 1 car park

Nicely renovated 5-bedroom house with a sufficient outdoor space overlooks a breathtaking view of Victoria Harbour

雅致裝修五房洋房，享充足戶外空間，俯瞰遼闊維港美景

Saleable 實用 2,798 s.f.

Lease 租 \$168,000 incl.

Inquiries 查詢 ☎ 9021 1270 Annie Lee 李小姐

Property Search No. 物業搜尋編號 140191



Grand house at The Peak 山頂奢華洋房



5 bed, 3.5 bath, 1 car park

One of a kind townhouse with an ample alfresco space and an excellent condition

獨樹一幟洋房，享充足戶外空間，裝修簇新

Saleable 實用 3,404 s.f.

Lease 租 \$198,000 incl.

Inquiries 查詢 ☎ 9020 1583 Michelle Chung 鍾小姐

Property Search No. 物業搜尋編號 140189



Grand penthouse unit in Repulse Bay
淺水灣奢華頂層單位



4 bed, 3.5 bath, 730 s.f. roof, 1 car park

Exquisite penthouse unit with a private roof top overlooks a fabulous sea view

華麗頂層單位，連私家天台，俯瞰優美海景

Saleable 實用 2,334 s.f.

Lease 租 \$200,000 excl.

Inquiries 查詢 ☎ 6538 6922 Teresa Fung 馮小姐

Property Search No. 物業搜尋編號 17139



Rare apartment in Deep Water Bay
深水灣罕有住宅



4 bed, 3.5 bath, 1 car park

Spacious 4-ensuite modern upscale apartment with full clubhouse facilities enjoys a peaceful green view

寬敞四套房頂級住宅，風格時尚，連完善會所設施，遠眺怡人翠綠景色

Saleable 實用 2,865 s.f.

Lease 租 \$245,000 incl.

Inquiries 查詢 ☎ 6538 6922 Teresa Fung 馮小姐

Property Search No. 物業搜尋編號 189187



Unique garden house in Deep Water Bay 深水灣獨一無二花園洋房



5 bed, 3.5 bath, 294 s.f. garden & 901 s.f. roof, 2 car parks

Cozy 5-bedroom house with upgraded kitchen, bathrooms and floorings
舒適五房洋房，連簇新廚房、浴室及地板

Saleable 實用 3,672

Lease 租 \$280,000 excl.

Inquiries 查詢 ☎ 6607 2082 Stephen Chan 陳先生

Property Search No. 物業搜尋編號 12397



Massive house in Deep Water Bay 深水灣偌大洋房



4 bed, 5 bath, 1,216 s.f. garden & 527 s.f. roof

Nicely renovated house with an ample outdoor space overlooks a peaceful view of Southside

雅致裝修洋房，享充足戶外空間，怡人南區海景盡收眼底

Saleable 實用 3,674 s.f.

Lease 租 \$300,000 incl.

Inquiries 查詢 ☎ 6538 6922 Teresa Fung 馮小姐

Property Search No. 物業搜尋編號 6737



Prestigious house at The Peak
山頂尊貴洋房



3 bed, 1 study, 3.5 bath, 770 s.f. garden & 743 s.f. roof, 2 car parks

Exceptional garden house with a stunning view of Victoria Harbour

獨特花園洋房，坐擁壯麗維港美景

Saleable 實用 3,736 s.f.

Lease 租 \$380,000 incl.

Inquiries 查詢 ☎ 9020 1583 Michelle Chung 鍾小姐

Property Search No. 物業搜尋編號 125923



Extravagant apartment in Midlevels Central
中半山奢華住宅



5 bed, 4.5 bath, 2 car parks

Generous 5-bedroom apartment with a fantastic harbour view

偌大五房單位，眺望迷人海景

Saleable 實用 4,715 s.f.

Lease 租 \$500,000 excl.

Inquiries 查詢 ☎ 6607 2082 Stephen Chan 陳先生

Property Search No. 物業搜尋編號 20870



Extraordinary colonial single house in Southside 南區非凡英式獨立屋



5 bed, 4 bath, private garden, private swimming pool

Enormous single house with a huge private garden and swimming pool in a peaceful location

巨型獨立屋，連偌大私家花園及游泳池，地段寧謐怡人

Saleable 實用 6,293 s.f.

Lease 租 Open Offer

Inquiries 查詢 ☎ 9027 2100 Louis Wong 黃先生

Property Search No. 物業搜尋編號 104479



Enormous house at The Peak 山頂巨型洋房



7 bed, 1 study, 7.5 bath, 255 s.f. terrace, 2,345 s.f. garden & 1,426 s.f. roof, 1 garage

Extraordinary garden house with a private swimming pool overlooks fantastic Victoria Harbour and Southside sea view

非凡花園洋房，連私家私家游泳池，俯瞰迷人維港景色及南區海景

Saleable 實用 10,804 s.f.

Lease 租 Open Offer

Inquiries 查詢 ☎ 9027 2100 Louis Wong 黃先生

Property Search No. 物業搜尋編號 190914





Chantilly, 6 Shiu Fai Terrace, Midlevels East 東半山 峯輝台 6 號

- ▶ 傳統豪宅區矜罕寬闊大戶，3.4 米特高樓底
- ▶ 莊園設計重演法式建築藝術
- ▶ 配置國際著名廚具潔具品牌，包括 Sub-Zero 雪櫃及 Gaggenau 廚具
- ▶ 酒店式玫瑰典雅大堂設計
- ▶ 專屬電梯直達私人電梯大堂
- ▶ 會所設有游泳池、健身室及宴會廳

Unit 6A (5-bed)
Saleable 實用 2,816s.f.
Lease 租 \$130,000 incl.

Unit 11B (4-bed)
Saleable 實用 2,805 s.f.
Lease 租 ~~\$132,000 incl.~~ (Leased)

Unit 15A (5-bed)
Saleable 實用 2,816 s.f.
Lease 租 \$140,000 incl.

Unit 15B (4-bed)
Saleable 實用 2,805 s.f.
Lease 租 \$140,000 incl.

Unit 16A (5-bed)
Saleable 實用 2,816 s.f. (with a roof 天台 2,262 s.f.)
Lease 租 ~~\$350,000 incl.~~ (Sold)
(All units include 1 car park 全部單位連一車位)

Inquiries 查詢 ☎ 6535 9918 Josephine Yuen 阮小姐
Property No. 物業編號 136282, 136298, 136289, 136300, 136290





如何購買英國商業物業

英國商業物業較住宅能提供更長，更穩定和更高的租金回報；卻可以比住宅更容易管理。但如何入手？

有哪些事項要注意？英國與香港市場的分別在哪裡？由豐富實戰經驗的皇家特許測量師提供免費一對一諮詢。

Commercial properties in the UK provide opportunities for overseas investors with long, stable rental income and high yields than residential properties; still they can be easier to manage than residential. But how to invest? What do you need to know before purchase? What are the differences between UK and HK markets? We are pleased to provide free, one-to-one consultation.



Prime freehold restaurant and bar in Farringdon, London 倫敦永久業權餐廳、酒吧

- Highly prominent, attractive double-fronted restaurant/bar in the heart of Farringdon with excellent connectivity
- 2,915 sq ft of well configured restaurant (Michelin-starred) and bar accommodation over ground and basement levels. The upper parts comprise apartments sold off on long leasehold
- Total net passing rent of £83,907 p.a.
- Freehold
- 倫敦 Farringdon 中心的優質大單邊餐廳、酒吧，交通便捷
- 位於地面層和地庫，2,915 平方呎的精心佈置的餐廳（米芝蓮）和酒吧。樓上住宅已售（長期租賃權）
- 淨年租金收入為 83,907 英鎊
- 永久業權

Guide Price 指標價 £1,600,000

Net Yield 淨收益率 c. 4.9%

Property No. 2001

ENQUIRES 查詢
WhatsApp 2152 4888 KS Koh 許先生 ks.koh@landscape.com



Fully-let freehold commercial building in City Core, London 倫敦金融區中心永久業權商廈

- Situated in the heart of the City Core within close proximity to The Bank of England and Moorgate
- Providing 18,027 sq ft of flexible Grade A office, retail and ancillary accommodation arranged over basement, ground and five upper floors
- Fully let producing a total passing rent of £845,259 p.a.
- Freehold
- 物業位於倫敦金融區中心，緊鄰英倫銀行和 Moorgate
- 18,027 平方呎的靈活甲級辦公室、零售和配套空間，提供地庫、地面層和五層上層
- 已全部出租，年租金收入為 845,259 英鎊
- 永久業權

Guide Price
指標價 £11,700,000

Net Yield
淨收益率 c. 6.7%

Property No. 7539



Long-let London foodstore 倫敦長約食品店

- Highly affluent and sought-after West London location with excellent connectivity
- Prominent corner position providing 3,800 sq ft convenience foodstore arranged over ground and first floors
- Single-let to Tesco Express 2039 at a passing rent of £120,000 p.a.
- Long leasehold
- 物業位於高度富裕且備受追捧的西倫敦位置，交通便利
- 優越大單邊轉角位，3,800 平方呎便利食品店，分佈在地面層和一樓
- 由 Tesco Express 單一承租至 2039 年，年租金為 120,000 英鎊
- 長期租賃業權

Guide Price
指標價 £2,257,000

Net Yield
淨收益率 c. 5%

Property No. 8363

ENQUIRES 查詢
WhatsApp 2152 4888 KS Koh 許先生 ks.koh@landscape.com



Rare freehold building in Knightsbridge, London 倫敦武士橋罕有永久業權建築

- Located in the heart of Knightsbridge in the vicinity of the world famous Harrods department store
- Totaling 5,887 sq ft retail and office accommodation arranged over lower ground, ground and four upper floors
- Let to 2 tenants at a total passing rent of £177,000 p.a. Some units vacant
- Freehold
- 物業位於武士橋中心，鄰近世界著名的哈羅百貨公司
- 5,887 平方呎的零售和辦公空間，分佈在地下一層、地面層和四層上層
- 目前兩個租戶承租，年租金收入為 177,000 英鎊。部分單位交吉
- 永久業權

Guide Price 指標價 £7,000,000

Property No. 2608



Central London high street bakery/café and bar/restaurant 倫敦市中心高街麵包 / 咖啡店和酒吧 / 餐廳

- Situated in an attractive and well-established high street in the heart of Bermondsey
- 2,918 sq ft retail accommodation arranged over lower ground and ground floors
- Let to a chain bakery and a bar/restaurant at a total passing rent of £141,500 p.a.
- 999-year long leasehold
- 物業坐落在伯蒙德中心具吸引力且成熟的高街
- 面積 2,918 平方呎零售空間，提供地下一層和地面層
- 租予連鎖麵包 / 咖啡店和酒吧 / 餐廳，年租金收入為 141,500 英鎊
- 999 年長期租賃權

Guide Price 指標價 £2,300,000

Net Yield 淨收益率 c. 5.7%

Property No. 3894



ENQUIRES 查詢
WhatsApp  2152 4888 KS Koh 許先生 ks.koh@landscape.com



Prominent, highly secure building society investment in Croydon 克羅伊登優質、高度穩健投資

- Ideally located in the south of Central London within the affluent Croydon town centre benefitting from exceptional transportation links
- 6,219 sq ft corner building with excellent return frontage arranged over basement, ground and three upper floors
- Single-let to Yorkshire Building Society at a passing rent of £100,000 p.a.
- Long leasehold
- 物業位處大倫敦區南部富裕的克羅伊登市中心理想地段，享有優越的交通連接
- 6,219 平方呎的大單邊轉角位建築，提供地庫、地面層和三層上層樓
- 由約克郡建築協會單一承租，年租金收入 100,000 英鎊
- 長期租賃權

Guide Price
指標價 £1,050,000

Net Yield
淨收益率 c. 9%

Property No. 8845



Prime high street freehold retail in Birmingham 伯明翰優質永久業權零售投資

- Situated in a prime position on High Street of Birmingham, an economic and cultural centre for the West Midlands and the UK's second largest city
- Comprising 11,493 sq ft accommodation arranged over basement, ground and four upper floors
- Let to undoubted national covenants of Greggs and Randox Health at a total passing rent of £310,000 p.a.
- Freehold
- 物業坐落於伯明翰高街黃金地段，伯明翰是英國第二大城市，也是西米德蘭茲郡經濟文化中心
- 面積 11,493 平方呎，提供地庫、地面層和四層上層
- 由全國性大公司 Greggs 和 Randox Health 承租，年租金收入為 310,000 英鎊
- 永久業權

Guide Price
指標價 £3,600,000

Net Yield
淨收益率 c. 8.1%

Property No. 8751

ENQUIRES 查詢
WhatsApp 2152 4888 KS Koh 許先生 ks.koh@landscape.com



Prime high street retail in Liverpool 利物浦優質高街旺鋪

- Located in the prime retailing pitch of Liverpool, one of the strongest retailing centres in the UK
- Totaling 36,467 sq ft accommodation arranged over basement, ground and six upper floors
- Let to secure covenants of River Island and The Works at a total passing rent of £775,000 p.a.
- Freehold
- 物業位於英國最強大的零售中心之一利物浦的主要零售區
- 面積 36,467 平方呎的空間，提供地庫、地面層和六層上層
- 由穩健租戶 River Island 及 The Works 承租，年租金收入 775,000 英鎊
- 永久業權

Guide Price
指標價 £7,250,000

Net Yield
淨收益率 c. 10.0%

Property No. 1333



Prime, well secured mixed use investment opportunity in Reading 雷丁優質穩健的綜合用途投資機會

- Situated at the prime, pedestrianised retailing pitch of Reading, one of the UK's leading university towns and an important and popular regional retail centre
- Comprising 8,707 sq ft of a modern, prominent mixed use building arranged over ground, basement and two upper floors
- Let to Coco Di Mama, Tortilla and Reading Smiles at a total passing rent of £270,000 p.a.
- Freehold
- 物業位於雷丁的主要行人購物區。雷丁是英國領先的大學城之一，也是重要的區域零售中心
- 8,707 平方呎的現代、優質綜合用途建築，提供地面層、地庫及兩層上層
- 由連鎖集團 Coco Di Mama、Tortilla 和 Reading Smiles (牙醫集團) 承租，年租金收入為 270,000 英鎊
- 永久業權

Guide Price
指標價 £3,600,000

Net Yield
淨收益率 c. 7%

Property No. 2577



ENQUIRES 查詢
WhatsApp  2152 4888 KS Koh 許先生 ks.koh@landscape.com



Looking forward to seeing you 我哋等緊你呀!

We are looking for suitable candidates to join us 如果你對以下工作有興趣, 請聯絡我哋

- Experienced luxury property sales/leasing consultants 豪宅部物業顧問
- Sales/Leasing Assistants 豪宅部助理
- Associate Director, Valuation 估價部聯席董事
- Photographers (Part time / Freelance) 攝影師 (兼職 / 自由工作)
- Graphic Designer (Part time / Freelance) 平面設計師 (兼職 / 自由工作)
- Editor / Copywriter (Part time / Freelance) 編輯 / 撰稿員 (兼職 / 自由工作)

Please send your enquiries / resume to the following 詢問、履歷可發送至

✉ recruit@landscape.com | ☎ +852 2152-4810

Disclaimer 免責聲明

The personal data collected in the job application will only be used by Landscape Realty Limited, its subsidiaries and/or affiliates (Landscape) internally to assess your suitability to assume the job duties of the position for which you have applied. All personal data will be handled in strict confidence and filed with Human Resources Department. It is the Company policy to retain the personal data of unsuccessful applicants for future recruitment opportunities for a period of maximum six (6) months, otherwise it will be destroyed. Any information or data which you submit through the e-mail or WhatsApp may be exposed to the risk of unauthorised access by third parties. Landscape has instituted security precautions to protect the privacy of data you submit, but cannot guarantee security or confidentiality against all hackers, other attacks or other security failures. Landscape accepts no responsibility and shall not be liable for any loss or damage arising from or related to such unauthorised access. You acknowledge that you have read the above conditions of use and that you accept and agree to be bound thereby upon making your application by e-mail or WhatsApp. If you do not agree to the above terms discussed above, you must not make your application by e-mail or WhatsApp. 對職位申請者所提交的個人資料, 領域房地產顧問有限公司, 其附屬公司及/或聯屬公司(領域)只用作處理其求職申請之用途。所有的個人資料將保密處理, 並提交人力資源部。我們將保留六(6)個月不成功申請人之個人資料, 期限後將被銷毀。通過電子郵件或WhatsApp提交的任何資料或數據可能會暴露於未經授權的第三方的風險。領域已設立安全措施以保護 台灣所呈交之資料。惟本公司不能保證因為黑客、其他侵襲或安全系統出現故障而衍生的保安或機密問題; 本公司也不負責任何直接、間接、特別情況而導致之任何損失。請閣下確認已閱讀了以上使用條款。通過電子郵件或WhatsApp發送職位申請者將視為已接納此等條款及條件。不同意此等條款及條件者不用通過電子郵件或WhatsApp發送職位申請。個別本聲明的英文本與中文本有任何差異的地方, 則以英文本為準。