

The
Key

大宅[®]

Select deluxe homes

LANDSCOPE

CHRISTIE'S
INTERNATIONAL REAL ESTATE

Volume 91 JULY 2012



Minimalist 簡約至尊
opulence

KeyWords

“It’s not enough that we do our best; sometimes we have to do what’s required”

「盡力而為還是不夠的，有時我們得做必須做的事。」

Sir Winston Churchill (1874-1965), former British Prime Minister
前英國首相丘吉爾爵士 (1874-1965)

KeyNotes

While local government officials are still threatening further restrictive measures on high property prices based on statistics that are very much lagging behind the current situation, market transactions and sentiment have already pointed in the opposite direction. Front-line property brokers can tell you right away how low sales are these days due to Euro crisis, stock market fluctuations and the uncertainties associated with the new government’s impending new policies towards the property market. Based on his recent comments and assertions, it is fairly easy to read C.Y. Leung’s mind on Hong Kong’s housing policy. Increasing the supply is already on the table; the question is, how much?

香港政府官員仍然基於遠遠落後現況的統計數據，威脅要進一步推行緊縮措施遏抑高企的樓價。與此同時，市場上的交投量和投資情緒都已朝反方向發展。前線的地產經紀可以立刻告訴你，歐元危機、動盪的股市和新政府可能將對樓市實施的新政策等等因素如何打擊市況，成交額如何急挫。聽到梁振英最近的評論與發言，不難猜測他對香港房屋政策的立場。增加供應已是如箭在弦；問題是，多少？

K.S. Koh
ks.koh@landscape-christies.com

(The above is an excerpt from Market Watch on www.landscape-christies.com. Read the full article at Market Watch, www.landscape-christies.com/marketwatch)

(以上內容節錄於領域網站內的市場觀察，如欲觀看全文，請登上網址：www.landscape-christies.com/marketwatch)

Monthly HIGHLIGHTS 每月精選

- 04 Royalton
薄扶林 豪峰
- 17 La Mer
薄扶林 浪頤居
- 22 99-103 Peak Road
山頂 山頂道99-103號



HOW MAY YOU LIST YOUR PROPERTY WITH THE KEY?

怎樣在《大宅》刊登您的出售／出租物業？

If you would like to see your property listed in The Key in the next issue, you may call Loretta Lui at 3102 4818 or visit us at www.landscape-christies.com/sell_let. Or you may simply fill out the space below and fax to us at 2866 0015.

如果您想將出售／出租物業刊登於大宅，可致電3102 4818與呂小姐聯絡，或登上 www.landscape-christies.com/sell_let。或者您可以填寫下面的表格傳真至2866 0015。

Property to be listed 物業

Asking Rental / Sale Price 租金 / 售價

Floor Area 面積

Contact Person 聯絡人

Telephone 電話

Email 電郵地址

Our KeyPersons will contact you for follow-up works.

我們的大宅專員會馬上與您聯絡

Published and distributed by

LANDSCOPE

CHRISTIE'S
INTERNATIONAL REAL ESTATE

Find us on:
facebook.

Designed by

PERSPECTIVE 透視

Landscape Christie's International Real Estate C-018733

Tel: +852 2866 0022
Fax: +852 2866 0015
Email: info@www.landscape-christies.com
Website: www.landscape-christies.com
Address: Unit 3106, 31/F, Hopewell Centre,
183 Queen's Road East, Wanchai, Hong Kong

Member of:



Tel: +852 2525 0287
Fax: +852 2526 3860
Email: info@perspectiveglobal.com
Website: www.perspectiveglobal.com
Address: Rm 2408, Dominion Centre,
59 Queen's Road East, Wanchai, Hong Kong

The information, text, photos, analyses and projections contained herein are provided solely for the convenience of prospective clients and no warranty or representation as to their accuracy, correctness or completeness is made by Landscape Christie's International Real Estate, Landscape Surveyors Limited, Landscape Realty Limited or the owners, none of whom shall have any liability or obligation with respect thereto. Interested parties should rely on their own investigations, interpretations and analyses in connection with the purchase or letting thereof.

Information has been provided to us by sources deemed reliable, but no warranty or representation is made as to its accuracy, correctness or completeness. These offerings are made subject to contract, correction of errors, omissions, prior sale or lease, change of price or terms or withdrawal from the market without notice. The contents of The Key are for reference only and do not constitute all or any part of a contract. Copyright 2012



GOODS OF DESIRE®

Causeway Bay 2890 5555 Tsim Sha Tsui 2784 5555 Central 2805 1876 Peak Galleria 2778 3331
Stanley 2673 0071 Sai Kung 2791 7122 Cyberport 2577 6899 Ap Lei Chau 2580 2290



Minimalist opulence

簡約至尊

Photography: Daniel Tam

Located in the upmarket residential suburb of Pokfulam, this minimalist 2,160 s.f. apartment is brightly lit and offers spectacular harbour and sunset views.

Featuring four bedrooms, a cool, calm white is the theme colour throughout, complementing the light hardwood floors to create a delightfully clean, minimalist look that quietly whispers 'luxury' at the same time.

The living and dining rooms are paired with an open kitchen, which is well-equipped with a large fridge, an oven and wine fridge. A high counter with sliding windows enables visitors to watch their meal being cooked in front of them, while the gracious host can still interact with dinner guests.

As with the common areas, all bedrooms feature large windows, allowing ample natural light to enter the rooms while also providing stunning seaviews. Three bathrooms (one ensuite) make this apartment ideal for families with busy lifestyles who may also entertain guests frequently, and there is a maid's room and a covered car park as well.

Located in the Royalton high-rise complex, residents have access to numerous recreational facilities such as a gym, an outdoor swimming pool, a children's pool and a playground, a sauna, an indoor play area, a Jacuzzi and a golf driving range.

Royalton is a 23-storey high-rise building offering 30 luxurious simplex/duplex apartments. Its proximity to the Pokfulam Reservoir and the Country Park makes for easy access to outdoor activities, while public bus routes are plentiful and Kowloon can also be reached easily via the Western Harbour Tunnel.

這個2160平方呎的住宅坐落薄扶林郊區的高尚住宅區，一室簡約明亮，盡享璀璨維港與日落景色。

住宅共有四間睡房，全屋以清淡的白色主調配合淺色實木地板，營造出令人喜愛的簡約俐落氣息，輕輕道出低調奢華。

客廳與飯廳旁是開放式廚房，設備齊全，包括大雪櫃、烤爐與酒櫃。高身吧枱配搭趟窗，客人既可欣賞主人烹調佳餚的過程，主客又可把酒言歡。

與住宅內的廳區一樣，所有睡房都有大窗戶，洋溢充沛日光之餘，亦把醉人海景帶進室內。住宅設有三間浴室（包括一間套房浴室），最適合生活忙碌又不時宴客的家庭，而且亦配有家傭房及有蓋車位。

住宅位於高層住宅大廈豪峰內，住戶可享用多種康樂設施，包括健身室、室外游泳池、兒童游泳池與兒童遊樂場、桑拿浴室、室內遊樂場、Jacuzzi按摩浴池與高爾夫球練習場。

豪峰樓高23層，提供30個豪華單式/複式單位，毗鄰薄扶林水塘及郊野公園，輕而易舉便到達郊外呼吸新鮮空氣。區內設多條巴士線，經西區海底隧道即可直達九龍區。

Royalton 豪峰

118 Pok Fu Lam Road, Pokfulam

薄扶林 薄扶林道118號

2,160 s.f.

HK\$26.8M

9250 0300 Randy Chan 陳先生

www.landscape-christies.com/129709.htm

灣仔活道28號

THE OAKHILL 萃峯

緊握機遇 今天擁有



- 座落港島灣仔核心地帶，瞬間接通都會繁盛脈搏，讓你遊走於各式食府時尚名店，中外藝廊。
- 頂層3,000呎天際屋，4房4套連約800呎空中庭園，三連車位，同區罕有。
- 位處港島區尖子校網，與著名中小學及國際學校為鄰。

售樓處：灣仔活道 28 號地下

開放時間：下午2時至7時（星期六、日及公眾假期）

賣方：發展商（樂居有限公司） 物業經理：（本公司） 樂居發展有限公司及由該公司所屬之管理公司（該公司或其成員之一）
認可人士：（建築師、測量師、工程師、估價師及之註冊） 總承建商：保華建築有限公司 賣方代表律師：（見文） 委託代辦的房地產
物業共 200 個住宅單位

預約參觀

8109 8282

www.theoakhill.com.hk



Lai Sun Group
麗新集團



景順 Invesco
的景順亞洲房地產基金（由該公司
（景順亞洲房地產基金之一）

本廣告內之相片、圖像、繪圖或素描並非按照比例繪畫或/及可能經過電腦圖像修飾處理，只作參考用途。準買家如欲了解本發展項目的詳情，請參閱售樓說明書。發展商亦建議買方到該物業考察，以獲取對該物業及其周圍地區的公共設施及環境較佳的了解。



Beauty Court

82 Robinson Road

Popular 3-bedroom family flat on convenient Robinson Road

受歡迎三房家庭式住宅，位於羅便臣道，交通方便

1,778 s.f.

\$25.5M

6183 8339 Carman Szeto 司徒小姐

www.landscape-christies.com/108739.htm

西半山雅苑



Serene Court

8 Kotewall Road

4-bedroom apartment with harbour view in Kotewall Road

壯麗海景四房單位，位於旭龔道

2,334 s.f.

\$33.6M

9028 0147 Jenson Au 區先生

www.landscape-christies.com/39041.htm

西半山秀麗閣



The Babington

6D-6E Babington Path

Designer decorated modern penthouse with private roof terrace

時尚頂層單位，配以設計師精心設計，連私家天台

2,301 s.f. (plus 445 s.f. roof)

\$46.02M

9871 6828 Louis Wong 黃先生

www.landscape-christies.com/126688.htm

西半山巴內頓道6D-6E號



Wisdom Court

5 Hatton Road

Nicely decorated 3-bedroom apartment with internal stairs to private roof top

雅緻裝修三房單位，連內置樓梯及私家天台

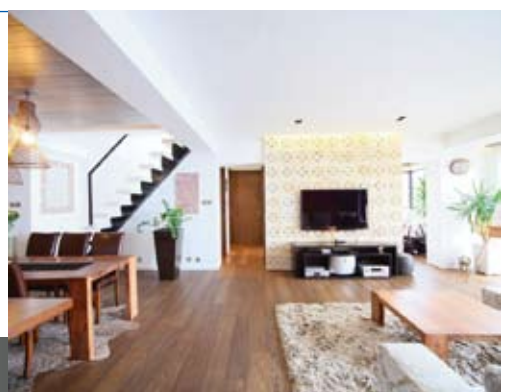
1,854 s.f. (plus 1,342 s.f. roof)

\$48M

9486 1566 Mira To 杜小姐

www.landscape-christies.com/108898.htm

西半山慧苑



Botanic Terrace

3-5 Conduit Road

Rare duplex with 5 bedrooms in Midlevels

West enjoying lush green views

西半山五房複式單位，享翠綠美景，市場罕有

2,984 s.f.

\$48.8M

9080 6686 Teresa Lau 劉小姐

www.landscape-christies.com/50450.htm

西半山芝蘭台





Villas Sorrento

64-66 Mount Davis Road

Modern sea view duplex with private roof in tranquil location

寬闊海景複式單位，連私家天台，環境清靜

2,207 s.f. (plus 348 s.f. terrace and 718 s.f. roof)

\$60M

9229 2396 Elaine Chow 周小姐

www.landscape-christies.com/95796.htm

薄扶林御海園



The Sail at Victoria

86 Victoria Road

Tastefully decorated duplex penthouse with harbour view

薄扶林頂層複式單位，配以品味裝修，欣賞迷人海景

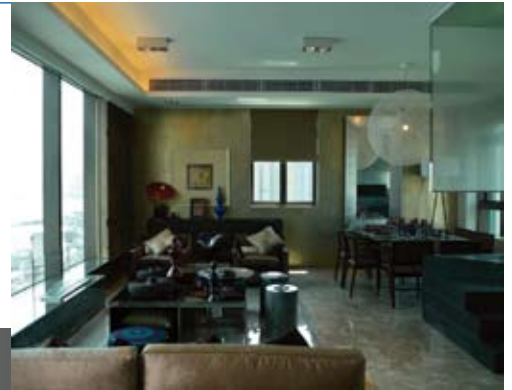
2,714 s.f. (plus 146 s.f. terrace)

\$61.07M

9215 3999 Boris Wong 王先生

www.landscape-christies.com/123043.htm

薄扶林傲翔灣畔



Seymour

9 Seymour Road

Brand new harbour view apartment with 5 bedrooms on fringe of CBD

全新五房住宅，享美麗海景，鄰近商業中心區

2,348 s.f.

\$86.88M

9551 1077 Walker Lam 林先生

www.landscape-christies.com/125766.htm

西半山懿峯



Residence Bel-Air

1-18 Cyberport Road

Brand new spacious waterfront garden house at Cyberport

寬敞海濱大屋，配以全新裝修，位於數碼港，可租可售

4,645 s.f. (plus 1,957 s.f. garden and 1,229 s.f. roof)

\$150M also for lease \$268K incl.

6330 7888 Cora Ko 高小姐

www.landscape-christies.com/99138.htm

薄扶林貝沙灣



Residence Bel-Air

1-18 Cyberport Road

Brand new sea view townhouse with deluxe clubhouse facilities

全新海景排屋，享豪華會所設施

6,305 s.f. (plus 602 s.f. terrace)

\$170M

6838 2929 Mark Mak 麥先生

www.landscape-christies.com/146921.htm

薄扶林貝沙灣





Stanford Villa

7 Stanley Village Road

Modern low-rise apartment close to Stanley Main Beach
赤柱低密度住宅，配以時尚裝修，
位於赤柱正灘附近

赤柱
旭逸居

1,052 s.f.
\$16.6M

9028 0147 Jenson Au 區先生
www.landscape-christies.com/36028.htm



Aqua 33

33 Consort Rise

Modern low-rise 3-bedroom apartment in Pokfulam
低密度三房單位，配以時尚靚裝修

薄扶林
金粟街33號

1,798 s.f.
\$22.5M

9229 2396 Elaine Chow 周小姐
www.landscape-christies.com/111784.htm



Albany Court

51 Bisney Road

Lofty-ceilinged low-rise flat with terrace in tranquil Pokfulam
薄扶林低密度住宅，樓底極高，連平台，環境恬靜

薄扶林
雅鑾閣

1,832 s.f. (plus 474 s.f. terrace)
\$25M

9229 2396 Elaine Chow 周小姐
www.landscape-christies.com/113639.htm



Hong Kong Parkview

88 Tai Tam Reservoir Road

Tastefully decorated apartment commanding country park view
品味裝修單位，飽覽郊野公園美景

淺水灣
陽明山莊

2,105 s.f.
\$28.9M

9028 0147 Jenson Au 區先生
www.landscape-christies.com/30902.htm



Grand Garden

61 South Bay Road

Practical 3-bedroom flat with mountain view and sea view, whole building renovated
淺水灣實用三房單位，盡享廣闊山巒及海港景致，
全幢大廈翻新

淺水灣
華景園

1,820 s.f.
\$33M also for lease \$65K incl.

9080 6686 Teresa Lau 劉小姐
www.landscape-christies.com/27010.htm



Honourgarten

11 Consort Rise

Deluxe decorated low-rise penthouse with roof
薄扶林低密度頂層單位，配以豪華裝修

薄扶林
安荔苑

2,100 s.f. (plus 776 s.f. roof)
\$33M

9250 0300 Randy Chan 陳先生
www.landscape-christies.com/112853.htm



The Brentwood

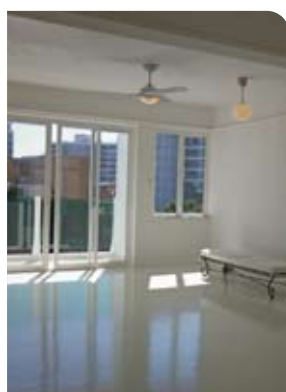
11 Repulse Bay Road

Sea view apartment with balcony and facilities on Repulse Bay
迷人海景住宅連露台，設施一應俱全，可租可售

淺水灣
蔚峰園

1,556 s.f.
\$33M also for lease \$Open Offer

6330 7888 Cora Ko 高小姐
www.landscape-christies.com/150412.htm



Villa Verde

4-18 Guildford Road

Practical 3-bedroom apartment at greenery Peak area
實用三房單位，享翠綠景致，可租可售

山頂
環翠園

1,505 s.f.
\$35M also for lease \$63K excl.

9648 6082 Christine Chong 莊小姐
www.landscape-christies.com/6614.htm



Hong Kong Parkview

88 Tai Tam Reservoir Road

Newly decorated 4-bedroom flat with estate shuttle bus to Central
全新裝修四房單位，享屋苑穿梭巴士至中環，
交通便利

淺水灣
陽明山莊

2,708 s.f.
\$45M

6330 7888 Cora Ko 高小姐
www.landscape-christies.com/28248.htm



Hong Kong Parkview

88 Tai Tam Reservoir Road

Spacious 3-bedroom unit with balcony enjoying mountain view and excellent facilities
寬敞三房單位連露台，享山巒景致及優質設施

淺水灣
陽明山莊

2,764 s.f.
\$48M

9093 3381 Stephen Chan 陳先生
www.landscape-christies.com/112895.htm

The antidote to huge, over specified boats?
A compact, over specified boat

Model featured is the remarkable Squadron 42. The compact Squadron that doesn't fall short in the luxury department
系列中的非凡之選Squadron 42, 小巧中凸顯珍貴。

Fairline China:

16/F, East Ocean Centre, 618 Yan An Road East, Shanghai 200001
菲爾蘭中國: 中國上海延安東路618號東海商業中心16樓 郵編: 200001
Tel 電話: +86 21 2306 4848 Email 電郵: china@fairline.com

Fairline Hong Kong:

Unit 5, 6/F, Aberdeen Marine Tower, 8 Sui Wo Wan Road, Aberdeen, Hong Kong
菲爾蘭香港: 香港香港仔深灣道8號深灣遊艇俱樂部地下5室
Tel 電話: +852 3180 3189 Email 電郵: hongkong@fairline.com

Appointed Dealers in 特別代理:

China 中國, Hong Kong 香港, India 印度, Indonesia 印尼, Japan 日本
Korea 韓國, Malaysia 馬來西亞, New Zealand 新西蘭, Philippines 菲律賓
Queensland 昆士蘭, Singapore 新加坡, Thailand 泰國, Victoria 維多利亞州
Vietnam 越南, Western Australia 澳洲西部



Ruby Court

55 South Bay Road

Popular sea view apartment in South Bay with swimming pool
受歡迎海景住宅，連私家游泳池，位於淺水灣

淺水灣 嘉麟閣

2,200 s.f.
\$55M

☎ 6258 8847 Anthea Ngai 魏小姐
🌐 www.landscape-christies.com/112798.htm



Celestial Garden

5 Repulse Bay Road

Nicely decorated 4-bedroom flat with fantastic sea view and green view on upper Repulse Bay Road
雅致四房裝修住宅，享迷人海景及翠綠景致，位於淺水灣道頭段

淺水灣 詩禮花園

2,375 s.f.
\$56.5M

☎ 9833 9509 Michelle Chung 鍾小姐
🌐 www.landscape-christies.com/4130.htm



Radcliffe

120 Pok Fu Lam Road

Good quality 4-ensuite duplex apartment with sea view
優質四房複式住宅，欣賞壯觀海景

薄扶林 靖林

3,620 s.f.
\$60M

☎ 9486 1566 Mira To 杜小姐
🌐 www.landscape-christies.com/107385.htm



33 Cape Road

Stylishly decorated 4-bedroom townhouse with sea view at Chung Hom Kok
春坎角時尚裝修四房排屋，欣賞美麗海景

春坎角 環角道33號

3,142 s.f. (plus 519 s.f. garden and 420 s.f. roof)
\$65M

☎ 9648 6082 Christine Chong 莊小姐
🌐 www.landscape-christies.com/124154.htm



Regalia Bay

88 Wong Ma Kok Road

Waterfront townhouse with 5-bedroom and splendid sea view
五房海濱大屋，欣賞壯麗海景

赤柱 富豪海灣

4,105 s.f. (plus 799 s.f. garden and 1167 s.f. roof)
\$68M

☎ 6838 2929 Mark Mak 麥先生
🌐 www.landscape-christies.com/31940.htm



Guildford Court

5 Guildford Road

Well decorated apartment in lower Peak
山頂特色單位，配以時尚靚裝修

山頂 僑福道5號

2,500 s.f.
\$70M

☎ 6838 2929 Mark Mak 麥先生
🌐 www.landscape-christies.com/30026.htm



Bluewater

25 Tai Tam Road

Deluxe 4-bedroom sea view apartment at Tai Tam waterfront
大潭海濱四房豪華大宅，享美麗海景，可租可售

大潭 大潭道25號

2,500 s.f.
\$70M also for lease \$100K incl.

☎ 9648 6082 Christine Chong 莊小姐
🌐 www.landscape-christies.com/13138.htm



Hillgrove

18 Cape Drive

Large and spacious townhouse in quiet Chung Hom Kok
巨大寬敞排屋，位於寧靜的春坎角

春坎角 壁如花園

3,000 s.f. (plus 660 s.f. garden and 900 s.f. roof)
\$73M

☎ 9809 8570 Stella Lo 羅小姐
🌐 www.landscape-christies.com/104403.htm



Villa Verde

4-18 Guildford Road

A rare find of spacious apartment with private garden on the Peak for sale
寬敞山頂住宅，連私家花園，罕有放售

山頂 環翠園

2,540 s.f. (plus 800 s.f. garden)
\$78M

☎ 9080 6686 Teresa Lau 劉小姐
🌐 www.landscape-christies.com/13460.htm



Carolina Garden

20-34 Coombe Road

Nicely decorated sea view apartment on Coombe Road
甘道清雅裝修海景住宅

山頂 嘉樂園

2,350 s.f.
\$78M

☎ 9493 8275 Sami Woo 胡小姐
🌐 www.landscape-christies.com/6005.htm

Interior design
 constructions
 space planning
 project management
 tendering
 landscaping
 quantity survey

Peter M. Cannon

Thank you for all your works over the past 4 months. Our home is beautiful and the time we have spent with our family in the house has been just what we dreamed of...

Perkins road –colonial charm



Sherrie Harps

Joseph is a problem-solver, talented designer, sophisticated and..... now my very good friend, I could not praise him and his firm enough.

Repulse Bay –classical contemporary



Susan Taylor

Thank you for giving me such a beautiful home. I can't say enough good things about you. Joseph -I know first hand why your company has such an excellent reputation. It was worth every penny I spent.

Castle Peak road –clean lines



Ethan King

We were very happy with Joseph as our designer. He made everything easy for us and read our tastes very well. We would recommend JCAW Consultants to anyone. We couldn't be happier with the outcome.

Plantation road –sophisticate mode



Jennifer Park

We are super pleased with our remodel that your team did at our home. Everyone we came in contact with is first class!

Sapphire Chalet –light filled spread



**a kiss is for a second
 admiring domicile is for ever -jc**





Belgravia

57 South Bay Road

Newly renovated apartment with facilities looking out to South Bay sea view
全新裝修海景大宅，設施齊備，享南灣美景

淺水灣
南灣道57號

2,790 s.f.

\$81M

☎ 6330 7888 Cora Ko 高小姐

🌐 www.landscape-christies.com/117806.htm



Twin Brook

43 Repulse Bay Road

Newly renovated large 4-bedroom sea view flat on Upper Repulse Bay Road
淺水灣巨大四房海景單位，配以全新裝修，可租可售

淺水灣
雙溪

2,700 s.f.

\$92M also for lease \$122K incl.

☎ 9833 9509 Michelle Chung 鍾小姐

🌐 www.landscape-christies.com/122721.htm



Las Pinadas

33 Shouson Hill Road

Spacious townhouse with large living room in gated neighbourhood
壽臣山寬敞排屋，連特大客廳，可租可售

壽臣山
朗松居

3,382 s.f. (plus 565 s.f. garden, 166 s.f. terrace and 617 s.f. roof)

\$110M also for lease \$190K incl.

☎ 9871 6828 Louis Wong 黃先生

🌐 www.landscape-christies.com/21407.htm



Strawberry Hill

8 Plunkett's Road

Tasteful designer decorated colonial townhouse
英式品味排屋，配以設計師精心設計靚裝修

山頂
紅莓閣

3,200 s.f.

\$168M

☎ 9648 6082 Christine Chong 莊小姐

🌐 www.landscape-christies.com/108282.htm



56 Repulse Bay Road

Deluxe waterfront duplex apartment with sweeping view of Repulse Bay
豪華海濱複式大宅，享無敵靚海景，可租可售

淺水灣
淺水灣道56號

3,281 s.f. (plus 848 s.f. roof)

\$175M also for lease \$200K incl.

☎ 9871 6828 Louis Wong 黃先生

🌐 www.landscape-christies.com/144428.htm



8 Tai Tam Road

Magnificent waterfront dream house with private pool taking in Tai Tam sea view
壯麗海濱大屋，連私家游泳池，享大潭海景，可租可售

大潭
大潭道8號

5,474 s.f. (plus 945 s.f. garden and 712 s.f. roof)

\$220M also for lease \$530K incl.

☎ 9250 0300 Randy Chan 陳先生

🌐 www.landscape-christies.com/34709.htm



SCape

20-26F Cape Road

Brand new sea view townhouse with private infinity pool at Chung Hom Kok waterfront
全新裝修海景排屋，連私家泳池，位於春坎角

春坎角
南靖

4,578 s.f. (plus 625 s.f. garden and 490 s.f. roof)

\$230M

☎ 9871 6828 Louis Wong 黃先生

🌐 www.landscape-christies.com/150397.htm



Island Grove

40 Island Road

Designer decorated waterfront townhouse at prestigious address
深水灣海濱排屋，配以設計師精心設計靚裝修，地段優越，可租可售

深水灣
香島道40號

5,080 s.f. (plus 423 s.f. garden)

\$260M also for lease \$390K incl.

☎ 9833 9509 Michelle Chung 鍾小姐

🌐 www.landscape-christies.com/121888.htm



Double Bay

46 Island Road

Deluxe townhouse at a prestigious location of Deep Water Bay
深水灣豪華大屋，地段尊貴，可租可售

深水灣
香島道46號

5,113 s.f. (plus 1,046 s.f. garden and 1,382 s.f. roof)

\$360M also for lease \$380K incl.

☎ 9871 6828 Louis Wong 黃先生

🌐 www.landscape-christies.com/108206.htm



Bay Villas

57-71 Shouson Hill Road

Huge combined townhouse with nice decorations in Deep Water Bay with sweeping sea view
巨大寬敞排屋，配以雅致靚裝修，享無敵靚海景

壽臣山
南源

10,061 s.f. (plus 671 s.f. garden and 2,125 s.f. roof)

\$680M

☎ 9080 6686 Teresa Lau 劉小姐

🌐 www.landscape-christies.com/30925.htm

Chinese Carpet Centre Ltd. offers the ***Best Quality***
of handknotted silk and woolen carpets
available in all range of sizes, colours and design



Special Promotion



CHINESE CARPET CENTRE LTD
珍藝行地毯有限公司

Shop 5, G/F, Houston Centre, 63 Mody Road, TST East, Kowloon
Tel: 2730 7230, 2736 1773 rugs@biznetvigator.com www.cccrugs.com.hk



Pak Fai Mansion

72 MacDonnell Road

Nicely decorated 2-bedroom apartment with private garden on MacDonnell Road
雅致兩房裝修單位，連私家花園，位於麥當奴道

1,600 s.f. (plus 400 s.f. garden)
\$21M

6183 8388 Chris Law 羅先生
www.landscape-christies.com/127673.htm

中半山百輝大廈



Elegant Terrace

36 Conduit Road

Harbour view apartment with balcony and great facilities in Midlevels West
西半山海景單位，連露台及完善設施

1,433 s.f.
\$21.5M

9028 0147 Jenson Au 區先生
www.landscape-christies.com/88187.htm

西半山慧明苑



Kenne Mansion

20 Kennedy Road

Colonial style mid-rise apartment with lush green view on Kennedy Road
堅尼地道中密度英式單位，享翠綠景致

1,200 s.f.
\$22M

9809 8570 Stella Lo 羅小姐
www.landscape-christies.com/122970.htm

中半山堅尼地台



Park View Court

1 Lyttelton Road

Good condition apartment for sale in prime location
西半山優質單位，位置方便

1,816 s.f.
\$22M

9028 0147 Jenson Au 區先生
www.landscape-christies.com/97841.htm

西半山恒柏園



Wing Way Court

31 Kennedy Road

High privacy and high efficiency
3-bedroom flat on Kennedy Road
高實用三房單位，私隱度高，位於堅尼地道

1,860 s.f.
\$24.48M

9229 2396 Elaine Chow 周小姐
www.landscape-christies.com/124399.htm

中半山永威閣



Hillsborough Court

18 Old Peak Road

Tastefully designed 3-bedroom apartment with greenery view on Lower Peak
品味裝修三房單位，享綠林景致

1,385 s.f.
\$28.5M

9486 1566 Mira To 杜小姐
www.landscape-christies.com/122048.htm

中半山曉峰閣



Visalia Garden

48 MacDonnell Road

Well designed and decorated flat on convenient MacDonnell Road
麥當奴道清雅住宅，配以特色裝修，交通便利

2,195 s.f.
\$39M

9809 8570 Stella Lo 羅小姐
www.landscape-christies.com/121861.htm

中半山蔚山花園



Kenville Building

32 Kennedy Road

Classic mid-rise apartment just steps from Hong Kong Park and Queensway for sale
優質中密度住宅，鄰近香港公園及金鐘道

1,800 s.f.
\$39M

6258 8847 Anthea Ngai 魏小姐
www.landscape-christies.com/37257.htm

中半山甘苑



Tregunter Tower

14 Tregunter Path

Well designed and decorated 4-bedroom apartment in upscale location
雅致四房裝修單位，位於著名豪宅地段

3,052 s.f.
\$40.2M

6330 7888 Cora Ko 高小姐
www.landscape-christies.com/130543.htm

中半山地利根德閣



Dynasty Court

23 Old Peak Road

Renowned 3-bedroom apartment with facilities overlooking nice city view
著名三房住宅，連完善設施，欣賞醉人城市景色

1,970 s.f.
\$41M

6838 2929 Mark Mak 麥先生
www.landscape-christies.com/136874.htm

中半山帝景園



Century Tower

1 Tregunter Path

Unique 3-bedroom apartment in prime location

獨特三房單位，位於高尚地段

2,565 s.f.

\$49M

9551 1077 Walker Lam 林先生
www.landscape-christies.com/35168.htm

中半山世紀大廈



The Royal Court

3 Kennedy Road

Rare penthouse duplex with private roof overlooking CBD and Victoria Harbour
罕有頂層複式住宅，連私家天台，俯瞰都市繁華及維港優美景致

2,280 s.f. (plus 747 s.f. roof)

\$58M

9250 0300 Randy Chan 陳先生
www.landscape-christies.com/109799.htm

中半山帝景閣



Regence Royale

2 Bowen Road

Bowen's Road landmark building with comprehensive facilities

寶雲道地標大廈，附有完善設施，可租可售

2,522 s.f.

\$59M also for lease \$130K incl.

9093 3381 Stephen Chan 陳先生
www.landscape-christies.com/107368.htm

中半山富匯豪庭



Rose Gardens

9 Magazine Gap Road

Mid-rise apartment with harbour view in Lower Peak area

中密度海景四房單位，可租可售

2,600 s.f.

\$65M also for lease \$130K incl.

9551 1077 Walker Lam 林先生
www.landscape-christies.com/108934.htm

中半山玫瑰別墅



1 Po Shan Road

Well managed 4-bedroom apartment with harbour view

四房優質單位，尊享靚維港景

2,939 s.f.

\$78M

9028 0147 Jenson Au 區先生
www.landscape-christies.com/36642.htm

西半山寶珊道一號



Dynasty Court

23 Old Peak Road

Victoria Harbour view apartment with grand clubhouse facilities

豪華維港景大宅，連會所設施，可租可售

2,680 s.f.

\$83.5M also for lease \$130K incl.

9028 0147 Jenson Au 區先生
www.landscape-christies.com/105885.htm

中半山帝景閣



Kennedy Heights

10-18 Kennedy Road

Huge 5-bedroom apartment on fringe of CBD

巨大五房單位，鄰近商業中心區

3,400 s.f.

\$92M

9648 6082 Christine Chong 莊小姐
www.landscape-christies.com/101979.htm

中半山堅麗閣



The Mayfair

1 May Road

Exquisite apartment with spectacular harbour view

中半山雅緻裝修單位，享無敵靚海景，可租可售

2,838 s.f.

\$98M also for lease \$180K incl.

9871 6828 Louis Wong 黃先生
www.landscape-christies.com/31145.htm

中半山梅道一號



Hong Villa

12 Bowen Road

Spacious 1-unit per each floor apartment enjoying Victoria Harbour view with 2 carpark spaces

寬敞維港靚景單位，一梯一伙，連兩車位

3,833 s.f.

\$100M

9080 6686 Teresa Lau 劉小姐
www.landscape-christies.com/7396.htm

中半山峰景花園



Grenville House

1, 3 & 3A Magazine Gap Road

Newly renovated huge apartment with big balcony on Lower Peak

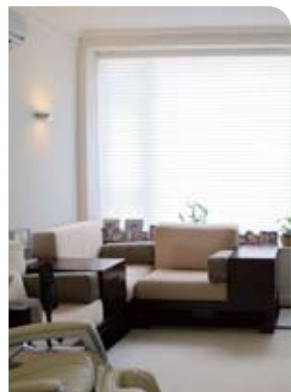
全新裝修寬敞單位，連大露台，可租可售

3,700 s.f.

\$125M also for lease \$280K incl.

6258 8847 Anthea Ngai 魏小姐
www.landscape-christies.com/150770.htm

中半山嘉慧園



18-19A Fung Fai Terrace
Lovely low-rise apartment with 3 bedrooms
at a convenient location of Happy Valley
雅致低密度單位連三房，交通方便

跑馬地鳳輝台18-19A號

1,200 s.f.
\$15M

9028 0147 Jenson Au 區先生
www.landscape-christies.com/122869.htm



Gardenview Heights
19 Tai Hang Drive
Harbour view apartment with private roof
in serene location
東半山海景住宅，連私家天台，地點清靜

東半山嘉景臺

1,350 s.f. (plus 836 s.f. roof)
\$22M

9229 2396 Elaine Chow 周小姐
www.landscape-christies.com/111644.htm



Braemar Hill Mansions
15-43 Braemar Hill Road
High efficiency harbour view apartment
with pool and tennis court surrounded by
lush greenery
高實用率海景住宅，連游泳池及網球場，享翠綠景致

北角半山賽西湖大廈

1,260 s.f.
\$24M

9093 3381 Stephen Chan 陳先生
www.landscape-christies.com/16690.htm

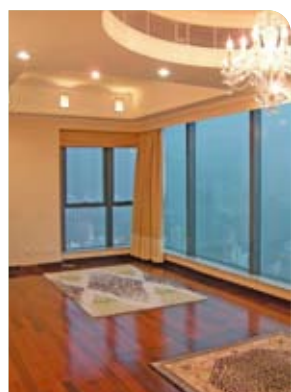


United Mansion
7 Shiu Fai Terrace
Unique mid-rise apartment with 3
ensuites in quiet neighbourhood
獨特中密度單位，連三套睡房，環境寧靜

東半山騰黃閣

2,200 s.f.
\$32M

9551 1077 Walker Lam 林先生
www.landscape-christies.com/72764.htm



The Colonnade
152 Tai Hang Road
Stylish apartment in Midlevels East with
fantastic views
時尚特色單位，享開揚美景，可租可售

東半山嘉福臺

1,857 s.f.
\$42.8M also for lease \$78K incl.

9493 8275 Sami Woo 胡小姐
www.landscape-christies.com/127169.htm



Silver Fair Mansion
2E-2F Shiu Fai Terrace
Spacious 3-bedroom flat with open view
and big balcony
寬敞三房單位，享開揚翠綠景色，連大露台

東半山銀輝大廈

1,450 s.f.
\$16M

9215 3999 Boris Wong 王先生
www.landscape-christies.com/72414.htm



Marlborough House
154 Tai Hang Road
Colonial style mid-rise apartment with
good-size balcony in a quiet location
英式中密度住宅，連大露台，環境清靜舒適

東半山保祿大廈

1,250 s.f.
\$22.8M

6838 2929 Mark Mak 麥先生
www.landscape-christies.com/38150.htm



2-6A Wilson Road
Colonial low-rise 3-bedroom apartment
with balcony enjoying green view
英式低密度三房單位，連大露台，享綠林美景，
可租可售

渣甸山衛信道2-6A號

1,550 s.f.
\$32M also for lease \$60K incl.

9229 2396 Elaine Chow 周小姐
www.landscape-christies.com/124604.htm



Stubbs Villa
2 Shiu Fai Terrace
Modern designed and decorated
4-bedroom flat with open city view
時尚裝修四房單位，享開揚城市景色

東半山詩濤花園

2,325 s.f.
\$32M

9551 1077 Walker Lam 林先生
www.landscape-christies.com/45131.htm



Fontana Gardens
1-25 Ka Ning Path
Huge 4-bedroom apartment with high
efficiency on fringe of Causeway Bay
巨大四房單位，間隔實用，鄰近銅鑼灣

東半山豪園

3,000 s.f.
\$45M

9215 3999 Boris Wong 王先生
www.landscape-christies.com/109309.htm



Villa Monte Rosa
41A Stubbs Road
Large family apartment on upper Stubbs Road
巨大家庭式住宅，位於司徒拔道頭段

東
半
山
玫
瑰
新
村

2,300 s.f.
\$45M

☎ 6330 7888 Cora Ko 高小姐
🌐 www.landscape-christies.com/31645.htm



Evergreen Villa
43 Stubbs Road
Newly renovated spacious 4-bedroom apartment with huge balcony
全新裝修四房單位，間隔寬敞，連大露台

東
半
山
松
柏
新
村

2,700 s.f.
\$65M

☎ 6330 7888 Cora Ko 高小姐
🌐 www.landscape-christies.com/123103.htm



Jade House
47C Stubbs Road
Tastefully decorated mid-rise apartment with harbour view in a prestigious location
品味裝修中密度住宅，享海港美景，地段尊貴

東
半
山
寶
璧
大
廈

2,700 s.f.
\$82M

☎ 9080 6686 Teresa Lau 劉小姐
🌐 www.landscape-christies.com/131610.htm



15 Moorsom Road
Rare find single house with private garden situated at a prestigious location
渣甸山罕有獨立屋，連私家花園，地段尊貴顯赫

渣
甸
山
睦
誠
道
15
號

3,154 s.f. (plus 1,000 s.f. garden)
\$Open Offer

☎ 6183 8339 Carman Szeto 司徒小姐
🌐 www.landscape-christies.com/14618.htm

居高臨下 Sitting on top of the world

La Mer 浪頤居

67-71 Bisney Road, Pokfulam

薄扶林 碧荔道67-71號

2,567 s.f. (plus 1,786 s.f. roof)
HK\$69M



Internally, this 2,567 s.f. apartment in a popular residential area of Pokfulam offers a welcoming environment with its cream and beige palette and spacious combined living and dining room, but what sets it apart is a massive 1,786 s.f. private roof — complete with its own Jacuzzi.

Accessed via an internal staircase, from the living room, the rooftop terrace has a wonderful 'resort' feel with its burnt umber hardwood floors and walls, all set off by matching outdoor furnishings. Ideal for parties in any weather, it has space for sunbathing, as well as a shaded area used for dining, equipped with a barbecue, pantry and seating.

Inside the apartment, large windows in the common areas provide ample natural lighting as well as stunning sea views. There are four bedrooms (one ensuite), 2.5 bathrooms, a study, a maid's room and a utility room, with the master bedroom (ensuite) and study strategically tucked behind the living area.

La Mer is located in a low density housing area on Bisney Road. The district is served by bus, public light buses and taxis.

這間2567平方呎的住宅單位位於薄扶林一個熱門住宅區，一室的奶白與米黃色調加上寬敞的客廳營造怡人居住環境。不過，說到最迷人之處，就不得不提那1786平方呎的偌大私人天台和自設的Jacuzzi按摩浴池。

客廳內的樓梯直接通往屋頂平台，焦茶色實木地板與牆壁加上配搭得恰到好處的戶外傢具，散發休閒度假風情。天台不受天氣影響，最適合開派對，亦有曬日光浴的角落，而進餐的地方則設遮陽頂蓋，配設燒烤爐、茶水間和座椅。

單位內，廳區的大窗不但令一室光線充沛，亦享有迷人海景。住宅共設四間睡房（一套房）、

2.5間浴室、書房、家傭房與雜物室，當中主人套房與書房都巧妙隱藏於客廳後。

浪頤居位於碧荔道的低密度住宅區，區內交通包括巴士、公共小巴與的士。



☎ 9093 3381 Stephen Chan 陳先生
🌐 www.landscape-christies.com/22029.htm



Fulham Garden
84 Pok Fu Lam Road
Practical 3-bedroom mid-rise apartment
in quiet neighbourhood
實用三房單位，環境清幽舒適，可租可售

薄扶林 富林苑

1,750 s.f.
\$48K incl. also for sale \$18M
9028 0147 Jenson Au 區先生
www.landscape-christies.com/42912.htm



Repulse Bay Garden
18-40 Bellevue Drive
High efficiency sea view apartment easily
accessible to various international schools
in Island South
南區海景大宅，間隔實用，鄰近眾多國際學校

淺水灣 麗景園

1,780 s.f.
\$60K incl.
9250 0300 Randy Chan 陳先生
www.landscape-christies.com/33548.htm



Hong Kong Parkview
88 Tai Tam Reservoir Road
Spacious 3-bedroom family flat with
deluxe clubhouse facilities in country park
家庭式三房住宅，間隔寬敞，連豪華會所設施

淺水灣 陽明山莊

2,093 s.f.
\$80K incl.
6258 8847 Anthea Ngai 魏小姐
www.landscape-christies.com/1263.htm



Repulse Bay Garden
18-40 Bellevue Drive
Newly renovated 3-bedroom sea view
apartment overlooking Repulse Bay
全新裝修三房海景住宅，俯瞰廣闊淺水灣

淺水灣 麗景園

2,288 s.f.
\$85K incl.
9833 9509 Michelle Chung 鍾小姐
www.landscape-christies.com/5706.htm



Bisney Cove
33-35 Bisney Road
3-bedroom low-rise flat with huge
balcony at Pokfulam
薄扶林低密度三房單位，連大露台

薄扶林 碧荔道33-35號

2,500 s.f.
\$88K incl.
9648 6082 Christine Chong 莊小姐
www.landscape-christies.com/94615.htm



Magazine Heights
17 Magazine Gap Road
Panoramic harbour view apartment
prestigiously located on Lower Peak
無敵全海景單位，地段尊貴

山頂馬己仙大廈

2,500 s.f.
\$89K incl.
9229 2396 Elaine Chow 周小姐
www.landscape-christies.com/14076.htm



Pine Crest
65 Repulse Bay Road
Full sea view unit featuring 3-bedroom, a
study room and balcony on Repulse Bay
Road
全海景大屋，連三睡房、書房及大露台，
位於淺水灣道

淺水灣 松苑

2,250 s.f.
\$120K incl.
9215 3999 Boris Wong 王先生
www.landscape-christies.com/3217.htm



The Mount Austin
8 Mount Austin Road
Five bedrooms apartment with south sea
view and private roof at The Peak
五房壯麗海景大宅，連私家天台

山頂 柯士甸山道8號

2,004 s.f. (plus 139 s.f. terrace and
1,500 s.f. roof)
\$120K incl.
9648 6082 Christine Chong 莊小姐
www.landscape-christies.com/27882.htm



Deepdene
55 Island Road
High efficiency 4-bedroom apartment
with huge living room and balcony in
quiet location
深水灣四房單位，實用率高，連寬敞客廳及大露台，
環境清靜

深水灣 蒲苑

2,319 s.f.
\$125K incl.
9648 6082 Christine Chong 莊小姐
www.landscape-christies.com/27333.htm



102 Repulse Bay Road
Spacious townhouse with terrace and roof
overlooking Repulse Bay for rent
淺水灣寬敞排屋，連平台及天台，俯瞰淺水灣景致

淺水灣 淺水灣道102號

3,500 s.f. (plus 1,031 s.f. terrace)
\$130K excl.
9493 8275 Sami Woo 胡小姐
www.landscape-christies.com/12691.htm

細說故事

The scent of success

With Shanghai Tang's signature ginger lily fragrance wafting through the doors of its new premises in Hong Kong, Duddell Street has officially become the sweetest-smelling cul-de-sac in town

上海灘招牌野薑花香水的芬芳從專門店大門飄到店外，讓都爹利街成為城裡最香氣芬馥的胡同小巷

text: suzanne miao
photography: dicky liu



When Shanghai Tang put an end to months of speculation and confirmed late last year that it was moving out of its historic Pedder Street premises, the question everyone was asking was "where to now?" The Chinese luxury lifestyle brand cleverly kept this a closely-guarded secret, effectively stirring up new speculation and guaranteeing top-of-mind awareness.

All was revealed earlier this year in April, when the Shanghai Tang Mansion opened its doors on Duddell Street in Central, with a façade that represents a modern tribute to the opulent mansions in the Art Déco style of 1930s Shanghai, crafted from etched glass and brass. No materials were kept or salvaged from the original location — apart from Michelle, a 17-year-old bird which had lived in the tailoring section at Pedder Street and has now taken up residence at the new premises.

In terms of the overall interiors, Shanghai-based studio Design MVW — founded by French architect Virginie Moriette and Chinese designer Xu Ming in 2006 — opted for creating a fresh new look that still remains true to the brand's ethos. The design team balances function and aesthetics using pure lines, lively forms and serene proportions, with equal touches of both whimsy and elegance. Duddell Street represents Shanghai Tang's largest store in the world, spread over a three-storey retail space of 15,000 sq-ft (and a Shanghai Tang Café opening later this year). Raphael le Masne de Chermont, executive chairman of Shanghai Tang, describes the Mansion as a representation of the brand's commitment "as the global ambassador of contemporary Chinese chic".





Entering the 'Grand Foyer', a huge Shou crystal chandelier hangs from the entrance hall's double-height ceiling. Surrounding walls of wooden lattice, backed by sepia-coloured mirrors, reinforce the contemporary Chinese theme, while also creating a visual link with the outer façade and inner walls. The chandelier was custom-made with four tiers of fine crystals that layer up to form the auspicious 'Shou' symbol of longevity, measuring 2.5m in height and 2m in width.

In the women's wear area, located on the ground and first floors, distinctively feminine lines include a curved ceiling, a peony brass inlay on the wooden flooring, fan-patterned screens and semi-circular seating. This provides contrast to the menswear section on the second floor, where an embossed dragon, a Chinese symbol of power, sets the mood. Evoking a gentleman's club in warm hues, the clearly masculine space also offers leather seating, with rich purple silk wall panels highlighting the men's 'Imperial Collection' of fine suiting. In the tailoring atelier, Chinese silks and European laces line the walls, while the classic tailor's table is re-imagined with minimalist lines and lit by brass hanging lamps inspired by antique Chinese vases.

Playful touches abound in the children's section, designed as a fantasy land for 'little emperors' in imperial yellow hues. Deliberately oversized motifs create an Alice in Wonderland mood, from a changing room shaped like a tea jar to fantastically large antique vase-shaped display cases. Whimsical elements are also seen in the area showcasing the Shanghai Tang Polo collection, where a curved ceiling recalls the roofs of ger tents in Mongolia, the reputed birthplace of the game — and a novel custom-made display table is cunningly constructed from Polo mallets.

From the Chinese cloud motifs as display stands in the Fragrance Bar to fitting rooms lined with handcrafted, bespoke Fromental wallpaper and the wrought-iron Art Déco staircase linking each floor, Shanghai Tang Mansion remains faithful to what made the brand great in the first place.

去年上海灘搬遷的傳言滿天飛，至年尾官方終於證實會遷出歷史悠久的畢打街舊店，當時每人心裡的問題都是「要搬到哪去？」。這個中式奢華生活品牌醒目得很，對新地址守口如瓶，再次成功引起坊間揣測，保證人人高度關注事態發展。

謎底終於在今年4月解開，上海灘Mansion於中環都爹利街登場。外牆由蝕刻玻璃配襯黃銅，以現代設計向上海30年代裝飾藝術派的奢華大宅致敬。新店並未留下或再用任何畢打街舊店的物料，除了一隻名為Michelle的小鳥。這隻17歲大的小鳥一直寄居畢打街舊店的裁縫部，現在則移居到新店裡。

上海設計事務所明合文吉由法國建築師Virginie Moriette及中國設計師徐明在2006年創辦，這次為上海灘創作室內設計，整體概念選擇營造出仍然忠於品牌理念的清新新形象。設計團隊以簡單線條、生動形狀與沉穩比例，搭配同樣豐富的奇異感與優雅感，平衡功能與美學。都爹利街新店是上海灘全球最大的專門店，三層佔地共1萬5000平方呎，今年稍後時間上海灘餐廳亦會在這裡開幕。上海灘執行主席雷富逸形容，新店代表品牌致力擔當推廣中國當代時尚風尚的環球大使。

走進「大玄關」，一盞攝人壽字水晶燈高吊在樓高兩層的入口大廳的天花上。四周牆壁的格子雕飾以深褐色調的鏡子襯底，加強當代中式主題，亦在內外牆壁之間營造出視覺聯繫。水晶吊燈度身訂造，高2.5米闊2米，四層精緻水晶品排成吉利的「壽」字圖案，寓意長壽。

女裝部設於地下和一樓，盡顯女性柔美線條，包括弧形天花、鑲上牡丹形黃銅裝飾的木地板、扇紋屏風與半圓座椅。二樓的男裝部與女裝部形成鮮明對比，牆上飾有在中國傳統中代表力量的龍浮雕，定下一室的格調。男裝部的陽剛味十足，以暖色系系觸發紳士俱樂部般的氣派，皮革椅配襯紫色絲綢牆板，突顯出高級男仕西裝系列「Imperial Collection」。至於裁縫部，牆上則有一排排的中國絲綢與歐洲蕾絲花邊，而經具裁縫 枱則以簡約線條重新演繹，上方高掛的黃銅吊燈的設計取自中國古董花瓶。

童裝部設計趣味滿分，塗上尊貴的皇室黃調，為一眾「小皇帝」創造樂園。刻意放大的圖案營造出「愛麗絲夢遊仙境」的格調，更衣室的形狀像是茶罐，而大型陳列櫃則是奇幻的古董花瓶形狀。上海灘Polo系列的展示區同樣洋溢夢幻元素，弧形天花儼如蒙古包的屋頂，向馬球的傳說發源地致敬，而馬球球棍則巧妙砌成特製陳列 枱，新奇又有趣。

上海灘Mansion始終如一，從香水吧的陳列架造成中式雲紋，到鋪上手工特製Fromental牆紙的試身室，以至連接各層的鐵橋樓梯都呈現裝飾藝術風格，依舊是當初令人眼前一亮的「上海灘」韻味。



For more features on design and architecture, don't miss the July issue of Perspective magazine, and check out our website at www.perspectiveglobal.com

請密切留意《透視》七月號更多有關建築與設計的專題報導，或登入www.perspectiveglobal.com參閱精彩內容。



Royal Garden

27 Repulse Bay Road

Well appointed 4-bedroom apartment with stunning sea view on Repulse Bay Road
雅緻四房單位，享壯麗海景，位於淺水灣道

淺水灣
聚豪居

2,680 s.f.
\$135K incl.

☎ 9493 8275 Sami Woo 胡小姐
🌐 www.landscape-christies.com/5433.htm



Manhattan Tower

63 Repulse Bay Road

Practical 4-bedroom apartment with superb sea view on Repulse Bay Road
實用四房單位，尊享無敵靚海景

淺水灣
曼赫頓大廈

2,400 s.f.
\$140K excl.

☎ 9809 8570 Stella Lo 羅小姐
🌐 www.landscape-christies.com/6428.htm



Casa Del Sol

33 Ching Sau Lane

Townhouse with practical layout and sea view in serene location
春坎角海景排屋，間隔實用，環境和諧寧靜

春坎角
昭陽花園

3,549 s.f.
\$145K incl.

☎ 6183 8388 Chris Law 羅先生
🌐 www.landscape-christies.com/8079.htm



Guildford Court

5 Guildford Road

Spacious 4-bedroom low-rise apartment at a convenient location on The Peak
寬敞四房低密度單位，交通方便，可租可售

山頂
僑福道5號

2,750 s.f.
\$150K incl. also for sale \$100M

☎ 9809 8570 Stella Lo 羅小姐
🌐 www.landscape-christies.com/107173.htm



5 Headland Road

Sought after low-rise apartment with roof terrace and stunning sea view on Headland Road
赫蘭道低密度住宅，連大天台，享廣闊海港景色

淺水灣
赫蘭道5號

3,200 s.f. (plus 786 s.f. roof)
\$160K excl.

☎ 6838 2929 Mark Mak 麥先生
🌐 www.landscape-christies.com/36933.htm



Orient Crest

76 Peak Road

Spacious and nicely renovated 4-bedroom townhouse on the Peak
雅緻四房裝修排屋，享壯麗海景，位於山頂道

山頂
山頂道76號

3,313 s.f. (plus 1,000 s.f. garden and 1,000 s.f. roof)
\$170K incl.

☎ 6183 8388 Chris Law 羅先生
🌐 www.landscape-christies.com/20263.htm



Louisette

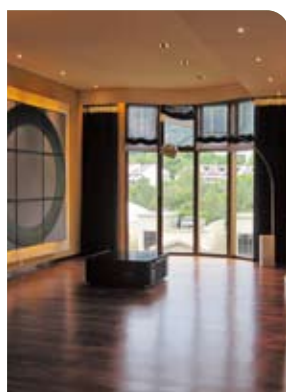
20 Stanley Beach Road

Full sea view townhouse with garden, roof and 3 covered parking spaces in Stanley
赤柱全海景排屋，附有花園及天台，連三車位，可租可售

赤柱
赤柱灘道20號

2,856 s.f. (plus 1,957 s.f. garden and 1,229 s.f. roof)
\$190K incl.

also for sale \$Open Offer
☎ 9486 1566 Mira To 杜小姐
🌐 www.landscape-christies.com/4652.htm



Las Pinadas

33 Shouson Hill Road

Spacious townhouse with large living room and private garden in gated neighbourhood
壽臣山寬敞排屋，連大客廳及私家花園

壽臣山
朗松居

3,494 s.f. (plus 393 s.f. garden, 144 s.f. terrace and 608 s.f. roof)
\$200K incl.

☎ 6183 8339 Carman Szeto 司徒小姐
🌐 www.landscape-christies.com/91170.htm



Altadena

27 Barker Road

Spacious duplex with spectacular harbour view prestigiously located on The Peak
山頂巨大複式住宅，欣賞醉人海港景色

山頂
白加道27號

4,500 s.f.
\$250K incl.

☎ 6838 2929 Mark Mak 麥先生
🌐 www.landscape-christies.com/12839.htm



32 Repulse Bay Road

Superb garden townhouse taking in stunning views of Deep Water Bay
華麗花園排屋，享深水灣廣闊景致

淺水灣
淺水灣道32號

3,000 s.f. (plus 1,356 s.f. garden and 556 s.f. roof)
\$280K excl.

☎ 9871 6828 Louis Wong 黃先生
🌐 www.landscape-christies.com/6317.htm



ARCHITECTURE INTERIORS DESIGN
PERSPECTIVE 透視
 Hong Kong's Interior Design Magazine of The Year

subscribe online
 and **save 20%**
 including free delivery

visit
www.perspectiveglobal.com

頂峰之位 The grand Peak

Located at the junction of Peak Road and Peel Rise, this is a luxury boutique development with three detached houses, each with a private outdoor swimming pool and garden with greenery and sea views. From modern contemporary to traditional Chinese, each house is newly renovated with its own unique design. Naturally, all evoke an ultra-luxe ambience, with a grand living and dining room as well as ceilings up to 13 feet high with glass skylights.

House 99 is two storeys high with a gross area of approximately 7,850 s.f. Houses 101 and 103 are three storeys at approximately 6,115 s.f. each. Each comes with its own lock-up garage.

The development is located near the Peak Towers, The Galleria and daily amenities, and Central is a 20 minute drive away.

這個豪華精品住宅發展項目坐落山頂道與貝璐道的交界，由三間獨立屋組成，每間都設私人戶外游泳池和花園，環境翠綠清幽，眺望海景。三間獨立屋都剛完成翻新，設計從當代到傳統中國風，各有各特色，亦同樣散發極奢華風尚，客廳廳偌大寬敞，天花高達13呎並有玻璃天窗。

99號房子樓高兩層，建築面積約7850平方呎。101號及103號的房則樓高三層，每間約6115平方呎。三間都有私人車庫。

項目鄰近凌霄閣、山頂廣場與日常設施，距中環亦只是20分鐘車程。

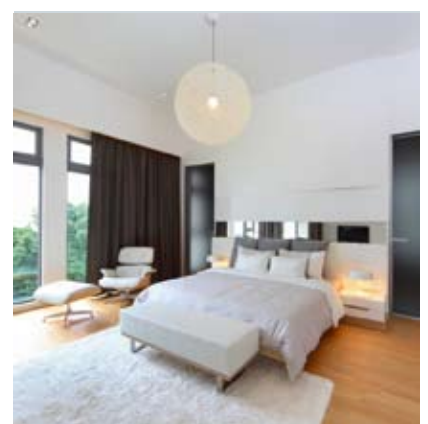
99-103 Peak Road, The Peak

山頂 山頂道99-103號

6,115 s.f.

(plus 2,273 s.f. garden, 492 s.f. terrace and 617 s.f. roof)
HK\$500K excl.

9833 9509 Michelle Chung 鍾小姐
www.landscape-christies.com/31761.htm



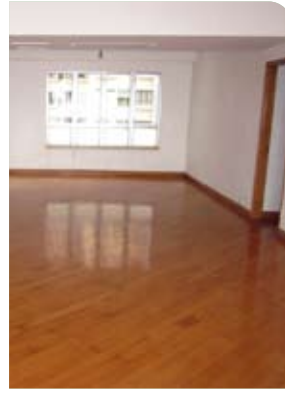


Best View Court
66-68 MacDonnell Road
Colonial mid-rise apartment with huge balcony on MacDonnell Road
英式中密度住宅，連巨大露台，位於麥當奴道

中半山
好景大廈

1,750 s.f.
\$54K incl.

9809 8570 Stella Lo 羅小姐
www.landscape-christies.com/54189.htm



Serene Court
8 Kotewall Road
Well kept 4-bedroom apartment in Midlevels West easily accessible by public transport
西半山優質四房單位，交通便利

西半山
秀麗閣

2,334 s.f.
\$70K incl.

9250 0300 Randy Chan 陳先生
www.landscape-christies.com/156740.htm



Hong Villa
12 Bowen Road
Practical 3-bedroom apartment with ample built-in wardrobes in a tranquil neighbourhood
實用三房單位，連寬敞大衣櫃，環境清靜

中半山
峰景花園

1,916 s.f.
\$70K incl.

9551 1077 Walker Lam 林先生
www.landscape-christies.com/3653.htm



Dragon View
39 MacDonnell Road
Spacious, high efficiency 3-bedroom apartment with new outlook
巨大三房單位，間隔實用，大廈全翻新

中半山
龍景樓

2,500 s.f.
\$80K incl.

9486 1566 Mira To 杜小姐
www.landscape-christies.com/37950.htm



1A Robinson Road
Unique 3-bedroom penthouse with private roof enjoying open city views in Midlevels West
獨特三房頂層單位，連私家天台，享開揚城市景觀

西半山
羅便臣道1號A

2,200 s.f. (plus 2,200 s.f. roof)
\$95K incl.

9551 1077 Walker Lam 林先生
www.landscape-christies.com/118844.htm



Kam Yuen Mansion
3 Old Peak Road
Colonial style low-rise apartment with exceptionally high efficiency close by CBD
英式低密度住宅，實用率高，鄰近商業中心區

中半山
錦園大廈

2,500 s.f.
\$95K incl.

9809 8570 Stella Lo 羅小姐
www.landscape-christies.com/23040.htm



Po Garden
9 Brewin Path
4-bedroom with good condition and open view apartment with full facilities
四房優質住宅，環境開揚，設施齊全

中半山
寶園

2,572 s.f.
\$95K incl.

9080 6686 Teresa Lau 劉小姐
www.landscape-christies.com/26077.htm



Kennedy Heights
10-18 Kennedy Road
Spacious and practical 5-bedroom apartment with city view nearby Hong Kong Park
五房寬敞大宅，間隔實用，享醉人城市景觀，鄰近香港公園

中半山
堅麗閣

3,400 s.f.
\$100K incl.

6183 8388 Chris Law 羅先生
www.landscape-christies.com/39691.htm



Bowen's Lookout
13 Bowen Road
Luxurious 4-bedroom apartment with fantastic views in quiet location
豪華四房單位，環境清靜，享壯麗景色

中半山
寶雲道13號

2,388 s.f.
\$100K incl.

9486 1566 Mira To 杜小姐
www.landscape-christies.com/33915.htm



Brewin Court
5-7 Brewin Path
Colonial low-rise 4-bedroom apartment with balcony on fringe of Central
英式低密度四房住宅，連大露台，鄰近中環

中半山
明雅園

2,600 s.f.
\$110K incl.

9809 8570 Stella Lo 羅小姐
www.landscape-christies.com/11659.htm



Branksome Grande

3 Tregunter Path

Spacious 3-bedroom apartment with balcony at a quiet location of Lower Peak
寬敞三房單位，連大露台，位於寧靜半山

3,030 s.f.
\$115K excl.

6330 7888 Cora Ko 高小姐
www.landscape-christies.com/10894.htm

中半山 地利根德里 8 號



The Harbourview

11 Magazine Gap Road

Sought after 4-bedroom apartment with Victoria Harbour view on Magazine Gap Road
中半山四房單位，欣賞維港美景

2,350 s.f.
\$118K excl.

9093 3381 Stephen Chan 陳先生
www.landscape-christies.com/3060.htm

中半山 港景別墅



Piccadilly Mansion

4-6 Po Shan Road

Large practical harbour view 4-bedroom apartment in tranquil environment
寬敞實用四房大宅，享海港景色，環境舒適寧靜，可租可售

2,800 s.f.
\$130K incl. also for sale \$60M

6183 8339 Carman Szeto 司徒小姐
www.landscape-christies.com/35976.htm

西半山 碧苑



Clovelly Court

12 May Road

Large and spacious 4-bedroom apartment with brand new decorations
巨大四房住宅，間隔四正，配以全新裝修

2,806 s.f.
\$135K excl.

9093 3381 Stephen Chan 陳先生
www.landscape-christies.com/29518.htm

中半山 嘉富麗苑



Fairlane Tower

2B Bowen Road

Rarely available harbour view penthouse with excellent facilities on fringe of Central
罕有頂層單位，設施齊全，享美麗海景，鄰近中環

2,682 s.f.
\$139.8K incl.

9093 3381 Stephen Chan 陳先生
www.landscape-christies.com/31007.htm

中半山 寶雲山莊



Hong Villa

12 Bowen Road

Spacious 4-bedroom apartment with balcony overlooking city and harbour views
中半山寬敞四房單位，連大露台，俯瞰迷人城市及海港景致

3,833 s.f.
\$140K excl.

6258 8847 Anthea Ngai 魏小姐
www.landscape-christies.com/7396.htm

中半山 峰景花園



Kennedy Heights

10-18 Kennedy Road

Newly decorated 5-bedroom apartment with open green views on fringe of CBD
全新裝修五房單位，享開揚綠林景致，鄰近中環商業區

3,400 s.f.
\$140K incl.

9486 1566 Mira To 杜小姐
www.landscape-christies.com/20516.htm

中半山 堅麗閣



Aigburth

12 Tregunter Path

Large 3-bedroom flat with excellent facilities in a prime location
巨大三房單位，享完善設施，位置便利

3,020 s.f.
\$150K excl.

6838 2929 Mark Mak 麥先生
www.landscape-christies.com/14166.htm

中半山 譽皇居



Regent On The Park

9A Kennedy Road

Huge duplex apartment with 6-bedroom and excellent facilities just steps away from Queensway and Hong Kong Park
巨大六房複式大宅，附完善設施，位於香港公園附近

5,440 s.f.
\$180K incl.

6258 8847 Anthea Ngai 魏小姐
www.landscape-christies.com/53636.htm

中半山 御花園



Tavistock 1

10-10A Tregunter Path

Popular 4-bedroom apartment at prestigious location with club facilities and mountain view
受歡迎四房單位，地段尊貴，享完善會所設施，欣賞山巒美景

4,880 s.f.
\$300K excl.

9486 1566 Mira To 杜小姐
www.landscape-christies.com/96561.htm

中半山 地利根德里 10 號



Flora Garden

7 Chun Fai Road

Popular family apartment with balcony and open city view

受歡迎家庭式住宅，連露台，享開揚城市景觀，可租可售

1,533 s.f.

\$46K incl. also for sale 23M

9229 2396 Elaine Chow 周小姐

www.landscape-christies.com/108737.htm

渣甸山
慧景園



24 Tung Shan Terrace

Nicely fitted low-rise apartment with panoramic racecourse view on Stubbs Road

司徒拔道清雅裝修低密度住宅，欣賞馬場全景

1,400 s.f.

\$52K incl.

6183 8388 Chris Law 羅先生

www.landscape-christies.com/21389.htm

東半山
東山台24號



Beverly Hill

6 Broadwood Road

Popular family and new decorated apartment in Happy Valley with great facilities and shuttle bus service

全新裝修受歡迎家庭式住宅，附有完善設施及穿梭巴士

1,748 s.f.

\$65K incl.

6183 8339 Carman Szeto 司徒小姐

www.landscape-christies.com/83187.htm

跑馬地
比華利山



21-25 Green Lane

Nicely decorated low-rise apartment with open city views in upper Happy Valley

品味裝修住宅，密度低，享開揚城市美景，可租可售

1,600 s.f.

\$65K incl. also for sale \$24M

9551 1077 Walker Lam 林先生

www.landscape-christies.com/109699.htm

跑馬地
箕璣坊21-25號



Elm Tree Towers

8-10 Chun Fai Road

3-bedroom apartment in Jardine's Lookout with panoramic harbour view

渣甸山三房單位，欣賞無敵全海景，可租可售

2,028 s.f.

\$85K incl. also for sale \$43M

6258 8847 Anthea Ngai 魏小姐

www.landscape-christies.com/37286.htm

渣甸山
愉富大廈



Evergreen Villa

43 Stubbs Road

Spacious 4-bedroom apartment with roof terrace enjoying open city and harbour views

巨大四房單位連大天台，享開揚城市及海港景觀

2,700 s.f. (plus 2,000 s.f. roof)

\$90K incl.

9493 8275 Sami Woo 胡小姐

www.landscape-christies.com/37650.htm

東半山
松柏新村



Broadview Villa

20 Broadwood Road

Large 4-bedroom apartment overlooking fantastic harbour and city views new facilities

寬敞四房住宅，俯瞰迷人海港及城市景觀，連泳池及網球場

3,134 s.f.

\$128K incl.

9080 6686 Teresa Lau 劉小姐

www.landscape-christies.com/34687.htm

跑馬地
樂景園



Highcliff

41D Stubbs Road

State of the art high-rise 4-bedroom apartment with stunning views

罕有四房高層住宅，享壯麗景色

3,676 s.f.

\$144K incl.

9833 9509 Michelle Chung 鍾小姐

www.landscape-christies.com/34289.htm

東半山
曉廬



Victoria Heights

43A Stubbs Road

Rarely available apartment with huge living room enjoying panorama of the city and Victoria Harbour

罕有寬敞客廳住宅，享城市景觀及維港美景，可租可售

2,650 s.f.

\$130K incl. also for sale \$70M

9493 8275 Sami Woo 胡小姐

www.landscape-christies.com/37141.htm

東半山
威利閣



The Summit

41C Stubbs Road

Panoramic view high-rise for rent in prime location

東半山特色住宅出租，位置方便，享美麗景色

3,254 s.f.

\$160K incl.

9493 8275 Sami Woo 胡小姐

www.landscape-christies.com/23865.htm

東半山
御峰

Mulberry Mews, Islington, London

倫敦市中心極具投資潛力之高尚住宅項目

Mulberry Mews
Islington



Taylor Wimpey is proud to present a luxurious collection of 1, 2 & 3 bedroom apartments and 4 & 5 bedroom townhouses set around a gated tree-lined square.

- 10-year NHBC Warranty, 999-Year Lease
- Superb links to The City (12 mins) & West End (8 mins)
- Secure underground parking
- Strong rental demand & capital growth potential
- Well positioned for London's key universities
- Estimated completion in Q4 2013
- Prices from £415,000

Sales Contacts

Yeoman Ho
yeoman.ho@landscape-christies.com • +852 9012 8222

Agnes Cheung
agnes.cheung@landscape-christies.com • +852 5303 4349

Chris Law
chris.law@landscape-christies.com • +852 6183 8388

Mark Mak
mark.mak@landscape-christies.com • +852 6838 2929

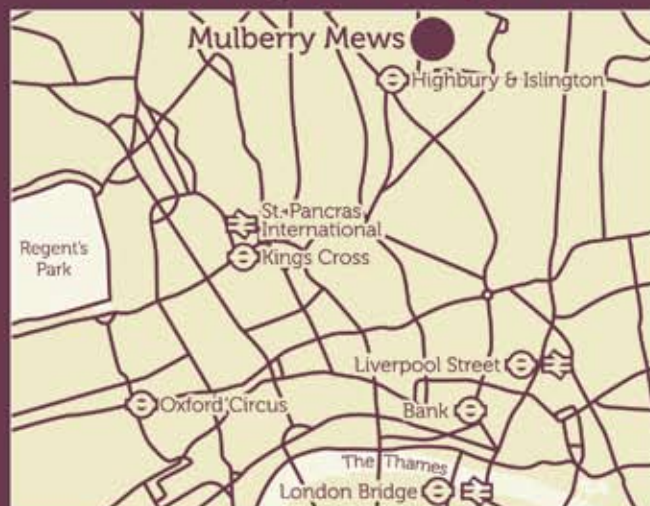
Randy Chan
randy.chan@landscape-christies.com • +852 9250 0300

Exclusive Launch - 7th & 8th July

The Drawing Room,
The Grand Hyatt Hong Kong,
1 Harbour Road, Hong Kong

Open 11am to 7pm on Saturday 7th & Sunday 8th July

www.mulberrymewsislington.com



Disclaimer: Information has been provided to us by sources deemed reliable, but no warranty or representation is made as to its accuracy or completeness. This offering is made subject to contract, correction of errors, omissions, change of price or terms or withdrawal from the market without notice. Information is for guidance only and does not constitute all or any part of the contract.

Developer:
Taylor Wimpey
Central London

Joint Selling Agents:



Landscape Christie's International Real Estate
Unit 3106, Hopewell Centre, 183 Queen's Road East,
Wanchai, Hong Kong
General +852 2866 0022 • **Fax** +852 2866 0015
Each Office is Independently Owned and Operated
Licence No: C-018733



Prime Residential Whole Block

Kensington & Chelsea
Whole house in prime location, newly redeveloped to be configured as 10 self contained apartments. Vacant at present, but full letting management service available on enquiry.
位於Kensington & Chelsea的豪華大宅，現已改建成10個交吉住宅單位。可提供售後出租及管理服務。

Estimated
Gross Yield 5%
Freehold
16,146 s.f.
Price upon request



Prime Mixed Use Commercial and Retail Block

Covent Garden W1
Grade 2 listed building in Prime Covent Garden location. Fully Renovated in 2007. Flagship Retail Store and Restaurant Chain on Ground floor, High profile media tenant in Grade A Office space above. All tenants on long leases. 這座位於Covent Garden的大廈是二級文物，於2007年全面翻新。地下是零售旗艦店及連鎖餐廳，樓上則是甲級寫字樓，租戶是世界知名的媒體公司，擁長期租約，絕少放盤。

Gross Yield 5.5%
Freehold
61,500 s.f.
£60-80M

Prime Retail & Commercial

Soho W1

Prime Soho 5 story building on prominent corner location, in the heart of the West End close to Carnaby Street. Fully let with Retail space let on new 15 year lease.

座落於Soho的5層高大廈，地段尊貴，位於West End的核心地帶，鄰近消費熱點Carnaby Street，罕有放盤，現已全部租出，其中地舖更擁有15年的高回報租約

Gross Yield 5%
Freehold
11,800 s.f.
£12-15M



Small Prime Commercial High Yield

City of London EC1

Small modern office block in the City. Multi let at current High yield with good potential for future rental increases.

位於The City的小型商業大廈，現租予多個租戶，租金回報高，不容錯過。

Gross Yield 8.1%
Freehold
17,010 s.f.
£5-7M



Prime Retail High Yield

Borough SE1

Prime location next to busy underground station, with single ground floor retail unit. Let on new 15 year lease with no breaks to successful high street chain. High Yield
鄰近旅遊景點London Bridge的零售商店。附近有繁忙的鐵路站，擁15年長期租約，回報可觀。

7% Gross Yield
Virtual
Freehold
Below £3M



Small Prime Commercial High Yield

Southwark SE1

Small modern Commercial building on South bank. Modern Specification interior, fully let to single tenant. High yield with good long term investment potential.

座落於South bank的小型商業大廈，內部裝修時尚。現租予單一租戶，高回報且具長遠投資潛力。

Gross Yield 7.4%
Freehold
8,116 s.f.
£3-5M

Prices on luxury UK properties are rarely quoted in listings. Interested parties are encouraged to make enquiries on price indications with Landscape

PRICE UPON ENQUIRY 歡迎查詢

6183 8388 Chris Law 羅先生



FARRINGTON INTERIORS

THE MOMENT MADE BEAUTIFUL



10,000 sq. ft. Flagship Store 旗艦店

31/F, World Trade Centre, 280 Gloucester Road, Causeway Bay, H.K.

香港銅鑼灣告士打道280號世貿中心31樓

T: (852) 2808 1000 F: (852) 2808 2800

Shop 店鋪

G/F, 87 Wong Nai Chung Road, Happy Valley, H.K.

香港跑馬地黃泥涌道87號地下

T: (852) 2808 0303 F: (852) 2801 6732

Opening Hours 營業時間

Mon - Fri

星期一至五

11:00 a.m - 7:00 p.m

Sat, Sun & Public Holiday

星期六、日及公眾假期

1:00 p.m - 6:00 p.m

WWW.FARRINGTONINTERIORS.COM