

select deluxe homes

# The Key

大宅®

www.landscape.com

JULY | 2010

Volume 69



Cozy Chic

Lofty retreat at the private comfort zone

KEY NOTES\*

“Be fearful when others are greedy, and be greedy when others are fearful”

「在別人貪婪的時候我恐懼，在別人恐懼的時候我貪婪。」

- Warren Buffett  
股神巴菲特

At the end of 2009, there were close to 1,100,000 residential units in Hong Kong, of which about 1,000,000 or 90% are small to medium units. The rest are large units with gross area of 1,500 square feet and above. According to government statistics, there are about 1,000,000 households living in private residential units (the rest are living in government housing including home ownership scheme housing). Obviously, supply and demand are in balance as far as the mass market is concerned. The supply and demand in luxury market is heavily skewed, with demand outstripping supply by a very wide margin. We estimate there are potentially 150,000 households in Hong Kong that have the actual need to live in large units and most of them are financially capable. On top of this is the demand from wealthy mainland Chinese and affluent expatriates. There are no reliable statistics available on the actual demand, but the fact that luxury property price keeps climbing is a testimony of the severe imbalance. There is then no surprise the site in Homantin which is suitable for developing large units had fetched such a high price.

2009年底，香港的住宅單位供應約110萬個，而當中的百分之九十，即100萬個是中小型住宅單位。根據政府數據顯示，現有大約100萬個家庭用戶居於私人住宅單位（其他則屬於包括居屋有其屋計劃在內的政府房屋）。就整體樓市而言，市場的供求是達到平衡的。然而，豪宅市場的供求卻嚴重失衡，需求遠遠超過市場供應量。估計大約有15萬家庭住戶對較大面積的單位有切實的需要，而當中大部份更有經濟能力的中產家庭。除此之外，內地富家和富裕的外籍專才也對豪宅的需求甚殷。雖然沒有可靠的實際需求數據，但事實上豪宅的價格不斷攀升，便是市場嚴重失衡的證據。因此，用以興建大面積單位的何文田住宅用地，能以如此高價售出也絕不意外。

By K.S. Koh  
ks-koh@landscape.com

Read the full article at Market Watch, [www.landscape.com/keynotes](http://www.landscape.com/keynotes)  
或瀏覽網頁全文，請登入Market Watch網站，網址：[www.landscape.com/keynotes](http://www.landscape.com/keynotes)

published and distributed by



Landscape Realty Limited C-018733  
a member of Landscape Surveys Ltd

Tel: 852-2866 0022 Fax: 852-2866 0015  
Email: info@landscape.com Website: [www.landscape.com](http://www.landscape.com)  
Unit 3106, 31/F, Hopewell Centre, 183 Queens Road East, Wanchai, Hong Kong

The information, text, photos, analyses and projections contained herein are provided solely for the convenience of prospective clients and no warranty or representation as to their accuracy, correctness or completeness is made by Landscape Surveys Limited, Landscape Realty Limited or the owners, none of whom shall have any liability or obligation with respect thereto. Interested parties should rely on their own investigations, interpretations and analyses in connection with the purchase or selling thereof.  
Information has been provided to us by sources deemed reliable, but no warranty or representation is made as to its accuracy, correctness or completeness. These offerings are made subject to contract, correction of errors, omissions, prior sale of assets, change of price or terms or withdrawal from the market without notice. The contents of The Key are for reference only and do not constitute all or any part of a contract.

Reproduction of any material in whole or part without written permission from In-Corporation Ltd is strictly prohibited. All information is correct at the time of going to press. The opinions expressed in The Key are those of the authors and are not necessarily endorsed by In-Corporation Ltd. Copyright 2010



THE KEY | CONTENTS

- 04 Cozy Chic  
時尚情懷
- 08 First show in Asia  
亞洲的第一次
- 12 In Details  
捕捉細節
- 18 Luxury property news  
第一手豪宅資訊

The Key (The No.1 Publication for Luxury Properties)

The Key is a monthly, bilingual lifestyle publication focusing on luxury residential properties in Hong Kong Island. It is sent to over 60,000 urban elites comprising of Hong Kong's most affluent inhabitants.

These consist of Landscape's VIP clients, who mainly reside in The Peak, Mid-Levels, Southside, Kowloon Tong, Homantin and other select up-market residential areas such as Tai Po, Sai Kung and Clear Water Bay, etc.

How may you list your property with The Key?

If you would like to list your property in an upcoming issue of The Key, you may contact Loretta Lui on +852 3102 4818 or visit us at [www.landscape.com/sell-to-let](http://www.landscape.com/sell-to-let). Alternatively, simply fill out the below and fax back to us on +852 2866 0015.

Property Details

Asking Rental / Sale Price

Floor Area

Contact Person

Telephone

Email

Our KeyPerson will contact you for follow-up work.

designed and produced by



In-Corporation Limited  
Your No. 1 Integrated Marketing Communications Partner in Hong Kong and China

Tel: 852-3699 0888 Fax: 852-3699 0889  
Email: [marketing@incorp.com.hk](mailto:marketing@incorp.com.hk) Website: [www.incmagazine.com.hk](http://www.incmagazine.com.hk)  
12/F Cyberport Road, Hong Kong



Situated on the Broadwood Road, the privileged mid-levels of Happy Valley, Broadwood Twelve overlooks the breath-taking view of 180° panoramic Victoria Harbour and the unparalleled Race Course. Its superb location is conveniently connected with all of Hong Kong. The prestigious vicinity includes a renowned school network providing the caring parents an array of top-notch schools from kindergartens, primary schools, secondary schools and international schools, as well as notable private clubs.

The premise offers various units with area from 1,650 sq ft to 3,236 sq ft for selection including two penthouse duplexes with private roofs. A 20,000 sq ft luxurious and functional clubhouse together with a podium garden is unique in the neighbourhood.

「樂天峯」盤踞跑馬地半山樂活道的傳統尊貴地段，飽覽180度醉人的維港景致及尊尚獨有的馬場勝景，位置優越，交通四通八達，區內名校林立，香港著名幼稚園、小學、中學甚至國際學校雲集；而且毗鄰多個香港豪宅私人會所。

單位面積由1,650平方呎至3,236平方呎不等，其中包括兩套頂層複式單位連私人天台可供選擇，並設有同區罕有的豪華會所連平台花園，設施應有盡有。

<b>Address:</b>	No. 12 Broadwood Road, Happy Valley
<b>No. of Tower:</b>	1
<b>No. of Flats:</b>	76 including 2 penthouse duplex units and 2 units with terrace
<b>No. of Storeys:</b>	45 storeys
<b>Fiat Type:</b>	<b>Standard Flat</b> 3-bedroom incl. 1 ensuite <b>Prestigious Flat</b> Units with Terrace <b>Penthouse Duplexes</b>
	<b>Gross Area</b> 1,650 sq.ft. and 1,653 sq.ft. <b>Gross Area</b> 1,630 sq.ft. (plus 1,762 sq.ft. terrace) 1,632 sq.ft. (plus 1,801 sq.ft. terrace) 3,236 sq.ft. (plus 1,097 sq.ft. roof) 3,234 sq.ft. (plus 884 sq.ft. roof)

<b>地址：</b>	跑馬地樂活道12號
<b>物業座數：</b>	1座
<b>單位數目：</b>	76個，包括2個頂層複式單位及2個特色單位連平台
<b>住宅層數：</b>	45層
<b>單位類型：</b>	<b>標準單位</b> 3房連主人套房 <b>特色單位</b> 特色單位連平台

頂層複式單位

Broadwood Twelve 跑馬地 樂天峯

No. 12 Broadwood Road, Happy Valley

Maria Cheung 葉小姐 5182 8699 Mira To 杜小姐 9486 1566 Mary Li 李小姐 9011 6395

Situated in the predominant mid-levels, "Sky Babington" is the penthouse of The Babington, a newly built sleek high-rise among its older neighbours. The 2,301 sq ft triplex is designed in a modern harmonious mood with simple earth hues throughout, featuring a 445 sq ft private hanging garden accessed from an internal staircase.

Huge windows fitted with powder-coated aluminium frames allow opulent natural light to flood in, creating a heart-warming private comfort zone. Four bedrooms including three ensuites are neatly decorated in a boutique-like chic style. The balcony fitted with wood decking and modern outdoor furniture is located between the study room and a bedroom, with full-height glass panels on both sides. Stainless steel decorations, glass panels and metal balustrades add a taste of sleekness to the cohesive earth tone while simple ceramic vases and paintings accentuate the artistic vibe of the apartment.

Proximity to the heart of the city - Central, this brand new apartment is the best retreat of the hectic lifestyles. ■

位於港島半山的優越地段，The Babington的頂層三樓式單位「尚天峯」，佔地2,301平方呎，全屋設計和諧時尚，以簡潔色調為主，更特設室內樓梯直達445平方呎的私人空中花園。

充足的天然光線從裝上粉末塗層鋁框的特大窗戶照進屋內每一角落，塑造一個溫暖和諧的安樂窩。全屋共有四個睡房，設計簡單優雅，並為其中三個套房佈置成時尚雅致的精品風格。鋪上木質戶外地板的露台位於睡房和書房中間，時尚的戶外傢俱，配合兩旁的落地玻璃，令空間變得優雅進徹。不銹鋼的小擺設、齊白金屬扶手和梯間的玻璃欄杆，為全屋的樸實格調增添光彩；而簡單的陶製花瓶和牆上的畫像，則突顯屋內的現代藝術氣息。

這座於2010年全新落成的公寓，位置優越，鄰近中環心臟地帶，堪稱繁忙生活的最佳避世之處。■

**The Babington**  
西半山 巴頓頓道6D-6E號  
6D-6E Babington Path, Midlevels West  
**2,301 s.f.** (plus 445 s.f. roof)  
**\$64,328,000**

www.landscape.com/126688.htm Louis Wong 黃先生 9871 6828



Designer: Rodolfo Dardani

Sole Dealer of Minotti for Hong Kong

# Minotti

Minotti S.p.A.  
20036 MEDA (MI) ITALIA  
e-mail: [info@minotti.it](mailto:info@minotti.it)  
[www.minotti.com](http://www.minotti.com)

# andante

Shop D, G/F, The Design Showcase,  
Ruttonjee Centre, 11 Duddell Street,  
Central, Hong Kong  
Tel. + 852/ 2537 9688  
Fax. + 852/ 2537 4488  
E-mail: [info@andante.com.hk](mailto:info@andante.com.hk)  
[www.andante.com.hk](http://www.andante.com.hk)

TK/1007/MI/AND07





**Villa Verde**  
山頂 豪華別墅  
4-18 Guilford Road, The Peak  
Rare investment property on The Peak with nice decor  
罕有山頂豪華裝修住宅，投資首選，可租可售

**1,200 s.f.**  
**\$23,000,000** also for lease \$48,000

www.landscope.com/44266.htm Teresa Lau 劉小姐 9080 6686



**Barker Villa**  
山頂 柏樂別墅  
41 Barker Road, The Peak  
Cozy apartment with panoramic views on Barker Road  
白加道迷人住宅，享遼闊開揚景觀

**1,650 s.f.**  
**\$45,000,000**

www.landscope.com/40734.htm Maria Cheung 張小姐 5182 8699



**26 Magazine Gap Road, The Peak**  
山頂 馬仙仙峰道26號  
Colonial apartment on Magazine Gap Road with harbour view  
馬仙仙峰道英式住宅，享尊維港景

**2,400 s.f.**  
**\$60,000,000**

www.landscope.com/31775.htm Stella Lo 蕭小姐 9809 8570



**Strawberry Hill**  
山頂 紅莓閣  
8 Plunkett's Road, The Peak  
Stylish colonial garden house overlooking Aberdeen Country Park and ocean view  
時尚英式花園大廈，俯瞰香港仔郊野公園景觀及海景

**3,194 s.f.**  
**\$120,000,000**

www.landscope.com/5288.htm Mavis Wu 吳小姐 9107 3891



**La Hacienda**  
山頂 加利山道29-33號  
29-33 Mount Kellett Road, The Peak  
Rare garden townhouse on The Peak overlooking verdant Aberdeen Country Park  
山頂罕有花園排屋，俯瞰香港仔郊野公園景觀

**3,200 s.f.**  
**\$150,000,000**

www.landscope.com/30422.htm David Leung 梁先生 9199 0672



**Severn**  
山頂 荷邊  
8 Severn Road, The Peak  
Brand new harbour view garden townhouse on The Peak  
山頂全新維港花園排屋

**3,330 s.f.** (plus 794 s.f. roof and 460 s.f. garden)  
**\$165,000,000**

www.landscope.com/101967.htm Maria Cheung 張小姐 5182 8699



**Kellett Heights**  
山頂 嘉利別墅  
61A-61B Mount Kellett Road, The Peak  
Nicely renovated apartment in tranquil environment  
山頂雅緻裝修單位，環境清幽怡人

**1,600 s.f.**  
**\$40,000,000**

www.landscope.com/30673.htm Chris Law 羅先生 6183 8388



**Stewart Terrace**  
山頂 史刺樓基  
81-95 Peak Road, The Peak  
Colonial low-rise apartment in the Peak with huge private roof  
山頂英式低密度住宅，連特大私人天台，可租可售

**2,327 s.f.** (plus 1,607 s.f. roof)  
**\$45,000,000** also for lease \$75,000 incl.

www.landscope.com/46374.htm Stephen Chan 陳先生 9093 3381



**Eredine**  
山頂 加利山道38號  
38 Mount Kellett Road, The Peak  
Huge colonial apartment with spectacular sea view  
巨型英式住宅，享壯麗的海景，可租可售

**3,300 s.f.**  
**\$75,000,000** also for lease \$160,000 incl.

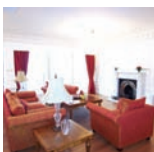
www.landscope.com/23687.htm David Leung 梁先生 9199 0672



**Mountain Lodge**  
山頂 瓦羅  
44 Mount Kellett Road, The Peak  
Rare duplex apartment with Southside sea view  
罕有複式住宅，享南面海景

**5,200 s.f.**  
**\$120,000,000**

www.landscope.com/96955.htm David Leung 梁先生 9199 0672



**Montebello**  
山頂 麥景閣  
15-17 Plantation Road, The Peak  
Rarely available 4-ensuite duplex with sweeping harbour view  
罕有四套房複式住宅，享優美維港景觀，可租可售

**4,455 s.f.**  
**\$158,000,000** also for lease \$250,000 incl.

www.landscope.com/103386.htm David Leung 梁先生 9199 0672



**Abergeldie**  
山頂 橡樹道52號  
52 Plantation Road, The Peak  
Peak house with bird's eye view of Victoria Harbour  
山頂大屋連天台花園及平台，享鳥瞰港景，可租可售

**3,655 s.f.** (plus 505 s.f. terrace, 464 s.f. garden and 282 s.f. roof)  
**\$200,000,000** also for lease \$300,000

www.landscope.com/13340.htm Louis Wong 黃先生 9671 6828



**Silver Star Court**  
跑馬地 銀星閣  
22-26 Village Road, Happy Valley  
Tastefully decorated apartment with car park in Happy Valley  
跑馬地雅緻品味裝修住宅連停車場

**1,088 s.f.**  
**\$13,000,000**

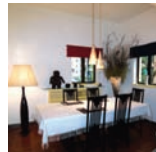
www.landscope.com/123700.htm Maria Cheung 張小姐 5182 8699



**Villa Lotto**  
跑馬地 樂陶苑  
18 Broadwood Road, Happy Valley  
High efficiency 3-bedroom flat with private terrace on Broadwood Road  
樂活三房住宅，連私家平台，實用率高

**1,225 s.f.** (plus 228 s.f. terrace)  
**\$15,500,000**

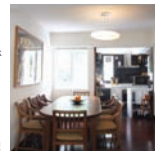
www.landscope.com/128008.htm Christine Chong 莊小姐 9648 6082



**79-81 Blue Pool Road, Happy Valley**  
跑馬地 藍池道79-81號  
Nicely decorated low-rise on upper Blue Pool Road  
藍池道頂段雅緻裝修低密度住宅

**1,900 s.f.**  
**\$21,000,000**

www.landscope.com/99604.htm Rowena Siu 蕭小姐 9348 4118



**Emerald Garden**  
西半山 雅翠閣  
36 Kotewall Road, Midlevels West  
Designer decorated apartment with good layout and 2 car parks  
設計師品味設計裝修住宅，間隔寬敞實用，連兩個車位

**1,450 s.f.**  
**\$15,280,000**

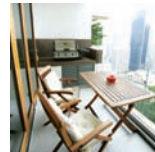
www.landscope.com/128535.htm Teresa Lau 蕭小姐 9080 6686



**Kensington Court**  
東半山 景福苑  
48-4C Shiu Fai Terrace, Midlevels East  
A nicely decorated apartment with 3 bedrooms and private roof top  
雅緻裝修住宅連三房及私家天台

**1,450 s.f.** (plus 964 s.f. roof)  
**\$16,000,000**

www.landscope.com/72633.htm Stephen Chan 陳先生 9093 3381



**Estella Court**  
中半山 香海大廈  
70 MacDonnell Road, Midlevels Central  
Well decorated colonial style apartment with open city and partial harbour view on MacDonnell Road  
麥當勞道雅緻裝修英式住宅連開揚城市景觀及部份港景

**2,000 s.f.**  
**\$25,000,000**

www.landscope.com/96274.htm Rowena Siu 蕭小姐 9348 4118

## The Hacienda 90 Repulse Bay Road

- Full seaview, with Roof
- Swimming pool, Gym & Carpark
- 1,600-3,000 sq.ft.
- 3-4 Bedrooms
- Welcome coupons to tenants

Leasing Hotline **2122 2025**  
**2122 2362**



- Open View, Carpark & BBQ area
- Approx. 5 minutes walk to Festival Walk / Kowloon Tong MTR
- 1,270-1,350 sq.ft., 2/3 bedrooms / balcony
- Kowloon Tong school network no.41
- Welcome coupons to tenants

Leasing Hotlines: **2122-2025**  
**2122-2362**



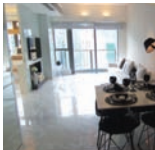
長江實業地產發展有限公司  
CHEUNG KONG PROPERTY DEVELOPMENT LIMITED



**Villa Rocha**  
跑馬地 樂翠台  
10 Broadwood Road, Happy Valley  
Contemporary-designed penthouse with roof terrace overlooking racecourse in Happy Valley  
時尚設計頂層住宅連天台平台，俯瞰跑馬地馬場景觀

**1,313 s.f. (plus 1,033 s.f. roof)**  
**\$26,800,000**

www.landscape.com/124690.htm Mary Li 李小姐 9011 6595



**Serenade**  
東半山 上林  
11 Tai Hang Road, Midlevels East  
Brand new harbour view apartment with excellent facilities  
全新靚港景住宅，適充居住客會所設施

**1,563 s.f.**  
**\$31,729,000**

www.landscape.com/128161.htm Rylie Ip 葉先生 6900 2238



**The Colonnade**  
東半山 嘉薈閣  
152 Tai Hang Road, Midlevels East  
Elegantly decorated exquisite apartment with fantastic views  
靚裝修精緻住宅，尊享讓人美景

**2,256 s.f.**  
**\$42,800,000**

www.landscape.com/21661.htm Mira To 杜小姐 9486 1566



## First show in Asia 亞洲的第一次

The Cat Street Gallery is proud to present "Revolve", an exhibition featuring the works of celebrated British duo Rob and Nick Carter. This will be the Carters' first solo show in Asia. Their artwork explores a central preoccupation with the tenets of light, colour and form. In this exhibition, the artists abandon traditional paint and canvas, and employ light sensitive paper instead. The artists have exhibited internationally including solo shows in New York, Los Angeles, Zurich, Geneva, and Milan. This exhibition will be held at The Cat Street Gallery in Sheung Wan until 30 July. ■

名為「Revolve」的畫展將展出兩位著名藝術家組合Rob Carter和Nick Carter的作品。這將會是他們首次在亞洲舉行的畫展。他們的作品強調光線、顏色和狀態的變化，Carter採用感光紙取代傳統的染料和畫布，藉此加強作品的效果。他們曾在世界各地展出作品，包括紐約、洛杉磯、蘇黎世、日內瓦及米蘭等地參展。畫展將於上環The Cat Street Gallery展出至7月30日。■

### 1-4 Briar Avenue, Happy Valley 跑馬地 比雅道1-4號



Charming colonial low-rise in Happy Valley  
跑馬地迷人英式低密度住宅，可租可售

**1,800 s.f.**  
**\$26,800,000 also for lease \$70,000 incl.**

www.landscape.com/41099.htm Mary Li 李小姐 9011 6595



**Regunter Tower 2**  
中半山 地利根樓閣 2座  
14 Tregunter Path, Midlevels Central  
Spacious colonial apartment with 4 bedrooms and balcony  
英式住宅連四房及陽臺，間隔寬敞

**3,052 s.f.**  
**\$33,500,000**

www.landscape.com/9951.htm Mira To 杜小姐 9486 1566



**Carnation Court**  
東半山 康翠園  
41-47 Tai Hang Road, Midlevels East  
Rare high floor unit with private flat roof and 3 carports  
東半山高層住宅，連私家天台及三個車位，罕有出售

**1,728 s.f. (plus 1,181 s.f. roof and 302 s.f. terrace)**  
**\$45,000,000** **Sole Agent 獨家代理**

www.landscape.com/89145.htm Carman Szeto 司徒小姐 6183 8339

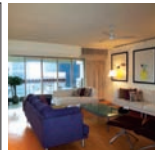
the summit  
A TREASURY OF SUCCESS

The essence of  
*Stylish living*

- Prominently located at 41C Stubbs Road, Mid-Levels
- In close proximity to C80, International schools and Bowen Road jogging trail
- With 70-storey, The Summit commands splendid views of Victoria Harbour and city skyline
- The duplex suites range from 3,254-6,496 sq.ft.
- Facilities include indoor swimming pool, Jacuzzi, gymnasium, golf simulator, outdoor entertainment/BBQ area and children's playground
- 24-hour security service
- On-site maintenance team

**Leasing Enquiry: 2679 0222**  
(viewing by appointment only)  
**LeasingEnquiry@hanglung.com**  
[www.thesummit.hk](http://www.thesummit.hk)

恒隆地產  
HANG LUNG PROPERTIES



**Dragon View**  
中半山 龍景樓  
39 MacDonnell Road, Midlevels Central  
Spacious designer's decorated apartment situated on fringe of CBD  
設計師精心設計寬敞住宅，鄰近中環商業區

**2,500 s.f.**  
**\$46,000,000**

www.landscape.com/37960.htm Louis Wong 黃先生 9871 6828



**Rose Gardens**  
中半山 玫瑰別墅  
9 Magazine Gap Road, Midlevels Central  
Classic mid-rise apartment in lower Peak with tasteful decor  
古典低密度住宅，配以雅緻裝修

**2,600 s.f.**  
**\$55,000,000**

www.landscape.com/108934.htm Mira To 杜小姐 9486 1566



**Piccadilly Mansion**  
西半山 碧苑  
4-6 Po Shan Road, Midlevels West  
Large practical harbour view apartment in tranquil environment  
西半山特大維港景住宅，間隔寬用，環境靜謐

**2,800 s.f.**  
**\$55,500,000**

www.landscape.com/35976.htm Carman Szeto 司徒小姐 6183 8339



**Tregunter Tower 3**  
中半山 地利根樓閣3座  
14 Tregunter Path, Midlevels Central  
Luxurious duplex apartment with stunning harbour view  
豪華複式住宅，尊享環圍維港景觀

**3,798 s.f.**  
**\$85,000,000**

www.landscape.com/14936.htm Sandra Choi 蔡小姐 9234 1109



**Craigmount**  
東半山 紀園  
34 Stubbs Road, Midlevels East  
Newly renovated penthouse with private roof overlooking Happy Valley  
全新低修頂層住宅，連私家天台，俯瞰跑馬地景觀

**3,200 s.f. (plus 799 s.f. roof)**  
**\$85,000,000**

www.landscape.com/32864.htm Christine Chong 莊小姐 9648 6082

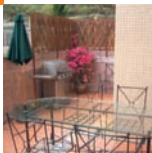


**5 Moorsom Drive, Jardine's Lookout**  
淺甸山 曉誠徑5號  
Exclusive detached house with private garden and garage  
淺甸山獨特大屋，連私家花園及車房

**4,000 s.f. (plus 3,000 s.f. garden)**  
**\$180,000,000**

www.landscape.com/13399.htm Sandra Choi 蔡小姐 9234 1109





**The Beachside**  
淺水灣 淺水灣道82-86號  
82-86 Repulse Bay Road, Repulse Bay  
Cozy flat with private terrace close to Repulse Bay Beach  
淺水灣私人住宅區私家平台，鄰近淺水灣海灘，可租可售

**930 s.f.** (plus 300 s.f. terrace and 268 s.f. garden)  
**\$14,500,000 also for lease \$32,000 incl.**

[www.landscape.com/10430.htm](http://www.landscape.com/10430.htm)

Christine Chong 莊小姐 9648 6082



**Goldson Place**  
壽臣山 金閣閣  
11 Shouson Hill Road West, Shouson Hill  
Tropical design low-rise flat with roof terrace in tranquil surroundings  
熱帶地氈式設計低密度住宅，連天台平台，環境寧靜

**1,650** (plus 1,297 s.f. roof)  
**\$23,000,000**

[www.landscape.com/40736.htm](http://www.landscape.com/40736.htm)

Mavis Wu 吳小姐 9107 3891

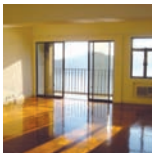


**Shousan Garden**  
壽臣山 壽山花園  
6A Shouson Hill Road, Shouson Hill  
Low-rise 3-bedroom apartment in Shouson Hill  
壽臣山低密度三房住宅

**1,598 s.f.**  
**\$30,000,000**

[www.landscape.com/13813.htm](http://www.landscape.com/13813.htm)

Mary Li 李小姐 9011 6595

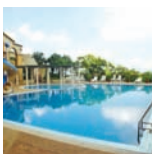


**Ming Wai Garden**  
淺水灣 明華園  
45 Repulse Bay Road, Repulse Bay  
Repulse Bay 3-bedroom sea view apartment in prime location  
淺水灣三房海景住宅，位處尊貴地段

**1,900 s.f.**  
**\$40,000,000**

[www.landscape.com/117789.htm](http://www.landscape.com/117789.htm)

Stella Lo 羅小姐 9809 8570

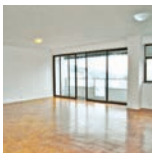


**Celestial Garden**  
淺水灣 詩禮花園  
5 Repulse Bay Road, Repulse Bay  
3-bedroom apartment on upper Repulse Bay Road  
淺水灣道頭段三房住宅

**2,363 s.f.**  
**\$46,000,000**

[www.landscape.com/1520.htm](http://www.landscape.com/1520.htm)

Stella Lo 羅小姐 9809 8570



**Repulse Bay Towers**  
淺水灣 保寧大廈  
119A Repulse Bay Road, Repulse Bay  
Renowned 4-bedroom duplex with view of Repulse Bay Beach  
有名望四房複式住宅，尊享壯麗淺水灣海灣景觀，可租可售

**3,100 s.f.**  
**\$52,000,000 also for lease \$80,000 incl.**

[www.landscape.com/4270.htm](http://www.landscape.com/4270.htm)

Rylie Ip 葉先生 6600 2238



**Yee On**  
薄扶林 羅富閣樓13-15號  
13-15 Northcote Close, Pokfulam  
Tastefully decorated 2-bedroom apartment with big balcony  
品味獨特兩房單位連大陽臺

**1,600 s.f.**  
**\$15,000,000**

[www.landscape.com/111417.htm](http://www.landscape.com/111417.htm)

Chris Law 羅先生 6183 8388



**Cape Mansions**  
薄扶林 翠海別墅  
56-62 Mount Davis Road, Pokfulam  
Meticulously designed sea view apartment in excellent condition  
薄扶林海景住宅，配以一絲不苟的設計，保養良好

**2,100 s.f.**  
**\$30,000,000**

[www.landscape.com/118859.htm](http://www.landscape.com/118859.htm)

Rowena Siu 蕭小姐 9348 4118



**Sea Cliff Mansions**  
淺水灣 海峰閣  
19A-19D Repulse Bay Road, Repulse Bay  
Sea view apartment in convenient location  
淺水灣海景住宅，位處優越地段

**2,400 s.f.**  
**\$36,000,000**

[www.landscape.com/6364.htm](http://www.landscape.com/6364.htm)

Stella Lo 羅小姐 9809 8570

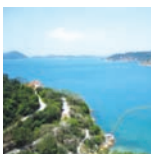


**Royalton I**  
薄扶林 豪峰 I  
118 Pokfulam Road, Pokfulam  
Spacious duplex with sweeping Pokfulam sea view  
寬敞複式住宅享廣闊薄扶林海景

**3,250 s.f.**  
**\$43,000,000**

[www.landscape.com/109727.htm](http://www.landscape.com/109727.htm)

Maria Cheung 張小姐 5182 8699



**Ruby Court**  
淺水灣 嘉蘭閣  
55 South Bay Road, Repulse Bay  
Fantastic sea view apartment in South Bay  
淺水灣驚人海景住宅，可租可售

**2,200 s.f.**  
**\$46,000,000 also for lease \$88,000 incl.**

[www.landscape.com/119761.htm](http://www.landscape.com/119761.htm)

Stephen Chan 陳先生 9093 3381



**3 Repulse Bay Road, Repulse Bay**  
淺水灣 淺水灣道3號  
Prestigious 4-bedroom apartment with lush green view and sea view  
豪華四房單位，尊享翠綠園景及海景，可租可售

**2,079 s.f.**  
**\$55,000,000 also for lease \$85,000 incl.**

[www.landscape.com/100222.htm](http://www.landscape.com/100222.htm)

Teresa Fung 馮小姐 9138 1621



**Park Place**  
淺水灣 雅柏苑  
7 Tai Tam Reservoir Road, Repulse Bay  
Prestigious apartment with facilities enjoying Victoria Harbour view and park view  
豪華尊貴住宅，享維多利亞海灣及翠綠公園景致，連住客會所設施

**2,288 s.f.**  
**\$57,000,000**

[www.landscape.com/39677.htm](http://www.landscape.com/39677.htm)

Teresa Fung 馮小姐 9138 1621



**Hillgrove**  
香坎角 盤如花園  
18 Cape Drive, Chung Hom Kok  
Low-rise 4-bedroom apartment with private roof  
香坎角低密度四房住宅，連私家花園

**2,680 s.f.** (plus 895 s.f. roof and terrace)  
**\$60,000,000**

[www.landscape.com/110161.htm](http://www.landscape.com/110161.htm)

Christine Chong 莊小姐 9648 6082



**Horizon Ridge**  
香坎角 海天小徑  
38-48 Horizon Drive, Chung Hom Kok  
Townhouse with stunning sea view in quiet enclave  
香坎角絕色海景單位，寧靜怡人

**3,800 s.f.** (plus 783 s.f. terrace)  
**\$73,800,000**

[www.landscape.com/22813.htm](http://www.landscape.com/22813.htm)

Teresa Fung 馮小姐 9138 1621



**Bellevue Place**  
淺水灣 寶晶苑  
93 Repulse Bay Road, Repulse Bay  
Rare find duplex in tranquil neighbourhood of Repulse Bay  
淺水灣罕見複式住宅，環境優美寧靜

**3,426 s.f.**  
**\$60,000,000**

[www.landscape.com/123284.htm](http://www.landscape.com/123284.htm)

Teresa Lau 蕭小姐 9080 6686



**Manhattan Tower**  
淺水灣 曼華閣大廈  
63 Repulse Bay Road, Repulse Bay  
Rarely available 4-bedroom flat in Repulse Bay  
淺水灣罕有四房住宅

**2,400 s.f.**  
**\$64,000,000**

[www.landscape.com/16574.htm](http://www.landscape.com/16574.htm)

Mark Mak 麥先生 6838 2329



**The Somerset**  
淺水灣 柏峰  
67 Repulse Bay Road, Repulse Bay  
Well decoration sea view famous duplex apartment with big balcony on upper Repulse Bay Road  
淺水灣道頭段有名雅緻裝修複式單位，尊享海景及特大陽臺

**2,464 s.f.**  
**\$73,920,000**

[www.landscape.com/111753.htm](http://www.landscape.com/111753.htm)

Maria Cheung 張小姐 5182 8699



歐詩木  
osmo<sup>®</sup>  
...in form und farbe

*Wood finishes from a wood specialist*



**Natural...**  
...with natural oils and waxes,  
the very best for wood and  
the environment!

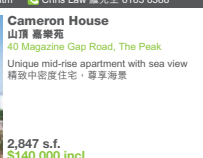
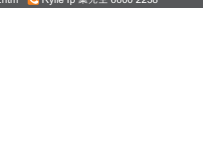
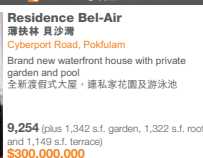
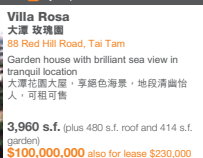
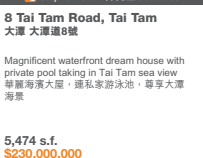


**Faster...**  
...Osmo finishes can be renovated  
without sanding, saving time  
and money!



**Coverage...**  
...high solid means amazing  
coverage and best price per m²!





Beauty is doomed to be left out when you fail to capture the details in life. Details come from bits and pieces in life resonates you and me. At the exhibition "In Details", three Hong Kong artists, namely Choi Yan Chi, Ivy Ma and Wat Kit Lam, scrutinise our very human relationship with the world through their discerning attention to details which are usually pass unnoticed in the course of everyday life. Choi Yan Chi's artwork reflects the extraordinary in ordinary situation; Ivy Ma presents the aesthetic of stillness through her drawings and Wat Kit Lam induces audience to get lost in ordinary everyday objects portrayed in her uncanny photos. Let's join the exhibition at agnès b. LA BIBLIOTHÈQUE GALERIE in Wan Chai till 20th August to capture the details. ■

只有捕捉細節，才能發現更多生活的美；但細節卻不能閉門造車，只有源自生活點滴的細節才能引起你與我的共鳴，勾起被淡忘的回憶。三原本地藝術家蔡家初、馬琼珠及林慧嫻在名為「細節」的展覽中，透過捕捉日常生活裡被遺忘的細節，探討我們與周遭世界的關係。蔡家初的作品折射出尋常生活中的瞬間與波瀾；馬琼珠教人從靜態中窺出人生哲理；而林慧嫻則利用光影令觀眾喪失於大眾所見的尋常事物中。如果你也想找找生活中的精華，請於8月20日前到灣仔的agnes b. Librairie Galerie體驗一下細節。

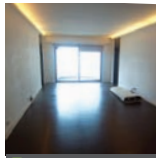
## MID-LEVELS Lease | 半山出租



**Flora Garden**  
 蓮荷山 翠景園  
 7 Chun Fai Road, Jardine's Lookout  
 Popular 3-bedroom apartment on prime Jardine's Lookout area  
 受歡迎三房單位，位於蓮荷山尊貴地段，可租可售

**1,533 s.f.**  
**\$45,000 incl.** also for sale \$19,000,000

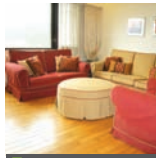
www.landscape.com/108737.htm | Rowena Siu 蕭小姐 9348 4118



**Wah Fung Mansion**  
 東半山 華峰閣  
 27 Tai Hang Road, Midlevels East  
 Spacious whole-floor unit with balcony in high privacy  
 東半山寬敞住宅連陽臺，私隱度高，可租可售

**2,087 s.f.**  
**\$60,000 incl.** also for sale \$23,000,000

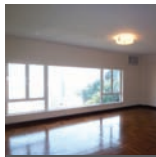
www.landscape.com/96287.htm | Stephen Chan 陳先生 9093 3381



**Butler Tower**  
 蓮荷山 柏園閣  
 1-5 Boyce Road, Jardine's Lookout  
 Practical 4-bedroom apartment in sought after Jardine's Lookout  
 蓮荷山實用四房住宅，市面難尋

**1,650 s.f.**  
**\$60,000 incl.**

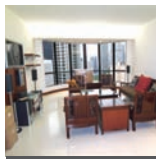
www.landscape.com/38287.htm | Carman Szeto 司徒小姐 6183 8339



**Craigmount**  
 東半山 紀園  
 34 Stubbs Road, Midlevels East  
 Rare on market 3-bedroom apartment on convenient Stubbs Road  
 司徒拔道三房單位，交通方便，罕有放盤

**2,200 s.f.**  
**\$69,800 incl.**

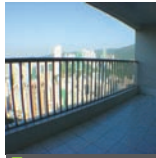
www.landscape.com/103464.htm | Christine Chong 莊小姐 9648 8082



**Park Mansions**  
 中半山 百年順大廈  
 27-29 MacDonnell Road, Midlevels Central  
 Spacious 3-bedroom apartment with view of Hong Kong Park on MacDonnell Road  
 麥當勞道寬敞三房住宅，享翠綠香港公園景致，可租可售

**2,013 s.f.**  
**\$70,000 incl.** also for sale \$30,000,000

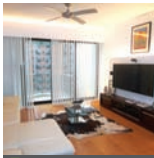
www.landscape.com/37078.htm | Stella Lo 羅小姐 9809 8570



**Evergreen Villa**  
 東半山 松柏軒村  
 43 Stubbs Road, Midlevels East  
 Large practical 4-bedroom flat with big balcony on Stubbs Road  
 司徒拔道特大四房住宅連大陽臺，間隔實用

**2,700 s.f.**  
**\$75,000 incl.**

www.landscape.com/2786.htm | Mira To 杜小姐 9486 1566



**Elegant Terrace**  
 西半山 慧明苑  
 36 Conduit Road, Midlevels West  
 Quality living at Midlevels West near pedestrian escalator  
 西半山優質住宅，鄰近山扶手电梯，可租可售

**1,433 s.f.**  
**\$49,000 incl.** also for sale \$18,500,000

www.landscape.com/111305.htm | Yvonne Chang 鄭小姐 9088 4666



**Beauty Court**  
 西半山 雅苑  
 82 Robinson Road, Midlevels West  
 Popular 3-bedroom family flat on convenient Robinson Road  
 羅便臣道受歡迎三房家庭式住宅，交通方便，可租可售

**1,778 s.f.**  
**\$61,000 incl.** also for sale \$20,800,000

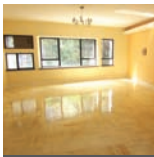
www.landscape.com/106656.htm | Carman Szeto 司徒小姐 6183 8339



**47A Stubbs Road, Midlevels East**  
 東半山 司徒拔道47A號  
 Exclusive low-rise apartment with harbour view  
 獨特低密度住宅，享港灣景，可租可售

**2,400 s.f.**  
**\$68,000 incl.** also for sale \$45,000,000

www.landscape.com/107400.htm | Rowena Siu 蕭小姐 9348 4118



**Birchwood Place**  
 中半山 寶樹臺  
 96 MacDonnell Road, Midlevels Central  
 4-bedroom apartment with full clubhouse  
 中半山四房住宅，連完善住客會所設施

**2,018 s.f.**  
**\$70,000 incl.**

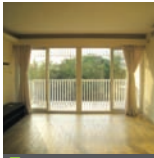
www.landscape.com/33354.htm | Stella Lo 羅小姐 9809 8570



**Visalia Garden**  
 中半山 蔚山花園  
 48 MacDonnell Road, Midlevels Central  
 Nice renovated 3-bedroom apartment close to Central  
 靚裝修三房住宅，鄰近中環，可租可售

**1,929 s.f.** (plus 94 s.f. terrace)  
**\$70,000 incl.** also for sale \$32,000,000

www.landscape.com/110154.htm | David Chan 陳先生 9238 2012



**Cooper Villa**  
 蓮荷山 衛信道23-29號  
 23-29 Wilson Road, Jardine's Lookout  
 Nicely renovated 3-bedroom low-rise with huge balcony and fantastic view  
 雅緻裝修低密度三房住宅，連特大陽臺，享讚人美景

**1,700 s.f.**  
**\$78,000 incl.**

www.landscape.com/129581.htm | Walker Lam 林先生 9551 1077

For more listings, please go to [www.landscape.com/lease](http://www.landscape.com/lease)



Alvin Lee

Joseph is friendly, honest, reliable, organized, and very meticulous in his work. I can't say enough good things about all the work he did to make my place perfect & very functional.

Old Peak road - the boundless ensuite



Suzanna Toppan

Don't be fooled by Joseph's very demeanor. He's an unassuming person for the client and the work. It's clear in his contractors that anything less than the best won't do. He thinks through everything, and does nothing slip by.

Shouson Hill - classical contemporary



Richard J. Brink

Throughout the project, Joseph was personally involved, covering the quality of the work and the project's adherence to the budget and schedule. The project was completed on time and within budget, and we now have a beautiful new home, as well as a new friend, Joseph!

Capitol Garden - revived modernized flexibility



Mei Ling

Thank you so much for designing our new dream house. We absolutely love it! I just keep going upstairs and looking at it. It looks like a place out of a magazine. Fantastic job! You matched the house to our personalities perfectly. Thanks again!

Red Hill Peninsula - accentuated cohesiveness



Sean Holden

We really appreciated the way Joseph worked with us in coming up with great ideas by taking our rudimentary ideas and developing them into amazing designs.

Park Place - interior & exterior connection

"you never own ya premises,  
 you merely live there unless  
 ya character implanted"

-Joseph Chang

Interior design  
 constructions  
 space planning  
 project management  
 tendering  
 landscaping  
 quantity survey





**Fairview Mansion**  
西半山 昭景大廈  
84 Robinson Road, Midlevels West  
Spacious 3-bedroom flat including 2 ensuite on convenient Robinson Road  
隔有兩房三房連兩套房住宅，間隔寬敞，可租可售

**2,500 s.f.**  
**\$78,000 incl.** also for sale \$37,500,000

[www.landscope.com/89494.htm](http://www.landscope.com/89494.htm) Sami Woo 胡小姐 9493 8275



**Bellevue Court**  
東半山 碧華園  
41 Stubbs Road, Midlevels East  
High efficiency colonial style mid-rise apartment off Stubbs Road  
英式中密度住宅，實用率高，可租可售

**2,700 s.f.**  
**\$80,000 incl.** also for sale \$35,000,000

[www.landscope.com/50056.htm](http://www.landscope.com/50056.htm) Sandra Choi 蔡小姐 9234 1109



**Po Garden**  
東半山 寶園  
9 Brevin Path, Midlevels Central  
Luxury apartment in lush greenery close to Central  
中半山豪華住宅，尊享翠綠景緻，鄰近中環，交通方便

**2,572 s.f.**  
**\$85,000 incl.**

[www.landscope.com/5650.htm](http://www.landscope.com/5650.htm) Rowena Siu 蕭小姐 9348 4118



**The Rednaxela**  
東半山 帝華閣  
60 Tai Hang Road, Midlevels East  
Penthouse duplex with air terrace overlooking Victoria Harbour  
頂層複式住宅連空中平台，俯瞰維港景緻，可租可售

**2,380 s.f.** (plus 114 s.f. terrace)  
**\$80,000 incl.** also for sale \$26,000,000

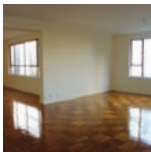
[www.landscope.com/109860.htm](http://www.landscope.com/109860.htm) Walker Lam 林先生 9551 1077



**Taipan Court**  
東半山 大班閣  
47B Stubbs Road, Midlevels East  
Huge 4-ensuite duplex with panoramic views of the racecourse  
特大四套房單位，尊享遶馬場景觀

**3,670 s.f.**  
**\$80,000**

[www.landscope.com/10447.htm](http://www.landscope.com/10447.htm) Mavis Wu 吳小姐 9107 3891



**Chung Tak Mansion**  
東半山 重德大廈  
2 Magazine Gap Road, Midlevels Central  
4-bedroom with 3 ensuite apartment with high efficiency in lower Peak  
中半山四房三套房住宅，實用率高

**2,864 s.f.**  
**\$85,000 incl.**

[www.landscope.com/16989.htm](http://www.landscope.com/16989.htm) Teresa Lau 蕭小姐 9080 6686



**Dynasty Court**  
東半山 帝景閣  
23 Old Peak Road, Midlevels Central  
Newly decorated 3-bedroom flat with harbour view  
全新裝修三房住宅，尊享維港景

**1,981 s.f.**  
**\$85,000 incl.**

[www.landscope.com/130540.htm](http://www.landscope.com/130540.htm) Garman Szeto 司徒小姐 6183 8339



**Tregunter Tower 2**  
中半山 地利利樓閣 2座  
14 Tregunter Path, Midlevels Central  
Spacious 4-bedrooms apartment with new bathroom, Full clubhouse facilities  
中半山四房住宅，間隔寬敞連全新浴室，住客會所設施齊備

**3,052 s.f.**  
**\$90,000 incl.**

[www.landscope.com/107387.htm](http://www.landscope.com/107387.htm) Yvonne Chang 鄭小姐 9088 4666



**Kam Yuen Mansion**  
東半山 錦園大廈  
3 Old Peak Road, Midlevels Central  
Newly renovated spacious apartment close to CBD  
中半山全新裝修住宅，間隔寬敞，鄰近中環商業區

**2,700 s.f.**  
**\$90,000**

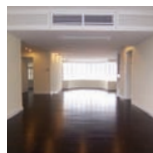
[www.landscope.com/37538.htm](http://www.landscope.com/37538.htm) Mira To 杜小姐 9486 1566



**May Tower 1**  
中半山 梅苑一樓  
7 May Road, Midlevels Central  
A well-presented 3-bedroom triplex apartment  
雅緻三房三樓式住宅，可租可售

**2,850 s.f.**  
**\$96,000 incl.** also for sale \$50,000,000

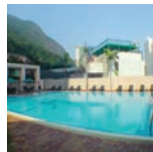
[www.landscope.com/6191.htm](http://www.landscope.com/6191.htm) David Chan 陳先生 9238 2012



**Garden Terrace 1**  
東半山 花園閣1座  
8 Old Peak Road, Midlevels Central  
Spacious high efficiency apartment with harbour view  
中半山間隔寬敞住宅，尊享維港景，實用率高

**2,798 s.f.**  
**\$108,000**

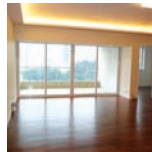
[www.landscope.com/12929.htm](http://www.landscope.com/12929.htm) Rylie Ip 葉先生 6600 2238



**Queen's Garden**  
東半山 荷景花園  
9 Old Peak Road, Midlevels Central  
Duplex apartment in good condition on fringe of Central  
中半山複式住宅，保養良好，鄰近中環

**2,960 s.f.**  
**\$114,700**

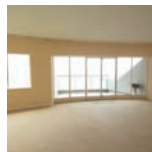
[www.landscope.com/21454.htm](http://www.landscope.com/21454.htm) Sami Woo 胡小姐 9493 8275



**MID-LEVELS Lease | 半山出租**  
**Valley View**  
東半山 欣景台  
4A-4D Wong Nai Chung Gap Road, Midlevels East  
Sought after huge mid-rise apartment with meticulous decoration  
東半山罕有巨廈四房中密度住宅，全新裝修

**2,400 s.f.**  
**\$90,000 incl.**

[www.landscope.com/104172.htm](http://www.landscope.com/104172.htm) Mary Li 李小姐 9011 6595



**Century Tower I**  
中半山 世紀大廈1座  
1 Tregunter Path, Midlevels Central  
Unique-style harbour view apartment on fringe of Central  
精緻特色維港景住宅，鄰近中環，交通方便，可租可售

**2,565 s.f.**  
**\$90,000 incl.** also for sale \$38,500,000

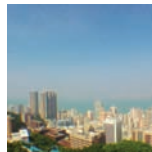
[www.landscope.com/12852.htm](http://www.landscope.com/12852.htm) David Chan 陳先生 9238 2012



**Grand Bowen**  
東半山 寶雲閣  
11B Bowen Road, Midlevels Central  
Unique 4-bedroom apartment with fantastic harbour view  
精緻四房特色單位，尊享維港美景

**3,071 s.f.**  
**\$93,000 incl.**

[www.landscope.com/22198.htm](http://www.landscope.com/22198.htm) Yvonne Chang 鄭小姐 9088 4666



**1 Po Shan Road, Midlevels West**  
西半山 寶珊道1號  
Modern 4-bedroom harbour view apartment in quiet enclave  
時尚四房維港景住宅，環境清幽寧靜。

**2,471 s.f.**  
**\$100,000 incl.**

[www.landscope.com/30209.htm](http://www.landscope.com/30209.htm) Sami Woo 胡小姐 9493 8275



**Borrett Mansion**  
東半山 寶德豪  
8A-9B Bowen Road, Midlevels Central  
Practical 4-bedroom apartment with balcony in tranquil location  
中半山四房住宅連陽臺，間隔實用，環境優美

**2,800 s.f.**  
**\$113,000 incl.**

[www.landscope.com/29611.htm](http://www.landscope.com/29611.htm) Mavis Wu 吳小姐 9107 3891



**Regence Royale**  
東半山 富園豪庭  
2 Bowen Road, Midlevels Central  
Luxurious 4-bedroom apartment with clubhouse on quiet location  
豪華四房住宅，連住客會所設施，位處清靜地段

**2,697 s.f.**  
**\$120,000 incl.**

[www.landscope.com/70613.htm](http://www.landscope.com/70613.htm) Teresa Lau 蕭小姐 9080 6686

SCHOTTEN & HANSEN

a passion for excellence

"A floor from Schotten & Hansen is as unique as the person who lives on it"

Torben Hansen, Managing Director of Schotten & Hansen



**Victoria Heights**  
東半山 威利閣  
43A Stubbs Road, Midlevels East  
Exclusive apartment with private roof in excellent condition overlooking stunning harbour view  
東半山獨特住宅連私家天台，保養良好，俯瞰驚人港海景觀  
**2,650 s.f. (plus 1,936 s.f. roof)**  
**\$120,000**

www.landscape.com/37156.htm Mark Mak 麥先生 6838 2929



**HighCliff**  
東半山 曉峯  
41D Stubbs Road, Midlevels East  
Prestigious 4-bedroom apartment with sleek modern design and deluxe clubhouse  
豪華尊貴四房住宅，配以時尚設計裝修及豪華會所  
**3,676 s.f.**  
**\$123,000**

www.landscape.com/81569.htm Teresa Lau 廖小姐 9080 6686



**Grenville House**  
中半山 嘉華園  
1-3A Magazine Gap Road, Midlevels Central  
Huge 4-bedroom apartment in renowned building on Magazine Gap Road  
馬己仙納路有名聲巨型四房住宅  
**3,700 s.f.**  
**\$130,000 incl.**

www.landscape.com/17363.htm Sami Woo 胡小姐 9493 8275



**Garden Terrace**  
中半山 花園臺  
8A Old Peak Road, Midlevels Central  
Immaculately decorated 3-bedroom spacious apartment with balcony  
中半山靚裝修三房住宅，間隔寬敞，連陽臺，可租可售  
**3,009 s.f.**  
**\$130,000 also for sale Open Offer**

www.landscape.com/30124.htm Chris Law 羅先生 6183 8388



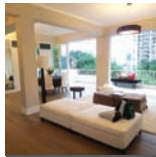
**The Mayfair**  
中半山 梅道1號  
1 May Road, Midlevels Central  
Deluxe 4-bedroom apartment with harbour view  
中半山豪華四房港灣景住宅，可租可售  
**2,905 s.f.**  
**\$140,000 incl. also for sale \$78,000,000**

www.landscape.com/12736.htm Chris Law 羅先生 6183 8388



**Kennedy Heights**  
中半山 堅麗閣  
10-18 Kennedy Road, Midlevels Central  
Huge 5-bedroom apartment on fringe of Central  
中半山特大五房單位，鄰近中環，交通方便  
**2,929 s.f.**  
**\$165,000**

www.landscape.com/33316.htm David Chan 陳先生 9238 2012



**Residence Bel-Air**  
薄扶林 貝沙灣  
Cyberport Road, Pokfulam  
Brand new waterfront apartment with deluxe clubhouse facilities  
全新豪華式住宅，連豪華住客會所設施，可租可售  
**2,000 s.f.**  
**\$58,000 incl.**

www.landscape.com/101683.htm Mark Mak 麥先生 6838 2929



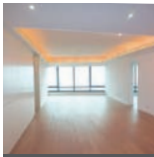
**Residence Bel-Air**  
薄扶林 貝沙灣  
Cyberport Road, Pokfulam  
Brand new waterfront apartment with deluxe clubhouse facilities  
全新豪華式住宅，連豪華住客會所設施，可租可售  
**1,863 s.f.**  
**\$65,000 incl. also for sale \$33,000,000**

www.landscape.com/98587.htm Walker Lam 林先生 9551 1077



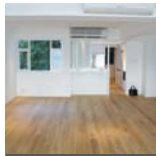
**Ming Wat Garden**  
淺水灣 明華園  
45 Repulse Bay Road, Repulse Bay  
Fantastic 3-bedroom sea view apartment on upper Repulse Bay Road  
淺水灣道頭段三房靚海景住宅  
**1,900 s.f.**  
**\$65,000**

www.landscape.com/24561.htm Walker Lam 林先生 9551 1077



**La Mer**  
薄扶林 浪瀾閣  
67-71 Bisney Road, Pokfulam  
Newly renovated 4-bedroom low-rise with full sea view  
全新裝修四房低座住宅，享全海景，可租可售  
**2,063 s.f.**  
**\$69,000 incl. also for sale \$33,000,000**

www.landscape.com/108873.htm Yvonne Chang 鄭小姐 9088 4666



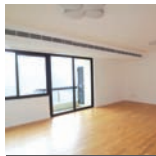
**Cape Mansions**  
薄扶林 翠海別墅  
56-62 Mount Davis Road, Pokfulam  
Meticulously decorated apartment with superb sea view  
華麗靚裝修住宅，享美麗海景  
**2,200 s.f.**  
**\$76,000**

www.landscape.com/125861.htm Rowena Siu 廖小姐 9348 4118



**Royalton**  
薄扶林 豪峰  
118 Pokfulam Road, Pokfulam  
4-bedroom duplex apartment with fantastic sea view  
薄扶林四房複式住宅，享壯麗海景，可租可售  
**3,250 s.f.**  
**\$85,000 incl. also for sale \$46,000,000**

www.landscape.com/11421.htm Yvonne Chang 鄭小姐 9088 4666



**Celestial Garden**  
淺水灣 詩曉花園  
5 Repulse Bay Road, Repulse Bay  
Well kept 4-bedroom apartment with facilities on upper Repulse Bay Road  
淺水灣道頭段四房住宅連完善住客會所設施  
**2,375 s.f.**  
**\$90,000 incl. also for sale \$53,000,000**

www.landscape.com/22426.htm Teresa Fung 馮小姐 9138 1621



**Villas Sorrento**  
薄扶林 御海園  
64-66 Mount Davis Road, Pokfulam  
Modern sea view duplex flat with 4-bedrooms and facilities  
時尚海景複式四房住宅，連住客會所設施，可租可售  
**2,253 s.f. (plus 32 s.f. terrace)**  
**\$95,000 incl. also for sale \$35,000,000**

www.landscape.com/38772.htm Carmian Szeto 司徒小姐 6183 8339



**29-31 Bisney Road, Pokfulam**  
薄扶林 碧嘉道29-31號  
4-bedroom low-rise with private roof in tranquil surroundings  
四房低座住宅，連私家天台，環境清幽怡人  
**2,500 s.f. (plus 2,200 s.f. roof)**  
**\$99,000 incl.**

www.landscape.com/51256.htm Walker Lam 林先生 9551 1077



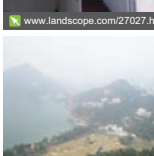
**Jade Beach Villa**  
碧翠角 華翠海邊別墅  
3-7 Horizon Drive, Chung Hom Kok  
Unique garden house with full sea view  
精緻花園大屋，享全海景  
**2,680 s.f. (plus 700 s.f. roof)**  
**\$100,000 incl.**

www.landscape.com/27027.htm Mark Mak 麥先生 6838 2929



**Carmel Hill**  
葵桂 海山別墅  
12 Carmel Road, Stanley  
Nicely fitted and equipped hilltop garden house with sweeping sea view  
靚裝修花園大屋，享遠闊海景，可租可售  
**2,378 s.f. (plus 405 s.f. garden and 262 s.f. roof)**  
**\$100,000 incl. also for sale \$42,000,000**

www.landscape.com/2613.htm Louis Wong 黃先生 9871 6828



**Monte Verde**  
淺水灣 南山別墅  
41 Repulse Bay Road, Repulse Bay  
Rare 4-bedroom apartment with Deep Water Bay view on upper Repulse Bay Road  
淺水灣道頭段罕有四房住宅，享深淡水灣景觀  
**2,400 s.f.**  
**\$100,000**

www.landscape.com/10238.htm Carmian Szeto 司徒小姐 6183 8339

## 隨時隨地 緊貼第一手豪宅資訊

# First-hand luxury property news on-the-go

With over a decade of experience in the property consultancy business, Landscape is a renowned real estate consulting group based in Hong Kong. Keeping up with the pace of life, Landscape is to launch its innovative luxury property mobile website in May, the first-of-its-kind in the entire market.

Go to Home Page to look for your targeted properties. With the real-time updates of property listings from our database, the mobile website, integrated with Google map, features over 2000 buy/ rent luxury properties in Hong Kong with internal photos and full details of the properties. Always keep updated with the first-hand luxury property news on-the-go...No delay!

領域是香港的獨立地產顧問集團，憑借專業的地產代理服務，一直享譽業界。為了與時俱進，領域將於五月推出香港首個的手機版網頁，為你帶來香港各區豪宅的最新資訊。

在首頁，你可選擇想尋找的單位，網頁的即時更新功能為你帶來超過2000個香港豪宅買賣租賃的資料及單位圖片，並附設Google地圖，顯示更一目了然。隨時隨地緊貼第一手豪宅資訊，時刻盡在掌握！



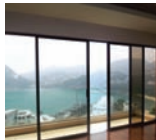
Website (網址): www.landscape.com



**The Somerset**  
 淺水灣 怡峰  
 67 Repulse Bay Road, Repulse Bay  
 Renowned sea view 3-bedroom duplex in  
 Repulse Bay  
 淺水灣有名豪華三房複式住宅

**2,464 s.f.**  
**\$105,000 incl.**

[www.landscape.com/2981.htm](http://www.landscape.com/2981.htm) Stephen Chan 陳先生 9093 3381



**Manhattan Tower**  
 淺水灣 曼頓大廈  
 63 Repulse Bay Road, Repulse Bay  
 Sea view apartment in excellent condition on  
 upper Repulse Bay Road  
 淺水灣道頂段海景住宅，保養良好

**2,400 s.f.**  
**\$110,000 incl.**

[www.landscape.com/35916.htm](http://www.landscape.com/35916.htm) Teresa Fung 馮小姐 9138 1621



**Horizon Crest**  
 赤柱 赤柱村道22號  
 22 Stanley Village Road, Stanley  
 Lovely garden townhouse in Stanley, rare  
 on market!  
 赤柱迷人別墅花園大廈，罕有放盤

**2,800 s.f.** (plus 447 s.f. terrace and 410  
 s.f. garden)  
**\$130,000 incl.**

[www.landscape.com/11649.htm](http://www.landscape.com/11649.htm) Teresa Fung 馮小姐 9138 1621



**18 South Bay Road, Repulse Bay**  
 淺水灣 南海道18號  
 Unique duplex with sweeping sea view  
 獨特複式海景住宅

**4,000 s.f.** (plus terrace)  
**\$148,000**

[www.landscape.com/50488.htm](http://www.landscape.com/50488.htm) Sandra Choi 蔡小姐 9234 1109



**Hillgrove**  
 香坎角 雙花園  
 18 Cape Drive, Chung Hom Kok  
 Sea view townhouse with private garden  
 and roof  
 香坎角海景排屋，連私家花園及天台，可租  
 可售

**3,000 s.f.** (plus 900 s.f. roof and 660 s.f.  
 garden)  
**\$160,000 incl. also for sale \$69,000,000**

[www.landscape.com/104403.htm](http://www.landscape.com/104403.htm) Mavis Wu 吳小姐 9107 3891



**Regalia Bay**  
 赤柱 富豪灣  
 88 Wong Ma Kok Road, Stanley  
 Popular sea view townhouse in prestigious  
 development  
 受歡迎海景排屋，位處尊貴地段

**4,212 s.f.** (plus 817 s.f. roof and 609 s.f.  
 garden)  
**\$170,000 incl.**

[www.landscape.com/31420.htm](http://www.landscape.com/31420.htm) Mark Mak 麥先生 6838 2929



**46 Tai Tam Road, Tai Tam**  
 大潭 大潭道46號

Duplex apartment with private terrace  
 大潭複式住宅連私家平台

**2,600 s.f.** (plus 474 s.f. terrace)  
**\$110,000 incl.**

[www.landscape.com/10688.htm](http://www.landscape.com/10688.htm) Chris Law 羅先生 6183 8388



**The Carmina**  
 深水灣 嘉名苑  
 7-9 Deep Water Bay Drive, Deep Water Bay  
 Newly renovated 4-bedroom apartment with  
 swimming pool and tennis court  
 全新裝修四房單位，設有游泳池及網球場  
 設施

**2,628 s.f.**  
**\$119,000 incl.**

[www.landscape.com/100149.htm](http://www.landscape.com/100149.htm) David Chan 陳先生 9238 2012



**Louiseette**  
 赤柱 赤柱灘道20號  
 20 Stanley Beach Road, Stanley  
 Rare beachside townhouse in Stanley  
 赤柱罕有裝修海邊度假式排屋

**2,856 s.f.** (plus 480 s.f. garden and 432  
 s.f. roof)  
**\$140,000**

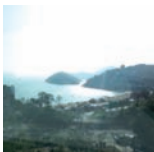
[www.landscape.com/4652.htm](http://www.landscape.com/4652.htm) Yvonne Chang 鄭小姐 9088 4666



**Pine Lodge**  
 壽臣山 松苑  
 10 Shouson Hill Road West, Shouson Hill  
 3-bedroom duplex with large terrace in  
 tranquil Shouson Hill  
 壽臣山三房複式住宅連特大平台，環境寧靜  
 怡人

**3,000 s.f.** (plus 800 s.f. terrace and garden)  
**\$150,000 incl.**

[www.landscape.com/3218.htm](http://www.landscape.com/3218.htm) Maria Cheung 張小姐 5182 8699



**The Lily**  
 淺水灣 淺水灣道129號  
 129 Repulse Bay Road, Repulse Bay  
 Luxurious brand new apartment with  
 fantastic Repulse Bay view  
 全新豪華住宅，尊享廣闊的淺水灣景觀

**3,799 s.f.**  
**\$168,000**

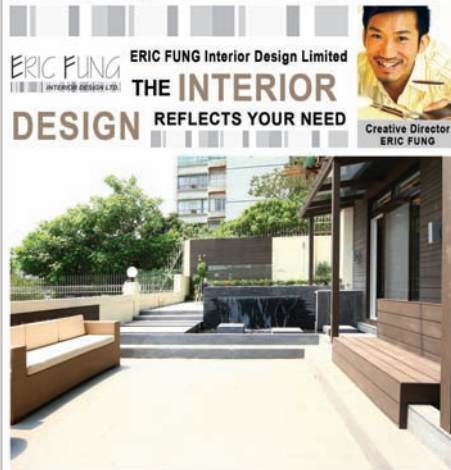
[www.landscape.com/75995.htm](http://www.landscape.com/75995.htm) Sami Woo 胡小姐 9493 8275



**Stanley Breeze**  
 赤柱 瓊海康樓  
 12-12A Stanley Beach Road, Stanley  
 Beachside townhouse with private pool  
 赤柱海邊排屋，連私家游泳池。

**3,187 s.f.** (plus 927 s.f. terrace, 804 s.f.  
 roof and 420 s.f. garden)  
**\$200,000 incl.**

[www.landscape.com/19792.htm](http://www.landscape.com/19792.htm) Mary Li 李小姐 9011 6595



OUR SERVICES : RESIDENTIAL DESIGN | OFFICE DESIGN | COMMERCIAL DESIGN | KITCHEN DESIGN | DESIGN CONCEPT | CONSULTANT | SPACE PLANNING  
 28/F & 29/F, Catic Plaza, 8 Causeway Road, Causeway Bay, Hong Kong T: (852) 3104 3104 F: (852) 2362 7788 [www.tint-international.com](http://www.tint-international.com)

**LOOKING FOR FURNITURE?!** Designer Furniture Gallery : G/F, 3 Blue Peel RD, Happy Valley, HK. T: (852) 3104 3105 [www.tintliving.com](http://www.tintliving.com)  
 Furniture Outlet : 1/F, Ming Sang Ind. Building, 19 Hing Yip Street, Kowloon. T: (852) 3104 3107





## SOUTHSIDE Lease | 南區出租



### Stanley Mound Road Single Number House

赤柱 赤柱崗獨立門牌大屋

Rare single detached house with private garden close to Stanley Beach 赤柱罕有獨立大屋，近私家花園，鄰近赤柱海灘，可租可售

5,600 s.f. (plus 3,391 s.f. garden and 646 s.f. roof and terrace)

\$200,000 incl. also for sale \$120,000,000

[www.landscope.com/3912.htm](http://www.landscope.com/3912.htm)

Sandra Choi 蔡小姐 9234 1109



### 32 Repulse Bay Road, Repulse Bay

深水灣 深水灣道 32 號

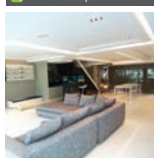
Rare extraordinary garden house on Repulse Bay Road 深水灣獨特花園大屋，罕有放盤

3,000 s.f. (plus 1,356 s.f. garden and 556 s.f. roof)

\$230,000

[www.landscope.com/6317.htm](http://www.landscope.com/6317.htm)

Louis Wong 黃先生 9871 6828



### 56 Repulse Bay Road, Repulse Bay

深水灣 深水灣道56號

Luxurious seafront duplex with direct access to private roof terrace 豪華海邊複式獨立住宅，連內置樓梯往私家天台平台

3,201 s.f. (plus 188 s.f. terrace)

\$250,000 incl.

[www.landscope.com/45883.htm](http://www.landscope.com/45883.htm)

Rylie Ip 葉先生 6900 2238



### 66 Deep Water Bay Road, Deep Water Bay

深水灣 深水灣道66號

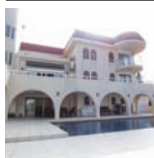
Prestigious townhouse facing Deep Water Bay 深水灣有名望豪華排屋

4,200 s.f. (plus 569 s.f. roof and 282 s.f. terrace)

\$300,000

[www.landscope.com/10204.htm](http://www.landscope.com/10204.htm)

Louis Wong 黃先生 9871 6828



### 23 Tung Tau Wan Road, Stanley

赤柱 東頭灣道23號

Waterfront detached house with private swimming pool in Tung Tau Wan Road 東頭灣道海邊獨立大屋，連私家游泳池

5,134 s.f. (plus 3,508 s.f. terrace, 1,513 s.f. roof and garden)

\$920,000

[www.landscope.com/13717.htm](http://www.landscope.com/13717.htm)

David Chan 陳先生 9238 2012



### The Lily

深水灣 深水灣道129號

129 Repulse Bay Road, Repulse Bay

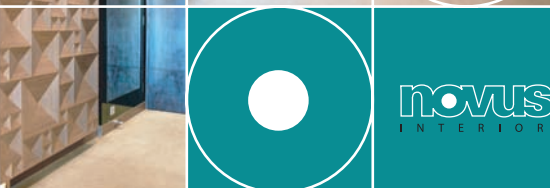
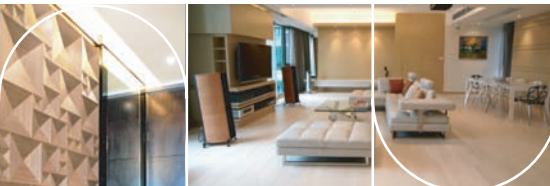
Luxurious brand new huge apartment with fantastic Repulse Bay view 全新豪華巨型單位，盡享迷人景色

7,700 s.f.

\$420,000

[www.landscope.com/75992.htm](http://www.landscope.com/75992.htm)

Mira To 杜小姐 9486 1566

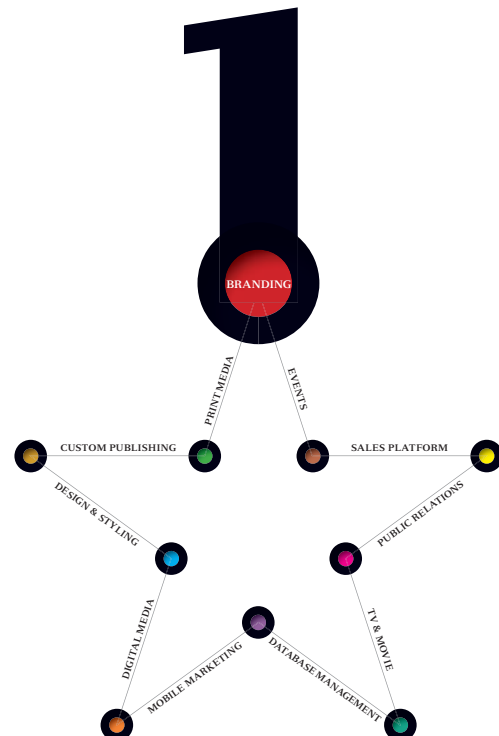


novus  
INTERIOR

www.novusp.com  
PENETRALS LIMITED  
ARCHITECTURE

UNIT 16A, HANG SENG CAUSEWAY BAY BUILDING  
28 YEE WO STREET, CAUSEWAY BAY, HONG KONG  
T: 3106 6069 / 2576 7202 F: 3106 6079  
E: info@novusp.com

# WE BLOSSOM BY PROVIDING YOU WITH THE BEST ONE-STOP SOLUTION



inc  
inCORPORATION Limited

(Hong Kong Head Office) 12/F Cyberport 2, 100 Cyberport Road, Hong Kong T+852 3699 0888 F+852 3699 0889  
(China Office) 15/F Plaza66 Tower 2, 1366 Nanjing West Road Shanghai T+86 21 6137 6038  
[www.inmagazine.com.hk](http://www.inmagazine.com.hk)

YOUR NO.1 INTERGATED MARKETING COMMUNICATIONS PARTNER IN HONG KONG AND CHINA

Your No.1 Integrated Marketing Communications Partner in Hong Kong & China



*inMAGAZINE* : publisher and sole advertising representatives  
of the top luxury lifestyle publications, including *Mission Hills Magazine*, *Jaguar Hong Kong Magazine* and *The Key*.

[www.inmagazine.com.hk](http://www.inmagazine.com.hk)



Hong Kong Head Office: 12/F Cyberport 2, 100 Cyberport Road, Hong Kong

China Office: 15/F Plaza 66 Tower 2, 1366 Nanjing West Road, Shanghai

Marketing (852) 3699 0877 | Advertising (852) 3699 0898 | email: [marketing@incorp.com.hk](mailto:marketing@incorp.com.hk)