

select deluxe homes

The Key

大宅®

JULY 2008
Volume 46

published and distributed by

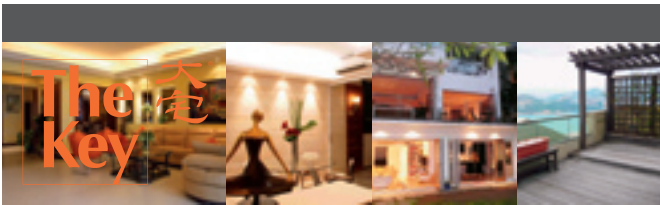
LANDSCOPE
The Specialists in Luxury Properties

領域



ARISTOCRATIC APARTMENT

www.landscape.com



KeyNotes

"Observe the opportunity."

Ecclesiasticus 4:20

In Hong Kong, the property market has been affected by such a myriad of uncertainties. Some people are seeing this as an opportunity and some are shunning investments, resulting in mixed market responses. The last few weeks were characterized by a sudden flurry of buying interspersed with quiet spells, indicating investors are still jittery about the market outlook. There is no overwhelming optimism or pessimism today. Property investors' swing of mood has dictated the market, with each swing bringing about swift changing of activity or non-activity.

Koh Keng-shing
ks-koh@landscape.com

(The above is an excerpt from Market Watch on www.landscape.com.
For the full article, please log on to www.landscape.com/m0708.htm)

About The Key

The Key is a monthly publication of sales and letting listings of luxury residential properties on Hong Kong Island. It is sent to VIP clients of Landscape Realty and residents of The Peak, Southside, Mid-Levels, Kowloon Tong, Homantin and selected upmarket residential areas in Shatin, Tai Po, Clear Water Bay and Castle Peak Road. The recipients comprise the crème de la crème of Hong Kong's affluent community.

In addition to The Key, Landscape Realty sends weekly eNewsletters to clients on most update listings of luxury properties. If you wish to receive the eNewsletter, please call Loretta Lui at 3102 4818 or email to info@landscape.com.

How may you list your property with The Key?

If you would like to see your property listed in The Key in the next issue, you may call Loretta Lui at 3102 4818 or email to info@landscape.com. Or you may simply fill out the space below and fax to us at 2866 0015.

Property to be listed

Asking Rental / Sale Price

Floor Area

Contact Person

Telephone

Email

Our KeyPersons will contact you for follow-up works.

SOUTHSIDE SALES

南區
出售



Y Y Mansion
薄扶林 裕仁大廈
96 Pok Fu Lam Road, Pokfulam
Cosy flat with nice decor in quiet environment
舒適單位，雅緻裝潢，環境清幽
1,450 s.f.
\$10,000,000 also for lease \$45,000 incl.

www.landscape.com/15126.htm | Sami Woo 胡小姐 9493 8275



Baguio Villa
薄扶林 碧瑤灣
550 & 555 Victoria Road, Pokfulam
Well decorated top floor unit with private roof garden enjoying green view
雅緻高層單位連私家天台花園，享綠景
1,135 s.f. (plus 687 s.f. roof)
\$11,800,000 **SOLE AGENT 獨家代理**

www.landscape.com/13539.htm | Teresa Lau 劉小姐 9080 6686



Regent Palisades
薄扶林 帝柏園
43 Bisney Road, Pokfulam
Designer decorated 3-bedroom apartment
設計師裝修三房物業
1,543 s.f.
\$15,850,000

www.landscape.com/15784.htm | Mary Li 李小姐 9011 6595



South Bay Garden
淺水灣 南灣花園
33 South Bay Close, Repulse Bay
3-bedroom flat in serene South Bay Close
三房物業，位於寧靜的南灣坊
1,542 s.f.
\$18,000,000

www.landscape.com/15194.htm | David Chan 陳先生 9238 2012



Grand Garden
淺水灣 華景園
61 South Bay Road, Repulse Bay
3-bedroom cosy family flat in tranquil location
三房舒適家庭單位，環境寧靜
1,657 s.f.
\$20,500,000

www.landscape.com/14768.htm | Cecilia Fung 馮小姐 6271 2388



Residence Bel-Air (Phase I) 薄扶林 貝沙灣 (第一期)
28 Bel-Air Avenue, Pokfulam
Nice apartment with full sea view and five star club house facilities
優雅住宅享全海景，五星級會所設施
1,682 s.f.
\$23,000,000

www.landscape.com/12838.htm | Rita Lee 李小姐 9437 0087



ARISTOCRATIC APARTMENT

This huge apartment on Pokfulam waterfront is converted from two adjoining units, and takes in sweeping golden sea view of Lamma Channel. Gifted with large floor space, the property accommodates spacious living room and dining room, each with full length balconies that are comfortable for a sit-out party. Two generous master's en suites each have roomy bathrooms, walk-in closets and private study rooms. The breakfast room is a perfect place for cozy family meals, while the 300 square feet fully appointed Poggengphol kitchen can cook up meals for any gourmet party. No need to worry about the extra calories because the fully equipped gym is fit for Olympian triathletes. There are two maid's rooms and plenty of store rooms to back up the logistics. The whole property is decorated to the highest standard, with the finest quality wood used throughout, and every detail of the décor meticulously prepared. It's not just another large apartment; it's an aristocratic lifestyle.

Scenic Villas

2-28 Scenic Villa Drive,
Pokfulam

薄扶林 美景臺

5,100 s.f.

\$80,000,000

www.landscape.com/15500.htm

Philip Lai 黎先生 9430 3330



Royalton I
薄扶林 豪峰 I
118 Pok Fu Lam Road, Pokfulam
Well maintained apartment with full sea view
保養優良單位享全海景
2,160 s.f.
\$24,000,000

www.landscape.com/10615.htm

Eric Wong 黃先生 9740 3396



Orchid Valley
壽山山 蘭苑 (香蘭別墅)
26 Shouson Hill Road, Shouson Hill
Exclusive Southside low-rise in lush green neighbourhood
獨特南區低密度單位，環境翠綠
1,650 s.f.
\$25,000,000

www.landscape.com/12598.htm

Cecilia Fung 馮小姐 6271 2388



Repulse Bay Garden
淺水灣 麗景園
18-40 Belleview Drive, Repulse Bay
High efficiency apartment overlooking Repulse Bay beach
實用單位眺望淺水灣泳灘
1,780 s.f.
\$25,000,000 **SOLE AGENT 獨家代理**

www.landscape.com/12489.htm

Stephen Chan 陳先生 9093 3381



Springfield Gardens
壽山山 春暉園
5-9 Shouson Hill Road West, Shouson Hill
Charming low-rise flat in serene surroundings
迷人低密度住宅，環境寧靜
1,775 s.f. (plus 600 s.f. terrace)
\$25,000,000

www.landscape.com/15078.htm

Eric Wong 黃先生 9740 3396



South Bay Palace
淺水灣 南灣御苑
25-31 South Bay Close, Repulse Bay
Modern Repulse Bay mid-rise apartment with comprehensive facilities
時尚淺水灣中密度單位享多樣化設施
1,698 s.f.
\$25,000,000 also for lease \$60,000 incl.

www.landscape.com/12922.htm

David Leung 梁先生 9199 0672

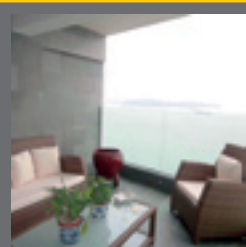


Cape Mansions
薄扶林 翠海別墅
56-62 Mount Davis Road, Pokfulam
Fully renovated flat with balcony and superb sea view
翻新物業連露台，享壯觀海景
2,100 s.f.
\$25,500,000

www.landscape.com/15575.htm

Ada Cheung 張小姐 9681 8166

SOUTHSIDE SALES



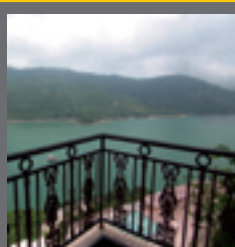
Vista Mount Davis

薄扶林 華亭閣

52-54 Mount Davis Road, Pokfulam
Meticulously decorated sea view apartment
精心設計裝修海景住宅

2,013 s.f.
\$27,000,000

www.landscape.com/15468.htm | Sylvia Tsang 曾小姐 9801 1742



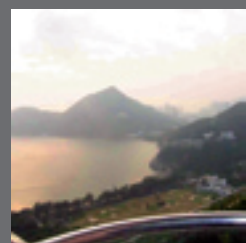
The Redhill Peninsula

大潭 紅山半島

18 Pak Pat Shan Road, Tai Tam
Waterfront apartment with spacious layout
and excellent facilities
海濱住宅，間格寬敞，一流設施

2,153 s.f.
\$27,800,000

www.landscape.com/15540.htm | Eric Wong 黃先生 9740 3396



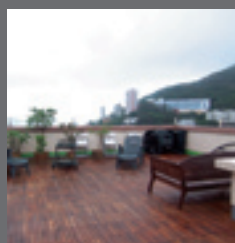
37 Repulse Bay Road, Repulse Bay

淺水灣 淺水灣道 37號

Sea view apartment with facilities on
sought after upper Repulse Bay Road
海景單位連設施，位於受歡迎淺灣頭段

1,635 s.f.
\$28,000,000 also for lease \$75,000 incl.

www.landscape.com/14353.htm | Teresa Fung 馮小姐 9138 1621



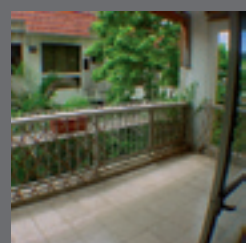
Scenic Villas

薄扶林 美景臺

2-28 Scenic Villa Drive, Pokfulam
Nicely decorated sea view apartment with
a big roof top
雅緻海景單位連特大天台

2,194 s.f. (plus 1,550 s.f. roof)
\$30,000,000

www.landscape.com/15603.htm | Rowena Siu 蕭小姐 9348 4118



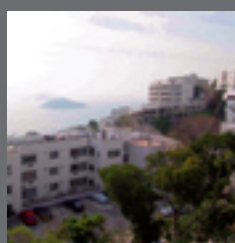
21-23 Bisney Road, Pokfulam

薄扶林 碧麗道 21-23號

Old world charming low-rise flat with big
balcony in lush greenery
老香港式迷人低密度，連大露台，四周翠綠

2,440 s.f.
\$30,000,000 also for lease \$100,000 incl.

www.landscape.com/14015.htm | Mary Li 李小姐 9011 6595



Hillgrove

春坎角 壁如花園

18 Cape Drive, Chung Hom Kok
Practical sea view low-rise in
tranquil location
實用海景低密度，環境寧靜

2,200 s.f.
\$32,000,000

www.landscape.com/15321.htm | Christine Chong 莊小姐 9648 6082

Hong Kong Parkview - Tower 18

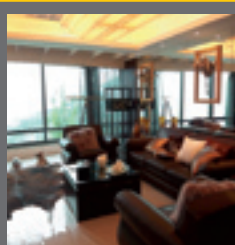


淺水灣 陽明山莊18座

88 Tai Tam Reservoir Road, Repulse Bay
Large 4-bedroom apartment with partial
harbour view and lush green view
四房大單位享部份維港景及綠景

2,708 s.f.
\$33,299,999

www.landscape.com/13017.htm | Stephen Chan 陳先生 9093 3381



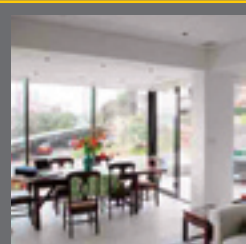
La Mer

薄扶林 浪頤居

67-71 Bisney Road, Pokfulam
Splendid sea view apartment with nice
decorations and private roof
壯觀海景單位，雅緻裝修，私家天台

1,808 s.f. (plus 1,378 s.f. roof)
\$33,500,000

www.landscape.com/13505.htm | Sylvia Tsang 曾小姐 9801 1742



Gordon Terrace

赤柱 歌敦臺

4-8A Carmel Road, Stanley
Stylishly decorated low-rise flat with
private terrace
獨特風格裝修低密度，連私家平台

1,800 s.f. (plus 700 s.f. garden)
\$34,000,000

www.landscape.com/15583.htm | Stephen Chan 陳先生 9093 3381



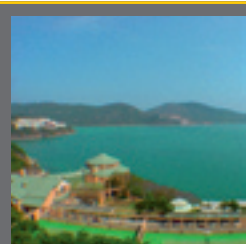
3 Consort Rise, Pokfulam

薄扶林 金業街 3 號

Townhouse in excellent condition at
tranquil environment
排屋狀況極優良，環境寧靜

2,800 s.f.
(plus 628 s.f. garden & 456 s.f. roof)
\$37,000,000

www.landscape.com/13455.htm | Sylvia Tsang 曾小姐 9801 1742



Faber Court

大潭 輝百閣

29-31 Tai Tam Road, Tai Tam
Tai Tam apartment with fascinating
sea view
大潭物業享迷人海景

2,250 s.f.
\$37,000,000

www.landscape.com/15428.htm | Christine Chong 莊小姐 9648 6082



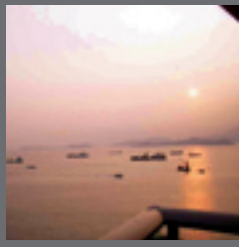
Villa Helvetia

淺水灣 雲濤別墅

69 Repulse Bay Road, Repulse Bay
Rare colonial apartment with fascinating
sea view
罕有英式單位享醉人海景

2,200 s.f.
\$37,000,000

www.landscape.com/9515.htm | Cecilia Fung 馮小姐 6271 2388



Villas Sorrento
薄扶林 御海園
64-66 Mount Davis Road, Pokfulam
Brand new 4-bedroom apartment with breath-taking sea view
全新四房單位享醉人海景
2,523 s.f.
\$37,500,000 also for lease \$120,000 incl.
www.landscape.com/13794.htm | Simon Lee 李先生 6014 3712



Joy Garden
壽臣山 曉穎花園
13 Shouson Hill Road West, Shouson Hill
Unique 4-bedroom duplex flat with new kitchen and bathrooms
獨特四房複式單位，全新廚房浴室
2,752 s.f.
\$39,000,000 also for lease \$100,000 incl.
www.landscape.com/14273.htm | Simon Yung 翁先生 9418 5743



Ridge Court
淺水灣 冠園
21A-21D Repulse Bay Road, Repulse Bay
Tastefully renovated apartment enjoying full sea view
品味翻新裝修單位享全海景
2,300 s.f.
\$39,000,000 also for lease \$100,000 incl.
www.landscape.com/15591.htm | Teresa Fung 馮小姐 9138 1621



Ming Wai Garden
淺水灣 明慧園
45 Repulse Bay Road, Repulse Bay
Popular sea view apartment on upper Repulse Bay Road
受歡迎海景單位，位於淺灣頭段
1,900 s.f.
\$42,000,000 also for lease \$85,000 incl.
www.landscape.com/15363.htm | Maria Cheung 張小姐 6256 1848



Pine Crest
淺水灣 松苑
65 Repulse Bay Road, Repulse Bay
Spacious apartment with beautiful Deep Water Bay view
寬敞單位享深水灣美景
2,250 s.f.
\$45,000,000
www.landscape.com/1197.htm | Johnny Cheung 張先生 9278 9939



Royalton II
薄扶林 豪峰 II
116 Pok Fu Lam Road, Pokfulam
Fully furnished penthouse duplex with nicely fitted roof garden
裝修連傢俬頂層複式，享迷人天台花園
3,247 s.f. (plus 613 s.f. roof)
\$45,000,000 also for lease \$120,000 incl.
www.landscape.com/14619.htm | Sylvia Tsang 曾小姐 9801 1742



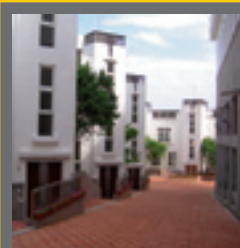
Woodbury Court
薄扶林 嘉林閣
137 Pok Fu Lam Road, Pokfulam
Practical duplex with balconies and peaceful sea view
實用複式連露台及平靜海景
2,895 s.f.
\$45,000,000
www.landscape.com/14474.htm | Christine Chong 莊小姐 9648 6082



Sea Branch
春坎角 海天閣
31 Horizon Drive, Chung Hom Kok
3-bedroom waterfront low-rise with stunning sea view
三房臨海低密度住宅享醉人海景
2,380 s.f.
\$46,000,000 also for lease \$130,000
www.landscape.com/12536.htm | Cecilia Fung 馮小姐 6271 2388



Bluewater
大潭 大潭道25號
25 Tai Tam Road, Tai Tam
Luxurious waterfront apartment with quality fittings and finishes
豪華海濱單位，用料配置一流
2,500 s.f.
\$50,000,000
www.landscape.com/15177.htm | Simon Lee 李先生 6014 3712



33 Cape Road, Chung Hom Kok
春坎角 環角道33號
Garden townhouse in quiet area of Chung Hom Kok
花園排屋，位處春坎角寧靜地段
3,140 s.f.
(plus 550 s.f. garden & 530 s.f. roof)
\$53,000,000
www.landscape.com/13483.htm | Philip Lai 黎先生 9430 3330



The Redhill Peninsula - Palm Drive
大潭 紅山半島 - 棕櫚徑
18 Pak Pat Shan Road, Tai Tam
Garden townhouse with 4 spacious bedrooms and private garage
花園排屋，四寬敞睡房，私家車房
3,109 s.f. (plus 2,002 s.f. garden)
\$53,000,000
www.landscape.com/15434.htm | Simon Lee 李先生 6014 3712



Beaconsfield Court
壽臣山 碧麗閣
7 Shouson Hill Road
Boutique apartment in Shouson Hill
壽山村精緻單位
1,650 s.f.
\$28,000,000
www.landscape.com/5049.htm | Philip Lai 黎先生 9430 3330

SOUTHSIDE SALES



Scenic Villas

薄扶林 美景臺

2-28 Scenic Villa Drive, Pokfulam

Rare huge 6-bedroom unit with practical layout in popular estate

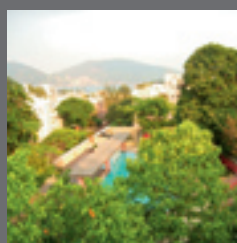
罕有巨型六房單位，間格實用，著名屋苑

4,388 s.f.

\$55,000,000

www.landscape.com/10511.htm

Mark Mak 麥先生 6838 2929



Stanley Court

赤柱 海灣園

9 Stanley Mound Road, Stanley

Newly renovated garden house close to beach

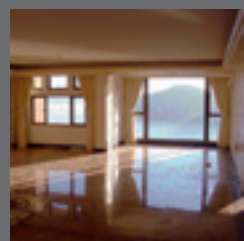
新裝花園屋，鄰近海灘

2,669 s.f. (plus 617 s.f. roof)

\$60,000,000

www.landscape.com/13230.htm

Mary Li 李小姐 9011 6595



Twin Brook

淺水灣 雙溪

43 Repulse Bay Road, Repulse Bay

Spacious 4-bedroom unit with fascinating view of Deep Water Bay

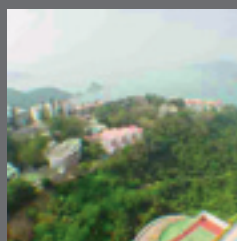
寬敞四房單位享迷人深水灣美景

2,700 s.f.

\$60,000,000

www.landscape.com/14721.htm

Teresa Fung 馮小姐 9138 1621



Grand Garden

淺水灣 華景園

61 South Bay Road, Repulse Bay

Rare find large 4-bedroom flat with excellent facilities

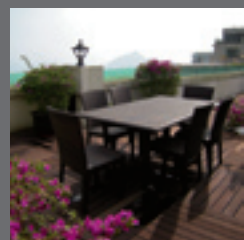
罕有四房住宅，一流設施

3,054 s.f.

\$60,000,000

www.landscape.com/13924.htm

Philip Lai 黎先生 9430 3330



Sea Cliff Mansions

淺水灣 海峰園

19A-19D Repulse Bay Road, Repulse Bay

Newly renovated penthouse with private roof overlooking Deep Water Bay

翻新頂層單位連私家天台，眺望深水灣

2,400 s.f.

\$60,000,000 also for lease \$160,000 incl.

www.landscape.com/15134.htm

Sylvia Tsang 曾小姐 9801 1742



The Hazelton

壽臣山 榛園

6 Shouson Hill Road, Shouson Hill

Garden townhouse with private garage

花園排屋連私家車房

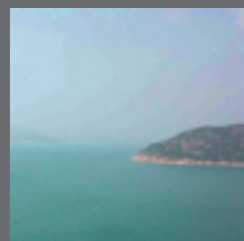
3,195 s.f.

(plus 567 s.f. garden & 671 s.f. roof)

\$65,000,000

www.landscape.com/14510.htm

Johnny Cheung 張先生 9278 9939



Regalia Bay 赤柱 富豪海灣

88 Wong Ma Kok Road, Stanley

5-bedroom sea view garden townhouse with full clubhouse facilities

五房海景花園排屋，全面設施

4,103 s.f.

(plus 1,340 s.f. roof & 750 s.f. garden)

\$65,000,000

www.landscape.com/14340.htm

Cecilia Fung 馮小姐 6271 2388



26E Shouson Hill Road

壽臣山 壽山村道26E號

Rare find duplex with large garden and tasteful decor

罕有複式連大花園及品味裝修

3,000 s.f. (plus 1,000 s.f. garden)

\$65,000,000

www.landscape.com/14794.htm

Cecilia Fung 馮小姐 6271 2388



Las Pinadas

壽臣山 朗松居

33 Shouson Hill Road, Shouson Hill

Popular townhouse with full clubhouse facilities in lush green surroundings

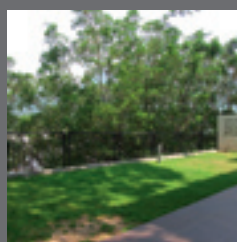
受歡迎排屋享多樣化會所設施，環境翠綠

3,500 s.f. (plus 778 s.f. roof)

\$65,500,000

www.landscape.com/14070.htm

Christine Chong 莊小姐 9648 6082



Evergreen Garden

壽臣山 松柏花園

18 Shouson Hill Road, Shouson Hill

Large duplex with sizeable garden

複式大單位，設有寬敞花園

2,106 s.f. (plus 1,374 s.f. garden)

\$68,000,000 also for lease \$180,000 incl.

www.landscape.com/15791.htm

Cecilia Fung 馮小姐 6271 2388



The Somerset

淺水灣 怡峰

67 Repulse Bay Road, Repulse Bay

Duplex apartment overlooking Repulse Bay and Deep Water Bay

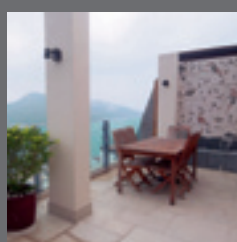
複式單位眺望淺水灣及深水灣

3,099 s.f.

\$68,000,000

www.landscape.com/12660.htm

Simon Yung 翁先生 9418 5743



Pinewaver Villas

春坎角 松濤小築

35 Ching Sau Lane, Chung Hom Kok

Well designed house with breath-taking sea view

精心設計洋房享扣人心弦海景

3,353 s.f.

\$70,000,000

www.landscape.com/14834.htm

Philip Lai 黎先生 9430 3330



Grosvenor Place
淺水灣 淺水灣道117號
117 Repulse Bay Road, Repulse Bay
Contemporary apartment overlooking the panorama of Repulse Bay beach
雅緻時尚住宅眺望環迴淺灣泳灘景
2,809 s.f.
\$73,000,000

www.landscape.com/7778.htm | Simon Lee 李先生 6014 3712



37 Tung Tau Wan Road, Stanley
赤柱 東頭灣道37號
Unique garden house at Stanley waterfront
獨特花園屋，赤柱海濱
3,300 s.f. (plus 1,000 s.f. garden)
\$75,000,000

www.landscape.com/10620.htm | Teresa Fung 馮小姐 9138 1621



Ruby Court
淺水灣 嘉麟閣
55 South Bay Road, Repulse Bay
Unique penthouse with roof and splendid South Bay view
特色頂層連天台享迷人南灣景
2,790 s.f. (plus 587 s.f. roof)
\$75,000,000

www.landscape.com/15657.htm | Mark Mak 麥先生 6838 2929



Manderly Garden 深水灣 文禮苑
48 Deep Water Bay Road, Deep Water Bay
Townhouse with roof and terrace in prestigious location
排屋連天台及平台，尊貴地段
3,594 s.f.
(plus 356 s.f. garden & 587 s.f. roof)
\$90,000,000

www.landscape.com/15411.htm | Teresa Lau 劉小姐 9080 6686



Villa Corniche
淺水灣 康芷苑
21 South Bay Road, Repulse Bay
Spacious garden house in serene area
寬敞花園屋，環境寧靜
4,200 s.f.
(plus 930 s.f. roof & 888 s.f. garden)
\$95,000,000

www.landscape.com/11774.htm | Sylvia Tsang 曾小姐 9801 1742



1 Shouson Hill Road East
壽臣山 壽臣山道東1號
Luxurious garden townhouse in lush green neighbourhood
豪華花園排屋，環境茂綠
5,300 s.f. (plus 961 s.f. garden)
\$98,000,000

www.landscape.com/15307.htm | Maria Cheung 張小姐 6256 1848



39 Deep Water Bay Road
深水灣道 39號
Rare Deep Water Bay townhouse with new decorations overlooking stunning views
罕有深水灣排屋連新裝修，眺望美景
4,047 s.f. (plus 1,354 s.f. garden)
\$148,000,000

www.landscape.com/15313.htm | Johnny Cheung 張先生 9278 9939



4 Shouson Hill Road West
壽臣山道西4號
Unique 6-bedroom townhouse with large private garden in tranquil neighbourhood
獨特六房排屋連私家大花園，環境寧靜
4,000 s.f. (plus 3,000 s.f. garden)
\$150,000,000

www.landscape.com/14420.htm | Louis Wong 黃先生 9871 6828



Ming Villas
壽臣山 明園
39B-F Shouson Hill Road, Shouson Hill
Boutique sea view townhouse with private pool and brand new decor
海景精品排屋連私家泳池，全新裝修
4,258 s.f. (plus 745 s.f. terrace)
\$150,000,000

www.landscape.com/15513.htm | Sylvia Tsang 曾小姐 9801 1742



25 Shek O Headland
石澳山仔25號
House at Shek O with huge private garden
石澳洋房，設有巨型私家花園
4,000 s.f. (plus 5,000 s.f. garden)
\$200,000,000

www.landscape.com/15513.htm | Mark Mak 麥先生 6838 2929



36A-36D Repulse Bay Road, Repulse Bay
淺水灣 淺水灣道36A-36D號
Rare detached house at Deep Water Bay waterfront
罕有獨立屋，深水灣海濱
4,900 s.f. (plus 1,946 s.f. garden)
\$200,000,000

www.landscape.com/13719.htm | Maria Cheung 張小姐 6256 1848



Island Grove
深水灣 香島道40號
40 Island Road, Deep Water Bay
Prestigious residence at Deep Water Bay waterfront
深水灣臨海尊貴住宅
5,080 s.f. (plus 423 s.f. garden)
\$250,000,000

www.landscape.com/13229.htm | Stephen Chan 陳先生 9093 3381

SOUTHSIDE SALES



Overbays

淺水灣 淺水灣道71號

71 Repulse Bay Road, Repulse Bay
Luxurious house at Repulse Bay
淺水灣豪華洋房

5,051 s.f.

Open Offer also for lease \$500,000

www.landscape.com/843.htm

Louis Wong 黃先生 9871 6828



45 Chung Hom Kok Road, Chung Hom Kok

春坎角 春坎角道45號

Designer decorated duplex with private pool and terrace
匠心設計裝修複式連私家泳池及平台

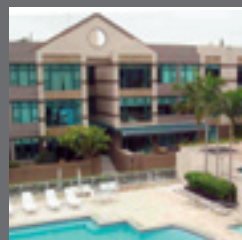
4,280 s.f. (plus 2,850 s.f. garden)

Open Offer

www.landscape.com/15471.htm

Louis Wong 黃先生 9871 6828

SOUTHSIDE LEASE



Stanford Villa

赤柱 旭逸居

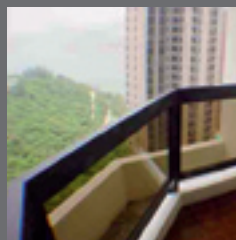
7 Stanley Village Road, Stanley
Cosy low-rise flat with roof close to beach
舒適低密度單位連天台，鄰近海灘

1,052 s.f. (plus 800 s.f. roof)

\$53,000

www.landscape.com/15621.htm

Mary Li 李小姐 9011 6595



South Bay Towers

淺水灣 南灣大廈

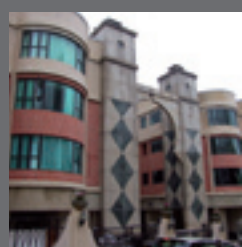
59 South Bay Road, Repulse Bay
Full sea view 2-bedroom flat with full facilities
全海景兩房單位享全面設施

1,433 s.f.

\$55,000

www.landscape.com/15620.htm

Mary Li 李小姐 9011 6595



Regent Palisades

薄扶林 帝柏園

43 Bisney Road, Pokfulam
Charming low-rise with private rooftop
迷人低密度住宅連私家天台

1,735 s.f. (plus 1,500 s.f. roof)

\$60,000 incl.

www.landscape.com/14967.htm

Rita Lee 李小姐 9437 0087



Repulse Bay Garden

淺水灣 麗景園

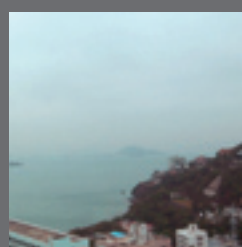
18-40 Belleview Drive, Repulse Bay
Practical flat with balcony overlooking Repulse Bay beach
實用單位連露台眺望淺水灣沙灘

2,288 s.f.

\$82,000

www.landscape.com/15244.htm

Sami Woo 胡小姐 9493 8275



La Mer

薄扶林 浪頤居

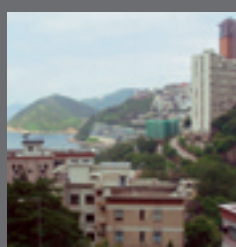
67-71 Bisney Road, Pokfulam
Newly renovated 4-bedroom low-rise with full sea view
新裝四房低密度享全海景

2,063 s.f.

\$95,000 incl.

www.landscape.com/14489.htm

Yvonne Chang 鄭小姐 9088 4666



South Bay Palace

淺水灣 南灣御苑

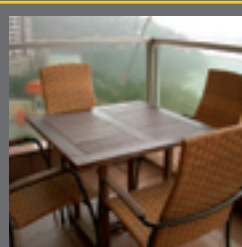
25-31 South Bay Close, Repulse Bay
Spacious 4-bedroom apartment with facilities
寬敞四房享消閒設施

2,636 s.f.

\$100,000 also for sale \$38,000,000

www.landscape.com/14203.htm

Teresa Fung 馮小姐 9138 1621



Faber Court

大潭 輝百閣

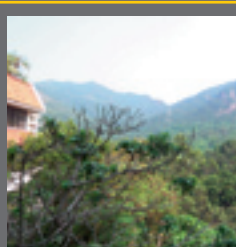
29 & 31 Tai Tam Road, Tai Tam
Full sea view 4-bedroom apartment on Tai Tam waterfront
大潭臨海全海景四房單位

2,250 s.f.

\$100,000 also for sale \$42,000,000

www.landscape.com/10366.htm

Philip Lai 黎先生 9430 3330



Ann Garden

壽臣山 安苑

29 Shouson Hill Road, Shouson Hill
Popular garden duplex in lush green setting
受歡迎花園複式，四周環境翠綠

2,500 s.f.

\$110,000

www.landscape.com/15219.htm

Maria Cheung 張小姐 6256 1848



Ruby Court

淺水灣 嘉麟閣

55 South Bay Road, Repulse Bay
Waterfront apartment with full sea view
臨海單位享全海景

2,200 s.f.

\$110,000

www.landscape.com/9005.htm

Carman Szeto 司徒小姐 8100 3893



Villa Cecil Phase III

薄扶林 趙苑3期

216 Victoria Road, Pokfulam
New large low-rise flat at Pokfulam waterfront
簇新低密度大單位，位於薄扶林海濱

3,911 s.f.

\$120,000 incl.

www.landscape.com/14121.htm

Rita Lee 李小姐 9437 0087



Banyan Villas
赤柱 榕蔭園
9 Stanley Village Road, Stanley
Resort style garden house close to Stanley beach
度假式花園洋房鄰近赤柱海灘
2,500 s.f.
\$125,000

www.landscape.com/15406.htm Philip Lai 黎先生 9430 3330



The Redhill Peninsula - Cedar Drive
大潭 紅山半島-松柏徑
18 Pak Pat Shan Road, Tai Tam
Spacious and practical sea view house with garden
寬敞實用海景洋房連花園
2,672 s.f. (plus 842 s.f. garden)
\$140,000 also for sale \$50,000,000

www.landscape.com/15271.htm Yvonne Chang 鄭小姐 9088 4666



Radcliffe
薄扶林 靖林
120 Pok Fu Lam Road, Pokfulam
Brand new 4-ensuite duplex with full clubhouse facilities
全新四套房複式連全面會所設施
3,620 s.f.
\$145,000 incl. also for sale \$72,400,000

www.landscape.com/15172.htm Teresa Lau 劉小姐 9080 6686



5 Headland Road, Repulse Bay
淺水灣 赫蘭道 5 號
Newly renovated penthouse duplex with peaceful sea view
翻新頂層複式享平靜海景
3,200 s.f. (plus 1,000 s.f. roof)
\$149,000

www.landscape.com/12969.htm Maria Cheung 張小姐 6256 1848



Xanadu Court
壽臣山 壽山村道 30 號
30 Shouson Hill Road, Shouson Hill
Unique garden duplex in Deep Water Bay
深水灣獨特花園複式
3,000 s.f. (plus 1,000 s.f. garden)
\$150,000 incl.

www.landscape.com/6631.htm Christine Chong 莊小姐 9648 6082



Twin Brook
淺水灣 雙溪
43 Repulse Bay Road, Repulse Bay
Spacious 4-bedroom unit with fascinating view of Deep Water Bay
寬敞四房單位享迷人深水灣景
2,700 s.f.
\$150,000 also for sale \$68,000,000

www.landscape.com/15419.htm Simon Lee 李先生 6014 3712



Faber Villa
大潭 輝百苑
17 Tai Tam Road, Tai Tam
4-bedroom sea view apartment with high privacy
四房海景住宅，高私隱
3,200 s.f.
\$160,000 incl. also for sale \$65,000,000

www.landscape.com/15058.htm Philip Lai 黎先生 9430 3330



Repulse Bay Apartments
淺水灣 淺水灣花園大廈
101 Repulse Bay Road, Repulse Bay
Highly sought after sea view apartment
罕有搶手海景單位
4,330 s.f.
\$166,000

www.landscape.com/1539.htm Louis Wong 黃先生 9871 6828



13 Headland Road, Repulse Bay
淺水灣 赫蘭道13號
Rare on market townhouse in tranquil location
罕有放盤排屋，環境清靜
3,576 s.f.
\$170,000

www.landscape.com/15654.htm Louis Wong 黃先生 9871 6828



Henredon Court
壽臣山 恆安閣
8 Shouson Hill Road, Shouson Hill
Newly renovated penthouse duplex in tranquil location
新裝頂層複式，環境寧靜
4,474 s.f.
\$170,000

www.landscape.com/15283.htm Simon Yung 翁先生 9418 5743



Fairview Court
淺水灣 富慧閣
94 Repulse Bay Road, Repulse Bay
Huge 5-bedroom flat in tranquil area
五房巨宅，環境寧靜
4,155 s.f.
\$180,000

www.landscape.com/15269.htm Christine Chong 莊小姐 9648 6082



Regalia Bay
赤柱 富豪海灣
88 Wong Ma Kok Road, Stanley
Nicely decorated 5-bedroom waterfront garden house
雅裝五房海濱花園屋
4,053 s.f. (plus 1,000 s.f. garden)
\$180,000 incl. also for sale \$63,000,000

www.landscape.com/15498.htm Teresa Fung 馮小姐 9138 1621

SOUTHSIDE LEASE



Le Palais

大潭 皇府灣

8 Pak Pat Shan Road, Tai Tam

Luxury waterfront garden townhouse in exclusive location

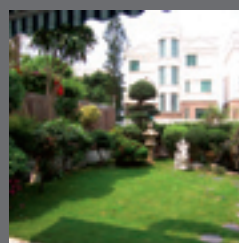
豪華海濱花園排屋，尊貴地段

3,348 s.f.

\$180,000 incl. also for sale \$70,000,000

www.landscape.com/12231.htm

Maria Cheung 張小姐 6256 1848



Bauhinia Gardens

春坎角 紫荊園

42 Chung Hom Kok Road, Chung Hom Kok

Garden townhouse ideal for big family in lush greenery neighbourhood

花園排屋，大家庭之選，環境翠綠

3,500 s.f. (plus 1,000 s.f. garden)

\$185,000

www.landscape.com/15740.htm

Philip Lai 黎先生 9430 3330



Burnside Estate

淺水灣 濱景園

9 South Bay Road, Repulse Bay

4-bedroom townhouse close to Repulse Bay beach

四房排屋鄰近淺灣泳灘

2,800 s.f.

\$190,000 incl.

www.landscape.com/15586.htm

Sissy Li 李小姐 9642 6969



Carriana Sassoon

薄扶林 沙宣道41號

41 Sassoon Road, Pokfulam

5-bedroom townhouse with private garage

五房排屋連私家車房

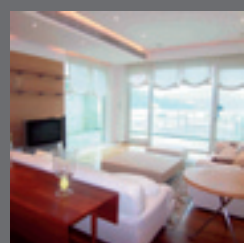
3,500 s.f.

(plus 836 s.f. terrace & 514 s.f. garden)

\$190,000 incl.

www.landscape.com/15486.htm

Christine Chong 莊小姐 9648 6082



Rosecliff 大潭 大潭道20號

20 Tai Tam Road, Tai Tam

Prestigious waterfront garden townhouse with private garage

尊貴臨海花園排屋連私家車房

3,980 s.f.

(plus 1,050 s.f. roof & 557 s.f. garden)

\$200,000 also for sale \$90,000,000

www.landscape.com/11812.htm

Teresa Lau 劉小姐 9080 6686



Circle Lodge 淺水灣 環翠園

79 Repulse Bay Road, Repulse Bay

Rare find Repulse Bay garden townhouse with full sea view

罕有淺水灣花園排屋享全海景

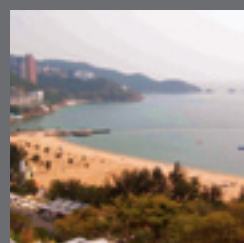
3,600 s.f.

(plus 605 s.f. roof & 540 s.f. garden)

\$220,000

www.landscape.com/14318.htm

Louis Wong 黃先生 9871 6828



115 Repulse Bay Road, Repulse Bay

淺水灣 淺水灣道115號

Newly renovated spacious low-rise flat overlooking Repulse Bay beach

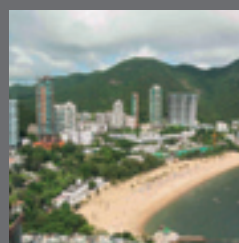
翻新寬敞低密度住宅眺望淺灣泳灘

4,000 s.f.

\$220,000

www.landscape.com/13301.htm

Sissy Li 李小姐 9642 6969



The Beachfront

淺水灣 壁池

7 Belleview Drive, Repulse Bay

Sea view townhouse in Repulse Bay with private garage

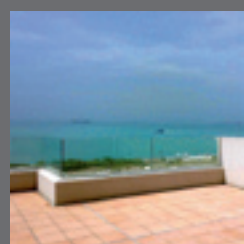
淺水灣海景排屋連私家車房

3,691 s.f. (plus 105 s.f. terrace)

\$230,000

www.landscape.com/15578.htm

Teresa Fung 馮小姐 9138 1621



Residence Bel-Air (Phase 3) Houses 薄扶林 貝沙灣洋房

8 Cyberport Road, Pokfulam

Brand new townhouse with full clubhouse facilities

全新排屋連全面會所設施

4,669 s.f.

(plus 1,796 s.f. garden & 1,503 s.f. roof)

\$250,000 also for sale \$120,000,000

www.landscape.com/13209.htm

Simon Lee 李先生 6014 3712



56 Repulse Bay Road, Repulse Bay

淺水灣 淺水灣道56號

Waterfront duplex with breath-taking view of Repulse Bay beach

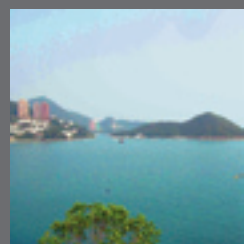
海濱複式享醉人淺水灣灘景

3,580 s.f.

\$290,000 incl. also for sale \$100,000,000

www.landscape.com/13708.htm

Simon Lee 李先生 6014 3712



Island View

深水灣 香島道2號

2 Island Road, Deep Water Bay

Rare find waterfront garden house in Deep Water Bay

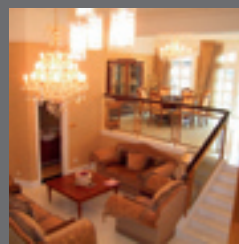
罕有放盤深水灣臨海花園屋

4,451 s.f.

\$350,000

www.landscape.com/15393.htm

Louis Wong 黃先生 9871 6828



Bay Villas

壽臣山 南源

57-71 Shouson Hill Road

Rare detached house with private lift overlooking Deep Water Bay

超罕獨立屋，私家升降機，眺望深水灣

5,443 s.f.

\$380,000 incl.

www.landscape.com/15248.htm

David Chan 陳先生 9238 2012



Barker Villa
山頂 柏架別墅

41 Barker Road, The Peak
Cosy apartment with panoramic views
舒適單位享環迴美景

1,650 s.f.
\$45,000,000

www.landscope.com/540.htm | David Leung 梁先生 9199 0672



Carolina Garden
山頂 嘉樂園

20-34 Coombe Road, The Peak
Rare colonial apartment in prestigious location
罕有英式物業，顯赫地段

2,350 s.f.
\$48,000,000

www.landscope.com/12308.htm | David Leung 梁先生 9199 0672



Villa Verde
山頂 環翠園

4-18 Guildford Road, The Peak
Sought after Peak apartment with 4-bedroom layout
搶手山頂物業，四房間格

2,540 s.f.
\$51,800,000 also for lease \$110,000 incl.

www.landscope.com/15685.htm | Teresa Lau 劉小姐 9080 6686



26 Magazine Gap Road, The Peak
山頂 馬己仙峽道26號

Colonial apartment with harbour view
英式物業享維港景

2,400 s.f.
\$60,000,000

www.landscope.com/1260.htm | Carman Szeto 司徒小姐 8100 3893



La Hacienda - Apartment
山頂 加列山道29-33號

29-33 Mount Kellett Road, The Peak
Rare colonial apartment at the Peak
山頂罕有英式單位

3,100 s.f.
\$70,000,000

www.landscope.com/12453.htm | David Leung 梁先生 9199 0672



Eredine
山頂 加列山道38號

38 Mount Kellett Road, The Peak
Huge colonial apartment with spectacular sea view
巨型英式住宅享壯觀海景

3,300 s.f.
\$71,000,000

www.landscope.com/9926.htm | David Leung 梁先生 9199 0672



Mountain Lodge
山頂 崑廬

44 Mount Kellett Road, The Peak
Rare duplex apartment with Southside sea view
罕有複式享南區海景

5,200 s.f.
\$120,000,000

www.landscope.com/14003.htm | Stephen Chan 陳先生 9093 3381



Strawberry Hill
山頂 紅莓閣

8 Plunkett's Road, The Peak
Rare colonial sea view house with private garden
珍貴英式海景洋房，享有私家花園

3,200 s.f. (plus 388 s.f. garden)
\$125,000,000

www.landscope.com/14357.htm | Mark Mak 麥先生 6838 2929



Sunshine Villa
山頂 陽光花園

48 Mount Kellett Road, The Peak
Airy townhouse on Mount Kellett
通爽排屋，位處加列山

3,500 s.f. (plus 2,242 s.f. garden)
\$130,000,000

www.landscope.com/2662.htm | David Leung 梁先生 9199 0672



Kletteria 山頂 加列山道71號

71 Mount Kellett Road, The Peak
Peak luxurious mansion with private pool and garage
山頂豪華住宅連私家泳池車房

3,198 s.f.
(plus 1,370 s.f. garden & 906 s.f. roof)
\$150,000,000 also for lease \$260,000

www.landscope.com/13460.htm | Simon Lee 李先生 6014 3712



Montebello
山頂 濠景閣

15-17 Plantation Road, The Peak
Rarely available 4-ensuite duplex with sweeping harbour view
罕有放盤四套房複式，飽覽維港

4,455 s.f.
\$158,000,000 also for lease \$420,000

www.landscope.com/14030.htm | Simon Yung 翁先生 9418 5743



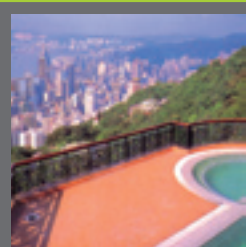
Cheuk Nang Lookout
山頂 卓能山莊

30 Severn Road, The Peak
Unique sea view house in exclusive location
獨特海景洋房，顯赫地段

6,600 s.f.
(plus 2,500 s.f. garden & 1,100 terrace)
\$160,000,000

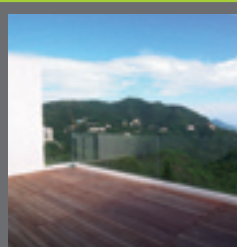
www.landscope.com/13355.htm | Sissy Li 李小姐 9642 6969

THE PEAK SALES



Abergeldie
山頂 種植道52號
52 Plantation Road, The Peak
Exclusive Peak townhouse with a bird's eye view of Victoria Harbour
獨特山頂排屋，鳥瞰維港
3,583 s.f.
\$180,000,000

www.landscope.com/13805.htm | David Leung 梁先生 9199 0672



1-9 Rosmead Road, The Peak 山頂 樂善美道1-9號
Rare garden house on the Peak
山頂罕有花園洋房
5,887 s.f.
(plus 2,228 s.f. terrace & 1,955 s.f. garden)
\$250,000,000

www.landscope.com/14409.htm | David Chan 陳先生 9238 2012



12-22 Black's Link, The Peak 山頂 布力徑12-22號
Townhouse in quiet location with four bedrooms and huge private garden
四房排屋連巨型私家花園，位置清靜
5,000 s.f.
\$250,000,000 also for lease \$350,000

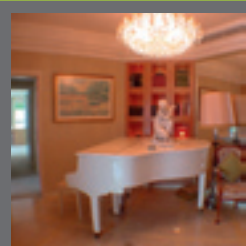
www.landscope.com/10425.htm | Maria Cheung 張小姐 6256 1848



Sherwood's Bluff
山頂 百祿徑10號
10 Bluff Path, The Peak
House on the Peak with Southside sea view
山頂洋房享南區海景
4,055 s.f. (plus 400 s.f. garden)
Open Offer also for lease \$200,000

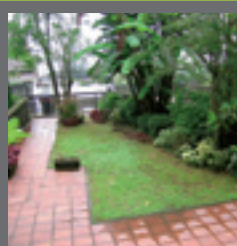
www.landscope.com/3719.htm | Simon Yung 翁先生 9418 5743

THE PEAK LEASE



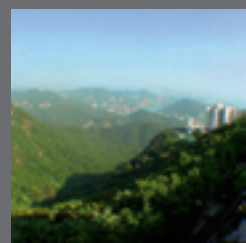
43 Barker Road, The Peak
山頂 白加道43號
Modern harbour view apartment
時尚維港景物業
3,820 s.f.
\$200,000

www.landscope.com/12669.htm | Simon Yung 翁先生 9418 5743



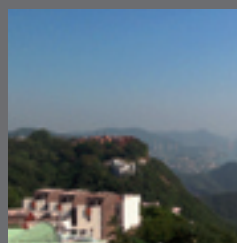
Mount Austin Estate
山頂 山景花園別墅
5 Mount Austin Road, The Peak
Exclusive garden house with Southside sea view
獨特花園洋房享南區海景
3,757 s.f.
\$235,000

www.landscope.com/15181.htm | Sissy Li 李小姐 9642 6969



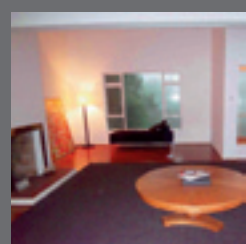
74 Mount Kellett Road, The Peak
山頂 加列山道 74 號
Rarely available Peak townhouse with sweeping sea view
罕有放盤山頂排屋享遼闊海景
4,200 s.f. (plus 300 s.f. garden)
\$250,000 incl.

www.landscope.com/15495.htm | Yvonne Chang 鄭小姐 9088 4666



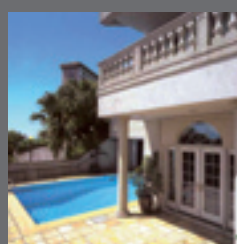
King's Court
山頂 龍庭
5 Mount Kellett Road, The Peak
Newly renovated garden townhouse with sweeping Southside sea view
新裝花園排屋享遼闊南區海景
3,165 s.f. (plus 1,916 s.f. garden)
\$250,000

www.landscope.com/15562.htm | Yvonne Chang 鄭小姐 9088 4666



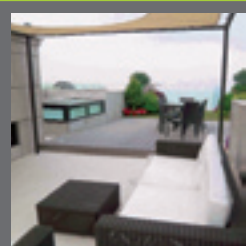
Strawberry Hill
山頂 紅莓閣
8 Plunkett's Road, The Peak
Prestigious house on the Peak
山頂尊貴洋房
3,250 s.f.
\$250,000

www.landscope.com/15675.htm | Yvonne Chang 鄭小姐 9088 4666



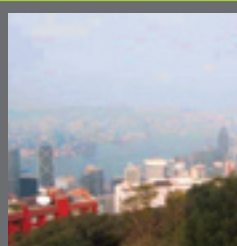
34 Mount Kellett Road, The Peak 山頂 加列山道34號
Colonial style detached townhouse with private pool and garden
獨立屋連私家泳池及花園
3,521 s.f. (plus 1,588 s.f. garden)
\$282,000

www.landscope.com/1978.htm | Louis Wong 黃先生 9871 6828



Severn 8
山頂 倚巒
8 Severn Road, The Peak
Brand new harbour view garden townhouse on the Peak
全新海景花園排屋，位處山頂
3,330 s.f.
\$290,000

www.landscope.com/14171.htm | Simon Yung 翁先生 9418 5743



56 Plantation Road, The Peak 山頂 種植道56號
Prestigious townhouse on the Peak with Victoria Harbour view
尊貴山頂排屋享維港景
4,613 s.f. (plus 858 s.f. roof)
\$350,000

www.landscope.com/15115.htm | Rita Lee 李小姐 9437 0087

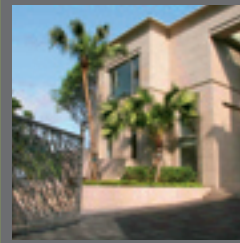
The Belvedere 山頂 種植道51至61號



51-61 Plantation Road, The Peak
Detached house on the Peak with private pool overlooking the harbour
山頂獨立屋連私家泳池眺望維港
4,800 s.f.
(plus 1,500 s.f. roof & 1,500 s.f. terrace)
\$450,000

www.landscape.com/9241.htm

Simon Yung 翁先生 9418 5743



Gough Hill Residences
山頂 歌賦山3至5號
3-5 Gough Hill Path, The Peak
Exclusive Peak house with huge garden
特色山頂洋房連巨型花園
5,657 s.f.
(plus 5,320 s.f. garden & 1,717 s.f. roof)
\$580,000 incl.

www.landscape.com/15140.htm

Teresa Fung 馮小姐 9138 1621

DO YOU KNOW

Old Wan Chai Post Office 舊灣仔郵政局

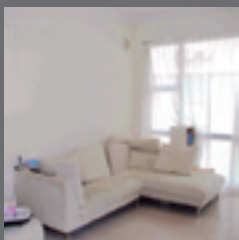


The Old Wan Chai Post Office is the oldest surviving post office building in Hong Kong. This L-shaped building situated at the junction of Wan Chai Gap Road and Queen's Road East, was erected between 1912 and 1913, and opened on 1 March 1915 as the Wan Chai Post Office. It is a simple pitched-roof structure with attractive gable ends and mouldings. The building is now operated by the Environmental Protection Department as a resource centre.

舊灣仔郵政局是本港現存歷史最悠久的郵政局建築。這座曲尺形建築物坐落於灣仔峽道和皇后大道東交界，建於一九一二至一九一三年間。一九一五年三月一日正式開放作為灣仔郵政局。這是一座簡單的金字頂建築，山牆及灰塑甚具特色。現由環境保護署用作環境資源中心。

Information provided by Antiquities and Monuments Office, Leisure and Cultural Services Department

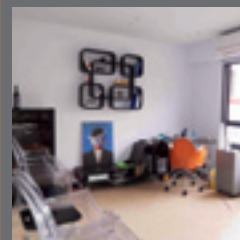
MID-LEVELS SALES



Best View Court
中半山 好景大廈
66-68 MacDonnell Road, Midlevels Central
Colonial style mid-rise apartment
英式中密度住宅
1,500 s.f.
\$15,500,000

www.landscape.com/14980.htm

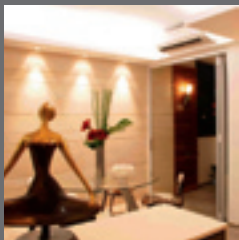
Mary Li 李小姐 9011 6595



Linden Height
渣甸山 年達閣
11 Boyce Road, Jardine's Lookout
Cosy flat with open view of Jardine's Lookout
舒適住宅享渣甸山開揚景觀
1,150 s.f.
\$15,500,000

www.landscape.com/15543.htm

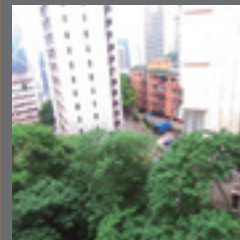
Rowena Siu 蕭小姐 9348 4118



Green Lane Court
跑馬地 箕璣閣
130-140 Blue Pool Road, Happy Valley
Designer decorated mid-rise flat with balcony
精心設計中密度單位連露台
1,400 s.f.
\$16,000,000

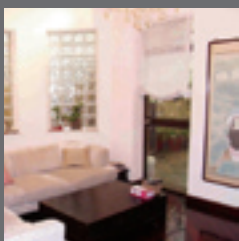
www.landscape.com/14601.htm

Stephen Chan 陳先生 9093 3381



Beau Cloud Mansion
中半山 碧雲樓
64 MacDonnell Road, Midlevels Central
4-bedroom apartment on MacDonnell Road
麥當勞道四房單位
1,700 s.f.
\$17,500,000

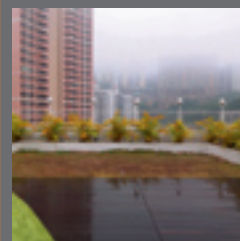
Eric Wong 黃先生 9740 3396



Pak Fai Mansion
中半山 百輝大廈
72 MacDonnell Road, Midlevels Central
Low-rise with terrace on MacDonnell Road
麥當勞道低密度住宅連平台
1,700 s.f. (plus 100 s.f. terrace)
\$18,000,000

www.landscape.com/14626.htm

Eric Wong 黃先生 9740 3396



Elegant Garden
西半山 精緻園
18 Babington Path, Midlevels West
Nicely decorated top floor apartment with internal access to private roof
雅裝頂層單位，內置樓梯直達天台
1,750 s.f. (plus 1,500 s.f. roof)
\$18,500,000

www.landscape.com/13893.htm

Christine Chong 莊小姐 9648 6082

MID-LEVELS SALES



Beverly Hill

跑馬地 比華利山

6 Broadwood Road, Happy Valley
4-bedroom with balcony in
convenient location
四房物業連露台，位置方便

1,754 s.f.

\$18,600,000 also for lease \$64,000

www.landscape.com/14996.htm

Rowena Siu 蕭小姐 9348 4118



Wealthy Heights

中半山 威豪閣

35 MacDonnell Road, Midlevels Central
Practical apartment with lush green
mountain view
實用住宅享茂綠山景

1,450 s.f.

\$20,000,000

www.landscape.com/12021.htm

Rita Lee 李小姐 9437 0087



Jardine's Lookout Low-rise

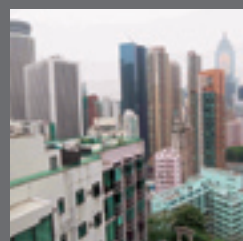
渣甸山低密度住宅

1-11 Wilson Road, Jardine's Lookout
Charming colonial low-rise with
high ceiling
迷人英式低密度住宅，高樓底

1,800 s.f.

\$21,000,000

Teresa Lau 劉小姐 9080 6686



United Mansion

東半山 騰黃閣

7 Shiu Fai Terrace, Midlevels East
Unique mid-rise apartment with
3 ensuites in quiet neighbourhood
獨特中密度物業連三套房，環境寧靜

2,200 s.f.

\$21,000,000 also for lease \$65,000

www.landscape.com/15026.htm

Sami Woo 胡小姐 9493 8275



Birchwood Place

中半山 寶樺臺

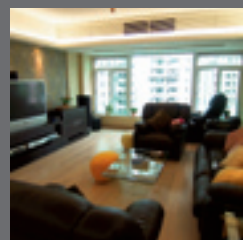
96 MacDonnell Road, Midlevels Central
Under valued apartment with clubhouse on
MacDonnell Road. Good for investment
麥當勞道超值單位，享會所設施，投資之選

2,018 s.f.

\$23,000,000 also for lease \$75,000

www.landscape.com/15701.htm

Teresa Lau 劉小姐 9080 6686



Medallion Heights

西半山 金徽閣

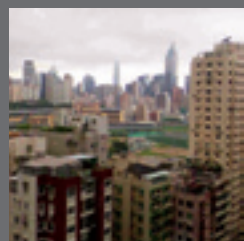
45 Conduit Road, Midlevels West
Spacious and high efficiency apartment in
popular location
寬敞實用單位，熱門地段

2,050 s.f.

\$23,000,000

www.landscape.com/14964.htm

Ada Cheung 張小姐 9681 8166



Ventris Terrace

跑馬地 雲臺別墅

25-27 Ventris Road, Happy Valley
Rare penthouse with internal stairs to huge
private roof terrace
罕有頂層，內置樓梯直上巨型私家天台

1,600 s.f. (plus 2,424 s.f. roof)

\$23,000,000

www.landscape.com/13933.htm

Mary Li 李小姐 9011 6595



Evergreen Villa

東半山 松柏新墅

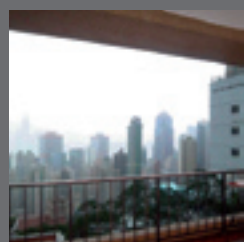
43 Stubbs Road, Midlevels East
Spacious practical apartment with balcony
寬敞實用單位連露台

1,750 s.f.

\$25,000,000

www.landscape.com/15781.htm

Carman Szeto 司徒小姐 8100 3893



Savoy Court 西半山 夏蕙苑

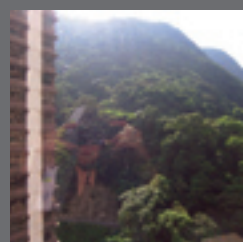
101 Robinson Road, Midlevels West
High efficiency 4-bedroom unit with
2 ensuites and huge balcony in
convenient location
實用四房連雙套及巨型露台，位置方便

2,546 s.f.

\$25,000,000 also for lease \$80,000

www.landscape.com/15769.htm

Ada Cheung 張小姐 9681 8166



Tregunter Tower 3

中半山 地利根德閣3座

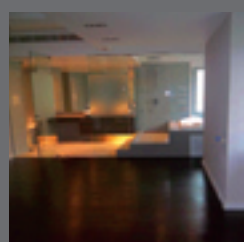
14 Tregunter Path, Midlevels Central
Good value apartment with full clubhouse
facilities in prime location
良好價值單位享會所設施，黃金地段

2,020 s.f.

\$25,000,000

www.landscape.com/14316.htm

Mira To 杜小姐 9486 1566



The Elegance

東半山 優雅閣

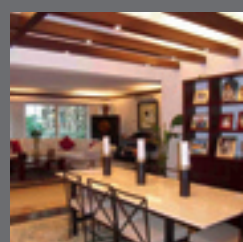
60 Tai Hang Road, Midlevels East
Fitted and equipped modern triplex on
Tai Hang Road
大坑道時尚三複式，用料配置上乘

2,438 s.f.

\$26,900,000

www.landscape.com/14197.htm

Yvonne Chang 鄭小姐 9088 4666



Babington House

西半山 巴威大廈

5 Babington Path, Midlevels West
Rare find huge apartment with a large
private terrace
罕有巨型單位連私家大平台

2,800 s.f. (plus 1,000 s.f. terrace)

\$28,000,000

www.landscape.com/15031.htm

Ada Cheung 張小姐 9681 8166



Tavistock 2
中半山 騰皇居2座
10A Tregunter Path, Midlevels Central
Luxurious flat with high quality fittings and finishes
豪華單位，優質配置
1,655 s.f.
\$29,800,000

www.landscape.com/14453.htm | Eric Wong 黃先生 9740 3396



The Legend
東半山 名門
23 Tai Hang Drive, Midlevels East
Brand new 4-bedroom apartment with lush green mountain view
全新四房單位，茂綠山景
2,058 s.f.
\$30,000,000

www.landscape.com/12020.htm | Simon Yung 翁先生 9418 5743



Bowen Place
中半山 寶雲閣
11A Bowen Road, Midlevels Central
Prestigious location with harbour and city views
尊貴地段，享維港及大都會景
1,983 s.f.
\$31,800,000

www.landscape.com/15385.htm | Ada Cheung 張小姐 9681 8166



Wilshire Park
中半山 豪輝閣
12-14 MacDonnell Road, Midlevels Central
Rare on market high privacy 4-bedroom flat
罕有放盤四房住宅，高私隱
2,265 s.f.
\$31,800,000

www.landscape.com/13899.htm | Rita Lee 李小姐 9437 0087



Bellevue Court
東半山 碧蕙園
41 Stubbs Road, Midlevels East
Sought after spacious apartment on upper Stubbs Road
上司徒拔道罕有寬敞住宅
2,700 s.f.
\$32,000,000

www.landscape.com/10772.htm | Mira To 杜小姐 9486 1566



Wealthy Heights
中半山 威豪閣
35 MacDonnell Road, Midlevels Central
Spacious two-bedroom flat with huge private terrace garden
寬敞兩房單位連巨型私家平台花園
1,561 s.f. (plus 3,880 s.f. terrace)
\$32,800,000

www.landscape.com/15046.htm | Eric Wong 黃先生 9740 3396



Dynasty Court
中半山 帝景園
23 Old Peak Road, Midlevels Central
Harbour view apartment in prestigious development
維港景單位，顯赫名廈
1,962 s.f.
\$33,000,000 also for lease \$90,000 incl.

www.landscape.com/10111.htm | Eric Wong 黃先生 9740 3396



Jardine's Lookout Garden Mansion 東半山 渣甸山花園大廈
148-150 Tai Hang Road, Midlevels East
5-bedroom residence with Victoria Harbour view
維港景五房單位
2,600 s.f.
\$33,000,000

www.landscape.com/10111.htm | Sissy Li 李小姐 9642 6969



The Colonnade
東半山 嘉崙臺
152 Tai Hang Road, Midlevels East
Exquisite modern high-rise apartment with open view of Midlevels East
精緻時尚單位，享東半山景觀
2,137 s.f.
\$33,800,000

www.landscape.com/14558.htm | Mark Mak 麥先生 6838 2929



8 Shiu Fai Terrace, Midlevels East
東半山 肇輝台8號
Modern 4-ensuite duplex in quiet neighbourhood
時尚四套房複式物業，寧靜地段
3,074 s.f.
\$34,000,000

www.landscape.com/14734.htm | Stephen Chan 陳先生 9093 3381



Villa Monte Rosa
東半山 玫瑰新村
41A Stubbs Road, Midlevels East
Spacious practical apartment with big balcony
實用大單位，設有露台
2,800 s.f.
\$35,000,000

www.landscape.com/15758.htm | Stephen Chan 陳先生 9093 3381



Estoril Court
中半山 愛都大廈
55 Garden Road, Midlevels Central
Huge apartment with high efficiency on fringe of Central
巨型實用單位，鄰近中環
3,347 s.f.
\$36,000,000

www.landscape.com/13041.htm | Mira To 杜小姐 9486 1566

MID-LEVELS SALES



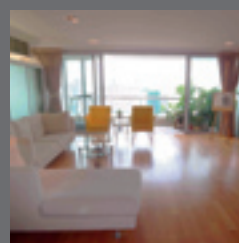
Hollywood Height

中半山 好利閣

6 Old Peak Road, Midlevels Central
High efficiency 4-bedroom apartment with easy access to Central
實用四房物業，鄰近中環

2,700 s.f.
\$37,000,000

www.landscape.com/14809.htm | David Chan 陳先生 9238 2012



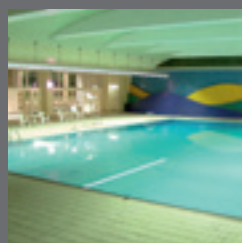
Evergreen Villa

東半山 松柏新村

43 Stubbs Road, Midlevels East
Large practical 4-bedroom flat with open city view
實用四房大單位享開揚城市景

2,560 s.f.
\$38,600,000

www.landscape.com/13921.htm | David Chan 陳先生 9238 2012



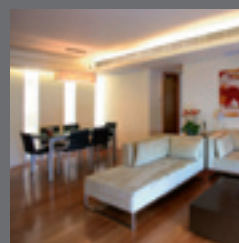
Regent on the Park

中半山 御花園

9A Kennedy Road, Midlevels Central
Spacious apartment with facilities on fringe of Admiralty
寬敞住宅連消閒設施，鄰近金鐘

2,720 s.f.
\$38,000,000

www.landscape.com/15643.htm | Sissy Li 李小姐 9642 6969



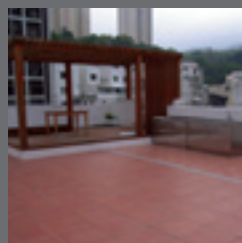
MacDonnell House

中半山 麥當奴大廈

6-8 MacDonnell Road, Midlevels Central
Tastefully decorated unique penthouse with private roof terrace
品味裝潢獨特頂層單位連私家天台

1,543 s.f. (plus 963 s.f. terrace)
\$38,000,000

www.landscape.com/15107.htm | Ada Cheung 張小姐 9681 8166



Pinewood Garden

渣甸山 松峰園

39 Perkins Road, Jardine's Lookout
Large low-rise apartment with sizeable private roof terrace
低密度大單位，設有寬敞私家天台

2,900 s.f. (plus 2,500 s.f. roof)
\$40,800,000

www.landscape.com/15099.htm | Christine Chong 莊小姐 9648 6082



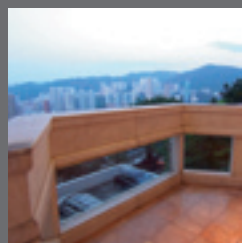
Hatton House

西半山 赫德大廈

15 Kotewall Road, Midlevels West
5-bedroom apartment with harbour view in tranquil location
五房住宅享維港景，位置寧靜

2,800 s.f.
\$42,000,000

www.landscape.com/10285.htm | Sami Woo 胡小姐 9493 8275



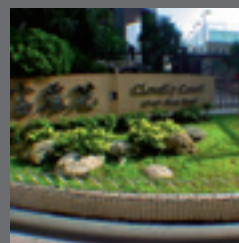
47A Stubbs Road, Midlevels East

東半山 司徒拔道 47A

Exclusive mid-rise apartment with harbour view
獨特中密度物業享維港景

2,400 s.f.
\$42,000,000

www.landscape.com/14822.htm | David Chan 陳先生 9238 2012



Clovelly Court

中半山 嘉富麗苑

12 May Road, Midlevels Central
High efficiency apartment with rooftop. Famous estate in prime location
實用單位連天台，著名屋苑，黃金地段

2,276 s.f. (plus 2,000 s.f. roof)
\$44,000,000

www.landscape.com/12488.htm | Ada Cheung 張小姐 9681 8166



1 Po Shan Road, Midlevels West

西半山 寶珊道1號

Mid-rise apartment with deluxe decoration
中密度單位，豪華裝修

2,471 s.f.
\$45,000,000

www.landscape.com/4163.htm | Carman Szeto 司徒小姐 8100 3893



Leon Court 東半山 利安閣

12-14 Wong Nai Chung Gap Road, Midlevels East

Good value apartment in a quiet enclave with open city view
良好價值單位享開揚城市景，位處寧靜一隅

2,800 s.f.
\$45,000,000

www.landscape.com/10476.htm | Mark Mak 麥先生 6838 2929



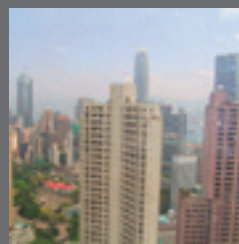
May Tower 1

中半山 梅苑一座

7 May Road, Midlevels Central
Harbour view duplex in prime location
維港景複式，黃金地段

2,850 s.f.
\$46,000,000

www.landscape.com/15356.htm | Johnny Cheung 張先生 9278 9939



Chung Tak Mansion

中半山 重德大廈

2 Magazine Gap Road, Midlevels Central
Spacious apartment with fabulous city view and harbour view
寬敞單位望維港及大部會美景

2,864 s.f.
\$50,000,000 also for lease \$150,000

www.landscape.com/6428.htm | Mira To 杜小姐 9486 1566



Broadview Villa
跑馬地 樂景園
20 Broadwood Road, Happy Valley
Large and practical flat with splendid views
實用大單位享醉人景觀

3,134 s.f.
\$52,000,000

www.landscape.com/15158.htm | Rowena Siu 蕭小姐 9348 4118



Hillsborough Court
中半山 曉峰閣
18 Old Peak Road, Midlevels Central
Duplex penthouse in Midlevels Central
中半山頂層複式

2,355 s.f.
(plus 841 s.f. roof and 330 s.f. terrace)
\$55,000,000 **SOLE AGENT 獨家代理**

www.landscape.com/8.htm | David Leung 梁先生 9199 0672



Bowen Mansion
中半山 寶雲大廈
7C Bowen Road, Midlevels Central
Huge flat with large balcony in
tranquil area
巨型單位連大露台，環境寧靜

4,200 s.f.
\$58,000,000

www.landscape.com/15534.htm | Johnny Cheung 張先生 9278 9939



Grenville House
中半山 嘉慧園
1, 3 & 3A Magazine Gap Road,
Midlevels Central
Large 4-bedroom flat with big balcony
四房大單位連大露台

3,400 s.f.
\$58,000,000

www.landscape.com/15427.htm | Sissy Li 李小姐 9642 6969



Garden Terrace 2 & 3
中半山 花園臺2 & 3座
8 Old Peak Road, Midlevels Central
Large 4-ensuite apartment with balcony
四套房大單位連露台

3,319 s.f.
\$60,000,000

www.landscape.com/15105.htm | Simon Lee 李先生 6014 3712



Grenville House
中半山 嘉慧園
1, 3 & 3A Magazine Gap Road,
Midlevels Central
Rare huge apartment at Midlevels Central
中半山罕有巨型單位

3,700 s.f.
\$65,000,000

www.landscape.com/13046.htm | David Leung 梁先生 9199 0672



Bowen Place
中半山 寶雲閣
11A Bowen Road, Midlevels Central
Rare harbour view duplex with five
bedrooms in quiet location
罕有維港景五房複式，環境寧靜

3,621 s.f. (plus 184 s.f. terrace)
\$80,000,000

www.landscape.com/15241.htm | Johnny Cheung 張先生 9278 9939



The Albany
中半山 雅賓利大廈
1 Albany Road, Midlevels Central
Exclusive flat with huge private terrace
獨特單位連巨型私家平台

2,546 s.f. (plus 2,628 s.f. garden)
\$80,000,000

www.landscape.com/15480.htm | Johnny Cheung 張先生 9278 9939



The Albany
中半山 雅賓利大廈
1 Albany Road, Midlevels Central
Prestigious 4-ensuite duplex with
splendid views
尊貴四套房複式享醉人美景

3,563 s.f.
\$90,000,000

www.landscape.com/12493.htm | Mark Mak 麥先生 6838 2929



Garden Terrace 2 & 3
中半山 花園臺2 & 3座
8 Old Peak Road, Midlevels Central
Huge combined unit with eight ensuites
巨型相連，設有八套房

6,018 s.f.
\$100,000,000

www.landscape.com/14414.htm | Eric Wong 黃先生 9740 3396



Tregunter Tower 1
中半山 地利根德閣 1座
14 Tregunter Path, Midlevels Central
Huge penthouse duplex with roof in
prime location
巨型頂層複式連天台，黃金地段

6,143 s.f. (plus 1,100 s.f. roof)
\$100,000,000

www.landscape.com/13868.htm | Johnny Cheung 張先生 9278 9939



**21 Perkins Road,
Jardine's Lookout**
渣甸山 白建時道21號
Highly sought after single detached house
in Jardine's Lookout
超罕渣甸山獨立屋

3,800 s.f. (plus 800 s.f. garden)
\$138,000,000

www.landscape.com/15593.htm | Maria Cheung 張小姐 6256 1848

MID-LEVELS SALES

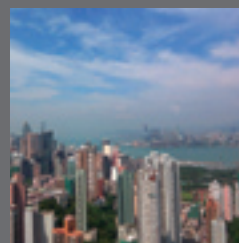
Hillsborough Court 中半山 曉峰閣



18 Old Peak Road, Midlevels Central
Unique triplex penthouse with tasteful decorations
特色頂層三複式，品味裝修
2,200 s.f.
(plus 1,016 s.f. terrace & 1,000 roof)
Open Offer

www.landscope.com/13019.htm

Stephen Chan 陳先生 9093 3381



The Legend

東半山 名門

23 Tai Hang Drive, Midlevels East
Brand new prestigious penthouse duplex with Victoria Harbour view
全新尊貴頂層複式享維港景
2,278 s.f. (plus 367 s.f. roof)
Open Offer

www.landscope.com/14498.htm

Teresa Fung 馮小姐 9138 1621

MID-LEVELS LEASE

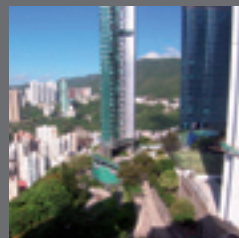


Bamboo Grove

中半山 竹林苑

74-86 Kennedy Road, Midlevels Central
Spacious apartments in convenient location with comprehensive clubhouse facilities
寬敞單位，交通便捷，設施齊備
986 - 2,600 s.f.
\$35,000 up

Mira To 杜小姐 9486 1566



Evergreen Villa

東半山 松柏新村

43 Stubbs Road, Midlevels East
Spacious practical apartment with balcony on Stubbs Road
實用寬敞單位連露台，位處司徒拔道
1,750 s.f.
\$55,000 also for sale \$25,000,000

www.landscope.com/15258.htm

David Chan 陳先生 9238 2012



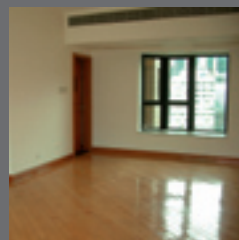
Loong Fung Terrace

東半山 龍風臺

89-93 Tai Hang Road, Midlevels East
Newly renovated low-rise on Tai Hang Road
大坑道翻新低密度單位
1,800 s.f.
\$65,000 incl.

www.landscope.com/3411.htm

Carman Szeto 司徒小姐 8100 3893



The Leighton Hill

跑馬地 禮頓山

28 Broadwood Road, Happy Valley
Luxurious 3-bedroom apartment overlooking the racecourse
豪華三房，眺望馬場
1,438 s.f.
\$67,000 incl.

www.landscope.com/14232.htm

Carman Szeto 司徒小姐 8100 3893



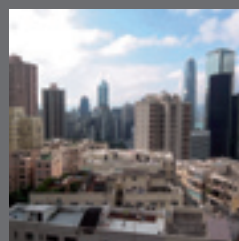
White Jade

東半山 白璧

51 Stubbs Road, Midlevels East
Boutique 2-bedroom apartment with fantastic harbour view
精品兩房單位享璀璨維港景
1,700 s.f.
\$70,000

www.landscope.com/15459.htm

David Chan 陳先生 9238 2012



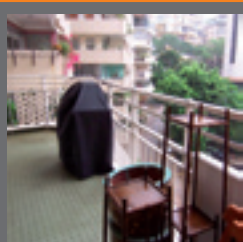
Fairlane Tower

中半山 寶雲山莊

28 Bowen Road, Midlevels Central
Bright and airy flat with open city view in serene location
光猛通爽單位享開揚城市景，寧靜地段
1,744 s.f.
\$75,000 incl.

www.landscope.com/15537.htm

Mira To 杜小姐 9486 1566

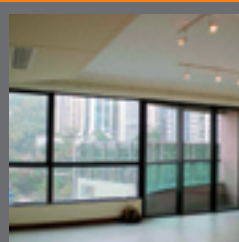


Grand House 中半山 柏齡大廈

110-112 MacDonnell Road, Midlevels Central
Colonial style mid-rise apartment in good condition
英式中密度單位，狀況優良
2,400 s.f.
\$75,000 incl.

www.landscope.com/10552.htm

Sami Woo 胡小姐 9493 8275



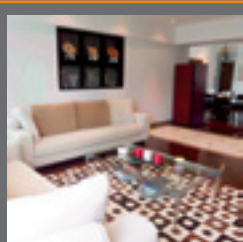
Dynasty Court

中半山 帝景園

23 Old Peak Road, Midlevels Central
Nice flat in Midlevels Central with good facilities
中半山雅緻單位，享有消閒設施
1,970 s.f.
\$80,000 incl. also for sale \$26,800,000

www.landscope.com/14522.htm

Rita Lee 李小姐 9437 0087



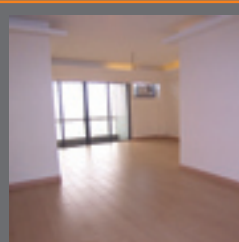
Carnation Court

東半山 康馨園

41-47 Tai Hang Road, Midlevels East
Practical 4-bedroom flat with open city view on fringe of Causeway Bay
實用四房單位享開揚城市景，鄰近銅鑼灣
2,126 s.f.
\$82,000 incl.

www.landscope.com/15207.htm

Sami Woo 胡小姐 9493 8275



Cavendish Heights

渣甸山 嘉雲臺

27-37 Perkins Road, Jardine's Lookout
Renovated family apartment with facilities in tranquil setting
翻新家庭住宅連設施，環境清靜
1,819 s.f.
\$85,000 also for sale \$27,500,000

www.landscope.com/15511.htm

Sylvia Tsang 曾小姐 9801 1742



Estoril Court
中半山 愛都大廈
55 Garden Road, Midlevels Central
Huge 3-bedroom apartment with family room
巨型三房單位，設有家庭室
3,347 s.f.
\$90,000 also for sale \$38,000,000

www.landscape.com/11848.htm | Ada Cheung 張小姐 9681 8166



Fontana Garden
東半山 豪園 A座
1-25 Ka Ning Path, Midlevels East
Deluxe apartment on fringe of Causeway Bay
豪華住宅，銅鑼灣近在咫尺
3,300 s.f.
\$90,000

www.landscape.com/6136.htm | Carman Szeto 司徒小姐 8100 3893



Cliffview Mansions
西半山 康苑
17-19 Conduit Road, Midlevels West
Large colonial style apartment with huge balcony
英式大宅連巨型露台
3,000 s.f.
\$92,000 incl. also for sale Open Offer

www.landscape.com/15038.htm | Mira To 杜小姐 9486 1566



Piccadilly Mansion
西半山 碧苑
4-6 Po Shan Road, Midlevels West
High efficiency large flat with harbour view in tree-lined neighbourhood
高實用率寬敞住宅享維港景，環境翠綠
2,790 s.f.
\$99,000 incl. also for sale \$43,000,000

www.landscape.com/15337.htm | Teresa Lau 劉小姐 9080 6686



Elm Tree Towers
渣甸山 愉富大廈
8-10 Chun Fai Road, Jardine's Lookout
High efficiency flat with lush green view
高實用率住宅，享茂密綠景
2,329 s.f.
\$100,000 incl. also for sale \$36,000,000

www.landscape.com/15510.htm | Sami Woo 胡小姐 9493 8275



Evergreen Villa
東半山 松柏新村
43 Stubbs Road, Midlevels East
Large and spacious 4-bedroom apartment with open city view
寬敞四房單位，享開揚城市景觀
2,700 s.f.
\$100,000 incl.

www.landscape.com/15579.htm | Sami Woo 胡小姐 9493 8275



Garden Terrace 1
中半山 花園臺 1座
8 Old Peak Road, Midlevels Central
Spacious 4-bedroom unit in convenient location
寬敞四房，位置方便
2,798 s.f.
\$100,000

www.landscape.com/15522.htm | Yvonne Chang 鄭小姐 9088 4666



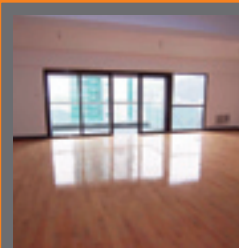
Private Garden Low-rise in Jardine's Lookout
渣甸山低密度住宅連私家花園
Dream home with huge garden in serene location
夢想之家，巨型花園，環境寧靜
1,400 s.f.
\$100,000 incl.

www.landscape.com/15579.htm | Sami Woo 胡小姐 9493 8275



Catalina Mansions
中半山 嘉年大廈
98-100 MacDonnell Road, Midlevels Central
Spacious colonial flat with balcony in convenient location
寬敞英式住宅連露台，位置方便
2,300 s.f.
\$110,000 incl. also for sale \$30,000,000

www.landscape.com/15496.htm | Yvonne Chang 鄭小姐 9088 4666



Villa Monte Rosa
東半山 玫瑰新村
41A Stubbs Road, Midlevels East
Spacious 4-bedroom apartment in good condition with big balcony and open view
寬敞四房單位連露台及開揚景觀，狀況優良
3,300 s.f.
\$110,000

www.landscape.com/14451.htm | Teresa Lau 劉小姐 9080 6686



Fontana Garden - Block C
東半山 豪園 C座
1-25 Ka Ning Path, Midlevels East
Huge apartment with brand new decorations in convenient location
巨型住宅，全新裝修，位置方便
3,300 s.f.
\$120,000 incl. also for sale \$30,500,000

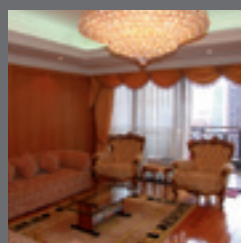
www.landscape.com/14464.htm | Rowena Siu 蕭小姐 9348 4118



Victoria Height
東半山 威利閣
43A Stubbs Road, Midlevels East
Spacious apartment ideal for large family
寬敞單位，大家庭理想之選
2,553 s.f.
\$120,000 incl.

www.landscape.com/15742.htm | Carman Szeto 司徒小姐 8100 3893

MID-LEVELS LEASE



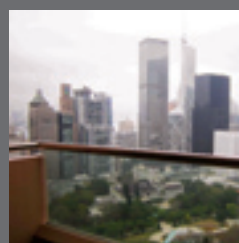
Clovelly Court

中半山 嘉富麗苑

12 May Road, Midlevels Central
Large family flat with 4 good sized bedrooms
大家庭住宅，享有四間寬敞睡房
2,809 s.f.
\$125,000 incl.

www.landscape.com/15570.htm

Rita Lee 李小姐 9437 0087



The Albany

中半山 雅賓利大廈

1 Albany Road, Midlevels Central
Exclusive apartment with splendid city view and harbour view
獨特單位享醉人都會景及維港景
2,546 s.f.
\$150,000 incl. also for sale \$70,000,000

www.landscape.com/14229.htm

Mira To 杜小姐 9486 1566



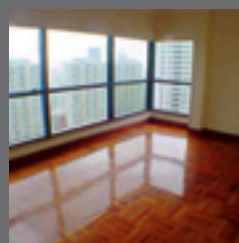
Bowen Mansion

中半山 寶雲大廈

7C Bowen Road, Midlevels Central
Huge colonial apartment on tree-lined Bowen Road
巨型英式單位，位於寶雲道翠綠地段
3,800 s.f.
\$150,000 incl.

www.landscape.com/15601.htm

Mira To 杜小姐 9486 1566



May Tower 2

中半山 梅苑二座

5 May Road, Midlevels Central
Huge apartment with 4 ensuite bedrooms
四套房巨宅
3,393 s.f.
\$150,000 incl. also for sale \$73,000,000

www.landscape.com/7676.htm

David Chan 陳先生 9238 2012



The Mayfair

中半山 梅道1號

1 May Road, Midlevels Central
Deluxe 4-bedroom apartment with harbour view
四房複式單位享維港景
2,905 s.f.
\$160,000 incl. also for sale \$63,000,000

www.landscape.com/11693.htm

Sissy Li 李小姐 9642 6969



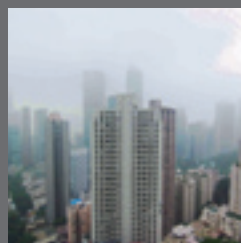
Bowen's Lookout

中半山 寶雲道13號

13 Bowen Road, Midlevels Central
Modern luxurious apartment with harbour view and high privacy
時尚豪華住宅享維港景，高私隱
2,388 s.f.
\$160,000

www.landscape.com/14695.htm

Sissy Li 李小姐 9642 6969



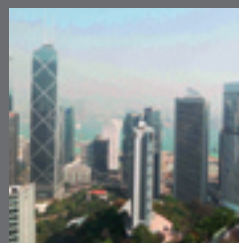
Grenville House 中半山 嘉慧園

1, 3 & 3A Magazine Gap Road, Midlevels Central
Exclusive huge unit in Midlevels Central with internal access to roof
中半山特大單位，內置樓梯直達天台

3,700 s.f. (plus 3,700 s.f. roof)
\$200,000

www.landscape.com/15512.htm

Sylvia Tsang 曾小姐 9801 1742



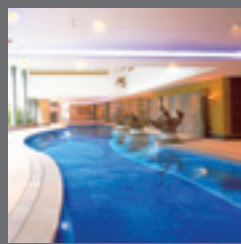
Borrett Mansion

中半山 寶德臺

8A-9B Borrett Road, Midlevels Central
Huge penthouse apartment in Midlevels with Victoria Harbour view
巨型頂層單位，位處半山，享維港景
6,000 s.f.
\$300,000 incl.

www.landscape.com/14274.htm

Ada Cheung 張小姐 9681 8166



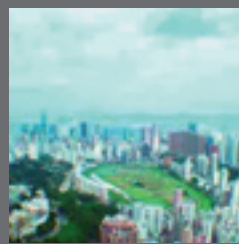
Regence Royale

中半山 富匯豪庭

2 Bowen Road, Midlevels Central
Prestigious modern harbour view flat in tree-lined neighbourhood
尊貴時尚維港景物業，環境翠綠
5,219 s.f.
\$400,000 incl. also for sale \$160,000,000

www.landscape.com/12813.htm

Mark Mak 麥先生 6838 2929



The Summit

東半山 御峰

41C Stubbs Road, Midlevels East
Jumbo penthouse duplex with sweeping harbour view
巨型頂層複式享遼闊維港景
6,496 s.f.
\$430,000 incl.

www.landscape.com/15148.htm

Yvonne Chang 鄭小姐 9088 4666

LANDSCOPE 領域
The Specialists in Luxury Properties

Landscape Realty Limited C-018733

a member of Landscape Surveyors Ltd

Tel: 852-2866 0022 Fax: 852-2866 0015

Email: info@landscape.com Website: www.landscape.com

Unit 3106, 31/F, Hopewell Centre,
183 Queen's Road East, Wanchai, Hong Kong

The information, text, photos, analyses and projections contained herein are provided solely for the convenience of prospective clients and no warranty or representation as to their accuracy, correctness or completeness is made by Landscape Surveyors Limited, Landscape Realty Limited or the owners, none of whom shall have any liability or obligation with respect thereto. Interested parties should rely on their own investigations, interpretations and analyses in connection with the purchase or letting thereof.

Information has been provided to us by sources deemed reliable, but no warranty or representation is made as to its accuracy, correctness or completeness. These offerings are made subject to contract, correction of errors, omissions, prior sale or lease, change of price or terms or withdrawal from the market without notice. The contents of The Key are for reference only and do not constitute all or any part of a contract.

Copyright 2008