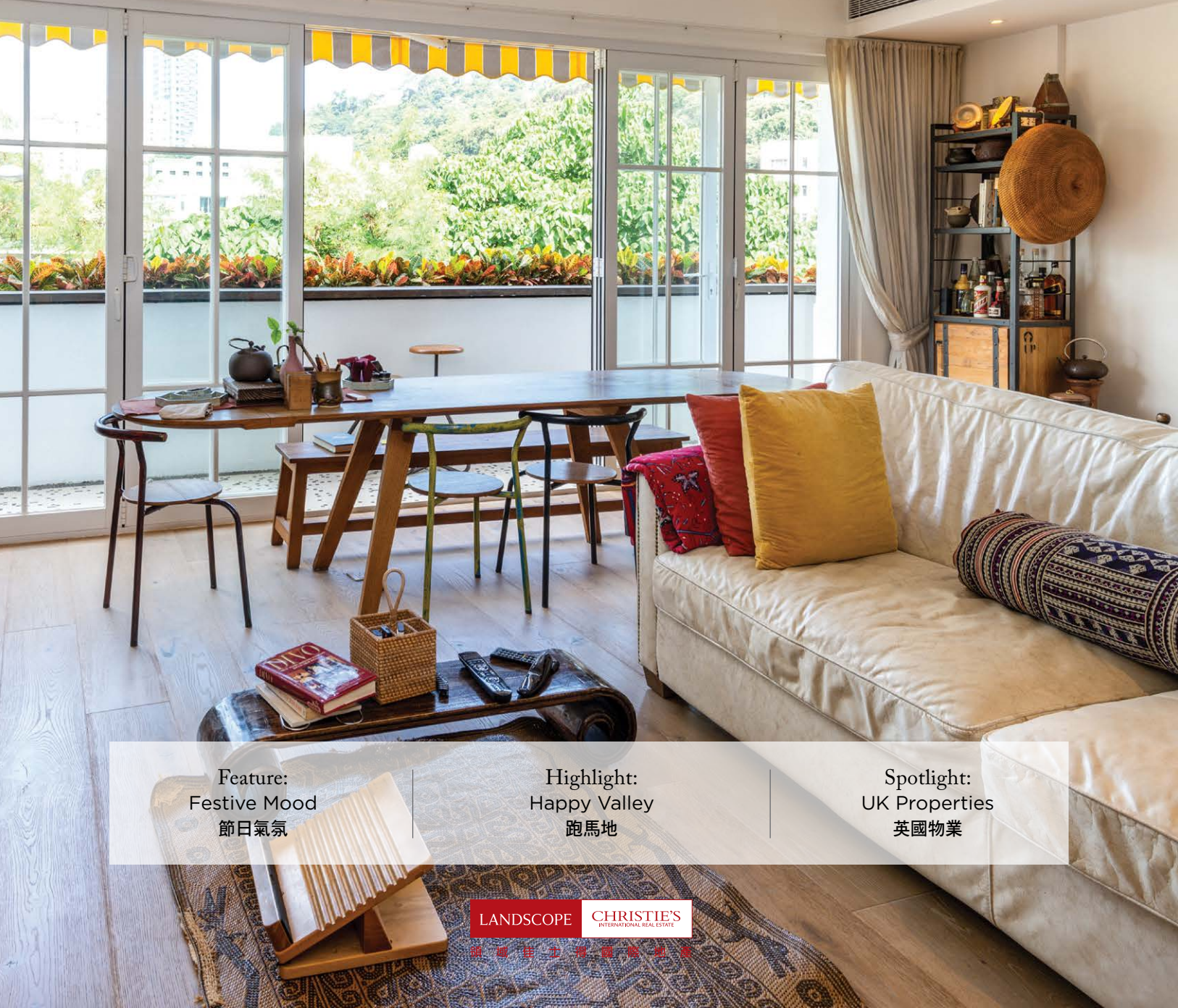


The 大宅 Key

THE KEY TO YOUR IDEAL HOME

Vol.195



Feature:
Festive Mood
節日氣氛

Highlight:
Happy Valley
跑馬地

Spotlight:
UK Properties
英國物業

LANDSCOPE

CHRISTIE'S
INTERNATIONAL REAL ESTATE

請認明此標誌為真貨



THE HIGHEST EVER AUCTION TOTAL FOR THE 20TH AND 21ST CENTURY ART AT CHRISTIE'S ASIA

Autumn Auction Series Achieved HK\$2,007,615,000

Interested in consigning?

We are now inviting consignments to our upcoming sales. Please contact us to arrange an appointment for a complimentary and confidential evaluation.

Contact

infoasia@christies.com
+852 2760 1766

christies.com/hk

YAYOI KUSAMA (B. 1929)

Pumpkin (LPASG)

titled in Japanese; signed, titled and dated
'PUMPKIN LPASG YAYOI KUSAMA 2013'
(on the reverse)

acrylic on canvas

130.3 x 130.3 cm. (51 1/4 x 51 1/4 in.)

Painted in 2013

Price Realised HKD 62,540,000

New World Auction Record for the Artist



View results

Auction | Private Sales | Christies.com

© YAYOI KUSAMA

CHRISTIE'S

A New Year's vision

新年景象

As Christmas passes it will soon be time to take down that festive season's decorations as Chinese New Year is approaching. It can be easy to add a little Chinese New Year flair without completely arranging every piece of furniture in your home, starting with a few decorations, and in this issue of the magazine we have carefully selected some fine handmade silverware decorations and some exquisite wallpaper which will surely bring a lovely atmosphere to the home.

Wishing you all stay warm and enjoy the festive atmosphere with relatives and friends!

拆除聖誕裝飾後，我們很快便要重新佈置家居，因為農曆新年即將到臨。即使我們難以更換全屋家具，但要加添農曆新年氣氛並非難事，例如我們可由飾物入手。在今期雜誌，我們精心挑選了一些手工精美的銀器擺設，以及一些精緻的牆紙，必能為家居生色不少。

佳節期間，更要注意保暖，與親友一同享受佳節氣氛。



CONTENTS 目錄



04 Monthly highlight

Happy Valley
跑馬地

06 Southside & The Peak sale

南區及山頂 出售

17 Midlevels Central & West sale

中半山及西半山 出售

23 Highlight

Happy Valley
跑馬地

25 Midlevels East & Other Districts sale

東半山及其他地區 出售

5 Easy ways to list your property with The Key:

5個簡單方法在《大宅》刊登您的出售 / 出租物業：

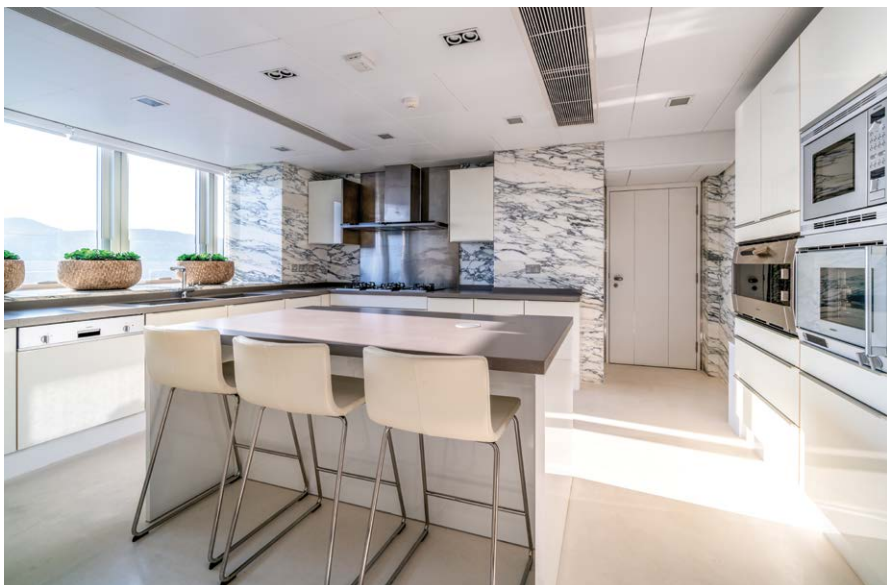
2152 4818 2866 0015 Fax 6891 3639 Whatsapp info@landscape.com www.landscape.com/sell-to-let

The information, text, photos, analyses and projections contained herein are provided solely for the convenience of prospective clients and no warranty or representation as to their accuracy, correctness or completeness is made by Landscape Christie's International Real Estate, Landscape Surveyors Limited, Landscape Realty Limited, Landscape International Property Agency Limited or the owners, none of whom shall have any liability or obligation with respect thereto. Interested parties should rely on their own investigations, interpretations and analyses in connection with the purchase or letting thereof.

Purchasing uncompleted properties situated outside Hong Kong is complicated and contains risk. You should review all relevant information and documents carefully before making a purchase decision. If in doubt, please seek independent professional advice before making a purchase decision. Selling Agent: Landscape International Property Agency Limited (C-089033) and Landscape Surveyors Limited (C-000715) are licensed and regulated by EAA. Our sales representatives for overseas property work exclusively in relation to properties outside Hong Kong and unless expressly stated otherwise, are not licensed under the EAA to deal with Hong Kong properties.

Information has been provided to us by sources deemed reliable, but no warranty or representation is made as to its accuracy, correctness or completeness. These offerings are made subject to contract, correction of errors, omissions, prior sale or lease, change of price or terms or withdrawal from the market without notice. The contents of The Key are for reference only and do not constitute all or any part of a contract. Copyright 2022

Each Office is Independently Owned and Operated



| CONTENTS 目錄

- | | | | |
|----|---|----|---------------------------------|
| 26 | Sai Kung &
Clear Water Bay sale
西貢及清水灣 出售 | 32 | Feature
Festive Mood
節日氣氛 |
| 30 | Highlight
Midlevels East
東半山 | 34 | Lease
出租 |
| | | 38 | U.K. Properties
英國物業 |

Published and distributed by



領域佳士得國際地產

C-018733

Tel: +852 2866 0022

Fax: +852 2866 0015


Email: info@landscape.com

Website: www.landscape.com

Address: Units 1201-3, 12/F,

Siu On Centre, No. 188 Lockhart Road,
Wanchai, Hong Kong

Produced by

vision  one

Vision One Hong Kong Ltd

Tel: +852 2856 3543

Fax: +852 3105 9782

Email: info@visiononehk.com

Website: www.visiononehk.com

Address: Unit 19, 5th Floor,

International Trade Centre, 11-19 Sha Tsui Road,
Tsuen Wan, N.T. Hong Kong



SCAN HERE
TO SUBSCRIBE
ONLINE

Did You Know

We list your homes as
videos online for
FREE on our page?

See it on Facebook at:

Landscape Christie's
International Real Estate



領域佳士得國際地產
微信號

關注更多
探索更多

Follow Us on
WeChat

landscapehk



ADO
DESIGN FOR LOVE

ADO CASA
INTERIOR DESIGN



BEGIN OUR RELATIONSHIP ☎️ 6607 0020 [ADOCASA.COM](https://www.adocasa.com)



Revitalised colonial living

舊日情懷

Happy Valley is one of Hong Kong's most sophisticated luxury residential areas. Here on Briar Avenue, this tastefully renovated apartment in Happy Valley offers contemporary living combined with meticulous design, and is an example of the enduring well-built structures of its age.

Spanning 1,600 s.f. (saleable area), this three-bedroom apartment boasts one ensuite, two bathrooms, a combined living and dining room, a maid's room, a private terrace, a

balcony, and a covered car park.

This airy and light apartment is nicely renovated in a colonial style featuring fine Chinese paintings, Chinese ceramics and works of art. Boasting a high efficiency ratio, the apartment offers ample space for residents to arrange furniture and decorations, and is ideal for enjoying living in such a convenient yet tranquil location. It also includes a fully fitted and equipped bathroom and kitchen.

Located at the junction of Briar Avenue with Blue Pool Road in upper



**Lovely colonial low-rise unit
in Happy Valley**

跑馬地別緻低密度住宅

3 bed, 2 bath, 64 s.f. terrace, 1 car park

Saleable 實用 1,600 s.f.

Sale 售 \$45,000,000

Inquiries 查詢 9021 1270 Annie Lee 李小姐

Property Search No. 物業搜尋編號 167094



Happy Valley, the apartment is conveniently served by public buses and minibuses. Daily necessities are easily accessible within walking distance in lower Happy Valley.

Available at the price of HK\$45 million, the apartment is undoubtedly a not-to-be-missed chance for potential homebuyers looking for an upscale lifestyle.

跑馬地是本港其中一個發展最成熟的傳統高尚豪宅區。此物業位於比雅道，設計盡見業主的心思，時尚細緻的設計融入了設計師的巧思，為這具時代感的住宅大廈增添色彩。

單位實用面積1,600平方呎，有三間睡房，其中一間為套房、兩間浴室、相連的客飯廳、家傭房、私家平台、露台及一個有蓋車位。

單位寬敞明亮，附有精美的殖民地時代裝修風格，隨處可見美不勝收的中式繪畫、陶瓷以及精雕細琢的藝術品。此外，單位實用率高，

充足的空間讓住戶可隨心所欲地放置家具及擺設。此外，廚房及浴室亦設備齊全。物業附近環境清幽寧靜，加上位置優越方便，實屬享受生活的理想家居。

物業位於上跑馬地的比雅道及藍塘道交界，附近設有巴士及小巴連接各區。住戶要購買日常生活所需的話，亦可以步行前往下跑馬地，十分方便。

這單位目前以港幣4,500萬元出售，為嚮往高尚生活方式的置業人士，帶來不容錯過的良機。



Unique penthouse unit in Repulse Bay

淺水灣獨特頂層單位

3 bed, 2 bath, 1,424 s.f. roof, 1 car park

One of a kind penthouse apartment with internal access to private roof top

別樹一幟頂層單位，連室內內置樓梯往私家天台

Saleable 實用 1,878 s.f.

Sale 售 \$78,000,000

Inquiries 查詢 6607 2082 Stephen Chan 陳先生

Property Search No. 物業搜尋編號 109613



Prestigious apartment on the Peak

山頂尊貴單位

3 bed, 2 bath, 1 car park

Colonial 3-bedroom apartment with unobstructed sea view and greenery

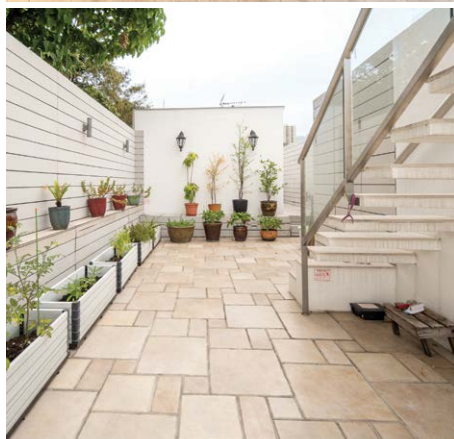
英式三房單位，飽覽遼闊海景及翠綠景色，可租可售

Saleable 實用 2,415 s.f.

Sale 售 \$108,675,000 / Lease 租 \$125,000 incl.

Inquiries 查詢 9027 2100 Louis Wong 黃先生

Property Search No. 物業搜尋編號 89



Lovely low-rise unit in Pokfulam

薄扶林別緻低密度單位

3 bed, 4 bath, 1,363 s.f. roof, 2 car parks

Nicely renovated 3-ensuite apartment with private rooftop in tranquil location

雅致裝修三套房單位，連私家天台，地段清幽

Saleable 實用 2,006 s.f.

Sale 售 \$68,000,000

Inquiries 查詢 9021 1270 Annie Lee 李小姐

Property Search No. 物業搜尋編號 124949





Rare penthouse unit in Tai Tam

大潭矜罕頂層單位

3 bed, 2 bath, 2,250 s.f. roof, 2 car parks

Sumptuous penthouse apartment with private rooftop enjoys fantastic sea view

豪華頂層單位，連私家天台，坐享優美海景

Saleable 實用 2,094 s.f.

Sale 售 \$82,000,000

Inquiries 查詢 6607 2082 Stephen Chan 陳先生

Property Search No. 物業搜尋編號 34234



Can be sold via company shares transfer
可以公司轉讓股份形式買賣



Bright and airy apartment in Repulse Bay

淺水灣明亮通風住宅

4 bed, 3 bath, 2 car parks

Nicely renovated 4-bedroom flat with balcony enjoys splendid sea view

雅致裝修四房單位，連露台，壯麗海景盡收眼底，可租可售

Saleable 實用 1,917 s.f.

Sale 售 \$95,000,000 / Lease 租 \$110,000 incl.

Inquiries 查詢 9020 1583 Michelle Chung 鍾小姐

Property Search No. 物業搜尋編號 205455





Stunning sea view house in Repulse Bay

淺水灣醉美海景大宅

2 bed, 2.5 bath, 435 s.f. terrace, 2 car parks

Nicely decorated townhouse with sufficient outdoor space enjoys stunning sea view

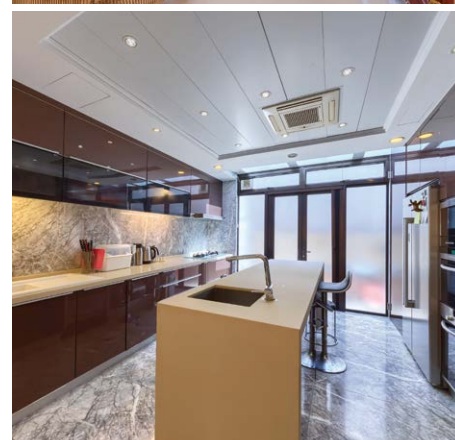
雅致裝修洋房，戶外空間充足，坐擁壯麗海景

Saleable 實用 2,503 s.f.

Sale 售 \$150,000,000 \$105,000,000

Inquiries 查詢 6538 6922 James Ng 伍先生

Property Search No. 物業搜尋編號 131357



Family 4-ensuite house in Tai Tam

大潭家庭式四套房洋房

4 bed, 5 bath, 414 s.f. garden & 480 s.f. roof, 2 car parks

Rare 4-ensuite house with ample alfresco space and swimming pool facilities enjoys breathtaking sea view

罕罕四套房洋房，戶外空間充足，會所設有游泳池，眺望醉人海景，可租可售

Saleable 實用 3,314 s.f.

Sale 售 \$145,000,000 / Lease 租 \$250,000 incl.

Inquiries 查詢 6607 2082 Stephen Chan 陳先生

Property Search No. 物業搜尋編號 1823





Luxurious apartment on The Peak

山頂奢華住宅

4 bed, 1 study, 2.5 bath, 1 car park

Rare 4-bedroom apartment with sleek textures and neutral tones overlooking lush green view

矜罕四房住宅，室內裝修以中性色調和簡約風格為主調，遠眺翠綠景色

Saleable 實用 2,593 s.f.

Sale 售 \$122,200,000

Inquiries 查詢 6607 2082 Stephen Chan 陳先生

Property Search No. 物業搜尋編號 28343



Southside sea view townhouse in Repulse Bay

淺水灣道頭段南區海景洋房

3 bed, 2 bath, 700 s.f. backyard, 1 garage (2 car parks)

Prestigious beachfront townhouse with ample alfresco space overlooks superb sea view
尊貴全淺水灣景洋房，可遇難求，屋苑設有游泳池

Saleable 實用 2,111 s.f.

Sale 售 \$130,000,000

Inquiries 查詢 6538 6922 James Ng 伍先生

Property Search No. 物業搜尋編號 12202





Can be sold via company shares transfer
可以公司轉讓股份形式買賣



Sumptuous house on Island Road

香島道奢華洋房

4 bed, 3.5 bath, 755 s.f. garden & 552 s.f. roof, 2 car parks

Family 4-bedroom townhouse with ample alfresco space in quiet location

家庭式四房洋房，享充足戶外空間，地段寧靜

Saleable 實用 2,222 s.f.

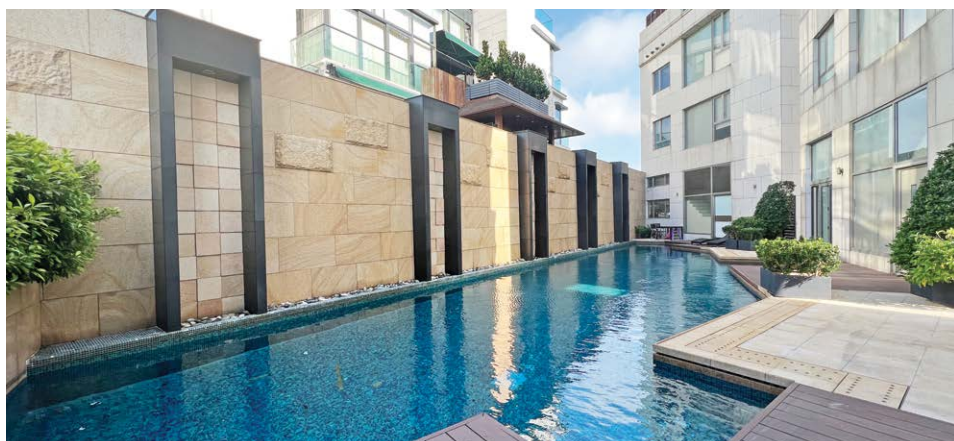
Sale 售 ~~\$168,000,000~~ \$148,300,000

Inquiries 查詢 6535 9918 Josephine Yuen 阮小姐

Property Search No. 物業搜尋編號 204728



Can be sold via company shares transfer
可以公司轉讓股份形式買賣



Grand house with private lift in Chung Hom Kok

春坎角私家電梯獨立屋

4 bed, 3.5 bath, 166 s.f. terrace, 1,237 s.f. garden & 659 s.f. roof, 2 car parks

Brand new renovated house with private lift, lofty ceilings and ample alfresco space overlooks stunning sea view, completed in 2009 with good condition

全新裝修洋房，特高樓式，連私家升降機及充足戶外空間，俯瞰壯麗海景，項目於2009年落成，樓齡較新，保養得宜

Saleable 實用 2,669 s.f.

Sale 售 ~~\$168,000,000~~ \$158,000,000

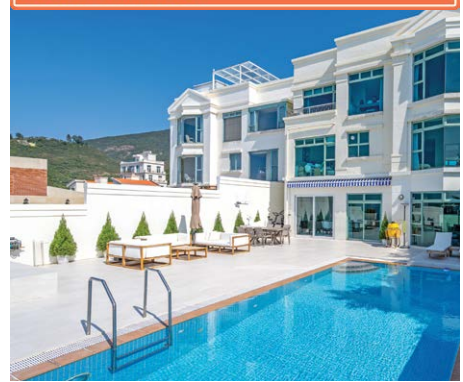
Inquiries 查詢 6535 9918 Josephine Yuen 阮小姐

Property Search No. 物業搜尋編號 193303





Can be sold via company shares transfer
可以公司轉讓股份形式買賣



Waterfront house in Chung Hom Kok

春坎角臨海洋房

4 bed, 5.5 bath, 2,354 s.f. garden & 602 s.f. roof, private swimming pool, 3 car parks

Rare 4-bedroom house with private garden and swimming pool enjoys splendid sea view
矜罕四房洋房，連私家花園及游泳池，坐擁壯麗海景

Saleable 實用 2,871 s.f.

Sale 售 \$200,000,000

Inquiries 查詢 9021 1270 Annie Lee 李小姐

Property Search No. 物業搜尋編號 32738



Can be sold via company shares transfer
可以公司轉讓股份形式買賣



Superb garden house on The Peak

山頂華麗花園洋房

4 bed, 4.5 bath, 298 s.f. terrace, 1,147 s.f. garden & 1,066 s.f. roof, 1 garage

Tastefully renovated 4-ensuite house with private swimming pool and ample alfresco space in secluded location
品味裝修四套房洋房，連私家游泳池，享充足戶外空間，地段清幽

Saleable 實用 3,436 s.f.

Sale 售 \$268,000,000

Inquiries 查詢 6538 6922 James Ng 伍先生

Property Search No. 物業搜尋編號 155745





Garden house in Shek O

石澳花園洋房

5 bed, 4.5 bath, 2,691 s.f. garden, private swimming pool, 2 car parks

One of a kind 5-bedroom garden house with private swimming pool in idyllic location
別具一格五房花園洋房，連私家游泳池，地段寧靜怡人

Saleable 實用 3,679 s.f.

Sale 售 \$300,000,000

Inquiries 查詢 6538 6922 James Ng 伍先生

Property Search No. 物業搜尋編號 21156



Can be sold via company shares transfer
可以公司轉讓股份形式買賣



Luxurious townhouse in Shouson Hill

壽臣山豪華洋房

5 bed, 4.5 bath, 603 s.f. terrace, 326 s.f. garden & 572 s.f. roof, 2 car parks

Tastefully decorated townhouse with sufficient outdoor space overlooks magnificent
Deep Water Bay

品味優雅裝修洋房，享充足戶外空間，俯瞰壯麗深水灣美景

Saleable 實用 3,680 s.f.

Sale 售 \$338,000,000

Inquiries 查詢 6607 2082 Stephen Chan 陳先生

Property Search No. 物業搜尋編號 135517





Grand Peak house

山頂奢華洋房

4 bed, 4 bath, 500 s.f. garden, 2 car parks

Highly sought after 4-ensuite house with sufficient outdoor area enjoys panoramic Victoria Harbour view

受歡迎四套房洋房，享充足戶外空間，飽覽維港全景，可租可售

Saleable 實用 1,817 s.f.

Sale 售 \$338,000,000 / Lease 租 \$250,000 incl.

Inquiries 查詢 9021 1270 Annie Lee 李小姐

Property Search No. 物業搜尋編號 4394



Can be sold via company shares transfer
可以公司轉讓股份形式買賣



Deluxe garden house at The Peak

山頂豪華花園洋房

5 bed, 6 bath, 400 s.f. garden, 2 car parks

Grand 5-bedroom house with private garden and plenty of elegant wood details

恢宏五房洋房，連私家花園，內設眾多雅致的木製裝飾配襯，散發古雅氣息

Saleable 實用 2,903 s.f.

Sale 售 \$240,000,000

Inquiries 查詢 6535 9918 Josephine Yuen 阮小姐

Property Search No. 物業搜尋編號 203783





Stunning Victoria Harbour view house at The Peak

山頂震撼維港景洋房

4 bed, 4.5 bath, 1,228 s.f. terrace & 676 s.f. garden, 2 car parks

Designer decorated extravagant house (all ensuites) with private lift and swimming pool enjoys fantastic Victoria Harbour view

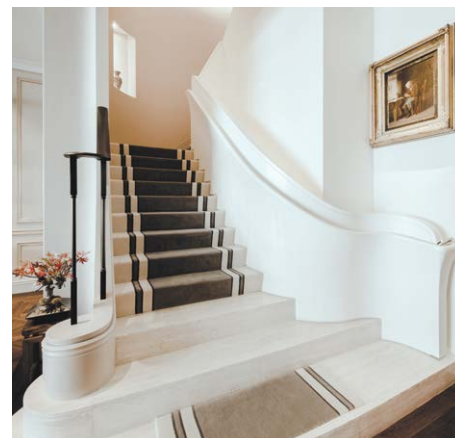
奢華極致設計全套房洋房，飽覽全維港景色，設有私家電梯及私家游泳池

Saleable 實用 4,274 s.f.

Sale 售 \$868,000,000

Inquiries 查詢 6535 9918 Josephine Yuen 阮小姐

Property Search No. 物業搜尋編號 163684



Can be sold via company shares transfer
可以公司轉讓股份形式買賣



Generous house in Deep Water Bay

深水灣巨型洋房

4 bed, 5.5 bath, 2,306 s.f. garden, 1 car park

Extraordinary detached house with private swimming pool enjoys spectacular view over Deep Water Bay

超凡獨立洋房別墅，連私人游泳池，深水灣美景盡收眼底

Saleable 實用 5,277 s.f.

Sale 售 \$1,200,000,000

Inquiries 查詢 9027 2100 Louis Wong 黃先生

Property No. 物業編號 122816



獨家代理



Palatial lifestyle

王者享受

Luxuriously decorated, this 3-storey house offers magnificent views of Repulse Bay, Deep Water Bay, and Middle Island with opulent design.

Boasting four bedrooms (including three ensembles), it also has four-and-a-half bathrooms, a separated living and dining room, three maid's rooms, a utility room, a family room, two balconies, a private lift, and a private gate with parking space for 4-6 cars.

The awe-inspiring double-height living room leads to a secluded terrace that takes in fantastic views. Additionally, the ample outdoor space is ideal for alfresco dining and entertaining.

Prestigious detached house in Repulse Bay

淺水灣極罕有獨立洋房

4 bed, 4.5 bath, Approx. 2,500 s.f. garden/terrace,

Approx. 1,700 s.f. roof, parking space (4-6 cars)

Saleable 實用 5,506 s.f.

Sale 售 Upon Enquiry

Inquiries 查詢 9027 2100 Louis Wong 黃先生

Property No. 物業編號 20284



三層高的洋房附有奢華裝修，享壯闊的淺水灣、深水灣及熨波洲優美的景色。

洋房提供四間睡房，三間為套房，另有四間半浴室、獨立的客飯廳、三間家傭房、多用途房、家庭廳、兩個露台、私家升降機、獨立大閘及停車位（可容納4-6輛車）。

大廳樓底高達兩層，並連接清幽的平台，迷人景色盡收眼底。此外，充足的戶外空間是舉行戶外用餐和娛樂的最佳地方。



指定代理



Top of the world

山頂之巔

A secluded development sits atop one of the highest points of Victoria Peak and above the fog line, commanding panoramic views of the harbour and the southern parts of Hong Kong Island.

This three-storey detached house on offer consists of five bedrooms (three ensembles), a separated living and dining room, four bathrooms, a balcony, a private huge garden and spacious roof, a maid's room, a family room and two covered car parks.

In excellent internal condition, the house is fully and tastefully decorated, complete with floor-to-ceiling windows, stylish false ceilings, a private bar area and a fitted, well-equipped kitchen. Different kinds of art pieces create a gallery-like yet simple design in the house. The development is complete with a communal swimming pool and tennis court.

Harbour view house at The Peak

山頂維港景洋房

5 bed, 4 bath, 1,624 s.f. garden & 1,000 s.f. roof,
2 car parks

Saleable 實用 2,242 s.f.

Sale 售 \$328,000,000

Inquiries 查詢 6535 9918 Josephine Yuen 阮小姐

Property No. 物業編號 122797



這位於港島太平山最高點之一的洋房屋苑聳立於霧線之上，是山頂低密度及私隱度高的住宅項目，盡享維港及南區優美景致。

這樓高三層的花園洋房，設有五間睡房（包括三間套房）、獨立的客飯廳、四間浴室、一個露台、特大私家花園、一個廣闊天台、一間家傭房、一個家庭廳及兩個有蓋車位。

洋房裝修品味時尚，保養簇新，並配備落地玻璃窗、精緻的假天花、私家吧檯，以及設備齊全的廚房。室內陳設了美不勝收的藝術品，營造畫廊式的簡約設計風格，增添絲絲藝術氣息。另外，住宅項目附設游泳池及網球場等設施。





Practical apartment in Midlevels Central

中半山實用單位

2 bed, 2 bath, 1 car park

Colonial style 2-bedroom flat with roomy balcony in renowned neighbourhood

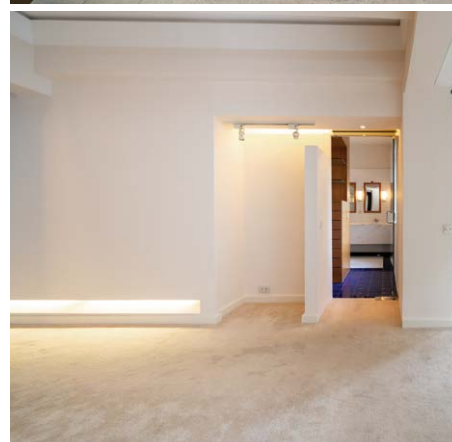
英式兩房單位，連寬闊露台，位處尊貴地段

Saleable 實用 1,864 s.f.

Sale 售 \$45,000,000

Inquiries 查詢 9021 1270 Annie Lee 李小姐

Property Search No. 物業搜尋編號 37384



Sought after apartment in Midlevels Central

中半山受歡迎住宅

2 bed, 2 bath, 424 s.f. roof, 1 car park

Rare find nicely renovated apartment with private roof in prime location

罕有雅致裝修住宅，連私家天台，地段優越，可租可售

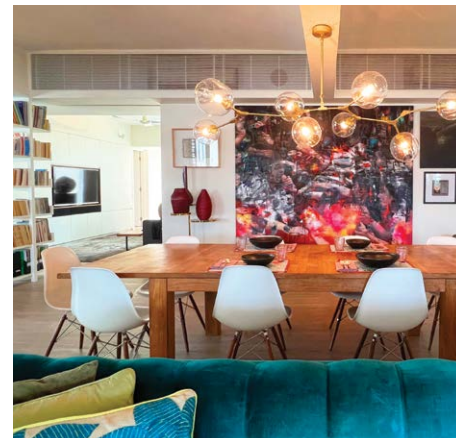
Saleable 實用 1,414 s.f.

Sale 售 \$49,950,000 / Lease 租 \$100,000 incl.

Inquiries 查詢 6607 2082 Stephen Chan 陳先生

Property Search No. 物業搜尋編號 47013





Tasteful joint unit in Midlevels Central

中半山華美相連大宅

5 bed, 1 study, 5.5 bath, 2 car parks

Glorious, huge penthouse unit with meticulously designed and massive living space, the building has been fully refurbished in recent years

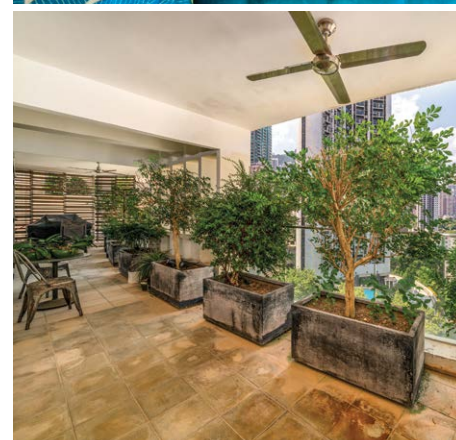
優雅頂層大宅，裝修高雅獨特，連寬敞居住空間，大廈近年經已翻新完畢

Saleable 實用 4,174 s.f.

Sale 售 \$150,000,000

Inquiries 查詢 6535 9918 Josephine Yuen 阮小姐

Property Search No. 物業搜尋編號 205673



Can be sold via company shares transfer
可以公司轉讓股份形式買賣



Lovely colonial apartment in Midlevels Central

中半山英式雅居

3 bed, 2 bath, 1,000 s.f. terrace, 1 car park

Nicely decorated apartment with wood-framed windows and doors leading to the private massive terrace

雅致裝修住宅，特色木製門框及窗框設計，連私家偌大平台

Saleable 實用 2,123 s.f.

Sale 售 \$105,000,000 \$93,000,000

Inquiries 查詢 9020 1583 Michelle Chung 鍾小姐

Property Search No. 物業搜尋編號 31196





Prestigious triplex in Midlevels Central 中半山尊貴三層複式

4 bed, 2.5 bath, 1 car park

Well decorated city view triplex apartment with facilities in prominent location

優質裝修城市景三層複式，連設施，地段優越

Saleable 實用 2,218 s.f.

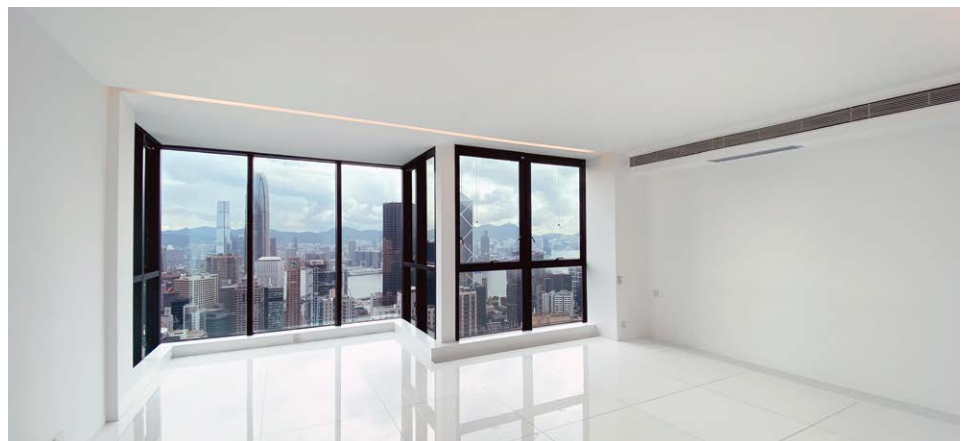
Sale 售 \$95,000,000

Inquiries 查詢 9020 1583 Michelle Chung 鍾小姐

Property Search No. 物業搜尋編號 184702



Can be sold via company shares transfer
可以公司轉讓股份形式買賣



Massive apartment in Midlevels Central 中半山偌大單位

4 bed, 3 bath, 1 car park

Spacious 4-bedroom apartment with comprehensive clubhouse facilities in prestigious location

寬敞四房單位，享完善會所設施，地段尊貴顯赫，可租可售

Saleable 實用 2,192 s.f.

Sale 售 \$160,000,000 / Lease 租 \$130,000 incl.

Inquiries 查詢 6607 2082 Stephen Chan 陳先生

Property Search No. 物業搜尋編號 31145





Generous apartment in Midlevels Central

中半山偌大住宅

4 bed, 3.5 bath, 1 car park

Rare on market 4-bedroom apartment with practical layout in prestigious building

罕有四房單位，間隔實用，地段顯赫尊貴

Saleable 實用 2,855 s.f.

Sale 售 \$120,000,000

Inquiries 查詢 9020 1583 Michelle Chung 鍾小姐

Property Search No. 物業搜尋編號 20821



Rare high floor apartment in Midlevels Central

中半山罕有高層住宅

4 bed, 4 bath

Unique 4-bedroom high floor apartment with balcony and full clubhouse facilities

獨特四房頂層單位，連露台，享完善會所設施

Saleable 實用 2,159 s.f.

Sale 售 \$120,000,000

Inquiries 查詢 9020 1583 Michelle Chung 鍾小姐

Property Search No. 物業搜尋編號 20837



Victoria Harbour view apartment in Midlevels Central
中半山維港景住宅

4 bed, 3 bath

Luxurious 4-bedroom apartment with balcony overlooks spectacular Victoria Harbour view

奢華四房住宅，連露台，維港美景一覽無遺

Saleable 實用 2,142 s.f.

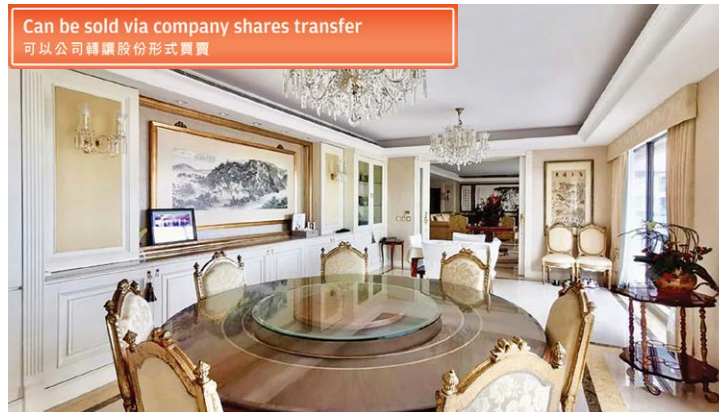
Sale 售 \$175,000,000

Inquiries 查詢 6538 6922 James Ng 伍先生

Property Search No. 物業搜尋編號 192699



Can be sold via company shares transfer
可以公司轉讓股份形式買賣



Family 5-bedroom apartment in Midlevels Central
中半山家庭式五房單位

5 bed, 5 bath, 2 car parks

Enormous 5-bedroom apartment with fantastic harbour view ideal for a family

偌大五房單位，眺望迷人維港景，適合家庭

Saleable 實用 5,776 s.f.

Sale 售 \$380,000,000

Inquiries 查詢 6607 2082 Stephen Chan 陳先生

Property Search No. 物業搜尋編號 6804



One of a kind huge duplex in Midlevels Central
中半山獨樹一幟巨型複式

6 bed, 4.5 bath, 4 car parks

Sumptuous duplex apartment with spacious kitchen equipped with high-end appliances enjoys sweeping harbour view

奢華複式單位，連寬敞廚房，配以頂級家電，維港美景盡收眼底

Saleable 實用 6,368 s.f.

Sale 售 \$398,000,000

Inquiries 查詢 9027 2100 Louis Wong 黃先生

Property Search No. 物業搜尋編號 179317





A fine apartment with charm and grace

精美佈局

Mid-Levels West is one of the most sought-after residential areas in Hong Kong. Located on Robinson Road, this apartment has been recently renovated and boasts an unforgettable yet meticulously designed interior.

The apartment spans 1,705 s.f. (saleable area) and boasts three bedrooms (including two ensembles), three bathrooms, a combined living and dining room, a maid's room, a utility room, and a covered car park.

This residence includes a wide range of meticulously chosen furniture and residents can enjoy a comfortable living experience while enjoying beautiful city views. Suitable for moving in immediately, this apartment is an ideal choice for homebuyers looking for a tastefully renovated residence.

Residents can easily head to the Central-Mid-Levels Escalator to reach Central and other major business areas. Schools, hospitals and grocery shopping are all in close proximity with ample public transport available to most areas in the city.

Midlevels West — Fully renovated & brand new interior

西半山全新裝修住宅

3 bed, 3 bath, 1 car park

Saleable 實用 1,705 s.f.

Sale 售 \$53,000,000

Inquiries 查詢 9027 2100 Louis Wong 黃先生

6535 2866 Mr. Lai 黎先生

Property Search No. 物業搜尋編號 185043



西半山是本港其中一個最受歡迎的高尚住宅區。此單位位於羅便臣道，最近經過全新裝修，呈現令人難以忘懷的雅致裝修。

單位實用面積達1,705平方呎，提供三間睡房，其中兩間為套房。另有三間浴室、相連的客飯廳、家傭房、多用途房及有蓋車位。

此單位有不少經精心挑選的家具、住戶既可以享受室內的舒適怡人，同時可欣賞繁華的都市美景，單位可即時入住，適合有意購入華麗而高尚單位的人士。

此外，住戶可使用中環至半山自動扶梯系統，前往中環及其他主要的商業中心區都十分方便。如要前往學校、醫院及購買生活所需，單位附近亦應有盡有，同時附近有公共交通前往各區。





Graceful interiors

高貴典雅

There are many elegant apartments in Happy Valley, with many of them boasting high efficiency ratios with well decorated interiors. This apartment is a prime example of such a property, offering high-end furniture and ample space for residents.

Spanning 1,873 s.f. (saleable area), this city view apartment boasts three bedrooms (including one ensuite), two bathrooms, a combined living and dining room, a maid's room, and a covered car park. It also has a spacious kitchen equipped with wall-height cabinets, high-end appliances and a bar table.

As regards transportation, the apartment is conveniently connected to Causeway Bay by nearby bus and minibus stops.

Cozy apartment in Happy Valley

跑馬地舒適住宅

3 bed, 2 bath, 1 car park

Saleable 實用 1,873 s.f.

Sale 售 \$48,000,000

Inquiries 查詢 9021 1270 Annie Lee 李小姐

Property Search No. 物業搜尋編號 39234



跑馬地有許多高貴典雅的住宅，當中大部分實用率高，而且內櫥精美。此單位擁有這些特色，提供高級家具及廣闊生活空間。

單位實用面積達1,873平方呎，可遙望城市優美景色，單位提供三間睡房，其中一間為套房、另有兩間浴室、相連的客飯廳、家傭房及有蓋車位。另外，廚房空間寬敞，更有入牆廚櫃、高級廚具及吧枱。

交通方面，前往銅鑼灣只需乘搭巴士及小巴，十分方便。



獨家代理



Stubbs Road Collection

上司徒拔道 收藏精選

Located on a serene neighbourhood off Stubbs Road, this immaculate 2,039 s.f. residence boasts a practical layout with stylish furnishings that give the space a warm, delightful vibe. This property is in close proximity to Opus Hong Kong, Mount Nicholson and White Jade. In addition, there is a recent new sale transaction at \$61,000 per square feet in White Jade, meaning that this property has great potential to greatly appreciate. It's a not-to-be-missed opportunity.

With views over the harbour and racecourse, this residence comes complete with three bedrooms, three bathrooms, combined living and dining rooms, a spacious kitchen, a maid's quarter and one covered car park.

Situated in a low density residential area, the residence is located close to city centre. Causeway Bay, Central, The Peak and Repulse Bay are also only minutes away. Bank valuation is HK\$88,000,000.

Immaculate residence in Upper Midlevels East

東半山頭段瑰麗住宅

3 bed, 3 bath, 1 car park

Saleable 實用 2,039 s.f.

Sale 售 \$89,800,000

Inquiries 查詢 6535 9918 Josephine Yuen 阮小姐

Property Search No. 物業搜尋編號 34856



Can be sold via company shares transfer
可以公司轉讓股份形式買賣



這位於司徒拔道寧靜一隅的瑰麗住宅，實用面積2,039平方呎，室內間隔實用，時尚品味的設計為居室營造溫暖愉悅的氛圍。物業鄰近「傲璇」及「轟歌信山道8號」，再加上鄰近的「白璧」剛創下新成交高達呎價\$61,000的紀錄，可見該物業極具升值潛力及爆炸力，請勿失良機。

單位坐擁投資首選的維港及馬場美景，三房三廁佈局連連連客廳、偌大的廚房、傭人套房及一個有蓋車位。

物業附近居住環境密度低，卻毗鄰市中心，數分鐘路程直達銅鑼灣、中環、山頂及淺水灣等地。銀行估價為港幣8,800萬。





Can be sold via company shares transfer
可以公司轉讓股份形式買賣



Racecourse view apartment in Midlevels East

東半山馬場景單位

4 bed, 3 bath, 3 car parks

Spacious 4-bedroom apartment with comprehensive clubhouse facilities overlooks impeccable Victoria Harbour and racecourse views

寬敞四房住宅，享完善會所設施，俯瞰優美維港景及馬場景

Saleable 實用 2,739 s.f.

Sale 售 \$180,000,000

Inquiries 查詢 9020 1583 Michelle Chung 鍾小姐

Property Search No. 物業搜尋編號 200975



Prestigious detached house in Macau

澳門尊貴獨立洋房

6 bed, 7 bath, 1,790 s.f. terrace & 2,778 s.f. roof, 4 car parks

Grand colonial style 4-storey detached house with 6 bedrooms overlooks sublime sea views of Hengqin Island

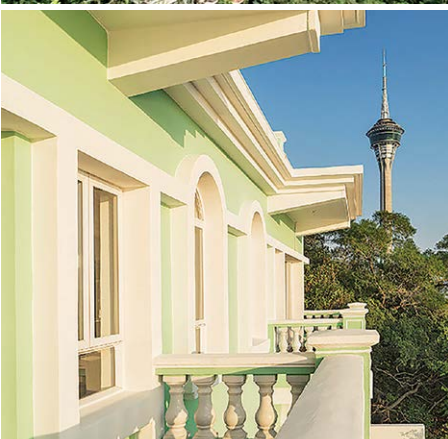
樓高四層豪華洋房，洋溢澳葡時代殖民地特色，提供六間睡房，飽覽醉人海景及橫琴島景色

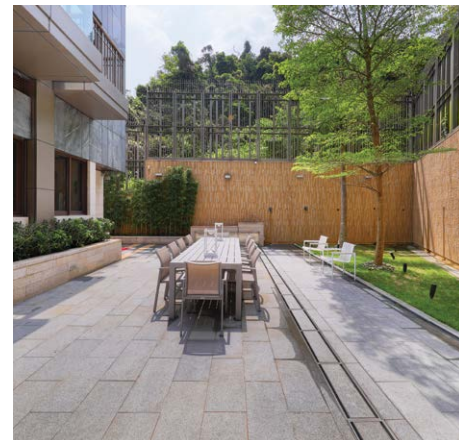
Gross 建築 12,814 s.f.

Sale 售 \$490,000,000

Inquiries 查詢 6538 6922 James Ng 伍先生

Property No. 物業編號 182750





Silverstrand – Modern Detached House

銀線灣 — 珍罕型格時尚獨立屋

5 bed (5 En-suites), 6 bath, exclusive garage for 5+ cars

2-storey stylish detached house. Private lift, private garage, huge garden with private pool. High privacy, contemporary structure with rare extremely high ceilings

罕有二層新穎獨立屋，私家電梯泳池，巨型入契花園，私人車庫（5車+），超高樓底享高度私隱

Saleable 實用面積 3,666 s.f. **Self-owned Garden 入契花園** 4,246 s.f.

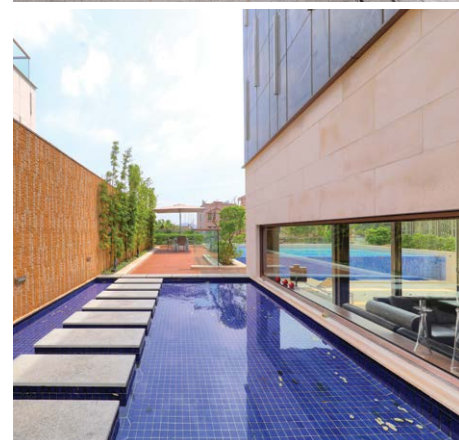
Roof Top 天台 1,187 s.f. **Garage 車庫** 1,861 s.f.

Sale 售 ~~\$178,000,000~~ \$160,000,000

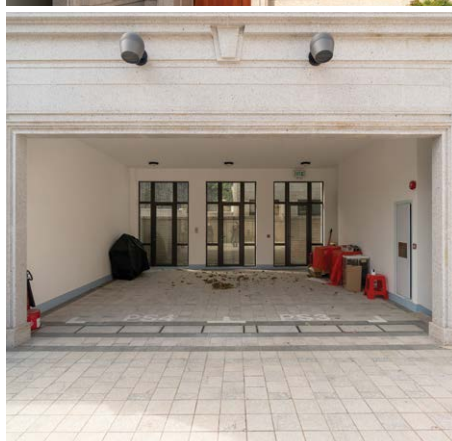
Inquiries 查詢 6535 2866 Mr. Lai 黎先生

Property Search No. 物業搜尋編號 70543

Welcome agent's inquiries 歡迎同業查詢



APPOINTED AGENT



Extremely Rare — Newly Detached House on Silverstrand

極罕新穎獨立屋 — 銀線灣核心段

4 bed (3 En-suite), 4 bath, private garage for 4 cars

Extremely Rare — Detached House. An Expression of Elegance in a serene location with perfect privacy. Unique detached-type house with private gate and own swimming pool. Extraordinary building style with magnificent sea view

新穎歐洲建築藝術，氣派優雅獨立屋，高私隱獨幢寧謐逸意，獨立私閘園泳池車庫，享遼闊海景

Saleable Area 實用面積 2,343 s.f.

Self-owned Garden 入契花園 2,972 s.f.

Sale 售 \$148,000,000

Inquiries 查詢 6535 2866 Mr. Lai 黎先生

Property No. 物業編號 CWBSS-SP-2103





Sumptuous Single House Lot in Clearwater Bay (near HKUST)

清水灣 — 近科技大學段 珍罕獨立屋地

Rarely single residential house lot with private owned-land and pool in prestigious & tranquil location, Government premium paid

獨一無二全獨立屋地，高級純別墅住宅段，連巨型入契花園、地塊及游泳池，已補政府地價，優越地利，名人巨賈首選，寧靜尊貴私隱

Approved GFA 屋面積 3,040 s.f. (Approx.約)

Site Area 土地面積 8,500 s.f. (Approx.約)

Sale 售 \$108,000,000

Inquiries 查詢 6535 2866 Mr. Lai 黎先生

Property No. 物業編號 CWB-CC-K-2111



Clearwater Bay — Extraordinary Development Corner House

清水灣 — 地中海 私密建築群 單邊私泳池

5 bed (En-suite), 6 bath, private pool, corner garden & 4+ car parks

Prestigious address, exclusive development. Mediterranean-style corner house with a spacious self-owned garden, private swimming pool and full sea view. Deluxe clubhouse facilities & excellent security

歐陸菲諾港海灣情懷建築風格，自成一角外型統一宏偉，氣派顯赫大宅巨屋，臨海生活標誌前臨遠闊海岸，嚴密保安大單邊花園，私人泳池，最佳位置董事屋

Saleable 實用 3,700 s.f. (Approx. 約)

Sale 售 \$98,000,000

Inquiries 查詢 6535 2866 Mr. Lai 黎先生

Property No. 物業編號 CWBWL-PF-2201





Sea View Mediterranean End-of-terrace House

外形高雅歐陸建築群海景屋

4.5 bed, 4.5 bath, 1,000 s.f. self-owned garden, Garage (6+ car parks)

Prestigious luxury development with comprehensive facilities and outstanding management. Pleasant outdoor area with all-natural landscape and sea view. A rare find 顯貴自成一隅，異國建築規劃，加勒比海崖岸魅力別墅，嚴密管理完美設施，藝術風格美感品味裝潢，外國情懷私隱單邊，完美自然陽光私泳池海景屋，罕有泊六車位

Saleable 實用 3,350 s.f. (Approx. 約)

Sale 售 \$98,000,000

Inquiries 查詢 6535 2866 Mr. Lai 黎先生

Property No. 物業編號 CWBTP-SS-2109



Expansive Full Sea View — Atop the hill above Silverstrand

銀線灣頂峰山嶺 — 層層全海獨立屋

3 bed (3 En-suite), 3.5bath, private garage for 4 cars+

An Expression of Elegance. Extremely high privacy, stylish detached house. Lofty high ceiling with floor-to-ceiling windows. Breathtaking full view of Silverstrand seaside 銀線灣頂峰，天高地利，顯赫家庭愛完美，嚴密保安名人私隱之選，獨立式超高樓底，時尚落地玻璃設計別墅，俯瞰壯麗寧謐絕美銀線灣層層全海景

Saleable 實用 1,789s.f.

Self-owned Garden 入契花園 2,003 s.f.

Sale 售 \$98,000,000

Inquiries 查詢 6535 2866 Mr. Lai 黎先生

Property No. 物業編號 CWBSS-RBV-2104

獨家代理



Supreme Luxury

至尊奢華

Tucked away on the south coast, Lantau Island is a popular destination for tourists, with its pristine beaches, deep blue sea, fresh air and resort-style vibe. Botanica Bay is a landmark residential development in Lantau Island. It only takes few minutes' walk from Cheung Sha Beach.

Spanning 3,575 s.f. (saleable area), this enormous 2-storey townhouse commands magnificent views of the sea and greenery. With a well-planned layout, this townhouse consists of four bedrooms (all ensuites), a separated living and dining room, five bathrooms, a balcony, a private huge garden, a terrace, a spacious roof, a maid's room, and a garage.

In excellent internal condition, this townhouse is well-maintained and nicely decorated, complete with floor-to-ceiling windows, lofty ceilings, and a well-equipped kitchen with a kitchen island table.

Sumptuous townhouse in Lantau Island 大嶼山奢華洋房別墅

4 bed, 5 bath, 216 s.f. terrace,
1,369 s.f. garden & 1,524 s.f. roof, 1 garage

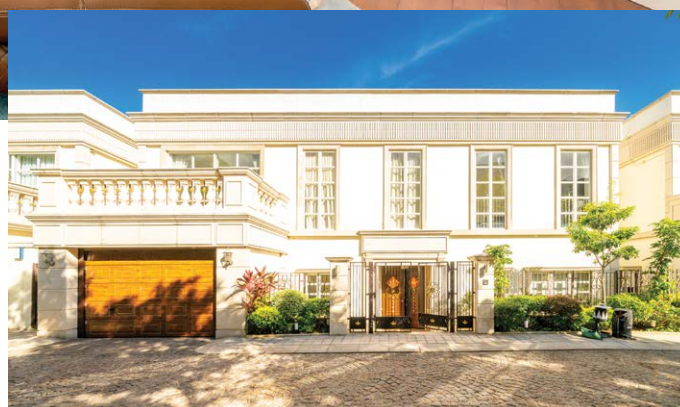
Saleable 實用 3,575 s.f.

Sale 售 \$75,000,000

Inquiries 查詢 6535 2866 Mr. Lai 黎先生

9027 2100 Louis Wong 黃先生

Property Search No. 物業搜尋編號 171457



大嶼山位處香港南面海岸，是遊客的熱門旅遊勝地，坐擁優質海灘、深藍色大海、清新空氣和度假式的氛圍。大嶼山南岸是大嶼山的住宅地標，前往長沙泳灘僅數分鐘步程。

這偌大洋房實用面積3,575平方呎，樓高兩層，遠眺優美海景和翠綠景色。洋房間隔佈局井井有條，提供四間睡房（全部為套房）、獨立的客飯廳、五間浴室、露台、私家大花園、平台、寬敞的天台、傭人房和一個車庫。

洋房別墅裝修雅致，保養簇新，室內條件極佳，配有落地玻璃窗、樓底高大氣派和一個設有廚房中島的廚房。





Unrivalled view of the city 醉人景致

Boasting a sweeping view of the Hong Kong skyline, this high floor apartment offers an unrivalled harbour view and a refined lifestyle.

Spanning a breath-taking 5,355 s.f. (saleable area), this extraordinary designer apartment boasts four ensembles, four-and-a-half bathrooms, a separated living and dining room, a maid's room, a utility room, a family room, a study room, and two covered car parks.

When it comes to recreational facilities, the development offers a gym, an outdoor swimming pool, a children's playground and pool, a sauna, and an indoor play area, to name just a few. Conveniently located on Stubbs Road, it takes just 10 minutes to commute to Central or Causeway Bay.

Extraordinary high floor apartment in Midlevels East 東半山高層非凡住宅

4 bed, 4.5 bath, 2 car parks

Saleable 實用 5,355 s.f.

Lease 租 \$500,000 incl.

Inquiries 查詢 9027 2100 Louis Wong 黃先生

Property Search No. 物業搜尋編號 168581



此高層單位可眺望香港天際線的迷人景色，其醉人的海港景色及奢華大度的生活方式，更是其他物業難以媲美。

單位設計獨具匠心，實用面積達到5,355平方呎，提供四間睡房、四間半浴室、獨立的客飯廳、家傭房、多用途房、家庭廳、書房及兩個有蓋車位。

康樂設施方面，屋苑設有健身室、室外泳池、兒童遊樂場及泳池、桑拿、室內遊樂場等等。物業坐落於司徒拔道，前往中環及銅鑼灣只需10分鐘。



General Valuations

We carry out property valuations for diversified purposes including IPO, annual audit, mergers and acquisitions, insurance, immigration, disposal, rating / stamp duty appeal and tax computations.

一般估值

我們會受託提供估值報告作公司上市、審計賬目、收購合併、保險、海外移民、資產出售、差餉或印花稅上訴及其他稅務用途。



Expert Witness and Dispute Resolution

We provide independent professional valuation advice and full narrative reports to solicitors and other clients in relation to property disputes, and can also act as an expert witness upon request.

專家證人和爭端調解

當物業價值遇上爭議時，我們向律師和客戶提供獨立專業估值建議和完整詳盡的報告，並在需要時在法庭充當專家證人。

Railway Works Disturbance Claim

Retail shop operators suffer from disturbance and business loss due to railways works. The complexity of relevant compensation ordinances is often beyond the understanding of a layman. We can help unravel the perplexity of such issues.

滋擾補償評估

零售及飲食業往往因鐵路工程受到滋擾並引致生意損失。相關補償條例複雜繁瑣，一般人不易理解。我們熟悉法定評估工作，深刻瞭解受影響行業，協助客戶拆解難題。

Development Consultancy

We have diverse and extensive experience in providing professional planning advice ranging from S.16 Planning Application, Lease Modification, Temporary Waiver etc

土地發展顧問

我們有多元化的經驗幫助客戶進行城市規劃第16條申請，更改土地契約，申請土地短期豁免書等。

Resumption Compensation

The government and URA acquire private land for public purposes. We are well-versed with resumption-related ordinances, subsequent procedure and assessment of claim. We can assist you in quantifying losses and carrying out negotiations with the Government and URA.

收地損失評估

政府及市區重建局不時根據相關條例收回私人土地作公共用途。我們熟悉該等條例，收地程序及補償評估工作，能協助客戶計算損失並代表客戶進行談判。

Compulsory Sale for Redevelopment

Under ordinance Cap.545, developers can apply to the Lands Tribunal for an order for sale of a lot when they have successfully acquired sufficient undivided shares of the lot. We can represent you to handle negotiations with developers more effectively and act as your expert witness if the case is eventually referred to the Lands Tribunal for determination.

強制售賣

根據香港法例第545章，若發展商成功收購土地上足夠的業權，便可向土地審裁處申請強制拍賣該土地。我們能代表小業主更有效地跟發展商商討收購價。若案件最終需提交土地審裁處裁決，我們亦可充當專家証人。

Inquiries : **Cliff Lau 劉先生** (MRICS)

查詢: **2152 4868**
cliff.lau@landscape.com

Jack Chan 陳先生 (MHKIS, MRICS, MCIREA)

2152 4812
jack.chan@landscape.com



Altfield's hand-crafted silverware is the result of collaboration with talented Asian craftsmen

Springtime gardens

春色滿園

After celebrating Christmas, it is time to refurnish the home and bring in the atmosphere of Chinese New Year. Even by adding just a few small touches and decorations to your home, it is possible to bring a new character into our beloved space.

歡度聖誕過後，是時候重新粉飾家居，注入農曆新年的氣氛。

即使加添少量擺設，或更改家居部分裝飾，也可以帶來煥然一新的感覺。

To bring a little of that auspicious red colour to your home, consider TREE's newly launched vase made from recycled glass. The vases are hand-made and the fact that they are mouth-blown makes each piece unique. During Chinese New Year they are perfect for holding cherry blossoms, peonies, silver willows, or even serving as a standalone decorative piece.

A common tradition before Chinese



Lala Curio previously cooperated with Christie's to launch a wallpaper with a theme focussing on the forest and animals

New Year is to clean out the house, symbolising sending out the old and welcoming the new. TREE's hand-woven baskets are available in a variety of sizes, colours, and shapes for an easy storage solution. The vibrant colours also help bring a fresh atmosphere into the home in addition to being practical.

Home decoration brand Lala Curio has launched a variety of wallpapers, bringing a wide variety of paper



Many of Lala Curio's past works have used Chinese elements as their theme



Lala Curio's works are full of colours

selections for homes with whitewashed walls. Many of their past works have used Chinese elements as their theme, referring to the style of dynastic China and depicting the elegance of the past, bringing traditional handicrafts into the contemporary art world. Their works are not limited to chinoiserie, and they have also produced creations based on animals and plants, many of which bring a touch of whimsy.

For example, Lala Curio previously cooperated with Christie's to launch a wallpaper with a theme focussing on the forest and animals. The works are

full of rich colour and depict the different postures of various animals in lush grass, creating a vivid indoor atmosphere that is sure to catch the eye. The brand also has pieces designed around the theme of butterflies and birds, and some are even embellished with pearls.

Altfield's hand-crafted silverware is the result of collaboration with talented Asian craftsmen. The silverware presents Chinese and Southeast Asian styles supplemented by the form and function of Western objects. Whether it is displayed alone in the form of

sculpture decorations or combined into table decorations and collections, this is a form of exquisite traditional craftsmanship that you can feel.

要為家居帶來一點吉祥的紅色，可選擇TREE推出，以回收玻璃製成的花瓶。花瓶以人手製作，口吹玻璃使每一件都獨一無二，更可以盛載櫻花、牡丹及銀柳。即使佳節過後，亦可以當作一般裝飾品單獨使用。

農曆新年前，我們多會大掃除，寓意送舊迎新。TREE的手織籃子，提供多種大小、顏色及外型，方便儲物。除了實用，籃子色彩鮮艷，可為家居有來不少生氣。

另外，家居裝飾品牌Lala Curio推出了多款牆紙，為粉飾家居帶來了不少選擇。過去不少作品以中國風為主題，參考了古代中國帝皇時代的風格之餘，亦描繪了以往的優雅，呈現傳統手工藝於現今藝術世界。作品亦不限於中國風，更有以動物及植物為主題的創作，不少都是具創意甚至異想天開的作品。

例如，Lala Curio早前與佳士得合作，推出了以森林及動物為主題的牆紙。作品色彩鮮艷，描繪了不同動物於高聳草叢中的不同姿態，可為室內氣氛變得更加生動有趣。品牌亦有以蝴蝶及雀鳥為主題的作品。部分作品更以珍珠點綴。

Altfield的人手製作銀器，是與一眾才華出眾的亞洲工匠合作之成果。銀器呈現中國及東南亞風格，輔以西方器物的形式及功能。不論是以雕塑裝飾品的形式單獨展示，或是組合成餐桌擺設和收藏品，均可以感受到精湛的傳統工藝。



TREE's handwoven baskets are available in a variety of sizes, colours, and shapes



TREE's newly launched vase is made from recycled glass

Victoria Harbour view apartment in Midlevels Central
中半山維港景住宅

4 bed, 2.5 bath, 1 car park

Harbour view 3-bedroom apartment with full clubhouse facilities in prime location

維港景三房住宅，連完善會所設施，地段優越

Saleable 實用 1,933 s.f.

Lease 租 \$118,000 incl.

Inquiries 查詢 6538 6922 James Ng 伍先生

Property Search No. 物業搜尋編號 35648



Deluxe 5-bedroom apartment in Midlevels Central
中半山豪華五房單位

5 bed, 4.5 bath, 2 car parks

Extravagant 5-bedroom apartment with magnificent view over Victoria Harbour

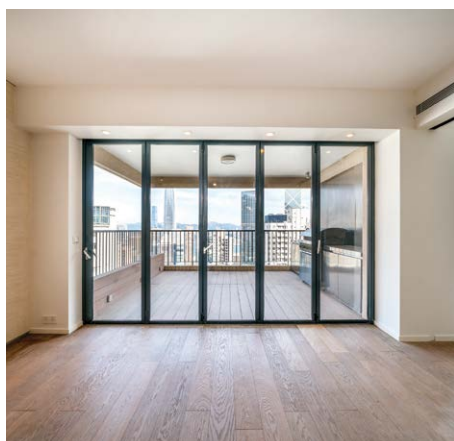
奢華極致五房單位，維多利亞港優美景色一覽無遺

Saleable 實用 4,715 s.f.

Lease 租 \$500,000 incl.

Inquiries 查詢 9027 2100 Louis Wong 黃先生

Property Search No. 物業搜尋編號 54176



Top-notch apartment in Midlevels Central
中半山尊貴府第

4 bed, 3.5 bath, 1 car park

Nicely decorated 4-bedroom apartment with practical layout and roomy balcony enjoys stunning city view

優雅裝修四房單位，間隔寬敞實用，連特大露台，眺望中區市景

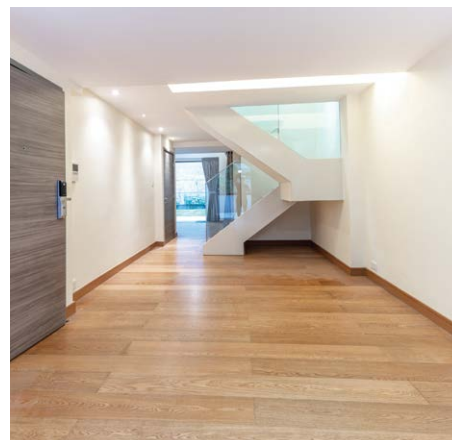
Saleable 實用 3,349 s.f.

Lease 租 \$180,000 incl.

Inquiries 查詢 9020 1583 Michelle Chung 鍾小姐

Property Search No. 物業搜尋編號 4847





Unique duplex unit in Midlevels Central

中半山獨特複式單位

3 bed, 4 bath, private terrace

One of a kind 3-bedroom duplex unit with private terrace in prestigious location

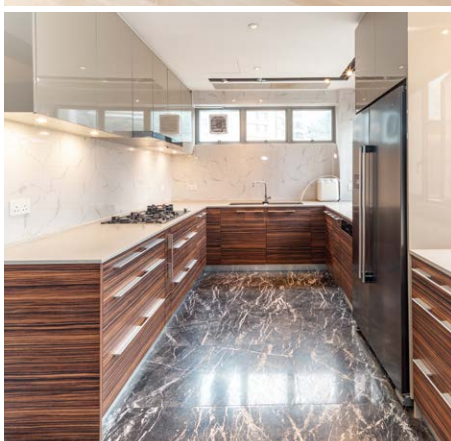
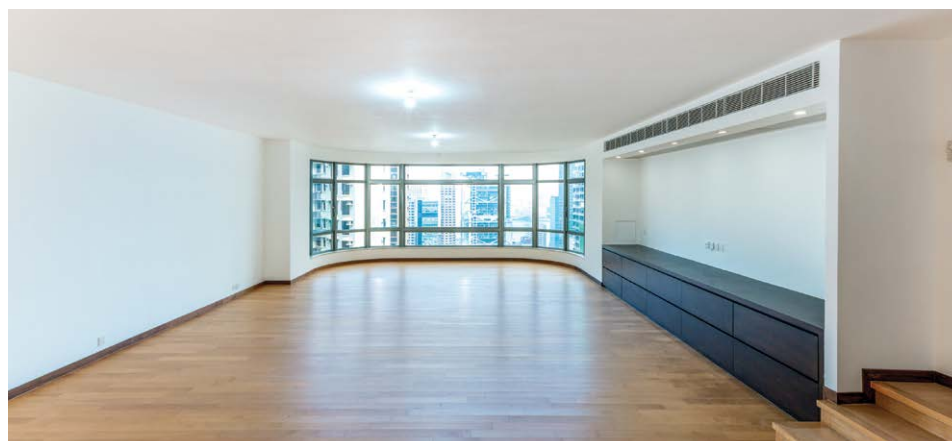
獨樹一幟三房複式單位，連私家平台，地段尊貴顯赫

Saleable 實用 1,737 s.f.

Lease 租 \$113,000 incl.

Inquiries 查詢 9021 1270 Annie Lee 李小姐

Property Search No. 物業搜尋編號 13295



Family 4-bedroom apartment in Midlevels Central

中半山家庭式四房住宅

4 bed, 3 bath, 1 car park

Massive 4-bedroom apartment with practical layout overlooks fantastic city view

寬敞四房住宅，間隔實用，俯瞰迷人城市美景

Saleable 實用 4,017 s.f.

Lease 租 \$225,000 incl.

Inquiries 查詢 6607 2082 Stephen Chan 陳先生

Property Search No. 物業搜尋編號 26702





Elegant house with harbour view at The Peak

山頂優雅維港景洋房

5 bed, 4 bath, 791 s.f. terrace, 1,766 s.f. garden & 612 s.f. roof, 1 garage (4 cars)

Peak house with private swimming pool and lift (can park 4 cars) ideal for big family

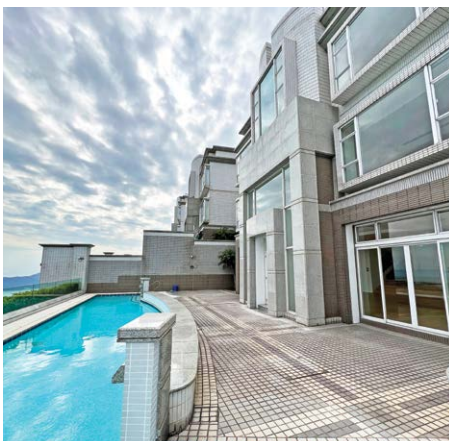
山頂頂級洋房，連私家游泳池及升降機，車庫可容納四車，適合大家庭

Saleable 實用 3,787 s.f.

Lease 租 \$268,000 excl.

Inquiries 查詢 6535 9918 Josephine Yuen 阮小姐

Property Search No. 物業搜尋編號 27920



Generous house at The Peak

山頂巨型洋房大宅

6 bed, 5.5 bath, 4,971 s.f. garden & 1,372 s.f. roof,
private swimming pool, 1 garage (4 cars)

Large and spacious 6-bedroom house with private swimming pool enjoys magnificent sea view

偌大寬敞六房洋房，連私家游泳池，遠眺壯麗海景

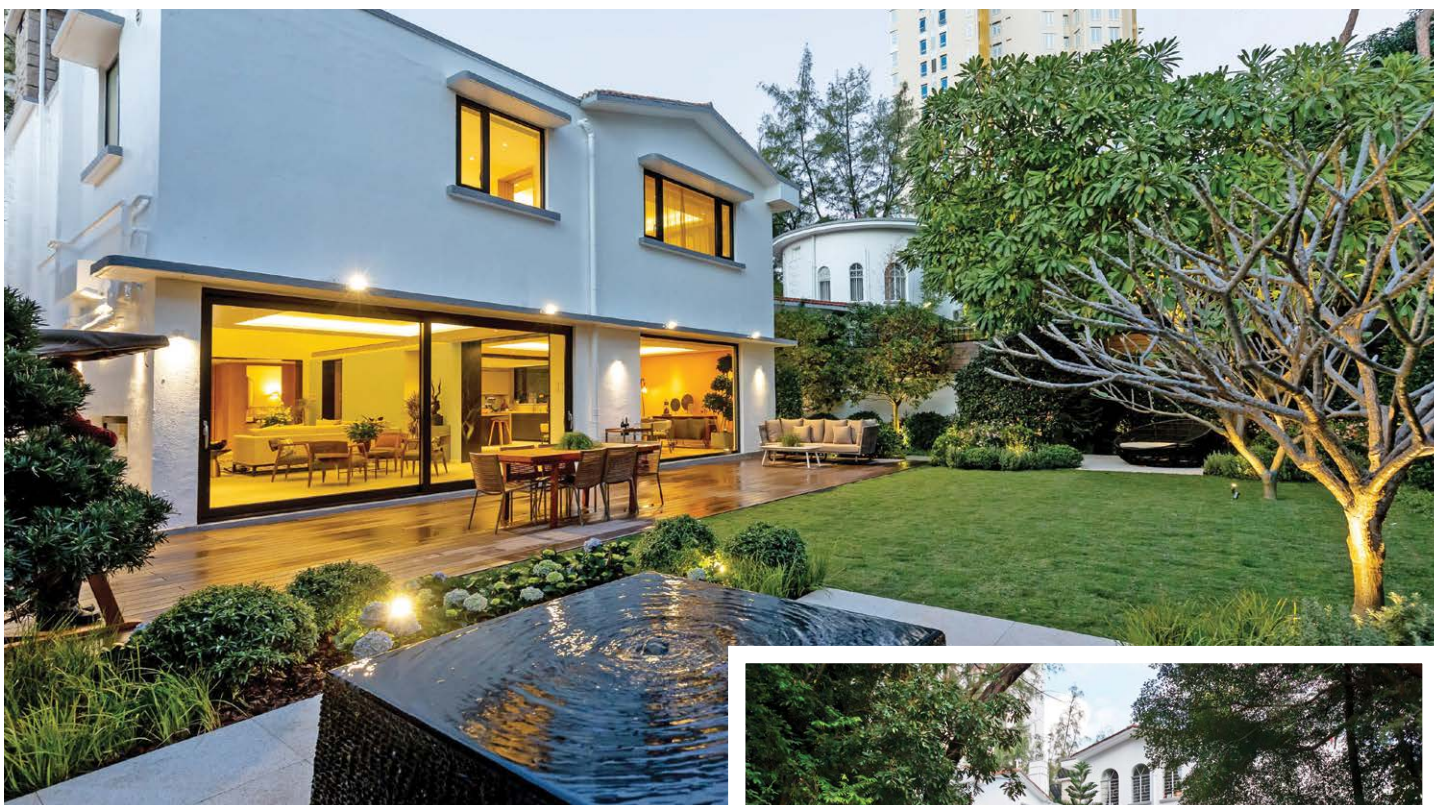
Saleable 實用 5,342 s.f.

Lease 租 \$590,000 incl.

Inquiries 查詢 6535 9918 Josephine Yuen 阮小姐

Property Search No. 物業搜尋編號 13523





Luxurious House on Kadoorie Avenue

嘉道理道華麗家居

Nestled in the heart of bustling Kowloon, hidden beneath a canopy of trees, lies The Kadoorie Estate — an exclusive residential community situated on Kadoorie Hill.

This peaceful enclave benefits from all the conveniences of modern city living and is readily accessible to the business and commercial hubs of West Kowloon and Central District.

The Estate's detached and semi-detached houses vary in size from 3,000 square feet to 6,000 square feet. Each house has its own garden and some have private pools.

Classic Three-storey House with Gorgeous Double Height Living Room

經典三層洋房連高樓底豪華客廳

4 ensuite bedrooms, sizeable garden landscape with water feature and alfresco dining area

Saleable 實用 4,571 s.f.

Lease 租 \$380,000 excl.

Inquiries 查詢 9027 2100 Louis Wong 黃先生

Property No. 物業編號 77500



位處九龍繁華心臟地段、藏於綠樹掩影下的隱世居庭，The Kadoorie Estate是座落於加多利山上的尊尚住宅區。

這靜謐怡然的尊尚住宅區，展現現代城市生活之便利，更可快速便捷往返西九龍及中環商業區。

The Kadoorie Estate獨立式和半獨立式洋房面積由3,000至6,000平方呎不等。每幢洋房皆附設獨立花園，部分更配備私人泳池。





Rare trophy asset investment in St James's 倫敦最優越地段罕有資產

- Prestigious St James's location on Jermyn Street directly opposite the St James's Piccadilly Church and gardens
- Unique mix of uses including private members club, retail, offices, and residential apartments over eight floors totalling 15,162 sq ft
- Total rental income of £1,336,120 p.a.
- Freehold
- 物業位於尊貴聖詹姆斯Jermyn Street優越地段，對面是皮卡迪利聖雅各教堂及花園
- 大廈屬混合用途，共八層，總面積達15,162平方呎，包括私人會員俱樂部、商舖、辦公室和住宅
- 年租金收入為1,336,120英鎊
- 永久業權

如何購買英國商業物業

英國商業物業較住宅能提供更長，更穩定和更高的租金回報；卻可以比住宅更容易管理。但如何入手？有哪些事項要注意？英國與香港市場的分別在哪裡？由豐富實戰經驗的皇家特許測量師提供免費一對一諮詢。

Commercial properties in the UK provide opportunities for overseas investors with long, stable rental income and higher yields than residential properties; still they can be easier to manage than residential. But how to invest? What do you need to know before purchase? What are the differences between UK and HK markets? We are pleased to provide free, one-to-one consultation.

Guide Price 指標價	£40,000,000
Net Yield 淨收益率	c. 3.1%

Property No. 5633



Attractive London commercial building 優質倫敦商業大廈投資

- Situated on the south side of Holborn and benefiting from excellent transport connections
- 20,257 sq ft of Grade A office, retail and ancillary accommodation arranged over lower ground, ground and seven upper floors
- Multi let to five tenants producing a total gross passing rent of £1,158,802.05 p.a.
- Long Leasehold

- 坐落於霍本南側，受益於優質的交通網絡
- 20,257平方呎的甲級寫字樓連零售，分佈在地庫、地面層和七層上層
- 由五個租戶承租，年租金總收入為1,158,802.05英鎊
- 長期租賃權

Guide Price 指標價	£17,000,000
Net Yield 淨收益率	c. 5.75%

Property No. 6740



ENQUIRIES 查詢
2152 4888 KS Koh 許先生 ks.koh@landscape.com



Opportunity to acquire 100% prime retail in Belsize Park 地鐵站出口100% 優質商鋪

- Highly prominent corner location immediately adjacent to Belsize Park Underground Station entrance/exit
- Total 2,928 sq ft over basement and ground floor
- Newly constructed building single-let to Pret A Manger for a term of 18 years without break at an initial rent of £150,000 p.a.
- Freehold
- 物業位於貝爾塞斯公園地鐵站出入口的優質大單邊轉角位
- 地庫和地面層合共約2,928平方呎
- 新落成大廈，由連鎖餐廳Pret A Manger獨立承租，新簽18年長租約（租客無中止權），現時年租金收入150,000英鎊
- 永久業權

Guide Price
指標價 £3,500,000

Net Yield
淨收益率 c. 4.0%

Property No. 2754



Well-secured prime High Street investment opportunity 利物浦穩健高街投資物業

- Located at a prominent position in Liverpool with key nearby tenants including Primark, TK Maxx and M&S
- Comprises total accommodation of 20,307 sq ft over basement, ground and first floors
- Majority let to Superdrug Stores Plc until May 2025 at a rent of £300,000 p.a.
- 999 years leasehold
- 物業位於利物浦的黃金地段，附近的主要租戶包括Primark、TK Maxx和馬莎百貨
- 地庫、地面層和一樓面積合共20,307平方呎
- 主要出租給 連鎖集團 Superdrug Stores Plc至2025年5月，目前年租金300,000英鎊
- 999年長期租賃權

Guide Price
指標價 £3,200,000

Net Yield
淨收益率 c. 8.6%

Property No. 2090

ENQUIRIES 查詢
2152 4888 KS Koh 許先生 ks.koh@landscape.com



Prime retail investment at Arndale Shopping Centre, Manchester

曼徹斯特優質零售投資

- Situated at a prime position at Manchester's shopping mecca, Arndale Shopping Centre
- Well configured retail investment providing a total floor area of 5,770 sq ft over basement and ground floor
- Single-let to multinational telecommunications company Vodafone until June 2028 at a rent of £300,000 p.a.
- Long Leasehold

- 位於曼徹斯特頂級零售中心Arndale Shopping Centre
- 配置完善的零售投資鋪位，地庫和地面層的總面積為5,770平方呎
- 由跨國電信公司Vodafone獨立承租至2028年6月，年租金為每年300,000英鎊
- 長期租賃權

Guide Price
指標價 £3,100,000

Net Yield
淨收益率 c. 9%

Property No. 5587



Prime corner retail investment opportunity

大倫敦區優質單邊轉角位零售投資機會

- Situated within the prime retail pitch, in a dominant position of Watford town centre
- Comprises total accommodation of 10,056 sq ft over 4 stories
- Fully let to Greggs, Pret A Manger, Shoe Zone and Betfred at a total net income of £246,833 p.a.
- Freehold

- 位於屈福特鎮中心黃金地段的零售區物業
- 物業共四層，總面積10,056平方呎
- 由各大連鎖集團Greggs、Pret A Manger、Shoe Zone及Betfred承租，總淨收入為每年246,833英鎊
- 永久業權

Guide Price
指標價 £2,650,000

Net Yield
淨收益率 c. 8.7%

Property No. 4755

ENQUIRIES 查詢
2152 4888 KS Koh 許先生 ks.koh@landscape.com



Prominent retail investment with high yields

銀行鋪定高收益率優質零售投資

- 100% prime retail unit between Costa and Marks and Spencer in Mansfield
- Total accommodation of 32,876 sq ft with 120 feet frontage
- Multi-let to Clydesdale Bank PLC, New Look and Shoe Zone at a total rent of £280,000 p.a.
- Freehold
- 位於曼斯菲爾德的100%優越鋪位，坐落在Costa咖啡廳和馬莎百貨中間
- 物業總面積32,876平方呎，鋪面長達120呎
- 由上市公司Clydesdale Bank、New Look及Shoe Zone承租，年租金合共為280,000英鎊。
- 永久業權

Guide Price
指標價 £2,630,000

Net Yield
淨收益率 c. 9.9%

Property No. 2852



Prime retail unit in St Albans

聖奧爾本斯的優質零售鋪位

- Located in a prominent location on St Peter's Street benefiting from a high footfall
- Comprises 3,319 sq ft of accommodation, arranged over ground and first floor
- Single-let to Pret A Manger until April 2028 at a rent of £150,000 p.a.
- Freehold
- 位於St Peter's Street的顯眼優越地段，人流暢旺
- 總面積3,319平方呎，包括地面層及一樓
- 由連鎖餐廳Pret A Manger獨立承租至2028年4月，年租金為150,000英鎊。
- 永久業權

Guide Price
指標價 £2,000,000

Net Yield
淨收益率 c. 7%

Property No. 4037



 **ALUMINIUM WINDOW**
BESPOKE EUROPEAN SYSTEM

We invite you to come & visit our showroom !



3621 0138



info@js-window.com



www.js-window.com