

select deluxe homes

# The Key

大宅®

www.landscape.com

JANUARY | 2011

Volume 75



## ANCIENT LUSTRE

Classic enjoyment on the luxurious Bel-Air

## IMPERIAL RESIDENCE

Create your own palace on Island Road

## KEY NOTES\*

“Drop the last year into the silent limbo of the past. Let it go, for it was imperfect, and thank God that it can go.”

「把去年丟進過去的幽冥裡，並帶著感恩的心讓它離去，因它並不完美。」

- Brooks Atkinson (American Journalist and Critic, 1894-1984)  
- 布魯克斯·阿金遜，美國作家和評論家1894至1984年

As the sole supplier of land in Hong Kong, the government has every means and capability to deflate / inflate the market. Over the years since the introduction of the application system, the government has discreetly set a high threshold for triggering the land auction, causing land supply to dwindle. The motive behind this was largely to correct the mistake that the Tung Chee-Hua administration had made in increasing housing supply, resulting in collapse of the property market for straight six years and the turning of tens of thousands of property owners into negative equity. The administration under Donald Tsang upheld a high land price policy without spelling it out. This has been demonstrated not only in the high threshold in application system but also in land lease modifications, where the government demanded very high premium, and there were therefore only very limited land released to the market. But the policy backfired, and the ensuing land supply squeeze set the stage for another rampant price hike starting 2005. Realising that they have overdone with the application system, the government reduced the threshold to 80% of their valuation of market price in 2009, and re-introduced regular land auction (without the need for application) in 2010 in an effort to encourage developers' buying interest. But it's already too late. Residential price in general has surged 50% since the beginning of 2009. Had the government come to correct their own mistake earlier, there wouldn't have been the need for the new round of anti-speculation measures which invariably dampened genuine demand from long term investors and end-users.

政府作為香港的獨家土地供應商，有絕對的能力及方法控制樓市的升跌。自推出勾地政策以來，政府隨時為勾地價定下高門檻，以致土地供應幾乎乾枯。這背後動機主要是為改正由董建華管治時的施政失誤所造成的住宅供應增加，引致長達六年的樓市衰退，令數以萬計的物業變成負資產的問題。故此，曾蔭權政府不明言地奉行高地價政策。除了體現在勾地政策的高門外，補地價政策也是另一例——由於政府收取高昂的補地價費用，導致市場上的土地供應非常有限。可惜事與願違，該政策不但收市無效，緊縮的土地供應更帶來一個由2005年開始的樓價狂升。政府在意識到勾地政策的失誤後，於2009把勾地價的門檻降至市價的百分之八十，並於2010年重新推出定期土地拍賣，以刺激發展商的買地意欲。但這些都已來得太晚了，本港整體的房屋價格自2009年初起已大幅上升百分之五十。假若政府能用勾地政策及早改正他們的失誤，那根本就無需推出最近打擊炒賣的措施，並一併限制了長遠投資者及用家的真正需求。

By K.S. Koh  
ks-koh@landscape.com

The above is an excerpt from Market Watch on [www.landscape.com](http://www.landscape.com)  
Read the full article at Market Watch, [www.landscape.com/marketwatch](http://www.landscape.com/marketwatch)  
以上內容節錄於《地產界之市場觀察》，如欲閱讀全文，請登上網址：[www.landscape.com/marketwatch](http://www.landscape.com/marketwatch)

published and distributed by

**LANDSCOPE** 領'域  
The Specialists in Luxury Properties

**Landscape Realty Limited** C-01873  
a member of Landscape Surveyors Ltd

Tel: 852-2866 0022 Fax: 852-2866 0015  
Email: info@landscape.com Website: [www.landscape.com](http://www.landscape.com)  
Unit 310B, 31/F, Hopewell Centre, 183 Queen's Road East, Wanchai, Hong Kong

The information, text, photos, analyses and projections contained herein are provided solely for the convenience of prospective clients and no warranty or representation as to their accuracy, correctness or completeness is made by Landscape Surveyors Limited, Landscape Realty Limited or the owners, none of whom shall have any liability or obligation with respect thereto. Interested parties should rely on their own investigations, interpretations and analyses in connection with the purchase or letting thereof.  
Information has been provided to you by sources deemed reliable, but no warranty or representation is made as to its accuracy, correctness or completeness. These offerings are made subject to contract, correction of errors, omissions, price change or price or terms or withdrawal from the market without notice. The contents of The Key are for reference only and do not constitute an offer or any part of a contract.  
Reproduction in any form of any information or material contained in The Key in whole or in part without the written permission from Landscape Realty Ltd is strictly prohibited.

Print on Demand



## THE KEY | CONTENTS

03 壹蘆

04 Ancient Lustre  
古典華美

10 Imperial Residence  
皇者之選

17 Chantilly  
嘉柏香

### The Key (The No. 1 Publication for Luxury Properties)

The Key is a monthly, bilingual lifestyle publication focusing on luxury residential properties in Hong Kong Island. It is sent to over 60,000 urban elites comprising of Hong Kong's most affluent inhabitants.

These consist of Landscape's VIP clients, who mainly reside in The Peak, Mid-Levels, Southside, Kowloon Tong, Homantin and other select up-market residential areas such as Tai Po, Sai Kung and Clear Water Bay, etc.

## How may you list your property with The Key?

If you would like to list your property in an upcoming issue of The Key, you may contact Loretta Lui on +852 3102 4818 or visit us at [www.landscape.com/sell-to-let](http://www.landscape.com/sell-to-let). Alternatively, simply fill out the below and fax back to us on +852 2866 0015.

### Property Details

### Asking Rental / Sale Price

### Floor Area

### Contact Person

### Telephone

### Email

Our KeyPerson will contact you for follow-up work.

designed and produced by

**inMAGAZINE**

**inCorporation Limited**  
Your No. 1 Integrated Marketing Communications Partner in Hong Kong and China

Tel: 852-3699 0888 Fax: 852-3699 0889  
Email: [marketing@incorp.com.hk](mailto:marketing@incorp.com.hk) Website: [www.innmagazine.com.hk](http://www.innmagazine.com.hk)  
12/F, Cyberport 2, 100 Cyberport Road, Hong Kong

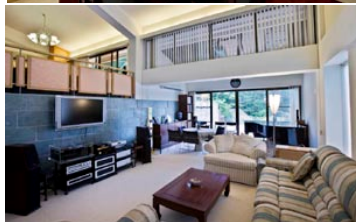


A rare private residence in the serene Pui O of Lantau Island is now open for sale by public tender. Amidst lush greenery of the San Shek Wan Village, this free-standing mansion spans across a 20,000-square-foot landscaped private garden fitted with sleek outdoor wooden boards, complete with an L-shaped private swimming pool. Back into the 2,144-square-foot neatly furnished duplex, it boasts 100 percent saleable area with a spacious sitting room, a commodious family room and a 420-square-foot open terrace.

Away from the hectic city centre, this tranquil mansion allows you to enjoy a sheer private life embraced by the peaceful nature, ideal for corporate holiday house, retirement home or redevelopment.

背山面海，環境寧靜致遠，位於恬靜的大嶼山貝澳歐克灣有私人宅，現已公開招標出售。這座獨立大宅被歐克灣的一片繁盛翠綠的山巒環抱，獨享20,000平方呎的私人花園。花園更鋪設時尚戶外木製地板及L型泳池。把眼光移向室內，這座2,144平方呎的複式別墅，實用面積高達百分之百，室內裝潢整潔，附設寬敞客廳，特大廳及420平方呎的開揚平台。

這座罕有的大宅遠離都市煩囂，讓你沉醉於大自然的恬靜中，享受全然的人生生活，是公司渡假屋、退休隱居所或重建發展的理想之選。



### Tender Information

By Order of The Owner  
For Sale By Public Tender  
LOT No. 687 IN D.D. 329, Lantau Island  
(Unless previously sold or withdrawn)

Tender closing date:  
12:00 noon 21 January 2011 (Friday)

### 招標資料

承業主命，大嶼山LOT No. 687 IN D.D. 329公開招標出售  
(截標前售出或收回除外)

截標日期  
2011年1月21日中午12時正 (星期五)

2,144 s.f. (plus 20,882 s.f. private garden size)

☎ KS Koh 先生 3102 4888

Teresa Fung 馮小姐 9138 1621

# Ancient Lustre

## 古典華美

Erected on the waterfront of Cyberport, Residence Bel-Air has a faddish streamlined outfit. When you enter this apartment, you will be illuminated by the glistening decorations of the combined living and dining room. A fully-fitted kitchen together with the maid's room and a utility room are on the left. Down the hallway, there are three bedrooms including a master ensuite and a further bathroom. Antique furniture and the vivid crystal lights add a sense of classic aesthetics to the apartment, creating a deluxe ambience throughout.

Apart from its practical setting, this 1,588-square-foot apartment boasts the picturesque, unobstructed sea view. You may enjoy the enchanting panoramic sea view through the floor-to-ceiling glass door or simply chill out on the sleek balcony and get yourself a refreshing breeze treatment. ■

聳立於數碼港海畔的貝沙灣有着時尚前衛的流線型外牆，當你走進這套公寓，你便會被客廳耀眼光明透的設計裝潢所迷住。設備齊全的廚房、工人房和多用途室設於屋子的右邊；穿過客廳，在走廊兩側分別是兩間睡房及一個浴室，走廊的盡頭則是主人套房。屋內古董傢俱與擺設以及閃亮剔透的水晶燈為全屋增添一股古典華麗氣息。

除了其清晰實用的間隔外，這間1,588平方呎的公寓還擁有全無遮擋的臨海景致，你可安坐客廳透過落地玻璃門欣賞這片蔚藍的海景，或是坐在呈流線型的露台上，享受迎面拂來的清新海風。■

### Residence Bel-Air

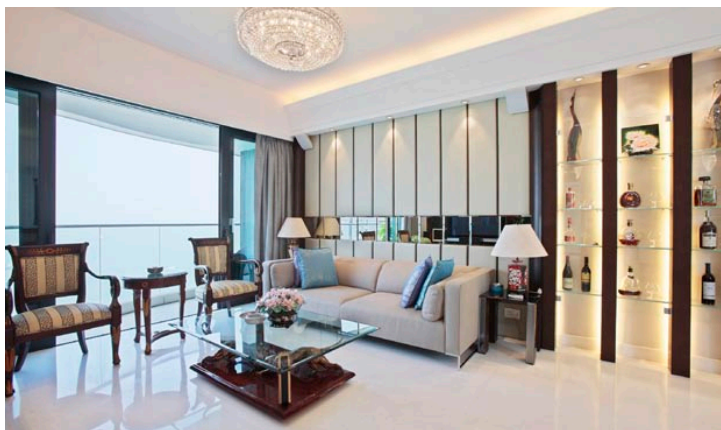
薄絲絲 貝沙灣

Cyberport Road, Pokfulam

1,588 s.f.

\$25,000,000 also for lease \$65,000 incl.

www.landscape.com/98641.htm Jensen Au 溫先生 9028 0147 查詢請電



## FARRINGTON INTERIORS

THE MOMENT MADE BEAUTIFUL



CHRISTOPHER GUY

## 10,000 sq. ft. Showroom at 31/F World Trade Centre

OVER 1,000 PIECES OF FINE FURNITURE AND ACCESSORIES.

### Shop 店舖:

G/F, 87 Wong Nai Chung Road,  
Happy Valley, H.K.  
香港跑馬地黃泥涌道87號地下  
Tel: (852) 2808 0303  
Fax: (852) 2801 6732

### Flagship Store 旗艦店:

31/F, World Trade Centre, 280 Gloucester Road,  
Causeway Bay, H.K.  
香港銅鑼灣告士打道280號世貿中心31樓  
Tel: (852) 2808 1000  
Fax: (852) 2808 2800

### Opening hours 營業時間:

11:00am – 7:00pm  
Mon – Fri (星期一至五)

1:00 pm – 6:00pm  
Sat, Sun & Public Holiday  
(星期六、日及公眾假期)

WWW.FARRINGTONINTERIORS.COM





**Guildford Court**  
山頂 俱備兩睡  
5 Guildford Road, The Peak  
Spacious colonial mid-rise apartment with open view on secluded location  
山頂寬敞英式中密度住宅, 享開揚景觀, 環境寧靜

2,500 s.f.  
**\$68,000,000**

[www.landscope.com/30299.htm](http://www.landscope.com/30299.htm) Stella Lo 羅小姐 9809 8570



**Mountain Lodge**  
山頂 瓦屋  
44 Mount Kellett Road, The Peak  
Rare duplex apartment with Southside sea view  
罕有複式住宅, 觀賞寧靜南面海景

5,200 s.f.  
**\$130,000,000**

[www.landscope.com/96955.htm](http://www.landscope.com/96955.htm) David Leung 梁先生 9199 0072



**La Hacienda**  
山頂 加列山道29-33號  
29-33 Mount Kellett Road, The Peak  
Sea view townhouse with tasteful decor bordering country park  
山頂海景洋房, 逢品味觀裝飾, 鄰近郊野公園

2,800 s.f. (Saleable Area)  
**\$138,000,000**

[www.landscope.com/119769.htm](http://www.landscope.com/119769.htm) Louis Wong 黃先生 9871 6828



**Strawberry Hill**  
山頂 紅梅閣  
8 Plunkett's Road, The Peak  
Colonial style townhouse with picturesque views  
山頂英式洋房, 尊享如畫美景

3,200 s.f.  
**\$140,000,000**

[www.landscope.com/49439.htm](http://www.landscope.com/49439.htm) Michelle Chung 羅小姐 9833 9509



**Bayview**  
山頂 布力徑21-35號  
21-35 Black's Link, The Peak  
5-bedroom townhouse with Deep Water Bay view from The Peak  
山頂五房排屋, 享寧靜深水灣景觀

3,350 s.f. (plus 532 s.f. terrace and 394 s.f. roof)  
**\$200,000,000**

[www.landscope.com/84364.htm](http://www.landscope.com/84364.htm) Michelle Chung 羅小姐 9833 9509



**Seyvern 8**  
山頂 荷樓  
8 Seyvern Road, The Peak  
Superb townhouse overlooking Victoria Harbour panorama  
山頂豪華洋房, 俯瞰優美寧靜港景

3,330 s.f. (plus 794 s.f. roof and 602 s.f. garden)  
**\$200,000,000**

[www.landscope.com/94672.htm](http://www.landscope.com/94672.htm) Mark Mak 麥先生 6838 2929



**the summit**  
A MEASURE OF SUCCESS

御峯

Stylish living

EXCLUSIVE UNITS FOR SHORT-TERM LEASE

- Prominently located at 41C Stubbs Road, Mid-Levels
- In close proximity to CBO, international schools and Bowen Road jogging trail
- With 70-storey, The Summit commands splendid views of Victoria Harbour and city skyline
- The duplex suites range from 3,254-6,496 sq.ft.
- Facilities include indoor swimming pool, jacuzzi, gymnasium, golf simulator, outdoor entertainment/BBQ area and children's playground
- 24-hour security service
- On-site maintenance team

**Leasing Enquiry: 2879 0222**  
(viewing by appointment only)  
**LeasingEnquiry@hangleung.com**  
[www.thesummit.com.hk](http://www.thesummit.com.hk)

**聯勝地產**  
Hing Lung Properties



**Garble Garden**  
西半山 嘉寶閣  
2-3 Seymour Terrace, Midlevels West  
Conveniently located cozy 2-bedroom flat with brand new decor  
精緻兩房單位, 享住新裝修, 位置優越, 可租可售

1,050 s.f.  
**\$8,700,000 also for lease \$38,000**

[www.landscope.com/136503.htm](http://www.landscope.com/136503.htm) Arthur Wong 黃先生 9304 4257



**Kingsford Height**  
西半山 瓊峰台  
17-19 Babington Path, Midlevels West  
Practical 3-bedroom flat at quiet end of Midlevels West  
西半山寶山三房住宅, 位處清幽地段

1,735 s.f.  
**\$15,500,000**

[www.landscope.com/96640.htm](http://www.landscope.com/96640.htm) Sami Woo 胡小姐 9493 8275



**Albron**  
西半山 豐樂閣  
99 Caine Road, Midlevels West  
Spacious 3-bedroom flat in Midlevels close to escalator  
西半山寬敞三房住宅, 鄰近半山扶手電梯

1,600 s.f.  
**\$16,000,000**

[www.landscope.com/136682.htm](http://www.landscope.com/136682.htm) Jackson Lee 李先生 9177 7191



**Swiss Towers**  
東半山 瑞士花園  
113 Tai Hang Road, Midlevels East  
Spacious 3-bedroom apartment with balcony  
開揚寬敞三房單位, 遠望景

1,600 s.f.  
**\$18,000,000**

[www.landscope.com/34095.htm](http://www.landscope.com/34095.htm) Chris Law 羅先生 6183 8388



**Gallant Place**  
東半山 嘉逸庭  
15 Tung Shan Terrace, Midlevels East  
Stylish low-rise apartment with private terrace garden  
時尚低密度住宅, 連私家平台花園

1,284 s.f. (plus 1,400 s.f. terrace)  
**\$20,500,000**

[www.landscope.com/98966.htm](http://www.landscope.com/98966.htm) Mavis Wu 吳小姐 9107 3891



**8 Shiu Fai Terrace, Midlevels East**  
東半山 翠峰台8號  
3-ensuite family flat in tranquil location with nice decor  
三家房家庭式住宅, 環境優美寧靜遠觀裝修

2,142 s.f.  
**\$28,000,000**

[www.landscope.com/31231.htm](http://www.landscope.com/31231.htm) Walker Lam 林先生 9551 1077



**Hillsborough Court**  
中半山 曉峰閣  
18 Old Peak Road, Midlevels Central  
2-bedroom apartment with club facilities close to Central  
兩房住宅連住客設施, 鄰近中環, 交通方便

938 s.f.  
**\$14,000,000**

[www.landscope.com/107921.htm](http://www.landscope.com/107921.htm) Jensen Au 區先生 9028 0147



**27-29 Village Terrace, Happy Valley**  
跑馬地 山村豪27-29號  
Renovated low-rise with private roof top in quiet enclave  
新裝修低密度住宅, 連私家天台, 環境寧靜, 可租可售

1,625 s.f. (plus 1,625 s.f. roof)  
**\$16,000,000 also for lease \$60,000 incl.**


[www.landscope.com/110825.htm](http://www.landscope.com/110825.htm) Stephen Chan 陳先生 9093 3381



**Scenic Heights**  
西半山 富景花園  
58A-58B Conduit Road, Midlevels West  
Popular 3-bedroom flat in convenient location with harbour view  
受歡迎三房單位, 地段優越, 享遠觀港景

1,251 s.f.  
**\$16,800,000**

[www.landscope.com/56828.htm](http://www.landscope.com/56828.htm) Walker Lam 林先生 9551 1077



**Monticello**  
中半山 滿峰台  
48 Kennedy Road, Midlevels Central  
Spacious and practical high floor flat with partial harbour view  
中半山實用住宅, 開揚寬敞, 享部份遠觀港景

1,329 s.f.  
**\$18,000,000**

[www.landscope.com/71100.htm](http://www.landscope.com/71100.htm) Jackson Lee 李先生 9177 7191



**Greenview Gardens**  
東半山 嘉苑  
16-17 Shiu Fai Terrace, Midlevels East  
3-bedroom sea view apartment in Midlevels East  
東半山海景三房住宅出售

1,462 s.f.  
**\$23,000,000**

[www.landscope.com/28942.htm](http://www.landscope.com/28942.htm) Jackson Lee 李先生 9177 7191



**Glory Mansion**  
中半山 輝煌大廈  
108-108 Macdonnell Road, Midlevels Central  
Well decorated rare colonial low-rise on Macdonnell Road  
麥當勞道罕有低密度英式住宅, 雅緻裝修

2,300 s.f.  
**\$29,000,000**

[www.landscope.com/37757.htm](http://www.landscope.com/37757.htm) Walker Lam 林先生 9551 1077

**Evergreen Villa**  
東半山 松柏新村  
43 Stubbs Road, Midlevels East  
Practical 3-bedroom apartment with big balcony on Stubbs Road  
司徒拔道三房住宅，間隔實用，連大陽臺  
**1,750 s.f.**  
**\$29,800,000**  
www.landscape.com/37117.htm Christine Chong 莊小姐 9648 6082

**Visalia Garden**  
東半山 蔚山花園  
48 MacDonnell Road, Midlevels Central  
Bright and airy apartment with Manhattan-style view  
時尚光猛住宅，空氣通爽，寧靜舒適  
**2,195 s.f.**  
**\$32,000,000**  
www.landscape.com/50238.htm Stella Lo 羅小姐 9809 8570

**Rose Court**  
跑馬地 逸庭  
115-121 Wong Nai Chung Road, Happy Valley  
High efficiency 3-bedroom apartment facing Happy Valley Racecourse  
高實用三房住宅，享跑馬地馬場景色  
**2,400 s.f.**  
**\$35,000,000**  
www.landscape.com/50027.htm Teresa Lau 劉小姐 9080 6686

**Dynasty Court**  
東半山 帝景園  
23 Old Peak Road, Midlevels Central  
Popular 3-bedroom apartment with full clubhouse facilities  
受歡迎三房住宅，連完善住客會所設施  
**1,970 s.f.**  
**\$37,000,000**  
www.landscape.com/123546.htm Yvonne Chang 鄭小姐 9088 4666

**16-20 Broom Road, Happy Valley**  
跑馬地 龍道16-20號  
Colonial low-rise with private garden in tranquil area  
跑馬地英式低密度住宅，連特大私家花園，環境優美  
**2,000 s.f. (plus 875 s.f. garden and 57 s.f. terrace)**  
**\$40,000,000**  
www.landscape.com/83486.htm Stella Lo 羅小姐 9809 8570

**Nicholson Tower**  
東半山 蔚豪苑  
8 Wong Nai Chung Gap Road, Midlevels East  
Well decorated top floor unit with private roof terrace  
雅緻裝修高層住宅，連私家天台平台  
**1,993 s.f. (plus 1,322 s.f. roof)**  
**\$45,000,000**  
www.landscape.com/82592.htm Mark Mak 麥先生 6838 2929

**The Rednaxela**  
東半山 帝寧峯  
1 Rednaxela Terrace, Midlevels West  
4-bedroom penthouse with private roof terrace close to Midlevels pedestrian escalator  
四房頂層住宅，連私家天台平台，鄰近半山扶手電梯  
**1,810 s.f. (plus 452 s.f. roof)**  
**\$29,800,000**  
www.landscape.com/96431.htm Mavis Wu 吳小姐 9107 3891

**Clement Court**  
港灣山 松風臺  
56-64 Mount Butler Road, Jardine's Lookout  
Colonial low-rise in tranquil neighbourhood  
英式低密度住宅，環境清幽怡人  
**2,200 s.f.**  
**\$23,000,000**  
www.landscape.com/49344.htm Maria Cheung 張小姐 5182 8699

**Po Garden**  
東半山 寶園  
9 Brewin Path, Midlevels Central  
Practical 3-bedroom apartment with facilities on fringe of Central  
實用三房單位，連會所設施，鄰近中環，交通方便  
**2,572 s.f.**  
**\$37,000,000**  
www.landscape.com/98123.htm Yvonne Chang 鄭小姐 9088 4666

**Fontana Gardens**  
東半山 豪園  
1-25 Ka Ning Path, Midlevels East  
Tasteful decor large family flat close to Causeway Bay  
品味裝修特大家庭式住宅，鄰近銅鑼灣，可租可售  
**3,000 s.f.**  
**\$39,000,000 also for lease \$90,000 incl.**  
www.landscape.com/109309.htm Walker Lam 林先生 9551 1077

**Villa Lotto**  
跑馬地 樂陶苑  
16 Broadwood Road, Happy Valley  
Newly renovated family flat in popular development  
全新裝修家庭式住宅，屋苑極受歡迎  
**2,406 s.f.**  
**\$45,000,000**  
www.landscape.com/135285.htm Jensen Au 區先生 9028 0147

**Jade House**  
東半山 寶園大廈  
47C Stubbs Road, Midlevels East  
Huge 4-bedroom apartment with panoramic views of the racecourse and the harbour  
特大四房住宅，享享廣闊馬場景及維港景色，可租可售  
**2,700 s.f.**  
**\$52,000,000 also for lease \$90,000**  
www.landscape.com/39654.htm Mavis Wu 吳小姐 9107 3891

**Estoril Court**  
東半山 愛都大廈  
55 Garden Road, Midlevels Central  
Huge 4-bedroom flat with practical layout and high efficiency on fringe of Central  
特大四房單位，間隔寬敞，實用率高，鄰近中環  
**3,347 s.f.**  
**\$53,000,000**  
www.landscape.com/45400.htm Mira To 杜小姐 9486 1566

**Villa Veneto**  
西半山 威都閣  
3 Colwell Road, Midlevels West  
Spacious 4-bedroom apartment with large private garden terrace  
寬敞四房單位，連特大私家花園平台  
**2,514 s.f. (plus 3,282 s.f. terrace)**  
**\$60,000,000**  
www.landscape.com/39093.htm Sami Woo 鄧小姐 9493 8275

**The Albany**  
東半山 雅賓利大廈  
1 Albany Road, Midlevels Central  
Renowned apartment on fringe of Central, overlooking city and greenery view  
中半山豪華住宅，鄰近中環，交通方便，俯瞰城市及翠綠景色，可租可售  
**2,546 s.f.**  
**\$75,000,000 also for lease \$108,000**  
www.landscape.com/49621.htm Teresa Lau 劉小姐 9080 6686

**Dynasty Court**  
東半山 帝景園  
23 Old Peak Road, Midlevels Central  
Prestigious apartment in prime location  
豪華住宅，位於半山尊貴地段，可租可售  
**2,691 s.f.**  
**\$59,000,000 also for lease \$130,000 incl.**  
www.landscape.com/107957.htm Mark Mak 麥先生 6838 2929

**Broadview Villa**  
跑馬地 樂景園  
20 Broadwood Road, Happy Valley  
Huge family apartment with comprehensive facilities  
巨型豪華家庭式住宅，連完善住客會所設施，可租可售  
**3,134 s.f.**  
**\$63,800,000 also for lease \$128,000 incl.**  
www.landscape.com/34747.htm Cora Ko 高小姐 6330 7888

**The Mayfair**  
東半山 梅道1號  
1 May Road, Midlevels Central  
2-bedroom apartment enjoy sea view  
兩房海景住宅，可租可售  
**2,838 s.f.**  
**\$85,000,000 also for lease \$150,000 incl.**  
www.landscape.com/31145.htm David Chan 陳先生 9238 2012

Wood finishes from a wood specialist

**歐詩木 osmo**  
德國...In form und farbe

**Natural...**  
...with natural oils and waxes, the very best for wood and the environment!

**Faster...**  
...Osmo finishes can be renovated without sanding, saving time and money!

**Coverage...**  
...high solid means amazing coverage and best price per m²!

Hop Sze Timber Co., Ltd.  
220 Gloucester Road, Wanchai, Hong Kong  
Phone (852) 28338069 - www.hopsze.com





**South Bay Towers**  
深水灣 南灣大廈  
59 South Bay Road, Repulse Bay  
Apartment in a quiet environment  
深水灣環境清靜的住宅

1,433 s.f.  
**\$17,800,000**

www.landscope.com/24627.htm Gora Ko 高小姐 6330 7888



**The Brentwood**  
深水灣 蔚峰園  
11 Repulse Bay Road, Repulse Bay  
3-bedroom sea view flat on upper Repulse Bay Road with nice decor  
深水灣道頭段三房單位，享觀海景，連雅緻裝修

1,556 s.f.  
**\$28,000,000**

www.landscope.com/109549.htm Chris Law 羅先生 6183 8388



**Scenic Villas**  
薄扶林 美景園  
2-28 Scenic Villa Drive, Pokfulam  
High efficiency 4-bedroom apartment with huge balcony and unobstructed sea view  
高實用四房住宅，享遼闊海景，連大露台

2,194 s.f.  
**\$29,500,000**

www.landscope.com/49804.htm Mary Li 李小姐 9011 6595

## Imperial Residence 皇者之選



www.landscope.com/99477.htm David Leung 梁先生 9199 0872



**Aegean Terrace**  
薄扶林 愛琴苑  
60 Sassoon Road, Pokfulam  
Sea view low-rise with brand new decorations and spacious layout  
低密度海景住宅，全新裝修，開揚寬敞

1,860 s.f.  
**\$27,800,000**

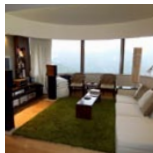
Sole Agent 獨家代理  
Maria Cheng 張小姐 5182 8699



**La Mer**  
薄扶林 浪濤居  
67-71 Binsley Road, Pokfulam  
Full sea view 3-bedroom low-rise apartment with study room and twin car parks  
全海景三房低密度住宅，連書房及雙車位

2,063 s.f.  
**\$29,000,000**

Sole Agent 獨家代理  
Yvonne Chang 鄭小姐 9088 4666



**Hong Kong Parkview - Tower 4**  
深水灣 陽明山莊4座  
88 Tai Tam Reservoir Road, Repulse Bay  
Popular 3-bedroom flat with clubhouse facilities in country park  
受歡迎三房住宅，連完善住客會所設施，鄰近郊野公園

2,105 s.f.  
**\$35,000,000**

可發通訊

www.landscope.com/33767.htm Jackson Lee 李先生 9177 7191

Dazzling decorations, breathtaking sea view and a prime location have combined to make this Southside townhouse an imperial residence.

Facing the stunning panoramic Deep Water Bay sea view in the front and overlooking the community pool at the back, this 4,800-square-foot colonial townhouse spreads across three storeys with lavish new renovation and fitted carpet throughout. It includes four ensuites, separated commodious living and dining rooms, a large, fully-equipped modern kitchen and four covered car parks for displaying your luxury car collection.

The house also offers abundant outdoor space. Apart from the 710-square-foot garden on the ground floor, the family room on the top floor is connected to a 540-square-foot rooftop and a roomy patio fitted with an outdoor Jacuzzi. Let your luxury lifestyle start at the mesmerizing palace-like living room now. ■

燦爛奪目的裝潢、令人醉人的海景及尊貴豪華的地段，倘若你的家齊集以上元素，那便是名副其實的「皇者之選」。

面向深水灣迷人的環海景致，後望屋苑的私人泳池，這間4,800平方呎的英式排屋樓高三層，全新室內裝修，一派瑰麗堂皇。此外，屋內更鋪設米白色地毯，為家中增添豪華時尚格調。全屋共設四個套房，間隔分明的客廳及寬敞的飯廳，設備齊全的現代化廚房，還有四個有蓋車位，讓你展示你的名貴汽車珍藏。

這座豪宅更為你提供足夠的戶外空間，除了位於地下的710平方呎花園外，還有位於頂層的家庭室連接540平方呎的天台和裝上戶外按摩浴池的寬闊露台。現在，就讓你的豪華優雅生活從這個如宮殿的迷人客廳開始吧！■

**45 Island Road, Deep Water Bay**  
深水灣 青島道45號

4,800 s.f. (plus 710 s.f. garden and 540 s.f. roof)  
**\$168,000,000**

Mary Li 李小姐 9011 6595

Louis Wong 黃先生 9871 6828

For more listings, please go to www.landscope.com/sale



**45 Island Road, Deep Water Bay**  
深水灣 青島道45號  
Low-rise 3-bedroom apartment with private roof in Deep Water Bay  
深水灣低密度三房住宅，連私家天台

1,634 s.f. (plus 1,207 s.f. roof)  
**\$37,500,000**

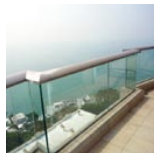
www.landscope.com/34433.htm Christine Chong 莊小姐 9648 6082



**12-14 Shoushan Hill Road West, Shoushan Hill**  
壽臣山 壽臣山道西12-14號  
Unique low-rise flat with nice decor in tranquil Shoushan Hill  
壽臣山精緻低密度住宅，連靚裝修，環境寧靜怡人

2,200 s.f.  
**\$38,000,000**

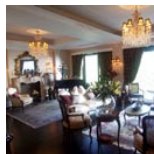
www.landscope.com/108788.htm Gora Ko 高小姐 6330 7888



**Villas Sorrento**  
薄扶林 御海園  
64-66 Mount Davis Road, Pokfulam  
Newly renovated 4-bedroom apartment with breath-taking sea view  
四房住宅，享豪華靜怡人海景，可租可售

2,523 s.f. (plus 78 s.f. terrace) 可發通訊  
**\$40,000,000 also for lease \$100,000 incl.**

www.landscope.com/107474.htm Teresa Lau 劉小姐 9080 6686



**Ridge Court**  
深水灣 翠園  
21A-21D Repulse Bay Road, Repulse Bay  
Full sea view flat with nice decorations in Repulse Bay  
深水灣雅緻裝修住宅，享享全海景

2,300 s.f.  
**\$42,800,000**

可發通訊

www.landscope.com/99498.htm Jensen Au 區先生 9028 0147



**Ruby Court**  
深水灣 嘉蘭閣  
55 South Bay Road, Repulse Bay  
Popular sea view 3-bedroom flat in tranquil South Bay  
受歡迎海景三房住宅，位於南灣清幽地段

2,200 s.f.  
**\$43,000,000**

www.landscope.com/51578.htm Mary Li 李小姐 9011 6595



**Sea Cliff Mansions**  
深水灣 海峰園  
18A-19D Repulse Bay Road, Repulse Bay  
Deluxe sea view apartment with nice decorations on upper Repulse Bay Road  
深水灣頭段豪華海景住宅，連雅緻靚裝修

2,400 s.f.  
**\$45,000,000**

可發通訊

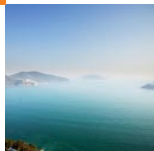
www.landscope.com/109433.htm Teresa Fung 馮小姐 9138 1621

For more listings, please go to www.landscope.com/sale

# INVENTIVE NOVATIVE IMAGINATIVE

our services

- RESIDENTIAL DESIGN
- OFFICE DESIGN
- COMMERCIAL DESIGN
- F&B DESIGN
- DESIGN CONSULTANT
- CONSTRUCTIONS

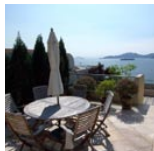

**Pacific View**  
 大潭 浪琴園

38 Tai Tam Road, Tai Tam

 High floor flat with splendid sea view  
 大潭高層住宅，尊享遠闊海景

**3,106 s.f.**  
**\$47,000,000**
[www.landscape.com/13954.htm](http://www.landscape.com/13954.htm)

Maria Cheung 葉小姐 5182 8699


**Regalia Bay**  
 赤柱 富豪海湾

88 Wong Ma Kok Road, Stanley

 Full sea view townhouse with luxurious  
 clubhouse facilities  
 赤柱全海景洋房，連豪華住客會所設施

**4,053 s.f.** (plus 1,190 s.f. roof and 672 s.f.  
 garden)  
**\$63,800,000**

Sole Agent 獨家代理

[www.landscape.com/34777.htm](http://www.landscape.com/34777.htm)

David Chan 陳先生 9238 2012


**Repulse Bay Towers**  
 淺水灣 保寧大廈

119A Repulse Bay Road, Repulse Bay

 5-ensuites large duplex with Repulse Bay  
 view  
 特大五套房複式單位，享淺水灣景觀

**5,000 s.f.**  
**\$82,000,000**
[www.landscape.com/33119.htm](http://www.landscape.com/33119.htm)

Jensen Au 區先生 9028 0147


**Las Pinadas**  
 壽臣山 朗松居

33 Shouson Hill Road, Shouson Hill

 Designer decorated 4-bedroom townhouse  
 with roof garden enjoy green mountain view  
 時尚設計四房洋房，尊享翠綠山景，連天台花園

**3,494 s.f.** (plus 608 s.f. roof, 393 s.f.  
 garden and 144 s.f. terrace)  
**\$95,000,000**
[www.landscape.com/91170.htm](http://www.landscape.com/91170.htm)

Mary Li 李小姐 9011 6595


**Villa Rosa**  
 大潭 玫瑰園

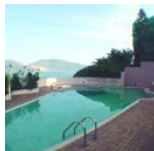
88 Red Hill Road, Tai Tam

 Garden house with brilliant sea view in  
 tranquil location  
 大潭花園大廈，享絕色海景，地段清幽怡人，可租可售

**3,960 s.f.** (plus 480 s.f. roof and 414 s.f.  
 garden)  
**\$120,000,000** also for lease \$250,000

[www.landscape.com/1914.htm](http://www.landscape.com/1914.htm)

Mark Mak 麥先生 6838 2929

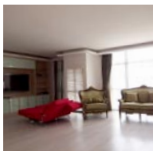

**Stanley Crest**  
 赤柱 赤柱連道5號

5 Stanley Beach Road, Stanley

 Sea view garden townhouse close to beach  
 海景花園洋房，鄰近海灘，連約售，投資首選

**3,894 s.f.** (plus 920 s.f. garden, 666 s.f.  
 roof and 436 s.f. terrace)  
**\$135,000,000**
[www.landscape.com/123699.htm](http://www.landscape.com/123699.htm)

Mark Mak 麥先生 6838 2929


**Park Place**  
 淺水灣 雅柏苑

7 Tai Tam Reservoir Road, Repulse Bay

 Popular 3-bedroom apartment at prestigious  
 location with partial harbour view  
 受歡迎三房單位，地段尊貴，享部份維港景

**2,335 s.f.**  
**\$63,000,000**

可發通訊

[www.landscape.com/108291.htm](http://www.landscape.com/108291.htm)

Michelle Chung 鍾小姐 9833 9509


**Hillgrove**  
 香軟角 璧如花園

18 Cape Drive, Chung Hom Kok

 Large and spacious 4-bedroom townhouse  
 in quiet Chung Hom Kok  
 香軟角特大四房排屋，間隔寬敞

**3,000 s.f.** (plus 895 s.f. roof and 700 s.f.  
 garden)  
**\$65,000,000**
[www.landscape.com/13747.htm](http://www.landscape.com/13747.htm)

Christine Chong 莊小姐 9648 6082


**Eden View**  
 赤柱 伊甸園

18 Stanley Village Road, Stanley

 Secluded sea view townhouse with private  
 garden  
 寧靜優美海景大屋，連私家花園

**3,400 s.f.** (plus 1,124 s.f. garden and 617  
 s.f. roof)  
**\$90,000,000**
[www.landscape.com/47625.htm](http://www.landscape.com/47625.htm)

Louis Wong 黃先生 9871 6828


**L'Harmonie**  
 赤柱 雅琳居

3 Stanley Mound Road, Stanley

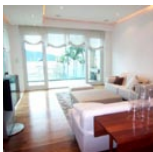
 Rare find 4-bedroom townhouse on Stanley  
 Main Beach  
 罕有四房洋房，鄰近赤柱海灘

**3,557 s.f.** (plus 1,125 s.f. garden and 663  
 s.f. roof)  
**\$102,800,000**

可發通訊

[www.landscape.com/122327.htm](http://www.landscape.com/122327.htm)

Jackson Lee 李先生 9177 7191


**Rosecliff**  
 大潭 大潭道20號

20 Tai Tam Road, Tai Tam

 Waterfront townhouse with garden and twin  
 balconies  
 大潭渡假式洋房，連花園及雙陽臺

**3,980 s.f.** (plus 1,050 s.f. roof and 649 s.f.  
 garden)  
**\$130,000,000**

可發通訊

[www.landscape.com/500771.htm](http://www.landscape.com/500771.htm)

Michelle Chung 鍾小姐 9833 9509


**Manly Villa**  
 淺水灣 文麗寶樂

58 Ocean Park Road, Repulse Bay

 Full sea view garden detached house in  
 exclusive location  
 全海景花園獨立大屋，位置尊貴獨特

**3,500 s.f.** (plus 3378 s.f. terrace)  
**\$200,000,000**

可發通訊

[www.landscape.com/4472.htm](http://www.landscape.com/4472.htm)

Michelle Chung 鍾小姐 9833 9509

# VIRTUE ARCHITECTS LIMITED

 No.11 Bird Street, Sheung Wan, Hong Kong  
 Tel. (852) 3113 4699 Fax. (852) 2574 6269  
 Email. virtuearch@gmail.com

Commercial Interior Design

商業室內設計

Residence Interior Design

住宅室內設計

Building Renovation Design

樓宇更新設計

Garden Design

園藝設計





**Barker Villa**  
山頂 柏樂別墅  
41 Barker Road, The Peak  
Nicely renovated apartment with full harbour view  
雅緻裝修全維港景單位

1,650 s.f.  
\$70,000 incl.

www.landscape.com/15818.htm Maria Cheung 葉小姐 5182 8699

**22A-22B Mount Austin Road, The Peak**  
山頂 柯士甸山道22A-22B號  
A bird's eye view of the Victoria Harbour  
山頂俯瞰維港景住宅，可租可售

2,650 s.f.  
\$130,000 also for sale \$100,000,000

www.landscape.com/14296.htm Stella Lo 廖小姐 9809 8570

**Eredine**  
山頂 加列山道38號  
38 Mount Kellett Road, The Peak  
Spacious colonial apartment with spectacular views of country park and ocean beyond  
寬敞英式住宅，享壯麗郊野公園景色，更可享受過海的海景

3,300 s.f.  
\$150,000 incl.

www.landscape.com/1416.htm Stephen Chan 陳先生 9093 3381

**Altadena**  
山頂 白加道27號  
27 Barker Road, The Peak  
Highly sought after huge apartment with panoramic harbour view on Barker Road  
白加道巨型住宅，享享優美維港景，市面難尋

4,500 s.f.  
\$230,000 incl.

www.landscape.com/12838.htm Louis Wong 黃先生 9871 6828

**Strawberry Hill**  
山頂 紅梅閣  
8 Plunkett's Road, The Peak  
Colonial house at prestigious location  
山頂華貴英式洋房出租

3,900 s.f. (plus terrace)  
\$250,000

www.landscape.com/4611.htm Louis Wong 黃先生 9871 6828

**11 Pollock's Path, The Peak**  
山頂 普樂道11號  
Exclusive garden house with a bird's eye view of Victoria Harbour  
獨特花園大屋，鳥瞰維港景色

4,600 s.f. (plus roof, terrace and garden)  
\$330,000 also for sale \$268,000,000

www.landscape.com/4394.htm David Leung 梁先生 9199 0672

**Orient Crest**  
山頂 山頂道76號  
76 Peak Road, The Peak  
Detached townhouse with private terrace and roof top  
山頂獨立洋房，連私家平台及天台

3,313 s.f. (plus 1,000 s.f. garden)  
\$130,000

www.landscape.com/20263.htm Chris Law 羅先生 6183 8388

**Oasis**  
山頂 欣怡居  
8-12 Peak Road, The Peak  
Deluxe harbour view apartment with high ceiling  
豪華維港景住宅，樓底極高，可租可售

2,719 s.f.  
\$140,000 incl. also for sale \$73,000,000

www.landscape.com/122953.htm David Leung 梁先生 9199 0672

**Kellett View Town House**  
山頂 嘉麗園  
65-69 Mount Kellett Road, The Peak  
Fantastic garden townhouse with sea view on The Peak  
山頂花園大屋，享遼闊海景

4,010 s.f. (plus 973 s.f. terrace)  
\$220,000

www.landscape.com/3327.htm Mira To 杜小姐 9486 1566

**La Hacienda**  
山頂 加列山道29-33號  
29-33 Mount Kellett Road, The Peak  
Newly decorated townhouse with facilities overlooking nice views  
山頂全新裝修排屋，連住客會所設施，俯瞰優美景觀，可租可售

3,200 s.f.  
\$230,000 incl. also for sale \$140,000,000

www.landscape.com/3323.htm David Leung 梁先生 9199 0672

**The Mount Austin**  
山頂 柯士甸山道8號  
8 Mount Austin Road, The Peak  
Detached 4-bedroom townhouse with huge private garden and internal lift at the zenith of The Peak  
山頂獨立四房大屋，連大花園，及內置樓梯

4,956 s.f. (plus 991 s.f. garden and 612 s.f. roof)  
\$278,000

www.landscape.com/27924.htm Mary Li 李小姐 9011 6595

**Cheuk Nang Lookout**  
山頂 卓能山莊  
30 Severn Road, The Peak  
Detached house with private pool and terrace  
山頂獨立洋房，連私家游泳池及平台，可租可售

5,500 s.f. (plus 2,904 s.f. garden, 1,400 s.f. terrace and 534 s.f. roof)  
\$390,000 also for sale \$280,000,000

www.landscape.com/19728.htm David Leung 梁先生 9199 0672



"you never own ya premises,  
you merely live there unless  
ya character implanted"

-Joseph Chang-



**Alvin Lee**  
Joseph is friendly, honest, reliable, organized, and very meticulous in his work. I can't say enough good things about all the work he did to make my place gorgeous & very functional.

Old Peak road -the boundless en-suite



**Susanna Toppan**  
Don't be fooled by Joseph's easy demeanor. He's an unwavering advocate for the client and the work. It's clear to his contractors that anything less than the best work is the life through everything, and the making slip by.

Shouson Hill -classical contemporary



**Richard J. Brink**  
Throughout the project, Joseph was personally involved, ensuring the quality of the work and the project's adherence to the budget and schedule. The project was completed on time and within budget, and we now have a beautiful new home, as well as a new friend, Joseph!

Capitol Garden -praised maintained flexibility



**Mei Ling**  
Thank you so much for designing our new dream home. We absolutely love it! I just kept going upstairs and looking at it. It looks like a place out of a magazine. Fantastic job! You matched the house to our personalities perfectly. Thanks again!

Red Hill Peninsula -accentuated coziness



**Sean Holden**  
We really appreciated the way Joseph worked with us in coming up with great ideas by taking our rudimentary ideas and developing them into amazing designs.

Park Place -interior & exterior connection

Interior design  
construction  
space planning  
project management  
tendering  
landscaping  
quantity survey



## MID-LEVELS Lease | 半山出租

**King's Garden**  
西半山 御園  
66 Conduit Road, Midlevels West  
Newly decorated 2-bedroom apartment  
全新裝修兩房單位

**1,000 s.f.**  
**\$37,000 incl.**

[www.landscope.com/7756.htm](http://www.landscope.com/7756.htm) [Arthur Wong 黃先生 9304 4257](#)

**Park Garden**  
東半山 柏園  
6 Tai Hang Drive, Midlevels East  
Practical boutique flat in convenient yet quiet location  
東半山雅緻單位，間隔實用，環境寧靜，位置優越

**1,450 s.f.**  
**\$52,000 incl.**

[www.landscope.com/54534.htm](http://www.landscope.com/54534.htm) [Arthur Wong 黃先生 9304 4257](#)

**Suncrest Tower**  
中半山 桂瀾苑  
1-11 Monmouth Terrace, Midlevels Central  
4-bedroom (2 en-suite) apartment close to CBD  
中半山近堅尼地城四房連兩套房住宅，鄰近中環，交通方便

**2,005 s.f.**  
**\$62,000 incl.**

[www.landscope.com/135598.htm](http://www.landscope.com/135598.htm) [Carman Szeto 司徒小姐 6183 8339](#)

**Swiss Towers**  
東半山 瑞士花園  
113 Tai Hang Road, Midlevels East  
3-bedroom apartment with practical layout enjoying harbour and green views  
間隔實用三房住宅，享美麗維港景色及翠綠景觀

**1,600 s.f.**  
**\$68,000 incl.**

[www.landscope.com/109946.htm](http://www.landscope.com/109946.htm) [Arthur Wong 黃先生 9304 4257](#)

**Serene Court**  
西半山 秀麗閣  
8 Kotewall Road, Midlevels West  
Spacious 4-bedroom apartment on tranquil Kotewall Road  
西半山寬敞四房單位，環境清幽怡人，可租可售

**2,334 s.f.**  
**\$75,000 incl. also for sale \$38,000,000**

[www.landscope.com/135237.htm](http://www.landscope.com/135237.htm) [Carman Szeto 司徒小姐 6183 8339](#)

**Tavistock 2**  
中半山 麗星閣2座  
10A Tregunter Path, Midlevels Central  
Luxurious 3-bedroom apartment with lush greenery view  
豪華三房住宅，享翠綠園林景致

**1,655 s.f.**  
**\$75,000 incl.**

[www.landscope.com/27613.htm](http://www.landscope.com/27613.htm) [Rowena Siu 蕭小姐 9346 4118](#)

**Wilton Place**  
西半山 蔚庭軒  
18 Park Road, Midlevels West  
Modern penthouse flat with private roof overlooking sweeping harbour view  
時尚頂層住宅，擁私家天台，俯瞰優美維港景致

**1,243 s.f. (plus roof and 350 s.f. terrace)**  
**\$49,000 incl.**

[www.landscope.com/38664.htm](http://www.landscope.com/38664.htm) [Carman Szeto 司徒小姐 6183 8339](#)

**CentreStage**  
上環 翠賢閣  
108 Hollywood Road, Sheung Wan  
Fully furnished harbour view apartment with 5-star hotel facilities  
配齊齊全五星酒店住宅，連完善住客會所設施

**857 s.f.**  
**\$55,000**

[www.landscope.com/84747.htm](http://www.landscope.com/84747.htm) [Sami Woo 胡小姐 9493 8275](#)

**Yukon Court**  
西半山 殷豪閣  
2-4 Conduit Road, Midlevels West  
Nicely decorated spacious apartment with balcony near pedestrian escalator  
雅緻裝修寬敞住宅，連陽臺，鄰近半山扶手電梯，可租可售

**1,697 s.f.**  
**\$62,000 also for sale \$23,000,000**

[www.landscope.com/103895.htm](http://www.landscope.com/103895.htm) [Stephen Chan 陳先生 9093 3381](#)

**Visalia Garden**  
中半山 蔚山花園  
48 MacDonnell Road, Midlevels Central  
Bright and airy 3-bedroom apartment on fringe of Central  
光猛通爽三房單位，鄰近中環，可租可售

**2,195 s.f.**  
**\$70,000 incl. also for sale Open Offer**

[www.landscope.com/81594.htm](http://www.landscope.com/81594.htm) [David Chan 陳先生 9238 2012](#)

**Beverly Hill**  
跑馬地 比華利山  
6 Broadwood Road, Happy Valley  
Hong Kong Stadium view with spacious 4-bedroom apartment  
跑馬地寬敞四房住宅，享香港大球場景觀

**1,968 s.f.**  
**\$75,000 incl.**

[www.landscope.com/135150.htm](http://www.landscope.com/135150.htm) [Arthur Wong 黃先生 9304 4257](#)

**Wisdom Court**  
西半山 慧苑  
5 Hutton Road, Midlevels West  
Meticulously designed apartment with private roof top at Midlevel West  
西半山完美觀景住宅，連私家天台

**1,394 s.f. (plus 1,300 s.f. roof)**  
**\$75,000 incl.**

[www.landscope.com/62331.htm](http://www.landscope.com/62331.htm) [Rowena Siu 蕭小姐 9346 4118](#)



## Chantilly 嘉柏薈



Situated on the traditional luxury residential area, Stubbs Road, Chantilly is another signature luxury residential project of KWHL. With the significant location, Chantilly has the gorgeous racecourse view, and it is inspired from Château de Chantilly, the French Château in North of France. The project enjoys the privilege of being the only new development in the district that provides low rise apartments of over 3,600-square-foot which offers only 24 unique units.

For the Chantilly Club, Hong Kong Jockey Club presents the exclusive top-class outside catering service to the Chantilly residents. It's the first and only property company to work with HKJC in town.

由嘉華國際精心策劃的豪宅項目嘉柏薈，座落港島司徒拔道傳統豪宅地段，擇居港島半山之最，俯瞰跑馬地馬場環迴駿景。嘉柏薈的建築靈感源自法國北部城堡——尚提伊城堡，是區內罕有提供逾3,600平方呎大單位的低密度分層豪宅，僅有24個貴車單位。

嘉柏薈會所更首度引入由香港賽馬會提供的「馬會星級盛宴」服務，為尊貴客戶提供貴族級盛宴享受。

|                    |   |            |
|--------------------|---|------------|
| <b>Flat Type:</b>  | 4-ensuite Suite   | 3,600 s.f. |
|                    | 5-ensuite Suite   | 3,650 s.f. |
| <b>Features:</b>   | Individual Private Lift Lobby, one-floor -one - lift design |            |
| <b>Facilities:</b> | Indoor Swimming Pool, Banquet Hall, Gym Room                |            |

|              |                      |          |
|--------------|----------------------|----------|
| <b>單位類型:</b> | 四套房單位                | 3,600平方呎 |
|              | 五套房單位                | 3,650平方呎 |
| <b>物業特色:</b> | 獨立私人電梯大堂，一樣一伙設計，全區獨有 |          |
| <b>會所設施:</b> | 室內泳池、宴會廳、健身室         |          |

## Enquiry Hotline 查詢熱線

[Carman Szeto 司徒小姐 6183 8339](#) [Mark Mak 麥先生 6838 2929](#)

## Chantilly 嘉柏薈

6 Shiu Fai Terrace, Stubbs Road

[可晉謁](#)





**Villa Monte Rosa**  
東半山 玻璃新村  
41A Stubbs Road, Midlevels East

Spacious practical apartment with big balcony on upper Stubbs Road  
司徒拔道頂段豪華住宅，間隔實用，連大陽臺

**2,300 s.f.**  
**\$76,000 incl.** [可發通訊](#)

[www.landscape.com/37474.htm](#) [Garman Szeto 司徒小姐 6183 8339](#)

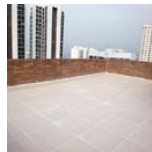


**Cliffview Mansions**  
西半山 康苑  
21-25 Conduit Road, Midlevels West

Large colonial style apartment with new refurbishment close to Midlevels pedestrian escalator  
特大英式住宅，單位已重新翻新，鄰近半山扶手電梯

**3,300 s.f.**  
**\$83,000 incl.**

[www.landscape.com/135020.htm](#) [Mira To 杜小姐 9486 1566](#)



**Monterey Court**  
渣甸山 白蓮時連47-49號  
47-49 Perkins Road, Jardine's Lookout

Duplex penthouse with private roof in Jardine's Lookout  
渣甸山豪華頂層住宅，連私家天台

**2,676 s.f.** (plus 743 s.f. roof and 363 s.f. terrace)  
**\$140,000 incl.**

[www.landscape.com/30937.htm](#) [Louis Wong 黃先生 9871 6828](#)



**Kennedy Heights**  
中半山 堅麗閣  
10-18 Kennedy Road, Midlevels Central

Huge 5-bedroom apartment overlooking Central cityscape and harbour view  
特大五房住宅，俯瞰中環城市景觀及維港景色

**3,400 s.f.**  
**\$140,000**

[www.landscape.com/33323.htm](#) [Sami Woo 胡小姐 9493 8275](#)



**Broadwood Twelve**  
跑馬地 樂天峰  
12 Broadwood Road, Happy Valley

Brand new 3-bedroom apartment with stunning views  
全新三房單位，尊享遼闊景觀

**1,653 s.f.**  
**\$86,000 incl.**

[www.landscape.com/133363.htm](#) [Sami Woo 胡小姐 9493 8275](#)



**Nicholson Tower**  
東半山 蔚豪閣  
8 Wong Nai Chung Gap Road, Midlevels East

Newly renovated apartment in exclusive location  
全新裝修住宅，位於東半山尊貴地段

**1,993 s.f.**  
**\$86,000 incl.**

[www.landscape.com/33867.htm](#) [Mira To 杜小姐 9486 1566](#)



**Jardine Terrace**  
渣甸山 渣甸臺  
2-32 Price Road, Jardine's Lookout

5-bedroom townhouse with private garden in quiet neighbourhood  
渣甸山五房排屋，連私家花園，環境清幽怡人

**3,500 s.f.** (plus 660 s.f. roof, 600 s.f. garden and 440 s.f. terrace)  
**\$180,000 incl.**

[www.landscape.com/39628.htm](#) [Christine Chong 莊小姐 9648 6082](#)



**Eva Court**  
中半山 惠園  
36 MacDonnell Road, Midlevels Central

Huge 4-bedroom apartment with high privacy on fringe of Central  
巨型四房住宅，私隱度高，鄰近中環交通方便

**4,500 s.f.**  
**\$180,000**

[www.landscape.com/14839.htm](#) [Mira To 杜小姐 9486 1566](#)




**Cavendish Heights**  
渣甸山 嘉雲臺  
27-37 Perkins Road, Jardine's Lookout

Rare 4-bedroom apartment in prime location  
渣甸山罕有四房住宅，地段尊貴

**2,242 s.f.**  
**\$88,000 incl.**

[www.landscape.com/32297.htm](#) [Jackson Lee 李先生 9177 7191](#)



**Villa Lotto**  
跑馬地 樂陶苑  
18 Broadwood Road, Happy Valley

Decorated flat in Villa lotto  
樂陶苑靚裝修住宅

**2,406 s.f.**  
**\$98,000 incl.** [可發通訊](#)

[www.landscape.com/9580.htm](#) [Mavis Wu 吳小姐 9107 3891](#)



**2-2A Henderson Road, Jardine's Lookout**  
渣甸山 軒禮羅道 2-2A 號

Rare 4-bedroom townhouse in prestigious location  
罕有四房排屋，位於渣甸山尊貴地段

**3,115 s.f.** (plus 1,000 s.f. garden)  
**\$190,000**

[www.landscape.com/14781.htm](#) [Maria Cheung 張小姐 5182 8699](#)



**Deluxe Duplex Penthouse**  
中半山 寶雲道豪華複式住宅  
Bowen Road, Midlevels Central

Extravagant duplex penthouse with harbour view and clubhouse facilities  
豪華複式頂層住宅，連完善住客會所，尊享維港景

**4,050 s.f.**  
**\$400,000 incl.**

[www.landscape.com/33936.htm](#) [Yvonne Chang 鄭小姐 9088 4666](#)



**Century Tower I**  
中半山 世紀大廈1座  
1 Tregunter Path, Midlevels Central

Spacious 3-bedroom apartment with large balcony in gated neighbourhood  
寬敞三房住宅，連大陽臺，環境寧靜優美

**2,565 s.f.**  
**\$100,000 incl.**

[www.landscape.com/9224.htm](#) [Rowena Siu 蕭小姐 9348 4118](#)



**Dynasty Court**  
中半山 帝景園  
23 Old Peak Road, Midlevels Central

4-bedroom apartment overlooking Victoria Harbour  
中半山四房住宅，俯瞰維港景致

**2,266 s.f.**  
**\$110,000 incl.**

[www.landscape.com/104347.htm](#) [Mira To 杜小姐 9486 1566](#)



**Valley View**  
東半山 欣景台  
4A-4D Wong Nai Chung Gap Road, Happy Valley

Practical apartment with huge balcony and distant harbour view  
東半山間隔實用單位，連大陽臺，享維港景

**2,400 s.f.**  
**\$110,000** [可發通訊](#)

[www.landscape.com/130793.htm](#) [Jenson Au 黃先生 9028 0147](#)



**Bowen's Lookout**  
中半山 寶雲道13號  
13 Bowen Road, Midlevels Central

Luxurious 4-bedroom apartment with fantastic views  
豪華四房住宅，享遼闊景觀

**2,389 s.f.**  
**\$138,000 incl.**

[www.landscape.com/33927.htm](#) [David Chan 陳先生 9238 2012](#)



**Villa Elegance**  
中半山 雅藝閣  
1 Robinson Road, Midlevels Central

Huge 4-bedroom flat with high privacy on fringe of Central  
特大四房單位，實用率高，鄰近中環，交通方便

**3,500 s.f.**  
**\$110,000 incl.** [可發通訊](#)

[www.landscape.com/96721.htm](#) [Mavis Wu 吳小姐 9107 3891](#)



**The Harbourview**  
中半山 港景別墅  
11 Magazine Gap Road, Midlevels Central

4-bedroom flat with full harbour view on Magazine Gap Road  
馬己仙峽道四房單位，尊享全海景

**2,346 s.f.**  
**\$124,000**

[www.landscape.com/3070.htm](#) [David Chan 陳先生 9238 2012](#)



**The Harbourview**  
中半山 港景別墅  
11 Magazine Gap Road, Midlevels Central

4-bedroom flat with full harbour view on Magazine Gap Road  
馬己仙峽道四房單位，尊享全海景

**2,346 s.f.**  
**\$124,000**

[www.landscape.com/3070.htm](#) [David Chan 陳先生 9238 2012](#)

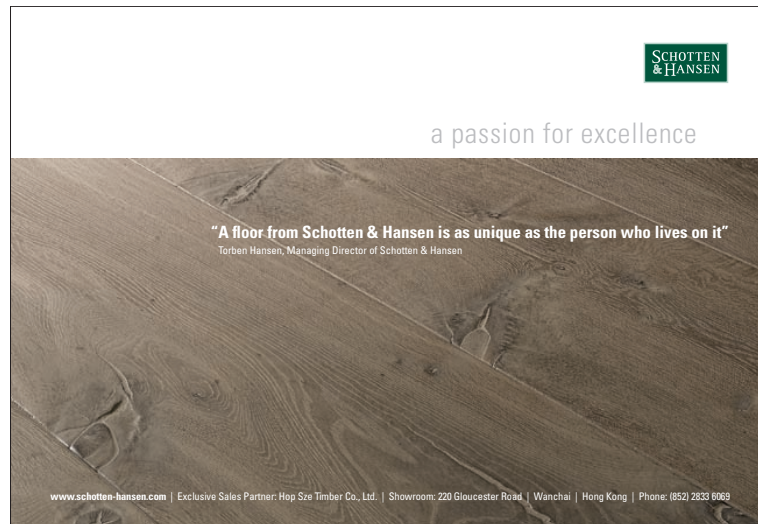


**Bowen's Lookout**  
中半山 寶雲道13號  
13 Bowen Road, Midlevels Central

Luxurious 4-bedroom apartment with fantastic views  
豪華四房住宅，享遼闊景觀

**2,389 s.f.**  
**\$138,000 incl.**

[www.landscape.com/33927.htm](#) [David Chan 陳先生 9238 2012](#)



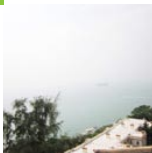
**“A floor from Schotten & Hansen is as unique as the person who lives on it”**  
Torben Hansen, Managing Director of Schotten & Hansen

**SCOTTEN & HANSEN**

a passion for excellence

[www.schotten-hansen.com](#) | Exclusive Sales Partner: Hop Sze Timber Co., Ltd. | Showroom: 220 Gloucester Road | Wanchai | Hong Kong | Phone: (852) 2833 6969





**Cape Mansions**  
**薄扶林 翠海別墅**  
 56-62 Mount Davis Road, Pokfulam  
 Newly renovated sea view flat in quiet neighbourhood  
 全新裝修海景住宅，環境寧靜怡人

2,200 s.f.  
**\$75,000 incl.**

www.landscope.com/135161.htm | Rowena Siu 蕭小姐 9348 4118



**7 South Bay Close, Repulse Bay**  
**淺水灣 南灣7號**  
 Brand new modern decorated 3-bedroom apartment in South Bay with swimming pool and gym room  
 淺水灣全新三房住宅，享時尚靚裝修連泳池及健身房

2,218 s.f.  
**\$83,000** 可營滿屋

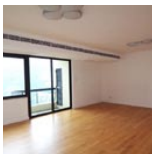
www.landscope.com/133353.htm | Teresa Lau 蕭小姐 9080 6686



**Scenic Villas**  
**薄扶林 美景**  
 2-28 Scenic Villa Drive, Pokfulam  
 Fantastic 3-bedroom apartment with full sea view  
 高質素三房住宅，享全海景，可租可售

2,517 s.f.  
**\$85,000 incl. also for sale \$35,000,000**

www.landscope.com/49856.htm | Yvonne Chang 鄭小姐 9088 4666



**Celestial Garden**  
**淺水灣 詩禮花園**  
 5 Repulse Bay Road, Repulse Bay  
 Spacious 3-bedroom apartment with facilities on upper Repulse Bay Road  
 淺水灣道頭段寬敞三房住宅，連完善住客會所設施

2,375 s.f.  
**\$93,000 incl.**

www.landscope.com/22426.htm | Stella Lo 廖小姐 9809 8570



**Pacific View**  
**大潭 浪聲園**  
 38 Tai Tam Road, Tai Tam  
 4-bedroom sea view apartment with clubhouse facilities and 2 carports  
 四房海景住宅，連完善住客會所設施連雙車位

2,054 s.f.  
**\$95,000 incl. 可營滿屋**

www.landscope.com/4572.htm | Walker Lam 林先生 95511077



**Ventura Villa**  
**薄扶林 華翠苑**  
 27 Ching Sau Lane, Chung Hom Kok  
 Tastefully decorated townhouse with private terrace in quiet enclave  
 品味裝修洋房，連私家平台，環境清幽怡人，可租可售

2,400 s.f. (plus 400 s.f. terrace)  
**\$110,000 incl. also for sale \$50,000,000**

www.landscope.com/33374.htm | Chris Law 羅先生 6163 8388



**Helene Tower**  
**淺水灣 慕蓮苑**  
 123 Repulse Bay Road, Repulse Bay  
 Bright duplex with a bird's eye view of Repulse Bay Beach  
 光猛複式住宅，鳥瞰淺水灣海灘

1,875 s.f.  
**\$79,000**

www.landscope.com/11343.htm | Teresa Fung 高小姐 9138 1621



**12-14 Shouson Hill Road West, Shouson Hill**  
**壽臣山 壽臣山道西12-14號**  
 Colonial low-rise 4-bedroom apartment with roof top in tranquil environment  
 英式低密度四房住宅，連天台，環境寧靜優美

2,200 s.f. (plus 2,000 s.f. roof)  
**\$85,000 incl.**

www.landscope.com/39377.htm | Mary Li 李小姐 9011 6595



**Hong Kong Parkview - Tower 18**  
**淺水灣 陽明山莊18座**  
 88 Tai Tam Reservoir Road, Repulse Bay  
 Nicely decorated 3-ensuite apartment with stunning views  
 雅緻裝修三套房住宅，享遼闊景觀，可租可售

2,570 s.f.  
**\$85,000 incl. also for sale Open Offer**

www.landscope.com/3379.htm | Stella Lo 廖小姐 9809 8570



**Jade Beach Villa**  
**香港角 華翠海邊別墅**  
 3-7 Horizon Drive, Chung Hom Kok  
 Unique garden house with full sea view  
 精緻花園大屋，享全海景

2,680 s.f. (plus 700 s.f. roof)  
**\$95,000 incl.**

www.landscope.com/27027.htm | Stephen Chan 陳先生 9093 3381



**Scenic Villas**  
**薄扶林 美景**  
 2-28 Scenic Villa Drive, Pokfulam  
 Large 4-bedroom apartment with facilities at Pokfulam waterfront  
 薄扶林特大四房海濱住宅，連住客設施，可租可售

2,517 s.f.  
**\$95,000 incl. also for sale \$33,000,000**

www.landscope.com/111468.htm | Rowena Siu 蕭小姐 9348 4118



**Twin Brook**  
**淺水灣 雙溪**  
 43 Repulse Bay Road, Repulse Bay  
 Spacious 4-bedroom unit with fascinating view of Deep Water Bay  
 寬敞四房住宅，享壯麗深水灣景色，可租可售

2,700 s.f.  
**\$110,000 also for sale \$85,600,000**

www.landscope.com/32624.htm | Stephen Chan 陳先生 9093 3381

本店有售賀年大利大吉、山東富貴牡丹花、台灣蝴蝶蘭花、蕙蘭、黃金菊花、富貴籽等。與你迎春節、接財神，歡迎預定。

花開富貴

Yim's Flower

No.11 Burd Street, Central, Hong Kong  
 Tel. 2544 6886 Fax. 2574 6269  
 Email. yimflower@yahoo.com.hk





**The Redhill Peninsula**  
大潭 紅山半島  
18 Pak Pat Shan Road, Tai Tam  
4-bedroom waterfront garden house with fantastic sea view  
四房渡假式花園大屋，享遼闊海景

**3,057 s.f.** (plus 517 s.f. garden, 292 s.f. roof and 72 s.f. terrace)  
**\$115,000** [可發傳訊](#)

[www.landscape.com/338308.htm](http://www.landscape.com/338308.htm) [Mavis Wu 吳小姐 9107 3891](#)

**Stanley Court**  
赤柱 海灣園  
9 Stanley Mound Road, Stanley  
Popular 3-bedroom townhouse in Stanley with big garden enjoy greenery view and pool view  
赤柱受歡迎三房大屋，遠大花園，享翠綠園景及泳池景

**2,669 s.f.** (plus 617 s.f. roof and 452 s.f. garden)  
**\$138,000 incl.** [可發傳訊](#)

[www.landscape.com/30808.htm](http://www.landscape.com/30808.htm) [Christine Chong 莊小姐 9648 6082](#)

**Bluewater**  
大潭 大潭道25號  
25 Tai Tam Road, Tai Tam  
Penthouse 4-bedroom apartment with private roof garden enjoying sweeping sea view  
大潭頂層四房單位，遠眺私家天台花園，尊享寧靜優美的海景

**2,700 s.f.** (plus 1,512 s.f. roof)  
**\$140,000** [可發傳訊](#)

[www.landscape.com/15824.htm](http://www.landscape.com/15824.htm) [Garman Szeto 司徒小姐 6183 8339](#)

**Repulse Bay Apartments**  
淺水灣 淺水灣花園大廈  
101 Repulse Bay Road, Repulse Bay  
Huge 5-bedroom apartment with full facilities and overlooking Repulse Bay Beach  
特大五房單位，遠完善住客會所設施，俯瞰淺水灣海灘景觀

**4,330 s.f.**  
**\$159,000** [可發傳訊](#)

[www.landscape.com/28284.htm](http://www.landscape.com/28284.htm) [Coria Ko 高小姐 6330 7888](#)

**61-63 Deep Water Bay Road, Deep Water Bay**  
深水灣 深水灣道61-63號  
Townhouse in prestigious location overlooking Deep Water Bay  
豪華洋房，俯瞰深水灣景觀

**3,479 s.f.** (plus 431 s.f. garden and 272 s.f. terrace)  
**\$178,000** [可發傳訊](#)

[www.landscape.com/14097.htm](http://www.landscape.com/14097.htm) [Coria Ko 高小姐 6330 7888](#)

**Regalia Bay**  
赤柱 富豪海灣  
88 Wong Mui Kok Road, Stanley  
Modern sea view townhouse with private garden and garage  
時尚海景洋房，遠眺私家花園及停車場，可租可售

**4,944 s.f.** (plus 1,432 s.f. roof and 753 s.f. garden)  
**\$228,000** also for sale \$97,000,000 [可發傳訊](#)

[www.landscape.com/121743.htm](http://www.landscape.com/121743.htm) [Maria Cheung 葉小姐 5162 8699](#)

**26C Shouson Hill Road, Shouson Hill**  
壽臣山 壽山村道26C號  
Shouson Hill townhouse with huge private garden  
壽臣山洋房，遠特大花園，可租可售

**3,000 s.f.** (plus 1,500 s.f. garden) [可發傳訊](#)  
**\$120,000 incl.** also for sale \$80,000,000

[www.landscape.com/49729.htm](http://www.landscape.com/49729.htm) [Teresa Lau 劉小姐 9080 6686](#)

**84 Repulse Bay Road, Repulse Bay**  
淺水灣 淺水灣道84號  
4-ensuite duplex unit with private roof close to Repulse Bay beach  
四套房複式住宅，遠眺私家天台，鄰近淺水灣海灘

**2,800 s.f.** (plus 1,922 s.f. roof)  
**\$140,000 incl.** [可發傳訊](#)

[www.landscape.com/27994.htm](http://www.landscape.com/27994.htm) [Teresa Fung 馮小姐 9138 1621](#)

**3-3E Shouson Hill Road, Shouson Hill**  
壽臣山 壽山村道3-3E號  
5-bedroom house with private garden  
壽臣山五房洋房，遠眺私家花園

**3,220 s.f.** (plus 5,800 s.f. garden and 500 s.f. roof)  
**\$150,000 incl.** [可發傳訊](#)

[www.landscape.com/40393.htm](http://www.landscape.com/40393.htm) [Teresa Fung 馮小姐 9138 1621](#)

**5 Headland Road, Repulse Bay**  
淺水灣 絲蘭道5號  
Rare low-rise 4-bedroom garden flat with sea view in gated neighbourhood  
罕有低密度四房花園住宅，享海景，環境寧靜怡人

**3,200 s.f.** (plus 2,138 s.f. garden)  
**\$160,000** [可發傳訊](#)

[www.landscape.com/36934.htm](http://www.landscape.com/36934.htm) [Chris Law 羅先生 6183 8388](#)

**12 Shouson Hill Road, Shouson Hill**  
壽臣山 壽山村道12號  
Large 5-bedroom garden house in quiet enclave  
特大五房花園洋房，位處清幽地段

**3,746 s.f.** (plus 370 s.f. garden)  
**\$165,000** [可發傳訊](#)

[www.landscape.com/11896.htm](http://www.landscape.com/11896.htm) [David Chan 陳先生 9238 2012](#)

**56 Repulse Bay Road, Repulse Bay**  
淺水灣 淺水灣道56號  
Waterfront duplex with roof taking in expansive view of Repulse Bay Beach  
復式兩層複式住宅，遠眺私家天台，享獨特淺水灣海灣景色，可租可售

**3,281 s.f.** (plus 948 s.f. roof)  
**\$230,000 incl.** also for sale \$130,000,000 [可發傳訊](#)

[www.landscape.com/50324.htm](http://www.landscape.com/50324.htm) [Coria Ko 高小姐 6330 7888](#)

# WE GROWTH WE MOVED

**ERIC FUNG**  
THE INTERIOR DESIGN  
REFLECTS YOUR NEED  
Creative Solutions

T: (852) 3684 3666  
F: (852) 2362 7788  
[www.fintinternational.com](http://www.fintinternational.com)

OUR SERVICES: INTERIOR DESIGN & BUILD | SPACE PLANNING | COMMERCIAL DESIGN |  
[ KITCHEN DESIGN ] CONSULTANT | ONE STOP SERVICES | ITALIAN FURNITURE |  
HONG KONG HEAD OFFICE: 7/F OF BLOCK C, SEA VIEW ESTATE, 2-8 WATSON ROAD, CAUSEWAY BAY, HK  
PRC OFFICE: 馮建強設計(深圳)有限公司 — 深圳市區湖濱區南園佳寧寧路1406室

**TINT LIVING LTD FURNITURE**

Furniture Retail Shop: 11/F, Ming Sang Ind. Building, 19 Hing Yip Street, Kwun Tong, Kowloon.  
T: (852) 3104 3107 [www.tintliving.com](http://www.tintliving.com)



## 86 DOMINO

A member of the Jepsen Group • CONDOLMER • INDUSTRIAL • BEVERAGE • LUXURY • Civita • Hong Kong • Miami • Taiwan • Korea



Unit 5, G/F, Aberdeen Marina Tower, 8 Shum Wan Road, Aberdeen, Hong Kong 香港香港仔深灣道8號深灣遊艇俱樂部地下5室  
Tel 電話: (852) 3180 3189 Fax 傳真: (852) 2805 6867 Email 電郵: info@jepsenmarine.com Website 網址: www.jepsenmarine.com  
16/F, East Ocean Centre, 618 Yan An Road East, Shanghai 200001, P.R.China 中國上海延安東路618號東海商業中心16樓  
Tel 電話: (86) 21 2306 4748 Fax 傳真: (86) 21 2306 4995 Email 電郵: chinainfo@jepsenmarine.com

*Riva*  
AUTHORIZED DEALER