

select deluxe homes

# The Key

大宅®

www.landscape.com

JANUARY | 2010

Volume 63



## LOFTY COMFORT

Striking penthouse bathed in warm tones perfect for entertaining

## SENSATIONAL LIFESTYLE

All-white luxury residence in an award-winning cylindrical building



## KEY NOTES\*

“There is no plateau of resting or stabilizing. Once you are interested in how things evolve, you have a kind of never-ending perspective, because it means you are interested in articulating the evolution, and therefore the potential change, the potential redefinition.”

「世上沒有永遠的停頓與穩定。一旦你對事情如何發展產生興趣，你彷彿會有無窮的觀點，因為你喜愛闡明發展的過程，即是潛在的變化及新定義。」

- Rem Koolhaas  
Dutch architectural theorist  
雷姆·庫哈斯，荷蘭建築理論家

The property market has gone into hibernation even before winter began. Isolated sales have been recorded in the luxury property market, but they have failed to generate momentum. Primary and secondary markets both suffered from lack of buying interest, despite inestimable financing packages offered by banks. However, many sellers are standing firm, reluctant to relax their asking price. A handful of eager sellers have eased on negotiability, resulting in sales.

The record high prices achieved at 39 Conduit Road in October did not help the market in any way. On the contrary, it elevated sellers' expectations to another stratosphere. Buyers on the other hand were not convinced, and adopted a wait-and-watch attitude. Transactions in traditional upscale locations have dwindled. Property brokers now find themselves spending more time chatting with fellow brokers than talking with clients; a non-productive routine that only kills time and boredom! Prospective buyers have been watching on the sidelines, waiting to seize bargain opportunities without success. But it will not be too long before prices take a dip, since sellers under pressure will be the first to succumb to the prolonged lull and accept lower offers, as the market enters its fourth quiet month. The festive season is always a quiet period for luxury property sales. The Christmas period, followed by Chinese New Year usually results in a period of low activity, as the well-heeled leave the city for a holiday.

早在冬天還未來臨之前，地產市場已經平靜下來。豪宅市場稍有成交紀錄，但動力仍不足以帶動樓市。即使銀行推出非常誘人的貸款計劃，一手及二手市場都乏人問津。但是，許多賣家都立場堅定，不願減價。小部份急切的賣家剛作出妥協，最終達成交易。

以打破樓市最高售價紀錄成交的千德道39號豪宅單位並沒有為樓市注入新的動力。相反，消息令買家進一步提升買價預期，而同時買家則抱有懷疑，採取靜觀其變的態度。傳統豪宅區成交量萎縮。如今，地產經紀與同行談天說地的時間，比見客戶的時間還要多。市場冷靜，他們唯有以這種方法緩解和打發時間。買家盼望樓市降溫，伺機出手，但至今仍未有收樓。相信不用多久，價格會有所下滑，因為有壓力的賣家面對疲長的淡市，最終將不得不屈服以較低價成交。長假出現的月份豪宅市場一向淡靜，因聖誕加惠農曆新年期間，富裕一族都會到外地度假。

Read the full article at Market Watch, [www.landscope.com/keynotes](http://www.landscope.com/keynotes)  
如欲觀看全文，請登入Market Watch網站，網址：[www.landscope.com/keynotes](http://www.landscope.com/keynotes)

published and distributed by

**LANDSCOPE** 領域  
The Specialists in Luxury Properties

**Landscope Realty Limited** C-18733  
a member of Landscope Surveys Ltd

Tel: 852-2866 0022 Fax: 852-2866 0015  
Email: [info@landscope.com](mailto:info@landscope.com)  
Unit 3106, 31/F, Hopewell Centre, 183 Queen's Road East, Wanchai, Hong Kong



## THE KEY | CONTENT

- 04 **Lofty Comfort**  
極致舒適
- 07 **Feeling Delicate in Macao**  
澳門展現精美手藝
- 09 **Tranquil Living**  
恬靜之選
- 13 **Xing's Eyes on China's Social Reality**  
邢丹文對中國現實的反思
- 19 **Sensational Lifestyle**  
頂級享受
- 21 **The Visionary Legacy of Kandinsky**  
Kandinsky的視覺藝術

## The Key (The No.1 Publication for Luxury Properties)

The Key is a monthly, bilingual lifestyle publication focusing on luxury residential properties in Hong Kong. It is sent to over 60,000 urban elites comprising of Hong Kong's most affluent inhabitants.

These consist of Landscope's VIP clients, who mainly reside in The Peak, Mid-Levels, Southside, Kowloon Tong, Homantin and other select up-market residential areas such as Tai Po, Sai Kung and Clear Water Bay, etc.

## How may you list your property with The Key?

If you would like to list your property in an upcoming issue of The Key, you may contact Loretta Lui on +852 3102 4818 or visit us at [www.landscope.com/sell-to-let](http://www.landscope.com/sell-to-let). Alternatively, simply fill out the below and fax back to us on +852 2866 0015.

## Property Details

## Asking Rental / Sale Price

## Floor Area

## Contact Person

## Telephone

## Email

Our KeyPerson will contact you for follow-up work.

designed and produced by

**in MAGAZINE**  
LUXURY REAL ESTATE SPECIALISTS

**inCorporation Limited**  
Your No. 1 Integrated Marketing Communications Partner in Hong Kong and China  
Tel: 852-2699 0888 Fax: 852-2699 0889  
Email: [marketing@incorp.com.hk](mailto:marketing@incorp.com.hk) Website: [www.inmagazine.com.hk](http://www.inmagazine.com.hk)  
12/F Cyberport 2, 100 Cyberport Road, Hong Kong

The information, text, photos, analyses and preparations contained herein are provided solely for the convenience of prospective clients and no warranty or representation as to their accuracy, correctness or completeness is made by Landscope Surveys Limited, Landscope Realty Ltd or the owners, none of whom shall have any liability or obligation with respect thereto. Interested parties should rely on their own investigations, interpretations and analyses in connection with the purchase or selling thereof.

Information has been provided to you by sources deemed reliable, but no warranty or representation is made as to its accuracy, correctness or completeness. These offerings are made subject to contract, correction of errors, omissions, prior sale of lease, change of price or terms or withdrawal from the market without notice. The contents of The Key are for reference only and do not constitute all or any part of a contract.

Reproduction of any material in whole or part without written permission from inCorporation Ltd is strictly prohibited. All information is correct at the time of going to press. The opinions expressed in The Key are those of the authors and are not necessarily endorsed by inCorporation Ltd. Copyright 2008

Lofty Comfort  
極致舒適

There is no better property than Greenland Court if you want to feel the vibe of the great Asian metropolises that is Hong Kong. This fully furnished penthouse spanning over 1,350 sq ft with a 1,000 sq ft private roof definitely has that wow factor.

The apartment has immaculate décor and a spacious yet functional layout. In addition, it projects a juxtaposition of old and new, fusing contemporary and classic Oriental elements. The master ensuite bedroom on the entry floor even comes complete with a walk-in wardrobe while the upper floor houses an open kitchen and a cosy living area, ideal for those who enjoy cooking and hosting dinner parties with good friends. Dark colours and woods have been used throughout the apartment for a more dramatic and sophisticated feel.

The magnificent environment is surrounded by so much greenery that nature lovers can go hiking, jog along its many trails or spend a few hours at the barbecue sites nearby. Meanwhile the accessibility of the Airport Express - Hong Kong Station and Central MTR station promises easy travel, whether around the world or to other Hong Kong districts. ■

沒有甚麼比住在恆翠苑，更能感受到香港這個亞洲大都會的繁榮。這座豪華頂樓公寓面積逾1,350平方呎，另有私家天台1,000平方呎，實在令人驚歎。

公寓擁有精緻縝密的裝潢，實用舒適。此外，佈置糅合了新興的元素，展現出古今東方魅力。下層的主人套房置有步入式衣櫃，而上層亦設有開放式廚房，環境舒適愜意，絕對適合喜歡下廚及邀請三五知己作客的住戶。屋內貫徹以深色及木色為主調，整體感覺不落俗套之餘，更能予人深刻印象。

住宅的四周盡是一片綠意，大自然愛好者可沿多條路徑徒步遠足和慢跑，甚或到附近的燒烤場燒烤玩樂。同時，公寓毗鄰機場快線香港站及中環站，無論是到其他地方，抑或世界各地，交通同樣方便快捷。■

## Greenland Court

中環山 恆翠園

56-58 MacDonnell Road, Midlevels Central

1,350 s.f. (plus 1,000 s.f. roof)  
\$26,000,000

[www.landscope.com/41835.htm](http://www.landscope.com/41835.htm) Stella Lo 羅小姐 9809 8570

For more listings, please go to [www.landscope.com/sale](http://www.landscope.com/sale)



**Villa Verde**  
山頂 連翠園  
4-18 Guildford Road, The Peak  
Spacious practical apartment at lower Peak  
山頂寬敞實用住宅

**1,505 s.f.**  
**\$20,000,000**

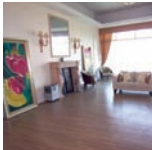
www.landscope.com/32827.htm David Leung 梁先生 9199 0672



**Guildford Garden**  
山頂 菁苑  
1-3 Mansfield Road, The Peak  
Spacious practical 4-bedroom flat at lower Peak  
山頂寬敞四房住宅，間隔實用

**2,400 s.f.**  
**\$42,000,000**

www.landscope.com/31449.htm Mira To 杜小姐 9486 1566



**Oasis**  
山頂 欣怡居  
8-12 Peak Road, The Peak  
Brand new 4-bedroom apartment with full harbour view  
全新四房住宅享廣闊維港景觀，可租可售

**2,719 s.f.**  
**\$65,000,000 also for lease \$120,000 incl.**

www.landscope.com/36662.htm Stephen Chan 陳先生 9093 3381



**Strawberry Hill**  
山頂 紅帽閣  
8 Plunkett's Road, The Peak  
Colonial style townhouse with picturesque views  
山頂英式排屋享如畫美景

**3,200 s.f.**  
**\$100,000,000**

www.landscope.com/49439.htm Eric Wong 葉先生 9740 3396



**Kelletteria**  
山頂 加列山道71號  
71 Mount Kellett Road, The Peak  
Peak luxurious mansion with private pool and garage  
山頂豪華住宅大廈連私家游泳池及車房

**3,198 s.f. (plus 1,370 s.f. garden, 906 s.f. roof and 169 s.f. terrace)**  
**\$138,000,000**

www.landscope.com/39225.htm Teresa Fung 高小姐 9138 1621



**Cheuk Nang Lookout**  
山頂 卓能山莊  
30 Severn Road, The Peak  
Detached house with private pool and terrace  
山頂獨立大廈連私家游泳池及平台，可租可售

**5,300 s.f. (plus 2,904 s.f. garden, 1,400 s.f. terrace and 534 s.f. roof)**  
**\$210,000,000 also for lease \$200,000**

www.landscope.com/19728.htm David Leung 梁先生 9199 0672



**Kellett Heights**  
山頂 嘉利別墅  
61A-61B Mount Kellett Road, The Peak  
Colonial apartment on Mount Kellett Road with Southside sea view  
加列山頂英式單位享南面海景

**1,600 s.f.**  
**\$30,000,000**

www.landscope.com/6073.htm Stella Lo 羅小姐 9809 8570



**26 Magazine Gap Road, The Peak**  
山頂 馬己仙峽道26號  
Colonial apartment on Magazine Gap Road with excellent Victoria Harbour view  
馬己仙峽道英式住宅享無敵維港景觀

**2,400 s.f.**  
**\$45,000,000**

www.landscope.com/107696.htm Garman Szeto 司徒小姐 6183 8339



**Eredine**  
山頂 加列山道38號  
38 Mount Kellett Road, The Peak  
Huge colonial apartment with spectacular sea view  
巨室英式住宅，尊貴壯麗維港景色

**3,300 s.f.**  
**\$70,800,000**

www.landscope.com/23687.htm David Leung 梁先生 9199 0672



**Mountain Lodge**  
山頂 嘉樓  
44 Mount Kellett Road, The Peak  
Rare duplex apartment with Southside sea view  
罕有複式住宅，尊享南面海景

**5,200 s.f.**  
**\$120,000,000**

www.landscope.com/96955.htm David Leung 梁先生 9199 0672



**La Hacienda**  
山頂 加列山道29-33號  
29-33 Mount Kellett Road, The Peak  
Rare garden townhouse on The Peak overlooking verdant Aberdeen Country Park  
山頂罕有花園排屋，俯瞰翠綠香港仔郊野公園景觀

**3,200 s.f.**  
**\$150,000,000**

www.landscope.com/30422.htm David Leung 梁先生 9199 0672



**1-9 Rosmead Road, The Peak**  
山頂 樂善美道1-9號  
Rare single number tranquil garden house on The Peak  
山頂罕有獨立幽靜花園大廈出售

**5,600 s.f. (plus 1,469 s.f. garden)**  
**\$250,000,000**

www.landscope.com/20798.htm Stella Lo 羅小姐 9809 8570

## The Hacienda

90 Repulse Bay Road

- Full seaview, with Garden / Roof
- Swimming pool, Gym & Carpark
- 1,822-3000 sq.ft.
- 3-4 Bedrooms

Leasing Hotline **2122 2025**  
**2122 2362**

**Luxury Apartments**  
5 Warwick Road, Kowloon Tong

- Open View, Carpark & BBQ area
- Approx. 5 minutes walk to Festival Walk / Kowloon tong MTR
- 1,270-1,350 sq.ft., 2/3 bedrooms / balcony
- Kowloon Tong school network no.41

Leasing Hotlines: **2122-2025**  
**2122-2362**

長江實業地產發展有限公司  
CHEUNG KONG PROPERTY DEVELOPMENT LIMITED



## Feeling Delicate in Macao 澳門展現精美手藝

Chinese traditional craftsmanship has been world renowned for centuries. Lou Kau Mansion, the heritage house of Macao, is now showcasing this unique art form with artworks by award-winning Chinese artists and artisans. Masterpieces include ivory and bamboo carvings of Yangzhou, traditional gold and silver craft, cloth sculptures combined with painting and embroidery techniques, and Xuzhou perfumed sachets with natural perfume made of Chinese herbs. Appreciating the aesthetics will bring you into the nostalgic world and the high intelligence of ancient Chinese culture. What's more, weekend workshops of Chinese handicrafts production have been set up for the public to experience and learn more about Chinese craftsmanship. Ivory and Bamboo Carvings and Artisanal Gold and Silver run until 10 January 2010, while Cloth Sculptures and Perfumed Sachets run until 2 February. ■

中國的傳統手藝歷史悠久，全球讚頌。澳門世界遺產家大屋正聯同國內多位屢獲殊榮的藝術家和工匠，攜手帶來中國獨特的民間工藝。大師級作品包括揚州牙刻和竹刻、傳統金銀飾品、絲綢繪畫、刺繡等技藝的布藝軟雕塑，以及裝入多種中華藥配製而成的天然香料的徐州香包。欣賞這些美學的同時，也能讓你感受到古舊情懷，並親探中國的高智慧傳統文化。於周末舉行的工作坊，更可讓大家親身體驗民間工藝的樂趣。揚州牙刻和竹刻及傳統金銀飾品展期至2010年1月10日，而布藝軟雕塑及徐州香包展期至2月7日。■

**Moon Fair Mansion**  
東半山 滿輝大廈  
11 Shui Fai Terrace, Midlevels East  
Apartment with modern stylish decor in quiet neighbourhood  
東半山時尚住宅，環境寧靜怡人

1,047 s.f.  
**\$9,000,000**

[www.landscape.com/102154.htm](http://www.landscape.com/102154.htm) Walker Lam 林先生 9551 1077

**Morengo Court**  
東半山 邱邊閣  
25 Tai Hang Road, Midlevels East  
Nicely renovated 3-bedroom flat with high efficiency and good layout  
全新裝修三房單位，間隔實用率高

1,155 s.f.  
**\$11,300,000**

[www.landscape.com/89143.htm](http://www.landscape.com/89143.htm) Chris Law 羅先生 6183 8388

**Botanic Terrace**  
西半山 芝蘭台  
3-5 Conduit Road, Midlevels West  
Stylish 3-bedroom apartment close to Midlevels pedestrian escalator  
時尚三房住宅，鄰近半山扶手電梯

1,492 s.f.  
**\$14,500,000**

[www.landscape.com/50436.htm](http://www.landscape.com/50436.htm) Walker Lam 林先生 9551 1077

**Camelot Height**  
中半山 金寶閣  
66 Kennedy Road, Midlevels Central  
Newly decorated 3-bedroom apartment with partial harbour view  
全新裝修三房單位享部份飽滿景

1,520 s.f.  
**\$16,000,000**

[www.landscape.com/95558.htm](http://www.landscape.com/95558.htm) Yvonne Chang 鄭小姐 9088 4866

**Hatton Place**  
西半山 峇利苑  
1A Po Shan Road, Midlevels West  
Cozy 3-bedroom apartment facing lush greenery  
迷人三房住宅，享翠綠山景

1,579 s.f.  
**\$18,000,000**

[www.landscape.com/38786.htm](http://www.landscape.com/38786.htm) Rowena Siu 蕭小姐 9348 4118

**Beverly Hill**  
跑馬地 比華利山  
6 Broadwood Road, Happy Valley  
Designer decorated family flat in Beverly Hill  
比華利山全新名師設計裝修家庭式住宅

1,721 s.f.  
**\$18,800,000**

[www.landscape.com/123629.htm](http://www.landscape.com/123629.htm) Mary Li 李小姐 8011 6595

**Igloo Residence**  
跑馬地 壹匯小築  
1A Shan Kwong Road, Happy Valley  
Modern boutique flat in the heart of Happy Valley  
跑馬地時尚精緻單位，租可租

795 s.f.  
**\$9,300,000** also for lease \$35,000 incl.  
Sole Agent 獨家代理

[www.landscape.com/96317.htm](http://www.landscape.com/96317.htm) Yvonne Chang 鄭小姐 9088 4666

**Convention Plaza**  
灣仔 會景閣  
1 Harbour Road, Wan Chai  
Boutique apartment with superb facilities in the heart of business district  
灣仔別致單位，還完善住客會所設施，鄰近商業區

1,272 s.f.  
**\$13,500,000**

[www.landscape.com/61.htm](http://www.landscape.com/61.htm) Stephen Chan 陳先生 9093 3381

**Elegant Terrace**  
中半山 慕明苑  
36 Conduit Road, Midlevels West  
3-bedroom apartment with good facilities close to Midlevels Escalator  
西半山三房單位還完善住客會所設施，鄰近半山扶手電梯

1,433 s.f.  
**\$15,500,000**

[www.landscape.com/48466.htm](http://www.landscape.com/48466.htm) Walker Lam 林先生 9551 1077

**Yicks Villa**  
跑馬地 奕匯  
83-85 Blue Pool Road, Happy Valley  
Well maintained 3-bedroom apartment with carpark on upper Blue Pool Road  
保養良好三房單位連車位，位於藍塘碼頭段

1,750 s.f.  
**\$16,800,000**

[www.landscape.com/40119.htm](http://www.landscape.com/40119.htm) Teresa Lau 劉小姐 9080 6686

**Suncrest Tower**  
中半山 桂濤苑  
1-11 Monmouth Terrace, Midlevels Central  
4-bedroom apartment on fringe of Central  
中半山四房單位，鄰近中環，交通方便

2,005 s.f. (plus 80 s.f. terrace)  
**\$18,646,500**

[www.landscape.com/16625.htm](http://www.landscape.com/16625.htm) Walker Lam 林先生 9551 1077

**Grandview Tower**  
中半山 慧豪臺  
128-130 Kennedy Road, Midlevels Central  
Rare combined unit with terrace and twin car parks enjoying greenery view  
罕有相連單位及雙車位，附設平台享翠綠山景

1,691 s.f. (include 265 s.f. terrace)  
**\$19,000,000** Sole Agent 獨家代理

[www.landscape.com/88929.htm](http://www.landscape.com/88929.htm) Carman Szeto 司徒小姐 6183 8339

**Belmont Court**  
西半山 雅苑  
10 Kotewall Road, Midlevels West  
Practical apartment in quiet location  
西半山間隔實用單位，環境寧靜怡人

2,200 s.f.  
**\$19,000,000**

[www.landscape.com/101665.htm](http://www.landscape.com/101665.htm) Sami Woo 胡小姐 9493 8275

**United Mansion**  
東半山 匯賢閣  
7 Shui Fai Terrace, Midlevels East  
Spacious flat with practical layout in tranquil neighbourhood  
東半山寬敞實用單位，環境寧靜

2,200 s.f.  
**\$25,000,000**

[www.landscape.com/72773.htm](http://www.landscape.com/72773.htm) Stephen Chan 陳先生 9093 3381

**Visalia Garden**  
中半山 蔚山花園  
48 Macdonnell Road, Midlevels Central  
Spacious 3-bedroom apartment with harbour view on fringe of Central  
間隔寬敞三房單位，享飽滿景，鄰近中環

2,195 s.f.  
**\$29,000,000**

[www.landscape.com/99666.htm](http://www.landscape.com/99666.htm) Stella Lo 蕭小姐 9809 8570

**Tranquil Living**  
恬靜之選

**Beauty Court**  
西半山 雅苑  
82 Robinson Road, Midlevels West  
Popular building on Robinson Road with easy access to Central  
匯豐臣道受歡迎住宅大廈，鄰近中環交通方便

1,762 s.f.  
**\$22,000,000** Sole Agent 獨家代理

[www.landscape.com/99570.htm](http://www.landscape.com/99570.htm) Carman Szeto 司徒小姐 6183 8339

**8 Shui Fai Terrace, Midlevels East**  
東半山 匯賢閣 8號  
Modern 3-ensuite mid-rise in quiet location  
時尚三套房中密度住宅，環境寧靜怡人

2,162 s.f.  
**\$26,000,000**

[www.landscape.com/31268.htm](http://www.landscape.com/31268.htm) Yvonne Chang 鄭小姐 9088 4666

**Dynasty Court**  
中半山 帝景園  
23 Old Peak Road, Midlevels Central  
Prestigious apartment with superb facilities in prime location  
中半山豪華住宅，享完善住客會所設施，地段專寬，租可租

1,970 s.f.  
**\$29,000,000** also for lease \$70,000

[www.landscape.com/32986.htm](http://www.landscape.com/32986.htm) Mira To 杜小姐 9486 1566

Situated off the beaten path in Happy Valley, Village Terrace combines peaceful living and urban conveniences. This 1,800 mid-rise apartment has great character – with its living/dining room, kitchen, two bedrooms, two bathrooms; one ensuite and a helper's room generously proportioned.

The apartment is a perfect fusion of cutting-edge amenities and modern style coziness. The interior designs couldn't have been combined more harmoniously with premium materials carefully selected to complement an exquisite collection of art pieces that attest to discerning tastes. After a busy day, residents can refresh in the luxurious bathroom equipped with a rainforest shower head or in a circular bath tub, and then snuggle under a cosy duvet for a perfect sleep.

Offering an endless variety of shopping, dining, entertainment and even supermarkets; residents can re-emerge into the buzzing city life in just a ten minute walk. ■

位於跑馬地的山村翠環境恬靜怡人，交通便利。這間1,800平方呎的中層公屋別具特色 – 客廳/飯廳、廚房、兩間臥室及浴室，一間套房及傭人房，空間均非常寬敞。

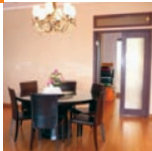
公寓完美地結合了先進設備和現代風格元素，感覺舒適安逸。屋內的裝潢設計兼融和諧之美，一流的裝飾材料都經過細心挑選，以配襯屋內的藝術作品，突顯出個人品味。忙碌了一天，你大可以於豪華浴室內盡享雨淋式淋浴和圓形浴缸之樂，完全放鬆休息。

只需短程十分鐘路程，你便可以感受到精彩的城市生活，購物、餐飲、娛樂，以至超級市場都一應俱全。■

**35-41 Village Terrace, Happy Valley**  
跑馬地 山村翠 35-41號  
1,800 s.f.  
**\$16,800,000**

[www.landscape.com/110031.htm](http://www.landscape.com/110031.htm) Mira To 杜小姐 9486 1566





**Villa Lotto**  
跑馬地 樂陶苑  
18 Broadwood Road, Happy Valley  
Well decorated 4-bedroom apartment with practical layout and high efficiency  
跑馬地全新裝修四房單位，間隔寬敞，實用率高

**2,406 s.f.**  
**\$30,500,000**

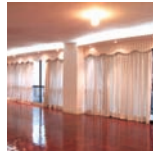
[www.landscope.com/31612.htm](http://www.landscope.com/31612.htm) [Mark Mak 麥先生 6838 2929](#)



**Lincoln Court**  
東半山 林肯大廈  
156 Tai Hang Road, Midlevels East  
Beautiful colonial mid-rise in convenient location  
迷人英式中密度住宅，位置優越

**1,900 s.f.**  
**\$33,000,000**

[www.landscope.com/11835.htm](http://www.landscope.com/11835.htm) [Teresa Lau 劉小姐 9080 6686](#)



**Estoril Court**  
東半山 晏都大廈  
55 Garden Road, Midlevels Central  
Huge 4-bedroom apartment with spacious and highly efficient layout  
巨座四房住宅，間隔寬敞，實用率高

**3,347 s.f.**  
**\$50,000,000**

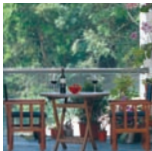
[www.landscope.com/107585.htm](http://www.landscope.com/107585.htm) [Mira To 杜小姐 9486 1566](#)



**Grenville House**  
東半山 嘉驊閣  
1, 3 & 3A Magazine Gap Road, Midlevels Central  
Exclusive huge apartment at prime location  
中半山獨特巨座單位，地段尊貴

**3,400 s.f.**  
**\$56,000,000**

[www.landscope.com/36380.htm](http://www.landscope.com/36380.htm) [Rebecca Cheung 張小姐 9021 7644](#)



**Clement Court**  
渣甸山 松風臺  
56-64 Mount Butler Road, Jardine's Lookout  
Colonial low-rise in tranquil neighbourhood  
英式低密度住宅，環境恬靜

**2,200 s.f.**  
**\$33,000,000**

[www.landscope.com/49344.htm](http://www.landscope.com/49344.htm) [Maria Cheung 張小姐 5182 8699](#)



**Clovelly Court**  
中半山 嘉富麗苑  
12 May Road, Midlevels Central  
Popular 3-bedroom family flat in convenient location  
罕見三房家庭式住宅，位於中半山，交通方便

**2,115s.f.**  
**\$36,000,000**

[www.landscope.com/1339.htm](http://www.landscope.com/1339.htm) [Eric Wong 黃先生 9740 3396](#)



**Trafalgar Court**  
東半山 大寶閣  
70 Tai Hang Road Midlevels East  
Huge 5-bedroom flat overlooking Causeway Bay and Victoria Harbour  
巨座五房住宅俯瞰維多利亞港及維多利亞港

**3,008 s.f.**  
**\$60,000,000**

[www.landscope.com/5913.htm](http://www.landscope.com/5913.htm) [Mark Mak 麥先生 6838 2929](#)



**The Albany**  
東半山 雅賓利大廈  
1 Albany Road, Midlevels Central  
Harbour view overlooking the Zoological and Botanical Gardens  
中半山維多利亞港住宅，俯瞰動物園及植物園

**2,546 s.f.**  
**\$66,000,000**

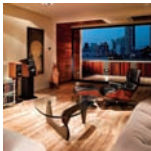
[www.landscope.com/40838.htm](http://www.landscope.com/40838.htm) [Rebecca Cheung 張小姐 9021 7644](#)



**Po Shan Mansion**  
西半山 寶城大廈  
10-16 Po Shan Road, Midlevels West  
Meticulously decorated 4-bedroom apartment in quiet enclave  
西半山四房單位，配以一條不苟的裝修，環境清幽寧靜

**2,800 s.f.**  
**\$36,000,000**

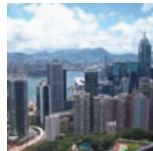
[www.landscope.com/35334.htm](http://www.landscope.com/35334.htm) [Garman Szeto 司徒小姐 6183 8339](#)



**11-15 Briar Avenue, Happy Valley**  
跑馬地 比華連道 11-15號  
Designer low-rise flat with private garden  
設計師品味設計低密度住宅連私家花園，可租可售

**2,100 s.f. (plus 400 s.f. terrace)**  
**\$36,000,000 also for lease \$36,000 incl.**

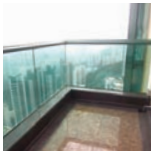
[www.landscope.com/112241.htm](http://www.landscope.com/112241.htm) [Sami Woo 胡小姐 9493 8275](#)



**Hong Villa**  
東半山 峰景花園  
12 Bowen Road, Midlevels Central  
Exclusive huge apartment with sweeping view of Victoria Harbour  
獨特巨座單位，專享寧靜的維多利亞港景觀

**3,833 s.f.**  
**\$75,000,000**

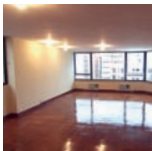
[www.landscope.com/111817.htm](http://www.landscope.com/111817.htm) [Mark Mak 麥先生 6838 2929](#)



**The Mayfair**  
東半山 梅道1號  
1 May Road, Midlevels Central  
High floor deluxe harbour view apartment in Midlevels Central  
中半山豪華高層維多利亞港住宅，可租可售

**2,918 s.f.**  
**\$80,000,000 also for lease \$140,000 incl.**

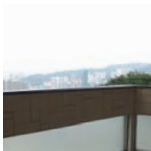
[www.landscope.com/122787.htm](http://www.landscope.com/122787.htm) [Walker Lam 林先生 9551 1077](#)



**Silvercrest**  
東半山 碧翠園  
24 Macdonnell Road, Midlevels Central  
Spacious 4-bedroom apartment with high privacy and open views  
寬敞四房單位享開揚景觀，私隱度高

**2,643 s.f.**  
**\$38,000,000**

[www.landscope.com/35199.htm](http://www.landscope.com/35199.htm) [Eric Wong 黃先生 9740 3396](#)



**47A Stubbs Road, Midlevels East**  
東半山 司徒拔道 47A號  
Exclusive mid-rise apartment with harbour view  
獨特中密度維多利亞港住宅，可租可售

**2,400 s.f.**  
**\$36,000,000 also for lease \$83,000 incl.**

[www.landscope.com/50089.htm](http://www.landscope.com/50089.htm) [Rowena Siu 蕭小姐 9348 4118](#)



**BROADWOOD TWELVE**  
樂天峯

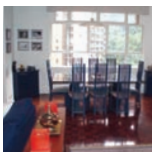
- Brand new apartment with stunning views of Happy Valley Racecourse and a bird's eye view of the Hong Kong Stadium
- Units ranging from about 1,600 sq. ft. (simplex) to 3,200 sq. ft. (duplex).
- Typical unit with 3 bedrooms including 1 ensuite
- Balcony
- Double-glazed windows
- Poggenpohl and Gaggenau equipped kitchen
- Developer: Hopewell Holding Limited

- 全新單位能飽覽快活谷馬場美景，更可以鳥瞰香港大球場
- 提供1,600呎標準單位、3,200呎複式單位一應俱全
- 標準單位為3房1廁，另設特色單位
- 環繞露台
- 雙層玻璃窗
- 廚房採用Poggenpohl與Gaggenau設備
- 發展商：合和實業



**Broadwood Twelve**  
樂天峯  
12 Broadwood Road, Happy Valley

[Stephen Chan 陳先生 9093 3381](#), [Mark Mak 麥先生 6838 2929](#)



**Tregunter Tower 1**  
東半山 地利根德閣1座  
14 Tregunter Path, Midlevels Central  
Large 4-bedroom apartment with full club facilities on Tregunter Path  
地利根德閣巨座四房單位配以完善住客會所設施

**3,336 s.f.**  
**\$40,000,000**

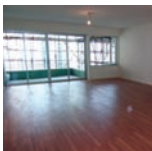
[www.landscope.com/105977.htm](http://www.landscope.com/105977.htm) [Rowena Siu 蕭小姐 9348 4118](#)



**Tavistock 2**  
東半山 滕屋居2座  
10A Tregunter Path, Midlevels Central  
High quality apartment with clubhouse facilities  
中半山高層住宅連完善住客會所設施，可租可售

**2,030 s.f.**  
**\$40,000,000 also for lease \$80,000 incl.**

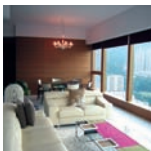
[www.landscope.com/27610.htm](http://www.landscope.com/27610.htm) [Eric Wong 黃先生 9740 3396](#)



**Brewin Court**  
東半山 明雅園  
5-7 Brewin Path, Midlevels Central  
Newly renovated colonial style low-rise flat with huge balcony  
全新裝修英式低密度住宅，獨特大陽臺

**2,600 s.f.**  
**\$42,000,000**

[www.landscope.com/52851.htm](http://www.landscope.com/52851.htm) [Mira To 杜小姐 9486 1566](#)



**The Colonnade**  
東半山 嘉善臺  
152 Tai Hang Road, Midlevels East  
Stylish modern apartment with tasteful decor  
時尚設計住宅，適宜致品味裝修，可租可售

**2,256 s.f.**  
**\$45,000,000 also for lease \$110,000 incl.**

[www.landscope.com/113654.htm](http://www.landscope.com/113654.htm) [Louis Wong 黃先生 9871 6828](#)

**Bel-Air on the Peak**  
薄扶林 貝沙灣4期  
68 Bel-Air Peak Avenue, Pokfulam

Nicely fitted and equipped flat with sweeping sea view  
雅緻裝修配套齊全住宅，享靜靜海景

896 s.f.  
**\$11,800,000**

[www.landscope.com/107902.htm](http://www.landscope.com/107902.htm) [Teresa Fung 蔣小姐 9138 1621](#)

**Hong Kong Parkview - Tower 05**  
清水灣 陽明山莊第5座  
88 Tai Tam Reservoir Road, Repulse Bay

Ideal home for couple with excellent facilities and easy access to Central  
精緻小單位兩房兩廁住宅，鄰近前往香港市設施，鄰近中環

1,312 s.f.  
**\$13,890,000**

[www.landscope.com/108909.htm](http://www.landscope.com/108909.htm) [Teresa Fung 蔣小姐 9138 1621](#)

**18-24 Bisney Road, Pokfulam**  
薄扶林 碧雲道 18-24號

Top floor unit with internal stair to roof terrace in low-rise block  
薄扶林低密度高層住宅樓內實樓樓梯私家天台

1,640 s.f. (plus 1,200 s.f. roof)  
**\$19,000,000**

[www.landscope.com/1122199.htm](http://www.landscope.com/1122199.htm) [Mary Li 李小姐 9011 6595](#)

**Bauhina Gardens**  
香軟角 紫雲園  
42 Chung Hom Kok Road, Chung Hom Kok

3-bedroom low-rise flat in tranquil Chung Hom Kok  
香軟角低密度三房住宅，環境寧靜，可租可售

1,500 s.f.  
**\$22,000,000 also for lease \$49,000 incl.**

[www.landscope.com/4326.htm](http://www.landscope.com/4326.htm) [Rebecca Cheung 張小姐 90217644](#)

**Beaconsfield Court**  
壽臣山 碧麗閣  
7 Shouson Hill Road, Shouson Hill

Well decorated low-rise flat in green surrounding in Shouson Hill  
壽臣山雅緻裝修低密度住宅，享康陵翠綠園景

1,650 s.f.  
**\$29,000,000**

[www.landscope.com/36777.htm](http://www.landscope.com/36777.htm) [Rowena Siu 蕭小姐 9348 4118](#)

**Splendour Villa**  
清水灣 雅景閣  
10 South Bay Road, Repulse Bay

Nicely decorated sea view low-rise apartment in Repulse Bay  
清水灣絕人裝修低密度住宅享靜靜海景

1,290 s.f. (plus 538 s.f. garden)  
**\$30,500,000**

[www.landscope.com/107738.htm](http://www.landscope.com/107738.htm) [David Chan 陳先生 9238 2012](#)

**Y Y Mansion**  
薄扶林 裕仁大廈  
96 Pokfulam Road, Pokfulam

Nicely decorated sea view apartment with private roof  
雅緻裝修海景住宅連私家天台

1,450 s.f. (plus 877 s.f. roof)  
**\$13,000,000**

[www.landscope.com/95525.htm](http://www.landscope.com/95525.htm) [Christine Chung 莊小姐 9648 6082](#)

**Glamour Court**  
薄扶林 華麗閣  
39 Consort Rise, Pokfulam

Low-rise with private roof and good condition and carpark space  
低密度住宅連私家天台及停車場，保存良好

1,500 s.f. (plus 1,106 s.f. roof)  
**\$18,000,000**

[www.landscope.com/64542.htm](http://www.landscope.com/64542.htm) [Teressa Lau 劉小姐 9080 6686](#)

**Villa Piubello**  
香軟角 瓊角徑1-7號  
1-7 Cape Drive, Chung Hom Kok

Colonial 3-bedroom low-rise in quiet neighbourhood  
罕有三房兩廁式低密度住宅，位於香軟角尊貴靜地段

1,800 s.f.  
**\$21,000,000**

[www.landscope.com](http://www.landscope.com) [Mary Li 李小姐 9011 6595](#)

**45 Island Road, Deep Water Bay**  
深水灣 香島道 45 號

Resort-style townhouse in a sought after address  
深水灣渡假式排屋，市面難尋

1,634 s.f.  
**\$29,000,000**

[www.landscope.com/86255.htm](http://www.landscope.com/86255.htm) [Rowena Siu 蕭小姐 9348 4118](#)

**Sea Branch**  
香軟角 海天閣  
31 Horizon Drive, Chung Hom Kok

Nicely decorated low-rise apartment with peaceful sea view on quiet Horizon Drive  
海天閣絕人裝修低密度單位，環境清幽享靜靜海景，可租可售

1,825 s.f.  
**\$30,000,000 also for lease \$88,000 incl.**

[www.landscope.com/81551.htm](http://www.landscope.com/81551.htm) [Teressa Lau 劉小姐 9080 6686](#)

**Hong Kong Parkview - Tower 8**  
清水灣 陽明山莊8座  
88 Tai Tam Reservoir Road, Repulse Bay

Popular family flat in country park  
受歡迎家庭式住宅，鄰近郊野公園

2,366 s.f.  
**\$30,800,000**

[www.landscope.com/45079.htm](http://www.landscope.com/45079.htm) [Rebecca Cheung 張小姐 9021 7644](#)

**Scenic Villas**  
薄扶林 美景臺  
2-28 Scenic Villa Drive, Pokfulam

High efficiency 4-bedroom apartment at waterfront with sea view  
高實用四房單位，位於薄扶林海濱，享靜靜海景

2,517 s.f.  
**\$11,500,000**

[www.landscope.com/49859.htm](http://www.landscope.com/49859.htm) [Christine Chung 莊小姐 9648 6082](#)

**Belgravia**  
清水灣 南灣道57號  
57 South Bay Road, Repulse Bay

Newly renovated development on South Bay Road with brand new decoration  
南灣道全新裝修住宅，大廈經已翻新

2,390 s.f. (plus 41 s.f. terrace)  
**\$36,000,000**

[www.landscope.com/117841.htm](http://www.landscope.com/117841.htm) [Teressa Fung 蔣小姐 9138 1621](#)

**Sea Cliff Mansions**  
清水灣 海峰閣  
19A-19D Repulse Bay Road, Repulse Bay

Well decorated sea view flat with balcony on upper Repulse Bay Road  
雅緻裝修海景住宅連陽臺，位於清水灣道頭段

2,400 s.f.  
**\$39,000,000**

[www.landscope.com/30916.htm](http://www.landscope.com/30916.htm) [Stella Lo 蕭小姐 9809 8570](#)



**Gordon Terrace**  
薄扶林 碧雲臺  
4-8A Carmel Road, Stanley

Unique 3-bedroom low-rise apartment with private garden  
獨特三房低密度住宅連私家花園

1,800 s.f. (plus 700 s.f. garden)  
**\$34,000,000**

[www.landscope.com/99085.htm](http://www.landscope.com/99085.htm) [Stephen Chan 陳先生 9093 3381](#)

**Carmel Hill**  
薄扶林 海明山  
12 Carmel Road, Stanley

Boutique sea view townhouse with pool and tennis court  
別墅式海景排屋連游泳池及網球場，可租可售

2,400 s.f.  
(plus 381 s.f. garden and 262 s.f. roof)  
**\$36,000,000 also for lease \$96,000 incl.**

[www.landscope.com/71417.htm](http://www.landscope.com/71417.htm) [Rebecca Cheung 張小姐 9021 7644](#)

**Royalton I**  
薄扶林 豪峰 I  
118 Pokfulam Road, Pokfulam

Spacious 5-bedroom duplex with sweeping Pokfulam sea view  
寬敞複式五房住宅享康陵薄扶林海景

3,250 s.f.  
**\$40,000,000**

[www.landscope.com/109727.htm](http://www.landscope.com/109727.htm) [Christine Chung 莊小姐 9648 6082](#)

## Xing's Eyes on China's Social Reality

### 邢丹文對中國現實的反照

Artists love bringing up issues about the world in their art. And the highly influential Beijing-based artist Xing Danwen is one of them. She is famous for examining China's contemporary social reality. At her first Hong Kong solo exhibition with the theme "In a perfect world...", Xing invites us to explore the concepts of modernisation and contemporary culture. The exhibition comprises two of Xing Danwen's seminal series "Duplication" and "Urban Fiction", which include a series of six photographs showing assorted groupings of toy dolls' body parts to raise issues of identity. Under the influence of globalisation, each individual has become monotonous and indistinctive. Xing is a dedicated professional artist who demonstrates her seriousness through the sincerity of her artistic practice and unveils China's reality. Find out more about Xing at Ooi Botos Gallery before 27 February 2010. ■

藝術家在創作時，往往會將自己對世界的關注以不同的藝術形式顯現於作品上。來自北京的邢丹文，有深遠的影響力，涉獵的題材多為探討中國近代的社會現實狀況。邢丹文首次於香港舉行的「活在美好的世界...」的個人展覽，探討有關現代化與當代文化的種種概念。是次展覽分為「複製」及「虛構都市」兩個主題，展出作品包括由六幅以拍攝洋娃娃不同身體部位結集而成的照片，以喚起對個人身份象徵問題的關注。在全球化的影響下，我們的角色已變得乏味和模糊，邢丹文出於一種對攝影的濃厚興趣與嚴肅態度，來實踐自己對藝術的追求，從而揭露中國社會問題。展覽於Ooi Botos Gallery 舉行，展期至2010年2月27日。■





**Stanley Court**  
赤柱 海灣園  
9 Stanley Mound Road, Stanley  
Boutique 3-bedroom townhouse with spacious garden close to Stanley Main Beach  
兩房三房排屋連寬敞花園，鄰近赤柱正灘  
**2,889 s.f.**  
(plus 1,075 s.f. garden and 552 s.f. roof)  
**\$46,500,000**

[www.landscope.com/122969.htm](http://www.landscope.com/122969.htm) | **Maria Cheung** 張小姐 5182 8699



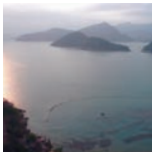
**3 Repulse Bay Road, Repulse Bay**  
淺水灣 淺水灣道3號  
Prestigious 4-bedroom apartment with lush green view and sea view  
有名第四層住宅，享翠綠園景及海景，可租可售  
**2,078 s.f.**  
**\$55,000,000** also for sale \$115,000 incl.

[www.landscope.com/100222.htm](http://www.landscope.com/100222.htm) | **Rowena Siu** 蘇小姐 9348 4118



**Grosvenor Place**  
淺水灣 淺水灣道117號  
117 Repulse Bay Road, Repulse Bay  
Sleek apartment overlooking Repulse Bay panorama  
精緻住宅俯瞰全淺水灣景觀  
**2,809 s.f.**  
**\$70,000,000**

[www.landscope.com/44586.htm](http://www.landscope.com/44586.htm) | **Stephen Chan** 陳先生 9093 3381



**Ruby Court**  
淺水灣 喜福閣  
55 South Bay Road, Repulse Bay  
Unique penthouse with roof enjoying splendid view of South Bay and Repulse Bay  
獨特頂層單位連天台，享南區及淺水灣景觀  
**2,790 s.f.**  
(plus 587 s.f. roof and 150 s.f. terrace)  
**\$80,000,000**

[www.landscope.com/110330.htm](http://www.landscope.com/110330.htm) | **Mark Mak** 麥先生 6838 2929



**Villa Rosa**  
大潭 玫瑰園  
88 Red Hill Road, Tai Tam  
Rare garden house at Tai Tam  
大潭罕有花園大屋  
**3,960 s.f.**  
(plus 480 s.f. roof and 414 s.f. garden)  
**\$100,000,000**

[www.landscope.com/21103.htm](http://www.landscope.com/21103.htm) | **Louis Wong** 黃先生 9871 6828



**Ocean Bay**  
碧映角 海天徑15-17號  
15-17 Horizon Drive, Chung Hom Kok  
Modern sea view townhouse with private pool  
時尚海景排屋連私家游泳池  
**3,800 s.f.**  
**\$120,000,000**

[www.landscope.com/107633.htm](http://www.landscope.com/107633.htm) | **Louis Wong** 黃先生 9871 6828



**Faber Villa**  
大潭 青百苑  
17 Tai Tam Road, Tai Tam  
Rare high privacy sea view flat in Tai Tam  
大潭罕有海景住宅，私隱度高  
**3,200 s.f.**  
**\$53,000,000**

[www.landscope.com/107946.htm](http://www.landscope.com/107946.htm) | **Mary Li** 李小姐 9011 6595



**Pine Lodge**  
壽臣山 松苑  
10 Shouson Hill Road West, Shouson Hill  
Low-rise flat with private garden in lush greenery  
低密度住宅連私家花園，享翠綠園景  
**3,000 s.f.** (plus 300 s.f. garden)  
**\$55,000,000**

[www.landscope.com/117654.htm](http://www.landscope.com/117654.htm) | **Christine Chong** 莊小姐 9648 6082



**Bellevue Place**  
淺水灣 寶晶苑  
93 Repulse Bay Road, Repulse Bay  
Sea view townhouse in Repulse Bay  
淺水灣海景排屋，可租可售  
**3,206 s.f.**  
(plus 747 s.f. roof and 171 s.f. terrace)  
**\$75,000,000** also for lease \$150,000 incl.

[www.landscope.com/124184.htm](http://www.landscope.com/124184.htm) | **Maria Cheung** 張小姐 5182 8699



**Manderly Garden**  
深水灣 文禮苑  
48 Deep Water Bay Road, Deep Water Bay  
House investment opportunity in Deep Water Bay  
深水灣邊獨特大屋，投資首選  
**3,504 s.f.** (plus 587 s.f. roof)  
**\$65,000,000**

[www.landscope.com/6527.htm](http://www.landscope.com/6527.htm) | **Maria Cheung** 6109 3862



**Manly Villa**  
淺水灣 文麗雙溪  
38 Ocean Park Road, Repulse Bay  
Under big renovation prestigious townhouse with private swimming pool  
全新翻新豪華排屋連私家游泳池  
**3,500 s.f.** (plus 1,500 s.f. garden)  
**\$120,000,000**

[www.landscope.com](http://www.landscope.com) | **Louis Wong** 黃先生 9871 6828



**Rosecliff**  
大潭 大潭道20號  
20 Tai Tam Road, Tai Tam  
Waterfront townhouse with garden and twin balconies  
海濱排屋花園及雙陽臺  
**3,980 s.f.**  
(plus 1,050 s.f. roof and 649 s.f. garden)  
**\$120,000,000** Sole Agent 獨家代理

[www.landscope.com/50071.htm](http://www.landscope.com/50071.htm) | **Rebecca Cheung** 張小姐 9021 7444



**Villa Verde**  
山頂 環翠閣  
4-18 Guildford Road, The Peak  
Boutique apartment with balcony overlooking mountain view  
山頂精緻住宅連陽臺，俯瞰翠綠山景，可租可售  
**1,200 s.f.**  
**\$60,000 incl.** also for sale \$21,000,000

[www.landscope.com/94681.htm](http://www.landscope.com/94681.htm) | **Rebecca Cheung** 張小姐 9021 7444



**43 Barker Road, The Peak**  
山頂 白加道43號  
Harbour view all year round  
山頂獨特港景住宅  
**1,873 s.f.**  
**\$90,000 incl.**

[www.landscope.com/20046.htm](http://www.landscope.com/20046.htm) | **Mark Mak** 麥先生 6838 2929



**29 Severn Road, The Peak**  
山頂 施勤道29號  
Brand new apartment with private roof on The Peak  
山頂全新裝修單位連私家天台  
**2,300 s.f.** (plus 888 s.f. roof)  
**\$150,000 incl.**

[www.landscope.com/46660.htm](http://www.landscope.com/46660.htm) | **Mary Li** 李小姐 9011 6595



**Chelsea Court**  
山頂 寶詩閣  
63 Mount Kellett Road, The Peak  
4-bedroom garden duplex with fantastic Southside sea view  
山頂四房花園複式住宅，享遼闊南區海景  
**3,116 s.f.**  
(plus 1,502 s.f. garden and 1,384 s.f. terrace)  
**\$175,000**

[www.landscope.com/46970.htm](http://www.landscope.com/46970.htm) | **Chris Law** 羅先生 6183 8388



**King's Court**  
山頂 龍庭  
5 Mount Kellett Road, The Peak  
Newly renovated garden townhouse with sweeping Southside sea view  
全新裝修花園排屋享卑道南區海景  
**3,165 s.f.** (plus 1,916 s.f. garden, roof and terrace)  
**\$220,000**

[www.landscope.com/12286.htm](http://www.landscope.com/12286.htm) | **Stella Lo** 羅小姐 9809 8570



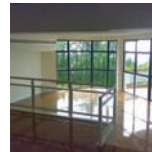
**Kenlis**  
山頂 加列山道34號  
34 Mount Kellett Road, The Peak  
Colonial style detached townhouse with private pool and garden  
山頂英式獨立大屋連私家游泳池及花園  
**3,521 s.f.** (plus 1,588 s.f. garden)  
**\$280,000**

[www.landscope.com/13537.htm](http://www.landscope.com/13537.htm) | **Yvonne Chang** 鄭小姐 8088 4666



**Stewart Terrace**  
山頂 史劍城臺  
81-95 Peak Road, The Peak  
Colonial low-rise apartment in The Peak with huge private roof  
山頂英式低密度住宅連特大私家天台，可租可售  
**2,327 s.f.** (plus 1,607 s.f. roof)  
**\$75,000** also for lease \$45,000,000 incl.

[www.landscope.com/46374.htm](http://www.landscope.com/46374.htm) | **Chris Law** 羅先生 6183 8388



**La Hacienda**  
山頂 加列山道29-33號  
29-33 Mount Kellett Road, The Peak  
Newly decorated townhouse with facilities overlooking nice views  
全新裝修排屋連住客套房設施，享翠綠山景  
**3,200 s.f.**  
**\$150,000 incl.**

[www.landscope.com/3323.htm](http://www.landscope.com/3323.htm) | **David Leung** 梁先生 9199 0672



**Strawberry Hill**  
山頂 紅莓閣  
8 Plunkett's Road, The Peak  
Colonial townhouse with spacious and practical layout in sought after location  
山頂英式排屋，間隔寬敞實用，市面難尋  
**3,136 s.f.** (plus garden)  
**\$160,000**

[www.landscope.com/25782.htm](http://www.landscope.com/25782.htm) | **Louis Wong** 黃先生 9871 6828



**Mount Austin Estate**  
山頂 山景花園別墅  
5 Mount Austin Road, The Peak  
Exclusive garden house with Southside sea view  
山頂獨特花園大屋享廣闊南區海景  
**3,757 s.f.** (plus garden)  
**\$180,000**

[www.landscope.com/24079.htm](http://www.landscope.com/24079.htm) | **Eric Wong** 黃先生 9740 3396



**2 Barker Road, The Peak**  
山頂 白加道2號  
High ceiling luxury house with Victoria Harbour view and Southside sea view  
山頂高樓豪華大屋，享盛港及南區海景  
**4,325 s.f.**  
**\$250,000**

[www.landscope.com/46174.htm](http://www.landscope.com/46174.htm) | **Chris Law** 羅先生 6183 8388



**40 Peak Road, The Peak**  
山頂 山頂道40號  
Townhouse on The Peak with full Victoria Harbour view  
山頂排屋享遼闊全港景觀  
**7,122 s.f.** (plus 3,256 s.f. garden, 1,313 s.f. roof and 298 s.f. terrace)  
**\$300,000**

[www.landscope.com/31370.htm](http://www.landscope.com/31370.htm) | **Sami Woo** 胡小姐 9493 8275



**Wealthy Heights**  
 中半山 威豪閣  
 35 Macdonnell Road, Midlevels Central  
 3-bedroom apartment with greenery view in Midlevels  
 中半山三房單位享翠綠園景，可租可售

**1,760 s.f.**  
**\$55,000 incl. also for sale \$25,000,000**

[www.landscope.com/36986.htm](http://www.landscope.com/36986.htm) David Chan 陳先生 9238 2012



**Hatton Place**  
 中半山 荷形閣  
 1A Po Shan Road, Midlevels West  
 Well decorated 3-bedroom apartment at tranquil Po Shan Road  
 實靚適宜致裝修三房單位，環境恬靜

**1,579 s.f.**  
**\$60,000 incl.**

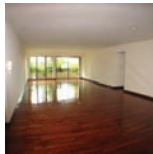
[www.landscope.com/40223.htm](http://www.landscope.com/40223.htm) Rowena Siu 蕭小姐 9348 4118



**Grand Bowen**  
 中半山 寶雲閣  
 11B Bowen Road, Midlevels Central  
 Harbour view family flat in tranquil location with facilities  
 中半山港景家庭式住宅連住客會所設施，環境寧靜怡人

**3,071 s.f.**  
**\$95,000 incl.**

[www.landscope.com/22798.htm](http://www.landscope.com/22798.htm) David Chan 陳先生 9238 2012



**Haddon Court**  
 中半山 寶雲閣  
 41C Conduit Road, Midlevels West  
 Rare find modern garden apartment on Conduit Road  
 千難萬平時尚住宅連特大花園

**2,805 s.f.**  
 (plus 1,884 s.f. terrace and 1,558 s.f. garden)  
**\$100,000 incl.**

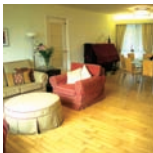
[www.landscope.com/14338.htm](http://www.landscope.com/14338.htm) Maria Cheung 張小姐 5182 8699



**Hong Villa**  
 中半山 峰景花園  
 12 Bowen Road, Midlevels Central  
 Newly decorated apartment with nice harbour view  
 全新裝修綠園景住宅，環境迷人

**1,579 s.f.**  
**\$65,000 incl.**

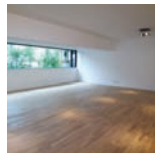
[www.landscope.com/6942.htm](http://www.landscope.com/6942.htm) Stephen Chan 陳先生 9093 3381



**Butler Tower**  
 中半山 柏麗閣  
 1-5 Boyce Road, Jardine's Lookout  
 Practical 4-bedroom apartment in sought after Jardine's Lookout  
 滿甸山罕有四房單位，間隔實用

**1,650 s.f.**  
**\$65,000 incl.**

[www.landscope.com/38287.htm](http://www.landscope.com/38287.htm) Carman Szeto 司徒小姐 6183 8339



**Fontana Garden**  
 東半山 豪園  
 1-25 Ka Ning Path, Midlevels East  
 Huge apartment with brand new decorations in convenient location  
 東半山巨型住宅配以全新裝修，交通方便，可租可售

**3,300 s.f.**  
**\$100,000 incl. also for sale \$34,000,000**

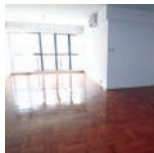
[www.landscope.com/103894.htm](http://www.landscope.com/103894.htm) Carman Szeto 司徒小姐 6183 8339



**Regent On The Park**  
 中半山 御花園  
 8A Kennedy Road, Midlevels Central  
 Conveniently located large apartment with city view  
 中半山特大城市景單位，位置優越，交通方便

**2,720 s.f.**  
**\$110,000 incl.**

[www.landscope.com/35039.htm](http://www.landscope.com/35039.htm) Teresa Fung 馮小姐 9138 1621



**Clovelly Court**  
 中半山 嘉富麗苑  
 12 May Road, Midlevels Central  
 Popular 3-bedroom family flat in quiet corner of Midlevels Central  
 中半山受歡迎三房單位，環境寧靜，可租可售

**1,925 s.f.**  
**\$72,000 incl. also for sale \$33,800,000**

[www.landscope.com/23309.htm](http://www.landscope.com/23309.htm) Stella Lo 蕭小姐 9809 8570



**Hoover Court**  
 中半山 豪華閣  
 7-9 Macdonnell Road, Midlevels Central  
 Spacious 4-bedroom apartment in Macdonnell Road  
 麥當勞道寬敞四房住宅，可租可售

**2,654 s.f.**  
**\$75,000 incl. also for sale \$38,000,000**

[www.landscope.com/37387.htm](http://www.landscope.com/37387.htm) Mira To 杜小姐 9486 1566



**Regence Royale**  
 中半山 富麗家園  
 2 Bowen Road, Midlevels Central  
 Luxuriously decorated apartment with excellent facilities in prime location  
 豪華裝修住宅連完善住客會所設施，地段尊貴，可租可售

**2,522 s.f.**  
**\$110,000 incl. also for sale \$48,000,000**

[www.landscope.com/110087.htm](http://www.landscope.com/110087.htm) Mira To 杜小姐 9486 1566



**Bowen Mansion**  
 中半山 寶雲閣  
 7C Bowen Road, Midlevels Central  
 Colonial low-rise flat with L-shaped huge balcony  
 中半山英式住宅連L型特大陽臺

**4,000 s.f.**  
**\$125,000 incl.**

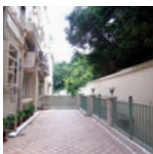
[www.landscope.com/38884.htm](http://www.landscope.com/38884.htm) Chris Law 羅先生 6183 8388



**Evergreen Villa**  
 東半山 松柏新村  
 43 Stubbs Road, Midlevels East  
 Large practical flat with green view and city view  
 東半山巨型住宅，享翠綠園景及城市景觀

**2,700 s.f.**  
**\$78,000 incl.**

[www.landscope.com/108415.htm](http://www.landscope.com/108415.htm) Sami Woo 胡小姐 9493 8275



**Clement Court**  
 中半山 松風閣  
 56-64 Mount Butler Road, Jardine's Lookout  
 Character low-rise with private terrace in tranquil neighbourhood  
 特色低密度住宅連私家平台，環境寧靜怡人

**2,200 s.f. (plus 800 s.f. terrace)**  
**\$80,000 incl.**

[www.landscope.com/23410.htm](http://www.landscope.com/23410.htm) Maria Cheung 張小姐 5182 8699

## Sensational Lifestyle 頂級享受



Award-winning cylindrical Century Tower 1 sets the bar high for luxury living with its unmatched location, landscaping, architecture and quality furnishings. To illustrate the grandeur of this 2,565 sq ft luxury residence, the sensuously crescent-shaped façade is set to become the daily "gateway" for the hectic professional, and offers residents a chance to step back and relax out of the urban buzz.

The entrance hallway walks you through the ensuite master bedroom, the living/dining area, the accompanying bedrooms and finally the kitchen. The unique interior design in the apartment reflects the passion for style, quality and comfort. The use of whites and occasional blues pay homage to the breathtaking harbour views seen through the large picture windows.

The superb location, comprehensive facilities and professional management makes Century Tower 1 different from other premier apartment developments. ■

憑藉地形環繞設計豪華的世紀大廈1座能提供與眾不同的豪華生活，位置優越，環境清幽，建築裝潢細緻高雅。這住宅佔地2,565平方呎，盡顯豪華氣派，而富美感的弧形設計為忙碌的專才提供了最佳避世之處，遠離煩囂，完全沉醉於寧靜之中。

沿着走廊會經過主人套房、客廳/飯廳、睡房，而最後是廚房。獨特的室內設計反映出住戶對品味、質素及舒適的追求。全屋採用白色為主調，偶爾抹上一點藍，映襯窗外美不勝收的海景。

世紀大廈1座擁有絕佳的地理位置，完善的設施，再加上專業的管理，令其有別於其他頂級住宅。■



**Old Peak Mansion**  
 中半山 舊山頂道5號  
 5 Old Peak Road, Midlevels Central  
 Rare spacious apartment with large balcony on Old Peak Road  
 舊山頂道間隔寬敞住宅連特大陽臺，市場罕有

**2,088 s.f.**  
**\$75,000**

[www.landscope.com/10319.htm](http://www.landscope.com/10319.htm) Eric Wong 黃先生 9740 3396



**Borrett Mansion**  
 中半山 寶德閣  
 8A-9B Bowen Road, Midlevels Central  
 Spacious and newly kitchen and bathroom with 4-bedroom layout flat and big balcony  
 寬敞新廚房四房住宅連大陽臺

**2,800 s.f.**  
**\$85,000 incl.**

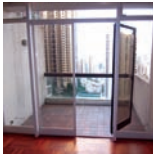
[www.landscope.com/15817.htm](http://www.landscope.com/15817.htm) Teresa Lau 劉小姐 9080 6686



**Victoria Height**  
 東半山 威利閣  
 43A Stubbs Road, Midlevels East  
 Sought after 4-bedroom apartment with harbour view on Stubbs Road  
 司徒拔道罕有四房單位，享港灣景

**2,650 s.f.**  
**\$85,000 incl.**

[www.landscope.com/31975.htm](http://www.landscope.com/31975.htm) Chris Law 羅先生 6183 8388



**May Tower 1**  
 中半山 梅苑一座  
 7 May Road, Midlevels Central  
 Rare duplex apartment for lease  
 中半山複式住宅，罕有出租

**2,850 s.f.**  
**\$85,000 incl.**

[www.landscope.com/8185.htm](http://www.landscope.com/8185.htm) David Chan 陳先生 9238 2012

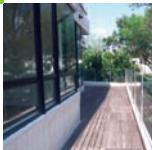
**Century Tower I**  
 中半山 世紀大廈 1座  
 1 Truncheon Path, Midlevels Central  
**2,565 s.f.**  
**\$38,000,000 also for lease \$80,000 incl.**

[www.landscope.com/30894.htm](http://www.landscope.com/30894.htm) Teresa Fung 馮小姐 9138 1621





## SOUTHSIDE Lease | 南區出租



**Banoo Villa**  
赤柱 步雲軒  
2 Tung Tau Wan Road, Stanley  
Spacious and practical low-rise flat with open kitchen in tranquil area  
寬敞實用低密度住宅樓開放式廚房，環境寧靜怡人  
**2,133 s.f.**  
**\$90,000**

[www.landscape.com/7008.htm](http://www.landscape.com/7008.htm) **Maria Cheung** 張小姐 5182 8699



**Ann Garden**  
壽臣山 安苑  
29 Shouson Hill Road, Shouson Hill  
4-bedroom duplex unit with private garden in serene neighbourhood  
四房複式住宅連私家花園環境寧靜怡人  
**2,500 s.f.**  
(plus 800 s.f. garden and 96 s.f. terrace)  
**\$125,000 incl.**

[www.landscape.com/34582.htm](http://www.landscape.com/34582.htm) **Christine Chong** 莊小姐 9648 6082



**Radcliffe**  
薄扶林 靖林  
120 Pokfulam Road, Pokfulam  
Sought after 4-ensuite duplex with sweeping sea view  
薄扶林四房複式住宅，享寧靜廣闊的海景，市面難尋，可租可售  
**3,620 s.f.**  
**\$140,000 incl.** also for sale **\$63,000,000**

[www.landscape.com/107385.htm](http://www.landscape.com/107385.htm) **Christine Chong** 莊小姐 9648 6082



**Grosse Pointe Villa**  
赤柱 赤柱村道4號  
4 Stanley Village Road, Stanley  
Stanley garden duplex with tasteful decorations  
赤柱花園複式住宅，配以品味裝修，可租可售  
**2,800 s.f.**  
(plus 504 s.f. garden and 500 s.f. terrace)  
**\$168,000 incl.** also for sale Open Offer

[www.landscape.com/109338.htm](http://www.landscape.com/109338.htm) **Mary Li** 李小姐 9011 6595



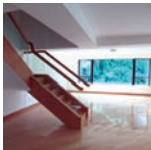
**Manderly Garden**  
深水灣 文禮苑  
48 Deep Water Bay Road, Deep Water Bay  
Townhouse with facilities in quiet Shouson Hill  
深水灣排屋連會所設施，環境恬靜怡人  
**3,504 s.f.**  
**\$180,000**

[www.landscape.com/8535.htm](http://www.landscape.com/8535.htm) **David Chan** 陳先生 9238 2012



**Le Palais**  
大潭 皇府灣  
8 Pak Pat Shan Road, Tai Tam  
Luxurious waterfront townhouse at Tai Tam with excellent facilities  
大潭豪華海濱排屋，享完善住客會所設施，可租可售  
**4,396 s.f.** (plus garden and terrace)  
**\$250,000 incl.** also for sale **\$122,000,000**

[www.landscape.com/125420.htm](http://www.landscape.com/125420.htm) **Yvonne Chang** 鄭小姐 9088 4666



**Joy Garden**  
壽臣山 曉韻花園  
13 Shouson Hill Road West, Shouson Hill  
An elegant 4-bedroom duplex apartment with greenery view  
雅緻四房複式單位，享翠綠園景  
**3,574 s.f.** (plus 1,357 s.f. roof)  
**\$105,000 incl.**

[www.landscape.com/121323.htm](http://www.landscape.com/121323.htm) **Eric Wong** 黃先生 9740 3396



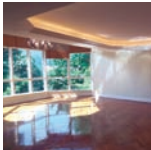
**Circle Villa**  
香軟角 環角道16號  
16 Cape Road, Chung Hom Kok  
Huge 4-bedroom sea view apartment  
香軟角巨型四房海景住宅  
**3,600 s.f.** (plus 1,000 s.f. terrace)  
**\$133,000 incl.**

[www.landscape.com/8498.htm](http://www.landscape.com/8498.htm) **Maria Cheung** 張小姐 5182 8699



**Helene Court**  
壽臣山 慕蓮閣  
14 Shouson Hill Road, Shouson Hill  
A detached townhouse with swimming pool and high privacy  
壽臣山獨立大屋連游泳池，私隱度高  
**3,555 s.f.**  
(plus 964 s.f. garden and 644 s.f. roof)  
**\$160,000**

[www.landscape.com/15619.htm](http://www.landscape.com/15619.htm) **David Chan** 陳先生 9238 2012



**Henredon Court**  
壽臣山 恒安閣  
8 Shouson Hill Road, Shouson Hill  
Huge duplex apartment in serene Shouson Hill with roof and 2 carports  
壽臣山特大複式住宅連天台，環境清靜，享雙車位  
**4,474 s.f.** (plus 1,435 s.f. roof)  
**\$170,000**

[www.landscape.com/99425.htm](http://www.landscape.com/99425.htm) **Teresa Lau** 劉小姐 9080 6686



**63 Deep Water Bay Road, Deep Water Bay**  
深水灣 深水灣道63號  
Prestigious detached house in upscale Deep Water Bay  
深水灣豪華獨立大屋，地段尊貴  
**3,479 s.f.**  
(plus 603 s.f. garden and 272 s.f. terrace)  
**\$220,000**

[www.landscape.com/33643.htm](http://www.landscape.com/33643.htm) **David Chan** 陳先生 9238 2012



**The Nautilus**  
深水灣 南灣道16A號  
16A South Bay Road, Repulse Bay  
Luxurious waterfront townhouse taking in uninterrupted Repulse Bay sea view  
豪華海濱排屋，享廣闊深水灣景觀  
**4,675 s.f.** (plus 640 s.f. roof and 80 s.f. garden)  
**\$300,000**

[www.landscape.com/27211.htm](http://www.landscape.com/27211.htm) **Yvonne Chang** 鄭小姐 9088 4666

For more listings, please go to [www.landscape.com/lease](http://www.landscape.com/lease)

We blossom by providing you with the **best** one-stop solution.



**INCORPORATION**

inCorporation Limited  
Hong Kong Head Office  
12/F Cyberport 2  
100 Cyberport Road Hong Kong  
T +852 3699 0888  
F +852 3699 0889

China Office  
15/F Plaza 66 Tower 2  
1366 Nanjing West Road Shanghai  
T +86 21 6137 6038

[www.incorp.com.hk](http://www.incorp.com.hk)

Your No. 1 Integrated Marketing Communications Partner in Hong Kong and China







**Your No.1 Integrated Marketing Communications Partner in Hong Kong & China**

*inMAGAZINE*: publisher and sole advertising representatives  
of the top luxury lifestyle publications, including *Mission Hills Magazine* and *The Key*.

[www.inmagazine.com.hk](http://www.inmagazine.com.hk)

Hong Kong Head Office: 12/F Cyberport 2, 100 Cyberport Road, Hong Kong

China Office: 15/F Plaza 66 Tower 2, 1366 Nanjing West Road, Shanghai

Marketing (852) 3699 0877 | Advertising (852) 3699 0898 | email: [marketing@incorp.com.hk](mailto:marketing@incorp.com.hk)