

select deluxe homes

# The Key

大宅®

JANUARY 2009  
Volume 51

published and distributed by

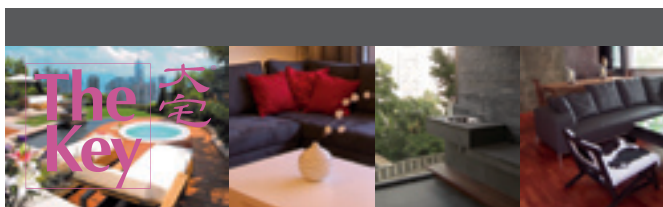
**LANDSCOPE**  
*The Specialists in Luxury Properties*

領域®



PENTHOUSE  
PANORAMA

[www.landscape.com](http://www.landscape.com)



## KeyNotes

*"You don't tell deliberate lies, but sometimes you have to be evasive."*

Margaret Thatcher

It is cliché now that the financial tsunami started in Wall Street has had caused turmoil all over the world, but the adverse effects are far from over. In the US, consumer market is badly hit after the property market collapse, and credit card woes begin to surface, which may ignite another round of credit crunch. Elsewhere in the world, major economies as well as developing countries are all bearing the brunt of the tsunami, with all countries asking for help or co-operation from international community including the World Bank.

In Hong Kong, the impact is more than manifest. Luxury property sales came to a virtual halt in the last two months. While luxury property leasing market remained active, the rentals had declined by 20% from early September. Property owners who failed to sell had no choice but to look for tenants, and this sudden surge of supply coupled with slashed rental budget of tenants across the board had pushed rents further down. As Christmas and Chinese New Year draw near (which is the traditional low season for rental market), rentals will face added pressure.

Koh Keng-shing  
ks-koh@landscape.com

(The above are an excerpt from Market Watch on [www.landscape.com](http://www.landscape.com). For the full article, please log on to [www.landscape.com/m0109.htm](http://www.landscape.com/m0109.htm))

## About The Key

The Key is a monthly publication of sales and letting listings of luxury residential properties on Hong Kong Island. It is sent to VIP clients of Landscape Realty and residents of The Peak, Southside, Mid-Levels, Kowloon Tong, Homantin and selected upmarket residential areas in Shatin, Tai Po, Clear Water Bay and Castle Peak Road. The recipients comprise the crème de la crème of Hong Kong's affluent community.

In addition to The Key, Landscape Realty sends weekly eNewsletters to clients on most update listings of luxury properties. If you wish to receive the eNewsletter, please call Loretta Lui at 3102 4818 or email to [info@landscape.com](mailto:info@landscape.com).

## How may you list your property with The Key?

If you would like to see your property listed in The Key in the next issue, you may call Loretta Lui at 3102 4818 or email to [info@landscape.com](mailto:info@landscape.com). Or you may simply fill out the space below and fax to us at 2866 0015.

Property to be listed

Asking Rental / Sale Price

Floor Area

Contact Person

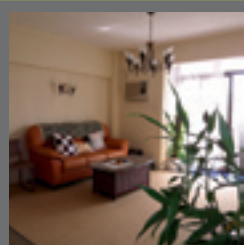
Telephone

Email

Our KeyPersons will contact you for follow-up works.

# THE PEAK SALES

山頂出售



### Villa Verde

山頂 環翠園

4-18 Guildford Road, The Peak  
Popular boutique apartment on The Peak  
受歡迎別緻山頂住宅

1,200 s.f.  
\$16,800,000

[www.landscape.com/17817.htm](http://www.landscape.com/17817.htm) | Maria Cheung 張小姐 6256 1848



### Guildford Garden

山頂 喬苑

1-3 Mansfield Road, The Peak  
Lower Peak 4-bedroom flat with spacious practical layout  
山頂寬敞四房單位，間格實用

2,400 s.f.  
\$35,000,000

[www.landscape.com/14486.htm](http://www.landscape.com/14486.htm) | Eric Wong 黃先生 9740 3396



### Montebello

山頂 濠景閣

15-17 Plantation Road, The Peak  
Newly furnished penthouse with private roof on The Peak  
山頂頂層單位連私家天台，配全新傢俬

3,140 s.f. (plus 2,129 s.f. roof)  
\$53,000,000 also for lease \$150,000 incl.

[www.landscape.com/5851.htm](http://www.landscape.com/5851.htm) | David Leung 梁先生 9199 0672



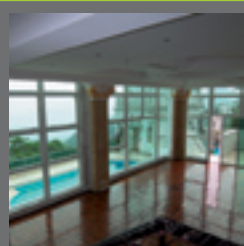
### Sunshine Villa 山頂 陽光花園

48 Mount Kellett Road, The Peak

Lovely garden house with 17 feet ceiling height  
迷人山頂花園屋，十七呎樓底

3,500 s.f.  
(plus 1,920 s.f. garden and 423 s.f. roof)  
\$60,000,000

[www.landscape.com/4082.htm](http://www.landscape.com/4082.htm) | David Leung 梁先生 9199 0672



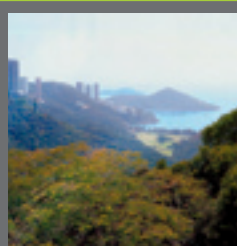
### Cheuk Nang Lookout

山頂 卓能山莊

30 Severn Road, The Peak  
Detached house with private pool and terrace  
山頂獨立洋房連私家泳池及平台

5,300 s.f.  
(plus 3,900 s.f. garden and 1,400 s.f. terrace)  
\$140,000,000 also for lease \$200,000

[www.landscape.com/2109.htm](http://www.landscape.com/2109.htm) | David Chan 陳先生 9238 2012



### Black's Link, The Peak

山頂 布力徑

Detached garden house with fantastic sea view on The Peak  
山頂獨立屋連巨型花園，俯瞰南區海景

4,000 s.f. (plus 5,700 s.f. garden)  
\$160,000,000

[www.landscape.com/18215.htm](http://www.landscape.com/18215.htm) | Stephen Chan 陳先生 9093 3381



## PENTHOUSE PANORAMA

This truly extravagant penthouse is a rare find in the high end market. Situated on the top floor of a mid-rise block on the ever sought after Magazine Gap Road, this 2,847 square feet apartment comes with a valuable private flat roof, which extends to over 2,000 square feet. The unit takes in the stunning views of the Victoria Harbour, the stretching green views of the Aberdeen Country Park and the sapphire sea beyond, a unique feature that is extremely rare in Hong Kong. The designer-decorated interior reflects the owner's discerning yet understated taste in modern opulence. The understatement echoes the building's surrounding greenery in harmony. Up on the roof, the stage is set for a 360-degree panorama of The Peak, the Harbour, the hills and the embracing ocean. Life at the top can be so enchanting!



**Cameron House**  
40 Magazine Gap Road,  
The Peak  
山頂 嘉樂苑  
2,847 s.f. (plus 2,081 s.f. roof)  
For sale by public tender  
Closing date: 15 January 2009

[www.landscape.com/13904.htm](http://www.landscape.com/13904.htm)

David Leung 梁先生 9199 0672 and Louis Wong 黃先生 9871 6828

## THE PEAK LEASE



**Stewart Terrace**  
山頂 史釗域臺  
81-95 Peak Road, The Peak  
Rare find colonial low-rise apartment with huge balcony  
英式低密度住宅連大陽臺，環境清幽怡人  
2,327 s.f.  
\$59,000 incl.

[www.landscape.com/17391.htm](http://www.landscape.com/17391.htm)

Mary Li 李小姐 9011 6595



**Chelsea Court**  
山頂 賽詩閣  
63 Mount Kellett Road, The Peak  
Luxurious 2-ensuite apartment in prime location  
豪華雙套房單位，位處優越地段  
1,522 s.f.  
\$78,000

[www.landscape.com/10857.htm](http://www.landscape.com/10857.htm)

Maria Cheung 張小姐 6256 1848

**The Mount Austin** 山頂 柯士甸山道8號



8 Mount Austin Road, The Peak  
Detached house with private garden and internal lift  
豪華佈置山頂住宅，擁有私家花園  
4,956 s.f.  
(plus 991 s.f. garden and 612 s.f. roof)  
\$200,000

[www.landscape.com/18187.htm](http://www.landscape.com/18187.htm)

David Leung 梁先生 9199 0672

**Interocean Court**  
山頂 山頂道26號



26 Peak Road, The Peak  
Rare find 5-bedroom apartment with full harbour view  
罕有五房大宅享有醉人的維港景色  
3,900 s.f. (plus 1,778 s.f. roof)  
\$250,000 incl.

[www.landscape.com/18243.htm](http://www.landscape.com/18243.htm)

Yvonne Chang 鄭小姐 9088 4666

**2 Barker Road, The Peak**  
山頂 白加道2號



Exquisite townhouse with stunning views over Victoria Harbour  
精緻排屋，享環迴維港景  
4,082 s.f.  
(plus 1,781 s.f. terrace and 526 s.f. roof)  
\$250,000

[www.landscape.com/11572.htm](http://www.landscape.com/11572.htm)

David Leung 梁先生 9199 0672

**1-9 Rosmead Road, The Peak** 山頂 樂善美道1-9號



Rare find single number garden house with terrace and garden on The Peak  
山頂獨立洋房擁有平台及花園，市場罕有  
5,887 s.f.  
(plus 2,228 s.f. terrace and 1,955 s.f. garden)  
\$270,000 incl. also for sale \$230,000,000

[www.landscape.com/14409.htm](http://www.landscape.com/14409.htm)

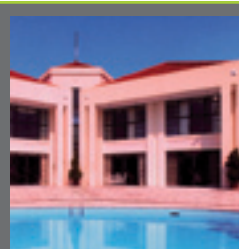
Louis Wong 黃先生 9871 6828

# THE PEAK LEASE



**Altadena**  
山頂 白加道27號  
27 Barker Road, The Peak  
Exclusive Peak duplex with a bird's eye view of Victoria Harbour  
山頂白加道巨型複式單位有全維港景觀  
4,500 s.f.  
\$300,000 incl.

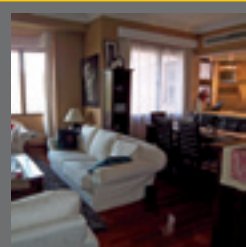
[www.landscape.com/16685.htm](http://www.landscape.com/16685.htm) | David Leung 梁先生 9199 0672



**Rare single house at Lower Peak** 山頂 罕有獨立大屋  
Single detached house with green and Southside sea view  
山頂獨立洋房俯瞰山頂綠樹叢及郊野公園，遠望南區海景  
5,750 s.f.  
\$600,000 incl. also for sale Open Offer

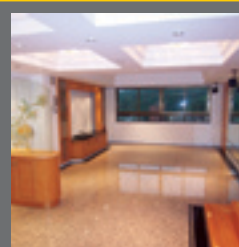
[www.landscape.com/1376.htm](http://www.landscape.com/1376.htm) | Louis Wong 黃先生 9871 6828

# SOUTHSIDE SALES



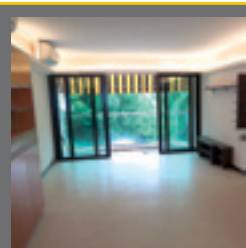
**Hong Kong Parkview**  
淺水灣 陽明山莊  
88 Tai Tam Reservoir Road, Repulse Bay  
Popular family estate with deluxe clubhouse in country park  
熱門家庭式屋苑座落郊野公園旁，享頂級會所設施  
1,235 s.f.  
\$9,800,000

[www.landscape.com/18107.htm](http://www.landscape.com/18107.htm) | Teresa Fung 馮小姐 9138 1621



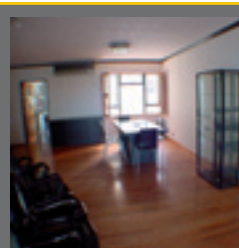
**Y Y Mansion**  
薄扶林 裕仁大廈  
96 Pok Fu Lam Road, Pokfulam  
3-bedroom flat with efficient layout in quiet Pokfulam  
間格實用三房單位，位於寧靜薄扶林  
1,750 s.f.  
\$14,800,000 also for lease \$42,000 incl.

[www.landscape.com/15544.htm](http://www.landscape.com/15544.htm) | Mira To 杜小姐 9486 1566



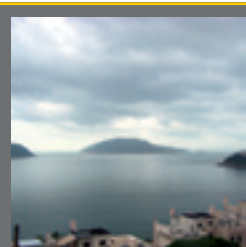
**43 Stanley Village Road,**  
Stanley 赤柱 赤柱村道43號  
Well designed and renovated low-rise with roof terrace  
全新精美裝修低密度住宅連天台  
1,454 s.f. (plus 1,033 s.f. roof)  
\$15,000,000 also for lease \$50,000 incl.

[www.landscape.com/16566.htm](http://www.landscape.com/16566.htm) | Sissy Li 李小姐 9642 6969



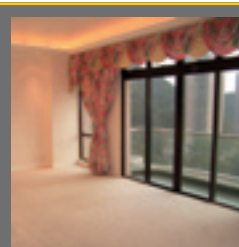
**Baguio Villa**  
薄扶林 碧瑤灣  
550 Victoria Road, Pokfulam  
Large practical 4-bedroom flat in convenient area  
寬敞實用四房單位，交通方便  
2,687 s.f.  
\$18,500,000

[www.landscape.com/14657.htm](http://www.landscape.com/14657.htm) | Christine Chong 莊小姐 9648 6082



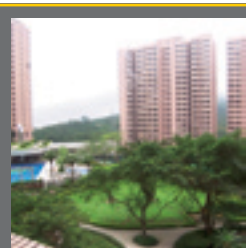
**Faber Court**  
大潭 輝百閣  
29-31 Tai Tam Road, Tai Tam  
Tai Tam mid-rise with sweeping sea view  
大潭中密度單位，享優美海景  
1,900 s.f.  
\$19,000,000 also for lease \$68,000 incl.

[www.landscape.com/15863.htm](http://www.landscape.com/15863.htm) | Mary Li 李小姐 9011 6595



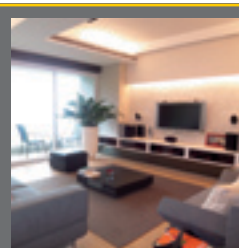
**37 Repulse Bay Road,**  
Repulse Bay  
淺水灣 淺水灣道37號  
Sea view apartment with facilities on sought after upper Repulse Bay Road  
海景單位連會所設施  
1,635 s.f.  
\$19,000,000 also for lease \$55,000 incl.

[www.landscape.com/14353.htm](http://www.landscape.com/14353.htm) | Teresa Fung 馮小姐 9138 1621



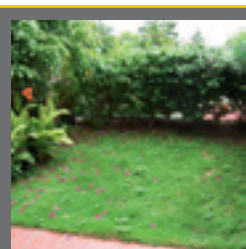
**Hong Kong Parkview**  
淺水灣 陽明山莊  
88 Tai Tam Reservoir Road, Repulse Bay  
Popular family apartment with deluxe clubhouse in Repulse Bay  
熱門家庭式屋苑，享頂級會所設施  
2,764 s.f.  
\$23,000,000 also for lease \$85,000

[www.landscape.com/806.htm](http://www.landscape.com/806.htm) | Teresa Fung 馮小姐 9138 1621



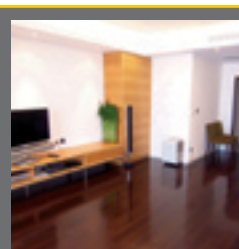
**Ridge Court**  
淺水灣 冠園  
21A-21D Repulse Bay Road, Repulse Bay  
Tastefully renovated apartment enjoying full sea view  
全海景住宅，連雅緻裝修  
2,300 s.f.  
\$27,000,000

[www.landscape.com/15591.htm](http://www.landscape.com/15591.htm) | Stella Lo 羅小姐 9809 8570



**Carmel Hill** 赤柱 海明山  
12 Carmel Road, Stanley  
Sea view townhouse with private garden in quiet Stanley  
海景排屋連私家花園，位於寧靜赤柱  
2,439 s.f.  
(plus 411 s.f. garden and 324 s.f. roof)  
\$30,000,000

[www.landscape.com/17713.htm](http://www.landscape.com/17713.htm) | Mark Mak 麥先生 6838 2929



**Repulse Bay Garden**  
淺水灣 麗景園  
18-40 Belleview Drive, Repulse Bay  
Practical 3-bedroom flat with sea view  
三房單位，間格實用，享淺水灣全景  
2,288 s.f.  
\$30,000,000

[www.landscape.com/17915.htm](http://www.landscape.com/17915.htm) | Christine Chong 莊小姐 9648 6082





**12-14 Shouson Hill Road West, Shouson Hill**  
壽臣山 壽臣山道西 12-14號  
Tastefully renovated low-rise with internal staircase to roof top  
低密度住宅連內置天台及雅致裝修，位於壽臣山  
2,400 s.f. (plus 2,400 s.f. roof)  
**\$35,000,000** also for lease \$100,000 incl.

[www.landscape.com/18190.htm](http://www.landscape.com/18190.htm) | Rowena Siu 蕭小姐 9348 4118



**Regalia Bay**  
赤柱 富豪海灣  
88 Wong Ma Kok Road, Stanley  
5-bedroom townhouse with full sea view  
五房排屋連全海景  
4,110 s.f.  
(plus 1,361 s.f. roof and 610 s.f. garden)  
**\$45,000,000**

[www.landscape.com/17863.htm](http://www.landscape.com/17863.htm) | Cecilia Fung 馮小姐 6271 2388



**Repulse Bay Heights** 淺水灣 淺水灣花園  
3 Bellevue Drive, Repulse Bay  
Newly renovated house with private swimming pool  
全新裝修住宅連私家泳池  
3,200 s.f.  
(plus 1,017 s.f. roof and 1,745 s.f. garden)  
**\$45,000,000**

[www.landscape.com/12695.htm](http://www.landscape.com/12695.htm) | Stella Lo 羅小姐 9809 8570



**Regalia Bay** 赤柱 富豪海灣  
88 Wong Ma Kok Road, Stanley  
Sea view townhouse with luxurious clubhouse  
海景排屋，設有豪華會所  
4,054 s.f.  
(plus 715 s.f. garden and 1,274 s.f. roof)  
**\$45,000,000** also for lease \$160,000 incl.

[www.landscape.com/17864.htm](http://www.landscape.com/17864.htm) | Mark Mak 麥先生 6838 2929



**Bauhinia Gardens**  
春坎角 紫荊園  
42 Chung Hom Kok Road, Chung Hom Kok  
Spacious garden house with new decorations  
間格寬敞花園大屋連全新裝修  
3,500 s.f. (plus 1,000 s.f. garden)  
**\$49,000,000**

[www.landscape.com/15740.htm](http://www.landscape.com/15740.htm) | Stephen Chan 陳先生 9093 3381



**Faber Villa**  
大潭 輝百苑  
17 Tai Tam Road, Tai Tam  
Rare find high privacy sea view flat in Tai Tam  
大潭海景巨宅環境寧靜，市場罕有  
3,200 s.f.  
**\$50,000,000** also for lease \$130,000 incl.

[www.landscape.com/15869.htm](http://www.landscape.com/15869.htm) | Mary Li 李小姐 9011 6595




**Las Pinadas** 壽臣山 朗松居  
33 Shouson Hill Road, Shouson Hill  
Newly renovated townhouse in lush green location  
全新裝修住宅，地點清幽，保值之選  
3,400 s.f.  
(plus 776 s.f. roof and 332 s.f. garden)  
**\$50,000,000**

[www.landscape.com/13369.htm](http://www.landscape.com/13369.htm) | Stella Lo 羅小姐 9809 8570



**Grosvenor Place**  
淺水灣 淺水灣道117號  
117 Repulse Bay Road, Repulse Bay  
4-bedroom apartment with fantastic Repulse Bay view  
四房單位，享無敵淺水灣海景  
2,809 s.f.  
**\$52,000,000** also for lease \$130,000 incl.

[www.landscape.com/12672.htm](http://www.landscape.com/12672.htm) | Walker Lam 林先生 9551 1077



**Stanley Knoll** 赤柱 赤柱村道42號  
42 Stanley Village Road, Stanley  
Rare sea view 4-bedroom townhouse with garden and facilities in quiet location  
四房大屋連花園及會所設施，環境寧靜，全海景，罕有放盤  
3,521 s.f. (plus 500 s.f. terrace)  
**\$60,000,000**

[www.landscape.com/18093.htm](http://www.landscape.com/18093.htm) | Christine Chong 莊小姐 9648 6082



**Panarama Terrace**  
淺水灣 蕙園  
12 South Bay Road, Repulse Bay  
Exquisite townhouse with private garden  
精緻排屋連私家花園  
3,300 s.f.  
**\$63,800,000** also for lease \$180,000 incl.

[www.landscape.com/16766.htm](http://www.landscape.com/16766.htm) | Maria Cheung 張小姐 6256 1848



**37 Repulse Bay Road, Repulse Bay**  
淺水灣 淺水灣道 37號  
Designer decorated duplex with picturesque sea view  
品味裝修複式單位，享迷人海景  
3,480 s.f.  
**\$65,000,000** also for lease \$190,000 incl.

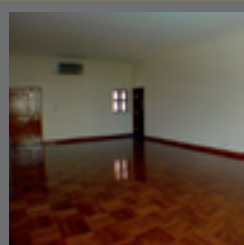
[www.landscape.com/17105.htm](http://www.landscape.com/17105.htm) | Stephen Chan 陳先生 9093 3381



**39 Deep Water Bay Road**  
深水灣 深水灣道 39號  
Rare find Deep Water Bay townhouse with new decoration overlooking stunning view  
深水灣全新裝修住宅俯瞰迷人景觀，市場罕有  
4,047 s.f.  
(plus 1,354 s.f. garden and 342 s.f. roof)  
**\$100,000,000** also for lease \$250,000 incl.

[www.landscape.com/15313.htm](http://www.landscape.com/15313.htm) | Louis Wong 黃先生 9871 6828

# SOUTHSIDE LEASE



## Elite Villas

壽臣山 怡禮苑

22 Shouson Hill Road, Shouson Hill  
3-bedroom low-rise apartment in lush greenery of Shouson Hill  
三房低密度住宅，位置清幽

1,767 s.f.  
\$49,830

[www.landscape.com/18012.htm](http://www.landscape.com/18012.htm)

David Chan 陳先生 9238 2012



## Hong Kong Parkview

淺水灣 陽明山莊

88 Tai Tam Reservoir Road, Repulse Bay  
County park 2-ensuite apartment with roof top and excellent clubhouse facilities  
兩套房單位連天台，配會所設施

2,093 s.f. (plus 1,516 s.f. roof)  
\$60,000 incl.

[www.landscape.com/8908.htm](http://www.landscape.com/8908.htm)

Sissy Li 李小姐 9642 6969



## Residence Bel-Air Phase 6

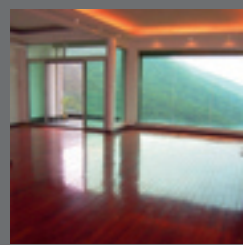
薄扶林 貝沙灣六期

Cyberport Road, Pokfulam  
Brand new 3-bedroom flat in Cyberport with excellent facilities  
豪華三房住宅連完善會所設施

1,863 s.f.  
\$60,000 incl.

[www.landscape.com/18220.htm](http://www.landscape.com/18220.htm)

Walker Lam 林先生 9551 1077



## Ridge Court

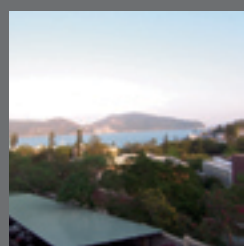
淺水灣 冠園

21A-21D Repulse Bay Road, Repulse Bay  
High-ceilinged colonial style flat with picturesque sea view  
高樓底英式住宅，坐享迷人海景

2,300 s.f.  
\$70,000 incl.

[www.landscape.com/17484.htm](http://www.landscape.com/17484.htm)

Christine Chong 莊小姐 9648 6082



## Gordon Terrace

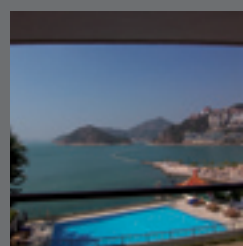
赤柱 歌敦臺

4-8A Carmel Road, Stanley  
Colonial low-rise flat with green view in quiet yet convenient location  
英式低密度住宅享翠綠園景，位處清幽地段交通方便

2,000 s.f.  
\$70,000 incl.

[www.landscape.com/18008.htm](http://www.landscape.com/18008.htm)

Eric Wong 黃先生 9740 3396



## Splendour Villa

淺水灣 雅景閣

10 South Bay Road, Repulse Bay  
Rare find beachfront 3-bedroom low-rise in good condition  
海濱低密度三房住宅，市場罕有

1,527 s.f.  
\$70,000 incl.

[www.landscape.com/14188.htm](http://www.landscape.com/14188.htm)

Teresa Fung 馮小姐 9138 1621



## Repulse Bay Villas

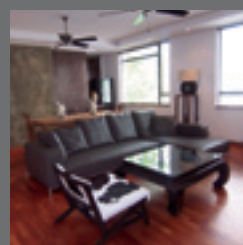
淺水灣道74-80號

74-80 Repulse Bay Road, Repulse Bay  
Colonial sea view apartment with balcony closed to the beach  
英式海景單位連陽臺，鄰近海灘

2,200 s.f.  
\$75,000 incl.

[www.landscape.com/18265.htm](http://www.landscape.com/18265.htm)

Christine Chong 莊小姐 9648 6082



## Consort Garden

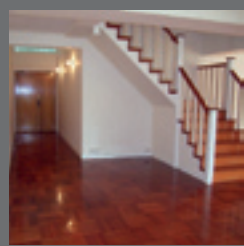
薄扶林 金碧花園

22-24 Consort Rise, Pokfulam  
Charming low-rise flat with private roof  
迷人低密度住宅，連私家天台

2,200 s.f. (plus 2,000 s.f. roof)  
\$80,000 incl. also for sale \$26,000,000

[www.landscape.com/15975.htm](http://www.landscape.com/15975.htm)

Carman Szeto 司徒小姐 8100 3893



## Joy Garden

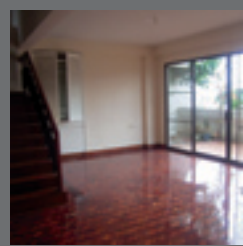
壽臣山 曉穎花園

13 Shouson Hill Road West, Shouson Hill  
An elegant 4-bedroom duplex apartment with private garden  
四房複式單位連私家花園

3,334 s.f. (plus 560 s.f. garden)  
\$93,000 incl.

[www.landscape.com/17483.htm](http://www.landscape.com/17483.htm)

David Chan 陳先生 9238 2012



## Carriana Sassoon

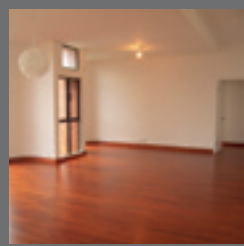
薄扶林 沙宣道41號

41 Sassoon Road, Pokfulam  
Unique and spacious house in Pokfulam  
薄扶林獨特寬敞大屋

3,000 s.f. (plus 500 s.f. terrace)  
\$95,000 incl.

[www.landscape.com/2162.htm](http://www.landscape.com/2162.htm)

Christine Chong 莊小姐 9648 6082



## Park Place

淺水灣 雅柏苑

7 Tai Tam Reservoir Road, Repulse Bay  
Prestigious apartment enjoying distant harbour view and green view  
尊貴豪宅，享維港景及園景

2,338 s.f.  
\$100,000

[www.landscape.com/17480.htm](http://www.landscape.com/17480.htm)

Cecilia Fung 馮小姐 6271 2388



## The Hacienda

淺水灣 海堤花園

90 Repulse Bay Road, Repulse Bay  
4-bedroom sea view duplex apartment with private garden  
四房海景複式單位連私家花園

2,962 s.f. (plus 654 s.f. garden)  
\$108,000 incl.

[www.landscape.com/17907.htm](http://www.landscape.com/17907.htm)

David Chan 陳先生 9238 2012





**Grand Garden**  
淺水灣 華景園  
61 South Bay Road, Repulse Bay  
Spacious 4-bedroom unit with picturesque sea view  
寬敞四房住宅，獨享迷人海景  
3,054 s.f.  
**\$110,000**

[www.landscape.com/18126.htm](http://www.landscape.com/18126.htm) | David Chan 陳先生 9238 2012



**Belvedere 春坎角 浩瀚臺**  
41 Chung Hom Kok Road, Chung Hom Kok  
Unique townhouse with green view and communal pool  
春坎角獨特排屋連翠綠景觀及泳池  
3,240 s.f.  
(plus 471 s.f. terrace and 1,081 s.f. roof)  
**\$105,000 incl.**

[www.landscape.com/17242.htm](http://www.landscape.com/17242.htm) | Yvonne Chang 鄭小姐 9088 4666



**68 Mount Davis Road, Pokfulam**  
薄扶林 摩星嶺道68號  
Newly decorated duplex with private roof and breathtaking sea view  
全新裝修複式單位連私家天台及海景  
2,900 s.f. (plus 576 s.f. roof)  
**\$120,000 incl.**

[www.landscape.com/10062.htm](http://www.landscape.com/10062.htm) | Yvonne Chang 鄭小姐 9088 4666



**24-24A Repulse Bay Road 淺水灣道24至24A號**  
Rare find colonial low-rise apartment with breathtaking sea view on upper Repulse Bay Road  
淺水灣道罕有英式低密度住宅，連廣闊海景  
2,260 s.f.  
**\$130,000**

[www.landscape.com/8766.htm](http://www.landscape.com/8766.htm) | Yvonne Chang 鄭小姐 9088 4666



**The Somerset**  
淺水灣 怡峰  
67 Repulse Bay Road, Repulse Bay  
Rare find Repulse Bay duplex apartment  
市場罕有淺水灣複式單位  
3,099 s.f.  
**\$138,000 incl.**

[www.landscape.com/14674.htm](http://www.landscape.com/14674.htm) | Maria Cheung 張小姐 6256 1848



**The Redhill House – Cedar 大潭 紅山半島 – 松柏徑**  
18 Pak Pat Shan Road, Tai Tam  
5-bedroom house in popular development with full sea view and private swimming pool  
五房大屋連全海景，位置優越連私身泳池  
3,055 s.f.  
(plus 181 s.f. terrace and 1,018 s.f. garden)  
**\$140,000 incl. also for sale \$75,000,000**

[www.landscape.com/7491.htm](http://www.landscape.com/7491.htm) | Cecilia Fung 馮小姐 6271 2388



**Belleview Place 淺水灣 寶晶苑**  
93 Repulse Bay Road, Repulse Bay  
Stylish luxury townhouse in serene location with terrace and roof  
時尚豪華大屋連天台及平台，環境寧靜  
3,619 s.f.  
(plus 455 s.f. terrace and 865 s.f. roof)  
**\$150,000 incl. also for sale \$78,000,000**

[www.landscape.com/18024.htm](http://www.landscape.com/18024.htm) | Cecilia Fung 馮小姐 6271 2388



**Ocean Bay 春坎角 海天徑15至17號**  
15-17 Horizon Drive, Chung Hom Kok  
4-ensuite waterfront house with private garden and pool  
海濱四套房大屋連私家平台及泳池  
3,690 s.f.  
(plus 2,580 s.f. garden and 942 s.f. roof)  
**\$180,000 incl. also for sale Open Offer**

[www.landscape.com/15565.htm](http://www.landscape.com/15565.htm) | Louis Wong 黃先生 9871 6828



**3 South Bay Close, Repulse Bay**  
淺水灣 南灣坊3號  
Boutique style 3-bedroom duplex with private roof  
精緻三房複式單位連私家天台  
4,400 s.f. (plus 678 s.f. roof)  
**\$185,000**

[www.landscape.com/17120.htm](http://www.landscape.com/17120.htm) | Yvonne Chang 鄭小姐 9088 4666



**Manderly Garden**  
深水灣 文禮苑  
48 Deep Water Bay Road, Deep Water Bay  
Spacious 5-bedroom townhouse in prestigious neighbourhood  
寬敞五房大屋，位置優越  
3,594 s.f. (plus 691 s.f. roof)  
**\$200,000 incl.**

[www.landscape.com/14838.htm](http://www.landscape.com/14838.htm) | Louis Wong 黃先生 9871 6828



**Carmelia**  
赤柱 赤柱村道60號  
60 Stanley Village Road, Stanley  
Huge colonial house with front yard and private garden  
寬敞英式大屋連前園及私家花園  
5,200 s.f. (plus 1,891 s.f. garden)  
**\$230,000 incl.**

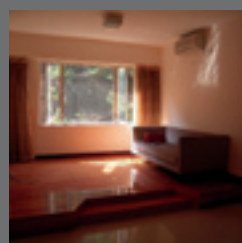
[www.landscape.com/8783.htm](http://www.landscape.com/8783.htm) | Louis Wong 黃先生 9871 6828



**Villa Corniche 淺水灣 康芷苑**  
21 South Bay Road, Repulse Bay  
Spacious garden house in serene area of Repulse Bay  
寬敞花園住宅，位於寧靜淺水灣區  
4,200 s.f.  
(plus 930 s.f. roof and 888 s.f. garden)  
**\$250,000 also for sale Open Offer**

[www.landscape.com/11774.htm](http://www.landscape.com/11774.htm) | Mark Mak 麥先生 6838 2929

# MID-LEVELS SALES



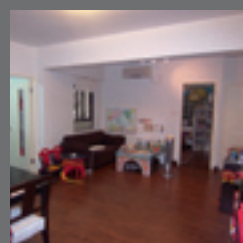
## Mandarin Villa

東半山 文華新村

10 Shiu Fai Terrace, Midlevels East  
2-bedroom apartment with green view on quiet Shiu Fai Terrace  
單牌臺兩房住宅享翠綠園景  
750 s.f.  
\$5,500,000 also for lease \$20,000 incl.

[www.landscape.com/18117.htm](http://www.landscape.com/18117.htm)

Maria Cheung 張小姐 6256 1848



## Well View Villa

東半山 瑩景閣

17 Tung Shan Terrace, Midlevels East  
3-bedroom low-rise with 2 car parks in convenient location  
低密度三房住宅連兩個車位，位於寧靜地段  
1,037 s.f.  
\$7,800,000 **SOLE AGENT 獨家代理**

[www.landscape.com/15915.htm](http://www.landscape.com/15915.htm)

David Chan 陳先生 9238 2012



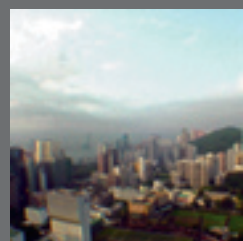
## Greycliff

東半山 翠壁

23 Tung Shan Terrace, Midlevels East  
Secluded low-rise apartment on Stubbs Road  
低密度住宅位於僻靜的司徒拔道  
1,395 s.f.  
\$8,000,000 also for lease \$30,000 incl.

[www.landscape.com/15970.htm](http://www.landscape.com/15970.htm)

Cecilia Fung 馮小姐 6271 2388



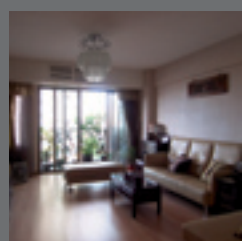
## Beverly Hill

跑馬地 比華利山

6 Broadwood Road, Happy Valley  
Practical 3-bedroom apartment with harbour view  
海景三房住宅，間格實用  
1,385 s.f.  
\$11,000,000

[www.landscape.com/18109.htm](http://www.landscape.com/18109.htm)

Walker Lam 林先生 9551 1077



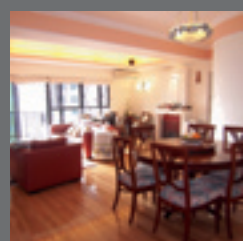
## Park Garden

東半山 柏園

6 Tai Hang Drive, Midlevels East  
Tastefully decorated 3-bedroom apartment in popular location  
三房單位連雅緻裝修，位置優越  
1,450 s.f.  
\$11,000,000

[www.landscape.com/17975.htm](http://www.landscape.com/17975.htm)

Rowena Siu 蕭小姐 9348 4118



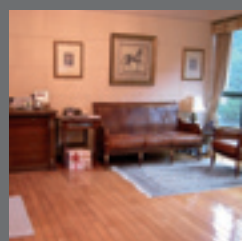
## Flora Garden

渣甸山 慧景園

7 Chun Fai Road, Jardine's Lookout  
Practical layout with nice decoration and swimming pool  
優美裝潢單位，間格實用連泳池設施  
1,533 s.f.  
\$13,000,000 also for lease \$45,000 incl.

[www.landscape.com/16681.htm](http://www.landscape.com/16681.htm)

Teresa Lau 劉小姐 9080 6686



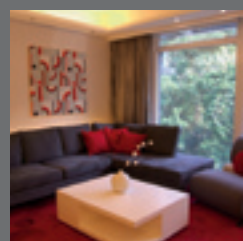
## Hillsborough Court

中半山 曉峰閣

18 Old Peak Road, Midlevels Central  
Nicely decorated apartment with excellent facilities in prime location  
精美裝修配完善設施，地點尊貴  
1,369 s.f.  
\$15,000,000

[www.landscape.com/14225.htm](http://www.landscape.com/14225.htm)

Eric Wong 黃先生 9740 3396



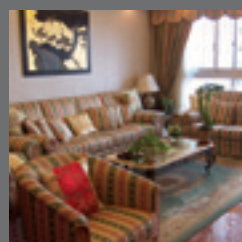
## Hatton Place

西半山 杏彤苑

1A Po Shan Road, Midlevels West  
Stylish designer decorated flat surrounded by lush greenery  
品味裝修，享環迴翠綠園景  
1,538 s.f.  
\$18,000,000 also for lease \$55,000 incl.

[www.landscape.com/17812.htm](http://www.landscape.com/17812.htm)

Rowena Siu 蕭小姐 9348 4118



## Serene Court

西半山 秀麗閣

8 Kotewall Road, Midlevels West  
4-bedroom apartment in Midlevels West with harbour view  
西半山四房住宅享維港景  
2,334 s.f.  
\$19,800,000

[www.landscape.com/17370.htm](http://www.landscape.com/17370.htm)

Sami Woo 胡小姐 9493 8275



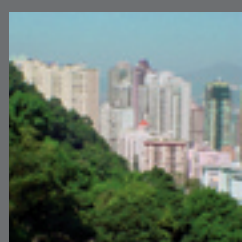
## Cavendish Heights

渣甸山 嘉雲臺

27-37 Perkins Road, Jardine's Lookout  
Famous family estate with good layout, garden view and clubhouse facilities  
受歡迎家庭住宅，配實用間格，連花園景觀及會所設施  
1,907 s.f.  
\$20,000,000

[www.landscape.com/18040.htm](http://www.landscape.com/18040.htm)

Mark Mak 麥先生 6838 2929



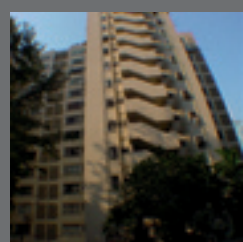
## Tregunter Tower III

中半山 地利根德閣3座

14 Tregunter Path, Midlevels Central  
Spacious practical flat in serene neighbourhood  
寬敞實用住宅環境清幽  
3,052 s.f.  
\$22,000,000

[www.landscape.com/15572.htm](http://www.landscape.com/15572.htm)

Christine Chong 莊小姐 9648 6082



## Dragon View

中半山 龍景樓

39 Macdonnell Road, Midlevels Central  
Older-style spacious practical flat on Macdonnell Road  
麥當勞道舊式寬敞住宅，間格實用  
2,500 s.f.  
\$23,500,000

[www.landscape.com/16409.htm](http://www.landscape.com/16409.htm)

Rowena Siu 蕭小姐 9348 4118





**Fontana Gardens**  
東半山 豪園  
1-25 Ka Ning Path, Midlevels East  
Huge practical 4-bedroom apartment with high efficiency on fringe of Causeway Bay  
間格寬敞四房大宅，來往銅鑼灣區十分方便  
3,000 s.f.  
**\$23,800,000**

[www.landscape.com/11542.htm](http://www.landscape.com/11542.htm) | Mira To 杜小姐 9486 1566



**Villa Veneto**  
西半山 威都閣  
3 Kotewall Road, Midlevels West  
Huge 4-bedrooms apartment with stunning harbour view in serene location  
四房巨宅連絕色的海景，位置清幽  
2,568 s.f.  
**\$25,680,000**

[www.landscape.com/12315.htm](http://www.landscape.com/12315.htm) | Walker Lam 林先生 9551 1077



**Century Tower**  
中半山 世紀大廈  
1 Tregunter Path, Midlevels Central  
Stylish apartment with large balcony  
精緻裝修住宅連大陽臺  
2,565 s.f.  
**\$26,000,000**

[www.landscape.com/13344.htm](http://www.landscape.com/13344.htm) | Sissy Li 李小姐 9642 6969



**Visalia Garden**  
中半山 蔚山花園  
48 MacDonnell Road, Midlevels Central  
Luxuriously decorated 4-bedroom flat with nice city view  
過百萬全新裝修四房單位，連迷人城市景觀  
2,195 s.f.  
**\$26,000,000 also for lease \$85,000 incl.**

[www.landscape.com/14513.htm](http://www.landscape.com/14513.htm) | Teresa Lau 劉小姐 9080 6686



**Regent On The Park**  
中半山 御花園  
9A Kennedy Road, Midlevels Central  
Designer decorated 3-bedroom apartment with clubhouse facilities close to Central  
優美裝潢三房單位連會所設施，鄰近中環  
2,720 s.f.  
**\$28,000,000**

[www.landscape.com/17640.htm](http://www.landscape.com/17640.htm) | Stephen Chan 陳先生 9093 3381



**Estoril Court**  
中半山 愛都大廈  
55 Garden Road, Midlevels Central  
Huge apartment with nice decor in Midlevels Central  
悅人裝修寬敞住宅  
3,347 s.f.  
**\$31,800,000**

[www.landscape.com/10434.htm](http://www.landscape.com/10434.htm) | Mira To 杜小姐 9486 1566



**Regence Royale**  
中半山 富匯豪庭  
2 Bowen Road, Midlevels Central  
Modern deluxe 4-bedroom apartment on tree-lined Bowen Road  
現代豪華四房單位，位於翠綠寶雲道  
2,522 s.f.  
**\$38,000,000**

[www.landscape.com/13775.htm](http://www.landscape.com/13775.htm) | Sissy Li 李小姐 9642 6969



**Rose Gardens**  
中半山 玫瑰別墅  
9 Magazine Gap Road, Midlevels Central  
Rare find colonial apartment in prime location  
市場罕有英式住宅，地點尊貴  
2,600 s.f.  
**\$38,000,000**

[www.landscape.com/14200.htm](http://www.landscape.com/14200.htm) | Sissy Li 李小姐 9642 6969



**Bowen Place**  
中半山 寶雲閣  
11A Bowen Road, Midlevels Central  
Rare find harbour view duplex with 5 bedrooms in quiet location  
位於寧靜寶雲道五房複式單位連維港景觀，市場罕見  
3,621 s.f.  
**\$55,000,000**

[www.landscape.com/15241.htm](http://www.landscape.com/15241.htm) | Stephen Chan 陳先生 9093 3381



**Grenville House** 中半山 嘉慧園  
1, 3 & 3A Magazine Gap Road, Midlevels central  
Renowned huge apartment with 4 spacious bedrooms at prime location  
四房間格寬敞巨宅，位處尊貴地段  
3,700 s.f.  
**\$60,000,000**

[www.landscape.com/18141.htm](http://www.landscape.com/18141.htm) | Sami Woo 胡小姐 9493 8275



**May Tower**  
中半山 梅苑  
5 May Road, Midlevels Central  
Spacious 4-ensuite apartment with high privacy  
寬敞四套房單位，環境清靜  
3,393 s.f.  
**\$68,000,000 also for lease \$120,000 incl.**

[www.landscape.com/18049.htm](http://www.landscape.com/18049.htm) | Eric Wong 黃先生 9740 3396



**Perkins Road, Jardine's Lookout**  
渣甸山 白建時道  
Highly sought after single detached house in Jardine's Lookout  
渣甸山獨立大屋，市面難求  
3,800 s.f. (plus 352 s.f. roof and 352 s.f. terrace and 800 s.f. garden)  
**\$100,000,000**

[www.landscape.com/15593.htm](http://www.landscape.com/15593.htm) | Mark Mak 麥先生 6838 2929

# MID-LEVELS LEASE

## Haddon Court 西半山 海天閣

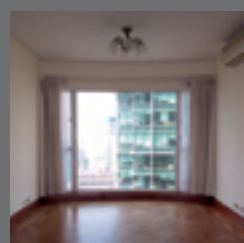


**Size:** 2,850 s.f.  
**Layout:** 4 bedrooms with 1 Ensuite  
**Appliances:** Fully fitted kitchen cabinet, 4-ring gas hob, electric oven, cooker hood, refrigerator, microwave oven, dishwasher & drying machine  
**Facilities:** Outdoor swimming pool and children's pool

**Rental: \$88,000 incl.**

[www.landscape.com/17668.htm](http://www.landscape.com/17668.htm)

Yvonne Chang 鄭小姐 9088 4666 / Sami Woo 胡小姐 9493 8275



### Starcrest

中半山 星域軒

9 Star Street, Wan Chai

Cosy 2-bedroom flat with facilities on fringe of Admiralty

舒適的兩房單位連設施，鄰近金鐘

1,033 s.f.

**\$34,000 incl.**

[www.landscape.com/18315.htm](http://www.landscape.com/18315.htm)

Carman Szeto 司徒小姐 8100 3893



### 2 Park Road, Midlevels West

西半山 柏道2號

Modern 2-bedroom apartment with private terrace and facilities

時尚兩房住宅連私家平台及設施

827 s.f.

**\$42,000 incl.**

[www.landscape.com/18178.htm](http://www.landscape.com/18178.htm)

Walker Lam 林先生 9551 1077



### Ventris Court

跑馬地 雲地利大廈

Ventris Road, Happy Valley

Attractive apartment with excellent decor

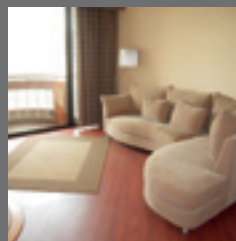
跑馬地迷人住宅配完善裝修

1,300 s.f. (plus 1,100 s.f. roof)

**\$43,000 incl. also for sale \$10,280,000**

[www.landscape.com/17985.htm](http://www.landscape.com/17985.htm)

Rowena Siu 蕭小姐 9348 4118



### Beverly Hill

跑馬地 比華利山

6 Broadwood Road, Happy Valley

Newly decorated apartment in popular family estate with open view

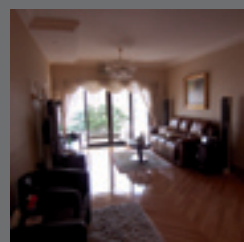
受歡迎家庭式住宅連全新裝修及開揚景觀

1,748 s.f.

**\$45,000 incl.**

[www.landscape.com/8377.htm](http://www.landscape.com/8377.htm)

Carman Szeto 司徒小姐 8100 3893



### Wah Fung Mansion

東半山 華峰閣

27 Tai Hang Road, Midlevels East

Unique spacious apartment with balcony occupying whole floor

精緻寬敞住宅連特大全層陽臺

2,087 s.f.

**\$55,000 incl. also for sale Open Offer**

[www.landscape.com/17866.htm](http://www.landscape.com/17866.htm)

Carman Szeto 司徒小姐 8100 3893



### Suncrest Tower

中半山 桂濤苑

1-11 Monmouth Terrace, Midlevels Central

Spacious apartment in convenient location

中半山寬敞單位，地點優越

2,005 s.f.

**\$59,000 incl. also for sale \$16,500,000**

[www.landscape.com/18254.htm](http://www.landscape.com/18254.htm)

Sissy Li 李小姐 9642 6969



### Evergreen Villa

東半山 松柏新村

43 Stubbs Road, Midlevels East

Penthouse apartment with roof on upper Stubbs Road

上司徒拔道頂樓單位連天台

1,750 s.f. (plus 1,200 s.f. roof)

**\$60,000 incl.**

[www.landscape.com/4786.htm](http://www.landscape.com/4786.htm)

Sami Woo 胡小姐 9493 8275



### Shuk Yuen Building

跑馬地 菽園新臺

2 Green Lane, Happy Valley

Low-rise apartment with greenery view in quiet location

低密度住宅，享翠綠景觀，地點清幽

1,900 s.f.

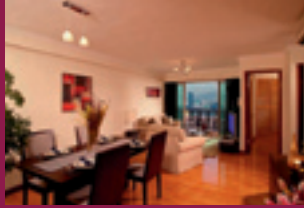
**\$60,000 incl. also for sale \$17,000,000**

[www.landscape.com/15992.htm](http://www.landscape.com/15992.htm)

Rowena Siu 蕭小姐 9348 4118



## Pacific Palisades 北角半山 寶馬山花園

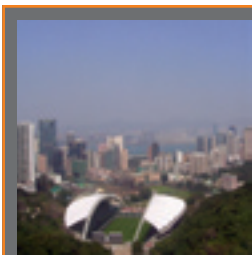


**Size:** 992 - 1,146 s.f.  
**Layout:** 3 bedrooms with 1 Ensuite  
**Appliances:** Gas cooker, cooker hood, ceiling lights, gas water heater(s), refrigerator, air-conditioners, washer/dryer (2 in 1), curtain rails, built-in wardrobe(s)  
**Facilities:** Gym room, outdoor swimming pool, children's pool, tennis court, squash court, children's playground, sauna room, golf simulator, aerobic room, steam bathroom, jacuzzi and billiards room  
**View:** Harbour view

Rentals from: \$30,800 incl.

[www.landscape.com/18291.htm](http://www.landscape.com/18291.htm)

Stella Lo 羅小姐 9809 8570 / Eric Wong 黃先生 9740 3396



### The Colonnade

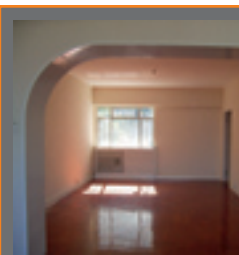
東半山 嘉禧臺

152 Tai Hang Road, Midlevels East  
 Stylish modern 3-bedroom apartment with stunning view  
 設計時尚的三房單位連絕色的景觀

1,857 s.f.  
 \$68,000 incl.

[www.landscape.com/17498.htm](http://www.landscape.com/17498.htm)

Mark Mak 麥先生 6838 2929



### Po Shan Mansion

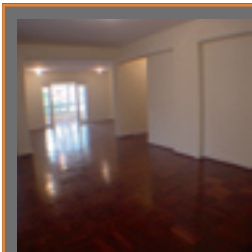
西半山 寶城大廈

10-16 Po Shan Road, Midlevels West  
 Huge 4-bedroom apartment with balcony  
 西半山巨型四房住宅連陽臺

2,800 s.f.  
 \$68,000

[www.landscape.com/17174.htm](http://www.landscape.com/17174.htm)

Mira To 杜小姐 9486 1566



### Kam Yuen Mansion

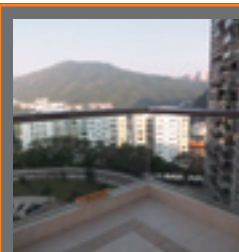
中半山 錦園大廈

3 Old Peak Road, Midlevels Central  
 Spacious colonial apartment on fringe of Central business district  
 寬敞英式住宅，鄰近中環商業區

2,500 s.f.  
 \$70,000

[www.landscape.com/7668.htm](http://www.landscape.com/7668.htm)

Mira To 杜小姐 9486 1566



### Villa Monte Rosa

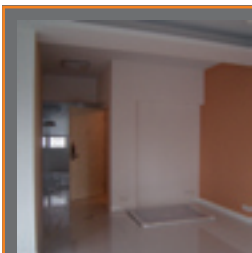
東半山 玫瑰新村

41A Stubbs Road, Midlevels East  
 Spacious practical apartment with big balcony on upper Stubbs Road  
 位於司徒拔道寬敞住宅連大陽臺，間格實用

2,300 s.f.  
 \$70,000 incl. also for sale \$26,000,000

[www.landscape.com/18042.htm](http://www.landscape.com/18042.htm)

Carman Szeto 司徒小姐 8100 3893



### Horizon Mansion

中半山 崇華大廈

102-104 Macdonnell Road, Midlevels Central  
 Newly renovated colonial apartment with big balcony  
 全新裝修英式住宅連大陽臺

2,300 s.f.  
 \$75,000 incl.

[www.landscape.com/17695.htm](http://www.landscape.com/17695.htm)

Mira To 杜小姐 9486 1566



### Tregunter Tower III

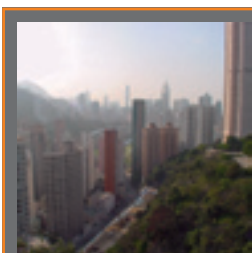
中半山 地利根德閣3座

14 Tregunter Path, Midlevels Central  
 Spacious apartment with splendid view of the city skyline  
 間格寬敞單位享輝煌的城市景觀

3,001 s.f.  
 \$80,000

[www.landscape.com/14952.htm](http://www.landscape.com/14952.htm)

Stephen Chan 陳先生 9093 3381



### Lincoln Court

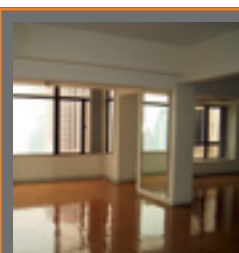
東半山 林肯大廈

56 Tai Hang Road, Midlevels East  
 Lovely colonial style mid-rise in tranquil location  
 迷人英式中密度住宅，環境清幽

2,200 s.f.  
 \$80,000 incl. also for sale \$25,300,000

[www.landscape.com/18067.htm](http://www.landscape.com/18067.htm)

Sami Woo 胡小姐 9493 8275



### Pine Court

中半山 翠峰園

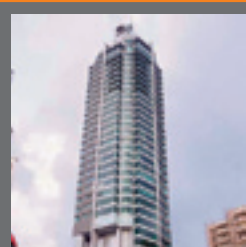
5 Old Peak Road, Midlevels Central  
 Large colonial low-rise apartment with big balcony and open city view and high ceiling  
 大型英式低密度高樓底住宅連大陽臺享開揚城市景觀

3,200 s.f.  
 \$85,000 incl.

[www.landscape.com/7024.htm](http://www.landscape.com/7024.htm)

Teresa Lau 劉小姐 9080 6686

# MID-LEVELS LEASE



## The Colonnade

東半山 嘉崙臺

152 Tai Hang Road, Midlevels East  
Bright and airy exquisite modern apartment  
精緻現代設計住宅，環境清幽

2,256 s.f.  
\$88,000 incl.

[www.landscape.com/5398.htm](http://www.landscape.com/5398.htm)

Maria Cheung 張小姐 6256 1848



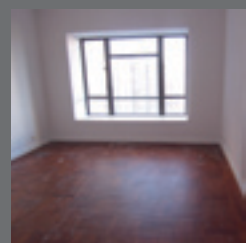
## Kennedy Terrace

中半山 堅尼地台

20 Kennedy Road, Midlevels Central  
High efficiency flat with nice decor  
enjoying fantastic view  
全新裝修連絕色的景觀，環境清幽  
2,500 s.f.  
\$90,000 incl. also for sale \$29,000,000

[www.landscape.com/18054.htm](http://www.landscape.com/18054.htm)

Walker Lam 林先生 9551 1077



## Branksome Grande

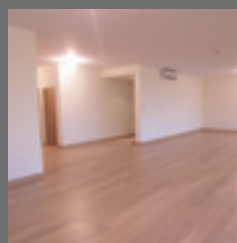
中半山 地利根德里3號

3 Tregunter Path, Midlevels Central  
Spacious 3-bedroom apartment with huge balcony and Central city view  
位於尊貴頂地段的寬敞三房住宅連大露台開揚景觀

3,030 s.f.  
\$90,000 incl.

[www.landscape.com/18255.htm](http://www.landscape.com/18255.htm)

Teresa Lau 劉小姐 9080 6686



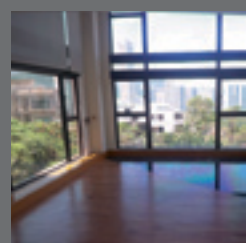
## Leon Court 東半山 利安閣

12-14 Wong Nai Chung Gap Road, Midlevels East  
Newly decorated 3-ensuite apartment in Midlevels East, overlooking garden and city views  
東半山全新裝修三套房住宅，遠望市區及翠綠景觀

2,800 s.f.  
\$95,000 incl.

[www.landscape.com/18142.htm](http://www.landscape.com/18142.htm)

Teresa Lau 劉小姐 9080 6686



## Villa De Perkins

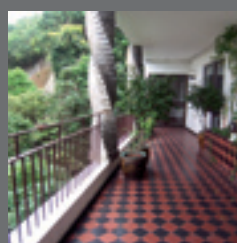
渣甸山 複式住宅

15 Perkins Road, Jardine's Lookout  
Modern mid-rise duplex with roof in Jardine's Lookout  
渣甸山時尚中密度住宅連天台

3,200 s.f. (plus 2,000 s.f. roof)  
\$100,000

[www.landscape.com/16973.htm](http://www.landscape.com/16973.htm)

Christine Chong 莊小姐 9648 6082



## Bowen Mansion

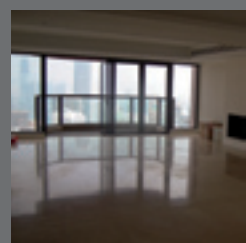
中半山 寶雲大廈

7C Bowen Road, Midlevels Central  
Huge colonial apartment on tree-lined Bowen Road  
巨型英式住宅，位於中半山尊貴地段

4,000 s.f.  
\$120,000 incl.

[www.landscape.com/15601.htm](http://www.landscape.com/15601.htm)

Mary Li 李小姐 9011 6595



## Estoril Court

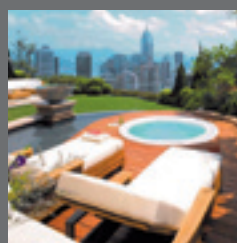
中半山 愛都大廈

55 Garden Road, Midlevels Central  
Newly decorated modern high floor flat with charming harbour view  
全新現代裝修高層住宅，享迷人維港景

3,347 s.f.  
\$120,000

[www.landscape.com/17698.htm](http://www.landscape.com/17698.htm)

Stella Lo 羅小姐 9809 8570



## Bowen's lookout

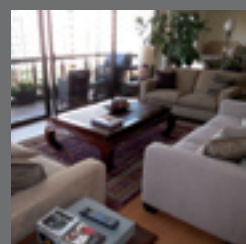
中半山 寶雲道13號

13 Bowen Road, Midlevels Central  
Modern luxurious apartment with harbour view and high privacy  
現代豪華住宅享維港景，環境寧靜

2,388 s.f.  
\$120,000

[www.landscape.com/17562.htm](http://www.landscape.com/17562.htm)

Teresa Fung 馮小姐 9138 1621



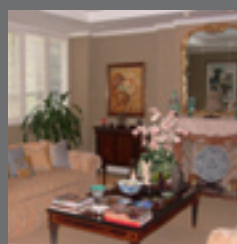
## Magazine Court 中半山 澄碧閣

5-7 Magazine Gap Road, Midlevels Central  
Sought after 4-bedroom apartment on Magazine Gap Road with stunning harbour view  
位於馬已仙峽道的四房單位享絕色的維港景，市場罕有

3,300 s.f.  
\$150,000

[www.landscape.com/18139.htm](http://www.landscape.com/18139.htm)

Carman Szeto 司徒小姐 8100 3893



## Grenville House 中半山 嘉慧園

1, 3 and 3A Magazine Gap Road, Midlevels Central  
Huge 6-bedroom duplex in renowned building on fringe of Central  
六房複式巨宅，尊貴地段，名人聚居

6,800 s.f.  
\$238,000

[www.landscape.com/18055.htm](http://www.landscape.com/18055.htm)

Christine Chong 莊小姐 9648 6082



Landscape Realty Limited C-018733

a member of Landscape Surveyors Ltd

Tel: 852-2866 0022 Fax: 852-2866 0015

Email: info@landscape.com Website: www.landscape.com

Unit 3106, 31/F, Hopewell Centre,

183 Queen's Road East, Wanchai, Hong Kong

The information, text, photos, analyses and projections contained herein are provided solely for the convenience of prospective clients and no warranty or representation as to their accuracy, correctness or completeness is made by Landscape Surveyors Limited, Landscape Realty Limited or the owners, none of whom shall have any liability or obligation with respect thereto. Interested parties should rely on their own investigations, interpretations and analyses in connection with the purchase or letting thereof.

Information has been provided to us by sources deemed reliable, but no warranty or representation is made as to its accuracy, correctness or completeness. These offerings are made subject to contract, correction of errors, omissions, prior sale or lease, change of price or terms or withdrawal from the market without notice. The contents of The Key are for reference only and do not constitute all or any part of a contract.

Copyright 2008