

select deluxe homes

The Key

大宅®

JANUARY 2008
Volume 40

published and distributed by

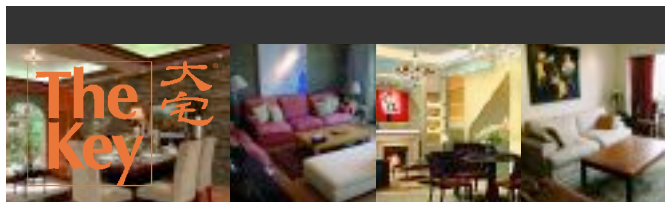
LANDSCOPE
The Specialists in Luxury Properties

領域



MAJESTIC MANSION

www.landscape.com



KeyNotes

"The glory of young men is their strength, and the beauty of old men is the gray head."

Proverbs 20:29

Hong Kong has so far been immune from all these, except a 15% setback of the stock market index. The luxury property market seems unmoved by what's happening in the financial markets, with prices making records almost daily. Most large apartments at The Peak, Southside and Midlevels Central are selling at over \$20,000 per square foot, and houses are carrying price tags of \$25,000 to \$40,000 per square foot, compared with \$15,000 and \$25,000 per square foot respectively three months ago. As stocks are drying up after a buying spree that started in September, sellers are having an upper hand in raising prices by leaps and bounds. There are a growing number of transactions with longer-than-normal completions, a sign that the price is too high that buyers are using a longer completion time to justify their purchase. Also, there appears to be more confirmed sales in the market today, as speculators are returning after 10 years. All this is reminiscent of the heydays of 1997, when the property bubble burst on the back of a high level of speculation activities and an about-turn of the economy.

Koh Keng-shing
ks-koh@landscape.com

(The above is an excerpt from Market Watch on www.landscape.com. For the full article, please log on to www.landscape.com/m0108.htm)

About The Key

The Key is a monthly publication of sales and letting listings of luxury residential properties on Hong Kong Island. It is sent to VIP clients of Landscape Realty and residents of The Peak, Southside, Mid-Levels, Kowloon Tong, Homantin and selected upmarket residential areas in Shatin, Tai Po, Clear Water Bay and Castle Peak Road. The recipients comprise the crème de la crème of Hong Kong's affluent community.

In addition to The Key, Landscape Realty sends weekly eNewsletters to clients on most update listings of luxury properties. If you wish to receive the eNewsletter, please call Loretta Lui at 3102 4818 or email to info@landscape.com.

How may you list your property with The Key?

If you would like to see your property listed in The Key in the next issue, you may call Loretta Lui at 3102 4818 or email to info@landscape.com. Or you may simply fill out the space below and fax to us at 2866 0015.

Property to be listed

Asking Rental / Sale Price

Floor Area

Contact Person

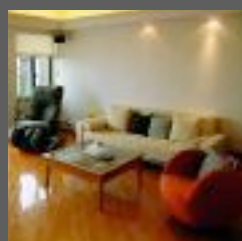
Telephone

Email

Our KeyPersons will contact you for follow-up works.

THE PEAK SALES

山頂
出售



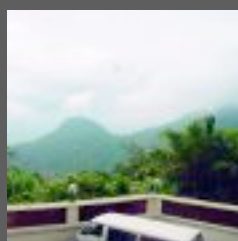
Villa Verde

山頂 環翠園

4-18 Guildford Road, The Peak
Colonial apartment on the Peak
英式山頂單位

1,505 s.f.
\$20,000,000

www.landscape.com/3016.htm | Jack Yip 葉先生 6011 8677



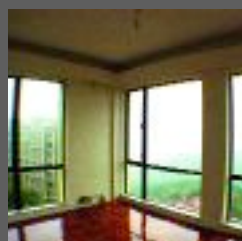
Vivian Court

山頂 瑞燕大廈

18-22 Mount Kellett Road, The Peak
Nicely decorated apartment on the Peak
雅裝山頂單位

1,450 s.f.
\$24,000,000

www.landscape.com/12769.htm | Rita Lee 李小姐 9437 0087



Kellett Heights

山頂 嘉利別墅

61A-61B Mount Kellett Road, The Peak
Nicely renovated apartment in
tranquil environment
翻新物業，環境寧靜

1,600 s.f.
\$32,000,000

www.landscape.com/1064.htm | David Leung 梁先生 9199 0672



Peak Garden

山頂 山頂花園

16-20 Mount Austin Road, The Peak
Unique apartment with full harbour view
特色全維港景單位

1,640 s.f.
\$40,000,000

www.landscape.com/11620.htm | David Leung 梁先生 9199 0672



Mountain Lodge

山頂 崑廬

44 Mount Kellett Road, The Peak
4-bedroom sea view apartment
on the Peak
四房山頂海景單位

2,600 s.f.
\$47,500,000

www.landscape.com/10797.htm | Jack Yip 葉先生 6011 8677



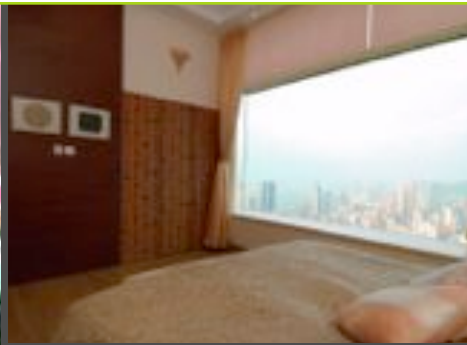
Carolina Garden

山頂 嘉樂園

20-34 Coombe Road, The Peak
Rare colonial apartment in
prestigious location
罕有英式單位，位置尊貴

2,350 s.f.
\$48,000,000

www.landscape.com/123088.htm | Maria Cheung 張小姐 8103 3862



MAJESTIC MANSION

This brand new building is perched high between Mount Cameron and Mount Gough just off Peak Road, overlooking the panorama of the renowned Victoria Harbour. Surrounded by lush greenery, this property is a rare gem in the city.

The 13-foot ceiling manifests the unique grandeur, and the full height, wall to wall glass windows showcase the magnificent views. The living room is meticulously decorated with semi-open ceiling, off-white walls and matching lounge chairs and sofa. The separate dining room is cozy and inviting, with its red walls adorned with huge paintings for the dramatic effects. The huge master bedroom and its en suite bathroom occupies the far end of the apartment, taking in the spectacular picturesque view of the Happy Valley racecourse in the back drop of the harbour. What's good for the king is good for me.

Oasis

8-12 Peak Road,
The Peak
山頂 欣怡居

2,719 s.f.
\$65,260,000

www.landscape.com/10625.htm

Sissy Li 李小姐 9642 6969



Villa Verde

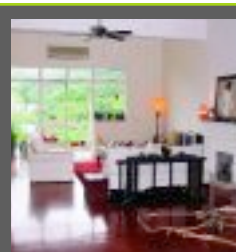
山頂 環翠園

4-18 Guildford Road, The Peak
Spacious colonial apartment on the Peak
寬敞英式山頂住宅

2,540 s.f.
\$49,800,000 also for lease \$100,000 incl.

www.landscape.com/2319.htm

Carman Szeto 司徒小姐 8100 3893



Stewart Terrace

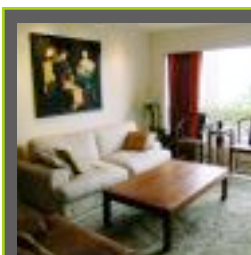
山頂 史釗域臺

81-95 Peak Road, The Peak
Colonial large flat in serene and lush
green environment
英式大單位，環境寧靜翠綠

3,103 s.f.
\$52,000,000

www.landscape.com/13029.htm

Christine Chong 莊小姐 9648 6082



Montebello

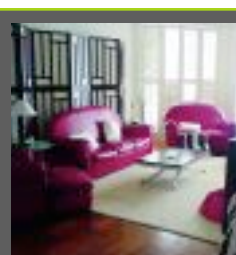
山頂 濠景閣

15-17 Plantation Road, The Peak
Duplex apartment with fantastic sea view
複式單位，享迷人海景

3,050 s.f.
\$54,000,000

www.landscape.com/5854.htm

David Leung 梁先生 9199 0672



La Hacienda - Apartment

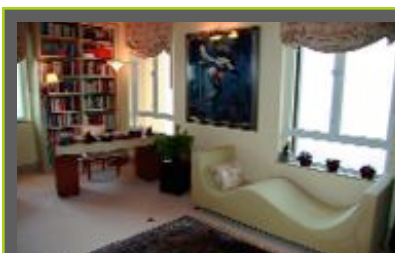
山頂 加列山道29-33號

29-33 Mount Kellett Road, The Peak
Rare colonial apartment at the Peak
罕有英式單位，位於山頂

3,100 s.f.
\$60,000,000

www.landscape.com/12453.htm

David Leung 梁先生 9199 0672



Eredine 山頂 加列山道38號

38 Mount Kellett Road, The Peak
Spacious colonial apartment with one huge
ensuite, best for single or couple
寬敞英式單位，擁有超巨套房，適合單身貴族或二人世界

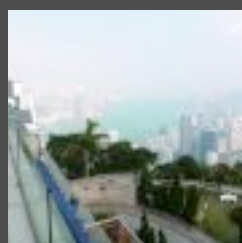
3,300 s.f.
\$60,000,000

www.landscape.com/10045.htm

David Leung 梁先生 9199 0672



THE PEAK SALES



Overthorpe

山頂 豐林閣

24-28 Mount Austin Road, The Peak
Peak townhouse in exclusive location
with a bird's eye view of Victoria Harbour
山頂排屋，位置顯赫，鳥瞰維港

2,210 s.f. (plus 735 s.f. terrace)
\$98,000,000

www.landscape.com/13331.htm

Simon Yung 翁先生 9418 5743



Ondina Heights 山頂安寧臺

62-66 Peak Road, The Peak
Luxurious European house with
peaceful sea view
豪華歐陸式洋房，享平靜海景

3,319 s.f.
(plus 572 s.f. roof and 318 s.f. terrace)
\$105,000,000

www.landscape.com/2112.htm

Teresa Fung 馮小姐 9138 1621



Mountain Lodge

山頂 崑廬

44 Mount Kellett Road, The Peak
Huge duplex apartment overlooking
Southside sea
巨型複式單位眺望南區海景

5,200 s.f.
\$108,000,000

www.landscape.com/12963.htm

Louis Wong 黃先生 9871 6828



Oasis

山頂 欣怡居

8-12 Peak Road, The Peak
Modern combined apartment with
panoramic sea view
環迴維港景相連單位

5,610 s.f.
\$134,800,000

Sissy Li 李小姐 9642 6969



Sunshine Villa

山頂 陽光花園

48 Mount Kellett Road, The Peak
Lovely Peak garden house with 17 foot ceiling
迷人山頂花園屋，擁有17呎特高樓底

3,500 s.f.
\$110,000,000



www.landscape.com/4082.htm

David Leung 梁先生 9199 0672



Abergeldie

山頂 種植道52號

52 Plantation Road, The Peak
Peak house with bird's eye view of
Victoria harbour
山頂洋房鳥瞰維港

3,655 s.f. (plus 464 s.f. garden)
\$138,000,000

www.landscape.com/12967.htm

Louis Wong 黃先生 9871 6828



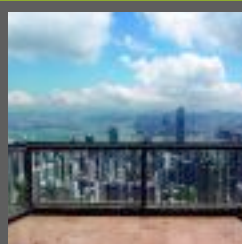
Kelletteria 山頂 加列山道71號

71 Mount Kellett Road, The Peak
Boutique townhouse with private pool
and garden
精緻排屋連私家泳池及花園

3,198 s.f.
(plus 1,370 s.f. garden and 906 s.f. roof)
\$150,000,000

www.landscape.com/12875.htm

David Leung 梁先生 9199 0672



Altadena

山頂 白加道27號

27 Barker Road, The Peak
Rare duplex penthouse with
unobstructed harbour view
罕有頂層複式享無遮擋維港景

4,500 s.f. (plus 1,435 s.f. roof)
\$168,000,000 also for lease \$200,000

www.landscape.com/11910.htm

Louis Wong 黃先生 9871 6828



4 Peel Rise, The Peak

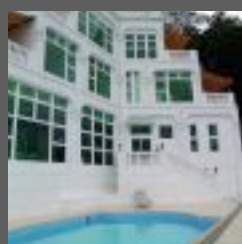
山頂 貝璣道4號

Rare garden house in quiet enclave of
the Peak
罕有花園洋房，位於山頂寧靜一隅

4,000 s.f.
(plus 1,377 s.f. garden and 1,067 s.f. roof)
\$180,000,000

www.landscape.com/1968.htm

Johnny Cheung 張先生 9278 9939



Cheuk Nang Lookout 山頂 卓能山莊

30 Severn Road, The Peak
Detached house with private pool and terrace
獨立屋連私家泳池及平台

5,300 s.f.
(plus 3,900 s.f. garden and 1,400 s.f. terrace)
\$180,000,000



www.landscape.com/2109.htm

Maria Cheung 張小姐 8103 3862

THE PEAK SALES

山頂
出售



28 Gough Hill Road, The Peak
山頂 歌賦山道28號
Brand new Peak garden house with private pool
全新山頂花園洋房擁有私家泳池

6,080 s.f. (plus 2,103 s.f. garden)
\$231,000,000 also for lease \$750,000



www.landscape.com/12794.htm | Stephen Chan 陳先生 9093 3381



11 Pollock's Path, The Peak
山頂 普樂道11號
Exclusive garden house with a bird's eye view of Victoria harbour
特色花園洋房，鳥瞰維港

4,600 s.f.
\$180,000,000

www.landscape.com/12745.htm | Rita Lee 李小姐 9437 0087



1-9 Rosmead Road, The Peak
山頂 樂善美道1-9號
Townhouse in quiet enclave of the Peak
排屋位處山頂寧靜一隅

5,136 s.f.
(plus 2,228 s.f. terrace and 1,955 s.f. garden)
\$240,000,000

www.landscape.com/1141.htm | David Leung 梁先生 9199 0672



The Belvedere 山頂 種植道51至61號
51-61 Plantation Road, The Peak
Magnificent house at the Peak with vantage view
精緻山頂洋房，位置優越，盡享靚景

7,300 s.f.
(plus 2,338 s.f. garden and 1,058 s.f. roof)
\$300,000,000

www.landscape.com/2659.htm | Sissy Li 李小姐 9642 6969



15 Gough Hill Road, The Peak
山頂 歌賦山道15號
Rare single detached house on the Peak
罕有山頂獨立屋

4,607 s.f.
\$470,000,000 also for lease \$500,000

www.landscape.com/12223.htm | Jack Yip 葉先生 6011 8677

THE PEAK LEASE

山頂
出租



Eredine 山頂 加列山道38號
38 Mount Kellett Road, The Peak
Spacious colonial apartment with spectacular sea view
寬敞英式單位，擁壯觀海景

3,300 s.f.
\$90,000

www.landscape.com/11206.htm | Louis Wong 黃先生 9871 6828



Vivian Court 山頂 瑞燕大廈
18-22 Mount Kellett Road, The Peak
Colonial apartment at the Peak
英式山頂住宅

2,100 s.f.
\$100,000 incl.

www.landscape.com/1368.htm | Mark Mak 麥先生 6838 2929



La Hacienda - Lower Townhouse 山頂 加列山道29-33號
29-33 Mount Kellett Road, The Peak
Peak garden house with a bird's eye view of southside
山頂花園洋房，鳥瞰港島南區

3,200 s.f.
\$160,000 incl.

www.landscape.com/12191.htm | Christine Chong 莊小姐 9648 6082



43 Barker Road, The Peak
山頂 白加道43號
Modern harbour view apartment on Barker Road
時尚維港景單位，位處白加道

3,820 s.f.
\$200,000

www.landscape.com/12669.htm | Stephen Chan 陳先生 9093 3381



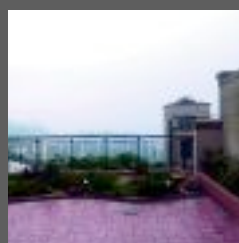
La Hacienda - Lower Townhouse 山頂 加列山道29-33號
29-33 Mount Kellett Road, The Peak
Garden house with fantastic sea view
花園洋房擁一流海景

3,200 s.f.
\$180,000 incl. also for sale \$100,000,000



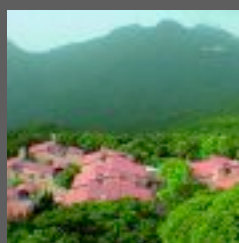
www.landscape.com/2462.htm | Louis Wong 黃先生 9871 6828

THE PEAK LEASE



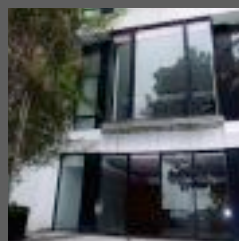
74 Mount Kellett Road, The Peak 山頂 加列山道 74 號
Rarely available sea view townhouse on the Peak
罕有放盤山頂海景排屋
4,200 s.f.
(plus 900 s.f. roof and 600 s.f. garden)
\$210,000 incl.

www.landscape.com/11843.htm | Yvonne Chang 鄭小姐 9088 4666



59 Mount Kellett Road, The Peak 山頂加列山道 59號
Stylish detached house on the Peak
風格山頂獨立屋
4,000 s.f.
\$220,000 incl.

www.landscape.com/777.htm | Louis Wong 黃先生 9871 6828



12-22 Black's Link, The Peak 山頂 布力徑12-22號
Townhouse in quiet location with four bedrooms and huge private garden
四房排屋連特大私家花園，環境寧靜
5,000 s.f.
\$300,000 also for sale \$198,000,000

www.landscape.com/10425.htm | Yvonne Chang 鄭小姐 9088 4666



Mountain Court 山頂山景大廈
11 Plantation Road, The Peak
Meticulously finished duplex apartment with private roof terrace overlooking the harbour
匠心裝修複式單位連私家天台，環迴眺望維港景色
4,256 s.f.
\$320,000

www.landscape.com/13092.htm | Mark Mak 麥先生 6838 2929



21 Severn Road, The Peak 山頂 施動道21號
Brand new detached house with private pool
全新獨立屋連私家泳池
6,000 s.f. (plus 6,000 s.f. garden)
\$380,000

www.landscape.com/1836.htm | Rita Lee 李小姐 9437 0087



The Belvedere 山頂 種植道51至61號
51-61 Plantation Road, The Peak
Detached house on the Peak with private pool overlooking the harbour
山頂獨立屋連私家泳池，眺望維港
4,800 s.f.
(plus 1,500 s.f. roof and 1,500 s.f. terrace)
\$450,000

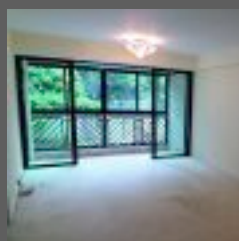
www.landscape.com/9241.htm | Christine Chong 莊小姐 9648 6082

SOUTHSIDE SALES



Greenery Garden 薄扶林怡林閣
2A Mount Davis Road, Pokfulam
Sea view apartment in tranquil location
海景單位，環境清幽
1,587 s.f.
\$12,500,000

www.landscape.com/8637.htm | Christine Chong 莊小姐 9648 6082



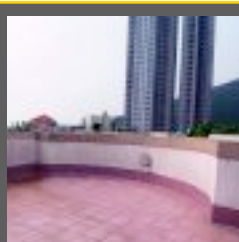
43 Stanley Village Road, Stanley 赤柱 赤柱村道43號
Nice low-rise apartment in tranquil area of Stanley
雅裝低密度單位，位於赤柱寧靜一隅
1,420 s.f.
\$12,500,000

www.landscape.com/13416.htm | Simon Yung 翁先生 9418 5743



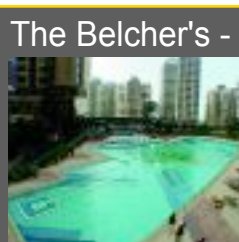
Baguio Villa 薄扶林碧瑤灣
550 & 555 Victoria Road, Pokfulam
3-bedroom family apartment with peaceful sea view
三房家庭住宅，享怡人海景
1,650 s.f.
\$13,000,000

www.landscape.com/13204.htm | Mark Mak 麥先生 6838 2929



Regent Palisades 薄扶林帝柏園
43 Bisney Road, Pokfulam
Peaceful low-rise with private roof top
寧靜低座住宅連私家天台
1,513 s.f. (plus 1,090 s.f. roof)
\$13,800,000

www.landscape.com/12207.htm | Mark Mak 麥先生 6838 2929



The Belcher's - Block 8 薄扶林寶翠園8座
89 Pok Fu Lam Road, Pokfulam
Newer apartment with clubhouse and harbour view
簇新單位備會所設施及維港景
1,462 s.f.
\$14,500,000 also for lease \$38,000 incl.
SOLE AGENT 獨家代理

www.landscape.com/8303.htm | Christine Chong 莊小姐 9648 6082



Albany Court 薄扶林雅鑾閣
51 Bisney Road, Pokfulam
3-bedroom low-rise in tranquil Pokfulam
三房低座單位，位於寧靜的薄扶林
1,795 s.f.
\$15,000,000

www.landscape.com/12451.htm | Rowena Siu 蕭小姐 9348 4118



Glamour Court
薄扶林 華麗閣

39 Consort Rise, Pokfulam
Unique low-rise with private roof in quiet location
獨特低座單位連私家天台，位置清靜

1,500 s.f. (plus 1,106 s.f. roof)
\$15,000,000

www.landscape.com/13286.htm | Teresa Lau 劉小姐 9080 6686



Grand Garden
淺水灣華景園

61 South Bay Road, Repulse Bay
Bargain of the town
全城最抵買

1,463 s.f.
\$15,000,000

www.landscape.com/2357.htm | Maria Cheung 張小姐 8103 3862



South Bay Towers
淺水灣 南灣大廈

59 South Bay Road, Repulse Bay
Cosy high-floor sea view flat in tranquil enclave
舒適高層海景單位，位置清靜

1,433 s.f.
\$15,000,000

www.landscape.com/12548.htm | Teresa Fung 馮小姐 9138 1621



Fulham Garden
薄扶林富林苑

84 Pok Fu Lam Road, Pokfulam
Practical 3-bedroom apartment commanding open sea view
實用三房單位享開揚海景

1,750 s.f.
\$16,200,000

www.landscape.com/13077.htm | Rowena Siu 蕭小姐 9348 4118



Belleview Place
淺水灣 寶晶苑

93 Repulse Bay Road, Repulse Bay
Duplex apartment in beautiful Repulse Bay
複式單位，位於優美的淺水灣

1,580 s.f.
\$20,000,000

www.landscape.com/2428.htm | Teresa Fung 馮小姐 9138 1621



Goldson Place
壽臣山金信閣

11 Shouson Hill Road West, Shouson Hill
Low-rise penthouse with internal access to private roof terrace
低密度頂層物業，內置樓梯直達私家天台

1,650 s.f. (plus 1,225 s.f. roof)
\$21,000,000

www.landscape.com/12909.htm | Christine Chong 莊小姐 9648 6082



Regent Palisades
薄扶林帝柏園

43 Bisney Road, Pokfulam
Charming low-rise with internal access to private rooftop
迷人低密度單位，內置樓梯直達私家天台

1,919 s.f. (plus 1,800 s.f. roof)
\$23,000,000

www.landscape.com/13456.htm | Rowena Siu 蕭小姐 9348 4118




Repulse Bay Garden
淺水灣麗景園

18-40 Belleview Drive, Repulse Bay
High efficiency apartment overlooking Repulse Bay beach
高實用率單位享淺水灣灘景

1,780 s.f.
\$24,500,000
SOLE AGENT 獨家代理

www.landscape.com/12489.htm | Mary Li 李小姐 9011 6595




La Mer
薄扶林 浪頤居

67-71 Bisney Road, Pokfulam
Modern waterfront low-rise in tranquil area of Pokfulam with 2 carparks
時尚海濱低座物業，位於薄扶林寧靜地段，連雙車位

2,063 s.f.
\$22,700,000

www.landscape.com/11783.htm | Teresa Lau 劉小姐 9080 6686



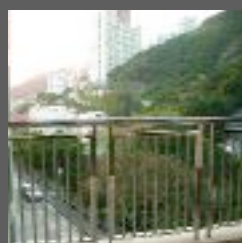
The Brentwood
淺水灣蔚峰園

11 Repulse Bay Road, Repulse Bay
Cosy sea view apartment with nice decorations on upper Repulse Bay Road
舒適海景雅裝單位，位於淺灣頭段

1,556 s.f.
\$23,000,000

www.landscape.com/13139.htm | Rita Lee 李小姐 9437 0087

SOUTHSIDE SALES



South Bay Villas

淺水灣南灣新村

4 South Bay Close, Repulse Bay
3-bedroom mid-rise flat with huge balcony
三房中座單位，連巨型露台

2,300 s.f.
\$25,000,000

www.landscape.com/9655.htm | Rowena Siu 蕭小姐 9348 4118



South Bay Palace

淺水灣南灣御苑

25-27 South Bay Close, Repulse Bay
Modern Repulse Bay mid-rise apartment
with comprehensive facilities
時尚淺水灣中座住宅，擁有多樣化設施

1,698 s.f.
\$25,000,000 also for lease \$60,000

www.landscape.com/12922.htm | David Leung 梁先生 9199 0672



53-55 Chung Hom Kok Road

春坎角春坎角道53-55號

Colonial style low-rise apartment with
three bedrooms
英式低密度三房住宅

1,800 s.f.
\$25,000,000 also for lease \$75,000 incl.

www.landscape.com/13280.htm | Mary Li 李小姐 9011 6595



37 Repulse Bay Road

淺水灣淺水灣道 37號

Modern apartment with picturesque view
of Deep Water Bay
時尚住宅享深水灣美景如畫

1,740 s.f.
\$28,000,000

www.landscape.com/12720.htm | Rita Lee 李小姐 9437 0087



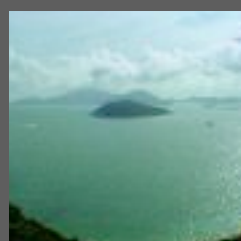
Gordon Terrace

赤柱 歌敦臺

4-8A Carmel Road, Stanley
Low-rise colonial flat with private roof
overlooking the sea
低座英式住宅連私家天台，眺望醉人海景

1,800 s.f. (plus 1,500 s.f. roof)
\$30,000,000

www.landscape.com/11117.htm | Christine Chong 莊小姐 9648 6082



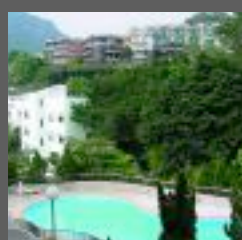
Sea Branch

春坎角海天閣

31 Horizon Drive, Chung Hom Kok
Nicely decorated low-rise apartment on
quiet Horizon Drive
雅裝低座單位，位於寧靜海天徑

1,825 s.f.
\$30,000,000 also for lease \$60,000

Mary Li 李小姐 9011 6595



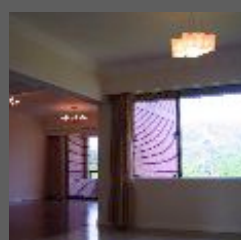
Shouson Garden

壽臣山壽山花園

6A Shouson Hill Road, Shouson Hill
Stylish duplex flat in serene location
風格獨特複式單位，環境寧靜

1,992 s.f. (plus 459 s.f. terrace)
\$30,000,000

www.landscape.com/9816.htm | Mary Li 李小姐 9011 6595



Hong Kong Parkview - Tower 18

淺水灣陽明山莊18座眺景台

Large 4-bedroom apartment with partial
harbour view and lush green view
四睡房大單位，享部份維港景及怡人綠景

2,708 s.f.
\$30,800,000

www.landscape.com/13017.htm | Jack Yip 葉先生 6011 8677



Villa Helvetia

淺水灣雲濤別墅

69 Repulse Bay Road, Repulse Bay
Rare colonial apartment with
fascinating sea view
罕有英式單位享迷人海景

2,200 s.f.
\$31,000,000

www.landscape.com/9515.htm | Maria Cheung 張小姐 8103 3862



Ruby Court

淺水灣嘉麟閣

55 South Bay Road, Repulse Bay
Nice sea view apartment in
quiet environment
迷人海景單位，環境寧靜

2,200 s.f.
\$32,000,000

www.landscape.com/10331.htm | Teresa Fung 馮小姐 9138 1621



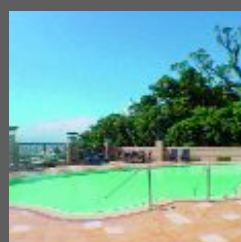
Woodgreen Estate

壽臣山壽山村道5號

5 Shouson Hill Road, Shouson Hill
Unique low-rise with large garden terrace
in serene neighbourhood
獨特低座單位連特大花園平台，環境寧靜

1,600 s.f. (plus 2,000 s.f. garden)
\$33,000,000

www.landscape.com/12744.htm | Sissy Li 李小姐 9642 6969



Royalton I

薄扶林豪峰 I

118 Pok Fu Lam Road, Pokfulam
Spacious duplex with sweeping
Western sea view
寬敞複式享遼闊西區海景

3,250 s.f.
\$33,800,000

www.landscape.com/3854.htm | Christine Chong 莊小姐 9648 6082



Pine Crest
淺水灣松苑
65 Repulse Bay Road, Repulse Bay
Nicely decorated 4-bedroom flat overlooking Deep Water Bay
雅裝四房單位享深水灣美景
2,250 s.f.
\$36,000,000

www.landscape.com/13012.htm | Christine Chong 莊小姐 9648 6082



Carmel Hill
赤柱 海明山
12 Carmel Road, Stanley
Mediterranean style sea view house with private garden
地中海風格海景洋房，擁有私家花園
2,395 s.f. (plus 406 s.f. garden)
\$37,000,000

www.landscape.com/2845.htm | Johnny Cheung 張先生 9278 9939



3 Consort Rise, Pokfulam
薄扶林 金粟街3號
Townhouse in excellent condition at tranquil Pokfulam
排屋位於薄扶林清靜地段，室內裝修狀況一流
2,800 s.f.
\$37,000,000

www.landscape.com/13455.htm | Rowena Siu 蕭小姐 9348 4118




Faber Court
大潭 輝百閣
29-31 Tai Tam Road, Tai Tam
Full sea view 4-bedroom apartment on Tai Tam waterfront
大潭海濱四房單位，享全海景
2,250 s.f.
\$38,000,000

www.landscape.com/10366.htm | Mary Li 李小姐 9011 6595



Celestial Garden
淺水灣詩禮花園
5 Repulse Bay Road, Repulse Bay
4-bedroom flat on upper Repulse Bay Road in peaceful surrounding
淺灣頭段四房住宅，環境寧靜
2,375 s.f.
\$39,000,000

www.landscape.com/12793.htm | Jack Yip 葉先生 6011 8677



Hillgrove 春坎角壁如花園
18 Cape Drive, Chung Hom Kok
Large and spacious townhouse in quiet Chung Hom Kok
寬敞排屋位於春坎角
3,000 s.f.
(plus 895 s.f. roof and 700 s.f. garden)
\$43,000,000

www.landscape.com/13143.htm | Teresa Lau 劉小姐 9080 6686



Hong Kong Parkview Tower 15
淺水灣陽明山莊15座摘星樓
88 Tai Tam Reservoir Road, Repulse Bay
3-ensuite bedroom apartment with splendid views
三套房住宅，景色壯觀
2,611 s.f.
\$44,000,000 also for lease \$100,000 incl.

www.landscape.com/12986.htm | Christine Chong 莊小姐 9648 6082



33 Cape Road, Chung Hom Kok 春坎角環角道33號
Brand new garden townhouse close to Stanley
全新花園排屋，鄰近赤柱
3,147 s.f.
(plus 764 s.f. garden and 423 s.f. roof)
\$51,100,000

www.landscape.com/12566.htm | Simon Yung 翁先生 9418 5743



Le Palais
大潭 皇府灣
8 Pak Pat Shan Road, Tai Tam
Waterfront garden residence with comprehensive facilities
臨海花園住宅，擁有多樣化設施
3,271 s.f. (plus 596 s.f. garden)
\$52,000,000

www.landscape.com/12535.htm | Stephen Chan 陳先生 9093 3381



Stanley Knoll
赤柱 赤柱村道42號
42 Stanley Village Road, Stanley
Spacious sea view house on the hill
寬敞海景洋房，居高臨下
3,521 s.f. (plus 520 s.f. terrace)
\$52,000,000

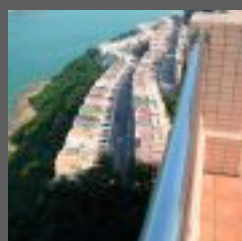
www.landscape.com/3077.htm | Christine Chong 莊小姐 9648 6082



The Somerset
淺水灣怡峰
67 Repulse Bay Road, Repulse Bay
Duplex overlooking Deep Water Bay
複式單位眺望深水灣
2,464 s.f.
\$53,000,000

www.landscape.com/10654.htm | Rita Lee 李小姐 9437 0087

SOUTHSIDE SALES



The Redhill Peninsula - Apartment 大潭紅山半島

18 Pak Pat Shan Road, Tai Tam
Unique penthouse duplex with nice decorations at Tai Tam waterfront
特色雅裝頂層複式，位於大潭海濱
3,423 s.f. (plus 1,261 s.f. roof)
\$55,000,000 also for lease \$200,000 incl.

www.landscape.com/12832.htm Teresa Fung 馮小姐 9138 1621

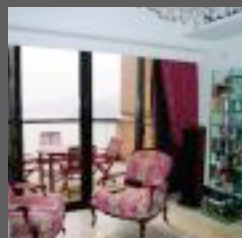
Hong Kong Parkview - Tower 18



淺水灣陽明山莊18座眺景台

88 Tai Tam Reservoir Road, Repulse Bay
Well-decorated 4 bedroom unit with sea view and mountain view
良好裝修四房單位，享有海景及山景
2,708 s.f. (plus 1,962 s.f. roof)
\$58,000,000

www.landscape.com/12163.htm Teresa Fung 馮小姐 9138 1621



Ruby Court

淺水灣 嘉麟閣

55 South Bay Road, Repulse Bay
Prestigious penthouse duplex with private roof top
尊貴頂層複式單位，連私家天台
2,790 s.f. (plus 565 s.f. roof)
\$58,000,000

www.landscape.com/12338.htm Stephen Chan 陳先生 9093 3381



Repulse Bay Heights

淺水灣淺水灣花園

3 Bellevue Drive, Repulse Bay
Garden townhouse with nice decor in the heart of Repulse Bay
雅裝花園排屋，位於淺水灣中心地帶
3,200 s.f. (plus 1,745 s.f. garden)
\$59,000,000 also for lease \$160,000

www.landscape.com/13236.htm Sissy Li 李小姐 9642 6969

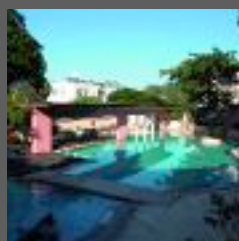


Regalia Bay

赤柱 富豪海灣

88 Wong Ma Kok Road, Stanley
Luxurious townhouse with sweeping sea view
豪華排屋享遼闊海景
4,089 s.f. (plus 1,317 s.f. roof)
\$60,000,000 also for lease \$150,000 incl.

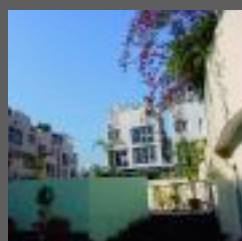
www.landscape.com/12058.htm Mary Li 李小姐 9011 6595



Stanley Court 赤柱海灣園

9 Stanley Mound Road, Stanley
Nicely decorated garden house close to beach with 2 carparks
雅裝花園洋房，鄰近海灘，連雙車位
2,669 s.f.
(plus 617 s.f. roof and 452 s.f. garden)
\$60,000,000

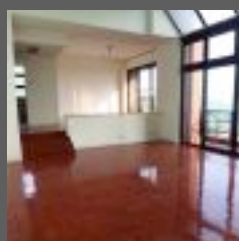
www.landscape.com/13230.htm Teresa Lau 劉小姐 9080 6686



The Hazelton 壽臣山橡園

6 Shouson Hill Road, Shouson Hill
Distinguished family house with private garden
尊貴洋房連私家花園，大家庭之選
3,195 s.f.
(plus 671 s.f. roof and 520 s.f. garden)
\$60,000,000

www.landscape.com/13237.htm Sissy Li 李小姐 9642 6969



The Somerset

淺水灣怡峰

67 Repulse Bay Road, Repulse Bay
Duplex apartment overlooking Repulse Bay and Deep Water Bay
複式住宅眺望淺水灣及深水灣
3,099 s.f.
\$60,000,000

www.landscape.com/12660.htm Teresa Fung 馮小姐 9138 1621



South Bay Palace

淺水灣南灣御苑

25-31 South Bay Close, Repulse Bay
Penthouse duplex in tranquil location
頂層複式單位，環境寧靜
3,401 s.f.
\$61,220,000

www.landscape.com/13292.htm Simon Yung 翁先生 9418 5743



Las Pinadas

壽臣山朗松居

33 Shouson Hill Road, Shouson Hill
Quality townhouse in tranquil Shouson Hill
優質排屋，位處寧靜的壽臣山
3,382 s.f. (plus 777 s.f. garden)
\$67,700,000

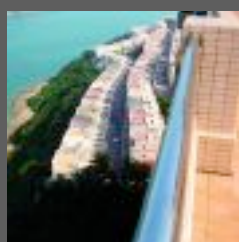
www.landscape.com/13369.htm Simon Yung 翁先生 9418 5743



45 Island Road, Deep Water Bay

深水灣香島道 45 號
Exclusive townhouse in prestigious location
獨特排屋，地點顯赫
2,705 s.f.
(plus 755 s.f. garden and 552 s.f. roof)
\$62,000,000

www.landscape.com/12926.htm Teresa Fung 馮小姐 9138 1621



The Redhill Peninsula - Cedar Drive 大潭紅山半島- 松柏徑

18 Pak Pat Shan Road, Tai Tam
Tai Tam waterfront townhouse in popular development
大潭臨海排屋，位處著名屋苑
3,055 s.f. (plus 1,398 s.f. garden)
\$63,000,000

www.landscape.com/13060.htm Teresa Fung 馮小姐 9138 1621



Las Pinadas
壽臣山 朗松居
33 Shouson Hill Road, Shouson Hill
High quality 4-bedroom townhouse in serene neighbourhood
優質四房排屋，位於寧靜地段
3,424 s.f. (plus 778 s.f. roof)
\$65,000,000 also for lease \$150,000

www.landscape.com/12682.htm | Carman Szeto 司徒小姐 8100 3893



Grosvenor Place
淺水灣淺水灣道117號
117 Repulse Bay Road, Repulse Bay
Modern high-rise in the heart of Repulse Bay with extensive views
時尚單位，位處淺水灣心臟地帶，享遼闊景觀
2,809 s.f.
\$68,000,000

www.landscape.com/13358.htm | Simon Yung 翁先生 9418 5743



The Redhill Peninsula - Palm Drive 大潭 紅山半島 棕櫚徑
18 Pak Pat Shan Road, Tai Tam
Waterfront townhouse with private pool and garage
臨海排屋，擁有私家泳池及車房
3,055 s.f. (plus 1,839 s.f. garden)
\$68,000,000

www.landscape.com/13220.htm | Yvonne Chang 鄭小姐 9088 4666



Repulse Bay Heights 淺水灣 淺水灣花園
3 Belleview Drive, Repulse Bay
Newly renovated house with private swimming pool
翻新洋房擁有私家泳池
4,457 s.f.
(plus 1,745 s.f. garden and 1,017 s.f. roof)
\$68,000,000

www.landscape.com/12695.htm | Rita Lee 李小姐 9437 0087



L'Harmonie 赤柱 葆琳居
3 Stanley Mound Road, Stanley
Newly renovated garden townhouse close to Stanley beach
新近裝修花園排屋，鄰近赤柱海灘
3,557 s.f.
(plus 1,179 s.f. garden and 895 s.f. roof)
\$70,000,000

www.landscape.com/13145.htm | Christine Chong 莊小姐 9648 6082



56 Repulse Bay Road
淺水灣淺水灣道56號
Waterfront duplex with roof taking in expansive view of Repulse Bay
海濱複式單位連天台，擁特闊淺水灣灘景
3,281 s.f. (plus 874 s.f. roof)
\$75,000,000

www.landscape.com/12279.htm | Teresa Fung 馮小姐 9138 1621



37 Tung Tau Wan Road, Stanley
赤柱 東頭灣道37號
Waterfront townhouse with private garden and indoor pool
海濱排屋享私家花園及室內泳池
3,300 s.f. (plus 600 s.f. garden)
\$75,000,000

www.landscape.com/10620.htm | Mary Li 李小姐 9011 6595



Pacific View
大潭 浪琴園
38 Tai Tam Road, Tai Tam
Duplex penthouse in prestigious estate with panoramic sea view
頂層複式，著名屋苑，享環迴海景
3,913 s.f. (plus 647 s.f. terrace)
\$78,260,000 also for lease \$160,000

www.landscape.com/10571.htm | Teresa Lau 劉小姐 9080 6686



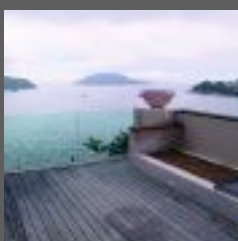
Villa Rosa 大潭 玫瑰園
88 Red Hill Road, Tai Tam
Deluxe hilltop garden house with sweeping sea view
豪華花園屋，居高臨下，享遼闊海景
3,960 s.f.
(plus 453 s.f. roof and 907 s.f. garden)
\$80,000,000

www.landscape.com/12928.htm | Maria Cheung 張小姐 8103 3862



1 Shouson Hill Road East
壽臣山壽臣山道東1號
Exclusive townhouse in serene location
特色排屋，環境寧靜
4,331 s.f.
\$82,000,000

www.landscape.com/12897.htm | Jack Yip 葉先生 6011 8677



Rosecliff 大潭 大潭道20號
20 Tai Tam Road, Tai Tam
Prestigious waterfront garden townhouse with private garage
尊貴臨海花園排屋擁私家車房
3,980 s.f.
(plus 1,050 s.f. roof and 649 s.f. garden)
\$85,000,000 also for lease \$230,000 incl.

www.landscape.com/9235.htm | Johnny Cheung 張先生 9278 9939



Villa Corniche 淺水灣康芷苑
21 South Bay Road, Repulse Bay
Spacious garden house in serene area of Repulse Bay
寬敞花園洋房，位於淺水灣寧靜地段
4,200 s.f.
(plus 930 s.f. roof and 888 s.f. garden)
\$88,000,000

www.landscape.com/11774.htm | Jack Yip 葉先生 6011 8677

SOUTHSIDE SALES



The Beachfront

淺水灣壁池

7 Bellevue Drive, Repulse Bay
Rare townhouse with full sea view
罕有排屋享有全海景

3,047 s.f. (plus 904 s.f. garden)
\$90,000,000

www.landscape.com/13183.htm David Leung 梁先生 9199 0672



Turtle Cove

大潭龜背灣

60 Tai Tam Road, Tai Tam
Tai Tam waterfront townhouse with
picturesque views
大潭海濱排屋，風景如畫

4,002 s.f.
\$95,000,000

www.landscape.com/12014.htm Johnny Cheung 張先生 9278 9939



Villa Rosa

大潭 玫瑰園

88 Red Hill Road, Tai Tam
Prestigious garden house with
brilliant sea view
尊貴花園洋房享優美海景

4,018 s.f.
\$95,000,000

www.landscape.com/12362.htm Christine Chong 莊小姐 9648 6082

Hong Kong Parkview - Tower 10



淺水灣陽明山莊 10座環翠軒

88 Tai Tam Reservoir Road, Repulse Bay
Huge penthouse with four large ensuite
bedrooms in meticulous interior design
巨型頂層物業，擁四大套房，精細裝修佈置

5,544 s.f.
\$96,000,000

www.landscape.com/10741.htm Louis Wong 黃先生 9871 6828



56 Repulse Bay Road

淺水灣淺水灣道56號

Repulse Bay waterfront duplex with
private terrace
淺水灣海濱複式連私家平台

3,201 s.f. (plus 383 s.f. terrace)
\$100,000,000

www.landscape.com/11786.htm Mary Li 李小姐 9011 6595



Villa Corniche 淺水灣康芷苑

21 South Bay Road, Repulse Bay
Luxuriously decorated garden house in
tranquil Repulse Bay
豪裝花園屋，位於清靜的淺水灣

3,480 s.f.
(plus 1,409 s.f. garden and 913 s.f. roof)
\$100,000,000

www.landscape.com/12640.htm Maria Cheung 張小姐 8103 3862



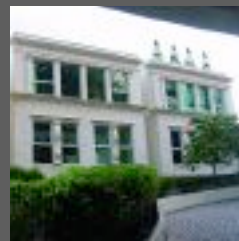
Manly Villa

淺水灣文麗雙築

38 Ocean Park Road, Repulse Bay
Full sea view garden detached house in
exclusive location
全海景花園獨立屋，尊貴地段

3,500 s.f. (plus 3,378 s.f. garden)
\$120,000,000

www.landscape.com/12786.htm Johnny Cheung 張先生 9278 9939



12 Tai Tam Road, Tai Tam

大潭大潭道 12 號

Exclusive waterfront garden house with
pool and unobstructed sea view
特色海濱花園屋連泳池及無遮擋海景

5,200 s.f. (plus 2,652 s.f. garden)
\$130,000,000

www.landscape.com/12941.htm Maria Cheung 張小姐 8103 3862



110 Repulse Bay Road

淺水灣淺水灣道110號

Townhouse with private garage,
garden and swimming pool
洋房連私家車房、花園及泳池

6,150 s.f.
(plus 2,753 s.f. garden and 934 s.f. roof)
\$220,000,000

www.landscape.com/13442.htm Christine Chong 莊小姐 9648 6082



Island Grove

深水灣香島道40號

40 Island Road, Deep Water Bay
Prestigious residence at Deep Water
Bay waterfront
尊貴住宅位於深水灣海濱

5,080 s.f. (plus 423 s.f. garden)
\$228,000,000

www.landscape.com/13229.htm Sissy Li 李小姐 9642 6969

4-10 Bellevue Drive, Repulse Bay



淺水灣 麗景道4-10號

Rare, huge detached house with private
garden and carport overlooking Repulse
Bay panorama
罕有巨型獨立屋備私家花園及車房，眺望淺灣環迴景色

9,000 s.f. (plus 2,960 s.f. garden)
\$300,000,000

www.landscape.com/12683.htm Johnny Cheung 張先生 9278 9939



15 South Bay Road, Repulse Bay 淺水灣 南灣道15號

Rare and unique single detached house
on tranquil South Bay Road
罕有獨特獨立屋，位於寧靜之南灣道

8,000 s.f. (plus 6,751 s.f. garden)
\$355,000,000

www.landscape.com/12795.htm Christine Chong 莊小姐 9648 6082



8A Stanley Beach Road, Stanley

赤柱赤柱灘道8A號

Newly renovated townhouse with garden on Stanley beach
翻新洋房連花園，位於赤柱海灘旁

4,360 s.f. (plus 2,192 s.f. garden)
Open Offer



www.landscape.com/12674.htm

Louis Wong 黃先生 9871 6828

SOUTHSIDE LEASE



South Bay Towers

淺水灣 南灣大廈

59 South Bay Road, Repulse Bay
Apartment in a quiet environment with private terrace
位置清靜住宅，設私家平台

1,433 s.f. (plus 239 s.f. terrace)
\$50,000

www.landscape.com/3731.htm

Mary Li 李小姐 9011 6595



Shouson Garden

壽臣山壽山花園

6A Shouson Hill Road, Shouson Hill
Low-rise 3-bedroom apartment in Shouson Hill
低密度三房單位，位處壽臣山

1,598 s.f.
\$60,000

www.landscape.com/11467.htm

Mary Li 李小姐 9011 6595



Cypresswaver Villa

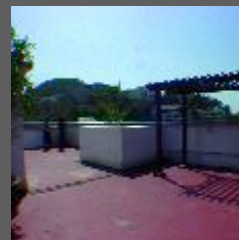
春坎角 柏濤小築

32 Cape Road, Chung Hom Kok
Nicely decorated garden duplex close to Stanley Market
雅裝花園複式，鄰近赤柱市場

2,200 s.f. (plus 580 s.f. garden)
\$80,000 incl. also for sale \$32,000,000

www.landscape.com/13063.htm

Yvonne Chang 鄭小姐 9088 4666



Ann Garden

壽臣山安苑

29 Shouson Hill Road, Shouson Hill
Colonial low-rise with lush green view
英式低密度住宅，環境翠綠

2,500 s.f. (plus around 1,300 s.f. roof)
\$85,000

www.landscape.com/11558.htm

Yvonne Chang 鄭小姐 9088 4666



Beaconsfield Court

壽臣山 碧麗閣

7 Shouson Hill Road, Shouson Hill
Stylish low-rise flat with private roof top
風格低座物業，擁有私家天台

1,650 s.f. (plus 1,650 s.f. roof)
\$85,000

www.landscape.com/10821.htm

Yvonne Chang 鄭小姐 9088 4666



Gordon Terrace

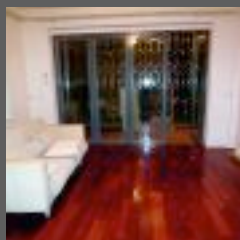
赤柱 歌敦臺

4-8A Carmel Road, Stanley
Colonial style low-rise apartment with huge balcony
英式風格低座單位連巨型露台

2,000 s.f.
\$85,000 incl.

www.landscape.com/11493.htm

Mary Li 李小姐 9011 6595



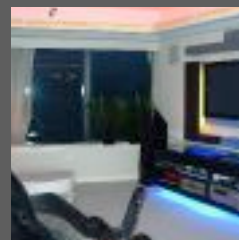
Low-rise on Bisney Road, Pokfulam

薄扶林 碧荔道低密度住宅

Modern design low-rise flat with private terrace and big balcony in lush greenery
時尚設計低座單位，設私家平台及大露台，環境翠綠
2,200 s.f. (plus 400 s.f. terrace)
\$85,000 incl.

www.landscape.com/13363.htm

Carman Szeto 司徒小姐 8100 3893



La Mer

薄扶林浪頤居

67-71 Bisney Road, Pokfulam
Rare sea view low-rise in tranquil surroundings
有海景低密度住宅，環境寧靜

2,063 s.f.
\$88,000

www.landscape.com/13471.htm

Yvonne Chang 鄭小姐 9088 4666



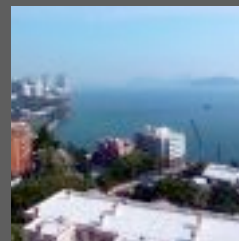
8-10 Headland Road, Repulse Bay

淺水灣赫蘭道8-10號

Unique low-rise overlooking Chung Hom Kok beach
獨特低密度住宅，眺望春坎角海灘
2,100 s.f.
\$90,000

www.landscape.com/5098.htm

Maria Cheung 張小姐 8103 3862



Villas Sorrento

薄扶林御海園

64-66 Mount Davis Road, Pokfulam
Modern sea view duplex in tranquil location
時尚海景複式，地點寧靜

2,257 s.f.
\$95,000 incl.

www.landscape.com/13262.htm

Mark Mak 麥先生 6838 2929

SOUTHSIDE LEASE



Evergreen Garden

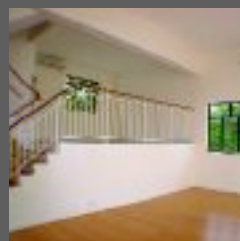
壽臣山松柏花園

Garden duplex in lush green Shouson Hill
花園複式位處翠綠的壽臣山

2,106 s.f.
\$100,000 incl.

www.landscape.com/11650.htm

Mary Li 李小姐 9011 6595



1 Horizon Drive, Chung Hom Kok

春坎角海天徑1號

5-bedroom townhouse with private terrace
五睡房排屋連私家平台

3,300 s.f.
\$100,000 incl.

www.landscape.com/1809.htm

Maria Cheung 張小姐 8103 3862



Park Place

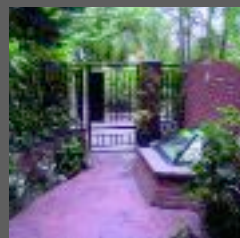
淺水灣雅柏苑

7 Tai Tam Reservoir Road, Repulse Bay
Newly renovated large apartment on upper
Repulse Bay Road with harbour view
翻新大單位，淺灣頭段，享維港景

2,288 s.f.
\$100,000 incl.

www.landscape.com/12261.htm

Rita Lee 李小姐 9437 0087



Banyan Villas

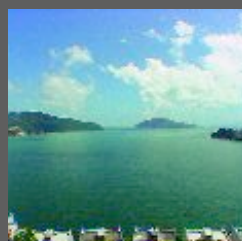
赤柱榕蔭園

9 Stanley Village Road, Stanley
Stylish townhouse with private yard
and roof
風格排屋擁有私家花園及天台

2,500 s.f.
\$125,000

www.landscape.com/13454.htm

Yvonne Chang 鄭小姐 9088 4666



Bluewater

大潭 大潭道25號

25 Tai Tam Road, Tai Tam
Prestigious apartment with 4 bedrooms
enjoying full sea view
尊貴全海景四房單位

2,500 s.f.
\$125,000 incl.

www.landscape.com/13275.htm

Mary Li 李小姐 9011 6595



3 Repulse Bay Road

淺水灣淺水灣道 3 號

Luxurious 4-bedroom apartment
with lovely
豪華四房住宅享一流海景

2,078 s.f.
\$132,000

www.landscape.com/13088.htm

Sissy Li 李小姐 9642 6969



Fortuna Court

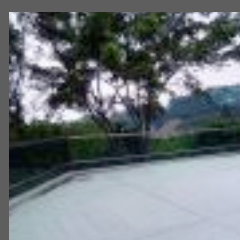
淺水灣福慧大廈

25 Repulse Bay Road, Repulse Bay
Spacious apartment with golf course view
and sea view
寬敞單位擁高爾夫球場景及醉人海景

2,857 s.f. (plus 2,300 s.f. roof)
\$138,000

www.landscape.com/13024.htm

Teresa Fung 馮小姐 9138 1621



Horizon Crest

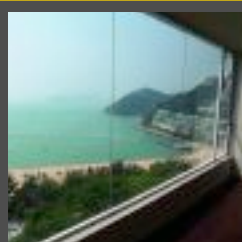
赤柱赤柱村道22號

22 Stanley Village Road, Stanley
Stylish garden townhouse with nice
facilities close to Stanley beach
風格獨特花園排屋擁一流設施，鄰近赤柱海灘

2,800 s.f.
\$145,000 incl.

www.landscape.com/12687.htm

Yvonne Chang 鄭小姐 9088 4666



Repulse Bay Mansions

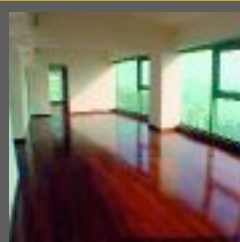
淺水灣淺水灣道113號

113 Repulse Bay Road, Repulse Bay
Large colonial low-rise flat with full view of
Repulse Bay beach
英式低座大單位享淺水灣全灣景

2,600 s.f.
\$150,000 incl.

www.landscape.com/12685.htm

Simon Yung 翁先生 9418 5743



Roylton II

薄扶林豪峰 II

116 Pok Fu Lam Road, Pokfulam
Rare 6-bedroom duplex with
unobstructed sea view
罕有六房複式享無遮擋海景

3,247 s.f.
\$150,000

www.landscape.com/11221.htm

Carman Szeto 司徒小姐 8100 3893



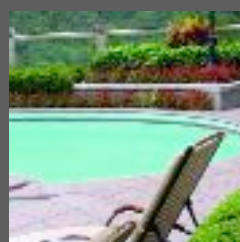
Stanley Court 赤柱 海灣園

9 Stanley Mound Road, Stanley
Private garden penthouse in family
development
私家花園排屋位處家庭屋苑

2,669 s.f.
\$150,000 incl.

www.landscape.com/3660.htm

Mary Li 李小姐 9011 6595



8 Deep Water Bay Road

深水灣深水灣道 8 號

Exclusive sea view house in upscale Deep
Water Bay
尊貴海景洋房，位處深水灣顯赫地段

3,000 s.f.
\$160,000

www.landscape.com/12884.htm

Teresa Lau 劉小姐 9080 6686



Pacific View
大潭 浪琴園
38 Tai Tam Road, Tai Tam
Unique sea view penthouse with roof terrace and full clubhouse facilities
獨特海景頂層複式連天台平台及完善會所設施
3,393 s.f. (plus 393 s.f. roof)
\$160,000
www.landscape.com/13150.htm Yvonne Chang 鄭小姐 9088 4666



Redhill Peninsula, The Apartments
大潭 紅山半島
18 Pak Pat Shan Road, Tai Tam
Rooftop penthouse duplex with serene sea view
頂層複式連天台，享寧靜怡人海景
3,433 s.f. (plus 1,061 s.f. garden)
\$160,000
www.landscape.com/13034.htm Yvonne Chang 鄭小姐 9088 4666



5 Headland Road, Repulse Bay
淺水灣赫蘭道 5 號
Newly renovated garden duplex in secluded area
翻新花園複式，自成一國
3,200 s.f. (plus 2,000 s.f. garden)
\$165,000
www.landscape.com/13051.htm Yvonne Chang 鄭小姐 9088 4666



Henredon Court
壽臣山恆安閣
8 Shouson Hill Road, Shouson Hill
Huge duplex apartment in serene Shouson Hill
巨型複式單位，位處寧靜的壽臣山
4,474 s.f. (plus 1,435 s.f. roof)
\$165,000
www.landscape.com/12305.htm Yvonne Chang 鄭小姐 9088 4666



1 Shouson Hill Road East
壽臣山 壽臣山道東1號
Quality 4-bedroom townhouse in green and quiet location
優質四房排屋，四周翠綠寧靜
4,331 s.f. (plus 1,099 s.f. garden)
\$170,000
www.landscape.com/12474.htm Christine Chong 莊小姐 9648 6082



Casa Del Sol
春坎角昭陽花園
33 Ching Sau Lane, Chung Hom Kok
Garden house with comprehensive facilities in quiet enclave
花園洋房擁有多樣化設施，環境寧靜
3,339 s.f.
\$185,000
www.landscape.com/11161.htm Yvonne Chang 鄭小姐 9088 4666



Grand Garden
淺水灣 華景園
61 South Bay Road, Repulse Bay
Rare sea view penthouse with private roof terrace
罕有海景頂層連私家天台平台
4,333 s.f.
\$195,000
www.landscape.com/11759.htm Louis Wong 黃先生 9871 6828



Residence Bel-Air House
薄扶林貝沙灣洋房
8 Cyberport Road, Pokfulam
Brand new townhouse with full clubhouse facilities
全新排屋擁完善會所設施
4,669 s.f.
\$220,000
www.landscape.com/13209.htm Carman Szeto 司徒小姐 8100 3893

DO YOU KNOW

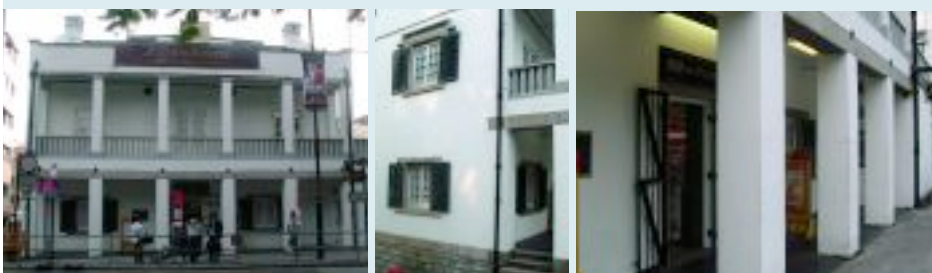
Old Stanley Police Station 舊赤柱警署

The Old Stanley Police Station was constructed in 1859 and is now the oldest surviving police station building in the territory. The Army, during the early years, used the station from time to time in conjunction with the police because of its strategic position as the most southerly outpost on Hong Kong Island. During the Japanese Occupation, the Japanese Gendarmerie used the station as a local headquarters and a mortuary was built onto the building. After the war, the building reverted to its original use as police station until 1974. Since then it had been used as a sub-office of the Southern District Office and a restaurant. It now becomes a supermarket.

舊赤柱警署建於一八五九年，是本港現存最古老的警署建築。警署早期作為港島最南端的前哨站，戰略地位重要，因此常供警隊及英軍聯合使用。二次大戰期間日軍曾徵用為分區總部，並加建殮房。戰後恢復用作警署，直至一九七四年。後由南區政務處分處使用，曾用作餐廳，現為超級市場。



Information provided by Antiquities and Monuments Office, Leisure and Cultural Services Department



SOUTHSIDE LEASE



Carmelia

赤柱 赤柱村道60號

60 Stanley Village Road, Stanley
Huge colonial house with front yard and private garden
英式大屋擁有前園及私家花園

4,600 s.f. (plus 1,155 s.f. garden)
\$250,000 also for sale Open Offer

www.landscape.com/9534.htm | Johnny Cheung 張先生 9278 9939



70 Deep Water Bay Road

深水灣深水灣道70號

Rarely available Deep Water Bay townhouse
罕有放盤深水灣排屋

4,140 s.f. (plus 2,959 s.f. garden)
\$270,000

www.landscape.com/13073.htm | Sami Woo 胡小姐 9493 8275

MID-LEVELS SALES



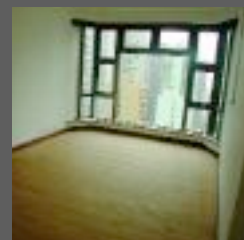
Cherry Crest

西半山翠麗軒

3 Kui In Fong, Midlevels West
New flat in very quiet but convenient enclave
簇新單位，位置方便寧靜

1,106 s.f.
\$7,600,000 SOLE AGENT 獨家代理

www.landscape.com/6141.htm | Mary Li 李小姐 9011 6595



Palatial Crest

西半山輝煌豪園

3 Seymour Road, Midlevels West
Conveniently located modern apartment with nice fittings and finishes
位置方便時尚住宅，幽雅裝修及優良廚浴設備

975 s.f.
\$9,200,000 SOLE AGENT 獨家代理

www.landscape.com/13120.htm | Christine Chong 莊小姐 9648 6082



San Francisco Tower

跑馬地金山花園

35 Ventris Road, Happy Valley
Newly renovated 3-bedroom apartment with lush green view in the heart of Happy Valley
翻新三房單位，享綠翠景觀，位於跑馬地中心地帶

1,050 s.f.
\$10,400,000

www.landscape.com/13103.htm | Simon Yung 翁先生 9418 5743



The Grand Panorama I

西半山嘉兆臺

10 Robinson Road, Midlevels West
Renowned development with splendid Victoria Harbour view in convenient location
著名屋苑，位置方便，享壯觀維港景

1,076 s.f.
\$11,000,000

www.landscape.com/13106.htm | Maria Cheung 張小姐 8103 3862



Broom Garden

跑馬地蟠龍苑

1 Broom Road, Happy Valley
Low-rise apartment with private terrace
低密度單位連私家平台

1,207 s.f. (plus 306 s.f. terrace)
\$11,300,000

www.landscape.com/8555.htm | Teresa Lau 劉小姐 9080 6686



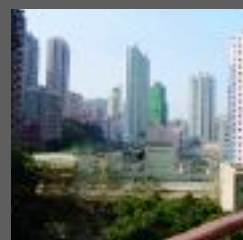
Holland Garden

跑馬地康蘭苑

56 Blue Pool Road, Happy Valley
High privacy 3-bedroom flat in quiet corner of Happy Valley
高私隱度三房單位，位於跑馬地寧靜一隅

1,506 s.f.
\$11,500,000

www.landscape.com/13125.htm | Stephen Chan 陳先生 9093 3381



2 Park Road, Midlevels West

西半山 柏道2號

Modern 2-bedroom flat with private terrace
時尚兩房單位連私家平台

1,040 s.f. (plus 608 s.f. terrace)
\$11,500,000

www.landscape.com/13211.htm | Mark Mak 麥先生 6838 2929



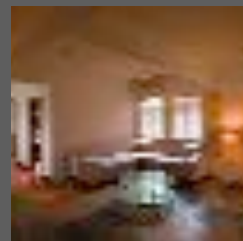
Starcrest

金鐘星域軒

9 Star Street, Admiralty
High quality modern apartment on fringe of Admiralty
優質時尚物業，金鐘近在咫尺

850 s.f.
\$11,500,000

www.landscape.com/6665.htm | Carman Szeto 司徒小姐 8100 3893



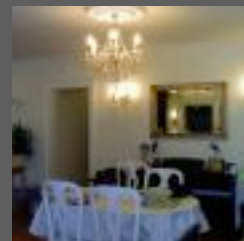
50 Blue Pool Road, Happy Valley

跑馬地藍塘道 50號

Newly decorated 2-bedroom penthouse flat in the heart of Happy Valley
全新裝修兩房頂層單位，位處跑馬地中心地段

1,200 s.f. (plus 1,200 s.f. roof)
\$12,000,000

www.landscape.com/13427.htm | Mira To 杜小姐 9486 1566



The Broadville

跑馬地樂活臺

4 Broadwood Road, Happy Valley
Family flat on Broadwood Road with easy access to Causeway Bay
樂活道家庭住宅，瞬間即達銅鑼灣

1,487 s.f.
\$13,000,000

www.landscape.com/13377.htm | Simon Yung 翁先生 9418 5743



Scenic Garden
西半山 福苑
9 Kotewall Road, Midlevels West
Nicely fitted apartment on quite neighbourhood of Midlevels West
雅裝單位，位處西半山清靜地段
1,534 s.f.
\$13,000,000

www.landscape.com/13451.htm Rita Lee 李小姐 9437 0087



5G Bowen Road, Midlevels Central
中半山寶雲道5G號
Colonial low-rise on Bowen Road
英式低座物業，位於寶雲道
1,500 s.f.
\$13,800,000

www.landscape.com/12553.htm Sissy Li 李小姐 9642 6969




Evergreen Court
跑馬地 翠苑
71-73A Blue Pool Road, Happy Valley
Tastefully decorated low-rise in quiet neighbourhood of Happy Valley
品味裝修低座住宅，位於清靜跑馬地地段
1,800 s.f.
\$15,300,000

www.landscape.com/13062.htm Christine Chong 莊小姐 9648 6082




Swiss Towers
東半山瑞士花園
113 Tai Hang Road, Midlevels East
Practical 3-bedroom apartment with harbour view
實用三房維港景單位
1,600 s.f.
\$16,000,000

www.landscape.com/12742.htm Stephen Chan 陳先生 9093 3381



47-49 Blue Pool Road, Happy Valley 跑馬地 藍塘道47-49號
Charming low-rise flat with nice decor
迷人低座單位，精緻裝修
1,800 s.f.
\$15,800,000



www.landscape.com/11420.htm Rowena Siu 蕭小姐 9348 4118



Green Lane Court
跑馬地 筭鍵閣
130-140 Blue Pool Road, Happy Valley
Practical low-rise with 4 good sized bedrooms in Happy Valley
跑馬地實用低密度住宅，四房兩睡房
2,080 s.f.
\$16,000,000

www.landscape.com/12596.htm Christine Chong 莊小姐 9648 6082



Amber Garden
中半山柏苑
70-72 Kennedy Road, Midlevels Central
Conveniently located apartment on fringe of Wanchai
位置方便，鄰近灣仔
1,732 s.f.
\$18,300,000

www.landscape.com/12734.htm Christine Chong 莊小姐 9648 6082



Wing Hong Mansion
中半山 永康大廈
60-62 MacDonnell Road, Midlevels Central
Good value apartment with private terrace
具價值物業，設有私人平台
1,700 s.f. (plus 900 s.f. terrace)
\$19,000,000 also for lease \$65,000 incl.

www.landscape.com/11370.htm Teresa Lau 劉小姐 9080 6686



Elm Tree Towers
渣甸山偷富大廈
8-10 Chun Fai Road, Jardine's Lookout
Spacious apartment in Jardine's Lookout
渣甸山寬敞單位
2,028 s.f.
\$19,500,000 also for lease \$37,000

www.landscape.com/8135.htm Jack Yip 葉先生 6011 8677



New Haven Court
渣甸山 衛信道1-11號
1-11 Wilson Road, Jardine's Lookout
Charming colonial low-rise in Jardine's Lookout
渣甸山迷人英式低座單位
1,800 s.f.
\$20,000,000

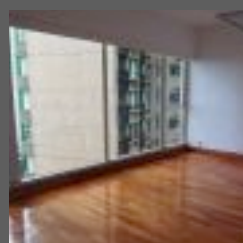
www.landscape.com/13171.htm Carman Szeto 司徒小姐 8100 3893



Wah Fung Mansion
東半山華峰閣
27 Tai Hang Road, Midlevels East
Spacious whole-floor unit with balcony
寬敞全層單位連露台
2,087 s.f.
\$20,000,000 also for lease \$60,000

www.landscape.com/11039.htm Carman Szeto 司徒小姐 8100 3893

MID-LEVELS SALES



Valverde

中半山蔚皇居

11 May Road, Midlevels Central
Deluxe flat in tranquil surroundings with easy access to CBD
豪華單位，環境寧靜，瞬間即達中區

1,373 s.f.
\$20,600,000

www.landscape.com/12345.htm | Teresa Fung 馮小姐 9138 1621



Lincoln Court

東半山林肯大廈

156 Tai Hang Road, Midlevels East
Beautiful colonial mid-rise in convenient location
美輪美奐英式中座單位，位置方便

1,900 s.f.
\$22,000,000 also for lease \$70,000 incl.

www.landscape.com/12291.htm | Sami Woo 胡小姐 9493 8275



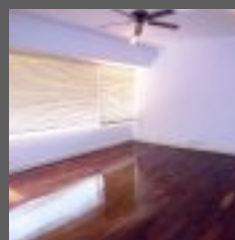
Medallion Heights

西半山金徽閣

45 Conduit Road, Midlevels West
Penthouse apartment with private roof on Conduit Road
頂層物業連私家天台，位於干德道

1,900 s.f.
\$22,000,000

www.landscape.com/11546.htm | Sami Woo 胡小姐 9493 8275



Serene Villa

渣甸山寧苑

41-45 Perkins Road, Jardine's Lookout
Bright and airy low-rise with nice decorations
光猛通爽低密度雅裝住宅

1,650 s.f.
\$23,000,000 also for lease \$63,000 incl.

www.landscape.com/13349.htm | Mark Mak 麥先生 6838 2929



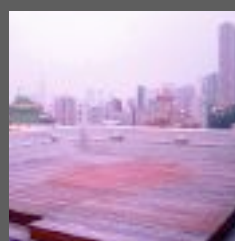
Ventris Place

跑馬地雲地利台

19-23 Ventris Road, Happy Valley
Large and practical 4-bedroom in good condition with racecourse view
實用四房大單位，狀況優良，享馬場景

2,121 s.f.
\$23,000,000

www.landscape.com/13457.htm | Mark Mak 麥先生 6838 2929

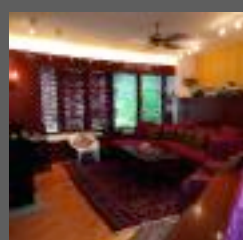


10 Briar Avenue, Happy Valley

跑馬地比雅道10號
Boutique low-rise apartment with private roof in quiet location
精緻低座單位連私家天台，環境寧靜

2,000 s.f. (plus 1,600 s.f. roof)
\$24,000,000

www.landscape.com/8804.htm | Sami Woo 胡小姐 9493 8275



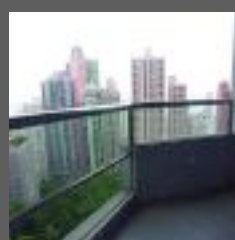
Tregunter Tower 3

中半山地利根德閣3座

14 Tregunter Path, Midlevels Central
Designer decorated spacious apartment with full clubhouse facilities
品味裝修，寬敞單位，會所設備齊全

2,020 s.f.
\$24,000,000

www.landscape.com/12837.htm | Teresa Lau 劉小姐 9080 6686



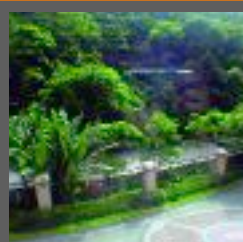
Serene Court

西半山秀麗閣

8 Kotewall Road, Midlevels West
4-bedroom spacious apartment in quiet location
四房寬敞單位，環境寧靜

2,334 s.f.
\$25,000,000

www.landscape.com/12603.htm | Sissy Li 李小姐 9642 6969



Tavistock 2

中半山騰皇居

10A Tregunter Path, Midlevels Central
Prestigious apartment in tree-lined neighbourhood
尊貴住宅，環境翠綠

1,730 s.f.
\$25,000,000 also for lease \$65,000

www.landscape.com/12420.htm | Teresa Lau 劉小姐 9080 6686



Butler Tower 渣甸山柏麗園

1-5 Boyce Road, Jardine's Lookout
High-floor, newly renovated 4-bedroom apartment in Jardine's Lookout with open city view
渣甸山四房單位，享開揚城市景，高層新裝

1,650 s.f.
\$25,000,000

www.landscape.com/13177.htm | Teresa Lau 劉小姐 9080 6686



Beauty Court

西半山雅苑

82 Robinson Road, Midlevels West
Renovated apartment with private roof overlooking the harbour
翻新單位連私家天台，眺望維港

1,762 s.f. (plus 915 s.f. roof)
\$26,000,000

www.landscape.com/11386.htm | Sami Woo 胡小姐 9493 8275



Fairlane Tower

中半山寶雲山莊

2B Bowen Road, Midlevels Central
Nicely maintained modern apartment on tree-lined Bowen Road
良好保養時尚物業，位處翠綠的寶雲道

1,744 s.f.
\$26,500,000 also for lease \$75,000 incl.

www.landscape.com/12908.htm | Mira To 杜小姐 9486 1566



The Legend
東半山 名門
23 Tai Hang Drive, Midlevels East
Harbour view apartment with top quality fittings and finishes
維港景單位，優質室內配備
1,542 s.f.
\$26,800,000 also for lease \$70,000 incl.

www.landscape.com/13129.htm | Sissy Li 李小姐 9642 6969



Visalia Garden
中半山蔚山花園
48 MacDonnell Road, Midlevels Central
Spacious 4-bedroom apartment in convenient location
四房大單位，位置方便
2,195 s.f.
\$27,000,000

www.landscape.com/13038.htm | Stephen Chan 陳先生 9093 3381



Po Garden
中半山 寶園
9 Brewin Path, Midlevels Central
Luxury apartment surrounded by lush greenery
豪華住宅，綠樹圍蔭
2,576 s.f.
\$27,500,000

www.landscape.com/3310.htm | Teresa Fung 馮小姐 9138 1621



18-20 Happy View Terrace, Happy Valley
跑馬地樂景臺18-20號
Colonial low-rise with huge balcony in Happy Valley
跑馬地英式低座單位連巨型露台
2,400 s.f.
\$28,000,000

www.landscape.com/5585.htm | Mark Mak 麥先生 6838 2929



Private Roof Unit in Tower 7, Hong Kong Parkview 私家天台住宅 - 陽明山莊第7座
88 Tai Tam Reservoir Road, Repulse Bay
Rare find 3-bedroom unit with 2 ensuites, enjoying sea and mountain view
罕有單位，三房兩套，享海景及山景
1,925 s.f. (plus 1,393 s.f. private roof)
\$28,000,000

www.landscape.com/3310.htm | Teresa Fung 馮小姐 9138 1621



Scenic Lodge
東半山怡晴軒
6 Wang Fung Terrace, Midlevels East
Modern high-rise with 4 ensuite bedrooms and splendid views
時尚單位設四套房，景觀一流
2,480 s.f.
\$28,000,000

www.landscape.com/13195.htm | Jack Yip 葉先生 6011 8677



Bellevue Court
東半山 碧蕙園
41 Stubbs Road, Midlevels East
Sought after spacious apartment on upper Stubbs Road
渴市寬敞物業，位處上司徒拔道
2,700 s.f.
\$29,500,000

www.landscape.com/10772.htm | Mira To 杜小姐 9486 1566



Birchwood Place
中半山寶樺臺
96 MacDonnell Road, Midlevels Central
4-bedroom flat close to Central and Admiralty
四房物業鄰近中環及金鐘
2,018 s.f.
\$30,000,000

www.landscape.com/12407.htm | Rita Lee 李小姐 9437 0087



Cavendish Heights
渣甸山 嘉雲臺
27-37 Perkins Road, Jardine's Lookout
Harbour view family apartment in popular development
維港景家庭住宅，位於受歡迎屋苑
2,265 s.f.
\$31,000,000

www.landscape.com/11894.htm | Jack Yip 葉先生 6011 8677



Elm Tree Towers
渣甸山偷富大廈
8-10 Chun Fai Road, Jardine's Lookout
Large and practical family flat in quiet enclave of Jardine's Lookout
寬敞實用家庭住宅，住處渣甸山寧靜一隅
2,329 s.f.
\$30,000,000

www.landscape.com/13232.htm | Mark Mak 麥先生 6838 2929



Park Mansions
中半山 百年順大廈
27-29 MacDonnell Road, Midlevels Central
Tastefully decorated apartment on MacDonnell Road
麥當勞道品味裝修住宅
2,013 s.f.
\$30,000,000

www.landscape.com/4118.htm | Rowena Siu 蕭小姐 9348 4118



8 Shiu Fai Terrace, Midlevels East
東半山肇輝8號
Brand new apartment in quiet enclave
全新單位，環境寧靜
3,074 s.f.
\$30,000,000

www.landscape.com/1210.htm | Carman Szeto 司徒小姐 8100 3893

MID-LEVELS SALES



Tregunter Tower 2

中半山地利根德閣 2座

14 Tregunter Path, Midlevels Central
Large and spacious flat in serene neighbourhood
寬敞大單位，位置清靜

3,052 s.f.

\$31,000,000 also for lease \$108,000 incl.

www.landscape.com/12591.htm

Sissy Li 李小姐 9642 6969



Clovelly Court

中半山嘉富麗苑

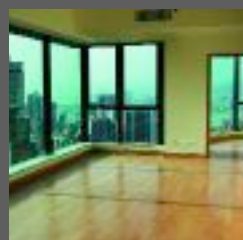
12 May Road, Midlevels Central
Practical apartment with comprehensive facilities
實用單位設多元化消閒設施

2,367 s.f.

\$32,000,000

www.landscape.com/13151.htm

Sissy Li 李小姐 9642 6969



The Colonnade

東半山嘉楠臺

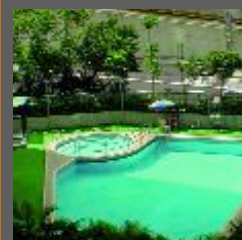
152 Tai Hang Road, Midlevels East
Stylish modern high-rise on convenient Tai Hang Road
風格時尚高座物業，位於大坑道交通方便

1,256 s.f.

\$32,000,000

www.landscape.com/11463.htm

Louis Wong 黃先生 9871 6828



Estoril Court

中半山愛都大廈

55 Garden Road, Midlevels Central
Huge apartment with high efficiency on fringe of Central
巨型單位，高實用率，鄰近中環

3,347 s.f.

\$35,000,000

www.landscape.com/13041.htm

Mira To 杜小姐 9486 1566



Savoy Court

西半山夏蕙苑

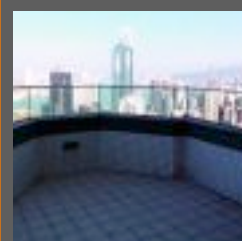
101 Robinson Road, Midlevels West
Rare garden apartment in Midlevels
罕有半山區花園物業

2,540 s.f. (plus 2,500 s.f. garden)

\$35,000,000

www.landscape.com/8791.htm

Mark Mak 麥先生 6838 2929



80 Robinson Road, Midlevels West

西半山羅便臣道 80 號

Luxurious duplex overlooking Victoria Harbour view
豪華複式眺望維港景

1,969 s.f.

\$36,800,000 also for lease \$100,000

www.landscape.com/12976.htm

Simon Yung 翁先生 9418 5743



Trafalgar Court

東山大寶閣

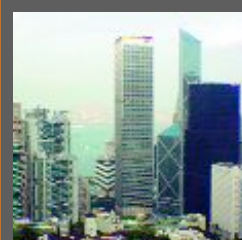
70 Tai Hang Road, Midlevels East
Large apartment good for investment
寬敞單位，投資之選

3,008 s.f.

\$37,000,000

www.landscape.com/1449.htm

Carman Szeto 司徒小姐 8100 3893



Hollywood Height

中半山好利閣

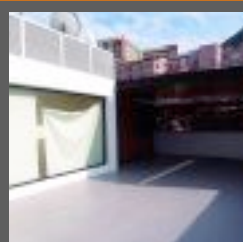
6 Old Peak Road, Midlevels Central
Lower Peak 4-bedroom apartment with easy access to Central
下山頂段四房物業，中環近在咫尺

2,700 s.f.

\$40,000,000

www.landscape.com/8609.htm

Sami Woo 胡小姐 9493 8275



Villa Dorada

跑馬地金碧別墅

124-126 Blue Pool Road, Happy Valley
Newly renovated townhouse in the heart of Happy Valley
新近裝修排屋，位於跑馬地心臟地帶

3,000 s.f. (plus 1,000 s.f. roof)

\$40,000,000

www.landscape.com/12386.htm

Simon Yung 翁先生 9418 5743



The Albany

中半山雅賓利大廈

1 Albany Road, Midlevels Central
Prestigious apartment overlooking Hong Kong Park
尊貴單位眺望香港公園

2,546 s.f.

\$55,000,000

www.landscape.com/13180.htm

Maria Cheung 張小姐 8103 3862



Hillsborough Court 中半山曉峰閣

18 Old Peak Road, Midlevels Central
Unique triplex penthouse with tasteful decorations in Midlevels
獨特半山頂層三複式連品味裝修

2,200 s.f.

(plus 1,016 s.f. terrace and 1,000 s.f. roof)

\$45,000,000



www.landscape.com/13019.htm

Mira To 杜小姐 9486 1566



Clovelly Court

中半山 嘉富麗苑

12 May Road, Midlevels Central
Spacious 4-bedroom apartment in prime location
寬敞四房單位，位於黃金地段

2,722 s.f.
\$42,000,000

www.landscape.com/12167.htm

Mira To 杜小姐 9486 1566



6A Bowen Road, Midlevels Central

中半山寶雲道6A號

Rare Bowen Road penthouse duplex
罕有寶雲道頂層複式

3,007 s.f.
\$45,000,000

www.landscape.com/13081.htm

Sami Woo 胡小姐 9493 8275



Dynasty Court

中半山 帝景園

23 Old Peak Road, Midlevels Central
Prestigious apartment in prime location
尊貴住宅，黃金地段

2,691 s.f.
\$45,000,000

www.landscape.com/13253.htm

Mira To 杜小姐 9486 1566



May Tower 1

中半山梅苑一座

7 May Road, Midlevels Central
Designer decorated triplex apartment in Lower Peak
匠心設計裝修三複式，位處下山頂段

2,850 s.f.
\$48,000,000 also for lease \$120,000

www.landscape.com/11170.htm

Yvonne Chang 鄭小姐 9088 4666



Chung Tak Mansion

中半山 重德大廈

2 Magazine Gap Road, Midlevels Central
Spacious apartment with fabulous city view and harbour view
寬敞單位享迷人城市景及維港景

2,864 s.f.
\$50,000,000

www.landscape.com/6428.htm

Mira To 杜小姐 9486 1566



Jardine Terrace

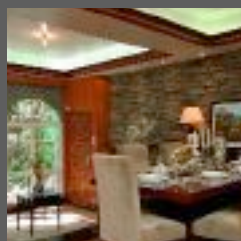
渣甸山渣甸臺

2-32 Price Road, Jardine's Lookout
Garden townhouse with private garage in quiet neighbourhood
花園排屋連私家車房，環境寧靜

3,000 s.f. (plus 300 s.f. terrace)
\$51,000,000

www.landscape.com/13290.htm

Johnny Cheung 張先生 9278 9939



Falcon Lodge 渣甸山嘉鵬園

67 Perkins Road, Jardine's Lookout
Townhouse in tree-lined neighbourhood with spacious and practical layout
寬敞實用排屋，四周處處綠蔭

3,728 s.f.
(plus 500 s.f. roof and 500 s.f. terrace)
\$52,000,000

www.landscape.com/11983.htm

Sissy Li 李小姐 9642 6969



Regence Royale

中半山富匯豪庭

2 Bowen Road, Midlevels Central
Prestigious apartment on fringe of Central with full clubhouse facilities
豪華住宅，鄰近中環，齊全會所設施

2,697 s.f.
\$52,600,000

www.landscape.com/13410.htm

Mark Mak 麥先生 6838 2929



Hillsborough Court

中半山 曉峰閣

18 Old Peak Road, Midlevels Central
Duplex penthouse in Midlevels Central
頂層複式單位，位於中半山

2,355 s.f. (plus 841 s.f. roof)
\$53,000,000
SOLE AGENT 獨家代理

www.landscape.com/8.htm

David Leung 梁先生 9199 0672



Estoril Court

中半山愛都大廈

55 Garden Road, Midlevels Central
Huge 4-bedroom harbour view apartment with high efficiency
巨型四房維港景單位，實用率高

3,347 s.f.
\$55,000,000

www.landscape.com/13118.htm

Louis Wong 黃先生 9871 6828



The Albany

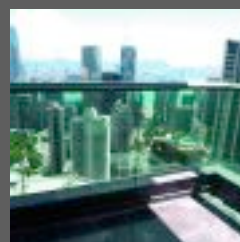
中半山 雅賓利大廈

1 Albany Road, Midlevels Central
Prestigious apartment in prime location
尊貴單位，位於黃金地段

2,546 s.f.
\$60,000,000

www.landscape.com/3735.htm

Sissy Li 李小姐 9642 6969



The Mayfair

中半山梅道1號

1 May Road, Midlevels Central
Deluxe 4-bedroom apartment with harbour view
豪華四房單位，享維港美景

2,905 s.f.
\$60,000,000 also for lease \$160,000 incl.

www.landscape.com/11693.htm

Stephen Chan 陳先生 9093 3381

MID-LEVELS SALES



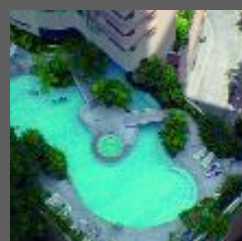
Grenville House

中半山嘉慧園

1-3 Magazine Gap Road, Midlevels Central
Rare huge apartment at Midlevels Central
罕有巨型單位，位於中半山

3,700 s.f.
\$63,000,000

www.landscape.com/13046.htm | Stephen Chan 陳先生 9093 3381



Hillsborough Court

中半山曉峰閣

18 Old Peak Road, Midlevels Central
Duplex penthouse with private roof
頂層複式單位連私家天台

2,337 s.f. (plus 1,079 s.f. roof)
\$66,000,000

www.landscape.com/11501.htm | Sissy Li 李小姐 9642 6969



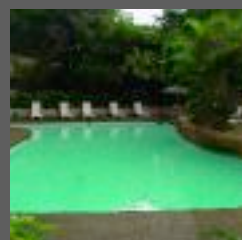
May Tower 2

中半山梅苑二座

5 May Road, Midlevels Central
Huge apartment with 4 ensuite bedrooms
巨型四套房單位

3,393 s.f.
\$68,000,000 also for lease \$138,000

www.landscape.com/7676.htm | Jack Yip 葉先生 6011 8677



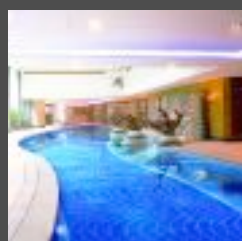
The Albany

中半山雅賓利大廈

1 Albany Road, Midlevels Central
Large duplex apartment with
magnificent views
複式大單位，景觀壯麗

3,567 s.f.
\$90,000,000

www.landscape.com/2798.htm | Johnny Cheung 張先生 9278 9939



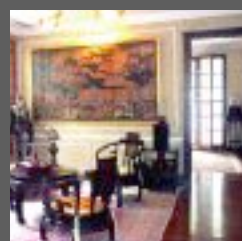
Regence Royale

中半山富匯豪庭

2 Bowen Road, Midlevels Central
Prestigious modern harbour view flat in
tree-lined neighbourhood
尊貴時尚維港景物業，四周環境翠綠

5,219 s.f.
Open Offer also for lease \$350,000

www.landscape.com/12613.htm | Simon Yung 翁先生 9418 5743



79 Perkins Road, Jardine's Lookout

渣甸山白建時道57號
Free-standing garden house in convenient
Jardine's Lookout
獨立花園屋，位處渣甸山方便位置

4,865 s.f.
Open Offer

www.landscape.com/6401.htm | Carman Szeto 司徒小姐 8100 3893

MID-LEVELS LEASE



Villa Lotto

跑馬地樂陶苑

18 Broadwood Road, Happy Valley
Top floor apartment with private roof
overlooking Hong Kong Stadium
高層單位連私家天台，眺望香港大球場

1,211 s.f. (plus 1,085 s.f. roof)
\$52,000 incl.

www.landscape.com/13328.htm | Sami Woo 胡小姐 9493 8275



Butler Tower

渣甸山柏麗園

1-5 Boyce Road, Jardine's Lookout
Duplex apartment with private roof
複式住宅連私家天台

1,800 s.f. (plus 1,306 s.f. roof)
\$55,000 incl. also for sale Open Offer

www.landscape.com/6633.htm | Johnny Cheung 張先生 9278 9939



Yukon Court

西半山殷豪閣

2-4 Conduit Road, Midlevels West
Spacious apartment with big balcony near
Midlevels pedestrian escalator
寬敞單位連大露台，鄰近半山扶手電梯

1,711 s.f.
\$58,000 incl.

www.landscape.com/13283.htm | Mira To 杜小姐 9486 1566



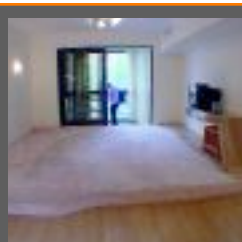
Carrie Garden

東半山嘉園

345 Tai Hang Road, Midlevels East
Rare find low-rise flat with large terrace in
good condition
罕有低密度單位連大平台，狀況優良

1,192 s.f. (plus 1,700 s.f. terrace)
\$63,000 incl.

www.landscape.com/12619.htm | Sami Woo 胡小姐 9493 8275



Amber Garden

中半山柏苑

70-72 Kennedy Road, Midlevels Central
Practical 3-bedroom flat on fringe
of Wanchai
實用三房單位鄰近灣仔

1,732 s.f.
\$68,000 incl.

www.landscape.com/12761.htm | Mary Li 李小姐 9011 6595



Craigmount

東半山紀園

34 Stubbs Road, Midlevels East
Rare on market 3-bedroom apartment on
convenient Stubbs Road
罕有放盤三房單位，位於司徒拔道，交通方便

2,200 s.f.
\$72,000

www.landscape.com/13122.htm | Sami Woo 胡小姐 9493 8275



Monterey Court

渣甸山 白建時道47-49號

47-49 Perkins Road, Jardine's Lookout
Exclusive building in tranquil location
特色住宅，位置寧靜

1,788 s.f.
\$73,000

www.landscape.com/12987.htm | Simon Yung 翁先生 9418 5743



Nicholson Tower 東半山蔚豪苑

8 Wong Nai Chung Gap Road,
Midlevels East
4-bedroom harbour view flat with
practical layout
四房維港景單位，間格實用

1,993 s.f.
\$75,000 incl.

www.landscape.com/13173.htm | Sami Woo 胡小姐 9493 8275



Bamboo Grove

中半山 竹林苑

74-86 Kennedy Road, Midlevels Central
Nicely fitted and equipped 3-bedroom flat
on fringe of Wanchai
良好裝修配備三房單位，灣仔近在咫尺

2,008 s.f.
\$85,000

www.landscape.com/12747.htm | Rita Lee 李小姐 9437 0087



Park Mansions

中半山百年順大廈

27-29 MacDonnell Road, Midlevels Central
Practical 4-bedroom flat on
MacDonnell road
實用四房位於麥當勞道

2,013 s.f.
\$85,000

www.landscape.com/12625.htm | Mira To 杜小姐 9486 1566



Chung Tak Mansion

中半山 重德大廈

2 Magazine Gap Road, Midlevels Central
Huge apartment with 3 ensuite close
to CBD
巨型三套房單位，鄰近中環商業區

2,864 s.f.
\$88,000 incl.

www.landscape.com/11118.htm | Teresa Lau 劉小姐 9080 6686



Silvercrest

中半山聚安樓

24 MacDonnell Road, Midlevels Central
Unique apartment with large terrace on
MacDonnell road
特色單位連大平台，位於麥當勞道

2,643 s.f. (plus 2,000 s.f. terrace)
\$90,000 incl.

www.landscape.com/13296.htm | Sami Woo 胡小姐 9493 8275



Pine Court

中半山 翠峰園

5 Old Peak Road, Midlevels Central
Colonial low-rise with big balcony in
Midlevels Central
英式低座單位連大露台，位於中半山

3,000 s.f.
\$98,000

www.landscape.com/13142.htm | Mira To 杜小姐 9486 1566



The Leighton Hill

跑馬地禮頓山

2B Broadwood Road, Happy Valley
Deluxe apartment overlooking Happy Valley
racecourse
豪華單位眺望跑馬地馬場

1,911 s.f.
\$98,000 incl.

www.landscape.com/12175.htm | Mira To 杜小姐 9486 1566



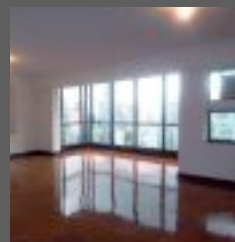
Borrett Mansion

中半山 寶德臺

8A-9B Bowen Road, Midlevels Central
Spacious older style 4-bedroom flat with
big balcony
寬敞老香港式四房連大露台

2,800 s.f.
\$100,000 incl.

www.landscape.com/13113.htm | Teresa Lau 劉小姐 9080 6686



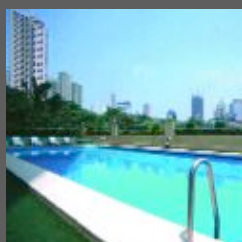
Villa Elegance

中半山雅藝園

1 Robinson Road, Midlevels Central
Large 4-bedroom apartment with new
decorations on fringe of CBD
四房大單位，新裝修，鄰近中環商業區

3,500 s.f.
\$100,000

www.landscape.com/13008.htm | Teresa Fung 馮小姐 9138 1621



Kennedy Heights

中半山 堅麗閣

10-18 Kennedy Road, Midlevels Central
Spacious 4-bedroom apartment on fringe
of Central
寬敞四房單位，鄰近中環

3,400 s.f.
\$120,000

www.landscape.com/12507.htm | Mira To 杜小姐 9486 1566



The Summit

東半山御峰

41C Stubbs Road, Midlevels East
Prestigious modern high-rise with stunning
harbour view
尊貴時尚名廈，享有壯觀維港景

3,272 s.f.
\$155,000 incl.

www.landscape.com/12499.htm | Simon Yung 翁先生 9418 5743

MID-LEVELS LEASE



Valley View 東半山欣景台

4A-4D Wong Nai Chung Gap Road,
Midlevels East
Sought after large mid-rise flat on upper
Stubbs Road
渴市中座大單位，位於上司徒拔道

2,400 s.f.
\$120,000 incl.

www.landscape.com/13200.htm | Rowena Siu 蕭小姐 9348 4118



Garden Terrace

中半山花園臺 1座

8 Old Peak Road, Midlevels Central
Large 4-bedroom apartment on fringe
of CBD
四房大單位，鄰近中環商業區

2,798 s.f.
\$135,000

www.landscape.com/13175.htm | Mira To 杜小姐 9486 1566



Fairlane Tower

中半山寶雲山莊

2B Bowen Road, Midlevels Central
Prestigious Central skyline flat at prime
location of Midlevels
尊貴半山區住宅，黃金地段，享璀璨城市景觀

2,830 s.f.
\$125,000

www.landscape.com/13198.htm | Mira To 杜小姐 9486 1566



Dynasty Court

中半山帝景園

23 Old Peak Road, Midlevels Central
Harbour view apartment at Lower Peak
維港景物業位處下山頂段

2,680 s.f.
\$140,000 incl.

www.landscape.com/12715.htm | Rita Lee 李小姐 9437 0087



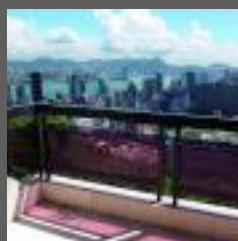
Kennedy Heights

中半山堅麗閣

18 Kennedy Road, Midlevels Central
Magnificent city and harbour views
享壯觀城市及維港景

3,400 s.f.
\$143,000

www.landscape.com/8715.htm | Rita Lee 李小姐 9437 0087



Taipan Court

東半山大班閣

47B Stubbs Road, Midlevels East
Newly renovated 4-ensuite duplex
commanding stunning harbour view
新裝四套房複式，享有壯觀維港景

3,670 s.f.
\$145,000

www.landscape.com/11691.htm | Simon Yung 翁先生 9418 5743



Duplex at Midlevels

半山複式住宅

Rare in market 4 bedrooms with
balcony and good condition
市場罕有四房連露台，狀況優良

3,400 s.f.
\$147,000

www.landscape.com/12998.htm | Teresa Lau 劉小姐 9080 6686



The Summit

東半山御峰

41C Stubbs Road, Midlevels East
Breathtaking panoramic views &
impeccable finishes
醉人環迴景觀，大師級裝修

3,254 s.f.
\$155,000

www.landscape.com/381.htm | Carman Szeto 司徒小姐 8100 3893



2-2A Henderson Road, Jardine's Lookout

渣甸山軒德蓀道 2-2A 號

2-2A Henderson Road, Jardine's Lookout
Rare garden house in unique colonial style
罕有獨特英式花園洋房

3,115 s.f. (plus 1,000 s.f. garden)
\$175,000

www.landscape.com/11269.htm | Carman Szeto 司徒小姐 8100 3893



Regence Royale

中半山富匯豪庭

2 Bowen Road, Midlevels Central
Brand new apartment with harbour view
全新物業，享維港景

2,871 s.f.
\$180,000 incl.

www.landscape.com/959.htm | Yvonne Chang 鄭小姐 9088 4666



Landscape Realty Limited C-018733

a member of Landscape Surveyors Ltd

Tel: 852-2866 0022 Fax: 852-2866 0015

Email: info@landscape.com Website: www.landscape.com

Unit 3106, 31/F, Hopewell Centre,
183 Queen's Road East, Wanchai, Hong Kong

The information, text, photos, analyses and projections contained herein are provided solely for the convenience of prospective clients and no warranty or representation as to their accuracy, correctness or completeness is made by Landscape Surveyors Limited, Landscape Realty Limited or the owners, none of whom shall have any liability or obligation with respect thereto. Interested parties should rely on their own investigations, interpretations and analyses in connection with the purchase or letting thereof.

Information has been provided to us by sources deemed reliable, but no warranty or representation is made as to its accuracy, correctness or completeness. These offerings are made subject to contract, correction of errors, omissions, prior sale or lease, change of price or terms or withdrawal from the market without notice. The contents of The Key are for reference only and do not constitute all or any part of a contract.

Copyright 2008