



86' DOMINO

A member of the Jepsen Group • CONSUMER • INDUSTRIAL • BEVERAGE • LUXURY • CHINA • HONG KONG • MACAU • TAIWAN CHINA • KOREA



Unit 5, G/F, Aberdeen Marina Tower, 8 Shum Wan Road, Aberdeen, Hong Kong 香港香港仔深灣道8號深灣遊艇俱樂部地下5室
Tel 電話: (852) 3180 3189 Fax 傳真: (852) 2805 6867 Email 電郵: info@jepsenmarine.com Website 網址: www.jepsenmarine.com
16/F, East Ocean Centre, 618 Yan An Road East, Shanghai 200001, PRC China 中國上海延安東路618號東海商業中心16樓
Tel 電話: (86) 21 2306 4748 Fax 傳真: (86) 21 2306 4999 Email 電郵: chinainfo@jepsenmarine.com

Riva
AUTHORIZED DEALER

The Key

大宅[®]

Select deluxe homes

Volume 86 FEBRUARY 2012



維港美色
Grand
harbour
beauty

KeyWords

"TO KNOW THAT YOU DO NOT KNOW IS THE BEST. TO PRETEND TO KNOW WHEN YOU DO NOT KNOW IS A DISEASE"

「知不知上，不知知病。」

— LAO-TZU, CHINESE PHILOSOPHER (604-531 BC)

— 中國哲學家老子（公元前604-531年）

KeyNotes

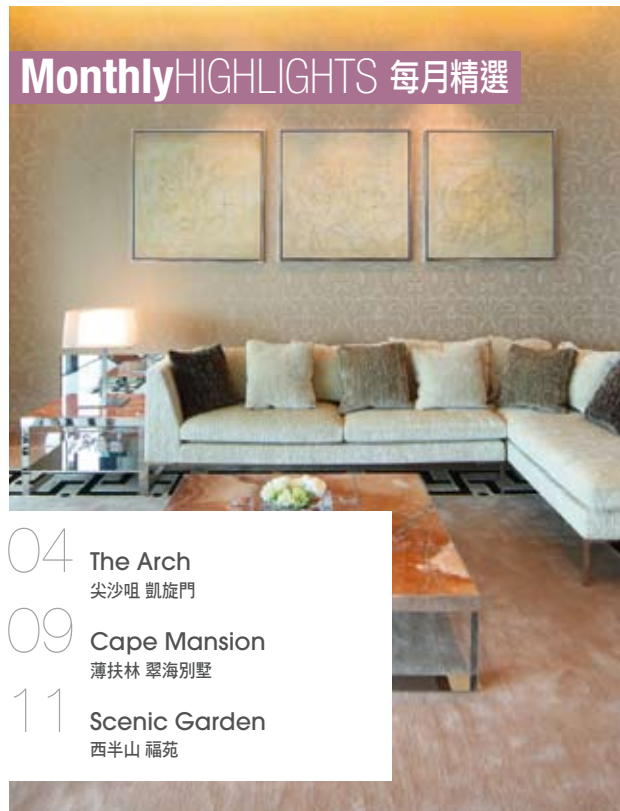
2012 started with a gloomy outlook amid the hitherto unresolved Euro debt crisis and China's decelerating economy; as investment sentiment in Hong Kong hit a low in recent years. It has become a majority view that the local economy will slide for the whole of this and possibly next year too. Against this backdrop, investors are staying put and end users are pushing back purchase decisions. In the high-end residential market, desperate sellers are widening negotiation margins to 10 per cent or more, where they used to be no more than five per cent.

踏入2012年，迎接我們的是一片愁雲慘霧。歐債危機至今仍未解除，加上中國經濟放緩，使香港的投資情緒跌至近年低點。主流意見均認為今年本土經濟會下滑，跌勢甚至會持續到明年。在如此環境下，投資者持觀望態度，用家也暫緩置業決定。在豪宅市場，急於出售物業的賣家紛紛把向來少於半成的議價空間調升至一成或以上。

K.S. Koh
ks-koh@landscape.com

(The above is an excerpt from Market Watch on www.landscape.com. Read the full article at Market Watch, www.landscape.com/marketwatch)
(以上內容節錄於領域網站內的市場觀察，如欲觀看全文，請登上網址：www.landscape.com/marketwatch)

Monthly HIGHLIGHTS 每月精選



04 The Arch
尖沙咀 凱旋門

09 Cape Mansion
薄扶林 翠海別墅

11 Scenic Garden
西半山 福苑

HOW MAY YOU LIST YOUR PROPERTY WITH THE KEY?

怎樣在《大宅》刊登您的出售／出租物業？

If you would like to see your property listed in The Key in the next issue, you may call Loretta Lui at 3102 4818 or visit us at www.landscape.com/sell_let. Or you may simply fill out the space below and fax to us at 2866 0015. 如果您想將出售／出租物業刊登於大宅，可致電3102 4818與呂小姐聯絡，或登上 www.landscape.com/sell_let。或者您可以填寫下面的表格傳真至2866 0015。

Property to be listed 物業

Asking Rental / Sale Price 租金 / 售價

Floor Area 面積

Contact Person 聯絡人

Telephone 電話

Email 電郵地址

Our KeyPersons will contact you for follow-up works.
我們的大宅專員會馬上與您聯絡

Published and distributed by

LANDSCOPE 領域
The Specialists in Luxury Properties

Landscape Realty Limited C-018733
a member of Landscape Surveyors Ltd

Find us on:
facebook.

Designed by

PERSPECTIVE 透視

Tel: +852 2866 0022
Fax: +852 2866 0015
Email: info@landscape.com
Website: www.landscape.com
Address: Unit 3106, 31/F, Hopewell Centre,
183 Queen's Road East, Wanchai, Hong Kong
Member of:



Tel: +852 2525 0287
Fax: +852 2526 3860
Email: info@perspectiveglobal.com
Website: www.perspectiveglobal.com
Address: Rm 2408, Dominion Centre,
59 Queen's Road East, Wanchai, Hong Kong

The information, text, photos, analyses and projections contained herein are provided solely for the convenience of prospective clients and no warranty or representation as to their accuracy, correctness or completeness is made by Landscape Surveyors Limited, Landscape Realty Limited or the owners, none of whom shall have any liability or obligation with respect thereto. Interested parties should rely on their own investigations, interpretations and analyses in connection with the purchase or letting thereof.

Information has been provided to us by sources deemed reliable, but no warranty or representation is made as to its accuracy, correctness or completeness. These offerings are made subject to contract, correction of errors, omissions, prior sale or lease, change of price or terms or withdrawal from the market without notice. The contents of The Key are for reference only and do not constitute all or any part of a contract. Copyright 2012



Sole Dealer of Minotti for Hong Kong

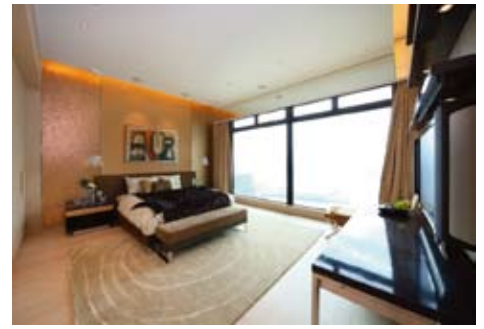
andante

Minotti

Model: Allen Sofa
Designer: Rodolfo Dordoni

TK/1201/M/ALN05

Shop D, G/F, The Design Showcase,
Ruttonjee Centre, 11 Duddell Street,
Central, Hong Kong
Tel. +852/ 2537 9688
Fax. +852/ 2537 4488
E-mail: info@andante.com.hk
www.andante.com.hk



維港美色 Grand harbour beauty

Photography: Daniel Tam

Calling to mind Paris' grand Arc de Triomphe, this 3,465 sq-ft apartment is located in The Arch, one the latest skyscrapers on top of Kowloon Station in Tsim Sha Tsui West. The apartment enjoys spectacular views of Victoria Harbour from the combined living and dining room, balcony and all four bedrooms (three ensuite).

Elegantly designed in a cream palette, the residence exudes a feeling of luxury that is also both warm and welcoming. High ceilings, ample concealed storage and well-planned rooms accentuate the apartment's smart layout, while floor-to-ceiling windows allow natural light to flood in during the day – and enable a million-dollar night view that most can only enjoy among the crowds along the Avenue of Stars.

Aside from stunning views, the master bedroom features a large walk-in closet and ensuite bathroom with a Jacuzzi and television. Concealed next to the combined living and dining room is a fully equipped kitchen with Gaggenau appliances and maid's room (ensuite). Built with a bar, guests can watch their host cook while sipping wine.

Other areas for entertainment include The Arch's Sky Club clubhouse, the Flora Heaven sky garden, a children's playground and pool, function rooms, café, bar and lounge. There are also facilities for health and fitness such as a gym, indoor swimming pool, basketball court, table tennis and billiards rooms, and sauna.

Conveniently located atop Kowloon Station, The Arch has plenty of shopping, restaurant and entertainment options,

thanks to the Elements shopping mall. The Airport Express and Tung Chung subway lines are just downstairs, allowing easy access to the airport and Central.

凱旋門是最新進駐尖沙咀西九龍站上空的高樓之一，它的獨特建築設計令人想起法國巴黎宏偉的凱旋門。這個3465平方呎的凱旋門住宅單位，客廳、陽台及四間睡房（三間為套房）皆有迷人的維多利亞港海景。

內部設計典雅，一室奶黃色調，散發出奢華格調的同時，也溫馨怡人。高樓底搭配充足的隱藏式貯物空間，加上房間佈局得宜，盡顯室內間隔精妙實用。落地玻璃窗令室內陽光充沛，晚上則坐擁千金難求的醉人夜景，無需與他人擁擠在星光大道上欣賞維港景色。

主人套房除了享有美麗景觀，亦設有大型衣帽間，而房內的浴室則設有Jacuzzi浴池及電視機。客飯廳旁是隱藏式廚房，設備齊全，配設Gaggenau電器，亦設家備套房。廚房內的吧，可供客人邊把酒言歡，邊觀賞主人家下廚為樂。

凱旋門內的娛樂設施應有盡有，包括空中會所、雲中花園、兒童遊樂場、兒童游泳池、活動室、咖啡廳、酒吧和雅座酒廊。其他康健設施包括健身中心、室內游泳池、籃球場、乒乓球室和桌球室，以及桑拿浴室。

凱旋門位置便利，位於港鐵九龍站上蓋，鄰近圓方商場，購物、飲食、消閒娛樂均一應盡有。乘搭機場快線及東涌線極為方便，機場或中環瞬間即達。

The Arch 尖沙咀 凱旋門

1 Austin Road West, Tsim Sha Tsui

尖沙咀柯士甸道西1號

3,465 s. f.
HK\$280K Incl.

9833 9509 Michelle Chung 鍾小姐

www.landscape.com/51892.htm

可普通話



Chinese Jackets Updated

Super comfortable Chinese jacket in polar fleece;
hooded overcoat in denim with classic longevity symbols



GOODS OF DESIRE®

Causeway Bay 2890 5555 Tsim Sha Tsui 2784 5555 Central 2805 1876 Peak Galleria 2778 3331
Stanley 2673 0071 Sai Kung 2791 7122 Cyberport 2577 6899 Ap Lei Chau 2580 2290



Seaview Garden

31 Cloud View Road,
North Point Midlevels

Studio flat with internal stair to roof top in North Point Midlevels with harbour view
北角半山維港景住宅，連內置樓梯上天台，觀賞維港景色

1,037 s.f. (plus 663 s.f. roof)

\$18M

☎ 9093 3381 Stephen Chan 陳先生

🌐 www.landscape.com/107401.htm

北角
半山
海景台



The Albany

1 Albany Road, Midlevels Central

Well known apartment at prime location
中半山有名望住宅，地段尊貴

1,753 s.f.

\$55M

☎ 9138 1621 Teresa Fung 馮小姐

🌐 www.landscape.com/24065.htm

中半
山
雅賓利大廈



Hatton House

15 Kotewall Road, Midlevels West

Spacious 4-bedroom apartment with greenery and city view, twin carpark
西半山四房單位，間隔寬敞，享翠綠景觀及城市景色，連雙車位

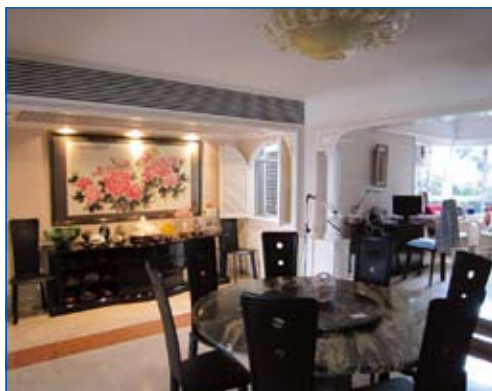
2,800 s.f.

\$55M

☎ 6655 4488 William Tam 談先生

🌐 www.landscape.com/123153.htm

西半
山
赫德大廈



Evergreen Villa

43 Stubbs Road, Midlevels East

Spacious apartment with huge balcony and beautiful racecourse view and harbour view
東半山住宅，間隔寬敞，連大陽臺，享美麗馬場景及維港景，可租可售

2,560 s.f.

\$63M also for lease \$103K incl.

☎ 9551 1077 Walker Lam 林先生

🌐 www.landscape.com/37692.htm

東半
山
松柏新村



Oasis

8-12 Peak Road, The Peak

Lower Peak apartment with high ceiling overlooking the Victoria Harbour panorama
山頂住宅，樓底極高，俯瞰維港景致，可租可售

2,719 s.f.

\$78M also for lease \$130K incl.

☎ 6330 7888 Cora Ko 高小姐

🌐 www.landscape.com/122963.htm

山頂
欣怡居





Magazine Court

5-7 Magazine Gap Road,
Midlevels Central

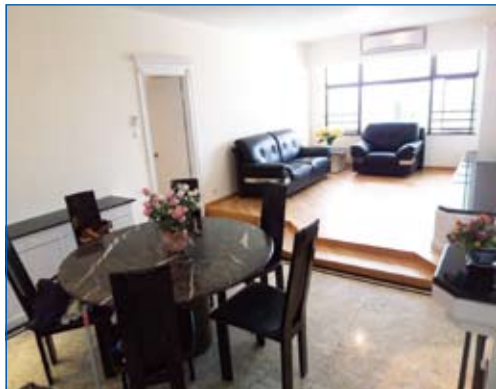
Spacious 4-bedroom apartment with
Victoria Harbour view
間隔寬敞四房單位，尊享維港美景

3,300 s.f.
\$90M

☎ 6183 8339 Carman Szeto 司徒小姐
🌐 www.landscape.com/95792.htm

可普通話

中
半
山
澄
碧
閣



Parkway Court

4 Park Road, Midlevels West

Nicely renovated 3-bedroom apartment
with stunning harbour view in Midlevels
West

西半山雅緻裝修三房單位，享遼闊維港景觀，
可租可售

1,298 s.f.
\$44K incl. also for sale Open Offer

☎ 9229 2396 Elaine Chow 周小姐
🌐 www.landscape.com/23180.htm

可普通話

西
半
山
實
威
閣



Hong Villa

12 Bowen Road, Midlevels Central

Spacious 4-bedroom apartment
with balcony overlooking city and
harbour views

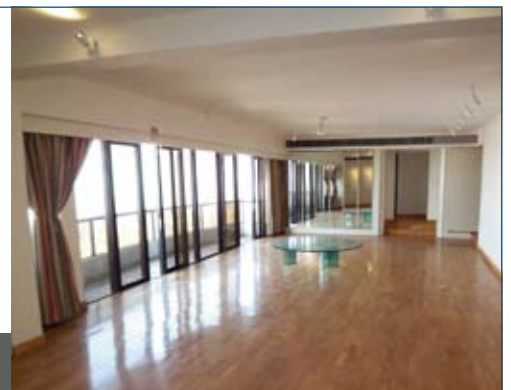
中半山四房單位連陽臺，間隔寬敞，俯瞰城市景觀
及維港美景

3,833 s.f.
\$140K

☎ 9080 6686 Teresa Lau 劉小姐
🌐 www.landscape.com/7396.htm

可普通話

中
半
山
峰
景
花
園



2 Barker Road, The Peak

Luxury townhouse on the Peak with
panoramic Victoria Harbour view
山頂豪華排屋，尊享遼闊維港景色

4,325 s.f. (plus 553 s.f. roof and
382 s.f. terrace)
\$310K

☎ 9648 6082 Christine Chong 莊小姐
🌐 www.landscape.com/46173.htm

山
頂
白
加
道
2
號



The Belvedere

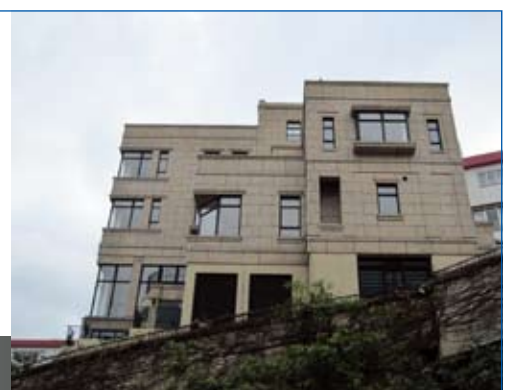
51-61 Plantation Road, The Peak

Exclusive harbour view Peak single house
for rent with indoor private pool
獨特維港景獨立大屋，連室內私家泳池

4,800 s.f. (plus 1,500 s.f. roof and
1,500 s.f. terrace)
\$400K incl.

☎ 9238 2012 David Chan 陳先生
🌐 www.landscape.com/20413.htm

山
頂
種
植
道
51-61
號





Hong Kong Parkview
88 Tai Tam Reservoir Road,
Repulse Bay
Cosy two-bedroom unit in well equipped
luxury estate amidst country park
迷人兩房單位，屋苑配套完善，鄰近郊野公園

淺水灣
陽明山莊

1,259 s.f.
\$18M

☎ 6330 7888 Cora Ko 高小姐
🌐 www.landscape.com/121870.htm



Pokfulam Court
94 Pok Fu Lam Road, Pokfulam
Practical 3-bedroom apartment with big
balcony overlooking harbour view
實用三房單位，連大陽臺，俯瞰維港景色

薄扶林
碧林閣

1,750 s.f.
\$23M

☎ 9809 8570 Stella Lo 羅小姐
🌐 www.landscape.com/83034.htm



La Mer
67-71 Bisney Road, Pokfulam
Full sea view 4-bedroom plus study room
low-rise apartment with twin carparks
全海景四房連書房低密度住宅，連雙車位

薄扶林
浪頤居

2,063 s.f.
\$26M

☎ 9648 6082 Christine Chong 莊小姐
🌐 www.landscape.com/108873.htm



Pokfulam Heights
86A-D Pok Fu Lam Road,
Pokfulam
Nicely renovated colonial low-rise
3-bedroom apartment with large balcony
and private garage
雅致裝修英式低密度三房住宅，連特大陽臺及私家
車庫

薄扶林
撲閣

2,200 s.f.
\$29.9M

☎ 9648 6082 Christine Chong 莊小姐
🌐 www.landscape.com/123356.htm



Baguio Villa
550 & 555 Victoria Road, Pokfulam
Well decorated 3-bedroom apartment
with private roof terrace
雅致裝修三房單位，連私家天台，可租可售

薄扶林
碧瑤灣

2,332 s.f. (plus 1,876 s.f. roof)
\$40M also for lease \$100K incl.

☎ 9348 4118 Rowena Siu 蕭小姐
🌐 www.landscape.com/111955.htm



Ruby Court
55 South Bay Road, Repulse Bay
Lovely 3-bedroom sea view apartment
with clubhouse facilities at South Bay
waterfront
淺水灣海濱迷人三房海景住宅，連完善住客會所設
施，可租可售

淺水灣
嘉麟閣

2,200 s.f.
\$50M also for lease \$95K incl.

☎ 9648 6082 Christine Chong 莊小姐
🌐 www.landscape.com/54398.htm



Repulse Bay Towers
119A Repulse Bay Road,
Repulse Bay
Renowned 4-bedroom duplex with view
of Repulse Bay Beach
新裝修四房複式單位，享淺水灣海灘美景，
可租可售

淺水灣
保華大廈

3,100 s.f.
\$68M also for lease \$90K incl.

☎ 9493 8275 Sami Woo 胡小姐
🌐 www.landscape.com/4270.htm



Regalia Bay
88 Wong Ma Kok Road, Stanley
5-bedroom townhouse with roof and
garden in tranquil enclave
赤柱五房排屋，連天台花園，環境優美怡人

赤柱
富豪海灣

4,212 s.f. (plus 618 s.f. garden
and 817 s.f. roof)
\$68M

☎ 6838 2929 Mark Mak 麥先生
🌐 www.landscape.com/107817.htm



Le Palais
8 Pak Pat Shan Road, Tai Tam
Garden townhouse with sweeping sea
view in serene location
大潭花園洋房，連寧靜海景，環境優美怡人

大潭
皇府灣

3,348 s.f. (plus 741 s.f. garden)
\$88M

☎ 6330 7888 Cora Ko 高小姐
🌐 www.landscape.com/32677.htm



**Tai Tam Contemporary
Townhouse**
Contemporary waterfront townhouse with
designer's decor and garden terrace
豪華海濱洋房，連設計師品味裝修及花園平台

大潭
豪華洋房

3,026 s.f. (plus 2,617 s.f. garden,
127 s.f. roof and 451 s.f. carport)
\$102M

☎ 9871 6828 Louis Wong 黃先生
🌐 www.landscape.com/107218.htm



Bellevue Place
93 Repulse Bay Road, Repulse Bay
Tastefully decorated modern townhouse with magnificent sea view
雅致裝修時尚大屋，尊享遼闊海洋美景

淺水灣寶晶苑

3,619 s.f. (plus 735 s.f. roof and 310 s.f. terrace)
\$120M

9871 6828 Louis Wong 黃先生
www.landscape.com/136438.htm



La Hacienda
29-33 Mount Kellett Road, The Peak
Newly decorated townhouse with facilities overlooking nice views
全新裝修洋房，連完善住客設施，俯瞰美麗景色

山頂加列山道29-33號

2,800 s.f.
\$160M

9833 9509 Michelle Chung 鍾小姐 可普通話
www.landscape.com/33958.htm

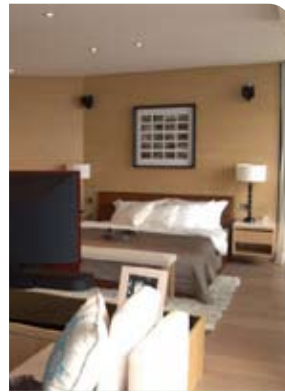


Residence Bel-Air
Cyberport Road, Pokfulam
Brand new sea view townhouse with deluxe clubhouse facilities
全新海景洋房，連豪華住客會所設施

薄扶林貝沙灣

6,305 s.f. (plus 602 s.f. terrace)
\$170M

6655 4488 William Tam 談先生 可普通話
www.landscape.com/146921.htm



Bay Villas
57-71 Shouson Hill Road, Shouson Hill
Rare find sea view townhouse at prestigious Shouson Hill
壽臣山罕有海景洋房，地段尊貴，可租可售

壽臣山南源

4,869 s.f. (plus 603 s.f. terrace)
\$280M also for lease \$300K incl.

6183 8339 Carman Szeto 司徒小姐 可普通話
www.landscape.com/135517.htm



以家為樂 Family-oriented

Cape Mansion 翠海別墅
56-62 Mount Davis Road, Pokfulam
薄扶林摩星嶺道56-62號

2,200 s.f.
HK\$31M

This 2,200 sq-ft apartment in Pokfulam has been beautifully renovated, with a practical layout and spacious design plan which offers three bedrooms (one ensuite), two bathrooms, a combined living and dining room with open kitchen and a maid's room. A colour palette of white and cream tones creates a warm, cosy environment, with unobstructed sea views from the balcony providing residents and guests with a sense of openness and serenity.

Located on Mount Davis Road, the apartment enjoys ultimate privacy with only one other flat on the same floor. The neighbourhood is served by buses, minibuses and taxis and the nearest supermarket is just a five-minute drive away. Ideal for families, Kennedy School, West Island School, Queen Mary Hospital and the Duchess of Kent Children's Hospital are all within close vicinity.

這間位於薄扶林的住宅面積達2200平方呎，裝潢別緻，佈局實用而間隔寬敞，設三間睡房（其一為套房）、兩個浴室、客飯廳、開放式廚房和家傭房。一室淨白配奶黃色調塑造出舒適溫馨的住家環境，陽台的景色一覽無遺，為屋主和客人帶來遼闊開揚的景緻和諧寧靜的感覺。

住宅位於摩星嶺道，每層只有兩個單位，隱私度高。區內交通有巴士、小巴和的士，而最近的超級市場亦不過是五分鐘車程。這裡更是家庭的不二之選，附近是堅尼地小學、西島中學、瑪麗醫院和根德公爵夫人兒童醫院。

9809 8570 Stella Lo 羅小姐
www.landscape.com/109494.htm





Monmouth Place

9L Kennedy Road,
Midlevels Central
Convenient apartment on Kennedy Road
中半山住宅，位置優越，交通方便，可租可售

中
半
山
萬
信
臺

1,483 s.f.
\$16.25M also for lease \$42K incl.

9238 2012 David Chan 陳先生
www.landscape.com/11312.htm



Elegant Terrace

36 Conduit Road, Midlevels West
Family apartment with facilities close to
Midlevels Escalator
西半山家庭式住宅，連住客會所設施，鄰近半山扶
手電梯

西
半
山
慧
明
苑

1,433 s.f.
\$17.9M

9486 1566 Mira To 杜小姐
www.landscape.com/48398.htm



Beauty Court

82 Robinson Road, Midlevels West
Practical 3-bedroom flat with balcony
taking in open city view
西半山三房單位，間隔實用，連陽臺，欣賞開揚城
市景觀

西
半
山
雅
苑

1,787 s.f.
\$21M

9551 1077 Walker Lam 林先生 可普通話
www.landscape.com/103461.htm



Wing Way Court

31 Kennedy Road,
Midlevels Central
3-bedroom apartment with high privacy
close to Wanchai and Causeway Bay
中半山三房單位，私隱度高，鄰近灣仔及銅鑼灣，
交通方便

中
半
山
永
威
閣

1,860 s.f.
\$24.98M

9809 8570 Stella Lo 羅小姐
www.landscape.com/94524.htm



Jade Garden

105 Robinson Road,
Midlevels West
Nicely renovated penthouse flat with
private roof terrace
全新裝修頂層單位，連私家天台

西
半
山
翡
翠
園

1,482 s.f. (plus 994 s.f. roof)
\$28M

9229 2396 Elaine Chow 周小姐 可普通話
www.landscape.com/17198.htm



Valverde

11 May Road, Midlevels Central
Modern apartment with newly renovated
facilities in prime location
中半山時尚住宅，連新裝修及會所設施，地段尊
貴，可租可售

中
半
山
蔚
星
居

1,398 s.f.
\$28.7M also for lease \$70K incl.

9138 1621 Teresa Fung 馮小姐
www.landscape.com/4417.htm



Fairlane Tower

2B Bowen Road, Midlevels Central
High quality boutique flat in quiet yet
convenient location
中半山精緻特色單位，位置優越

中
半
山
寶
雲
山
莊

1,744 s.f.
\$30M

6655 4488 William Tam 談先生 可普通話
www.landscape.com/130641.htm



Tregunter Tower

14 Tregunter Path,
Midlevels Central
Large and spacious 4-bedroom
apartment with comprehensive facilities
特大四房單位，連完善住客會所設施，間隔寬敞，
可租可售

中
半
山
地
利
根
德
閣

3,050 s.f.
\$39M also for lease \$80K incl.

9028 0147 Jenson Au 區先生 可普通話
www.landscape.com/1025.htm



Visalia Garden

48 MacDonnell Road,
Midlevels Central
Well designed and decorated flat on
convenient MacDonnell Road
麥當勞道靚裝修單位，位置優越，交通方便，
可租可售

中
半
山
蔚
山
花
園

2,195 s.f.
\$39.8M also for lease \$90K incl.

6330 7888 Cora Ko 高小姐
www.landscape.com/121861.htm



Hong Villa

12 Bowen Road, Midlevels Central
Designer decorated apartment with
harbour view, including 2 carparks
中半山維港景住宅，連雙車位，享品味靚裝修

中
半
山
峰
景
花
園

1,916 s.f.
\$45M

9080 6686 Teresa Lau 劉小姐 可普通話
www.landscape.com/70583.htm



Wisdom Court
5 Hatton Road, Midlevels West
Nicely decorated 3-bedroom apartment with internal stairs to private roof top
雅緻裝修三房單位，連內置樓梯上天台

西
半
山
慧
苑

1,854 s.f. (plus 1,342 s.f. roof)
\$48M

☎ 6838 2929 Mark Mak 麥先生
🌐 www.landscape.com/108898.htm



Regent On The Park
9A Kennedy Road,
Midlevels Central
Conveniently located apartment with indoor pool and tennis courts
中半山住宅，位置優越，交通方便，連室內泳池及網球場，可租可售

中
半
山
御
花
園

2,720 s.f.
\$56M also for lease \$110K incl.

☎ 9093 3381 Stephen Chan 陳先生
🌐 www.landscape.com/108993.htm



Hillsborough Court
18 Old Peak Road,
Midlevels Central
Unique triplex penthouse with big terrace and roof and tasteful decorations in Midlevels
中半山獨特三複式頂層住宅，連大平台及天台，尊享品味靚裝修，可租可售

中
半
山
曉
峰
閣

2,200 s.f. (plus 1,016 s.f. terrace and 1,000 s.f. roof)
\$58M also for lease \$150K incl.

☎ 9080 6686 Teresa Lau 劉小姐 **可普通話**
🌐 www.landscape.com/100233.htm



Catalina Mansions
98-100 MacDonnell Road,
Midlevels Central
5-bedroom duplex with designer deco in colonial style mansion
五房英式複式住宅，尊享設計師品味裝修

中
半
山
嘉
年
大
廈

4,600 s.f.
\$75M

☎ 9080 6686 Teresa Lau 劉小姐 **可普通話**
🌐 www.landscape.com/130902.htm

東方神韻 Eastern influences

Scenic Garden 福苑

9 Kotewall Road, Midlevel West

西半山旭蘇道9號

1,344 s.f. (plus 804 s.f. roof)
HK\$32.5M

Stylishly designed with a meticulous choice of furnishings, this one-bedroom (ensuite) apartment exemplifies an appreciation of Asian culture, with regional artwork, a Chinese folding screen and vintage-style wardrobes and cabinets set throughout the 1,344 sq-ft space. Dark wood is used in a lot of the furniture and walls, enhancing the sophisticated décor.

Particularly noteworthy is the master bedroom featuring an open ensuite bathroom with a bathtub and separate rain shower. The kitchen is fully equipped with an oven, coffeemaker, large fridge, wine rack and wine cellar, as well as a maid's room with ensuite bathroom. Views of the city and harbour can be enjoyed from the balcony and private roof.

Situated on Kotewall Road, this apartment is part of a green and tranquil neighbourhood in Midlevels West. Residents have access to recreational facilities such as an outdoor swimming pool and children's playground, while ample public transport options, including minibuses and main bus services, are available.

這個住宅設單套房，面積1344平方呎，設計時尚，一室傢具陳設經精挑細選，以亞洲藝術品、中式屏風及懷舊衣櫥及架櫃點綴，展現東方文化的情懷。牆壁以至許多傢具都選出色調深沉的木材，使裝潢更見別緻細膩。

不得不提的是設計獨特的主人套房，內有浴缸和獨立淋浴間的開放式浴室。廚房設備齊全，除了有焗爐、咖啡機和大雪櫃外，亦設酒架和酒櫃，另有附設浴室的家傭套房。陽台及私人天台可飽覽城市和維港美景。

住宅坐落西半山旭蘇道翠綠寧靜的社區之內，居民可享用多個休閒設施，包括室外游泳池和兒童遊樂場。區內交通亦相當便利，可選擇乘搭多種公共交通，如小巴和巴士。



☎ 9486 1566 Mira To 杜小姐
🌐 www.landscape.com/98995.htm



Shan Kwong Court
26-32 Shan Kwong Road,
Happy Valley
Practical 3-bedroom apartment in quiet
yet convenient neighbourhood
實用三房單位，環境寧靜，位置優越

跑馬地
山光樓

1,200 s.f.
\$11.5M

☎ 9551 1077 Walker Lam 林先生 可普通話
🌐 www.landscape.com/115765.htm



Crescent Heights
3 Tung Shan Terrace,
Midlevels East
3-bedroom apartment in the quiet
neighbourhood of Tung Shan Terrace
東山臺三房單位，環境寧靜怡人

東半山
月陶居

1,208 s.f.
\$12.5M

☎ 9229 2396 Elaine Chow 周小姐 可普通話
🌐 www.landscape.com/115673.htm



Grand Deco Tower
26 Tai Hang Road, Midlevels East
Nicely renovated 3-bedroom apartment
with open city view
雅致裝修三房單位，享開揚城市景觀

東半山
帝后臺

1,415 s.f.
\$14.8M

☎ 9229 2396 Elaine Chow 周小姐 可普通話
🌐 www.landscape.com/127797.htm



Silver Fair Mansion
2E-2F Shiu Fai Terrace,
Midlevels East
Brand new decoration flat with green
view and open view
東半山全新裝修單位，尊享翠綠景觀及開揚景色，
可租可售

東半山
銀輝大廈

1,450 s.f.
\$15.5M also for lease \$50K incl.

☎ 6183 8339 Carman Szeto 司徒小姐 可普通話
🌐 www.landscape.com/72414.htm



Grand Court
16 Shan Kwong Road,
Happy Valley
Tastefully decorated 3-bedroom
apartment with rare, large private terrace
in Happy Valley
跑馬地三房住宅，雅致裝修連特大私家平台，市場
罕有，可租可售

跑馬地
嘉蘭閣

1,569 s.f. (plus 1,404 s.f. terrace)
\$28M also for lease \$78K incl.

☎ 9080 6686 Teresa Lau 劉小姐 可普通話
🌐 www.landscape.com/112728.htm



Evergreen Villa
43 Stubbs Road, Midlevels East
Practical apartment with balcony on
Stubbs Road
司徒拔道實用間隔單位，連陽臺

東半山
松柏新村

1,750 s.f.
\$28.9M

☎ 9486 1566 Mira To 杜小姐 可普通話
🌐 www.landscape.com/37717.htm



The Leighton Hill
2B Broadwood Road,
Happy Valley
2-bedroom racecourse view apartment
with excellent facilities
跑馬地兩房馬場景單位，連完善住客會所設施

跑馬地
禮頓山

1,206 s.f.
\$29.8M

☎ 9551 1077 Walker Lam 林先生 可普通話
🌐 www.landscape.com/34133.htm



Stubbs Villa
2 Shiu Fai Terrace, Midlevels East
Modern designed and decorated
4-bedroom flat with open city view
時尚裝修四房單位，欣賞開揚城市景色

東半山
詩瀟花園

2,325 s.f.
\$32M

☎ 9348 4118 Rowena Siu 蕭小姐 可普通話
🌐 www.landscape.com/45131.htm



**11-15 Briar Avenue,
Happy Valley**
Stylish colonial low-rise in quiet
environment
跑馬地時尚英式低密度住宅，環境清幽怡人

跑馬地
比雅道11-15號

2,200 s.f.
\$33M

☎ 9028 0147 Jenson Au 區先生 可普通話
🌐 www.landscape.com/9313.htm



The Legend
23 Tai Hang Drive, Midlevels East
Sleek 4-bedroom apartment with full
harbour view
別致四房單位連全海景，可租可售

東半山
名門

1,918 s.f.
\$40M also for lease \$100K incl.

☎ 9229 2396 Elaine Chow 周小姐 可普通話
🌐 www.landscape.com/42543.htm



Villa Monte Rosa
41A Stubbs Road, Midlevels East
Large family apartment on upper Stubbs Road
東半山特大家庭式住宅，位於司徒拔道頭段

東
半
山
玫
瑰
新
村

2,300 s.f.
\$44M

☎ 6330 7888 Cora Ko 高小姐
🌐 www.landscape.com/38403.htm



The Leighton Hill
2B Broadwood Road,
Happy Valley
Rare find 4-bedroom apartment with private terrace overlooking racecourse
罕有四房單位，連私家平台，俯瞰馬場景觀

跑
馬
地
禮
頓
山

2,227 s.f. (plus 1,340 s.f. garden and 1,411 s.f. terrace)
\$74.8M

☎ 9093 3381 Stephen Chan 陳先生
🌐 www.landscape.com/42392.htm



Evergreen Villa
43 Stubbs Road, Midlevels East
Spacious 4-bedroom apartment with large balcony and stunning views
間隔寬敞四房單位，連大陽臺及遼闊景觀，可租可售

東
半
山
松
柏
新
村

2,700 s.f.
\$82M also for lease \$98K incl.

☎ 9093 3381 Stephen Chan 陳先生
🌐 www.landscape.com/120166.htm



Broadwood Park
38 Broadwood Road,
Happy Valley
Well decorated large 3-bedroom apartment with huge private terrace in upper Happy Valley
跑馬地雅緻裝修特大三房單位，連私家平台，可租可售

跑
馬
地
柏
樂
苑

2,938 s.f. (plus 1,069 s.f. terrace)
\$95M also for lease \$150K incl.

☎ 9348 4118 Rowena Siu 蕭小姐
🌐 www.landscape.com/34737.htm

FOR LEASE

The Altitude 紀雲峰

Brand new luxurious residential
by Kerry Properties
嘉里建設全新豪華住宅項目

Unit size 1,855 s.f – 1,995 s.f. with
3 bedrooms (incl. 2 ensembles)
單位面積由1855至1955平方呎，
間隔均為三房設計，其中兩房為套房

Comprehensive clubhouse facilities
完善住客會所配套設施

Excellent location with easy access
to Central and Causeway Bay
座落優越地段，往來中環及
銅鑼灣均極之便利

Asking Rental 租金: \$110K

20 Shang Kwong Road, Happy Valley
跑馬地山光道廿號



Contact person 聯絡人:

Walker Lam 林先生

☎ 9551 1077 可曾通話

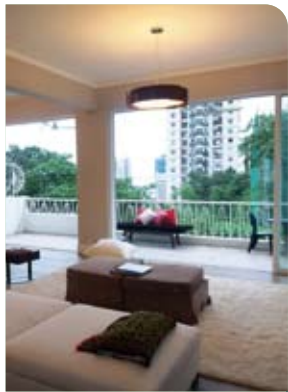
Cora Ko 高小姐

☎ 6330 7888

Christine Chong 莊小姐

☎ 9648 6082

The photographs, images, drawings or sketches shown in this advertisement/promotional material represent the artist's imaginative impression of the development concerned only. They are not drawn to scale and/or may have been edited and processed with computerized imaging techniques. Prospective purchasers should make reference to the sales brochure for details of the development. The Developer also advises purchasers to conduct on-site visit for a better understanding of the development site, its surrounding environment and the public facilities nearby.
本廣告/宣傳資料內載列的相片、圖像、繪圖或素描顯示的純屬畫家對該發展地盤之想像感覺。有關圖片並非按照比例繪畫或/及可能經過電腦圖像修飾處理。準買家如欲了解本發展項目的詳情，請參閱售樓說明書。發展商亦建議買方到該發展地盤作實地考察，以獲取該發展地盤以及其周圍地區的公共設施及環境較佳的了解。



88A-B Pok Fu Lam Road, Pokfulam
Fully furnished 2-ensuite low-rise with stylish decorations
薄扶林低密度兩套房單位，設計時尚連全屋傢俬

薄扶林
薄扶林道88A-B號

2,000 s.f.
\$68K incl.

9648 6082 Christine Chong 莊小姐
www.landscape.com/101683.htm



63-65 Bisney Road, Pokfulam
Practical 4-bedroom low-rise apartment in quiet location with sea view
實用四房低密度住宅，環境優美寧靜，欣賞海景，可租可售

薄扶林
碧荔道63-65號

2,400 s.f.
\$76K incl. also for sale \$41M

6838 2929 Mark Mak 麥先生
www.landscape.com/11631.htm



Coombe Apartments
15-17 Coombe Road, The Peak
Well appointed 3-bedroom low-rise in prestigious neighbourhood
山頂三房低密度住宅，地段尊貴

山頂
甘道15-17號

2,150 s.f.
\$88K incl.

9809 8570 Stella Lo 羅小姐
www.landscape.com/18555.htm



South Bay Villas
4 South Bay Close, Repulse Bay
Practical 4-bedroom mid-rise at serene South Bay Close
淺水灣實用四房中密度住宅

淺水灣
南灣新村

2,500 s.f.
\$95K incl.

9493 8275 Sami Woo 胡小姐
www.landscape.com/99735.htm



Repulse Bay Garden
18-40 Belleview Drive, Repulse Bay
Practical 4-bedroom sea view apartment at Repulse Bay
淺水灣實用四房單位，尊享海景

淺水灣
麗景園

2,810 s.f.
\$100K incl.

9871 6828 Louis Wong 黃先生
www.landscape.com/5595.htm



Repulse Bay Towers
119A Repulse Bay Road, Repulse Bay
Well kept 4-bedroom duplex overlooking Repulse Bay Beach
雅致裝修四房複式住宅，俯瞰淺水灣海灘景觀

淺水灣
保華大廈

3,300 s.f.
\$100K

9871 6828 Louis Wong 黃先生
www.landscape.com/105931.htm



Celestial Garden
5 Repulse Bay Road, Repulse Bay
4-bedroom sea view apartment on upper Repulse Bay Road with swimming pool
淺水灣道頭段四房海景單位，連泳池

淺水灣
詩禮花園

2,363 s.f.
\$105K incl.

9809 8570 Stella Lo 羅小姐
www.landscape.com/11028.htm



14 Stanley Beach Road, Stanley
Renovated 3-bedroom low-rise with balcony and private roof close to beach
新裝修三房低密度住宅，連陽臺及私家天台，鄰近海灘

赤柱
赤柱灘道14號

2,320 s.f. (plus 2,000 s.f. roof)
\$105K

9648 6082 Christine Chong 莊小姐
www.landscape.com/10886.htm



Celestial Garden
5 Repulse Bay Road, Repulse Bay
Nicely decorated 4-bedroom apartment with fantastic sea view and hill view
雅致裝修四房單位，享遼闊海景及山景

淺水灣
詩禮花園

2,363 s.f.
\$106K incl.

9138 1621 Teresa Fung 馮小姐
www.landscape.com/3879.htm



Villa Verde
4-18 Guildford Road, The Peak
High efficiency 3-bedroom apartment in Lower Peak
山頂三房住宅，實用率高

山頂
環翠園

2,520 s.f.
\$110K incl.

9080 6686 Teresa Lau 劉小姐
www.landscape.com/4433.htm

可普通話



FARRINGTON INTERIORS

THE MOMENT MADE BEAUTIFUL

www.farringtoninteriors.com

FLAGSHIP STORE - 10,000 sq. ft. SHOWROOM

31/F., World Trade Centre, Causeway Bay, Hong Kong | 香港銅鑼灣世界貿易中心31樓

Tel: 852. 2808 1000 Fax: 852. 2808 2800

SHOP

G/F., 87 Wong Nai Chung Road, Happy Valley, Hong Kong | 香港跑馬地黃泥涌道87號地下

Tel: 852. 2808 0303 Fax: 852. 2801 6732



Mountain Lodge
44 Mount Kellett Road, The Peak
Spacious 4-bedroom apartment with sea view
間隔寬敞四房單位，欣賞美麗海景

山頂
寬廬

2,600 s.f.
\$112K incl.

9833 9509 Michelle Chung 鍾小姐 可普通話
www.landscape.com/11692.htm



29-31 Bisney Road, Pokfulam
Rare 4-bedroom low-rise apartment with private garden
罕有四房低密度住宅，連私家花園平台

薄扶林 碧荔道 29-31號

2,500 s.f. (plus 1,000 s.f. garden and 578 s.f. terrace)
\$115K incl.

9348 4118 Rowena Siu 蕭小姐
www.landscape.com/51258.htm



Oasis
8-12 Peak Road, The Peak
Brand new harbour view apartment with high ceiling
山頂維港景住宅，樓底極高

山頂
欣怡居

2,719 s.f.
\$118K incl.

9833 9509 Michelle Chung 鍾小姐 可普通話
www.landscape.com/40250.htm



Belgravia
57 South Bay Road, Repulse Bay
Luxurious 4-bedroom apartment in South Bay with fantastic sea view
淺水灣豪華四房單位，連廣闊海景

淺水灣 南灣道 57號

2,790 s.f.
\$150K incl.

9809 8570 Stella Lo 羅小姐
www.landscape.com/122509.htm



29 Severn Road, The Peak
Modern low-rise 4-bedroom apartment on the Peak
山頂時尚低密度四房單位出租

山頂
施勳道 29號

2,300 s.f.
\$150K incl.

9229 2396 Elaine Chow 周小姐 可普通話
www.landscape.com/46658.htm



Montebello
15-17 Plantation Road, The Peak
Spacious low-rise 4-bedroom apartment on the Peak
山頂低密度四房單位，間隔寬敞

山頂
濠景閣

3,070 s.f.
\$160K incl.

9648 6082 Christine Chong 莊小姐
www.landscape.com/148291.htm

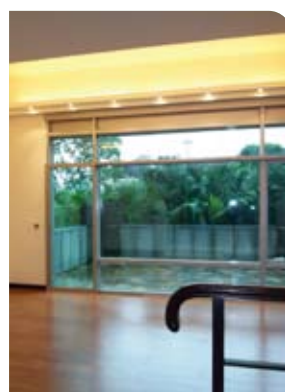


12 Shouson Hill Road, Shouson Hill
Large 5-bedroom garden house in quiet enclave
特大五房花園大屋，位於壽臣山，環境清幽怡人

壽臣山 壽臣村道 12號

3,746 s.f. (plus 374 s.f. garden)
\$165K

6838 2929 Mark Mak 麥先生
www.landscape.com/11896.htm



The Zenith
11A Shouson Hill Road West, Shouson Hill
Modern townhouse with roof and garden terrace at tranquil Shouson Hill area
壽臣山時尚大屋，連天台及花園，寧靜舒適

壽臣山 采庵

3,692 s.f. (plus 372 s.f. terrace, 307 s.f. garden and 286 s.f. roof)
\$168K incl.

9348 4118 Rowena Siu 蕭小姐
www.landscape.com/50355.htm



1-3 Pollock's Path, The Peak
Stylish colonial low-rise on the Peak with facilities overlooking the harbour
山頂時尚英式低密度住宅，連住客設施，俯瞰維港景色

山頂
普樂道 1-3號

2,800 s.f. (plus 434 s.f. terrace and 105 s.f. garden)
\$185K incl.

9551 1077 Walker Lam 林先生 可普通話
www.landscape.com/22050.htm



Orient Crest
76 Peak Road, The Peak
Newly renovated peak townhouse with 4 bedrooms in tranquil neighbourhood
全新裝修山頂四房排屋，地段尊貴

山頂
山頂道 76號

3,300 s.f.
\$195K incl.

9138 1621 Teresa Fung 馮小姐
www.landscape.com/7735.htm



Alexis Lee

Joseph is friendly, honest, reliable, organized, and very meticulous in his work. I can't say enough good things about all the work he did to make my place gorgeous & very functional.

Old Peak road -the boundless en-suite



Sherrie Harps

Joseph is a problem-solver, talented designer, sophisticated and.....now my very good friend, I could not praise him and his firm enough

Repulse Bay -classical contemporary



Richard J. Brink

Throughout the project, Joseph was personally involved, assuring the quality of the work and the project's adherence to the budget and schedule. The project was completed on time and within budget, and we now have a beautiful new home, as well as a new friend, Joseph!

Capital Garden -minimal maximized flexibility



Mei Ling

Thank you so much for designing our new dreamy house. We absolutely love it! I just keep going upstairs and looking at it. It looks like a place out of a magazine. Fantastic Job! You matched the house to our personalities perfectly. Thanks again!

Red Hill Peninsula -accentuated coziness



Sean Holdren

We really appreciated the way Joseph worked with us in coming up with great ideas by taking our rudimentary ideas and developing them into amazing designs.

Park Place -interior & exterior connection

Interior design
constructions
space planning
project management
tendering
landscaping
quantity survey

**"you never own ya premises,
you merely live there unless
ya character implanted"**

-joseph chang-



Carmelia
60 Stanley Village Road, Stanley
Huge colonial house with front yard and private garden
特大英式洋房，連平台及私家花園，可租可售

赤柱
赤柱村道60號

5,200 s.f. (plus 753 s.f. garden and 343 s.f. terrace)
\$250K incl. also for sale \$200M

☎ 9871 6828 Louis Wong 黃先生
🌐 www.landscape.com/84478.htm



Belgravia
57 South Bay Road, Repulse Bay
Rare and unique duplex penthouse with private terrace overlooking stunning sea view
淺水灣罕有獨特頂層住宅，連私家天台平台，俯瞰遼闊海景

淺水灣
南灣道57號

3,675 s.f. (plus 1,154 s.f. roof and 462 s.f. terrace)
\$220K incl.

☎ 9486 1566 Mira To 杜小姐
🌐 www.landscape.com/136359.htm



Turtle Cove
60 Tai Tam Road, Tai Tam
Nicely decorated waterfront house in Tai Tam
大潭雅緻裝修海濱大屋，可租可售

大潭
龜背灣

4,300 s.f. (plus 453 s.f. terrace and 259 s.f. roof)
\$250K incl. also for sale \$150M

☎ 9138 1621 Teresa Fung 馮小姐
🌐 www.landscape.com/12763.htm



Villa Rosa
88 Red Hill Road, Tai Tam
High privacy garden house overlooking Stanley Bay
大潭花園大屋，私隱度高，俯瞰赤柱美景，可租可售

大潭
玫瑰園

3,960 s.f. (plus 2,234 s.f. garden and 480 s.f. roof)
\$250K incl. also for sale \$180M

☎ 9833 9509 Michelle Chung 鍾小姐 可普通話
🌐 www.landscape.com/1782.htm



King's Court
5 Mount Kellest Road, The Peak
Spacious Peak townhouse with exclusive terrace and functional balcony
山頂洋房連花園平台及陽臺，間隔寬敞

山頂
龍庭

3,165 s.f. (plus 1,302 s.f. garden)
\$258K

☎ 9833 9509 Michelle Chung 鍾小姐 可普通話
🌐 www.landscape.com/22784.htm



Peak Gardens
16-20 Mount Austin Road, The Peak
Peak 4-bedroom apartment with panoramic Victoria Harbour view
山頂四房單位，尊享遼闊維港景觀

山頂
山頂花園

4,000 s.f.
\$280K incl.

☎ 6838 2929 Mark Mak 麥先生 可普通話
🌐 www.landscape.com/110876.htm



2 Barker Road, The Peak
Luxury townhouse on the Peak with terrace
山頂豪華洋房連花園平台

山頂
白加道2號

4,745 s.f. (plus 551 s.f. roof, 518 s.f. terrace and 264 s.f. garden)
\$290K

☎ 6183 8388 Chris Law 羅先生
🌐 www.landscape.com/46175.htm



Coombe Road, Luxury Townhouse
Luxury townhouse with private garden in gated neighbourhood
豪華山頂排屋，連私家花園，寧靜舒適

山頂
甘道豪華洋房

4,436 s.f. (plus 1,854 s.f. garden)
\$380K incl.

☎ 6183 8339 Carman Szeto 司徒小姐 可普通話
🌐 www.landscape.com/90605.htm



Island Grove
40 Island Road, Deep Water Bay
Designer decorated waterfront townhouse at prestigious address
設計師精心設計海濱洋房，地段尊貴，可租可售

深水灣
香島道40號

5,080 s.f. (plus 423 s.f. garden)
\$390K incl. also for sale \$260M

☎ 9093 3381 Stephen Chan 陳先生
🌐 www.landscape.com/121888.htm



21 Coombe Road, The Peak
Newly renovated detached townhouse with private pool overlooking sea view and hill view
全新裝修獨立大屋，連私家泳池，俯瞰海景及翠綠山景

山頂
甘道21號

4,843 s.f. (plus 540 s.f. roof)
\$400K

☎ 9871 6828 Louis Wong 黃先生
🌐 www.landscape.com/19074.htm



名貴真絲手織地毯，傳統波斯圖案手織地毯，純羊毛手織地毯，
歐洲頂級機織地毯及澳洲頂級純羊皮地毯。

承接各類高級地毯鋪設工程，服務大眾三十年，品質保證最好。

We offer the best quality of Hand-Knotted Silk, Woolen, Wool-Silk mixed and super fine Persian Silk Rugs.

Top quality European machine-made Contemporary Rugs and Australian Sheepskin Rugs.

Acceptance of high quality wall to wall carpets with installation.

Serving Hong Kong over 30 years, quality and service guarantee.

www.cccrugs.com.hk

e-mail: rugs@biznetvigator.com



九龍尖沙咀東麼地道63號好時中心5號地下及一樓 (香格里拉酒店對面)

Shop #5, G & 1/F, Houston Centre, 63 Mody Road, T.S.T. East (facing Shangri-la Hotel) 電話(Tel): 2730 7230

型格之選

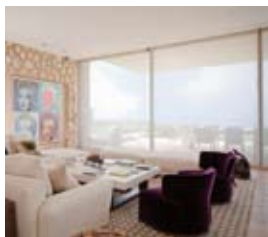
A stylish selection

If you've ever wondered how and why designers make their choices, Italian Solutions founder Kate Macklin might have the answer

要是你好奇設計師怎樣選擇傢具配襯，
問問Italian Solutions的創辦人Kate Macklin便知答案

Text: Teresa Chow

Photography: Courtesy of Tara Bernerd



We spend a lot of time perfecting our homes by pairing furniture and furnishings, but we don't always get it right, because just knowing what you like and where to find it are two quite separate things. It stands to reason, then, why there are still many who turn to designers to save time and trouble. So when Italy-based Kate Macklin founded Italian Solutions, she wanted to offer her expertise to designers looking to source items swiftly and with minimum fuss. Over the years, Italian Solutions has gone on to build a strong reputation, counting leading designers like Tara Bernerd and Paul Davis in her substantial client list. Perspective asked Macklin to tell us how Italian Solutions fits in to the high-end furniture business.

What exactly does Italian Solutions do?

We're based in the furniture heartland of Italy. We buy a huge range of products and brands from showrooms and factories, and supply the end user directly.

What did you do before Italian Solutions?

I was in the import and export food business for many years.

What tempted you into the furniture industry?

I have been interested in interior design since I was very young — I used to do all the decorating in my house while I was growing up. Moving to Italy in my 20s meant that I was always in contact with great design — it was all around me.

How did Italian Solutions come about?

Many of my friends are either architects or furniture designers working with big companies. I decided I could make my passion a business, so I set up Italian Solutions in 2005.

What sets Italian Solutions apart from its competitors?

Italian Solutions provides a complete service and simplifies the supply chain. We offer a comprehensive brand range — both well-known and less well known brands. Our extensive product range covers sofas, tables and chairs, beds and night furniture, kitchens, lighting, office furniture and outdoor furniture, contemporary and also classic — and more. We supply directly, so our delivery times tend to be short. We can also help and advise customers with their product and brand selection according to the project they are furnishing.

How did you enter the Asia market?

Our markets have traditionally been in Europe, but we came to Hong Kong as a result of a liaison with British designer Tara Bernerd, when she was working on the very large penthouse apartments of Westminster Terrace at Approach Bay, and also Highcliff at the top of Stubbs Road. Tara and her wonderful team carried out the design for these projects and Italian Solutions supplied practically all the designer loose furniture directly from Europe. As the delivery times were very tight, all the furniture was air freighted out and fitted by Italian Solutions.

我們一般花上很多時間在美化家居上，傢具裝潢總想顯出心思。可是配襯得當並非易事，因為就算知道自己的喜好，也未必一定找對地方把心頭好買回來。正因如此，仍有不少人還是找室內設計師為佈置家居打點一切，省時又方便。於是，當Italian Solutions的創辦人Kate Macklin成立公司時，便決意為設計師們以她專業的知識快捷地找對合適的傢具，省卻不少麻煩。多年來，Italian Solutions已建立了相當的信譽，客戶都是鼎鼎大名的設計師，如Tara Bernerd和Paul Davis。《透視》跟Kate詳談Italian Solutions如何在高級傢具業中突圍而出。

Italian Solutions專營甚麼業務？

我們的公司位於意大利傢具的核心地區，專責從傢具陳列室及傢具廠購買一系列各色各樣的產品及品牌，再直接供應到用家去。

創辦Italian Solutions前，你的工作是甚麼？

我曾經從事食品出入口工作多年。

甚麼吸引你轉投傢具業呢？

我年輕時已對室內設計感到興趣，成長時家裡的佈置都是我一手一腳親自配搭的。當我二十多歲移居意大利時，身邊都是出色的設計師，接觸他們的機會自然也多了。

Italian Solutions是怎樣成立的？

我身邊的朋友不是建築師便是設計師，他們都在規模大的設計工作室工作。在零五年我決定把自己熱愛的設計業變成事業，於是便創辦了Italian Solutions。

Italian Solutions比同行優勝之處在哪裡？

Italian Solutions提供完善的服務，簡化供應程序。我們又提供完整的傢具品牌系列，不論是知名的還是小規模經營的，都一應俱全。傢具種類包括沙發、桌椅、床及床上用品，還有廚房、燈飾、辦公室傢具及戶外傢具，風格方面有時尚的，也有古典的，總之款式齊全。我們直接為客戶供應傢具，所以送貨時間短；同時又為客戶提供諮詢服務，根據他們的設計項目來建議合適的傢具和品牌。

你是怎樣開拓亞洲的業務？

一直以來我們的主要市場都在歐洲，但因為英國設計師Tara Bernerd在香港近水灣皇璧的一項頂層大宅和司徒拔道曉廬大宅把我們也帶到這裡來。Tara跟她出色的設計團隊為這兩個項目作設計工作，我們則負責直接從歐洲為項目進口活動式傢具。因為時間緊迫，所有傢具都空運到港，並由Italian Solutions負責裝嵌。

For more features on design and architecture, don't miss the February issue of Perspective magazine, and check out our website at www.perspectiveglobal.com

請密切留意《透視》二月號更多有關建築與設計的專題報導，或登入www.perspectiveglobal.com參閱精彩內容。



Robinson Place
70 Robinson Road, Midlevels West
Practical 3-bedroom apartment with facilities on Robinson Road
羅便臣道三房單位，間隔實用，連會所設施

西
半
山
雍
景
臺

1,266 s.f.
\$45K incl.

9493 8275 Sami Woo 胡小姐
www.landscape.com/5364.htm



Kenville Building
32 Kennedy Road,
Midlevels Central
Spacious mid-rise apartment at upper Kennedy Road
堅尼地道頭段中密度住宅，間隔寬敞

中
半
山
甘
苑

1,800 s.f.
\$66K incl.

9238 2012 David Chan 陳先生
www.landscape.com/37256.htm



Hillsborough Court
18 Old Peak Road,
Midlevels Central
Luxurious 3-bedroom apartment within minutes to Central
豪華三房單位，鄰近中環，交通方便

中
半
山
曉
峰
閣

1,385 s.f.
\$68K incl.

9238 2012 David Chan 陳先生
www.landscape.com/140380.htm



Tregunter Tower
14 Tregunter Path,
Midlevels Central
Modern 3-bedroom apartment with full facilities at Midlevels Central
中半山時尚三房住宅，連完善住客會所設施

中
半
山
地
利
根
德
閣

2,020 s.f.
\$68K incl.

9809 8570 Stella Lo 羅小姐
www.landscape.com/37094.htm



Tavistock
10A Tregunter Path,
Midlevels Central
Deluxe 4-bedroom apartment in sought after development
中半山豪華四房單位，市場罕有

中
半
山
騰
皇
居

2,030 s.f.
\$80K incl.

9551 1077 Walker Lam 林先生 可普通話
www.landscape.com/45563.htm



Hamilton Court
8 Po Shan Road, Midlevels West
Practical 4-bedroom apartment with big balcony in quiet location
實用四房單位，連大陽臺，環境寧靜怡人

西
半
山
愛
敦
大
廈

2,600 s.f.
\$82K

9551 1077 Walker Lam 林先生 可普通話
www.landscape.com/10519.htm



Po Shan Mansion
10-16 Po Shan Road,
Midlevels West
Large practical 4-bedroom apartment with harbour view in quiet neighbourhood
特大四房單位，間隔實用，欣賞維港景色，位於西半山寧靜地段

西
半
山
寶
城
大
廈

2,800 s.f.
\$82K

9493 8275 Sami Woo 胡小姐
www.landscape.com/29508.htm



Birchwood Place
96 MacDonnell Road,
Midlevels Central
Rare on Macdonnell Road - 4-bedroom apartment with tennis court and swimming pool
麥當勞道四房單位，連網球場及泳池，市場罕有

中
半
山
寶
樺
臺

2,018 s.f.
\$83K incl.

9028 0147 Jenson Au 區先生 可普通話
www.landscape.com/6516.htm



Park View Court
1 Lyttelton Road, Midlevels West
3-bedroom duplex in convenient location
西半山三房複式單位，位置優越

西
半
山
柏
園

2,873 s.f.
\$88K incl.

6655 4488 William Tam 談先生 可普通話
www.landscape.com/15734.htm



Kantian Rise
62 Kennedy Road,
Midlevels Central
Brand new duplex apartment with swimming pool and high privacy in convenient location
全新複式住宅，連泳池設施，私隱度高，位置優越，可租可售

中
半
山
康
德
居

1,261 s.f.
\$138K incl.

also for sale Open Offer
9080 6686 Teresa Lau 劉小姐 可普通話
www.landscape.com/154946.htm



Pine Court

5 Old Peak Road,
Midlevels Central

Colonial low-rise with backyard and huge balcony on fringe of CBD
中半山英式低密度住宅，連大陽台及平台，鄰近中環，交通方便

2,650 s.f. (plus 400 s.f. terrace)
\$92K incl.

9080 6686 Teresa Lau 劉小姐
www.landscape.com/20258.htm

中半山
翠峰園



Piccadilly Mansion

4-6 Po Shan Road, Midlevels West

High efficiency large flat with harbour view in tree-lined neighbourhood
西半山特大單位，間隔實用，綠葉松蔭，享維港景，可租可售

2,790 s.f.
\$98K incl. also for sale \$60M

6183 8339 Carman Szeto 司徒小姐
www.landscape.com/16116.htm

西半山
山碧苑



Borrett Mansions

8A-9B Borrett Road,
Midlevels Central

Spacious 4-bedroom apartment with big balcony in leafy neighbourhood
寬敞四房住宅，連大陽台，環境舒適

2,800 s.f.
\$100K incl.

9238 2012 David Chan 陳先生
www.landscape.com/31487.htm

中半山
寶德臺



Regent On The Park

9A Kennedy Road,
Midlevels Central

Nice and tastefully decorated apartment with panoramic city view
品味靚裝修單位，享遠闊城市景色

2,720 s.f.
\$110K

9486 1566 Mira To 杜小姐
www.landscape.com/150668.htm

中半山
御花園



Palatial Crest

3 Seymour Road, Midlevels West

High floor modern flat with sweeping harbour view next to Midlevels escalator
高層住宅，設計時尚，享寧靜維港景，鄰近半山扶手電梯

2,174 s.f.
\$115K incl.

6655 4488 William Tam 談先生
www.landscape.com/151301.htm

西半山
輝煌豪園



Grenville House

1-3A Magazine Gap Road,
Midlevels Central

Huge practical 4-bedroom apartment in prime location
特大四房單位，位於中半山尊貴地段

3,400 s.f.
\$120K incl.

9493 8275 Sami Woo 胡小姐
www.landscape.com/36440.htm

中半山
嘉慧園



Garden Terrace

8 Old Peak Road,
Midlevels Central

High efficiency 4-bedroom apartment with fantastic harbour view on fringe of CBD
中半山四房單位，實用率高，尊享廣闊維港美景，鄰近中環，交通方便

3,319 s.f.
\$120K incl.

9138 1621 Teresa Fung 馮小姐
www.landscape.com/36624.htm

中半山
花園臺



Estoril Court

55 Garden Road,
Midlevels Central

Huge apartment on fringe of Central
中半山特大單位

3,347 s.f.
\$123K incl.

6838 2929 Mark Mak 麥先生
www.landscape.com/150527.htm

中半山
愛都大廈



Clovelly Court

12 May Road, Midlevels Central

Large and spacious 4-bedroom apartment with brand new decorations
中半山特大四房單位，間隔寬敞，享全新靚裝修

2,806 s.f.
\$140K

9493 8275 Sami Woo 胡小姐
www.landscape.com/29518.htm

中半山
嘉富麗苑



Kennedy Heights

10-18 Kennedy Road,
Midlevels Central

Newly decorated high efficiency 4-bedroom flat on fringe of CBD
雅致裝修四房單位，間隔實用，鄰近中環，交通方便

3,400 s.f.
\$158K incl.

6330 7888 Cora Ko 高小姐
www.landscape.com/34770.htm

中半山
堅麗閣



MOLD architecture & interior

www.moldarch.com tel: 2137 0122 fax: 3170 6506 email: info@moldarch.com



Custom-made Wine Cellar

With over 30 years' experience in setting-up Cooling System for supermarkets, hotels and restaurants, we generate a new image by designing exclusive, custom-made Wine Cellar not only in commercials but also for households in recent years. Apart from providing professional setup on the whole system for storing red wine, white wine, champagne and sake, we also focus on featuring-wine display purpose and creating an elegant decoration in our new concepts.

Unit 1401, 14/F Westlands Centre,
20 Westlands Road, Quarry Bay, H.K.
Tel: (852) 2811-9381
Fax: (852) 2565-7094
Email: sales@fixwell.com.hk
Website: www.fixwell.com.hk

 輝和陳列設備有限公司
Fixwell Display System Co., Ltd.

PERSPECTIVE透視

For more than a decade, Hong Kong-based Perspective Ltd has covered the architecture, interiors and design markets in Asia and beyond. Our monthly flagship title **Perspective** is a vital source of information for architects and design professionals. It is complemented by our annual books **Interiors+**, a style guide to fashionable interiors, furniture and homeware, and **Perspective+**, targeting the architecture and construction industry with extensive supplier listings, profiles of leading architectural firms and a lavishly-illustrated selection of the most emblematic works in Asia-Pacific and beyond. We also proudly own the regional **Perspective Awards** and **40 Under 40** programmes.

 www.perspectiveglobal.com

A LIFESTYLE THAT CANNOT BE SEEN ONLY EXPERIENCED

239 Queen's Road East, Wan Chai, Hong Kong
香港灣仔皇后大道東239號
www.queenscube.com

Furnished Apartment For
LEASING
Leasing Hotline
81028366



QUEEN'S CUBE

Nan Fung Real Estate Agency Ltd. 南豐地產代理有限公司 (C-026066)



Flora Garden

7 Chun Fai Road, Jardine's Lookout

Newly renovated 3-bedroom flat with balcony and lush green view
全新裝修三房單位，連陽臺，尊享翠綠景色，可租可售

1,302 s.f.
\$49K incl. also for sale \$18M

☎ 6183 8388 Chris Law 羅先生
🌐 www.landscape.com/125564.htm

渣甸山
慧景園



Pinewood Garden

39 Perkins Road, Jardine's Lookout

Colonial low-rise with nice decor in Jardine's Lookout
渣甸山英式低密度住宅，尊享雅緻靚裝修，可租可售

1,450 s.f.
\$55K incl. also for sale \$22.5M

☎ 9093 3381 Stephen Chan 陳先生
🌐 www.landscape.com/125385.htm

渣甸山
松峰園



Wah Fung Mansion

27 Tai Hang Road, Midlevels East

Spacious 4-bedroom apartment with balcony occupying whole floor
東半山寬敞四房單位，連特大陽臺

2,087 s.f.
\$65K incl.

☎ 9486 15666 Mira To 杜小姐
🌐 www.landscape.com/34705.htm

東半山
華峰樓



Monterey Court

47-49 Perkins Road, Jardine's Lookout

3-bedroom apartment with balcony enjoy greenery view
渣甸山三房單位，連陽臺，欣賞翠綠景色

1,788 s.f.
\$68K incl.

☎ 6183 8388 Chris Law 羅先生
🌐 www.landscape.com/20666.htm

渣甸山
白建時道47-49號



The Legend

23 Tai Hang Drive, Midlevels East

Newly renovated 4-bedroom apartment in prestigious development with clubhouse facilities and harbour view
全新裝修東半山四房住宅，連完善住客會所設施，交通方便，享維港景

1,908 s.f.
\$75K incl.

☎ 9138 1621 Teresa Fung 馮小姐
🌐 www.landscape.com/141504.htm

東半山
名門



Low-rise Apartment

Wilson Road, Jardine's lookout

Rare colonial apartment with nice deco and balcony overlooking mountain view
罕有英式住宅，雅緻裝修連陽臺，俯瞰翠綠山景

1,800 s.f.
\$80K incl.

☎ 6183 8339 Carman Szeto 司徒小姐
🌐 www.landscape.com/41237.htm

渣甸山
衛信道低密度住宅



Beverly Hill

6 Broadwood Road, Happy Valley

Newly renovated 4-bedroom apartment with panoramic city and greenery view
全新裝修四房住宅，尊享壯麗城市景色及翠綠景觀

1,996 s.f.
\$80K incl.

☎ 9229 2396 Elaine Chow 周小姐
🌐 www.landscape.com/19237.htm

跑馬地
比華利山



Villa Monte Rosa

41A Stubbs Road, Midlevels East

Spacious 3-bedroom apartment with big balcony on upper Stubbs Road
司徒拔道頭段三房單位，間隔寬敞，連大陽臺

2,300 s.f.
\$85K incl.

☎ 9238 2012 David Chan 陳先生
🌐 www.landscape.com/38464.htm

東半山
玫瑰新村



Evergreen Villa

43 Stubbs Road, Midlevels East

Spacious 4-bedroom apartment with open city view
間隔寬敞四房單位，尊享開揚城市景觀

2,700 s.f.
\$88K incl.

☎ 6655 4488 William Tam 談先生
🌐 www.landscape.com/37639.htm

東半山
松柏新村



The Legend

23 Tai Hang Drive, Midlevels East

Brand new 6-bedroom apartment with harbour view
東半山全新六房單位，尊享維港景，可租可售

2,338 s.f.
\$90K incl. also for sale \$38M

☎ 6655 4488 William Tam 談先生
🌐 www.landscape.com/107860.htm

東半山
名門



Taipan Court

47B Stubbs Road, Midlevels East
4-bedroom duplex on Stubbs Road with splendid city and harbour views
司徒拔道四房複式單位，尊享廣闊城市景及維港景

東半山
大班閣

3,670 s.f.
\$99K

9238 2012 David Chan 陳先生
www.landscape.com/10448.htm



The Colonnade

152 Tai Hang Road, Midlevels East
Modern 4-bedroom home on Tai Hang Road with sweeping views
大坑道時尚四房住宅，享寧靜景觀

東半山
嘉倫臺

2,256 s.f.
\$100K incl.

6330 7888 Cora Ko 高小姐
www.landscape.com/107794.htm



47A Stubbs Road, Midlevels East

Spacious 2-bedroom apartment with study room and balcony overlooking nice city view
間隔寬敞兩房單位，連書房及陽臺，俯瞰城市美景，可租可售

東半山
司徒拔道 47A號

2,400 s.f.
\$100K incl. also for sale \$75M

9348 4118 Rowena Siu 蕭小姐
www.landscape.com/150437.htm



Bellevue Court

41 Stubbs Road, Midlevels East
Practical colonial 3-bedroom apartment on upper Stubbs Road
實用英式三房單位，位於司徒拔道頭段

東半山
碧蕙園

2,700 s.f.
\$100K

9028 0147 Jenson Au 區先生
www.landscape.com/20303.htm



Trafalgar Court

70 Tai Hang Road, Midlevels East
High efficiency 5-bedroom apartment with harbour view for rent
東半山五房維港景住宅出租，實用率高，可租可售

東半山
大寶閣

2,465 s.f.
\$120K incl. also for sale \$91M

9093 3381 Stephen Chan 陳先生
www.landscape.com/5912.htm



Broadwood Park

38 Broadwood Road, Happy Valley
Large 3-ensuite apartment with fantastic views on Broadwood Road
樂活道特大三套房住宅，尊享遠闊景色

跑馬地
柏樂苑

2,938 s.f.
\$130K incl.

9028 0147 Jenson Au 區先生
www.landscape.com/109432.htm



Villa Dorada

124-126 Blue Pool Road, Happy Valley
Rare find 3-storey townhouse in the heart of Happy Valley
罕有三層排屋，位於跑馬地中心地段，可租可售

跑馬地
金碧別墅

3,000 s.f.
\$130K incl. also for sale \$75M

9028 0147 Jenson Au 區先生
www.landscape.com/46359.htm



Serenade

11 Tai Hang Road, Midlevels East
Luxurious duplex with sweeping view and comprehensive facilities
豪華複式住宅，享遠闊景致，連完善住客會所設施

東半山
上林

2,617 s.f.
\$148K

9486 1566 Mira To 杜小姐
www.landscape.com/128230.htm



2-2A Henderson Road, Jardine's Lookout

4-bedroom townhouse with private garden in Jardine's Lookout
渣甸山四房排屋，連私家花園

渣甸山
軒德蔭道 2-2A號

3,115 s.f. (plus 1,000 s.f. garden)
\$170K

6183 8388 Chris Law 羅先生
www.landscape.com/14781.htm



Cavendish Heights

27-37 Perkins Road, Jardine's Lookout
Harbour view 4-ensuite duplex with brand new decor in popular estate
受歡迎四套房複式住宅，連維港景及全新靚裝修

渣甸山
嘉雲臺

3,363 s.f.
\$180K incl.

9833 9509 Michelle Chung 鍾小姐
www.landscape.com/32390.htm



Prime Retail

Mayfair W1

Prime retail site in prestigious Mayfair address. Two retail tenants with offices on upper two floors, with opportunity for future conversion to residential.

Fully let.

位於倫敦最尊貴地段Mayfair的貴重物業，全幢出售。地舖現租予知名時裝品牌，樓上寫字樓可改建成住宅，增加回報，不容錯過。

Freehold
2,500 s.f.
£5M-£10M



Prime Retail

Kensington W8

Prime retail site, fully let to 3 high street fashion retailers, on prestigious Kensington street.

座落於Kington的三個大型商舖連租約出售。租戶全是世界知名的時裝品牌連鎖店。

Gross Yield est. 4.5%
Freehold
£30M-£40M

LARGE BLOCK OF NEW APARTMENTS

Central London N1

High Yield Investment or Suitable for Strata Sale



A completed development of 70 modern flats finished 4 years ago. Now Fully-let all flats are well maintained with high specification interiors. Located in a fashionable & popular Central North London residential district. Stylish low rise courtyard design. All 1 and 2 bedroom flats, with 3 Penthouses. 7 day concierge services. High yield, could be held for investment or suitable for strata sale.

由世界著名的零售百貨店Harrods步行數分鐘可到達的豪華精品酒店，樓高6層共34個套房。全酒店現正內外翻新，因業主財政問題，工程只有80%完成，買家可以一個遠低於市價的價錢買取並完成該項目。



5%+ Gross Yield
Freehold

45,989 s.f.
£30M-£40M

6183 8388 Chris Law 羅先生



Prime Retail

Tottenham Court Road W1

Corner retail unit in prime West End location. Single-let on long lease. Tenant well established Coffee Shop chain.

鄰近Tottenham Court Road的單邊地舖，租戶是英國現時增長率最高的餐飲集團，租約長回報高。

6.5% Gross Yield
Long Leasehold
3,051 s.f.
Below £5M



Small Retail

Westminster SW1

Period building featuring 4 small Ground floor retail units in busy tourist and commercial area close to Houses of Parliament. Office space above. Fully let. Good potential for rental and capital appreciation.

4個小型地舖連一個寫字樓連租約出售，位於Victoria附近的繁華大街，升值空間無限。

6.3% Gross Yield
Long Leasehold
2,459 s.f.
Below £5M

Commercial; Art Gallery

Kings Cross W1

Warehouse style commercial space currently used as art gallery with offices above. Stunning interior design, high ceilings and modern design and specification throughout. Single tenant. High yield with good potential for rental and capital appreciation, in an up and coming area.

由特高樓底的倉庫改建成的商用物業，現租予單一租戶作美術畫廊，收租回報有6.4厘。

6.4% Gross Yield.
Freehold
16,923 s.f.
£5M-£10M



Prime Residential

Belgravia SW1

Prime Belgravia Residence. 6 Floors plus 2 mezzanine floors added, was previously reconfigured as flats, conversion back to a single large residence is in progress.

位於倫敦珍貴豪宅地段Belgravia的一幢6層高住宅物業，現正由分層單位改裝成單一大宅出售，極為罕有。

Freehold
7,354 s.f.
£15M-£20M

Hotel

Kensington SW5

88 Room hotel with planning approved to expand to 126 rooms in future. 7 Floors plus 2 mezzanine floors. Refurbished throughout in 2002.

該酒店位於Kensington區大街的單邊位置，樓高7層共88個豪華房間。現已獲批准將房間數量增加至126個，全酒店已內外翻新。

Freehold
33,811 s.f.
(existing)
42,085 s.f.
(approved)
£20M-£30M



Distressed Luxury Hotel Development

Knightsbridge SW3

Luxury Boutique Hotel in Prime Knightsbridge garden square, a short walk from Harrods. 80% finished seeking buyer to finish the development. Basement ground and five upper floors.

34 Suites and luxury facilities. 位於英國Knightsbridge花園廣場的豪華精品酒店，舉步可達Harrods。樓高5層連一個地下室。設有34間套房和豪華的住客設施。

Distressed Price
(on request only)
Leasehold
19,900 s.f.

Prices on luxury UK properties are rarely quoted in listings. Interested parties are encouraged to make enquiries on price indications with Landscape

PRICE UPON ENQUIRY 歡迎查詢

6183 8388 Chris Law 羅先生