

select deluxe homes

The Key

大宅®

www.landscape.com

FEBRUARY | 2011

Volume 76



CONTEMPORARY CHIC

The synthesis of modernism and classicism

LIVING IN HARMONY

Enjoy the ultimate cosiness in Happy Valley

KEY NOTES*

“Great things are done by a series of small things brought together.”

「偉大的成就，總是由一連串小事串合而成的。」

- Vincent Willem van Gogh (Artist 1853-1890)
- 文森·威廉·梵谷 (畫家1853至1890年)

The main factors contributing to high property price are still there, and there is another factor coming into play. This is inflation, which is looming large. The worldwide quantitative easing has created huge hot money flows, which chase assets including real estate. Asia being a main destination of the money flow has absorbed more than its fair share of the surplus cash. Hong Kong is among the hot spots to where money flows. To counteract inflation brought about by surplus money, a traditional and effective way is to raise the interest rate. However, Hong Kong Monetary Authority has its hands tied up because of its peg to the US dollar. And Federal Reserve will not raise the interest rate any time soon in an effort to jump start the US economy. The result is that inflation will quickly build up its momentum and become rampant in the years to come. The consumer market is already feeling the pinch. The anticipation of high inflation and the next-to-nothing deposit rate have combined to spur property investment demand. Even if the government increases land supply now, it won't quench the thirst for another three years before buildings are completed. As we pointed out in last month's market commentary ("The Culprit of High Property Price"), the government is largely responsible for the rampant price surge since 2005 because of its high land price policy. So the anti-speculation measures introduced in last November is doomed to fail. Looking ahead, we expect sales activities will continue to be buoyant and price will continue to escalate.

樓價高企的主要成因依然存在，而另一令人憂慮的因素——通貨膨脹卻同時漸漸浮現。由於遍及全球的量化寬鬆貨幣政策，令大量熱錢在市場上湧現，流入包括房地產在內的資產市場。亞洲是這些資金流向的主要目的地，而香港作為亞洲其中一個熱點，自然吸納了大量資金。為應對熱錢流入而衍生的通脹問題，傳統而有效的方法是調高利率。可是，港幣和美元掛鈎，基於聯繫匯率的限制，香港金融管理局也束手無策；同時，聯儲局為刺激美國經濟發展，短期內也不會上調利率，結果引致通貨膨脹問題，而此問題於未來數年將越見嚴重。目前，消費市場已感到通脹的壓力。高通脹的預期加上近乎零的存款利率，這些都大大刺激市場對物業投資的需求。即使政府已開始增加土地供應，但也難以供應未來三年的需求。我們上月的市場評論——《樓價高企的始作俑者》已指出，政府採取的高地價政策，是本港樓價自2005年起開飆升的主要原因。所以，於去年十一月推出的一系列打擊炒賣的措施是註定要失敗的。我預期樓市的前景將會繼續看漲，而交投及樓價亦會持續攀升。

By K.S. Koh
ks-koh@landscape.com

The above is an excerpt from Market Watch on www.landscape.com
Read the full article at Market Watch, www.landscape.com/marketwatch
以上內容錄於市場觀察站之市場觀察，如欲閱讀全文，
請登上網站：www.landscape.com/marketwatch

published and distributed by

LANDSCOPE 領域
The Specialists in Luxury Properties

Landscape Realty Limited C-018733
a member of Landscape Surveyors Ltd

Tel: 852-2866 0022 Fax: 852-2866 0015
Email: info@landscape.com Website: www.landscape.com
Unit 3106, 31/F, Hopewell Centre, 183 Queen's Road East, Wanchai, Hong Kong

The information, text, photos, analyses and projections contained herein are provided solely for the convenience of prospective clients and no warranty or representation as to their accuracy, correctness or completeness is made by Landscape Surveyors Limited, Landscape Realty Limited or the owners, none of whom shall have any liability or obligation with respect thereto. Interested parties should rely on their own investigations, interpretations and analyses.

Information has been provided to us by sources deemed reliable, but no warranty or representation is made as to its accuracy, correctness or completeness. These offerings are made subject to contract, correction of errors, omissions, prior sale of issue, change of price or terms or withdrawal from the market without notice. The contents of The Key are for reference only and do not constitute all or any part of a contract.

Reproduction in any form of any information or material contained in The Key in whole or in part without the written permission from Landscape Realty Ltd is strictly prohibited.

Copyright 2011

THE KEY | CONTENTS



04 Contemporary Chic
摩登時尚

08 The White Factor
淨白元素

12 Living in Harmony
和諧居所

20 Chantilly
嘉柏寶

The Key (The No.1 Publication for Luxury Properties)

The Key is a monthly, bilingual lifestyle publication focusing on luxury residential properties in Hong Kong Island. It is sent to over 60,000 urban elites comprising of Hong Kong's most affluent inhabitants.

These consist of Landscape's VIP clients, who mainly reside in The Peak, Mid-Levels, Southside, Kowloon Tong, Homantin and other select up-market residential areas such as Tai Po, Sai Kung and Clear Water Bay, etc.

How may you list your property with The Key?

If you would like to list your property in an upcoming issue of The Key, you may contact Loretta Lui on +852 3102 4818 or visit us at www.landscape.com/sell-to-let. Alternatively, simply fill out the below and fax back to us on +852 2866 0015.

Property Details

Asking Rental / Sale Price

Floor Area

Contact Person

Telephone

Email

Our Key/Person will contact you for follow-up work.

designed and produced by

in MAGAZINE

inCorporation Limited

Your No. 1 Integrated Marketing Communications Partner in Hong Kong and China

Tel: 852-3699 0888 Fax: 852-3699 0889
Email: marketing@incorp.com.hk Website: www.inmagazine.com.hk
12/F, Cyberport 2, 100 Cyberport Road, Hong Kong

懿峯

SEYMOUR

港島半山



鋒芒, 來自世界的目光

最頂層壓軸鉅宅 擁維港煙花全景

傲處港島半山西摩道,

正中環維港全景高層鉅宅, 一層兩戶,

2,348平方呎五房雙套房,

及1,888平方呎四房雙套房。

將維港光芒永恒珍藏,

機遇罕有, 千載難求。



永泰亞洲

預約專線: 8203 2838

發展商: Cathayon Limited/Yachow Development Corporation及多美地產有限公司聯營。建築師: 潘達利、郭景雄建築(亞洲)有限公司。認可人士: 趙國英建築設計(國際)有限公司的李學聖先生。設計建築師: Arquitectonica International Corporation。賣方發展商代表律師: 貝登、麥堅迪建築師及地產專業律師行(即聯李雷律師行)之一位合夥人與發展商之一位董事及有私人關係。建築師註冊承辦人: 中國銀行(香港)有限公司。職責公司: 廣聯有限公司。職責公司已提供數款支持上述發展商的發展計劃會加入簽署有關正式買賣合約。承辦銀行: 中國銀行(香港)有限公司已簽署有關承諾書, 承諾提供資金完成上述物業。此廣告內附相片/圖畫/圖則內容僅供參考, 並不構成或視為發展商之任何契約、承諾或保證。所有詳細之訂正圖則內容以政府有關部門最後批准之圖則為準。

此廣告內載列的相片、圖像、繪圖或素描顯示的純屬畫家對該發展地盤之想像感覺。有關圖片並非按照比例繪畫或/及可能經過電腦圖像修飾處理。準買家如欲了解本發展項目的詳情, 請參閱售樓說明書。發展商亦建議買方到該發展地盤作實地考察, 以獲取對該地盤以及其周圍地區的公共設施及環境較佳的了解。物業地址: 香港半山區西摩道9號 網站: www.seymour.com.hk



Contemporary Chic

摩登時尚

Nestled in the prestigious Albany Road in the Mid-Levels, this 2,546-square-foot apartment with a private balcony overlooks the splendid sea view of Victoria Harbour. Spacious and practical in setting, the apartment boasts a rectangular living room with modern furniture and artistic wooden decorations. The white-toned interior design gives the room a perfect harmony.

There are three bedrooms including two ensembles installed with in-wall wardrobes. Another highlight is that, this apartment is on the same floor with the sky garden of the building. You can enjoy the greenery in the garden within a few footsteps. Just indulge yourself in the fresh air during the day and the stunning city view at night. ■

這間位於中半山豪宅地段雅賓利道1號的公寓，面積2,546平方呎，附有私人露台，坐擁壯闊的維多利亞港景致。單位間隔寬敞實用，長方形的大廳擺放着摩登時尚的傢俱，並襯以木製裝飾擺設，其半開放式的廚房更是設計獨特。室內風格典雅統一，以白色為主的色調，營造了一片和諧舒適的氣氛。

全屋共有三間睡房，其中兩間是套房；而每間睡房皆設有入牆衣櫃，令房間更具空間感。此公寓的另一亮點是與屋苑的空中花園在同一層，甫出家門，便可以漫遊翠綠園林，日間在此呼吸清新空氣，抖擻精神；晚間俯瞰醉人的城市夜景，舒暢身心。■



The Albany
中半山 雅賓利大廈
1 Albany Road, Midlevels Central

2,546 s.f.
\$80,000,000 also for lease \$128,000

www.landscape.com/49621.htm Teresa Lau 劉小姐 9080 6686 可普通話

氣勢、時尚蒼於一體，成就不惜工本，大師之鉅建



傲據傳統尊貴地段 坐擁多項大型基建

懿蒼位處九龍傳統低密度豪宅地段，私謐而自成一隅，歷久常新的外型，勢成九龍極致豪邸新地標。
鄰近未來可停泊22萬噸位巨型轉輪的新碼頭、容納4萬多名觀眾的多用途體育館、主題購物中心、200米海濱長廊及約24公頃的大型都會公園，緊接這約300億元的未來港鐵沙中線，位置優越無可比擬，長線投資潛力優厚。

名校林立 一呼一吸 吐露儒雅氣息

區內地靈人傑，校網出眾，多所著名優質學府，出類拔萃的幼稚園、小學至大學，名校包括喇沙書院、瑪利諾修院學校、耀中國際學校等。
四周散發著如外國名學府區的儒雅不凡氣度，
長久以來吸引不少家長慕名到區內置業，
擁有最肥沃的教育土壤，讓孩子茁壯成長。

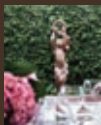
360度環迴景致 永恆無際

在政府建築物高限條例下，懿蒼以一派超然之勢，高度俯視同儕。
罕貴玻璃幕牆完美透視360度遼闊景致—維多利亞港兩岸日月、翠綠獅子山巒、
鯉魚門海岸、晝夜滲透大宅每處，瑰麗景色如影隨形。

市場稀有高層壓軸海港全景大宅

2,498及2,342平方呎四房雙套絕大宅；3複式及複式鉅宅分別約4,500及3,700平方呎，
每戶專辦獨立電梯大堂，服務電梯直達工作間，入口大道特設司機等候區。
真正豪邸氣派及配套，凌駕同儕。

珍藏級鉅宅，罕罕難求。





Villa Verde
山頂 瓊翠園

4-18 Guildford Road, The Peak

Spacious and practical 2-bedroom apartment with nice decorations at Lower Peak
山頂寬敞雅緻裝修兩房單位，間隔實用，可租可售

1,505 s.f.
\$30,000,000 also for lease \$63,000 incl.

www.landscape.com/124055.htm Chris Law 羅先生 6183 8388



Carolina Garden
山頂 嘉樂園

20-34 Coombe Road, The Peak

Open greenery view 3-bedroom apartment in prime location
開揚翠綠山景三房住宅，位處山頂尊貴地段

2,350 s.f.
\$62,000,000

www.landscape.com/34360.htm Stephen Chan 陳先生 9093 3381



Guildford Court
山頂 傅福道5號

5 Guildford Road, The Peak

Spacious colonial mid-rise apartment with open view on secluded location
山頂寬敞英式中密度住宅，享開揚景觀，環境僻靜

2,500 s.f.
\$68,000,000

www.landscape.com/30299.htm Maria Cheung 張小姐 5182 8699



Oasis
山頂 欣怡居

8-12 Peak Road, The Peak

Deluxe harbour view apartment with high ceiling
豪華維港景住宅，樓底極高，可租可售

2,719 s.f.
\$73,000,000 also for lease \$140,000 incl.

www.landscape.com/122963.htm Cora Ko 高小姐 6330 7888



La Hacienda
山頂 加列山道29-33號

29-33 Mount Kellett Road, The Peak

Spacious colonial apartment surrounded in lush greenery
寬敞英式住宅，環境翠綠怡人，可租可售

2,820 s.f.
\$80,000,000 also for lease \$120,000 incl.

www.landscape.com/135223.htm Chris Law 羅先生 6183 8388



Cameron House
山頂 嘉樂苑

40 Magazine Gap Road, The Peak

Extravagant penthouse with private roof situated on Lower Peak
山頂豪華頂層住宅，連私家天台，地段尊貴

2,847 s.f. (plus 2,081 s.f. roof)
\$98,000,000

www.landscape.com/30565.htm Louis Wong 黃先生 9871 6828



Mountain Lodge
山頂 嘉禧

44 Mount Kellett Road, The Peak

Rare duplex apartment with Southside sea view
罕有複式住宅，觀賞寧靜南區海景

5,200 s.f.
\$130,000,000

www.landscape.com/96955.htm David Leung 梁先生 9199 0672



Kelletteria
山頂 加列山道71號

71 Mount Kellett Road, The Peak

Peak luxurious mansion with private pool and garage
山頂豪華大宅，連私家泳池及車庫

3,198 s.f. (plus 1,370 s.f. garden, 906 s.f. roof and 169 s.f. terrace)
\$160,000,000

www.landscape.com/99225.htm Louis Wong 黃先生 9871 6828



Strawberry Hill
山頂 紅莓閣

8 Plunkett's Road, The Peak

Renowned colonial townhouse on The Peak with spacious practical layout
山頂新裝修英式排屋，間隔寬敞實用

3,200 s.f.
\$170,000,000

www.landscape.com/108282.htm Maria Cheung 張小姐 5182 8699



Severn 8
山頂 荷里

8 Severn Road, The Peak

Superb townhouse overlooking Victoria Harbour panorama
山頂豪華洋房，俯瞰優美維港景色

3,330 s.f. (plus 794 s.f. roof and 602 s.f. garden)
\$200,000,000

www.landscape.com/94672.htm Mark Mak 麥先生 6838 2929



Kellett View Town House
山頂 嘉麗園

65-69 Mount Kellett Road, The Peak

Colonial style townhouse with terrace situated at prime location
山頂英式洋房，連平台，地段尊貴

3,986 s.f. (plus 1,637 s.f. terrace)
\$200,000,000 可普通話

www.landscape.com/96599.htm Michelle Chung 鍾小姐 9833 9509



Abergeldie
山頂 楓樹道52號

52 Plantation Road, The Peak

Peak house with bird's eye view of Victoria Harbour
山頂洋房，享鳥語花香的維港景緻

3,655 s.f. (plus 505 s.f. terrace, 464 s.f. garden and 282 s.f. roof)
\$200,000,000

www.landscape.com/13340.htm David Leung 梁先生 9199 0672



“you never own ya premises,
you merely live there unless
ya character implanted”

-joseph chang-



Alexei Lee

Joseph is friendly, honest, reliable, organized, and very meticulous in his work. I can't say enough good things about all the work he did to make my place gorgeous & very functional.

Old Peak road -the boundless en-suite



Savanna Topjian

Don't be fooled by Joseph's easy demeanor. He's an unwavering advocate for the client and the work. It's clear to his contractors that everything less than the best won't do. He thinks through everything, and lets nothing slip by.

Shouson Hill -classical contemporary



Richard J. Brink

Throughout the project, Joseph was personally involved, ensuring the quality of the work and the project's adherence to the budget and schedule. The project was completed on time and within budget, and we now have a beautiful new home, as well as a new friend, Joseph!

Capital Garden -minimal maximized flexibility



Mei Ling

Thank you so much for designing our new dreamy house. We absolutely love it! I just keep going upstairs and looking at it. It looks like a place out of a magazine. Fantastic Job! You matched the house to our personalities perfectly. Thanks again!

Red Hill Peninsula -accentuated coziness



Sean Holdren

We really appreciated the way Joseph worked with us in coming up with great ideas by taking our rudimentary ideas and developing them into amazing designs.

Park Place -interior & exterior connection

Interior design
constructions
space planning
project management
tendering
landscaping
quantity survey



Caroline Height
跑馬地 嘉蘭閣
1 Link Road, Happy Valley
3-bedroom apartment on fringe of Causeway Bay
跑馬地三房住宅，鄰近銅鑼灣，可租可售

1,052 s.f.
\$9,500,000 also for lease \$29,000 incl.

可普通話

www.landscape.com/109719.htm Teresa Lau 劉小姐 9080 6686



Hillsborough Court
中半山 曉峰閣
18 Old Peak Road, Midlevels Central
Spacious 2-bedroom apartment in prime location
寬敞兩房單位，位於中半山尊貴地段

938 s.f.
\$14,000,000

可普通話

www.landscape.com/107921.htm Jenson Au 區先生 9028 0147



Serenade
東半山 上林
11 Tai Hang Road, Midlevels East
3-bedroom mountain view apartment in prime location
東半山三房住宅，享山景，地段尊貴

1,032 s.f.
\$14,500,000

www.landscape.com/128402.htm Cora Ko 高小姐 6330 7888

The White Factor 淨白元素



www.landscape.com/130577.htm Michelle Chung 鍾小姐 9833 9509



Gallant Place
東半山 嘉逸居
15 Tung Shan Terrace, Midlevels East
Bright and airy low-rise flat with racecourse view
光猛通爽低密度住宅，享馬場景

1,476 s.f.
\$13,000,000

www.landscape.com/106174.htm Jackson Lee 李先生 9177 7191



Grand Deco Tower
東半山 帝后峯
26 Tai Hang Road, Midlevels East
Trendy decorated 2-bedroom apartment on fringe of Causeway Bay
時尚裝修兩房單位，鄰近銅鑼灣，吃喝玩樂十分方便

1,418 s.f.
\$14,000,000

www.landscape.com/52342.htm Arthur Wong 黃先生 9304 4257



Summit Court
北角半山 雲峰大廈
144-158 Tin Hau Temple Road, North Point Midlevels
Designer decorated apartment with spacious practical layout
設計師品味裝修單位，間隔寬敞實用

1,650 s.f.
\$21,000,000

www.landscape.com/124501.htm Mark Mak 麥先生 68382929

White symbolises purity and clarity. This 1,400-square-foot apartment at Bowen Road, Mid-Levels is literally the embodiment of the white factor. It consists of two ensuites, a guest washroom, separated living and dining rooms, a fully-fitted open kitchen and a balcony. You will be wowed by the "germfree space" ambience as you enter the door – the yellow-beige wooden floorings, the kitchen fitted with an array of sleek white cabinets, and the light-grey sofa and rug – especially when the living room is illuminated by the natural light shone through the balcony.

This apartment also boasts a 3,000-square-foot rooftop fitted with stylish outdoor furniture overlooking the open view of the Mid-Levels. These white factors allow you to unwind yourself in this pure and limpid comfort zone from the lively urban life. ■

白色象徵純潔無瑕，這間位於中半山寶雲道的1,400平方呎公寓採用淨白色系為主調，共有兩套房、一個客廳、間隔分明的客廳和飯廳、設備齊全的開放式廚房，以及位於客廳旁的露台。一走進大門，便彷彿進入了「無菌空間」，皆因全屋鋪設了米黃色橡木地板，廚房則裝上全套光滑的白色廚櫃，客廳內的沙發及地毯亦以灰白色為主，一派簡約格調，而當陽光從露台照進屋內，頓時令客廳的銀白色調更亮光炫目，令人精神一振。

這間公寓更設有3,000平方呎的天台花園，配襯時尚的戶外傢俱，於此眺望中半山遼闊景致，讓你身心舒展。要是每天都能從繽紛喧鬧的城市生活回到這片清幽澄淨的私人天地，一切煩惱及疲勞定必一掃而空。■

5G-5H Bowen Road, Midlevels Central 中半山 寶雲道5G-5H樓

1,400 s.f. (plus 3,000 s.f. roof)
\$24,000,000

可普通話



Robinson Garden Apartment

西半山 羅便臣道花園大廈
3-3G Robinson Road, Midlevels West

Efficient mid-rise apartment with open city view
實用中密度住宅，尊享開揚城市景觀

1,800 s.f.
\$24,000,000

www.landscape.com/113308.htm Mira To 杜小姐 9486 1566



36-36A Kennedy Road, Midlevels Central

中半山 堅尼地 36-36A號

Rare find colonial apartment with open city view at top of Kennedy Road
堅尼地街頭段英式住宅，享開揚城市景觀，市面難尋，可租可售

1,500 s.f.
\$26,500,000 also for lease \$52,000 incl.

www.landscape.com/99967.htm Sami Woo 胡小姐 9493 8275



The Legend

東半山 名門
23 Tai Hang Drive, Midlevels East

Spacious 4-bedroom flat with expansive view of the harbour
東半山寬敞四房住宅，享廣闊的維港景色

2,908 s.f.
\$29,000,000 可普通話

www.landscape.com/42559.htm Jenson Au 區先生 9028 0147



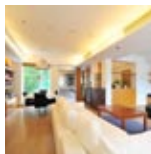
Suncrest Tower

中半山 桂灣苑
1-11 Monmouth Terrace, Midlevels Central

High efficiency, newly decorated 4-bedroom (2 en-suites) apartment on fringe of CBD
全新裝修四房連兩套房單位，實用率高，鄰近中環

2,005 s.f.
\$24,200,000

www.landscape.com/109565.htm Teresa Fung 馮小姐 9138 1621



New Haven Court

灣仔山 衛信道 1-11號
1-11 Wilson Road, Jardine's Lookout

Well decorated colonial style low-rise with high ceiling and efficiency in Jardine's Lookout
灣仔山靚裝修英式平房，高樓底，間隔實用

1,800 s.f. (plus roof)
\$28,800,000 可普通話

www.landscape.com/39344.htm Teresa Lau 劉小姐 9080 6686



Regal Crest

西半山 寶翠苑
9 Robinson Road, Midlevels West

3-bedroom apartment with full clubhouse facilities
西半山三房住宅，連完善住客會所設施

2,316 s.f.
\$30,000,000

www.landscape.com/103369.htm Mira To 杜小姐 9486 1566

歐詩木
德國 **osmo**[®]
...in form und farbe

Wood finishes from a wood specialist



Natural...

...with natural oils and waxes, the very best for wood and the environment!



Faster...

...Osmo finishes can be renovated without sanding, saving time and money!



Coverage...

...high solid means amazing coverage and best price per m²!

Hop Sze Timber Co., Ltd.
220 Gloucester Road, Wanchai, Hong Kong
Phone (852) 28336069 - www.hopsze.com



Visalia Garden

中半山 蔚山花園

48 MacDonnell Road, Midlevels Central

High floor 3-bedroom apartment close to CBD
半山高層三房住宅，鄰近中環商業區

1,929 s.f. (plus 94 s.f. terrace)
\$33,000,000

可普通話

www.landscape.com/110154.htm Walker Lam 林先生 9551 1077



Nicholson Tower

東半山 蔚豪苑

8 Wong Nai Chung Gap Road, Midlevels East

4-bedroom flat with balcony overlooking the city skyline
東半山四房連陽臺住宅，俯瞰城市景色

1,993 s.f.
\$36,000,000

www.landscape.com/33409.htm Christine Chong 莊小姐 9648 6082



Wealthy Heights

中半山 威豪閣

35 MacDonnell Road, Midlevels Central

High efficiency 3-bedroom flat in convenient location
高實用三房住宅，地段優越方便

1,815 s.f.
\$37,000,000

www.landscape.com/36963.htm David Chan 陳先生 9238 2012



Dynasty Court

中半山 帝景園

23 Old Peak Road, Midlevels Central

High floor renowned apartment with tenancy and comprehensive clubhouse facilities
著名豪宅高層單位，連約售，完善住客會所設施，投資首選

1,981 s.f.
\$40,000,000

可普通話

www.landscape.com/30712.htm Walker Lam 林先生 9551 1077



9-10 Briar Avenue, Happy Valley

跑馬地 比雅道9-10號

Newly decorated low-rise 2-bedroom apartment with private roof garden
全新裝修低密度兩房住宅，連私家天台花園

2,000 s.f. (plus 1,600 s.f. roof terrace)
\$40,000,000

www.landscape.com/121863.htm Mary Li 李小姐 9011 6595



16-20 Broom Road, Happy Valley

跑馬地 蠟籠道16-20號

Colonial low-rise with private garden in tranquil area
跑馬地英式低密度住宅，連特大私家花園，環境優美

2,000 s.f. (plus 875 s.f. garden and 57 s.f. terrace)
\$40,000,000 Sole Agent 獨家代理

www.landscape.com/83486.htm Stella Lo 羅小姐 9809 8570



Dynasty Court

中半山 帝景園

23 Old Peak Road, Midlevels Central

Prestigious apartment with deluxe clubhouse
中半山尊貴住宅，享豪華會所設施

1,970 s.f.
\$35,000,000

www.landscape.com/1246.htm David Chan 陳先生 9238 2012



Po Garden

中半山 寶園

9 Brewin Path, Midlevels Central

Practical 3-bedroom apartment with facilities on fringe of Central
實用三房單位，連會所設施，鄰近中環，交通方便

2,572 s.f.
\$37,000,000

Sole Agent 獨家代理

www.landscape.com/98123.htm Yvonne Chang 鄭小姐 9088 4666



Tregunter Tower

中半山 地利根德閣

14 Tregunter Path, Midlevels Central

Large and practical modern 3-bedroom flat with easy access to Central
中半山特大三房單位，間隔實用，鄰近中環，交通方便

3,052 s.f.
\$38,000,000

www.landscape.com/89920.htm David Chan 陳先生 9238 2012



Macdonnell House

中半山 麥當奴大廈

6-8 MacDonnell Road, Midlevels Central

Unique penthouse with double terraces on fringe of CBD
精緻頂層住宅，連兩個平台，鄰近中環商業區

1,700 s.f. (plus 963 s.f. terrace)
\$40,000,000

可普通話

www.landscape.com/35058.htm Mavis Wu 吳小姐 9107 3891



Century Tower I

中半山 世紀大廈1座

1 Tregunter Path, Midlevels Central

Unique harbour view flat in Central Midlevels with nice decorations
中半山雅緻裝修住宅，享迷人港灣景色

2,565 s.f.
\$40,000,000

www.landscape.com/21356.htm Teresa Fung 馮小姐 9138 1621



Cavendish Heights

渣甸山 嘉雲臺

27-37 Perkins Road, Jardine's Lookout

Renowned harbour view property in Jardine's Lookout
渣甸山全新裝修維港景住宅

2,242 s.f.
\$43,800,000

www.landscape.com/5817.htm Mira To 杜小姐 9486 1566



SEPANG
\$4,500



RUFFLE
\$4,990



SPECTRA
\$7,990

so... fa... bed

Come and see our full range of sofabeds



GOODS OF DESIRE

Causeway Bay 2890 5555

Tsim Sha Tsui 2784 5555

Central 2805 1876

Peak Galleria 2778 3331



Show Flat

39 Conduit Road

西半山 天匯

39 Conduit Road, Midlevels

Brand new apartments with expansive view of harbour and full clubhouse facilities
全新住宅單位，尊享遼闊的維港景色，連完善住客會所設施

2,808 s.f.
\$69,400,000

www.landscape.com/125984.htm Carman Szeto 司徒小姐 6183 8339



Show Flat

可寄煩請

Villa Lotto

跑馬地 樂陶苑

18 Broadwood Road, Happy Valley

Newly renovated family flat in popular development
極受歡迎家庭式住宅，連全新裝修

2,406 s.f.
\$45,000,000

可晉訪

www.landscape.com/135265.htm Jenson Au 區先生 9028 0147

**White Jade**

東半山 白璧

51 Stubbs Road, Midlevels East

Boutique 2-bedroom apartment with fantastic harbour view
精緻兩房單位，尊享遼闊維港景

1,700 s.f.
\$53,000,000

www.landscape.com/38175.htm Arthur Wong 黃先生 9304 4257

**Estoril Court**

中半山 曼都大廈

55 Garden Road, Midlevels Central

Huge 4-bedroom apartment on fringe of Central
特大四房住宅，鄰近中環，交通方便

3,347 s.f.
\$52,800,000

www.landscape.com/45400.htm Sami Woo 胡小姐 9493 8275

**Evergreen Villa**

東半山 松柏新村

43 Stubbs Road, Midlevels East

Spacious 4-bedroom apartment with balcony
ideal for large family
東半山四房單位，連特大陽臺，適合大家庭

2,700 s.f.
\$54,000,000

www.landscape.com/32207.htm Stella Lo 羅小姐 9809 8570

Living in Harmony 和諧居所



www.landscape.com/91994.htm Rowena Siu 蕭小姐 93484118

Situated on the serene Blue Pool Road, Wing On Lodge enjoys both its privacy and convenience. The building is composed of five floors with one unit on each floor. On the other hand, it is in the vicinity of Happy Valley where international schools, hospital, local shops and restaurants are found, and it is just minutes away from the business and entertainment hub of Causeway Bay.

With two bedrooms and one master ensuite, combined living and dining room and a fully-equipped semi-open kitchen, this 1,308-square-foot apartment is well-decorated in a simple and harmonious sense. The earth-hued decoration and the balmy lightings have created a cosy atmosphere throughout while the semi-open kitchen is fitted in an avant-garde style with the use of white and silver furnishing, adding a touch of contrast to the whole environment. ■

永安新村坐落於寧靜的跑馬地藍塘道，共分五層，每層只有一個單位，私隱度高；另一方面，區內的配套設施如國際學校、醫院、超級市場、食肆等也一應俱全。而且此區交通便利，往來商業及娛樂中心——銅鑼灣只需數分鐘車程。

全屋共有一間主人套房、兩間睡房、相連客廳及裝備齊全的半開放式廚房。這間1,308平方呎的公寓以簡潔的裝潢為主，淡褐色調的裝潢及傢俱擺設配合溫暖的燈光，為全屋營造出一片和諧愜意的氛圍；而其半開放式廚房則用上前衛型格的銀白色裝備及陳設，為全屋柔和的主調帶來幾分視覺衝擊感。■

Wing On Lodge

跑馬地 永安新村

72-82 Blue Pool Road, Happy Valley

1,308 s.f.
\$20,000,000

INVENTIVE INNOVATIVE IMAGINATIVE

our services

RESIDENTIAL DESIGN

OFFICE DESIGN

COMMERCIAL DESIGN

F&B DESIGN

DESIGN CONSULTANT

CONSTRUCTIONS



www.novusp.com

NOVUS PENETRALIS LIMITED
INTERIOR ARCHITECTURE

UNIT 16A, HANG SENG CAUSEWAY BAY BUILDING
28 YEE WO STREET, CAUSEWAY BAY, HONG KONG
T. 3106 6069 F. 3106 6079 E. info@novusp.com

MID-LEVELS Sales | 半山出售

Leon Court

東半山 利安閣

12-14 Wong Nai Chung Gap Road, Midlevels East

Rare 3-bedroom mid-rise apartment with panoramic view
罕有三房中密度住宅，享遼闊景觀

2,800 s.f.

\$55,000,000

可營通話

www.landscape.com/131038.htm Walker Lam 林先生 9551 1077

The Royal Court

中半山 帝景閣

3 Kennedy Road, Midlevels Central

Duplex penthouse with private roof in prime location
豪華頂層住宅，連私家天台，地段尊貴

2,280 s.f. (plus 747 s.f. roof)

\$58,000,000

可營通話

www.landscape.com/109799.htm Walker Lam 林先生 9551 1077

Villa Veneto

西半山 威都閣

3 Kotewall Road, Midlevels West

Spacious 4-bedroom apartment with large private garden terrace
寬敞四房單位，連特大私家花園平台

2,514 s.f. (plus 3,282 s.f. terrace)

\$60,000,000

www.landscape.com/39093.htm Sami Woo 胡小姐 9493 8275

Garden Terrace

中半山 花園臺

8A Old Peak Road, Midlevels Central

Large family apartment with modern decorations on fringe of CBD
特大家庭式住宅，裝修時尚美麗，鄰近中環

3,002 s.f.

\$62,000,000

www.landscape.com/34957.htm Mark Mak 麥先生 6838 2929

Kennedy Heights

中半山 堅麗閣

10-18 Kennedy Road, Midlevels Central

Huge 5-bedroom apartment in heart of Midlevels Central with twin carpark
特大五房住宅，位於中半山核心地段，連雙車位

3,400 s.f.

\$75,000,000

www.landscape.com/27644.htm Rowena Siu 蕭小姐 9348 4118

Clovelly Court

中半山 嘉富麗苑

12 May Road, Midlevels Central

Large and spacious flat with balcony and harbour view
中半山巨型住宅，間隔寬敞，連陽臺，享維港景致

2,809 s.f.

\$82,800,000

www.landscape.com/26300.htm Mark Mak 麥先生 6838 2929

**Pokfulam Court**

薄扶林 碧林閣

94 Pokfulam Road, Pokfulam

Practical 3-bedroom apartment with big balcony overlooking harbour view
間隔實用三房住宅，連大陽臺，俯瞰維港美景

1,800 s.f.
\$22,800,000

www.landscape.com/83034.htm Rowena Si 蕭小姐 9348 4118

**Villa Piubello**

香坎角 環角徑1-7號

1-7 Cape Drive, Chung Hom Kok

3-bedroom flat with big balcony and tranquil sea view
三房住宅，尊享寧靜海景，連大陽臺

1,800 s.f.
\$26,000,000

www.landscape.com/113946.htm Christine Chong 莊小姐 9648 6082

**La Mer**

薄扶林 浪濤閣

67-71 Bisney Road, Pokfulam

Full sea view 3-bedroom low-rise apartment with study room and twin car parks
全海景三房低密度住宅，連書房及雙車位

2,063 s.f.
\$29,000,000

Sole Agent 獨家代理

www.landscape.com/108873.htm Yvonne Chang 鄭小姐 9088 4666

**Cape Mansions**

薄扶林 翠海別墅

56-62 Mount Davis Road, Pokfulam

Sea view apartment in Pokfulam
薄扶林海景住宅出售

2,100 s.f.
\$31,000,000

www.landscape.com/18679.htm Mira To 杜小姐 9486 1566

**Ruby Court**

淺水灣 嘉蘭閣

55 South Bay Road, Repulse Bay

Newly renovated sea view flat in tranquil South Bay with facilities
全新裝修海景住宅，位於南灣清幽地段，連完善住客會所設施

1,780 s.f.
\$31,500,000

www.landscape.com/107492.htm Cora Ko 蕭小姐 6330 7888

**Repulse Bay Garden**

淺水灣 麗景園

18-40 Bellevue Drive, Repulse Bay

A spacious 3-bedroom apartment with full sea view
寬敞三房單位，尊享全海景

2,288 s.f.
\$40,000,000

www.landscape.com/98524.htm Jackson Lee 李先生 9177 7191

**Residence Bel-Air**

薄扶林 貝沙灣

Cyberport Road, Pokfulam

Spacious waterfront apartment with huge balcony
寬敞海旁住宅，連特大陽臺

1,588 s.f.
\$25,500,000

可晉通話

www.landscape.com/98641.htm Jenson Au 區先生 9028 0147

**Hong Kong Parkview - Tower 4**

淺水灣 陽明山莊4座

88 Tai Tam Reservoir Road, Repulse Bay

3-bedroom apartment with practical layout overlooking country park
間隔實用三房單位，俯瞰郊野公園景致

1,857 s.f.
\$28,800,000

www.landscape.com/122830.htm David Chan 陳先生 9238 2012

**6-8 Ching Sau Lane, Chung Hom Kok**

香坎角 靜修里6-8號

Well maintained low-rise flat with huge balcony and open view
優質低密度住宅，連大陽臺，享開揚景觀

2,000 s.f.
\$30,000,000

可晉通話

www.landscape.com/36857.htm Teresa Lau 劉小姐 9080 6686

**98 Repulse Bay Road, Repulse Bay**

淺水灣 淺水灣道98號

Well decorated 4-bedroom apartment close to Repulse Bay Beach
雅緻裝修四房單位，鄰近淺水灣海灘，可租可售

1,800 s.f.
\$31,000,000 also for lease \$80,000 incl.

www.landscape.com/124331.htm Chris Lau 羅先生 6183 8388

**37 Repulse Bay Road, Repulse Bay**

淺水灣 淺水灣道 37號

Well decorated sea view flat on upper Repulse Bay Road
靚裝修海景住宅，位於淺水灣道頂段

1,635 s.f.
\$33,000,000

www.landscape.com/99647.htm Teresa Fung 馮小姐 9138 1621

**Pacific View**

大潭 浪琴園

38 Tai Tam Road, Tai Tam

High floor flat with splendid sea view
大潭高層住宅，尊享遼闊海景

3,106 s.f.
\$47,000,000

www.landscape.com/13954.htm Maria Cheung 張小姐 5182 8699



Happy
Valentine's
day

我們以專業及貼心的態度為每位客人安排節日花束、禮盒果籃、開張花籃、悼念花籃、場地佈置、花卉擺設、宴會襟花和婚禮花球等，並可根據客人要求而提供特定的設計，務求為每位客人提供最優質及可信賴的服務。詳情可致電2544 6886或親臨本花店查詢。

情人節花束現已接受訂購。
Valentine's Day Bouquet available for order.

Yim's
Flower

No.11 Burd Street, Central, Hong Kong
Tel. 2544 6886 Fax. 2574 6269
Email. yimflower@yahoo.com.hk





Celestial Garden

淺水灣 詩禮花園

5 Repulse Bay Road, Repulse Bay

3-bedroom apartment on upper Repulse Bay Road
淺水灣道頭段三房住宅

2,363 s.f.
\$49,500,000

www.landscape.com/1520.htm | Stephen Chan 陳先生 9093 3381



Faber Villa

大潭 輝百苑

17 Tai Tam Road, Tai Tam

Rare high privacy sea view flat in Tai Tam
大潭罕有海景住宅，私隱度高

3,200 s.f.
\$53,000,000

www.landscape.com/107946.htm | Mary Li 李小姐 9011 6595



The Redhill Peninsula

大潭 紅山半島

18 Pak Pat Shan Road, Tai Tam

Stunning sea view townhouse with efficiency layout
遠闊海景大廈，間隔寬敞實用，可租可售

2,880 s.f. (plus 629 s.f. garden, 379 s.f. terrace and 309 s.f. roof) 可普通話
\$58,000,000 also for lease \$125,000 incl.

www.landscape.com/1855.htm | Michelle Chung 鍾小姐 9833 9509



Hillgrove

喜坎角 庭如花園

18 Cape Drive, Chung Hom Kok

Large and spacious 4-bedroom townhouse with private garden in quiet Chung Hom Kok
特大四房大廈，間隔寬敞，環境寧靜，連私家花園

3,000 s.f. (plus 895 s.f. roof and 700 s.f. garden) 可普通話
\$65,000,000

www.landscape.com/13747.htm | Christine Chong 莊小姐 9648 6082



The Somerset

淺水灣 怡峰

67 Repulse Bay Road, Repulse Bay

Famous building with fantastic Southside sea view in Repulse Bay
受歡迎住宅大廈，尊享廣闊淺水灣南區海景

2,464 s.f. (plus 200 s.f. terrace) 可普通話
\$67,000,000

www.landscape.com/110820.htm | Stella Lo 羅小姐 9809 8570



Regalia Bay

赤柱 富豪海灣

88 Wong Ma Kok Road, Stanley

Large 5-bedroom waterfront townhouse with facilities
特大五房海濱洋房，連完善住客會所設施

4,212 s.f. (plus 817 s.f. roof and 302 s.f. garden) 可普通話
\$71,000,000

www.landscape.com/124598.htm | Mark Mak 麥先生 6838 2929



Rare Southside Sea View Low-rise

罕有淺水灣海景低密度住宅

Remarkable colonial low-rise apartment enjoying peaceful sea view of Repulse Bay
英式低密度住宅，尊享寧靜美麗的淺水灣海景

3,300 s.f.
\$75,000,000

www.landscape.com/113232.htm | Louis Wong 黃先生 9671 6828



Repulse Bay Towers

淺水灣 保華大廈

119A Repulse Bay Road, Repulse Bay

5-ensuites large duplex with Repulse Bay view
特大五套房複式住宅，尊享美麗淺水灣景色

5,000 s.f.
\$82,000,000 可普通話

www.landscape.com/33119.htm | Jenson Au 區先生 9028 0147



L'Harmonie

赤柱 葆琳居

3 Stanley Mound Road, Stanley

Rare find 4-bedroom townhouse on Stanley Main Beach
罕有四房洋房，鄰近赤柱海灘

3,557 s.f. (plus 1,125 s.f. garden and 663 s.f. roof) 可普通話
\$102,800,000

www.landscape.com/122327.htm | Jackson Lee 李先生 9177 7191



Le Palais

大潭 皇府灣

8 Pak Pat Shan Road, Tai Tam

Renowned townhouse with picturesque views of Tai Tam
新裝修大潭洋房，尊享如畫美景，可租可售

4,372 s.f. (plus 770 s.f. garden) 可普通話
\$105,000,000 also for lease \$260,000

www.landscape.com/36564.htm | Mavis Wu 吳小姐 9107 3891



56 Repulse Bay Road, Repulse Bay

淺水灣 淺水灣道56號

Waterfront duplex with roof taking in expansive view of Repulse Bay Beach
臨海複式住宅，連天台，享獨特淺水灣海灘景色，可租可售

3,281 s.f. (plus 848 s.f. roof) 可普通話
\$230,000 incl. also for lease \$130,000,000

www.landscape.com/50324.htm | Michelle Chung 鍾小姐 9833 9509



45 Island Road, Deep Water Bay

深水灣 香島道45號

Rare find sea view garden house at Deep Water Bay
深水灣海景大廈，連花園，市場罕有

4,800 s.f. (plus 710 s.f. garden and 540 s.f. roof) 可普通話
\$168,000,000

www.landscape.com/99477.htm | David Leung 梁先生 9199 0672



HIGH CLIFF THE PROJECT



ERIC FUNG
DESIGN & ARCHITECTURE

T: (852) 3664 3666

F: (852) 2362 7788

www.ericfung-design.com

INTERIOR DESIGN	CONSTRUCTION	SPACE PLANNING
COMMERCIAL DESIGN	KITCHEN DESIGN	CONSULTANT
GARDEN DESIGN	ONE STOP SERVICE	ITALIAN FURNITURE



KARLUSSELL CHAIR & OTTOMAN
DESIGNER BY: YUO KUNO KAPURO



Chief Design Director
ERIC FUNG

TINT INTERNATIONAL LIMITED
7/F OF BLOCK C, SEA VIEW ESTATE,
2-8 WATSON ROAD, CAUSEWAY BAY, H.K.
馮建輝設計(深圳)有限公司
深圳市羅湖區春風路佳寧娜友誼廣場1406室



Guildford Garden

山頂 薈苑

1-3 Mansfield Road, The Peak

Designer decorated huge master bedroom apartment on The Peak
設計師精心設計，特大主人房，位於山頂高尚地段

2,500 s.f.
\$100,000 incl.

可普通話

www.landscape.com/31245.htm

Teresa Lau 劉小姐 9080 6686



Orient Crest

山頂 山頂道76號

76 Peak Road, The Peak

Detached townhouse with huge private terrace and roof top
山頂巨型獨立排屋，連私家平台及天台

3,313 s.f. (plus 1,000 s.f. garden)
\$130,000

www.landscape.com/20263.htm

Chris Law 羅先生 6183 8388



The Mount Austin

山頂 柯士甸山道8號

8 Mount Austin Road, The Peak

Harbour view garden apartment with clubhouse facilities
山頂維港景花園住宅，連完善住客會所設施

2,657 s.f. (plus 1,229 s.f. garden)
\$148,000

www.landscape.com/27913.htm

Sami Woo 胡小姐 9493 8275



74 Mount Kellett Road, The Peak

山頂 加列山道 74 號

Rare find 4-bedroom house with roof and garden on The Peak
山頂罕有四房洋房，連天台及花園

4,200 s.f. (plus 1,041 s.f. roof, 753 s.f. garden and 191 s.f. terrace)
\$220,000 incl.

www.landscape.com/129288.htm

Mary Li 李小姐 9011 6595



Strawberry Hill

山頂 紅萼閣

8 Plunkett's Road, The Peak

Colonial house at prestigious location
山頂尊貴英式洋房出租

3,900 s.f. (plus terrace)
\$250,000

www.landscape.com/4611.htm

Louis Wong 黃先生 9871 6828



11 Pollock's Path, The Peak

山頂 普樂道11號

Exclusive garden house with a bird's eye view of Victoria Harbour
獨特花園大屋，鳥瞰維港景色，可租可售

4,600 s.f. (plus roof, terrace and garden)
\$330,000 also for sale \$268,000,000

www.landscape.com/4394.htm

David Leung 梁先生 9199 0672



Mountain Lodge

山頂 嘉康

44 Mount Kellett Road, The Peak

Exclusive Peak apartment with sweeping Southside sea view
獨特山頂住宅，連寧靜南區海景，可租可售

2,600 s.f.
\$120,000 incl. also for sale \$85,000,000

可普通話

www.landscape.com/17490.htm

Mavis Wu 吳小姐 9107 3891



Sunshine Villa

山頂 陽光花園

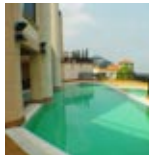
48 Mount Kellett Road, The Peak

Deluxe Peak townhouse with private garage and garden
山頂豪華洋房，連私家花園及停車場，可租可售

2,300 s.f. (plus 929 s.f. garden)
\$130,000 incl. also for sale \$95,000,000

www.landscape.com/1708.htm

David Leung 梁先生 9199 0672



Abergeldie

山頂 檳榔連52號

52 Plantation Road, The Peak

Peak townhouse with bird's eye view of Victoria Harbour
山頂洋房，鳥瞰維港優美景色

3,655 s.f. (plus 759 s.f. garden and 313 s.f. terrace)
\$200,000 incl.

www.landscape.com/606.htm

Yvonne Chang 鄭小姐 9088 4666



La Hacienda

山頂 加列山道29-33號

29-33 Mount Kellett Road, The Peak

Newly decorated townhouse with facilities overlooking nice views
山頂全新裝修排屋，連住客會所設施，俯瞰優美景觀，可租可售

3,200 s.f.
\$230,000 incl. also for sale \$135,000,000

www.landscape.com/3323.htm

Stephen Chan 陳先生 9093 3381



King's Court

山頂 龍庭

5 Mount Kellett Road, The Peak

Prestigious townhouse with unobstructed hill view and sea view
山頂豪華洋房，享一望無際的山景及海景

3,165 s.f. (plus 1,916 s.f. garden)
\$260,000

www.landscape.com/29488.htm

Yvonne Chang 鄭小姐 9088 4666



9 Coombe Road, The Peak

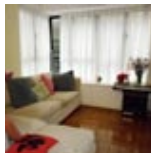
山頂 甘道9號

Rare renovated luxurious house on tranquil Coombe Road
甘道罕有全新裝修豪華大屋

7,500 s.f. (plus 400 s.f. garden)
\$415,000

www.landscape.com/5569.htm

Louis Wong 黃先生 9871 6828



Elegant Terrace

西半山 慧明苑

36 Conduit Road, Midlevels West

Cozy home with facilities next to Midlevels pedestrian escalator
暖意居室連設施，鄰近半山扶山電梯

1,348 s.f.
\$46,000 incl.

www.landscape.com/92001.htm Mira To 杜小姐 9486 1566



Yuenita Villa

跑馬地 苑

43A-B Blue Pool Road, Happy Valley

Colonial apartment with high efficiency on Blue Pool Road
藍塘道英式住宅，實用率高，可租可售

2,380 s.f.
\$58,000 incl. also for sale \$26,500,000

www.landscape.com/52778.htm Jackson Lee 李先生 9177 7191



Serene Court

西半山 秀麗閣

8 Kotewall Road, Midlevels West

Spacious 4-bedroom apartment on tranquil Kotewall Road
旭餅道寬敞四房單位，環境寧靜怡人

2,334 s.f.
\$75,000 incl. 可曾通話

www.landscape.com/135237.htm Carman Szeto 司徒小姐 6183 8339



The Royal Court

中半山 帝景閣

3 Kennedy Road, Midlevels Central

Conveniently located apartment overlooking Hong Kong Park
中半山位置優越單位，俯瞰香港公園景，可租可售

1,428 s.f.
\$50,000 incl. also for sale Open Offer

www.landscape.com/112784.htm Arthur Wong 黃先生 9304 4257



Swiss Towers

東半山 瑞士花園

113 Tai Hang Road, Midlevels East

3-bedroom apartment with practical layout enjoying harbour and green views
三房維港景住宅，兼享翠綠景致，間隔實用

1,600 s.f.
\$68,000 incl.

www.landscape.com/109946.htm Arthur Wong 黃先生 9304 4257



Man Yuen Garden

中半山 文苑花園

52A-52B Kennedy Road, Midlevels Central

Newly decorated mid-rise flat with big balcony
新裝修中密度住宅，連大陽臺

2,000 s.f.
\$75,000 incl.

www.landscape.com/64981.htm Stephen Chan 陳先生 9093 3381

SCHOTTEN & HANSEN

a passion for excellence

"One day means 24 hours of time for new ideas."

Torben Hansen, Managing Director and Chief Visionary of Schotten & Hansen

Wooden floorboards and interiors by Schotten & Hansen are unique in their expression, quality and feel. Each custom-made individual piece is a product of creativity and skilled workmanship. For people who choose an aesthetic way of life.

Hop Sze Timber Co., Ltd.
Exclusive Sales Partner of
Schotten & Hansen
Showroom: 220 Gloucester Road
Wanchai | Hong Kong
Phone: (852) 2833 6069
hst@netvigator.com

www.schotten-hansen.com



Villa Monte Rosa 東半山 玫瑰新村

41A Stubbs Road, Midlevels East

Spacious practical apartment with big balcony on upper Stubbs Road
開隔寬敞實用住宅，連巨型陽臺，位於司徒拔道尊貴地段

2,300 s.f.
\$76,000 incl.

www.landscape.com/37474.htm

Rowena Siu 蕭小姐 9348 4118



Tavistock 2 中半山 麗皇居2座

10A Tregunter Path, Midlevels Central

Prestigious property in Midlevels Central
中半山豪華住宅，地段尊貴，可租可售

1,730 s.f.
\$80,000 incl. also for sale \$40,000,000

www.landscape.com/27571.htm

Teresa Fung 馮小姐 9138 1621



Cliffview Mansions 西半山 康苑

21-25 Conduit Road, Midlevels West

Large colonial style apartment with new refurbishment close to Midlevels pedestrian escalator
特大英式住宅，全新翻新，鄰近半山扶手電梯

3,300 s.f.
\$83,000 incl.

www.landscape.com/135020.htm

Arthur Wong 黃先生 9304 4257



Evergreen Villa 東半山 松柏新村

English Address

Spacious apartment with big balcony and roof terrace
寬敞住宅，連大陽臺及天台平台

2,700 s.f. (plus 2,500 s.f. roof)
\$85,000

www.landscape.com/29043.htm

Carman Szeto 司徒小姐 6183 8339



Tregunter Tower 1 中半山 地利根德閣 1座

14 Tregunter Path, Midlevels Central

Spacious 4-bedroom flat with full clubhouse facilities bargain rent on market
寬敞四房住宅連住客會所設施，超值租金

3,336 s.f.
\$110,000 incl.

可曾通話

www.landscape.com/103033.htm

Teresa Lau 劉小姐 9080 6686



Borrett Mansion 中半山 寶德豪

8A-9B Bowen Road, Midlevels Central

Newly renovated 4-bedroom apartment in tranquil neighbourhood
全新裝修四房住宅，環境清幽怡人

2,800 s.f.
\$110,000 incl.

可曾通話

www.landscape.com/29366.htm

Mavis Wu 吳小姐 9107 3891



Situated on the traditional luxury residential area, Stubbs Road, Chantilly is another signature luxury residential project of KWIH. With the significant location, Chantilly has the gorgeous racecourse view, and it is inspired from Château de Chantilly, the French Château in North of France. Limited to only 24 unique units, the project enjoys the privilege of being the only new development in the district. Chantilly also boasts its one-floor-one-unit design with individual private lift lobby for each unit. It offers luxurious clubhouse facilities of indoor swimming pool, banquet hall and gym room.

Flat Type: 4-ensuite Suite 3,600 s.f.
5-ensuite Suite 3,650 s.f.

由嘉華國際精心策劃的豪宅項目嘉柏薈，座落港島司徒拔道傳統豪宅地段，擇居港島半山之最，俯瞰跑馬地馬場環迴景觀。嘉柏薈的建築靈感源自法國北部城堡——「尚提伊城堡」，是區內罕有的低密度分層豪宅，採用一梯一伙設計，可享獨立私人電梯大堂。此外，嘉柏薈的會所設施齊備，室內泳池、宴會廳及健身房等一應俱全，全幢僅有24個罕貴單位，全區獨有。

單位類型： 四套睡房單位 3,600平方呎
五套睡房單位 3,650平方呎

Enquiry Hotline 查詢熱線

Carman Szeto 司徒小姐 6183 8339

Jenson Au 區先生 9028 7147

可曾通話

**Chantilly
嘉柏薈**

6 Shiu Fai Terrace, Stubbs Road



**Chung Tak Mansion**

中半山 重德大廈

2 Magazine Gap Road, Midlevels Central

Spacious 3-ensuite apartment on fringe of Central

寬敞三套房住宅，鄰近中環，交通方便

2,864 s.f.**\$120,000 incl.**

www.landscape.com/12907.htm Teresa Fung 馮小姐 9138 1621

**Tregunter Tower**

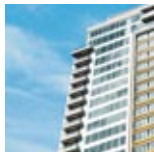
中半山 地利根德閣

14 Tregunter Path, Midlevels Central

Modern 3-bedroom apartment with nice

decor and comprehensive facilities
時尚三房住宅，尊享雅緻裝修，連完善住
客會所設施**3,001 s.f.****\$135,000 incl.**

www.landscape.com/3696.htm Mary Li 李小姐 9011 6595

**Bowen's Lookout**

中半山 寶雲道13號

13 Bowen Road, Midlevels Central

Luxurious 4-bedroom apartment with
fantastic views

豪華四房住宅，享遼闊景觀

2,388 s.f.**\$138,000 incl.**

www.landscape.com/33927.htm David Chan 陳先生 9238 2012

**Estoril Court**

中半山 愛都大廈

55 Garden Road, Midlevels Central

Large 4-bedroom (2 ensembles) apartment
with harbour view on high floor

特大四房連兩套房單位，極高層，享維港景

3,347 s.f.**\$160,000**

www.landscape.com/9585.htm Chris Law 羅先生 6183 8388

**2-2A Henderson Road,**

Jardine's Lookout

渣甸山 軒德羅道 2-2A 號

Rare 4-bedroom townhouse in prestigious
location罕有四房排屋，位於渣甸山尊貴地段，連私
家花園**3,115 s.f. (plus 1,000 s.f. garden)****\$190,000**

www.landscape.com/14781.htm Mary Li 李小姐 9011 6595

**Midlevels East Brand New**

Apartment for Lease

東半山全新住宅出租

6 Shiu Fai Terrace, Midlevels East

Brand new 5-bedroom apartment at
convenient location

全新五房單位出租，位置優越，交通方便

3,650 s.f.**\$220,000**

www.landscape.com/136278.htm Carman Szeto 司徒小姐 6183 8339

astral
advanced lighting system



**Astral system controls more than just lights,
discover how it can change your lifestyle.**

astral™, the advanced lighting system from MK Electric, brings out the best in your environment and is the ideal lighting control solution if you are looking to enhance the ambience and atmosphere in any room or residence.

Providing sophisticated and inspirational lighting control, astral is an extremely versatile and intelligent system, which incorporates the award-winning Zensys RF communications technology (Z-Wave™) ensuring the ultimate in both reliability and flexibility.



MK Electric (China) Ltd
25/F, Honeywell Tower, Olympia Plaza, 255 King's Road, North Point, Hong Kong
Telephone (+852) 2331 9133, (+852) 2953 6379 • Fax (+852) 2151 9465
www.mkelectric.com.hk



Parisian

赤柱 海寧雅舍

8 Stanley Mound Road, Stanley

2-bedroom low-rise apartment on Stanley Main Beach
赤柱海灘兩房低密度住宅，可租可售

1,670 s.f.
\$55,000 incl. also for sale \$22,000,000

可普通話

www.landscape.com/36007.htm Walker Lam 林先生 9551 1077



Ruby Court

淺水灣 嘉麟閣

55 South Bay Road, Repulse Bay

Prestigious apartment with facilities enjoying sea view
淺水灣豪華住宅，連住客會所設施，享海景，可租可售

1,780 s.f.
\$70,000 also for sale \$40,000,000

www.landscape.com/34859.htm Maria Cheung 張小姐 5182 8699



Repulse Bay Garden

淺水灣 麗景園

18-40 Bellevue Drive, Repulse Bay

Decorated in modern style flat close to the Repulse Bay Beach
時尚裝修特色單位，鄰近淺水灣海灘，可租可售

2,288 s.f.
\$75,000 incl. also for sale \$33,000,000

www.landscape.com/123991.htm Sami Woo 胡小姐 9493 8275



Manhattan Tower

淺水灣 曼特頓大廈

63 Repulse Bay Road, Repulse Bay

4-bedroom sea view apartment in Repulse Bay
淺水灣四房海景住宅

2,400 s.f.
\$120,000

www.landscape.com/6422.htm Rowena Siu 蕭小姐 9348 4118



Residence Bel-Air

薄扶林 貝沙灣

Cyberport Road, Pokfulam

Brand new duplex penthouse with sky garden and private roof
全新複式頂層住宅，連私家天台，可租可售

2,425 s.f. (plus 556 s.f. terrace and 304 s.f. roof)
\$135,000 incl. also for sale \$54,000,000

www.landscape.com/99245.htm Stella Lo 羅小姐 9809 8570



Stanley Court

赤柱 海灣園

9 Stanley Mound Road, Stanley

Popular 3-bedroom townhouse in Stanley with greenery view and pool view
赤柱或歡迎三房大屋，連私家花園，享翠綠景致及泳池景

2,669 s.f. (plus 617 s.f. roof and 452 s.f. garden)
\$138,000 incl.

www.landscape.com/30808.htm Christine Chong 莊小姐 9648 6082



Good Cheer Villa

赤柱 赤柱崗道16號

16 Stanley Mound Road, Stanley

Unique low-rise duplex apartment with private roof in Stanley
赤柱精緻低密度複式住宅，連私家天台

1,320 s.f. (plus 694 s.f. roof)
\$65,000 incl.

www.landscape.com/134772.htm Jackson Lee 李先生 9177 7191



Cape Mansions

薄扶林 翠海別墅

56-62 Mount Davis Road, Pokfulam

Newly renovated sea view flat in quiet neighbourhood
全新裝修海景住宅，環境寧靜怡人

2,200 s.f.
\$80,000 incl.

www.landscape.com/135161.htm Rowena Siu 蕭小姐 9348 4118



Scenic Villas

薄扶林 美景園

2-28 Scenic Villa Drive, Pokfulam

Fantastic 3-bedroom apartment with full sea view
高質素三房住宅，尊享全海景，可租可售

2,517 s.f.
\$85,000 incl. also for sale \$35,000,000

www.landscape.com/49858.htm Yvonne Chang 鄭小姐 9088 4666



14 Headland Road, Repulse Bay

淺水灣 赫蘭道14號

Low-rise apartment with roof top at Headland Road
赫蘭道低密度住宅，連天台

2,360 s.f. (plus 1,200 s.f. roof)
\$123,000

www.landscape.com/124152.htm Maria Cheung 張小姐 5182 8699



The Redhill Peninsula

大潭 紅山半島

18 Pak Pat Shan Road, Tai Tam

Waterfront garden townhouse with sea view
渡假式花園洋房，享寧靜海景

3,020 s.f. (plus 1,019 s.f. garden and 180 s.f. roof)
\$135,000 incl.

www.landscape.com/135724.htm Michelle Chung 鍾小姐 9833 9509



3- 3E Shouson Hill Road, Shouson Hill

壽臣山 壽臣山道3-E號

5-bedroom house with private garden
壽臣山五房大屋，連私家花園

3,220 s.f. (plus 5,800 s.f. garden and 500 s.f. roof)
\$150,000

www.landscape.com/40393.htm Stella Lo 羅小姐 9809 8570



The Somerset

淺水灣 怡峰

67 Repulse Bay Road, Repulse Bay

Duplex with relaxing sea view in exclusive location
豪華休閒海景住宅，位處獨特地段，可租可售

3,099 s.f.
\$170,000 incl. also for sale \$96,000,000

www.landscape.com/31500.htm Stephen Chan 陳先生 9093 3381



Burnside Villa

淺水灣 濱景園

9 South Bay Road, Repulse Bay

Sea view townhouse with roof and swimming pool close to Repulse Bay beach
淺水灣海景洋房，連天台及游泳池，鄰近淺水灣海灘

2,800 s.f. (plus 788 s.f. terrace, 701 s.f. roof and 57 s.f. garden)
\$170,000 incl.

www.landscape.com/34641.htm Cora Ko 高小姐 6330 7888



The Repulse Bay

淺水灣 影灣園

109 Repulse Bay Road, Repulse Bay

Duplex with private sky garden enjoy breathtaking view of Repulse Bay Beach
複式住宅連私家花園，享寧靜淺水灣海灘景色

4,378 s.f.
\$180,000

www.landscape.com/134726.htm Mavis Wu 吳小姐 9107 3891



12 Shouson Hill Road, Shouson Hill

壽臣山 壽山村道12號

Large 5-bedroom garden house in quiet enclave
特大五房花園大屋，環境寧靜怡人

3,918 s.f. (plus 727 s.f. garden)
\$188,000

www.landscape.com/20068.htm Cora Ko 高小姐 6330 7888



Belgavia

淺水灣 南灣道57號

57 South Bay Road, Repulse Bay

3-ensuite penthouse with roof and terrace in quiet location
淺水灣三套房頂層住宅連天台，環境寧靜優美，可租可售

3,675 s.f. (plus 1,154 s.f. roof and 462 s.f. terrace)
\$350,000 incl. also for sale \$218,000,000

www.landscape.com/136359.htm Christine Chong 莊小姐 9648 6082



Overbays

淺水灣 淺水灣道71號

71 Repulse Bay Road, Repulse Bay

Rare find townhouse with lift overlooking the beautiful view of Deep Water Bay
罕有洋房連內置升降機，俯瞰深水灣迷人景色，可租可售

5,051 s.f. (plus 878 s.f. roof and 214 s.f. terrace)
\$360,000 also for sale Open Offer

www.landscape.com/31622.htm Michelle Chung 鍾小姐 9833 9509



...we supply wide range of renowned European brands at competitive package offer..
contact us by email or visit our website for stock information



more choices for your designs...

DESIDERI

I 29504026 f 23982211 email info@desideri.com.hk
www.desideri.com.hk

71 oriental crystal plaza 46 lyndhurst terrace central hk



86 DOMINO

A member of the JEBSEN Group • CONDOLMER • INDUSTRIAL • BEVERAGE • LUXURY • Civita • Hong Kong • Miami • Taiwan • Korea



Unit 5, G/F, Aberdeen Marina Tower, 8 Shum Wan Road, Aberdeen, Hong Kong 香港香港仔深灣道8號深灣遊艇俱樂部地下5室
Tel 電話: (852) 3180 3189 Fax 傳真: (852) 2805 6867 Email 電郵: info@jebesenmarine.com Website 網址: www.jebesenmarine.com
16/F, East Ocean Centre, 618 Yan An Road East, Shanghai 200001, P.R.China 中國上海延安東路618號東海商業中心16樓
Tel 電話: (86) 21 2306 4748 Fax 傳真: (86) 21 2306 4995 Email 電郵: chinainfo@jebesenmarine.com

Riva
AUTHORIZED DEALER