

select deluxe homes

# The Key

大宅<sup>®</sup>

www.landscape.com

FEBRUARY | 2010

Volume 64



## FASHIONABLE FLAIR

Refreshingly decorated to reflect understated style and practical function

## CONTEMPORARY COOL

Perfect retreat just a stone's throw away from Causeway Bay

## KEY NOTES\*

“What between the duties expected of one during one's lifetime, and the duties exacted from one after one's death, land has ceased to be either a profit or a pleasure. It gives one position, and prevents one from keeping it up. That's all that can be said about land.”

??

「當一個人身故後，與在世時不同的是，土地再不是財產或享樂之地，土地帶來地位，但不能永遠擁有。關於土地的，要說的只能是這麼多。」

- Oscar Wilde  
Renowned Irish playwright & author  
奧斯卡·王爾德，著名愛爾蘭劇作家及作家

It has become a common phenomenon that people make full use of whatever space is available in and around their property. Some owners build a projected balcony off their apartment; some enclose the open-sided balcony with windows so that the living space is enlarged; some erect a room on the open roof terrace, often constructing an internal staircase to it; and some even enclose part of the common corridor adjacent to their main door for self use. All of these alterations need the approval by Hong Kong's Buildings Department and, sometimes, the building manager's consent according to the Deed of Mutual Covenant and Management Agreement before any structure is built.

Making an on-site inspection is therefore an essential part of the preliminaries. Make sure you enquire from the owner or the property agent if any of these alterations are "legal", i.e. approved by the relevant authorities. If they are illegal, you run the risk of demolishing or restoring the structures at your own cost. Failing to comply with such requests may attract statutory orders to be registered against your property (your property is "encumbered") which may cause banks to refuse or terminate your mortgage thus scaring away buyers and tenants.

人們各出奇謀利用物業及四周環境的每一分每一寸，已是司空見慣。一些業主於公寓外搭建露台；有的則在露台上蓋上窗戶，以增加單位面積；有的在露台興建房間，當中不少更設有樓梯；有的則佔用門外的公共走廊空間。以上的改建工程必先得到香港屋宇署的批准，而有時亦要物業經理的允許，並根據公契及管理協議的內容進行審批，獲得批准後，才可以進行工程。

因此，實地考察是有必要的。諮詢向業主或地產代理查詢各項改建工程是否合法，即是建築工程有否獲得相關部門的批准。如被列入為違法建築，你便可能需要花錢拆卸建築，以回復原狀。若不遵照指示履行職責，屋宇署或會就樓宇發出法定命令（即物業會被扣押），而銀行將拒絕或終止提供按揭貸款，最終影響到租戶及買家的決定。

Read the full article at Market Watch, [www.landscope.com/keynotes](http://www.landscope.com/keynotes)  
請即觀看全文，請登入Market Watch網站，網址：[www.landscope.com/keynotes](http://www.landscope.com/keynotes)

published and distributed by

**LANDSCOPE** 領域  
The Specialists in Luxury Properties

**Landscape Realty Limited** C-018733  
a member of Landscape Survivors Ltd

Tel: 852-2866 0022 Fax: 852-2866 0015  
Email: [info@landscope.com](mailto:info@landscope.com) Website: [www.landscope.com](http://www.landscope.com)  
Unit 3106, 31/F, Hopewell Centre, 183 Queen's Road East, Wanchai, Hong Kong



## THE KEY | CONTENT

- 04 Fashionable Flair  
摩登時尚
- 09 A History Lesson  
Through Art  
上一堂歷史藝術課
- 13 Contemporary Cool  
現代風情
- 15 Imagination of  
Captivating Colours  
帶來無窮幻想的色彩
- 16 The Whirl of Life and Art  
生活與藝術的結合
- 20 A Visit to China With  
Miao Chong'an  
跟隨苗董安遊覽大

### The Key (The No.1 Publication for Luxury Properties)

The Key is a monthly, bilingual lifestyle publication focusing on luxury residential properties in Hong Kong Island. It is sent to over 60,000 urban elites comprising of Hong Kong's most affluent inhabitants.

These consist of Landscape's VIP clients, who mainly reside in The Peak, Mid-Levels, Southside, Kowloon Tong, Homantin and other select up-market residential areas such as Tai Po, Sai Kung and Clear Water Bay, etc.

### How may you list your property with The Key?

If you would like to list your property in an upcoming issue of The Key, you may contact Loretta Lui on +852 3102 4818 or visit us at [www.landscope.com/sell-to-let](http://www.landscope.com/sell-to-let). Alternatively, simply fill out the below and fax back to us on +852 2866 0015.

Property Details

Asking Rental / Sale Price

Floor Area

Contact Person

Telephone

Email

Our KeyPerson will contact you for follow-up work.

designed and produced by

**in** MAGAZINE  
LUXURY REAL ESTATE

**inCorporation Limited**

Your No. 1 Integrated Marketing Communications Partner in Hong Kong and China

Tel: 852-2699 0888 Fax: 852-2699 0889  
Email: [marketing@inccorp.com.hk](mailto:marketing@inccorp.com.hk) Website: [www.inmagazine.com.hk](http://www.inmagazine.com.hk)  
12/F, Cyberport 2, 100 Cyberport Road, Hong Kong

The information, text, photos, analyses and projections contained herein are provided solely for the convenience of prospective clients and no warranty or representation as to their accuracy, correctness or completeness is made by Landscape Survivors Limited or the owners, none of whom shall have any liability or obligation with respect thereto. Interested parties should rely on their own investigations, interpretations and analyses in connection with the purchase or selling thereof.

Information has been provided to us by sources deemed reliable, but no warranty or representation is made as to its accuracy, correctness or completeness. These offerings are made subject to contract, correction of errors, omissions, prior sale of assets, change of price or terms or withdrawal from the market without notice. The contents of The Key are for reference only and do not constitute all or any part of a contract.

Reproduction of any material in whole or part without written permission from inCorporation Ltd is strictly prohibited. All information is correct at the time of going to press. The opinions expressed in The Key are those of the authors and are not necessarily endorsed by inCorporation Ltd.

Copyright 2016

## XJ THE ICON REIMAGINED



A distinctively different appearance, a more contemporary design; the same thriving Jaguar soul.  
Our flagship reimaged - the all new Jaguar XJ.

Starting from HK\$1,300,000

THIS IS THE NEW JAGUAR

Jaguar Hong Kong  
Shop 2, G/F, Bank of East Asia Harbour View Centre, 56 Gloucester Road, Wanchai, Hong Kong  
Tel: 2520 0989 [www.jaguar.com.hk](http://www.jaguar.com.hk)

**Inchcape**



**Villa Verde**  
山頂 環翠閣  
4-18 Guildford Road, The Peak  
Spacious practical apartment at lower Peak  
山頂寬敞實用住宅

1,505 s.f.  
**\$20,000,000**

[www.landscope.com/32827.htm](http://www.landscope.com/32827.htm) David Leung 梁先生 9199 0672



**Barker Villa**  
山頂 柏樂別墅  
41 Barker Road, The Peak  
Cozy apartment with panoramic views on Barker Road  
白加瀾迷人住宅，尊享一覽無餘景觀

1,650 s.f.  
**\$45,000,000**

[www.landscope.com/40734.htm](http://www.landscope.com/40734.htm) Stella Lo 羅小姐 9809 8570



**Villa Verde**  
山頂 環翠閣  
4-18 Guildford Road, The Peak  
Spacious 4-bedrooms apartment with balcony overlooking Southside sea view and hill view  
山頂寬敞四房單位連陽臺，俯瞰南區海景及翠峰山景

2,540 s.f.  
**\$51,000,000**

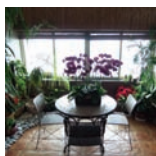
[www.landscope.com/32812.htm](http://www.landscope.com/32812.htm) Louis Wong 黃先生 9871 6828



**Eredine**  
山頂 加列山道38號  
38 Mount Kellett Road, The Peak  
Huge colonial apartment with spectacular sea view  
特大英式住宅，尊享壯麗維港景觀

3,300 s.f.  
**\$75,000,000**

[www.landscope.com/23687.htm](http://www.landscope.com/23687.htm) Teresa Fung 馮小姐 9138 1621



**Mountain Lodge**  
山頂 嘉慶  
44 Mount Kellett Road, The Peak  
Rare duplex apartment with Southside sea view  
罕有複式住宅，尊享南區海景

5,200 s.f.  
**\$120,000,000**

[www.landscope.com/96955.htm](http://www.landscope.com/96955.htm) David Leung 梁先生 9199 0672



**Severn 8**  
山頂 荷密  
8 Severn Road, The Peak  
Brand new harbour view garden townhouse on The Peak  
山頂全新維港景觀花園屋

3,330 s.f. (plus 794 s.f. roof and 460 s.f. garden)  
**\$165,000,000**

[www.landscope.com/101967.htm](http://www.landscope.com/101967.htm) Mark Mak 麥先生 6838 2929



**Guildford Garden**  
山頂 菁苑  
1-3 Mansfield Road, The Peak  
Spacious practical 4-bedroom flat at lower Peak  
山頂寬敞四房住宅，開闊實用

2,400 s.f.  
**\$42,000,000 also for lease \$70,000 incl.**

[www.landscope.com/31449.htm](http://www.landscope.com/31449.htm) Mira To 杜小姐 9486 1566



**Peak Gardens**  
山頂 山頂花園  
16-20 Mount Austin Road, The Peak  
Unique apartment with full harbour view  
山頂獨特全維港景住宅

1,640 s.f.  
**\$49,500,000**

[www.landscope.com/14034.htm](http://www.landscope.com/14034.htm) Teresa Lau 劉小姐 9080 6686



**La Hacienda - Apartment**  
山頂 加列山道29-33號  
29-33 Mount Kellett Road, The Peak  
Colonial apartment at The Peak  
山頂獨特英式住宅

2,820 s.f.  
**\$65,000,000**

[www.landscope.com/34861.htm](http://www.landscope.com/34861.htm) David Leung 梁先生 9199 0672



**Overthorpe**  
山頂 豐林閣  
24-28 Mount Austin Road, The Peak  
Peak townhouse in exclusive location with a bird's eye view of Victoria Harbour  
山頂排屋尊享鳥瞰港灣的維港景緻，地段獨特

2,210 s.f. (plus 735 s.f. terrace and roof)  
**\$118,000,000**

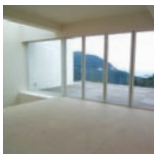
[www.landscope.com/21593.htm](http://www.landscope.com/21593.htm) Louis Wong 黃先生 9871 6828



**Montebello**  
山頂 達景閣  
15-17 Plantation Road, The Peak  
Rarely available 4-ensuite duplex with sweeping harbour view  
罕有四房複式住宅，尊享優美維港景緻，可租可售

4,455 s.f.  
**\$158,000,000 also for lease \$250,000 incl.**

[www.landscope.com/103366.htm](http://www.landscope.com/103366.htm) Mary Li 李小姐 90118595



**1-9 Rosmead Road, The Peak**  
山頂 樂善美道1-9號  
Rare single number garden house on The Peak  
山頂罕有獨立花園大屋出售

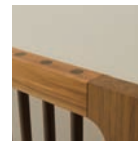
5,600 s.f. (plus 1,469 s.f. garden, roof and terrace)  
**\$250,000,000**

[www.landscope.com/20798.htm](http://www.landscope.com/20798.htm) David Leung 梁先生 9199 0672



Designer:  
Helen Jones

"In an era of generic mass-produced furniture Aver presents a refreshing departure. Drawing inspiration from the honesty and craftsmanship of the Shaker tradition, Aver combines elegant contemporary form, contrasting timber elements, and visible jointing used as discreet decorative detailing. Celebrating fine workmanship and the beauty of natural materials, Aver is a timeless design of subtle and sophisticated appeal."



## New ranges. New store. Same location

Address: 27/F Horizon Plaza, 2 Lee Wing Street, Ap Lei Chau, Hong Kong  
Tel: 2870-1132 WWW.OKOOKO.COM

**okooko**  
sleep. dream. live

# Fashionable Flair

## 摩登時尚

Nestled in Hong Kong Island's prestigious belt, this 1,520 sq ft Camelot Heights apartment on Kennedy Road, Mid-Levels Central has been tastefully designed in a style that is chic and luxurious.

Against the neutral backdrop of whites and light wood hues, functionality is the sole focus of this place with a bank of cabinets incorporated along a stretch of wall space. To enhance the space, multiple sources of light, many of which are subtly hidden reflect off the lovely, high-quality finishes of the walls and floors. Different kinds of vases and exquisite photo frames decorate a corner, creating a stylish, intimate space that speaks volumes. In the bedroom, the clothes hang on open racks while glassware is neatly positioned on exposed shelves. Despite these features, the flat is surprisingly free from clutter.

Wan Chai's convenience aside, it is the East-meets-West vibrancy that makes this fascinating district an exciting place to live. Yet, you know that you will return to a home where you can relax, recharge your batteries in peace and comfort. ■

這座位處中半山豪宅區堅尼地道的公寓面積達1,520平方呎，室內設計風格豪華時尚，流露出非凡的品味。

公寓以白色和淺木色為主調，設計貫徹以功能實用為大前提，如牆壁上的嵌入式抽屜便是其中例子。為增加空間感，屋內巧妙地運用了隱藏於不同地方的光線，同時亦突顯了牆壁及地板的優質上乘造工。各式的花瓶及精美雅緻的相架擺放於一角，營造出時尚之美，為公寓增添一份親切感。踏進寢室，看到衣服掛在衣架上，而玻璃飾品則整齊地陳列於櫃上。雖然如此，公寓並不予人凌亂之感。

除毗鄰灣仔外，此區中西文化的交融使生活多姿多彩，別有一番獨特的魅力。然而，當回到家中，你便可放鬆休息，盡情享受恬靜舒適的生活。 ■

### Camelot Height

中半山 金鐘閣  
60 Kennedy Road, Midlevels Central

1,520 s.f.  
\$16,000,000

[www.landscope.com/95558.htm](http://www.landscope.com/95558.htm) Yvonne Chang 鄭小姐 9088 4666



Designer: Rodolfo Dordoni

# Minotti

Minotti S.p.A.  
20036 MEDA (MI) ITALIA  
e-mail: [info@minotti.it](mailto:info@minotti.it)  
[www.minotti.com](http://www.minotti.com)

TK/1002/M/WLM03

Sole Dealer of Minotti in Hong Kong

# andante

Shop D, G/F, The Design Showcase,  
Ruttonjee Centre, 111 Duddell Street,  
Central, Hong Kong  
Tel. +852/ 2537 9688  
Fax. +852/ 2537 4488  
E-mail: [info@andante.com.hk](mailto:info@andante.com.hk)  
[www.andante.com.hk](http://www.andante.com.hk)



**Phoenix Court**  
 中半山 鳳凰閣  
 39 Kennedy Road, Midlevels Central  
 Practical flat in contemporary design with lush green view  
 實用兩房配以時尚裝修，尊享翠綠園景

**983 s.f.**  
**\$9,680,000**

[www.landscope.com/88509.htm](http://www.landscope.com/88509.htm) [Maria Cheung 張小姐 5182 8699](#)

**Dragon Garden**  
 渣甸山 龍園  
 1 Chun Fai Terrace, Jardine's Lookout  
 Spacious 3-bedroom apartment in convenient location  
 寬敞三房住宅，位於渣甸山，交通方便

**1,750 s.f.**  
**\$16,000,000**

[www.landscope.com/39171.htm](http://www.landscope.com/39171.htm) [Walker Lam 林先生 9551 1077](#)

**Best View Court**  
 中半山 好景大廈  
 66-68 MacDonnell Road, Midlevels Central  
 Nicely decorated low-rise apartment with practical layout  
 雅緻裝修低密度住宅，開闊實用

**1,600 s.f. (plus 150 s.f. terrace)**  
**\$18,000,000**

[www.landscope.com/94761.htm](http://www.landscope.com/94761.htm) [Mira To 杜小姐 9486 1566](#)

**Wing Way Court**  
 中半山 永威閣  
 31 Kennedy Road, Midlevels Central  
 Spacious 3-bedroom apartment in convenient location  
 中半山三房住宅，開闊寬敞，交通方便

**1,860 s.f.**  
**\$19,000,000**

[www.landscope.com/96205.htm](http://www.landscope.com/96205.htm) [Eric Wong 黃先生 97403396](#)

**Belmont Court**  
 西半山 清暉大廈  
 10 Kowtow Road, Midlevels West  
 Practical apartment in quiet location  
 西半山開闊實用單位，環境寧靜怡人

**2,200 s.f.**  
**\$19,000,000**

[www.landscope.com/101665.htm](http://www.landscope.com/101665.htm) [Sami Woo 胡小姐 9493 8275](#)

**Belmont Court**  
 西半山 清暉大廈  
 10 Kowtow Road, Midlevels West  
 Family apartment on quiet Kowtow Road  
 溫馨舒適家庭住宅，環境寧靜，可租可售

**2,000 s.f.**  
**\$23,000,000 also for lease \$60,000 incl.**

[www.landscope.com/40410.htm](http://www.landscope.com/40410.htm) [Stephen Chan 陳先生 9093 3381](#)

**Silver Fair Mansion**  
 東半山 銀輝大廈  
 2E-2F Shiu Fai Terrace, Midlevels East  
 Rare 3-bedroom apartment with open city view  
 罕有東半山三房住宅，享開揚城市景觀

**1,450 s.f.**  
**\$13,300,000**

[www.landscope.com/72414.htm](http://www.landscope.com/72414.htm) [Garman Szeto 麥小姐 6183 8339](#)

**Marlborough House**  
 東半山 保羅大廈  
 154 Tai Hang Road, Midlevels East  
 Colonial apartment with big balcony and open city view  
 英式匯大兩房住宅，享開揚城市景觀

**1,250 s.f.**  
**\$17,000,000**

[www.landscope.com/36150.htm](http://www.landscope.com/36150.htm) [Mark Mak 麥先生 6838 2329](#)

**Grandview Tower**  
 中半山 懸景閣  
 128-130 Kennedy Road, Midlevels Central  
 Rare combined unit with terrace and twin car parks enjoying greenery view  
 罕有兩連單位及雙車位，附設平台兼享翠綠山景

**1,681 s.f. (include 265 s.f. terrace)**  
**\$18,500,000** **Sole Agent 獨家代理**

[www.landscope.com/88929.htm](http://www.landscope.com/88929.htm) [Garman Szeto 麥小姐 6183 8339](#)

**47-49 Blue Pool Road, Happy Valley**  
 跑馬地 藍塘道 47-49號  
 Charming low-rise flat with nice decor  
 迷人低密度住宅環境精緻裝修

**1,600 s.f.**  
**\$19,000,000**

[www.landscope.com/96442.htm](http://www.landscope.com/96442.htm) [Walker Lam 林先生 9551 1077](#)

**Pak Fai Mansion**  
 中半山 百輝大廈  
 72 MacDonnell Road, Midlevels Central  
 Colonial low-rise with balcony overlooking city view  
 中半山英式低密度住宅，遠隔臺俯瞰城市景觀，可租可售

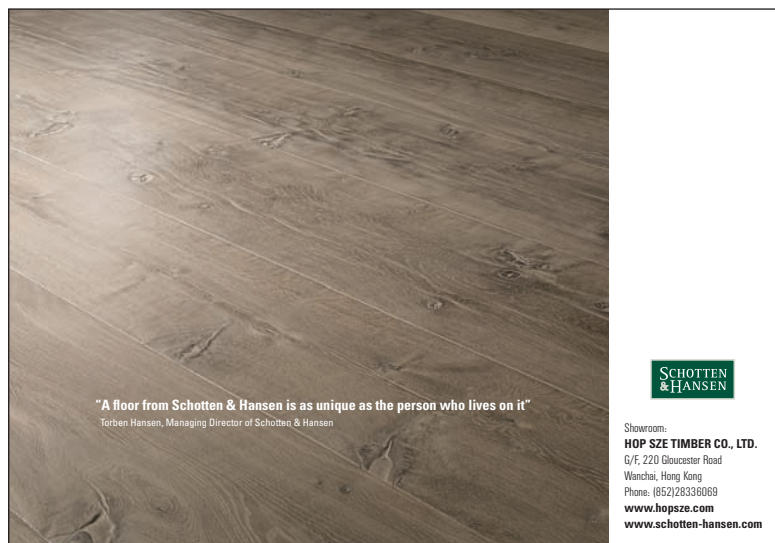
**1,750 s.f.**  
**\$22,000,000 also for lease \$52,000 incl.**

[www.landscope.com/50493.htm](http://www.landscope.com/50493.htm) [Mary Li 李小姐 9011 6595](#)

**Cooper Villa**  
 渣甸山 衛街連道23-29號  
 23-29 Wilson Road, Jardine's Lookout  
 Nicely renovated 3 bedroom low-rise with huge balcony and fantastic view. Can park 2 cars  
 雅緻裝修低密度三房單位遠眺大灣區及優美景觀，擁雙車位，可租可售

**1,600 s.f.**  
**\$23,800,000 also for lease \$65,000 incl.**

[www.landscope.com/100348.htm](http://www.landscope.com/100348.htm) [Chris Law 羅先生 6183 8388](#)



"A floor from Schotten & Hansen is as unique as the person who lives on it"

Torben Hansen, Managing Director of Schotten & Hansen

Showroom:  
**HOP SIZE TIMBER CO., LTD.**  
 G/F, 220 Gloucester Road  
 Wanchai, Hong Kong  
 Phone: (852)28336069  
[www.hopsze.com](http://www.hopsze.com)  
[www.schotten-hansen.com](http://www.schotten-hansen.com)

## A History Lesson Through Art 上一堂歷史藝術課

Appreciating art and painting is an alternative and powerful way to look back at our history. Back in the 16th century, the Queen of England was executed after a reign of just nine days. The young queen named Lady Jane Grey, was later regarded as an archetypal Protestant heroine and martyr. She was driven from the throne by her cousin, the Catholic Mary Tudor, who claimed the crown of England. Lady Jane Grey was beheaded under the Tower of London at the age of only 16. This bizarre English history was captured in the paintings by the French artist Paul Delaroche. Being one of the most celebrated artists of his time, Delaroche made his reputation by examining the poignant scenes from English history in his great historical paintings. The Execution of Lady Jane Grey (1833) is Delaroche's most famous work and has become one of the world's best-loved historical paintings. Explore Delaroche's most iconic masterpiece at the National Gallery, London. Opens 24 February to 23 May. ■

欣賞藝術品及畫作可作為了解歷史的另一種途徑，且影響力強。回溯十六世紀的英國，在歷史上有一位只登上皇位九日就被處決的女王。這名傳奇的英國女皇名叫Lady Jane Grey，被後世稱為典型基督教的女英雄及烈士。在當時中，Lady Jane Grey一位信奉天主教的表親叫Mary Tudor，她發動兵變，攝權篡位，並下令將當時只有十六歲的Lady Jane Grey在倫敦塔下斬首。這段悲壯的英國歷史由法國偉大畫家Paul Delaroche記載於他的作品。Delaroche是當時最著名的畫家之一，他所繪畫的油畫探討了英國深切的歷史事跡，而選用歷史為題材令其聲名大噪。「The Execution of Lady Jane Grey (1833)」是Delaroche最著名的作品，亦是古今中外深受愛戴的歷史畫作。英國倫敦的國家美術館 (National Gallery) 將展出Delaroche最具代表性的大師級作品。展期由2月24日至5月23日。■





**Ventris Place**  
跑馬地 雲地利台  
19-23 Ventris Road, Happy Valley  
Top floor flat with roof garden overlooking the racecourse  
跑馬地頂層露天花園住宅，俯瞰馬場景，可租可售  
**1,471 s.f.** (plus 991 s.f. roof)  
**\$24,000,000** also for lease \$58,000 incl.  
www.landscape.com/46184.htm | Rowena Siu 蕭小姐 9348 4118



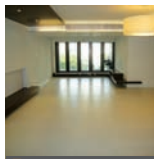
**Cavendish Heights**  
渣甸山 嘉雲臺  
27-37 Perkins Road, Jardine's Lookout  
3-bedroom apartment in prime location  
渣甸山三房住宅，地段優貴，可租可售  
**1,819 s.f.**  
**\$24,600,000** also for lease \$65,000 incl.  
www.landscape.com/32402.htm | Garman Szeto 司徒小姐 6183 8339



**1-4 Briar Avenue, Happy Valley**  
跑馬地 比雅道1-4 號  
Charming colonial low-rise in Happy Valley  
跑馬地迷人低密度英式住宅  
**1,800s.f.** (plus roof)  
**\$30,000,000**  
www.landscape.com/41099.htm | Stephen Chan 陳先生 9093 3381



**Medallion Heights**  
西半山 金鑽閣  
45 Conduit Road, Midlevels West  
Exclusive mid-rise apartment with private roof terrace  
獨特中密度住宅讓私家天台  
**2,000 s.f.** (plus 1,500 s.f. roof)  
**\$28,500,000**  
www.landscape.com/98468.htm | Rowena Siu 蕭小姐 9348 4118



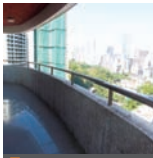
**Kennedy Terrace**  
中半山 堅尼地台  
20 Kennedy Road, Midlevels Central  
High efficiency flat with nice decor with fantastic views  
超實用雅緻裝修住宅，尊享讓人美景  
**2,500 s.f.**  
**\$32,000,000**  
www.landscape.com/107931.htm | Eric Wong 黃先生 97403396



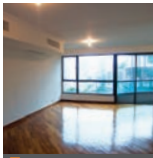
**MacDonnell House**  
中半山 麥當奴大廈  
6-8 Macdonnell Road, Midlevels Central  
Very well maintained 4-bedroom flat in convenient location  
優美四房單位，地段優越，可租可售  
**2,519 s.f.**  
**\$33,000,000** also for lease \$83,000 incl.  
www.landscape.com/111646.htm | Stella Lo 羅小姐 9809 8570



**Man Yuen Garden**  
中半山 文苑花園  
52A-52B Kennedy Road, Midlevels Central  
Spacious apartment with nice decorations on Kennedy Road  
藍尼地廣寬雅緻裝修住宅，可租可售  
**2,000 s.f.**  
**\$24,000,000** also for lease \$65,000 incl.  
www.landscape.com/126947.htm | Stephen Chan 陳先生 9093 3381



**Visalia Garden**  
中半山 新山花園  
48 Macdonnell Road, Midlevels Central  
4-bedroom with balcony in MacDonnell Road with open city view  
豪華四房兩廁單位連陽臺，尊享開揚城市景緻  
**2,195 s.f.**  
**\$29,000,000**  
www.landscape.com/109897.htm | Stella Lo 羅小姐 9809 8570



**Dynasty Court**  
中半山 帝皇閣  
20 Kennedy Road, Midlevels Central  
Stylishly designed and decorated apartment in popular estate  
受歡迎新式設計裝修住宅，可租可售  
**1,970 s.f.**  
**\$30,000,000** also for lease \$66,000 incl.  
www.landscape.com/32986.htm | Mira To 杜小姐 9486 1566



**Grosvenor House**  
中半山 高雲大廈  
114-120 Macdonnell Road, Midlevels Central  
Charming colonial apartment on MacDonnell Road  
中半山麥當奴道迷人英式住宅  
**2,400 s.f.**  
**\$32,000,000**  
www.landscape.com/37570.htm | Teresa Lau 劉小姐 9080 6686



**Clement Court**  
渣甸山 松風臺  
56-64 Mount Butler Road, Jardine's Lookout  
Colonial low-rise in tranquil neighbourhood  
英式低密度住宅，環境恬靜  
**2,200 s.f.**  
**\$33,000,000**  
www.landscape.com/48344.htm | Maria Cheung 張小姐 5182 8699



**Century Tower I**  
中半山 世紀大廈1座  
1 Tregunter Path, Midlevels Central  
Unique harbour view flat in Central Midlevels with nice decorations  
中半山獨特維港景住宅，連美裝修，可租可售  
**2,565s.f.**  
**\$38,000,000** also for lease \$95,000 incl.  
www.landscape.com/21356.htm | Teresa Fung 馮小姐 9138 1621



Situated on Tai Hang Road, Island East, the new Serenade embraces a metropolitan pulse with its advantageous geographical locations and convenient transport. The premise possesses panoramic view of the spectacular Victoria Harbour in its front, and greeneries from Mount Butler at its back. The area of each apartment varies from 1,000 square feet to 4,000 square feet. Among the available apartments are duplexes with four bedrooms including two ensuites and prestigious penthouses.

The luxurious two-storey clubhouse is equipped with every recreational facility that one would expect. Exclusive services include banquet catering by Michelin star chefs from AMBER of the Landmark Mandarin Oriental Hotel, and spa and massage by professional therapists from the same hotel.

「上林」位處香港島東半山之罕貴地段，掌握大都會脈搏，地理位置優越，交通四通八達。前臨270度遼闊維多利亞港美景，背靠青蔥翠綠華佗山山巒。單位面積由約1,000平方呎至4,000平方呎，其中包括四房兩套複式單位及頂層特色單位。

雙層豪華會所，消閒設施應有盡有。特色設施包括由重文華東方酒店AMBER提供的米芝星級連廚師宴會到會服務及重文華東方酒店培訓之專業水療按摩師到會服務。

<b>Address:</b>	No. 11 Tai Hang Road, Hong Kong
<b>No. of Towers:</b>	2
<b>No. of Flats:</b>	270 including 30 duplex units and 4 penthouse units
<b>No. of Storeys:</b>	55 storeys
<b>Fiat Type:</b>	<b>Standard Flat</b> 3-bedroom incl. 1 ensuite 4-bedroom incl. 2 ensuite <b>Prestigious Flat</b> Duplex Penthouse
<b>Gross Area</b>	approx. 1,349 sq.ft.
<b>Gross Area</b>	approx. 1,563 sq.ft.
<b>Gross Area</b>	approx. 2,605 sq.ft.
<b>Gross Area</b>	approx. 3,755 — 3,958 sq.ft.

<b>地址：</b>	香港大坑道11號
<b>物業座數：</b>	2座
<b>單位數目：</b>	270個，包括 30個複式單位及4個頂層特色單位
<b>住宅層數：</b>	55層
<b>單位類型：</b>	<b>標準單位</b> 3房連主人套房 4房雙套房 <b>特色單位</b> 複式單位 頂層特色單位
<b>建築面積</b>	約1,349平方呎
<b>建築面積</b>	約1,563平方呎
<b>建築面積</b>	約2,605平方呎
<b>建築面積</b>	約3,755 — 3,958平方呎

## Serenade 上林

11, Tai Hang Road, Hong Kong

<b>Chris Law 羅先生</b>	6183 8388,	<b>Christine Chong 莊小姐</b>	9648 6082
<b>Teresa Fung 馮小姐</b>	9138 1621,	<b>Sami Woo 胡小姐</b>	9493 8275





**Garden Terrace**  
**中半山 花園**  
 8A Old Peak Road, Midlevels Central  
 Large 4-ensuite flat with nice decorations in prime location  
 特大四套房單位連雅緻裝修，地段專貴

**3,002 s.f.**  
**\$44,000,000**

[www.landscape.com/101674.htm](http://www.landscape.com/101674.htm) **Eric Wong** 黃先生 97403396

**May Tower**  
**中半山 梅苑**  
 7 May Road, Midlevels Central  
 Deluxe harbour view duplex with enlarged master bedroom at prime location  
 豪華新港景複式住宅連特大主人睡房，地段專貴

**2,850 s.f.**  
**\$49,800,000**

[www.landscape.com/33364.htm](http://www.landscape.com/33364.htm) **Teresa Lau** 劉小姐 9080 6686

**Suncrest Tower**  
**中半山 桂滿苑**  
 1-11 Monmouth Terrace, Midlevels Central  
 Duplex penthouse with private roof in prime location  
 中半山頂層複式住宅，連私家天台，地段專貴

**3,413 s.f. (plus 229 s.f. terrace)**  
**\$54,608,000**

[www.landscape.com/6039.htm](http://www.landscape.com/6039.htm) **Mary Li** 李小姐 9011 6595

**Piccadilly Mansion**  
**西半山 碧苑**  
 4-6 Po Shan Road, Midlevels West  
 Large practical harbour view apartment in tranquil environment  
 巨座臨港景住宅，間隔實用，環境清幽怡人

**2,800 s.f.**  
**\$58,000,000**

[www.landscape.com/35976.htm](http://www.landscape.com/35976.htm) **Carman Szeto** 司徒小姐 6183 8339

**Trafalgar Court**  
**東半山 大寶閣**  
 70 Tai Hang Road Midlevels East  
 Huge 5-bedroom flat overlooking Causeway Bay and Victoria Harbour  
 巨座五房住宅俯瞰銅鑼灣及維多利亞港

**3,008 s.f.**  
**\$65,000,000**

[www.landscape.com/59113.htm](http://www.landscape.com/59113.htm) **Stephen Chan** 陳先生 9093 3381

**HighCliff**  
**東半山 曉嶺**  
 41D Stubbs Road, Midlevels East  
 Modern landmark building with bird's eye view of Victoria Harbour  
 時尚地標住宅大廈，尊享鳥瞰港景的絕佳景觀，可租可售

**3,816 s.f.**  
**\$88,000,000**

[www.landscape.com/34312.htm](http://www.landscape.com/34312.htm) **Louis Wong** 黃先生 9871 6828

**The Colonnade**  
**東半山 嘉滿閣**  
 152 Tai Hang Road, Midlevels East  
 Stylish modern apartment with tasteful decor  
 時尚設計住宅，連雅緻品味裝修，可租可售

**2,256 s.f.**  
**\$45,000,000 also for lease \$110,000 incl.**

[www.landscape.com/113664.htm](http://www.landscape.com/113664.htm) **Louis Wong** 黃先生 9871 6828

**Hollywood Heights**  
**中半山 好利閣**  
 6 Old Peak Road, Midlevels Central  
 Spacious 4-bedroom apartment with large private garden terrace  
 寬敞四房住宅連特大私家花園平台

**2,700 s.f. (plus 3,478 s.f. garden)**  
**\$50,000,000**

[www.landscape.com/37486.htm](http://www.landscape.com/37486.htm) **Carman Szeto** 司徒小姐 6183 8339

**Tregunter Tower 3**  
**中半山 地利根德閣3座**  
 14 Tregunter Path, Midlevels Central  
 Tastefully decorated duplex with excellent clubhouse facilities  
 品味設計複式住宅連完善住客會所設施

**2,980 s.f. (plus 187 s.f. terrace)**  
**\$56,000,000**

[www.landscape.com/105883.htm](http://www.landscape.com/105883.htm) **Rebecca Cheung** 張小姐 9021 7644

**Estoril Court**  
**中半山 愛都大廈**  
 55 Garden Road, Midlevels Central  
 High efficiency practical apartment with new decorations  
 全新裝修住宅，間隔寬敞，實用率高

**3,347 s.f.**  
**\$58,000,000**

[www.landscape.com/95882.htm](http://www.landscape.com/95882.htm) **Mark Mak** 麥先生 6838 2929

**Tregunter Tower**  
**中半山 地利根德閣**  
 14 Tregunter Path, Midlevels Central  
 Luxurious duplex apartment with full clubhouse facilities overlooking the harbour  
 豪華複式住宅連完善住客會所設施，俯瞰維多利亞港，可租可售

**3,639 s.f.**  
**\$72,000,000 also for lease \$140,000**

[www.landscape.com/3950.htm](http://www.landscape.com/3950.htm) **Rowna Si** 蕭小姐 9348 4118

**Century Tower I**  
**中半山 世紀大廈1座**  
 1 Tregunter Path, Midlevels Central  
 Rare duplex with panoramic view of Victoria Harbour  
 中半山罕有複式住宅，俯瞰維多利亞港

**5,130 s.f.**  
**\$118,000,000**

[www.landscape.com/94786.htm](http://www.landscape.com/94786.htm) **Mira To** 杜小姐 9486 1566



## Contemporary Cool 現代氣息

Happy Valley Court in Happy Valley has everything for those who enjoy living in a booming metropolis. This 1,340 sq ft colonial low-rise apartment is an alluring pad where character and charm blend with modern convenience. The living room positioned right next to the balcony is so cool it lifts the spirit as soon as you walk in. Step out onto the balcony to enjoy a view of the racecourse on one side and open greenery on the other. The open-plan living area interestingly displays what goes on in the kitchen too.

位於跑馬地的華景閣絕對是感受大都會氣息的最佳之處。這座富殖民地色彩的低層公寓面積佔1,340平方呎，時尚舒適，展現出與眾不同的魅力。客廳座落於露台旁，甫踏進屋內，不緊被客廳的佈置裝潢吸引著。漫步走出露台，馬場美景盡收眼底，令人沉醉於一片綠油油之中。開放式的設計亦讓廚房裡的一舉一動表露無遺。

The art pieces, paintings and sculptures such as a pencil-shaped clothes hanger and a 18th century boat model enriches and further livens up the apartment. To top it off, it has a unique transparent bathroom in the ensuite bedroom that's stunning yet playful. Not just a popular residential area, Happy Valley also offers around-

屋內的藝術品、畫作及雕塑，如呈鉛筆形的直立式衣櫥架，以及18世紀帆船船，為公寓抹上豐富色彩。此外，主人套房裡的透明浴室設計獨特，帶出玩味主義的同時亦不失美感。跑馬地不僅是熱門的住宅區，更可享受到全天的購物樂趣、美食佳饈，以及體育消閒活動。

### Happy Valley Court 跑馬地 華景閣

**1,340 s.f.**  
**\$16,500,000**

[www.landscape.com/104840.htm](http://www.landscape.com/104840.htm) **Mary Li** 李小姐 9011 6595





**Sunlight Court**  
薄扶林 新舊閣  
30-32 Bisney Road, Pokfulam

Well-kept 3 bedroom low-rise at quiet Pokfulam  
薄扶林良好保養三房低密度住宅。環境清幽寧靜，可租可售

**1,350 s.f.**  
**\$10,800,000** also for lease \$40,000 incl.

[www.landscope.com/109060.htm](http://www.landscope.com/109060.htm) [Rowena.Siu](mailto:Rowena.Siu) 廖小姐 9348 4118



**43 Stanley Village Road, Stanley**  
赤柱 赤柱村道43號

Well designed and renovated low-rise with roof top  
優美裝修低密度住宅連天台

**1,454 s.f.** (plus 1,033 s.f. roof)  
**\$17,500,000**

[www.landscope.com/112638.htm](http://www.landscope.com/112638.htm) [Eric.Wong](mailto:Eric.Wong) 黃先生 9740 3396



**18-24 Bisney Road, Pokfulam**  
薄扶林 碧蘿道18-24號

Stylishly decorated low-rise flat in quiet enclave  
時尚低密度住宅。環境清幽怡人

**1,650 s.f.**  
**\$20,000,000**

[www.landscope.com/113575.htm](http://www.landscope.com/113575.htm) [Christine.Chong](mailto:Christine.Chong) 莊小姐 9648 6082



**South Bay Palace**  
淺水灣 南灣御苑  
25-31 South Bay Close, Repulse Bay

Modern mid-rise with comprehensive facilities in Repulse Bay  
淺水灣時尚中密度住宅連完善住客會所設施

**1,698 s.f.**  
**\$21,500,000**

[www.landscope.com/393630.htm](http://www.landscope.com/393630.htm) [Teressa.Fung](mailto:Teressa.Fung) 馮小姐 9138 1621



**Repulse Bay Garden**  
淺水灣 麗景園  
18-40 Bellevue Drive, Repulse Bay

Practical flat with large balcony overlooking Repulse Bay Beach  
淺水灣開闊實用單位連大陽臺，俯瞰淺水灣海灘

**1,790 s.f.**  
**\$30,000,000**

[www.landscope.com/99184.htm](http://www.landscope.com/99184.htm) [Mark.Mak](mailto:Mark.Mak) 麥先生 6838 2329



**Hong Kong Parkview**  
淺水灣 陽明山莊  
88 Tai Tam Reservoir Road, Repulse Bay

Spacious apartment overlooking greenery country park  
淺水灣頂級開闊寬敞住宅，俯瞰翠綠郊野公園景致

**2,366 s.f.**  
**\$32,000,000**

[www.landscope.com/106649.htm](http://www.landscope.com/106649.htm) [Christine.Chong](mailto:Christine.Chong) 莊小姐 9648 6082



**Stanford Villa**  
赤柱 旭逸居  
7 Stanley Village Road, Stanley

Low-rise boutique apartment with private roof close to Stanley Main Beach  
低密度精緻單位連私家天台，鄰近赤柱大灘

**1,052 s.f.** (plus 597 s.f. roof)  
**\$12,500,000**

[www.landscope.com/36018.htm](http://www.landscope.com/36018.htm) [Eric.Wong](mailto:Eric.Wong) 黃先生 9740 3396



**Glamour Court**  
薄扶林 華麗閣  
39 Consort Rise, Pokfulam

Low-rise with private roof and good condition  
低密度住宅連私家天台及雅緻裝修

**1,500 s.f.** (plus 1,106 s.f.)  
**\$18,000,000**

[www.landscope.com/64542.htm](http://www.landscope.com/64542.htm) [Teressa.Lau](mailto:Teressa.Lau) 劉小姐 9080 6686



**Villa Piubello**  
赤柱角 瓊角道1-7號  
1-7 Cape Drive, Chung Hom Kok

Rare 3-bedroom flat in quiet neighbourhood  
赤柱角罕有三房住宅，環境寧靜怡人

**1,800 s.f.**  
**\$21,000,000**

[www.landscope.com/113937.htm](http://www.landscope.com/113937.htm) [Christine.Chong](mailto:Christine.Chong) 莊小姐 9648 6082



**Scenic Villas**  
薄扶林 美景峯  
2-28 Scenic Villa Drive, Pokfulam

Popular high efficiency 4-bedroom apartment with full sea view  
受歡迎實用四房單位享全海景

**2,517 s.f.**  
**\$29,000,000** also for lease \$90,000 incl.

[www.landscope.com/49867.htm](http://www.landscope.com/49867.htm) [Stephen.Chan](mailto:Stephen.Chan) 陳先生 9093 3381



**Sea Branch**  
赤柱角 海天閣  
31 Horizon Drive, Chung Hom Kok

Nicely decorated low-rise apartment on quiet Horizon Drive  
海天閣迷人裝修低密度單位，環境寧靜，可租可售

**1,825 s.f.**  
**\$30,000,000** also for lease \$88,000 incl.

[www.landscope.com/81551.htm](http://www.landscope.com/81551.htm) [Maria.Cheung](mailto:Maria.Cheung) 張小姐 5182 8699



**Gordon Terrace**  
赤柱 歌敦塞  
4-8A Carmel Road, Stanley

Unique 3-bedroom low-rise apartment with private garden  
獨特三房低密度住宅連私家花園

**1,800 s.f.** (plus 700 s.f. garden)  
**\$34,000,000**

[www.landscope.com/99085.htm](http://www.landscope.com/99085.htm) [Chris.Law](mailto:Chris.Law) 羅先生 6183 8388



**Repulse Bay Garden**  
淺水灣 麗景園  
18-40 Bellevue Drive, Repulse Bay

Practical apartment with nice view of Repulse Bay Beach  
淺水灣開闊實用單位，尊享優美淺水灣海灘景觀

**2,288 s.f.**  
**\$35,000,000**

[www.landscope.com/33636.htm](http://www.landscope.com/33636.htm) [Stella.Lo](mailto:Stella.Lo) 羅小姐 9809 8570



**South Bay Towers**  
淺水灣 南灣大廈  
59 South Bay Road, Repulse Bay

High floor practical family flat with sea view and facilities  
高層實用家庭式海景住宅連住客設施，可租可售

**2,738 s.f.**  
**\$43,800,000** also for lease \$90,000 incl.

[www.landscope.com/84779.htm](http://www.landscope.com/84779.htm) [Sam.Woo](mailto:Sam.Woo) 胡小姐 9493 8275



**Bluewater**  
大潭 大潭道25號  
25 Tai Tam Road, Tai Tam

Prestigious apartment with 4 bedrooms enjoying full sea view  
尊貴四房單位享全海景，可租可售

**2,500 s.f.**  
**\$50,000,000** also for lease \$110,000 incl.

[www.landscope.com/106586.htm](http://www.landscope.com/106586.htm) [Rebecca.Cheung](mailto:Rebecca.Cheung) 張小姐 9021 7644



**Ridge Court**  
淺水灣 靚園  
21A-21D Repulse Bay Road, Repulse Bay

Best positioned apartment with breathtaking sea view  
位置優越豪華寧靜海景，可租可售

**2,300 s.f.**  
**\$37,000,000** also for lease \$75,000 incl.

[www.landscope.com/29945.htm](http://www.landscope.com/29945.htm) [Walker.Lam](mailto:Walker.Lam) 林先生 9551 1077



**Stanley Court**  
赤柱 海灣閣  
9 Stanley Mound Road, Stanley

Newly renovated garden house close to beach  
全新裝修花園大屋，鄰近海灘，可租可售

**2,669 s.f.** (plus 732 s.f. garden, 517 s.f. roof and 320 s.f. terrace)  
**\$48,000,000** also for lease \$138,000 incl.

[www.landscope.com/84806.htm](http://www.landscope.com/84806.htm) [Maria.Cheung](mailto:Maria.Cheung) 張小姐 8103 3862



**Faber Villa**  
大潭 靚角苑  
17 Tai Tam Road, Tai Tam

Rare high privacy sea view 4-bedroom flat in Tai Tam  
大潭罕有海景四房住宅，私隱度高

**3,200 s.f.**  
**\$53,000,000**

[www.landscope.com/107946.htm](http://www.landscope.com/107946.htm) [Mary.Li](mailto:Mary.Li) 李小姐 9011 6595

## Imagination of Captivating Colours 帶來無窮幻想的色彩

Having gained an enormous reputation in the New York art world, the Indian-born artist Natvar Bhavsar will unveil his new work in the solo show entitled 'RANG' in Hong Kong. The artist will display his widely acclaimed pure pigment paintings at the exhibition held at Sundaram Tagore gallery. In the artist's works, the vibrantly coloured pigment powder plays an integral aspect in his magnificent creation, of which the artist draws inspiration from the Indian traditions of Holi and Rangoli. By using thrown and sifted dry pigments in the

paintings, Bhavsar illustrates a distinctly Eastern aesthetic to the world. If you look at Bhavsar's paintings, they may appear to be mesmerising energy fields, luminous atmospheres or vapours diffusing out; the cloud-like compositions allow our imagination to run wild with the artist's creativity. Runs from 24 February to 28 March. ■

於紐約藝術界享負盛名的藝術家Natvar Bhavsar，將於二月搬遷香港，於Sundaram Tagore Gallery為其新系列「RANG」舉辦個人展覽，帶來備受讚譽及壯麗美絕的作品。這位出生於印度的藝術家的作品多以鮮艷奪目的顏料為主，創作靈感源自印度傳統節日Holi及彩繪地畫Rangoli，富有濃厚的傳統印度色彩。他以拋灑乾顏料粉末的手法繪製畫作，向世界展現獨特的東方美學。在欣賞Bhavsar作品的時候，觀者可能會看到一股令人迷惑的能量場，明亮的氛圍或是向外擴散中的蒸氣。這些煙霧朦朧的結構畫面，連同藝術家非凡的創意，將引領我們開拓幻想的視野。展期由2月24日至3月28日。■





**Pine Lodge**  
壽臣山 松苑  
10 Shouson Hill Road West, Shouson Hill

Low-rise flat with private garden in lush greenery  
低密高尚住宅獨立私家花園，享翠靜園景

**3,000 s.f.** (plus 300 s.f. garden)  
**\$55,000,000**

[www.landscape.com/117654.htm](http://www.landscape.com/117654.htm) | Mary Li 李小姐 9011 6595

**Villa Rosa**  
大潭 玫瑰園  
88 Red Hill Road, Tai Tam

Rare 4-bedroom garden house at Tai Tam  
大潭罕有四房花園大屋

**3,960 s.f.** (plus 480 s.f. roof and 414 s.f. garden)  
**\$100,000,000**

[www.landscape.com/21103.htm](http://www.landscape.com/21103.htm) | Christine Chong 莊小姐 9648 6082

**Rosecliff**  
大潭 大潭道20號  
20 Tai Tam Road, Tai Tam

Waterfront townhouse with garden and twin balconies  
海濱排屋臨花園及雙陽臺

**3,980 s.f.** (plus 1,050 s.f. roof and 649 s.f. garden)  
**\$120,000,000** **Sole Agent 獨家代理**

[www.landscape.com/50071.htm](http://www.landscape.com/50071.htm) | Rebecca Cheung 張小姐 9021 7644



**10A-10B Stanley Beach Road, Stanley**  
赤柱 連翠道10A-B號

Rare colonial low-rise with 3-ensuite bedrooms and a huge balcony in a quiet area of Stanley  
罕有英式低密度住宅，三房連大陽臺設計，位於赤柱環境寧靜，可租可售

**3,300 s.f.**  
**\$60,000,000 also for lease \$128,000 incl.**

[www.landscape.com/36040.htm](http://www.landscape.com/36040.htm) | Chris Law 羅先生 6183 8388

**Ocean Bay**  
香軟角 海天徑15-17號  
15-17 Horizon Drive, Chung Hom Kok

Modern sea view townhouse with private pool  
時尚海景排屋連私家游泳池

**3,800 s.f.**  
**\$120,000,000**

[www.landscape.com/107653.htm](http://www.landscape.com/107653.htm) | Rebecca Cheung 張小姐 9021 7644

**Majestic Court**  
大潭 君誠閣  
9 Tai Tam Road, Tai Tam

Brand new decorated duplex and triplex with private garden  
全新裝修複式及三層式單位連私家花園

**3,496 to 5,244 s.f.** (plus 1,956 s.f. garden)  
**Open Offer**

[www.landscape.com/111310.htm](http://www.landscape.com/111310.htm) | Louis Wong 黃先生 9871 6828

## The Whirl of Life and Art 生活與藝術的結合

The oeuvres of Gabriel Orozco comprise a wide range of art forms in drawing, photography, sculpture, installation and painting. This Mexican artist presents his vision through combining art and life in his creations: rather than using a fine-art material, Orozco used clay made by a brick factory in Mexico; many of his sculptures from the 1990s are altered ready-made objects, such as an elevator, car or bicycle. Being a central figure of his generation, Orozco's career was marked with his continuing innovation and knowledge in contemporary art. The Museum of Modern Art in New York is now showcasing the first major retrospective of Orozco, including around 80 of his overwhelming works of the past two decades. The exhibition explores both the consistency and the surprising evolution of Orozco's artistic approach. It runs from now till 1 March. ■

Gabriel Orozco的作品涉及不同藝術範疇如繪畫、攝影、雕刻、裝置及油畫。這名墨西哥藝術家常把生活與藝術融合在創作裡，表現自有一些的生活觀。他沒有利用專業美術材料，反而應用墨西哥一間造磚工廠製造的粘土來創作。其他作品大部份屬於1990年代的雕塑，靈感源自日常所見的物件包括升降機、汽車或單車改造而成。創新的意念及對當代藝術的認知，令Orozco的藝術事業得到肯定，成為當代藝術界最重要的人物。紐約的現代藝術博物館（MoMA）現正舉辦Orozco首個大型回顧展，一次過展出藝術家二十年來約八十件罕世寶目的作品，讓公眾探索Orozco完滿的創作過程之餘，並展現出藝術家將物體結合的創作。展期至3月1日。■

For more listings, please go to [www.landscape.com/sale](http://www.landscape.com/sale)

**Villa Verde**  
山頂 連翠閣  
4-18 Guildford Road, The Peak

Boutique apartment with balcony overlooking mountain view  
山頂精緻住宅連陽臺，俯瞰翠峰山景，可租可售

**1,200 s.f.**  
**\$60,000 incl. also for sale \$21,000,000**

[www.landscape.com/94681.htm](http://www.landscape.com/94681.htm) | Rebecca Cheung 張小姐 9021 7644

**Vivian Court**  
山頂 瑞南大廈  
18-22 Mount Kellett Road, The Peak

Newly renovated colonial apartment overlooking Southside sea view  
全新裝修英式住宅，俯瞰南面海景

**2,100 s.f.**  
**\$80,000**

[www.landscape.com/40247.htm](http://www.landscape.com/40247.htm) | Eric Wong 黃先生 9740 3396

**Montebello**  
山頂 濠景閣  
15-17 Plantation Road, The Peak

Spacious practical 4-bedroom flat at lower Peak  
山頂寬敞四房住宅，開闊實用，可租可售

**3,070 s.f.**  
**\$100,000 also for sale \$55,000,000**

[www.landscape.com/124532.htm](http://www.landscape.com/124532.htm) | David Leung 梁先生 9199 0672

**La Hacienda**  
山頂 加列山道29-33號  
29-33 Mount Kellett Road, The Peak

Newly decorated townhouse with facilities overlooking nice views  
全新裝修排屋連套房設施，尊享華麗園景

**3,200 s.f.** (plus garden and roof)  
**\$120,000 incl. also for sale \$110,000,000**

[www.landscape.com/3323.htm](http://www.landscape.com/3323.htm) | David Leung 梁先生 9199 0672

**Ondina Heights**  
山頂 安寧臺  
62-66 Peak Road, The Peak

Newly renovated townhouse with sweeping sea view  
山頂全新裝修大屋，享寧靜海景

**2,945 s.f.** (plus 2,881 s.f. terrace, 138 s.f. garden and roof)  
**\$150,000 incl.**

[www.landscape.com/31708.htm](http://www.landscape.com/31708.htm) | Yvonne Chang 鄭小姐 9088 4666

**Abergeldie**  
山頂 櫻楓道52號  
52 Plantation Road, The Peak

Peak house with bird's eye view of Victoria Harbour  
山頂大屋享有鳥瞰花港的維港景觀，可租可售

**3,655 s.f.** (plus 505 s.f. terrace, 464 s.f. garden and 282 s.f. roof)  
**\$200,000 also for sale \$200,000,000**

[www.landscape.com/13340.htm](http://www.landscape.com/13340.htm) | Yvonne Chang 鄭小姐 9088 4666

**77 Peak Road, The Peak**  
山頂 連翠道77號

Newly renovated colonial apartment with huge balcony  
全新裝修英式住宅連特大陽臺

**2,392 s.f.**  
**\$65,000**

[www.landscape.com/11743.htm](http://www.landscape.com/11743.htm) | Teresa Fung 馮小姐 9138 1621

**Coombe Apartments**  
山頂 甘道15-17號  
15-17 Coombe Road, The Peak

Stylish colonial apartment in secluded green surrounding, 3 bedrooms with fire place  
山頂時尚英式三房住宅，尊享隱匿翠峰園景

**2,150 s.f.**  
**\$86,000 incl.**

[www.landscape.com/12213.htm](http://www.landscape.com/12213.htm) | Teresa Lau 劉小姐 9080 6686

**1-3 Homestead Road, The Peak**  
山頂 峇仕連道1-3號

Luxurious modern apartment on The Peak with Southside sea view  
山頂時尚華麗住宅，享南面海景

**2,828 s.f.**  
**\$120,000 incl.**

[www.landscape.com/29262.htm](http://www.landscape.com/29262.htm) | Stella Lo 劉小姐 9809 8570

**Eredine**  
山頂 加列山道38號  
38 Mount Kellett Road, The Peak

Spacious colonial apartment with spectacular sea view  
寬敞英式住宅享壯麗維港景

**3,300 s.f.**  
**\$120,000**

[www.landscape.com/1624.htm](http://www.landscape.com/1624.htm) | Mary Li 李小姐 9011 6595

**Intercean Court**  
山頂 安寧臺  
26 Peak Road, The Peak

Prestigious 5-bedroom apartment with panoramic Victoria Harbour view  
山頂豪華五房住宅，享全盤港景，環境優美

**3,844 s.f.**  
**\$188,000**

[www.landscape.com/21581.htm](http://www.landscape.com/21581.htm) | Yvonne Chang 鄭小姐 9088 4666

**King's Court**  
山頂 龍庭  
5 Mount Kellett Road, The Peak

Newly renovated garden townhouse with sweeping Southside sea view  
全新裝修花園大屋享寧靜南面海景

**3,165 s.f.** (plus 2,045 s.f. garden, roof and terrace)  
**\$200,000**

[www.landscape.com/12286.htm](http://www.landscape.com/12286.htm) | David Chan 陳先生 8238 2012

**Igloo Residence**  
 跑馬地 意盧小區  
 1A Shan Kwong Road, Happy Valley  
 Modern boutique flat in the heart of Happy Valley  
 設計時尚精緻住宅，位於跑馬地中心地帶，可租可售

**795 s.f.**  
**\$38,000 incl. also for sale \$9,300,000**

**Sole Agent 獨家代理**  
 Yvonne Chang 鄭小姐 9238 2012

**Pearl Gardens**  
 西半山 明珠薈  
 7 Conduit Road, Midlevels West  
 Spacious 4-bedroom apartment with open city view  
 西半山寬敞四房單位享開揚城市景觀

**2,200 s.f.**  
**\$58,000 incl.**

www.landscape.com/18288.htm Mark Mak 麥先生 6838 2929

**Park Mansions**  
 中半山 百年閣大廈  
 27-29 Macdonnell Road, Midlevels Central  
 4-bedroom flat close to Central business district  
 中半山四房單位，鄰近中環商業區

**2,013 s.f.**  
**\$72,000 incl.**

www.landscape.com/18173.htm David Chan 陳先生 9238 2012

**Old Peak Mansion**  
 中半山 舊山頂道5號  
 5 Old Peak Road, Midlevels Central  
 Rare spacious apartment with large balcony on Old Peak Road  
 舊山頂寬敞住宅連特大陽臺，罕有出租

**2,088 s.f.**  
**\$75,000**

www.landscape.com/10325.htm Teresa Lau 劉小姐 9080 6686

**Bellevue Court**  
 東半山 碧翠園  
 41 Stubbs Road, Midlevels East  
 Rare mid-rise with lush greenery view on Stubbs Road  
 可往跑馬地有中庭度翠綠園景住宅，可租可售

**2,700 s.f.**  
**\$80,000 incl. also for sale \$36,200,000**

www.landscape.com/50056.htm Chris Law 羅先生 6183 8388

**May Tower 1**  
 中半山 梅苑一座  
 7 May Road, Midlevels Central  
 Sought after spacious duplex apartment in Midlevels Central  
 中半山複式住宅，開闊寬敞，市面難尋

**2,850 s.f.**  
**\$82,000 incl.**

www.landscape.com/8184.htm Garman Szeto 司徒小姐 6183 8339

**Ventris Place**  
 跑馬地 雲地利台  
 19-23 Ventris Road, Happy Valley  
 Efficient 3-bedroom flat with fantastic racecourse view  
 跑馬地實用三房單位遠望闊闊人的馬場景觀，可租可售

**1,471 s.f.**  
**\$49,000 incl. also for sale \$19,580,000**

www.landscape.com/52425.htm Stella Lo 羅小姐 9809 8570

**Hong Villa**  
 中半山 峰景花園  
 12 Bowen Road, Midlevels Central  
 Newly decorated apartment with nice harbour view  
 全新裝修住宅，享優美維港景觀

**1,916 s.f.**  
**\$65,000 incl.**

www.landscape.com/6942.htm Garman Szeto 司徒小姐 6183 8339

**Hamilton Court**  
 西半山 愛敦大廈  
 8 Po Shan Road, Midlevels West  
 Practical 4-bedroom apartment with big balcony in quiet enclave  
 西半山實用四房連大陽臺住宅，環境優美寧靜

**2,600 s.f.**  
**\$74,000**

www.landscape.com/5481.htm Sami Woo 胡小姐 9493 8275

**Clement Court**  
 跑馬地 松風臺  
 56-64 Mount Butler Road, Jardine's Lookout  
 Character low-rise with private terrace in tranquil neighbourhood  
 特色低密度住宅連私家平台，環境寧靜怡人

**2,200 s.f. (plus 800 s.f. terrace)**  
**\$78,000 incl.**

www.landscape.com/23410.htm Maria Cheung 張小姐 5182 8699

**Hollywood Height**  
 中半山 好利閣  
 6 Old Peak Road, Midlevels Central  
 Lower Peak apartment with easy access to Central  
 中半山尊貴住宅，鄰近中環，交通四通八達

**2,700 s.f.**  
**\$80,000 incl.**

www.landscape.com/27171.htm Mira To 杜小姐 9486 1566

**Botanic Terrace**  
 西半山 芝蘭台  
 3-5 Conduit Road, Midlevels West  
 Spacious 3-bedroom apartment with balcony close to Midlevels escalator  
 西半山三房住宅連陽臺，鄰近半山扶手電梯

**3,200 s.f. (plus 1,967 s.f. roof)**  
**\$85,000 incl.**

www.landscape.com/4639.htm Christine Chong 莊小姐 9648 6082

**Cavendish Heights**  
 渣甸地 嘉雲臺  
 27-37 Perkins Road, Jardine's Lookout  
 Popular 4-bedroom apartment with nice facilities including tennis court and swimming pool  
 受歡迎四房單位配以雅致裝修，連網球場及游泳池

**2,265 s.f.**  
**\$85,000 incl.**

www.landscape.com/32278.htm Mary Li 李小姐 9011 6595

**Estoril Court**  
 中半山 愛都大廈  
 55 Garden Road, Midlevels Central  
 Large high efficiency 4-bedroom apartment on fringe of Central  
 特高大房實用四房住宅，鄰近中環交通方便

**3,347 s.f.**  
**\$95,000**

www.landscape.com/5478.htm Sami Woo 胡小姐 9493 8275

**Taipan Court**  
 東半山 大氈閣  
 47B Stubbs Road, Midlevels East  
 4-ensuite duplex with panoramic views of the racecourse and harbour  
 四套房複式住宅連豪華園景景觀及維港景

**3,670 s.f.**  
**\$95,000**

www.landscape.com/10449.htm Teresa Lau 劉小姐 9080 6686

**The Westminster Terrace**  
 皇璧

英國殿堂級發展商高富諾 (Grosvenor) 一向以高級豪宅享譽國際，繼淡水灣 Grosvenor Place 後，皇璧再度展現高富諾一貫對建築品味的極致追求，成為全城罕有僅提供59個複式大宅，面積由3,200呎至6,500呎。

地址： 汀九德輔道E  
 層樓： 32層  
 單位面積： 3,200呎 - 6,500呎

- 樓層高度約11呎半
- 住宅專用電梯，私人電梯大堂
- 前往中環及尖沙咀只需15分鐘，而前往中國境內亦只需20分鐘
- 鄰近貴馬大橋及汀九橋
- 所有單位均飽覽南中國海及雙機景

**The Westminster Terrace**  
 皇璧

www.landscape.com/9809 8570, Rebecca Cheung 張小姐 9021 7644

**Century Tower 1**  
 中半山 世紀大廈1座  
 1 Tregunter Path, Midlevels Central  
 Unique-style harbour view apartment on fringe of Central  
 獨特維港景住宅，鄰近中環交通方便，可租可售

**2,565 s.f.**  
**\$90,000 also for sale \$38,475,000**

www.landscape.com/12852.htm Yvonne Chang 鄭小姐 9238 2012

**Borrett Mansion**  
 中半山 寶德臺  
 8A-9B Bowen Road, Midlevels Central  
 Newly renovated spacious 4-bedroom flat with large balcony  
 全新裝修寬敞四房住宅連特大陽臺

**2,800 s.f.**  
**\$95,000**

www.landscape.com/11185.htm David Chan 陳先生 9238 2012

**Haddon Court**  
 西半山 海天閣  
 41C Conduit Road, Midlevels West  
 Rare find modern garden apartment on Conduit Road  
 千難萬罕有時尚住宅連特大花園

**2,805 s.f. (plus 1,884 s.f. terrace and 1,558 s.f. garden)**  
**\$100,000 incl.**

www.landscape.com/14338.htm Christine Chong 莊小姐 9648 6082





**Branksome Crest**  
 中半山 地利極佳3A號  
 3A Tregunter Path, Midlevels Central  
 Modern style apartment with duplex club house  
 時尚設計住宅連完善住客會所設施

**2,370 s.f.**  
**\$110,000**

[www.landscape.com/20913.htm](http://www.landscape.com/20913.htm) Walker Lam 林先生 9551 1077



**Hillsborough Court**  
 中半山 曉峰閣  
 18 Old Peak Road, Midlevels Central  
 Unique triplex penthouse with tasteful decorations in Midlevels  
 中半山獨特頂層三層複式單位，匯品味裝修

**2,200 s.f. (plus 1,016 s.f. terrace and 1,000 s.f. roof)**  
**\$120,000 incl.**

[www.landscape.com/100233.htm](http://www.landscape.com/100233.htm) Walker Lam 林先生 9551 1077



**The Beachside**  
 清水灣 清水灣道82及86號  
 82 & 86 Repulse Bay Road, Repulse Bay  
 2-bedroom low-rise flat closed to Repulse Bay beach  
 清水灣低密度兩房住宅，鄰近清水灣海灘，環境宜人

**969 s.f.**  
**\$40,000 incl.**

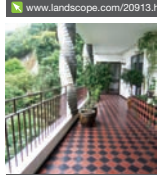
[www.landscape.com/126706.htm](http://www.landscape.com/126706.htm) Rebecca Cheung 張小姐 9021 7644



**Ming Wai Garden**  
 清水灣 明華閣  
 45 Repulse Bay Road, Repulse Bay  
 Popular apartment on upper Repulse Bay Road with full sea view and very good condition  
 清水灣頂段受歡迎住宅，享享全海景

**1,900 s.f.**  
**\$60,000 incl.**

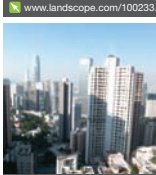
[www.landscape.com/4490.htm](http://www.landscape.com/4490.htm) Teresa Fung 馮小姐 9138 1621



**Bowen Mansion**  
 中半山 寶雲大廈  
 7C Bowen Road, Midlevels Central  
 Colonial low-rise flat with huge balcony and greenery view  
 中半山英式住宅連特大陽臺及翠綠樹景

**4,000 s.f.**  
**\$125,000 incl.**

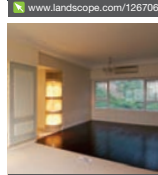
[www.landscape.com/38884.htm](http://www.landscape.com/38884.htm) Chris Law 羅先生 6183 8388



**Grenville House**  
 中半山 嘉華閣  
 1-3A Magazine Gap Road, Midlevels Central  
 Huge 4-bedroom apartment in renowned building on Magazine Gap Road  
 馬巴仙峽路有聲望巨型四房住宅

**3,700 s.f.**  
**\$130,000 incl.**

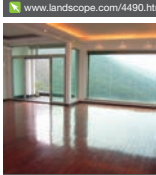
[www.landscape.com/17363.htm](http://www.landscape.com/17363.htm) Teresa Fung 馮小姐 9138 1621



**Ruby Court**  
 清水灣 嘉福閣  
 55 South Bay Road, Repulse Bay  
 Nicely decorated flat with full sea view in prestigious development  
 清水灣全新裝修單位，享享全海景，地段尊貴，可租可售

**1,780 s.f.**  
**\$65,000 incl. also for sale \$32,000,000**

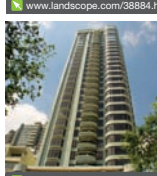
[www.landscape.com/123302.htm](http://www.landscape.com/123302.htm) David Chan 廖先生 9238 2012



**Ridge Court**  
 清水灣 靚閣  
 21A-21D Repulse Bay Road, Repulse Bay  
 High-ceilinged colonial style flat with breath-taking sea view  
 英式設計高層複式單位，享享寧靜怡人的海景

**2,300 s.f.**  
**\$70,000 incl.**

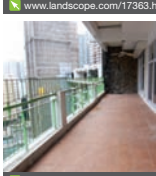
[www.landscape.com/43036.htm](http://www.landscape.com/43036.htm) Sami Woo 胡小姐 9493 8275



**Eva Court**  
 中半山 嘉園  
 36 Macdonnell Road, Midlevels Central  
 Huge single floor apartment with high privacy and security close to Central  
 巨型單層單位，保安完善私隱度，鄰近中環，交通方便

**4,500 s.f.**  
**\$138,000**

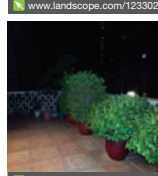
[www.landscape.com/96353.htm](http://www.landscape.com/96353.htm) Yvonne Chang 鄭小姐 9238 2012



**Panorama**  
 西半山 全景大廈  
 15 Conduit Road, Midlevels West  
 Duplex apartment with huge balcony at Midlevel West  
 西半山模式住宅連巨型陽臺

**4,980 s.f. (plus 511 s.f. terrace)**  
**\$160,000 incl.**

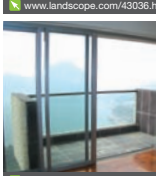
[www.landscape.com/50363.htm](http://www.landscape.com/50363.htm) Mira To 杜小姐 9486 1566



**34-36 Bisney Road, Pokfulam**  
 薄扶林 碧荔道34-36號  
 Newly renovated low-rise flat with private terrace and balcony in lush greenery  
 全新裝修低密度住宅連私家平台及陽臺，環境寧靜宜人

**2,200 s.f. (plus 500 s.f. terrace)**  
**\$80,000 incl.**

[www.landscape.com/50596.htm](http://www.landscape.com/50596.htm) Walker Lam 林先生 9551 1077



**Monte Verde**  
 清水灣 南別墅  
 41 Repulse Bay Road, Repulse Bay  
 Rare 4-bedroom apartment with Deep Water Bay view on upper Repulse Bay Road  
 罕有四房單位享深水灣景觀，位於清水灣頂段

**2,200 s.f.**  
**\$85,000**

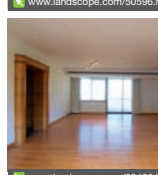
[www.landscape.com/10238.htm](http://www.landscape.com/10238.htm) Sami Woo 胡小姐 9493 8275



## A Visit to China With Miao Chong'an 跟隨苗重安遊華夏大地

To coincide with the celebration of the 10th Anniversary of Macau SAR, Tap Seac Gallery is showcasing 'Ancient Silk Road' by Miao Chong'an, a renowned ink painter from Shanxi province. With more than sixty landscape paintings, the skillful painter takes the audience on a tour through the gorgeous landscape scenery of China, showing its diversity of beauty. The paintings were created after his visits to many Chinese provinces and living in the remote areas for prolonged periods, followed by collecting various materials and conducting cultural research. Miao's masterpieces show the world his genius creativity and originality; each painting does not only demonstrate his superior painting skill, but also tells a story about how the rivers, mountains and people work in harmony with nature. This exhibition runs till 7 March. Free Admission. ■

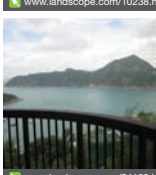
華夏風光，瑰麗無比。為慶祝澳門特別行政區成立十周年，於塔石藝文館正舉行的《絲路古道》，展出山西省著名水墨畫家苗重安的六十多幅水墨代表作。這位擁有高超技巧的藝術家帶領我們遊覽華夏大地，讓大家感受他的創作精髓。苗重安踏遍中國多個省份及長期生活在偏遠地區，親自收集各種素材及體驗各種文化，從而啟發其創作靈感。他的傑作將自然山川的美態描得淋漓盡致，神采畢現。雅俗共賞的作品更體現了「山川立骨」的精神，讓我們藉此歌頌中國山川的雄偉壯麗。展期至3月7日，免費入場。■



**Celestial Garden**  
 清水灣 詩韻花園  
 5 Repulse Bay Road, Repulse Bay  
 Well kept 3-bedroom apartment with facilities on upper Repulse Bay Road  
 清水灣頂段雅緻三房住宅連完善住客會所設施

**2,375 s.f.**  
**\$90,000 incl.**

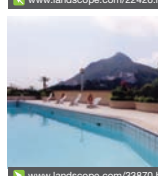
[www.landscape.com/22426.htm](http://www.landscape.com/22426.htm) Rowena Siu 蕭小姐 9348 4118



**Pine Crest**  
 清水灣 松苑  
 65 Repulse Bay Road, Repulse Bay  
 Sea view apartment at Repulse Bay  
 清水灣海景住宅

**2,250 s.f.**  
**\$95,000 incl.**

[www.landscape.com/34120.htm](http://www.landscape.com/34120.htm) Mark Mak 麥先生 6838 2929



**Park Place**  
 清水灣 雅柏苑  
 7 Tai Tam Reservoir Road, Repulse Bay  
 Harbour view spacious flat with facilities at prestigious location  
 清水灣絕佳海景住宅，開闊寬敞連住客設施，地段尊貴，可租可售

**2,335 s.f.**  
**\$110,000 incl. also for sale \$50,000,000**

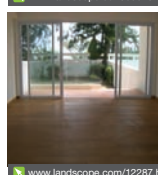
[www.landscape.com/33870.htm](http://www.landscape.com/33870.htm) Rowena Siu 蕭小姐 9348 4118



**Fortuna Court**  
 清水灣 福慧大廈  
 25 Repulse Bay Road, Repulse Bay  
 Spacious apartment with golf course view and sea view  
 清水灣寬敞住宅，鄰近高爾夫球場及海景

**2,857 s.f.**  
**\$115,000**

[www.landscape.com/174.htm](http://www.landscape.com/174.htm) Mira To 杜小姐 9486 1566



**14 Stanley Beach Road, Stanley**  
 赤柱 赤柱灘道14號  
 Newly renovated low-rise apartment with private garden on the beach  
 全新裝修低密度住宅連私家花園

**2,320 s.f. (plus 2,000 s.f. garden)**  
**\$100,000**

[www.landscape.com/12287.htm](http://www.landscape.com/12287.htm) Maria Cheung 馮小姐 5182 8699



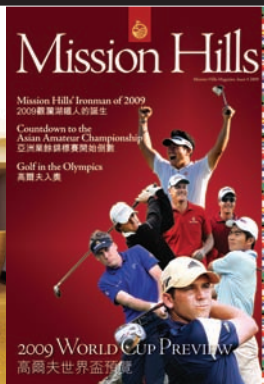
**The Zenith**  
 壽臣山 榮閣  
 11A Shouson Hill Road West, Shouson Hill  
 New townhouse incorporating intelligent home management system  
 壽臣山全新排屋，應有盡有完善

**3,692 s.f. (plus 365 s.f. terrace, 321 s.f. garden and 510 s.f. roof)**  
**\$130,000 incl.**

[www.landscape.com/50355.htm](http://www.landscape.com/50355.htm) Chris Law 羅先生 6183 8388







## Your No.1 Integrated Marketing Communications Partner in Hong Kong & China

*inMAGAZINE* : publisher and sole advertising representatives  
of the top luxury lifestyle publications, including *Mission Hills Magazine* and *The Key*.

[www.inmagazine.com.hk](http://www.inmagazine.com.hk)

Hong Kong Head Office: 12/F Cyberport 2, 100 Cyberport Road, Hong Kong

China Office: 15/F Plaza 66 Tower 2, 1366 Nanjing West Road, Shanghai

Marketing (852) 3699 0877 | Advertising (852) 3699 0898 | email: [marketing@incorp.com.hk](mailto:marketing@incorp.com.hk)