

select deluxe homes

The Key

大宅®

FEBRUARY 2009
Volume 52

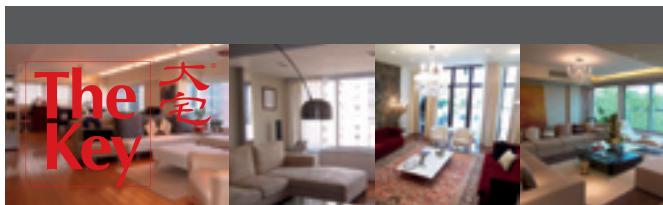
published and distributed by

LANDSCOPE
The Specialists in Luxury Properties

領域®



www.landscape.com



KeyNotes

"We should never despair; our situation before has been unpromising and has changed for the better, so I trust, it will again."

George Washington

After three months of sales freeze, the luxury property market seemed to have thawed in last December. Sales resumed in Southside and The Peak notably, with a number of townhouses sold for between \$35 million to \$60 million, many of them having been on the market for over 9 months, some even more than a year. The brisk sale of Belgravia apartments on South Bay Road at 10% premium to market price was a surprise. It helped many townhouse owners in Southside finding buyers who felt townhouses with similar price tag were really attractive. On The Peak, the market benefited from an improved sentiment and had seen the sale of Sunshine Villa, La Hacienda and Kletteria. With price having tumbled by 30% to 40% over the last 12 months, bargain hunters are out in force. The sales have defied market predictions, amidst a gloomy economic outlook.

Koh Keng-shing
ks-koh@landscape.com

(The above are an excerpt from Market Watch on www.landscape.com. For the full article, please log on to www.landscape.com/m0209.htm)

About The Key

The Key is a monthly publication of sales and letting listings of luxury residential properties on Hong Kong Island. It is sent to VIP clients of Landscape Realty and residents of The Peak, Southside, Mid-Levels, Kowloon Tong, Homantin and selected upmarket residential areas in Shatin, Tai Po, Clear Water Bay and Castle Peak Road. The recipients comprise the crème de la crème of Hong Kong's affluent community.

In addition to The Key, Landscape Realty sends weekly eNewsletters to clients on most update listings of luxury properties. If you wish to receive the eNewsletter, please call Loretta Lui at 3102 4818 or email to info@landscape.com.

How may you list your property with The Key?

If you would like to see your property listed in The Key in the next issue, you may call Loretta Lui at 3102 4818 or email to info@landscape.com. Or you may simply fill out the space below and fax to us at 2866 0015.

Property to be listed

Asking Rental / Sale Price

Floor Area

Contact Person

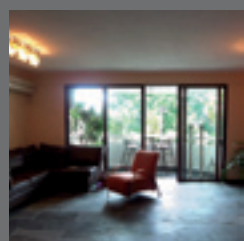
Telephone

Email

Our KeyPersons will contact you for follow-up works.

SOUTHSIDE SALES

南區
出售



Greenery Garden

薄扶林 怡林閣

2A Mount Davis Road, Pokfulam

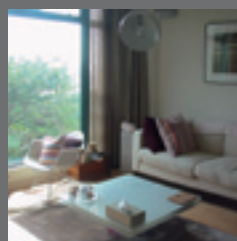
Nicely decorated apartment with peaceful green view

全新裝修住宅，享寧靜翠綠園景

1,217 s.f.

\$9,000,000

www.landscape.com/11756.htm | Christine Chong 莊小姐 9648 6082



Stanford Villa

赤柱 旭逸居

7 Stanley Village Road, Stanley

Stanley low-rise 2-bedroom apartment with sea view

赤柱低密度兩房住宅連海景

1,052 s.f. (plus 600 s.f. roof)

\$13,000,000

www.landscape.com/18433.htm | Christine Chong 莊小姐 9648 6082



Fulham Garden

薄扶林 富林苑

84 Pokfulam Road, Pokfulam

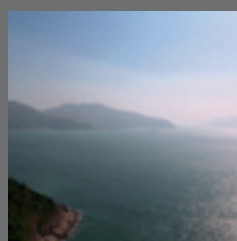
Tastefully decorated 3-bedroom apartment enjoying green view

品味設計三房單位，享寧靜翠綠園景

1,750 s.f.

\$13,000,000 also for lease \$45,000 incl.

www.landscape.com/18336.htm | Rowena Siu 蕭小姐 9348 4118



Pacific View

大潭 浪琴園

38 Tai Tam Road, Tai Tam

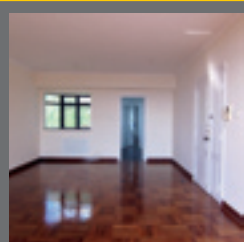
Waterfront 3-bedroom apartment in well planned development with 2 car parks

海濱三房住宅，良好建設規劃連兩個車位

1,772 s.f.

\$14,800,000

www.landscape.com/18481.htm | Teresa Fung 馮小姐 9138 1621



Grand Garden

淺水灣 華景園

61 South Bay Road, Repulse Bay

South Bay apartment with facilities and southside sea view

南灣住宅連住客設施及南區海景

1,657 s.f.

\$19,000,000 also for lease \$50,000 incl.

www.landscape.com/17059.htm | Maria Cheung 張小姐 6256 1848



The Brentwood

淺水灣 蔚峰園

11 Repulse Bay Road, Repulse Bay

Boutique flat with fascinating sea view on upper Repulse Bay Road

淺水灣道精緻住宅連迷人海景

1,556 s.f.

\$21,200,000

www.landscape.com/16361.htm | Stella Lo 羅小姐 9809 8570

HIDDEN GEM

This is a meticulously prepared 3-storey townhouse nestled at the end of the tranquil Ching Sau Lane. On entering the house, one is instantly embraced by its serene ambience, which is heightened by the wood-panelled walls in the living and dining rooms. The dark wood wide boarded floor sets up a perfect palette for the earthy coloured furniture, dotted with silverware. The spacious kitchen with skylights reflects the owner's discerning taste. Upstairs, the family room is warm and cozy, looking out to the glistening St. Stephen's Bay in the sunset. The master bedroom comes with a huge walk-in closet that is fit for a Hollywood movie star, and a generous bathroom clad with yellowish marbles and a free-standing tub that enjoys uninterrupted sea view. The roof terrace is well decorated for al fresco dining and of course barbeque feast, with green hills and blue sea around. For many, it's a dream home.



Pinewaver Villas

35 Ching Sau Lane,
Chung Hom Kok

春坎角 松濤小築

3,353 s.f.

(plus 188 s.f. roof and 133 s.f. terrace)

\$40,000,000

also for lease \$140,000 incl.

www.landscape.com/14834.htm

Christine Chong 莊小姐 9648 6082 / Yvonne Chang 鄭小姐 9088 4666

Scenic Villas

薄扶林 美景臺

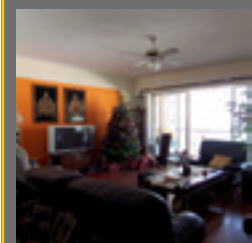
2-28 Scenic Villa Drive, Pokfulam

Spacious 4-bedroom apartment with facilities at Pokfulam waterfront

薄扶林海濱四房單位連設施，間格寬敞

2,200 s.f.

\$22,000,000 also for lease \$65,000 incl.



www.landscape.com/18338.htm

Rowena Siu 蕭小姐 9348 4118

Hong Kong Parkview

淺水灣 陽明山莊

88 Tai Tam Reservoir Road, Repulse Bay

4-bedroom unit with 2-ensuite in well managed estate

四房連兩套房單位，屋苑管理完善

2,772 s.f.

\$25,500,000



www.landscape.com/18163.htm

Cecilia Fung 馮小姐 6271 2388

Ridge Court 淺水灣 冠園

21A-21D Repulse Bay Road,

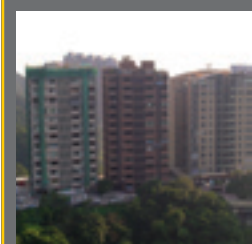
Repulse Bay

3-bedroom colonial style flat with lofty-ceiling

高樓底三房英式設計單位

2,300 s.f.

\$29,000,000 also for lease \$75,000



www.landscape.com/17929.htm

Maria Cheung 張小姐 6256 1848

Sea Branch

春坎角 海天閣

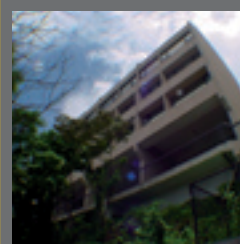
31 Horizon Drive, Chung Hom Kok

3-bedroom waterfront low-rise with sea view

海濱低密度三房住宅連海景

2,380 s.f.

\$30,000,000 also for lease \$80,000



www.landscape.com/12536.htm

Cecilia Fung 馮小姐 6271 2388

Sea Cliff Mansions

淺水灣 海峰園

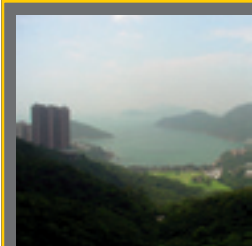
19A-19D Repulse Bay Road, Repulse Bay

4-bedroom sea view apartment on upper Repulse Bay Road

淺水灣道四房連海景住宅

2,400 s.f.

\$31,000,000



www.landscape.com/16266.htm

Cecilia Fung 馮小姐 6271 2388

Baguio Villa

薄扶林 碧瑤灣

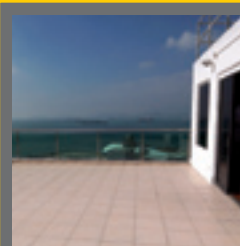
550 & 555 Victoria Road, Pokfulam

Rare find 6-bedroom sea view duplex with private roof

罕有六房海景複式住宅連私家天台

3,160 s.f. (plus 1,313 s.f. garden)

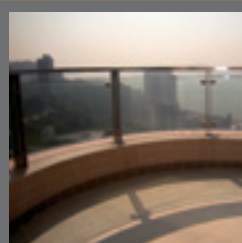
\$31,800,000 also for lease \$108,000 incl.



www.landscape.com/16404.htm

David Leung 梁先生 9199 0672

SOUTHSIDE SALES



Royalton II

薄扶林 豪峰二座

116 Pokfulam Road, Pokfulam

Duplex penthouse with sweeping west harbour view

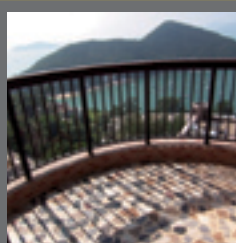
頂層複式單位，享廣闊的海景

3,460 s.f. (plus 126 s.f. terrace)

\$35,000,000 also for lease \$75,000 incl.

www.landscape.com/18203.htm

Christine Chong 莊小姐 9648 6082



Pine Crest

淺水灣 松苑

65 Repulse Bay Road, Repulse Bay

Spacious apartment with beautiful Deep Water Bay view

淺水灣間隔寬敞住宅，專享迷人深水灣景觀

2,250 s.f.

\$37,500,000

www.landscape.com/18445.htm

David Chan 陳先生 9238 2012



Stanley Court 赤柱 海灣園

9 Stanley Mound Road, Stanley

Resort-style townhouse with private garden close to beach

設計舒適排屋連私家花園，鄰近海灘

2,889 s.f.

(plus 667 s.f. roof and 825 s.f. garden)

\$41,000,000 also for lease \$130,000

www.landscape.com/18096.htm

Rowena Siu 蕭小姐 9348 4118



Radcliffe

薄扶林 靖林

120 Pokfulam Road, Pokfulam

Brand new 4-ensuite duplex with full clubhouse facilities

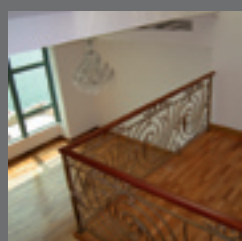
全新四套房複式單位連住客會所設施

3,620 s.f.

\$42,800,000

www.landscape.com/10852.htm

Sissy Li 李小姐 9642 6969



Regalia Bay 赤柱 富豪海灣

88 Wong Ma Kok Road, Stanley

Sea view townhouse with luxurious clubhouse

赤柱海景排屋連豪華會所設施

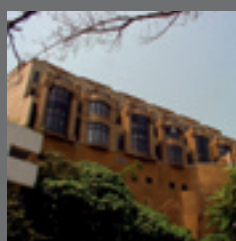
4,054 s.f.

(plus 1,274 s.f. roof and 715 s.f. garden)

\$45,000,000 also for lease \$160,000 incl.

www.landscape.com/17864.htm

Mark Mak 麥先生 6838 2929



Las Pinadas 壽臣山 朗松居

33 Shouson Hill Road, Shouson Hill

Luxurious garden house in tranquil enclave for sale with tenancy

豪華的花園大屋，位於寧靜的壽臣山區，連約出售

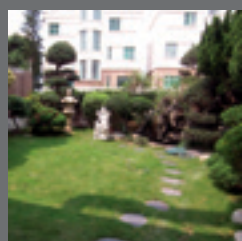
3,382 s.f.

(plus 790 s.f. roof and 542 s.f. garden)

\$46,000,000

www.landscape.com/11654.htm

Stella Lo 羅小姐 9809 8570



Bauhinia Gardens

春坎角 紫荊園

42 Chung Hom Kok Road, Chung Hom Kok

Spacious garden house with new decorations

全新裝修花園大屋，間格寬敞

3,500 s.f. (plus 1,000 s.f. garden)

\$49,000,000

www.landscape.com/15740.htm

Christine Chong 莊小姐 9648 6082



Grosvenor Place

淺水灣 淺水灣道117號

117 Repulse Bay Road, Repulse Bay

4-bedroom apartment with fantastic Repulse Bay sea view

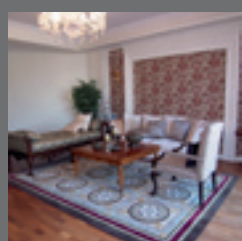
淺水灣四房住宅，配醉人的淺水灣海景

2,809 s.f.

\$52,000,000 also for lease \$130,000 incl.

www.landscape.com/12672.htm

Walker Lam 林先生 9551 1077



Belleview Place 淺水灣 寶晶苑

93 Repulse Bay Road, Repulse Bay

Stylish luxury townhouse in serene location

精緻豪華排屋，環境清幽

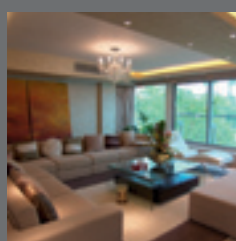
3,619 s.f.

(plus 865 s.f. roof and 455 s.f. terrace)

\$80,000,000 also for lease \$155,000 incl.

www.landscape.com/18024.htm

Maria Cheung 張小姐 6256 1848



56 Repulse Bay Road, Repulse Bay

淺水灣 淺水灣道56號

Luxuriously decorated duplex with lovely Repulse Bay sea view

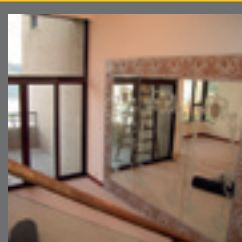
豪華裝修複式單位連迷人淺水灣海景

3,279 s.f. (plus 881 s.f. roof)

\$82,000,000 also for lease \$160,000 incl.

www.landscape.com/17128.htm

Stella Lo 羅小姐 9809 8570



The Beachfront

淺水灣 壁池

7 Belleview Drive, Repulse Bay

Exclusive townhouse with panoramic sea view of Repulse Bay

淺水灣獨立排屋連全海景

3,691 s.f. (plus 105 s.f. terrace)

\$130,000,000 also for lease \$180,000

www.landscape.com/17928.htm

Louis Wong 黃先生 9871 6828



Tai Tam Road

大潭道

Gorgeous waterfront house with private terrace and indoor pool looking out to ocean

華麗的海濱大屋連私家平台及室內泳池，享海洋景觀

6,500 s.f.

\$250,000,000 also for lease \$500,000 incl.

www.landscape.com/18480.htm

Louis Wong 黃先生 9871 6828



Elite Villas
壽臣山 怡禮苑
22 Shouson Hill Road, Shouson Hill
3-bedroom low-rise apartment in lush greenery of Shouson Hill
壽臣山三房低密度單位，享翠綠園景
1,767 s.f.
\$49,830

www.landscape.com/18012.htm | Stephen Chan 陳先生 9093 3381



Hong Kong Parkview
淺水灣 陽明山莊
88 Tai Tam Reservoir Road, Repulse Bay
Penthouse flat with private roof and full facilities
頂樓連私家天台住宅，配完善住客設施
2,093 s.f. (plus 1,516 s.f. roof)
\$60,000 incl.

www.landscape.com/18350.htm | Cecilia Fung 馮小姐 6271 2388



Repulse Bay Garden
淺水灣 麗景園
18-40 Belleview Drive, Repulse Bay
Spacious and practical apartment overlooking Repulse Bay Beach
淺水灣間格寬敞實用住宅，俯瞰淺水灣海灘
2,288 s.f.
\$61,000 incl.

www.landscape.com/18402.htm | Stella Lo 羅小姐 9809 8570



Celestial Garden
淺水灣 詩禮花園
5 Repulse Bay Road, Repulse Bay
Spacious 4-bedroom flat on Upper Repulse Bay Road
淺水灣道四房單位，間格寬敞
2,363 s.f.
\$75,000 incl.

www.landscape.com/16101.htm | Eric Wong 黃先生 9740 3396



Consort Garden
薄扶林 金碧花園
22-24 Consort Rise, Pokfulam
Charming low-rise flat with private roof in serene Pokfulam
迷人低密度住宅連私家天台，位於寧靜的薄扶林區
2,200 s.f. (plus 2,000 s.f. roof)
\$80,000 incl. also for sale \$24,000,000

www.landscape.com/15975.htm | Carman Szeto 司徒小姐 6183 8339



Joy Garden
壽臣山 曉穎花園
13 Shouson Hill Road West, Shouson Hill
An elegant 4-bedroom duplex apartment with private garden
精緻四房複式單位連私家花園
3,334 s.f.
\$93,000 incl.

www.landscape.com/17483.htm | Eric Wong 黃先生 9740 3396



Park Place
淺水灣 雅柏苑
7 Tai Tam Reservoir Road, Repulse Bay
Prestigious apartment enjoying distant harbour view and green view
淺水灣寧靜翠綠園景住宅，地段尊貴
2,338 s.f.
\$100,000

www.landscape.com/17480.htm | Sissy Li 李小姐 9642 6969



6-10 Mount Davis Road, Pokfulam 薄扶林 摩星嶺道6-10號
Practical townhouse with sea and greenery view
間隔實用排屋享海景及翠綠園景
3,200 s.f.
(plus 600 s.f. garden and 987 s.f. roof)
\$100,000 incl. also for sale \$65,000,000

www.landscape.com/18515.htm | Yvonne Chang 鄭小姐 9088 4666



Belvedere 春坎角 浩瀚臺
41 Chung Hom Kok Road, Chung Hom Kok
Newly renovated townhouse with green view and communal pool
全新裝修獨特翠綠園景排屋連泳池
3,240 s.f.
(plus 1,080 s.f. roof and 471 s.f. terrace)
\$105,000 incl.

www.landscape.com/17242.htm | Yvonne Chang 鄭小姐 9088 4666



The Hacienda
淺水灣 海堤花園
90 Repulse Bay Road, Repulse Bay
4-bedroom sea view duplex apartment with private garden
四房海景複式單位連私家花園
2,962 s.f. (plus 654 s.f. garden)
\$108,000 incl.

www.landscape.com/17907.htm | David Chan 陳先生 9238 2012



The Somerset
淺水灣 怡峰
67 Repulse Bay Road, Repulse Bay
Newly renovated duplex with unobstructed Deep Water Bay sea view
全新裝修複式單位，享開揚深水灣海景
3,099 s.f.
\$120,000 incl.

www.landscape.com/14674.htm | Teresa Fung 馮小姐 9138 1621



Manhattan Tower
淺水灣 曼赫頓大廈
63 Repulse Bay Road, Repulse Bay
Spacious 4-bedroom flat with a bird's eye view of Deep Water Bay
寬敞四房住宅，俯瞰深水灣景
2,400 s.f.
\$130,000 incl.

www.landscape.com/17111.htm | Louis Wong 黃先生 9871 6828

SOUTHSIDE LEASE



Provident Villas

薄扶林 富麗苑

29-30 Sassoon Road, Pokfulam

Spacious 4-bedroom townhouse with private garden

3,312 s.f. (plus 1,000 s.f. garden)
\$140,000

www.landscape.com/2717.htm

Carman Szeto 司徒小姐 6183 8339



3 & 3A-E Shouson Hill Road, Shouson Hill

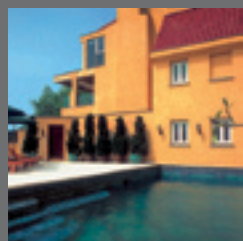
壽臣山 壽臣山道3號及3A-E號

5-bedroom house with private garden and excellent decoration
完美裝修五房住宅連私家花園

3,220 s.f. (plus 4,800 s.f. garden)
\$150,000

www.landscape.com/17813.htm

David Chan 陳先生 9238 2012



Carmelia

赤柱 赤柱村道60號

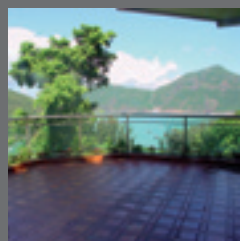
60 Stanley Village Road, Stanley

Huge colonial house with front yard and private garden
巨型英式大屋連前院及私家花園

5,200 s.f.
\$230,000 incl.

www.landscape.com/8783.htm

Louis Wong 黃先生 9871 6828



Overbays

淺水灣道 淺水灣道71號

71 Repulse Bay Road, Repulse Bay

Luxurious house in Repulse Bay with breath-taking seaview
淺水灣豪華大屋連醉人海景

5,051 s.f. (plus 452 and 282 s.f. terrace)
\$350,000 also for sale Open Offer

www.landscape.com/843.htm

Yvonne Chang 鄭小姐 9088 4666

MID-LEVELS SALES



Monmouth Place

中半山 萬信臺

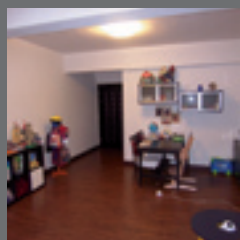
9L Kennedy Road, Midlevels Central

Cozy apartment close to Central
迷人別緻住宅，鄰近中環尊貴地段

1,072 s.f.
\$5,800,000

www.landscape.com/6038.htm

Eric Wong 黃先生 9740 3396



Well View Villa

東半山 瑩景閣

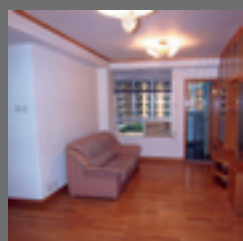
17 Tung Shan Terrace, Midlevels East

3-bedroom low-rise with 2 car parks in convenient location
三房低密度連兩個車位，位置優越交通便利

1,037 s.f.
\$7,200,000 SOLE AGENT 獨家代理

www.landscape.com/15915.htm

David Chan 陳先生 9238 2012



Caroline Height

跑馬地 嘉蘭閣

1 Link Road, Happy Valley

Spacious 3-bedroom flat on fringe of Causeway Bay with car park
寬敞三房單位，鄰近銅鑼灣，交通十分方便連車位

1,052 s.f.
\$8,300,000

www.landscape.com/15974.htm

Carman Szeto 司徒小姐 6183 8339



Greenville Gardens

東半山 嘉苑

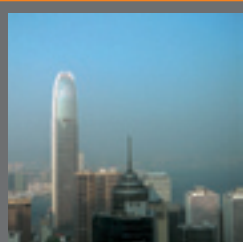
16-17 Shiu Fai Terrace, Midlevels East

Spacious race course view apartment on fringe of Causeway Bay
廣闊馬場景住宅，鄰近銅鑼灣交通方便，間隔寬敞

1,462 s.f.
\$12,000,000

www.landscape.com/18497.htm

Walker Lam 林先生 9551 1077



The Grand Panorama

西半山 嘉兆臺

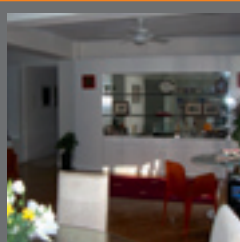
10 Robinson Road, Midlevels West

Nicely decorated apartment enjoying fantastic Victoria Harbour view
全新裝修單位，享絕色的維港景觀

1,269 s.f.
\$12,500,000

www.landscape.com/18358.htm

Eric Wong 黃先生 9740 3396



Mirror Marina

西半山 鑑波樓

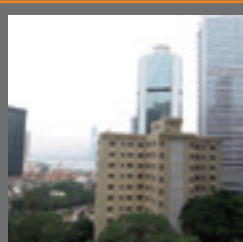
47 Conduit Road, Midlevels West

Practical apartment in quiet location with 3 bedrooms
西半山三房住宅，間格實用，環境清幽怡人

1,900 s.f.
\$13,800,000

www.landscape.com/18228.htm

Sami Woo 胡小姐 9493 8275



Starcrest

灣仔 星域軒

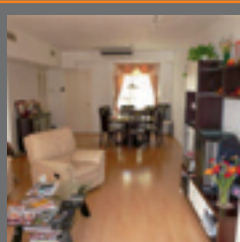
9 Star Street, Wan Chai

Fully furnished apartment with nice decorations on fringe of Admiralty
悅人裝修配全屋傢俬，鄰近金鐘交通十分方便

1,158 s.f.
\$13,800,000

www.landscape.com/13944.htm

Mira To 杜小姐 9486 1566



Amber Garden 中半山 柏苑

70-72 Kennedy Road, Midlevels Central

Conveniently located 3-bedroom flat with practical layout
三房間格實用住宅，位於中半山優越地段，交通往來十分方便

1,732 s.f.
\$13,880,000

www.landscape.com/12490.htm

Mira To 杜小姐 9486 1566



Suncrest Tower
中半山 桂濤苑
1-11 Monmouth Terrace, Midlevels Central
Spacious and practical 4-bedroom flat on Kennedy Road
位於堅尼地道寬敞四房單位，間格實用
2,005 s.f.
\$14,000,000

www.landscape.com/17315.htm | Teresa Fung 馮小姐 9138 1621



Hillsborough Court
中半山 曉峰閣
18 Old Peak Road, Midlevels Central
Nicely decorated apartment with mountain view and clubhouse facilities
精緻裝修住宅，連翠綠山景及完善住客會所設施
1,369 s.f.
\$14,300,000

www.landscape.com/12009.htm | Sissy Li 李小姐 9642 6969



1 Po Shan Road, Midlevels West
西半山 寶珊道1號
Prestige 3-bedroom apartment on upscale Po Shan Road
豪華三房住宅，位於寶珊道
1,332 s.f.
\$14,880,000

www.landscape.com/17545.htm | Rowena Siu 蕭小姐 9348 4118



Yick King Building
渣甸山 億景大廈
3 Chun Fai Road, Jardine's Lookout
Spacious 3-bedroom apartment with harbour view
渣甸山三房海景單位，間隔寬敞
1,450 s.f.
\$16,000,000 also for lease \$35,000 incl.

www.landscape.com/18455.htm | Eric Wong 黃先生 9740 3396



Shuk Yuen Building
跑馬地 菽園新臺
2 Green Lane, Happy Valley
Rare find low-rise apartment with greenery view in quiet neighbourhood
罕有低密度住宅，享翠綠園景，環境清幽怡人
1,900 s.f.
\$17,000,000 also for lease \$55,000 incl.

www.landscape.com/15992.htm | Stephen Chan 陳先生 9093 3381



Wing Hong Mansion
中半山 永康大廈
60-62 MacDonnell Road, Midlevels Central
Cozy flat with practical layout in convenient location
迷人別緻住宅，鄰近中環交通方便，間隔實用
1,399 s.f.
\$18,000,000

www.landscape.com/18223.htm | Stella Lo 羅小姐 9809 8570



Hilary Court
西半山 學林雅軒
63G Bonham Road, Midlevels West
Unique penthouse duplex with sweeping Victoria Harbour view
獨特頂樓複式單位，享廣闊維港景
1,917 s.f.
\$19,800,000 also for lease \$55,000

www.landscape.com/16981.htm | Walker Lam 林先生 9551 1077



Tavistock 2
中半山 騰皇居2座
10A Tregunter Path, Midlevels Central
Quality 3-bedroom flat in prestigious location of Midlevels
中半山獨特顯赫的三房單位，位置優越
1,730 s.f.
\$20,000,000

www.landscape.com/17815.htm | Stella Lo 羅小姐 9809 8570



2-6A Wilson Road, Jardine's Lookout
渣甸山 衛信道 2-6A 號
Low-rise apartment with private roof top
渣甸山低密度住宅連私家天台
1,800 s.f. (plus 1,600 s.f. roof)
\$20,000,000 also for lease \$70,000 incl.

www.landscape.com/16040.htm | Walker Lam 林先生 9551 1077



Tavistock 2
中半山 騰皇居2座
10A Tregunter Path, Midlevels Central
Quality 3-bedroom flat at prestigious location of Midlevels Central
中半山三房單位，位處尊貴地段，來往中環十分方便
1,655 s.f.
\$23,800,000 also for lease \$70,000 incl.

www.landscape.com/17967.htm | Sissy Li 李小姐 9642 6969



Cavendish Heights
渣甸山 嘉雲臺
27-37 Perkins Road, Jardine's Lookout
Renowned 4-bedroom flat with Victoria Harbour view
全新裝修買房住宅，享維港景觀
2,265 s.f.
\$25,000,000

www.landscape.com/17514.htm | Mira To 杜小姐 9486 1566



Villa Monte Rosa
東半山 玫瑰新村
41A Stubbs Road, Midlevels East
Renowned practical 3-bedroom flat on Stubbs Road
東半山實用三房住宅，位置優越
2,300 s.f.
\$25,000,000

www.landscape.com/18396.htm | Carman Szeto 司徒小姐 6183 8339

MID-LEVELS SALES



Lincoln Court
東半山 林肯大廈
156 Tai Hang Road, Midlevels East
Lovely colonial mid-rise apartment in tranquil location
迷人英式中密度住宅，地點清幽寧靜
2,200 s.f.
\$25,300,000 also for lease \$80,000 incl.
www.landscape.com/18057.htm | Stephen Chan 陳先生 9093 3381



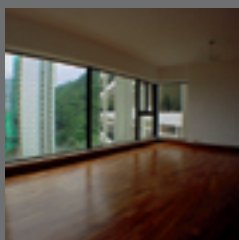
Nicholson Tower 東半山 蔚豪苑
8 Wong Nai Chung Gap Road, Midlevels East
A truly gracious 3-bedroom apartment with harbour view
東半山三房海景住宅，享驚人海景
1,993 s.f.
\$26,000,000
www.landscape.com/16010.htm | Cecilia Fung 馮小姐 6271 2388



6A Bowen Road, Midlevels Central
中半山 寶雲道6A號
Spacious 3-bedroom apartment on tree-lined Bowen Road
寬敞三房住宅，位於寶雲道
2,220 s.f.
\$26,000,000 also for lease \$80,000 incl.
www.landscape.com/10495.htm | Rowena Siu 蕭小姐 9348 4118



Regent on the Park
中半山 御花園
9A Kennedy Road, Midlevels Central
Prestigious apartment with metropolitan view on fringe of CBD
中半山尊貴住宅，鄰近中環商業區
2,720 s.f.
\$28,000,000 also for lease \$80,000 incl.
www.landscape.com/18133.htm | Teresa Lau 劉小姐 9080 6686



Tavistock 2 中半山 騰皇居2座
10A Tregunter Path, Midlevels Central
Deluxe flat with comprehensive clubhouse facilities in prime location, sale with tenancy
豪華住宅連完善住客會所設施，位於中半山優越地段，交通方便，連約賣
2,030 s.f.
\$29,000,000
www.landscape.com/11943.htm | Stephen Chan 陳先生 9093 3381



Fontana Garden
東半山 豪園
1-25 Ka Ning Path, Midlevels East
Large and practical family flat on fringe of Causeway Bay
大型家庭式住宅，間格實用，鄰近銅鑼灣
3,300 s.f.
\$29,800,000 also for lease \$65,000
www.landscape.com/16824.htm | Walker Lam 林先生 9551 1077



Dynasty Court
中半山 帝景園
23 Old Peak Road, Midlevels Central
Luxurious 3-bedroom apartment in renowned estate
中半山豪華三房住宅，位處尊貴地段
1,981 s.f.
\$30,000,000 also for lease \$72,000 incl.
www.landscape.com/18102.htm | Stephen Chan 陳先生 9093 3381



Pinewood Garden
渣甸山 松峰園
39 Perkins Road, Jardine's Lookout
Unique low-rise in Jardine's Lookout with private roof and 2 car parks
渣甸山獨特低密度住宅，連私家天台及兩個停車場
2,900 s.f. (plus 2,500 s.f. roof)
\$30,000,000
www.landscape.com/15099.htm | Teresa Lau 劉小姐 9080 6686



The Leighton Hill
跑馬地 禮頓山
28 Broadwood Road, Happy Valley
Luxurious 4-bedroom apartment with racecourse view
跑馬地豪華四房住宅連開揚馬場景觀
1,911 s.f.
\$30,500,000
www.landscape.com/18478.htm | Carman Szeto 司徒小姐 6183 8339



Estoril Court
中半山 愛都大廈
55 Garden Road, Midlevels Central
Huge 4-bedroom apartment with high efficiency on fringe of Central
中半山四房巨宅，鄰近中環
3,347 s.f.
\$32,500,000
www.landscape.com/13041.htm | Sissy Li 李小姐 9642 6969



Hatton House
西半山 赫德大廈
15 Kotewall Road, Midlevels West
Large 4-bedroom apartment commanding expansive harbour view
巨型四房單位享一望無際的維港景
2,800 s.f.
\$33,800,000 also for lease \$78,000 incl.
www.landscape.com/18164.htm | Sami Woo 胡小姐 9493 8275



Rose Gardens
中半山 玫瑰別墅
9 Magazine Gap Road, Midlevels Central
Classic mid-rise apartment in lower Peak with tasteful decoration
半山經典中密度住宅連品味裝修
2,600 s.f.
\$46,000,000 also for lease \$150,000 incl.
www.landscape.com/17819.htm | Mark Mak 麥先生 6838 2929

MID-LEVELS SALES

半山
出售



Garden Terrace
中半山 花園臺
8A Old Peak Road, Midlevels Central
Tastefully decorated 4-bedroom apartment at Midlevels Central
中半山品味裝修四房住宅
3,009 s.f.
\$48,000,000 also for lease \$110,000 incl.
www.landscape.com/17609.htm | Mark Mak 麥先生 6838 2929



Bowen Place
中半山 寶雲閣
11A Bowen Road, Midlevels Central
Rare harbour view duplex with 5 bedrooms in quiet location
中半山罕有海景複式五房住宅連空中花園
3,621 s.f. (plus 184 s.f. terrace)
\$52,000,000
www.landscape.com/15241.htm | Walker Lam 林先生 9551 1077



May Tower 2
中半山 梅苑二座
5 May Road, Midlevels Central
Spacious 4-ensuite apartment with high privacy
寬敞四套房住宅，環境清幽寧靜
3,393 s.f.
\$60,000,000 also for lease \$120,000 incl.
www.landscape.com/18040.htm | Eric Wong 黃先生 9740 3396



Perkins Road, Jardine's Lookout
渣甸山 白建時道
Highly sought after single detached house with greenery view in Jardine's Lookout
渣甸山罕有獨立屋，享翠綠園景
3,800 s.f.
(plus 800 s.f. garden and 352 s.f. terrace)
\$100,000,000
www.landscape.com/15593.htm | Mark Mak 麥先生 6838 2929

MID-LEVELS LEASE

半山
出租



Flora Garden
渣甸山 慧景園
7 Chun Fai Road, Jardine's Lookout
Practical flat with nice decoration and balcony
華麗品味裝修，間隔實用，連陽台
1,533 s.f.
\$40,000 incl. also for sale \$13,000,000
www.landscape.com/16681.htm | Teresa Lau 劉小姐 9080 6686



Beauty Court
西半山 雅苑
82 Robinson Road, Midlevels West
Harbour view 3-bedroom flat with balcony
西半山三房單位連陽臺
1,771 s.f.
\$50,000 incl.
www.landscape.com/18431.htm | Sami Woo 胡小姐 9493 8275



Birchwood Place
中半山 寶樺臺
96 Macdonnell Road, Midlevels Central
3-bedroom apartment with tennis court and pool
中半山三房單位連網球場及泳池
2,018 s.f.
\$53,000 incl.
www.landscape.com/17475.htm | Stella Lo 羅小姐 9809 8570



Tregunter Tower III
中半山 地利根德閣3座
14 Tregunter Path, Midlevels Central
3-bedroom flat in well managed building with lush green view
中半山三房單位，現有完善管理設施，享翠綠園景
2,042 s.f.
\$59,000 incl. also for sale \$28,000,000
www.landscape.com/18378.htm | Teresa Fung 馮小姐 9138 1621



Pearl Gardens
西半山 明珠臺
7 Conduit Road, Midlevels West
Spacious 4-bedroom flat with splendid view on Conduit Road
干德道寬敞四房住宅連開揚城市景
2,200 s.f.
\$63,000
www.landscape.com/18414.htm | Sami Woo 胡小姐 9493 8275



Wealthy Heights
中半山 威豪閣
35 Macdonnell Road, Midlevels Central
4-bedroom apartment with excellent harbour and city view
中半山四房單位連完美維港景及城市景觀
2,128 s.f.
\$64,000 incl.
www.landscape.com/18256.htm | Eric Wong 黃先生 9740 3396



Wilshire Park
中半山 豪輝閣
12-14 Macdonnell Road, Midlevels Central
Rare on market high privacy 4-bedroom flat
市場罕有四房單位，環境清幽
2,265 s.f.
\$65,000 incl. also for sale \$31,300,000
www.landscape.com/13899.htm | David Chan 陳先生 9238 2012



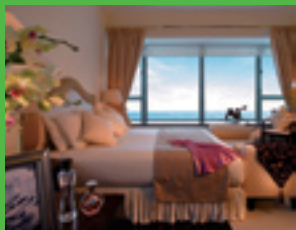
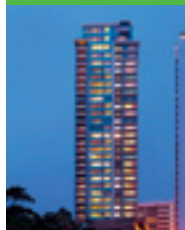
Bellevue Court
東半山 碧蕙園
41 Stubbs Road, Midlevels East
Rare find spacious colonial style 3-bedroom apartment on upper Stubbs Road
司徒拔道寬敞英式三房住宅，市場罕有
2,700 s.f.
\$65,000 incl.
www.landscape.com/18113.htm | Mark Mak 麥先生 6838 2929

For more listings, please go to www.landscape.com/sale

For more listings, please go to www.landscape.com/lease

MID-LEVELS LEASE

Bowen's Lookout 中半山 寶雲道13號

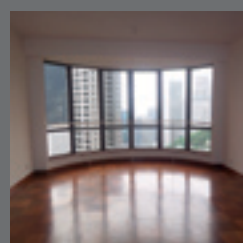


Size: Apartment: 2,322 -2,388 s.f.
Penthouse duplex: 4,050 s.f.
Layout: 4-5 bedrooms with 2-3 ensembles
Appliances: Gaggenau Gas & Electric Hob, Exhaust Hood, Built-in Microwave and Oven, Siemens Washer & Dryer, Built-in Refrigerator, Gas Water Heater
Facilities: Sitting Lounge, Private Function Room with Kitchen, Gymnasium with LCD TV, Children Playroom, Indoor and Outdoor Jacuzzi, BBQ Alfresco Dining Area, Landscaped Garden

Rental from: \$120,000 incl.

www.landscape.com/17562.htm

Mira To 杜小姐 9486 1566 / Rowena Siu 蕭小姐 9348 4118



Park Mansions

中半山 百年順大廈

27-29 Macdonnell Road, Midlevels Central
Well maintained 4-bedroom flat with open city view
中半山四房住宅享開揚城市景觀

2,013 s.f.
\$70,000

www.landscape.com/16588.htm

Mira To 杜小姐 9486 1566



Evergreen Villa

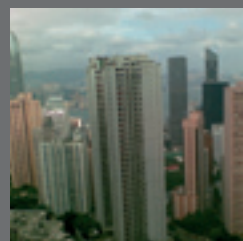
東半山 松柏新村

43 Stubbs Road, Midlevels East
Huge 3-bedroom apartment with balcony on upper Stubbs Road
司徒拔道三房巨宅連陽臺

2,560 s.f.
\$73,000 incl.

www.landscape.com/18410.htm

Sami Woo 胡小姐 9493 8275



Tregunter Tower III

中半山 地利根德閣三座

14 Tregunter Path, Midlevels Central
Spacious apartment with splendid view of the city skyline
中半山間格寬敞住宅，享絕色城市景觀

3,001 s.f.
\$75,000

www.landscape.com/14952.htm

Christine Chong 莊小姐 9648 6082



Borrett Mansion

中半山 寶德臺

8A-9B Bowen Road, Midlevels Central
Practical large apartment in prestigious location
中半山大型住宅，位於尊貴地段，間格實用

2,800 s.f.
\$85,000 incl.

www.landscape.com/3834.htm

Yvonne Chang 鄭小姐 9088 4666



Piccadilly Mansion

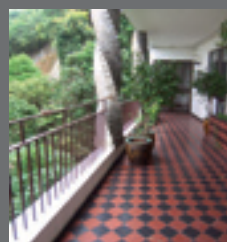
西半山 碧苑

4-6 Po Shan Road, Midlevels West
4-bedroom flat with 2 ensembles and huge balcony, overlooking harbour view
西半山四房連兩套房配巨型陽臺，享開揚海景

2,800 s.f.
\$78,000 incl.

www.landscape.com/18177.htm

Teresa Lau 劉小姐 9080 6686



Bowen Mansion

中半山 寶雲大廈

7C Bowen Road, Midlevels Central
Huge colonial apartment on tree-lined Bowen Road
寶雲道巨型英式住宅

4,000 s.f.
\$118,000 incl.

www.landscape.com/15601.htm

Yvonne Chang 鄭小姐 9088 4666



Branksome Crest

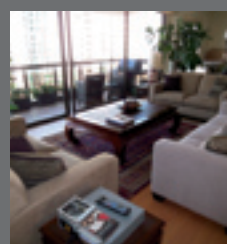
中半山 地利根德里3A號

3A Tregunter Path, Midlevels Central
Luxuriously decorated and furnished 3-bedroom apartment in lower Peak
山頂三房豪華裝修住宅連全屋傢俬

2,355 s.f.
\$125,000

www.landscape.com/18516.htm

Stephen Chan 陳先生 9093 3381



Magazine Court 中半山 澄碧閣

5-7 Magazine Gap Road, Midlevels Central
Rare 4-bedroom with 3 ensembles apartment on Magazine Gap Road with stunning harbour view
馬己仙峽道四房住宅，享絕色維港景，罕有放盤

3,300 s.f.
\$150,000

www.landscape.com/18139.htm

Teresa Lau 劉小姐 9080 6686

THE PEAK SALES

山頂
出售



Villa Verde
山頂 環翠園
4-18 Guildford Road, The Peak
Popular boutique apartment on The Peak
山頂受歡迎別緻住宅

1,200 s.f.
\$14,800,000

www.landscope.com/17817.htm | Maria Cheung 張小姐 6256 1848



Guildford Garden
山頂 喬苑
1-3 Mansfield Road, The Peak
Lower Peak 4-bedroom flat with
spacious practical layout
山頂四房單位，間格寬敞實用

2,400 s.f.
\$35,000,000

www.landscope.com/14486.htm | Maria Cheung 張小姐 6256 1848



La Hacienda - Apartment
山頂 加列山道29-33號
29-33 Mount Kellett Road, The Peak
Rare colonial style with high-ceilinged
apartment overlooking turfed garden
罕有英式住宅，高樓底，俯瞰翠綠園景

3,100 s.f.
\$52,000,000 also for lease \$130,000 incl.

www.landscope.com/18009.htm | Sami Woo 胡小姐 9493 8275



Montebello
山頂 濠景閣
15-17 Plantation Road, The Peak
Newly furnished penthouse with private
roof on The Peak
山頂全新裝修連全層傢俬頂層住宅，連私家天台

3,140 s.f. (plus 2,129 s.f. roof)
\$53,000,000 also for lease \$150,000 incl.

www.landscope.com/5851.htm | David Leung 梁先生 9199 0672



Villa De Victoria
山頂 維景山莊
19 Plantation Road, The Peak
Harbour view duplex with designer
decoration
名師精心設計複式住宅，享維港景

3,500 s.f. (plus 733 s.f. roof)
\$65,000,000

www.landscope.com/4213.htm | David Leung 梁先生 9199 0672



Cheuk Nang Lookout
山頂 卓能山莊
30 Severn Road, The Peak
Detached house with private pool and terrace
山頂獨立屋連私家天台及平台

5,300 s.f.
(plus 1,400 s.f. terrace and 3,900 s.f. garden)
\$140,000,000 also for lease \$200,000

www.landscope.com/2109.htm | David Chan 陳先生 9238 2012



Pollock's Path, The Peak
山頂 普樂道
Exclusive garden house with a bird's eye
view of Victoria Harbour
山頂獨特花園大屋，享環迴維港景色

4,600 s.f.
\$150,000,000

www.landscope.com/12745.htm | David Leung 梁先生 9199 0672



Black's Link, The Peak
山頂 布力徑
Rare find detached garden house with
fantastic sea view on The Peak
山頂罕有獨立大屋，連醉人海景

4,000 s.f. (plus 5,700 s.f. garden)
\$160,000,000

www.landscope.com/18215.htm | Louis Wong 黃先生 9871 6828



Rosmead Road, The Peak 山頂 樂善美道
Rare single number garden
house on The Peak
山頂罕有獨立花園大屋

5,887 s.f.
(plus 2,228 s.f. terrace and 1,955 s.f. garden)
\$230,000,000

www.landscope.com/14409.htm | Sissy Li 李小姐 9642 6969



Abergeldie 山頂 種植道52號
52 Plantation Road, The Peak
Newly renovated townhouse with pool
overlooking Victoria Harbour panorama
全新裝修排屋連泳池，尊享開揚維港全景

3,688 s.f.
(plus 759 s.f. garden and 313 s.f. terrace)
Open Offer

www.landscope.com/18449.htm | David Leung 梁先生 9199 0672

THE PEAK LEASE

山頂
出租



Stewart Terrace
山頂 史釗域臺
81-95 Peak Road, The Peak
Rare colonial low-rise apartment with
huge balcony
罕有英式低密度住宅配大陽臺

2,327 s.f.
\$59,000

www.landscope.com/17391.htm | Cecilia Fung 馮小姐 6271 2388



26 Magazine Gap Road, The Peak 山頂 馬己仙峽道26號
Rare harbour view colonial mid-rise in
lower Peak in new decor
山頂低密度英式海景住宅，市場罕見新裝修

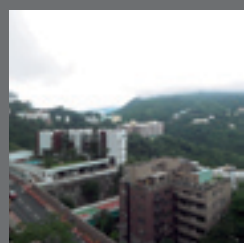
2,400 s.f.
\$75,000 incl. also for sale \$42,000,000

www.landscope.com/18509.htm | Carman Szeto 司徒小姐 6183 8339

For more listings, please go to www.landscope.com/sale

For more listings, please go to www.landscope.com/lease

THE PEAK LEASE



Villa Verde

山頂 環翠園

4-18 Guildford Road, The Peak

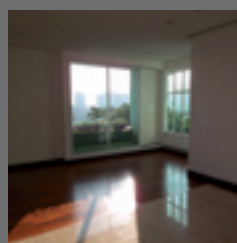
Rare find older-style Peak apartment with 4-bedroom layout
山頂懷舊設計四房單位，間隔實用

2,600 s.f.

\$98,000 incl. also for sale \$51,800,000

www.landscape.com/15685.htm

Teresa Fung 馮小姐 9138 1621



11 Coombe Road, The Peak

山頂 甘道11號

Charming colonial sea view apartment on tranquil Coombe Road
迷人英式海景單位，位於寧靜的甘道

2,200 s.f.

\$100,000

www.landscape.com/17962.htm

Sami Woo 胡小姐 9493 8275



Carolina Garden

山頂 嘉樂園

20-34 Coombe Road, The Peak

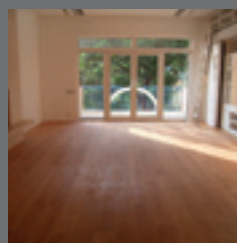
Rare colonial apartment in prestigious location
罕有英式住宅，位處尊貴優越地段

2,800 s.f.

\$115,000

www.landscape.com/1523.htm

Mira To 杜小姐 9486 1566



Stewart Terrace

山頂 史釗域臺

81-95 Peak Road, The Peak

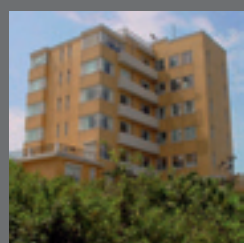
Green view duplex with stylish design and decorations, high ceiling
品味設計裝修複式單位，配翠綠園景，高樓底

3,077 s.f.

\$118,000 incl. also for lease Open Offer

www.landscape.com/18444.htm

Teresa Lau 劉小姐 9080 6686



Cloud Nine

山頂 九雲居

9 Plunkett's Road, The Peak

Rare cosy colonial apartment on The Peak
山頂罕有迷人英式住宅

2,719 s.f. (plus 980 s.f. terrace)

\$130,000

www.landscape.com/18236.htm

Christine Chong 莊小姐 9648 6082



Eredine

山頂 加列山道38號

38 Mount Kellett Road, The Peak

Spacious colonial apartment with spectacular sea view
寬敞英式住宅享壯觀海景

3,300 s.f.

\$130,000 incl.

www.landscape.com/13070.htm

Maria Cheung 張小姐 6256 1848



Sherwood's Bluff

山頂 百祿徑10號

10 Bluff Path, The Peak

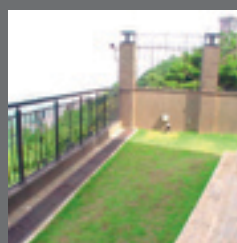
House on The Peak with Southside sea view
山頂大屋享南區海景

4,055 s.f. (plus 400 s.f. garden)

\$140,000,000

www.landscape.com/3719.htm

Yvonne Chang 鄭小姐 9088 4666



74 Mount Kellett Road, The Peak

山頂 加列山道 74 號

Rare Peak townhouse with sea and hill view
山頂排屋享山景及海景市場罕有

4,200 s.f.

(plus 2,207 s.f. garden and 677 s.f. roof)

\$185,000 incl.

www.landscape.com/10636.htm

Yvonne Chang 鄭小姐 9088 4666



Altadena

山頂 白加道27號

27 Barker Road, The Peak

Rare duplex penthouse with unobstructed harbour view
罕有複式頂層單位連開揚維港景觀

4,500 s.f. (plus 1,435 s.f. roof)

\$230,000

www.landscape.com/11910.htm

David Leung 梁先生 9199 0672



2 Barker Road, The Peak

山頂 白加道2號

Exquisite townhouse with stunning view over Victoria Harbour and Southside
精緻排屋連環迴維港景及南區景觀

4,082 s.f.

(plus 526 s.f. roof and 1,781 s.f. garden)

\$250,000

www.landscape.com/11572.htm

Louis Wong 黃先生 9871 6828

LANDSCOPE 領域
The Specialists in Luxury Properties

Landscape Realty Limited C-018733

a member of Landscape Surveyors Ltd

Tel: 852-2866 0022 Fax: 852-2866 0015

Email: info@landscape.com Website: www.landscape.com

Unit 3106, 31/F, Hopewell Centre,
183 Queen's Road East, Wanchai, Hong Kong

The information, text, photos, analyses and projections contained herein are provided solely for the convenience of prospective clients and no warranty or representation as to their accuracy, correctness or completeness is made by Landscape Surveyors Limited, Landscape Realty Limited or the owners, none of whom shall have any liability or obligation with respect thereto. Interested parties should rely on their own investigations, interpretations and analyses in connection with the purchase or letting thereof.

Information has been provided to us by sources deemed reliable, but no warranty or representation is made as to its accuracy, correctness or completeness. These offerings are made subject to contract, correction of errors, omissions, prior sale or lease, change of price or terms or withdrawal from the market without notice. The contents of The Key are for reference only and do not constitute all or any part of a contract.

Copyright 2008