

select deluxe homes

The Key

大宅®

FEBRUARY 2008
Volume 41

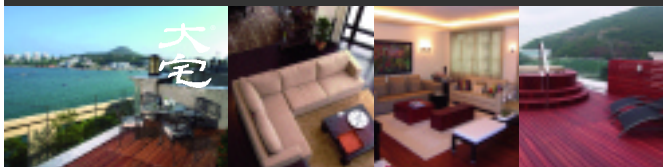
published and distributed by

LANDSCOPE
The Specialists in Luxury Properties

領域



www.landscape.com



KeyNotes

"We must always think about things, and we must think about things as they are, not as they are said to be."

George Bernard Shaw

The current situation is somewhat different from the early 1990's. Supply remains tight and in fact, 2007 saw only 10,500 residential units completed (against an average of over 20,000 in the last ten years), the lowest in the last three decades. The price of mass residential property today is still comfortably affordable. The economic growth in recent years has added impetus to the large buying force. In the high end market, the tight supply situation is even more acute, with demand outstripping supply for properties over 1,500 square feet. The lacklustre Hong Kong stock market will only serve to drive some of the capital to property market, which benefits from inflation, low interest rate and a chronic shortage of supply. We foresee that in the next 6 to 12 months real estate investment will steal the lime light and mass residential property price will soon recover its loss since 1997.

Koh Keng-shing
ks-koh@landscape.com

(The above is an excerpt from Market Watch on www.landscape.com. For the full article, please log on to www.landscape.com/m0208.htm)

About The Key

The Key is a monthly publication of sales and letting listings of luxury residential properties on Hong Kong Island. It is sent to VIP clients of Landscape Realty and residents of The Peak, Southside, Mid-Levels, Kowloon Tong, Homantin and selected upmarket residential areas in Shatin, Tai Po, Clear Water Bay and Castle Peak Road. The recipients comprise the crème de la crème of Hong Kong's affluent community.

In addition to The Key, Landscape Realty sends weekly eNewsletters to clients on most update listings of luxury properties. If you wish to receive the eNewsletter, please call Loretta Lui at 3102 4818 or email to info@landscape.com.

How may you list your property with The Key?

If you would like to see your property listed in The Key in the next issue, you may call Loretta Lui at 3102 4818 or email to info@landscape.com. Or you may simply fill out the space below and fax to us at 2866 0015.

Property to be listed

Asking Rental / Sale Price

Floor Area

Contact Person

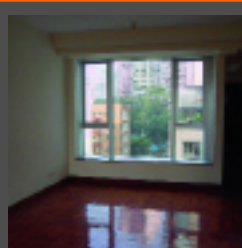
Telephone

Email

Our KeyPersons will contact you for follow-up works.

MID-LEVELS SALES

半山
出售



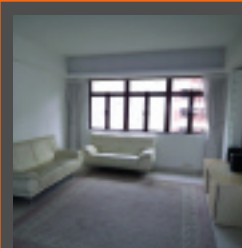
Cherry Crest

西半山翠麗軒

3 Kui In Fong, Midlevels West
Cozy apartment with balcony
舒適物業連露台

1,106 s.f.
\$8,500,000 also for lease \$35,000 incl

Mary Li 李小姐 9011 6595



Morengo Court

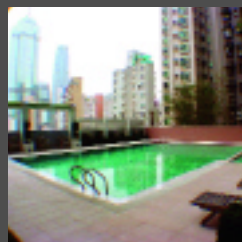
東半山明達閣

25 Tai Hang Road, Midlevels East
Spacious apartment on Tai Hang Road with
easy access to Causeway Bay
大坑道寬敞單位，鄰近銅鑼灣

1,066 s.f.
\$10,500,000

www.landscape.com/13648.htm

Carman Szeto 司徒小姐 8100 3893



Casa Bella

西半山寶華軒

117 Caine Road, Midlevels West
Modern 3-bedroom apartment with
clubhouse facilities on Caine Road
堅道時尚三房物業，會所設施

1,136 s.f.
\$10,800,000

Mark Mak 麥先生 6838 2929



Jardine Summit

東半山渣甸豪庭

50A Tai Hang Road, Midlevels East
Cozy apartment on Tai Hang Road
大坑道舒適物業

1,222 s.f.
\$11,000,000

www.landscape.com/13745.htm

Sissy Li 李小姐 9642 6969



Starcrest

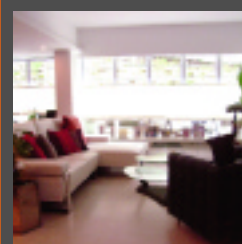
金鐘 星域軒

9 Star Street, Admiralty
Quality boutique apartment with
tenancy on fringe of Admiralty
品味優質物業連租約，鄰近金鐘地鐵站

850 s.f.
\$12,000,000 **SOLE AGENT** 獨家代理

www.landscape.com/6665.htm

Carman Szeto 司徒小姐 8100 3893



Skyline Mansion

西半山年豐園

51 Conduit Road, Midlevels West
Well decorated practical flat with
private yard
雅裝實用單位享有小花園

1,303 s.f.
\$13,500,000

www.landscape.com/12856.htm

Mary Li 李小姐 9011 6595



HOUSE ABOVE

Upon entering this top floor duplex situated on Lower Peak, one is instantly wrapped in a Mediterranean ambience. The pastel coloured walls, the broad wooden beams on the ceiling and the exotic fireplace all evoke a warm homey feel. The dining room on a raised platform connects to the semi-open kitchen on one side, and walks out to a spacious open terrace on the other. The terrace is meticulously furnished, with open bar, barbeque stand and rustic dining table and chairs all set for a hearty meal al fresco style. The master bedroom upstairs includes a huge en suite bathroom that is big enough for dancing in the rain shower. There is another terrace at this level for more private indulgence under the stars. This is hardly another duplex; it's a house above.



Hillsborough Court

18 Old Peak Road, Midlevels Central
中半山 曉峰閣

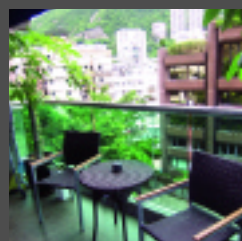
2,200 s.f.

(plus 1,016 s.f. terrace and 1,000 s.f. roof)

\$49,000,000

www.landscape.com/13019.htm

Mira To 杜小姐 9486 1566 / Teresa Lau 劉小姐 9080 6686



47-49 Blue Pool Road, Happy Valley

跑馬地藍塘道 47-49號

Charming low-rise flat with nice decor
迷人低密度住宅，裝修雅緻

1,600 s.f.

\$15,800,000

www.landscape.com/11420.htm

Stephen Chan 陳先生 9093 3381



Bellevue Heights

東半山碧蘭閣

8 Tai Hang Drive, Midlevels East

Spacious family apartment on fringe of Causeway Bay

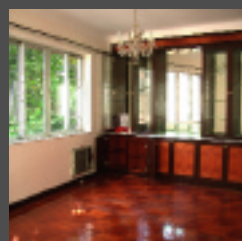
寬敞家庭住宅，銅鑼灣近在咫尺

1,650 s.f.

\$16,500,000

www.landscape.com/13258.htm

Mira To 杜小姐 9486 1566



Hong Lok Mansions

中半山康樂大廈

44-44F MacDonnell Road, Midlevels Central

4-bedroom mid-rise close to escalator in Midlevels

四房低密度住宅，鄰近半山扶手電梯

1,600 s.f.

\$17,000,000

www.landscape.com/13659.htm

Maria Cheung 張小姐 8103 3862



Swiss Towers

東半山瑞士花園

113 Tai Hang Road, Midlevels East

Harbour view apartment with balcony

維港景單位連露台

1,600 s.f.

\$18,000,000

www.landscape.com/13659.htm

Rowena Siu 蕭小姐 9348 4118



Shuk Yuen Building

跑馬地菽園新臺

2 Green Lane, Happy Valley

Spacious colonial low-rise at the quiet corner of Happy Valley

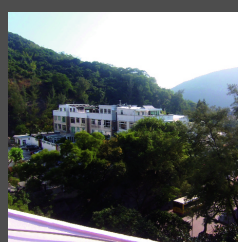
寬敞英式低密度單位，位處跑馬地寧靜地段

2,000 s.f.

\$20,000,000 also for lease \$52,000 incl

www.landscape.com/12311.htm

Mark Mak 麥先生 6838 2929



Low-rise at Jardine's Lookout

渣甸山低密度住宅

Charming colonial low-rise

迷人英式低密度住宅

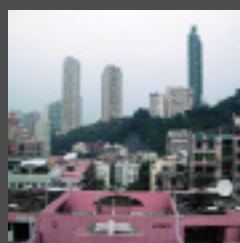
1,800 s.f.

\$21,000,000

www.landscape.com/12311.htm

Carman Szeto 司徒小姐 8100 3893

MID-LEVELS SALES



10 Briar Avenue, Happy Valley

跑馬地比雅道10號

Boutique low-rise apartment with private roof in quiet location

雅緻低密度單位，擁有私家天台，環境寧靜

2,000 s.f. (plus 1,600 s.f. roof)

\$24,000,000 also for lease \$75,000 incl

www.landscape.com/8804.htm

Stephen Chan 陳先生 9093 3381



Regal Crest

西半山薈萃苑

9 Robinson Road, Midlevels West

Spacious family apartment on upper Robinson Road with excellent facilities

寬敞家庭住宅位於羅便臣道頭段，一流消閒設施

2,314 s.f.

\$25,000,000

www.landscape.com/13579.htm

Sissy Li 李小姐 9642 6969



Beauty Court

西半山雅苑

82 Robinson Road, Midlevels West

Renovated apartment with private roof overlooking the harbour

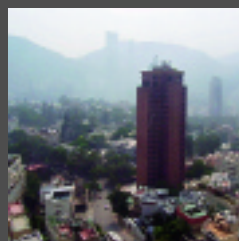
翻新物業連私家天台，眺望維港

1,762 s.f. (plus 915 s.f. roof)

\$26,000,000

www.landscape.com/11388.htm

Sissy Li 李小姐 9642 6969



Butler Tower

渣甸山柏麗園

1-5 Boyce Road, Jardine's Lookout

Duplex with private roof apartment

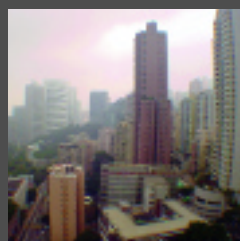
複式連私家天台

1,800 s.f. (plus 1,306 s.f. roof)

\$27,000,000

www.landscape.com/13579.htm

Johnny Cheung 張先生 9278 9939



Park Mansions

中半山百年順大廈

27-29 MacDonnell Road, Midlevels Central

4-bedroom apartment close to Hong Kong Park

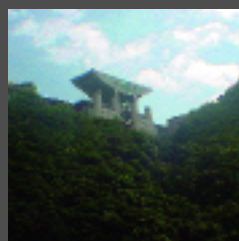
四房單位，鄰近香港公園

2,013 s.f.

\$27,500,000

www.landscape.com/12743.htm

Carman Szeto 司徒小姐 8100 3893



Tavistock 2

中半山騰皇居

10A Tregunter Path, Midlevels Central

Prestigious apartment in prime location with view of the Peak

尊貴住宅，黃金地段，居高臨下

1,655 s.f.

\$28,500,000

www.landscape.com/13501.htm

Stephen Chan 陳先生 9093 3381



Clovelly Court

中半山嘉富麗苑

12 May Road, Midlevels Central

Apartment in popular family development

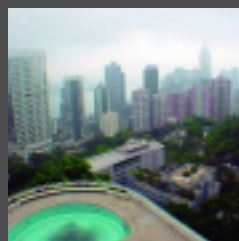
物業位於受歡迎屋苑

2,115 s.f.

\$30,000,000

www.landscape.com/11611.htm

Rita Lee 李小姐 9437 0087



Hong Villa

中半山峰景花園

12 Bowen Road, Midlevels Central

Large 3-bedroom apartment with facilities in lush green surroundings

寬敞三房單位，消閒設施，環境翠綠

1,916 s.f.

\$30,000,000

www.landscape.com/13216.htm

Mark Mak 麥先生 6838 2929



Evergreen Villa

東半山松柏新村

43 Stubbs Road, Midlevels East

Spacious practical 4-bedroom flat on Stubbs Road

實用寬敞四房，位處司徒拔道

2,530 s.f. (plus 1,500 s.f. terrace)

\$32,000,000

www.landscape.com/13704.htm

Christine Chong 莊小姐 9648 6082



Goodview Garden

東半山豐景台

24 Stubbs Road, Midlevels East

Unique well decorated duplex with roof and stunning harbour view

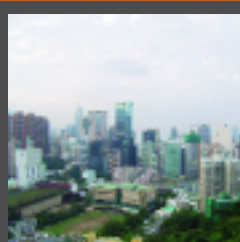
獨特靚裝複式連天台，享維港景

2,200 s.f.

\$32,000,000

www.landscape.com/13746.htm

Mira To 杜小姐 9486 1566



Scenic Lodge

東半山怡晴軒

6 Wang Fung Terrace, Midlevels East

Designer decorated high privacy apartment with stunning views

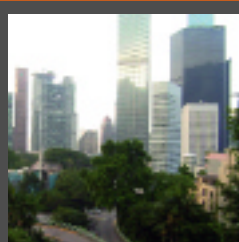
匠心裝修物業享一流景觀，私隱度高

2,480 s.f.

\$32,000,000

www.landscape.com/12949.htm

Johnny Cheung 張先生 9278 9939



Kennedy Terrace

中半山堅尼地台

20 Kennedy Road, Midlevels Central

Colonial low-rise with new decor

英式低密度單位，最新裝修

2,500 s.f.

\$33,750,000

www.landscape.com/13628.htm

Mira To 杜小姐 9486 1566



Bellevue Court
東半山碧蕙園
41 Stubbs Road, Midlevels East
Spacious and practical flat on convenient location
寬敞實用單位，位置方便
2,700 s.f.
\$35,000,000

www.landscape.com/13491.htm | Mira To 杜小姐 9486 1566



Estoril Court
中半山愛都大廈
55 Garden Road, Midlevels Central
Huge apartment with high efficiency on fringe of Central
巨型單位，實用率高，鄰近中環
3,347 s.f.
\$35,000,000

www.landscape.com/13041.htm | Sissy Li 李小姐 9642 6969



Hollywood Heights
中半山好利閣
6 Old Peak Road, Midlevels Central
Lower Peak 4-bedroom apartment with easy access to Central
下山頂段四房住宅，鄰近中環
2,700 s.f.
\$40,000,000

www.landscape.com/8609.htm | Sami Woo 胡小姐 9493 8275



Unique Villa
跑馬地友園
10 Holly Road, Happy Valley
Designer decorated penthouse flat with internal staircase to roof
品味裝修頂層單位，內置樓梯直達天台
2,500 s.f.
\$40,000,000 also for lease \$120,000

www.landscape.com/11952.htm | Mark Mak 麥先生 6838 2929



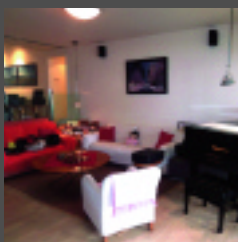
Kennedy Apartment
中半山堅尼地大廈
34A Kennedy Road, Midlevels Central
Unique mid-rise overlooking Hong Kong Park
獨特中低密度住宅，眺望香港公園
2,500 s.f.
\$41,000,000

www.landscape.com/13748.htm | Mira To 杜小姐 9486 1566



May Tower 1
中半山梅苑一座
7 May Road, Midlevels Central
Designer decorated triplex apartment in Lower Peak
匠心裝修三複式住宅，位於下山頂段
2,850 s.f.
\$48,000,000 also for lease \$120,000

www.landscape.com/11170.htm | Johnny Cheung 張先生 9278 9939



Garden Terrace 2 & 3
中半山 花園臺2 & 3座
8A Old Peak Road, Midlevels Central
Rare find 4-ensuite apartment with 3 car parks close to CBD
罕有四套房物業連三車位，鄰近中區
3,009 s.f.
\$50,000,000

www.landscape.com/13651.htm | Simon Lee 李先生 6014 3712



Kennedy Heights
中半山堅麗閣
10-18 Kennedy Road, Midlevels Central
Spacious 4-bedroom apartment on fringe of Central
寬敞四房單位鄰近中環
3,400 s.f.
\$53,000,000 also for lease \$120,000

www.landscape.com/13736.htm | Carman Szeto 司徒小姐 8100 3893



Tregunter Tower 3
中半山地利根德閣3座
14 Tregunter Path, Midlevels Central
High floor duplex with clubhouse facilities and nice decoration
雅裝高層複式，會所設施
3,639 s.f.
\$58,000,000

www.landscape.com/7677.htm | Christine Chong 莊小姐 9648 6082



Dynasty Court
中半山帝景園
23 Old Peak Road, Midlevels Central
4-bedroom harbour view apartment
四房維港景住宅
2,691 s.f.
\$59,000,000 also for lease \$110,000

www.landscape.com/13307.htm | Sami Woo 胡小姐 9493 8275



Cavendish Heights
渣甸山嘉雲臺
27-37 Perkins Road, Jardine's Lookout
Huge penthouse converted from two adjoining apartments in Jardine's Lookout
巨型頂層雙連，位於渣甸山
3,638 s.f. (plus 3,638 s.f. roof)
\$60,000,000

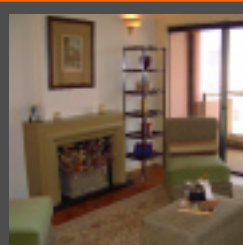
www.landscape.com/6397.htm | Johnny Cheung 張先生 9278 9939



Grenville House 中半山 嘉蕙園
1, 3 & 3A Magazine Gap Road, Midlevels Central
Nicely decorated colonial apartment with large balcony
雅裝英式單位連大露台
3,400 s.f.
\$61,000,000

www.landscape.com/12030.htm | David Leung 梁先生 9199 0672

MID-LEVELS SALES



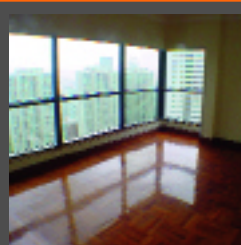
The Albany

中半山雅賓利大廈

1 Albany Road, Midlevels Central
Prestigious apartment overlooking Botanical Garden
尊貴住宅，眺望動植物公園

2,546 s.f.
\$63,650,000

www.landscape.com/13612.htm | Simon Lee 李先生 6014 3712



May Tower 2

中半山梅苑二座

5 May Road, Midlevels Central
Huge apartment with 4 ensuite bedrooms
四套房巨宅

3,393 s.f.
\$73,000,000

www.landscape.com/7676.htm | Jack Yip 葉先生 6011 8677

MID-LEVELS LEASE



View Mansion

中半山景雲大廈

5L-5P Bowen Road, Midlevels Central
Charming low-rise flat on tree-lined Bowen Road
迷人低密度住宅，位於翠綠的寶雲道

1,800 s.f.
\$60,000

www.landscape.com/13751.htm | Rita Lee 李小姐 9437 0087



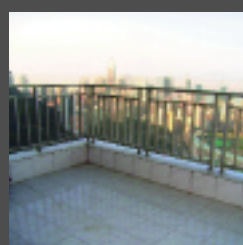
Bellevue Court

東半山碧蕙園

41 Stubbs Road, Midlevels East
Spacious 3-bedroom apartment with greenery view
寬敞三房單位享綠景

2,700 s.f.
\$90,000 incl. also for sale \$31,000,000

www.landscape.com/11432.htm | Teresa Lau 劉小姐 9080 6686



Evergreen Villa

東半山松柏新村

43 Stubbs Road, Midlevels East
Spacious 4-bedroom apartment with large balcony
寬敞四房單位連大露台

2,700 s.f.
\$90,000 incl.

www.landscape.com/13588.htm | Sami Woo 胡小姐 9493 8275



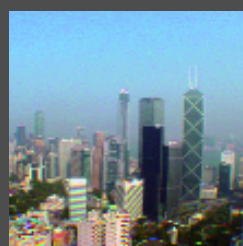
Estoril Court

中半山愛都大廈

55 Garden Road, Midlevels Central
Huge practical 4-bedroom apartment on fringe of Central
四房實用巨宅，鄰近中環

3,347 s.f.
\$112,000

www.landscape.com/8599.htm | Rita Lee 李小姐 9437 0087



Fairlane Tower

中半山寶雲山莊

2B Bowen Road, Midlevels Central
Prestigious Central skyline flat at prime location of Midlevels
雄踞半山重要地段，盡享都市璀璨美景

2,830 s.f.
\$130,000

www.landscape.com/13198.htm | Rita Lee 李小姐 9437 0087



15-21 Wilson Road, Jardine's Lookout

渣甸山衛信道15-21號
Jardine's Lookout townhouse with large garden and private garage
渣甸山排屋連大花園及私家車房

3,000 s.f.
\$130,000

www.landscape.com/11848.htm | Mira To 杜小姐 9486 1566



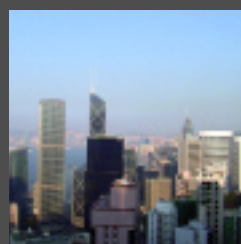
Borrett Mansion

中半山寶德臺

9B Bowen Road, Midlevels Central
Spacious 4-bedroom apartment with big balcony
寬敞四房單位連大露台

2,800 s.f.
\$135,000 incl.

www.landscape.com/13078.htm | Yvonne Chang 鄭小姐 9088 4666



Garden Terrace 2 & 3

中半山花園臺2 & 3座

8A Old Peak Road, Midlevels Central
Newly renovated 4-ensuite large apartment close to Central
翻新四套房大宅，鄰近中環

3,319 s.f.
\$145,000 incl.

www.landscape.com/10076.htm | Sami Woo 胡小姐 9493 8275



Aigburth

中半山譽皇居

12 Tregunter Path, Midlevels Central
Luxurious Midlevels apartment with balcony and harbour view
半山豪宅連大露台及維港景

3,080 s.f.
\$160,000

www.landscape.com/13449.htm | Rita Lee 李小姐 9437 0087



Branksome Grande

中半山地利根德里3號

3 Tregunter Path, Midlevels Central
Unique full harbour view penthouse with huge sky terrace
獨特全維港景頂層連大平台

4,486 s.f. (plus 1,154 s.f. terrace)
\$330,000

www.landscape.com/10666.htm | Yvonne Chang 鄭小姐 9088 4666



Baguio Villa

薄扶林碧瑤灣

550 Victoria Road, Pokfulam

Well decorated top floor unit with private roof garden enjoying green view
雅裝高層單位連私家天台花園，享翠綠景致

1,135 s.f. (plus 687 s.f. roof)

\$11,800,000 **SOLE AGENT** 獨家代理



www.landscape.com/13539.htm

Teresa Lau 劉小姐 9080 6686

DO YOU KNOW

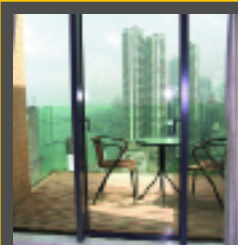
The Exterior of the Main Building, 香港大學
The University of Hong Kong 本部大樓外部

The Main Building of the University of Hong Kong is the oldest of the University's structures. Construction of the building started in 1910 and was completed in 1912. It is an imposing institutional structure, supported by granite colonnades in Renaissance style and surmounted by a tall clock tower and four turrets. There are four internal courtyards, two of which have palm trees over 9m tall.



香港大學本部大樓是該校最古老的建築，一九一一年動工興建，一九一二年落成。大樓宏偉壯觀，以富有文藝復興風格的花崗石柱支撐，頂部矗立著鐘樓，四角則有塔樓。大樓內有庭院四個，其中兩個種植有高達九米的棕櫚樹。

Information provided by Antiquities and Monuments Office, Leisure and Cultural Services Department



60 Victoria Road, Pokfulam

薄扶林域多利道60號

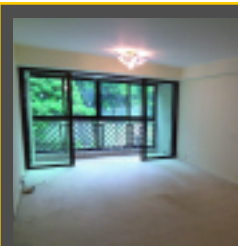
Brand new penthouse flat with private terrace in quiet location
全新頂層物業連私家平台，環境寧靜

944 s.f.

\$9,600,000 also for lease **\$40,000** incl.

www.landscape.com/13672.htm

Maria Cheung 張小姐 8103 3862



43 Stanley Village Road

赤柱 赤柱村道43號

Nice low-rise apartment in tranquil area of Stanley
優質低密度住宅，位於赤柱清靜地段

1,420 s.f.

\$12,000,000

www.landscape.com/13416.htm

Simon Yung 翁先生 9418 5743



Greenery Garden

薄扶林 怡林閣

2A Mount Davis Road, Pokfulam

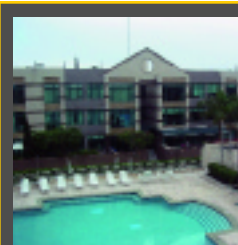
Sea view apartment in tranquil location
海景物業，環境寧靜

1,587 s.f.

\$13,700,000

www.landscape.com/8637.htm

Christine Chong 莊小姐 9648 6082



Standford Villa

赤柱 旭逸居

7 Stanley Village Road, Stanley

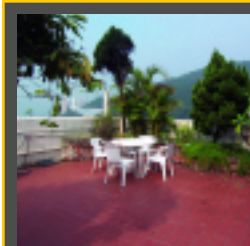
Peaceful low-rise close to Stanley Main Beach
寧靜低密度物業，鄰近赤柱海灘

1,052 s.f. (plus 648 s.f. roof)

\$14,000,000

www.landscape.com/13738.htm

Mark Mak 麥先生 6838 2929



Glamour Court

薄扶林 華麗閣

39 Consort Rise, Pokfulam

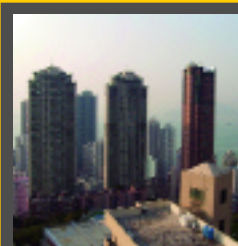
Unique low-rise with private roof in quiet location
獨特低密度住宅連私家天台，環境清幽

1,500 s.f. (plus 1,106 s.f. roof)

\$16,000,000

www.landscape.com/13286.htm

Teresa Lau 劉小姐 9080 6686



Fulham Garden

薄扶林富林苑

84 Pokfulam Road, Pokfulam

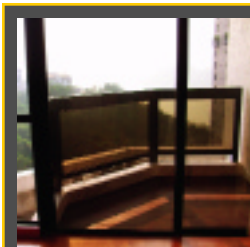
Practical 3-bedroom apartment commanding open sea view
實用三房，開揚海景

1,750 s.f.

\$16,800,000

www.landscape.com/13780.htm

Rowena Siu 蕭小姐 9348 4118



South Bay Tower

淺水灣 南灣大廈

59 South Bay Road, Repulse Bay

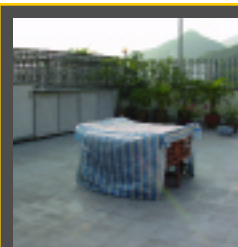
Deluxe sea view boutique flat in tranquil area of Repulse Bay
豪華海景複式單位，環境寧靜，全新裝修

1,433 s.f.

\$17,500,000

www.landscape.com/13831.htm

Teresa Fung 馮小姐 9138 1621



Goldson Place

壽臣山金信閣

11 Shouson Hill Road West, Shouson Hill

Low-rise penthouse with internal access to private roof terrace
頂層低密度住宅，內置樓梯直達私家天台平台

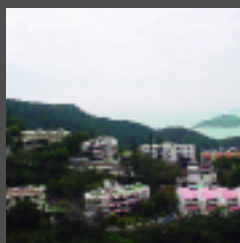
1,650 s.f. (plus 1,225 s.f. private roof)

\$20,000,000

www.landscape.com/12909.htm

Christine Chong 莊小姐 9648 6082

SOUTHSIDE SALES



Grand Garden

淺水灣華景園

61 South Bay Road, Repulse Bay
Sea view apartment in tranquil South Bay
海景物業，位處南灣寧靜地段

1,657 s.f.
\$20,000,000

www.landscape.com/2090.htm | Teresa Fung 馮小姐 9138 1621

Residence Bel-Air (Phase 2) - South Towers



薄扶林貝沙灣南岸 (第二期)

38 Bel-Air Avenue, Pokfulam
Lovely 3-bedroom waterfront flat with
private terrace
迷人三房臨海住宅，享有私家平台

1,681 s.f. (plus 136 s.f. terrace)
\$21,000,000

www.landscape.com/13687.htm | Johnny Cheung 張先生 9278 9939



Repulse Bay Garden

淺水灣麗景園

18-40 Belleview Drive, Repulse Bay
High efficiency apartment overlooking
Repulse Bay beach
實用物業眺望淺灣泳灘

1,780 s.f.
\$24,500,000 **SOLE AGENT** 獨家代理

www.landscape.com/12489.htm | Mary Li 李小姐 9011 6595



Hong Kong Parkview - Tower 7

88 Tai Tam Reservoir Road, Repulse Bay
Popular family development in
verdant greenery
搶手家庭住宅，享茂盛綠景

1,925 s.f.
\$25,000,000

www.landscape.com/9529.htm | Jack Yip 葉先生 6011 8677



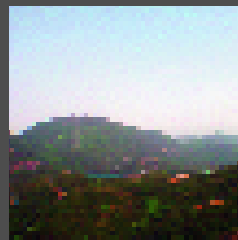
53-55 Chung Hom Kok Road

春坎角道53-55號

Colonial style low-rise apartment with
three bedrooms
英式三房低密度住宅

1,800 s.f.
\$25,000,000 also for lease \$75,000 incl

www.landscape.com/13280.htm | Mary Li 李小姐 9011 6595



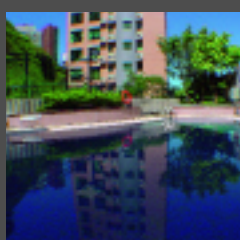
Hong Kong Parkview Private Roof Unit

淺水灣陽明山莊 私家天台單位

88 Tai Tam Reservoir Road, Repulse Bay
Sought after family flat with private roof
罕有家庭住宅連私家天台

1,860 s.f. (plus 1,347 s.f. roof)
\$27,000,000 also for lease \$100,000 incl.

www.landscape.com/13562.htm | Teresa Fung 馮小姐 9138 1621



South Bay Palace

淺水灣南灣御苑

25-31 South Bay Close, Repulse Bay
Nicely fitted and equipped 3-bedroom
apartment close to international school
配置完善三房住宅，鄰近國際學校

1,980 s.f.
\$28,500,000 also for lease \$84,000 incl.

www.landscape.com/13288.htm | Mary Li 李小姐 9011 6595



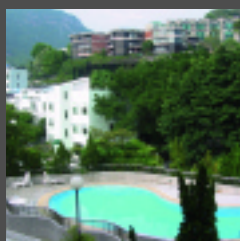
Pacific View

大潭浪琴園

38 Tai Tam Road, Tai Tam
4-bedroom flat with comprehensive
facilities at Tai Tam waterfront
大潭臨海四房住宅，設施齊全

2,054 s.f.
\$30,000,000 also for lease \$75,000 incl.

www.landscape.com/13567.htm | Simon Lee 李先生 6014 3712



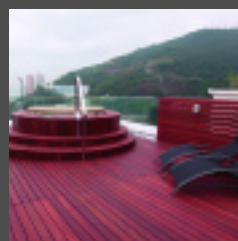
Shouson Garden

壽臣山壽山花園

6A Shouson Hill Road, Shouson Hill
Stylish duplex flat in serene location
風格複式物業，環境寧靜

1,992 s.f. (plus 459 s.f. terrace)
\$30,000,000

www.landscape.com/9816.htm | Mary Li 李小姐 9011 6595



La Mer

薄扶林浪頤居

67-71 Bisney Road, Pokfulam
Splendid sea view apartment with nice
decorations and private roof
迷人海景單位連私家天台，裝修雅緻

1,808 s.f. (plus 1,378 s.f. roof)
\$33,000,000

www.landscape.com/13505.htm | Christine Chong 莊小姐 9648 6082



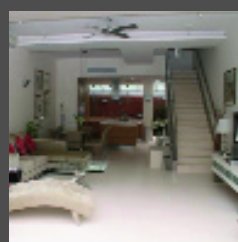
Bisney View

薄扶林碧荔道 47-49號

47-49 Bisney Road, Pokfulam
Four-bedroom house in
secluded environment
四房洋房，環境寧靜

3,500 s.f.
\$33,000,000

www.landscape.com/7862.htm | Rowena Siu 蕭小姐 9348 4118



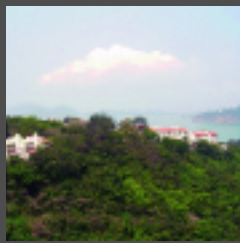
3 Consort Rise, Pokfulam

薄扶林金粟街3號

Townhouse in excellent condition at
tranquil surroundings
狀況優良排屋，環境寧靜

2,800 s.f.
\$37,000,000

www.landscape.com/13455.htm | Rowena Siu 蕭小姐 9348 4118



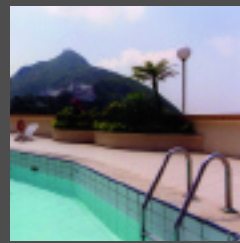
Grand Garden

淺水灣 華景園

61 South Bay Road, Repulse Bay
Rare twins sea view unit
罕有海景雙連單位

1,820 s.f. + 1,463 s.f.
\$42,700,000

Simon Lee 李先生 6014 3712



Park Place

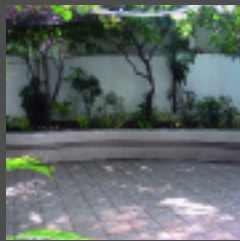
淺水灣雅柏苑

7 Tai Tam Reservoir Road, Repulse Bay
Spacious and practical apartment on
upper Repulse Bay Road
寬敞實用單位，位於淺灣頭段

2,288 s.f.
\$44,000,000

www.landscape.com/13499.htm

Simon Yung 翁先生 9418 5743



Hillgrove 春坎角壁如花園

18 Cape Drive, Chung Hom Kok
Large and spacious townhouse in
quiet environment
寬敞實用排屋，環境寧靜

3,000 s.f.
(plus 895 s.f. roof and 700 s.f. garden)
\$44,000,000

www.landscape.com/13143.htm

Christine Chong 莊小姐 9648 6082



The Somerset

淺水灣怡峰

67 Repulse Bay Road, Repulse Bay
2-ensuite duplex flat with splendid views
雙套房複式單位享醉人景致

2,464 s.f.
\$50,000,000

www.landscape.com/12677.htm

Teresa Fung 馮小姐 9138 1621



33 Cape Road, Chung Hom Kok 春坎角 環角道33號

Brand new sea view garden house with
tasteful decorations
全新海景花園洋房，匠心設計

3,154 s.f.
(plus 667 s.f. garden and 530 s.f. roof)
\$58,000,000

www.landscape.com/12478.htm

Simon Yung 翁先生 9418 5743

Repulse Bay Heights 淺水灣淺水灣花園

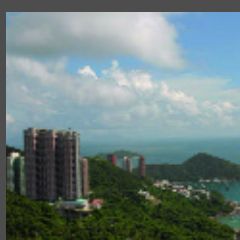


3 Bellevue Drive, Repulse Bay
Garden townhouse with nice decor in the
heart of Repulse Bay
花園排屋連高雅裝修，位處淺水灣心臟地帶

3,200 s.f.
(plus 1,745 s.f. garden and 997 s.f. roof)
\$59,000,000 also for lease \$160,000

www.landscape.com/13236.htm

Teresa Fung 馮小姐 9138 1621



Royal Garden

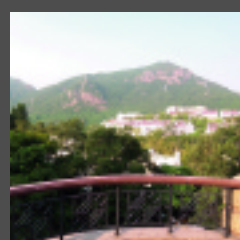
淺水灣 聚豪居

27 Repulse Bay Road, Repulse Bay
Exclusive penthouse apartment with
private roof on upper Repulse Bay Road
特色頂層物業連私家天台，位於淺灣頭段

2,680 s.f. (plus 2,000 s.f. roof)
\$63,000,000

www.landscape.com/13413.htm

Simon Yung 翁先生 9418 5743



Las Pinadas

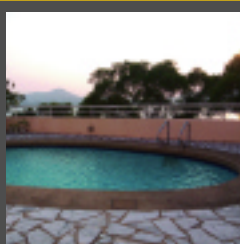
壽臣山朗松居

33 Shouson Hill Road, Shouson Hill
Quality townhouse in tranquil environment
優質排屋，四周寧靜

3,382 s.f. (plus 777 s.f. roof)
\$68,000,000

www.landscape.com/13369.htm

Simon Yung 翁先生 9418 5743



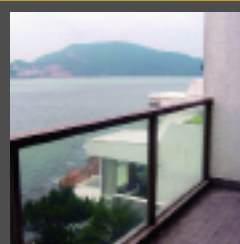
Redhill Peninsula - Palm Drive 大潭 紅山半島 棕櫚徑

18 Pak Pat Shan Road, Tai Tam
Waterfront townhouse with private pool
and garage
臨海排屋連私家泳池及車房

3,055 s.f. (plus 1,839 s.f. garden)
\$72,000,000

www.landscape.com/13220.htm

Simon Lee 李先生 6014 3712



37 Tung Tau Wan Road, Stanley 赤柱東頭灣道37號

Waterfront townhouse with private garden
and indoor communal pool
海濱洋房連私家花園，享屋苑室內泳池

3,300 s.f. (plus 1,000 s.f. garden)
\$75,000,000

www.landscape.com/10620.htm

Jack Yip 葉先生 6011 8677



Rosecliff

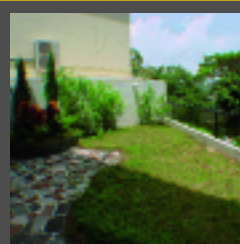
大潭 大潭道20號

20 Tai Tam Road, Tai Tam
Prestigious waterfront garden townhouse
with private garage
尊貴臨海花園排屋連私家車房

3,980 s.f. (plus 1,050 s.f. roof)
\$85,000,000 also for lease \$230,000 incl.

www.landscape.com/9235.htm

Stephen Chan 陳先生 9093 3381



Villa Corniche 淺水灣康芷苑

21 South Bay Road, Repulse Bay
Spacious garden house in serene
area of Repulse Bay
寬敞花園洋房，位於淺水灣清靜地段

4,200 s.f.
(plus 888 s.f. garden and 930 s.f. roof)
\$93,000,000

www.landscape.com/11774.htm

Maria Cheung 張小姐 8103 3862

SOUTHSIDE SALES



Manderly Garden
深水灣文禮苑
48 Deep Water Bay Road,
Deep Water Bay
Spacious house in Deep Water Bay
深水灣寬敞洋房
3,504 s.f.
\$120,000,000

www.landscape.com/1566.htm | Sissy Li 李小姐 9642 6969



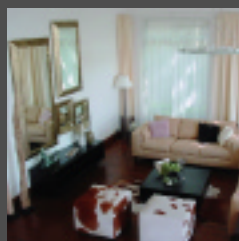
Residence Bel-Air Houses 薄扶林貝沙灣洋房
8 Cyberport Road, Pokfulam
Brand new townhouse with full clubhouse facilities
全新排屋享齊全消閒設施
4,645 s.f.
(plus 1,977 s.f. garden and 1,503 s.f. roof)
\$120,000,000

www.landscape.com/11509.htm | Maria Cheung 張小姐 8103 3862



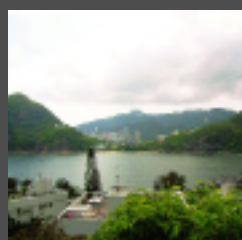
18 Carmel Road, Stanley
赤柱 佳美道18號
Prestigious sea view house in
tranquil location
尊貴海景洋房，環境寧境
5,363 s.f. (Site area approx. 7,150 s.f.)
\$160,000,000

Louis Wong 黃先生 9871 6828



110 Repulse Bay Road
淺水灣道110號
Exclusive sea view house with huge garden
in prestigious location of Repulse Bay
獨特海景洋房連巨型花園，位處淺水灣尊貴地段
6,150 s.f.
(plus 2,753 s.f. garden and 934 s.f. roof)
\$220,000,000

www.landscape.com/13442.htm | Louis Wong 黃先生 9871 6828



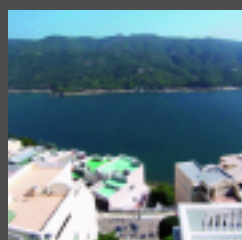
**Repulse Bay Road even
number garden house**
淺水灣道雙號花園洋房
Rare sea view house at Repulse Bay
淺水灣罕有海景洋房
4,230 s.f.
\$250,000,000

Mark Mak 麥先生 6838 2929



**4-10 Bellevue Drive,
Repulse Bay** 淺水灣麗景道4-10號
Rare, huge detached house with private
garden and carport overlooking Repulse
Bay panorama
罕有巨型獨立屋連私家花園及車庫，眺望環迴淺水灣景致
9,000 s.f. (plus 2,960 s.f. garden)
\$320,000,000

www.landscape.com/12683.htm | Louis Wong 黃先生 9871 6828



**Redhill Peninsula -
Palm Drive** 大潭 紅山半島 棕櫚徑
18 Pak Pat Shan Road, Tai Tam
Waterfront townhouse with private terrace
and garage
海濱洋房連私家平台及車房
2,880 s.f. (plus 758 s.f. garden)
Open Offer

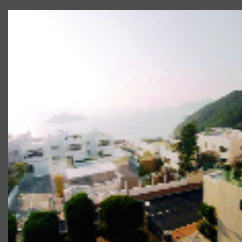
www.landscape.com/13356.htm | Stephen Chan 陳先生 9093 3381



45 Chung Hom Kok Road
春坎角道45號
Fully renovated large low-rise flat with
sea view
翻新寬敞低密度單位，享怡人海景
4,400 s.f. (plus 4,000 s.f. roof)
Open Offer

www.landscape.com/13429.htm | Louis Wong 黃先生 9871 6828

SOUTHSIDE LEASE



40 Chung Hom Kok Road
春坎角道40號
Rare colonial low-rise apartment with
peaceful sea view
罕有英式低密度住宅，享平靜海景
1,600 s.f.
\$63,000

www.landscape.com/13033.htm | Maria Cheung 張小姐 8103 3862



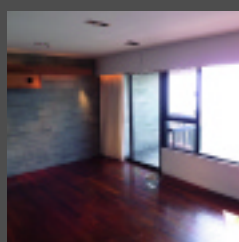
Gordon Terrace
赤柱歌敦臺
4-8A Carmel Road, Stanley
Colonial style low-rise apartment with
huge balcony
英式低密度單位連大露台
2,000 s.f.
\$85,000 incl.

www.landscape.com/11493.htm | Teresa Fung 馮小姐 9138 1621



La Mer
薄扶林浪頤居
67-71 Bisney Road, Pokfulam
Rare find modern sea view low-rise in
tranquil surroundings
罕有時尚海景低密度住宅，環境清靜
2,063 s.f.
\$93,000

www.landscape.com/13471.htm | Yvonne Chang 鄭小姐 9088 4666



Pine Crest
淺水灣松苑
65 Repulse Bay Road, Repulse Bay
High floor sea view apartment with nice
decor in exclusive building
高層海景名廈住宅，裝修雅緻
2,250 s.f.
\$105,000

www.landscape.com/13586.htm | Stephen Chan 陳先生 9093 3381



Jade Crest
壽臣山翠峰園
35A-H Shouson Hill Road, Shouson Hill
Secluded townhouse with large garden in lush green surroundings
洋房連大花園，環境翠綠，自成一個
3,300 s.f. (plus 1,000 s.f. garden)
\$150,000 incl.

www.landscape.com/12621.htm | Maria Cheung 張小姐 8103 3862



Henredon Court
壽臣山恆安閣
8 Shouson Hill Road, Shouson Hill
Spacious duplex with greenery view
寬敞複式享翠綠景致
4,474 s.f.
\$170,000

www.landscape.com/13701.htm | Mary Li 李小姐 9011 6595



Radcliffe
薄扶林靖林
120 Pokfulam Road, Pokfulam
Brand new luxurious duplex
全新豪華複式住宅
3,620 s.f.
\$180,000 incl.

www.landscape.com/13270.htm | Carman Szeto 司徒小姐 8100 3893



Grand Garden
淺水灣華景園
61 South Bay Road, Repulse Bay
Rare sea view penthouse with private roof terrace
罕有海景頂層物業連私家天台平台
4,333 s.f.
\$195,000

www.landscape.com/11759.htm | Yvonne Chang 鄭小姐 9088 4666



Carmelia
赤柱 赤柱村道60號
60 Stanley Village Road, Stanley
Huge colonial house with front yard and private garden
英式巨型洋房，享有前園及私家花園
4,600 s.f. (plus 1,155 s.f. garden)
\$250,000 also for sale Open Offer

www.landscape.com/9534.htm | Johnny Cheung 張先生 9278 9939



70 Deep Water Bay Road
深水灣道70號
Rarely available Deep Water Bay townhouse
罕有放盤深水灣排屋
4,140 s.f. (plus 2,959 s.f. garden)
\$270,000

www.landscape.com/13073.htm | Yvonne Chang 鄭小姐 9088 4666



56 Repulse Bay Road
淺水灣道56號
Waterfront duplex with breath-taking view of Repulse Bay Beach
臨海複式享醉人淺水灣灘景
3,580 s.f.
\$290,000 incl.

www.landscape.com/13708.htm | Louis Wong 黃先生 9871 6828



Three Bays
赤柱 赤柱灘道7號
7 Stanley Beach Road, Stanley
Townhouse with quality finishes overlooking stunning sea view
優質排屋眺望醉人海景
3,870 s.f. (plus 1,069 s.f. garden)
\$300,000 incl.

www.landscape.com/13534.htm | Yvonne Chang 鄭小姐 9088 4666

THE PEAK SALES



Guildford Garden 山頂 喬苑
1-3 Mansfield Road, The Peak
Lower Peak apartment in quiet neighbourhood with 4 bedrooms and spacious layout
下山頂段單位，環境寧靜，四睡房，間格寬敞
2,400 s.f.
\$39,000,000

www.landscape.com/13502.htm | Teresa Lau 劉小姐 9080 6686



Carolina Garden
山頂 嘉樂園
20-34 Coombe Road, The Peak
Rare colonial apartment in prestigious location
罕有英式住宅，地段尊貴
2,350 s.f.
\$48,000,000

www.landscape.com/12308.htm | Simon Lee 李先生 6014 3712



Mountain Lodge
山頂 崑廬
44 Mount Kellett Road, The Peak
4-bedroom sea view apartment
四房海景物業
2,600 s.f.
\$49,000,000

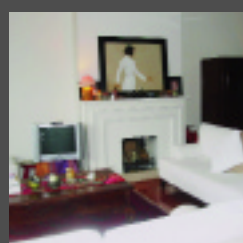
www.landscape.com/10797.htm | Simon Yung 翁先生 9418 5743



Sunshine Villa
山頂 陽光花園
48 Mount Kellett Road, The Peak
Lovely Peak garden house with 17-foot ceiling
迷人山頂花園洋房，享特高十七呎樓底
3,500 s.f. (plus 1,920 s.f. garden)
\$110,000,000

www.landscape.com/4082.htm | David Leung 梁先生 9199 0672

THE PEAK SALES



Stewart Terrace

山頂 史釗域臺

81-95 Peak Road, The Peak
Colonial large flat in serene and lush green environment
英式大單位, 環境寧靜翠綠

3,103 s.f.
\$52,000,000

www.landscape.com/13029.htm | David Leung 梁先生 9199 0672



La Hacienda - Apartment

山頂 加列山道29-33號

29-33 Mount Kellett Road, The Peak
Rare colonial apartment
罕有英式物業

3,100 s.f.
\$65,000,000

www.landscape.com/12453.htm | David Leung 梁先生 9199 0672



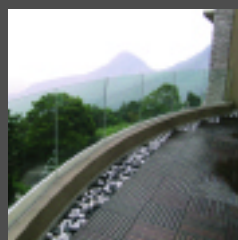
Peak Garden

山頂 山頂花園

16-20 Mount Austin Road, The Peak
Peak apartment with bird's eye view of Victoria Harbour
山頂物業鳥瞰維港

2,655 s.f. (plus 2,000 s.f. roof)
\$70,000,000

www.landscape.com/12604.htm | David Leung 梁先生 9199 0672



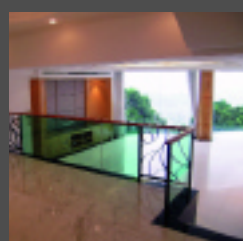
Montebello

山頂 濠景閣

15-17 Plantation Road, The Peak
Newly furnished penthouse with private roof on the Peak
山頂頂樓單位有全新傢具及私家天台

3,140 s.f. (plus 2,129 s.f. roof)
\$78,000,000

www.landscape.com/5851.htm | Jack Yip 葉先生 6011 8677



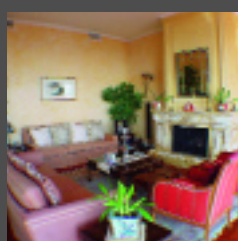
La Hacienda - Lower Townhouse

山頂 加列山道29-33號

29-33 Mount Kellett Road, The Peak
Peak townhouse with Southside sea view
山頂排屋享南區海景

3,200 s.f.
\$100,000,000

www.landscape.com/3210.htm | Louis Wong 黃先生 9871 6828



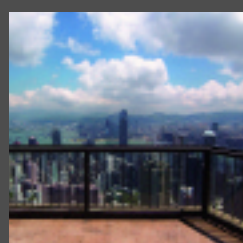
Strawberry Hill

山頂紅莓閣

8 Plunkett's Road, The Peak
Colonial townhouse with fireplace at the Peak
山頂英式排屋, 設有壁爐

3,200 s.f.
\$128,000,000

www.landscape.com/1852.htm | Jack Yip 葉先生 6011 8677



Altadena

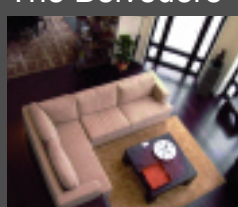
山頂 白加道27號

27 Barker Road, The Peak
Rare duplex penthouse with unobstructed harbour view
罕有層頂複式享無遮擋海景

4,500 s.f. (plus 1,435 s.f. roof)
\$168,000,000 also for lease \$200,000

www.landscape.com/11910.htm | David Leung 梁先生 9199 0672

The Belvedere 山頂 種植道51至61號



51-61 Plantation Road, The Peak
Magnificent house at the Peak with vantage view
醉人山頂洋房, 居高臨下

7,300 s.f.
(plus 1,058 s.f. roof and 2,338 s.f. garden)
\$300,000,000

www.landscape.com/2659.htm | Sissy Li 李小姐 9642 6969

THE PEAK LEASE



Chateau Vivienne

山頂 顯峰居

72 Mount Kellett Road, The Peak
Extraordinary boutique duplex penthouse
特色精緻複式頂層

1,744 s.f.
\$89,000

www.landscape.com/2327.htm | Sami Woo 胡小姐 9493 8275



26 Magazine Gap Road, The Peak 山頂 馬己仙峽道26號

Rarely on market colonial apartment on Lower Peak with harbour view
英式單位, 位於下山頂段, 享維港景, 罕有放盤

2,400 s.f.
\$110,000 incl.
also for sale Subject To Offer

www.landscape.com/13590.htm | Teresa Lau 劉小姐 9080 6686



Landscape Realty Limited C-018733

a member of Landscape Surveyors Ltd

Tel: 852-2866 0022 Fax: 852-2866 0015

Email: info@landscape.com Website: www.landscape.com

Unit 3106, 31/F, Hopewell Centre,
183 Queen's Road East, Wanchai, Hong Kong

The information, text, photos, analyses and projections contained herein are provided solely for the convenience of prospective clients and no warranty or representation as to their accuracy, correctness or completeness is made by Landscape Surveyors Limited, Landscape Realty Limited or the owners, none of whom shall have any liability or obligation with respect thereto. Interested parties should rely on their own investigations, interpretations and analyses in connection with the purchase or letting thereof.

Information has been provided to us by sources deemed reliable, but no warranty or representation is made as to its accuracy, correctness or completeness. These offerings are made subject to contract, correction of errors, omissions, prior sale or lease, change of price or terms or withdrawal from the market without notice. The contents of The Key are for reference only and do not constitute all or any part of a contract.

Copyright 2008