



大宅[®]

Select deluxe homes

Volume 84 DECEMBER 2011

風尚典雅
Pristine
elegance

PROVIDENCE BAY
**LUXURY WORLD-CLASS
COASTAL OASIS**



KeyWords

“The wise man in the storm prays to God, not for safety from danger, but for deliverance from fear”

「明智的人在危難中向天主禱告，並不是祈求平安，而是祈求無懼的勇氣。」

— Ralph Waldo Emerson (1803-1882), American essayist, lecturer, and poet
— 美國散文家、文學家兼詩人拉爾夫·沃爾多·愛默生 (1803-1882)

KeyNotes

With its main export markets in deep trouble, China's economic outlook can be anything but bullish. China has not developed a mature internal consumption market, so its economy still relies largely on exports. If the economic engine loses steam, a slowdown is expected.

Already the mainland property market is shrinking, with a glut of unsold flats across the country, and buyers are being discouraged by the government from making any purchases. Developers are finding it almost impossible to get financing, and are thus having to slash prices to boost cash flow. Residential prices in major cities have declined by as much as 30 per cent and are tipped to continue the down-trend; hundreds of property agency offices have closed their doors. This will adversely affect Hong Kong, which has benefited from, and become more and more reliant on, China's growth.

由於主要出口市場正處於水深火熱之中，中國經濟前景並不樂觀。中國的內銷市場發展仍未成熟，以致整體經濟仍主要依靠出口市場。若然經濟引擎失去動力，經濟下滑放緩便無可避免。

中國房地產市場正在萎縮，未售出的住宅單位在全國市場都積壓過量，而政府又勸喻買家切勿作出任何買賣。發展商想盡辦法籌措資金，在難以融資的情況下而割價推銷增加現金流動。大城市的住宅樓價下挫有達三成，預料跌勢將持續，而數百計地產代理分行亦已關閉。香港越來越依賴中國經濟增長，而且一直蒙受其惠，因此現時的情況難免會對香港造成嚴重的影響。

K.S. Koh
ks-koh@landscape.com

(The above is an excerpt from Market Watch on www.landscape.com. Read the full article at Market Watch, www.landscape.com/marketwatch)
(以上內容節錄於領域網站內的市場觀察，如欲觀看全文，請登上網址：www.landscape.com/marketwatch)

Monthly HIGHLIGHTS 每月精選



- 04 Bellevue Place
淺水灣 寶晶苑
- 10 Regalia Bay
赤柱 富豪海灣
- 13 Green View Mansion
跑馬地 翠景樓

HOW MAY YOU LIST YOUR PROPERTY WITH THE KEY?

怎樣在《大宅》刊登您的出售／出租物業？

If you would like to see your property listed in The Key in the next issue, you may call Loretta Lui at 3102 4818 or visit us at www.landscape.com/sell_let. Or you may simply fill out the space below and fax to us at 2866 0015.

如果您想將出售／出租物業刊登於大宅，可致電3102 4818與呂小姐聯絡，或登上 www.landscape.com/sell_let。或者您可以填寫下面的表格傳真至2866 0015。

Property to be listed 物業

Asking Rental / Sale Price 租金 / 售價

Floor Area 面積

Contact Person 聯絡人

Telephone 電話

Email 電郵地址

Our KeyPersons will contact you for follow-up works.
我們的大宅專員會馬上與您聯絡

Published and distributed by

LANDSCOPE 領域
The Specialists in Luxury Properties

Landscape Realty Limited C-018733

a member of Landscape Surveyors Ltd

Find us on:
facebook.

Designed by

PERSPECTIVE 透視

Tel: +852 2866 0022
Fax: +852 2866 0015
Email: info@landscape.com
Website: www.landscape.com
Address: Unit 3106, 31/F, Hopewell Centre,
183 Queen's Road East, Wanchai, Hong Kong
Member of:



Tel: +852 2525 0287
Fax: +852 2526 3860
Email: info@perspectiveglobal.com
Website: www.perspectiveglobal.com
Address: Rm 2408, Dominion Centre,
59 Queen's Road East, Wanchai, Hong Kong

The information, text, photos, analyses and projections contained herein are provided solely for the convenience of prospective clients and no warranty or representation as to their accuracy, correctness or completeness is made by Landscape Surveyors Limited, Landscape Realty Limited or the owners, none of whom shall have any liability or obligation with respect thereto. Interested parties should rely on their own investigations, interpretations and analyses in connection with the purchase or letting thereof.

Information has been provided to us by sources deemed reliable, but no warranty or representation is made as to its accuracy, correctness or completeness. These offerings are made subject to contract, correction of errors, omissions, prior sale or lease, change of price or terms or withdrawal from the market without notice. The contents of The Key are for reference only and do not constitute all or any part of a contract. Copyright 2011

PROVIDENCE BAY

Next to The Hong Kong Science Park

LUXURY WORLD-CLASS COASTAL OASIS



Visit **PROVIDENCE BAY** "Luxury World-Class Coastal Residences"

Show Suites at Room 105B, 1st Floor, Olympian City 2 (✳ MTR Olympic Station Exit D3)

Opening Hours: 12nn - 9pm (Mon to Fri), 10am - 9pm (Sat and Sun)

From Tsim Sha Tsui to Providence Bay: Highway Route No.3 to No.8 (Tsing Sha Highway towards Shatin), via Tai Po Road, after passing the Shatin Racecourse, keep left and drive towards the Hong Kong Science Park in Pak Shek Kok, turn right at the roundabout. Providence Bay is adjacent to the Science Park.

Units vary from one to five bedrooms. Gross floor area from 795 sq ft to 2,572 sq ft, and saleable area from 625 sq ft to 2,025 sq ft. Special units with gross floor area from 763 sq ft to 3,361 sq ft, and saleable area from 600 sq ft to 2,662 sq ft. 7 houses with gross floor area from 4,172 sq ft to 5,408 sq ft, and saleable area from 2,921 sq ft to 3,786 sq ft.

For enquiries, please call Isabella at **8209 9366** (including public holidays). Website: **WWW.PROVIDENCEBAY.HK**
Address/District of the development: 5 Fo Chun Road, Tai Po, N.T./Pak Shek Kok (East)

DEVELOPERS:



SALES AGENT:



Sino Real Estate Agency Limited

PROJECT MANAGER:



南豐發展有限公司
Nan Fung Development Ltd

Vendor/Developer: Pacific Bond Limited. Parent/Holding Company of the Vendor*: Garwin Investment Limited. *The shareholders of Garwin Investment Limited are Nan Fung Development Limited, Nan Fung Resources Limited, King Chance Development Limited, Gempress Limited and Wealthy Vision Limited. The holding company of King Chance Development Limited, Gempress Limited and Wealthy Vision Limited are Sino Land Company Limited, Wing Tai Properties Limited and K. W. H. International Holdings Limited respectively. Vendor's Solicitors: Baker & McKenzie and F. Zimmermann & Co. Authorized Person: Mr. Chu Hek Wing Clement of WCWP International Limited. Project Architect: WCWP International Limited. Main Superstructure Contractor: China Overseas Building Construction Limited. Mortgagee Bank Financing the Construction of the Development under a Building Mortgage: Bank of China (Hong Kong) Limited. Financier which has Provided Loans to Finance the Construction of the Development: Gempress Limited, King Chance Development Limited, Nan Fung Development Limited, Nan Fung Resources Limited and Wealthy Vision Limited. Providence Bay comprises 18 residential towers and 7 houses with a total of 482 units.

The photographs, images, drawings or sketches shown in this advertisement/ promotional material represent the artist's imaginative impression of the development concerned only. They are not drawn to scale and/or may have been edited and processed with computerized imaging techniques. Prospective purchasers should make reference to the sales brochure for details of the development. The developer also advises purchasers to conduct on-site visit for a better understanding of the development site, its surrounding environment and the public facilities nearby.



Pristine 風尚典雅 elegance

Photography: Daniel Tam



Tastefully decorated with magnificent sea views, this 3,619 sq-ft townhouse is set in Repulse Bay, known for its beautiful beach and resort-like environment.

Part of a sizeable estate of townhouses and duplex apartments, the residence features elegant furnishings and classic chandeliers in the living, dining and family rooms. Floor-to-ceiling windows not only provide great views, but also allow natural sunlight fill the space during the daytime. The four-bedroom (two ensuite) house also has a large, fully equipped kitchen, 3.5 bathrooms, a maid's room, a garden and balcony. The 735 sq-ft roof and 310 sq-ft terrace allow homeowners to enjoy opulent living in the comfort and privacy of their own home.

Bellevue Place is located at the top of Bellevue Drive in Repulse Bay, a well-known low-density luxury residential district on Hong Kong Island. It is a three-minute drive to Repulse Bay Beach and nearby Stanley Market. The area includes amenities such as banks, medical services, dry cleaners and restaurants. It is accessible by bus, taxi or private car.

洋房座落幽靜怡人的淺水灣，面積達3,619平方呎，坐擁壯麗開闊海景，設計時尚富品味。淺水灣素以美麗綿長的沙灘聞名，散發愜意閒適度假風情，教人心曠神怡。

偌大的屋苑提供洋房及複式單位，這幢豪宅身處其中卻顯獨特，裝潢典雅高貴，客廳、飯廳和家庭廳均裝有古典吊燈，盡顯華麗氣派。落地玻璃讓迷人景緻一覽無遺，更使陽光灑滿室內，提供明亮舒適的環境。全屋共有4間臥室（2間套房），寬敞而設備齊全的廚房，3間半浴室，1間傭人房，更設有花園和陽台。天台廣達735平方呎，還有佔地310平方呎平台花園，讓屋主盡情享受寫意舒適的私人空間。

寶晶苑傲踞麗景道最高點，是港島著名的低密度豪宅區。駕車至淺水灣泳灘只需3分鐘，毗連赤柱市中心，區內還有銀行、診所、乾洗店和餐廳等設施，非常方便。附近有巴士服務，計程車和私家車均可到達。

Bellevue Place 寶晶苑
93 Repulse Bay Road, Repulse Bay
淺水灣淺水灣道93號

3,619 s.f. (plus 735 s.f. roof and 310 s.f. terrace)
HK\$120M

9871 6828 Louis Wong 黃先生
www.landscape.com/136438.htm



FARRINGTON INTERIORS

THE MOMENT MADE BEAUTIFUL

www.farringtoninteriors.com

FLAGSHIP STORE - 10,000 sq. ft. SHOWROOM

31/F., World Trade Centre, Causeway Bay, Hong Kong | 香港銅鑼灣世界貿易中心31樓

Tel: 852. 2808 1000

Fax: 852. 2808 2800

SHOP

G/F., 87 Wong Nai Chung Road, Happy Valley, Hong Kong | 香港跑馬地黃泥涌道87號地下

Tel: 852. 2808 0303

Fax: 852. 2801 6732



Carmel Hill

12 Carmel Road, Stanley

Sea view townhouse in quiet location with 4 bedrooms

赤柱海景四房洋房，環境寧靜優美

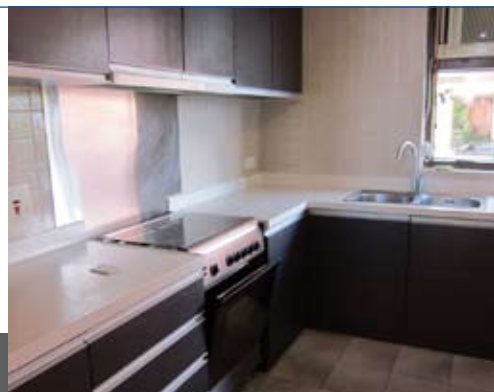
2,395 s.f. (plus 381 s.f. garden and 262 s.f. terrace)

\$110K incl.

☎ 9493 8275 Sami Woo 胡小姐

🌐 www.landscape.com/8468.htm

赤柱
海明山



L'Harmonie

3 Stanley Mound Road, Stanley

Townhouse with 4 bedrooms and green view close to Stanley Main Beach

赤柱四房排屋，享翠綠景觀，鄰近赤柱海灘

2,700 s.f. (plus 1,185 s.f. garden and 601 s.f. roof)

\$150K

☎ 6838 2929 Mark Mak 麥先生

🌐 www.landscape.com/69629.htm

赤柱
葆琳居



12A South Bay Road, Repulse Bay

Fantastic sea view townhouse with private lift and swimming pool

淺水灣海景洋房，連私家升降機及泳池

4,603 s.f.

\$168K

☎ 6655 4488 William Tam 談先生

🌐 www.landscape.com/16296.htm

淺水灣
南灣道12號



Villa Rosa

88 Red Hill Road, Tai Tam

High privacy garden house overlooking Stanley Bay

大潭花園大屋，私隱度高，俯瞰赤柱海景

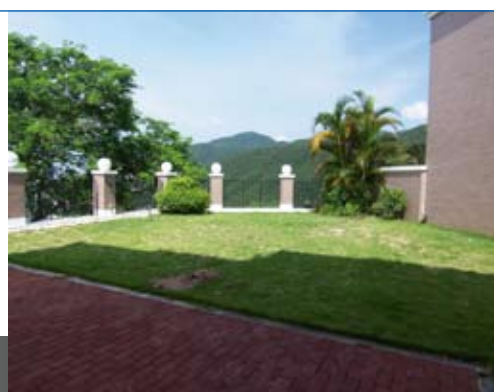
3,960 s.f. (plus 2,234 s.f. garden and 480 s.f. roof)

\$200K incl.

☎ 9833 9509 Michelle Chung 鍾小姐

🌐 www.landscape.com/1782.htm

大潭
玫瑰園



Le Palais

8 Pak Pat Shan Road, Tai Tam

Townhouse with garden overlooking stunning sea view

大潭花園洋房，俯瞰遼闊海景

3,348 s.f. (plus 740 s.f. garden)

\$210K incl.

☎ 9028 0147 Jenson Au 區先生

🌐 www.landscape.com/6896.htm

大潭
皇府灣





Regalia Bay

88 Wong Ma Kok Road, Stanley
5-bedroom townhouse with clubhouse facilities enjoy sea view
赤柱五房排屋，連住客會所設施，尊享海景，可租可售

4,881 s.f. (plus 1,421 s.f. roof and 931 s.f. garden)

\$210K incl. also for sale \$115M

☎ 9088 4666 Yvonne Chang 鄭小姐

🌐 www.landscape.com/122801.htm

赤柱
富豪海灣



Strawberry Hill

8 Plunkett's Road, The Peak
Colonial townhouse with private garden
山頂英式洋房出租，連私家花園

3,000 s.f. (plus 1,623 s.f. garden)

\$220K

☎ 9551 1077 Walker Lam 林先生

🌐 www.landscape.com/48206.htm

山頂
紅莓閣



Stanley Breeze

12-12A Stanley Beach Road, Stanley

Sea view garden townhouse with private swimming pool on Stanley Main Beach
赤柱花園洋房，尊享海景，連私家泳池，鄰近赤柱大灘

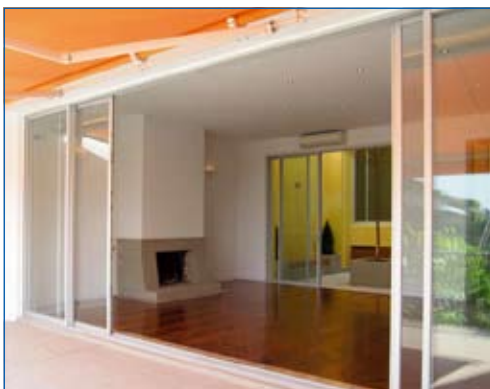
3,128 s.f. (plus 1,361 s.f. terrace, 811 s.f. roof and 383 s.f. garden)

\$230K incl.

☎ 9486 1566 Mira To 杜小姐

🌐 www.landscape.com/134827.htm

赤柱
環海崇樓



Turtle Cove

60 Tai Tam Road, Tai Tam

Nicely decorated waterfront house in Tai Tam
大潭雅致裝修海濱大屋，可租可售

4,300 s.f. (plus 453 s.f. terrace and 259 s.f. roof)

\$250K incl. also for sale \$168M

☎ 9138 1621 Teresa Fung 馮小姐

🌐 www.landscape.com/12763.htm

大潭
龜背灣



12-16 Tai Tam Road, Tai Tam

Exclusive waterfront house with private swimming pool
獨特海濱洋房，連私家泳池，可租可售

5,234 s.f. (plus 2,652 s.f. garden, 939 s.f. roof and 767 s.f. terrace)

\$300K also for sale \$220M

☎ 9093 3381 Stephen Chan 陳先生

🌐 www.landscape.com/120240.htm

大潭
大潭道12-16號





Aqua 33

33 Consort Rise, Pokfulam
Brand new apartment in quiet location
薄扶林全新住宅，環境寧靜，可租可售

1,434 s.f.
\$15M also for lease \$42K incl.

☎ 9809 8570 Stella Lo 羅小姐
🌐 www.landscape.com/111767.htm

薄扶林 金葉街 33號



Regent Palisades

43 Bisney Road, Pokfulam
Newly renovated low-rise flat with huge private roof terrace in quiet neighbourhood
全新裝修低密度住宅，連大天台，環境清幽怡人

1,513 s.f. (plus 905 s.f. roof)
\$18.5M

☎ 5182 8699 Maria Cheung 張小姐
🌐 www.landscape.com/109888.htm

薄扶林 帝柏園



18-24 Bisney Road, Pokfulam
Low-rise unit with private roof for sale in Pokfulam
薄扶林低密度住宅，連內置私家天台出售

1,500 s.f. (plus 1,500 s.f. roof)
\$19.8M

☎ 9648 6082 Christine Chong 莊小姐
🌐 www.landscape.com/83518.htm

薄扶林 碧翠庭道 18-24號



South Bay Towers

59 South Bay Road, Repulse Bay
Sea view high-floor boutique 2-bedroom apartment with facilities
高層精緻兩房單位，尊享海景，連住客會所設施

1,433 s.f.
\$20M

☎ 6330 7888 Cora Ko 高小姐
🌐 www.landscape.com/16275.htm

淺水灣 南灣大廈



La Mer

67-71 Bisney Road, Pokfulam
Full sea view 3-bedroom plus study room low-rise apartment with twin carparks
全海景三房連書房低密度住宅，連雙車位

2,063 s.f.
\$26M

Sole Agent 獨家代理

☎ 9088 4666 Yvonne Chang 鄭小姐
🌐 www.landscape.com/108873.htm

薄扶林 浪頤居



Hillgrove

18 Cape Drive, Chung Hok Kok
Low-rise apartment with 2 car parks
春坎角低密度住宅，連兩個車位，可租可售

2,200 s.f.
\$33M also for lease \$85K incl.

☎ 9093 3381 Stephen Chan 陳先生
🌐 www.landscape.com/108468.htm

春坎角 壁如花園



Country Villa

4 Shouson Hill Road, Shouson Hill
Well appointed 3-bedroom apartment at tranquil Shouson Hill
壽臣山優質三房單位，環境寧靜，可租可售

1,580 s.f.
\$40M also for lease \$60K incl.

☎ 9093 3381 Stephen Chan 陳先生
🌐 www.landscape.com/125425.htm

壽臣山 翠谷別墅



Hong Kong Parkview - Tower 18

88 Tai Tam Reservoir Road, Repulse Bay
Newly decorated 4-bedroom flat with estate shuttle bus to Central
全新裝修四房住宅，設有接駁巴士往中環，十分方便

2,708 s.f.
\$45M

☎ 6330 7888 Cora Ko 高小姐
🌐 www.landscape.com/28248.htm

淺水灣 陽明山莊 18座



Ridge Court

21A-21D Repulse Bay Road, Repulse Bay
3-bedroom hillside apartment with breath-taking view of Deep Water Bay
淺水灣三房住宅，享寧靜的深水灣景色

2,300 s.f.
\$48M

☎ 6330 7888 Cora Ko 高小姐
🌐 www.landscape.com/33542.htm

淺水灣 冠園



Faber Villa

17 Tai Tam Road, Tai Tam
Rare find high privacy sea view flat at Tai Tam waterfront
高私隱海景住宅，位於大潭海濱，市場罕有

3,200 s.f.
\$53M

☎ 9138 1621 Teresa Fung 馮小姐
🌐 www.landscape.com/107946.htm

大潭 輝百苑



Regalia Bay

88 Wong Ma Kok Road, Stanley
Luxurious 5-bedroom townhouse with roof and garden enjoy sea view
豪華五房海景排屋，連天台花園

4,105 s.f. (plus 1,167 s.f. roof and 799 s.f. garden)

\$70M

☎ 6838 2929 Mark Mak 麥先生
🌐 www.landscape.com/31940.htm

赤柱
富豪海灣



Bluewater

25 Tai Tam Road, Tai Tam
Deluxe sea view 4-bedroom apartment at Tai Tam waterfront
豪華海景四房住宅，位於大潭海濱，可租可售

2,500 s.f.

\$70M also for lease \$115K incl.

☎ 9648 6082 Christine Chong 莊小姐
🌐 www.landscape.com/13138.htm

大潭
大潭道109號



Regalia Bay

88 Wong Ma Kok Road, Stanley
5-bedroom townhouse with roof in tranquil enclave
赤柱五房上行排屋，連天台，環境優美怡人

4,212 s.f. (plus 817 s.f. roof and 618 s.f. garden)

\$72M

☎ 9238 2012 David Chan 陳先生
🌐 www.landscape.com/107817.htm

赤柱
富豪海灣



Stanley Beach Road, Stanley

Tastefully decorated 4-bedroom low-rise apartment close to Stanley Beach
品味靚裝修四房低密度住宅，鄰近赤柱海灘

3,300 s.f.

\$73M

☎ 9088 4666 Yvonne Chang 鄭小姐
🌐 www.landscape.com/13862.htm

赤柱
赤柱灘道



La Hacienda - Apartment

29-33 Mount Kellett Road, The Peak
Colonial style apartment with facilities in The Peak
山頂英式住宅，連完善住客會所設施，可租可售

3,506 s.f.

\$90M also for lease \$140K

☎ 9080 6686 Teresa Lau 劉小姐
🌐 www.landscape.com/30905.htm

山頂
加列山道29-33號



Repulse Bay Towers

119A Repulse Bay Road, Repulse Bay
5-ensuites large duplex with Repulse Bay view
特大五套房豪華住宅，享淺水灣迷人景致

5,000 s.f.

\$92M

☎ 5182 8699 Maria Cheung 張小姐
🌐 www.landscape.com/79080.htm

淺水灣
保華大廈



Tai Tam Contemporary Townhouse

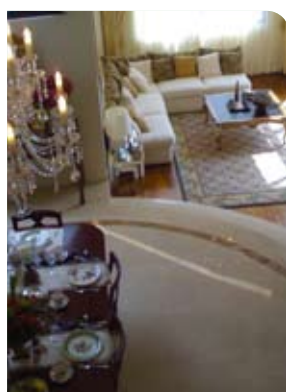
Contemporary waterfront townhouse with designer's decor and garden terrace
豪華海濱洋房，連設計師品味裝修及花園平台

3,026 s.f. (plus 2,617 s.f. garden, 127 s.f. roof and 451 s.f. carport)

\$102M

☎ 9871 6828 Louis Wong 黃先生
🌐 www.landscape.com/107218.htm

大潭
豪華洋房



Bellevue Place

93 Repulse Bay Road, Repulse Bay
High quality sea view townhouse with private garage
雅致海景排屋，連私家車庫

3,619 s.f.

(plus 747 s.f. roof, 171 s.f. terrace)

\$115M

☎ 9138 1621 Teresa Fung 馮小姐
🌐 www.landscape.com/84590.htm

淺水灣
寶晶苑



Sunshine Villa

48 Mount Kellett Road, The Peak
4-bedroom townhouse with garden and roof enjoy peaceful sea view
山頂四房排屋，連花園及天台，享寧靜海景

3,500 s.f. (plus 1,323 s.f. garden, 756 s.f. roof and 178 s.f. terrace)

\$128M

☎ 9551 1077 Walker Lam 林先生
🌐 www.landscape.com/25857.htm

山頂
陽光花園



Manderly Garden

48 Deep Water Bay Road, Deep Water Bay
Designer decorated townhouse in Deep Water Bay
深水灣靚裝修排屋

3,610 s.f. (plus 587 s.f. roof)

\$150M

☎ 9833 9509 Michelle Chung 鍾小姐
🌐 www.landscape.com/6527.htm

深水灣
文禮苑



Tai Tam Road, Tai Tam
Magnificent waterfront dream house with private pool taking in Tai Tam sea view
尊貴海濱渡假式大屋，連私家泳池，欣賞大潭海景

大潭
大潭道

5,474 s.f. (plus 945 s.f. garden and 712 s.f. roof)
\$250M

☎ 9871 6828 Louis Wong 黃先生
🌐 www.landscape.com/34709.htm



Kellett View Town House
65-69 Mount Kellett Road,
The Peak

山頂
嘉麗園

Tastefully renovated 4-bedroom townhouse on the Peak with sea view
山頂四房海景排屋，尊享雅致靚裝修

3,986 s.f. (plus 1,205 s.f. terrace)
\$250M

☎ 6183 8388 Chris Law 羅先生
🌐 www.landscape.com/136180.htm



Peak Road, The Peak
Rare detached townhouse with private swimming pool and huge garden
山頂罕有獨立大屋，連私家泳池及大花園

山頂
山頂道

4,250 s.f. (plus 2,087 s.f. garden, 673 s.f. terrace and 376 s.f. roof)
\$280M

☎ 5182 8699 Maria Cheung 張小姐
🌐 www.landscape.com/79080.htm



Island Grove
40 Island Road, Deep Water Bay
Designer decorated waterfront townhouse at prestigious address
設計師精心設計海濱洋房，地段尊貴，可租可售

深水灣
香港島道40號

5,080 s.f. (plus 423 s.f. garden)
\$330M also for lease \$390K incl.

☎ 9871 6828 Louis Wong 黃先生
🌐 www.landscape.com/121888.htm

安居樂業 Everyday getaway

Regalia Bay 赤柱 富豪海灣
88 Wong Ma Kok Road, Stanley

9,916 s.f. (plus 3,215 s.f. roof and 3,789 s.f. garden)
HK\$500M

This 9,916 sq-ft detached house instantly removes you from the hustle and bustle that Hong Kong is known for. The spacious abode has five bedrooms (five ensuites), a 3,789 s.f. garden, a 3,215 s.f. roof, a 785 s.f. garage and its own private lift for easy access to all three floors.

Upon entrance, guests can store their coats in the room to the left. The massive kitchen on the other side is equipped with Gaggenau appliances and ample storage space. A separate room with gas stoves allows heavy duty cooks to deep fry without the fumes spreading elsewhere. On the same floor, the living and dining rooms are elegantly decorated in cream tones and enjoy unobstructed views of Stanley Bay and the South China Sea.

All the bedrooms are located on the lower floors. The large master bedroom includes a separate walk-in closet and study area. With views of the garden, the family room with mini dining area on the lower floor are ideal for intimate gatherings, while on a clear day, gatherings can also be held outside in the garden or the barbecue-equipped rooftop.

Part of a large townhouse development in Island South and located at the coastal area of Wong Ma Kok Road, Regalia Bay is short drive to Stanley Market and just 30 minutes to Central. With exceptional security and recreational facilities such as shuttle bus services, a gym and outdoor swimming pool, it is a peaceful residence offering far more than just basic luxuries.



這間相連獨立屋面積達9,916平方呎，周遭環境恬靜怡人，旋即讓人遠離香港繁囂的都市生活。偌大寬敞間格，設五間套房，擁有3,789平方呎的花園，3,215平方呎的天台和785平方呎車房，更有私人升降機直達所有三個樓層。

甫路進住宅，客人可把外套放於左邊的衣帽間。另一邊的寬敞廚房貯物空間充足，配有Gaggenau電器。廚房另設獨立房間擺放煮食爐，讓大廚放心煎炸食物，無懼油煙飄散四周。同層還有客廳與飯廳，一室優雅時尚的米黃色調，盡享一望無際的海景，眺望赤柱灣與南中國海。

所有睡房都設於下方的樓層。寬敞的主人房設有獨立衣帽間及書房。下層的家庭室附設小型飯廳可享有花園美景，最適合親友聚會。倘若天氣好，更可於室外的花園或設有燒烤爐的天台來個聚會。

這個屬於港島南區大型別墅式發展項目，「富豪海灣」位於黃麻角道的臨海地段，駕車一會便到赤柱市集，去中環亦只需30分鐘車程，相當便利。「富豪海灣」的保安嚴密，設住客專車服務，健身室和室外游泳池等娛樂設施，既寧靜怡人，又奢華尊貴無比。

☎ 5182 8699 Maria Cheung 張小姐
🌐 www.landscape.com/126208.htm



名貴真絲手織地毯，傳統波斯圖案手織地毯，純羊毛手織地毯，
歐洲頂級機織地毯及澳洲頂級純羊皮地毯。

承接各類高級地毯鋪設工程，服務大眾三十年，品質保證最好。

We offer the best quality of Hand-Knotted Silk, Woolen, Wool-Silk mixed and super fine Persian Silk Rugs.

Top quality European machine-made Contemporary Rugs and Australian Sheepskin Rugs.

Acceptance of high quality wall to wall carpets with installation.

Serving Hong Kong over 30 years, quality and service guarantee.

www.cccrugs.com.hk

e-mail: rugs@biznetvigator.com



九龍尖沙咀東麼地道63號好時中心5號地下及一樓 (香格里拉酒店對面)

Shop #5, G & 1/F, Houston Centre, 63 Mody Road, T.S.T. East (facing Shangri-la Hotel) 電話(Tel): 2730 7230



Realty Garden

41 Conduit Road, Midlevels West
Well kept practical 2-bedroom apartment with lush green view
西半山兩房單位，間隔實用，享翠綠景觀

西
半
山
聯
邦
花
園

1,350 s.f.
\$21M

9486 1566 Mira To 杜小姐
www.landscape.com/71620.htm



Conduit Tower

20 Conduit Road, Midlevels West
Nicely renovated 2 ensuite duplex apartment with internal staircase to the private roof terrace
雅緻裝修兩套房複式單位，連內置樓梯往私家天台

西
半
山
君
德
閣

1,360 s.f. (plus 420 s.f. roof and 80 s.f. terrace)
\$26M

6183 8388 Chris Law 羅先生
www.landscape.com/124312.htm



Skyline Mansion

51 Conduit Road, Midlevels West
Penthouse with well decorated and private stylish roof top
雅緻裝修頂層住宅，連私家天台

西
半
山
年
豐
園

1,543 s.f. (plus 1,402 s.f. roof)
\$26.8M

9648 6082 Christine Chong 莊小姐
www.landscape.com/28477.htm



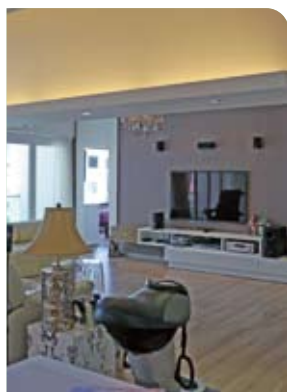
Glenealy Tower

1 Glenealy, Central
Stylish renovated spacious 2-bedroom flat in Central with greenery and city view
中環時尚裝修兩房住宅，間隔寬敞，享翠綠景色及城市景觀，可租可售

中
環
華
昌
大
廈

2,000 s.f.
\$28M also for lease \$85K incl.

9229 2396 Elaine Chow 周小姐
www.landscape.com/152955.htm



King's Garden

66 Conduit Road, Midlevels West
Spacious 5-bedroom apartment on Conduit Road
千德道五房單位，間隔寬敞

西
半
山
健
園

2,480 s.f.
\$30M

9486 1566 Mira To 杜小姐
www.landscape.com/72798.htm



Glory Mansion

106-108 MacDonnell Road, Midlevels Central
Tastefully designed colonial apartment on convenient MacDonnell Road
麥當勞道品味裝修英式住宅，位置優越，交通方便

中
半
山
輝
煌
大
廈

2,300 s.f.
\$30.5M

9348 4118 Rowena Siu 蕭小姐
www.landscape.com/107872.htm



Fairlane Tower

2B Bowen Road, Midlevels Central
Modern unit at Midlevels Central
中半山時尚單位出售

中
半
山
寶
雲
山
莊

1,700 s.f.
\$34.8M

9809 8570 Stella Lo 羅小姐
www.landscape.com/100687.htm



Medallion Heights

45 Conduit Road, Midlevels West
Tastefully decorated 3-bedroom penthouse with open green view in tranquil location
雅緻裝修三房單位頂層單位，享開揚翠綠景觀，環境清幽怡人

西
半
山
金
徽
閣

2,050 s.f. (plus 1,500 s.f. roof)
\$38M

9028 0147 Jenson Au 區先生
www.landscape.com/135947.htm



Elegant Garden

11 Conduit Road, Midlevels West
Newly renovated 3-ensuite flat next to Midlevels escalator
全新裝修三套房住宅，鄰近半山扶手電梯，可租可售

西
半
山
美
景
臺

2,500 s.f.
\$39.5M also for lease \$130K incl.

9486 1566 Mira To 杜小姐
www.landscape.com/94669.htm



Tregunter Tower 1

14 Tregunter Path, Midlevels Central
4-bedroom flat in convenient location
中半山四房住宅，位置優越，交通方便，可租可售

中
半
山
地
利
根
德
閣
之
座

3,052 s.f.
\$40M also for lease \$90K incl.

9486 1566 Mira To 杜小姐
www.landscape.com/84922.htm



Haddon Court
41C Conduit Road, Midlevels West
Spacious 4-bedroom apartment in convenient yet quiet location
寬敞四房單位，位置優越寧靜

西半山
海天閣

2,850 s.f.
\$43M

☎ 9229 2396 Elaine Chow 周小姐 可普通話
🌐 www.landscape.com/9831.htm



Clovelly Court
12 May Road, Midlevels Central
Spacious 3-bedroom apartment with full facilities
中半山寬敞三房住宅，連完善住客會所設施

中半山
嘉富麗苑

2,115 s.f.
\$48M

☎ 6183 8339 Carman Szeto 司徒小姐 可普通話
🌐 www.landscape.com/135022.htm



Century Tower 1
1 Tregunter Path, Midlevels Central
Designer flat in prime location of Midlevels
設計師精心設計靚裝修單位，位於中半山，地段尊貴

中半山
世紀大廈二座

2,565 s.f.
\$48.2M

☎ 9028 0147 Jenson Au 區先生 可普通話
🌐 www.landscape.com/135573.htm



Chung Tak Mansion
2 Magazine Gap Road, Midlevels Central
Spacious apartment with brand new decoration and harbour view
間隔寬敞單位，兼享全新裝修及維港景

中半山
重德大廈

2,864 s.f.
\$75M

☎ 9080 6686 Teresa Lau 劉小姐 可普通話
🌐 www.landscape.com/35231.htm



安居快活谷 Chez Happy Valley

Green View Mansion 翠景樓
55-57 Wong Nai Chung Road, Happy Valley
跑馬地黃泥涌道55-57號

1,200 s.f. (plus approx. 700 s.f. roof)
HK\$20M also for lease \$60K incl.

Situated on Wong Nai Chung Road in Happy Valley, this chic one-bedroom penthouse meets both functional and aesthetic needs.

Extending 1,200 sq-ft with a 700 sq-ft rooftop, the apartment has a spacious layout with unobstructed views of Happy Valley Racecourse from the combined living and dining room, master bedroom, and roof.

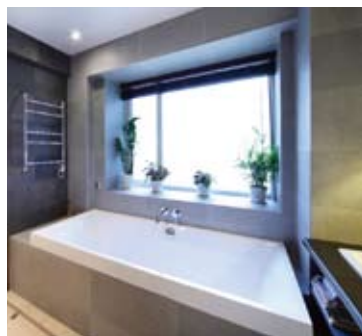
Green View Mansion is in a convenient location that is easily accessible by bus, minibus and tram. The Aberdeen Tunnel and Cross Harbour Tunnel are a five-minute drive away.

位於跑馬地黃泥涌道，這間頂層連天台一房單位時尚別緻，可謂集實用與美觀於一身。

面積達1,200平方呎，外加700平方呎天台，是個極為寬敞舒適的單位。坐擁無遮擋的跑馬地馬場遼闊景緻，不論從客廳、主人房和天台都可盡情欣賞怡人翠綠美景。

開放式廚房設備齊全，大冰箱、酒櫃、烤箱，還有一間傭人房。烹調時，客人可以隨意坐在吧。佈局很適合開派對的寬敞天台有餐桌和坐椅，可共邀好友於賽馬日一邊欣賞賽事，一邊對酒當歌，誠人生一樂也！

翠景樓交通方便，巴士、小巴和電車均可抵達，只需5分鐘車程便抵香港仔隧道和海底隧道。



☎ 9348 4118 Rowena Siu 蕭小姐
🌐 www.landscape.com/104596.htm



Village Tower

7 Village Road, Happy Valley
Cozy 3-bedroom apartment for sale with tenancy in Happy Valley
跑馬地迷人三房單位，連約售，投資首選

跑馬地山村大廈

1,050 s.f.
\$11M

☎ 9551 1077 Walker Lam 林先生 可普通話
🌐 www.landscape.com/128516.htm



Shan Kwong Towers

22-24 Shan Kwong Road, Happy Valley
Nicely decorated 2-bedroom apartment with balcony enjoying open view
雅致裝修兩房單位，連陽臺，享開揚景觀

跑馬地山光苑

1,100 s.f.
\$12M

☎ 6655 4488 William Tam 談先生 可普通話
🌐 www.landscape.com/129673.htm



Blue Pool Mansion

1-3 Blue Pool Road, Happy Valley
Spacious 2-bedroom mid-rise apartment at Happy Valley
跑馬地中密度兩房單位，間隔寬敞，可租可售

跑馬地藍塘大廈

1,200 s.f. (plus 1,000 s.f. roof)
\$15.8M also for lease \$39K incl.

☎ 9648 6082 Christine Chong 莊小姐
🌐 www.landscape.com/102722.htm



Beverly Hill

6 Broadwood Road, Happy Valley
Sought after racecourse view apartment for sale with tenancy
罕有馬場景住宅，連約售，投資首選

跑馬地比華利山

1,378 s.f.
\$20M

☎ 9809 8570 Stella Lo 羅小姐
🌐 www.landscape.com/24577.htm



The Legend

23 Tai Hang Drive, Midlevels East
Luxurious 4-bedroom apartment in conveniently location
東半山豪華四房單位，位置優越

東半山名門

2,048 s.f.
\$29M

☎ 6330 7888 Cora Ko 高小姐
🌐 www.landscape.com/42678.htm



9 Broom Road, Happy Valley

Renovated in modern contemporary style low-rise apartment with 1 car park
新裝修時尚設計低密度住宅，連一個車位

跑馬地蟻龍道9號

2,000 s.f.
\$33.8M

☎ 9229 2396 Elaine Chow 周小姐 可普通話
🌐 www.landscape.com/136247.htm



Cavendish Heights

27-37 Perkins Road, Jardine's Lookout
Well decorated flat in family-oriented estate with swimming pool and tennis courts
雅致裝修家庭式住宅，連泳池及網球場

渣甸山嘉雲臺

1,907 s.f.
\$35M

☎ 9028 0147 Jenson Au 區先生 可普通話
🌐 www.landscape.com/31208.htm



Summit Court

144-158 Tin Hau Temple Road, North Point Midlevels
Rare find penthouse with internal staircase to private roof top
罕有頂層單位連內置樓梯往天台

北角半山雲峰大廈

1,850 s.f. (plus 1,000 s.f. roof)
\$36M

☎ 9229 2396 Elaine Chow 周小姐 可普通話
🌐 www.landscape.com/83368.htm



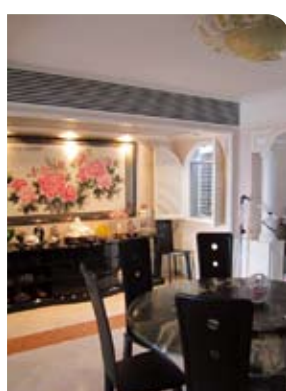
The Leighton Hill

2B Broadwood Road, Happy Valley
Well kept deluxe apartment with racecourse view
跑馬地豪華住宅，尊享馬場景

跑馬地禮頓山

1,618 s.f.
\$40.2M

☎ 9551 1077 Walker Lam 林先生 可普通話
🌐 www.landscape.com/124012.htm



Evergreen Villa

43 Stubbs Road, Midlevels East
Spacious apartment with huge balcony and beautiful racecourse view
東半山寬敞住宅，連大陽臺，尊享美麗馬場景色，可租可售

東半山松柏新村

2,560 s.f.
\$63M also for lease \$103K incl.

☎ 6330 7888 Cora Ko 高小姐
🌐 www.landscape.com/37692.htm



Our meticulously crafted Sports Cruisers and Motor Yachts range from 38 to 80 feet.
To discover the full Fairline story - and to view our new and pre-owned models - visit our website.

專注於打造38英尺至80英尺運動型快艇及豪華動力艇
欲探索更多菲爾蘭發展的故事、瞭解更多菲爾蘭全新的船型，請登錄官網



Fairline China: 16/F, East Ocean Centre, 618 Yan An Road East, Shanghai 200001

菲爾蘭中國：上海延安東路618號東海商業中心16樓 郵編：200001

Tel 電話: +86 21 2306 4748 Email 電郵: china@fairline.com

Fairline Hong Kong: Unit 5, G/F, Aberdeen Marina Tower, 8 Shum Wan Road, Aberdeen, Hong Kong

菲爾蘭香港：香港香港仔深灣道8號深灣遊艇俱樂部地下5室

Tel 電話: +852 3180 3189 Email 電郵: hongkong@fairline.com

Appointed Dealers in 特約代理:

China中國 Hong Kong香港 India印度 Indonesia印尼 Japan日本 Malaysia馬來西亞 New Zealand新西蘭 Philippines菲律賓
Queensland昆士蘭 Singapore新加坡 South Korea南韓 Thailand泰國 Victoria維多利亞州 Vietnam越南 Western Australia澳洲西部



FAIRLINE

www.fairline.com



The Brentwood

11 Repulse Bay Road, Repulse Bay
Boutique flat with magnificent view from top of Repulse Bay Road
淺水灣道頭段精緻特色單位，享遼闊美景

淺水灣
蔚峰園

1,556 s.f.
\$65K incl.

☎ 9551 1077 Walker Lam 林先生 可普通話
🌐 www.landscape.com/140435.htm



Barker Villa

41 Barker Road, The Peak
Nicely renovated apartment with full harbour view
雅致裝修單位，享全維港景，可租可售

山頂
柏架別墅

1,650 s.f.
\$70K incl. also for sale \$70M

☎ 5182 8699 Maria Cheung 張小姐
🌐 www.landscape.com/15818.htm



Cape Mansions

56-62 Mount Davis Road, Pokfulam
Colonial style 3-bedroom sea view flat with spacious and practical layout
英式三房海景住宅，間隔寬敞實用

薄扶林
翠海別墅

2,200 s.f.
\$78K incl.

☎ 9348 4118 Rowena Siu 蕭小姐
🌐 www.landscape.com/38908.htm



Villa Cecil Phase III

216 Victoria Road, Pokfulam
Brand new sea view low-rise with spacious private roof
全新海景低密度住宅，設有寬敞的私家天台

薄扶林
趙苑二期

2,562 s.f. (plus 1,833 s.f. roof)
\$80.7K

☎ 9088 4666 Yvonne Chang 鄭小姐
🌐 www.landscape.com/13862.htm



7 South Bay Close, Repulse Bay

Brand new apartment with facilities
淺水灣全新住宅，連住客會所設施

淺水灣
南灣坊7號

2,359 s.f.
\$81K

☎ 9080 6686 Teresa Lau 劉小姐 可普通話
🌐 www.landscape.com/133344.htm



63-65 Bisney Road, Pokfulam

Practical 4-bedroom low-rise apartment in quiet location with sea view
實用四房低密度住宅，環境優美寧靜，欣賞海景，可租可售

薄扶林
碧荔道63-65號

2,400 s.f.
\$85k incl. also for sale \$50M

☎ 6838 2929 Mark Mak 麥先生
🌐 www.landscape.com/11631.htm



Stewart Terrace

81-95 Peak Road, The Peak
Spacious 4-bedroom apartment at The Peak
山頂寬敞四房單位出租

山頂
史釗域臺

3,077 s.f.
\$85K

☎ 9093 3381 Stephen Chan 陳先生
🌐 www.landscape.com/95.htm



Magazine Heights

17 Magazine Gap Road, The Peak
Victoria Harbour view 4-bedroom apartment close to CBD
山頂維港景四房單位，鄰近中環，交通方便

山頂
馬己仙大廈

2,500 s.f.
\$86K incl.

☎ 6183 8339 Carman Szeto 司徒小姐 可普通話
🌐 www.landscape.com/9173.htm



Repulse Bay Villas

74-80 Repulse Bay Road, Repulse Bay
Quiet low-rise flat with large balcony
寧靜舒適低密度住宅，連大陽臺

淺水灣
淺水灣道74-80號

2,040 s.f.
\$90K incl.

☎ 9809 8570 Stella Lo 羅小姐
🌐 www.landscape.com/12648.htm



Scenic Villas

2-28 Scenic Villa Drive, Pokfulam
Spacious 4-bedroom sea view apartment with balcony and facilities
四房海景住宅，連陽臺及住客設施，間隔寬敞

薄扶林
美景臺

2,517 s.f.
\$90K

☎ 9348 4118 Rowena Siu 蕭小姐
🌐 www.landscape.com/49874.htm



Alexis Lee

Joseph is friendly, honest, reliable, organized, and very meticulous in his work. I can't say enough good things about all the work he did to make my place gorgeous & very functional.

Old Peak road -the boundless en-suite



Sherrie Harps

Joseph is a problem-solver, talented designer, sophisticated and.....now my very good friend, I could not praise him and his firm enough

Repulse Bay -classical contemporary



Richard J. Brink

Throughout the project, Joseph was personally involved, assuring the quality of the work and the project's adherence to the budget and schedule. The project was completed on time and within budget, and we now have a beautiful new home, as well as a new friend, Joseph!

Capital Garden -minimal maximized flexibility



Mei Ling

Thank you so much for designing our new dreamy house. We absolutely love it! I just keep going upstairs and looking at it. It looks like a place out of a magazine. Fantastic Job! You matched the house to our personalities perfectly. Thanks again!

Red Hill Peninsula -accentuated coziness



Sean Holdren

We really appreciated the way Joseph worked with us in coming up with great ideas by taking our rudimentary ideas and developing them into amazing designs.

Park Place -interior & exterior connection

Interior design
constructions
space planning
project management
tendering
landscaping
quantity survey

**"you never own ya premises,
you merely live there unless
ya character implanted"**

-joseph chang-



Monte Verde

41 Repulse Bay Road, Repulse Bay
4-bedroom apartment overlooking
southside sea view
淺水灣四房住宅，俯瞰南區海景

淺水灣
南山別墅

2,400 s.f.
\$98K incl.

9493 8275 Sami Woo 胡小姐
www.landscape.com/8021.htm



Repulse Bay Garden

18-40 Bellevue Drive, Repulse Bay
Practical 4-bedroom sea view apartment
at Repulse Bay
淺水灣實用四房海景住宅

淺水灣
麗景園

2,810 s.f.
\$100K incl.

9648 6082 Christine Chong 莊小姐
www.landscape.com/5595.htm



Repulse Bay Towers

119A Repulse Bay Road,
Repulse Bay
Renowned 4-bedroom duplex with view
of Repulse Bay Beach
新裝修四房複式單位，享淺水灣海灘美景，
可租可售

淺水灣
保華大廈

3,100 s.f.
\$100K incl. also for sale \$68M

9809 8570 Stella Lo 羅小姐
www.landscape.com/4270.htm



14 Stanley Beach Road, Stanley

Seaside low-rise with private roof in
tranquil neighbourhood
海邊低密度住宅，連私家天台，環境寧靜怡人

赤柱
赤柱灘道14號

2,320 s.f. (plus 2,000 s.f. roof)
\$105K

9833 9509 Michelle Chung 鍾小姐
www.landscape.com/9473.htm



Villa Verde

4-18 Guildford Road, The Peak
High efficiency 3-bedroom apartment in
Lower Peak
山頂三房住宅，廚廁新裝，實用率高

山頂
環翠園

2,520 s.f.
\$108K incl.

9348 4118 Rowena Siu 蕭小姐
www.landscape.com/4433.htm



29-31 Bisney Road, Pokfulam

Low-rise flat with private garden in
tranquil area
低密度住宅，連私家花園，環境清幽寧靜

薄扶林
碧荔道29-31號

2,500 s.f. (plus 578 s.f. terrace)
\$115K incl.

9551 1077 Walker Lam 林先生
www.landscape.com/51254.htm



Mount Davis Road, Pokfulam

Modern 4-bedroom apartment with
balcony taking in stunning vista of
Lamma Channel
時尚四房單位，連陽臺，享遼闊景觀

薄扶林
摩星嶺道

2,409 s.f.
\$118K

6183 8339 Carman Szeto 司徒小姐
www.landscape.com/127373.htm



Mountain Lodge

44 Mount Kelleff Road, The Peak
Spacious 4-bedroom apartment with
sea view
間隔寬敞四房單位，欣賞美麗海景

山頂
嵐廬

2,600 s.f.
\$120K incl.

6838 2929 Mark Mak 麥先生
www.landscape.com/11692.htm



Fortuna Court

25 Repulse Bay Road, Repulse Bay
Spacious 4-bedroom hill top flat with
breath-taking sea view
淺水灣四房住宅，欣賞寧靜海景

淺水灣
福慧大廈

3,012 s.f.
\$123K

6330 7888 Cora Ko 高小姐
www.landscape.com/172.htm



The Mount Austin

8 Mount Austin Road, The Peak
Deluxe duplex apartment with luxurious
clubhouse facilities
尊貴複式住宅，尊享豪華完善住客會所設施

山頂
柯士甸山道8號

2,661 s.f.
\$135K

9138 1621 Teresa Fung 馮小姐
www.landscape.com/27906.htm



As Shanghai's design scene continues to evolve, the fifth edition of Interior Lifestyle China — a trade fair now infused with creativity and an artistic sensibility — is taken to another level

第五屆上海時尚家居展集創意與藝術於一身，在各方面都比往年更上一層樓，是上海設計界演變不斷的成果

Text: Mavis Wong

Photography: Courtesy of Featured Exhibitors and Konstantin Grcic Industrial Design

At the 1950s Russian classicism-styled Shanghai Exhibition Centre, this year's Interior Lifestyle China was yet another huge success. Not only did it see 225 exhibitors from 17 countries and regions showcasing a wide range of innovative products — from tableware and cookware to lifestyle products, home accessories and furniture — on 16,000 sq-m of exhibition space, it also attracted over 14,500 visitors worldwide, up 16 per cent from the previous year. Special country and region pavilions — Germany, France, Italy, Japan, Hong Kong and Taiwan — presented their latest products and designs there.

What's more, a series of designer-led programmes made design a focal point of the annual fair. In addition to the On Design Forum and the Talents showcase, a number of theme displays were also featured, including the 'China Love' porcelain showcase and the Miji Art Kitchen. Among them, Shine Shanghai 3 was surely a highlight. Visitors were invited to walk through a dark tunnel lined with sparkling glass objects, created by a group of Shanghai's top designers to interpret the theme 'True Lies'.



上海展覽中心為50年代的俄羅斯古典主義風格建築，今年這裡又上演了一場好戲，中國（上海）國際時尚家居用品展覽會2011再次獲得空前成功。展覽吸引了來自17個國家和地區的225個參展商參展，面積達1萬6000平方米的展場琳瑯滿目，創新產品從餐具和廚具、到時尚生活產品、家品和傢俱都一應俱全。入場人數較去年上升一成六，共有逾1萬4500名來自世界各地的人士到來參觀。今年多個國家與城市亦有組團參展，帶來它們最新的產品和設計，包括德國、法國、意大利、日本、香港和台灣。

更吸引人的，是一連串由設計師主導的節目使設計成為上海時尚家居展的矚目焦點。除了「設計風尚大講壇」和「設計新星」展區外，還特設一系列的主題展覽，包括「戀瓷」陶瓷專題展和「米技藝術廚房」。而當中的焦點之一，便是「晒上海叁」概念設計展。訪客遊走於黑暗的隧道之中，從沿途由上海頂尖設計師創造的水晶品中，感受「真實的謊言」主題。



For more features on design and architecture, don't miss the December issue of Perspective magazine, and check out our website at www.perspectiveglobal.com
請密切留意《透視》十二月號更多有關建築與設計的專題報導，或登入 www.perspectiveglobal.com 參閱精彩內容。



Belgravia

57 South Bay Road, Repulse Bay
High quality apartment with stunning sea view
淺水灣優質住宅，享遠闊海景

淺水灣
南灣道57號

2,390 s.f.
\$140K incl.

9028 0147 Jenson Au 區先生
www.landscape.com/118552.htm

可普通話



Mountain Court

11 Plantation Road, The Peak
Modern apartment with a postcard view of Victoria Harbour
山頂時尚住宅，享維港如畫美景

山頂
山景大廈

2,171 s.f.
\$155K

9238 2012 David Chan 陳先生
www.landscape.com/18976.htm



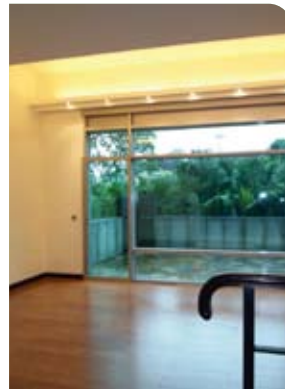
Casa Del Sol

33 Ching Sau Lane, Chung Hom Kok
Spanish style 5-bedroom townhouse with garden in serene neighbourhood
西班牙式五房排屋，連花園，環境寧靜優美怡人

春坎角
昭陽花園

3,155 s.f. (plus 1,207 s.f. garden)
\$160K

9088 4666 Yvonne Chang 鄭小姐
www.landscape.com/5728.htm



The Zenith

11A Shouson Hill Road West, Shouson Hill
Modern townhouse with roof and garden terrace at tranquil Shouson Hill area
時尚設計洋房，連天台及花園平台，位於壽臣山，優美寧靜

壽臣山
山景

3,692 s.f. (plus 372 s.f. terrace, 307 s.f. garden and 286 s.f. roof)
\$168K

9138 1621 Teresa Fung 馮小姐
www.landscape.com/50355.htm



Helene Court

14 Shouson Hill Road, Shouson Hill
Garden townhouse with practical layout in serene location
壽臣山花園洋房，間隔實用，環境清幽怡人

壽臣山
喜蓮閣

3,113 s.f. (plus 1,011 s.f. garden and 553 s.f. roof)
\$170K

9238 2012 David Chan 陳先生
www.landscape.com/17607.htm



11 Coombe Road, The Peak

Huge 4-bedroom apartment nestled in sought after neighbourhood
特大四房單位，環境優美，市面難尋

山頂
甘道11號

3,830 s.f.
\$178K

5182 8699 Maria Cheung 張小姐
www.landscape.com/102084.htm



Felix Villas

61 Mount Davis Road, Pokfulam
Stylish colonial 4-bedroom high ceiling townhouse with big balcony in Pokfulam
薄扶林時尚英式四房排屋，連大陽臺，超高樓底

薄扶林
福和別墅

5,000 s.f. (plus 750 s.f. garden)
\$180K incl.

9648 6082 Christine Chong 莊小姐
www.landscape.com/130604.htm



5 Headland Road, Repulse Bay

Unique 4-bedroom low-rise flat with private garden on tranquil Headland Road
別致四房低密度住宅，連私家花園，位於赫蘭道，清幽怡人

淺水灣
赫蘭道5號

3,200 s.f. (plus 2,040 s.f. garden)
\$190K incl.

6838 2929 Mark Mak 麥先生
www.landscape.com/36935.htm



Orient Crest

76 Peak Road, The Peak
Peak townhouse with 4 bedrooms in tranquil neighbourhood
山頂四房排屋，地段尊貴

山頂
山頂道76號

3,300 s.f.
\$195K incl.

6183 8388 Chris Law 羅先生
www.landscape.com/7735.htm



12 Shouson Hill Road, Shouson Hill

Large 5-bedroom garden house in quiet enclave
特大五房花園大屋，位於壽臣山，環境舒適

壽臣山
壽山村道12號

3,746 s.f. (plus 374 s.f. garden)
\$200K

9088 4666 Yvonne Chang 鄭小姐
www.landscape.com/11896.htm



56 Repulse Bay Road, Repulse Bay
4-bedroom waterfront duplex with facilities overlooking Repulse Bay Beach
四房海濱複式住宅，連住客會所設施，俯瞰淺水灣海灘景色

淺水灣 淺水灣道56號

3,964 s.f. (plus 277 s.f. terrace)
\$220K incl.

9551 1077 Walker Lam 林先生
www.landscape.com/46233.htm

可普通話



Magnolia
29-31 Ching Sau Lane, Chung Hom Kok
Newly decorated townhouse with private pool
全新裝修大屋，連私家泳池

春坎角 靜修里29-31號

4,200 s.f.
\$250K incl.

9088 4666 Yvonne Chang 鄭小姐
www.landscape.com/124010.htm



74 Mount Kellett Road, The Peak
Prestigious Peak townhouse overlook mountain view for rent
豪華山頂洋房出租，俯瞰翠綠山景

山頂 加列山道74號

4,600 s.f. (plus 400 s.f. garden)
\$280K incl.

6655 4488 William Tam 談先生
www.landscape.com/11704.htm

可普通話



Three Bays
7 Stanley Beach Road, Stanley
Sea view townhouse with practical layout in serene neighbourhood
赤柱海景排屋，間隔實用，環境寧靜

赤柱 赤柱灘道7號

3,870 s.f. (plus 977 s.f. garden, 611 s.f. roof and 508 s.f. terrace)
\$320K incl.

9138 1621 Teresa Fung 馮小姐
www.landscape.com/33109.htm



Island View
2 Island Road, Deep Water Bay
Sought after townhouse with unobstructed sea view at Deep Water Bay waterfront
深水灣海濱大屋，尊享一望無際海景，市場罕有

深水灣 香港島道2號

4,451 s.f. (plus 2,299 s.f. garden and 1,133 s.f. roof)
\$350K incl.

9833 9509 Michelle Chung 鍾小姐
www.landscape.com/5336.htm

可普通話



Royal Bay
82 Chung Hom Kok Road, Chung Hom Kok
Modern 4-bedroom townhouse in mint condition at tranquil location
時尚四房大屋，位置優越，交通方便，環境寧靜

春坎角 御溝灣

4,688 s.f. (plus 2,455 s.f. garden and 1,238 s.f. roof)
\$230K incl.

9648 6082 Christine Chong 莊小姐
www.landscape.com/30219.htm



2 Barker Road, The Peak
Taipan house with excellent harbour view and Southside view
山頂洋房，享廣闊維港景及南區景色

山頂 白加道2號

4,082 s.f. (plus 1,184 s.f. terrace and 526 s.f. roof)
\$270K

6183 8388 Chris Law 羅先生
www.landscape.com/46182.htm



Deep Water Bay Road, Deep Water Bay
Prestigious townhouse facing Deep Water Bay
深水灣道豪華尊貴洋房出租

深水灣 深水灣道

3,000 s.f.
\$300K

9871 6828 Louis Wong 黃先生
www.landscape.com/100123.htm



The Mount Austin
8 Mount Austin Road, The Peak
Prestigious Peak garden house with roof and terrace overlooking harbour view
豪華山頂花園大屋，連天台平台，俯瞰維港景

山頂 柯士甸山道8號

5,083 s.f. (plus 1,766 s.f. garden, 791 s.f. terrace and 612 s.f. roof)
\$328K

9833 9509 Michelle Chung 鍾小姐
www.landscape.com/27920.htm

可普通話



Island Road, Deep Water Bay
Townhouse with stunning sea view at prestigious Deep Water Bay
深水灣豪華大屋，尊享廣闊海景

深水灣 香港島道

4,400 s.f. (plus 1,260 s.f. garden and 417 s.f. terrace)
\$480K

9871 6828 Louis Wong 黃先生
www.landscape.com/35172.htm



Monticello

48 Kennedy Road,
Midlevels Central

Newly decorated 3-bedroom flat in convenient location
全新裝修三房住宅，位置優越，交通方便

1,275 s.f.
\$55K incl.

9238 2012 David Chan 陳先生
www.landscape.com/33335.htm

中半山 滿峰台



Regent On The Park

9A Kennedy Road,
Midlevels Central

Popular 2-ensuite apartment with facilities on Kennedy Road
堅尼地道受歡迎兩套房住宅，連住客設施

1,344 s.f.
\$62K incl.

6183 8339 Carman Szeto 司徒小姐
www.landscape.com/17854.htm

中半山 御花園



Cliffview Mansions

21-25 Conduit Road,
Midlevels West

Colonial style apartment with carpark close to Midlevels pedestrian escalator
西半山英式住宅，鄰近半山扶手電梯，連車位

1,960 s.f.
\$68K incl.

6655 4488 William Tam 談先生
www.landscape.com/113928.htm

西半山 康苑



Park Mansions

27-29 MacDonnell Road,
Midlevels Central

Nice 4-bedroom apartment on fringe of CBD
雅緻四房單位，鄰近中環，交通方便

2,013 s.f.
\$75K incl.

9238 2012 David Chan 陳先生
www.landscape.com/38207.htm

中半山 百年順大廈



Tregunter Tower 3

14 Tregunter Path,
Midlevels Central

Luxurious duplex apartment with full clubhouse facilities overlooking the harbour
豪華複式住宅，連完善住客會所設施，俯瞰維港美景，可租可售

3,639 s.f.
\$80K incl. also for sale \$85M
Sole Agent 獨家代理

66838 2929 Mark Mak 麥先生
www.landscape.com/3950.htm

中半山 地利根德閣3座



Pearl Gardens

7 Conduit Road, Midlevels West

Practical 3-bedroom apartment on convenient Conduit Road
西半山實用三房住宅，位置優越，可租可售

2,200 s.f.
\$83K incl. also for sale \$34M

9348 4118 Rowena Siu 蕭小姐
www.landscape.com/109264.htm

西半山 明珠臺



Tavistock 2

10A Tregunter Path,
Midlevels Central

Sought after luxurious apartment in Midlevels Central
中半山罕有豪華住宅

1,655 s.f.
\$82K incl.

9229 2396 Elaine Chow 周小姐
www.landscape.com/16155.htm

中半山 騰皇居2座



Po Shan Mansion

10-16 Po Shan Road,
Midlevels West

Large practical 4-bedroom apartment with harbour view in quiet neighbourhood
特大四房單位，間隔實用，享維港景，環境清幽怡人

2,800 s.f.
\$85K

9080 6686 Teresa Lau 劉小姐
www.landscape.com/29508.htm

西半山 寶城大廈



Tavistock

10A Tregunter Path,
Midlevels Central

Grand modern apartment for rent in Midlevels Central
中半山豪華時尚住宅出租

2,030 s.f.
\$90K incl.

9493 8275 Sami Woo 胡小姐
www.landscape.com/45563.htm

中半山 騰皇居



Pine Court

5 Old Peak Road,
Midlevels Central

Colonial low-rise with backyard and huge balcony and upgrade kitchen and bathroom
英式低密度住宅，連後院及大陽臺，新廚廁

2,650 s.f. (plus 400 s.f. terrace)
\$98K incl.

9080 6686 Teresa Lau 劉小姐
www.landscape.com/20258.htm

中半山 翠峰園



DORMIREST
THE NATURE OF SLEEP

The Nature of Sleep

"The thermostatic properties of camel wool in Dormirest beds keep the body cool and comfortable"

1016 Horizon Plaza, 2 Lee Wing Street, Ap Lei Chau, Aberdeen, Hong Kong
Tel +852 3741 1828 Fax +852 3741 1829 www.dormirest.com



Karndean LVT

Karndean LVT replicates the beauty of natural materials without any of the practical drawbacks associated with the likes of stone and woods. Its benefits are far reaching and suitable for a raft of applications including healthcare, residential, retail and leisure.

For more information, visit Karndean International (Asia) Ltd. showroom: 10/F, 313 Lockhart Road, Wanchai. Ring: 2572 2886 / 2572 2238
Email: salesasia@karndean.com or see: www.karndean.com.au

Karndean LVT 設計出眾，環保、安全、容易安裝且用途廣泛，適用於家居、商業、零售及酒店等地方。歡迎光臨灣仔諾克道 313 號 10 樓
Karndean International (Asia) Ltd. 電話: 2572 2886 / 2572 2238
電郵: salesasia@karndean.com 或瀏覽: www.karndean.com.au

Where They Create
By Alexandra Onderwater; published by Frame Publishers

Innovative designs sometimes make us wonder where they are created and, probably out of the same curiosity, interiors photographer Paul Barbera started documenting creative working spaces about 20 years ago. Along with interviews with the creators — artists, architects, illustrators, designers and even media companies, Barbera's shots offer a peek behind the scenes.

創新的設計有時候會令人心癢癢，想要知道它們是在那裡創造的；室內攝影師Paul Barbera很可能就是在好奇心的驅使下，二十年前開始拍下創意工作室的環境。讀者除了能在他的照片中一睹創作花絮外，亦能透過與藝術家、建築師、插畫家、設計師和媒體公司的訪問，了解他們的創作環境。




Custom-made Wine Cellar

With over 30 years' experience in setting-up Cooling System for supermarkets, hotels and restaurants, we generate a new image by designing exclusive, custom-made Wine Cellar not only in commercials but also for households in recent years. Apart from providing professional setup on the whole system for storing red wine, white wine, champagne and sake, we also focus on featuring-wine display purpose and creating an elegant decoration in our new concepts.

**Unit 1401, 14/F Westlands Centre,
20 Westlands Road, Quarry Bay, H.K.
Tel: (852) 2811-9381
Fax: (852) 2565-7094
Email: sales@fixwell.com.hk
Website: www.fixwell.com.hk**

Fixwell Display System Co., Ltd.



MOLD architecture & interior
www.moldarch.com tel: 2137 0122 fax: 3170 6506 email: info@moldarch.com



Birds to Treasure

Presented by Galerie Huit, *Birds to Treasure* is a solo exhibition by David Hu Wei, who incorporates a modern twist into traditional Chinese *gong-bi* techniques in his ink paintings of birds, flowers and nature studies on both paper and silk in water-based colours and ink, and also acrylic and oils on canvas.

錦藝筋帶來胡煒的個人展《靈禽天趣》。胡煒以當代手法玩味中國傳統工筆畫，繪畫出美不勝收的花卉禽鳥和自然景象，除了以水彩和墨水繪成的紙本和絹本作品外，亦有亞加力膠和油料繪畫的油畫作品。

**Dec 7 to Jan 31
Galerie Huit, G/F, No 8 St Francis Street Wanchai, Hong Kong
Tel: 2520 0281 Email: doristo@galeriehuit.com.hk
www.galeriehuit.com.hk**



Borrett Mansions

8A-9B Borrett Road,
Midlevels Central

Spacious 4-bedroom apartment with big balcony in leafy neighbourhood
寬敞四房住宅，連大陽臺，環境舒適

2,800 s.f.
\$100K incl.

9809 8570 Stella Lo 羅小姐
www.landscape.com/31487.htm

中半山
寶德臺



Garden Terrace

8 Old Peak Road,
Midlevels Central

Newly renovated apartment with 4 bedrooms including 2 ensembles on fringe of CBD
全新裝修四房連兩套房單位，鄰近中環，交通方便

2,798 s.f.
\$110K

6183 8339 Carman Szeto 司徒小姐 可普通話
www.landscape.com/18514.htm

中半山
花園臺



Kam Yuen Mansion

3 Old Peak Road,
Midlevels Central

Colonial style large apartment with nice decorations
英式住宅，間隔寬敞，享雅緻靚裝修

2,500 s.f.
\$100K

9833 9509 Michelle Chung 鍾小姐 可普通話
www.landscape.com/14193.htm

中半山
錦園大廈



Estoril Court

55 Garden Road,
Midlevels Central

Spacious 5-bedroom apartment with club facilities on fringe of CBD
寬敞五房住宅，連住客會所設施，鄰近中環，交通方便

3,347 s.f.
\$113K

9493 8275 Sami Woo 胡小姐
www.landscape.com/4973.htm

中半山
愛都大廈



Palatial Crest

3 Seymour Road, Midlevels West

Modern penthouse duplex with carpark and sweeping harbour view
時尚頂層住宅，連車位，享遼闊開揚維港景

2,174 s.f.
\$115K incl.

6655 4488 William Tam 談先生 可普通話
www.landscape.com/151301.htm

西半山
輝煌豪園



Regence Royale

2 Bowen Road, Midlevels Central

Prestigious 3-bedroom apartment with full club facilities on serene Bowen Road
寶雲道豪華三房單位，連完善住客會所設施，尊享寧靜環境

2,697 s.f.
\$120K incl.

9486 1566 Mira To 杜小姐
www.landscape.com/70613.htm

中半山
富匯豪庭



Duplex Apartment In Midlevels West

1 Robinson Road, Midlevels West

Brand new decoration 4-bedroom duplex apartment on fringe of CBD overlooking dynamic metropolitan view
全新裝修四房複式住宅，鄰近中環，俯瞰壯麗城市景觀

3,400 s.f.
\$128K incl.

9080 6686 Teresa Lau 劉小姐 可普通話
www.landscape.com/114909.htm

西半山
羅便臣道一號



The Albany

1 Albany Road, Midlevels Central

Prestigious apartment overlooking the Botanical Gardens on fringe of CBD
中半山豪華住宅，俯瞰動植物公園，鄰近中環，交通方便

2,546 s.f.
\$130K incl.

9809 8570 Stella Lo 羅小姐
www.landscape.com/31537.htm

中半山
雅賓利大廈



The Mayfair

1 May Road, Midlevels Central

Modern landmark building with bird's eye view of Victoria Harbour
時尚地標住宅大廈，矜享鳥語花香的維港美景

2,872 s.f.
\$140K incl.

9486 1566 Mira To 杜小姐
www.landscape.com/125153.htm

中半山
梅道一號



Fairlane Tower

2B Bowen Road, Midlevels Central

Modern apartment with stunning harbour view on Bowen Road
寶雲道時尚單位，享遼闊維港景致

2,830 s.f.
\$155K incl.

9238 2012 David Chan 陳先生
www.landscape.com/105884.htm

中半山
寶雲山莊

bulthaup



bulthaup b3 – a solid investment. This universal design system offers everything you could wish for from the total kitchen. If you are looking for superlative quality, lasting value, solid materials and attention to precision craftsmanship and you want to experience the particular advantages of unique interior fittings, then we invite you to visit the specialists in the new bulthaup kitchen architecture. You will find them wherever you see the name bulthaup. www.bulthaup.com

MADISON hong kong | macau | beijing | shanghai | singapore

ground floor, 5 hoi ping road, causeway bay, hong kong
t +2868 0895. info.bulthaup.hk@madison-asia.com



Flora Garden

7 Chun Fai Road,
Jardine's Lookout

Newly renovated 3-bedroom flat with balcony and lush green view
全新裝修三房單位，連陽臺，尊享翠綠景色，可租可售

1,302 s.f.
\$49K incl. also for sale \$18.5M

9093 3381 Stephen Chan 陳先生
www.landscape.com/125564.htm

渣甸山
慧景園



Evelyn Towers

38 Cloud View Road,
North Point Midlevels

Rare find 3-bedroom harbour view flat with huge private terrace
罕有三房維港景住宅，連特大私家平台

1,198 s.f. (plus 2,100 s.f. terrace)
\$62K incl.

9493 8275 Sami Woo 胡小姐
www.landscape.com/130196.htm

北角
半山
雲景台



Rosedale

6 Fuk Kwan Avenue,
Midlevels East

High privacy mid-rise 4-bedroom apartment at quiet enclave
東半山中密度四房住宅，環境寧靜，私隱度高

2,382 s.f.
\$60K incl.

6183 8339 Carman Szeto 司徒小姐 可普通話
www.landscape.com/44238.htm

東半山
玫瑰花園



Butler Tower

1-5 Boyce Road, Jardine's Lookout

High efficiency 4-bedroom flat with practical layout and carpark
高實用四房住宅，間隔寬敞連車位

1,650 s.f.
\$63K incl.

6655 4488 William Tam 談先生 可普通話
www.landscape.com/38287.htm

渣甸山
柏麗園



Fontana Gardens

1-25 Ka Ning Path, Midlevels East

Practical huge apartment with 5 bedrooms close to Causeway Bay
東半山特大五房單位，間隔實用，鄰近銅鑼灣，交通方便

3,300 s.f.
\$80K incl.

9093 3381 Stephen Chan 陳先生
www.landscape.com/39429.htm

東半山
豪園



Antonia House

4-12 Broom Road, Happy Valley

Rarely available spacious colonial apartment at upper Happy Valley
跑馬地頭段英式住宅，間隔寬敞，市場罕有，可租可售

2,400 s.f.
\$80K incl. also for sale \$40M

9028 0147 Jenson Au 區先生 可普通話
www.landscape.com/66985.htm

跑馬地
蟠龍道4-12號



Evergreen Villa

43 Stubbs Road, Midlevels East

High efficiency practical apartment in prime location with harbour view
間隔實用維港景住宅，地段尊貴，實用率高

2,560 s.f.
\$85K incl.

9093 3381 Stephen Chan 陳先生
www.landscape.com/24828.htm

東半山
松柏新村



Nicholson Tower

8 Wong Nai Chung Gap Road,
Midlevels East

Newly renovated high floor 3-bedroom flat with sweeping views of the city
全新裝修高層三房單位，可改四房，享開揚城市景觀

1,993 s.f.
\$85K incl.

9493 8275 Sami Woo 胡小姐
www.landscape.com/7344.htm

東半山
蔚豪苑



Taipan Court

47B Stubbs Road, Midlevels East

4-bedroom duplex on Stubbs Road with splendid city and harbour views
司徒拔道四房複式住宅，享開揚城市景及維港景觀

3,670 s.f.
\$99K

9080 6686 Teresa Lau 劉小姐 可普通話
www.landscape.com/10448.htm

東半山
大班閣



Villa Monte Rosa

41A Stubbs Road, Midlevels East

Large 4-bedroom flat with splendid view of city skyline
特大四房單位，享遠闊城市美景

3,300 s.f.
\$138K

6183 8388 Chris Law 羅先生
www.landscape.com/115494.htm

東半山
玫瑰新村



Prime Residential Investment Whole House

Kensington W8

Large attractive Kensington House converted into 10 self contained apartments over Lower Ground, Ground, and upper 5 floors, some with private balconies and gardens. Fully let at 4% yield with upgrade potential through renovation.

極受歡迎的Kensington House現已改建成10個單位，部份單位更設有私家陽臺及花園。現已全部租出回報率高達4%，翻新後可大大提升升值潛力。

8,300 s.f. (gross internal)



High Yield - Commercial Investment

Kennington SE11

Mixed use Retail and Commercial, fully let at gross yield of 8.3%. Completely modernized in 2004, but with long-term development potential.

混合式零售及商業大廈回報率高達8.3%。於2004年完成翻新，有長遠的重建潛力。

**Freehold
15,600 s.f.**



Super Prime Retail

**New Bond Street,
Mayfair W1.**

Located in London's most sought after retail address, well positioned, good lot size. Retail unit let to reputable retail tenant, 13 years remaining on FRI lease, with upward only rent reviews. Upper floors fully let. Previous planning consent granted to add additional floor so good development potential. 位於倫敦的最黃金零售地段，間隔實用，極受歡迎。現租予信譽良好的租戶租約尚有13年，租金還會作出向上調整。上層單位已全部租出，更已獲規劃批准增建樓層，極具發展潛力。

**Freehold
16,500 s.f.**



Prime Retail

Oxford Street SW1

Large site, redevelopment just completed in Oxford Street. Large frontage, sought after site, with new tenancy currently under negotiation for 15 year lease. Located at the Marble Arch end of Oxford Street.

位於Oxford Street的大型重建項目，大馬路旁邊特長鋪面，位置罕有獨特，極受追捧。目前正洽談15年的新租約。坐落於Oxford Street尾段的Marble Arch。

**Freehold
15,328 s.f.**



Prime Residential "Mews"

Kensington W8

Rare in market, attractive "mews" house in quiet cobbled Kensington Mews. Currently reconfigured as 2 flats plus 1 office. Development potential to create large single dwelling, with roof terrace. Planning previously granted to extend the basement. 坐落於Kensington Mews的"Mews" house，環境寧靜，市場罕有。現時有兩個住宅單位加一個辦公室。具改建為一獨立大型住宅發展潛力，連天台平台，早前已獲規劃批准擴建地下室。

**Freehold
2,400 s.f.
plus 800 s.f. Roof Terrace**



Luxury 5 Star Boutique Hotel

Kensington SW7

Premier 5 star deluxe boutique hotel on Hyde Park. 70 rooms, mostly suites, also including renowned restaurant, business, entertaining and health facilities. Sold with management agreement in place for further 12 years on FRI lease.

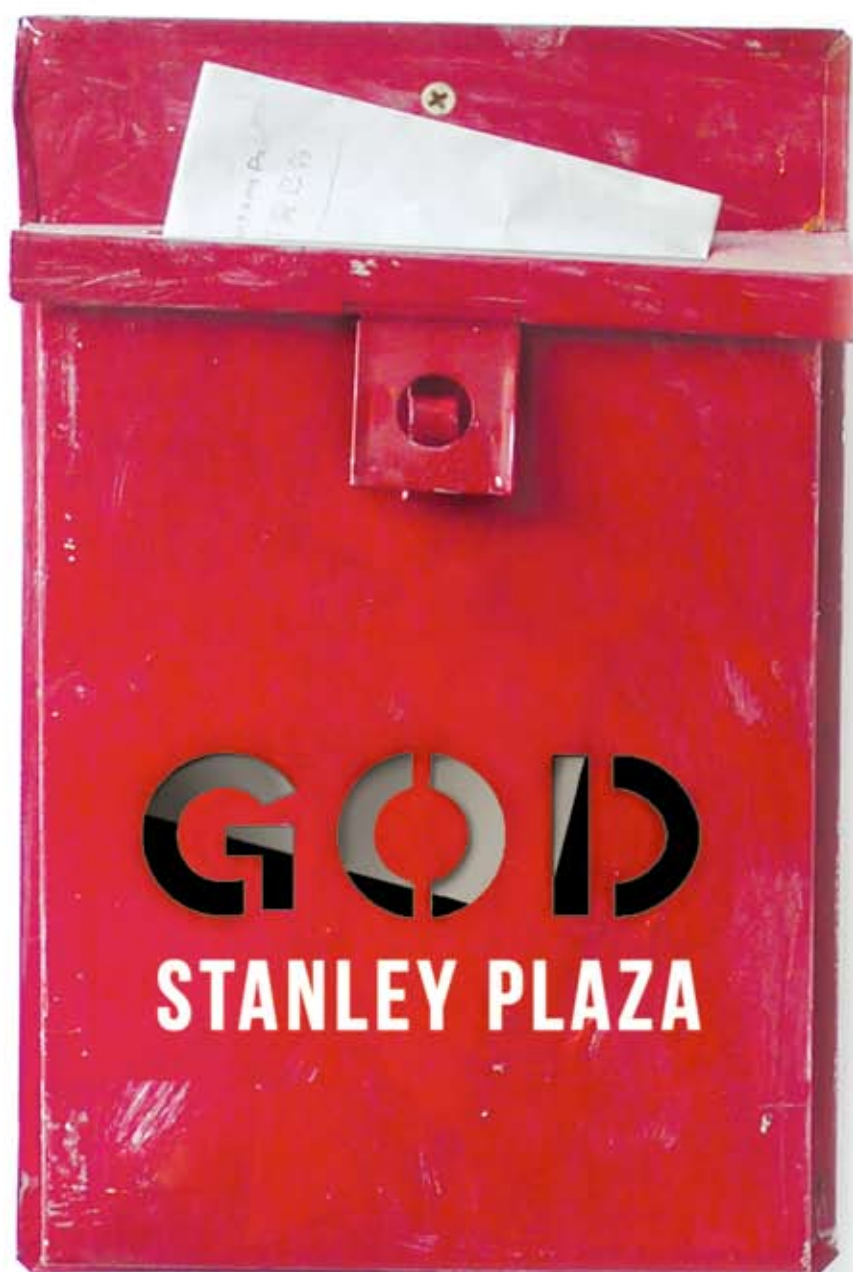
豪華五星級特色酒店位於Hyde Park，提供70間客房，其中以套房為主。酒店設有著名的餐廳，娛樂，商務及健身設施，連12年管理合約出售。

**Freehold
61,700 s.f.**

Prices on luxury UK properties are rarely quoted in listings. Interested parties are encouraged to make enquiries on price indications with Landscape.

PRICE UPON ENQUIRY 歡迎查詢

6183 8388 Chris Law 羅先生



Now Open



GOODS OF DESIRE®