

select deluxe homes

# The Key

大宅®

www.landscape.com

DECEMBER | 2010

Volume 74



## SEDATE DOMICILE

Unwind yourself at the tranquil Babington House

## BOUTIQUE APARTMENT

Stylish living at the gallery-like apartment in Happy Valley

## KEY NOTES\*

“Courage is what it takes to stand up and speak; courage is also what it takes to sit down and listen.”

”

「勇氣乃讓人站起來說話的力量。勇氣同時也是讓人坐下來聆聽他人說話的力量。」

- Sir Winston Churchill, British Prime Minister during Second World War  
- 丘吉爾爵士，二次大戰時期的英國首相

Since early 2009 Hong Kong has seen its property value swollen by 50%, with luxury property leading the charge. Despite the cooling measures, the market sentiments remain bullish. Investors are banking on the hot money effect and the fact that residential property supply will not see any appreciable increase until perhaps three years from now, as it takes time to build from bare land. With interest rate hovering at historical low level, money will find its way into the asset markets. Local stock market and property market will benefit from this expanded flow of capital. It is predictable that asset values will continue to inflate until the bubble bursts or the hot money is withdrawn.

So the stage is set for a war. Hot money will keep pouring in, and investors won't miss this golden opportunity to jump on the bandwagon, thus further fueling asset value inflation. The government will do whatever they can to take the heat out of the markets and to maintain a stable environment. Who will emerge as a winner remains to be seen, but one thing is for sure: it is a bumpy ride ahead. Buckle up!

自2009年初以來，香港的樓價在豪宅引領下已增長了百分之五十。儘管以上的降溫措施出，市場的情緒卻仍然樂觀，投資者都期待熱錢效應，再加上土地供應有限，新的住宅亦需時興建，豪宅供應在這三年內應該不會顯著增加。另外，由於利率仍於歷史低位徘徊，資金自然會湧進資產市場，對本港的股市及樓市幫助不少，故此在泡沫爆破或熱錢撤離之前，資產價格預料會繼續攀升。

看來一場大戰即將展開——一方面熱錢會持續湧進，刺激資產價格上升，投資者絕不會錯過這個投資的黃金機會；另一方面政府會竭盡所能為市場降溫，從而維持穩定的經濟環境。這場戰爭的最後贏家誰屬言之尚早，不過可以肯定的是市場將如過山車般劇烈波動，請大家扣好安全帶！

By K.S. Koh  
ks-koh@landscape.com

The above is an excerpt from Market Watch on [www.landscape.com](http://www.landscape.com).  
Read the full article at Market Watch, [www.landscape.com/marketwatch](http://www.landscape.com/marketwatch).  
以上內容錄於《市場觀察》的市場觀察，歡迎瀏覽全文。  
請登上網址：[www.landscape.com/marketwatch](http://www.landscape.com/marketwatch)

published and distributed by

**LANDSCOPE** 領域  
The Specialists in Luxury Properties

**Landscape Realty Limited** C-018733  
a member of Landscape Surveyors Ltd

Tel: 852-2866 0022 Fax: 852-2866 0015  
Email: [info@landscape.com](mailto:info@landscape.com) Website: [www.landscape.com](http://www.landscape.com)  
Unit 3106, 31/F, Hopewell Centre, 183 Queen's Road East, Wanchai, Hong Kong

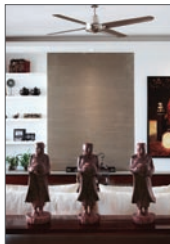
The information, text, photos, analyses and projections contained herein are provided solely for the convenience of prospective clients and no warranty or representation as to their accuracy, correctness or completeness is made by Landscape Surveyors Limited, Landscape Realty Limited or the owners, none of whom shall have any liability or obligation with respect thereto. Interested parties should rely on their own investigations, interpretations and analyses.

Information has been provided to us by sources deemed reliable, but no warranty or representation is made as to its accuracy, correctness or completeness. These offerings are made subject to contract, correction of errors, omissions, prior sale of lease, change of price or terms or withdrawal from the market without notice. The contents of The Key are for reference only and do not constitute a part of any part of a contract.

Reproduction in any form of any information or material contained in The Key in whole or in part without the written permission from Landscape Realty Ltd is strictly prohibited.

Copyright 2010

## THE KEY | CONTENTS



**03** Broadwood Twelve  
跑馬地 樂天峯

**03** Serenade  
東半山 上林

**04** Sedate Domicile  
寧靜生活

**11** Boutique Apartment  
精品公寓

### The Key (The No.1 Publication for Luxury Properties)

The Key is a monthly, bilingual lifestyle publication focusing on luxury residential properties in Hong Kong Island. It is sent to over 60,000 urban elites comprising of Hong Kong's most affluent inhabitants.

These consist of Landscape's VIP clients, who mainly reside in The Peak, Mid-Levels, Southside, Kowloon Tong, Homantin and other select up-market residential areas such as Tai Po, Sai Kung and Clear Water Bay, etc.

## How may you list your property with The Key?

If you would like to list your property in an upcoming issue of The Key, you may contact Loretta Lui on +852 3102 4818 or visit us at [www.landscape.com/sell-to-let](http://www.landscape.com/sell-to-let). Alternatively, simply fill out the below and fax back to us on +852 2866 0015.

### Property Details

### Asking Rental / Sale Price

### Floor Area

### Contact Person

### Telephone

### Email

Our KeyPerson will contact you for follow-up work.

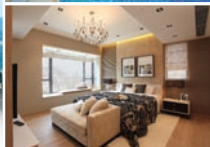
designed and produced by

**in** MAGAZINE

### inCorporation Limited

Your No. 1 Integrated Marketing Communications Partner in Hong Kong and China

Tel: 852-3699 0888 Fax: 852-3699 0889  
Email: [marketing@incorp.com.hk](mailto:marketing@incorp.com.hk) Website: [www.inmagazine.com.hk](http://www.inmagazine.com.hk)  
12/F, Cyberport 2, 100 Cyberport Road, Hong Kong



Situated on the Broadwood Road, the privileged mid-levels of Happy Valley, Broadwood Twelve overlooks the breath-taking view of 180° panoramic Victoria Harbour and the unparalleled Race Course. Its superb location is conveniently connected with all of Hong Kong. The prestigious vicinity includes a renowned school network, as well as notable private clubs. The premise offers various units with area from 1,650 sq ft to 3,236 sq ft for selection including two penthouse duplexes with private roofs. A 20,000 sq ft luxurious and functional clubhouse together with a podium garden is unique in the neighbourhood.

樂天峯盤踞跑馬地半山樂活道的傳統尊貴地段，飽覽180度醉人的維港景致及尊尚獨有的馬場勝景，位置優越。區內名校林立，而且毗鄰多個香港尊尚私人會所。單位面積由1,650平方呎至3,236平方呎不等，其中包括兩套頂層複式單位連私人天台可供選擇，並設有同區罕有的20,000平方呎豪華會所連平台花園，設施應有盡有。

## Broadwood Twelve 跑馬地 樂天峯

No. 12 Broadwood Road, Happy Valley

Appointed Agent 指定代理

Cora Ko 高小姐 6330 7888

David Leung 梁先生 9199 0672

Sami Woo 胡小姐 9493 8275

Situated on Tai Hang Road, Island East, the new Serenade embraces a metropolitan pulse with its advantageous geographical locations and convenient transport. The premise possesses panoramic view of the spectacular Victoria Harbour in its front, and greeneries from Mount Butler at its back. The area of each apartment varies from 1,000 square feet to 4,000 square feet. Among the available apartments are duplexes with four bedrooms including two ensembles and prestigious penthouses.

上林位處香港島東半山之罕貴地段，掌握大都會脈搏，地理位置優越、交通四通八達。前臨270度遼闊維多利亞港美麗海景，背靠青蔥翠綠畢拉山山巒。單位面積由約1,000平方呎至4,000平方呎，其中包括四房兩套複式單位及頂層特色單位。



## Serenade 東半山 上林

11 Tai Hang Road, Midlevels East

Mark Mak 麥先生 6838 2929

Mavis Wu 吳小姐 9107 3891

Stephen Chan 陳先生 9093 3381



# Sedate Domicile

寧靜生活

Nestled in the middle of Babington Path, Babington House boasts its practical layout with high ceiling and spacious balcony. This 2,750 square feet unit is well-decorated in a tranquil Indian style, wooden floorings and furniture, elegant ceiling fans and some oriental ornaments throughout, creating a private place to unwind yourself from the bustling urban life.

This apartment has five bedrooms including two ensuite, a combined living and dining room and a roomy oriental patio which can accommodate a large family. Despite the Indian décor throughout, the illuminated contemporary semi-open kitchen adds a sense of contrast to the modish apartment.

Babington House is located at Midlevels West in the proximity of Central with easy access to the financial hubs of Hong Kong. Besides, you can also find plenty of elite schools ranging from pre-schools, traditional elite schools, international schools to the renowned University of Hong Kong in the vicinity. ■

位處巴頓道的巴威大廈以高實用率、高天花及寬闊露台見稱。而這間2,750平方呎的單位採用平和的印度式東方風格，配以木製地板及傢俱、優雅的吊扇和遍佈全屋的東方擺設，為你營造一個私人地帶，讓你從煩囂的生活中卸下來縛。

這公寓共有五個睡房，其中兩個是套房，相連客廳及寬闊露台，適合三代同堂的大家庭居住。儘管全屋採用印度式的裝潢設計，但其簡潔鮮明的半開放式廚房，對比強烈，恰好為全屋添上一絲時代感。

西半山區內名校林立，由學前幼兒院、傳統著名學府、國際學校以至享負盛名的香港大學均在其中。此外，巴威大廈毗鄰中環及香港的金融樞紐，交通四通八達。 ■

## Babington House

西半山 巴威大廈

5 Babington Path, Midlevels West

2,750 s.f.

\$35,000,000

www.landscape.com/129680.htm Arthur Wong 黃先生 9304 4257



# JAGUAR | XJ



Look at me,  
Admire me,  
How can you forget me.

The XJ was re-imagined with only one design vision - to create 'The World's Most Beautiful Sporting Saloon'. We wanted a powerful and aggressive design that would look graceful and elegant at the same time. In other words, we sought to capture the essences of a real Jaguar in the design. And the result is beyond our wildest dreams! Not only have we succeeded in creating a most beautiful sporting saloon, some would even say that it looked alive. Now how can you forget something this good? You know you want to give it a try.



**Jaguar Hong Kong**  
Shop 2, G/F, Bank of East Asia Harbour View Centre,  
56 Gloucester Road, Wanchai, Hong Kong  
Tel : 2520 0989  
[www.jaguar.com.hk](http://www.jaguar.com.hk)





### Villa Verde

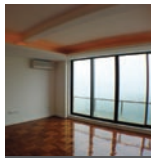
山頂 瓊翠園

4-18 Guildford Road, The Peak

Spacious colonial style 3-bedroom flat on Guildford Road  
僑福道英式三房住宅，間隔寬敞實用

1,505 s.f.  
**\$27,000,000**

[www.landscape.com/130687.htm](http://www.landscape.com/130687.htm) Chris Law 羅先生 6183 8388



### Kellett Heights

山頂 嘉利別墅

61A-61B Mount Kellett Road, The Peak

Nicely renovated apartment in tranquil environment  
雅緻裝修單位，環境清幽怡人

1,600 s.f.  
**\$45,000,000**

[www.landscape.com/30673.htm](http://www.landscape.com/30673.htm) David Leung 梁先生 9199 0672



### Guildford Court

山頂 僑福道5號

5 Guildford Road, The Peak

Spacious colonial mid-rise apartment with open view on secluded location  
山頂寬敞英式中密度住宅，享開揚景觀，環境僻靜

2,500 s.f.  
**\$68,000,000**

[www.landscape.com/30299.htm](http://www.landscape.com/30299.htm) Mark Mak 麥先生 6838 2929



### Peak Gardens

山頂 山頂花園

16-20 Mount Austin Road, The Peak

Contemporary designed apartment overlooking picturesque Victoria Harbour view  
全新簡約靚裝修山頂大宅，俯瞰全維港海景

2,655 s.f.  
**\$90,000,000**

[www.landscape.com/30077.htm](http://www.landscape.com/30077.htm) Chris Law 羅先生 6183 8388



### Sunshine Villa

山頂 陽光花園

48 Mount Kellett Road, The Peak

Deluxe Peak townhouse with private garage and garden  
山頂豪華洋房，連私家花園及停車場，可租可售

2,300 s.f. (plus 929 s.f. garden)  
**\$95,000,000 also for lease \$120,000 incl.**

[www.landscape.com/1708.htm](http://www.landscape.com/1708.htm) David Chan 陳先生 9238 2012



### Mountain Lodge

山頂 嘉麗

44 Mount Kellett Road, The Peak

Rare duplex apartment with Southside sea view  
罕有複式住宅，觀賞寧靜南區海景

5,200 s.f.  
**\$130,000,000**

[www.landscape.com/96955.htm](http://www.landscape.com/96955.htm) David Leung 梁先生 9199 0672



### Strawberry Hill

山頂 紅莓閣

8 Plunkett's Road, The Peak

Colonial style townhouse with picturesque views  
山頂英式洋房，尊享如畫美景

3,200 s.f.  
**\$140,000,000**

可普通話

[www.landscape.com/49439.htm](http://www.landscape.com/49439.htm) Mavis Wu 吳小姐 9107 3891



### La Hacienda

山頂 加列山道29-33號

29-33 Mount Kellett Road, The Peak

Newly decorated townhouse with facilities overlooking nice views  
山頂全新裝修排屋，連住客會所設施，俯瞰優美景觀，可租可售

3,200 s.f. **\$140,000,000 also for lease \$230,000 incl.**

可普通話

[www.landscape.com/3323.htm](http://www.landscape.com/3323.htm) Mavis Wu 吳小姐 9107 3891



### Cragside Mansion

山頂 白加道23號

23 Barker Road, The Peak

Rare huge apartment with panoramic view of Victoria Harbour  
罕有巨型住宅，尊享遼闊維港景致

4,000 s.f.  
**\$190,000,000**

[www.landscape.com/126951.htm](http://www.landscape.com/126951.htm) David Leung 梁先生 9199 0672



### Severn Eight

山頂 荷里

8 Severn Road, The Peak

High ceiling luxury house with breath-taking Victoria Harbour view  
豪華洋房，樓底特高，享鳥語花香的維港景色

3,330 s.f. (plus 773 s.f. roof and 540 s.f. garden)  
**\$190,000,000**

[www.landscape.com/104471.htm](http://www.landscape.com/104471.htm) Mark Mak 麥先生 6838 2929



### Abergeldie

山頂 薈徑道52號

52 Plantation Road, The Peak

Peak house with bird's eye view of Victoria Harbour  
山頂洋房，尊享鳥語花香的維港景致

3,655 s.f. (plus 505 s.f. terrace, 464 s.f. garden and 282 s.f. roof)  
**\$200,000,000**

[www.landscape.com/13340.htm](http://www.landscape.com/13340.htm) David Leung 梁先生 9199 0672



### 1-9 Rosmad Road, The Peak

山頂 樂善美道1-9號

Rare single number garden house on the Peak  
山頂罕有獨立單號屋，連花園，市面難尋

5,600 s.f. (plus 1,469 s.f. garden)  
**\$250,000,000**

[www.landscape.com/20798.htm](http://www.landscape.com/20798.htm) David Leung 梁先生 9199 0672





# FARRINGTON INTERIORS

THE MOMENT MADE BEAUTIFUL



CHRISTOPHER GUY

## 10,000 sq. ft. Showroom at 31/F World Trade Centre

OVER 1,000 PIECES OF FINE FURNITURE AND ACCESSORIES.

### Shop 店舖:

G/F., 87 Wong Nai Chung Road,  
Happy Valley, H.K.  
香港跑馬地黃泥涌道87號地下  
Tel: (852) 2808 0303  
Fax: (852) 2801 6732

### Flagship Store 旗艦店:

31/F, World Trade Centre, 280 Gloucester Road,  
Causeway Bay, H.K.  
香港銅鑼灣告士打道280號世貿中心31樓  
Tel: (852) 2808 1000  
Fax: (852) 2808 2800

### Opening hours 營業時間:

11:00am – 7:00pm  
Mon – Fri (星期一至五)

1:00 pm – 6:00pm  
Sat, Sun & Public Holiday  
(星期六、日及公眾假期)

[WWW.FARRINGTONINTERIORS.COM](http://WWW.FARRINGTONINTERIORS.COM)



**Starcrest**  
灣仔 星域軒

9 Star Street, Wan Chai

Modern apartment close to Admiralty  
灣仔時尚住宅，鄰近金鐘，交通方便

949 s.f.  
**\$15,500,000**

可普通話

www.landscape.com/23935.htm Jensen Au 區先生 9028 0147



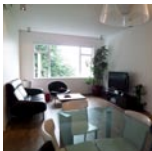
**Green Lane Court**  
跑馬地 賽馬閣

130-140 Blue Pool Road, Happy Valley

Colonial low-rise with greenery surroundings  
on upper Blue Pool Road  
藍塘道頂段英式低密度住宅，欣賞遼闊翠綠  
景致

1,400 s.f.  
**\$16,000,000**

www.landscape.com/122890.htm Stephen Chan 陳先生 9093 3381



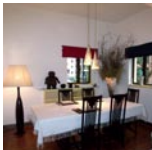
**Villa Lotto**  
跑馬地 樂陶苑

18 Broadwood Road, Happy Valley

3-bedroom apartment with Hong Kong  
Stadium view  
跑馬地三房單位，俯瞰香港大球場景觀

1,211 s.f.  
**\$18,000,000**

www.landscape.com/91903.htm Jackson Lee 李先生 9177 7191



**79-81 Blue Pool Road, Happy Valley**  
跑馬地 藍塘道79-81號

Nicely decorated low-rise on upper Blue  
Pool Road  
藍塘道上段低密度住宅，尊享雅緻裝修

1,900 s.f.  
**\$21,000,000**

www.landscape.com/99604.htm Cora Ko 高小姐 6330 7888



**Robinson Garden Apartment**  
西半山 羅便臣道花園大廈

3-3G Robinson Road, Midlevels West

Mid-rise colonial apartment with open  
Central view and balcony  
中密度英式住宅，遠大陽臺，享開揚中環市  
區景觀，可租可售

1,800 s.f.  
**\$24,000,000** also for lease \$55,000 incl.

可普通話

www.landscape.com/26682.htm Teresa Lau 劉小姐 9080 6686



**Park View Court**  
西半山 恒柏園

1 Lyttelton Road, Midlevels West

Rare find 4-bedroom apartment in Midlevels  
West  
西半山罕有四房住宅出售

2,360 s.f.  
**\$25,500,000**

www.landscape.com/123355.htm Chris Law 羅先生 6183 8388



**Kingsford Height**  
西半山 瓊峰台

17-19 Babinington Path, Midlevels West

Practical 3-bedroom flat at quiet end of  
Midlevels West  
西半山實用三房住宅，位處清幽地段

1,735 s.f.  
**\$15,500,000**

www.landscape.com/96640.htm Sami Woo 胡小姐 9493 8275



**Flora Garden**  
渣甸山 慕景園

7 Chun Fai Road, Jardine's Lookout

Practical 3-bedroom apartment with balcony  
and swimming pool  
實用三房單位，連陽臺及泳池，可租可售

1,302 s.f.  
**\$16,800,000** also for lease \$45,000 incl.

可普通話

www.landscape.com/54588.htm Jensen Au 區先生 9028 0147



**Monticello**  
中半山 滿峰台

48 Kennedy Road, Midlevels Central

Spacious and practical high floor flat with  
partial harbour view  
中半山實用住宅，間隔寬敞，享部份維港景

1,329 s.f.  
**\$18,000,000**

www.landscape.com/71100.htm Rowena Siu 蕭小姐 9348 4118



**Wing On Tower**  
渣甸山 永安閣

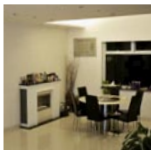
7-9 Boyce Road, Jardine's Lookout

3-bedroom flat with spacious and practical  
layout in quiet location  
渣甸山三房單位，間隔寬敞實用，環境清幽  
怡人

1,650 s.f.  
**\$22,800,000**

可普通話

www.landscape.com/62107.htm Teresa Lau 劉小姐 9080 6686



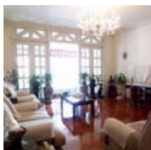
**Breezy Court**  
西半山 瑞麟大廈

2A Park Road, Midlevels West

4-bedroom apartment with large balcony on  
Park Road  
西半山四房住宅，連特大陽臺

1,820 s.f.  
**\$25,000,000**

www.landscape.com/96815.htm Erica Fan 范小姐 6972 3063



**Medallion Heights**  
西半山 金鑽閣

45 Conduit Road, Midlevels West

Practical 3-bedroom apartment in popular  
location  
受歡迎三房住宅，間隔實用

2,000 s.f.  
**\$26,000,000**

www.landscape.com/34243.htm Erica Fan 范小姐 6972 3063





G 住  
好 O  
ID 咁

Causeway Bay 2890 5555

Tsim Sha Tsui 2784 5555

Central 2805 1876

Peak Galleria 2778 3331



**36-36A Kennedy Road, Midlevels Central**  
 中半山 堅尼地道 36-36A號

Rare find colonial apartment with open city view at top of Kennedy Road  
 堅尼地道頂段英式住宅，享開揚城市景觀，市面難尋

1,500 s.f.  
**\$26,500,000**

www.landscape.com/99967.htm Sami Woo 胡小姐 9493 8275



**Sakura Court**  
 中半山 金櫻閣

58-60 Kennedy Road, Midlevels Central

Good layout high efficiency 4-bedroom flat with big balcony on Kennedy Road  
 堅尼地道高實用四房住宅，間隔良好，連大陽臺

2,200 s.f.  
**\$30,000,000**

www.landscape.com/99630.htm Mary Li 李小姐 9011 6595



**Serene Court**  
 西半山 秀麗閣

8 Kotewall Road, Midlevels West

Newly renovated 4-bedroom flat enjoying open harbour view  
 全新裝修四房住宅，尊享開揚維港景

2,334 s.f.  
**\$37,000,000**

www.landscape.com/115655.htm Carman Szeto 司徒小姐 6183 8339



**Clovelly Court**  
 中半山 嘉富閣苑

12 May Road, Midlevels Central

Practical apartment with comprehensive facilities  
 中半山實用單位，連完善住客會所設施

2,367 s.f.  
**\$38,000,000**

www.landscape.com/1243.htm Erica Fan 范小姐 6972 3063



**Elm Tree Towers**  
 渣甸山 愉富大廈

8-10 Chun Fai Road, Jardine's Lookout

Renovated spacious 3-bedroom apartment with Victoria Harbour view  
 全新裝修三房單位，間隔寬敞，俯瞰維港景色

2,028 s.f.  
**\$39,800,000**

www.landscape.com/127001.htm Mark Mak 麥先生 6838 2929



**Dynasty Court**  
 中半山 帝景園

23 Old Peak Road, Midlevels Central

Luxury 3-bedroom apartment with full clubhouse facilities  
 中半山豪華三房單位，連完善住客會所設施

1,970 s.f.  
**\$40,000,000**

Sole Agent 獨家代理

www.landscape.com/123546.htm Yvonne Chang 鄭小姐 9088 4666



**New Haven Court**  
 渣甸山 衛信道1-11號

1-11 Wilson Road, Jardine's Lookout

Well decorated colonial style apartment with open city view in Jardine's Lookout  
 渣甸山靚裝修英式住宅，尊享開揚城市景觀

1,800 s.f. (plus roof)  
**\$28,800,000**

可曾通話

www.landscape.com/39344.htm Carman Szeto 司徒小姐 6183 8339



**Visalia Garden**  
 中半山 蔚山花園

48 MacDonnell Road, Midlevels Central

Bright and airy apartment with Manhattan-style view  
 時尚光猛住宅，空氣通爽，寧靜舒適

2,195 s.f.  
**\$32,000,000**

可曾通話

www.landscape.com/50238.htm Mavis Wu 吳小姐 9107 3891



**Nicholson Tower**  
 東半山 蔚豪苑

8 Wong Nai Chung Gap Road, Midlevels East

4-bedroom apartment with balcony enjoying unobstructed racecourse view  
 四房住宅，連陽臺，俯瞰暢通無阻的馬會景觀

1,993 s.f.  
**\$37,000,000**

www.landscape.com/35537.htm Christine Chong 莊小姐 9648 6082



**Century Tower 1**  
 中半山 世紀大廈 1座

1 Tregunter Path, Midlevels Central

Unique 3-bedroom property in prime location with splendid view and big balcony  
 中半山獨特三房住宅，位處尊貴地段，連大露台，享壯麗景色

2,565 s.f.  
**\$38,000,000**

www.landscape.com/15864.htm Mary Li 李小姐 9011 6595



**Haddon Court**  
 西半山 海天閣

41C Conduit Road, Midlevels West

Spacious 4-bedroom apartment in convenient yet quiet location  
 寬敞四房單位，地段寧靜優越

2,850 s.f.  
**\$40,000,000**

www.landscape.com/9831.htm Sami Woo 胡小姐 9493 8275



**16-20 Broom Road, Happy Valley**  
 跑馬地 蠟龍道16-20號

Colonial low-rise with private garden in tranquil area  
 跑馬地英式低密度住宅，連特大私家花園，環境優美

2,000 s.f. (plus 875 s.f. garden and 57 s.f. terrace)  
**\$40,000,000**

Sole Agent 獨家代理

www.landscape.com/83486.htm Stella Lo 羅小姐 9809 8570

**Po Garden**

中半山 寶園

9 Brewin Path, Midlevels Central

Practical 3-bedroom apartment with facilities on fringe of Central  
實用三房單位，連會所設施，鄰近中環，交通方便

**2,572 s.f.****\$40,000,000**

Sole Agent 獨家代理

www.landscape.com/98123.htm

Yvonne Chang 鄭小姐 9088 4666

**Tregunter Tower 2**

中半山 地利根德閣 2座

14 Tregunter Path, Midlevels Central

Practical 4-bedroom apartment with easy access to Central  
實用四房住宅，鄰近中環，交通方便

**3,052 s.f.****\$42,800,000**

www.landscape.com/103657.htm

Jackson Lee 李先生 9177 7191

**11 MacDonnell Road,**

Midlevels Central

中半山 麥當勞道11號

Fully furnished harbour view flat with high privacy  
中半山維港景住宅，私隱度高，連全屋傢俬，可租可售

**2,352 s.f.****\$48,000,000 also for lease \$130,000 incl.**

www.landscape.com/107760.htm

Erica Fan 范小姐 6972 3063

## Boutique Apartment

### 精品公寓

**Celeste Court**

跑馬地 蔚雲閣

12 Fung Fai Terrace, Happy Valley

3-bedroom apartment with roof and terrace enjoy racecourse view  
三房單位連獨立內置天台及平台，享馬場景觀

**1,638 s.f. (plus 500 s.f. roof and 275 s.f. terrace)****\$42,000,000**

www.landscape.com/108271.htm

Christine Chong 莊小姐 9648 6082

**Clovelly Court**

中半山 富宜嘉苑

12 May Road, Midlevels Central

Sought after family flat with comprehensive facilities in quiet enclave  
罕有家庭式住宅，連完善住客會所設施，環境寧靜

**2,115 s.f.****\$45,000,000**

可營通話

www.landscape.com/33893.htm

Jenson Au 區先生 9028 0147

**May Tower 1**

中半山 梅苑一座

7 May Road, Midlevels Central

A well-presented 3-bedroom triplex apartment  
雅緻三房三複式住宅，可租可售

**2,850 s.f.****\$50,000,000 also for lease \$98,000 incl.**

www.landscape.com/6191.htm

Mira To 杜小姐 9486 1566

Tucked away in the peaceful Briar Avenue of Happy Valley, this 2,000 square feet low-rise apartment showcases the attitude of stylish living. When you first enter the apartment, you will see a long hallway with the stylish paintings and portraits on the wall, creating a gallery-like serene ambience. This apartment consists of two bedrooms with one ensuite, commodious combined living and dining room and a fully-fitted modern kitchen.

This boutique apartment also boasts a 1,600 square feet private rooftop accessible with an internal staircase. The rooftop is divided into two parts where you may host a BBQ party at the front, overlooking the open view of upper Happy Valley; and enjoy your gardening life in the patio at the back. Simple but stylish, what else can be a better choice for young hip couple? ■

坐落於地靈人潔的跑馬地比雅道，這間面積達2,000平方呎的低密度公寓展現了時尚的生活態度。當你走進屋內，一幅幅掛在長廊牆上的畫像映入眼簾，瞬間帶你進入像畫廊般的寧靜氛圍。全屋共有兩個睡房，其中一個為套房，現代化裝潢的寬闊客廳飯廳及設備齊全的廚房。

這間精品公寓的另一賣點是由屋內的樓梯直達其1,600平方呎的私人天台，天台更分為兩部份：前半部份可讓你舉行燒烤派對，邀請親朋好友共享上跑馬地的開揚景致；天台的後半部份提供充裕的園藝空間，讓你綠化家居。既簡約又時尚，還有哪裡比這間公寓更適合時髦的年輕夫婦？■

**9-10 Briar Avenue, Happy Valley**

跑馬地 比雅道9-10號

**2,000 s.f. (plus 1,600 s.f. roof)****\$40,000,000**

www.landscape.com/121863.htm

Louis Wong 黃先生 9871 6828

**Rose Gardens**

中半山 玫瑰閣

9 Magazine Gap Road, Midlevels Central

Harbour view apartment with nice layout on Magazine Gap Road  
中半山維港景住宅，間隔實用，可租可售

2,600 s.f.  
\$50,000,000 also for lease \$140,000 incl.

可普通話

www.landscape.com/21557.htm

Teresa Lau 劉小姐 9080 6686

**Regence Royale**

中半山 富麗豪庭

2 Bowen Road, Midlevels Central

Luxury 3-bedroom apartment with quality fittings in prime location  
中半山豪華三房住宅，建高品質配套，地段尊貴

2,697 s.f.  
\$53,800,000

www.landscape.com/107671.htm

Mary Li 李小姐 9011 6595

**Yale Lodge**

中半山 怡康

30 Kennedy Road, Midlevels Central

Rare found apartment with new renovation  
中半山罕有全新裝修住宅

3,300 s.f.  
\$57,000,000

www.landscape.com/128564.htm

Rowena Siu 蕭小姐 9348 4118

**The Albany**

中半山 雅賓利大廈

1 Albany Road, Midlevels Central

Stylishly decorated prestigious flat in prime location  
品味時尚裝修豪華住宅，位處中半山尊貴地段

2,546 s.f.  
\$76,000,000

www.landscape.com/123164.htm

Louis Wong 黃先生 9871 6828

**Clovelly Court**

中半山 嘉富麗苑

12 May Road, Midlevels Central

Large and spacious flat with balcony and harbour view  
中半山巨型住宅，間隔寬敞，連陽臺，享維港景致

2,809 s.f.  
\$82,800,000

www.landscape.com/26300.htm

Mark Mak 麥先生 6838 2929

**Craigmount**

東半山 紀園

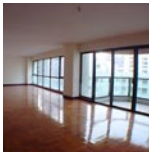
34 Stubbs Road, Midlevels East

Newly renovated penthouse with private terrace overlooking Happy Valley  
全新裝修頂層住宅，連私家平台，俯瞰跑馬地景觀

3,200 s.f. (plus 799 s.f. terrace)  
\$85,000,000

www.landscape.com/32864.htm

Louis Wong 黃先生 9871 6828

**Estoril Court**

中半山 愛都大廈

55 Garden Road, Midlevels Central

Huge 4-bedroom apartment on fringe of Central  
特大四房住宅，鄰近中環，交通方便

3,347 s.f.  
\$53,000,000

www.landscape.com/45400.htm

Sami Woo 胡小姐 9493 8275

**Tregunter Tower 3**

中半山 地利根德閣 3座

14 Tregunter Path, Midlevels Central

Tastefully decorated duplex with excellent clubhouse facilities  
品味靚裝修複式住宅，享完齊住客會所設施

2,980 s.f. (plus 187 s.f. terrace)  
\$56,000,000

www.landscape.com/105883.htm

Rowena Siu 蕭小姐 9348 4118

**Kennedy Heights**

中半山 堅離閣

10-18 Kennedy Road, Midlevels Central

Huge 5-bedroom apartment on fringe of CBD  
中半山特大五房單位，鄰近中環，交通方便

3,400 s.f.  
\$75,000,000

www.landscape.com/101979.htm

Stella Lo 羅小姐 9809 8570

**Grenville House**

中半山 嘉慧閣

1-3A Magazine Gap Road, Midlevels Central

Renovated large apartment with spacious layout and huge balcony  
新裝修特大住宅，間隔實用，連特大露台，可租可售

3,700 s.f.  
\$80,000,000 also for lease \$170,000

可普通話

www.landscape.com/126945.htm

Teresa Lau 劉小姐 9080 6686

**The Mayfair**

中半山 梅道1號

1 May Road, Midlevels Central

Spacious 2-bedroom flat in Midlevels Central  
中半山兩房單位，間隔寬敞

2,838 s.f.  
\$85,000,000

www.landscape.com/31145.htm

Erica Fan 范小姐 6972 3063

**Elm Tree Towers**

灣甸山 榆富大廈

8-10 Chun Fai Road, Jardine's Lookout

Rare harbour view penthouse duplex with private roof and terrace  
灣甸山罕有維港景頂層複式住宅，連私家天台及平台

2,950 s.f. (plus 1,075 s.f. roof and 468 s.f. terrace)  
\$110,000,000

www.landscape.com/121961.htm

Jackson Lee 李先生 9177 7191



"you never own ya premises,  
you merely live there unless  
ya character implanted"

-joseph chang-



Alexie Lee

*Joseph is friendly, honest, reliable, organized, and very meticulous in his work. I can't say enough good things about all the work he did to make my place gorgeous & very functional.*

**Old Peak road** -the boundless en-suite



Susanna Toyson

*Don't be fooled by Joseph's easy demeanor. he's an unwavering advocate for the client and the work. It's clear to his contractors that anything less than the best won't do. He thinks through everything, and lets nothing slip by.*

**Shouson Hill** -classical contemporary



Richard J. Brink

*Throughout the project, Joseph was personally involved, assuring the quality of the work and the project's adherence to the budget and schedule. The project was completed on time and within budget, and we now have a beautiful new home, as well as a new friend, Joseph!*

**Capitol Garden** -minimal maximized flexibility



Mei Ling

*Thank you so much for designing our new dreamy house. We absolutely love it! I just keep going upstairs and looking at it. It looks like a place out of a magazine. Fantastic Job! You matched the house in our personalities perfectly. Thanks again!*

**Red Hill Peninsula** -eccentricated coziness



Sean Holden

*We really appreciated the way Joseph worked with us in coming up with great ideas by taking our rudimentary ideas and developing them into amazing designs.*

**Park Place** -interior & exterior connection

Interior design  
constructions  
space planning  
project management  
tendering  
landscaping  
quantity survey



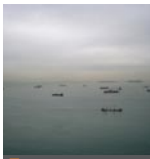
**Stanford Villa**  
 赤柱 旭逸居  
 7 Stanley Village Road, Stanley  
 Newly decorated low-rise apartment with private garden close to beach  
 全新裝修低密度住宅，鄰近私家花園，鄰近海灘  
**758 s.f. (plus 292 s.f. garden)**  
**\$13,500,000**

www.landscape.com/100244.htm Jackson Lee 李先生 9177 7191



**Pokfulam Heights**  
 薄扶林 橫園  
 86A-D Pokfulam Road, Pokfulam  
 Colonial low-rise 3-bedroom apartment with greenery view in quiet neighbourhood off Pokfulam Road  
 薄扶林道英式低密度三房住宅，環境清幽怡人，享怡人美景  
**2,200 s.f.**  
**\$27,000,000**

www.landscape.com/44677.htm Mary Li 李小姐 9011 6595



**Cape Mansions**  
 薄扶林 翠海別墅  
 56-62 Mount Davis Road, Pokfulam  
 Sea view apartment in Mount Davis Road  
 薄扶林海景住宅出售  
**2,100 s.f.**  
**\$29,500,000**

www.landscape.com/18679.htm Erica Fan 范小姐 6972 3063



**Scenic Villas**  
 薄扶林 美景臺  
 2-28 Scenic Villa Drive, Pokfulam  
 Spacious 4-bedroom sea view apartment with facilities  
 寬敞四房海景住宅，連住客會所設施  
**2,517 s.f.**  
**\$33,000,000** 可營話

www.landscape.com/111486.htm Jensen Au 區先生 9028 0147



**12-14 Shouson Hill Road West, Shouson Hill**  
 壽臣山 壽臣山道西12-14號  
 Unique low-rise flat with nice decor in tranquil Shouson Hill  
 壽臣山獨特低密度住宅，享享雅緻裝修，環境怡人  
**2,200 s.f.**  
**\$38,000,000**

www.landscape.com/108788.htm Maria Cheung 張小姐 5182 8699



**Joy Garden**  
 壽臣山 曉輝花園  
 13 Shouson Hill Road West, Shouson Hill  
 4-bedroom (3 en suites) duplex in tranquil Shouson Hill  
 壽臣山四房連三套房複式住宅，環境寧靜怡人  
**2,753 s.f.**  
**\$39,800,000**

www.landscape.com/107698.htm Stella Lo 羅小姐 9809 8570



**The Brentwood**  
 淺水灣 蔚峰園  
 11 Repulse Bay Road, Repulse Bay  
 3-bedroom sea view flat on upper Repulse Bay Road with nice decor  
 淺水灣道頭段三房住宅，欣賞優美海景，享觀裝修，可租可售  
**1,556 s.f.**  
**\$26,000,000** also for lease \$65,000 incl.

www.landscape.com/109549.htm Chris Law 羅先生 6183 8388



**Aegean Terrace**  
 薄扶林 愛琴苑  
 60 Sassoon Road, Pokfulam  
 Sea view low-rise with brand new decorations and spacious layout  
 低密度海景住宅，全新裝修，間隔寬敞  
**1,860 s.f.**  
**\$28,500,000** Sole Agent 獨家代理

www.landscape.com/40058.htm Maria Cheung 張小姐 5182 8699



**La Mer**  
 薄扶林 浪韻居  
 67-71 Bisney Road, Pokfulam  
 Full sea view 3-bedroom low-rise apartment with study room and twin car parks  
 全海景三房低密度住宅，連書房及雙車位  
**2,063 s.f.**  
**\$30,000,000** Sole Agent 獨家代理

www.landscape.com/108873.htm Yvonne Chang 鄭小姐 9088 4666



**Hong Kong Parkview - Tower 8**  
 淺水灣 隱山莊8座  
 88 Tai Tam Reservoir Road, Repulse Bay  
 Popular 3-bedroom apartment with lush green view in country park  
 受歡迎三房單位，享享郊野公園園景  
**2,366 s.f.**  
**\$33,800,000**

www.landscape.com/99642.htm Cora Ko 高小姐 6330 7888



**45 Island Road, Deep Water Bay**  
 深水灣 香島道45號  
 Low-rise apartment with private roof in Deep Water Bay  
 深水灣低密度住宅，連私家天台  
**1,634 s.f. (plus 1,207 s.f. roof)**  
**\$38,000,000**

www.landscape.com/34433.htm Mark Mak 麥先生 6838 2929



**Ruby Court**  
 淺水灣 嘉韻閣  
 55 South Bay Road, Repulse Bay  
 Popular sea view 3-bedroom flat in tranquil South Bay  
 淺水灣受歡迎海景三房住宅，環境清幽怡人  
**2,200 s.f.**  
**\$43,000,000**

www.landscape.com/51578.htm Christine Chong 莊小姐 9648 6082





Merry Christmas

我們以專業及貼心的態度為每位客人安排節日花束、禮盒果籃、開張花籃、悼念花籃、場地佈置、花卉擺設、宴會襟花和婚禮花球等，並可根據客人要求而提供特定的設計，務求為每位客人提供最優質及可信賴的服務。詳情可致電**2544 6886**或親臨本店查詢。

聖誕禮物籃Christmas Present Basket、聖誕花Christmas Flowers、聖誕樹Christmas Tree、聖誕場地佈置Christmas Decoration現已接受訂購available for order。

Yim's  
Flower

No.11 Burd Street, Central, Hong Kong  
Tel. 2544 6886 Fax. 2574 6269  
Email. yimflower@yahoo.com.hk





### Woodbury Court

薄扶林 嘉林閣

137 Pokfulam Road, Pokfulam

Practical duplex with balconies and peaceful sea view, 4 carparks  
間隔實用複式住宅，連陽臺，享寧靜海景，連四車位

2,895 s.f.  
**\$45,000,000**

可普通話

www.landscape.com/38820.htm Carman Szeto 司徒小姐 6183 8339



### Sea Cliff Mansions

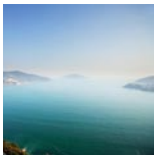
淺水灣 海峰閣

19A-19D Repulse Bay Road, Repulse Bay

Deluxe sea view apartment with nice decorations on upper Repulse Bay Road  
淺水灣道頭段豪華海景住宅，連雅緻靚裝修

2,400 s.f.  
**\$45,000,000**

www.landscape.com/109433.htm Stella Lo 羅小姐 9809 8570



### Pacific View

大潭 浪琴閣

38 Tai Tam Road, Tai Tam

High floor flat with splendid sea view  
大潭高層住宅，享寧靜海景

3,106 s.f.  
**\$47,000,000**

www.landscape.com/13954.htm Maria Cheung 張小姐 5182 8699



### Celestial Garden

淺水灣 荷禮花園

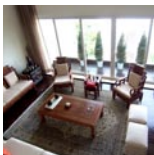
5 Repulse Bay Road, Repulse Bay

3-bedroom apartment on upper Repulse Bay Road  
淺水灣道頭段三房住宅

2,363 s.f.  
**\$50,000,000**

可普通話

www.landscape.com/1520.htm Mavis Wu 吳小姐 9107 3891



### Ventura Villa

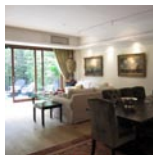
香港角 華翠苑

27 Ching Sau Lane, Chung Hom Kok

Tastefully decorated townhouse with private terrace in quiet enclave  
品味裝修洋房，連私家平台，環境清幽怡人，可租可售

2,400 s.f. (plus 400 s.f. terrace)  
**\$50,000,000 also for lease \$110,000 incl.**

www.landscape.com/33374.htm Chris Law 羅先生 6183 8388



### 27-29 Consort Rise, Pokfulam

薄扶林 金翠閣27-29號

Modern stylish house with roof and garden  
spacious layout in Pokfulam  
薄扶林時尚洋房，闊闊寬敞連天台花園

3,500 s.f. (plus 692 s.f. roof and 531 s.f. garden)  
**\$58,000,000**

可普通話

www.landscape.com/48235.htm Walker Lam 林先生 95511077



### Regalia Bay

赤柱 富豪海灣

88 Wong Ma Kok Road, Stanley

Full sea view townhouse with luxurious clubhouse facilities  
赤柱全海景洋房，連豪華住客會所設施

4,053 s.f. (plus 1,190 s.f. roof and 672 s.f. garden)  
**\$63,800,000**

Sole Agent 獨家代理

www.landscape.com/34777.htm David Chan 陳先生 9238 2012



### Hillgrove

香港角 羅如花園

18 Cape Drive, Chung Hom Kok

Low-rise 6-bedroom house with private roof  
低密度六房住宅，連私家平台天台

3,000 s.f. (plus 900 s.f. roof and 600 s.f. garden)  
**\$68,000,000**

www.landscape.com/104403.htm Christine Chong 莊小姐 9648 6082



### Belgravia

淺水灣 南灣道57號

57 South Bay Road, Repulse Bay

Newly renovated 4-bedroom apartment  
enjoying fantastic sea view with 2 carparks  
全新裝修四房住宅連雙車位，享寧靜海景

2,790 s.f.  
**\$68,000,000**

可普通話

www.landscape.com/117869.htm Walker Lam 林先生 9551 1077



### Residence Bel-Air

薄扶林 貝沙灣

38 Bel-Air Avenue, Pokfulam

Full sea view 4-ensuite penthouse with deluxe club facilities  
全海景四房頂層住宅，連豪華住客會所設施

3,002 s.f. (plus 624 s.f. roof and 156 s.f. terrace)  
**\$75,050,000**

www.landscape.com/108717.htm Jackson Lee 李先生 9177 7191



### Repulse Bay Towers

淺水灣 保華大廈

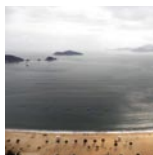
119A Repulse Bay Road, Repulse Bay

5-ensuite large duplex with Repulse Bay sea view  
特大五套房複式單位，享淺水灣海景

5,000 s.f.  
**\$82,000,000**

可普通話

www.landscape.com/33119.htm Jenson Au 區先生 9028 0147



### Grosvenor Place

淺水灣 淺水灣道117號

117 Repulse Bay Road, Repulse Bay

Renowned building in Repulse Bay with sweeping sea view  
淺水灣有名望住宅大廈，俯瞰寧靜海景

2,809 s.f.  
**\$88,000,000**

www.landscape.com/108477.htm Teresa Fung 馮小姐 9138 1621

**The Somerset**

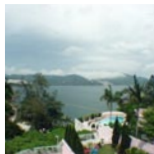
淺水灣 怡峰

67 Repulse Bay Road, Repulse Bay

Duplex with relaxing sea view in exclusive location  
豪華休閒海景住宅，位處獨特地段，可租可售

**3,099 s.f.****\$96,000,000** also for lease \$170,000 incl.[www.landscape.com/31500.htm](http://www.landscape.com/31500.htm)

Stephen Chan 陳先生 9093 3381

**Stanley Crest**

赤柱 赤柱灘道5號

5 Stanley Beach Road, Stanley

Sea view plus 1,000 s.f. garden 4-bedroom townhouse close to beach  
海景四房洋房，連一千呎大花園，鄰近海灘

**3,894 s.f.** (plus 920 s.f. garden, 666 s.f. roof and 436 s.f. terrace)**\$135,000,000**[www.landscape.com/123699.htm](http://www.landscape.com/123699.htm)

Christine Chong 莊小姐 9648 6082

**Residence Bel-Air**

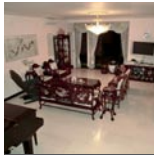
薄扶林 貝沙灣

Cyberport Road, Pokfulam

Brand new waterfront house with 4 ensuite and private garden  
全新渡假式四房洋房，連私家花園

**5,495 s.f.** (plus 478 s.f. terrace)**\$153,860,000**[www.landscape.com/108223.htm](http://www.landscape.com/108223.htm)

Louis Wong 黃先生 9871 6828

**Villa Rosa**

大潭 玫瑰園

88 Red Hill Road, Tai Tam

Well decorated 4-ensuite detached townhouse with huge garden  
雅緻裝修四套房獨立洋房，連巨型花園

**3,960 s.f.** (plus 1,776 s.f. garden and 480 s.f. roof)**\$160,000,000**[www.landscape.com/31916.htm](http://www.landscape.com/31916.htm)

Cora Ko 高小姐 6330 7888

**Shek O Headland, Tai Tam**

大潭 石澳山仔

Colonial style single house with wrap-around garden and private pool in exclusive location  
大潭英式獨立屋，連特大花園及私家游泳池，地段尊貴

**4,000 s.f.** (plus 5,000 s.f. garden)**\$250,000,000**[www.landscape.com](http://www.landscape.com)

Mark Mak 麥先生 6838 2929

**Tai Tam Road, Tai Tam**

大潭 大潭道

Newly decorated apartment block with unobstructed sea view  
大潭全新裝修住宅，尊享無阻擋海景

**12,236 s.f.** (plus 1,858 s.f. and 1,086 s.f. roof)**\$340,000,000**[www.landscape.com/111310.htm](http://www.landscape.com/111310.htm)

Louis Wong 黃先生 9871 6828



歐詩木

德國

osmo®

...in form und farbe

*Wood finishes from a wood specialist***Natural...**

...with natural oils and waxes,  
the very best for wood and  
the environment!

**Faster...**

...Osmo finishes can be renovated  
without sanding, saving time  
and money!

**Coverage...**

...high solid means amazing  
coverage and best price per m²!

Hop Sze Timber Co., Ltd.  
220 Gloucester Road, Wanchai, Hong Kong  
Phone (852) 28336069 · [www.hopsze.com](http://www.hopsze.com)



**La Hacienda**  
 山頂 加列山道29-33號  
 29-33 Mount Kellett Road, The Peak  
 Stylish colonial apartment with overlooking  
 Aberdeen Country Park  
 時尚英式住宅，俯瞰優美香港仔郊野公園  
 景色  
**2,700 s.f.**  
**\$110,000 incl.**

[www.landscape.com/128563.htm](http://www.landscape.com/128563.htm) Teresa Fung 馮小姐 9138 1621



**22A-22B Mount Austin Road, The Peak**  
 山頂 柯士甸山道22A-22B號  
 A bird's eye view of the Victoria Harbour  
 山頂維港景住宅，可租可售  
**2,650 s.f.**  
**\$130,000 also for sale \$100,000,000**

[www.landscape.com/14296.htm](http://www.landscape.com/14296.htm) Maria Cheung 張小姐 5182 8699



**Cameron House**  
 山頂 嘉樂苑  
 40 Magazine Gap Road, The Peak  
 Unique mid-rise apartment with sea view  
 精緻中密度住宅，尊享海景  
**2,847 s.f.**  
**\$140,000 incl.**

[www.landscape.com/14268.htm](http://www.landscape.com/14268.htm) Teresa Fung 馮小姐 9138 1621



**Abergeldie**  
 山頂 種植道52號  
 52 Plantation Road, The Peak  
 Peak townhouse with bird's eye view of  
 Victoria Harbour  
 山頂洋房，尊享鳥語花香的維港景色  
**3,655 s.f.** (plus 759 s.f. garden and 313  
 s.f. terrace)  
**\$190,000 incl.**

[www.landscape.com/606.htm](http://www.landscape.com/606.htm) David Chan 陳先生 9238 2012



**Haking Mansions**  
 山頂 白加道43號  
 43 Barker Road, The Peak  
 Modern apartment on Barker Road with  
 Victoria Harbour view  
 白加道時尚維港海景住宅  
**3,820 s.f.**  
**\$200,000**

[www.landscape.com/103936.htm](http://www.landscape.com/103936.htm) Mavis Wu 吳小姐 9107 3891



**Altadena**  
 山頂 白加道27號  
 27 Barker Road, The Peak  
 Highly sought after huge apartment with  
 panoramic harbour view on Barker Road  
 白加道巨座住宅，尊享優美維港，市面  
 難尋  
**4,500 s.f.**  
**\$250,000 incl.**

[www.landscape.com/12838.htm](http://www.landscape.com/12838.htm) Louis Wong 黃先生 9871 6828

# INVENTIVE INNOVATIVE IMAGINATIVE

Our services

RESIDENTIAL DESIGN

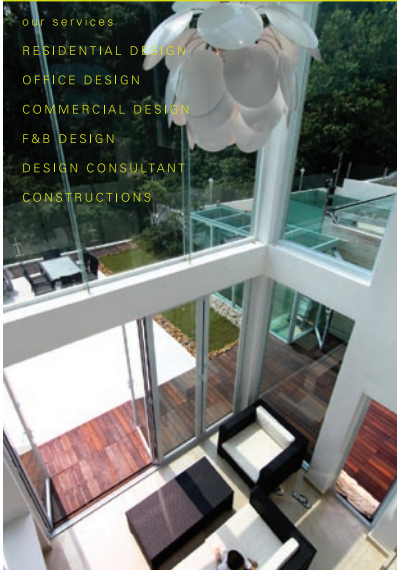
OFFICE DESIGN

COMMERCIAL DESIGN

F&B DESIGN

DESIGN CONSULTANT

CONSTRUCTIONS



[www.novusp.com](http://www.novusp.com)

**NOVUS PENETRALIS LIMITED**  
 INTERIOR ARCHITECTURE

UNIT 16A, HANG SENG CAUSEWAY BAY BUILDING  
 28 YEE WO STREET, CAUSEWAY BAY, HONG KONG  
 T. 3106 6069 F. 3106 6079 E. info@novusp.com

**Shiu Fai Terrace Garden**

東半山 翠輝台花園

3-4 Shiu Fai Terrace, Midlevels East

Cozy flat with city view in quiet location  
東半山迷人住宅，享城市景觀，環境寧靜舒適**1,563 s.f.**  
**\$38,000 incl.**[www.landscape.com/128043.htm](http://www.landscape.com/128043.htm) Arthur Wong 黃先生 9304 4257**Swiss Towers**

東半山 瑞士花園

113 Tai Hang Road, Midlevels East

Practical apartment with Victoria Harbour view  
東半山維港景住宅，間隔實用**1,600 s.f.**  
**\$52,000 incl.**[www.landscape.com/30789.htm](http://www.landscape.com/30789.htm) Arthur Wong 黃先生 9304 4257**Scenic Heights**

西半山 富景花園

58A-58B Conduit Road, Midlevels West

Popular 3-bedroom flat in convenient location with harbour view  
受歡迎三房單位，享維港景，位置優越，可租可售**1,251 s.f.**  
**\$56,000 incl. also for sale \$16,800,000**[www.landscape.com/56826.htm](http://www.landscape.com/56826.htm) Stella Lo 羅小姐 9809 8570**Dragon Garden**

渣甸山 龍園

1 Chun Fai Terrace, Jardine's Lookout

Designer decorated 3-bedroom flat in quiet corner  
設計師精心設計三房住宅，環境寧靜怡人，可租可售**1,750 s.f.**  
**\$62,000 incl. also for sale \$20,000,000**[www.landscape.com/104282.htm](http://www.landscape.com/104282.htm) Stephen Chan 陳先生 9093 3381**Seaview Mansion**

中半山 時和大廈

34 Kennedy Road, Midlevels Central

Nicely renovated flat with open city view  
中半山係新裝修單位，享開揚城市景觀**1,750 s.f.**  
**\$75,000 incl.**[www.landscape.com/39348.htm](http://www.landscape.com/39348.htm) David Chan 陳先生 9238 2012**Glory Mansion**

中半山 輝煌大廈

106-108 MacDonnell Road, Midlevels Central

Well decorated and fully furnished colonial low-rise on MacDonnell Road  
麥當勞道低密度英式住宅，雅致裝修，連全屋傢俬，可租可售**2,300 s.f.**  
**\$75,000 incl. also for sale \$29,000,000**[www.landscape.com/37757.htm](http://www.landscape.com/37757.htm) Cora Ko 高小姐 6330 7888**Park Garden**

東半山 柏園

6 Tai Hang Drive, Midlevels East

Practical 3-bedroom apartment with Victoria Harbour view  
三房維港景單位，間隔實用，可租可售**1,450 s.f.**  
**\$48,000 incl. also for sale \$17,800,000**[www.landscape.com/23940.htm](http://www.landscape.com/23940.htm) Arthur Wong 黃先生 9304 4257**Flora Garden**

渣甸山 翠景園

7 Chun Fai Road, Jardine's Lookout

Cozy apartment with podium garden and pool at Jardine's Lookout  
渣甸山迷人住宅，設有住客花園及游泳池**1,533 s.f.**  
**\$53,000 incl.**[www.landscape.com/102000.htm](http://www.landscape.com/102000.htm) Arthur Wong 黃先生 9304 4257**Kingsford Gardens**

北角半山 瓊峰園

202-216 Tin Hau Temple Road, North Point Midlevels

High efficiency apartment with panoramic harbour view  
北角半山維港景住宅，間隔實用，可租可售**1,480 s.f.**  
**\$60,000 incl. also for sale \$19,800,000**[www.landscape.com/113448.htm](http://www.landscape.com/113448.htm) Stephen Chan 陳先生 9093 3381**Butler Tower**

渣甸山 柏麗園

1-5 Boyce Road, Jardine's Lookout

Practical 4-bedroom apartment enjoy greenery view  
實用四房單位，享翠綠園景**1,650 s.f.**  
**\$70,000 incl.**[www.landscape.com/38266.htm](http://www.landscape.com/38266.htm) Arthur Wong 黃先生 9304 4257**Wisdom Court**

西半山 慧苑

5 Hutton Road, Midlevels West

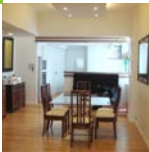
Meticulously designed apartment with private roof top at Midlevel West  
西半山完美觀裝修住宅，連私家天台**1,394 s.f. (plus 1,300 s.f. roof)**  
**\$75,000 incl.**[www.landscape.com/62331.htm](http://www.landscape.com/62331.htm) Rowena Si 蕭小姐 9348 4118**Elegant Garden**

西半山 美景臺

11 Conduit Road, Midlevels West

Large 4-bedroom apartment next to Midlevels pedestrian escalator  
特大四房單位，鄰近半山扶手電梯**2,500 s.f.**  
**\$80,000 incl.**[www.landscape.com/49129.htm](http://www.landscape.com/49129.htm) Mira To 杜小姐 9486 1566



**Medallion Heights**

西半山 金鑽閣

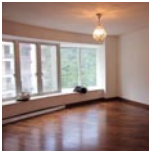
45 Conduit Road, Midlevels West

Nicely renovated 3-bedroom apartment with open kitchen and balcony  
雅緻裝修三房住宅，連開放式廚房及陽臺，可租可售

1,950 s.f.  
**\$80,000 incl.** also for sale \$26,000,000

可普通話

www.landscape.com/127339.htm Carman Szeto 司徒小姐 6183 8339

**Tregunter Tower 3**

中半山 地利根德閣3座

14 Tregunter Path, Midlevels Central

Newly renovated luxurious high floor apartment with facilities  
全新豪華裝修高層住宅，連住客會所設施

2,042 s.f.  
**\$95,000 incl.**

www.landscape.com/95681.htm Stella Lo 羅小姐 9809 8570

**Villa Lotto**

跑馬地 樂陶苑

18 Broadwood Road, Happy Valley

Decorated flat in Villa lotto  
樂陶苑靚裝修住宅，可租可售

2,406 s.f.  
**\$95,000 incl.** also for sale \$40,000,000

可普通話

www.landscape.com/9580.htm Jensen Au 區先生 9028 0147

**The Albany**

中半山 雅賓利大廈

1 Albany Road, Midlevels Central

Renowned apartment on fringe of Central  
中半山豪華住宅，鄰近中環，交通方便

2,546 s.f.  
**\$108,000**

www.landscape.com/31634.htm Mira To 杜小姐 9486 1566

**Old Peak Mansion**

中半山 舊山頂道5號

5 Old Peak Road, Midlevels Central

Spacious 4-bedroom low-rise apartment on fringe of CBD  
低密度四房住宅，間隔寬敞，鄰近中環，交通方便

3,130 s.f.  
**\$110,000**

www.landscape.com/10324.htm Teresa Fung 馮小姐 9138 1621

**Grenville House**

中半山 嘉慧園

1-3A Magazine Gap Road, Midlevels Central

Renowned huge 4-bedroom apartment with new decor  
有名望特大四房單位，全新靚裝修

3,700 s.f.  
**\$150,000 incl.**

www.landscape.com/30085.htm Mira To 杜小姐 9486 1566

**Nicholson Tower**

東半山 蔚豪苑

8 Wong Nai Chung Gap Road, Midlevels East

Brand new decoration spacious apartment with stunning views  
全新裝修住宅，間隔寬敞，享遼闊景觀

1,993 s.f.  
**\$95,000 incl.**

可普通話

www.landscape.com/34592.htm Walker Lam 林先生 9551 1077

**Hillsborough Court**

中半山 卑峰閣

18 Old Peak Road, Midlevels Central

Rare penthouse duplex with private roof  
頂層複式住宅，連私家天台，市場罕有，可租可售

1,993 s.f. (plus 472 s.f. terrace)  
**\$95,000 incl.** also for sale \$45,000,000

www.landscape.com/108988.htm Cora Ko 高小姐 6330 7888

**Tregunter Tower 2**

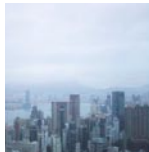
中半山 地利根德閣2座

14 Tregunter Path, Midlevels Central

Spacious and practical apartment with excellent facilities in Midlevels Central  
中半山寬敞住宅，間隔實用，連完善住客會所設施

3,052 s.f.  
**\$106,000 incl.**

www.landscape.com/109568.htm Mira To 杜小姐 9486 1566

**Taipan Court**

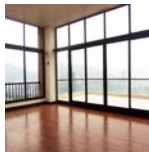
東半山 大莊閣

47B Stubbs Road, Midlevels East

Newly renovated 4-ensuite duplex with splendid harbour view  
全新裝修四套房複式住宅，享壯麗維港景色

3,670 s.f.  
**\$109,000**

www.landscape.com/23298.htm Yvonne Chang 鄭小姐 9088 4666

**Monterey Court**

渣甸山 白蓮時道47-49號

47-49 Perkins Road, Jardine's Lookout

Exclusive duplex penthouse flat with roof and huge balcony and sweeping views in Jardine's Lookout  
渣甸山獨特複式頂層住宅，連天台及大露台，享遼闊渣甸山景觀

2,678 s.f. (plus terrace and roof)  
**\$140,000 incl.**

可普通話

www.landscape.com/30937.htm Teresa Lau 劉小姐 9080 6686

**Estoril Court**

中半山 愛都大廈

55 Garden Road, Midlevels Central

Large luxuriously designed 4-bedroom apartment commanding harbour view  
特大豪華四房單位，居高臨下，享維港景觀

3,347 s.f.  
**\$170,000 incl.**

可普通話

www.landscape.com/6796.htm Carman Szeto 司徒小姐 6183 8339



# WE GROWTH WE MOVED



OUR SERVICES : INTERIOR DESIGN & BUILD | SPACE PLANNING | COMMERCIAL DESIGN |  
| KITCHEN DESIGN | CONSULTANT | ONE STOP SERVICES | ITALIAN FURNITURE |

HONG KONG HEAD OFFICE : 7/F OF BLOCK C, SEA VIEW ESTATE, 2-8 WATSON ROAD, CAUSEWAY BAY, HK  
PRC OFFICE : 馮建輝設計(深圳)有限公司 — 深圳市龍湖區春風路佳寧娜友誼廣場 1406 室

**TINT LIVING LTD  
FURNITURE**

Designer Furniture Gallery : G/F, 3 Blue Pool RD, Happy Valley, HK. T: (852) 3104 3105 [www.tintliving.com](http://www.tintliving.com)  
Furniture Outlet : 11/F, Ming Sang Ind. Building, 19 Hing Yip Street, Kwun Tong, Kowloon. T: (852) 3104 3107





### The Sail at Victoria

薄扶林 傲翔灣畔

86 Victoria Road, Pokfulam

Brand new modern 4-bedroom sea view flat with balcony  
全新時尚四房海景住宅，連陽臺，可租可售

**1,429 s.f.**  
**\$54,000 incl.** also for sale \$19,000,000

[www.landscape.com/122769.htm](http://www.landscape.com/122769.htm) [Rowena Siu 蕭小姐 9348 4118](mailto:Rowena.Siu@landscape.com)



### Aqua 33

薄扶林 金樂街33號

33 Consort Rise, Pokfulam

Brand new low-rise with private roof top  
全新低密度住宅，連私家天台，可租可售

**1,703 s.f.** (plus 1,726 s.f. roof)  
**\$72,000 incl.** also for sale \$28,650,000

[www.landscape.com/123841.htm](http://www.landscape.com/123841.htm) [Christine Chong 莊小姐 9648 6082](mailto:Christine.Chong@landscape.com)



### Tam Gardens

薄扶林 譚亦衡樓

25 Sha Wan Drive, Pokfulam

Full sea view duplex apartment with big balcony in secluded environment of Pokfulam  
薄扶林全海景三房複式住宅，連大陽臺，環境寧靜舒適

**3,125 s.f.** (plus garden)  
**\$90,000 incl.**

[www.landscape.com/73906.htm](http://www.landscape.com/73906.htm) [Mary Li 李小姐 9011 6595](mailto:Mary.Li@landscape.com)



### Monte Verde

淺水灣 南山別墅

41 Repulse Bay Road, Repulse Bay

Full sea view renovated apartment in Repulse Bay  
淺水灣全海景住宅，享新裝修

**2,400 s.f.**  
**\$100,000**

[www.landscape.com/20990.htm](http://www.landscape.com/20990.htm) [Sami Woo 胡小姐 9493 8275](mailto:Sami.Woo@landscape.com)



### The Carmina

深水灣 嘉名苑

7-9 Deep Water Bay Drive, Deep Water Bay

Newly renovated 4-bedroom apartment in tranquil area  
全新裝修四房單位，環境清幽怡人

**2,628 s.f.**  
**\$110,000 incl.**

[www.landscape.com/100154.htm](http://www.landscape.com/100154.htm) [Chris Lam 羅先生 6183 8388](mailto:Chris.Lam@landscape.com)



### 68 Mount Davis Road, Pokfulam

薄扶林 摩星嶺道68號

Penthouse with private roof in Pokfulam

薄扶林頂層住宅，連私家天台

**2,925 s.f.** (plus 718 s.f. roof)  
**\$150,000**

[www.landscape.com/127378.htm](http://www.landscape.com/127378.htm) [Stephen Chan 陳先生 9093 3381](mailto:Stephen.Chan@landscape.com)



### Parisian

赤柱 海寧雅舍

8 Stanley Mound Road, Stanley

Boutique low-rise apartment on Stanley Main Beach  
迷人精緻低密度兩房單位，鄰近赤柱海灘

**1,670 s.f.**  
**\$55,000 incl.**

可普通話

[www.landscape.com/36007.htm](http://www.landscape.com/36007.htm) [Walker Lam 林先生 9551 1077](mailto:Walker.Lam@landscape.com)



### Helene Tower

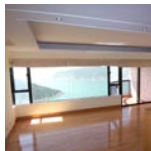
淺水灣 喜蓮閣

123 Repulse Bay Road, Repulse Bay

Bright duplex with a bird's eye view of Repulse Bay Beach  
光猛複式住宅，俯瞰淺水灣海灣的優美景色

**1,875 s.f.**  
**\$79,000 incl.**

[www.landscape.com/11343.htm](http://www.landscape.com/11343.htm) [Jackson Lee 李先生 9177 7191](mailto:Jackson.Lee@landscape.com)



### Pine Crest

淺水灣 松苑

65 Repulse Bay Road, Repulse Bay

Spacious 4-bedroom apartment enjoy sweeping view of Deep Water Bay  
寬敞四房住宅，享寧靜深水灣景觀

**2,250 s.f.**  
**\$100,000 incl.**

[www.landscape.com/1527.htm](http://www.landscape.com/1527.htm) [Teresa Fung 馮小姐 9138 1621](mailto:Teresa.Fung@landscape.com)



### 29-31 Bisney Road, Pokfulam

薄扶林 碧荔道29-31號

Well decorated 4-bedroom low-rise flat with private garden  
雅緻裝修四房低密度住宅，連私家花園

**2,500 s.f.** (plus 578 s.f. terrace)  
**\$105,000 incl.**

可普通話

[www.landscape.com/51254.htm](http://www.landscape.com/51254.htm) [Walker Lam 林先生 9551 1077](mailto:Walker.Lam@landscape.com)



### 8 Deep Water Bay Road, Deep Water Bay

深水灣 深水灣道8號

Exclusive sea view townhouse in upscale Deep Water Bay  
獨特海景排屋，位於深水灣尊貴地段

**3,200 s.f.** (plus 1,000 s.f. roof and 304 s.f. terrace)  
**\$135,000**

[www.landscape.com/13233.htm](http://www.landscape.com/13233.htm) [Maria Cheung 張小姐 5182 8699](mailto:Maria.Cheung@landscape.com)



### The Lily

淺水灣 淺水灣道129號

129 Repulse Bay Road, Repulse Bay

Luxurious brand new apartment with fantastic Repulse Bay view  
全新豪華住宅，尊享驚人淺水灣景觀

**3,545 s.f.**  
**\$160,000**

可普通話

[www.landscape.com/75990.htm](http://www.landscape.com/75990.htm) [Mavis Wu 吳小姐 9107 3891](mailto:Mavis.Wu@landscape.com)

**Unique House****摩星嶺道英式洋房出租****61 Mount Davis Road, Pokfulam**

Rare high ceiling townhouse with private garage and peaceful sea view  
罕有英式洋房，樓底極高，連私家車庫，享美麗海景

**5,000 s.f.** (plus 800 s.f. terrace)  
**\$180,000 incl.**

可普通話

[www.landscape.com/130602.htm](http://www.landscape.com/130602.htm) Teresa Lau 劉小姐 9080 6686


**61-63 Deep Water Bay Road,  
Deep Water Bay**  
深水灣 深水灣道61-63號

Newly renovated prestigious townhouse with private roof and garden and clubhouse facilities  
深水灣全新裝修豪華洋房，連私家天台及花園，設有住客會所設施

**3,362 s.f.** (plus 753 s.f. garden and 279 s.f. terrace)  
**\$190,000**

[www.landscape.com/41029.htm](http://www.landscape.com/41029.htm) Yvonne Chang 鄭小姐 9088 4666

**Las Pinadas****壽臣山 蔚松庭****33 Shouson Hill Road, Shouson Hill**

Luxurious garden house with roof and terrace in tranquil enclave  
豪華花園大屋，連天台及平台，環境清幽怡人，可租可售

**3,382 s.f.** (plus 617 s.f. roof, 565 s.f. garden and 166 s.f. terrace)  
**\$190,000 incl.** also for sale \$100,000,000

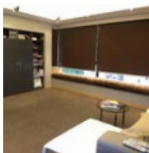
[www.landscape.com/21407.htm](http://www.landscape.com/21407.htm) David Chan 陳先生 9238 2012


**12 Shouson Hill Road, Shouson Hill**  
壽臣山 壽山村道12號

Large 5-bedroom garden house in quiet enclave  
特大五房花園洋房，位處清幽地段

**3,746 s.f.** (plus 370 s.f. garden)  
**\$185,000**

[www.landscape.com/11896.htm](http://www.landscape.com/11896.htm) David Chan 陳先生 9238 2012

**Repulse Bay Heights****淺水灣 淺水灣花園****3 Belleview Drive, Repulse Bay**

Newly renovated house with private swimming pool  
全新裝修大屋，連私家游泳池，可租可售

**3,200 s.f.** (plus 1,745 s.f. garden and 1,017 s.f. roof)  
**\$240,000 incl.** also for sale \$90,000,000

[www.landscape.com/50171.htm](http://www.landscape.com/50171.htm) Cora Ko 高小姐 6330 7888


**3 Headland Road, Repulse Bay**  
淺水灣 赫蘭道3號

Sought after apartment with internal staircase to roof  
淺水灣罕有住宅，連內置樓梯上天台

**2,833 s.f.** (plus roof)  
**Open Offer**

[www.landscape.com/27583.htm](http://www.landscape.com/27583.htm) Maria Cheung 張小姐 5182 8699

**SCHOTTEN  
& HANSEN**

a passion for excellence

**"A floor from Schotten & Hansen is as unique as the person who lives on it"**

Torben Hansen, Managing Director of Schotten & Hansen

# SPECIAL OFFER, CALL US



SPORTRIVA 56'

A member of the Jepsen Group • CONSUMER • INDUSTRIAL • BEVERAGE • LUXURY • China • Hong Kong • Macau • Taiwan • Korea



Unit: 5, G/F, Aberdeen Marina Tower, 8 Shum Wan Road, Aberdeen, Hong Kong 香港香港仔深灣道8號深灣遊艇俱樂部地下5室  
Tel 電話: (852) 3180 3189 Fax 傳真: (852) 2805 6867 Email 電郵: info@jepsenmarine.com Website 網址: www.jepsenmarine.com  
China Information 中國電話: (86) 21 23064748 China Email 中國電郵: chinainfo@jepsenmarine.com

*Riva*  
AUTHORIZED DEALER