

select deluxe homes

# The Key

大宅®

www.landscape.com

DECEMBER | 2009

Volume 62



## OPULENT LIVING

High life with world-class amenities on the Peak.

## PURE INDULGENCE

Enjoy premium butler style concierge services.

## KEY NOTES\*

“You do ill if you praise, but worse if you censure, what you do not understand.”

「對於你不理解的事情，如果你加於讚賞的話，後果會很糟糕；如果你加於譴責的話，後果會更糟糕。」

- Leonardo da Vinci  
Italian engineer, painter & sculptor (1452 - 1519)  
達文西，意大利工程師、畫家及雕塑家

The exorbitant price of a penthouse unit at 39 Conduit Road last month, reportedly a world-record took the property market by surprise, leaving many wondering how much higher prices can go. Succumbing to outcry from the media, the Monetary Authority has tightened lending policies on luxury properties by reducing the mortgage ceiling from 70% to 60% for properties worth HK\$20 million or more. The Authority further asserts that it is closely monitoring the situation and is contemplating more cooling measures should the price rocket unabated.

In his policy address last month, Chief Executive Donald Tsang claimed what was happening in the luxury market would not have any effect on the mass market. A few days later, he retracted under media pressure and expressed concern at the escalation of luxury property prices. Officials vowed they would introduce more measures to cool down the market if the new mortgage ceiling was not effective. Measures yet to be confirmed included increasing the supply by expediting the construction of some MTR Corporation projects, which are majority-owned by the government.

報稱打破樓市最高售價紀錄的千德道39號的天價複式單位，上個月給地產市場帶來極大的驚喜，不禁令人猜想樓價還能高到甚麼程度。面對來自媒體的爭論，金管局只好收緊豪宅的借貸政策，將價值二百萬或以上的樓盤按揭上限從七成降低到六成。金管局強調會密切關注事態發展，如果樓價居高不下，將會推出更多的樓市降溫政策。

財政司司長曾俊華在上個月發表的施政報告中表示，豪宅市場的現狀對一般住宅市場有任何的影響。幾天之後，在媒體的壓力下，他不得不收回自己的觀點，表示關注豪宅市場價格的上升幅度。政府官員亦聲稱如果新的按揭政策不能達到效果，他們會推出更多的樓市降溫政策。預料的措施包括加快建設政府為大股東的港鐵工程，以增加樓盤供應量。

Read the full article at Market Watch, [www.landscope.com/keynotes](http://www.landscope.com/keynotes)  
請閱讀華文全文，請登入Market Watch網站，網址：[www.landscope.com/keynotes](http://www.landscope.com/keynotes)

published and distributed by

**LANDSCOPE** 領域  
The Specialists in Luxury Properties

**Landscape Realty Limited** C-018733  
a member of Landscape Surveyors Ltd

Tel: 852-2866 0022 Fax: 852-2866 0015  
Email: [info@landscope.com](mailto:info@landscope.com) Website: [www.landscope.com](http://www.landscope.com)  
Unit 3106, 31/F, Hopewell Centre, 183 Queen's Road East, Wanchai, Hong Kong



## THE KEY | CONTENT

- 04 Opulent Living 富裕生活
- 07 A Slice of Macau 澳門一角
- 09 Pure Indulgence 華富之最
- 11 Beyond Luxury 豪華至尊
- 11 Feast of Culture 文化盛宴
- 14 Peaceful Living 幽雅之選
- 17 The Glory of the 60s 六十年代傳奇

### The Key (The No.1 Publication for Luxury Properties)

The Key is a monthly, bilingual lifestyle publication focusing on luxury residential properties in Hong Kong Island. It is sent to over 60,000 urban elites comprising of Hong Kong's most affluent inhabitants.

These consist of Landscape's VIP clients, who mainly reside in The Peak, Mid-Levels, Southside, Kowloon Tong, Homantin and other select up-market residential areas such as Tai Po, Sai Kung and Clear Water Bay, etc.

### How may you list your property with The Key?

If you would like to list your property in an upcoming issue of The Key, you may contact Loretta Lui on +852 3102 4818 or visit us at [www.landscope.com/sell-to-let](http://www.landscope.com/sell-to-let). Alternatively, simply fill out the below and fax back to us on +852 2866 0015.

Property Details

Asking Rental / Sale Price

Floor Area

Contact Person

Telephone

Email

Our KeyPerson will contact you for follow-up work.

designed and produced by

**inMAGAZINE**  
LUXURY REAL ESTATE & LIFESTYLE

**inCorporation Limited**  
Your No. 1 Integrated Marketing Communications Partner in Hong Kong and China

Tel: 852-3699 0888 Fax: 852-3699 0889  
Email: [marketing@incorp.com.hk](mailto:marketing@incorp.com.hk) Website: [www.invmagazine.com.hk](http://www.invmagazine.com.hk)  
12/F, Cyberport 2, 100 Cyberport Road, Hong Kong

The information, text, photos, analyses and preparations contained herein are provided solely for the convenience of prospective clients and no warranty or representation as to their accuracy, correctness or completeness is made by Landscape Surveyors Limited, Landscape Realty Limited or the owners, none of whom shall have any liability or obligation with respect thereto. Interested parties should rely on their own investigations, interpretations and analyses in connection with the purchase or selling thereof.

Information has been provided to us by sources deemed reliable, but no warranty or representation is made as to its accuracy, correctness or completeness. These offerings are made subject to contract, correction of errors, omissions, prior sale of lease, change of price or terms or withdrawal from the market without notice. The contents of The Key are for reference only and do not constitute all or any part of a contract.

Reproduction of any material in whole or part without written permission from inCorporation Ltd is strictly prohibited. All information is correct at the time of going to press. The opinions expressed in The Key are those of the authors and are not necessarily endorsed by inCorporation Ltd.

Copyright 2008

December Issue is available now!



**inMAGAZINE**  
FASHION • BEAUTY • STYLE • WEDDING

iPhone Application Version  
Immerse yourself in this stylish experience anytime, anywhere!

Enquiries: [marketing@incorp.com.hk](mailto:marketing@incorp.com.hk)  
Website: [www.invmagazine.com.hk](http://www.invmagazine.com.hk)

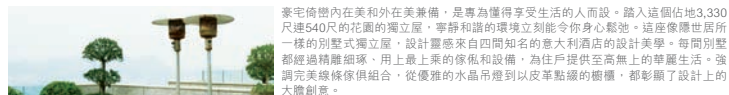


## Opulent Living

### 富裕生活

Elegant in form and function, Severn Eight is designed to fulfill the needs of those who appreciate the finer things in life. From the moment one enters this villa, the peaceful and tranquil ambience works to calm the soul in this 3,330 sq ft welcoming home and 540 sq ft garden. This mountain retreat of elegant villas has been inspired by the grace and aesthetics of four famous Italian hotels. Each house has been exquisitely designed, and combines the finest quality finishes as well as superb amenities to provide the ultimate lifestyle in this luxury showpiece. The wonderful mix of streamlined designer furnishings – from exquisite chandeliers to leather upholstered cupboards make a bold statement.

This amazing structure is spread over three levels – the entry floor accommodates the spacious living room, dining room and open kitchen while the second level houses three ensuite bedrooms. The third level contains a 773 sq ft rooftop which offers a breathtaking panorama of Victoria Harbour, constituting one of the world's most amazing skylines. Residents also enjoy exceptional security with three layers of defence. ■



豪宅倚壁內在美和外在美兼備，是專為懂得享受生活的人而設。踏入這個佔地3,330尺連540尺的花園的獨立屋，寧靜和諧的環境立刻令你身心鬆弛。這座像隱世居所一樣的別墅式獨立屋，設計靈感來自四間知名的意大利酒店的設計美學。每間別墅都經過精雕細琢，用上最上乘的傢俱和設備，為住戶提供至高無上的華麗生活。強調完美美條傢俱組合，從優雅的水晶吊燈到以皮革點綴的櫃檯，都彰顯了設計上的大膽創意。

這座宏偉的住宅樓高三層：地下包括寬敞的客廳、飯廳以及開放式廚房；二樓則有三個套房；三樓有一個773尺的天台，攝人的維港全景盡入眼簾。住戶亦享有嚴密的三重防護保安設施，倍感安心。■

#### Severn Eight

山頂 獨屋

8 Severn Road, The Peak

3,330 s.f. (plus 773 s.f. roof and 540 s.f. garden)

\$180,000,000

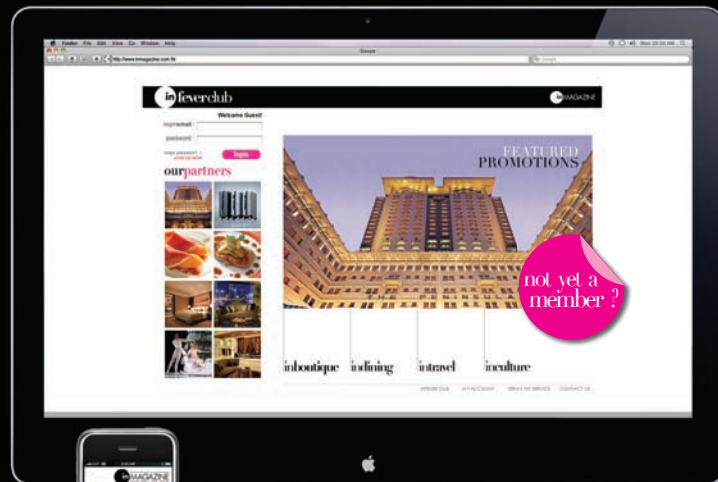
www.landscope.com/104471.htm Chris Law 羅先生 6183 8388

## Sign up now!

Access inFEVER Club by simply logging on to:

- inFEVER Club Website: [www.inmagazine.com.hk/infever](http://www.inmagazine.com.hk/infever)
- inMAGAZINE iPhone Application via iTunes: <http://www.inmagazine.com.hk/i.php>

Enquiries: [marketing@incorp.com.hk](mailto:marketing@incorp.com.hk)  
Website: [www.inmagazine.com.hk](http://www.inmagazine.com.hk)



#### inFEVER club member privileges:

- Prestigious offers on shopping
- Complimentary 5-star hotel stay accommodation
- Dining offers
- Tickets to art performance
- Styling class
- Beauty class
- Photography course
- Test drive
- Painting appreciation
- Music appreciation
- Wine tasting
- Coffee brewing
- Cooking class
- Flower arrangement
- Admission to brands' VIP and preview events



**Villa Verde**  
山頂 建築園  
4-18 Guildford Road, The Peak  
Lower Peak 4-bedroom flat with balcony overlooking mountain view  
山頂精緻住宅樓層，俯瞰翠綠山景，可租可售

**1,200 s.f.**  
**\$21,000,000** also for lease \$55,000 incl.

[www.landscape.com/94681.htm](http://www.landscape.com/94681.htm) [Rebecca Cheung 張小姐 9021 7644](#)

**Barker Villa**  
山頂 柏樂別墅  
41 Barker Road, The Peak  
Cozy apartment with panoramic view on Barker Road  
白加道迷人住宅，享廣闊開揚景觀

**1,650 s.f.**  
**\$45,000,000**

[www.landscape.com/40734.htm](http://www.landscape.com/40734.htm) [Rebecca Cheung 張小姐 9021 7644](#)

**Eredine**  
山頂 加利山道38號  
38 Mount Kellett Road, The Peak  
Huge colonial apartment with spectacular sea view  
巨座英式住宅，尊貴壯麗港景景色

**3,300 s.f.**  
**\$70,800,000**

[www.landscape.com/23687.htm](http://www.landscape.com/23687.htm) [Teresa Fung 馮小姐 9138 1621](#)

**43 Barker Road, The Peak**  
山頂 白加道43號  
Modern harbour view apartment on Barker Road  
白加道時尚維港景住宅，可租可售

**3,820 s.f.**  
**\$100,000,000** also for lease \$170,000

[www.landscape.com/103936.htm](http://www.landscape.com/103936.htm) [Maria Cheung 張小姐 5182 8699](#)

**Strawberry Hill**  
山頂 紅莓閣  
8 Plunkett's Road, The Peak  
Colonial townhouse with spacious and good layout at prestigious address  
山頂英式排屋環境優美良好開闊，地段尊貴

**2,903 s.f.**  
**\$150,000,000**

[www.landscape.com/24565.htm](http://www.landscape.com/24565.htm) [Maria Cheung 張小姐 5182 8699](#)

**Severn Eight**  
山頂 尚閣  
8 Severn Road, The Peak  
High ceiling luxury house with breath taking Victoria Harbour view  
高樓豪華大屋，享恬靜維港景觀

**4,300 s.f.** (plus 1,138 s.f. garden and 538 s.f. roof)  
**\$230,000,000**

[www.landscape.com/124472.htm](http://www.landscape.com/124472.htm) [Louis Wong 黃先生 9871 6828](#)

**Guildford Garden**  
山頂 菁苑  
1-3 Mansfield Road, The Peak  
Lower Peak 4-bedroom flat with spacious practical layout  
山頂四房住宅開闊寬敞實用

**2,400 s.f.**  
**\$36,000,000**

[www.landscape.com/108886.htm](http://www.landscape.com/108886.htm) [David Leung 梁先生 9199 0672](#)

**26 Magazine Gap Road, The Peak**  
山頂 馬己仙峽道26號  
Colonial apartment on Lower Peak with harbour view  
山頂英式維港景住宅

**2,400 s.f.**  
**\$60,000,000**

[www.landscape.com/12006.htm](http://www.landscape.com/12006.htm) [Rebecca Cheung 張小姐 9021 7644](#)

**La Hacienda**  
山頂 加利山道29-33號  
29-33 Mount Kellett Road, The Peak  
Stylish colonial apartment with Southside sea view  
時尚英式兩層海景住宅，可租可售

**3,506 s.f.**  
**\$80,000,000** also for lease \$130,000

[www.landscape.com/30434.htm](http://www.landscape.com/30434.htm) [David Leung 梁先生 9199 0672](#)

**Mountain Lodge**  
山頂 嘉樓  
44 Mount Kellett Road, The Peak  
Rare duplex apartment with Southside sea view  
罕有複式住宅，尊享南區海景

**5,200 s.f.**  
**\$120,000,000**

[www.landscape.com/96955.htm](http://www.landscape.com/96955.htm) [David Leung 梁先生 9199 0672](#)

**Cheuk Nang Lookout**  
山頂 卓能山莊  
30 Severn Road, The Peak  
Detached house with private pool and terrace  
山頂獨立大屋離私家游泳池及平台，可租可售

**5,300 s.f.** (plus 2,904 s.f. garden, 1,400 s.f. terrace and 534 s.f. roof)  
**\$210,000,000** also for lease \$200,000

[www.landscape.com](http://www.landscape.com) [David Leung 梁先生 9199 0672](#)

**Cameron House**  
山頂 嘉樂苑  
40 Magazine Gap Road, The Peak  
Extravagant penthouse with private roof situated on Lower Peak  
山頂豪華罕見兩層半連私家天台

**2,847 s.f.** (plus 2081 s.f. roof)  
**Open Offer**

[www.landscape.com](http://www.landscape.com) [Louis Wong 黃先生 9871 6828](#)

## The Hacienda

90 Repulse Bay Road

- Full seaview, with Garden / Roof
- Swimming pool, Gym & Carpark
- 1,822-3,000 sq.ft.
- 3-4 Bedrooms
- Incentive commission scheme to agents and welcome coupons to tenants

**Leasing Hotlines: 2122 2025 2122 2362**



**Luxury Apartments**  
5 Warwick Road, Kowloon Tong

- Open View, Carpark & BBQ area
- Approx. 5 minutes walk to Festival Walk / Kowloon Tong MTR
- 1,277-1,350 sq.ft., 2/3 bedrooms / balcony
- Kowloon Tong school network no.41
- Incentive commission scheme to agents and welcome coupons to tenants

**Leasing Hotlines: 2122-2025 2122-2362**

 長江實業地產發展有限公司  
CHEUNG KONG PROPERTY DEVELOPMENT LIMITED



## A Slice of Macau 澳門一角

Macao is synonymous with the rock band Soler, delectable pork chop buns, ginger milk, Portuguese-style egg tarts and flamboyant hotels, yet it is so much more than that. This tiny place contains a rich tapestry of traditions and cultures that can be explored right here at the Museum of Macau, which will be opened for free on Macau SAR Establishment Day on 20 December in celebration of this important date in the city's history. Reflecting the different facets of Macanese life in the past and the present, it gives Macau some food for thoughts on how best to mould her future. From memorabilia to works by contemporary Macanese artists and writers, the exhibited pieces take us on a trip down memory lane, reminding us just how wonderful it is to be able to celebrate the past in all its forms. ■

澳門向來以Soler的搖滾樂、美味豬扒包、生薑牛奶、葡撻以及高級豪華酒店見稱，但是它遠遠不止擁有這些。只要去到澳門博物館，你就會發現這個小小的城市蘊含了豐富的傳統與文化。澳門博物館於12月20日，即是澳門特別行政區成立的日子，將會免費開放，以慶祝這段重要歷史。從不同角度反映澳門現在及過去的生活景狀，就可以令澳門人深省如何構建最美好的未來。從過去留下的紀念性作品至當今澳門藝術家及作家的創作，展出的作品把我們帶進歷史長廊暢遊，提醒我們能夠以各種方式去紀念過去是何等有意義的事情。■



**Billion Terrace**  
跑馬地 千禧閣  
137-139 Blue Pool Road, Happy Valley  
Boutique apartment with nice decor in quiet location  
跑馬地精緻住宅連雅緻裝修，環境寧靜怡人  
871 s.f.  
**\$8,680,000**  
www.landscope.com/108786.htm Stephen Chan 陳先生 9093 3381

**Gallant Place**  
東半山 嘉逸閣  
15 Tung Shan Terrace, Midlevels East  
Well designed low-rise flat in quiet neighbourhood with open view  
美觀裝修在寧靜住宅區享開揚景觀，環境清幽  
1,337 s.f.  
**\$17,300,000** also for lease \$39,000 incl.  
www.landscope.com/110584.htm Stephen Chan 陳先生 9093 3381

**Best View Court**  
東半山 好景大廈  
66-68 Macdonnell Road, Midlevels Central  
Colonial style mid-rise on Macdonnell Road  
麥當勞道英式設計中密度住宅  
1,500 s.f.  
**\$17,300,000**  
www.landscope.com/54567.htm Stella Lo 廖小姐 9809 8570

**Wing Way Court**  
東半山 永威閣  
31 Kennedy Road, Midlevels Central  
3-bedroom apartment with nice decorations overlooking Wan Chai cityscape  
東半山三房住宅連雅緻裝修，俯瞰灣仔城市景觀  
1,860 s.f.  
**\$22,000,000**  
www.landscope.com/94524.htm Eric Wong 黃先生 9740 3396

**Cooper Villa**  
淺水灣 雲徑23-29號  
23-29 Wilson Road, Jardine's Lookout  
Nicely renovated 3 bedroom low-rise with huge balcony and fantastic view. Can park 2 cars  
雅緻裝修低密度三房單位連特大陽臺及優美景觀，雙車位，可租可售  
1,600 s.f.  
**\$24,000,000** also for lease \$68,000 incl.  
www.landscope.com/1100348.htm Chris Law 羅先生 6183 8388

**Catalina Mansions**  
東半山 嘉年大廈  
98-100 Macdonnell Road, Midlevels Central  
Nicely decorated apartment on convenient Macdonnell Road  
麥當勞道雅緻裝修單位，交通方便  
2,300 s.f.  
**\$26,500,000**  
www.landscope.com/1110374.htm Christine Chong 莊小姐 9648 6082

**Bon-Point**  
西半山 雅雅閣  
11 Bonham Road, Midlevels West  
Modern 3-bedroom flat with private terrace and clubhouse facilities  
時三三房住宅連私家平台及完善住客會所設施，可租可售  
1,169 s.f. (plus 644 s.f. terrace)  
**\$10,500,000** also for lease \$34,000 incl.  
www.landscope.com/99437.htm Mary Li 李小姐 9011 6595

**Yicks Villa**  
跑馬地 奕廬  
83-85 Blue Pool Road, Happy Valley  
Well maintained 3-bedroom apartment on upper Blue Pool Road  
保養良好三房單位，位於藍池邊地段  
1,750 s.f.  
**\$16,800,000**  
www.landscope.com/40119.htm Teresa Lau 劉小姐 9080 6686

**Beauty Court**  
東半山 雅苑  
82 Robinson Road, Midlevels West  
Popular building on Robinson Road with easy access to Central  
羅便申道榮華戲院住宅大廈，鄰近中環交通方便  
1,762 s.f.  
**\$22,000,000** Sole Agent 獨家代理  
www.landscope.com/96570.htm German Szeto 司徒小姐 6183 8339

**View Mansion**  
東半山 景雲大廈  
5L-5P Bowen Road, Midlevels Central  
Colonial apartment with huge balcony close to Central  
東半山英式住宅連特大陽臺，鄰近中環，交通方便  
1,800 s.f.  
**\$23,000,000**  
www.landscope.com/36588.htm David Leung 梁先生 9199 0672

**Rose Court**  
跑馬地 逸庭  
115-121 Wong Nai Chung Road, Happy Valley  
Stylish apartment by the racecourse  
馬場景時尚設計住宅，可租可售  
2,300 s.f.  
**\$24,500,000** also for lease \$60,000 incl.  
www.landscope.com/31687.htm Stella Lo 廖小姐 9809 8570

**Fairview Mansion**  
西半山 昭景大廈  
84 Robinson Road, Midlevels West  
Large practical 4-bedroom apartment  
西半山巨型實用四房住宅，可租可售  
2,700 s.f.  
**\$30,000,000** also for lease \$70,000 incl.  
www.landscope.com/40168.htm Mary Li 李小姐 9011 6595

**Cliffview Mansions**  
東半山 康苑  
17-19 Conduit Road, Midlevels West  
Large colonial style flat with private terrace and balcony close to Midlevels escalator  
巨型英式住宅連廣闊陽臺，鄰近半山扶手電梯  
3,000 s.f.  
**\$31,500,000**  
www.landscope.com/35939.htm Mira To 杜小姐 9486 1566

**8 Shui Fai Terrace, Midlevels East**  
東半山 翠輝台8號  
Modern 4-ensuite apartment with private roof in quiet Shui Fai Terrace  
時尚四套房住宅連私家天台，位於翠輝臺，環境寧靜怡人，可租可售  
2,428 s.f. (plus 2,000 s.f. roof)  
**\$33,000,000** also for lease \$90,000 incl.  
www.landscope.com/31328.htm Rowena Siu 蕭小姐 9348 4118

**Fontana Gardens**  
東半山 豪園  
1-25 Ka Ning Path, Midlevels East  
Huge apartment with brand new decorations in convenient location  
東半山巨型單位，全新裝修，交通方便，可租可售  
3,300 s.f.  
**\$34,000,000** also for lease \$110,000 incl.  
www.landscope.com/103894.htm Stephen Chan 陳先生 9093 3381

**Pure Indulgence**  
華麗之最  
With spectacular vistas and premium butler style concierge services, The Leighton Hill is set apart as the most stunning landmark in Happy Valley, offering the ultimate in prestigious living. Comfortable and contemporary, this 2,238 sq ft grand oasis reflects the true Peninsula style – formal pillars and strand oak designs have been combined harmoniously. Premium materials have been carefully selected to complement an exquisite collection of furniture pieces that attest to discerning tastes – all of which gives the apartment a distinctive touch of sophisticated glamour.

To help guests acclimatise into life in a new environment, The Leighton Hill provides six star personalised services such as door-to-door laundry and even postnatal services. Business executives and expatriates will be especially attracted to this kind of luxury, with convenience and luxury designed into every detail and arrangement.

擁有壯麗景觀和高級管家式禮賓服務，樓壇山一枝獨秀，是跑馬地令人稱羨的豪宅典範，為住戶提供至尊豪華生活。這2,238呎的豪華溫馨時尚，真正體現了半島風格，豎立的柱與與宏偉的橡木設計協調一致。傢俱經過精心挑選，採用優質材料，以詮釋非凡品味，所有這一切都令這豪宅富有獨特的高貴魅力。

為了幫助住戶儘早融入新的生活環境，樓壇山還提供六星級的個人服務，包括上門洗衣服務及產後服務。由於這裡既方便又豪華，各樣安排和設施都細微不至，所以深得高級行政人員和外籍人士的青睞。

**The Leighton Hill**  
跑馬地 樓壇山  
218 Broadwood Road, Happy Valley  
2,238 s.f.  
**\$50,000,000**  
www.landscope.com/29528.htm Stephen Chan 陳先生 9093 3381

**Lincoln Court**  
東半山 林肯大廈  
156 Tai Hang Road, Midlevels East  
Beautiful colonial mid-rise in convenient location  
美觀精緻英式中密度住宅，位於東半山交通方便  
1,900 s.f.  
**\$33,000,000**  
www.landscope.com/11835.htm Christine Chong 莊小姐 9648 6082

**Po Garden**  
東半山 寶園  
9 Brewin Path, Midlevels Central  
Newly renovated 3-bedroom apartment on fringe of Central  
全新裝修三房住宅，鄰近中環，可租可售  
2,572 s.f.  
**\$34,000,000** also for lease \$69,000 incl.  
www.landscope.com/96123.htm Yvonne Chang 鄭小姐 9088 4666

**Hoover Court**  
東半山 豪華閣  
7-9 Macdonnell Road, Midlevels Central  
Spacious 4-bedroom apartment on Macdonnell Road  
麥當勞道寬敞四房單位，可租可售  
2,854 s.f.  
**\$38,000,000** also for lease \$75,000 incl.  
www.landscope.com/37367.htm Teresa Lau 劉小姐 9080 6686

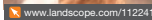


**11-15 Brier Avenue, Happy Valley**  
 跑馬地 比鄰道11-15號

Designer low-rise flat with private garden terrace  
 設計師品味設計低密度住宅連私家花園平台，可租可售

**2,100 s.f. (plus 400 s.f. terrace)**  
**\$38,000,000** also for lease \$98,000 incl.

[www.landscape.com/112241.htm](http://www.landscape.com/112241.htm) [Mary Li 李小姐 9011 6595](#)

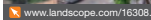


**Yale Lodge**  
 中半山 柏康  
 30 Kennedy Road, Midlevels Central

Large 4-bedroom apartment overlooking Hong Kong Park on fringe of Central  
 巨型四房住宅俯瞰香港公園景緻，鄰近中環

**2,669 s.f.**  
**\$45,000,000**

[www.landscape.com/16306.htm](http://www.landscape.com/16306.htm) [Mark Mak 麥先生 6838 2929](#)

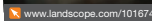


**Garden Terrace**  
 中半山 花園臺  
 8A Old Peak Road, Midlevels Central

Large 4-ensuite flat with nice decorations in prime location  
 特大四房兩廁，連雅緻裝修，地段尋貴，可租可售

**3,002 s.f.**  
**\$45,000,000** also for lease \$100,000 incl.

[www.landscape.com/101674.htm](http://www.landscape.com/101674.htm) [Stephen Chan 陳先生 9093 3381](#)

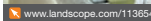


**The Colonnade**  
 東半山 嘉富峯  
 152 Tai Hang Road, Midlevels East

Stylish modern apartment with tasteful decor  
 時尚設計住宅，連雅緻品味裝修，可租可售

**2,256 s.f.**  
**\$45,000,000** also for lease \$110,000 incl.

[www.landscape.com/113654.htm](http://www.landscape.com/113654.htm) [Samir Wai 胡小姐 9493 8275](#)



**Po Shan Mansions**  
 西半山 寶城大廈  
 10-16 Po Shan Road, Midlevels West

Huge 3-bedroom apartment with tasteful decor  
 巨型三房住宅，配以品味雅緻裝修

**2,800 s.f.**  
**\$49,000,000**

[www.landscape.com/100653.htm](http://www.landscape.com/100653.htm) [Garman Sze 司徒小姐 6183 8339](#)



**May Tower 1**  
 中半山 荷苑一座  
 7 May Road, Midlevels Central

Deluxe harbour view duplex with enlarged master bedroom at prime location  
 豪華港灣景雙式住宅座落特主人樓房，地段尋貴

**2,850 s.f.**  
**\$49,800,000**

[www.landscape.com/33364.htm](http://www.landscape.com/33364.htm) [Rebecca Cheung 張小姐 9021 7644](#)

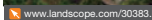


**Dynasty Court**  
 中半山 帝景園  
 23 Old Peak Road, Midlevels Central

Prestigious Midlevels apartment with excellent facilities  
 中半山有聲名住宅大廈連完善住客會所設施

**2,691 s.f.**  
**\$53,000,000**

[www.landscape.com/30383.htm](http://www.landscape.com/30383.htm) [Sissy Li 李小姐 9642 6969](#)

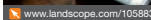


**Tregunter Tower 3**  
 中半山 地利根德閣3座  
 14 Tregunter Path, Midlevels Central

Tastefully decorated duplex with excellent clubhouse facilities  
 品味設計雙式住宅連完善住客會所設施

**2,980 s.f. (plus 187 s.f. terrace)**  
**\$56,000,000** **Sole Agent 獨家代理**

[www.landscape.com/105883.htm](http://www.landscape.com/105883.htm) [Sissy Li 李小姐 9642 6969](#)

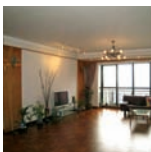
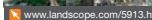


**Trafalgar Court**  
 東半山 大寶閣  
 70 Tai Hang Road Midlevels East

Huge 5-bedroom flat overlooking Causeway Bay and Victoria Harbour  
 巨型五房住宅俯瞰銅鑼灣及維多利亞港

**3,008 s.f.**  
**\$60,000,000**

[www.landscape.com/39113.htm](http://www.landscape.com/39113.htm) [Mira To 杜小姐 9486 1566](#)

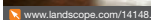


**Clovelly Court**  
 中半山 嘉富麗苑  
 12 May Road, Midlevels Central

Spacious apartment with roof in a family oriented complex  
 中半山寬敞單位連天台，適合家庭入住，可租可售

**2,115 s.f. (plus 1,602 s.f. roof)**  
**\$60,000,000** also for lease \$100,000 incl.

[www.landscape.com/14148.htm](http://www.landscape.com/14148.htm) [Maria Cheung 張小姐 5182 8699](#)

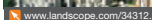


**High Cliff**  
 東半山 曉雲  
 410 Stubbs Road, Midlevels East

Modern landmark building with bird's eye view of Victoria Harbour  
 時尚地標大廈，享鳥瞰港灣的絕佳景觀，可租可售

**3,816 s.f.**  
**\$85,000,000** also for lease \$150,000 incl.

[www.landscape.com/34312.htm](http://www.landscape.com/34312.htm) [Louis Wong 黃先生 9871 6828](#)

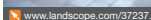


**Kenville Building**  
 中半山 甘菊  
 32 Kennedy Road, Midlevels Central

Large combined 5-bedroom garden flat with huge terrace  
 特大相連五房花園住宅連巨型平台

**4,000 s.f. (plus 2,607 s.f. terrace)**  
**\$100,000,000**

[www.landscape.com/37237.htm](http://www.landscape.com/37237.htm) [Christine Chang 莊小姐 9648 6082](#)



## Beyond Luxury 豪華至尊



Boasting a 270-degree sweeping view of Victoria Harbour and Kowloon Peninsula is Estoril Court in Mid-Levels Central, a quiet neighbourhood with all the conveniences of the big city at its doorstep. This 3,347 sq ft apartment is decked out with an interior that is best characterised as sophisticated chic combined with a warm and inviting colour palette. A key attraction here is its high net to gross area ratio, in the range of 86% to 88%, which further enhances Estoril Court's luxury lifestyle.

Here, residents are ideally located for work and play, which is a stone's throw away from the central business district and entertainment hub of Lan Kwai Fong and Soho. A spacious, lush landscaped garden, full clubhouse facilities and personalised services provided by the team of concierge services ensure a carefree and enjoyable living for residents all year round. ■

這座位於中環半山的愛都大廈是都市門閥，幽靜而便利。擁有 3,347 尺的面積的名廈，室內裝潢展現優雅和溫馨的風格，色調主要以暖色為重點，充分表現出愛都大廈豪華的格調和高雅品味。這裡最吸引人的地方是，它實用面積高達八成六至八成八。

這裡離中環商業中心和蘭桂坊及Soho僅一箭之遙，為住戶提供了便利的工作和玩樂環境。而由管理團隊提供的一系列服務設施，如廣闊的園林草地、齊全的會所設施以及個人化服務則讓住戶全年盡享舒適、愉快的生活。此外，整座大廈外牆及會所設施均全面翻新，予人嶄新感覺，與時並進！■

**Estoril Court**  
 中半山 愛都大廈  
 55 Garden Road, Midlevels Central  
**3,347 s.f.**  
**\$58,000,000**

[www.landscape.com/95882.htm](http://www.landscape.com/95882.htm) [Mira To 杜小姐 9486 1566](#)

## Feast of Culture 文化盛宴

American artist Georgia O'Keeffe once said, "To create one's world in any of the arts takes courage". From 25 February to 28 March 2010, the 38th Hong Kong Arts Festival, which keeps raising the bar for both the local and international cultural scenes, will present works by creative bigwigs equipped with the guts, originality and vision to craft their own world with their chosen art form. HKAF Chairman Mr Charles Lee explains, "The Festival's wide range of excellent programmes compliments Hong Kong's international status, enhances the quality of life for residents and attracts visitors. Also, the HKAF continues to explore different types of performance venues, presenting performances in unconventional spaces, in order to enhance the audiences' experience." From internationally renowned Chinese folk singer and songwriter Sa Dingding to Dutch National Ballet, helmed by famed ballet choreographer Hans van Manen, Hong Kong Arts Festival is no doubt a satisfying feast of culture. ■

美國藝術家Georgia O'Keeffe曾經說過：「從任何一種藝術創作中建立自己的世界是需要勇氣的。」致力於提升本港和國際藝術文化的平台的第38屆香港藝術節，將於2010年2月25日至3月28日舉行。歷時大會將展出一系列由創意大師們勇敢、具創意和前瞻性的作品，以不同的藝術形式勾勒他們的世界。香港藝術節主席李業廣先生解釋：「一系列精心策劃的項目展現香港節的國際地位，提高市民的生活質素，以及吸引參觀者。同時，香港藝術節積極尋找不同風格的表演場地，於非傳統的地方演出，來豐富觀眾的體驗。」從國際知名的中國民歌歌手薩頂頂到由知名芭蕾舞編舞家Hans van Manen掌舵的荷蘭國家芭蕾舞團，香港藝術節無疑是一場令人滿足的文化盛宴。■





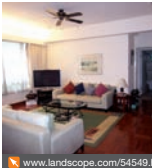


**Yu On Co-op Building**  
薄扶林 麗富閣徑13-15號  
13-15 Northcoote Close, Pokfulam

Rare found low-rise apartment at tranquil Pokfulam area  
市場罕有薄扶林低密度住宅，環境寧靜

**1,600 s.f.**  
**\$11,980,000**

[www.landscope.com/111421.htm](http://www.landscope.com/111421.htm) Walker Lam 林先生 9551 1077



**Glamour Court**  
薄扶林 華麗閣  
39 Consort Rise, Pokfulam

Quiet 3-bedroom low-rise apartment in serene Pokfulam  
恬靜低密度三房平房，環境怡人

**1,500 s.f.**  
**\$13,000,000**

[www.landscope.com/54549.htm](http://www.landscope.com/54549.htm) Rowena Siu 蕭小姐 9348 4118



**Hong Kong Parkview**  
清水灣 陽明山莊  
88 Tai Tam Reservoir Road, Repulse Bay

Popular family flat in country park  
受歡迎家庭式住宅，鄰近郊野公園

**2,366 s.f.**  
**\$30,800,000**

Sole Agent 獨家代理  
[www.landscope.com/45079.htm](http://www.landscope.com/45079.htm) Rebecca Cheung 張小姐 9021 7644



**Scenic Villas**  
薄扶林 美景豪庭  
2-28 Scenic Villa Drive, Pokfulam

High efficiency 4-bedroom apartment at waterfront with sea view, can park 2 cars  
高貴用四房單位，位於薄扶林海濱，尊享海景，還雙車位

**2,517 s.f.**  
**\$31,000,000**

[www.landscope.com/49859.htm](http://www.landscope.com/49859.htm) Christine Chong 莊小姐 9648 6082



**Y Y Mansion**  
薄扶林 裕仁大廈  
96 Pokfulam Road, Pokfulam

Nicely decorated sea view apartment with private roof  
雅緻裝修海景住宅連私家天台

**1,450 s.f. (plus 877 s.f. roof)**  
**\$13,500,000**

[www.landscope.com/95525.htm](http://www.landscope.com/95525.htm) Sami Woo 胡小姐 9493 8275



**Hong Kong Parkview**  
清水灣 陽明山莊  
88 Tai Tam Reservoir Road, Repulse Bay

Ideal home for couple with excellent facilities and easy access to Central  
完美住宅兼易所放進住宅，鄰近中環，適合小型家庭居住

**1,312 s.f.**  
**\$13,890,000**

[www.landscope.com/10809.htm](http://www.landscope.com/10809.htm) Teresa Fung 馮小姐 9138 1621



**Spendour Villa**  
清水灣 雅景閣  
10 South Bay Road, Repulse Bay

Nicely decorated sea view low-rise apartment in Repulse Bay  
清水灣低密度雅緻裝修海景住宅

**1,290 s.f. (plus 538 s.f. garden)**  
**\$32,000,000**

[www.landscope.com/107738.htm](http://www.landscope.com/107738.htm) David Chan 陳先生 9238 2012



**Ming Wai Garden**  
清水灣 明翠園  
45 Repulse Bay Road, Repulse Bay

Popular building on upper Repulse Bay Road with picturesque sea view  
清水灣高段受歡迎大廈尊享海洋知無美景，可租可售

**1,900 s.f.**  
**\$36,000,000 also for lease \$65,000 incl.**

[www.landscope.com/121046.htm](http://www.landscope.com/121046.htm) Stephen Chan 陳先生 9093 3381



**South Bay Garden**  
薄扶林 南灣花園  
33 South Bay Close, Repulse Bay

Popular 3-bedroom mid-rise at tranquil South Bay Close  
南海灣受歡迎中區三房單位，環境清幽怡人

**1,542 s.f.**  
**\$17,000,000**

[www.landscope.com/34531.htm](http://www.landscope.com/34531.htm) Rowena Siu 蕭小姐 9348 4118



**Royalton**  
薄扶林 豪峰  
118 Pokfulam Road, Pokfulam

Bright and airy 4-bedroom sea view flat  
薄扶林開揚光猛四房海景住宅

**2,160 s.f.**  
**\$17,500,000**

[www.landscope.com/42274.htm](http://www.landscope.com/42274.htm) Eric Wong 黃先生 9740 3396



**Sea Branch**  
香港角 海天閣  
31 Horizon Drive, Chung Hom Kok

3-bedroom waterfront low-rise with stunning sea view  
海濱三房低密度住宅，享廣闊海景

**2,380 s.f.**  
**\$38,000,000**

[www.landscope.com/106423.htm](http://www.landscope.com/106423.htm) Teresa Fung 馮小姐 9138 1621



**Repulse Bay Garden**  
清水灣 麗景園  
18-40 Bellevue Drive, Repulse Bay

3-bedroom flat overlooking Repulse Bay Beach  
清水灣三房海景單位，俯瞰清水灣海灘景觀

**2,288 s.f.**  
**\$38,000,000**

[www.landscope.com/5611.htm](http://www.landscope.com/5611.htm) Stephen Chan 陳先生 9093 3381



**Goldson Place**  
壽臣山 金信閣  
11 Shouson Hill Road West, Shouson Hill

Lovely garden low-rise with lush green surroundings  
絕人絕密度花園住宅，享廣闊翠綠景觀

**1,650 s.f. (plus 543 s.f. garden)**  
**\$20,000,000**

[www.landscope.com/35471.htm](http://www.landscope.com/35471.htm) Maria Cheung 張小姐 5182 8699




**Villa Piubello**  
香港角 瓊角徑  
1-7 Cape Drive, Chung Hom Kok

Rare 3-bedroom flat in quiet neighbourhood  
罕有三房住宅，位於香港角尊貴寧靜地段

**1,800 s.f.**  
**\$21,000,000**

[www.landscope.com](http://www.landscope.com) Christine Chong 莊小姐 9648 6082



**12 Broadwood Road**  
樂活道12號

Brand new apartment with stunning views of Happy Valley Racecourse and a bird's eye view of the Hong Kong Stadium  
Units ranging from about 1,600 sq. ft. (simplex), 3,200 sq. ft. (duplex) and 4,800 sq. ft. (triplex).

- 3 to 6 bedrooms
- Balcony
- Double-glazed windows
- Pogenpohl and Gaggenau equipped kitchen
- Completion by mid 2010

全新單位能飽覽快活谷馬場美景，更可以鳥瞰香港大球場  
由大約1,600呎複式單位至4,800呎的頂層複式單位也一應俱全  
三至六個睡房  
雙層露台  
廚房採用Pogenpohl與Gaggenau設備  
將於2010年落成



**Bellevue Place**  
清水灣 碧晶苑  
93 Repulse Bay Road, Repulse Bay

Duplex unit close to Repulse Bay Beach  
清水灣複式住宅，鄰近清水灣海灘

**1,846 s.f.**  
**\$24,000,000**

[www.landscope.com/38742.htm](http://www.landscope.com/38742.htm) Sissy Li 李小姐 9642 9696

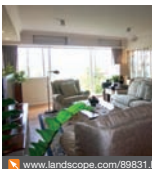


**The Brentwood**  
清水灣 蔚風園  
11 Repulse Bay Road, Repulse Bay

Boutique flat on upper Repulse Bay Road with full sea view  
清水灣高段精緻住宅，享全海景

**1,556 s.f.**  
**\$27,500,000**

Sole Agent 獨家代理  
[www.landscope.com/35641.htm](http://www.landscope.com/35641.htm) Teresa Fung 馮小姐 9138 1621



**Aegean Terrace**  
薄扶林 愛琴苑  
60 Sassoon Road, Pokfulam

Sea view waterfront low-rise with elegant decorations  
低密度海濱海景住宅，連優美華麗裝修

**2,064 s.f.**  
**\$26,350,000**

[www.landscope.com/89831.htm](http://www.landscope.com/89831.htm) Teresa Lau 劉小姐 9080 6686



**Scenic Villas**  
薄扶林 美景豪庭  
2-28 Scenic Villa Drive, Pokfulam

Popular high efficiency 4-bedroom apartment with full sea view  
受歡迎實用四房單位享全海景

**2,517 s.f.**  
**\$29,000,000**

[www.landscope.com/49867.htm](http://www.landscope.com/49867.htm) Stella Lo 羅小姐 9809 8570



**12 Broadwood Road**  
樂活道12號

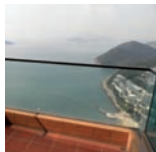
Mira To 杜小姐 9486 1566, Teresa Lau 劉小姐 9080 6686





**Repulse Bay Towers**  
 清水灣 豪華大廈  
 119A Repulse Bay Road, Repulse Bay  
 Stylish duplex apartment with full sea view of Repulse Bay  
 時尚複式住宅，享尊優水灣全景  
**3,300 s.f.**  
**\$65,000,000**

www.landscape.com/33123.htm Maria Cheung 張小姐 5182 8699



**Grosvenor Place**  
 清水灣 清水灣道117號  
 117 Repulse Bay Road, Repulse Bay  
 Sleek apartment overlooking Repulse Bay panorama  
 雅緻住宅俯瞰全清水灣景觀  
**2,809 s.f.**  
**\$70,000,000**

www.landscape.com/44586.htm Walker Lam 林先生 9551 1077



**Rosecliff**  
 大潭 大潭道20號  
 20 Tai Tam Road, Tai Tam  
 Prestigious 4-ensuite waterfront townhouse in tranquil location  
 尊貴豪華四套房海濱住宅，地段清幽怡人  
**3,980 s.f.** (plus 1,050 s.f. roof and 486 s.f. garden)  
**\$130,000,000**

www.landscape.com/4430.htm Louis Wong 黃先生 9871 6828

## Peaceful Living 幽雅之選



**Regalia Bay**  
 赤柱 富豪海灣  
 88 Wong Ma Kok Road, Stanley  
 Large 5-bedroom waterfront townhouse with facilities  
 特大五房海濱排屋連住客會所設施  
**4,212 s.f.** (plus 817 s.f. roof and 328 s.f. garden)  
**\$70,000,000**

www.landscape.com/124596.htm Mark Mak 麥先生 6838 2929



**Villa Rosa**  
 大潭 玫瑰園  
 88 Red Hill Road, Tai Tam  
 Rare garden house at Tai Tam  
 大潭罕有花園大廈  
**3,960 s.f.** (plus 480 s.f. roof and 414 s.f. garden)  
**\$100,000,000**

www.landscape.com/21103.htm Louis Wong 黃先生 9871 6828



**Deep Water Bay Modern House**  
 深水灣時尚大廈  
 Rare find modern house with private lift on Deep Water Bay waterfront  
 深水灣海濱時尚大廈連私家電梯，市場罕有  
**6,000 s.f.** (plus 1,240 s.f. garden and 689 s.f. roof)  
**\$300,000,000**

www.landscape.com Louis Wong 黃先生 9871 6828

Do you love the energy of Hong Kong's best neighbourhoods but want a relaxed home in the middle of it all? Situated on Kennedy Road, 1,681 sq ft Grandview Tower with its open-air adjoining terrace offers convenience in a peaceful and tranquil environment. Earthy, relaxing browns and Scandinavian light creams are used for the interior colour scheme – all impeccably detailed with thoughtful touches. The ensuite master bedroom even comes complete with a walk-in closet. The space is clean and contemporary; allowing you to create a home that is fun and fashionable or any other looks that truly reflect your lifestyle.

The intelligently planned space and user-friendly interior design with an emphasis on comfort and functionality are the hallmarks here. Just a five minutes walk from Hopewell Centre, the mid-point between Central and Causeway Bay – has a transport infrastructure system that is second to none. ■

你想要體驗香港的繁榮，又希望在其中擁有寧靜的家？位於堅尼地道，佔地1,681尺的慧景臺，擁有露天陽臺，為你提供寧靜的居住環境。室內裝潢以大自然泥土色、令人放鬆的褐色以及充滿北歐風情的淺奶油色為主調，室內每處都盡顯特色。主人套房位於步入式衣櫥前面。室內環境清新又充滿現代氣息：你可以建立一個充滿樂趣又時髦的家環境，亦可以設計完全屬於你自己的獨特風格。

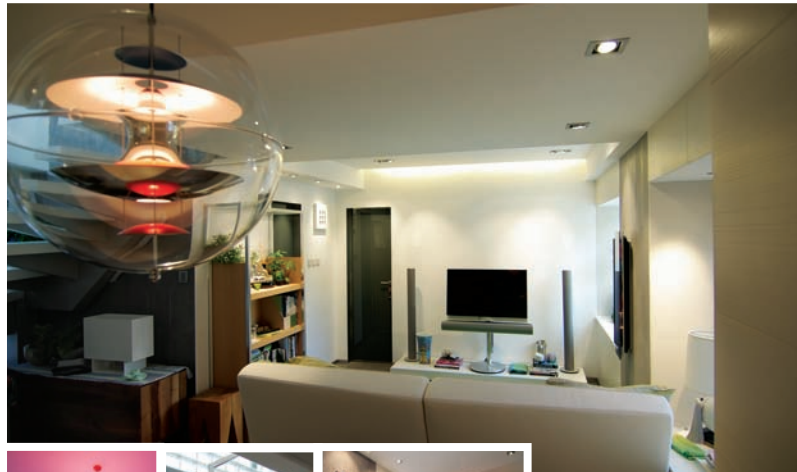
強調居住環境的舒適性和實用性，這裡巧妙的空間佈置以及實用的室內設計就是它的特點。融合和中心僅五分鐘路程，並位於中環和銅鑼灣的中心點，這裡的交通設施簡直是無可比擬。■

**Grandview Tower**  
 中半山 慧景臺  
 128-130 Kennedy Road, Midlevels Central  
**1,681 s.f.** (include 265 s.f. terrace)  
**\$19,000,000**

www.landscape.com/88929.htm Carman Szeto 司徒小姐 8100 3893

For more listings, please go to [www.landscape.com/sale](http://www.landscape.com/sale)

## Creative Vision interior design and project management



Hong Kong Head Office: 12/F, Cyberport 2, 100 Cyberport Road, Hong Kong  
 China Office: 15/F, Plaza 66, 1366 Nanjing West Road, Shanghai, China  
 t +852 3699 0899 (Hong Kong) t +86 21 6137 6038 (China)  
 info@visionnouvelle.com.hk www.visionnouvelle.com.hk





**Barker Villa**  
山頂 柏樂別墅  
41 Barker Road, The Peak  
Cozy apartment with panoramic harbour view on Barker Road  
白加道迷人廣闊維港景住宅

1,650 s.f.  
\$70,000 incl.

www.landscape.com/45038.htm David Leung 梁先生 9199 0672



**Carolina Garden**  
山頂 嘉樂園  
20-34 Coombe Road, The Peak  
Rare colonial apartment on Coombe Road overlooking Aberdeen Country Park  
甘道英式住宅俯瞰維港公園景，市場罕有

2,350 s.f.  
\$70,000

www.landscape.com/17381.htm Mark Mak 麥先生 6838 2929



**The Mount Austin**  
山頂 柯士甸山道8號  
8 Mount Austin Road, The Peak  
Luxury duplex flat at top of The Peak  
山頂豪華複式住宅

2,657 s.f. (plus 593 s.f. garden)  
\$148,000 incl.

www.landscape.com/27914.htm Chris Lau 羅先生 6183 8388



**Strawberry Hill**  
山頂 紅莓閣  
8 Plunkett's Road, The Peak  
Sea view colonial townhouse on The Peak  
山頂英式海景住宅

3,190 s.f. (plus garden)  
\$160,000

www.landscape.com/25782.htm Sissy Li 李小姐 9642 6969



**Mount Austin Estate**  
山頂 山景花園別墅  
5 Mount Austin Road, The Peak  
Nicely renovated townhouse with private garden overlooking green view  
山頂靚裝修排屋連私家花園，俯瞰翠綠園景

3,614 s.f. (plus garden)  
\$180,000

www.landscape.com/18612.htm Maria Cheung 張小姐 5182 8699



**12-22 Black's Link, The Peak**  
山頂 布力徑12-22號  
Townhouse in quiet location with 4 bedrooms and huge private garden  
山頂四房兩層連巨型私家花園，環境寧靜，可租可售

5,000 s.f. (plus 1,000 s.f. garden)  
\$300,000 incl. also for sale \$280,000,000

www.landscape.com David Leung 梁先生 9199 0672



**23 Plantation Road, The Peak**  
山頂 種植道23號

Unique Peak low-rise apartment with nice harbour view  
精緻山頂低密度住宅，享美麗維港景

2,626 s.f.  
\$70,000 incl.

www.landscape.com/15743.htm Mark Mak 麥先生 6838 2929



**1-3 Homestead Road, The Peak**  
山頂 峇仕連道1-3號

Luxurious modern sea view apartment on The Peak  
山頂豪華時尚海景住宅

2,828 s.f.  
\$120,000 incl.

www.landscape.com/29260.htm David Leung 梁先生 9199 0672



**La Hacienda**  
山頂 加列山道29-33號  
29-33 Mount Kellett Road, The Peak  
Newly decorated townhouse with facilities overlooking nice views  
全新裝修排屋連住客會所設施，享豪華景觀

3,200 s.f.  
\$150,000 incl.

www.landscape.com/3323.htm Teresa Lau 劉小姐 9080 6686



**Chelsea Court**  
山頂 賽詩閣  
63 Mount Kellett Road, The Peak  
4-bedroom garden flat with fantastic Southside sea view  
山頂四房花園住宅，享遼闊南區海景

3,116 s.f. (plus 1,502 s.f. garden)  
\$175,000

www.landscape.com/46970.htm Sami Woo 胡小姐 9493 8275



**Orient Crest**  
山頂 山頂道76號  
76 Peak Road, The Peak  
Newly renovated house on The Peak with sea view  
山頂靚裝修特大家庭，享維港景

3,300 s.f.  
\$190,000 incl.

www.landscape.com/17202.htm Rowena Siu 蕭小姐 9348 4118



**2 Barker Road, The Peak**  
山頂 白加道2號

Exquisite townhouse on Barker Road with harbour view  
白加道獨特排屋享維港景觀

4,745 s.f. (plus 553 s.f. roof and 382 s.f. terrace)  
\$300,000

www.landscape.com/46174.htm Yvonne Chang 鄭小姐 9088 4666

We are expert in providing professional services in space planning and interior design to our clients. With our open-minded ideas, we serve the needs of our global clients which vary from hospital, worldwide corporate, international retail chain store and financial institutions.

www.fkconcept.com

## CONCEPT & SOLUTION FOR INTERIOR DESIGN



Unit 3-5, 10F Jupiter Tower, 9 Jupiter Street, Hong Kong Telephone: 2882 4007 Fax: 3428 8379 email: fk@fkconcept.com



## The Glory of the 60s 六十年代傳奇

The 60s bore witness to space exploration, the antiwar movement, the rise of feminism and the assassinations of Martin Luther King, Jr. and John F. Kennedy. The National Portrait Gallery's photographic exhibition "Beatles to Bowie: The 60s Exposed" gets you to the other side of the decade – the swinging side. Featuring rare portraits of music bigwigs such as David Bowie, Jimi Hendrix, The Beatles, The Rolling Stones, Marianne Faithfull, Pink Floyd, The Who and The Kinks, many showcased for the first time, the exhibition also boasts ephemera including record sleeves, illustrated sheet music and magazines. "Beatles to Bowie: The 60s Exposed" is your ticket to a time of unapologetic excess. Runs till 24 January 2010. ■

六十年代經歷了太空探索、反戰運動、女性主義抬頭，還有小馬丁·路德·金及約翰·F·甘迺迪先後遇刺身亡。倫敦National Portrait Gallery的攝影展「從披頭四到大衛寶兒：六十年代曝光」將帶你進入這個年代的另外一面——搖滾樂的一面。攝影展包括大衛寶兒、Jimi Hendrix、披頭四、The Rolling Stones、Marianne Faithfull、Pink Floyd、The Who及The Kinks等樂壇巨星的稀有肖像照，當中有不少為首次公眾露面；當然還有極珍貴的唱片封面、附插圖的樂譜和相關雜誌。「從披頭四到大衛寶兒：六十年代曝光」是光輝歲月的入場券。展出日期至2010年1月24日。■



**The Grand Panorama**  
西半山 嘉亮閣  
10 Robinson Road, Midlevels West

Family apartment with high efficiency layout  
西半山家庭式住宅，實用率高

**1,612 s.f.**  
**\$48,000 incl.**

[www.landscape.com/125925.htm](http://www.landscape.com/125925.htm) Mira To 杜小姐 9486 1566

**Fairville Garden**  
跑馬地 嘉園  
63 Blue Pool Road, Happy Valley

Spacious practical mid-rise flat with large balcony  
寬敞實用中密度住宅連巨型陽臺，可租可售

**1,800 s.f.**  
**\$54,000 incl. also for sale \$19,000,000**

[www.landscape.com/57770.htm](http://www.landscape.com/57770.htm) Walker Lam 林先生 9551 1077

**Garden Terrace**  
中半山 花園閣  
8A Old Peak Road, Midlevels Central

Newly renovated 4-bedroom apartment on fringe of Central  
中半山全新裝修四房住宅，鄰近中環，交通方便

**3,002 s.f.**  
**\$83,000 incl.**

[www.landscape.com/13034.htm](http://www.landscape.com/13034.htm) Sissy Li 李小姐 9642 6969

**47A Stubbs Road, Midlevels East**  
東半山 司徒拔道 47A號

Unique 3-bedroom flat overlooking Victoria Harbour  
東半山精緻三房住宅，俯瞰維港，可租可買

**2,400 s.f.**  
**\$83,000 incl. also for sale \$38,000,000**

[www.landscape.com/50089.htm](http://www.landscape.com/50089.htm) Teresa Lau 劉小姐 9080 6686

**Woodland Garden**  
中半山 翠苑  
10 Macdonnell Road, Midlevels Central

3-bedroom apartment on convenient Macdonnell Road  
麥當勞道三房住宅，交通方便

**1,940 s.f. (plus 2,647 s.f. garden)**  
**\$65,000 incl.**

[www.landscape.com/88210.htm](http://www.landscape.com/88210.htm) Eric Wong 黃先生 9740 3396

**Ventris Place**  
跑馬地 雲地利台  
19-23 Ventris Road, Happy Valley

Spacious 4-bedroom in quiet enclave close to Causeway Bay  
寬敞四房單位，環境寧靜，鄰近銅鑼灣，可租可售

**2,121s.f.**  
**\$65,000 incl. also for sale \$24,000,000**

[www.landscape.com/6901.htm](http://www.landscape.com/6901.htm) Mark Mak 麥先生 8838 2929

**Hillsborough Court**  
中半山 曉峰閣  
18 Old Peak Road, Midlevels Central

Penthouse duplex with private roof  
中半山頂層複式住宅連私家天台

**2,100 s.f. (plus 607 s.f. roof)**  
**\$85,000 incl.**

[www.landscape.com/1181.htm](http://www.landscape.com/1181.htm) Mira To 杜小姐 9486 1566

**Borrett Mansion**  
中半山 寶麗閣  
8A-9B Bowen Road, Midlevels Central

Spacious older style 4-bedroom flat with big balcony  
寬敞舊式四房住宅連大陽臺

**2,800 s.f.**  
**\$85,000 incl.**

[www.landscape.com/15817.htm](http://www.landscape.com/15817.htm) Stella Lo 羅小姐 9809 8570

**Tavistock 2**  
中半山 麗皇閣2座  
10A Tregunter Path, Midlevels Central

Modern luxury 3-bedroom apartment at prestige location  
時尚豪華三房住宅，地段尊貴

**1,730 s.f.**  
**\$69,000 incl.**

[www.landscape.com/47605.htm](http://www.landscape.com/47605.htm) Eric Wong 黃先生 9740 3396

**The Colonnade**  
東半山 嘉禧閣  
152 Tai Hang Road, Midlevels East

Modern 2-bedroom flat with breath taking harbour view in Midlevels East  
東半山時尚二房單位連寧靜維港景觀

**1,857 s.f.**  
**\$70,000 incl.**

[www.landscape.com/123997.htm](http://www.landscape.com/123997.htm) Chris Law 陳先生 6183 8388

**Evergreen Villa**  
東半山 松柏新村  
43 Stubbs Road, Midlevels East

Large practical 4-bedroom flat with big balcony on Stubbs Road  
可住放兩巨型四房住宅連特大陽臺，間隔實用

**2,700s.f.**  
**\$90,000 incl.**

[www.landscape.com/2786.htm](http://www.landscape.com/2786.htm) Eric Wong 黃先生 9740 3396

**Clovelly Court**  
中半山 嘉富麗苑  
12 May Road, Midlevels Central

Large and spacious flat with balcony and harbour view  
特大寬敞單位連陽臺及維港景

**2,809 s.f.**  
**\$98,000 incl.**

[www.landscape.com/864.htm](http://www.landscape.com/864.htm) David Chan 陳先生 9238 2012

**Villa Veneto**  
西半山 威都閣  
3 Kotewall Road, Midlevels West

Spacious 4-bedroom sea view flat in tranquil area  
寬敞四房海景住宅，環境寧靜

**2,562 s.f.**  
**\$75,000 incl.**

[www.landscape.com/40819.htm](http://www.landscape.com/40819.htm) Sami Woo 胡小姐 9493 8275

**Hamilton Court**  
西半山 愛敦大廈  
8 Po Shan Road, Midlevels West

4-bedroom apartment on tranquil Po Shan Road  
寬敞四房單位，環境恬靜怡人

**2,600 s.f.**  
**\$75,000 incl.**

[www.landscape.com/11527.htm](http://www.landscape.com/11527.htm) Sami Woo 胡小姐 9493 8275

**Grand Bowen**  
中半山 寶雲閣  
11B Bowen Road, Midlevels Central

Unique 4-bedroom apartment with fantastic harbour view  
精緻四房住宅享驚人維港景觀

**3,071 s.f.**  
**\$98,000 incl.**

[www.landscape.com/22198.htm](http://www.landscape.com/22198.htm) David Chan 陳先生 9238 2012

**Kennedy Heights**  
中半山 堅麗閣  
10-18 Kennedy Road, Midlevels Central

Huge 5-bedroom apartment with partial harbour view close to Central  
巨型五房單位享部份維港景，鄰近中環

**3,400 s.f.**  
**\$118,000**

[www.landscape.com/20515.htm](http://www.landscape.com/20515.htm) Teresa Fung 馮小姐 9138 1621

**Clement Court**  
渣甸山 松鳳閣  
56-64 Mount Butler Road, Jardine's Lookout

Character low-rise with private terrace in tranquil neighbourhood  
特色低密度住宅連私家平台，環境寧靜怡人

**2,200 s.f. (plus 800 s.f. terrace)**  
**\$80,000 incl.**

[www.landscape.com/23410.htm](http://www.landscape.com/23410.htm) Rowena Siu 蕭小姐 9348 4118

**Century Tower 1**  
中半山 世紀大廈1座  
1 Tregunter Path, Midlevels Central

Stylish apartment at prime location  
中半山時尚住宅，地段尊貴

**2,565 s.f.**  
**\$80,000 incl.**

[www.landscape.com/11382.htm](http://www.landscape.com/11382.htm) David Chan 陳先生 9238 2012

**Kennedy Heights**  
中半山 堅麗閣  
10-18 Kennedy Road, Midlevels Central

Huge 5-bedroom apartment enjoy harbour view close to Central  
中半山巨型五房單位享維港景，鄰近中環，可租可售

**3,400 s.f.**  
**\$120,000**

[www.landscape.com/15766.htm](http://www.landscape.com/15766.htm) Yvonne Chang 鄭小姐 9088 4666

**Bowen Mansion**  
中半山 寶雲閣  
7C Bowen Road, Midlevels Central

Colonial low-rise flat with L-shaped huge balcony  
中半山英式低密度住宅連L型特大陽臺

**4,000 s.f.**  
**\$125,000 incl.**

[www.landscape.com/38884.htm](http://www.landscape.com/38884.htm) Mira To 杜小姐 9486 1566

**Tavistock 2**  
中半山 麗皇閣2座  
10A Tregunter Path, Midlevels Central

Prestigious 3-bedroom apartment with excellent clubhouse facilities  
豪華三房住宅連完善住客會所設施

**2,030 s.f.**  
**\$82,000 incl.**

[www.landscape.com/31523.htm](http://www.landscape.com/31523.htm) Rowena Siu 蕭小姐 9348 4118

**May Tower 1**  
中半山 梅苑一  
7 May Road, Midlevels Central

Sought after spacious duplex apartment in Midlevels Central  
中半山複式住宅，間隔寬敞，市面難尋

**2,850 s.f.**  
**\$82,000 incl.**

[www.landscape.com/6184.htm](http://www.landscape.com/6184.htm) Mark Mak 麥先生 6838 2929

**Grenville House**  
中半山 嘉福閣  
1-3A Magazine Gap Road, Midlevels Central

Huge 4-bedroom apartment in renowned building on Magazine Gap Road  
馬己峽道有名豪宅區四房住宅

**3,700 s.f.**  
**\$145,000**

[www.landscape.com/17363.htm](http://www.landscape.com/17363.htm) Teresa Lau 劉小姐 9080 6686

**The Harbourview**  
中半山 港景別墅  
11 Magazine Gap Road, Midlevels Central

Rare and unique duplex penthouse with panoramic harbour view  
極罕頂層複式住宅，尊享全維港景，市場罕有

**4,257 s.f. (plus 79.6 s.f. terrace)**  
**\$190,000**

[www.landscape.com/18275.htm](http://www.landscape.com/18275.htm) Mary Li 李小姐 9011 6595





**Pacific View**  
大潭 浪琴園  
38 Tai Tam Road, Tai Tam  
Waterfront apartment with wonderful clubhouse facilities  
大潭海濱住宅，專享完善住客會所設施

**1,334 s.f.**  
**\$93,000 incl. also for sale \$16,000,000**

[www.landscape.com/31210.htm](http://www.landscape.com/31210.htm) Walker Lam 林先生 9551 1077



**Y Y Mansion**  
清水灣 裕仁大廈  
96 Pokfulam Road, Pokfulam  
Cozy flat with nice decor in quiet environment  
絕大雅緻裝修單位，環境寧靜，可租可售

**1,450 s.f.**  
**\$35,000 incl. also for sale \$9,200,000**

[www.landscape.com/106167.htm](http://www.landscape.com/106167.htm) Stella Lo 羅小姐 9809 8570



**Monte Verde**  
清水灣 南山別墅  
41 Repulse Bay Road, Repulse Bay  
Sought after Repulse Bay apartment with practical layout  
清水灣間間寬用單位，市面難尋，可租可售

**2,400 s.f.**  
**\$90,000 incl. also for sale \$45,000,000**

[www.landscape.com/122367.htm](http://www.landscape.com/122367.htm) Stella Lo 羅小姐 9809 8570



**14 Stanley Beach Road, Stanley**  
赤柱 連理14號  
Renovated 3-bedroom low-rise with balcony and roof close to beach  
全新裝修三房低密度住宅連陽臺及天台，鄰近海灘

**2,320 s.f.**  
**\$93,000**

[www.landscape.com/9473.htm](http://www.landscape.com/9473.htm) Walker Lam 林先生 9551 1077



**The Brentwood**  
清水灣 蔚海園  
11 Repulse Bay Road, Repulse Bay  
Boutique 3-bedroom apartment overlooking Deep Water Bay  
清水灣精緻三房單位，俯瞰深水灣景觀

**1,556 s.f.**  
**\$55,000 incl. also for sale \$28,000,000**

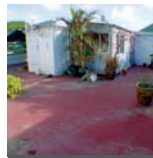
[www.landscape.com/122938.htm](http://www.landscape.com/122938.htm) Stella Lo 羅小姐 9809 8570



**Cape Mansions**  
薄扶林 翠海別墅  
56-62 Mount Davis Road, Pokfulam  
3-bedroom sea view apartment in popular building  
薄扶林受歡迎三房海景單位

**2,100 s.f.**  
**\$60,000 incl.**

[www.landscape.com/38942.htm](http://www.landscape.com/38942.htm) Eric Wong 黃先生 9740 3396



**Ann Garden**  
壽臣山 安苑  
29 Shouson Hill Road, Shouson Hill  
Spacious duplex with roof garden in serene Shouson Hill  
壽臣山寬敞複式住宅連天台花園，環境寧靜怡人

**2,500 s.f. (plus roof)**  
**\$95,000 incl.**

[www.landscape.com/11849.htm](http://www.landscape.com/11849.htm) Mira To 杜小姐 9486 1566



**Park Place**  
清水灣 雅柏苑  
7 Tai Tam Reservoir Road, Repulse Bay  
Newly renovated harbour view apartment on upper Repulse Bay Road  
清水灣道環境雅緻裝修維港景住宅

**2,335 s.f.**  
**\$110,000 incl.**

[www.landscape.com/3138.htm](http://www.landscape.com/3138.htm) Sissy Li 李小姐 9642 9969



**Beaconsfield Court**  
壽臣山 碧麗閣  
7 Shouson Hill Road, Shouson Hill  
Newly renovated low-rise in quiet enclave  
全新裝修低密度住宅，環境恬靜怡人

**1,650 s.f.**  
**\$63,000 incl.**

[www.landscape.com/28187.htm](http://www.landscape.com/28187.htm) Walker Lam 林先生 9551 1077



**Faber Court**  
大潭 舞百閣  
29-31 Tai Tam Road, Tai Tam  
Popular colonial flat with sea view in quiet Tai Tam  
大潭受歡迎英式住宅享寧靜海景

**1,900 s.f.**  
**\$65,000 incl.**

[www.landscape.com/14746.htm](http://www.landscape.com/14746.htm) David Chan 陳先生 9238 2012



**Redhill Park**  
大潭 紅山花園  
12 Pak Pat Shan Road, Tai Tam  
Rare on market 5-bedroom garden house at Tai Tam waterfront  
大潭海濱五房花園大廈，市面難尋

**3,608 s.f. (plus 1,160 s.f. garden)**  
**\$115,000 incl.**

[www.landscape.com/21082.htm](http://www.landscape.com/21082.htm) David Chan 陳先生 9238 2012



**Xanadu Court**  
壽臣山 壽山村道30號  
30 Shouson Hill Road, Shouson Hill  
Colonial style apartment with private terrace in tranquil Shouson Hill  
壽臣山英式住宅連私家平台，環境寧靜舒適

**3,000 s.f. (plus 243 s.f. terrace)**  
**\$120,000 incl.**

[www.landscape.com/15185.htm](http://www.landscape.com/15185.htm) Yvonne Cheng 鄭小姐 9088 4666



**Repulse Bay Villas**  
清水灣 清水灣道74-80號  
74-80 Repulse Bay Road, Repulse Bay  
Spacious low-rise apartment at Repulse Bay  
清水灣寬敞低密度住宅

**2,200 s.f.**  
**\$75,000 incl.**

[www.landscape.com/34573.htm](http://www.landscape.com/34573.htm) Teresa Fung 馮小姐 9136 1621



**Hong Kong Parkview**  
清水灣 陽明山莊  
88 Tai Tam Reservoir Road, Repulse Bay  
Large 4-bedroom apartment with partial harbour view and lush green view  
巨型四房單位連部份維港景及翠綠景觀，可租可售

**2,708 s.f.**  
**\$80,000 also for sale \$37,500,000**

[www.landscape.com/3231.htm](http://www.landscape.com/3231.htm) Mark Mak 麥先生 6838 2929



British property giant Grosvenor is famed for its high end apartments. hot on the heel of Grosvenor Place at Repulse Bay, The Westminster Terrace will be testament to Grosvenor's impeccable architectural taste. The Westminster terrace is a rare gem in Hong Kong - it comprises 59 duplex residences that stretch from 3,200 to 6,500 square feet.

**Address:** 2A Yau Lai Road, Ting Kau  
**Storey:** 32-storey  
**Size:** 3,200 s.f. - 6,500 s.f.

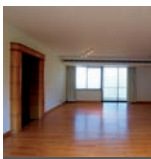
- A 11.5-metre floor height
- Private lift lobby
- Just 15 minutes to Central & Tsim Sha Tsui and just 20 minutes to China's border
- On Fringe of Tsing Ma Bridge & Ting Kau Bridge
- Over Looking South China Sea & the two bridges



**Twin Brook**  
清水灣 雙溪  
43 Repulse Bay Road, Repulse Bay  
Popular Repulse Bay 4-bedroom apartment overlooking Deep Water Bay with huge balcony  
清水灣受歡迎四房單位連巨型陽臺，俯瞰深水灣景觀

**2,700 s.f.**  
**\$85,000 incl.**

[www.landscape.com/9419.htm](http://www.landscape.com/9419.htm) Chris Law 羅先生 6183 8388



**Celestial Garden**  
清水灣 詩禮花園  
5 Repulse Bay Road, Repulse Bay  
Well kept 3-bedroom apartment with facilities on upper Repulse Bay Road  
清水灣道環境雅緻三房住宅連完善住客會所設施

**2,375 s.f.**  
**\$85,000 incl.**

[www.landscape.com/22426.htm](http://www.landscape.com/22426.htm) Eric Wong 黃先生 9740 3396



**34-36 Bisney Road, Pokfulam**  
薄扶林 碧嘉道34-36號  
Newly renovated low-rise flat with private terrace and balcony in lush greenery  
全新裝修低密度住宅連私家平台及陽臺，環境翠綠怡人

**2,200 s.f. (plus 500 s.f. terrace)**  
**\$85,000 incl.**

[www.landscape.com/50596.htm](http://www.landscape.com/50596.htm) Walker Lam 林先生 9551 1077



**South Bay Towers**  
清水灣 南灣大廈  
59 South Bay Road, Repulse Bay  
High floor practical family flat with sea view and facilities  
高樓層家庭住宅享海景及完善住客會所設施，間隔寬敞，可租可售

**2,738 s.f.**  
**\$90,000 incl. also for sale \$43,800,000**

[www.landscape.com/64779.htm](http://www.landscape.com/64779.htm) Sami Woo 胡小姐 9493 8275



英國殿堂級發展商高富諾 (Grosvenor) 一向以高級豪宅享譽國際，繼清水灣Grosvenor Place後，皇堡再度展現高富諾一貫對建築品味的極致追求，成為全港有僅提供59個複式大宅，面積由3,200呎至6,500呎。

**地址：** 汀九悠麗路2A  
**層樓：** 32層  
**單位面積：** 3,200呎 - 6,500呎

- 樓層高度約11呎半
- 住戶專用電梯，私人電梯大堂
- 前往中環及尖沙咀只需15分鐘，而前往中國邊境亦只需20分鐘
- 鄰近青馬大橋及汀九橋
- 所有單位均飽覽南中國海及雙橋景致

#### The Westminster Terrace

皇堡  
2A Yau Lai Road, Ting Kau

[www.landscape.com/5182.htm](http://www.landscape.com/5182.htm) Maria Cheung 梁小姐 5182 8699, Eric Wong 黃先生 9740 3396

**4 Headland Road, Repulse Bay**  
 淺水灣 靜園道4號

Colonial apartment with peaceful sea view  
 淺水灣英式住宅，享寧靜海景

**3,586 s.f.**  
**\$137,000**

[www.landscape.com/12033.htm](http://www.landscape.com/12033.htm) | Yvonne Chang 鄭小姐 9088 4666

**14 Stanley Beach Road, Stanley**  
 赤柱 赤柱灘道14號

Colonial style low-rise flat with huge garden on Stanley Main Beach  
 低密度英式住宅，鄰近赤柱正灘，鐘大花園

**2,900 s.f. (plus 2,500 s.f. garden)**  
**\$140,000**

[www.landscape.com/2393.htm](http://www.landscape.com/2393.htm) | Christine Chong 莊小姐 9648 6082

**Helene Court**  
 壽臣山 喜蓮閣

14 Shouson Hill Road, Shouson Hill  
 Garden townhouse with practical layout in serene location  
 花園排屋，間隔實用，環境寧靜

**3,555 s.f. (plus 964 s.f. garden and 644 s.f. roof)**  
**\$160,000**

[www.landscape.com/15619.htm](http://www.landscape.com/15619.htm) | David Chan 陳先生 9238 2012

**35 South Bay Road, Repulse Bay**  
 淺水灣 南灣道35號

Rare find colonial sea view apartment  
 罕有英式海景住宅

**3,800 s.f.**  
**\$200,000 incl.**

[www.landscape.com/3995.htm](http://www.landscape.com/3995.htm) | Yvonne Chang 鄭小姐 9088 4866

**36 Island Road, Deep Water Bay**  
 深水灣 香島道36號

Deluxe high privacy detached house in prestigious location with stunning sea view  
 豪華獨立大屋，私隱度高，地段專貴，享寧靜海景

**3,319 s.f. (plus 274 s.f. garden, 262 s.f. terrace and 108 s.f. roof)**  
**\$230,000**

[www.landscape.com/45596.htm](http://www.landscape.com/45596.htm) | Christine Chong 莊小姐 9648 6082

**115 Repulse Bay Road, Repulse Bay**  
 淺水灣 淺水灣道115號

Full sea view duplex penthouse with large terraces and brand new decoration  
 全海景複式頂層位鐘巨屋平台，全新裝修

**7,700 s.f. (plus 825 s.f. roof)**  
**\$280,000**

[www.landscape.com/43974.htm](http://www.landscape.com/43974.htm) | Teresa Lau 劉小姐 9080 6686

**Radcliffe**  
 羅拔林 瑞林

120 Pokfulam Road, Pokfulam  
 Sought after 4-ensuites duplex with sweeping sea view  
 海法林徑四房複式住宅，享寧靜廣闊的海景，市面難得，可租可售

**3,620 s.f.**  
**\$140,000 incl. also for sale \$63,000,000**

[www.landscape.com/107385.htm](http://www.landscape.com/107385.htm) | Sissy Li 李小姐 9642 6969

**Pacific View**  
 大潭 波琴園

38 Tai Tam Road, Tai Tam  
 Nicely decorated duplex apartment with roof terrace  
 雅緻裝修複式住宅連天台平台

**3,393 s.f. (plus 393 s.f. roof and 352 s.f. terrace)**  
**\$160,000**

[www.landscape.com/34948.htm](http://www.landscape.com/34948.htm) | Mary Li 李小姐 9011 6595

**Manderly Garden**  
 深水灣 文禮苑

48 Deep Water Bay Road, Deep Water Bay  
 Townhouse with facilities in quiet Shouson Hill  
 壽臣山排屋連住客會所設施，環境寧靜

**3,504 s.f.**  
**\$180,000**

[www.landscape.com/6535.htm](http://www.landscape.com/6535.htm) | Teresa Fung 馮小姐 9138 1621

**Carmelia**  
 赤柱 赤柱村道60號

60 Stanley Village Road, Stanley  
 Huge colonial house with front yard and private garden  
 巨屋英式大屋連前院及私家花園，可租可售

**5,200 s.f. (plus 753 s.f. garden and 343 s.f. terrace)**  
**\$210,000 incl. also for sale \$160,000,000**

[www.landscape.com/](http://www.landscape.com/) | Chris Law 羅先生 6183 8388

**Three Bays**  
 赤柱 赤柱灘道7號

7 Stanley Beach Road, Stanley  
 Townhouse with quality finishes overlooking stunning sea view  
 赤柱排屋配以高品質的裝修，俯瞰廣闊海景

**3,870 s.f. (plus 977 s.f. garden, 671 s.f. terrace and 611 s.f. roof)**  
**\$280,000**

[www.landscape.com/33107.htm](http://www.landscape.com/33107.htm) | Chris Law 羅先生 6183 8388

**Overbays**  
 淺水灣 淺水灣道71號

71 Repulse Bay Road, Repulse Bay  
 Luxurious house at Repulse Bay  
 淺水灣豪華大屋，可租可售

**5,051 s.f. (plus 214 s.f. terrace)**  
**\$350,000 also for sale Open Offer**

[www.landscape.com/](http://www.landscape.com/) | Rebecca Cheung 張小姐 9021 7444

**We blossom by providing you the best total solution.**

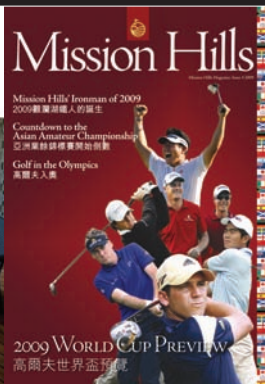
**incORPORATION**

incORPORATION Limited  
 Hong Kong Head Office  
 12/F Cyberport 2  
 100 Cyberport Road Hong Kong  
 T +852 3699 0888  
 F +852 3699 0889

China Office  
 15/F Plaza 66 Tower 2  
 1366 Nanjing West Road Shanghai  
 T +86 21 6137 6038

[www.incpr.com.hk](http://www.incpr.com.hk)

Your No. 1 integrated marketing communications partner in Hong Kong & China



## Your No.1 Integrated Marketing Communications Partner in Hong Kong & China

*inMAGAZINE* : publisher and sole advertising representatives  
of the top luxury lifestyle publications, including *Mission Hills Magazine* and *The Key*.

[www.inmagazine.com.hk](http://www.inmagazine.com.hk)

Hong Kong Head Office: 12/F Cyberport 2, 100 Cyberport Road, Hong Kong

China Office: 15/F Plaza 66 Tower 2, 1366 Nanjing West Road, Shanghai

Marketing (852) 3699 0877 | Advertising (852) 3699 0898 | email: [marketing@incorp.com.hk](mailto:marketing@incorp.com.hk)