

select deluxe homes

# The Key

# 大宅®

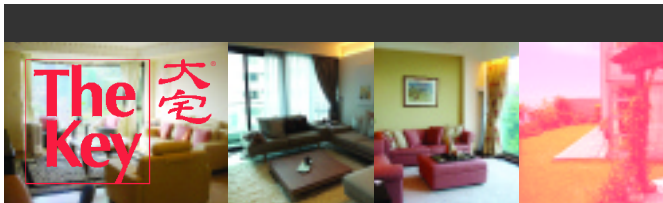
DECEMBER 2007  
Volume 39

published and distributed by

**LANDSCOPE** 領域  
*The Specialists in Luxury Properties*



[www.landscape.com](http://www.landscape.com)



## KeyNotes

*"If you want something very, very badly, let it go free. If it comes back to you, it's yours forever. If it doesn't, it was never yours to begin with."*  
Anonymous

.....With this potential demand in place, the supply of new and old luxury properties in the market is in severe scarcity. According to Landscape research, on Hong Kong Island alone, the ratio of number of people who can afford to buy large units to the stock available for sale (many large units are for lease only) is 2.5 :1; and this ratio is skewed steeply to 5:1 in Class E (2,000 square feet and over) submarket. If we take into account the tens of thousands of expatriate executives who take up more than half of the leasing stock in Class E units, the units available for sale is more limited. The imbalance is exacerbated by the fact that many owners have withheld their sales stock in anticipation of more price growth amid buoyant economy. All this explains the phenomenal price hike in the luxury property market in recent years. In Island South and The Peak, which are the two most expensive residential locations in Hong Kong, large apartment prices have increased by 15% in the last three months alone, and 20% price gain is recorded in the house submarket in the districts in the same period. Other districts also saw prices edged up as a result, with Midlevels Central and Kowloon Station becoming bright spots after Island South and The Peak.

Koh Keng-shing  
ks-koh@landscape.com

(The above is an excerpt from Market Watch on [www.landscape.com](http://www.landscape.com). For the full article, please log on to [www.landscape.com/m1207.htm](http://www.landscape.com/m1207.htm))

## About The Key

The Key is a monthly publication of sales and letting listings of luxury residential properties on Hong Kong Island. It is sent to VIP clients of Landscape Realty and residents of The Peak, Southside, Mid-Levels, Kowloon Tong, Homantin and selected upmarket residential areas in Shatin, Tai Po, Clear Water Bay and Castle Peak Road. The recipients comprise the crème de la crème of Hong Kong's affluent community.

In addition to The Key, Landscape Realty sends weekly eNewsletters to clients on most update listings of luxury properties. If you wish to receive the eNewsletter, please call Loretta Lui at 3102 4818 or email to [info@landscape.com](mailto:info@landscape.com).

## How may you list your property with The Key?

If you would like to see your property listed in The Key in the next issue, you may call Loretta Lui at 3102 4818 or email to [info@landscape.com](mailto:info@landscape.com). Or you may simply fill out the space below and fax to us at 2866 0015.

Property to be listed

Asking Rental / Sale Price

Floor Area

Contact Person

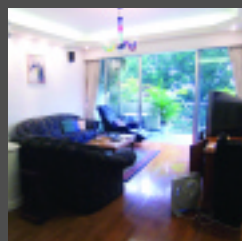
Telephone

Email

Our KeyPersons will contact you for follow-up works.

## MID-LEVELS SALES

半山  
出售



### Skyline Mansion

西半山年豐園

51 Conduit Road, Midlevels West  
Bright and airy spacious flat with balcony in quiet location  
光猛通爽物業，設有露台，四周恬靜怡人

1,650 s.f.  
\$1,380,000

[www.landscape.com/12483.htm](http://www.landscape.com/12483.htm) | Teresa Lau 劉小姐 9080 6686



### Cherry Crest

西半山翠麗軒

3 Kui In Fong, Midlevels West  
New flat in very quiet but convenient enclave  
全新住宅，環境寧靜，交通方便

1,106 s.f.  
\$7,500,000

[www.landscape.com/6141.htm](http://www.landscape.com/6141.htm) | Mary Li 李小姐 9011 6595

## Plan for a good year, get your desktop calendar 2008 for FREE!

免費索取2008年精美座月曆，計劃您的美好來年！

Please fill in the slip below and **FAX** to 2866 0015 or **EMAIL** to [info@landscape.com](mailto:info@landscape.com) or

**MAIL** to Unit 3106, Hopewell Centre, 183 Queen's Rd East, Wanchai, Hong Kong

請即填妥以下回條，傳真至 2866 0015 或 電郵至 [info@landscape.com](mailto:info@landscape.com) 或 郵寄至 香港灣仔皇后大道東183號合和中心31樓3106室

**Reply slip for desktop calendar 2008** 索取2008年座月曆表格

Name 姓名: \_\_\_\_\_

Address 地址: \_\_\_\_\_

Telephone 電話: \_\_\_\_\_

Email 電郵: \_\_\_\_\_

\* 數量有限，換完即止 \* Limited offers. First come, first served!



TO BE SOLD SOON

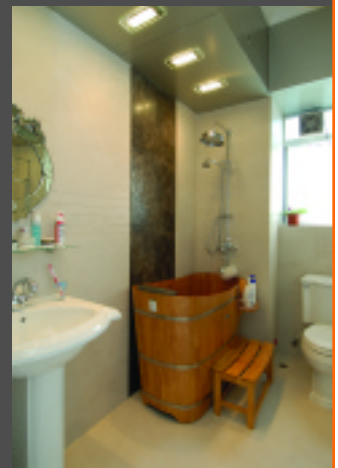


## HOME COMING

This state-of-the-art apartment on the fringe of Central Business District is a cozy hideaway. As one enters the hallway, a warm feeling conjures up. The subdued lightings on the wall and at the skirting evoke homey ambience. The dining room is planted with a round crystal table, which is surrounded by equally transparent Philippe Starck signature chairs, and the ceiling light dressed with crystal decanters sprinkles vintage colours on the table. Off the living room is a spacious balcony on which stands a high table made from a huge tree root, and this is the vantage point to take in the stunning view of the Central Business District in the back drop of Victoria Harbour. The huge kitchen is a testimony of the best home cooking, as it summons all the professional equipment and skills of a restaurant to the master's call for the most delicious home meal. Sweet dream in the cooking...

**Rose Gardens**  
9 Magazine Gap Road,  
Midlevels Central  
中半山 玫瑰別墅

2,600 s.f.  
\$46,800,000



[www.landscape.com/12943.htm](http://www.landscape.com/12943.htm)

Teresa Lau 劉小姐 9080 6686 / Mira To 杜小姐 9486 1566



**Billion Terrace**  
跑馬地 千葉居

137-139 Blue Pool Road, Happy Valley  
Nicely decorated low-rise apartment in quiet location

雅裝低座單位，環境寧靜  
1,166 s.f.  
\$10,300,000

[www.landscape.com/12517.htm](http://www.landscape.com/12517.htm)

Simon Yung 翁先生 9418 5743



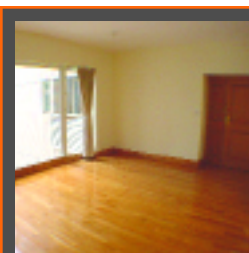
**Morengo Court**  
東半山明達閣

25 Tai Hang Road, Midlevels East  
Conveniently located penthouse flat with private roof terrace

頂層物業位置方便，設私家天台  
1,066 s.f. (plus 859 s.f. roof)  
\$10,500,000

[www.landscape.com/12259.htm](http://www.landscape.com/12259.htm)

Carman Szeto 司徒小姐 8100 3893



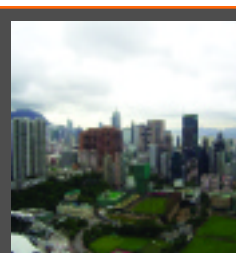
**Valverde**  
中半山 蔚皇居

11 May Road, Midlevels Central  
Luxury boutique apartment with deluxe clubhouse

豪裝單位，尊貴住客會所設施  
1,355 s.f.  
\$15,500,000

[www.landscape.com/9198.htm](http://www.landscape.com/9198.htm)

Maria Cheung 張小姐 8103 3862



**Swiss Towers**  
東半山瑞士花園

113 Tai Hang Road, Midlevels East  
Practical 3-bedroom apartment with harbour view

實用三房享維港景  
1,600 s.f.  
\$16,000,000

[www.landscape.com/12742.htm](http://www.landscape.com/12742.htm)

Johnny Cheung 張先生 9278 9939



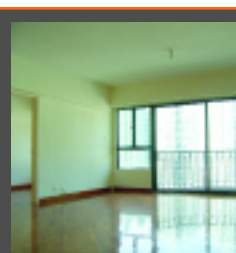
**The Elegance**  
東半山 優雅閣

60 Tai Hang Road, Midlevels East  
High privacy duplex apartment with partial harbour view

高私隱度複式物業，享部份維港景  
2,404 s.f.  
\$21,000,000 also for lease \$68,000 incl.

[www.landscape.com/12601.htm](http://www.landscape.com/12601.htm)

Johnny Cheung 張先生 9278 9939



**Carnation Court**  
東半山康馨園

41-47 Tai Hang Road, Midlevels East  
Practical 4-bedroom apartment with easy access to Causeway Bay

實用四房物業，鄰近銅鑼灣  
2,126 s.f.  
\$22,000,000 also for lease \$70,000 incl.

[www.landscape.com/12523.htm](http://www.landscape.com/12523.htm)

Mira To 杜小姐 9486 1566

# MID-LEVELS SALES



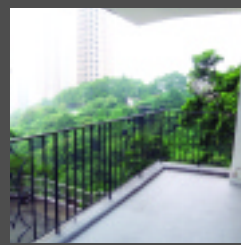
## The Leighton Hill

跑馬地禮頓山

2B Broadwood Road, Happy Valley  
Prestigious apartment with  
clubhouse facilities  
尊貴住宅, 附有會所設施

1,438 s.f.  
\$22,000,000 also for lease \$65,000

[www.landscape.com/11608.htm](http://www.landscape.com/11608.htm) Mary Li 李小姐 9011 6595



## Lincoln Court

東半山林肯大廈

156 Tai Hang Road, Midlevels East  
Beautiful colonial mid-rise in  
convenient location  
典雅英式中座物業, 地點方便

1,900 s.f.  
\$22,000,000 also for lease \$70,000 incl.

[www.landscape.com/12291.htm](http://www.landscape.com/12291.htm) Sami Woo 胡小姐 9493 8275



## Fairlane Tower

中半山寶雲山莊

2B Bowen Road, Midlevels Central  
Nicely maintained modern apartment on  
tree-lined Bowen Road  
保養良好時尚物業, 位處四周翠綠之寶雲道

1,744 s.f.  
\$24,000,000 also for lease \$75,000 incl.

[www.landscape.com/12908.htm](http://www.landscape.com/12908.htm) Stephen Chan 陳先生 9093 3381



## Tregunter Tower 3

中半山地利根德閣3座

14 Tregunter Path, Midlevels Central  
Large 2-bedroom flat in greenery of  
Midlevel Central  
兩房大單位, 位於環境翠綠的中半山

2,020 s.f.  
\$22,500,000

[www.landscape.com/10093.htm](http://www.landscape.com/10093.htm) Simon Yung 翁先生 9418 5743



## 11 MacDonnell Road, Midlevels Central

中半山麥當勞道 11 號

Deluxe apartment within 5-minute  
drive to CBD  
豪華住宅, 5分鐘車程往中環商業區

2,313 s.f.  
\$24,500,000

[www.landscape.com/10460.htm](http://www.landscape.com/10460.htm) Mira To 杜小姐 9486 1566



## Beauty Court

西半山雅苑

82 Robinson Road, Midlevels West  
Renovated apartment with private roof  
overlooking the harbour  
翻新物業設私家天台, 眺望維港美景

1,762 s.f. (plus 915 s.f. roof)  
\$24,800,000

[www.landscape.com/11386.htm](http://www.landscape.com/11386.htm) Mira To 杜小姐 9486 1566



## Villa Monte Rosa

東半山玫瑰新村

41A Stubbs Road, Midlevels East  
Nicely decorated high-floor apartment  
with 2 carparks  
雅裝高層物業連雙車位

2,300 s.f.  
\$27,000,000

[www.landscape.com/11648.htm](http://www.landscape.com/11648.htm) Teresa Lau 劉小姐 9080 6686



## 8 Shiu Fai Terrace, Midlevels East

東半山肇輝台8號

4-ensuite bedroom modern mid-rise duplex  
時尚中座複式, 擁四套房

3,074 s.f.  
\$28,500,000

[www.landscape.com/12440.htm](http://www.landscape.com/12440.htm) Rowena Siu 蕭小姐 9348 4118



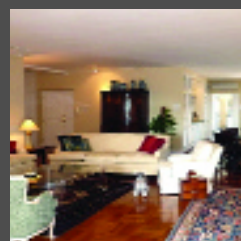
## Visalia Garden

中半山蔚山花園

48 MacDonnell Road, Midlevels Central  
4-bedroom family flat at quiet yet  
convenient location  
四房家庭式物業, 環境寧靜, 位置方便

2,195 s.f.  
\$29,800,000

[www.landscape.com/12836.htm](http://www.landscape.com/12836.htm) Carman Szeto 司徒小姐 8100 3893



## Cliffview Mansions

西半山康苑

21-25 Conduit Road, Midlevels West  
Large traditional style apartment by the  
Midlevels pedestrian escalator  
敞大傳統風格住宅, 鄰近半山扶手電梯

3,300 s.f.  
\$29,900,000

[www.landscape.com/12168.htm](http://www.landscape.com/12168.htm) Mira To 杜小姐 9486 1566



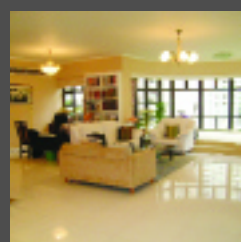
## Birchwood Place

中半山寶樺臺

96 MacDonnell Road, Midlevels Central  
4-bedroom flat close to Central and  
Admiralty  
四房單位鄰近中環及金鐘

2,018 s.f.  
\$30,000,000 also for lease \$65,000

[www.landscape.com/12407.htm](http://www.landscape.com/12407.htm) Rita Lee 李小姐 9437 0087



## Po Garden

中半山寶園

9 Brewin Path, Midlevels Central  
Luxury apartment in exclusive area of the  
lower Peak  
豪華住宅, 位處下山頂尊貴地段

2,567 s.f.  
\$30,000,000

[www.landscape.com/3385.htm](http://www.landscape.com/3385.htm) Rowena Siu 蕭小姐 9348 4118



**Valley View**  
東半山 欣景台  
4A-4D Wong Nai Chung Gap Road, Midlevels East  
Mid-rise colonial style apartment  
中座英式物業  
2,400 s.f.  
**\$30,500,000**

[www.landscape.com/10926.htm](http://www.landscape.com/10926.htm) | Stephen Chan 陳先生 9093 3381



**Tregunter Tower 2**  
中半山地利根德閣 2座  
14 Tregunter Path, Midlevels Central  
Spacious flat in serene neighbourhood  
寬敞單位, 環境寧靜  
3,052 s.f.  
**\$31,000,000** also for lease \$108,000 incl.

[www.landscape.com/12591.htm](http://www.landscape.com/12591.htm) | Teresa Fung 馮小姐 9138 1621



**Grand Deco Tower**  
東半山 帝后臺  
26 Tai Hang Road, Midlevels East  
Unique triplex penthouse with private roof garden  
獨特三複式頂層住宅連私家天台花園  
3,216 s.f.  
**\$32,000,000**

[www.landscape.com/2296.htm](http://www.landscape.com/2296.htm) | Simon Yung 翁先生 9418 5743



**Villa Lotto**  
跑馬地樂陶苑  
18 Broadwood Road, Happy Valley  
Practical 4-bedroom apartment overlooking Hong Kong Stadium  
實用四房物業, 眺望香港大球場  
2,406 s.f.  
**\$32,800,000**

[www.landscape.com/12775.htm](http://www.landscape.com/12775.htm) | Rowena Siu 蕭小姐 9348 4118



**Bellevue Court**  
東半山 碧蕙園  
41 Stubbs Road, Midlevels East  
High efficiency colonial apartment on Stubbs Road  
實用英式住宅, 位處司徒拔道  
2,700 s.f.  
**\$33,000,000**

[www.landscape.com/10695.htm](http://www.landscape.com/10695.htm) | Sami Woo 胡小姐 9493 8275



**Century Tower 1**  
中半山世紀大廈 1座  
1 Tregunter Path, Midlevels Central  
Unique style harbour view apartment on the fringe of Central  
特色維港景單位, 中環近在咫尺  
2,330 s.f.  
**\$34,000,000** also for lease \$90,000 incl.

[www.landscape.com/12852.htm](http://www.landscape.com/12852.htm) | Rowena Siu 蕭小姐 9348 4118



**Midlevels Duplex Unit**  
半山複式單位  
Duplex flat with excellent accessibility in prime location  
複式單位, 黃金地段, 交通極方便  
3,400 s.f.  
**\$36,000,000** also for lease \$147,000 incl.

[www.landscape.com/12125.htm](http://www.landscape.com/12125.htm) | Teresa Lau 劉小姐 9080 6686



**Hillsborough Court**  
中半山曉峰閣  
18 Old Peak Road, Midlevels Central  
Unique triplex penthouse with tasteful decorations with 2 carparks  
特色複式頂層, 品味裝修連2車位  
2,200 s.f. (plus 1,200 s.f. roof garden terrace)  
**\$45,000,000**

[www.landscape.com/13019.htm](http://www.landscape.com/13019.htm) | Teresa Lau 劉小姐 9080 6686



**Kennedy Heights**  
中半山 堅麗閣  
10-18 Kennedy Road, Midlevels Central  
Huge 5-bedroom apartment with magnificent city view  
五房巨宅享壯觀城市景  
3,400 s.f.  
**\$48,000,000**

[www.landscape.com/11553.htm](http://www.landscape.com/11553.htm) | Carman Szeto 司徒小姐 8100 3893



**Tregunter Tower 3**  
中半山地利根德閣3座  
14 Tregunter Path, Midlevels Central  
Harbour view apartment with full clubhouse facilities  
維港景物業, 享齊全會所設備  
3,304 s.f.  
**\$50,000,000**

[www.landscape.com/12597.htm](http://www.landscape.com/12597.htm) | Sissy Li 李小姐 9642 6969



**The Albany**  
中半山 雅賓利大廈  
1 Albany Road, Midlevels Central  
Prestigious apartment in prime location  
尊貴住宅位於黃金地段  
2,546 s.f.  
**\$58,000,000**

[www.landscape.com/3735.htm](http://www.landscape.com/3735.htm) | Sissy Li 李小姐 9642 6969



**Cavendish Heights**  
渣甸山嘉雲臺  
27-37 Perkins Road, Jardine's Lookout  
Huge penthouse converted from two adjoining apartments in Jardine's Lookout  
渣甸山巨型頂層, 由兩個單位合併組成  
3,638 s.f. (plus 3,638 s.f. roof)  
**\$60,000,000**

[www.landscape.com/6397.htm](http://www.landscape.com/6397.htm) | Stephen Chan 陳先生 9093 3381

# MID-LEVELS SALES



## Dynasty Court

中半山帝景園

23 Old Peak Road, Midlevels Central  
Spacious 4-bedroom apartment for both sale and lease  
寬敞四房單位, 租售均可

2,680 s.f.  
\$60,000,000 also for lease \$140,000

[www.landscape.com/3301.htm](http://www.landscape.com/3301.htm) | Teresa Lau 劉小姐 9080 6686



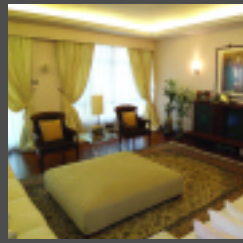
## The Mayfair

中半山梅道1號

1 May Road, Midlevels Central  
Prestigious harbour view apartment in exclusive development  
尊貴維港景住宅, 位於搶手屋苑

2,905 s.f.  
\$60,000,000

[www.landscape.com/12331.htm](http://www.landscape.com/12331.htm) | Mark Mak 麥先生 6838 2929



## Grenville House

中半山 嘉慧園

1-3 Magazine Gap Road, Midlevels Central  
Rare huge apartment at Midlevels Central  
中半山罕有巨型單位

3,700 s.f.  
\$63,000,000

[www.landscape.com/13046.htm](http://www.landscape.com/13046.htm) | David Leung 梁先生 9199 0672



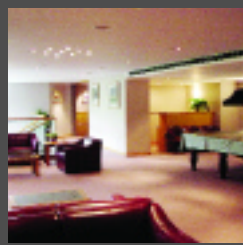
## May Tower 2

中半山梅苑二座

5 May Road, Midlevels Central  
Huge apartment with 4 ensuite bedrooms  
四套房大宅

3,393 s.f.  
\$68,000,000 also for lease \$138,000

[www.landscape.com/7676.htm](http://www.landscape.com/7676.htm) | Carman Szeto 司徒小姐 8100 3893



## The Albany

中半山雅賓利大廈

1 Albany Road, Midlevels Central  
Large duplex apartment with magnificent views  
特大複式單位, 景觀一流

3,567 s.f.  
\$90,000,000

[www.landscape.com/2798.htm](http://www.landscape.com/2798.htm) | Johnny Cheung 張先生 9278 9939



## Branksome Crest

中半山地利根德里 3A號

3A Tregunter Path, Midlevels Central  
Unique penthouse duplex with walk-out garden and private swimming pool  
特色頂樓複式單位, 外接花園及私家泳池

7,088 s.f. (plus 2,771 s.f. roof)  
\$300,000,000

[www.landscape.com/1686.htm](http://www.landscape.com/1686.htm) | Maria Cheung 張小姐 8103 3862

# MID-LEVELS LEASE



## The Leighton Hill

跑馬地禮頓山

2B Broadwood Road, Happy Valley  
Modern luxurious flat with racecourse view  
時尚豪華住宅享馬場景

1,438 s.f.  
\$65,000

[www.landscape.com/12902.htm](http://www.landscape.com/12902.htm) | Mira To 杜小姐 9486 1566



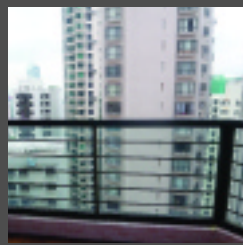
## 1A Robinson Road, Midlevels West

西半山羅便臣道 1號A

Unique low-rise flat with large L-shaped terrace and floor-to-ceiling windows  
特色低座單位設L型大平台及落地窗戶

2,200 s.f. (plus 1,200 s.f. terrace)  
\$90,000 incl.

[www.landscape.com/12873.htm](http://www.landscape.com/12873.htm) | Mira To 杜小姐 9486 1566



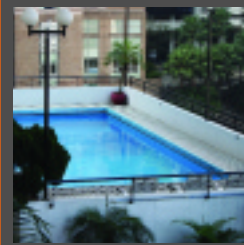
## Estoril Court

中半山愛都大廈

55 Garden Road, Midlevels Central  
Huge 4-bedroom practical apartment on fringe of Central  
四房實用巨宅, 鄰近中環

3,347 s.f.  
\$93,000

[www.landscape.com/12509.htm](http://www.landscape.com/12509.htm) | Carman Szeto 司徒小姐 8100 3893



## May Tower 1

中半山梅苑一座

7 May Road, Midlevels Central  
Renowned harbour view apartment in Midlevels  
著名維港景屋苑, 位於半山區

2,850 s.f.  
\$95,000 incl.

[www.landscape.com/6963.htm](http://www.landscape.com/6963.htm) | Rowena Siu 蕭小姐 9348 4118



## Eva Court

中半山惠園

36 MacDonnell Road, Midlevels Central  
Huge apartment on fringe of Central with high privacy and security  
巨型住宅, 中環近在咫尺, 保安嚴密私隱度高

4,500 s.f.  
\$166,000

[www.landscape.com/12641.htm](http://www.landscape.com/12641.htm) | Sissy Li 李小姐 9642 6969



## Dynasty Court

中半山帝景園

23 Old Peak Road, Midlevels Central  
Stunning harbour view penthouse in superb development  
怡人維港景頂層物業, 位於熱門屋苑

5,453 s.f. (plus 566 s.f. roof)  
\$280,000

[www.landscape.com/11835.htm](http://www.landscape.com/11835.htm) | Yvonne Chang 鄭小姐 9088 4666



**Villa Verde**  
山頂 環翠園  
4-18 Guildford Road, The Peak  
Apartment in convenient location of the Peak  
位於山頂住宅, 位置方便  
1,505 s.f.  
**\$20,000,000**

[www.landscape.com/3016.htm](http://www.landscape.com/3016.htm) | Mary Li 李小姐 9011 6595



**Stewart Terrace**  
山頂 史釗域臺  
81-95 Peak Road, The Peak  
Spacious colonial apartment with balcony and 2 carparks  
寬敞英式住宅享露台及雙車位  
3,103 s.f.  
**\$46,000,000**

[www.landscape.com/7773.htm](http://www.landscape.com/7773.htm) | Christine Chong 莊小姐 9648 6082




**Eredine**  
山頂 加列山道38號  
38 Mount Kellett Road, The Peak  
Spacious colonial apartment with one huge ensuite  
寬敞英式物業, 享超大套房  
3,300 s.f.  
**\$60,000,000**

[www.landscape.com/11112.htm](http://www.landscape.com/11112.htm) | David Leung 梁先生 9199 0672



**22A-22B Mount Austin Road, The Peak**  
山頂 柯士甸山道22A至22B號  
Deluxe residence enjoying extravagant view of Victoria Harbour  
豪華住宅享壯觀維港景  
2,650 s.f.  
**\$62,000,000**

[www.landscape.com/1622.htm](http://www.landscape.com/1622.htm) | Stephen Chan 陳先生 9093 3381



**Montebello**  
山頂 濠景閣  
15-17 Plantation Road, The Peak  
Newly furnished penthouse with private roof  
全新裝修傢俬頂層單位, 設私家天台  
3,140 s.f.  
**\$65,000,000**

[www.landscape.com/5851.htm](http://www.landscape.com/5851.htm) | Christine Chong 莊小姐 9648 6082



**Strawberry Hill**  
山頂 紅莓閣  
8 Plunkett's Road, The Peak  
Brand new renovated townhouse in famous development  
英式排屋, 位於著名屋苑, 全新裝修  
3,200 s.f.  
**\$90,000,000**

[www.landscape.com/1004.htm](http://www.landscape.com/1004.htm) | David Leung 梁先生 9199 0672



**Sunshine Villa**  
山頂 陽光花園  
48 Mount Kellett Road, The Peak  
Lovely garden house with 17-foot ceiling  
迷人花園洋房, 特高十七呎樓底  
3,500 s.f. (plus 1,920 s.f. garden)  
**\$92,000,000**

[www.landscape.com/4082.htm](http://www.landscape.com/4082.htm) | Rita Lee 李小姐 9437 0087



**Abergeldie**  
山頂 種植道52號  
52 Plantation Road, The Peak  
Peak townhouse with panoramic harbour view  
山頂排屋擁環迴維港景  
3,688 s.f. (plus 759 s.f. garden)  
**\$110,000,000**

[www.landscape.com/1407.htm](http://www.landscape.com/1407.htm) | David Leung 梁先生 9199 0672



**4 Peel Rise, The Peak**  
山頂 貝璐道4號  
Rare garden house in quiet enclave  
罕有花園洋房, 位處寧靜一隅  
4,000 s.f.  
(plus 1,377 s.f. garden and 1,067 s.f. roof)  
**\$150,000,000**

[www.landscape.com/1968.htm](http://www.landscape.com/1968.htm) | Louis Wong 黃先生 9871 6828



**11 Pollock's Path, The Peak**  
山頂 普樂道11號  
Exclusive garden house with a bird's eye view of Victoria Harbour  
特色花園洋房, 鳥瞰維港  
4,600 s.f.  
**\$180,000,000**

[www.landscape.com/12745.htm](http://www.landscape.com/12745.htm) | Teresa Fung 馮小姐 9138 1621



**28 Gough Hill Road, The Peak**  
山頂 歌賦山道28號  
Brand new garden house with private pool  
全新花園洋房享私家泳池  
6,080 s.f. (plus 2,103 s.f. garden)  
**\$226,000,000 also for lease \$750,00 incl.**

[www.landscape.com/12794.htm](http://www.landscape.com/12794.htm) | Teresa Fung 馮小姐 9138 1621

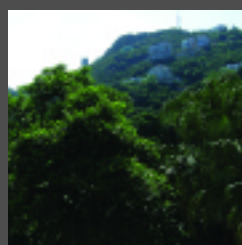


**15 Gough Hill Road, The Peak**  
山頂 歌賦山道15號  
Rare single detached house on the Peak  
超罕山頂獨立屋  
4,607 s.f.  
**\$370,000,000 also for lease \$500,000**

[www.landscape.com/12223.htm](http://www.landscape.com/12223.htm) | Louis Wong 黃先生 9871 6828

山頂  
出租

# THE PEAK LEASE



## Carolina Garden

山頂 嘉樂園

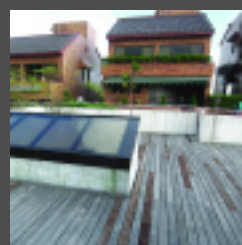
20-34 Coombe Road, The Peak  
Rare colonial apartment in prestigious location

罕有英式單位, 位置尊貴

2,350 s.f.  
\$82,000

[www.landscape.com/12648.htm](http://www.landscape.com/12648.htm)

Sami Woo 胡小姐 9493 8275



## Orient Crest

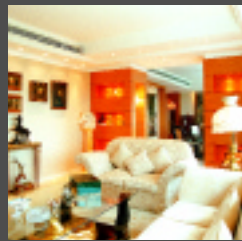
山頂山頂道76號

76 Peak Road, The Peak  
Colonial style townhouse with private garden

3,313 s.f.  
\$145,000

[www.landscape.com/12060.htm](http://www.landscape.com/12060.htm)

Maria Cheung 張小姐 8103 3862



## 43 Barker Road, The Peak

山頂 白加道43號

Modern harbour view apartment on Barker Road  
位於白加道之時尚維港景單位

3,820 s.f.  
\$210,000

[www.landscape.com/12669.htm](http://www.landscape.com/12669.htm)

Sami Woo 胡小姐 9493 8275



## 11-21 Watford Road, The Peak

山頂 和福道11-21號  
Large 5-bedroom Peak townhouse in tranquil location

敞大五房山頂排屋, 環境寧靜

5,300 s.f. (plus 1,500 s.f. garden)  
\$220,000

[www.landscape.com/12283.htm](http://www.landscape.com/12283.htm)

Sami Woo 胡小姐 9493 8275



## 59 Mount Kellett Road, The Peak

山頂 加列山道59號

Stylish house on the Peak  
品味洋房, 位處山頂

4,000 s.f.  
\$220,000 incl.

[www.landscape.com/777.htm](http://www.landscape.com/777.htm)

Louis Wong 黃先生 9871 6828



## 21 Severn Road, The Peak

山頂 施動道21號

Brand new detached house with private pool

全新獨立屋享私家泳池

6,000 s.f. (plus 6,000 s.f. garden)  
\$380,000

[www.landscape.com/1836.htm](http://www.landscape.com/1836.htm)

Mark Mak 麥先生 6838 2929

# SOUTHSIDE SALES

南區  
出售



## Baguio Villa

薄扶林碧瑤灣

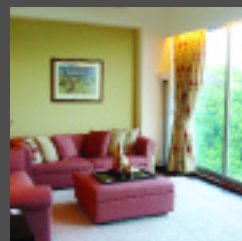
550 & 555 Victoria Road, Pokfulam  
Practical apartment with lush greenery view in popular development

實用單位, 景觀翠綠, 位於熱門屋苑

1,020 s.f.  
\$7,500,000

[www.landscape.com/12850.htm](http://www.landscape.com/12850.htm)

Rowena Siu 蕭小姐 9348 4118



## Cypresswaver Villas

春坎角柏濤小築

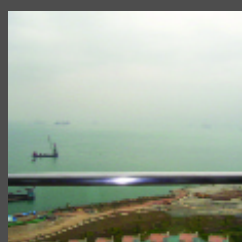
32 Cape Road, Chung Hom Kok  
Boutique low-rise flat with sea view

品味低密度住宅, 享有海景

1,375 s.f.  
\$14,000,000

[www.landscape.com/8842.htm](http://www.landscape.com/8842.htm)

Christine Chong 莊小姐 9648 6082



## Residence Bel-Air (Phase 1) 薄扶林貝沙灣(第一期)

28 Bel-Air Avenue, Pokfulam

Well planned waterfront development with excellent facilities  
優質臨海物業擁一流會所設施

1,327 s.f.  
\$15,900,000

[www.landscape.com/12767.htm](http://www.landscape.com/12767.htm)

Rita Lee 李小姐 9437 0087



## Parisian

赤柱海寧雅舍

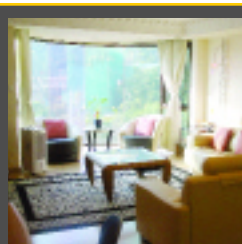
8 Stanley Mound Road, Stanley

Low-rise apartment with private terrace close to beach  
低座物業連私家平台, 鄰近海灘

1,550 s.f. (plus 521 s.f. garden)  
\$17,500,000

[www.landscape.com/12376.htm](http://www.landscape.com/12376.htm)

Stephen Chan 陳先生 9093 3381



## Goldson Place

壽臣山金信閣

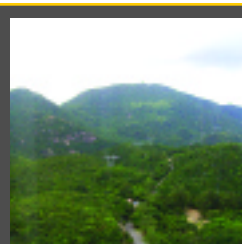
11 Shouson Hill Road West, Shouson Hill  
Low-rise penthouse with internal access to private roof terrace

低座頂層內置樓梯直達天台

1,650 s.f. (plus 1,225 s.f. roof)  
\$21,000,000

[www.landscape.com/12909.htm](http://www.landscape.com/12909.htm)

Christine Chong 莊小姐 9648 6082



## Hong Kong Parkview - Tower 4

淺水灣 陽明山莊4座

88 Tai Tam Reservoir Road, Repulse Bay

Nicely decorated family flat in lush greenery  
雅裝家庭住宅, 環境翠綠

2,105 s.f.  
\$21,000,000

[www.landscape.com/6094.htm](http://www.landscape.com/6094.htm)

Johnny Cheung 張先生 9278 9939





**Repulse Bay Garden**  
淺水灣 麗景園  
18-40 Belleview Drive, Repulse Bay  
High efficiency apartment overlooking Repulse Bay beach  
實用單位眺望淺水灣泳灘  
1,780 s.f.  
**\$23,000,000 SOLE AGENT 獨家代理**

[www.landscape.com/12489.htm](http://www.landscape.com/12489.htm) | Mary Li 李小姐 9011 6595



**Redhill Peninsula - Apartment** 大潭 紅山半島  
18 Pak Pat Shan Road, Tai Tam  
Tranquil waterfront apartment with great clubhouse facilities  
恬靜海濱住宅設一流會所設施  
2,143 s.f.  
**\$24,000,000**

[www.landscape.com/12809.htm](http://www.landscape.com/12809.htm) | Jack Yip 葉先生 6011 8677



**La Mer**  
薄扶林 浪頤居  
67-71 Bisney Road, Pokfulam  
Modern waterfront low-rise in tranquil area of Pokfulam  
時尚海濱低座，位處薄扶林寧靜區域  
2,063 s.f.  
**\$22,500,000**

[www.landscape.com/11783.htm](http://www.landscape.com/11783.htm) | Maria Cheung 張小姐 8103 3862



**South Bay Palace**  
淺水灣南灣御苑  
25-31 South Bay Close, Repulse Bay  
Repulse Bay mid-rise apartment with comprehensive facilities  
時尚中座住宅，位於淺水灣，備多種消閒設施  
1,698 s.f.  
**\$25,000,000 also for lease \$60,000**

[www.landscape.com/12922.htm](http://www.landscape.com/12922.htm) | David Leung 梁先生 9199 0672



**Repulse Bay Garden**  
淺水灣 麗景園  
18-40 Belleview Drive, Repulse Bay  
Spacious apartment with tasteful decorations close to Repulse Bay beach  
寬敞住宅連品味裝修，鄰近淺水灣海灘  
2,288 s.f.  
**\$26,990,000**

[www.landscape.com/12910.htm](http://www.landscape.com/12910.htm) | Maria Cheung 張小姐 8103 3862



**Villas Sorrento**  
薄扶林御海園  
64-66 Mount Davis Road, Pokfulam  
Brand new large 4-bedroom mid-rise with sweeping sea view  
全新中座四房大單位，享遼闊海景  
2,523 s.f.  
**\$27,400,000**

[www.landscape.com/11083.htm](http://www.landscape.com/11083.htm) | Rita Lee 李小姐 9437 0087



**Repulse Bay Towers**  
淺水灣 保華大廈  
119A Repulse Bay Road, Repulse Bay  
Older styled sea view duplex with large and practical layout  
傳統風格海景複式，間格實用寬敞  
3,100 s.f.  
**\$30,000,000**

[www.landscape.com/11819.htm](http://www.landscape.com/11819.htm) | Johnny Cheung 張先生 9278 9939



**Woodgreen Estate**  
壽臣山壽山村道5號  
5 Shouson Hill Road, Shouson Hill  
Low-rise penthouse with roof and new kitchen in quiet neighbourhood  
低座頂層單位，連天台及全新廚房，環境寧靜怡人  
2,200 s.f. (plus 2,200 s.f. roof)  
**\$30,000,000**

[www.landscape.com/12961.htm](http://www.landscape.com/12961.htm) | Maria Cheung 張小姐 8103 3862



**Hong Kong Parkview - Tower 18**  
淺水灣陽明山莊18座  
88 Tai Tam Reservoir Road, Repulse Bay  
Large 4-bedroom apartment with excellent facilities  
2,708 s.f.  
**\$30,800,000**

[www.landscape.com/12773.htm](http://www.landscape.com/12773.htm) | Jack Yip 葉先生 6011 8677



**Bluewater**  
大潭 大潭道25號  
25 Tai Tam Road, Tai Tam  
Exclusive mid-rise apartment with sweeping Southside sea view  
獨特中座住宅，享遼闊南區海景  
2,500 s.f.  
**\$36,000,000**

[www.landscape.com/12015.htm](http://www.landscape.com/12015.htm) | Teresa Fung 馮小姐 9138 1621



**Pine Crest**  
淺水灣 松苑  
65 Repulse Bay Road, Repulse Bay  
Spacious apartment with beautiful Deep Water Bay view  
寬敞單位享深水灣醉人景色  
2,250 s.f.  
**\$36,000,000**

[www.landscape.com/13012.htm](http://www.landscape.com/13012.htm) | Teresa Fung 馮小姐 9138 1621



**Celestial Garden**  
淺水灣詩禮花園  
5 Repulse Bay Road, Repulse Bay  
4-bedroom flat on upper Repulse Bay Road in peaceful surroundings  
四房單位，位於淺灣頭段，環境寧靜怡人  
2,375 s.f.  
**\$39,000,000**

[www.landscape.com/12793.htm](http://www.landscape.com/12793.htm) | Sissy Li 李小姐 9642 6969



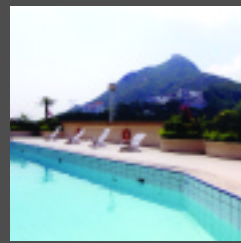
## Monte Verde

淺水灣南山別墅

41 Repulse Bay Road, Repulse Bay  
Sought-after sea view apartment on upper Repulse Bay Road  
熱門海景物業，位於淺水灣道頭段

2,400 s.f.  
\$45,000,000

[www.landscape.com/12893.htm](http://www.landscape.com/12893.htm) | Stephen Chan 陳先生 9093 3381



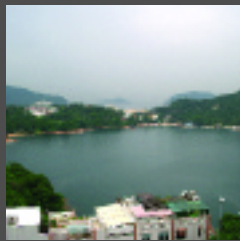
## Park Place

淺水灣雅柏苑

7 Tai Tam Reservoir Road, Repulse Bay  
Luxurious apartment on upper Repulse Bay Road with harbour view  
豪華住宅位於淺灣頭段，享維港美景

2,288 s.f.  
\$45,000,000

[www.landscape.com/9837.htm](http://www.landscape.com/9837.htm) | Christine Chong 莊小姐 9648 6082



## Pinewaver Villas

春坎角松濤小築

35 Ching Sau Lane, Chung Hom Kok  
Spacious 4-bedroom townhouse with sweeping view of Stanley Bay  
寬敞四房排屋，享遼闊赤柱灣景致

3,602 s.f.  
\$46,000,000

[www.landscape.com/11896.htm](http://www.landscape.com/11896.htm) | Sissy Li 李小姐 9642 6969



## 33 Cape Road, Chung Hom Kok

Brand new garden townhouse close to Stanley  
全新花園排屋，鄰近赤柱

3,147 s.f.  
(plus 764 s.f. garden and 423 s.f. roof)  
\$51,100,000

[www.landscape.com/12566.htm](http://www.landscape.com/12566.htm) | Simon Yung 翁先生 9418 5743



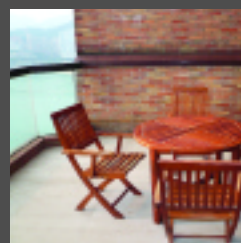
## The Somerset

淺水灣怡峰

67 Repulse Bay Road, Repulse Bay  
Duplex overlooking Deep Water Bay  
複式單位眺望深水灣

2,464 s.f.  
\$53,000,000

[www.landscape.com/10654.htm](http://www.landscape.com/10654.htm) | Simon Yung 翁先生 9418 5743



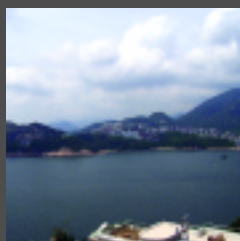
## Ruby Court

淺水灣嘉麟閣

55 South Bay Road, Repulse Bay  
Prestigious penthouse duplex with private rooftop  
尊貴頂層複式連私家天台

2,790 s.f. (plus 565 s.f. roof)  
\$53,000,000

[www.landscape.com/12338.htm](http://www.landscape.com/12338.htm) | Mak Mark 麥先生 6838 2929



## Regalia Bay

赤柱 富豪海灣

88 Wong Ma Kok Road, Stanley  
Luxurious townhouse with sweeping sea view  
豪華排屋，享廣角海景

4,089 s.f. (plus 1,317 s.f. roof)  
\$55,000,000 also for lease \$150,000 incl.

[www.landscape.com/12058.htm](http://www.landscape.com/12058.htm) | Jack Yip 葉先生 6011 8677



## The Somerset

淺水灣怡峰

67 Repulse Bay Road, Repulse Bay  
Four-bedroom duplex with deluxe decorations overlooking Deep Water Bay  
四房複式，時尚豪華裝修，眺望深水灣

3,099 s.f.  
\$60,000,000

[www.landscape.com/12681.htm](http://www.landscape.com/12681.htm) | Teresa Fung 馮小姐 9138 1621



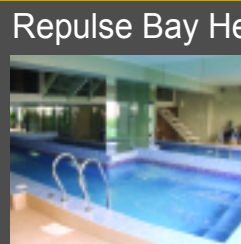
## Las Pinadas

壽臣山朗松居

33 Shouson Hill Road, Shouson Hill  
High quality 4-bedroom townhouse in serene neighbourhood  
優質四房排屋，環境寧靜

3,424 s.f. (plus 778 s.f. roof)  
\$65,000,000

[www.landscape.com/12682.htm](http://www.landscape.com/12682.htm) | Carman Szeto 司徒小姐 8100 3893

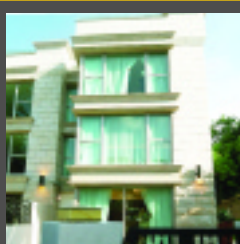


## Repulse Bay Heights 淺水灣 淺水灣花園

3 Belleview Drive, Repulse Bay  
Newly renovated house with private swimming pool  
全新裝修洋房，備有私家泳池

4,457 s.f.  
(plus 1,017 s.f. roof and 1,745 s.f. garden)  
\$68,000,000 also for lease \$220,000 incl.

[www.landscape.com/12695.htm](http://www.landscape.com/12695.htm) | Rita Lee 李小姐 9437 0087



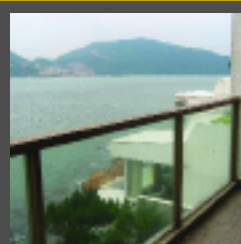
## L'Harmonie

赤柱 葆琳居

3 Stanley Mound Road, Stanley  
Luxurious townhouse with brand new decoration  
豪華排屋，全新裝修

3,557 s.f. (plus 1,077 s.f. garden)  
\$70,000,000

[www.landscape.com/9997.htm](http://www.landscape.com/9997.htm) | David Leung 梁先生 9199 0672



## 37 Tung Tau Wan Road, Stanley

Waterfront townhouse with private garden and community indoor pool  
海濱排屋連私家花園，享屋苑室內泳池

3,300 s.f. (plus 600 s.f. garden)  
\$75,000,000

[www.landscape.com/10620.htm](http://www.landscape.com/10620.htm) | Johnny Cheung 張先生 9278 9939



**1 Shouson Hill Road East**  
壽臣山 壽臣山道東1號  
Exclusive townhouse in serene location  
特色排屋，環境寧靜

4,331 s.f.  
**\$80,000,000**

[www.landscape.com/12897.htm](http://www.landscape.com/12897.htm) | Jack Yip 葉先生 6011 8677



**Villa Rosa**  
大潭 玫瑰園  
88 Red Hill Road, Tai Tam  
Deluxe hilltop garden house with sweeping sea view  
尊貴花園洋房，居高臨下，眺望遼闊海景

3,960 s.f. (plus 907 s.f. garden)  
**\$80,000,000**

[www.landscape.com/12928.htm](http://www.landscape.com/12928.htm) | Jack Yip 葉先生 6011 8677



**Turtle Cove**  
大潭 龜背灣  
60 Tai Tam Road, Tai Tam  
Tai Tam waterfront townhouse with picturesque views  
大潭臨海排屋，景觀如畫

4,002 s.f.  
**\$95,000,000**

[www.landscape.com/12014.htm](http://www.landscape.com/12014.htm) | Louis Wong 黃先生 9871 6828



**Twin Brook**  
淺水灣雙溪  
43 Repulse Bay Road, Repulse Bay  
Huge duplex apartment overlooking Deep Water Bay  
巨型複式單位，眺望深水灣

5,400 s.f.  
**\$108,000,000**


[www.landscape.com/10961.htm](http://www.landscape.com/10961.htm) | Mak Mark 麥先生 6838 2929



**The Beachfront**  
淺水灣 壁池  
7 Belleview Drive, Repulse Bay  
Unique townhouse with full view of Repulse Bay beach  
特色排屋，淺水灣海灘全景

3,691 s.f. (plus 280 s.f. garden)  
**\$150,000,000**

[www.landscape.com/12920.htm](http://www.landscape.com/12920.htm) | Jack Yip 葉先生 6011 8677



**12 Tai Tam Road, Tai Tam**  
大潭 大潭道12號  
Prestigious garden house with private pool at Tai Tam  
尊貴花園洋房，享有私家泳池，位於大潭海濱

4,991 s.f.  
**\$160,000,000**

[www.landscape.com/12796.htm](http://www.landscape.com/12796.htm) | Christine Chong 莊小姐 9648 6082



**110 Repulse Bay Road, Repulse Bay**  
淺水灣 淺水灣道110號  
Luxurious house with private garage, garden and swimming pool  
豪華洋房擁私家車房、花園及泳池

6,150 s.f. (plus 2,753 s.f. garden)  
**\$180,000,000**

[www.landscape.com/12224.htm](http://www.landscape.com/12224.htm) | Louis Wong 黃先生 9871 6828



**8A Stanley Beach Road, Stanley**  
赤柱 赤柱灘道8A號  
Tastefully designed garden house on Stanley beach  
品味設計花園洋房，位於赤柱泳灘旁

4,360 s.f.  
**Open Offer**

[www.landscape.com/12674.htm](http://www.landscape.com/12674.htm) | Louis Wong 黃先生 9871 6828

# SOUTHSIDE LEASE



**Helene Tower**  
淺水灣 喜蓮苑  
123 Repulse Bay Road, Repulse Bay  
Unique duplex with a bird's eye view of Repulse Bay beach  
獨特複式，鳥瞰淺水灣海灘

1,875 s.f.  
**\$75,000**

[www.landscape.com/12996.htm](http://www.landscape.com/12996.htm) | Simon Yung 翁先生 9418 5743



**Woodland Villa**  
壽臣山傲林軒  
53 Shouson Hill Road, Shouson Hill  
Sea view apartment in verdant woods of Shouson Hill  
海景單位，位處翠綠之壽臣山

2,060 s.f.  
**\$80,000**

[www.landscape.com/12894.htm](http://www.landscape.com/12894.htm) | Rita Lee 李小姐 9437 0087



**Burnside Estate**  
淺水灣 濱景園  
9 South Bay Road, Repulse Bay  
3-bedroom townhouse with private roof terrace close to beach  
三房排屋設私家天台平台，海灘近在咫尺

2,100 s.f.  
**\$100,000 incl.**

[www.landscape.com/12916.htm](http://www.landscape.com/12916.htm) | Mary Li 李小姐 9011 6595



**Park Place**  
淺水灣雅柏苑  
7 Tai Tam Reservoir Road, Repulse Bay  
Newly renovated large apartment on upper Repulse Bay Road with harbour view  
翻新海景大單位，位處淺水灣道頭段

2,288 s.f.  
**\$100,000 incl.**

[www.landscape.com/12261.htm](http://www.landscape.com/12261.htm) | Sami Woo 胡小姐 9493 8275

# SOUTHSIDE LEASE

南區  
出租



## Pine Crest

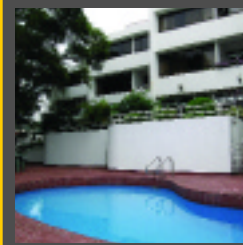
淺水灣 松苑

65 Repulse Bay Road, Repulse Bay  
Spacious 3-bedroom flat in move-in condition

寬敞三房物業，狀況良好，即租即住

2,250 s.f.  
\$105,000 incl.

[www.landscape.com/12913.htm](http://www.landscape.com/12913.htm) | Mary Li 李小姐 9011 6595



## Provident Villas

薄扶林富麗苑

29-30 Sassoon Road, Pokfulam  
Garden townhouse with high privacy in tranquil neighbourhood

花園排屋，私隱度高，環境寧靜

3,312 s.f.  
\$135,000

[www.landscape.com/12389.htm](http://www.landscape.com/12389.htm) | Yvonne Chang 鄭小姐 9088 4666



## Horizon Crest 赤柱赤柱村道22號

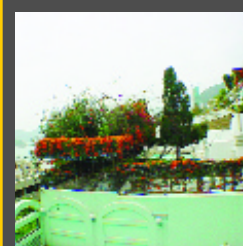
22 Stanley Village Road, Stanley

4-bedroom townhouse with plenty of open space close to beach

四房排屋，享有充足戶外空間，鄰近海灘

2,800 s.f.  
(plus 852 s.f. terrace and 935 s.f. garden)  
\$140,000 incl.

[www.landscape.com/12687.htm](http://www.landscape.com/12687.htm) | Yvonne Chang 鄭小姐 9088 4666



## Fairview Court

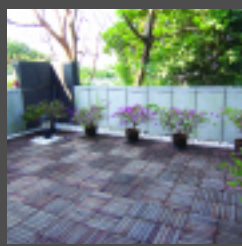
淺水灣富慧閣

94 Repulse Bay Road, Repulse Bay  
Large and spacious 5-bedroom flat with private garden

五房巨宅享私家花園

4,155 s.f. (plus 400 s.f. garden)  
\$150,000

[www.landscape.com/12285.htm](http://www.landscape.com/12285.htm) | Yvonne Chang 鄭小姐 9088 4666



## The Zenith 壽山山 采簷

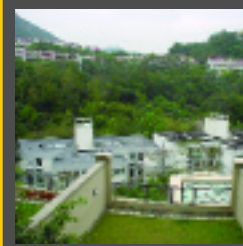
11A Shouson Hill Road West, Shouson Hill

Modern style house in Shouson Hill

位於壽山山之時尚洋房

3,692 s.f.  
(plus 343 s.f. garden and 365 s.f. terrace)  
\$155,000 incl.

[www.landscape.com/12959.htm](http://www.landscape.com/12959.htm) | Teresa Lau 劉小姐 9080 6686



## 1 Shouson Hill Road East

壽山山壽山山道東1號

Quality 4-bedroom townhouse in green and quiet location

優質四房排屋，環境翠綠寧靜

4,331 s.f. (plus 1,099 s.f. garden)  
\$170,000

[www.landscape.com/12474.htm](http://www.landscape.com/12474.htm) | Mak Mark 麥先生 6838 2929



## 63 Deep Water Bay Road

深水灣道63號

Quality townhouse in tranquil area of Deep Water Bay

優質排屋，位處寧靜的深水灣地段

3,479 s.f. (plus 317 s.f. garden)  
\$195,000

[www.landscape.com/12302.htm](http://www.landscape.com/12302.htm) | Yvonne Chang 鄭小姐 9088 4666



## Fairwinds

赤柱東頭灣道29-31號

29-31 Tung Tau Wan Road, Stanley  
Rare find garden townhouse at Stanley waterfront

罕有放盤花園排屋，位於赤柱海濱

3,553 s.f.  
\$200,000

[www.landscape.com/12903.htm](http://www.landscape.com/12903.htm) | Yvonne Chang 鄭小姐 9088 4666



## Rosecliff

大潭道20號

20 Tai Tam Road, Tai Tam

Prestigious seaside garden house with private carport

尊貴臨海花園洋房，享私家車房

3,980 s.f. (plus 1,050 s.f. roof)  
\$200,000

[www.landscape.com/11812.htm](http://www.landscape.com/11812.htm) | Mak Mark 麥先生 6838 2929



## 56 Repulse Bay Road, Repulse Bay

淺水灣淺水灣道56號

Garden duplex with breath-taking view of Repulse Bay beach

花園複式，享有醉人壯觀之淺水灣灘景

4,053 s.f. (plus 1,522 s.f. terrace)  
\$280,000

[www.landscape.com/11803.htm](http://www.landscape.com/11803.htm) | Sissy Li 李小姐 9642 6969



**Landscape Realty Limited** C-018733

a member of Landscape Surveyors Ltd

Tel: 852-2866 0022 Fax: 852-2866 0015

Email: [info@landscape.com](mailto:info@landscape.com) Website: [www.landscape.com](http://www.landscape.com)

Unit 3106, 31/F, Hopewell Centre,

183 Queen's Road East, Wanchai, Hong Kong

The information, text, photos, analyses and projections contained herein are provided solely for the convenience of prospective clients and no warranty or representation as to their accuracy, correctness or completeness is made by Landscape Surveyors Limited, Landscape Realty Limited or the owners, none of whom shall have any liability or obligation with respect thereto. Interested parties should rely on their own investigations, interpretations and analyses in connection with the purchase or letting thereof.

Information has been provided to us by sources deemed reliable, but no warranty or representation is made as to its accuracy, correctness or completeness. These offerings are made subject to contract, correction of errors, omissions, prior sale or lease, change of price or terms or withdrawal from the market without notice. The contents of The Key are for reference only and do not constitute all or any part of a contract.

Copyright 2007