

VOLUME 104 | August 2013

The Key

SELECT DELUXE HOMES

大宅®

靜中帶動
QUIET
DYNAMISM



LANDSCOPE

CHRISTIE'S
INTERNATIONAL REAL ESTATE



WINFIELD

VENTRIS ROAD - HAPPY VALLEY



GROSS FLOOR AREA
1,940-2,468 SQFT

SALEABLE AREA
1,567-2,006 SQFT

3 - 4 BEDROOMS

LEASING

8102 8366



02	MONTHLY HIGHLIGHT Ruby Court, Repulse Bay 淺水灣 嘉麟閣	13	Southside & the Peak lease 南區及山頂 出租
04	SPECIAL FEATURE Charming Clubhouse 怡人會所	22	Midlevels Central & West lease 中半山及西半山 出租
06	Southside & the Peak sale 南區及山頂 出售	26	FEATURE A flight of fantasy 奇幻之旅
08	Midlevels Central & West sale 中半山及西半山 出售	28	HIGHLIGHT Azura, Midlevels West 西半山 蔚然
11	Midlevels East & Happy Valley sale 東半山及跑馬地 出售	29	Midlevels East & Happy Valley lease 東半山及跑馬地 出租
12	HIGHLIGHT 18-19A Fung Fai Terrace, Happy Valley 跑馬地 鳳輝台18-19A號	33	Other Districts 其他地區
		34	London Properties 倫敦物業

HOW MAY YOU LIST YOUR PROPERTY WITH THE KEY?

怎樣在《大宅》刊登您的出售／出租物業？

If you would like to see your property listed in The Key in the next issue, you may call Loretta Lui at 3102 4818 or visit us at www.landscape-christies.com/sell_let. Or you may simply fill out the space below and fax to us at 2866 0015.

如果您想將出售／出租物業刊登於大宅，可致電3102 4818與呂小姐聯絡，或登上 www.landscape-christies.com/sell_let。或者您可以填寫下面的表格傳真至2866 0015。

Property to be listed 物業

Asking Rental / Sale Price 租金 / 售價

Floor Area 面積

Contact Person 聯絡人

Telephone 電話

Email 電郵地址

Our KeyPersons will contact you for follow-up works.

我們的大宅專員會馬上與您聯絡



美食天堂

A foodie paradise

For four days this month, Hong Kongers (and thousands of visitors flying in from all over the world) will be loosening their belt buckles as the Hong Kong Food Expo kicks from from 15-19 August at the Hong Kong Convention and Exhibition Centre in Wanchai.

The event cements the city's reputation as the Culinary Capital of Asia – Hong Kong is home to a great melting pot of foodie influences, from Michelin-starred chefs and restaurants to humble dai pai dongs all serving up the best dishes money can buy – of course, with the vast wealth of knowledge from kitchen suppliers and cooking equipment brands in the city, creating your own gastronomic extravaganzas at home is easier than ever.

香港市民（和數以千計從世界各地來訪的遊客）於今月將可以一連四天盡情放縱，從8月15至19日到香港灣仔會議及展覽中心，在香港美食博覽中大快朵頤。

美食博覽正好彰顯了香港身為「亞洲美食之都」的地位：香港匯聚林林總總的環球美食，不論是米芝蓮星級大廚和餐廳，或是平民化的大排檔，都能提供物有所值的美饌佳餚。此外，本地的廚房傢俱和廚具品牌眾多，為你帶來豐富的資訊，和提供各樣的美食知識；在家烹調一頓盛宴，自然易如反掌。

Published and distributed by

LANDSCOPE

CHRISTIE'S
INTERNATIONAL REAL ESTATE



Find us on:
facebook.

Designed by

透視雜誌
perspective

Landscape Christie's International Real Estate C-018733

Tel: +852 2866 0022

Fax: +852 2866 0015

Email: info@www.landscape-christies.com

Website: www.landscape-christies.com

Address: Unit 3106, 31/F, Hopewell Centre,
183 Queen's Road East, Wanchai, Hong Kong

Tel: +852 2525 0287

Fax: +852 2526 3860

Email: info@perspectiveglobal.com

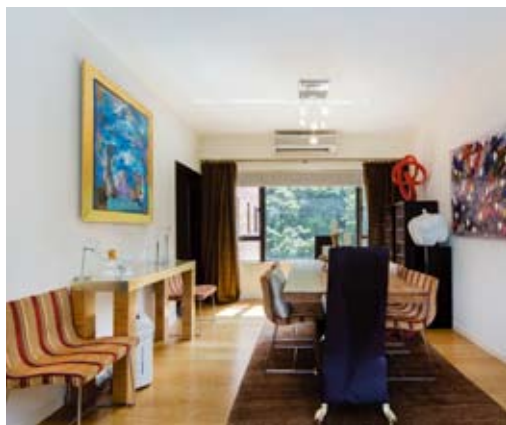
Website: www.perspectiveglobal.com

Address: Rm 2408, Dominion Centre,
59 Queen's Road East, Wanchai, Hong Kong

The information, text, photos, analyses and projections contained herein are provided solely for the convenience of prospective clients and no warranty or representation as to their accuracy, correctness or completeness is made by Landscape Christie's International Real Estate, Landscape Surveyors Limited, Landscape Realty Limited or the owners, none of whom shall have any liability or obligation with respect thereto. Interested parties should rely on their own investigations, interpretations and analyses in connection with the purchase or letting thereof.

Information has been provided to us by sources deemed reliable, but no warranty or representation is made as to its accuracy, correctness or completeness. These offerings are made subject to contract, correction of errors, omissions, prior sale or lease, change of price or terms or withdrawal from the market without notice. The contents of The Key are for reference only and do not constitute all or any part of a contract. Copyright 2013

Each Office is Independently Owned and Operated



靜中帶動 QUIET DYNAMISM

Tucked in a serene neighbourhood and surrounded by a lush belt of forest, this cosy, vibrant 1,780 s.f. apartment in Repulse Bay is located in a quiet corner of South Bay Road, boasting lovely views of the mountains and the sea.

Featuring warm oak flooring and a palette of pale colours, the interiors of this residence radiate a contemporary vibe, complemented by a rich mix of textures and thoughtfully selected artworks. There are two spacious bedrooms (one ensuite), with a welcoming combined living and dining room that is connected to an open study area, which has been modified into a comfortable home office.

The apartment comes complete with a fully-fitted kitchen, an additional bathroom, a powder room, a maid's room and one

covered car park.

Exclusive facilities for residents include a gymnasium, an outdoor swimming pool, tennis court, basketball court and children's playground. Families can also easily access the pristine Middle Bay and South Bay beaches.

Available for purchase at HK\$34 million, the residence is part of a development with twin towers of 23 and 27 storeys, with two units per floor. Shops and entertainments in Repulse Bay, Stanley and Tai Tam are located within short driving distance. Shuttle bus services to Central and Repulse Bay are also available to residents.

這佈置舒適又充滿生氣的單位，坐落於寧靜的淺水灣南灣道地段，面積達1780平方呎，四周茂綠的林蔭翠意盎然，坐擁優美的山色和海景，讓心窩盈溢一片靜謐。

居室以令人溫暖的橡木地板，搭配明亮的淡色調設計，再結合多元物料的豐富質感，和經過精心挑選的藝術品，營造出時尚的氛圍。單位設有兩間寬敞的睡房，其中一間為套房；偌大的客廳廳彼此相連，廳旁是開放式書房，可讓屋主舒適地在家中辦公。

單位另有設備齊全的廚房、浴室、化妝間、家傭房，以及一個有蓋車位。

住戶可享用各式休閒設施，包括健身中心、室外游泳池、網球場、籃球場和兒童遊樂場。此外，前往鄰近的中灣和南灣泳灘亦十分方便。

嘉麟閣由兩座大樓組成，分別高23和27層，每層有兩個單位。鄰近的淺水灣、赤柱和大潭有各式各樣的商舖和消閒設施，駕車瞬間可達。屋苑亦為住戶提供穿梭巴士服務，來往中環和淺水灣都非常便捷。單位現售3400萬港元。

Ruby Court

嘉麟閣

55 South Bay Road, Repulse Bay

淺水灣 南灣道55號

GROSS AREA 1,780 s.f.

SALEABLE AREA 1,390 s.f.

INQUIRIES 9809 8570 Stella Lo 羅小姐

SEARCH REFERENCE NO. 100164



Perkins road – colonial charm

Repulse Bay -classical contemporary

Castle Peak road –clean lines

Plantation road –sophisticate mode

Sapphire Chalet –light filled spread



JG Saw Consultants





37 Repulse Bay Road

淺水灣 淺水灣道37號

3-bedroom apartment at a prime location of Island South with enchanting sea view
迷人海景三房單位，地段優越

GROSS AREA 1,635 s.f.

SALEABLE AREA 1,199 s.f.

OFFERED AT \$60,000 incl.

INQUIRIES 6258 8847 Anthea Ngai 魏小姐

SEARCH REFERENCE NO. 39613



Hong Kong Parkview

淺水灣 陽明山莊

88 Tai Tam Reservoir Road

Tastefully decorated apartment with mountain view and excellent clubhouse facilities

品味裝修單位，享山巒景致，連優質會所設施，
可租可售

GROSS AREA 2,366 s.f.

SALEABLE AREA 1,886 s.f.

OFFERED AT \$95,000 incl.

also for sale Open Offer

INQUIRIES 9871 6828 Louis Wong 黃先生

SEARCH REFERENCE NO. 151123



Grand Garden

淺水灣 華景園

61 South Bay Road

Spacious 4-bedroom apartment including 2-ensuite with full facilities

寬敞四房單位，連兩間套房，享完善設施，
可租可售

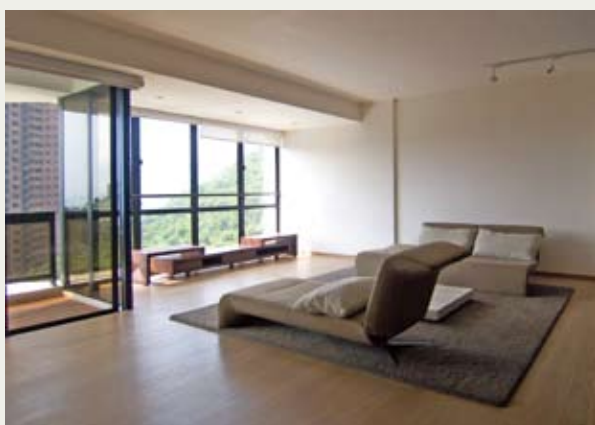
GROSS AREA 3,061 s.f.

SALEABLE AREA 2,490 s.f.

OFFERED AT \$100,000 incl. also for sale
\$68,000,000

INQUIRIES 9493 8275 Sami Woo 胡小姐

SEARCH REFERENCE NO. 34185



South Bay Towers

淺水灣 南灣大廈

59 South Bay Road

3-bedroom apartment in serene South Bay with mountain and sea views

南灣寧靜三房單位，欣賞山巒景及海景，可租可售

GROSS AREA 2,738 s.f.

SALEABLE AREA 2,143 s.f.

OFFERED AT \$110,000 incl.

also for sale \$46,000,000

INQUIRIES 9648 6082 Christine Chong 莊小姐

SEARCH REFERENCE NO. 125396





Belgravia

淺水灣 南灣道57號

57 South Bay Road

Prestigious 4-bedroom apartment with sea view in quiet location

著名四房海景住宅，環境恬靜，可租可售

GROSS AREA 2,790 s.f.

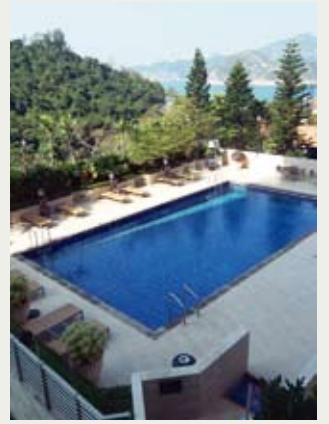
SALEABLE AREA 2,197 s.f.

OFFERED AT \$148,000 incl.

also for sale \$79,000,000

INQUIRIES 9080 6686 Teresa Lau 劉小姐

SEARCH REFERENCE NO. 137434



37 Repulse Bay Road

淺水灣 淺水灣道37號

Unique penthouse duplex with

spectacular views of Deep Water Bay

獨特頂層複式單位，欣賞深水灣美景，可租可售

GROSS AREA 3,177 s.f.

SALEABLE AREA 2,158 s.f.

(plus 181 s.f. terrace and 845 s.f. roof)

OFFERED AT \$150,000 incl.

also for sale \$95,000,000

INQUIRIES 9486 1566 Mira To 杜小姐

SEARCH REFERENCE NO. 33139



The Repulse Bay

淺水灣 影灣園

109 Repulse Bay Road

Newly designed 3-bedroom duplex with excellent clubhouse facilities and superb views of Repulse Bay

全新設計三房複式單位，享優質會所設施，飽覽淺水灣華麗景色

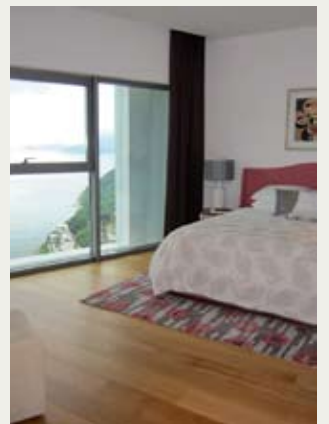
GROSS AREA 3,340 s.f.

SALEABLE AREA 2,474 s.f.

OFFERED AT \$163,000 excl.

INQUIRIES 9093 3381 Stephen Chan 陳先生

SEARCH REFERENCE NO. 161195



Hong Kong Parkview

淺水灣 陽明山莊

88 Tai Tam Reservoir Road

Newly decorated 4-bedroom decent flat

with estate shuttle bus to Central

全新裝修四房住宅，享屋苑穿梭巴士服務，直達市中心

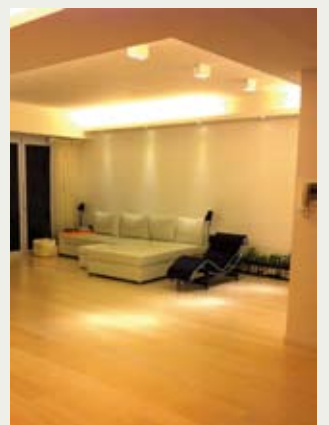
GROSS AREA 2,570 s.f.

SALEABLE AREA 2,067 s.f.

OFFERED AT \$45,000,000

INQUIRIES 9833 9509 Michelle Chung 鍾小姐

SEARCH REFERENCE NO. 127444





The Sail at Victoria 薄扶林 傲翔灣畔 86 Victoria Road

Modern 2-bedroom apartment with balcony overlooking unobstructed sea view at a tranquil location of Island West

時尚兩房單位，連露台，俯瞰遼闊海景，地點寧靜，可租可售



GROSS AREA 1,074 s.f.
SALEABLE AREA 790 s.f.
OFFERED AT \$16,200,000
also for lease \$40,000 incl.

INQUIRIES

9093 3381 Stephen Chan 陳先生

SEARCH REFERENCE NO. 125932



Greenery Garden

薄扶林 怡林閣

2A Mount Davis Road

Tastefully renovated apartment with greenery view and great recreational facilities

品味裝修住宅，欣賞翠綠景致，享優質設施



GROSS AREA 1,629 s.f.
SALEABLE AREA 1,329 s.f.
OFFERED AT \$17,500,000

INQUIRIES

9551 1077 Walker Lam 林先生

SEARCH REFERENCE NO. 96216



Gordon Terrace

赤柱 歌敦臺

4-8A Carmel Road

3-bedroom colonial low-rise with private roof-top close to Stanley Market

三房英式低密度住宅，連私家天台，鄰近赤柱市場



GROSS AREA 1,800 s.f.
SALEABLE AREA 1,548 s.f.
(plus 1,238 s.f. roof)

OFFERED AT \$38,000,000

INQUIRIES

9648 6082 Christine Chong 莊小姐

SEARCH REFERENCE NO. 36755



Stanley Court 赤柱 海灣園

9 Stanley Mound Road

Well kept townhouse with garden and roof terraces close by Stanley Beach and Market

優質裝修排屋，連花園及天台，鄰近赤柱泳灘及市場，可租可售



GROSS AREA 2,889 s.f.
SALEABLE AREA 2,151 s.f.
(plus 1,075 s.f. garden and 552 s.f. roof)

OFFERED AT \$61,000,000

also for lease \$160,000 incl.

INQUIRIES

9648 6082 Christine Chong 莊小姐

SEARCH REFERENCE NO. 136248





Villa Rosa

大潭 玫瑰園

88 Red Hill Road

Renowned deluxe townhouse at Tai Tam waterfront with stunning sea view
著名豪華排屋，位於大潭海濱，欣賞壯麗海景



GROSS AREA 3,960 s.f.
SALEABLE AREA 3,314 s.f.
(plus 414 s.f. garden and 480 s.f. roof)
OFFERED AT \$130,000,000
INQUIRIES 9809 8570 Stella Lo 羅小姐
SEARCH REFERENCE NO. 89452



Abergeldie

山頂 種植道52號

52 Plantation Road

Luxurious and modern townhouse located on The Peak with magnificent view of Victoria Harbour
豪華時尚排屋，享壯麗維港景致



GROSS AREA 3,688 s.f.
SALEABLE AREA 3,221 s.f.
(plus private terraces)
OFFERED AT \$200,000,000
INQUIRIES
9871 6828 Louis Wong 黃先生
SEARCH REFERENCE NO. 108991



Tai Tam Road

大潭道

Rare whole block residential building overlooking peaceful Tai Tam Bay
罕有全幢住宅大廈，俯瞰恬靜怡人的大潭灣

GROSS AREA 12,600 s.f.
SALEABLE AREA 10,136 s.f.
OFFERED AT Open Offer
INQUIRIES
9871 6828 Louis Wong 黃先生



Single detached house for sale at The Peak with exceptional redevelopment opportunity
山頂區罕有可重建獨立屋出售

Site Area approx. 11,000 sq.ft.
地盤面積約11,000平方呎
OFFERED AT Open Offer
INQUIRIES
9871 6828 Louis Wong 黃先生



Midlevels Central & West SALE

中半山及西半山 出售



Belcher's Hill 堅尼地城 寶雅山

9 Rock Hill Street

Compact 3-bedroom flat with city and greenery views, close to future MTR Station

簡潔裝修三房單位，飽覽城市及翠綠景觀，鄰近未來港鐵站

GROSS AREA 972 s.f.

SALEABLE AREA 716 s.f.

OFFERED AT \$12,800,000

INQUIRIES 9551 1077 Walker Lam 林先生

SEARCH REFERENCE NO. 129485



Phoenix Court 中半山 鳳凰閣

39 Kennedy Road

High-efficiency and practical 3-bedroom flat with balcony at convenient location

間隔實用三房單位，連露台，地點方便

GROSS AREA 983 s.f.

SALEABLE AREA 890 s.f.

OFFERED AT \$15,800,000

INQUIRIES 6183 8339 Carman Szeto 司徒小姐 **SOLE AGENT**

SEARCH REFERENCE NO. 88633



Island Crest

堅尼地城 繡城峰

8 First Street

Conveniently located 3-bedroom flat on fringe of Central

交通便利三房住宅，鄰近中環

GROSS AREA 1,029 s.f.

SALEABLE AREA 765 s.f.

OFFERED AT \$17,200,000

INQUIRIES 9551 1077 Walker Lam 林先生

SEARCH REFERENCE NO. 129105



Blessings Garden

西半山 殷樺花園

95 Robinson Road

3-bedroom flat with facilities near Midlevels escalator

三房住宅連設施，鄰近半山扶手電梯

GROSS AREA 1,106 s.f.

SALEABLE AREA 854 s.f. (plus 653 s.f. roof)

OFFERED AT \$18,000,000

INQUIRIES 9493 8275 Sami Woo 胡小姐

SEARCH REFERENCE NO. 16773



31 Robinson Road

西半山 羅便臣道31號

Modern 3-bedroom apartment with clubhouse facilities close to Central-Mid-levels Escalators

時尚三房住宅，連會所設施，鄰近中環半山扶手電梯

GROSS AREA 1,172 s.f.

SALEABLE AREA 884 s.f.

OFFERED AT \$20,000,000

INQUIRIES 9028 0147 Jenson Au 區先生

SEARCH REFERENCE NO. 101794



Excelsior Court 西半山 輝鴻閣

83 Robinson Road

Tastefully decorated 2-bedroom apartment with wood-decked roof terrace for sale with tenancy

品味裝修兩房單位，連實木地板天台，連約出售

GROSS AREA 1,283 s.f.

SALEABLE AREA 1,081 s.f. (plus 842 s.f. roof)

OFFERED AT \$22,000,000

INQUIRIES 9551 1077 Walker Lam 林先生

SEARCH REFERENCE NO. 114766





Imperial Court 西半山 帝豪閣
62G Conduit Road

3-bedroom apartment at convenient location with city view for sale with tenancy

三房城市景住宅，地點方便，連約出售

GROSS AREA 1,531 s.f.

SALEABLE AREA 1,196 s.f.

OFFERED AT \$23,200,000

INQUIRIES 9028 0147 Jenson Au 區先生

SEARCH REFERENCE NO. 72458



1 Po Shan Road

西半山 寶珊道1號

Modern mid-rise apartment with good facilities at a quiet enclave of Midlevels West

時尚中密度單位，連優質設施，地段寧靜

GROSS AREA 1,324 s.f.

SALEABLE AREA 1,031 s.f.

OFFERED AT \$26,000,000

INQUIRIES 9028 0147 Jenson Au 區先生

SEARCH REFERENCE NO. 36657



Fujiya Mansion 中半山 富士屋

21-23A Kennedy Road

3-bedroom mid-rise apartment on convenient Kennedy Road with easy access to Wanchai

三房中密度住宅，位於交通便利的堅尼地道，鄰近灣仔

GROSS AREA 1,600 s.f.

SALEABLE AREA 1,367 s.f.

OFFERED AT \$26,800,000

INQUIRIES 9648 6082 Christine Chong 莊小姐

SEARCH REFERENCE NO. 63027



Glory Mansion

中半山 輝煌大廈

106-108 MacDonnell Road

Tastefully decorated 2-bedroom older style apartment with spacious layout

品味裝修兩房單位，間隔寬敞

GROSS AREA 2,300 s.f.

SALEABLE AREA 1,880 s.f.

OFFERED AT \$35,000,000

INQUIRIES 9028 0147 Jenson Au 區先生

SEARCH REFERENCE NO. 158100



Pearl Gardens

西半山 明珠臺

7 Conduit Road

Spacious apartment with nice kitchen and bathrooms

西半山寬敞住宅，連雅緻裝修廚廁

GROSS AREA 2,200 s.f.

SALEABLE AREA 2,100 s.f.

OFFERED AT \$35,000,000

INQUIRIES 9028 0147 Jenson Au 區先生

SEARCH REFERENCE NO. 108475



Chenyu Court 中半山 燦如閣

22-24 Kennedy Road

Practical mid-rise apartment with city view conveniently located on Kennedy Road

實用中密度住宅單位，位於交通方便的堅尼地道，享城市景觀

GROSS AREA 1,800 s.f.

SALEABLE AREA 1,419 s.f.

OFFERED AT \$36,000,000

INQUIRIES 9648 6082 Christine Chong 莊小姐

SEARCH REFERENCE NO. 50258



Midlevels Central & West SALE

中半山及西半山 出售



Haddon Court 西半山 海天閣
41C Conduit Road
Nicely decorated 3-bedroom
apartment with direct access to
private roof terrace
雅致裝修三房住宅，連內置樓梯往私家天台



GROSS AREA 1,860 s.f.
SALEABLE AREA 1,668 s.f.

(plus 718 s.f. roof)

OFFERED AT \$42,800,000

INQUIRIES

9028 0147 Jenson Au 區先生

SEARCH REFERENCE NO. 85899



Po Garden
中半山 寶園
9 Brewin Path

Spacious 3-bedroom apartment at
prime location enjoying mountain
and city view
寬敞三房單位，欣賞山巒及城市景致，地段
優質，可租可售



GROSS AREA 2,590 s.f.

SALEABLE AREA 1,941 s.f.

OFFERED AT \$46,800,000

also for lease \$90,000 incl.

INQUIRIES

6258 8847 Anthea Ngai 魏小姐

SEARCH REFERENCE NO. 30143



Azura
西半山 蔚然
2A Seymour Road
Brand new 3-bedroom apartment
with city and harbour views for sale
with tenancy
全新裝修三房住宅，欣賞城市及海港景色，
連約出售



GROSS AREA 1,679 s.f.

SALEABLE AREA 1,308 s.f.

OFFERED AT \$51,000,000

INQUIRIES

9229 2396 Elaine Chow 周小姐

SEARCH REFERENCE NO. 150451



Garden Terrace
中半山 花園臺
8A Old Peak Road
Spacious and well decorated 4-
bedroom apartment with balcony
overlooking greenery and city views
優質裝修四房單位，間隔特大寬敞，連露
台，俯瞰翠綠及城市景觀



GROSS AREA 3,319 s.f.

SALEABLE AREA 2,828 s.f.

OFFERED AT \$73,800,000

INQUIRIES

9080 6686 Teresa Lau 劉小姐

SEARCH REFERENCE NO. 123895





King Inn Mansion

跑馬地 景怡大廈

13-15 Yik Yam Street

Unique 2-bedroom duplex with private sky garden enjoying racecourse view

獨特兩房複式單位，連私家平台花園，享馬場美景



GROSS AREA 1,500 s.f.

SALEABLE AREA 1,315 s.f.

(plus 388 s.f. terrace)

OFFERED AT \$17,900,000

INQUIRIES

9551 1077 Walker Lam 林先生

SEARCH REFERENCE NO. 112270



Marlborough House

東半山 保祿大廈

154 Tai Hang Road

Tastefully decorated colonial flat in convenient location

品味裝修英式住宅，地段優越



GROSS AREA 1,250 s.f.

SALEABLE AREA 973 s.f.

OFFERED AT \$22,500,000

INQUIRIES

6258 8847 Anthea Ngai 魏小姐

SEARCH REFERENCE NO. 125633



Swiss Towers

東半山 瑞士花園

113 Tai Hang Road

Practical 3-bedroom apartment with balcony conveniently located at Tai Hang Road

實用三房住宅，連露台，位於交通方便的大坑道



GROSS AREA 1,600 s.f.

SALEABLE AREA 1,265 s.f.

OFFERED AT \$23,000,000

INQUIRIES 9486 1566 Mira To 杜小姐

SEARCH REFERENCE NO. 34695



Dragon Garden

東半山 龍園

1 Chun Fai Terrace

Tastefully decorated 3-bedroom apartment with balcony on fringe of Causeway Bay

品味裝修三房單位，連露台，鄰近銅鑼灣



GROSS AREA 1,750 s.f.

SALEABLE AREA 1,598 s.f.

OFFERED AT \$24,800,000

INQUIRIES

6183 8339 Carman Szeto 司徒小姐

SOLE AGENT

SEARCH REFERENCE NO. 139958





Tucked away on Fung Fai Terrace, off Village Road in the heart of Happy Valley, this 1,200 s.f. apartment features a highly practical layout with calm, minimalist décor. There are two bedrooms (one ensuite), with a generous combined living and dining room. Other highlights include a well-equipped semi-open kitchen, an additional bathroom, one covered car park, as well as a 900 s.f. roof.

With peaceful surroundings, this old-style low-rise development offers a pleasantly high level of privacy. Served by well-connected bus and minibus networks, residents can also easily access the supermarkets, convenience stores and restaurants nearby.

單位坐落於鳳輝台，鄰近跑馬地近山村道的心臟地帶；其面積達1200平方呎，間隔非常實用，佈置清逸簡約。室內設有兩間睡房，其中一間為套房；其客廳寬敞舒適，另有設備齊全的半開放式廚房、一間浴室、一個有蓋車位，以及面積達900平方呎的天台。

鳳輝台為樓層較低的舊式建築，位處靜中帶旺的地區，住戶能享有頗高的私隱度。屋苑四周鄰近超級市場、便利店和不少食肆，亦有完善的巴士和小巴服務。

寧靜的魅力 The beauty of serenity

18-19A Fung Fai Terrace,
Happy Valley

跑馬地 鳳輝台18-19A號

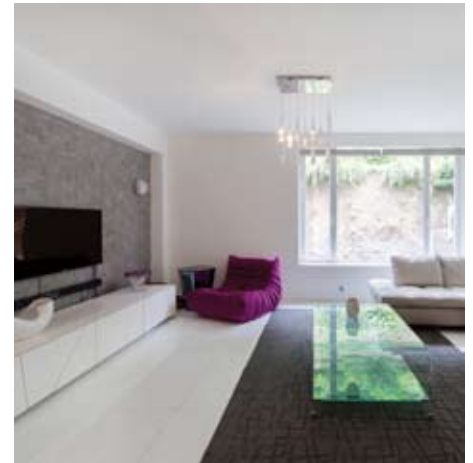
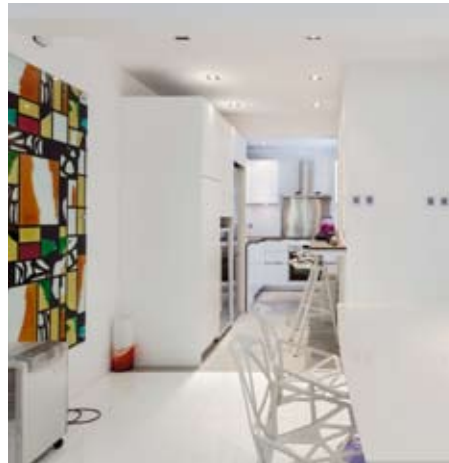
GROSS AREA 1,200 s.f.

SALEABLE AREA 989 s.f. (plus 900 s.f. roof)

OFFERED AT \$23,000,000

INQUIRIES 9551 1077 Walker Lam 林先生

SEARCH REFERENCE NO. 147032



We are specialised in custom made
Furniture
Sofas
Carpets

Thanksliving
Taste of Living

ph: 3693-4585

L-shape sofa set
Was: 19800
Now: 11800 (261w)/12800 (325w)

www.thanksliving.com.hk

e-mail: info@thanksliving.com.hk
add: Rm 29, 2/F Oceanic Industrial
centre, No.2 Lee Lok Street, Apleichau



Fulham Garden 薄扶林 富林苑
84 Pok Fu Lam Road

Newly renovated mid-rise apartment with very efficient layout located in Pokfulam

全新裝修中密度單位，間隔實用

GROSS AREA 1,750 s.f.

SALEABLE AREA 1,560 s.f.

OFFERED AT \$61,000 incl.

INQUIRIES 9229 2396 Elaine Chow 周小姐

SEARCH REFERENCE NO. 102311



8-14 Cape Road
春坎角 環角道8-14號

Charming low-rise apartment with private garden in a quiet location of Island South

迷人低密度單位，連私家花園，地段寧靜

GROSS AREA 1,800 s.f.

SALEABLE AREA 1,481 s.f.

OFFERED AT \$62,500 incl.

INQUIRIES 6258 8847 Anthea Ngai 魏小姐

SEARCH REFERENCE NO. 41699



Grand Garden 淺水灣 華景園
61 South Bay Road

Stylishly renovated 3-bedroom apartment enjoying full sea view and comprehensive clubhouse facilities

時尚裝修三房單位，享全海景及完善會所設施

GROSS AREA 1,463 s.f.

SALEABLE AREA 1,089 s.f.

OFFERED AT \$65,000 incl.

INQUIRIES 9080 6686 Teresa Lau 劉小姐

SEARCH REFERENCE NO. 34023



Unicorn Gardens 壽臣山 麒麟閣
11 Shouson Hill Road East

Charming low-rise apartment at convenient location with practical layout and greenery view

迷人低密度住宅，間隔實用，地點方便，景觀青蔥翠綠

GROSS AREA 1,714 s.f.

SALEABLE AREA 1,657 s.f.

OFFERED AT \$70,000 incl.

INQUIRIES 9229 2396 Elaine Chow 周小姐

SEARCH REFERENCE NO. 15184



Residence Bel-Air
薄扶林 貝沙灣

Bel-Air Avenue

3-bedroom sea view apartment enjoying deluxe clubhouse facilities

三房海景單位，享豪華會所設施

GROSS AREA 1,863 s.f.

SALEABLE AREA 1,340 s.f.

OFFERED AT \$75,000 incl.

INQUIRIES 9028 0147 Jenson Au 區先生

SEARCH REFERENCE NO. 108840



Grand Garden 淺水灣 華景園
61 South Bay Road

Newly renovated 3-bedroom apartment with balcony enjoying spectacular views of South China Sea

全新裝修三房住宅，連露台，享南中國海壯麗景致

GROSS AREA 1,820 s.f.

SALEABLE AREA 1,358 s.f.

OFFERED AT \$82,000 incl.

INQUIRIES 9809 8570 Stella Lo 羅小姐

SEARCH REFERENCE NO. 156437





Larvotto

鴨洲南灣

8 Ap Lei Chau Praya Road

Brand new modern apartment with luxurious clubhouse facilities and enchanting marina and sea views
全新時尚住宅，連豪華會所設施，欣賞迷人遊艇會海景



GROSS AREA 2,363 s.f.

SALEABLE AREA 1,795 s.f.

OFFERED AT \$85,000 incl.

INQUIRIES

6258 8847 Anthea Ngai 魏小姐

SEARCH REFERENCE NO. 133836



Royalton

薄扶林 豪峰I

118 Pok Fu Lam Road

Newly decorated 4-bedroom flat with floor-to-ceiling windows enjoying sweeping sea view
全新裝修四房住宅，連落地玻璃窗，享遼闊海景



GROSS AREA 2,160 s.f.

SALEABLE AREA 1,572 s.f.

OFFERED AT \$85,000 incl.

INQUIRIES 9809 8570 Stella Lo 羅小姐

SEARCH REFERENCE NO. 2441



Baguio Villa

薄扶林 碧瑤灣

550 & 555 Victoria Road

Popular 4-bedroom apartment with practical layout and full sea view in a quiet neighbourhood
受歡迎四房住宅，間隔實用，飽覽全海景，環境清靜



GROSS AREA 2,332 s.f.

SALEABLE AREA 2,119 s.f.

OFFERED AT \$90,000 incl.

INQUIRIES

9229 2396 Elaine Chow 周小姐

SEARCH REFERENCE NO. 55099



Ming Wai Garden

淺水灣 明慧園

45 Repulse Bay Road

Tastefully designed 3-bedroom apartment on upper Repulse Bay Road boasting stunning sea view
淺水灣道頭段品味設計單位，三房間隔，享壯麗海景



GROSS AREA 1,900 s.f.

SALEABLE AREA 1,583 s.f.

OFFERED AT \$90,000 incl.

INQUIRIES 9809 8570 Stella Lo 羅小姐

SEARCH REFERENCE NO. 11177





Vivian Court

山頂 瑞燕大廈

18-22 Mount Kellett Road

Rare find mid-rise apartment with gigantic garden prestigiously located on the Peak
罕有中密度住宅，連偌大花園，地段尊貴優越



GROSS AREA 2,300 s.f.

SALEABLE AREA 1,818 s.f.

(plus 1,500 s.f. garden)

OFFERED AT \$90,000 excl.

INQUIRIES 9809 8570 Stella Lo 羅小姐

SEARCH REFERENCE NO. 31164



South Bay Towers

淺水灣 南灣大廈

59 South Bay Road

South Bay 3-bedroom apartment with comprehensive facilities
南灣三房住宅，享完善設施，可租可售



GROSS AREA 2,738 s.f.

SALEABLE AREA 2,143 s.f.

OFFERED AT \$95,000 incl.

also for sale \$50,000,000

INQUIRIES

9229 2396 Elaine Chow 周小姐

SEARCH REFERENCE NO. 31603



Villa Verde

山頂 環翠園

4-18 Guildford Road

Well decorated mid-rise apartment at prestigious location overlooking panoramic Southside sea view
優質裝修中密度住宅，俯瞰南區全海景，地段尊貴顯赫



GROSS AREA 2,520 s.f.

SALEABLE AREA 2,311 s.f.

OFFERED AT \$105,000 incl.

INQUIRIES

9093 3381 Stephen Chan 陳先生

SEARCH REFERENCE NO. 4433



Carolina Garden

山頂 嘉樂園

20-34 Coombe Road

Nicely decorated seaview apartment on Coombe Road
甘道海景單位，裝修雅致



GROSS AREA 2,350 s.f.

SALEABLE AREA 2,117 s.f.

OFFERED AT \$108,000 incl.

INQUIRIES

9833 9509 Michelle Chung 鍾小姐

SEARCH REFERENCE NO. 6005





Pak Villa

壽臣山 碧園

41 Shouson Hill Road

Spacious low-rise apartment with big terrace located in a serene and verdant neighbourhood
寬敞低密度單位，連大平台花園，環境和諧恬靜



GROSS AREA 2,250 s.f.

SALEABLE AREA 1,967 s.f.

(plus 724 s.f. garden)

OFFERED AT \$115,000 incl.

INQUIRIES

9080 6686 Teresa Lau 劉小姐

SEARCH REFERENCE NO. 34585



Hong Kong Parkview

淺水灣 陽明山莊

88 Tai Tam Reservoir Road

Popular 4-bedroom apartment including 3 ensembles enjoying mountain view and excellent clubhouse facilities
受歡迎四房住宅，連三間套房，欣賞山巒美景，享優質會所設施



GROSS AREA 2,722 s.f.

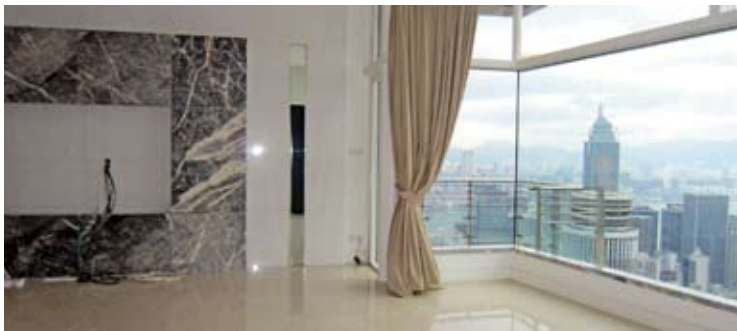
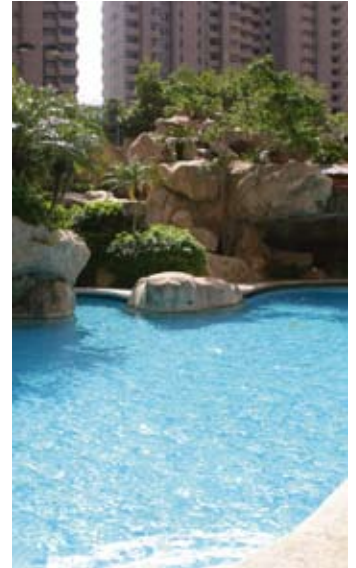
SALEABLE AREA 2,167 s.f.

OFFERED AT \$120,000 incl.

INQUIRIES

6258 8847 Anthea Ngai 魏小姐

SEARCH REFERENCE NO. 1178



Oasis 山頂 欣怡居

8-12 Peak Road

Modern mid-rise apartment at prestigious location boasting panoramic views of Victoria Harbour with 2 carpark spaces
時尚中密度住宅，飽覽維港全景，地段尊貴，連兩車位，可租可售



GROSS AREA 2,891 s.f.

SALEABLE AREA 1,992 s.f.

OFFERED AT \$120,000 incl.

also for sale \$75,000,000

INQUIRIES

9080 6686 Teresa Lau 劉小姐

SEARCH REFERENCE NO. 109001



Burnside Villa

淺水灣 濱景園

9 South Bay Road

3-bedroom townhouse with roof terrace overlooking green view
淺水灣三房排屋，連天台平台，俯瞰翠綠景致



GROSS AREA 2,100 s.f.

SALEABLE AREA 2,043 s.f. (plus 309

s.f. terrace and 446 s.f. roof)

OFFERED AT \$122,000 incl.

INQUIRIES 9493 8275 Sami Woo 胡小姐

SEARCH REFERENCE NO. 71012





The Mount Austin
山頂 柯士甸山道8號
8 Mount Austin Road
Deluxe 4-bedroom apartment at
high level on the Peak
豪華四房住宅，地段顯赫尊貴



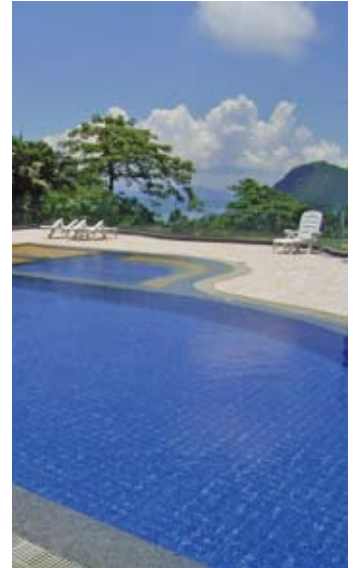
GROSS AREA 2,715 s.f.
SALEABLE AREA 2,097 s.f.
OFFERED AT \$123,000 excl.
INQUIRIES
9833 9509 Michelle Chung 鍾小姐
SEARCH REFERENCE NO. 27907



1-3 Homestead Road
山頂 堪仕達道1至3號
3-ensuite apartment with stunning
sea view on the Peak
山頂三套房住宅，飽覽壯麗景致



GROSS AREA 2,828 s.f.
SALEABLE AREA 2,156 s.f.
OFFERED AT \$128,000 incl.
INQUIRIES
9833 9509 Michelle Chung 鍾小姐
SEARCH REFERENCE NO. 29259



22A-22B Mount Austin Road
山頂 柯士甸山道22A至22B號
Prestigious low-rise apartment atop
the Peak with breathtaking Victoria
Harbour view
山頂低密度名廈住宅，享華麗維港景色



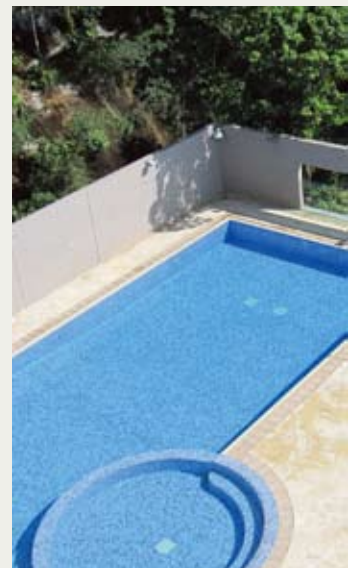
GROSS AREA 2,650 s.f.
SALEABLE AREA 2,221 s.f.
OFFERED AT \$130,000 incl.
INQUIRIES
9833 9509 Michelle Chung 鍾小姐
SEARCH REFERENCE NO. 109208



29 Severn Road
山頂 施勳道29號
Rarely found mid-rise apartment
with 4 bedrooms on the Peak
enjoying Southside Sea view
罕有中密度住宅，四睡房間隔，享南區
海景



GROSS AREA 2,300 s.f.
SALEABLE AREA 2,044 s.f.
OFFERED AT \$130,000 incl.
INQUIRIES
9229 2396 Elaine Chow 周小姐
SEARCH REFERENCE NO. 46656





102 Repulse Bay Road

淺水灣 淺水灣道102號

Boutique townhouse on prestigious Repulse Bay Road with stunning sea view

淺水灣道精緻排屋，欣賞壯麗海景，地段尊貴



GROSS AREA 3,500 s.f.

SALEABLE AREA 2,486 s.f.

OFFERED AT \$135,000 excl.

INQUIRIES 9493 8275 Sami Woo 胡小姐

SEARCH REFERENCE NO. 13995



Carolina Garden

山頂 嘉樂園

20-34 Coombe Road

Colonial mid-rise apartment located on Lower Peak overlooking Southside sea view

英式中密度住宅，俯瞰南區海景



GROSS AREA 2,800 s.f.

SALEABLE AREA 2,448 s.f.

OFFERED AT \$138,000 incl.

INQUIRIES

9833 9509 Michelle Chung 鍾小姐

SEARCH REFERENCE NO. 30102



Eredine

山頂 加列山道38號

38 Mount Kellett Road

Beautifully decorated colonial mid-rise apartment at prestigious location with mountain and sea views

英式中密度住宅，配以典雅裝修，地段尊貴，享山巒及海景



GROSS AREA 3,300 s.f.

SALEABLE AREA 2,836 s.f.

OFFERED AT \$140,000 excl.

INQUIRIES

9833 9509 Michelle Chung 鍾小姐

SEARCH REFERENCE NO. 50482



Las Pinadas 壽臣山 朗松居

33 Shouson Hill Road

Sought after townhouse in a tranquil location of Shouson Hill with lush green surroundings

壽臣山受歡迎排屋，地點清靜，四周一片青蔥翠綠



GROSS AREA 3,383 s.f.

SALEABLE AREA 2,917 s.f.

(plus 214 s.f. garden, 152 s.f. terrace and 617 s.f. roof)

OFFERED AT \$150,000 incl.

INQUIRIES

9648 6082 Christine Chong 莊小姐

SEARCH REFERENCE NO. 121421





8 Shouson Hill Road East

壽臣山 壽臣山道東8號

Unique townhouse with spacious terraces in a tranquil and verdant environment

壽臣山獨特排屋，連偌大平台，環境和諧寧靜



GROSS AREA 3,500 s.f.

SALEABLE AREA 2,838 s.f.

OFFERED AT \$160,000 incl.

INQUIRIES 9809 8570 Stella Lo 羅小姐

SEARCH REFERENCE NO. 39457



8 Deep Water Bay Road

深水灣 深水灣道8號

Bright and airy townhouse stands in a serene and verdant environment with greenery and sea views

光猛通風海景排屋，環境和諧恬靜，欣賞翠綠景色



GROSS AREA 3,200 s.f.

SALEABLE AREA 3,200 s.f.

(plus 304 s.f. terrace)

OFFERED AT \$160,000 excl.

INQUIRIES 9493 8275 Sami Woo 胡小姐

SEARCH REFERENCE NO. 14096



The Redhill Peninsula

大潭 紅山半島

18 Pak Pat Shan Road

Tastefully decorated waterfront house with private garden, terrace and balcony in prestigious Island South

大潭海濱排屋，配以品味裝修，連私家花園、平台及露台，地段尊貴



GROSS AREA 3,020 s.f.

SALEABLE AREA 3,012 s.f. (plus 985 s.f. garden and 181 s.f. terrace)

OFFERED AT \$180,000 incl.

INQUIRIES

9648 6082 Christine Chong 莊小姐

SEARCH REFERENCE NO. 49325



Chelsea Court

山頂 賽詩閣

63 Mount Kellett Road

Unique mid-rise duplex with huge garden enjoying Southside sea view located on the Peak

獨特中密度複式單位，連偌大花園，享南區美麗海景



GROSS AREA 3,107 s.f.

SALEABLE AREA 2,497 s.f.

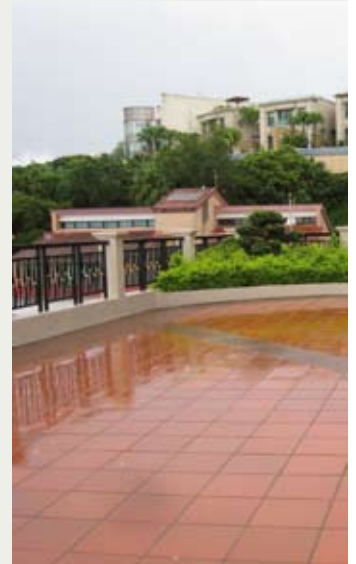
(plus 1,872 s.f. garden)

OFFERED AT \$190,000 excl.

INQUIRIES

9833 9509 Michelle Chung 鍾小姐

SEARCH REFERENCE NO. 20451

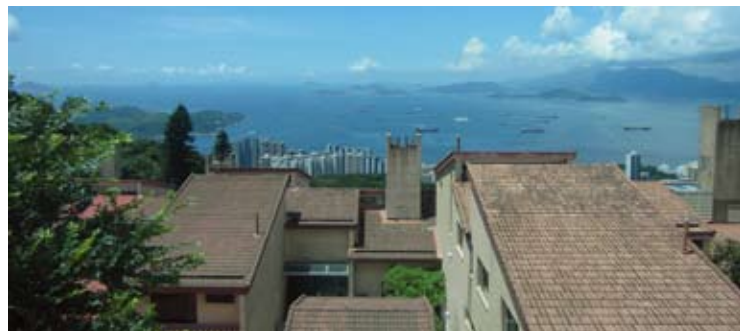




Stanley Breeze 赤柱 環海崇樓
12-12A Stanley Beach Road
Meticulous townhouse with private swimming pool and spacious garden along Stanley Beach
赤柱精緻排屋，連私家游泳池及寬敞花園，鄰近赤柱泳灘



GROSS AREA 3,187 s.f.
SALEABLE AREA 3,187 s.f.
(plus 420 s.f. garden, 927 s.f. terrace and 804 s.f. roof)
OFFERED AT \$220,000 incl.
INQUIRIES
9648 6082 Christine Chong 莊小姐
SEARCH REFERENCE NO. 19792



Kellett View Town House
山頂 嘉麗園
65-69 Mount Kellett Road
Prestigious 5-bedroom townhouse with harbour view on the Peak
著名五房排屋，享海景



GROSS AREA 4,010 s.f.
SALEABLE AREA 2,990 s.f.
(plus 973 s.f. terrace)
OFFERED AT \$230,000 incl.
INQUIRIES
9871 6828 Louis Wong 黃先生
SEARCH REFERENCE NO. 3327



Rocky Bank
深水灣 深水灣道6號
6 Deep Water Bay Road
Prestigious townhouse with tasteful decoration, ample outdoor spaces and stunning sea view
品味裝修著名排屋，戶外空間充裕，享無敵靚海景



GROSS AREA 2,586 s.f.
SALEABLE AREA 2,586 s.f.
OFFERED AT \$230,000 excl.
INQUIRIES 9080 6686 Teresa Lau 劉小姐
SEARCH REFERENCE NO. 15780



Residence Bel-Air
薄扶林 貝沙灣
1-18 Cyberport Road
Deluxe townhouse with unobstructed sea views and private terraces in Cyberport
數碼港豪華排屋，飽覽遼闊海景，連私家平台花園



GROSS AREA 4,654 s.f.
SALEABLE AREA 3,308 s.f. (plus 1,778 s.f. garden and 1,229 s.f. roof)
OFFERED AT \$270,000 incl.
INQUIRIES
6258 8847 Anthea Ngai 魏小姐
SEARCH REFERENCE NO. 126958





Strawberry Hill

山頂 紅莓閣

8 Plunkett's Road

Newly renovated colonial townhouse prestigiously located on the Peak with greenery view
全新裝修英式排屋，享翠綠景致，地段尊貴，可租可售



GROSS AREA 3,250 s.f.

SALEABLE AREA 3,194 s.f.

OFFERED AT \$280,000 excl.

also for sale Open Offer

INQUIRIES

9871 6828 Louis Wong 黃先生

SEARCH REFERENCE NO. 5288



6 Stanley Beach Road

赤柱 赤柱灘道6號

Brand new townhouse at a serene location of Island South with ample alfresco spaces

赤柱全新排屋，環境恬靜，戶外空間充裕



GROSS AREA 4,242 s.f.

SALEABLE AREA 3,183 s.f.

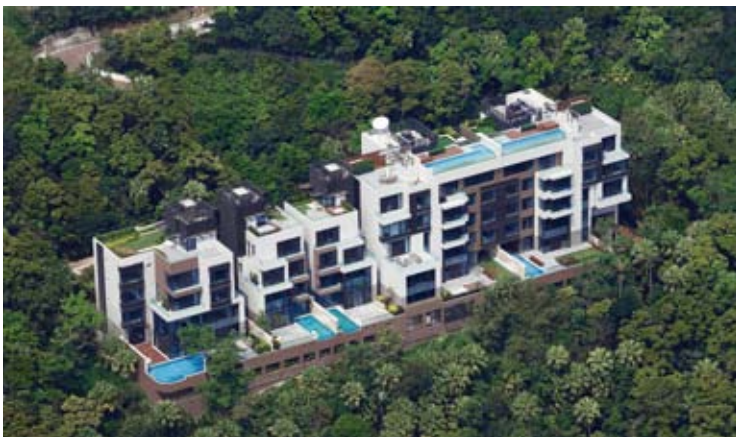
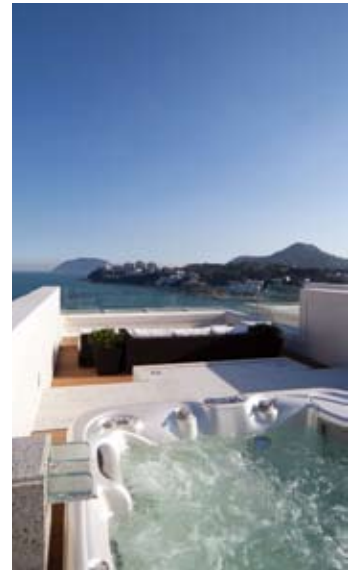
(plus 1,717 s.f. garden, 233 s.f. terrace and 785 s.f. roof)

OFFERED AT \$350,000 incl.

INQUIRIES

9871 6828 Louis Wong 黃先生

SEARCH REFERENCE NO. 161112



A brand new deluxe residential development offers the serenity of nature in a peaceful environment of The Peak, shares an unobstructed panoramic view of the East and South side of Hong Kong Island. Each of the 3 detached houses and 10 apartments features a classic yet contemporary design aesthetic and are extremely spacious, ranging from 2,400 – 11,500 square feet with exceptionally high ceilings of 3.74m.

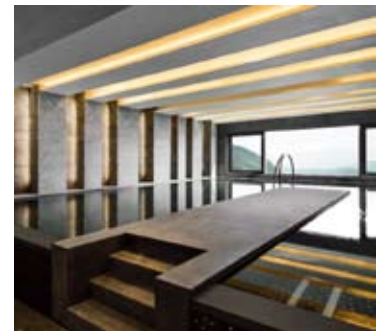
The luxurious detached houses are equipped with internal lifts to private roof top, outdoor heated swimming pool and Jacuzzi. Some apartments include private spacious gardens and heated swimming pools.

Deluxe clubhouse features a fully functional gym with an excellent selection of training equipment as well as an indoor heated swimming pool. Residents are safeguarded by a triple-layer security system offering detection, surveillance and access control. The perimeter is armed with infra-red sensors and radial detectors.

這個全新豪華住宅項目位於綠意盎然的山頂隱密地段，鳥瞰港島東南遼闊景致。大宅由3座獨立屋及10個單位組成。設計融合經典與現代風格，面積2,400-11,500平方呎，提供3.74米高樓底，空間寬敞。

獨立屋設有內置獨立電梯往天台，並設室外恆溫游泳池及按摩浴池，極致奢華。部份分層單位還有偌大私人花園及室外恆溫游泳池。

此外，住戶可享用會所健身設施及室內恆溫游泳池。保安方面，物業設有偵測、監視及出入監控三重功能，物業周邊已裝上紅外線及放射式探測器。



7-15 Mount Kellett Road, The Peak

山頂 加列山道7-15號

HOUSES:

SALEABLE AREA 6,200 s.f.

OFFERED AT \$650,000 incl.

APARTMENTS:

SALEABLE AREA 2,400 s.f. to 5,200 s.f.

OFFERED AT \$150,000 to \$430,000 incl.

INQUIRIES 6183 8339 Carman Szeto 司徒小姐

9871 6828 Louis Wong 黃先生

SEARCH REFERENCE NO. 160086





Hillsborough Court

中半山 曉峰閣

18 Old Peak Road

Newly renovated and fully furnished 2-bedroom apartment with mountain view just 5 minutes from CBD

全新裝修兩房住宅，飽覽山巒景色，鄰近商業中心區



GROSS AREA 931 s.f.

SALEABLE AREA 772 s.f.

OFFERED AT \$48,000 excl.

INQUIRIES

6258 8847 Anthea Ngai 魏小姐

SEARCH REFERENCE NO. 31175



Woodland Garden

中半山 肇苑

10 MacDonnell Road

High-efficiency 3-bedroom apartment with balcony enjoying easy access to CBD

高實用率三房住宅，連露台，鄰近商業中心區



GROSS AREA 1,940 s.f.

SALEABLE AREA 1,615 s.f.

OFFERED AT \$65,000 incl.

INQUIRIES 9493 8275 Sami Woo 胡小姐

SEARCH REFERENCE NO. 12358



Pearl Gardens

西半山 明珠臺

7 Conduit Road

Practical bright and airy 4-bedroom apartment with balcony in very high-efficiency

光猛通風四房單位，間隔實用，連露台



GROSS AREA 2,200 s.f.

SALEABLE AREA 2,100 s.f.

OFFERED AT \$75,000 incl.

INQUIRIES

6183 8339 Carman Szeto 司徒小姐

SEARCH REFERENCE NO. 158197



Clovelly Court

中半山 嘉富麗苑

12 May Road

Spacious 3-bedroom apartment at a prime location just minutes from CBD

寬敞三房住宅，鄰近商業中心區，交通方便



GROSS AREA 2,115 s.f.

SALEABLE AREA 1,784 s.f.

OFFERED AT \$75,000 incl.

INQUIRIES

9648 6082 Christine Chong 莊小姐

SEARCH REFERENCE NO. 159830





Suncrest Tower

中半山 桂灣苑

1-11 Monmouth Terrace

Practical 4-bedroom apartment with mountain view in a quiet location of Midlevels Central

實用四房住宅，享山巒景致，地點寧靜



GROSS AREA 2,005 s.f.

SALEABLE AREA 1,646 s.f.

OFFERED AT \$78,000 incl.

INQUIRIES

6183 8339 Carman Szeto 司徒小姐

SEARCH REFERENCE NO. 125388



Tavistock 2

中半山 騰皇居2座

10A Tregunter Path

Harbour View 3-bedroom apartment with full clubhouse facilities

三房海景單位，享完善會所設施



GROSS AREA 2,030 s.f.

SALEABLE AREA 1,520 s.f.

OFFERED AT \$85,000 incl.

INQUIRIES 9809 8570 Stella Lo 羅小姐

SEARCH REFERENCE NO. 34510



Dynasty Court

中半山 帝景園

23 Old Peak Road

Victoria harbour view 3-bedroom apartment in Midlevels Central

中半山三房單位，享維港美景



GROSS AREA 1,973 s.f.

SALEABLE AREA 1,520 s.f.

OFFERED AT \$85,000 incl.

INQUIRIES 9028 0147 Jenson Au 區先生

SEARCH REFERENCE NO. 1961



Wing Hong Mansion

中半山 永康大廈

60-62 MacDonnell Road

New renovated apartment for rent in prime location with garden view

全新裝修住宅出租，地段優越，欣賞花園景觀



GROSS AREA 1,700 s.f.

SALEABLE AREA 1,353 s.f.

(plus 1,880 s.f. terrace)

OFFERED AT \$88,000 incl.

INQUIRIES

9080 6686 Teresa Lau 劉小姐

SEARCH REFERENCE NO. 35099



Midlevels Central & West LEASE

中半山及西半山 出租



Rose Gardens

中半山 玫瑰別墅

9 Magazine Gap Road

High-efficiency 3-bedroom apartment on Lower Peak enjoying partial harbour view

高實用率三房單位，享美麗海景



GROSS AREA 2,600 s.f.

SALEABLE AREA 2,235 s.f.

OFFERED AT \$95,000 incl.

INQUIRIES 9486 1566 Mira To 杜小姐

SEARCH REFERENCE NO. 160125



Brewin Court

中半山 明雅園

5-7 Brewin Path

High-efficiency mid-rise apartment with huge balcony enjoying greenery view on Lower Peak
間隔實用中密度住宅，連大露台，飽覽翠綠景色



GROSS AREA 2,600 s.f.

SALEABLE AREA 2,145 s.f.

OFFERED AT \$110,000 incl.

INQUIRIES 9486 1566 Mira To 杜小姐

SEARCH REFERENCE NO. 38602



Century Tower 1

中半山 世紀大廈1座

1 Tregunter Path

Newly renovated apartment with huge balcony and facilities

全新裝修住宅，連寬敞露台及完善設施



GROSS AREA 2,565 s.f.

SALEABLE AREA 2,041 s.f.

OFFERED AT \$110,000 incl.

INQUIRIES 9080 6686 Teresa Lau 劉小姐

SEARCH REFERENCE NO. 11383



80 Robinson Road

西半山 羅便臣道80號

Well decorated duplex unit with charming Victoria Harbour view
優質裝修複式單位，飽覽迷人維港景色



GROSS AREA 2,198 s.f.

SALEABLE AREA 1,366 s.f.

(plus 27 s.f. terrace and 572 s.f. roof)

OFFERED AT \$110,000 incl.

INQUIRIES

6258 8847 Anthea Ngai 魏小姐

SEARCH REFERENCE NO. 104923





1 Robinson Road

西半山 羅便臣道1號

Huge duplex in the heart of Midlevels enjoying garden and partial harbour views with 2 carpark spaces
半山巨大複式單位，享園林及海港景色，連兩車位，可租可售



GROSS AREA 3,400 s.f.

SALEABLE AREA 2,626 s.f.

OFFERED AT \$138,000 incl.

also for sale \$70,000,000

INQUIRIES

9080 6686 Teresa Lau 劉小姐

SEARCH REFERENCE NO. 152144



Magazine Court

中半山 澄碧閣

5-7 Magazine Gap Road

Spacious colonial mid-rise apartment with balcony overlooking sweeping city view

英式中密度單位，寬敞間隔，連露台，俯瞰廣闊城市景觀



GROSS AREA 3,300 s.f.

SALEABLE AREA 2,855 s.f.

OFFERED AT \$138,000 incl.

INQUIRIES

6183 8339 Carman Szeto 司徒小姐

SEARCH REFERENCE NO. 159681



Clovelly Court

中半山 嘉富麗苑

12 May Road

Harbour view luxury apartment with modern decorations in a desirable location

豪華海景單位，配以時尚特色裝修，地段優越



GROSS AREA 2,809 s.f.

SALEABLE AREA 2,348 s.f.

OFFERED AT \$138,000 incl.

INQUIRIES 9486 1566 Mira To 杜小姐

SEARCH REFERENCE NO. 31945



The Mayfair

中半山 梅道1號

1 May Road

Harbour view apartment with deluxe clubhouse facilities at a tranquil and prestigious location

地段尊貴海景單位，連豪華會所設施，環境寧靜



GROSS AREA 2,918 s.f.

SALEABLE AREA 2,242 s.f.

OFFERED AT \$150,000 incl.

INQUIRIES

9871 6828 Louis Wong 黃先生

SEARCH REFERENCE NO. 11707





Mixed-era furniture includes chairs from the 1950s and a 1960s banquette designed by Stefano Tordiglione Design

奇幻之旅

A flight of fantasy

At Sal Curioso, the quirky interiors were inspired by the eponymous — and entirely imaginary — food inventor and traveller for whom the restaurant is named

Sal Curioso—室奇妙設計，靈感源自虛構的同名料理發明家兼旅行家

In Hong Kong, the legendary nightlife district of Lan Kwai Fong is in the final throes of a revamp which dates back to 2011, when entrepreneur Allan Zeman decided to tear down and rebuild California Tower. Bars and restaurants in the immediate area, after months of flux, are finally settling down again — and one of the area's most recent arrivals is Sal Curioso.

Located on Wyndham Street rather than Lan Kwai Fong proper, this too befits the overall theme of a curious traveller — Sal Curioso himself, a mythical character dreamed up by husband-and-wife duo Chris Woodyard and Bronwyn Cheung of Woolly Pig Concepts. Serving Spanish cuisine, the interiors of the cocktail bar and restaurant were conceived by Stefano Tordiglione Design (construction and material selection, the layout and story of the space) and award-winning branding agency Substance, which translated the story of Sal Curioso into the graphics and decorations on the walls of the restaurant.

"The project is the second restaurant by Chris



Clubs of the 1970s provided inspiration



The long bar features a mosaic countertop constructed of varied slices of Spanish tiles

and Bronwyn. Sal Curioso is a continuation of the concept of the first restaurant, Madam Sixty Ate in Wanchai," says Stefano Tordiglione. "Sal is the Spanish the ex-lover of Madam, a world traveller who is curious and eccentric. He is crazy about food and is a genius inventor of food machines."

Following the imaginary chef's footsteps in creating the concept for the space, Tordiglione sliced it through the middle to create a distinctive split effect centred around a 'construct and deconstruct' approach, inspired by Spanish architect Antonio Gaudi. This is perhaps most clearly demonstrated by the long bar, which features a mosaic countertop constructed of varied slices of Spanish tiles.

"Everything was specifically designed, beginning from the chairs that are inspired from an Italian 60s design," Tordiglione notes. "The concept of the whole project is very Spanish, so we tried to keep the whole atmosphere coherent with a Mediterranean influence."

Against the gritty, industrial neutrality of a cement-dominated backdrop of floors, walls and ceiling, molded panels, sumptuous fabrics and a riot of colours and patterns provide visual interest. The establishment is divided into distinct areas, each with its unique design. The lounge is welcoming and cosy, for example, inspired by clubs of the 1970s with optical-illusion wallpaper, sofas covered with multi-hued fabrics, and eye-catching black and red stools.

With regards to the graphics and wall décor, Maxime Dautresme, creative director and co-founder of Substance, points out that Sal Curioso is an inventor and uncommon genius: "He meticulously designs and builds contraptions to



Quirky touches include optical-illusion wallpaper, sofas covered with multi-hued fabrics, and eye-catching black and red stools

best broil, steam or pop the strange animals from Madam's travels," she says.

"Each device is accompanied by Sal's annotations. His schematics fill the menus as patents, the interior is his studio displaying assembled machines and licensing labels as business cards. Showcased is his anthology complete with illustrations and diagrams. Even the coasters are not immune — they are a piping system to transport excess condensation when placed together to connect the pipes."

Quirky and bright themes continue throughout. Mixed-era furniture includes chairs from the 1950s and a 1960s banquette designed by Tordiglione, as well as vintage lamps from the 1970s at the chef's table.

在香港，赫赫有名的夜生活據點蘭桂坊已步入大變身的最後階段。這個最後的改造工程要追溯到2011年企業家盛智文決定把加州大廈推倒重建，而經過數月的變遷，附近的酒吧和餐廳都終於塵埃落定，而其中一間最新加盟的餐廳就是Sal Curioso。

Sal Curioso選擇在雲咸街而非蘭桂坊開設，對整體主題來說也很恰當。餐廳以一名好奇心強的旅行家Sal Curioso為題，實際上是Woolly Pig Concepts夫妻檔組合Chris Woodyard和Bronwyn Cheung虛構出來的人物。這間雞尾酒吧餐廳所提供的是西班牙菜，室內設計（包括建造及挑選用料、空間佈局及背後的故事）出自Stefano Tordiglione Design的手筆，參與設計的還有屢獲殊榮的品牌形象設計公司Substance，負責把Sal Curioso的故事轉化成餐廳牆壁上的平面設計和裝飾。

Stefano Tordiglione說：「這間餐廳是Chris和Bronwyn的第二個餐廳項目。他們的第一間餐廳是在灣仔的Madam Sixty Ate，而Sal Curioso便是其概念的延伸。Sal是Madam的前愛人，是個在各國遊歷的西班牙旅行家，好奇心強又古古怪怪。他對食物很熱衷狂熱，是個料理機器天才發明家。」

隨著這位虛構的大廚的思維而得出創造空間的概念，Stefano把餐廳從中央一分为二，營造出以一種「建構與解構」的方向為本的獨特分裂效果，靈感源自西班牙建築師高迪。最明顯表現出這種概念的或許是長長的吧台，枱面由形形色色的西班牙碎磚砌成美麗的馬賽克。

Stefano說：「從意大利60年代設計所啟發的椅子起，一切都是度身設計的。整個項目的概念帶有強烈的西班牙氣息，所以我們盡量保持整體氣氛帶有地中海的味道。」

石屎地板、牆壁和天花塑造出粗糙的工業味道，讓模鑄鐵板、奢華的布料及豐富的色彩和圖案在中性背景中帶出有趣的視覺效果。餐廳劃分成個別的區域，各有獨一無二的設計。以廳區為例，氣氛舒適怡人，靈感源自70年代的俱樂部，以錯視效果的

The details are, of course, expressions of the imagined journey. Wave-like, sand-blasted mirrors surround the sleek stainless steel open kitchen, also reminiscent of an ocean and reflecting the importance of seafood in Mediterranean cuisine. Large central columns in the dining area are decorated with patterns and prints inspired by the Islamic palace and fortress complex Alhambra, in Granada, Spain.

Opposites attract in the bathrooms, where an inverted theme is apparent — simple black and white tiles provide a frame for the space, while a striking strip of stark cement runs around the middle. Like Sal Curioso's extraordinary mind, his restaurant is full of surprises.

牆紙、裹上七彩布料的梳化和亮眼的黑色和紅色矮櫈作裝飾。

說到平面設計和牆壁的裝飾，Substance的創作總監兼合夥人Maxime Dautresme指出Sal Curioso是個發明家，更是個非一般的天才。她說：「他精密地設計和製作新發明，想出最好的方法來烤、蒸或煮Madam從旅行帶回來的古怪動物。」

她又說：「每件發明都伴隨著Sal的註解。他的圖解把餐牌變成他的專利品，餐廳是他用來陳列各件機器的工作室，而牌照標籤則是他的名片。展示的都是他配上插畫和圖表的創作。就算是杯墊亦不例外，實際上是個管道系統，把杯墊的管道連接好就可以運送多餘的凝結水滴。」

奇異且繽紛的主題繼續漫延到餐廳每個角落。室內擺放了不同年代的傢俱，包括50年代的椅子、一張Stefano設計的60年代長梳化椅，以及大廚桌上的70年代古董燈。當然，細節訴說著一趟幻想的旅程。時尚的不鏽鋼開放式廚房圍上波浪形的噴砂鏡面，亦讓人聯想到大海，反映出海鮮在地中海菜中有多重要。用餐區中央的巨柱子亦以印花圖案和圖紋來裝飾，靈感是西班牙格拉納達的伊斯蘭宮殿兼堡壘阿蘭布拉宮。

洗手間裡又是一種截然不同的美，主題明顯是剛好相反的。簡單的黑磚與白磚形成空間的背景，中間有一行顯眼突出的混凝土。如同Sal Curioso異與常人的腦袋，他的餐廳也是驚喜處處。

For more features on design and architecture, don't miss the August issue of Perspective magazine, and check out our website at www.perspectiveglobal.com

請密切留意《透視》八月號更多有關建築與設計的專題報導，或登入www.perspectiveglobal.com參閱精彩內容。

perspective



Century Tower 2

中半山 世紀大廈 2座

1A Tregunter Path

Prestigious large 4-bedroom apartment on Lower Peak with partial harbour and city views
寬敞四房住宅，享海景及城市景，地段尊貴，可租可售



GROSS AREA 3,663 s.f.

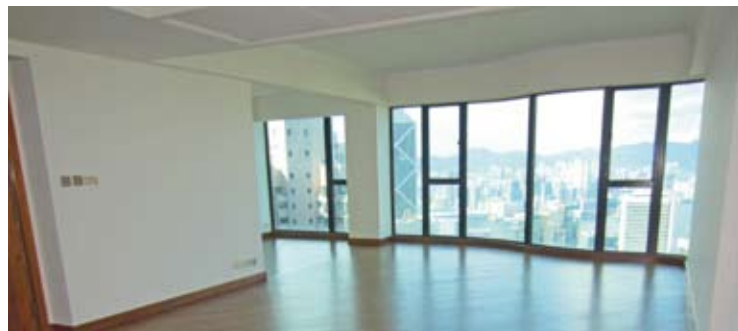
SALEABLE AREA 2,848 s.f.

OFFERED AT \$170,000 incl.

also for sale \$100,000,000

INQUIRIES 9486 1566 Mira To 杜小姐

SEARCH REFERENCE NO. 31547



The Harbourview

中半山 港景別墅

11 Magazine Gap Road

Rare find 6 bedrooms apartment with open city view in Magazine Gap Road

馬己仙峽道六房住宅，欣賞開揚城市景色



GROSS AREA 4,696 s.f.

SALEABLE AREA 3,969 s.f.

OFFERED AT \$240,000 incl.

INQUIRIES 9493 8275 Sami Woo 胡小姐

SEARCH REFERENCE NO. 3057



壯麗景觀 A majestic overlook

Azura

蔚然

2A Seymour Road,

Midlevels West

西半山 西摩道2A號

GROSS AREA 1,665 s.f.

SALEABLE AREA 1,297 s.f.

OFFERED AT \$96,000 incl.

INQUIRIES 9229 2396 Elaine Chow 周小姐

SEARCH REFERENCE NO. 159167



Boasting grand views of the city skyline, this 1,665 s.f. apartment in Mid-levels West features elegant interiors with a neutral palette and slick materials. This contemporary residence includes three bedrooms (one ensuite), a combined living and dining room, a fully-fitted open kitchen and an additional bathroom, as well as a maid's room, a utility room and an airy balcony.

With close proximity to Central and the entertainment hub of SoHo, Azura comprises a single tower of 43 storeys which offers 126 spacious apartments in total. Exclusive facilities for residents include a gymnasium, an outdoor swimming pool, sauna and steam bath.

這位處西半山的單位面積達1665平方呎，能把香港市中心的景致盡收眼底，配合室內的自然色調和高貴的用料，既能予人時尚之感，亦展現出典雅的氣派。單位共設三間睡房，其中一間為套房；其客廳廳採一體式設計，另有設備齊全的開放式廚房、一間浴室、家傭房、多用途房，以及開揚的陽台。

蔚然採單幢式的設計，樓高43層，共有126個寬敞單位，中環和蘇豪區近在咫尺。屋苑為住戶提供一系列休閒設施，包括健身中心、室外游泳池、桑拿浴室和蒸汽浴室。



Marlborough House

東半山 保祿大廈

154 Tai Hang Road

Well kept 2-bedroom apartment at convenient location with sweeping views across the city

優質保養兩房單位，飽覽廣闊城市景，交通方便，可租可售



GROSS AREA 1,250 s.f.

SALEABLE AREA 973 s.f.

OFFERED AT \$48,000 incl.

also for sale \$19,800,000

INQUIRIES

9093 3381 Stephen Chan 陳先生

SEARCH REFERENCE NO. 38150



Villa Lotto

跑馬地 樂陶苑

18 Broadwood Road

Well decorated 3-bedroom apartment with efficient layout on fringe of Causeway Bay

優質裝修三房住宅，間隔實用，鄰近銅鑼灣，可租可售



GROSS AREA 1,225 s.f.

SALEABLE AREA 1,116 s.f.

OFFERED AT \$50,000 incl.

also for sale \$23,000,000

INQUIRIES

9551 1077 Walker Lam 林先生

SEARCH REFERENCE NO. 48524



Shuk Yuen Building

跑馬地 荻園新臺

2 Green Lane

Low-rise colonial flat with easy transport to Causeway Bay

英式低密度單位，交通方便，鄰近銅鑼灣，可租可售



GROSS AREA 1,800 s.f.

SALEABLE AREA 1,453 s.f.

OFFERED AT \$55,000 incl.

also for sale \$28,500,000

INQUIRIES

6258 8847 Anthea Ngai 魏小姐

SEARCH REFERENCE NO. 50472



Swiss Towers

東半山 瑞士花園

113 Tai Hang Road

Highly sought after family apartment on Tai Hang Road with easy access to Causeway Bay

受歡迎家庭式住宅，鄰近銅鑼灣，交通方便，可租可售



GROSS AREA 1,600 s.f.

SALEABLE AREA 1,265 s.f.

OFFERED AT \$58,000 incl.

also for sale \$28,000,000

INQUIRIES

9551 1077 Walker Lam 林先生

SEARCH REFERENCE NO. 36222



Midlevels East & Happy Valley LEASE

東半山及跑馬地 出租



Wing On Lodge

跑馬地 永安新村

72-82 Blue Pool Road

Bright and airy 3-bedroom mid-rise apartment conveniently located on Upper Happy Valley

光猛通風三房中密度住宅，位於跑馬地頭段，交通方便



GROSS AREA 1,206 s.f.

SALEABLE AREA 1,170 s.f.

OFFERED AT \$68,000 incl.

INQUIRIES

9093 3381 Stephen Chan 陳先生

SEARCH REFERENCE NO. 143964



6-6A Sing Woo Crescent

跑馬地 成和坊6-6A號

Unique duplex in quiet yet convenient location

獨特複式單位，環境寧靜，地點方便



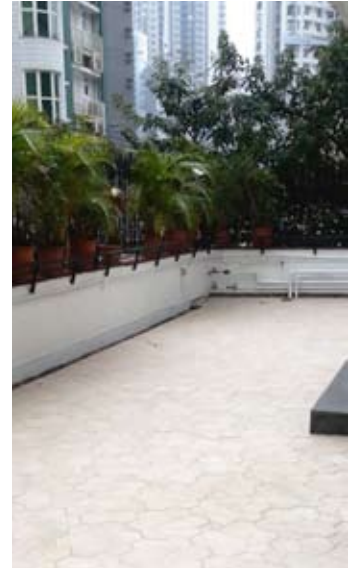
GROSS AREA 2,000 s.f.

SALEABLE AREA 1,574 s.f.

OFFERED AT \$70,000 incl.

INQUIRIES 9486 1566 Mira To 杜小姐

SEARCH REFERENCE NO. 159004



Butler Tower

渣甸山 柏麗園

1-5 Boyce Road

Newly renovated 4-bedroom apartment with efficient and practical layout in Jardine's Lookout

渣甸山四房住宅，全新裝修，間隔實用，可租可售



GROSS AREA 1,650 s.f.

SALEABLE AREA 1,492 s.f.

OFFERED AT \$70,000 incl.

also for sale \$33,000,000

INQUIRIES

9229 2396 Elaine Chow 周小姐

SEARCH REFERENCE NO. 7316



Serene Villa

渣甸山 寧苑

41-45 Perkins Road

Contemporary low-rise apartment at quiet location

當代時尚裝修住宅，密度低，地點寧靜



GROSS AREA 1,650 s.f.

SALEABLE AREA 1,401 s.f.

OFFERED AT \$72,000 incl.

INQUIRIES

9871 6828 Louis Wong 黃先生

SEARCH REFERENCE NO. 41333





The Altitude

跑馬地 紀雲峰

20 Shan Kwong Road

Fully furnished 3-bedroom apartment of a brand new development conveniently located in Happy Valley

跑馬地全新住宅大廈，優質裝修，三房間隔



GROSS AREA 1,885 s.f.

SALEABLE AREA 1,451 s.f.

OFFERED AT \$76,000 incl.

INQUIRIES

9093 3381 Stephen Chan 陳先生

SEARCH REFERENCE NO. 159282



Evergreen Villa

東半山 松柏新村

43 Stubbs Road

High-efficiency penthouse with balcony and private roof terrace located in prestigious location
高實用率頂層單位，連露台及天台，地段尊貴



GROSS AREA 1,750 s.f.

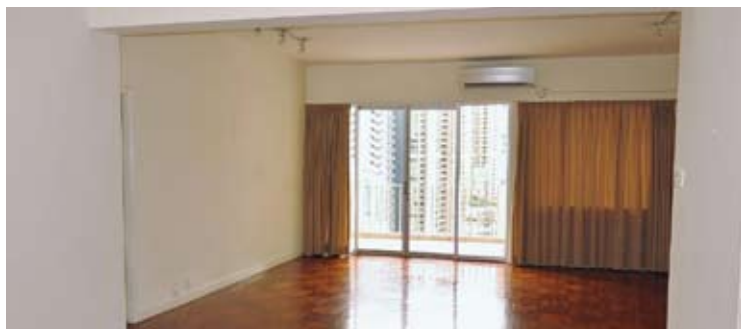
SALEABLE AREA 1,525 s.f.

(plus 1,200 s.f. roof)

OFFERED AT \$78,000 incl.

INQUIRIES 9486 1566 Mira To 杜小姐

SEARCH REFERENCE NO. 46995



United Mansion

東半山 騰黃閣

7 Shiu Fai Terrace

Spacious 3-bedroom mid-rise apartment with balcony on tranquil Shiu Fai Terrace

寬敞三房中密度單位，連露台，位於環境寧靜的肇輝台



GROSS AREA 2,200 s.f.

SALEABLE AREA 1,882 s.f.

OFFERED AT \$80,000 incl.

INQUIRIES 9486 1566 Mira To 杜小姐

SEARCH REFERENCE NO. 72767



18-20 Happy View Terrace

跑馬地 樂景臺18-20號

Low-rise apartment in quiet yet convenient location

清靜低密度住宅，地點方便，可租可售



GROSS AREA 2,400 s.f.

SALEABLE AREA 2,081 s.f.

OFFERED AT \$85,000 incl.

also for sale \$50,000,000

INQUIRIES

6183 8339 Carman Szeto 司徒小姐

SEARCH REFERENCE NO. 12605



Midlevels East & Happy Valley LEASE

東半山及跑馬地 出租



The Elegance

東半山 優雅閣

60 Tai Hang Road

Tastefully renovated harbour view duplex apartment on convenient Tai Hang Road

品味裝修海景複式住宅，位於交通方便的大坑道，可租可售



GROSS AREA 2,404 s.f.
SALEABLE AREA 1,710 s.f.

OFFERED AT \$88,000 incl.
also for sale \$45,000,000

INQUIRIES

9093 3381 Stephen Chan 陳先生

SEARCH REFERENCE NO. 130711



Villa Lotto

跑馬地 樂陶苑

18 Broadwood Road

High-efficiency 4-bedroom apartment with stadium view

高實用率四房單位，享大球場景致



GROSS AREA 2,406 s.f.
SALEABLE AREA 2,169 s.f.

OFFERED AT \$98,000 incl.

INQUIRIES 9486 1566 Mira To 杜小姐

SEARCH REFERENCE NO. 129553



Evergreen Court

跑馬地 翠苑

71-73A Blue Pool Road

Unique sizeable mid-rise flat with lush green view and private roof top

獨特中密度住宅，寬敞偌大，享翠綠景致，連私家天台



GROSS AREA 1,700 s.f.
SALEABLE AREA 1,378 s.f.

(plus 1,750 s.f. roof)

OFFERED AT \$100,000 incl.

INQUIRIES

9093 3381 Stephen Chan 陳先生

SEARCH REFERENCE NO. 136160



Woodland Heights

東半山 怡園

2A-2F Wong Nai Chung

Gap Road

Brand new kitchen 3-bedroom apartment with panoramic vista of the city

全新廚房三房住宅，飽覽城市全景



GROSS AREA 2,800 s.f.
SALEABLE AREA 2,547 s.f.

(plus 2,165 s.f. roof)

OFFERED AT \$115,000 incl.

INQUIRIES

9093 3381 Stephen Chan 陳先生

SEARCH REFERENCE NO. 38348





Celestial Heights 何文田 半山壹號
80 Sheung Shing Street,
Ho Man Tin

Harbour view apartment with balcony
and deluxe clubhouse facilities in
tranquil and convenient location
海景單位連露台，享豪華會所設施，環境清
靜，交通方便



GROSS AREA 2,191 s.f.

SALEABLE AREA 1,662 s.f.

OFFERED AT \$39,800,000

INQUIRIES

6183 8339 Carman Szeto 司徒小姐

SOLE AGENT

SEARCH REFERENCE NO. 114338



Bowl with Hippopotamus | Hella Jongerius for Nymphenburg | Diameter 25 cm



(852) 2520 0281 | info@galeriehuit.com.hk
G/F, No. 8 St. Francis Street, Wanchai, Hong Kong
www.galeriehuit.com.hk



The Arch

尖沙咀 凱旋門

1 Austin Road West, Tsim Sha Tsui
3-bedroom apartment of a landmark
development with excellent facilities
atop Kowloon Station

九龍站地標住宅大廈，三房間隔，享優質會
所設施



GROSS AREA 1,087 s.f.

SALEABLE AREA 791 s.f.

OFFERED AT \$21,380,000

INQUIRIES

6183 8339 Carman Szeto 司徒小姐

SEARCH REFERENCE NO. 110745



The Westminster Terrace

荃灣 皇璧

2A Yau Lai Road, Tsuen Wan
Luxury 4-ensuite duplex with superb
sea view and great clubhouse
facilities

豪華四套房複式單位，享華麗海景，連優質
會所設施，可租可售



GROSS AREA 3,424 s.f.

SALEABLE AREA 2,561 s.f.

OFFERED AT \$90,000 incl.

also for sale \$48,000,000

INQUIRIES

6183 8339 Carman Szeto 司徒小姐

SEARCH REFERENCE NO. 125538



Prime Residential Block

South Kensington SW7

Prime Grade II-listed freehold mid-terrace in South Kensington. Configured as 5 apartments with a lift. Fully renovated to a very high specification in 2007 and well maintained. Each apartment has views of the Garden Square. Long-term investment opportunity.

位於南肯辛頓擁永久業權的二級表列保育住宅大廈，經改建成5個分層單位，並設有升降機。大廈曾於2007年進行全面翻新，保養良好。每個單位均享花園廣場景觀。長線投資，機遇無限。

Freehold

9,373 s.f.

Gross Yield 3%

£12.5M – 15M



Prime Residential & Commercial

Mayfair W1

Prime Grade II-listed Mayfair freehold. Lower ground, ground and 3 upper floors with large courtyard to rear. Previously used as offices but with planning in place to convert to luxury residence, increasing internal size from approximately 5,500 s.f. to 9,500 s.f. Potential short-term development gain or hold for long-term investment or own use.

坐落於梅菲爾擁永久業權的二級表列保育商住大廈。由地下低層、地下層及樓上三層組成，連偌大後花園。物業前身為辦公室，如經城規批准可改建成豪華住宅，室內面積將可由約5,500平方呎增加至9,500平方呎。短線或長線投資及自用皆宜。

Freehold

5,500 s.f. existing

9,500 s.f. redeveloped

£9M – 11M



Prime Commercial

Soho W1

Small commercial building in a prime location in Soho close to Oxford Circus. Lower ground, ground and 5 upper floors. Currently fully let to 3 tenants on long leases producing strong rental return.

位處蘇豪區的小型商業大廈，鄰近牛津廣場。由地下低層、地下層及樓上五層組成。現由三個獨立租戶承租，擁長期租約，租金回報優厚。

Virtual Freehold

Area available on request

Gross Yield 5.6%

£8M – 10M



Prime Commercial

St James WC2

Small prime freehold corner block in St James, well renovated in a modern style. Currently used as offices and let for a further 5 years to a single tenant, one of the world's best known luxury retail brands. Good yield and available at attractive purchase price psf. Potential in future to convert to residential use subject to planning consents.

位於聖詹姆士街角擁永久業權的小型商業大廈，附摩登品味裝修。現時租予一間世界知名的奢侈品零售品牌作辦公室之用，擁五年租約。物業售價極為吸引，且回報優厚。未來透過城規批准，可改為豪華住宅用途。

Freehold

5,530 s.f.

Gross Yield 6%

£3M – 4M



Prime Commercial

Midtown WC2

Prime offices located in midtown in the historic Lincoln's Inn legal district. Second, third and fourth floors, let to a legal firm on lease expiring in 2020. Good gross yield for long-term investment.

坐落於歷史悠久的林肯律師學院區域核心地段的優質商業大廈，二樓、三樓及四樓現租予一間法律事務所，租約期至2020年。長線投資回報極佳。

Flying Freehold

2,965 s.f.

Gross Yield 6%

£1.8M – 2.5M



Prime Retail

Kensington W8

Situated in the heart of Kensington High Street. It currently comprises 16 (C3) residential apartments (totaling 12,517 s.f. (NSA)) and 4,783 s.f. (NIA) of (B1) office and D1 accommodation. It has acquired full planning permission for 24,450 s.f. NSA of prime residential accommodation creating up to 27 apartments.

此零售商舖位於肯辛頓大街核心地段，目前有16個住宅單位（共12,517平方呎）及4,783平方呎的辦公室和商舖。現已獲城規批准，可改建為27個豪華住宅單位，總樓面面積可增至24,450平方呎。

Virtually freehold

12,517 s.f.

Vacant possession

£20M – 22M



Large selection of recommended investment properties are available upon request.

FOR ENQUIRIES 歡迎查詢

6624 6938 Derek Chan 陳先生 derek.chan@landscape-christies.com

6205 0415 Yeoman Ho 何小姐 yeoman.ho@landscape-christies.com

VITA
STUDENT



The Best UK Student Accommodation Investment

英國豪華學生宿舍投資首選

- ▶ Bristol City Centre Location, Just Minutes' Walk From Bristol University
- ▶ Minimum 7% Net Rental Yield Guaranteed For 5 Years
- ▶ Fully Managed and Completely Hassle Free
- ▶ 131 Self-Contained, Modern and Fully Furnished Studio Flats
- ▶ Prices From £78,250
- ▶ 位於布里斯托市中心，著名的布里斯托大學，近在咫尺
- ▶ 5年最少7厘租金淨回報保證
- ▶ 全面統一物業管理，安享無憂
- ▶ 131個獨立精裝套間，傢具配套，一應俱全
- ▶ 售價由£78,250起



From £78,250

**Minimum 7% Net Rental Yield
Guaranteed For 5 Years, Fully Managed.**

**ALL 279 Units of Vita Student
at First Street, Manchester
Sold Out Within 15 Weeks!!
Contact Us While Stock Lasts!!**

LANDSCOPE

CHRISTIE'S
INTERNATIONAL REAL ESTATE

For enquiries, please contact 如欲垂詢，請聯絡：

Ms. Yeoman Ho 何小姐 +852 6205 0415
yeoman.ho@landscape-christies.com

Mr. Derek Chan 陳先生 +852 6624 6938
derek.chan@landscape-christies.com

Ms. Agnes Cheung 張小姐 +852 5303 4349
agnes.cheung@landscape-christies.com

Mr. Jan Ng 伍先生 +852 6088 1418
jan.ng@landscape-christies.com

Disclaimer: The market information appearing in this publication is obtained and re-transmitted from sources believed to be reliable but which have not been independently verified; no guarantee, representation or warranty is made and no responsibility or liability as to its accuracy or completeness is accepted. No liability is accepted whatsoever for any direct, indirect or consequential loss arising from the use of this publication. The market information provided in this publication is not and shall not be construed as an offer to sell or the solicitation of an offer to purchase any landed property and, accordingly, do not have any legal binding effect. However, on Landscape Christies and/or its clients. The market information contained in this publication is not intended to provide any professional advice. As such, this publication should not be relied upon in that regard. Our services are provided exclusively in relation to properties outside Hong Kong and thus our personnel are not required to hold any license pursuant to the Hong Kong Real Estate Agents Ordinance.

Prime Commercial

Mayfair W1

A commercial building arranged over lower ground to fifth floors. It is located on the corner of Charles Street and Chesterfield Hill in Mayfair. Planning consent secured for a conversion to a single residence of 14,293 s.f. GIA. Vacant possession will be available from January 2015.

此商業大廈由地下低層至五樓組成，位於梅菲爾查爾斯街及Chesterfield Hill的轉角位。已獲得城規批准，可改建成達14,293平方呎的大宅。物業可於2015年1月交吉出售。



Freehold

13,468 s.f. GIA

£19.5M – 22.5M

Prime Commercial

Mayfair W1

The property is located in prime Mayfair location and close proximity to Berkeley Square and Bond Street. Substantially refurbished in 2006/2007 to provide Grade A office and retail accommodation. Upper office accommodation is multi-let to 6 tenants and lower retail is let to a gallery.

位處梅菲爾黃金地段的商業大廈，毗鄰伯克利廣場及龐德街。曾於2006及2007年進行全面翻新，提供甲級寫字樓及零售商舖空間。樓上的辦公室已租予6個租戶，地下的商舖則由一間畫廊承租。



Freehold

16,235 s.f.

Gross Yield 4.25%

£28.7M – 33M

Prime Commercial

Noho W1

It is situated in Noho district in close proximity to Tottenham Court Road and Oxford Street. Its location benefits from Crossrail interchange station at Tottenham Court Road. It was redeveloped in 2008 to provide Grade A accommodation awarded a very good BREEAM rating. Multi-let to 5 tenants with long leases.

位處Noho區優越地段的商業大廈，鄰近圖騰漢路中轉站及牛津街，交通四通八達。於2008年重新發展，提供甲級寫字樓單位，並獲英國建築環境評估體系的優質認證。現由5個租戶承租，擁長期租約。



Freehold

21,263 s.f.

Gross Yield 5.1%

£17.8M – 19.58M

Prime Retail

Kings Road SW3

The property is a prime retail investment at the heart of King's Road. It has a prime frontage to King's Road. Single let to a furniture store expiring in 2023. Very low current passing rent of £165 ITZA. Hence, good potential to achieve better reversionary rent.

位於英皇道核心地段的優質零售商舖，臨街鋪面寬闊，現由一間傢俱店承租至2023年。現時的估值租金 (ITZA) 僅£165，遠低於市值租金，故租金調整潛力極佳。



Long Leasehold

2,327 s.f.

Gross Yield 5%

£3.6M – 4.1M

Prime Retail

Baker Street W1U

Prime corner retail investment in Marylebone. Marylebone has undergone a comprehensive regeneration over the last 20 years. Ground and lower ground of the premises single let to Marsh & Parsons Ltd on an unbroken new 15-year FRI lease with 5-yearly upward only rent reviews.

坐落於馬里波恩街角位置的投資零售商舖，此區在過去20年曾進行大規模的重建計劃。地下低層及地下層現已租予倫敦地產代理公司Marsh & Parsons，擁15年長約，每5年租金可向上調整。



Freehold

2,327 s.f.

Gross Yield 4.9%

£2.7M – 3.05M

Prime Retail

Kensington Square W8

Located approximately 150 metres south from Kensington High Street. The property comprises eight retail units and eight sold off residential flats, arranged over lower ground, ground and 5 upper floors, providing a total of 23,246 s.f. of retail accommodation. 8 retail units are multi-let to 8 retail tenants.

位處肯辛頓大街以南約150米的優質零售商舖，物業由8個商舖及8個住宅單位組成，由地下低層、地下層至五樓，共提供23,246平方呎的零售舖位，8個零售商舖現由8個獨立租戶承租。



Freehold

23,246 s.f.

Gross Yield 4.52%

£3.35M – 3.8M

Large selection of recommended investment properties are available upon request.



FAIRLINE



NEW MODEL - FAIRLINE SQUADRON 60

Colour: Midnight Blue

Engines: 2 x Volvo Penta D13-900 EVC

Available in
Hong Kong

Main Options:

- Tropical grade air conditioning
- Bang & Olufsen audio and video entertainment system
- Flybridge icemaker, fridge, and BBQ griddle
- Teak laid side decks and flybridge flooring
- Full Garmin electronics
- Large Hi/Lo bathing platform

and much more...

Call us now (852) 3180-3189 or info@jebesenmarine.com



A member of the Jebesen Group • CONSUMER • INDUSTRIAL • BEVERAGE • LUXURY • China • Hong Kong • Macau • Taiwan • Korea



Unit 5, G/F, Aberdeen Marina Tower, 8 Shum Wan Road, Aberdeen, Hong Kong 香港香港仔深灣道8號深灣遊艇俱樂部地下5室
Tel 電話: (852) 3180 3189 Fax 傳真: (852) 2805 6867 Email 電郵: info@jebesenmarine.com Website 網址: www.jebesenmarine.com
12/F East Ocean Centre, No. 618 Yan An Road East, Shanghai, 200001, P.R. China 中國上海市延安東路618號東海商業中心12樓
Tel 電話: (86) 21 6032 3860 Fax 傳真: (86) 21 6032 3861 Email 電郵: chinainfo@jebesenmarine.com



FARRINGTON INTERIORS

THE MOMENT MADE BEAUTIFUL



Flagship store: 31/F, World Trade Centre, Causeway Bay +852 2808-1000

Shop: G/F, 8 7 Wong Nai Chung Road, +852 2808-0303

WWW.FARRINGTONINTERIORS.COM

