

The
Key

大宅[®]

Select deluxe homes

LANDSCOPE

CHRISTIE'S
INTERNATIONAL REAL ESTATE

Volume 92 AUGUST 2012



Bird's eye view
鳥瞰灣畔

KeyWords

“A superior man is modest in his speech, but exceeds in his actions”

「君子恥其言而過其行。」

Confucius (Chinese philosopher, 551-479 BC)
中國思想家孔子（公元前551-479年）

KeyNotes

Despite concerns over the Euro and the failings of many European economies, London still remains a safe haven for overseas buyers, with continued capital growth and strong yields. Developments which high net-worth clients are looking to buy were sold out during the first allocations made available in the first week of exhibiting in the Asia-Pacific region. Other successes include those close to key landmarks in Central London, many of which are sold units prior to official launch. With some completions still four years away, it's great value to purchase now. More pocket-friendly developments are also doing strong business, while mid-range developments where strong yields can be harder to achieve are struggling to sell.

儘管最近市場對歐元危機及歐洲多國經濟衰退都憂心忡忡，倫敦仍然是海外買家的安全避風港，物業市場資本持續增長，且回報豐厚。高資產淨值客戶的目標發展項目，每每在亞太區展銷會推出的首周，瞬即售罄。其他毗鄰倫敦市中心各主要地標的發展項目，不少單位在展銷正式開幕前便已售出。有些項目雖然距離落成還有四年之久，現在購買實屬物超所值。同時，區內還有許多交投強勁的低價發展項目，而較難取得豐厚回報的中價發展項目銷售則陷入泥沼。

Chris Redfern
Director of Business Development
1st avenue

(The above is an excerpt from Market Watch on www.landscape-christies.com. Read the full article at Market Watch, www.landscape-christies.com/marketwatch)

(以上內容節錄於領域網站內的市場觀察，如欲觀看全文，請登上網址：www.landscape-christies.com/marketwatch)

Monthly HIGHLIGHTS 每月精選



- 04 The Sail at Victoria
薄扶林 傲翔灣畔
- 22 Visalia Garden
中半山 蔚山花園
- 26 Hong Kong Parkview
淺水灣 陽明山莊

HOW MAY YOU LIST YOUR PROPERTY WITH THE KEY?

怎樣在《大宅》刊登您的出售／出租物業？

If you would like to see your property listed in The Key in the next issue, you may call Loretta Lui at 3102 4818 or visit us at www.landscape-christies.com/sell_net. Or you may simply fill out the space below and fax to us at 2866 0015.

如果您想將出售／出租物業刊登於大宅，可致電3102 4818與呂小姐聯絡，或登上www.landscape-christies.com/sell_net。或者您可以填寫下面的表格傳真至2866 0015。

Property to be listed 物業

Asking Rental / Sale Price 租金 / 售價

Floor Area 面積

Contact Person 聯絡人

Telephone 電話

Email 電郵地址

Our KeyPersons will contact you for follow-up works.
我們的大宅專員會馬上與您聯絡

Published and distributed by

LANDSCOPE

CHRISTIE'S
INTERNATIONAL REAL ESTATE

Find us on:
facebook.

Designed by

PERSPECTIVE透視

Landscape Christie's International Real Estate C-018733

Tel: +852 2866 0022
Fax: +852 2866 0015
Email: info@www.landscape-christies.com
Website: www.landscape-christies.com
Address: Unit 3106, 31/F, Hopewell Centre,
183 Queen's Road East, Wanchai, Hong Kong

Member of:



Tel: +852 2525 0287
Fax: +852 2526 3860
Email: info@perspectiveglobal.com
Website: www.perspectiveglobal.com
Address: Rm 2408, Dominion Centre,
59 Queen's Road East, Wanchai, Hong Kong

The information, text, photos, analyses and projections contained herein are provided solely for the convenience of prospective clients and no warranty or representation as to their accuracy, correctness or completeness is made by Landscape Christie's International Real Estate, Landscape Surveyors Limited, Landscape Realty Limited or the owners, none of whom shall have any liability or obligation with respect thereto. Interested parties should rely on their own investigations, interpretations and analyses in connection with the purchase or letting thereof.

Information has been provided to us by sources deemed reliable, but no warranty or representation is made as to its accuracy, correctness or completeness. These offerings are made subject to contract, correction of errors, omissions, prior sale or lease, change of price or terms or withdrawal from the market without notice. The contents of The Key are for reference only and do not constitute all or any part of a contract. Copyright 2012

Mulberry Mews Islington, London

倫敦市中心極具投資潛力之高尚住宅項目



英國著名發展商Taylor Wimpey 推出1房、2房及3房豪華單位和3房、4房及5房尊貴洋房，項目設計時尚優雅，四周綠樹林蔭，環境恬靜舒適

- 10年NHBC 新屋建築保證，999年期業權
- 交通網絡完善，前往商業中心區約12分鐘車程，離West End僅約8分鐘車程
- 區內租務需求強大，物業升值潛力極高
- 位置優越，鄰近多所著名大學學府，區內優質中小學及幼兒園林立
- 提供24小時禮賓服務及設有地庫停車場，保安嚴密
- 售價由GBP 415,000 起

如有垂詢，請聯絡 / Sales Contacts:

Yeoman Ho
yeoman.ho@landscape-christies.com • +852 9012 8222

Agnes Cheung
agnes.cheung@landscape-christies.com • +852 5303 4349

Chris Law
chris.law@landscape-christies.com • +852 6183 8388

Mark Mak
mark.mak@landscape-christies.com • +852 6838 2929

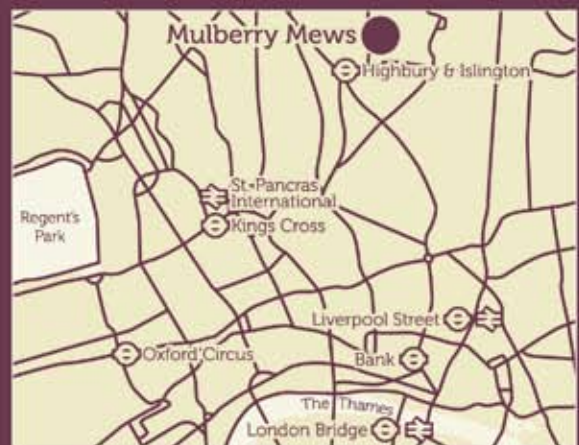
Randy Chan
randy.chan@landscape-christies.com • +852 9250 0300

Rowena Siu
rowena.siu@landscape-christies.com • +852 9348 4118

www.mulberrymewsislington.com

Taylor Wimpey is proud to present a luxurious collection of 1, 2 & 3 bedroom apartments and 3, 4 & 5 bedroom townhouses set around a gated tree-lined square.

- 10-year NHBC Warranty, 999-Year Lease
- Superb links to the City (12 mins) & West End (8 mins)
- Strong rental demand & capital growth potential
- Well-positioned for London's key universities, schools & kindergartens
- 24 hrs concierge service & secure underground parking
- Prices from £415,000



Scale: 1 mile 1km



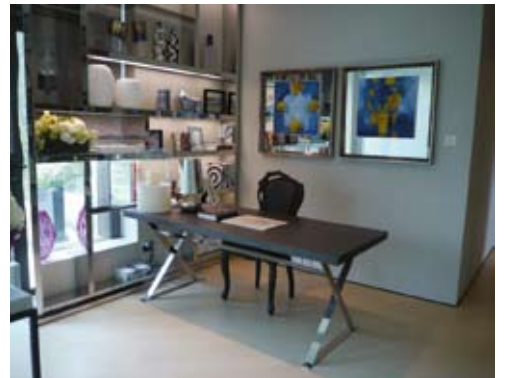
Disclaimer: Information has been provided to us by sources deemed reliable, but no warranty or representation is made as to its accuracy or completeness. This offering is made subject to contract, correction of errors, omissions, change of price or terms or withdrawal from the market without notice. Information is for guidance only and does not constitute all or any part of the contract.

Developer:
Taylor Wimpey
Central London

Joint Selling Agents:



Landscape Christie's International Real Estate
Unit 3106, Hopewell Centre, 183 Queen's Road East, Wanchai, Hong Kong
General +852 2866 0022 • Fax +852 2866 0015
Each Office is Independently Owned and Operated
Licence No.: C-018733



Bird's eye view 鳥瞰灣畔

Photography: Daniel Tam

Tucked away in a quiet corner of Island West in Pokfulam, this four-bedroom (two ensuite) duplex penthouse features stunning views of the Victoria Harbour that can be seen via large windows throughout the living areas as well as bedrooms. The spacious penthouse covers 2,714 s.f. with high ceilings, terrace and a balcony. Ideal for families, there are 3.5 bathrooms, a large combined living and dining room, a family room, a kitchen and a maid's room. The master bedroom (en-suite) features a large walk-in closet. A cool colour palette of cream and light grey — also the colour of the marble floors in the common areas — creates a warm, welcoming environment.

The penthouse sits atop The Sail at Victoria, one of few high-rise buildings built in recent years that offer harbour views from almost all units. Providing maximum privacy and space, the 33-storey building only has two to four units per floor. Residents can also take advantage of various recreational facilities such as a gym, an outdoor swimming pool, an indoor play area, table tennis and billiards.

The Sail at Victoria is well served by buses and mini-buses. Central is a 15-minute drive away. Transportation to the neighbourhood will be further improved when the MTR Island Line extension is completed in a few years.

這個四睡房（兩間為套房）頂層複式單位落戶港島西薄扶林的寧靜一角，無論是廳區還是睡房都裝上偌大窗戶，鳥瞰維港醉人景色。單位面積達2714平方呎，樓底高，空間寬敞得宜。除了設私人平台與陽台外，亦有三間半浴室、偌大客廳、活動室、廚房與家傭房，最適合一家大細居住。主人套房配設大型衣帽間，而一室色調清淡，米白配淺灰，而廳區亦鋪上淺灰雲石地板，營造出窩心迎人的環境。

這個複式單位位於傲翔灣畔的頂層，是近年少數幾乎所有單位都可眺望維港的住宅大廈之一。傲翔灣畔樓高33層，每層只有二至四伙，極顯隱私空間。住戶可享用完善的會所設施，如健身室、室外游泳池、室內遊樂場、乒乓球室與桌球室。

傲翔灣畔交通便利，就近有完善的巴士及小巴服務，距離中環只需15分鐘車程。港鐵港島西線將於數年後通車，屆時該區交通會更見方便。

The Sail at Victoria 傲翔灣畔
86 Victoria Road, Pokfulam
薄扶林 域多利道86號

2,714 s.f. (plus 141 s.f. terrace)
\$61,070,000

☎ 6838 2929 Mark Mak 麥先生
🌐 www.landscape-christies.com/123043.htm

HONG KONG GOLD COAST RESIDENCES



HOME FOR LEASE



Marina Villas



View From Marina Villas



Grassland



Short and Long Term Lease Available


- Marina Villas (1,950 – 3,540sq.ft.)
- Sea View Apartments (700 – 1,718 sq.ft.)
- Serviced Apartments (700 – 1,138 sq.ft.)

☎ 2457 0789 gallycowen@sino.com

1/F Gold Coast Piazza, 1 Castle Peak Road,
Castle Peak Bay, N.T., Hong Kong

www.goldcoast.com.hk

f www.facebook.com/GoldCoastResidences

 Sino Group YOUR LEASING PARTNER

All information and photo are for reference only





Jade Terrace

3 Link Road

Cozy 3-bedroom penthouse with roof on fringe of Causeway Bay
舒適三房頂層住宅，連天台，鄰近銅鑼灣

827 s.f. (plus 547 s.f. roof)

\$16M

6183 8339 Carman Szeto 司徒小姐

www.landscape-christies.com/115381.htm

跑馬地華翠臺



Medallion Heights

45 Conduit Road

Tastefully decorated 3-bedroom penthouse with open green view in tranquil location
品味裝修三房頂層單位，享開揚翠綠景觀，環境恬靜

2,050 s.f. (plus 1,500 s.f. roof)

\$38M

9250 0300 Randy chan 陳先生

www.landscape-christies.com/135947.htm

西半山金徽閣



The Waterfront

1 Austin Road West

Rare find duplex with brand new decoration locate in Kowloon West
全新裝修複式住宅，罕有放售

2,060 s.f.

\$45M

9809 8570 Stella Lo 羅小姐

www.landscape-christies.com/136263.htm

尖沙咀濠日居



8 Shiu Fai Terrace

Unique duplex with private roof and balcony in Midlevels East for sale
東半山獨特複式單位，連私家天台及露台

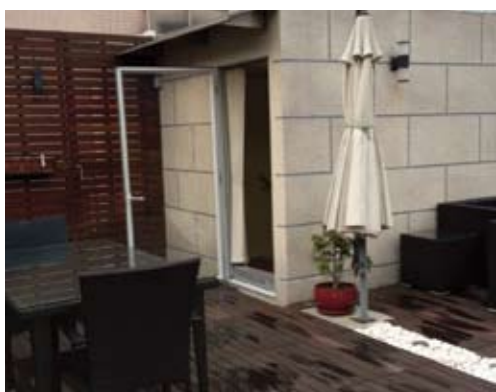
3,076 s.f. (plus 746 s.f. roof)

\$55M

9551 1077 Walker Lam 林先生

www.landscape-christies.com/101559.htm

東半山肇輝台8號



The Royal Court

3 Kennedy Road

Rare penthouse duplex with private roof overlooking CBD and Victoria Harbour
罕有頂層複式住宅，連私家天台，俯瞰維港及城市景致

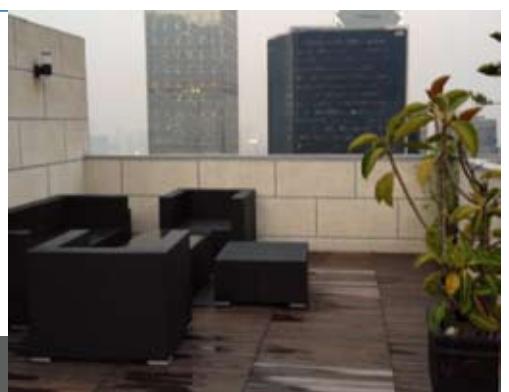
2,280 s.f. (plus 747 s.f. roof)

\$58M

9215 3999 Boris Wong 王先生

www.landscape-christies.com/109799.htm

中半山帝景閣





Radcliffe

120 Pok Fu Lam Road

Good quality 4-ensuite duplex apartment with sea view

優質四套房複式單位，享壯麗海景

3,620 s.f.

\$60M

☎ 6183 8388 Chris Law 羅先生

🌐 www.landscape-christies.com/107385.htm

薄扶林
靖林



Hillsborough Court

18 Old Peak Road

Duplex penthouse with private roof in Midlevels Central

中半山頂層複式單位，連私家天台

2,337 s.f. (plus 405 s.f. terrace and 549 s.f. roof)

\$62M

☎ 6258 8847 Anthea Ngai 魏小姐

🌐 www.landscape-christies.com/1183.htm

中半山
曉峰閣



Pacific View

38 Tai Tam Road

Duplex penthouse in prestigious estate with panoramic sea view

大潭頂層複式住宅，地段優越，享無敵靚海景，可租可售

3,913 s.f. (plus 647 s.f. terrace)

\$80M also for lease \$180K incl.

☎ 9648 6082 Christine Chong 莊小姐

🌐 www.landscape-christies.com/125658.htm

大潭
浪琴園



The Somerset

67 Repulse Bay Road

Exclusive duplex with full sea view of Deep Water Bay

獨特複式住宅，欣賞深水灣美景

3,099 s.f.

\$90M

☎ 9833 9509 Michelle Chung 鍾小姐

🌐 www.landscape-christies.com/4674.htm

淺水灣
怡峰



South Bay Palace

25-31 South Bay Close

Designer decorated penthouse duplex with huge private roof terrace

淺水灣頂層複式住宅，配以設計師品味設計裝修，連巨大私家天台

3,960 s.f. (plus 4,133 s.f. roof)

\$140M

☎ 9871 6828 Louis Wong 黃先生

🌐 www.landscape-christies.com/109182.htm

淺水灣
南灣御苑





Aqua 33

33 Consort Rise

Brand new 2-bedroom low-rise apartment at quiet Pokfulam
全新低密度兩房住宅，位於寧靜的薄扶林

1,434 s.f.
\$15M

6838 2929 Mark Mak 麥先生
www.landscape-christies.com/111767.htm

薄扶林 金粟街3號



Hong Kong Parkview

88 Tai Tam Reservoir Road

Cosy 2-bedroom unit in well equipped luxury estate amidst country park
舒適兩房單位，屋苑配套設施完善，鄰近大潭郊野公園

1,275 s.f.
\$19.7M

9215 3999 Boris Wong 王先生
www.landscape-christies.com/118047.htm

淺水灣 陽明山莊



37 Repulse Bay Road

2-bedroom apartment with clubhouse facilities and magnificent sea view
淺水灣兩房住宅，享完善會所設施及壯觀海景

1,225 s.f.
\$21.88M

9250 0300 Randy Chan 陳先生
www.landscape-christies.com/15688.htm

淺水灣 淺水灣道37號



Villa Piubello

1-7 Cape Drive

Charming colonial low-rise apartment with high ceiling in a quiet neighbourhood
英式低密度住宅，樓底特高，環境寧靜舒適

1,800 s.f.
\$29M

6330 7888 Cora Ko 高小姐
www.landscape-christies.com/134753.htm

春坎角 環角徑11號



Hong Kong Parkview

88 Tai Tam Reservoir Road

Tastefully decorated unit with 2 bedrooms and a study commanding country park view
品味裝修兩房單位，連書房，享郊野公園美景

2,105 s.f.
\$30M

6258 8847 Anthea Ngai 魏小姐
www.landscape-christies.com/30902.htm

淺水灣 陽明山莊



La Mer

67-71 Bisney Road

Nicely decorated sea view low-rise apartment in tranquil surroundings
雅致裝修海景大宅，密度低，環境舒適恬靜，可租可售

2,185 s.f.
\$33M also for lease \$90K incl.

9229 2396 Elaine Chow 周小姐
www.landscape-christies.com/110195.htm

薄扶林 浪頤居



The Brentwood

11 Repulse Bay Road

Renowned boutique apartment on Repulse Bay Road enjoying stunning sea view
淺水灣品味住宅，欣賞無敵靚海景，可租可售

1,556 s.f.
\$33M also for lease \$Open Offer

9215 3999 Boris Wong 王先生
www.landscape-christies.com/150412.htm

淺水灣 蔚峰園



Shouson Garden

6A Shouson Hill Road

Charming 3-bedroom low-rise apartment in a lush green and serene area in Shouson Hill
迷人三房低密度住宅，享翠綠景致，環境和諧清靜

1,598 s.f.
\$35M

9215 3999 Boris Wong 王先生
www.landscape-christies.com/13813.htm

壽臣山 壽山花園



Cape Mansions

56-62 Mount Davis Road

Spacious 3-bedroom sea view apartment at Pokfulam waterfront
薄扶林寬敞三房海景住宅，可租可售

2,100 s.f.
\$36.5M also for lease \$75K incl.

6183 8339 Carman Szeto 司徒小姐
www.landscape-christies.com/47004.htm

薄扶林 翠海別墅



Ridge Court

21A-21D Repulse Bay Road

High floor 3-bedroom mid-rise apartment with breath-taking view of Deep Water Bay
高層三房中密度住宅，享壯麗深水灣景致

2,300 s.f.
\$48M

9551 1077 Walker Lam 林先生
www.landscape-christies.com/33542.htm

淺水灣 冠園



NEW LOOK
GOD
JUST RE-OPENED IN
HORIZON
PLAZA

G 住
好 O
D 晒





Faber Villa

17 Tai Tam Road

Exclusive mid-rise apartment with expansive sea view
獨特中密度住宅，欣賞遼闊海景，可租可售

3,200 s.f.

\$53M also for lease \$150K excl.

9551 1077 Walker Lam 林先生
www.landscape-christies.com/29964.htm

大潭輝百苑



Villas Sorrento

64-66 Mount Davis Road

Modern sea view duplex with private roof in tranquil location
時尚海景複式單位，連私家天台，環境清幽寧靜

2,207 s.f. (plus 348 s.f. terrace and 718 s.f. roof)

\$60M

9250 0300 Randy Chan 陳先生
www.landscape-christies.com/95796.htm

薄扶林御海園



Regalia Bay

88 Wong Ma Kok Road

Waterfront townhouse with 5 bedrooms and splendid sea view
赤柱海濱五房大屋，欣賞壯麗海景

4,053 s.f. (plus 113 s.f. garden and 1,190 s.f. roof)

\$66M

6838 2929 Mark Mak 麥先生
www.landscape-christies.com/31214.htm

赤柱富豪海灣



3 Repulse Bay Road

Nicely decorated mountain view apartment at a prime location with comprehensive facilities
清雅裝修住宅，享山巒景致，設施完善，位置優越

2,161 s.f.

\$67M

6258 8847 Anthea Ngai 魏小姐
www.landscape-christies.com/37806.htm

淺水灣淺水灣道6號



Repulse Bay Towers

119A Repulse Bay Road

Spacious duplex with partial sea view in a peaceful location for sale with tenancy
寬敞複式海景大宅，環境和諧寧靜，連約放售

3,100 s.f.

\$68M

9809 8570 Stella Lo 羅小姐
www.landscape-christies.com/4270.htm

淺水灣保華大廈



Guildford Court

5 Guildford Road

Well decorated apartment in lower Peak
山頂雅緻裝修住宅

2,500 s.f.

\$70M

9648 6082 Christine Chong 莊小姐
www.landscape-christies.com/30026.htm

山頂僑福道5號



La Hacienda

29-33 Mount Kellett Road

Tastefully renovated 3-bedroom colonial apartment with high ceiling enjoying partial sea view
英式品味裝修三房單位，樓底特高，享美麗海景，可租可售

2,700 s.f.

\$75M also for lease \$140K incl.

6183 8388 Chris Law 羅先生
www.landscape-christies.com/28825.htm

山頂加列山道29-33號



Louisette

20 Stanley Beach Road

Full sea view townhouse with garden, roof and 3 covered parking spaces in Stanley
全海景排屋，連花園、天台及三車位，可租可售

2,856 s.f. (plus 489 s.f. garden and 432 s.f. roof)

\$Open Offer

also for lease \$190K incl.

Mira To 9486 1566 杜小姐
www.landscape-christies.com/4652.htm

赤柱赤柱灘道20號



Hillgrove

18 Cape Drive

Large and spacious 6-bedroom townhouse in quiet Chung Hom Kok
寬敞六房排屋，位於寧靜春坎角，可租可售

3,000 s.f. (plus 600 s.f. garden and 900 s.f. roof)

\$75M also for lease \$190K incl.

9648 6082 Christine Chong 莊小姐
www.landscape-christies.com/104403.htm

春坎角壁如花園



Villa Verde

4-18 Guildford Road

A rare find of spacious apartment with private garden and 2 carpark spaces on the Peak for sale
山頂罕有寬敞住宅，連私家花園及兩車位

2,540 s.f. (plus 800 s.f. garden)

\$78M

9080 6686 Teresa Lau 劉小姐
www.landscape-christies.com/13460.htm

山頂環翠園



FAIRLINE



There's something wonderful on the horizon

Model featured is the remarkable Squadron 42. The compact Squadron that doesn't fall short in the luxury department.
系列中的非凡之選Squadron 42, 小巧中凸顯矜貴。

Fairline China:

16/F, East Ocean Centre, 618 Yan An Road East, Shanghai 200001

菲爾蘭中國: 中國上海延安東路618號東海商業中心16樓 郵編: 200001

Tel 電話: +86 21 2306 4846 E-mail 電郵: china@fairline.com

Fairline Hong Kong:

Unit 5, 6/F, Aberdeen Marina Tower, 8 Shum Wan Road, Aberdeen, Hong Kong

菲爾蘭香港: 香港香港仔深灣道8號深灣遊艇俱樂部地下5室

Tel 電話: +852 3180 3189 E-mail 電郵: hongkong@fairline.com

Appointed Dealers in 特約代理:

China 中國 Hong Kong 香港 India 印度 Indonesia 印尼 Japan 日本

Korea 韓國 Malaysia 馬來西亞 New Zealand 新西蘭 Philippines 菲律賓

Queensland 昆士蘭 Singapore 新加坡 Thailand 泰國 Victoria 維多利亞州

Vietnam 越南 Western Australia 澳洲西部





South Bay Towers

59 South Bay Road

Adjoining huge unit featuring 5 bedrooms, twin balconies and full sea view
巨大五房大宅，雙露台設計，享壯麗全海景

淺水灣
南灣大廈

4,171 s.f.

\$90M

9871 6828 Louis Wong 黃先生
www.landscape-christies.com/102449.htm



37 Repulse Bay Road

Unique duplex overlook Deep Water Bay
獨特複式單位，俯瞰深水灣美景，可租可售

淺水灣
淺水灣道37號

3,480 s.f.

\$90M also for lease \$150K incl.

6330 7888 Cora Ko 高小姐
www.landscape-christies.com/31310.htm



Las Pinadas

33 Shouson Hill Road

Spacious townhouse with large living room in gated neighbourhood
壽臣山寬敞排屋，特大客廳，可租可售

壽臣山
朗松居

3,382 s.f. (plus 565 s.f. garden, 166 s.f. terrace and 617 s.f. roof)

\$110M also for lease \$190K incl.

9648 6082 Christine Chong 莊小姐
www.landscape-christies.com/21407.htm



56 Repulse Bay Road

Waterfront apartment with full view of Repulse Bay Beach
淺水灣海濱大宅，享淺水灣泳灘全景

淺水灣
淺水灣道56號

2,671 s.f.

\$120M

9093 3381 Stephen Chan 陳先生
www.landscape-christies.com/34400.htm



Bellevue Place

93 Repulse Bay Road

Tastefully decorated modern townhouse with magnificent sea view
時尚品味裝修排屋，欣賞無敵靚海景

淺水灣
寶晶苑

3,619 s.f. (plus 310s.f. terrace and 735 s.f. roof)

\$125M

9871 6828 Louis Wong 黃先生
www.landscape-christies.com/136438.htm



La Hacienda

29-33 Mount Kellett Road

4-bedroom garden Peak house enjoying harbour view for sale
山頂四房花園大屋，享海港美景，可租可售

山頂
加列山道29-33號

3,200 s.f.

\$150M also for lease \$200K excl.

6330 7888 Cora Ko 高小姐
www.landscape-christies.com/33958.htm



56 Repulse Bay Road

Deluxe waterfront duplex apartment with sweeping view of Repulse Bay
豪華海濱複式大宅，欣賞淺水灣醉人海景，可租可售

淺水灣
淺水灣道56號

3,281 s.f. (plus 848 s.f. roof)

\$175M also for lease \$200K incl.

9250 0300 Randy Chan 陳先生
www.landscape-christies.com/144428.htm



12-16 Tai Tam Road

Waterfront luxury townhouse overlooking Tai Tam Bay
大潭豪華海濱大屋，俯瞰大潭灣，可租可售

大潭
大潭道12-16號

5,234 s.f. (plus 2,652 s.f. garden, 767 s.f. terrace and 939 s.f. roof)

\$200M also for lease \$228K incl.

9250 0300 Randy Chan 陳先生
www.landscape-christies.com/120240.htm



Severn Eight

8 Severn Road

Prestigious 2-bedroom townhouse with private garden overlooking Victoria Harbour panorama
著名兩房排屋連私家花園，享維港全海景，可租可售

山頂
倚巒

3,363 s.f. (plus 461 s.f. garden, 80 s.f. terrace and 794 s.f. roof)

\$230M also for lease \$250K incl.

9093 3381 Stephen Chan 陳先生
www.landscape-christies.com/106601.htm



Bay Villas

57-71 Shouson Hill Road

Rare find sea view townhouse at prestigious Deep Water Bay
深水灣罕有海景排屋，地段尊貴

壽臣山
南源

4,869 s.f. (plus 603 s.f. terrace)

\$280M

9871 6828 Louis Wong 黃先生
www.landscape-christies.com/135517.htm

Interior design
 constructions
 space planning
 project management
 tendering
 landscaping
 quantity survey

Peter M. Cannon

Thank you for all your works over the past 4 months. Our home is beautiful and the time we have spent with our family in the house has been just what we dreamed of...

Perkins road —colonial charm



Sherrie Harps

Joseph is a problem-solver, talented designer, sophisticated and..... now my very good friend. I could not praise him and his firm enough.

Repulse Bay —classical contemporary



Susan Taylor

Thank you for giving me such a beautiful home. I can't say enough good things about you. Joseph -I know first hand why your company has such an excellent reputation. It was worth every penny I spent.

Castle Peak road —clean lines



Ethan King

We were very happy with Joseph as our designer. He made everything easy for us and read our tastes very well. We would recommend JCAW Consultants to anyone. We couldn't be happier with the outcome.

Plantation road —sophisticate mode



Jennifer Park

We are super pleased with our remodel that your team did at our home. Everyone we came in contact with is first class!

Sapphire Chalet —light filled spread



**a kiss is for a second
 admiring domicile is for ever -jc**





5G-5H Bowen Road
Rare find stylish 3-bedroom colonial apartment on tranquil Bowen Road
英式典雅三房住宅，位於寧靜寶雲道

中半山寶雲道5G-5H號

1,700 s.f.
\$24.8M

9028 0147 Jenson Au 區先生
www.landscape-christies.com/123608.htm



Beauty Court
82 Robinson Road
Popular 3-bedroom family flat on convenient Robinson Road
受歡迎三房家庭式住宅，位於羅便臣道

西半山雅苑

1,778 s.f.
\$25M also for lease \$65K incl.

Mira To 9486 1566 杜小姐
www.landscape-christies.com/108739.htm



Hillsborough Court
18 Old Peak Road
Tastefully designed 3-bedroom apartment with greenery view on Lower Peak
品味裝修三房單位，享綠林景致

中半山曉峰閣

1,385 s.f.
\$26.8M

9028 0147 Jenson Au 區先生
www.landscape-christies.com/122048.htm



36-36A Kennedy Road
Conveniently located charming low-rise with view of Hong Kong Park
迷人低密度住宅，位置優越，欣賞香港公園美景，可租可售

中半山堅尼地道36-36A號

1,500 s.f.
\$28M also for lease \$60K incl.

9833 9509 Michelle Chung 鍾小姐
www.landscape-christies.com/99967.htm



Man Yuen Garden
52A-52B Kennedy Road
Mid-rise apartment with open city view at a convenient location of Midlevels Central
中密度住宅，享開揚城市景觀，交通方便，可租可售

中半山文苑花園

2,000 s.f.
\$32M also for lease \$60K incl.

9833 9509 Michelle Chung 鍾小姐
www.landscape-christies.com/107398.htm



11 MacDonnell Road
Boutique 3-bedroom apartment on MacDonnell Road for sale with lease
雅致裝修三房單位，位於麥當勞道，可租可售

中半山麥當勞道11號

2,313 s.f.
\$33M also for lease \$80K incl.

9229 2396 Elaine Chow 周小姐
www.landscape-christies.com/50176.htm



Pearl Gardens
7 Conduit Road
Well decorated 4-bedroom apartment with efficient layout
精緻裝修四房住宅，間隔實用

西半山明珠臺

2,200 s.f.
\$33M

Mira To 9486 1566 杜小姐
www.landscape-christies.com/135047.htm



Beau Cloud Mansion
64 MacDonnell Road
Mid-rise flat in good upkeep for sale
中密度優質住宅，罕有放賣

中半山碧雲樓

2,000 s.f.
\$33.8M

9833 9509 Michelle Chung 鍾小姐
www.landscape-christies.com/124216.htm



Catalina Mansions
98-100 MacDonnell Road
Designer decoration colonial low-rise with huge balcony
麥當奴道英式大宅，市場罕有，可租可售

中半山嘉年大廈

2,300 s.f.
\$35.5M also for lease \$105K incl.

9080 6686 Teresa Lau 劉小姐
www.landscape-christies.com/110374.htm

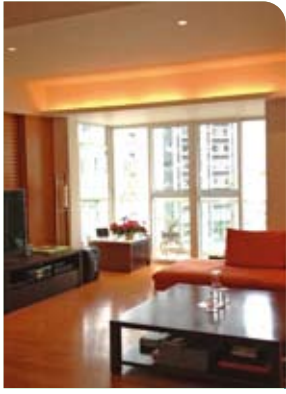


Clovelly Court
12 May Road
Practical flat with facilities in prime location
間隔實用單位，設施齊備，位置優越

中半山嘉富麗苑

2,115 s.f.
\$39M

6258 8847 Anthea Ngai 魏小姐
www.landscape-christies.com/5719.htm



Grand House

110-112 MacDonnell Road

Renovated and spacious 3-ensuite older style flat with large balcony
寬敞三套房單位，全新裝修，連大露台

2,400 s.f.
\$39.8M

9028 0147 Jenson Au 區先生
www.landscape-christies.com/37735.htm

中半山
柏齡大廈



Dynasty Court

23 Old Peak Road

3-bedroom apartment with city view enjoying great facilities on fringe of CBD
城市景觀三房單位，享完善設施，鄰近商業中心區，可租可售

1,970 s.f.
\$40M also for lease \$80K incl.

9486 1566 Mira To 杜小姐
www.landscape-christies.com/1246.htm

中半山
帝景園



Dragon View

39 MacDonnell Road

Mid-rise good upkeeping for sale in prime location
中密度高質素住宅，交通方便

2,500 s.f.
\$45M

9833 9509 Michelle Chung 鍾小姐
www.landscape-christies.com/112301.htm

中半山
龍景樓



Kantian Rise

62 Kennedy Road

Brand new duplex apartment with high privacy in convenient location
全新複式單位，一梯一伙，私隱度高，交通方便，可租可售

2,613 s.f.
\$Open Offer
also for lease \$115K excl.

9093 3381 Stephen Chan 陳先生
www.landscape-christies.com/154947.htm

中半山
康德居



Botanic Terrace

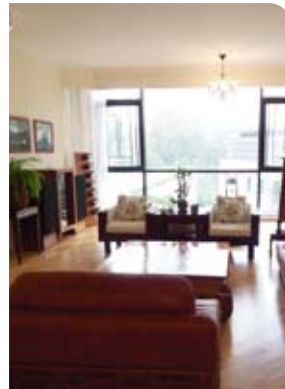
3-5 Conduit Road

Rare duplex with 5 bedrooms in Midlevels West enjoying lush green views
西半山五房複式單位，享翠綠美景，市場罕有

2,984 s.f.
\$48.8M

9080 6686 Teresa Lau 劉小姐
www.landscape-christies.com/50450.htm

西半山
芝蘭台



Regent On The Park

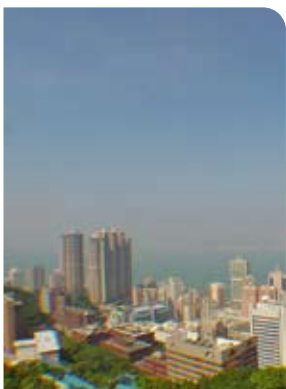
9A Kennedy Road

Conveniently located apartment with indoor pool and tennis courts
中半山地段優越大宅，連室內游泳池及網球場，可租可售

2,720 s.f.
\$56M also for lease \$110K incl.

9093 3381 Stephen Chan 陳先生
www.landscape-christies.com/108993.htm

中半山
御花園



1 Po Shan Road

Well managed 4-bedroom apartment with harbour view
四房優質單位，尊享靚維港景

2,939 s.f.
\$78M

9093 3381 Stephen Chan 陳先生
www.landscape-christies.com/36642.htm

西半山
寶珊道一號



Kennedy Heights

10-18 Kennedy Road

Huge 5-bedroom apartment on fringe of CBD
巨大五房大宅，鄰近商業中心區

3,400 s.f.
\$92M

9809 8570 Stella Lo 羅小姐
www.landscape-christies.com/101979.htm

中半山
堅麗閣



Tregunter Tower 3

14 Tregunter Path

Newly renovated duplex at a prime location with stunning harbour view and comprehensive facilities
中半山全新裝修複式單位，享華麗海景及完善設施，可租可售

3,798 s.f.
\$Open Offer
also for lease \$300K incl.

9229 2396 Elaine Chow 周小姐
www.landscape-christies.com/1808.htm

中半山
地利根德閣三座



Hong Villa

12 Bowen Road

Spacious 4-bedroom apartment with balcony overlooking city and harbour views
寬敞四房單位，連大露台，俯瞰迷人城市及海港景致，可租可售

3,833 s.f.
\$100M also for lease \$140K excl.

6258 8847 Anthea Ngai 魏小姐
www.landscape-christies.com/7396.htm

中半山
峰景花園



Silver Fair Mansion
2E-2F Shiu Fai Terrace
Spacious 3-bedroom flat with open view and big balcony
寬敞三房單位，享開揚翠綠景色，連大露台

東
半
山
銀
輝
大
廈

1,450 s.f.
\$16M

6183 8339 Carman Szeto 司徒小姐
www.landscape-christies.com/72414.htm



Yun On Terrace
135 Blue Pool Road
Rare find practical 3-bedroom mid-rise with private roof
三房中密度單位，連私家天台，市場罕有

跑
馬
地
仁
安
台

1,259 s.f.
\$23.8M

6838 2929 Mark Mak 麥先生
www.landscape-christies.com/95206.htm



The Leighton Hill
2B Broadwood Road
2-bedroom racecourse view apartment with excellent facilities
兩房馬場景住宅，享優質設施

跑
馬
地
禮
頓
山

1,206 s.f.
\$30.15M

9551 1077 Walker Lam 林先生
www.landscape-christies.com/34133.htm



United Mansion
7 Shiu Fai Terrace
Unique mid-rise apartment with 3 ensembles in quiet neighbourhood
獨特中密度住宅，連三房，環境寧靜舒適

東
半
山
騰
黃
閣

2,200 s.f.
\$32M

9809 8570 Stella Lo 羅小姐
www.landscape-christies.com/72764.htm



Cavendish Heights
27-37 Perkins Road
Renowned family apartment with facilities in prime location
著名家庭式單位，設施齊全，位置優越

渣
甸
山
嘉
雲
臺

1,819 s.f.
\$32M

6258 8847 Anthea Ngai 魏小姐
www.landscape-christies.com/32490.htm



Bellevue Court
41 Stubbs Road
High efficiency colonial style mid-rise apartment on Stubbs Road
英式中密度住宅，實用率高，位於司徒拔道

東
半
山
碧
蕙
園

2,700 s.f.
\$50M

9229 2396 Elaine Chow 周小姐
www.landscape-christies.com/50056.htm



Fontana Gardens
1-25 Ka Ning Path
Huge 4-bedroom flat overlooking Hong Kong Stadium
巨大四房單位，俯瞰香港大球場

東
半
山
豪
園

3,300 s.f.
\$52M

9809 8570 Stella Lo 羅小姐
www.landscape-christies.com/45983.htm



Evergreen Villa
43 Stubbs Road
Spacious 4-bedroom apartment with huge balcony on Stubbs Road
司徒拔道寬敞四房單位，連大露台

東
半
山
松
柏
新
村

2,560 s.f.
\$56M

9809 8570 Stella Lo 羅小姐
www.landscape-christies.com/108458.htm



Evergreen Villa
43 Stubbs Road
Newly renovated spacious 4-bedroom apartment with huge balcony
全新裝修四房單位，空間特大，連大露台

東
半
山
松
柏
新
村

2,700 s.f.
\$65M

6330 7888 Cora Ko 高小姐
www.landscape-christies.com/123103.htm



15 Moorsom Road
21-49 Moorsom Road
Rare find single house with private garden situated at a prestigious location
渣甸山罕有獨立屋，連私家花園，地段尊貴顯赫

渣
甸
山
睦
誠
道
15
號

3,154 s.f. (plus 1,000 s.f. garden)
\$Upon Application

6183 8339 Carman Szeto 司徒小姐
www.landscape-christies.com/14618.htm

Chinese Carpet Centre Ltd. offers the ***Best Quality***
of handknotted silk and woolen carpets
available in all range of sizes, colours and design



pure wool 90 Lines
5' x 8'



pure silk 120 Lines
5' x 8'



pure silk 120 Lines
6' x 9'

Special Promotion



pure silk 120 Lines
5' x 8'



pure wool 90 Lines
5' x 8'



pure wool 90 Lines
5' x 8'

CHINESE CARPET CENTRE LTD
珍藝行地毯有限公司

Shop 5, G/F, Houston Centre, 63 Mody Road, TST East, Kowloon
Tel: 2730 7230, 2736 1773 rugs@biznetvigator.com www.ccrugs.com.hk



Stanford Villa

7 Stanley Village Road

Boutique style apartment with private terrace
赤柱典雅住宅，連私家平台

758 s.f. (plus 846 s.f. garden)
\$42K incl.

9229 2396 Elaine Chow 周小姐
www.landscape-christies.com/105308.htm

赤柱
旭逸居



Pokfulam Court

94 Pok Fu Lam Road

Opened 3-bedroom apartment with nice decoration
開揚三房雅致裝修

1,750 s.f.
\$60K incl.

9551 1077 Walker Lam 林先生
www.landscape-christies.com/83029.htm

薄扶林
碧林閣



Residence Bel-Air

28 Bel-Air Avenue

3-bedroom sea view unit with clubhouse facilities at Pokfulam waterfront
薄扶林三房海景單位，享完善會所設施

1,687 s.f.
\$60K incl.

9551 1077 Walker Lam 林先生
www.landscape-christies.com/122952.htm

薄扶林
貝沙灣



The Brentwood

11 Repulse Bay Road

Newly renovated 3-bedroom apartment commanding stunning sea view
全新裝修三房單位，享美麗海景

1,556 s.f.
\$65K incl.

9229 2396 Elaine chow 周小姐
www.landscape-christies.com/35642.htm

淺水灣
蔚峰園



Villa Cecil Phase II

192 Victoria Road

Large 3-bedroom low-rise apartment with panoramic sea view
寬敞低密度三房單位，欣賞無敵靚海景

2,860 s.f.
\$70K incl.

9648 6082 Christine Chong 莊小姐
www.landscape-christies.com/141475.htm

薄扶林
趙苑二期



Baguio Villa

550 & 555 Victoria Road

High efficiency 4-bedroom apartment in Pokfulam next to Cyberport
四房高實用率單位，鄰近數碼港

2,332 s.f.
\$75K incl.

9229 2396 Elaine Chow 周小姐
www.landscape-christies.com/15846.htm

薄扶林
碧瑤閣



Magazine Gap Towers

15 Magazine Gap Road

Spacious 3-bedroom flat with balcony on Magazine Gap Road
巨大三房住宅，連露台，位於馬己仙峽道

2,300 s.f.
\$79K incl.

9493 8275 Sami Woo 胡小姐
www.landscape-christies.com/18200.htm

山頂馬己仙峽道15號



Residence Bel-Air

68 Bel-Air Peak Avenue

Modern 4-bedroom apartment enjoying splendid sea view and ample natural light
時尚四房單位，享美麗海景及和諧日光

2,346 s.f.
\$100K incl.

9250 0300 Randy Chan 陳先生
www.landscape-christies.com/98203.htm

薄扶林
貝沙灣



Ruby Court

55 South Bay Road

Waterfront 4-bedroom apartment in quiet South Bay with facilities
四房海濱大住宅，環境寧靜，連完善設施，可租可售

2,200 s.f.
\$110K incl. also for sale \$Open Offer

6183 8339 Carman Szeto 司徒小姐
www.landscape-christies.com/112689.htm

淺水灣
嘉麟閣



Celestial Garden

5 Repulse Bay Road

Tastefully decorated apartment with lovely sea view on Repulse Bay Road
品味裝修淺水灣頭段海景單位

2,363 s.f.
\$111K incl.

9551 1077 Walker Lam 林先生
www.landscape-christies.com/157154.htm

淺水灣
詩禮花園



High West
142 Pok Fu Lam Road
Four bedrooms apartment with private garden
薄扶林四房住宅，連私家大花園

薄扶林
西苑

3,046 s.f. (plus 1,320 s.f. garden)
\$115K incl.

9648 6082 Christine Chong 莊小姐
www.landscape-christies.com/158435.htm



Twin Brook
43 Repulse Bay Road
Newly renovated large 4-bedroom sea view flat on Upper Repulse Bay Road
全新裝修巨大四房單位，享壯麗海景，可租可售

淺水灣
雙溪

2,700 s.f.
\$120K incl. also for sale \$92M

9080 6686 Teresa Lau 劉小姐
www.landscape-christies.com/122721.htm

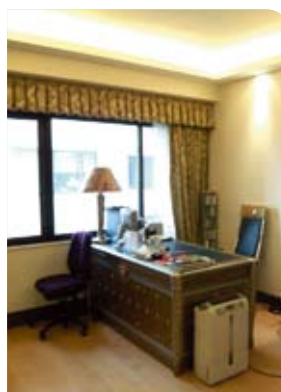


Banyan Villas
9 Stanley Village Road
3-ensuite townhouse with garden view close to Stanley Main Beach
赤柱三套房排屋，享花園美景，鄰近赤柱正灘

赤柱
榕蔭園

2,500 s.f. (plus 1,000 s.f. garden)
\$125K incl.

9215 3999 Boris Wong 王先生
www.landscape-christies.com/8183.htm



Hong Kong Parkview
88 Tai Tam Reservoir Road
Newly decorated apartment with fantastic green view
淺水灣全新裝修住宅，欣賞翠綠景致，可租可售

淺水灣
陽明山莊

2,764 s.f.
\$128K incl. also for sale \$48M

9215 3999 Boris Wong 王先生
www.landscape-christies.com/108892.htm



Woodgreen Estate
5 Shouson Hill Road
Four Bedrooms low-rise with private roof at Shouson Hill
四房低密度住宅，連私家天台

壽臣山
木苑

2,200 s.f. (plus 2,200 s.f. roof)
\$130K incl.

9648 6082 Christine Chong 莊小姐
www.landscape-christies.com/108869.htm



102 Repulse Bay Road
Spacious townhouse with terrace and private roof overlooking Repulse Bay for rent
寬敞排屋連平台花園及私家天台，俯瞰淺水灣

淺水灣
淺水灣道102號

3,500 s.f. (plus 1,031 s.f. garden)
\$130K excl.

6183 8388 Chris Law 羅先生
www.landscape-christies.com/12691.htm



Stanley Knoll
42 Stanley Village Road
Attractive duplex in quiet location with mountain and sea views
迷人複式單位，環境清靜，享山巒及海港景色

赤柱
赤柱村道12號

2,634 s.f. (plus 1,018 s.f. garden)
\$135K excl.

9215 3999 Boris Wong 王先生
www.landscape-christies.com/34598.htm



La Hacienda
29-33 Mount Kellett Road
Charming 3-bedroom apartment with stunning Southside sea view
迷人三房住宅，欣賞壯麗海景

山頂
加列山道29-33號

3,386 s.f.
\$150K incl.

6838 2929 Mark Mak 麥先生
www.landscape-christies.com/122415.htm



Repulse Bay Towers
119A Repulse Bay Road
Unique duplex with tasteful decor taking in a bird's eye view of Repulse Bay Beach
品味裝修複式單位，鳥瞰淺水灣泳灘

淺水灣
保華大廈

3,300 s.f.
\$160K incl.

9871 6828 Louis Wong 黃先生
www.landscape-christies.com/32043.htm



Le Palais
8 Pak Pat Shan Road
Top notch waterfront garden house
大潭高質素大屋，連海濱花園

大潭
皇府灣

3,393 s.f. (plus 741 s.f. garden)
\$190K excl. also for sale \$89M

6330 7888 Cora Ko 高小姐
www.landscape-christies.com/112386.htm



Orient Crest

76 Peak Road

Spacious and nicely renovated 4-bedroom townhouse with private roof terrace and garden on the Peak
雅緻裝修四房排屋，連天台及花園，間隔寬敞

3,313 s.f. (plus 1,000 s.f. garden and 1,000 s.f. roof)

\$170K incl.

6183 8388 Chris Law 羅先生
www.landscape-christies.com/20263.htm

山頂山頂道76號



5 Headland Road

Sought after low-rise apartment with roof terrace and stunning sea view on Headland Road
赫蘭道低密度住宅，連天台，欣賞無敵靚海景

3,200 s.f. (plus 786 s.f. roof)

\$172K excl.

9250 0300 Randy Chan 陳先生
www.landscape-christies.com/36933.htm

淺水灣赫蘭道5號



1 Shouson Hill Road East

1 Shouson Hill Road East

Exquisite townhouse with private garden and roof in a serene neighbourhood of Shouson Hill
壽臣山典雅排屋，連私家天台，環境恬靜舒適

4,063 s.f. (plus 525 s.f. garden and 629 s.f. roof)

\$174K excl.

9809 8570 Stella Lo 羅小姐
www.landscape-christies.com/94618.htm

壽臣山壽臣山道東1號



12 Shouson Hill Road

5-bedroom townhouse with good-size backyard at a quiet location of Shouson Hill
優質五房排屋，連間隔四正後院，環境清幽

3,918 s.f. (plus 727 s.f. garden)

\$185K excl.

6330 7888 Cora Ko 高小姐
www.landscape-christies.com/20068.htm

壽臣山壽山村道12號



Magnolia

29-31 Ching Sau Lane

Newly renovated townhouse with private pool and garage in Chung Hom Kok
春坎角全新裝修排屋，連私家游泳池及車庫

4,200 s.f.

\$188K incl.

6258 8847 Anthea Ngai 魏小姐
www.landscape-christies.com/124009.htm

春坎角靜修里29-31號



The Hazelton

6 Shouson Hill Road

Tastefully decorated detached townhouse with private garden and the garage can park 4 cars
品味裝修排屋，連私家花園，可泊四部車

3,195 s.f. (plus 390 s.f. garden and 548 s.f. roof)

\$198K incl.

9080 6686 Teresa Lau 劉小姐
www.landscape-christies.com/130863.htm

壽臣山榛園



22 Wong Ma Kok Road

Newly decorated unique low-rise flat at tranquil location of Stanley
全新裝修獨特大屋，密度低，環境清幽

2,600 s.f.

\$200K excl.

9215 3999 Boris Wong 王先生
www.landscape-christies.com/11911.htm

赤柱黃麻角道22號



Altadena

27 Barker Road

Spacious duplex with spectacular harbour view prestigiously located on The Peak
山頂寬敞複式大宅，享極美海景，地段顯赫尊貴

4,500 s.f.

\$250K incl.

9871 6828 Louis Wong 黃先生
www.landscape-christies.com/12839.htm

山頂白加道27號



6 Stanley Beach Road

Brand new townhouse in a quiet location with ample open space and stunning sea view
赤柱全新排屋，環境清靜，享開揚海港景致

4,242 s.f. (plus 2,063 s.f. garden, 233 s.f. terrace and 785 s.f. roof)

\$380K incl.

6838 2929 Mark Mak 麥先生
www.landscape-christies.com/147686.htm

赤柱赤柱灘道6號



99-103 Peak Road

Prestigious Peak house with private pool, garden and tasteful decor for rent
著名山頂大屋，連私家游泳池及花園，品味裝修連傢俬

6,115 s.f. (plus 2,273 s.f. garden, 492 s.f. terrace and 617 s.f. roof)

\$500K incl.

9833 9509 Michelle Chung 鍾小姐
www.landscape-christies.com/31761.htm

山頂山頂道99-103號

心血傑作

A labour of love

Strato's Marco Gorini is creating a legacy of art, crafts and cooking in the making of bespoke Italian kitchens

Strato的Marco Gorini從藝術、工藝與烹飪中，發掘創作獨到的意大利訂製廚櫃的秘訣

text : teresa chow

photography : teresa chow & courtesy of strato

During EuroCucina 2012 in Milan, Italy, Italian kitchen brand Strato presented the latest version of its Simplicity Luxury collection, Semplice, embodying a new direction in aesthetics and choice of materials. Mixing copper and bronze, the sculptural kitchen unit was not only a showstopper, it also won the Best of Milan Design Week Award 2012 by Yatzer, setting a new benchmark for bespoke luxury kitchens.

"The power of Semplice comes from its perfection," says designer Marco Gorini, who co-founded Strato with Gianna Farina in 1987. Since then, the company has built a reputation for craftsmanship, cutting-edge technology and uncompromising quality. Recently opening in the historical heart of Milan, the new Spaziostrato showroom targets customers seeking design and functionality, while also performing double-duty as a gallery showcasing the love of art of both founders.

Behind the glamour and glitz, however, the heart of Strato resides in Talamona, located in the province of Sondrio in the Italian region of Lombardy, about 80 km northeast of Milan. This is what Gorini refers to as "the laboratory" of the brand — the manufacturing plant specialises in the construction of hand-finished, tailor-made kitchens. "At my laboratory, pieces need to pass through many hands, so the craftsmen need to be extremely well trained," he says.

Strato is best known for its skill in combining different materials, so the factory houses not just the most advanced production machinery, but also highly specialised workers. "I make every kitchen myself, but no man could do it by himself. Most of my craftsmen came to work for us at a young age and have acquired highly skilled techniques," he says.

Fittingly, Gorini presents two personas, depending on where he is. Outside the factory, he is stylishly dressed; inside the factory, he dons a white lab coat and will always be seen toting a Strato scale. This scale, he says, is as important to him as a sketchbook is to architects, as precise measurements are a critical first step in the design and construction of a great kitchen.

Before entering the design industry, Gorini worked in fashion for two years. He then went to his father's factory, which manufactured doors and windows, while he was finishing his studies. "After that, I went to the USA for a year and when I came back, I decided to establish my own brand. I believe it is direct influence from my father that I am interested in design too," he says. That Gorini is himself a gourmet foodie and chef also became a factor in the building of his kitchen empire. "I like to cook and I think it's better to cook in a nice place with all the systems ergonomically correct," he explains.

In his 20-year career in kitchen design, the components of technology, functionality and aesthetics have become fundamental to his philosophy. "I agree with aesthetics, but sometimes they can be cold. But look at our kitchens and you see emotion — the lines and the pure quality are what I call the emotion."

In making every Strato kitchen, Gorini balances both emotional and rational factors. "You have to be free to express yourself; I am almost an artist forced to be highly technical," he says. "But I never do prototypes, because all the kitchens have to be completed the first time. I need to know every material and measurement well — I make the design and I know it works."



EuroCucina 2012在米蘭舉行期間，意大利廚櫃品牌Strato發表了SimplicityLuxury系列裡的最新款色Semplice，不但帶來全新的設計方向，亦引入新的物料選擇。結合銅與青銅的廚櫃如雕塑般美，不但吸引參觀人士駐足欣賞，更贏得由Yatzer頒發2012年米蘭設計週大獎，為訂製奢華廚櫃定下新指標。

設計師MarcoGorini說：「Semplice的威力源自其完美的設計。」他與GiannaFarina在1987年共同創辦Strato，自此品牌便建立起結合工藝、先進技術與堅守品質的商譽。全新的Spaziostrato陳列室早前於米蘭歷史城區的核心地帶開幕，為追求設計與功能的顧客開啟方便之門，同時亦充當藝術畫廊，展出兩位創辦人鍾愛的藝術作品。

在炫目耀眼的面貌背後，Strato的心臟其實位於Talamona，就在米蘭東北面80公里倫巴底區裡的松德里奧省。Gorini把這裡形容為品牌的「實驗室」，專責製造手工修飾的度身訂製廚櫃的工場。他說：「在我的實驗室裡，組件需經過許多雙手製作，所以每個工匠都得訓練得很精熟。」

Strato的過人之處，就是精於結合不同物料。因此，工場不僅配備最先進的生產機器，工人亦是優秀的專才。他說：「每個廚櫃我都自己創作，但沒有人可以靠自己就造出廚櫃來。我們大多工匠很年輕便來工作，練出很精湛的木工技術。」

Gorini會以兩種不同姿態示人，全看他身在何方。工場以外，他一身打扮時尚；在工場裡，他披上白色實驗袍，總帶著印有Strato的尺子四處走。他指這把尺子對他而言，等同掃描本對建築師般重要，精準量度是設計與建造卓越廚櫃關鍵的第一步。

投身設計以前，Gorini在時裝界工作了兩年。他後來一邊完成學業，一邊到父親製作門窗的工廠工作。他說：「之後，我在美國住了一年，而回來時我決定要建立自己的品牌。我相信是受到父親直接的薰陶，我才也對設計感到興趣。」Gorini本身是美食家兼廚師，亦促成他建立個人廚櫃王國。他解釋：「我喜歡下廚，也覺得在廚櫃設備都符合人體工學的地方煮食才算好。」

20年的廚櫃設計生涯中，科技、功能與美學都是Gorini設計哲學的根基。他說：「我認同美學，但有時候美學會來得很冷酷。但看看我們的廚櫃便會感受到情感——線條與純淨特質便是我所說的情感。」

Gorini製作每個Strato廚櫃，都會平衡情感與理性的因素。他說：「你得自由表達自己。我幾乎是被迫出擁有極高技術的藝術家。但我從來都不造產品原型，因為所有廚櫃初次製作都經已是完整的。我需要清楚知道每種物料與尺寸。設計是我創作的，我知道是可行的。」

For more features on design and architecture, don't miss the August issue of Perspective magazine, and check out our website at www.perspectiveglobal.com

請密切留意《透視》八月號更多有關建築與設計的專題報導，或登入www.perspectiveglobal.com參閱精彩內容。



Living in style®

www.living-instyles.com

At **Living in Style**, we mainly use valuable and rare hardwood. We provide HANDMADE furniture, lighting and wood sculptures which are inspired by nature. You will also find home décor accessories as well as customised programmes for visual arts. We offer an exceptional choice of the latest national and international brands exclusive to **Living in Style**. **Living in Style** creates your own oasis of rejuvenation and tranquility, where a sense of understated luxury is attainable.

非凡氣派 超級傢俬
Living in Style主要選用珍貴罕有的原木，打造天然簡約，獨特又時尚的手工傢俱、燈飾與木工藝品，並代理世界各地頂級傢俬品牌，設計訂做為你個人而設的傢俱，創造悠然恬靜的生活綠洲，體驗低調的奢華享受

Living in Style – Flagship Store (Tuen Mun)
Showroom: Room 712, 7/F, Block 3, Nan Fung Industrial City, No. 18 Tin Hau Road, Tuen Mun, Hong Kong
Tel: 2463 8498 **Fax:** 2463 8182
Email: living_style@live.hk

Living in Style – Specialist Dealer (Central)
Showroom: G/F, No. 174 Wellington Street, Central, Hong Kong
Tel: 2815 5515 / 2815 5516 **Fax:** 2815 5517
Email: cvtstyle@biznetvigator.com

都會之選 Designed for urbanites

With a cool interior highlighted via metallic tones, this 2,195 s.f. apartment is perfect for a young family or couple. Part of a 35-storey building with two units per floor, the apartment has four bedrooms (one ensuite), two bathrooms, a combined living and dining room, a kitchen, a maid's room and a balcony. Upon entrance, the combined living and dining room features an abstract clock mounted on a shimmery asphalt wall. This faces the balcony, from where residents get views of Victoria Harbour as well as iconic buildings such as the Bank of China Tower, the HSBC main building, and the IFC towers.

Visalia Garden is situated in the popular residential area of MacDonnell Road in Mid-levels Central. Business and entertainment districts are within easy driving and walking distance and the area is also conveniently served by buses, mini-buses and taxis.

這個2195平方呎的單位一室金屬色調，突顯型格設計，是年輕家庭或新婚夫婦的不二之選。蔚山花園樓高35層，每層只有兩伙，而這單位便有四睡房（一間套房）、兩間浴室、客廳、廚房、家傭房與陽台。門口直達客廳，抽象的時鐘掛在門邊一幅閃爍的瀝青牆上。特色牆對著陽台，不僅眺望維港，中銀大廈、匯豐總行與國際金融中心等地標亦盡收眼底。

蔚山花園位於中半山麥當勞道一受歡迎住宅區，步行或駕車到商業及娛樂區均十分便利，亦可選搭區內便利的公共交通，包括巴士、小巴與的士。

Visalia Garden

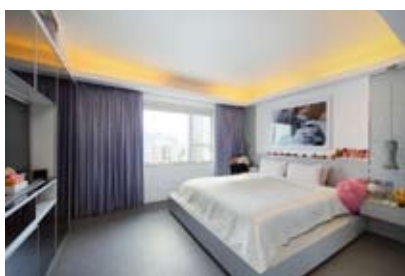
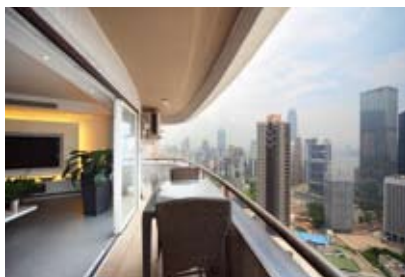
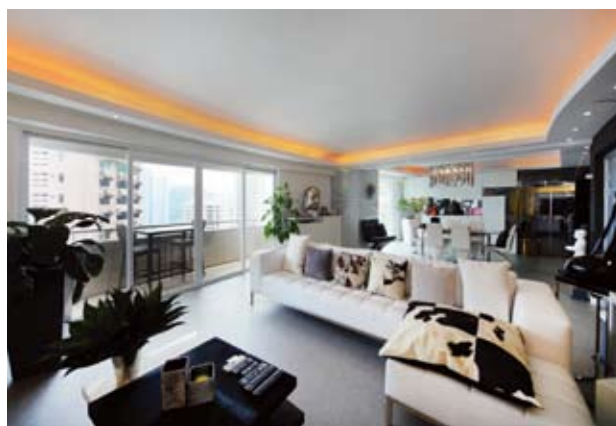
蔚山花園

48 MacDonnell Road, Midlevel Central

中半山 麥當勞道48號

2,195 s.f.
\$39,000,000

☎ 9028 0147 Jenson Au 區先生
🌐 www.landscape-christies.com/121861.htm





Fair Wind Manor

6A-6B Seymour Road

Rare mid size apartment with open view at Midlevels west
西半山罕有中型住宅，享開揚景觀

1,100 s.f.
\$42K incl.

9250 0300 Randy Chan 陳先生
www.landscape-christies.com/112068.htm

西
半
山
輝
永
大
廈



Tregunter Tower 2

14 Tregunter Path

Spacious 4-bedroom apartment on Lower Peak with mountain and neighbourhood views
寬敞四房大宅，享山巒美景

3,052 s.f.
\$70K incl.

6258 8847 Anthea Ngai 魏小姐
www.landscape-christies.com/156809.htm

中
半
山
地
利
根
德
閣
座



23 Po Shan Road

4-bedroom apartment with huge living room and balcony in a tranquil neighbourhood
西半山四房單位，連寬敞客廳及露台，環境清幽恬靜

3,000 s.f.
\$75K incl.

9028 0147 Jenson Au 區先生
www.landscape-christies.com/24354.htm

西
半
山
寶
珊
道
23
號



Catalina Mansions

98-100 MacDonnell Road

Colonial 3-bedroom apartment on MacDonnell Road
英式三房住宅，位於麥當勞道

2,300 s.f.
\$80K incl.

9833 9509 Michelle Chung 鍾小姐
www.landscape-christies.com/37788.htm

中
半
山
嘉
年
大
廈



Park View Court

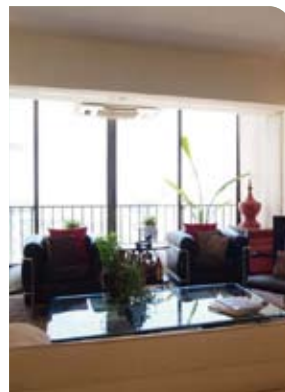
1 Lyttelton Road

Practical 4-bedroom flat at quiet yet convenient location
實用四房單位，環境清靜，交通方便

2,857 s.f.
\$85K incl.

9229 2396 Elaine chow 周小姐
www.landscape-christies.com/40835.htm

西
半
山
恒
柏
園



Monticello

48 Kennedy Road

Bright and airy apartment with internal stairs to private roof terrace
光猛通風住宅，連內置樓梯及私家天台

1,447 s.f. (plus 1,000 s.f. roof)
\$88K incl.

9486 1566 Mira To 杜小姐
www.landscape-christies.com/71103.htm

中
半
山
滿
峰
台



Po Garden

9 Brewin Path

3-bedroom apartment with huge living room just 5 minutes to CBD
三房單位連巨大客廳，鄰近商業中心區

2,586 s.f.
\$90K incl.

9809 8570 Stella Lo 羅小姐
www.landscape-christies.com/24391.htm

中
半
山
寶
園



May Tower 1

7 May Road

Colonial style mid-rise apartment in prime location
英式中密度住宅，位置優越

2,850 s.f.
\$95K incl.

9833 9509 Michelle Chung 鍾小姐
www.landscape-christies.com/33362.htm

中
半
山
梅
苑
一
座



1A Robinson Road

Unique 3-bedroom penthouse with private roof enjoying open city views in Midlevels Central
獨特三房頂層單位，連私家天台，享開揚城市景觀

2,200 s.f. (plus 2,200 s.f. roof)
\$95K incl.

9493 8275 Sami Woo 胡小姐
www.landscape-christies.com/118844.htm

西
半
山
羅
便
臣
道
1
號
A



Tavistock 2

10A Tregunter Path

Renowned apartment building with deluxe clubhouse at a prestigious location
著名半山住宅，享豪華會所設施，地段顯赫尊貴，可租可售

2,030 s.f.
\$95K incl. also for sale \$58M

9486 1566 Mira To 杜小姐
www.landscape-christies.com/27610.htm

中
半
山
騰
皇
居
座



Kennedy Apartment

34A Kennedy Road

Rare spacious apartment with full Hong Kong Park view
罕有寬敞三房單位，享香港公園美景

2,500 s.f.
\$100K incl.

9080 6686 Teresa Lau 劉小姐
www.landscape-christies.com/99978.htm

中半山
堅尼地大廈



11 MacDonnell Road

High privacy modern flat with quality fits and finishes
私隱度高尚住宅，優雅裝修，可租可售

2,313 s.f.
\$105K incl. also for sale \$40M

6258 8847 Anthea Ngai 魏小姐
www.landscape-christies.com/124576.htm

中半山
麥當勞道二號



Brewin Court

5-7 Brewin Path

Colonial mid-rise apartment on Lower Peak with huge balcony and open green views
英式中密度住宅，連大露台，享開揚翠綠景致

2,600 s.f.
\$110K incl.

9486 1566 Mira To 杜小姐
www.landscape-christies.com/11659.htm

中半山
明雅園



Estoril Court

55 Garden Road

Large practical 4-bedroom apartment with open city view on fringe of CBD
實用四房單位，間隔寬敞，享開揚城市景致，鄰近商業中心區

3,347 s.f.
\$113K incl.

9493 8275 Sami Woo 胡小姐
www.landscape-christies.com/32122.htm

中半山
愛都大廈



Piccadilly Mansion

4-6 Po Shan Road

Large practical harbour view 4-bedroom apartment with newly decorated in tranquil environment
全新裝修四房大宅，寬敞實用，享海港美景，環境舒適寧靜

2,800 s.f.
\$118K incl.

6183 8339 Carman Szeto 司徒小姐
www.landscape-christies.com/35976.htm

西半山
碧苑



Garden Terrace

8A Old Peak Road

High efficiency and good condition 4-bedroom apartment with fantastic harbour view
實用率高四房單位，欣賞醉人海景

3,319 s.f.
\$120K incl.

9080 6686 Teresa Lau 劉小姐
www.landscape-christies.com/36624.htm

中半山
花園臺



Garden Terrace

8 Old Peak Road

Newly renovated large apartment with high efficiency
全新裝修寬敞住宅，實用率高

2,798 s.f.
\$145K excl.

9486 1566 Mira To 杜小姐
www.landscape-christies.com/96258.htm

中半山
花園臺



Century Tower 2

1A Tregunter Path

4 bedrooms apartment in Midlevels Central
中半山特色四房單位

3,663 s.f.
\$180K incl.

9648 6082 Christine Chong 莊小姐
www.landscape-christies.com/5763.htm

中半山
世紀大廈二座



Tavistock 1

10-10A Tregunter Path

Nicely decorated apartment with excellent clubhouse facilities in Midlevels Central
雅致裝修住宅，盡享優質會所設施

4,860 s.f.
\$300K excl.

6330 7888 Cora Ko 高小姐
www.landscape-christies.com/96561.htm

中半山
地厘根德里一〇號



Aigburth

12 Tregunter Path

Huge 4-ensuite harbour view apartment with excellent facilities prestigiously located on Lower Peak
寬敞四套房海景大宅，享優質設施，地段尊貴

6,100 s.f. (plus 215 s.f. terrace)
\$480K excl.

9871 6828 Louis Wong 黃先生
www.landscape-christies.com/26301.htm

中半山
譽皇居



Shiu Fai Terrace Garden

3-4 Shiu Fai Terrace

Mid-rise 3-bedroom flat with open city view in convenient location
中密度三房單位，享開揚城市景觀，交通方便，可租可售

1,596 s.f.
\$45K incl. also for sale \$18M

9493 8275 Sami Woo 胡小姐
www.landscape-christies.com/122624.htm

東半山
肇輝台花園



2-6A Wilson Road

Colonial low-rise 3-bedroom apartment with balcony enjoying green view
英式低密度三房單位，連露台，享翠綠景色，可租可售

1,550 s.f.
\$60K incl. also for sale \$32M

6183 8388 Chris Law 羅先生
www.landscape-christies.com/124604.htm

渣甸山
衛信道 2-6A 號



Beverly Hill

6 Broadwood Road

Popular 4-bedroom city view apartment well served by shuttle bus service and clubhouse facilities
受歡迎四房住宅，享城市景致，連穿梭巴士服務及會所設施，可租可售

1,748 s.f.
\$65K incl. also for sale \$25.8M

Carman Szeto 6183 8339 司徒小姐
www.landscape-christies.com/83187.htm

跑馬地
比華利山



Craigmount

34 Stubbs Road

Nicely decorated 3-bedroom apartment in quiet yet convenient location
雅致裝修三房單位，環境清靜，交通便利

2,200 s.f.
\$80K incl.

9493 8275 Sami Woo 胡小姐
www.landscape-christies.com/37209.htm

東半山
紀園



Bellevue Court

41 Stubbs Road

Brand new decor colonial style mid-rise apartment with high-ceiling in Midlevels East
全新裝修英式中密度住宅，樓底特高

2,700 s.f.
\$83K incl.

9080 6686 Teresa Lau 劉小姐
www.landscape-christies.com/28371.htm

東半山
碧蕙園



Elm Tree Towers

8-10 Chun Fai Road

3-bedroom apartment in Jardine's Lookout with panoramic harbour view
渣甸山三房單位，享美麗全海景，可租可售

2,028 s.f.
\$85K incl. also for sale \$46.6M

9493 8275 Sami Woo 胡小姐
www.landscape-christies.com/37286.htm

渣甸山
愉富大廈



Nicholson Tower

8 Wong Nai Chung Gap Road

4-bedroom apartment with practical layout and superb panorama of the city, mountains and Victoria Harbour in Midlevels East
東半山四房單位，間隔實用，享無敵城市山巒及海港景致

1,993 s.f.
\$90K incl.

9493 8275 Sami Woo 胡小姐
www.landscape-christies.com/9298.htm

東半山
蔚豪苑



Fontana Gardens

1-25 Ka Ning Path

Spacious 4-bedroom apartment on fringe of Causeway Bay
寬敞四房單位，鄰近銅鑼灣，交通便利

3,300 s.f.
\$90K excl.

6183 8339 Carman Szeto 司徒小姐
www.landscape-christies.com/45973.htm

東半山
豪園



Broadview Villa

20 Broadwood Road

Large apartment with a bird's eye view of Hong Kong Stadium
東半山巨大住宅，鳥瞰香港大球場美景，可租可售

3,134 s.f.
\$100K incl. also for sale \$65M

9551 1077 Walker Lam 林先生
www.landscape-christies.com/9779.htm

跑馬地
樂景園



47A Stubbs Road

Nice 3-bedroom apartment with harbour view on Stubbs Road
三房迷人住宅，享壯觀海港景色，位於司徒拔道

2,400 s.f.
\$120K incl.

9028 0147 Jenson Au 區先生
www.landscape-christies.com/37074.htm

東半山
司徒拔道 47A



Victoria Heights

43A Stubbs Road

Rarely available apartment with huge living room enjoying panorama of the city and Victoria Harbour
罕有寬敞大客廳住宅，享壯麗城市及維港景致，可租可售

2,650 s.f.

\$130K incl. also for sale \$70M

6330 7888 Cora Ko 高小姐

www.landscape-christies.com/37141.htm

東半山
威利閣



Cavendish Heights

27-37 Perkins Road

Harbour view 4-ensuite duplex with brand new decorations in popular estate
全新裝修四房複式單位，欣賞迷人海景

3,363 s.f.

\$160K incl.

9093 3381 Stephen Chan 陳先生

www.landscape-christies.com/32390.htm

渣甸山
嘉雲臺



Henderson Road, 2-2A

Unique colonial garden house in Jardine's Lookout
渣甸山獨特英式花園大屋，可租可售

3,115 s.f. (plus 3,014 s.f. garden, 262 s.f. terrace and 569 s.f. roof)

\$250K excl. also for sale

\$Open Offer

9833 9509 Michelle Chung 鍾小姐

www.landscape-christies.com/94694.htm

渣甸山
軒德孫道 2-2A 號



Broadview Villa

20 Broadwood Road

Huge penthouse with roof terrace in Upper Happy Valley enjoying stunning harbour and city views
跑馬地巨大頂層住宅，連私家平台，尊享海港及城市景致

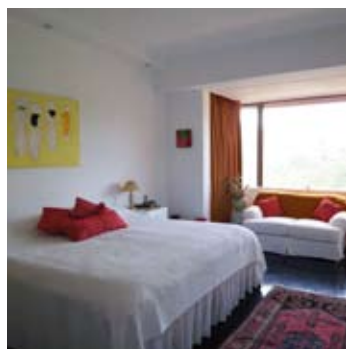
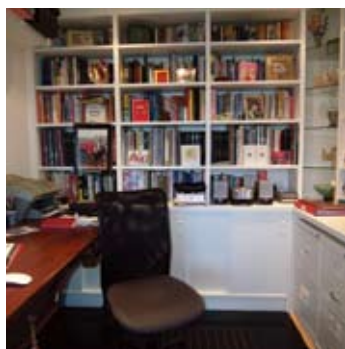
5,019 s.f. (plus 703 s.f. terrace)

\$298K incl.

9871 6828 Louis Wong 黃先生

www.landscape-christies.com/12249.htm

跑馬地
樂景園



高尚家庭樂

Upmarket & family-oriented

Hong Kong Parkview

陽明山莊

88 Tai Tam Reservoir Road, Repulse Bay

淺水灣 大潭水塘道88號

2,764 s.f.

\$48,000,000

This 2,764 s.f. apartment enjoys expansive green views best appreciated from the balcony, where homeowners can also sit and read on a fine day. The spacious apartment has three bedrooms (two ensuite), 3.5 bathrooms, a combined living and dining room, a study with ample built-in shelving, a maid's room and a fully equipped kitchen.

Situated in the expansive Tai Tam Country Park amid verdant greenery, Hong Kong Parkview is one of the largest upmarket, family-oriented housing estates in the city. A full range of recreational facilities are included in the deluxe clubhouse. There are also an international kindergarten and a well stocked supermarket within the complex. Causeway Bay, Central and the beaches of Island South are all within close proximity and can be accessed via Hong Kong Parkview's frequent shuttle bus service. Taxis are also readily available.

單位面積2764平方呎，坐擁遼闊翠綠山景，陽台的景緻尤其美麗，風和日麗的日子屋主可以靜坐享受閱讀之樂。這個偌大寬敞的住宅共有三間睡房（兩間為套房）、三間半浴室、客飯廳、裝上嵌牆式書櫃的書房、家傭房與設備齊全的廚房。

陽明山莊位於遼闊的大潭郊野公園，四周一派翠綠，是香港其中一個專為家庭而建的大型高尚住宅屋苑，豪華會所內消遣娛樂設施齊全，屋苑內更有國際幼稚園與貨品種類多元化的超級市場。銅鑼灣、中環與南區的海灘都近在咫尺，屋苑的穿梭巴士班次頻密，乘搭的士亦十分便利。



9093 3381 Stephen Chan 陳先生

www.landscape-christies.com/112895.htm

Prime Residential Whole Block

Knightsbridge SW3

Whole house in prime Knightsbridge address, a beautiful quiet residential street a short walk from Harrods. The House is configured as 7 apartments with a lift. Good long term investment potential.

位於Knightsbridge的住宅大廈，環境清幽恬靜，大廈重新改建為7個住宅單位，並配有電梯，具長遠投資潛力。

Freehold
5,780 s.f.
£9-12M



Prime Commercial

Mid-Town WC1

Attractive Office building in the Grays Inn legal district, renovated in 2002. The Single tenant is a law firm with lease until 2022 with upward only rent reviews. Impressive views over Grays Inn gardens from all floors. High Yield

位於Grays Inn律師樓集中地的辦公大廈，於2002年翻新，現租予一間律師樓，租約至2022年，享Grays Inn gardens的醉人景致，擁有回報長期租約。

Gross Yield 6.8%
Freehold
9,142 s.f.
£5-7M



Small Prime Commercial

West End W1

Small attractive Grade II listed commercial property. Prime West End location near Oxford Circus. Single tenant is a major high street bank, with 15.5 years remaining on FRI lease with 5 yearly upward only rent reviews. High yield for such a central location.

這座具吸引力的小型商業大廈是2級文物，鄰近Oxford Circus，租戶為一銀行，擁有15長期租約，回報極高。

Gross Yield 4.2%
Freehold
5,805 s.f.
£3-5M



Small Prime Retail

Clerkenwell EC1

Purpose built retail unit in Clerkenwell "Tech City" district adjacent to the City of London. Newly built ground and lower ground floor unit, completion in September 2012. Pre-let to Tesco convenience store on new 20 year lease, with 5 year upward only rent reviews.

座落於Clerkenwell的小型零售大廈，毗鄰倫敦市中心，地下及地庫一層重新改建，預計2012年9月完工，現已租予Tesco便利店，擁有20長期租約。

Gross Yield 5.5%
Long Leasehold
4,728 s.f.
Below £2M



Prime Residential

Kensington & Chelsea SW5

While House converted into 8 apartments in prime location in "the Royal Borough". Fully renovated in 2006. Four 2 Bedroom, Three 1 Bedroom and 1 Studio Flat. Possible to operate as serviced apartments.

位於Kensington的住宅大廈，重新改建為8個住宅單位，於2006年全面翻新，4個兩房單位，3個1房單位，1個開放式單位，可用作服務式住宅單位。

Gross Yield 4.5%
Freehold
5,280 s.f.
£5-7M



Prime Commercial High Yield

City EC2

Small City Office block, let to single tenant. High Yield. Opportunity in future to expand to 56,000 s.f.

位於The City市中心的小型辦公室大樓，現租予單一租戶，坐享11%回報，長遠可擴張發展至56,000平方呎，投資首選。

11% Gross Yield
Freehold
38,000 s.f.
£15-18M



Prices on luxury UK properties are rarely quoted in listings. Interested parties are encouraged to make enquiries on price indications with Landscape

PRICE UPON ENQUIRY 歡迎查詢

6183 8388 Chris Law 羅先生



FARRINGTON INTERIORS

THE MOMENT MADE BEAUTIFUL



10,000 sq. ft. Flagship Store 旗艦店

31/F, World Trade Centre, 280 Gloucester Road, Causeway Bay, H.K.

香港銅鑼灣告士打道280號世貿中心31樓

T: (852) 2808 1000 F: (852) 2808 2800

Shop 店鋪

G/F, 87 Wong Nai Chung Road, Happy Valley, H.K.

香港跑馬地黃泥涌道87號地下

T: (852) 2808 0303 F: (852) 2801 6732

Opening Hours 營業時間

Mon - Fri

星期一至五

11:00 a.m - 7:00 p.m

Sat, Sun & Public Holiday

星期六、日及公眾假期

1:00 p.m - 6:00 p.m

WWW.FARRINGTONINTERIORS.COM