

select deluxe homes

The Key

大宅[®]

www.landscape.com

AUGUST | 2010

Volume 70



VICTORIAN LUXE

Glamorous abode in Stanley Bay

TRANQUIL DWELLING

Scenic delight of sea view with tranquility

“Success is to be measured not so much by the position that one has reached in life as by the obstacles which he has overcome while trying to succeed.”

「成功並不是用一個人達到甚麼地位來衡量，而是依據他在邁向成功的過程中，克服了多少困難。」

- Booker T. Washington
布克•華盛頓

Sizeable transactions of over HK\$80 million were recorded on Hong Kong Island for mostly townhouses in the southern regions. Large apartments also have strong followers. While many buyers are coming out with improved bids, it has been found that the sellers are even more aggressive in raising the offers, the mainlanders are still the significant part among the buying force, a significant part still comprises, but there is a growing trend that many local investors are joining the shopping force. Since the economic recovery of Hong Kong in 2003, the upper echelon of the local wealthy population has benefited the most from asset value growth, and has amassed more returns in the stock market and property market. With interest rates hovering in historical lows it is predicted that we will not see any signs of increase anytime soon. Earned profits have been ploughed back into the property market, in particular luxury property markets that have always “enjoyed” an undersupply condition. The influx of more expatriates, due to a new round of hiring among multinational corporations, has led to a sustained rental growth in the high end market since last year – making property investments more rewarding as owners can reap better yields while riding on a wave of capital appreciation.

最近，香港島錄得大量超過HK\$ 8000萬的成交，尤其位於南區的獨立洋房，而大面積的公寓單位亦受追捧。很多買家出手毫不吝嗇，賣家自然更速取地價。雖然內地人士仍是主要買家，但不少本地投資者也紛紛入市，並漸漸形成一股趨勢。自2003年經濟復甦，香港的富裕階層受惠於資產增值，同時從股票市場及地產市場獲得豐厚回報。目前利率在歷史低位徘徊，而且在短期內我們也見不到會有上升的可能。大量的獲利資金再投入投資市場，特別是一向供應短缺的豪宅市場。跨國企業的新輪招聘令大量外籍人士湧入香港，使高檔物業的租金自去年開始持續上升，更令投資物業的業主在資產增值的同時享有更高的租金回報率。

By K.S. Koh
ks-koh@landscope.com

Read the full article at Market Watch, www.landscope.com/keynotes
如欲觀看全文，請登入Market Watch網站，網址：www.landscope.com/keynotes

published and distributed by



Landscope Realty Limited C-018733
a member of Landscope Surveys Ltd

Tel: 852-2866 0022 Fax: 852-2866 0015
Email: info@landscope.com Website: www.landscope.com
Unit 3106, 31/F, Hopewell Centre, 183 Queen's Road East, Wanchai, Hong Kong

The information, text, photos, analyses and projections contained herein are provided solely for the convenience of prospective clients and no warranty or representation as to their accuracy, completeness or timeliness is made by Landscope Surveys Limited, Landscope Realty Limited or the owners, none of whom shall have any liability or obligation with respect thereto. Interested parties should rely on their own investigations, interpretations and analysis in connection with the purchase or selling thereof.

Information has been provided to us by sources deemed reliable, but no warranty or representation is made as to its accuracy, completeness or timeliness. These offerings are made subject to contract, correction of errors, omissions, prior sale of assets, change of price or terms or withdrawal from the market without notice. The contents of this Key Note are for reference only and do not constitute all or any part of a contract.

Reproduction of any material in whole or part without written permission from InCorporation Ltd is strictly prohibited. All information is correct at the time of going to press. The opinions expressed in The Key are those of the authors and are not necessarily endorsed by InCorporation Ltd.

Copyright 2016



- 04 Modern Victorian Luxe
維多利亞式的富家氣派
- 08 in3D Survey
同卷調查
- 09 Luxury property news
第一手豪宅資訊
- 12 Tranquil Dwelling
寧靜居所

The Key (The No.1 Publication for Luxury Properties)

The Key is a monthly, bilingual lifestyle publication focusing on luxury residential properties in Hong Kong Island. It is said to cover 60,000 urban elites comprising of Hong Kong's most affluent inhabitants.

These consist of Landscope's VIP clients, who mainly reside in The Peak, Mid-Levels, Southside, Kowloon Tong, Homantin and other select up-market residential areas such as Tai Po, Sai Kung and Clear Water Bay, etc.

How may you list your property with The Key?

If you would like to list your property in an upcoming issue of The Key, you may contact Loretta Lui on +852 3102 4818 or visit us at www.landscope.com/sell-to-let. Alternatively, simply fill out the below and fax back to us on +852-2866 0015.

Property Details

Asking Rental / Sale Price

Floor Area

Contact Person

Telephone

Email

Our KeyPerson will contact you for follow-up work.

designed and produced by



InCorporation Limited
Your No. 1 Integrated Marketing Communications Partner in Hong Kong and China

Tel: 852-3699 0888 Fax: 852-3699 0889
Email: marketing@incorp.com.hk Website: www.inmagazine.com.hk
12/F Cyberport 2, 100 Cyberport Road, Hong Kong



Situated on the Broadwood Road, the privileged mid-levels of Happy Valley, Broadwood Twelve overlooks the breath-taking view of 180° panoramic Victoria Harbour and the unparalleled Race Course. Its superb location is conveniently connected with all of Hong Kong. The prestigious vicinity includes a renowned school network providing the caring parents an array of top-notch schools from kindergartens, primary schools, secondary schools and international schools, as well as notable private clubs.

The premise offers various units with area from 1,650 sq ft to 3,236 sq ft for selection including two penthouse duplexes with private roofs. A 20,000 sq ft luxurious and functional clubhouse together with a podium garden is unique in the neighbourhood.

「樂天峯」盤踞跑馬地半山樂活道的傳統尊貴地段，飽覽180度醉人的維港景致及尊尚獨有的馬場勝景，位置優越，交通四通八達。區內名校林立，香港著名幼稚園、小學、中學甚至國際學校雲集；而且毗鄰多個香港尊尚私人會所。

單位面積由1,650平方呎至3,236平方呎不等，其中包括兩套頂層複式單位連私人天台可供選擇，並設有同區罕有的豪華會所連平台花園，設施應有盡有。

Address: No. 12 Broadwood Road, Happy Valley

No. of Tower: 1
No. of Flats: 76 including 2 penthouse duplex units and 2 units with terrace
No. of Storeys: 45 storeys
Flat Type: Standard Flat

3-bedroom incl. 1 ensuite

Gross Area 1,650 sq.ft. and 1,653 sq.ft.

Prestigious Flat 1,630 sq.ft. (plus 1,762 sq.ft. terrace)

Units with Terrace 1,632 sq.ft. (plus 1,801 sq.ft. terrace)

Penthouse Duplexes 3,236 sq.ft. (plus 1,097 sq.ft. roof)

3,234 sq.ft. (plus 884 sq.ft. roof)

地址：

物業座數：

單位數目：

住宅層數：

單位類型：

標準單位

3房連主人套房

特色單位

特色單位連平台

頂層複式單位

頂層複式單位

頂層複式單位

頂層複式單位

頂層複式單位

頂層複式單位

頂層複式單位

頂層複式單位

頂層複式單位

頂層複式單位

頂層複式單位

頂層複式單位

Broadwood Twelve 跑馬地 樂天峯

No. 12 Broadwood Road, Happy Valley

Chris Law 羅先生 6183 8388

Stella Lo 羅小姐 9809 8570

Louis Wong 黃先生 9871 6828

Walker Lam 林先生 9551 1077

Sandra Choi 華小姐 9234 1109

Yvonne Chang 鄭小姐 9088 4666

Appointed Agent 指定代理



Modern Victorian Luxe

維多利亞式的富豪氣派

Nestled in prestigious Stanley, this luxurious three-storey house with a total area over 8,300 sq ft including over 1,000 sq ft private gardens and roof terraces at Regalia Bay overlooking 180 degrees Stanley Bay sea view is the perfect interpretation of extravagance.

The house adopts a Victorian Palace style adorned with a silver-white tone interior design, a modern Italian chandelier, and an emulated fireplace which are the core elements of Victorian embellishment. Gorgeous crystal lighting and ornate details – it actually exudes a splendid aristocratic and noble ambience. The handsome foyer, lofty high ceilings and vast picture windows draw the beauty of the spectacular views of Stanley Bay and Pacific Ocean into the house's interior. Featuring a scenic seascape, this seafront house is accompanied with the soothing sound of waves and the soft chattering of birds which creates a concerto of nature. Imagine yourself overlooking the poetic natural sceneries, listening to the call of the ocean as you sit in the terrace outside the master bedroom with a cup of Earl Gray. This would be an unparalleled experience for anyone who yearns for a modern posh living style. ■

「富豪海灣」坐落於港島傳統的豪宅地段，這間總面積約8,300平方呎的三層高洋房，坐擁180度赤柱灣的無敵海景，洋房擁有千呎空中花園及前後花園，盡顯豪華氣派。

屋內裝潢採用富麗堂皇的維多利亞宮廷式設計，銀白色調為主的室內裝潢，典雅的歐陸傢俬，現代雅致的意大利水晶吊燈、仿真壁爐，為古典的維多利亞風格添上時尚元素。客廳及飯廳牆身均裝上鏡子，增強屋內的空間感，配合天花一系列的聚光燈，營造出一派金碧輝煌的貴族格調。這間海邊大屋以無敵海景及其海浪和小鳥協奏曲作為賣點，豪爽的客廳和個主人套房均採用特大落地玻璃窗，讓住客盡覽無邊際的壯麗海景。走出主人套房的露台，一邊喝著伯爵紅茶，一邊欣賞著大自然如畫的景緻及浪濤拍岸的演奏，是極少數人士才能擁有的現代的貴族式豪華生活。 ■

Regalia Bay
赤柱 富豪海灣
88 Wong Ma Kok Road, Stanley
9,322 s.f.
\$150,000,000

www.landscape.com/114058.htm ☎ Rylie Ip 葉先生 6600 2238



Photo courtesy of Thomas Lam

75
YEARS
OF
JAGUAR

75 Years of impeccable lineage. The Jaguar legend lives on.

For 75 years, Jaguar has dedicated every effort in designing and producing 'Beautiful, fast cars'. Through iconic and hugely popular models, Jaguar has certainly etched an indelible mark in automotive history. Today, this unique philosophy has been re-imagined through the launch of the new XJ, XF and XK.

Jaguar Hong Kong
Shop 2, G/F, Bank of East Asia Harbour View Centre, 56 Gloucester Road, Wanchai, Hong Kong
Tel: 2520 0989

A Member of Inchcape Group
www.jaguar.com.hk


JAGUAR



Peak Gardens
山頂 山頂花園
16-20 Mount Austin Road, The Peak
Unique apartment with full harbour view
山頂雅緻住宅，尊享壯麗維港景色

1,640 s.f.
\$49,500,000

www.landscape.com/14034.htm [Stephen Chan 陳先生 9093 3381](#)

www.landscape.com/14034.htm [Stephen Chan 陳先生 9093 3381](#)



Stewart Terrace
山頂 史都域基
81-95 Peak Road, The Peak
Spacious colonial low-rise apartment on The Peak
山頂寬敞英式低密度住宅

3,077 s.f.
\$58,000,000

www.landscape.com/28368.htm [Rylie Ip 葉先生 6900 2238](#)

www.landscape.com/28368.htm [Rylie Ip 葉先生 6900 2238](#)



Guildford Court
山頂 佛羅道5號
5 Guildford Road, The Peak
Rare colonial low-rise in green surroundings on The Peak
山頂罕有英式低密度住宅，尊享翠綠環境

2,500 s.f.
\$68,000,000

www.landscape.com/30299.htm [Maria Cheung 張小姐 5182 8699](#)

www.landscape.com/30299.htm [Maria Cheung 張小姐 5182 8699](#)



43 Barker Road, The Peak
山頂 白加道43號
Modern harbour view apartment on Barker Road
白加道時尚港景住宅

3,820 s.f.
\$100,000,000

www.landscape.com/103936.htm [David Leung 梁先生 9199 0672](#)

www.landscape.com/103936.htm [David Leung 梁先生 9199 0672](#)



Strawberry Hill
山頂 紅莓閣
8 Plunkett's Road, The Peak
Stylish colonial garden house overlooking Aberdeen Country Park and ocean view
時尚英式花園大廈，俯瞰香港仔郊野公園景觀及海景

3,194 s.f.
\$120,000,000

www.landscape.com/5288.htm [Mavis Wu 吳小姐 9107 3891](#)

www.landscape.com/5288.htm [Mavis Wu 吳小姐 9107 3891](#)



Abergeldie
山頂 櫻楓道52號
52 Plantation Road, The Peak
Peak house with bird's eye view of Victoria Harbour
山頂大屋盡天台花園及平台，尊享鳥瞰花荷的維港景致，可租可售

3,655 s.f. (plus 505 s.f. terrace, 464 s.f. garden and 282 s.f. roof)
\$200,000,000 also for lease \$200,000

www.landscape.com/13340.htm [David Leung 梁先生 9199 0672](#)

www.landscape.com/13340.htm [David Leung 梁先生 9199 0672](#)



La Hacienda
山頂 加列山道29-33號
29-33 Mount Kellett Road, The Peak
Huge colonial apartment in lush greenery
特大英式住宅，尊享翠綠園景

2,820 s.f.
\$56,000,000

www.landscape.com/5732.htm [David Chan 陳先生 9238 2012](#)

www.landscape.com/5732.htm [David Chan 陳先生 9238 2012](#)



Magazine Gap Road, The Peak
山頂 馬己仙峽道
Colonial apartment on lower Peak with harbour view
山頂英式住宅，尊享維港景觀，可租可售

2,400 s.f.
\$60,000,000 also for lease \$100,000 incl.

www.landscape.com/12008.htm [Sandra Choi 蔡小姐 9234 1109](#)

www.landscape.com/12008.htm [Sandra Choi 蔡小姐 9234 1109](#)



Eredine
山頂 加列山道38號
38 Mount Kellett Road, The Peak
Huge colonial apartment with spectacular sea view
巨型英式住宅，尊享壯麗的海景

3,300 s.f.
\$75,000,000

www.landscape.com/23687.htm [David Leung 梁先生 9199 0672](#)

www.landscape.com/23687.htm [David Leung 梁先生 9199 0672](#)



Mountain Lodge
山頂 嘉麗
44 Mount Kellett Road, The Peak
Rare duplex apartment with Southside sea view
罕有複式住宅，尊享南區海景

5,200 s.f.
\$120,000,000

www.landscape.com/96955.htm [David Leung 梁先生 9199 0672](#)

www.landscape.com/96955.htm [David Leung 梁先生 9199 0672](#)



La Hacienda
山頂 加列山道29-33號
29-33 Mount Kellett Road, The Peak
Rare garden townhouse on The Peak overlooking verdant Aberdeen Country Park
山頂罕有花園排屋，俯瞰香港仔郊野公園景觀

3,200 s.f.
\$150,000,000

www.landscape.com/30422.htm [David Leung 梁先生 9199 0672](#)

www.landscape.com/30422.htm [David Leung 梁先生 9199 0672](#)



Rosmead Road, The Peak
山頂 樂善美道
Rare single number garden house on The Peak
山頂罕有獨立花園大廈出售

5,600 s.f. (plus 1,469 s.f. garden)
\$250,000,000

www.landscape.com/20798.htm [Maria Cheung 張小姐 5182 8699](#)

www.landscape.com/20798.htm [Maria Cheung 張小姐 5182 8699](#)

The essence of *Stylish living*

- Prominently located at 41C Stubbs Road, Mid-Levels
- In close proximity to C80, International schools and Bowen Road jogging trail
- With 70-storey, The Summit commands splendid views of Victoria Harbour and city skyline
- The duplex suites range from 3,254-6,496 sq.ft.
- Facilities include indoor swimming pool, Jacuzzi, gymnasium, golf simulator, outdoor entertainment BBQ area and children's playground
- 24-hour security service
- On-site maintenance team

Leasing Enquiry: 2879 0222
(viewing by appointment only)
LeasingEnquiry@hanglung.com
www.thesummit.hk

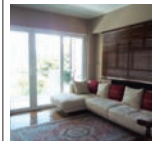


Winway Court
東半山 永威閣
3 Tai Hang Road, Midlevels East
Tastefully decorated 3-bedroom flat
東半山品味靚裝修三房住宅

1,600 s.f.
\$14,800,000

www.landscape.com/98354.htm [Stella Lo 羅小姐 9809 8570](#)

www.landscape.com/98354.htm [Stella Lo 羅小姐 9809 8570](#)



Silver Fair Mansion
東半山 銀禧大廈
2E-2F Shiu Fai Terrace, Midlevels East
Nicely renovated apartment with balcony in quiet Shiu Fai Terrace
靜寧靚裝修三房住宅，連陽臺，環境寧靜

1,450 s.f.
\$15,000,000

www.landscape.com/112404.htm [Samir Woo 胡小姐 9493 8275](#)

www.landscape.com/112404.htm [Samir Woo 胡小姐 9493 8275](#)



Sanitarian Apartments
跑馬地 潔園
20-30 Green Lane, Happy Valley
Exclusive colonial low-rise 3-bedroom flat with balcony
獨特英式低密度三房住宅，設有陽臺

1,350 s.f.
\$15,500,000

www.landscape.com/52816.htm [Teresa Lau 蕭小姐 9080 6686](#)

www.landscape.com/52816.htm [Teresa Lau 蕭小姐 9080 6686](#)



Kensington Court
東半山 景福苑
48-4C Shiu Fai Terrace, Midlevels East
A nicely decorated apartment with 3 bedrooms and private roof top
雅緻裝修三房連三房及私家天台

1,450 s.f. (plus 964 s.f. roof)
\$16,000,000

www.landscape.com/72633.htm [Mary Li 李小姐 9011 6595](#)

www.landscape.com/72633.htm [Mary Li 李小姐 9011 6595](#)



Green Valley Mansion
跑馬地 翠谷樓
51 Wong Nai Chung Road, Happy Valley
Nicely decorated racecourse apartment with terrace
雅緻裝修馬場豪宅，連平台

1,350 s.f. (plus 150 s.f. terrace)
\$15,000,000

www.landscape.com/113673.htm [Rowena Shiu 蕭小姐 9348 4118](#)

www.landscape.com/113673.htm [Rowena Shiu 蕭小姐 9348 4118](#)



Richery Garden
東半山 德信花園
19 Tung Shan Terrace, Midlevels East
A nicely renovated 2-bedroom apartment with private roof terrace and breathtaking racecourse view
雅緻裝修兩房住宅，連私家天台平台，享優美馬場景觀

1,202 s.f. (plus 868 s.f. roof)
\$16,800,000

www.landscape.com/88283.htm [Chris Law 羅先生 6183 8388](#)

www.landscape.com/88283.htm [Chris Law 羅先生 6183 8388](#)



Villa Rocha
跑馬地 樂翠台
10 Broadwood Road, Happy Valley
Practical 3-bedroom apartment with Hong Kong Stadium view
實用三房住宅，尊享香港大球場景觀

1,340 s.f.
\$17,000,000

www.landscape.com/46826.htm Mira To 杜小姐 9486 1566



Hatton Place
西半山 吉形苑
1A Po Shan Road, Midlevels West
Stylish designer's gem surrounded by lush greenery
設計師精心設計住宅，尊享遼闊翠綠景觀

1,538 s.f.
\$19,800,000

www.landscape.com/40222.htm Rowena Siu 蕭小姐 9348 4118



Ventris Place
跑馬地 雲地利台
19-23 Ventris Road, Happy Valley
Efficient 3-bedroom flat with fantastic racecourse view
實用三房住宅，尊享廣闊馬場景觀

1,560 s.f.
\$23,000,000

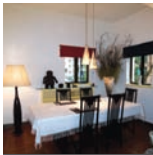
www.landscape.com/103255.htm Sami Woo 胡小姐 9493 8275



47-49 Blue Pool Road, Happy Valley
跑馬地 藍池道47-49號
Nicely decorated mid-rise in the heart of Happy Valley
靚裝修中密度住宅，位於跑馬地中心地帶

1,600 s.f.
\$19,000,000

www.landscape.com/82940.htm Stephen Chan 陳先生 9093 3381



79-81 Blue Pool Road, Happy Valley
跑馬地 藍池道79-81號
Nicely decorated low-rise on upper Blue Pool Road
靚裝修低密度住宅，位於跑馬地上座住宅

1,900 s.f.
\$21,000,000

www.landscape.com/99604.htm Rowena Siu 蕭小姐 9348 4118



Pearl Gardens
西半山 明珠臺
7 Conduit Road, Midlevels West
Spacious 4-bedroom flat near Midlevels escalator
西半山四房住宅，鄰近半山扶手電梯

2,200 s.f.
\$23,800,000

www.landscape.com/36705.htm Jensen Au 區先生 9028 0147



Pearl Gardens
中半山 明珠臺
7 Conduit Road, Midlevels West
Practical 4-bedroom flat on Conduit Road close to Midlevels Escalator
干諾道四房住宅，鄰近半山扶手電梯，間隔實用

2,200 s.f.
\$23,800,000

www.landscape.com/35119.htm Sami Woo 胡小姐 9493 8275



Clovelly Court
中半山 嘉富麗苑
12 May Road, Midlevels Central
Popular 3-bedroom family flat in quiet enclave of Midlevels
中半山靚靚三房單位，環境清幽寧靜，可租可售

1,925 s.f.
\$32,000,000 also for lease \$80,000

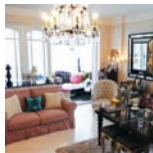
www.landscape.com/32854.htm Stella Lo 蕭小姐 9809 8570



Tregunter Tower 2
中半山 地利根德閣 2座
14 Tregunter Path, Midlevels Central
Spacious colonial apartment with 4 bedrooms and balcony
中半山高級住宅連四房及陽臺，間隔寬敞

3,052 s.f.
\$35,000,000

www.landscape.com/99951.htm Mary Li 李小姐 9011 6595



Glory Mansion
中半山 輝煌大廈
106-108 MacDonnell Road, Midlevels Central
Well decorated and fully furnished colonial low-rise on MacDonnell Road
豪華裝修完成度英式住宅，雅緻裝修，盡全層優靚

2,300 s.f.
\$29,000,000

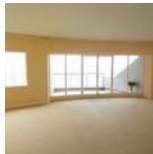
www.landscape.com/37757.htm Rowena Siu 蕭小姐 9348 4118



Rose Court
跑馬地 逸康
115-121 Wong Nai Chung Road, Happy Valley
Mid-rise apartment overlooking Happy Valley racecourse close to Causeway Bay
中密度住宅，俯瞰跑馬地馬場景觀，鄰近銅鑼灣，吃喝玩樂十分方便

2,400 s.f.
\$34,000,000

www.landscape.com/50027.htm Walker Lam 林先生 9551 1077



Century Tower 1
中半山 世紀大廈 1座
1 Tregunter Path, Midlevels Central
Unique-style Harbour view apartment on fringe of Central
獨特港灣四房住宅，鄰近中環

2,565 s.f.
\$35,000,000

www.landscape.com/12852.htm Christine Chong 莊小姐 9648 6082

THE WORLD'S FIRST 3D BILINGUAL LIFESTYLE E-MAGAZINE - in3D

We would be grateful if you could take a few seconds to fill in our survey.
Please fax the completed form to +852 3699 0889 OR you could also visit www.inmagazine.com.hk/survey/thekey to fill in the form.

SURVEY

About in3D

1. Did you read in3D? ☐ Yes ☐ No
2. If yes, did you enjoy it? ☐ Very enjoy ☐ Enjoy ☐ Do not enjoy

Grab the chance to get a set of FUJI FLIM 3D Digital Camera & 3D Viewer Displays, valued HK\$7,980.
Visit www.inmagazine.com.hk/inferver for more exclusive privileges of inFEVER Club members.

PLEASE FILL IN YOUR INFORMATION

☐ Mr ☐ Mrs ☐ Ms

First Name : _____ Surname : _____

Address : _____

Mobile No. : _____ Email : _____

THANK YOU FOR YOUR TIME



隨時隨地
緊貼第一手豪宅資訊

First-hand luxury property news on-the-go

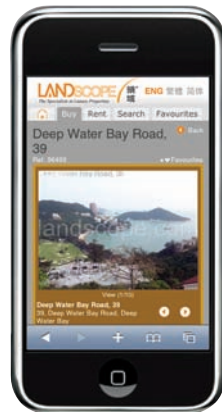
With over a decade of experience in the property consultancy business, Landscape is a renowned real estate consulting group based in Hong Kong. Keeping up with the pace of life, Landscape has launched its innovative luxury property mobile website in May, the first-of-its-kind in the entire market.

Go to Home Page to look for your targeted properties. With the real-time updates of property listings from our database, the mobile website, integrated with Google map, features over 3,000 buy/ rent luxury properties in Hong Kong with internal photos and full details of the properties. Always keep updated with the first-hand luxury property news on-the-go...No delay!

領域是香港的獨立地產顧問集團，憑借專業的地產代理服務，一直享譽業界。為了與時俱進，領域今年五月推出香港首個的手機版網頁，為你帶來香港各區豪宅的最新資訊。

在首頁，你可選擇想尋找的單位，網頁的即時更新新功能為你帶來超過3,000個香港豪宅買賣租賃的資料及單位圖片，並附設Google地圖，顯示更一目了然。隨時隨地緊貼第一手豪宅資訊，時刻盡在掌握！

Website (網址) : www.landscape.com



Po Shan Mansions
西半山 寶城大廈
10-16 Po Shan Road, Midlevels West
Huge 4-bedroom apartment with tasteful decor
西半山巨型四房住宅，配以品味雅緻裝修

2,800 s.f.
\$36,000,000

www.landscape.com/35334.htm Christine Chong 莊小姐 9648 6082

Fontana Gardens
東半山 豪園
1-25 Ka Ning Path, Midlevels East
Large practical 4-bedroom flat with nice decor on fringe of Causeway Bay
特大四房住宅連雅緻裝修，間隔寬用，鄰近銅鑼灣

3,000 s.f.
\$39,000,000

www.landscape.com/118512.htm Stephen Chan 陳先生 9093 3381

Elm Tree Towers
渣甸山 愉寧大廈
8-10 Chun Fat Road, Jardine's Lookout
Renovated spacious 3-bedroom apartment with Victoria Harbour view
重新裝修三房住宅，享維多利亞港，間隔寬敞

2,028 s.f.
\$42,000,000

www.landscape.com/127001.htm Mark Mak 麥先生 6838 2329

Carnation Court
東半山 康翠園
41 - 47 Tai Hang Road, Midlevels East
Rare high floor unit with private flat roof terrace
東半山高層住宅，盡私享天台，罕有出售

1,728 s.f. (plus 1,181 s.f. roof and 302 s.f. terrace)
\$45,000,000

www.landscape.com/89145.htm Carman Szeto 司徒小姐 6183 8339

Piccadilly Mansion
西半山 碧苑
4-6 Po Shan Road, Midlevels West
Large practical harbour view apartment in tranquil environment
西半山特大靚港景住宅，間隔寬用，環境寧靜

2,800 s.f.
\$55,500,000

www.landscape.com/35976.htm Carman Szeto 司徒小姐 6183 8339

Woodland Heights
東半山 怡園
2A-2F Wong Nai Chung Gap Road, Midlevels East
Rare 4-bedroom apartment with roof in prime location
罕有四房住宅，連天台，位處尊貴地段

2,800 s.f. (plus 2,000 s.f. roof and terrace)
\$80,000,000

www.landscape.com/38337.htm Stephen Chan 陳先生 9093 3381

Newton Court
東半山 蔚豪苑
8 Wong Nai Chung Gap Road, Midlevels East
High floor 4-bedroom harbour view flat with practical layout
高層四房港景住宅，間隔寬用

1,993 s.f.
\$38,000,000

www.landscape.com/34828.htm Carman Szeto 司徒小姐 6183 8339

Bellevue Court
東半山 碧翠園
41 Stubbs Road, Midlevels East
Spacious colonial style 3-bedroom flat on Stubbs Road
司徒拔道英式三房住宅，間隔寬敞寬用

2,700 s.f.
\$40,800,000

www.landscape.com/28998.htm Teresa Lau 蕭小姐 9080 6686

Villa Benesther
跑馬地 輝華小苑
4 Sing Woo Crescent, Happy Valley
Rare find duplex with tasteful decor in quiet corner of Happy Valley
跑馬地罕有複式住宅，匯品裝修，環境寧靜怡人

2,840 s.f. (plus 302 s.f. roof)
\$43,800,000

www.landscape.com/103139.htm Mira To 杜小姐 9486 1566

Tregunter Tower 3
中半山 地利根德閣3座
14 Tregunter Path, Midlevels Central
Modern apartment with comprehensive facilities
現代時尚住宅，連完善住客會所設施

3,001 s.f.
\$50,000,000

www.landscape.com/35059.htm Mira To 杜小姐 9486 1566

Hillsborough Court
中半山 曉峰閣
18 Old Peak Road, Midlevels Central
Duplex penthouse with roof and terrace in Midlevels Central
中半山豪華頂層住宅，連天台及平台

2,355 s.f. (plus 646 s.f. roof and 295 s.f. terrace)
\$68,000,000

www.landscape.com/23008.htm Rylie Ip 葉先生 6600 2238

Moorsom Drive, Jardine's Lookout
渣甸山 錦庭閣
Huge 4-ensuite garden detached single number house in prime location, newly rebuilt and renovated
巨型四套房花園獨立門牌大廈，位處尊貴地段，新建新裝

3,566 s.f. (plus garden)
\$163,000,000

www.landscape.com/47366.htm Sandra Choi 蔡小姐 9234 1109

Albany Court
薄扶林 雅蘭閣
51 Bisney Road, Pokfulam
3-bedroom low-rise in quiet neighbourhood
三房低密度住宅，環境寧靜怡人

1,787 s.f.
\$16,000,000

www.landscape.com/108548.htm Walker Lam 林先生 9551 1077

Pokfulam Court
薄扶林 碧林閣
94 Pokfulam Road, Pokfulam
Newly decoration 3-bedroom apartment enjoy sea view
全新裝修三房住宅，享享海景

1,780 s.f.
\$25,000,000

www.landscape.com/124534.htm Christine Chong 莊小姐 9648 6082

Cape Mansions
薄扶林 翠海別墅
56-62 Mount Davis Road, Pokfulam
Meticulously designed sea view apartment in excellent condition
滿扶林海景住宅，配以一絲不苟的設計，保養良好

2,100 s.f.
\$30,000,000

www.landscape.com/118859.htm Jensen Au 區先生 9028 0147

Cypresswaver Villas
香軟角 柏濤小築
32 Cape Road, Chung Hom Kok
Waterfront low-rise with nice decorations
海港低密度住宅連雅緻裝修，可租可售

1,375 s.f.
\$19,000,000 also for lease \$42,000 incl.

www.landscape.com/110168.htm Christine Chong 莊小姐 9648 6082

Pacific View
大潭 波翠園
38 Tai Tam Road, Tai Tam
Popular family estate with comprehensive clubhouse at Tai Tam waterfront
大潭海濱受歡迎家庭式屋苑，連完善住客會所設施

1,906 s.f.
\$27,000,000

www.landscape.com/112401.htm David Chan 陳先生 9238 2012

Scenic Villas
薄扶林 美景豪
2-28 Scenic Villa Drive, Pokfulam
High efficiency 4-bedroom sea view apartment in well-known development
滿扶林有名望靚景四房住宅，享享海景

2,517 s.f.
\$30,000,000

www.landscape.com/49867.htm Jensen Au 區先生 9028 0147

The Hacienda

90 Repulse Bay Road

- Full seaview, with Roof
- Swimming pool, Gym & Carpark
- 1,600-3,000 sq.ft.
- 3-4 Bedrooms
- Welcome coupons to tenants

Leasing Hotline **2122 2025**
2122 2362



Luxe Apartments
5 Warwick Road, Kowloon Tong

- Open View, Carpark & BBQ area
- Approx. 5 minutes walk to Festival Walk / Kowloon Tong MTR
- 1,270-1,350 sq.ft., 2/3 bedrooms / balcony
- Kowloon Tong school network no.41
- Welcome coupons to tenants

Leasing Hotlines: **2122-2025**
2122-2362



Repulse Bay Garden
淡水灣 靚景園
18-40 Bellevue Drive, Repulse Bay

Decorated in modern style flat close to the Repulse Bay Beach
品味時尚裝修住宅，鄰近淡水灣海邊

2,288 s.f.
\$33,000,000

www.landscape.com/123991.htm [Stella To 羅小姐 9809 8570](#)



Royalton
薄扶林 豪峰 I
118 Pokfulam Road, Pokfulam

5-bedroom duplex apartment with fantastic sea view
五房複式住宅，尊享壯麗海景

3,250 s.f.
\$40,000,000

www.landscape.com/15200.htm [Mira To 杜小姐 9486 1566](#)



South Bay Towers
淡水灣 南灣大廈
59 South Bay Road, Repulse Bay

Spacious sea view apartment at serene South Bay
間隔寬敞海景住宅，位於南灣寧靜地段，可租可售

2,738 s.f.
\$45,000,000 also for lease \$95,000 incl.

www.landscape.com/125396.htm [Maria Cheung 張小姐 5182 8699](#)



Tranquil Dwelling
寧靜居所

This serene and lofty 2,438 square foot apartment, situated at the prestigious Bel-Air-on-the-Peak, features a stupendous panoramic ocean view. Its high ceilings and limpid décor complement the huge window panels and overhanging balcony – creating a spacious living and dining area. The design of the house is clean and simplistic allowing the spotlight to be on the beguiling view instead. Wooden flooring, antique furniture, sculptures from the Middle East and simple yet classic English lights accentuate its spacious interior and sedate character of the apartment's confines. The bathroom of the master suite is fully equipped; heating under the marble tiles ensure tranquility and comfort at all times.

You may opt to relax at home or head to Club Bel-Air where an encompassing range of facilities is offered to its residents. Restaurants, health and beauty services, as well as exclusive private yachts and jets can be used at the residents' disposal. This apartment is the perfect choice for those in pursuit of leading a hassle-free lifestyle. ■

這座2,438平方呎的寧靜高層公寓，位於尊貴的貝沙灣，以其遼闊的全海景作為賣點。特高天花以及清雅的裝潢配合落地玻璃窗和露台，令客廳與飯廳的空間感大大提高。為免喧賓奪主，全屋採用簡潔的裝潢，以突出其靜人海景。胡桃色實木地板、古董傢俱、富中東色彩的雕型 and 簡潔的英式古典吊燈，更加突顯室內的空間感及全屋的寧靜和諧氣氛。作為一個靜謐徹底的居所，更細心地於主人房套間的雲石地磚下裝上暖氣系統，確保住戶能隨時享受溫馨貼心的感覺。

隨你喜好，或選擇安坐家中，或到屋苑會所享受多元化的設施及服務，美食佳餚、運動消閒和美容服務都一應俱全，另外更置創私人飛機及遊艇團隊供住戶享用，是追求無憂生活的必然之道。 ■

Residence Bel-Air
薄扶林 貝沙灣
68 Bel-Air Peak Avenue, Pokfulam

2,438 s.f.
\$45,000,000

www.landscape.com/44641.htm [Christine Chong 莊小姐 9648 6082](#)



Shouson Garden
壽臣山 壽山花園
6A Shouson Hill Road, Shouson Hill

Quiet low-rise 3-bedroom flat in lush green Shouson Hill
壽臣山清靜低密度三房住宅，尊享翠綠景觀，可租可售

1,598 s.f.
\$35,000,000 also for lease \$60,000 incl.

www.landscape.com/13813.htm [Mary Li 李小姐 9011 6595](#)



Ruby Court
淡水灣 嘉蘭閣
55 South Bay Road, Repulse Bay

Popular sea view 3-bedroom with big balcony flat in tranquil South Bay
淡水灣寧靜三房大露台豪華住宅，鄰近南灣，環境寧靜怡人

2,200 s.f.
\$40,000,000

www.landscape.com/51578.htm [Mary Li 李小姐 9011 6595](#)




The Redhill Peninsula
大潭 紅山半島
18 Pak Pat Shan Road, Tai Tam

Waterfront garden house in quiet Tai Tam
大潭海邊花園大廈，可租可售

3,054 s.f. (plus 631 s.f. garden, 291 s.f. roof and 72 s.f. terrace)
\$50,000,000 also for lease \$100,500 incl.

www.landscape.com/4866.htm [Mark Mak 麥先生 6838 2929](#)



This serene and lofty 2,438 square foot apartment, situated at the prestigious Bel-Air-on-the-Peak, features a stupendous panoramic ocean view. Its high ceilings and limpid décor complement the huge window panels and overhanging balcony – creating a spacious living and dining area. The design of the house is clean and simplistic allowing the spotlight to be on the beguiling view instead. Wooden flooring, antique furniture, sculptures from the Middle East and simple yet classic English lights accentuate its spacious interior and sedate character of the apartment's confines. The bathroom of the master suite is fully equipped; heating under the marble tiles ensure tranquility and comfort at all times.

You may opt to relax at home or head to Club Bel-Air where an encompassing range of facilities is offered to its residents. Restaurants, health and beauty services, as well as exclusive private yachts and jets can be used at the residents' disposal. This apartment is the perfect choice for those in pursuit of leading a hassle-free lifestyle. ■

這座2,438平方呎的寧靜高層公寓，位於尊貴的貝沙灣，以其遼闊的全海景作為賣點。特高天花以及清雅的裝潢配合落地玻璃窗和露台，令客廳與飯廳的空間感大大提高。為免喧賓奪主，全屋採用簡潔的裝潢，以突出其靜人海景。胡桃色實木地板、古董傢俱、富中東色彩的雕型 and 簡潔的英式古典吊燈，更加突顯室內的空間感及全屋的寧靜和諧氣氛。作為一個靜謐徹底的居所，更細心地於主人房套間的雲石地磚下裝上暖氣系統，確保住戶能隨時享受溫馨貼心的感覺。

隨你喜好，或選擇安坐家中，或到屋苑會所享受多元化的設施及服務，美食佳餚、運動消閒和美容服務都一應俱全，另外更置創私人飛機及遊艇團隊供住戶享用，是追求無憂生活的必然之道。 ■

56 Repulse Bay Road, Repulse Bay
淡水灣 淡水灣道56號

Tastefully decorated 3-bedroom duplex apartment with terrace overlooking Repulse Bay
品味裝修複式三房住宅連平台，俯瞰淡水灣景觀

3,173 s.f. (plus 262 s.f. terrace)
\$120,000,000

www.landscape.com/98347.htm [Mary Li 李小姐 9011 6595](#)



Park Place
淡水灣 雅柏苑
7 Tai Tam Reservoir Road, Repulse Bay

Prestigious apartment with facilities enjoying Victoria Harbour view and park view
豪華尊貴住宅，尊享維多利亞港及翠綠公園景致，連住客會所設施

2,288 s.f.
\$57,000,000

www.landscape.com/39677.htm [Mavis Wu 吳小姐 9107 3891](#)



Manhattant Tower
淡水灣 曼曼閣大廈
63 Repulse Bay Road, Repulse Bay

Rarely available 4-bedroom flat on upper Repulse Bay Road with stunning sea view
淡水灣道頂段四房住宅，尊享遼闊海景，罕有放盤

2,400 s.f.
\$64,000,000

www.landscape.com/16574.htm [Teresa Fung 潘小姐 9138 1621](#)



The Somerset
淡水灣 怡峰
67 Repulse Bay Road, Repulse Bay

Well decoration sea view famous duplex apartment with big balcony on upper Repulse Bay Road
淡水灣道頂段有名雅緻裝修複式單位，尊享海景及特大陽臺

2,464 s.f.
\$73,920,000

www.landscape.com/111753.htm [Maria Cheung 張小姐 5182 8699](#)



The Somerset
淡水灣 怡峰
67 Repulse Bay Road, Repulse Bay

Luxury duplex with relaxing Deep Water Bay view
豪華複式住宅，尊享寧靜舒適的深水灣景觀

3,099 s.f.
\$85,000,000

www.landscape.com/13611.htm [Louis Wong 黃先生 9871 6828](#)



56 Repulse Bay Road, Repulse Bay
淡水灣 淡水灣道56號

Tastefully decorated 3-bedroom duplex apartment with terrace overlooking Repulse Bay
品味裝修複式三房住宅連平台，俯瞰淡水灣景觀

3,173 s.f. (plus 262 s.f. terrace)
\$120,000,000

www.landscape.com/98347.htm [Mary Li 李小姐 9011 6595](#)



8 Tai Tam Road, Tai Tam
大潭 大潭道8號

Magnificent waterfront dream house with private pool taking in Tai Tam sea view
華貴海濱大廈，連私家游泳池，尊享大潭海景

5,474 s.f. (plus 945 s.f. garden and 712 s.f. roof)
\$230,000,000

www.landscape.com/34709.htm [Louis Wong 黃先生 9871 6828](#)



Bellevue Place
深水灣 寶品苑
93 Repulse Bay Road, Repulse Bay

Rare exclusive 4-bedroom garden-orchard duplex of Repulse Bay, enjoy pool view
淡水灣罕有獨特複式四房住宅，連天台平台，環境清幽，享泳池景

3,426 s.f. (plus 117 s.f. terrace)
\$60,000,000

www.landscape.com/123234.htm [Sandra Choi 蔡小姐 9234 1109](#)



Sea Cliff Mansions
深水灣 海峰閣
19A-19D Repulse Bay Road, Repulse Bay

Newly renovated penthouse with private roof overlooking Deep Water Bay
全新裝修頂層住宅，連私家天台，俯瞰深水灣景觀

2,400 s.f. (plus roof)
\$68,000,000

www.landscape.com/109654.htm [Stephen Chan 陳先生 9093 3381](#)



45 Island Road, Deep Water Bay
深水灣 香島道45號

Townhouse with private garden in prestigious location
深水灣排屋，連私家花園，位處尊貴地段

2,751 s.f. (plus 503 s.f. roof and 474 s.f. garden)
\$83,000,000

www.landscape.com/34142.htm [Mavis Wu 吳小姐 9107 3891](#)



Ocean Bay
香港角 海天匯15-17號
15-17 Horizon Drive, Chung Hom Kok

Sea view detached house with big veranda
香港角海邊獨立兩層私家平台花園

3,180 s.f. (plus 437 s.f. roof and 436 s.f. terrace)
\$100,000,000

www.landscape.com/34993.htm [Sandra Choi 蔡小姐 9234 1109](#)



The Beachfront
深水灣 璧池
7 Bellevue Drive, Repulse Bay

Exclusive townhouse with panoramic sea view of Repulse Bay
深水灣獨特洋房，尊享遠水遼闊海景，可租可售

3,691 s.f. (plus 105 s.f. terrace)
\$130,000,000 also for lease \$320,000 incl.

www.landscape.com/4262.htm [Sandra Choi 蔡小姐 9234 1109](#)



Double Bay
深水灣 香島道46號
46 Island Road, Deep Water Bay

Deluxe waterfront house at Deep Water Bay
深水灣豪華海濱大廈，可租可售

5,113 s.f. (plus 1,382 s.f. roof and 1,046 s.f. garden)
\$298,000,000 also for lease \$360,000

www.landscape.com/108206.htm [Louis Wong 黃先生 9871 6828](#)

77 Peak Road, The Peak
山頂 山頂道77號

Colonial apartment with huge balcony in quiet enclave on The Peak
山頂英式住宅，高層，環境清幽寧靜

2,392 s.f.
\$78,000

www.landscape.com/7517.htm Rydie Ip 葉先生 6600 2238

29 Severn Road, The Peak
山頂 施勒道29號

Modern style 4-bedroom apartment with spacious balcony and sea view, have swimming pool
山頂時尚四房住宅連寬敞陽臺及游泳池設施，尊享海景

2,300 s.f.
\$90,000

www.landscape.com/46657.htm Teresa Lau 劉小姐 9080 6686

Cameron House
山頂 嘉樂苑
40 Magazine Gap Road, The Peak

Unique mid-rise apartment with sea view and big balcony
精緻中密度海景住宅，連特大陽臺

2,847 s.f.
\$140,000 incl.

www.landscape.com/14268.htm Teresa Fung 馮小姐 9138 1621

The Mount Austin
山頂 荷士甸山道8號
8 Mount Austin Road, The Peak

Luxury 4-bedroom duplex with private garden and terrace on The Peak
山頂豪華四房複式住宅，連私家花園及平台

2,675 s.f. (plus 749 s.f. garden and 257 s.f. terrace)
\$148,000 incl.

www.landscape.com/27916.htm David Chan 陳先生 9238 2012

Eredine
山頂 加列山道38號
38 Mount Kellett Road, The Peak

A truly elegant colonial style 4-bedroom harbour view apartment
雅緻英式四房住宅，享維港景，可租可售

3,300 s.f.
\$160,000 incl. also for sale \$75,000,000

www.landscape.com/34848.htm Sandra Choi 蔡小姐 9234 1109

Altadena
山頂 白加道27號
27 Barker Road, The Peak

Highly sought after huge apartment with panoramic harbour view on Barker Road
白加道巨型住宅，尊享遠闊維港景致，市面難尋

4,500 s.f.
\$250,000 incl.

www.landscape.com/12838.htm Yvonne Chang 鄭小姐 9088 4666

Coombe Apartments
山頂 甘道15-17號
15-17 Coombe Road, The Peak

Stylish colonial apartment in secluded green surrounding
時尚英式住宅，尊享遠闊翠綠景致

2,150 s.f.
\$86,000

www.landscape.com/12213.htm Teresa Fung 馮小姐 9138 1621

Mountain Lodge
山頂 嘉廬
44 Mount Kellett Road, The Peak

Exclusive Peak apartment with sweeping Southside sea view
山頂獨特住宅，尊享南面海景，可租可售

2,600 s.f.
\$105,000 incl. also for sale \$65,000,000

www.landscape.com/17490.htm Mark Mak 麥先生 6838 2329

La Hacienda
山頂 加列山道29-33號
29-33 Mount Kellett Road, The Peak

Spacious colonial apartment with new decor
全新裝修英式住宅，開闊寬敞

3,506 s.f.
\$145,000 incl.

www.landscape.com/5700.htm Mavis Wu 吳小姐 9107 3891

Charles Mansion
山頂 雅禮道25號
25 Plantation Road, The Peak

Colonial 4-bedroom apartment overlooking picturesque Victoria Harbour view
英式四房住宅，俯瞰維港如畫美景

3,800 s.f. (plus 844 s.f. terrace)
\$152,000

www.landscape.com/23584.htm Yvonne Chang 鄭小姐 9088 4666

La Hacienda
山頂 加列山道29-33號
29-33 Mount Kellett Road, The Peak

Townhouse on The Peak with practical layout
山頂開闊實用排屋出租

3,660 s.f.
\$160,000 incl.

www.landscape.com/1421.htm Louis Wong 黃先生 9871 6828

The Mount Austin
山頂 荷士甸山道8號
8 Mount Austin Road, The Peak

Detached townhouse with private garden and internal lift at the zenith of The Peak
山頂獨立大屋，連私家花園及內置樓梯

4,956 s.f.
\$290,000

www.landscape.com/27924.htm David Chan 陳先生 9238 2012

For more listings, please go to www.landscape.com/lease



"you never own ya premises,
you merely live there unless
ya character implanted"

-Joseph Chang-



Alvin Lee

Joseph is friendly, honest, reliable, organized, and very meticulous in his work. I can't say enough good things about all the work he did to make my place gorgeous & very functional.

Old Peak road -the boundless en-suite



Suzanna Toppan

Don't be fooled by Joseph's easy demeanor. He's an unwavering advocate for the client and the work. It's clear in his contractors that anything less than the best won't do. He thinks through everything, and does nothing shy by.

Shouson Hill -classical contemporary



Richard J. Brink

Throughout the project, Joseph was personally involved, ensuring the quality of the work and the project's adherence to the budget and schedule. The project was completed on time and within budget, and we now have a beautiful new home, as well as a new friend, Joseph!

Capitol Garden -reinvigorated modernized flexibility



Mei Ling

Thank you so much for designing our new dreamy house. We absolutely love it! Just keep going spirit and looking at it. It looks like a place out of a magazine. Fantastic job! You matched the house to our personalities perfectly. Thanks again!

Red Hill Peninsula -accentuated coziness



Sean Holden

We really appreciated the way Joseph worked with us in coming up with great ideas by taking our rudimentary ideas and developing them into amazing designs.

Park Place -refactor exterior connection

Interior design
consultations
space planning
project management
tendering
landscaping
quantity survey

tel: +852 2524 5388 fax: +852 2524 5388 email: jchan@jchanjaguar.com workshop: 11th, Leunging Bldg., 4 Queen Victoria St., Central

Fine Mansion
跑馬地 豪華大廈
32-40 Village Road, Happy Valley
Spacious 3-bedroom apartment in the heart of Happy Valley
寬敞三房住宅，位於跑馬地中心地帶，可租可售

1,600 s.f.
\$45,000 incl. also for sale \$17,800,000

www.landscape.com/29714.htm | Jenson Au 羅先生 9028 0147

Elegant Terrace
西半山 雙明苑
36 Conduit Road, Midlevels West
Quality living at Midlevels West near pedestrian escalator
西半山優質住宅，鄰近半山扶手電梯，可租可售

1,433 s.f.
\$55,000 incl. also for sale \$17,500,000

www.landscape.com/111305.htm | Yvonne Chang 鄭小姐 9088 4666

Wing On Towers
渣甸山 永安閣
7-9 Boyce Road, Jardine's Lookout
Well decorated designer flat in Jardine's Lookout
渣甸山靚裝修住宅，設計師精心設計，可租可售

1,650 s.f.
\$60,000 incl. also for sale \$25,000,000

www.landscape.com/127512.htm | Walker Lam 林先生 9551 1077

Haddon Court
西半山 海天閣
41C Conduit Road, Midlevels West
Modern 3-bedroom apartment in quiet enclave
時尚三房住宅，位處清靜地段

1,860 s.f.
\$68,000 incl.

www.landscape.com/37396.htm | Sami Woo 胡小姐 9493 8275

Cooper Villa
渣甸山 衛徑道23-29號
23-29 Wilson Road, Jardine's Lookout
Icely renovated 3-bedroom low-rise with huge balcony and fantastic view
雅致裝修低密度三房住宅，遠特大陽臺，專享讓人羨慕

1,700 s.f.
\$73,000 incl.

www.landscape.com/129581.htm | Stephen Chan 陳先生 9093 3381

Serene Villa
渣甸山 寧苑
41-45 Perkins Road, Jardine's Lookout
Nice decoration spacious 3-bedroom low-rise apartment
靚裝修三房低密度住宅，間隔寬敞實用

2,000 s.f.
\$80,000 incl.

www.landscape.com/126908.htm | Stephen Chan 陳先生 9093 3381

Kennedy Terrace
中半山 堅尼地台
20 Kennedy Road, Midlevels Central
Colonial mid-rise apartment with excellent condition at the heart of Central
英式中庭住宅，配以一條中街的裝修，鄰近中環，交通方便

1,200 s.f.
\$52,000 incl.

www.landscape.com/131621.htm | Teresa Fung 馮小姐 9138 1621

The Royal Court
中半山 帝景閣
3 Kennedy Road, Midlevels Central
Luxurious 2-bedroom apartment with nice open view fringe of Central
豪華兩房住宅，專享開揚景觀，鄰近中環，可租可售

1,428 s.f.
\$60,000 incl. also for sale \$23,000,000

www.landscape.com/89939.htm | Rowena Siu 蘇小姐 9348 4118

Fontana Gardens
東半山 豪園
1-25 Ka Ning Path, Midlevels East
High efficiency 4-bedroom apartment close to Causeway Bay
高實用四房住宅，鄰近銅鑼灣，吃喝玩樂十分方便

3,100 s.f.
\$90,000

www.landscape.com/46125.htm | Christine Chong 莊小姐 9648 6082

8 Shiu Fai Terrace, Midlevels East
東半山 翠輝台8號
Modern 4-ensuite apartment on quiet Shiu Fai Terrace
雅靜時尚四房住宅，地段清幽怡人

2,428 s.f.
\$68,000 incl.

www.landscape.com/31890.htm | Walker Lam 林先生 9551 1077

Ventris Place
跑馬地 雲地利台
19-23 Ventris Road, Happy Valley
Spacious 4-bedroom flat with balcony and nice open racecourse view
寬敞四房住宅，遠陽臺，享開揚跑馬地景觀

2,121 s.f.
\$79,000 incl.

www.landscape.com/104235.htm | Walker Lam 林先生 9551 1077

The Leighton Hill
跑馬地 禮頓山
28 Broadwood Road, Happy Valley
Luxury 3-bedroom apartment overlooking the Happy Valley racecourse
豪華三房住宅，俯瞰跑馬地馬場景觀

1,618 s.f.
\$82,000 incl.

www.landscape.com/51654.htm | Mira To 杜小姐 9486 1566

Horizon Mansion
東半山 嘉禧豪
102-104 MacDonnell Road, Midlevels Central
Newly renovated colonial apartment with big balcony
全新裝修英式住宅，遠特大陽臺

2,300 s.f.
\$82,000 incl.

www.landscape.com/115892.htm | Jenson Au 羅先生 9028 0147

Dynasty Court
中半山 帝景閣
23 Old Peak Road, Midlevels Central
Newly decorated 3-bedroom flat with harbour view
中半山靚裝修三房住宅，專享遠港景

1,981 s.f.
\$85,000 incl.

www.landscape.com/130540.htm | Garman Szeto 司徒小姐 6183 8339

Catalina Mansions
中半山 嘉年大廈
98-100 MacDonnell Road, Midlevels Central
Nicely decorated apartment on convenient MacDonnell Road
麥當奴道靚裝修住宅，交通方便，可租可售

2,300 s.f.
\$88,000 incl. also for sale \$28,000,000

www.landscape.com/110374.htm | Jenson Au 羅先生 9028 0147

The Colonnade
東半山 嘉禧豪
152 Tai Hang Road, Midlevels East
Modern 3-bedroom flat with breath-taking harbour view in Midlevels East
東半山時尚三房住宅，專享靜怡人港景，可租可售

1,857 s.f.
\$82,000 incl. also for sale \$40,800,000

www.landscape.com/127169.htm | Chris Law 羅先生 6183 8388

Evergreen Villa
東半山 松柏新村
23 Old Peak Road, Midlevels East
Practical and high efficiency 4-bedroom harbour view apartment with huge balcony
間隔實用四房住宅，專享遠港景，遠特大陽臺

2,700 s.f.
\$88,000 incl.

www.landscape.com/17747.htm | Sami Woo 胡小姐 9493 8275

Valley View
東半山 欣景台
4A-4D Wong Nai Chung Gap Road, Midlevels East
Sought after huge mid-rise 4-bedroom apartment with meticulous decoration and huge balcony
罕有巨型中密度四房住宅，配以一條不苛裝修及大陽臺，可租可售

2,940 s.f.
\$90,000 incl. also for sale \$38,000,000

www.landscape.com/104172.htm | Teresa Lau 劉小姐 9080 6666

Wood finishes from a wood specialist

Natural...
...with natural oils and waxes, the very best for wood and the environment!

Faster...
...Osmo finishes can be renovated without sanding, saving time and money!

Coverage...
...high solid means amazing coverage and best price per m²!

歐詩木 osmo
...in form und farbe

Hop Sze Timber Co., Ltd.
220 Gloucester Road, Wanchai, Hong Kong
Phone (852) 28336069 - www.hopsze.com

MID-LEVELS Lease | 半山出租



Rose Gardens
 中半山 玫瑰別墅
 9 Magazine Gap Road, Midlevels Central
 Rare find colonial apartment with newly decorated at prime location close to Central
 罕有全新裝修英式住宅，鄰近中環，位處尊貴地段
 2,600 s.f.
 \$100,000 incl.

www.landscape.com/125468.htm Teresa Fung 馮小姐 9138 1621



Tregunter Tower 3
 中半山 地利利樓3座
 14 Tregunter Path, Midlevels Central
 Spacious apartment with splendid view of the city skyline
 中半山寬敞住宅，尊享壯麗輝煌的城市景觀

3,001 s.f.
 \$108,000 incl.

www.landscape.com/13965.htm Mira To 杜小姐 9486 1566



Kennedy Heights
 中半山 堅麗閣
 10-18 Kennedy Road, Midlevels Central
 Huge 5-bedroom apartment in heart of Midlevels Central
 特大五房住宅，位於中半山中心地帶

3,400 s.f.
 \$110,000 incl.

www.landscape.com/27644.htm Stella Lo 羅小姐 9809 8570



Grenville House
 中半山 嘉華閣
 1-3A Magazine Gap Road, Midlevels Central
 Huge 4-bedroom flat with large balcony in exclusive development
 大型四房住宅，連特大陽臺，罕有放租

3,400 s.f.
 \$130,000 incl.

www.landscape.com/15251.htm Stella Lo 羅小姐 9809 8570



Borrett Mansion
 中半山 寶德豪
 8A-9B Bowen Road, Midlevels Central
 Spacious colonial 4-bedroom apartment with harbour view
 寬敞英式四房住宅，尊享維港景致

2,800 s.f.
 \$140,000 incl.

www.landscape.com/12007.htm Teresa Fung 馮小姐 9138 1621



The Mayfair
 中半山 梅道1號
 1 May Road, Midlevels Central
 Deluxe 4-bedroom apartment with harbour view and balcony
 中半山豪華四房兩廳兩套房連陽臺，可租可售

2,905 s.f.
 \$140,000 incl. also for sale \$78,000,000

www.landscape.com/12736.htm Chris Law 羅先生 6183 8388



Dynasty Court
 中半山 帝景閣
 23 Old Peak Road, Midlevels Central
 Popular apartment with open city view and clubhouse facilities
 受歡迎住宅，遠開揚城市景觀，更設有完善住客會所設施
 2,691 s.f.
 \$100,000

www.landscape.com/13799.htm Mark Mak 麥先生 6838 2929



Silvercrest
 中半山 翠景閣
 24 MacDonnell Road, Midlevels Central
 Unique 4-bedroom apartment with huge terrace on MacDonnell Road
 獨特四房住宅，連巨型陽臺，位於麥當勞道尊貴地段

2,643 s.f. (plus 2,129 s.f. terrace)
 \$100,000 incl.

www.landscape.com/20681.htm Mavis Wu 吳小姐 9107 3891



Garden Terrace
 中半山 花園臺
 8A Old Peak Road, Midlevels Central
 Immaculately decorated 3-bedroom with 1 study room spacious apartment with balcony
 完美裝修三房住宅，連一書房及陽臺，間隔寬敞，可租可售

3,009 s.f.
 \$110,000 incl. also for sale Open Offer

www.landscape.com/30124.htm Chris Law 羅先生 6183 8388



Bamboo Grove
 中半山 竹林苑
 74-86 Kennedy Road, Midlevels Central
 Rare find duplex apartment on fringe of Wan Chai
 罕有複式住宅，鄰近灣仔，交通方便

3,282 s.f. (plus 597 s.f. terrace and 500 s.f. incl.)
 \$138,000

www.landscape.com/28042.htm Rylie Ip 葉先生 6600 2238



The Leighton Hill
 跑馬地 禮頓山
 2B Broadwood Road, Happy Valley
 Prestigious 4-bedroom flat with private terrace
 豪華四房住宅，連私家平台，可租可售

2,227 s.f. (plus 1,411 s.f. terrace and 1,340 s.f. garden)
 \$140,000 incl. also for sale \$55,000,000

www.landscape.com/42392.htm Carmen Szeto 司徒小姐 6183 8339



The Albany
 中半山 雅賓利大廈
 1 Albany Road, Midlevels Central
 Restigious apartment overlooking greenery and harbour view
 中半山尊貴住宅，俯瞰翠綠園景及維港景致

2,546 s.f.
 \$155,000 incl.

www.landscape.com/41797.htm Mavis Wu 吳小姐 9107 3891



ERIC FUNG Interior Design Limited
 THE INTERIOR DESIGN REFLECTS YOUR NEED



OUR SERVICES : RESIDENTIAL DESIGN | OFFICE DESIGN | COMMERCIAL DESIGN | KITCHEN DESIGN | DESIGN CONCEPT | CONSULTANT | SPACE PLANNING
 28/F & 29/F, Catic Plaza, 8 Causeway Road, Causeway Bay, Hong Kong T: (852) 3104 3104 F: (852) 2362 7788 www.tint-international.com

LOOKING FOR FURNITURE?!

Designer Furniture Gallery : G/F, 3 Blue Pool RD, Happy Valley, HK. T: (852) 3104 3100 www.tintliving.com
 Furniture Outlet : 11/F, Ming Sang Ind. Building, 8 Hing Yip Street, Kwun Tong, Kowloon. T: (852) 3104 3107

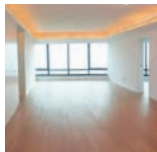




The Beachside
淺水灣 淺水灣道82-86號
82-86 Repulse Bay Road, Repulse Bay
Cozy flat with private terrace close to Repulse Bay Beach
淺水灣靚人住宅，連私家平台，鄰近淺水灣海濱，可租可售

930 s.f. (plus 300 s.f. terrace and 268 s.f. garden)
\$32,000 incl. also for sale \$14,500,000

www.landscape.com/10430.htm [Mavis Wu 吳小姐 9107 3891](#)



La Mer
薄扶林 浪蕩閣
67-71 Bisney Road, Pokfulam

Newly renovated 4-bedroom low-rise with full sea view
全新裝修四房低密度住宅，尊享全海景，可租可售

2,063 s.f.
\$69,000 incl. also for sale \$33,000,000

www.landscape.com/108873.htm [Yvonne Chang 鄭小姐 9088 4666](#)

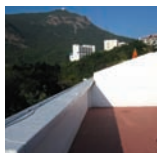


Cape Mansions
薄扶林 翠海別墅
56-62 Mount Davis Road, Pokfulam

Sea view apartment in prime location
薄扶林海景住宅，地段尊貴，可租可售

2,100 s.f.
\$75,000 incl. also for sale \$29,500,000

www.landscape.com/18679.htm [Mark Mak 麥先生 6838 2929](#)



Ann Garden
壽臣山 安苑
29 Shouson Hill Road, Shouson Hill

Low-rise duplex on top floor with exclusive roof terrace
低密度複式頂層住宅，連獨特天台平台

2,500 s.f. (plus 2,500 s.f. roof)
\$90,000 incl.

www.landscape.com/11849.htm [Maria Cheung 張小姐 5182 8699](#)



Celestial Garden
淺水灣 詩禮花園
5 Repulse Bay Road, Repulse Bay

Practical 4-bedroom apartment with new decorations
實用四房住宅，全新裝修，可租可售

2,375 s.f.
\$96,000 incl. also for sale \$51,000,000

www.landscape.com/4126.htm [Teresa Lau 劉小姐 9080 6886](#)



29-31 Bisney Road, Pokfulam
薄扶林 碧嘉道29-31號

Newly renovated low-rise 4-bedroom including 2 en-suites apartment with private roof in tranquil surroundings
碧嘉道全新裝修低密度四房連兩套房住宅，環境清幽怡人

2,500 s.f. (plus 2,200 s.f. private roof terrace)
\$90,000 incl.

www.landscape.com/51256.htm [Walker Lam 林先生 9551 1077](#)



Regent Palisades
薄扶林 帝柏閣
43 Bisney Road, Pokfulam

Charming low-rise with private roof top
迷人低密度住宅，連私家天台，可租可售

1,735 s.f. (plus 1,034 s.f. roof)
\$68,000 incl. also for sale \$22,000,000

www.landscape.com/111476.htm [Rowena Siu 蕭小姐 9348 4118](#)



7 South Bay Close, Repulse Bay
淺水灣 南海坊7號

Brand new high-ceilinged mid-rise apartment with facilities
全新高樓底中密度住宅，連住客會所設施

2,187 s.f.
\$74,000

www.landscape.com/133356.htm [Teresa Lau 劉小姐 9080 6886](#)



3 Repulse Bay Road, Repulse Bay
淺水灣 淺水灣道3號

Prestigious 4-bedroom apartment with lush green view and sea view
豪華四房單位，尊享翠綠園景及海景，可租可售

2,078 s.f.
\$85,000 incl. also for sale \$55,000,000

www.landscape.com/100222.htm [Maria Cheung 張小姐 5182 8699](#)



Stanley Green
赤柱 維靈別墅
66 Stanley Village Road, Stanley

Nice low-rise duplex with private garden
雅緻低密度複式住宅，連私家花園

2,200 s.f. (plus garden)
\$95,000

www.landscape.com/100717.htm [Chris Law 羅先生 6183 8388](#)



Monte Verde
淺水灣 南山別墅
41 Repulse Bay Road, Repulse Bay

Rare 4-bedroom apartment with Deep Water Bay view on upper Repulse Bay Road
淺水灣道頂段罕有四房住宅，尊享深水灣景觀

2,400 s.f.
\$96,000

www.landscape.com/10238.htm [Samui Woo 胡小姐 9493 8275](#)



Pine Lodge
壽臣山 松苑
10 Shouson Hill Road West, Shouson Hill

Low-rise flat with private roof in tranquil Shouson Hill
壽臣山低密度住宅，連私家天台，環境清幽怡人

3,000 s.f. (plus 2,000 s.f. roof)
\$100,000 incl.

www.landscape.com/30730.htm [Mark Mak 麥先生 6838 2929](#)



Pacific View
大潭 浪琴閣
38 Tai Tam Road, Tai Tam

High floor flat with splendid sea view
高層單位有優美海景，可租可售

3,106 s.f.
\$105,000 incl. also for sale \$45,880,000

www.landscape.com/13954.htm [Maria Cheung 張小姐 5182 8699](#)



The Hacienda
淺水灣 海境花園
90 Repulse Bay Road, Repulse Bay

Low-rise penthouse with private roof containing 4 bedrooms
低密度頂層四房住宅，連私家天台

2,993 s.f. (plus 975 s.f. roof)
\$110,000 incl.

www.landscape.com/94794.htm [Rylie Ip 葉先生 6900 2238](#)



33 Cape Road, Chung Hom Kok
香仗角 環角道33號

Garden townhouse in quiet location with charming sea view
香仗角花園排屋，地段清靜，尊享迷人海景，可租可售

3,140 s.f. (plus 645 s.f. garden and 420 s.f. roof)
\$135,000 incl. also for sale \$55,000,000

www.landscape.com/123155.htm [Yvonne Chang 鄭小姐 9088 4666](#)



46 Tai Tam Road, Tai Tam
大潭 大潭道46號

Duplex apartment with private roof facing sea view
大潭豪華海景住宅，連私家天台及花園

2,600 s.f. (plus 968 s.f. roof and 400 s.f. garden)
\$110,000 incl.

www.landscape.com/6329.htm [Chris Law 羅先生 6183 8388](#)



30-36 Horizon Drive, Chung Hom Kok
香仗角 海天徑30-36號

Spacious 4-bedroom townhouse with sea view and 3 balconies
寬敞四房洋房連三陽臺，享美麗海景

3,000 s.f.
\$130,000

www.landscape.com/17842.htm [Sandra Choi 葉小姐 9234 1109](#)



27-31 South Bay Road, Repulse Bay
淺水灣 南海道27-31號

Newly renovated colonial low-rise with huge balcony
靚裝修英式低密度三層住宅，連特大陽臺

2,920 s.f.
\$150,000 incl.

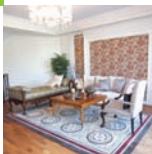
www.landscape.com/22478.htm [Christine Chong 莊小姐 9648 6082](#)

SCHOTTEN & HANSEN

a passion for excellence

"A floor from Schotten & Hansen is as unique as the person who lives on it"

Torben Hansen, Managing Director of Schotten & Hansen


Bellevue Place
 淺水灣 寶晶苑

93 Repulse Bay Road, Repulse Bay
 Stylish luxury townhouse in serene location
 時尚豪華排屋，環境寧靜，地段優越，可租可買

3,619 s.f. (plus 735 s.f. roof, 310 s.f. terrace and 25 s.f. garden)
\$150,000 incl. also for sale \$88,000,000

www.landscope.com/109039.htm David Chan 陳先生 9238 2012


5 Headland Road, Repulse Bay
 淺水灣 赫蘭道5號

Rare low-rise 4-bedroom garden flat with sea view in gated neighbourhood
 罕有低密度四房花園住宅，尊享海景

3,200 s.f. (plus 2,138 s.f. garden)
\$160,000

www.landscope.com/36934.htm Carman Szeto 司徒小姐 6183 8339


37 Repulse Bay Road, Repulse Bay
 淺水灣 淺水灣道37號

Designer decorated duplex with picturesque sea view
 設計師精心設計複式住宅，尊享如畫美景，可租可售

3,480 s.f.
\$170,000 incl. also for sale \$70,000,000

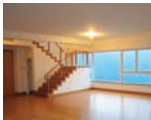
www.landscope.com/31508.htm Stella Lo 羅小姐 9809 8570


Fairview Court
 淺水灣 富華閣

94 Repulse Bay Road, Repulse Bay
 Huge 5-bedroom garden flat in tranquil area of Repulse Bay
 淺水灣巨型五房花園住宅，位處清幽地段

4,155 s.f. (plus 764 s.f. garden)
\$150,000

www.landscope.com/3036.htm Yvonne Chang 鄭小姐 9088 4666


The Redhill Peninsula
 大潭 紅山半島

18 Pak Pat Shan Road, Tai Tam
 5-bedroom duplex apartment with full sea view
 大潭五房複式住宅，尊享全海景

3,443 s.f. (plus 986 s.f. roof and 237 s.f. terrace)
\$170,000 incl.

www.landscope.com/33487.htm Mary Li 李小姐 9011 6595


Las Pinadas
 壽臣山 蔚松居

33 Shouson Hill Road, Shouson Hill
 Designer decoration townhouse with roof terrace and garden enjoy greenery mountain view
 設計師精心設計排屋，擁天台平台及花園，尊享翠綠山景

3,494 s.f. (plus 796 s.f. roof, 393 s.f. garden and 184 s.f. terrace)
\$180,000 incl.

www.landscope.com/91170.htm Rowena Siu 蕭小姐 9348 4118


Stanley Mound Road, Stanley
 赤柱 赤柱崗道

Rare single detached house with private garden close to Stanley Beach
 赤柱罕有獨立大屋，擁私家花園，鄰近赤柱海灘，可租可售

5,600 s.f. (plus 3,391 s.f. garden, 646 s.f. roof and terrace)
\$200,000 incl. also for sale \$120,000,000

www.landscope.com Chris Law 羅先生 6183 8388


Villa Rosa
 大潭 玫瑰園

88 Red Hill Road, Tai Tam
 Garden house with brilliant sea view in tranquil location
 大潭花園大屋，享絕色海景，地段清幽怡人，可租可售

3,960 s.f. (plus 480 s.f. roof and 414 s.f. garden)
\$230,000 also for sale \$100,000,000

www.landscope.com/1914.htm Yvonne Chang 鄭小姐 9088 4666


115 Repulse Bay Road, Repulse Bay
 淺水灣 淺水灣道115號

Newly renovated huge mid-rise duplex apartment with private garden
 海裏中密度複式住宅，擁私家花園及新裝修

6,500 s.f. (plus 1,454 s.f. garden)
\$280,000

www.landscope.com/43967.htm Teresa Lau 劉小姐 9080 6686


32 Repulse Bay Road, Repulse Bay
 淺水灣 淺水灣道32號

Extraordinary garden house on Repulse Bay Road
 淺水灣道獨特花園大屋

3,000 s.f. (plus 1,356 s.f. garden and 556 s.f. roof)
\$230,000

www.landscope.com/6317.htm Louis Wong 黃先生 9871 6828


56 Repulse Bay Road, Repulse Bay
 淺水灣 淺水灣道56號

Luxurious seafront duplex with direct access to private roof terrace
 豪華海濱複式住宅，可直達天台平台，可租可售

3,201 s.f. (plus 188 s.f. terrace)
\$250,000 incl. also for sale \$130,000,000

www.landscope.com/45883.htm Mira To 杜小姐 9486 1566


66 Deep Water Bay Road, Deep Water Bay
 深水灣 深水灣道66號

Prestigious townhouse facing Deep Water Bay
 深水灣有名望豪華排屋

4,200 s.f. (plus 569 s.f. roof and 282 s.f. terrace)
\$300,000

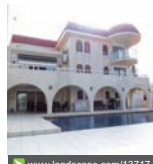
www.landscope.com/10204.htm Louis Wong 黃先生 9871 6828



novus
 INTERIOR ARCHITECTURE

novus
 PENETRALIS LIMITED
 ARCHITECTURE

UNIT 16A, HANG SENG CAUSEWAY BAY BUILDING
 28 YEE WO STREET, CAUSEWAY BAY, HONG KONG
 T: 3106 6069 / 2576 7202 F: 3106 6079
 E: info@novusp.com


Tung Tau Wan Road, Stanley
 赤柱 東頭灣道

Waterfront detached house with private swimming pool in secluded location
 赤柱海邊獨立大屋，擁私家游泳池，地段清幽怡人

5,134 s.f. (plus 3,508 s.f. terrace and 1,513 s.f. roof)
\$320,000

www.landscope.com/13717.htm David Chan 陳先生 9238 2012


110 Repulse Bay Road, Repulse Bay
 淺水灣 淺水灣道110號

Exclusive sea view mansion in prestigious location of Repulse Bay
 淺水灣獨特海景大宅，位處尊貴地段，可租可售

6,150 s.f. (plus 1,173 s.f. garden and 934 s.f. roof)
\$360,000 incl. also for sale \$220,000,000

www.landscope.com/104464.htm Rylie Ip 葉小姐 6600 2238


The Lily
 淺水灣 淺水灣道129號

Luxurious brand new 4-bedroom apartment with fantastic Repulse Bay view
 全新豪華四房住宅，尊享遠闊觀海景

7,700 s.f.
\$420,000

www.landscope.com/75992.htm Louis Wong 黃先生 9871 6828

For more listings, please go to www.landscope.com/lease

保快家
 PURIFICARE®

逆滲透濾水系統
 Reverse Osmosis (R.O.) Water Filter System

歡迎聯絡我們安排免費水質測試！
 Call us for a FREE water test NOW!

Hotline 熱線 **9013 2338**

www.mtel.com.hk

LEICHT®
Germany High Quality Kitchen

WE ARE MOVED

showroom panorama harbour view



LEICHT CHIEF DESIGNER: Hartmut Waiser - award winner of iF Award 2008 on Concept 40



product
design
award

2008

Concept 40 series



HONG KONG MAIN OFFICE CHEST APPLY (ASIA) LTD.
Shop No. 201, 2/F Harbour Centre, 25 Harbour Road, Wanchai, HK
香港灣仔港灣道25號海港中心2樓201號舖
enquiry@leicht.com.hk

HONG KONG SHOWROOM	+852 2575 8286
BEIJING SHOWROOM	+8610 8527 1858
SHANGHAI SHOWROOM	+8621 3878 0212
SHENZHEN SHOWROOM	+86755 8279 3211

Opening Hours
Mon - Sat: 0900 - 1930
Sun & Pub: 1300 - 1930