

select deluxe homes

The Key

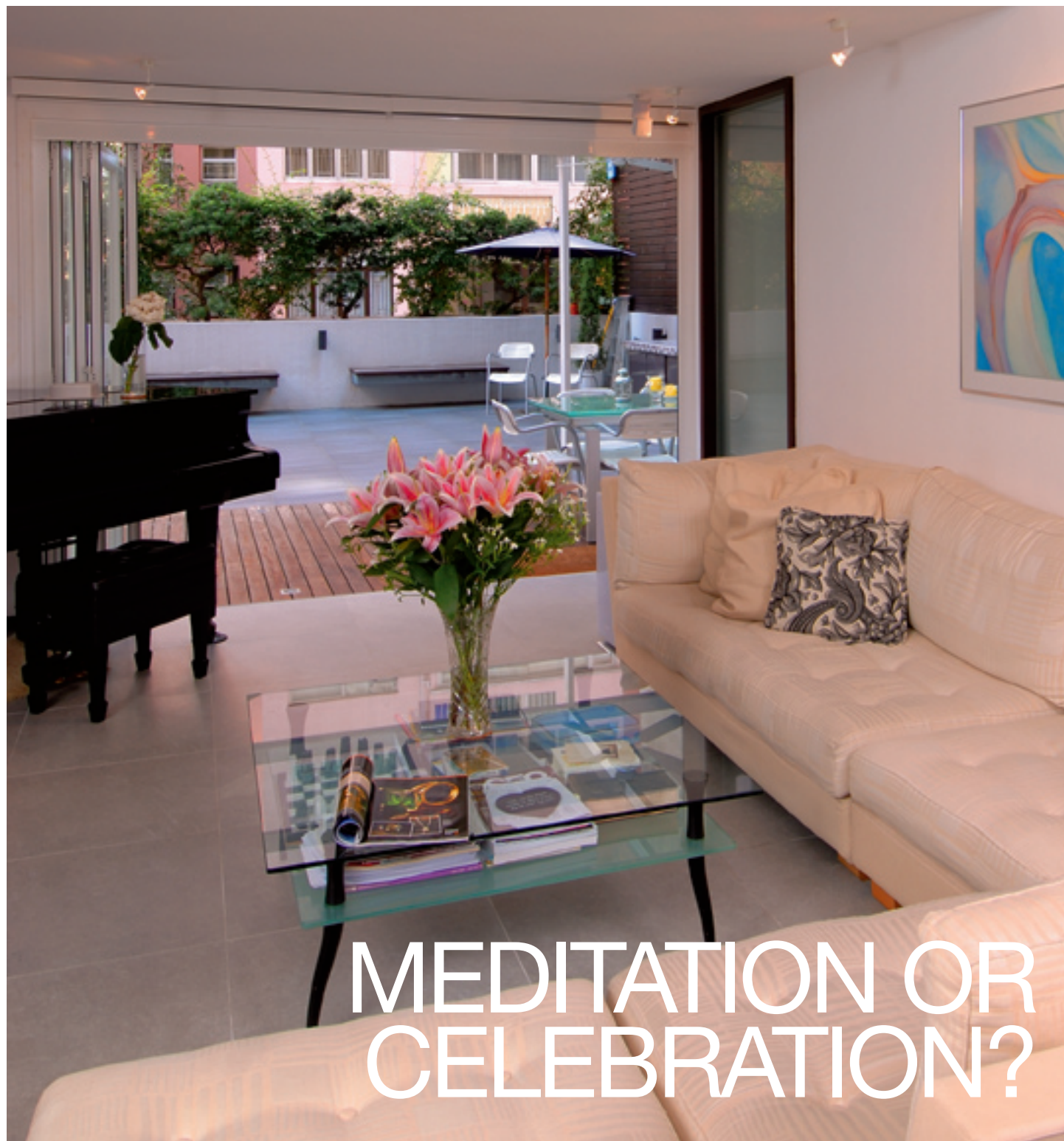
大宅®

AUGUST 2008
Volume 47

published and distributed by

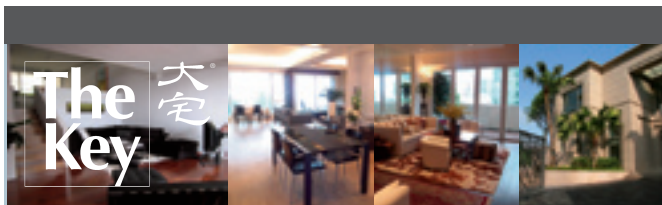
LANDSCOPE
The Specialists in Luxury Properties

領域



MEDITATION OR
CELEBRATION?

www.landscape.com



KeyNotes

"What is past I know, but what is for to come I know not."

II Esdras 4:46

After a rampant surge in the last quarter of 2007, the property bull lost steam beginning 2008. Transient revival of activities over the last few months failed to prop up the price, which showed tiredness since last April. Transactions of properties over \$100 million, which were hitting headlines every week at the height of the market, are nowhere to be seen these days. Even sales of \$50 million-plus have become a rare scene. In the luxury property market, most sales are in the \$10 million to \$20 million and they are today only a fraction of the trading volume in 4Q2007. Among the sellers, quite some are speculators who jumped on the bandwagon at the height of the market, hoping to hit and run with a handsome profit but only to find now being left high and dry. Some of them are investment bankers who had pocketed huge bonuses in previous years and invested heavily in property but are now faced with a gloomy job prospect as the US sub prime mortgage woes sent shock waves to Asia. With these desperate sellers dominating the market, luxury property price can't defy gravity, at least not until these stocks are absorbed. We foresee in the next few months the sales market will continue to remain in the doldrums and price will soften further, as market sentiment will not improve any time soon and the seasonal effect of summer kicks in.

Koh Keng-shing
ks-koh@landscape.com

(The above is an excerpt from Market Watch on www.landscape.com. For the full article, please log on to www.landscape.com/m0808.htm)

About The Key

The Key is a monthly publication of sales and letting listings of luxury residential properties on Hong Kong Island. It is sent to VIP clients of Landscape Realty and residents of The Peak, Southside, Mid-Levels, Kowloon Tong, Homantin and selected upmarket residential areas in Shatin, Tai Po, Clear Water Bay and Castle Peak Road. The recipients comprise the crème de la crème of Hong Kong's affluent community.

In addition to The Key, Landscape Realty sends weekly eNewsletters to clients on most update listings of luxury properties. If you wish to receive the eNewsletter, please call Loretta Lui at 3102 4818 or email to info@landscape.com.

How may you list your property with The Key?

If you would like to see your property listed in The Key in the next issue, you may call Loretta Lui at 3102 4818 or email to info@landscape.com. Or you may simply fill out the space below and fax to us at 2866 0015.

Property to be listed

Asking Rental / Sale Price

Floor Area

Contact Person

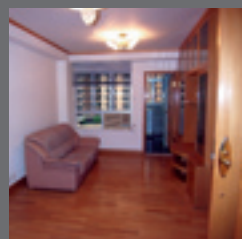
Telephone

Email

Our KeyPersons will contact you for follow-up works.

半山
出售

MID-LEVELS SALES



Caroline Height

跑馬地 嘉蘭閣

1 Link Road, Happy Valley
Spacious 3-bedroom flat on fringe of Causeway Bay
寬敞三房單位，鄰近銅鑼灣

1,052 s.f.
\$9,500,000

www.landscape.com/15974.htm | Carman Szeto 司徒小姐 8100 3893



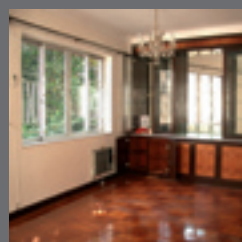
Vivian's Court

跑馬地 榮慧苑

75 Blue Pool Road, Happy Valley
Low-rise penthouse with roof in quiet location
低密度頂層單位連天台，位處寧靜地段

1,100 s.f.
\$11,000,000

www.landscape.com/14448.htm | Johnny Cheung 張先生 9278 9939



Hong Lok Mansions

中半山 康樂大廈

44-44F MacDonnell Road, Midlevels Central
4-bedroom mid-rise in Mid-levels
中半山 中密度四房單位

1,600 s.f.
\$14,800,000 also for lease \$50,000

www.landscape.com/13659.htm | Eric Wong 黃先生 9740 3396



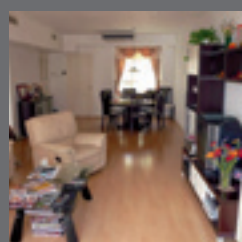
18 Tung Shan Terrace, Midlevels East

東半山 東山臺18號

Low-rise with open city view in convenient location
低密度住宅，享開揚城市景，位處便利地段

1,595 s.f.
\$15,800,000 also for lease \$50,000

www.landscape.com/15924.htm | Walker Lam 林先生 9551 1077



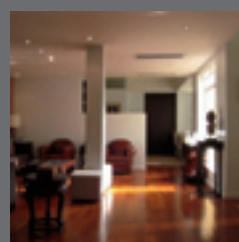
Amber Garden

東半山 柏苑

70-72 Kennedy Road, Midlevels East
Conveniently located 3-bedroom flat with practical layout
實用三房單位，交通便利

1,732 s.f.
\$16,800,000

www.landscape.com/12490.htm | Sissy Li 李小姐 9642 6969



Pak Fai Mansion

中半山 百輝大廈

72 MacDonnell Road, Midlevels Central
Well renovated 2-ensuite flat in colonial building
新裝英式大廈雙套房單位

1,800 s.f.
\$18,500,000

www.landscape.com/15684.htm | David Chan 陳先生 9238 2012



MEDITATION OR CELEBRATION?

This property in the heart of Happy Valley has a huge terrace, which is fully decorated and equipped and is perfect for hosting big parties of family gatherings and guest entertainment. The terrace is decked out with semi-covered glass roof, slate-covered flooring and two sets of tables and chairs, one for drinks and one for sit down dinner. The well appointed barbeque booth and the huge market umbrella set up an enchanting tropical ambience. Inside the flat, a grand piano adorns a corner of living room next to a study-cum-guest room. The dining room is flanked by two large paintings that heighten one's appetite. Next to dining room is a lounge which is good for a quiet read. The open kitchen is spacious enough to cook up any feast. Whether it's meditation for self reflection or a big party for celebration, this is an ideal home.

Grand Court

16 Shan Kwong Road,
Happy Valley
跑馬地 嘉蘭閣

1,569 s.f. (plus 1,404 s.f. terrace)

\$26,000,000

www.landscape.com/15741.htm

Simon Lee 李先生 6014 3712



The Royal Court

中半山 帝景閣

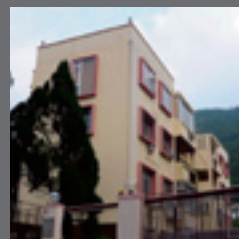
3 Kennedy Road, Midlevels Central
Garden view apartment on Kennedy Road
堅尼地道住宅，觀賞香港公園景觀

1,428 s.f.

\$18,800,000

www.landscape.com/6997.htm

Eric Wong 黃先生 9740 3396



New Haven Court

渣甸山 衛信道1-11號

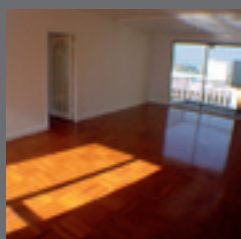
1-11 Wilson Road, Jardine's Lookout
Charming colonial low-rise in
Jardine's Lookout
渣甸山迷人英式低密度住宅

1,800 s.f.

\$21,000,000

www.landscape.com/13171.htm

Johnny Cheung 張先生 9278 9939



Amber Garden

中半山 柏苑

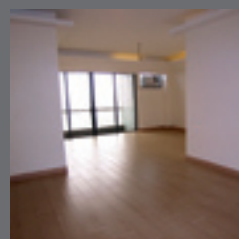
70-72 Kennedy Road, Midlevels East
Nice flat on Kennedy Road with easy
access to Central and Wanchai
堅尼地道精緻單位，往返中環灣仔交通方便

1,732 s.f.

\$21,000,000

www.landscape.com/2037.htm

Rita Lee 李小姐 9437 0087



Cavendish Heights

中半山 嘉雲臺

27-37 Perkins Road, Jardine's Lookout
Renovated family apartment with facilities
全新裝修家庭式住宅，配完善會所設施

1,819 s.f.

\$22,000,000 also for lease \$75,000 incl.

www.landscape.com/15511.htm

Teresa Lau 劉小姐 9080 6686



Evergreen Villa

東半山 松柏新村

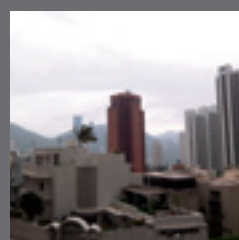
43 Stubbs Road, Midlevels East
Practical flat with good layout and balcony
高實用率單位連露台

1,750 s.f.

\$23,500,000

www.landscape.com/16489.htm

Maria Cheung 張小姐 6256 1848



Butler Tower

渣甸山 柏麗園

1-5 Boyce Road, Jardine's Lookout
Practical 4-bedroom flat in
renovated building
翻新大廈，實用四房單位

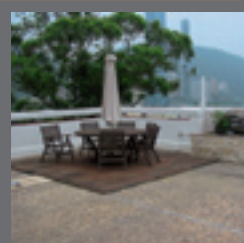
1,650 s.f.

\$23,800,000 also for lease \$80,000 incl.

www.landscape.com/14942.htm

Mira To 杜小姐 9486 1566

MID-LEVELS SALES



2-6A Wilson Road, Jardine's Lookout

渣甸山 衛信道 2-6A 號

Low-rise apartment with private roof top
低密度住宅連私家天台

1,800 s.f. (plus 1,600 s.f. roof)
\$27,800,000

www.landscape.com/15040.htm | Christine Chong 莊小姐 9648 6082



Birchwood Place

中半山 寶樺臺

96 MacDonnell Road, Midlevels Central
Popular 4-bedroom flat on MacDonnell Road with full clubhouse facilities
搶手四房單位，位處麥當勞道，配完善會所設施

2,018 s.f.
\$30,000,000

www.landscape.com/13546.htm | Philip Lai 黎先生 9430 3330



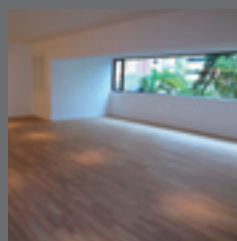
Palatial Crest 西半山 輝煌豪園

3 Seymour Road, Midlevels West

4-bedroom (incl 2 ensuite) flat with sweeping harbour view next to pedestrian escalator
四房雙套單位，享維港景，鄰近半山自動行人電梯

2,177 s.f.
\$30,800,000

www.landscape.com/15950.htm | Ada Cheung 張小姐 9681 8166



Fontana Garden

東半山 豪園

1-25 Ka Ning Path, Midlevels East
Huge apartment with brand new decorations in convenient location
全新裝潢大宅，交通便利

3,300 s.f.
\$31,000,000 also for lease \$120,000

www.landscape.com/14464.htm | Rita Lee 李小姐 9437 0087

Grand Deco Tower 東半山 帝后臺

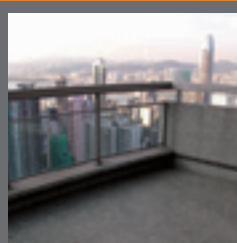


26 Tai Hang Road, Midlevels East

Unique triplex penthouse with private roof garden
獨特三層複式頂樓單位，連私家天台花園

3,216 s.f.
(plus 476 s.f. roof)
\$35,000,000 also for lease \$128,000

www.landscape.com/2296.htm | Simon Lee 李先生 6014 3712



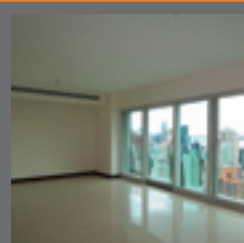
Century Tower I

中半山 世紀大廈一座

1 Tregunter Path, Midlevels Central
Unique apartment in prestigious Midlevels Central
中半山高尚特色單位

2,565 s.f.
\$35,000,000

www.landscape.com/3939.htm | Stella Lo 羅小姐 9809 8570



The Legend

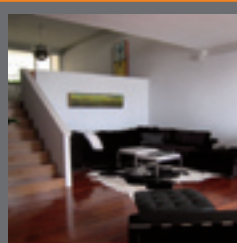
渣甸山 名門

23 Tai Hang Drive, Jardine's Lookout

5-bedroom harbour view flat with comprehensive facilities
維港景五房單位，配完善會所設施

2,372 s.f.
\$39,000,000

www.landscape.com/16160.htm | Cecilia Fung 馮小姐 6271 2388



May Tower I

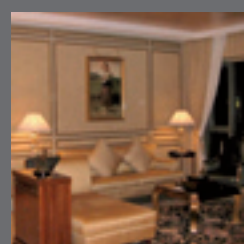
中半山 梅苑一座

7 May Road, Midlevels Central

Harbour view duplex in prime location
維港景複式單位，位處黃金地段

2,850 s.f.
\$46,000,000

www.landscape.com/15356.htm | David Chan 陳先生 9238 2012



Regence Royale

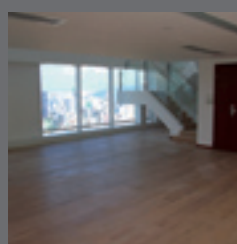
中半山 富匯豪庭

2 Bowen Road, Midlevels Central

Prestigious apartment on fringe of Central with full clubhouse facilities
尊貴住宅，鄰近中環，配完善會所設施

2,697 s.f.
\$52,600,000

www.landscape.com/13410.htm | Stella Lo 羅小姐 9809 8570



Bowen Place

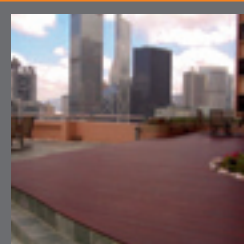
中半山 寶雲閣

11A Bowen Road, Midlevels Central

Rare harbour view duplex with five bedrooms in quiet location
罕有維港景五房複式單位，地點寧靜

3,621 s.f. (plus 184 s.f. terrace)
\$64,000,000

www.landscape.com/15241.htm | Ada Cheung 張小姐 9681 8166



The Albany

中半山 雅賓利大廈

1 Albany Road, Midlevels Central

Exclusive flat with huge private terrace
獨特單位連巨型私家平台

2,546 s.f. (plus 2,628 s.f. garden)
\$80,000,000

www.landscape.com/15480.htm | Christine Chong 莊小姐 9648 6082



21 Perkins Road, Jardine's Lookout

渣甸山 白建時道21號

Highly sought after single detached house in Jardine's Lookout
罕有放售渣甸山獨立屋

3,800 s.f. (plus 800 s.f. garden)
\$138,000,000

www.landscape.com/15593.htm | Walker Lam 林先生 9551 1077



Seaview Mansion
中半山 時和大廈
34 Kennedy Road, Midlevels Central
Spacious 3-bedroom flat on convenient Kennedy Road
寬敞三房單位，位處堅尼地道，交通便利
1,700 s.f.
\$50,000 also for sale \$20,000,000

www.landscape.com/16467.htm | Mira To 杜小姐 9486 1566



Shuk Yuen Building
跑馬地 菽園新臺
2 Green Lane, Happy Valley
Unique mid-rise with large balcony on upper Happy Valley
特色中密度單位連大露台，位處上跑馬地
2,000 s.f.
\$50,000 also for sale \$20,000,000

www.landscape.com/14824.htm | Walker Lam 林先生 9551 1077



The Royal Court
中半山 帝景閣
3 Kennedy Road, Midlevels Central
Conveniently located apartment overlooking Hong Kong Park
物業位置便利，遠眺香港公園
1,428 s.f.
\$60,000 also for sale \$22,000,000

www.landscape.com/12413.htm | Walker Lam 林先生 9551 1077



Loong Fung Terrace
東半山 龍風臺
89-93 Tai Hang Road, Midlevels East
Mint condition low-rise flat with lush green view in quiet neighbourhood
完美低密度住宅，位處寧靜地段，享綠景
1,800 s.f.
\$65,000 incl.

www.landscape.com/15832.htm | Walker Lam 林先生 9551 1077



Wing On Lodge
跑馬地 永安新村
72-82 Blue Pool Road, Happy Valley
Nicely decorated apartment in Happy Valley
跑馬地精緻裝修單位
1,308 s.f.
\$70,000 also for sale \$16,500,000

www.landscape.com/16218.htm | Rowena Siu 蕭小姐 9348 4118



Tregunter Tower
中半山 地利根德閣
14 Tregunter Path, Midlevels Central
Nicely fitted and finished flat in prime location, with full club house facilities
優雅裝潢傢俱單位，位處黃金地段，配完善會所設施
2,020 s.f.
\$75,000 incl. also for sale \$24,000,000

www.landscape.com/15858.htm | Teresa Lau 劉小姐 9080 6686



Catalina Mansions
中半山 嘉年大廈
98-100 MacDonnell Road, Midlevels Central
Nicely decorated apartment on convenient MacDonnell Road
麥當勞道雅緻裝潢住宅，交通便利
2,300 s.f.
\$85,000

www.landscape.com/15838.htm | Yvonne Chang 鄭小姐 9088 4666



Birchwood Place
中半山 寶樺臺
96 MacDonnell Road, Midlevels Central
3-bedroom flat with comprehensive facilities in prime location
三房單位，配完善設施，位處尊貴地段
2,018 s.f.
\$85,000 incl. also for sale \$35,000,000

www.landscape.com/16227.htm | Stella Lo 羅小姐 9809 8570



Elegant Garden
西半山 美景臺
11 Conduit Road, Midlevels West
Spacious 4-bedroom flat with access to open space on Conduit Road
寬敞四房單位，直達空地，位處干德道頭
2,500 s.f.
\$88,000 incl.

www.landscape.com/15945.htm | Sami Woo 胡小姐 9493 8275



Savoy Court
西半山 夏蕙苑
101 Robinson Road, Midlevels West
High efficiency 4-bedroom flat with balcony and new decor
高實用率四房單位，連露台和全新裝修
2,546 s.f.
\$90,000 incl. also for sale \$26,000,000

www.landscape.com/15769.htm | Ada Cheung 張小姐 9681 8166



Cliffview Mansions
西半山 康苑
17-19 Conduit Road, Midlevels West
Large colonial style apartment with huge balcony
英式大宅連巨型露台
3,000 s.f.
\$92,000 incl. also for sale Open Offer

www.landscape.com/15038.htm | Ada Cheung 張小姐 9681 8166



Visalia Garden
中半山 蔚山花園
48 MacDonnell Road, Midlevels Central
Nicely decorated apartment with Manhattan-style view
精緻裝潢住宅，享曼克頓式景觀
2,195 s.f.
\$95,000

www.landscape.com/15329.htm | David Chan 陳先生 9238 2012

MID-LEVELS LEASE



Macdonnell House

中半山 麥當奴大廈

6-8 MacDonnell Road, Midlevels Central
Spacious 4-bedroom apartment on top of
MacDonnell Road

寬敞四房單位，位處麥當奴道頭段

2,519 s.f.

\$99,000 also for sale Open Offer

www.landscape.com/15068.htm

Sissy Li 李小姐 9642 6969



Evergreen Villa

東半山 松柏新村

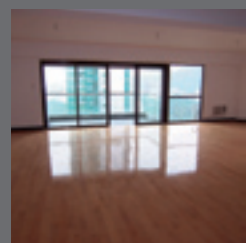
43 Stubbs Road, Midlevels East
Spacious 3-bedroom apartment on
Stubbs Road with open city view

2,560 s.f.

\$100,000 incl.

www.landscape.com/15829.htm

Simon Yung 翁先生 9418 5743



Villa Monte Rosa

東半山 玫瑰新村

41A Stubbs Road, Midlevels East
Spacious 4-bedroom apartment in
good condition

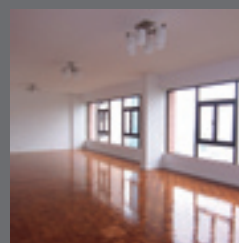
寬敞四房單位，狀態良好

3,300 s.f.

\$110,000

www.landscape.com/14451.htm

Sami Woo 胡小姐 9493 8275



Leon Court 東半山 利安閣

12-14 Wong Nai Chung Gap Road,
Midlevels East

Spacious high floor apartment with open
city view

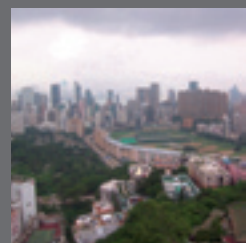
實用高層單位，望開揚城市景

2,800 s.f.

\$112,000 incl.

www.landscape.com/14333.htm

Carman Szeto 司徒小姐 8100 3893



Victoria Height

東半山 威利閣

43A Stubbs Road, Midlevels East
Spacious apartment ideal for large family

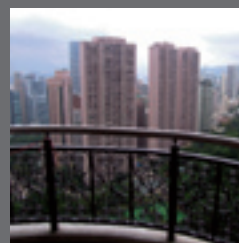
寬敞住宅，大家庭理想之選

2,553 s.f.

\$120,000 incl.

www.landscape.com/15742.htm

Eric Wong 黃先生 9740 3396



Clovelly Court

中半山 嘉富麗苑

12 May Road, Midlevels Central
Large and spacious 4-bedroom flat in
Lower Peak area

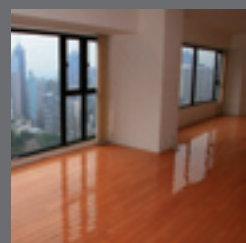
寬敞四房單位，位處下山頂段

2,809 s.f.

\$120,000 also for sale \$65,000,000

www.landscape.com/13459.htm

Mira To 杜小姐 9486 1566



The Royal Court

中半山 帝景閣

3 Kennedy Road, Midlevels Central
High floor duplex with sweeping view
of the city skyline

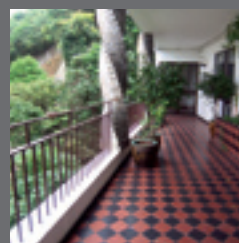
高層複式單位，享城市天際景色

2,846 s.f.

\$140,000 also for sale \$56,920,000

www.landscape.com/15804.htm

Sissy Li 李小姐 9642 6969



Bowen Mansion 中半山 寶雲大廈

7C Bowen Road, Midlevels Central
Colonial low-rise apartment with
huge balcony on Bowen Road,
enjoying greenview

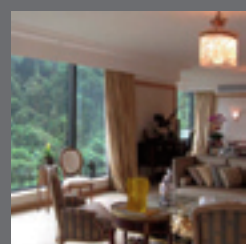
寶雲道英式低密度住宅連特大露台，享綠景

4,000 s.f.

\$150,000 incl.

www.landscape.com/15601.htm

Teresa Lau 劉小姐 9080 6686



Century Tower II

中半山 世紀大廈二座

1A Tregunter Path, Midlevels Central
Nicely decorated 4-bedroom property
with high privacy

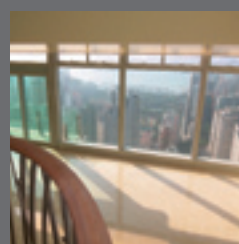
高私隱四房住宅，配精緻裝潢

3,638 s.f.

\$170,000 incl. also for sale \$72,000,000

www.landscape.com/11556.htm

Mira To 杜小姐 9486 1566



The Legend

渣甸山 名門

23 Tai Hang Drive, Jardine's Lookout
Brand new penthouse with private pool and
picturesque harbour view

全新頂層單位連私家泳池，享壯觀維港景

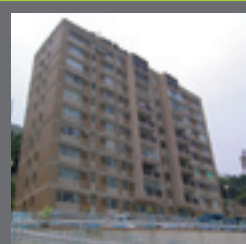
3,860 s.f.

\$280,000 incl.

www.landscape.com/15587.htm

Ada Cheung 張小姐 9681 8166

THE PEAK SALES



Ville Verde

山頂 環翠園

4-18 Guildford Road, The Peak
Cosy flat with balcony in prestigious
Lower Peak area

舒適單位連露台，位處山頂黃金地段

1,505 s.f.

\$30,000,000

www.landscape.com/15779.htm

Rita Lee 李小姐 9437 0087



Barker Villa

山頂 柏架別墅

41 Barker Road, The Peak
Cosy apartment with panoramic
harbour view on Barker Road

舒適住宅，座落白加道上，享環迴維港景色

1,650 s.f.

\$45,000,000

www.landscape.com/540.htm

David Leung 梁先生 9199 0672

THE PEAK SALES

山頂
出售



Carolina Garden
山頂 嘉樂園
20-34 Coombe Road, The Peak
Rare colonial apartment in prestigious location
罕有英式物業，位處優越地段
2,350 s.f.
\$48,000,000

www.landscape.com/12308.htm | Rita Lee 李小姐 9437 0087



26 Magazine Gap Road, The Peak
山頂 馬己仙峽道26號
Colonial apartment on Magazine Gap Road with harbour view
馬己仙峽道英式單位，望維港景色
2,400 s.f.
\$60,000,000

www.landscape.com/1260.htm | Mark Mak 麥先生 6838 2929



Stewart Terrace
山頂 史釗域臺
81-95 Peak Road, The Peak
Colonial large flat in serene and lush green environment
英式大宅，享開揚綠景
3,103 s.f.
\$65,000,000

www.landscape.com/13029.htm | David Leung 梁先生 9199 0672



Eredine
山頂 加列山道38號
38 Mount Kellett Road, The Peak
Huge colonial apartment with spectacular sea view
巨型英式住宅，享壯觀海景
3,300 s.f.
\$71,000,000

www.landscape.com/9926.htm | David Leung 梁先生 9199 0672



Peak Garden
山頂 山頂花園
16-20 Mount Austin Road, The Peak
Exclusive Peak apartment with bird's eye view of Victoria Harbour
獨特山頂單位，鳥瞰維港景色
2,655 s.f.
\$78,000,000

www.landscape.com/13923.htm | David Leung 梁先生 9199 0672



Strawberry Hill
山頂 紅莓閣
8 Plunkett's Road, The Peak
Rare colonial sea view house with private garden
罕有英式海景洋房，連私家花園
3,200 s.f. (plus 388 s.f. garden)
\$125,000,000

www.landscape.com/14357.htm | Maria Cheung 張小姐 6256 1848



Severn 8
山頂 倚巒
8 Severn Road, The Peak
Extravagant townhouse with panoramic view of the Harbour
豪華排屋，享環迴維港景色
3,330 s.f.
\$170,000,000

www.landscape.com/15847.htm | Mark Mak 麥先生 6838 2929



1-9 Rosmead Road, The Peak
山頂 樂善美道1-9號
Rare garden house on The Peak
罕有山頂花園洋房
5,887 s.f. (plus 1,955 s.f. garden)
\$280,000,000

www.landscape.com/14409.htm | David Leung 梁先生 9199 0672

THE PEAK LEASE

山頂
出租



Chelsea Court
山頂 賽詩閣
63 Mount Kellett Road, The Peak
Exclusive 2-ensuite apartment on The Peak
山頂特色雙套房住宅
1,509 s.f.
\$85,000

www.landscape.com/7346.htm | Maria Cheung 張小姐 6256 1848



Barker Villa
山頂 柏架別墅
41 Barker Road, The Peak
Nicely renovated apartment with full harbour view
全新裝修全海景單位
1,650 s.f.
\$88,000 also for sale Open Offer

www.landscape.com/15852.htm | Rita Lee 李小姐 9437 0087



Guildford Garden
山頂 喬苑
1-3 Mansfield Road, The Peak
Rare mid-rise apartment with 4 bedrooms & twin carparks
罕有中密度四房雙車位山頂住宅
2,400 s.f.
\$100,000 also for sale \$42,000,000

www.landscape.com/1140.htm | Teresa Lau 劉小姐 9080 6686



Sunshine Villa
山頂 陽光花園
48 Mount Kellett Road, The Peak
Deluxe Peak townhouse with private garage
豪華山頂排屋連私家車房
2,300 s.f. (plus 929 s.f. garden)
\$140,000 incl. also for sale \$70,000,000

www.landscape.com/11406.htm | Christine Chong 莊小姐 9648 6082

THE PEAK LEASE



43 Barker Road, The Peak 山頂 白加道43號
43 Barker Road, The Peak
 Modern harbour view apartment on Barker Road
 白加道時尚住宅，享維港景
 3,820 s.f.
\$200,000

www.landscape.com/12669.htm Rita Lee 李小姐 9437 0087



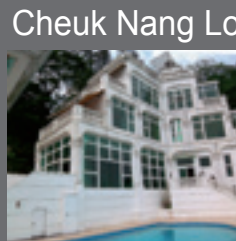
11-21 Watford Road, The Peak
 山頂 和福道11-21號
 Huge garden house in quiet corner of Lower Peak
 巨型花園大宅，位處寧靜山頂頭段
 4,800 s.f. (plus 1,262 s.f. garden)
\$250,000

www.landscape.com/16280.htm Sami Woo 胡小姐 9493 8275



Abergeldie 山頂 種植道52號
52 Plantation Road, The Peak
 Peak house with bird's eye view of Victoria Harbour
 山頂大宅，鳥瞰維港景色
 3,655 s.f. (plus 464 s.f. garden)
\$250,000 also for sale \$188,000,000

www.landscape.com/12967.htm Stephen Chan 陳先生 9093 3381



Cheuk Nang Lookout 山頂 卓能山莊
30 Severn Road, The Peak
 Detached house with private pool and terrace
 山頂獨立屋有私家泳池及平台
 5,300 s.f. (plus 3,900 s.f. garden)
\$260,000 also for sale \$160,000,000

www.landscape.com/2109.htm Simon Yung 翁先生 9418 5743



2 Barker Road, The Peak 山頂 白加道2號
 Exquisite townhouse with stunning views over Victoria Harbour and Island Southside
 精緻排屋，享無敵維港及南區景色
 4,082 s.f.
\$290,000

www.landscape.com/11572.htm Louis Wong 黃先生 9871 6828



12-22 Black's Link, The Peak 山頂 布力徑12-22號
 Townhouse in quiet location with four bedrooms and huge private garden
 四房獨立屋連私家大花園，環境清幽
 5,000 s.f.
\$350,000 also for sale \$250,000,000

www.landscape.com/10425.htm Maria Cheung 張小姐 6256 1848



56 Plantation Road, The Peak 山頂 種植道56號
 Prestigious newly renovated townhouse with panoramic harbour view
 尊貴山頂獨立屋，享環迴維港景色
 4,733 s.f. (plus 442 s.f. garden)
\$400,000

www.landscape.com/14807.htm Yvonne Chang 鄭小姐 9088 4666



Gough Hill Residences 山頂 歌賦山里3-5號
3-5 Gough Hill Path, The Peak
 Exclusive Peak house with huge garden
 特色山頂洋房連巨型花園
 5,657 s.f. (plus 5,320 s.f. garden)
\$580,000 incl. also for sale \$330,000,000

www.landscape.com/15140.htm Teresa Fung 馮小姐 9138 1621

SOUTHSIDE SALES



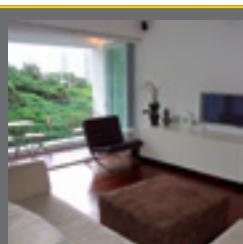
Bisney Terrace 薄扶林 碧荔臺
73-79 Bisney Road, Pokfulam
 3-bedroom sea and 3-balcony sea view apartment in Pokfulam
 薄扶林三房三露台海景住宅
 1,129 s.f.
\$10,500,000

www.landscape.com/16418.htm Mary Li 李小姐 9011 6595



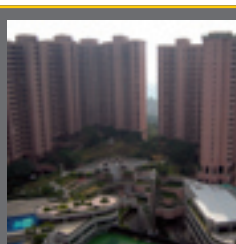
King's Court 薄扶林 景緻閣
9 Consort Rise, Pokfulam
 Well kept low-rise flat with large private terrace
 良好保養低密度住宅連私家大平台
 1,100 s.f. (plus 1,000 s.f. garden)
\$13,000,000

www.landscape.com/15563.htm Johnny Cheung 張先生 9278 9939



Regent Palisades 薄扶林 帝柏園
43 Bisney Road, Pokfulam
 Designer decorated 3-bedroom low-rise low-density 3房住宅，配品味裝潢
 1,543 s.f.
\$15,580,000

www.landscape.com/15784.htm Christine Chong 莊小姐 9648 6082



Hong Kong Parkview 淺水灣 陽明山莊
88 Tai Tam Reservoir Road, Repulse Bay
 Rare penthouse flat with private roof
 頂層單位連私家天台，罕有放盤
 1,312 s.f. (plus 1,000 s.f. roof)
\$17,000,000

www.landscape.com/14347.htm Johnny Cheung 張先生 9278 9939



Woodgreen Estate
壽臣山 壽山村道5號
5 Shouson Hill Road, Shouson Hill
Lovely low-rise in serene Shouson Hill
迷人低密度住宅，位處寧靜壽山村道

1,600 s.f.
\$18,880,000

www.landscape.com/15139.htm | Simon Yung 翁先生 9418 5743



Royalton I
薄扶林 豪峰一座
118 Pok Fu Lam Road, Pokfulam
Spacious and airy 4-bedroom flat with sweeping sea view
寬敞開揚四房住宅，享醉人海景

2,160 s.f.
\$21,600,000

www.landscape.com/10032.htm | Eric Wong 黃先生 9740 3396



Springfield Gardens
壽臣山 春暉園
5-9 Shouson Hill Road West, Shouson Hill
Charming low-rise flat in serene Shouson Hill
雅緻低密度住宅，位處寧靜壽臣山

1,775 s.f. (plus 1,000 s.f. terrace)
\$24,000,000

www.landscape.com/15078.htm | Johnny Cheung 張先生 9278 9939



Repulse Bay Garden 淺水灣 麗景園
18-40 Belleview Drive, Repulse Bay
High efficiency apartment overlooking Repulse Bay Beach
實用單位，眺望淺水灣泳灘

1,780 s.f.
\$25,000,000 also for lease \$73,000
SOLE AGENT 獨家代理

www.landscape.com/12489.htm | Mary Li 李小姐 9011 6595



Consort Garden
薄扶林 金碧花園
22-24 Consort Rise, Pokfulam
Nicely decorated low-rise flat with private roof in serene Pokfulam
精心佈置低密度住宅連私家天台

2,200 s.f. (plus 2,000 s.f. roof)
\$28,000,000

www.landscape.com/15975.htm | Carman Szeto 司徒小姐 8100 3893



South Bay Villas
淺水灣 南灣新村
4 South Bay Close, Repulse Bay
Renovated spacious apartment at quiet South Bay Close
獨特新裝寬敞住宅，鄰近南灣坊

2,300 s.f.
\$28,000,000

www.landscape.com/11473.htm | Rowena Siu 蕭小姐 9348 4118



Residence Bel-Air South Towers (Phase 2)
薄扶林 貝沙灣南岸 (第二期)
38 Bel-Air Avenue, Pokfulam
4-bedroom waterfront apartment with comprehensive facilities
四房海濱單位，享多樣化設施

2,180 s.f.
\$28,500,000 **SOLE AGENT 獨家代理**

www.landscape.com/15455.htm | Sissy Li 李小姐 9642 6969



Scenic Villas
薄扶林 美景臺
2-28 Scenic Villa Drive, Pokfulam
Nicely decorated sea view apartment with roof top
雅緻裝潢海景住宅連天台

2,194 s.f. (plus 1,369 s.f. roof)
\$29,000,000

www.landscape.com/15603.htm | Sami Woo 胡小姐 9493 8275



Cypresswaver Villas
春坎角 柏濤小築
32 Cape Road, Chung Hom Kok
Renovated sea view duplex with private roof top
新裝海景複式住宅連私家天台

1,650 s.f. (plus 1,446 s.f. roof)
\$30,000,000

www.landscape.com/14540.htm | Simon Lee 李先生 6014 3712



The Brentwood
淺水灣 蔚峰園
11 Repulse Bay Road, Repulse Bay
High-floor unit with magnificent view
高層單位壯享麗景觀

1,556 s.f. (plus 1,400 s.f. roof)
\$31,000,000

www.landscape.com/12965.htm | Teresa Lau 劉小姐 9080 6686



Villa Helvetia
淺水灣 雲濤別墅
69 Repulse Bay Road, Repulse Bay
Rare colonial apartment with nice decoration
罕有英式單位，配品味雅緻裝修

2,200 s.f.
\$37,000,000

www.landscape.com/9515.htm | Maria Cheung 張小姐 6256 1848



Faber Court
大潭 輝百閣
29 - 31 Tai Tam Road, Tai Tam
Full sea view 4-bedroom apartment on Tai Tam waterfront
大潭海濱全海景四房單位

2,250 s.f.
\$37,000,000

www.landscape.com/10366.htm | Mary Li 李小姐 9011 6595

SOUTHSIDE SALES



Ruby Court

淺水灣 嘉麟閣

55 South Bay Road, Repulse Bay
Renowned sea view flat with balcony and large windows
新裝海景住宅連大露台

2,200 s.f.

\$39,800,000 also for lease \$100,000 incl.

www.landscape.com/15527.htm

Mary Li 李小姐 9011 6595



Baguio Villa

薄扶林 碧瑤灣

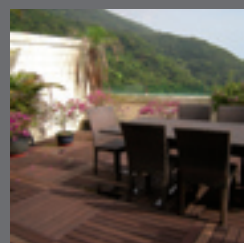
550 Victoria Road, Pokfulam
Spacious sea view duplex flat with private roof
寬敞海景複式單位連私家天台

4,740 s.f. (plus 1,650 s.f. roof)

\$46,800,000

www.landscape.com/16404.htm

Mark Mak 麥先生 6838 2929



Sea Cliff Mansions

淺水灣 海峰園

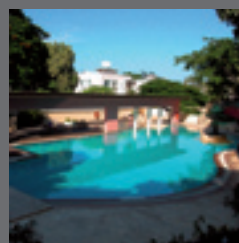
19A-19D Repulse Bay Road, Repulse Bay
Newly renovated penthouse with private roof overlooking Deep Water Bay
新裝頂層單位連私家天台，享深水灣全景

2,400 s.f.

\$60,000,000 also for lease \$160,000 incl.

www.landscape.com/15134.htm

Cecilia Fung 馮小姐 6271 2388



Stanley Court

赤柱 海灣園

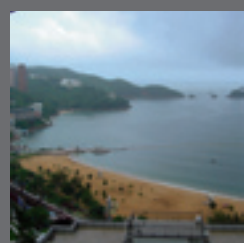
9 Stanley Mound Road, Stanley
Newly renovated garden house close to beach
新裝花園屋，鄰近沙灘

2,669 s.f. (plus 452 s.f. garden)

\$60,000,000 also for lease \$168,000 incl.

www.landscape.com/13230.htm

Rowena Siu 蕭小姐 9348 4118



Repulse Bay Towers

淺水灣 保華大廈

119A Repulse Bay Road, Repulse Bay
Sought after large duplex with bird's eye view of Repulse Bay Beach
搶手複式大單位，鳥瞰淺水灣沙灘

3,300 s.f.

\$68,000,000

www.landscape.com/15251.htm

Teresa Fung 馮小姐 9138 1621



Regalia Bay

赤柱 富豪海灣

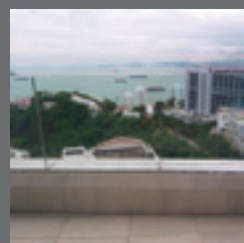
88 Wong Ma Kok Road, Stanley
5-bedroom seaside townhouse with private garden and carport
五房海邊排屋，連私家花園及停車場

4,212 s.f. (plus 1,122 s.f. garden)

\$72,000,000

www.landscape.com/14323.htm

Cecilia Fung 馮小姐 6271 2388



Radcliffe

薄扶林 靖林

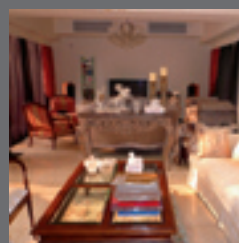
120 Pok Fu Lam Road, Pokfulam
Brand new 4-ensuite duplex with full clubhouse facilities
全新四套房複式單位，完善會所設施

3,620 s.f.

\$72,400,000

www.landscape.com/10853.htm

Stephen Chan 陳先生 9093 3381



Ruby Court

淺水灣 嘉麟閣

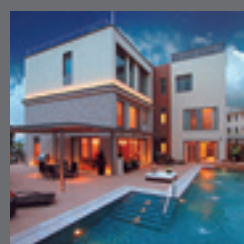
55 South Bay Road, Repulse Bay
Unique penthouse with roof and splendid South Bay view
特色頂層單位連天台，享迷人南灣景

2,790 s.f. (plus 587 s.f. roof)

\$75,000,000

www.landscape.com/15657.htm

Stephen Chan 陳先生 9093 3381



45 Chung Hom Kok Road, Chung Hom Kok

春坎角 春坎角道45號

Duplex with private pool and terrace
精緻裝修複式大宅，連私家泳池及平台

4,280 s.f. (plus 2,850 s.f. garden)

\$130,000,000

www.landscape.com/15471.htm

Louis Wong 黃先生 9871 6828



39 Deep Water Bay Road, Deep Water Bay

深水灣 深水灣道 39號

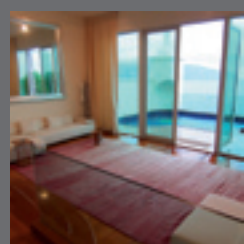
Rare Deep Water Bay townhouse with new decorations and stunning view
罕有深水灣排屋連新裝修，享迷人景觀

4,047 s.f. (plus 1,354 s.f. garden)

\$148,000,000

www.landscape.com/15313.htm

David Chan 陳先生 9238 2012



12 Tai Tam Road, Tai Tam

大潭 大潭道12號

5-bedroom detached house with panoramic sea view and swimming pool
五房獨立洋房連泳池，享無敵海景

5,200 s.f. (plus 443 s.f. terrace)

\$155,000,000

www.landscape.com/16262.htm

Philip Lai 黎先生 9430 3330



25 Shek O Headland, Shek O

大潭 石澳山仔25號
Colonial style single house with huge garden and private pool
英式獨立屋連巨型花園及私家泳池

11,330 s.f. (plus 5,000 s.f. garden)

\$200,000,000

www.landscape.com/16271.htm

Mark Mak 麥先生 6838 2929

SOUTHSIDE SALES

南區
出售



Repulse Bay Road, Repulse Bay
淺水灣 淺水灣道
Rare single house with fantastic views of Deep Water Bay
罕見獨立屋，享無敵深水灣景觀
14,465 s.f.
\$700,000,000

www.landscape.com/675.htm | Mark Mak 麥先生 6838 2929



Repulse Bay Garden
淺水灣 麗景園
18-40 Belleview Drive, Repulse Bay
Nicely decorated 3-bedroom flat with view of Repulse Bay Beach
精緻裝修三房單位，望淺水灣全景
2,288 s.f.
Open Offer

www.landscape.com/16336.htm | Philip Lai 黎先生 9430 3330


SOUTHSIDE LEASE

南區
出租



Faber Court
大潭 輝百閣
29-31 Tai Tam Road, Tai Tam
Tai Tam mid-rise with sweeping sea view
大潭中密度單位，享廣闊海景
1,900 s.f.
\$78,000 incl. also for sale \$28,000,000

www.landscape.com/15863.htm | Simon Lee 李先生 6014 3712



La Mer
薄扶林 浪頤居
71 Bisney Road, Pokfulam
Newly renovated 4-bedroom low-rise with full sea view
全新裝修低密度全海景四房單位
2,063 s.f.
\$82,000 incl. also for sale \$33,000,000

www.landscape.com/14489.htm | Yvonne Chang 鄭小姐 9088 4666



Residenece Bel-Air
薄扶林 貝沙灣
28 Bel-Air Avenue, Pokfulam
Well maintained 3-bedroom flat with unobstructed sea view
良好保養三房單位，享無敵海景
1,950 s.f.
\$88,000 incl.

www.landscape.com/16337.htm | Philip Lai 黎先生 9430 3330



Ridge Court
淺水灣 冠園
21A-21D Repulse Bay Road, Repulse Bay
Tastefully renovated apartment enjoying full sea view
海景精緻住宅，環境寧靜
2,300 s.f.
\$100,000 also for sale \$39,000,000

www.landscape.com/15591.htm | Teresa Fung 馮小姐 9138 1621



Stanley Green
赤柱 維壁別墅
66 Stanley Village Road, Stanley
Duplex with private garden in serene location of Stanley
複式單位連私家花園，位於赤柱寧靜地段
2,200 s.f. (plus 500 s.f. garden)
\$108,000

www.landscape.com/14747.htm | Cecilia Fung 馮小姐 6271 2388



Ruby Court
淺水灣 嘉麟閣
55 South Bay Road, Repulse Bay
Waterfront 4-bedroom apartment in quiet South Bay with facilities
海濱四房住宅配完善設施，位處寧靜南灣
2,200 s.f.
\$110,000

www.landscape.com/15660.htm | Carman Szeto 司徒小姐 8100 3893



Villa Martini
赤柱 醇廬
8 Stanley Beach Road, Stanley
Low-rise with spacious practical layout close to Stanley Beach
低密度住宅，間隔寬敞實用，鄰近赤柱沙灘
2,500 s.f.
\$112,000 incl.

www.landscape.com/15927.htm | Teresa Fung 馮小姐 9138 1621



Repulse Bay Towers
淺水灣 保華大廈
119A Repulse Bay Road, Repulse Bay
Renowned 4-bedroom duplex in Repulse Bay with 2 car parks
淺水灣熱門四房複式單位，連雙車位
3,100 s.f.
\$120,000 incl. also for sale \$58,000,000

www.landscape.com/15641.htm | Yvonne Chang 鄭小姐 9088 4666



Celestial Garden
淺水灣 詩禮花園
5 Repulse Bay Road, Repulse Bay
Spacious 4-bedroom flat on upper Repulse Bay Road
淺水灣道頭段，寬敞四房單位
2,363 s.f.
\$120,000

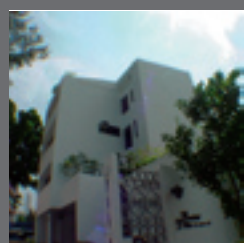
www.landscape.com/14683.htm | David Chan 陳先生 9238 2012



Residence Bel-Air South Towers
薄扶林 貝沙灣南岸
38 Bel-Air Avenue, Pokfulam
Full sea view 4-bedroom apartment with comprehensive facilities
全海景四房單位，配完善設施
2,560 s.f.
\$120,000 incl.

www.landscape.com/15222.htm | Sissy Li 李小姐 9642 6969

SOUTHSIDE LEASE



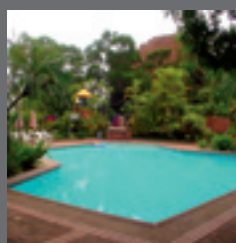
Provident Villas

薄扶林 富麗苑

29-31 Sassoon Road, Pokfulam
High privacy garden townhouse on secluded Sassoon Road
高私隱花園排屋，位寧靜沙宣道
3,030 s.f. (plus 800 s.f. terrace)
\$130,000

www.landscape.com/14990.htm

Rowena Siu 蕭小姐 9348 4118



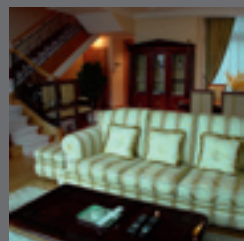
Banyan Villas

赤柱 榕蔭園

9 Stanley Village Road, Stanley
Resort-style garden house close to Stanley Beach
渡假式花園排屋，鄰近赤柱沙灘
2,600 s.f. (plus 1000 s.f. garden)
\$132,000

www.landscape.com/14644.htm

Maria Cheung 張小姐 6256 1848



Le Palais

大潭 皇府灣

8 Pak Pat Shan Road, Tai Tam
Luxury waterfront garden townhouse in exclusive location
豪華海濱花園排屋，位處尊貴地段
3,348 s.f.
\$150,000 incl. also for sale \$60,000,000

www.landscape.com/12231.htm

Stephen Chan 陳先生 9093 3381



Faber Villa

大潭 輝百苑

17 Tai Tam Road, Tai Tam
Rare on market high privacy sea view flat in Tai Tam
大潭罕有放售，高私隱海景住宅
3,200 s.f.
\$150,000 incl. also for sale \$65,000,000

www.landscape.com/15869.htm

Mary Li 李小姐 9011 6595



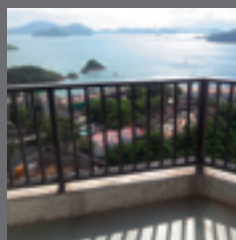
Helence Garden

赤柱 喜蓮花園

22 Stanley Beach Road, Stanley
Huge 6-bedroom garden duplex with new decorations close to beach
全新裝修六房複式巨宅連花園，鄰近沙灘
3,606 s.f. (plus 1,000 s.f. garden)
\$168,000

www.landscape.com/15751.htm

Simon Yung 翁先生 9418 5743



Grand Garden

淺水灣 華景園

61 South Bay Road, Repulse Bay
Full sea view penthouse duplex apartment on South Bay Road
罕有海景頂層複式住宅，連私家天台
4,333 s.f.
\$195,000

www.landscape.com/11759.htm

Simon Yung 翁先生 9418 5743



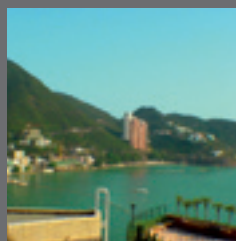
Panarama Terrace

淺水灣 蕙園

12 South Bay Road, Repulse Bay
Charming garden house in serene South Bay
迷人花園屋，位處寧靜南灣
3,500 s.f. (plus 1,000 s.f. garden)
\$200,000 also for sale \$115,000,000

www.landscape.com/11401.htm

Christine Chong 莊小姐 9648 6082



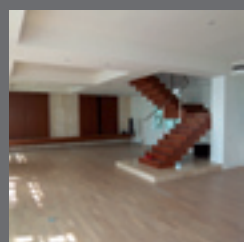
The Beachfront

淺水灣 壁池

7 Belleview Drive, Repulse Bay
Sea view townhouse in Repulse Bay with private garage
淺水灣海景排屋連私家車房
3,691 s.f.
\$230,000 also for sale \$180,000,000

www.landscape.com/15578.htm

Louis Wong 黃先生 9871 6828



37 Repulse Bay Road, Repulse Bay

淺水灣 淺水灣道 37號
Rare find huge penthouse with roof garden enjoying stunning sea view
罕有巨型頂層單位連天台花園，享無敵海景
5,804 s.f. (plus 1,194 s.f. roof)
\$250,000 incl.

www.landscape.com/14281.htm

Louis Wong 黃先生 9871 6828



Three Bays

赤柱灘道7號

7 Stanley Beach Road, Stanley
Waterfront townhouse in meticulous decors
海濱排屋配精緻裝潢
3,870 s.f. (plus 1,069 s.f. garden)
\$300,000

www.landscape.com/13534.htm

Sami Woo 胡小姐 9493 8275

LANDSCOPE 領域
The Specialists in Luxury Properties

Landscape Realty Limited C-018733

a member of Landscape Surveyors Ltd

Tel: 852-2866 0022 Fax: 852-2866 0015

Email: info@landscape.com Website: www.landscape.com

Unit 3106, 31/F, Hopewell Centre,
183 Queen's Road East, Wanchai, Hong Kong

The information, text, photos, analyses and projections contained herein are provided solely for the convenience of prospective clients and no warranty or representation as to their accuracy, correctness or completeness is made by Landscape Surveyors Limited, Landscape Realty Limited or the owners, none of whom shall have any liability or obligation with respect thereto. Interested parties should rely on their own investigations, interpretations and analyses in connection with the purchase or letting thereof.

Information has been provided to us by sources deemed reliable, but no warranty or representation is made as to its accuracy, correctness or completeness. These offerings are made subject to contract, correction of errors, omissions, prior sale or lease, change of price or terms or withdrawal from the market without notice. The contents of The Key are for reference only and do not constitute all or any part of a contract.

Copyright 2008