

VOLUME 136 | April 2016

# The Key

# 宅

SELECT DELUXE HOMES

奢華殿堂

## An unexpected hideaway in Mid-levels

本期焦點：英式雅居

Spotlight:  
Colonial apartments  
with timeless elegance

LANDSCOPE

CHRISTIE'S  
INTERNATIONAL REAL ESTATE

FEATURE

Industry Focus:  
Lighting

優質海外投資物業  
Prime Overseas Property  
for Investment



# 339 大宅

Tai Hang Road



This photograph was taken on 7<sup>th</sup> March 2014 at 339 Tai Hang Road and has been integrated and calibrated by computerized imaging techniques.



LAI SUN DEVELOPMENT

麗新發展



8207 0808

District : Wong Nai Chung

Name of Street and Street No. : 339 Tai Hang Road

The photographs, images, drawings or sketches shown in this advertisement/promotional material represent an artist's impression of the development concerned only. They are not drawn to scale and/or may have been edited and processed with computerized imaging techniques. Prospective purchasers should make reference to the sales brochure for details of the development. The vendor also advises prospective purchasers to conduct an on-site visit for a better understanding of the development site, its surrounding environment and the public facilities nearby. The website address designated by the vendor for the development: [www.339taihangroad.com](http://www.339taihangroad.com)

Vendor: Hushell Limited / Holding Company of the Vendor: Lai Sun Development Company Limited / Building Contractor: Hien Lee Engineering Co., Limited / Authorized Person: Jennifer Lee, Ming Yen of PWT Architects and Engineers Ltd. / Vendor's Solicitors: Lo & Lo / Authorized Institution that has made a loan, or has undertaken to provide finance, for the construction of the Development: Chong Hing Bank Limited (Note: The loan has been repaid in full) / Other Person who has made a loan for the construction of the Development: Lai Sun Development Company Limited. Please refer to the sales brochure for details. Date of printing: 25<sup>th</sup> March 2014



|    |  |    |   |
|----|--|----|---|
| 02 | <b>MONTHLY HIGHLIGHT</b><br>Kennedy Apartment,<br>Midlevels Central<br>中半山 堅尼地大廈 | 22 | Southside & the Peak lease<br>南區及山頂 出租                            |
| 06 | <b>SPOTLIGHT</b><br>Colonial apartments<br>with timeless elegance<br>英式雅居        | 26 | Midlevels Central<br>& West lease<br>中半山及西半山 出租                   |
| 11 | Southside & the Peak sale<br>南區及山頂 出售  | 30 | Midlevels East &<br>Happy Valley lease<br>東半山及跑馬地 出租              |
| 14 | Midlevels Central<br>& West sale<br>中半山及西半山 出售                                   | 31 | <b>HIGHLIGHT</b><br>Flora Garden,<br>Jardine's Lookout<br>渣甸山 慧景園 |
| 16 | <b>HIGHLIGHT</b><br>YY Mansion, Pokfulam<br>薄扶林 裕仁大廈                             | 32 | U.K. Properties<br>英國物業   |
| 17 | Midlevels East &<br>Happy Valley sale<br>東半山及跑馬地 出售                              | 36 | Japanese Properties<br>日本物業                                       |
| 18 | Other Districts<br>其他地區  | 38 | U.S.A. Properties<br>美國物業   |
| 20 | <b>FEATURE</b><br>Industry Focus • Lighting                                      | 39 | Thailand Properties<br>泰國物業                                       |
|    |  | 40 | Overseas Properties<br>海外物業                                       |

## HOW MAY YOU LIST YOUR PROPERTY WITH THE KEY?

怎樣在《大宅》刊登您的出售/出租物業?

If you would like to see your property listed in The Key in the next issue, you may call Loretta Lui at 3102 4818 or visit us at [www.landscape-christies.com/sell\\_lct](http://www.landscape-christies.com/sell_lct). Or you may simply fill out the space below and fax to us at 2866 0015.

如果您想將出售/出租物業刊登於大宅，可致電3102 4818與呂小姐聯絡，或登上 [www.landscape-christies.com/sell\\_lct](http://www.landscape-christies.com/sell_lct)。或者您可以填寫下面的表格傳真至2866 0015。

Property to be listed 物業

Asking Rental / Sale Price 租金 / 售價

Floor Area 面積

Contact Person 聯絡人

Telephone 電話

Email 電郵地址

Our KeyPersons will contact you for follow-up works.

我們的大宅專員會馬上與您聯絡



求教專家

Seek expert advice  
for your ideal kitchen

As boundaries between kitchen and living zones blur even further, our food preparation areas are taking on a more 'furnished' look, with many homeowners opting to integrate or conceal major appliances behind matching cabinetry.

While the theory is that the oven or microwave will only be seen when in use, the reality is that aesthetics have never been more front of mind — Italian appliance specialist Smeg, for example, reports that clients are expressing a strong desire to personalise their food preparation space.

The ideal balance between function, form and fun can be achieved, especially if skilled architects and designers are called upon to combine the very best in design with the latest in technology when it comes to putting together your dream kitchen.

今時今日，不少廚房採用開放式設計，與客廳融為一體。為增添美感，廚房設計愈見時尚，很多戶主更將廚具收入組合櫃中。

微波爐及焗爐只會於使用時才看見。此設計意念是將美感因素置於首位，以意大利名牌Smeg所作的調查為例，客人普遍喜歡具個人特色的廚房。

保留廚房的功能、形式但不失美感並非不可能，資深的建築師及設計師均可結合時尚與科技，設計完美的入廚空間。

Published and distributed by

LANDSCOPE

CHRISTIE'S  
INTERNATIONAL REAL ESTATE



Designed by

perspective

Landscape Christie's International Real Estate

C-018733

Tel: +852 2866 0022 Fax: +852 2866 0015

Email: [info@landscape-christies.com](mailto:info@landscape-christies.com)

Website: [www.landscape-christies.com](http://www.landscape-christies.com)

Address: Unit 3106, 31/F, Hopewell Centre,

183 Queen's Road East, Wanchai, Hong Kong

Tel: +852 2525 0287 Fax: +852 2526 3860

Email: [info@perspectiveglobal.com](mailto:info@perspectiveglobal.com)

Website: [www.perspectiveglobal.com](http://www.perspectiveglobal.com)

Address: Rm 2408, Dominion Centre,

59 Queen's Road East, Wanchai, Hong Kong

SCAN HERE  
TO SUBSCRIBE  
ONLINE



The information, text, photos, analyses and projections contained herein are provided solely for the convenience of prospective clients and no warranty or representation as to their accuracy, correctness or completeness is made by Landscape Christie's International Real Estate, Landscape Surveyors Limited, Landscape Realty Limited or the owners, none of whom shall have any liability or obligation with respect thereto. Interested parties should rely on their own investigations, interpretations and analyses in connection with the purchase or letting thereof.

Information has been provided to us by sources deemed reliable, but no warranty or representation is made as to its accuracy, correctness or completeness. These offerings are made subject to contract, correction of errors, omissions, prior sale or lease, change of price or terms or withdrawal from the market without notice. The contents of The Key are for reference only and do not constitute all or any part of a contract. Copyright 2016

Each Office is Independently Owned and Operated



## 奢華殿堂

# An unexpected hideaway in Mid-levels

Mid-levels residents have access to some of Hong Kong's greatest green and city views, and at this airy, spacious apartment on Kennedy Road, a massive outdoor terrace with your own private, mature garden certainly makes you feel that you are out in the countryside. The perfect spot for mingling, an outdoor table with six seats creates a convivial atmosphere, coupled with great views and seclusion.

Measuring 2,123 s.f. (saleable area), this family residence has three bedrooms including one ensuite, two bathrooms, a combined living and dining room, two terraces, a maid's room, a utility room and one covered car park.

The floor-to-ceiling windows in the open-plan living and dining room allow natural light and fresh air to circulate freely — the wood-framed windows and doors leading to the terrace also lend a stylish, bespoke touch.

Available to rent at HK\$135,000 per month, the owner is also open to purchase offers for this apartment, which boasts an efficiency ratio of 85 per cent. This is significantly higher than most new apartments in recent years, along with well-maintained interiors and a fully-fitted equipped kitchen.







半山物業可享翠綠景色及繁華都市景致。此位處堅尼地道的物業間隔寬敞且空氣流通，加上擁有巨大的室外私家平台花園，令人感到猶如置身郊野，平台有足夠的空間放置一張六人戶外餐桌，方便住客亦可與來賓相聚，營造愉快氛圍，美景與私隱兼得。

此家庭式住宅實用面積廣達2,123平方呎，提供三間睡房，包括一間套房、兩間浴室、一個相連的客廳及飯廳、兩個平台、一間家傭房、一間多用途房以及一個有蓋車位。

客飯廳的落地門窗為室內提供充裕的自然光以及清新空氣，木製門框及窗框更令單位富有時尚及高貴的氣息。

單位目前以月租135,000港元出租，業主同時接受自由出價放售。單位實用率更高達八成半，擁有簇新的裝修，以及設備齊全的廚房。

## Kennedy Apartment

堅尼地大廈

34A Kennedy Road, Midlevels Central

中半山 堅尼地道34A



GROSS AREA 2,500 s.f.

SALEABLE AREA 2,123 s.f. (plus 1,000 s.f. terrace)

INQUIRIES 9833 9509 Michelle Chung 鍾小姐

SEARCH REFERENCE NO. 31196



# THE MEDITERRANEAN 逸 瓏 園

Sai Kung · Hong Kong








Actual shooting in Sai Kung<sup>2</sup>

- Low density, Mediterranean resort-style residences in Sai Kung
- Luxurious clubhouse featuring a 45m-long swimming pool, jogging trail and horticultural amenities<sup>3</sup> and more
- Approximately 7-minute walk<sup>4</sup> to Sai Kung Public Transport Interchange
- Close to Kau Sai Chau Golf Course, Hong Kong Geopark of China and Waterfront Park
- Relaxing seaside community, renowned for seafood alfresco dining and charming cafes
- In the vicinity of Hong Kong Academy<sup>5</sup> and a wide selection of sports facilities
- Complimentary limousine service<sup>6</sup> connecting to Hang Hau MTR Station

Name of Street and Street Number of the Development: **8 Tai Mong Tsai Road\***  
 District: Sai Kung Town Website Address: [www.themediterranean.hk](http://www.themediterranean.hk)<sup>#</sup>  
 Sales Gallery: 146 & 148A, 1/F, Olympian City 2 (Olympic  MTR station Exit D3)  
 Enquiries: **8208 8223**



信和置業  
Sino Land



BEST DEVELOPER  
OVERALL  
IN HONG KONG

BEST RESIDENTIAL  
DEVELOPER  
IN HONG KONG

BEST LEISURE /  
HOTEL DEVELOPER  
IN HONG KONG

BEST MIXED  
DEVELOPER  
IN HONG KONG

Sino Land Company Limited has been named the 'Best Developer Overall in Hong Kong', 'Best Residential Developer in Hong Kong', 'Best Leisure / Hotel Developer in Hong Kong' and 'Best Mixed Developer in Hong Kong' at Real Estate Survey conducted by leading international financial magazine Euromoney for two consecutive years.

The photographs, images, drawings or sketches shown in this advertisement / promotional material represent an artist's impression of the development concerned only. They are not drawn to scale and / or may have been edited and processed with computerized imaging techniques. Prospective purchasers should make reference to the sales brochure for details of the development. The vendor also advises prospective purchasers to conduct an on-site visit for a better understanding of the development site, its surrounding environment and the public facilities nearby. This advertisement / promotional material shall not constitute or be construed as giving any offer, representation, undertaking or warranty whether express or implied by the vendor.

1. The image contained in this advertisement / promotional material is the rendering of the Mediterranean. The rendering is not taken from the Development and has been processed with computerized imaging techniques. The actual facilities, layout, positions, specifications, measurements, colours, materials, fittings, finishes, appliances, fixtures, decorative items, plants, landscaping and other objects and the views thereof may not appear in the Development or in reality when the Development is completed. The rendering only shows the general appearance of the Development. The structure and surrounding environment of the Development have not been altered in the rendering or may be different from the reality. The rendering does not show the conditions, page design, and graphics on the external wall of the Development. The advertisement / promotional material does not reflect the actual view or the general appearance of the Development. The vendor also advises prospective purchasers to conduct an on-site visit for a better understanding of the development site, its surrounding environment and the public facilities nearby. The rendering and the information contained in the rendering are for reference only. This advertisement / promotional material shall not constitute any express or implied offer representation, undertaking or warranty given by the vendor. 2. This photograph was taken from a perspective at Sai Kung Town Centre on 3 August 2015 and has been processed with computerized imaging techniques. It does not illustrate the final appearance or view of or from the Development and is for reference only. The environment, buildings and facilities surrounding the Development may change from time to time. The Vendor does not give any other representation, undertaking or warranty whether express or implied. The Vendor also advises prospective purchasers to conduct an on-site visit for a better understanding of the development site, its surrounding environment and the public facilities nearby. 3. The details of clubhouse (including its location) may differ from that stated in this advertisement / promotional material and are subject to the final plans approved by the relevant authorities. The opening hours and use of different facilities in the clubhouse are subject to the relevant laws, land grant, deed of mutual covenant, clubhouse rules and the situation of the environment. The facilities may not be immediately available upon completion and occupation of the Development and additional changes may apply upon usage. The names of the clubhouse facilities are yet to be confirmed and will not be shown in the Provisional Agreements for Sale and Purchase, Agreements for Sale and Purchase, Assignments and other deeds of the residential properties in the Development. The final names may differ from those stated in this advertisement / promotional material. The Vendor reserves the right to change the clubhouse facilities and design without prior notice. 4. The estimated walking time is based on the actual walking time of a pedestrian starting on 23 October 2015. The actual walking time is subject to the actual traffic conditions. 5. Please refer to the Education Bureau website of 'Innovative Schools in Hong Kong' - [http://www.edb.gov.hk/en/innovative\\_schools/](http://www.edb.gov.hk/en/innovative_schools/). 6. This complimentary limousine service will be available from the date of completion to 31 January 2020. The vendor reserves the right to amend or cancel the service, and the service is subject to the terms and conditions set out by the property management company. The descriptions of the service as stated in this advertisement is for reference only. The manager of the Development reserves the right to amend or change the service and / or to terminate the service without prior notice. Vendor: Asian View Development Limited. Fidelity Company of the Vendor: Yau She Sai Properties Limited, Sino Land Company Limited, King Chuen Development Limited and Bui In Investment Limited. The authorized person for the Development and the firm in cooperation of which the authorized person is a proprietor, director or employee in his or her professional capacity: Mr. Chan Ki Hong of STRAL Architectural Design Limited. Building contractor for the Development: Cheung Kai Hong Construction Company Limited. The firm of solicitors acting for the Vendor in relation to the sale of residential properties of the Development: Woo Kwan Lee & Lo and King & Wai Midway. Authorized institution that has made a loan or has undertaken to provide finance for the construction of the Development: The Hongkong and Shanghai Banking Corporation Limited. Other person who has made a loan or has undertaken to provide finance for the construction of the Development: Sing Ho Finance Company Limited. To the best of the Vendor's knowledge, the estimated material date for the Development: 31 January 2018. Material date means the date on which the conditions of the land grant are complied with in respect of the Development. The estimated material date is subject to any extension of time that is permitted under the agreement for sale and purchase. For the purpose of the agreement for sale and purchase, without limiting any other means by which the completion of the Development may be proved, the issue of a certificate of compliance or consent to assign for the director of lands is conclusive evidence that the development has been completed or is deemed to be completed (as the case may be). The Mediterranean comprises 4 towers with a total of 257 units. Prospective purchasers are advised to refer to the sales brochure for any information on the Development. The provisional street address is subject to confirmation when the Development is completed. A website containing electronic copies of sales brochures, price lists and register of transactions. This advertisement / promotional material shall not constitute or be construed as giving any offer, representation, undertaking or warranty whether express or implied by the vendor. This advertisement is published by the vendor or is published by another person with its consent. Date of Printing: 14th March 2016



Please scan QR code  
for more information





**Regent Palisades 薄扶林 帝柏園**

43 Bisney Road

Charming 3-bedroom low-rise with practical layout in tree-lined neighborhood

迷人三房低密度住宅，間隔實用，環境綠樹成蔭

GROSS AREA 1,513 s.f.

SALEABLE AREA 1,143 s.f.

OFFERED AT \$17,600,000

INQUIRIES 9648 6082 Christine Chong 莊小姐

SEARCH REFERENCE NO. 131350



**Marlborough House**

東半山 保祿大廈

154 Tai Hang Road

2-bedroom apartment at desirable location with city view

兩房城市景住宅，位處優越地段

GROSS AREA 1,250 s.f.

SALEABLE AREA 973 s.f.

OFFERED AT \$22,000,000

INQUIRIES 9028 0147 Jenson Au 區先生

SEARCH REFERENCE NO. 36614



**9 Broom Road**

跑馬地 蟠龍道9號

Lovely 3-bedroom low-rise at quiet location

精品三房低密度單位，地段寧靜

GROSS AREA 2,150 s.f.

SALEABLE AREA 1,737 s.f. (plus 130 s.f. terrace)

OFFERED AT \$25,000,000 \$23,800,000

INQUIRIES 9551 1077 Walker Lam 林先生

SEARCH REFERENCE NO. 67623



**35-41 Village Terrace**

跑馬地 山村臺35-41號

Colonial low-rise flat with high ceiling and spacious roof terrace in tranquil location

英式低密度住宅，樓底高，連偌大平台天台，位處清幽地段

GROSS AREA 1,500 s.f.

SALEABLE AREA 1,232 s.f. (plus 1,000 s.f. roof)

OFFERED AT \$24,500,000

INQUIRIES 9648 6082 Christine Chong 莊小姐

SEARCH REFERENCE NO. 128055



**Seaview Mansion**

中半山 時和大廈

34 Kennedy Road

Conveniently located apartment within walking distance to Central

交通便利住宅，信步可達中環，可租可售

GROSS AREA 1,700 s.f.

SALEABLE AREA 1,426 s.f.

OFFERED AT \$26,000,000 also for lease \$60,000 incl.

INQUIRIES 9662 2199 David Lau 劉先生

SEARCH REFERENCE NO. 36897



**South Garden Mansion 中半山 南園大廈**

40-40A Kennedy Road

Well maintained apartment in convenient location taking in good view of Hong Kong Park

保養簇新住宅，交通便利，眺望香港公園怡人景致

GROSS AREA 1,500 s.f.

SALEABLE AREA 1,348 s.f.

OFFERED AT \$34,000,000

INQUIRIES 9080 6686 Teresa Lau 劉小姐

SEARCH REFERENCE NO. 45145







### Glory Mansion

中半山 輝煌大廈

106-108 MacDonnell Road

Well kept mid-rise apartment with spacious balcony in convenient Midlevels Central

保養簇新中密度住宅，連寬敞露台，交通便利，可租可賣



GROSS AREA 2,300 s.f.

SALEABLE AREA 1,880 s.f.

OFFERED AT \$37,500,000

also for lease \$90,000 incl.

INQUIRIES 9486 1566 Mira To 杜小姐

SEARCH REFERENCE NO. 40189



### Grand House

中半山 柏齡大廈

110-112 MacDonnell Road

Spacious 4-bedroom colonial mid-rise with large balcony at Midlevels Central

寬敞四房英式中密度單位，連大露台



GROSS AREA 2,400 s.f.

SALEABLE AREA 2,087 s.f.

OFFERED AT \$41,000,000

INQUIRIES

9648 6082 Christine Chong 莊小姐

SEARCH REFERENCE NO. 25389



### Mountain Lodge

山頂 崑廬

44 Mount Kellett Road

Fully furnished 4-bedroom flat with practical layout enjoying spectacular sea and mountain view

裝修完善四房單位，間隔實用，坐擁壯麗海景及山樹景



GROSS AREA 2,600 s.f.

SALEABLE AREA 2,222 s.f.

OFFERED AT \$66,800,000

INQUIRIES

9028 0147 Jenson Au 區先生

SEARCH REFERENCE NO. 26404



### Bowen Mansion

中半山 寶雲大廈

7C Bowen Road

Rare find spacious colonial style 3-ensuite mid-rise apartment on fringe of CBD

罕有英式中密度住宅，三套房寬敞間隔，毗鄰商業中心區



GROSS AREA 4,100 s.f.

SALEABLE AREA 3,273 s.f.

OFFERED AT \$68,000,000

INQUIRIES

9648 6082 Christine Chong 莊小姐

SEARCH REFERENCE NO. 32206







### 113 Repulse Bay Road

淺水灣 淺水灣道113號

Colonial apartment with 2 bedrooms enjoys beautiful sea view  
英式兩房單位，享美麗海景

GROSS AREA 1,400 s.f.

SALEABLE AREA 1,093 s.f.

OFFERED AT \$42,000 incl.

INQUIRIES 9093 3381 Stephen Chan 陳先生

SEARCH REFERENCE NO. 32997



### Horizon Mansion

中半山 崇華大廈

102-104 MacDonnell Road

3-bedroom mid-rise unit with balcony enjoying open view

三房中密度單位，連露台，眺望開揚景色

GROSS AREA 2,300 s.f.

SALEABLE AREA 1,864 s.f.

OFFERED AT \$75,000 incl.

INQUIRIES 9028 0147 Jenson Au 區先生

SEARCH REFERENCE NO. 35386



### Jade House

東半山 寶璧大廈

47C Stubbs Road

4-bedroom flat with city view in exclusive building

四房城市景單位，位處尊貴住宅大廈，可租可售

GROSS AREA 2,700 s.f.

SALEABLE AREA 2,218 s.f.

OFFERED AT \$80,000 incl. also for sale \$60,000,000

INQUIRIES 9093 3381 Stephen Chan 陳先生

SEARCH REFERENCE NO. 39654



### Shouson Garden

壽臣山 壽山花園

6A Shouson Hill Road

Nicely decorated low-rise flat with private terrace in tranquil location

雅致裝修低密度住宅，連私家平台，地段寧靜

GROSS AREA 1,590 s.f.

SALEABLE AREA 1,302 s.f. (plus 283 s.f. terrace)

OFFERED AT \$80,000 incl.

INQUIRIES 9080 6686 Teresa Lau 劉小姐

SEARCH REFERENCE NO. 102325



### Vivian Court 山頂 瑞燕大廈

18-22 Mount Kellett Road

3-bedroom colonial apartment at prime location with Southside sea view and hill view

三房英式住宅，地段優越，享南區海景及山巒景

GROSS AREA 2,100 s.f.

SALEABLE AREA 1,749 s.f.

OFFERED AT \$85,000 incl.

INQUIRIES 9250 0300 Randy Chan 陳先生

SEARCH REFERENCE NO. 40247



### Rose Gardens

中半山 玫瑰別墅

9 Magazine Gap Road

Exclusive 3-bedroom apartment with efficient layout at prime location

獨特三房單位，間隔實用，地段優越

GROSS AREA 2,600 s.f.

SALEABLE AREA 2,235 s.f.

OFFERED AT \$88,000 incl.

INQUIRIES 6183 8339 Carman Szeto 司徒小姐

SEARCH REFERENCE NO. 21557







### 37 Barker Road

山頂 白加道37號

Sought after low-rise apartment with bird's eye view of the harbour  
受歡迎低密度單位，鳥瞰海港美景

GROSS AREA 2,100 s.f.

SALEABLE AREA 1,849 s.f.

OFFERED AT \$90,000 excl.

INQUIRIES 6258 8847 Anthea Ngai 魏小姐

SEARCH REFERENCE NO. 16242



### K.Y. Mansion 東半山 嘉裕閣

4A Shiu Fai Terrace

Spacious and practical 4-bedroom apartment at quiet yet convenient location

寬敞實用四房單位，位處寧靜方便地段，可租可售

GROSS AREA 2,800 s.f.

SALEABLE AREA 2,199 s.f.

OFFERED AT \$95,000 incl. also for lease \$42,000,000

INQUIRIES 9093 3381 Stephen Chan 陳先生

SEARCH REFERENCE NO. 47908



### 47A Stubbs Road

東半山 司徒拔道 47A

Rarely available high floor unit in move-in condition  
罕有高層單位，裝修簇新

GROSS AREA 2,400 s.f.

SALEABLE AREA 2,039 s.f.

OFFERED AT \$95,000 incl.

INQUIRIES 9662 2199 David Lau 劉先生

SEARCH REFERENCE NO. 44039



### Park Place

淺水灣 雅柏苑

7 Tai Tam Reservoir Road

Large and spacious 3-bedroom flat in exclusive location

偌大寬敞三房住宅，位處尊貴地段

GROSS AREA 2,338 s.f.

SALEABLE AREA 2,070 s.f.

OFFERED AT \$115,000 incl.

INQUIRIES 9662 2199 David Lau 劉先生

SEARCH REFERENCE NO. 19737



### La Hacienda 山頂 九層樓

29-33 Mount Kellett Road

Spacious mid-rise apartment at a prestigious location enjoying mountain and sea views

寬敞中密度單位，地段尊貴，飽覽山巒景及海景

GROSS AREA 3,386 s.f.

SALEABLE AREA 2,865 s.f.

OFFERED AT \$115,000 incl.

INQUIRIES 9080 6686 Teresa Lau 劉小姐

SEARCH REFERENCE NO. 122415



### 22A-22B Mount Austin Road

山頂 柯士甸山道22A至22B號

Distinguished low-rise flat with fabulous harbour view and lush green surroundings

尊貴低密度住宅，坐擁華麗海景，環境翠綠，可租可售

GROSS AREA 2,650 s.f.

SALEABLE AREA 2,221 s.f.

OFFERED AT \$115,000 excl. also for sale \$120,000,000

INQUIRIES 9681 1819 Peggy Yau 丘小姐

SEARCH REFERENCE NO. 109208







### Evergreen Gardens

壽臣山 松柏花園

18 Shouson Hill Road

Charming 4-bedroom low-rise flat  
with green view at tranquil location

迷人四房低密度單位，享翠綠景色，  
地段寧靜



GROSS AREA 2,106 s.f.

SALEABLE AREA 2,015 s.f.

(plus 1,368 s.f. garden)

OFFERED AT \$120,000 incl.

INQUIRIES

9209 9988 Alan Wong 王先生

SEARCH REFERENCE NO. 33805



### Eredine

山頂 加列山道38號

Rare find 5-bedroom colonial  
mid-rise apartment with Southside  
sea view on the Peak

罕有英式中密度住宅，五房間隔，  
坐擁南區海景



GROSS AREA 3,300 s.f.

SALEABLE AREA 2,786 s.f.

OFFERED AT \$160,000 incl.

INQUIRIES

9833 9509 Michelle Chung 鍾小姐

SEARCH REFERENCE NO. 1628



### Xanadu Court

壽臣山 壽臣山道30-30A號

30-30A Shouson Hill Road

Spacious 4-bedroom duplex low-rise  
with large private garden and  
terrace in tranquil Shouson Hill

寬敞四房複式低密度單位，連偌大平台花  
園，位處清幽恬靜壽臣山



GROSS AREA 3,500 s.f.

SALEABLE AREA 3,355 s.f.

(plus 942 s.f. garden)

OFFERED AT \$168,000 incl.

INQUIRIES 9486 1566 Mira To 杜小姐

SEARCH REFERENCE NO. 20372



### Cragside Mansion

山頂 白加道23號

23 Barker Road

Rarely available harbour view  
apartment with nice decoration  
and furnishing

罕有維港巨宅，配以雅致裝修



GROSS AREA 4,000 s.f.

SALEABLE AREA 3,796 s.f.

OFFERED AT \$290,000 incl.

INQUIRIES

9209 9988 Alan Wong 王先生

SEARCH REFERENCE NO. 33470







### Emerald Garden

薄扶林 嘉瑜園

86 Pok Fu Lam Road

High efficiency 3-bedroom flat  
in serene area enjoying peaceful  
sea view

高實用率三房單位，地段寧靜，享怡人海景



GROSS AREA 1,160 s.f.

SALEABLE AREA 971 s.f.

OFFERED AT \$16,800,000

INQUIRIES

9080 6686 Teresa Lau 劉小姐

SEARCH REFERENCE NO. 98742



### Greenery Garden

薄扶林 怡林閣

2A Mount Davis Road

Nicely renovated 3-bedroom  
apartment with lush green view  
雅致裝修三房單位，享茂綠景色



GROSS AREA 1,244 s.f.

SALEABLE AREA 1,024 s.f.

OFFERED AT \$17,800,000

INQUIRIES

9250 0300 Randy Chan 陳先生

SEARCH REFERENCE NO. 126607



### 37 Repulse Bay Road

淺水灣 淺水灣道37號

Popular 2-bedroom apartment with  
great clubhouse facilities and views  
across Deep Water Bay

受歡迎兩房單位，連優質會所設施，  
眺望深水灣美景



GROSS AREA 1,225 s.f.

SALEABLE AREA 848 s.f.

OFFERED AT \$20,000,000

INQUIRIES

9250 0300 Randy Chan 陳先生

SEARCH REFERENCE NO. 126702



### Grand Garden

淺水灣 華翠園

61 South Bay Road

Sea view 3-bedroom flat with  
comprehensive facilities in  
tranquil location

海景三房單位，連完善設施，地段寧靜，  
可租可售



GROSS AREA 1,657 s.f.

SALEABLE AREA 1,239 s.f.

OFFERED AT \$34,500,000

also for lease \$67,000 incl.

INQUIRIES

6258 8847 Anthea Ngai 魏小姐

SEARCH REFERENCE NO. 157388







## Repulse Bay Garden

淺水灣 麗景園

18-40 Belleview Drive

Spacious 3-bedroom sea view apartment in older style development  
寬敞三房海景單位，位處傳統住宅名廈，可租可售

**GROSS AREA** 2,288 s.f.

**SALEABLE AREA** 2,049 s.f.

**OFFERED AT** \$50,000,000 also for lease \$70,000 incl.

**INQUIRIES** 6183 8339 Carman Szeto 司徒小姐

**SEARCH REFERENCE NO.** 106454



## Stanley Court 赤柱 海灣園

9 Stanley Mound Road

Tastefully decorated 3-bedroom townhouse with ample alfresco space at serene location

品味裝修三房排屋，享充裕戶外空間，地段寧靜

**GROSS AREA** 2,669 s.f.

**SALEABLE AREA** 2,049 s.f. (plus 452 s.f. garden and 617 s.f. roof)

**OFFERED AT** \$62,000,000

**INQUIRIES** 9833 9509 Michelle Chung 鍾小姐

**SEARCH REFERENCE NO.** 124240



## Repulse Bay Garden

淺水灣 麗景園

18-40 Belleview Drive

Practical 4-bedroom apartment with spacious balcony at serene location  
實用四房單位，連寬敞露台，地段清幽恬靜

**GROSS AREA** 2,810 s.f.

**SALEABLE AREA** 2,576 s.f.

**OFFERED AT** \$65,000,000

**INQUIRIES** 9250 0300 Randy Chan 陳先生

**SEARCH REFERENCE NO.** 4679



## 33 Cape Road

春坎角 環角道33號

Nicely renovated 4-bedroom townhouse at tranquil location  
雅致裝修四房排屋，地段清靜

**GROSS AREA** 3,142 s.f.

**SALEABLE AREA** 2,403 s.f. (plus 519 s.f. garden and 420 s.f. roof)

**OFFERED AT** \$66,000,000

**INQUIRIES** 9028 0147 Jenson Au 區先生

**SEARCH REFERENCE NO.** 124154



## Repulse Bay Towers 淺水灣 保華大廈

119A Repulse Bay Road

Spacious duplex with partial sea view on Repulse Bay Beach for sale with tenancy

寬敞複式住宅，享淺水灣泳灘部分海景，連租約出售

**GROSS AREA** 3,100 s.f.

**SALEABLE AREA** 2,578 s.f.

**OFFERED AT** \$68,000,000

**INQUIRIES** 6258 8847 Anthea Ngai 魏小姐

**SEARCH REFERENCE NO.** 4270



## The Redhill Peninsula 大潭 紅山半島

18 Pak Pat Shan Road

Nice seaside house with sweeping sea view and clubhouse facilities  
雅致海濱大屋，眺望遼闊海景，享會所設施

**GROSS AREA** 2,672 s.f.

**SALEABLE AREA** 2,584 s.f.

(plus 779 s.f. garden, 108 s.f. terrace and 114 s.f. roof)

**OFFERED AT** \$68,500,000

**INQUIRIES** 9250 0300 Randy Chan 陳先生

**SEARCH REFERENCE NO.** 4560







The Redhill Peninsula 大潭 紅山半島  
18 Pak Pat Shan Road

Nice garden townhouse enjoying excellent sea view  
雅致花園排屋，坐擁優美海景，可租可售

GROSS AREA 3,339 s.f.

SALEABLE AREA 3,135 s.f.

(plus 1,326 s.f. garden and 1,108 s.f. roof)

OFFERED AT \$95,000,000 also for lease \$110,000 incl.

INQUIRIES 9833 9509 Michelle Chung 鍾小姐

SEARCH REFERENCE NO. 5440



Royal Bay 春坎角 御瀟灣  
82 Chung Hom Kok Road

Brand new townhouse tucked away at a quiet and verdant  
neighbourhood in Island South

春坎角全新排屋，環境和諧寧靜

GROSS AREA 3,850 s.f.

SALEABLE AREA 2,724 s.f. (plus 595 s.f. terrace and 522 s.f. roof)

OFFERED AT \$125,000,000

INQUIRIES 9209 9988 Alan Wong 王先生

SEARCH REFERENCE NO. 30954



Villa Rosa 大潭 玫瑰園  
88 Red Hill Road

Exclusive and spacious hill top townhouse with garden and rooftop  
enjoys sweeping views

獨特寬敞排屋，連花園及天台，坐擁遼闊景色，可租可售

GROSS AREA 3,960 s.f.

SALEABLE AREA 3,314 s.f. (plus 414 s.f. garden and 481 s.f. roof)

OFFERED AT \$150,000,000 also for lease \$220,000 incl.

INQUIRIES 9648 6082 Christine Chong 莊小姐

SEARCH REFERENCE NO. 107188



Island Road 深水灣 香島道

Top notch townhouse with 5 ensuite bedrooms and private garden  
enjoying the stunning sea view of Deep Water Bay

豪華五套房排屋，連私家花園，飽覽深水灣壯麗海景

GROSS AREA 6,389 s.f.

SALEABLE AREA 4,720 s.f.

(plus 1,907 s.f. garden and 157 s.f. terrace)

OFFERED AT ~~\$580,000,000~~ \$480,000,000

INQUIRIES 9871 6828 Louis Wong 黃先生

SEARCH REFERENCE NO. 115984



Abergeldie 山頂 種植道52號  
52 Plantation Road

Luxurious and modern townhouse located on The Peak with magnificent  
view of Victoria Harbour

豪華時尚排屋，享壯麗維港景致

GROSS AREA 3,688 s.f.

SALEABLE AREA 3,221 s.f. (plus private terraces)

OFFERED AT \$230,000,000 Open Offer

INQUIRIES 9871 6828 Louis Wong 黃先生

SEARCH REFERENCE NO. 108991



Single detached house for sale at The Peak with exceptional  
redevelopment opportunity

山頂區罕有可重建獨立屋出售

Site Area approx. 11,100-28,000 s.f.

地盤面積約 11,100-28,000平方呎

OFFERED AT Open Offer

INQUIRIES 9871 6828 Louis Wong 黃先生



## Midlevels Central & West SALE

中半山及西半山 出售



### Wing Way Court

中半山 永威閣

31 Kennedy Road

Cozy 3-bedroom full floor apartment across from Hopewell Centre

舒適三房全層住宅，毗鄰合和中心



GROSS AREA 1,860 s.f.

SALEABLE AREA 1,478 s.f.

OFFERED AT \$23,900,000 \$22,900,000

INQUIRIES

9551 1077 Walker Lam 林先生

SEARCH REFERENCE NO. 96204



### Monticello 中半山 滿峰台

48 Kennedy Road

Practical apartment at convenient location with city and partial harbour view

中半山實用住宅，交通便利，享城市景色及部分海景



GROSS AREA 1,447 s.f.

SALEABLE AREA 1,232 s.f.

OFFERED AT \$25,000,000

INQUIRIES 9681 1819 Peggy Yau 丘小姐

SEARCH REFERENCE NO. 124287



### Valverde

中半山 蔚皇居

11 May Road

2-bedroom boutique flat with extensive facilities with city view

兩房精品單位，連完善設施，享城市景，可租可售



GROSS AREA 1,355 s.f.

SALEABLE AREA 1,085 s.f.

OFFERED AT \$33,000,000

also for lease \$68,000 incl.

INQUIRIES

9093 3381 Stephen Chan 陳先生

SEARCH REFERENCE NO. 35945



### Park View Court

西半山 恒柏園

1 Lyttelton Road

Spacious duplex with 4 bedrooms and family room at exclusive area

寬敞四房複式單位，連家庭廳，地段優越



GROSS AREA 2,837 s.f.

SALEABLE AREA 2,662 s.f.

OFFERED AT \$45,000,000

INQUIRIES 9486 1566 Mira To 杜小姐

SEARCH REFERENCE NO. 97793







### Po Shan Mansion

西半山 寶城大廈

10-16 Po Shan Road

Newly decorated large practical  
4-bedroom (3-ensuite) apartment  
with big balcony  
全新裝修四房(連三套房)單位，偌大寬敞，  
連大露台



GROSS AREA 2,800 s.f.

SALEABLE AREA 2,410 s.f.

OFFERED AT \$45,000,000

INQUIRIES 9662 2199 David Lau 劉先生

SEARCH REFERENCE NO. 160707



### Wealthy Heights 中半山 威豪閣

35 MacDonnell Road

Rare 4-bedroom apartment with  
practical layout enjoys harbour view  
in recently refurbished building with  
2 car parks

罕有實用四房單位，享海景，大廈外牆剛  
全面翻新，連雙車位



GROSS AREA 2,128 s.f.

SALEABLE AREA 1,824 s.f.

OFFERED AT \$52,000,000

INQUIRIES 9662 2199 David Lau 劉先生

SEARCH REFERENCE NO. 37019



### Regent On The Park

中半山 御花園

9A Kennedy Road

Conveniently located spacious  
apartment close to CBD

交通便利偌大住宅，毗鄰商業中心區



GROSS AREA 2,720 s.f.

SALEABLE AREA 2,154 s.f.

OFFERED AT \$65,000,000

INQUIRIES 9662 2199 David Lau 劉先生

SEARCH REFERENCE NO. 32785



### 1 Robinson Road

西半山 羅便臣道1號

Full floor duplex with high privacy  
overlooking the Zoological &  
Botanical Garden

複式全層住宅，私隱度高，眺望動植物公園  
美景



GROSS AREA 3,400 s.f.

SALEABLE AREA 2,626 s.f.

OFFERED AT \$65,000,000

INQUIRIES

9093 3381 Stephen Chan 陳先生

SEARCH REFERENCE NO. 114909







### Century Tower 2

中半山 世紀大廈 2座

1A Tregunter Path

Spacious apartment situated in prestigious location with metropolitan view

地段尊貴寬敞住宅，享城市美景



GROSS AREA 3,663 s.f.

SALEABLE AREA 2,848 s.f.

OFFERED AT \$90,000,000

INQUIRIES

9871 6828 Louis Wong 黃先生

SEARCH REFERENCE NO. 136237



### Regence Royale

中半山 富匯豪庭

2 Bowen Road

Commodious apartment with tasteful and pleasant decoration enjoying spectacular view of metropolitan

舒適住宅享品味優質裝修，坐擁城市壯麗景色



GROSS AREA 5,219 s.f.

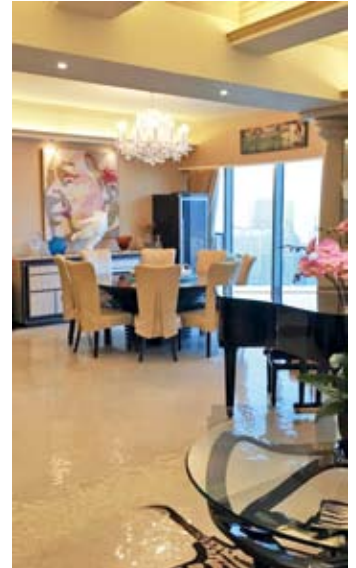
SALEABLE AREA 3,738 s.f.

OFFERED AT \$190,000,000

INQUIRIES

9871 6828 Louis Wong 黃先生

SEARCH REFERENCE NO. 106351



### 隱居寧靜

## Away from the hustle

### YY Mansion

裕仁大廈

96 Pok Fu Lam Road, Pokfulam

薄扶林 薄扶林道96號



GROSS AREA 1,450 s.f.

SALEABLE AREA 1,032 s.f.

OFFERED AT \$20,000,000

INQUIRIES 9028 0147 Jenson Au 區先生

SEARCH REFERENCE NO. 127898

YY Mansion in Pok Fu Lam — a great location for those seeking serenity and green views — offers higher ceilings and much more spacious rooms than newer apartment blocks, as can be seen in this 1,032 s.f (saleable area) apartment. With two bedrooms including one ensuite, two bathrooms, a combined living and dining room, a study room and a covered car park, the residence also has a fully-equipped kitchen and a maid's room.

Situated at Pok Fu Lam Road, the residence provides convenient access to the city, with buses, public light buses and plentiful taxis available.

裕仁大廈位於薄扶林，地段優越，享有寧靜及翠綠景色。此實用面積達1,032平方呎的單位樓底高，間隔非常寬敞。單位有兩間睡房，包括一間套房，另有兩間浴室、相連的客飯廳、一間書房、一間家傭房及一個有蓋車位。廚房設備亦相當齊全。

物業座落於薄扶林道，附近有巴士、小巴及充裕的士，住客前往市區非常方便。







### Linden Height

渣甸山 年達園

11 Boyce Road

Boutique 3-bedroom apartment  
in quiet neighbourhood

精緻三房住宅，環境寧靜



GROSS AREA 1,150 s.f.

SALEABLE AREA 973 s.f.

OFFERED AT ~~\$19,800,000~~ \$18,800,000

INQUIRIES

9551 1077 Walker Lam 林先生

SEARCH REFERENCE NO. 45679



### Stubbs Villa

東半山 詩瀟花園

2 Shiu Fai Terrace

Nicely renovated large apartment  
with spectacular racecourse view  
and 2 car parks

雅致裝修大單位，飽覽壯麗馬場景色，  
連雙車位



GROSS AREA 2,325 s.f.

SALEABLE AREA 2,189 s.f.

OFFERED AT \$41,000,000

INQUIRIES

9250 0300 Randy Chan 陳先生

SEARCH REFERENCE NO. 102790



### Craigmount

東半山 紀園

34 Stubbs Road

Spacious 3-bedroom apartment on  
Stubbs Road

司徒拔道三房住宅，間隔寬敞



GROSS AREA 2,200 s.f.

SALEABLE AREA 1,790 s.f.

OFFERED AT \$46,000,000

INQUIRIES 9486 1566 Mira To 杜小姐

SEARCH REFERENCE NO. 37185



### Jardine's Lookout Single House

渣甸山獨立屋

Exclusive detached house at quiet  
location with garden and rooftop

渣甸山罕有大屋，位處清幽恬靜地段，  
連花園及天台



GROSS AREA 4,500 s.f.

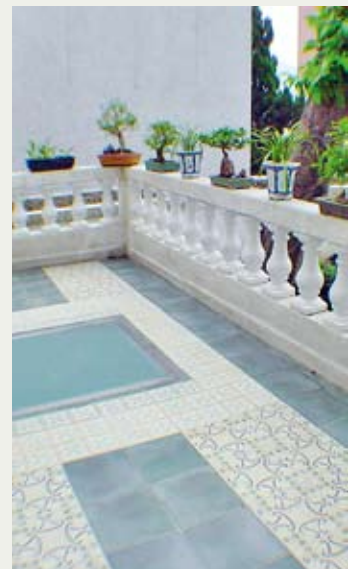
SALEABLE AREA 2,961 s.f.

OFFERED AT \$230,000,000

INQUIRIES

9871 6828 Louis Wong 黃先生

SEARCH REFERENCE NO. 12657







**Peak One 沙田 壹號雲頂**  
68 Mei Tin Road

Rare find townhouse with private pool and double garage in tranquil neighbourhood

罕有排屋連私家游泳池及雙車庫，位處清幽恬靜地段，可租可售



**GROSS AREA** 4,025 s.f.  
**SALEABLE AREA** 2,722 s.f. (plus 1,234 s.f. garden and 185 s.f. terrace)  
**OFFERED AT** \$75,000,000  
also for lease \$110,000 incl.  
**INQUIRIES**  
9250 0300 Randy Chan 陳先生  
**SEARCH REFERENCE NO.** 154288



**Cullinan I**  
尖沙咀 天璽 I

1 Austin Road West

Deluxe harbour view apartment with excellent clubhouse facilities atop Kowloon Station

豪華海景住宅，享優質會所設施，位處港鐵九龍站上蓋，可租可售



**GROSS AREA** 2,144 s.f.  
**SALEABLE AREA** 1,521 s.f.  
**OFFERED AT** \$80,000,000  
also for lease \$130,000 incl.  
**INQUIRIES** 9681 1819 Peggy Yau 丘小姐  
**SEARCH REFERENCE NO.** 130143



**Moorsom Drive, Jardine's Lookout**  
渣甸山 睦誠徑

**GROSS AREA** 3,566 s.f.  
**SALEABLE AREA** 3,500 s.f. (plus 2,522 s.f. garden and 1,441 s.f. roof)  
**OFFERED AT** \$288,600,000  
**INQUIRIES** 6183 8339 Carman Szeto 司徒小姐

The bespoke luxury property at 5 Moorsom Drive is a new, purpose-built residence on a rare single lot at Jardine's Lookout. Moorsom Drive is one of only five streets at Jardine's Lookout with only individual single lots.

The detached house comprises three levels, including a double-storey living room, four ensuite bedrooms, as well as extensively landscaped outdoor space. Against its backdrop of modern architecture, this masterpiece is a showcase of elegant interiors, with plush materials, subtle contrasts and gentle hues.

睦誠徑五號是建立於港島渣甸山罕有獨立地的全新豪華洋房。睦誠徑是渣甸山唯獨五條擁有獨立地的街道之一。

四大套房佔據了三層樓；豪華的大客廳有兩層樓高。四周廣闊而且遍布美麗園林。豪宅外表有現代建築物的氣派，室內設計卻以華麗的物料交織著微妙的對比和柔和的色彩，高雅而不俗。

Photos provided by owner  
相片由業主提供







Occhio's family of 3d lights — available as ceiling, suspended and standing lights — work together to show off House M to the best effect

## Urbane living in the best light

*Occhio's 3d family of luminaires brings a refined light to the urban interior of an exposed concrete home in Munich – designed by maio und maio architekten, the building exudes calm and sophisticated modernity*

Text: Phoebe Liu

Photography: © Hubertus Hamm, Munich; courtesy of Occhio | [www.occhio.de/en](http://www.occhio.de/en)

In Munich, Germany, House M is an urban, exposed concrete structure which stands out in an otherwise inconspicuous neighbourhood; a pleasant departure from its surroundings.

On the ground floor, flowing spaces open onto a private patio, while shifts in floor level and wall elements separate the various living spaces. Architecture and space-defining extensions, textures and materials work in sync with one another to form a very dense atmosphere – and this is where Occhio's 3d luminaires show what they are capable of.

Founded in 1999 by Axel Meise, Occhio started out with a simple yet revolutionary concept: to create a multifunctional lighting system with universal design and shape, which offers the optimal solution for every spatial requirement.

At House M, the three very unique personalities, io, lui and lei, come in a range of versions that can be combined in various colour combinations to envelope the spaces in warm light. In minimised matt

white and chrome, lui ceiling spotlights directed at the walls provide the basic lighting for the living room and accentuate paintings. In the dining room, the same lights are used in the reverse colour combination, matt chrome with white. It is a subtle difference that changes the perception and at the same time preserves the continuity of the lighting concept.

While the generous dining table is illuminated by a lei linea suspended luminaire, the counter workspace features two io sospeso suspended luminaires. With ceiling and suspended luminaires in subdued matt chrome and matt white finishes, the io and lei reading and table luminaires contrast in vibrant polished chrome and black, thereby acting as counterpoints.

The full potential of the spotlight series is displayed: expert illumination for a wide variety of scenarios, optimal solutions that meet different needs – all while maintaining a uniform design and the highest quality of light.



# Let it glow

Besides illuminating the room, lighting plays a vital part in creating the ambience of a space and adding style to the interior décor



## Megaman® LED Dim to Warm Series

Megaman®'s new LED lamps incorporate a brand new 'Dim to Warm' feature. This innovative technology allows the lamps to emit a warmer light when they are dimmed, with their colour temperature changing from 2800K to 1800K. Dimmable from 100 per cent to one per cent, the Dim to Warm range simulates the characteristics of incandescent and halogen lamps.

Megaman® Concept Store, G/F, 703 Shanghai Street, Mongkok, Kowloon, Hong Kong. Call +852 2393 0962, email [info@hk.megaman.cc](mailto:info@hk.megaman.cc) or visit [www.hk.megaman.cc](http://www.hk.megaman.cc)



## Lutron myRoom™

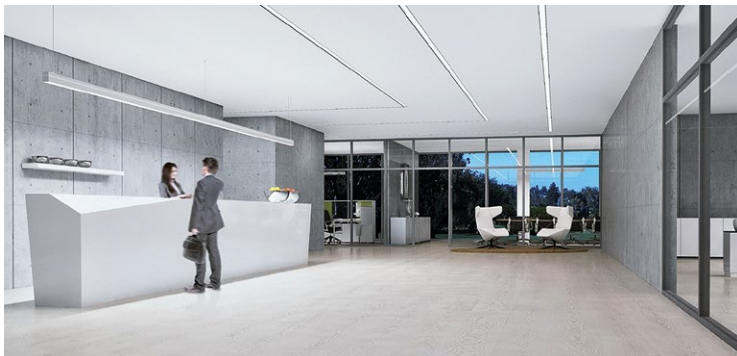
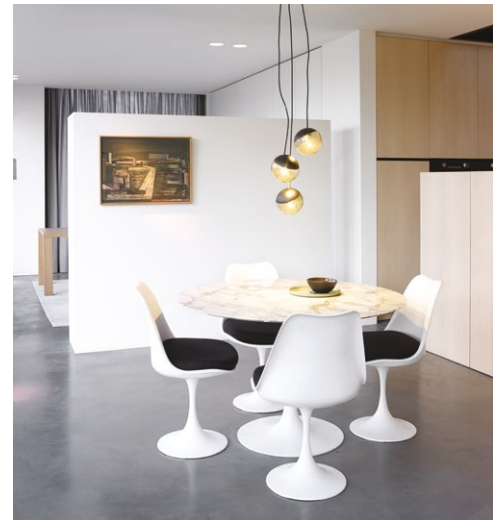
Lutron myRoom™ is a family of guestroom systems for light, temperature and shade control. Each can be tailored to specific performance and budget requirements, and all myRoom systems offer beautiful, energy-efficient, affordable control options that will help differentiate your property and delight your guests.

BAP Technology Consultants Ltd, Room 6, 7/F Block B, Po Lung Centre, 11 Wang Chiu Road, Kowloon Bay, Hong Kong. Call +852 2571 8289, email [info@bap.com.hk](mailto:info@bap.com.hk) or visit [www.bap.com.hk](http://www.bap.com.hk)

## Delta Light Gibbo

Awarded the iF Product Design Award 2016, the Gibbo is a suspended fixture with a base positioned at an angle so that the globe appears to be rolling away. A fresh touch in the Delta Light range is the use of hand-blown glass globes, a new decorative eye-catcher that combines warm tints and materials with the latest LED technology. The golden brown colour gives the Gibbo a warm presence, becoming an attraction above tables and completing interiors with a warm accent.

Zodiac Lighting Ltd, G/F & 1/F, Amber Commercial Building, 70-74 Morrison Hill Road, Wan Chai, Hong Kong. Call +852 2882 9082 or visit [www.deltalight.com](http://www.deltalight.com)



## Zumtobel Slotlight infinity

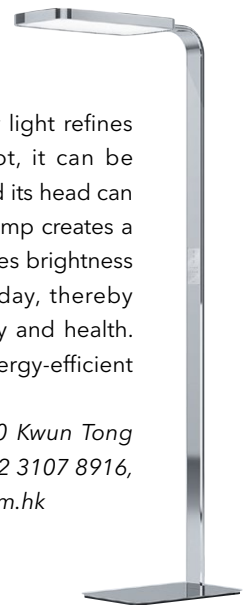
Slotlight infinity is a pure light line and a timeless interior design feature which can be specified to meet the lighting requirements for office areas. An LED wall washer, offering uniform illumination of vertical areas, has also been added to the range. Extra creative scope is provided by a version incorporating tunable white technology, which enables the colour temperature to be adjusted continuously between 3000K-6000K.

ZG Lighting Hong Kong Ltd, Units 503-508, 5/F Building 16W, Phase 3, Hong Kong Science Park, New Territories, Hong Kong. Call +852 2578 4303, email [info.hk@zumtobelgroup.com](mailto:info.hk@zumtobelgroup.com) or visit [www.zumtobelgroup.com](http://www.zumtobelgroup.com)

## Esylux Prana+

The minimalist design of the Prana+ office floor light refines every workplace. Owing to its patented foot, it can be combined with all established desk variations, and its head can be adapted to the desk length. If required, the lamp creates a biologically effective light that dynamically changes brightness and colour temperature in the course of the day, thereby improving the user's vitality, concentration ability and health. The integrated high-tech sensor ensures an energy-efficient use of daylight.

Esylux Asia Ltd, 15/F Millennium City 3, 370 Kwun Tong Road, Kwun Tong, Kowloon, Hong Kong. Call +852 3107 8916, email [sales@esylux.com.hk](mailto:sales@esylux.com.hk) or visit [www.esylux.com.hk](http://www.esylux.com.hk)



For more features on design and architecture, don't miss the April issue of Perspective magazine, and check out our website at [www.perspectiveglobal.com](http://www.perspectiveglobal.com)

**perspective**



# Chantilly

肇輝臺6號  
6 SHIU FAI TERRACE

## A Splendid Residence Neighbouring Stubbs Road 毗鄰司徒拔道地段 罕罕寬闊大戶設計

肇輝臺6號位於港島半山區東部傳統豪宅地段，毗鄰司徒拔道，飽覽跑馬地馬場一帶的景致，駕車瞬間可往來銅鑼灣、金鐘及中環商業核心區、名店購物區及五星級酒店，大都會生活盡在掌握之中。

- 單位A室為五房四套房間隔\*，實用面積為2,816平方呎
- 間隔寬闊方正，樓底高達11呎，景觀開揚，感覺舒適
- 廚房搜羅國際著名廚具品牌
- 糅合私人電梯大堂概念，採用智能卡系統直達專屬單位，為住戶帶來高私隱度的生活空間
- 港島半山區東部校網享負盛名，小學為12校網，中學校網為灣仔區，國際學校林立，包括德瑞國際學校（灣仔校舍）、白普理小學（英基屬下小學）及英基國際幼稚園（曉新）等

Located at No. 6 Shiu Fai Terrace, neighbouring Stubbs Road in Mid-Levels East, most units in Chantilly enjoy a captivating view of the Happy Valley Racecourse. Chantilly also enjoys easy access to core business areas in Causeway Bay, Admiralty and Central, as well as internationally celebrated shops and 5-star hotels.

- Unit A of Chantilly offers 5 bedrooms with 4 en-suites^ with saleable area of 2,816 sq.ft
- Generous layout design with ceiling height of 11 ft. and a wide open view
- Kitchen is equipped with internationally recognised brands
- Private lift lobby concept supported by a state-of-the-art smart card control system is offered to ensure a high degree of privacy
- Renowned Mid-Levels East school network includes primary school net number 12, as well as secondary school in Wan Chai district and international schools such as the German Swiss International School, Bradbury School (ESF) and ESF International Kindergarten (Hillside)

6 Shiu Fai Terrace, Mid-Levels East

東半山 肇輝臺6號

NET AREA 2,816 s.f. (Brand new 5-bedroom unit with 4 en-suites)

OFFERED AT for lease \$148,000 incl.

JOINT EXCLUSIVE SOLE AGENT

6183 8339 Carman Szeto 司徒小姐

9871 6828 Louis Wong 黃先生

9209 9988 Alan Wong 王先生

SEARCH REFERENCE NO. 136284



\* 五房四套房間隔之單位的其中一套房為兩個睡房以同一浴室相連

^ For the 5-bedroom unit with 4 en-suites, 2 of the en-suite bedrooms share the same bathroom.





## 37 Repulse Bay Road

淺水灣 淺水灣道37號

Family apartment with full facilities enjoys stunning view  
淺水灣家庭式住宅，連完善設施，享壯麗景致

GROSS AREA 1,745 s.f.

SALEABLE AREA 1,254 s.f.

OFFERED AT \$70,000 incl.

INQUIRIES 6258 8847 Anthea Ngai 魏小姐

SEARCH REFERENCE NO. 34194



## Celestial Garden 淺水灣 詩禮花園

5 Repulse Bay Road

Large 2-bedroom apartment enjoying sea and mountain views on  
popular Upper Repulse Bay Road

淺水灣道頭段偌大住宅，兩房間隔，坐擁海景及山巒景，極受歡迎，可租可售

GROSS AREA 2,363 s.f.

SALEABLE AREA 1,962 s.f.

OFFERED AT \$90,000 incl. also for sale \$78,000,000

INQUIRIES 9551 1077 Walker Lam 林先生

SEARCH REFERENCE NO. 157154



## The Redhill Peninsula 大潭 紅山半島 18 Pak Pat Shan Road

Waterfront 4-bedroom townhouse with stunning sea view and  
clubhouse facilities

海濱四房排屋，享壯麗海景及會所設施，可租可售

GROSS AREA 3,075 s.f.

SALEABLE AREA 2,836 s.f.

(plus 804 s.f. garden, 72 s.f. terrace and 292 s.f. roof)

OFFERED AT \$95,000 incl. also for sale \$70,000,000

INQUIRIES 9648 6082 Christine Chong 莊小姐

SEARCH REFERENCE NO. 147466



## Ventura Villa 春坎角 華慧苑

27 Ching Sau Lane

Unique Spanish style 4-ensuite townhouse located at a tranquil and  
verdant location of Chung Hom Kok

獨特西班牙式四套房排屋，位處和諧恬靜的春坎角，可租可售

GROSS AREA 2,800 s.f.

SALEABLE AREA 2,351 s.f. (plus 580 s.f. terrace)

OFFERED AT \$100,000 incl. also for sale \$58,000,000

INQUIRIES 9648 6082 Christine Chong 莊小姐

SEARCH REFERENCE NO. 34854



## Grand Garden 淺水灣 華景園

61 South Bay Road

Well decorated 4-bedroom (2-ensuite) apartment enjoying breath-taking  
sea view

優質裝修四房(連兩套房)住宅，飽覽華麗海景

GROSS AREA 3,054 s.f.

SALEABLE AREA 2,555 s.f.

OFFERED AT \$100,000 incl.

INQUIRIES 9681 1819 Peggy Yau 丘小姐

SEARCH REFERENCE NO. 150435



## Belgravia Heights

大潭 碧濤閣

27 Tai Tam Road

Spacious 4-bedroom apartment with sweeping sea view over Tai Tam Bay

寬敞四房住宅，飽覽大潭灣遠闊海景

GROSS AREA 2,890 s.f.

SALEABLE AREA 2,534 s.f.

OFFERED AT \$105,000 incl.

INQUIRIES 9209 9988 Alan Wong 王先生

SEARCH REFERENCE NO. 13501







**Woodbury Court** 薄扶林 嘉林閣

137 Pok Fu Lam Road

Spacious 4-bedroom apartment with brand new decorations enjoying gorgeous sea view

寬敞四房單位，連全新裝修，眺望華麗海景

GROSS AREA 2,536 s.f.

SALEABLE AREA 2,307 s.f.

OFFERED AT \$118,000 incl.

INQUIRIES 9871 6828 Louis Wong 黃先生

SEARCH REFERENCE NO. 173434



**The Somerset**

淺水灣 怡峰

67 Repulse Bay Road

Sought after sea view duplex at prestigious location

受歡迎海景複式單位，地段尊貴

GROSS AREA 2,464 s.f.

SALEABLE AREA 1,939 s.f.

OFFERED AT \$120,000 incl.

INQUIRIES 9093 3381 Stephen Chan 陳先生

SEARCH REFERENCE NO. 2981



**Woodbury Court**

薄扶林 嘉林閣

137 Pok Fu Lam Road

Well decorated 3-bedroom apartment with practical layout in Pokfulam

優質裝修三房單位，間隔實用

GROSS AREA 2,536 s.f.

SALEABLE AREA 2,307 s.f.

OFFERED AT \$120,000 incl.

INQUIRIES 9028 0147 Jenson Au 區先生

SEARCH REFERENCE NO. 38830



**Repulse Bay Garden** 淺水灣 麗景園

18-40 Bellevue Drive

Fully furnished and equipped spacious flat with designer decorations overlooking Repulse Bay Beach with 3 car parks

裝修完善大住宅，匠心獨運，俯瞰淺水灣泳灘景致，連三車位，可租可售

GROSS AREA 2,288 s.f.

SALEABLE AREA 2,049 s.f.

OFFERED AT \$120,000 incl. also for sale \$68,000,000

INQUIRIES 9080 6686 Teresa Lau 劉小姐

SEARCH REFERENCE NO. 30953



**Grosvenor Place** 淺水灣 淺水灣道117號

117 Repulse Bay Road

Spectacular beachfront modern apartment with stunning picturesque views

壯麗海濱時尚住宅，美景如畫，可租可售

GROSS AREA 2,809 s.f.

SALEABLE AREA 1,974 s.f.

OFFERED AT \$130,000 incl. also for sale \$120,000,000

INQUIRIES 6258 8847 Anthea Ngai 魏小姐

SEARCH REFERENCE NO. 139961



**UNIR Garden** 石澳 安利花園 4 Shek O Headland

Waterfront modern townhouse with private terrace in quiet and tranquil setting

時尚海濱排屋，連私家平台，地段清幽恬靜

GROSS AREA 3,844 s.f.

SALEABLE AREA 2,560 s.f.

(plus 12 s.f. garden, 266 s.f. terrace and 510 s.f. roof)

OFFERED AT \$140,000 incl.

INQUIRIES 6258 8847 Anthea Ngai 魏小姐

SEARCH REFERENCE NO. 160148





## Southside & The Peak LEASE

南區及山頂 出租



### Burnside Villa 淺水灣 濱景園

9 South Bay Road

Townhouse with ample open spaces enjoys comprehensive facilities close to local amenities

戶外空間充裕排屋，享完善設施，鄰近社區設施

GROSS AREA 2,800 s.f.

SALEABLE AREA 2,784 s.f. (plus 845 s.f. garden and 670 s.f. roof)

OFFERED AT \$145,000 incl.

INQUIRIES 9681 1819 Peggy Yau 丘小姐

SEARCH REFERENCE NO. 21709



### Le Palais

大潭 皇府灣

8 Pak Pat Shan Road

Beautiful townhouse with ample open space overlooking Tai Tam Bay

典雅排屋連充裕戶外空間，俯瞰大潭灣美景，可租可售

GROSS AREA 3,348 s.f.

SALEABLE AREA 2,507 s.f. (plus 741 s.f. garden)

OFFERED AT \$145,000 incl. also for sale \$86,000,000

INQUIRIES 9209 9988 Alan Wong 王先生

SEARCH REFERENCE NO. 109996



### 9 Coombe Road 山頂 甘道9號

Spacious townhouse surrounded in lush greenery on The Peak with beautiful views

山頂寬敞排屋，環境茂綠，享美麗景色

GROSS AREA 3,300 s.f.

SALEABLE AREA 2,911 s.f.

(plus 781 s.f. garden and 306 s.f. terrace)

OFFERED AT \$210,000 incl.

INQUIRIES 9486 1566 Mira To 杜小姐

SEARCH REFERENCE NO. 5570



### Altadena 山頂 白加道27號

27 Barker Road

Highly sought after 4-bedroom apartment with lofty ceiling taking in a bird's eye view of Victoria Harbour

受歡迎四房住宅，樓底高，鳥瞰維港美景

GROSS AREA 4,500 s.f.

SALEABLE AREA 4,073 s.f.

OFFERED AT \$250,000 incl.

INQUIRIES 6183 8339 Carman Szeto 司徒小姐

SEARCH REFERENCE NO. 12839



### 4 Peel Rise 山頂 貝璐道4號

Prestigious Peak house with extensive garden, terrace and roof area enjoying spectacular views

尊貴山頂大屋，連寬闊花園、平台及天台，享壯麗景致

GROSS AREA 4,307 s.f.

SALEABLE AREA 3,436 s.f.

(plus 1,147 s.f. garden, 298 s.f. terrace and 1,066 s.f. roof)

OFFERED AT \$290,000 incl.

INQUIRIES 9681 1819 Peggy Yau 丘小姐

SEARCH REFERENCE NO. 155745



### Chateau De Peak 山頂 顯峰居

8 Mount Kellett Road

Rarely available Peak garden house with tasteful decorations

罕有山頂花園大屋，配以品味裝修

GROSS AREA 3,477 s.f.

SALEABLE AREA 3,425 s.f.

(plus 3,867 s.f. garden and 1,091 s.f. roof)

OFFERED AT \$300,000 excl.

INQUIRIES 9871 6828 Louis Wong 黃先生

SEARCH REFERENCE NO. 5623







### The Belvedere

山頂 種植道51-61號  
51-61 Plantation Road  
Exclusive harbour view Peak house  
for rent with indoor private pool  
山頂獨特海景排屋，連室內私家游泳池，  
罕有出租



GROSS AREA 4,800 s.f.  
SALEABLE AREA 3,189 s.f.  
(plus 879 s.f. garden, 662 s.f. terrace  
and 461 s.f. roof)  
OFFERED AT \$330,000 incl.  
INQUIRIES  
9551 1077 Walker Lam 林先生  
SEARCH REFERENCE NO. 20413



### Shouson Peak

壽臣山 壽山村道9-19號  
9-19 Shouson Hill Road  
Brand new townhouse with private  
lift and swimming pool in tranquil  
Shouson Hill  
壽臣山全新排屋，連私家升降機及游泳池，  
環境寧靜，可租可售



GROSS AREA 6,140 s.f.  
SALEABLE AREA 4,318 s.f. (plus 1,016  
s.f. garden and 902 s.f. roof)  
OFFERED AT \$390,000 incl.  
also for sale \$430,000,000  
INQUIRIES  
9209 9988 Alan Wong 王先生  
SEARCH REFERENCE NO. 140567



### 7-15 Mount Kellett Road

山頂 加列山道7-15號  
Rarely find 7-bedroom garden  
townhouse with private rooftop  
and swimming pool enjoying  
peaceful view in prestigious location  
罕有七房花園排屋，連私家天台及游泳池，  
眺望怡人景色，地段尊貴



SALEABLE AREA 6,208 s.f. (plus 1,196  
s.f. garden and 1,515 s.f. roof)  
OFFERED AT \$490,000 incl.  
INQUIRIES  
9648 6082 Christine Chong 莊小姐  
SEARCH REFERENCE NO. 160079



### Shek O Road

石澳 石澳道  
Extremely rare and exclusive  
colonial single house with expansive  
garden in the secluded Shek O  
Country Club  
罕有獨特英式獨立屋，連偌大花園，位處寧  
靜石澳鄉村俱樂部



GROSS AREA 5,642 s.f.  
SALEABLE AREA 4,662 s.f.  
OFFERED AT Open Offer  
INQUIRIES  
9080 6686 Teresa Lau 劉小姐  
SEARCH REFERENCE NO. 13711





## Midlevels Central & West LEASE

中半山及西半山 出租



### Starcrest 灣仔 星域軒

9 Star Street

Modern apartment in prime location with facilities and easy access to local shops and MTR station

時尚住宅連設施，舉步可達商舖及港鐵站，地段優越

GROSS AREA 929 s.f.

SALEABLE AREA 734 s.f.

OFFERED AT \$48,000 incl.

INQUIRIES 6183 8339 Carman Szeto 司徒小姐

SEARCH REFERENCE NO. 32081



### Amber Garden 中半山 柏苑

70-72 Kennedy Road

High floor zone 3-bedroom apartment with open city view at convenient location and 2 car parks

高層三房單位，享開揚城市景色，交通便利，連雙車位，可租可售

GROSS AREA 1,732 s.f.

SALEABLE AREA 1,532 s.f.

OFFERED AT \$75,000 incl. also for sale \$35,000,000

INQUIRIES 9662 2199 David Lau 劉先生

SEARCH REFERENCE NO. 40122



### Po Garden

中半山 寶園

9 Brewin Path

Luxury 3-bedroom apartment with green view on fringe of CBD

豪華三房單位，眺望翠綠景色，毗鄰商業中心區

GROSS AREA 2,572 s.f.

SALEABLE AREA 1,940 s.f.

OFFERED AT \$85,000 incl.

INQUIRIES 9833 9509 Michelle Chung 鍾小姐

SEARCH REFERENCE NO. 110262



### Po Shan Mansion

西半山 寶城大廈

10-16 Po Shan Road

4-bedroom apartment with balcony overlooking the Victoria Harbour

四房住宅連露台，俯瞰維港美景

GROSS AREA 2,800 s.f.

SALEABLE AREA 2,410 s.f.

OFFERED AT \$85,000 incl.

INQUIRIES 9486 1566 Mira To 杜小姐

SEARCH REFERENCE NO. 26417



### Tregunter Tower 2

中半山 地利根德閣2座

14 Tregunter Path

Practical 3-bedroom flat in sought after development in prime location

實用三房住宅，位處受歡迎住宅項目，地段優越

GROSS AREA 3,052 s.f.

SALEABLE AREA 2,330 s.f.

OFFERED AT \$90,000 incl.

INQUIRIES 6277 1295 Henry Chan 陳先生

SEARCH REFERENCE NO. 89826



### Dragon View

中半山 龍景樓

39 MacDonnell Road

Newly renovated spacious city view apartment with easy access to Central

全新裝修寬敞住宅，享城市景，距離中環僅咫尺之遙

GROSS AREA 2,500 s.f.

SALEABLE AREA 2,351 s.f.

OFFERED AT \$90,000 incl.

INQUIRIES 9093 3381 Stephen Chan 陳先生

SEARCH REFERENCE NO. 37965







### 11 MacDonnell Road

中半山 麥當勞道 11號

Nicely decorated 3-bedroom flat occupying the full floor located in convenient location

雅致裝修全層三房單位，交通便利

GROSS AREA 2,352 s.f.

SALEABLE AREA 1,580 s.f.

OFFERED AT \$90,000 incl.

INQUIRIES 6277 1295 Henry Chan 陳先生

SEARCH REFERENCE NO. 175721



### Hollywood Heights

中半山 好利閣

6 Old Peak Road

High efficiency 4-bedroom flat with balcony in prime location

高實用率四房單位，連露台，地段優越，可租可售

GROSS AREA 2,700 s.f.

SALEABLE AREA 2,272 s.f.

OFFERED AT \$90,800 incl. also for sale \$58,800,000

INQUIRIES 6277 1295 Henry Chan 陳先生

SEARCH REFERENCE NO. 18760



### Grand Bowen

中半山 寶雲殿

11B Bowen Road

Full floor harbour view 4-bedroom apartment in prime location

四房全層海景住宅，地段優越

GROSS AREA 3,071 s.f.

SALEABLE AREA 2,182 s.f.

OFFERED AT \$98,000 incl.

INQUIRIES 9833 9509 Michelle Chung 鍾小姐

SEARCH REFERENCE NO. 29638



### Dynasty Court

中半山 帝景園

23 Old Peak Road

Harbour view 4-bedroom flat in prestigious development

海景四房單位，位處尊貴地段

GROSS AREA 2,266 s.f.

SALEABLE AREA 1,806 s.f.

OFFERED AT \$105,000 incl.

INQUIRIES 9551 1077 Walker Lam 林先生

SEARCH REFERENCE NO. 104347



### Estoril Court

中半山 愛都大廈

55 Garden Road

Large and efficient apartment with balcony on fringe of Central

偌大實用單位，連露台，毗鄰中環

GROSS AREA 3,347 s.f.

SALEABLE AREA 2,888 s.f.

OFFERED AT \$108,000 excl.

INQUIRIES 9486 1566 Mira To 杜小姐

SEARCH REFERENCE NO. 5526



### Regence Royale

中半山 富匯豪庭

2 Bowen Road

4-bedroom luxurious apartment with city view on quiet Bowen Road

四房豪華住宅，享城市景，位處清幽寶雲道

GROSS AREA 2,522 s.f.

SALEABLE AREA 1,805 s.f.

OFFERED AT \$110,000 incl.

INQUIRIES 6277 1295 Henry Chan 陳先生

SEARCH REFERENCE NO. 107368





## Midlevels Central & West LEASE

中半山及西半山 出租



**Fairlane Tower 中半山 寶雲山莊**  
2B Bowen Road  
4-bedroom apartment with  
clubhouse facilities overlooking the  
city and Victoria Harbour  
四房住宅連會所設施，俯瞰城市及維港景色



GROSS AREA 2,830 s.f.  
SALEABLE AREA 2,159 s.f.  
OFFERED AT \$110,000 incl.  
INQUIRIES  
9080 6686 Teresa Lau 劉小姐  
SEARCH REFERENCE NO. 158624



**Branksome Grande**  
中半山 地利根德里3號  
3 Tregunter Path  
Newly renovated 3-bedroom colonial  
apartment in prime location  
全新裝修英式單位，三房間隔，地段優越



GROSS AREA 3,030 s.f.  
SALEABLE AREA 2,410 s.f.  
OFFERED AT \$113,000 excl.  
INQUIRIES  
9833 9509 Michelle Chung 鍾小姐  
SEARCH REFERENCE NO. 31536



**Garden Terrace 中半山 花園臺**  
8A Old Peak Road  
Newly renovated large 4-ensuite  
apartment with facilities and shuttle  
bus on fringe of CBD  
全新裝修偌大四套房住宅，連設施及穿梭巴  
士，鄰近商業中心區，可租可售



GROSS AREA 3,307 s.f.  
SALEABLE AREA 2,828 s.f.  
OFFERED AT \$120,000 incl.  
also for sale \$105,000,000  
INQUIRIES  
6183 8339 Carman Szeto 司徒小姐  
SEARCH REFERENCE NO. 31723



**Grenville House**  
中半山 嘉慧園  
1, 3 & 3A Magazine Gap Road  
Highly sought after large  
4-bedroom apartment in  
prime location  
受歡迎偌大四房單位，地段優越



GROSS AREA 3,400 s.f.  
SALEABLE AREA 3,113 s.f.  
OFFERED AT \$120,000 incl.  
INQUIRIES  
6258 8847 Anthea Ngai 魏小姐  
SEARCH REFERENCE NO. 36440







**Aigburth 中半山 譽皇居**  
12 Tregunter Path

Exclusive apartment with balcony on tranquil Tregunter Path with facilities and shuttle bus  
獨特住宅連露台，連設施及穿梭巴士服務，位處寧靜地利根德里



GROSS AREA 2,980 s.f.  
SALEABLE AREA 2,102 s.f.  
OFFERED AT \$120,000 excl.  
INQUIRIES  
9250 0300 Randy Chan 陳先生  
SEARCH REFERENCE NO. 14534



**Argenta**

西半山 瑋然  
63 Seymour Road

Brand new 3-bedroom apartment with city view at Midlevels West  
西半山全新三房單位，坐擁城市美景



GROSS AREA 2,728 s.f.  
SALEABLE AREA 2,182 s.f.  
OFFERED AT \$140,000 incl.  
INQUIRIES 9681 1819 Peggy Yau 丘小姐  
SEARCH REFERENCE NO. 168144

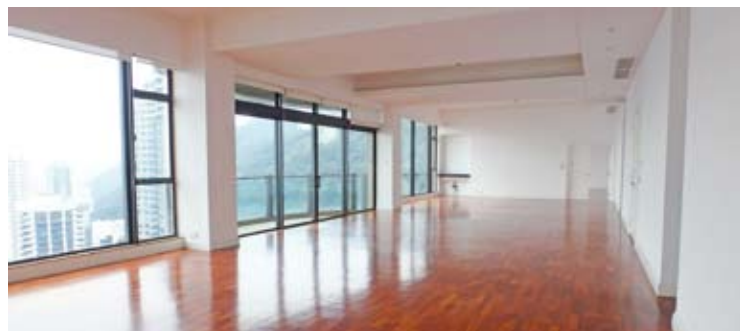


**May Tower 1**  
中半山 梅苑一座  
7 May Road

Large 3-bedroom duplex apartment on top floor with private rooftop in prime location  
偌大三房頂層複式單位，連私家天台，地段優越



GROSS AREA 2,850 s.f.  
SALEABLE AREA 2,218 s.f.  
(plus 1,400 s.f. roof)  
OFFERED AT \$160,000 incl.  
INQUIRIES 9662 2199 David Lau 劉先生  
SEARCH REFERENCE NO. 31447



**Midlevels Central property**

中半山 物業  
Extravagant huge apartment overlooking fantastic Victoria Harbour  
豪華偌大住宅，俯瞰迷人維港景致



GROSS AREA 6,250 s.f.  
SALEABLE AREA 4,715 s.f.  
OFFERED AT \$500,000 excl.  
INQUIRIES  
9871 6828 Louis Wong 黃先生  
SEARCH REFERENCE NO. 20870





## Midlevels East & Happy Valley LEASE

東半山及跑馬地 出租



### Swiss Towers

東半山 瑞士花園

113 Tai Hang Road

Sought after older-style 2-bedroom apartment on fringe of Causeway

受歡迎兩房住宅，毗鄰銅鑼灣



GROSS AREA 1,600 s.f.

SALEABLE AREA 1,265 s.f.

OFFERED AT \$55,000 incl.

INQUIRIES

6277 1295 Henry Chan 陳先生

SEARCH REFERENCE NO. 35495



### Cavendish Heights

渣甸山 嘉雲臺

27-37 Perkins Road

Newly renovated 3-bedroom apartment in well planned development

全新裝修三房單位，位處規劃完善住宅項目



GROSS AREA 1,620 s.f.

SALEABLE AREA 1,300 s.f.

OFFERED AT \$68,000 incl.

INQUIRIES 9028 0147 Jenson Au 區先生

SEARCH REFERENCE NO. 32699



### Butler Tower

渣甸山 柏麗園

1-5 Boyce Road

Boutique 4-bedroom unit with practical layout at quiet location

精品四房單位，間隔實用，地點寧靜



GROSS AREA 1,650 s.f.

SALEABLE AREA 1,492 s.f.

OFFERED AT \$68,000 incl.

INQUIRIES 9028 0147 Jenson Au 區先生

SEARCH REFERENCE NO. 112414



### Victoria Heights

東半山 威利閣

43A Stubbs Road

Large 3-bedroom apartment with sweeping city view at Lower Peak

偌大三房單位，飽覽遼闊城市景色



GROSS AREA 2,553 s.f.

SALEABLE AREA 2,344 s.f.

OFFERED AT \$120,000 incl.

INQUIRIES 9486 1566 Mira To 杜小姐

SEARCH REFERENCE NO. 103009





### Chantilly

東半山 肇輝台6號  
6 Shiu Fai Terrace

Luxury 5-bedroom apartment with comprehensive clubhouse facilities at quiet location  
豪華五房住宅，享完善會所設施，地段清幽恬靜



GROSS AREA 3,650 s.f.  
SALEABLE AREA 2,816 s.f.  
OFFERED AT \$148,000 incl.  
INQUIRIES

6183 8339 Carman Szeto 司徒小姐  
SEARCH REFERENCE NO. 136284



### Highcliff

東半山 曉廬  
41D Stubbs Road

Huge apartment with 4-ensuite enjoying panoramic vista of the city and Victoria Harbour  
四套房偌大住宅，眺望城市及維港全景



GROSS AREA 7,486 s.f.  
SALEABLE AREA 5,357 s.f.  
OFFERED AT \$400,000 incl.  
INQUIRIES

9551 1077 Walker Lam 林先生  
SEARCH REFERENCE NO. 123974



### 完美綠帶

## The untouched greenery

### Flora Garden

慧景園  
7 Chun Fai Road, Jardine's Lookout  
渣甸山 春暉道7號



GROSS AREA 1,302 s.f.  
SALEABLE AREA 1,011 s.f.  
OFFERED AT \$24,880,000  
INQUIRIES 9080 6686 Teresa Lau 劉小姐  
SEARCH REFERENCE NO. 157564

This luxury residence at Jardine's Lookout enjoys great mountain views, with a unique open-plan lounge, dining area and kitchen making the property feel extremely spacious. The homeowners have extended their ingenuity across into well-designed, bespoke built-in furniture, while bathrooms and kitchen all have high-end fittings.

In addition to two bedrooms (including one ensuite), the 1,011 s.f. (saleable area) apartment also has a total of two bathrooms, one maid's room, one balcony, a study room and a covered car park.

Recent renovation of the building exteriors and lobby have refreshed its outlook, ensuring its longevity for many years to come.

此豪華單位位於渣甸山，可享絕美山巒景色，單位設獨特的開放式廚房，令室內更見寬敞。業主為單位的设计花盡心思，用上各種高級傢具，廚房及浴室更配置高端設備。

單位實用面積達1,011平方呎，有兩間睡房，其中一間為套房、兩間浴室、一間家傭房、一個露台、一間書房及一個有蓋車位。

大廈外牆及大堂最近完成復修翻新，外觀新穎，延長使用年限。





## Iconic en-bloc building for redevelopment

Clerkenwell EC1

- Famous former public house which has been extensively restored to an excellent standard, located in the Underwood Street Conservation Area
- Planning consent granted for the addition of a new 4th floor and conversion into a 14 bedroom boutique hotel, or reconfiguration into 4 one-bedroom apartments
- 4 minutes on foot from Old Street Tube station
- 前公共住宅改建成高標準優質住宅，位處Underwood Street保護區
- 已獲城規批准擴建四樓，改建成14睡房的精品酒店或4個一房單位
- 4分鐘路程可抵達Old Street地鐵站

Freehold; Vacant Possession

Total Internal Area 5,030 s.f.

Circa £5.3M - £5.9M

9051 3096 Edward Chiang 姜先生



## Prime London en-bloc office investment

Clerkenwell EC1

- Prime location in the heart of Clerkenwell
- Fully-let to 4 tenants at a highly reversionary passing rent of £358,582 p.a., estimated rental value of £693,897 p.a. subject to undertaking Grade A refurbishment
- Average weighted unexpired lease term of 2.25 years, 7 minute walk to Farringdon station
- 位處Clerkenwell優越地段
- 現由4個租戶全數承租，年租金收入358,582英鎊，若進行頂級翻新，年租金收入更可達693,897英鎊
- 尚餘平均租期2.25年，4分鐘路程可達Farringdon地鐵站

Freehold; Gross Yield 3.68%

Gross Internal Area 10,061 s.f.

Circa £9.75M - £10.65M

9051 3096 Edward Chiang 姜先生



## En-bloc building with redevelopment opportunity

The City EC2

- Prominent corner building, single-let to a British Charity institution
- Passing rent of £1,497,736 p.a., current lease expires Sep 2018
- Potential for asset enhancement through adding two floors, subject to planning permission
- Within 150 metres of both Liverpool Street Tube station and the future Moorgate CrossRail station
- 優質轉角位大廈，由英國慈善機構獨立承租
- 年租金收入1,497,736英鎊，租約於2018年9月到期
- 若透過城規批准，可額外增加兩層
- 距離Liverpool Street地鐵站及未來Moorgate CrossRail車站僅150米

Freehold; Gross Yield 4.99%

Gross Internal Area 33,538 s.f.

Circa £30M - £33M

9051 3096 Edward Chiang 姜先生



## En-bloc residential investment in Prime London area

Marylebone W1

- 3 attractive mid-terraced Victorian buildings in a prime West London address
- Total 9 self-contained apartments with studio, 1-bed and 2-bed configurations, annual passing rent of £187,420 p.a.
- Asset enhancement potential through refurbishment or extension, subject to planning permission, 4 minute walk to Baker Street station
- 三幢維多利亞式建築，位處西倫敦優越地段
- 共9個設備齊全的單位，連開放式、一房及兩房單位，年租金收入187,420英鎊
- 若透過城規批准，可翻新或擴建增加物業價值，4分鐘路程可達Baker Street地鐵站

Freehold; Gross Yield 2.88%

Gross Internal Area 4,953 s.f.

Circa £6.5M - £7.2M

9051 3096 Edward Chiang 姜先生



## Prime West London residential development opportunity

Covent Garden WC2

- Attractive mixed-use office and retail building near Covent Garden
- Fully-let to 3 tenants producing a passing rent of £480,665 p.a.
- Detailed planning consent for the provision of 14 residential apartments (C3) comprising 12,648 s.f. and a new A3 unit, Covent Garden station only 6 minutes away on foot
- 受歡迎辦公室及零售混合物業，毗鄰Covent Garden
- 由3個租戶獨立承租，年租金收入480,665英鎊
- 已取得詳細規劃同意書提供14個住宅單位 (C3)，共12,648平方呎，另設一個A3單位，Covent Garden地鐵站僅6分鐘路程

Freehold; Gross Yield 3.77%

Net Internal Area 11,153 s.f.

Circa £12.75M - £14.25M

6199 7640 Gary Lam 林先生



## Prime commercial and residential development

St John's Wood NW8

- Freehold Property in the affluent district of St John's Wood
- Public House with two levels of self-contained residential above
- Commercial premises let on a new 20 year lease from completion at a passing rent of £92,500 p.a.
- Residential let on ASTs producing a gross income of £72,000 p.a.
- 位處St John's Wood優越地段的永久業權物業
- 樓上兩層設有設備齊全的住宅
- 商舖擁20年租約，年租金收入92,500英鎊
- 住宅以ASTs形式租出，年租金收入72,000英鎊

Freehold; Net Yield 4.5%

Circa £4M

6199 7640 Gary Lam 林先生







## IDEO 02 BY ANANDA

### ALMOST 16,000 SQ.M. OF COMMON FACILITIES

- Bike Track 700 meters Certified by Peppermint Bike Park\*
- Airy futsal field
- Jogging Track in the green space 5,000 sq.m.
- 3 Swimming pools 1,700 sq.m. connected
- Fitness center 2 zones available
- Co-working space: providing working space with WIFI

### CONVENIENT LOCATION

- Easy access to the central Bangkok by expressway and BTS
- Close to the Bangkok Mall\*\*, one of the best shopping mall in Southeast Asia and close to BITEC
- Close to BTS Bang Na (Skytrain main Sukhumvit Line)

### FULLY FURNISHED



JOGGING TRACK & BIKE TRACK



SWIMMING POOL

售價由 **STARTS FROM HK\$ 570,000** 起

## IDEO 02 曼谷矚目住宅項目

位於曼谷 Bangna，區內匯聚商廈、時尚住宅及國際學校。項目毗鄰曼谷國際貿易展覽中心 (BITEC) 及興建中全泰國最大購物中心 BangkokMall，蘊藏巨大升值潛力。鄰近 BTS Bangna 站，使用快速公路或 Skytrain 前往曼谷其他商業、購物區均十分便利。

17萬呎住大型園林會所，包括綠化緩跑徑、單車徑、3個大型相連戶外泳池、健身中心、小型足球場、住客專用 WIFI 覆蓋共用工作空間等，設施一應俱全。

標準單位設開放式、1房及2房，全部配備高級傢俬及廚房傢電，切合自住、投資所需。

### Enquiries & Appointments

Maggie 郭小姐  
☎ 9028 0519

Wendy 杜小姐  
☎ 9349 0622



### Retail/Residential investment opportunity

Buckingham Gate, SW1

- Uppers all sold off as 59 new build residential units, G/F retail unit let to Royal Quarter Café until 2028
- Passing rent on café topped up to £97,500 p.a.
- Current ground rent from the residential of £49,450 p.a.
- Total current passing rent £146,950 p.a.
- 上層設有59個住宅單位，首層由Royal Quarter Café咖啡廳獨立承租至2028年
- 咖啡廳年租金收入達97,500英鎊
- 住宅單位地租年租金收入達49,450英鎊
- 總年租金收入達146,950英鎊



Freehold; Net Yield 4.25%

Total 90,000 s.f.

Circa £3.25M

6199 7640 Gary Lam 林先生

### Prime West London retail investment opportunity

Chelsea SW3

- Well-placed retail unit operating as the flagship office for a respected UK estate agency
- Unbeatable location in the heart of Kensington and Chelsea
- Single-let on a new 15 year lease with a passing rent of £122,500 p.a.
- 10 minute walk to Sloane Square Tube station
- 位處優越地段的零售舖位，由一著名英國房地產代理經營為旗艦辦公室
- 座落Kensington及Chelsea核心位置
- 擁15年新租約，年租金收入達122,500英鎊
- 10分鐘步程可達Sloane Square地鐵站



Virtual Freehold; Gross Yield 4.49%

Total Internal Area 1,538 s.f.

Circa £2.725M - £2.925M

6199 7640 Gary Lam 林先生

### Prime mixed-use retail and office investment

Piccadilly Circus, St James's SW1

- Prominent location near the world-famous Piccadilly Circus
- Mixed-use retail and office building with 2 separate entrances
- Single-let to a reputable international fashion chain on an FRI lease expiring in 2034
- Total passing rent of £350,000 p.a. with regular rent reviews every 5 years
- 3 minute walk to Piccadilly Circus Tube station
- 毗鄰世界聞名的Piccadilly Circus，地段優越
- 零售及辦公室混合大廈，設兩個獨立入口
- 由一間著名國際時裝品牌公司以FRI形式獨立承租，租約至2034年
- 年租金收入350,000英鎊，每五年租金可向上調整
- 3分鐘步程可達Piccadilly Circus地鐵站



Freehold; Gross Yield 3.68%

Net Internal Area 3,965 s.f.

Circa £9.5M - £10.5M

9284 0044 Dougal Robertson 羅先生

### Very rare West End residential conversion opportunity

St James's SW1

- Impressive 19th Century Grade-I Listed building
- Currently zoned as office space (B1) presenting potential for an impressive/boutique private office, planning and Listed Building Consent have both been approved for conversion into a single family house
- 5 minute walk to Charing Cross Tube station
- 19世紀優質一級文物大廈
- 目前是辦公室空間 (B1)，可改作精品私人辦公室，已獲城規批准改建為單幢家庭大宅
- 5分鐘步程可達Charing Cross地鐵站



Long Leasehold (125 years);

Vacant Possession

Gross Internal Area 27,000 s.f.

Circa £55M - £61M

9284 0044 Dougal Robertson 羅先生

### Prime Central London en-bloc office building

Covent Garden WC2

- Attractive early 20th century 6-floor office building, located within the Covent Garden Conservation Area
- Rare opportunity with potential for extension or comprehensive refurbishment, subject to planning permission
- Covent Garden Tube station located 5 minutes away on foot
- 建於20世紀初的樓高六層辦公室大廈，位處Covent Garden保護區
- 若透過城規批准，可擴建或全面翻新
- 5分鐘步程可達Covent Garden地鐵站



Freehold; Vacant Possession

Net Internal Area 11,031 s.f.

Circa £14M - £16M

9284 0044 Dougal Robertson 羅先生

### West London en-bloc residential investment opportunity

Earls Court SW5

- Attractive mid-terrace apartment block, interior accommodation configured as 7 one-bedroom units and 2 three-bedroom units
- Excellent residential location within the Earls Court regeneration area
- Total passing rent of £196,278 p.a. with an estimated rental value (ERV) of £227,240 p.a.
- 3 minute walk to Earls Court Tube station
- 受歡迎住宅大廈，室內可建成7個一房單位及2個三房單位
- 座落Earls Court新區的優質住宅地段
- 目前年租金收入196,278英鎊，預計年租金收入達227,240英鎊
- 3分鐘步程可達Earls Court地鐵站



Freehold; Gross Yield 3.47%

Gross Internal Area 5,422 s.f.

Circa £5.65M - £6.15M

9284 0044 Dougal Robertson 羅先生



全幢僅設  
更顯罕有珍貴

曼谷市全新低密度豪華公寓

42 EXCLUSIVE  
UNITS

FREEHOLD LOW-RISE IN BANGKOK CITY CENTRE

Developer

RICHEST  
UNION

D'ROUVRE

A STEP TO PROMINENCE  
BANGKOK - THAILAND

- ★ Prime Location - Nearby BTS Ari Station, just 6 minutes to the Airport Rail Link and 10 minutes to Siam Paragon  
優越地段 - 毗鄰 ARI BTS 站, 乘搭 BTS 6分鐘車程可達 Airport Rail Link 轉車站、前往 Siam Paragon 亦只需10分鐘
- ★ Full Clubhouse Facilities - All season pool, fitness centre, party room, children's playroom, shuttle bus service  
星級會所 - 全天候游泳池、健身中心、宴會廳、兒童遊樂中心及穿梭巴士服務



Dining Room



Bedroom



Fitness Centre



Swimming Pool

位於「曼谷九龍塘」

融合都市繁華與豪華生活的絕佳地段

每呎售價由 **LUXURY LOW-RISE FROM HK\$ 2,550\*** per sqft

SPECIAL OFFERS • 特別優惠

**7%** Guaranteed Rental Return<sup>®</sup>  
保證7%租金回報<sup>®</sup>

**FREE** Furniture Package  
免費傢俬組合



2 round-trip tickets to Bangkok  
plus 2 hotel nights for all buyers  
曼谷來回機票兩張連兩晚酒店住宿

Enquiries 查詢

Gary 林先生  
☎ 6199 7640

Patty 鄧小姐  
☎ 9162 9219

projects@landscape.com

LANDSCOPE  
INTERNATIONAL

Landscape International Properties Limited  
Unit 3106, 31/F, Hopewell Centre, 183 Queen's Road East  
Wan Chai, Hong Kong SAR, China  
Tel: +852 2866-0022 Fax: +852 2866-0015  
www.landscape-international.com



Computer generated images are indicative only

The information, text and photos contained herein are provided solely for the convenience of interested parties and no warranty or representation as to their accuracy, correctness or completeness is made by Landscape International Properties Ltd., Landscape Christie's International Real Estate, Landscape Realty Ltd., Landscape Surveyors Ltd. (collectively "Landscape") or the sellers, none of whom shall have any liability or obligation with respect thereto. These offerings are made subject to contract, correction of errors, omissions, prior sale, change of price or terms or withdrawal from the market without notice. Information provided is for reference only and does not constitute all or any part of a contract. Our sales representatives for overseas properties work exclusively in relation to properties outside Hong Kong and are not therefore licensed under the Estate Agents Ordinance to deal with Hong Kong properties.  
\* Price correct at time of press \* Please contact our agents for details



### Prime Osaka en-bloc residential investment

Suita, Osaka 大阪 吹田

- 4-storey reinforced concrete apartment block built in 1986
- Used primarily as student accommodation for Kansai University with high occupancy rates
- Internal accommodation comprises 65 studio apartments
- Total passing rent of JPY 34,918,284 p.a. with an estimate rental value (ERV) of JPY 35,470,284 if fully-let
- 5 minute walk to Toyotsu station of the Hankyu Senri line
- 建於1986年，樓高四層的鋼筋混凝土建築
- 主要用作關西大學的學生住宿，出租率極高
- 設有65個開放式單位
- 年租金收入約34,918,284日元，如果滿租，預計可達35,470,284日元
- 5分鐘步程可達阪急千里線豐津站



Freehold;  
Gross Yield 7.27%  
Gross Internal Area 1,131.55 sq.m.  
Circa JPY 480M  
(approx. HK\$32.85M)

9051 3096 Edward Chiang 姜先生

### En-bloc residential building in Central Osaka

Yodogawa-ku, Osaka 大阪 淀川區

- 3-storey steel structured apartment block built in 1992
- Internal accommodation consists of 23 studio apartments plus 5 carpark spaces
- 21 out of 23 units currently let with an estimated total rental value of JPY 13,820,400 p.a.
- 8 minute walk to JR Tsukamoto station
- 建於1992年，樓高三層的鋼鐵建築
- 設有23個開放式單位，連五個車位
- 21個單位現已租出，預計如滿租年租金收入可達13,820,400日元
- 8分鐘步程可達JR塚本站



Freehold;  
Reversionary Yield 8.13%  
Gross Internal Area 515.47 sq.m.  
Circa JPY 170M  
(approx. HK\$11.64M)

9051 3096 Edward Chiang 姜先生

### En-bloc residential investment opportunity in Osaka

Higashi Yodogawa-ku, Osaka 大阪 東淀川區

- 8-storey reinforced concrete apartment building constructed in 2016
- Interior accommodation comprises 21 units in total with 3 units per floor
- Fully-let and producing a passing rent of JPY 16,392,000 p.a.
- 8 minute walk to Nishinakajima Minamigata station of the Midosuji line
- 建於2016年，樓高八層的鋼筋混凝土建築
- 共有21個開放式單位，每層三個單位
- 單位現已全數租出，年租金收入16,392,000日元
- 8分鐘步程可達御堂筋線西中島南方站



Freehold;  
Gross Yield 6.07%  
Gross Internal Area 719.04 sq.m.  
Circa JPY 270M  
(approx. HK\$18.48M)

9284 0044 Dougal Robertson 羅先生

### Prime Tokyo mixed-use retail and office building

Chiyoda-ku, Tokyo 東京 千代田區

- 6-storey reinforced concrete structure completed in 1984
- Interior accommodation comprises 5 office units and 1 retail unit
- 5 out of 6 units are let with an annual passing rent of JPY 15,094,248
- Estimated rental value (ERV) of 17,686,248 p.a. if fully-let
- 2 minute walk to Kudanshita station of the Metro Tozai and Metro Hanzomon lines
- 建於1984年，樓高六層的鋼筋混凝土建築
- 設有五個辦公室及一個零售商舖
- 五個單位現已租出，年租金收入15,094,248日元
- 如果滿租，預計年租金收入可達17,686,248
- 2分鐘步程可達地鐵東西線及半藏門線的九段下站



Freehold;  
Gross Yield 5.08%  
Net Internal Area 358.09 sq.m.  
Circa JPY 348M  
(approx. HK\$23.82M)

9284 0044 Dougal Robertson 羅先生



UK Buy-To-Let Hotspot • 收租投資首選

# KINGS DOCK MILL, LIVERPOOL

英國利物浦 KINGS DOCK MILL

KINGS DOCK MILL  
L1

LIVERPOOL • UNITED KINGDOM



Echo Arena  
0.4 miles

Albert Dock  
0.4 miles



Liverpool One  
Shopping Centre  
0.4 miles

Ropewalks  
0.5 miles

Three Graces  
0.6 miles

James Street  
Station  
0.6 miles

Liverpool  
Central Station  
0.6 miles

- Prime location near historic Liverpool waterfront  
位處市中心，毗鄰著名 Albert Dock 及文化、購物區
- Phase One achieving near 100% occupancy rate \*  
第一期出租率接近 100% \*，信心保證
- 7% NET rental guarantee for 3 years \*  
發展商提供首 3 年每年 7 厘淨租金保證 \*

Starting from £115,000  
Only 25% Deposit Required



查詢及預約 ☎  
Enquiries & Appointments

6680 4173  
Sharon 盧小姐

5361 3890  
Jessica 章小姐



Landscape International Properties Limited  
Unit 3106, 31/F, Hopewell Centre, 183 Queen's Road East  
Wan Chai, Hong Kong SAR, China  
Tel: +852 2866-0022 Fax: +852 2866-0015  
www.landscape-international.com

The information, text and photos contained herein are provided solely for the convenience of interested parties and no warranty or representation as to their accuracy, correctness or completeness is made by Landscape International Properties Ltd., Landscape Christie's International Real Estate, Landscape Realty Ltd., Landscape Surveyors Ltd., (collectively "Landscape") or the sellers, none of whom shall have any liability or obligation with respect thereto. These offerings are made subject to contract, correction of errors, omissions, prior sale, change of price or terms or withdrawal from the market without notice. Information provided is for reference only and does not constitute all or any part of a contract. Our sales representatives for overseas properties work exclusively in relation to properties outside Hong Kong and are not therefore licensed under the Estate Agents Ordinance to deal with Hong Kong properties. \* Information provided by developer \* Optional rental assurance - Furniture pack must be purchased and management company appointed



## San Francisco, U.S.A. 美國 三藩市

Hayes Valley

Located in the heart of vibrant Hayes Valley, Fulton 555 residents will enjoy living among cultural landmarks, renowned restaurants, boutique shopping, and green spaces. Fulton 555 will offer 139 stylish residences with tech-friendly designs and modern floor plans, and residents will enjoy access to unique amenities such as a rooftop terrace with resort-style seating and an on-site market.

座落於Hayes Valley繁華地段，Fulton 555住宅項目毗鄰文化地標、著名餐廳、精品購物區及綠化用地。Fulton 555提供139個時尚住宅，配以高科技設計及新穎間隔。住戶尊享獨特的設施，如度假式的天台及市場。

Price Upon Request

9051 3096 Edward Chiang 姜先生



## Marina District, San Francisco

三藩市Marina區

Impressive Two-Unit Marina Building

Ideally located just steps from San Francisco Bay, this two-level home has 3 bedrooms in the top unit and 2 in the bottom unit, making it ideal for multigenerational living. Highlights include several decks for taking in the views, gleaming hardwood floors, and crown molding.

這兩個住宅的上層是三房單位，下層則是兩房單位，適合幾代人一起生活。物業距離三藩市海灣僅咫尺之遙，地段優越。物業的亮點包括多個觀景台、亮麗的硬木地板及頂冠飾條。

US\$3,795,000

9051 3096 Edward Chiang 姜先生



## East Bay, Oakland 三藩市 奧克蘭 東灣

Distinctive Home in Coveted East Bay Neighborhood

Located in one of Oakland's most sought-after neighborhoods, this sleek, sophisticated home offers 3 bedrooms and commanding views of the Bay, the San Francisco skyline, and the Golden Gate Bridge. Highlights include a chef's kitchen, a media room, and a low-maintenance lawn.

位處Oakland其中一個最受歡迎的社區，這時尚的三房單位坐擁海灣美景、三藩市城市及金門大橋景色。物業的亮點包括一個偌大廚房、一個媒體室及保養費用低的草地。

US\$1,899,000

9051 3096 Edward Chiang 姜先生



## Silicon Valley, U.S.A. 美國 矽谷

Centrally Located Condo in Red-Hot Palo Alto

Located a short distance from Stanford University in highly sought-after Palo Alto, this 1,479 s.f. unit boasts an open-air lanai for relaxing and taking in the views.

位處極受歡迎Palo Alto地區，信步可達史丹佛大學。單位面積1,479平方呎，設一個開揚露台，提供休憩空間，眺望怡人景色。

US\$1,950,000

9051 3096 Edward Chiang 姜先生







### Freehold Development Land in Jomtien, Pattaya

芭堤雅Jomtien永久業權的可發展用地

A large freehold land plot with planning for a residential/retail/hospitality project, with main road access from either end of the plot, and direct views to Jomtien Beach. This is an excellent development opportunity to tap-in to the rapidly growing market for tourists from PRC.

此偌大地盤已取得城規批准作住宅、零售或酒店項目，設有主要道路連接，飽覽Jomtien泳灘美景。中國遊客的快速增長促使此地盤成為熱門的發展項目。

Approx. HK\$349,000,000

約港幣 \$349,000,000

### Freehold Development Land in Patong, Phuket

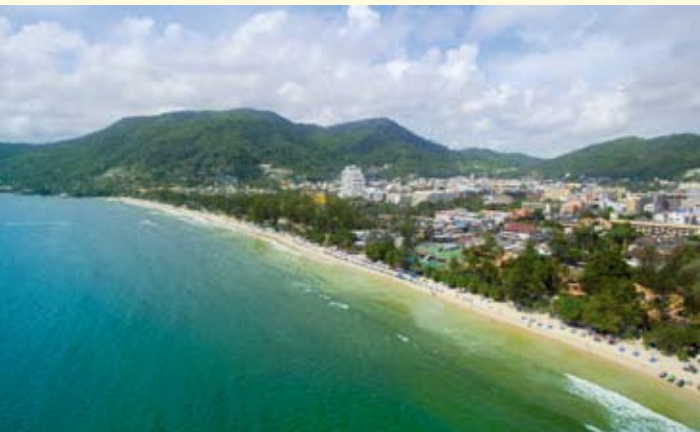
布吉 巴東永久業權的可發展用地

A prime land plot in Central Patong, only 500 metres from the beach, and suitable for a hotel, resort or condominium development. Located on Patong Sai 2 Road, the freehold plot is 1.84 acres (7,462.8 M<sup>2</sup>) in size with direct road frontage.

位處巴東優越核心地段的地盤，距離海灘僅500米，適合發展成酒店、度假村及住宅。座落於Patong Sai 2 Road，此永久業權的用地達1.84英畝（7,462.8平方米），正面設有直接的道路。

Approx. HK\$124,865,546

約港幣 \$124,865,546



### The Ritz Carlton Residences Bangkok 曼谷

A unique opportunity to purchase from a choice of unexpected returned units at prices well below those being currently asked. A selection of exclusive 2-bedroom residences of 134 M<sup>2</sup> on high-floors with unobstructed river views. Located in the City's highest building, the Ritz Carlton Residences is Bangkok's most talked about five-star development to date and due for completion in August 2016.

此單位價格優惠，回報甚高，實屬罕有。這精選獨特的高層兩房住宅面積廣達134平方米，坐擁壯麗河景。位處市內最高的建築，Ritz Carlton Residences屬曼谷五星級發展發展項目，預計於2016年8月竣工。

Approx. HK\$8,336,036

約港幣\$8,336,036





## Castle in Central London

Bloomsbury, London WC1

- Once in a life time property and most unique detached castle
- Newly Refurnished property with 5 bedrooms Property (Master Bedroom, En-suite and dresser)
- Beautiful large sitting room, separate wine cellar and large patio areas
- ZONE 1 Central London WC1
- Close to University of London, British Museum, EuroStar, St Pancras International Railway Station, British Library
- Walking distance to Regents Park and Oxford Street
- 經典獨特的獨立式城堡物業
- 物業全新裝修，設五睡房(主人睡眠、套睡房及化妝間)
- 偌大華麗的客廳、獨立的酒窖及大平台區
- 位處W1倫敦市中心地段
- 毗鄰倫敦大學、大英博物館、歐洲之星火車站、St Pancras國際火車站、大英圖書館
- 舉步可達Regents Park及Oxford Street



Freehold

Gross floor area 1974 s.f.  
plus Patio 400 s.f.

Circa £4.25M - £4.7M

9194 8365 Stephen Park-Smith 史先生

## Prime en-bloc residential building

Knightsbridge, London SW3

- Attractive en-bloc red brick period building located opposite to the world famous Harrod's department store
- Internal accommodation is currently configured as 6 self-contained apartments which were extensively refurbished in 2011
- Fully-let to a corporate short-let provider on a 3 year term at £340,001.48 p.a.
- Current tenancy arrangement expires circa Q2 2017
- 6 minute walk to Knightsbridge Tube station
- 受歡迎的紅磚建築大廈，正對面是世界知名的Harrod百貨公司
- 現有6個設備齊全的住宅單位，已於2011年全面翻新
- 現由短期租客作三年短期承租，年租金收入340,001.48英鎊
- 租約期約2017年第二季屆滿，租金可重新議定
- 6分鐘步程可達Knightsbridge地鐵站



Freehold

Gross Yield 2.27%

Net Internal Area 5,393 s.f.

Circa £15M - £17M

9051 3096 Edward Chiang 姜先生

## Vineyard Estate, Oregon, U.S.A.

美國 俄勒岡州酒莊

Breezes rustle through the branches of the tall pines and Pinot Gris vines to this incredible French Country estate on Pete's Mountain in West Linn, Oregon.

Outside, a broad stone staircase leads up to the grand front doors. To the left of the foyer is the living room showcasing the amazing view of Mt. Hood. On the opposite side, the formal dining room with beam ceilings and more beautiful views. Easy access from here to the kitchen via a fully-equipped butler's pantry with wine cooler and sink.

On the far side of the main floor you'll find the master suite. The view from this room overlooks the Willamette Valley and the Pinot Noir and Pinot Gris vines next door. There's three bedrooms, two with the unique addition of separate sink and vanity areas and the third with a large closet and ensuite bath.

位處俄勒岡州West Linn Pete's Mountain的華麗法國鄉村莊園，微風吹過高聳的松樹及Pinot Gris葡萄樹。

從戶外一條石梯可通往大門，門廳的左邊是客廳，遠眺胡德山怡人景色。另一邊是正式的飯廳，設橫樑的天花，享優美景致。由設有酒櫃及洗碗槽的備餐室可通往廚房，十分容易。

主樓層的另一側是主人套房，飽覽Willamette Valley、Pinot Noir及Pinot Gris葡萄樹美景。設有三間睡房，其中兩間睡房備有獨立水槽及梳妝區，第三間睡房則設有偌大衣櫥及套睡房浴室。



Price: US\$2.95M

6276 8567 Urosh Teodorovich 尤先生



Interior design  
 constructions  
 space planning  
 project management  
 tendering  
 landscaping  
 quantity survey

Lucy SY Teo

*Joseph has great aesthetic taste and so very detailed oriented, his super swift responses give me a great sense of security that he will always be ready to help.*

**Peak road –contemporary classic**



Jennifer & Mandan Fong

*We love your passion towards your work, your ideas are just awesome and I could never imagine my home will look like what it is now.*

**Magazine Gap road –pure elegance**



Harry Dinh Khoan

*Before I met Joseph, people said my schedule was a "Mission Impossible", in fact, my place finished 1 week ahead and with meticulous finishes.*

**Repulse Bay road –les Français**



Sailesha N Boyd

*Joseph no doubt a design guru, highly efficient and very pragmatic man, we had easy interactions and rapports over the project.*

**Mt Kellet road –deja vu**



Stephen Carroll

*It was a daunting task but Joseph's attention to details is apparent in the finished product, we now have a home more beautiful than we originally expected.*

**Albion Terrace -colonial sensation**



It's broader & deeper than design,  
 it's part of your life.....





# FARRINGTON

INTERIORS



*THE ONE STOP SHOP*  
*for home furnishings*

**10,000 sq. ft. Flagship Store:**

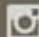
31/F, World Trade Centre, 280 Gloucester Road, Causeway Bay, HK


+852 2808 1000

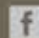
**Boutique Shop:**


Shop No.211, Level 2, The Pulse, No.28 Beach Road, Repulse Bay, HK

+852 2808 0303

 Farrington\_Interiors

 FarringtonInteriors

 Farrington Interiors Ltd.

 [www.farringtoninteriors.com](http://www.farringtoninteriors.com)