

The
Key

大宅[®]

Select deluxe homes

LANDSCOPE[®] 領域[®]
The Specialists in Luxury Properties

Volume 88 APRIL 2012



KeyWords

“SERVE THE PEOPLE” 「为人民服务」

— Mao Zedong (Mao Tse-Tung) (1893-1976)
— 毛泽东 (1893-1976)

KeyNotes

A professional estate agent will provide you with the necessary information for you to make important decisions on pricing, timing and marketing. He will also advise you on market conditions, comparable or competing listings, marketing strategies and negotiation tactics. You may leave the deal negotiation to the agent while maintaining a cool head to make wise decisions. Viewings and walk-throughs are better handled by estate agent, who knows best how to prepare and present the property. Documentation may be handled by the agent who has extensive working knowledge and experience.

With his expertise, it is easier for an estate agent to close a deal acting as the catalyst than a direct negotiation between seller and buyer or landlord and tenant, who may easily run into deadlock. Estate agents are also well trained in managing handovers and the follow-ups after completion of a sale or signing of a tenancy. Now, tell me you don't need an estate agent.

一个专业的地产代理，会提供一切必需的资讯，让你在做订价、推出时机和推广销售等重大决定时能有所依据。同时，他也会就市况、竞争的楼盘、行销策略和议价技巧等方面提供建议。你可以放手让地产代理与潜在买家议价，自己则保持头脑清醒作明智决定。地产代理处理看楼和介绍楼盘会较得心应手，因为他们深谙该如何装备物业和阐述物业特点。具丰富经验的地产代理也可以处理有关文件。地产代理凭著专业技巧，能较容易促进交易，而买卖双方直接洽商经常容易陷入僵局。地产代理训练有素，处理交收和跟进买卖合约或租约皆驾轻就熟。现在，你还说不需要地产代理吗？

K.S. Koh
ks-koh@landscape.com

(The above is an excerpt from Market Watch on www.landscape.com. Read the full article at Market Watch, www.landscape.com/marketwatch)
(以上内容节录于领域网站内的市场观察，如欲观看全文，请登上网址：www.landscape.com/marketwatch)

Monthly HIGHLIGHTS 每月精选



06 33 Cape Road
春坎角 环角道33号

14 Babington House
西半山 巴威大厦

20 Redhill Apartment
大潭 红山半岛

HOW MAY YOU LIST YOUR PROPERTY WITH THE KEY?

怎样在《大宅》刊登您的出售／出租物业？

If you would like to see your property listed in The Key in the next issue, you may call Loretta Lui at 3102 4818 or visit us at www.landscape.com/sell_let. Or you may simply fill out the space below and fax to us at 2866 0015.

如果您想将出售／出租物业刊登于大宅，可致电3102 4818与吕小姐联络，或登上 www.landscape.com/sell_let。或者您可以填写下面的表格传真至2866 0015。

Property to be listed 物业

Asking Rental / Sale Price 租金／售价

Floor Area 面积

Contact Person 联络人

Telephone 电话

Email 电邮地址

Our KeyPersons will contact you for follow-up works.
我们的大宅专员会马上与您联络

Published and distributed by

LANDSCOPE 領域
The Specialists in Luxury Properties

Landscape Realty Limited C-018733

a member of Landscape Surveyors Ltd

Find us on:
facebook.

Designed by

PERSPECTIVE 透視

Tel: +852 2866 0022
Fax: +852 2866 0015
Email: info@landscape.com
Website: www.landscape.com
Address: Unit 3106, 31/F, Hopewell Centre,
183 Queen's Road East, Wanchai, Hong Kong
Member of:



Tel: +852 2525 0287
Fax: +852 2526 3860
Email: info@perspectiveglobal.com
Website: www.perspectiveglobal.com
Address: Rm 2408, Dominion Centre,
59 Queen's Road East, Wanchai, Hong Kong

The information, text, photos, analyses and projections contained herein are provided solely for the convenience of prospective clients and no warranty or representation as to their accuracy, correctness or completeness is made by Landscape Surveyors Limited, Landscape Realty Limited or the owners, none of whom shall have any liability or obligation with respect thereto. Interested parties should rely on their own investigations, interpretations and analyses in connection with the purchase or letting thereof.

Information has been provided to us by sources deemed reliable, but no warranty or representation is made as to its accuracy, correctness or completeness. These offerings are made subject to contract, correction of errors, omissions, prior sale or lease, change of price or terms or withdrawal from the market without notice. The contents of The Key are for reference only and do not constitute all or any part of a contract. Copyright 2012

Interior design
 constructions
 space planning
 project management
 tendering
 landscaping
 quantity survey

Peter M. Cannon

Thank you for all your works over the past 4 months. Our home is beautiful and the time we have spent with our family in the house has been just what we dreamed of....

Perkins road —colonial charm



Sherrie Harps

Joseph is a problem-solver, talented designer, sophisticated and..... now my very good friend. I could not praise him and his firm enough.

Repulse Bay -classical contemporary



Susan Taylor

Thank you for giving me such a beautiful home. I can't say enough good things about you. Joseph -I know first hand why your company has such an excellent reputation. It was worth every penny I spent.

Castle Peak road —clean lines



Ethan King

We were very happy with Joseph as our designer. He made everything easy for us and read our tastes very well. We would recommend JCAW Consultants to anyone. We couldn't be happier with the outcome.

Plantation road —sophisticate mode



Jennifer Park

We are super pleased with our remodel that your team did at our home. Everyone we came in contact with is first class!

Sapphire Chalet —light filled spread



**a kiss is for a second
 admiring domicile is for ever -jc**



PROVIDENCE BAY

天賦海灣

Visit Show Suites at Room 105B, 1/F, Olympian City 2 (✳ MTR Olympic Station Exit D3),
Opening Hours: 12NN – 8PM (Including Public Holidays)

For enquiries, please call Isabella at 8209 9366 (including public holidays).
Address/ District of the development: 5 Fo Chun Road, Tai Po, N.T./ Pak Shek Kok (East)
Website: www.providencebay.hk

Units vary from one to five bedrooms. Gross floor area from 763 sq. ft. to 3,361 s. ft. and saleable area from 600 sq. ft. to 2,662 sq. ft. 7 houses with gross floor area from 4,172 sq. ft. to 5,408 sq. ft. and saleable area from 2,921 sq. ft. to 3,786 sq. ft.

Sales Agent:



信和地產代理有限公司
Sino Real Estate Agency Limited

Project Manager:



南豐發展有限公司
Nan Fung Development Ltd

Developers:



信和置業
Sino Land



南豐集團
NAN FUNG GROUP



藝華國際
K. WAH INTERNATIONAL



永泰亞洲
WING TAI ASIA

Vendor/ Developer: Pacific Bond Limited Patent/Holding Company of the Vendor*: Garwin Investment Limited *The shareholders of Garwin Investment Limited are Nan Fung Development Limited, Nan Fung Resources Limited, King Chance Development Limited, Gempress Limited and Wealthy Vision Limited. The holding company of King Chance Development Limited, Gempress Limited and Wealthy Vision Limited are Sino Land Company Limited, Wing Tai Properties Limited and K. Wah International Holdings Limited respectively. Vendor's Solicitors: Baker & McKenzie and F. Zimmern & Co. Authorized Person: Mr. Chu Hok Wang Clement of WCWP International Limited Project Architect: WCWP International Limited Main Superstructure Contractor: China Overseas Building Construction Limited Mortgagee Bank Financing the Construction of the Development under a Building Mortgage: Bank of China (Hong Kong) Limited Financier which has Provided Loans to Finance the Construction of the Development: Gempress Limited, King Chance Development Limited, Nan Fung Development Limited, Nan Fung Resources Limited and Wealthy Vision Limited Providence Bay comprises 18 residential towers and 7 houses with a total of 482 units.



A high-angle photograph of a woman standing in clear, turquoise water. She is wearing a yellow one-piece swimsuit and a colorful swim cap with a floral pattern. To her left is a thick white pillar that extends from the top of the frame down into the water. The water is very clear, showing the woman's reflection and the bottom of the pool. The overall scene is bright and sunny, suggesting a luxurious outdoor swimming area.

Luxury in Nature

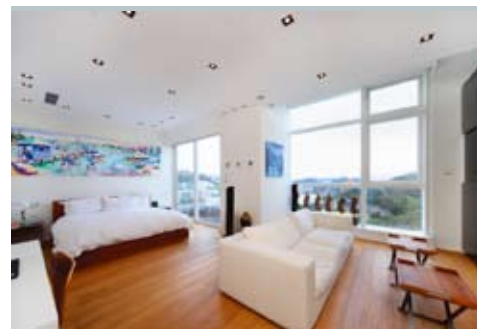
*"Providence Bay nestles on a unique land
embraced by stately mountains and pristine waters,
forming what's likely the world's most beautiful bay.*

*The view from above is extraordinary,
and we were inspired right from the start to design
Foster+Partners' grandest scale residential project in the world,
to create Hong Kong's first, and very own Riviera."*

Richard Hawkins,

Foster+Partners

The photographs, images, drawings or sketches shown in this advertisement/ promotional material represent the artist's imaginative impression of the development concerned only. They are not drawn to scale and/ or may have been edited and processed with computerized imaging techniques. Prospective purchasers should make reference to the sales brochure for details of the development. The developer also advises purchasers to conduct on-site visit for a better understanding of the development site, its surrounding environment and the public facilities nearby.



从简极乐 MINIMALIST BLISS

Photography: Daniel Tam

Situated in the peaceful neighbourhood of Chung Hom Kok, this 3,142 sq-ft townhouse offers striking sea views that stretch over Stanley Bay and across the horizon of the South China Sea. The four-bedroom home was stylishly renovated in 2004 with new timber flooring, electric switches, dual air conditioning and heating, and mood lighting in the master bedroom and living room. The homeowner enlisted a local interior designer to provide a white, minimalist look for the house, while at the same time being fully functional. Maintaining clean lines all over, custom-made furniture and concealed storage were produced to accommodate a large family.

With floor-to-ceiling windows overlooking the garden, the combined living and dining room enjoys ample natural lighting. When the weather is cold outside, the living room can also be transformed into a private cinema where homeowners can curl up near the fireplace to watch a movie shown on a large projector with state-of-the-art surround sound system. You could also easily spend an entire day in the master bedroom (ensuite) – reading a book on the balcony or watching TV in the seating area – where there is also a built-in fish tank. Upstairs, the rooftop is ideal for entertaining guests, fitted with a barbecue and pantry.

33 Cape Road consists of 14 semi-detached houses and townhouses, as well as a clubhouse that offers a swimming pool and gym. Located on a peninsula between Repulse Bay and Stanley, it is part of the quiet, predominantly low-rise district of Chung Hom Kok. The complex takes advantage of verdant hills, providing a plenty of fresh air. Nearby, there is a local supermarket, dry cleaners, a doctor's clinic and both campuses of Hong Kong International School. Stanley is just a five-minute drive away and the area is well served by public transport with easy routes to Central and elsewhere.



这间3,142平方呎的排屋位于春坎角宁静的住宅区，坐拥赤柱湾迷人海景，远眺南中国海的海平线。屋内共有四间睡房，2004年翻新后换上时尚的面貌，主人房和客厅除了重铺木地板外，亦装上新电制、冷暖气系统和情境照明。屋主找来本地室内设计师营造一室净白简约格调之余，亦不忘把家居设计得方便实用。全屋的订制家具线条简约，配合隐藏式储物柜，是大家庭的不二之选。

客饭厅设落地玻璃窗，把花园的翠绿带进室内，天然照明充足。天冷时，客厅亦可化身为私人影院，以大型投影机配合先进的环绕立体声音响系统，让人可蜷缩在温暖的火炉旁欣赏电影。另一边厢，在主人套房里待上一整天亦是一种享受，既可在阳台享受阅读之乐，又可在装上鱼缸的睡房厅区中偷闲看电视。房子的天台设有烧烤炉和小型厨房，最适合招待客人。

环角道33号由14间半独立屋及排屋组成，住客会所内设游泳池和健身室。春坎角位于浅水湾和赤柱之间的半岛，环角道33号便正坐落春坎角宁静的著名低密度住宅区之中，位置得天独厚，倚傍翠绿山峦，空气清新。区内亦十分便利，附近有超级市场、乾衣店和诊所，香港国际学校的中小学部亦近在咫尺。从环角道33号驾车到赤柱仅五分钟，交通方便，有公共交通工具往中环闹市及其他地区。

33 Cape Road, Chung Hom Kok
春坎角环角道33号

3,142 s.f. (plus 519 s.f. garden and 420 s.f. roof)
HK\$65M



37 Repulse Bay Road
Family flat with comprehensive facilities
and full view of Deep Water Bay
家庭式住宅，连完善住客会所设施，欣赏深水湾
全景

浅水湾 浅水湾道37号

1,745 s.f.
\$38M

☎ 6330 7888 Cora Ko 高小姐
🌐 www.landscape.com/19689.htm



Baguio Villa
550 & 555 Victoria Road
Well decorated 3-bedroom apartment
with private roof terrace
靚装修三房住宅，连私家天台，可租可售

薄扶林 碧瑶湾

2,332 s.f. (plus 1,876 s.f. roof)
\$40M also for lease \$100K incl.

☎ 9028 0147 Jenson Au 区先生
🌐 www.landscape.com/111955.htm



Bluewater
25 Tai Tam Road
Deluxe sea view apartment at Tai Tam
waterfront
豪华海景排屋，位于大潭海滨，地段尊贵，
可租可售

大潭 大潭道25号

2,500 s.f.
\$70M also for lease \$120K incl.

☎ 9871 6828 Louis Wong 黄先生
🌐 www.landscape.com/13138.htm



68 Mount Davis Road
Modern 4-bedroom sea view apartment
with balcony
时尚四房海景住宅，连阳台

薄扶林 摩星岭道68号

2,409 s.f.
\$108K

☎ 9486 1566 Mira To 杜小姐
🌐 www.landscape.com/127371.htm



34 Island Road
Rare garden townhouse at Deep Water
Bay waterfront with sweeping sea view
深水湾海滨花园大屋，享宁静海景，市场罕有

深水湾 香岛道34号

4,200 s.f. (plus 1,154 s.f. garden
and 420 s.f. terrace)
\$480K

☎ 9833 9509 Michelle Chung 鍾小姐
🌐 www.landscape.com/35171.htm





Greenery Garden
2A Mount Davis Road
Practical 3-bedroom apartment with open view
薄扶林间隔实用三房单位，尊享开扬美景

薄扶林 怡林阁

1,587 s.f.
\$15M

☎ 6838 2929 Mark Mak 麦先生
🌐 www.landscape.com/43655.htm



Belleview Place
93 Repulse Bay Road
Unique 2-bedroom duplex apartment in quiet neighbourhood of Repulse Bay
浅水湾别致两房复式单位，环境优美怡人

浅水湾 宝晶苑

1,846 s.f. (plus 114 s.f. terrace)
\$28M

☎ 9809 8570 Stella Lo 罗小姐
🌐 www.landscape.com/38742.htm



Pacific View
38 Tai Tam Road
Well decorated high quality 4-bedroom apartment at Tai Tam waterfront
大潭海滨四房住宅，尊享雅致装修，可租可售

大潭 浪琴园

2,054 s.f.
\$36.8M also for lease \$130K incl.

☎ 9080 6686 Teresa Lau 刘小姐
🌐 www.landscape.com/124936.htm



Baguio Villa
550 & 555 Victoria Road
Practical 4-bedroom apartment with private roof enjoy stunning sea view
间隔实用四房单位，尊享广阔海景，连私家天台

薄扶林 碧瑶湾

2,332 s.f. (plus 1,700 s.f. roof)
\$39M

☎ 9648 6082 Christine Chong 庄小姐
🌐 www.landscape.com/108091.htm



Hong Kong Parkview
88 Tai Tam Reservoir Road
Newly decorated 4-bedroom flat with estate shuttle bus to Central
全新装修四房单位，设有接驳巴士往中环，十分方便

浅水湾 阳明山庄

2,708 s.f.
\$45M

☎ 9833 9509 Michelle Chung 鍾小姐
🌐 www.landscape.com/28248.htm



Ventura Villa
27 Ching Sau Lane
Tastefully decorated townhouse with private terrace in quiet enclave
品味靚装修排屋，连私家平台，位于春坎角清静地段

春坎角 华慧苑

2,400 s.f. (plus 400 s.f. terrace)
\$50M

☎ 9809 8570 Stella Lo 罗小姐
🌐 www.landscape.com/33374.htm



Ruby Court
55 South Bay Road
Fantastic 3-bedroom sea view apartment with clubhouse facilities at South Bay waterfront
浅水湾三房海景住宅，连住客会所设施，享美丽景色，可租可售

浅水湾 嘉麟阁

2,200 s.f.
\$53M also for lease \$130K incl.

☎ 9648 6082 Christine Chong 庄小姐
🌐 www.landscape.com/140369.htm



Radcliffe
120 Pok Fu Lam Road
Brand new 4-ensuite duplex with peaceful sea view
全新四套房复式住宅，欣赏美丽海景

薄扶林 靖林

3,620 s.f.
\$55M

☎ 6838 2929 Mark Mak 麦先生
🌐 www.landscape.com/108093.htm



Celestial Garden
5 Repulse Bay Road
Nice 4-bedroom with fantastic sea view and green view on upper Repulse Bay Road
浅水湾道头段雅致装修四房住宅，兼享赞人海景及翠绿景色

浅水湾 诗礼花园

2,375 s.f.
\$55.25M

☎ 6330 7888 Cora Ko 高小姐
🌐 www.landscape.com/4130.htm



Redhill House
18 Pak Pat Shan Road
Sea view townhouse with roof garden and full facilities
大潭海景洋房，连天台花园及完善住客会所设施

大潭 红山半岛

3,075 s.f. (plus 715 s.f. garden, 292 s.f. roof and 72 s.f. terrace)
\$63M

☎ 9486 1566 Mira To 杜小姐
🌐 www.landscape.com/124045.htm



Causeway Bay 2890 5555

Tsim Sha Tsui 2784 5555

Central 2805 1876

Peak Galleria 2778 3331

Stanley 2673 0071

Sai Kung 2791 7122

Cyberport 2577 6899

Ap Lei Chau 2580 2290



Woodbury Court
137 Pok Fu Lam Road
Designer decorated 4-bedroom duplex apartment enjoying fantastic sea view
设计师精心设计四房复式住宅，尊享广阔海景

薄扶林 嘉林阁

2,968 s.f.
\$70M

9809 8570 Stella Lo 罗小姐
www.landscape.com/102055.htm



Guildford Court
5 Guildford Road
Well decorated 3-bedroom apartment in lower Peak
山顶雅致装修三房住宅出售

山顶 乔福道5号

2,500 s.f.
\$70M

9648 6082 Christine Chong 庄小姐
www.landscape.com/30026.htm



Carolina Garden
20-34 Coombe Road
Nicely decorated sea view apartment sale with tenancy on Coombe Road
山顶海景住宅，配以雅致靓装修，连约售，罕有放盘

山顶 嘉乐园

2,350 s.f.
\$78M

9493 8275 Sami Woo 胡小姐
www.landscape.com/6005.htm



The Somerset
67 Repulse Bay Road
Exclusive duplex with full sea view of Deep Water Bay
独特豪华复式住宅，尊享深水湾全海景

浅水湾 怡峰

3,099 s.f.
\$90M

9871 6828 Louis Wong 黄先生
www.landscape.com/4674.htm



La Hacienda
29-33 Mount Kellett Road
Large 3-bedroom colonial apartment with Southside sea view
特大三房英式住宅，欣赏南区海景，可租可售

山顶 加列山道29-33号

3,506 s.f.
\$90M also for lease \$118K

9551 1077 Walker Lam 林先生
www.landscape.com/30905.htm



Panarama Terrace
12 South Bay Road
Rare on market garden townhouse with practical layout
浅水湾花园洋房，间隔实用，市场罕有

浅水湾 蕙园

3,500 s.f. (plus 1,000 s.f. garden)
\$160M

9080 6686 Teresa Lau 刘小姐
www.landscape.com/4868.htm



Strawberry Hill
8 Plunkett's Road
Colonial style townhouse with picturesque views
山顶英式洋房，尊享如画美景

山顶 红莓阁

3,200 s.f.
\$168M

6330 7888 Cora Ko 高小姐
www.landscape.com/49439.htm



Villa Rosa
88 Red Hill Road
High privacy garden house overlooking Stanley Bay
大潭花园大屋，私隐度高，俯瞰赤柱美景，可租可售

大潭 玫瑰园

3,960 s.f. (plus 2,234 s.f. garden and 480 s.f. roof)
\$180M also for lease \$250K incl.

9833 9509 Michelle Chung 鍾小姐
www.landscape.com/1782.htm



Overthorpe
24-28 Mount Austin Road
Superb townhouse on the Peak with stunning views
山顶豪华洋房，享辽阔景致

山顶 丰林阁

2,450 s.f. (plus 1,637 s.f. garden)
\$250M

9238 2012 David Chan 陈先生
www.landscape.com/5987.htm



Bay Villas
57-71 Shouson Hill Road
Rare find sea view townhouse at prestigious Deep Water Bay
罕有海景洋房，位于深水湾尊贵地段，可租可售

寿臣山 南源

4,869 s.f. (plus 603 s.f. terrace)
\$280M also for lease \$300K incl.

6183 8339 Carman Szeto 司徒小姐
www.landscape.com/135517.htm

bulthaup



bulthaup b3 – a solid investment. This universal design system offers everything you could wish for from the total kitchen. If you are looking for superlative quality, lasting value, solid materials and attention to precision craftsmanship and you want to experience the particular advantages of unique interior fittings, then we invite you to visit the specialists in the new bulthaup kitchen architecture. You will find them wherever you see the name bulthaup. www.bulthaup.com

MADISON hong kong | macau | beijing | shanghai | singapore

ground floor, 5 hoi ping road, causeway bay, hong kong
t +2868 0895. info.bulthaup.hk@madison-asia.com



Monticello
48 Kennedy Road
Practical apartment with private roof top
中半山间隔实用住宅，连私家天台

中半山
满峰台

1,293 s.f. (plus 1,000 s.f. roof)
\$23M

📞 6330 7888 Cora Ko 高小姐
🌐 www.landscape.com/110138.htm



Yukon Court
2-4 Conduit Road
Nicely decorated spacious apartment
with balcony near pedestrian escalator
西半山宽敞住宅，尊享雅致装修，连阳台，邻近半山扶手电梯

西半山
殷豪阁

1,697 s.f.
\$23M

📞 9028 0147 Jenson Au 区先生
🌐 www.landscape.com/103895.htm



5G-5H Bowen Road
Rare find stylish 3-bedroom colonial
apartment on tranquil Bowen Road
宝云道罕有三房英式单位，环境宁静

中半山
宝云道5G-5H号

1,600 s.f.
\$24M

📞 9493 8275 Sami Woo 胡小姐
🌐 www.landscape.com/123608.htm

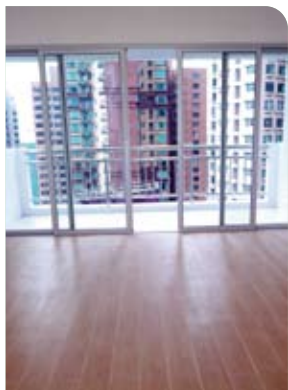


Valverde
11 May Road
Modern high floor apartment with
facilities in prime location
中半山时尚极高层单位，连住客设施，地段尊贵，可租可售

中半山
蔚皇居

1,398 s.f.
\$27.8M also for lease \$66K incl.

📞 9080 6686 Teresa Lau 刘小姐
🌐 www.landscape.com/108301.htm



Jade Garden
105 Robinson Road
Nicely renovated penthouse flat with
private roof terrace
全新装修顶层单位，连私家天台

西半山
翡翠园

1,482 s.f. (plus 994 s.f. roof)
\$28M

📞 9229 2396 Elaine Chow 周小姐
🌐 www.landscape.com/17198.htm



Fairlane Tower
2B Bowen Road
High quality boutique flat in quiet yet
convenient location
优质精致特色单位，位于中半山，交通方便，可租可售

中半山
宝云山庄

1,744 s.f.
\$30M also for lease \$78K incl.

📞 6838 2929 Mark Mak 麦先生
🌐 www.landscape.com/130641.htm



Pearl Gardens
7 Conduit Road
Practical 4-bedroom apartment on
convenient Conduit Road
干德道四房单位，间隔实用，交通方便

西半山
明珠台

2,200 s.f.
\$34M

📞 6183 8339 Carman Szeto 司徒小姐
🌐 www.landscape.com/109264.htm



Dynasty Court
23 Old Peak Road
Famous building with clubhouse facilities
on fringe of Central
有名望住宅大厦，配以完善住客会所设施，邻近中环

中半山
帝景园

1,970 s.f.
\$36M

📞 6838 2929 Mark Mak 麦先生
🌐 www.landscape.com/126700.htm



Catalina Mansions
98-100 MacDonnell Road
Spacious designed flat in excellent
condition on MacDonnell Road
设计师精心设计住宅，间隔宽敞，位于麦当劳道高尚地段

中半山
嘉年大厦

2,300 s.f.
\$36.5M

📞 9028 0147 Jenson Au 区先生
🌐 www.landscape.com/136843.htm



Medallion Heights
45 Conduit Road
Tastefully decorated 3-bedroom
penthouse with open green view in
tranquil location
雅致装修三房顶层单位，俯瞰翠绿景致，宁静怡人

西半山
金徽阁

2,050 s.f. (plus 1,500 s.f. roof)
\$38M

📞 9229 2396 Elaine Chow 周小姐
🌐 www.landscape.com/135947.htm



Tregunter Tower
14 Tregunter Path
Spacious 4-bedroom apartment with balcony on fringed of Central
宽敞四房单位，连阳台，邻近中环，交通方便

3,052 s.f.
\$40.2M

☎ 6330 7888 Cora Ko 高小姐
🌐 www.landscape.com/130543.htm

中半山
地利根德阁

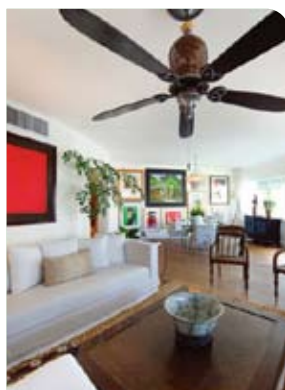


Cliffview Mansions
21-25 Conduit Road
Huge 4-bedroom practical flat close to Midlevels Pedestrian Escalator
特大四房住宅，间隔实用，邻近半山扶手电梯

3,300 s.f.
\$45.5M

☎ 9028 0147 Jenson Au 区先生
🌐 www.landscape.com/36314.htm

西半山
康苑



Century Tower
1 Tregunter Path
Designer flat in prime location of Midlevels
设计师精心设计住宅，位于中半山尊贵地段

2,565 s.f.
\$48.2M

☎ 9238 2012 David Chan 陈先生
🌐 www.landscape.com/135573.htm

中半山
世纪大厦



Hollywood Heights
6 Old Peak Road
Lower Peak spacious apartment with easy access to Central
中半山间隔宽敞单位，邻近中环，交通方便

2,466 s.f.
\$55M

☎ 9238 2012 David Chan 陈先生
🌐 www.landscape.com/122740.htm

中半山
好利阁



Tregunter Tower
14 Tregunter Path
Spacious apartment with magnificent views sale with tenancy or vacant possession
中半山间隔宽敞住宅，享辽阔景致，可交吉或连约售，投资首选

3,001 s.f.
\$56.5M

☎ 9551 1077 Walker Lam 林先生
🌐 www.landscape.com/29799.htm

中半山
地利根德阁



Yale Lodge
30 Kennedy Road
Rare found apartment with new renovation
中半山全新装修单位，市场罕有

3,300 s.f.
\$57M

☎ 9238 2012 David Chan 陈先生
🌐 www.landscape.com/128564.htm

中半山
怡庐

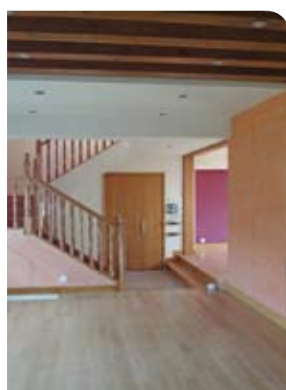


The Royal Court
3 Kennedy Road
Rare penthouse duplex with private roof overlooking CBD and Victoria Harbour
罕有顶层复式住宅，连私家天台，俯瞰城市景观及维港景色

2,280 s.f. (plus 747 s.f. roof)
\$58M

☎ 9093 3381 Stephen Chan 陈先生
🌐 www.landscape.com/109799.htm

中半山
帝景阁



Hillsborough Court
18 Old Peak Road
Unique triplex penthouse with tasteful decorations in Midlevels
中半山独特三复式顶层住宅，享品味靓装修

2,200 s.f. (plus 1,016 s.f. terrace and 1,000 s.f. roof)
\$60M

☎ 6183 8388 Chris Law 罗先生
🌐 www.landscape.com/100233.htm

中半山
晓峰阁



Piccadilly Mansion
4-6 Po Shan Road
Large practical harbour view 4-bedroom with balcony apartment in tranquil environment
巨型维港景住宅，间隔实用，四房连大阳台，环境优美，可租可售

2,800 s.f.
\$60M also for lease \$130K incl.

☎ 6183 8339 Carman Szeto 司徒小姐
🌐 www.landscape.com/35976.htm

西半山
碧苑



1 Po Shan Road
Well managed 4-bedroom apartment with harbour view
管理完善四房单位，欣赏维港景色

2,939 s.f.
\$80M

☎ 9028 0147 Jenson Au 区先生
🌐 www.landscape.com/36642.htm

西半山
宝珊道1号



Regal Crest

9 Robinson Road

Spacious 4-ensuite duplex on upper Robinson Road with excellent facilities
间隔宽敞四套房复式住宅，位于罗便臣道头段，地段尊贵，配以完善住客设施，可租可售

4,039 s.f.

\$88M also for lease \$150K incl.

9486 1566 Mira To 杜小姐

www.landscape.com/125902.htm

西
半
山
荟
萃
苑



Magazine Court

5-7 Magazine Gap Road

Spacious 4-bedroom apartment with Victoria Harbour view
间隔宽敞四房单位，欣赏维港美景，可租可售

3,300 s.f.

\$90M also for lease \$140K incl.

6183 8339 Carman Szeto 司徒小姐

www.landscape.com/95792.htm

中
半
山
澄
碧
閣



Tregunter Tower

14 Tregunter Path

Rare find tastefully decorated triplex with sky terrace
品味靚装修三复式住宅，连空中花园，市场罕有

4,146 s.f. (plus 1,073 s.f. roof)

\$118M

6838 2929 Mark Mak 麦先生

www.landscape.com/109256.htm

中
半
山
地
利
根
德
閣



May Tower

5 May Road

Rare find huge duplex apartment at prime location
罕有特大复式住宅出售，位于中半山优越地段

6,786 s.f.

\$200M

9028 0147 Jenson Au 区先生

www.landscape.com/74586.htm

中
半
山
梅
苑

细腻浓稠

Rich sophistication

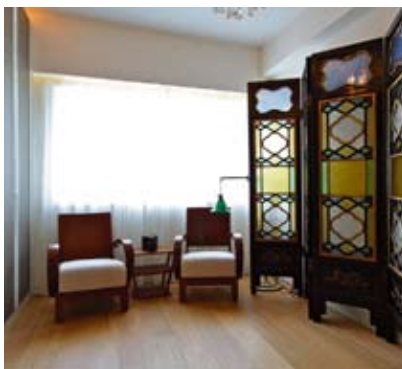
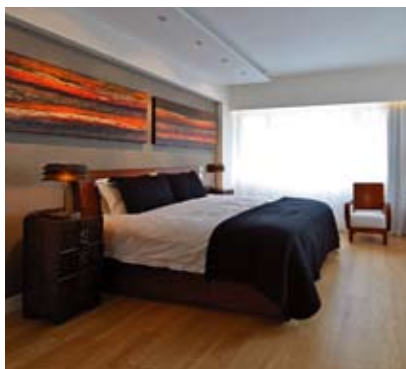
Babington House 巴威大厦

5 Babington Path

西半山 巴丙顿道5号

2,800 s.f.

HK\$39M



One of two units per floor, this 2,800 sq-ft apartment in Midlevels West is tastefully decorated in rich, chocolate tones. Furnishings and artwork hung throughout the home display a sense of sophistication and elegance.

The apartment is spaciouly laid out with four rooms (included two ensuites), three bathrooms, a large combined living and dining room, two maid's rooms, a balcony and two covered car parks. The master bathroom features a large bathtub ideal for relaxation. The kitchen is fully equipped with the latest appliances including an oven and large fridge with ice maker.

Ceilings are high with large windows throughout, offering ample natural lighting. Hardwood floors allow hassle-free maintenance and cleaning.

Nestled in a quiet area of Midlevels West on Babington Path, Babington House is conveniently located near supermarkets, restaurants and local shops. Hong Kong University and local elite schools are all in the vicinity. Buses and minibuses can also be found nearby – and the future MTR station for Sai Ying Pun is going to be just three minutes' walk away.

西半山的巴威大厦一梯两伙，其中一间2800平方呎的住宅单位设计雅致，一室深沉的朱古力色调，配衬家具陈设与艺术品，散发典雅高贵的品味。

这个单位间格宽敞，共有四间房(连两套房)、三间浴室、一个偌大的客饭厅、两间工人房、一个阳台和两个有盖车位。主人房的浴室配设大浴缸，最适合浸浴放松心情。厨房设备齐全，包括新型号的电器，如焗炉和具制冰功能的大雪柜。

单位楼底高，有多个大窗户，日间室内光线充足。全屋铺设实木地板，保养清洁都简单轻松。

巴威大厦坐落西半山巴丙顿道的宁静地段，位置便利，附近有超级市场、餐厅和小商店，香港大学和多所著名精英学府亦近在咫尺。区内交通亦相当便利，除巴士和小巴外，将来只需步行三分钟便可达新的西营盘地铁站。

9080 6686 Teresa Lau 刘小姐

www.landscape.com/122829.htm



Village Tower

7 Village Road

Well decorated apartment with sky terrace in Happy Valley
跑马地雅致装修住宅，连平台

跑马地山村大厦

1,000 s.f. (plus 76 s.f. terrace)
\$12.8M

☎ 6183 8388 Chris Law 罗先生
🌐 www.landscape.com/120940.htm



Smiley Court

41 Blue Pool Road

Nicely decorated mid-rise apartment on Blue Pool Road
跑马地雅致装修中密度住宅

跑马地怡苑

1,250 s.f.
\$15M

☎ 9551 1077 Walker Lam 林先生
🌐 www.landscape.com/96458.htm



Evergreen Villa

43 Stubbs Road

Nicely decorated practical apartment with balcony on Stubbs Road
司徒拔道高实用住宅，连阳台，靚装修

东半山松柏新村

1,750 s.f.
\$29M

☎ 9551 1077 Walker Lam 林先生
🌐 www.landscape.com/127520.htm



Swiss Towers

113 Tai Hang Road

Tastefully decorated 3-bedroom apartment with practical layout
品味装修三房住宅，间隔实用，可租可售

东半山瑞士花园

1,600 s.f.
\$29M also for lease \$75K incl.

☎ 9093 3381 Stephen Chan 陈先生
🌐 www.landscape.com/134333.htm



9-10 Briar Avenue

Unique low-rise for sale in Happy Valley
跑马地别致低密度住宅出售

跑马地比雅道6-10号

2,000 s.f.
\$30M

☎ 9833 9509 Michelle Chung 鍾小姐
🌐 www.landscape.com/67477.htm



Stubbs Villa

2 Shiu Fai Terrace

Modern designed and decorated 4-bedroom flat with open city view and 2 huge parking space can park 4 cars
时尚装修四房单位，欣赏开扬城市景色，连两个大车位可泊四辆车

东半山诗涛花园

2,325 s.f.
\$32M

☎ 9551 1077 Walker Lam 林先生
🌐 www.landscape.com/45131.htm



Riverain Valley

79 Sing Woo Road

Stylish duplex apartment on top floor with private roof terrace in the heart of Happy Valley
时尚复式住宅，高层连私家天台平台，位于跑马地中心地带，可租可售

跑马地御骏居

2,060 s.f. (plus 320 s.f. roof)
\$33.8M also for lease \$73K incl.

☎ 9486 1566 Mira To 杜小姐
🌐 www.landscape.com/112764.htm



Sanitarian Apartments

20-30 Green Lane

Charming low-rise with 3 bedrooms and balcony in quiet enclave of Happy Valley
跑马地迷人低密度三房单位，连阳台，环境清幽怡人

跑马地洁园

2,200 s.f. (plus 400 s.f. terrace)
\$37M

☎ 9028 0147 Jenson Au 区先生
🌐 www.landscape.com/104376.htm



Broadwood Park

38 Broadwood Road

Well decorated large 3-bedroom apartment with huge private terrace in upper Happy Valley
跑马地雅致装修特大三房单位，连私家平台，可租可售

跑马地柏乐苑

2,938 s.f. (plus 1,069 s.f. terrace)
\$95M also for lease \$150K incl.

☎ 9093 3381 Stephen Chan 陈先生
🌐 www.landscape.com/34737.htm



Jardine's Lookout

Rare Single Lot

Rare single lot for sale in Jardine's Lookout
渣甸山罕有独立地盘出售

渣甸山罕有地盘出售

Site Area: Approx. 16,010 s.f.
\$700M

☎ 9871 6828 Louis Wong 黄先生
🌐 www.landscape.com/14781.htm



Repulse Bay Garden
18-40 Belleview Drive
High efficiency practical apartment overlooking Repulse Bay sea view
高实用住宅，俯瞰浅水湾迷人海景

浅水湾
丽景园

2,288 s.f.
\$73K incl.

9229 2396 Elaine Chow 周小姐
www.landscape.com/5631.htm



Monte Verde
41 Repulse Bay Road
Popular 4-bedroom apartment with splendid sea view on upper Repulse Bay Road
受欢迎四房单位，观赏辽阔海景，位于浅水湾道头段

浅水湾
南山别墅

2,400 s.f.
\$90K incl.

9493 8275 Sami Woo 胡小姐
www.landscape.com/8021.htm



Sea Cliff Mansions
19A-19D Repulse Bay Road
Newly decorated 4-bedroom apartment on upper Repulse Bay Road
浅水湾道头段四房单位，尊享全新靚装修

浅水湾
海峰园

2,400 s.f.
\$90K incl.

9809 8570 Stella Lo 罗小姐
www.landscape.com/6364.htm



Vivian Court
18-22 Mount Kellett Road
Colonial apartment on The Peak
山顶英式洋房出租

山顶
瑞燕大厦

2,100 s.f.
\$90K

9238 2012 David Chan 陈先生
www.landscape.com/21418.htm



Hong Kong Parkview
88 Tai Tam Reservoir Road
Newly renovated 3-bedroom apartment with comprehensive facilities in country park
全新装修三房单位，连完善住客会所设施，邻近郊野公园

浅水湾
阳明山庄

2,366 s.f.
\$100K incl.

6183 8388 Chris Law 罗先生
www.landscape.com/124187.htm



Celestial Garden
5 Repulse Bay Road
Popular sea view apartment on upper Repulse Bay Road
浅水湾道头段海景单位，极受住客欢迎

浅水湾
诗礼花园

2,363 s.f.
\$101K incl.

6183 8388 Chris Law 罗先生
www.landscape.com/3879.htm

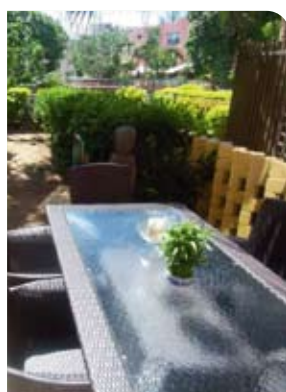


Park Place
7 Tai Tam Reservoir Road
Good upkeeping apartment for rent in Repulse Bay
浅水湾优质住宅出租

浅水湾
雅柏苑

2,338 s.f.
\$105K

6330 7888 Cora Ko 高小姐
www.landscape.com/19738.htm



Stanley Court
9 Stanley Mound Road
Resort style 3-bedroom townhouse with private garden and roof top close to Stanley Main Beach
渡假式三房大屋，连私家花园及天台，邻近赤柱正滩

赤柱
海湾园

2,701 s.f. (plus 732 s.f. garden and 517 s.f. roof)
\$145K incl.

9648 6082 Christine Chong 庄小姐
www.landscape.com/108708.htm



Eredine
38 Mount Kellett Road
Character colonial style mid-rise with good layout
独特英式中密度住宅，间隔实用

山顶
加列山道38号

3,300 s.f.
\$148K incl.

6330 7888 Cora Ko 高小姐
www.landscape.com/1624.htm



Eden View
18 Stanley Village Road
Sea view garden house in secluded enclave
海景花园洋房，环境清幽宁静，可租可售

赤柱
伊甸园

3,400 s.f.
\$160K incl. also for sale \$95M

9871 6828 Louis Wong 黄先生
www.landscape.com/8771.htm



FARRINGTON INTERIORS

THE MOMENT MADE BEAUTIFUL



Exclusive Dealer of



PARIS

HUGUES CHEVALIER

10,000 sq. ft.

Flagship Store 旗艦店

31/F, World Trade Centre, 280 Gloucester, Causeway Bay, H.K.
香港銅鑼灣告士打道280號世貿中心31樓
T: (852) 2808 1000 F: (852) 2808 2800

Shop 店鋪

G/F, 87 Wong Nai Chung Road, Happy Valley, H.K.
香港黃泥涌道87號地下
T: (852) 2808 0303 F: (852) 2801 6732

Opening Hours 營業時間

Mon - Fri

星期一至五

11:00 a.m - 7:00 p.m

Sat, Sun & Public Holiday

星期六、日及公眾假期

1:00 p.m - 6:00 p.m

WWW.FARRINGTONINTERIORS.COM



Regalia Bay

88 Wong Ma Kok Road

Prestigious waterfront townhouse with 5 bedrooms and splendid sea view
赤柱海滨尊贵五房排屋，尊享辽阔海景，可租可售

4,100 s.f. (plus 1,167 s.f. roof and 131 s.f. garden)

\$165K incl. also for sale \$72M

☎ 6838 2929 Mark Mak 麦先生

🌐 www.landscape.com/135672.htm

赤柱 富豪海湾



Grosvenor Place

117 Repulse Bay Road

Extravagant whole floor apartment taking in Repulse Bay panorama
特大整层住宅，观赏浅水湾迷人景色

2,809 s.f.

\$168K incl.

☎ 9229 2396 Elaine Chow 周小姐

🌐 www.landscape.com/139961.htm

浅水湾 浅水湾道117号



Helene Court

14 Shouson Hill Road

Garden townhouse with practical layout in serene location
寿臣山花园排屋，间隔实用，环境宁静怡人

3,113 s.f. (plus 1,011 s.f. terrace and 553 s.f. roof)

\$170K

☎ 6330 7888 Cora Ko 高小姐

🌐 www.landscape.com/17607.htm

寿臣山 喜莲阁



The Beachfront

7 Belleview Drive

Newly renovated townhouse overlooking the Repulse Bay Beach
全新装修大屋，俯瞰浅水湾海滩迷人景色

3,000 s.f. (plus 700 s.f. terrace)

\$180K incl.

☎ 9238 2012 David Chan 陈先生

🌐 www.landscape.com/12202.htm

浅水湾 壁池



Hillgrove

18 Cape Drive

Sea view townhouse with garden and roof in quiet Chung Hom Kok
春坎角海景洋房，宁静舒适，连花园天台，可租可售

3,300 s.f. (plus 1,146 s.f. garden and 1,083 s.f. roof)

\$180K also for sale \$128M

☎ 9093 3381 Stephen Chan 陈先生

🌐 www.landscape.com/27548.htm

春坎角 壁如花园



Le Palais

8 Pak Pat Shan Road

Quality waterfront townhouse in serene Tai Tam
大潭优质海滨洋房，环境宁静，可租可售

3,393 s.f. (plus 741 s.f. garden)

\$190K incl. also for sale \$89M

☎ 9093 3381 Stephen Chan 陈先生

🌐 www.landscape.com/112386.htm

大潭 皇府湾



Turtle Cove

60 Tai Tam Road

Nicely decorated waterfront house in Tai Tam
大潭雅致装修海滨大屋，可租可售

4,300 s.f. (plus 453 s.f. terrace and 259 s.f. roof)

\$198K incl. also for sale \$150M

☎ 9871 6828 Louis Wong 黄先生

🌐 www.landscape.com/12763.htm

大潭 龟背湾



63 Deep Water Bay Road

Exquisite 4-bedroom townhouse in gated community
独特四房排屋，位于深水湾清静地段

3,362 s.f. (plus 269 s.f. terrace and 269 s.f. garden)

\$200K

☎ 9833 9509 Michelle Chung 鍾小姐

🌐 www.landscape.com/5343.htm

深水湾 深水湾道63号



Interocean Court

26 Peak Road

Exclusive large 5-bedroom apartment at prime location overlooking the harbour panorama
独特五房单位，间隔宽敞，地段尊贵，俯瞰维港景致

3,844 s.f.

\$218K

☎ 9871 6828 Louis Wong 黄先生

🌐 www.landscape.com/21582.htm

山顶 山顶道26号



King's Court

5 Mount Kellett Road

Spacious Peak townhouse with exclusive terrace and funtional balcony
山顶洋房连花园平台及阳台，间隔宽敞

3,165 s.f. (plus 1,302 s.f. garden)

\$258K

☎ 9833 9509 Michelle Chung 鍾小姐

🌐 www.landscape.com/22784.htm

山顶 龙庭

SEASONAL SALE

Chinese Carpet Centre Ltd. offers the *Best Quality*
of handknotted silk and woolen carpets



*available in
all range
of sizes,
colours
and design*



CHINESE CARPET CENTRE LTD

珍藝行地毯有限公司

Shop 5, G/F, Houston Centre, 63 Mody Road, TST East, Kowloon
Tel: 2730 7230, 2736 1773 rugs@biznetvigator.com www.cccrugs.com.hk



12-16 Tai Tam Road
Waterfront luxury townhouse with garden and roof overlooking Tai Tam Bay
大潭海滨排屋，连花园及天台，俯瞰大潭景色，可租可售

大潭
大潭道12-16号

5,234 s.f. (plus 2,652 s.f. garden, 939 s.f. roof and 767 s.f. terrace)
\$260K incl. also for sale \$200M

9551 1077 Walker Lam 林先生
www.landscape.com/120240.htm



Three Bays
7 Stanley Beach Road
4-ensuite garden townhouse at tranquil seafront of Stanley
四套房花园排屋，位于赤柱海滨宁静地段

赤柱
赤柱滩道7号

3,870 s.f. (plus 1,069 s.f. garden, 611 s.f. roof and 238 s.f. terrace)
\$268K incl.

6183 8388 Chris Law 罗先生
www.landscape.com/33113.htm



The Belvedere
51-61 Plantation Road
Exclusive harbour view Peak house for rent with indoor private pool
独特维港景大屋，连室内私家泳池

山頂
种植道51-61号

4,800 s.f. (plus 461 s.f. roof and 663 s.f. terrace and 879 s.f. garden)
\$300K incl.

9833 9509 Michelle Chung 鍾小姐
www.landscape.com/20413.htm



The Peak
Luxury Townhouse
Luxury townhouse with private garden in gated neighbourhood
山頂豪華排屋，连私家花园，环境优美怡人

山頂
豪華洋房出租

4,436 s.f. (plus 1,854 s.f. garden)
\$380K incl.

9871 6828 Louis Wong 黄先生
www.landscape.com/90605.htm



大潭好风光 Indulging Tai Tam

Redhill Apartment 红山半岛
18 Pak Pat Shan Road
大潭白笔山道18号

2,153 s.f.
HK\$35M



This 2,153 sq-ft apartment in Redhill Peninsula offers stunning sea views of Tai Tam best enjoyed from the living room and balcony. Providing spacious layouts, the four-bedroom (one ensuite) apartment is part of 10 towers, with two flats per block. Concealed storage in the combined living and dining room and kitchen provides an even more expansive outlook to the apartment. Windows all over allow ample natural lighting to enter during the day.

Redhill Apartment is also well-equipped with recreational and entertainment facilities – a gym, outdoor swimming, children's pool and playground, tennis court, squash court, sauna, indoor play area, aerobic exercise room, Jacuzzi, table tennis, billiards, barbecue areas and function rooms.

Part of the self-contained estate of Redhill Peninsula, tucked away in a quiet corner of Tai Tam Bay, the apartment is within short driving distance of Hong Kong International School (senior campus) and the American Club. Daily amenities are available in Stanley, just a five minutes' drive away. The commute to Central and other commercial areas takes about 30 minutes via Chai Wan or Repulse Bay.

红山半岛这个2153平方呎的住宅单位尽享大潭的醉人海景，客厅与阳台的景致尤佳。屋苑内同期只有10座，每层只有两个单位。这个单位格局宽敞，设有四间睡房(其一为套房)，客饭厅和厨房的隐藏式储物柜使单位更见阔大。全屋有许多窗户，室内在日间能有充足的天然照明。

红山半岛的休闲娱乐设施齐备，有健身室、室外游泳池、儿童游泳池及游乐场、网球场、壁球场、桑拿浴室、室内游玩区、带氧运动室、按摩浴池、乒乓球室、桌球室、烧烤区和活动室。

这个住宅单位在独立屋苑红山半岛内，位处大潭湾的宁静一角，距离香港国际学校(中学部)和美国会所只有短短车程，驾车五分钟便可到达日常便利设施一应俱全的赤柱，而经柴湾或浅水湾到中环及其他商业区亦只需均30分钟。

9809 8570 Stella Lo 罗小姐
www.landscape.com/117704.htm

星級設計師大談 LEICHT KITCHEN...

國際著名室內設計師梁景華先生的設計思路
 MORE THAN WHAT THEY WANT ■ MORE THAN WHAT THEY EXPECT

pal

PAL DESIGN CONSULTANTS LTD

PATRICK LEUNG



著名室內設計師梁景華博士，加拿大籍香港十大頂尖設計師，在室內設計界享負盛名，作品遍及中國及香港各地。他的作品強調永恆、創意，以簡約精巧見稱，擅長融合東西方文化之精華，創造出和諧、舒適和不受時空限制的空間，務求優化生活環境，改善生活質素。

1978年畢業於香港理工大學，1994年創立PAL設計事務所，其間創造了不少經典作品，獲獎無數，2012年剛獲美國林肯大學頒授榮譽博士頭銜。他經常被邀請到世界各地的研討會作主講嘉賓，指導年輕的設計師。他鼓勵年輕人要打破常規：「我希望每個人都能像我那樣經常挑戰一些常規的事物，因為這樣才能有助創造新的東西。」



梁景華先生的設計追求永恆和完美，並喜愛把室內空間加上藝術元素，使其獨特及富生命力，他擅長控制大型項目，以設計星級酒店和會所最為人津津樂道，成功的作品包括北京希爾頓逸林酒店，東莞及海口觀瀾酒店及高爾夫會所，南京希爾頓酒店等等...另梁先生對SPA及餐廳的設計亦甚有心得，SPA MTM及上海蘇浙匯餐廳曾經分別在美國及英國拿取國際大獎，揚威海外！他成功理念以“Never Miss Never Regret”的格言一直去啟發他的創作概念。

info: www.paldesign.cn

在業界獲獎無數

2001年亞太區室內設計大獎
 2006十大傑出設計師
 2006大中華傑出設計大獎
 2006最佳服務業設計(酒店) 傑出獎
 2006年度中國室內設計師風雲人物獎
 2007年亞洲最具影響力設計大獎
 2007年度中國最具影響力設計師
 2009年美國“Interior Design”室內設計最佳設計獎(酒店)
 2008-2011 Andrew Martin International Interior Design Awards
 2010年英國FX國際室內設計大獎
 2010年美國室內設計雜誌頒發最佳設計獎(酒店)

AWARDS
 AWARDS
 AWARDS

在和LEICHT以往的合作，就是建基於忠於自己設計這完全相符的理念而成的。他強調一個舒適的家的設計，就是應該以簡潔為方針，這點跟我們LEICHT的宗旨完全一致。訪問期間，他亦大讚LEICHT的設計風格既簡潔亦時尚，並以卓越的功能及實用性來照顧客人，跟他的設計風格吻合。在產品上，LEICHT的設計是從不停留，每年都帶出新意念，而品質方面在多年來亦是持續向上及不斷更新，完全符合優質設計的好材料。從合作期間，他亦抱著跟LEICHT的共同觀點去共事，給客人「More than what they want, more than what they expect」為原則，因此促成了大家多年來的合作關係，尤其大家都是在公司成立開始並獲多位城中名人垂青而為他們提供設計服務，亦喜見LEICHT多年來在國際上獲獎無數，為此引以為傲。而作為富經驗的設計師的他亦覺得各大品牌均散發著各自的品味，唯獨LEICHT的產品於顏色、物料及門板上的配搭，設計師的專業意見和品味，以及品牌的知名度及優良的品質才是他的唯一首選。

www.leicht.com.hk



LEICHT - Frame H

LEICHT®

Germany High Quality Kitchen



Starcrest

9 Star Street

2-bedroom boutique flat with facilities next to Pacific Place III and MTR station
金钟特色两房单位，连会所设施，邻近太古广场三期及港铁站

929 s.f.
\$45K incl.

6183 8339 Carman Szeto 司徒小姐
www.landscape.com/32081.htm

湾仔
星域轩



Kenville Building

32 Kennedy Road

Spacious mid-rise apartment at upper Kennedy Road
坚尼地道头段中密度住宅，间隔宽敞

1,800 s.f.
\$66K incl.

9238 2012 David Chan 陈先生
www.landscape.com/37256.htm

中半山
甘苑



Tregunter Tower

14 Tregunter Path

Bargain rental for 4-bedroom large apartment in prime location
特大中半山四房住宅，地段尊贵

3,052 s.f.
\$70K incl.

9833 9509 Michelle Chung 鍾小姐
www.landscape.com/153510.htm

中半山
地利根德閣



Haddon Court

41C Conduit Road

3-bedroom apartment with facilities in quiet neighbourhood
西半山三房单位，连住客设施，环境宁静怡人

1,860 s.f.
\$75K incl.

9493 8275 Sami Woo 胡小姐
www.landscape.com/8629.htm

西半山
海天閣



Dragon View

39 MacDonnell Road

Newly decorated practical apartment with balcony in high efficiency
全新靚装修住宅，间隔宽敞，连阳台，实用率高

2,500 s.f.
\$75K incl.

9486 1566 Mira To 杜小姐
www.landscape.com/37953.htm

中半山
龙景楼



Bowen Place

11A Bowen Road

3-bedroom harbour view apartment with good layout on Bowen Road
宝云道三维维港景单位，间隔实用，可租可售

1,927 s.f.
\$78K incl. also for sale \$55M

6838 2929 Mark Mak 麦先生
www.landscape.com/126632.htm

中半山
宝云閣



150 Kennedy Road

3-bedroom fully furnished duplex apartment
三房复式住宅，家俬配套齐全

1,678 s.f.
\$78K

9493 8275 Sami Woo 胡小姐
www.landscape.com/112138.htm

中半山
坚尼地道150号



Chung Tak Mansion

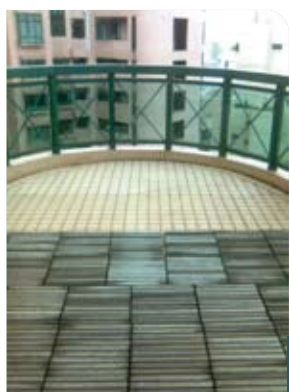
2 Magazine Gap Road

3-ensuite apartment with high efficiency in mint condition at Lower Peak area
三套房住宅，实用率高，位于中半山高尚地段

2,864 s.f.
\$89K incl.

9080 6686 Teresa Lau 刘小姐
www.landscape.com/34947.htm

中半山
重德大厦



Hillsborough Court

18 Old Peak Road

Unique 4-bedroom duplex penthouse with private roof terrace in Midlevels Central
中半山独特四房复式顶层住宅，连私家天台平台

2,095 s.f. (plus 1,225 s.f. terrace and 607 s.f. roof)
\$95K

9229 2396 Elaine Chow 周小姐
www.landscape.com/2513.htm

中半山
晓峰閣



Borrett Mansions

8A-9B Borrett Road

Spacious 4-bedroom apartment with big balcony in leafy neighbourhood
宽敞四房住宅，连大阳台，环境舒适

2,800 s.f.
\$100K incl.

9551 1077 Walker Lam 林先生
www.landscape.com/31487.htm

中半山
宝德台



MOLD architecture & interior
www.moldarch.com tel: 2137 0122 fax: 3170 6506 email: info@moldarch.com

Le French May 2012

The annual Le French May returns with a wide selection of French cultural programmes for Hong Kong and Macau. Highlight programmes of this 20th edition include the largest-ever Picasso exhibition and Jean-Michel Othoniel's contemporary art exhibition 'My Way'.

一年一度的「法国五月」重临港澳，呈献一系列法国文化节目。艺术节迎接第20个年头，重点节目包括香港历来最大型的毕加索作品展及Jean-Michel Othoniel的当代艺术展《My Way》。

Apr 12 to Jun 23
Various locations
www.frenchmay.com



PERSPECTIVE 透視

For more than a decade, Hong Kong-based Perspective Ltd has covered the architecture, interiors and design markets in Asia and beyond. Our monthly flagship title **Perspective** is a vital source of information for architects and design professionals. It is complemented by our annual books **Interiors+**, a style guide to fashionable interiors, furniture and homeware, and **Perspective+**, targeting the architecture and construction industry with extensive supplier listings, profiles of leading architectural firms and a lavishly-illustrated selection of the most emblematic works in Asia-Pacific and beyond. We also proudly own the regional **Perspective Awards** and **40 Under 40** programmes.

 www.perspectiveglobal.com

A LIFESTYLE THAT CANNOT BE SEEN ONLY EXPERIENCED

239 Queen's Road East, Wan Chai, Hong Kong
香港灣仔皇后大道東239號
www.queenscube.com

Furnished Apartment For
LEASING
Leasing Hotline
81028366

Nan Fung Real Estate Agency Ltd. 南豐地產代理有限公司 (C-026066)


QUEEN'S CUBE



Seymour

9 Seymour Road

Brand new 5-bedroom apartment close to Midlevels escalator
全新五房单位，邻近半山扶手电梯，可租可售

2,348 s.f.

\$110K incl. also for sale \$50M

9229 2396 Elaine Chow 周小姐

www.landscape.com/125737.htm

西
半
山
懿
峰



Cliffview Mansions

21-25 Conduit Road

Large and practical 4-bedroom flat close to CBD
特大四房住宅，间隔实用，邻近中环商业区

3,300 s.f.

\$118K incl.

9028 0147 Jenson Au 区先生

www.landscape.com/11434.htm

西
半
山
康
苑



Estoril Court

55 Garden Road

Huge 3-bedroom apartment on fringe of Central
中半山巨型三房住宅出租

3,347 s.f.

\$118K incl.

9486 1566 Mira To 杜小姐

www.landscape.com/150527.htm

中
半
山
爱
都
大
厦



Regence Royale

2 Bowen Road

4-bedroom good quality apartment with full clubhouse overlooking Central view
优质实用四房住宅，连完善住客会所设施，享中环景色

2,522 s.f.

\$128K incl.

9080 6686 Teresa Lau 刘小姐

www.landscape.com/70612.htm

中
半
山
富
汇
豪
庭



Century Tower

1A Tregunter Path

Prestigious large 4-bedroom flat with high privacy
特大四房住宅，地段尊贵，私隐度高

3,638 s.f.

\$135K incl.

9648 6082 Christine Chong 庄小姐

www.landscape.com/31547.htm

中
半
山
世
纪
大
厦



Dynasty Court

23 Old Peak Road

Newly renovated 4-bedroom apartment with city view on Old Peak Road
中半山全新装修四房单位，享城市景色

2,256 s.f.

\$138K incl.

6183 8339 Carman Szeto 司徒小姐

www.landscape.com/1378.htm

中
半
山
帝
景
园



Clovelly Court

12 May Road

Large and spacious 4-bedroom apartment with brand new decorations
中半山特大四房单位，间隔宽敞，享全新靚装修

2,806 s.f.

\$140K

9809 8570 Stella Lo 罗小姐

www.landscape.com/29518.htm

中
半
山
嘉
富
丽
苑



Grenville House

1-3A Magazine Gap Road

Well sought after luxurious 4-bedroom apartment with high efficiency on fringe of CBD
罕有豪华四房住宅，实用率高，邻近中环

3,700 s.f.

\$145K incl.

9229 2396 Elaine Chow 周小姐

www.landscape.com/36393.htm

中
半
山
嘉
慧
园



The Albany

1 Albany Road

Newly renovated apartment with garden and city view
全新装修单位，兼享城市景观及翠绿景色，可租可售

2,549 s.f.

\$150K incl. also for sale \$98M

9486 1566 Mira To 杜小姐

www.landscape.com/112282.htm

中
半
山
雅
宾
利
大
厦



May Tower

5 May Road

Sought after spacious 4-ensuite apartment in prime location
罕有四套房住宅，间隔宽敞，位于中半山尊贵地段

3,393 s.f.

\$160K incl.

9486 1566 Mira To 杜小姐

www.landscape.com/1613.htm

中
半
山
梅
苑



2-6A Wilson Road
Colonial low-rise 3-bedroom apartment with balcony enjoying green view
低密度英式三房单位，连阳台，绿树松荫，可租可售

渣甸山 卫辉道2-6A号

1,550 s.f.
\$60K incl. also for sale \$32M

9093 3381 Stephen Chan 陈先生
www.landscape.com/124604.htm



Serenade
11 Tai Hang Road
Modern 4-bedroom apartment with excellent facilities on fringe of Causeway Bay
时尚四房单位配以完善住客会所设施，邻近铜锣湾，可租可售

东半山 上林

1,563s.f.
\$68K incl. also for sale \$31.26M

9809 8570 Stella Lo 罗小姐
www.landscape.com/128153.htm



Broadview Villa
20 Broadwood Road
Large apartment with a bird's eye view of Hong Kong Stadium
跑马地特大单位，鸟瞰香港大球场，可租可售

跑马地 乐景园

3,134 s.f.
\$100K incl. also for sale \$65M

9093 3381 Stephen Chan 陈先生
www.landscape.com/9779.htm



Trafalgar Court
70 Tai Hang Road
High efficiency 5-bedroom apartment with harbour view
东半山五房维港景住宅出租，实用率高，可租可售

东半山 大宝阁

2,465 s.f.
\$120K incl. also for sale \$91M

9493 8275 Sami Woo 胡小姐
www.landscape.com/5912.htm



Chantilly
嘉柏薈

Prime location three minutes' away from Times Square, Causeway Bay
3分鐘直達銅鑼灣時代廣場凌駕地利據點

All new haute couture concept: Distinguished designer home by a world-renowned master
Offering more than 3,600 sq-ft of space, Chantilly homes are a rare find in Hong Kong. The four to five-ensuite apartments are the only ones in the neighbourhood that offer private elevators for each floor with private lobbies, providing full privacy. Combined with design features such as floor-to-ceiling windows and lofty ceilings, the homes display a sense of world-class style and luxury. Chantilly presents every homeowner a stress-free and leisurely lifestyle. Creating a unique designer home for every homeowner, Chantilly has enlisted a world-renowned designer to meet everyone's needs using high quality materials and furniture by top international brands.

全新Haute Couture概念國際名師操刀打造尊貴 Designer Home

嘉柏薈 獨享全城矜貴罕難求逾3,600 呎四房及五房全套設計顯赫府邸，特設同區唯一的一梯一伙設計，尊享獨立私人電梯大堂，為住客帶來百分百私隱的生活空間。配合其全廣角落地玻璃及特高樓底設計，盡顯國際級豪邸的超然氣派，為每位住戶呈獻真正無憂的尊貴寫意生活。嘉柏薈 更邀請國際名師為每位住客度身訂造室內設計，以上乘名貴的用料及國際頂尖品牌之家具，打造非凡獨一的 Designer Home。



Cora Ko 高小姐 6330 7888 Louis Wong 黃先生 9871 6828 Carman Szeto 司徒小姐 6183 8339



Prime Residential, Whole House

Marylebone W2

Large grade II listed Georgian House currently converted into 18 apartments, studio, 1 and 2 bedrooms.

大型二级文物建筑，现已改建成18个住宅，提供开放式、1房或两房的住宅单位。

£10-£15M Gross Yield 4%

9,227 s.f.

Freehold



Prime Commercial

Kensington W8

Small prime commercial building recently renovated throughout. Basement, ground and 3 upper floors should attract rental of £27psf

位于Kensington地段的豪华精致的商业大厦，现已重新装修。并交吉出售，回报可达6.95%。

Vacant possession

Below £5M target gross yield 6.95%

Freehold

4,510 s.f.

ROYAL BOROUGH OF KENSINGTON & CHELSEA

Prime Luxury Residential Apartments



Due to a lack of supply, very strict conservation and planning regulation, international demand and proximity to all of the attractions of central London, the Royal Borough of Kensington & Chelsea continues to represent the "gold standard" of the international property market. Historically price volatility has been very low making this area a safe long-term investment haven, yet still offering good yields.

This selection of 2 bedroom apartments are all within a short walk of South Kensington, Gloucester Road "Tube" stations, with Hyde Park, Knightsbridge, Harrods and the Mandarin Oriental nearby.

All feature luxurious contemporary interior and fittings, some with porter service, balconies, terraces or access to private gardens.

由于供应不足，且受规划调控，以及国际市场需求和邻近伦敦市中心的所有景点，令Royal Borough of Kensington及Chelsea continues成为国际物业市场的“黄金地段”，由于过往的价格波动一直处于一个较低的水平，使这个地方成为长线投资的避风塘，但租金的回报仍然带来良好的收益。

这个两房单位交通便利，只需数分钟的路程便可抵达位于Gloucester Road地铁站，邻近South Kensington，Hyde Park Knightsbridge，Harrods及文华东方酒店。

提供所有现代化的装修及家私，连阳台，平台及私家花园。



Gross Yields 3.5-4%

Price circa £1.5 million

860-1,100 s.f. (net internal)

Freehold or Shared Freehold

Studio, 1 bedroom, 3 bedroom, duplex units also available on request

6183 8388 Chris Law 罗先生



Prime Commercial

Mayfair W1

Prime commercial building in Mayfair. Single tenant is a leading UK Bank, on long 25 year lease, with 1 year remaining.

位于Mayfair的豪华商业大厦，现已单一租予一间世界知名的英国银行。

£15-£20M

Gross Yield 5.2%

Long Leasehold

(112 years remaining)
13,700 s.f.



Prime Commercial

City of London EC2

City office block with lower ground and 5 upper floors. Fully let to 5 tenants. High yield with opportunity to increase yield as tenancy agreements renew.

由低至5楼为市政大楼，现租予5个租户。通过租金调整回报可以更高。

£5-£10M

Net Yield 6.3%

Long Leasehold,

118 years remaining
17,285 s.f.

Prime Retail

Covent Garden WC2

Prime Covent Garden retail site. Single tenant, a leading apparel retailer, on long 25 year lease with 9 years remaining.

位于伦敦最繁盛的消费购物区之一，现已单一租予一家知名的服装连锁集团，连9年租约出售。

£10-£15M Gross yield 4.8%

Virtual Freehold

(999 years at "peppercorn")
7,320 s.f.



Prime Retail & Commercial

Holborn EC1

Prime mixed use retail and commercial unit. The anchor tenant occupying retail and 1st floor is a leading multinational banking institution. Excellent potential returns through existing use and asset management. Planning consent is in place to expand 2nd to 7th floors and add an 8th Floor.

豪华尊贵的混合式大厦，提供零售及商业单位。其中1楼租予1间举足轻重的跨国银行。2至7楼则是多用途的办公室，可通过扩建增加回报。

Freehold

£20-£25M

48,524 s.f. Offices existing

(55,822 s.f. consented)

17,853 s.f. Retail

67,029 s.f. Total

Prime Retail and Commercial

West End W1

Mixed use retail and commercial building in the fashionable business and entertainment district known as "NoHo". Basement, ground and 5 upper floors. Multi-let at good current yield with significant uplift potential as current tenancy agreements expire. Opportunity to convert commercial space to residential in future subject to planning consents.

楼高5层连地下停车场的混合式零售及商业大厦，位于Oxford Street及Regent Street附近的高级消费区，称为"NoHo"，已获得批准于未来可转换成住宅，增加回报。

£5-£10M

Gross Yield 6.1%

Freehold

14,304 s.f.



Prime Commercial

St James SW1

Prime commercial building close to St. James Park. Modern office interior behind period facade.

Multi-let to 7 tenants.

邻近St. James Park的豪华商业大厦，提供时尚的办公室，现租予7个租户。

£15-£20M Gross yield 5.8%

Freehold

25,000 s.f.



Prices on luxury UK properties are rarely quoted in listings. Interested parties are encouraged to make enquiries on price indications with Landscape

PRICE UPON ENQUIRY 欢迎查询

6183 8388 Chris Law 罗先生



Introducing beauty and power to your fingertips



Sports Cruisers and Motor Yachts range from 38 to 80 feet.
Model featured: The beautifully proportioned Squadron 65.
由38英尺至80英尺運動型快艇及豪華動力艇
型號推介: 出色相稱的Squadron 65.

Fairline China:

16/F, East Ocean Centre, 618 Yan An Road East, Shanghai 200001
菲爾蘭中國: 中國上海延安東路618號東海商業中心16樓 郵編: 200001
Tel 電話: +86 21 2306 4748 Email 電郵: china@fairline.com

Fairline Hong Kong:

Unit 5, G/F, Aberdeen Marina Tower, 8 Shum Wan Road, Aberdeen, Hong Kong
菲爾蘭香港: 香港香港仔深灣道8號深灣遊艇俱樂部地下5室
Tel 電話: +852 3180 3189 Email 電郵: hongkong@fairline.com

Appointed Dealers in 代理:

China中國 Hong Kong香港 India印度 Indonesia印度尼西亞
Japan日本 Korea韓國 Malaysia馬來西亞 New Zealand新西蘭
Philippines菲律賓 Queensland昆士蘭 Singapore新加坡 Thailand泰國
Victoria維多利亞州 Vietnam越南 Western Australia澳洲西部

