

select deluxe homes

The Key

大宅

www.landscape.com

APRIL | 2010

Volume 66



LIGHT THE WAY

An amazing house that literally brings the outdoors in

ELEMENTAL BEAUTY

An oasis of serenity filled with positive feng shui energy

KEY NOTES*

“Take nothing for granted as beautiful or ugly, but take every building to pieces, and challenge every feature. Learn to distinguish the curious from the beautiful. Get the habit of analysis - analysis will in time enable synthesis to become your habit of mind. 'Think simples' as my old master used to say - meaning to reduce the whole of its parts into the simplest terms, getting back to first principles.”

「不要武斷事情的或美或醜，而得將所建建築物的每一部分作分析，並且提出疑問。培養分析能力，令其成為日常生活中的習慣。古語有云：『化繁為簡』——意即將物件簡化為最基本的元素，將一切回歸根本。」

—Frank Lloyd Wright
American architect, interior designer and educator
法蘭克·萊特，美國建築大師、室內設計師及教育學家

Succumbing to the local community's call to dampen property prices and make them more affordable, Financial Secretary John Tsang introduced measures in the hopes of reigning in the escalating prices in his recent Budget Policy Speech. To reach the thirst for luxury property developments, more sizeable lands in upscale locations are included in the application list for auction; and the government will initiate public auction of six large sites without waiting for developers' applications.

Effective April 1, residential sales over HK\$20 million will be charged with a 4.25 percent stamp duty, up 0.5 percent from 3.75 percent previously. In response to the mortgage war between local banks which are offering historically low interest rates (effectively between 1 percent and 2 percent per annum), the Hong Kong Monetary Authority has set a floor mortgage interest rate at Hbhor plus 0.75 percent in an attempt to take the heat out of the market. But are these measures enough to cool the market?

Certainly the cost of transactions will increase. But it's not enough to deter buyers from entering the market, as the increased stamp duty is nominal compared to the value of the property. Supply of more land for luxury developments is moving in the right direction, but it will take years before the buildings are ready for purchase. In past decades, banks have always enjoyed superb profit margins on mortgages, which have been one of their safest sectors. So it's expected that banks will continue to lend aggressively against property, adding fuel to the sales market. Apparently these measures alone are not enough to dampen the price hike. Nevertheless, we estimate the luxury property market will not enjoy the same buoyancy as it did last year.

由於社會上有聲音要求政府打擊過熱樓市，令樓價回落至可負擔水平，財政司長曾俊華在最近發表的預算案中，推出措施壓抑過熱樓市。為了滿足豪宅發展項目的需要，更多較大型的豪宅地皮被納入土地拍賣申請表(俗稱「勾地表」)，而政府也會在未有發展商遞交申請之前，拍賣六幅大型土地。

由四月一日起，成交金額超過二千萬的住宅樓宇需繳納4.25%印花稅，較以前的3.75%多出0.5%。面對本地銀行之間的利率競爭，按揭利率減息(年利率僅為1至2厘)，香港金管局訂立最低按揭息口水平至同業拆息加0.75厘，試圖為市場降溫。然而，這些措施足以為市場降溫嗎？

當然，交易成本會增加，但亦無阻買家入市。畢竟，相比起物業的價格，印花稅的增幅可謂微不足道。供應更多地皮與建豪宅，無疑是朝著正確的方向走，但是要持上好幾年，物業才會賣出。過去數十年，銀行一直按按揭業務中獲得相當可觀的溢利，而按揭生意一向是銀行風險最低的業務之一。所以，預計未來銀行會繼續大力推行樓宇按揭計劃，此舉將令買家市場升溫，單靠這些措施顯然並不足以壓抑樓價。不過，我們料豪宅市場會比去年放緩。

Read the full article at Market Watch, www.landscope.com/keysnotes
如欲觀看全文，請至Market Watch網站，網址：www.landscope.com/keysnotes

published and distributed by

LANDSCOPE 領域
The Specialists in Luxury Properties

Landscope Realty Limited C-18733
a member of Landscope Surveys Ltd

Tel: 852-3699 0022 Fax: 852-2866 0015
Email: info@landscope.com.hk
Unit 3106, 31/F, Hopewell Centre, 183 Queens Road East, Wanchai, Hong Kong

The information, text, photos, analyses and projections contained herein are provided solely for the convenience of prospective clients and no warranty or representation as to their accuracy, correctness or completeness is made by Landscope Surveys Limited, Landscope Realty Limited or the owners, none of whom shall have any liability or obligation with respect thereto. Interested parties should rely on their own investigations, interpretations and analyses in connection with the purchase or selling of land.
Information has been provided to us by sources deemed reliable, but no warranty or representation is made as to its accuracy, correctness or completeness. These offerings are made subject to contract, correction of errors, omissions, prior sale of assets, change of price or terms or withdrawal from the market without notice. The contents of The Key are for reference only and do not constitute all or any part of a contract.
Reproduction of any material in whole or part without written permission from In-Corporation Ltd is strictly prohibited. All information is correct at the time of going to press. The opinions expressed in The Key are those of the authors and are not necessarily endorsed by In-Corporation Ltd.



THE KEY | CONTENTS

- 04 Light the Way
美妙天地
- 09 Elemental Beauty
自然之美
- 13 Timeless Flair
經典時尚
- 20 Lush Melodies for
Enamored Listeners
為旋律著迷

The Key (The No.1 Publication for Luxury Properties)

The Key is a monthly, bilingual lifestyle publication focusing on luxury residential properties in Hong Kong Island. It is sent to over 60,000 urban elites comprising of Hong Kong's most affluent inhabitants.

These consist of Landscope's VIP clients, who mainly reside in The Peak, Mid-Levels, Southside, Kowloon Tong, Homantin and other select up-market residential areas such as Tai Po, Sai Kung and Clear Water Bay, etc.

How may you list your property with The Key?

If you would like to list your property in an upcoming issue of The Key, you may contact Loretta Lui on +852 3102 4818 or visit us at www.landscope.com/sell-to-let. Alternatively, simply fill out the below and fax back to us on +852 2866 0015.

Property Details

Asking Rental / Sale Price

Floor Area

Contact Person

Telephone

Email

Your KeyPerson will contact you for follow-up work.

designed and produced by

in MAGAZINE
LUXURY REAL ESTATE

In-Corporation Limited

Your No. 1 Integrated Marketing Communications Partner in Hong Kong and China

Tel: 852-3699 0888 Fax: 852-3699 0889
Website: www.landscope.com.hk Website: www.inmagazine.com.hk
12/F Cyberport 2, 100 Cyberport Road, Hong Kong



CUSTOM-MADE LUXURY SOFAS OF ITALIAN HERITAGE



Over 200 colors of Italian leather
European mechanisms
Size, comfort & design alterations
Fast delivery program

cierre
ITALIA

Shop F, G/F, 12-22 Blue Pool Road, Happy Valley Tel: 2573 8083
Shop 1, G/F, 51 Wong Nai Chung Road, Happy Valley Tel: 2576 9168
Shop G03, G/F, Man Yue Arcade, 60-68 Des Voeux Road Central Tel: 2259 5368
G/F, Capital Commercial Building, 26 Leighton Road, Causeway Bay Tel: 2808 0297
www.cierre.com.hk

Italy Factory

cierre imbottiti s.r.l.
via Ansaldo, 2-47100 FORLÌ-ITALY Tel: (+39) 0543 782611
www.cierreimbottiti.com



Tucked away in the quiet enclave of Bisney Road in Pokfulam, this 1,650 sq ft stylishly decorated low-rise flat literally brings the floor-to-ceiling windows predominately used here. By entering the home, one is enveloped into a designer cocoon, where dark coloured cabinetry contrasts with white walls and dramatic lighting emits a sexy glow to the space.

Besides maximising the natural light that streams in, lighting is introduced as an important element of the design around this apartment. The house's design aesthetic is based on a natural palette that is brought to life with shots of colours and bold, graphic patterns. Light tones feel soothing and comfortable, but dark colours help set the mood.

There are rich contrasts in texture and style throughout, yet the overall look is cohesive – the sum of the house is, indeed, greater than its individual parts. Other impactful pieces that accentuate the home include caged candle holders and vintage zebra skin rugs. Another favourite corner is the study area in the living room where nostalgic family photos may be placed.

Here, residents can enjoy the best of both worlds with clean air; quiet surroundings and clearer skies, while still having easy access to the city centre. ■

這座低層住宅坐落於薄扶林碧器道上，佔地1,650平方呎，設計時尚華麗。透過落地大玻璃，住戶可飽覽屋外的瑰麗風光。踏進屋內，瞬間感受到當中的濃厚藝術氣息—深色的細木家具與白牆相互映襯，而室內的燈光讓空氣中瀰漫出絲絲浪漫情調。

除了充分利用自然光之外，設計上亦巧妙地運用了燈光。住宅的設計以自然色調為主，並點綴上點點色彩及大膽圖案，令人倍感舒適，而深色元素則帶出濃厚的氣氛。

室內設計所採用的物料與風格帶有強烈對比，但整體感覺和諧協調，且極富美感。其他令人讚歎不已的元素包括鳥籠形燭台、古董斑馬皮地毯，而客廳裡的閱讀角，更可擺放一張溫馨寧靜家庭照。

在這裡，住戶可呼吸到新鮮空氣，陶醉於清幽的環境與碧綠藍天之中，又可方便到達繁華的市中心，盡享兩個截然不同的美妙天地。■

19-24 Bisney Road, Pokfulam
薄扶林 碧器道19-24號

1,650 s.f.
\$20,000,000

www.landscape.com/113575.htm | Christine Chong 莊小姐 9648 6082



This bed is not for you...

but it is for Mr and Misses Chan of Chung Hom Kok. At Okooko we personalise every bed to each partners unique sleep needs and preferences. The secret is in the underlying european birch flexible slats and specialised mattress technologies, which are configured differently depending



upon each partners requirements. This unique design feature also has the additional benefit of totally eliminating partner disturbance. So don't accept a one size fits all approach when it comes to your bed, receive your free personalised sleep consultation instore today. New Ensemble bedding range instore now!

okooko
sleep.dream.live

Address: 27/F Horizon Plaza, 2 Lee Wing Street, Ap Lei Chau, Hong Kong
Tel: 2870-1132 WWW.OKOOKO.COM

Opening hours: 11am to 7pm



Eredine
山頂 加列山道38號
38 Mount Kellett Road, The Peak
Huge colonial apartment with spectacular sea view
特大英式住宅享驚人海景，環境優美

3,300 s.f.
\$75,000,000

www.landscape.com/23687.htm David Leung 梁先生 9199 0672



Mountain Lodge
山頂 嘉耀
44 Mount Kellett Road, The Peak
Rare duplex apartment with Southside sea view
山頂罕有複式住宅，享南區海景

5,200 s.f.
\$120,000,000

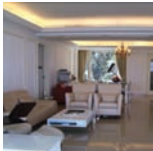
www.landscape.com/96955.htm David Leung 梁先生 9199 0672



Abergeldie
山頂 雅禮道52號
52 Plantation Road, The Peak
Peak house with bird's eye view of Victoria Harbour
山頂大屋享鳥瞰花香的維港景觀

3,655 s.f. (plus 505 s.f. terrace, 464 s.f. garden and 282 s.f. roof)
\$200,000,000

www.landscape.com/13340.htm Louis Wong 黃先生 9871 6828



Peak Garden
山頂 山頂花園
16-20 Mount Austin Road, The Peak
Contemporarily designed apartment overlooking picturesque Victoria Harbour view
時尚設計單位，俯瞰美麗維港景觀

2,655 s.f.
\$82,000,000

www.landscape.com/30077.htm Mavis Wu 吳小姐 9107 3891



Sherwood's Bluff
山頂 百禧徑10號
10 Bluff Path, The Peak
Detached townhouse with splendid Southside sea view
山頂獨立大屋享壯麗的南區海景

4,055 s.f. (plus 1,000 s.f. garden)
\$180,000,000

www.landscape.com David Leung 梁先生 9199 0672



Rare Garden House
罕有花園大屋
Rare single number garden house on The Peak
山頂罕有獨立花園大屋出售

5,800 s.f. (plus 1,469 s.f. garden)
\$250,000,000

www.landscape.com/20798.htm Louis Wong 黃先生 9871 6828



Suncrest Tower
中半山 桂灣苑
1-11 Monmouth Terrace, Midlevels Central
High efficiency and newly decorated 4-bedroom (2 ensembles) apartment on fringe of Central
全新裝修高實用四房連兩套房單位，鄰近中環，交通方便

2,005 s.f.
\$23,800,000

www.landscape.com/109565.htm Teresa Fung 馮小姐 9138 1621



Silver Fair Mansion
東半山 銀禧大廈
2E-2F Shiu Fai Terrace, Midlevels East
Conveniently located flat with green view and open view
東半山罕有綠園景住宅，景觀開揚，交通方便，可租可售

1,450 s.f.
\$13,300,000 also for lease \$38,000

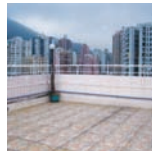
www.landscape.com/72414.htm Garman Szeto 司徒小姐 6183 8339



Happy View Court
跑馬地 華景閣
2-8A Happy View Terrace, Happy Valley
Colonial low-rise with contemporary deco in Happy Valley, with 90% efficiency and very high ceiling
跑馬地英式低密度住宅享時尚裝修，樓底特高，九成實用

1,340 s.f.
\$16,500,000

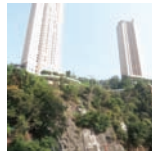
www.landscape.com/104840.htm Chris Law 羅先生 6183 8388



Hawthorn Garden
跑馬地 荷蟬苑
70-70A Sing Woo Road, Happy Valley
Rare find apartment with private roof overlooking nice green view
跑馬地罕有綠園景住宅，獨家私天，市場罕有

1,125 s.f. (include 765 s.f. roof)
\$13,800,000

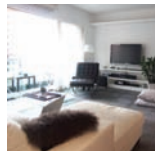
www.landscape.com/109619.htm Teresa Lau 劉小姐 9080 6686



Formwell Garden
跑馬地 豐和苑
46-48 Blue Pool Road, Happy Valley
Prestigious 3 bedroom duplex with green view
豪華三房複式住宅，享享綠園景，可租可售

1,600 s.f.
\$16,500,000 also for lease \$55,000 incl.

www.landscape.com/124324.htm Mark Mak 麥先生 6838 2929



Greenview Garden
西半山 景景園
125 Robinson Road, Midlevels West
Modern design family apartment on Robinson Road
匯俊臣區時尚家庭式住宅

1,600 s.f.
\$16,500,000

www.landscape.com/111680.htm Sami Woo 胡小姐 9493 8275



35-41 Village Terrace, Happy Valley
跑馬地 山村道35-41號
Nicely decorated apartment in quiet neighbourhood
跑馬地匯致裝修住宅，環境清幽靜

1,800 s.f.
\$16,000,000

www.landscape.com/1110031.htm Christine Chong 莊小姐 9648 6082



Grandview Tower
中半山 碧景臺
128-130 Kennedy Road, Midlevels Central
Rare combined unit with terrace and twin car parks enjoying greenery view
罕有相連單位及雙車位，附設平台兼享翠綠山景

1,691 s.f. (include 265 s.f. terrace)
\$18,500,000

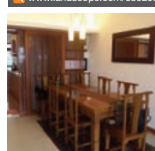
www.landscape.com/88929.htm Garman Szeto 司徒小姐 6183 8339



47-49 Blue Pool Road, Happy Valley
跑馬地 藍塘道47-49號
Charming low-rise flat with nice decor and balcony
迷人低密度住宅匯雅緻裝修及陽臺

1,600 s.f.
\$19,000,000

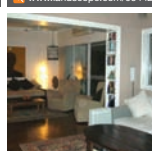
www.landscape.com/96442.htm Chris Law 羅先生 6183 8388



Beauty Court
西半山 雅苑
82 Robinson Road, Midlevels West
Popular 3-bedroom family flat on convenient Robinson Road
匯俊臣區交通動三房家庭式住宅

1,778 s.f.
\$21,600,000

www.landscape.com/108739.htm Sami Woo 胡小姐 9493 8275



Evergreen Court
跑馬地 翠苑
71-73A Blue Pool Road, Happy Valley
Rare find low-rise with quiet environment
罕有跑馬地低密度住宅，環境寧靜怡人

1,750 s.f.
\$22,000,000

www.landscape.com/53563.htm Rowena Si 蕭小姐 9348 4118

The Hacienda

- Full seaview, with Garden / Roof
- Swimming pool, Gym & Carpark
- 1,822-3000 sq.ft.
- 3-4 Bedrooms

Leasing Hotline **2122 2025**
2122 2362



Quess Apartments
5 Warwick Road, Kowloon Tong

- Open View, Carpark & BBQ area
- Approx. 5 minutes walk to Festival Walk / Kowloon Tong MTR
- 1,277-1,350 sq.ft., 2/3 bedrooms / balcony
- Kowloon Tong school network no.41

Leasing Hotlines: **2122-2025**
2122-2362

Wing Hong Mansion
 中半山 永康大廈
 60-62 MacDonnell Road, Midlevels Central
 Cozy flat with practical layout in convenient location
 中半山迷人住宅，單位間隔實用，交通方便

1,700 s.f.
\$22,000,000

www.landscape.com/99598.htm | Rowena Siu 廖小姐 9348 4118

Wing On Towers
 渣甸山 永安閣
 7-9 Boyce Road, Jardine's Lookout
 well decorated 2-bedroom apartment with city view in prime location
 渣甸山雅緻裝修兩房城市景單位，地段尊貴

1,700 s.f.
\$24,600,000

www.landscape.com/37838.htm | Garman Szeto 司徒小姐 6183 8339

Hong Kong Garden
 西半山 香港花園
 8 Seymour Road, Midlevels West
 Spacious 4-bedroom apartment with open city view
 西半山四房住宅享開揚城市景觀

2,202 s.f.
\$26,500,000

www.landscape.com/36478.htm | Mark Mak 麥先生 6838 2929

Elemental Beauty 自然之美



Hatton Place
 西半山 香彤苑
 1A Po Shan Road, Midlevels West
 3-bedroom harbour view apartment at tranquil location
 西半山三房維港景住宅，環境清幽怡人

1,579 s.f.
\$22,500,000

www.landscape.com/127506.htm | Walker Lam 林先生 9551 1077

2D Shui Fai Terrace, Midlevels East
 東半山 翠輝台2D號
 Nicely decorated low-rise with flat roof in tranquil location
 雅緻裝修低密度住宅連天台，地段清幽怡人

2,000 s.f. (plus 1,438 s.f. roof)
\$25,000,000

www.landscape.com/72299.htm | Teresa Lau 劉小姐 9080 6686

Evergreen Villa
 東半山 松柏新村
 43 Stubbs Road, Midlevels East
 High efficiency apartment green view on Stubbs Road
 司徒拔道高實用翠綠園景住宅，可租可售

1,750 s.f.
\$27,000,000 also for lease \$58,000 incl.

www.landscape.com/40312.htm | Yvonne Cheng 鄭小姐 9088 4666

Incorporating the groundbreaking aspects of modern architecture and sophisticated engineering, The Legend's 2,348 sq ft simplex on Tai Hang Drive offers the fortunate few a combination of prestige, security and serenity.

It has all the essentials needed to keep up with the buzz that is Hong Kong, but it also allows residents the chance to find tranquility that comes with panoramic views of the lush green mountains, the glint of the sun across the entire house in the mornings and the soothing sounds of water trickling from an ornamental structure on the balcony. These elements ensure that the entire design abides with feng shui principles to further accentuate the home's positive vibe.

On their doorstep, residents can find outstanding services and facilities available including state-of-the-art fitness centres, swimming pools, jazzuizs and even aerobics exercise rooms. With all that, The Legend represents a pinnacle of luxury for cosmopolitan lifestyles that balance work and leisure, activity and pure relaxation. ■

位於大坑徑的名門大宅佔地2,348平方呎，糅合了破格的現代建築設計及超卓的工藝，加上保安全衛嚴密，環境寧靜怡人，彰顯出絕無倫有尊貴氣派。

名門俱備了香港這個繁華都市的所有必備元素，同時又為住戶提供寧靜舒適的生活。在這裡，住戶可能覽青蔥的山景景致，並享受到清晨溫暖的陽光，伴隨從露台灑落的水滴聲，一切都禁不禁令人陶醉。公寓的設計融入了風水元素，令屋內洋溢出和諧的氣息。

住戶可享受各式各樣的豪華設施，當中包括健身中心、游泳池、按摩浴池及健康舞室。以上所有優越條件，令名門成為演譯大都會生活的經典代表。無論是工作或休息，進行活動或完全放鬆身心，名門都能——滿足你的要求。■

The Legend
 東半山 名門
 23 Tai Hang Drive, Midlevels East
2,348 s.f.
\$46,500,000

www.landscape.com/42796.htm | Eric Wong 黃先生 9740 3396

For more listings, please go to www.landscape.com/sale



"you never own ya premises,
 you merely live there unless
 ya character implanted"

-joseph chang-



Alister Lee

Joseph is friendly, honest, reliable, organized, and very meticulous in his work. I can't say enough good things about all the work he did to make my place gorgeous & very functional.

Old Peak road -the boundless en-suite



Susanna Toppon

Don't be fooled by Joseph's easy demeanor. He's an unwavering advocate for the client and the work. It's clear in his contractors that anything less than the best work do. He thinks through everything, and does nothing slip by.

Shouson Hill -classical contemporary



Richard J. Brink

Throughout the project, Joseph was personally involved, ensuring the quality of the work and the project's adherence to the budget and schedule. The project was completed on time and within budget, and we now have a beautiful new home, as well as a new friend, Joseph!

Capitol Garden -reinvigorated modernized flexibility



Mei Ling

Thank you so much for designing our new dream home. We absolutely love it! I just keep getting updates and looking at it. It looks like a piece out of a magazine. Fantastic job! You matched the house to our personalities perfectly. Thanks again!

Red Hill Peninsula -accentuated coziness



Susan Holden

We really appreciated the way Joseph worked with us in coming up with great ideas by making our rudimentary ideas and developing them into amazing designs.

Park Place -interior & exterior connection

Interior design
 constructions
 space planning
 project management
 tendering
 landscaping
 quantity survey



Pearl Gardens
 西半山 明珠薈
 7 Conduit Road, Midlevels West
 Spacious 4-bedroom flat near Midlevels escalator
 寬敞四房住宅，鄰近半山扶手電梯

2,200 s.f.
\$27,000,000

www.landscape.com/36705.htm | Rebecca Cheung 甄小姐 9021 7644



Medallion Heights
 中半山 金鑽閣
 45 Conduit Road, Midlevels West
 Exclusive mid-rise apartment with private roof terrace
 獨特中密住宅，連私家天台平台

2,000 s.f. (plus 1,500 s.f. roof)
\$26,500,000

www.landscape.com/98468.htm | Stephen Chan 陳先生 9093 3381



Tregunter Tower 1
 中半山 地利根德閣1座
 14 Tregunter Path, Midlevels Central
 Spacious 4-bedroom apartment with facilities at prestige area
 寬敞四房住宅連住客設施，地段尊貴

3,336 s.f.
\$43,800,000

www.landscape.com/108189.htm | Eric Wong 黃先生 9740 3396



May Tower 1
 中半山 梅苑一座
 7 May Road, Midlevels Central
 A well-presented 3-bedroom triplex apartment
 雅緻三房三樓式住宅，可租可售

2,850 s.f.
\$45,000,000 also for lease \$95,000 incl.

www.landscape.com/6191.htm | David Chan 陳先生 9238 2012



Grosvenor House
 中半山 高魯大廈
 114-120 MacDonnell Road, Midlevels Central
 Unique huge duplex apartment on MacDonnell Road
 麥當奴道精緻大複式單位

2,400 s.f.
\$32,000,000

www.landscape.com/37568.htm | Teresa Lau 蕭小姐 9080 6686



Fontana Garden
 東半山 萊園
 1-25 Ka Ning Path, Midlevels East
 Large high efficiency 4-bedroom flat on fringe of Causeway Bay
 東半山高實用巨型四房單位，鄰近銅鑼灣

3,300 s.f.
\$32,000,000

www.landscape.com/45997.htm | Walker Lam 林先生 9551 1077



The Colonnade
 東半山 嘉富薈
 152 Tai Hang Road, Midlevels East
 Stylish modern apartment with tasteful decor
 東半山時尚獨特住宅連品味裝修，可租可售

2,256 s.f.
\$45,000,000 also for lease \$110,000 incl.

www.landscape.com/113654.htm | Louis Wong 黃先生 9871 6828



MacDonnell House
 中半山 麥當奴大廈
 6-8 MacDonnell Road, Midlevels Central
 Tastefully decorated 4-bedroom apartment on MacDonnell Road
 麥當奴道雅緻裝修四房單位

2,519 s.f.
\$48,000,000

www.landscape.com/112781.htm | Mavis Wu 吳小姐 9107 3891



Tregunter Tower 2
 中半山 地利根德閣2座
 14 Tregunter Path, Midlevels Central
 Large and spacious flat in serene neighbourhood
 中半山特大寬敞單位，環境優美寧靜

3,052 s.f.
\$35,000,000

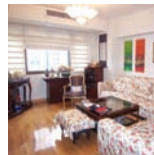
www.landscape.com/103089.htm | Rebecca Cheung 甄小姐 9021 7644



Villa Veneto
 中半山 威都閣
 3 Kotewall Road, Midlevels West
 High efficiency 4-bedroom flat with harbour view
 西半山高實用四房維港景住宅

2,562 s.f.
\$35,000,000

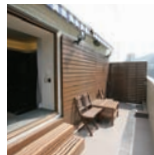
www.landscape.com/118545.htm | Mark Mak 麥先生 6838 2929



1 Robinson Road, Midlevels West
 西半山 羅便臣道1號
 Rare found duplex apartment at Midlevels West
 西半山罕有複式住宅

3,400 s.f.
\$48,000,000

www.landscape.com/98548.htm | Mavis Wu 吳小姐 9107 3891



Tregunter Tower 3
 中半山 地利根德閣3座
 14 Tregunter Path, Midlevels Central
 Tastefully decorated duplex with excellent clubhouse facilities
 品味設計複式住宅連完善住客會所設施

2,980 s.f. (plus 187 s.f. terrace)
\$56,000,000

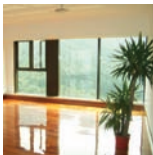
www.landscape.com/105883.htm | David Chan 陳先生 9238 2012



Nicholson Tower
 東半山 蔚豪苑
 8 Wong Nai Chung Gap Road, Midlevels East
 Popular 4-bedroom apartment in tranquil location with fantastic views
 受歡迎四房住宅環境寧靜怡人，享優美景觀

1,993 s.f.
\$35,500,000

www.landscape.com/34828.htm | Walker Lam 林先生 9551 1077



Tavistock 2
 中半山 騰皇閣2座
 10A Tregunter Path, Midlevels Central
 Exclusive apartment in lower Peak with harbour view
 中半山獨特維港景住宅，可租可售

1,730 s.f.
\$36,000,000 also for lease \$80,000 incl.

www.landscape.com/19406.htm | Christine Chong 莊小姐 9648 6082



Serene Court
 西半山 秀麗閣
 8 Kotewall Road, Midlevels West
 Newly renovated 4-bedroom flat enjoying open harbour view
 全新裝修四房住宅，享開揚維港景觀

2,334 s.f.
\$38,000,000

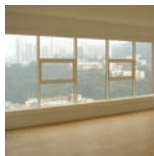
www.landscape.com/115655.htm | Carman Sze 司徒小姐 6183 8339



Silvercrest
 中半山 翠安樓
 24 MacDonnell Road, Midlevels Central
 Spacious 4-bedroom (2 ensuite) apartment with high privacy and open views
 寬敞四房連兩套房單位，享開揚景觀，私隱度高

2,643 s.f.
\$38,000,000

www.landscape.com/36199.htm | Eric Wong 黃先生 9740 3396



Leon Court
 東半山 利安閣
 12-14 Wong Nai Chung Gap Road, Midlevels East
 Large 3-bedroom apartment with picturesque view
 東半山特大三房單位，享享如畫美景

2,800 s.f.
\$38,000,000


www.landscape.com/96481.htm | Maria Cheung 張小姐 5182 8699



Clovelly Court
 中半山 嘉富麗苑
 12 May Road, Midlevels Central
 Popular 3-bedroom family flat with private roof for sale with lease
 受歡迎三房家庭式住宅連私家天台，連約售，投資首選

1,925 s.f. (plus 1,382 s.f. roof)
\$41,000,000


www.landscape.com/12997.htm | Mark Mak 麥先生 6838 2929



a passion for excellence

"A floor from Schotten & Hansen is as unique as the person who lives on it"

Torben Hansen, Managing Director of Schotten & Hansen



www.schotten-hansen.com | Exclusive Sales Partner: Hop Sze Timber Co., Ltd. | Showroom: 220 Gloucester Road | Wanchai | Hong Kong | Phone: (852) 2833 6069



Situated on Tai Hang Road, Island East, the new Serenade embraces a metropolitan pulse with its advantageous geographical locations and convenient transport. The premise possesses panoramic view of the spectacular Victoria Harbour in its front, and greeneries from Mount Butler at its back. The area of each apartment varies from 1,000 square feet to 4,000 square feet. Among the available apartments are duplex with four bedrooms including two ensuites and prestigious penthouses.

The luxurious two-storey clubhouse is equipped with every recreational facility that one would expect. Exclusive services include banquet catering by Michelin star chefs from AMBER of the Landmark Mandarin Oriental Hotel, and spa and massage by professional therapists from the same hotel.

「上林」位處香港島東半山之罕貴地段，掌握大都會脈搏，地理位置優越，交通四通八達。前臨270度遼闊維多利亞港美麗海景，背倚青蔥翠綠華拉山山帶。單位面積由約1,000平方呎至4,000平方呎，其中包括四房兩套樓式單位及頂層特色單位。

雙層豪華會所，消閒設施應有盡有。特色設施包括由置地文華東方酒店AMBER提供的米芝星級連廚師宴會會所及置地文華東方酒店培訓之專業水療按摩師到會服務。

Address:	No. 11 Tai Hang Road, Hong Kong
No. of Towers:	2
No. of Flats:	270 including 30 duplex units and 4 penthouse units
No. of Storeys:	55 storeys
Fiat Type:	Standard Flat
	3-bedroom incl. 1 ensuite
	4-bedroom incl. 2 ensuite
	Prestigious Flat
	Duplex
	Penthouse
	Gross Area
	approx. 1,349 sq.ft.
	approx. 1,563 sq.ft.
	Gross Area
	approx. 2,605 sq.ft.
	approx. 3,755 — 3,958 sq.ft.

地址：	香港大坑道11號
物業座數：	2座
單位數目：	270個，包括 30個複式單位及4個頂層特色單位
住宅層數：	55層
單位類型：	標準單位
	3房連主人套房
	4房雙套房
	特色單位
	複式單位
	頂層特色單位
	建築面積
	約1,349平方呎
	約1,563平方呎
	建築面積
	約2,605平方呎
	約3,755 — 3,958平方呎

Serenade

上林

11, Tai Hang Road, Hong Kong

Rebecca Cheung 張小姐 9021 7644,	Teresa Lau 劉小姐 9080 6686
Mark Mak 麥先生 6838 2929,	Christine Chong 莊小姐 9648 6082



Piccadilly Mansion
西半山 禧苑
4-6 Po Shan Road, Midlevels West
Large practical harbour view apartment in tranquil environment
西半山特大維港景住宅，開闊實用，環境靜謐

2,800 s.f.
\$56,000,000

www.landscope.com/35976.htm Carmar Sze 司徒小姐 6183 8339

Estoril Court
中半山 愛都大廈
55 Garden Road, Midlevels Central
High efficiency practical apartment with new decorations
高實用開闊住宅廳新裝修

3,347 s.f.
\$58,000,000

www.landscope.com/95882.htm Mira To 杜小姐 9486 1566

Grenville House
中半山 嘉慧園
1-3A Magazine Gap Road, Midlevels Central
Nicely decorated colonial apartment with large balcony
中半山雅緻裝修英式住宅連特大陽臺

3,700 s.f.
\$70,000,000

www.landscope.com/41363.htm Mira To 杜小姐 9486 1566

Timeless Flair
經典時尚

Housed in an old building, Estella Court on MacDonnell Road in Mid-Levels Central is a gem with substantial property potential. This 2,000 sq ft spacious open abode overlooks the buzzing city and calming seas that seem to stretch infinitely over the horizon. The interiors are composed of beautiful white marbled floors, finely crafted furniture and pretty hues of Vietnamese artwork and paintings that harmoniously complement the surroundings.

This residence is a testament to the contractor's meticulous sourcing, organisational skills as well as quality of workmanship – whether it's the door frame matched to the exact shade of the interior, the selection of luxe upholstery or the master en-suite, which is probably the home's biggest and most dramatic transformation.

Accented by its location in the middle of Hong Kong's business and entertainment district, Estella Court appeals to residents who need to "get up and go" while living in a luxurious sanctuary.

位於中半山富貴驛道的香港大廈擁有可觀的升值潛力。這座佔地2,000平方呎的公寓寬敞舒適，坐擁鬧騰的城市景觀，以及一望無際的無敵海景。屋內裝潢雅緻非常——白色大理石地板、精緻細膩的家具、引人入勝的越式藝術品及畫作，和諧地襯托著周遭的環境。

住宅的每一個角落，完全體現出承包商心思縝密的組織能力與卓越非凡的工藝，如配製室內裝潢色調的門框、高貴豪華的設計牆紙，以及改動最大的主人套房。

香港大廈坐落於集商業、娛樂於一身的心臟地带，絕對適合生活繁忙而又追求恬靜豪華生活的你。

Estella Court
中半山 香港大廈
70 MacDonnell Road, Midlevels Central
2,000 s.f.
\$25,000,000

www.landscope.com/96274.htm Carmar Sze 司徒小姐 6183 8339

Catalina Mansions
中半山 嘉年大廈
98-100 MacDonnell Road, Midlevels Central
Designer decorated huge 5-bedroom duplex on MacDonnell Road
豪氣磅礴巨型五房複式住宅，設計師精心設計

4,600 s.f.
\$55,000,000

www.landscope.com/116527.htm Christine Chong 莊小姐 9648 6082

Victoria Height
東半山 威利閣
43A Stubbs Road, Midlevels East
Harbour view 4-bedroom flat on Stubbs Road
司徒拔道維港景四房單位

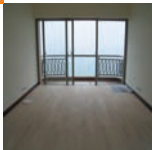
2,650 s.f.
\$65,000,000

www.landscope.com/124265.htm Stephen Chan 陳先生 9093 3381

Regal Crest
西半山 香翠閣
9 Robinson Road, Midlevels West
Spacious 4-ensuite duplex on Upper Robinson Road with excellent facilities
寬敞四睡房四套房四套住宅連完善住客會所設施

4,039 s.f.
\$100,000,000

www.landscope.com/125902.htm Stephen Chan 陳先生 9093 3381

**Mount Davis 33**

薄扶林 怡峰

33 Ka Wai Man Road, Pokfulam

Newly 3-bedroom sea view apartment with balcony
三房兩廁海景住宅連陽臺**1,108 s.f.**
\$1,300,000

www.landscope.com/63910.htm | Carman Szeto 司徒小姐 6183 8339

**Albany Court**

薄扶林 雅雅閣

51 Bisney Road, Pokfulam

3-bedroom low-rise in quiet neighbourhood
薄扶林低密度住宅，環境優美寧靜**1,787 s.f.**
\$17,500,000

www.landscope.com/108548.htm | Rowena Siu 蕭小姐 9348 4118

**Glamour Court**

薄扶林 華麗閣

39 Consort Rise, Pokfulam

Low-rise with private roof and good condition
低密度住宅連私家天台，保養良好**1,500 s.f. (plus 1,107 s.f. roof)**
\$18,000,000

www.landscope.com/54542.htm | Teresa Lau 劉小姐 9080 6686

**Aqua 33**

薄扶林 金東雨33號

33 Consort Rise, Pokfulam

Rare brand new shop flat in newly renovated development
罕有全新示範單位，環境寧靜，交通方便**1,591 s.f.**
\$20,663,000

www.landscope.com/111811.htm | Yvonne Chang 鄭小姐 9088 4666

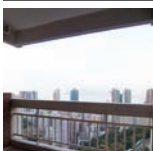
**South Bay Palace**

清水灣 南灣御苑

25-31 South Bay Close, Repulse Bay

Deluxe modern mid-rise in quiet enclave with comprehensive facilities
豪華時尚中密度住宅，環境寧靜，連完善住客會所設施，可租可售**1,698 s.f.**
\$22,000,000 also for lease \$65,000 incl.

www.landscope.com/99638.htm | Mavis Wu 吳小姐 9107 3891

**Pokfulam Mansion**

薄扶林 碧林大廈

94B Pokfulam Road, Pokfulam

Spacious mid-rise apartment in quiet Pokfulam neighbourhood
薄扶林高級中密度住宅，環境寧靜，可租可售**1,950 s.f.**
\$25,000,000 also for lease \$75,000 incl.

www.landscope.com/124456.htm | Rowena Siu 蕭小姐 9348 4118

**Repulse Bay Garden**

清水灣 麗景園

18-40 Bellevue Drive, Repulse Bay

Practical flat with large balcony overlooking Repulse Bay Beach
清水灣間隔實用單位連特大陽臺，俯瞰淡水灣海灘**1,790 s.f.**
\$30,000,000

www.landscope.com/99184.htm | Mark Mak 麥先生 6838 2929

**Scenic Villas**

薄扶林 美景豪

2-28 Scenic Villa Drive, Pokfulam

High efficiency and high floor 4-bedroom apartment at waterfront with sea view
高層高質四房單位，位於薄扶林海濱，靜享海景**2,517 s.f.**
\$31,500,000

www.landscope.com/49899.htm | Christine Chong 莊小姐 9648 6082

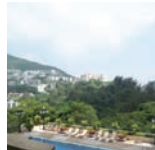
**Ming Wai Garden**

清水灣 明慧園

45 Repulse Bay Road, Repulse Bay

Full sea view cozy 3-bedroom apartment in Repulse Bay Road
清水灣兩連人全海景三房住宅**1,900 s.f.**
\$38,000,000

www.landscope.com/28219.htm | Mary Li 李小姐 9011 6595

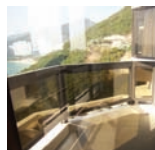
**Celestial Garden**

清水灣 詩禮花園

5 Repulse Bay Road, Repulse Bay

Spacious sea view flat on upper Repulse Bay Road with excellent facilities
清水灣高級海景住宅，間隔寬敞連完善住客會所設施**2,363 s.f.**
\$40,000,000

www.landscope.com/11328.htm | Rowena Siu 蕭小姐 9348 4118

**South Bay Towers**

清水灣 南灣大廈

59 South Bay Road, Repulse Bay

Renowned practical sea view apartment with swimming pool
有名校海景住宅連康樂設施，間隔實用，可租可售**2,738 s.f.**
\$43,800,000 also for lease \$83,000 incl.

www.landscope.com/112724.htm | Teresa Lau 劉小姐 9080 6686

**Stanley Court**

赤柱 海灣園

9 Stanley Mound Road, Stanley

Boutique 3-bedroom townhouse with spacious garden close to Stanley Main Beach
精緻三房排屋連寬敞花園，鄰近赤柱正灘**2,889 s.f. (plus 1,075 s.f. garden and 552 s.f. roof)**
\$50,000,000

www.landscope.com/122969.htm | Rebecca Cheung 張小姐 9021 7644

**Park Place**

清水灣 雅柏苑

7 Tai Tam Reservoir Road, Repulse Bay

Prestigious apartment with facilities enjoying unique views
豪華高尚住宅連完善住客會所設施，享別致景觀，可租可售**2,335 s.f.**
\$56,000,000 also for lease \$100,000 incl.

www.landscope.com/33870.htm | Rebecca Cheung 張小姐 9021 7644

**Cypresswaver Villas**

香林角 柏濤小築

32 Cape Road, Chung Hom Kok

Sea view low-rise apartment with private roof terrace in tranquil neighbourhood
海景低密度住宅連私家天台平台，環境清幽寧靜**1,650 s.f. (plus 1,158 s.f. roof)**
\$33,000,000

www.landscope.com/96861.htm | Maria Cheung 張小姐 5182 8699

**Hong Kong Parkview - Tower 18**

清水灣 陽明山莊18座

88 Tai Tam Reservoir Road, Repulse Bay

Harbour view flat in country park
清水灣港灣住宅，鄰近郊野公園**2,570 s.f.**
\$40,000,000

www.landscope.com/3266.htm | Teresa Fung 蕭小姐 9138 1621

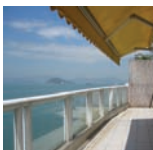
**Carmel Hill**

赤柱 海明山

12 Carmel Road, Stanley

Nicely fitted and equipped hilltop garden house with sweeping sea view
環境優雅地段高闊大廈豪華寧靜的海景，可租可售**2,378 s.f. (plus 405 s.f. garden and 262 s.f. roof)**
\$42,000,000 also for lease \$30,000 incl.

www.landscope.com/2613.htm | David Chan 陳先生 9238 2012

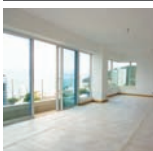
**Villa Cecil Phase II**

薄扶林 趙麗二期

192 Victoria Road, Pokfulam

4-bedroom waterfront low-rise apartment with private garden
低密度四房海濱住宅，連私家花園，可租可售**3,467 s.f. (plus 920 s.f. garden)**
\$46,000,000 also for lease \$32,000

www.landscope.com/36628.htm | Chris Law 羅先生 6183 8388

**Radcliffe**

薄扶林 培林

120 Pokfulam Road, Pokfulam

Brand new 4-ensuite duplex with full clubhouse facilities
全新四套房複式住宅連完善住客會所設施**3,620 s.f.**
\$53,000,000

www.landscope.com/107522.htm | Mary Li 李小姐 9011 6595

**The Somerset**

清水灣 怡峰

67 Repulse Bay Road, Repulse Bay

Well decoration sea view famous duplex apartment with big balcony on upper Repulse Bay Road
清水灣兩連房有名雅緻裝修複式單位，享海景及特大陽臺，可租可售**2,464 s.f.**
\$73,920,000 also for lease \$130,000 incl.

www.landscope.com/111753.htm | Maria Cheung 張小姐 5182 8699

Horizon Ridge
 香欣角 海天小區
 38-48 Horizon Drive, Chung Hom Kok
 Tastefully decorated townhouse with stunning sea view and terrace in quiet enclave
 品味絕佳綠屋連平台, 享迷人海景, 環境清幽寧靜

3,500 s.f. (plus 785 s.f. terrace)
\$75,000,000

www.landscope.com/31517.htm [Christine Chong 莊小姐 9648 6082](#)

Springfield Gardens
 香區山 翠園
 5-9 Shouson Hill Road West, Shouson Hill
 Rare 4-bedroom townhouse in Southside near Aberdeen Tunnel
 南區罕有四房排屋, 鄰近香港仔隧道, 交通方便

3,000 s.f. (plus 1,750 s.f. garden)
\$85,000,000

www.landscope.com/36570.htm [Mavis Wu 吳小姐 9107 3891](#)

Villa Rosa
 大潭 玫瑰園
 88 Red Hill Road, Tai Tam
 Rare garden house at Tai Tam
 大潭罕有花園大屋

3,960 s.f. (plus 480 s.f. roof and 414 s.f. garden)
\$100,000,000

www.landscope.com/21103.htm [Louis Wong 黃先生 9871 6828](#)

Grosvenor Place
 山頂 瑰翠園
 117 Repulse Bay Road, Repulse Bay
 High privacy luxurious unit with large terrace on Repulse Bay Beach
 灣水灣豪華住宅連特大平台, 私隱度高, 鄰近灣水灣海灘, 可租可售

2,719 s.f. (plus 2,500 s.f. terrace)
\$78,000,000 also for lease \$160,000 incl.

www.landscope.com/34995.htm [Rebecca Cheung 張小姐 9021 7644](#)

Repulse Bay Heights
 灣水灣 灣水灣花園
 3 Bellevue Drive, Repulse Bay
 Nicely renovated house with private swimming pool
 罕有雅緻後座大屋連私家游泳池, 可租可售

3,200 s.f. (plus 1,745 s.f. garden and 1,017 s.f. roof)
\$90,000,000 also for lease \$240,000 incl.

www.landscope.com/50171.htm [Yvonne Chang 鄭小姐 9088 4666](#)

110 Repulse Bay Road, Repulse Bay
 灣水灣 灣水灣110號
 Exclusive sea view house in prestigious location of Repulse Bay
 灣水灣獨特海景大屋, 位處尊貴地段, 可租可售

6,150 s.f. (plus 1,173 s.f. garden and 934 s.f. roof)
\$220,000,000 also for lease \$350,000 incl.

www.landscope.com/104464.htm [Mavis Wu 吳小姐 9107 3891](#)

Villa Verde
 山頂 瑰翠園
 4-18 Guildford Road, The Peak
 Boutique apartment with balcony and mountain view
 山頂獨特住宅連陽臺, 享享翠綠山景

1,200 s.f.
\$55,000 incl.

www.landscope.com/126731.htm [Eric Wong 黃先生 9740 3396](#)

Stewart Terrace
 山頂 史刺樓基
 81-95 Peak Road, The Peak
 Colonial low-rise apartment in The Peak with huge private roof
 山頂英式低密度住宅連特大私家天台, 可租可售

2,327 s.f. (plus 1,607 s.f. roof)
\$75,000 incl. also for sale \$45,000,000

www.landscope.com/46374.htm [Eric Wong 黃先生 9740 3396](#)

Mountain Court
 山頂 山景大廈
 11 Plantation Road, The Peak
 Peak apartment with expansive harbour view and quality finishes
 山頂闊敞港景住宅, 屋內配以高質素裝修

2,171 s.f.
\$118,000

www.landscope.com/18983.htm [Eric Wong 黃先生 9740 3396](#)

Orient Crest
 山頂 山頂76號
 76 Peak Road, The Peak
 Colonial style townhouse with private garden
 山頂英式排屋連私家花園

3,313 s.f. (plus 1,259 s.f. garden and roof)
\$130,000 incl.

www.landscope.com/12831.htm [Mavis Wu 吳小姐 9107 3891](#)

22A - 22B Mount Austin Road, The Peak
 山頂 荷士甸山頂22A-22B號
 Spacious layout with 3 suites and 3 car park overlooking Victoria Harbour view
 開揚寬敞三套房住宅連三車位, 俯瞰維多利亞港景觀, 可租可售

2,650 s.f.
\$130,000 also for sale \$100,000,000

www.landscope.com/14296.htm [Teresa Lau 劉小姐 9080 6686](#)

40 Peak Road, The Peak
 山頂 山頂連40號
 Townhouse on The Peak with full Victoria Harbour view
 罕有山頂排屋出租, 享享全海景

7,122 s.f. (plus 3,256 s.f. garden, 1,313 s.f. roof and 298 s.f. terrace)
\$330,000

www.landscope.com/31370.htm [Louis Wong 黃先生 9871 6828](#)

Magazine Gap Towers
 山頂 馬已仙峽道15號
 15 Magazine Gap Road, The Peak
 Spacious colonial-style apartment with nice city view and huge balcony
 山頂寬敞英式住宅, 享優美城市景觀及特大陽臺

2,300 s.f.
\$74,000 incl.

www.landscope.com/6993.htm [Chris Law 羅先生 6183 8388](#)

La Hacienda - Apartment
 山頂 加列山道29-33號
 29-33 Mount Kellett Road, The Peak
 Huge colonial apartment in lush greenery
 特大英式住宅, 享翠綠園景, 可租可售

2,820 s.f.
\$110,000 also for sale \$56,000,000

www.landscope.com/5732.htm [Maria Cheung 張小姐 5182 8699](#)

1-3 Homestead Road, The Peak
 山頂 峇仕連道1-3號
 Luxurious modern sea view apartment on The Peak
 山頂豪華時尚海景住宅

2,828 s.f.
\$120,000 incl.

www.landscope.com/29280.htm [Chris Law 羅先生 6183 8388](#)

29 Severn Road, The Peak
 山頂 蘇聯道29號
 Brand new 4-bedroom apartment with spacious balcony and sea view
 全新四房住宅連陽臺, 開揚寬敞享海景

2,300 s.f.
\$150,000

www.landscope.com/46657.htm [David Chan 陳先生 9238 2012](#)

Ondina Heights
 山頂 安寧臺
 62-66 Peak Road, The Peak
 Luxurious european style house with sweeping sea view
 豪華英式大屋, 享享優美海景

3,396 s.f. (plus 2,881 s.f. terrace and 138 s.f. roof)
\$150,000 incl.

www.landscope.com/31708.htm [Rebecca Cheung 張小姐 9021 7644](#)

46 Plantation Road, The Peak
 山頂 種植道46號
 Brand new extravagant detached house with private pool and private lift overlooking harbour view
 全新豪華獨立大屋連私家游泳池及升降機, 俯瞰維多利亞港景觀

5,730 s.f. (plus 1,569 s.f. garden and 670 s.f. roof)
\$430,000 incl.

www.landscope.com/110224.htm [Rebecca Cheung 張小姐 9021 7644](#)

CONCEPT & SOLUTION FOR INTERIOR DESIGN

We are expert in providing professional services in space planning and interior design to our clients. With our open-minded ideas, we serve the needs of our global clients which vary from hospitality, worldwide corporate, international retail chain store and financial institutions.

www.fkconcept.com

Unit 3-5, 10/F Jupiter Tower, 9 Jupiter Street, Hong Kong. Telephone: 2882 4007 Fax: 3428 8379 email: fk@fkconcept.com

Monmouth Place
 中半山 高信濠
 9L Kennedy Road, Midlevels Central
 Newly renovated flat with chic bathroom and fully fitted kitchen
 全新裝修住宅連附設浴室，廚房配齊齊全

1,483 s.f.
\$49,000 incl.

www.landscope.com/46583.htm | Walker Lam 林先生 9551 1077

Park Mansions
 中半山 百年禧大廈
 27-29 Macdonnell Road, Midlevels Central
 Newly renovated 4-bedroom flat with open city view
 全新裝修四房單位享開揚城市景觀

2,013 s.f.
\$65,000 incl.

www.landscope.com/24297.htm | Mira To 杜小姐 9486 1566

Wah Fung Mansion
 東半山 華峰樓
 27 Tai Hang Road, Midlevels East
 Spacious whole-floor unit with balcony in high privacy
 豪華山景高層住宅連陽臺，私隱度高，可租可售

2,087 s.f.
\$70,000 incl. also for sale \$26,000,000

www.landscope.com/36117.htm | Garman Seto 司徒小姐 6183 8339

William Mansion
 中半山 惠利大廈
 16-18 MacDonnell Road, Midlevels Central
 Practical 4-bedroom apartment at MacDonnell Road
 麥當奴路實用四房單位

2,500 s.f.
\$73,000 incl.

www.landscope.com/99492.htm | Sami Woo 胡小姐 9493 8275

Old Peak Mansion
 中半山 舊山頂道5號
 5 Old Peak Road, Midlevels Central
 Spacious 3-bedroom low-rise with big balcony on fringe of Central
 寬敞三房低密度住宅連大陽臺，鄰近中環，交通方便

2,088 s.f.
\$75,000

www.landscope.com/10325.htm | Eric Wong 黃先生 9740 3396

May Tower 1
 中半山 梅苑一座
 7 May Road, Midlevels Central
 Renovated harbour view apartment in Midlevels
 中半山有景望維港景住宅

2,850 s.f.
\$83,000 incl.

www.landscope.com/19442.htm | Mira To 杜小姐 9486 1566

Butler Tower
 中半山 柏麗閣
 1-5 Goldsmith Road, Jardine's Lookout
 Practical 4-bedroom flat in renovated building
 實用四房單位，大廈經已翻新，可租可售

1,650 s.f.
\$65,000 incl. also for sale \$26,800,000

www.landscope.com/107039.htm | Stephen Chan 陳先生 9093 3381

Man Yuen Garden
 中半山 文苑花園
 52A-52B Kennedy Road, Midlevels Central
 Spacious apartment with nice decorations on Kennedy Road
 鄰近地鐵寬敞雅緻裝修住宅，可租可售

2,000 s.f.
\$65,000 incl. also for sale \$24,000,000

www.landscope.com/126947.htm | Stephen Chan 陳先生 9093 3381

Visalia Garden
 中半山 蔚山花園
 48 MacDonnell Road, Midlevels Central
 Newly renovated apartment close to Central
 中半山全新裝修住宅，鄰近中環，可租可售

1,929 s.f. (plus 94 s.f. terrace)
\$70,000 incl. also for sale \$31,000,000

www.landscope.com/110154.htm | Maria Cheung 張小姐 5182 8699

Babington House
 西半山 巴威大廈
 48 MacDonnell Road, Midlevels Central
 Nicely decorated 5-bedroom apartment with huge balcony
 全新裝修五房寬敞房住宅連特大陽臺，可租可售

2,750 s.f.
\$75,000 incl. also for sale \$27,000,000

www.landscope.com/96921.htm | Sami Woo 胡小姐 9493 8275

Hamilton Court
 西半山 愛敦大廈
 8 Po Shan Road, Midlevels West
 Spacious and high efficiency 4-bedroom apartment with western harbour view
 寬敞實用四房單位，享維港景

2,515 s.f.
\$80,000

www.landscope.com/12671.htm | Mavis Wu 吳小姐 9107 3891

MacDonnell House
 中半山 麥當奴大廈
 6-8 MacDonnell Road, Midlevels Central
 Very well maintained 4-bedroom flat in convenient location
 中半山豪裝裝修四房單位，地段優越，交通方便，可租可售

2,519 s.f.
\$83,000 incl. also for sale \$33,000,000

www.landscope.com/11164.htm | Mary Li 李小姐 9011 6595

Kennedy Apartment
 中半山 堅尼地大廈
 34A Kennedy Road, Midlevels Central
 Unique apartment overlooking the Hong Kong Garden view
 中半山精緻單位，俯瞰香港公園景觀，景色怡人

2,500 s.f.
\$88,000

www.landscope.com/49509.htm | Mira To 杜小姐 9486 1566

Haddon Court
 西半山 海天閣
 41C Conduit Road, Midlevels West
 Rare find modern garden apartment on Conduit Road
 千難萬幸有時尚住宅連特大花園

2,805 s.f. (plus 1,884 s.f. terrace and 1,558 s.f. garden)
\$100,000 incl.

www.landscope.com/14338.htm | Sami Woo 胡小姐 9493 8275

Chung Tak Mansion
 中半山 重德大廈
 2 Magazine Gap Road, Midlevels Central
 3-bedroom with 3-ensuite flat plus 1 family area enjoy open city view
 三房工薪房住宅，間隔實用率高，尊享開揚城市景觀

2,864 s.f.
\$100,000 incl.

www.landscope.com/16989.htm | Teresa Lau 劉小姐 9080 6686

5 Goldsmith Road, Jardine's Lookout
 薄甸山 高士美道5號
 3-bedroom apartment with terrace enjoy city view
 三房住宅連平台，享城市景觀

2,500 s.f. (plus 73 s.f. terrace)
\$95,000

www.landscope.com/30152.htm | Chris Law 羅先生 6183 8388

1 Po Shan Road, Midlevels West
 西半山 寶珊道1號
 Modern 4-bedroom harbour view apartment in quiet enclave
 時尚四房維港景住宅，環境清幽寧靜，可租可售

2,471 s.f.
\$100,000 incl. also for sale \$50,000,000

www.landscope.com/30209.htm | Sami Woo 胡小姐 9493 8275

Monmouth Place
 中半山 高信濠
 9L Kennedy Road, Midlevels Central
 Modern 3-bedroom building with fantastic harbour view
 新穎三房住宅連鄰近維港景

2,256 s.f.
\$100,100 incl.

www.landscope.com/107794.htm | Walker Lam 林先生 9551 1077

歐詩木
 德國 osmo[®]
 ...in form und farbe

Wood finishes from a wood specialist

Natural...
 ...with natural oils and waxes, the very best for wood and the environment!

Faster...
 ...Osmo finishes can be renovated without sanding, saving time and money!

Coverage...
 ...high solid means amazing coverage and best price per m²!

Hop Sze Timber Co., Ltd.
 220 Gloucester Road, Wanchai, Hong Kong
 Phone (852) 28336069 | www.hopsze.com

Tregunter Tower 2
 中半山 地利極優閣2座
 14 Tregunter Path, Midlevels Central
 Large and practical 4-bedroom flat with easy access to Central
 特大實用四房單位，鄰近中環，可租可售

3,052 s.f.
\$108,000 incl. also for sale \$36,500,000

www.landscape.com/118858.htm [Mira To 杜小姐 9486 1566](#)

The Mayfair
 中半山 荷道1號
 1 May Road, Midlevels Central
 Deluxe harbour view apartment
 中半山豪華維港景住宅，可租可售

2,905 s.f.
\$130,000 incl. also for sale \$75,000,000

www.landscape.com/6558.htm [Mark Mak 麥先生 6838 2929](#)

Grenville House
 中半山 嘉慧園
 1-3A Magazine Gap Road, Midlevels Central
 Huge 4-bedroom apartment in renowned building on Magazine Gap Road
 馬已仙嶺著名名望巨型四房住宅

3,700 s.f.
\$130,000 incl.

www.landscape.com/17363.htm [Mira To 杜小姐 9486 1566](#)

Victoria Height
 東半山 威利閣
 43A Stubbs Road, Midlevels East
 Exclusive apartment with private roof in excellent condition overlooking stunning harbour view
 東半山獨特住宅連私家天台，保養良好，俯瞰維港景觀

2,650 s.f. (plus 1,936 s.f. roof)
\$135,000

www.landscape.com/37158.htm [Rowena Si 蘇小姐 9348 4118](#)

Panorama
 西半山 全景大廈
 15 Conduit Road, Midlevels West
 Duplex apartment with huge balcony at Midlevel West
 西半山複式住宅連巨型陽臺

4,980 s.f. (plus 511 s.f. terrace)
\$160,000 incl.

www.landscape.com/50363.htm [Yvonne Chang 鄭小姐 9088 4666](#)

Regence Royale
 中半山 富匯豪庭
 2 Bowen Road, Midlevels Central
 Luxuriously decorated huge apartment on Bowen Road
 寬闊豪華裝修巨型單位，可租可售

5,219 s.f.
\$250,000 incl. also for sale \$145,000,000

www.landscape.com/105968.htm [Louis Wong 黃先生 9871 6828](#)

Lush Melodies for Enamored Listeners 為旋律著迷



If you enjoy unique melodic aesthetics, delicate orchestration skills, and Tchaikovsky's masterpieces, you will enjoy the Tchaikovsky's Masterpieces Concert. Renowned Russian-American conductor Edvard Tschizhel, joins hands with outstanding Chinese pianist Ju Jin, third prize winner of the 12th Tchaikovsky International Competition in presenting three of Tchaikovsky's masterpieces in their upcoming concert, namely Dance of the Tumblers, from the opera The Snow Maiden, Piano Concerto No. 1 in B-flat minor, op. 23, and Symphony No. 4 in F minor, op. 36. This exciting concert will be held at the Macao Cultural Centre Grand Auditorium on the 24 April 2010. ■

如果你喜歡獨特的旋律美感，精巧的管弦樂編排技巧，以及柴可夫斯基的作品，你將會享受柴可夫斯基的代表作音樂會。俄羅斯著名指揮家愛德華·茨希爾，將攜手與第十二屆柴可夫斯基國際鋼琴比賽第三名得獎者居金，演出三首柴可夫斯基的頂級傑作：“丑角之舞”，選自電影“雪姑娘”；降B小調第一鋼琴協奏曲，作品23；F小調第四交響樂，作品36。這激動人心的音樂會將會在2010年4月24日澳門文化中心綜合劇院盛大舉行。■

96 Repulse Bay Road, Repulse Bay
 清水灣 清水灣道96號
 Newly renovated colonial low-rise in Repulse Bay
 清水灣全新裝修英式低密度住宅

1,500 s.f.
\$55,000 incl.

www.landscape.com/127465.htm [Teresa Fung 高小姐 9138 1621](#)

Unicorn Gardens
 壽臣山 麒麟閣
 11 Shouson Hill Road East, Shouson Hill
 Decent spacious flat in Shouson Hill
 壽臣山舒適寬敞住宅

1,714 s.f.
\$60,000 incl.

www.landscape.com/34404.htm [Mark Mak 麥先生 6838 2929](#)

Splendour Villa
 清水灣 雅景閣
 10 South Bay Road, Repulse Bay
 Nicely decorated sea view low-rise apartment in Repulse Bay
 清水灣雅緻裝修低密度海景住宅，可租可售

1,290 s.f. (plus 538 s.f. garden)
\$75,000 incl. also for sale \$30,500,000

www.landscape.com/107738.htm [Maria Cheung 黎小姐 5182 8699](#)

Scenic Views
 薄扶林 美景臺
 192 Victoria Road, Pokfulam
 High efficiency 4-bedroom sea view apartment in well-known development
 薄扶林有名望高尚實用四房海景住宅，可租可售

2,517 s.f.
\$80,000 incl. also for sale \$30,000,000

www.landscape.com/49867.htm [Stephen Chan 陳先生 9093 3381](#)

Ann Garden
 壽臣山 安苑
 29 Shouson Hill Road, Shouson Hill
 Low-rise duplex with exclusive roof terrace
 低密度複式單位，獨享特天台平台

2,500 s.f. (plus 2,500 s.f. roof)
\$95,000 incl.

www.landscape.com/11849.htm [Mary Li 李小姐 9011 6595](#)

49 Beach Road, Repulse Bay
 清水灣 海濱道49號
 Rare and unique single house on Repulse Bay Beach
 清水灣罕有別墅獨立大廈

3,500 s.f. (plus 550 s.f. terrace, garden and roof)
\$100,000 incl.

www.landscape.com/11266.htm [Teresa Lau 劉小姐 9080 6686](#)

98 Repulse Bay Road, Repulse Bay
 清水灣 清水灣道98號
 Sea view low-rise apartment with big balcony close to Repulse Bay Beach
 清水灣低密度海景住宅連特大陽臺，鄰近清水灣海灘

1,600 s.f.
\$56,000 incl.

www.landscape.com/31995.htm [Chris Law 羅先生 6183 8388](#)

Repulse Bay Garden
 清水灣 麗景園
 18-40 Bellevue Drive, Repulse Bay
 Spacious practical older-style apartment with full view of Repulse Bay Beach
 清水灣寬敞實用古典住宅，享享清水灣海灣全景

2,288 s.f.
\$70,000 incl.

www.landscape.com/30473.htm [Samir Woo 胡小姐 9493 8275](#)

34-36 Bisney Road, Pokfulam
 薄扶林 碧荔道34-36號
 Newly renovated low-rise flat with private terrace and balcony in lush greenery
 全新裝修三房低密度住宅連私家平台及陽臺，環境優雅怡人

2,200 s.f. (plus 500 s.f. terrace)
\$78,000 incl.

www.landscape.com/50595.htm [Christine Chong 莊小姐 9648 6082](#)

14 Stanley Beach Road, Stanley
 赤柱 赤柱灘道14號
 Renovated 3-bedroom low-rise with balcony and private roof close to beach
 全新裝修三房低密度住宅連陽臺及私家天台，鄰近海灘

2,320 s.f. (plus 2,000 s.f. roof)
\$89,000

www.landscape.com/9473.htm [Mark Mak 麥先生 6838 2929](#)

Carmel Hill
 赤柱 海明山
 12 Carmel Road, Stanley
 Boutique sea view townhouse with pool and tennis court
 精緻海景排屋連游泳池及網球場設施

2,400 s.f. (plus 381 s.f. garden and 262 s.f. roof)
\$96,000 incl.

www.landscape.com/71417.htm [Mary Li 李小姐 9011 6595](#)

Belvedere
 碧坑角 海濱臺
 41 Chung Hom Kok Road, Chung Hom Kok
 Mountain view 3-bedroom townhouse in Chung Hom Kok
 碧坑角半綠山景三房排屋

3,343 s.f. (plus 1,195 s.f. roof and 503 s.f. terrace)
\$105,000 incl.

www.landscape.com/34465.htm [Yvonne Chang 鄭小姐 9088 4666](#)

Grosse Pointe Villa
赤柱 赤柱村道4號
4 Stanley Village Road, Stanley
Well maintained 4-bedroom garden duplex
赤柱良好四房複式花園住宅

2,700 s.f. (plus 393 s.f. garden)
\$110,000

www.landscape.com/21238.htm Maria Cheung 葉小姐 5182 8699

Regalia Bay
赤柱 富豪灣
88 Wong Ma Kok Road, Stanley
Rare find full sea view townhouse in secluded area of Stanley
赤柱罕有全海景屋，遠離市區，清幽寧靜

4,212 s.f. (plus 841 s.f. roof and 451 s.f. garden)
\$165,000 incl.

www.landscape.com/30617.htm Yvonne Chang 鄭小姐 9088 4666

Helene Court
壽臣山 嘉蓮閣
14 Shouson Hill Road, Shouson Hill
Townhouse in serene Shouson Hill surrounded by lush greenery
壽臣山翠綠園景屋，環境寧靜優美

3,555 s.f. (plus 1,860 s.f. garden and 644 s.f. roof)
\$170,000

www.landscape.com/14374.htm David Chan 陳先生 9238 2012

Stanley Breeze
赤柱 環海晨樓
12-12A Stanley Beach Road, Stanley
Beachside townhouse with private pool
赤柱海邊大屋連私家游泳池

3,087 s.f. (plus 927 s.f. terrace 804 s.f. roof and 420 s.f. garden)
\$200,000 incl.

www.landscape.com Christine Chong 莊小姐 9648 6082

Ocean Bay
香港角 海天徑15-17號
15-17 Horizon Drive, Chung Hom Kok
Sea view townhouse with private garden
香港角海景排屋連私家花園

3,180 s.f. (plus 437 s.f. roof and 436 s.f. terrace)
\$200,000 incl.

www.landscape.com/34993.htm David Chan 陳先生 9238 2012

63 Deep Water Bay Road, Deep Water Bay
深水灣 深水灣道63號
Prestigious detached house in upscale Deep Water Bay
深水灣豪華獨立大屋，地段罕貴

3,479 s.f. (plus 603 s.f. garden and 272 s.f. terrace)
\$260,000

www.landscape.com/33643.htm Rebecca Cheung 葉小姐 9021 7644

The Somerset
深水灣 怡峰
67 Repulse Bay Road, Repulse Bay
Renowned sea view 3-bedroom duplex in Repulse Bay
深水灣有名望海景雙連三房複式住宅

2,464 s.f.
\$120,000 incl.

www.landscape.com/2981.htm Teresa Fung 馮小姐 9138 1621

Henredon Court
壽臣山 恒安閣
8 Shouson Hill Road, Shouson Hill
Huge duplex apartment in serene Shouson Hill
壽臣山巨型複式住宅，環境優美寧靜

4,474 s.f. (plus 1,435 s.f. roof)
\$170,000

www.landscape.com/98425.htm Mary Li 李小姐 9011 6595

8 Deep Water Bay Road, Deep Water Bay
深水灣 深水灣道8號
Exclusive sea view townhouse in prestigious Deep Water Bay
深水灣獨特海景屋，地段罕貴

3,978 s.f. (plus 304 s.f. terrace)
\$185,000

www.landscape.com/12965.htm David Chan 陳先生 9238 2012

The Somerset
深水灣 怡峰
67 Repulse Bay Road, Repulse Bay
Rare duplex with huge garden overlooking Deep Water Bay
深水灣罕有複式住宅連特大花園，俯瞰深水灣景觀

3,141 s.f. (plus 2,035 s.f. garden and 911 s.f. terrace)
\$200,000 incl.

www.landscape.com/3611.htm Louis Wong 黃先生 9871 6828

Villa Rosa
大潭 玫瑰園
88 Red Hill Road, Tai Tam
Prestigious garden house with brilliant sea view
大潭豪華花園大屋，享迷人海景，可租可售

4,018 s.f. (plus 786 s.f. garden, 480 s.f. roof and terrace)
\$228,000 incl. also for sale \$100,000

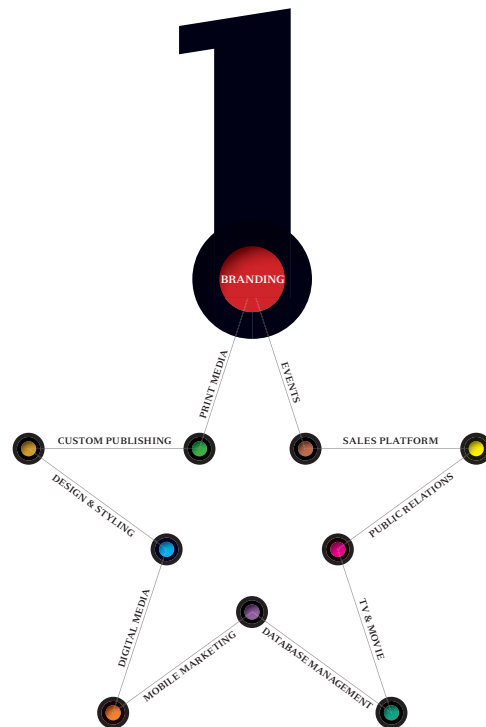
www.landscape.com/7228.htm Stephen Chan 陳先生 9093 3381

56 Repulse Bay Road, Repulse Bay
深水灣 深水灣道56號
Seaside duplex with private terrace enjoying breath-taking sea view
海邊複式住宅連私家平台，享寧靜海景

3,761 s.f. (plus 1,436 s.f. terrace)
\$300,000 incl.

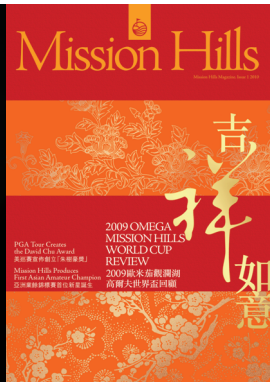
www.landscape.com/50121.htm Rebecca Cheung 葉小姐 9021 7644

WE BLOSSOM BY PROVIDING YOU WITH THE BEST ONE-STOP SOLUTION



(Hong Kong Head Office) 12/F Cyberport 2, 100 Cyberport Road, Hong Kong T+852 3699 0888 F+852 3699 0889
(China Office) 15/F Plaza66 Tower 2, 1366 Nanjing West Road Shanghai T+86 21 6137 6038
www.inmagazine.com.hk

YOUR NO.1 INTERGATED MARKETING COMMUNICATIONS PARTNER IN HONG KONG AND CHINA

INCORPORATION

Your No.1 Integrated Marketing Communications Partner in Hong Kong & China

inMAGAZINE : publisher and sole advertising representatives of the top luxury lifestyle publications, including *Mission Hills Magazine*, *The Key* and *Jaquar Hong Kong Magazine*.

www.inmagazine.com.hk

Hong Kong Head Office: 12/F Cyberport 2, 100 Cyberport Road, Hong Kong

China Office: 15/F Plaza 66 Tower 2, 1366 Nanjing West Road, Shanghai

Marketing (852) 3699 0820 | Advertising (852) 3699 0881 | email: marketing@incorp.com.hk