

select deluxe homes

# The Key

大宅®

APRIL 2009  
Volume 54

published and distributed by

**LANDSCOPE**  
*The Specialists in Luxury Properties*

領域®



BROAD  
PICTURE

[www.landscape.com](http://www.landscape.com)



## KeyNotes

*"The Chinese use two brush strokes to write the word 'crisis.' One brush stroke stands for danger; the other for opportunity. In a crisis, be aware of the danger - but recognize the opportunity."*

John F. Kennedy

Premier Wen has pledged that Beijing will implement plans for Renminbi trade settlement in Hong Kong, speed up the mega scale infrastructure construction in connecting the mainland, Hong Kong and Macau, provide more opportunities for Hong Kong's service sector to enter the mainland market by beefing up the Closer Economic Partnership Arrangement (CEPA) and strengthen regional co-operation in the Pearl River Delta including Hong Kong. These measures are expected to elevate Hong Kong to a new platform, which integrates the interests of Hong Kong and its close neighbours. This is particularly essential because amid the world economic recession and the resultant collapse of export trade, on which both Hong Kong and the mainland heavily rely on, Hong Kong's future is tied to its economic integration with the mainland.

Koh Keng-shing  
ks-koh@landscape.com

(The above are an excerpt from Market Watch on [www.landscape.com](http://www.landscape.com). For the full article, please log on to [www.landscape.com/m0409.htm](http://www.landscape.com/m0409.htm))

## About The Key

The Key is a monthly publication of sales and letting listings of luxury residential properties on Hong Kong Island. It is sent to VIP clients of Landscape Realty and residents of The Peak, Southside, Mid-Levels, Kowloon Tong, Homantin and selected upmarket residential areas in Shatin, Tai Po, Clear Water Bay and Castle Peak Road. The recipients comprise the crème de la crème of Hong Kong's affluent community.

In addition to The Key, Landscape Realty sends weekly eNewsletters to clients on most update listings of luxury properties. If you wish to receive the eNewsletter, please call Loretta Lui at 3102 4818 or email to [info@landscape.com](mailto:info@landscape.com).

## How may you list your property with The Key?

If you would like to see your property listed in The Key in the next issue, you may call Loretta Lui at 3102 4818 or email to [info@landscape.com](mailto:info@landscape.com). Or you may simply fill out the space below and fax to us at 2866 0015.

Property to be listed

Asking Rental / Sale Price

Floor Area

Contact Person

Telephone

Email

Our KeyPersons will contact you for follow-up works.

## MID-LEVELS SALES

半山  
出售



### Well View Villa

東半山 瑩景閣

17 Tung Shan Terrace, Midlevels East  
3-bedroom low-rise with 2 car parks in convenient location  
東半山低密度三房單位連兩車位，交通方便

1,037 s.f.  
**\$7,200,000** SOLE AGENT 獨家代理

[www.landscape.com/15915.htm](http://www.landscape.com/15915.htm) | David Chan 陳先生 9238 2012



### Beverly Hill

跑馬地 比華利山

6 Broadwood Road, Happy Valley  
3-bedroom family apartment with full facilities  
三房家庭式住宅，連完善會所設施

1,385 s.f.  
**\$10,500,000**

[www.landscape.com/18779.htm](http://www.landscape.com/18779.htm) | Eric Wong 黃先生 9740 3396



### Starcrest

灣仔 星域軒

9 Star Street, Wan Chai  
Fully furnished apartment with nice decorations on fringe of Admiralty  
品味設計裝修住宅連傢俱，鄰近金鐘

1,158 s.f.  
**\$11,580,000**

[www.landscape.com/13944.htm](http://www.landscape.com/13944.htm) | Rowena Siu 蕭小姐 9348 4118



### Amber Garden

中半山 柏苑

70-72 Kennedy Road, Midlevels Central  
Conveniently located 3-bedroom flat with practical layout  
實用三房單位，位處黃金地段

1,732 s.f.  
**\$13,000,000**

[www.landscape.com/12490.htm](http://www.landscape.com/12490.htm) | Maria Cheung 張小姐 8103 3862



### Flora Garden

渣甸山 慧景園

7 Chun Fai Road, Jardine's Lookout  
Practical layout flat in good condition with swimming pool  
間隔實用住宅，狀態良好，配有泳池設施，可租可售

1,533 s.f.  
**\$13,800,000** also for lease \$43,000 incl.

[www.landscape.com/16681.htm](http://www.landscape.com/16681.htm) | Teresa Lau 劉小姐 9080 6686



### Wing Hong Mansion

中半山 永康大廈

60-62 Macdonnell Road, Midlevels Central  
Cozy flat with practical layout in convenient location  
舒適住宅，間隔實用，交通便利

1,700 s.f.  
**\$16,500,000**

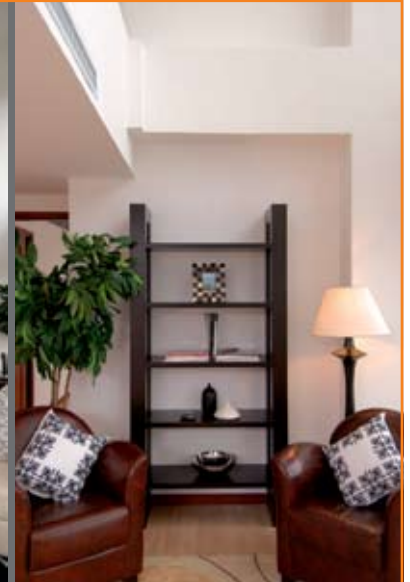
[www.landscape.com/18223.htm](http://www.landscape.com/18223.htm) | Mira To 杜小姐 9486 1566





## BROAD PICTURE

This is a duplex apartment that stands out from the crowd. The 20-feet-ceilinged living room presents expansive full height windows to showcase the picturesque views of Victoria Harbour and the dynamic city skyline. The off-white walls provide the matching frame for the picture, and the drawing board to lend more space to the owner's artistic imaginations. There are four bedrooms including two master's en suite, one on the lower level and the other on the upper level. An added advantage is the open terrace on upper floor, which takes in the stunning views while hosting barbeque party. Generous walk-in closet and en suite bathroom are sufficient to satisfy the most demanding master. Ultimate luxury life is complete with the spacious kitchen that cooks up gourmet meals for the very discerning.



**Bowen Place**  
11A Bowen Road,  
Midlevels Central  
中半山 寶雲閣

3,621 s.f.  
(plus 184 s.f. terrace)

**\$48,000,000**  
SOLE AGENT 獨家代理

[www.landscape.com/15241.htm](http://www.landscape.com/15241.htm)

Sissy Li 李小姐 9642 6969



**5G-5H Bowen Road,**  
Midlevels Central  
中半山 寶雲道5G-5H號

Low-rise apartment with huge roof in tranquil area  
傳統中半山低密度住宅連特大天台，位處尊貴地段，可租可售

1,400 s.f.  
**\$16,000,000** also for lease \$58,000 incl.



[www.landscape.com/18603.htm](http://www.landscape.com/18603.htm)

Sami Woo 胡小姐 9493 8275



**9 Broom Road,**  
Happy Valley 跑馬地 蟠龍道9號

9 Broom Road, Happy Valley  
Stylish low-rise flat with large private roof terrace in quiet neighbourhood  
品味裝潢低密度住宅，連特大天台，環境寧靜

2,100 s.f.  
**\$20,000,000**

[www.landscape.com/10184.htm](http://www.landscape.com/10184.htm)

Christine Chong 莊小姐 9648 6082



**Tavistock 2**  
中半山 騰皇居2座

10A Tregunter Path, Midlevels Central  
Luxurious apartment with green view in prime location  
豪華住宅位處黃金地段，附近環境青翠

1,730 s.f.  
**\$21,000,000**

[www.landscape.com/15878.htm](http://www.landscape.com/15878.htm)

Mira To 杜小姐 9486 1566



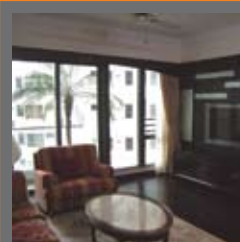
**Birchwood Place**  
中半山 寶樺臺

96 Macdonnell Road, Midlevels Central  
Popular flat on Macdonnell Road with excellent facilities  
麥當勞道尾段住宅連配套設施，深受歡迎

2,018 s.f.  
**\$21,800,000**

[www.landscape.com/14941.htm](http://www.landscape.com/14941.htm)

Stella Lo 羅小姐 9809 8570



**11 Macdonnell Road,**  
Midlevels Central

中半山 麥當勞道 11 號  
Nicely decorated modern apartment with high privacy  
精美裝修住宅，私隱度高，可租可售

2,313 s.f.  
**\$23,000,000** also for lease \$65,000 incl.

[www.landscape.com/18675.htm](http://www.landscape.com/18675.htm)

Mark Mak 麥先生 6838 2929

# MID-LEVELS SALES



## Century Tower 1

中半山 世紀大廈 1座

1 Tregunter Path, Midlevels Central  
Nicely decorated apartment with large balcony  
優美裝修住宅，連特大陽台

2,565 s.f.

**\$26,000,000**

[www.landscape.com/13344.htm](http://www.landscape.com/13344.htm)

David Chan 陳先生 9238 2012



## Tregunter Tower 2

中半山 地利根德閣 2座

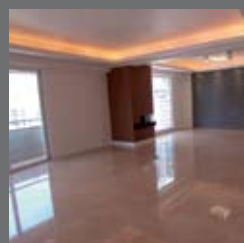
14 Tregunter Path, Midlevels Central  
Large 4-bedroom flat in serene neighbourhood  
華麗巨型四房住宅，間隔寬敞，環境清幽，可租可售

3,052 s.f.

**\$26,000,000** also for lease \$79,000 incl.

[www.landscape.com/12591.htm](http://www.landscape.com/12591.htm)

Teresa Fung 馮小姐 9138 1621



## Visalia Garden

中半山 蔚山花園

48 Macdonnell Road, Midlevels Central  
Newly renovated high-floor 4-bedroom flat in convenient location  
全新裝修高層四房住宅，位置優越，交通方便

2,195 s.f.

**\$26,800,000**

[www.landscape.com/14513.htm](http://www.landscape.com/14513.htm)

Stella Lo 羅小姐 9809 8570



## Regent on the Park

中半山 御花園

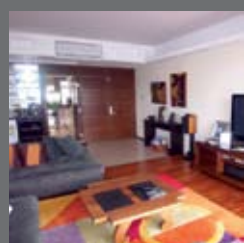
9A Kennedy Road, Midlevels Central  
Prestigious apartment with metropolitan view on fringe of CBD  
中半山有名望尊貴住宅，鄰近中環，交通方便

2,720 s.f.

**\$28,000,000**

[www.landscape.com/18133.htm](http://www.landscape.com/18133.htm)

Stephen Chan 陳先生 9093 3381



## Clement Court

渣甸山 松風臺

56-64 Mount Butler Road, Jardine's Lookout  
Colonial low-rise in tranquil neighbourhood  
英式低密度住宅，環境寧靜

2,200 s.f.

**\$28,000,000**

[www.landscape.com/18858.htm](http://www.landscape.com/18858.htm)

Mary Li 李小姐 9011 6595



## Valley View 東半山 欣景台

4A-4D Wong Nai Chung Gap Road, Midlevels East

Sought after huge mid-rise apartment with meticulous decoration  
搶手中密度特大單位，尊享優美裝修，可租可售

2,400 s.f.

**\$31,000,000** also for lease \$108,000 incl.

[www.landscape.com/18810.htm](http://www.landscape.com/18810.htm)

Rowena Siu 蕭小姐 9348 4118



## Nicholson Tower 東半山 蔚豪苑

8 Wong Nai Chung Gap Road, Midlevels East

Nicely decorated top floor unit with private roof terrace  
豪華複式頂層住宅連天台，可租可售

1,993 s.f.

**\$38,000,000** also for lease \$80,000 incl.

[www.landscape.com/17651.htm](http://www.landscape.com/17651.htm)

Eric Wong 黃先生 9740 3396



## Garden Terrace 2 & 3

中半山 花園臺2 & 3座

8A Old Peak Road, Midlevels Central  
High-floor 4-ensuite apartment with comprehensive facilities  
高層四套房單位連完善會所設施

3,307 s.f.

**\$43,000,000**

[www.landscape.com/16733.htm](http://www.landscape.com/16733.htm)

Sissy Li 李小姐 9642 6969



## Kennedy Heights

中半山 堅麗閣

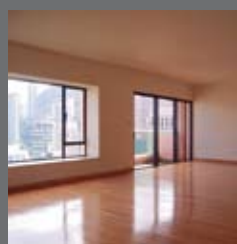
10-18 Kennedy Road, Midlevels Central  
Well maintained 5-bedroom apartment in convenient location  
保養良好五房住宅，交通便利

3,400 s.f.

**\$50,000,000** also for lease \$95,000 incl.

[www.landscape.com/18841.htm](http://www.landscape.com/18841.htm)

Stella Lo 羅小姐 9809 8570



## The Albany

中半山 雅賓利大廈

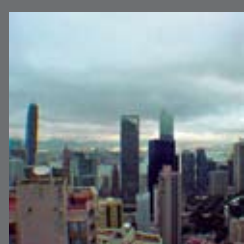
1 Albany Road, Midlevels Central  
Prestigious apartment in prime location  
豪華住宅，位於中半山尊貴地段，可租可售

2,549 s.f.

**\$55,000,000** also for lease \$150,000 incl.

[www.landscape.com/16112.htm](http://www.landscape.com/16112.htm)

Sissy Li 李小姐 9642 6969



## Estoril Court

中半山 愛都大廈

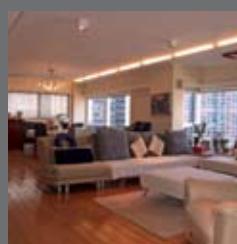
55 Garden Road, Midlevels Central  
Practical 4-bedroom apartment near CBD  
實用四房單位，鄰近中環商業區，地點優越，可租可售

3,347 s.f.

**\$57,000,000** also for lease \$140,000

[www.landscape.com/15956.htm](http://www.landscape.com/15956.htm)

Stephen Chan 陳先生 9093 3381



## May Tower 2

中半山 梅苑 2 座

5 May Road, Midlevels Central  
Spacious 4-ensuite apartment with high privacy  
寬敞四套房單位，寧靜私隱，可租可售

3,393 s.f.

**\$68,000,000** also for lease \$120,000 incl.

[www.landscape.com/18049.htm](http://www.landscape.com/18049.htm)

Rowena Siu 蕭小姐 9348 4118





**Billion Terrace**  
跑馬地 千葉居  
137-139 Blue Pool Road, Happy Valley  
Stylish 3-bedroom flat in tranquil location  
精緻裝潢三房單位，環境清幽，可租可售

1,166 s.f.  
\$24,000 incl. also for sale \$8,500,000

[www.landscape.com/17425.htm](http://www.landscape.com/17425.htm) Walker Lam 林先生 9551 1077



**Skyline Mansion**  
西半山 年豐園  
51 Conduit Road, Midlevels West  
Spacious apartment with balcony enjoying peaceful green view  
寬敞大宅連陽臺，俯瞰優美綠景

1,733 s.f.  
\$38,000 incl.

[www.landscape.com/11753.htm](http://www.landscape.com/11753.htm) Teresa Lau 劉小姐 9080 6686



**Wah Fung Mansion**  
東半山 華峰閣  
27 Tai Hang Road, Midlevels East  
Unique spacious apartment with balcony occupying whole floor  
特色一梯一伙單位寬敞單位連大陽台

2,087 s.f.  
\$50,000 also for sale \$16,800,000


[www.landscape.com/17866.htm](http://www.landscape.com/17866.htm) David Leung 梁先生 9199 0672



**1 Po Shan Road, Midlevels West**  
西半山 寶珊道1號  
Mid-rise mountain view apartment with facilities  
中密度翠綠山景單位，享會所設施

1,332 s.f.  
\$51,000 incl.

[www.landscape.com/12624.htm](http://www.landscape.com/12624.htm) Walker Lam 林先生 9551 1077



**Suncrest Tower**  
中半山 桂濤  
1-11 Monmouth Terrace, Midlevels Central  
Apartment with good layout in convenient location  
良好間隔住宅，地點便利，可租可售

2,005 s.f.  
\$55,000 incl. also for sale \$14,500,000

[www.landscape.com/17667.htm](http://www.landscape.com/17667.htm) Eric Wong 黃先生 9740 3396



**Carnation Court**  
東半山 康馨園  
41-47 Tai Hang Road, Midlevels East  
Practical 4-bedroom flat with open city view on fringe of Causeway Bay  
四房單位，間隔寬敞實用，鄰近銅鑼灣

2,126 s.f.  
\$58,000 incl.

[www.landscape.com/15207.htm](http://www.landscape.com/15207.htm) Sami Woo 胡小姐 9493 8275



**Park Mansions**  
中半山 百年順大廈  
27-29 Macdonnell Road, Midlevels Central  
Well maintained 4-bedroom flat with nice city view  
四房住宅，盡享城市景，保養良好

2,013 s.f.  
\$60,000

[www.landscape.com/16588.htm](http://www.landscape.com/16588.htm) David Chan 陳先生 9238 2012



**Fairlane Tower**  
中半山 寶雲山莊  
2B Bowen Road, Midlevels Central  
Modern apartment with full clubhouse facilities  
時尚單位，尊享會所設施

1,744 s.f.  
\$65,000 incl.

[www.landscape.com/18859.htm](http://www.landscape.com/18859.htm) Mira To 杜小姐 9486 1566



**Villa Veneto**  
西半山 威都閣  
3 Kotewall Road, Midlevels West  
Practical 4-bedroom apartment with western harbour view  
實用四房單位，坐擁西區維港景

2,562 s.f.  
\$65,000 incl.

[www.landscape.com/17427.htm](http://www.landscape.com/17427.htm) Mark Mak 麥先生 6838 2929



**Nicholson Tower 東半山 蔚豪苑**  
8 Wong Nai Chung Gap Road, Midlevels East  
Popular family apartment with racecourse view  
受歡迎家庭式住宅，享開揚馬場景，可租可售

1,993 s.f.  
\$65,000 incl. also for sale \$35,000,000

[www.landscape.com/10830.htm](http://www.landscape.com/10830.htm) Walker Lam 林先生 9551 1077



**Cavendish Heights**  
渣甸山 嘉雲臺  
27-37 Perkins Road, Jardine's Lookout  
Harbour view 4-bedroom flat with balcony, enjoying full range facilities  
無敵維港景四房單位連露台，配完善會所設施，可租可售

2,242 s.f.  
\$68,000 incl. also for sale \$30,000,000

[www.landscape.com/3328.htm](http://www.landscape.com/3328.htm) Teresa Lau 劉小姐 9080 6686

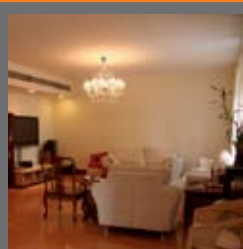


**Lincoln Court**  
東半山 林肯大廈  
156 Tai Hang Road, Midlevels East  
Lovely colonial mid-rise flat in tranquil location  
中密度迷人英式單位，地點清幽

1,900 s.f.  
\$75,000 incl.

[www.landscape.com/10735.htm](http://www.landscape.com/10735.htm) Eric Wong 黃先生 9740 3396

# MID-LEVELS LEASE



## Tregunter Tower 1

中半山 地利根德閣 1座

14 Tregunter Path, Midlevels Central  
Spacious and practical 3-bedroom flat with full facilities in prime location  
巨型三房單位，間隔實用，享會所設施，地段優越  
3,052 s.f.  
**\$75,000**

[www.landscape.com/17600.htm](http://www.landscape.com/17600.htm)

Yvonne Chang 鄭小姐 9088 4666



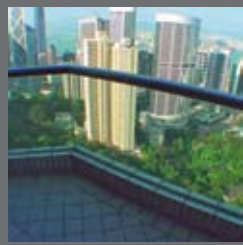
## Evergreen Villa

東半山 松柏新村

43 Stubbs Road, Midlevels East  
Spacious apartment with huge balcony and private roof  
寬敞實用住宅連巨型陽台及私家天台  
2,560 s.f.  
**\$75,000 incl.**

[www.landscape.com/18670.htm](http://www.landscape.com/18670.htm)

Teresa Lau 劉小姐 9080 6686



## Bowen Place

中半山 寶雲閣

11A Bowen Road, Midlevels Central  
Rare find harbour view apartment on Bowen Road  
寶雲道維港景住宅，市場罕有，可租可售  
1,927 s.f.  
**\$78,000 incl. also for sale \$30,000,000**

[www.landscape.com/11164.htm](http://www.landscape.com/11164.htm)

Stephen Chan 陳先生 9093 3381



## Pine Court

中半山 翠峰園

5 Old Peak Road, Midlevels Central  
Large colonial apartment with big balcony and open city view  
寬敞英式住宅連巨型陽台，享開揚城市景  
3,200 s.f.  
**\$80,000 incl.**

[www.landscape.com/7024.htm](http://www.landscape.com/7024.htm)

Mira To 杜小姐 9486 1566



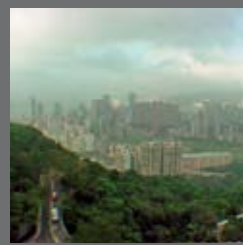
## Century Tower I

中半山 世紀大廈 1座

1 Tregunter Path, Midlevels Central  
Modern apartment in prime location  
時尚設計單位，位置優越，交通方便，可租可售  
2,565 s.f.  
**\$80,000 incl. also for sale \$30,000,000**

[www.landscape.com/18876.htm](http://www.landscape.com/18876.htm)

Mira To 杜小姐 9486 1566



## Taipan Court

東半山 大班閣

47B Stubbs Road, Midlevels East  
Spacious 4-bedroom triplex with unobstructed views  
寬敞四房三複式單位，享一流景觀  
3,670 s.f.  
**\$80,000**

[www.landscape.com/331.htm](http://www.landscape.com/331.htm)

Mark Mak 麥先生 6838 2929



## Garden Terrace 1

中半山 花園臺 1座

8 Old Peak Road, Midlevels Central  
Spacious duplex apartment on fringe of CBD  
間隔寬敞複式住宅，鄰近中環交通方便  
3,726 s.f.  
**\$80,000**

[www.landscape.com/18860.htm](http://www.landscape.com/18860.htm)

Yvonne Chang 鄭小姐 9088 4666



## Estoril Court

中半山 愛都大廈

55 Garden Road, Midlevels Central  
High efficiency 4-bedroom apartment on fringe of Central  
高實用率四房單位，鄰近中環，交通方便  
3,347 s.f.  
**\$85,000 incl.**

[www.landscape.com/17730.htm](http://www.landscape.com/17730.htm)

Sissy Li 李小姐 9642 6969



## Tregunter Tower 3

中半山 地利根德閣3座

14 Tregunter Path, Midlevels Central  
Large 4-bedroom apartment with comprehensive facilities  
寬敞四房單位，配完善設施  
3,034 s.f.  
**\$90,000 incl.**

[www.landscape.com/17650.htm](http://www.landscape.com/17650.htm)

Mark Mak 麥先生 6838 2929



## 80 Robinson Road, Midlevels West

西半山 羅便臣道 80 號

Designer decorated harbour view apartment in convenient location  
設計師精心設計維港景住宅，位置優越，交通方便  
2,523 s.f.  
**\$90,000 incl.**

[www.landscape.com/18612.htm](http://www.landscape.com/18612.htm)

Mira To 杜小姐 9486 1566



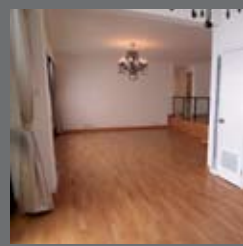
## Villa Monte Rosa

東半山 玫瑰新村

41A Stubbs Road, Midlevels East  
High efficiency older style apartment on Stubbs Road  
司徒拔道舊式寬敞單位，實用率高  
2,800 s.f.  
**\$90,000 incl.**

[www.landscape.com/16949.htm](http://www.landscape.com/16949.htm)

Walker Lam 林先生 9551 1077



## Broadwood Park

跑馬地 柏樂苑

38 Broadwood Road, Happy Valley  
Practical flat with 2 ensuites and facilities  
間隔寬敞實用雙套房單位，配會所設施  
2,913 s.f.  
**\$98,000 incl.**

[www.landscape.com/18802.htm](http://www.landscape.com/18802.htm)

Stephen Chan 陳先生 9093 3381



# MID-LEVELS LEASE

半山  
出租



**Grand Bowen**  
中半山 寶雲殿  
11B Bowen Road, Midlevels Central  
Unique 4-bedroom apartment with fantastic harbour view  
獨特四房單位，飽覽迷人維港景  
3,071 s.f.  
**\$99,800 incl.**  
[www.landscape.com/8138.htm](http://www.landscape.com/8138.htm) | Carman Szeto 司徒小姐 6183 8339



**Borrett Mansion**  
中半山 寶德臺  
8A-9B Borrett Road, Midlevels Central  
Spacious colonial apartment with huge balcony and fantastic view  
寬敞英式住宅連巨型陽臺，享無敵翠綠景觀  
2,708 s.f.  
**\$100,000**  
[www.landscape.com/18627.htm](http://www.landscape.com/18627.htm) | Teresa Fung 馮小姐 9138 1621



**Century Tower II**  
中半山 世紀大廈 2座  
1A Tregunter Path, Midlevels Central  
Prestigious large 4-bedroom flat with high privacy, enjoying Victoria Harbour and city view  
中半山豪華四房單位，私隱度高享維港市區景，可租可售  
3,638 s.f.  
**\$100,000 incl. also for sale \$55,000,000**  
[www.landscape.com/16669.htm](http://www.landscape.com/16669.htm) | Teresa Lau 劉小姐 9080 6686



**Kennedy Heights**  
中半山 堅麗閣  
10-18 Kennedy Road, Midlevels Central  
Huge 5-bedroom apartment with excellent harbour and CBD views  
特大五房住宅，眺望維港及中環一帶景色  
3,400 s.f.  
**\$108,000**  
[www.landscape.com/18787.htm](http://www.landscape.com/18787.htm) | David Chan 陳先生 9238 2012



**Garden Terrace 2 & 3**  
中半山 花園臺2 & 3座  
8A Old Peak Road, Midlevels Central  
Large apartment in exclusive development on fringe of Central  
寬敞大單位，鄰近中環，地點優越  
3,002 s.f.  
**\$110,000 incl.**  
[www.landscape.com/18843.htm](http://www.landscape.com/18843.htm) | Eric Wong 黃先生 9740 3396



**The Albany**  
中半山 雅賓利大廈  
1 Albany Road, Midlevels Central  
Newly renovated duplex apartment on fringe of Central  
全新裝修複式住宅，鄰近中環交通方便  
3,563 s.f.  
**\$130,000 incl.**  
[www.landscape.com/14475.htm](http://www.landscape.com/14475.htm) | Teresa Fung 馮小姐 9138 1621



**Magazine Court** 中半山 澄碧閣  
5-7 Magazine Gap Road, Midlevels Central  
Sought after 4-bedroom apartment on Magazine Gap Road with stunning harbour view  
馬己仙峽道熱門四房單位，坐擁優美維港景色  
3,300 s.f.  
**\$138,000 incl.**  
[www.landscape.com/18139.htm](http://www.landscape.com/18139.htm) | Carman Szeto 司徒小姐 6183 8339



**Fairlane Tower**  
中半山 寶雲山莊  
2B Bowen Road, Midlevels Central  
Prestigious 3-bedroom flat enjoying dynamic Central skyline  
豪華三房單位，俯瞰中環都會景  
2,830 s.f.  
**\$140,000**  
[www.landscape.com/18715.htm](http://www.landscape.com/18715.htm) | Christine Chong 莊小姐 9648 6082



**Grenville House**  
中半山 嘉慧園  
1-3 Magazine Gap Road, Midlevels Central  
Huge 6-bedroom duplex in renowned building on fringe of CBD  
名廈巨型六房複式大宅，鄰近中環商業區  
6,800 s.f.  
**\$190,000 also for sale \$100,000,000**  
[www.landscape.com/18055.htm](http://www.landscape.com/18055.htm) | Yvonne Chang 鄭小姐 9088 4666



**Tregunter Tower 2**  
中半山 地利根德閣 2座  
14 Tregunter Path, Midlevels Central  
Spacious 4-ensuite penthouse with private roof in well planned development  
名牌屋苑，寬敞四套房頂層單位連天台  
1,100 s.f.  
**\$190,000**  
[www.landscape.com/18594.htm](http://www.landscape.com/18594.htm) | Eric Wong 黃先生 9740 3396

# SOUTHSIDE SALES

南區  
出售



**Regent Palisades**  
薄扶林 帝柏園  
43 Bisney Road, Pokfulam  
Designer decorated low-rise 3-bedroom apartment  
迷人低密度裝修三房單位  
1,543 s.f.  
**\$11,000,000**  
[www.landscape.com/15784.htm](http://www.landscape.com/15784.htm) | Rowena Siu 蕭小姐 9348 4118



**Fulham Garden**  
薄扶林 富林苑  
84 Pokfulam Road, Pokfulam  
Newly renovated family apartment in lush green environment  
全新裝修住宅，環境清幽怡人  
1,750 s.f.  
**\$14,000,000**  
[www.landscape.com/11857.htm](http://www.landscape.com/11857.htm) | Rowena Siu 蕭小姐 9348 4118

For more listings, please go to [www.landscape.com/lease](http://www.landscape.com/lease)

For more listings, please go to [www.landscape.com/sale](http://www.landscape.com/sale)

# SOUTHSIDE SALES

## Residence Bel-Air South Towers (Phase 2)



薄扶林 貝沙灣南岸(第2期)

38 Bel-Air Avenue, Pokfulam

4-bedroom waterfront apartment with comprehensive facilities

薄扶林海濱四房住宅配以完善住客設施，可租可售

2,180 s.f.

**\$21,000,000** also for lease \$50,000 incl.

[www.landscape.com/15455.htm](http://www.landscape.com/15455.htm)

Sissy Li 李小姐 9642 6969

## Consort Garden 薄扶林 金碧花園



22-24 Consort Rise, Pokfulam

Charming low-rise flat with private roof in serene Pokfulam

薄扶林迷人低密度住宅連私家天台，環境清幽怡人，可租可售

2,200 s.f.

**\$24,000,000** also for lease \$80,000 incl.

[www.landscape.com/15975.htm](http://www.landscape.com/15975.htm)

Carman Szeto 司徒小姐 6183 8339

## Ruby Court

淺水灣 嘉麟閣

55 South Bay Road, Repulse Bay

Nicely decorated flat with full sea view in prestigious development

精美裝修連全海景，位處優越地段，可租可售

1,780 s.f.

**\$24,000,000** also for lease \$78,000 incl.

[www.landscape.com/15680.htm](http://www.landscape.com/15680.htm)

Teresa Fung 馮小姐 9138 1621

## Vista Mount Davis

薄扶林 華亭閣

52-54 Mount Davis Road, Pokfulam

Newly decorated apartment with full sea view

全新裝修住宅，可享全海景

2,100 s.f.

**\$26,000,000**

[www.landscape.com/17577.htm](http://www.landscape.com/17577.htm)

Christine Chong 莊小姐 9648 6082

## Ridge Court

淺水灣 冠園

21A-21D Repulse Bay Road, Repulse Bay

Stylish apartment with full view of Deep Water Bay

淺水灣完美裝修單位，配以深水灣全海景，可租可售

2,300 s.f.

**\$27,000,000** also for lease \$80,000 incl.

[www.landscape.com/11663.htm](http://www.landscape.com/11663.htm)

Stephen Chan 陳先生 9093 3381

## Carmel Hill 赤柱 海明山

12 Carmel Road, Stanley

Nicely fitted and equipped hilltop garden house with sweeping sea view

雅緻裝修連家具花園大屋，享壯麗海景

2,378 s.f.

(plus 405 s.f. garden and 318 s.f. roof)

**\$30,000,000**

[www.landscape.com/14431.htm](http://www.landscape.com/14431.htm)

Mary Li 李小姐 9011 6595

## Woodbury Court

薄扶林 嘉林閣

137 Pokfulam Road, Pokfulam

Practical duplex with balcony and peaceful sea view

間隔實用複式連陽臺單位，享寧靜海景

2,895 s.f.

**\$32,000,000**

[www.landscape.com/14474.htm](http://www.landscape.com/14474.htm)

Christine Chong 莊小姐 9648 6082

## Sea Cliff Mansions 淺水灣 海峰園



19A-19D Repulse Bay Road, Repulse Bay

Well decorated sea view flat with balcony enjoying communal garden and pagoda facilities

豪華裝修海景住宅連陽台，屋苑配有公眾花園涼亭

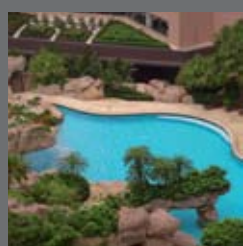
2,400 s.f.

**\$35,000,000**

[www.landscape.com/18741.htm](http://www.landscape.com/18741.htm)

Sami Woo 胡小姐 9493 8275

## Hong Kong Parkview - Tower 15 淺水灣 陽明山莊15座



88 Tai Tam Reservoir Road, Repulse Bay

3-ensuite apartment with both harbour view and Southside sea view

三套房單位，尊享維港及南區海景，可租可售

2,611 s.f.

**\$35,000,000** also for lease \$95,000 incl.

[www.landscape.com/14346.htm](http://www.landscape.com/14346.htm)

Stephen Chan 陳先生 9093 3381

## Bauhinia Gardens

春坎角 紫荊園

42 Chung Hom Kok Road, Chung Hom Kok

Spacious garden house with new decoration

春坎角寬敞花園大屋，連全新裝修

3,500 s.f. (plus 1,000 s.f. garden)

**\$45,000,000**

[www.landscape.com/15740.htm](http://www.landscape.com/15740.htm)

Rowena Siu 蕭小姐 9348 4118

## Redhill Park

大潭 紅山花園

12 Pak Pat Shan Road, Tai Tam

Sea view townhouse with spacious private garden and terrace

大潭海景排屋連寬敞私家花園及平台

3,608 s.f. (plus 1,342 s.f. garden)

**\$58,000,000**

[www.landscape.com/18421.htm](http://www.landscape.com/18421.htm)

Christine Chong 莊小姐 9648 6082

## The Beachfront

淺水灣 壁池

7 Bellevue Drive, Repulse Bay

Repulse Bay townhouse with picturesque sea view

淺水灣排屋，尊享優美海景

3,047 s.f.

**\$80,000,000**

[www.landscape.com/14459.htm](http://www.landscape.com/14459.htm)

David Leung 梁先生 9199 0672






**The Brentwood 淺水灣 蔚峰園**  
**11 Repulse Bay Road, Repulse Bay**  
 3-bedroom boutique apartment with newly decorated kitchen enjoying picturesque sea view  
 三房精品住宅連新裝修廚房，享廣闊海景  
 1,556 s.f.  
**\$48,000 incl.**  
[www.landscape.com/17349.htm](http://www.landscape.com/17349.htm) | Stella Lo 羅小姐 9809 8570



**Woodgreen Estate**  
 壽臣山 壽臣山道5號  
**5 Shouson Hill Road, Shouson Hill**  
 Low-rise apartment with open view in quiet Shouson Hill  
 壽臣山低密度住宅，尊享開揚景觀，可租可售  
 1,600 s.f.  
**\$50,000 incl. also for sale \$18,000,000**  
[www.landscape.com/18081.htm](http://www.landscape.com/18081.htm) | David Chan 陳先生 9238 2012



**37 Repulse Bay Road, Repulse Bay**  
 淺水灣 淺水灣道37號  
 Family apartment with excellent view of Deep Water Bay  
 淺水灣道家庭式住宅，尊享深水灣海景  
 1,680 s.f.  
**\$55,000 incl.**  
[www.landscape.com/18702.htm](http://www.landscape.com/18702.htm) | Stella Lo 羅小姐 9809 8570



**6-8 Ching Sau Lane, Chung Hom Kok**  
 春坎角 靜修里6-8號  
 Low-rise apartment with huge balcony  
 低密度住宅連巨型陽臺，可租可售  
 2,000 s.f.  
**\$58,000 incl. also for sale \$20,000,000**  
[www.landscape.com/11342.htm](http://www.landscape.com/11342.htm) | Mary Li 李小姐 9011 6595



**Cape Mansions**  
 薄扶林 翠海別墅  
**56-62 Mount Davis Road, Pokfulam**  
 Fantastic sea view apartment in good layout with balcony  
 尊享壯麗海景住宅連陽台，間隔實用  
 2,100 s.f.  
**\$60,000 incl.**  
[www.landscape.com/18774.htm](http://www.landscape.com/18774.htm) | Christine Chong 莊小姐 9648 6082




**Evergreen Garden**  
 壽臣山 松柏花園  
**18 Shouson Hill Road, Shouson Hill**  
 Garden duplex in lush greenery of tranquil Shouson Hill  
 迷人花園複式單位，位處寧靜壽臣山  
 2,106 s.f.  
**\$80,000 incl.**  
[www.landscape.com/18247.htm](http://www.landscape.com/18247.htm) | Maria Cheung 張小姐 8103 3862



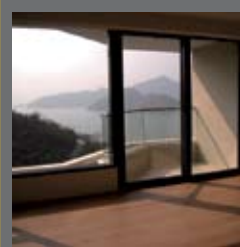
**Monte Villa**  
 淺水灣 明苑  
**121 Repulse Bay Road, Repulse Bay**  
 Penthouse duplex apartment with private roof overlooking Repulse Bay  
 淺水灣頂層複式單位連私家天台，俯瞰淺水灣全景  
 2,500 s.f.  
**\$80,000**  
[www.landscape.com/17782.htm](http://www.landscape.com/17782.htm) | Walker Lam 林先生 9551 1077



**Villa Cecil Phase II**  
 薄扶林 趙苑2期  
**192 Victoria Road, Pokfulam**  
 Popular 4-bedroom low-rise apartment with fantastic sea view  
 受歡迎低密度四房住宅，獨享優美海景  
 3,731 s.f.  
**\$85,000**  
[www.landscape.com/16351.htm](http://www.landscape.com/16351.htm) | Yvonne Chang 鄭小姐 9088 4666



**Park Place**  
 淺水灣 雅柏苑  
**7 Tai Tam Reservoir Road, Repulse Bay**  
 Large 3-bedroom penthouse apartment with private roof top in prime location  
 寬敞三房頂層單位連私家天台  
 2,338 s.f. (plus 1,613 s.f. garden)  
**\$88,000 incl.**  
[www.landscape.com/12115.htm](http://www.landscape.com/12115.htm) | Sissy Li 李小姐 9642 6969



**Belgravia 淺水灣 南灣道57號**  
**57 South Bay Road, Repulse Bay**  
 Superbly renovated sea view apartment with balcony and full club facilities  
 高貴裝修海景住宅連陽臺及完善住客會所設施，可租可售  
 2,390 s.f.  
**\$89,000 incl. also for sale \$38,000,000**  
[www.landscape.com/18704.htm](http://www.landscape.com/18704.htm) | Teresa Lau 劉小姐 9080 6686



**Pine Crest**  
 淺水灣 松苑  
**65 Repulse Bay Road, Repulse Bay**  
 Spacious apartment with beautiful view of Deep Water Bay  
 寬敞住宅，環境寧靜，望迷人深水灣景  
 2,250 s.f.  
**\$85,000 incl.**  
[www.landscape.com/17902.htm](http://www.landscape.com/17902.htm) | Maria Cheung 張小姐 8103 3862



**Stanley Green**  
 赤柱 維壁別墅  
**66 Stanley Village Road, Stanley**  
 Spacious apartment with private roof in quiet neighbourhood  
 間隔寬敞單位連私家天台，環境寧靜  
 2,200 s.f.  
**\$93,000**  
[www.landscape.com/17602.htm](http://www.landscape.com/17602.htm) | Mary Li 李小姐 9011 6595

# SOUTHSIDE LEASE



**102 Repulse Bay Road, Repulse Bay**  
 淺水灣 淺水灣道102號  
 Sea view townhouse with private pool on Repulse Bay Road  
 淺水灣道獨特海景排屋連私家泳池，珍貴罕有  
 3,500 s.f.  
**\$95,000**

[www.landscape.com/18742.htm](http://www.landscape.com/18742.htm)

Sami Woo 胡小姐 9493 8275



**Hong Kong Parkview - Tower 15 淺水灣 陽明山莊15座**  
 88 Tai Tam Reservoir Road, Repulse Bay  
 3-ensuite apartment with both harbour view and Southside sea view  
 淺水灣三套房住宅，配以維港景及南區海景，可租可售  
 2,611 s.f.  
**\$95,000 incl. also for sale \$35,000,000**

[www.landscape.com/14346.htm](http://www.landscape.com/14346.htm)

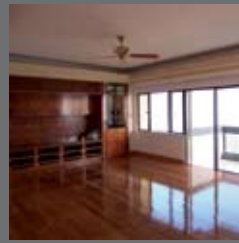
Mark Mak 麥先生 6838 2929



**Ann Garden 壽臣山 安苑**  
 29 Shouson Hill Road, Shouson Hill  
 Penthouse duplex with new decoration in tranquil Shouson Hill  
 壽臣山頂層單位全新裝修，環境寧靜  
 2,500 s.f.  
**\$100,000**

[www.landscape.com/17132.htm](http://www.landscape.com/17132.htm)

Stella Lo 羅小姐 9809 8570



**Belgravia Heights 大潭 碧濤閣**  
 27 Tai Tam Road, Tai Tam  
 Newly renovated 4-bedroom apartment enjoying beautiful sea view  
 翻新裝修四房海景住宅  
 2,890 s.f.  
**\$100,000**

[www.landscape.com/18531.htm](http://www.landscape.com/18531.htm)

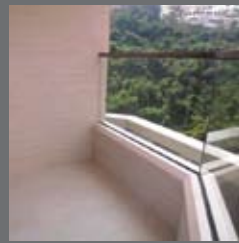
Teresa Fung 馮小姐 9138 1621



**14 Stanley Beach Road, Stanley 赤柱 赤柱灘道14號**  
 Newly renovated beachside low-rise apartment with roof top  
 赤柱海濱翻新裝修單位連天台，環境優美  
 2,000 s.f. (plus 2,000 s.f. roof)  
**\$100,000**

[www.landscape.com/2047.htm](http://www.landscape.com/2047.htm)

Maria Cheung 張小姐 8103 3862



**Belgravia 淺水灣 南灣道57號**  
 57 South Bay Road, Repulse Bay  
 Newly renovated 4-bedroom apartment in South Bay enjoying fantastic sea view  
 全新豪華裝修四房住宅，尊享南區海景  
 2,790 s.f.  
**\$120,000 incl.**

[www.landscape.com/18706.htm](http://www.landscape.com/18706.htm)

Sami Woo 胡小姐 9493 8275



**46 Tai Tam Road, Tai Tam 大潭 大潭道46號**  
 4-bedroom duplex in quiet Turtle Cove  
 四房複式單位，位處寧靜龜背灣  
 2,600 s.f.  
 (plus 1,300 s.f. roof and 400 s.f. garden)  
**\$120,000 incl.**

[www.landscape.com/1806.htm](http://www.landscape.com/1806.htm)

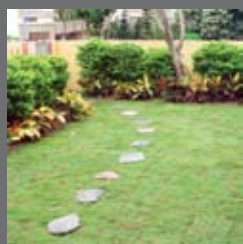
Mary Li 李小姐 9011 6595



**1 Shouson Hill Road East, Shouson Hill 壽臣山 壽臣山道東1號**  
 Townhouse with private garden in lush green neighbourhood  
 寬敞排屋連私家花園，獨享青翠綠景  
 4,062 s.f.  
**\$128,000**

[www.landscape.com/18271.htm](http://www.landscape.com/18271.htm)

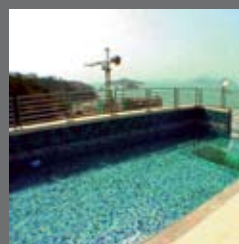
Louis Wong 黃先生 9871 6828



**Stanley Court 赤柱 海灣園**  
 9 Stanley Mound Road, Stanley  
 Charming townhouse with private garden  
 迷人排屋連私家花園，環境怡人，可租可售  
 2,889 s.f. (plus 825 s.f. garden)  
**\$130,000 also for sale \$41,000,000**

[www.landscape.com/18096.htm](http://www.landscape.com/18096.htm)

David Chan 陳先生 9238 2012



**12A South Bay Road, Repulse Bay 淺水灣 南灣道12號A**  
 Luxurious house with private swimming pool and fantastic sea view  
 豪華大屋連私家泳池，尊享無敵海景  
 4,603 s.f.  
**\$132,000**

[www.landscape.com/8440.htm](http://www.landscape.com/8440.htm)

Christine Chong 莊小姐 9648 6082



**Stanley Court 赤柱 海灣園**  
 9 Stanley Mound Road, Stanley  
 Nicely decorated beachside townhouse with private roof and garden  
 優美裝修海濱排屋，連私家天台及花園  
 2,713 s.f.  
 (plus 622 s.f. roof and 457 s.f. garden)  
**\$135,000 incl.**

[www.landscape.com/18863.htm](http://www.landscape.com/18863.htm)

Walker Lam 林先生 9551 1077



**56 Repulse Bay Road, Repulse Bay 淺水灣 淺水灣道56號**  
 Bright and airy waterfront unit with full view of Repulse Bay Beach  
 光猛開揚海濱住宅，坐擁全淺水灣海景  
 2,671 s.f.  
**\$135,000 incl.**

[www.landscape.com/12233.htm](http://www.landscape.com/12233.htm)

Mary Li 李小姐 9011 6595



# SOUTHSIDE LEASE

南區  
出租



**Las Pinadas**  
壽臣山 朗松居  
33 Shouson Hill Road, Shouson Hill  
Rare find high quality 4-bedroom  
townhouse in Shouson Hill  
壽臣山優質四房排屋，市場罕有  
3,383 s.f.  
**\$148,000 incl.**  
[www.landscape.com/13179.htm](http://www.landscape.com/13179.htm) | Louis Wong 黃先生 9871 6828



**Coral Villas**  
春坎角 珊瑚小築  
27 Horizon Drive, Chung Hom Kok  
Exquisite townhouse with peaceful sea  
view  
春坎角精緻排屋享寧靜海景  
3,345 s.f.  
**\$160,000**  
[www.landscape.com/9415.htm](http://www.landscape.com/9415.htm) | Teresa Fung 馮小姐 9138 1621



**Le Palais**  
大潭 皇府灣  
8 Pak Pat Shan Road, Tai Tam  
Luxurious townhouse with stunning sea  
view  
豪華裝修排屋連優美海景  
4,365 s.f.  
**\$170,000 incl.**  
[www.landscape.com/9423.htm](http://www.landscape.com/9423.htm) | David Chan 陳先生 9238 2012



**Evergreen Garden**  
壽臣山 松柏花園  
18 Shouson Hill Road, Shouson Hill  
Spacious 5-bedroom apartment with  
brand new decoration and lush green view  
寬敞五房住宅全新裝修，獨享翠綠園景  
3,800 s.f. (plus 998 s.f. terrace)  
**\$198,000 incl.**  
[www.landscape.com/18601.htm](http://www.landscape.com/18601.htm) | Carman Szeto 司徒小姐 6183 8339



**Ocean Bay**  
春坎角 海天徑15-17號  
15-17 Horizon Drive, Chung Hom Kok  
4-ensuite waterfront house with private  
roof and pool  
春坎角海濱四套房大屋連私家天台及泳池  
3,690 s.f.  
**\$200,000**  
[www.landscape.com/15565.htm](http://www.landscape.com/15565.htm) | Louis Wong 黃先生 9871 6828




**Carmelia**  
赤柱 赤柱村道60號  
60 Stanley Village Road, Stanley  
Rare find huge colonial house with front  
yard and private garden  
罕有巨型英式大屋，連前院及私家花園  
5,200 s.f. (plus 1,891 s.f. garden)  
**\$230,000 incl.**  
[www.landscape.com/8783.htm](http://www.landscape.com/8783.htm) | Louis Wong 黃先生 9871 6828

# THE PEAK SALES

山頂  
出售



**Guildford Garden**  
山頂 喬苑  
1-3 Mansfield Road, The Peak  
Lower Peak 4-bedroom flat with spacious  
and practical layout  
山頂寬敞四房住宅，間隔實用  
2,400 s.f.  
**\$35,000,000**  
[www.landscape.com/14486.htm](http://www.landscape.com/14486.htm) | Maria Cheung 張小姐 8103 3862



**Montebello**  
山頂 濠景閣  
15-17 Plantation Road, The Peak  
Newly furnished penthouse with private  
roof on The Peak  
山頂頂層單位，配全新傢俬及私家天台，可租可售  
3,140 s.f.  
**\$53,000,000 also for lease \$150,000 incl.**  
[www.landscape.com/5851.htm](http://www.landscape.com/5851.htm) | Carman Szeto 司徒小姐 6183 8339



**Strawberry Hill**  
山頂 紅莓閣  
8 Plunkett's Road, The Peak  
Colonial house with spacious and  
practical layout on The Peak  
山頂英式大宅，間隔寬敞實用  
3,190 s.f.  
**\$80,000,000**  
[www.landscape.com/15722.htm](http://www.landscape.com/15722.htm) | Maria Cheung 張小姐 8103 3862



**Abergeldie**  
山頂 種植道 52號  
52 Plantation Road, The Peak  
Newly renovated townhouse with pool  
overlooking Victoria Harbour panorama  
翻新排屋連游泳池，俯瞰維港美景  
3,688 s.f.  
**\$130,000,000**  
[www.landscape.com/18449.htm](http://www.landscape.com/18449.htm) | David Leung 梁先生 9199 0672

# THE PEAK LEASE

山頂  
出租



**43 Barker Road, The Peak**  
山頂 白加道43號  
Modern mid-rise apartment on Barker  
Road with Victoria Harbour view  
白加道時尚中密度住宅連維港景觀  
1,946 s.f.  
**\$75,000 incl.**  
[www.landscape.com/18484.htm](http://www.landscape.com/18484.htm) | Mark Mak 麥先生 6838 2929



**Carolina Garden**  
山頂 嘉樂園  
20-34 Coombe Road, The Peak  
Rare find colonial apartment on  
Lower Peak  
罕有英式住宅，位處顯赫地段  
2,850 s.f.  
**\$110,000 incl.**  
[www.landscape.com/10810.htm](http://www.landscape.com/10810.htm) | Sami Woo 胡小姐 9493 8275

# THE PEAK LEASE



## Stewart Terrace

山頂 史釗域臺

81-95 Peak Road, The Peak

Colonial low-rise apartment with nice decoration on The Peak

山頂低密度英式住宅，連雅緻裝修，可租可售

3,077 s.f.

\$110,000 also for sale Open Offer

[www.landscape.com/18444.htm](http://www.landscape.com/18444.htm)

Teresa Lau 劉小姐 9080 6686



## 1-3 Homestead Road, The Peak

Luxurious modern 3-ensuite apartment on The Peak with Southside sea view

山頂豪華時尚三套房單位，尊享南區海景

2,828 s.f.

\$120,000 incl.

[www.landscape.com/18568.htm](http://www.landscape.com/18568.htm)

Louis Wong 黃先生 9871 6828



## Orient Crest

山頂 山頂道 76號

76 Peak Road, The Peak

Newly renovated townhouse with 4 bedrooms

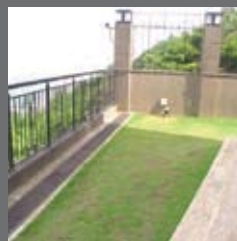
全新翻新四房排屋，間隔實用

3,300 s.f.

\$145,000

[www.landscape.com/18836.htm](http://www.landscape.com/18836.htm)

Carman Szeto 司徒小姐 6183 8339



## 74 Mount Kellett Road, The Peak

山頂 加列山道 74 號

Peak townhouse with sea and hill views

山頂時尚排屋，尊享海景山景

4,200 s.f.

\$165,000 incl.

[www.landscape.com/10636.htm](http://www.landscape.com/10636.htm)

Yvonne Chang 鄭小姐 9088 4666



## Plantation Heights

山頂 迎福苑

29 Plantation Road, The Peak

Newly renovated house with private garden

翻新山頂大屋連私家花園

3,500 s.f. (plus 1,265 s.f. garden)

\$190,000 incl.

[www.landscape.com/18529.htm](http://www.landscape.com/18529.htm)

Carman Szeto 司徒小姐 6183 8339



## Interocean Court

山頂 山頂道 26號

26 Peak Road, The Peak

Prestigious 5-bedroom apartment with panoramic view of Victoria Harbour

豪華五房住宅，尊享一流維港景觀

3,844 s.f.

\$200,000

[www.landscape.com/18703.htm](http://www.landscape.com/18703.htm)

Louis Wong 黃先生 9871 6828



## 2 Barker Road, The Peak

山頂 白加道2號

Exquisite 4-bedroom townhouse enjoying excellent harbour view

特色四房排屋，獨享迷人維港景

4,082 s.f.

\$230,000

[www.landscape.com/18597.htm](http://www.landscape.com/18597.htm)

Yvonne Chang 鄭小姐 9088 4666



## Altadena

山頂 白加道27號

27 Barker Road, The Peak

Rare find duplex penthouse with unobstructed harbour view

罕有頂層複式單位獨享一望無際維港景

4,500 s.f.

\$230,000

[www.landscape.com/11910.htm](http://www.landscape.com/11910.htm)

David Leung 梁先生 9199 0672



## 24 Middle Gap Road, The Peak

山頂 中峽道24號

Single detached house rarely for lease

山頂獨立屋罕有放租，可租可售

5,750 s.f.

\$380,000 also for sale Open Offer

[www.landscape.com/1376.htm](http://www.landscape.com/1376.htm)

David Leung 梁先生 9199 0672



## 46 Plantation Road, The Peak

山頂 種植道46號

Brand new extravagant detached house with private pool and private lift overlooking harbour view

全新豪華獨立屋連私家泳池及私家電梯，俯瞰維港景觀

5,730 s.f.

\$400,000

[www.landscape.com/18865.htm](http://www.landscape.com/18865.htm)

David Leung 梁先生 9199 0672a



Landscape Realty Limited C-018733

a member of Landscape Surveyors Ltd

Tel: 852-2866 0022 Fax: 852-2866 0015

Email: info@landscape.com Website: www.landscape.com

Unit 3106, 31/F, Hopewell Centre,  
183 Queen's Road East, Wanchai, Hong Kong

The information, text, photos, analyses and projections contained herein are provided solely for the convenience of prospective clients and no warranty or representation as to their accuracy, correctness or completeness is made by Landscape Surveyors Limited, Landscape Realty Limited or the owners, none of whom shall have any liability or obligation with respect thereto. Interested parties should rely on their own investigations, interpretations and analyses in connection with the purchase or letting thereof.

Information has been provided to us by sources deemed reliable, but no warranty or representation is made as to its accuracy, correctness or completeness. These offerings are made subject to contract, correction of errors, omissions, prior sale or lease, change of price or terms or withdrawal from the market without notice. The contents of The Key are for reference only and do not constitute all or any part of a contract.

Copyright 2009