

select deluxe homes

The Key

大宅®

APRIL 2008
Volume 43

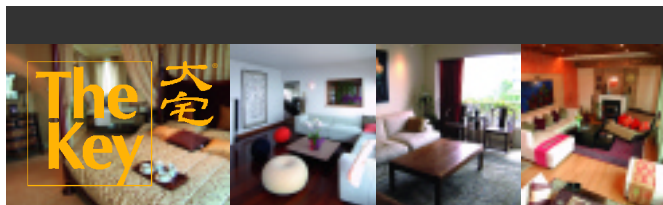
published and distributed by

LANDSCOPE
The Specialists in Luxury Properties

領域



www.landscape.com



KeyNotes

Fear not, provided you fear; but if you fear not, then fear.
Blaise Pascal

..... However, the two contrasting scenes have the same impact on Hong Kong, especially its luxury property market which has benefited in the last nine months from overspill of the buoyant stock markets in Hong Kong, China and the US. Many buyers of luxury properties in the last quarter of 2007 were investors who made good fortunes in the stock market. The iron hot stock market helped fuel demand for alternative investment in real estate, which saw prices rocketed to new highs amid a sudden surge of activities. Now that local stock market has lost one third of its peak value and major counterparts in China and the US have fared no better, the chase for cash has begun. The collapse of an investment fund at Carlyle Group (one of US's largest private equity investors) and Bear Stern, a major US investment bank, sent shock waves across the Pacific Ocean to Hong Kong. Equity and property investors are jittering with fright. More sales listings emerged in the last two weeks. Luxury property sales are sluggish and price softening in the tone of 3% to 5% is already seen in some areas. As more people choose to sell, we expect the fat profit margin they have seen accumulated on their properties is beginning to thin down.

Koh Keng-Shing
ks-koh@landscape.com

(The above is an excerpt from Market Watch on www.landscape.com. For the full article, please log on to www.landscape.com/m0408.htm)

About The Key

The Key is a monthly publication of sales and letting listings of luxury residential properties on Hong Kong Island. It is sent to VIP clients of Landscape Realty and residents of The Peak, Southside, Mid-Levels, Kowloon Tong, Homantin and selected upmarket residential areas in Shatin, Tai Po, Clear Water Bay and Castle Peak Road. The recipients comprise the crème de la crème of Hong Kong's affluent community.

In addition to The Key, Landscape Realty sends weekly eNewsletters to clients on most update listings of luxury properties. If you wish to receive the eNewsletter, please call Loretta Lui at 3102 4818 or email to info@landscape.com.

How may you list your property with The Key?

If you would like to see your property listed in The Key in the next issue, you may call Loretta Lui at 3102 4818 or email to info@landscape.com. Or you may simply fill out the space below and fax to us at 2866 0015.

Property to be listed

Asking Rental / Sale Price

Floor Area

Contact Person

Telephone

Email

Our KeyPersons will contact you for follow-up works.

SOUTHSIDE SALES

南區
出售



Sunlight Court

薄扶林新麗閣

30-32 Bisney Road, Pokfulam

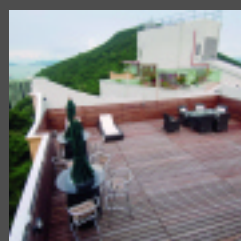
Low-rise penthouse with roof in quiet enclave

低密度頂層連天台，位置寧靜

1,300 s.f. (plus 1,300 s.f. roof)

\$16,800,000 also for lease \$65,000 incl.

www.landscape.com/14113.htm | Rowena Siu 蕭小姐 9348 4118



YY Mansion

薄扶林裕仁大廈

96 Pok Fu Lam Road, Pokfulam

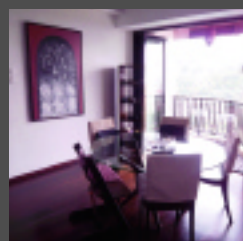
Nicely decorated apartment with private rooftop

雅裝住宅連私家天台

1,750 s.f. (plus 1,194 s.f. roof)

\$18,500,000 also for lease \$88,000 incl.

www.landscape.com/12944.htm | Sami Woo 胡小姐 9493 8275



Grand Garden

淺水灣華景園

61 South Bay Road, Repulse Bay

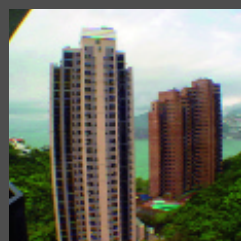
Cosy apartment with balcony in tranquil South Bay

舒適單位連露台，位於寧靜南灣

1,463 s.f.

\$19,019,000

www.landscape.com/13742.htm | Simon Lee 李先生 6014 3712



South Bay Towers

淺水灣南灣大廈

59 South Bay Road, Repulse Bay

Cosy 2-bedroom sea view apartment in quiet South Bay

舒適兩房海景單位，位於清靜南灣

1,433 s.f.

\$17,500,000

www.landscape.com/13830.htm | Mark Mak 麥先生 6838 2929



Bauhinia Garden - Lowrise

春坎角紫荊園

42 Chung Hom Kok Road, Chung Hom Kok

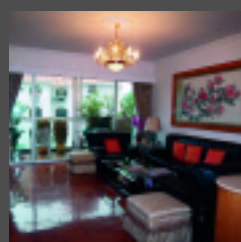
Lovely low-rise flat in quiet area of Chung Hom Kok

迷人低密度住宅，位於寧靜的春坎角

1,800 s.f.

\$20,000,000

www.landscape.com/13961.htm | Maria Cheung 張小姐 6256 1848



La Clare Mansion

薄扶林利嘉大廈

92 Pok Fu Lam Road, Pokfulam

Spacious 4-bedroom mid-rise unit

寬敞四房中密度住宅

2,500 s.f.

\$21,000,000

www.landscape.com/13994.htm | Rowena Siu 蕭小姐 9348 4118



IDYLLIC INDULGENCE

Nestled in the verdant woods of Mt. Davis Road is this mid-rise apartment, with a large crescent-shaped sit-out balcony looking out to Lamma Channel and the South China Sea beyond. Connecting with the balcony is a comfortable lounge, which has a feature wall with alcoves adorned with artistic sculptures. The designer-owner spared no pains to dress the open-plan kitchen that has a high bar table good for a sip while taking in the late afternoon sun from the balcony. The master en suite at the other end of the apartment has wide foldable windows that when opened make one feel like sleeping under the stars. The white-washed walls and the dark wood floor compliment the bright and airy ambience of this cozy domicile. Indulge yourself.

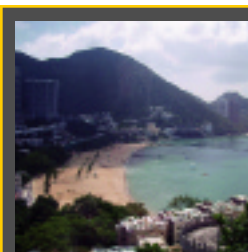
Greenery Garden
2A Mount Davis Road,
Pokfulam

薄扶林 怡林閣

1,547 s.f.
\$14,000,000

www.landscape.com/14325.htm

Christine Chong 莊小姐 9648 6082



Repulse Bay Garden

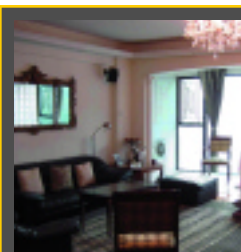
淺水灣麗景園

18-40 Belleview Drive, Repulse Bay
High efficiency apartment overlooking
Repulse Bay beach
高實用率單位，眺望淺灣海灘

1,780 s.f.
\$25,000,000 **SOLE AGENT** 獨家代理

www.landscape.com/12489.htm

Mary Li 李小姐 9011 6595



Scenic Villas

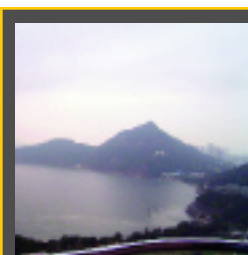
薄扶林美景臺

2-28 Scenic Villa Drive, Pokfulam
Cosy sea view apartment with facilities
舒適海景單位，消閒設施

2,194 s.f.
\$25,000,000

www.landscape.com/14372.htm

Mary Li 李小姐 9011 6595



37 Repulse Bay Road

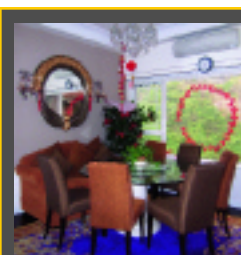
淺水灣道 37號

Sea view apartment with facilities on
sought after upper Repulse Bay Road
搶手海景住宅連設施，位於淺灣頭段

1,635 s.f.
\$29,000,000

www.landscape.com/14353.htm

Teresa Fung 馮小姐 9138 1621



Ruby Court

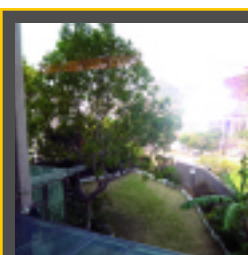
淺水灣嘉麟閣

55 South Bay Road, Repulse Bay
Popular apartment with unobstructed
sea view
受歡迎住宅享無遮擋海景

1,780 s.f.
\$29,800,000

www.landscape.com/10137.htm

Philip Lai 黎先生 9430 3330



Joy Garden

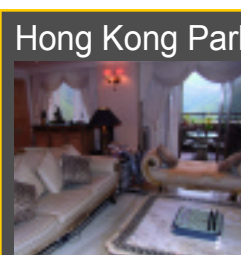
壽山山曉頹花園

13 Shouson Hill Road West, Shouson Hill
Unique 4-bedroom duplex flat with new
kitchen and bathrooms
獨特四房複式單位，廚浴新穎

2,752 s.f.
\$39,800,000 also for lease \$108,000 incl.

www.landscape.com/14273.htm

Simon Yung 翁先生 9418 5743



Hong Kong Parkview - Tower 10

淺水灣陽明山莊第10座

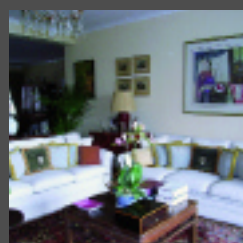
88 Tai Tam Reservoir Road, Repulse Bay
Deluxe 4-bedroom apartment in lush
green surroundings
豪華四房，茂盛綠景

2,772 s.f.
\$40,800,000

www.landscape.com/14351.htm

Sissy Li 李小姐 9642 6969

SOUTHSIDE SALES



Repulse Bay Garden

淺水灣麗景園

18-40 Belleview Drive, Repulse Bay
Nicely decorated sea view flat with large balcony and high efficiency
雅裝海景單位連大露台，實用率高

2,288 s.f.
\$32,000,000

www.landscape.com/13776.htm | Sylvia Tsang 曾小姐 9801 1742



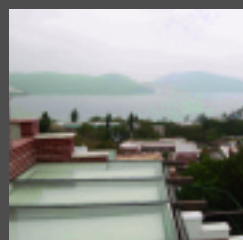
Ruby Court

淺水灣嘉麟閣

55 South Bay Road, Repulse Bay
Renowned waterfront apartment in quiet South Bay with comprehensive facilities
著名海濱單位於寧靜南灣，享全面消閒設施

2,200 s.f.
\$39,000,000

www.landscape.com/14102.htm | Carman Szeto 司徒小姐 8100 3893



Carmel Hill

赤柱 海明山

12 Carmel Road, Stanley
Hilltop garden townhouse overlooking Stanley Bay
花園排屋眺望赤柱灣，居高臨下

2,378 s.f. (plus 405 s.f. garden)
\$45,000,000 also for lease \$115,000

www.landscape.com/14431.htm | Johnny Cheung 張先生 9278 9939



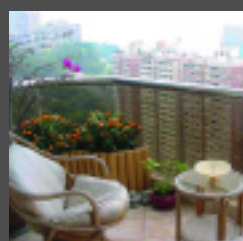
Sea Cliff Mansions

淺水灣海峰園

19D Repulse Bay Road, Repulse Bay
Deluxe sea view apartment with nice decorations on upper Repulse Bay Road
豪華海景雅裝單位，淺灣頭段

2,400 s.f.
\$45,000,000

www.landscape.com/13860.htm | Teresa Fung 馮小姐 9138 1621



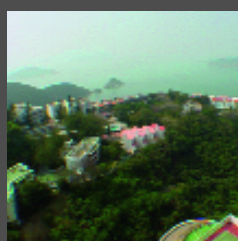
Woodbury Court

薄扶林 嘉林閣

137 Pok Fu Lam Road, Pokfulam
Practical duplex with balcony and peaceful sea view
實用複式連露台，享平靜海景

2,895 s.f.
\$48,000,000

www.landscape.com/14474.htm | Christine Chong 莊小姐 9648 6082



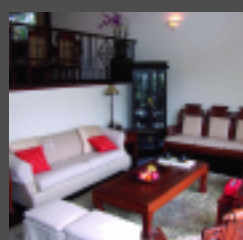
Grand Garden

淺水灣華景園

61 South Bay Road, Repulse Bay
Rare find large 4-bedroom flat with excellent facilities
罕有四房大單位，享一流設施

3,054 s.f.
\$52,000,000

www.landscape.com/13924.htm | Philip Lai 黎先生 9430 3330



House at Chung Hom Kok

春坎角洋房

Tastefully decorated townhouse with private terrace in quiet enclave
品味裝修排屋連私家平台，環境寧靜

2,800 s.f. (plus 400 s.f. terrace)
\$60,000,000

| Christine Chong 莊小姐 9648 6082

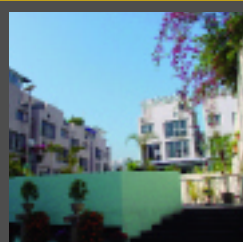
Repulse Bay Heights 淺水灣淺水灣花園



3 Belleview Drive, Repulse Bay
Spacious garden townhouse in the heart of Repulse Bay with 2 carparks
寬敞花園排屋，位於淺水灣中心地帶，連雙車位

3,200 s.f.
(plus 2,900 s.f. garden & 997 s.f. roof)
\$60,000,000

www.landscape.com/14268.htm | Simon Lee 李先生 6014 3712



The Hazelton

壽臣山橡園

6 Shouson Hill Road, Shouson Hill
Distinguished family house with private garden
獨特家庭洋房連私家花園

3,195 s.f. (plus 520 s.f. garden)
\$60,000,000

www.landscape.com/13237.htm | Simon Lee 李先生 6014 3712



33 Cape Road, Chung Hom Kok 春坎角 環角道33號

Brand new sea view townhouse in tranquil location
全新海景排屋，環境寧靜

3,182 s.f. (plus 997 s.f. garden)
\$66,000,000

www.landscape.com/6898.htm | Simon Yung 翁先生 9418 5743



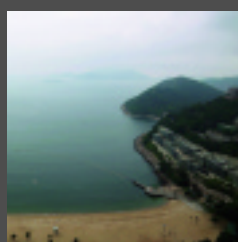
Hong Kong Parkview - Tower 18

淺水灣陽明山莊第18座

88 Tai Tam Reservoir Road, Repulse Bay
Penthouse with private roof
頂層單位連天台

2,540 s.f.
\$68,000,000

www.landscape.com/2486.htm | Sissy Li 李小姐 9642 6969



Grosvenor Place

淺水灣淺水灣道117號

117 Repulse Bay Road, Repulse Bay
Modern high-rise in the heart of Repulse Bay with extensive views
時尚住宅享開揚景觀，位於淺水灣中心地帶

2,809 s.f.
\$70,000,000

www.landscape.com/13358.htm | Maria Cheung 張小姐 6256 1848

SOUTHSIDE SALES

南區
出售



Las Pinadas
壽臣山 朗松居
33 Shouson Hill Road, Shouson Hill
Popular townhouse in Shouson Hill with full club facilities
壽臣山受歡迎排屋，全面會所設施
3,424 s.f. (plus 261 s.f. garden)
\$70,000,000 also for lease \$160,000

www.landscape.com/13834.htm | Simon Yung 翁先生 9418 5743



Manderly Garden
深水灣文禮苑
48 Deep Water Bay Road, Deep Water Bay
Modern townhouse in serene environment
時尚排屋，環境寧靜
3,594 s.f. (plus 161 s.f. garden)
\$85,000,000 also for lease \$190,000

www.landscape.com/6323.htm | Teresa Fung 馮小姐 9138 1621



2-8 Shouson Hill Road West
壽臣山道西2至8號
Unique 6-bedroom townhouse with large private garden in tranquil neighbourhood
獨特六房排屋連大私家花園，環境清靜
4,000 s.f. (plus 3,000 s.f. garden)
\$150,000,000

www.landscape.com/14420.htm | Christine Chong 莊小姐 9648 6082



12 Tai Tam Road
大潭道12號
Newly renovated garden house on Tai Tam waterfront
翻新花園洋房，位處大潭海濱
5,200 s.f. (plus 933 s.f. roof & 636 s.f. garden)
\$175,000,000

www.landscape.com/11195.htm | Stephen Chan 陳先生 9093 3381



Island Grove
深水灣 香島道40號
40 Island Road, Deep Water Bay
Prestigious residence at Deep Water Bay waterfront
深水灣臨海尊貴住宅
5,080 s.f. (plus 423 s.f. garden)
\$228,000,000

www.landscape.com/13229.htm | Louis Wong 黃先生 9871 6828



House at Upper Repulse Bay Road
淺水灣道頭段洋房
Rare detached house
罕有獨立屋
4,900 s.f. (plus 1,946 s.f. garden)
\$250,000,000

www.landscape.com/13229.htm | Louis Wong 黃先生 9871 6828

SOUTHSIDE LEASE

南區
出租



Helene Tower
淺水灣 喜蓮苑
123 Repulse Bay Road, Repulse Bay
Unique duplex with full view of Repulse Bay Beach
獨特複式擁全淺灣灘景
1,904 s.f.
\$83,000

www.landscape.com/11565.htm | Simon Yung 翁先生 9418 5743



Pacific View
大潭 浪琴園
38 Tai Tam Road, Tai Tam
Sea view apartment in quiet Tai Tam
海景住宅，位於清靜大潭
1,906 s.f.
\$75,000 incl.

www.landscape.com/11565.htm | Carman Szeto 司徒小姐 8100 3893



La Mer
薄扶林 浪頤居
67-71 Bisney Road, Pokfulam
Rare find modern sea view low-rise in tranquil surroundings
罕有時尚海景低密度住宅，環境清靜
2,063 s.f.
\$93,000

www.landscape.com/13471.htm | Yvonne Chang 鄭小姐 9088 4666



Burnside Estate
淺水灣濱景園
9 South Bay Road, Repulse Bay
3-bedroom townhouse with private roof terrace close to beach
三房排屋連私家天台，鄰近海灘
2,100 s.f.
\$100,000 incl.

www.landscape.com/12916.htm | Maria Cheung 張小姐 6256 1848



Celestial Garden
淺水灣 詩禮花園
5 Repulse Bay Road, Repulse Bay
Lovely home on upper Repulse Bay Road with open green view
淺灣頭段迷人家居，享開揚綠景
2,375 s.f.
\$125,000 incl.

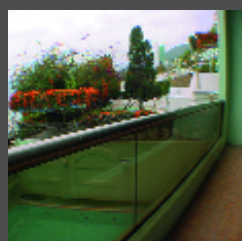
www.landscape.com/12730.htm | Yvonne Chang 鄭小姐 9088 4666



5 Headland Road, Repulse Bay
淺水灣赫蘭道5號
Newly renovated penthouse duplex with peaceful sea view
新裝頂層複式享寧靜海景
3,200 s.f.
\$162,000

www.landscape.com/12969.htm | Christine Chong 莊小姐 9648 6082

SOUTHSIDE LEASE



Fairview Court

淺水灣富慧閣

94 Repulse Bay Road, Repulse Bay
Huge 5-bedroom garden flat in tranquil surroundings
巨型五房花園住宅，環境寧靜

4,155 s.f. (plus 764 s.f. garden)
\$180,000

www.landscape.com/14194.htm Rita Lee 李小姐 9437 0087



Coral Villas

春坎角珊瑚小築

27 Horizon Drive, Chung Hom Kok
Rare sea view house with outdoor pool
罕有海景洋房，室外泳池設施

3,345 s.f.
\$200,000

www.landscape.com/14376.htm Yvonne Chang 鄭小姐 9088 4666

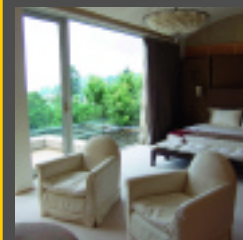


35 South Bay Road, Repulse Bay

淺水灣南灣道35號
Rare find colonial sea view apartment with garden
罕有英式海景單位連花園

3,800 s.f.
\$210,000

www.landscape.com/14198.htm Sami Woo 胡小姐 9493 8275



Carmelia

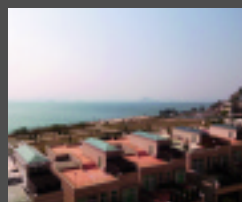
赤柱赤柱村道60號

60 Stanley Village Road, Stanley
Huge colonial house with front yard and private garden
巨型英式洋房，享有前園及私家花園

4,600 s.f. (plus 1,155 s.f. garden)
\$250,000 incl. also for sale Open Offer

www.landscape.com/9534.htm Johnny Cheung 張先生 9278 9939

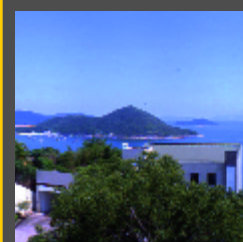
Residence Bel-Air (Phase 3) Houses



薄扶林 貝沙灣洋房

8 Cyberport Road, Pokfulam
Brand new spacious waterfront garden house
全新寬敞臨海花園屋
4,645 s.f. (plus 1,977 s.f. garden)
\$268,000 also for sale \$120,000,000

www.landscape.com/14348.htm Mira To 杜小姐 9486 1566



Ming Villas

壽臣山明園

39B-F Shouson Hill Road, Shouson Hill
Exclusive sea view garden house in tranquil area
特色海景花園洋房，位置清靜

4,258 s.f. (plus 745 s.f. terrace)
\$300,000 incl. also for sale \$150,000,000

www.landscape.com/11984.htm Sissy Li 李小姐 9642 6969

DO YOU KNOW

The Exterior of Hung Hing Ying Building, The University of Hong Kong

香港大學孔慶熒樓外部

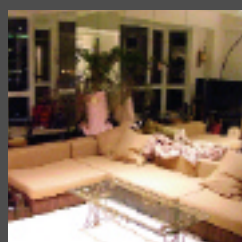
Information provided by Antiquities and Monuments Office, Leisure and Cultural Services Department

The building which was built with the financial assistance from Sir Paul Chater, Professor G. P. Jordan and others, was originally designed to house the student union. It was officially opened by the Governor, Sir Reginald Stubbs in February 1919. The building was temporarily used for administrative purpose after World War II but was later converted into the Senior Common Room in 1974. The building was named in honour of Mr. Hung Hing-ying in 1986 in recognition of his family's donations to the University. It is now re-used for administrative purpose.

孔慶熒樓是由遮打爵士、佐敦教授及其他人士捐款建成，原用作學生會之用，於一九一九年二月由當時之總督司徒拔爵士正式揭幕。第二次世界大戰後，建築物曾暫作行政大樓之用，其後於一九七四年改用作高級職員休息室。香港大學為感謝孔慶熒先生家人慷慨捐助，於一九八六年正式將建築物命名為孔慶熒樓。建築物最近再改作行政用途。



MID-LEVELS SALES



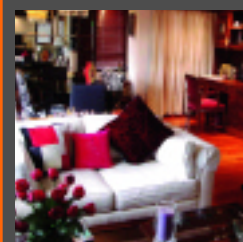
St. Louis Mansion

中半山雨時大廈

20 MacDonnell Road, Midlevels Central
Unique flat with stunning city and Victoria Harbour view
特色單位享壯觀城市及維港景

822 s.f.
\$11,500,000 SOLE AGENT 獨家代理

www.landscape.com/14006.htm Philip Lai 黎先生 9430 3330



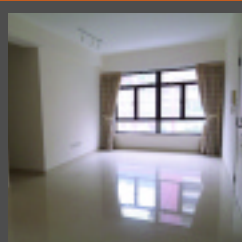
Carrie Garden

東半山嘉園

345 Tai Hang Road, Midlevels East
English classic cosy flat on upper Tai Hang Road
舒適單位配英式經典裝修，位於大坑道頭段

792 s.f.
\$9,300,000 SOLE AGENT 獨家代理

www.landscape.com/14518.htm Philip Lai 黎先生 9430 3330



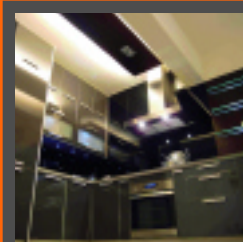
Billion Terrace

跑馬地千葉居

137-139 Blue Pool Road, Happy Valley
Nicely decorated 3-bedroom flat in upper Happy Valley
雅緻裝修三房，位於上跑馬地

1,166 s.f.
\$12,000,000 also for lease \$40,000 incl.

www.landscape.com/13712.htm Teresa Lau 劉小姐 9080 6686




Hillsborough Court

中半山曉峰閣

18 Old Peak Road, Midlevels Central
Luxurious boutique apartment on fringe of Central
豪華雅緻物業，鄰近中環

976 s.f.
\$14,640,000

www.landscape.com/14226.htm Johnny Cheung 張先生 9278 9939



47-49 Blue Pool Road, Happy Valley
跑馬地 藍塘道47-49號
Charming low-rise flat with nice decor
迷人雅裝低密度單位

1,600 s.f.
\$15,800,000

www.landscape.com/11420.htm | Stephen Chan 陳先生 9093 3381



Hillsborough Court
中半山曉峰閣
18 Old Peak Road, Midlevels Central
Boutique high floor apartment on Old Peak Road
品味高層單位，位於舊山頂道

938 s.f.
\$16,000,000 **SOLE AGENT** 獨家代理

www.landscape.com/9770.htm | Teresa Fung 馮小姐 9138 1621



Scenic Garden
西半山 福苑
9 Kotewall Road, Midlevels West
Nicely fitted apartment on quiet neighbourhood of Midlevels West
良好配備單位，西半山寧靜地段

1,534 s.f.
\$16,000,000

www.landscape.com/13451.htm | Rita Lee 李小姐 9437 0087



Ewan Court
中半山倚雲閣
54-56 Kennedy Road, Midlevels Central
Designer decorated flat with open city view on fringe of Central
匠心設計裝修連開揚景觀，鄰近中環

1,485 s.f.
\$16,800,000

www.landscape.com/13440.htm | Johnny Cheung 張先生 9278 9939



35-41 Village Terrace, Happy Valley
跑馬地 山村臺35-41號
Rarely available mid-rise flat with nice decor in quiet enclave
罕有放盤中密度單位，雅裝，位處寧靜一隅

1,800 s.f.
\$18,000,000

www.landscape.com/14150.htm | Sylvia Tsang 曾小姐 9801 1742



Estella Court
中半山香海大廈
70 MacDonnell Road, Midlevels Central
Charming 2-bedroom unit with nice décor
裝修匠心設計兩房單位

1,700 s.f.
\$19,300,000

www.landscape.com/14460.htm | Mary Li 李小姐 9011 6595



Dragon Garden
渣甸山 龍園
1 Chun Fai Road, Jardine's Lookout
Spacious flat with efficiency layout in convenient location
寬敞實用單位，位置方便

1,750 s.f.
\$20,125,000

www.landscape.com/14212.htm | Simon Yung 翁先生 9418 5743



9 Broom Road, Happy Valley
跑馬地蟠龍道9號
Spacious colonial apartment with balcony in quiet neighbourhood
寬敞英式單位連露台，環境寧靜

2,000 s.f.
\$21,000,000

www.landscape.com/13998.htm | Rowena Siu 蕭小姐 9348 4118



Goodview Garden
東半山 豐景台
24 Stubbs Road, Midlevels East
Garden duplex with decent decorations
花園複式，雅緻裝修

2,200 s.f. (plus 100 s.f. terrace)
\$22,500,000

www.landscape.com/14252.htm | Christine Chong 莊小姐 9648 6082



Sanitarian Apartments
跑馬地潔園
20-30 Green Lane, Happy Valley
Unique colonial low-rise flat in tranquil location
獨特英式低密度單位，位置寧靜

2,000 s.f.
\$23,000,000

www.landscape.com/4748.htm | Sami Woo 胡小姐 9493 8275



Valverde
中半山 蔚皇居
11 May Road, Midlevels Central
Boutique apartment in tranquil location
品味單位，位置寧靜

1,373 s.f.
\$23,000,000

www.landscape.com/12411.htm | Teresa Fung 馮小姐 9138 1621

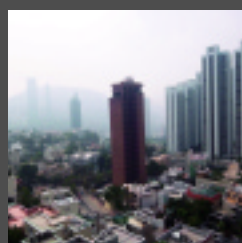


Carnation Court
東半山 康馨園
41-47 Tai Hang Road, Midlevels East
Practical 4-bedroom apartment with easy access to Causeway Bay
實用四房單位，鄰近銅鑼灣

2,126 s.f.
\$23,000,000

www.landscape.com/12523.htm | Sami Woo 胡小姐 9493 8275

MID-LEVELS SALES



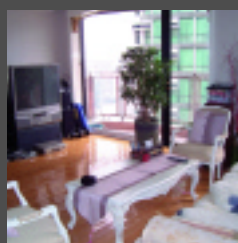
Butler Tower

渣甸山柏麗園

1-5 Boyce Road, Jardine's Lookout
Practical apartment at quiet location
overlooking Jardine's Lookout area
實用住宅，環境寧靜，眺望渣甸山一帶

1,650 s.f.
\$24,000,000

www.landscape.com/14213.htm | Stephen Chan 陳先生 9093 3381



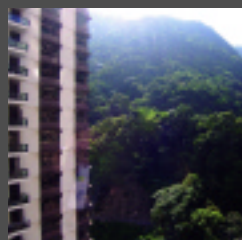
Regal Crest

西半山薈萃苑

9 Robinson Road, Midlevels West
Spacious family apartment on upper
Robinson Road with excellent facilities
寬敞家庭住宅，位於羅便臣道頭段，設施一流

2,314 s.f.
\$25,000,000

www.landscape.com/13579.htm | Stephen Chan 陳先生 9093 3381



Tregunter Tower 3

中半山地利根德閣3座

14 Tregunter Path, Midlevels Central
High floor, good value apartment with full
clubhouse facilities in prime location
高層優良價值物業，享全面會所設施，黃金地段

2,020 s.f.
\$26,000,000

www.landscape.com/14316.htm | Teresa Lau 劉小姐 9080 6686



Villa Monte Rosa

東半山玫瑰新村

41A Stubbs Road, Midlevels East
Spacious practical apartment with
big balcony
寬敞實用單位連大露台

2,300 s.f.
\$26,500,000

www.landscape.com/14339.htm | Johnny Cheung 張先生 9278 9939



Glory Mansion 中半山輝煌大廈

106-108 MacDonnell Road,
Midlevels Central

Older style flat with large
balcony and practical layout
老香港式單位連大露台，間格實用

2,300 s.f.
\$26,500,000

www.landscape.com/13919.htm | Simon Lee 李先生 6014 3712



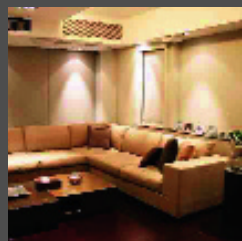
Birchwood Place

中半山寶樺臺

96 MacDonnell Road, Midlevels Central
Apartment with clubhouse on
MacDonnell Road
物業享會所設施，位處麥當勞道

2,018 s.f.
\$27,000,000

www.landscape.com/7901.htm | Sylvia Tsang 曾小姐 9801 1742



The Elegance

東半山 優雅閣

60 Tai Hang Road, Midlevels East
Designer decorated harbour view duplex
匠心設計裝修維港景複式

2,438 s.f.
\$28,000,000

www.landscape.com/14197.htm | Rowena Siu 蕭小姐 9348 4118



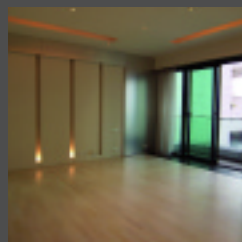
Hong Villa

中半山峰景花園

12 Bowen Road, Midlevels Central
Large 3-bedroom apartment with facilities
in lush green surroundings
三房大單位連消閒設施，環境翠綠

1,916 s.f.
\$31,800,000

www.landscape.com/14392.htm | Philip Lai 黎先生 9430 3330



11 MacDonnell Road, Midlevels Central

中半山麥當勞道 11 號

Nicely decorated high privacy modern
apartment
雅裝高私隱度時尚單位

2,313 s.f.
\$31,000,000

www.landscape.com/14367.htm | Rowena Siu 蕭小姐 9348 4118



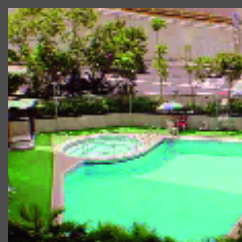
Wilshire Park

中半山豪輝閣

12-14 MacDonnell Road, Midlevels Central
Rare on market high privacy
4-bedroom flat
罕有放盤高私隱度四房物業

2,265 s.f.
\$33,000,000

www.landscape.com/13899.htm | Rita Lee 李小姐 9437 0087



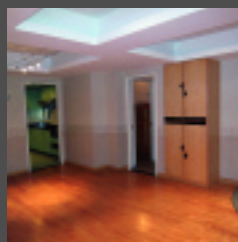
Estoril Court

中半山愛都大廈

55 Garden Road, Midlevels Central
Huge apartment with high efficiency on
fringe of Central
實用巨宅，鄰近中環

3,347 s.f.
\$35,000,000

www.landscape.com/13041.htm | Mira To 杜小姐 9486 1566



Fontana Garden

東半山豪園

1-25 Ka Ning Path, Midlevels East
Huge practical apartment with high
efficiency on fringe of Causeway Bay
巨型實用住宅，高實用率，鄰近銅鑼灣

3,000 s.f.
\$35,000,000

www.landscape.com/13517.htm | Mira To 杜小姐 9486 1566



Nicholson Tower

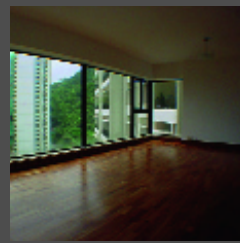
東半山 蔚豪苑

8 Wong Nai Chung Gap Road, Midlevels East
High floor 4-bedroom harbour view flat
with practical layout
實用高層維港景四房

1,993 s.f.

\$36,500,000

www.landscape.com/14457.htm | Stephen Chan 陳先生 9093 3381



Tavistock 2

中半山騰皇居

10A Tregunter Path, Midlevels Central
Deluxe flat with comprehensive clubhouse
facilities in prime location
豪華住宅享多樣化會所設施，位置優越

2,030 s.f.

\$38,000,000 also for lease \$120,000 incl.

www.landscape.com/11943.htm | Sissy Li 李小姐 9642 6969



Po Shan Mansions

西半山 寶城大廈

10-16 Po Shan Road, Midlevels West
Large 4-bedroom apartment with huge
balcony enjoying harbour view
四房大單位連大露台，享維港景

2,800 s.f.

\$36,000,000

www.landscape.com/14512.htm | Teresa Lau 劉小姐 9080 6686



Regent on the Park

中半山御花園

9A Kennedy Road, Midlevels Central
Prestigious apartment with
metropolitan view
尊貴物業，大都會景觀

2,720 s.f.

\$39,000,000

www.landscape.com/10946.htm | Sissy Li 李小姐 9642 6969



Kennedy Apartment

中半山 堅尼地大廈

34A Kennedy Road, Midlevels Central
Unique mid-rise overlooking
Hong Kong Park
獨特中密度住宅眺望香港公園

2,500 s.f.

\$42,000,000

www.landscape.com/13748.htm | Teresa Lau 劉小姐 9080 6686



Garden Terrace 2 & 3

中半山花園臺2, 3座

8A Old Peak Road, Midlevels Central
4-ensuite apartment with balcony
四套房住宅連露台

3,319 s.f.

\$42,000,000

www.landscape.com/14416.htm | Sylvia Tsang 曾小姐 9801 1742



Rose Gardens

中半山 玫瑰別墅

9 Magazine Gap Road, Midlevels Central
Rare find colonial apartment in prime
location
罕有英式住宅，黃金地段

2,600 s.f.

\$46,000,000

www.landscape.com/14200.htm | Carman Szeto 司徒小姐 8100 3893



Clement Court 渣甸山 松風臺

56-64 Mount Butler Road,
Jardine's Lookout
Brand new sea view townhouse in
tranquil location
全新海景排屋，環境寧靜

2,200 s.f. (plus 1,400 s.f. roof)

\$45,000,000

www.landscape.com/14277.htm | Sylvia Tsang 曾小姐 9801 1742

Nicholson Tower-penthouse unit

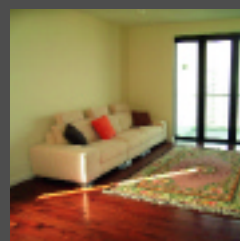
東半山蔚豪苑頂層單位

8 Wong Nai Chung Gap Road, Midlevels East
Exclusive apartment with private roof terrace
overlooking the harbour
獨特住宅連私家天台平台，眺望維港

1,993 s.f. (plus 1,322 s.f. roof)

\$48,000,000

www.landscape.com/13954.htm | Mark Mak 麥先生 6838 2929



May Tower 1

中半山梅苑一座

7 May Road, Midlevels Central
Well designed triplex apartment
with harbour view
雅緻設計裝修三複式享維港景

2,850 s.f.

\$48,000,000 also for lease \$110,000 incl.

www.landscape.com/8923.htm | Carman Szeto 司徒小姐 8100 3893



Victoria Height

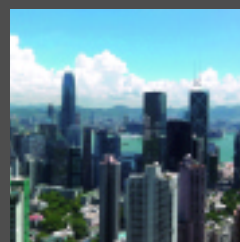
東半山 威利閣

43A Stubbs Road, Midlevels East
Rare find 4-bedroom harbour
view apartment
罕有四房維港景住宅

2,650 s.f.

\$55,500,000

www.landscape.com/14248.htm | Carman Szeto 司徒小姐 8100 3893



The Mayfair

中半山梅道1號

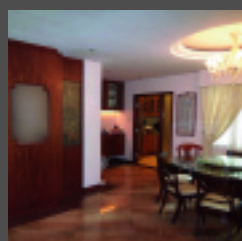
1 May Road, Midlevels Central
Deluxe 4-bedroom apartment with
harbour view
豪華四房單位享維港景

2,905 s.f.

\$63,000,000 also for lease \$160,000 incl.

www.landscape.com/11693.htm | Maria Cheung 張小姐 6256 1848

MID-LEVELS SALES



Grenville House

中半山嘉慧園

1, 3 & 3A Magazine Gap Road,
Midlevels Central
Rare huge apartment at Midlevels Central
罕有中半山巨型物業

3,700 s.f.
\$65,000,000

www.landscape.com/13046.htm

David Leung 梁先生 9199 0672



Kennedy Heights

中半山 堅麗閣

10-18 Kennedy Road, Midlevels Central
Huge 5-bedroom apartment on
fringe of CBD
巨型五房物業，鄰近商業樞紐

3,400 s.f.
\$75,000,000

www.landscape.com/13768.htm

Philip Lai 黎先生 9430 3330



White Jade

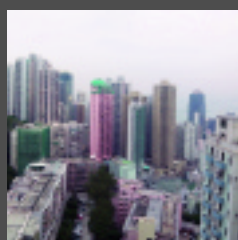
東半山 白璧

51 Stubbs Road, Midlevels East
Rare find large harbour view flat on
Stubbs Road
罕有維港景大單位，位處司徒拔道

3,000 s.f.
\$75,000,000 also for lease \$150,000 incl.

www.landscape.com/14219.htm

Mira To 杜小姐 9486 1566



Garden Terrace 2 & 3

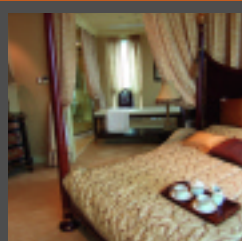
中半山花園臺2, 3座

8A Old Peak Road, Midlevels Central
Huge combined unit with 8 ensuite
極罕放盤八套房大宅

6,018 s.f.
\$100,000,000

www.landscape.com/14414.htm

Simon Lee 李先生 6014 3712



Regence Royale

中半山富匯豪庭

2 Bowen Road, Midlevels Central
Luxuriously decorated huge
apartment on Bowen Road
豪華裝修巨型單位，位處寶雲道

5,219 s.f.
\$138,000,000 also for lease \$350,000 incl.

www.landscape.com/13729.htm

Sissy Li 李小姐 9642 6969



Hillsborough Court 中半山曉峰閣

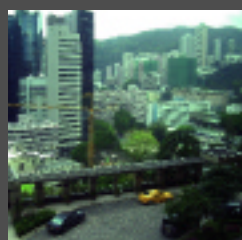
18 Old Peak Road, Midlevels Central
Unique triplex penthouse with tasteful
decorations
特色頂層三複式，品味裝修

2,200 s.f.
(plus 1,000 s.f. roof & 1,016 s.f. terrace)
Open Offer

www.landscape.com/13019.htm

Mira To 杜小姐 9486 1566

MID-LEVELS LEASE



The Leighton Hill

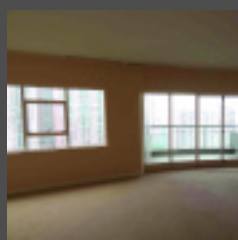
跑馬地禮頓山

2B Broadwood Road, Happy Valley
Luxurious 3-bedroom apartment
overlooking the racecourse
豪華三房單位眺望馬場

1,438 s.f.
\$75,000 incl.

www.landscape.com/14232.htm

Carman Szeto 司徒小姐 8100 3893



Century Tower I

中半山世紀大廈 1座

1 Tregunter Path, Midlevels Central
Unique triplex harbour view apartment on
fringe of Central
特色維港景單位，鄰近中環

2,565 s.f.
\$90,000 incl. also for sale \$35,700,000

www.landscape.com/12852.htm

Yvonne Chang 鄭小姐 9088 4666



Po Shan Mansions

西半山寶城大廈

10-16 Po Shan Road, Midlevels West
Spacious 4-bedroom flat with big balcony
overlooking Western Victoria Harbour
寬敞四房物業連大露台，眺望西區維港

2,700 s.f.
\$90,000 incl.

www.landscape.com/14280.htm

Sami Woo 胡小姐 9493 8275



Pine Court

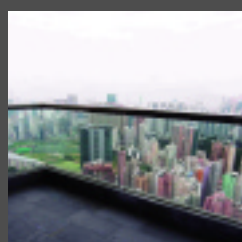
中半山翠峰園

5 Old Peak Road, Midlevels Central
Colonial mid-rise with private backyard and
large balcony
英式中密度住宅連私家後園及大露台

2,650 s.f. (plus 150 s.f. terrace)
\$95,000 incl.

www.landscape.com/14452.htm

Teresa Lau 劉小姐 9080 6686



Villa Monte Rosa

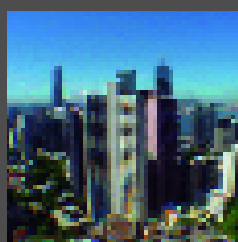
東半山玫瑰新村

41A Stubbs Road, Midlevels East
Spacious 4-bedroom apartment with
good condition
寬敞四房，狀況優良

3,300 s.f.
\$110,000

www.landscape.com/14451.htm

Teresa Lau 劉小姐 9080 6686



Grenville House 中半山嘉慧園

1, 3 & 3A Magazine Gap Road,
Midlevels Central
Large and spacious 4-bedroom
apartment at prestigious address
寬敞四房物業，地段優越

3,700 s.f.
\$250,000

www.landscape.com/12534.htm

Yvonne Chang 鄭小姐 9088 4666

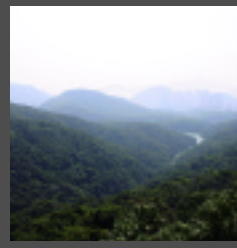


Guildford Garden 山頂 喬苑

1-3 Mansfield Road, The Peak
Lower Peak apartment in quiet
neighbourhood with easy access
to Central
下山頂段物業位置寧靜，瞬間可達中環

2,400 s.f.
\$40,000,000 also for lease \$110,000

www.landscape.com/13502.htm Rita Lee 李小姐 9437 0087



Carolina Garden

山頂 嘉樂園
20-34 Coombe Road, The Peak
Rare colonial apartment in
prestigious location
罕有英式單位，地段顯赫

2,350 s.f.
\$48,000,000

www.landscape.com/12308.htm Mark Mak 麥先生 6838 2929



Villa Verde

山頂 環翠閣
4-18 Guildford Road, The Peak
Spacious colonial apartment on the Peak
山頂區寬敞老香港式單位

2,540 s.f.
\$53,000,000

www.landscape.com/2319.htm Simon Lee 李先生 6014 3712

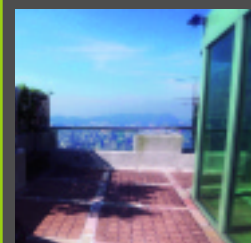


Montebello

山頂 濠景閣
15-17 Plantation Road, The Peak
Duplex apartment with fantastic sea view
複式單位享無敵海景

3,050 s.f.
\$60,000,000

www.landscape.com/5854.htm Simon Yung 翁先生 9418 5743



27 Plantation Road, The Peak

山頂 種植道27號
Unique low-rise flat with private roof
terrace overlooking the harbour
特色低密度物業連私家天台平台，眺望維港
2,600 s.f. (plus 1,000 s.f. roof)
\$65,000,000 also for lease \$135,000 incl.

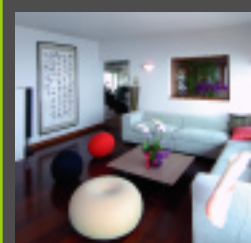
www.landscape.com/11498.htm Mark Mak 麥先生 6838 2929



Oasis

山頂 欣怡居
8-12 Peak Road, The Peak
Brand new peak apartment with a bird's
eye view of Victoria Harbour
全新山頂物業，鳥瞰維港
3,194 s.f.
\$93,000,000

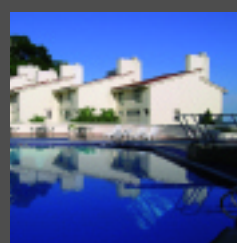
www.landscape.com/14186.htm Sylvia Tsang 曾小姐 9801 1742



Mountain Lodge

山頂 崑廬
44 Mount Kellett Road, The Peak
Rare duplex apartment with
Southside sea view
罕有複式物業享南區美景
5,200 s.f.
\$120,000,000

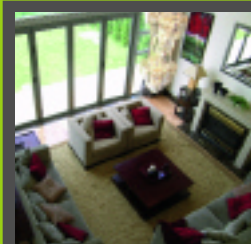
www.landscape.com/14003.htm David Leung 梁先生 9199 0672



Strawberry Hill

山頂 紅莓閣
8 Plunkett's Road, The Peak
Rare colonial sea view house with
private garden
罕有英式海景洋房連私家花園
3,200 s.f. (plus 388 s.f. garden)
\$125,000,000

www.landscape.com/14357.htm David Leung 梁先生 9199 0672



Sunshine Villa

山頂 陽光花園
48 Mount Kellett Road, The Peak
Airy townhouse on Mount Kellett
加列山通爽排屋
3,500 s.f. (plus 2,242 s.f. garden)
\$130,000,000

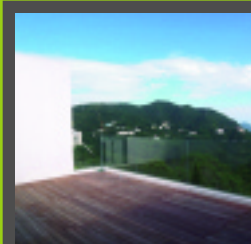
www.landscape.com/2662.htm David Leung 梁先生 9199 0672



Kletteria

山頂 加列山道71號
71 Mount Kellett Road, The Peak
Boutique townhouse with private pool
and garden
雅緻排屋連私家泳池及花園
3,198 s.f. (plus 1,370 s.f. garden)
\$150,000,000

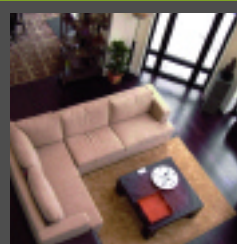
www.landscape.com/12875.htm Maria Cheung 張小姐 6256 1848



1-9 Rosmead Road

山頂 樂善美道1-9號
1-9 Rosmead Road, The Peak
Rare garden house at the Peak
罕有山頂花園屋
5,136 s.f. (plus 1,955 s.f. garden)
\$280,000,000

www.landscape.com/14409.htm David Leung 梁先生 9199 0672



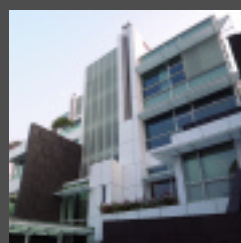
The Belvedere

山頂 種植道51至61號
51-61 Plantation Road, The Peak
Magnificent house at the Peak with
vantage view
山頂豪華洋房享無敵景觀
7,300 s.f. (plus 2,338 s.f. garden)
\$300,000,000

www.landscape.com/2659.htm Louis Wong 黃先生 9871 6828

山頂
出售

THE PEAK SALES



**10-18 Pollock's Path,
The Peak** 山頂 普樂道10-18號
Huge harbour view house with large
garden and terrace
巨型維港景洋房，特大花園及平台
7,229 s.f.
(plus 1,999 s.f. garden & 1,756 terrace)
\$433,740,000

Louis Wong 黃先生 9871 6828



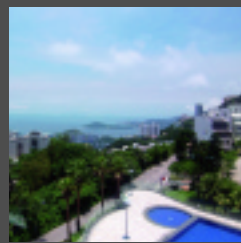
**15 Gough Hill Road,
The Peak**
山頂歌賦山道15號
Rare single detached house on the Peak
罕有山頂獨立屋
4,607 s.f.
\$480,000,000 also for lease \$500,000

www.landscape.com/12223.htm

Mark Mak 麥先生 6838 2929

山頂
出租

THE PEAK LEASE



**1-3 Homestead Road,
The Peak**
山頂 堪仕達道1至3號
Modern Peak apartment with
fantastic sea view
時尚山頂物業，享醉人海景
2,828 s.f.
\$100,000 incl.

www.landscape.com/13709.htm

Louis Wong 黃先生 9871 6828



**11-21 Watford Road,
The Peak**
山頂和福道11-21號
Huge house with garden
巨型洋房連花園
5,300 s.f.
\$250,000

www.landscape.com/14201.htm

Sami Woo 胡小姐 9493 8275

其他

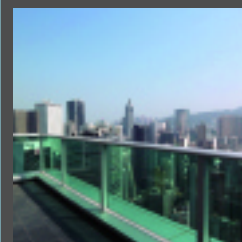
OTHERS



Sunrise House
中環 新陞大樓
21-23 Old Bailey Street, Central
City oasis with huge private terrace
舒適物業連特大私人平台，彷彿城中綠洲
580 s.f. (plus 1,000 s.f. terrace)
\$8,700,000 also for lease \$48,000

www.landscape.com/14246.htm

Rowena Siu 蕭小姐 9348 4118



J-Residence
灣仔嘉薈軒
60 Johnston Road, Wan Chai
Conveniently located brand new penthouse
flat with panoramic city views
全新頂層單位，環迴都會景，位置方便
2,449 s.f.
\$61,230,000 also for lease \$171,430 incl.

www.landscape.com/14135.htm

Stephen Chan 陳先生 9093 3381

九龍
出售

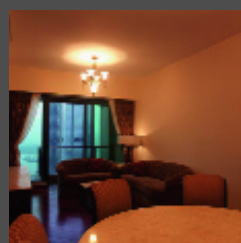
KOWLOON SALES



Sorrento
尖沙咀擎天半島
1 Austin Road West, Tsim Sha Tsui
Modern landmark property on top of Kowloon Station
時尚地標式屋苑，九龍站上蓋
1,274 s.f.
\$16,000,000
SOLE AGENT 獨家代理

www.landscape.com/14137.htm

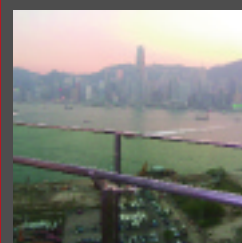
Mary Li 李小姐 9011 6595



The Arch
尖沙咀凱旋門
1 Austin Road West, Tsim Sha Tsui
Fully furnished harbour view flat in
landmark development
裝修連傢俬維港景物業，位處地標式屋苑
1,260 s.f.
\$22,000,000 also for lease \$6,000 incl.

www.landscape.com/14267.htm

Rita Lee 李小姐 9437 0087



The Harbourside
尖沙咀君臨天下
1 Austin Road West, Tsim Sha Tsui
Rarely on market harbour view duplex
with sky garden
罕有放盤維港景複式物業連空中花園
2,257 s.f. (plus 168 s.f. terrace)
\$90,000,000

www.landscape.com/12541.htm

Rita Lee 李小姐 9437 0087

LANDSCOPE 領域
The Specialists in Luxury Properties

Landscape Realty Limited C-018733
a member of Landscape Surveyors Ltd

Tel: 852-2866 0022 Fax: 852-2866 0015
Email: info@landscape.com Website: www.landscape.com
Unit 3106, 31/F, Hopewell Centre,
183 Queen's Road East, Wanchai, Hong Kong

The information, text, photos, analyses and projections contained herein are provided solely for the convenience of prospective clients and no warranty or representation as to their accuracy, correctness or completeness is made by Landscape Surveyors Limited, Landscape Realty Limited or the owners, none of whom shall have any liability or obligation with respect thereto. Interested parties should rely on their own investigations, interpretations and analyses in connection with the purchase or letting thereof.

Information has been provided to us by sources deemed reliable, but no warranty or representation is made as to its accuracy, correctness or completeness. These offerings are made subject to contract, correction of errors, omissions, prior sale or lease, change of price or terms or withdrawal from the market without notice. The contents of The Key are for reference only and do not constitute all or any part of a contract.

Copyright 2008