

The
Key

大宅[®]

Select deluxe homes

Volume 82 OCTOBER 2011



南海逍遙

everyday
getaway

何為家...



中國西安，秦嶺北麓，漢上林苑故址之上，一座足以傳世的家宅。
 倚秦嶺之勢，北瞰秦川，東望紫閣峰，西臨太平河，
 歷時五年，六十多位祖傳手工藝匠人，
 于三百畝林溪坡地之上，精心打磨三十五席純手工院落，
 引天然溫泉，山水園林布局，東方古韵盎然。
 以家園情懷，縱橫天下，今回歸此間，心駐為家……

... 吾心安處！



西廂院子

XIXIANG GARDEN

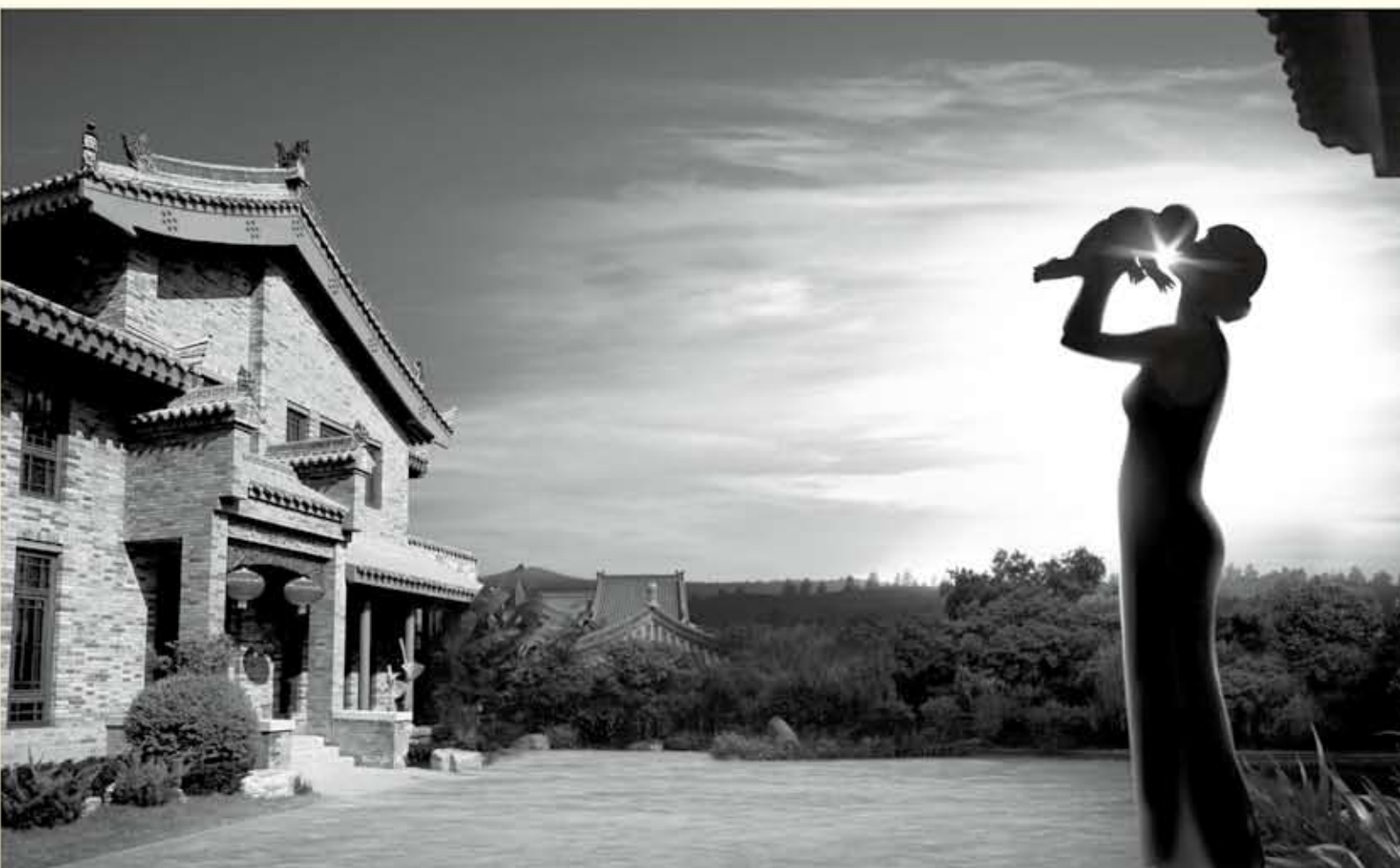
品鑒專線：400-029-8885

港澳地區：+852 3102 4888

Contact: Mr. Koh +852 31024888

www.xianyuanzi.com

開發商：陝西嘉友軒置業有限公司 | 物業/營銷顧問：美倫物業管理(上海)有限公司 | 品牌策劃諮詢：迪卡品牌策劃諮詢(上海)有限公司





周邊環境及專案特點：

西安院子坐落於西安市西南郊秦嶺北麓，東鄰大漢上林苑遺址，西接太平河，依山傍水，樹木蔥郁。其主要建築由35座純手工中式大宅和自然山水園林景觀構成。

西安院子設計項目以中國傳統庭院為基調，兼顧北方民居，採用了門樓、院牆、坡頂、青磚及窗櫺的形式。在設計理念上，將現代建築功能、結構、形式及設備配套與豐富的文化內涵有機結合，形成了青瓦延綿，灰牆連貫，古樹參天，樸實自然的建築群體。園林景觀集南北方園林之精粹，戶戶溪流環繞，三季有花，四季常綠。

精裝修戶型由梁錦華先生與蔡文亮先生兩位大師親自設計，將藝術、建築與科技完美融合。物業管理獨創「中國式管家服務特色」，為業主提供舒適貼心服務，另西安院子成為業主的理想身心家園。

項目位置：陝西省西安市草堂寺景區內

別墅面積：每棟建築面積 600平米-800平米

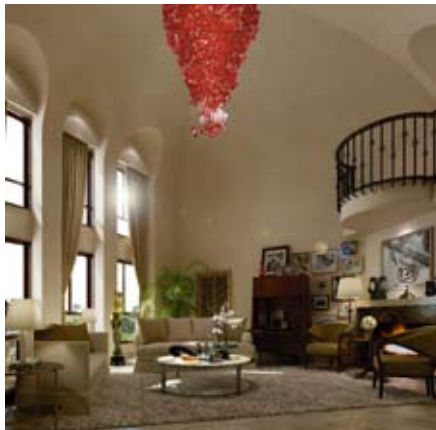
庭院面積：400平米-800平米

均價及價格區間：

30000元/平米（均價）

聯絡人：

許先生 +852 3102 4888



KeyWords

“Life is difficult and complicated and beyond anyone's total control, and the humility to know that will enable you to survive its vicissitudes”

『人生錯綜複雜，無人能全盤掌握；若能謙遜深諳這哲理，才能在它的千變萬化中生存下來。』

JK Rowling, British author of the Harry Potter novels
英國作家JK羅琳，《哈利波特》系列小說作者

KeyNotes

The land auction yesterday returned worrying results. While the two lots of land in Yuen Long and Sai Kung were sold within prior price expectations, which had been generally adjusted downward by 10 per cent just before the auction, the larger lot at Junk Bay fetched a price below all predictions. If the theory that government land auctions reveal what the developers truly think about market prospects is anything to go by, the picture is once again confirmed to be on the dark side.

But will the market head further south as manifested here? Or will it stabilise at the current level before rebounding?

政府昨日拍賣三幅地皮，結果令人憂慮。元朗與西貢地皮的成交價雖在市場預期之內，但市場人士早在剛開售前便把預期成交價調低一成；而另一面積較大的將軍澳地皮的情況則更差，成交價低於所有市場預期。倘若政府的土地拍賣能真實反映發展商對市場前景的看法，那麼市況便再次確認是陰霾一片。

但是，市場真的會如賣地結果顯示般繼續下挫嗎？還是會企穩於現時水平再反彈？

K.S. Koh
ks-koh@landscape.com

(The above is an excerpt from Market Watch on www.landscape.com. Read the full article at Market Watch, www.landscape.com/marketwatch)
(以上內容節錄於領域網站內的市場觀察，如欲觀看全文，請登上網址：www.landscape.com/marketwatch)

Monthly HIGHLIGHTS 每月精選



- 06 Regalia Bay
赤柱 富豪海灣
- 13 Marlborough House
東半山 保祿大廈
- 15 3-5 Happy View Terrace,
Happy Valley
跑馬地 樂景臺3-5號

HOW MAY YOU LIST YOUR PROPERTY WITH THE KEY?

怎樣在《大宅》刊登您的出售／出租物業？

If you would like to see your property listed in The Key in the next issue, you may call Loretta Lui at 3102 4818 or visit us at www.landscape.com/sell_let. Or you may simply fill out the space below and fax to us at 2866 0015.

如果您想將出售／出租物業刊登於大宅，可致電3102 4818與呂小姐聯絡，或登上 www.landscape.com/sell_let。或者您可以填寫下面的表格傳真至2866 0015。

Property to be listed 物業

Asking Rental / Sale Price 租金 / 售價

Floor Area 面積

Contact Person 聯絡人

Telephone 電話

Email 電郵地址

Our KeyPersons will contact you for follow-up works.
我們的大宅專員會馬上與您聯絡

Published and distributed by

LANDSCOPE 領域
The Specialists in Luxury Properties

Landscape Realty Limited C-018733

a member of Landscape Surveyors Ltd

Find us on:
facebook

Designed by

PERSPECTIVE 透視

Tel: +852 2866 0022
Fax: +852 2866 0015
Email: info@landscape.com
Website: www.landscape.com
Address: Unit 3106, 31/F, Hopewell Centre,
183 Queen's Road East, Wanchai, Hong Kong
Member of:



Tel: +852 2525 0287
Fax: +852 2526 3860
Email: info@perspectiveglobal.com
Website: www.perspectiveglobal.com
Address: Rm 2408, Dominion Centre,
59 Queen's Road East, Wanchai, Hong Kong

The information, text, photos, analyses and projections contained herein are provided solely for the convenience of prospective clients and no warranty or representation as to their accuracy, correctness or completeness is made by Landscape Surveyors Limited, Landscape Realty Limited or the owners, none of whom shall have any liability or obligation with respect thereto. Interested parties should rely on their own investigations, interpretations and analyses in connection with the purchase or letting thereof.

Information has been provided to us by sources deemed reliable, but no warranty or representation is made as to its accuracy, correctness or completeness. These offerings are made subject to contract, correction of errors, omissions, prior sale or lease, change of price or terms or withdrawal from the market without notice. The contents of The Key are for reference only and do not constitute all or any part of a contract. Copyright 2011



Part of a large townhouse development in Stanley, this 9,916 sq-ft house instantly removes you from the hustle and bustle that Hong Kong is known for. Completed in 2003, the spacious abode has five bedrooms (four ensembles), two maid's rooms, five bathrooms, a garden, a 2,947 sq-ft roof and its own private lift for easy access to all three floors.

Upon entrance, guests can store their shoes and coats in the room to the left. The massive kitchen on the other side is equipped with Gaggenau appliances and ample storage space. A separate room with gas stoves allows heavy duty cooks to deep fry without the fumes spreading elsewhere. On the same floor, the living and dining rooms are elegantly decorated in cream tones and enjoy unobstructed views of Stanley Bay and the South China Sea.

All the bedrooms are located on the lower floors. The large master bedroom includes a separate walk-in closet and study area. With views of the garden, the family room and dining area on the lower floor are ideal for intimate gatherings, while on a clear day, gatherings can also be held outside in the garden or the barbecue-equipped rooftop.

Located at the coastal area of Wong Ma Kok Road, Regalia Bay is short drive to Stanley Market and just 30 minutes to Central. With exceptional security and recreational facilities such as a gym and outdoor swimming pool, it is a peaceful residence offering far more than just basic luxuries.

這個屬於赤柱大型別墅式發展項目的住宅單位，面積9,916平方呎，周遭環境恬靜怡人，旋即讓人遠離香港繁囂的都市生活。單位於2003年落成，偌大寬敞，設五間睡房(四間為套房)、兩間工人房、五間浴室、一個花園和2,947平方呎的天台，更有私人升降機直達所有三個樓層。

甫踏進住宅，客人可把鞋子和外套放於左邊的衣帽間。另一邊的寬敞廚房貯物空間充足，配有Gaggenau電器。廚房另設獨立房間擺放煮食爐，讓大廚放心煎炸食物，無懼油煙飄散四周。同層還有客廳與飯廳，一室淡黃色調，盡享一望無際的海景，眺望赤柱灣與南中國海。

所有睡房都設於下方的樓層。寬敞的主人房設有獨立衣帽間及書房。下層的家庭室與飯廳享有花園景，最適合親友聚會。倘若天氣好，更可於外面的花園或設有燒烤爐的天台來個聚會。

富豪海灣位於黃麻角道的臨海地段，駕車一會便到赤柱市集，去中環亦只需30分鐘車程，相當便利。富豪海灣的保安嚴密，設健身室和室外游泳池等娛樂設施，既寧靜怡人，又奢華尊貴無比。



Regalia Bay 赤柱 富豪海灣
88 Wong Ma Kok Road, Stanley

9,916 s.f.
(plus 2,947 s.f. roof and 1,645 s.f. garden)
HK\$500M

5182 8699 Maria Cheung 張小姐
www.landscape.com/126208.htm



Sole Dealer of Minotti for Hong Kong

andante

Minotti

Model: Donovan Sofa
Designer: Rodolfo Dordoni

TK/1109/M/DNV07

Shop D, G/F, The Design Showcase,
Ruttonjee Centre, 11 Duddell Street,
Central, Hong Kong
Tel. +852/ 2537 9688
Fax. +852/ 2537 4488
E-mail: info@andante.com.hk
www.andante.com.hk



Stanford Villa
7 Stanley Village Road, Stanley
Modern boutique low-rise with facilities close to beach
時尚精緻低密度住宅，連住客設施，鄰近海灘

赤柱
旭逸居

1,052 s.f.
\$14M

☎ 6838 2929 Mark Mak 麥先生
🌐 www.landscape.com/36037.htm



Pacific View
38 Tai Tam Road, Tai Tam
Renowned 2-bedroom apartment with clubhouse facilities at Tai Tam waterfront
新裝修兩房單位，連住客會所設施，位於大潭海濱，環境舒適

大潭
浪琴園

1,334 s.f.
\$16M

☎ 6838 2929 Mark Mak 麥先生
🌐 www.landscape.com/110486.htm



Regent Palisades
43 Bisney Road, Pokfulam
Newly renovated low-rise flat with huge private roof terrace in quiet neighbourhood
全新裝修低密度住宅，連大天台，環境清幽怡人

薄扶林
帝柏園

1,513 s.f. (plus 905 s.f. roof)
\$18.5M

☎ 5182 8699 Maria Cheung 張小姐
🌐 www.landscape.com/109888.htm



18-24 Bisney Road, Pokfulam
Low-rise 3-bedroom unit with private roof for sale in Pokfulam
薄扶林低密度三房住宅，連私家天台出售

薄扶林
碧荔道 18-24號

1,500 s.f. (plus 1,500 s.f. roof)
\$19.8M

☎ 9648 6082 Christine Chong 莊小姐
🌐 www.landscape.com/83518.htm



Y Y Mansion
96 Pok Fu Lam Road, Pokfulam
Nicely decorated sea view apartment on Pokfulam Road
薄扶林道雅緻裝修海景單位，環境優美寧靜

薄扶林
裕仁大廈

1,750 s.f.
\$20.5M

☎ 9809 8570 Stella Lo 羅小姐
🌐 www.landscape.com/136479.htm



La Mer
67-71 Bisney Road, Pokfulam
Full sea view 3-bedroom low-rise apartment plus study room with twin carparks
全海景三房連書房低密度住宅，連雙車位

薄扶林
浪語居

2,063 s.f.
\$29.8M

Sole Agent 獨家代理

☎ 9088 4666 Yvonne Chang 鄭小姐
🌐 www.landscape.com/108873.htm



Hillgrove
18 Cape Drive, Chung Hok Kok
Low-rise 4-bedroom apartment with 2 car parks
春坎角低密度四房住宅，連兩個車位

春坎角
壁如花園

2,200 s.f.
\$33M

☎ 9551 1077 Walker Lam 林先生
🌐 www.landscape.com/108468.htm

可普通話



72 Chung Hom Kok Road, Chung Hom Kok
Charming low-rise with peaceful sea and green view
迷人低密度住宅，享寧靜海景及翠綠景觀，可租可售

春坎角
春坎角道 72號

1,700 s.f.
\$35M also for lease \$80K incl.

☎ 9093 3381 Stephen Chan 陳先生
🌐 www.landscape.com/35871.htm



Larvotto
8 Ap Lei Chau Praya Road, Aberdeen
Deluxe 2-bedroom apartment in quiet location with stunning sea view
豪華兩房單位，環境寧靜，享廣闊海景，可租可售

香港仔
南灣

1,968 s.f.
\$38M also for lease \$80K incl.

☎ 6330 7888 Cora Ko 高小姐
🌐 www.landscape.com/133983.htm



South Bay Palace
25-31 South Bay Close, Repulse Bay
Nicely fitted and equipped 4-bedroom family flat in serene neighbourhood
新裝修設備齊全四房家庭式住宅，環境寧靜，可租可售

淺水灣
南灣御苑

2,540 s.f.
\$41M also for lease \$120K incl.

☎ 9080 6686 Teresa Lau 劉小姐
🌐 www.landscape.com/127602.htm

可普通話

THE OAKHILL 橡樹山

天際鉅宅 四房四套
空中庭園 唯您獨尊

預約參觀
8109 8282
www.theoakhill.com.hk

[illegible]

140	141	142	143	144	145	146	147	148	149	150	151	152	153	154	155	156	157	158	159	160	161	162	163	164	165	166	167	168	169	170	171	172	173	174	175	176	177	178	179	180	181	182	183	184	185	186	187	188	189	190	191	192	193	194	195	196	197	198	199	200
-----	-----	-----	-----	-----	-----	-----	-----	-----	-----	-----	-----	-----	-----	-----	-----	-----	-----	-----	-----	-----	-----	-----	-----	-----	-----	-----	-----	-----	-----	-----	-----	-----	-----	-----	-----	-----	-----	-----	-----	-----	-----	-----	-----	-----	-----	-----	-----	-----	-----	-----	-----	-----	-----	-----	-----	-----	-----	-----	-----	-----



景順 Invesco

本廣告內載列的相片、圖像、繪圖或素描顯示的純屬畫家對該發展地盤之想像感覺。有關圖片並非按照比例繪畫或/及可能經過電腦圖像修飾處理。準買家如欲了解本發展項目的詳情，請參閱售樓說明書。發展商亦建議買方到該發展地盤作實地考察，以獲取對該發展地盤以及其周圍地區的公共設施及環境較佳的了解。



Ridge Court

21A-21D Repulse Bay Road,
Repulse Bay
Full sea view flat with nice decorations in
Repulse Bay
淺水灣全海景住宅，連雅緻靚裝修

2,300 s.f.
\$44.8M

☎ 6838 2929 Mark Mak 麥先生
🌐 www.landscape.com/99498.htm

淺水灣
冠園



South Bay Towers

59 South Bay Road, Repulse Bay
Sea view apartment with high efficiency
layout in South Bay
淺水灣海景住宅，實用率高，間隔寬敞

2,738 s.f.
\$45M

☎ 9833 9509 Michelle Chung 鍾小姐
🌐 www.landscape.com/3328.htm

淺水灣
南灣大廈



Hong Kong Parkview - Tower 6

88 Tai Tam Reservoir Road,
Repulse Bay
Hong Kong Parkview 3-bedroom
apartment with greenery mountain view
陽明山莊三房住宅，享翠綠山景，可租可售

2,583 s.f.
\$47M also for lease \$120K incl.

☎ 9833 9509 Michelle Chung 鍾小姐
🌐 www.landscape.com/3104.htm

淺水灣
陽明山莊之座



Redhill Apartment

18 Pak Pat Shan Road, Tai Tam
Waterfront duplex apartment
with facilities
大潭海濱複式單位，達完善住客會所設施

3,433 s.f. (plus 986 s.f. roof and
237 s.f. terrace)
\$60M

☎ 6838 2929 Mark Mak 麥先生
🌐 www.landscape.com/31825.htm

大潭
紅山半島



Celestial Garden

5 Repulse Bay Road, Repulse Bay
Popular 4-bedroom mountain view flat on
upper Repulse Bay Road
受歡迎四房山景單位，位於淺水灣道頭段

2,375 s.f.
\$61M

☎ 9833 9509 Michelle Chung 鍾小姐
🌐 www.landscape.com/4127.htm

淺水灣
詩禮花園



33 Cape Road, Chung Hom Kok

Modern garden house near Stanley
Market with garden and roof
時尚花園大屋，鄰近赤柱市集，連天台及花園

3,168 s.f. (plus 862 s.f. garden
and 420 s.f. roof)
\$67.7M

☎ 6330 7888 Cora Ko 高小姐
🌐 www.landscape.com/34724.htm

春坎角
環角道33號



Repulse Bay Towers

119A Repulse Bay Road,
Repulse Bay
Renowned 4-bedroom duplex with view
of Repulse Bay Beach
新裝修四房複式住宅，俯瞰淺水灣海灘景觀，
可租可售

3,100 s.f.
\$68M also for lease \$110K incl.

☎ 9809 8570 Stella Lo 羅小姐
🌐 www.landscape.com/4270.htm

淺水灣
保華大廈



Woodbury Court

137 Pok Fu Lam Road, Pokfulam
Designer decorated duplex 4-bedroom
apartment enjoying fantastic sea view
設計師精心設計四房複式住宅，享遠闊海景

2,968 s.f.
\$70M

☎ 5182 8699 Maria Cheung 張小姐
🌐 www.landscape.com/102055.htm

薄扶林
嘉林閣



Stewart Terrace

81-95 Peak Road, The Peak
Spacious colonial low-rise apartment on
the Peak
山頂英式低密度住宅，間隔寬敞

3,077 s.f.
\$78M

☎ 9093 3381 Stephen Chan 陳先生
🌐 www.landscape.com/28368.htm

山頂
史釗域臺



Twin Brook

43 Repulse Bay Road, Repulse Bay
4-bedroom apartment with sea view in
prime location
四房海景住宅，欣賞美麗海景，地段顯赫，
可租可售

2,700 s.f.
\$78M also for lease \$128K

☎ 9809 8570 Stella Lo 羅小姐
🌐 www.landscape.com/7861.htm

淺水灣
雙溪

bulthaup



bulthaup b3 – a solid investment. This universal design system offers everything you could wish for from the total kitchen. If you are looking for superlative quality, lasting value, solid materials and attention to precision craftsmanship and you want to experience the particular advantages of unique interior fittings, then we invite you to visit the specialists in the new bulthaup kitchen architecture. You will find them wherever you see the name bulthaup. www.bulthaup.com

MADISON hong kong | macau | beijing | shanghai | singapore

ground floor, 5 hoi ping road, causeway bay, hong kong
t +2868 0895. info.bulthaup.hk@madison-asia.com



Splendour Villa
10 South Bay Road, Repulse Bay
Duplex with private roof overlooking picturesque sea view
複式連天台單位，俯瞰南區如畫美景

淺水灣雅景閣

2,816 s.f. (plus 861 s.f. roof)
\$79M

9138 1621 Teresa Fung 馮小姐
www.landscape.com/107977.htm



Le Palais
8 Pak Pat Shan Road, Tai Tam
Garden townhouse with sweeping sea view in serene location
大潭花園洋房，環境寧靜，享優美海景

大潭皇府灣

3,348 s.f. (plus 741 s.f. garden)
\$88M

5182 8699 Maria Cheung 張小姐
www.landscape.com/32677.htm



Royal Garden
27 Repulse Bay Road, Repulse Bay
Exclusive apartment at vantage point to take in spectacular views
淺水灣獨特住宅，尊享美麗景色

淺水灣聚豪居

2,680 s.f.
\$90M

9809 8570 Stella Lo 羅小姐
www.landscape.com/103481.htm



Las Pinadas
33 Shouson Hill Road, Shouson Hill
Spacious townhouse with large living room in gated neighbourhood
間隔寬敞洋房，連大客廳，地段清幽怡人

壽臣山朗松居

3,382 s.f. (plus 617 s.f. roof, 565 s.f. garden and 166 s.f. terrace)
\$100M

6330 7888 Cora Ko 高小姐
www.landscape.com/21407.htm



Tai Tam Contemporary Townhouse
Contemporary waterfront townhouse with designer's decor and garden terrace
豪華海濱洋房，連設計師品味裝修及花園平台

大潭豪華洋房

3,026 s.f. (plus 2,618 s.f. garden)
\$102M

9871 6828 Louis Wong 黃先生
www.landscape.com/107218.htm



L'Harmonie
3 Stanley Mound Road, Stanley
Rare find 4-bedroom townhouse on Stanley Main Beach
罕有四房排屋，鄰近赤柱大灘，可租可售

赤柱葆琳居

3,557 s.f. (plus 1,125 s.f. garden and 663 s.f. roof)
\$106M also for lease \$250K incl.

9648 6082 Christine Chong 莊小姐
www.landscape.com/122327.htm



Sunshine Villa
48 Mount Kellett Road, The Peak
Bright and airy townhouse on Mount Kellett with nice views
光猛通爽排屋，位於加列山道，欣賞美麗景色

山頂陽光花園

3,500 s.f. (plus 1,937 s.f. garden)
\$138M

5182 8699 Maria Cheung 張小姐
www.landscape.com/25857.htm



Villa Rosa
88 Red Hill Road, Tai Tam
Deluxe hilltop 4-bedroom garden house with sweeping sea view
豪華四房花園洋房，享遼闊海景

大潭玫瑰園

3,960 s.f. (plus 480 s.f. roof and 414 s.f. garden)
\$140M

9871 6828 Louis Wong 黃先生
www.landscape.com/1823.htm



Manderly Garden
48 Deep Water Bay Road, Deep Water Bay
Designer decorated townhouse in Deep Water Bay
深水灣靚裝修排屋，設計師精心設計

深水灣文禮苑

3,610 s.f. (plus 587 s.f. roof)
\$150M

9028 0147 Jenson Au 區先生
www.landscape.com/6527.htm

可普通話



La Hacienda - Townhouse
29-33 Mount Kellett Road, The Peak
Newly decorated townhouse with facilities overlooking nice views
全新裝修洋房，連完善住客設施，俯瞰美麗景色

山頂加列山道29-33號

3,200 s.f.
\$160M

9871 6828 Louis Wong 黃先生
www.landscape.com/33958.htm



**45 Island Road,
Deep Water Bay**
Rare find sea view garden house at Deep
Water Bay
深水灣罕有海景花園洋房

深水灣
香島道45號

4,800 s.f. (plus 710 s.f. garden
and 540 s.f. roof)
\$168M

9199 0672 David Leung 梁先生
www.landscape.com/99477.htm



Strawberry Hill
8 Plunkett's Road, The Peak
Tasteful designer decorated colonial
townhouse
設計師品味裝修英式洋房

山頂
紅莓閣

3,200 s.f.
\$170M

9199 0672 David Leung 梁先生
www.landscape.com/108282.htm



Abergeldie
52 Plantation Road, The Peak
Peak house with garden and terrace
enjoy bird's eye view of Victoria Harbour
山頂大屋，連花園平台，鳥瞰維港景色

山頂
種植道52號

3,655 s.f. (plus 282 s.f. roof, 505
s.f. terrace and 464 s.f. garden)
\$220M

9199 0672 David Leung 梁先生
www.landscape.com/13340.htm



**7-11 Cape Road,
Chung Hom Kok**
Brand new high privacy sea view garden
townhouse in Chung Hom Kok
春坎角全新海景洋房，私隱度高，連花園平台

春坎角
環角道7-11號

5,233 s.f. (plus 1,237 s.f. garden,
937 s.f. roof and 161 s.f. terrace)
\$220M

9028 0147 Jenson Au 區先生
www.landscape.com/126121.htm

可普通話



異想天開 Quirks and twists

Marlborough House 東半山 保祿大廈
154 Tai Hang Road, Midlevels East

1,250 s.f.
HK\$25M

Drawn up by the homeowner himself, this one-bedroom (ensuite) home displays the character of one who is passionate about art, design and quirky memorabilia. The homeowner's unique flair can be seen in collectibles such as a giant pencil-shaped coat rack, a mini vending machine and antique ship figures. The balcony has the view of the city's skyline and greenery. The open kitchen and open ensuite bathroom further make this a cozy and entertaining apartment in Midlevels East.

這個住宅單位僅有一間套房，室內裝潢由屋主構思，盡顯他對藝術、設計與奇趣物件的熱愛。從屋內的收藏品中，深深感受到屋主的獨特氣質，例如巨型的鉛筆掛衣架、迷你自動販賣機和古老帆船模型。露台飽覽市內壯觀的天際線和青翠山景。開放式廚房與套房浴室，進一步使這個位於東半山的住宅單位既寬敞舒適又趣味無窮。



9648 6082 Christine Chong 莊小姐
www.landscape.com/125633.htm



All Fit Garden
20-22 Bonham Road,
Midlevels West
Cozy duplex apartment with open terrace
西半山迷人複式住宅，連平台，景致開揚

西
半
山
百
合
苑

989 s.f. (plus 140 s.f. terrace)
\$16M

☎ 9028 0147 Jenson Au 區先生 可普通話
🌐 www.landscape.com/150666.htm



Starcrest
9 Star Street, Wan Chai
Stylish 3-bedroom apartment on fringe
of Admiralty
時尚三房單位，鄰近金鐘，交通方便

灣
仔
星
域
軒

1,164 s.f.
\$24.5M

☎ 9486 1566 Mira To 杜小姐
🌐 www.landscape.com/25462.htm



Catalina Mansions
98-100 MacDonnell Road,
Midlevels Central
Renovated colonial flat with big balcony
on MacDonnell Road
麥當勞道新裝修英式住宅，連大陽臺，可租可售

中
半
山
嘉
年
大
廈

2,300 s.f.
\$36.8M also for lease \$108K incl.

☎ 9028 0147 Jenson Au 區先生 可普通話
🌐 www.landscape.com/136378.htm



Tavistock 2
10A Tregunter Path,
Midlevels Central
3-bedroom designer decorated luxury flat
in Midlevels Central
中半山豪華三房住宅，享設計師品味裝修

中
半
山
騰
皇
居
2
座

2,030 s.f.
\$46M

☎ 9348 4118 Rowena Siu 蕭小姐
🌐 www.landscape.com/27625.htm



Tregunter Tower 3
14 Tregunter Path,
Midlevels Central
Spacious apartment with
magnificent views
間隔寬敞住宅，享遠闊景觀

中
半
山
地
利
根
德
閣
3
座

3,001 s.f.
\$56M

☎ 6183 8339 Carman Szeto 司徒小姐 可普通話
🌐 www.landscape.com/29799.htm



Botanic Terrace
3-5 Conduit Road, Midlevels West
A designer gem on convenient
Conduit Road
雅致靚裝修單位，位於干德道優越地段

西
半
山
芝
蘭
台

1,400 s.f.
\$22.5M

☎ 9348 4118 Rowena Siu 蕭小姐
🌐 www.landscape.com/136455.htm



Glory Mansion
106-108 MacDonnell Road,
Midlevels Central
Tastefully designed colonial apartment on
convenient MacDonnell Road
麥當勞道品味裝修英式住宅，位置優越，交通方便

中
半
山
輝
煌
大
廈

2,300 s.f.
\$30.5M

☎ 9080 6686 Teresa Lau 劉小姐 可普通話
🌐 www.landscape.com/107872.htm

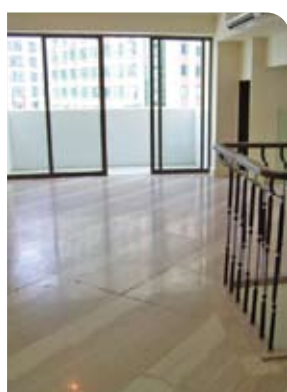


Po Garden
9 Brewin Path, Midlevels Central
Spacious 3-bedroom apartment on fringe
of CBD
寬敞三房住宅，鄰近中環，交通方便

中
半
山
寶
園

2,594 s.f. (plus 165 s.f. terrace)
\$40M

☎ 9648 6082 Christine Chong 莊小姐
🌐 www.landscape.com/17111.htm



Midlevels Central Duplex Apartment
1 Robinson Road,
Midlevels Central
Rare found 4-bedroom duplex apartment
with 2 carports at Midlevels Central
中半山四房複式住宅，連兩個車位，市場罕有

中
半
山
複
式
住
宅

3,400 s.f.
\$48M

☎ 9080 6686 Teresa Lau 劉小姐 可普通話
🌐 www.landscape.com/98594.htm



Hillsborough Court
18 Old Peak Road,
Midlevels Central
Duplex penthouse with roof and terrace in
Midlevels Central
中半山豪華頂層住宅，連天台及平台

中
半
山
曉
峰
閣

2,355 s.f. (plus 646 s.f. roof and
295 s.f. terrace)
\$68M

☎ 9199 0672 David Leung 梁先生
🌐 www.landscape.com/23008.htm



Kennedy Heights
10-18 Kennedy Road,
Midlevels Central
Hugh 5-bedroom apartment next to Hong Kong Park
特大五房住宅，鄰近香港公園，環境優美

中
半
山
堅
麗
閣

3,400 s.f.
\$78M

☎ 6330 7888 Cora Ko 高小姐
🌐 www.landscape.com/27651.htm



Tregunter Tower 3
14 Tregunter Path,
Midlevels Central
Luxurious duplex apartment with full clubhouse facilities overlooking the harbour
豪華複式住宅，連完善住客會所設施，俯瞰維港美景，可租可售

中
半
山
地
利
根
德
閣
座

3,639 s.f.
\$82M also for lease \$150K incl.
Sole Agent 獨家代理

☎ 6838 2929 Mark Mak 麥先生
🌐 www.landscape.com/3950.htm



Dynasty Court
23 Old Peak Road,
Midlevels Central
Victoria Harbour view apartment with grand clubhouse
中半山維港景住宅，享豪華會所設施，可租可售

中
半
山
帝
景
園

2,680 s.f.
\$83.5M also for lease \$170K incl.

☎ 9871 6828 Louis Wong 黃先生
🌐 www.landscape.com/105885.htm



The Albany
1 Albany Road, Midlevels Central
Exquisite duplex 4-bedroom apartment on fringe of CBD commanding nice views
豪華四房複式住宅，鄰近中環，享優美景色

中
半
山
雅
賓
利
大
廈

3,563 s.f.
\$118M

☎ 9348 4118 Rowena Siu 蕭小姐
🌐 www.landscape.com/39658.htm



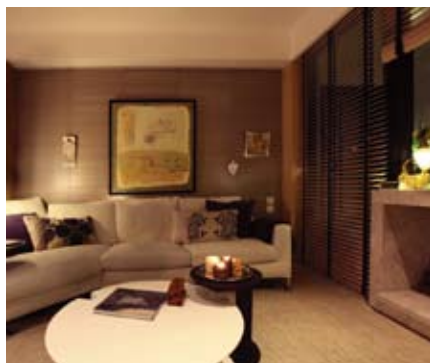
城中靜居 Serenity within the city

3-5 Happy View Terrace, Happy Valley
跑馬地 樂景臺3-5號

1,500 s.f.
HK\$22.5M

Situated in a quiet yet convenient area of Happy Valley, this 1,500 sq-ft apartment is part of a three-storey low rise building with two units per floor. The one-bedroom apartment features a combined living and dining room, a maid's room, a study room, two bathrooms, a fully equipped kitchen and a spacious balcony overlooking Happy Valley Racecourse and surrounding greenery. Decorated with contemporary furnishings in warm, cream tones and ample lighting throughout, the apartment is easily accessible with plenty of buses heading toward Causeway Bay and Jardine's Lookout.

這個1,500平方呎的住宅單位落戶跑馬地寧靜又便利的地段，身處的低層住宅大廈只有三層高，每層設兩個單位。住宅設一間睡房、客飯廳、傭人睡房、書房及設備齊全的廚房，浴室則有兩間，寬闊的露台更眺望跑馬地馬場和四周綠意悠長的美景。全屋以淡黃暖色為主調，牆上充足照明與當代傢俱陳設。交通亦相當便利，附近有不少巴士駛往銅鑼灣及渣甸山。



☎ 6183 8388 Chris Law 羅先生
🌐 www.landscape.com/117672.htm



Gallant Place

15 Tung Shan Terrace,

Midlevels East

Stylish low-rise apartment with private terrace

時尚低密度住宅，連私家平台

1,284 s.f. (plus 818 s.f. terrace)

\$18.5M

6183 8388 Chris Law 羅先生

www.landscape.com/96966.htm

東半山
嘉逸居



Flora Garden

7 Chun Fai Road,

Jardine's Lookout

3-bedroom family apartment with podium garden and pool in Jardine's Lookout

渣甸山三房家庭式住宅，設有公共花園及泳池，可租可售

1,518 s.f.

\$24M also for lease \$50K incl.

6330 7888 Cora Ko 高小姐

www.landscape.com/54582.htm

渣甸山
慧景園



Elm Tree Towers

8-10 Chun Fai Road,

Jardine's Lookout

Large and practical flat with nice decor in sought after neighbourhood

特大靚裝修單位，間隔實用，市場罕有，可租可售

2,028 s.f.

\$29M also for lease \$74K incl.

9238 2012 David Chan 陳先生

www.landscape.com/50008.htm

渣甸山
愉富大廈



The Legend

23 Tai Hang Drive, Midlevels East

Luxurious brand new 4-bedroom apartment in conveniently location

全新豪華四房單位，位置優越

1,918 s.f.

\$33M

9028 0147 Jenson Au 區先生

www.landscape.com/42529.htm

可普通話

東半山
名門



Wilshire Towers

200 Tin Hau Temple Road,

North Point Midlevels

4-bedroom (2 ensembles) designer decorated apartment with harbour view

四房連兩套房單位，連設計師品味靚裝修，更可欣賞維港景色

2,317 s.f.

\$34M

9229 2396 Elaine Chow 周小姐

www.landscape.com/83365.htm

可普通話

北角半山
慧雅閣



9 Broom Road, Happy Valley

Renovated in modern contemporary style low-rise apartment for sale

時尚雅緻裝修低密度住宅出售

2,000 s.f.

\$35.8M

9833 9509 Michelle Chung 鍾小姐

www.landscape.com/136247.htm

可普通話

跑馬地
蟠龍道8號



8 Shiu Fai Terrace, Midlevels East

Spacious apartment with 4 ensuite bedrooms and nice open view

東半山四套房住宅，間隔寬敞，享開揚景觀

2,428 s.f.

\$36M

9551 1077 Walker Lam 林先生

www.landscape.com/34042.htm

可普通話

東半山
肇輝台8號



11-15 Briar Avenue, Happy Valley

Stylish colonial low-rise in quiet environment, rare in market

時尚英式低密度住宅，環境清幽寧靜，罕有放盤

2,200 s.f.

\$36.5M

9648 6082 Christine Chong 莊小姐

www.landscape.com/9313.htm

跑馬地
比雅道11-15號



Stubbs Villa

2 Shiu Fai Terrace, Midlevels East

Spacious 4-bedroom apartment with good sized balcony and open view

寬敞四房單位，間隔實用，連陽臺，尊享開揚美景

2,325 s.f.

\$38M

9093 3381 Stephen Chan 陳先生

www.landscape.com/107807.htm

東半山
詩瀾花園



Leon Court

12-14 Wong Nai Chung Gap Road, Midlevels East

Rare 3-bedroom mid-rise apartment with panoramic view

罕有三房中密度住宅，享美麗景觀

2,800 s.f.

\$55M

9551 1077 Walker Lam 林先生

www.landscape.com/131038.htm

可普通話

東半山
利安閣



CHRISTOPHER GUY



10,000 Sq.Ft.
FLAGSHIP
STORE AT
31/F WORLD TRADE CENTRE



FARRINGTON INTERIORS
THE MOMENT MADE BEAUTIFUL



Shop 店舖:

G/F., 87 Wong Nai Chung Road,
Happy Valley, H.K.
香港跑馬地黃泥涌道87號地下
Tel: (852) 2808 0303
Fax: (852) 2801 6732

Flagship Store 旗艦店:

31/F, World Trade Centre,
280 Gloucester Road, Causeway Bay, H.K.
香港銅鑼灣告士打道280號世貿中心31樓
Tel: (852) 2808 1000
Fax: (852) 2808 2800

Opening hours 營業時間:

11:00am – 7:00pm
Mon – Fri(星期一至五)
1:00 pm – 6:00pm
Sat, Sun & Public Holiday (星期六、日及公眾假期)

WWW.FARRINGTONINTERIORS.COM



Barker Villa
41 Barker Road, The Peak
Nicely renovated apartment with full harbour view
雅致裝修住宅，尊享全維港景色，可租可售

山頂柏架別墅

1,650 s.f.
\$70K incl. also for sale 68M

☎ 9199 0672 David Leung 梁先生
🌐 www.landscape.com/15818.htm



45 Island Road, Deep Water Bay
Upscale low-rise apartment with private roof top at Deep Water Bay
深水灣低密度住宅，連私家天台

深水灣 香島道45號

1,634 s.f. (plus 1,207 s.f. roof)
\$73K incl.

☎ 5182 8699 Maria Cheung 張小姐
🌐 www.landscape.com/138152.htm



Jade Beach Villa
3-7 Horizon Drive, Chung Hom Kok
3-bedroom sea view apartment with roof
春坎角三房海景住宅，連天台

春坎角華翠海灘別墅

1,980 s.f. (plus 1,199 s.f. roof)
\$75K

☎ 9238 2012 David Chan 陳先生
🌐 www.landscape.com/9844.htm



34-36 Bisney Road, Pokfulam
Tastefully decorated 4-bedroom colonial low-rise in Pokfulam
薄扶林低密度英式四房單位，尊享品味靚裝修

薄扶林 碧荔道 34-36號

2,200 s.f.
\$80K incl.

☎ 9551 1077 Walker Lam 林先生
🌐 www.landscape.com/104002.htm

可普通話



18 Cape Road, Chung Hom Kok
Cosy low-rise spacious 4-bedroom apartment with garden in Chung Hom Kok
春坎角迷人低密度四房住宅，間隔寬敞，連花園

春坎角環角道18號

2,000 s.f. (plus 446 s.f. garden)
\$80K incl.

☎ 9229 2396 Elaine Chow 周小姐
🌐 www.landscape.com/147453.htm

可普通話



Villa Cecil Phase III
216 Victoria Road, Pokfulam
Brand new 4-bedroom low-rise with full sea view
全新四房低密度住宅，尊享全海景

薄扶林 趙苑9期

2,733 s.f. (plus 1,872 s.f. roof)
\$86.1K

☎ 9088 4666 Yvonne Chang 鄭小姐
🌐 www.landscape.com/13862.htm



1 Plantation Road, The Peak
Immaculately renovated 3-bedroom apartment with sea view on the Peak
山頂豪華裝修三房單位，欣賞美麗海景

山頂種植道1號

1,768 s.f.
\$95K

☎ 6183 8388 Chris Law 羅先生
🌐 www.landscape.com/24384.htm



Monte Verde
41 Repulse Bay Road, Repulse Bay
4-bedroom apartment overlooking southside sea view
淺水灣四房住宅，俯瞰南區海景

淺水灣南山別墅

2,400 s.f.
\$98K incl.

☎ 9493 8275 Sami Woo 胡小姐
🌐 www.landscape.com/8021.htm



Carmel Hill
12 Carmel Road, Stanley
Stylish 3-bedroom townhouse with garden terrace overlooking sea view at Stanley
赤柱時尚三房排屋，俯瞰海景，連花園平台

赤柱海明山

2,439 s.f. (plus 381 s.f. garden, 324 s.f. roof and 262 s.f. terrace)
\$105K incl.

☎ 9648 6082 Christine Chong 莊小姐
🌐 www.landscape.com/123379.htm



Villa Verde
4-18 Guildford Road, The Peak
Spacious 4-bedroom practical unit in Lower Peak
山頂四房住宅，間隔寬敞實用

山頂環翠園

2,520 s.f.
\$108K incl.

☎ 6183 8339 Carman Szeto 司徒小姐
🌐 www.landscape.com/32799.htm

可普通話



Hong Kong Parkview - Tower 8
88 Tai Tam Reservoir Road, Repulse Bay
Tastefully designed spacious 2-bedroom apartment in well managed estate
品味裝修兩房單位，間隔寬敞，屋苑管理完善

淺水灣陽明山莊8座

2,366 s.f.
\$110K incl.

9871 6828 Louis Wong 黃先生
www.landscape.com/151123.htm



14 Stanley Beach Road, Stanley
Charming garden low-rise flat close to Stanley Beach
迷人低密度住宅，連花園，鄰近赤柱海灘

赤柱赤柱灘道14號

2,320 s.f. (plus 2,000 s.f. garden)
\$110K

6330 7888 Cora Ko 高小姐
www.landscape.com/12287.htm



Grand Garden
61 South Bay Road, Repulse Bay
Spacious 4-bedroom apartment on tranquil South Bay Road
南灣道四房單位，間隔寬敞，環境寧靜

淺水灣華景園

3,054 s.f.
\$120K incl.

9833 9509 Michelle Chung 鍾小姐 可普通話
www.landscape.com/106119.htm



1-3 Homestead Road, The Peak
Sleek modern apartment with panoramic views
山頂時尚住宅，尊享遼闊景觀

山頂堪仕達道1-3號

2,828 s.f.
\$130K incl.

9493 8275 Sami Woo 胡小姐
www.landscape.com/29263.htm



Ann Gardens
29 Shouson Hill Road, Shouson Hill
Duplex apartment with private roof enjoying verdant hill view
壽臣山複式住宅，連私家天台，獨享美麗山景

壽臣山安苑

2,500 s.f. (plus roof)
\$130K incl.

9238 2012 David Chan 陳先生
www.landscape.com/23666.htm



Hong Kong Parkview - Tower 12
88 Tai Tam Reservoir Road, Repulse Bay
4-bedroom family flat with upgraded kitchen and bathrooms
淺水灣四房家庭式住宅，廚房及浴室經翻新，可租可售

淺水灣陽明山莊12座

2,794 s.f.
\$133K incl. also for sale \$48.8M

9080 6686 Teresa Lau 劉小姐 可普通話
www.landscape.com/4870.htm



1-9 Watford Road, The Peak
4-bedroom Peak townhouse with garden and terrace
山頂四房排屋，連花園平台

山頂和福道1-9號

4,678 s.f. (plus 1,065 s.f. garden and 228 s.f. terrace)
\$135K

6183 8388 Chris Law 羅先生
www.landscape.com/4851.htm



The Mount Austin
8 Mount Austin Road, The Peak
Deluxe duplex apartment with luxurious clubhouse facilities
豪華複式住宅，連完善住客會所設施

山頂柯士甸山道8號

2,661 s.f.
\$135K

9493 8275 Sami Woo 胡小姐
www.landscape.com/27906.htm



La Hacienda - Apartment
29-33 Mount Kellett Road, The Peak
Colonial style apartment with facilities in The Peak
山頂英式住宅，連完善住客會所設施，可租可售

山頂加列山道29-33號

3,506 s.f.
\$145K incl. also for sale \$90M

9138 1621 Teresa Fung 馮小姐
www.landscape.com/30905.htm



Carriana Sassoon
41 Sassoon Road, Pokfulam
Large 4-bedroom townhouse with expansive sea view located at quiet Sassoon Road
沙宣道特大四房排屋，尊享美麗海景，環境寧靜

薄扶林沙宣道41號

3,000 s.f. (plus 795 s.f. terrace and 236 s.f. garden)
\$150K incl.

9348 4118 Rowena Siu 蕭小姐
www.landscape.com/37426.htm



84 Repulse Bay Road, Repulse Bay
Low-rise garden duplex close to Repulse Bay Beach
低密度花園複式住宅，鄰近淺水灣海灘

淺水灣 淺水灣道84號

2,800 s.f. (plus 950 s.f. garden)
\$150K incl.

☎ 9138 1621 Teresa Fung 馮小姐
🌐 www.landscape.com/11750.htm



Helene Garden
22 Stanley Beach Road, Stanley
5-bedroom garden duplex on Stanley Main Beach
赤柱五房花園複式住宅，鄰近赤柱正灘

赤柱 喜蓮花園

3,606 s.f. (plus 1,874 s.f. garden)
\$168K

☎ 9138 1621 Teresa Fung 馮小姐
🌐 www.landscape.com/14485.htm



29 Severn Road, The Peak
Modern low-rise 4-bedroom apartment on the Peak
山頂時尚低密度四房住宅

山頂 施勳道29號

2,300 s.f.
\$170K incl.

☎ 9229 2396 Elaine Chow 周小姐 可普通話
🌐 www.landscape.com/46658.htm



11 Coombe Road, The Peak
Huge 4-bedroom apartment nestled in sought after neighbourhood
山頂特大四房單位，市面難尋

山頂 甘道11號

3,830 s.f.
\$178K

☎ 9486 1566 Mira To 杜小姐
🌐 www.landscape.com/102084.htm



12A South Bay Road, Repulse Bay
Fantastic sea view townhouse with private lift and swimming pool
淺水灣渡假式洋房，尊享壯麗海景，連私家電梯及泳池

淺水灣 南灣道12號A

4,603 s.f.
\$188K

☎ 9486 1566 Mira To 杜小姐
🌐 www.landscape.com/16296.htm



22A-22B Mount Austin Road, The Peak
Superb apartment with a bird's eye view of the Victoria Harbour
山頂豪華住宅，鳥語花香，享維港美景

山頂 柯士甸山道22A-22B號

2,650 s.f.
\$190K

☎ 6838 2929 Mark Mak 麥先生
🌐 www.landscape.com/14296.htm

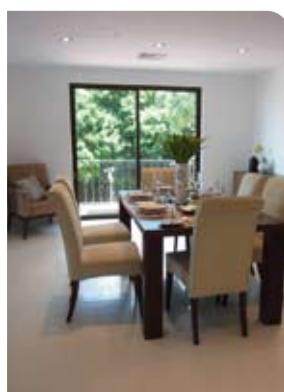


Peak Villa
86-88 Peak Road, The Peak
Exclusive townhouse in serene neighbourhood
山頂獨特排屋，環境清幽寧靜

山頂 頤翠園

3,280 s.f. (plus 300 s.f. terrace)
\$210K

☎ 9871 6828 Louis Wong 黃先生
🌐 www.landscape.com/17712.htm



Kelleff View Town House
65-69 Mount Kelleff Road, The Peak
Fantastic garden townhouse with partial sea view on the Peak
山頂花園洋房，享部份海景

山頂 喜龍園

4,010 s.f. (plus 973 s.f. terrace)
\$250K

☎ 9833 9509 Michelle Chung 鍾小姐 可普通話
🌐 www.landscape.com/3327.htm



King's Court
5 Mount Kelleff Road, The Peak
Townhouse with huge garden overlooking Southside sea view
山頂洋房連大花園，俯瞰南區海景

山頂 龍庭

3,165 s.f. (plus 2,207 s.f. garden)
\$270K

☎ 9238 2012 David Chan 陳先生
🌐 www.landscape.com/22784.htm

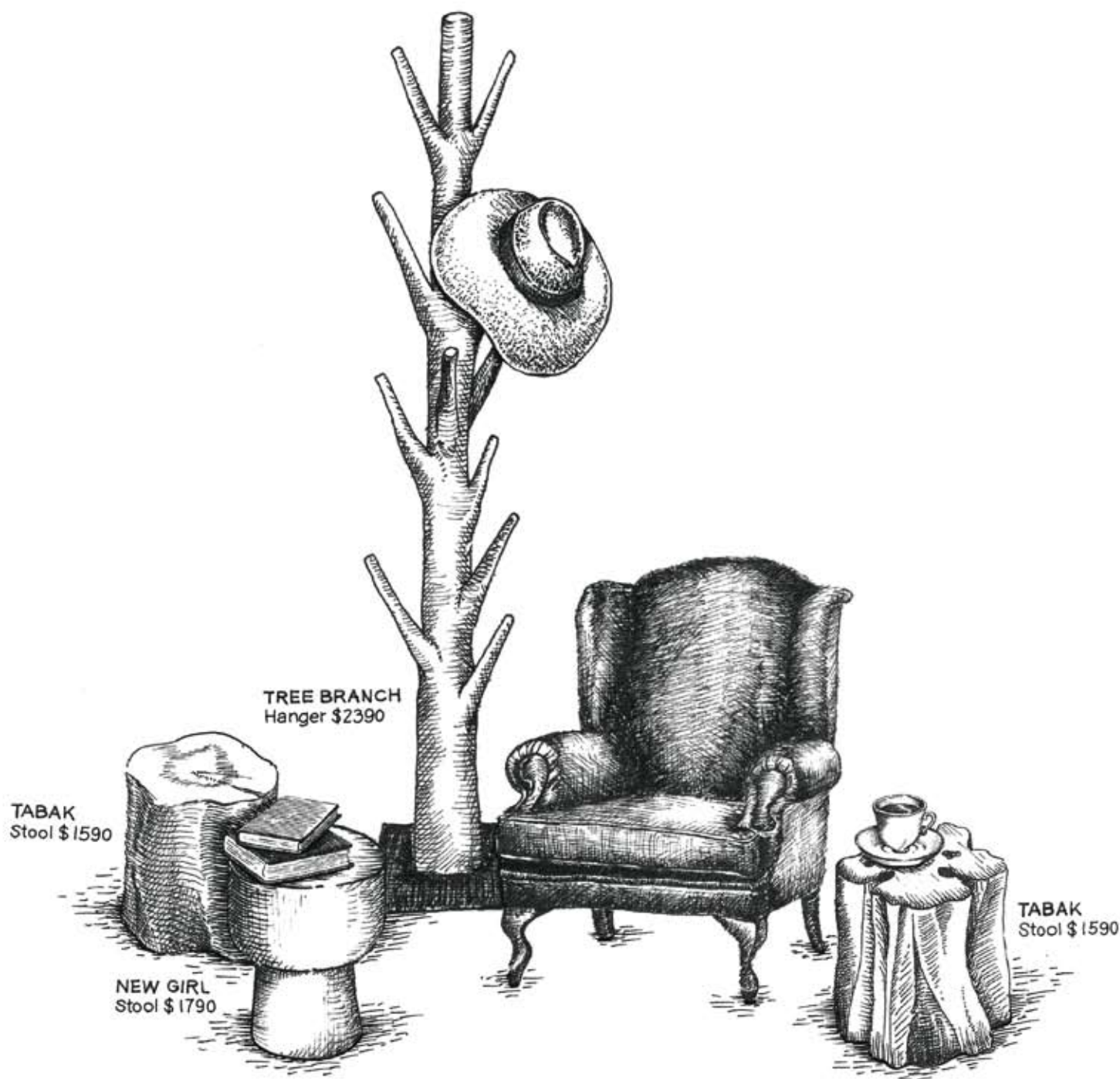


Magnolia
29-31 Ching Sau Lane, Chung Hom Kok
Newly decorated townhouse with private pool
全新裝修排屋，連私家泳池出租

春坎角 靜修里29-31號

4,200 s.f.
\$300K

☎ 9088 4666 Yvonne Chang 鄭小姐
🌐 www.landscape.com/124010.htm



Au Naturale

Solid wood furniture and accessories
for that primitively sophisticated look



GOODS OF DESIRE®

Causeway Bay 2890 5555

Tsim Sha Tsui 2784 5555

Central 2805 1876

Peak Galleria 2778 3331



Conduit Tower

20 Conduit Road, Midlevels West
Sea view apartment with modern kitchen and bathroom close to Midlevels escalator
西半山海景住宅，連設施時尚廚房，鄰近半山扶手電梯

925 s.f.
\$35K incl.

9080 6686 Teresa Lau 劉小姐 可普通話
www.landscape.com/100110.htm

西
半
山
君
德
閣



The Royal Court

3 Kennedy Road,
Midlevels Central
Luxurious 2-bedroom apartment in Midlevels Central overlooking Hong Kong Park
中半山豪華兩房單位，俯瞰香港公園美景

1,428 s.f.
\$62K incl.

9229 2396 Elaine Chow 周小姐 可普通話
www.landscape.com/109387.htm

中
半
山
帝
景
閣



Alpine Court

12 Kotewall Road, Midlevels West
High efficiency 3-bedroom apartment with private roof in quiet location
高實用三房住宅，連私家天台，環境清幽怡人

2,200 s.f. (plus 1,350 s.f. roof)
\$65K

9493 8275 Sami Woo 胡小姐
www.landscape.com/43887.htm

西
半
山
嘉
賢
大
廈



View Mansion

5L-5P Bowen Road,
Midlevels Central
Spacious colonial mid-rise in lush green surroundings
中半山高密度住宅，間隔寬敞，享翠綠美景

1,600 s.f.
\$75K incl.

9348 4118 Rowena Siu 蕭小姐
www.landscape.com/38589.htm

中
半
山
景
雲
大
廈



Hamilton Court

8 Po Shan Road, Midlevels West
Spacious and high efficiency 4-bedroom flat with huge balcony on quiet Po Shan Road
中半山四房單位，實用率高，連特大陽臺，環境清幽怡人

2,600 s.f.
\$78K

9809 8570 Stella Lo 羅小姐
www.landscape.com/8193.htm

西
半
山
愛
敦
大
廈



Grand House

110-112 MacDonnell Road,
Midlevels Central
Colonial style mid-rise apartment in good condition
英式中密度住宅，連雅緻裝修

2,400 s.f.
\$80K

9809 8570 Stella Lo 羅小姐
www.landscape.com/25389.htm

中
半
山
柏
齡
大
廈



Babington House

5 Babington Path, Midlevels West
Nicely decorated 5-bedroom apartment with large balcony
靚裝修五房單位，連大陽臺

2,750 s.f.
\$83K incl.

9493 8275 Sami Woo 胡小姐
www.landscape.com/132039.htm

西
半
山
巴
威
大
廈



Hollywood Heights

6 Old Peak Road,
Midlevels Central
High efficiency 4-bedroom apartment with easy access to Central
中半山四房單位，間隔實用，鄰近中環，交通方便

2,700 s.f.
\$95K incl.

9493 8275 Sami Woo 胡小姐
www.landscape.com/6564.htm

中
半
山
好
利
閣



Tavistock 2

10A Tregunter Path,
Midlevels Central
Luxury apartment with city view and full clubhouse on fringe of Central
中半山豪華住宅，尊享城市景及住客設施，鄰近中環，交通方便

2,030 s.f.
\$98K incl.

9093 3381 Stephen Chan 陳先生
www.landscape.com/147480.htm

中
半
山
騰
皇
居
2
座



Borrett Mansions

8A-9B Borrett Road,
Midlevels Central
Spacious 4-bedroom apartment with big balcony in leafy neighbourhood
寬敞四房住宅，連大陽臺，環境舒適

2,800 s.f.
\$100K incl.

9238 2012 David Chan 陳先生
www.landscape.com/31487.htm

中
半
山
寶
德
臺



Fixwell Display System Co., Ltd.

With over 30 years' experience in Cooling System for supermarkets, hotels and restaurants, we generate a new image by designing exclusive, custom-made Wine Cellar not only in commercials but also for households in recent years. Apart from providing professional setup on the whole system for storing Red Wine, White Wine, Champagne and Sake, we also focus on featuring-wine display purpose and creating an elegant decoration in our new concepts.

Unit 1401, 14/F Westlands Centre,
20 Westlands Road, Quarry Bay, Hong Kong
Tel: (852) 2811 9381
Fax: (852) 2565 7094
Email: sales@fixwell.com.hk
Website: www.fixwell.com.hk



輝和陳列設備有限公司
Fixwell Display System Co., Ltd.



Karndean

Karndean replicates the beauty of natural materials without any of the practical drawbacks associated with the likes of stone and wood. Its benefits are far reaching and suitable for a raft of applications including healthcare, retail and leisure. • Unique designs • Versatile • Hygienic For more information, visit Karndean International (Asia) Ltd showroom: 10/F, 313 Lockhart Road, Wanchai. Ring 2572 2238 / 2572 2886 email salesasia@karndean.com or see www.karndean.com.au Karndean LVT 設計出眾、環保、安全、容易安裝且用途廣泛，適用於家居、商業、零售及酒店等地方。歡迎光臨灣仔駱克道 313 號 10 樓 Karndean International (Asia) Ltd. 電話: 2572 2238 / 2572 2886 電郵: salesasia@karndean.com 或瀏覽www.karndean.com.au



MOLD architecture & interior

www.moldarch.com tel: 2137 0122 fax: 3170 6506 email: info@moldarch.com

PERSPECTIVE 透視

For more than a decade, Hong Kong-based Perspective Ltd has covered the architecture, interiors and design markets in Asia and beyond. Our monthly flagship title **Perspective** is a vital source of information for architects and design professionals. It is complemented by our annual books **Interiors+**, a style guide to fashionable interiors, furniture and homeware, and **Perspective+**, targeting the architecture and construction industry with extensive supplier listings, profiles of leading architectural firms and a lavishly-illustrated selection of the most emblematic works in Asia-Pacific and beyond. We also proudly own the regional **Perspective Awards** and **40 Under 40** programmes.



www.perspectiveglobal.com

OCEANNA, the Great Experience of "Freshness"

OCEANNA is famous for its Italian cuisine. Decorated with European style, provides you a comfortable dining atmosphere with serene, stylish and tasteful environment. Apart from the signature pasta and pizza, OCEANNA serves the freshest oysters and seafood from all over the world.

OCEANNA 主打傳統意大利菜式，食材除了保留原材料的鮮味，亦能為視覺及味蕾帶來新驚喜。店內的海鮮生蠔吧，客人可任意挑選。精選海鮮大拼盤集合了原隻波士頓龍蝦、即開生蠔、帶子及中蝦等，配上白酒品嚐，細味海洋滋味。



TIMES SQUARE

12/F, Food Forum, Times Square,
Causeway Bay, H.K.
Tel: 2506 3282

K11

G26, G/F, K11, 18 Hanoi Road,
Tsim Sha Tsui, Kowloon
Tel: 2506 1323

www.oceanna.com.hk



Philips LED Lighting

Lighting can change much more than just the light. It's amazing how lighting can transform the whole atmosphere in a room. To demonstrate this, Philips has done a series of Lightovers in real people's homes, dramatically improving the ambiance using the latest LED lighting. Scan the QR code to watch this lightover and discover more at www.philips.com/seewhatlightcando. Philips LED Lighting. See what light can do.

燈光所能改變的豈只是光線燈光所能改變的，遠超乎想像。Philips 實地走訪不同家庭，利用最先進的LED燈具改造室內照明，塑造完美氣氛。立即用手機或平板電腦輸入QR碼觀看改造過程或瀏覽www.philips.com/seewhatlightcando，感受飛利浦LED演繹照明全新定義。

PHILIPS
sense and simplicity





Kenne Mansion

20 Kennedy Road,
Midlevels Central

Sought after colonial mid-rise overlooking metropolitan and harbour view
罕有英式中密度住宅，俯瞰城市及維港美景

2,560 s.f.
\$105K incl.

9348 4118 Rowena Siu 蕭小姐
www.landscape.com/150605.htm

中半山
堅尼地台



Catalina Mansions

98-100 MacDonnell Road,
Midlevels Central

Spacious designed flat in excellent condition on MacDonnell Road
品味靚裝修住宅，間隔寬敞，位於麥當勞道，可租可售

2,300 s.f.
\$108K incl. also for sale \$36.8M

9028 0147 Jenson Au 區先生
www.landscape.com/136843.htm

中半山
嘉年大廈



The Harbourview

11 Magazine Gap Road,
Midlevels Central

Pretigious 4-bedroom apartment with Victoria Harbour view
豪華四房住宅，尊享維港景色

2,350 s.f.
\$119.5K

9138 1621 Teresa Fung 馮小姐
www.landscape.com/3063.htm

中半山
港景別墅



Bowen Mansion

7C Bowen Road,
Midlevels Central

Colonial apartment with huge balcony enjoying green and partial harbour view
中半山英式住宅，連大陽臺，欣賞翠綠景致及部份維港景

3,300 s.f.
\$125K incl.

9486 1566 Mira To 杜小姐
www.landscape.com/15436.htm

中半山
寶雲大廈



Chung Tak Mansion

2 Magazine Gap Road,
Midlevels Central

Spacious 4-bedroom apartment with fabulous city view and harbour view
間隔寬敞四房單位，兼享城市景及維港景，可租可售

2,864 s.f.
\$130K incl.

also for sale Open Offer

6183 8339 Carman Szeto 司徒小姐 可普通話
www.landscape.com/35231.htm

中半山
重德大廈



Magazine Court

5-7 Magazine Gap Road,
Midlevels Central

Victoria Harbour view 4-bedroom apartment with nice decoration
中半山四房維港景住宅，連雅緻裝修，可租可售

3,300 s.f.
\$140K also for sale \$98M

9080 6686 Teresa Lau 劉小姐 可普通話
www.landscape.com/21618.htm

中半山
澄碧閣



1 Robinson Road, Midlevels West

Nicely decorated duplex on fringe of CBD overlooking dynamic metropolitan view
雅緻裝修複式住宅，鄰近中環，俯瞰壯麗城市景觀

3,400 s.f.
\$142K incl.

6183 8339 Carman Szeto 司徒小姐 可普通話
www.landscape.com/114909.htm

西半山
羅便臣道1號



Clovelly Court

12 May Road, Midlevels Central

Newly renovated 4-bedroom apartment at prestigious Lower Peak area
全新裝修四房住宅，位於中半山尊貴地段

2,809 s.f.
\$143K incl.

9348 4118 Rowena Siu 蕭小姐
www.landscape.com/1017.htm

中半山
嘉富麗苑



23 Po Shan Road, Midlevels West

Spacious 5-bedroom duplex flat in secluded location
西半山寬敞五房複式住宅，環境寧靜怡人

5,600 s.f.
\$160K incl.

9088 4666 Yvonne Chang 鄭小姐
www.landscape.com/34636.htm

西半山
寶珊道23號



Century Tower

1 Tregunter Path,
Midlevels Central

Exclusive 4-bedroom duplex with sweeping city view
豪華四房複式住宅，尊享遠闊城市美景

5,130 s.f.
\$250K

9088 4666 Yvonne Chang 鄭小姐
www.landscape.com/21370.htm

中半山
世紀大廈



Beverly Hill

6 Broadwood Road, Happy Valley
Decorated 4 bedrooms apartment in family estate with open city view
新裝修四房家庭式住宅，享開揚城市景觀，可租可售

1,748 s.f.
\$60K incl. also for sale \$22.5M

☎ 6183 8339 Carman Szeto 司徒小姐 可普通話
🌐 www.landscape.com/83187.htm

跑馬地比華利山



Serene Villa

41-45 Perkins Road,
Jardine's Lookout
Well decorated spacious 3-bedroom low-rise apartment
雅致裝修三房低密度住宅，間隔寬敞，可租可售

1,650 s.f.
\$60K incl. also for sale \$38M

☎ 9238 2012 David Chan 陳先生
🌐 www.landscape.com/49322.htm

渣甸山寧苑



Cliveden Place

20 Tung Shan Terrace,
Midlevels East
Brand new 3-bedroom apartment with private roof terrace in low-rise new complex
東半山全新低密度三房單位，連私家天台

1,549 s.f. (plus 1,070 s.f. roof)
\$62K

☎ 9229 2396 Elaine Chow 周小姐 可普通話
🌐 www.landscape.com/151494.htm

東半山東山臺20號



Evergreen Villa

43 Stubbs Road, Midlevels East
Practical flat on Stubbs Road with 3 good size bedrooms
司徒拔道三房住宅，間隔實用

1,750 s.f.
\$63K incl.

☎ 9486 1566 Mira To 杜小姐
🌐 www.landscape.com/10958.htm

東半山松柏新村



Winfield Building

5 Ventris Road, Happy Valley
Racecourse view 3-bedroom apartment on fringed of Causeway Bay
跑馬地馬場景三房單位，鄰近銅鑼灣，可租可售

1,597 s.f.
\$68.5K incl. also for sale \$32M

☎ 9551 1077 Walker Lam 林先生 可普通話
🌐 www.landscape.com/112809.htm

跑馬地雲輝大廈



Monterey Court

47-49 Perkins Road,
Jardine's Lookout
Popular spacious 3-bedroom apartment with open view of Jardine's Lookout
渣甸山受歡迎三房單位，間隔寬敞，享開揚景觀

1,788 s.f.
\$73K

☎ 9093 3381 Stephen Chan 陳先生
🌐 www.landscape.com/20667.htm

渣甸山白建時頭47-49號



The Colonnade

152 Tai Hang Road, Midlevels East
Modern 3-bedroom apartment with stunning view
時尚三房住宅，欣賞遠闊景色，可租可售

1,857 s.f.
\$90K incl. also for sale \$48M

☎ 9486 1566 Mira To 杜小姐
🌐 www.landscape.com/124048.htm

東半山嘉寧臺



Cooper Villa

23-29 Wilson Road,
Jardine's Lookout
3-bedroom colonial low-rise with huge balcony and lush green view
三房英式低密度住宅，連大陽臺，享翠綠景觀

2,000 s.f. (plus 1,800 s.f. roof)
\$95K incl.

☎ 9551 1077 Walker Lam 林先生 可普通話
🌐 www.landscape.com/36355.htm

渣甸山衛理頭23-29號



Broadwood Park

38 Broadwood Road,
Happy Valley
Large three-ensuite apartment with fantastic views on Broadwood Road
跑馬地特大三套房單位，尊享遠闊景觀

2,938 s.f.
\$148K incl.

☎ 9093 3381 Stephen Chan 陳先生
🌐 www.landscape.com/109432.htm

跑馬地柏樂苑



Trafalgar Court

70 Tai Hang Road, Midlevels East
High efficiency 5-bedroom apartment with harbour view for rent
東半山五房維港景住宅出租，實用率高，可租可售

2,465 s.f.
\$150K incl. also for sale \$91M

☎ 9088 4666 Yvonne Chang 鄭小姐
🌐 www.landscape.com/5912.htm

東半山大寶閣



Super Prime Retail - Commercial Investment

Knightsbridge SW1

Retail unit in super prime new development, adjacent to Harrods and Harvey Nichols. Let to single tenant, a world famous luxury car company, with 14.5 years lease term remaining.

全新超豪華發展項目地舖，毗鄰為Harrods和Harvey Nichols。現租予世界著名豪華汽車品牌，還有14.5年回報可觀的租約。

Virtual Freehold (994 year peppercorn lease)
3,186 s.f. (net internal)



Prime Retail- Commercial Investment

Kensington W8

Two Retail units on one of Kensington's prime retail streets, both let to well known high street retailers, producing good income and yield. One unit has office space rented above with possibility to convert to residential in future.

兩地舖位於肯辛頓的商業街道，現各租予知名品牌，並帶來可觀的收入。樓上單位可由寫字樓轉成住宅出租。

Freehold
5,900s.f. (net internal)



Prime - Commercial Investment

Mayfair W1

Period building in prime Mayfair location converted to Offices, with adjoining Mews House also converted for Office use. Fully let to quality tenants producing good income and yield.

位於尊貴地段Mayfair，現已改裝為辦公室，單位全部已租出。帶來可觀的回報。

Long Leasehold
(100 years).
15,850 s.f. plus 1,500sf
Mews (net internal)



Prime Boutique Hotel- Commercial Investment

Belgravia SW1

Stylish luxury 4 star Boutique Hotel with 50 rooms in prime Belgravia situated in a quiet and private location. Recently re-opened after extensive modernization and expansion.

設有五十間客房的時尚四星級酒店，位於Belgravia尊貴地段，環境寧靜私隱度極高。經大規模擴張和裝修之後，最近已經重新開業。

Leasehold 70 years



Prime Residential Investment

Kensington W8

Two outstanding period Houses in prime Kensington location. The Two houses have been connected and converted into 7 high quality apartments over 5 floors with lift. Contains 4 bedroom, 3 bedroom and 1 studio flat both lateral and marionette style. Fully let.

位於肯辛頓的兩個獨特大宅，已連接並改裝成7個高級公寓，並設有升降機。提供四睡房或三睡房及開放式單位，現已全部租出。

Freehold
13,297s.f. (gross internal)



Super Prime Residential

Belgravia SW1

Large single residence with attached "mews" house in super prime exclusive Belgravia location. 9 bedrooms, ample living, dining, and home entertainment space, plus staff quarters. Secure Parking for 5 cars. Detailed floor plans available on request.

位於Belgravia尊貴地段的大宅連改裝屋。設有九間睡房、寬敞的客廳、飯廳、家庭娛樂室及傭人睡房。保安停車場可泊五輛車，不容錯過。

Freehold
12,616 s.f. (net internal)
House
plus 3,000s.f. (net internal)
Mews

Prices on luxury UK properties are rarely quoted in listings. Interested parties are encouraged to make enquiries on price indications with Landscape.

PRICE UPON ENQUIRY 歡迎查詢

Contact person: 6183 8388 Chris Law 羅先生

TOUCH

— Julia Nee Chu Solo Exhibition —

7 Oct – 4 Nov 2011



Newer, 2011, acrylic on canvas, 137 x 107 cm



atelier • fine art • villa

sin sin fine art | 53 - 54 sai street, central, hong kong | 香港中環西街 53 - 54 號地下

t: (852) 2858 5072 | e: info@sinsinfineart.com | w: www.sinsin.com.hk

open Tue - Sat 10:30am - 7:30pm & Sun 2 - 7pm | closed Mondays and public holidays



Coming soon, call us now.

Our meticulously crafted Sports Cruisers and Motor Yachts range from 38 to 80 feet.
To discover the full Fairline story - and to view our new and pre-owned models - visit our website.

專注於打造38英尺至80英尺運動型快艇及豪華動力艇
欲探索更多菲爾蘭發展的故事、瞭解更多菲爾蘭全新的船型，請登錄官網



Fairline China: 16/F, East Ocean Centre, 618 Yan An Road East, Shanghai 200001
菲爾蘭中國：上海延安東路618號東海商業中心16樓 郵編：200001
Tel 電話: +86 21 2306 4981 **Email 電郵:** china@fairline.com

Fairline Hong Kong: Unit 5, G/F, Aberdeen Marina Tower, 8 Shum Wan Road, Aberdeen, Hong Kong
菲爾蘭香港：香港香港仔深灣道8號深灣遊艇俱樂部地下5室
Tel 電話: +852 3180 3189 **Email 電郵:** hongkong@fairline.com

Appointed Dealers in 特約代理:

China中國 Hong Kong香港 India印度 Indonesia印尼 Japan日本 Malaysia馬來西亞 New Zealand新西蘭 Philippines菲律賓
Singapore新加坡 South Korea南韓 Thailand泰國 Vietnam越南 Victoria維多利亞州 Western Australia澳洲西部

www.fairline.com

